



Full wwPDB X-ray Structure Validation Report ⓘ

Mar 5, 2026 – 04:41 PM UTC

PDB ID : 8ZX9 / pdb_00008zx9
Title : Structure-Based Mechanism and Specificity of Human Galactosyltransferase B3GalT5
Authors : Lo, J.M.; Ma, C.
Deposited on : 2024-06-14
Resolution : 2.30 Å (reported)

This is a Full wwPDB X-ray Structure Validation Report for a publicly released PDB entry.

We welcome your comments at validation@mail.wwpdb.org

A user guide is available at

<https://www.wwpdb.org/validation/2017/XrayValidationReportHelp>

with specific help available everywhere you see the ⓘ symbol.

The types of validation reports are described at

<http://www.wwpdb.org/validation/2017/FAQs#types>.

The following versions of software and data (see [references ⓘ](#)) were used in the production of this report:

MolProbity : 4-5-2 with Phenix2.0
Mogul : 2022.3.0, CSD as543be (2022)
Xtrriage (Phenix) : 2.0
EDS : 3.0
Buster-report : wwPDB partial adaption of 1.1.7 (2018)
Percentile statistics : 20250101.v01 (using entries in the PDB archive January 1st 2025)
CCP4 : 9.0.010 (Gargrove)
Density-Fitness : 1.0.12
Ideal geometry (proteins) : Engh & Huber (2001)
Ideal geometry (DNA, RNA) : Parkinson et al. (1996)
Validation Pipeline (wwPDB-VP) : 2.49

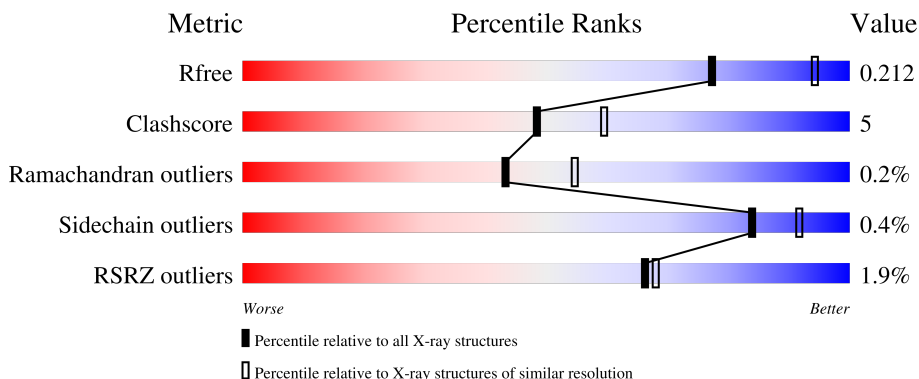
1 Overall quality at a glance

The following experimental techniques were used to determine the structure:

X-RAY DIFFRACTION

The reported resolution of this entry is 2.30 Å.

Percentile scores (ranging between 0-100) for global validation metrics of the entry are shown in the following graphic. The table shows the number of entries on which the scores are based.




Metric	Whole archive (#Entries)	Similar resolution (#Entries, resolution range(Å))
R_{free}	180053	6319 (2.30-2.30)
Clashscore	190562	6919 (2.30-2.30)
Ramachandran outliers	187476	6854 (2.30-2.30)
Sidechain outliers	187428	6854 (2.30-2.30)
RSRZ outliers	180081	6325 (2.30-2.30)

The table below summarises the geometric issues observed across the polymeric chains and their fit to the electron density. The red, orange, yellow and green segments of the lower bar indicate the fraction of residues that contain outliers for ≥ 3 , 2, 1 and 0 types of geometric quality criteria respectively. A grey segment represents the fraction of residues that are not modelled. The numeric value for each fraction is indicated below the corresponding segment, with a dot representing fractions $\leq 5\%$. The upper red bar (where present) indicates the fraction of residues that have poor fit to the electron density. The numeric value is given above the bar.

Mol	Chain	Length	Quality of chain
1	A	278	 3% 82% 13%
1	B	278	 3% 83% 13%
2	E	2	 100%
2	G	2	 50% 50%
3	F	6	 67% 33%

Continued on next page...

Continued from previous page...

Mol	Chain	Length	Quality of chain
4	D	2	

2 Entry composition [i](#)

There are 10 unique types of molecules in this entry. The entry contains 4946 atoms, of which 56 are hydrogens and 0 are deuteriums.

In the tables below, the ZeroOcc column contains the number of atoms modelled with zero occupancy, the AltConf column contains the number of residues with at least one atom in alternate conformation and the Trace column contains the number of residues modelled with at most 2 atoms.

- Molecule 1 is a protein called Beta-1,3-galactosyltransferase 5.

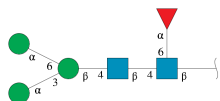
Mol	Chain	Residues	Atoms					ZeroOcc	AltConf	Trace
			Total	C	N	O	S			
1	A	267	2193	1420	371	389	13	0	0	0
1	B	267	2193	1420	371	389	13	0	0	0

- Molecule 2 is an oligosaccharide called 2-acetamido-2-deoxy-beta-D-glucopyranose-(1-4)-2-acetamido-2-deoxy-beta-D-glucopyranose.



Mol	Chain	Residues	Atoms				ZeroOcc	AltConf	Trace
			Total	C	N	O			
2	E	2	28	16	2	10	0	0	0
2	G	2	28	16	2	10	0	0	0

- Molecule 3 is an oligosaccharide called alpha-D-mannopyranose-(1-3)-[alpha-D-mannopyranose-(1-6)]beta-D-mannopyranose-(1-4)-2-acetamido-2-deoxy-beta-D-glucopyranose-(1-4)-[alpha-L-fucopyranose-(1-6)]2-acetamido-2-deoxy-beta-D-glucopyranose.



Mol	Chain	Residues	Atoms					ZeroOcc	AltConf	Trace
			Total	C	H	N	O			
3	F	6	127	40	56	2	29	0	0	0

- Molecule 4 is an oligosaccharide called alpha-L-fucopyranose-(1-6)-2-acetamido-2-deoxy-beta-D-glucopyranose.

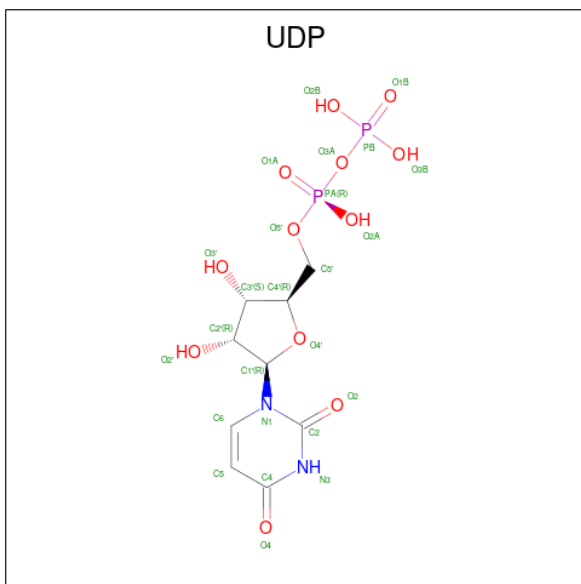


Mol	Chain	Residues	Atoms				ZeroOcc	AltConf	Trace
			Total	C	N	O			
4	D	2	24	14	1	9	0	0	0

- Molecule 5 is MANGANESE (II) ION (CCD ID: MN) (formula: Mn) (labeled as "Ligand of Interest" by depositor).

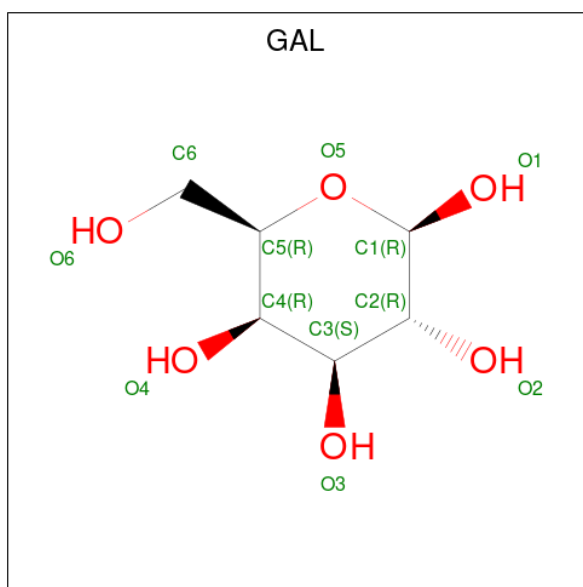
Mol	Chain	Residues	Atoms		ZeroOcc	AltConf
			Total	Mn		
5	A	1	1	1	0	0
5	B	1	1	1	0	0

- Molecule 6 is URIDINE-5'-DIPHOSPHATE (CCD ID: UDP) (formula: C₉H₁₄N₂O₁₂P₂) (labeled as "Ligand of Interest" by depositor).



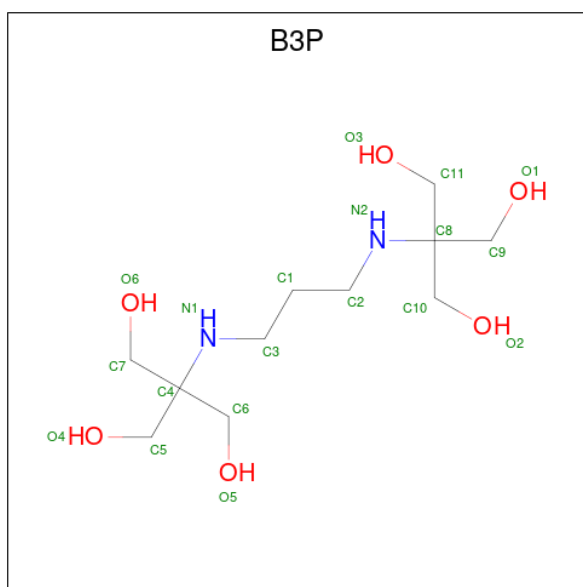
Mol	Chain	Residues	Atoms					ZeroOcc	AltConf
			Total	C	N	O	P		
6	A	1	25	9	2	12	2	0	0
6	B	1	25	9	2	12	2	0	0

- Molecule 7 is beta-D-galactopyranose (CCD ID: GAL) (formula: C₆H₁₂O₆) (labeled as "Ligand of Interest" by depositor).



Mol	Chain	Residues	Atoms			ZeroOcc	AltConf
7	A	1	Total	C	O	0	0
			11	6	5		
7	B	1	Total	C	O	0	0
			11	6	5		

- Molecule 8 is 2-[3-(2-HYDROXY-1,1-DIHYDROXYMETHYL-ETHYLAMINO)-PROPYLAMINO]-2-HYDROXYMETHYL-PROPANE-1,3-DIOL (CCD ID: B3P) (formula: $C_{11}H_{26}N_2O_6$).



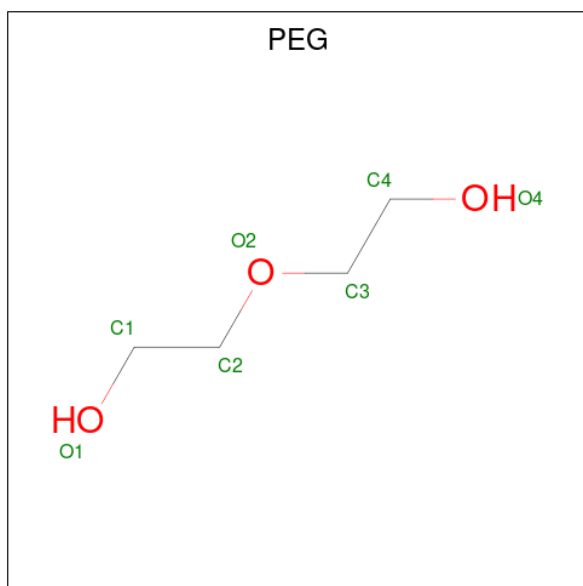
Mol	Chain	Residues	Atoms				ZeroOcc	AltConf
8	A	1	Total	C	N	O	0	0
			19	11	2	6		

Continued on next page...

Continued from previous page...

Mol	Chain	Residues	Atoms				ZeroOcc	AltConf
			Total	C	N	O		
8	B	1	19	11	2	6	0	0

- Molecule 9 is DI(HYDROXYETHYL)ETHER (CCD ID: PEG) (formula: $C_4H_{10}O_3$).



Mol	Chain	Residues	Atoms			ZeroOcc	AltConf
			Total	C	O		
9	A	1	7	4	3	0	0
9	A	1	7	4	3	0	0
9	A	1	7	4	3	0	0

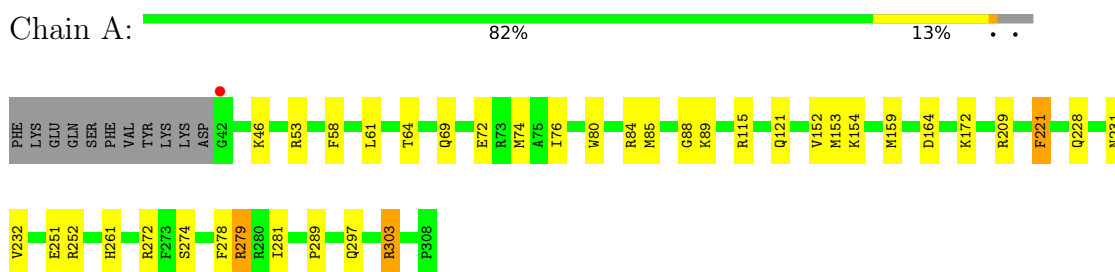
- Molecule 10 is water.

Mol	Chain	Residues	Atoms		ZeroOcc	AltConf
			Total	O		
10	A	152	152	152	0	0
10	B	68	68	68	0	0

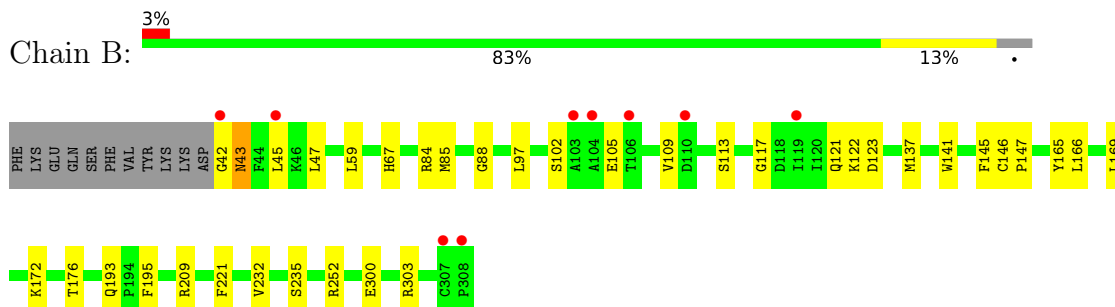
3 Residue-property plots [i](#)

These plots are drawn for all protein, RNA, DNA and oligosaccharide chains in the entry. The first graphic for a chain summarises the proportions of the various outlier classes displayed in the second graphic. The second graphic shows the sequence view annotated by issues in geometry and electron density. Residues are color-coded according to the number of geometric quality criteria for which they contain at least one outlier: green = 0, yellow = 1, orange = 2 and red = 3 or more. A red dot above a residue indicates a poor fit to the electron density ($RSRZ > 2$). Stretches of 2 or more consecutive residues without any outlier are shown as a green connector. Residues present in the sample, but not in the model, are shown in grey.

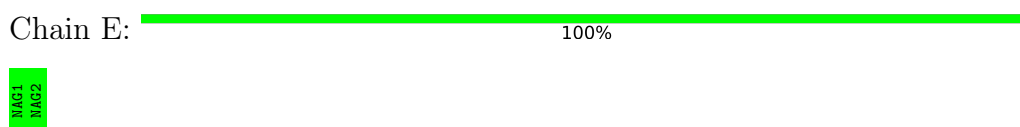
- Molecule 1: Beta-1,3-galactosyltransferase 5



- Molecule 1: Beta-1,3-galactosyltransferase 5



- Molecule 2: 2-acetamido-2-deoxy-beta-D-glucopyranose-(1-4)-2-acetamido-2-deoxy-beta-D-glucopyranose



- Molecule 2: 2-acetamido-2-deoxy-beta-D-glucopyranose-(1-4)-2-acetamido-2-deoxy-beta-D-glucopyranose



- Molecule 3: alpha-D-mannopyranose-(1-3)-[alpha-D-mannopyranose-(1-6)]beta-D-mannopyranose-(1-4)-2-acetamido-2-deoxy-beta-D-glucopyranose-(1-4)-[alpha-L-fucopyranose-(1-6)]2-acetamid

o-2-deoxy-beta-D-glucopyranose

Chain F:  67% 33%

 MAG1
MAG2
BMA3
MALV4
MAN5
FUC6

- Molecule 4: alpha-L-fucopyranose-(1-6)-2-acetamido-2-deoxy-beta-D-glucopyranose

Chain D:  50% 50%

 MAG1
FUC2

4 Data and refinement statistics

Property	Value	Source
Space group	P 1 21 1	Depositor
Cell constants a, b, c, α , β , γ	47.98Å 86.34Å 87.51Å 90.00° 95.48° 90.00°	Depositor
Resolution (Å)	26.63 – 2.30 26.63 – 2.30	Depositor EDS
% Data completeness (in resolution range)	90.6 (26.63-2.30) 90.6 (26.63-2.30)	Depositor EDS
R_{merge}	0.08	Depositor
R_{sym}	(Not available)	Depositor
$\langle I/\sigma(I) \rangle$ ¹	3.83 (at 2.31Å)	Xtrriage
Refinement program	PHENIX 1.19.1_4122	Depositor
R, R_{free}	0.180 , 0.212 0.181 , 0.212	Depositor DCC
R_{free} test set	1504 reflections (4.74%)	wwPDB-VP
Wilson B-factor (Å ²)	30.9	Xtrriage
Anisotropy	0.138	Xtrriage
Bulk solvent k_{sol} (e/Å ³), B_{sol} (Å ²)	0.33 , 51.1	EDS
L-test for twinning ²	$\langle L \rangle = 0.50$, $\langle L^2 \rangle = 0.34$	Xtrriage
Estimated twinning fraction	No twinning to report.	Xtrriage
F_o, F_c correlation	0.95	EDS
Total number of atoms	4946	wwPDB-VP
Average B, all atoms (Å ²)	42.0	wwPDB-VP

Xtrriage's analysis on translational NCS is as follows: *The largest off-origin peak in the Patterson function is 6.10% of the height of the origin peak. No significant pseudotranslation is detected.*

¹Intensities estimated from amplitudes.

²Theoretical values of $\langle |L| \rangle$, $\langle L^2 \rangle$ for acentric reflections are 0.5, 0.333 respectively for untwinned datasets, and 0.375, 0.2 for perfectly twinned datasets.

5 Model quality

5.1 Standard geometry

Bond lengths and bond angles in the following residue types are not validated in this section: NAG, PEG, MAN, BMA, UDP, MN, GAL, B3P, FUC

The Z score for a bond length (or angle) is the number of standard deviations the observed value is removed from the expected value. A bond length (or angle) with $|Z| > 5$ is considered an outlier worth inspection. RMSZ is the root-mean-square of all Z scores of the bond lengths (or angles).

Mol	Chain	Bond lengths		Bond angles	
		RMSZ	# Z >5	RMSZ	# Z >5
1	A	0.70	0/2252	1.04	3/3045 (0.1%)
1	B	0.52	0/2252	0.79	1/3045 (0.0%)
All	All	0.62	0/4504	0.92	4/6090 (0.1%)

Chiral center outliers are detected by calculating the chiral volume of a chiral center and verifying if the center is modelled as a planar moiety or with the opposite hand. A planarity outlier is detected by checking planarity of atoms in a peptide group, atoms in a mainchain group or atoms of a sidechain that are expected to be planar.

Mol	Chain	#Chirality outliers	#Planarity outliers
1	A	0	5
1	B	0	2
All	All	0	7

There are no bond length outliers.

All (4) bond angle outliers are listed below:

Mol	Chain	Res	Type	Atoms	Z	Observed(°)	Ideal(°)
1	A	221	PHE	CA-CB-CG	5.09	118.89	113.80
1	A	303	ARG	CA-C-N	-5.08	117.39	123.44
1	A	303	ARG	C-N-CA	-5.08	117.39	123.44
1	B	221	PHE	CA-CB-CG	5.01	118.81	113.80

There are no chirality outliers.

All (7) planarity outliers are listed below:

Mol	Chain	Res	Type	Group
1	A	115	ARG	Sidechain
1	A	272	ARG	Sidechain

Continued on next page...

Continued from previous page...

Mol	Chain	Res	Type	Group
1	A	279	ARG	Sidechain
1	A	303	ARG	Sidechain
1	A	53	ARG	Sidechain
1	B	209	ARG	Sidechain
1	B	84	ARG	Sidechain

5.2 Too-close contacts [i](#)

In the following table, the Non-H and H(model) columns list the number of non-hydrogen atoms and hydrogen atoms in the chain respectively. The H(added) column lists the number of hydrogen atoms added and optimized by MolProbity. The Clashes column lists the number of clashes within the asymmetric unit, whereas Symm-Clashes lists symmetry-related clashes.

Mol	Chain	Non-H	H(model)	H(added)	Clashes	Symm-Clashes
1	A	2193	0	2178	26	0
1	B	2193	0	2178	20	0
2	E	28	0	25	0	0
2	G	28	0	25	0	0
3	F	71	56	61	2	0
4	D	24	0	22	0	0
5	A	1	0	0	0	0
5	B	1	0	0	0	0
6	A	25	0	11	0	0
6	B	25	0	11	0	0
7	A	11	0	10	0	0
7	B	11	0	10	0	0
8	A	19	0	26	1	0
8	B	19	0	26	1	0
9	A	21	0	30	3	0
10	A	152	0	0	9	0
10	B	68	0	0	3	0
All	All	4890	56	4613	51	0

The all-atom clashscore is defined as the number of clashes found per 1000 atoms (including hydrogen atoms). The all-atom clashscore for this structure is 5.

All (51) close contacts within the same asymmetric unit are listed below, sorted by their clash magnitude.

Atom-1	Atom-2	Interatomic distance (Å)	Clash overlap (Å)
10:B:561:HOH:O	3:F:6:FUC:H3	1.82	0.78

Continued on next page...

Continued from previous page...

Atom-1	Atom-2	Interatomic distance (Å)	Clash overlap (Å)
1:B:67:HIS:ND1	1:B:109:VAL:HG21	2.02	0.74
1:A:251:GLU:HG3	9:A:406:PEG:H32	1.80	0.64
10:B:561:HOH:O	3:F:6:FUC:C3	2.42	0.61
1:A:278:PHE:HA	1:A:281:ILE:HG12	1.82	0.61
1:A:232:VAL:CG2	1:A:252:ARG:HG2	2.32	0.59
1:A:61:LEU:HD23	1:A:153:MET:HB3	1.84	0.59
1:B:232:VAL:HG21	1:B:252:ARG:HG2	1.85	0.58
1:A:232:VAL:HG21	1:A:252:ARG:HG2	1.86	0.57
1:A:72:GLU:HG3	1:A:289:PRO:HG3	1.87	0.56
1:B:176:THR:HB	10:B:557:HOH:O	2.05	0.55
1:B:232:VAL:CG2	1:B:252:ARG:HG2	2.37	0.55
1:A:64:THR:HG21	10:A:533:HOH:O	2.07	0.54
1:A:274:SER:HB3	10:A:589:HOH:O	2.08	0.54
1:B:300:GLU:O	1:B:303:ARG:HG2	2.08	0.54
1:A:69:GLN:NE2	10:A:503:HOH:O	2.39	0.54
1:B:42:GLY:O	1:B:43:ASN:HB2	2.08	0.53
1:A:231:ASN:ND2	10:A:504:HOH:O	2.41	0.53
1:B:97:LEU:O	1:B:121:GLN:HA	2.09	0.53
1:A:74:MET:CE	10:A:546:HOH:O	2.56	0.52
1:A:228:GLN:O	1:A:232:VAL:HG12	2.10	0.51
1:B:165:TYR:CE2	1:B:169:LEU:HD11	2.48	0.49
1:A:84:ARG:HH22	1:A:164:ASP:CG	2.21	0.49
1:A:46:LYS:HA	9:A:405:PEG:H12	1.93	0.49
8:B:404:B3P:H32	8:B:404:B3P:H52	1.58	0.49
1:B:141:TRP:CD1	1:B:145:PHE:HD2	2.32	0.48
1:B:59:LEU:HD21	1:B:166:LEU:HD23	1.95	0.48
8:A:404:B3P:H32	8:A:404:B3P:H52	1.55	0.48
1:B:85:MET:HE3	1:B:88:GLY:HA2	1.97	0.46
1:B:235:SER:OG	1:B:252:ARG:NH1	2.48	0.46
1:B:122:LYS:HD2	1:B:137:MET:HG3	1.99	0.45
1:A:159:MET:HE3	1:A:159:MET:HB3	1.86	0.45
1:A:74:MET:HE1	10:A:546:HOH:O	2.17	0.45
1:A:297:GLN:HB2	10:A:569:HOH:O	2.17	0.44
1:B:113:SER:O	1:B:117:GLY:N	2.40	0.44
1:A:76:ILE:HG12	1:A:80:TRP:CZ2	2.52	0.44
1:A:85:MET:HE3	1:A:88:GLY:C	2.43	0.43
1:A:152:VAL:HB	1:A:221:PHE:CE2	2.53	0.43
1:A:279:ARG:NE	10:A:511:HOH:O	2.51	0.43
1:B:45:LEU:HD21	1:B:123:ASP:HB2	2.00	0.43
1:B:47:LEU:HD23	1:B:47:LEU:HA	1.85	0.42
9:A:407:PEG:H42	9:A:407:PEG:H21	1.78	0.41

Continued on next page...

Continued from previous page...

Atom-1	Atom-2	Interatomic distance (Å)	Clash overlap (Å)
1:B:172:LYS:HE3	1:B:172:LYS:HB2	1.71	0.41
1:A:232:VAL:HG21	1:A:252:ARG:CG	2.50	0.41
1:A:74:MET:HE2	10:A:546:HOH:O	2.17	0.41
1:A:58:PHE:CB	1:A:89:LYS:HB3	2.51	0.41
1:A:172:LYS:HE2	1:A:261:HIS:HD2	1.86	0.41
1:A:46:LYS:HB2	1:A:121:GLN:HB3	2.03	0.41
1:B:193:GLN:HB3	1:B:195:PHE:CE2	2.56	0.41
1:B:146:CYS:N	1:B:147:PRO:CD	2.84	0.40
1:B:102:SER:HB3	1:B:105:GLU:HB2	2.03	0.40

There are no symmetry-related clashes.

5.3 Torsion angles [i](#)

5.3.1 Protein backbone [i](#)

In the following table, the Percentiles column shows the percent Ramachandran outliers of the chain as a percentile score with respect to all X-ray entries followed by that with respect to entries of similar resolution.

The Analysed column shows the number of residues for which the backbone conformation was analysed, and the total number of residues.

Mol	Chain	Analysed	Favoured	Allowed	Outliers	Percentiles	
1	A	265/278 (95%)	255 (96%)	10 (4%)	0	100	100
1	B	265/278 (95%)	257 (97%)	7 (3%)	1 (0%)	30	38
All	All	530/556 (95%)	512 (97%)	17 (3%)	1 (0%)	43	55

All (1) Ramachandran outliers are listed below:

Mol	Chain	Res	Type
1	B	43	ASN

5.3.2 Protein sidechains [i](#)

In the following table, the Percentiles column shows the percent sidechain outliers of the chain as a percentile score with respect to all X-ray entries followed by that with respect to entries of similar resolution.

The Analysed column shows the number of residues for which the sidechain conformation was

analysed, and the total number of residues.

Mol	Chain	Analysed	Rotameric	Outliers	Percentiles	
1	A	244/255 (96%)	242 (99%)	2 (1%)	73	86
1	B	244/255 (96%)	244 (100%)	0	100	100
All	All	488/510 (96%)	486 (100%)	2 (0%)	84	92

All (2) residues with a non-rotameric sidechain are listed below:

Mol	Chain	Res	Type
1	A	154	LYS
1	A	209	ARG

Sometimes sidechains can be flipped to improve hydrogen bonding and reduce clashes. All (3) such sidechains are listed below:

Mol	Chain	Res	Type
1	A	111	GLN
1	B	231	ASN
1	B	297	GLN

5.3.3 RNA [i](#)

There are no RNA molecules in this entry.

5.4 Non-standard residues in protein, DNA, RNA chains [i](#)

There are no non-standard protein/DNA/RNA residues in this entry.

5.5 Carbohydrates [i](#)

12 monosaccharides are modelled in this entry.

In the following table, the Counts columns list the number of bonds (or angles) for which Mogul statistics could be retrieved, the number of bonds (or angles) that are observed in the model and the number of bonds (or angles) that are defined in the Chemical Component Dictionary. The Link column lists molecule types, if any, to which the group is linked. The Z score for a bond length (or angle) is the number of standard deviations the observed value is removed from the expected value. A bond length (or angle) with $|Z| > 2$ is considered an outlier worth inspection. RMSZ is the root-mean-square of all Z scores of the bond lengths (or angles).

Mol	Type	Chain	Res	Link	Bond lengths			Bond angles		
					Counts	RMSZ	# Z > 2	Counts	RMSZ	# Z > 2
4	NAG	D	1	1,4	14,14,15	0.42	0	17,19,21	0.55	0
4	FUC	D	2	4	10,10,11	0.29	0	14,14,16	1.00	1 (7%)
2	NAG	E	1	1,2	14,14,15	0.45	0	17,19,21	0.65	0
2	NAG	E	2	2	14,14,15	0.42	0	17,19,21	0.63	0
3	NAG	F	1	3,1	14,14,15	0.42	0	17,19,21	1.14	1 (5%)
3	NAG	F	2	3	14,14,15	0.46	0	17,19,21	0.72	0
3	BMA	F	3	3	11,11,12	0.52	0	15,15,17	0.62	0
3	MAN	F	4	3	11,11,12	0.35	0	15,15,17	0.60	0
3	MAN	F	5	3	11,11,12	0.29	0	15,15,17	0.65	0
3	FUC	F	6	3	10,10,11	0.36	0	14,14,16	0.39	0
2	NAG	G	1	1,2	14,14,15	0.44	0	17,19,21	0.71	0
2	NAG	G	2	2	14,14,15	0.40	0	17,19,21	1.04	1 (5%)

In the following table, the Chirals column lists the number of chiral outliers, the number of chiral centers analysed, the number of these observed in the model and the number defined in the Chemical Component Dictionary. Similar counts are reported in the Torsion and Rings columns. '-' means no outliers of that kind were identified.

Mol	Type	Chain	Res	Link	Chirals	Torsions	Rings
4	NAG	D	1	1,4	-	2/6/23/26	0/1/1/1
4	FUC	D	2	4	-	-	0/1/1/1
2	NAG	E	1	1,2	-	0/6/23/26	0/1/1/1
2	NAG	E	2	2	-	4/6/23/26	0/1/1/1
3	NAG	F	1	3,1	-	2/6/23/26	0/1/1/1
3	NAG	F	2	3	-	2/6/23/26	0/1/1/1
3	BMA	F	3	3	-	0/2/19/22	0/1/1/1
3	MAN	F	4	3	-	0/2/19/22	0/1/1/1
3	MAN	F	5	3	-	0/2/19/22	0/1/1/1
3	FUC	F	6	3	-	-	0/1/1/1
2	NAG	G	1	1,2	-	0/6/23/26	0/1/1/1
2	NAG	G	2	2	-	4/6/23/26	0/1/1/1

There are no bond length outliers.

All (3) bond angle outliers are listed below:

Mol	Chain	Res	Type	Atoms	Z	Observed(°)	Ideal(°)
3	F	1	NAG	C2-N2-C7	3.21	127.20	122.90
2	G	2	NAG	C1-O5-C5	3.00	116.21	112.19
4	D	2	FUC	C1-C2-C3	2.59	113.42	109.64

There are no chirality outliers.

All (14) torsion outliers are listed below:

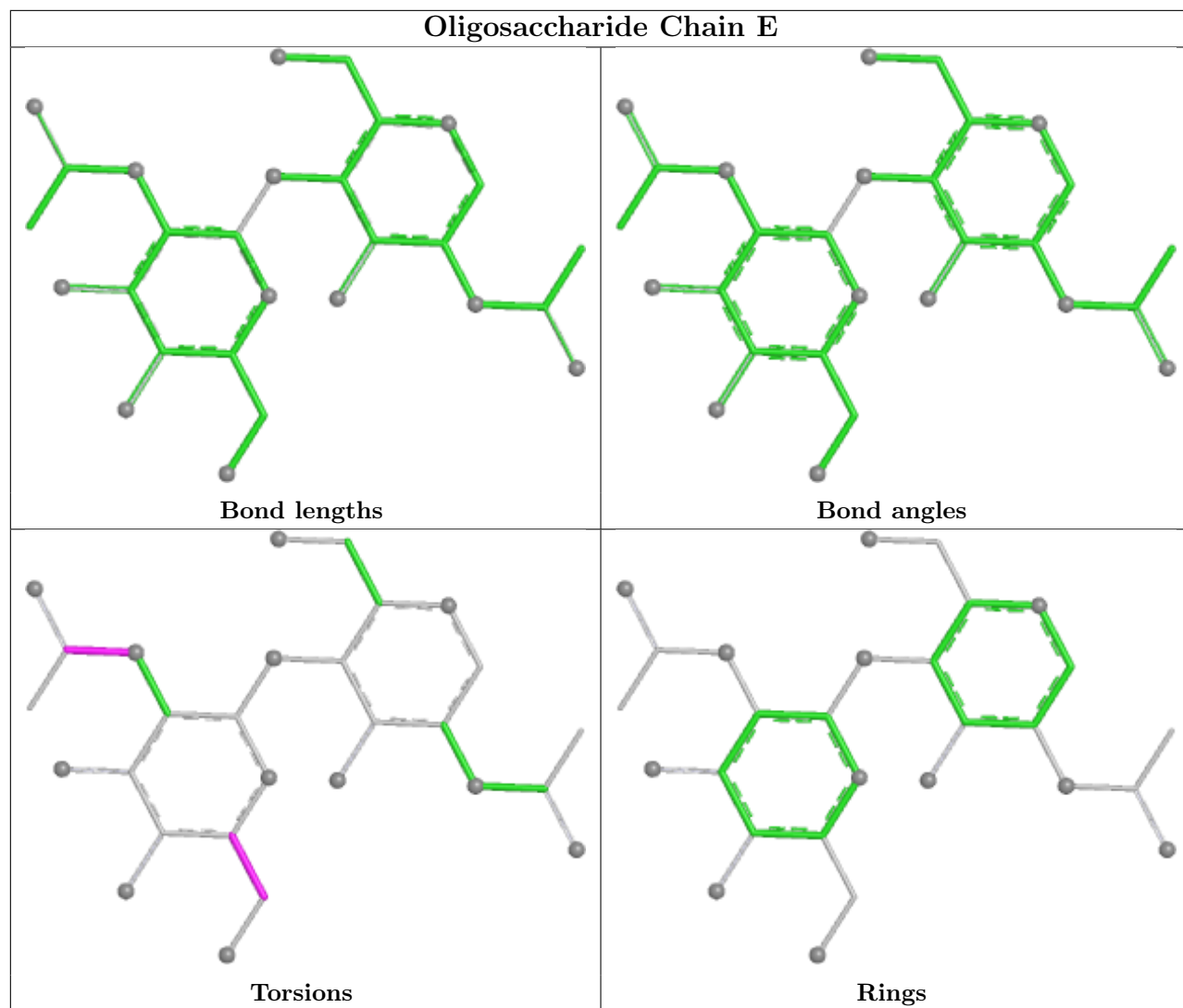
Mol	Chain	Res	Type	Atoms
2	G	2	NAG	C8-C7-N2-C2
2	G	2	NAG	O7-C7-N2-C2
2	G	2	NAG	C4-C5-C6-O6
3	F	2	NAG	C8-C7-N2-C2
3	F	2	NAG	O7-C7-N2-C2
2	G	2	NAG	O5-C5-C6-O6
4	D	1	NAG	O5-C5-C6-O6
2	E	2	NAG	O5-C5-C6-O6
4	D	1	NAG	C4-C5-C6-O6
3	F	1	NAG	C8-C7-N2-C2
3	F	1	NAG	O7-C7-N2-C2
2	E	2	NAG	C4-C5-C6-O6
2	E	2	NAG	C8-C7-N2-C2
2	E	2	NAG	O7-C7-N2-C2

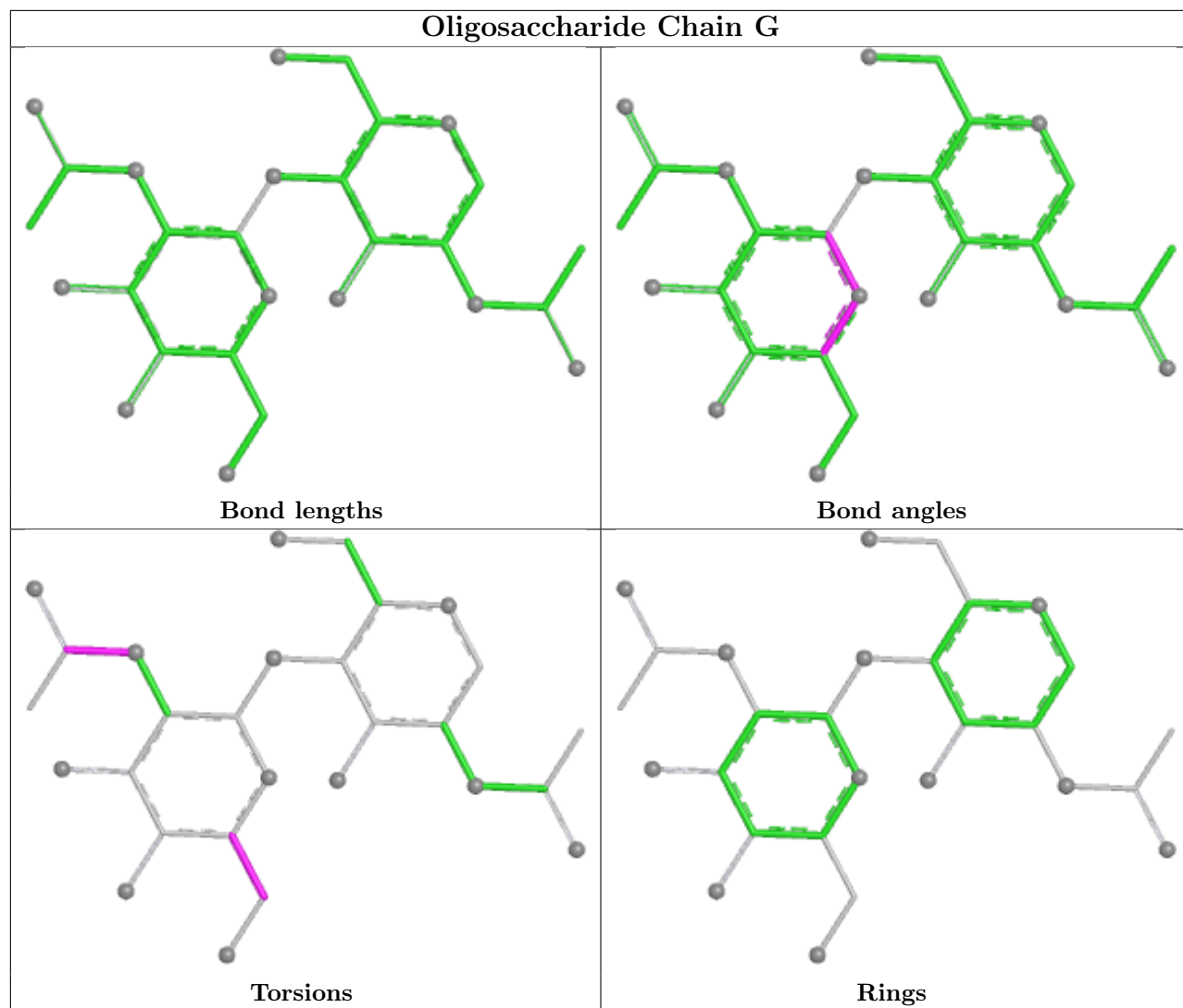
There are no ring outliers.

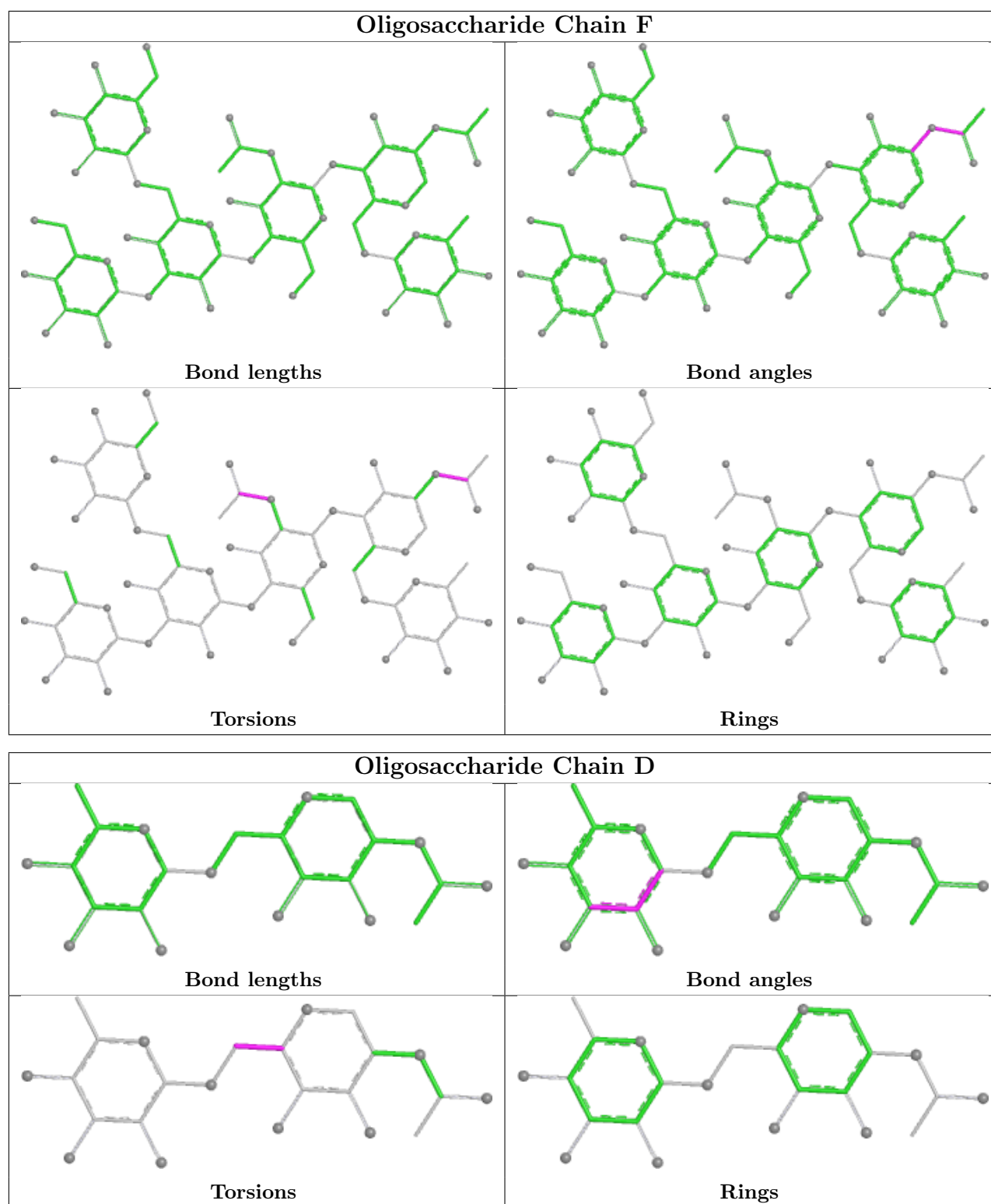
1 monomer is involved in 2 short contacts:

Mol	Chain	Res	Type	Clashes	Symm-Clashes
3	F	6	FUC	2	0

The following is a two-dimensional graphical depiction of Mogul quality analysis of bond lengths, bond angles, torsion angles, and ring geometry for oligosaccharide.







5.6 Ligand geometry [i](#)

Of 11 ligands modelled in this entry, 2 are monoatomic - leaving 9 for Mogul analysis.

In the following table, the Counts columns list the number of bonds (or angles) for which Mogul

statistics could be retrieved, the number of bonds (or angles) that are observed in the model and the number of bonds (or angles) that are defined in the Chemical Component Dictionary. The Link column lists molecule types, if any, to which the group is linked. The Z score for a bond length (or angle) is the number of standard deviations the observed value is removed from the expected value. A bond length (or angle) with $|Z| > 2$ is considered an outlier worth inspection. RMSZ is the root-mean-square of all Z scores of the bond lengths (or angles).

Mol	Type	Chain	Res	Link	Bond lengths			Bond angles		
					Counts	RMSZ	# $ Z > 2$	Counts	RMSZ	# $ Z > 2$
9	PEG	A	405	-	6,6,6	0.09	0	5,5,5	0.13	0
9	PEG	A	407	-	6,6,6	0.11	0	5,5,5	0.07	0
6	UDP	B	402	5	25,26,26	0.54	0	38,40,40	0.52	0
8	B3P	A	404	-	18,18,18	0.61	0	23,23,23	1.59	4 (17%)
6	UDP	A	402	5	25,26,26	0.54	0	38,40,40	0.54	0
7	GAL	B	403	-	11,11,12	0.60	0	15,15,17	1.90	3 (20%)
7	GAL	A	403	-	11,11,12	0.60	0	15,15,17	1.90	3 (20%)
8	B3P	B	404	-	18,18,18	0.66	0	23,23,23	1.47	2 (8%)
9	PEG	A	406	-	6,6,6	0.22	0	5,5,5	0.19	0

In the following table, the Chirals column lists the number of chiral outliers, the number of chiral centers analysed, the number of these observed in the model and the number defined in the Chemical Component Dictionary. Similar counts are reported in the Torsion and Rings columns. '-' means no outliers of that kind were identified.

Mol	Type	Chain	Res	Link	Chirals	Torsions	Rings
9	PEG	A	405	-	-	3/4/4/4	-
9	PEG	A	407	-	-	2/4/4/4	-
6	UDP	B	402	5	-	8/16/32/32	0/2/2/2
8	B3P	A	404	-	-	6/28/28/28	-
6	UDP	A	402	5	-	3/16/32/32	0/2/2/2
7	GAL	B	403	-	-	2/2/19/22	0/1/1/1
7	GAL	A	403	-	-	2/2/19/22	0/1/1/1
8	B3P	B	404	-	-	4/28/28/28	-
9	PEG	A	406	-	-	3/4/4/4	-

There are no bond length outliers.

All (12) bond angle outliers are listed below:

Mol	Chain	Res	Type	Atoms	Z	Observed(°)	Ideal(°)
7	B	403	GAL	C1-O5-C5	4.87	118.72	112.19
7	A	403	GAL	C1-O5-C5	4.86	118.70	112.19

Continued on next page...

Continued from previous page...

Mol	Chain	Res	Type	Atoms	Z	Observed(°)	Ideal(°)
8	B	404	B3P	C3-N1-C4	-4.51	109.57	116.17
8	A	404	B3P	C3-N1-C4	-4.43	109.68	116.17
7	A	403	GAL	O5-C1-C2	3.96	120.24	110.79
7	B	403	GAL	O5-C1-C2	3.95	120.20	110.79
8	A	404	B3P	C2-N2-C8	-3.74	110.69	116.17
8	B	404	B3P	C2-N2-C8	-3.43	111.15	116.17
8	A	404	B3P	O2-C10-C8	-2.51	106.58	111.68
8	A	404	B3P	O4-C5-C4	-2.11	107.39	111.68
7	A	403	GAL	C2-C3-C4	-2.08	107.20	110.86
7	B	403	GAL	C2-C3-C4	-2.07	107.23	110.86

There are no chirality outliers.

All (33) torsion outliers are listed below:

Mol	Chain	Res	Type	Atoms
6	A	402	UDP	PA-O3A-PB-O3B
6	B	402	UDP	C5'-O5'-PA-O1A
6	B	402	UDP	C5'-O5'-PA-O2A
6	B	402	UDP	C5'-O5'-PA-O3A
8	A	404	B3P	N1-C4-C5-O4
8	A	404	B3P	C6-C4-C5-O4
8	A	404	B3P	C7-C4-C5-O4
8	A	404	B3P	N1-C4-C6-O5
8	A	404	B3P	C5-C4-C6-O5
8	A	404	B3P	C7-C4-C6-O5
7	B	403	GAL	O5-C5-C6-O6
7	A	403	GAL	O5-C5-C6-O6
9	A	407	PEG	O1-C1-C2-O2
7	A	403	GAL	C4-C5-C6-O6
7	B	403	GAL	C4-C5-C6-O6
9	A	406	PEG	O2-C3-C4-O4
9	A	407	PEG	C4-C3-O2-C2
6	B	402	UDP	O4'-C4'-C5'-O5'
9	A	406	PEG	O1-C1-C2-O2
9	A	406	PEG	C4-C3-O2-C2
9	A	405	PEG	O2-C3-C4-O4
8	B	404	B3P	C7-C4-C6-O5
8	B	404	B3P	C5-C4-C6-O5
9	A	405	PEG	C1-C2-O2-C3
6	B	402	UDP	PB-O3A-PA-O5'
8	B	404	B3P	C3-C1-C2-N2
6	A	402	UDP	PA-O3A-PB-O1B

Continued on next page...

Continued from previous page...

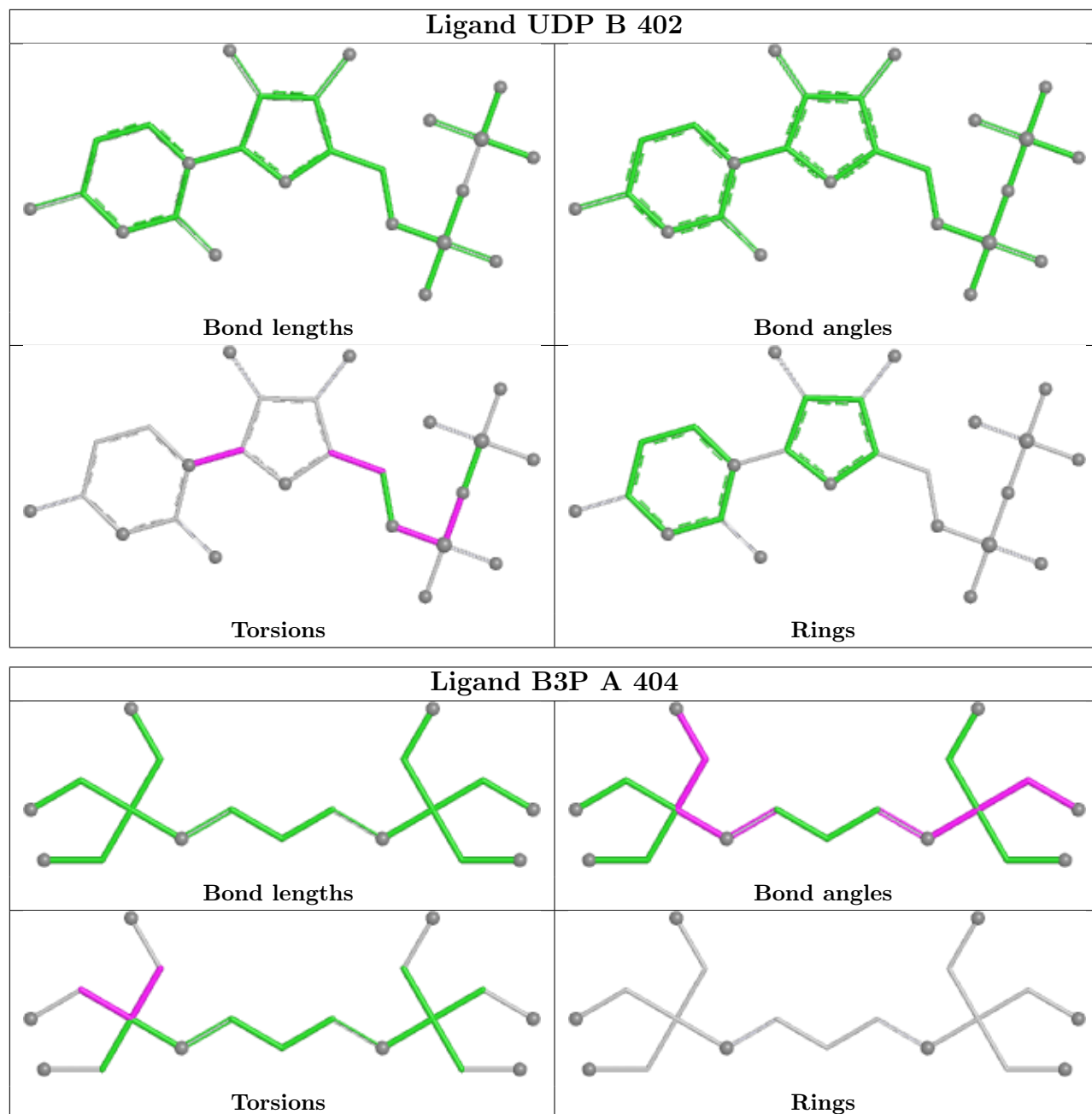
Mol	Chain	Res	Type	Atoms
8	B	404	B3P	N1-C4-C6-O5
6	B	402	UDP	C2'-C1'-N1-C6
6	A	402	UDP	PB-O3A-PA-O2A
9	A	405	PEG	O1-C1-C2-O2
6	B	402	UDP	O4'-C1'-N1-C6
6	B	402	UDP	PB-O3A-PA-O2A

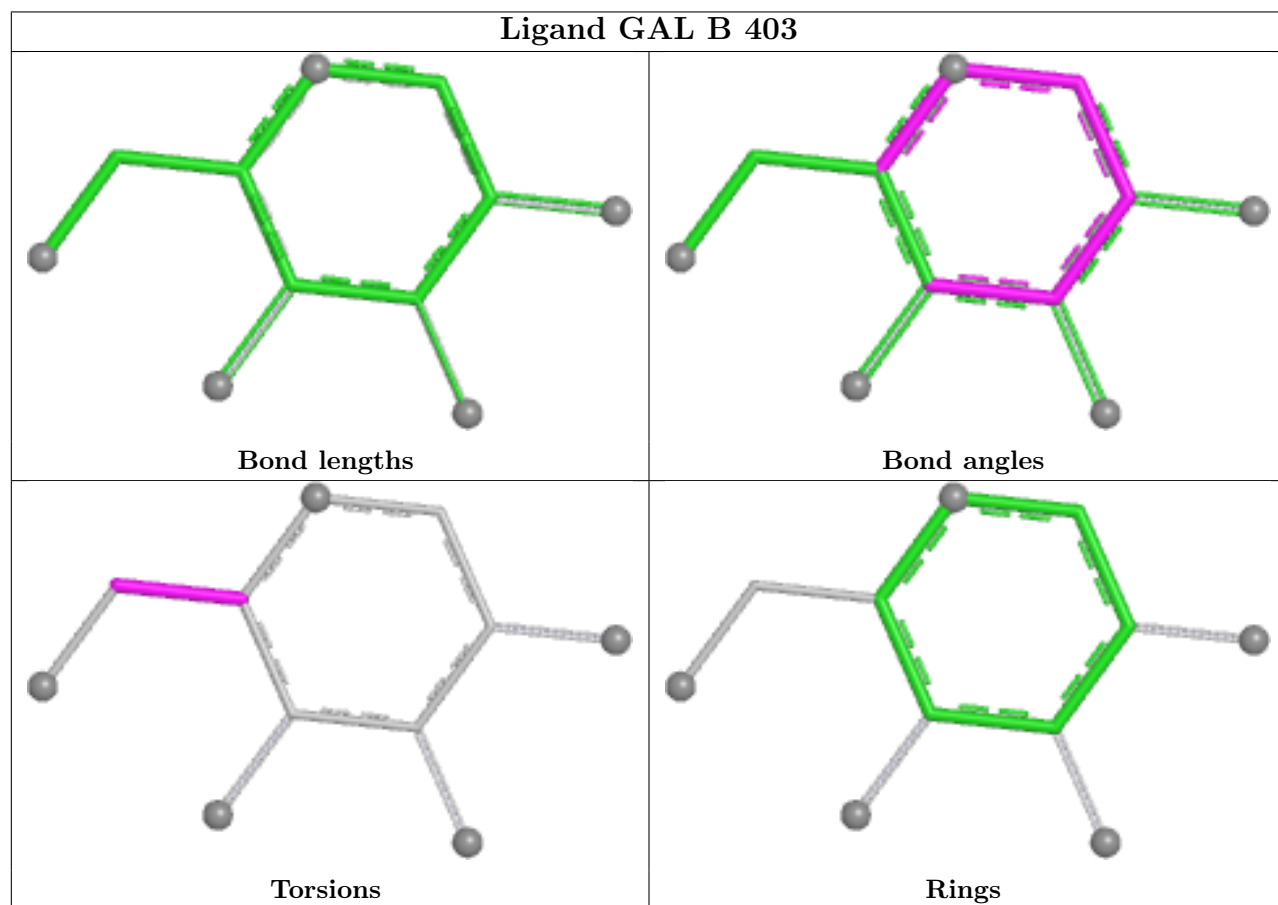
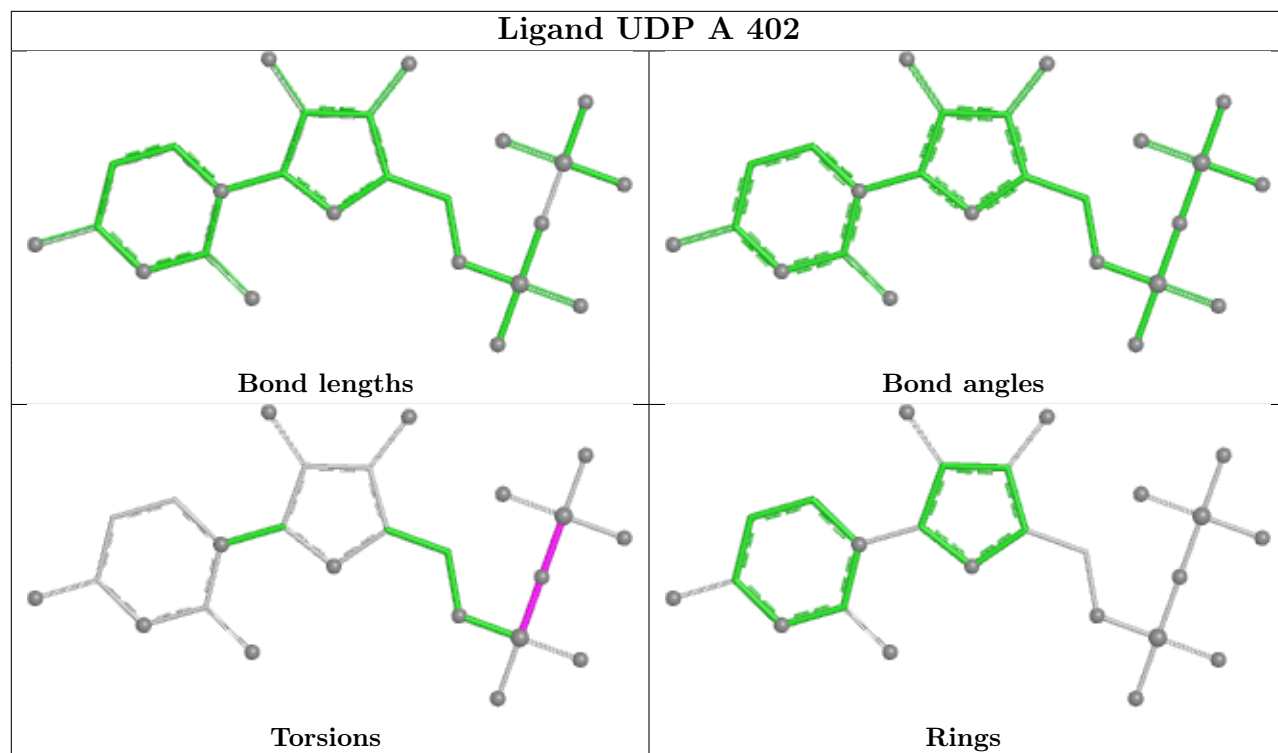
There are no ring outliers.

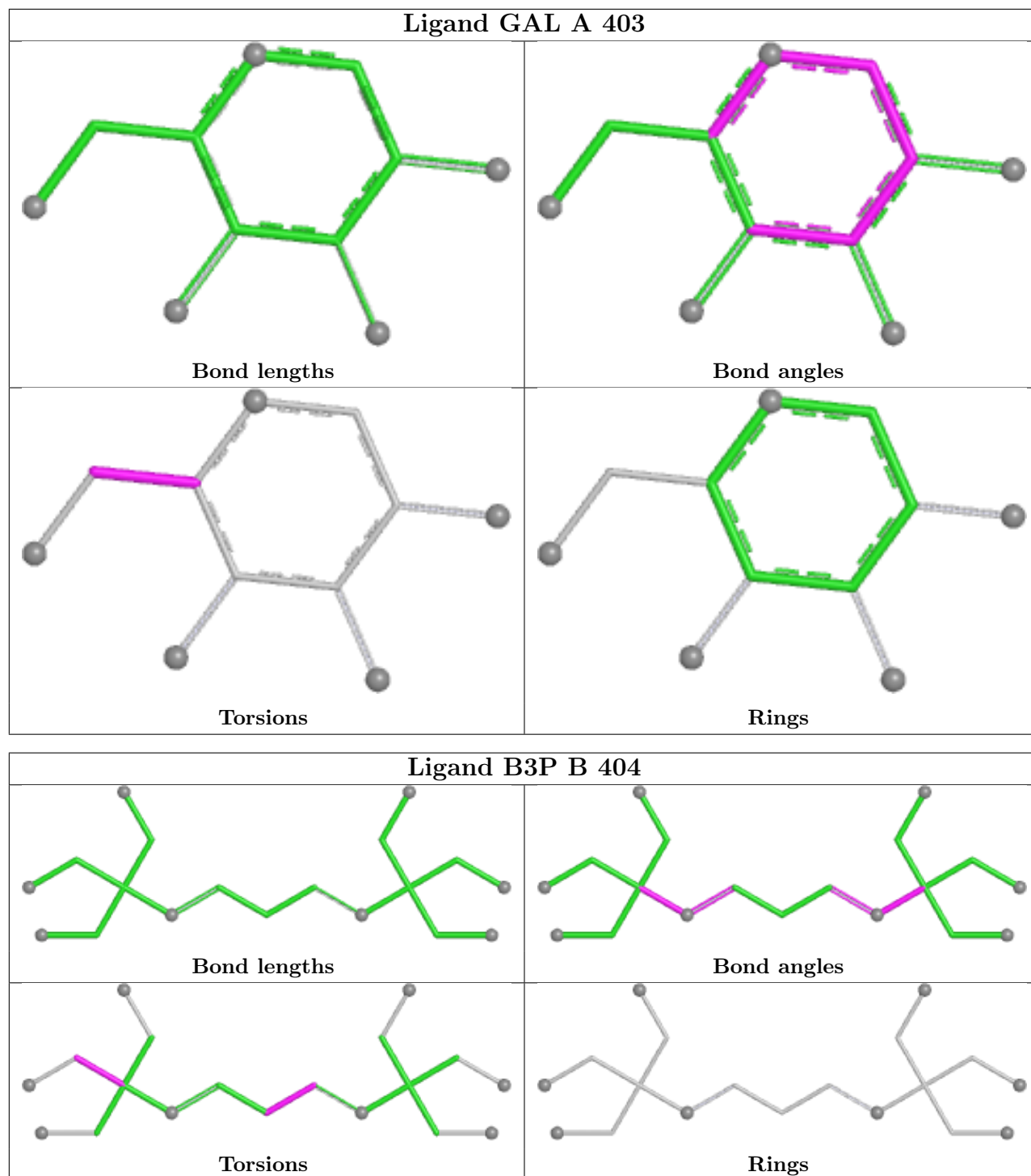
5 monomers are involved in 5 short contacts:

Mol	Chain	Res	Type	Clashes	Symm-Clashes
9	A	405	PEG	1	0
9	A	407	PEG	1	0
8	A	404	B3P	1	0
8	B	404	B3P	1	0
9	A	406	PEG	1	0

The following is a two-dimensional graphical depiction of Mogul quality analysis of bond lengths, bond angles, torsion angles, and ring geometry for all instances of the Ligand of Interest. In addition, ligands with molecular weight > 250 and outliers as shown on the validation Tables will also be included. For torsion angles, if less than 5% of the Mogul distribution of torsion angles is within 10 degrees of the torsion angle in question, then that torsion angle is considered an outlier. Any bond that is central to one or more torsion angles identified as an outlier by Mogul will be highlighted in the graph. For rings, the root-mean-square deviation (RMSD) between the ring in question and similar rings identified by Mogul is calculated over all ring torsion angles. If the average RMSD is greater than 60 degrees and the minimal RMSD between the ring in question and any Mogul-identified rings is also greater than 60 degrees, then that ring is considered an outlier. The outliers are highlighted in purple. The color gray indicates Mogul did not find sufficient equivalents in the CSD to analyse the geometry.







5.7 Other polymers [i](#)

There are no such residues in this entry.

5.8 Polymer linkage issues

There are no chain breaks in this entry.

6 Fit of model and data [i](#)

6.1 Protein, DNA and RNA chains [i](#)

In the following table, the column labelled ‘#RSRZ > 2’ contains the number (and percentage) of RSRZ outliers, followed by percent RSRZ outliers for the chain as percentile scores relative to all X-ray entries and entries of similar resolution. The OWAB column contains the minimum, median, 95th percentile and maximum values of the occupancy-weighted average B-factor per residue. The column labelled ‘Q < 0.9’ lists the number of (and percentage) of residues with an average occupancy less than 0.9.

Mol	Chain	Analysed	<RSRZ>	#RSRZ>2	OWAB(Å ²)	Q<0.9
1	A	267/278 (96%)	-0.27	1 (0%) 88 89	16, 28, 60, 90	0
1	B	267/278 (96%)	0.17	9 (3%) 48 50	28, 46, 92, 113	0
All	All	534/556 (96%)	-0.05	10 (1%) 66 68	16, 37, 77, 113	0

All (10) RSRZ outliers are listed below:

Mol	Chain	Res	Type	RSRZ
1	B	42	GLY	3.0
1	B	45	LEU	2.9
1	B	308	PRO	2.7
1	B	110	ASP	2.6
1	B	104	ALA	2.5
1	B	106	THR	2.4
1	A	42	GLY	2.2
1	B	119	ILE	2.2
1	B	103	ALA	2.1
1	B	307	CYS	2.0

6.2 Non-standard residues in protein, DNA, RNA chains [i](#)

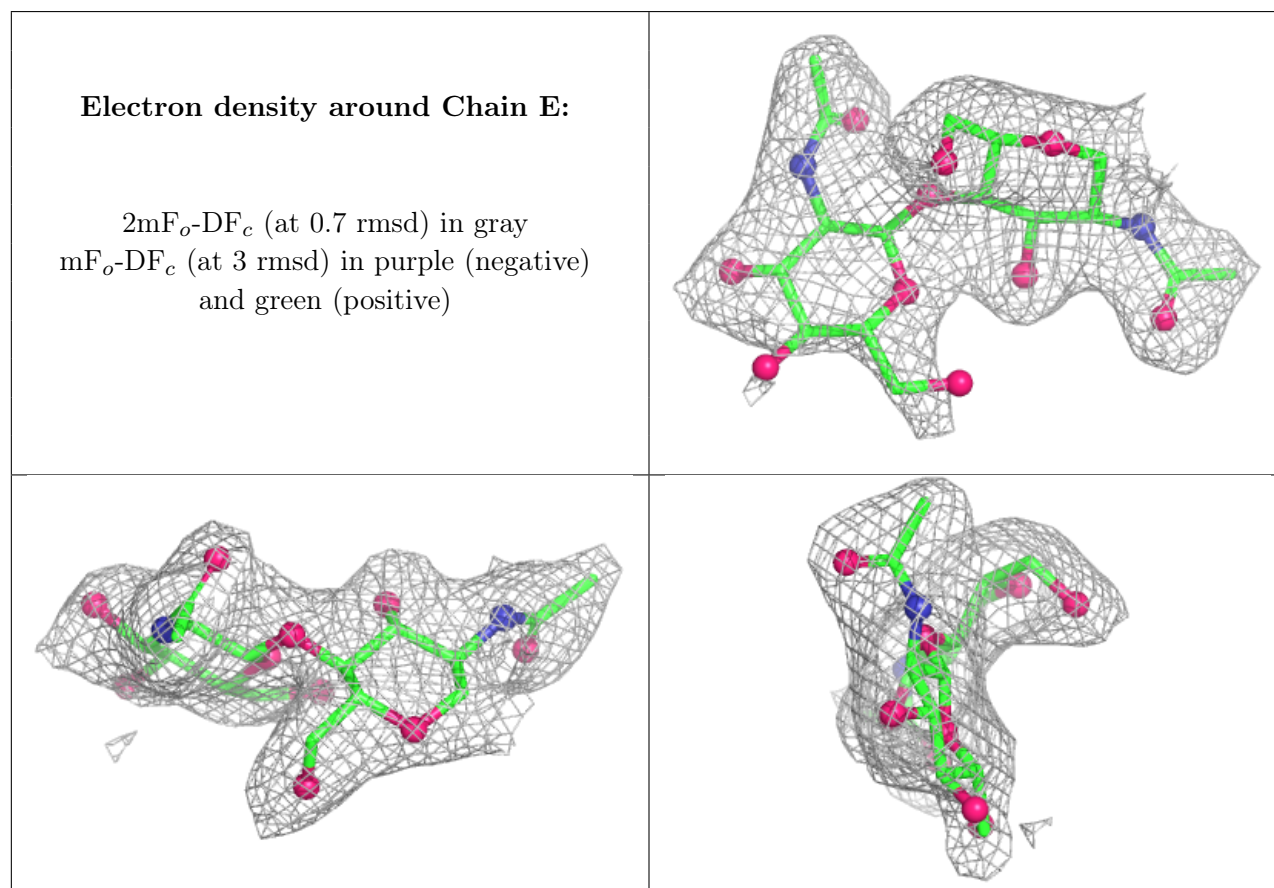
There are no non-standard protein/DNA/RNA residues in this entry.

6.3 Carbohydrates [i](#)

In the following table, the Atoms column lists the number of modelled atoms in the group and the number defined in the chemical component dictionary. The B-factors column lists the minimum, median, 95th percentile and maximum values of B factors of atoms in the group. The column labelled ‘Q < 0.9’ lists the number of atoms with occupancy less than 0.9.

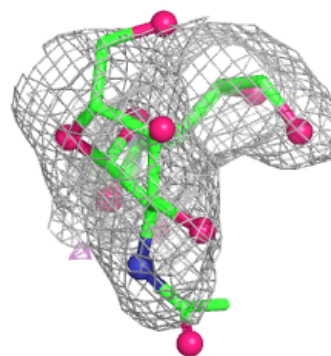
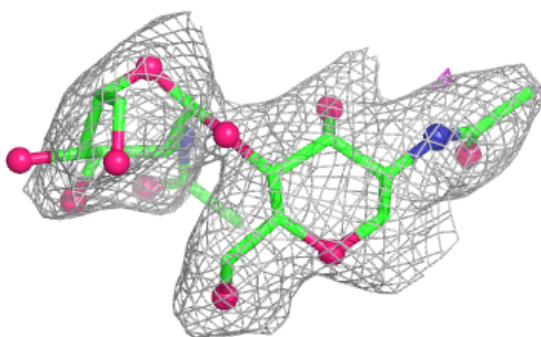
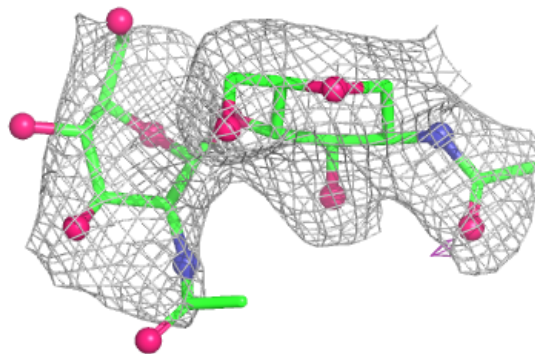
Mol	Type	Chain	Res	Atoms	RSCC	RSR	B-factors(\AA^2)	Q<0.9
3	NAG	F	2	14/15	0.65	0.12	33,41,61,61	0
2	NAG	E	2	14/15	-	-	43,71,88,99	0
2	NAG	G	1	14/15	-	-	50,66,85,102	0
2	NAG	G	2	14/15	-	-	90,102,108,113	0
2	NAG	E	1	14/15	0.72	0.12	30,36,45,59	0
3	NAG	F	1	14/15	0.83	0.10	33,40,56,61	0
3	BMA	F	3	11/12	-	-	34,41,47,49	0
3	MAN	F	4	11/12	-	-	47,58,70,74	0
3	MAN	F	5	11/12	-	-	38,49,58,69	0
3	FUC	F	6	10/11	-	-	52,71,78,79	0
4	NAG	D	1	14/15	0.94	0.08	59,75,85,87	0
4	FUC	D	2	10/11	-	-	92,95,104,104	0

The following is a graphical depiction of the model fit to experimental electron density for oligosaccharide. Each fit is shown from different orientation to approximate a three-dimensional view.

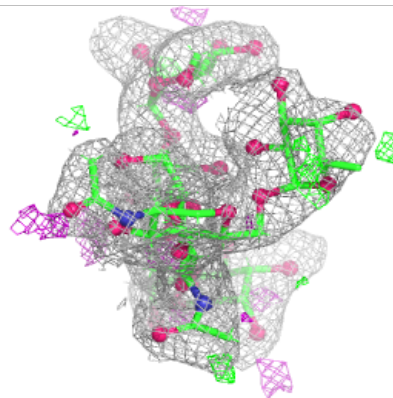
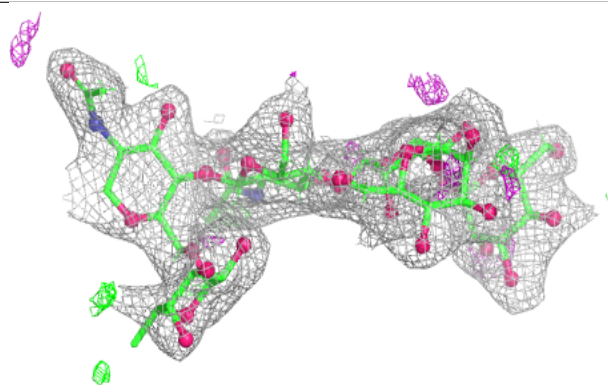
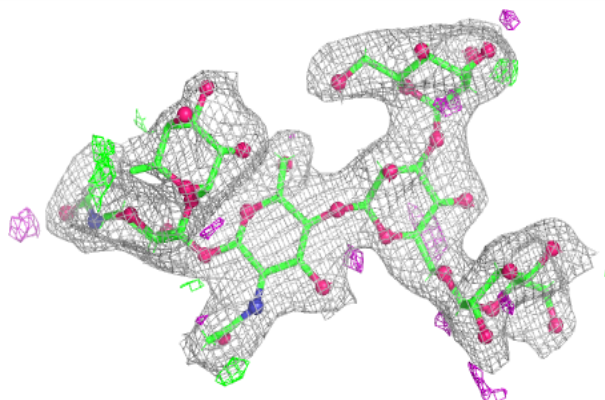


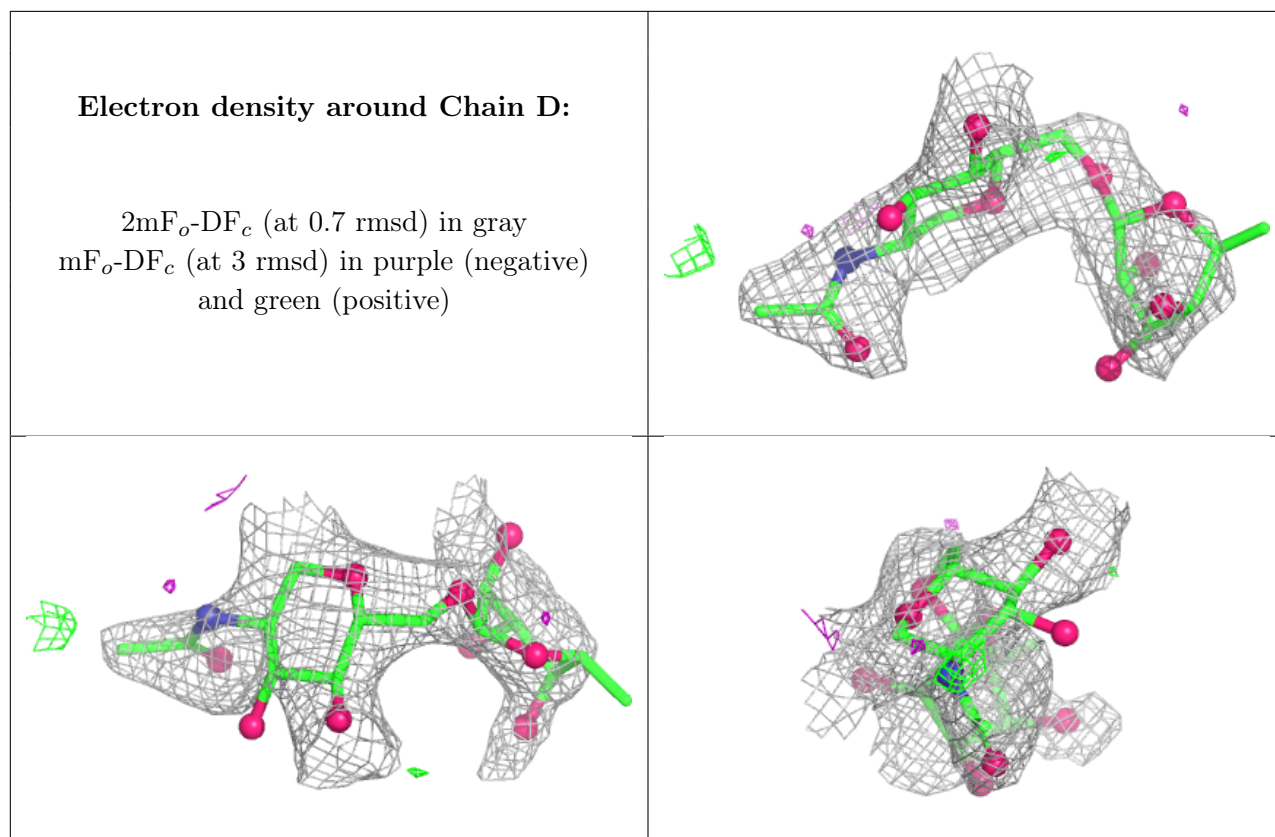
Electron density around Chain G:

$2mF_o-DF_c$ (at 0.7 rmsd) in gray
 mF_o-DF_c (at 3 rmsd) in purple (negative)
and green (positive)

**Electron density around Chain F:**

$2mF_o-DF_c$ (at 0.7 rmsd) in gray
 mF_o-DF_c (at 3 rmsd) in purple (negative)
and green (positive)





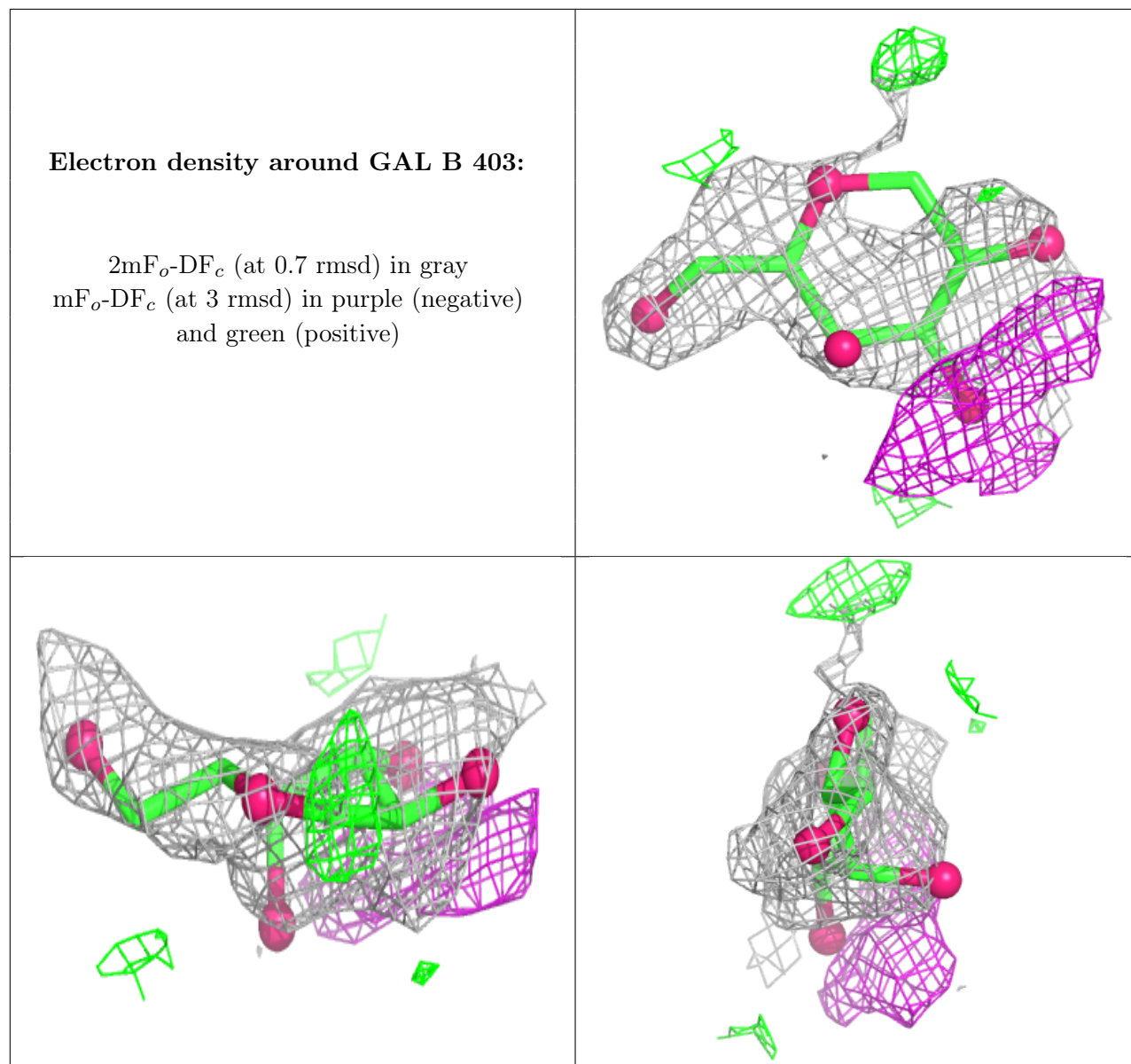
6.4 Ligands [i](#)

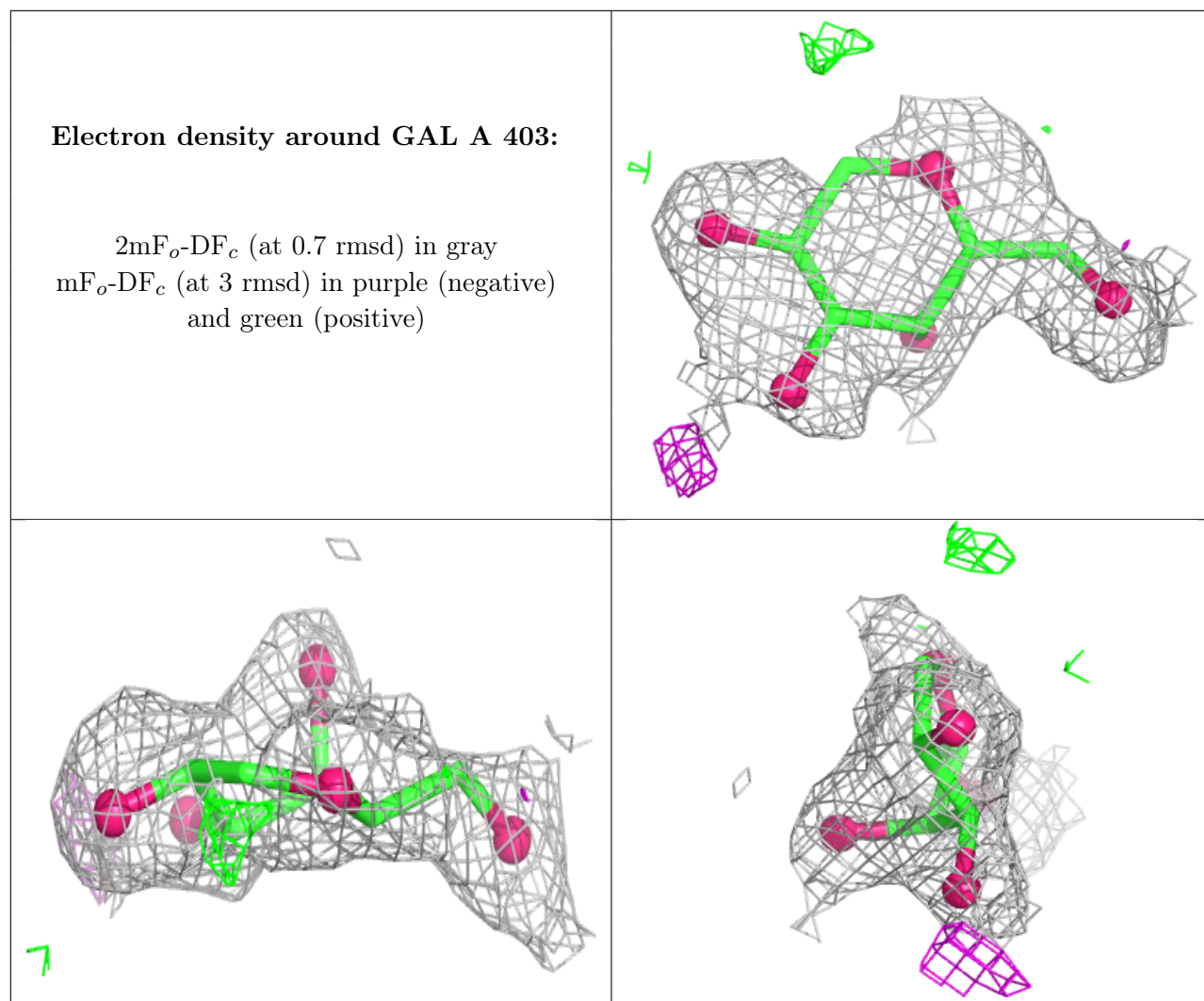
In the following table, the Atoms column lists the number of modelled atoms in the group and the number defined in the chemical component dictionary. The B-factors column lists the minimum, median, 95th percentile and maximum values of B factors of atoms in the group. The column labelled 'Q< 0.9' lists the number of atoms with occupancy less than 0.9.

Mol	Type	Chain	Res	Atoms	RSCC	RSR	B-factors(Å ²)	Q<0.9
9	PEG	A	407	7/7	0.65	0.15	70,77,90,91	0
7	GAL	B	403	11/12	0.73	0.21	65,77,91,98	0
9	PEG	A	405	7/7	0.77	0.17	63,67,72,72	0
7	GAL	A	403	11/12	0.83	0.15	38,54,66,71	0
9	PEG	A	406	7/7	0.88	0.23	37,46,56,59	0
8	B3P	B	404	19/19	0.93	0.08	35,43,52,64	0
6	UDP	B	402	25/25	0.94	0.09	40,51,62,64	0
8	B3P	A	404	19/19	0.94	0.07	15,19,34,35	0
5	MN	B	401	1/1	0.97	0.04	46,46,46,46	0
6	UDP	A	402	25/25	0.97	0.06	18,26,40,42	0
5	MN	A	401	1/1	0.98	0.03	26,26,26,26	0

The following is a graphical depiction of the model fit to experimental electron density of all instances of the Ligand of Interest. In addition, ligands with molecular weight > 250 and outliers as shown on the geometry validation Tables will also be included. Each fit is shown from different

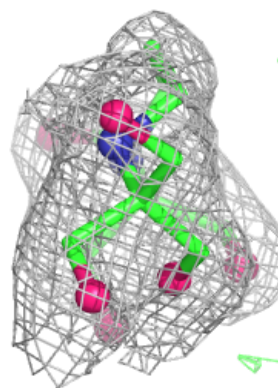
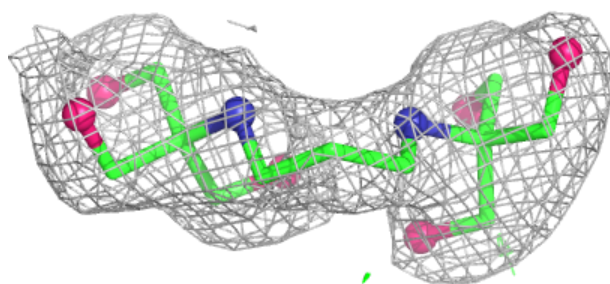
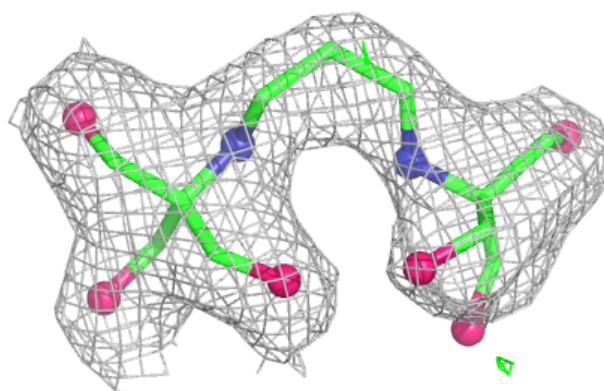
orientation to approximate a three-dimensional view.



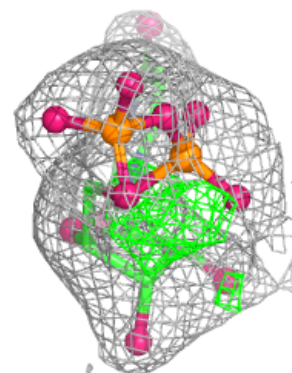
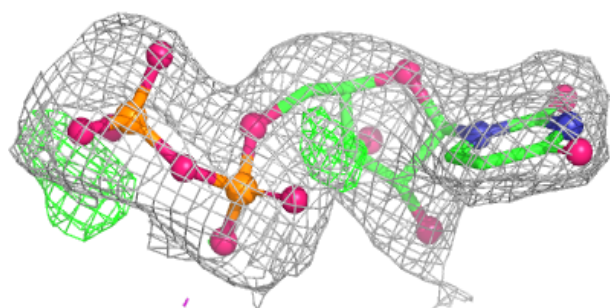
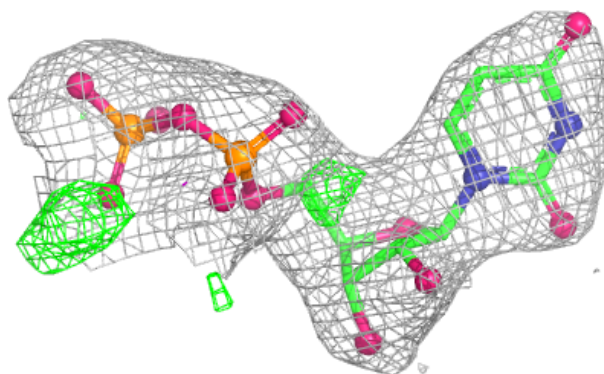


Electron density around B3P B 404:

$2mF_o-DF_c$ (at 0.7 rmsd) in gray
 mF_o-DF_c (at 3 rmsd) in purple (negative)
and green (positive)

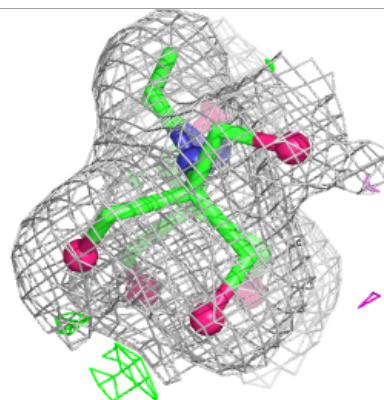
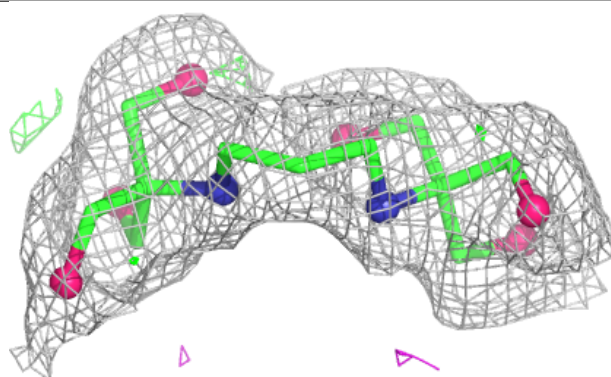
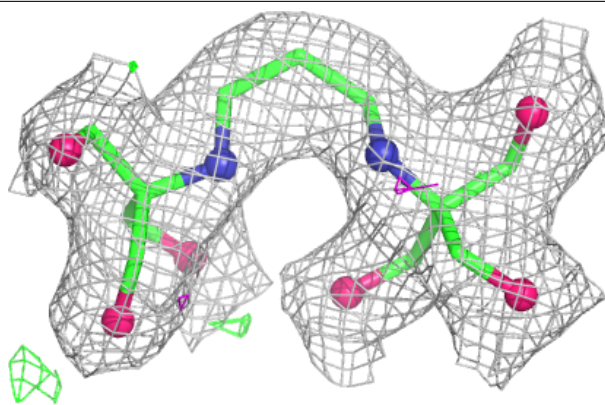
**Electron density around UDP B 402:**

$2mF_o-DF_c$ (at 0.7 rmsd) in gray
 mF_o-DF_c (at 3 rmsd) in purple (negative)
and green (positive)



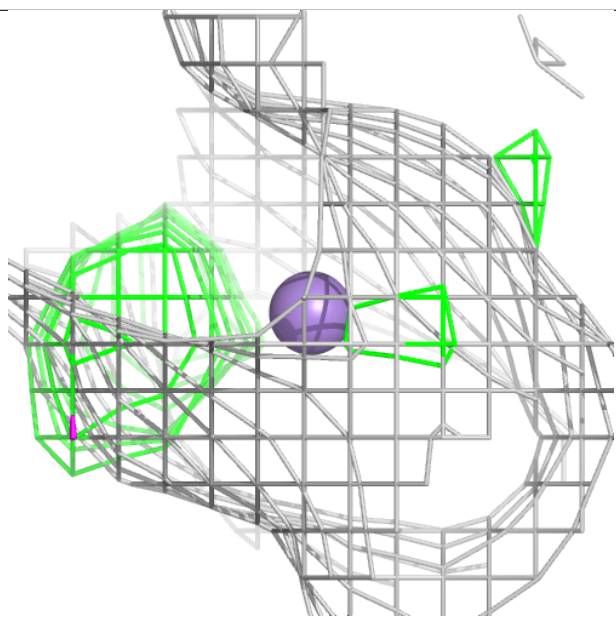
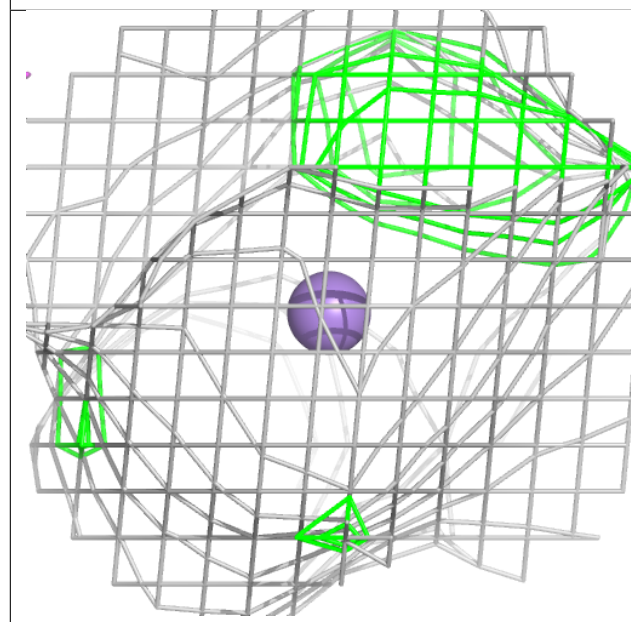
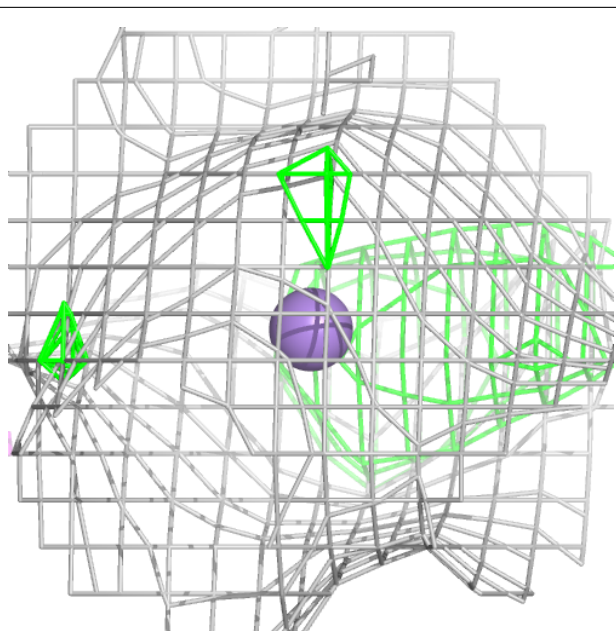
Electron density around B3P A 404:

$2mF_o-DF_c$ (at 0.7 rmsd) in gray
 mF_o-DF_c (at 3 rmsd) in purple (negative)
and green (positive)



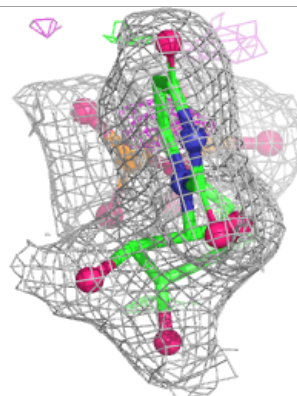
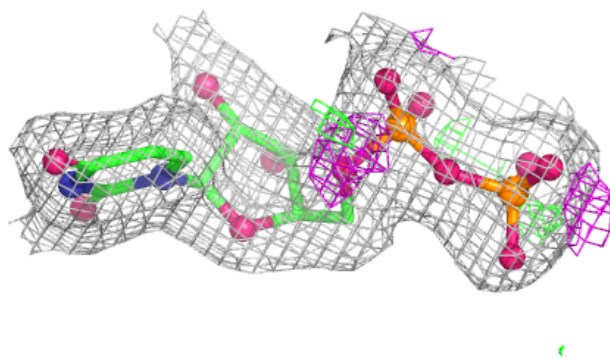
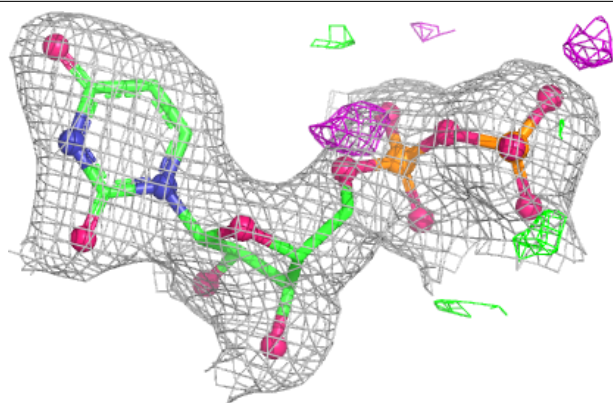
Electron density around MN B 401:

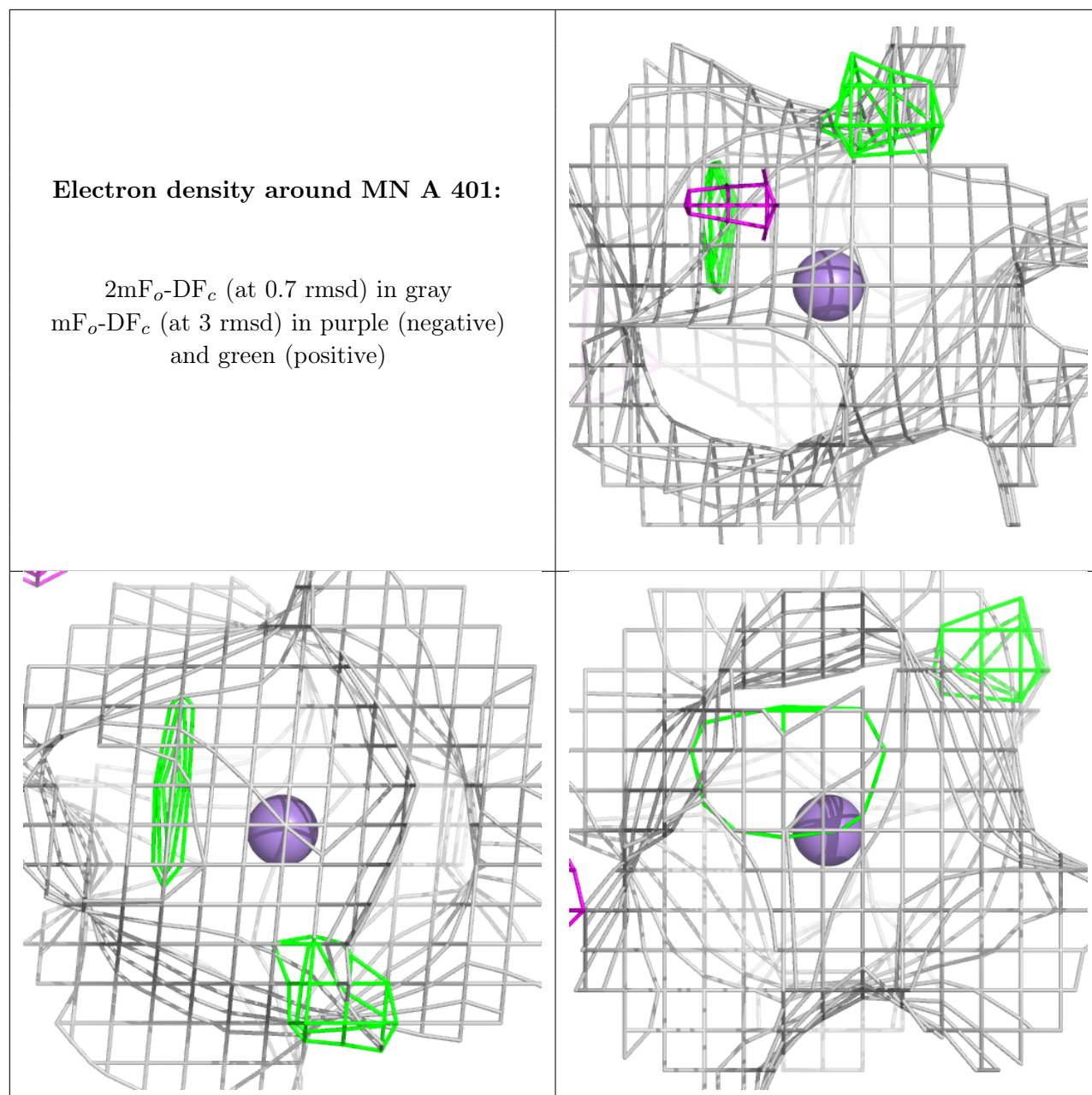
$2mF_o-DF_c$ (at 0.7 rmsd) in gray
 mF_o-DF_c (at 3 rmsd) in purple (negative)
and green (positive)



Electron density around UDP A 402:

$2mF_o-DF_c$ (at 0.7 rmsd) in gray
 mF_o-DF_c (at 3 rmsd) in purple (negative)
and green (positive)





6.5 Other polymers ⓘ

There are no such residues in this entry.