



wwPDB EM Validation Summary Report ⓘ

Mar 19, 2026 – 08:08 PM UTC

PDB ID : 8ZTO / pdb_00008zto
EMDB ID : EMD-60469
Title : Cryo-EM structure of the human XPR1
Authors : She, J.; Chen, L.
Deposited on : 2024-06-07
Resolution : 3.55 Å(reported)

This is a wwPDB EM Validation Summary Report for a publicly released PDB entry.

We welcome your comments at validation@mail.wwpdb.org

A user guide is available at

<https://www.wwpdb.org/validation/2017/EMValidationReportHelp>

with specific help available everywhere you see the ⓘ symbol.

The types of validation reports are described at

<http://www.wwpdb.org/validation/2017/FAQs#types>.

The following versions of software and data (see [references ⓘ](#)) were used in the production of this report:

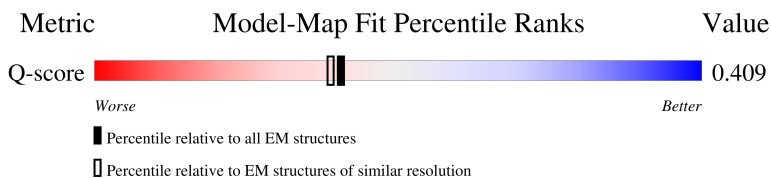
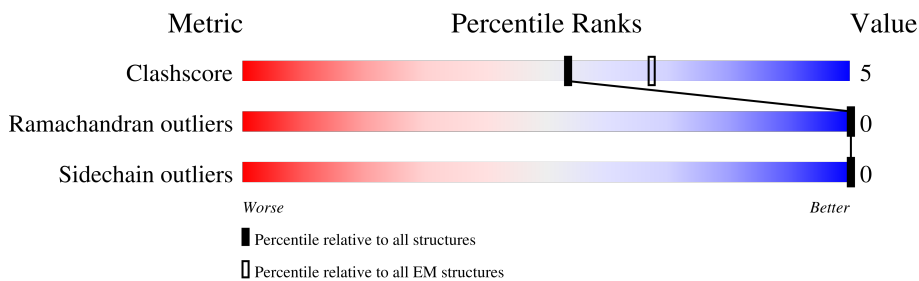
EMDB validation analysis : 0.0.1.dev132
Mogul : 2022.3.0, CSD as543be (2022)
MolProbity : 4-5-2 with Phenix2.0
Buster-report : wwPDB partial adaption of 1.1.7 (2018)
Percentile statistics : 20250101.v01 (using entries in the PDB archive January 1st 2025)
EM percentile statistics : 202505.v01 (Using data in the EMDB archive up until May 2025)
MapQ : 1.9.13
Ideal geometry (proteins) : Engh & Huber (2001)
Ideal geometry (DNA, RNA) : Parkinson et al. (1996)
Validation Pipeline (wwPDB-VP) : 2.49

1 Overall quality at a glance

The following experimental techniques were used to determine the structure:
ELECTRON MICROSCOPY

The reported resolution of this entry is 3.55 Å.

Percentile scores (ranging between 0-100) for global validation metrics of the entry are shown in the following graphic. The table shows the number of entries on which the scores are based.



Metric	Whole archive (#Entries)	EM structures (#Entries)	Similar EM resolution (#Entries, resolution range(Å))
Clashscore	229148	23984	-
Ramachandran outliers	224038	23583	-
Sidechain outliers	223484	23102	-
Q-score	-	25397	12819 (3.05 - 4.05)

The table below summarises the geometric issues observed across the polymeric chains and their fit to the map. The red, orange, yellow and green segments of the bar indicate the fraction of residues that contain outliers for ≥ 3 , 2, 1 and 0 types of geometric quality criteria respectively. A grey segment represents the fraction of residues that are not modelled. The numeric value for each fraction is indicated below the corresponding segment, with a dot representing fractions $\leq 5\%$. The upper red bar (where present) indicates the fraction of residues that have poor fit to the EM map (all-atom inclusion $< 40\%$). The numeric value is given above the bar.

Mol	Chain	Length	Quality of chain
1	A	706	<p>48% 7% 45%</p>
1	B	706	<p>47% 8% 45%</p>

2 Entry composition i

There are 3 unique types of molecules in this entry. The entry contains 6590 atoms, of which 0 are hydrogens and 0 are deuteriums.

In the tables below, the AltConf column contains the number of residues with at least one atom in alternate conformation and the Trace column contains the number of residues modelled with at most 2 atoms.

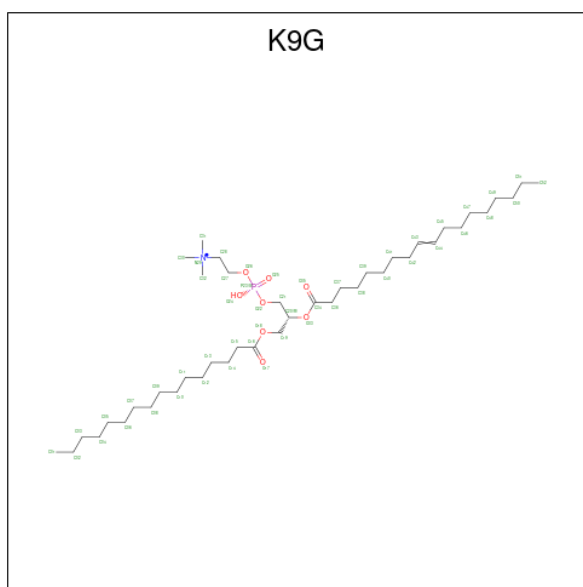
- Molecule 1 is a protein called Solute carrier family 53 member 1.

Mol	Chain	Residues	Atoms					AltConf	Trace
			Total	C	N	O	S		
1	A	389	3243	2179	518	531	15	0	0
1	B	389	3243	2179	518	531	15	0	0

There are 20 discrepancies between the modelled and reference sequences:

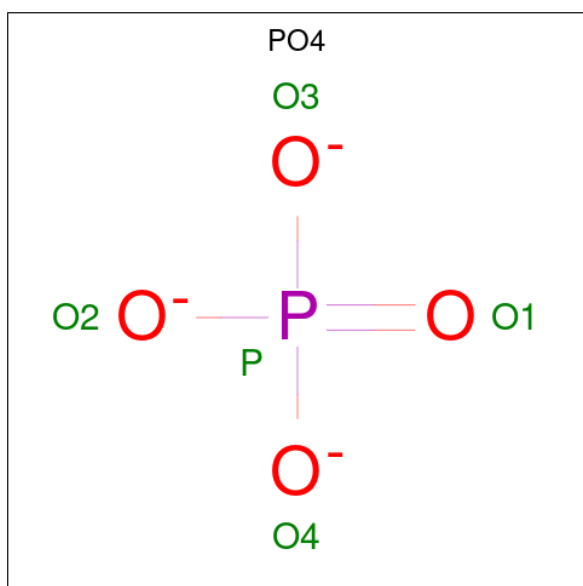
Chain	Residue	Modelled	Actual	Comment	Reference
A	697	ALA	-	expression tag	UNP Q9UBH6
A	698	SER	-	expression tag	UNP Q9UBH6
A	699	ASP	-	expression tag	UNP Q9UBH6
A	700	TYR	-	expression tag	UNP Q9UBH6
A	701	LYS	-	expression tag	UNP Q9UBH6
A	702	ASP	-	expression tag	UNP Q9UBH6
A	703	ASP	-	expression tag	UNP Q9UBH6
A	704	ASP	-	expression tag	UNP Q9UBH6
A	705	ASP	-	expression tag	UNP Q9UBH6
A	706	LYS	-	expression tag	UNP Q9UBH6
B	697	ALA	-	expression tag	UNP Q9UBH6
B	698	SER	-	expression tag	UNP Q9UBH6
B	699	ASP	-	expression tag	UNP Q9UBH6
B	700	TYR	-	expression tag	UNP Q9UBH6
B	701	LYS	-	expression tag	UNP Q9UBH6
B	702	ASP	-	expression tag	UNP Q9UBH6
B	703	ASP	-	expression tag	UNP Q9UBH6
B	704	ASP	-	expression tag	UNP Q9UBH6
B	705	ASP	-	expression tag	UNP Q9UBH6
B	706	LYS	-	expression tag	UNP Q9UBH6

- Molecule 2 is [(2 {R})-1-hexadecanoyloxy-3-[oxidanyl-[2-(trimethyl- $\text{S}^{\wedge}\{4\}$ -azanyl)ethoxy]phosphoryl]oxy-propan-2-yl] octadec-9-enoate (CCD ID: K9G) (formula: $\text{C}_{42}\text{H}_{83}\text{NO}_8\text{P}$).



Mol	Chain	Residues	Atoms					AltConf
			Total	C	N	O	P	
2	A	1	47	37	1	8	1	0
2	B	1	47	37	1	8	1	0

- Molecule 3 is PHOSPHATE ION (CCD ID: PO4) (formula: O_4P) (labeled as "Ligand of Interest" by depositor).



Mol	Chain	Residues	Atoms			AltConf
			Total	O	P	
3	A	1	5	4	1	0

Continued on next page...

Continued from previous page...

Mol	Chain	Residues	Atoms			AltConf
			Total	O	P	
3	B	1	5	4	1	0

GLU ARG
 VAL GLN
 PRO HIS
 PHE ARG
 THR ASN
 ILE LYS
 LYS ASP
 LEU ASP
 LYS LYS
 LEU ALA
 PHE
 SER SER
 SER GLU
 PHE THR
 TVR LEU
 LEU SER
 SER LEU
 ILE ILE
 LEU LEU
 LEU GLN
 ASN ASN
 TYR TYR
 GLN GLN
 ASN ASN
 LEU LEU
 ASN PHE
 PHE THR
 GLY GLY
 ARG ARG
 LYS LYS
 ILE ILE
 LEU LEU
 LYS LYS
 ASP ASP
 HIS HIS
 LYS LYS

GLU VAL
 PRO ALA
 PHE PHE
 THR THR
 CYS CYS
 LYS LYS
 LYS ASP
 ILE ILE
 ASN ASN
 GLN GLN
 LEU LEU
 ILE ILE
 SER SER
 SER GLU
 THR THR
 GLU GLU
 ALA ALA
 VAL VAL
 VAL VAL
 THR THR
 ASN ASN
 GLU GLU
 LEU LEU
 LEU LEU
 GLU GLU
 ASP ASP
 GLY GLY
 ASP ASP
 ARG ARG
 GLN GLN
 LYS LYS
 MET MET
 THR THR
 LYS LYS
 ARG ARG
 LEU LEU
 ARG ARG
 VAL VAL
 PRO PRO
 PRO PRO
 LEU LEU
 GLY GLY
 ALA ALA
 ALA ALA
 GLN GLN
 PRO PRO
 PRO PRO
 ALA ALA
 P230
 L247
 L269
 E260
 T261
 T271
 Y272

N288
 W292
 R308
 L323
 L326
 W327
 C328
 A333
 C334
 S340
 Y341
 I342
 Y345
 Y346
 Y347
 F348
 F354
 F355
 L359
 F366
 R371
 L375
 F386
 Y389
 D393
 L400
 E411
 D424
 E425
 S426
 K427
 G428
 L429
 M432
 E435
 E436
 S437
 C440
 H441

K442
 Y443
 R448
 V451
 Q452
 P455
 D469
 K482
 T485
 L495
 T498
 H499
 R500
 T507
 F510
 L513
 H514
 I515
 F517
 Y518
 H519
 I520
 S521
 T525
 L526
 W534
 S535
 L536
 F539
 H540
 A541
 H544
 T545
 E550
 Y558
 I564
 V567
 I568
 L569
 S570

F571
 T574
 I577
 L599
 N608
 F609
 F610
 R611
 E615
 N618
 ASN CYS
 GLY GLY
 GLU GLU
 PHE PHE
 THR THR
 LYS LYS
 VAL VAL
 VAL VAL
 LEU LEU
 VAL VAL
 ARG ARG
 ASP ASP
 ILE ILE
 GLU GLU
 ASP ASP
 ILE ILE
 THR THR
 THR THR
 ASP ASP
 ASP ASP
 GLU GLU
 ALA ALA
 LEU LEU
 ASN ASN
 ALA ALA
 THR THR
 ASN ASN
 ASP ASP
 GLN GLN
 THR THR
 TYR TYR
 LYS LYS
 LEU LEU
 ASP ASP
 ASP ASP
 ASP ASP
 ASP ASP
 MET MET
 MET MET
 ASP ASP
 GLN GLN
 ASP ASP
 ASP ASP
 ASP ASP
 ASP ASP
 VAL VAL
 ARG ARG
 ASN ASN
 ARG ARG
 GLN GLN
 LYS LYS
 ASN ASN
 ARG ARG
 SER SER
 TRP TRP
 LYS LYS

TYR
 ASN
 GLN
 SER
 ILE
 SER
 LEU
 LEU
 ARG
 ARG
 PRO
 ARG
 LEU
 LEU
 ALA
 SER
 GLN
 GLN
 LYS
 LYS
 ALA
 ARG
 ASP
 THR
 THR
 LYS
 VAL
 VAL
 LEU
 LEU
 ILE
 GLU
 ASP
 ASP
 THR
 THR
 ASP
 ASP
 GLU
 ALA
 LEU
 ASN
 THR
 THR
 ASN
 ASP
 GLN
 THR
 TYR
 LYS
 LYS
 ASP
 ASP
 ASP
 ASP
 MET
 MET
 ASP
 GLN
 ASP
 ASP
 ASP
 ASP
 VAL
 ARG
 ASN
 ARG
 GLN
 LYS
 ASN
 ARG
 SER
 TRP
 LYS

4 Experimental information

Property	Value	Source
EM reconstruction method	SINGLE PARTICLE	Depositor
Imposed symmetry	POINT, Not provided	
Number of particles used	424758	Depositor
Resolution determination method	FSC 0.143 CUT-OFF	Depositor
CTF correction method	NONE	Depositor
Microscope	FEI TITAN KRIOS	Depositor
Voltage (kV)	300	Depositor
Electron dose ($e^-/\text{\AA}^2$)	55	Depositor
Minimum defocus (nm)	1400	Depositor
Maximum defocus (nm)	2800	Depositor
Magnification	Not provided	
Image detector	GATAN K3 BIOQUANTUM (6k x 4k)	Depositor
Maximum map value	1.382	Depositor
Minimum map value	-1.118	Depositor
Average map value	0.000	Depositor
Map value standard deviation	0.020	Depositor
Recommended contour level	0.12	Depositor
Map size (\AA)	314.88, 314.88, 314.88	wwPDB
Map dimensions	384, 384, 384	wwPDB
Map angles ($^\circ$)	90.0, 90.0, 90.0	wwPDB
Pixel spacing (\AA)	0.82, 0.82, 0.82	Depositor

5 Model quality [i](#)

5.1 Standard geometry [i](#)

Bond lengths and bond angles in the following residue types are not validated in this section: PO4, K9G

The Z score for a bond length (or angle) is the number of standard deviations the observed value is removed from the expected value. A bond length (or angle) with $|Z| > 5$ is considered an outlier worth inspection. RMSZ is the root-mean-square of all Z scores of the bond lengths (or angles).

Mol	Chain	Bond lengths		Bond angles	
		RMSZ	# Z >5	RMSZ	# Z >5
1	A	0.24	0/3352	0.54	0/4562
1	B	0.24	0/3352	0.54	0/4562
All	All	0.24	0/6704	0.54	0/9124

There are no bond length outliers.

There are no bond angle outliers.

There are no chirality outliers.

There are no planarity outliers.

5.2 Too-close contacts [i](#)

In the following table, the Non-H and H(model) columns list the number of non-hydrogen atoms and hydrogen atoms in the chain respectively. The H(added) column lists the number of hydrogen atoms added and optimized by MolProbity. The Clashes column lists the number of clashes within the asymmetric unit, whereas Symm-Clashes lists symmetry-related clashes.

Mol	Chain	Non-H	H(model)	H(added)	Clashes	Symm-Clashes
1	A	3243	0	3237	33	0
1	B	3243	0	3237	35	0
2	A	47	0	0	0	0
2	B	47	0	0	0	0
3	A	5	0	0	1	0
3	B	5	0	0	1	0
All	All	6590	0	6474	68	0

The all-atom clashscore is defined as the number of clashes found per 1000 atoms (including hydrogen atoms). The all-atom clashscore for this structure is 5.

The worst 5 of 68 close contacts within the same asymmetric unit are listed below, sorted by their

clash magnitude.

Atom-1	Atom-2	Interatomic distance (Å)	Clash overlap (Å)
1:B:345:TYR:O	1:B:348:PRO:HD2	1.98	0.64
1:A:345:TYR:O	1:A:348:PRO:HD2	1.98	0.64
1:B:345:TYR:HB3	1:B:428:GLY:HA3	1.84	0.59
1:A:345:TYR:HB3	1:A:428:GLY:HA3	1.84	0.59
1:A:482:LYS:HB2	1:A:525:THR:HG22	1.85	0.58

There are no symmetry-related clashes.

5.3 Torsion angles [i](#)

5.3.1 Protein backbone [i](#)

In the following table, the Percentiles column shows the percent Ramachandran outliers of the chain as a percentile score with respect to all PDB entries followed by that with respect to all EM entries.

The Analysed column shows the number of residues for which the backbone conformation was analysed, and the total number of residues.

Mol	Chain	Analysed	Favoured	Allowed	Outliers	Percentiles	
1	A	387/706 (55%)	367 (95%)	20 (5%)	0	100	100
1	B	387/706 (55%)	367 (95%)	20 (5%)	0	100	100
All	All	774/1412 (55%)	734 (95%)	40 (5%)	0	100	100

There are no Ramachandran outliers to report.

5.3.2 Protein sidechains [i](#)

In the following table, the Percentiles column shows the percent sidechain outliers of the chain as a percentile score with respect to all PDB entries followed by that with respect to all EM entries.

The Analysed column shows the number of residues for which the sidechain conformation was analysed, and the total number of residues.

Mol	Chain	Analysed	Rotameric	Outliers	Percentiles	
1	A	346/630 (55%)	346 (100%)	0	100	100
1	B	346/630 (55%)	346 (100%)	0	100	100

Continued on next page...

Continued from previous page...

Mol	Chain	Analysed	Rotameric	Outliers	Percentiles	
All	All	692/1260 (55%)	692 (100%)	0	100	100

There are no protein residues with a non-rotameric sidechain to report.

Sometimes sidechains can be flipped to improve hydrogen bonding and reduce clashes. All (2) such sidechains are listed below:

Mol	Chain	Res	Type
1	A	452	GLN
1	B	452	GLN

5.3.3 RNA [i](#)

There are no RNA molecules in this entry.

5.4 Non-standard residues in protein, DNA, RNA chains [i](#)

There are no non-standard protein/DNA/RNA residues in this entry.

5.5 Carbohydrates [i](#)

There are no oligosaccharides in this entry.

5.6 Ligand geometry [i](#)

4 ligands are modelled in this entry.

In the following table, the Counts columns list the number of bonds (or angles) for which Mogul statistics could be retrieved, the number of bonds (or angles) that are observed in the model and the number of bonds (or angles) that are defined in the Chemical Component Dictionary. The Link column lists molecule types, if any, to which the group is linked. The Z score for a bond length (or angle) is the number of standard deviations the observed value is removed from the expected value. A bond length (or angle) with $|Z| > 2$ is considered an outlier worth inspection. RMSZ is the root-mean-square of all Z scores of the bond lengths (or angles).

Mol	Type	Chain	Res	Link	Bond lengths			Bond angles		
					Counts	RMSZ	$\# Z > 2$	Counts	RMSZ	$\# Z > 2$
3	PO4	B	802	-	4,4,4	1.03	0	6,6,6	0.44	0
3	PO4	A	802	-	4,4,4	1.03	0	6,6,6	0.44	0
2	K9G	B	801	-	46,46,51	1.20	4 (8%)	52,54,59	0.99	3 (5%)
2	K9G	A	801	-	46,46,51	1.20	4 (8%)	52,54,59	0.99	3 (5%)

In the following table, the Chirals column lists the number of chiral outliers, the number of chiral centers analysed, the number of these observed in the model and the number defined in the Chemical Component Dictionary. Similar counts are reported in the Torsion and Rings columns. '-' means no outliers of that kind were identified.

Mol	Type	Chain	Res	Link	Chirals	Torsions	Rings
2	K9G	B	801	-	-	25/50/50/55	-
2	K9G	A	801	-	-	25/50/50/55	-

The worst 5 of 8 bond length outliers are listed below:

Mol	Chain	Res	Type	Atoms	Z	Observed(Å)	Ideal(Å)
2	A	801	K9G	O18-C16	3.48	1.43	1.33
2	B	801	K9G	O18-C16	3.48	1.43	1.33
2	A	801	K9G	O33-C34	2.96	1.42	1.34
2	B	801	K9G	O33-C34	2.96	1.42	1.34
2	A	801	K9G	O33-C20	-2.50	1.40	1.46

The worst 5 of 6 bond angle outliers are listed below:

Mol	Chain	Res	Type	Atoms	Z	Observed(°)	Ideal(°)
2	A	801	K9G	C32-N29-C30	3.88	119.17	108.98
2	B	801	K9G	C32-N29-C30	3.88	119.17	108.98
2	A	801	K9G	O33-C34-C36	3.15	118.30	111.48
2	B	801	K9G	O33-C34-C36	3.15	118.30	111.48
2	A	801	K9G	O18-C16-C15	2.74	120.20	111.83

There are no chirality outliers.

5 of 50 torsion outliers are listed below:

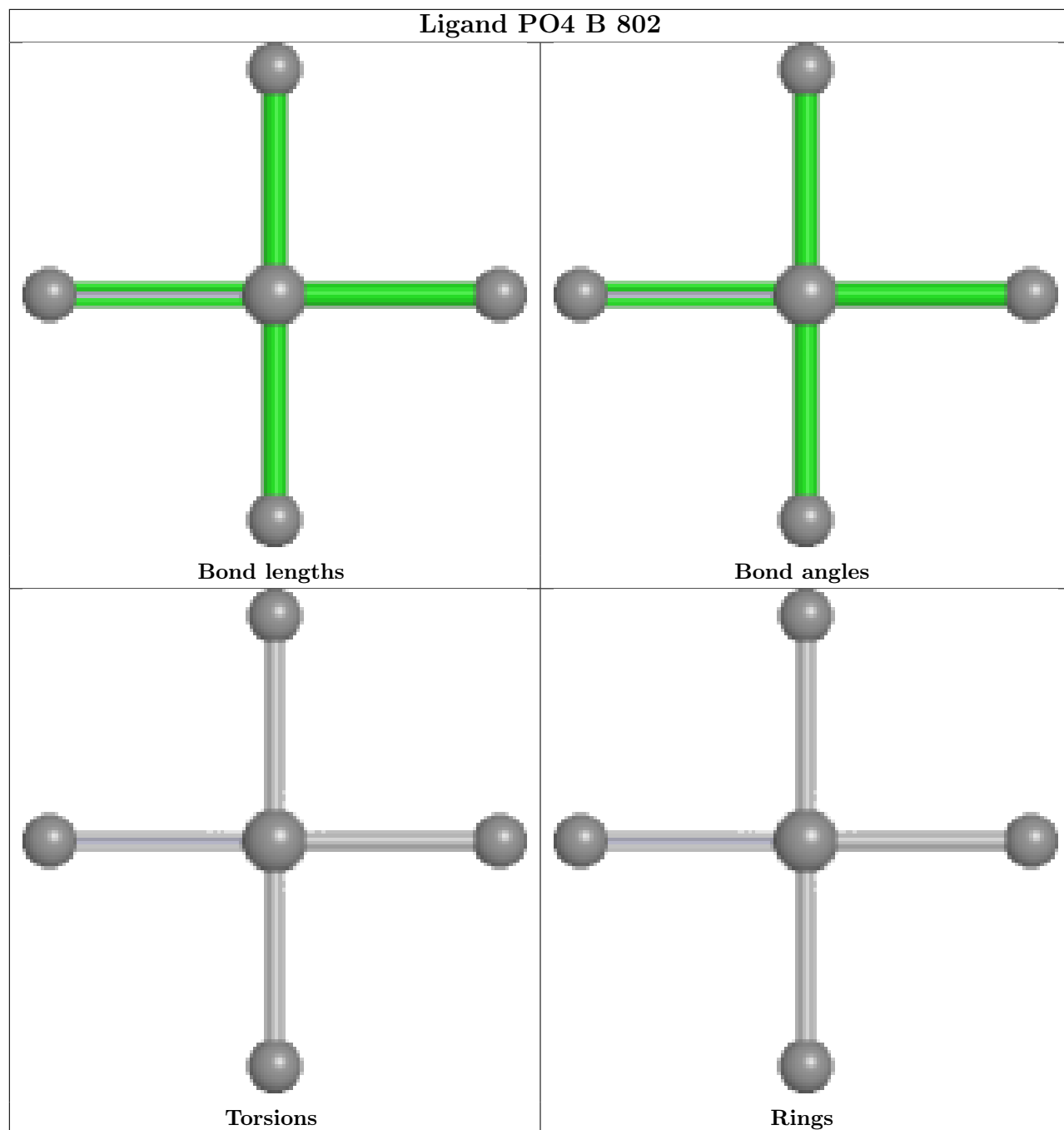
Mol	Chain	Res	Type	Atoms
2	A	801	K9G	C21-O22-P23-O24
2	A	801	K9G	C21-O22-P23-O25
2	A	801	K9G	C21-O22-P23-O26
2	B	801	K9G	C21-O22-P23-O24
2	B	801	K9G	C21-O22-P23-O25

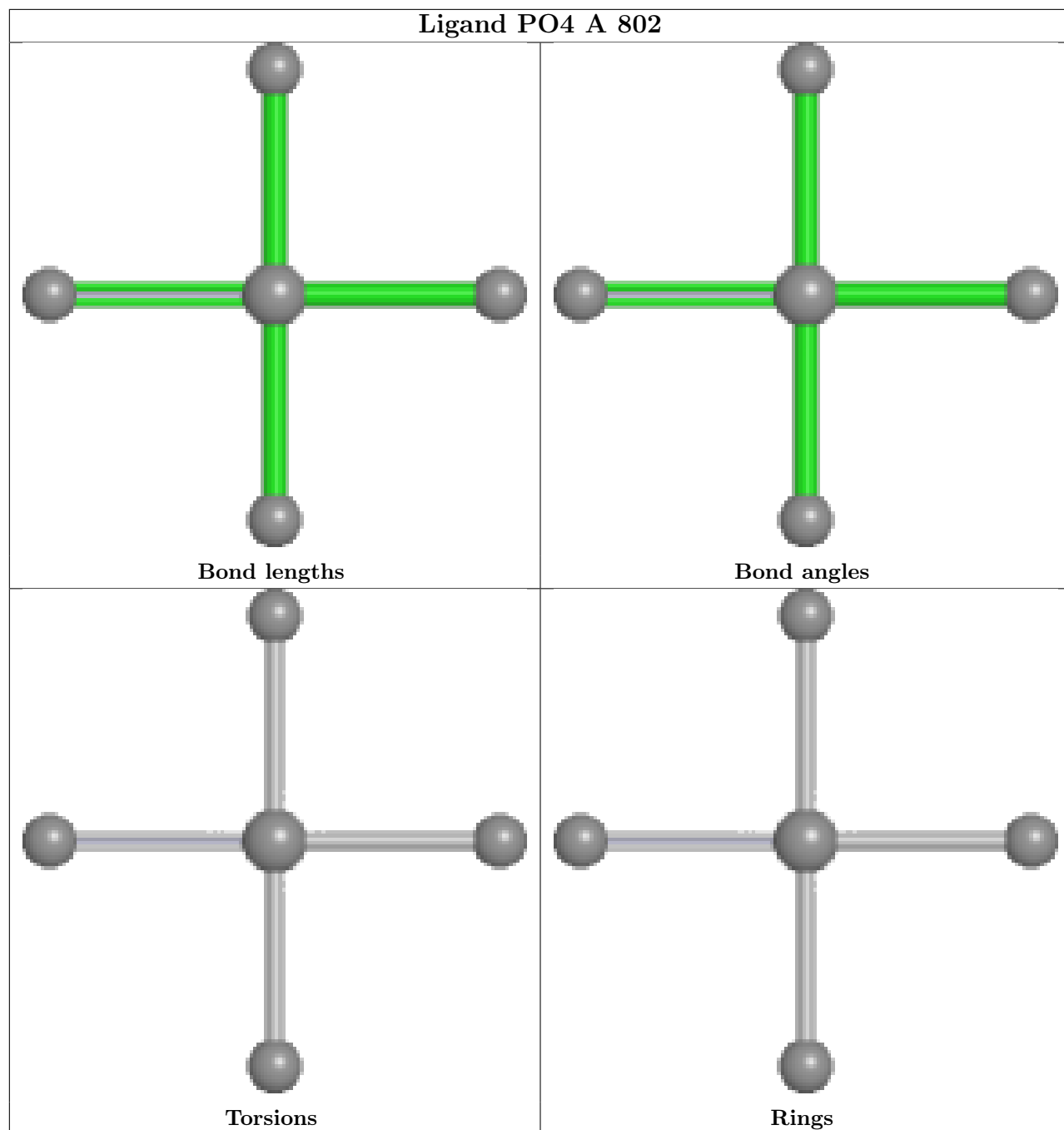
There are no ring outliers.

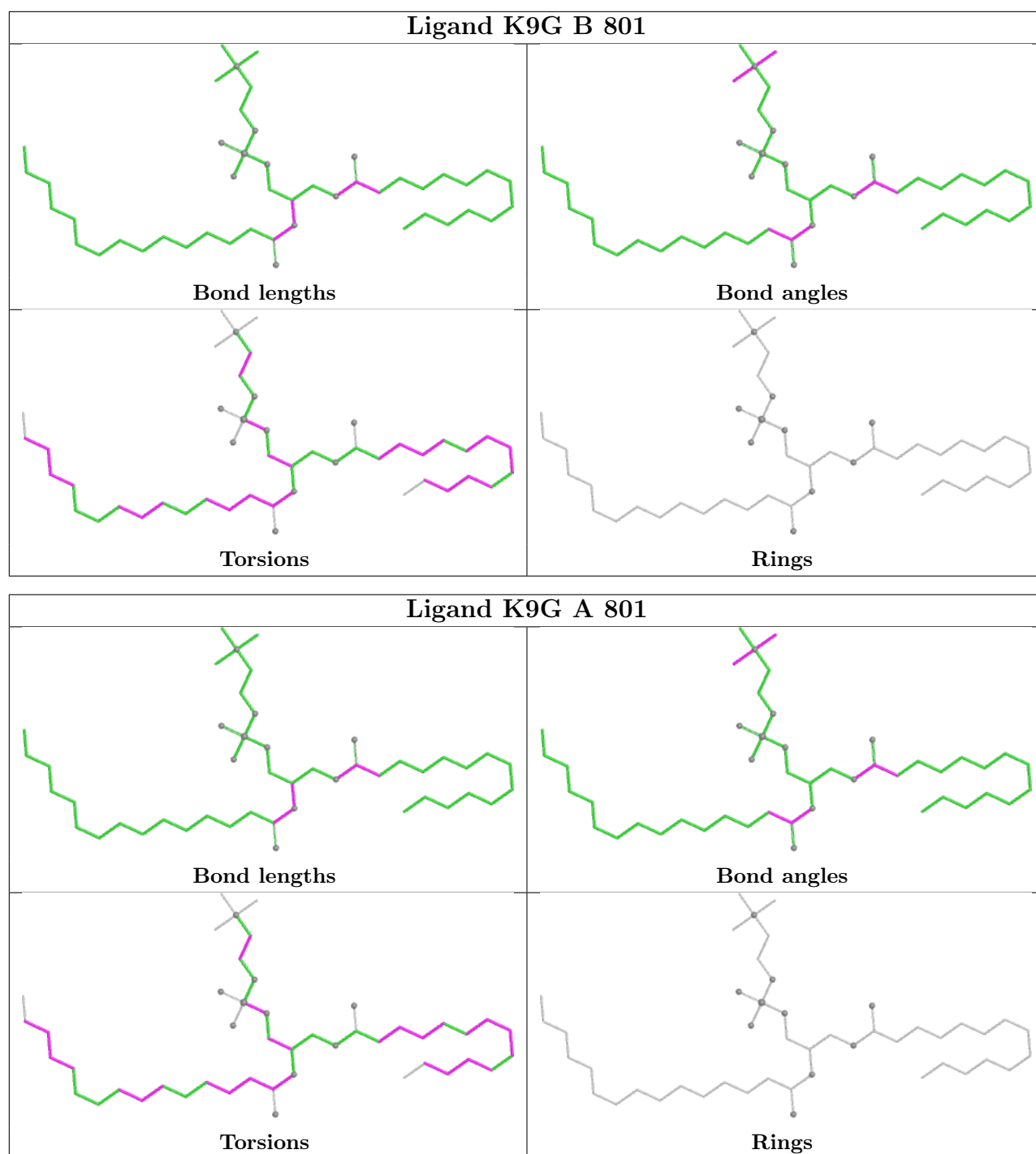
2 monomers are involved in 2 short contacts:

Mol	Chain	Res	Type	Clashes	Symm-Clashes
3	B	802	PO4	1	0
3	A	802	PO4	1	0

The following is a two-dimensional graphical depiction of Mogul quality analysis of bond lengths, bond angles, torsion angles, and ring geometry for all instances of the Ligand of Interest. In addition, ligands with molecular weight > 250 and outliers as shown on the validation Tables will also be included. For torsion angles, if less than 5% of the Mogul distribution of torsion angles is within 10 degrees of the torsion angle in question, then that torsion angle is considered an outlier. Any bond that is central to one or more torsion angles identified as an outlier by Mogul will be highlighted in the graph. For rings, the root-mean-square deviation (RMSD) between the ring in question and similar rings identified by Mogul is calculated over all ring torsion angles. If the average RMSD is greater than 60 degrees and the minimal RMSD between the ring in question and any Mogul-identified rings is also greater than 60 degrees, then that ring is considered an outlier. The outliers are highlighted in purple. The color gray indicates Mogul did not find sufficient equivalents in the CSD to analyse the geometry.







5.7 Other polymers [\(i\)](#)

There are no such residues in this entry.

5.8 Polymer linkage issues [\(i\)](#)

There are no chain breaks in this entry.

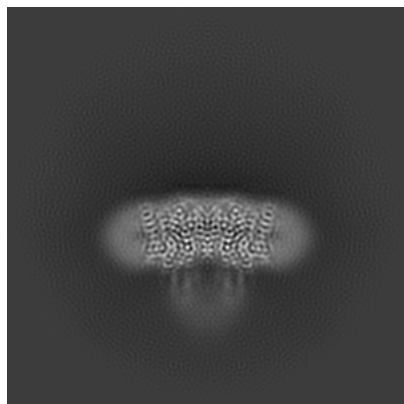
6 Map visualisation [i](#)

This section contains visualisations of the EMDB entry EMD-60469. These allow visual inspection of the internal detail of the map and identification of artifacts.

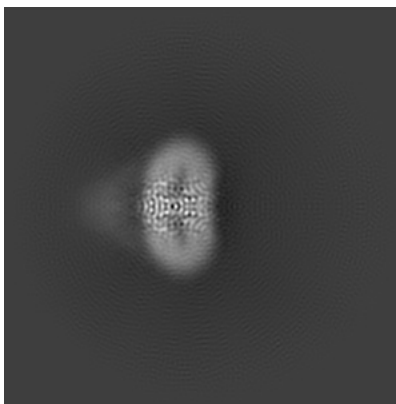
Images derived from a raw map, generated by summing the deposited half-maps, are presented below the corresponding image components of the primary map to allow further visual inspection and comparison with those of the primary map.

6.1 Orthogonal projections [i](#)

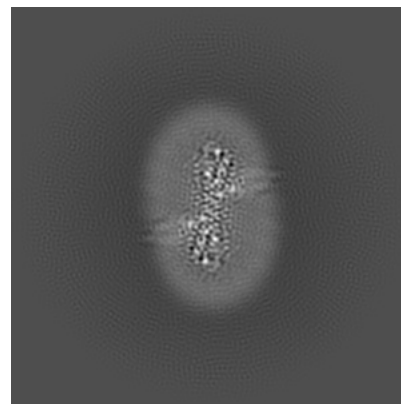
6.1.1 Primary map



X

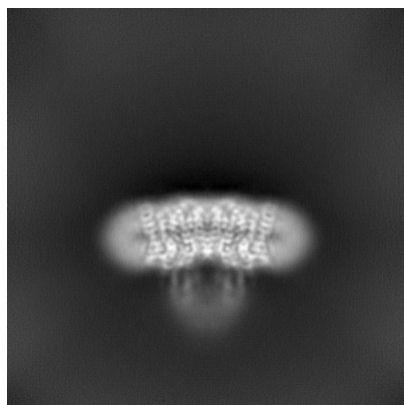


Y

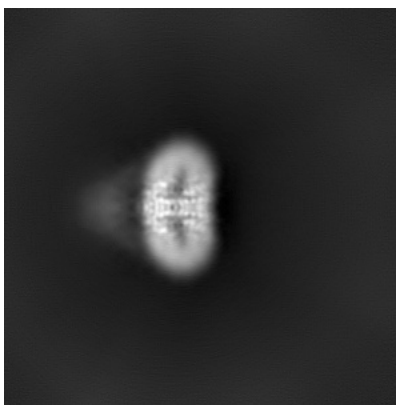


Z

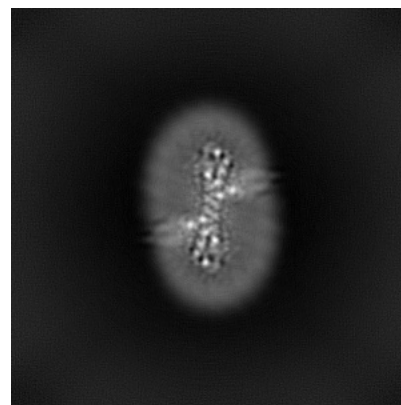
6.1.2 Raw map



X



Y

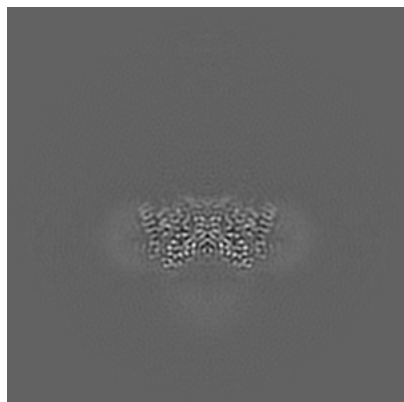


Z

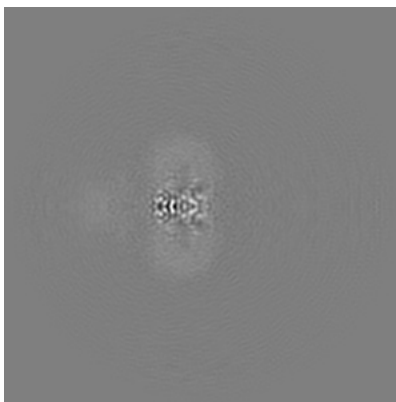
The images above show the map projected in three orthogonal directions.

6.2 Central slices [i](#)

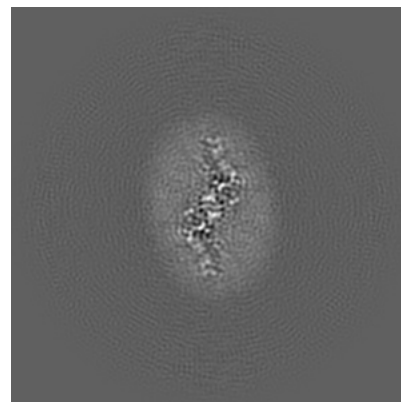
6.2.1 Primary map



X Index: 192

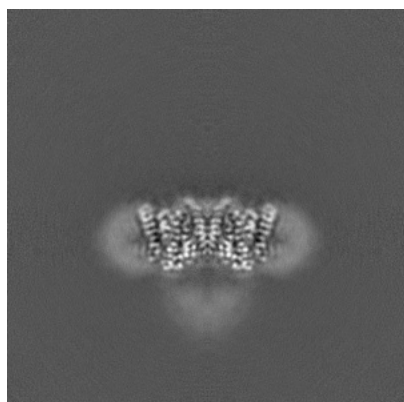


Y Index: 192

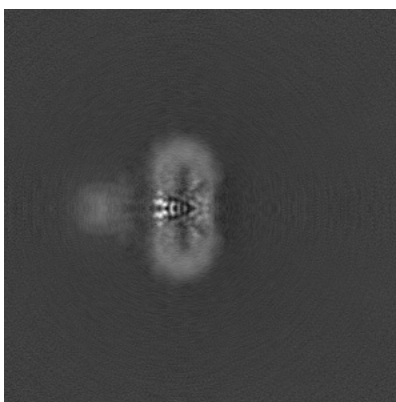


Z Index: 192

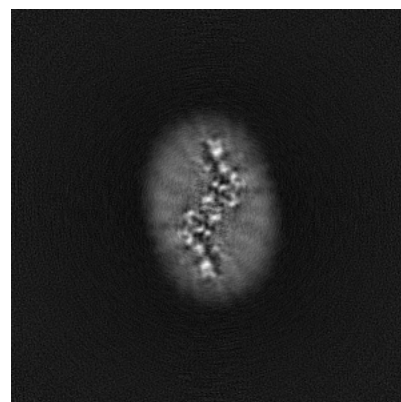
6.2.2 Raw map



X Index: 192



Y Index: 192

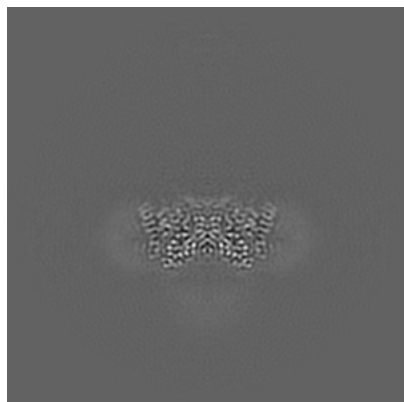


Z Index: 192

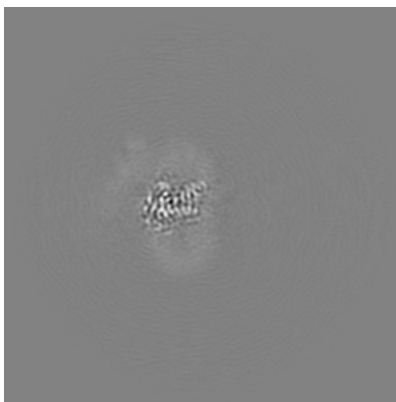
The images above show central slices of the map in three orthogonal directions.

6.3 Largest variance slices [i](#)

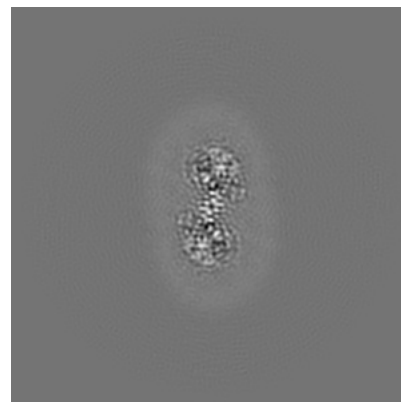
6.3.1 Primary map



X Index: 192

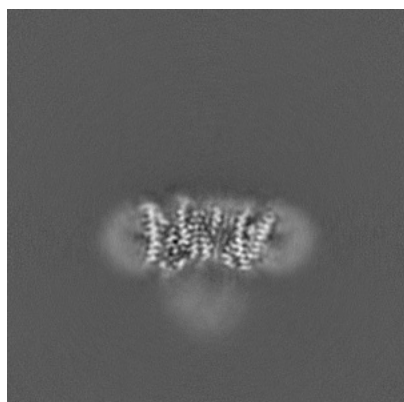


Y Index: 223

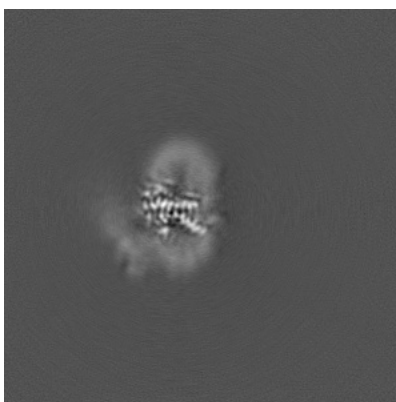


Z Index: 156

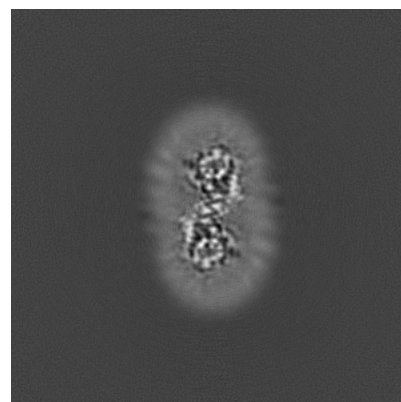
6.3.2 Raw map



X Index: 187



Y Index: 160

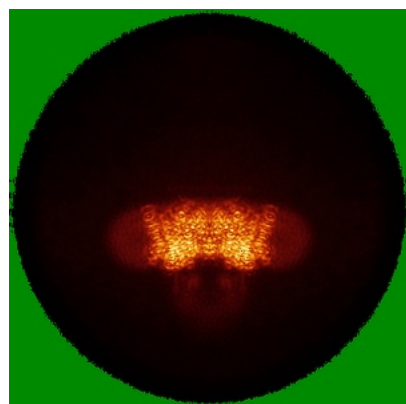


Z Index: 151

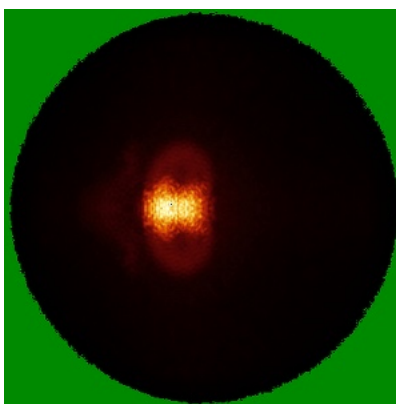
The images above show the largest variance slices of the map in three orthogonal directions.

6.4 Orthogonal standard-deviation projections (False-color) [i](#)

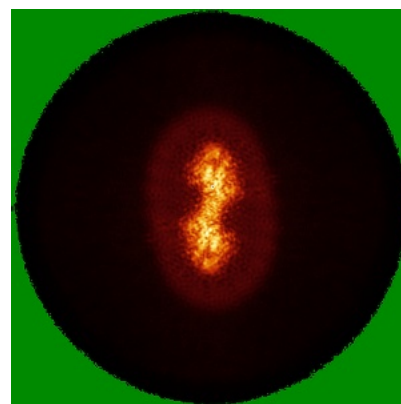
6.4.1 Primary map



X

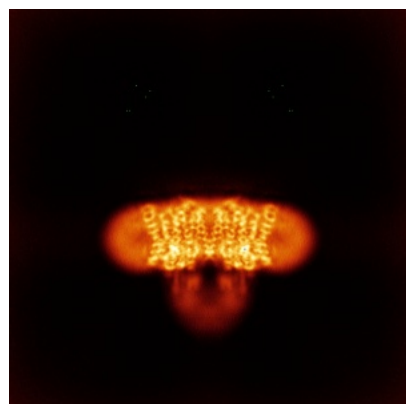


Y

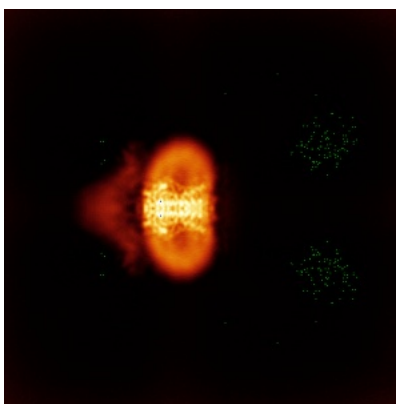


Z

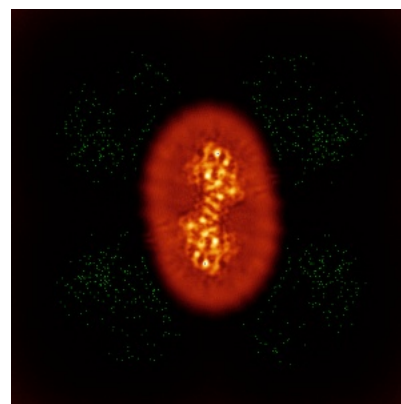
6.4.2 Raw map



X



Y

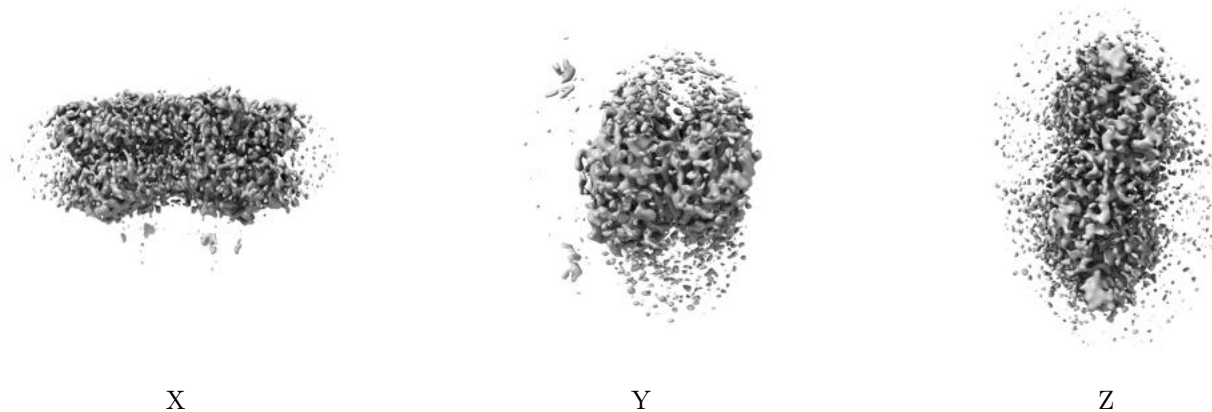


Z

The images above show the map standard deviation projections with false color in three orthogonal directions. Minimum values are shown in green, max in blue, and dark to light orange shades represent small to large values respectively.

6.5 Orthogonal surface views [i](#)

6.5.1 Primary map



The images above show the 3D surface view of the map at the recommended contour level 0.12. These images, in conjunction with the slice images, may facilitate assessment of whether an appropriate contour level has been provided.

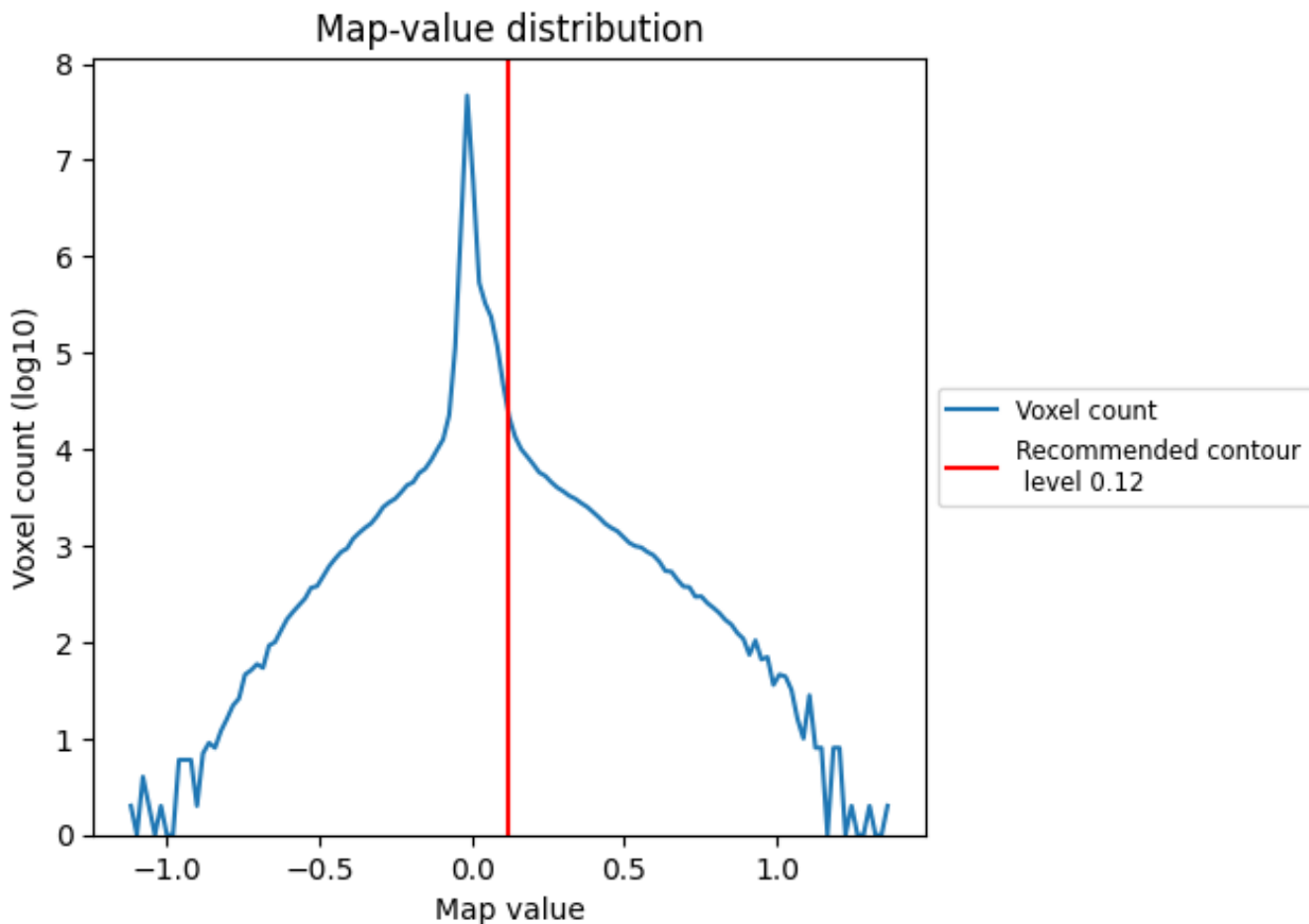
6.6 Mask visualisation [i](#)

This section was not generated. No masks/segmentation were deposited.

7 Map analysis [i](#)

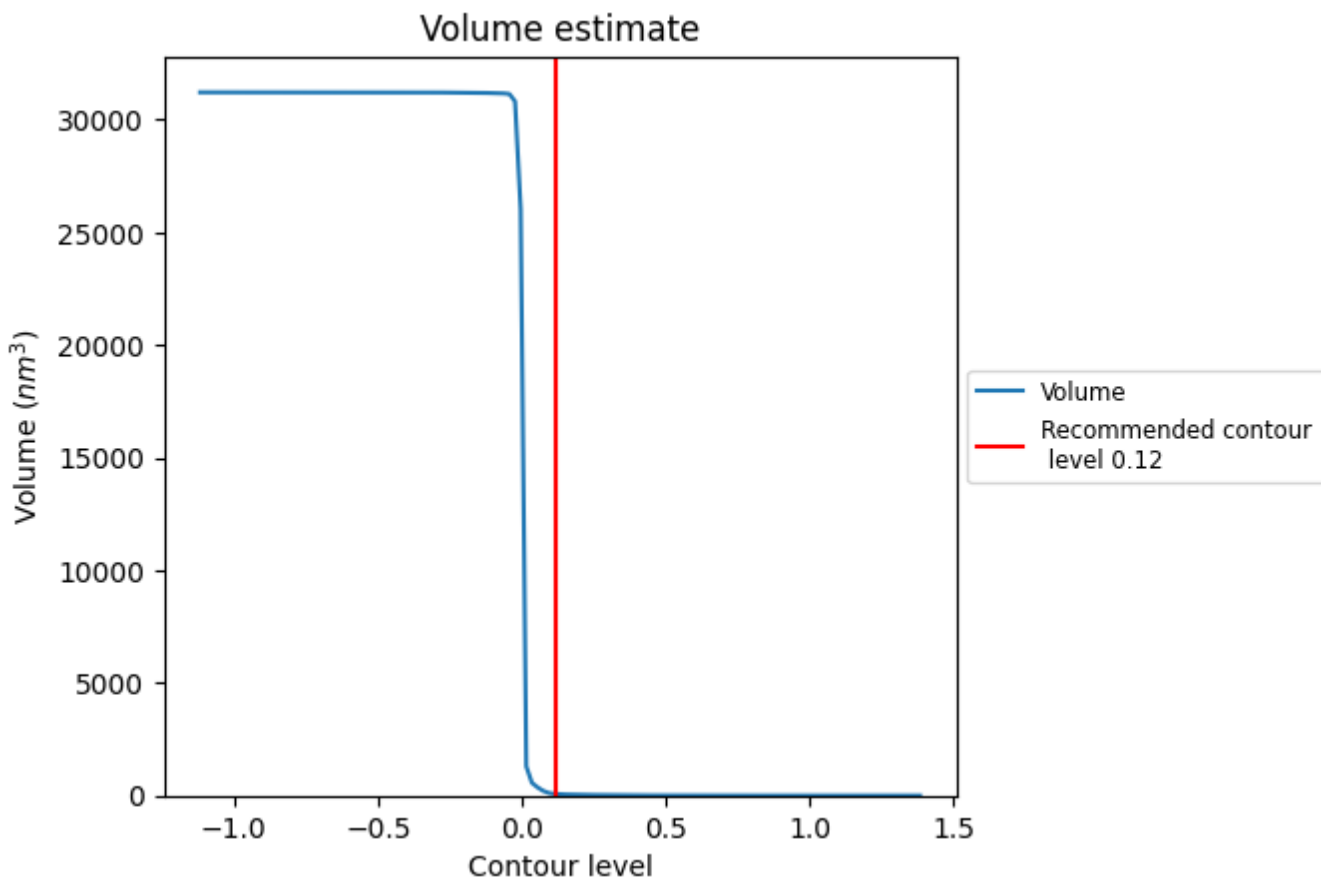
This section contains the results of statistical analysis of the map.

7.1 Map-value distribution [i](#)



The map-value distribution is plotted in 128 intervals along the x-axis. The y-axis is logarithmic. A spike in this graph at zero usually indicates that the volume has been masked.

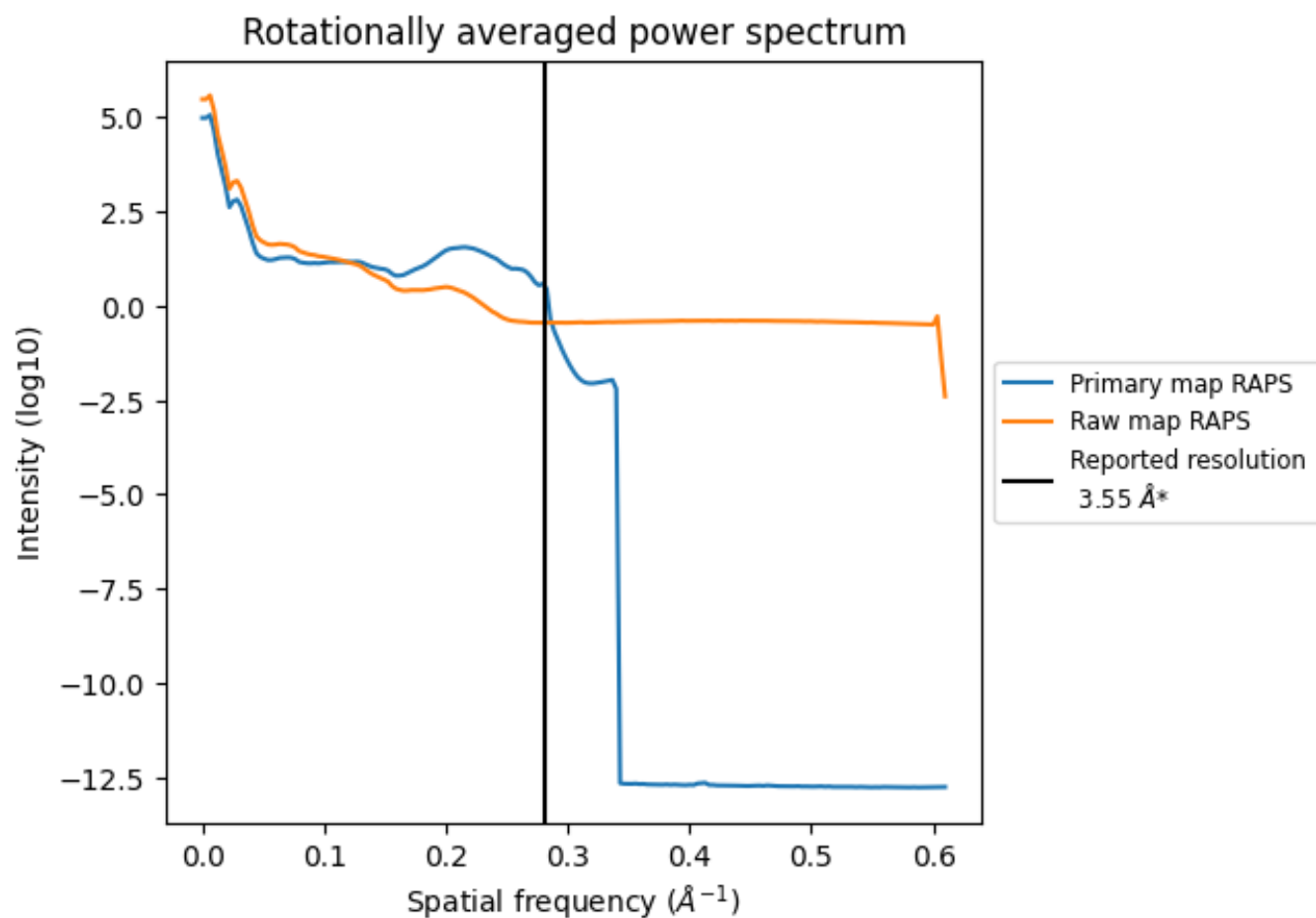
7.2 Volume estimate [i](#)



The volume at the recommended contour level is 67 nm³; this corresponds to an approximate mass of 61 kDa.

The volume estimate graph shows how the enclosed volume varies with the contour level. The recommended contour level is shown as a vertical line and the intersection between the line and the curve gives the volume of the enclosed surface at the given level.

7.3 Rotationally averaged power spectrum [i](#)

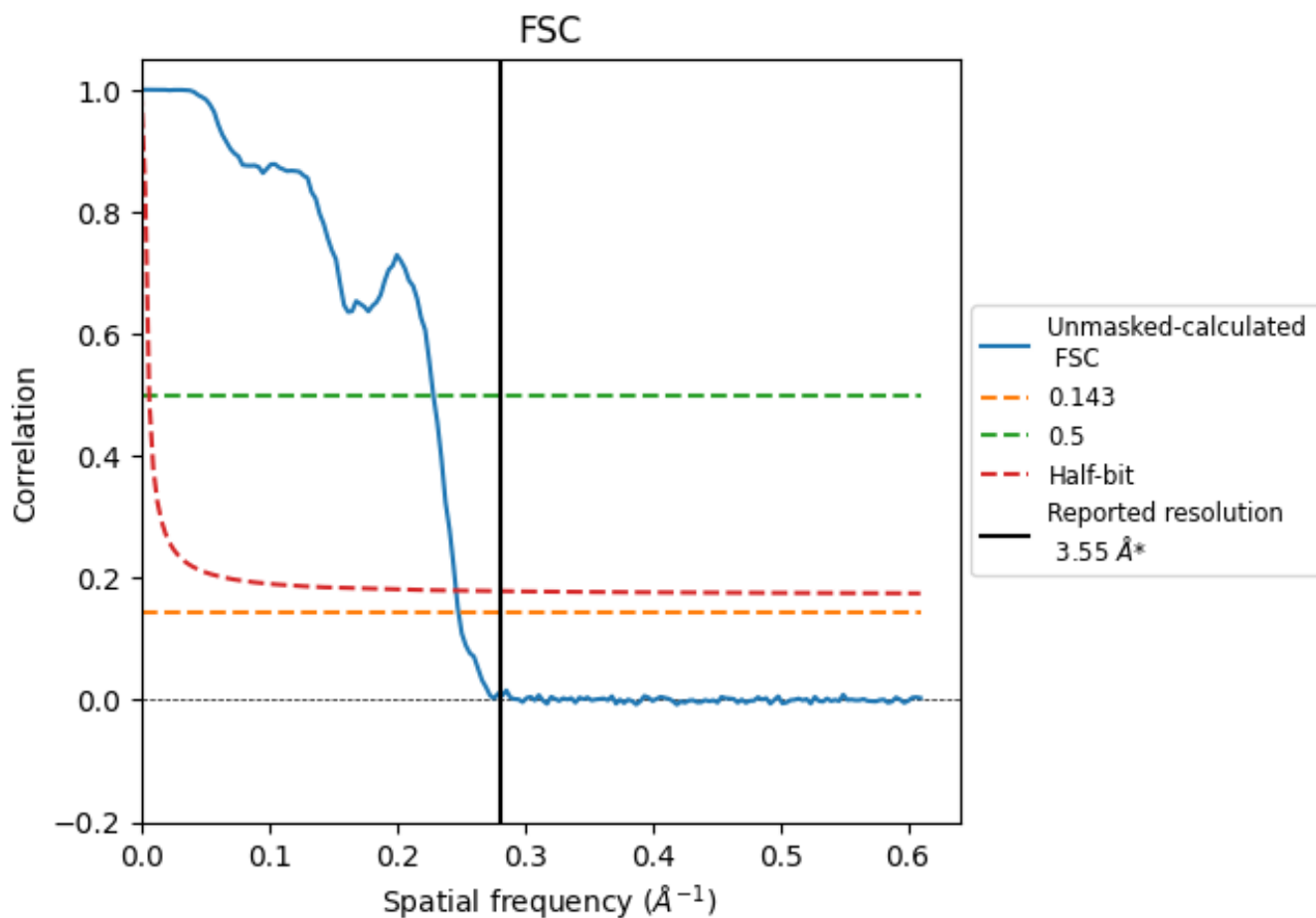


*Reported resolution corresponds to spatial frequency of 0.282 Å⁻¹

8 Fourier-Shell correlation [i](#)

Fourier-Shell Correlation (FSC) is the most commonly used method to estimate the resolution of single-particle and subtomogram-averaged maps. The shape of the curve depends on the imposed symmetry, mask and whether or not the two 3D reconstructions used were processed from a common reference. The reported resolution is shown as a black line. A curve is displayed for the half-bit criterion in addition to lines showing the 0.143 gold standard cut-off and 0.5 cut-off.

8.1 FSC [i](#)



*Reported resolution corresponds to spatial frequency of 0.282 Å⁻¹

8.2 Resolution estimates [i](#)

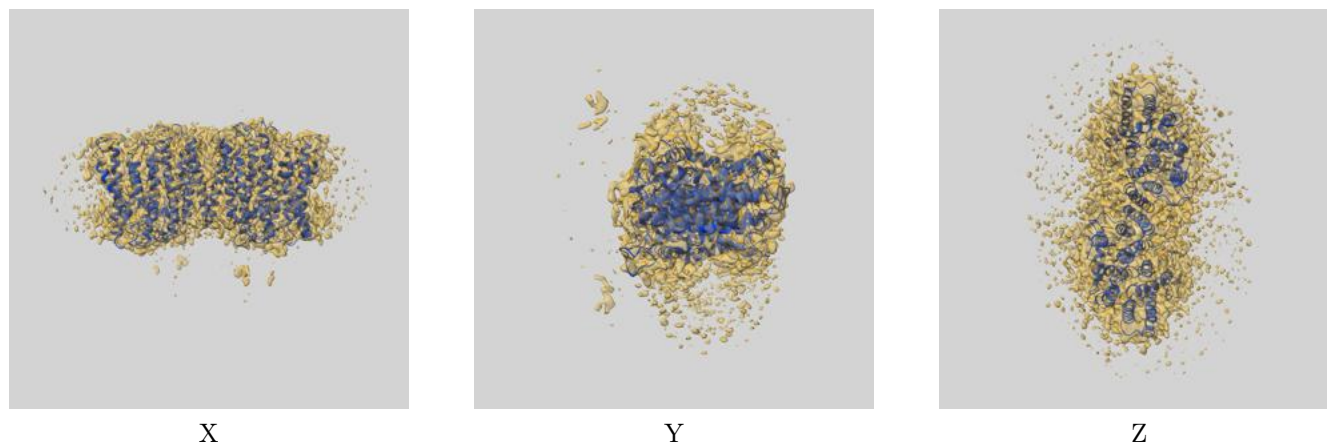
Resolution estimate (Å)	Estimation criterion (FSC cut-off)		
	0.143	0.5	Half-bit
Reported by author	3.55	-	-
Author-provided FSC curve	-	-	-
Unmasked-calculated*	4.03	4.37	4.06

*Resolution estimate based on FSC curve calculated by comparison of deposited half-maps. The value from deposited half-maps intersecting FSC 0.143 CUT-OFF 4.03 differs from the reported value 3.55 by more than 10 %

9 Map-model fit [i](#)

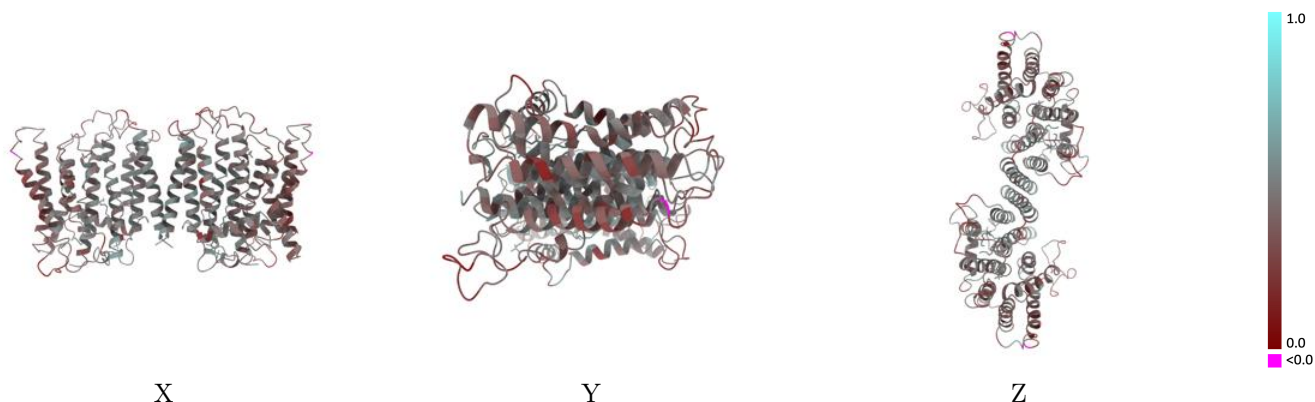
This section contains information regarding the fit between EMDB map EMD-60469 and PDB model 8ZTO. Per-residue inclusion information can be found in section 3 on page 6.

9.1 Map-model overlay [i](#)



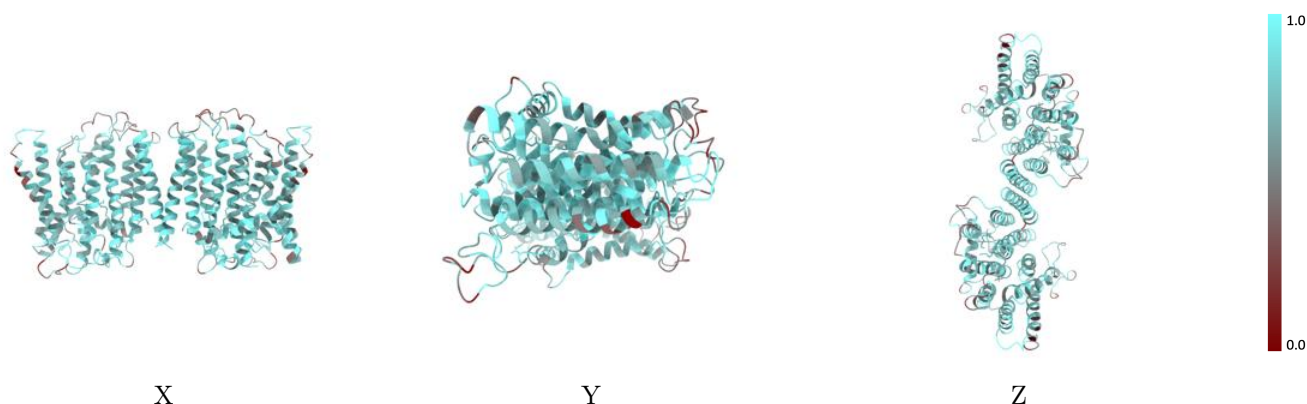
The images above show the 3D surface view of the map at the recommended contour level 0.12 at 50% transparency in yellow overlaid with a ribbon representation of the model coloured in blue. These images allow for the visual assessment of the quality of fit between the atomic model and the map.

9.2 Q-score mapped to coordinate model [i](#)



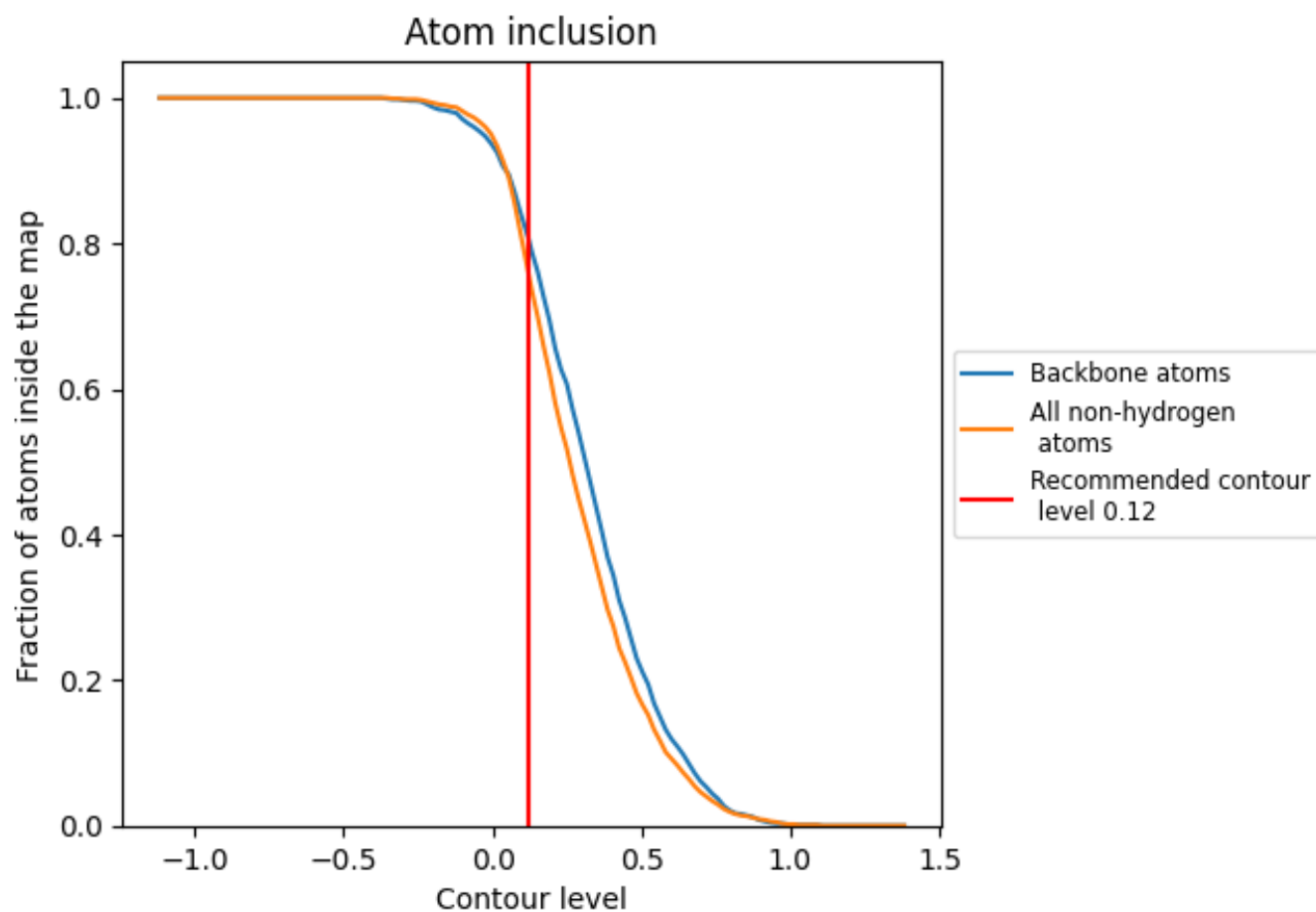
The images above show the model with each residue coloured according to its Q-score. This shows their resolvability in the map with higher Q-score values reflecting better resolvability. Please note: Q-score is calculating the resolvability of atoms, and thus high values are only expected at resolutions at which atoms can be resolved. Low Q-score values may therefore be expected for many entries.

9.3 Atom inclusion mapped to coordinate model [i](#)



The images above show the model with each residue coloured according to its atom inclusion. This shows to what extent they are inside the map at the recommended contour level (0.12).







9.4 Atom inclusion [i](#)



At the recommended contour level, 81% of all backbone atoms, 76% of all non-hydrogen atoms, are inside the map.

9.5 Map-model fit summary [i](#)

The table lists the average atom inclusion at the recommended contour level (0.12) and Q-score for the entire model and for each chain.

Chain	Atom inclusion	Q-score
All	 0.7600	 0.4090
A	 0.7600	 0.4090
B	 0.7600	 0.4090

