



# wwPDB X-ray Structure Validation Summary Report ⓘ

Mar 8, 2026 – 05:48 PM UTC

PDB ID : 3ZPQ / pdb\_00003zpq  
Title : Thermostabilised turkey beta1 adrenergic receptor with 4-(piperazin-1-yl)-1H-indole bound (compound 19)  
Authors : Christopher, J.A.; Congreve, M.; Dore, A.S.; Marshall, F.H.; Myszka, D.G.; Brown, J.; Koglin, M.; Tehan, B.; Errey, J.C.; Tate, C.G.; Warne, T.  
Deposited on : 2013-03-01  
Resolution : 2.80 Å(reported)

This is a wwPDB X-ray Structure Validation Summary Report for a publicly released PDB entry.

We welcome your comments at [validation@mail.wwpdb.org](mailto:validation@mail.wwpdb.org)

A user guide is available at

<https://www.wwpdb.org/validation/2017/XrayValidationReportHelp>

with specific help available everywhere you see the ⓘ symbol.

The types of validation reports are described at

<http://www.wwpdb.org/validation/2017/FAQs#types>.

---

The following versions of software and data (see [references ⓘ](#)) were used in the production of this report:

MolProbity : 4-5-2 with Phenix2.0  
Mogul : 2022.3.0, CSD as543be (2022)  
Xtrriage (Phenix) : 2.0  
EDS : 3.0  
Buster-report : wwPDB partial adaption of 1.1.7 (2018)  
Percentile statistics : 20250101.v01 (using entries in the PDB archive January 1st 2025)  
CCP4 : 9.0.010 (Gargrove)  
Density-Fitness : 1.0.12  
Ideal geometry (proteins) : Engh & Huber (2001)  
Ideal geometry (DNA, RNA) : Parkinson et al. (1996)  
Validation Pipeline (wwPDB-VP) : 2.49

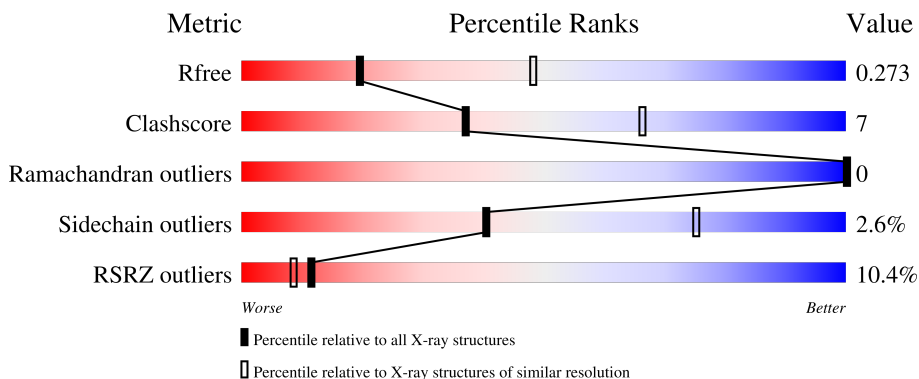
# 1 Overall quality at a glance

The following experimental techniques were used to determine the structure:

*X-RAY DIFFRACTION*

The reported resolution of this entry is 2.80 Å.

Percentile scores (ranging between 0-100) for global validation metrics of the entry are shown in the following graphic. The table shows the number of entries on which the scores are based.



Metric	Whole archive (#Entries)	Similar resolution (#Entries, resolution range(Å))
$R_{free}$	180053	3866 (2.80-2.80)
Clashscore	190562	4276 (2.80-2.80)
Ramachandran outliers	187476	4196 (2.80-2.80)
Sidechain outliers	187428	4198 (2.80-2.80)
RSRZ outliers	180081	3869 (2.80-2.80)

The table below summarises the geometric issues observed across the polymeric chains and their fit to the electron density. The red, orange, yellow and green segments of the lower bar indicate the fraction of residues that contain outliers for  $\geq 3$ , 2, 1 and 0 types of geometric quality criteria respectively. A grey segment represents the fraction of residues that are not modelled. The numeric value for each fraction is indicated below the corresponding segment, with a dot representing fractions  $\leq 5\%$ . The upper red bar (where present) indicates the fraction of residues that have poor fit to the electron density. The numeric value is given above the bar.

Mol	Chain	Length	Quality of chain
1	A	315	 10% 82% 8% • 9%
1	B	315	 10% 83% 11% • 5%

## 2 Entry composition [i](#)

There are 6 unique types of molecules in this entry. The entry contains 4996 atoms, of which 0 are hydrogens and 0 are deuteriums.

In the tables below, the ZeroOcc column contains the number of atoms modelled with zero occupancy, the AltConf column contains the number of residues with at least one atom in alternate conformation and the Trace column contains the number of residues modelled with at most 2 atoms.

- Molecule 1 is a protein called BETA-1 ADRENERGIC RECEPTOR.

Mol	Chain	Residues	Atoms					ZeroOcc	AltConf	Trace
			Total	C	N	O	S			
1	A	287	2273	1500	373	380	20	0	0	0
1	B	299	2375	1562	397	396	20	0	0	0

There are 30 discrepancies between the modelled and reference sequences:

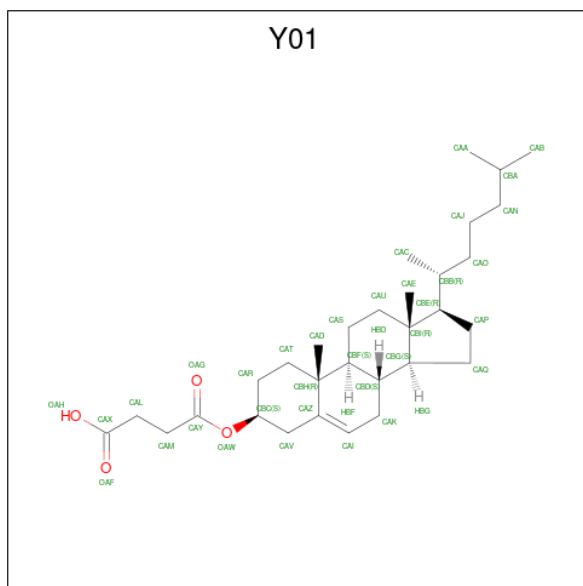
Chain	Residue	Modelled	Actual	Comment	Reference
A	31	MET	-	expression tag	UNP P07700
A	32	GLY	-	expression tag	UNP P07700
A	369	HIS	-	expression tag	UNP P07700
A	370	HIS	-	expression tag	UNP P07700
A	371	HIS	-	expression tag	UNP P07700
A	372	HIS	-	expression tag	UNP P07700
A	373	HIS	-	expression tag	UNP P07700
A	68	SER	ARG	engineered mutation	UNP P07700
A	90	VAL	MET	engineered mutation	UNP P07700
A	116	LEU	CYS	engineered mutation	UNP P07700
A	227	ALA	TYR	engineered mutation	UNP P07700
A	282	LEU	ALA	engineered mutation	UNP P07700
A	327	ALA	PHE	engineered mutation	UNP P07700
A	338	MET	PHE	engineered mutation	UNP P07700
A	358	ALA	CYS	engineered mutation	UNP P07700
B	31	MET	-	expression tag	UNP P07700
B	32	GLY	-	expression tag	UNP P07700
B	369	HIS	-	expression tag	UNP P07700
B	370	HIS	-	expression tag	UNP P07700
B	371	HIS	-	expression tag	UNP P07700
B	372	HIS	-	expression tag	UNP P07700
B	373	HIS	-	expression tag	UNP P07700
B	68	SER	ARG	engineered mutation	UNP P07700
B	90	VAL	MET	engineered mutation	UNP P07700
B	116	LEU	CYS	engineered mutation	UNP P07700

*Continued on next page...*

Continued from previous page...

Chain	Residue	Modelled	Actual	Comment	Reference
B	227	ALA	TYR	engineered mutation	UNP P07700
B	282	LEU	ALA	engineered mutation	UNP P07700
B	327	ALA	PHE	engineered mutation	UNP P07700
B	338	MET	PHE	engineered mutation	UNP P07700
B	358	ALA	CYS	engineered mutation	UNP P07700

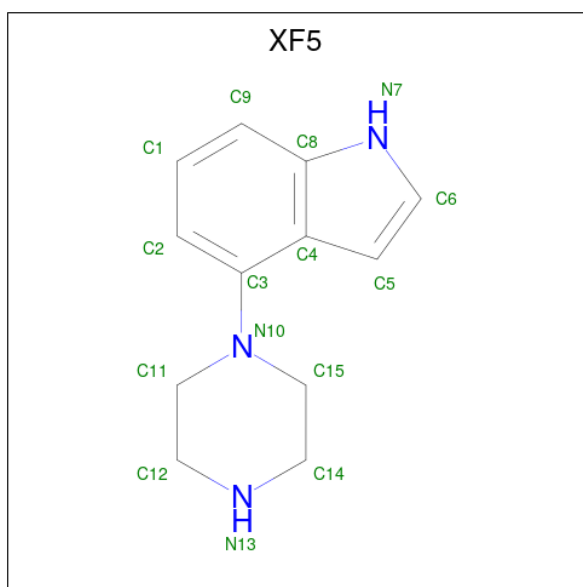
- Molecule 2 is CHOLESTEROL HEMISUCCINATE (CCD ID: Y01) (formula:  $C_{31}H_{50}O_4$ ).



Mol	Chain	Residues	Atoms	ZeroOcc	AltConf
2	A	1	Total C O 35 31 4	0	0
2	A	1	Total C O 35 31 4	0	0
2	B	1	Total C O 35 31 4	0	0
2	B	1	Total C O 35 31 4	0	0

- Molecule 3 is HEGA-10 (CCD ID: 2CV) (formula:  $C_{18}H_{37}NO_7$ ).





Mol	Chain	Residues	Atoms			ZeroOcc	AltConf
4	A	1	Total	C	N	0	0
			15	12	3		
4	B	1	Total	C	N	0	0
			15	12	3		

- Molecule 5 is SODIUM ION (CCD ID: NA) (formula: Na).

Mol	Chain	Residues	Atoms		ZeroOcc	AltConf
5	A	1	Total	Na	0	0
			1	1		
5	B	2	Total	Na	0	0
			2	2		

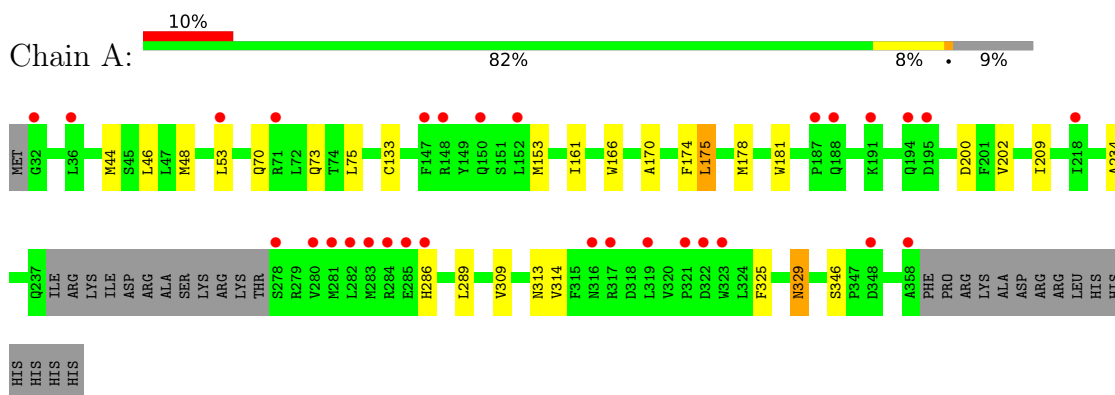
- Molecule 6 is water.

Mol	Chain	Residues	Atoms		ZeroOcc	AltConf
6	A	18	Total	O	0	0
			18	18		
6	B	17	Total	O	0	0
			17	17		

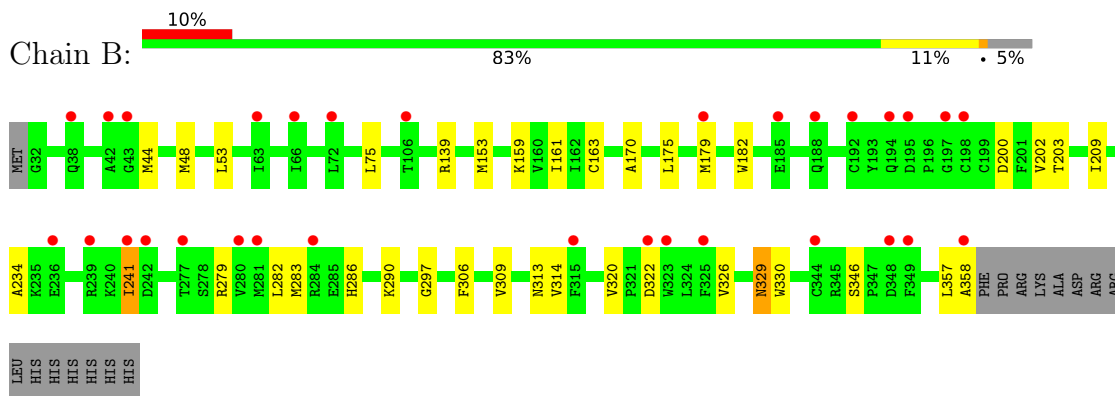
### 3 Residue-property plots [i](#)

These plots are drawn for all protein, RNA, DNA and oligosaccharide chains in the entry. The first graphic for a chain summarises the proportions of the various outlier classes displayed in the second graphic. The second graphic shows the sequence view annotated by issues in geometry and electron density. Residues are color-coded according to the number of geometric quality criteria for which they contain at least one outlier: green = 0, yellow = 1, orange = 2 and red = 3 or more. A red dot above a residue indicates a poor fit to the electron density ( $RSRZ > 2$ ). Stretches of 2 or more consecutive residues without any outlier are shown as a green connector. Residues present in the sample, but not in the model, are shown in grey.

#### • Molecule 1: BETA-1 ADRENERGIC RECEPTOR



#### • Molecule 1: BETA-1 ADRENERGIC RECEPTOR



## 4 Data and refinement statistics

Property	Value	Source
Space group	P 1 21 1	Depositor
Cell constants a, b, c, $\alpha$ , $\beta$ , $\gamma$	89.85Å 61.44Å 100.78Å 90.00° 108.89° 90.00°	Depositor
Resolution (Å)	95.36 – 2.80 95.36 – 2.80	Depositor EDS
% Data completeness (in resolution range)	91.7 (95.36-2.80) 91.8 (95.36-2.80)	Depositor EDS
$R_{merge}$	0.18	Depositor
$R_{sym}$	(Not available)	Depositor
$\langle I/\sigma(I) \rangle$ <sup>1</sup>	1.99 (at 2.81Å)	Xtrriage
Refinement program	REFMAC 5.6.0117	Depositor
R, $R_{free}$	0.220 , 0.274 0.221 , 0.273	Depositor DCC
$R_{free}$ test set	1214 reflections (5.09%)	wwPDB-VP
Wilson B-factor (Å <sup>2</sup> )	56.5	Xtrriage
Anisotropy	0.248	Xtrriage
Bulk solvent $k_{sol}$ (e/Å <sup>3</sup> ), $B_{sol}$ (Å <sup>2</sup> )	0.29 , 36.2	EDS
L-test for twinning <sup>2</sup>	$\langle  L  \rangle = 0.47$ , $\langle L^2 \rangle = 0.30$	Xtrriage
Estimated twinning fraction	No twinning to report.	Xtrriage
$F_o, F_c$ correlation	0.90	EDS
Total number of atoms	4996	wwPDB-VP
Average B, all atoms (Å <sup>2</sup> )	54.0	wwPDB-VP

Xtrriage's analysis on translational NCS is as follows: *The largest off-origin peak in the Patterson function is 5.11% of the height of the origin peak. No significant pseudotranslation is detected.*

<sup>1</sup>Intensities estimated from amplitudes.

<sup>2</sup>Theoretical values of  $\langle |L| \rangle$ ,  $\langle L^2 \rangle$  for acentric reflections are 0.5, 0.333 respectively for untwinned datasets, and 0.375, 0.2 for perfectly twinned datasets.

## 5 Model quality

### 5.1 Standard geometry

Bond lengths and bond angles in the following residue types are not validated in this section: XF5, NA, 2CV, Y01

The Z score for a bond length (or angle) is the number of standard deviations the observed value is removed from the expected value. A bond length (or angle) with  $|Z| > 5$  is considered an outlier worth inspection. RMSZ is the root-mean-square of all Z scores of the bond lengths (or angles).

Mol	Chain	Bond lengths		Bond angles	
		RMSZ	# Z  >5	RMSZ	# Z  >5
1	A	0.69	0/2327	0.85	0/3172
1	B	0.70	0/2430	0.83	0/3308
All	All	0.69	0/4757	0.84	0/6480

There are no bond length outliers.

There are no bond angle outliers.

There are no chirality outliers.

There are no planarity outliers.

### 5.2 Too-close contacts

In the following table, the Non-H and H(model) columns list the number of non-hydrogen atoms and hydrogen atoms in the chain respectively. The H(added) column lists the number of hydrogen atoms added and optimized by MolProbity. The Clashes column lists the number of clashes within the asymmetric unit, whereas Symm-Clashes lists symmetry-related clashes.

Mol	Chain	Non-H	H(model)	H(added)	Clashes	Symm-Clashes
1	A	2273	0	2352	23	0
1	B	2375	0	2473	34	0
2	A	70	0	98	4	0
2	B	70	0	98	8	0
3	A	57	0	87	7	0
3	B	83	0	124	17	0
4	A	15	0	15	2	0
4	B	15	0	15	1	0
5	A	1	0	0	0	0
5	B	2	0	0	0	0
6	A	18	0	0	0	0

*Continued on next page...*

Continued from previous page...

Mol	Chain	Non-H	H(model)	H(added)	Clashes	Symm-Clashes
6	B	17	0	0	0	0
All	All	4996	0	5262	73	0

The all-atom clashscore is defined as the number of clashes found per 1000 atoms (including hydrogen atoms). The all-atom clashscore for this structure is 7.

The worst 5 of 73 close contacts within the same asymmetric unit are listed below, sorted by their clash magnitude.

Atom-1	Atom-2	Interatomic distance (Å)	Clash overlap (Å)
1:A:170:ALA:HB2	3:A:505:2CV:H03C	1.66	0.78
3:A:503:2CV:H271	3:A:503:2CV:C60	2.13	0.77
3:A:503:2CV:H271	3:A:503:2CV:H601	1.66	0.77
1:B:290:LYS:HG3	3:B:504:2CV:H272	1.72	0.71
1:A:175:LEU:HD22	1:B:175:LEU:HD22	1.73	0.70

There are no symmetry-related clashes.

## 5.3 Torsion angles [i](#)

### 5.3.1 Protein backbone [i](#)

In the following table, the Percentiles column shows the percent Ramachandran outliers of the chain as a percentile score with respect to all X-ray entries followed by that with respect to entries of similar resolution.

The Analysed column shows the number of residues for which the backbone conformation was analysed, and the total number of residues.

Mol	Chain	Analysed	Favoured	Allowed	Outliers	Percentiles	
1	A	283/315 (90%)	276 (98%)	7 (2%)	0	100	100
1	B	297/315 (94%)	289 (97%)	8 (3%)	0	100	100
All	All	580/630 (92%)	565 (97%)	15 (3%)	0	100	100

There are no Ramachandran outliers to report.

### 5.3.2 Protein sidechains [i](#)

In the following table, the Percentiles column shows the percent sidechain outliers of the chain as a percentile score with respect to all X-ray entries followed by that with respect to entries of similar

resolution.

The Analysed column shows the number of residues for which the sidechain conformation was analysed, and the total number of residues.

Mol	Chain	Analysed	Rotameric	Outliers	Percentiles	
1	A	247/273 (90%)	240 (97%)	7 (3%)	38	73
1	B	258/273 (94%)	252 (98%)	6 (2%)	44	78
All	All	505/546 (92%)	492 (97%)	13 (3%)	40	75

5 of 13 residues with a non-rotameric sidechain are listed below:

Mol	Chain	Res	Type
1	B	53	LEU
1	B	241	ILE
1	B	346	SER
1	B	322	ASP
1	B	329	ASN

Sometimes sidechains can be flipped to improve hydrogen bonding and reduce clashes. All (1) such sidechains are listed below:

Mol	Chain	Res	Type
1	A	59	ASN

### 5.3.3 RNA [i](#)

There are no RNA molecules in this entry.

## 5.4 Non-standard residues in protein, DNA, RNA chains [i](#)

There are no non-standard protein/DNA/RNA residues in this entry.

## 5.5 Carbohydrates [i](#)

There are no oligosaccharides in this entry.

## 5.6 Ligand geometry [i](#)

Of 18 ligands modelled in this entry, 3 are monoatomic - leaving 15 for Mogul analysis.

In the following table, the Counts columns list the number of bonds (or angles) for which Mogul statistics could be retrieved, the number of bonds (or angles) that are observed in the model and the number of bonds (or angles) that are defined in the Chemical Component Dictionary. The Link column lists molecule types, if any, to which the group is linked. The Z score for a bond length (or angle) is the number of standard deviations the observed value is removed from the expected value. A bond length (or angle) with  $|Z| > 2$  is considered an outlier worth inspection. RMSZ is the root-mean-square of all Z scores of the bond lengths (or angles).

Mol	Type	Chain	Res	Link	Bond lengths			Bond angles		
					Counts	RMSZ	# Z  > 2	Counts	RMSZ	# Z  > 2
2	Y01	A	401	-	38,38,38	1.16	2 (5%)	57,57,57	2.15	12 (21%)
3	2CV	B	502	-	18,18,25	0.64	0	19,20,30	0.98	1 (5%)
3	2CV	B	504	-	11,11,25	0.53	0	11,11,30	0.47	0
2	Y01	A	402	-	38,38,38	1.38	2 (5%)	57,57,57	1.40	11 (19%)
3	2CV	A	502	-	9,9,25	0.52	0	8,8,30	0.36	0
2	Y01	B	401	-	38,38,38	1.21	2 (5%)	57,57,57	2.20	15 (26%)
4	XF5	A	1359	-	17,17,17	2.82	8 (47%)	22,23,23	2.34	6 (27%)
4	XF5	B	1360	-	17,17,17	3.17	8 (47%)	22,23,23	2.74	9 (40%)
3	2CV	B	505	-	20,20,25	0.73	1 (5%)	22,23,30	0.93	1 (4%)
3	2CV	A	503	-	20,20,25	0.61	0	22,23,30	1.04	1 (4%)
3	2CV	B	506	-	18,18,25	0.69	0	19,20,30	0.78	1 (5%)
3	2CV	A	506	-	11,11,25	0.47	0	11,11,30	0.61	0
3	2CV	B	503	-	11,11,25	0.59	0	11,11,30	0.37	0
2	Y01	B	402	-	38,38,38	1.29	2 (5%)	57,57,57	1.52	11 (19%)
3	2CV	A	505	-	13,13,25	0.84	1 (7%)	14,14,30	0.47	0

In the following table, the Chirals column lists the number of chiral outliers, the number of chiral centers analysed, the number of these observed in the model and the number defined in the Chemical Component Dictionary. Similar counts are reported in the Torsion and Rings columns. '-' means no outliers of that kind were identified.

Mol	Type	Chain	Res	Link	Chirals	Torsions	Rings
2	Y01	A	401	-	-	12/19/77/77	0/4/4/4
3	2CV	B	502	-	-	9/20/20/34	-
3	2CV	B	504	-	-	6/9/9/34	-
2	Y01	A	402	-	-	9/19/77/77	0/4/4/4
3	2CV	A	502	-	-	5/7/7/34	-
2	Y01	B	401	-	-	12/19/77/77	0/4/4/4
4	XF5	A	1359	-	-	3/4/12/12	0/3/3/3
4	XF5	B	1360	-	-	2/4/12/12	0/3/3/3

Continued on next page...

Continued from previous page...

Mol	Type	Chain	Res	Link	Chirals	Torsions	Rings
3	2CV	B	505	-	-	7/24/24/34	-
3	2CV	A	503	-	-	11/24/24/34	-
3	2CV	B	506	-	-	8/20/20/34	-
3	2CV	A	506	-	-	1/9/9/34	-
3	2CV	B	503	-	-	4/9/9/34	-
2	Y01	B	402	-	-	6/19/77/77	0/4/4/4
3	2CV	A	505	-	-	4/13/13/34	-

The worst 5 of 26 bond length outliers are listed below:

Mol	Chain	Res	Type	Atoms	Z	Observed(Å)	Ideal(Å)
4	B	1360	XF5	C4-C3	-7.91	1.34	1.41
4	B	1360	XF5	C4-C8	-7.23	1.34	1.41
4	A	1359	XF5	C4-C3	-6.81	1.35	1.41
4	A	1359	XF5	C4-C8	-6.13	1.35	1.41
2	B	402	Y01	CAK-CAI	-5.27	1.39	1.50

The worst 5 of 68 bond angle outliers are listed below:

Mol	Chain	Res	Type	Atoms	Z	Observed(°)	Ideal(°)
4	B	1360	XF5	C8-C4-C3	9.71	120.95	118.17
2	A	401	Y01	CAR-CBC-CAV	-9.08	98.36	110.97
2	B	401	Y01	CAR-CBC-CAV	-8.68	98.91	110.97
2	B	401	Y01	OAW-CBC-CAV	8.08	124.69	108.04
4	A	1359	XF5	C8-C4-C3	7.84	120.42	118.17

There are no chirality outliers.

5 of 99 torsion outliers are listed below:

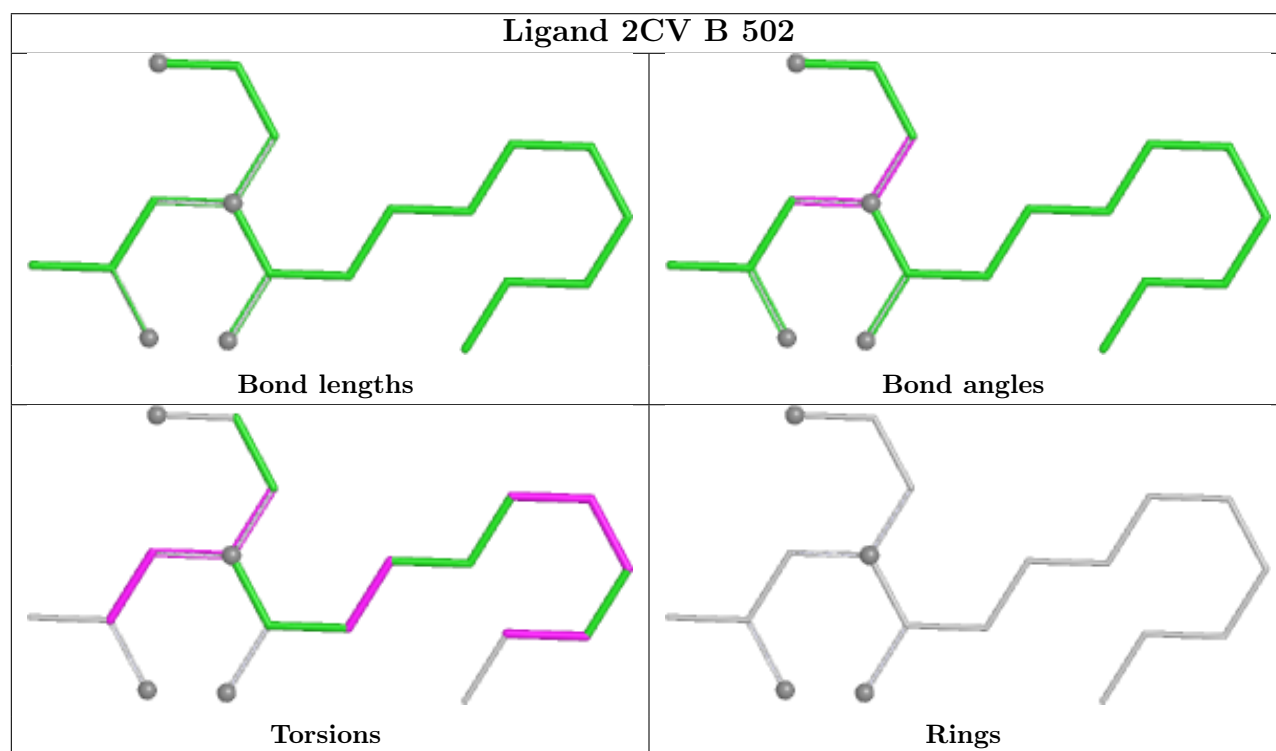
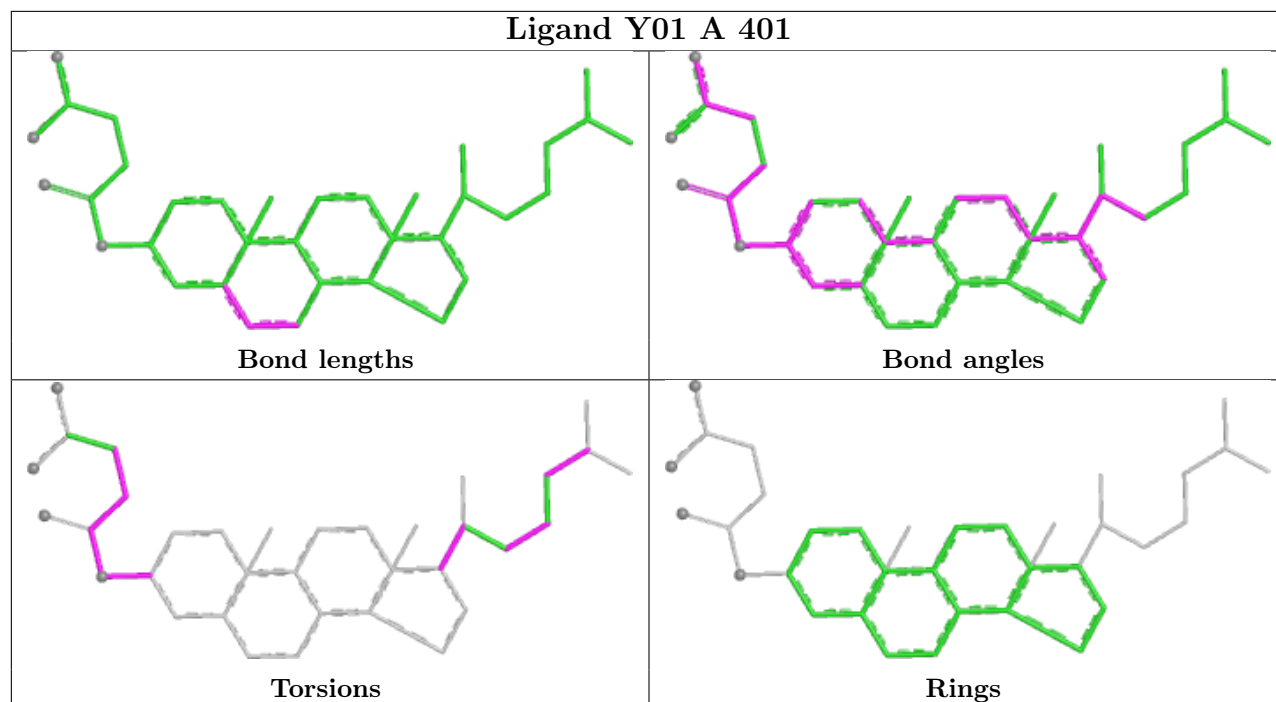
Mol	Chain	Res	Type	Atoms
2	A	401	Y01	CAR-CBC-OAW-CAY
2	A	402	Y01	OAG-CAY-OAW-CBC
3	A	503	2CV	N33-C36-C37-C40
3	A	503	2CV	N33-C36-C37-O47
3	B	502	2CV	C37-C36-N33-C35

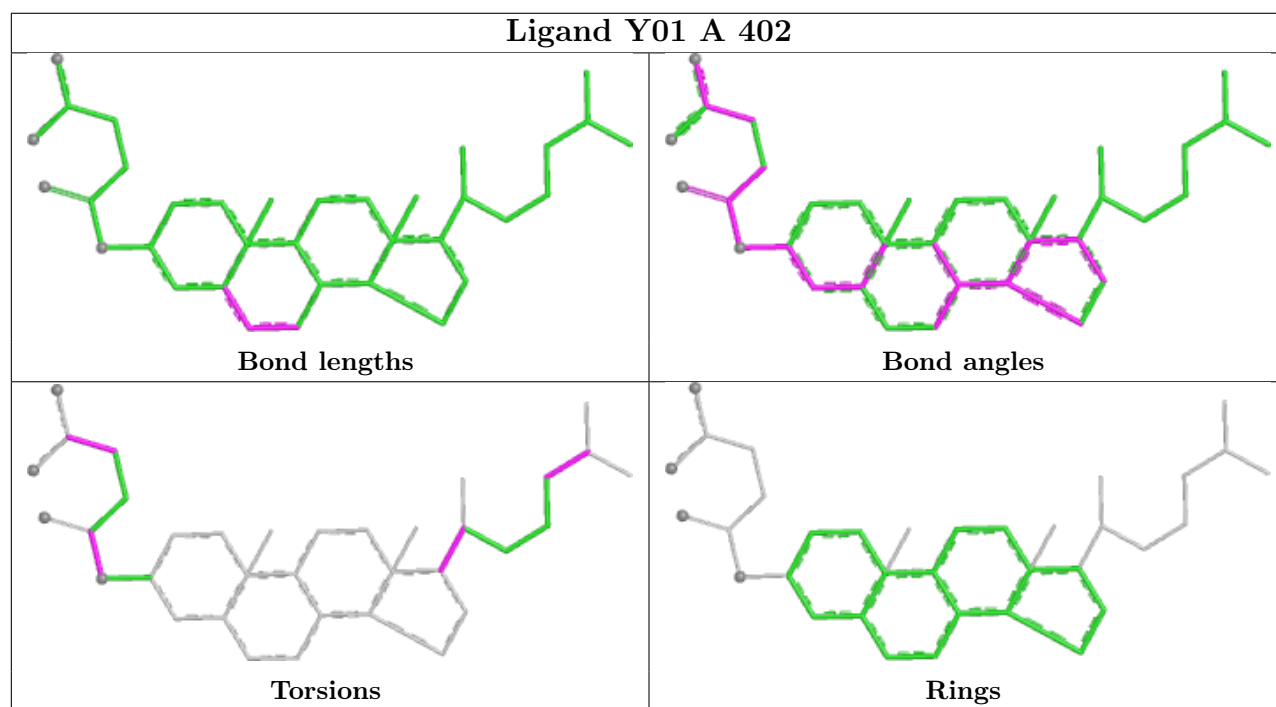
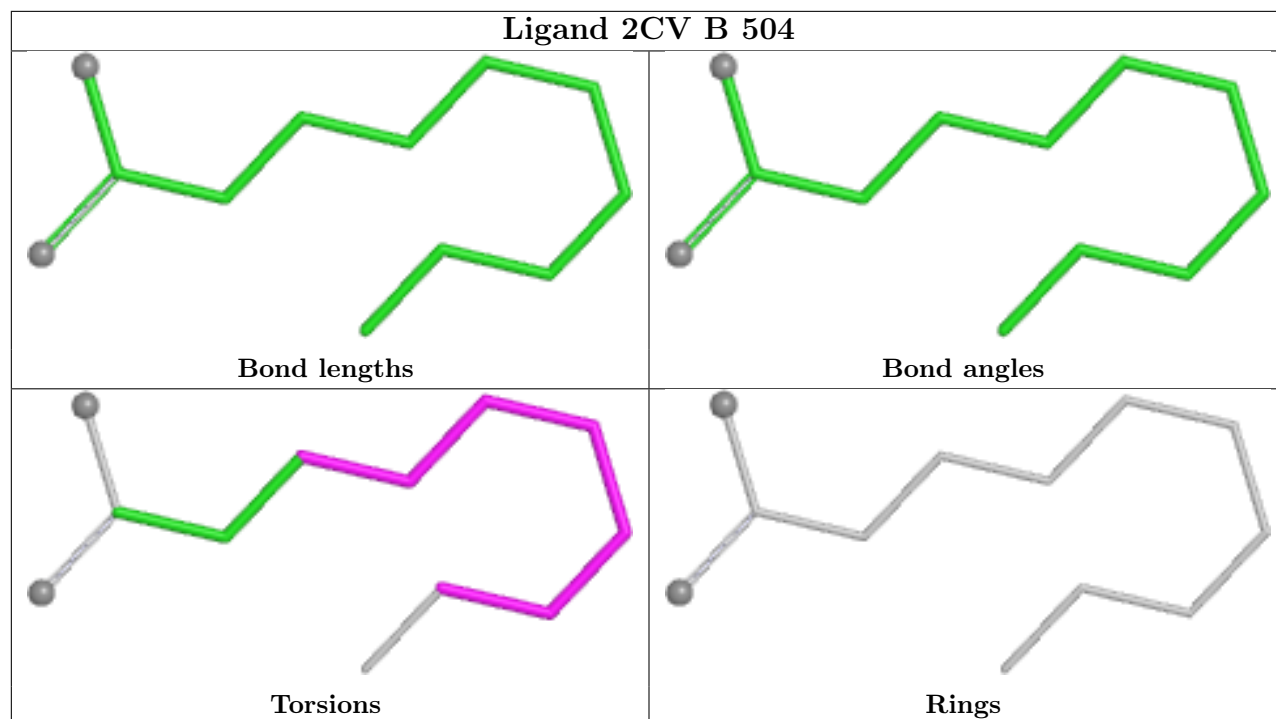
There are no ring outliers.

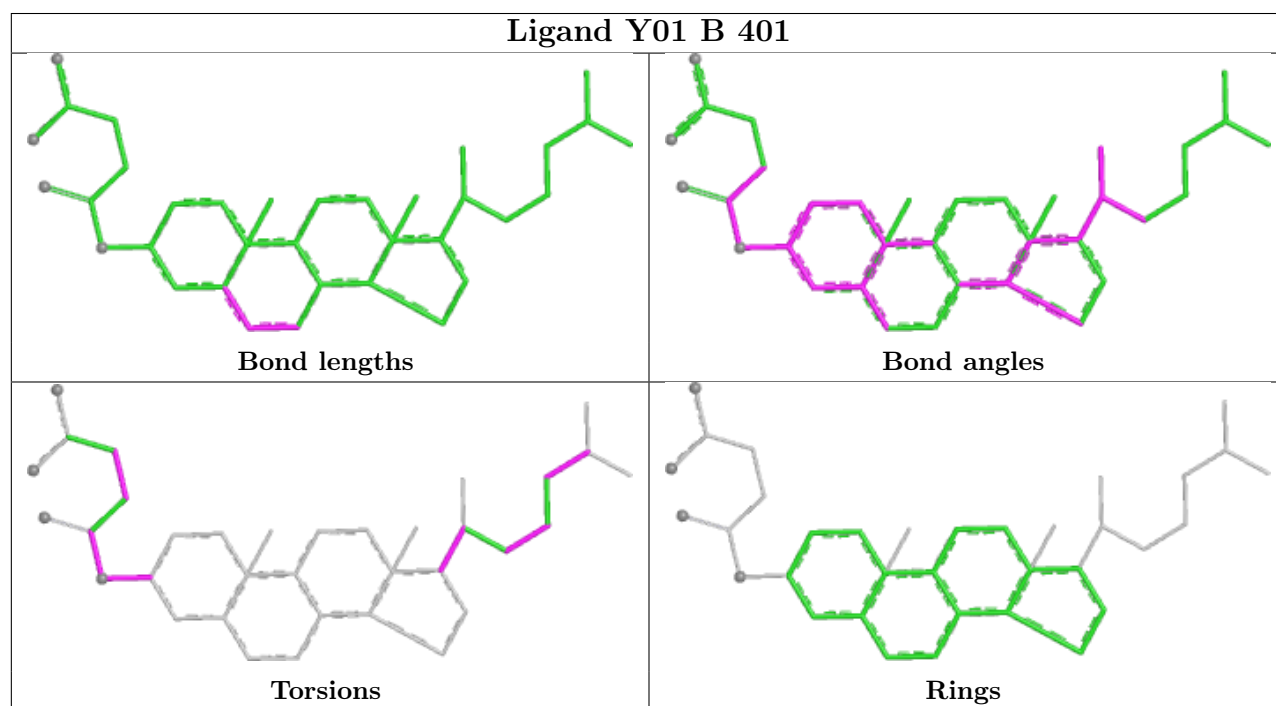
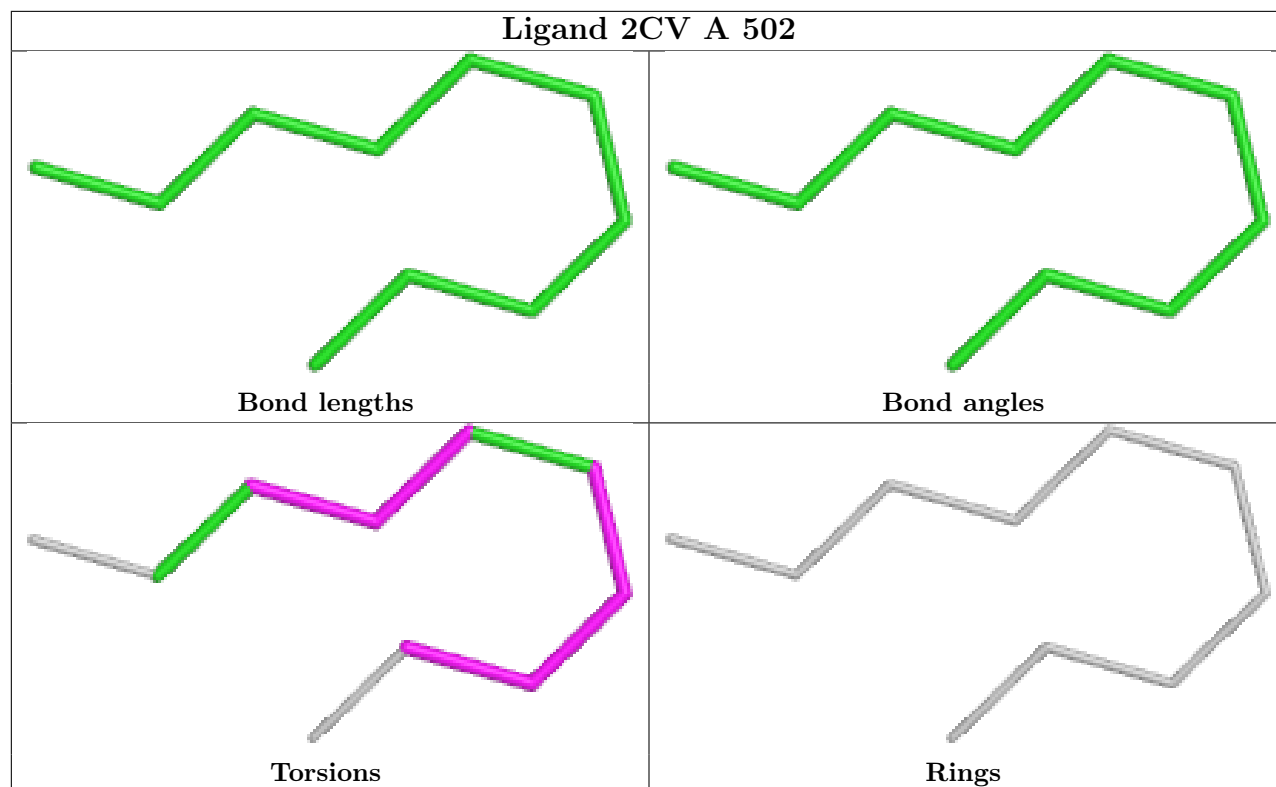
14 monomers are involved in 38 short contacts:

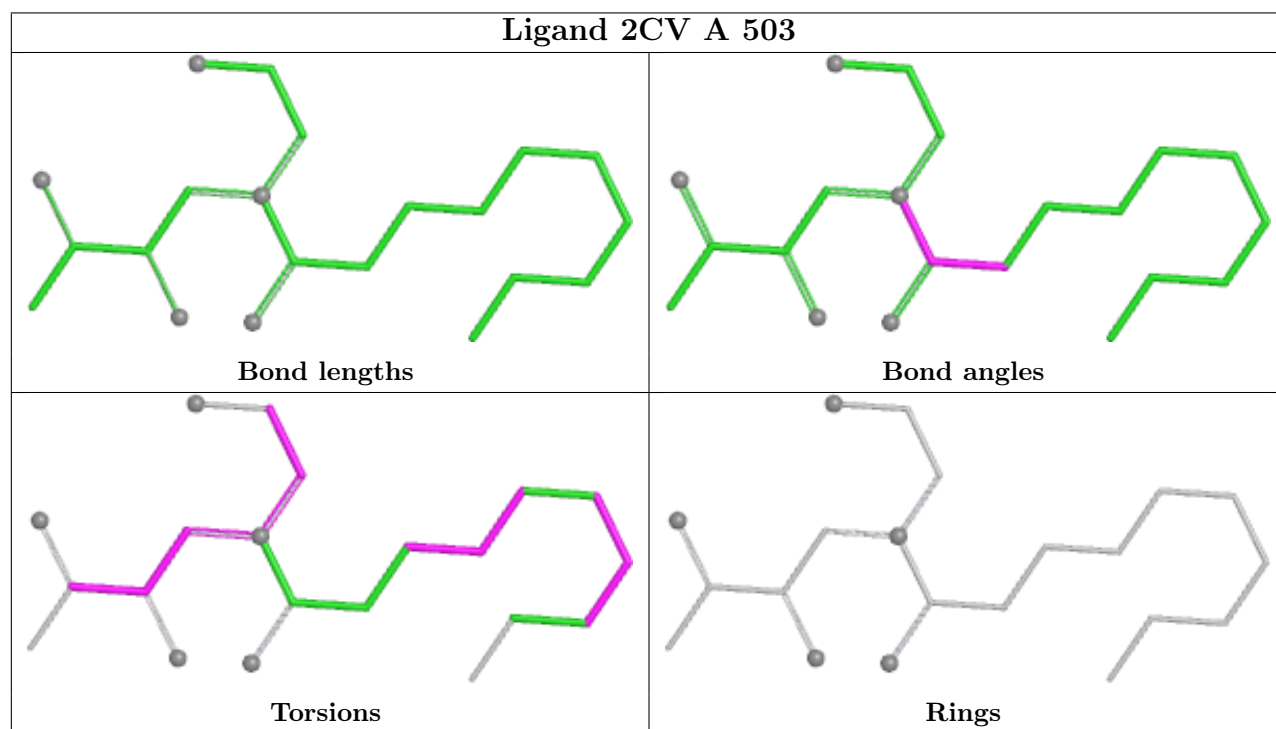
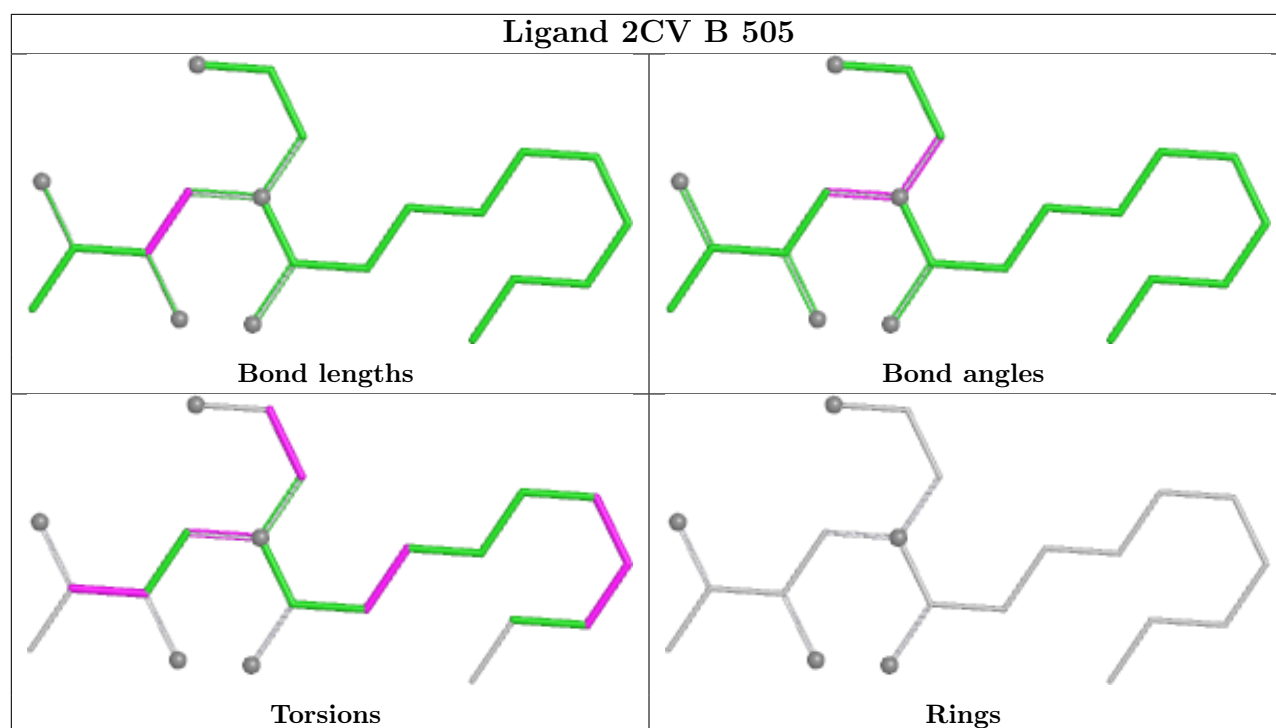
Mol	Chain	Res	Type	Clashes	Symm-Clashes
2	A	401	Y01	2	0
3	B	502	2CV	6	0
3	B	504	2CV	3	0
2	A	402	Y01	2	0
3	A	502	2CV	1	0
2	B	401	Y01	4	0
4	A	1359	XF5	2	0
4	B	1360	XF5	1	0
3	B	505	2CV	6	0
3	A	503	2CV	5	0
3	B	506	2CV	1	0
3	B	503	2CV	1	0
2	B	402	Y01	4	0
3	A	505	2CV	1	0

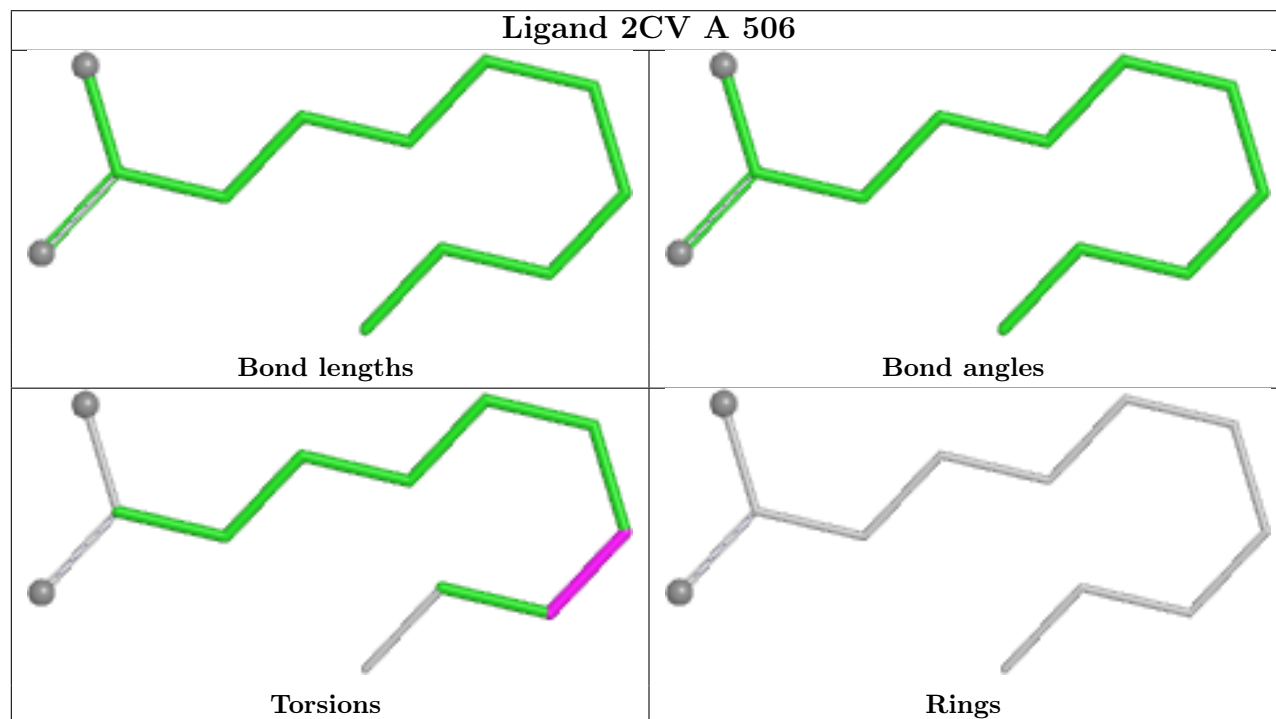
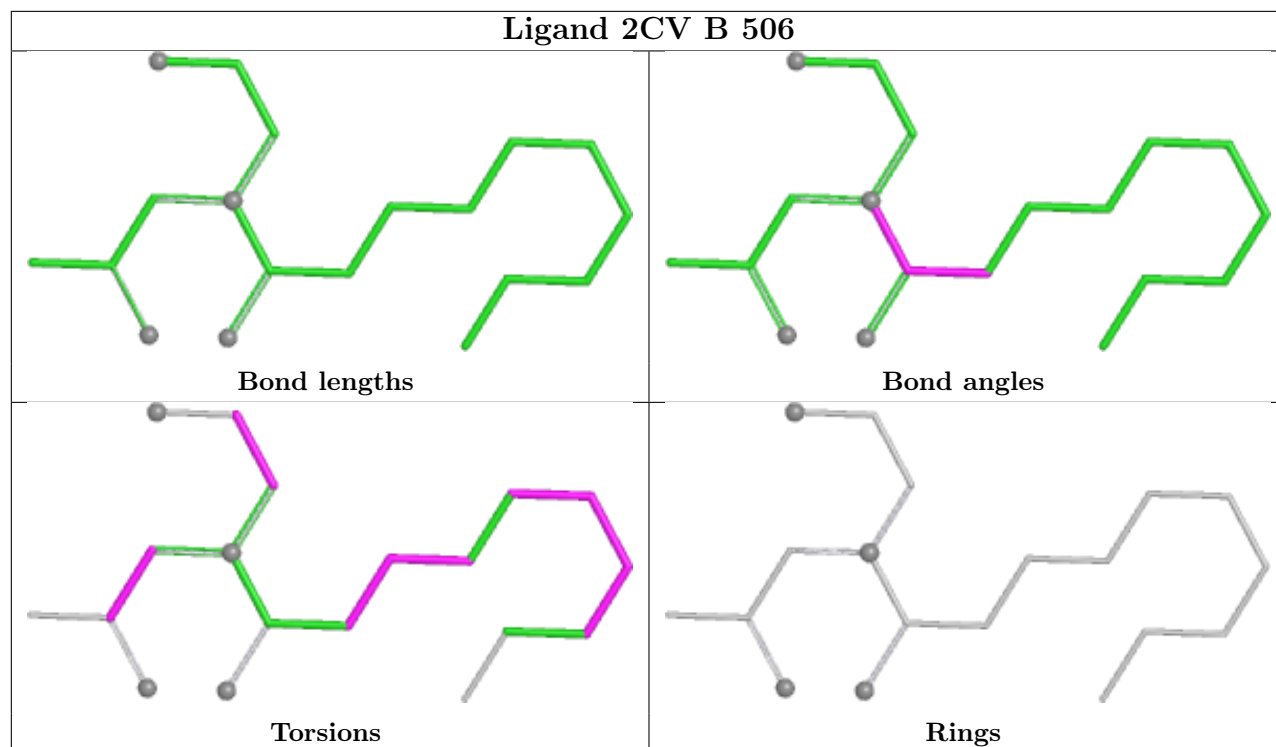
The following is a two-dimensional graphical depiction of Mogul quality analysis of bond lengths, bond angles, torsion angles, and ring geometry for all instances of the Ligand of Interest. In addition, ligands with molecular weight > 250 and outliers as shown on the validation Tables will also be included. For torsion angles, if less than 5% of the Mogul distribution of torsion angles is within 10 degrees of the torsion angle in question, then that torsion angle is considered an outlier. Any bond that is central to one or more torsion angles identified as an outlier by Mogul will be highlighted in the graph. For rings, the root-mean-square deviation (RMSD) between the ring in question and similar rings identified by Mogul is calculated over all ring torsion angles. If the average RMSD is greater than 60 degrees and the minimal RMSD between the ring in question and any Mogul-identified rings is also greater than 60 degrees, then that ring is considered an outlier. The outliers are highlighted in purple. The color gray indicates Mogul did not find sufficient equivalents in the CSD to analyse the geometry.

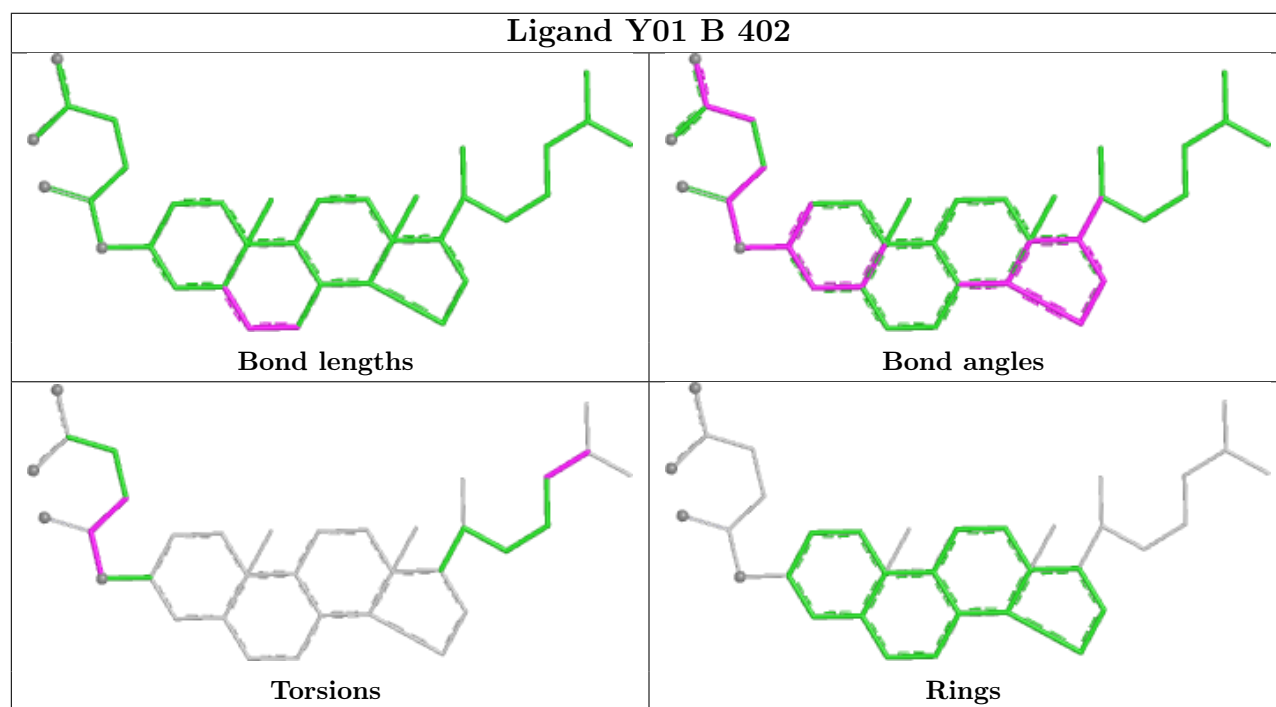
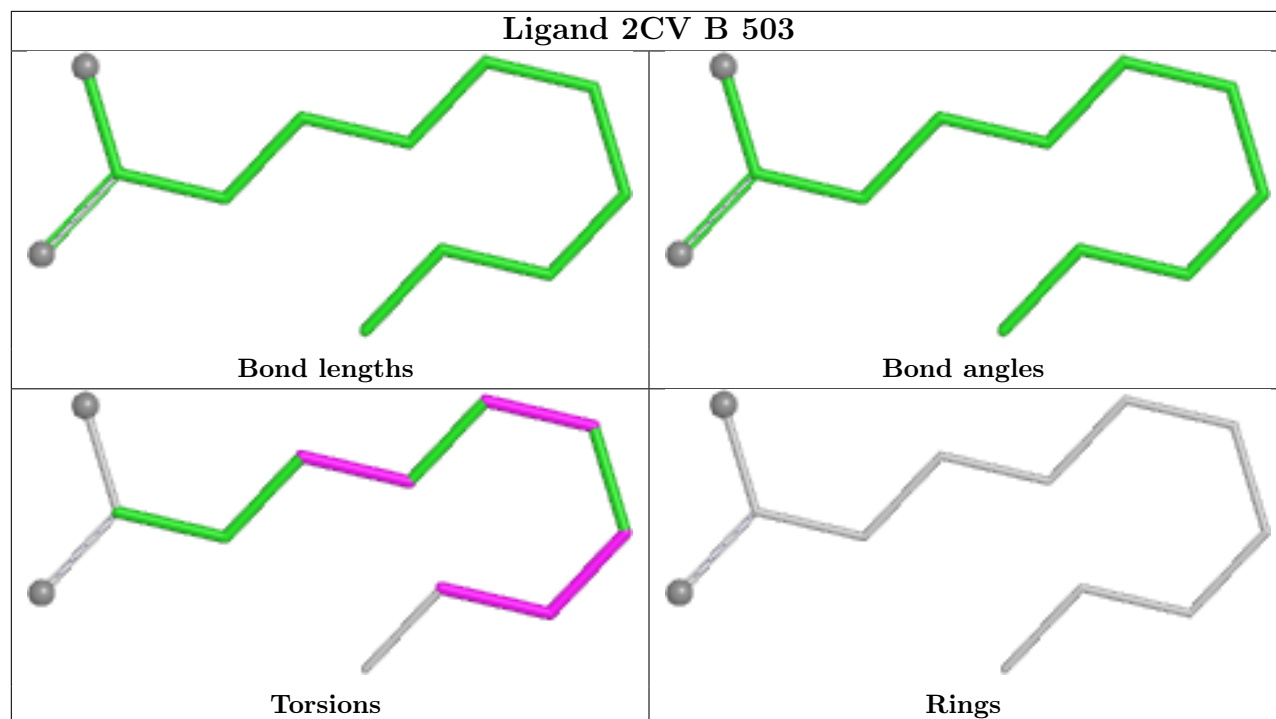


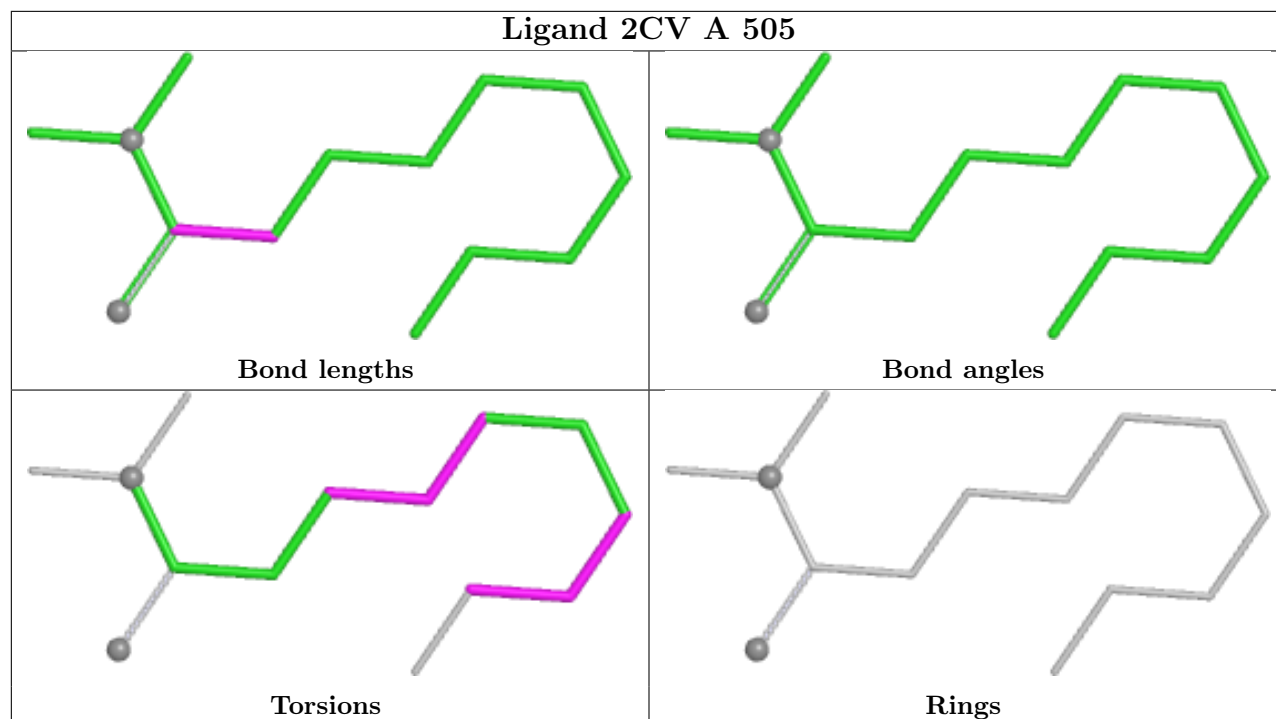












## 5.7 Other polymers [i](#)

There are no such residues in this entry.

## 5.8 Polymer linkage issues [i](#)

There are no chain breaks in this entry.

## 6 Fit of model and data [i](#)

### 6.1 Protein, DNA and RNA chains [i](#)

In the following table, the column labelled ‘#RSRZ > 2’ contains the number (and percentage) of RSRZ outliers, followed by percent RSRZ outliers for the chain as percentile scores relative to all X-ray entries and entries of similar resolution. The OWAB column contains the minimum, median, 95<sup>th</sup> percentile and maximum values of the occupancy-weighted average B-factor per residue. The column labelled ‘Q < 0.9’ lists the number of (and percentage) of residues with an average occupancy less than 0.9.

Mol	Chain	Analysed	<RSRZ>	#RSRZ>2	OWAB(Å <sup>2</sup> )	Q<0.9
1	A	287/315 (91%)	0.41	30 (10%) 11 8	30, 49, 93, 146	0
1	B	299/315 (94%)	0.56	31 (10%) 11 8	27, 49, 80, 104	0
All	All	586/630 (93%)	0.49	61 (10%) 11 8	27, 49, 87, 146	0

The worst 5 of 61 RSRZ outliers are listed below:

Mol	Chain	Res	Type	RSRZ
1	A	71	ARG	6.1
1	B	242	ASP	6.1
1	B	236	GLU	5.5
1	B	197	GLY	4.9
1	B	322	ASP	4.5

### 6.2 Non-standard residues in protein, DNA, RNA chains [i](#)

There are no non-standard protein/DNA/RNA residues in this entry.

### 6.3 Carbohydrates [i](#)

There are no oligosaccharides in this entry.

### 6.4 Ligands [i](#)

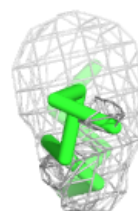
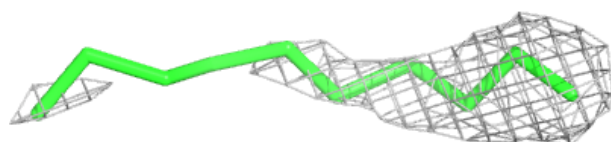
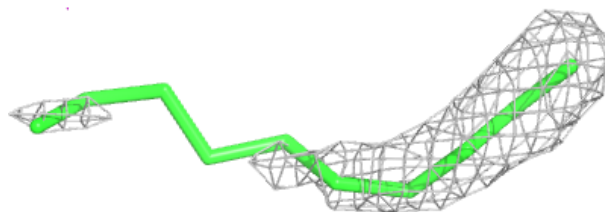
In the following table, the Atoms column lists the number of modelled atoms in the group and the number defined in the chemical component dictionary. The B-factors column lists the minimum, median, 95<sup>th</sup> percentile and maximum values of B factors of atoms in the group. The column labelled ‘Q < 0.9’ lists the number of atoms with occupancy less than 0.9.

Mol	Type	Chain	Res	Atoms	RSCC	RSR	B-factors( $\text{\AA}^2$ )	Q<0.9
3	2CV	A	502	10/26	0.83	0.26	60,70,82,82	0
3	2CV	B	504	12/26	0.84	0.23	75,85,88,89	0
2	Y01	A	402	35/35	0.86	0.19	64,71,114,116	0
3	2CV	B	503	12/26	0.87	0.19	47,62,84,88	0
3	2CV	A	505	14/26	0.88	0.25	60,82,97,102	0
3	2CV	A	506	12/26	0.88	0.18	71,75,79,80	0
5	NA	B	1359	1/1	0.88	0.12	47,47,47,47	0
3	2CV	B	505	21/26	0.89	0.15	47,75,85,89	0
3	2CV	B	502	19/26	0.90	0.16	48,76,92,94	0
5	NA	A	1360	1/1	0.91	0.07	61,61,61,61	0
2	Y01	B	402	35/35	0.92	0.13	52,63,108,114	0
3	2CV	A	503	21/26	0.93	0.11	38,49,56,61	0
5	NA	B	1361	1/1	0.93	0.12	56,56,56,56	0
2	Y01	B	401	35/35	0.95	0.13	44,48,74,85	0
2	Y01	A	401	35/35	0.95	0.11	39,45,62,65	0
3	2CV	B	506	19/26	0.95	0.11	36,48,59,65	0
4	XF5	B	1360	15/15	0.96	0.08	37,38,42,43	0
4	XF5	A	1359	15/15	0.97	0.08	39,41,41,42	0

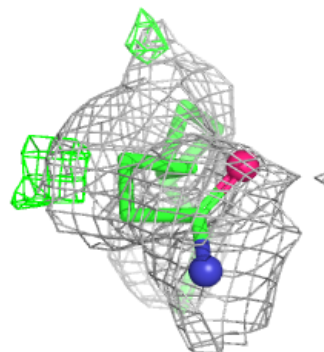
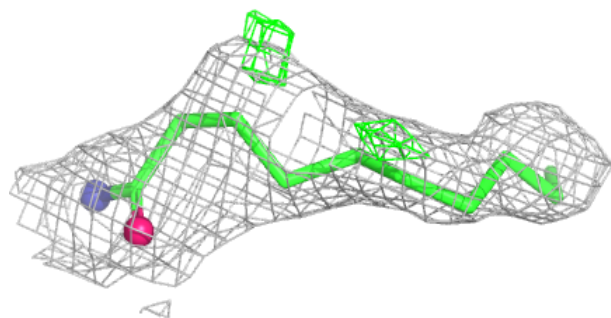
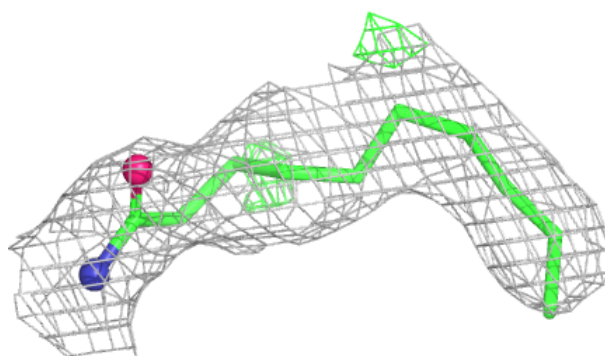
The following is a graphical depiction of the model fit to experimental electron density of all instances of the Ligand of Interest. In addition, ligands with molecular weight > 250 and outliers as shown on the geometry validation Tables will also be included. Each fit is shown from different orientation to approximate a three-dimensional view.

**Electron density around 2CV A 502:**

$2mF_o-DF_c$  (at 0.7 rmsd) in gray  
 $mF_o-DF_c$  (at 3 rmsd) in purple (negative)  
and green (positive)

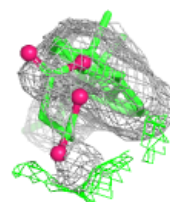
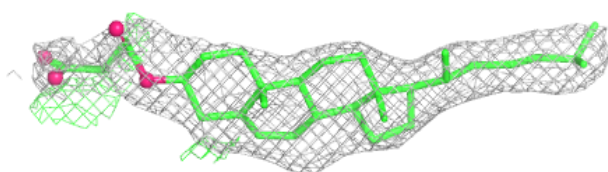
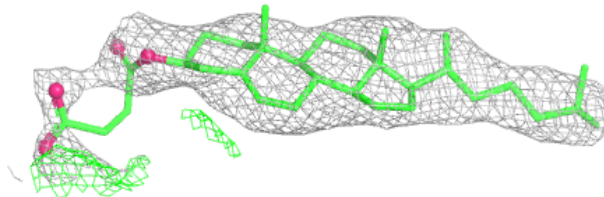
**Electron density around 2CV B 504:**

$2mF_o-DF_c$  (at 0.7 rmsd) in gray  
 $mF_o-DF_c$  (at 3 rmsd) in purple (negative)  
and green (positive)

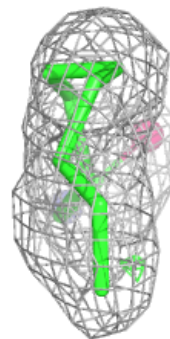
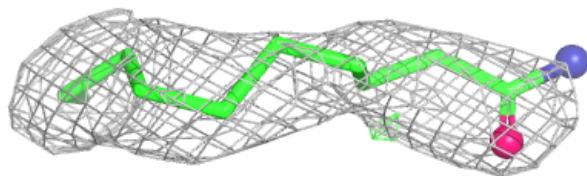
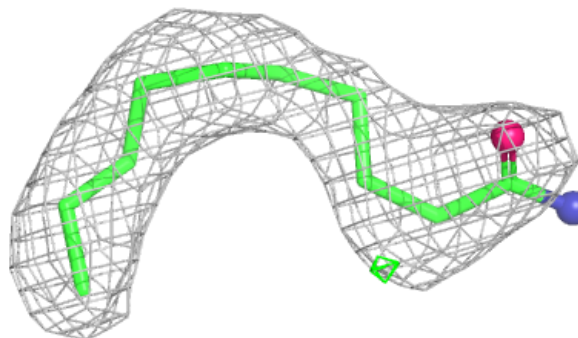


**Electron density around Y01 A 402:**

$2mF_o-DF_c$  (at 0.7 rmsd) in gray  
 $mF_o-DF_c$  (at 3 rmsd) in purple (negative)  
and green (positive)

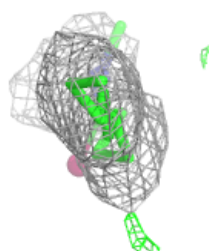
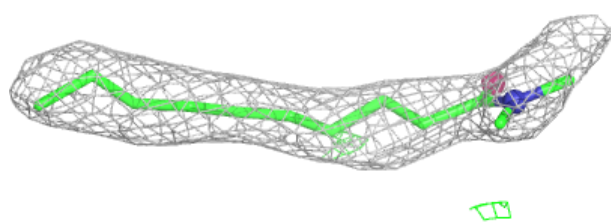
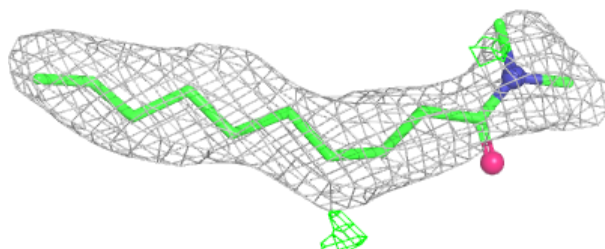
**Electron density around 2CV B 503:**

$2mF_o-DF_c$  (at 0.7 rmsd) in gray  
 $mF_o-DF_c$  (at 3 rmsd) in purple (negative)  
and green (positive)

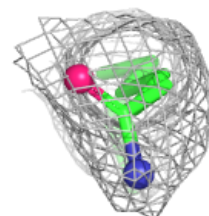
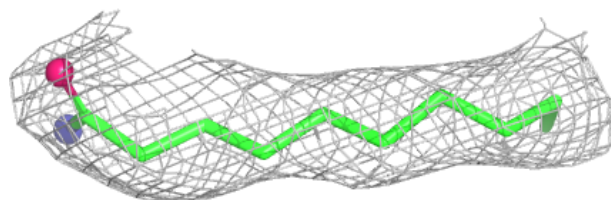
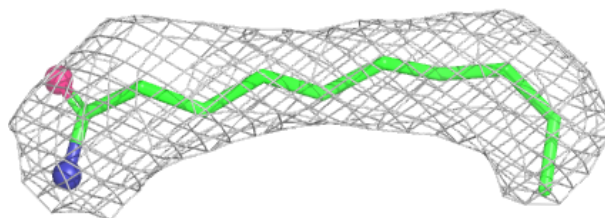


**Electron density around 2CV A 505:**

$2mF_o-DF_c$  (at 0.7 rmsd) in gray  
 $mF_o-DF_c$  (at 3 rmsd) in purple (negative)  
and green (positive)

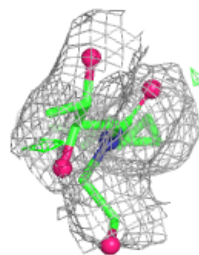
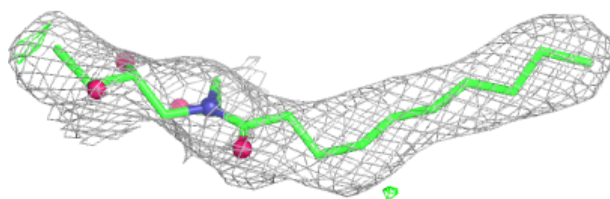
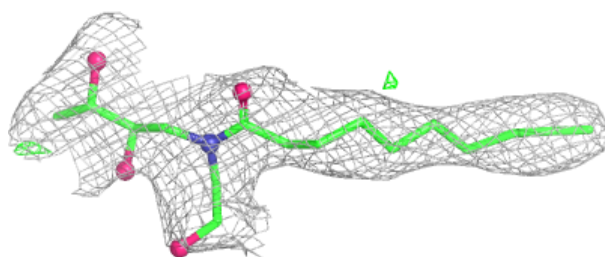
**Electron density around 2CV A 506:**

$2mF_o-DF_c$  (at 0.7 rmsd) in gray  
 $mF_o-DF_c$  (at 3 rmsd) in purple (negative)  
and green (positive)

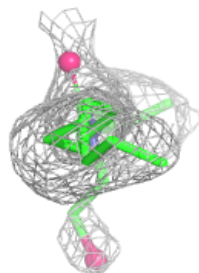
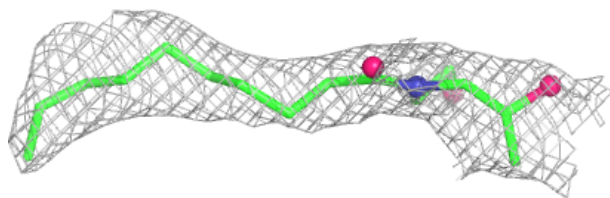
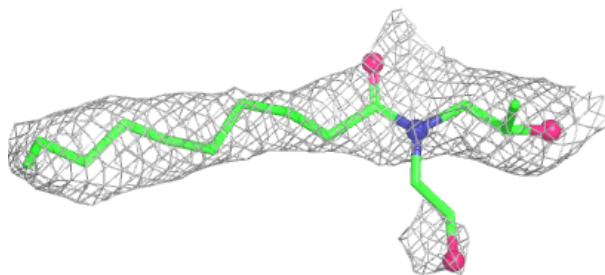


**Electron density around 2CV B 505:**

$2mF_o-DF_c$  (at 0.7 rmsd) in gray  
 $mF_o-DF_c$  (at 3 rmsd) in purple (negative)  
and green (positive)

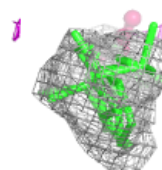
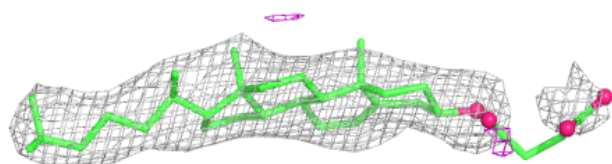
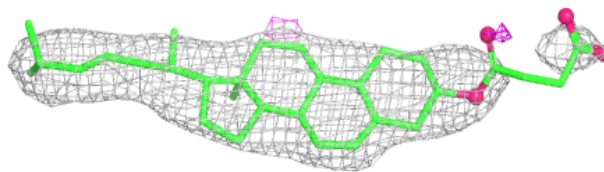
**Electron density around 2CV B 502:**

$2mF_o-DF_c$  (at 0.7 rmsd) in gray  
 $mF_o-DF_c$  (at 3 rmsd) in purple (negative)  
and green (positive)

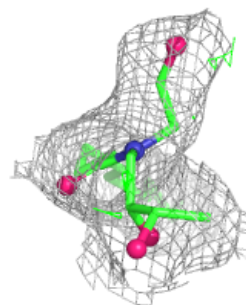
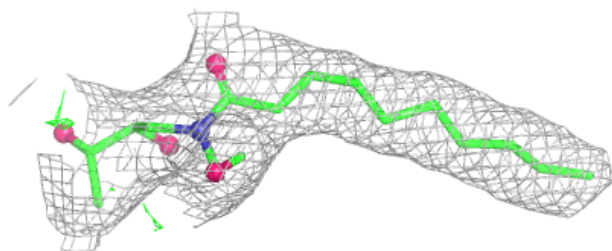
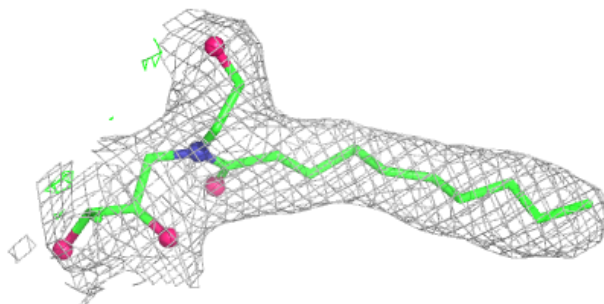


**Electron density around Y01 B 402:**

$2mF_o-DF_c$  (at 0.7 rmsd) in gray  
 $mF_o-DF_c$  (at 3 rmsd) in purple (negative)  
and green (positive)

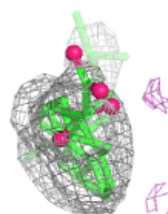
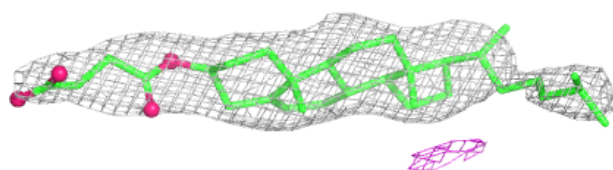
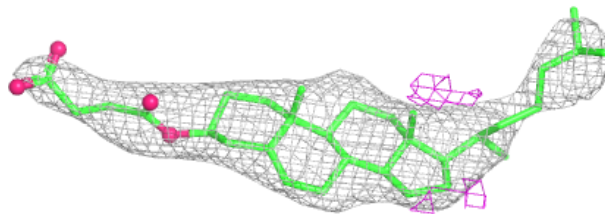
**Electron density around 2CV A 503:**

$2mF_o-DF_c$  (at 0.7 rmsd) in gray  
 $mF_o-DF_c$  (at 3 rmsd) in purple (negative)  
and green (positive)

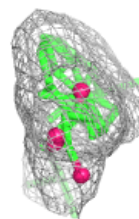
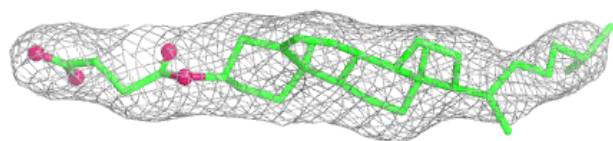
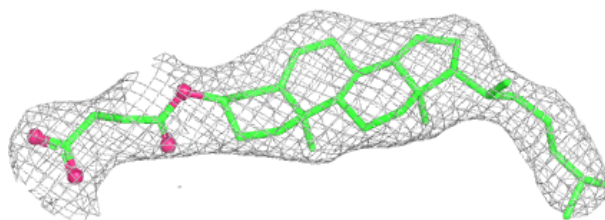


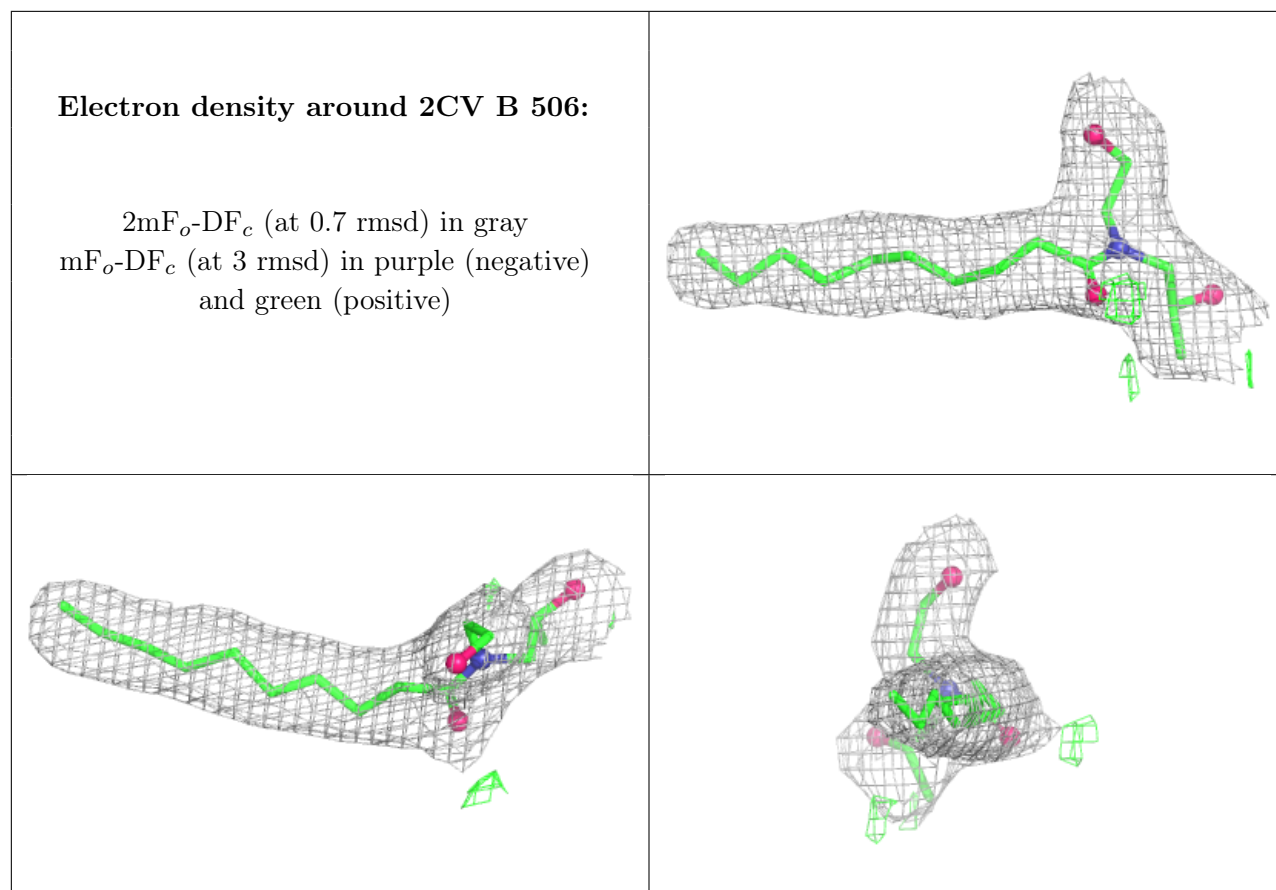
**Electron density around Y01 B 401:**

$2mF_o-DF_c$  (at 0.7 rmsd) in gray  
 $mF_o-DF_c$  (at 3 rmsd) in purple (negative)  
and green (positive)

**Electron density around Y01 A 401:**

$2mF_o-DF_c$  (at 0.7 rmsd) in gray  
 $mF_o-DF_c$  (at 3 rmsd) in purple (negative)  
and green (positive)





## 6.5 Other polymers [i](#)

There are no such residues in this entry.