



Full wwPDB X-ray Structure Validation Report ⓘ

May 12, 2025 – 08:10 PM JST

PDB ID : 8ZK8 / pdb_00008zk8
Title : Crystal structure of the Decarboxylase KDC4427 mutant E468L in complex with indole-3-pyruvic acid
Authors : Dong, S.; Liu, L.; Zhang, H.
Deposited on : 2024-05-15
Resolution : 2.16 Å(reported)

This is a Full wwPDB X-ray Structure Validation Report for a publicly released PDB entry.

We welcome your comments at validation@mail.wwpdb.org

A user guide is available at

<https://www.wwpdb.org/validation/2017/XrayValidationReportHelp>

with specific help available everywhere you see the ⓘ symbol.

The types of validation reports are described at

<http://www.wwpdb.org/validation/2017/FAQs#types>.

The following versions of software and data (see [references ⓘ](#)) were used in the production of this report:

MolProbity : 4-5-2 with Phenix2.0rc1
Mogul : 1.8.5 (274361), CSD as541be (2020)
Xtriage (Phenix) : 2.0rc1
EDS : 3.0
buster-report : 1.1.7 (2018)
Percentile statistics : 20231227.v01 (using entries in the PDB archive December 27th 2023)
CCP4 : 9.0.006 (Gargrove)
Density-Fitness : 1.0.12
Ideal geometry (proteins) : Engh & Huber (2001)
Ideal geometry (DNA, RNA) : Parkinson et al. (1996)
Validation Pipeline (wwPDB-VP) : 2.43.1

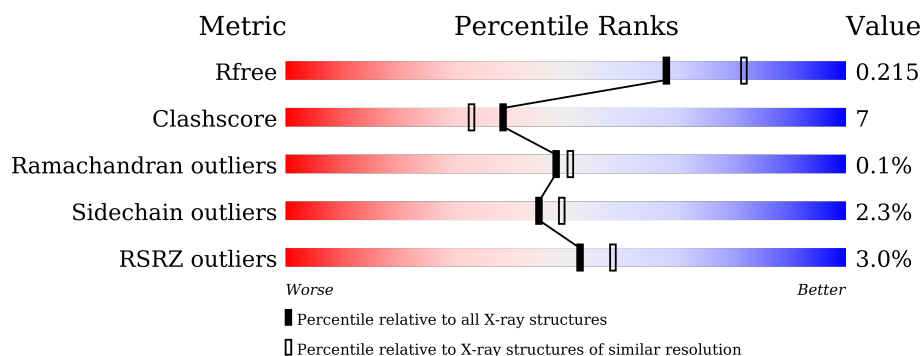
1 Overall quality at a glance

The following experimental techniques were used to determine the structure:

X-RAY DIFFRACTION

The reported resolution of this entry is 2.16 Å.

Percentile scores (ranging between 0-100) for global validation metrics of the entry are shown in the following graphic. The table shows the number of entries on which the scores are based.



Metric	Whole archive (#Entries)	Similar resolution (#Entries, resolution range(Å))
R_{free}	164625	1881 (2.16-2.16)
Clashscore	180529	2047 (2.16-2.16)
Ramachandran outliers	177936	2027 (2.16-2.16)
Sidechain outliers	177891	2026 (2.16-2.16)
RSRZ outliers	164620	1882 (2.16-2.16)

The table below summarises the geometric issues observed across the polymeric chains and their fit to the electron density. The red, orange, yellow and green segments of the lower bar indicate the fraction of residues that contain outliers for ≥ 3 , 2, 1 and 0 types of geometric quality criteria respectively. A grey segment represents the fraction of residues that are not modelled. The numeric value for each fraction is indicated below the corresponding segment, with a dot representing fractions $\leq 5\%$. The upper red bar (where present) indicates the fraction of residues that have poor fit to the electron density. The numeric value is given above the bar.

Mol	Chain	Length	Quality of chain
1	A	566	<div> <div>3%</div> <div> <div></div> <div>84%</div> <div>10%</div> <div>5%</div> </div> </div>
1	B	566	<div> <div>2%</div> <div> <div></div> <div>86%</div> <div>8%</div> <div>5%</div> </div> </div>

The following table lists non-polymeric compounds, carbohydrate monomers and non-standard residues in protein, DNA, RNA chains that are outliers for geometric or electron-density-fit criteria:

Mol	Type	Chain	Res	Chirality	Geometry	Clashes	Electron density
2	TPP	A	601	-	-	X	-
2	TPP	B	601	-	-	X	-
4	3IO	A	603	-	-	X	-
4	3IO	B	603	-	-	X	-

2 Entry composition

There are 5 unique types of molecules in this entry. The entry contains 8763 atoms, of which 0 are hydrogens and 0 are deuteriums.

In the tables below, the ZeroOcc column contains the number of atoms modelled with zero occupancy, the AltConf column contains the number of residues with at least one atom in alternate conformation and the Trace column contains the number of residues modelled with at most 2 atoms.

- Molecule 1 is a protein called Indolepyruvate decarboxylase.

Mol	Chain	Residues	Atoms					ZeroOcc	AltConf	Trace
1	A	536	Total	C	N	O	S	0	0	0
			4114	2612	718	762	22			
1	B	536	Total	C	N	O	S	0	0	0
			4114	2612	718	762	22			

There are 30 discrepancies between the modelled and reference sequences:

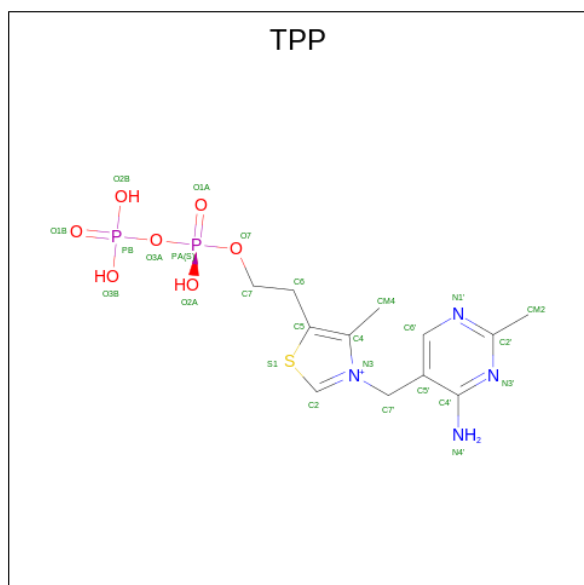
Chain	Residue	Modelled	Actual	Comment	Reference
A	-13	MET	-	initiating methionine	UNP A0A2U3EYQ2
A	-12	GLY	-	expression tag	UNP A0A2U3EYQ2
A	-11	SER	-	expression tag	UNP A0A2U3EYQ2
A	-10	SER	-	expression tag	UNP A0A2U3EYQ2
A	-9	HIS	-	expression tag	UNP A0A2U3EYQ2
A	-8	HIS	-	expression tag	UNP A0A2U3EYQ2
A	-7	HIS	-	expression tag	UNP A0A2U3EYQ2
A	-6	HIS	-	expression tag	UNP A0A2U3EYQ2
A	-5	HIS	-	expression tag	UNP A0A2U3EYQ2
A	-4	HIS	-	expression tag	UNP A0A2U3EYQ2
A	-3	SER	-	expression tag	UNP A0A2U3EYQ2
A	-2	GLN	-	expression tag	UNP A0A2U3EYQ2
A	-1	ASP	-	expression tag	UNP A0A2U3EYQ2
A	0	PRO	-	expression tag	UNP A0A2U3EYQ2
A	468	LEU	GLU	engineered mutation	UNP A0A2U3EYQ2
B	-13	MET	-	initiating methionine	UNP A0A2U3EYQ2
B	-12	GLY	-	expression tag	UNP A0A2U3EYQ2
B	-11	SER	-	expression tag	UNP A0A2U3EYQ2
B	-10	SER	-	expression tag	UNP A0A2U3EYQ2
B	-9	HIS	-	expression tag	UNP A0A2U3EYQ2
B	-8	HIS	-	expression tag	UNP A0A2U3EYQ2
B	-7	HIS	-	expression tag	UNP A0A2U3EYQ2
B	-6	HIS	-	expression tag	UNP A0A2U3EYQ2
B	-5	HIS	-	expression tag	UNP A0A2U3EYQ2
B	-4	HIS	-	expression tag	UNP A0A2U3EYQ2

Continued on next page...

Continued from previous page...

Chain	Residue	Modelled	Actual	Comment	Reference
B	-3	SER	-	expression tag	UNP A0A2U3EYQ2
B	-2	GLN	-	expression tag	UNP A0A2U3EYQ2
B	-1	ASP	-	expression tag	UNP A0A2U3EYQ2
B	0	PRO	-	expression tag	UNP A0A2U3EYQ2
B	468	LEU	GLU	engineered mutation	UNP A0A2U3EYQ2

- Molecule 2 is THIAMINE DIPHOSPHATE (CCD ID: TPP) (formula: $C_{12}H_{19}N_4O_7P_2S$) (labeled as "Ligand of Interest" by depositor).

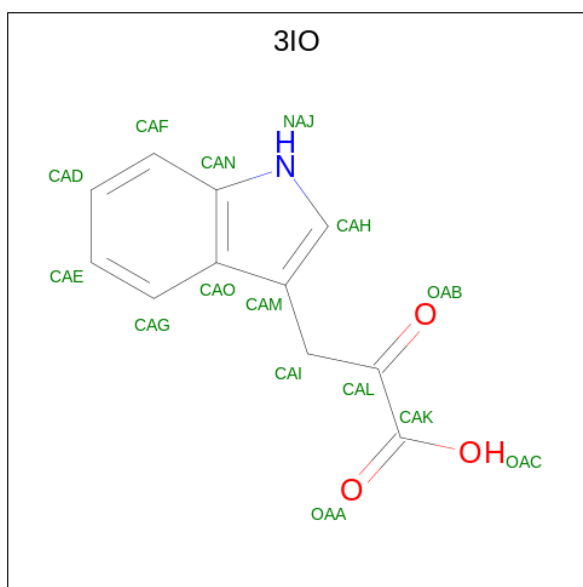


Mol	Chain	Residues	Atoms						ZeroOcc	AltConf
2	A	1	Total	C	N	O	P	S	0	0
			26	12	4	7	2	1		
2	B	1	Total	C	N	O	P	S	0	0
			26	12	4	7	2	1		

- Molecule 3 is MAGNESIUM ION (CCD ID: MG) (formula: Mg) (labeled as "Ligand of Interest" by depositor).

Mol	Chain	Residues	Atoms		ZeroOcc	AltConf
3	A	1	Total	Mg	0	0
			1	1		
3	B	1	Total	Mg	0	0
			1	1		

- Molecule 4 is 3-(1H-INDOL-3-YL)-2-OXOPROPANOIC ACID (CCD ID: 3IO) (formula: $C_{11}H_9NO_3$) (labeled as "Ligand of Interest" by depositor).



Mol	Chain	Residues	Atoms				ZeroOcc	AltConf
4	A	1	Total	C	N	O	0	0
			15	11	1	3		
4	B	1	Total	C	N	O	0	0
			15	11	1	3		

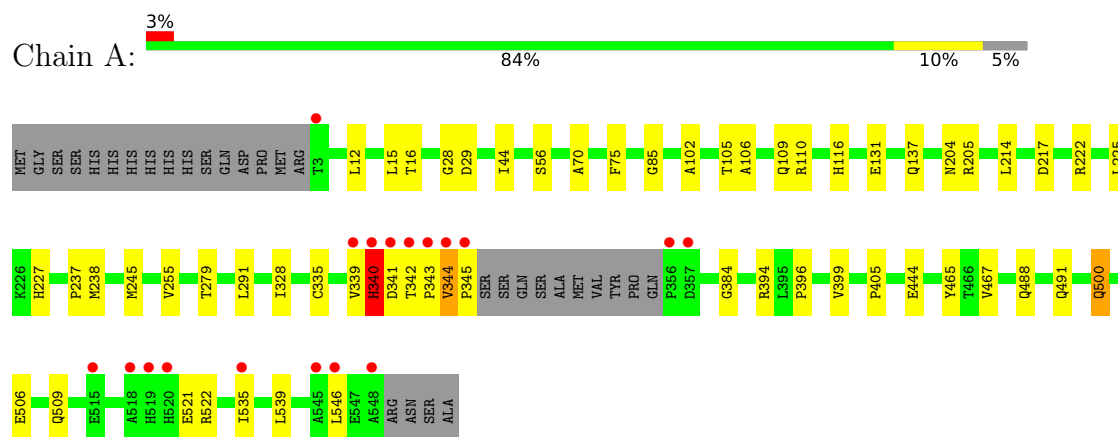
- Molecule 5 is water.

Mol	Chain	Residues	Atoms		ZeroOcc	AltConf
5	A	246	Total	O	0	0
			246	246		
5	B	205	Total	O	0	0
			205	205		

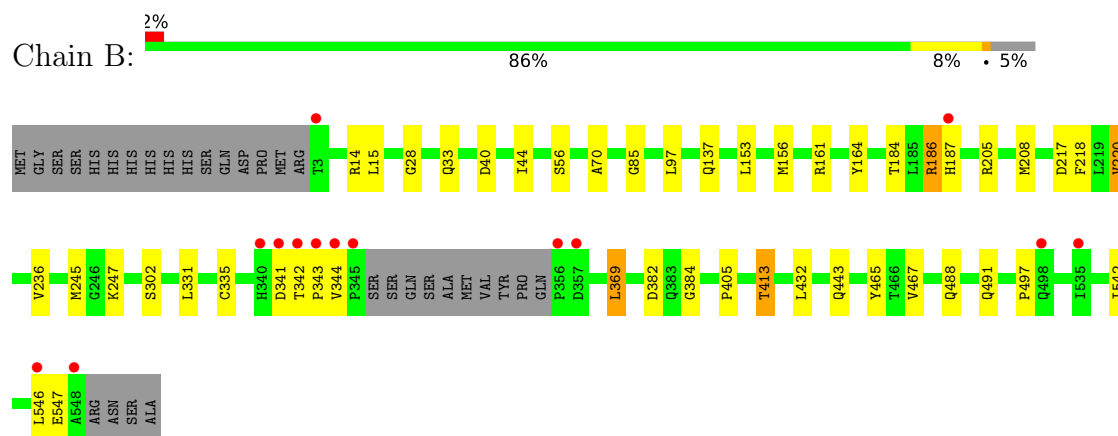
3 Residue-property plots

These plots are drawn for all protein, RNA, DNA and oligosaccharide chains in the entry. The first graphic for a chain summarises the proportions of the various outlier classes displayed in the second graphic. The second graphic shows the sequence view annotated by issues in geometry and electron density. Residues are color-coded according to the number of geometric quality criteria for which they contain at least one outlier: green = 0, yellow = 1, orange = 2 and red = 3 or more. A red dot above a residue indicates a poor fit to the electron density ($RSRZ > 2$). Stretches of 2 or more consecutive residues without any outlier are shown as a green connector. Residues present in the sample, but not in the model, are shown in grey.

• Molecule 1: Indolepyruvate decarboxylase



• Molecule 1: Indolepyruvate decarboxylase



4 Data and refinement statistics

Property	Value	Source
Space group	P 21 21 2	Depositor
Cell constants a, b, c, α , β , γ	116.87Å 136.86Å 77.27Å 90.00° 90.00° 90.00°	Depositor
Resolution (Å)	19.98 – 2.16 19.98 – 2.16	Depositor EDS
% Data completeness (in resolution range)	99.8 (19.98-2.16) 99.7 (19.98-2.16)	Depositor EDS
R_{merge}	0.17	Depositor
R_{sym}	(Not available)	Depositor
$\langle I/\sigma(I) \rangle$ ¹	2.08 (at 2.16Å)	Xtriage
Refinement program	PHENIX (1.20.1_4487: ???)	Depositor
R, R_{free}	0.182 , 0.220 0.179 , 0.215	Depositor DCC
R_{free} test set	3278 reflections (4.88%)	wwPDB-VP
Wilson B-factor (Å ²)	27.2	Xtriage
Anisotropy	1.189	Xtriage
Bulk solvent k_{sol} (e/Å ³), B_{sol} (Å ²)	0.39 , 57.5	EDS
L-test for twinning ²	$\langle L \rangle = 0.50$, $\langle L^2 \rangle = 0.34$	Xtriage
Estimated twinning fraction	No twinning to report.	Xtriage
F_o, F_c correlation	0.96	EDS
Total number of atoms	8763	wwPDB-VP
Average B, all atoms (Å ²)	41.0	wwPDB-VP

Xtriage's analysis on translational NCS is as follows: *The largest off-origin peak in the Patterson function is 3.74% of the height of the origin peak. No significant pseudotranslation is detected.*

¹Intensities estimated from amplitudes.

²Theoretical values of $\langle |L| \rangle$, $\langle L^2 \rangle$ for acentric reflections are 0.5, 0.333 respectively for untwinned datasets, and 0.375, 0.2 for perfectly twinned datasets.

5 Model quality [i](#)

5.1 Standard geometry [i](#)

Bond lengths and bond angles in the following residue types are not validated in this section: MG, 3IO, TPP

The Z score for a bond length (or angle) is the number of standard deviations the observed value is removed from the expected value. A bond length (or angle) with $|Z| > 5$ is considered an outlier worth inspection. RMSZ is the root-mean-square of all Z scores of the bond lengths (or angles).

Mol	Chain	Bond lengths		Bond angles	
		RMSZ	$\# Z > 5$	RMSZ	$\# Z > 5$
1	A	0.33	0/4210	0.46	1/5737 (0.0%)
1	B	0.35	0/4210	0.46	0/5737
All	All	0.34	0/8420	0.46	1/11474 (0.0%)

There are no bond length outliers.

All (1) bond angle outliers are listed below:

Mol	Chain	Res	Type	Atoms	Z	Observed(°)	Ideal(°)
1	A	340	HIS	CB-CA-C	5.88	119.80	111.74

There are no chirality outliers.

There are no planarity outliers.

5.2 Too-close contacts [i](#)

In the following table, the Non-H and H(model) columns list the number of non-hydrogen atoms and hydrogen atoms in the chain respectively. The H(added) column lists the number of hydrogen atoms added and optimized by MolProbity. The Clashes column lists the number of clashes within the asymmetric unit, whereas Symm-Clashes lists symmetry-related clashes.

Mol	Chain	Non-H	H(model)	H(added)	Clashes	Symm-Clashes
1	A	4114	0	4068	55	0
1	B	4114	0	4068	29	0
2	A	26	0	16	16	0
2	B	26	0	16	15	0
3	A	1	0	0	0	0
3	B	1	0	0	0	0
4	A	15	0	8	16	0
4	B	15	0	8	15	0

Continued on next page...

Continued from previous page...

Mol	Chain	Non-H	H(model)	H(added)	Clashes	Symm-Clashes
5	A	246	0	0	2	0
5	B	205	0	0	2	0
All	All	8763	0	8184	111	0

The all-atom clashscore is defined as the number of clashes found per 1000 atoms (including hydrogen atoms). The all-atom clashscore for this structure is 7.

All (111) close contacts within the same asymmetric unit are listed below, sorted by their clash magnitude.

Atom-1	Atom-2	Interatomic distance (Å)	Clash overlap (Å)
4:A:603:3IO:HAI2	2:B:601:TPP:C2	1.60	1.30
2:A:601:TPP:H2	4:B:603:3IO:CAL	1.68	1.23
2:A:601:TPP:H2	4:B:603:3IO:OAB	1.37	1.20
4:A:603:3IO:CAL	2:B:601:TPP:H2	1.75	1.16
1:A:500:GLN:CG	1:A:522:ARG:HD2	1.76	1.14
4:A:603:3IO:HAI2	2:B:601:TPP:S1	1.88	1.12
4:A:603:3IO:CAI	2:B:601:TPP:C2	2.28	1.10
1:A:500:GLN:HG2	1:A:522:ARG:HD2	1.36	1.04
2:A:601:TPP:C2	4:B:603:3IO:CAL	2.35	1.04
2:A:601:TPP:C2	4:B:603:3IO:HAI2	1.87	1.04
4:A:603:3IO:CAL	2:B:601:TPP:C2	2.38	1.01
4:A:603:3IO:CAI	2:B:601:TPP:H2	1.93	0.97
1:A:28:GLY:HA2	4:A:603:3IO:OAC	1.68	0.94
2:A:601:TPP:C2	4:B:603:3IO:CAI	2.46	0.93
1:A:340:HIS:ND1	1:A:340:HIS:O	2.02	0.92
1:A:255:VAL:HG23	1:A:345:PRO:HD3	1.54	0.89
4:A:603:3IO:OAB	2:B:601:TPP:H2	1.72	0.88
2:A:601:TPP:H2	4:B:603:3IO:CAI	2.08	0.82
2:A:601:TPP:S1	4:B:603:3IO:HAI2	2.18	0.82
1:A:500:GLN:CG	1:A:522:ARG:CD	2.60	0.77
1:A:255:VAL:CG2	1:A:345:PRO:HD3	2.15	0.76
1:A:500:GLN:HG2	1:A:522:ARG:CD	2.13	0.74
1:A:488:GLN:HB3	1:B:491:GLN:HE22	1.53	0.73
2:A:601:TPP:C2	4:B:603:3IO:OAB	2.27	0.73
1:B:28:GLY:HA2	4:B:603:3IO:OAA	1.90	0.72
2:A:601:TPP:H7'2	4:B:603:3IO:CAK	2.20	0.71
4:A:603:3IO:CAK	2:B:601:TPP:H7'2	2.21	0.71
1:B:28:GLY:CA	4:B:603:3IO:OAA	2.38	0.71
1:A:491:GLN:HE22	1:B:488:GLN:HB3	1.56	0.69
1:A:28:GLY:CA	4:A:603:3IO:OAC	2.37	0.69
1:A:535:ILE:HD12	1:A:539:LEU:HD23	1.74	0.67

Continued on next page...

Continued from previous page...

Atom-1	Atom-2	Interatomic distance (Å)	Clash overlap (Å)
4:A:603:3IO:HAI2	2:B:601:TPP:H2	1.52	0.67
2:B:601:TPP:H2	2:B:601:TPP:HN42	1.59	0.67
2:A:601:TPP:H7'2	4:B:603:3IO:OAA	1.97	0.65
1:B:137:GLN:HB3	1:B:164:TYR:HB3	1.79	0.65
1:B:547:GLU:OE2	1:B:547:GLU:HA	1.97	0.65
4:A:603:3IO:OAC	2:B:601:TPP:H7'2	1.98	0.64
1:A:384:GLY:HA2	1:A:467:VAL:HG21	1.80	0.64
1:A:29:ASP:H	4:A:603:3IO:CAK	2.11	0.64
1:A:335:CYS:O	1:A:339:VAL:HG22	2.00	0.62
1:A:500:GLN:CD	1:A:522:ARG:HD2	2.24	0.62
1:A:214:LEU:HD12	1:A:238:MET:HE3	1.83	0.61
1:A:500:GLN:HG3	1:A:522:ARG:HD2	1.77	0.61
2:A:601:TPP:H7'2	4:B:603:3IO:CAL	2.32	0.59
2:B:601:TPP:C2	2:B:601:TPP:HN42	2.15	0.59
1:A:506:GLU:HB2	1:A:509:GLN:HG3	1.83	0.59
1:B:384:GLY:HA2	1:B:467:VAL:HG21	1.84	0.58
2:A:601:TPP:H2	2:A:601:TPP:HN42	1.68	0.58
2:A:601:TPP:C2	2:A:601:TPP:HN42	2.17	0.58
1:B:205:ARG:HA	1:B:208:MET:HE3	1.86	0.57
1:A:15:LEU:HD11	1:A:70:ALA:HB2	1.86	0.57
1:B:15:LEU:HD11	1:B:70:ALA:HB2	1.87	0.57
1:A:343:PRO:C	1:A:344:VAL:HG12	2.29	0.57
1:B:245:MET:HG3	1:B:405:PRO:HG2	1.86	0.56
1:B:344:VAL:HG23	1:B:344:VAL:O	2.05	0.56
1:B:491:GLN:HA	1:B:497:PRO:HG3	1.87	0.56
1:A:343:PRO:O	1:A:344:VAL:CG1	2.54	0.56
1:A:500:GLN:HG3	1:A:522:ARG:CD	2.35	0.56
1:A:106:ALA:O	1:A:110:ARG:HG3	2.07	0.55
4:A:603:3IO:OAC	2:B:601:TPP:C7'	2.56	0.54
1:B:97:LEU:HD22	1:B:153:LEU:HD21	1.90	0.53
1:A:255:VAL:HG23	1:A:345:PRO:CD	2.32	0.53
2:A:601:TPP:N4'	4:B:603:3IO:OAB	2.38	0.52
1:B:184:THR:HG23	1:B:186:ARG:HD2	1.90	0.52
1:B:217:ASP:O	1:B:220:VAL:HG13	2.10	0.52
1:A:245:MET:HG3	1:A:291:LEU:HD11	1.91	0.52
1:A:245:MET:HG2	1:A:405:PRO:HG2	1.93	0.51
1:B:369:LEU:HD11	1:B:432:LEU:HD21	1.92	0.51
4:A:603:3IO:CAL	2:B:601:TPP:H7'2	2.41	0.51
1:A:245:MET:HG3	1:A:291:LEU:HD21	1.94	0.50
1:A:467:VAL:HG22	1:A:539:LEU:HD22	1.93	0.49
1:A:255:VAL:HG22	1:A:343:PRO:HB2	1.94	0.49

Continued on next page...

Continued from previous page...

Atom-1	Atom-2	Interatomic distance (Å)	Clash overlap (Å)
1:A:56:SER:OG	1:A:85:GLY:HA3	2.12	0.49
1:A:500:GLN:HG3	1:A:522:ARG:HG3	1.95	0.49
1:B:542:ILE:O	1:B:546:LEU:HD13	2.13	0.49
1:A:500:GLN:HG3	1:A:522:ARG:CG	2.43	0.48
1:A:344:VAL:HG13	1:A:344:VAL:O	2.12	0.48
1:B:343:PRO:C	1:B:344:VAL:HG22	2.39	0.48
1:A:343:PRO:C	1:A:344:VAL:CG1	2.86	0.48
1:A:217:ASP:OD2	1:A:245:MET:HB2	2.14	0.48
1:A:222:ARG:HD3	5:A:834:HOH:O	2.14	0.47
1:B:218:PHE:HB3	1:B:245:MET:HB3	1.97	0.47
1:A:205:ARG:NH1	1:A:279:THR:OG1	2.47	0.46
1:A:245:MET:HG2	1:A:405:PRO:HD2	1.98	0.46
1:B:40:ASP:OD1	5:B:701:HOH:O	2.21	0.46
1:A:396:PRO:HD2	1:A:399:VAL:HG21	1.96	0.46
1:A:116:HIS:NE2	4:A:603:3IO:OAB	2.48	0.46
1:B:33:GLN:HG3	5:B:848:HOH:O	2.15	0.46
1:B:465:TYR:CD1	2:B:601:TPP:H61	2.51	0.46
1:B:488:GLN:O	1:B:491:GLN:HG3	2.16	0.45
1:A:12:LEU:O	1:A:16:THR:HG23	2.16	0.45
1:A:343:PRO:O	1:A:344:VAL:HG12	2.16	0.45
1:A:535:ILE:HD12	1:A:539:LEU:CD2	2.44	0.44
1:A:16:THR:HG22	1:A:44:ILE:HD11	1.99	0.44
1:A:105:THR:O	1:A:109:GLN:HG3	2.17	0.44
1:B:382:ASP:CG	1:B:413:THR:HG23	2.43	0.43
1:A:465:TYR:CD1	2:A:601:TPP:H61	2.53	0.43
1:B:56:SER:OG	1:B:85:GLY:HA3	2.18	0.43
1:A:225:LEU:HD13	1:A:328:ILE:HD12	2.01	0.42
1:A:227:HIS:HB3	5:A:792:HOH:O	2.20	0.42
1:A:204:ASN:HD22	1:A:204:ASN:HA	1.68	0.42
2:A:601:TPP:C7'	4:B:603:3IO:OAA	2.68	0.41
1:A:343:PRO:O	1:A:344:VAL:HG13	2.20	0.41
1:B:14:ARG:HA	1:B:14:ARG:HD2	1.89	0.41
1:A:75:PHE:HB2	1:A:102:ALA:HA	2.01	0.41
1:A:131:GLU:HB2	1:A:137:GLN:HE22	1.85	0.41
1:B:236:VAL:HG11	1:B:335:CYS:HB3	2.02	0.41
1:A:237:PRO:HB2	1:A:343:PRO:HD3	2.03	0.41
1:A:255:VAL:HG21	1:A:345:PRO:HD3	2.02	0.40
1:B:384:GLY:HA2	1:B:467:VAL:CG2	2.49	0.40
1:B:156:MET:HG2	1:B:161:ARG:O	2.21	0.40

There are no symmetry-related clashes.

5.3 Torsion angles

5.3.1 Protein backbone

In the following table, the Percentiles column shows the percent Ramachandran outliers of the chain as a percentile score with respect to all X-ray entries followed by that with respect to entries of similar resolution.

The Analysed column shows the number of residues for which the backbone conformation was analysed, and the total number of residues.

Mol	Chain	Analysed	Favoured	Allowed	Outliers	Percentiles	
1	A	532/566 (94%)	519 (98%)	12 (2%)	1 (0%)	44	44
1	B	532/566 (94%)	520 (98%)	12 (2%)	0	100	100
All	All	1064/1132 (94%)	1039 (98%)	24 (2%)	1 (0%)	48	51

All (1) Ramachandran outliers are listed below:

Mol	Chain	Res	Type
1	A	344	VAL

5.3.2 Protein sidechains

In the following table, the Percentiles column shows the percent sidechain outliers of the chain as a percentile score with respect to all X-ray entries followed by that with respect to entries of similar resolution.

The Analysed column shows the number of residues for which the sidechain conformation was analysed, and the total number of residues.

Mol	Chain	Analysed	Rotameric	Outliers	Percentiles	
1	A	431/458 (94%)	423 (98%)	8 (2%)	52	57
1	B	431/458 (94%)	419 (97%)	12 (3%)	38	40
All	All	862/916 (94%)	842 (98%)	20 (2%)	45	49

All (20) residues with a non-rotameric sidechain are listed below:

Mol	Chain	Res	Type
1	A	340	HIS
1	A	341	ASP
1	A	342	THR
1	A	394	ARG
1	A	444	GLU

Continued on next page...

Continued from previous page...

Mol	Chain	Res	Type
1	A	500	GLN
1	A	521	GLU
1	A	546	LEU
1	B	44	ILE
1	B	186	ARG
1	B	187	HIS
1	B	220	VAL
1	B	247	LYS
1	B	302	SER
1	B	331	LEU
1	B	341	ASP
1	B	342	THR
1	B	369	LEU
1	B	413	THR
1	B	443	GLN

Sometimes sidechains can be flipped to improve hydrogen bonding and reduce clashes. All (7) such sidechains are listed below:

Mol	Chain	Res	Type
1	A	137	GLN
1	A	181	ASN
1	A	204	ASN
1	A	491	GLN
1	A	500	GLN
1	B	491	GLN
1	B	519	HIS

5.3.3 RNA ⓘ

There are no RNA molecules in this entry.

5.4 Non-standard residues in protein, DNA, RNA chains ⓘ

There are no non-standard protein/DNA/RNA residues in this entry.

5.5 Carbohydrates ⓘ

There are no oligosaccharides in this entry.

5.6 Ligand geometry

Of 6 ligands modelled in this entry, 2 are monoatomic - leaving 4 for Mogul analysis.

In the following table, the Counts columns list the number of bonds (or angles) for which Mogul statistics could be retrieved, the number of bonds (or angles) that are observed in the model and the number of bonds (or angles) that are defined in the Chemical Component Dictionary. The Link column lists molecule types, if any, to which the group is linked. The Z score for a bond length (or angle) is the number of standard deviations the observed value is removed from the expected value. A bond length (or angle) with $|Z| > 2$ is considered an outlier worth inspection. RMSZ is the root-mean-square of all Z scores of the bond lengths (or angles).

Mol	Type	Chain	Res	Link	Bond lengths			Bond angles		
					Counts	RMSZ	# Z > 2	Counts	RMSZ	# Z > 2
2	TPP	A	601	3	22,27,27	0.53	0	29,40,40	0.73	1 (3%)
2	TPP	B	601	3	22,27,27	0.54	0	29,40,40	0.73	1 (3%)
4	3IO	A	603	-	15,16,16	1.26	2 (13%)	17,22,22	0.97	1 (5%)
4	3IO	B	603	-	15,16,16	1.54	2 (13%)	17,22,22	1.21	2 (11%)

In the following table, the Chirals column lists the number of chiral outliers, the number of chiral centers analysed, the number of these observed in the model and the number defined in the Chemical Component Dictionary. Similar counts are reported in the Torsion and Rings columns. '-' means no outliers of that kind were identified.

Mol	Type	Chain	Res	Link	Chirals	Torsions	Rings
2	TPP	A	601	3	-	6/16/17/17	0/2/2/2
2	TPP	B	601	3	-	6/16/17/17	0/2/2/2
4	3IO	A	603	-	-	6/8/8/8	0/2/2/2
4	3IO	B	603	-	-	5/8/8/8	0/2/2/2

All (4) bond length outliers are listed below:

Mol	Chain	Res	Type	Atoms	Z	Observed(Å)	Ideal(Å)
4	B	603	3IO	CAH-NAJ	-2.82	1.30	1.36
4	B	603	3IO	CAO-CAN	-2.78	1.35	1.42
4	A	603	3IO	CAH-NAJ	-2.06	1.32	1.36
4	A	603	3IO	OAB-CAL	-2.06	1.18	1.23

All (5) bond angle outliers are listed below:

Mol	Chain	Res	Type	Atoms	Z	Observed(°)	Ideal(°)
4	B	603	3IO	OAA-CAK-CAL	-2.38	118.54	121.72
4	B	603	3IO	OAC-CAK-CAL	2.22	120.05	113.97

Continued on next page...

Continued from previous page...

Mol	Chain	Res	Type	Atoms	Z	Observed(°)	Ideal(°)
4	A	603	3IO	OAC-CAK-CAL	2.20	119.98	113.97
2	B	601	TPP	PA-O3A-PB	2.05	139.86	132.83
2	A	601	TPP	PA-O3A-PB	2.01	139.72	132.83

There are no chirality outliers.

All (23) torsion outliers are listed below:

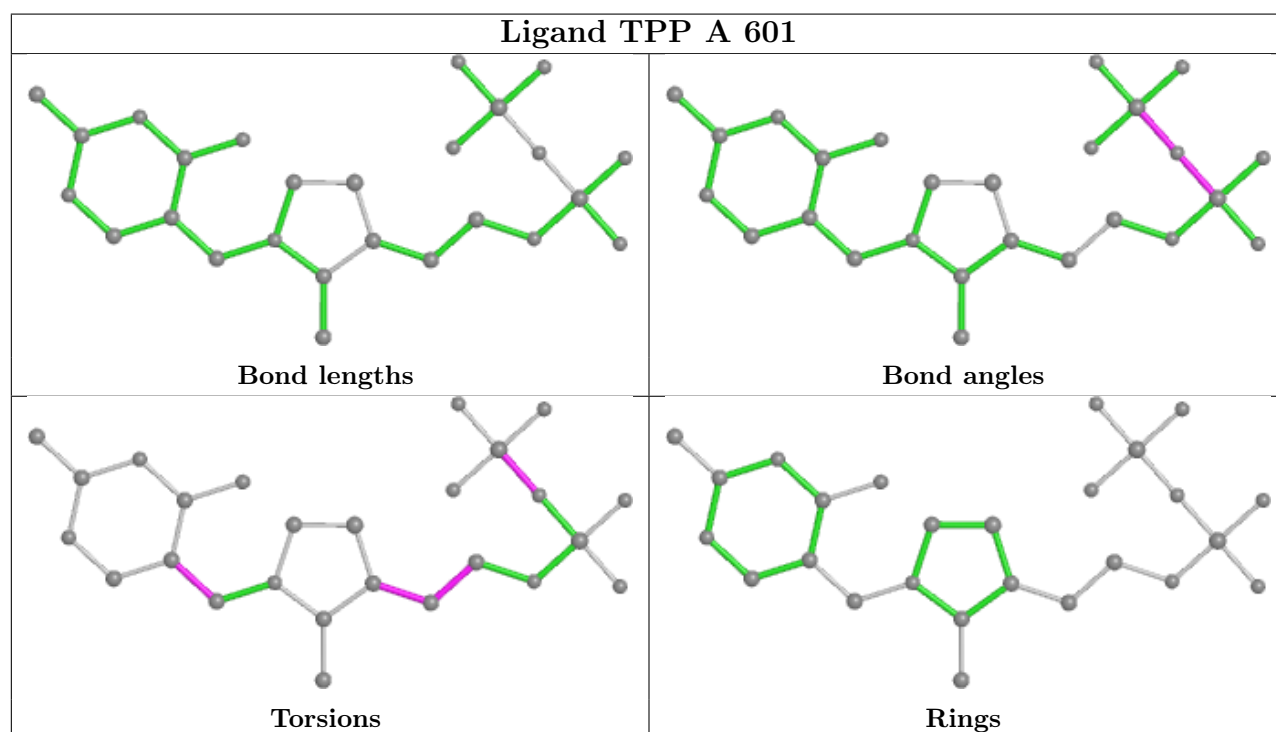
Mol	Chain	Res	Type	Atoms
2	A	601	TPP	C4'-C5'-C7'-N3
2	A	601	TPP	C4-C5-C6-C7
2	A	601	TPP	C5-C6-C7-O7
2	A	601	TPP	PA-O3A-PB-O2B
2	B	601	TPP	C4'-C5'-C7'-N3
2	B	601	TPP	C4-C5-C6-C7
2	B	601	TPP	C5-C6-C7-O7
2	B	601	TPP	PA-O3A-PB-O3B
4	A	603	3IO	OAC-CAK-CAL-CAI
4	A	603	3IO	OAA-CAK-CAL-CAI
4	A	603	3IO	OAC-CAK-CAL-OAB
4	A	603	3IO	OAA-CAK-CAL-OAB
4	B	603	3IO	OAC-CAK-CAL-CAI
4	B	603	3IO	OAA-CAK-CAL-CAI
4	B	603	3IO	OAA-CAK-CAL-OAB
4	A	603	3IO	CAM-CAI-CAL-OAB
4	B	603	3IO	CAM-CAI-CAL-OAB
2	A	601	TPP	PA-O3A-PB-O3B
2	B	601	TPP	PA-O3A-PB-O2B
4	A	603	3IO	CAM-CAI-CAL-CAK
4	B	603	3IO	CAM-CAI-CAL-CAK
2	B	601	TPP	C7-O7-PA-O1A
2	A	601	TPP	PA-O3A-PB-O1B

There are no ring outliers.

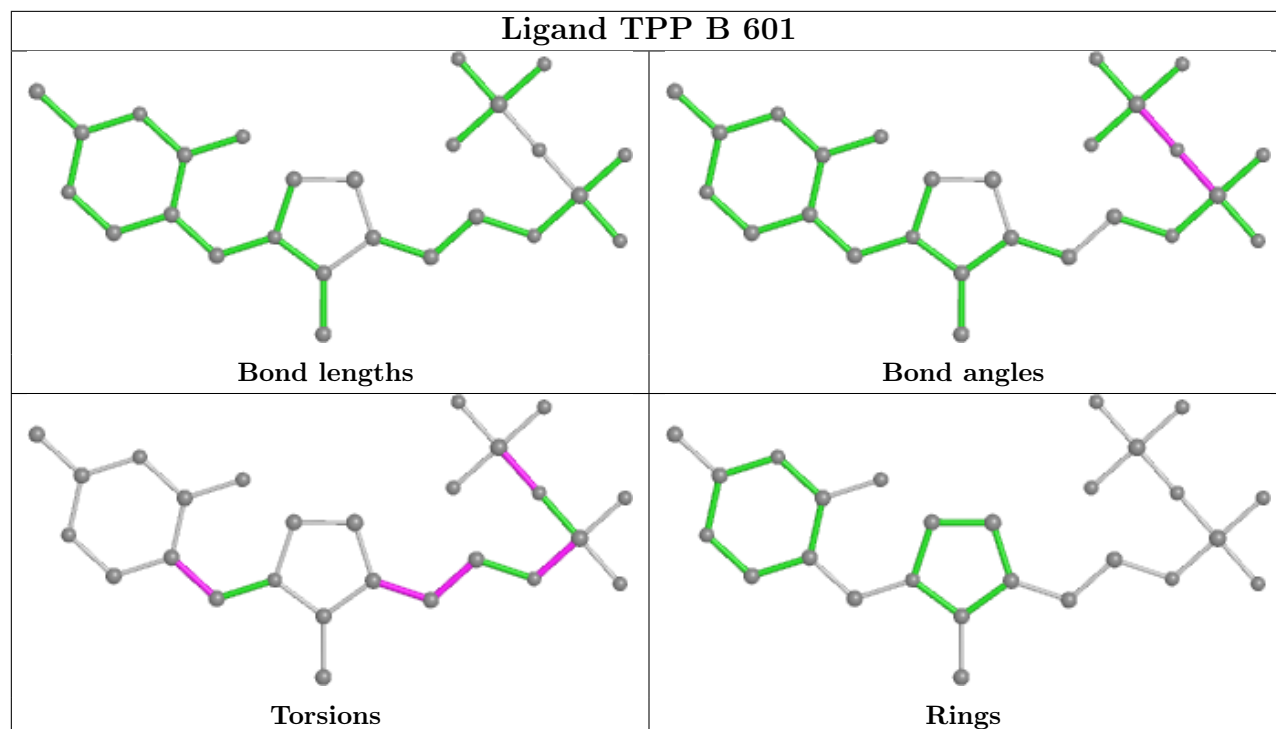
4 monomers are involved in 37 short contacts:

Mol	Chain	Res	Type	Clashes	Symm-Clashes
2	A	601	TPP	16	0
2	B	601	TPP	15	0
4	A	603	3IO	16	0
4	B	603	3IO	15	0

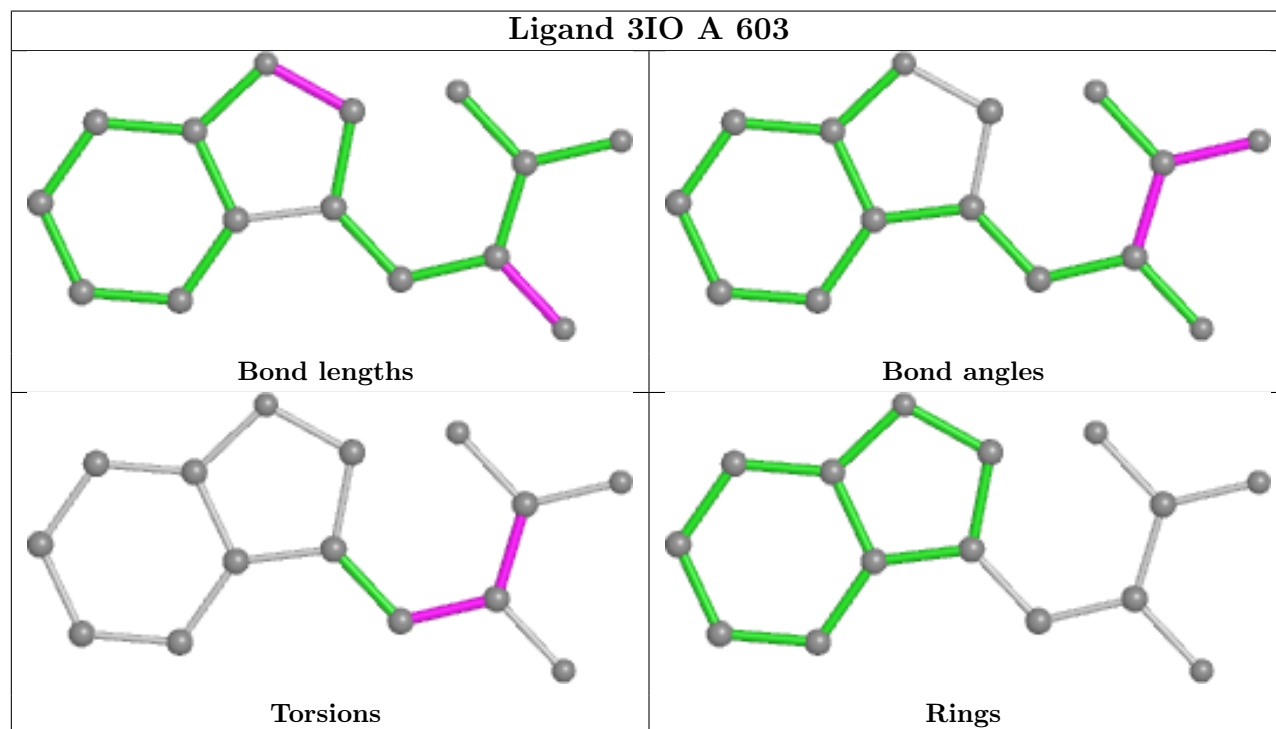
The following is a two-dimensional graphical depiction of Mogul quality analysis of bond lengths, bond angles, torsion angles, and ring geometry for all instances of the Ligand of Interest. In addition, ligands with molecular weight > 250 and outliers as shown on the validation Tables will also be included. For torsion angles, if less than 5% of the Mogul distribution of torsion angles is within 10 degrees of the torsion angle in question, then that torsion angle is considered an outlier. Any bond that is central to one or more torsion angles identified as an outlier by Mogul will be highlighted in the graph. For rings, the root-mean-square deviation (RMSD) between the ring in question and similar rings identified by Mogul is calculated over all ring torsion angles. If the average RMSD is greater than 60 degrees and the minimal RMSD between the ring in question and any Mogul-identified rings is also greater than 60 degrees, then that ring is considered an outlier. The outliers are highlighted in purple. The color gray indicates Mogul did not find sufficient equivalents in the CSD to analyse the geometry.

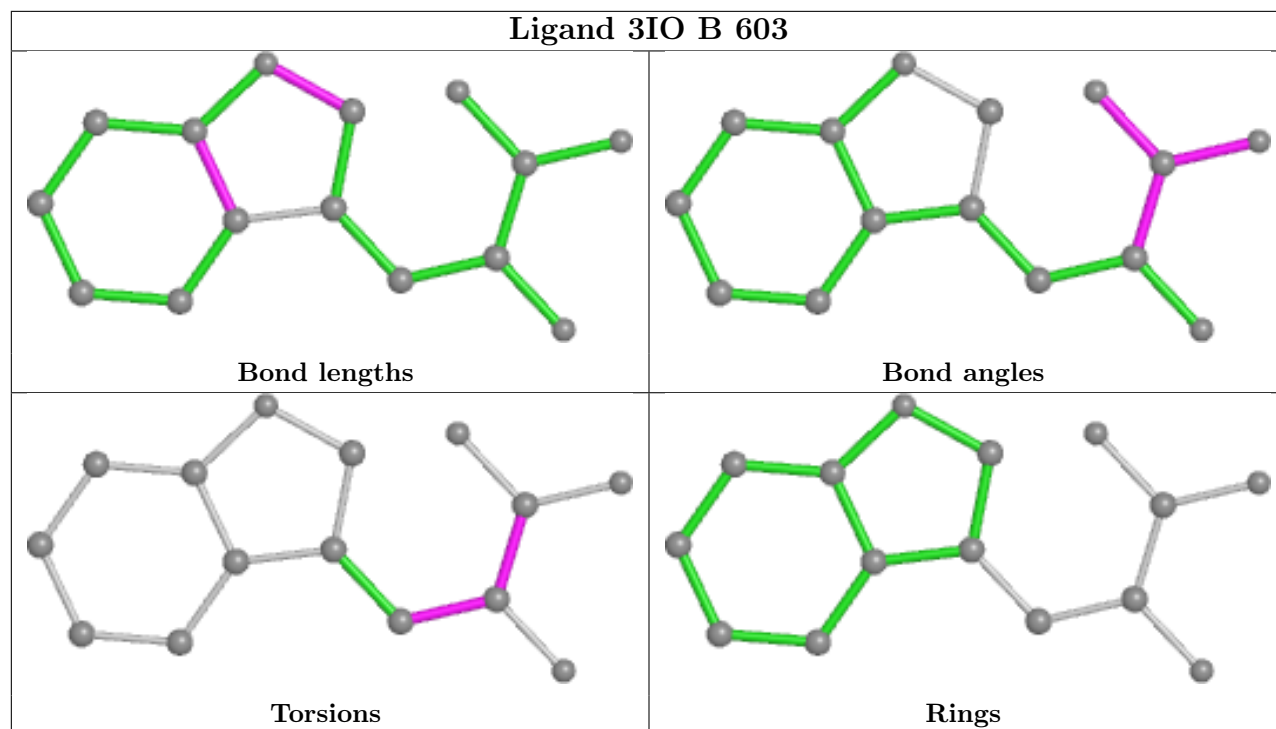


Ligand TPP B 601



Ligand 3IO A 603





5.7 Other polymers [i](#)

There are no such residues in this entry.

5.8 Polymer linkage issues [i](#)

There are no chain breaks in this entry.

6 Fit of model and data ⓘ

6.1 Protein, DNA and RNA chains ⓘ

In the following table, the column labelled ‘#RSRZ> 2’ contains the number (and percentage) of RSRZ outliers, followed by percent RSRZ outliers for the chain as percentile scores relative to all X-ray entries and entries of similar resolution. The OWAB column contains the minimum, median, 95th percentile and maximum values of the occupancy-weighted average B-factor per residue. The column labelled ‘Q< 0.9’ lists the number of (and percentage) of residues with an average occupancy less than 0.9.

Mol	Chain	Analysed	<RSRZ>	#RSRZ>2		OWAB(Å ²)	Q<0.9
1	A	536/566 (94%)	-0.28	18 (3%)	48 54	22, 36, 65, 110	0
1	B	536/566 (94%)	-0.19	14 (2%)	57 62	24, 39, 71, 134	0
All	All	1072/1132 (94%)	-0.23	32 (2%)	52 58	22, 37, 69, 134	0

All (32) RSRZ outliers are listed below:

Mol	Chain	Res	Type	RSRZ
1	B	498	GLN	6.5
1	A	345	PRO	5.7
1	A	344	VAL	5.6
1	A	357	ASP	4.9
1	B	344	VAL	4.4
1	B	356	PRO	4.2
1	B	342	THR	4.2
1	B	343	PRO	4.1
1	A	356	PRO	4.0
1	B	357	ASP	4.0
1	B	548	ALA	3.5
1	A	519	HIS	3.5
1	B	345	PRO	3.4
1	B	546	LEU	3.4
1	A	340	HIS	3.2
1	A	545	ALA	3.0
1	A	342	THR	2.9
1	A	548	ALA	2.9
1	B	535	ILE	2.9
1	B	3	THR	2.9
1	A	515	GLU	2.8
1	B	340	HIS	2.6
1	A	341	ASP	2.4
1	B	341	ASP	2.4

Continued on next page...

Continued from previous page...

Mol	Chain	Res	Type	RSRZ
1	A	546	LEU	2.4
1	A	339	VAL	2.4
1	A	518	ALA	2.3
1	A	343	PRO	2.2
1	A	3	THR	2.1
1	A	520	HIS	2.1
1	B	187	HIS	2.1
1	A	535	ILE	2.0

6.2 Non-standard residues in protein, DNA, RNA chains [i](#)

There are no non-standard protein/DNA/RNA residues in this entry.

6.3 Carbohydrates [i](#)

There are no monosaccharides in this entry.

6.4 Ligands [i](#)

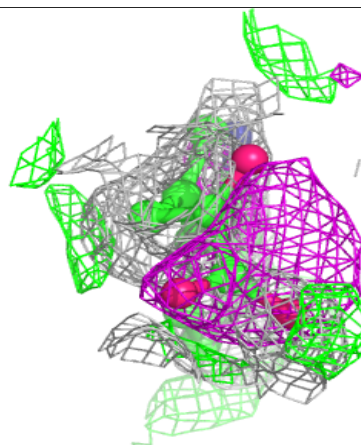
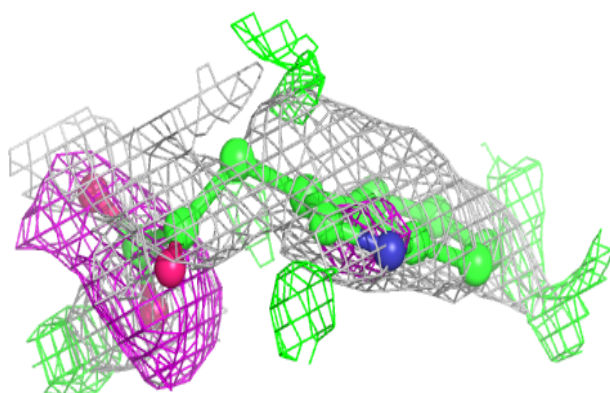
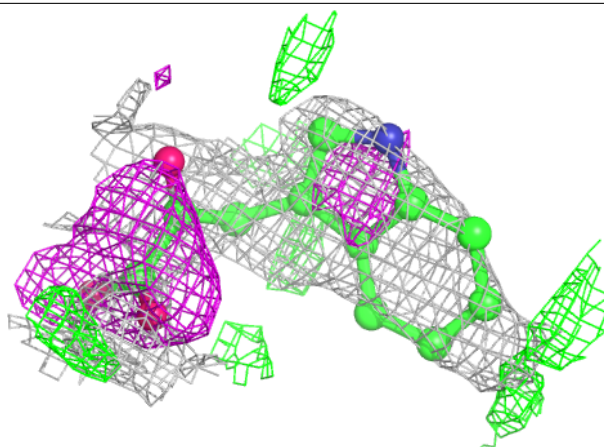
In the following table, the Atoms column lists the number of modelled atoms in the group and the number defined in the chemical component dictionary. The B-factors column lists the minimum, median, 95th percentile and maximum values of B factors of atoms in the group. The column labelled 'Q< 0.9' lists the number of atoms with occupancy less than 0.9.

Mol	Type	Chain	Res	Atoms	RSCC	RSR	B-factors(\AA^2)	Q<0.9
4	3IO	B	603	15/15	0.55	0.20	38,64,68,73	0
4	3IO	A	603	15/15	0.57	0.20	51,69,78,79	0
2	TPP	B	601	26/26	0.96	0.07	23,32,46,71	0
2	TPP	A	601	26/26	0.97	0.06	14,26,41,62	0
3	MG	B	602	1/1	0.98	0.03	27,27,27,27	0
3	MG	A	602	1/1	0.99	0.03	23,23,23,23	0

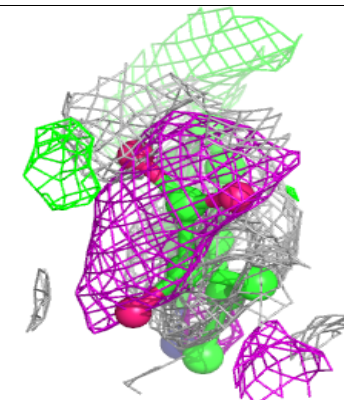
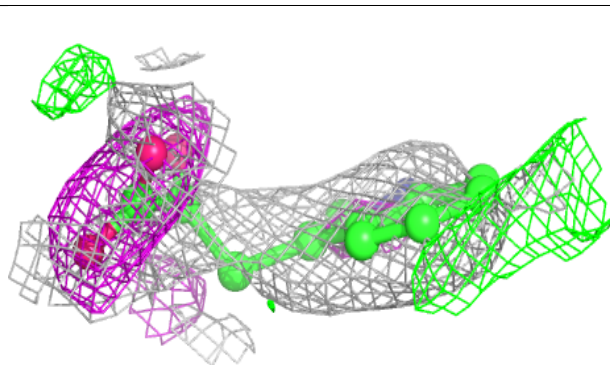
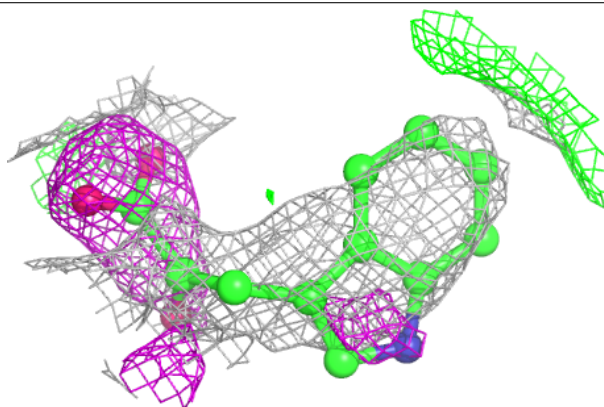
The following is a graphical depiction of the model fit to experimental electron density of all instances of the Ligand of Interest. In addition, ligands with molecular weight > 250 and outliers as shown on the geometry validation Tables will also be included. Each fit is shown from different orientation to approximate a three-dimensional view.

Electron density around 3IO B 603:

$2mF_o-DF_c$ (at 0.7 rmsd) in gray
 mF_o-DF_c (at 3 rmsd) in purple (negative)
and green (positive)

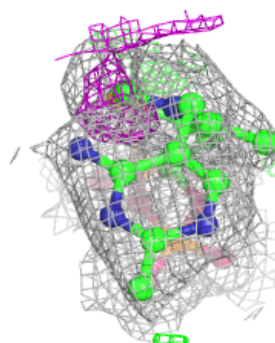
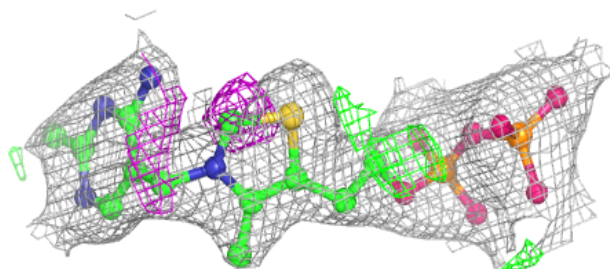
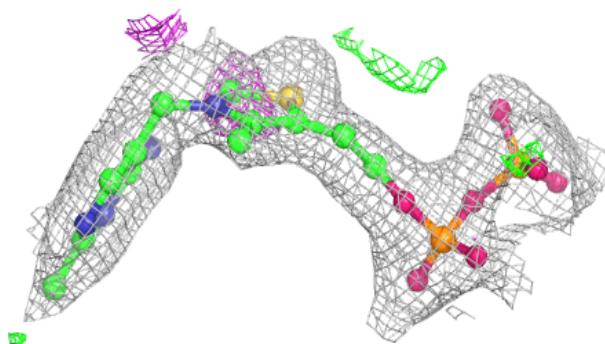
**Electron density around 3IO A 603:**

$2mF_o-DF_c$ (at 0.7 rmsd) in gray
 mF_o-DF_c (at 3 rmsd) in purple (negative)
and green (positive)

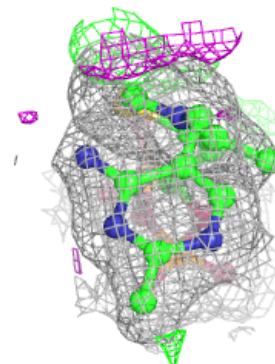
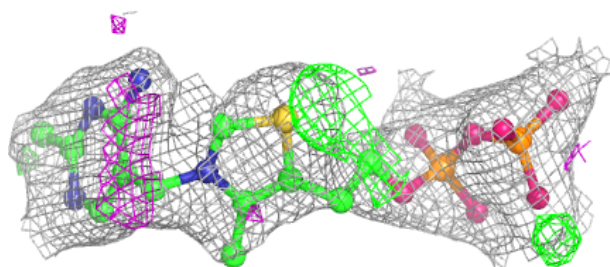
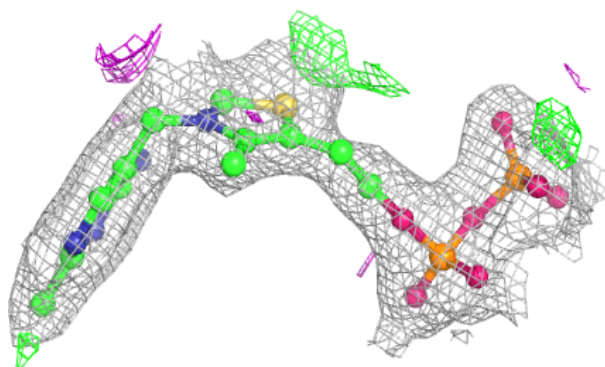


Electron density around TPP B 601:

$2mF_o-DF_c$ (at 0.7 rmsd) in gray
 mF_o-DF_c (at 3 rmsd) in purple (negative)
and green (positive)

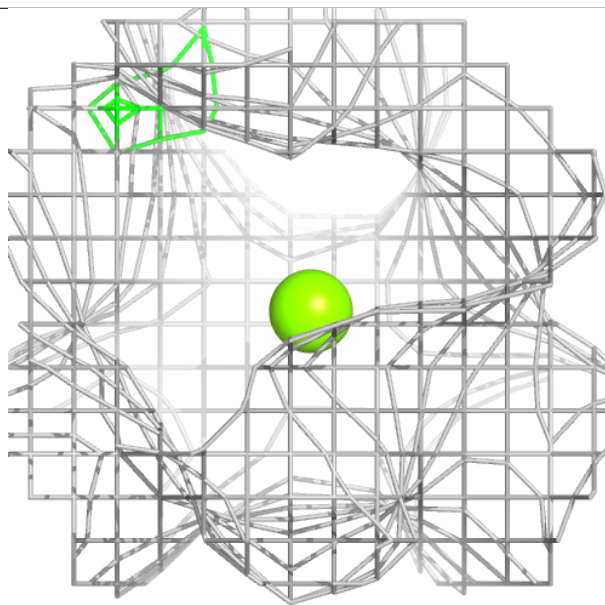
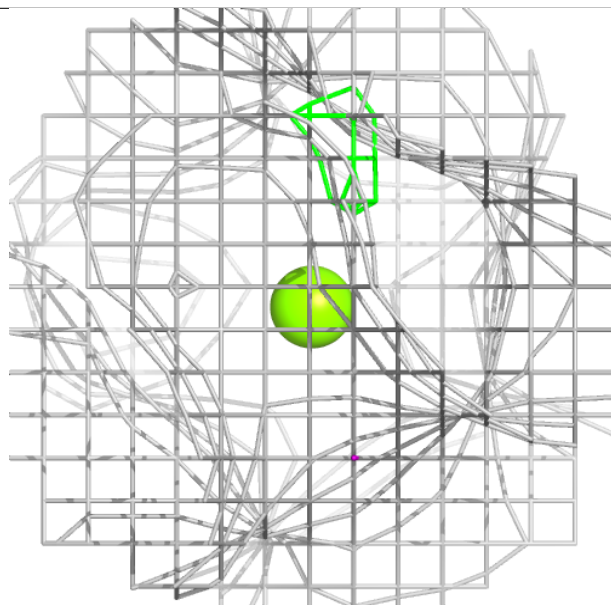
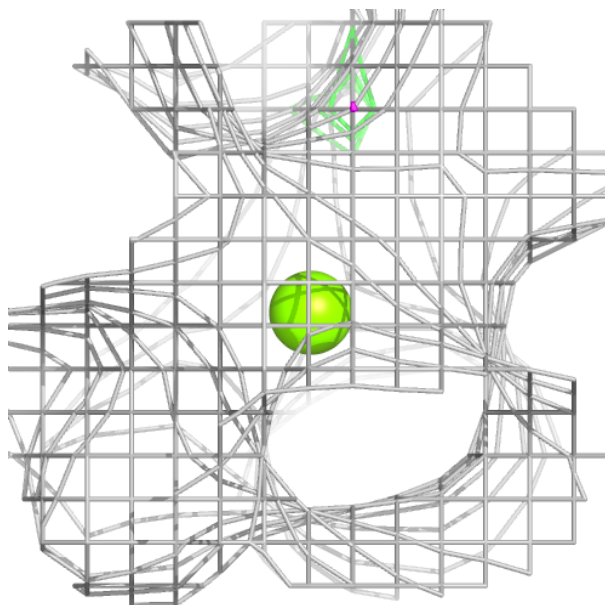
**Electron density around TPP A 601:**

$2mF_o-DF_c$ (at 0.7 rmsd) in gray
 mF_o-DF_c (at 3 rmsd) in purple (negative)
and green (positive)



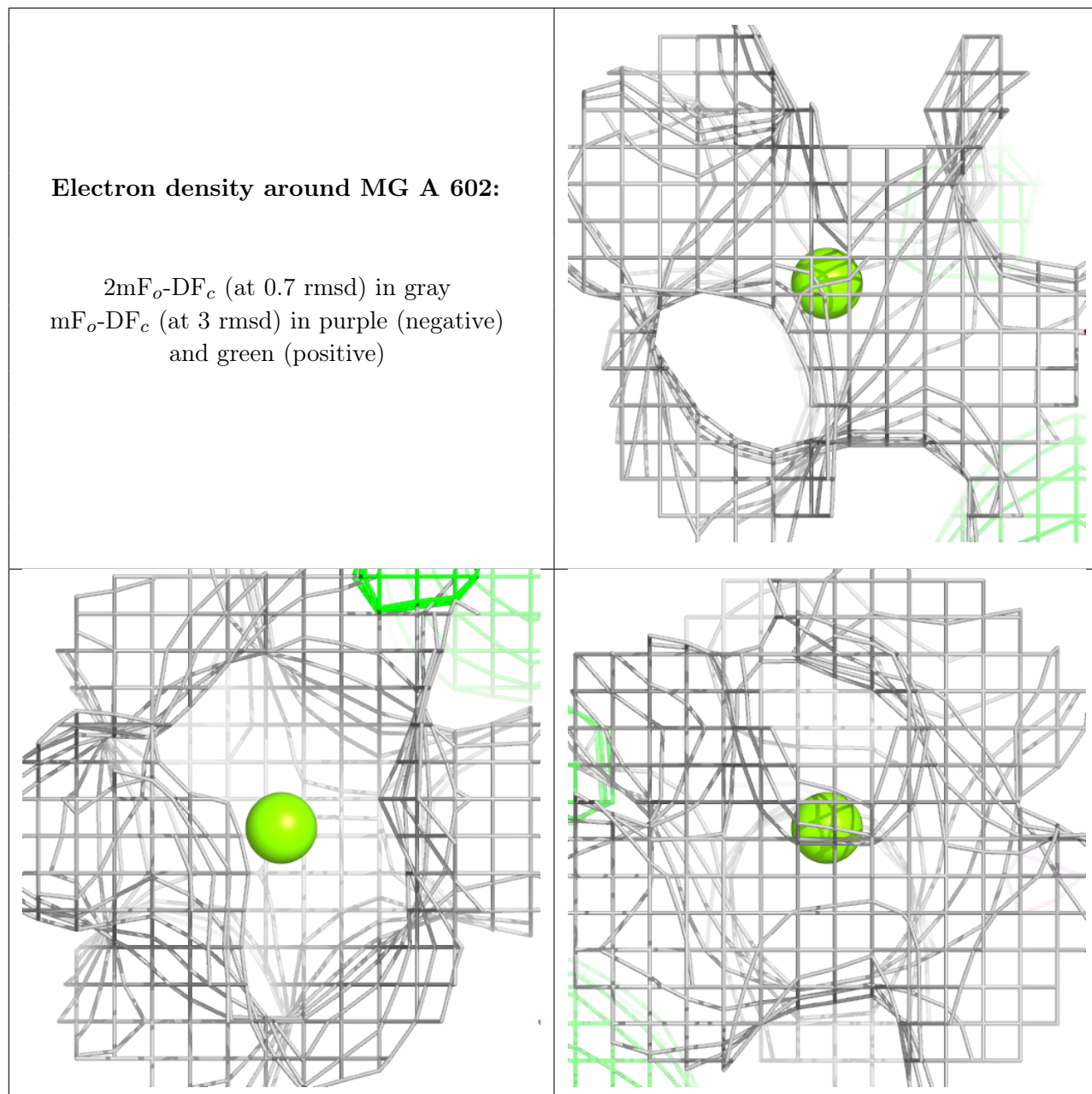
Electron density around MG B 602:

$2mF_o-DF_c$ (at 0.7 rmsd) in gray
 mF_o-DF_c (at 3 rmsd) in purple (negative)
and green (positive)



Electron density around MG A 602:

$2mF_o-DF_c$ (at 0.7 rmsd) in gray
 mF_o-DF_c (at 3 rmsd) in purple (negative)
and green (positive)



6.5 Other polymers ⓘ

There are no such residues in this entry.