



# wwPDB X-ray Structure Validation Summary Report ⓘ

Sep 9, 2025 – 12:16 AM JST

PDB ID : 5YY5 / pdb\_00005yy5  
Title : Structural definition of a unique neutralization epitope on the receptor-binding domain of MERS-CoV spike glycoprotein  
Authors : Zhang, S.; Wang, P.; Zhou, P.; Wang, X.; Zhang, L.  
Deposited on : 2017-12-08  
Resolution : 2.80 Å(reported)

This is a wwPDB X-ray Structure Validation Summary Report for a publicly released PDB entry.

We welcome your comments at [validation@mail.wwpdb.org](mailto:validation@mail.wwpdb.org)

A user guide is available at

<https://www.wwpdb.org/validation/2017/XrayValidationReportHelp>

with specific help available everywhere you see the ⓘ symbol.

The types of validation reports are described at

<http://www.wwpdb.org/validation/2017/FAQs#types>.

---

The following versions of software and data (see [references ⓘ](#)) were used in the production of this report:

MolProbity : 4-5-2 with Phenix2.0rc1  
Mogul : 1.8.5 (274361), CSD as541be (2020)  
Xtriage (Phenix) : 2.0rc1  
EDS : 3.0  
Percentile statistics : 20231227.v01 (using entries in the PDB archive December 27th 2023)  
CCP4 : 9.0.006 (Gargrove)  
Density-Fitness : 1.0.12  
Ideal geometry (proteins) : Engh & Huber (2001)  
Ideal geometry (DNA, RNA) : Parkinson et al. (1996)  
Validation Pipeline (wwPDB-VP) : 2.45.1

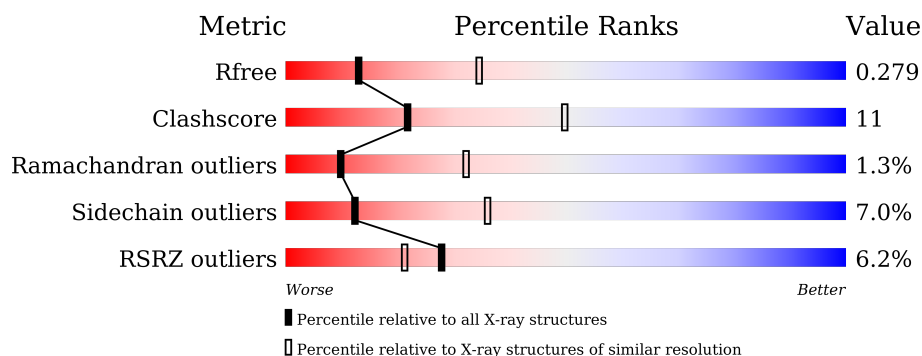
# 1 Overall quality at a glance

The following experimental techniques were used to determine the structure:

*X-RAY DIFFRACTION*

The reported resolution of this entry is 2.80 Å.

Percentile scores (ranging between 0-100) for global validation metrics of the entry are shown in the following graphic. The table shows the number of entries on which the scores are based.



Metric	Whole archive (#Entries)	Similar resolution (#Entries, resolution range(Å))
$R_{free}$	164625	3657 (2.80-2.80)
Clashscore	180529	4123 (2.80-2.80)
Ramachandran outliers	177936	4071 (2.80-2.80)
Sidechain outliers	177891	4073 (2.80-2.80)
RSRZ outliers	164620	3659 (2.80-2.80)

The table below summarises the geometric issues observed across the polymeric chains and their fit to the electron density. The red, orange, yellow and green segments of the lower bar indicate the fraction of residues that contain outliers for  $\geq 3$ , 2, 1 and 0 types of geometric quality criteria respectively. A grey segment represents the fraction of residues that are not modelled. The numeric value for each fraction is indicated below the corresponding segment, with a dot representing fractions  $\leq 5\%$ . The upper red bar (where present) indicates the fraction of residues that have poor fit to the electron density. The numeric value is given above the bar.

Mol	Chain	Length	Quality of chain
1	A	209	<div> <div>2%</div> <div>78%</div> <div>19%</div> <div>.</div> </div>
1	B	209	<div> <div>4%</div> <div>83%</div> <div>14%</div> <div>.</div> </div>
2	H	111	<div> <div>5%</div> <div>64%</div> <div>31%</div> <div>5%</div> </div>
3	L	112	<div> <div>3%</div> <div>62%</div> <div>35%</div> <div>..</div> </div>
4	C	109	<div> <div>11%</div> <div>72%</div> <div>25%</div> <div>.</div> </div>
5	D	105	<div> <div>19%</div> <div>70%</div> <div>25%</div> <div>5%</div> </div>

## 2 Entry composition

There are 6 unique types of molecules in this entry. The entry contains 6592 atoms, of which 0 are hydrogens and 0 are deuteriums.

In the tables below, the ZeroOcc column contains the number of atoms modelled with zero occupancy, the AltConf column contains the number of residues with at least one atom in alternate conformation and the Trace column contains the number of residues modelled with at most 2 atoms.

- Molecule 1 is a protein called MERS-CoV RBD.

Mol	Chain	Residues	Atoms					ZeroOcc	AltConf	Trace
1	A	209	Total	C	N	O	S	0	0	0
			1612	1028	257	316	11			
1	B	209	Total	C	N	O	S	0	0	0
			1612	1028	257	316	11			

- Molecule 2 is a protein called Heavy chain.

Mol	Chain	Residues	Atoms					ZeroOcc	AltConf	Trace
2	H	111	Total	C	N	O	S	0	0	0
			878	557	146	171	4			

- Molecule 3 is a protein called Light chain.

Mol	Chain	Residues	Atoms					ZeroOcc	AltConf	Trace
3	L	112	Total	C	N	O	S	0	0	0
			825	512	140	171	2			

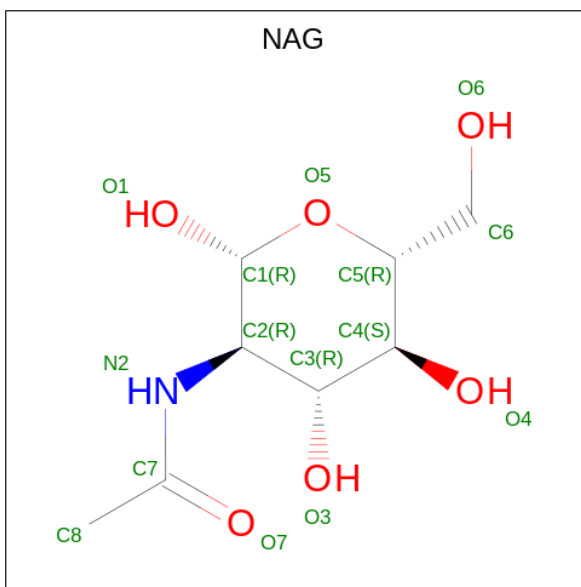
- Molecule 4 is a protein called Heavy chain.

Mol	Chain	Residues	Atoms					ZeroOcc	AltConf	Trace
4	C	109	Total	C	N	O	S	0	0	0
			860	546	144	166	4			

- Molecule 5 is a protein called Light chain.

Mol	Chain	Residues	Atoms					ZeroOcc	AltConf	Trace
5	D	105	Total	C	N	O	S	0	0	0
			777	481	132	162	2			

- Molecule 6 is 2-acetamido-2-deoxy-beta-D-glucopyranose (CCD ID: NAG) (formula: C<sub>8</sub>H<sub>15</sub>NO<sub>6</sub>).

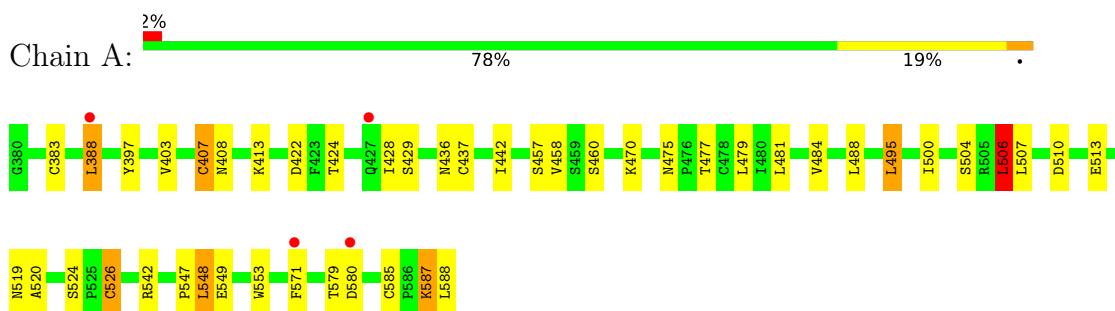


Mol	Chain	Residues	Atoms				ZeroOcc	AltConf
6	A	1	Total	C	N	O	0	0
			14	8	1	5		
6	B	1	Total	C	N	O	0	0
			14	8	1	5		

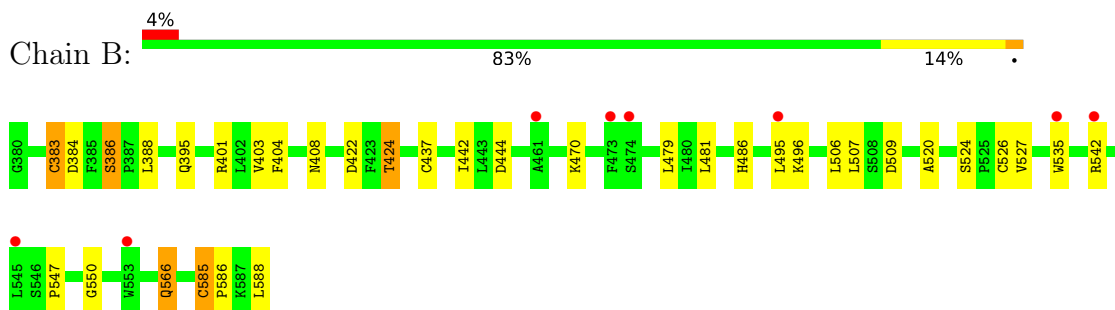
### 3 Residue-property plots [i](#)

These plots are drawn for all protein, RNA, DNA and oligosaccharide chains in the entry. The first graphic for a chain summarises the proportions of the various outlier classes displayed in the second graphic. The second graphic shows the sequence view annotated by issues in geometry and electron density. Residues are color-coded according to the number of geometric quality criteria for which they contain at least one outlier: green = 0, yellow = 1, orange = 2 and red = 3 or more. A red dot above a residue indicates a poor fit to the electron density ( $RSRZ > 2$ ). Stretches of 2 or more consecutive residues without any outlier are shown as a green connector. Residues present in the sample, but not in the model, are shown in grey.

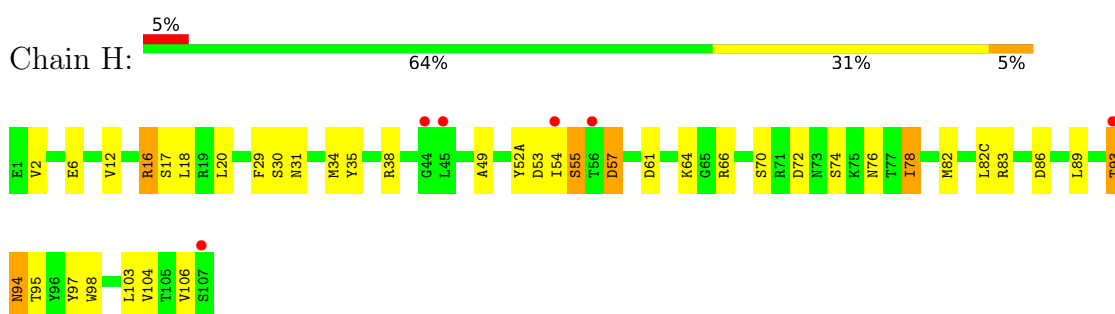
- Molecule 1: MERS-CoV RBD



- Molecule 1: MERS-CoV RBD

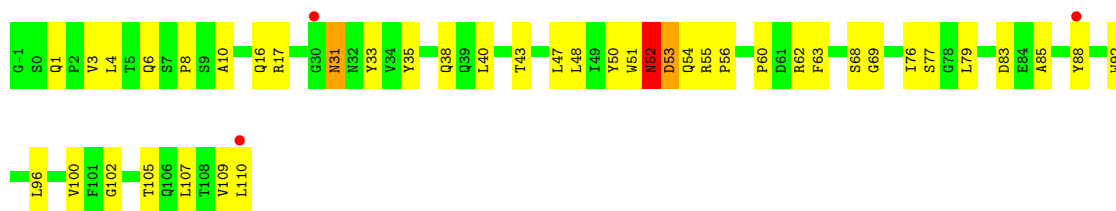


- Molecule 2: Heavy chain



- Molecule 3: Light chain

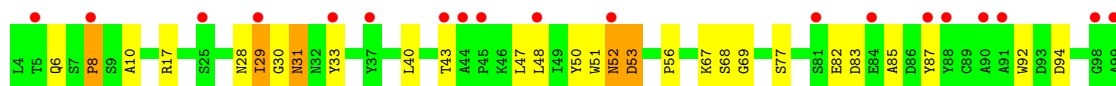




● Molecule 4: Heavy chain



● Molecule 5: Light chain



## 4 Data and refinement statistics

Property	Value	Source
Space group	H 3	Depositor
Cell constants a, b, c, $\alpha$ , $\beta$ , $\gamma$	152.31Å 152.31Å 148.53Å 90.00° 90.00° 120.00°	Depositor
Resolution (Å)	41.51 – 2.80 41.51 – 2.80	Depositor EDS
% Data completeness (in resolution range)	99.8 (41.51-2.80) 99.9 (41.51-2.80)	Depositor EDS
$R_{merge}$	(Not available)	Depositor
$R_{sym}$	(Not available)	Depositor
$\langle I/\sigma(I) \rangle$ <sup>1</sup>	1.65 (at 2.61Å)	Xtriage
Refinement program	PHENIX (1.11.1_2575: ???)	Depositor
R, $R_{free}$	0.246 , 0.279 0.249 , 0.279	Depositor DCC
$R_{free}$ test set	1927 reflections (4.87%)	wwPDB-VP
Wilson B-factor (Å <sup>2</sup> )	63.6	Xtriage
Anisotropy	0.830	Xtriage
Bulk solvent $k_{sol}$ (e/Å <sup>3</sup> ), $B_{sol}$ (Å <sup>2</sup> )	0.30 , 49.9	EDS
L-test for twinning <sup>2</sup>	$\langle  L  \rangle = 0.50$ , $\langle L^2 \rangle = 0.33$	Xtriage
Estimated twinning fraction	0.017 for h,-h-k,-l	Xtriage
$F_o, F_c$ correlation	0.94	EDS
Total number of atoms	6592	wwPDB-VP
Average B, all atoms (Å <sup>2</sup> )	104.0	wwPDB-VP

Xtriage's analysis on translational NCS is as follows: *The largest off-origin peak in the Patterson function is 3.76% of the height of the origin peak. No significant pseudotranslation is detected.*

<sup>1</sup>Intensities estimated from amplitudes.

<sup>2</sup>Theoretical values of  $\langle |L| \rangle$ ,  $\langle L^2 \rangle$  for acentric reflections are 0.5, 0.333 respectively for untwinned datasets, and 0.375, 0.2 for perfectly twinned datasets.

## 5 Model quality

### 5.1 Standard geometry

Bond lengths and bond angles in the following residue types are not validated in this section: NAG

The Z score for a bond length (or angle) is the number of standard deviations the observed value is removed from the expected value. A bond length (or angle) with  $|Z| > 5$  is considered an outlier worth inspection. RMSZ is the root-mean-square of all Z scores of the bond lengths (or angles).

Mol	Chain	Bond lengths		Bond angles	
		RMSZ	$\# Z  > 5$	RMSZ	$\# Z  > 5$
1	A	0.50	0/1651	0.77	1/2254 (0.0%)
1	B	0.40	0/1651	0.72	1/2254 (0.0%)
2	H	0.49	0/898	0.94	5/1221 (0.4%)
3	L	0.40	0/845	0.67	0/1153
4	C	0.32	0/880	0.58	0/1196
5	D	0.32	0/796	0.60	0/1085
All	All	0.42	0/6721	0.73	7/9163 (0.1%)

Chiral center outliers are detected by calculating the chiral volume of a chiral center and verifying if the center is modelled as a planar moiety or with the opposite hand. A planarity outlier is detected by checking planarity of atoms in a peptide group, atoms in a mainchain group or atoms of a sidechain that are expected to be planar.

Mol	Chain	#Chirality outliers	#Planarity outliers
2	H	0	1
4	C	0	1
All	All	0	2

There are no bond length outliers.

The worst 5 of 7 bond angle outliers are listed below:

Mol	Chain	Res	Type	Atoms	Z	Observed(°)	Ideal(°)
2	H	94	ASN	CA-C-N	-7.76	108.68	122.42
2	H	94	ASN	C-N-CA	-7.76	108.68	122.42
1	B	535	TRP	CA-CB-CG	-7.54	99.26	113.60
2	H	95	THR	N-CA-C	-6.23	106.32	114.04
2	H	78	ILE	CB-CG1-CD1	-5.56	102.13	113.80

There are no chirality outliers.

All (2) planarity outliers are listed below:



Mol	Chain	Res	Type	Group
4	C	93	THR	Peptide
2	H	93	THR	Peptide

## 5.2 Too-close contacts [i](#)

In the following table, the Non-H and H(model) columns list the number of non-hydrogen atoms and hydrogen atoms in the chain respectively. The H(added) column lists the number of hydrogen atoms added and optimized by MolProbity. The Clashes column lists the number of clashes within the asymmetric unit, whereas Symm-Clashes lists symmetry-related clashes.

Mol	Chain	Non-H	H(model)	H(added)	Clashes	Symm-Clashes
1	A	1612	0	1575	33	0
1	B	1612	0	1576	14	0
2	H	878	0	842	30	0
3	L	825	0	778	30	0
4	C	860	0	825	21	0
5	D	777	0	723	18	0
6	A	14	0	13	5	0
6	B	14	0	12	0	0
All	All	6592	0	6344	137	0

The all-atom clashscore is defined as the number of clashes found per 1000 atoms (including hydrogen atoms). The all-atom clashscore for this structure is 11.

The worst 5 of 137 close contacts within the same asymmetric unit are listed below, sorted by their clash magnitude.

Atom-1	Atom-2	Interatomic distance (Å)	Clash overlap (Å)
5:D:30:GLY:H	5:D:67:LYS:HE3	1.41	0.86
2:H:53:ASP:OD1	2:H:55:SER:HB2	1.79	0.82
5:D:40:LEU:HD23	5:D:85:ALA:HB2	1.64	0.79
1:A:413:LYS:HA	6:A:601:NAG:H82	1.64	0.77
4:C:52:SER:HB3	4:C:55:SER:HB3	1.66	0.77

There are no symmetry-related clashes.

## 5.3 Torsion angles [i](#)

### 5.3.1 Protein backbone [i](#)

In the following table, the Percentiles column shows the percent Ramachandran outliers of the chain as a percentile score with respect to all X-ray entries followed by that with respect to entries

of similar resolution.

The Analysed column shows the number of residues for which the backbone conformation was analysed, and the total number of residues.

Mol	Chain	Analysed	Favoured	Allowed	Outliers	Percentiles	
1	A	207/209 (99%)	198 (96%)	9 (4%)	0	100	100
1	B	207/209 (99%)	199 (96%)	8 (4%)	0	100	100
2	H	109/111 (98%)	99 (91%)	8 (7%)	2 (2%)	7	24
3	L	110/112 (98%)	97 (88%)	8 (7%)	5 (4%)	2	7
4	C	107/109 (98%)	94 (88%)	12 (11%)	1 (1%)	14	42
5	D	103/105 (98%)	92 (89%)	8 (8%)	3 (3%)	3	13
All	All	843/855 (99%)	779 (92%)	53 (6%)	11 (1%)	10	32

5 of 11 Ramachandran outliers are listed below:

Mol	Chain	Res	Type
2	H	55	SER
3	L	10	ALA
3	L	53	ASP
4	C	55	SER
5	D	10	ALA

### 5.3.2 Protein sidechains ⓘ

In the following table, the Percentiles column shows the percent sidechain outliers of the chain as a percentile score with respect to all X-ray entries followed by that with respect to entries of similar resolution.

The Analysed column shows the number of residues for which the sidechain conformation was analysed, and the total number of residues.

Mol	Chain	Analysed	Rotameric	Outliers	Percentiles	
1	A	190/190 (100%)	176 (93%)	14 (7%)	11	33
1	B	190/190 (100%)	176 (93%)	14 (7%)	11	33
2	H	94/94 (100%)	87 (93%)	7 (7%)	11	33
3	L	90/90 (100%)	86 (96%)	4 (4%)	24	56
4	C	91/91 (100%)	84 (92%)	7 (8%)	10	31
5	D	84/84 (100%)	78 (93%)	6 (7%)	12	35
All	All	739/739 (100%)	687 (93%)	52 (7%)	12	36

5 of 52 residues with a non-rotameric sidechain are listed below:

Mol	Chain	Res	Type
2	H	12	VAL
3	L	31	ASN
5	D	52	ASN
2	H	16	ARG
2	H	89	LEU

Sometimes sidechains can be flipped to improve hydrogen bonding and reduce clashes. 5 of 12 such sidechains are listed below:

Mol	Chain	Res	Type
1	B	519	ASN
1	B	566	GLN
4	C	100	GLN
1	B	582	ASN
1	B	408	ASN

### 5.3.3 RNA ⓘ

There are no RNA molecules in this entry.

## 5.4 Non-standard residues in protein, DNA, RNA chains ⓘ

There are no non-standard protein/DNA/RNA residues in this entry.

## 5.5 Carbohydrates ⓘ

There are no oligosaccharides in this entry.

## 5.6 Ligand geometry ⓘ

2 ligands are modelled in this entry.

In the following table, the Counts columns list the number of bonds (or angles) for which Mogul statistics could be retrieved, the number of bonds (or angles) that are observed in the model and the number of bonds (or angles) that are defined in the Chemical Component Dictionary. The Link column lists molecule types, if any, to which the group is linked. The Z score for a bond length (or angle) is the number of standard deviations the observed value is removed from the expected value. A bond length (or angle) with  $|Z| > 2$  is considered an outlier worth inspection. RMSZ is the root-mean-square of all Z scores of the bond lengths (or angles).

Mol	Type	Chain	Res	Link	Bond lengths			Bond angles		
					Counts	RMSZ	# Z  > 2	Counts	RMSZ	# Z  > 2
6	NAG	A	601	1	14,14,15	0.92	2 (14%)	17,19,21	0.78	0
6	NAG	B	601	1	14,14,15	0.46	0	17,19,21	0.90	1 (5%)

In the following table, the Chirals column lists the number of chiral outliers, the number of chiral centers analysed, the number of these observed in the model and the number defined in the Chemical Component Dictionary. Similar counts are reported in the Torsion and Rings columns. '-' means no outliers of that kind were identified.

Mol	Type	Chain	Res	Link	Chirals	Torsions	Rings
6	NAG	A	601	1	-	2/6/23/26	0/1/1/1
6	NAG	B	601	1	-	2/6/23/26	0/1/1/1

All (2) bond length outliers are listed below:

Mol	Chain	Res	Type	Atoms	Z	Observed(Å)	Ideal(Å)
6	A	601	NAG	O5-C1	-2.51	1.39	1.43
6	A	601	NAG	C1-C2	2.18	1.55	1.52

All (1) bond angle outliers are listed below:

Mol	Chain	Res	Type	Atoms	Z	Observed(°)	Ideal(°)
6	B	601	NAG	C1-O5-C5	3.12	116.42	112.19

There are no chirality outliers.

All (4) torsion outliers are listed below:

Mol	Chain	Res	Type	Atoms
6	A	601	NAG	O5-C5-C6-O6
6	A	601	NAG	C4-C5-C6-O6
6	B	601	NAG	O5-C5-C6-O6
6	B	601	NAG	C4-C5-C6-O6

There are no ring outliers.

1 monomer is involved in 5 short contacts:

Mol	Chain	Res	Type	Clashes	Symm-Clashes
6	A	601	NAG	5	0

## 5.7 Other polymers [i](#)

There are no such residues in this entry.

## 5.8 Polymer linkage issues [i](#)

There are no chain breaks in this entry.

## 6 Fit of model and data [i](#)

### 6.1 Protein, DNA and RNA chains [i](#)

In the following table, the column labelled ‘#RSRZ> 2’ contains the number (and percentage) of RSRZ outliers, followed by percent RSRZ outliers for the chain as percentile scores relative to all X-ray entries and entries of similar resolution. The OWAB column contains the minimum, median, 95<sup>th</sup> percentile and maximum values of the occupancy-weighted average B-factor per residue. The column labelled ‘Q< 0.9’ lists the number of (and percentage) of residues with an average occupancy less than 0.9.

Mol	Chain	Analysed	<RSRZ>	#RSRZ>2	OWAB(Å <sup>2</sup> )	Q<0.9
1	A	209/209 (100%)	0.26	4 (1%) 66 58	66, 74, 94, 102	0
1	B	209/209 (100%)	0.60	8 (3%) 44 36	74, 96, 131, 139	0
2	H	111/111 (100%)	0.48	6 (5%) 32 25	75, 96, 123, 133	0
3	L	112/112 (100%)	0.68	3 (2%) 56 47	72, 97, 119, 128	0
4	C	109/109 (100%)	1.09	12 (11%) 12 9	126, 145, 175, 185	0
5	D	105/105 (100%)	1.23	20 (19%) 4 4	113, 140, 153, 157	0
All	All	855/855 (100%)	0.65	53 (6%) 28 21	66, 97, 151, 185	0

The worst 5 of 53 RSRZ outliers are listed below:

Mol	Chain	Res	Type	RSRZ
2	H	56	THR	5.2
4	C	56	THR	4.4
1	B	535	TRP	4.3
4	C	68	THR	4.2
5	D	52	ASN	4.0

### 6.2 Non-standard residues in protein, DNA, RNA chains [i](#)

There are no non-standard protein/DNA/RNA residues in this entry.

### 6.3 Carbohydrates [i](#)

There are no oligosaccharides in this entry.

## 6.4 Ligands [i](#)

In the following table, the Atoms column lists the number of modelled atoms in the group and the number defined in the chemical component dictionary. The B-factors column lists the minimum, median, 95<sup>th</sup> percentile and maximum values of B factors of atoms in the group. The column labelled 'Q< 0.9' lists the number of atoms with occupancy less than 0.9.

Mol	Type	Chain	Res	Atoms	RSCC	RSR	B-factors(Å <sup>2</sup> )	Q<0.9
6	NAG	B	601	14/15	0.71	0.13	96,98,102,103	0
6	NAG	A	601	14/15	0.72	0.12	90,92,95,97	0

## 6.5 Other polymers [i](#)

There are no such residues in this entry.