



Full wwPDB EM Validation Report ⓘ

Feb 10, 2025 – 12:22 PM JST

PDB ID : 8YBS
EMDB ID : EMD-34546
Title : State - I: Spike 2-up RBD with THSC20.HVTR04 (Fab4)
Authors : Rencilin, C.F.; Bhattacharya, J.; Dutta, S.
Deposited on : 2024-02-16
Resolution : 4.54 Å(reported)

This is a Full wwPDB EM Validation Report for a publicly released PDB entry.

We welcome your comments at validation@mail.wwpdb.org

A user guide is available at

<https://www.wwpdb.org/validation/2017/EMValidationReportHelp>

with specific help available everywhere you see the ⓘ symbol.

The types of validation reports are described at

<http://www.wwpdb.org/validation/2017/FAQs#types>.

The following versions of software and data (see [references ⓘ](#)) were used in the production of this report:

EMDB validation analysis : 0.0.1.dev113
Mogul : 1.8.5 (274361), CSD as541be (2020)
MolProbity : 4.02b-467
Percentile statistics : 20231227.v01 (using entries in the PDB archive December 27th 2023)
MapQ : 1.9.13
Ideal geometry (proteins) : Engh & Huber (2001)
Ideal geometry (DNA, RNA) : Parkinson et al. (1996)
Validation Pipeline (wwPDB-VP) : 2.40

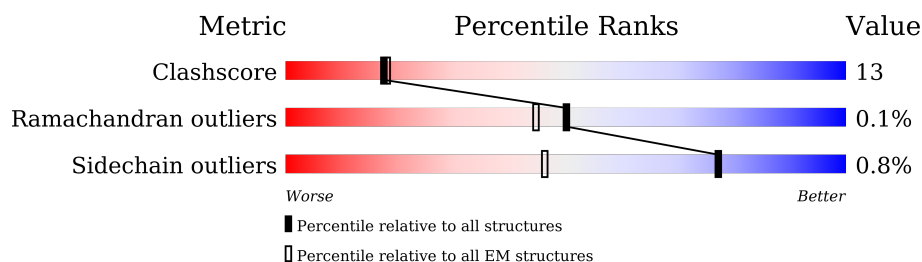
1 Overall quality at a glance

The following experimental techniques were used to determine the structure:

ELECTRON MICROSCOPY

The reported resolution of this entry is 4.54 Å.

Percentile scores (ranging between 0-100) for global validation metrics of the entry are shown in the following graphic. The table shows the number of entries on which the scores are based.



Metric	Whole archive (#Entries)	EM structures (#Entries)
Clashscore	210492	15764
Ramachandran outliers	207382	16835
Sidechain outliers	206894	16415

The table below summarises the geometric issues observed across the polymeric chains and their fit to the map. The red, orange, yellow and green segments of the bar indicate the fraction of residues that contain outliers for ≥ 3 , 2, 1 and 0 types of geometric quality criteria respectively. A grey segment represents the fraction of residues that are not modelled. The numeric value for each fraction is indicated below the corresponding segment, with a dot representing fractions $\leq 5\%$. The upper red bar (where present) indicates the fraction of residues that have poor fit to the EM map (all-atom inclusion $< 40\%$). The numeric value is given above the bar.

Mol	Chain	Length	Quality of chain
1	B	1273	 8% 61% 19% . 19%
2	D	1273	 62% 15% 23%
2	G	1273	 65% 11% . 23%
3	A	227	 87% 11% .
3	C	227	 80% 85% 13% .
4	E	214	 69% 81% 17% .
4	F	214	 74% 81% 17% .

The following table lists non-polymeric compounds, carbohydrate monomers and non-standard

residues in protein, DNA, RNA chains that are outliers for geometric or electron-density-fit criteria:

Mol	Type	Chain	Res	Chirality	Geometry	Clashes	Electron density
5	NAG	B	1310	-	-	X	-

2 Entry composition [i](#)

There are 5 unique types of molecules in this entry. The entry contains 30449 atoms, of which 0 are hydrogens and 0 are deuteriums.

In the tables below, the AltConf column contains the number of residues with at least one atom in alternate conformation and the Trace column contains the number of residues modelled with at most 2 atoms.

- Molecule 1 is a protein called Spike glycoprotein.

Mol	Chain	Residues	Atoms					AltConf	Trace
1	B	1033	Total	C	N	O	S	0	0
			8031	5134	1334	1526	37		

There are 2 discrepancies between the modelled and reference sequences:

Chain	Residue	Modelled	Actual	Comment	Reference
B	986	PRO	LYS	conflict	UNP P0DTC2
B	987	PRO	VAL	conflict	UNP P0DTC2

- Molecule 2 is a protein called Spike glycoprotein.

Mol	Chain	Residues	Atoms					AltConf	Trace
2	D	985	Total	C	N	O	S	0	0
			7711	4931	1282	1465	33		
2	G	985	Total	C	N	O	S	0	0
			7711	4931	1282	1465	33		

- Molecule 3 is a protein called THSC20.HVTR4 (Fab4) - Heavy Chain.

Mol	Chain	Residues	Atoms					AltConf	Trace
3	A	224	Total	C	N	O	S	0	0
			1684	1066	285	327	6		
3	C	224	Total	C	N	O	S	0	0
			1684	1066	285	327	6		

- Molecule 4 is a protein called THSC20.HVTR4 (Fab4) - Light Chain.

Mol	Chain	Residues	Atoms					AltConf	Trace
4	E	211	Total	C	N	O	S	0	0
			1569	981	261	321	6		
4	F	211	Total	C	N	O	S	0	0
			1569	981	261	321	6		

- Molecule 5 is 2-acetamido-2-deoxy-beta-D-glucopyranose (three-letter code: NAG) (formula: $C_8H_{15}NO_6$).



Mol	Chain	Residues	Atoms				AltConf
5	B	1	Total	C	N	O	0
			14	8	1	5	
5	B	1	Total	C	N	O	0
			14	8	1	5	
5	B	1	Total	C	N	O	0
			14	8	1	5	
5	B	1	Total	C	N	O	0
			14	8	1	5	
5	B	1	Total	C	N	O	0
			14	8	1	5	
5	B	1	Total	C	N	O	0
			14	8	1	5	
5	B	1	Total	C	N	O	0
			14	8	1	5	
5	B	1	Total	C	N	O	0
			14	8	1	5	
5	B	1	Total	C	N	O	0
			14	8	1	5	

Continued on next page...

Continued from previous page...

Mol	Chain	Residues	Atoms				AltConf
5	B	1	Total	C	N	O	0
			14	8	1	5	
5	D	1	Total	C	N	O	0
			14	8	1	5	
5	D	1	Total	C	N	O	0
			14	8	1	5	
5	D	1	Total	C	N	O	0
			14	8	1	5	
5	D	1	Total	C	N	O	0
			14	8	1	5	
5	D	1	Total	C	N	O	0
			14	8	1	5	
5	D	1	Total	C	N	O	0
			14	8	1	5	
5	D	1	Total	C	N	O	0
			14	8	1	5	
5	D	1	Total	C	N	O	0
			14	8	1	5	
5	D	1	Total	C	N	O	0
			14	8	1	5	
5	G	1	Total	C	N	O	0
			14	8	1	5	
5	G	1	Total	C	N	O	0
			14	8	1	5	
5	G	1	Total	C	N	O	0
			14	8	1	5	
5	G	1	Total	C	N	O	0
			14	8	1	5	
5	G	1	Total	C	N	O	0
			14	8	1	5	
5	G	1	Total	C	N	O	0
			14	8	1	5	
5	G	1	Total	C	N	O	0
			14	8	1	5	

Continued on next page...

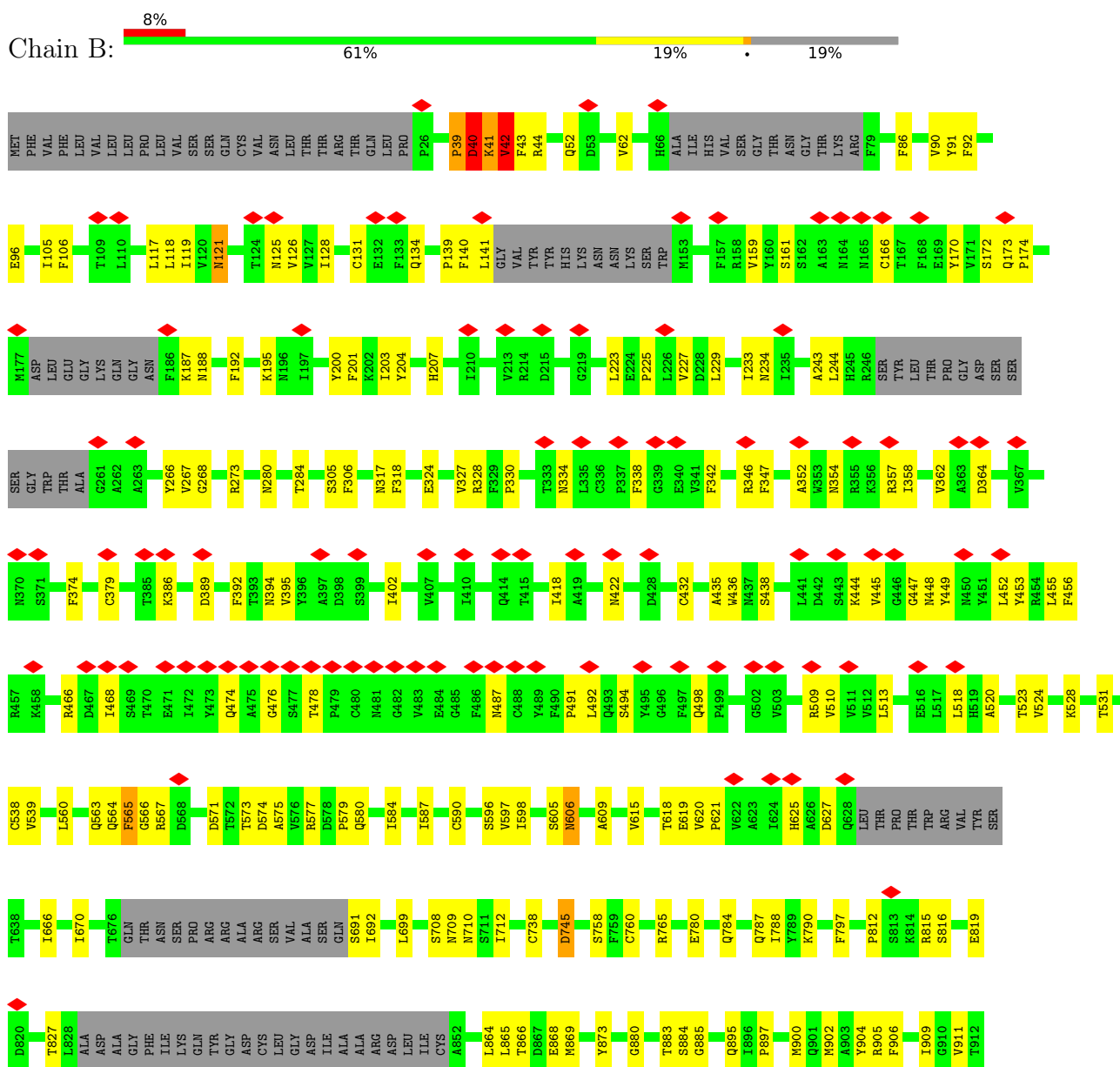
Continued from previous page...

Mol	Chain	Residues	Atoms				AltConf
5	G	1	Total	C	N	O	0
			14	8	1	5	
5	G	1	Total	C	N	O	0
			14	8	1	5	

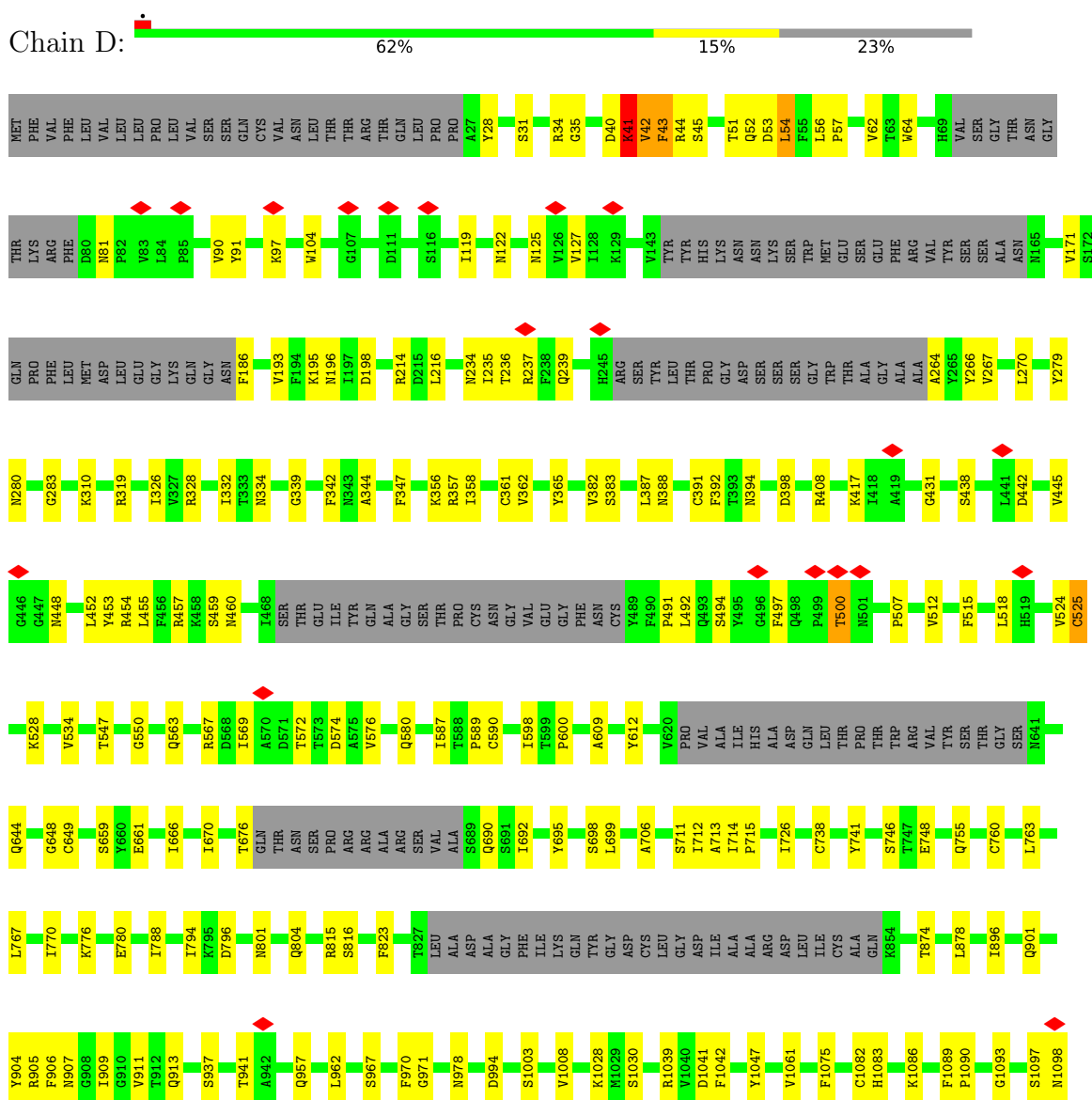
3 Residue-property plots [i](#)

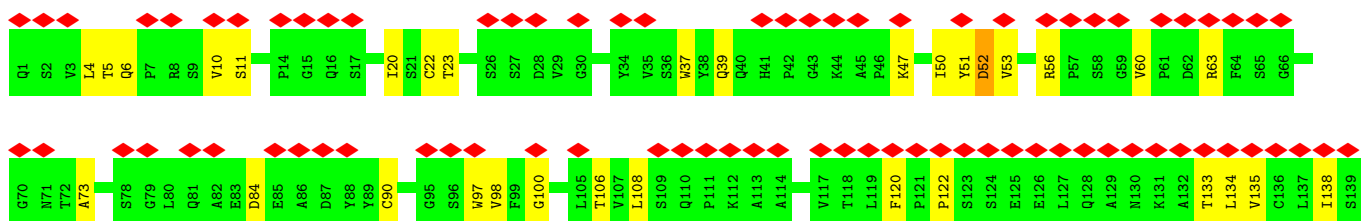
These plots are drawn for all protein, RNA, DNA and oligosaccharide chains in the entry. The first graphic for a chain summarises the proportions of the various outlier classes displayed in the second graphic. The second graphic shows the sequence view annotated by issues in geometry and atom inclusion in map density. Residues are color-coded according to the number of geometric quality criteria for which they contain at least one outlier: green = 0, yellow = 1, orange = 2 and red = 3 or more. A red diamond above a residue indicates a poor fit to the EM map for this residue (all-atom inclusion < 40%). Stretches of 2 or more consecutive residues without any outlier are shown as a green connector. Residues present in the sample, but not in the model, are shown in grey.

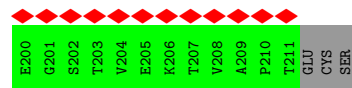
• Molecule 1: Spike glycoprotein



- Molecule 2: Spike glycoprotein

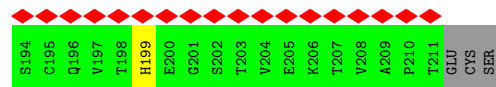
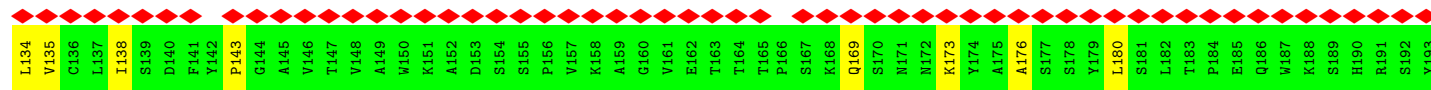
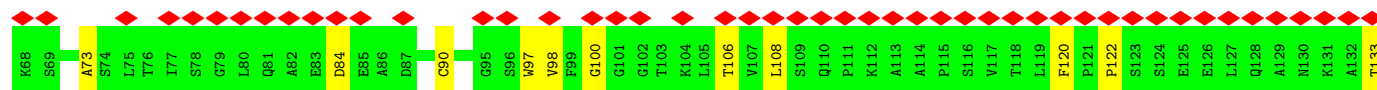
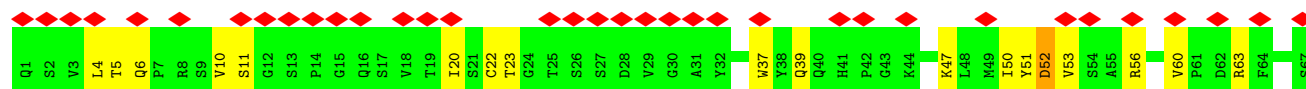






• Molecule 4: THSC20.HVTR4 (Fab4) - Light Chain

Chain F: 74% 81% 17% .



4 Experimental information

Property	Value	Source
EM reconstruction method	SINGLE PARTICLE	Depositor
Imposed symmetry	POINT, Not provided	
Number of particles used	163492	Depositor
Resolution determination method	FSC 0.143 CUT-OFF	Depositor
CTF correction method	PHASE FLIPPING AND AMPLITUDE CORRECTION	Depositor
Microscope	FEI TALOS ARCTICA	Depositor
Voltage (kV)	200	Depositor
Electron dose ($e^-/\text{\AA}^2$)	50	Depositor
Minimum defocus (nm)	1500	Depositor
Maximum defocus (nm)	2750	Depositor
Magnification	Not provided	
Image detector	GATAN K2 SUMMIT (4k x 4k)	Depositor
Maximum map value	26.442	Depositor
Minimum map value	-14.274	Depositor
Average map value	0.000	Depositor
Map value standard deviation	1.000	Depositor
Recommended contour level	4.29	Depositor
Map size (Å)	309.12, 309.12, 309.12	wwPDB
Map dimensions	336, 336, 336	wwPDB
Map angles (°)	90.0, 90.0, 90.0	wwPDB
Pixel spacing (Å)	0.91999996, 0.91999996, 0.91999996	Depositor

5 Model quality [i](#)

5.1 Standard geometry [i](#)

Bond lengths and bond angles in the following residue types are not validated in this section: NAG

The Z score for a bond length (or angle) is the number of standard deviations the observed value is removed from the expected value. A bond length (or angle) with $|Z| > 5$ is considered an outlier worth inspection. RMSZ is the root-mean-square of all Z scores of the bond lengths (or angles).

Mol	Chain	Bond lengths		Bond angles	
		RMSZ	$\# Z > 5$	RMSZ	$\# Z > 5$
1	B	1.91	14/8214 (0.2%)	0.68	14/11178 (0.1%)
2	D	0.45	3/7882 (0.0%)	0.66	14/10718 (0.1%)
2	G	0.53	7/7882 (0.1%)	0.79	25/10718 (0.2%)
3	A	0.28	0/1726	0.52	0/2355
3	C	0.28	0/1726	0.52	0/2355
4	E	0.27	0/1609	0.51	0/2198
4	F	0.27	0/1609	0.51	0/2198
All	All	1.06	24/30648 (0.1%)	0.68	53/41720 (0.1%)

Chiral center outliers are detected by calculating the chiral volume of a chiral center and verifying if the center is modelled as a planar moiety or with the opposite hand. A planarity outlier is detected by checking planarity of atoms in a peptide group, atoms in a mainchain group or atoms of a sidechain that are expected to be planar.

Mol	Chain	#Chirality outliers	#Planarity outliers
1	B	0	1
2	D	0	4
2	G	0	1
4	E	0	1
4	F	0	1
All	All	0	8

All (24) bond length outliers are listed below:

Mol	Chain	Res	Type	Atoms	Z	Observed(Å)	Ideal(Å)
1	B	565	PHE	CE2-CZ	83.37	2.95	1.37
1	B	565	PHE	CD1-CE1	77.69	2.94	1.39
1	B	565	PHE	CE1-CZ	76.23	2.82	1.37
1	B	565	PHE	CD2-CE2	71.58	2.82	1.39
1	B	565	PHE	CG-CD2	47.78	2.10	1.38
1	B	565	PHE	CG-CD1	47.60	2.10	1.38

Continued on next page...

Continued from previous page...

Mol	Chain	Res	Type	Atoms	Z	Observed(Å)	Ideal(Å)
2	D	42	VAL	C-O	-13.04	0.98	1.23
2	D	42	VAL	CA-CB	-11.06	1.31	1.54
2	G	561	PRO	CA-C	-10.46	1.31	1.52
1	B	41	LYS	CA-CB	-9.85	1.32	1.53
2	G	561	PRO	N-CA	-9.30	1.31	1.47
1	B	41	LYS	CA-C	-8.77	1.30	1.52
2	G	562	PHE	CB-CG	-8.08	1.37	1.51
1	B	41	LYS	C-O	-7.07	1.09	1.23
2	G	563	GLN	C-N	6.61	1.49	1.34
1	B	40	ASP	CB-CG	-5.97	1.39	1.51
2	D	43	PHE	CA-C	-5.87	1.37	1.52
1	B	42	VAL	C-N	-5.72	1.20	1.34
1	B	40	ASP	C-O	-5.54	1.12	1.23
2	G	562	PHE	CA-CB	-5.38	1.42	1.53
1	B	40	ASP	CA-CB	-5.36	1.42	1.53
1	B	41	LYS	N-CA	-5.34	1.35	1.46
2	G	562	PHE	CA-C	-5.27	1.39	1.52
2	G	562	PHE	N-CA	-5.18	1.35	1.46

All (53) bond angle outliers are listed below:

Mol	Chain	Res	Type	Atoms	Z	Observed(°)	Ideal(°)
2	D	42	VAL	CG1-CB-CG2	-17.57	82.79	110.90
2	G	1107	ARG	CG-CD-NE	13.51	140.16	111.80
2	G	560	LEU	O-C-N	13.38	146.52	121.10
1	B	565	PHE	CB-CG-CD1	-12.55	112.02	120.80
2	D	43	PHE	CB-CA-C	-12.54	85.32	110.40
2	G	214	ARG	CB-CG-CD	11.92	142.59	111.60
1	B	42	VAL	CB-CA-C	-11.88	88.84	111.40
2	D	42	VAL	N-CA-CB	-11.85	85.43	111.50
2	G	902	MET	CB-CG-SD	11.03	145.48	112.40
1	B	565	PHE	CD1-CG-CD2	10.13	131.47	118.30
2	G	567	ARG	CG-CD-NE	9.41	131.57	111.80
2	G	563	GLN	C-N-CA	-9.21	98.68	121.70
1	B	40	ASP	N-CA-C	9.13	135.66	111.00
2	G	560	LEU	CA-C-N	-9.11	91.60	117.10
2	D	42	VAL	CA-C-O	-8.78	101.67	120.10
2	G	755	GLN	CA-CB-CG	8.61	132.34	113.40
2	G	357	ARG	NE-CZ-NH1	-8.49	116.06	120.30
2	G	560	LEU	C-N-CD	8.40	146.05	128.40
2	G	902	MET	CA-CB-CG	8.28	127.37	113.30
2	D	43	PHE	N-CA-C	8.22	133.20	111.00

Continued on next page...

Continued from previous page...

Mol	Chain	Res	Type	Atoms	Z	Observed(°)	Ideal(°)
2	D	42	VAL	CA-C-N	8.11	135.03	117.20
2	D	42	VAL	N-CA-C	8.10	132.86	111.00
1	B	41	LYS	CB-CA-C	-7.95	94.50	110.40
2	D	41	LYS	CA-C-N	-7.94	99.73	117.20
2	D	42	VAL	C-N-CA	7.77	141.13	121.70
1	B	42	VAL	C-N-CA	-7.40	103.21	121.70
2	G	563	GLN	N-CA-CB	-6.57	98.78	110.60
1	B	40	ASP	CB-CA-C	-6.50	97.39	110.40
2	G	563	GLN	N-CA-C	6.50	128.55	111.00
1	B	40	ASP	CB-CG-OD2	-6.31	112.62	118.30
1	B	565	PHE	CB-CG-CD2	-6.31	116.39	120.80
2	G	562	PHE	N-CA-C	-6.22	94.20	111.00
2	D	43	PHE	CB-CG-CD2	6.19	125.13	120.80
2	G	560	LEU	C-N-CA	-6.17	96.08	122.00
1	B	41	LYS	N-CA-CB	-6.16	99.51	110.60
2	G	567	ARG	NE-CZ-NH1	5.98	123.29	120.30
2	G	214	ARG	NE-CZ-NH2	5.98	123.29	120.30
1	B	39	PRO	O-C-N	5.96	132.24	122.70
2	G	567	ARG	CB-CG-CD	5.75	126.54	111.60
1	B	565	PHE	CZ-CE2-CD2	-5.60	113.38	120.10
2	G	466	ARG	NE-CZ-NH1	5.42	123.01	120.30
2	G	1014	ARG	NE-CZ-NH1	5.41	123.00	120.30
2	D	41	LYS	C-N-CA	-5.34	108.34	121.70
2	G	755	GLN	CB-CG-CD	5.31	125.41	111.60
2	D	54	LEU	CA-CB-CG	5.27	127.42	115.30
2	G	1145	LEU	CB-CG-CD2	5.21	119.85	111.00
2	G	525	CYS	CA-CB-SG	5.19	123.35	114.00
1	B	42	VAL	N-CA-C	5.18	124.99	111.00
2	D	198	ASP	CB-CG-OD1	5.17	122.95	118.30
2	D	518	LEU	CA-CB-CG	5.15	127.14	115.30
1	B	42	VAL	N-CA-CB	5.13	122.78	111.50
2	G	561	PRO	CB-CG-CD	-5.11	86.58	106.50
2	G	765	ARG	NE-CZ-NH1	5.04	122.82	120.30

There are no chirality outliers.

All (8) planarity outliers are listed below:

Mol	Chain	Res	Type	Group
1	B	945	LEU	Peptide
2	D	234	ASN	Peptide
2	D	235	ILE	Peptide
2	D	41	LYS	Mainchain

Continued on next page...

Continued from previous page...

Mol	Chain	Res	Type	Group
2	D	500	THR	Peptide
4	E	52	ASP	Peptide
4	F	52	ASP	Peptide
2	G	1107	ARG	Sidechain

5.2 Too-close contacts ⓘ

In the following table, the Non-H and H(model) columns list the number of non-hydrogen atoms and hydrogen atoms in the chain respectively. The H(added) column lists the number of hydrogen atoms added and optimized by MolProbity. The Clashes column lists the number of clashes within the asymmetric unit, whereas Symm-Clashes lists symmetry-related clashes.

Mol	Chain	Non-H	H(model)	H(added)	Clashes	Symm-Clashes
1	B	8031	0	7804	403	0
2	D	7711	0	7538	278	0
2	G	7711	0	7537	419	0
3	A	1684	0	1658	16	0
3	C	1684	0	1658	18	0
4	E	1569	0	1514	22	0
4	F	1569	0	1514	22	0
5	B	182	0	169	8	0
5	D	154	0	143	2	0
5	G	154	0	143	2	0
All	All	30449	0	29678	801	0

The all-atom clashscore is defined as the number of clashes found per 1000 atoms (including hydrogen atoms). The all-atom clashscore for this structure is 13.

All (801) close contacts within the same asymmetric unit are listed below, sorted by their clash magnitude.

Atom-1	Atom-2	Interatomic distance (Å)	Clash overlap (Å)
1:B:983:ARG:HB3	2:G:390:LEU:CD1	1.30	1.55
1:B:983:ARG:CB	2:G:390:LEU:HD11	1.14	1.54
1:B:40:ASP:CB	1:B:41:LYS:NZ	1.72	1.50
2:D:1089:PHE:CE2	2:G:914:ASN:CB	1.95	1.47
1:B:797:PHE:CE1	2:G:707:TYR:CE2	2.03	1.46
1:B:913:GLN:NE2	2:G:1089:PHE:HB3	1.24	1.46
1:B:40:ASP:HB2	1:B:41:LYS:NZ	1.20	1.44
1:B:904:TYR:HD1	2:G:1107:ARG:NH1	0.95	1.44
2:D:1089:PHE:CE2	2:G:914:ASN:HB3	1.51	1.43

Continued on next page...

Continued from previous page...

Atom-1	Atom-2	Interatomic distance (Å)	Clash overlap (Å)
1:B:1019:ARG:NH2	2:G:1017:GLU:HG3	1.10	1.42
2:D:1089:PHE:HE2	2:G:914:ASN:CA	1.32	1.42
1:B:983:ARG:NE	2:G:517:LEU:HD11	1.34	1.41
2:D:1089:PHE:HE2	2:G:914:ASN:CB	1.26	1.40
1:B:904:TYR:CD1	2:G:1107:ARG:NH1	1.88	1.40
1:B:913:GLN:HE22	2:G:1090:PRO:CD	1.33	1.39
1:B:797:PHE:HE1	2:G:707:TYR:CE2	1.35	1.39
2:D:1089:PHE:CD2	2:G:914:ASN:HB3	1.57	1.39
1:B:913:GLN:HE21	2:G:1089:PHE:CB	1.32	1.38
1:B:565:PHE:CG	1:B:565:PHE:CD2	2.10	1.38
1:B:565:PHE:CG	1:B:565:PHE:CD1	2.10	1.38
1:B:765:ARG:NH1	2:G:957:GLN:NE2	1.73	1.36
1:B:967:SER:HB3	2:G:571:ASP:CB	1.56	1.35
2:D:1148:PHE:HE2	2:G:1148:PHE:CZ	1.43	1.34
2:D:567:ARG:HH22	2:G:44:ARG:NH2	1.26	1.33
1:B:873:TYR:CE1	2:G:699:LEU:HB3	1.65	1.31
2:D:1089:PHE:CE2	2:G:914:ASN:CA	2.11	1.30
1:B:913:GLN:NE2	2:G:1090:PRO:HD2	1.41	1.30
2:D:1041:ASP:HB3	2:G:1030:SER:OG	1.14	1.27
2:D:357:ARG:NH2	2:G:230:PRO:O	1.67	1.27
1:B:1019:ARG:NH2	2:G:1017:GLU:CG	1.99	1.25
2:D:1089:PHE:CE2	2:G:914:ASN:HA	1.66	1.24
1:B:895:GLN:HG2	2:G:712:ILE:CA	1.69	1.23
2:D:547:THR:HG23	2:G:978:ASN:OD1	1.31	1.23
1:B:765:ARG:NH1	2:G:957:GLN:HE21	1.31	1.21
2:D:567:ARG:NH2	2:G:44:ARG:NH2	1.86	1.21
1:B:985:ASP:HB2	2:G:383:SER:OG	1.39	1.20
2:D:1039:ARG:NH2	2:G:1031:GLU:OE2	1.74	1.18
2:D:1041:ASP:CB	2:G:1030:SER:OG	1.93	1.17
2:D:1148:PHE:HE2	2:G:1148:PHE:CE2	1.63	1.16
1:B:1019:ARG:HH22	2:G:1017:GLU:CG	1.58	1.14
2:D:713:ALA:HB3	2:G:894:LEU:CA	1.78	1.12
2:D:1148:PHE:CE2	2:G:1148:PHE:CZ	2.35	1.12
1:B:873:TYR:HE1	2:G:699:LEU:CB	1.63	1.11
1:B:788:ILE:HD11	2:G:699:LEU:HB2	1.13	1.11
2:D:1148:PHE:CE2	2:G:1148:PHE:CE2	2.39	1.11
1:B:765:ARG:HH11	2:G:957:GLN:NE2	1.41	1.10
1:B:790:LYS:HB3	2:G:704:SER:HB3	1.25	1.10
2:G:560:LEU:HB3	2:G:562:PHE:CE2	1.87	1.09
1:B:967:SER:CB	2:G:571:ASP:HB2	1.82	1.09
2:D:383:SER:HB2	2:G:984:LEU:CA	1.83	1.09

Continued on next page...

Continued from previous page...

Atom-1	Atom-2	Interatomic distance (Å)	Clash overlap (Å)
2:D:43:PHE:CZ	2:D:45:SER:HB2	1.88	1.08
1:B:895:GLN:HG2	2:G:712:ILE:C	1.72	1.07
2:D:563:GLN:OE1	2:G:43:PHE:HB2	1.54	1.07
1:B:967:SER:CB	2:G:571:ASP:CB	2.32	1.07
1:B:983:ARG:CG	2:G:390:LEU:HD11	1.86	1.06
2:D:383:SER:HB2	2:G:984:LEU:HA	1.11	1.06
2:D:699:LEU:HD22	2:G:873:TYR:CZ	1.90	1.06
1:B:40:ASP:HB3	1:B:41:LYS:NZ	1.65	1.06
2:D:43:PHE:HE1	2:D:283:GLY:HA3	1.19	1.05
1:B:790:LYS:HB3	2:G:704:SER:CB	1.86	1.05
1:B:797:PHE:HE1	2:G:707:TYR:CZ	1.75	1.04
2:D:957:GLN:NE2	2:G:765:ARG:CZ	2.21	1.04
1:B:797:PHE:CE1	2:G:707:TYR:CZ	2.45	1.03
2:D:567:ARG:CZ	2:G:42:VAL:HG11	1.87	1.03
2:D:713:ALA:HB3	2:G:894:LEU:CB	1.89	1.03
2:D:567:ARG:NH2	2:G:42:VAL:HG11	1.71	1.03
1:B:765:ARG:HH12	2:G:957:GLN:HE21	1.05	1.02
1:B:873:TYR:OH	2:G:699:LEU:HD22	1.59	1.02
1:B:866:THR:CG2	2:G:668:ALA:C	2.29	1.02
1:B:565:PHE:CZ	2:D:43:PHE:HA	1.95	1.01
1:B:904:TYR:HD1	2:G:1107:ARG:HH12	1.04	1.01
1:B:565:PHE:CE1	2:D:43:PHE:N	2.29	1.01
1:B:873:TYR:CZ	2:G:699:LEU:HD22	1.95	1.00
1:B:565:PHE:CZ	2:D:42:VAL:C	2.35	1.00
2:D:547:THR:CG2	2:G:978:ASN:OD1	2.10	0.99
1:B:883:THR:HG23	2:G:707:TYR:CD1	1.98	0.99
1:B:983:ARG:NE	2:G:517:LEU:CD1	2.26	0.99
1:B:565:PHE:CE1	2:D:42:VAL:C	2.35	0.99
2:D:957:GLN:NE2	2:G:765:ARG:NE	2.09	0.98
1:B:895:GLN:HG2	2:G:712:ILE:HA	1.43	0.98
1:B:967:SER:CB	2:G:571:ASP:CG	2.33	0.98
1:B:788:ILE:HD11	2:G:699:LEU:CB	1.93	0.97
1:B:866:THR:HG23	2:G:669:GLY:CA	1.94	0.97
2:D:713:ALA:HB3	2:G:894:LEU:HB3	1.40	0.97
1:B:967:SER:HB2	2:G:571:ASP:CG	1.85	0.97
1:B:983:ARG:HD3	2:G:390:LEU:HD13	1.46	0.97
1:B:983:ARG:HB3	2:G:390:LEU:CG	1.94	0.96
1:B:983:ARG:CB	2:G:390:LEU:CD1	2.05	0.96
1:B:982:SER:HB2	2:G:390:LEU:CD2	1.94	0.96
1:B:225:PRO:HG2	2:G:562:PHE:CG	2.00	0.96
1:B:985:ASP:HB2	2:G:383:SER:CB	1.95	0.95

Continued on next page...

Continued from previous page...

Atom-1	Atom-2	Interatomic distance (Å)	Clash overlap (Å)
1:B:873:TYR:CE1	2:G:699:LEU:HD13	2.01	0.95
2:G:559:PHE:CE2	2:G:563:GLN:HB3	2.01	0.95
2:D:713:ALA:CB	2:G:894:LEU:HA	1.96	0.94
1:B:966:LEU:HD22	2:G:570:ALA:HB1	1.49	0.94
2:D:567:ARG:NE	2:G:42:VAL:HG11	1.82	0.94
1:B:565:PHE:CE2	2:D:42:VAL:O	2.21	0.93
1:B:895:GLN:NE2	2:G:1074:ASN:HA	1.84	0.93
1:B:983:ARG:HE	2:G:517:LEU:HD11	1.20	0.93
2:G:560:LEU:O	2:G:563:GLN:HB2	1.68	0.92
1:B:895:GLN:CG	2:G:712:ILE:C	2.28	0.92
1:B:982:SER:OG	2:G:390:LEU:HD21	1.70	0.92
2:D:43:PHE:CE1	2:D:283:GLY:HA3	2.04	0.92
1:B:866:THR:HG23	2:G:669:GLY:HA3	1.51	0.91
2:D:567:ARG:NH2	2:G:44:ARG:HH22	1.50	0.91
1:B:565:PHE:CZ	2:D:42:VAL:O	2.22	0.91
1:B:866:THR:HG22	2:G:668:ALA:C	1.90	0.91
1:B:982:SER:CB	2:G:390:LEU:HD21	1.98	0.91
1:B:983:ARG:HB2	2:G:390:LEU:HD11	1.53	0.91
1:B:984:LEU:O	2:G:386:LYS:HG3	1.69	0.91
2:D:957:GLN:NE2	2:G:765:ARG:NH2	2.19	0.91
1:B:1019:ARG:HH21	2:G:1017:GLU:HG3	1.10	0.90
2:D:713:ALA:CB	2:G:894:LEU:CA	2.48	0.90
2:D:712:ILE:HD11	2:G:896:ILE:HD12	1.52	0.89
1:B:565:PHE:CE1	2:D:42:VAL:CA	2.55	0.89
1:B:967:SER:HB3	2:G:571:ASP:HB2	0.89	0.89
1:B:873:TYR:HE1	2:G:699:LEU:HB3	0.75	0.89
1:B:745:ASP:HB3	2:G:319:ARG:CD	2.02	0.88
1:B:866:THR:CG2	2:G:668:ALA:O	2.22	0.88
1:B:983:ARG:CD	2:G:517:LEU:HD11	2.03	0.88
1:B:42:VAL:HG11	1:B:44:ARG:HH12	1.38	0.88
5:B:1310:NAG:H5	2:G:465:GLU:OE2	1.74	0.88
1:B:983:ARG:HD3	2:G:390:LEU:CD1	2.03	0.87
2:D:1039:ARG:CZ	2:G:1031:GLU:OE2	2.22	0.87
1:B:983:ARG:HE	2:G:517:LEU:CD1	1.84	0.87
1:B:985:ASP:HB2	2:G:383:SER:HG	1.40	0.87
2:D:1039:ARG:HE	2:G:1031:GLU:CD	1.77	0.87
1:B:895:GLN:HE22	2:G:1074:ASN:HA	1.37	0.86
1:B:985:ASP:CB	2:G:383:SER:OG	2.21	0.86
2:D:383:SER:CB	2:G:984:LEU:HA	2.01	0.86
1:B:745:ASP:HB3	2:G:319:ARG:HD3	1.57	0.85
2:D:43:PHE:HZ	2:D:45:SER:HB2	1.39	0.85

Continued on next page...

Continued from previous page...

Atom-1	Atom-2	Interatomic distance (Å)	Clash overlap (Å)
1:B:982:SER:HB2	2:G:390:LEU:HD23	1.56	0.85
2:D:567:ARG:HH21	2:G:42:VAL:HG11	1.42	0.85
1:B:225:PRO:HG2	2:G:562:PHE:CD1	2.12	0.85
2:D:41:LYS:C	2:D:42:VAL:HG23	1.97	0.85
2:D:567:ARG:CZ	2:G:44:ARG:NH2	2.40	0.85
1:B:788:ILE:CD1	2:G:699:LEU:HB2	2.04	0.84
2:G:559:PHE:CZ	2:G:563:GLN:HB3	2.11	0.84
1:B:994:ASP:OD2	2:G:995:ARG:NH2	2.09	0.84
1:B:797:PHE:HD1	2:G:707:TYR:HH	0.84	0.84
1:B:895:GLN:O	2:G:712:ILE:HG13	1.77	0.83
2:D:957:GLN:HE22	2:G:765:ARG:NE	1.73	0.83
2:D:971:GLY:N	2:G:755:GLN:NE2	2.27	0.83
1:B:866:THR:HG23	2:G:669:GLY:N	1.92	0.83
2:D:567:ARG:HH12	2:G:44:ARG:HH21	1.25	0.83
1:B:864:LEU:HD11	2:G:665:PRO:HB3	1.61	0.82
1:B:864:LEU:HD11	2:G:665:PRO:CB	2.09	0.82
2:D:1089:PHE:HD2	2:G:914:ASN:HB3	1.43	0.82
2:D:957:GLN:HE22	2:G:765:ARG:HE	1.24	0.82
2:D:957:GLN:HE21	2:G:765:ARG:NH2	1.77	0.82
1:B:913:GLN:HE22	2:G:1090:PRO:HD2	0.66	0.82
1:B:983:ARG:HH11	2:G:382:VAL:HG22	1.45	0.81
2:D:563:GLN:OE1	2:G:43:PHE:CB	2.28	0.81
2:D:383:SER:N	2:G:983:ARG:O	2.11	0.80
1:B:797:PHE:CD1	2:G:707:TYR:CE2	2.69	0.80
1:B:1019:ARG:HH22	2:G:1017:GLU:HG3	0.97	0.80
1:B:797:PHE:CE1	2:G:707:TYR:HE2	1.94	0.80
1:B:983:ARG:CD	2:G:390:LEU:CD1	2.59	0.80
1:B:985:ASP:N	2:G:383:SER:HB2	1.96	0.80
1:B:884:SER:HB2	2:G:705:VAL:HG11	1.63	0.80
2:G:560:LEU:C	2:G:562:PHE:H	1.84	0.79
1:B:866:THR:HG21	2:G:668:ALA:O	1.83	0.79
1:B:904:TYR:HD1	2:G:1107:ARG:HH11	0.95	0.79
1:B:895:GLN:CD	2:G:713:ALA:N	2.23	0.79
2:D:713:ALA:CB	2:G:894:LEU:HB3	2.11	0.79
1:B:983:ARG:CD	2:G:390:LEU:HD11	2.13	0.79
2:G:559:PHE:CE2	2:G:563:GLN:CB	2.64	0.79
2:D:713:ALA:HB2	2:G:895:GLN:H	1.46	0.79
1:B:866:THR:CG2	2:G:669:GLY:HA3	2.13	0.78
1:B:797:PHE:HD1	2:G:707:TYR:OH	1.66	0.78
1:B:565:PHE:CD1	2:D:42:VAL:HA	2.19	0.78
1:B:897:PRO:HB3	2:G:709:ASN:HA	1.63	0.78

Continued on next page...

Continued from previous page...

Atom-1	Atom-2	Interatomic distance (Å)	Clash overlap (Å)
1:B:967:SER:HB3	2:G:571:ASP:CG	1.99	0.78
2:D:394:ASN:ND2	2:G:200:TYR:OH	2.17	0.78
1:B:1019:ARG:HH22	2:G:1017:GLU:CD	1.88	0.77
2:D:957:GLN:HE21	2:G:765:ARG:CZ	1.91	0.77
2:D:713:ALA:HB3	2:G:894:LEU:C	2.04	0.77
1:B:42:VAL:HG11	1:B:44:ARG:NH1	1.99	0.77
2:D:1089:PHE:CE2	2:G:914:ASN:HB2	2.15	0.77
2:D:41:LYS:N	2:D:42:VAL:HG23	1.98	0.77
2:D:567:ARG:NH1	2:G:44:ARG:HH21	1.80	0.77
2:D:699:LEU:HD22	2:G:873:TYR:OH	1.84	0.77
1:B:913:GLN:HE21	2:G:1089:PHE:HB3	0.60	0.77
1:B:982:SER:CB	2:G:390:LEU:CD2	2.61	0.76
1:B:913:GLN:NE2	2:G:1090:PRO:CD	2.19	0.76
2:G:716:THR:OG1	2:G:1071:GLN:O	2.02	0.76
1:B:40:ASP:OD2	1:B:41:LYS:HG2	1.86	0.76
2:D:1041:ASP:HB3	2:G:1030:SER:HG	0.95	0.76
2:D:1089:PHE:CD2	2:G:914:ASN:CB	2.44	0.75
2:D:1039:ARG:NE	2:G:1031:GLU:OE2	2.19	0.75
1:B:982:SER:HB2	2:G:390:LEU:HD21	1.63	0.75
1:B:873:TYR:CE1	2:G:699:LEU:CB	2.51	0.75
1:B:765:ARG:HH12	2:G:957:GLN:NE2	1.68	0.74
2:D:408:ARG:NH2	2:G:378:LYS:NZ	2.36	0.74
2:D:971:GLY:H	2:G:755:GLN:CD	1.90	0.74
2:D:567:ARG:HE	2:G:42:VAL:HG11	1.53	0.74
1:B:895:GLN:NE2	2:G:713:ALA:HA	2.02	0.74
1:B:41:LYS:HE3	2:G:519:HIS:O	1.88	0.73
1:B:40:ASP:HB2	1:B:41:LYS:CE	2.18	0.73
1:B:913:GLN:NE2	2:G:1089:PHE:CB	2.11	0.73
1:B:920:GLN:OE1	2:G:1130:ILE:HG21	1.88	0.73
2:D:43:PHE:CE2	2:D:45:SER:HB2	2.22	0.73
1:B:797:PHE:HE1	2:G:707:TYR:CD2	2.03	0.73
2:G:1011:GLN:OE1	2:G:1014:ARG:NH1	2.22	0.73
1:B:797:PHE:CD1	2:G:707:TYR:CZ	2.76	0.73
2:G:560:LEU:C	2:G:562:PHE:N	2.35	0.72
2:G:732:THR:OG1	2:G:955:ASN:ND2	2.22	0.72
1:B:200:TYR:HE2	2:G:519:HIS:CE1	2.07	0.72
1:B:895:GLN:O	2:G:712:ILE:HA	1.88	0.72
2:D:43:PHE:O	2:D:43:PHE:CD2	2.43	0.72
2:D:41:LYS:C	2:D:42:VAL:CG2	2.57	0.72
2:D:569:ILE:HD11	2:G:47:VAL:HG11	1.70	0.71
2:D:711:SER:OG	2:G:895:GLN:NE2	2.23	0.71

Continued on next page...

Continued from previous page...

Atom-1	Atom-2	Interatomic distance (Å)	Clash overlap (Å)
1:B:895:GLN:NE2	2:G:713:ALA:CA	2.52	0.71
1:B:873:TYR:CD1	2:G:699:LEU:HD13	2.25	0.71
2:D:408:ARG:HH21	2:G:378:LYS:NZ	1.88	0.71
1:B:797:PHE:CD1	2:G:707:TYR:OH	2.43	0.70
2:D:699:LEU:CD2	2:G:873:TYR:CZ	2.72	0.70
1:B:188:ASN:HB3	1:B:207:HIS:HB3	1.73	0.70
2:D:40:ASP:OD1	2:D:42:VAL:HB	1.90	0.70
2:D:567:ARG:NE	2:G:42:VAL:CG1	2.55	0.70
2:D:567:ARG:NH1	2:G:44:ARG:NH2	2.40	0.70
2:D:713:ALA:CB	2:G:894:LEU:CB	2.67	0.70
2:G:560:LEU:HD13	2:G:561:PRO:HD3	1.74	0.70
1:B:883:THR:HG23	2:G:707:TYR:CG	2.26	0.70
1:B:565:PHE:CD1	2:D:43:PHE:N	2.57	0.70
1:B:565:PHE:CZ	2:D:43:PHE:N	2.60	0.70
1:B:917:TYR:CZ	2:G:1079:PRO:HB2	2.27	0.70
2:G:560:LEU:HD12	2:G:562:PHE:CZ	2.26	0.70
1:B:866:THR:CG2	2:G:669:GLY:N	2.53	0.69
1:B:452:LEU:HD23	1:B:492:LEU:HB3	1.75	0.69
1:B:790:LYS:CB	2:G:704:SER:HB3	2.13	0.69
1:B:565:PHE:CE1	2:D:42:VAL:N	2.61	0.69
2:D:713:ALA:O	2:G:894:LEU:HB3	1.91	0.69
2:D:971:GLY:N	2:G:755:GLN:CD	2.46	0.69
1:B:41:LYS:O	1:B:42:VAL:HG13	1.93	0.69
2:G:725:GLU:OE1	2:G:1064:HIS:NE2	2.22	0.69
1:B:873:TYR:CE1	2:G:699:LEU:CD1	2.75	0.68
2:G:561:PRO:HD2	2:G:562:PHE:CE1	2.28	0.68
1:B:895:GLN:CG	2:G:712:ILE:CA	2.60	0.68
1:B:913:GLN:HE22	2:G:1090:PRO:N	1.88	0.68
2:D:28:TYR:HB2	5:D:1301:NAG:H82	1.76	0.68
1:B:983:ARG:HH11	2:G:382:VAL:CG2	2.06	0.68
2:G:560:LEU:HB2	2:G:563:GLN:HG3	1.76	0.68
1:B:444:LYS:HG2	1:B:448:ASN:HA	1.75	0.68
1:B:565:PHE:CD2	1:B:565:PHE:CE2	2.82	0.68
1:B:873:TYR:OH	2:G:699:LEU:CD2	2.40	0.67
2:D:567:ARG:HE	2:G:42:VAL:CG1	2.05	0.67
2:G:560:LEU:HD12	2:G:562:PHE:HZ	1.58	0.67
1:B:565:PHE:CZ	1:B:565:PHE:CE1	2.82	0.67
2:D:971:GLY:CA	2:G:755:GLN:NE2	2.57	0.67
1:B:883:THR:CG2	2:G:707:TYR:HB2	2.25	0.67
1:B:765:ARG:HH11	2:G:957:GLN:HE22	1.40	0.67
1:B:983:ARG:O	2:G:382:VAL:HA	1.94	0.67

Continued on next page...

Continued from previous page...

Atom-1	Atom-2	Interatomic distance (Å)	Clash overlap (Å)
1:B:141:LEU:H	1:B:243:ALA:HA	1.59	0.67
1:B:233:ILE:HA	5:B:1310:NAG:H83	1.77	0.67
2:D:569:ILE:HD11	2:G:47:VAL:CG1	2.24	0.67
1:B:967:SER:HB2	2:G:571:ASP:OD1	1.95	0.67
2:D:1041:ASP:CG	2:G:1030:SER:OG	2.34	0.67
1:B:895:GLN:H	2:G:713:ALA:HB3	1.60	0.66
1:B:985:ASP:HB2	2:G:383:SER:HB2	1.77	0.66
1:B:983:ARG:CZ	2:G:517:LEU:HD11	2.23	0.66
2:D:40:ASP:CG	2:D:42:VAL:HG21	2.15	0.66
2:G:562:PHE:O	2:G:563:GLN:HG2	1.95	0.66
1:B:200:TYR:OH	2:G:393:THR:HB	1.95	0.66
2:D:40:ASP:CG	2:D:42:VAL:CB	2.64	0.66
1:B:40:ASP:HB2	1:B:41:LYS:CD	2.26	0.66
1:B:967:SER:CB	2:G:571:ASP:OD1	2.44	0.66
1:B:436:TRP:HE1	1:B:509:ARG:HH11	1.44	0.66
1:B:866:THR:CG2	2:G:669:GLY:CA	2.72	0.66
2:D:319:ARG:HH21	2:G:740:MET:HE1	1.60	0.66
1:B:797:PHE:CE1	2:G:707:TYR:CD2	2.78	0.65
2:D:567:ARG:HH22	2:G:44:ARG:HH22	0.66	0.65
2:D:398:ASP:HB2	2:D:512:VAL:HB	1.78	0.64
2:D:713:ALA:CB	2:G:895:GLN:N	2.60	0.64
1:B:40:ASP:CG	1:B:41:LYS:NZ	2.46	0.64
2:D:40:ASP:HB2	2:D:42:VAL:HG21	1.80	0.64
1:B:200:TYR:CE2	2:G:519:HIS:CE1	2.86	0.64
2:G:1116:THR:OG1	2:G:1118:ASP:OD1	2.07	0.64
1:B:233:ILE:HA	5:B:1310:NAG:C8	2.28	0.64
2:D:40:ASP:C	2:D:42:VAL:H	2.00	0.64
1:B:42:VAL:O	1:B:43:PHE:C	2.30	0.64
2:G:560:LEU:O	2:G:562:PHE:N	2.30	0.64
1:B:985:ASP:CB	2:G:383:SER:CB	2.76	0.64
2:D:42:VAL:O	2:D:42:VAL:HG12	1.97	0.64
1:B:913:GLN:CD	2:G:1090:PRO:HD2	2.16	0.63
1:B:317:ASN:O	1:B:625:HIS:ND1	2.30	0.63
1:B:1089:PHE:HB3	2:D:913:GLN:HE21	1.63	0.63
1:B:920:GLN:OE1	2:G:1130:ILE:CG2	2.46	0.63
1:B:328:ARG:HH21	1:B:580:GLN:HB2	1.64	0.62
1:B:334:ASN:HB3	1:B:362:VAL:HG22	1.81	0.62
2:D:408:ARG:HH22	2:G:378:LYS:CE	2.11	0.62
2:D:567:ARG:HH21	2:G:42:VAL:CG1	2.12	0.62
1:B:39:PRO:O	1:B:40:ASP:HB3	1.97	0.62
2:D:236:THR:HG23	2:D:237:ARG:HG2	1.82	0.62

Continued on next page...

Continued from previous page...

Atom-1	Atom-2	Interatomic distance (Å)	Clash overlap (Å)
2:D:1003:SER:OG	2:G:759:PHE:HE1	1.81	0.62
1:B:41:LYS:HA	2:G:563:GLN:NE2	2.15	0.62
2:D:408:ARG:NH2	2:G:378:LYS:CE	2.63	0.62
1:B:518:LEU:HD12	1:B:520:ALA:H	1.64	0.62
2:D:712:ILE:HA	2:G:895:GLN:O	2.00	0.62
2:D:1093:GLY:HA2	2:D:1107:ARG:HG3	1.80	0.62
1:B:565:PHE:CZ	2:D:43:PHE:CA	2.80	0.62
2:G:437:ASN:OD1	2:G:439:ASN:ND2	2.33	0.62
2:D:713:ALA:HB2	2:G:895:GLN:N	2.15	0.61
1:B:895:GLN:H	2:G:713:ALA:CB	2.13	0.61
1:B:983:ARG:HB3	2:G:390:LEU:HD11	0.61	0.61
2:D:567:ARG:HH12	2:G:44:ARG:NH2	1.96	0.61
1:B:983:ARG:HB2	2:G:390:LEU:CD1	2.18	0.61
2:G:125:ASN:ND2	2:G:172:SER:O	2.34	0.61
2:D:589:PRO:HG2	2:G:855:PHE:CG	2.35	0.61
2:D:41:LYS:CA	2:D:42:VAL:HG23	2.31	0.61
1:B:121:ASN:ND2	1:B:125:ASN:O	2.34	0.61
1:B:864:LEU:HD11	2:G:665:PRO:HB2	1.83	0.61
1:B:445:VAL:HG22	3:C:52:SER:HA	1.83	0.60
1:B:598:ILE:HB	1:B:609:ALA:HB3	1.83	0.60
1:B:780:GLU:O	1:B:784:GLN:NE2	2.34	0.60
1:B:1129:VAL:HB	1:B:1132:ILE:HD11	1.83	0.60
2:D:40:ASP:OD2	2:D:42:VAL:HG11	2.01	0.60
2:D:699:LEU:CD2	2:G:873:TYR:OH	2.50	0.60
2:D:1003:SER:OG	2:G:759:PHE:CE1	2.54	0.60
2:G:409:GLN:OE1	2:G:417:LYS:N	2.34	0.60
2:D:54:LEU:HB3	2:D:270:LEU:HB3	1.82	0.60
2:D:383:SER:HB2	2:G:984:LEU:C	2.20	0.60
2:G:323:THR:OG1	2:G:324:GLU:OE1	2.11	0.60
1:B:864:LEU:CD1	2:G:665:PRO:HB2	2.32	0.60
2:D:713:ALA:CB	2:G:895:GLN:H	2.15	0.60
2:D:319:ARG:HH21	2:G:740:MET:CE	2.15	0.59
2:D:442:ASP:O	2:D:448:ASN:ND2	2.35	0.59
2:G:561:PRO:C	2:G:562:PHE:CD1	2.75	0.59
2:D:572:THR:HG21	2:G:855:PHE:HE2	1.67	0.59
1:B:883:THR:HG21	2:G:707:TYR:HB2	1.83	0.59
2:D:40:ASP:CG	2:D:42:VAL:HB	2.23	0.59
4:F:169:GLN:HE21	4:F:173:LYS:HB2	1.68	0.59
1:B:812:PRO:HB2	1:B:815:ARG:HE	1.68	0.58
2:D:711:SER:O	2:G:897:PRO:HD3	2.02	0.58
4:F:22:CYS:HB3	4:F:73:ALA:HB3	1.84	0.58

Continued on next page...

Continued from previous page...

Atom-1	Atom-2	Interatomic distance (Å)	Clash overlap (Å)
2:D:40:ASP:CG	2:D:42:VAL:CG2	2.71	0.58
2:D:40:ASP:CB	2:D:42:VAL:HG21	2.34	0.58
3:A:205:ILE:HG12	3:A:220:ARG:HG2	1.85	0.58
4:E:22:CYS:HB3	4:E:73:ALA:HB3	1.84	0.58
3:C:205:ILE:HG12	3:C:220:ARG:HG2	1.85	0.58
1:B:106:PHE:HB2	1:B:117:LEU:HB3	1.85	0.58
1:B:346:ARG:NH1	1:B:347:PHE:O	2.37	0.58
2:D:712:ILE:HG13	2:G:895:GLN:O	2.04	0.58
2:D:726:ILE:HG12	2:D:1061:VAL:HG22	1.85	0.58
4:E:169:GLN:HE21	4:E:173:LYS:HB2	1.68	0.58
1:B:1148:PHE:CD1	2:G:1149:LYS:HD2	2.38	0.58
2:D:339:GLY:HA2	2:D:342:PHE:HB2	1.85	0.58
2:D:43:PHE:CZ	2:D:45:SER:CB	2.77	0.57
2:D:500:THR:HG23	3:A:101:ASP:HB2	1.85	0.57
2:D:567:ARG:NH2	2:G:42:VAL:CG1	2.59	0.57
2:D:971:GLY:N	2:G:755:GLN:HE22	2.01	0.57
1:B:474:GLN:NE2	1:B:478:THR:O	2.36	0.57
1:B:39:PRO:O	1:B:40:ASP:CB	2.52	0.57
1:B:873:TYR:CE1	2:G:699:LEU:CG	2.87	0.57
2:D:383:SER:OG	2:G:985:ASP:CG	2.43	0.57
2:D:794:ILE:HG22	2:D:796:ASP:H	1.68	0.57
2:D:612:TYR:HB2	2:D:649:CYS:HB3	1.86	0.57
1:B:318:PHE:HZ	1:B:615:VAL:HG21	1.69	0.57
1:B:42:VAL:CG1	1:B:44:ARG:NH1	2.66	0.57
1:B:225:PRO:HG2	2:G:562:PHE:CD2	2.37	0.57
1:B:758:SER:H	2:G:965:GLN:HE22	1.53	0.57
1:B:815:ARG:NH1	1:B:868:GLU:OE2	2.37	0.57
2:G:1048:HIS:NE2	2:G:1050:MET:O	2.38	0.57
2:D:408:ARG:HH21	2:G:378:LYS:HZ1	1.51	0.57
2:D:457:ARG:NH1	2:D:459:SER:OG	2.37	0.57
1:B:917:TYR:CE1	2:G:1079:PRO:HB2	2.39	0.56
2:D:957:GLN:NE2	2:G:765:ARG:HH21	2.01	0.56
1:B:447:GLY:HA2	1:B:498:GLN:HE21	1.70	0.56
1:B:1031:GLU:OE2	2:G:1039:ARG:NE	2.33	0.56
1:B:1047:TYR:HB2	1:B:1067:TYR:HB3	1.86	0.56
2:D:676:THR:HA	2:D:690:GLN:HG2	1.86	0.56
2:D:40:ASP:OD2	2:D:42:VAL:HG21	2.04	0.56
2:D:452:LEU:HD13	2:D:494:SER:HB2	1.86	0.56
1:B:973:ILE:HD11	1:B:984:LEU:HD21	1.87	0.56
4:E:134:LEU:HB2	4:E:180:LEU:HB3	1.88	0.56
2:D:408:ARG:HH22	2:G:378:LYS:HE2	1.69	0.56

Continued on next page...

Continued from previous page...

Atom-1	Atom-2	Interatomic distance (Å)	Clash overlap (Å)
1:B:873:TYR:CE1	2:G:699:LEU:HD22	2.41	0.56
3:A:22:CYS:HB3	3:A:79:LEU:HD21	1.88	0.56
1:B:895:GLN:HE22	2:G:713:ALA:HA	1.69	0.56
1:B:979:ASP:OD1	2:G:546:LEU:HD23	2.05	0.56
1:B:913:GLN:CD	2:G:1089:PHE:HB3	2.18	0.56
2:D:1148:PHE:CZ	2:G:1148:PHE:CE2	2.93	0.56
1:B:565:PHE:CD1	1:B:565:PHE:CE1	2.94	0.55
1:B:895:GLN:HG2	2:G:713:ALA:N	2.21	0.55
2:D:40:ASP:OD1	2:D:40:ASP:N	2.35	0.55
1:B:909:ILE:HG21	1:B:1047:TYR:HB3	1.88	0.55
2:D:53:ASP:OD2	2:D:195:LYS:NZ	2.39	0.55
2:D:776:LYS:NZ	2:D:780:GLU:OE2	2.35	0.55
2:D:957:GLN:NE2	2:G:765:ARG:HE	1.88	0.55
2:D:332:ILE:HG22	2:D:334:ASN:H	1.71	0.55
1:B:449:TYR:HD1	1:B:494:SER:HB2	1.71	0.55
1:B:895:GLN:CG	2:G:713:ALA:N	2.65	0.55
1:B:979:ASP:OD1	2:G:546:LEU:CD2	2.55	0.55
1:B:902:MET:O	1:B:906:PHE:N	2.38	0.55
4:E:37:TRP:HB2	4:E:50:ILE:HB	1.89	0.54
4:F:134:LEU:HB2	4:F:180:LEU:HB3	1.88	0.54
2:D:659:SER:HB3	2:D:698:SER:HB3	1.88	0.54
3:C:22:CYS:HB3	3:C:79:LEU:HD21	1.88	0.54
1:B:983:ARG:O	2:G:382:VAL:HG13	2.08	0.54
2:D:901:GLN:HE21	2:D:905:ARG:HH21	1.55	0.54
1:B:983:ARG:CD	2:G:390:LEU:HD13	2.27	0.54
1:B:565:PHE:CZ	1:B:565:PHE:CE2	2.95	0.54
4:F:4:LEU:HB2	4:F:100:GLY:HA2	1.88	0.54
1:B:200:TYR:OH	2:G:393:THR:CB	2.55	0.54
2:D:711:SER:OG	2:G:895:GLN:CD	2.46	0.54
4:E:4:LEU:HB2	4:E:100:GLY:HA2	1.88	0.54
2:G:34:ARG:NH2	2:G:217:PRO:O	2.39	0.54
2:G:560:LEU:HB3	2:G:562:PHE:CZ	2.38	0.54
1:B:131:CYS:HA	1:B:166:CYS:HA	1.89	0.54
1:B:358:ILE:HG22	1:B:524:VAL:HG21	1.89	0.54
1:B:121:ASN:HD21	1:B:174:PRO:HB3	1.73	0.54
1:B:880:GLY:O	1:B:885:GLY:N	2.40	0.54
4:F:37:TRP:HB2	4:F:50:ILE:HB	1.89	0.54
1:B:40:ASP:O	2:G:563:GLN:NE2	2.41	0.53
1:B:418:ILE:HA	1:B:422:ASN:HB2	1.90	0.53
1:B:865:LEU:HD23	2:G:697:MET:SD	2.48	0.53
2:D:43:PHE:CE1	2:D:44:ARG:O	2.61	0.53

Continued on next page...

Continued from previous page...

Atom-1	Atom-2	Interatomic distance (Å)	Clash overlap (Å)
3:A:181:GLN:HE21	3:A:185:LEU:HB2	1.73	0.53
3:C:34:ILE:HG21	3:C:79:LEU:HD22	1.90	0.53
4:F:5:THR:HB	4:F:23:THR:HB	1.90	0.53
2:G:560:LEU:CB	2:G:562:PHE:CE2	2.76	0.53
2:G:560:LEU:CD1	2:G:561:PRO:HD3	2.37	0.53
1:B:745:ASP:CB	2:G:319:ARG:CD	2.82	0.53
1:B:984:LEU:O	2:G:386:LYS:CG	2.51	0.53
1:B:985:ASP:CB	2:G:383:SER:HB2	2.38	0.53
2:D:713:ALA:HB1	2:G:894:LEU:HA	1.90	0.53
1:B:1128:VAL:HG23	1:B:1129:VAL:HG23	1.90	0.53
2:D:1028:LYS:NZ	2:D:1042:PHE:O	2.39	0.53
3:C:181:GLN:HE21	3:C:185:LEU:HB2	1.73	0.53
1:B:1019:ARG:NH2	2:G:1017:GLU:OE1	2.41	0.53
1:B:790:LYS:N	2:G:703:ASN:O	2.42	0.53
2:D:326:ILE:HD11	2:D:534:VAL:HG12	1.89	0.53
1:B:913:GLN:NE2	2:G:1090:PRO:N	2.52	0.53
4:F:63:ARG:NH1	4:F:84:ASP:OD2	2.35	0.53
1:B:86:PHE:HZ	1:B:195:LYS:HA	1.74	0.53
3:A:34:ILE:HG21	3:A:79:LEU:HD22	1.90	0.52
1:B:140:PHE:HB2	1:B:244:LEU:H	1.74	0.52
1:B:984:LEU:C	2:G:383:SER:HB2	2.29	0.52
2:D:81:ASN:O	2:D:239:GLN:NE2	2.42	0.52
2:D:97:LYS:HG2	2:D:186:PHE:HD1	1.74	0.52
2:D:1098:ASN:OD1	2:D:1110:TYR:OH	2.27	0.52
2:D:40:ASP:C	2:D:42:VAL:N	2.62	0.52
4:E:63:ARG:NH1	4:E:84:ASP:OD2	2.35	0.52
4:E:5:THR:HB	4:E:23:THR:HB	1.90	0.52
4:F:51:TYR:HD1	4:F:52:ASP:HB2	1.75	0.52
2:D:357:ARG:NH2	2:G:230:PRO:C	2.59	0.52
1:B:869:MET:HB2	2:G:699:LEU:HD11	1.92	0.52
3:A:108:TRP:O	4:E:97:TRP:NE1	2.42	0.52
4:E:10:VAL:HG21	4:E:20:ILE:HG12	1.92	0.52
1:B:432:CYS:HB2	1:B:513:LEU:HD12	1.92	0.52
2:G:560:LEU:O	2:G:563:GLN:CB	2.52	0.52
2:G:1077:THR:OG1	2:G:1078:ALA:N	2.42	0.52
1:B:985:ASP:CA	2:G:383:SER:HB2	2.39	0.52
2:D:408:ARG:NH2	2:G:378:LYS:HZ3	2.07	0.52
3:A:71:SER:OG	3:A:80:SER:OG	2.28	0.52
1:B:466:ARG:HG2	1:B:468:ILE:HG12	1.91	0.51
2:D:104:TRP:HB2	2:D:119:ILE:HD13	1.91	0.51
2:D:567:ARG:NH2	2:G:44:ARG:CZ	2.68	0.51

Continued on next page...

Continued from previous page...

Atom-1	Atom-2	Interatomic distance (Å)	Clash overlap (Å)
2:D:712:ILE:CD1	2:G:896:ILE:HD12	2.33	0.51
2:D:971:GLY:N	2:G:755:GLN:OE1	2.42	0.51
1:B:438:SER:HB3	1:B:509:ARG:HB2	1.92	0.51
2:D:970:PHE:CE1	2:G:759:PHE:CZ	2.99	0.51
2:G:388:ASN:O	2:G:528:LYS:NZ	2.36	0.51
2:G:903:ALA:HB1	2:G:913:GLN:HB2	1.93	0.51
1:B:200:TYR:HE2	2:G:519:HIS:NE2	2.08	0.51
1:B:564:GLN:H	1:B:565:PHE:HD1	1.57	0.51
1:B:708:SER:OG	1:B:709:ASN:N	2.44	0.51
4:E:51:TYR:HD1	4:E:52:ASP:HB2	1.75	0.51
2:G:661:GLU:OE2	2:G:661:GLU:N	2.42	0.51
4:F:10:VAL:HG21	4:F:20:ILE:HG12	1.92	0.51
2:D:712:ILE:HD12	2:G:896:ILE:HG13	1.92	0.51
3:C:29:PHE:O	3:C:72:ARG:NH2	2.43	0.51
1:B:596:SER:OG	1:B:597:VAL:N	2.43	0.51
1:B:883:THR:CG2	2:G:707:TYR:CD1	2.84	0.51
2:D:712:ILE:HD11	2:G:896:ILE:CD1	2.33	0.51
1:B:566:GLY:HA3	1:B:575:ALA:HB3	1.92	0.51
1:B:995:ARG:NH1	2:D:994:ASP:OD2	2.39	0.51
5:B:1310:NAG:O4	2:G:465:GLU:HG2	2.10	0.51
1:B:39:PRO:HB2	1:B:40:ASP:OD1	2.10	0.50
1:B:280:ASN:OD1	1:B:284:THR:N	2.41	0.50
1:B:917:TYR:CZ	2:G:1079:PRO:CB	2.95	0.50
1:B:1031:GLU:HB3	1:B:1037:SER:HB2	1.94	0.50
2:D:453:TYR:HE2	2:D:455:LEU:HD12	1.77	0.50
2:D:598:ILE:HB	2:D:609:ALA:HB3	1.93	0.50
2:D:763:LEU:HD22	2:D:1008:VAL:HG21	1.93	0.50
4:E:143:PRO:O	4:E:199:HIS:NE2	2.44	0.50
1:B:897:PRO:CB	2:G:709:ASN:HA	2.37	0.50
2:D:43:PHE:CD1	2:D:44:ARG:O	2.64	0.50
2:D:438:SER:HB3	2:D:442:ASP:H	1.76	0.50
4:F:143:PRO:O	4:F:199:HIS:NE2	2.44	0.50
2:G:391:CYS:HA	2:G:525:CYS:HB3	1.91	0.50
3:C:108:TRP:O	4:F:97:TRP:NE1	2.42	0.50
2:D:40:ASP:HB2	2:D:42:VAL:CG2	2.40	0.50
1:B:352:ALA:HA	1:B:466:ARG:HE	1.77	0.50
2:D:34:ARG:HE	2:D:216:LEU:HD12	1.77	0.50
4:F:138:ILE:HB	4:F:176:ALA:HB3	1.93	0.50
2:G:657:ASN:N	2:G:657:ASN:OD1	2.43	0.50
1:B:92:PHE:N	1:B:192:PHE:O	2.45	0.49
4:F:120:PHE:HB2	4:F:135:VAL:HB	1.93	0.49

Continued on next page...

Continued from previous page...

Atom-1	Atom-2	Interatomic distance (Å)	Clash overlap (Å)
2:G:559:PHE:CE2	2:G:563:GLN:HB2	2.44	0.49
1:B:41:LYS:CA	2:G:563:GLN:NE2	2.75	0.49
1:B:710:ASN:OD1	1:B:710:ASN:N	2.43	0.49
1:B:864:LEU:CD1	2:G:665:PRO:CB	2.86	0.49
2:D:957:GLN:HE22	2:G:765:ARG:CZ	2.10	0.49
1:B:40:ASP:OD2	1:B:41:LYS:N	2.42	0.49
1:B:957:GLN:HA	1:B:960:ASN:HB2	1.94	0.49
1:B:971:GLY:N	2:D:755:GLN:OE1	2.45	0.49
1:B:1040:VAL:O	2:D:1030:SER:OG	2.29	0.49
4:E:120:PHE:HB2	4:E:135:VAL:HB	1.93	0.49
2:D:91:TYR:HA	2:D:193:VAL:HG22	1.94	0.49
2:D:457:ARG:NH1	2:D:460:ASN:O	2.46	0.49
1:B:39:PRO:C	1:B:40:ASP:OD1	2.51	0.49
1:B:91:TYR:HB3	1:B:268:GLY:HA3	1.94	0.49
3:C:131:VAL:O	3:C:219:LYS:NZ	2.39	0.49
1:B:435:ALA:HB2	1:B:510:VAL:HG23	1.94	0.49
2:D:454:ARG:HG3	2:D:491:PRO:HB2	1.95	0.49
4:E:122:PRO:HB3	4:E:133:THR:H	1.78	0.49
4:F:106:THR:HG21	4:F:143:PRO:HB3	1.95	0.49
1:B:790:LYS:HB2	2:G:703:ASN:O	2.12	0.49
2:D:43:PHE:CD2	2:D:43:PHE:C	2.69	0.49
1:B:620:VAL:HG23	1:B:621:PRO:HD3	1.94	0.49
1:B:1100:THR:OG1	5:B:1302:NAG:O7	2.31	0.49
2:D:906:PHE:HB3	2:D:911:VAL:HB	1.95	0.49
4:E:138:ILE:HB	4:E:176:ALA:HB3	1.94	0.49
2:D:970:PHE:CA	2:G:755:GLN:OE1	2.61	0.48
2:G:214:ARG:HG2	2:G:215:ASP:N	2.28	0.48
1:B:787:GLN:HA	2:G:700:GLY:HA3	1.94	0.48
1:B:974:SER:OG	1:B:975:SER:N	2.47	0.48
1:B:225:PRO:CG	2:G:562:PHE:CG	2.87	0.48
1:B:374:PHE:HA	1:B:436:TRP:HB3	1.96	0.48
1:B:560:LEU:HB2	1:B:563:GLN:HE22	1.78	0.48
1:B:895:GLN:O	2:G:712:ILE:CG1	2.56	0.48
1:B:1037:SER:OG	1:B:1038:LYS:N	2.46	0.48
2:D:1089:PHE:CZ	2:G:914:ASN:HA	2.36	0.48
2:G:969:ASN:OD1	2:G:975:SER:N	2.46	0.48
1:B:39:PRO:C	1:B:40:ASP:CG	2.62	0.48
1:B:567:ARG:HD3	1:B:571:ASP:HA	1.96	0.48
1:B:895:GLN:C	2:G:712:ILE:HA	2.33	0.48
1:B:1019:ARG:NH1	2:G:1017:GLU:OE1	2.47	0.48
2:D:383:SER:HB2	2:G:985:ASP:N	2.29	0.48

Continued on next page...

Continued from previous page...

Atom-1	Atom-2	Interatomic distance (Å)	Clash overlap (Å)
1:B:128:ILE:HD13	1:B:170:TYR:HD2	1.78	0.48
1:B:913:GLN:NE2	2:G:1089:PHE:CA	2.76	0.48
2:D:661:GLU:O	2:D:695:TYR:OH	2.32	0.48
1:B:1018:ILE:O	1:B:1022:ALA:N	2.46	0.47
1:B:1141:LEU:O	1:B:1145:LEU:N	2.45	0.47
2:D:715:PRO:HG3	2:G:894:LEU:HD11	1.96	0.47
2:D:901:GLN:NE2	2:D:905:ARG:HH21	2.12	0.47
2:D:1090:PRO:HA	2:D:1120:THR:HG22	1.95	0.47
4:E:106:THR:HG21	4:E:143:PRO:HB3	1.95	0.47
2:G:214:ARG:HG2	2:G:215:ASP:H	1.79	0.47
1:B:203:ILE:HB	1:B:227:VAL:H	1.79	0.47
5:G:1310:NAG:O7	5:G:1310:NAG:O3	2.25	0.47
1:B:389:ASP:HA	1:B:528:LYS:HE3	1.96	0.47
2:D:957:GLN:HE22	2:G:765:ARG:NH2	2.05	0.47
1:B:574:ASP:HA	1:B:587:ILE:HB	1.97	0.47
1:B:574:ASP:O	1:B:587:ILE:N	2.43	0.47
2:D:1086:LYS:HD2	2:D:1122:VAL:HG11	1.96	0.47
1:B:200:TYR:CE2	2:G:519:HIS:NE2	2.82	0.47
1:B:379:CYS:HA	1:B:432:CYS:HA	1.96	0.47
1:B:90:VAL:HG13	1:B:267:VAL:HG13	1.96	0.47
2:D:43:PHE:O	2:D:43:PHE:HD2	1.91	0.47
4:F:122:PRO:HB3	4:F:133:THR:H	1.78	0.47
2:D:90:VAL:HG21	2:D:267:VAL:HG23	1.97	0.47
3:A:2:VAL:HG12	3:A:27:PHE:HB3	1.97	0.47
3:A:72:ARG:HA	3:A:79:LEU:HA	1.97	0.47
4:F:6:GLN:NE2	4:F:90:CYS:SG	2.79	0.47
2:G:776:LYS:NZ	2:G:780:GLU:OE2	2.48	0.47
1:B:436:TRP:O	1:B:509:ARG:N	2.48	0.47
3:A:29:PHE:O	3:A:72:ARG:NH2	2.43	0.47
1:B:201:PHE:O	1:B:229:LEU:N	2.42	0.47
2:G:353:TRP:O	2:G:466:ARG:NE	2.48	0.47
1:B:204:TYR:HB3	1:B:223:LEU:HB3	1.97	0.47
1:B:951:VAL:O	1:B:955:ASN:ND2	2.48	0.47
2:D:738:CYS:HB2	2:D:760:CYS:HB2	1.58	0.47
1:B:895:GLN:HG2	2:G:712:ILE:N	2.24	0.46
2:D:51:THR:OG1	2:D:52:GLN:N	2.48	0.46
2:D:741:TYR:OH	2:D:962:LEU:O	2.24	0.46
3:C:69:THR:O	3:C:82:GLN:N	2.43	0.46
3:C:72:ARG:HA	3:C:79:LEU:HA	1.97	0.46
2:D:382:VAL:HA	2:G:983:ARG:O	2.14	0.46
3:A:91:THR:HG23	3:A:120:THR:HA	1.96	0.46

Continued on next page...

Continued from previous page...

Atom-1	Atom-2	Interatomic distance (Å)	Clash overlap (Å)
1:B:917:TYR:CE1	2:G:1079:PRO:CB	2.97	0.46
3:A:131:VAL:O	3:A:219:LYS:NZ	2.39	0.46
3:C:35:HIS:N	3:C:97:ALA:O	2.47	0.46
3:C:91:THR:HG23	3:C:120:THR:HA	1.96	0.46
2:G:234:ASN:OD1	2:G:235:ILE:N	2.49	0.46
1:B:895:GLN:N	2:G:713:ALA:HB3	2.29	0.46
1:B:945:LEU:HD13	1:B:945:LEU:HA	1.83	0.46
1:B:618:THR:OG1	1:B:619:GLU:OE1	2.34	0.46
1:B:92:PHE:HB3	1:B:192:PHE:HB2	1.97	0.46
1:B:961:THR:HA	1:B:964:LYS:HE2	1.98	0.46
3:C:71:SER:OG	3:C:80:SER:OG	2.28	0.46
1:B:978:ASN:HB3	2:G:547:THR:HG22	1.98	0.46
2:G:490:PHE:O	2:G:493:GLN:NE2	2.49	0.46
2:G:560:LEU:HB3	2:G:562:PHE:CD2	2.40	0.46
2:G:560:LEU:HA	2:G:561:PRO:HD3	1.77	0.46
1:B:790:LYS:CB	2:G:703:ASN:O	2.64	0.46
2:D:712:ILE:CA	2:G:895:GLN:HG3	2.46	0.46
3:C:63:SER:O	3:C:67:ARG:NH2	2.48	0.46
2:G:1125:ASN:OD1	2:G:1126:CYS:N	2.45	0.46
1:B:41:LYS:CA	2:G:563:GLN:HE22	2.29	0.46
1:B:476:GLY:H	1:B:487:ASN:HB2	1.81	0.46
2:D:1105:THR:HB	2:D:1112:PRO:HA	1.97	0.46
4:E:56:ARG:NH1	4:E:60:VAL:O	2.48	0.46
2:G:28:TYR:HB2	5:G:1301:NAG:H83	1.97	0.46
1:B:234:ASN:ND2	5:B:1310:NAG:C6	2.79	0.45
1:B:1143:PRO:HA	1:B:1146:ASP:HB2	1.98	0.45
2:D:431:GLY:HA2	2:D:515:PHE:HD2	1.81	0.45
3:A:63:SER:O	3:A:67:ARG:NH2	2.49	0.45
4:F:56:ARG:NH1	4:F:60:VAL:O	2.48	0.45
2:D:31:SER:HB3	2:D:62:VAL:HB	1.98	0.45
2:D:56:LEU:HD12	2:D:57:PRO:HD2	1.97	0.45
2:D:417:LYS:NZ	2:G:369:TYR:CE1	2.80	0.45
2:D:713:ALA:O	2:G:894:LEU:HD13	2.16	0.45
2:D:937:SER:O	2:D:941:THR:OG1	2.31	0.45
3:A:51:VAL:HG13	3:A:72:ARG:HD2	1.98	0.45
3:C:51:VAL:HG13	3:C:72:ARG:HD2	1.99	0.45
1:B:324:GLU:H	1:B:539:VAL:HG23	1.82	0.45
1:B:456:PHE:H	1:B:491:PRO:HB3	1.81	0.45
1:B:928:ASN:O	1:B:932:GLY:N	2.48	0.45
2:D:332:ILE:HB	2:D:362:VAL:HG23	1.99	0.45
3:C:2:VAL:HG12	3:C:27:PHE:HB3	1.97	0.45

Continued on next page...

Continued from previous page...

Atom-1	Atom-2	Interatomic distance (Å)	Clash overlap (Å)
2:D:746:SER:OG	2:D:748:GLU:OE1	2.34	0.45
2:D:1039:ARG:HH21	2:G:1031:GLU:CD	2.03	0.45
1:B:745:ASP:HB3	2:G:319:ARG:NE	2.29	0.45
1:B:1116:THR:HG22	1:B:1140:PRO:HD3	1.99	0.45
2:D:970:PHE:HD1	2:G:756:TYR:CD2	2.34	0.45
2:G:562:PHE:N	2:G:562:PHE:CD2	2.75	0.45
1:B:566:GLY:O	1:B:574:ASP:N	2.41	0.45
1:B:1019:ARG:NH2	2:G:1017:GLU:CD	2.58	0.45
2:D:767:LEU:HD23	2:D:770:ILE:HD12	1.97	0.45
2:D:970:PHE:HA	2:G:755:GLN:OE1	2.16	0.45
4:E:11:SER:HB3	4:E:108:LEU:HD11	1.99	0.45
1:B:41:LYS:O	1:B:42:VAL:CG1	2.62	0.45
1:B:105:ILE:HG12	1:B:118:LEU:HD12	1.98	0.45
1:B:565:PHE:CE2	2:D:42:VAL:C	2.83	0.45
1:B:897:PRO:HG2	1:B:900:MET:HG2	1.99	0.45
1:B:1143:PRO:O	1:B:1147:SER:N	2.50	0.45
2:D:40:ASP:CB	2:D:42:VAL:CG2	2.94	0.45
4:F:11:SER:HB3	4:F:108:LEU:HD11	1.99	0.45
1:B:571:ASP:OD2	2:D:967:SER:OG	2.33	0.45
1:B:865:LEU:CD2	2:G:697:MET:SD	3.05	0.45
1:B:914:ASN:HD22	2:G:1123:SER:CB	2.30	0.45
1:B:119:ILE:HG12	1:B:128:ILE:HG13	1.99	0.45
1:B:983:ARG:NH1	2:G:382:VAL:CG2	2.79	0.45
2:D:332:ILE:HG21	2:D:361:CYS:HA	1.99	0.45
1:B:691:SER:OG	1:B:692:ILE:N	2.50	0.45
2:D:1039:ARG:NE	2:G:1031:GLU:CD	2.55	0.45
2:G:454:ARG:NH2	2:G:467:ASP:O	2.49	0.45
1:B:41:LYS:O	1:B:42:VAL:CB	2.63	0.44
1:B:985:ASP:CA	2:G:383:SER:CB	2.95	0.44
1:B:225:PRO:HG2	2:G:562:PHE:CE1	2.51	0.44
1:B:902:MET:HA	1:B:905:ARG:HB2	1.98	0.44
1:B:950:ASP:HA	1:B:953:ASN:HB2	2.00	0.44
2:D:388:ASN:HB3	2:D:528:LYS:HZ2	1.82	0.44
1:B:395:VAL:HG21	1:B:524:VAL:HB	2.00	0.44
2:D:44:ARG:HB2	2:D:279:TYR:CD2	2.53	0.44
2:D:328:ARG:HH22	2:D:580:GLN:HE21	1.64	0.44
2:D:550:GLY:HA2	2:D:590:CYS:H	1.81	0.44
1:B:883:THR:HG23	2:G:707:TYR:HB2	2.00	0.44
2:D:497:PHE:CG	2:D:507:PRO:HD3	2.53	0.44
3:C:164:TRP:HB3	3:C:169:LEU:HD23	1.99	0.44
1:B:357:ARG:HH22	1:B:394:ASN:HA	1.83	0.44

Continued on next page...

Continued from previous page...

Atom-1	Atom-2	Interatomic distance (Å)	Clash overlap (Å)
1:B:666:ILE:HD12	1:B:670:ILE:HG22	1.99	0.44
1:B:712:ILE:HD13	2:D:896:ILE:HA	2.00	0.44
3:A:164:TRP:HB3	3:A:169:LEU:HD23	1.99	0.44
4:F:6:GLN:HE22	4:F:90:CYS:H	1.65	0.44
2:D:589:PRO:HG2	2:G:855:PHE:CD2	2.53	0.44
2:D:713:ALA:HB3	2:G:895:GLN:N	2.24	0.44
2:D:1083:HIS:CE1	2:D:1137:VAL:H	2.35	0.44
2:G:503:VAL:HG22	2:G:508:TYR:OH	2.17	0.44
1:B:225:PRO:CG	2:G:562:PHE:CD2	3.00	0.44
1:B:790:LYS:HB3	2:G:704:SER:HB2	1.87	0.44
2:D:310:LYS:HG3	2:D:600:PRO:HA	2.00	0.44
1:B:627:ASP:N	1:B:627:ASP:OD1	2.49	0.44
1:B:909:ILE:HG13	1:B:911:VAL:HG23	2.00	0.44
2:D:970:PHE:HE1	2:G:759:PHE:CZ	2.36	0.44
3:A:69:THR:O	3:A:82:GLN:N	2.43	0.44
1:B:418:ILE:HD13	1:B:422:ASN:HD22	1.83	0.43
1:B:866:THR:HG22	2:G:668:ALA:CA	2.48	0.43
1:B:969:ASN:OD1	1:B:975:SER:OG	2.28	0.43
2:D:1082:CYS:HB2	2:D:1126:CYS:HB2	1.90	0.43
4:F:39:GLN:O	4:F:47:LYS:N	2.51	0.43
1:B:708:SER:OG	1:B:710:ASN:OD1	2.31	0.43
2:D:344:ALA:HB3	2:D:347:PHE:HE1	1.84	0.43
1:B:605:SER:OG	1:B:606:ASN:N	2.50	0.43
1:B:880:GLY:O	1:B:884:SER:N	2.51	0.43
2:D:909:ILE:HG21	2:D:1047:TYR:HB3	2.00	0.43
1:B:352:ALA:HB1	1:B:466:ARG:HH21	1.83	0.43
1:B:358:ILE:HB	1:B:395:VAL:HB	1.98	0.43
2:D:699:LEU:CD2	2:G:873:TYR:CE2	3.01	0.43
2:D:874:THR:O	2:D:878:LEU:N	2.50	0.43
2:D:1039:ARG:NE	2:G:1031:GLU:OE1	2.50	0.43
4:E:6:GLN:HE22	4:E:90:CYS:H	1.65	0.43
1:B:62:VAL:HG21	1:B:266:TYR:HB3	1.99	0.43
1:B:172:SER:OG	1:B:173:GLN:N	2.50	0.43
1:B:233:ILE:CA	5:B:1310:NAG:H83	2.45	0.43
2:D:815:ARG:HD2	2:D:823:PHE:HE2	1.84	0.43
2:G:914:ASN:OD1	2:G:915:VAL:N	2.51	0.43
1:B:305:SER:OG	1:B:306:PHE:N	2.51	0.43
4:E:39:GLN:O	4:E:47:LYS:N	2.51	0.43
2:G:576:VAL:HG22	2:G:587:ILE:HD11	2.01	0.43
1:B:957:GLN:O	1:B:961:THR:N	2.42	0.43
1:B:985:ASP:HB3	1:B:988:GLU:HG3	2.01	0.43

Continued on next page...

Continued from previous page...

Atom-1	Atom-2	Interatomic distance (Å)	Clash overlap (Å)
2:D:391:CYS:HA	2:D:525:CYS:HB3	1.99	0.43
1:B:827:THR:O	1:B:949:GLN:NE2	2.49	0.43
1:B:897:PRO:HB3	2:G:708:SER:O	2.19	0.43
2:D:280:ASN:OD1	2:D:283:GLY:N	2.51	0.43
2:D:589:PRO:HG2	2:G:855:PHE:CD1	2.54	0.43
2:D:711:SER:CB	2:G:895:GLN:NE2	2.81	0.43
1:B:134:GLN:HB2	1:B:161:SER:HB2	2.01	0.43
1:B:139:PRO:HB2	1:B:159:VAL:HG23	2.00	0.43
1:B:1077:THR:HG22	1:B:1096:VAL:HG12	2.00	0.43
2:D:713:ALA:HB1	2:G:894:LEU:HD22	2.01	0.43
2:D:1107:ARG:HD2	2:G:904:TYR:CZ	2.54	0.43
1:B:1018:ILE:HD13	1:B:1018:ILE:HA	1.92	0.42
1:B:538:CYS:HB2	1:B:590:CYS:HB3	1.69	0.42
1:B:869:MET:SD	2:G:699:LEU:HD21	2.60	0.42
1:B:1014:ARG:O	1:B:1018:ILE:N	2.49	0.42
2:D:644:GLN:NE2	2:D:648:GLY:O	2.52	0.42
2:G:334:ASN:OD1	2:G:335:LEU:N	2.52	0.42
2:G:562:PHE:O	2:G:562:PHE:CD2	2.72	0.42
1:B:950:ASP:HA	1:B:953:ASN:HD22	1.84	0.42
2:D:452:LEU:HB3	2:D:492:LEU:HD11	2.01	0.42
2:D:1075:PHE:HD1	2:D:1097:SER:HB2	1.84	0.42
1:B:565:PHE:CG	2:D:43:PHE:N	2.87	0.42
1:B:1107:ARG:HD2	2:D:904:TYR:CE1	2.55	0.42
2:D:706:ALA:O	2:G:895:GLN:NE2	2.53	0.42
2:D:713:ALA:N	2:G:895:GLN:O	2.49	0.42
1:B:52:GLN:NE2	1:B:273:ARG:O	2.53	0.42
1:B:386:LYS:HB2	1:B:389:ASP:HB2	2.01	0.42
1:B:865:LEU:CD2	2:G:697:MET:CE	2.98	0.42
1:B:1148:PHE:CE2	2:G:1148:PHE:CD2	3.07	0.42
2:D:31:SER:HB2	2:D:56:LEU:HD21	2.02	0.42
2:D:576:VAL:HG22	2:D:587:ILE:HD11	2.02	0.42
1:B:364:ASP:OD1	1:B:364:ASP:N	2.49	0.42
1:B:897:PRO:HA	2:G:707:TYR:CE1	2.54	0.42
2:D:356:LYS:HE3	2:D:358:ILE:HD11	2.00	0.42
1:B:126:VAL:HG13	1:B:174:PRO:HA	2.01	0.42
1:B:204:TYR:HB3	1:B:223:LEU:HD12	2.01	0.42
1:B:392:PHE:O	1:B:523:THR:OG1	2.38	0.42
2:D:365:TYR:HD2	2:D:387:LEU:HB3	1.84	0.42
2:D:609:ALA:HB2	2:D:692:ILE:HG21	2.01	0.42
1:B:234:ASN:ND2	5:B:1310:NAG:O6	2.53	0.42
1:B:567:ARG:HG3	2:D:44:ARG:HG2	2.01	0.42

Continued on next page...

Continued from previous page...

Atom-1	Atom-2	Interatomic distance (Å)	Clash overlap (Å)
1:B:895:GLN:O	2:G:712:ILE:CA	2.63	0.42
2:D:127:VAL:HG12	2:D:171:VAL:HG23	2.02	0.42
2:G:365:TYR:CE2	2:G:387:LEU:HD23	2.55	0.42
1:B:327:VAL:O	1:B:531:THR:OG1	2.31	0.42
1:B:453:TYR:HE2	1:B:455:LEU:HD13	1.85	0.42
1:B:567:ARG:HB3	1:B:573:THR:HA	2.02	0.42
1:B:699:LEU:HB3	2:D:788:ILE:HD11	2.01	0.42
2:D:392:PHE:N	2:D:524:VAL:O	2.46	0.42
2:D:580:GLN:O	5:D:1304:NAG:O6	2.32	0.42
1:B:40:ASP:HB2	1:B:41:LYS:HD3	2.02	0.41
1:B:990:GLU:O	1:B:994:ASP:N	2.53	0.41
1:B:1114:ILE:O	1:B:1116:THR:OG1	2.35	0.41
4:E:6:GLN:NE2	4:E:90:CYS:SG	2.79	0.41
2:G:523:THR:HG23	2:G:524:VAL:HG23	2.02	0.41
1:B:330:PRO:HA	1:B:579:PRO:HB2	2.02	0.41
1:B:917:TYR:OH	2:G:1079:PRO:CB	2.69	0.41
2:D:1104:VAL:O	2:D:1113:GLN:N	2.53	0.41
2:D:64:TRP:HE1	2:D:264:ALA:HB1	1.84	0.41
2:G:192:PHE:HE1	2:G:205:SER:HG	1.64	0.41
1:B:984:LEU:HD13	1:B:984:LEU:HA	1.96	0.41
2:D:804:GLN:O	2:D:816:SER:OG	2.38	0.41
1:B:96:GLU:HB2	1:B:187:LYS:HB3	2.02	0.41
2:D:122:ASN:HB3	2:D:125:ASN:H	1.84	0.41
1:B:745:ASP:CB	2:G:319:ARG:HD3	2.37	0.41
1:B:1003:SER:O	1:B:1006:THR:OG1	2.26	0.41
2:D:35:GLY:HA3	2:D:56:LEU:HB3	2.02	0.41
2:G:988:GLU:OE1	2:G:988:GLU:N	2.53	0.41
1:B:354:ASN:OD1	1:B:354:ASN:N	2.53	0.41
2:D:714:ILE:HA	2:D:715:PRO:HD3	1.87	0.41
4:F:6:GLN:NE2	4:F:90:CYS:H	2.19	0.41
1:B:577:ARG:HA	1:B:584:ILE:HA	2.02	0.41
4:E:4:LEU:HG	4:E:98:VAL:HG12	2.03	0.41
2:G:1072:GLU:OE2	2:G:1072:GLU:N	2.53	0.41
1:B:738:CYS:HB2	1:B:760:CYS:HB2	1.97	0.41
2:G:365:TYR:HE2	2:G:387:LEU:HD23	1.85	0.41
2:G:1135:ASN:OD1	2:G:1136:THR:N	2.54	0.41
2:D:574:ASP:HA	2:D:587:ILE:HB	2.03	0.40
2:D:712:ILE:CD1	2:G:896:ILE:CD1	2.97	0.40
4:E:6:GLN:NE2	4:E:90:CYS:H	2.19	0.40
1:B:958:ALA:HA	1:B:961:THR:HG22	2.04	0.40
2:D:216:LEU:HB3	2:D:266:TYR:CE2	2.56	0.40

Continued on next page...

Continued from previous page...

Atom-1	Atom-2	Interatomic distance (Å)	Clash overlap (Å)
3:C:98:SER:OG	3:C:99:VAL:N	2.54	0.40
2:G:81:ASN:O	2:G:239:GLN:NE2	2.53	0.40
1:B:402:ILE:HD13	1:B:402:ILE:HA	1.93	0.40
1:B:816:SER:HB3	1:B:819:GLU:HG3	2.02	0.40
2:D:666:ILE:HD12	2:D:670:ILE:HG22	2.03	0.40
2:G:1092:GLU:OE1	2:G:1092:GLU:N	2.53	0.40
1:B:338:PHE:HB2	1:B:342:PHE:CD2	2.57	0.40
1:B:948:LEU:HD13	1:B:948:LEU:HA	1.91	0.40
1:B:1119:ASN:OD1	1:B:1119:ASN:N	2.53	0.40
2:D:815:ARG:HD2	2:D:823:PHE:CE2	2.57	0.40
4:F:4:LEU:HG	4:F:98:VAL:HG12	2.03	0.40
2:G:437:ASN:ND2	2:G:506:GLN:OE1	2.49	0.40
2:G:721:SER:OG	2:G:1066:THR:OG1	2.38	0.40

There are no symmetry-related clashes.

5.3 Torsion angles [i](#)

5.3.1 Protein backbone [i](#)

In the following table, the Percentiles column shows the percent Ramachandran outliers of the chain as a percentile score with respect to all PDB entries followed by that with respect to all EM entries.

The Analysed column shows the number of residues for which the backbone conformation was analysed, and the total number of residues.

Mol	Chain	Analysed	Favoured	Allowed	Outliers	Percentiles	
1	B	1017/1273 (80%)	903 (89%)	111 (11%)	3 (0%)	37	72
2	D	967/1273 (76%)	890 (92%)	77 (8%)	0	100	100
2	G	967/1273 (76%)	918 (95%)	49 (5%)	0	100	100
3	A	222/227 (98%)	215 (97%)	7 (3%)	0	100	100
3	C	222/227 (98%)	215 (97%)	7 (3%)	0	100	100
4	E	209/214 (98%)	200 (96%)	8 (4%)	1 (0%)	25	64
4	F	209/214 (98%)	200 (96%)	8 (4%)	1 (0%)	25	64
All	All	3813/4701 (81%)	3541 (93%)	267 (7%)	5 (0%)	50	83

All (5) Ramachandran outliers are listed below:

Mol	Chain	Res	Type
1	B	40	ASP
1	B	42	VAL
4	E	53	VAL
4	F	53	VAL
1	B	745	ASP

5.3.2 Protein sidechains ⓘ

In the following table, the Percentiles column shows the percent sidechain outliers of the chain as a percentile score with respect to all PDB entries followed by that with respect to all EM entries.

The Analysed column shows the number of residues for which the sidechain conformation was analysed, and the total number of residues.

Mol	Chain	Analysed	Rotameric	Outliers	Percentiles	
1	B	891/1112 (80%)	886 (99%)	5 (1%)	84	88
2	D	863/1111 (78%)	856 (99%)	7 (1%)	79	84
2	G	863/1111 (78%)	847 (98%)	16 (2%)	52	69
3	A	189/192 (98%)	189 (100%)	0	100	100
3	C	189/192 (98%)	189 (100%)	0	100	100
4	E	177/180 (98%)	177 (100%)	0	100	100
4	F	177/180 (98%)	177 (100%)	0	100	100
All	All	3349/4078 (82%)	3321 (99%)	28 (1%)	77	84

All (28) residues with a non-rotameric sidechain are listed below:

Mol	Chain	Res	Type
1	B	40	ASP
1	B	42	VAL
1	B	121	ASN
1	B	606	ASN
1	B	1116	THR
2	D	196	ASN
2	D	214	ARG
2	D	445	VAL
2	D	525	CYS
2	D	801	ASN
2	D	907	ASN
2	D	978	ASN
2	G	52	GLN

Continued on next page...

Continued from previous page...

Mol	Chain	Res	Type
2	G	197	ILE
2	G	214	ARG
2	G	369	TYR
2	G	398	ASP
2	G	465	GLU
2	G	516	GLU
2	G	517	LEU
2	G	562	PHE
2	G	571	ASP
2	G	584	ILE
2	G	755	GLN
2	G	794	ILE
2	G	902	MET
2	G	1107	ARG
2	G	1145	LEU

Sometimes sidechains can be flipped to improve hydrogen bonding and reduce clashes. All (30) such sidechains are listed below:

Mol	Chain	Res	Type
1	B	121	ASN
1	B	245	HIS
1	B	498	GLN
1	B	606	ASN
1	B	901	GLN
1	B	913	GLN
1	B	953	ASN
1	B	1108	ASN
2	D	196	ASN
2	D	271	GLN
2	D	394	ASN
2	D	580	GLN
2	D	801	ASN
2	D	901	GLN
2	D	907	ASN
2	D	913	GLN
2	D	928	ASN
2	D	949	GLN
2	D	953	ASN
2	D	957	GLN
2	D	965	GLN
2	D	978	ASN
2	D	1083	HIS

Continued on next page...

Continued from previous page...

Mol	Chain	Res	Type
2	D	1119	ASN
3	A	181	GLN
3	C	181	GLN
2	G	895	GLN
2	G	955	ASN
2	G	957	GLN
2	G	965	GLN

5.3.3 RNA [i](#)

There are no RNA molecules in this entry.

5.4 Non-standard residues in protein, DNA, RNA chains [i](#)

There are no non-standard protein/DNA/RNA residues in this entry.

5.5 Carbohydrates [i](#)

There are no oligosaccharides in this entry.

5.6 Ligand geometry [i](#)

35 ligands are modelled in this entry.

In the following table, the Counts columns list the number of bonds (or angles) for which Mogul statistics could be retrieved, the number of bonds (or angles) that are observed in the model and the number of bonds (or angles) that are defined in the Chemical Component Dictionary. The Link column lists molecule types, if any, to which the group is linked. The Z score for a bond length (or angle) is the number of standard deviations the observed value is removed from the expected value. A bond length (or angle) with $|Z| > 2$ is considered an outlier worth inspection. RMSZ is the root-mean-square of all Z scores of the bond lengths (or angles).

Mol	Type	Chain	Res	Link	Bond lengths			Bond angles		
					Counts	RMSZ	$\# Z > 2$	Counts	RMSZ	$\# Z > 2$
5	NAG	G	1303	2	14,14,15	0.25	0	17,19,21	0.65	0
5	NAG	B	1308	1	14,14,15	0.32	0	17,19,21	0.45	0
5	NAG	G	1308	2	14,14,15	0.52	0	17,19,21	2.48	3 (17%)
5	NAG	G	1304	2	14,14,15	0.50	0	17,19,21	2.16	6 (35%)
5	NAG	B	1312	1	14,14,15	0.71	1 (7%)	17,19,21	0.44	0
5	NAG	G	1306	2	14,14,15	0.30	0	17,19,21	1.75	3 (17%)

Mol	Type	Chain	Res	Link	Bond lengths			Bond angles		
					Counts	RMSZ	# Z > 2	Counts	RMSZ	# Z > 2
5	NAG	B	1311	1	14,14,15	0.39	0	17,19,21	0.48	0
5	NAG	D	1301	2	14,14,15	0.51	0	17,19,21	0.52	0
5	NAG	D	1303	2	14,14,15	0.43	0	17,19,21	0.74	1 (5%)
5	NAG	D	1308	2	14,14,15	0.61	0	17,19,21	0.48	0
5	NAG	G	1310	2	14,14,15	0.40	0	17,19,21	1.95	5 (29%)
5	NAG	D	1304	2	14,14,15	0.27	0	17,19,21	0.45	0
5	NAG	B	1309	1	14,14,15	0.20	0	17,19,21	0.54	0
5	NAG	B	1301	1	14,14,15	0.62	0	17,19,21	0.69	1 (5%)
5	NAG	D	1310	2	14,14,15	0.45	0	17,19,21	0.51	0
5	NAG	B	1306	1	14,14,15	0.28	0	17,19,21	0.46	0
5	NAG	B	1303	1	14,14,15	0.32	0	17,19,21	0.52	0
5	NAG	G	1302	2	14,14,15	0.39	0	17,19,21	2.47	6 (35%)
5	NAG	D	1302	2	14,14,15	1.24	1 (7%)	17,19,21	1.57	1 (5%)
5	NAG	D	1307	2	14,14,15	1.18	1 (7%)	17,19,21	1.34	1 (5%)
5	NAG	B	1310	1	14,14,15	1.23	2 (14%)	17,19,21	3.08	8 (47%)
5	NAG	G	1305	2	14,14,15	0.46	0	17,19,21	1.85	2 (11%)
5	NAG	D	1305	2	14,14,15	0.33	0	17,19,21	0.43	0
5	NAG	D	1306	2	14,14,15	0.40	0	17,19,21	0.67	1 (5%)
5	NAG	G	1307	2	14,14,15	0.49	0	17,19,21	1.40	1 (5%)
5	NAG	B	1304	1	14,14,15	0.38	0	17,19,21	0.96	1 (5%)
5	NAG	B	1307	1	14,14,15	0.23	0	17,19,21	0.39	0
5	NAG	B	1302	1	14,14,15	0.28	0	17,19,21	0.96	1 (5%)
5	NAG	D	1311	2	14,14,15	0.45	0	17,19,21	0.95	1 (5%)
5	NAG	B	1305	1	14,14,15	0.54	0	17,19,21	0.45	0
5	NAG	G	1301	2	14,14,15	0.62	0	17,19,21	2.89	5 (29%)
5	NAG	D	1309	2	14,14,15	0.31	0	17,19,21	0.38	0
5	NAG	G	1309	2	14,14,15	0.30	0	17,19,21	0.88	0
5	NAG	B	1313	1	14,14,15	0.42	0	17,19,21	1.02	1 (5%)
5	NAG	G	1311	2	14,14,15	0.56	0	17,19,21	1.26	1 (5%)

In the following table, the Chirals column lists the number of chiral outliers, the number of chiral centers analysed, the number of these observed in the model and the number defined in the Chemical Component Dictionary. Similar counts are reported in the Torsion and Rings columns. '-' means no outliers of that kind were identified.

Mol	Type	Chain	Res	Link	Chirals	Torsions	Rings
5	NAG	G	1303	2	-	2/6/23/26	0/1/1/1
5	NAG	B	1308	1	-	3/6/23/26	0/1/1/1

Continued on next page...

Continued from previous page...

Mol	Type	Chain	Res	Link	Chirals	Torsions	Rings
5	NAG	G	1308	2	-	3/6/23/26	0/1/1/1
5	NAG	G	1304	2	-	4/6/23/26	0/1/1/1
5	NAG	B	1312	1	-	2/6/23/26	0/1/1/1
5	NAG	G	1306	2	-	0/6/23/26	0/1/1/1
5	NAG	B	1311	1	-	2/6/23/26	0/1/1/1
5	NAG	D	1301	2	-	2/6/23/26	0/1/1/1
5	NAG	D	1303	2	-	2/6/23/26	0/1/1/1
5	NAG	D	1308	2	-	0/6/23/26	0/1/1/1
5	NAG	G	1310	2	-	3/6/23/26	0/1/1/1
5	NAG	D	1304	2	-	4/6/23/26	0/1/1/1
5	NAG	B	1309	1	-	2/6/23/26	0/1/1/1
5	NAG	B	1301	1	-	2/6/23/26	0/1/1/1
5	NAG	D	1310	2	-	2/6/23/26	0/1/1/1
5	NAG	B	1306	1	-	1/6/23/26	0/1/1/1
5	NAG	B	1303	1	-	2/6/23/26	0/1/1/1
5	NAG	G	1302	2	-	4/6/23/26	0/1/1/1
5	NAG	D	1302	2	-	4/6/23/26	0/1/1/1
5	NAG	D	1307	2	-	2/6/23/26	0/1/1/1
5	NAG	B	1310	1	-	4/6/23/26	0/1/1/1
5	NAG	G	1305	2	-	2/6/23/26	0/1/1/1
5	NAG	D	1305	2	-	2/6/23/26	0/1/1/1
5	NAG	D	1306	2	-	2/6/23/26	0/1/1/1
5	NAG	G	1307	2	-	4/6/23/26	0/1/1/1
5	NAG	B	1304	1	-	1/6/23/26	0/1/1/1
5	NAG	B	1307	1	-	2/6/23/26	0/1/1/1
5	NAG	B	1302	1	-	3/6/23/26	0/1/1/1
5	NAG	D	1311	2	-	3/6/23/26	0/1/1/1
5	NAG	B	1305	1	-	2/6/23/26	0/1/1/1
5	NAG	G	1301	2	-	4/6/23/26	0/1/1/1
5	NAG	D	1309	2	-	2/6/23/26	0/1/1/1
5	NAG	G	1309	2	-	2/6/23/26	0/1/1/1
5	NAG	B	1313	1	-	2/6/23/26	0/1/1/1
5	NAG	G	1311	2	-	4/6/23/26	0/1/1/1

All (5) bond length outliers are listed below:

Mol	Chain	Res	Type	Atoms	Z	Observed(Å)	Ideal(Å)
5	D	1302	NAG	O5-C1	4.42	1.50	1.43
5	D	1307	NAG	O5-C1	3.89	1.49	1.43
5	B	1310	NAG	C3-C2	-2.68	1.46	1.52
5	B	1312	NAG	C1-C2	2.57	1.56	1.52
5	B	1310	NAG	O5-C1	-2.12	1.40	1.43

All (49) bond angle outliers are listed below:

Mol	Chain	Res	Type	Atoms	Z	Observed(°)	Ideal(°)
5	G	1301	NAG	C1-O5-C5	-9.23	99.69	112.19
5	G	1308	NAG	C1-O5-C5	-8.18	101.11	112.19
5	B	1310	NAG	O5-C1-C2	6.81	122.04	111.29
5	G	1302	NAG	C1-O5-C5	6.65	121.20	112.19
5	G	1305	NAG	C1-O5-C5	-6.42	103.49	112.19
5	D	1302	NAG	C1-O5-C5	6.10	120.45	112.19
5	G	1306	NAG	C1-O5-C5	5.72	119.94	112.19
5	D	1307	NAG	C1-O5-C5	5.31	119.38	112.19
5	B	1310	NAG	C1-C2-N2	5.09	119.19	110.49
5	G	1301	NAG	C1-C2-N2	4.81	118.71	110.49
5	G	1304	NAG	C1-O5-C5	-4.78	105.72	112.19
5	B	1310	NAG	C3-C4-C5	4.56	118.38	110.24
5	G	1310	NAG	C1-O5-C5	-4.30	106.37	112.19
5	G	1302	NAG	C2-N2-C7	4.25	128.96	122.90
5	B	1310	NAG	O4-C4-C3	-4.22	100.59	110.35
5	G	1311	NAG	C1-O5-C5	-4.07	106.68	112.19
5	G	1307	NAG	C1-O5-C5	3.98	117.59	112.19
5	G	1310	NAG	C3-C4-C5	3.88	117.16	110.24
5	B	1313	NAG	C1-O5-C5	3.76	117.29	112.19
5	B	1310	NAG	O3-C3-C2	-3.73	101.75	109.47
5	G	1308	NAG	C1-C2-N2	3.58	116.60	110.49
5	B	1310	NAG	C2-N2-C7	3.41	127.76	122.90
5	G	1310	NAG	C1-C2-N2	3.30	116.12	110.49
5	G	1301	NAG	C3-C4-C5	3.26	116.05	110.24
5	G	1308	NAG	C3-C4-C5	3.18	115.92	110.24
5	G	1304	NAG	C8-C7-N2	3.13	121.39	116.10
5	G	1302	NAG	C8-C7-N2	3.11	121.37	116.10
5	D	1311	NAG	C2-N2-C7	3.11	127.33	122.90
5	G	1304	NAG	C2-N2-C7	3.01	127.19	122.90
5	B	1302	NAG	C2-N2-C7	2.97	127.14	122.90
5	G	1302	NAG	C1-C2-N2	-2.93	105.48	110.49
5	B	1304	NAG	C2-N2-C7	2.93	127.07	122.90
5	G	1304	NAG	C4-C3-C2	-2.91	106.75	111.02
5	G	1310	NAG	O5-C1-C2	-2.83	106.83	111.29

Continued on next page...

Continued from previous page...

Mol	Chain	Res	Type	Atoms	Z	Observed(°)	Ideal(°)
5	G	1304	NAG	C3-C4-C5	2.71	115.07	110.24
5	G	1304	NAG	O5-C1-C2	-2.63	107.14	111.29
5	D	1303	NAG	C1-O5-C5	2.58	115.68	112.19
5	G	1306	NAG	C4-C3-C2	-2.53	107.31	111.02
5	B	1310	NAG	C1-O5-C5	-2.47	108.85	112.19
5	B	1301	NAG	C1-O5-C5	2.43	115.49	112.19
5	D	1306	NAG	C1-O5-C5	2.35	115.37	112.19
5	G	1302	NAG	C6-C5-C4	2.29	118.36	113.00
5	G	1301	NAG	O3-C3-C2	2.25	114.12	109.47
5	G	1305	NAG	O5-C1-C2	-2.21	107.81	111.29
5	B	1310	NAG	C6-C5-C4	2.19	118.13	113.00
5	G	1306	NAG	O5-C5-C6	-2.18	103.79	107.20
5	G	1310	NAG	O4-C4-C3	-2.12	105.45	110.35
5	G	1302	NAG	C4-C3-C2	-2.10	107.94	111.02
5	G	1301	NAG	C4-C3-C2	-2.01	108.07	111.02

There are no chirality outliers.

All (85) torsion outliers are listed below:

Mol	Chain	Res	Type	Atoms
5	B	1310	NAG	C8-C7-N2-C2
5	B	1310	NAG	O7-C7-N2-C2
5	G	1302	NAG	C4-C5-C6-O6
5	G	1304	NAG	C8-C7-N2-C2
5	G	1304	NAG	O7-C7-N2-C2
5	B	1311	NAG	O5-C5-C6-O6
5	B	1305	NAG	O5-C5-C6-O6
5	B	1313	NAG	O5-C5-C6-O6
5	G	1301	NAG	O5-C5-C6-O6
5	G	1307	NAG	C4-C5-C6-O6
5	G	1307	NAG	C1-C2-N2-C7
5	D	1311	NAG	O5-C5-C6-O6
5	B	1302	NAG	C4-C5-C6-O6
5	D	1310	NAG	C4-C5-C6-O6
5	B	1301	NAG	C4-C5-C6-O6
5	D	1305	NAG	O5-C5-C6-O6
5	B	1312	NAG	O5-C5-C6-O6
5	B	1305	NAG	C4-C5-C6-O6
5	B	1313	NAG	C4-C5-C6-O6
5	D	1310	NAG	O5-C5-C6-O6
5	B	1310	NAG	O5-C5-C6-O6
5	G	1302	NAG	O5-C5-C6-O6

Continued on next page...

Continued from previous page...

Mol	Chain	Res	Type	Atoms
5	G	1308	NAG	O5-C5-C6-O6
5	D	1307	NAG	C4-C5-C6-O6
5	G	1301	NAG	C4-C5-C6-O6
5	D	1304	NAG	O5-C5-C6-O6
5	D	1309	NAG	O5-C5-C6-O6
5	G	1303	NAG	O5-C5-C6-O6
5	G	1309	NAG	O5-C5-C6-O6
5	G	1311	NAG	O5-C5-C6-O6
5	D	1311	NAG	C4-C5-C6-O6
5	B	1301	NAG	O5-C5-C6-O6
5	B	1302	NAG	O5-C5-C6-O6
5	G	1304	NAG	O5-C5-C6-O6
5	G	1307	NAG	O5-C5-C6-O6
5	B	1311	NAG	C4-C5-C6-O6
5	D	1303	NAG	O5-C5-C6-O6
5	G	1305	NAG	O5-C5-C6-O6
5	D	1309	NAG	C4-C5-C6-O6
5	D	1304	NAG	C4-C5-C6-O6
5	B	1308	NAG	C8-C7-N2-C2
5	B	1308	NAG	O7-C7-N2-C2
5	D	1302	NAG	C8-C7-N2-C2
5	D	1302	NAG	O7-C7-N2-C2
5	D	1304	NAG	C8-C7-N2-C2
5	D	1304	NAG	O7-C7-N2-C2
5	G	1302	NAG	C8-C7-N2-C2
5	G	1302	NAG	O7-C7-N2-C2
5	B	1303	NAG	C4-C5-C6-O6
5	G	1304	NAG	C4-C5-C6-O6
5	G	1308	NAG	C4-C5-C6-O6
5	B	1307	NAG	O5-C5-C6-O6
5	D	1305	NAG	C4-C5-C6-O6
5	D	1306	NAG	O5-C5-C6-O6
5	B	1310	NAG	C4-C5-C6-O6
5	D	1302	NAG	C4-C5-C6-O6
5	G	1303	NAG	C4-C5-C6-O6
5	G	1309	NAG	C4-C5-C6-O6
5	G	1311	NAG	C4-C5-C6-O6
5	D	1307	NAG	O5-C5-C6-O6
5	D	1306	NAG	C4-C5-C6-O6
5	D	1302	NAG	O5-C5-C6-O6
5	B	1312	NAG	C4-C5-C6-O6
5	D	1301	NAG	C4-C5-C6-O6

Continued on next page...

Continued from previous page...

Mol	Chain	Res	Type	Atoms
5	G	1305	NAG	C4-C5-C6-O6
5	B	1308	NAG	O5-C5-C6-O6
5	G	1301	NAG	C1-C2-N2-C7
5	G	1310	NAG	C1-C2-N2-C7
5	B	1303	NAG	O5-C5-C6-O6
5	B	1307	NAG	C4-C5-C6-O6
5	G	1310	NAG	O5-C5-C6-O6
5	B	1306	NAG	O5-C5-C6-O6
5	G	1307	NAG	C3-C2-N2-C7
5	D	1301	NAG	O5-C5-C6-O6
5	G	1311	NAG	C1-C2-N2-C7
5	D	1303	NAG	C4-C5-C6-O6
5	B	1309	NAG	C4-C5-C6-O6
5	B	1309	NAG	O5-C5-C6-O6
5	G	1308	NAG	C1-C2-N2-C7
5	G	1301	NAG	C3-C2-N2-C7
5	G	1310	NAG	C3-C2-N2-C7
5	B	1302	NAG	C3-C2-N2-C7
5	B	1304	NAG	C3-C2-N2-C7
5	D	1311	NAG	C3-C2-N2-C7
5	G	1311	NAG	C3-C2-N2-C7

There are no ring outliers.

6 monomers are involved in 12 short contacts:

Mol	Chain	Res	Type	Clashes	Symm-Clashes
5	D	1301	NAG	1	0
5	G	1310	NAG	1	0
5	D	1304	NAG	1	0
5	B	1310	NAG	7	0
5	B	1302	NAG	1	0
5	G	1301	NAG	1	0

5.7 Other polymers [i](#)

There are no such residues in this entry.

5.8 Polymer linkage issues [i](#)

There are no chain breaks in this entry.

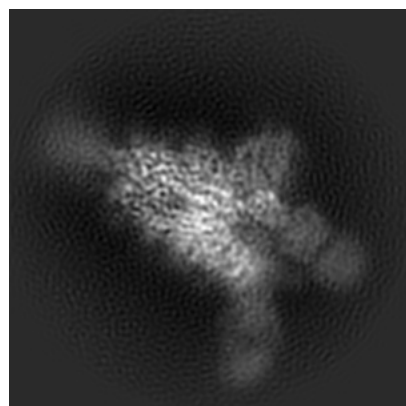
6 Map visualisation [i](#)

This section contains visualisations of the EMDB entry EMD-34546. These allow visual inspection of the internal detail of the map and identification of artifacts.

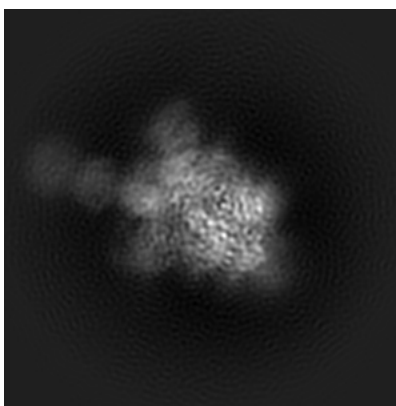
Images derived from a raw map, generated by summing the deposited half-maps, are presented below the corresponding image components of the primary map to allow further visual inspection and comparison with those of the primary map.

6.1 Orthogonal projections [i](#)

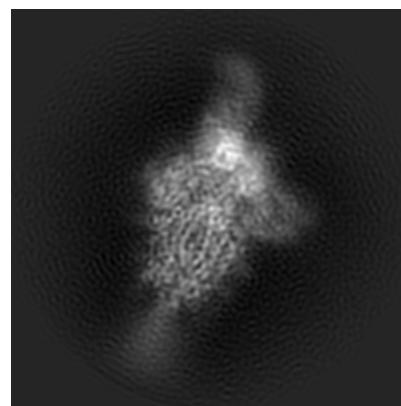
6.1.1 Primary map



X

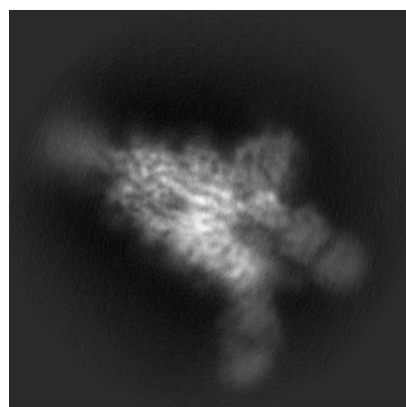


Y

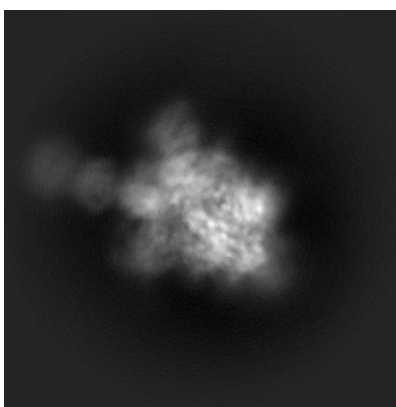


Z

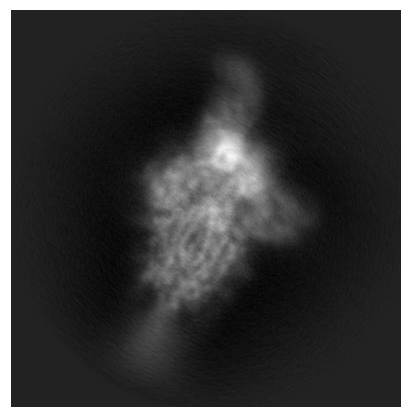
6.1.2 Raw map



X



Y

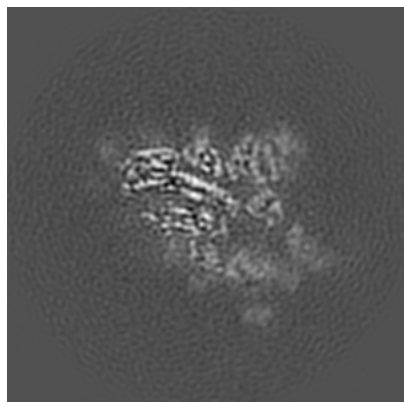


Z

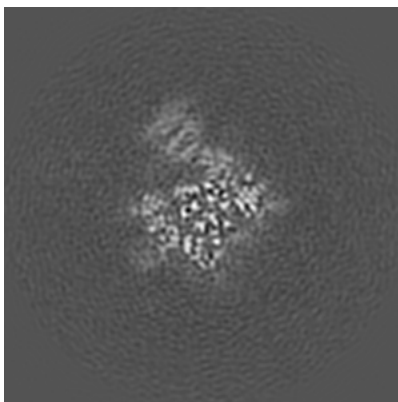
The images above show the map projected in three orthogonal directions.

6.2 Central slices [i](#)

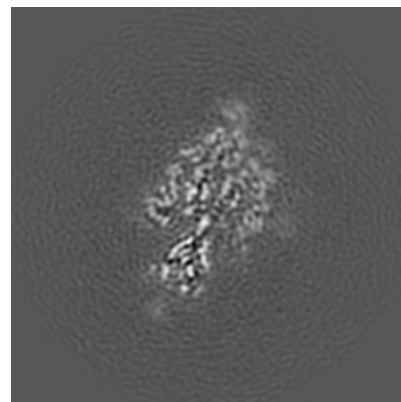
6.2.1 Primary map



X Index: 168

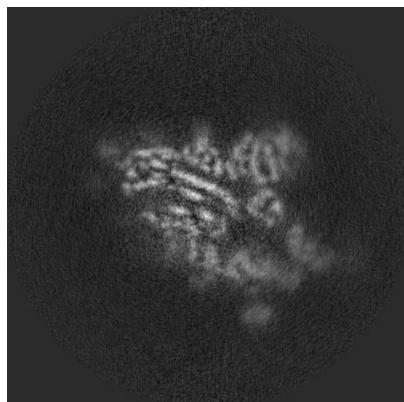


Y Index: 168

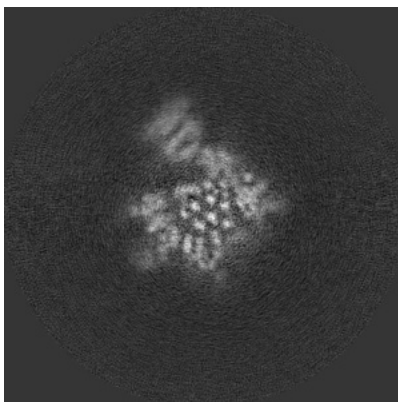


Z Index: 168

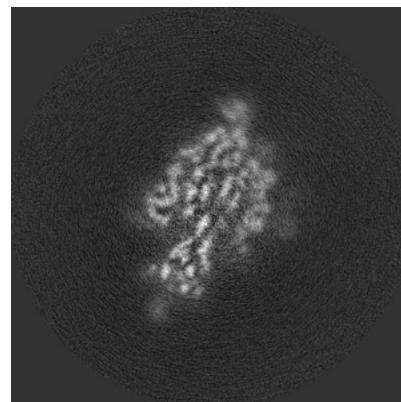
6.2.2 Raw map



X Index: 168



Y Index: 168

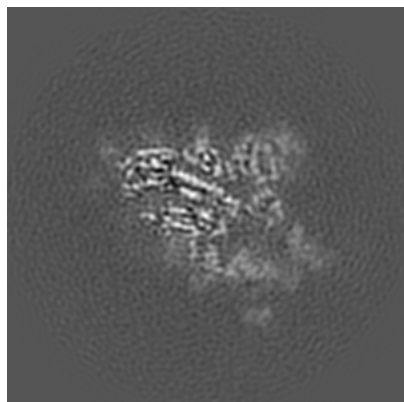


Z Index: 168

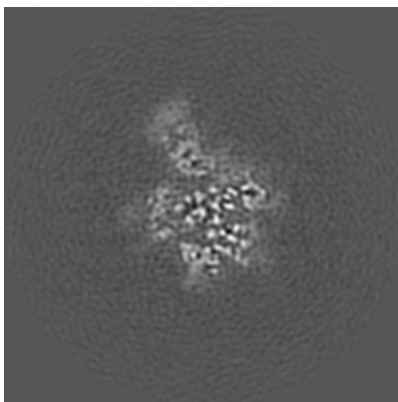
The images above show central slices of the map in three orthogonal directions.

6.3 Largest variance slices [i](#)

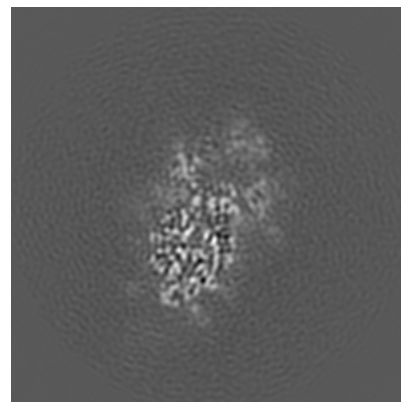
6.3.1 Primary map



X Index: 167

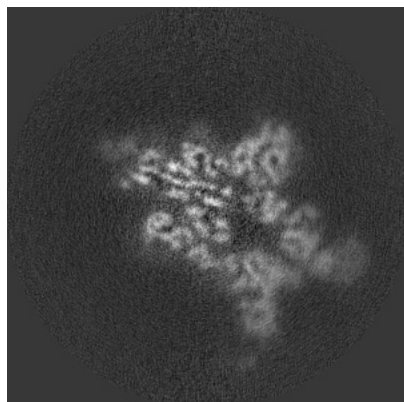


Y Index: 158

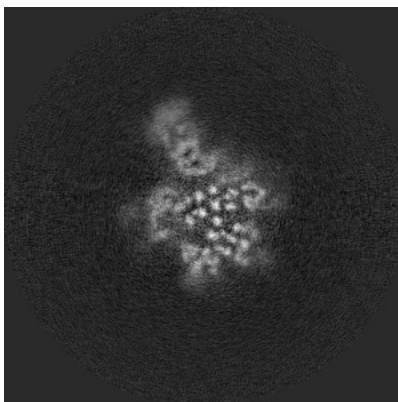


Z Index: 184

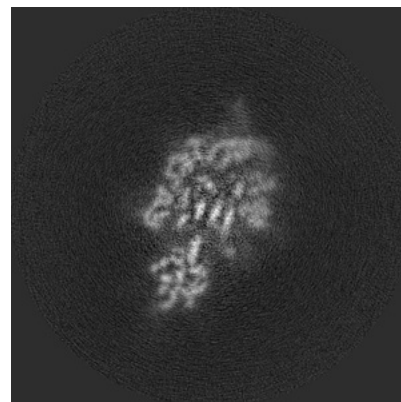
6.3.2 Raw map



X Index: 176



Y Index: 157

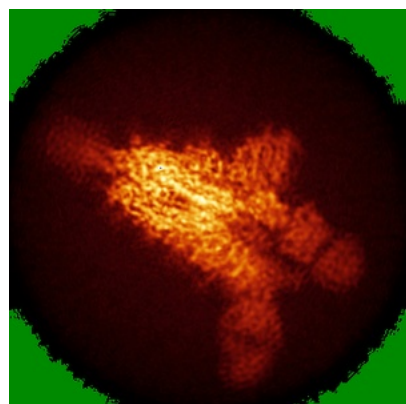


Z Index: 175

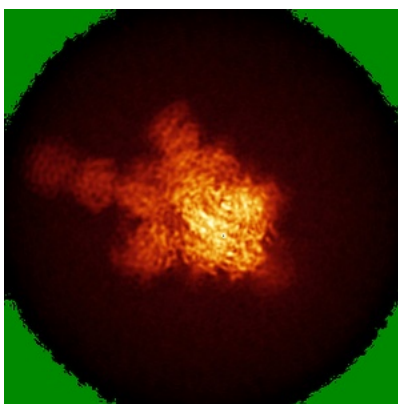
The images above show the largest variance slices of the map in three orthogonal directions.

6.4 Orthogonal standard-deviation projections (False-color) [i](#)

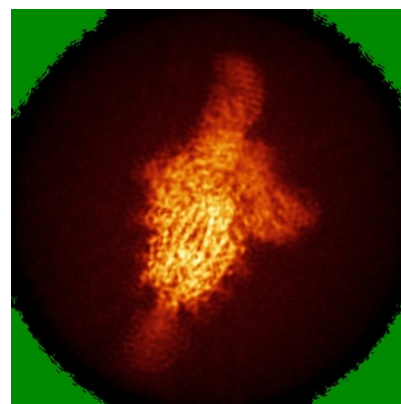
6.4.1 Primary map



X

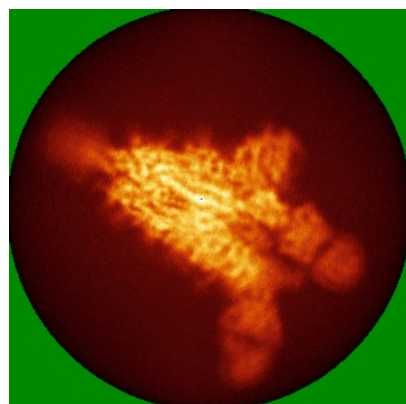


Y

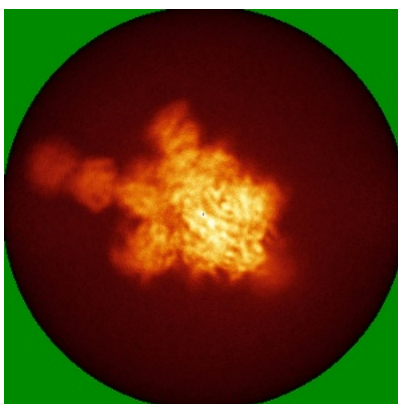


Z

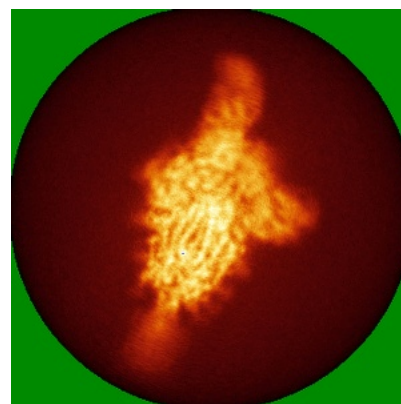
6.4.2 Raw map



X



Y

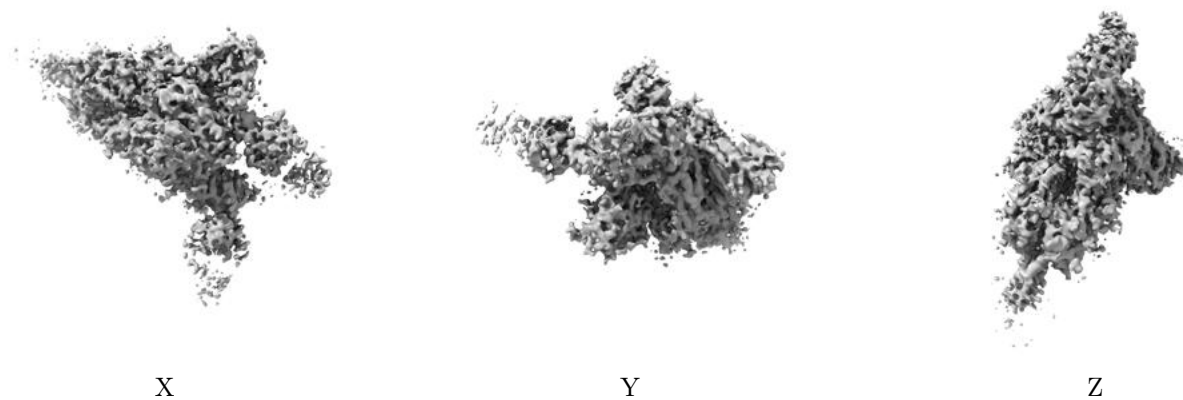


Z

The images above show the map standard deviation projections with false color in three orthogonal directions. Minimum values are shown in green, max in blue, and dark to light orange shades represent small to large values respectively.

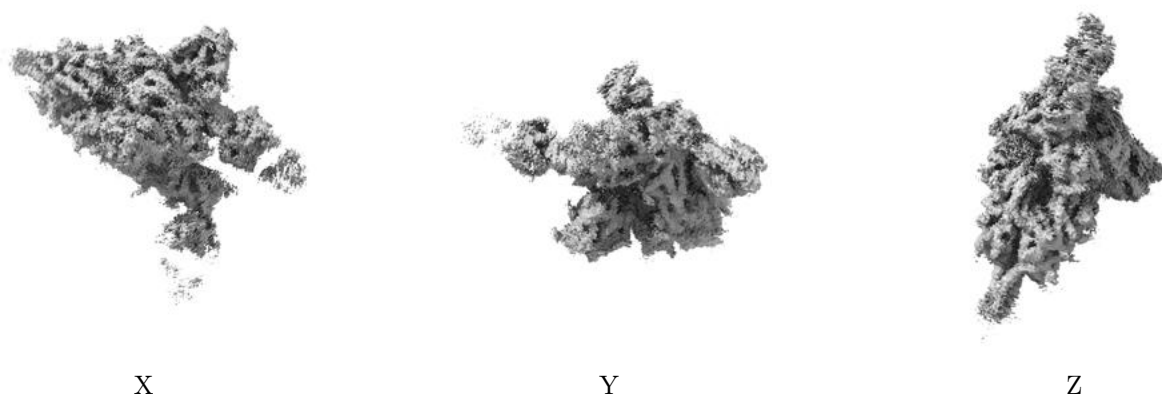
6.5 Orthogonal surface views [i](#)

6.5.1 Primary map



The images above show the 3D surface view of the map at the recommended contour level 4.29. These images, in conjunction with the slice images, may facilitate assessment of whether an appropriate contour level has been provided.

6.5.2 Raw map



These images show the 3D surface of the raw map. The raw map's contour level was selected so that its surface encloses the same volume as the primary map does at its recommended contour level.

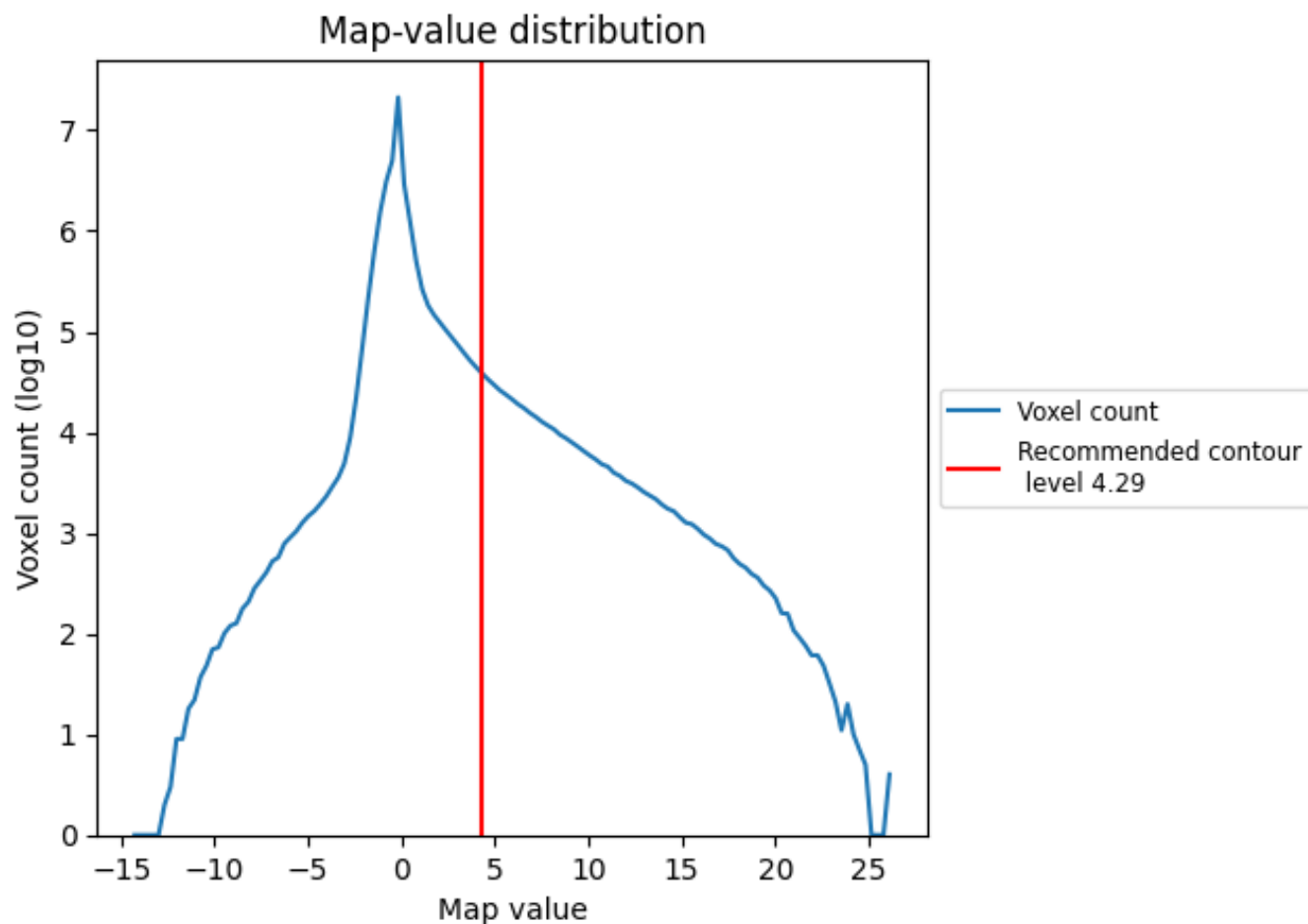
6.6 Mask visualisation [i](#)

This section was not generated. No masks/segmentation were deposited.

7 Map analysis [i](#)

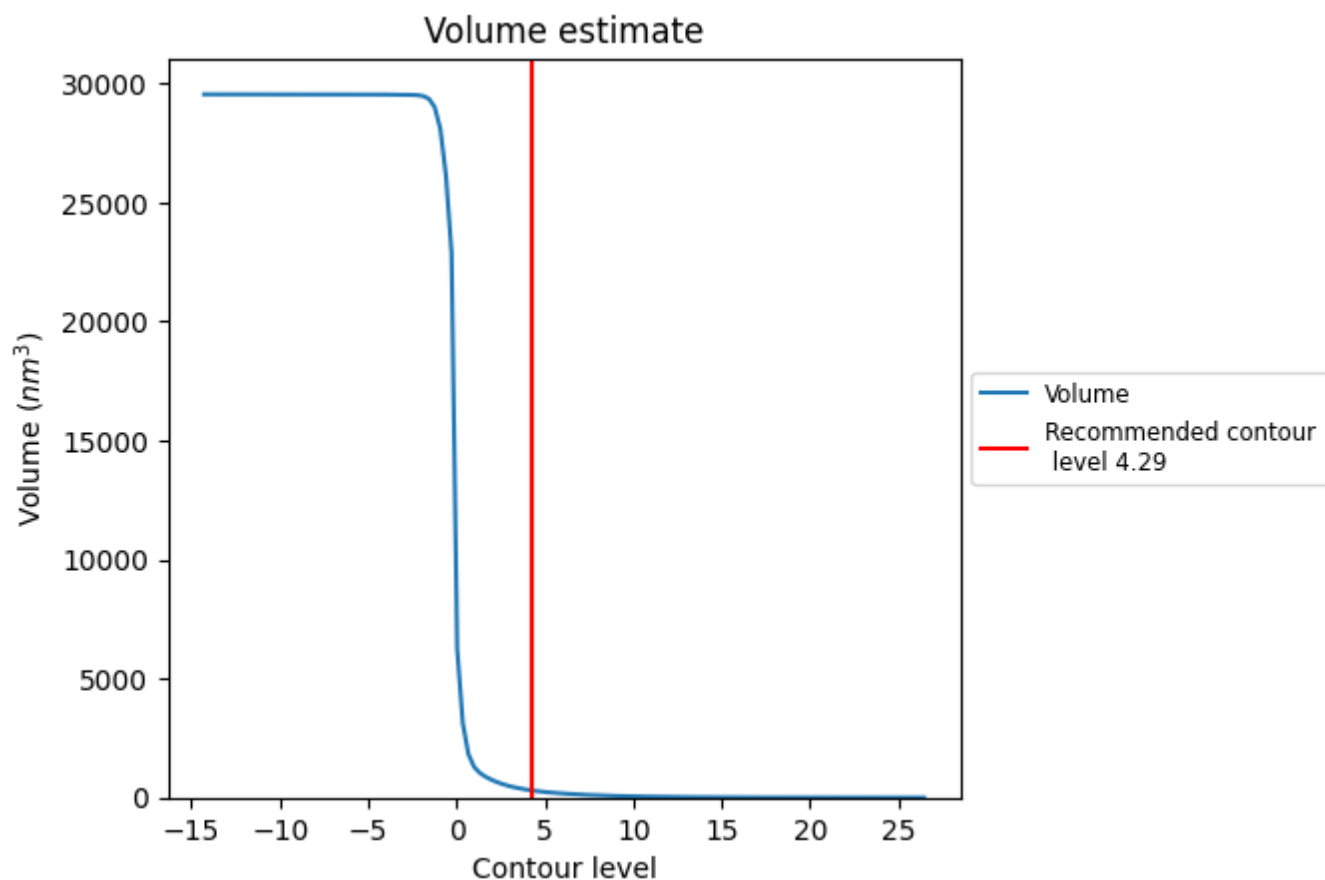
This section contains the results of statistical analysis of the map.

7.1 Map-value distribution [i](#)



The map-value distribution is plotted in 128 intervals along the x-axis. The y-axis is logarithmic. A spike in this graph at zero usually indicates that the volume has been masked.

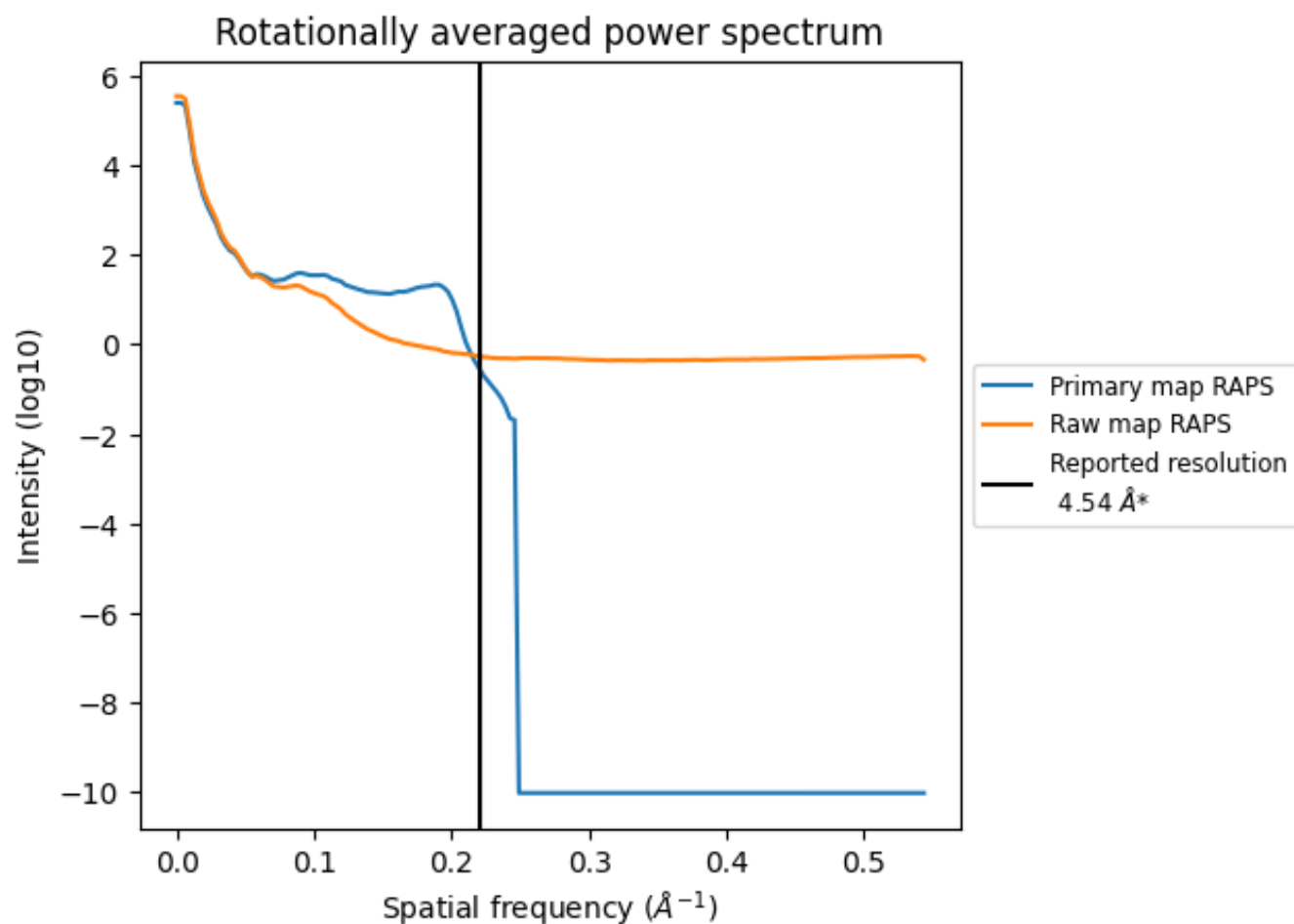
7.2 Volume estimate [i](#)



The volume at the recommended contour level is 297 nm^3 ; this corresponds to an approximate mass of 268 kDa.

The volume estimate graph shows how the enclosed volume varies with the contour level. The recommended contour level is shown as a vertical line and the intersection between the line and the curve gives the volume of the enclosed surface at the given level.

7.3 Rotationally averaged power spectrum ⓘ

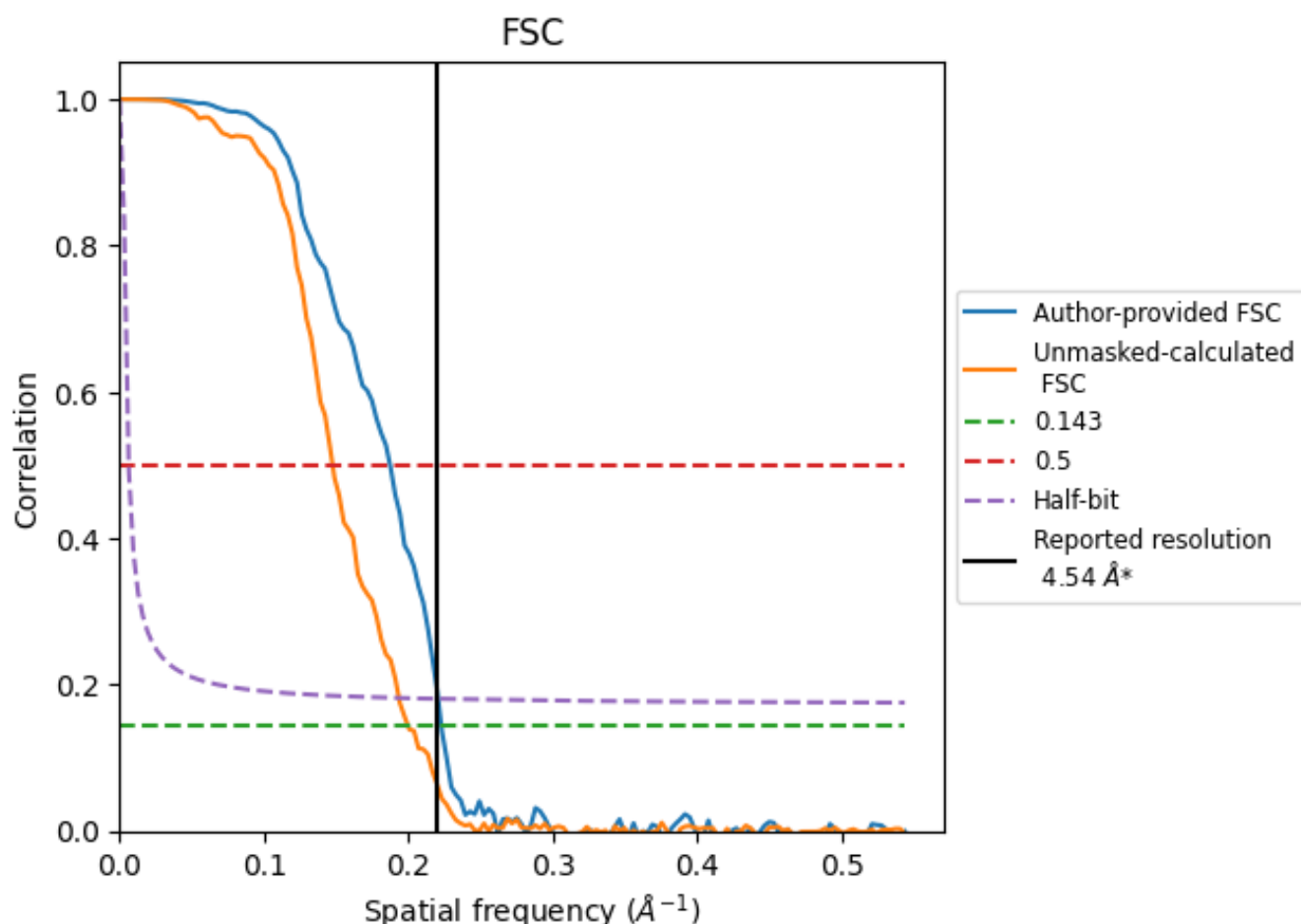


*Reported resolution corresponds to spatial frequency of 0.220 Å⁻¹

8 Fourier-Shell correlation [i](#)

Fourier-Shell Correlation (FSC) is the most commonly used method to estimate the resolution of single-particle and subtomogram-averaged maps. The shape of the curve depends on the imposed symmetry, mask and whether or not the two 3D reconstructions used were processed from a common reference. The reported resolution is shown as a black line. A curve is displayed for the half-bit criterion in addition to lines showing the 0.143 gold standard cut-off and 0.5 cut-off.

8.1 FSC [i](#)



*Reported resolution corresponds to spatial frequency of 0.220 \AA^{-1}

8.2 Resolution estimates [i](#)

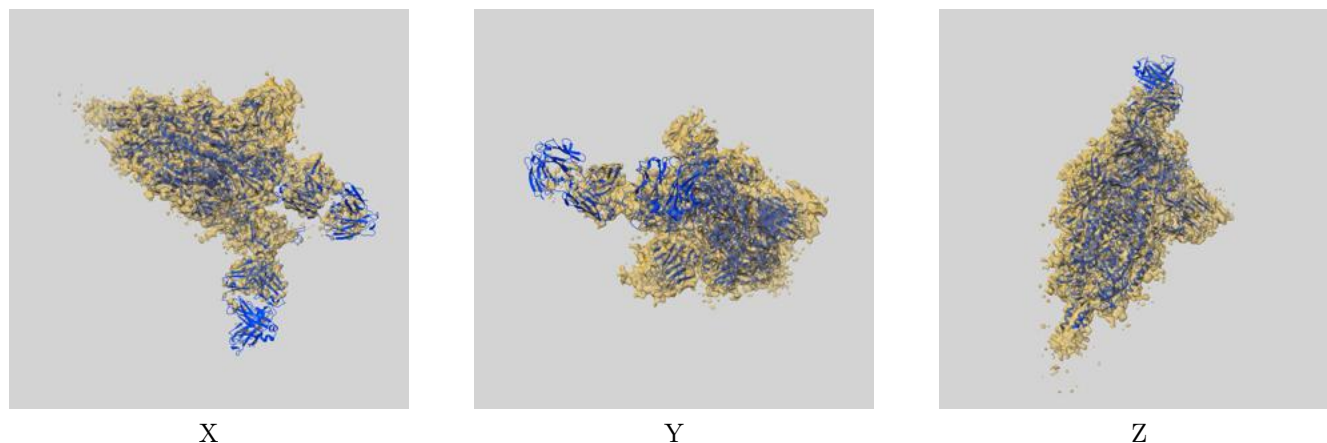
Resolution estimate (Å)	Estimation criterion (FSC cut-off)		
	0.143	0.5	Half-bit
Reported by author	4.54	-	-
Author-provided FSC curve	4.49	5.34	4.53
Unmasked-calculated*	5.01	6.78	5.17

*Resolution estimate based on FSC curve calculated by comparison of deposited half-maps. The value from deposited half-maps intersecting FSC 0.143 CUT-OFF 5.01 differs from the reported value 4.54 by more than 10 %

9 Map-model fit [i](#)

This section contains information regarding the fit between EMDB map EMD-34546 and PDB model 8YBS. Per-residue inclusion information can be found in section [3](#) on page [8](#).

9.1 Map-model overlay [i](#)



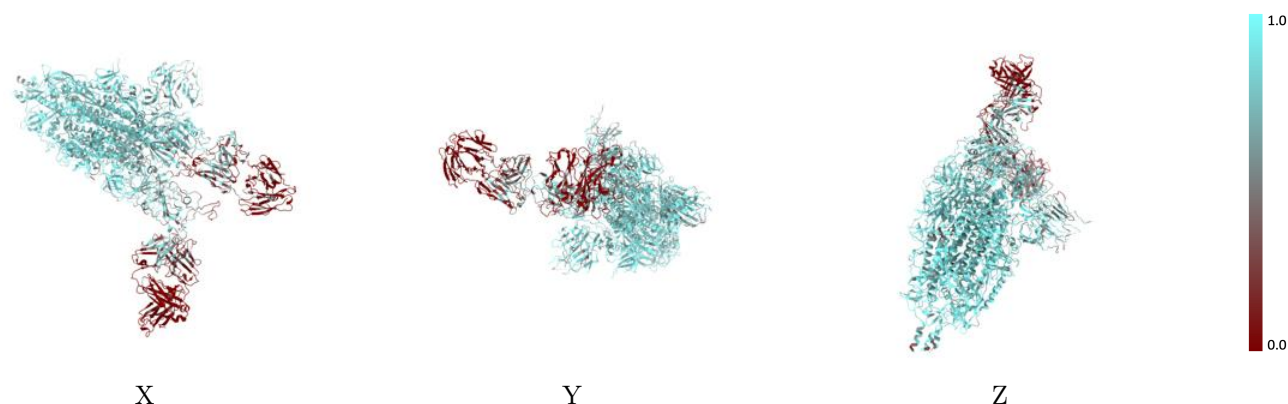
The images above show the 3D surface view of the map at the recommended contour level 4.29 at 50% transparency in yellow overlaid with a ribbon representation of the model coloured in blue. These images allow for the visual assessment of the quality of fit between the atomic model and the map.

9.2 Q-score mapped to coordinate model [i](#)



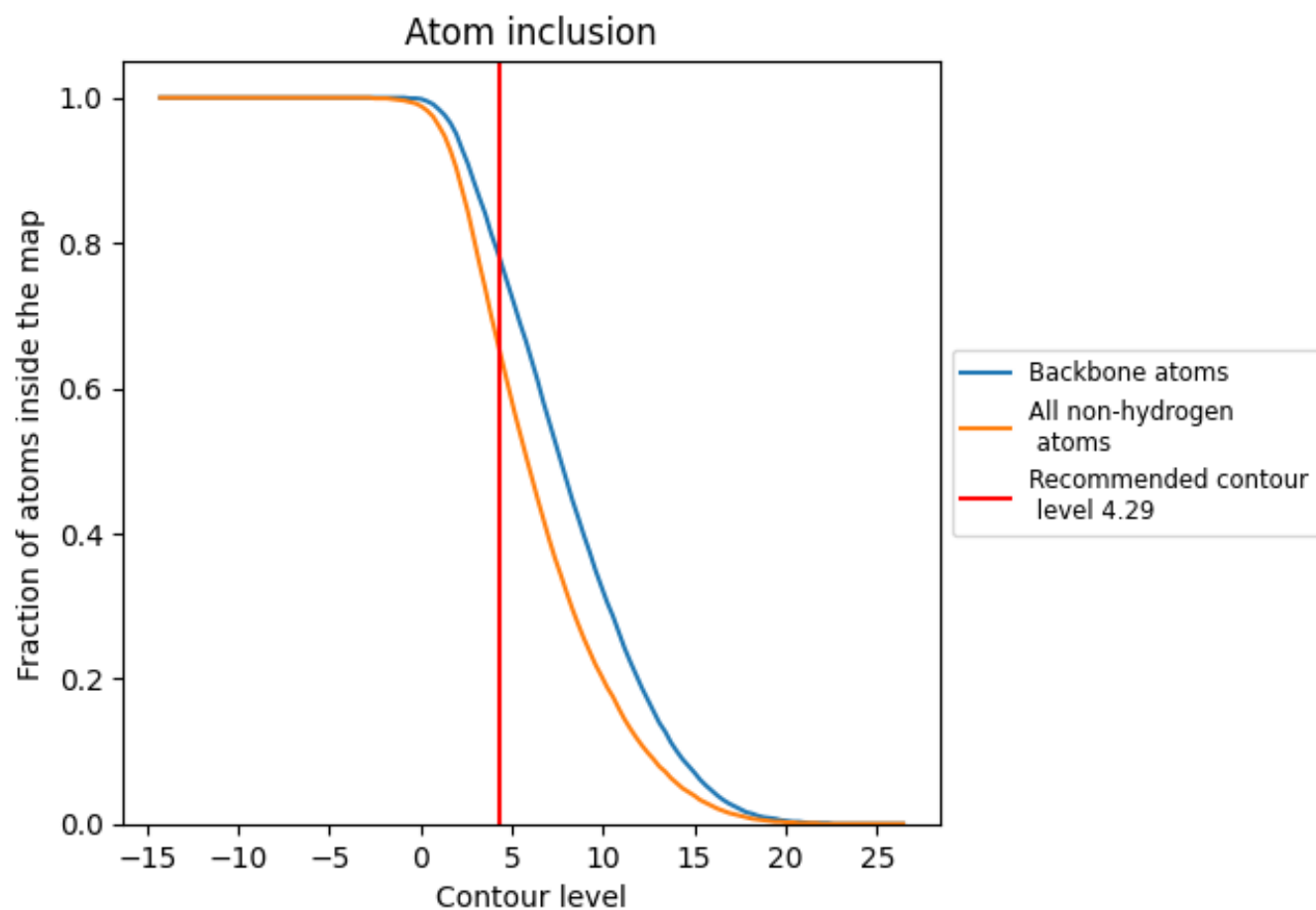
The images above show the model with each residue coloured according to its Q-score. This shows their resolvability in the map with higher Q-score values reflecting better resolvability. Please note: Q-score is calculating the resolvability of atoms, and thus high values are only expected at resolutions at which atoms can be resolved. Low Q-score values may therefore be expected for many entries.

9.3 Atom inclusion mapped to coordinate model [i](#)



The images above show the model with each residue coloured according to its atom inclusion. This shows to what extent they are inside the map at the recommended contour level (4.29).

9.4 Atom inclusion [i](#)



At the recommended contour level, 78% of all backbone atoms, 66% of all non-hydrogen atoms, are inside the map.

9.5 Map-model fit summary ⓘ

The table lists the average atom inclusion at the recommended contour level (4.29) and Q-score for the entire model and for each chain.

Chain	Atom inclusion	Q-score
All	<div></div> 0.6550	<div></div> 0.2340
A	<div></div> 0.2540	<div></div> 0.0570
B	<div></div> 0.7550	<div></div> 0.2730
C	<div></div> 0.1860	<div></div> 0.0920
D	<div></div> 0.8130	<div></div> 0.3000
E	<div></div> 0.2390	<div></div> 0.0620
F	<div></div> 0.1950	<div></div> 0.1070
G	<div></div> 0.7540	<div></div> 0.2540

1.0

0.0

<0.0