



Full wwPDB EM Validation Report ⓘ

Mar 10, 2026 – 01:31 PM UTC

PDB ID : 9XZF / pdb_00009xzf
EMDB ID : EMD-72352
Title : hPNPase RNA loading state with extended RNA in the bottom
Authors : Unseld, O.; Das, H.; Hallberg, B.M.
Deposited on : 2025-08-27
Resolution : 2.65 Å (reported)
Based on initial model : .

This is a Full wwPDB EM Validation Report for a publicly released PDB entry.

We welcome your comments at validation@mail.wwpdb.org

A user guide is available at

<https://www.wwpdb.org/validation/2017/EMValidationReportHelp>

with specific help available everywhere you see the ⓘ symbol.

The types of validation reports are described at

<http://www.wwpdb.org/validation/2017/FAQs#types>.

The following versions of software and data (see [references ⓘ](#)) were used in the production of this report:

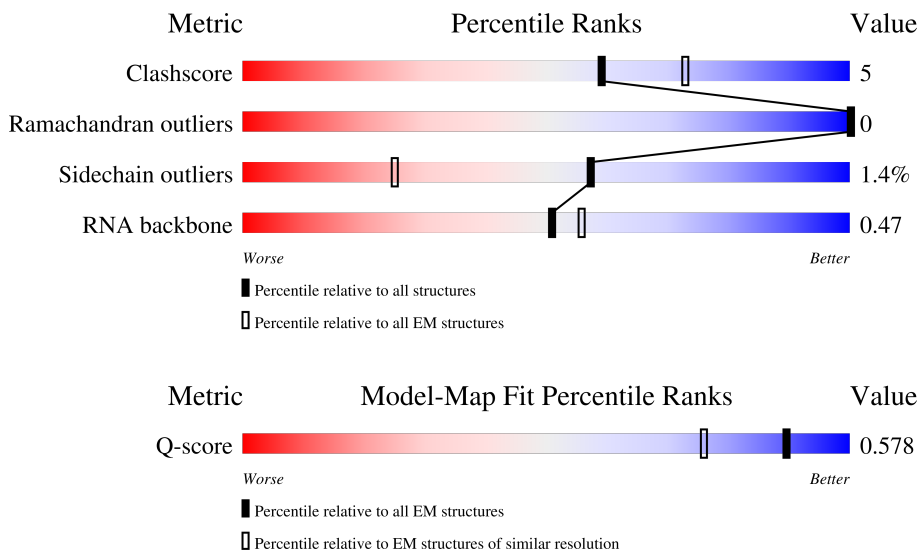
EMDB validation analysis : 0.0.1.dev132
Mogul : 2022.3.0, CSD as543be (2022)
MolProbity : 4-5-2 with Phenix2.0
Buster-report : wwPDB partial adaption of 1.1.7 (2018)
Percentile statistics : 20250101.v01 (using entries in the PDB archive January 1st 2025)
EM percentile statistics : 202505.v01 (Using data in the EMDB archive up until May 2025)
MapQ : 1.9.13
Ideal geometry (proteins) : Engh & Huber (2001)
Ideal geometry (DNA, RNA) : Parkinson et al. (1996)
Validation Pipeline (wwPDB-VP) : 2.49

1 Overall quality at a glance i

The following experimental techniques were used to determine the structure:
ELECTRON MICROSCOPY

The reported resolution of this entry is 2.65 Å.

Percentile scores (ranging between 0-100) for global validation metrics of the entry are shown in the following graphic. The table shows the number of entries on which the scores are based.




Metric	Whole archive (#Entries)	EM structures (#Entries)	Similar EM resolution (#Entries, resolution range(Å))
Clashscore	229148	23984	-
Ramachandran outliers	224038	23583	-
Sidechain outliers	223484	23102	-
RNA backbone	8273	3508	-
Q-score	-	25397	9050 (2.15 - 3.15)

The table below summarises the geometric issues observed across the polymeric chains and their fit to the map. The red, orange, yellow and green segments of the bar indicate the fraction of residues that contain outliers for ≥ 3 , 2, 1 and 0 types of geometric quality criteria respectively. A grey segment represents the fraction of residues that are not modelled. The numeric value for each fraction is indicated below the corresponding segment, with a dot representing fractions $\leq 5\%$. The upper red bar (where present) indicates the fraction of residues that have poor fit to the EM map (all-atom inclusion $< 40\%$). The numeric value is given above the bar.

Mol	Chain	Length	Quality of chain
1	A	773	
1	B	773	
1	C	773	

Continued on next page...

Continued from previous page...

Mol	Chain	Length	Quality of chain
2	D	31	 19% 10% 71%

2 Entry composition i

There are 3 unique types of molecules in this entry. The entry contains 14555 atoms, of which 0 are hydrogens and 0 are deuteriums.

In the tables below, the AltConf column contains the number of residues with at least one atom in alternate conformation and the Trace column contains the number of residues modelled with at most 2 atoms.

- Molecule 1 is a protein called Polyribonucleotide nucleotidyltransferase 1, mitochondrial.

Mol	Chain	Residues	Atoms					AltConf	Trace
			Total	C	N	O	S		
1	A	624	4788	3026	817	925	20	0	0
1	B	624	4788	3026	817	925	20	0	0
1	C	623	4779	3020	815	924	20	0	0

There are 105 discrepancies between the modelled and reference sequences:

Chain	Residue	Modelled	Actual	Comment	Reference
A	45	MET	-	initiating methionine	UNP Q8TCS8
A	784	SER	-	expression tag	UNP Q8TCS8
A	785	GLY	-	expression tag	UNP Q8TCS8
A	786	SER	-	expression tag	UNP Q8TCS8
A	787	GLY	-	expression tag	UNP Q8TCS8
A	788	SER	-	expression tag	UNP Q8TCS8
A	789	ALA	-	expression tag	UNP Q8TCS8
A	790	TRP	-	expression tag	UNP Q8TCS8
A	791	SER	-	expression tag	UNP Q8TCS8
A	792	HIS	-	expression tag	UNP Q8TCS8
A	793	PRO	-	expression tag	UNP Q8TCS8
A	794	GLN	-	expression tag	UNP Q8TCS8
A	795	PHE	-	expression tag	UNP Q8TCS8
A	796	GLU	-	expression tag	UNP Q8TCS8
A	797	LYS	-	expression tag	UNP Q8TCS8
A	798	GLY	-	expression tag	UNP Q8TCS8
A	799	GLY	-	expression tag	UNP Q8TCS8
A	800	GLY	-	expression tag	UNP Q8TCS8
A	801	SER	-	expression tag	UNP Q8TCS8
A	802	GLY	-	expression tag	UNP Q8TCS8
A	803	GLY	-	expression tag	UNP Q8TCS8
A	804	GLY	-	expression tag	UNP Q8TCS8
A	805	SER	-	expression tag	UNP Q8TCS8
A	806	GLY	-	expression tag	UNP Q8TCS8

Continued on next page...

Continued from previous page...

Chain	Residue	Modelled	Actual	Comment	Reference
A	807	GLY	-	expression tag	UNP Q8TCS8
A	808	SER	-	expression tag	UNP Q8TCS8
A	809	ALA	-	expression tag	UNP Q8TCS8
A	810	TRP	-	expression tag	UNP Q8TCS8
A	811	SER	-	expression tag	UNP Q8TCS8
A	812	HIS	-	expression tag	UNP Q8TCS8
A	813	PRO	-	expression tag	UNP Q8TCS8
A	814	GLN	-	expression tag	UNP Q8TCS8
A	815	PHE	-	expression tag	UNP Q8TCS8
A	816	GLU	-	expression tag	UNP Q8TCS8
A	817	LYS	-	expression tag	UNP Q8TCS8
B	45	MET	-	initiating methionine	UNP Q8TCS8
B	784	SER	-	expression tag	UNP Q8TCS8
B	785	GLY	-	expression tag	UNP Q8TCS8
B	786	SER	-	expression tag	UNP Q8TCS8
B	787	GLY	-	expression tag	UNP Q8TCS8
B	788	SER	-	expression tag	UNP Q8TCS8
B	789	ALA	-	expression tag	UNP Q8TCS8
B	790	TRP	-	expression tag	UNP Q8TCS8
B	791	SER	-	expression tag	UNP Q8TCS8
B	792	HIS	-	expression tag	UNP Q8TCS8
B	793	PRO	-	expression tag	UNP Q8TCS8
B	794	GLN	-	expression tag	UNP Q8TCS8
B	795	PHE	-	expression tag	UNP Q8TCS8
B	796	GLU	-	expression tag	UNP Q8TCS8
B	797	LYS	-	expression tag	UNP Q8TCS8
B	798	GLY	-	expression tag	UNP Q8TCS8
B	799	GLY	-	expression tag	UNP Q8TCS8
B	800	GLY	-	expression tag	UNP Q8TCS8
B	801	SER	-	expression tag	UNP Q8TCS8
B	802	GLY	-	expression tag	UNP Q8TCS8
B	803	GLY	-	expression tag	UNP Q8TCS8
B	804	GLY	-	expression tag	UNP Q8TCS8
B	805	SER	-	expression tag	UNP Q8TCS8
B	806	GLY	-	expression tag	UNP Q8TCS8
B	807	GLY	-	expression tag	UNP Q8TCS8
B	808	SER	-	expression tag	UNP Q8TCS8
B	809	ALA	-	expression tag	UNP Q8TCS8
B	810	TRP	-	expression tag	UNP Q8TCS8
B	811	SER	-	expression tag	UNP Q8TCS8
B	812	HIS	-	expression tag	UNP Q8TCS8
B	813	PRO	-	expression tag	UNP Q8TCS8

Continued on next page...

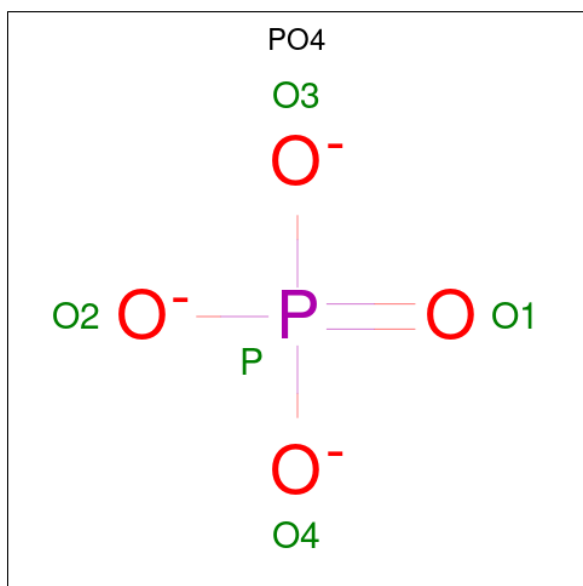
Continued from previous page...

Chain	Residue	Modelled	Actual	Comment	Reference
B	814	GLN	-	expression tag	UNP Q8TCS8
B	815	PHE	-	expression tag	UNP Q8TCS8
B	816	GLU	-	expression tag	UNP Q8TCS8
B	817	LYS	-	expression tag	UNP Q8TCS8
C	45	MET	-	initiating methionine	UNP Q8TCS8
C	784	SER	-	expression tag	UNP Q8TCS8
C	785	GLY	-	expression tag	UNP Q8TCS8
C	786	SER	-	expression tag	UNP Q8TCS8
C	787	GLY	-	expression tag	UNP Q8TCS8
C	788	SER	-	expression tag	UNP Q8TCS8
C	789	ALA	-	expression tag	UNP Q8TCS8
C	790	TRP	-	expression tag	UNP Q8TCS8
C	791	SER	-	expression tag	UNP Q8TCS8
C	792	HIS	-	expression tag	UNP Q8TCS8
C	793	PRO	-	expression tag	UNP Q8TCS8
C	794	GLN	-	expression tag	UNP Q8TCS8
C	795	PHE	-	expression tag	UNP Q8TCS8
C	796	GLU	-	expression tag	UNP Q8TCS8
C	797	LYS	-	expression tag	UNP Q8TCS8
C	798	GLY	-	expression tag	UNP Q8TCS8
C	799	GLY	-	expression tag	UNP Q8TCS8
C	800	GLY	-	expression tag	UNP Q8TCS8
C	801	SER	-	expression tag	UNP Q8TCS8
C	802	GLY	-	expression tag	UNP Q8TCS8
C	803	GLY	-	expression tag	UNP Q8TCS8
C	804	GLY	-	expression tag	UNP Q8TCS8
C	805	SER	-	expression tag	UNP Q8TCS8
C	806	GLY	-	expression tag	UNP Q8TCS8
C	807	GLY	-	expression tag	UNP Q8TCS8
C	808	SER	-	expression tag	UNP Q8TCS8
C	809	ALA	-	expression tag	UNP Q8TCS8
C	810	TRP	-	expression tag	UNP Q8TCS8
C	811	SER	-	expression tag	UNP Q8TCS8
C	812	HIS	-	expression tag	UNP Q8TCS8
C	813	PRO	-	expression tag	UNP Q8TCS8
C	814	GLN	-	expression tag	UNP Q8TCS8
C	815	PHE	-	expression tag	UNP Q8TCS8
C	816	GLU	-	expression tag	UNP Q8TCS8
C	817	LYS	-	expression tag	UNP Q8TCS8

- Molecule 2 is a RNA chain called RNA (31-MER).

Mol	Chain	Residues	Atoms				AltConf	Trace	
			Total	C	N	O			P
2	D	9	185	86	36	54	9	0	0

- Molecule 3 is PHOSPHATE ION (CCD ID: PO4) (formula: O_4P) (labeled as "Ligand of Interest" by depositor).



Mol	Chain	Residues	Atoms			AltConf
			Total	O	P	
3	A	1	5	4	1	0
3	B	1	5	4	1	0
3	C	1	5	4	1	0

4 Experimental information

Property	Value	Source
EM reconstruction method	SINGLE PARTICLE	Depositor
Imposed symmetry	POINT, C1	Depositor
Number of particles used	89314	Depositor
Resolution determination method	FSC 0.143 CUT-OFF	Depositor
CTF correction method	PHASE FLIPPING AND AMPLITUDE CORRECTION	Depositor
Microscope	TFS KRIOS	Depositor
Voltage (kV)	300	Depositor
Electron dose ($e^-/\text{\AA}^2$)	58.4	Depositor
Minimum defocus (nm)	300	Depositor
Maximum defocus (nm)	2000	Depositor
Magnification	165000	Depositor
Image detector	GATAN K3 BIOQUANTUM (6k x 4k)	Depositor
Maximum map value	0.907	Depositor
Minimum map value	-0.393	Depositor
Average map value	0.001	Depositor
Map value standard deviation	0.026	Depositor
Recommended contour level	0.138	Depositor
Map size (Å)	304.56, 304.56, 304.56	wwPDB
Map dimensions	300, 300, 300	wwPDB
Map angles (°)	90.0, 90.0, 90.0	wwPDB
Pixel spacing (Å)	1.0152, 1.0152, 1.0152	Depositor

5 Model quality [i](#)

5.1 Standard geometry [i](#)

Bond lengths and bond angles in the following residue types are not validated in this section: PO4

The Z score for a bond length (or angle) is the number of standard deviations the observed value is removed from the expected value. A bond length (or angle) with $|Z| > 5$ is considered an outlier worth inspection. RMSZ is the root-mean-square of all Z scores of the bond lengths (or angles).

Mol	Chain	Bond lengths		Bond angles	
		RMSZ	# Z >5	RMSZ	# Z >5
1	A	0.17	0/4866	0.24	0/6589
1	B	0.18	0/4866	0.26	0/6589
1	C	0.17	0/4857	0.25	0/6578
2	D	0.16	0/207	0.43	0/312
All	All	0.17	0/14796	0.26	0/20068

There are no bond length outliers.

There are no bond angle outliers.

There are no chirality outliers.

There are no planarity outliers.

5.2 Too-close contacts [i](#)

In the following table, the Non-H and H(model) columns list the number of non-hydrogen atoms and hydrogen atoms in the chain respectively. The H(added) column lists the number of hydrogen atoms added and optimized by MolProbity. The Clashes column lists the number of clashes within the asymmetric unit, whereas Symm-Clashes lists symmetry-related clashes.

Mol	Chain	Non-H	H(model)	H(added)	Clashes	Symm-Clashes
1	A	4788	0	4882	44	0
1	B	4788	0	4882	56	0
1	C	4779	0	4869	46	0
2	D	185	0	99	0	0
3	A	5	0	0	0	0
3	B	5	0	0	0	0
3	C	5	0	0	0	0
All	All	14555	0	14732	134	0

The all-atom clashscore is defined as the number of clashes found per 1000 atoms (including

hydrogen atoms). The all-atom clashscore for this structure is 5.

All (134) close contacts within the same asymmetric unit are listed below, sorted by their clash magnitude.

Atom-1	Atom-2	Interatomic distance (Å)	Clash overlap (Å)
1:A:114:THR:HG21	1:A:409:ASP:HB3	1.70	0.72
1:A:187:PRO:HG2	1:A:256:ILE:HG23	1.72	0.71
1:A:113:PRO:HB2	1:A:118:ARG:HH11	1.60	0.66
1:C:187:PRO:HG2	1:C:256:ILE:HG23	1.78	0.66
1:A:440:VAL:HG21	1:C:153:LEU:HD21	1.78	0.66
1:B:410:GLN:HB2	1:B:413:THR:HG22	1.77	0.65
1:B:232:SER:HB2	1:B:456:LYS:HD2	1.79	0.65
1:C:634:GLU:HG3	1:C:635:THR:HG23	1.78	0.64
1:C:232:SER:HB3	1:C:456:LYS:HE3	1.80	0.63
1:A:412:ILE:HG22	1:A:414:ALA:H	1.64	0.62
1:C:221:ALA:HB3	1:C:225:GLN:HB2	1.83	0.60
1:B:113:PRO:HB3	1:B:118:ARG:HG3	1.84	0.59
1:A:411:VAL:HB	1:A:412:ILE:HD12	1.84	0.58
1:B:106:ALA:HB1	1:B:110:GLY:H	1.68	0.58
1:C:399:PHE:HB2	1:C:605:PRO:HG2	1.85	0.58
1:A:221:ALA:HB3	1:A:225:GLN:HB2	1.85	0.57
1:A:637:VAL:HG11	1:A:660:ALA:HB2	1.88	0.56
1:B:332:ASP:OD1	1:B:333:PRO:HD2	2.05	0.56
1:B:399:PHE:HB2	1:B:605:PRO:HG2	1.87	0.55
1:C:179:LEU:HA	1:C:268:VAL:HG21	1.86	0.55
1:B:363:ASP:OD1	1:B:366:SER:HB2	2.07	0.54
1:A:629:LYS:HD3	1:C:406:ILE:HD13	1.90	0.54
1:B:229:LEU:HB2	1:B:559:ALA:HB3	1.88	0.54
1:B:439:LYS:HE2	1:B:439:LYS:H	1.72	0.54
1:B:406:ILE:HB	1:B:418:ILE:HG13	1.90	0.53
1:B:485:MET:HA	1:B:485:MET:HE2	1.90	0.53
1:B:632:GLN:HG2	1:B:638:THR:HA	1.91	0.53
1:A:412:ILE:HG21	1:A:415:ILE:HG12	1.89	0.53
1:B:111:ARG:HG3	1:C:471:ARG:NE	2.24	0.53
1:B:543:MET:HE3	1:B:545:PHE:HB2	1.91	0.52
1:A:443:LEU:H	1:C:119:ARG:HG3	1.74	0.52
1:B:101:ASP:HB2	1:B:153:LEU:HD23	1.92	0.52
1:A:485:MET:HE2	1:A:485:MET:HA	1.91	0.52
1:A:399:PHE:HB2	1:A:605:PRO:HG2	1.91	0.52
1:A:567:PRO:HD2	1:A:570:ILE:HD12	1.91	0.52
1:B:370:VAL:HG22	1:B:388:ARG:HG3	1.92	0.52
1:A:236:ILE:HD11	1:A:241:PHE:HD1	1.75	0.51
1:B:221:ALA:HB3	1:B:225:GLN:HB2	1.92	0.51

Continued on next page...

Continued from previous page...

Atom-1	Atom-2	Interatomic distance (Å)	Clash overlap (Å)
1:C:512:GLY:HA3	1:C:533:ILE:HG21	1.92	0.51
1:B:72:VAL:HG22	1:B:81:MET:HB2	1.94	0.49
1:C:324:LEU:HB3	1:C:336:ILE:HD12	1.94	0.49
1:B:187:PRO:HG2	1:B:256:ILE:HG23	1.94	0.49
1:A:118:ARG:HH22	1:B:404:SER:C	2.20	0.49
1:B:228:MET:HB3	1:B:228:MET:HE3	1.73	0.49
1:A:642:VAL:HG22	1:B:623:PRO:HB3	1.95	0.48
1:B:368:ARG:HD2	1:B:389:GLY:HA3	1.95	0.48
1:C:120:GLU:HG2	1:C:121:ILE:HG12	1.94	0.48
1:C:229:LEU:HB2	1:C:559:ALA:HB3	1.96	0.48
1:A:324:LEU:HB3	1:A:336:ILE:HD12	1.96	0.48
1:A:380:LEU:HD13	1:A:396:THR:HG23	1.95	0.48
1:A:512:GLY:HA3	1:A:533:ILE:HG21	1.95	0.48
1:A:288:HIS:O	1:A:292:MET:HB2	2.13	0.48
1:B:512:GLY:HA3	1:B:533:ILE:HG21	1.95	0.47
1:C:304:HIS:HB3	1:C:309:ARG:HB2	1.96	0.47
1:B:616:LYS:HE2	1:B:620:PHE:HB2	1.95	0.47
1:C:105:LYS:HA	1:C:115:ASN:HB3	1.96	0.47
1:C:216:LEU:HD11	1:C:229:LEU:HD22	1.95	0.47
1:A:442:GLY:HA3	1:C:119:ARG:HA	1.97	0.47
1:C:236:ILE:HD11	1:C:241:PHE:HD1	1.79	0.47
1:A:118:ARG:HA	1:A:118:ARG:HD3	1.72	0.46
1:A:550:THR:HG22	1:A:551:ASN:H	1.80	0.46
1:A:401:SER:HB3	1:A:650:PHE:CD2	2.51	0.46
1:A:636:GLY:HA2	1:C:112:ILE:HD11	1.98	0.46
1:B:94:GLN:HA	1:B:94:GLN:OE1	2.15	0.46
1:C:616:LYS:HE2	1:C:616:LYS:HB2	1.71	0.46
1:C:228:MET:HE3	1:C:228:MET:HB3	1.79	0.46
1:A:160:ASP:HA	1:B:379:THR:HG21	1.96	0.46
1:B:664:ILE:HD12	1:B:665:THR:N	2.30	0.46
1:A:248:GLY:O	1:A:252:THR:HG23	2.16	0.46
1:A:660:ALA:O	1:A:664:ILE:HD12	2.15	0.46
1:B:288:HIS:O	1:B:292:MET:HB2	2.16	0.46
1:B:406:ILE:HD12	1:B:407:LYS:HZ2	1.80	0.46
1:B:119:ARG:HB3	1:C:442:GLY:HA2	1.98	0.45
1:B:304:HIS:HB3	1:B:309:ARG:HB2	1.97	0.45
1:B:348:PHE:HZ	1:B:537:GLU:HG3	1.81	0.45
1:C:106:ALA:HB3	1:C:110:GLY:HA2	1.98	0.45
1:A:348:PHE:HZ	1:A:537:GLU:HG2	1.81	0.44
1:B:103:ARG:HE	1:B:103:ARG:HB3	1.63	0.44
1:C:349:ARG:HH22	1:C:542:ASP:CG	2.26	0.44

Continued on next page...

Continued from previous page...

Atom-1	Atom-2	Interatomic distance (Å)	Clash overlap (Å)
1:C:81:MET:HB2	1:C:157:LEU:HD11	1.99	0.44
1:A:128:ILE:HG23	1:A:445:ARG:HG2	1.99	0.44
1:A:424:MET:HE2	1:A:424:MET:HB3	1.86	0.44
1:C:367:LEU:HD23	1:C:532:ASP:HB2	2.00	0.44
1:B:283:ILE:HG13	1:B:328:PHE:CE2	2.53	0.43
1:B:597:ARG:NH2	1:B:601:LYS:HG2	2.34	0.43
1:C:229:LEU:HD23	1:C:229:LEU:HA	1.86	0.43
1:B:621:VAL:HG12	1:B:625:GLY:HA2	2.00	0.43
1:C:93:SER:HB3	1:C:95:PHE:CE1	2.54	0.43
1:C:348:PHE:HZ	1:C:537:GLU:HG2	1.82	0.43
1:C:493:LEU:HD21	1:C:589:MET:HB3	2.00	0.43
1:A:661:ARG:HD2	1:A:661:ARG:HA	1.66	0.43
1:B:229:LEU:HD23	1:B:229:LEU:HA	1.93	0.43
1:C:96:MET:HG2	1:C:146:TYR:O	2.18	0.42
1:C:287:THR:HB	1:C:343:VAL:HG21	2.01	0.42
1:B:207:LYS:HB3	1:B:207:LYS:HE3	1.74	0.42
1:A:652:PRO:HG3	1:C:111:ARG:HB3	2.00	0.42
1:C:424:MET:HE2	1:C:424:MET:HB3	1.83	0.42
1:A:171:ASN:O	1:A:175:VAL:HG23	2.19	0.42
1:B:616:LYS:HE3	1:B:667:ILE:HG22	2.02	0.42
1:A:96:MET:HE3	1:A:146:TYR:O	2.19	0.42
1:B:321:GLU:HG2	1:B:336:ILE:HG22	2.01	0.42
1:C:533:ILE:HD12	1:C:538:ASP:HB2	2.01	0.42
1:A:228:MET:HB3	1:A:228:MET:HE3	1.77	0.42
1:B:426:HIS:NE2	1:B:443:LEU:HD11	2.35	0.42
1:C:466:PHE:CD1	1:C:467:PRO:HD2	2.55	0.42
1:C:585:ILE:O	1:C:589:MET:HG3	2.20	0.41
1:B:118:ARG:NH2	1:B:122:GLY:HA2	2.35	0.41
1:B:290:LEU:HD23	1:B:290:LEU:HA	1.89	0.41
1:C:81:MET:HE2	1:C:81:MET:HB3	1.82	0.41
1:A:48:ALA:HB1	1:A:55:LYS:HD2	2.02	0.41
1:A:136:ARG:HH21	1:A:230:GLU:HG3	1.84	0.41
1:B:497:ASP:O	1:B:597:ARG:HD3	2.20	0.41
1:A:290:LEU:HD23	1:A:290:LEU:HA	1.92	0.41
1:A:477:LEU:HD13	1:C:63:LEU:HB3	2.02	0.41
1:B:376:MET:HE3	1:B:376:MET:HB2	1.71	0.41
1:B:397:VAL:HG22	1:B:472:VAL:HG22	2.03	0.41
1:B:631:LEU:HD13	1:B:663:PHE:CD1	2.55	0.41
1:B:89:LYS:HD3	1:B:89:LYS:HA	1.83	0.41
1:B:376:MET:HE2	1:B:383:SER:HB2	2.03	0.41
1:B:458:LEU:O	1:B:462:ILE:HG12	2.21	0.41

Continued on next page...

Continued from previous page...

Atom-1	Atom-2	Interatomic distance (Å)	Clash overlap (Å)
1:C:250:LYS:HE3	1:C:250:LYS:HB3	1.92	0.41
1:B:511:ILE:HB	1:B:545:PHE:HB3	2.01	0.41
1:A:657:MET:HE2	1:A:657:MET:HB2	1.92	0.41
1:B:115:ASN:OD1	1:B:115:ASN:C	2.64	0.40
1:C:248:GLY:O	1:C:252:THR:HG23	2.21	0.40
1:C:631:LEU:HD13	1:C:663:PHE:CD2	2.55	0.40
1:B:250:LYS:HB3	1:B:250:LYS:HE3	1.94	0.40
1:C:103:ARG:HH21	1:C:118:ARG:HH11	1.69	0.40
1:C:280:SER:OG	1:C:283:ILE:HG12	2.20	0.40
1:B:406:ILE:CD1	1:B:407:LYS:HZ2	2.35	0.40
1:C:276:LEU:HD23	1:C:276:LEU:HA	1.95	0.40
1:A:81:MET:HE2	1:A:81:MET:HB3	1.79	0.40
1:A:246:LYS:HB3	1:A:246:LYS:HE3	1.77	0.40
1:B:100:VAL:HG11	1:B:134:ILE:HB	2.04	0.40

There are no symmetry-related clashes.

5.3 Torsion angles [i](#)

5.3.1 Protein backbone [i](#)

In the following table, the Percentiles column shows the percent Ramachandran outliers of the chain as a percentile score with respect to all PDB entries followed by that with respect to all EM entries.

The Analysed column shows the number of residues for which the backbone conformation was analysed, and the total number of residues.

Mol	Chain	Analysed	Favoured	Allowed	Outliers	Percentiles	
1	A	622/773 (80%)	606 (97%)	16 (3%)	0	100	100
1	B	622/773 (80%)	610 (98%)	12 (2%)	0	100	100
1	C	621/773 (80%)	612 (99%)	9 (1%)	0	100	100
All	All	1865/2319 (80%)	1828 (98%)	37 (2%)	0	100	100

There are no Ramachandran outliers to report.

5.3.2 Protein sidechains [i](#)

In the following table, the Percentiles column shows the percent sidechain outliers of the chain as a percentile score with respect to all PDB entries followed by that with respect to all EM entries.

The Analysed column shows the number of residues for which the sidechain conformation was analysed, and the total number of residues.

Mol	Chain	Analysed	Rotameric	Outliers	Percentiles	
1	A	530/654 (81%)	520 (98%)	10 (2%)	50	71
1	B	530/654 (81%)	524 (99%)	6 (1%)	65	80
1	C	529/654 (81%)	522 (99%)	7 (1%)	61	77
All	All	1589/1962 (81%)	1566 (99%)	23 (1%)	57	76

All (23) residues with a non-rotameric sidechain are listed below:

Mol	Chain	Res	Type
1	A	56	LEU
1	A	93	SER
1	A	116	TYR
1	A	322	GLU
1	A	416	ASN
1	A	448	LEU
1	A	610	VAL
1	A	645	GLU
1	A	666	GLU
1	A	667	ILE
1	B	96	MET
1	B	112	ILE
1	B	265	GLU
1	B	406	ILE
1	B	547	ILE
1	B	610	VAL
1	C	99	VAL
1	C	188	VAL
1	C	371	SER
1	C	448	LEU
1	C	572	MET
1	C	609	THR
1	C	641	GLN

Sometimes sidechains can be flipped to improve hydrogen bonding and reduce clashes. All (9) such sidechains are listed below:

Mol	Chain	Res	Type
1	A	163	ASN
1	A	225	GLN
1	A	435	ASN
1	A	444	ASN
1	B	225	GLN
1	B	422	ASN
1	C	225	GLN
1	C	435	ASN
1	C	632	GLN

5.3.3 RNA [i](#)

Mol	Chain	Analysed	Backbone Outliers	Pucker Outliers
2	D	8/31 (25%)	3 (37%)	0

All (3) RNA backbone outliers are listed below:

Mol	Chain	Res	Type
2	D	1	A
2	D	7	A
2	D	8	A

There are no RNA pucker outliers to report.

5.4 Non-standard residues in protein, DNA, RNA chains [i](#)

There are no non-standard protein/DNA/RNA residues in this entry.

5.5 Carbohydrates [i](#)

There are no oligosaccharides in this entry.

5.6 Ligand geometry [i](#)

3 ligands are modelled in this entry.

In the following table, the Counts columns list the number of bonds (or angles) for which Mogul statistics could be retrieved, the number of bonds (or angles) that are observed in the model and the number of bonds (or angles) that are defined in the Chemical Component Dictionary. The Link column lists molecule types, if any, to which the group is linked. The Z score for a bond

length (or angle) is the number of standard deviations the observed value is removed from the expected value. A bond length (or angle) with $|Z| > 2$ is considered an outlier worth inspection. RMSZ is the root-mean-square of all Z scores of the bond lengths (or angles).

Mol	Type	Chain	Res	Link	Bond lengths			Bond angles		
					Counts	RMSZ	# Z > 2	Counts	RMSZ	# Z > 2
3	PO4	C	901	-	4,4,4	1.44	1 (25%)	6,6,6	0.49	0
3	PO4	A	901	-	4,4,4	1.47	1 (25%)	6,6,6	0.48	0
3	PO4	B	901	-	4,4,4	1.47	1 (25%)	6,6,6	0.46	0

All (3) bond length outliers are listed below:

Mol	Chain	Res	Type	Atoms	Z	Observed(Å)	Ideal(Å)
3	B	901	PO4	P-O1	2.63	1.56	1.50
3	A	901	PO4	P-O1	2.60	1.56	1.50
3	C	901	PO4	P-O1	2.55	1.56	1.50

There are no bond angle outliers.

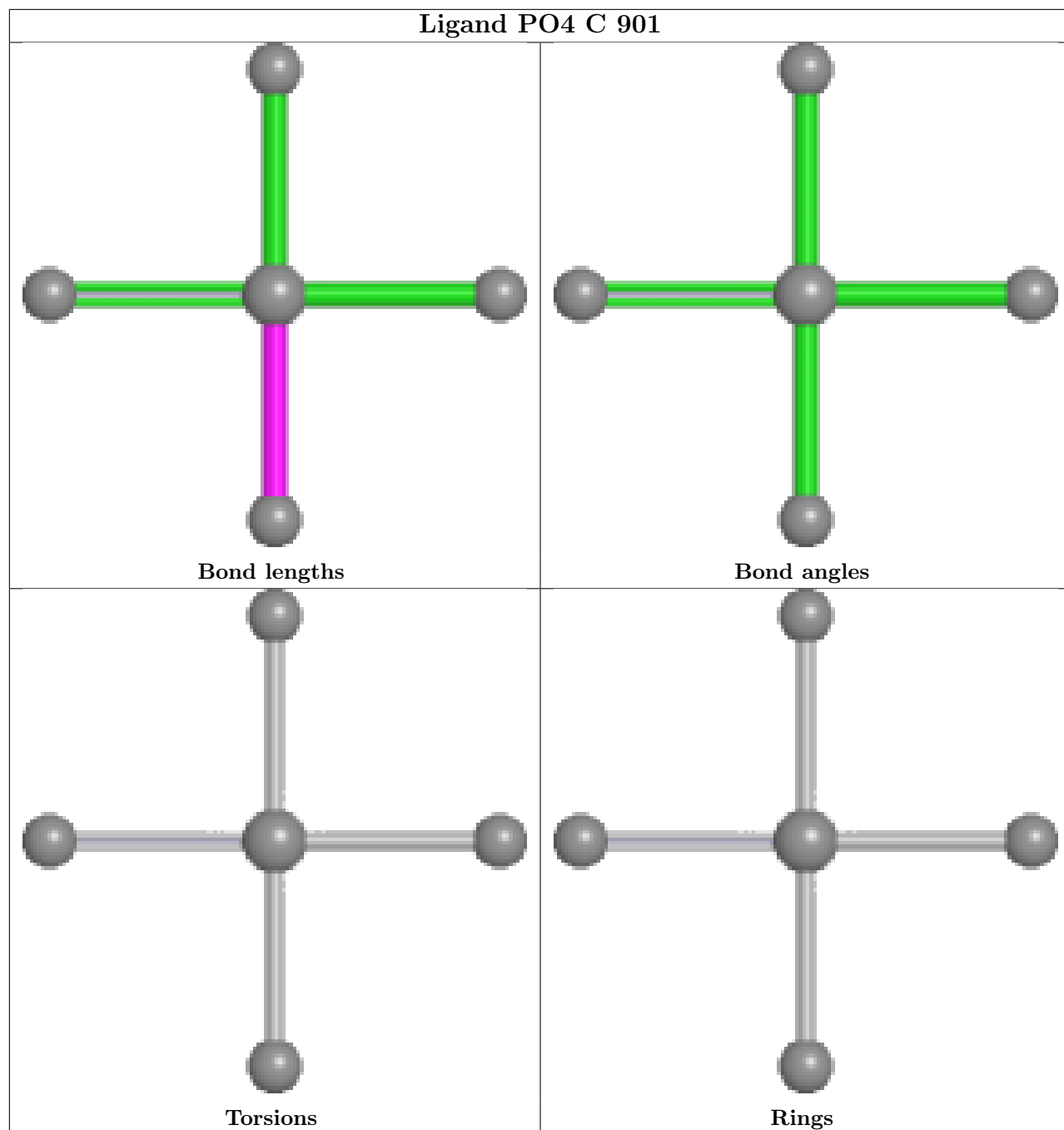
There are no chirality outliers.

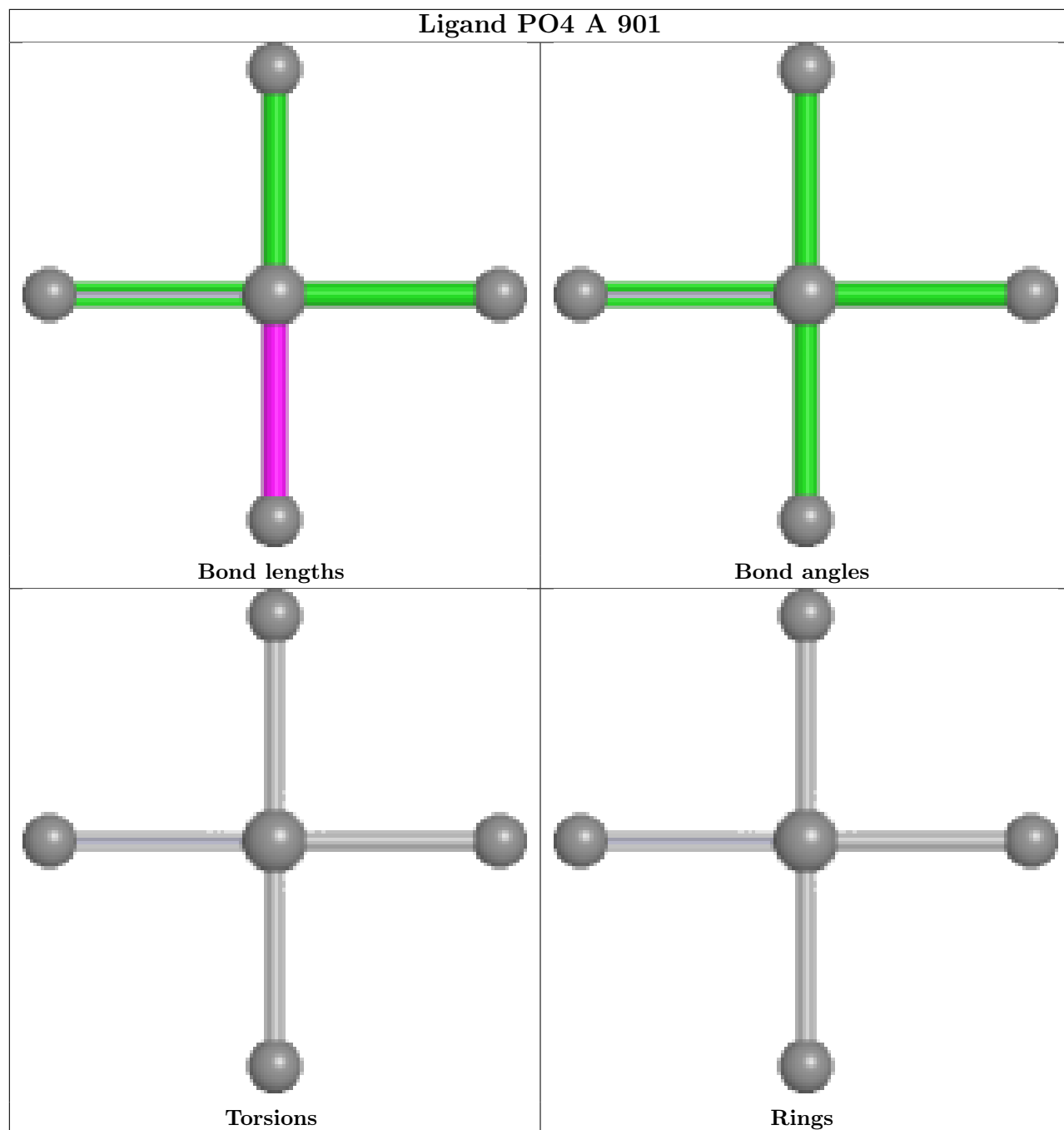
There are no torsion outliers.

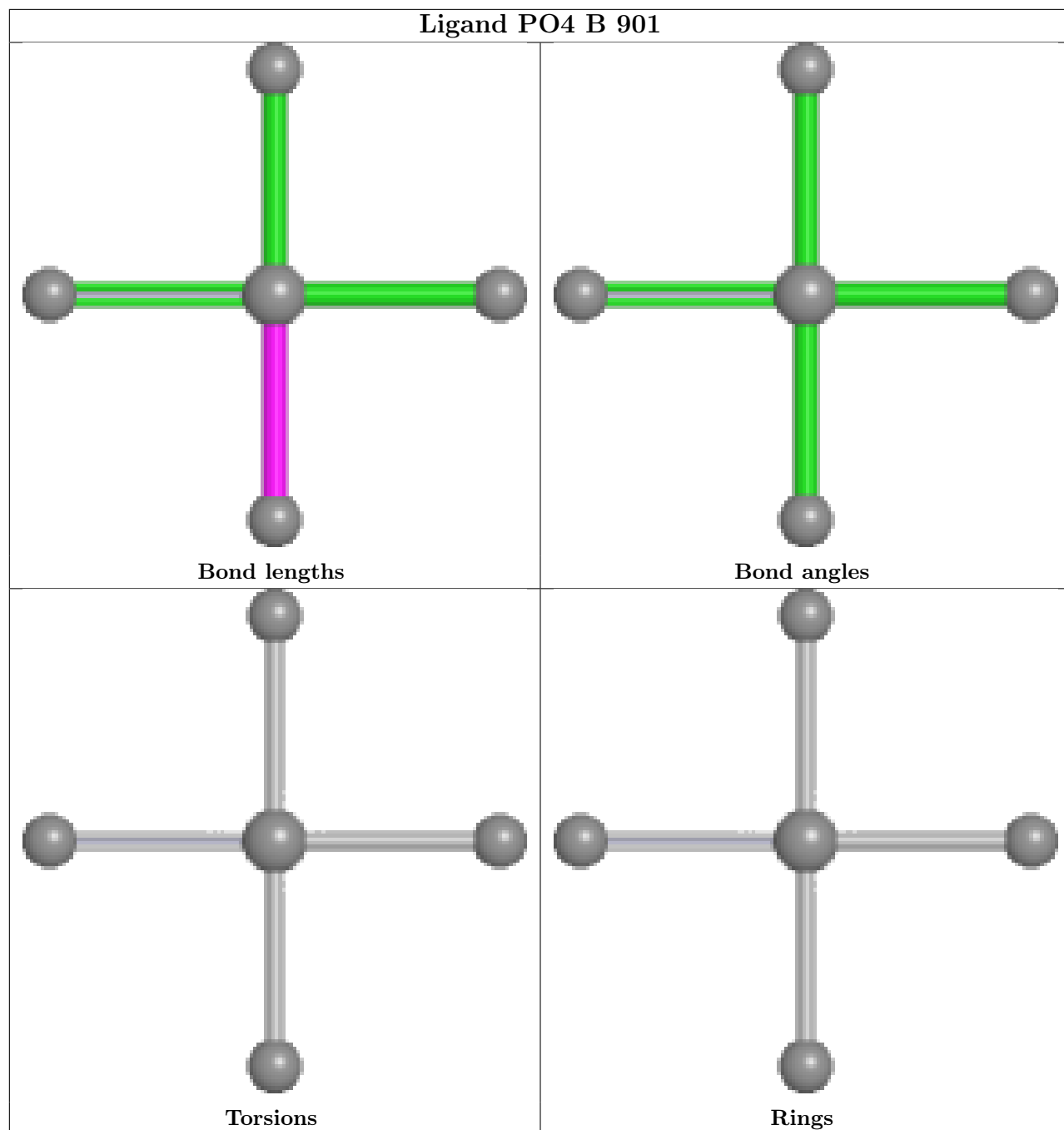
There are no ring outliers.

No monomer is involved in short contacts.

The following is a two-dimensional graphical depiction of Mogul quality analysis of bond lengths, bond angles, torsion angles, and ring geometry for all instances of the Ligand of Interest. In addition, ligands with molecular weight > 250 and outliers as shown on the validation Tables will also be included. For torsion angles, if less than 5% of the Mogul distribution of torsion angles is within 10 degrees of the torsion angle in question, then that torsion angle is considered an outlier. Any bond that is central to one or more torsion angles identified as an outlier by Mogul will be highlighted in the graph. For rings, the root-mean-square deviation (RMSD) between the ring in question and similar rings identified by Mogul is calculated over all ring torsion angles. If the average RMSD is greater than 60 degrees and the minimal RMSD between the ring in question and any Mogul-identified rings is also greater than 60 degrees, then that ring is considered an outlier. The outliers are highlighted in purple. The color gray indicates Mogul did not find sufficient equivalents in the CSD to analyse the geometry.







5.7 Other polymers [i](#)

There are no such residues in this entry.

5.8 Polymer linkage issues [i](#)

There are no chain breaks in this entry.

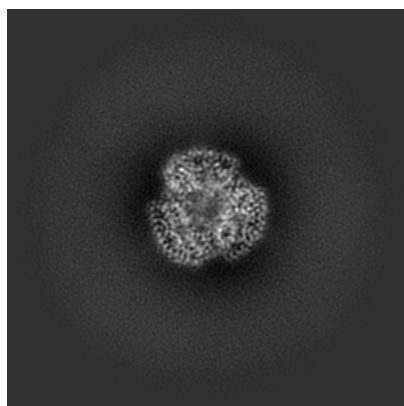
6 Map visualisation [i](#)

This section contains visualisations of the EMDB entry EMD-72352. These allow visual inspection of the internal detail of the map and identification of artifacts.

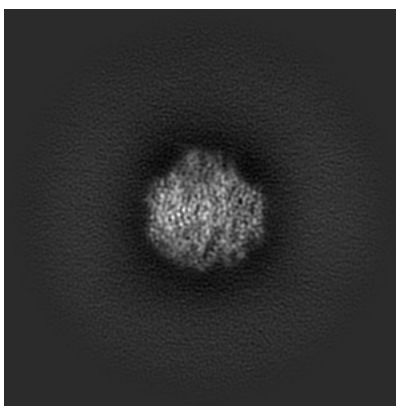
Images derived from a raw map, generated by summing the deposited half-maps, are presented below the corresponding image components of the primary map to allow further visual inspection and comparison with those of the primary map.

6.1 Orthogonal projections [i](#)

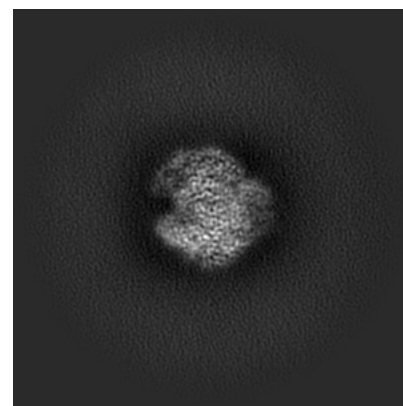
6.1.1 Primary map



X

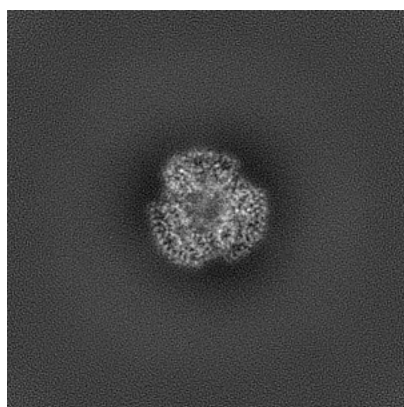


Y

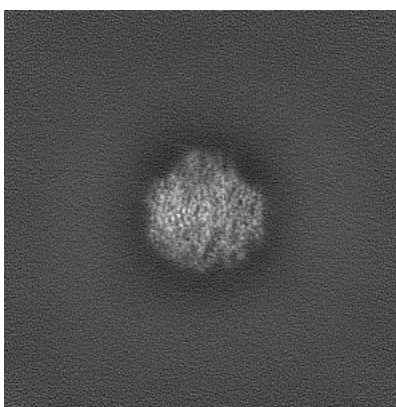


Z

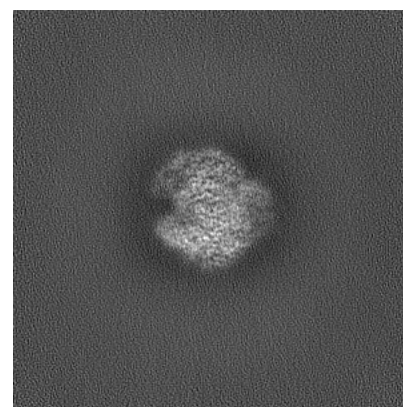
6.1.2 Raw map



X



Y

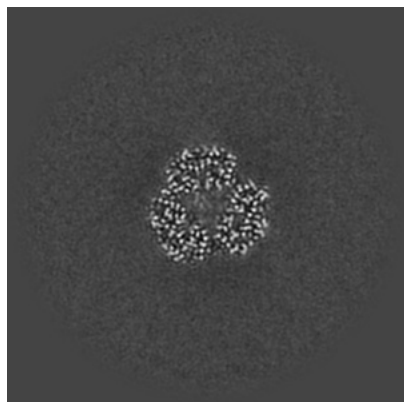


Z

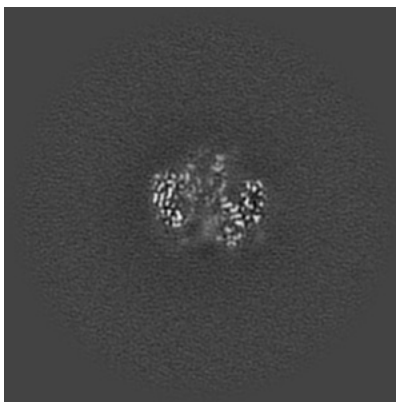
The images above show the map projected in three orthogonal directions.

6.2 Central slices [i](#)

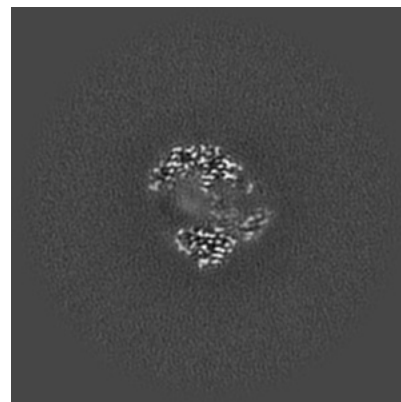
6.2.1 Primary map



X Index: 150

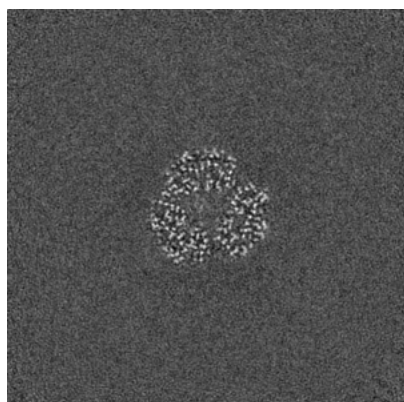


Y Index: 150

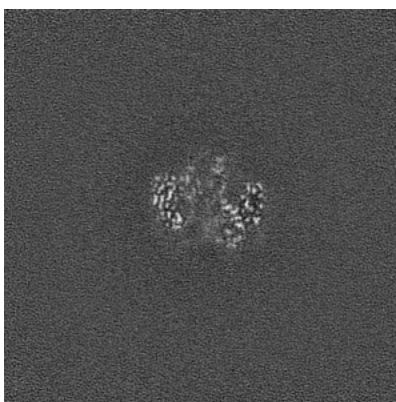


Z Index: 150

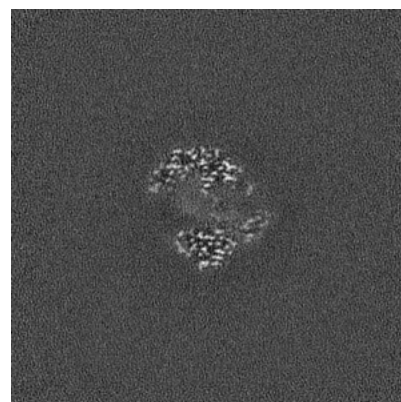
6.2.2 Raw map



X Index: 150



Y Index: 150

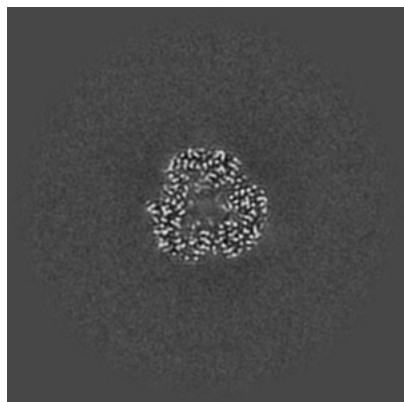


Z Index: 150

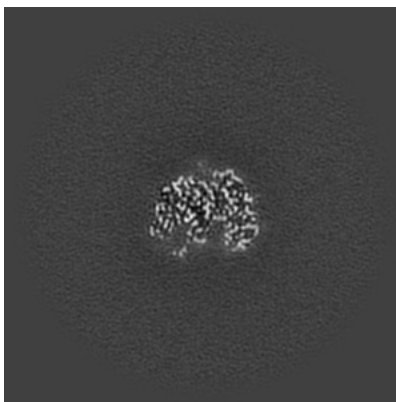
The images above show central slices of the map in three orthogonal directions.

6.3 Largest variance slices [i](#)

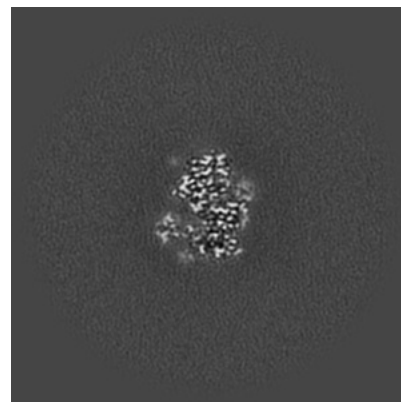
6.3.1 Primary map



X Index: 146

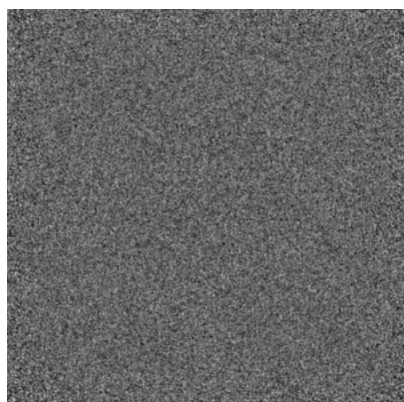


Y Index: 124

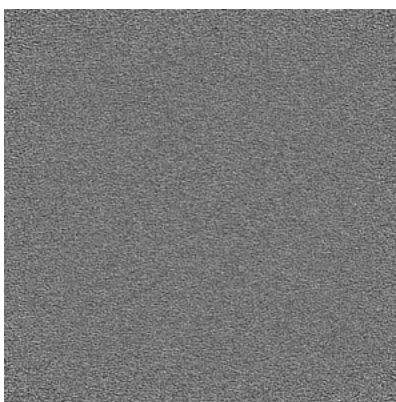


Z Index: 127

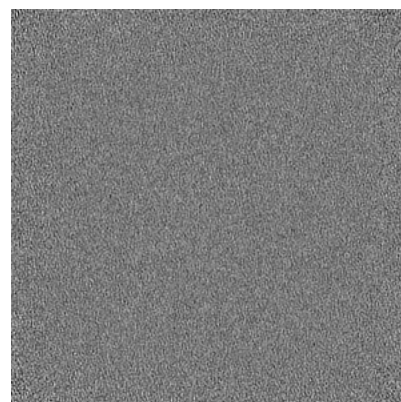
6.3.2 Raw map



X Index: 0



Y Index: 0

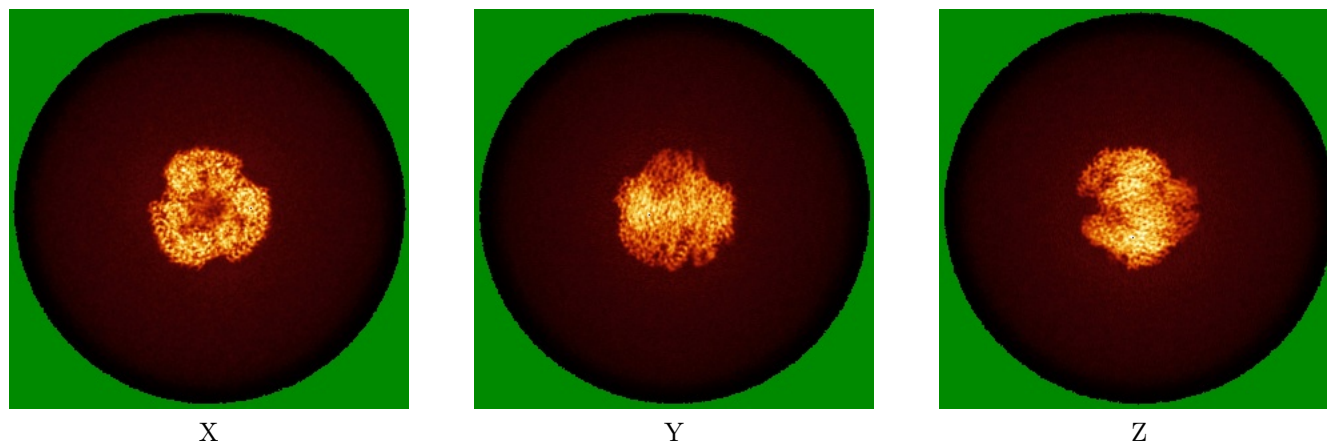


Z Index: 0

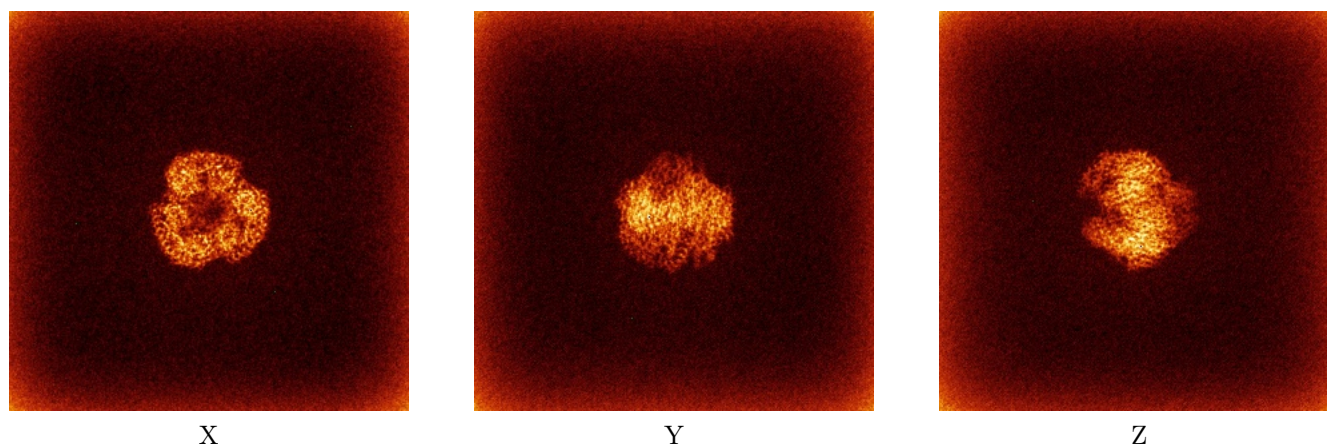
The images above show the largest variance slices of the map in three orthogonal directions.

6.4 Orthogonal standard-deviation projections (False-color) [i](#)

6.4.1 Primary map



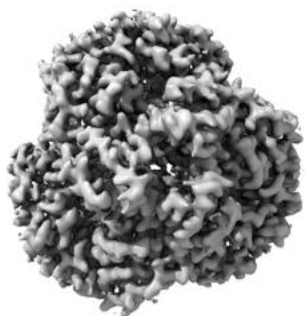
6.4.2 Raw map



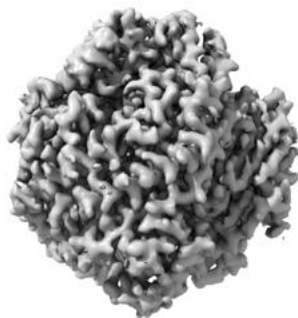
The images above show the map standard deviation projections with false color in three orthogonal directions. Minimum values are shown in green, max in blue, and dark to light orange shades represent small to large values respectively.

6.5 Orthogonal surface views [i](#)

6.5.1 Primary map



X



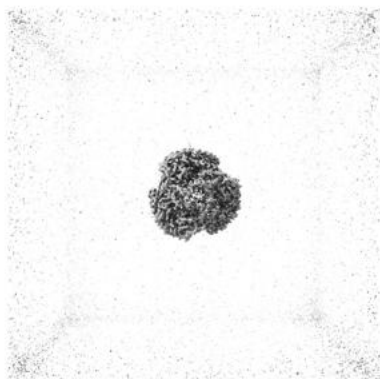
Y



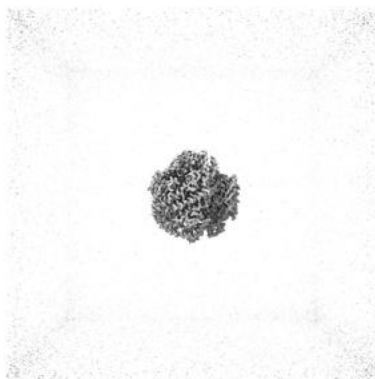
Z

The images above show the 3D surface view of the map at the recommended contour level 0.138. These images, in conjunction with the slice images, may facilitate assessment of whether an appropriate contour level has been provided.

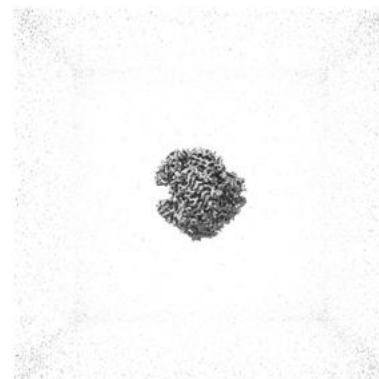
6.5.2 Raw map



X



Y



Z

These images show the 3D surface of the raw map. The raw map's contour level was selected so that its surface encloses the same volume as the primary map does at its recommended contour level.

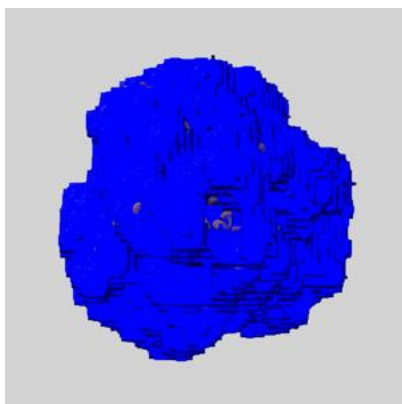
6.6 Mask visualisation [i](#)

This section shows the 3D surface view of the primary map at 50% transparency overlaid with the specified mask at 0% transparency

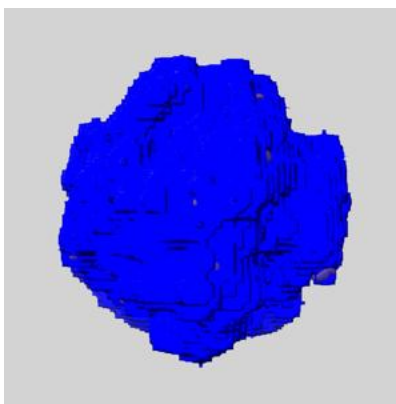
A mask typically either:

- Encompasses the whole structure
- Separates out a domain, a functional unit, a monomer or an area of interest from a larger structure

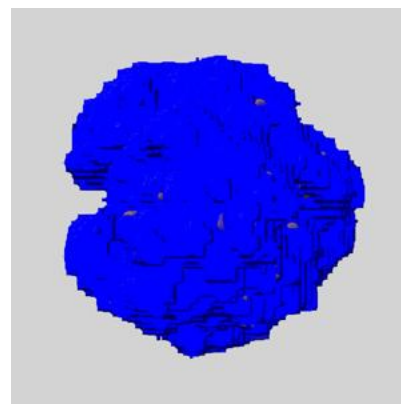
6.6.1 emd_72352_msk_1.map [i](#)



X



Y

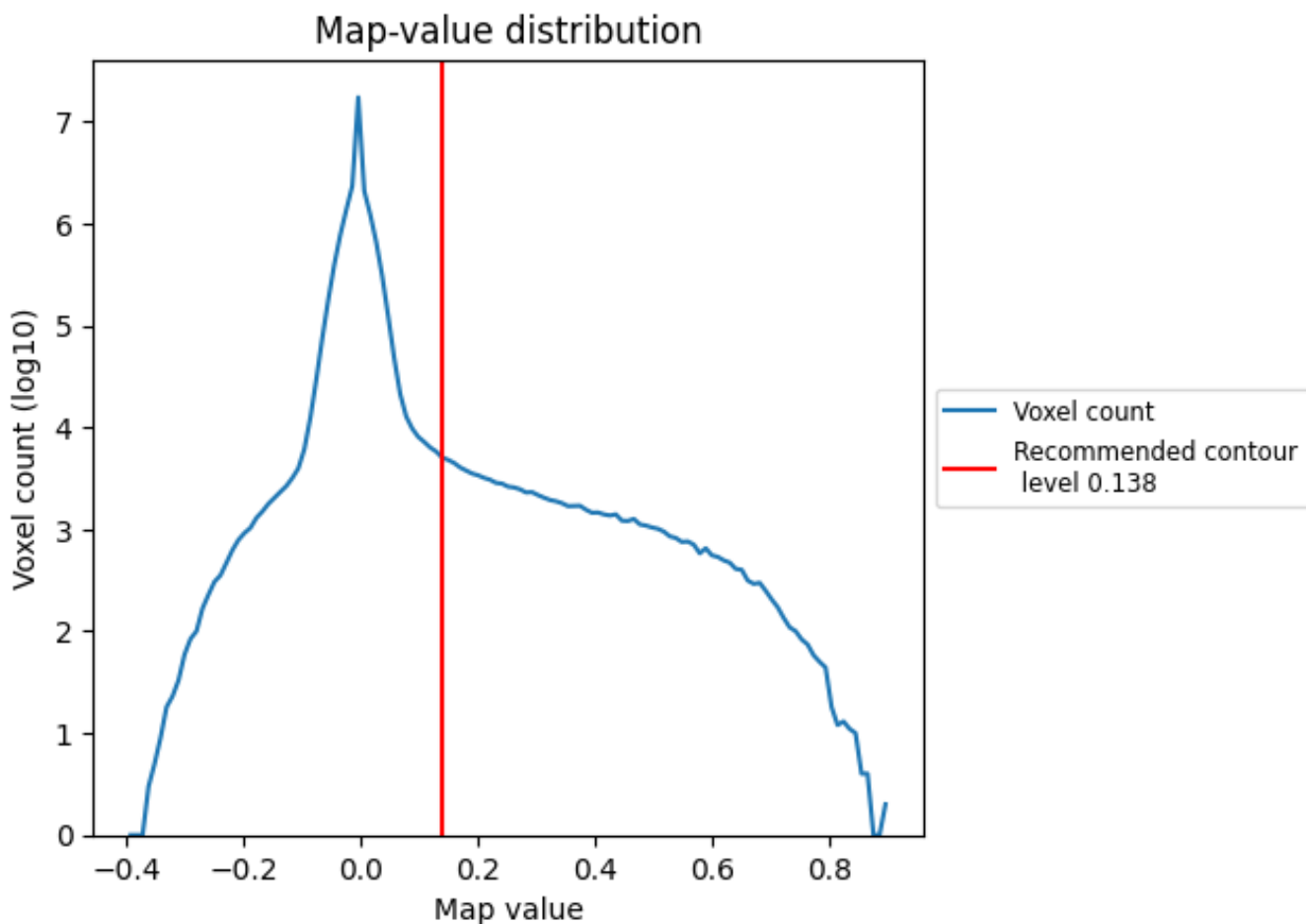


Z

7 Map analysis [i](#)

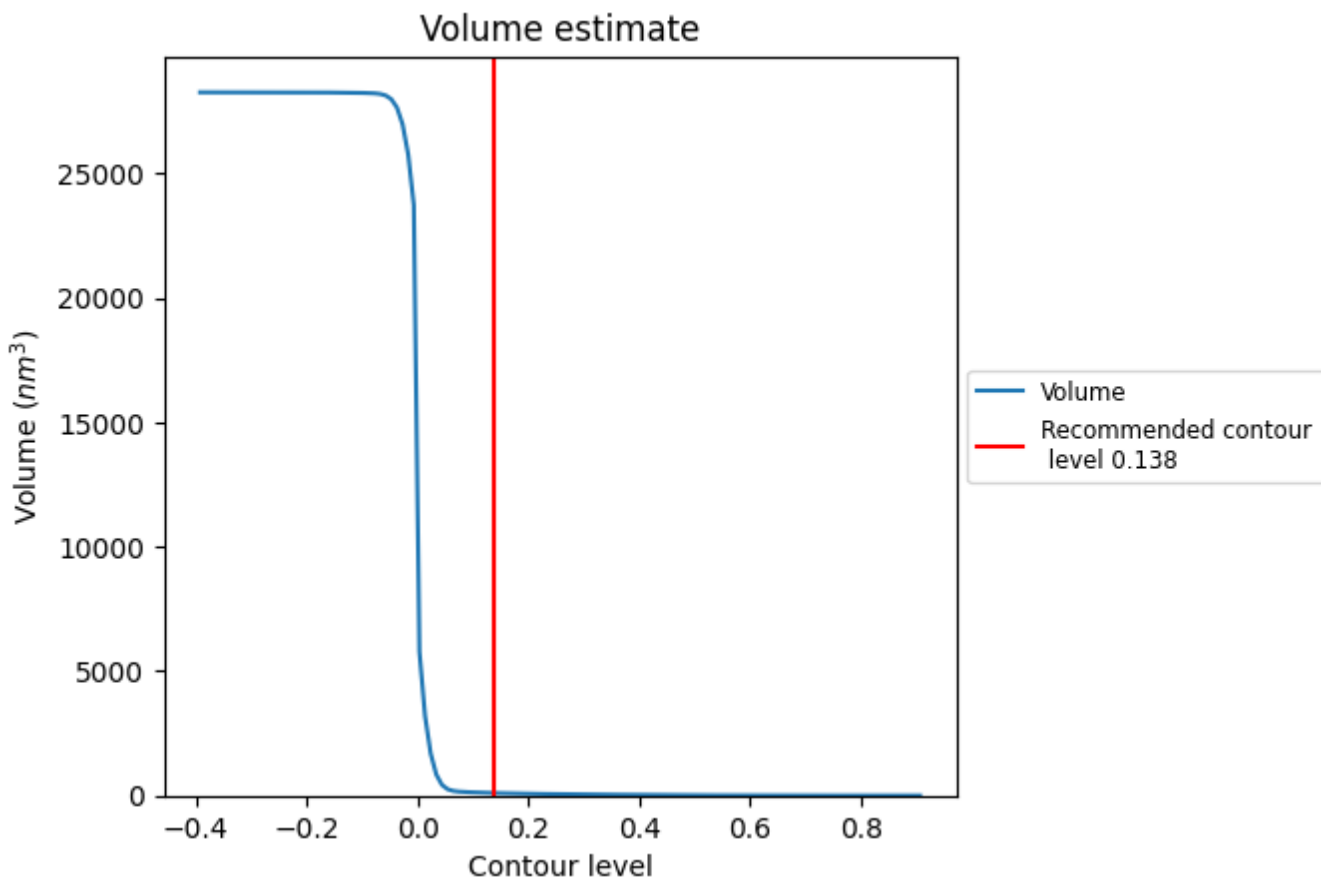
This section contains the results of statistical analysis of the map.

7.1 Map-value distribution [i](#)



The map-value distribution is plotted in 128 intervals along the x-axis. The y-axis is logarithmic. A spike in this graph at zero usually indicates that the volume has been masked.

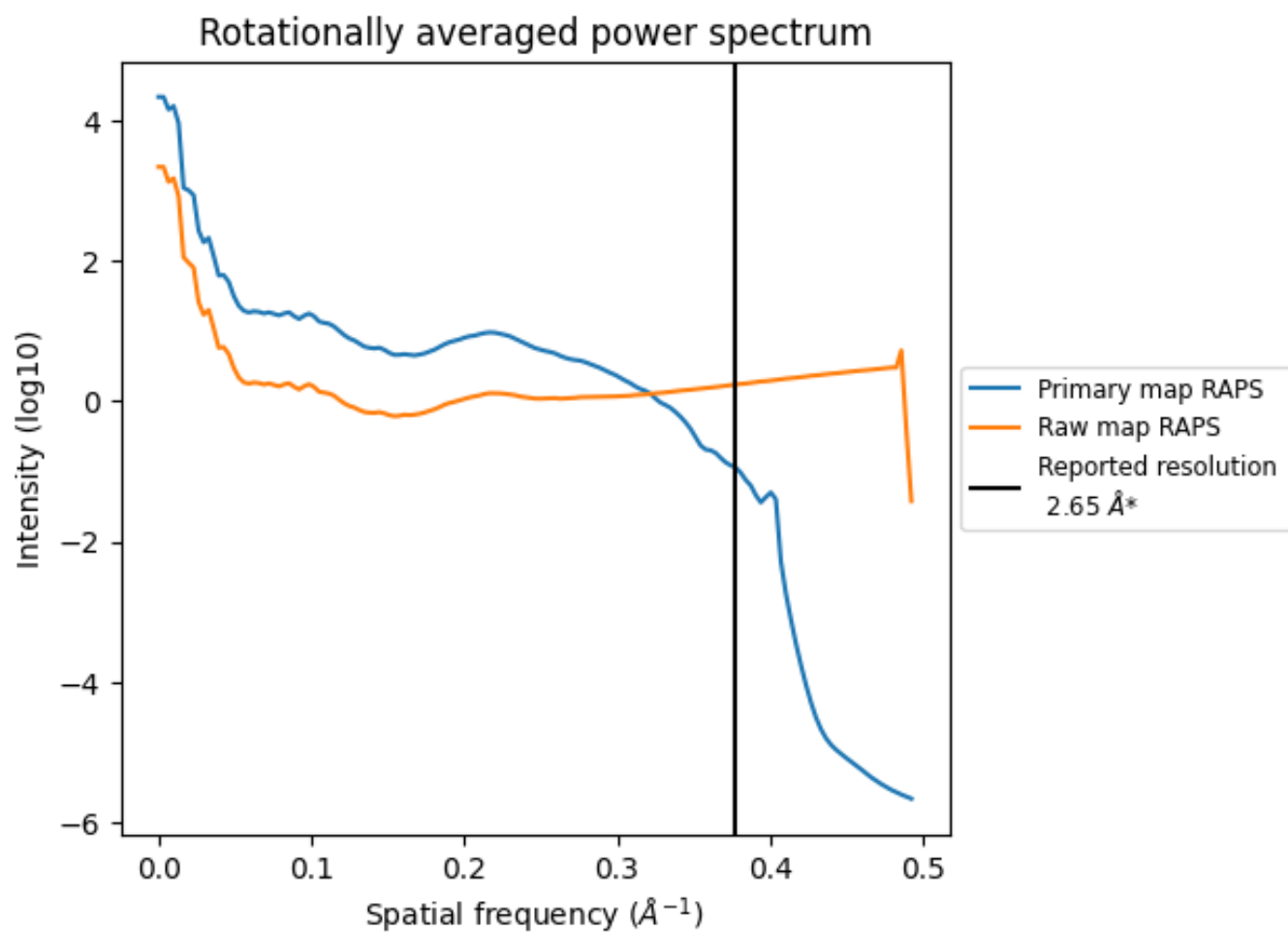
7.2 Volume estimate [i](#)



The volume at the recommended contour level is 101 nm³; this corresponds to an approximate mass of 91 kDa.

The volume estimate graph shows how the enclosed volume varies with the contour level. The recommended contour level is shown as a vertical line and the intersection between the line and the curve gives the volume of the enclosed surface at the given level.

7.3 Rotationally averaged power spectrum [i](#)

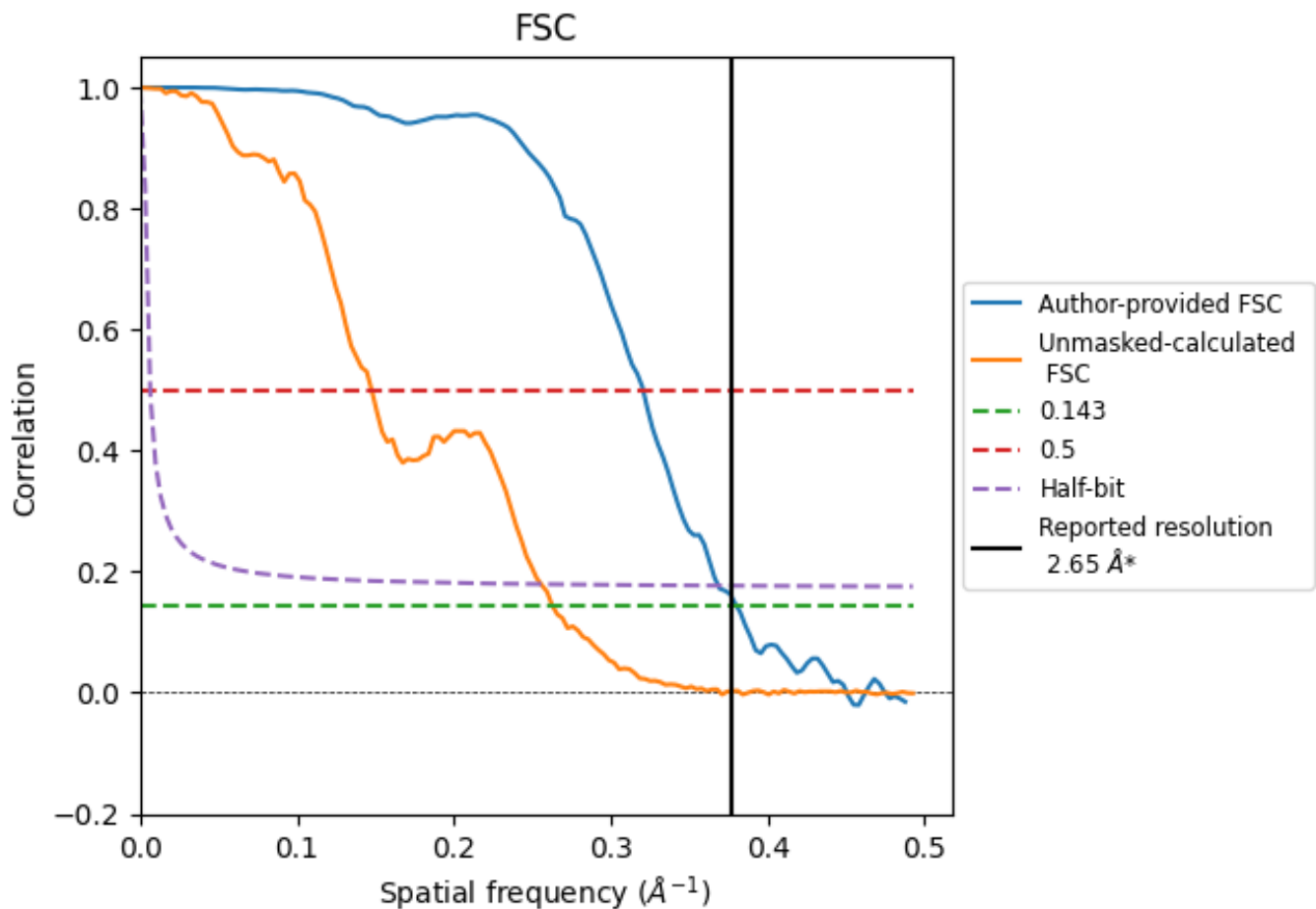


*Reported resolution corresponds to spatial frequency of 0.377 Å⁻¹

8 Fourier-Shell correlation [i](#)

Fourier-Shell Correlation (FSC) is the most commonly used method to estimate the resolution of single-particle and subtomogram-averaged maps. The shape of the curve depends on the imposed symmetry, mask and whether or not the two 3D reconstructions used were processed from a common reference. The reported resolution is shown as a black line. A curve is displayed for the half-bit criterion in addition to lines showing the 0.143 gold standard cut-off and 0.5 cut-off.

8.1 FSC [i](#)



*Reported resolution corresponds to spatial frequency of 0.377 Å⁻¹

8.2 Resolution estimates [i](#)

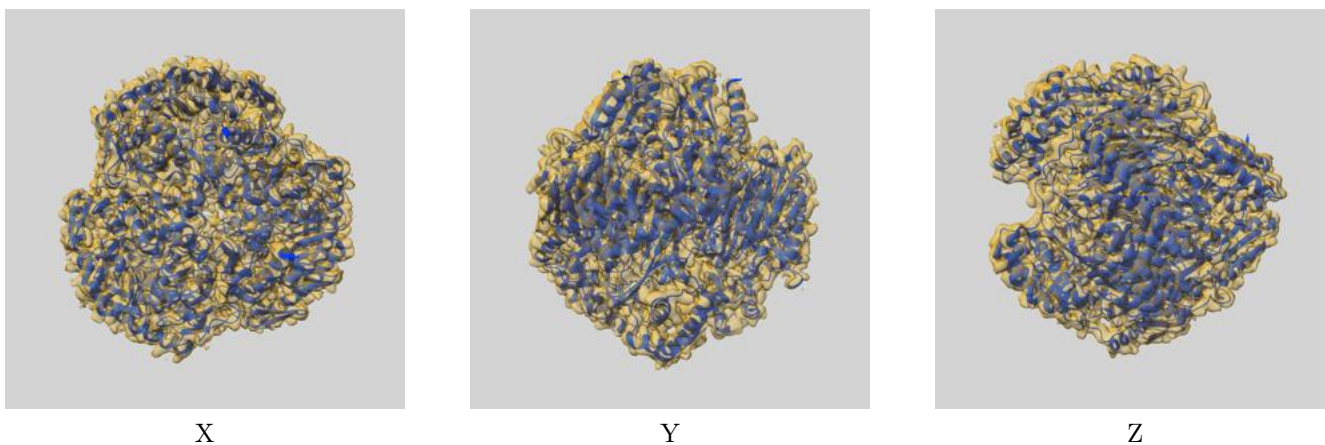
Resolution estimate (Å)	Estimation criterion (FSC cut-off)		
	0.143	0.5	Half-bit
Reported by author	2.65	-	-
Author-provided FSC curve	2.63	3.12	2.71
Unmasked-calculated*	3.80	6.78	3.91

*Resolution estimate based on FSC curve calculated by comparison of deposited half-maps. The value from deposited half-maps intersecting FSC 0.143 CUT-OFF 3.80 differs from the reported value 2.65 by more than 10 %

9 Map-model fit [i](#)

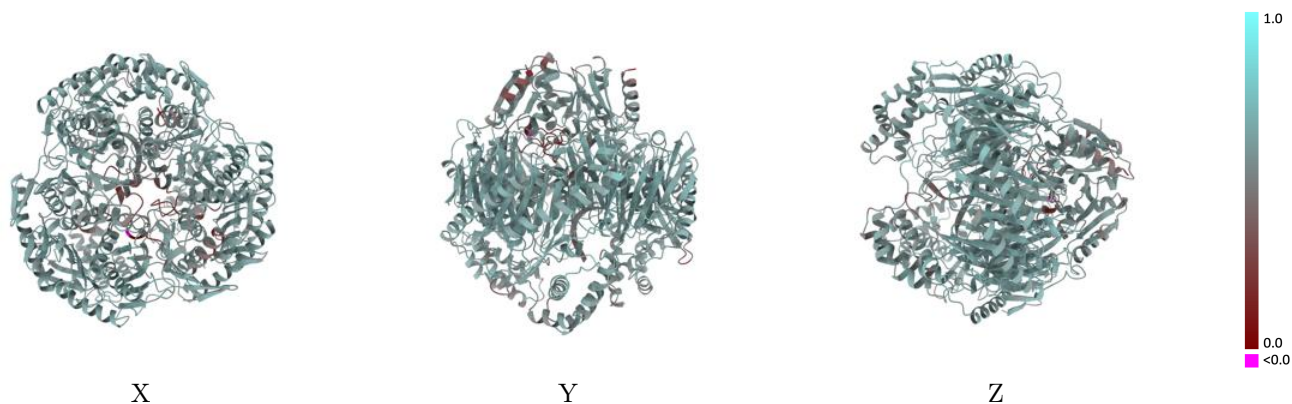
This section contains information regarding the fit between EMDB map EMD-72352 and PDB model 9XZF. Per-residue inclusion information can be found in section 3 on page 8.

9.1 Map-model overlay [i](#)



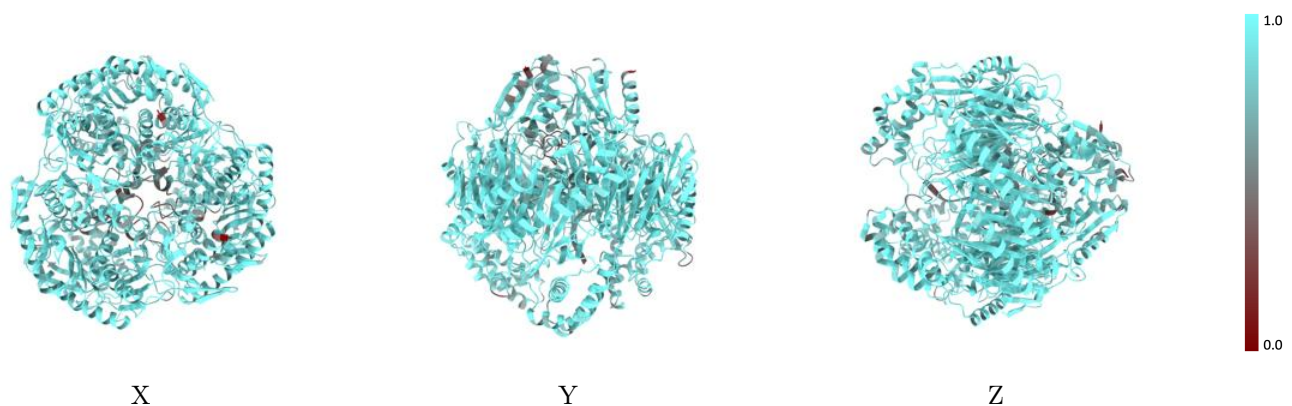
The images above show the 3D surface view of the map at the recommended contour level 0.138 at 50% transparency in yellow overlaid with a ribbon representation of the model coloured in blue. These images allow for the visual assessment of the quality of fit between the atomic model and the map.

9.2 Q-score mapped to coordinate model [i](#)



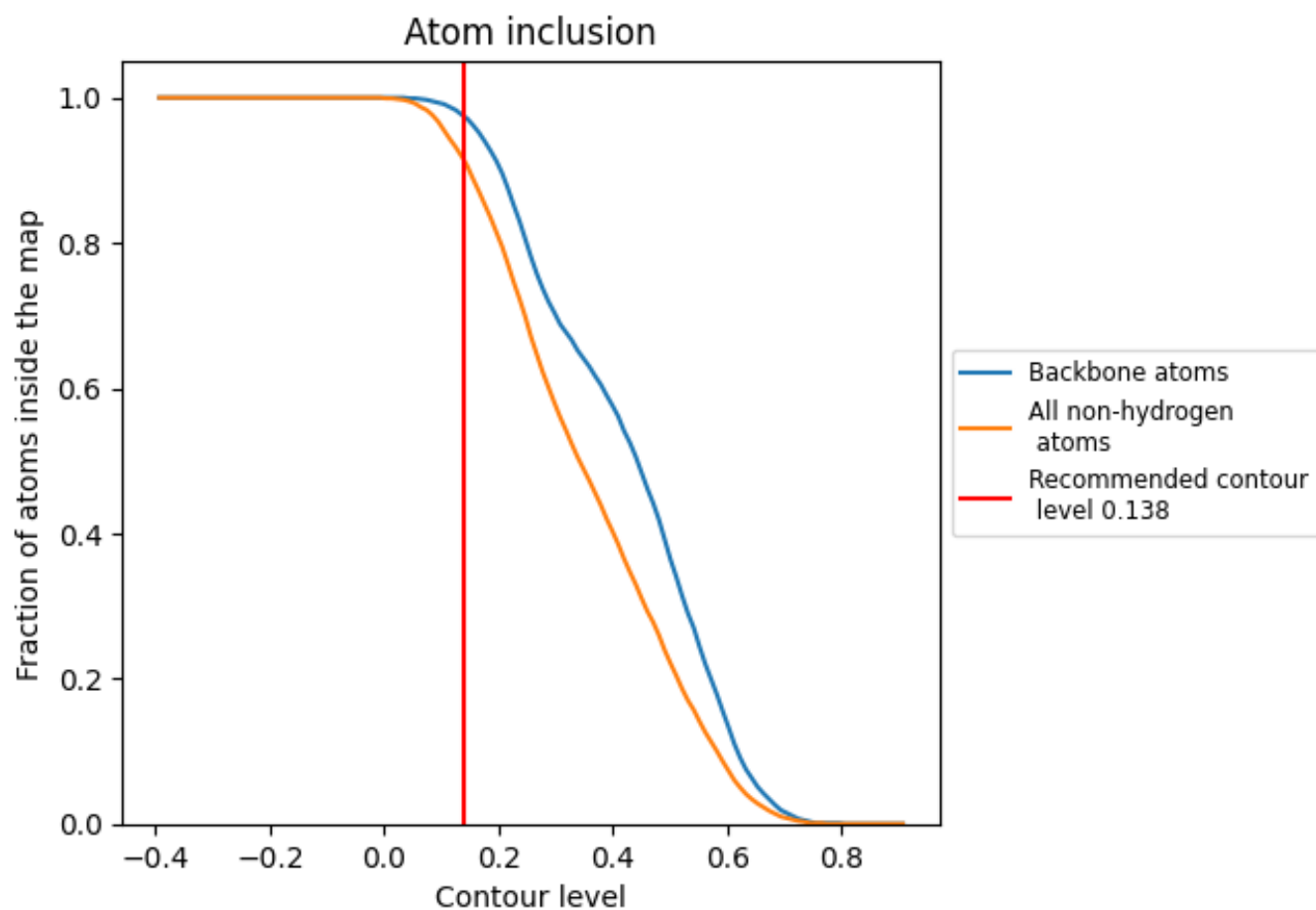
The images above show the model with each residue coloured according to its Q-score. This shows their resolvability in the map with higher Q-score values reflecting better resolvability. Please note: Q-score is calculating the resolvability of atoms, and thus high values are only expected at resolutions at which atoms can be resolved. Low Q-score values may therefore be expected for many entries.

9.3 Atom inclusion mapped to coordinate model [i](#)



The images above show the model with each residue coloured according to its atom inclusion. This shows to what extent they are inside the map at the recommended contour level (0.138).







9.4 Atom inclusion [i](#)



At the recommended contour level, 98% of all backbone atoms, 92% of all non-hydrogen atoms, are inside the map.

9.5 Map-model fit summary

The table lists the average atom inclusion at the recommended contour level (0.138) and Q-score for the entire model and for each chain.

Chain	Atom inclusion	Q-score
All	 0.9160	 0.5780
A	 0.9190	 0.5790
B	 0.9090	 0.5750
C	 0.9250	 0.5850
D	 0.7570	 0.4740

