



## Full wwPDB EM Validation Report ⓘ

Mar 8, 2026 – 10:06 AM UTC

PDB ID : 8XL2 / pdb\_00008xl2  
EMDB ID : EMD-38435  
Title : Human acetyl-CoA carboxylase 1 filament in complex with acetyl-CoA (ACC1-inact)  
Authors : Zhou, F.Y.; Zhang, Y.Y.; Zhou, Q.; Hu, Q.  
Deposited on : 2023-12-25  
Resolution : 2.73 Å(reported)

This is a Full wwPDB EM Validation Report for a publicly released PDB entry.

We welcome your comments at [validation@mail.wwpdb.org](mailto:validation@mail.wwpdb.org)

A user guide is available at

<https://www.wwpdb.org/validation/2017/EMValidationReportHelp>

with specific help available everywhere you see the ⓘ symbol.

The types of validation reports are described at

<http://www.wwpdb.org/validation/2017/FAQs#types>.

---

The following versions of software and data (see [references ⓘ](#)) were used in the production of this report:

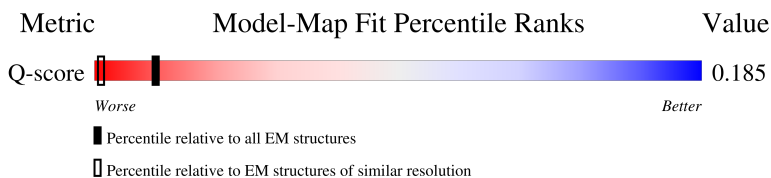
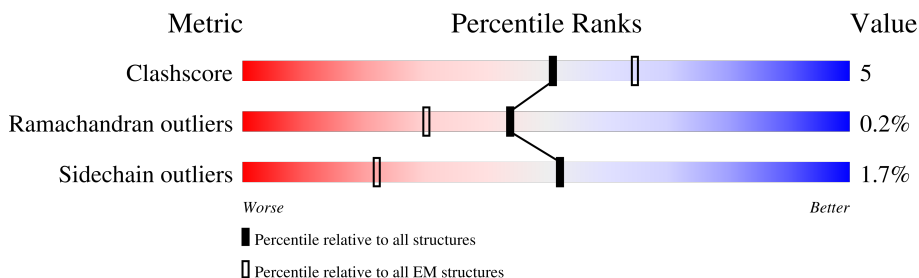
EMDB validation analysis : 0.0.1.dev132  
Mogul : 2022.3.0, CSD as543be (2022)  
MolProbity : 4-5-2 with Phenix2.0  
Buster-report : wwPDB partial adaption of 1.1.7 (2018)  
Percentile statistics : 20250101.v01 (using entries in the PDB archive January 1st 2025)  
EM percentile statistics : 202505.v01 (Using data in the EMDB archive up until May 2025)  
MapQ : 1.9.13  
Ideal geometry (proteins) : Engh & Huber (2001)  
Ideal geometry (DNA, RNA) : Parkinson et al. (1996)  
Validation Pipeline (wwPDB-VP) : 2.49

# 1 Overall quality at a glance i

The following experimental techniques were used to determine the structure:  
*ELECTRON MICROSCOPY*

The reported resolution of this entry is 2.73 Å.

Percentile scores (ranging between 0-100) for global validation metrics of the entry are shown in the following graphic. The table shows the number of entries on which the scores are based.



Metric	Whole archive (#Entries)	EM structures (#Entries)	Similar EM resolution (#Entries, resolution range(Å))
Clashscore	229148	23984	-
Ramachandran outliers	224038	23583	-
Sidechain outliers	223484	23102	-
Q-score	-	25397	10432 ( 2.23 - 3.23 )

The table below summarises the geometric issues observed across the polymeric chains and their fit to the map. The red, orange, yellow and green segments of the bar indicate the fraction of residues that contain outliers for  $\geq 3$ , 2, 1 and 0 types of geometric quality criteria respectively. A grey segment represents the fraction of residues that are not modelled. The numeric value for each fraction is indicated below the corresponding segment, with a dot representing fractions  $\leq 5\%$ . The upper red bar (where present) indicates the fraction of residues that have poor fit to the EM map (all-atom inclusion  $< 40\%$ ). The numeric value is given above the bar.

Mol	Chain	Length	Quality of chain
1	A	2346	15% (Upper red bar) 58% (Green) 7% (Yellow) 35% (Grey)
1	B	2346	57% (Green) 8% (Yellow) 35% (Grey)
1	C	2346	29% (Upper red bar) 49% (Green) 6% (Yellow) 45% (Grey)
1	D	2346	21% (Upper red bar) 20% (Green) 77% (Grey)

The following table lists non-polymeric compounds, carbohydrate monomers and non-standard residues in protein, DNA, RNA chains that are outliers for geometric or electron-density-fit criteria:

<b>Mol</b>	<b>Type</b>	<b>Chain</b>	<b>Res</b>	<b>Chirality</b>	<b>Geometry</b>	<b>Clashes</b>	<b>Electron density</b>
2	ACO	A	2501	-	-	X	-

## 2 Entry composition [i](#)

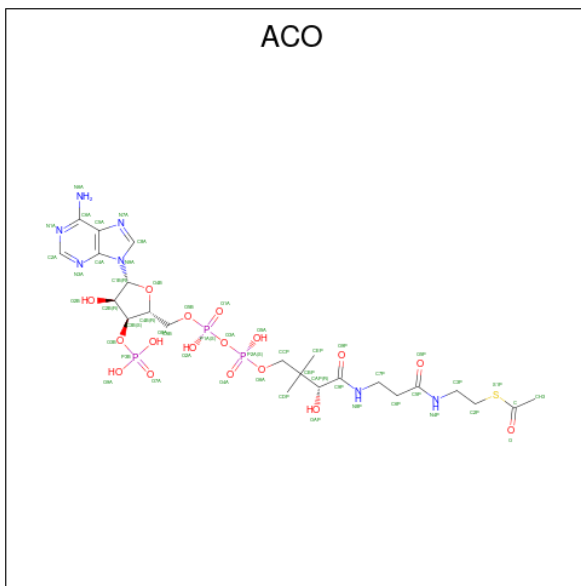
There are 2 unique types of molecules in this entry. The entry contains 39556 atoms, of which 0 are hydrogens and 0 are deuteriums.

In the tables below, the AltConf column contains the number of residues with at least one atom in alternate conformation and the Trace column contains the number of residues modelled with at most 2 atoms.

- Molecule 1 is a protein called Acetyl-CoA carboxylase 1.

Mol	Chain	Residues	Atoms					AltConf	Trace
			Total	C	N	O	S		
1	A	1527	Total	C	N	O	S	0	0
			12307	7828	2137	2273	69		
1	B	1527	Total	C	N	O	S	0	0
			12307	7828	2137	2273	69		
1	D	547	Total	C	N	O	S	0	0
			4365	2776	766	802	21		
1	C	1300	Total	C	N	O	S	0	0
			10424	6637	1798	1926	63		

- Molecule 2 is ACETYL COENZYME \*A (CCD ID: ACO) (formula:  $C_{23}H_{38}N_7O_{17}P_3S$ ) (labeled as "Ligand of Interest" by depositor).



Mol	Chain	Residues	Atoms					AltConf	
			Total	C	N	O	P		S
2	A	1	Total	C	N	O	P	S	0
			51	23	7	17	3	1	
2	A	1	Total	C	N	O	P	S	0
			51	23	7	17	3	1	

*Continued on next page...*

*Continued from previous page...*

Mol	Chain	Residues	Atoms						AltConf
			Total	C	N	O	P	S	
2	C	1	51	23	7	17	3	1	0

















## 4 Experimental information

Property	Value	Source
EM reconstruction method	SINGLE PARTICLE	Depositor
Imposed symmetry	POINT, Not provided	
Number of particles used	155033	Depositor
Resolution determination method	FSC 0.143 CUT-OFF	Depositor
CTF correction method	PHASE FLIPPING AND AMPLITUDE CORRECTION	Depositor
Microscope	FEI TITAN KRIOS	Depositor
Voltage (kV)	300	Depositor
Electron dose ( $e^-/\text{\AA}^2$ )	50	Depositor
Minimum defocus (nm)	1200	Depositor
Maximum defocus (nm)	2200	Depositor
Magnification	Not provided	
Image detector	GATAN K3 (6k x 4k)	Depositor
Maximum map value	6.869	Depositor
Minimum map value	-4.629	Depositor
Average map value	-0.001	Depositor
Map value standard deviation	0.078	Depositor
Recommended contour level	0.2	Depositor
Map size (Å)	525.72235, 525.72235, 525.72235	wwPDB
Map dimensions	488, 488, 488	wwPDB
Map angles (°)	90.0, 90.0, 90.0	wwPDB
Pixel spacing (Å)	1.0773, 1.0773, 1.0773	Depositor

## 5 Model quality [i](#)

### 5.1 Standard geometry [i](#)

Bond lengths and bond angles in the following residue types are not validated in this section: ACO

The Z score for a bond length (or angle) is the number of standard deviations the observed value is removed from the expected value. A bond length (or angle) with  $|Z| > 5$  is considered an outlier worth inspection. RMSZ is the root-mean-square of all Z scores of the bond lengths (or angles).

Mol	Chain	Bond lengths		Bond angles	
		RMSZ	# Z  >5	RMSZ	# Z  >5
1	A	0.30	1/12565 (0.0%)	0.45	0/17010
1	B	0.28	0/12565	0.44	0/17010
1	C	0.28	0/10646	0.44	0/14418
1	D	0.35	0/4463	0.47	0/6052
All	All	0.29	1/40239 (0.0%)	0.45	0/54490

Chiral center outliers are detected by calculating the chiral volume of a chiral center and verifying if the center is modelled as a planar moiety or with the opposite hand. A planarity outlier is detected by checking planarity of atoms in a peptide group, atoms in a mainchain group or atoms of a sidechain that are expected to be planar.

Mol	Chain	#Chirality outliers	#Planarity outliers
1	A	0	5
1	B	0	5
1	C	0	5
All	All	0	15

All (1) bond length outliers are listed below:

Mol	Chain	Res	Type	Atoms	Z	Observed(Å)	Ideal(Å)
1	A	2116	SER	CA-C	-5.95	1.45	1.52

There are no bond angle outliers.

There are no chirality outliers.

All (15) planarity outliers are listed below:

Mol	Chain	Res	Type	Group
1	A	1140	HIS	Peptide
1	A	1141	SER	Peptide

*Continued on next page...*

*Continued from previous page...*

Mol	Chain	Res	Type	Group
1	A	1241	THR	Peptide
1	A	1242	PHE	Peptide
1	A	1687	ARG	Peptide
1	B	1140	HIS	Peptide
1	B	1141	SER	Peptide
1	B	1241	THR	Peptide
1	B	1242	PHE	Peptide
1	B	1687	ARG	Peptide
1	C	1140	HIS	Peptide
1	C	1141	SER	Peptide
1	C	1241	THR	Peptide
1	C	1242	PHE	Peptide
1	C	1687	ARG	Peptide

## 5.2 Too-close contacts [i](#)

In the following table, the Non-H and H(model) columns list the number of non-hydrogen atoms and hydrogen atoms in the chain respectively. The H(added) column lists the number of hydrogen atoms added and optimized by MolProbity. The Clashes column lists the number of clashes within the asymmetric unit, whereas Symm-Clashes lists symmetry-related clashes.

Mol	Chain	Non-H	H(model)	H(added)	Clashes	Symm-Clashes
1	A	12307	0	12287	166	0
1	B	12307	0	12287	196	0
1	C	10424	0	10378	133	0
1	D	4365	0	4365	79	0
2	A	102	0	68	34	0
2	C	51	0	34	11	0
All	All	39556	0	39419	431	0

The all-atom clashscore is defined as the number of clashes found per 1000 atoms (including hydrogen atoms). The all-atom clashscore for this structure is 5.

All (431) close contacts within the same asymmetric unit are listed below, sorted by their clash magnitude.

Atom-1	Atom-2	Interatomic distance (Å)	Clash overlap (Å)
1:D:2190:HIS:NE2	1:C:1726:LEU:HD22	1.66	1.11
1:A:2190:HIS:NE2	1:B:1726:LEU:HD22	1.66	1.10
1:D:1875:MET:CE	1:C:2056:MET:HE3	1.89	1.02
1:A:1875:MET:CE	1:B:2056:MET:HE3	1.89	1.00

*Continued on next page...*

*Continued from previous page...*

Atom-1	Atom-2	Interatomic distance (Å)	Clash overlap (Å)
1:A:1875:MET:HE3	1:B:2056:MET:HE3	1.52	0.91
1:D:1875:MET:HE3	1:C:2056:MET:HE3	1.52	0.89
1:D:2190:HIS:NE2	1:C:1726:LEU:CD2	2.36	0.89
1:A:2190:HIS:NE2	1:B:1726:LEU:CD2	2.36	0.89
1:D:1830:TYR:OH	1:C:2049:PHE:CD1	2.27	0.88
1:A:2049:PHE:HB2	1:B:1848:LEU:HD13	1.57	0.86
1:A:1830:TYR:OH	1:B:2049:PHE:CD1	2.27	0.86
1:D:2049:PHE:HB2	1:C:1848:LEU:HD13	1.57	0.85
1:A:1732:HIS:O	1:B:2139:ARG:CZ	2.25	0.84
1:B:933:LEU:CD2	1:C:1121:GLN:HG2	2.08	0.84
2:A:2502:ACO:HH32	1:B:1826:GLY:HA3	1.58	0.84
1:D:2061:LEU:HD12	1:C:1875:MET:HE1	1.63	0.80
1:A:2061:LEU:HD12	1:B:1875:MET:HE1	1.63	0.80
1:B:933:LEU:HD21	1:C:1121:GLN:CG	2.12	0.80
1:D:2117:VAL:HG11	2:C:2501:ACO:H32	1.64	0.79
1:B:1124:ILE:HD13	1:B:1155:ARG:HD3	1.62	0.79
1:A:1784:ASP:OD2	1:B:2192:THR:HG21	1.84	0.76
1:B:1166:VAL:O	1:C:928:ASN:CG	2.29	0.76
2:A:2501:ACO:H4B	2:A:2501:ACO:O7A	1.85	0.76
1:A:1723:ARG:HD2	1:A:1791:GLY:O	1.86	0.75
1:C:1826:GLY:HA3	2:C:2501:ACO:HH32	1.67	0.75
1:D:2117:VAL:CG1	2:C:2501:ACO:H32	2.16	0.74
1:B:1168:HIS:CE1	1:C:932:VAL:HG22	2.23	0.74
1:A:1362:ASP:OD2	1:A:1363:LYS:NZ	2.21	0.74
1:B:1362:ASP:OD2	1:B:1363:LYS:NZ	2.21	0.73
1:B:933:LEU:HD21	1:C:1121:GLN:HG2	1.70	0.73
1:A:2056:MET:HB3	1:B:1874:ILE:HG21	1.70	0.73
1:B:933:LEU:CD2	1:C:1121:GLN:CG	2.66	0.73
2:A:2501:ACO:H72	2:A:2501:ACO:H62A	1.54	0.72
1:C:1362:ASP:OD2	1:C:1363:LYS:NZ	2.21	0.72
1:C:1722:ALA:H	2:C:2501:ACO:HH33	1.54	0.72
1:B:1771:HIS:HE2	1:B:1778:SER:HG	1.36	0.72
1:C:1867:ASN:O	1:C:1873:GLN:NE2	2.23	0.72
1:A:1875:MET:HE1	1:B:2056:MET:HE3	1.72	0.72
1:B:1867:ASN:O	1:B:1873:GLN:NE2	2.23	0.72
1:D:2056:MET:HB3	1:C:1874:ILE:HG21	1.70	0.72
1:A:1867:ASN:O	1:A:1873:GLN:NE2	2.23	0.71
1:D:1867:ASN:O	1:D:1873:GLN:NE2	2.23	0.71
1:D:1875:MET:HE1	1:C:2056:MET:HE3	1.72	0.71
1:A:1721:GLY:HA3	2:A:2501:ACO:H22	1.72	0.71
1:B:932:VAL:HG22	1:C:1151:GLU:OE1	1.93	0.69

*Continued on next page...*

*Continued from previous page...*

Atom-1	Atom-2	Interatomic distance (Å)	Clash overlap (Å)
1:D:1800:SER:HB2	1:C:2094:VAL:HG12	1.74	0.69
1:A:1057:ASP:O	1:A:1061:ASN:ND2	2.26	0.69
1:D:1830:TYR:OH	1:C:2049:PHE:CG	2.46	0.68
1:B:933:LEU:HD23	1:C:1121:GLN:HG2	1.75	0.68
1:B:1057:ASP:O	1:B:1061:ASN:ND2	2.26	0.68
1:A:2056:MET:HG3	1:B:1869:LEU:O	1.94	0.68
1:A:1830:TYR:OH	1:B:2049:PHE:CG	2.46	0.68
1:B:1168:HIS:HB2	1:C:930:THR:O	1.93	0.68
1:C:1057:ASP:O	1:C:1061:ASN:ND2	2.26	0.68
1:A:1800:SER:HB2	1:B:2094:VAL:HG12	1.75	0.67
1:B:2175:LEU:O	1:B:2176:ILE:C	2.34	0.67
1:A:1316:LYS:NZ	1:A:1365:GLU:OE2	2.28	0.67
1:D:2056:MET:HG3	1:C:1869:LEU:O	1.94	0.67
1:A:2052:GLY:CA	1:B:1863:TYR:OH	2.43	0.67
1:D:2052:GLY:CA	1:C:1863:TYR:OH	2.43	0.67
1:B:1316:LYS:NZ	1:B:1365:GLU:OE2	2.28	0.66
1:C:1316:LYS:NZ	1:C:1365:GLU:OE2	2.28	0.66
1:A:2317:ASP:CB	1:B:2301:LEU:HD11	2.25	0.66
1:C:1352:PHE:O	1:C:1354:LYS:NZ	2.29	0.66
1:A:2049:PHE:HB2	1:B:1848:LEU:CD1	2.25	0.66
1:C:1990:THR:HG22	1:C:2016:GLN:CG	2.26	0.66
1:D:2049:PHE:HB2	1:C:1848:LEU:CD1	2.25	0.66
1:B:1094:GLU:OE2	1:C:1106:SER:HB3	1.95	0.65
1:A:2118:LEU:HD12	1:B:1724:ILE:HD13	1.77	0.65
1:D:1875:MET:HE3	1:C:2056:MET:CE	2.26	0.65
1:A:2117:VAL:HG12	2:A:2502:ACO:H32	1.79	0.65
1:A:1352:PHE:O	1:A:1354:LYS:NZ	2.29	0.65
1:D:1990:THR:HG22	1:D:2016:GLN:CG	2.26	0.65
1:B:1147:MET:HB3	1:B:1168:HIS:ND1	2.11	0.65
1:A:1990:THR:HG22	1:A:2016:GLN:CG	2.26	0.65
1:A:2317:ASP:HB2	1:B:2301:LEU:CD1	2.27	0.64
1:B:1147:MET:HB3	1:B:1168:HIS:CE1	2.32	0.64
1:B:1990:THR:HG22	1:B:2016:GLN:CG	2.26	0.64
1:D:2061:LEU:HD12	1:C:1875:MET:CE	2.27	0.64
1:B:1743:ASP:OD2	1:B:1746:LYS:NZ	2.31	0.64
1:A:1743:ASP:OD2	1:A:1746:LYS:NZ	2.31	0.63
1:A:2061:LEU:HD12	1:B:1875:MET:CE	2.27	0.63
1:B:932:VAL:HG22	1:C:1151:GLU:CD	2.24	0.63
1:A:1878:ASN:ND2	1:B:2056:MET:O	2.32	0.63
1:D:1878:ASN:ND2	1:C:2056:MET:O	2.32	0.63
1:C:1743:ASP:OD2	1:C:1746:LYS:NZ	2.31	0.63

*Continued on next page...*

*Continued from previous page...*

Atom-1	Atom-2	Interatomic distance (Å)	Clash overlap (Å)
1:A:1782:ILE:CG2	1:B:2189:LEU:HD13	2.29	0.63
1:B:1113:HIS:HE1	1:C:1052:ASP:OD1	1.81	0.63
1:C:1771:HIS:HE2	1:C:1778:SER:HG	1.36	0.63
1:B:1352:PHE:O	1:B:1354:LYS:NZ	2.29	0.62
1:A:1875:MET:HE3	1:B:2056:MET:CE	2.26	0.62
1:A:2056:MET:CB	1:B:1869:LEU:O	2.48	0.62
1:A:1771:HIS:HE2	1:A:1778:SER:HG	1.36	0.62
1:A:2313:GLU:N	1:A:2313:GLU:OE1	2.33	0.61
1:B:933:LEU:HD21	1:C:1121:GLN:HG3	1.79	0.61
1:B:2313:GLU:OE1	1:B:2313:GLU:N	2.33	0.61
1:D:2056:MET:CB	1:C:1869:LEU:O	2.48	0.61
1:D:2052:GLY:HA2	1:C:1863:TYR:OH	2.01	0.61
1:A:1825:ILE:HG21	2:A:2501:ACO:O5P	2.00	0.61
1:D:2313:GLU:OE1	1:D:2313:GLU:N	2.33	0.61
1:A:2052:GLY:HA2	1:B:1863:TYR:OH	2.01	0.61
1:A:1782:ILE:HG21	1:B:2189:LEU:HD13	1.83	0.61
1:A:2057:TYR:OH	1:B:1997:ILE:HD13	2.01	0.60
1:D:2057:TYR:OH	1:C:1997:ILE:HD13	2.01	0.60
1:D:2062:LYS:NZ	1:C:1878:ASN:O	2.23	0.60
1:B:1166:VAL:N	1:C:928:ASN:HD21	1.99	0.60
1:A:2049:PHE:CB	1:B:1848:LEU:HD13	2.32	0.59
1:A:1785:ILE:O	1:B:2190:HIS:HB3	2.01	0.59
1:A:1182:PHE:O	1:A:1231:GLN:NE2	2.36	0.59
2:A:2502:ACO:O9P	2:A:2502:ACO:H122	2.01	0.59
1:B:1151:GLU:O	1:B:1155:ARG:HG3	2.03	0.59
2:C:2501:ACO:O9P	2:C:2501:ACO:H122	2.01	0.59
1:A:2174:PHE:O	1:B:1745:TYR:OH	2.21	0.59
1:A:2056:MET:HB3	1:B:1869:LEU:O	2.03	0.59
1:D:2056:MET:HB3	1:C:1869:LEU:O	2.03	0.59
1:C:1182:PHE:O	1:C:1231:GLN:NE2	2.36	0.59
1:A:2334:VAL:HG21	1:B:2319:ILE:HD13	1.85	0.59
1:B:1182:PHE:O	1:B:1231:GLN:NE2	2.36	0.59
1:B:2175:LEU:O	1:B:2177:PRO:N	2.35	0.59
1:A:1605:PHE:CZ	1:A:1896:LEU:HD21	2.38	0.59
1:A:2052:GLY:HA3	1:B:1863:TYR:OH	2.04	0.58
1:B:1166:VAL:O	1:C:928:ASN:HA	2.02	0.58
1:B:1605:PHE:CZ	1:B:1896:LEU:HD21	2.38	0.58
1:A:1731:ARG:O	1:B:2139:ARG:NH2	2.36	0.58
2:A:2502:ACO:H61	2:A:2502:ACO:H62A	1.67	0.58
2:C:2501:ACO:H3B	2:C:2501:ACO:P1A	2.43	0.58
1:A:1374:GLU:N	1:A:1374:GLU:OE1	2.37	0.58

*Continued on next page...*

*Continued from previous page...*

Atom-1	Atom-2	Interatomic distance (Å)	Clash overlap (Å)
1:D:2052:GLY:HA2	1:C:1863:TYR:CZ	2.39	0.58
1:D:2174:PHE:O	1:C:1745:TYR:OH	2.21	0.58
1:B:1374:GLU:N	1:B:1374:GLU:OE1	2.37	0.58
1:C:1605:PHE:CZ	1:C:1896:LEU:HD21	2.38	0.58
1:A:2052:GLY:HA2	1:B:1863:TYR:CZ	2.39	0.58
1:A:2057:TYR:OH	1:B:1997:ILE:CD1	2.52	0.58
1:A:1732:HIS:O	1:B:2139:ARG:NH1	2.37	0.57
1:B:1167:GLN:HB2	1:C:927:SER:O	2.04	0.57
2:A:2502:ACO:P1A	2:A:2502:ACO:H3B	2.44	0.57
1:A:2117:VAL:HG12	1:A:2117:VAL:O	2.02	0.57
1:D:2052:GLY:HA3	1:C:1863:TYR:OH	2.04	0.57
1:D:1891:GLY:O	1:D:1895:VAL:HG23	2.04	0.57
1:C:1841:VAL:O	1:C:1844:SER:OG	2.20	0.57
1:C:1891:GLY:O	1:C:1895:VAL:HG23	2.04	0.57
1:D:2057:TYR:OH	1:C:1997:ILE:CD1	2.52	0.57
1:A:1891:GLY:O	1:A:1895:VAL:HG23	2.04	0.56
1:B:1166:VAL:H	1:C:928:ASN:ND2	2.02	0.56
1:C:1374:GLU:OE1	1:C:1374:GLU:N	2.37	0.56
1:B:1891:GLY:O	1:B:1895:VAL:HG23	2.04	0.56
1:B:2221:ARG:NH1	1:B:2264:TRP:O	2.39	0.56
1:A:2317:ASP:HB2	1:B:2301:LEU:HD11	1.86	0.56
1:B:2174:PHE:O	1:B:2175:LEU:HB2	2.05	0.56
1:A:2117:VAL:HG12	2:A:2502:ACO:C3P	2.36	0.56
1:D:1888:ASP:OD1	1:D:1888:ASP:N	2.39	0.56
1:D:2049:PHE:CB	1:C:1848:LEU:HD13	2.32	0.56
2:C:2501:ACO:O5P	2:C:2501:ACO:H21	2.05	0.56
1:A:2221:ARG:NH1	1:A:2264:TRP:O	2.39	0.56
1:C:1888:ASP:N	1:C:1888:ASP:OD1	2.39	0.56
1:D:2221:ARG:NH1	1:D:2264:TRP:O	2.39	0.55
1:A:2056:MET:CG	1:B:1869:LEU:O	2.55	0.55
1:A:1823:ARG:NH1	2:A:2501:ACO:CDP	2.70	0.55
1:A:2056:MET:CB	1:B:1874:ILE:HG21	2.36	0.55
1:D:2056:MET:CB	1:C:1874:ILE:HG21	2.36	0.55
1:A:1888:ASP:OD1	1:A:1888:ASP:N	2.39	0.55
1:C:1037:LYS:O	1:C:1041:VAL:HG23	2.07	0.54
1:B:1037:LYS:O	1:B:1041:VAL:HG23	2.07	0.54
1:A:1293:ILE:HD12	1:A:1329:PHE:CE1	2.43	0.54
1:D:2056:MET:CG	1:C:1869:LEU:O	2.55	0.54
1:C:1619:GLN:O	1:C:1916:LYS:N	2.38	0.54
1:A:1037:LYS:O	1:A:1041:VAL:HG23	2.07	0.54
1:B:1293:ILE:HD12	1:B:1329:PHE:CE1	2.43	0.54

*Continued on next page...*

*Continued from previous page...*

Atom-1	Atom-2	Interatomic distance (Å)	Clash overlap (Å)
1:A:2062:LYS:NZ	1:B:1878:ASN:O	2.23	0.54
2:A:2501:ACO:HN4	2:A:2501:ACO:H61A	1.55	0.54
2:C:2501:ACO:H61	2:C:2501:ACO:H62A	1.73	0.54
1:B:1841:VAL:O	1:B:1844:SER:OG	2.20	0.53
1:B:1888:ASP:N	1:B:1888:ASP:OD1	2.39	0.53
1:C:1293:ILE:HD12	1:C:1329:PHE:CE1	2.43	0.53
1:B:1619:GLN:O	1:B:1916:LYS:N	2.38	0.53
1:C:1917:ASP:OD2	1:C:1921:ARG:NH2	2.42	0.53
1:A:1745:TYR:HE1	1:B:2175:LEU:HD23	1.73	0.53
1:D:1834:LEU:HD23	1:C:2065:ALA:HB1	1.90	0.53
1:A:2087:GLU:HG3	1:A:2089:ARG:HE	1.72	0.53
1:D:2056:MET:HE3	1:C:1875:MET:CE	2.38	0.53
1:C:989:ASP:OD1	1:C:992:ARG:NH2	2.42	0.53
1:B:1165:SER:CA	1:C:928:ASN:HD21	2.22	0.52
1:B:1166:VAL:H	1:C:928:ASN:CG	2.17	0.52
1:D:1990:THR:HG22	1:D:2016:GLN:HG3	1.91	0.52
1:A:2093:TRP:CD2	1:B:1797:LEU:HD13	2.45	0.52
1:A:989:ASP:OD1	1:A:992:ARG:NH2	2.42	0.52
1:A:2056:MET:HE3	1:B:1875:MET:CE	2.38	0.52
1:D:2093:TRP:CD2	1:C:1797:LEU:HD13	2.45	0.52
1:A:1823:ARG:NH1	2:A:2501:ACO:H133	2.25	0.52
1:A:1834:LEU:HD23	1:B:2065:ALA:HB1	1.90	0.52
1:B:933:LEU:CD2	1:C:1121:GLN:HG3	2.39	0.52
1:B:1990:THR:HG22	1:B:2016:GLN:HG3	1.91	0.52
1:D:1917:ASP:OD2	1:D:1921:ARG:NH2	2.42	0.52
1:D:2120:PRO:O	1:D:2124:VAL:HG23	2.10	0.52
1:A:1990:THR:HG22	1:A:2016:GLN:HG3	1.91	0.51
1:A:2335:ILE:O	1:B:2331:ARG:NH2	2.43	0.51
1:B:989:ASP:OD1	1:B:992:ARG:NH2	2.42	0.51
1:A:1619:GLN:O	1:A:1916:LYS:N	2.38	0.51
1:A:1917:ASP:OD2	1:A:1921:ARG:NH2	2.42	0.51
1:C:1990:THR:HG22	1:C:2016:GLN:HG3	1.91	0.51
1:A:1732:HIS:HA	1:B:2139:ARG:NH2	2.25	0.51
1:B:1165:SER:HA	1:C:928:ASN:HD21	1.76	0.51
1:A:2120:PRO:O	1:A:2124:VAL:HG23	2.10	0.51
2:A:2501:ACO:H8A	2:A:2501:ACO:O5B	2.11	0.51
1:B:1166:VAL:N	1:C:928:ASN:ND2	2.58	0.51
1:A:1362:ASP:OD1	1:A:1362:ASP:N	2.44	0.51
1:A:1724:ILE:HG12	2:A:2501:ACO:C2A	2.41	0.51
2:A:2501:ACO:H121	2:A:2501:ACO:O9P	2.11	0.51
1:A:1841:VAL:O	1:A:1844:SER:OG	2.20	0.51

*Continued on next page...*

*Continued from previous page...*

Atom-1	Atom-2	Interatomic distance (Å)	Clash overlap (Å)
1:B:1917:ASP:OD2	1:B:1921:ARG:NH2	2.42	0.51
1:B:2120:PRO:O	1:B:2124:VAL:HG23	2.10	0.51
1:A:1440:GLU:O	1:A:1444:ASN:ND2	2.44	0.51
1:A:2334:VAL:CG1	1:B:2319:ILE:HG21	2.41	0.51
1:C:709:LEU:HD21	1:C:715:LEU:HB2	1.93	0.51
1:C:1362:ASP:N	1:C:1362:ASP:OD1	2.44	0.50
1:C:1440:GLU:O	1:C:1444:ASN:ND2	2.44	0.50
1:A:2322:MET:CE	1:B:2322:MET:HE1	2.42	0.50
1:A:1784:ASP:OD2	1:B:2192:THR:CG2	2.55	0.50
1:A:2317:ASP:HB3	1:B:2301:LEU:HD21	1.93	0.50
1:B:1362:ASP:OD1	1:B:1362:ASP:N	2.44	0.50
1:A:709:LEU:HD21	1:A:715:LEU:HB2	1.93	0.50
1:A:1823:ARG:CZ	2:A:2501:ACO:CDP	2.89	0.50
2:A:2501:ACO:HN8	1:B:2126:ILE:HD11	1.77	0.50
1:A:1785:ILE:HD12	1:B:2189:LEU:CB	2.42	0.50
2:A:2501:ACO:O5P	2:A:2501:ACO:H21	2.11	0.50
1:A:1738:TRP:CZ3	1:B:2178:ILE:HG21	2.47	0.49
1:A:1771:HIS:NE2	1:A:1778:SER:OG	2.29	0.49
1:A:1823:ARG:CZ	2:A:2501:ACO:H131	2.42	0.49
1:B:1094:GLU:OE2	1:C:1106:SER:CB	2.59	0.49
1:B:709:LEU:HD21	1:B:715:LEU:HB2	1.93	0.49
1:B:1128:THR:OG1	1:B:1430:SER:N	2.46	0.49
1:C:1421:PHE:CD1	1:C:1468:THR:HG21	2.47	0.49
1:A:1738:TRP:HZ3	1:B:2178:ILE:HG21	1.77	0.49
1:B:932:VAL:CG2	1:C:1151:GLU:CD	2.85	0.49
1:A:1421:PHE:CD1	1:A:1468:THR:HG21	2.47	0.49
1:A:1627:LEU:O	1:A:1631:MET:N	2.44	0.49
1:A:2072:ARG:NE	1:B:1808:SER:OG	2.45	0.49
1:B:1421:PHE:CD1	1:B:1468:THR:HG21	2.47	0.49
1:D:1878:ASN:HB2	1:C:2057:TYR:O	2.13	0.49
1:A:1878:ASN:HB2	1:B:2057:TYR:O	2.13	0.49
1:A:2016:GLN:HB3	1:A:2047:ARG:HD3	1.95	0.49
1:A:1488:ILE:HG22	1:A:1530:LEU:HD21	1.95	0.49
1:A:2317:ASP:HB2	1:B:2301:LEU:HD13	1.92	0.49
1:B:1440:GLU:O	1:B:1444:ASN:ND2	2.44	0.49
1:B:1919:ILE:HD13	1:B:2216:TYR:CE2	2.48	0.49
1:C:1128:THR:OG1	1:C:1430:SER:N	2.46	0.49
1:B:1939:ALA:O	1:B:1950:TRP:NE1	2.43	0.49
1:D:1939:ALA:O	1:D:1950:TRP:NE1	2.43	0.49
1:D:2072:ARG:NE	1:C:1808:SER:OG	2.45	0.49
1:C:1541:ASP:OD1	1:C:1564:LYS:NZ	2.41	0.48

*Continued on next page...*

*Continued from previous page...*

Atom-1	Atom-2	Interatomic distance (Å)	Clash overlap (Å)
1:A:1128:THR:OG1	1:A:1430:SER:N	2.46	0.48
1:B:1488:ILE:HG22	1:B:1530:LEU:HD21	1.95	0.48
1:A:1919:ILE:HD13	1:A:2216:TYR:CE2	2.48	0.48
1:D:1919:ILE:HD13	1:D:2216:TYR:CE2	2.48	0.48
1:C:1627:LEU:O	1:C:1631:MET:N	2.43	0.48
2:C:2501:ACO:O9P	2:C:2501:ACO:H143	2.14	0.48
2:C:2501:ACO:H4B	2:C:2501:ACO:O7A	2.13	0.48
2:A:2501:ACO:O9P	2:A:2501:ACO:H143	2.14	0.48
1:D:1841:VAL:O	1:D:1844:SER:OG	2.20	0.48
1:C:1488:ILE:HG22	1:C:1530:LEU:HD21	1.95	0.48
1:C:1939:ALA:O	1:C:1950:TRP:NE1	2.43	0.48
2:A:2501:ACO:H61	1:B:2118:LEU:HD11	1.96	0.47
2:A:2502:ACO:H61	2:A:2502:ACO:N6A	2.29	0.47
1:B:2171:ARG:CZ	1:B:2175:LEU:HD11	2.44	0.47
1:A:1825:ILE:CG2	2:A:2501:ACO:O5P	2.61	0.47
2:A:2502:ACO:O9P	2:A:2502:ACO:H143	2.14	0.47
2:A:2502:ACO:H4B	2:A:2502:ACO:O7A	2.14	0.47
1:B:1627:LEU:O	1:B:1631:MET:N	2.44	0.47
1:A:2304:ILE:HG23	1:B:2304:ILE:HG23	1.96	0.47
2:A:2501:ACO:H72	2:A:2501:ACO:N6A	2.25	0.47
1:A:2322:MET:HG2	1:B:2308:VAL:HG11	1.96	0.47
1:D:1811:TYR:OH	1:D:2032:ASP:OD1	2.33	0.47
1:A:1726:LEU:CD2	1:B:2190:HIS:NE2	2.78	0.47
1:A:1800:SER:CB	1:B:2094:VAL:HG12	2.45	0.47
1:A:1811:TYR:OH	1:A:2032:ASP:OD1	2.33	0.46
1:D:1797:LEU:HD13	1:C:2093:TRP:CD1	2.50	0.46
1:C:1293:ILE:HD12	1:C:1329:PHE:HE1	1.79	0.46
1:B:1293:ILE:HD12	1:B:1329:PHE:HE1	1.79	0.46
1:A:1243:GLU:N	1:A:1243:GLU:OE1	2.49	0.46
1:A:1954:PHE:CE1	1:A:2041:MET:HE2	2.51	0.46
1:A:2117:VAL:HG22	1:B:1797:LEU:HD21	1.96	0.46
2:A:2501:ACO:H2B	1:B:2126:ILE:CG2	2.46	0.46
1:B:1083:GLN:O	1:B:1087:ALA:N	2.49	0.46
1:C:1243:GLU:N	1:C:1243:GLU:OE1	2.49	0.46
1:A:1797:LEU:HD13	1:B:2093:TRP:CD1	2.50	0.46
1:B:1954:PHE:CE1	1:B:2041:MET:HE2	2.51	0.46
1:D:1808:SER:O	1:D:1812:ASN:ND2	2.49	0.46
1:A:1745:TYR:CE1	1:B:2175:LEU:HD23	2.51	0.46
1:A:2110:ASP:OD1	1:A:2111:ARG:N	2.49	0.46
1:A:1782:ILE:HG22	1:B:2189:LEU:HD13	1.98	0.46
1:B:1993:VAL:HG23	1:B:2013:GLN:HB2	1.98	0.46

*Continued on next page...*

*Continued from previous page...*

Atom-1	Atom-2	Interatomic distance (Å)	Clash overlap (Å)
1:A:2049:PHE:CD1	1:B:1830:TYR:OH	2.69	0.46
1:B:1243:GLU:OE1	1:B:1243:GLU:N	2.49	0.46
1:A:1385:ARG:NH1	1:A:1512:GLU:OE1	2.49	0.45
1:A:2335:ILE:HG23	1:B:2335:ILE:HG12	1.99	0.45
1:D:1954:PHE:CE1	1:D:2041:MET:HE2	2.51	0.45
1:D:2049:PHE:CD1	1:C:1830:TYR:OH	2.69	0.45
1:A:664:HIS:O	1:A:667:LEU:HD21	2.16	0.45
1:B:1151:GLU:OE2	1:C:933:LEU:HB2	2.16	0.45
1:A:2317:ASP:CB	1:B:2301:LEU:CD1	2.91	0.45
1:D:2049:PHE:CE1	1:C:1830:TYR:OH	2.67	0.45
1:C:1385:ARG:NH1	1:C:1512:GLU:OE1	2.49	0.45
1:A:1993:VAL:HG23	1:A:2013:GLN:HB2	1.98	0.45
1:A:2317:ASP:HB3	1:B:2301:LEU:HD11	1.99	0.45
1:D:2049:PHE:CB	1:C:1848:LEU:CD1	2.94	0.45
1:C:1954:PHE:CE1	1:C:2041:MET:HE2	2.51	0.45
1:B:2110:ASP:OD1	1:B:2111:ARG:N	2.49	0.45
1:D:2110:ASP:OD1	1:D:2111:ARG:N	2.49	0.45
1:C:664:HIS:O	1:C:667:LEU:HD21	2.16	0.45
1:D:2053:MET:SD	1:C:2001:PRO:HD3	2.57	0.45
1:D:2190:HIS:CE1	1:C:1726:LEU:CD2	3.00	0.45
1:A:1541:ASP:OD1	1:A:1564:LYS:NZ	2.42	0.45
1:A:1720:SER:O	2:A:2501:ACO:N6A	2.50	0.45
1:A:2053:MET:SD	1:B:2001:PRO:HD3	2.57	0.45
1:B:664:HIS:O	1:B:667:LEU:HD21	2.16	0.45
1:D:1993:VAL:HG23	1:D:2013:GLN:HB2	1.98	0.45
1:A:1939:ALA:O	1:A:1950:TRP:NE1	2.43	0.44
1:A:2175:LEU:HD23	1:B:1745:TYR:HE1	1.82	0.44
1:B:1897:HIS:O	1:B:1900:SER:OG	2.34	0.44
1:A:1605:PHE:CZ	1:A:1677:ILE:HD11	2.53	0.44
1:B:1166:VAL:H	1:C:928:ASN:HD21	1.56	0.44
1:D:2123:THR:HG23	1:C:1724:ILE:HD12	1.99	0.44
1:C:1990:THR:HG22	1:C:2016:GLN:HG2	2.00	0.44
1:C:1993:VAL:HG23	1:C:2013:GLN:HB2	1.98	0.44
2:A:2502:ACO:O5P	2:A:2502:ACO:H21	2.18	0.44
1:B:1385:ARG:NH1	1:B:1512:GLU:OE1	2.49	0.44
1:D:2175:LEU:HD23	1:C:1745:TYR:HE1	1.82	0.44
1:A:1083:GLN:O	1:A:1087:ALA:N	2.49	0.44
1:A:1293:ILE:HD12	1:A:1329:PHE:HE1	1.79	0.44
1:B:1113:HIS:CE1	1:C:1052:ASP:OD1	2.65	0.44
1:B:1605:PHE:CZ	1:B:1677:ILE:HD11	2.52	0.44
1:A:2123:THR:HG23	1:B:1724:ILE:HD12	1.99	0.44

*Continued on next page...*

*Continued from previous page...*

Atom-1	Atom-2	Interatomic distance (Å)	Clash overlap (Å)
1:A:1897:HIS:O	1:A:1900:SER:OG	2.34	0.44
1:B:1168:HIS:HE1	1:C:932:VAL:HG22	1.78	0.44
1:C:1083:GLN:O	1:C:1087:ALA:N	2.49	0.44
1:C:848:LYS:O	1:C:897:LEU:HD13	2.18	0.43
1:C:1605:PHE:CZ	1:C:1677:ILE:HD11	2.52	0.43
1:A:924:GLN:O	1:A:928:ASN:ND2	2.52	0.43
1:A:1783:THR:C	1:B:2189:LEU:HD22	2.43	0.43
1:B:848:LYS:O	1:B:897:LEU:HD13	2.17	0.43
1:A:848:LYS:O	1:A:897:LEU:HD13	2.18	0.43
1:A:1808:SER:O	1:A:1812:ASN:ND2	2.49	0.43
1:D:1858:LEU:HD13	1:D:1862:VAL:HG21	2.01	0.43
1:B:2173:GLU:OE1	1:B:2173:GLU:HA	2.18	0.43
1:B:1811:TYR:OH	1:B:2032:ASP:OD1	2.33	0.43
1:B:1990:THR:HG22	1:B:2016:GLN:HG2	2.00	0.43
1:A:2099:SER:OG	1:B:1798:ARG:HD3	2.18	0.43
1:D:2099:SER:OG	1:C:1798:ARG:HD3	2.18	0.43
1:D:2117:VAL:HG13	2:C:2501:ACO:S1P	2.59	0.43
2:A:2501:ACO:H142	2:A:2501:ACO:O3A	2.19	0.43
1:B:924:GLN:O	1:B:928:ASN:ND2	2.52	0.43
1:A:1858:LEU:HD13	1:A:1862:VAL:HG21	2.01	0.43
1:A:2049:PHE:CE1	1:B:1830:TYR:OH	2.67	0.43
1:C:1897:HIS:O	1:C:1900:SER:OG	2.34	0.43
1:A:2317:ASP:C	1:B:2301:LEU:HD11	2.44	0.43
1:A:2322:MET:CE	1:B:2322:MET:CE	2.96	0.42
1:B:1858:LEU:HD13	1:B:1862:VAL:HG21	2.01	0.42
1:D:2054:LYS:HD2	1:C:2000:ASP:OD2	2.19	0.42
2:A:2502:ACO:H22	2:A:2502:ACO:HH33	1.68	0.42
1:A:1989:GLU:OE2	1:A:1991:ARG:NE	2.52	0.42
1:D:1830:TYR:CE2	1:D:1848:LEU:HD11	2.54	0.42
1:C:1589:GLN:O	1:C:1592:SER:OG	2.35	0.42
1:D:1990:THR:HG22	1:D:2016:GLN:HG2	2.00	0.42
1:A:2208:TRP:O	1:A:2211:SER:HB2	2.20	0.42
1:D:1797:LEU:HD13	1:C:2093:TRP:CG	2.55	0.42
1:A:1086:ILE:HG22	1:A:1444:ASN:OD1	2.20	0.42
1:A:2190:HIS:CE1	1:B:1726:LEU:CD2	3.00	0.42
1:C:1820:VAL:HG21	1:C:1846:LEU:HD21	2.02	0.42
1:A:1048:LEU:HD21	1:A:1059:LEU:CD2	2.50	0.42
1:B:1771:HIS:NE2	1:B:1778:SER:OG	2.29	0.42
1:C:1052:ASP:O	1:C:1054:THR:N	2.52	0.42
1:B:1820:VAL:HG21	1:B:1846:LEU:HD21	2.02	0.42
1:A:1052:ASP:O	1:A:1054:THR:N	2.52	0.42

*Continued on next page...*

*Continued from previous page...*

Atom-1	Atom-2	Interatomic distance (Å)	Clash overlap (Å)
1:B:1086:ILE:HG22	1:B:1444:ASN:OD1	2.20	0.42
1:B:2175:LEU:O	1:B:2178:ILE:N	2.50	0.42
1:B:2175:LEU:C	1:B:2177:PRO:HD2	2.45	0.42
1:D:1820:VAL:HG21	1:D:1846:LEU:HD21	2.02	0.42
1:C:1086:ILE:HG22	1:C:1444:ASN:OD1	2.20	0.42
1:C:1107:ALA:HB2	1:C:1116:CYS:HB2	2.02	0.42
1:A:2300:VAL:HG13	1:B:2307:LEU:HD22	2.01	0.41
1:D:2047:ARG:NE	1:D:2119:GLU:OE2	2.51	0.41
1:C:1048:LEU:HD21	1:C:1059:LEU:CD2	2.50	0.41
1:C:1808:SER:O	1:C:1812:ASN:ND2	2.53	0.41
1:A:1107:ALA:HB2	1:A:1116:CYS:HB2	2.02	0.41
1:B:994:TYR:CD1	1:B:1041:VAL:HG21	2.55	0.41
1:A:1726:LEU:HD23	1:B:2190:HIS:NE2	2.35	0.41
1:A:1797:LEU:HD13	1:B:2093:TRP:CG	2.55	0.41
1:B:1048:LEU:HD21	1:B:1059:LEU:CD2	2.50	0.41
1:B:1107:ALA:HB2	1:B:1116:CYS:HB2	2.02	0.41
1:C:1858:LEU:HD13	1:C:1862:VAL:HG21	2.01	0.41
1:A:1785:ILE:HD12	1:B:2189:LEU:HB2	2.02	0.41
1:B:1589:GLN:O	1:B:1592:SER:OG	2.35	0.41
1:B:1600:ASP:OD1	1:B:1600:ASP:N	2.53	0.41
1:B:1989:GLU:OE2	1:B:1991:ARG:NE	2.52	0.41
1:D:2208:TRP:O	1:D:2211:SER:HB2	2.20	0.41
1:A:994:TYR:CD1	1:A:1041:VAL:HG21	2.55	0.41
1:B:1771:HIS:CE1	1:B:1778:SER:HG	2.37	0.41
1:B:2208:TRP:O	1:B:2211:SER:HB2	2.20	0.41
1:A:2054:LYS:HD2	1:B:2000:ASP:OD2	2.19	0.41
1:C:1771:HIS:NE2	1:C:1778:SER:OG	2.29	0.41
1:A:1785:ILE:HD12	1:B:2189:LEU:CD1	2.51	0.41
1:A:2049:PHE:CB	1:B:1848:LEU:CD1	2.94	0.41
1:B:1074:ASN:O	1:B:1077:VAL:HG22	2.21	0.41
1:D:1800:SER:CB	1:C:2094:VAL:HG12	2.45	0.41
1:D:2000:ASP:OD1	1:D:2000:ASP:N	2.54	0.41
1:A:1605:PHE:CE1	1:A:1896:LEU:HD21	2.56	0.41
1:B:1808:SER:O	1:B:1812:ASN:ND2	2.53	0.41
1:C:1074:ASN:O	1:C:1077:VAL:HG22	2.21	0.41
1:C:1665:THR:OG1	1:C:1676:ASP:OD1	2.36	0.41
1:A:2087:GLU:O	1:A:2087:GLU:HG2	2.20	0.41
2:A:2501:ACO:H71	2:A:2501:ACO:H10	1.88	0.41
1:D:1897:HIS:O	1:D:1900:SER:OG	2.34	0.41
1:A:1724:ILE:HG12	2:A:2501:ACO:N1A	2.35	0.41
1:A:2118:LEU:CD1	1:B:1724:ILE:HD13	2.49	0.41

*Continued on next page...*

Continued from previous page...

Atom-1	Atom-2	Interatomic distance (Å)	Clash overlap (Å)
1:A:2314:VAL:HG12	1:B:2297:ARG:HG2	2.02	0.41
1:D:2190:HIS:NE2	1:C:1726:LEU:HD23	2.30	0.41
1:B:1919:ILE:HD13	1:B:2216:TYR:CD2	2.56	0.40
1:B:2000:ASP:OD1	1:B:2000:ASP:N	2.54	0.40
1:A:1820:VAL:HG21	1:A:1846:LEU:HD21	2.02	0.40
1:D:2056:MET:HE3	1:C:1875:MET:HE3	2.03	0.40
1:D:2061:LEU:CD1	1:C:1875:MET:HE1	2.44	0.40
1:A:1785:ILE:O	1:B:2190:HIS:CB	2.67	0.40
1:A:1919:ILE:HD13	1:A:2216:TYR:CD2	2.56	0.40
1:B:1605:PHE:CE1	1:B:1896:LEU:HD21	2.56	0.40
1:D:1919:ILE:HD13	1:D:2216:TYR:CD2	2.56	0.40
1:D:2099:SER:OG	1:C:1798:ARG:CD	2.70	0.40
1:C:994:TYR:CD1	1:C:1041:VAL:HG21	2.56	0.40
1:A:1074:ASN:O	1:A:1077:VAL:HG22	2.21	0.40
1:B:1803:ILE:HD12	1:B:1831:LEU:HD11	2.04	0.40
1:A:1783:THR:O	1:B:2189:LEU:CD2	2.70	0.40
1:C:1901:TYR:O	1:C:2038:LEU:HD21	2.22	0.40

There are no symmetry-related clashes.

## 5.3 Torsion angles [i](#)

### 5.3.1 Protein backbone [i](#)

In the following table, the Percentiles column shows the percent Ramachandran outliers of the chain as a percentile score with respect to all PDB entries followed by that with respect to all EM entries.

The Analysed column shows the number of residues for which the backbone conformation was analysed, and the total number of residues.

Mol	Chain	Analysed	Favoured	Allowed	Outliers	Percentiles	
1	A	1515/2346 (65%)	1429 (94%)	83 (6%)	3 (0%)	43	62
1	B	1515/2346 (65%)	1428 (94%)	84 (6%)	3 (0%)	43	62
1	C	1288/2346 (55%)	1219 (95%)	67 (5%)	2 (0%)	43	62
1	D	545/2346 (23%)	522 (96%)	23 (4%)	0	100	100
All	All	4863/9384 (52%)	4598 (95%)	257 (5%)	8 (0%)	44	62

All (8) Ramachandran outliers are listed below:

Mol	Chain	Res	Type
1	A	1572	LEU
1	B	1572	LEU
1	C	1572	LEU
1	A	2118	LEU
1	A	1242	PHE
1	B	1242	PHE
1	C	1242	PHE
1	B	2176	ILE

### 5.3.2 Protein sidechains [i](#)

In the following table, the Percentiles column shows the percent sidechain outliers of the chain as a percentile score with respect to all PDB entries followed by that with respect to all EM entries.

The Analysed column shows the number of residues for which the sidechain conformation was analysed, and the total number of residues.

Mol	Chain	Analysed	Rotameric	Outliers	Percentiles	
1	A	1361/2057 (66%)	1335 (98%)	26 (2%)	50	68
1	B	1361/2057 (66%)	1340 (98%)	21 (2%)	57	73
1	C	1153/2057 (56%)	1138 (99%)	15 (1%)	61	75
1	D	476/2057 (23%)	464 (98%)	12 (2%)	42	63
All	All	4351/8228 (53%)	4277 (98%)	74 (2%)	52	71

All (74) residues with a non-rotameric sidechain are listed below:

Mol	Chain	Res	Type
1	A	868	CYS
1	A	1291	VAL
1	A	1330	LEU
1	A	1578	VAL
1	A	1581	ASP
1	A	1582	LEU
1	A	1688	ILE
1	A	1717	SER
1	A	1726	LEU
1	A	1731	ARG
1	A	1848	LEU
1	A	1888	ASP
1	A	1912	LEU
1	A	1962	GLU

*Continued on next page...*

*Continued from previous page...*

<b>Mol</b>	<b>Chain</b>	<b>Res</b>	<b>Type</b>
1	A	2000	ASP
1	A	2040	LEU
1	A	2047	ARG
1	A	2087	GLU
1	A	2118	LEU
1	A	2127	LYS
1	A	2199	LYS
1	A	2213	THR
1	A	2248	LEU
1	A	2249	ARG
1	A	2274	LEU
1	A	2316	MET
1	B	868	CYS
1	B	1291	VAL
1	B	1330	LEU
1	B	1578	VAL
1	B	1581	ASP
1	B	1582	LEU
1	B	1688	ILE
1	B	1717	SER
1	B	1726	LEU
1	B	1731	ARG
1	B	1888	ASP
1	B	1912	LEU
1	B	1962	GLU
1	B	2000	ASP
1	B	2040	LEU
1	B	2199	LYS
1	B	2213	THR
1	B	2248	LEU
1	B	2249	ARG
1	B	2274	LEU
1	B	2316	MET
1	D	1888	ASP
1	D	1912	LEU
1	D	1962	GLU
1	D	2000	ASP
1	D	2040	LEU
1	D	2127	LYS
1	D	2199	LYS
1	D	2213	THR
1	D	2248	LEU

*Continued on next page...*

*Continued from previous page...*

Mol	Chain	Res	Type
1	D	2249	ARG
1	D	2274	LEU
1	D	2316	MET
1	C	868	CYS
1	C	1291	VAL
1	C	1330	LEU
1	C	1578	VAL
1	C	1581	ASP
1	C	1582	LEU
1	C	1688	ILE
1	C	1717	SER
1	C	1726	LEU
1	C	1731	ARG
1	C	1888	ASP
1	C	1912	LEU
1	C	1962	GLU
1	C	2000	ASP
1	C	2040	LEU

Sometimes sidechains can be flipped to improve hydrogen bonding and reduce clashes. All (35) such sidechains are listed below:

Mol	Chain	Res	Type
1	A	707	HIS
1	A	928	ASN
1	A	1174	ASN
1	A	1181	GLN
1	A	1649	ASN
1	A	1845	HIS
1	A	1946	GLN
1	A	1965	GLN
1	A	2016	GLN
1	A	2330	GLN
1	B	664	HIS
1	B	928	ASN
1	B	1113	HIS
1	B	1168	HIS
1	B	1174	ASN
1	B	1181	GLN
1	B	1649	ASN
1	B	1845	HIS
1	B	1946	GLN
1	B	1965	GLN

*Continued on next page...*

*Continued from previous page...*

Mol	Chain	Res	Type
1	B	2016	GLN
1	B	2146	HIS
1	D	1845	HIS
1	D	1946	GLN
1	D	1965	GLN
1	D	2016	GLN
1	D	2146	HIS
1	C	928	ASN
1	C	1174	ASN
1	C	1649	ASN
1	C	1845	HIS
1	C	1946	GLN
1	C	1965	GLN
1	C	2016	GLN
1	C	2085	GLN

### 5.3.3 RNA [i](#)

There are no RNA molecules in this entry.

### 5.4 Non-standard residues in protein, DNA, RNA chains [i](#)

There are no non-standard protein/DNA/RNA residues in this entry.

### 5.5 Carbohydrates [i](#)

There are no oligosaccharides in this entry.

### 5.6 Ligand geometry [i](#)

3 ligands are modelled in this entry.

In the following table, the Counts columns list the number of bonds (or angles) for which Mogul statistics could be retrieved, the number of bonds (or angles) that are observed in the model and the number of bonds (or angles) that are defined in the Chemical Component Dictionary. The Link column lists molecule types, if any, to which the group is linked. The Z score for a bond length (or angle) is the number of standard deviations the observed value is removed from the expected value. A bond length (or angle) with  $|Z| > 2$  is considered an outlier worth inspection. RMSZ is the root-mean-square of all Z scores of the bond lengths (or angles).

Mol	Type	Chain	Res	Link	Bond lengths			Bond angles		
					Counts	RMSZ	# Z  > 2	Counts	RMSZ	# Z  > 2
2	ACO	A	2502	-	51,53,53	1.16	4 (7%)	73,79,79	1.49	9 (12%)
2	ACO	C	2501	-	51,53,53	1.15	4 (7%)	73,79,79	1.50	9 (12%)
2	ACO	A	2501	-	51,53,53	1.15	4 (7%)	73,79,79	1.49	9 (12%)

In the following table, the Chirals column lists the number of chiral outliers, the number of chiral centers analysed, the number of these observed in the model and the number defined in the Chemical Component Dictionary. Similar counts are reported in the Torsion and Rings columns. '-' means no outliers of that kind were identified.

Mol	Type	Chain	Res	Link	Chirals	Torsions	Rings
2	ACO	A	2502	-	-	19/51/67/67	0/3/3/3
2	ACO	C	2501	-	-	19/51/67/67	0/3/3/3
2	ACO	A	2501	-	-	22/51/67/67	0/3/3/3

All (12) bond length outliers are listed below:

Mol	Chain	Res	Type	Atoms	Z	Observed(Å)	Ideal(Å)
2	A	2501	ACO	C5A-C4A	4.76	1.47	1.39
2	A	2502	ACO	C5A-C4A	4.76	1.47	1.39
2	C	2501	ACO	C5A-C4A	4.73	1.47	1.39
2	A	2501	ACO	C5A-C6A	2.77	1.48	1.41
2	C	2501	ACO	C5A-C6A	2.76	1.48	1.41
2	A	2502	ACO	C5A-C6A	2.76	1.48	1.41
2	A	2502	ACO	C8A-N7A	2.39	1.36	1.31
2	C	2501	ACO	C8A-N7A	2.34	1.36	1.31
2	A	2501	ACO	C8A-N7A	2.34	1.36	1.31
2	C	2501	ACO	C5A-N7A	-2.26	1.35	1.39
2	A	2502	ACO	C5A-N7A	-2.26	1.35	1.39
2	A	2501	ACO	C5A-N7A	-2.23	1.35	1.39

All (27) bond angle outliers are listed below:

Mol	Chain	Res	Type	Atoms	Z	Observed(°)	Ideal(°)
2	C	2501	ACO	C5A-C4A-N3A	-5.86	118.64	126.72
2	A	2502	ACO	C5A-C4A-N3A	-5.85	118.66	126.72
2	A	2501	ACO	C5A-C4A-N3A	-5.85	118.66	126.72
2	C	2501	ACO	N3A-C4A-N9A	4.63	135.05	127.17
2	A	2502	ACO	N3A-C4A-N9A	4.61	135.00	127.17
2	A	2501	ACO	N3A-C4A-N9A	4.60	134.99	127.17
2	C	2501	ACO	C2A-N3A-C4A	3.71	120.89	111.83
2	A	2501	ACO	C2A-N3A-C4A	3.70	120.87	111.83

*Continued on next page...*

Continued from previous page...

Mol	Chain	Res	Type	Atoms	Z	Observed(°)	Ideal(°)
2	A	2502	ACO	C2A-N3A-C4A	3.69	120.84	111.83
2	A	2501	ACO	C4A-C5A-N7A	-3.52	106.56	110.58
2	A	2502	ACO	C4A-C5A-N7A	-3.49	106.59	110.58
2	C	2501	ACO	C4A-C5A-N7A	-3.49	106.60	110.58
2	A	2501	ACO	N3A-C2A-N1A	-3.21	123.72	128.58
2	C	2501	ACO	N3A-C2A-N1A	-3.20	123.74	128.58
2	A	2502	ACO	N3A-C2A-N1A	-3.18	123.77	128.58
2	A	2501	ACO	C3B-C2B-C1B	2.90	106.27	99.89
2	A	2502	ACO	C3B-C2B-C1B	2.90	106.27	99.89
2	C	2501	ACO	C3B-C2B-C1B	2.90	106.27	99.89
2	A	2502	ACO	C4A-N9A-C8A	2.61	108.48	105.74
2	C	2501	ACO	C4A-N9A-C8A	2.61	108.48	105.74
2	A	2501	ACO	C4A-N9A-C8A	2.57	108.44	105.74
2	A	2502	ACO	C5A-N7A-C8A	2.56	107.47	103.45
2	C	2501	ACO	C5A-N7A-C8A	2.56	107.47	103.45
2	A	2501	ACO	C5A-N7A-C8A	2.56	107.47	103.45
2	A	2501	ACO	C6A-C5A-N7A	2.11	136.15	132.09
2	A	2502	ACO	C6A-C5A-N7A	2.09	136.12	132.09
2	C	2501	ACO	C6A-C5A-N7A	2.07	136.09	132.09

There are no chirality outliers.

All (60) torsion outliers are listed below:

Mol	Chain	Res	Type	Atoms
2	A	2501	ACO	C5B-O5B-P1A-O2A
2	A	2501	ACO	C5B-O5B-P1A-O3A
2	A	2501	ACO	O9P-C9P-CAP-OAP
2	A	2501	ACO	N8P-C9P-CAP-OAP
2	A	2501	ACO	CAP-C9P-N8P-C7P
2	A	2501	ACO	O9P-C9P-N8P-C7P
2	A	2501	ACO	C6P-C5P-N4P-C3P
2	A	2501	ACO	C3P-C2P-S1P-C
2	A	2502	ACO	C5B-O5B-P1A-O1A
2	A	2502	ACO	C5B-O5B-P1A-O2A
2	A	2502	ACO	C5B-O5B-P1A-O3A
2	A	2502	ACO	CCP-O6A-P2A-O3A
2	A	2502	ACO	CCP-O6A-P2A-O4A
2	A	2502	ACO	O9P-C9P-CAP-OAP
2	A	2502	ACO	N8P-C9P-CAP-OAP
2	A	2502	ACO	CAP-C9P-N8P-C7P
2	A	2502	ACO	C5P-C6P-C7P-N8P
2	A	2502	ACO	C2P-C3P-N4P-C5P

Continued on next page...

*Continued from previous page...*

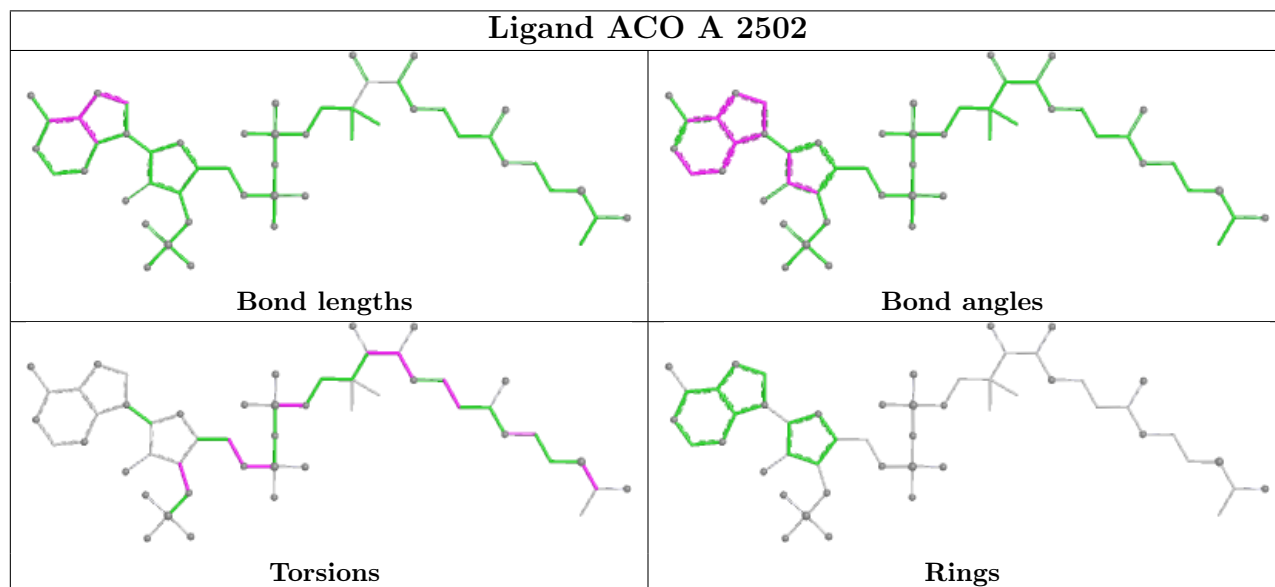
Mol	Chain	Res	Type	Atoms
2	A	2502	ACO	O-C-S1P-C2P
2	A	2502	ACO	CH3-C-S1P-C2P
2	C	2501	ACO	C5B-O5B-P1A-O1A
2	C	2501	ACO	C5B-O5B-P1A-O2A
2	C	2501	ACO	C5B-O5B-P1A-O3A
2	C	2501	ACO	CCP-O6A-P2A-O3A
2	C	2501	ACO	CCP-O6A-P2A-O4A
2	C	2501	ACO	O9P-C9P-CAP-OAP
2	C	2501	ACO	N8P-C9P-CAP-OAP
2	C	2501	ACO	CAP-C9P-N8P-C7P
2	C	2501	ACO	C2P-C3P-N4P-C5P
2	C	2501	ACO	S1P-C2P-C3P-N4P
2	C	2501	ACO	O-C-S1P-C2P
2	C	2501	ACO	CH3-C-S1P-C2P
2	A	2501	ACO	O5P-C5P-N4P-C3P
2	A	2502	ACO	O9P-C9P-N8P-C7P
2	C	2501	ACO	O9P-C9P-N8P-C7P
2	A	2501	ACO	C4B-C3B-O3B-P3B
2	A	2502	ACO	C4B-C3B-O3B-P3B
2	C	2501	ACO	C4B-C3B-O3B-P3B
2	A	2502	ACO	C2B-C3B-O3B-P3B
2	C	2501	ACO	C2B-C3B-O3B-P3B
2	A	2501	ACO	O9P-C9P-CAP-CBP
2	A	2502	ACO	O9P-C9P-CAP-CBP
2	C	2501	ACO	O9P-C9P-CAP-CBP
2	A	2501	ACO	S1P-C2P-C3P-N4P
2	A	2501	ACO	N8P-C9P-CAP-CBP
2	A	2502	ACO	N8P-C9P-CAP-CBP
2	C	2501	ACO	N8P-C9P-CAP-CBP
2	C	2501	ACO	C5P-C6P-C7P-N8P
2	C	2501	ACO	C4B-C5B-O5B-P1A
2	A	2501	ACO	CDP-CBP-CCP-O6A
2	A	2502	ACO	C4B-C5B-O5B-P1A
2	A	2501	ACO	O-C-S1P-C2P
2	A	2501	ACO	C5B-O5B-P1A-O1A
2	A	2501	ACO	CCP-O6A-P2A-O3A
2	A	2502	ACO	CCP-O6A-P2A-O5A
2	A	2501	ACO	CH3-C-S1P-C2P
2	A	2501	ACO	C2P-C3P-N4P-C5P
2	A	2501	ACO	O5P-C5P-C6P-C7P
2	A	2501	ACO	CBP-CCP-O6A-P2A
2	A	2501	ACO	CEP-CBP-CCP-O6A

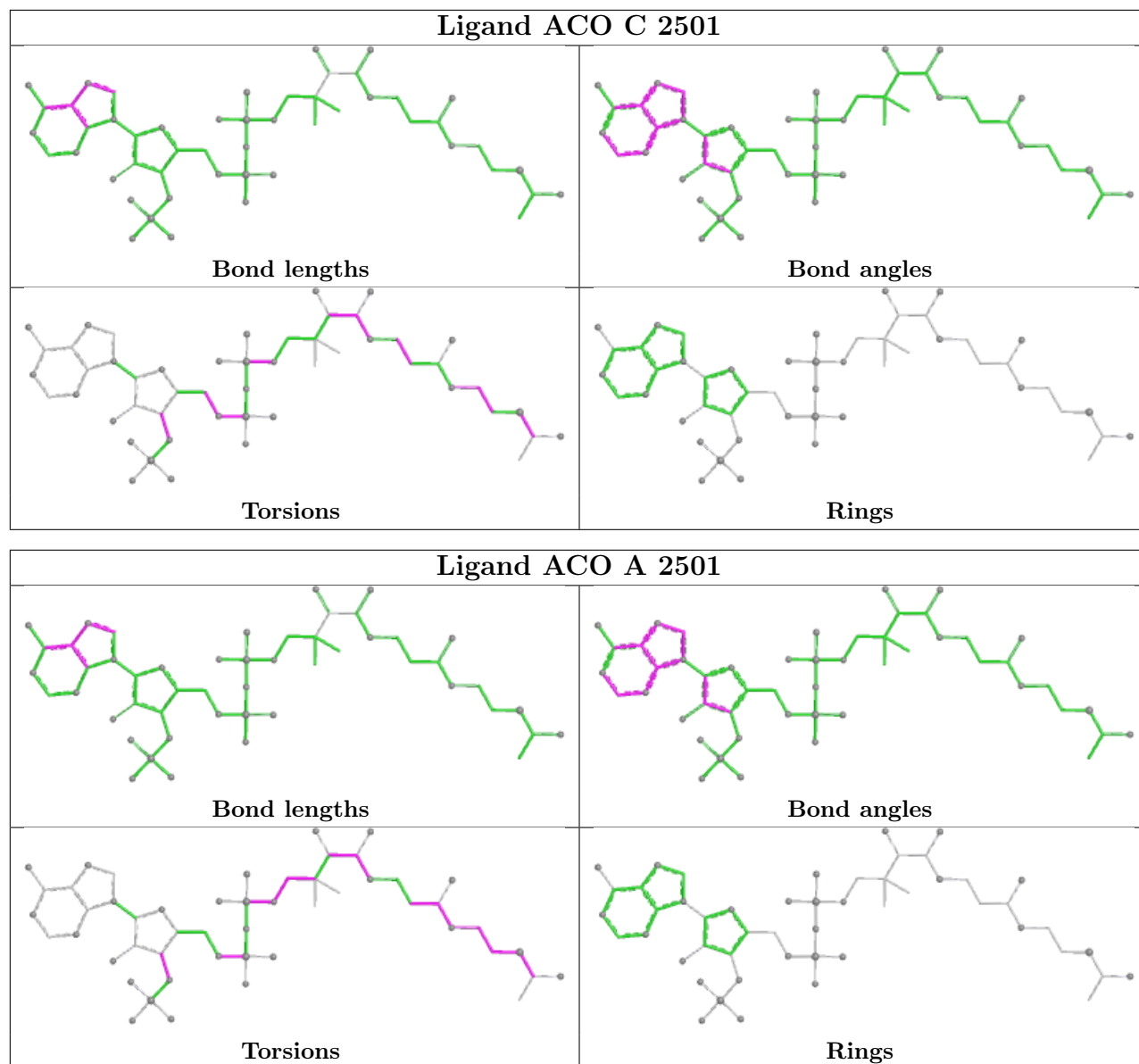
There are no ring outliers.

3 monomers are involved in 45 short contacts:

Mol	Chain	Res	Type	Clashes	Symm-Clashes
2	A	2502	ACO	11	0
2	C	2501	ACO	11	0
2	A	2501	ACO	23	0

The following is a two-dimensional graphical depiction of Mogul quality analysis of bond lengths, bond angles, torsion angles, and ring geometry for all instances of the Ligand of Interest. In addition, ligands with molecular weight > 250 and outliers as shown on the validation Tables will also be included. For torsion angles, if less than 5% of the Mogul distribution of torsion angles is within 10 degrees of the torsion angle in question, then that torsion angle is considered an outlier. Any bond that is central to one or more torsion angles identified as an outlier by Mogul will be highlighted in the graph. For rings, the root-mean-square deviation (RMSD) between the ring in question and similar rings identified by Mogul is calculated over all ring torsion angles. If the average RMSD is greater than 60 degrees and the minimal RMSD between the ring in question and any Mogul-identified rings is also greater than 60 degrees, then that ring is considered an outlier. The outliers are highlighted in purple. The color gray indicates Mogul did not find sufficient equivalents in the CSD to analyse the geometry.





## 5.7 Other polymers [i](#)

There are no such residues in this entry.

## 5.8 Polymer linkage issues [i](#)

There are no chain breaks in this entry.

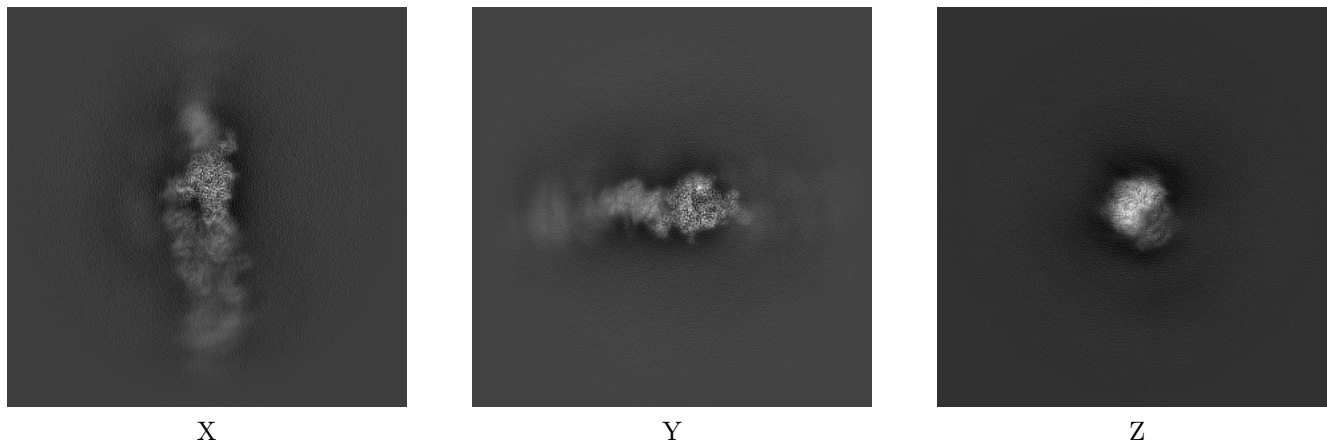
## 6 Map visualisation [i](#)

This section contains visualisations of the EMDB entry EMD-38435. These allow visual inspection of the internal detail of the map and identification of artifacts.

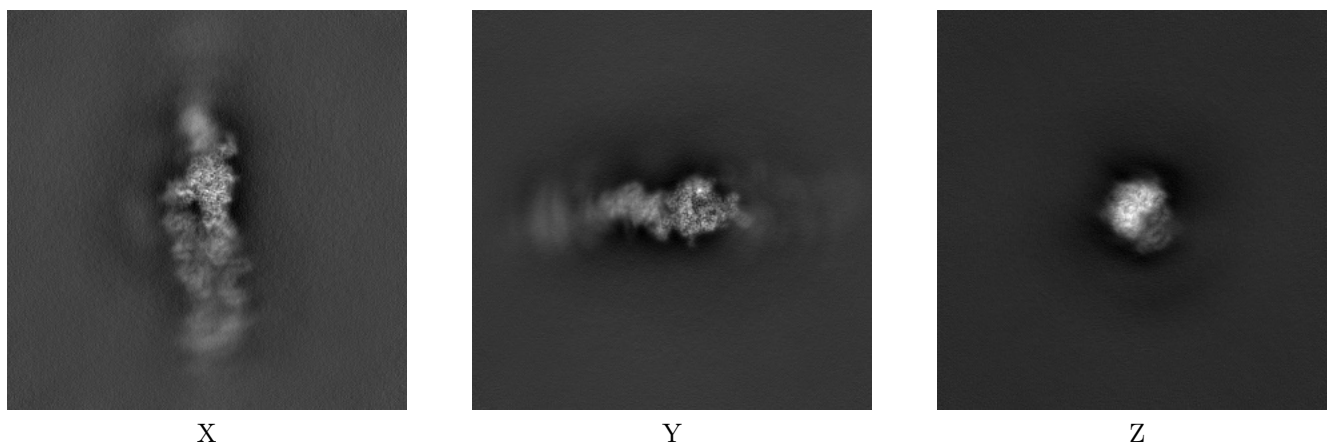
Images derived from a raw map, generated by summing the deposited half-maps, are presented below the corresponding image components of the primary map to allow further visual inspection and comparison with those of the primary map.

### 6.1 Orthogonal projections [i](#)

#### 6.1.1 Primary map



#### 6.1.2 Raw map



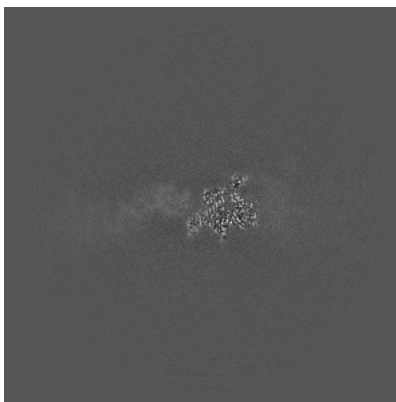
The images above show the map projected in three orthogonal directions.

## 6.2 Central slices [i](#)

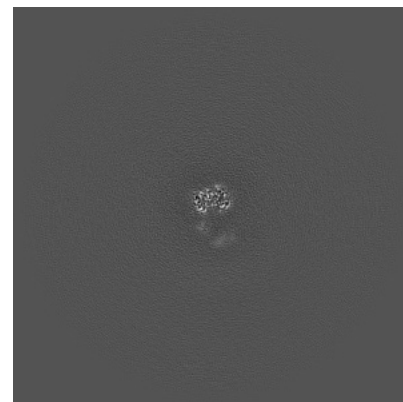
### 6.2.1 Primary map



X Index: 244

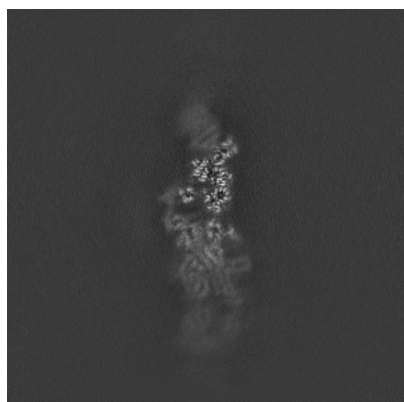


Y Index: 244

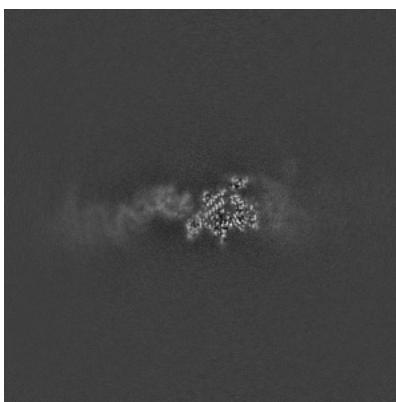


Z Index: 244

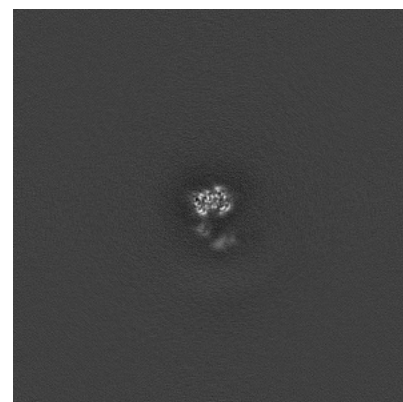
### 6.2.2 Raw map



X Index: 244



Y Index: 244

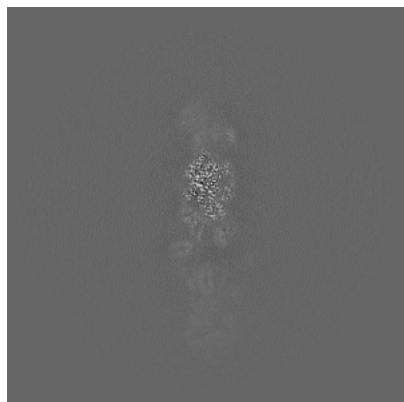


Z Index: 244

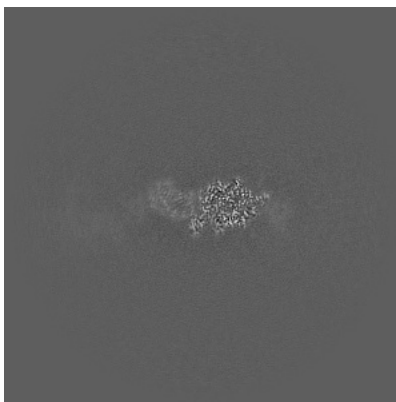
The images above show central slices of the map in three orthogonal directions.

## 6.3 Largest variance slices [i](#)

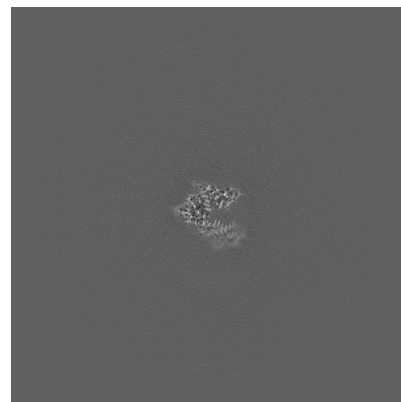
### 6.3.1 Primary map



X Index: 228



Y Index: 252

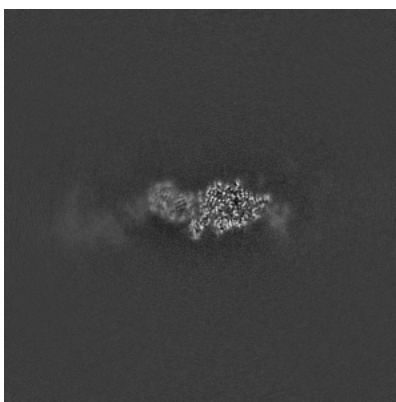


Z Index: 265

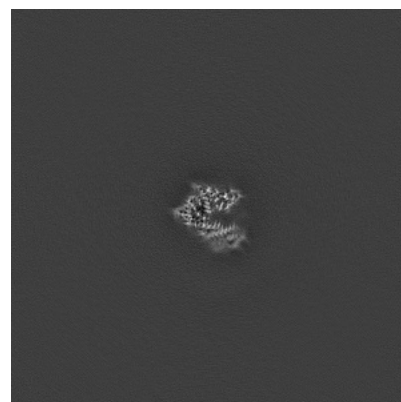
### 6.3.2 Raw map



X Index: 236



Y Index: 253

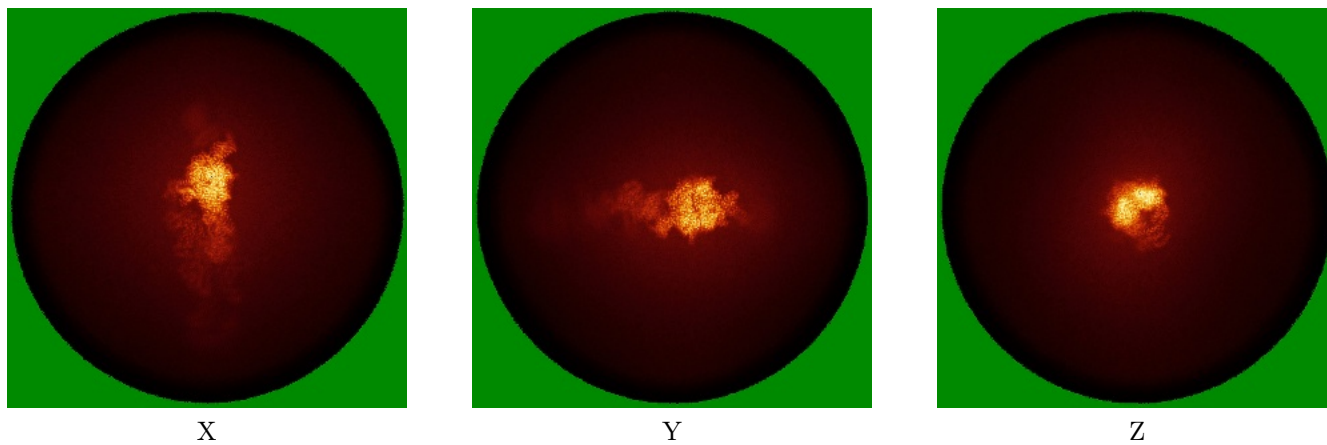


Z Index: 265

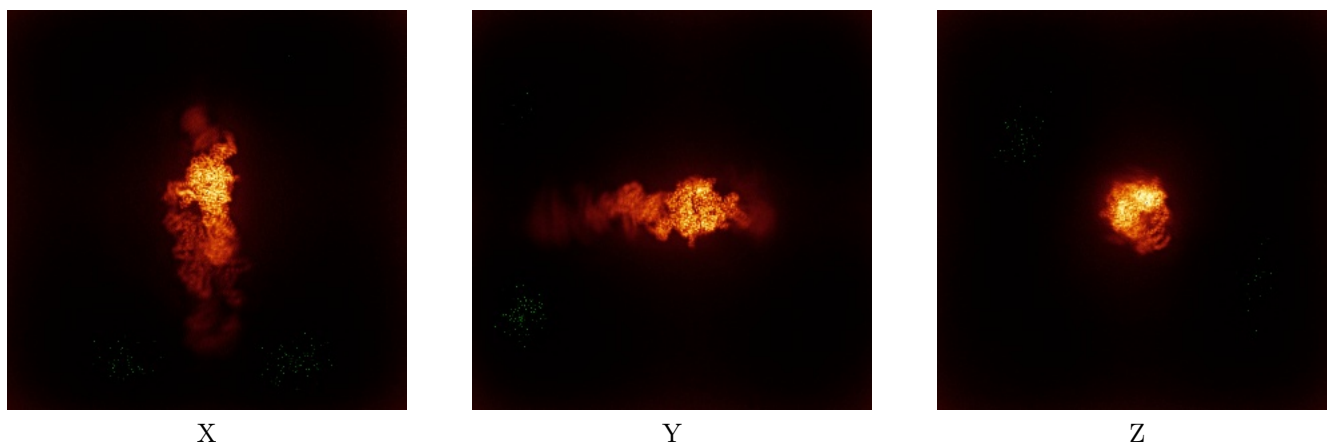
The images above show the largest variance slices of the map in three orthogonal directions.

## 6.4 Orthogonal standard-deviation projections (False-color) [i](#)

### 6.4.1 Primary map



### 6.4.2 Raw map



The images above show the map standard deviation projections with false color in three orthogonal directions. Minimum values are shown in green, max in blue, and dark to light orange shades represent small to large values respectively.

## 6.5 Orthogonal surface views [i](#)

This section was not generated.

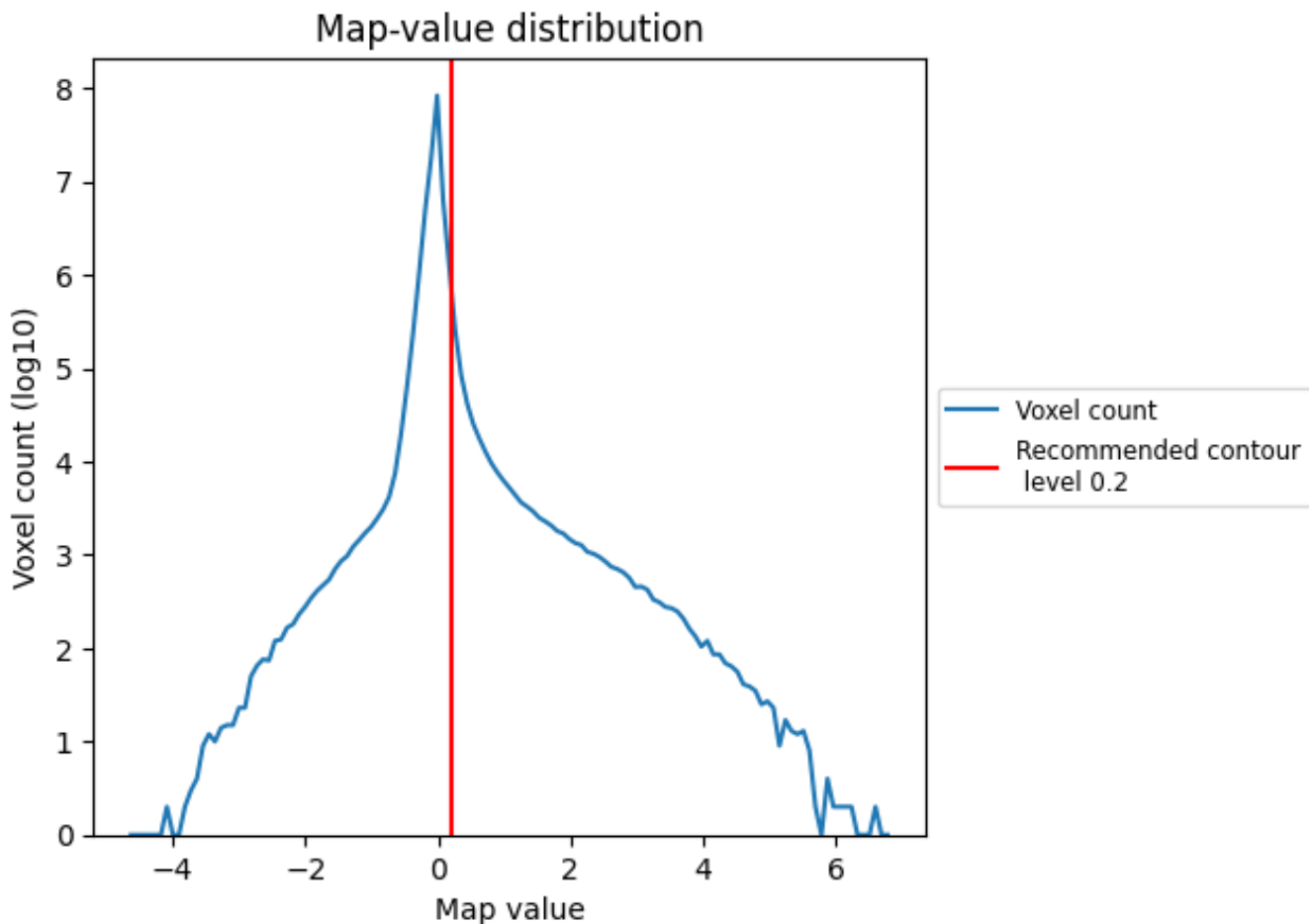
## 6.6 Mask visualisation [i](#)

This section was not generated. No masks/segmentation were deposited.

## 7 Map analysis [i](#)

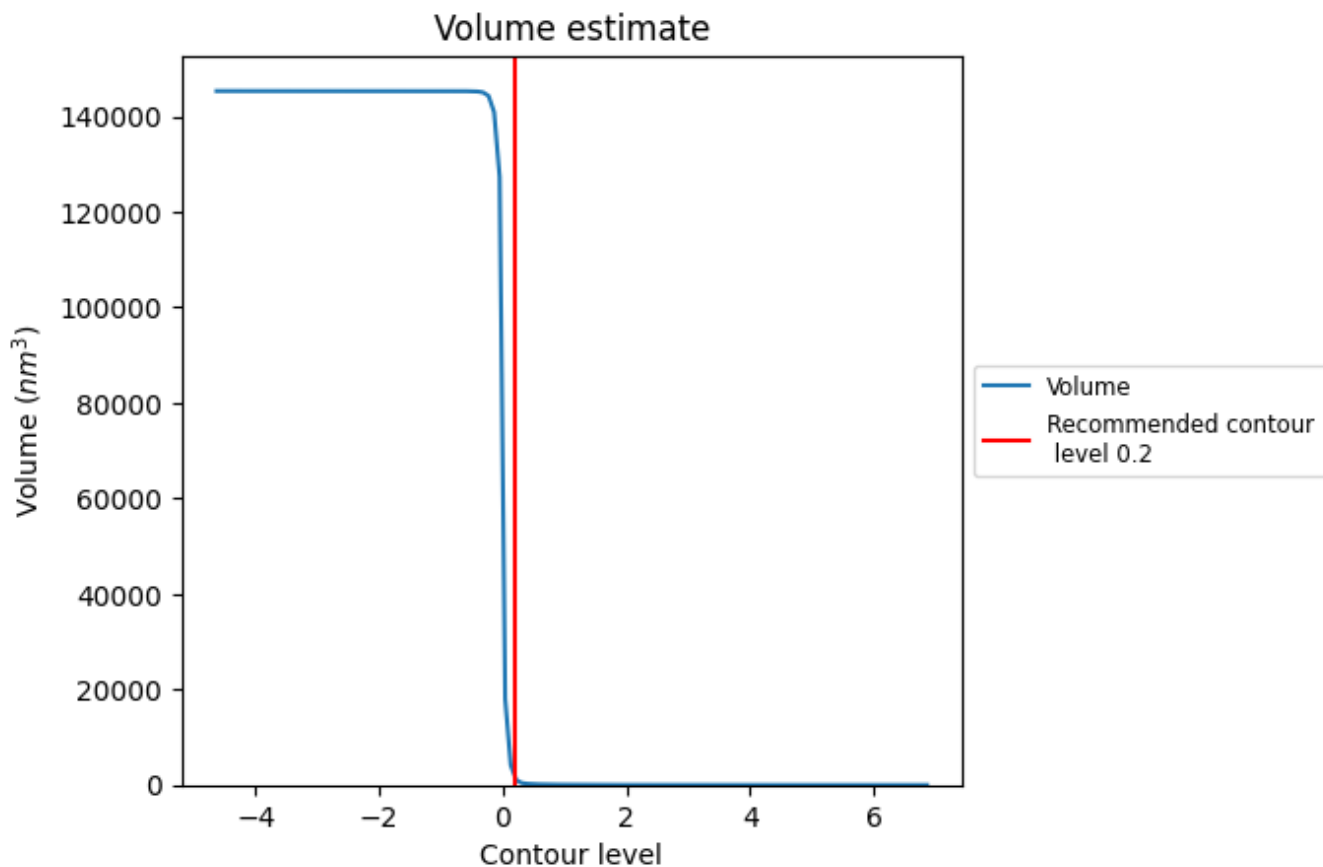
This section contains the results of statistical analysis of the map.

### 7.1 Map-value distribution [i](#)



The map-value distribution is plotted in 128 intervals along the x-axis. The y-axis is logarithmic. A spike in this graph at zero usually indicates that the volume has been masked.

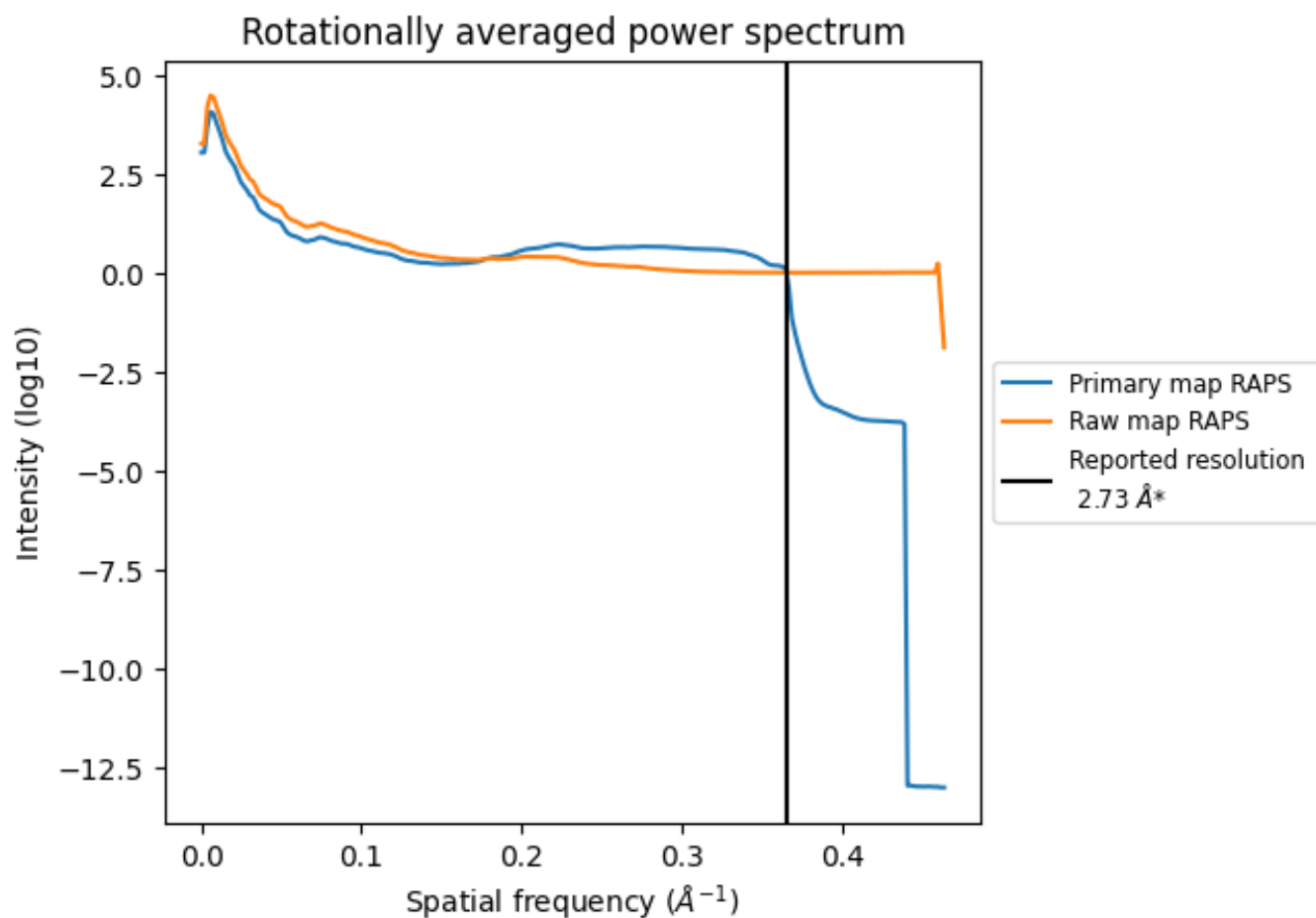
## 7.2 Volume estimate [i](#)



The volume at the recommended contour level is 1761  $\text{nm}^3$ ; this corresponds to an approximate mass of 1590 kDa.

The volume estimate graph shows how the enclosed volume varies with the contour level. The recommended contour level is shown as a vertical line and the intersection between the line and the curve gives the volume of the enclosed surface at the given level.

### 7.3 Rotationally averaged power spectrum [i](#)

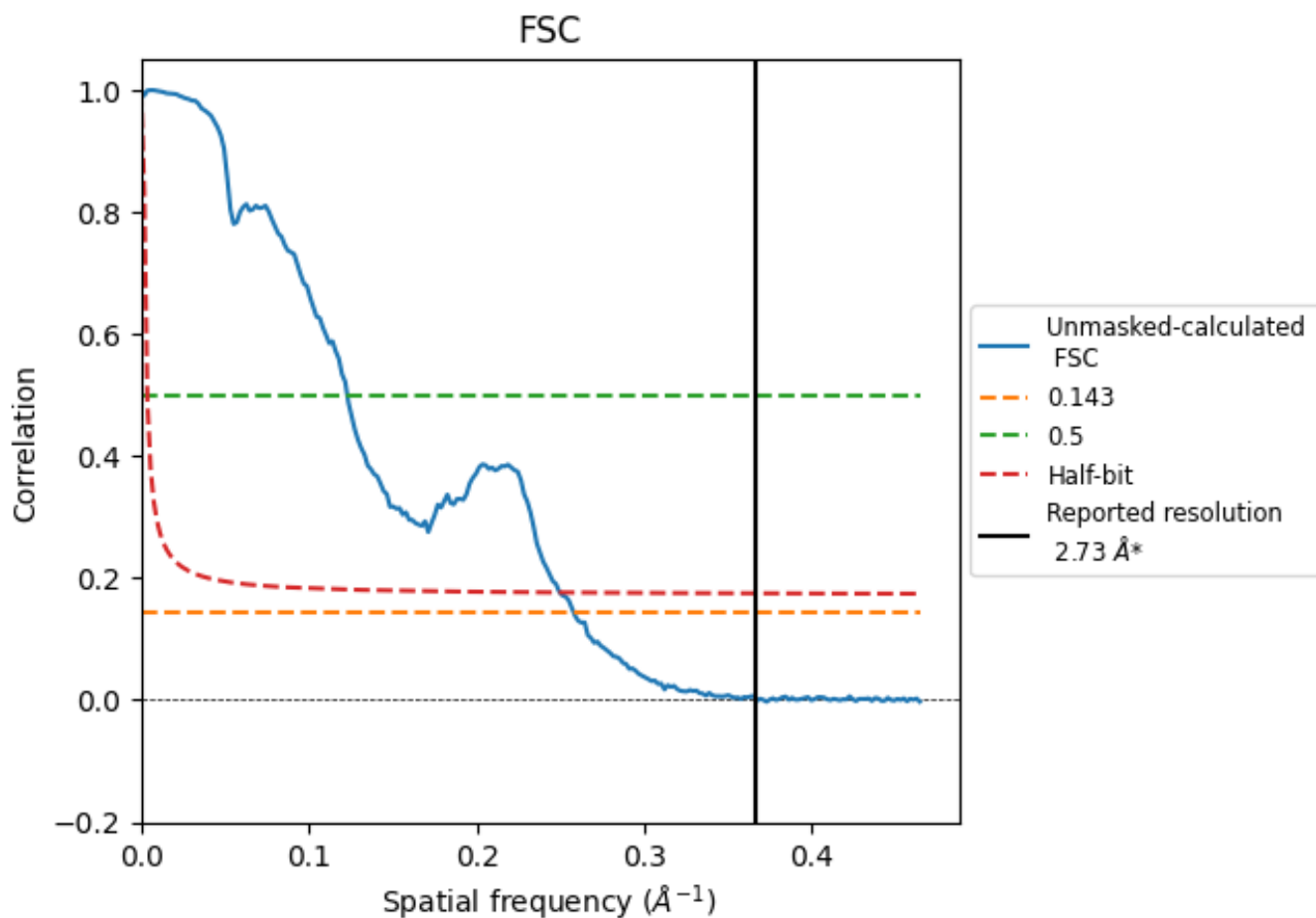


\*Reported resolution corresponds to spatial frequency of 0.366 Å<sup>-1</sup>

## 8 Fourier-Shell correlation [i](#)

Fourier-Shell Correlation (FSC) is the most commonly used method to estimate the resolution of single-particle and subtomogram-averaged maps. The shape of the curve depends on the imposed symmetry, mask and whether or not the two 3D reconstructions used were processed from a common reference. The reported resolution is shown as a black line. A curve is displayed for the half-bit criterion in addition to lines showing the 0.143 gold standard cut-off and 0.5 cut-off.

### 8.1 FSC [i](#)



\*Reported resolution corresponds to spatial frequency of 0.366 Å<sup>-1</sup>

## 8.2 Resolution estimates [i](#)

Resolution estimate (Å)	Estimation criterion (FSC cut-off)		
	0.143	0.5	Half-bit
Reported by author	2.73	-	-
Author-provided FSC curve	-	-	-
Unmasked-calculated*	3.88	8.14	4.01

\*Resolution estimate based on FSC curve calculated by comparison of deposited half-maps. The value from deposited half-maps intersecting FSC 0.143 CUT-OFF 3.88 differs from the reported value 2.73 by more than 10 %

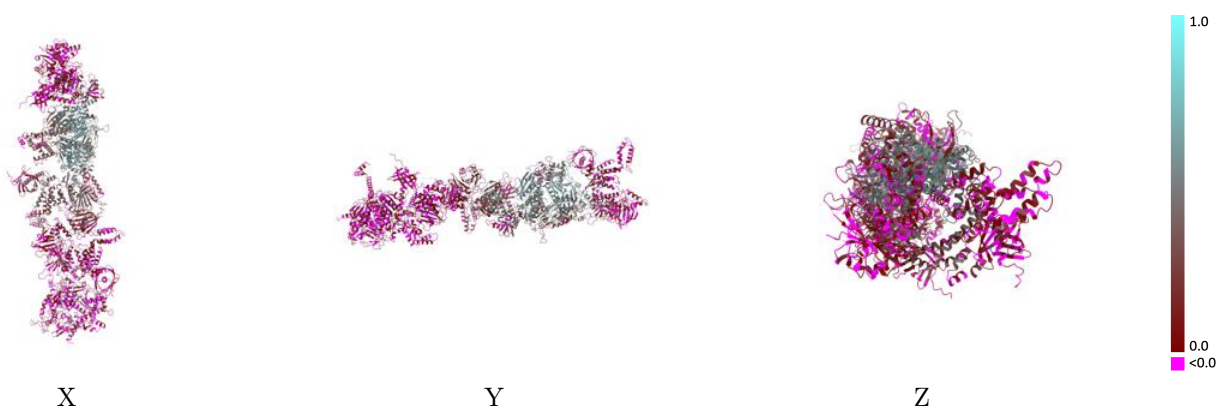
## 9 Map-model fit [i](#)

This section contains information regarding the fit between EMDB map EMD-38435 and PDB model 8XL2. Per-residue inclusion information can be found in section 3 on page 6.

### 9.1 Map-model overlay [i](#)

This section was not generated.

### 9.2 Q-score mapped to coordinate model [i](#)

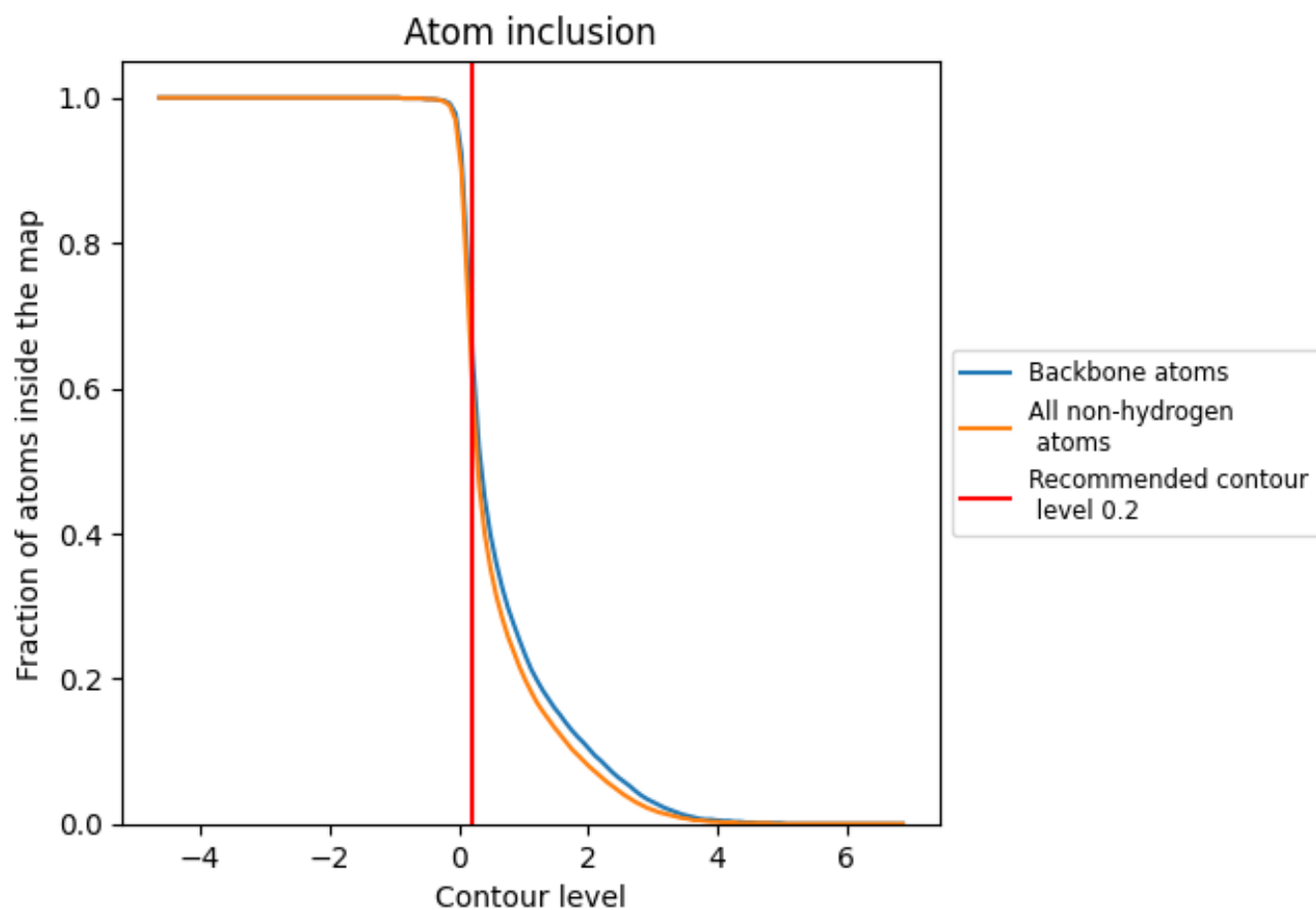


The images above show the model with each residue coloured according its Q-score. This shows their resolvability in the map with higher Q-score values reflecting better resolvability. Please note: Q-score is calculating the resolvability of atoms, and thus high values are only expected at resolutions at which atoms can be resolved. Low Q-score values may therefore be expected for many entries.

### 9.3 Atom inclusion mapped to coordinate model [i](#)

This section was not generated.











## 9.4 Atom inclusion [i](#)



At the recommended contour level, 67% of all backbone atoms, 62% of all non-hydrogen atoms, are inside the map.

## 9.5 Map-model fit summary [i](#)

The table lists the average atom inclusion at the recommended contour level (0.2) and Q-score for the entire model and for each chain.

Chain	Atom inclusion	Q-score
All	 0.6220	 0.1850
A	 0.6680	 0.1890
B	 0.9200	 0.3640
C	 0.4140	 0.0400
D	 0.1510	 0.0170

