



Full wwPDB EM Validation Report ⓘ

May 8, 2025 – 12:16 PM JST

PDB ID : 8X1U / pdb_00008x1u
EMDB ID : EMD-38002
Title : Cryo-EM structure of human DRA (SLC26A3) bound with oxalate
Authors : Yang, X.; Zhang, Y.
Deposited on : 2023-11-08
Resolution : 2.21 Å(reported)

This is a Full wwPDB EM Validation Report for a publicly released PDB entry.

We welcome your comments at validation@mail.wwpdb.org

A user guide is available at

<https://www.wwpdb.org/validation/2017/EMValidationReportHelp>

with specific help available everywhere you see the ⓘ symbol.

The types of validation reports are described at

<http://www.wwpdb.org/validation/2017/FAQs#types>.

The following versions of software and data (see [references ⓘ](#)) were used in the production of this report:

EMDB validation analysis : 0.0.1.dev118
Mogul : 1.8.5 (274361), CSD as541be (2020)
MolProbity : 4-5-2 with Phenix2.0rc1
buster-report : 1.1.7 (2018)
Percentile statistics : 20231227.v01 (using entries in the PDB archive December 27th 2023)
MapQ : 1.9.13
Ideal geometry (proteins) : Engh & Huber (2001)
Ideal geometry (DNA, RNA) : Parkinson et al. (1996)
Validation Pipeline (wwPDB-VP) : 2.43.1

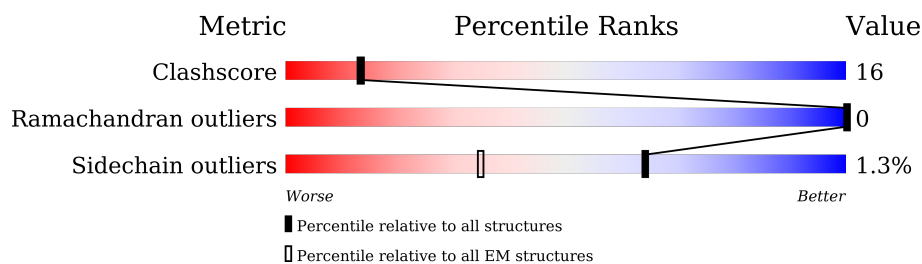
1 Overall quality at a glance

The following experimental techniques were used to determine the structure:

ELECTRON MICROSCOPY

The reported resolution of this entry is 2.21 Å.

Percentile scores (ranging between 0-100) for global validation metrics of the entry are shown in the following graphic. The table shows the number of entries on which the scores are based.



Metric	Whole archive (#Entries)	EM structures (#Entries)
Clashscore	210492	15764
Ramachandran outliers	207382	16835
Sidechain outliers	206894	16415

The table below summarises the geometric issues observed across the polymeric chains and their fit to the map. The red, orange, yellow and green segments of the bar indicate the fraction of residues that contain outliers for ≥ 3 , 2, 1 and 0 types of geometric quality criteria respectively. A grey segment represents the fraction of residues that are not modelled. The numeric value for each fraction is indicated below the corresponding segment, with a dot representing fractions $\leq 5\%$. The upper red bar (where present) indicates the fraction of residues that have poor fit to the EM map (all-atom inclusion $< 40\%$). The numeric value is given above the bar.

Mol	Chain	Length	Quality of chain
1	A	775	 67% 23% 9%
1	B	775	 68% 22% 10%

The following table lists non-polymeric compounds, carbohydrate monomers and non-standard residues in protein, DNA, RNA chains that are outliers for geometric or electron-density-fit criteria:

Mol	Type	Chain	Res	Chirality	Geometry	Clashes	Electron density
2	OXL	A	901	-	X	X	-
2	OXL	B	801	-	X	X	-
3	POV	B	841	-	-	X	-
5	D12	B	803	-	-	X	-

Continued on next page...

Continued from previous page...

Mol	Type	Chain	Res	Chirality	Geometry	Clashes	Electron density
7	D10	A	930	-	-	X	-
7	D10	B	824	-	-	X	-
8	CLR	A	942	-	-	X	-

2 Entry composition

There are 9 unique types of molecules in this entry. The entry contains 12323 atoms, of which 0 are hydrogens and 0 are deuteriums.

In the tables below, the AltConf column contains the number of residues with at least one atom in alternate conformation and the Trace column contains the number of residues modelled with at most 2 atoms.

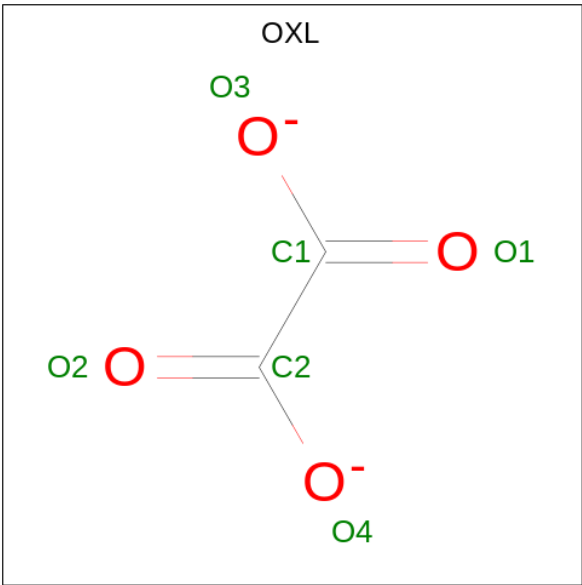
- Molecule 1 is a protein called Chloride anion exchanger.

Mol	Chain	Residues	Atoms					AltConf	Trace
1	A	702	Total	C	N	O	S	0	0
			5440	3573	889	958	20		
1	B	701	Total	C	N	O	S	0	0
			5429	3564	887	958	20		

There are 22 discrepancies between the modelled and reference sequences:

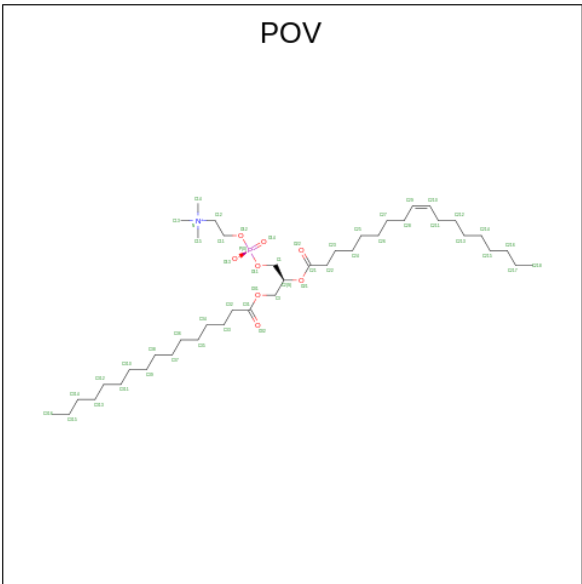
Chain	Residue	Modelled	Actual	Comment	Reference
A	-10	MET	-	initiating methionine	UNP P40879
A	-9	ASP	-	expression tag	UNP P40879
A	-8	TYR	-	expression tag	UNP P40879
A	-7	LYS	-	expression tag	UNP P40879
A	-6	ASP	-	expression tag	UNP P40879
A	-5	ASP	-	expression tag	UNP P40879
A	-4	ASP	-	expression tag	UNP P40879
A	-3	ASP	-	expression tag	UNP P40879
A	-2	LYS	-	expression tag	UNP P40879
A	-1	GLY	-	expression tag	UNP P40879
A	0	THR	-	expression tag	UNP P40879
B	-10	MET	-	initiating methionine	UNP P40879
B	-9	ASP	-	expression tag	UNP P40879
B	-8	TYR	-	expression tag	UNP P40879
B	-7	LYS	-	expression tag	UNP P40879
B	-6	ASP	-	expression tag	UNP P40879
B	-5	ASP	-	expression tag	UNP P40879
B	-4	ASP	-	expression tag	UNP P40879
B	-3	ASP	-	expression tag	UNP P40879
B	-2	LYS	-	expression tag	UNP P40879
B	-1	GLY	-	expression tag	UNP P40879
B	0	THR	-	expression tag	UNP P40879

- Molecule 2 is OXALATE ION (CCD ID: OXL) (formula: C_2O_4) (labeled as "Ligand of Interest" by depositor).



Mol	Chain	Residues	Atoms			AltConf
2	A	1	Total	C	O	0
			6	2	4	
2	B	1	Total	C	O	0
			6	2	4	

- Molecule 3 is (2S)-3-(hexadecanoyloxy)-2-[(9Z)-octadec-9-enoyloxy]propyl 2-(trimethylamm onio)ethyl phosphate (CCD ID: POV) (formula: C₄₂H₈₂NO₈P).



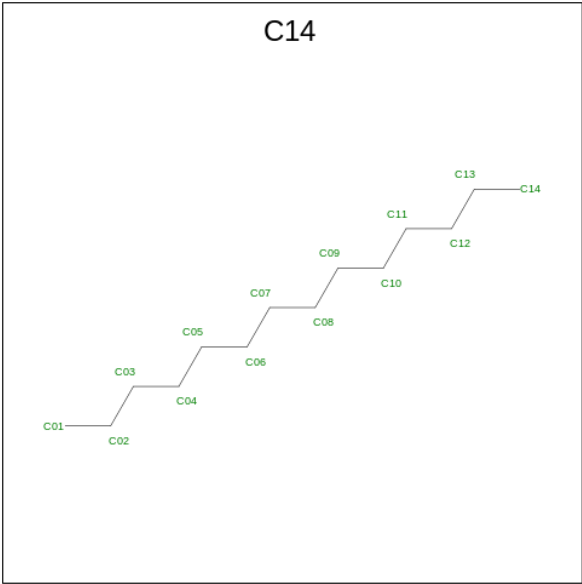
Mol	Chain	Residues	Atoms					AltConf
3	A	1	Total	C	N	O	P	0
			52	42	1	8	1	

Continued on next page...

Continued from previous page...

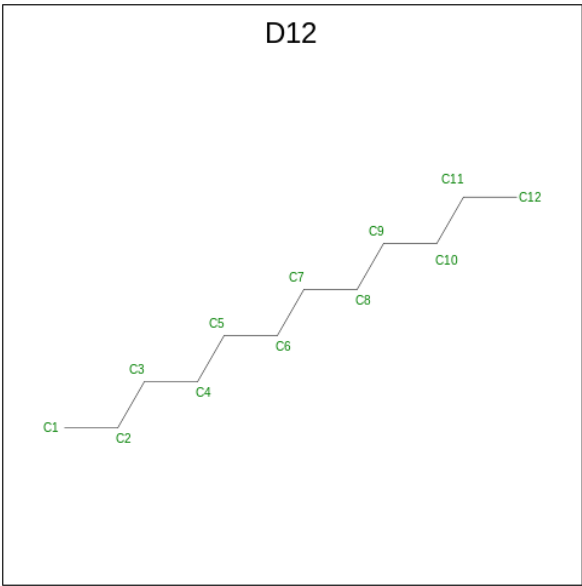
Mol	Chain	Residues	Atoms					AltConf
3	A	1	Total	C	N	O	P	0
			52	42	1	8	1	
3	B	1	Total	C	N	O	P	0
			52	42	1	8	1	
3	B	1	Total	C	N	O	P	0
			52	42	1	8	1	

- Molecule 4 is TETRADECANE (CCD ID: C14) (formula: C₁₄H₃₀).



Mol	Chain	Residues	Atoms		AltConf
4	A	1	Total	C	0
			14	14	
4	A	1	Total	C	0
			14	14	
4	A	1	Total	C	0
			14	14	
4	A	1	Total	C	0
			14	14	
4	B	1	Total	C	0
			14	14	
4	B	1	Total	C	0
			14	14	
4	B	1	Total	C	0
			14	14	
4	B	1	Total	C	0
			14	14	

- Molecule 5 is DODECANE (CCD ID: D12) (formula: C₁₂H₂₆).



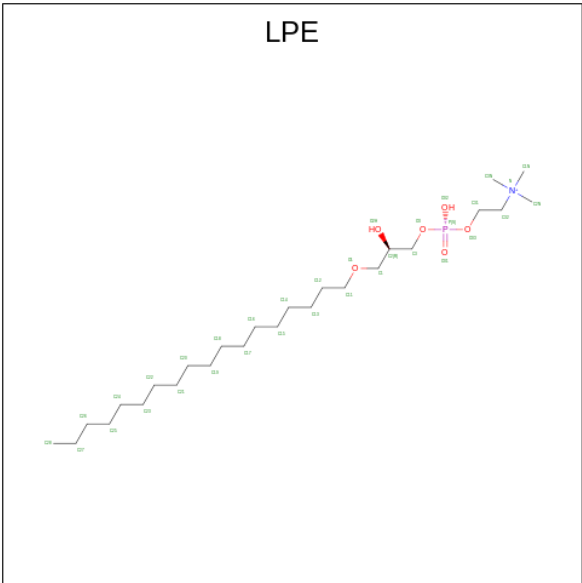
Mol	Chain	Residues	Atoms	AltConf
5	A	1	Total C 12 12	0
5	A	1	Total C 12 12	0
5	A	1	Total C 12 12	0
5	A	1	Total C 12 12	0
5	A	1	Total C 12 12	0
5	A	1	Total C 12 12	0
5	A	1	Total C 12 12	0
5	A	1	Total C 12 12	0
5	B	1	Total C 12 12	0
5	B	1	Total C 12 12	0
5	B	1	Total C 12 12	0
5	B	1	Total C 12 12	0
5	B	1	Total C 12 12	0

Continued on next page...

Continued from previous page...

Mol	Chain	Residues	Atoms		AltConf
5	B	1	Total	C	0
			12	12	
5	B	1	Total	C	0
			12	12	
5	B	1	Total	C	0
			12	12	

- Molecule 6 is 1-O-OCTADECYL-SN-GLYCERO-3-PHOSPHOCHOLINE (CCD ID: LPE) (formula: C₂₆H₅₇NO₆P).



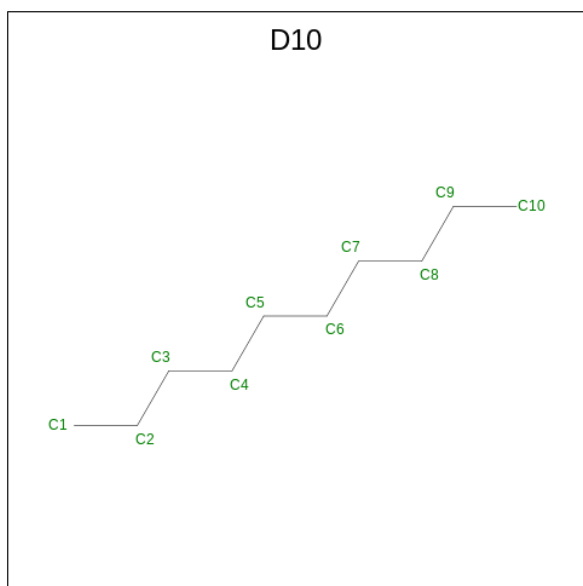
Mol	Chain	Residues	Atoms					AltConf
6	A	1	Total	C	N	O	P	0
			34	26	1	6	1	
6	A	1	Total	C	N	O	P	0
			34	26	1	6	1	
6	A	1	Total	C	N	O	P	0
			34	26	1	6	1	
6	A	1	Total	C	N	O	P	0
			34	26	1	6	1	
6	A	1	Total	C	N	O	P	0
			34	26	1	6	1	
6	A	1	Total	C	N	O	P	0
			34	26	1	6	1	
6	B	1	Total	C	N	O	P	0
			34	26	1	6	1	

Continued on next page...

Continued from previous page...

Mol	Chain	Residues	Atoms					AltConf
6	B	1	Total	C	N	O	P	0
			34	26	1	6	1	
6	B	1	Total	C	N	O	P	0
			34	26	1	6	1	
6	B	1	Total	C	N	O	P	0
			34	26	1	6	1	
6	B	1	Total	C	N	O	P	0
			34	26	1	6	1	
6	B	1	Total	C	N	O	P	0
			34	26	1	6	1	

- Molecule 7 is DECANE (CCD ID: D10) (formula: C₁₀H₂₂).



Mol	Chain	Residues	Atoms		AltConf
7	A	1	Total	C	0
			10	10	
7	A	1	Total	C	0
			10	10	
7	A	1	Total	C	0
			10	10	
7	A	1	Total	C	0
			10	10	
7	A	1	Total	C	0
			10	10	

Continued on next page...

Continued from previous page...

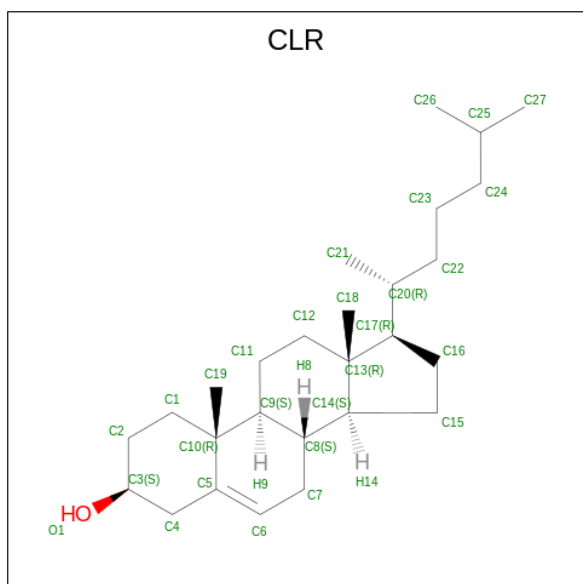
Mol	Chain	Residues	Atoms	AltConf
7	A	1	Total C 10 10	0
7	A	1	Total C 10 10	0
7	A	1	Total C 10 10	0
7	A	1	Total C 10 10	0
7	A	1	Total C 10 10	0
7	A	1	Total C 10 10	0
7	A	1	Total C 10 10	0
7	A	1	Total C 10 10	0
7	A	1	Total C 10 10	0
7	A	1	Total C 10 10	0
7	A	1	Total C 10 10	0
7	A	1	Total C 10 10	0
7	A	1	Total C 10 10	0
7	A	1	Total C 10 10	0
7	B	1	Total C 10 10	0
7	B	1	Total C 10 10	0
7	B	1	Total C 10 10	0
7	B	1	Total C 10 10	0
7	B	1	Total C 10 10	0
7	B	1	Total C 10 10	0
7	B	1	Total C 10 10	0

Continued on next page...

Continued from previous page...

Mol	Chain	Residues	Atoms	AltConf
7	B	1	Total C 10 10	0
7	B	1	Total C 10 10	0
7	B	1	Total C 10 10	0
7	B	1	Total C 10 10	0
7	B	1	Total C 10 10	0
7	B	1	Total C 10 10	0
7	B	1	Total C 10 10	0
7	B	1	Total C 10 10	0
7	B	1	Total C 10 10	0
7	B	1	Total C 10 10	0
7	B	1	Total C 10 10	0
7	B	1	Total C 10 10	0

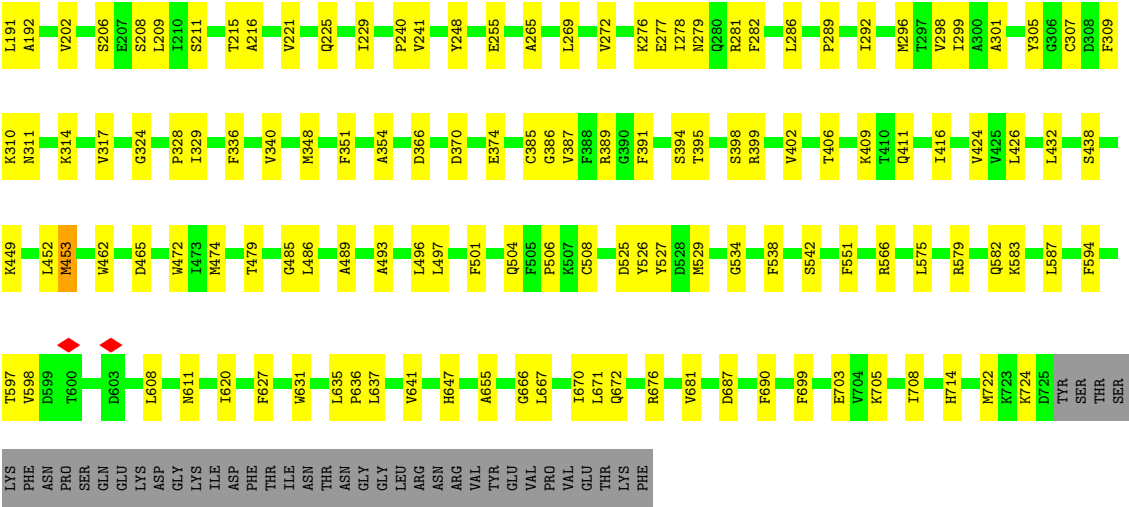
- Molecule 8 is CHOLESTEROL (CCD ID: CLR) (formula: $C_{27}H_{46}O$) (labeled as "Ligand of Interest" by depositor).



Mol	Chain	Residues	Atoms			AltConf
8	A	1	Total	C	O	0
			28	27	1	
8	B	1	Total	C	O	0
			28	27	1	

- Molecule 9 is water.

Mol	Chain	Residues	Atoms		AltConf
9	A	9	Total	O	0
			9	9	
9	B	9	Total	O	0
			9	9	



4 Experimental information

Property	Value	Source
EM reconstruction method	SINGLE PARTICLE	Depositor
Imposed symmetry	POINT, Not provided	
Number of particles used	498096	Depositor
Resolution determination method	FSC 0.143 CUT-OFF	Depositor
CTF correction method	NONE	Depositor
Microscope	FEI TITAN KRIOS	Depositor
Voltage (kV)	300	Depositor
Electron dose ($e^-/\text{\AA}^2$)	50	Depositor
Minimum defocus (nm)	900	Depositor
Maximum defocus (nm)	1600	Depositor
Magnification	130000	Depositor
Image detector	TFS FALCON 4i (4k x 4k)	Depositor
Maximum map value	5.178	Depositor
Minimum map value	-2.547	Depositor
Average map value	0.005	Depositor
Map value standard deviation	0.119	Depositor
Recommended contour level	0.35	Depositor
Map size (\AA)	279.6, 279.6, 279.6	wwPDB
Map dimensions	300, 300, 300	wwPDB
Map angles ($^\circ$)	90.0, 90.0, 90.0	wwPDB
Pixel spacing (\AA)	0.93200004, 0.93200004, 0.93200004	Depositor

5 Model quality [i](#)

5.1 Standard geometry [i](#)

Bond lengths and bond angles in the following residue types are not validated in this section: D10, OXL, POV, LPE, D12, C14, CLR

The Z score for a bond length (or angle) is the number of standard deviations the observed value is removed from the expected value. A bond length (or angle) with $|Z| > 5$ is considered an outlier worth inspection. RMSZ is the root-mean-square of all Z scores of the bond lengths (or angles).

Mol	Chain	Bond lengths		Bond angles	
		RMSZ	$\# Z > 5$	RMSZ	$\# Z > 5$
1	A	0.55	7/5558 (0.1%)	0.66	12/7553 (0.2%)
1	B	0.56	4/5547 (0.1%)	0.71	5/7538 (0.1%)
All	All	0.56	11/11105 (0.1%)	0.68	17/15091 (0.1%)

All (11) bond length outliers are listed below:

Mol	Chain	Res	Type	Atoms	Z	Observed(Å)	Ideal(Å)
1	A	448	LEU	C-N	-5.81	1.26	1.34
1	A	399	ARG	C-N	-5.17	1.27	1.34
1	B	714	HIS	ND1-CE1	5.15	1.37	1.32
1	A	38	HIS	ND1-CE1	5.12	1.37	1.32
1	A	714	HIS	ND1-CE1	5.12	1.37	1.32
1	B	611	ASN	CG-OD1	5.09	1.33	1.23
1	A	311	ASN	CG-OD1	5.08	1.33	1.23
1	A	322	ASN	CG-OD1	5.03	1.33	1.23
1	B	311	ASN	CG-OD1	5.03	1.33	1.23
1	B	672	GLN	CD-OE1	5.03	1.33	1.23
1	A	504	GLN	CD-NE2	-5.00	1.22	1.33

All (17) bond angle outliers are listed below:

Mol	Chain	Res	Type	Atoms	Z	Observed(°)	Ideal(°)
1	A	366	ASP	N-CA-C	7.17	121.55	111.52
1	A	38	HIS	CB-CG-CD2	-6.67	122.54	131.20
1	A	714	HIS	CB-CG-CD2	-6.50	122.75	131.20
1	B	714	HIS	CB-CG-CD2	-6.48	122.78	131.20
1	A	16	TYR	N-CA-C	6.43	118.89	108.34
1	B	17	SER	N-CA-C	-6.42	100.46	110.42
1	A	362	SER	N-CA-C	-6.16	104.48	111.14
1	A	38	HIS	CB-CG-ND1	5.78	131.38	122.70

Continued on next page...

Continued from previous page...

Mol	Chain	Res	Type	Atoms	Z	Observed(°)	Ideal(°)
1	A	714	HIS	CB-CG-ND1	5.57	131.05	122.70
1	B	714	HIS	CB-CG-ND1	5.54	131.02	122.70
1	A	17	SER	N-CA-C	-5.46	103.18	110.55
1	A	606	GLU	N-CA-C	5.31	117.81	111.71
1	A	688	ASP	N-CA-C	5.22	117.71	111.71
1	A	293	GLU	N-CA-C	-5.21	105.50	111.07
1	B	366	ASP	N-CA-C	5.19	118.55	111.39
1	A	542	SER	N-CA-CB	-5.17	105.67	111.10
1	B	542	SER	N-CA-C	5.04	112.56	108.07

There are no chirality outliers.

There are no planarity outliers.

5.2 Too-close contacts

In the following table, the Non-H and H(model) columns list the number of non-hydrogen atoms and hydrogen atoms in the chain respectively. The H(added) column lists the number of hydrogen atoms added and optimized by MolProbity. The Clashes column lists the number of clashes within the asymmetric unit, whereas Symm-Clashes lists symmetry-related clashes.

Mol	Chain	Non-H	H(model)	H(added)	Clashes	Symm-Clashes
1	A	5440	0	5607	147	0
1	B	5429	0	5591	153	0
2	A	6	0	0	4	0
2	B	6	0	0	2	0
3	A	104	0	164	23	0
3	B	104	0	164	36	0
4	A	56	0	120	2	0
4	B	56	0	120	3	0
5	A	96	0	208	9	0
5	B	96	0	208	11	0
6	A	238	0	392	44	0
6	B	238	0	392	54	0
7	A	190	0	418	14	0
7	B	190	0	418	15	0
8	A	28	0	46	21	0
8	B	28	0	46	5	0
9	A	9	0	0	0	0
9	B	9	0	0	0	0
All	All	12323	0	13894	416	0

The all-atom clashscore is defined as the number of clashes found per 1000 atoms (including hydrogen atoms). The all-atom clashscore for this structure is 16.

All (416) close contacts within the same asymmetric unit are listed below, sorted by their clash magnitude.

Atom-1	Atom-2	Interatomic distance (Å)	Clash overlap (Å)
6:A:922:LPE:H232	8:A:942:CLR:H271	1.29	1.14
1:B:340:VAL:CG1	3:B:841:POV:H32	1.81	1.11
1:B:340:VAL:HG11	3:B:841:POV:H32	1.26	1.10
1:A:589:VAL:HG13	1:A:627:PHE:HE1	1.17	1.08
7:B:809:D10:H12	7:B:810:D10:H21	1.11	1.06
1:B:496:LEU:HD12	7:B:824:D10:C1	1.90	1.01
1:B:301:ALA:CB	6:B:812:LPE:H181	1.93	0.99
1:A:589:VAL:HG13	1:A:627:PHE:CE1	1.97	0.99
1:B:496:LEU:CD1	7:B:824:D10:H11	1.93	0.98
1:B:348:MET:SD	3:B:841:POV:H316	2.04	0.97
1:B:301:ALA:HB3	6:B:812:LPE:H181	1.47	0.97
6:A:922:LPE:C23	8:A:942:CLR:H271	1.93	0.97
1:A:44:SER:CB	1:A:49:LYS:CD	2.46	0.92
1:B:496:LEU:CD1	7:B:824:D10:C1	2.49	0.90
7:B:809:D10:C1	7:B:810:D10:H21	2.04	0.85
1:B:671:LEU:HD22	1:B:681:VAL:HG11	1.56	0.85
6:A:922:LPE:H222	8:A:942:CLR:H261	1.59	0.84
3:B:841:POV:O14	3:B:841:POV:H15A	1.78	0.83
3:A:902:POV:H15A	3:A:902:POV:O14	1.78	0.82
1:A:457:GLU:HG2	1:A:460:ARG:HH11	1.44	0.82
5:A:904:D12:H13	6:A:905:LPE:H262	1.61	0.81
1:A:44:SER:CB	1:A:49:LYS:HD2	2.10	0.80
6:B:814:LPE:H11	6:B:814:LPE:H322	1.62	0.79
6:B:814:LPE:H311	6:B:814:LPE:H31	1.64	0.79
6:B:825:LPE:H3N3	3:B:841:POV:H35A	1.64	0.79
1:A:118:PHE:HE1	7:A:930:D10:H101	1.48	0.78
1:B:340:VAL:CG1	3:B:841:POV:C32	2.61	0.78
6:B:815:LPE:H12	6:B:815:LPE:H322	1.65	0.78
6:A:922:LPE:H232	8:A:942:CLR:C27	2.13	0.77
1:B:496:LEU:HD11	7:B:824:D10:H11	1.65	0.76
1:B:432:LEU:CD2	6:B:812:LPE:H231	2.16	0.76
1:B:298:VAL:HG22	6:B:812:LPE:H212	1.67	0.76
1:A:248:TYR:HA	5:A:921:D12:H62	1.68	0.76
1:B:398:SER:O	1:B:402:VAL:HG23	1.86	0.75
6:A:922:LPE:C22	8:A:942:CLR:H271	2.16	0.74
1:A:589:VAL:CG1	1:A:627:PHE:HE1	1.98	0.74
1:A:473:ILE:HD13	5:A:941:D12:H92	1.70	0.73

Continued on next page...

Continued from previous page...

Atom-1	Atom-2	Interatomic distance (Å)	Clash overlap (Å)
1:A:7:ASN:HA	1:B:722:MET:HE1	1.71	0.73
1:B:493:ALA:HB3	4:B:823:C14:H141	1.70	0.73
1:B:301:ALA:HB1	6:B:812:LPE:H181	1.71	0.72
1:A:44:SER:CB	1:A:49:LYS:HD3	2.18	0.72
6:A:939:LPE:H192	6:A:939:LPE:H283	1.70	0.72
8:B:821:CLR:H212	8:B:821:CLR:H183	1.72	0.71
8:A:942:CLR:H183	8:A:942:CLR:H212	1.72	0.71
1:B:130:PHE:HE2	1:B:394:SER:HG	1.35	0.71
6:B:814:LPE:H31	6:B:814:LPE:C31	2.20	0.71
3:A:902:POV:O21	3:A:902:POV:H25A	1.91	0.70
1:A:40:LYS:HD3	1:A:40:LYS:C	2.15	0.70
3:B:841:POV:O21	3:B:841:POV:H25A	1.91	0.70
1:B:329:ILE:HB	1:B:389:ARG:HE	1.56	0.70
1:A:81:ILE:HD13	1:A:420:ILE:HD11	1.72	0.70
1:A:276:LYS:NZ	1:A:447:ASN:OD1	2.25	0.70
1:A:46:SER:OG	1:A:47:PRO:HD2	1.92	0.69
6:A:922:LPE:H222	8:A:942:CLR:C26	2.23	0.68
5:A:904:D12:H71	6:A:905:LPE:H182	1.76	0.68
1:B:432:LEU:HD21	6:B:812:LPE:H231	1.74	0.68
3:B:842:POV:H36A	3:B:842:POV:H211	1.76	0.68
3:A:940:POV:H36A	3:A:940:POV:H211	1.76	0.67
1:B:277:GLU:OE1	1:B:277:GLU:HA	1.94	0.67
1:A:38:HIS:O	1:A:41:VAL:HG22	1.94	0.66
7:A:929:D10:H11	7:A:930:D10:H13	1.76	0.66
1:A:666:GLY:O	1:A:670:ILE:HG13	1.96	0.66
1:B:131:PRO:HD2	2:B:801:OXL:C1	2.26	0.66
6:A:915:LPE:H31	6:A:915:LPE:H2N3	1.78	0.66
1:B:248:TYR:CD2	5:B:820:D12:H51	2.31	0.65
6:B:839:LPE:H252	6:B:839:LPE:H191	1.76	0.65
1:A:589:VAL:HG11	1:A:626:PRO:HD2	1.79	0.65
1:A:35:PHE:O	1:A:39:LEU:HG	1.97	0.64
1:B:87:ALA:HB2	1:B:399:ARG:HD2	1.78	0.64
1:B:370:ASP:O	1:B:374:GLU:HG2	1.97	0.64
6:A:922:LPE:H271	8:A:942:CLR:H273	1.80	0.64
1:A:131:PRO:HD2	2:A:901:OXL:C2	2.28	0.63
1:A:525:ASP:OD1	1:B:30:ARG:NH1	2.30	0.63
1:A:92:LEU:HD11	1:A:432:LEU:HD13	1.80	0.63
1:A:241:VAL:HB	1:A:244:PHE:HD2	1.63	0.63
7:A:929:D10:H11	7:A:930:D10:C1	2.29	0.63
1:B:340:VAL:HG11	3:B:841:POV:C32	2.17	0.63
3:A:940:POV:H24A	3:A:940:POV:O21	1.98	0.63

Continued on next page...

Continued from previous page...

Atom-1	Atom-2	Interatomic distance (Å)	Clash overlap (Å)
7:B:809:D10:H12	7:B:810:D10:C2	2.07	0.63
3:B:842:POV:O21	3:B:842:POV:H24A	1.98	0.63
1:A:589:VAL:HG11	1:A:626:PRO:CD	2.29	0.62
7:A:911:D10:H103	7:A:912:D10:H91	1.80	0.62
1:B:676:ARG:HG3	1:B:703:GLU:OE2	1.99	0.62
1:B:92:LEU:HD11	1:B:432:LEU:HD13	1.82	0.62
1:A:291:PRO:HG3	4:A:935:C14:H013	1.81	0.62
6:A:913:LPE:H192	6:A:913:LPE:H151	1.81	0.62
1:A:118:PHE:HE1	7:A:930:D10:C10	2.13	0.62
6:A:922:LPE:C22	8:A:942:CLR:H261	2.27	0.62
7:B:810:D10:H103	7:B:811:D10:H91	1.81	0.62
7:A:924:D10:C10	6:A:925:LPE:O31	2.48	0.61
3:B:841:POV:H27	3:B:841:POV:H34A	1.83	0.60
1:A:589:VAL:CG1	1:A:626:PRO:HD2	2.31	0.60
1:A:87:ALA:HB2	1:A:399:ARG:HD2	1.84	0.60
1:A:692:GLU:HG3	1:A:696:ARG:HH11	1.66	0.60
1:B:20:ALA:O	1:B:23:GLU:HG2	2.02	0.60
3:B:841:POV:H13B	3:B:841:POV:O12	2.02	0.60
3:A:902:POV:H34A	3:A:902:POV:H27	1.83	0.59
3:A:902:POV:O12	3:A:902:POV:H13B	2.02	0.59
1:A:222:LEU:HD12	1:A:452:LEU:HD11	1.84	0.59
7:B:824:D10:H102	3:B:841:POV:H38	1.85	0.59
1:A:118:PHE:CE1	7:A:930:D10:H101	2.34	0.59
1:B:534:GLY:HA3	1:B:647:HIS:CD2	2.37	0.59
6:B:815:LPE:H311	6:B:815:LPE:H31	1.84	0.59
1:A:543:PRO:HG3	1:A:657:SER:HB2	1.84	0.58
1:B:289:PRO:HG2	1:B:406:THR:HG22	1.85	0.58
6:B:815:LPE:H2N2	6:B:815:LPE:O2H	2.02	0.58
6:B:825:LPE:C3N	3:B:841:POV:H35A	2.33	0.58
1:A:170:ASP:OD2	1:A:173:ARG:NE	2.36	0.58
1:A:108:ALA:HA	1:A:385:CYS:SG	2.43	0.58
6:A:922:LPE:H32	8:A:942:CLR:H11	1.84	0.58
1:B:496:LEU:HD12	7:B:824:D10:H11	1.62	0.58
1:B:307:CYS:HB2	1:B:309:PHE:CE1	2.39	0.57
1:A:76:ASP:OD2	1:A:410:THR:OG1	2.21	0.57
1:B:496:LEU:HD11	7:B:824:D10:C1	2.27	0.57
1:B:45:CYS:H	1:B:49:LYS:NZ	2.03	0.57
1:B:301:ALA:HB1	6:B:812:LPE:C18	2.32	0.57
1:B:587:LEU:HD12	1:B:637:LEU:HD23	1.86	0.57
1:A:607:GLU:OE2	1:B:71:GLU:HG2	2.05	0.57
1:B:348:MET:CG	3:B:841:POV:H316	2.34	0.57

Continued on next page...

Continued from previous page...

Atom-1	Atom-2	Interatomic distance (Å)	Clash overlap (Å)
6:B:839:LPE:H1N2	6:B:839:LPE:O33	2.04	0.56
5:B:803:D12:H72	6:B:804:LPE:C18	2.35	0.56
1:B:324:GLY:HA2	1:B:426:LEU:HD23	1.86	0.56
1:A:299:ILE:CG2	6:A:916:LPE:H281	2.35	0.56
1:A:18:THR:O	1:A:22:GLU:HG2	2.06	0.56
1:A:294:PHE:O	1:A:298:VAL:HG23	2.06	0.56
1:B:310:LYS:HE2	1:B:317:VAL:HG21	1.87	0.56
1:A:170:ASP:CG	1:A:173:ARG:HH11	2.13	0.56
1:A:481:VAL:HG21	8:A:942:CLR:H25	1.87	0.56
1:A:575:LEU:HD22	1:A:620:ILE:HG23	1.87	0.55
1:A:355:PHE:CE2	1:A:369:LEU:HD23	2.40	0.55
6:A:915:LPE:H2N3	6:A:915:LPE:C3	2.35	0.55
1:B:215:THR:HG21	1:B:472:TRP:CZ2	2.41	0.55
1:A:354:ALA:HA	1:A:395:THR:HG22	1.87	0.55
1:A:655:ALA:HA	1:B:655:ALA:HA	1.88	0.55
1:A:248:TYR:HD2	5:A:921:D12:H51	1.71	0.55
1:B:489:ALA:HB1	7:B:824:D10:H72	1.88	0.55
3:B:842:POV:H13B	3:B:842:POV:H2	1.89	0.55
5:B:803:D12:C7	6:B:804:LPE:H182	2.37	0.54
1:A:77:ILE:HA	1:A:416:ILE:HD12	1.89	0.54
1:A:589:VAL:CG1	1:A:626:PRO:CD	2.86	0.54
3:A:940:POV:H13B	3:A:940:POV:H2	1.89	0.54
1:A:307:CYS:HB2	1:A:309:PHE:CE1	2.42	0.54
1:A:546:PHE:CG	1:B:206:SER:HB3	2.43	0.54
7:A:924:D10:H102	6:A:925:LPE:O31	2.06	0.54
1:B:348:MET:SD	3:B:841:POV:C316	2.89	0.54
1:B:449:LYS:HE2	1:B:453:MET:SD	2.48	0.54
6:B:812:LPE:H232	6:B:812:LPE:H191	1.89	0.53
1:A:473:ILE:CD1	5:A:941:D12:H92	2.38	0.53
4:A:923:C14:H131	7:B:824:D10:H42	1.91	0.53
3:A:940:POV:H13B	3:A:940:POV:O12	2.08	0.53
1:B:248:TYR:HD2	5:B:820:D12:H51	1.72	0.53
1:B:432:LEU:HD23	6:B:812:LPE:H231	1.88	0.52
1:A:242:SER:O	1:A:246:VAL:HG23	2.10	0.52
1:A:517:THR:HG21	1:B:13:ARG:HB3	1.89	0.52
1:B:130:PHE:CZ	1:B:133:LEU:HB2	2.44	0.52
1:B:635:LEU:HB3	1:B:636:PRO:HD2	1.91	0.52
1:A:314:LYS:HG3	6:A:916:LPE:O31	2.10	0.52
1:A:370:ASP:O	1:A:374:GLU:HG2	2.10	0.52
3:A:902:POV:H28	3:A:902:POV:H24	1.90	0.52
6:A:922:LPE:H222	8:A:942:CLR:H271	1.91	0.52

Continued on next page...

Continued from previous page...

Atom-1	Atom-2	Interatomic distance (Å)	Clash overlap (Å)
5:B:803:D12:H72	6:B:804:LPE:H182	1.92	0.52
1:A:354:ALA:HA	1:A:395:THR:CG2	2.40	0.52
3:B:842:POV:H13B	3:B:842:POV:O12	2.08	0.52
1:B:462:TRP:CD1	5:B:840:D12:H22	2.44	0.52
3:B:841:POV:H28	3:B:841:POV:H24	1.90	0.52
1:A:9:TYR:N	1:B:13:ARG:O	2.35	0.52
1:B:211:SER:O	1:B:215:THR:HG22	2.10	0.52
1:B:594:PHE:CD1	1:B:627:PHE:HZ	2.27	0.52
5:B:803:D12:H11	6:B:804:LPE:H262	1.92	0.52
7:A:929:D10:C1	7:A:930:D10:C1	2.88	0.51
1:B:225:GLN:O	1:B:229:ILE:HG12	2.11	0.51
1:B:77:ILE:HA	1:B:416:ILE:HD12	1.92	0.51
1:B:127:VAL:HA	1:B:394:SER:O	2.11	0.51
1:A:589:VAL:CG2	1:A:594:PHE:CE1	2.93	0.51
1:A:202:VAL:HG13	1:A:351:PHE:CE2	2.46	0.51
1:B:68:ARG:HD3	1:B:72:TRP:CZ2	2.46	0.51
1:A:310:LYS:O	1:A:314:LYS:HA	2.11	0.50
1:A:589:VAL:HG22	1:A:627:PHE:CZ	2.46	0.50
1:B:496:LEU:CD1	7:B:824:D10:H12	2.40	0.50
1:A:594:PHE:CE1	1:A:627:PHE:HZ	2.29	0.50
1:B:85:ILE:HG23	6:B:812:LPE:H281	1.93	0.50
1:A:331:PRO:HG2	5:A:904:D12:H81	1.94	0.50
1:A:451:MET:CE	2:A:901:OXL:O4	2.59	0.50
1:B:202:VAL:HG13	1:B:351:PHE:CE2	2.46	0.50
1:A:299:ILE:HG22	6:A:916:LPE:C27	2.42	0.50
1:B:104:TYR:HA	1:B:107:TYR:CD2	2.47	0.50
1:B:192:ALA:HA	6:B:804:LPE:H283	1.94	0.50
1:A:192:ALA:HB2	6:A:905:LPE:H283	1.94	0.49
1:A:261:ASP:OD2	1:A:315:VAL:HG12	2.12	0.49
1:A:589:VAL:HG22	1:A:594:PHE:CD1	2.47	0.49
1:B:328:PRO:HB2	6:B:804:LPE:H32	1.93	0.49
1:A:37:ASP:O	1:A:40:LYS:HB3	2.12	0.49
1:A:38:HIS:O	1:A:41:VAL:CG2	2.60	0.49
1:A:508:CYS:HB3	1:A:538:PHE:CZ	2.46	0.49
1:A:341:GLY:HA3	6:A:925:LPE:O33	2.12	0.49
1:A:525:ASP:O	1:B:28:THR:N	2.45	0.49
1:B:64:LEU:HB3	1:B:65:PRO:HD3	1.94	0.49
1:B:594:PHE:HB3	1:B:636:PRO:HB3	1.95	0.49
1:A:137:VAL:HG22	1:A:346:ILE:HD13	1.95	0.49
1:B:59:PRO:HD2	1:B:119:PHE:HA	1.94	0.48
1:B:301:ALA:CB	6:B:812:LPE:C18	2.78	0.48

Continued on next page...

Continued from previous page...

Atom-1	Atom-2	Interatomic distance (Å)	Clash overlap (Å)
1:A:676:ARG:HG3	1:A:703:GLU:OE1	2.13	0.48
5:B:803:D12:H72	6:B:804:LPE:H191	1.94	0.48
1:A:553:ARG:HH12	1:A:669:SER:HB3	1.78	0.48
1:A:92:LEU:HD22	1:A:102:PRO:HB2	1.95	0.48
1:A:185:LEU:HB3	1:A:343:CYS:SG	2.54	0.48
1:B:48:GLN:NE2	1:B:52:ARG:HG3	2.28	0.48
1:B:108:ALA:HA	1:B:385:CYS:SG	2.53	0.48
1:B:278:ILE:HG23	1:B:282:PHE:CD1	2.49	0.48
1:A:451:MET:HE2	2:A:901:OXL:O4	2.14	0.48
1:B:191:LEU:HD23	6:B:804:LPE:H251	1.95	0.48
1:B:666:GLY:O	1:B:670:ILE:HG13	2.13	0.48
1:A:581:LEU:HD21	1:A:601:ILE:HG12	1.96	0.48
6:B:814:LPE:H202	6:B:815:LPE:H282	1.95	0.48
1:A:145:VAL:HG22	1:A:174:VAL:HG12	1.95	0.48
1:B:229:ILE:HD12	1:B:265:ALA:HB1	1.95	0.48
5:B:803:D12:C7	6:B:804:LPE:C18	2.91	0.48
1:A:81:ILE:HA	1:A:420:ILE:CD1	2.43	0.48
1:A:329:ILE:HB	1:A:389:ARG:HE	1.78	0.48
5:A:904:D12:H71	6:A:905:LPE:C18	2.42	0.48
1:B:724:LYS:HA	1:B:724:LYS:HD3	1.69	0.48
1:A:13:ARG:O	1:B:9:TYR:N	2.40	0.47
1:A:130:PHE:CZ	1:A:133:LEU:HB2	2.49	0.47
6:A:939:LPE:H161	6:A:939:LPE:H281	1.96	0.47
1:B:485:GLY:O	6:B:825:LPE:O2H	2.32	0.47
1:A:27:LYS:HG3	1:B:525:ASP:O	2.15	0.47
1:A:122:SER:O	1:A:411:GLN:OE1	2.32	0.47
1:A:594:PHE:CD1	1:A:627:PHE:HZ	2.33	0.47
7:A:929:D10:C1	7:A:930:D10:H12	2.45	0.47
1:B:269:LEU:HD21	7:B:838:D10:H62	1.97	0.47
1:A:28:THR:HA	1:B:527:TYR:CZ	2.49	0.47
1:B:131:PRO:HD2	2:B:801:OXL:O3	2.14	0.47
1:B:289:PRO:CG	1:B:406:THR:HG22	2.44	0.46
1:A:692:GLU:CG	1:A:696:ARG:HH11	2.28	0.46
3:B:841:POV:H15A	3:B:841:POV:P	2.55	0.46
1:B:279:ASN:HA	1:B:286:LEU:CD1	2.44	0.46
1:A:225:GLN:O	1:A:229:ILE:HG12	2.16	0.46
1:A:299:ILE:HG21	6:A:916:LPE:H281	1.97	0.46
1:B:48:GLN:HE22	1:B:52:ARG:HG3	1.80	0.46
6:B:814:LPE:H202	6:B:815:LPE:C28	2.46	0.46
3:B:842:POV:H211	3:B:842:POV:C36	2.45	0.46
1:B:277:GLU:HB3	1:B:281:ARG:NH1	2.31	0.46

Continued on next page...

Continued from previous page...

Atom-1	Atom-2	Interatomic distance (Å)	Clash overlap (Å)
1:B:340:VAL:HG13	3:B:841:POV:H32	1.85	0.46
1:A:119:PHE:O	1:A:377:ALA:HB2	2.16	0.46
1:A:94:PHE:O	1:A:98:VAL:HG23	2.16	0.46
1:A:265:ALA:HB2	1:A:438:SER:HB2	1.98	0.46
3:A:902:POV:H24	3:A:902:POV:C28	2.46	0.45
6:A:939:LPE:H201	6:A:939:LPE:H171	1.80	0.45
1:B:209:LEU:HD23	1:B:209:LEU:C	2.39	0.45
1:B:305:TYR:CD2	6:B:812:LPE:H131	2.51	0.45
1:B:705:LYS:O	1:B:708:ILE:HG23	2.15	0.45
3:B:841:POV:H24	3:B:841:POV:C28	2.47	0.45
1:A:420:ILE:HG12	7:A:933:D10:H101	1.98	0.45
1:A:589:VAL:HG12	1:A:626:PRO:HG2	1.98	0.45
3:A:902:POV:H15A	3:A:902:POV:P	2.55	0.45
8:A:942:CLR:H212	8:A:942:CLR:H121	1.98	0.45
1:B:272:VAL:HA	1:B:292:ILE:HG12	1.98	0.45
3:B:842:POV:H32A	3:B:842:POV:H35	1.79	0.45
1:A:648:SER:HB3	1:A:720:ILE:HD13	1.97	0.45
1:B:216:ALA:CB	1:B:479:THR:HB	2.46	0.45
8:B:821:CLR:H221	8:B:821:CLR:H263	1.98	0.45
6:A:915:LPE:H31	6:A:915:LPE:C31	2.47	0.45
3:A:940:POV:H211	3:A:940:POV:C36	2.45	0.45
1:A:44:SER:CB	1:A:49:LYS:CE	2.94	0.45
3:A:940:POV:H32A	3:A:940:POV:H35	1.79	0.45
6:A:939:LPE:H172	6:A:939:LPE:H142	1.76	0.45
1:B:188:ILE:HG23	6:B:804:LPE:H261	1.99	0.45
1:A:589:VAL:CG2	1:A:594:PHE:CD1	2.99	0.45
1:B:298:VAL:HA	6:B:812:LPE:H202	1.97	0.45
1:A:589:VAL:CG1	1:A:627:PHE:CE1	2.83	0.45
1:A:589:VAL:HG22	1:A:627:PHE:CE1	2.52	0.45
8:A:942:CLR:H221	8:A:942:CLR:H263	1.99	0.45
1:B:7:ASN:OD1	1:B:7:ASN:O	2.35	0.45
1:B:296:MET:HE1	6:B:815:LPE:H283	1.99	0.45
1:B:22:GLU:N	1:B:22:GLU:OE2	2.50	0.44
1:B:299:ILE:CG2	6:B:815:LPE:H281	2.48	0.44
8:B:821:CLR:H212	8:B:821:CLR:H121	1.98	0.44
1:A:79:SER:OG	1:A:403:GLN:HG3	2.17	0.44
3:A:940:POV:H25	3:A:940:POV:C32	2.47	0.44
1:B:45:CYS:H	1:B:49:LYS:HZ1	1.65	0.44
1:B:240:PRO:C	1:B:241:VAL:HG22	2.43	0.44
1:B:587:LEU:HD21	1:B:594:PHE:CD1	2.51	0.44
3:B:842:POV:C32	3:B:842:POV:H25	2.47	0.44

Continued on next page...

Continued from previous page...

Atom-1	Atom-2	Interatomic distance (Å)	Clash overlap (Å)
1:B:39:LEU:O	1:B:42:CYS:HB3	2.17	0.44
1:B:671:LEU:HD12	1:B:699:PHE:HZ	1.82	0.44
1:A:572:ASN:O	1:A:576:ARG:HG3	2.17	0.44
1:B:631:TRP:CZ3	1:B:635:LEU:HD21	2.53	0.44
6:B:815:LPE:H262	6:B:815:LPE:H231	1.79	0.44
1:A:203:ILE:HD11	1:B:504:GLN:NE2	2.33	0.44
6:A:922:LPE:H222	8:A:942:CLR:C27	2.47	0.44
1:B:272:VAL:HG13	1:B:292:ILE:HG21	1.99	0.44
7:A:924:D10:H101	6:A:925:LPE:O31	2.16	0.44
1:B:305:TYR:CG	6:B:812:LPE:H131	2.53	0.44
1:B:722:MET:HE2	1:B:722:MET:HB3	1.78	0.44
5:B:803:D12:H72	6:B:804:LPE:C19	2.47	0.44
6:A:925:LPE:H2N3	6:A:925:LPE:H311	1.83	0.44
3:A:940:POV:H38	3:A:940:POV:H35A	1.80	0.44
1:B:486:LEU:HD13	6:B:825:LPE:O31	2.18	0.44
3:B:841:POV:H26A	3:B:841:POV:H23	1.81	0.44
1:A:462:TRP:CD1	5:A:941:D12:H13	2.53	0.44
1:B:180:ALA:HB1	1:B:386:GLY:O	2.18	0.44
1:B:298:VAL:HG22	6:B:812:LPE:C21	2.41	0.44
1:A:40:LYS:C	1:A:40:LYS:CD	2.85	0.43
1:B:506:PRO:HD2	1:B:551:PHE:CD1	2.53	0.43
1:A:245:LYS:HG2	8:A:942:CLR:H22	2.00	0.43
3:A:940:POV:H31B	3:A:940:POV:H38A	1.84	0.43
1:B:608:LEU:HD12	1:B:608:LEU:H	1.84	0.43
1:A:241:VAL:HG21	8:A:942:CLR:H112	2.00	0.43
1:A:501:PHE:CZ	6:B:825:LPE:H271	2.53	0.43
1:A:350:ALA:HB1	1:A:394:SER:HB3	1.99	0.43
1:B:185:LEU:O	1:B:189:ILE:HG13	2.19	0.43
1:B:566:ARG:HE	1:B:566:ARG:HB2	1.50	0.43
1:B:49:LYS:HA	1:B:52:ARG:NH1	2.34	0.43
1:B:354:ALA:HA	1:B:395:THR:CG2	2.49	0.43
1:B:575:LEU:HD22	1:B:620:ILE:HG23	2.00	0.43
3:B:841:POV:H24	3:B:841:POV:C29	2.48	0.43
3:B:841:POV:H24	3:B:841:POV:H29	2.01	0.43
1:A:277:GLU:O	1:A:278:ILE:C	2.61	0.43
3:A:902:POV:H24	3:A:902:POV:H29	2.01	0.43
1:B:49:LYS:O	1:B:53:ILE:HG12	2.19	0.43
6:B:815:LPE:H121	6:B:815:LPE:H152	1.79	0.43
3:B:842:POV:H36A	3:B:842:POV:C211	2.45	0.43
3:B:842:POV:H31B	3:B:842:POV:H38A	1.84	0.43
1:A:116:TYR:OH	1:A:374:GLU:OE1	2.25	0.43

Continued on next page...

Continued from previous page...

Atom-1	Atom-2	Interatomic distance (Å)	Clash overlap (Å)
1:A:661:VAL:HA	1:A:664:VAL:HG22	2.01	0.43
1:B:72:TRP:CD1	1:B:409:LYS:HG3	2.54	0.43
1:B:508:CYS:HB3	1:B:538:PHE:CZ	2.53	0.43
1:B:579:ARG:HA	1:B:582:GLN:HG2	2.01	0.43
1:A:7:ASN:HA	1:B:722:MET:CE	2.47	0.42
1:A:131:PRO:HD2	2:A:901:OXL:O2	2.17	0.42
3:A:902:POV:H24	3:A:902:POV:C29	2.48	0.42
8:A:942:CLR:H121	8:A:942:CLR:C21	2.49	0.42
1:B:687:ASP:OD2	1:B:690:PHE:HB2	2.18	0.42
1:A:68:ARG:NH1	1:A:71:GLU:HG2	2.33	0.42
1:A:684:VAL:HG12	1:A:710:PHE:HB2	1.99	0.42
1:A:724:LYS:HD3	1:A:724:LYS:HA	1.65	0.42
1:B:310:LYS:O	1:B:314:LYS:HA	2.19	0.42
1:B:497:LEU:HG	1:B:501:PHE:CZ	2.54	0.42
1:A:180:ALA:HB1	1:A:386:GLY:O	2.19	0.42
3:A:902:POV:H26A	3:A:902:POV:H23	1.81	0.42
6:B:839:LPE:H191	6:B:839:LPE:H222	1.84	0.42
1:A:30:ARG:NH2	1:B:525:ASP:OD1	2.52	0.42
1:A:671:LEU:HG	1:A:681:VAL:HG11	2.00	0.42
1:B:181:SER:HB3	1:B:336:PHE:CE1	2.55	0.42
1:B:181:SER:HB3	1:B:336:PHE:HE1	1.84	0.42
1:A:121:THR:HG21	1:A:370:ASP:H	1.84	0.42
3:A:940:POV:H36A	3:A:940:POV:C211	2.45	0.42
1:B:183:THR:OG1	1:B:391:PHE:HA	2.19	0.42
1:A:191:LEU:HD23	6:A:905:LPE:H251	2.01	0.42
6:A:922:LPE:H271	8:A:942:CLR:C27	2.49	0.42
3:A:940:POV:C36	3:A:940:POV:C211	2.97	0.42
1:B:255:GLU:H	1:B:255:GLU:CD	2.27	0.42
1:B:474:MET:HE1	6:B:822:LPE:H252	2.01	0.42
3:B:842:POV:C36	3:B:842:POV:C211	2.97	0.42
1:A:68:ARG:O	1:A:72:TRP:HB2	2.20	0.42
8:B:821:CLR:H263	8:B:821:CLR:C22	2.50	0.42
6:B:825:LPE:H171	6:B:825:LPE:H201	1.87	0.42
6:A:913:LPE:H151	6:A:913:LPE:C19	2.49	0.42
1:B:14:PRO:HG2	1:B:16:TYR:CZ	2.55	0.42
1:B:582:GLN:HG3	1:B:583:LYS:N	2.35	0.42
1:A:68:ARG:HH11	1:A:71:GLU:HG2	1.85	0.42
1:A:180:ALA:O	1:A:184:VAL:HG23	2.19	0.42
1:A:326:GLN:HB2	1:A:389:ARG:HG3	2.02	0.42
6:A:916:LPE:H2N3	6:A:916:LPE:H311	1.83	0.42
8:B:821:CLR:H121	8:B:821:CLR:C21	2.49	0.42

Continued on next page...

Continued from previous page...

Atom-1	Atom-2	Interatomic distance (Å)	Clash overlap (Å)
6:A:916:LPE:C31	6:A:916:LPE:H12	2.49	0.42
1:B:265:ALA:HB2	1:B:438:SER:HB2	2.02	0.42
1:A:221:VAL:O	1:A:225:GLN:HG2	2.20	0.41
1:A:448:LEU:HD12	1:A:448:LEU:HA	1.92	0.41
8:A:942:CLR:H263	8:A:942:CLR:C22	2.50	0.41
1:B:348:MET:HG3	3:B:841:POV:H316	2.02	0.41
1:A:67:TYR:HD2	1:A:69:LEU:HD12	1.85	0.41
1:A:81:ILE:CD1	7:A:933:D10:H102	2.49	0.41
1:A:93:ALA:O	1:A:96:LEU:HB2	2.20	0.41
6:A:916:LPE:H231	6:A:916:LPE:H262	1.88	0.41
1:A:249:SER:O	1:A:253:GLN:HG2	2.20	0.41
1:A:439:VAL:O	1:A:443:LEU:HG	2.20	0.41
1:B:48:GLN:HE22	1:B:52:ARG:NE	2.18	0.41
1:B:88:VAL:HG21	1:B:424:VAL:HG21	2.02	0.41
1:B:526:TYR:HB2	1:B:529:MET:SD	2.60	0.41
1:B:192:ALA:CA	6:B:804:LPE:H283	2.51	0.41
1:B:272:VAL:CG1	1:B:276:LYS:HE2	2.51	0.41
1:B:354:ALA:HB2	1:B:394:SER:HB2	2.03	0.41
1:A:31:HIS:CG	1:A:32:HIS:N	2.88	0.41
1:A:140:ALA:HB2	1:A:342:ASP:HB3	2.01	0.41
1:A:277:GLU:O	1:A:281:ARG:HG2	2.21	0.41
1:A:299:ILE:HG22	6:A:916:LPE:H271	2.02	0.41
1:A:333:VAL:O	1:A:337:GLN:HG3	2.20	0.41
1:A:589:VAL:HG22	1:A:594:PHE:CE1	2.55	0.41
7:A:929:D10:C1	7:A:930:D10:H13	2.47	0.41
1:A:697:TYR:CE2	1:B:465:ASP:HB2	2.56	0.41
3:A:902:POV:H25A	3:A:902:POV:O31	2.21	0.41
1:B:92:LEU:HD22	1:B:102:PRO:HB2	2.02	0.41
5:B:803:D12:H71	6:B:804:LPE:H182	2.02	0.41
6:A:922:LPE:H2N3	6:A:922:LPE:H311	1.83	0.41
1:B:493:ALA:CB	4:B:823:C14:H141	2.45	0.41
6:B:822:LPE:H171	4:B:823:C14:H042	2.01	0.41
6:A:916:LPE:H311	6:A:916:LPE:H31	2.01	0.41
6:A:922:LPE:H283	8:A:942:CLR:H272	2.01	0.41
1:B:188:ILE:HG23	6:B:804:LPE:C26	2.51	0.41
3:B:841:POV:H25A	3:B:841:POV:O31	2.21	0.41
3:B:842:POV:H24A	3:B:842:POV:C31	2.51	0.41
1:A:50:ALA:O	1:A:54:VAL:HG23	2.21	0.41
1:A:237:HIS:HD2	1:A:246:VAL:HG22	1.86	0.41
6:B:825:LPE:C3N	3:B:841:POV:H33	2.51	0.40
6:A:913:LPE:H192	6:A:913:LPE:C15	2.45	0.40

Continued on next page...

Continued from previous page...

Atom-1	Atom-2	Interatomic distance (Å)	Clash overlap (Å)
3:A:940:POV:H24A	3:A:940:POV:C31	2.51	0.40
1:A:183:THR:OG1	1:A:391:PHE:HA	2.20	0.40
1:A:192:ALA:CB	6:A:905:LPE:H283	2.52	0.40
1:A:262:LEU:O	1:A:266:LEU:HG	2.22	0.40
1:B:452:LEU:HD23	1:B:452:LEU:HA	1.91	0.40
3:B:841:POV:H215	3:B:841:POV:H314	2.04	0.40
1:B:221:VAL:O	1:B:225:GLN:HG2	2.21	0.40
1:B:329:ILE:HG22	1:B:387:VAL:O	2.21	0.40
1:B:667:LEU:O	1:B:671:LEU:HG	2.20	0.40
6:B:815:LPE:H31	6:B:815:LPE:C31	2.50	0.40

There are no symmetry-related clashes.

5.3 Torsion angles [i](#)

5.3.1 Protein backbone [i](#)

In the following table, the Percentiles column shows the percent Ramachandran outliers of the chain as a percentile score with respect to all PDB entries followed by that with respect to all EM entries.

The Analysed column shows the number of residues for which the backbone conformation was analysed, and the total number of residues.

Mol	Chain	Analysed	Favoured	Allowed	Outliers	Percentiles	
1	A	698/775 (90%)	672 (96%)	26 (4%)	0	100	100
1	B	697/775 (90%)	676 (97%)	21 (3%)	0	100	100
All	All	1395/1550 (90%)	1348 (97%)	47 (3%)	0	100	100

There are no Ramachandran outliers to report.

5.3.2 Protein sidechains [i](#)

In the following table, the Percentiles column shows the percent sidechain outliers of the chain as a percentile score with respect to all PDB entries followed by that with respect to all EM entries.

The Analysed column shows the number of residues for which the sidechain conformation was analysed, and the total number of residues.

Mol	Chain	Analysed	Rotameric	Outliers	Percentiles	
1	A	593/671 (88%)	587 (99%)	6 (1%)	73	83
1	B	592/671 (88%)	583 (98%)	9 (2%)	60	73
All	All	1185/1342 (88%)	1170 (99%)	15 (1%)	64	77

All (15) residues with a non-rotameric sidechain are listed below:

Mol	Chain	Res	Type
1	A	69	LEU
1	A	123	ARG
1	A	134	SER
1	A	208	SER
1	A	448	LEU
1	A	589	VAL
1	B	22	GLU
1	B	117	LEU
1	B	135	MET
1	B	208	SER
1	B	411	GLN
1	B	453	MET
1	B	597	THR
1	B	598	VAL
1	B	641	VAL

Sometimes sidechains can be flipped to improve hydrogen bonding and reduce clashes. All (10) such sidechains are listed below:

Mol	Chain	Res	Type
1	A	8	GLN
1	A	25	HIS
1	A	31	HIS
1	A	48	GLN
1	A	382	ASN
1	A	454	GLN
1	A	582	GLN
1	A	719	HIS
1	B	7	ASN
1	B	504	GLN

5.3.3 RNA ⓘ

There are no RNA molecules in this entry.

5.4 Non-standard residues in protein, DNA, RNA chains [i](#)

There are no non-standard protein/DNA/RNA residues in this entry.

5.5 Carbohydrates [i](#)

There are no oligosaccharides in this entry.

5.6 Ligand geometry [i](#)

84 ligands are modelled in this entry.

In the following table, the Counts columns list the number of bonds (or angles) for which Mogul statistics could be retrieved, the number of bonds (or angles) that are observed in the model and the number of bonds (or angles) that are defined in the Chemical Component Dictionary. The Link column lists molecule types, if any, to which the group is linked. The Z score for a bond length (or angle) is the number of standard deviations the observed value is removed from the expected value. A bond length (or angle) with $|Z| > 2$ is considered an outlier worth inspection. RMSZ is the root-mean-square of all Z scores of the bond lengths (or angles).

Mol	Type	Chain	Res	Link	Bond lengths			Bond angles		
					Counts	RMSZ	# $ Z > 2$	Counts	RMSZ	# $ Z > 2$
7	D10	A	912	-	9,9,9	0.21	0	8,8,8	0.58	0
6	LPE	A	922	-	33,33,33	0.47	0	37,39,39	0.66	1 (2%)
7	D10	A	928	-	9,9,9	0.21	0	8,8,8	0.58	0
3	POV	A	902	-	51,51,51	0.92	2 (3%)	57,59,59	1.07	4 (7%)
7	D10	A	920	-	9,9,9	0.20	0	8,8,8	0.56	0
7	D10	A	917	-	9,9,9	0.21	0	8,8,8	0.57	0
7	D10	B	828	-	9,9,9	0.21	0	8,8,8	0.57	0
5	D12	B	836	-	11,11,11	0.21	0	10,10,10	0.60	0
6	LPE	B	812	-	33,33,33	0.47	0	37,39,39	0.66	1 (2%)
7	D10	B	810	-	9,9,9	0.21	0	8,8,8	0.60	0
6	LPE	A	925	-	33,33,33	0.46	0	37,39,39	0.59	0
7	D10	A	906	-	9,9,9	0.20	0	8,8,8	0.60	0
3	POV	B	841	-	51,51,51	0.92	2 (3%)	57,59,59	1.07	4 (7%)
3	POV	A	940	-	51,51,51	0.93	2 (3%)	57,59,59	1.03	4 (7%)
4	C14	B	835	-	13,13,13	0.21	0	12,12,12	0.63	0
6	LPE	B	839	-	33,33,33	0.45	0	37,39,39	0.60	0
7	D10	A	908	-	9,9,9	0.20	0	8,8,8	0.59	0
6	LPE	A	913	-	33,33,33	0.47	0	37,39,39	0.69	0
7	D10	B	805	-	9,9,9	0.20	0	8,8,8	0.60	0
7	D10	B	811	-	9,9,9	0.21	0	8,8,8	0.57	0
5	D12	A	926	-	11,11,11	0.20	0	10,10,10	0.62	0

Mol	Type	Chain	Res	Link	Bond lengths			Bond angles		
					Counts	RMSZ	# Z > 2	Counts	RMSZ	# Z > 2
8	CLR	A	942	-	31,31,31	0.83	1 (3%)	48,48,48	1.12	3 (6%)
7	D10	B	818	-	9,9,9	0.20	0	8,8,8	0.58	0
7	D10	B	831	-	9,9,9	0.21	0	8,8,8	0.57	0
7	D10	B	827	-	9,9,9	0.20	0	8,8,8	0.58	0
5	D12	B	803	-	11,11,11	0.20	0	10,10,10	0.62	0
6	LPE	B	815	-	33,33,33	0.46	0	37,39,39	0.57	0
7	D10	A	924	-	9,9,9	0.12	0	8,8,8	0.71	0
6	LPE	B	822	-	33,33,33	0.48	0	37,39,39	0.66	1 (2%)
7	D10	B	837	-	9,9,9	0.20	0	8,8,8	0.58	0
7	D10	B	819	-	9,9,9	0.21	0	8,8,8	0.57	0
7	D10	A	933	-	9,9,9	0.21	0	8,8,8	0.58	0
7	D10	A	929	-	9,9,9	0.20	0	8,8,8	0.60	0
5	D12	A	909	-	11,11,11	0.20	0	10,10,10	0.60	0
7	D10	A	910	-	9,9,9	0.18	0	8,8,8	0.58	0
7	D10	A	927	-	9,9,9	0.20	0	8,8,8	0.58	0
5	D12	A	934	-	11,11,11	0.20	0	10,10,10	0.61	0
4	C14	A	923	-	13,13,13	0.19	0	12,12,12	0.65	0
7	D10	A	930	-	9,9,9	0.21	0	8,8,8	0.59	0
7	D10	A	919	-	9,9,9	0.19	0	8,8,8	0.57	0
4	C14	B	802	-	13,13,13	0.15	0	12,12,12	0.77	0
6	LPE	A	939	-	33,33,33	0.45	0	37,39,39	0.66	0
5	D12	B	808	-	11,11,11	0.20	0	10,10,10	0.60	0
7	D10	A	914	-	9,9,9	0.21	0	8,8,8	0.58	0
6	LPE	A	905	-	33,33,33	0.46	0	37,39,39	0.65	0
7	D10	B	829	-	9,9,9	0.21	0	8,8,8	0.50	0
7	D10	B	830	-	9,9,9	0.16	0	8,8,8	0.65	0
5	D12	A	936	-	11,11,11	0.22	0	10,10,10	0.60	0
3	POV	B	842	-	51,51,51	0.93	2 (3%)	57,59,59	1.03	4 (7%)
5	D12	A	932	-	11,11,11	0.20	0	10,10,10	0.62	0
8	CLR	B	821	-	31,31,31	0.83	1 (3%)	48,48,48	1.12	3 (6%)
7	D10	B	838	-	9,9,9	0.20	0	8,8,8	0.58	0
7	D10	A	931	-	9,9,9	0.22	0	8,8,8	0.58	0
4	C14	A	907	-	13,13,13	0.20	0	12,12,12	0.63	0
2	OXL	B	801	-	5,5,5	1.93	2 (40%)	6,6,6	1.56	2 (33%)
2	OXL	A	901	-	5,5,5	1.92	2 (40%)	6,6,6	1.18	0
5	D12	B	826	-	11,11,11	0.19	0	10,10,10	0.60	0
7	D10	B	816	-	9,9,9	0.21	0	8,8,8	0.58	0
7	D10	B	807	-	9,9,9	0.20	0	8,8,8	0.58	0
5	D12	B	832	-	11,11,11	0.21	0	10,10,10	0.62	0
7	D10	B	833	-	9,9,9	0.20	0	8,8,8	0.57	0
5	D12	A	921	-	11,11,11	0.19	0	10,10,10	0.68	0
5	D12	B	820	-	11,11,11	0.20	0	10,10,10	0.61	0

Mol	Type	Chain	Res	Link	Bond lengths			Bond angles		
					Counts	RMSZ	# Z > 2	Counts	RMSZ	# Z > 2
4	C14	A	903	-	13,13,13	0.16	0	12,12,12	0.74	0
5	D12	B	840	-	11,11,11	0.20	0	10,10,10	0.51	0
6	LPE	B	814	-	33,33,33	0.53	0	37,39,39	0.59	0
7	D10	A	938	-	9,9,9	0.16	0	8,8,8	0.65	0
6	LPE	B	825	-	33,33,33	0.46	0	37,39,39	0.65	0
7	D10	A	911	-	9,9,9	0.20	0	8,8,8	0.59	0
5	D12	A	941	-	11,11,11	0.20	0	10,10,10	0.59	0
7	D10	B	813	-	9,9,9	0.21	0	8,8,8	0.57	0
7	D10	A	937	-	9,9,9	0.20	0	8,8,8	0.57	0
4	C14	B	823	-	13,13,13	0.20	0	12,12,12	0.61	0
5	D12	A	904	-	11,11,11	0.20	0	10,10,10	0.62	0
6	LPE	B	804	-	33,33,33	0.45	0	37,39,39	0.65	0
7	D10	A	918	-	9,9,9	0.19	0	8,8,8	0.57	0
7	D10	B	809	-	9,9,9	0.21	0	8,8,8	0.59	0
4	C14	A	935	-	13,13,13	0.21	0	12,12,12	0.64	0
7	D10	B	817	-	9,9,9	0.21	0	8,8,8	0.58	0
5	D12	B	834	-	11,11,11	0.20	0	10,10,10	0.61	0
7	D10	B	824	-	9,9,9	0.21	0	8,8,8	0.60	0
6	LPE	A	915	-	33,33,33	0.48	0	37,39,39	0.66	1 (2%)
4	C14	B	806	-	13,13,13	0.20	0	12,12,12	0.63	0
6	LPE	A	916	-	33,33,33	0.47	0	37,39,39	1.08	2 (5%)

In the following table, the Chirals column lists the number of chiral outliers, the number of chiral centers analysed, the number of these observed in the model and the number defined in the Chemical Component Dictionary. Similar counts are reported in the Torsion and Rings columns. '-' means no outliers of that kind were identified.

Mol	Type	Chain	Res	Link	Chirals	Torsions	Rings
7	D10	A	912	-	-	0/7/7/7	-
6	LPE	A	922	-	-	7/34/34/34	-
7	D10	A	928	-	-	0/7/7/7	-
3	POV	A	902	-	-	21/55/55/55	-
7	D10	A	920	-	-	0/7/7/7	-
7	D10	A	917	-	-	0/7/7/7	-
7	D10	B	828	-	-	0/7/7/7	-
5	D12	B	836	-	-	0/9/9/9	-
6	LPE	B	812	-	-	8/34/34/34	-
7	D10	B	810	-	-	0/7/7/7	-
6	LPE	A	925	-	-	13/34/34/34	-
7	D10	A	906	-	-	0/7/7/7	-
3	POV	B	841	-	-	21/55/55/55	-

Continued on next page...

Continued from previous page...

Mol	Type	Chain	Res	Link	Chirals	Torsions	Rings
3	POV	A	940	-	-	14/55/55/55	-
4	C14	B	835	-	-	0/11/11/11	-
6	LPE	B	839	-	-	23/34/34/34	-
7	D10	A	908	-	-	0/7/7/7	-
6	LPE	A	913	-	-	17/34/34/34	-
7	D10	B	805	-	-	0/7/7/7	-
7	D10	B	811	-	-	0/7/7/7	-
5	D12	A	926	-	-	0/9/9/9	-
8	CLR	A	942	-	-	2/10/68/68	0/4/4/4
7	D10	B	818	-	-	0/7/7/7	-
7	D10	B	831	-	-	0/7/7/7	-
7	D10	B	827	-	-	0/7/7/7	-
5	D12	B	803	-	-	0/9/9/9	-
6	LPE	B	815	-	-	7/34/34/34	-
7	D10	A	924	-	-	2/7/7/7	-
6	LPE	B	822	-	-	7/34/34/34	-
7	D10	B	837	-	-	0/7/7/7	-
7	D10	B	819	-	-	0/7/7/7	-
7	D10	A	933	-	-	0/7/7/7	-
7	D10	A	929	-	-	0/7/7/7	-
5	D12	A	909	-	-	0/9/9/9	-
7	D10	A	910	-	-	3/7/7/7	-
7	D10	A	927	-	-	0/7/7/7	-
5	D12	A	934	-	-	0/9/9/9	-
4	C14	A	923	-	-	0/11/11/11	-
7	D10	A	930	-	-	0/7/7/7	-
7	D10	A	919	-	-	0/7/7/7	-
4	C14	B	802	-	-	3/11/11/11	-
6	LPE	A	939	-	-	13/34/34/34	-
5	D12	B	808	-	-	0/9/9/9	-
7	D10	A	914	-	-	0/7/7/7	-
6	LPE	A	905	-	-	8/34/34/34	-
7	D10	B	829	-	-	3/7/7/7	-
7	D10	B	830	-	-	2/7/7/7	-
5	D12	A	936	-	-	0/9/9/9	-
3	POV	B	842	-	-	14/55/55/55	-
5	D12	A	932	-	-	0/9/9/9	-
8	CLR	B	821	-	-	2/10/68/68	0/4/4/4
7	D10	B	838	-	-	0/7/7/7	-

Continued on next page...

Continued from previous page...

Mol	Type	Chain	Res	Link	Chirals	Torsions	Rings
7	D10	A	931	-	-	0/7/7/7	-
4	C14	A	907	-	-	0/11/11/11	-
2	OXL	B	801	-	-	4/4/4/4	-
2	OXL	A	901	-	-	4/4/4/4	-
5	D12	B	826	-	-	0/9/9/9	-
7	D10	B	816	-	-	0/7/7/7	-
7	D10	B	807	-	-	0/7/7/7	-
5	D12	B	832	-	-	0/9/9/9	-
7	D10	B	833	-	-	0/7/7/7	-
5	D12	A	921	-	-	0/9/9/9	-
5	D12	B	820	-	-	0/9/9/9	-
4	C14	A	903	-	-	1/11/11/11	-
5	D12	B	840	-	-	4/9/9/9	-
6	LPE	B	814	-	-	12/34/34/34	-
7	D10	A	938	-	-	1/7/7/7	-
6	LPE	B	825	-	-	5/34/34/34	-
7	D10	A	911	-	-	0/7/7/7	-
5	D12	A	941	-	-	2/9/9/9	-
7	D10	B	813	-	-	0/7/7/7	-
7	D10	A	937	-	-	0/7/7/7	-
4	C14	B	823	-	-	1/11/11/11	-
5	D12	A	904	-	-	0/9/9/9	-
6	LPE	B	804	-	-	8/34/34/34	-
7	D10	A	918	-	-	0/7/7/7	-
7	D10	B	809	-	-	0/7/7/7	-
4	C14	A	935	-	-	0/11/11/11	-
7	D10	B	817	-	-	0/7/7/7	-
5	D12	B	834	-	-	0/9/9/9	-
7	D10	B	824	-	-	0/7/7/7	-
6	LPE	A	915	-	-	12/34/34/34	-
4	C14	B	806	-	-	0/11/11/11	-
6	LPE	A	916	-	-	11/34/34/34	-

All (14) bond length outliers are listed below:

Mol	Chain	Res	Type	Atoms	Z	Observed(Å)	Ideal(Å)
3	B	842	POV	O21-C21	4.13	1.45	1.34
3	A	940	POV	O21-C21	4.12	1.45	1.34
3	B	841	POV	O31-C31	4.10	1.45	1.33
3	A	902	POV	O31-C31	4.10	1.45	1.33

Continued on next page...

Continued from previous page...

Mol	Chain	Res	Type	Atoms	Z	Observed(Å)	Ideal(Å)
3	B	842	POV	O31-C31	3.97	1.44	1.33
3	A	940	POV	O31-C31	3.96	1.44	1.33
3	B	841	POV	O21-C21	3.91	1.45	1.34
3	A	902	POV	O21-C21	3.90	1.45	1.34
2	B	801	OXL	C2-C1	-3.07	1.45	1.54
2	A	901	OXL	C2-C1	-2.97	1.46	1.54
2	A	901	OXL	O4-C2	-2.27	1.24	1.30
2	B	801	OXL	O3-C1	-2.17	1.24	1.30
8	B	821	CLR	C13-C14	-2.16	1.50	1.55
8	A	942	CLR	C13-C14	-2.15	1.50	1.55

All (30) bond angle outliers are listed below:

Mol	Chain	Res	Type	Atoms	Z	Observed(°)	Ideal(°)
6	A	916	LPE	C17-C16-C15	4.97	139.66	114.42
3	A	940	POV	O21-C21-C22	4.48	121.16	111.50
3	B	842	POV	O21-C21-C22	4.48	121.15	111.50
3	A	902	POV	O21-C21-C22	4.32	120.81	111.50
3	B	841	POV	O21-C21-C22	4.32	120.80	111.50
8	A	942	CLR	C13-C17-C20	-3.38	114.19	119.49
8	B	821	CLR	C13-C17-C20	-3.36	114.23	119.49
3	B	841	POV	C2-O21-C21	-2.95	110.52	117.79
3	A	902	POV	C2-O21-C21	-2.95	110.53	117.79
3	B	842	POV	C2-O21-C21	-2.65	111.26	117.79
3	A	940	POV	C2-O21-C21	-2.65	111.28	117.79
2	B	801	OXL	O3-C1-C2	2.60	120.87	113.16
3	B	842	POV	O31-C31-C32	2.54	119.87	111.91
3	A	940	POV	O31-C31-C32	2.52	119.82	111.91
3	B	841	POV	O31-C31-C32	2.50	119.75	111.91
3	A	902	POV	O31-C31-C32	2.50	119.75	111.91
8	B	821	CLR	C11-C12-C13	-2.28	108.88	112.78
8	A	942	CLR	C11-C12-C13	-2.27	108.89	112.78
6	A	916	LPE	C3-C2-C1	-2.19	106.33	112.79
2	B	801	OXL	O4-C2-C1	2.17	119.59	113.16
8	A	942	CLR	C13-C14-C8	-2.15	111.19	114.38
6	A	915	LPE	C3-C2-C1	-2.13	106.52	112.79
8	B	821	CLR	C13-C14-C8	-2.12	111.24	114.38
3	B	841	POV	O21-C21-O22	-2.05	118.76	123.70
3	A	902	POV	O21-C21-O22	-2.04	118.76	123.70
3	B	842	POV	O21-C21-O22	-2.04	118.77	123.70
3	A	940	POV	O21-C21-O22	-2.04	118.77	123.70
6	B	812	LPE	C31-C32-N	-2.03	109.00	115.78

Continued on next page...

Continued from previous page...

Mol	Chain	Res	Type	Atoms	Z	Observed(°)	Ideal(°)
6	B	822	LPE	C31-C32-N	-2.02	109.03	115.78
6	A	922	LPE	C31-C32-N	-2.00	109.09	115.78

There are no chirality outliers.

All (255) torsion outliers are listed below:

Mol	Chain	Res	Type	Atoms
2	A	901	OXL	O1-C1-C2-O2
2	A	901	OXL	O1-C1-C2-O4
2	A	901	OXL	O3-C1-C2-O2
2	A	901	OXL	O3-C1-C2-O4
2	B	801	OXL	O1-C1-C2-O2
2	B	801	OXL	O1-C1-C2-O4
2	B	801	OXL	O3-C1-C2-O2
2	B	801	OXL	O3-C1-C2-O4
3	A	940	POV	C11-O12-P-O13
3	A	940	POV	C11-O12-P-O14
3	B	842	POV	C11-O12-P-O13
3	B	842	POV	C11-O12-P-O14
6	A	905	LPE	C31-O33-P-O3
6	A	905	LPE	C31-O33-P-O31
6	A	905	LPE	C31-O33-P-O32
6	A	913	LPE	C3-O3-P-O31
6	A	913	LPE	C3-O3-P-O32
6	A	913	LPE	C3-O3-P-O33
6	A	915	LPE	O1-C1-C2-O2H
6	A	915	LPE	C3-O3-P-O31
6	A	915	LPE	C3-O3-P-O32
6	A	915	LPE	C3-O3-P-O33
6	A	915	LPE	O33-C31-C32-N
6	A	916	LPE	O33-C31-C32-N
6	A	922	LPE	C3-O3-P-O32
6	A	925	LPE	C31-O33-P-O31
6	A	925	LPE	O33-C31-C32-N
6	A	939	LPE	C31-O33-P-O31
6	B	804	LPE	C31-O33-P-O3
6	B	804	LPE	C31-O33-P-O31
6	B	804	LPE	C31-O33-P-O32
6	B	812	LPE	C31-O33-P-O31
6	B	814	LPE	O1-C1-C2-C3
6	B	815	LPE	O33-C31-C32-N
6	B	822	LPE	C3-O3-P-O32

Continued on next page...

Continued from previous page...

Mol	Chain	Res	Type	Atoms
6	B	839	LPE	O1-C1-C2-O2H
6	B	839	LPE	C3-O3-P-O31
6	B	839	LPE	C31-O33-P-O31
6	B	839	LPE	C31-O33-P-O32
6	A	939	LPE	O1-C1-C2-O2H
3	A	902	POV	C22-C21-O21-C2
3	B	841	POV	C22-C21-O21-C2
6	A	916	LPE	C15-C16-C17-C18
5	B	840	D12	C5-C6-C7-C8
6	A	913	LPE	C16-C17-C18-C19
6	B	814	LPE	C1-C2-C3-O3
6	B	814	LPE	O1-C1-C2-O2H
3	A	902	POV	O22-C21-O21-C2
3	B	841	POV	O22-C21-O21-C2
6	B	814	LPE	O1-C11-C12-C13
5	B	840	D12	C7-C8-C9-C10
3	A	940	POV	C11-O12-P-O11
3	B	842	POV	C11-O12-P-O11
6	A	922	LPE	C3-O3-P-O33
6	B	814	LPE	C3-O3-P-O33
6	B	822	LPE	C3-O3-P-O33
6	B	839	LPE	C31-O33-P-O3
3	A	902	POV	C31-C32-C33-C34
3	B	841	POV	C31-C32-C33-C34
6	B	839	LPE	C31-C32-N-C1N
6	B	839	LPE	C31-C32-N-C2N
6	B	839	LPE	C31-C32-N-C3N
3	A	902	POV	C32-C31-O31-C3
3	B	841	POV	C32-C31-O31-C3
6	A	913	LPE	C19-C20-C21-C22
6	A	925	LPE	C14-C15-C16-C17
6	A	925	LPE	C19-C20-C21-C22
6	A	925	LPE	C21-C22-C23-C24
6	A	939	LPE	C12-C13-C14-C15
6	A	913	LPE	C22-C23-C24-C25
6	A	915	LPE	O2H-C2-C3-O3
6	B	814	LPE	O2H-C2-C3-O3
6	B	839	LPE	C14-C15-C16-C17
6	A	913	LPE	C20-C21-C22-C23
7	A	924	D10	C2-C3-C4-C5
3	A	902	POV	C22-C23-C24-C25
3	B	841	POV	C22-C23-C24-C25

Continued on next page...

Continued from previous page...

Mol	Chain	Res	Type	Atoms
6	A	916	LPE	C21-C22-C23-C24
6	B	839	LPE	C11-C12-C13-C14
6	A	916	LPE	C12-C13-C14-C15
7	A	910	D10	C4-C5-C6-C7
6	A	913	LPE	C1-C2-C3-O3
6	A	915	LPE	C1-C2-C3-O3
4	B	802	C14	C04-C05-C06-C07
4	B	823	C14	C10-C11-C12-C13
3	A	902	POV	O32-C31-O31-C3
3	B	841	POV	O32-C31-O31-C3
3	A	902	POV	C35-C36-C37-C38
6	A	913	LPE	C25-C26-C27-C28
3	B	841	POV	C35-C36-C37-C38
6	A	915	LPE	O1-C11-C12-C13
6	B	815	LPE	C25-C26-C27-C28
6	A	925	LPE	C23-C24-C25-C26
6	A	916	LPE	O1-C11-C12-C13
3	A	902	POV	C311-C310-C39-C38
3	B	841	POV	C311-C310-C39-C38
6	B	812	LPE	C20-C21-C22-C23
6	B	839	LPE	C20-C21-C22-C23
6	A	922	LPE	C2-C1-O1-C11
6	B	822	LPE	C2-C1-O1-C11
6	B	839	LPE	C2-C1-O1-C11
6	A	915	LPE	C17-C18-C19-C20
6	A	913	LPE	C21-C22-C23-C24
7	B	829	D10	C1-C2-C3-C4
7	A	910	D10	C3-C4-C5-C6
3	A	902	POV	C313-C314-C315-C316
3	B	841	POV	C313-C314-C315-C316
3	A	902	POV	C24-C25-C26-C27
3	B	841	POV	C24-C25-C26-C27
6	A	913	LPE	O2H-C2-C3-O3
6	A	913	LPE	C17-C18-C19-C20
6	A	925	LPE	C16-C17-C18-C19
6	A	939	LPE	C1-C2-C3-O3
6	A	913	LPE	C2-C1-O1-C11
6	A	916	LPE	C19-C20-C21-C22
6	A	916	LPE	C22-C23-C24-C25
6	B	839	LPE	C17-C18-C19-C20
7	A	924	D10	C1-C2-C3-C4
6	A	915	LPE	O1-C1-C2-C3

Continued on next page...

Continued from previous page...

Mol	Chain	Res	Type	Atoms
6	A	939	LPE	O1-C1-C2-C3
6	B	839	LPE	O1-C1-C2-C3
4	B	802	C14	C02-C03-C04-C05
6	B	815	LPE	C11-C12-C13-C14
3	A	940	POV	C23-C24-C25-C26
3	B	842	POV	C23-C24-C25-C26
3	A	902	POV	C2-C1-O11-P
3	B	841	POV	C2-C1-O11-P
6	A	913	LPE	C2-C3-O3-P
6	B	812	LPE	C2-C3-O3-P
6	B	839	LPE	C2-C3-O3-P
6	B	814	LPE	C17-C18-C19-C20
6	B	815	LPE	C16-C17-C18-C19
6	A	939	LPE	C11-C12-C13-C14
3	A	940	POV	C311-C312-C313-C314
3	B	842	POV	C311-C312-C313-C314
6	B	825	LPE	C2-C1-O1-C11
3	A	940	POV	C22-C21-O21-C2
3	B	842	POV	C22-C21-O21-C2
6	A	939	LPE	O2H-C2-C3-O3
5	A	941	D12	C5-C6-C7-C8
7	B	829	D10	C3-C4-C5-C6
8	A	942	CLR	C23-C24-C25-C26
8	B	821	CLR	C23-C24-C25-C26
6	A	913	LPE	C11-C12-C13-C14
3	A	940	POV	O22-C21-O21-C2
3	B	842	POV	O22-C21-O21-C2
5	B	840	D12	C1-C2-C3-C4
6	A	925	LPE	C11-C12-C13-C14
5	B	840	D12	C3-C4-C5-C6
6	A	905	LPE	C12-C11-O1-C1
6	A	922	LPE	C12-C11-O1-C1
6	B	822	LPE	C12-C11-O1-C1
7	B	830	D10	C6-C7-C8-C9
3	B	841	POV	C312-C313-C314-C315
3	A	902	POV	C312-C313-C314-C315
6	B	812	LPE	C31-O33-P-O3
6	B	839	LPE	C3-O3-P-O33
7	B	830	D10	C3-C4-C5-C6
6	A	939	LPE	C31-O33-P-O32
6	B	814	LPE	C3-O3-P-O31
6	B	814	LPE	C3-O3-P-O32

Continued on next page...

Continued from previous page...

Mol	Chain	Res	Type	Atoms
6	B	839	LPE	C3-O3-P-O32
6	B	814	LPE	C25-C26-C27-C28
6	A	915	LPE	C25-C26-C27-C28
6	A	939	LPE	C32-C31-O33-P
7	A	938	D10	C1-C2-C3-C4
6	A	925	LPE	C15-C16-C17-C18
6	B	804	LPE	C12-C11-O1-C1
6	B	839	LPE	O1-C11-C12-C13
6	B	815	LPE	C19-C20-C21-C22
6	A	905	LPE	C31-C32-N-C2N
6	B	804	LPE	C31-C32-N-C2N
6	A	913	LPE	O33-C31-C32-N
6	A	922	LPE	O33-C31-C32-N
6	B	812	LPE	O33-C31-C32-N
6	B	814	LPE	O33-C31-C32-N
6	B	822	LPE	O33-C31-C32-N
6	B	825	LPE	O33-C31-C32-N
6	A	916	LPE	C2-C3-O3-P
7	A	910	D10	C5-C6-C7-C8
4	B	802	C14	C03-C04-C05-C06
6	A	939	LPE	C2-C3-O3-P
3	A	902	POV	C11-O12-P-O11
3	B	841	POV	C11-O12-P-O11
6	A	913	LPE	C31-O33-P-O3
6	A	922	LPE	C31-O33-P-O3
6	A	925	LPE	C31-O33-P-O3
6	B	822	LPE	C31-O33-P-O3
6	B	825	LPE	C31-O33-P-O3
6	B	814	LPE	C19-C20-C21-C22
3	A	940	POV	C36-C37-C38-C39
3	B	842	POV	C36-C37-C38-C39
3	A	940	POV	O11-C1-C2-C3
3	B	842	POV	O11-C1-C2-C3
6	B	839	LPE	C16-C17-C18-C19
6	B	839	LPE	C15-C16-C17-C18
6	B	839	LPE	O2H-C2-C3-O3
4	A	903	C14	C05-C06-C07-C08
6	A	916	LPE	C17-C18-C19-C20
7	B	829	D10	C6-C7-C8-C9
6	A	905	LPE	C31-C32-N-C3N
6	B	804	LPE	C31-C32-N-C3N
6	A	905	LPE	C14-C15-C16-C17

Continued on next page...

Continued from previous page...

Mol	Chain	Res	Type	Atoms
6	B	804	LPE	C14-C15-C16-C17
3	A	902	POV	C310-C311-C312-C313
3	B	841	POV	C310-C311-C312-C313
6	B	839	LPE	C13-C14-C15-C16
3	B	842	POV	C212-C213-C214-C215
6	A	939	LPE	C15-C16-C17-C18
3	A	940	POV	C212-C213-C214-C215
6	B	812	LPE	C2-C1-O1-C11
6	B	815	LPE	C17-C18-C19-C20
3	A	902	POV	C215-C216-C217-C218
3	B	841	POV	C215-C216-C217-C218
6	A	915	LPE	C24-C25-C26-C27
3	A	940	POV	C25-C26-C27-C28
3	B	842	POV	C25-C26-C27-C28
5	A	941	D12	C7-C8-C9-C10
3	A	940	POV	C27-C28-C29-C210
3	B	842	POV	C27-C28-C29-C210
6	B	825	LPE	C12-C11-O1-C1
3	B	841	POV	C25-C26-C27-C28
3	A	902	POV	C25-C26-C27-C28
6	A	939	LPE	C19-C20-C21-C22
6	A	905	LPE	C31-C32-N-C1N
6	B	804	LPE	C31-C32-N-C1N
6	A	925	LPE	O1-C1-C2-O2H
6	B	815	LPE	C22-C23-C24-C25
3	A	902	POV	O21-C2-C3-O31
3	B	841	POV	O21-C2-C3-O31
6	A	925	LPE	C2-C1-O1-C11
8	A	942	CLR	C23-C24-C25-C27
8	B	821	CLR	C23-C24-C25-C27
3	A	902	POV	C37-C38-C39-C310
3	B	841	POV	C37-C38-C39-C310
3	B	842	POV	C215-C216-C217-C218
3	A	940	POV	C215-C216-C217-C218
6	B	812	LPE	C15-C16-C17-C18
6	B	839	LPE	C12-C11-O1-C1
3	A	902	POV	C39-C310-C311-C312
3	B	841	POV	C39-C310-C311-C312
6	A	925	LPE	C12-C13-C14-C15
6	A	916	LPE	C3-O3-P-O33
6	A	939	LPE	C31-O33-P-O3
6	A	922	LPE	C2-C3-O3-P

Continued on next page...

Continued from previous page...

Mol	Chain	Res	Type	Atoms
3	A	902	POV	C11-O12-P-O14
3	B	841	POV	C11-O12-P-O14
6	A	916	LPE	C31-O33-P-O31
3	A	940	POV	C37-C38-C39-C310
3	B	842	POV	C37-C38-C39-C310
6	B	825	LPE	C17-C18-C19-C20
6	B	822	LPE	C2-C3-O3-P
6	B	812	LPE	C25-C26-C27-C28
3	A	902	POV	O31-C31-C32-C33
3	B	841	POV	O31-C31-C32-C33

There are no ring outliers.

42 monomers are involved in 210 short contacts:

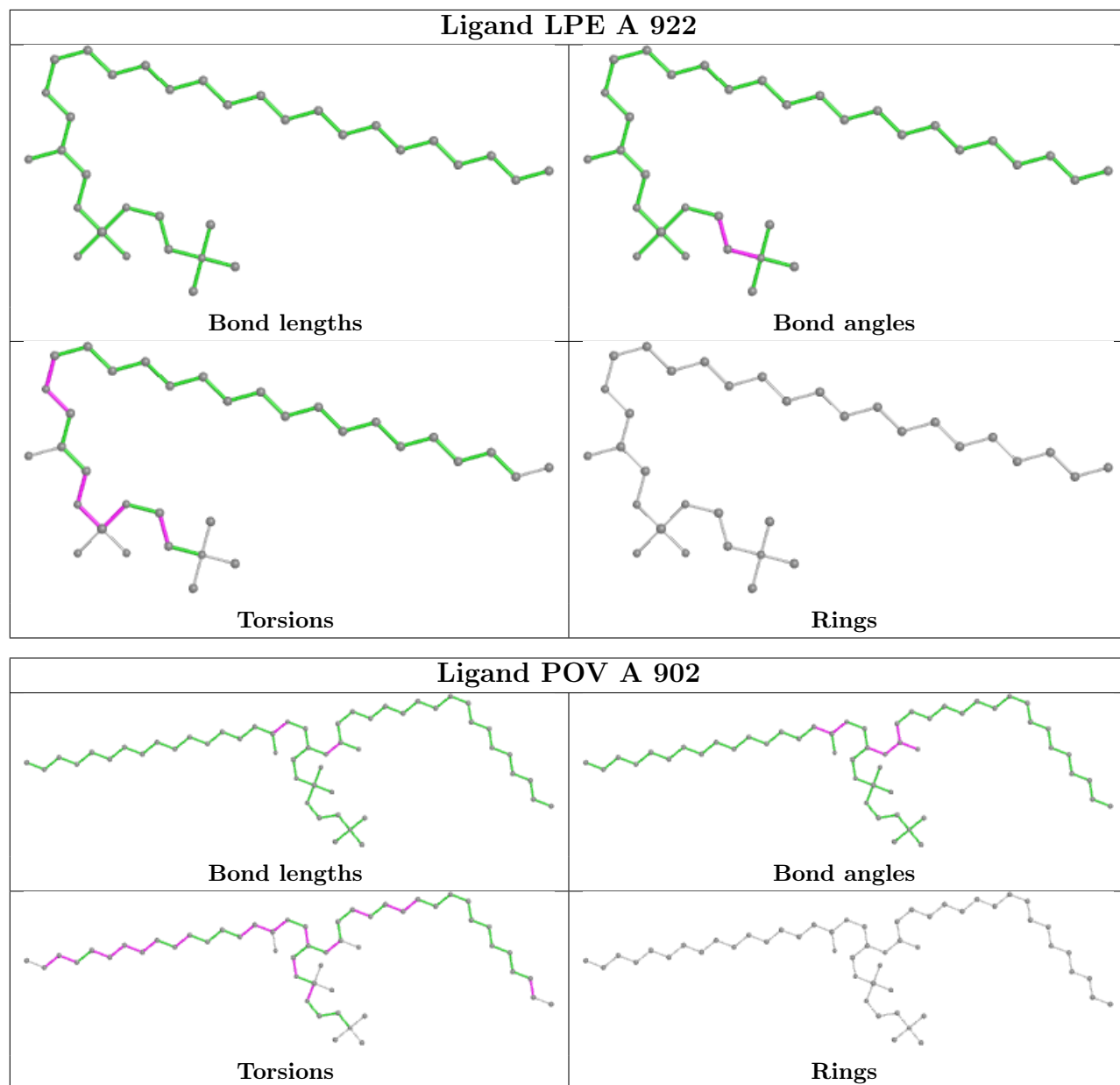
Mol	Chain	Res	Type	Clashes	Symm-Clashes
7	A	912	D10	1	0
6	A	922	LPE	14	0
3	A	902	POV	11	0
6	B	812	LPE	15	0
7	B	810	D10	4	0
6	A	925	LPE	5	0
3	B	841	POV	25	0
3	A	940	POV	12	0
6	B	839	LPE	3	0
6	A	913	LPE	3	0
7	B	811	D10	1	0
8	A	942	CLR	21	0
5	B	803	D12	8	0
6	B	815	LPE	10	0
7	A	924	D10	3	0
6	B	822	LPE	2	0
7	A	933	D10	2	0
7	A	929	D10	5	0
4	A	923	C14	1	0
7	A	930	D10	8	0
6	A	939	LPE	4	0
6	A	905	LPE	6	0
3	B	842	POV	11	0
8	B	821	CLR	5	0
7	B	838	D10	1	0
2	B	801	OXL	2	0
2	A	901	OXL	4	0

Continued on next page...

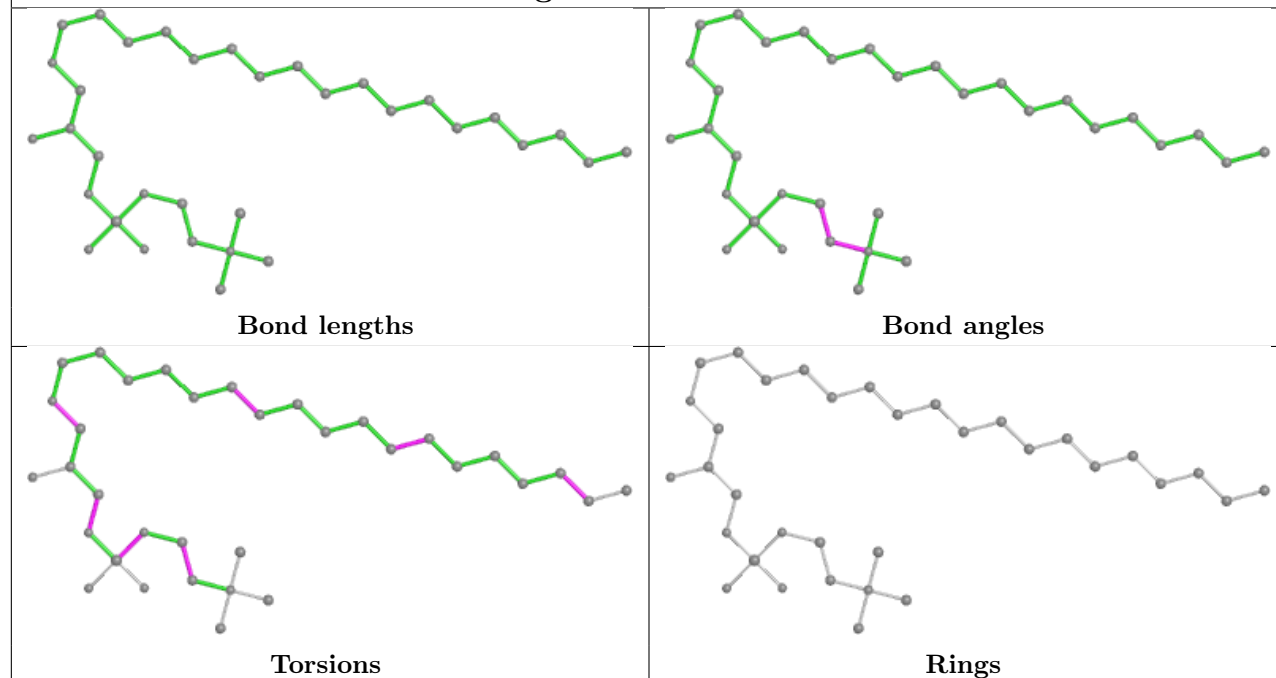
Continued from previous page...

Mol	Chain	Res	Type	Clashes	Symm-Clashes
5	A	921	D12	2	0
5	B	820	D12	2	0
5	B	840	D12	1	0
6	B	814	LPE	5	0
6	B	825	LPE	7	0
7	A	911	D10	1	0
5	A	941	D12	3	0
4	B	823	C14	3	0
5	A	904	D12	4	0
6	B	804	LPE	14	0
7	B	809	D10	3	0
4	A	935	C14	1	0
7	B	824	D10	10	0
6	A	915	LPE	3	0
6	A	916	LPE	9	0

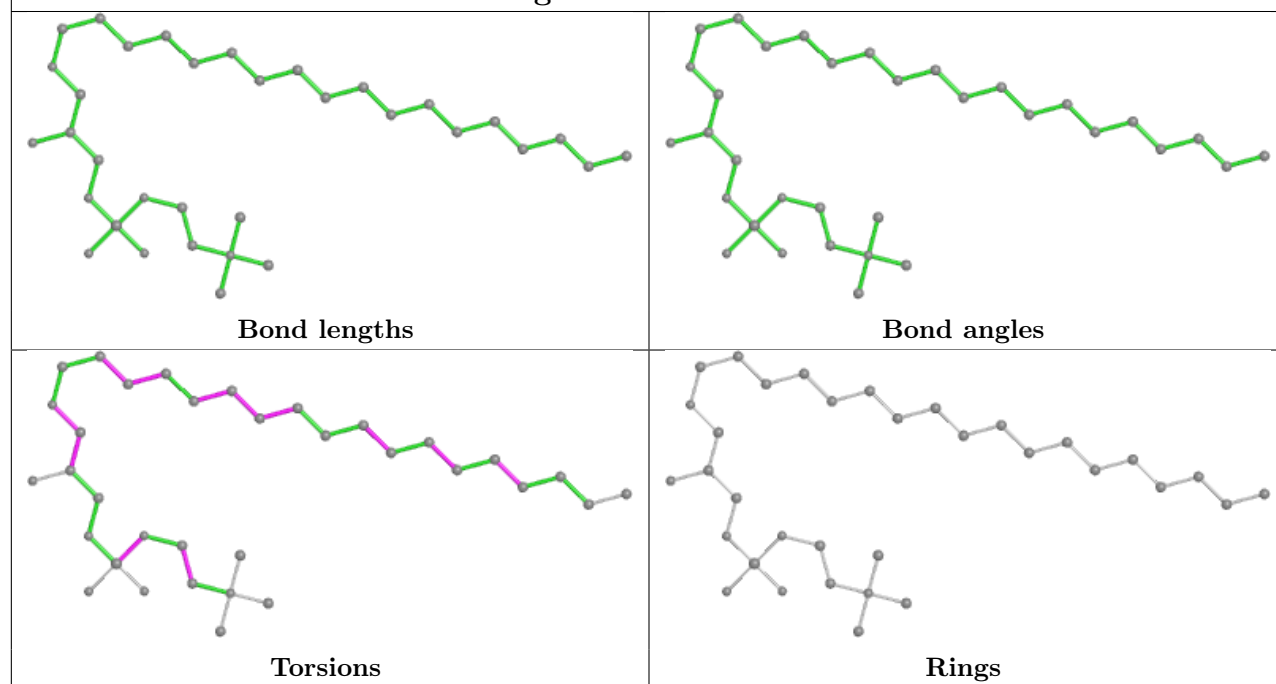
The following is a two-dimensional graphical depiction of Mogul quality analysis of bond lengths, bond angles, torsion angles, and ring geometry for all instances of the Ligand of Interest. In addition, ligands with molecular weight > 250 and outliers as shown on the validation Tables will also be included. For torsion angles, if less than 5% of the Mogul distribution of torsion angles is within 10 degrees of the torsion angle in question, then that torsion angle is considered an outlier. Any bond that is central to one or more torsion angles identified as an outlier by Mogul will be highlighted in the graph. For rings, the root-mean-square deviation (RMSD) between the ring in question and similar rings identified by Mogul is calculated over all ring torsion angles. If the average RMSD is greater than 60 degrees and the minimal RMSD between the ring in question and any Mogul-identified rings is also greater than 60 degrees, then that ring is considered an outlier. The outliers are highlighted in purple. The color gray indicates Mogul did not find sufficient equivalents in the CSD to analyse the geometry.

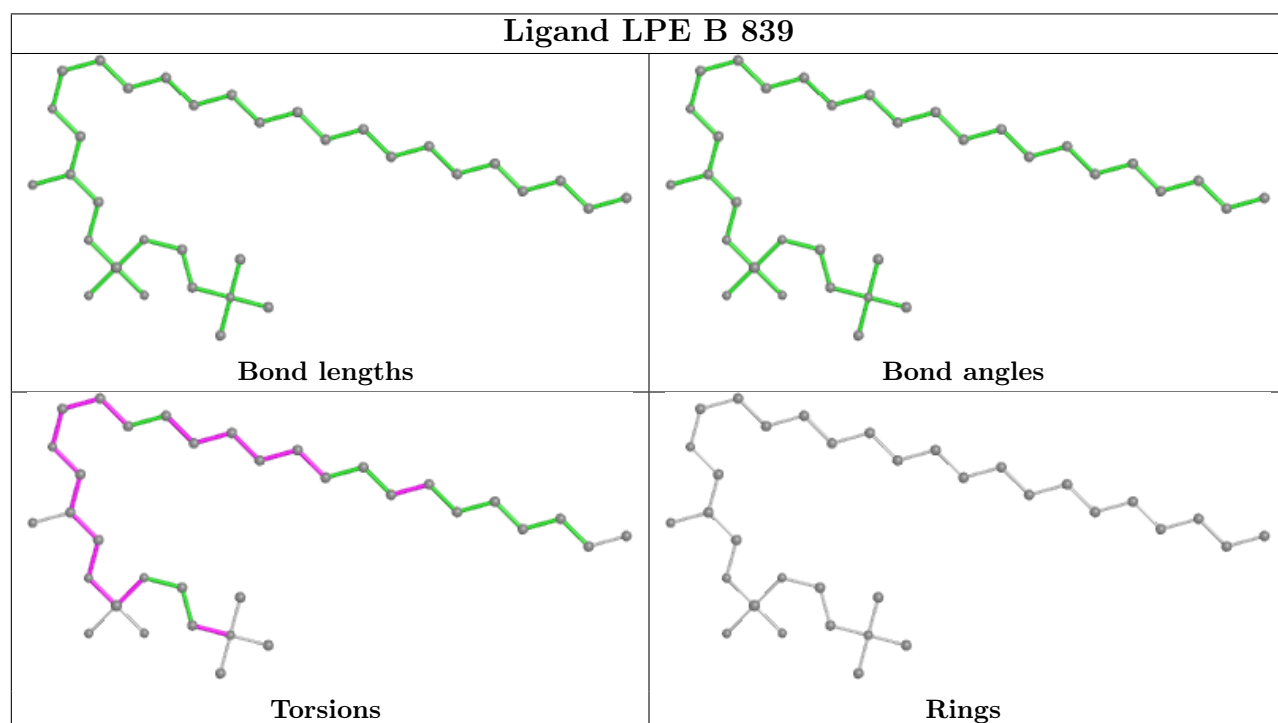
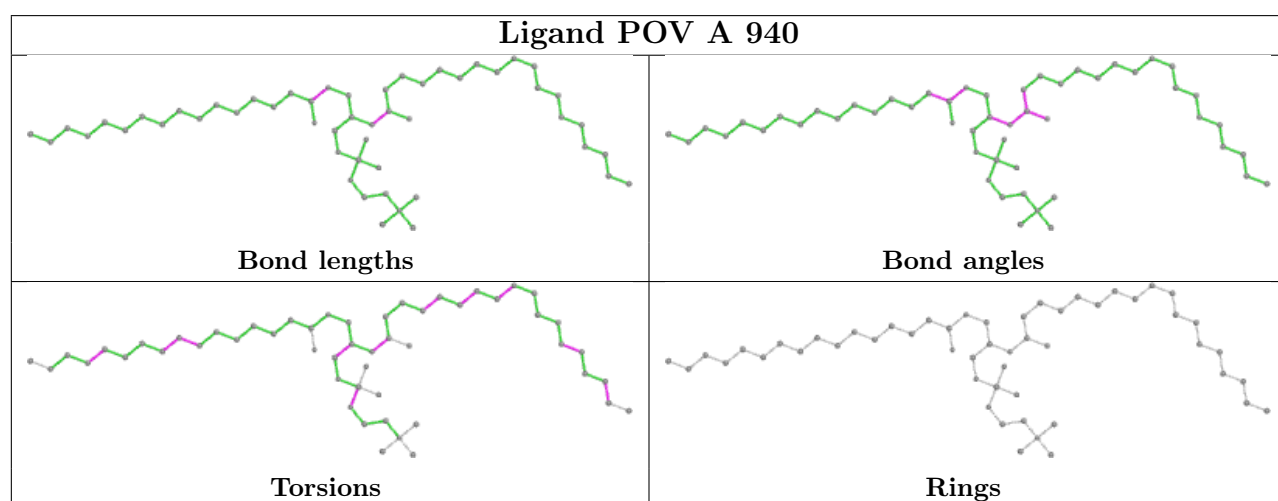
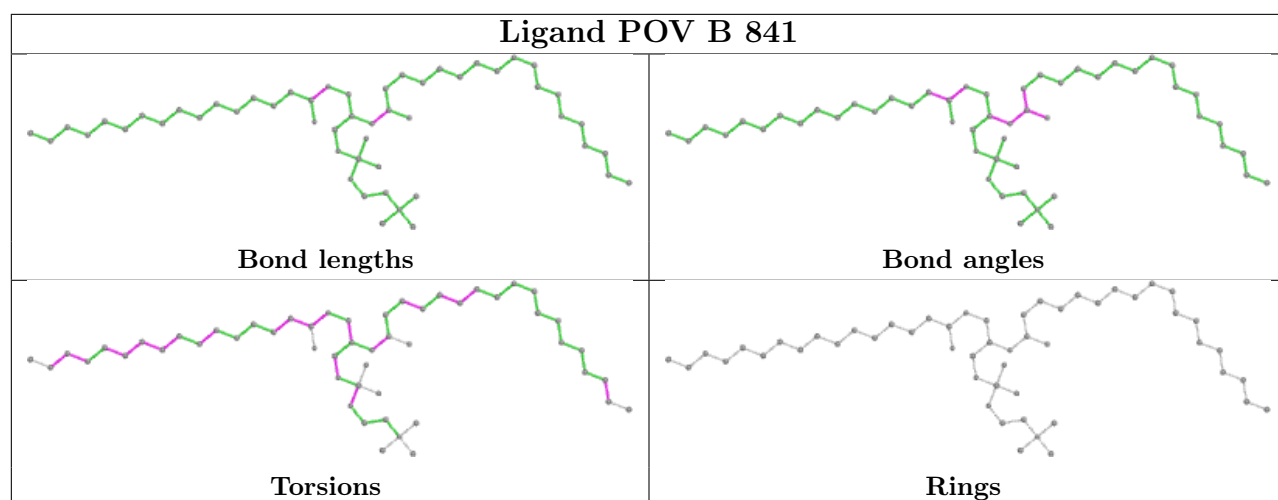


Ligand LPE B 812

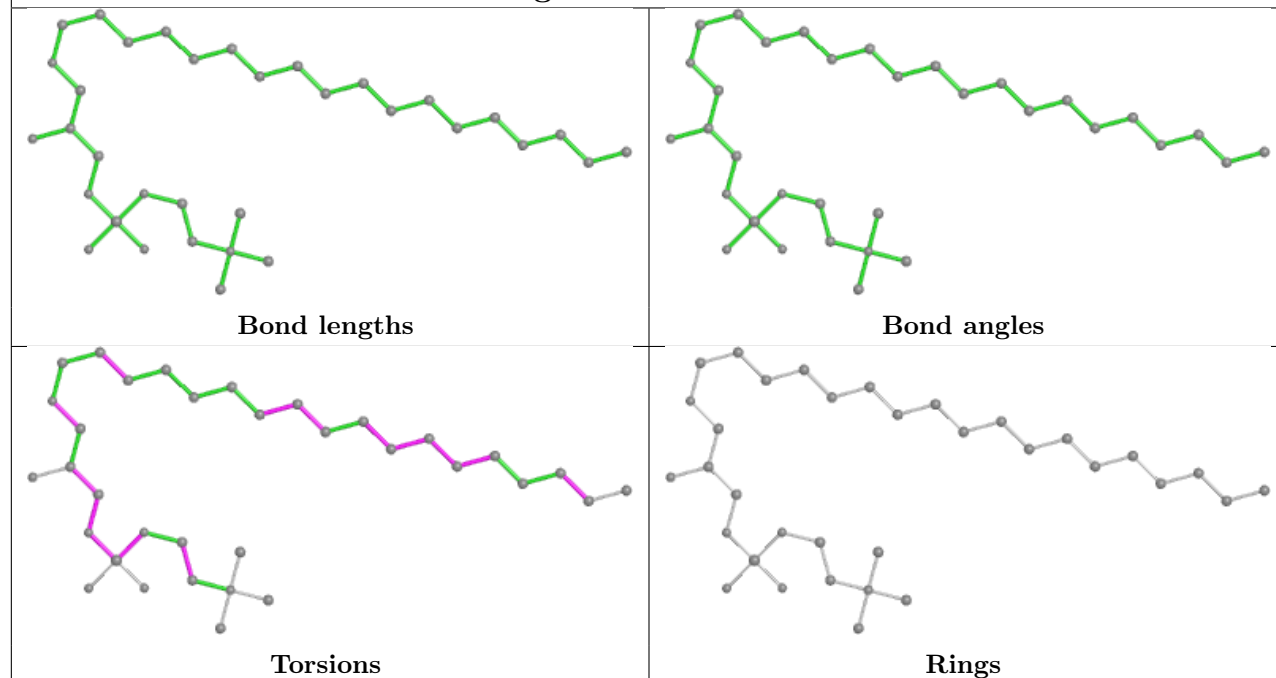


Ligand LPE A 925

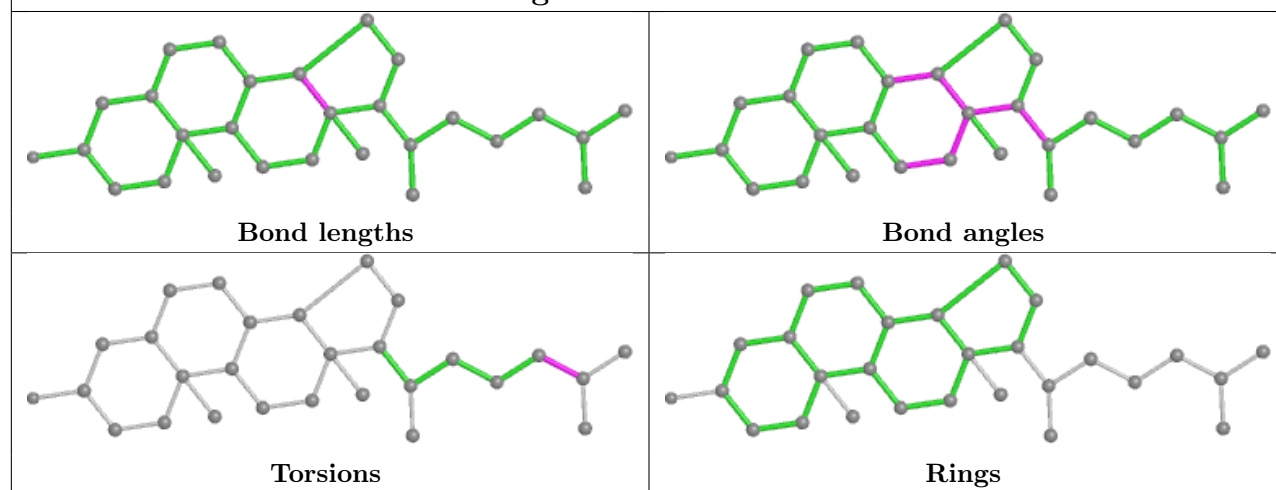




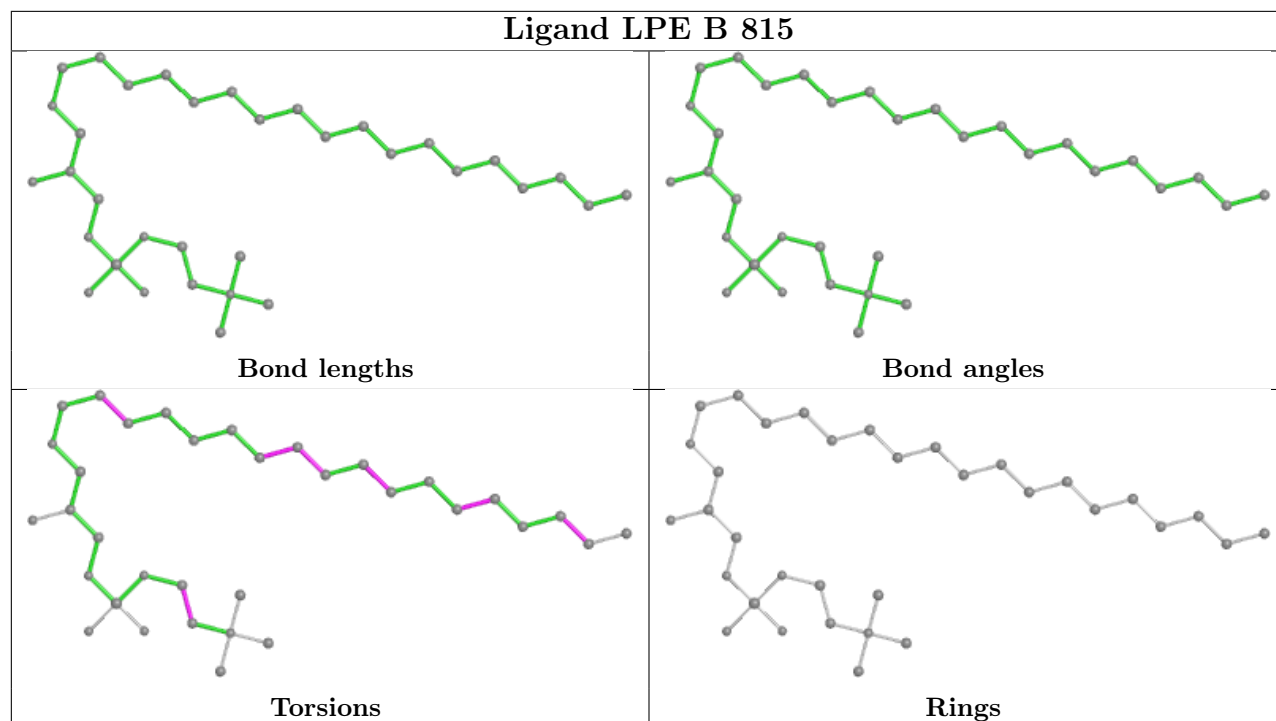
Ligand LPE A 913



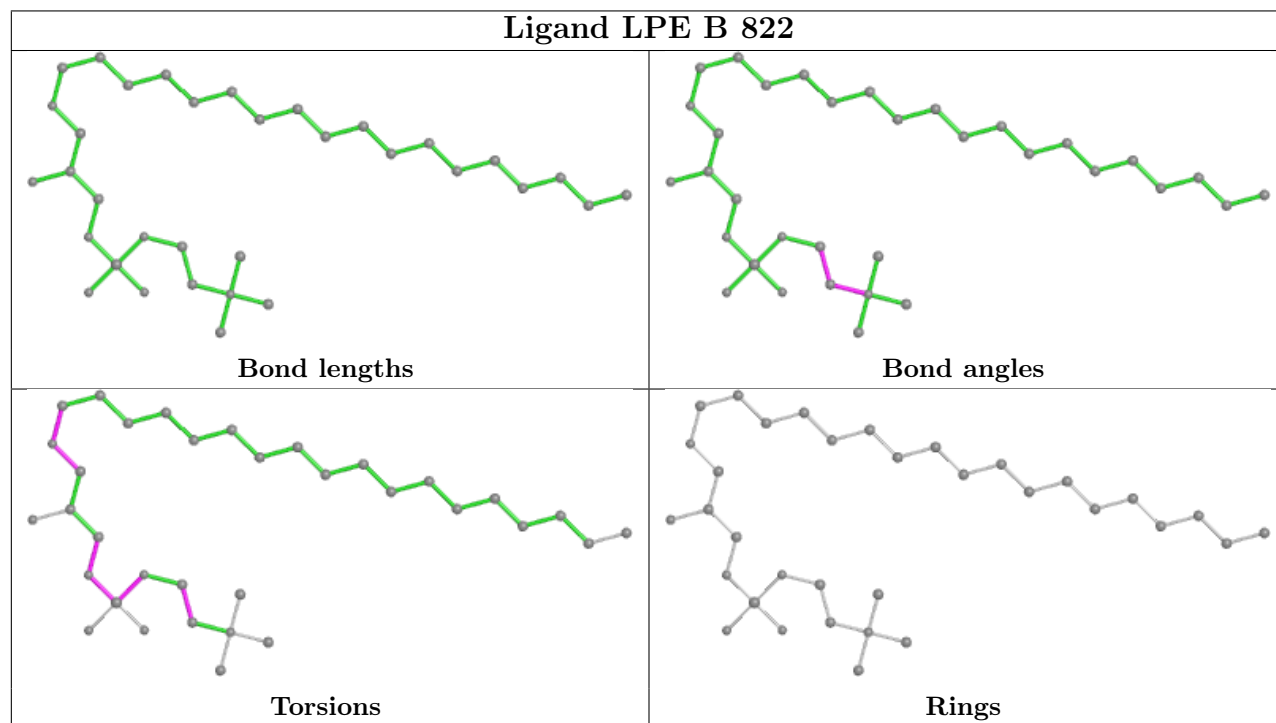
Ligand CLR A 942



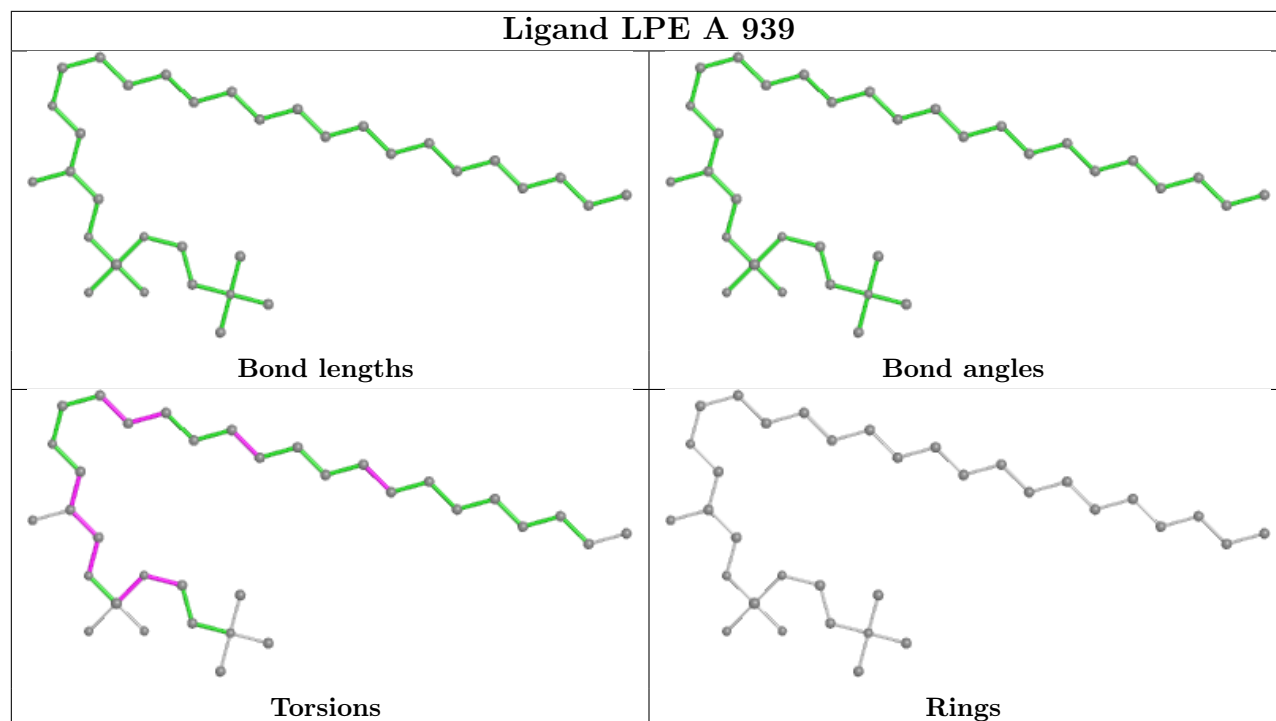
Ligand LPE B 815



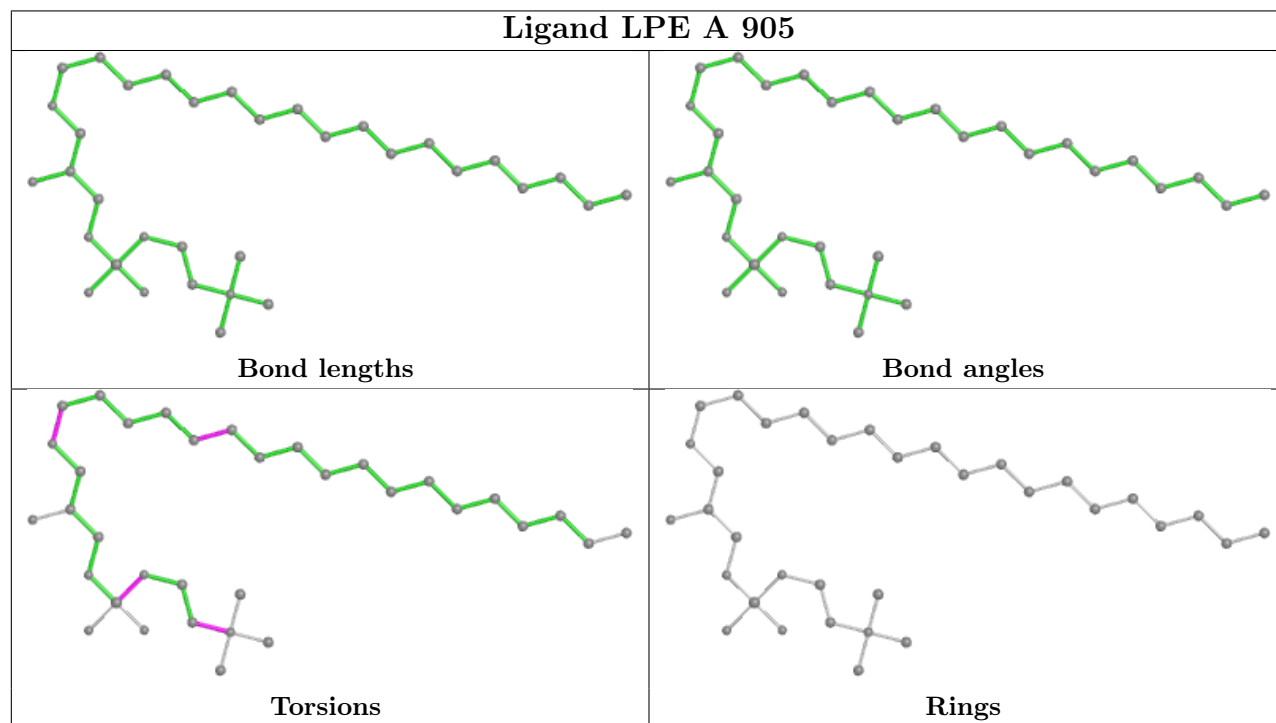
Ligand LPE B 822

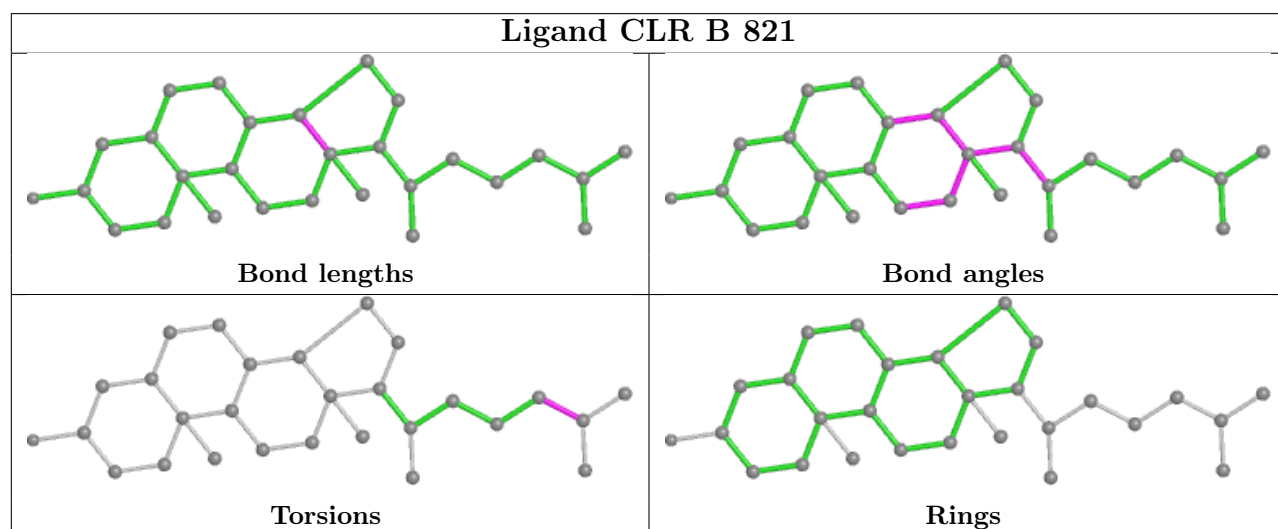
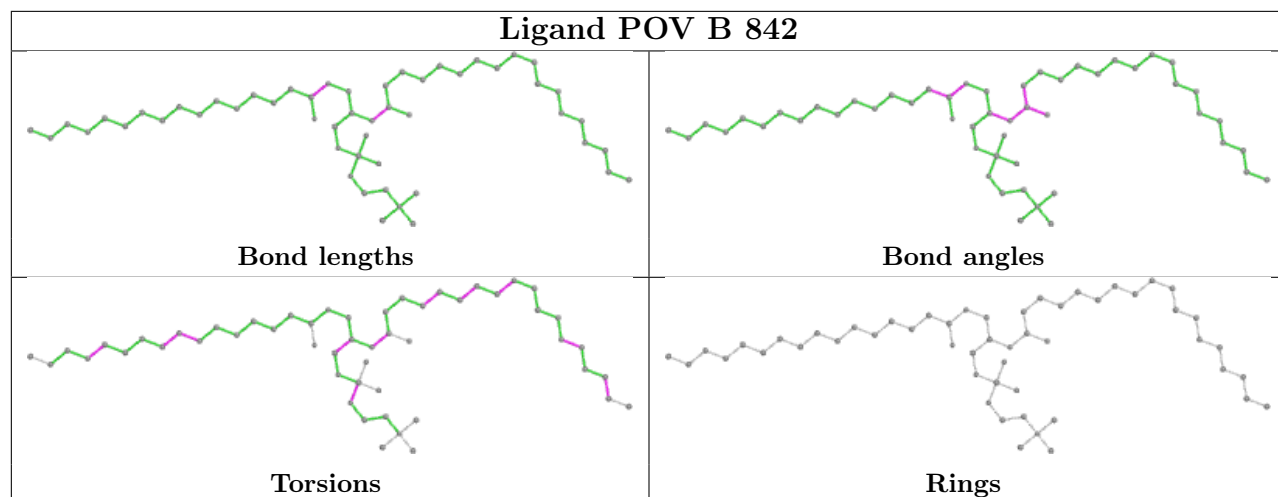


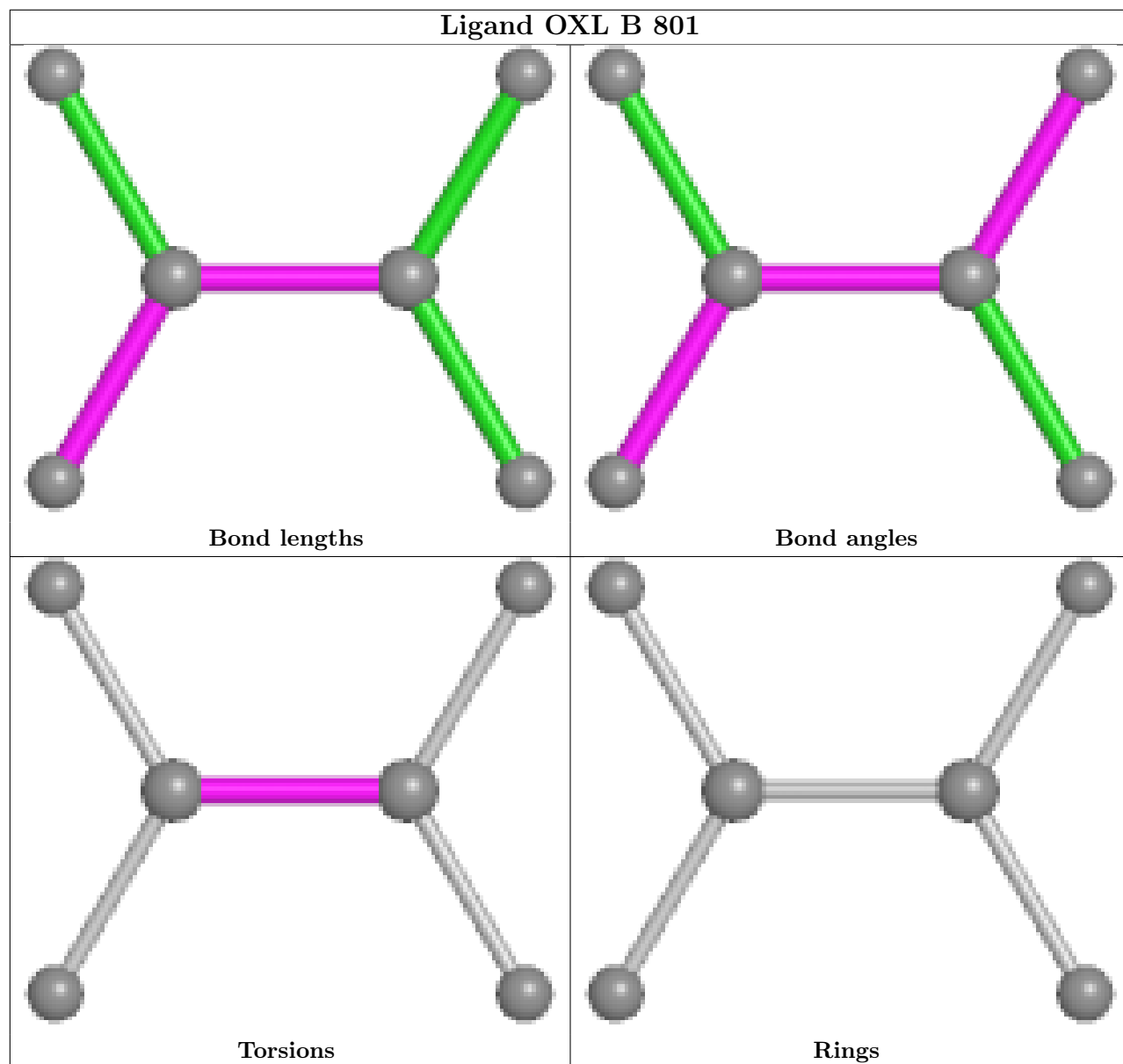
Ligand LPE A 939

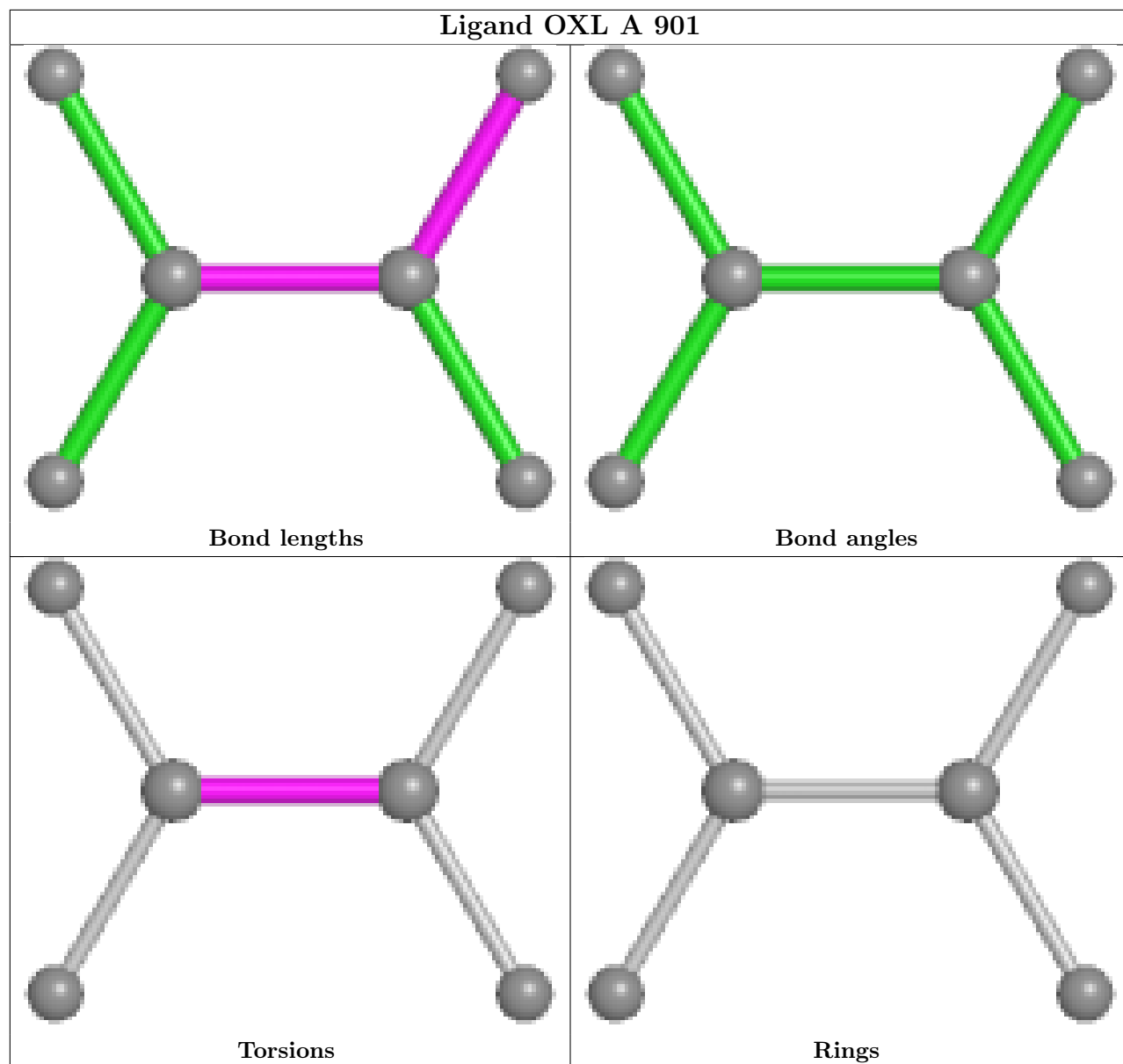


Ligand LPE A 905

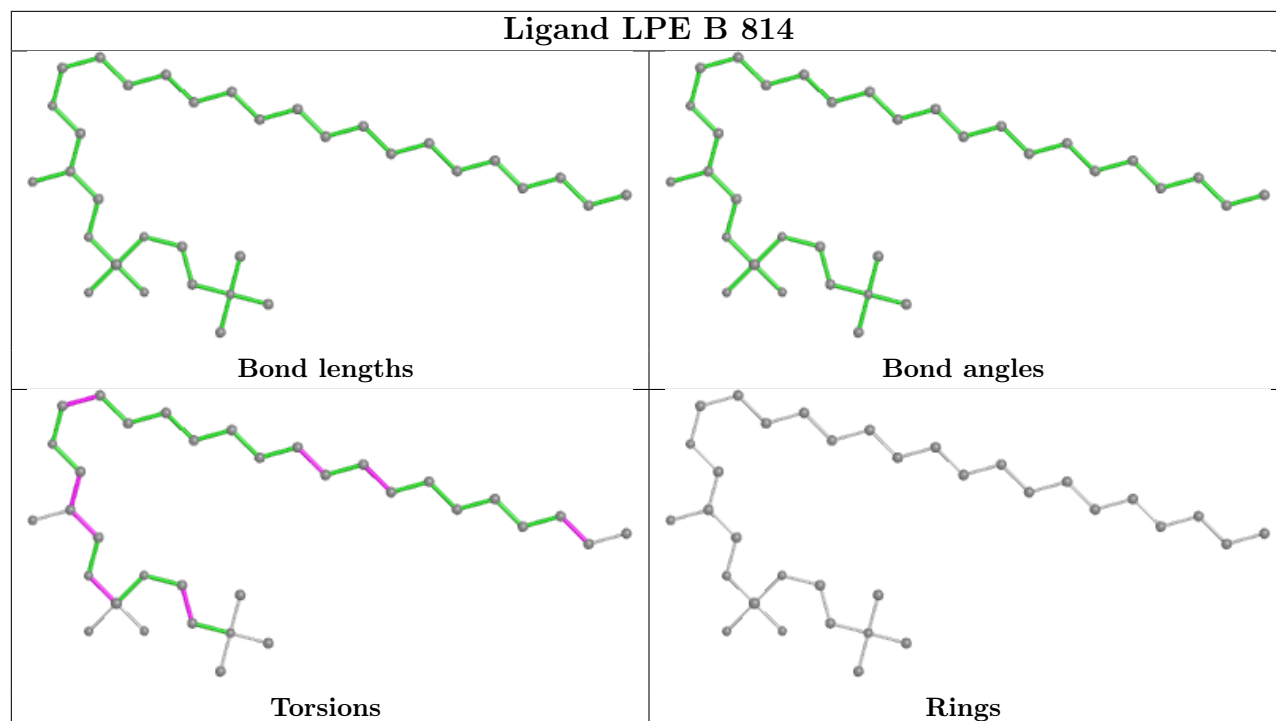




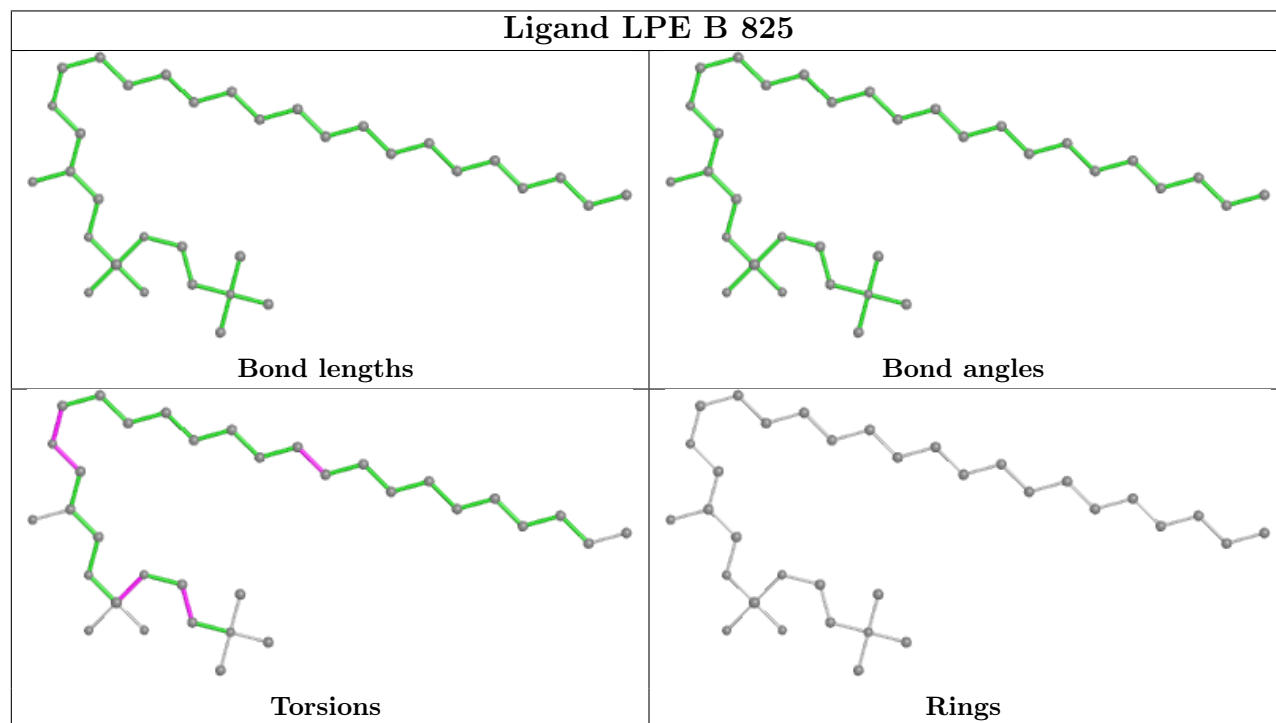




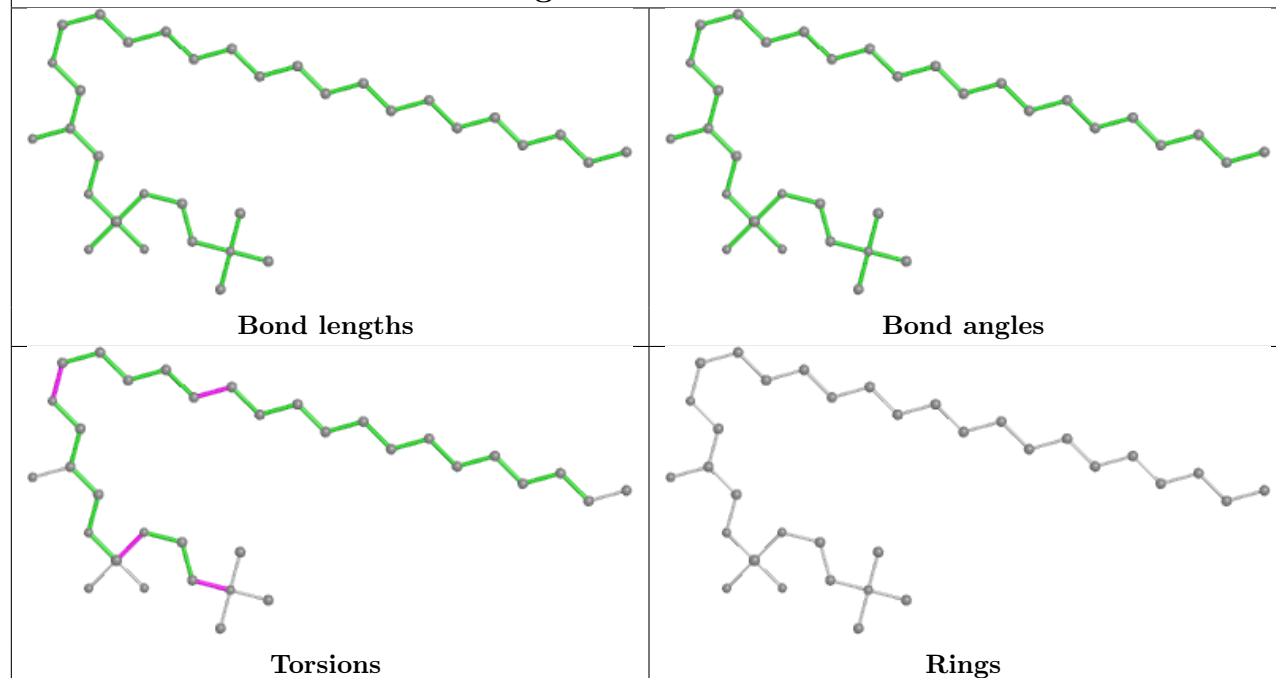
Ligand LPE B 814



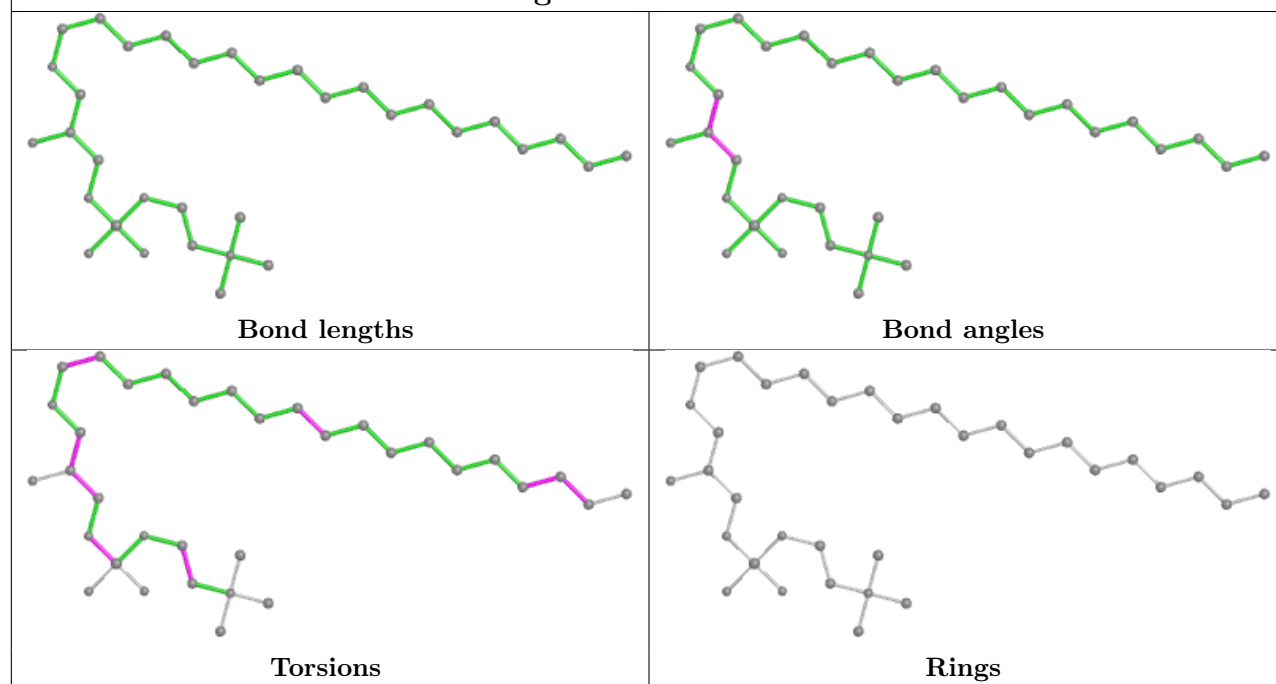
Ligand LPE B 825

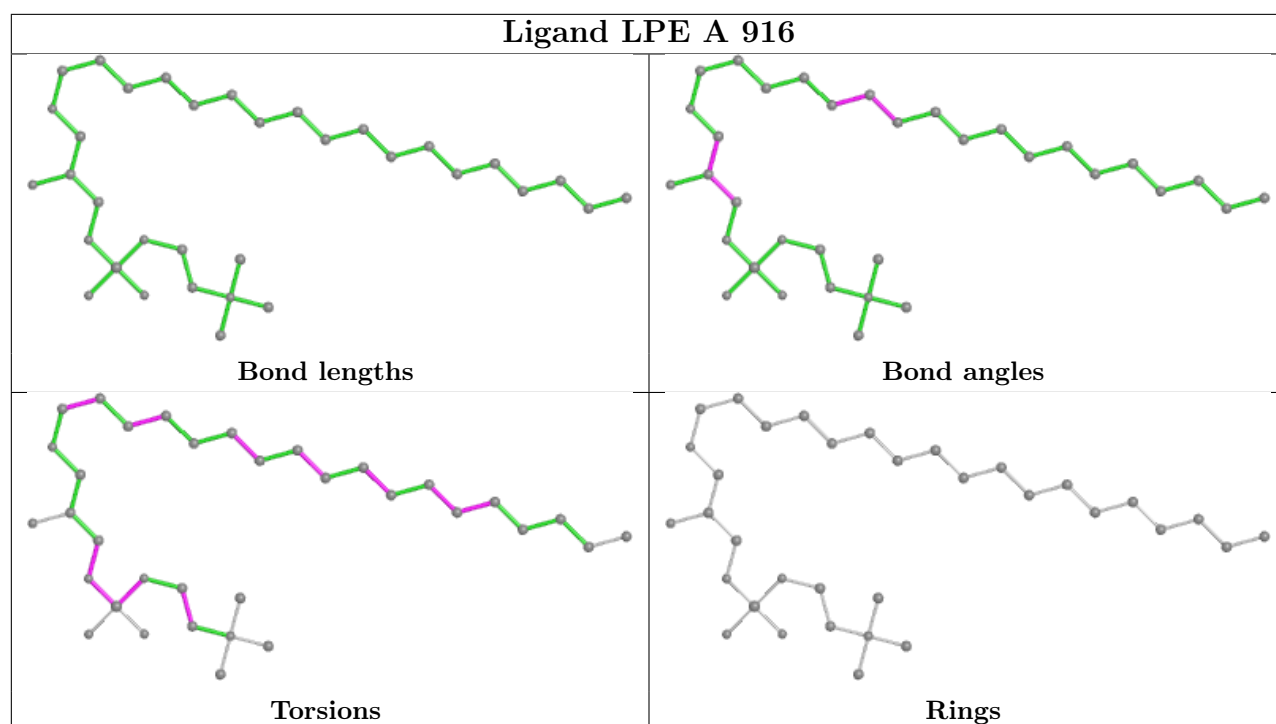


Ligand LPE B 804



Ligand LPE A 915





5.7 Other polymers [i](#)

There are no such residues in this entry.

5.8 Polymer linkage issues [i](#)

There are no chain breaks in this entry.

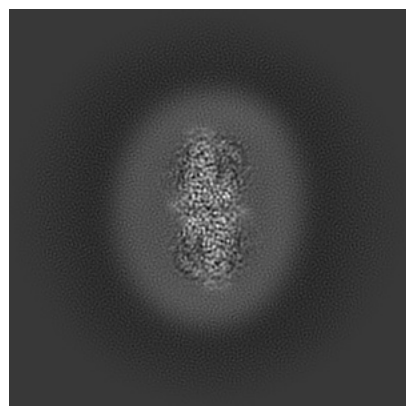
6 Map visualisation [i](#)

This section contains visualisations of the EMDB entry EMD-38002. These allow visual inspection of the internal detail of the map and identification of artifacts.

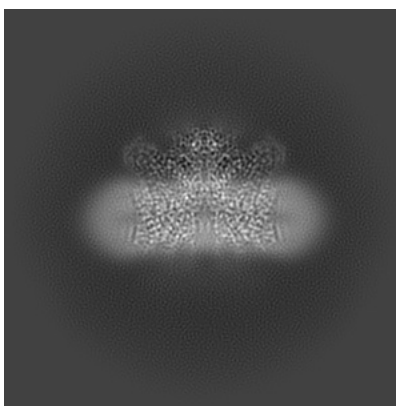
Images derived from a raw map, generated by summing the deposited half-maps, are presented below the corresponding image components of the primary map to allow further visual inspection and comparison with those of the primary map.

6.1 Orthogonal projections [i](#)

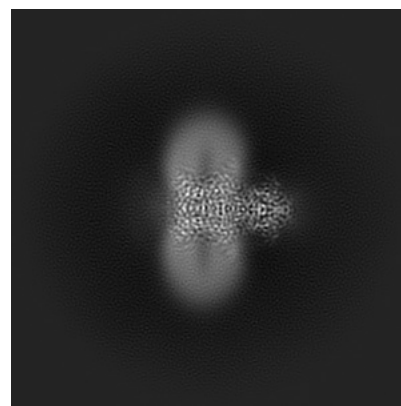
6.1.1 Primary map



X

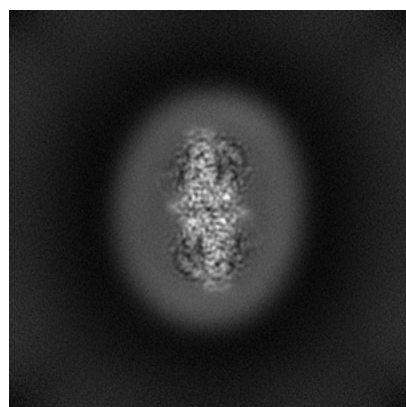


Y

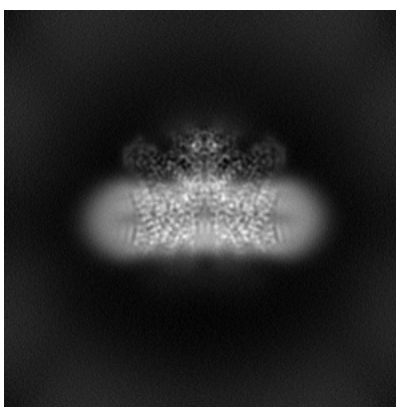


Z

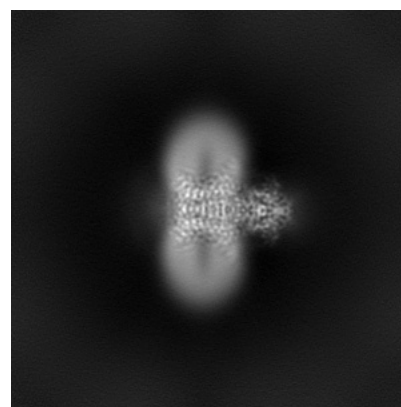
6.1.2 Raw map



X



Y

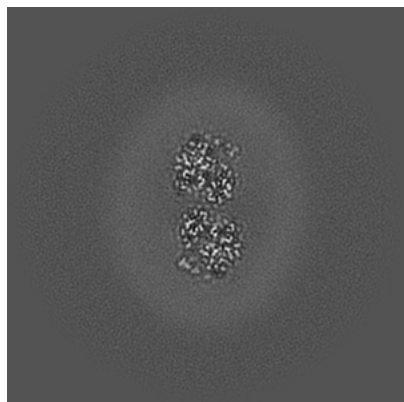


Z

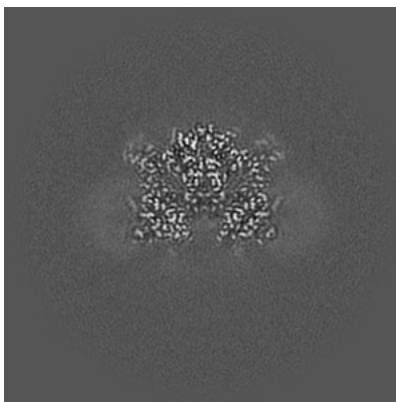
The images above show the map projected in three orthogonal directions.

6.2 Central slices [i](#)

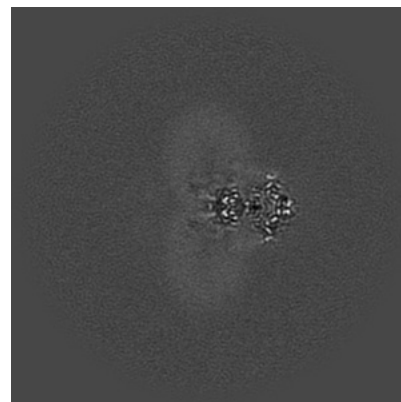
6.2.1 Primary map



X Index: 150

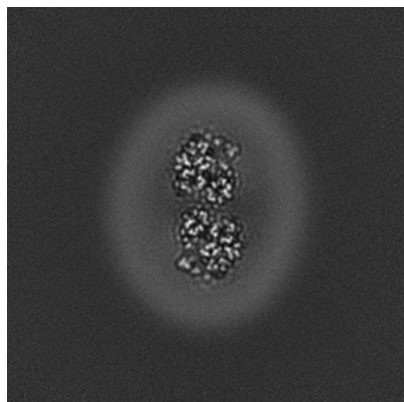


Y Index: 150

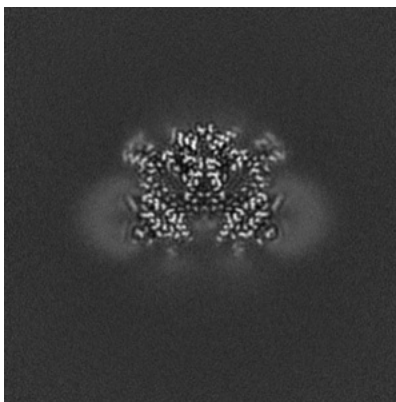


Z Index: 150

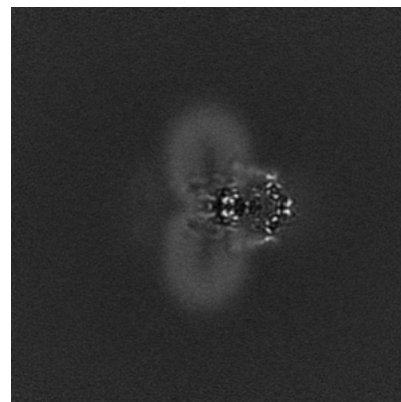
6.2.2 Raw map



X Index: 150



Y Index: 150

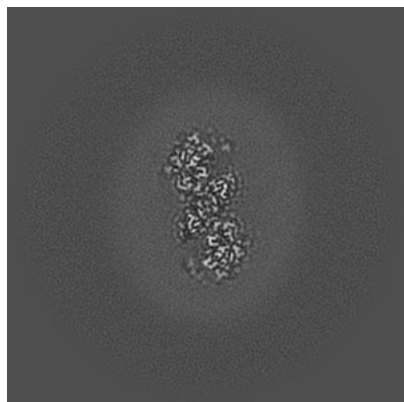


Z Index: 150

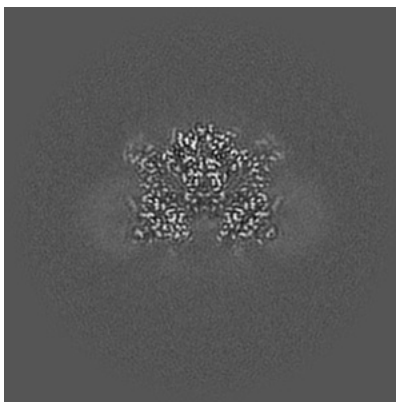
The images above show central slices of the map in three orthogonal directions.

6.3 Largest variance slices [i](#)

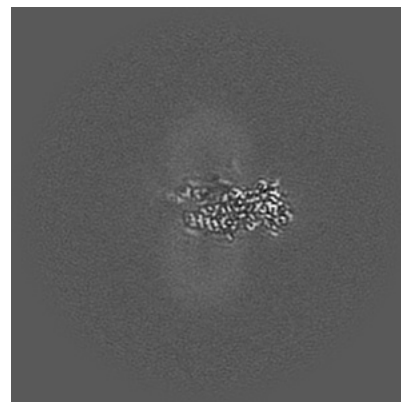
6.3.1 Primary map



X Index: 158

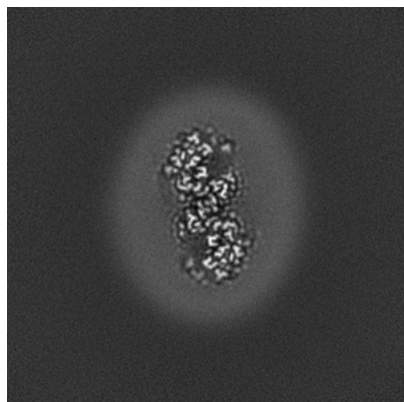


Y Index: 150

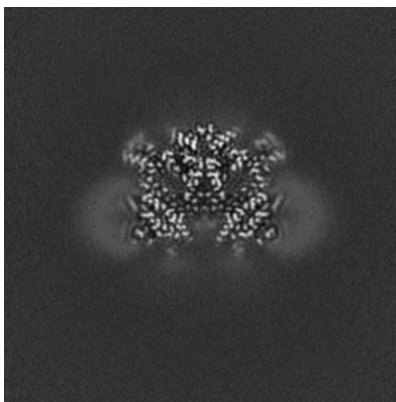


Z Index: 142

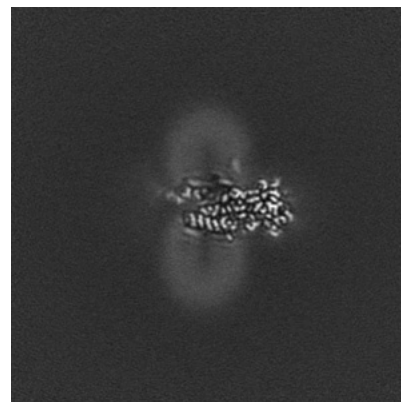
6.3.2 Raw map



X Index: 158



Y Index: 150

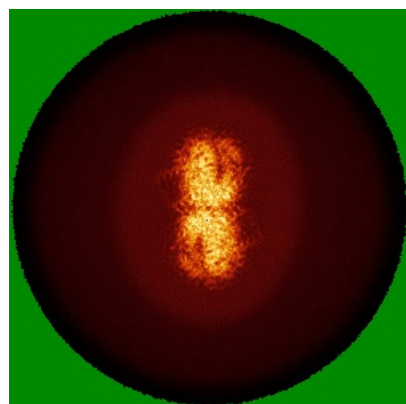


Z Index: 142

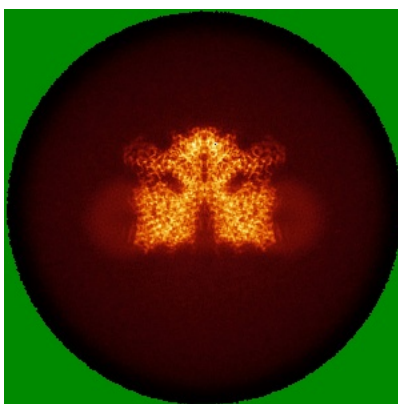
The images above show the largest variance slices of the map in three orthogonal directions.

6.4 Orthogonal standard-deviation projections (False-color) [i](#)

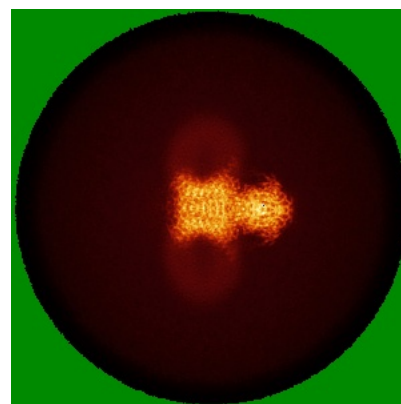
6.4.1 Primary map



X

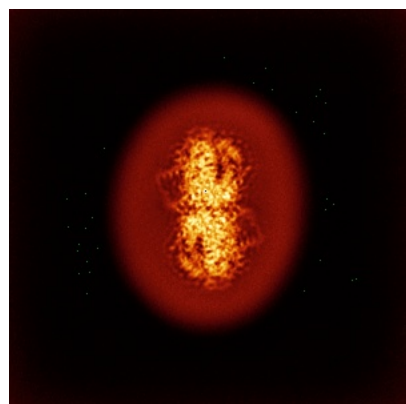


Y

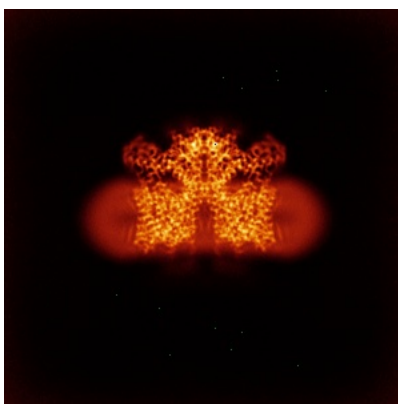


Z

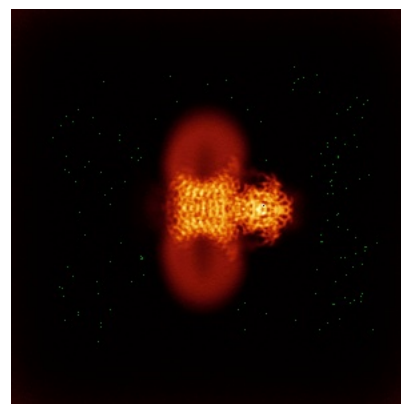
6.4.2 Raw map



X



Y

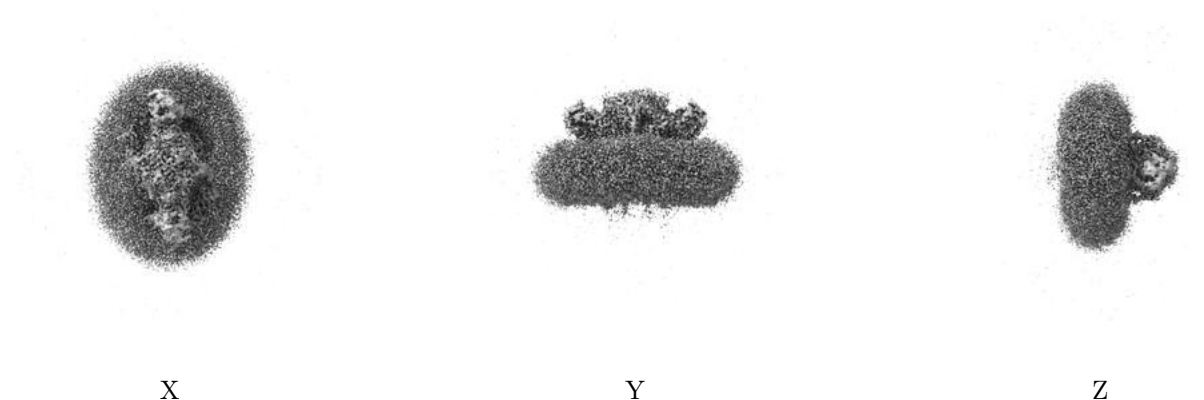


Z

The images above show the map standard deviation projections with false color in three orthogonal directions. Minimum values are shown in green, max in blue, and dark to light orange shades represent small to large values respectively.

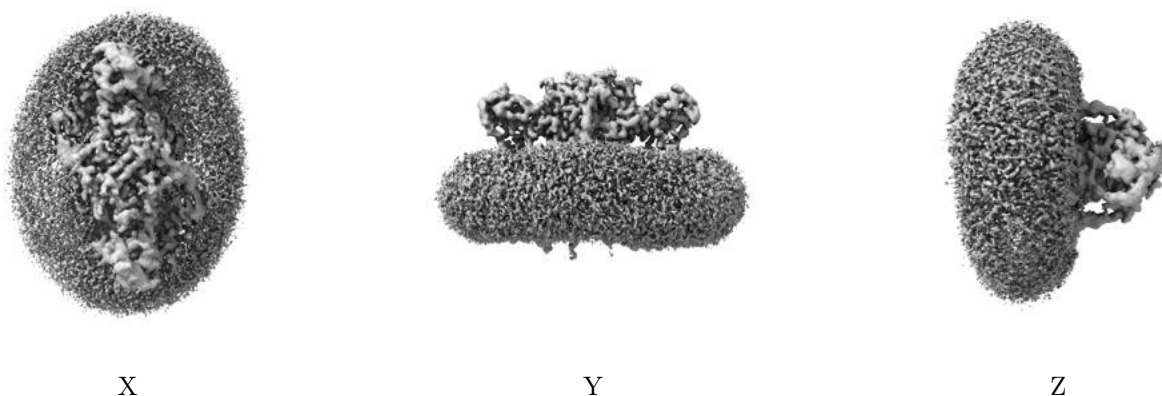
6.5 Orthogonal surface views [i](#)

6.5.1 Primary map



The images above show the 3D surface view of the map at the recommended contour level 0.35. These images, in conjunction with the slice images, may facilitate assessment of whether an appropriate contour level has been provided.

6.5.2 Raw map



These images show the 3D surface of the raw map. The raw map's contour level was selected so that its surface encloses the same volume as the primary map does at its recommended contour level.

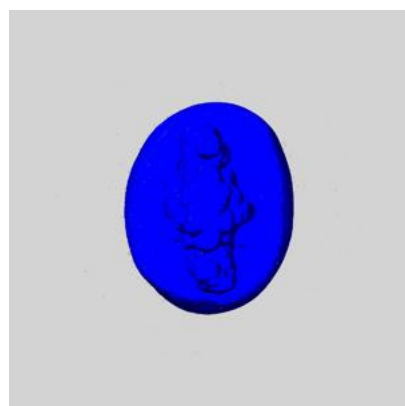
6.6 Mask visualisation [i](#)

This section shows the 3D surface view of the primary map at 50% transparency overlaid with the specified mask at 0% transparency

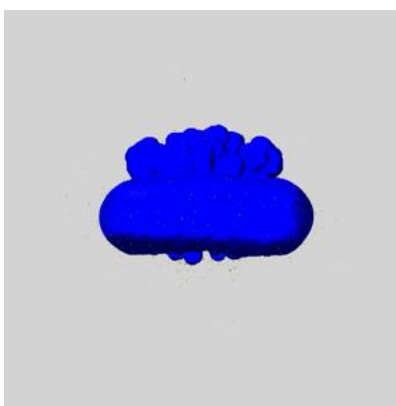
A mask typically either:

- Encompasses the whole structure
- Separates out a domain, a functional unit, a monomer or an area of interest from a larger structure

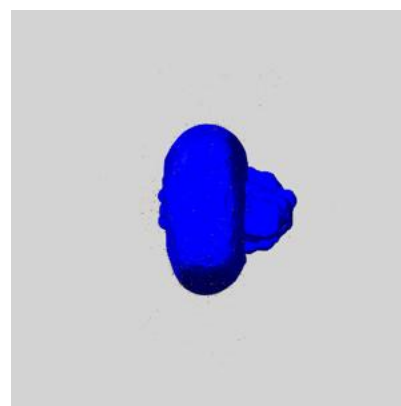
6.6.1 emd_38002_msk_1.map [i](#)



X



Y

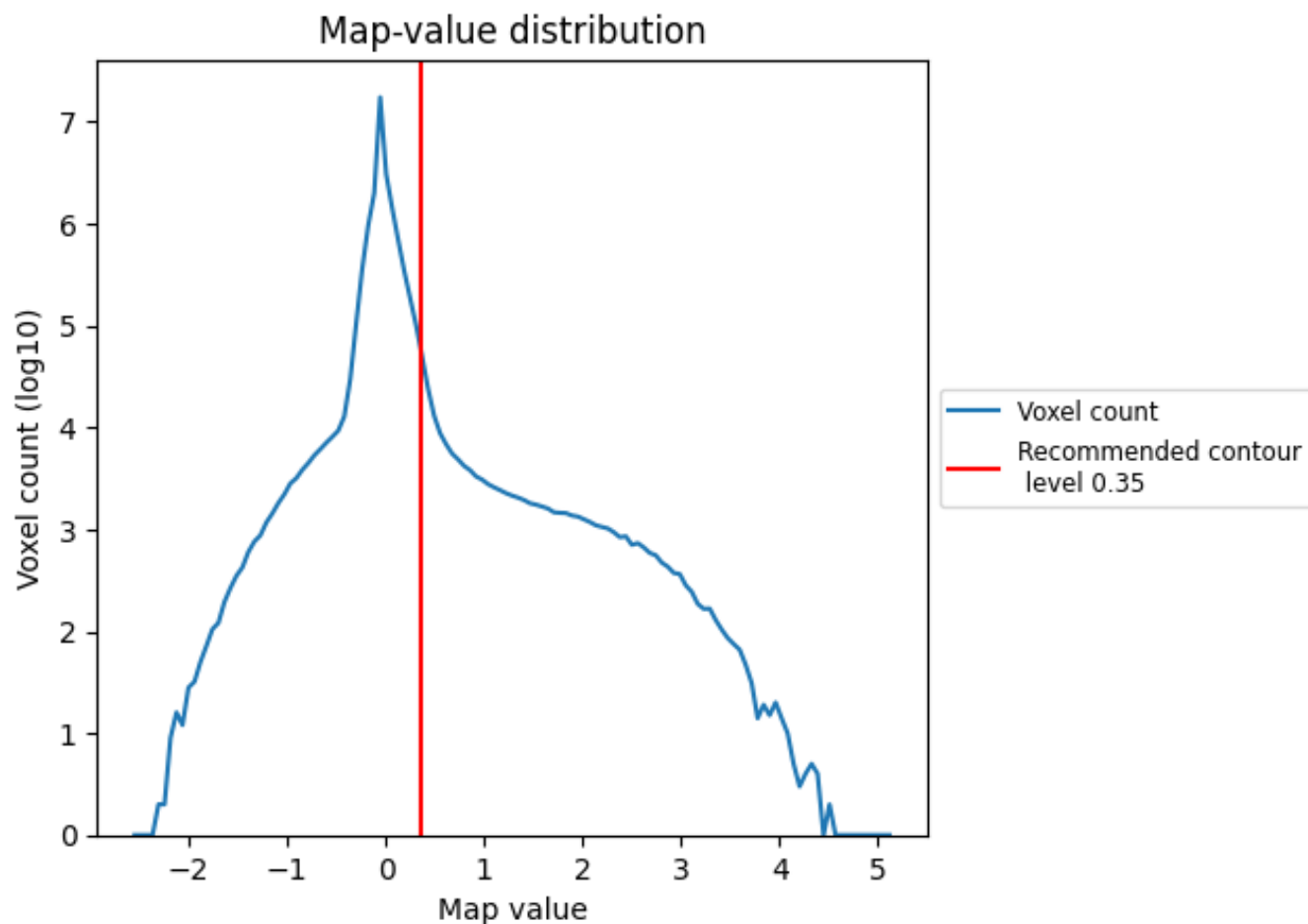


Z

7 Map analysis [i](#)

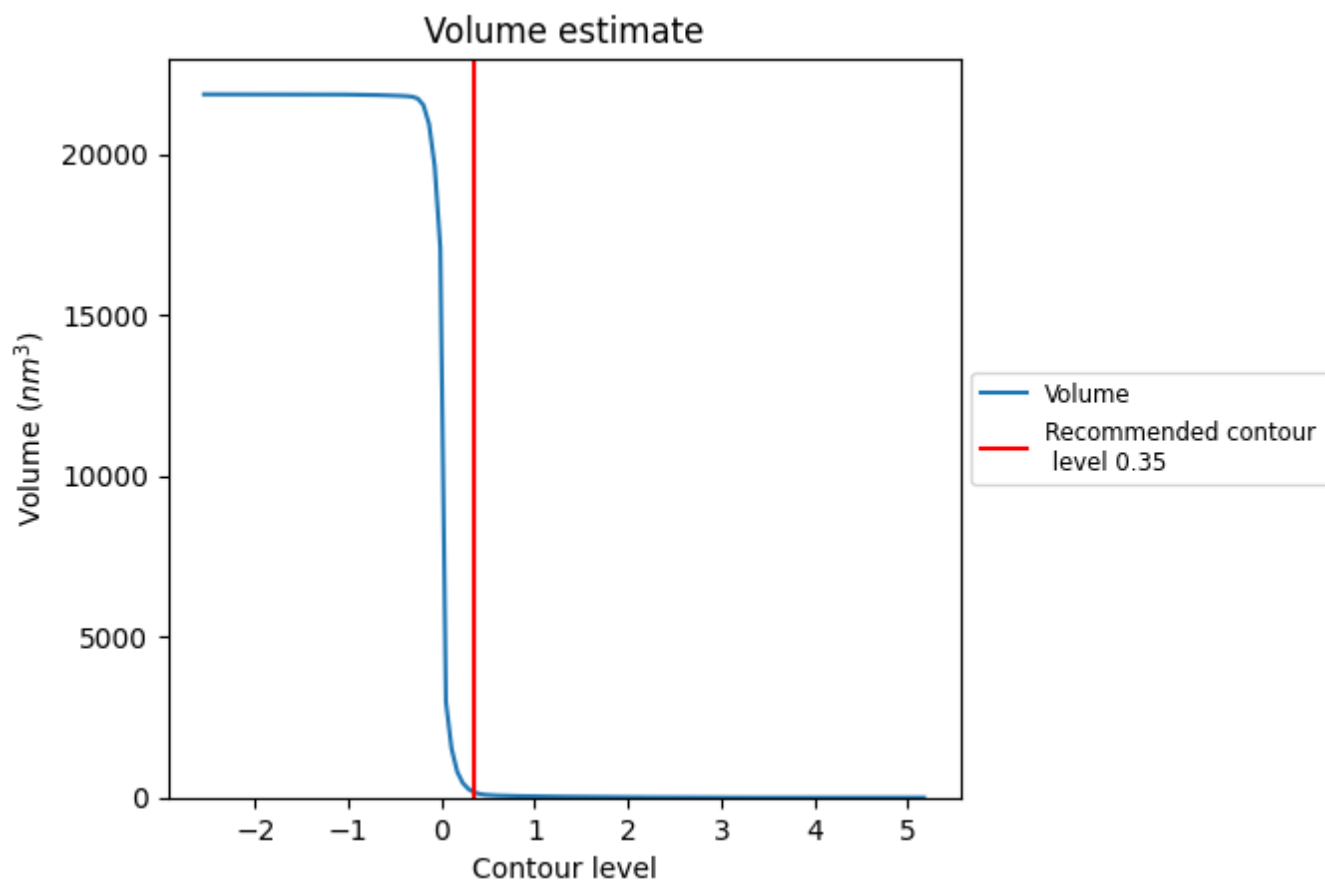
This section contains the results of statistical analysis of the map.

7.1 Map-value distribution [i](#)



The map-value distribution is plotted in 128 intervals along the x-axis. The y-axis is logarithmic. A spike in this graph at zero usually indicates that the volume has been masked.

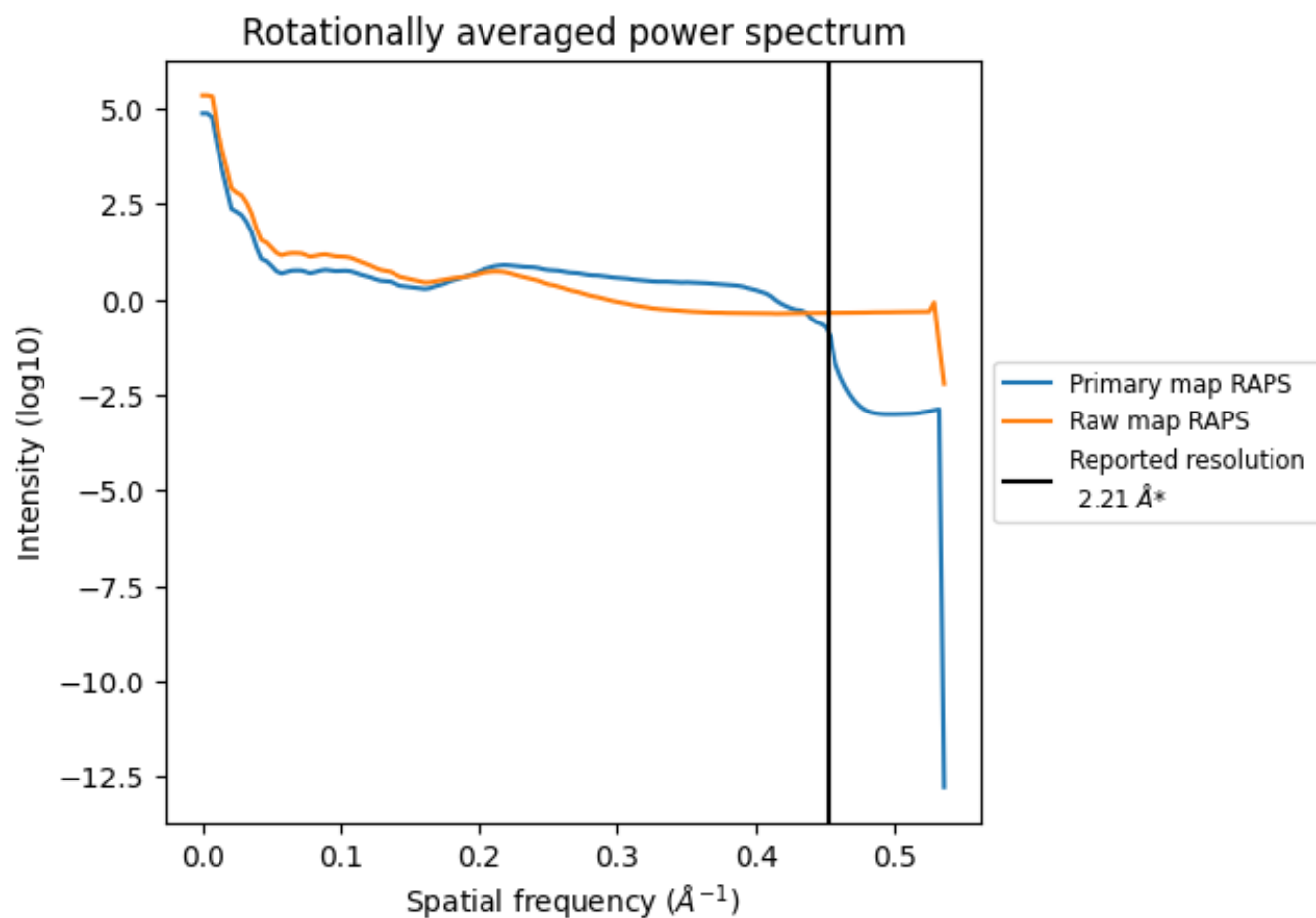
7.2 Volume estimate [i](#)



The volume at the recommended contour level is 164 nm^3 ; this corresponds to an approximate mass of 148 kDa.

The volume estimate graph shows how the enclosed volume varies with the contour level. The recommended contour level is shown as a vertical line and the intersection between the line and the curve gives the volume of the enclosed surface at the given level.

7.3 Rotationally averaged power spectrum ⓘ

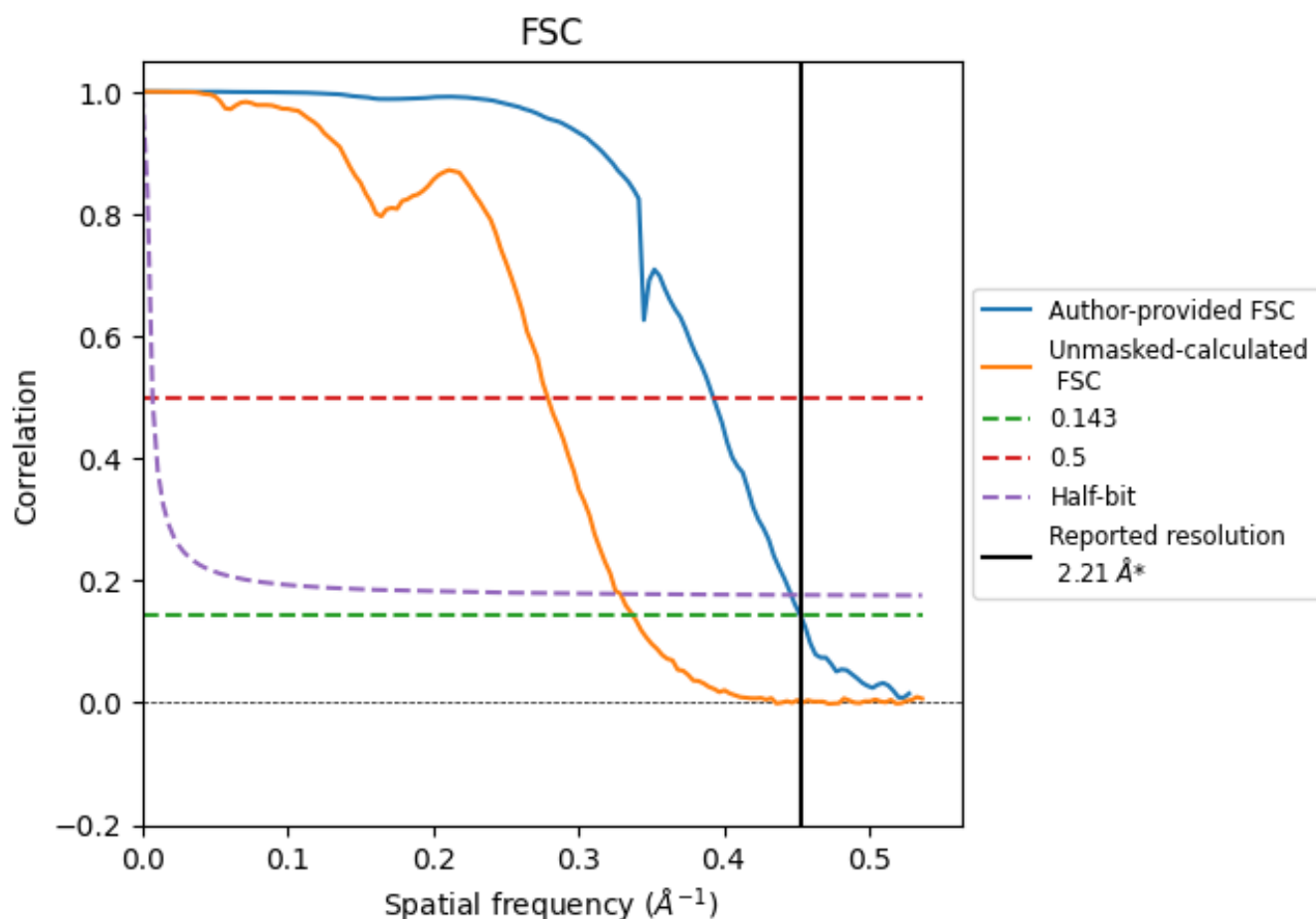


*Reported resolution corresponds to spatial frequency of 0.452 \AA^{-1}

8 Fourier-Shell correlation [i](#)

Fourier-Shell Correlation (FSC) is the most commonly used method to estimate the resolution of single-particle and subtomogram-averaged maps. The shape of the curve depends on the imposed symmetry, mask and whether or not the two 3D reconstructions used were processed from a common reference. The reported resolution is shown as a black line. A curve is displayed for the half-bit criterion in addition to lines showing the 0.143 gold standard cut-off and 0.5 cut-off.

8.1 FSC [i](#)



*Reported resolution corresponds to spatial frequency of 0.452 \AA^{-1}

8.2 Resolution estimates [i](#)

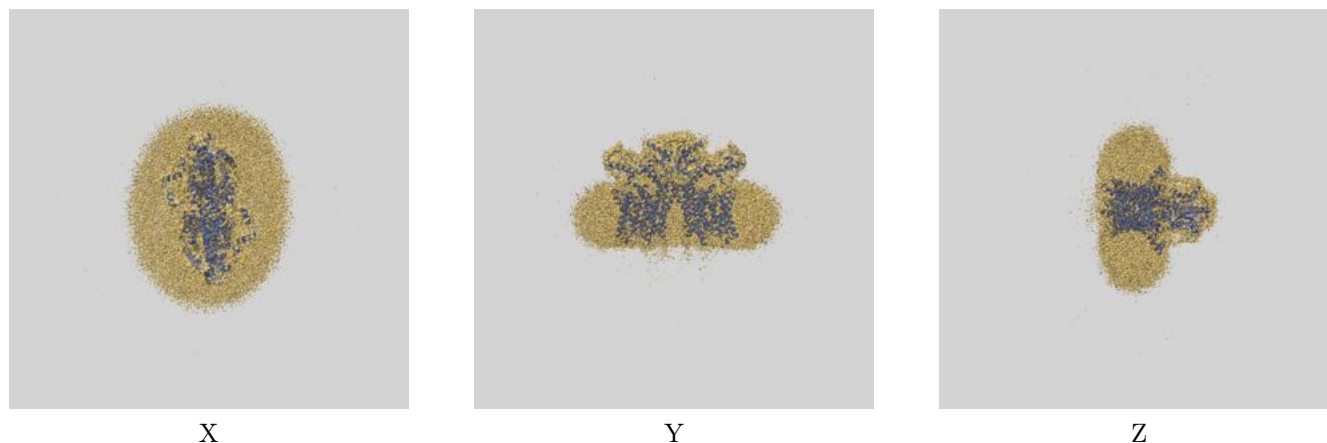
Resolution estimate (Å)	Estimation criterion (FSC cut-off)		
	0.143	0.5	Half-bit
Reported by author	2.21	-	-
Author-provided FSC curve	2.21	2.55	2.24
Unmasked-calculated*	2.96	3.59	3.04

*Resolution estimate based on FSC curve calculated by comparison of deposited half-maps. The value from deposited half-maps intersecting FSC 0.143 CUT-OFF 2.96 differs from the reported value 2.21 by more than 10 %

9 Map-model fit [i](#)

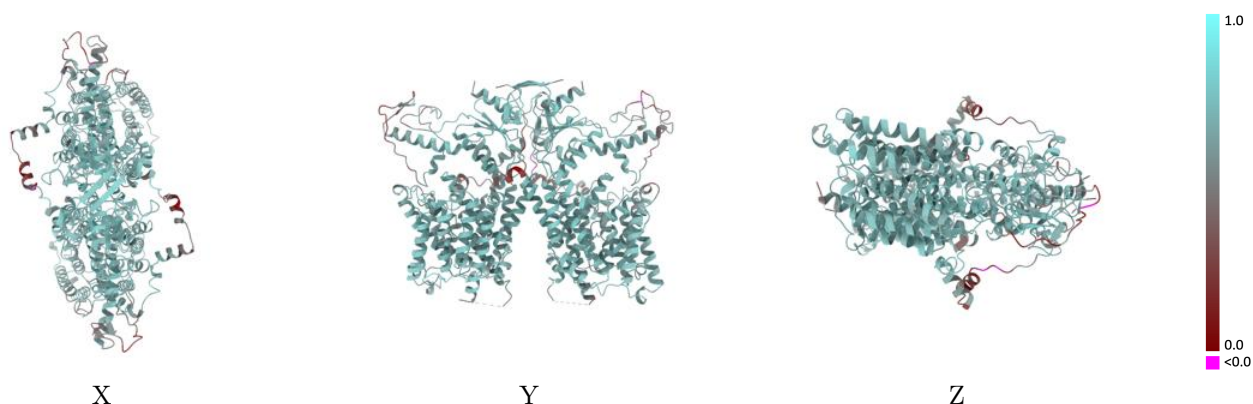
This section contains information regarding the fit between EMDB map EMD-38002 and PDB model 8X1U. Per-residue inclusion information can be found in section [3](#) on page [13](#).

9.1 Map-model overlay [i](#)



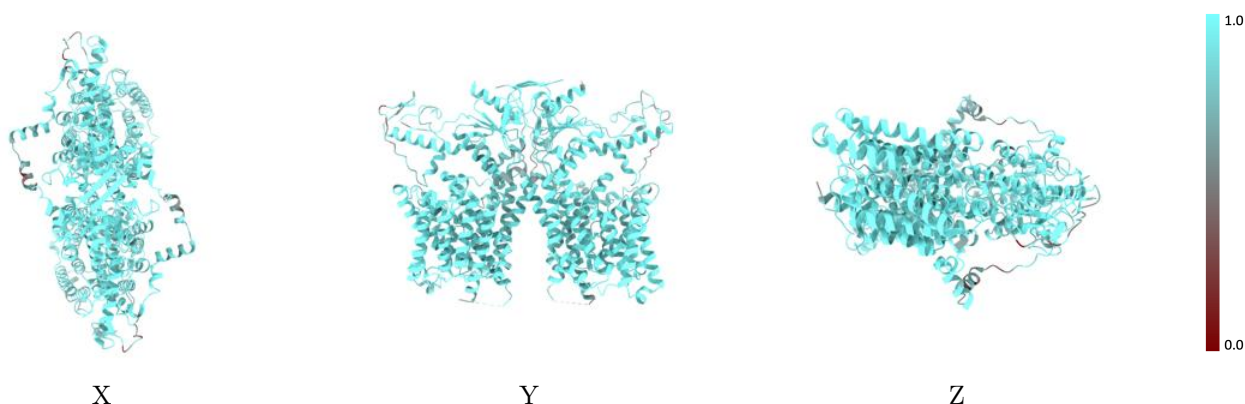
The images above show the 3D surface view of the map at the recommended contour level 0.35 at 50% transparency in yellow overlaid with a ribbon representation of the model coloured in blue. These images allow for the visual assessment of the quality of fit between the atomic model and the map.

9.2 Q-score mapped to coordinate model [i](#)



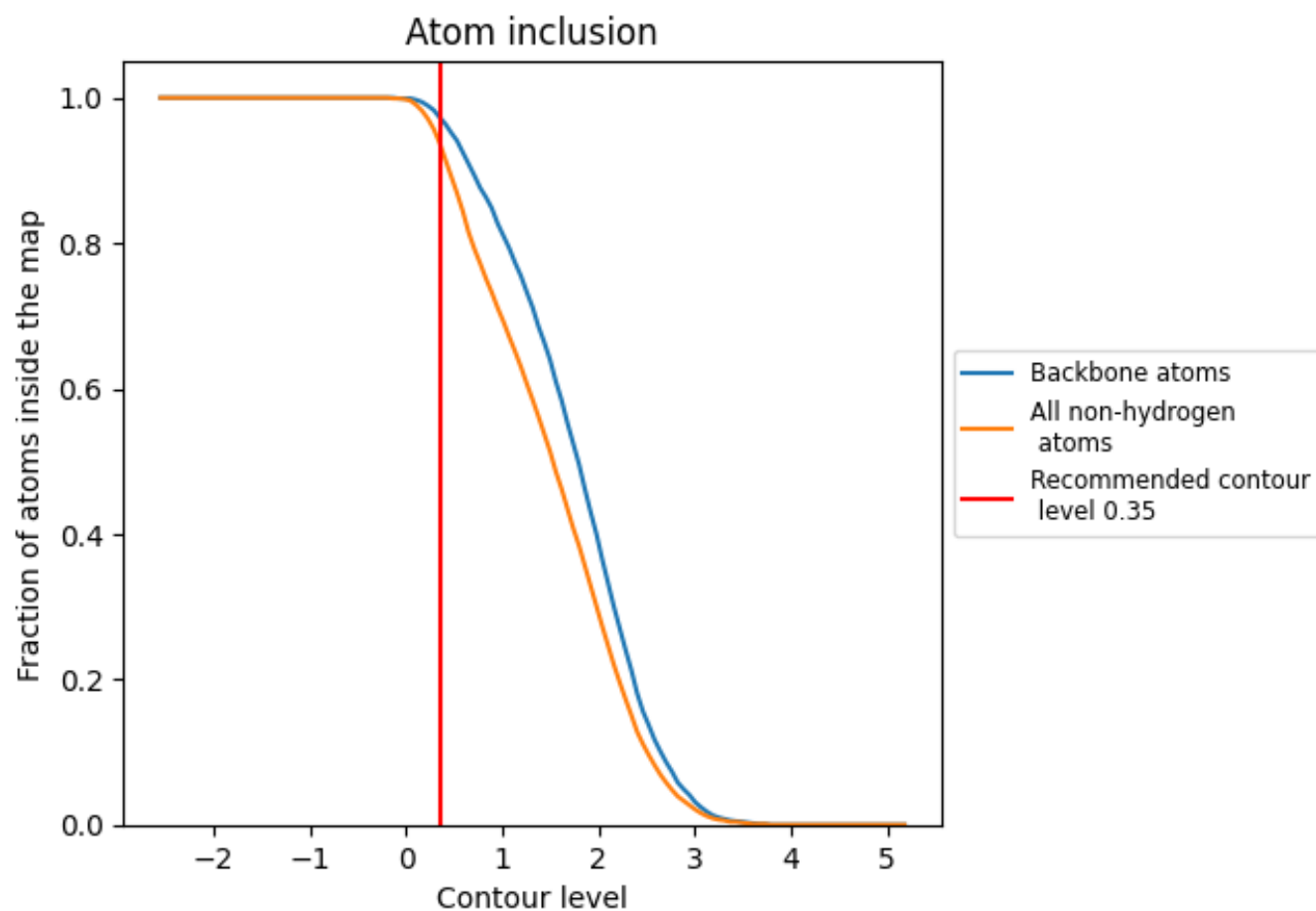
The images above show the model with each residue coloured according to its Q-score. This shows their resolvability in the map with higher Q-score values reflecting better resolvability. Please note: Q-score is calculating the resolvability of atoms, and thus high values are only expected at resolutions at which atoms can be resolved. Low Q-score values may therefore be expected for many entries.

9.3 Atom inclusion mapped to coordinate model [i](#)



The images above show the model with each residue coloured according to its atom inclusion. This shows to what extent they are inside the map at the recommended contour level (0.35).

9.4 Atom inclusion [i](#)



At the recommended contour level, 97% of all backbone atoms, 94% of all non-hydrogen atoms, are inside the map.

9.5 Map-model fit summary ⓘ

The table lists the average atom inclusion at the recommended contour level (0.35) and Q-score for the entire model and for each chain.

Chain	Atom inclusion	Q-score
All	<div></div> 0.9380	<div></div> 0.6230
A	<div></div> 0.9400	<div></div> 0.6230
B	<div></div> 0.9360	<div></div> 0.6220

