



wwPDB EM Validation Summary Report ⓘ

Mar 8, 2026 – 12:42 AM UTC

PDB ID : 7X1U / pdb_00007x1u
EMDB ID : EMD-32950
Title : Structure of Thyrotropin-Releasing Hormone Receptor bound with an Endogenous Peptide Agonist TRH.
Authors : Yang, F.; Zhang, H.H.; Meng, X.Y.; Li, Y.G.; Zhou, Y.X.; Ling, S.L.; Liu, L.; Shi, P.; Tian, C.L.
Deposited on : 2022-02-24
Resolution : 3.19 Å(reported)

This is a wwPDB EM Validation Summary Report for a publicly released PDB entry.

We welcome your comments at validation@mail.wwpdb.org

A user guide is available at

<https://www.wwpdb.org/validation/2017/EMValidationReportHelp>

with specific help available everywhere you see the ⓘ symbol.

The types of validation reports are described at

<http://www.wwpdb.org/validation/2017/FAQs#types>.

The following versions of software and data (see [references ⓘ](#)) were used in the production of this report:

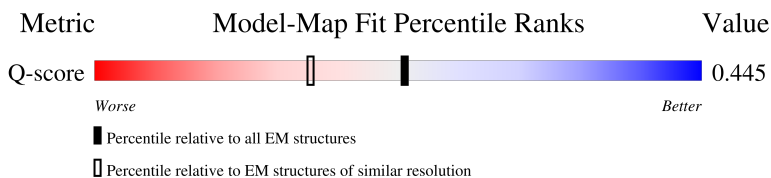
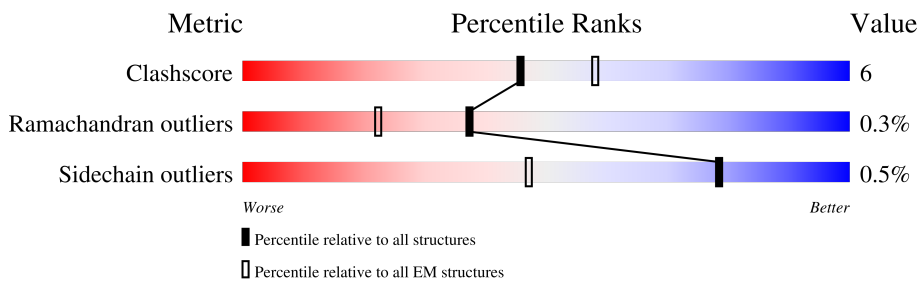
EMDB validation analysis : 0.0.1.dev132
Mogul : 2022.3.0, CSD as543be (2022)
MolProbity : 4-5-2 with Phenix2.0
Percentile statistics : 20250101.v01 (using entries in the PDB archive January 1st 2025)
EM percentile statistics : 202505.v01 (Using data in the EMDB archive up until May 2025)
MapQ : 1.9.13
Ideal geometry (proteins) : Engh & Huber (2001)
Ideal geometry (DNA, RNA) : Parkinson et al. (1996)
Validation Pipeline (wwPDB-VP) : 2.49

1 Overall quality at a glance

The following experimental techniques were used to determine the structure:
ELECTRON MICROSCOPY

The reported resolution of this entry is 3.19 Å.

Percentile scores (ranging between 0-100) for global validation metrics of the entry are shown in the following graphic. The table shows the number of entries on which the scores are based.



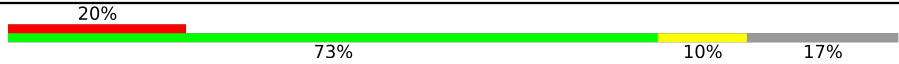

Metric	Whole archive (#Entries)	EM structures (#Entries)	Similar EM resolution (#Entries, resolution range(Å))
Clashscore	229148	23984	-
Ramachandran outliers	224038	23583	-
Sidechain outliers	223484	23102	-
Q-score	-	25397	14455 (2.69 - 3.69)

The table below summarises the geometric issues observed across the polymeric chains and their fit to the map. The red, orange, yellow and green segments of the bar indicate the fraction of residues that contain outliers for ≥ 3 , 2, 1 and 0 types of geometric quality criteria respectively. A grey segment represents the fraction of residues that are not modelled. The numeric value for each fraction is indicated below the corresponding segment, with a dot representing fractions $\leq 5\%$. The upper red bar (where present) indicates the fraction of residues that have poor fit to the EM map (all-atom inclusion $< 40\%$). The numeric value is given above the bar.

Mol	Chain	Length	Quality of chain
1	F	71	<p>48% (Poor fit), 69% (0 outliers), 31% (Not modelled)</p>
2	A	398	<p>8% (1 outlier), 61% (0 outliers), 7% (1 outlier), 32% (Not modelled)</p>
3	B	246	<p>8% (1 outlier), 79% (0 outliers), 11% (1 outlier), 10% (Not modelled)</p>
4	C	340	<p>11% (1 outlier), 77% (0 outliers), 20% (1 outlier), . (Not modelled)</p>

Continued on next page...

Continued from previous page...

Mol	Chain	Length	Quality of chain
5	D	251	
6	E	4	

2 Entry composition [i](#)

There are 6 unique types of molecules in this entry. The entry contains 7483 atoms, of which 0 are hydrogens and 0 are deuteriums.

In the tables below, the AltConf column contains the number of residues with at least one atom in alternate conformation and the Trace column contains the number of residues modelled with at most 2 atoms.

- Molecule 1 is a protein called Guanine nucleotide-binding protein G(I)/G(S)/G(O) subunit gamma-2.

Mol	Chain	Residues	Atoms					AltConf	Trace
			Total	C	N	O	S		
1	F	49	302	193	52	55	2	0	0

There is a discrepancy between the modelled and reference sequences:

Chain	Residue	Modelled	Actual	Comment	Reference
F	68	SER	CYS	conflict	UNP P63212

- Molecule 2 is a protein called Thyrotropin-releasing hormone receptor.

Mol	Chain	Residues	Atoms					AltConf	Trace
			Total	C	N	O	S		
2	A	271	1918	1268	311	326	13	0	0

- Molecule 3 is a protein called mini-G alpha q prtoein.

Mol	Chain	Residues	Atoms					AltConf	Trace
			Total	C	N	O	S		
3	B	221	1612	1029	284	293	6	0	0

- Molecule 4 is a protein called Guanine nucleotide-binding protein G(I)/G(S)/G(T) subunit beta-1.

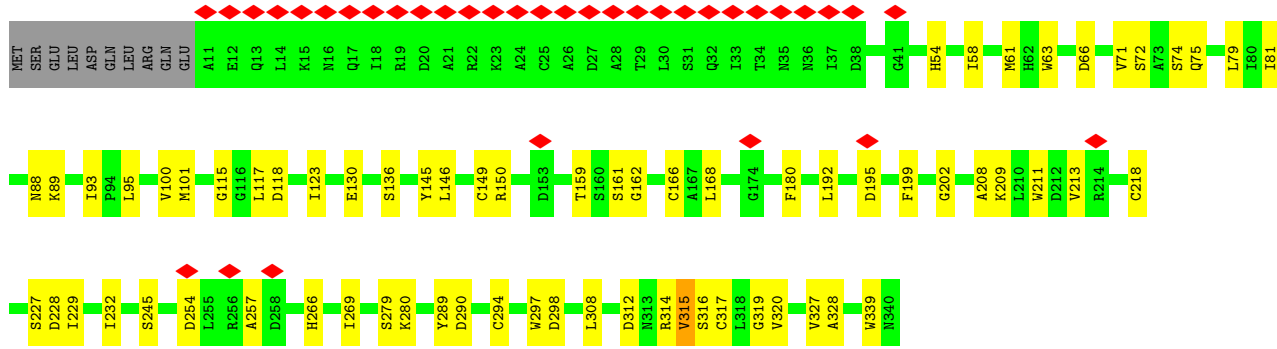
Mol	Chain	Residues	Atoms					AltConf	Trace
			Total	C	N	O	S		
4	C	330	2269	1416	392	445	16	0	0

- Molecule 5 is a protein called ScFv16.

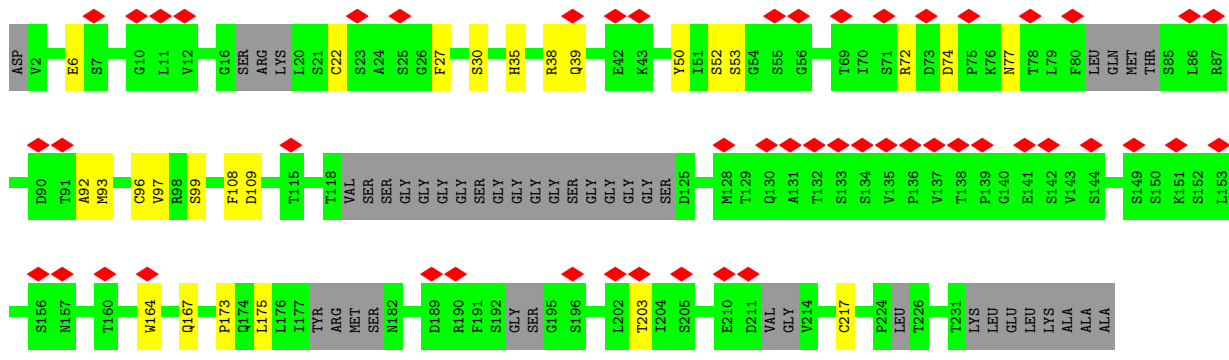
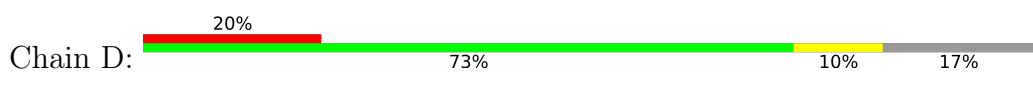
Mol	Chain	Residues	Atoms					AltConf	Trace
			Total	C	N	O	S		
5	D	208	1356	860	231	261	4	0	0

- Molecule 6 is a protein called Endogenous Peptide Agonist TRH.

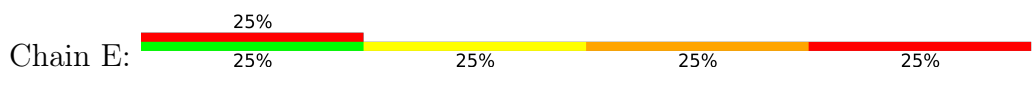
Mol	Chain	Residues	Atoms				AltConf	Trace
			Total	C	N	O		
6	E	4	26	16	6	4	0	1



• Molecule 5: ScFv16



• Molecule 6: Endogenous Peptide Agonist TRH



4 Experimental information

Property	Value	Source
EM reconstruction method	SINGLE PARTICLE	Depositor
Imposed symmetry	POINT, Not provided	
Number of particles used	870595	Depositor
Resolution determination method	FSC 0.143 CUT-OFF	Depositor
CTF correction method	PHASE FLIPPING AND AMPLITUDE CORRECTION	Depositor
Microscope	FEI TITAN KRIOS	Depositor
Voltage (kV)	300	Depositor
Electron dose ($e^-/\text{\AA}^2$)	55	Depositor
Minimum defocus (nm)	1200	Depositor
Maximum defocus (nm)	2200	Depositor
Magnification	Not provided	
Image detector	GATAN K3 (6k x 4k)	Depositor
Maximum map value	3.141	Depositor
Minimum map value	-2.333	Depositor
Average map value	0.001	Depositor
Map value standard deviation	0.080	Depositor
Recommended contour level	0.4	Depositor
Map size (Å)	214.00002, 214.00002, 214.00002	wwPDB
Map dimensions	200, 200, 200	wwPDB
Map angles (°)	90.0, 90.0, 90.0	wwPDB
Pixel spacing (Å)	1.07, 1.07, 1.07	Depositor

5 Model quality i

5.1 Standard geometry i

Bond lengths and bond angles in the following residue types are not validated in this section: NH2, PCA

The Z score for a bond length (or angle) is the number of standard deviations the observed value is removed from the expected value. A bond length (or angle) with $|Z| > 5$ is considered an outlier worth inspection. RMSZ is the root-mean-square of all Z scores of the bond lengths (or angles).

Mol	Chain	Bond lengths		Bond angles	
		RMSZ	# Z >5	RMSZ	# Z >5
1	F	0.16	0/307	0.45	0/427
2	A	0.31	1/1956 (0.1%)	0.66	5/2686 (0.2%)
3	B	0.27	0/1639	0.55	1/2229 (0.0%)
4	C	0.31	0/2310	0.59	2/3168 (0.1%)
5	D	0.23	0/1384	0.60	0/1896
6	E	5.26	6/19 (31.6%)	2.14	0/27
All	All	0.39	7/7615 (0.1%)	0.61	8/10433 (0.1%)

Chiral center outliers are detected by calculating the chiral volume of a chiral center and verifying if the center is modelled as a planar moiety or with the opposite hand. A planarity outlier is detected by checking planarity of atoms in a peptide group, atoms in a mainchain group or atoms of a sidechain that are expected to be planar.

Mol	Chain	#Chirality outliers	#Planarity outliers
6	E	1	0

The worst 5 of 7 bond length outliers are listed below:

Mol	Chain	Res	Type	Atoms	Z	Observed(Å)	Ideal(Å)
6	E	1	PCA	C-N	12.12	1.50	1.33
6	E	2	HIS	C-N	10.37	1.51	1.34
6	E	3	PRO	CA-CB	-8.92	1.35	1.53
6	E	3	PRO	N-CA	6.70	1.57	1.47
2	A	189	SER	C-N	6.31	1.39	1.33

The worst 5 of 8 bond angle outliers are listed below:

Mol	Chain	Res	Type	Atoms	Z	Observed(°)	Ideal(°)
2	A	49	VAL	N-CA-C	-5.62	107.34	111.90
2	A	181	TYR	N-CA-C	5.61	115.97	108.23

Continued on next page...

Continued from previous page...

Mol	Chain	Res	Type	Atoms	Z	Observed($^{\circ}$)	Ideal($^{\circ}$)
2	A	264	VAL	N-CA-C	-5.57	107.32	112.83
3	B	227	ILE	N-CA-C	-5.49	107.47	112.96
4	C	195	ASP	CA-C-N	5.48	132.01	121.54

All (1) chirality outliers are listed below:

Mol	Chain	Res	Type	Atom
6	E	3	PRO	CA

There are no planarity outliers.

5.2 Too-close contacts [i](#)

In the following table, the Non-H and H(model) columns list the number of non-hydrogen atoms and hydrogen atoms in the chain respectively. The H(added) column lists the number of hydrogen atoms added and optimized by MolProbity. The Clashes column lists the number of clashes within the asymmetric unit, whereas Symm-Clashes lists symmetry-related clashes.

Mol	Chain	Non-H	H(model)	H(added)	Clashes	Symm-Clashes
1	F	302	0	252	0	0
2	A	1918	0	1797	15	0
3	B	1612	0	1459	17	0
4	C	2269	0	2006	48	0
5	D	1356	0	1082	16	0
6	E	26	0	20	1	0
All	All	7483	0	6616	88	0

The all-atom clashscore is defined as the number of clashes found per 1000 atoms (including hydrogen atoms). The all-atom clashscore for this structure is 6.

The worst 5 of 88 close contacts within the same asymmetric unit are listed below, sorted by their clash magnitude.

Atom-1	Atom-2	Interatomic distance (\AA)	Clash overlap (\AA)
2:A:218:LEU:HD21	3:B:240:LEU:HD21	1.80	0.63
4:C:146:LEU:HD11	4:C:159:THR:HB	1.80	0.62
5:D:52:SER:O	5:D:72:ARG:NH2	2.34	0.60
3:B:112:SER:HB3	3:B:149:LEU:HB2	1.83	0.59
2:A:125:ILE:HG22	2:A:133:ALA:HB2	1.84	0.59

There are no symmetry-related clashes.

5.3 Torsion angles [i](#)

5.3.1 Protein backbone [i](#)

In the following table, the Percentiles column shows the percent Ramachandran outliers of the chain as a percentile score with respect to all PDB entries followed by that with respect to all EM entries.

The Analysed column shows the number of residues for which the backbone conformation was analysed, and the total number of residues.

Mol	Chain	Analysed	Favoured	Allowed	Outliers	Percentiles	
1	F	47/71 (66%)	45 (96%)	2 (4%)	0	100	100
2	A	267/398 (67%)	249 (93%)	17 (6%)	1 (0%)	30	62
3	B	213/246 (87%)	202 (95%)	11 (5%)	0	100	100
4	C	328/340 (96%)	302 (92%)	26 (8%)	0	100	100
5	D	192/251 (76%)	167 (87%)	25 (13%)	0	100	100
6	E	2/4 (50%)	0	0	2 (100%)	0	0
All	All	1049/1310 (80%)	965 (92%)	81 (8%)	3 (0%)	37	68

All (3) Ramachandran outliers are listed below:

Mol	Chain	Res	Type
6	E	3	PRO
2	A	183	ILE
6	E	2	HIS

5.3.2 Protein sidechains [i](#)

In the following table, the Percentiles column shows the percent sidechain outliers of the chain as a percentile score with respect to all PDB entries followed by that with respect to all EM entries.

The Analysed column shows the number of residues for which the sidechain conformation was analysed, and the total number of residues.

Mol	Chain	Analysed	Rotameric	Outliers	Percentiles	
1	F	20/58 (34%)	20 (100%)	0	100	100
2	A	173/363 (48%)	171 (99%)	2 (1%)	63	79
3	B	145/213 (68%)	145 (100%)	0	100	100
4	C	208/283 (74%)	207 (100%)	1 (0%)	81	85

Continued on next page...

Continued from previous page...

Mol	Chain	Analysed	Rotameric	Outliers	Percentiles	
5	D	106/201 (53%)	106 (100%)	0	100	100
6	E	2/2 (100%)	2 (100%)	0	100	100
All	All	654/1120 (58%)	651 (100%)	3 (0%)	78	85

All (3) residues with a non-rotameric sidechain are listed below:

Mol	Chain	Res	Type
2	A	265	THR
2	A	271	VAL
4	C	315	VAL

Sometimes sidechains can be flipped to improve hydrogen bonding and reduce clashes. 5 of 7 such sidechains are listed below:

Mol	Chain	Res	Type
4	C	119	ASN
4	C	142	HIS
6	E	2	HIS
5	D	220	HIS
4	C	88	ASN

5.3.3 RNA [i](#)

There are no RNA molecules in this entry.

5.4 Non-standard residues in protein, DNA, RNA chains [i](#)

1 non-standard protein/DNA/RNA residue is modelled in this entry.

In the following table, the Counts columns list the number of bonds (or angles) for which Mogul statistics could be retrieved, the number of bonds (or angles) that are observed in the model and the number of bonds (or angles) that are defined in the Chemical Component Dictionary. The Link column lists molecule types, if any, to which the group is linked. The Z score for a bond length (or angle) is the number of standard deviations the observed value is removed from the expected value. A bond length (or angle) with $|Z| > 2$ is considered an outlier worth inspection. RMSZ is the root-mean-square of all Z scores of the bond lengths (or angles).

Mol	Type	Chain	Res	Link	Bond lengths			Bond angles		
					Counts	RMSZ	$\# Z > 2$	Counts	RMSZ	$\# Z > 2$
6	PCA	E	1	6	7,8,9	4.55	3 (42%)	9,10,12	1.23	0

In the following table, the Chirals column lists the number of chiral outliers, the number of chiral centers analysed, the number of these observed in the model and the number defined in the Chemical Component Dictionary. Similar counts are reported in the Torsion and Rings columns. '-' means no outliers of that kind were identified.

Mol	Type	Chain	Res	Link	Chirals	Torsions	Rings
6	PCA	E	1	6	-	0/0/11/13	0/1/1/1

All (3) bond length outliers are listed below:

Mol	Chain	Res	Type	Atoms	Z	Observed(Å)	Ideal(Å)
6	E	1	PCA	CA-N	11.14	1.59	1.46
6	E	1	PCA	CG-CD	3.50	1.59	1.50
6	E	1	PCA	OE-CD	-2.05	1.19	1.23

There are no bond angle outliers.

There are no chirality outliers.

There are no torsion outliers.

There are no ring outliers.

No monomer is involved in short contacts.

5.5 Carbohydrates [i](#)

There are no oligosaccharides in this entry.

5.6 Ligand geometry [i](#)

There are no ligands in this entry.

5.7 Other polymers [i](#)

There are no such residues in this entry.

5.8 Polymer linkage issues [i](#)

There are no chain breaks in this entry.

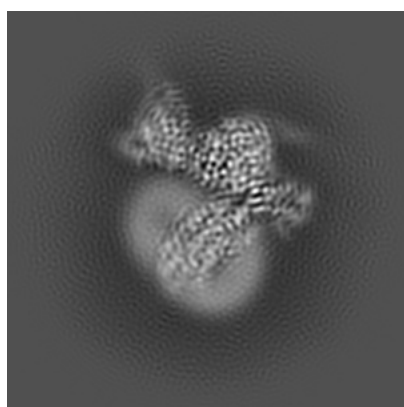
6 Map visualisation [i](#)

This section contains visualisations of the EMDB entry EMD-32950. These allow visual inspection of the internal detail of the map and identification of artifacts.

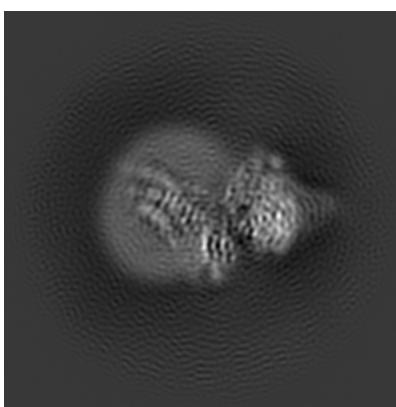
No raw map or half-maps were deposited for this entry and therefore no images, graphs, etc. pertaining to the raw map can be shown.

6.1 Orthogonal projections [i](#)

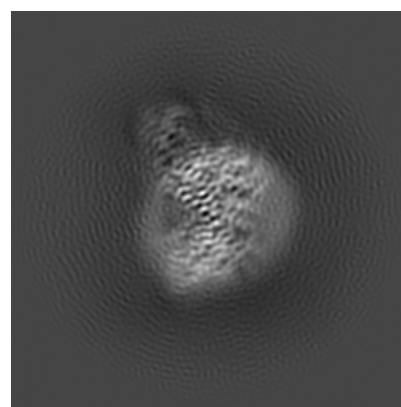
6.1.1 Primary map



X



Y

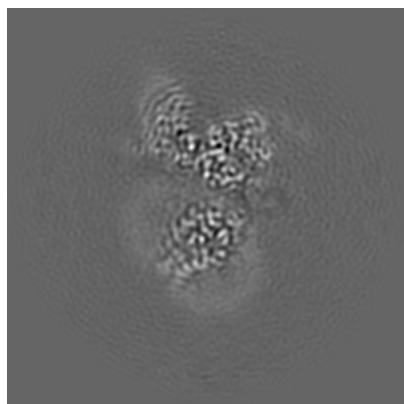


Z

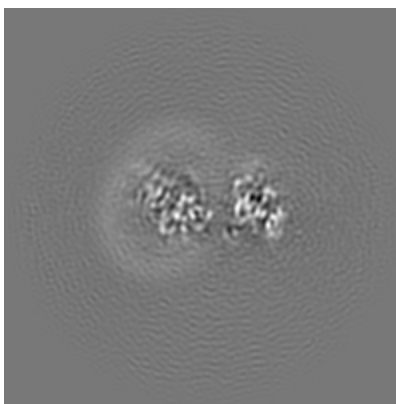
The images above show the map projected in three orthogonal directions.

6.2 Central slices [i](#)

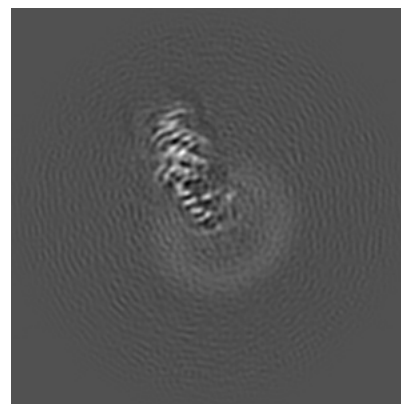
6.2.1 Primary map



X Index: 100



Y Index: 100

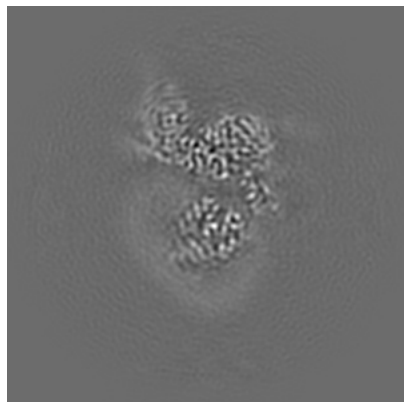


Z Index: 100

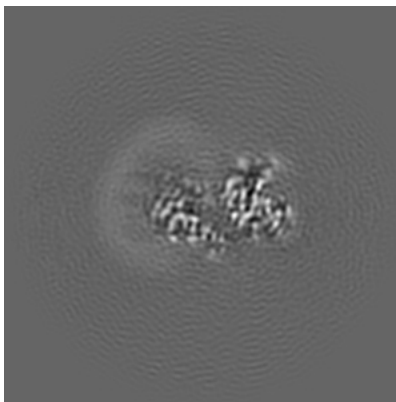
The images above show central slices of the map in three orthogonal directions.

6.3 Largest variance slices [\(i\)](#)

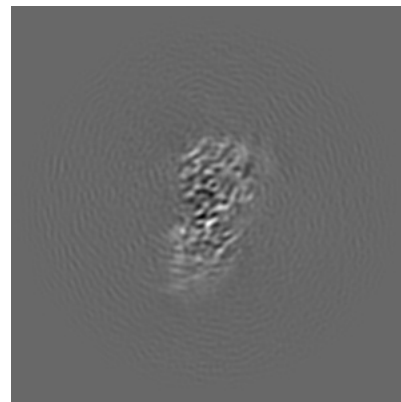
6.3.1 Primary map



X Index: 95



Y Index: 108

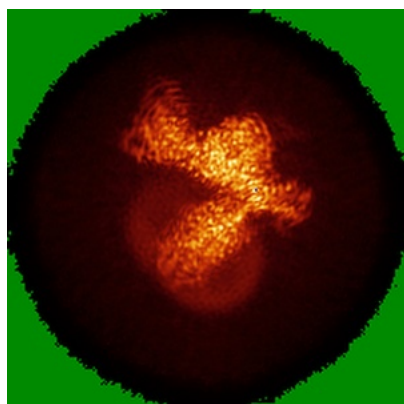


Z Index: 130

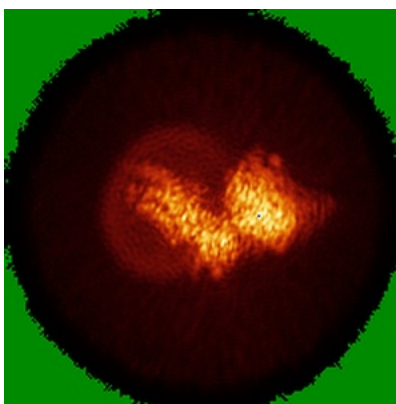
The images above show the largest variance slices of the map in three orthogonal directions.

6.4 Orthogonal standard-deviation projections (False-color) [\(i\)](#)

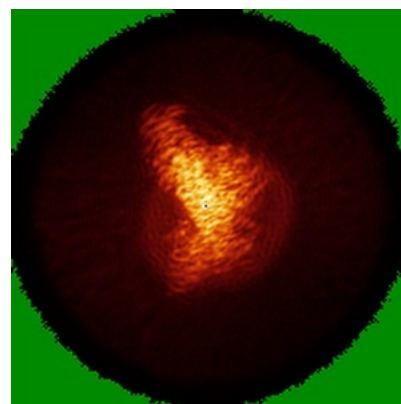
6.4.1 Primary map



X



Y

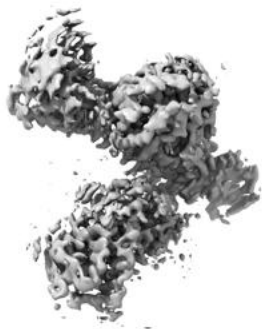


Z

The images above show the map standard deviation projections with false color in three orthogonal directions. Minimum values are shown in green, max in blue, and dark to light orange shades represent small to large values respectively.

6.5 Orthogonal surface views [i](#)

6.5.1 Primary map



X



Y



Z

The images above show the 3D surface view of the map at the recommended contour level 0.4. These images, in conjunction with the slice images, may facilitate assessment of whether an appropriate contour level has been provided.

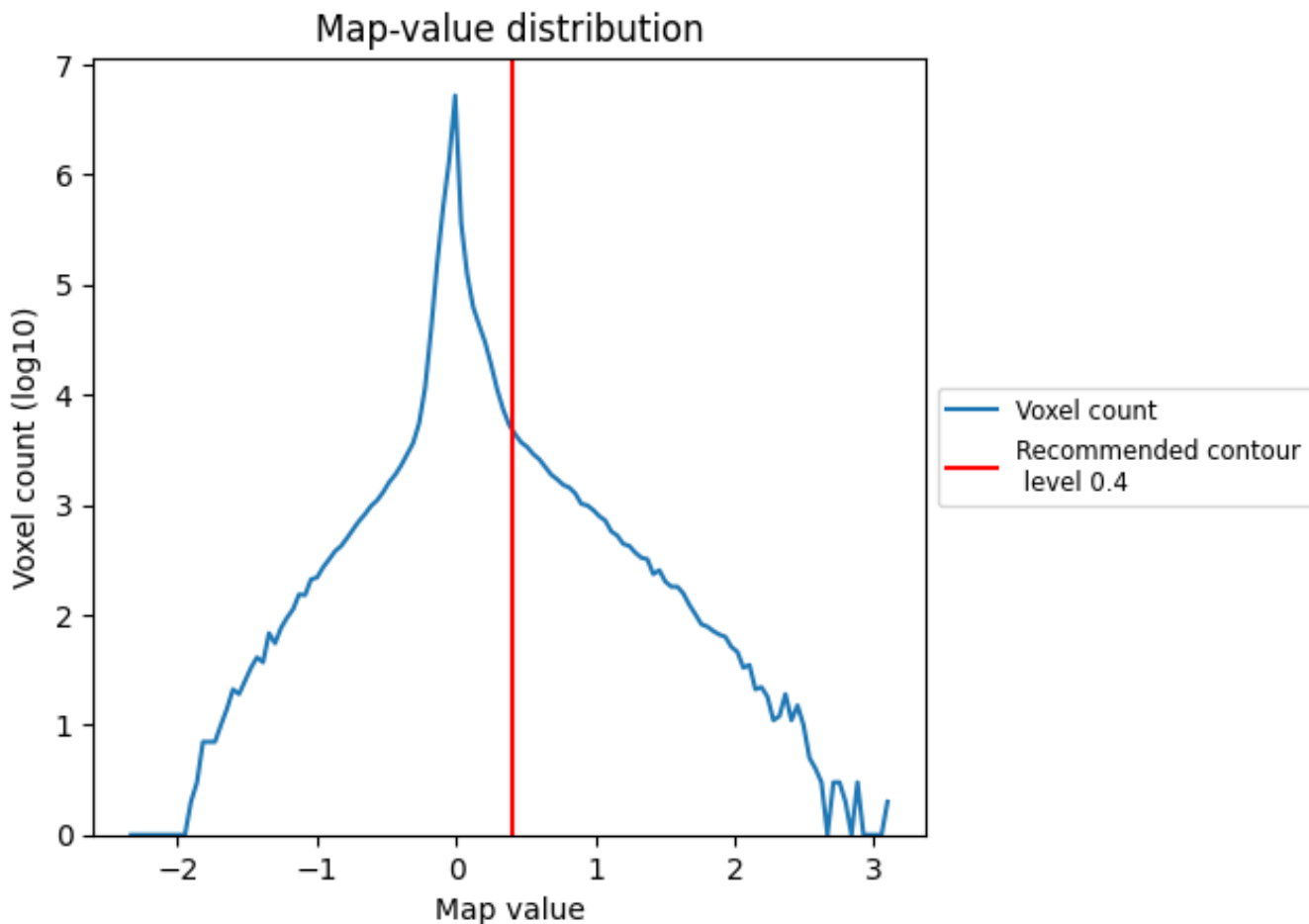
6.6 Mask visualisation [i](#)

This section was not generated. No masks/segmentation were deposited.

7 Map analysis [i](#)

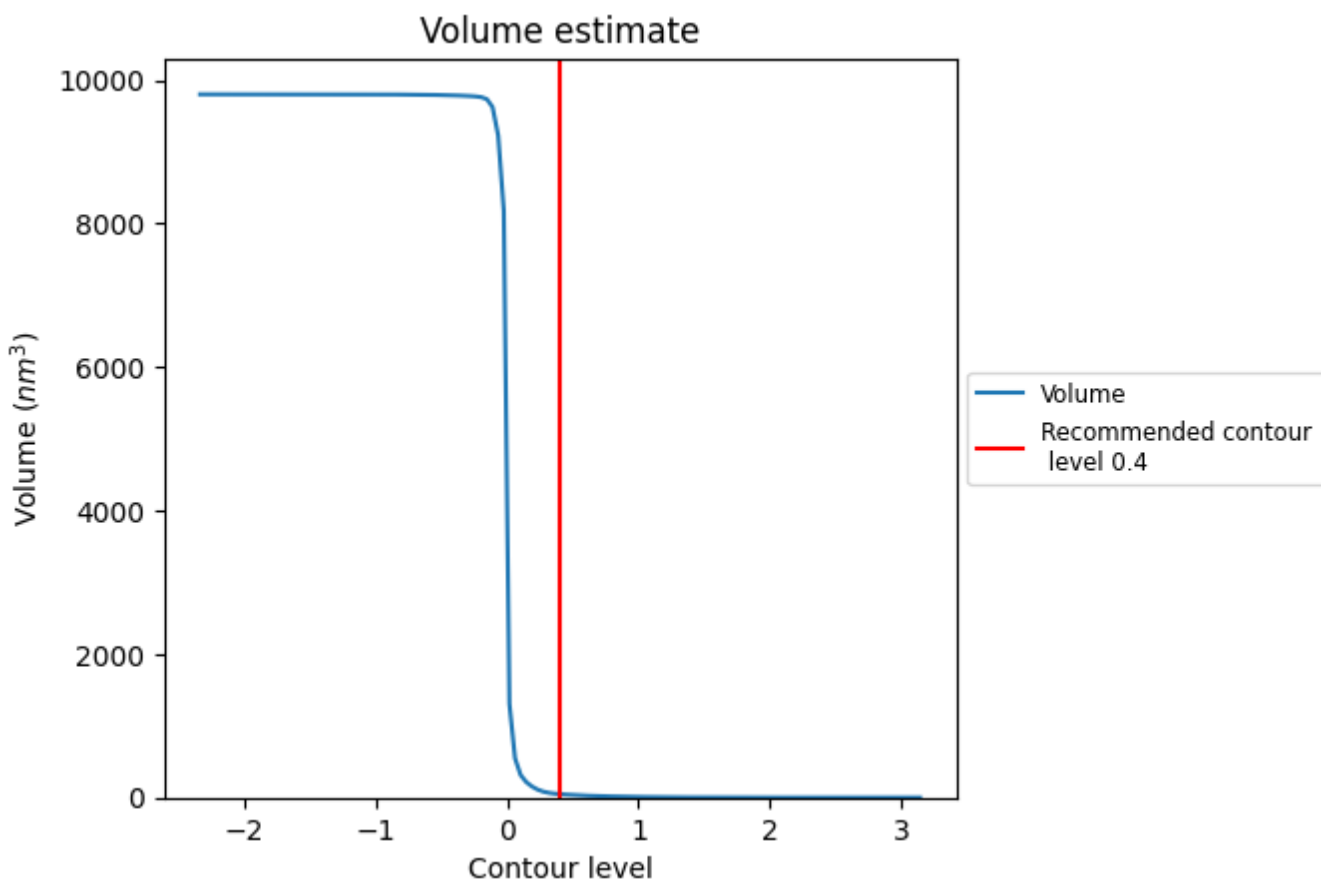
This section contains the results of statistical analysis of the map.

7.1 Map-value distribution [i](#)



The map-value distribution is plotted in 128 intervals along the x-axis. The y-axis is logarithmic. A spike in this graph at zero usually indicates that the volume has been masked.

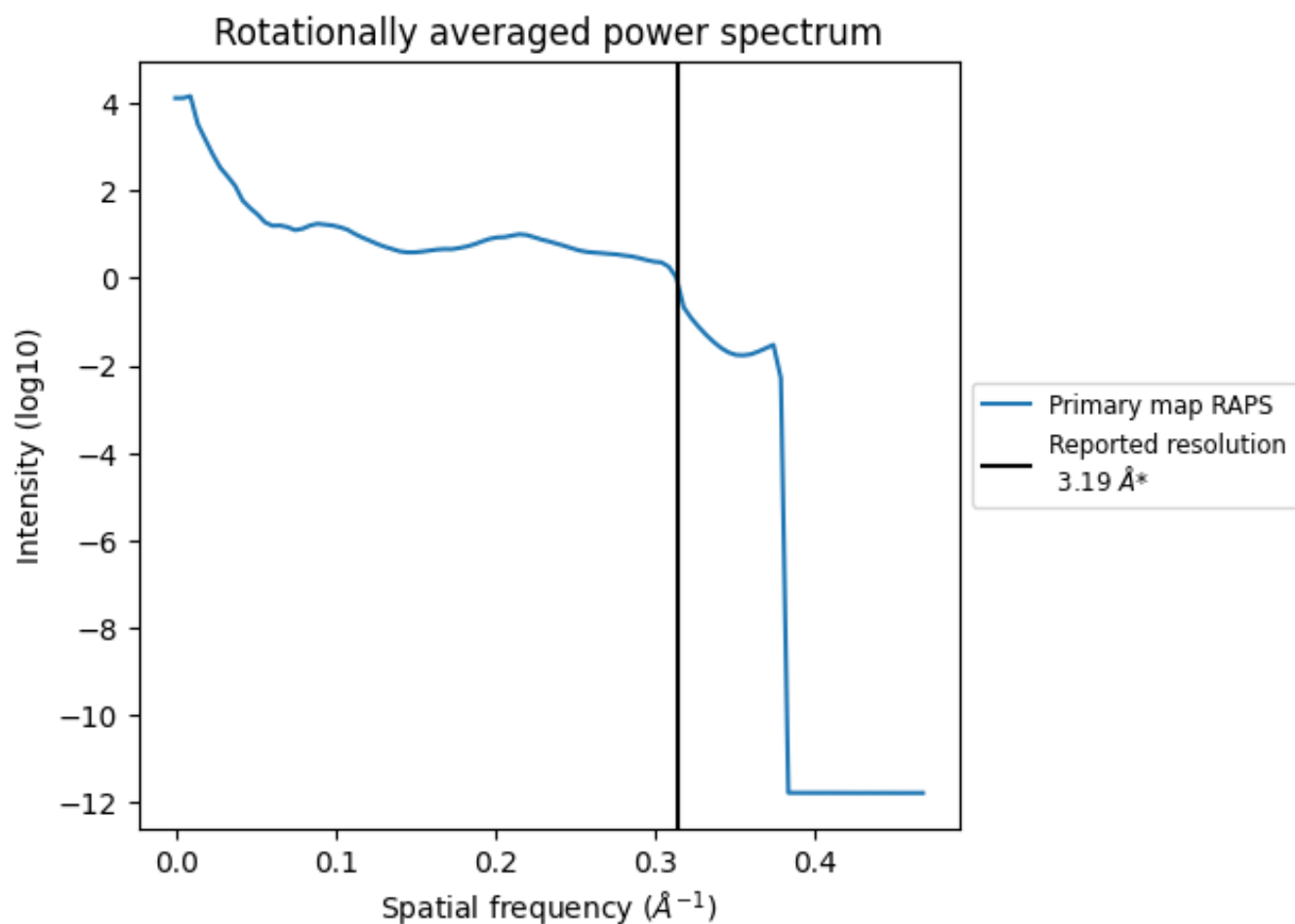
7.2 Volume estimate [i](#)



The volume at the recommended contour level is 48 nm³; this corresponds to an approximate mass of 44 kDa.

The volume estimate graph shows how the enclosed volume varies with the contour level. The recommended contour level is shown as a vertical line and the intersection between the line and the curve gives the volume of the enclosed surface at the given level.

7.3 Rotationally averaged power spectrum [\(i\)](#)



*Reported resolution corresponds to spatial frequency of 0.313 Å⁻¹

8 Fourier-Shell correlation

This section was not generated. No FSC curve or half-maps provided.

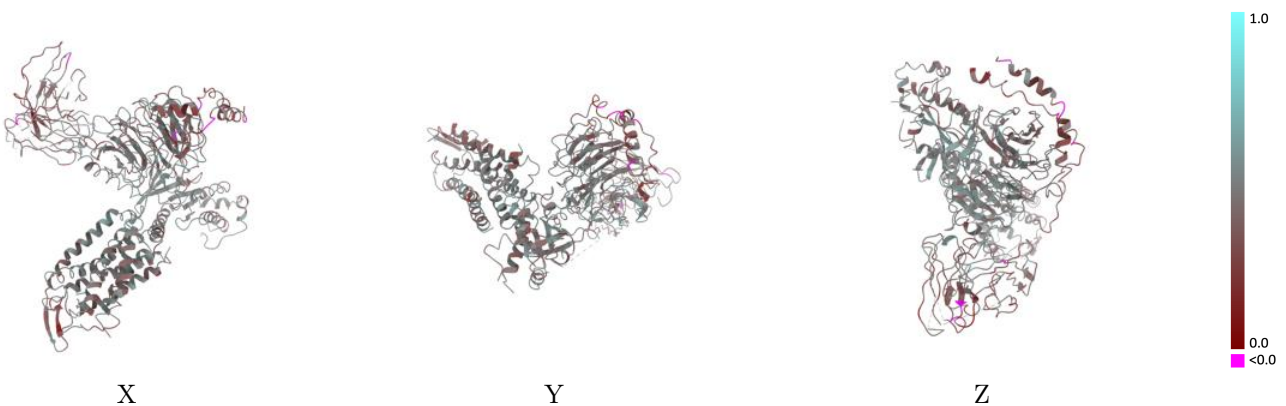
9 Map-model fit [i](#)

This section contains information regarding the fit between EMDB map EMD-32950 and PDB model 7X1U. Per-residue inclusion information can be found in section 3 on page 6.

9.1 Map-model overlay [i](#)

This section was not generated.

9.2 Q-score mapped to coordinate model [i](#)

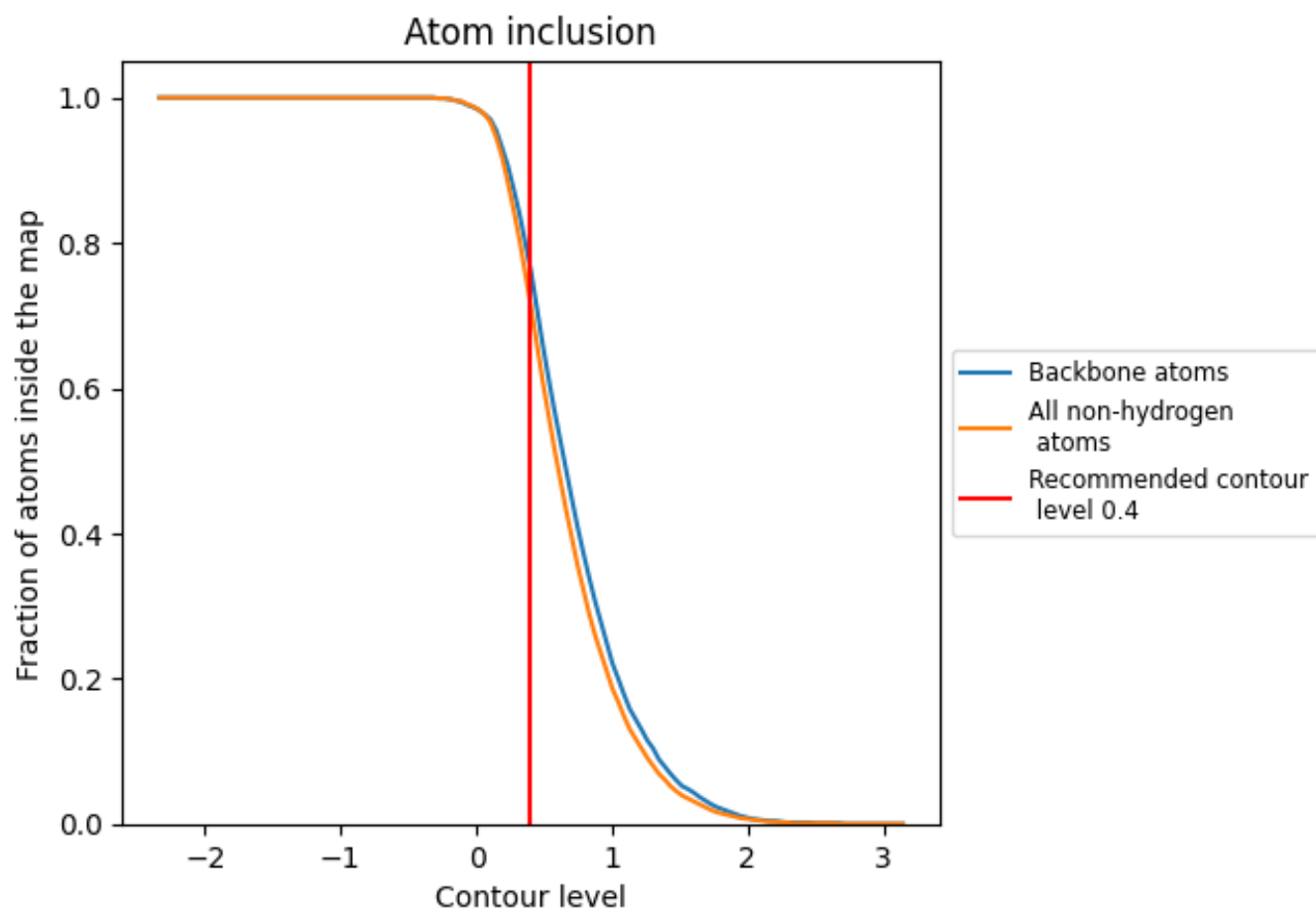


The images above show the model with each residue coloured according to its Q-score. This shows their resolvability in the map with higher Q-score values reflecting better resolvability. Please note: Q-score is calculating the resolvability of atoms, and thus high values are only expected at resolutions at which atoms can be resolved. Low Q-score values may therefore be expected for many entries.

9.3 Atom inclusion mapped to coordinate model [i](#)

This section was not generated.















9.4 Atom inclusion [i](#)



At the recommended contour level, 76% of all backbone atoms, 72% of all non-hydrogen atoms, are inside the map.

9.5 Map-model fit summary [i](#)

The table lists the average atom inclusion at the recommended contour level (0.4) and Q-score for the entire model and for each chain.

Chain	Atom inclusion	Q-score
All	 0.7160	 0.4450
A	 0.7230	 0.4600
B	 0.7550	 0.4730
C	 0.7700	 0.4570
D	 0.6610	 0.3930
E	 0.7690	 0.4840
F	 0.3120	 0.3380

