



wwPDB X-ray Structure Validation Summary Report ⓘ

Mar 9, 2026 – 10:20 AM UTC

PDB ID : 8WMO / pdb_00008wmo
Title : Crystal structure analysis of tubulin and heterocyclic podophyllotoxins complex for anticancer agents
Authors : Zhao, W.; Bi, J.
Deposited on : 2023-10-04
Resolution : 2.89 Å (reported)

This is a wwPDB X-ray Structure Validation Summary Report for a publicly released PDB entry.

We welcome your comments at validation@mail.wwpdb.org

A user guide is available at

<https://www.wwpdb.org/validation/2017/XrayValidationReportHelp>

with specific help available everywhere you see the ⓘ symbol.

The types of validation reports are described at

<http://www.wwpdb.org/validation/2017/FAQs#types>.

The following versions of software and data (see [references ⓘ](#)) were used in the production of this report:

MolProbity : 4-5-2 with Phenix2.0
Mogul : 2022.3.0, CSD as543be (2022)
Xtrriage (Phenix) : 2.0
EDS : 3.0
Buster-report : wwPDB partial adaption of 1.1.7 (2018)
Percentile statistics : 20250101.v01 (using entries in the PDB archive January 1st 2025)
CCP4 : 9.0.010 (Gargrove)
Density-Fitness : 1.0.12
Ideal geometry (proteins) : Engh & Huber (2001)
Ideal geometry (DNA, RNA) : Parkinson et al. (1996)
Validation Pipeline (wwPDB-VP) : 2.49

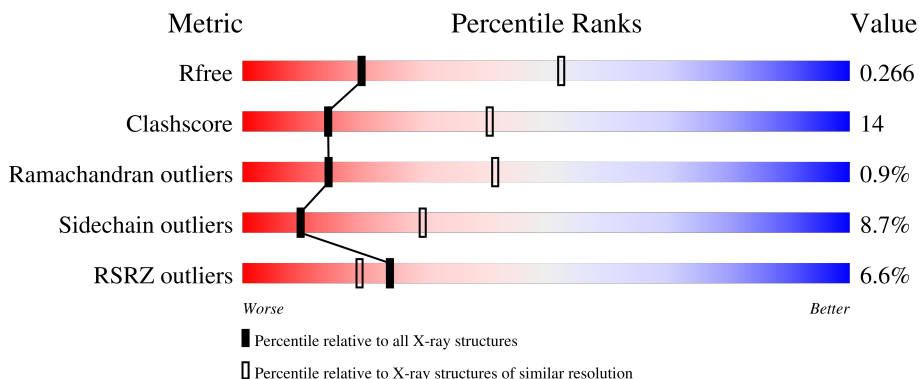
1 Overall quality at a glance

The following experimental techniques were used to determine the structure:

X-RAY DIFFRACTION

The reported resolution of this entry is 2.89 Å.

Percentile scores (ranging between 0-100) for global validation metrics of the entry are shown in the following graphic. The table shows the number of entries on which the scores are based.



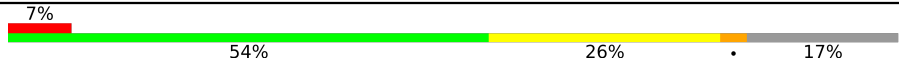
Metric	Whole archive (#Entries)	Similar resolution (#Entries, resolution range(Å))
R_{free}	180053	2481 (2.90-2.90)
Clashscore	190562	2690 (2.90-2.90)
Ramachandran outliers	187476	2623 (2.90-2.90)
Sidechain outliers	187428	2625 (2.90-2.90)
RSRZ outliers	180081	2481 (2.90-2.90)

The table below summarises the geometric issues observed across the polymeric chains and their fit to the electron density. The red, orange, yellow and green segments of the lower bar indicate the fraction of residues that contain outliers for ≥ 3 , 2, 1 and 0 types of geometric quality criteria respectively. A grey segment represents the fraction of residues that are not modelled. The numeric value for each fraction is indicated below the corresponding segment, with a dot representing fractions $\leq 5\%$. The upper red bar (where present) indicates the fraction of residues that have poor fit to the electron density. The numeric value is given above the bar.

Mol	Chain	Length	Quality of chain
1	A	440	
1	C	440	
2	B	445	
2	D	445	
3	E	138	

Continued on next page...

Continued from previous page...

Mol	Chain	Length	Quality of chain
4	F	381	 <p>A horizontal bar chart representing the quality of chain. The bar is divided into four segments: a small red segment at the beginning labeled '7%', a large green segment labeled '54%', a yellow segment labeled '26%', and a grey segment at the end labeled '17%'. A small black dot is visible on the yellow segment.</p>

2 Entry composition [i](#)

There are 14 unique types of molecules in this entry. The entry contains 16707 atoms, of which 0 are hydrogens and 0 are deuteriums.

In the tables below, the ZeroOcc column contains the number of atoms modelled with zero occupancy, the AltConf column contains the number of residues with at least one atom in alternate conformation and the Trace column contains the number of residues modelled with at most 2 atoms.

- Molecule 1 is a protein called Detyrosinated tubulin alpha-1B chain.

Mol	Chain	Residues	Atoms					ZeroOcc	AltConf	Trace
			Total	C	N	O	S			
1	A	433	Total	C	N	O	S	0	0	0
			3244	2061	540	622	21			
1	C	440	Total	C	N	O	S	0	0	0
			3363	2132	566	643	22			

- Molecule 2 is a protein called Tubulin beta chain.

Mol	Chain	Residues	Atoms					ZeroOcc	AltConf	Trace
			Total	C	N	O	S			
2	B	424	Total	C	N	O	S	0	0	0
			3243	2040	543	636	24			
2	D	419	Total	C	N	O	S	0	0	0
			3162	1990	528	620	24			

- Molecule 3 is a protein called Stathmin-4.

Mol	Chain	Residues	Atoms					ZeroOcc	AltConf	Trace
			Total	C	N	O	S			
3	E	120	Total	C	N	O	S	0	0	0
			938	577	171	186	4			

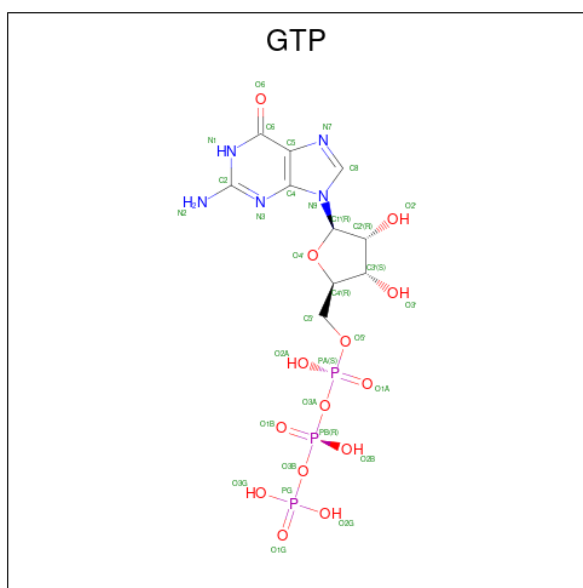
- Molecule 4 is a protein called Tubulin-tyrosine ligase.

Mol	Chain	Residues	Atoms					ZeroOcc	AltConf	Trace
			Total	C	N	O	S			
4	F	317	Total	C	N	O	S	0	0	0
			2479	1589	418	458	14			

There are 3 discrepancies between the modelled and reference sequences:

Chain	Residue	Modelled	Actual	Comment	Reference
F	379	HIS	-	expression tag	UNP A0A8C9FGJ1
F	380	HIS	-	expression tag	UNP A0A8C9FGJ1
F	381	HIS	-	expression tag	UNP A0A8C9FGJ1

- Molecule 5 is GUANOSINE-5'-TRIPHOSPHATE (CCD ID: GTP) (formula: $C_{10}H_{16}N_5O_{14}P_3$).



Mol	Chain	Residues	Atoms				ZeroOcc	AltConf	
5	A	1	Total	C	N	O	P	0	0
			32	10	5	14	3		
5	C	1	Total	C	N	O	P	0	0
			32	10	5	14	3		
5	D	1	Total	C	N	O	P	0	0
			32	10	5	14	3		

- Molecule 6 is MAGNESIUM ION (CCD ID: MG) (formula: Mg).

Mol	Chain	Residues	Atoms		ZeroOcc	AltConf
6	A	1	Total	Mg	0	0
			1	1		
6	B	1	Total	Mg	0	0
			1	1		
6	C	1	Total	Mg	0	0
			1	1		
6	D	1	Total	Mg	0	0
			1	1		

- Molecule 7 is 1,2-ETHANEDIOL (CCD ID: EDO) (formula: $C_2H_6O_2$).



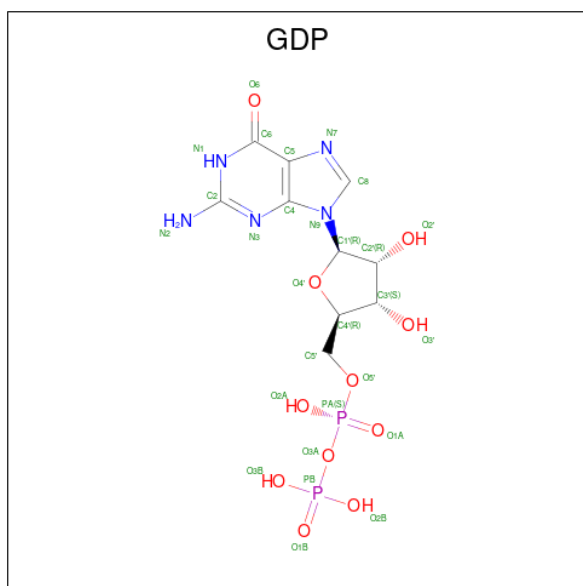
Mol	Chain	Residues	Atoms	ZeroOcc	AltConf
7	A	1	Total C O 4 2 2	0	0
7	B	1	Total C O 4 2 2	0	0
7	C	1	Total C O 4 2 2	0	0
7	C	1	Total C O 4 2 2	0	0
7	C	1	Total C O 4 2 2	0	0
7	C	1	Total C O 4 2 2	0	0
7	D	1	Total C O 4 2 2	0	0
7	D	1	Total C O 4 2 2	0	0

- Molecule 8 is DI(HYDROXYETHYL)ETHER (CCD ID: PEG) (formula: C₄H₁₀O₃).



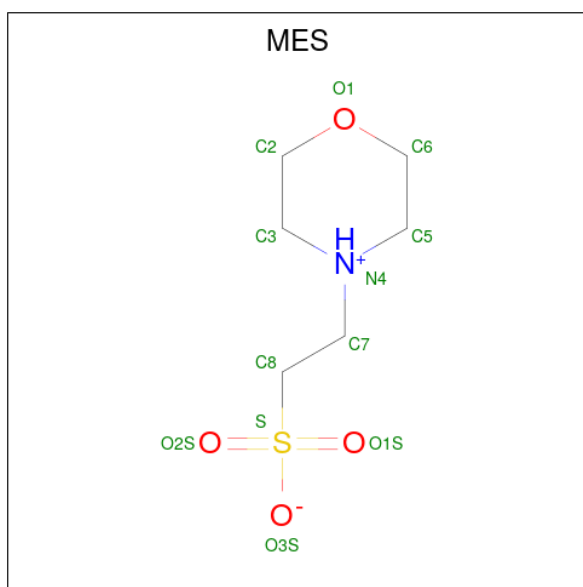
Mol	Chain	Residues	Atoms			ZeroOcc	AltConf
8	A	1	Total	C	O	0	0
			7	4	3		

- Molecule 9 is GUANOSINE-5'-DIPHOSPHATE (CCD ID: GDP) (formula: $C_{10}H_{15}N_5O_{11}P_2$).



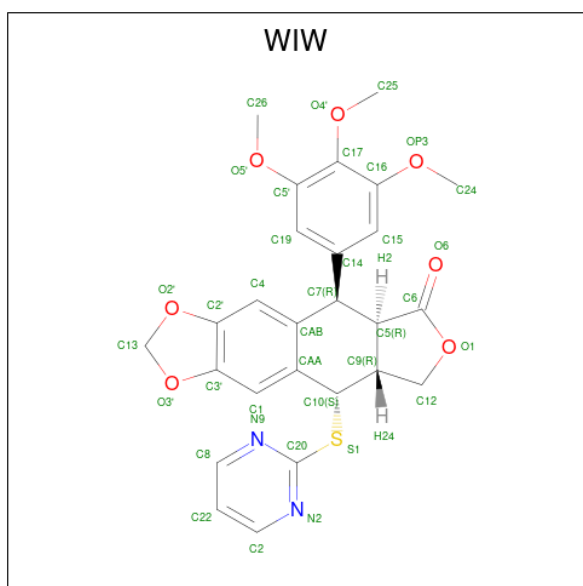
Mol	Chain	Residues	Atoms					ZeroOcc	AltConf
9	B	1	Total	C	N	O	P	0	0
			28	10	5	11	2		

- Molecule 10 is 2-(N-MORPHOLINO)-ETHANESULFONIC ACID (CCD ID: MES) (formula: $C_6H_{13}NO_4S$).



Mol	Chain	Residues	Atoms					ZeroOcc	AltConf
			Total	C	N	O	S		
10	B	1	12	6	1	4	1	0	0

- Molecule 11 is (5 {S},5 {a} {R},8 {a} {R},9 {R})-5-pyrimidin-2-ylsulfanyl-9-(3,4,5-trimethoxyphenyl)-5 {a},6,8 {a},9-tetrahydro-5 {H}-[2]benzofuro[5,6-f][1,3]benzodioxol-8-one (CCD ID: WIW) (formula: C₂₆H₂₄N₂O₇S) (labeled as "Ligand of Interest" by depositor).

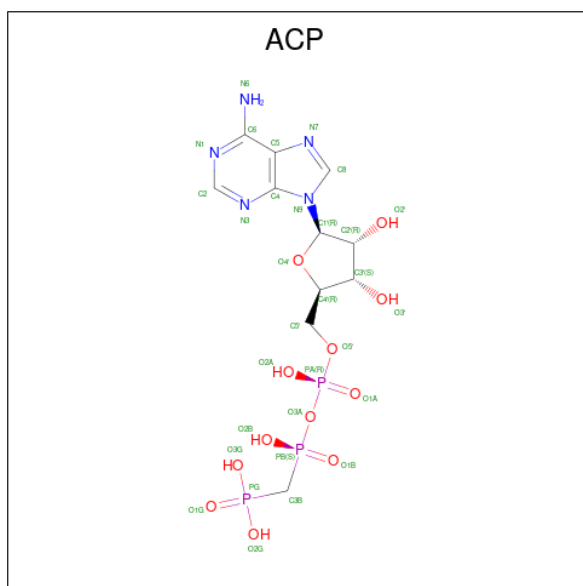


Mol	Chain	Residues	Atoms					ZeroOcc	AltConf
			Total	C	N	O	S		
11	B	1	36	26	2	7	1	0	0

- Molecule 12 is CALCIUM ION (CCD ID: CA) (formula: Ca).

Mol	Chain	Residues	Atoms	ZeroOcc	AltConf
12	C	1	Total Ca 1 1	0	0

- Molecule 13 is PHOSPHOMETHYLPHOSPHONIC ACID ADENYLATE ESTER (CCD ID: ACP) (formula: $C_{11}H_{18}N_5O_{12}P_3$).



Mol	Chain	Residues	Atoms	ZeroOcc	AltConf
13	F	1	Total C N O P 31 11 5 12 3	0	0

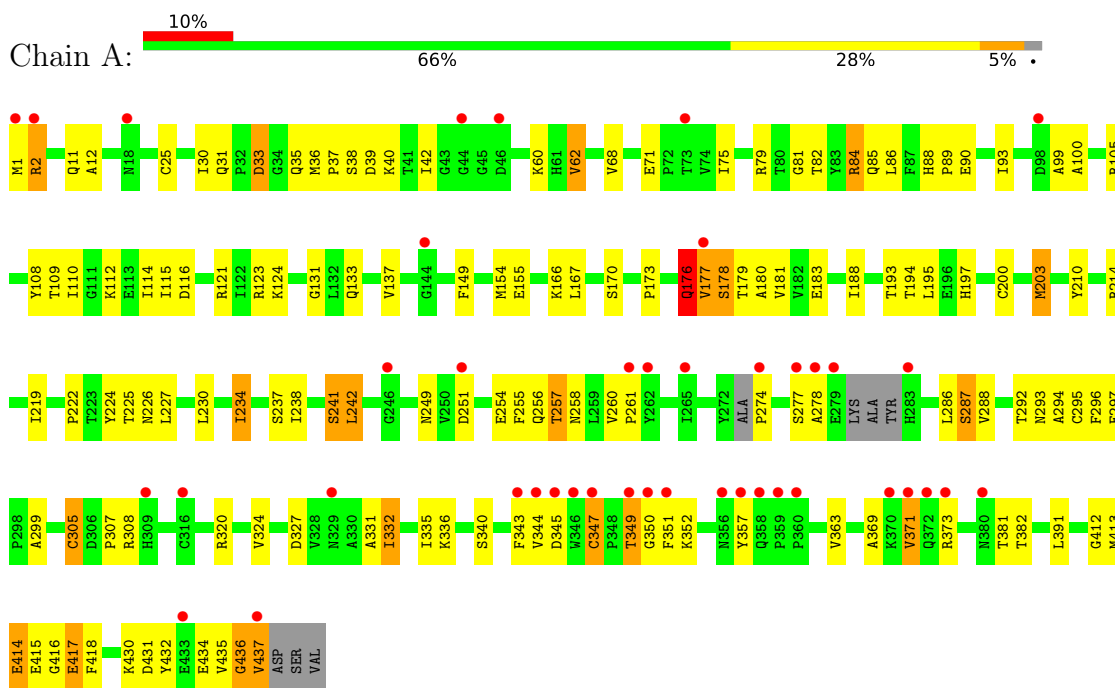
- Molecule 14 is water.

Mol	Chain	Residues	Atoms	ZeroOcc	AltConf
14	A	7	Total O 7 7	0	0
14	B	6	Total O 6 6	0	0
14	C	6	Total O 6 6	0	0
14	D	9	Total O 9 9	0	0
14	F	3	Total O 3 3	0	0

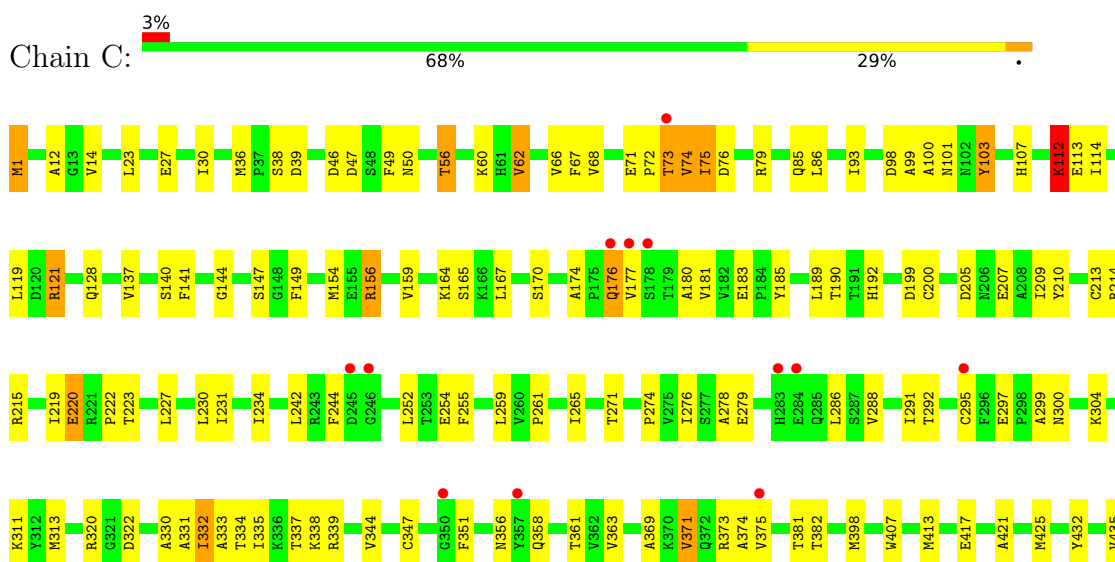
3 Residue-property plots

These plots are drawn for all protein, RNA, DNA and oligosaccharide chains in the entry. The first graphic for a chain summarises the proportions of the various outlier classes displayed in the second graphic. The second graphic shows the sequence view annotated by issues in geometry and electron density. Residues are color-coded according to the number of geometric quality criteria for which they contain at least one outlier: green = 0, yellow = 1, orange = 2 and red = 3 or more. A red dot above a residue indicates a poor fit to the electron density ($RSRZ > 2$). Stretches of 2 or more consecutive residues without any outlier are shown as a green connector. Residues present in the sample, but not in the model, are shown in grey.

- Molecule 1: Detyrosinated tubulin alpha-1B chain



- Molecule 1: Detyrosinated tubulin alpha-1B chain



4 Data and refinement statistics

Property	Value	Source
Space group	P 21 21 21	Depositor
Cell constants a, b, c, α , β , γ	103.82Å 156.45Å 179.39Å 90.00° 90.00° 90.00°	Depositor
Resolution (Å)	49.86 – 2.89 49.86 – 2.89	Depositor EDS
% Data completeness (in resolution range)	99.6 (49.86-2.89) 96.3 (49.86-2.89)	Depositor EDS
R_{merge}	(Not available)	Depositor
R_{sym}	(Not available)	Depositor
$\langle I/\sigma(I) \rangle$ ¹	2.11 (at 2.91Å)	Xtrriage
Refinement program	PHENIX 1.20.1_4487, PHENIX 1.20.1_4487	Depositor
R, R_{free}	0.224 , 0.266 0.224 , 0.266	Depositor DCC
R_{free} test set	3225 reflections (4.89%)	wwPDB-VP
Wilson B-factor (Å ²)	71.9	Xtrriage
Anisotropy	0.043	Xtrriage
Bulk solvent k_{sol} (e/Å ³), B_{sol} (Å ²)	0.33 , 59.2	EDS
L-test for twinning ²	$\langle L \rangle = 0.49$, $\langle L^2 \rangle = 0.32$	Xtrriage
Estimated twinning fraction	No twinning to report.	Xtrriage
F_o, F_c correlation	0.92	EDS
Total number of atoms	16707	wwPDB-VP
Average B, all atoms (Å ²)	70.0	wwPDB-VP

Xtrriage's analysis on translational NCS is as follows: *The largest off-origin peak in the Patterson function is 2.36% of the height of the origin peak. No significant pseudotranslation is detected.*

¹Intensities estimated from amplitudes.

²Theoretical values of $\langle |L| \rangle$, $\langle L^2 \rangle$ for acentric reflections are 0.5, 0.333 respectively for untwinned datasets, and 0.375, 0.2 for perfectly twinned datasets.

5 Model quality [i](#)

5.1 Standard geometry [i](#)

Bond lengths and bond angles in the following residue types are not validated in this section: CA, WIW, GTP, PEG, MES, GDP, EDO, ACP, MG

The Z score for a bond length (or angle) is the number of standard deviations the observed value is removed from the expected value. A bond length (or angle) with $|Z| > 5$ is considered an outlier worth inspection. RMSZ is the root-mean-square of all Z scores of the bond lengths (or angles).

Mol	Chain	Bond lengths		Bond angles	
		RMSZ	# Z >5	RMSZ	# Z >5
1	A	0.83	1/3318 (0.0%)	0.83	1/4528 (0.0%)
1	C	0.71	2/3440 (0.1%)	0.84	9/4686 (0.2%)
2	B	0.64	0/3316	0.80	3/4508 (0.1%)
2	D	0.53	0/3233	0.78	2/4403 (0.0%)
3	E	0.59	0/946	0.66	0/1266
4	F	0.42	0/2530	0.62	0/3430
All	All	0.65	3/16783 (0.0%)	0.78	15/22821 (0.1%)

All (3) bond length outliers are listed below:

Mol	Chain	Res	Type	Atoms	Z	Observed(Å)	Ideal(Å)
1	C	62	VAL	CA-C	-6.59	1.48	1.52
1	C	363	VAL	CA-C	6.50	1.59	1.53
1	A	363	VAL	CA-C	6.35	1.59	1.53

The worst 5 of 15 bond angle outliers are listed below:

Mol	Chain	Res	Type	Atoms	Z	Observed(°)	Ideal(°)
1	C	62	VAL	CA-C-O	6.54	123.57	119.51
2	B	281	TYR	N-CA-C	-6.53	105.61	113.97
1	A	62	VAL	N-CA-C	5.83	114.24	107.89
2	D	41	ASP	N-CA-C	-5.59	106.46	113.28
1	C	356	ASN	N-CA-C	-5.54	99.87	108.90

There are no chirality outliers.

There are no planarity outliers.

5.2 Too-close contacts

In the following table, the Non-H and H(model) columns list the number of non-hydrogen atoms and hydrogen atoms in the chain respectively. The H(added) column lists the number of hydrogen atoms added and optimized by MolProbity. The Clashes column lists the number of clashes within the asymmetric unit, whereas Symm-Clashes lists symmetry-related clashes.

Mol	Chain	Non-H	H(model)	H(added)	Clashes	Symm-Clashes
1	A	3244	0	3040	81	0
1	C	3363	0	3204	100	0
2	B	3243	0	3018	103	0
2	D	3162	0	2917	95	0
3	E	938	0	897	23	0
4	F	2479	0	2323	74	0
5	A	32	0	12	0	0
5	C	32	0	12	0	0
5	D	32	0	12	2	0
6	A	1	0	0	0	0
6	B	1	0	0	0	0
6	C	1	0	0	0	0
6	D	1	0	0	0	0
7	A	4	0	6	0	0
7	B	4	0	6	0	0
7	C	16	0	24	2	0
7	D	8	0	12	0	0
8	A	7	0	10	0	0
9	B	28	0	12	1	0
10	B	12	0	12	4	0
11	B	36	0	0	4	0
12	C	1	0	0	0	0
13	F	31	0	14	2	0
14	A	7	0	0	0	0
14	B	6	0	0	0	0
14	C	6	0	0	0	0
14	D	9	0	0	1	0
14	F	3	0	0	0	0
All	All	16707	0	15531	459	0

The all-atom clashscore is defined as the number of clashes found per 1000 atoms (including hydrogen atoms). The all-atom clashscore for this structure is 14.

The worst 5 of 459 close contacts within the same asymmetric unit are listed below, sorted by their clash magnitude.

Atom-1	Atom-2	Interatomic distance (Å)	Clash overlap (Å)
1:C:36:MET:HE2	1:C:39:ASP:HB2	1.39	1.00
1:C:101:ASN:HD22	1:C:180:ALA:HB2	1.38	0.86
1:C:261:PRO:HG2	1:C:313:MET:HE2	1.61	0.83
3:E:14:CYS:SG	3:E:15:THR:N	2.56	0.79
4:F:304:THR:HG21	4:F:311:SER:HB2	1.65	0.77

There are no symmetry-related clashes.

5.3 Torsion angles [i](#)

5.3.1 Protein backbone [i](#)

In the following table, the Percentiles column shows the percent Ramachandran outliers of the chain as a percentile score with respect to all X-ray entries followed by that with respect to entries of similar resolution.

The Analysed column shows the number of residues for which the backbone conformation was analysed, and the total number of residues.

Mol	Chain	Analysed	Favoured	Allowed	Outliers	Percentiles	
1	A	427/440 (97%)	394 (92%)	28 (7%)	5 (1%)	10	34
1	C	438/440 (100%)	414 (94%)	20 (5%)	4 (1%)	14	41
2	B	420/445 (94%)	390 (93%)	26 (6%)	4 (1%)	12	39
2	D	413/445 (93%)	387 (94%)	25 (6%)	1 (0%)	43	72
3	E	116/138 (84%)	109 (94%)	5 (4%)	2 (2%)	7	26
4	F	297/381 (78%)	260 (88%)	35 (12%)	2 (1%)	18	48
All	All	2111/2289 (92%)	1954 (93%)	139 (7%)	18 (1%)	14	41

5 of 18 Ramachandran outliers are listed below:

Mol	Chain	Res	Type
2	B	42	LEU
2	B	302	ALA
1	C	73	THR
1	C	74	VAL
2	D	302	ALA

5.3.2 Protein sidechains [i](#)

In the following table, the Percentiles column shows the percent sidechain outliers of the chain as a percentile score with respect to all X-ray entries followed by that with respect to entries of similar resolution.

The Analysed column shows the number of residues for which the sidechain conformation was analysed, and the total number of residues.

Mol	Chain	Analysed	Rotameric	Outliers	Percentiles
1	A	333/371 (90%)	294 (88%)	39 (12%)	5 17
1	C	352/371 (95%)	325 (92%)	27 (8%)	12 35
2	B	342/383 (89%)	309 (90%)	33 (10%)	8 26
2	D	331/383 (86%)	307 (93%)	24 (7%)	13 38
3	E	94/123 (76%)	87 (93%)	7 (7%)	13 38
4	F	256/339 (76%)	237 (93%)	19 (7%)	13 38
All	All	1708/1970 (87%)	1559 (91%)	149 (9%)	9 30

5 of 149 residues with a non-rotameric sidechain are listed below:

Mol	Chain	Res	Type
2	D	257	MET
4	F	245	ILE
2	D	309	ARG
4	F	12	SER
2	B	152	ILE

Sometimes sidechains can be flipped to improve hydrogen bonding and reduce clashes. 5 of 35 such sidechains are listed below:

Mol	Chain	Res	Type
2	D	423	GLN
3	E	64	GLN
4	F	145	ASN
1	C	28	HIS
1	C	11	GLN

5.3.3 RNA [i](#)

There are no RNA molecules in this entry.

5.4 Non-standard residues in protein, DNA, RNA chains [i](#)

There are no non-standard protein/DNA/RNA residues in this entry.

5.5 Carbohydrates [i](#)

There are no oligosaccharides in this entry.

5.6 Ligand geometry [i](#)

Of 21 ligands modelled in this entry, 5 are monoatomic - leaving 16 for Mogul analysis.

In the following table, the Counts columns list the number of bonds (or angles) for which Mogul statistics could be retrieved, the number of bonds (or angles) that are observed in the model and the number of bonds (or angles) that are defined in the Chemical Component Dictionary. The Link column lists molecule types, if any, to which the group is linked. The Z score for a bond length (or angle) is the number of standard deviations the observed value is removed from the expected value. A bond length (or angle) with $|Z| > 2$ is considered an outlier worth inspection. RMSZ is the root-mean-square of all Z scores of the bond lengths (or angles).

Mol	Type	Chain	Res	Link	Bond lengths			Bond angles		
					Counts	RMSZ	# Z > 2	Counts	RMSZ	# Z > 2
5	GTP	C	501	6	33,34,34	1.58	5 (15%)	50,54,54	1.86	12 (24%)
7	EDO	A	503	-	3,3,3	0.61	0	2,2,2	0.19	0
10	MES	B	503	-	12,12,12	2.36	1 (8%)	15,16,16	2.16	3 (20%)
11	WIW	B	504	-	39,41,41	1.78	7 (17%)	55,60,60	1.68	13 (23%)
7	EDO	C	507	-	3,3,3	0.41	0	2,2,2	0.39	0
5	GTP	D	501	6	33,34,34	0.86	1 (3%)	50,54,54	1.51	10 (20%)
7	EDO	D	503	-	3,3,3	0.48	0	2,2,2	0.47	0
7	EDO	C	505	-	3,3,3	0.49	0	2,2,2	0.61	0
13	ACP	F	401	-	31,33,33	1.14	2 (6%)	47,52,52	0.77	1 (2%)
7	EDO	B	505	-	3,3,3	0.37	0	2,2,2	0.41	0
7	EDO	C	506	-	3,3,3	0.54	0	2,2,2	0.31	0
9	GDP	B	501	6	29,30,30	1.28	2 (6%)	45,47,47	1.97	11 (24%)
5	GTP	A	501	6	33,34,34	1.04	2 (6%)	50,54,54	1.59	12 (24%)
8	PEG	A	504	-	6,6,6	0.37	0	5,5,5	0.33	0
7	EDO	D	504	-	3,3,3	1.58	0	2,2,2	0.87	0
7	EDO	C	504	-	3,3,3	0.61	0	2,2,2	0.15	0

In the following table, the Chirals column lists the number of chiral outliers, the number of chiral centers analysed, the number of these observed in the model and the number defined in the Chemical Component Dictionary. Similar counts are reported in the Torsion and Rings columns. '-' means no outliers of that kind were identified.

Mol	Type	Chain	Res	Link	Chirals	Torsions	Rings
5	GTP	C	501	6	-	6/22/38/38	0/3/3/3
7	EDO	A	503	-	-	0/1/1/1	-
10	MES	B	503	-	-	2/6/14/14	0/1/1/1
11	WIW	B	504	-	-	2/14/49/49	0/6/6/6
7	EDO	C	507	-	-	0/1/1/1	-
5	GTP	D	501	6	-	5/22/38/38	0/3/3/3
7	EDO	D	503	-	-	1/1/1/1	-
7	EDO	C	505	-	-	0/1/1/1	-
13	ACP	F	401	-	-	0/19/38/38	0/3/3/3
7	EDO	B	505	-	-	0/1/1/1	-
7	EDO	C	506	-	-	0/1/1/1	-
9	GDP	B	501	6	-	5/16/32/32	0/3/3/3
5	GTP	A	501	6	-	5/22/38/38	0/3/3/3
8	PEG	A	504	-	-	2/4/4/4	-
7	EDO	D	504	-	-	0/1/1/1	-
7	EDO	C	504	-	-	1/1/1/1	-

The worst 5 of 20 bond length outliers are listed below:

Mol	Chain	Res	Type	Atoms	Z	Observed(Å)	Ideal(Å)
10	B	503	MES	C8-S	-7.91	1.66	1.77
11	B	504	WIW	CAB-C7	5.63	1.59	1.51
5	C	501	GTP	PB-O3A	5.03	1.64	1.59
13	F	401	ACP	PB-O3A	4.93	1.63	1.58
11	B	504	WIW	C20-S1	4.25	1.82	1.76

The worst 5 of 62 bond angle outliers are listed below:

Mol	Chain	Res	Type	Atoms	Z	Observed(°)	Ideal(°)
10	B	503	MES	C5-N4-C3	6.35	122.51	108.84
9	B	501	GDP	C5-C4-N3	-6.08	118.71	128.39
9	B	501	GDP	C2-N3-C4	5.12	121.11	112.30
5	C	501	GTP	C5-C4-N3	-4.87	120.64	128.39
13	F	401	ACP	PB-O3A-PA	-4.67	117.13	132.37

There are no chirality outliers.

5 of 29 torsion outliers are listed below:

Mol	Chain	Res	Type	Atoms
5	A	501	GTP	C5'-O5'-PA-O1A
5	C	501	GTP	C5'-O5'-PA-O3A

Continued on next page...

Continued from previous page...

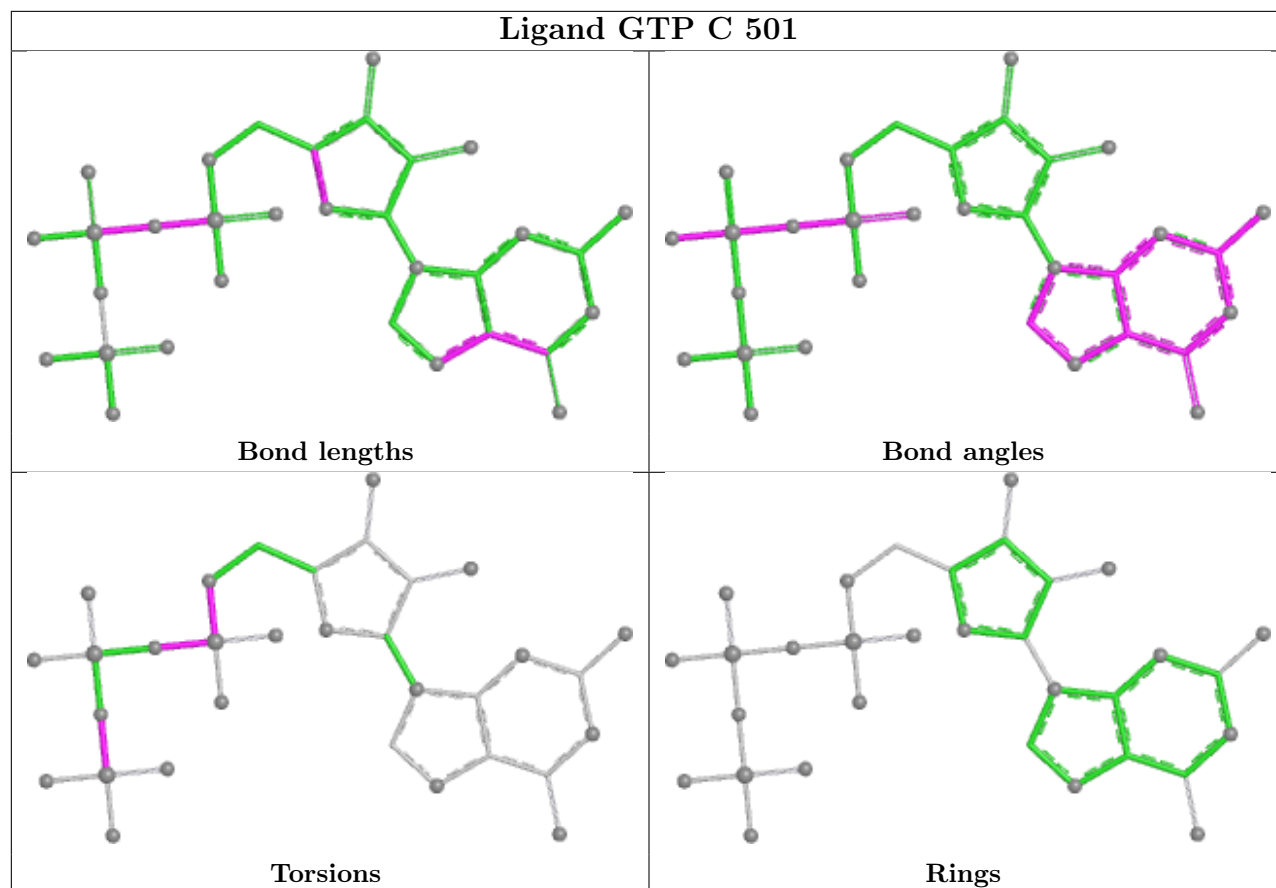
Mol	Chain	Res	Type	Atoms
5	C	501	GTP	C5'-O5'-PA-O1A
5	C	501	GTP	C5'-O5'-PA-O2A
5	D	501	GTP	C5'-O5'-PA-O3A

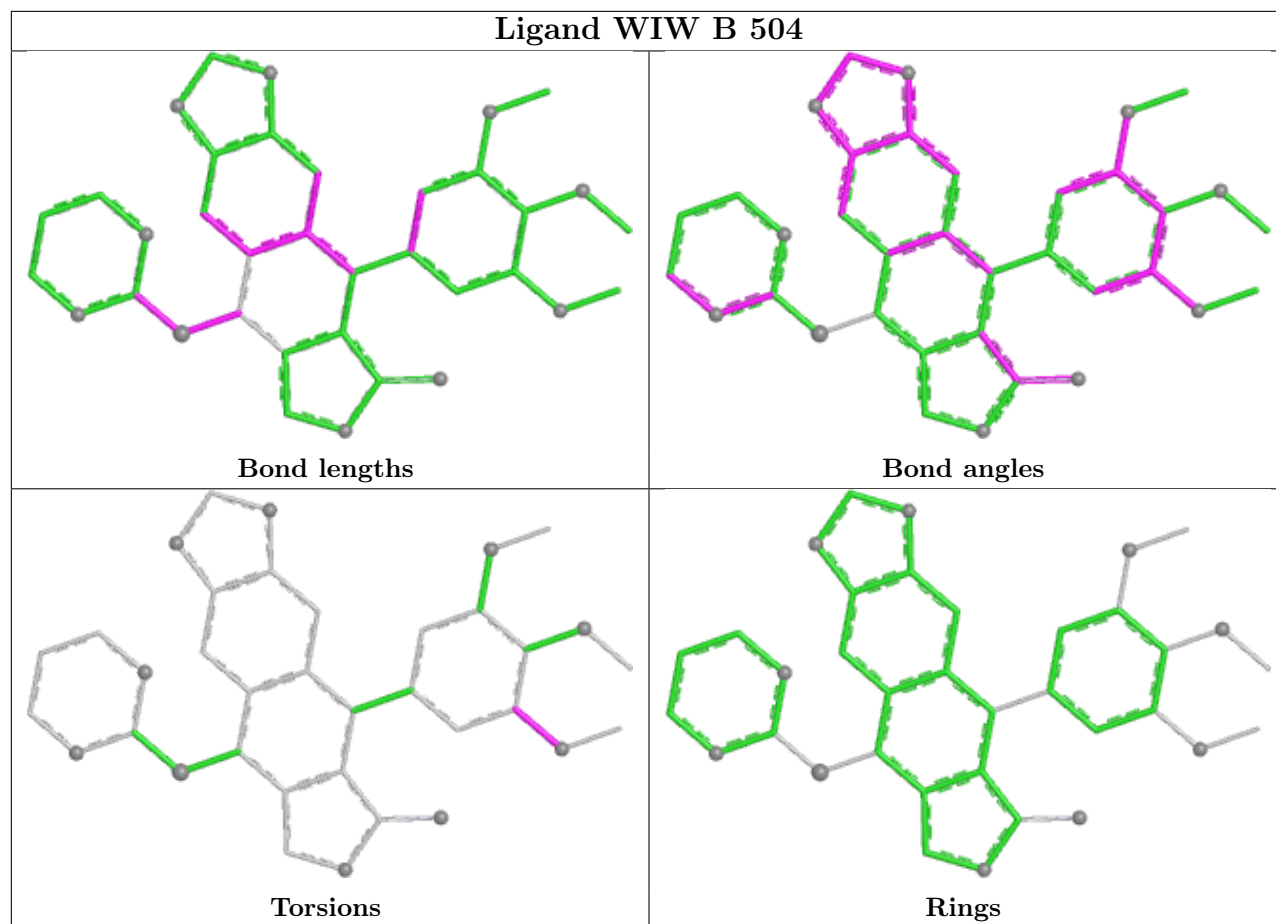
There are no ring outliers.

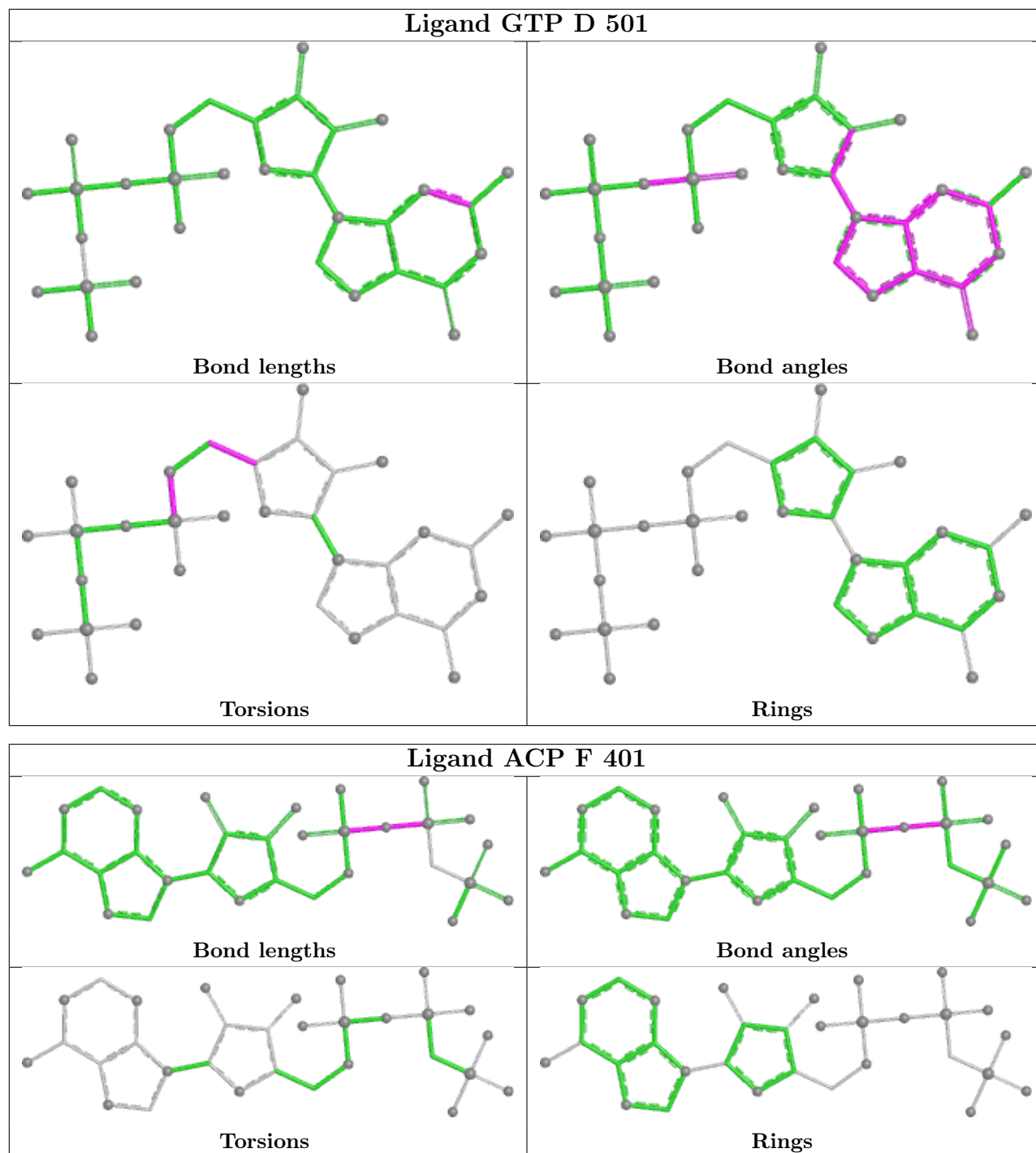
6 monomers are involved in 15 short contacts:

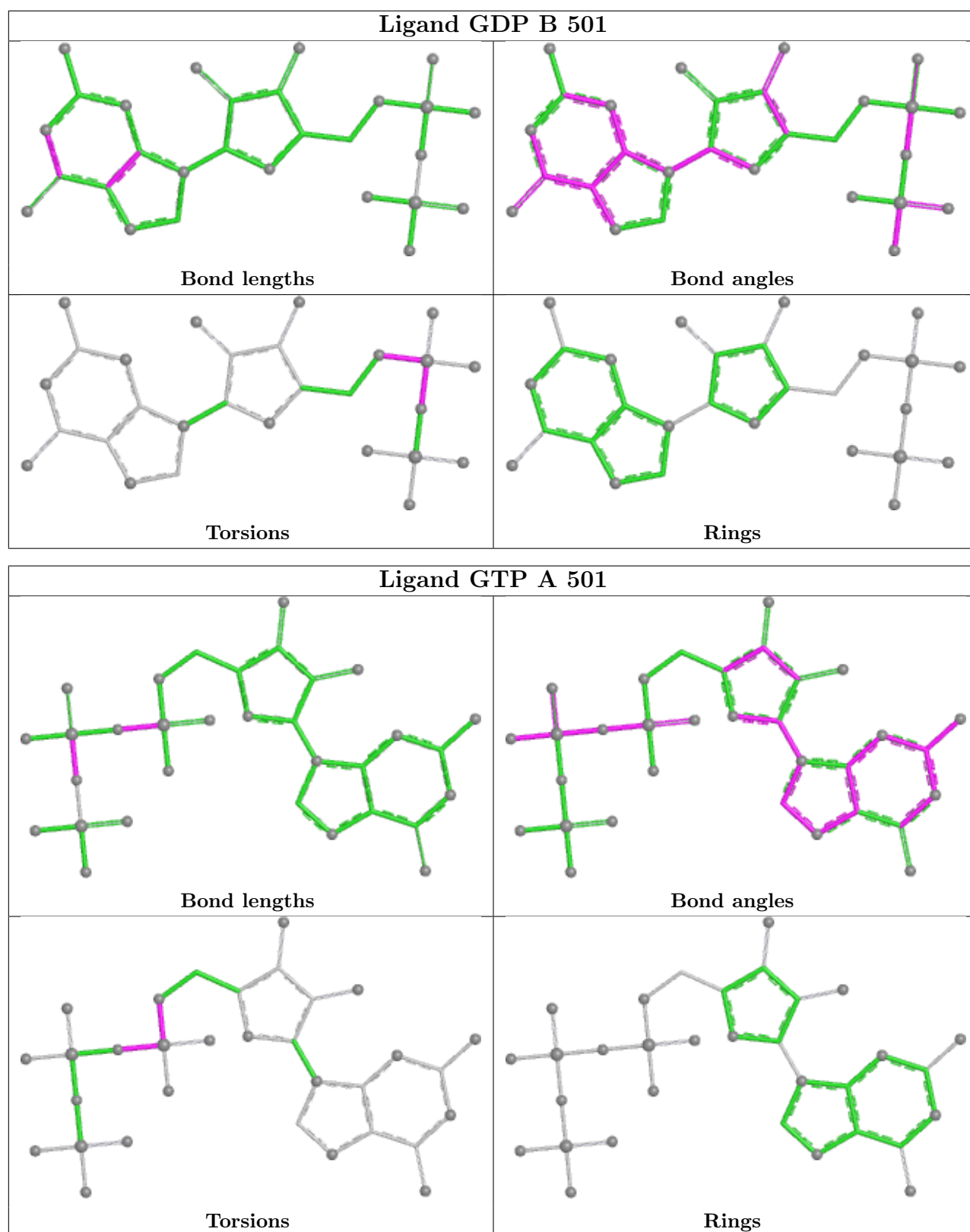
Mol	Chain	Res	Type	Clashes	Symm-Clashes
10	B	503	MES	4	0
11	B	504	WIW	4	0
5	D	501	GTP	2	0
7	C	505	EDO	2	0
13	F	401	ACP	2	0
9	B	501	GDP	1	0

The following is a two-dimensional graphical depiction of Mogul quality analysis of bond lengths, bond angles, torsion angles, and ring geometry for all instances of the Ligand of Interest. In addition, ligands with molecular weight > 250 and outliers as shown on the validation Tables will also be included. For torsion angles, if less than 5% of the Mogul distribution of torsion angles is within 10 degrees of the torsion angle in question, then that torsion angle is considered an outlier. Any bond that is central to one or more torsion angles identified as an outlier by Mogul will be highlighted in the graph. For rings, the root-mean-square deviation (RMSD) between the ring in question and similar rings identified by Mogul is calculated over all ring torsion angles. If the average RMSD is greater than 60 degrees and the minimal RMSD between the ring in question and any Mogul-identified rings is also greater than 60 degrees, then that ring is considered an outlier. The outliers are highlighted in purple. The color gray indicates Mogul did not find sufficient equivalents in the CSD to analyse the geometry.









5.7 Other polymers [i](#)

There are no such residues in this entry.

5.8 Polymer linkage issues

There are no chain breaks in this entry.

6 Fit of model and data [i](#)

6.1 Protein, DNA and RNA chains [i](#)

In the following table, the column labelled ‘#RSRZ> 2’ contains the number (and percentage) of RSRZ outliers, followed by percent RSRZ outliers for the chain as percentile scores relative to all X-ray entries and entries of similar resolution. The OWAB column contains the minimum, median, 95th percentile and maximum values of the occupancy-weighted average B-factor per residue. The column labelled ‘Q< 0.9’ lists the number of (and percentage) of residues with an average occupancy less than 0.9.

Mol	Chain	Analysed	<RSRZ>	#RSRZ>2	OWAB(Å ²)	Q<0.9
1	A	433/440 (98%)	0.76	42 (9%) 13 11	47, 68, 94, 118	0
1	C	440/440 (100%)	0.24	12 (2%) 56 47	40, 56, 81, 107	0
2	B	424/445 (95%)	0.41	16 (3%) 44 36	43, 64, 90, 108	0
2	D	419/445 (94%)	0.83	44 (10%) 11 10	47, 76, 99, 116	0
3	E	120/138 (86%)	0.43	3 (2%) 58 48	51, 73, 97, 106	0
4	F	317/381 (83%)	0.67	26 (8%) 17 14	58, 84, 122, 135	0
All	All	2153/2289 (94%)	0.57	143 (6%) 24 19	40, 69, 102, 135	0

The worst 5 of 143 RSRZ outliers are listed below:

Mol	Chain	Res	Type	RSRZ
1	A	1	MET	5.7
2	D	339	SER	5.7
1	A	277	SER	5.3
1	C	178	SER	4.6
1	A	278	ALA	4.5

6.2 Non-standard residues in protein, DNA, RNA chains [i](#)

There are no non-standard protein/DNA/RNA residues in this entry.

6.3 Carbohydrates [i](#)

There are no oligosaccharides in this entry.

6.4 Ligands [i](#)

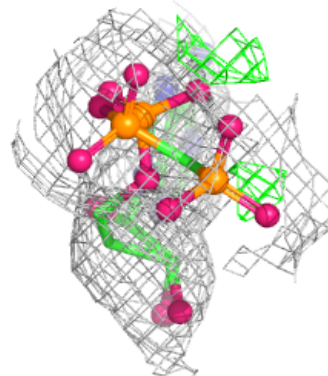
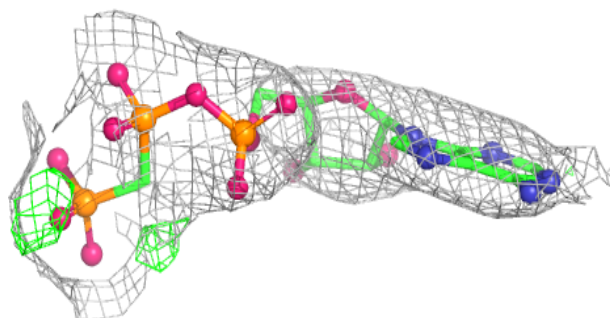
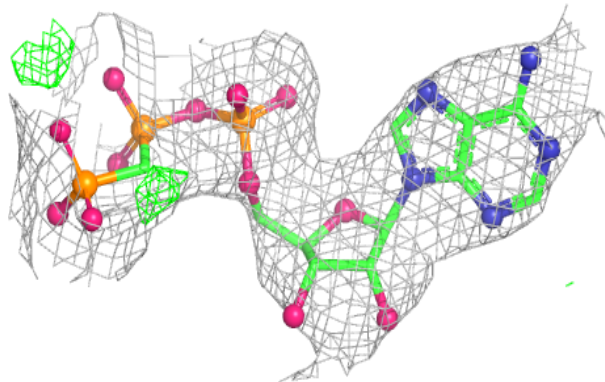
In the following table, the Atoms column lists the number of modelled atoms in the group and the number defined in the chemical component dictionary. The B-factors column lists the minimum, median, 95th percentile and maximum values of B factors of atoms in the group. The column labelled 'Q< 0.9' lists the number of atoms with occupancy less than 0.9.

Mol	Type	Chain	Res	Atoms	RSCC	RSR	B-factors(Å ²)	Q<0.9
6	MG	D	502	1/1	0.39	0.22	88,88,88,88	0
7	EDO	C	507	4/4	0.53	0.19	86,86,93,94	0
6	MG	C	502	1/1	0.80	0.28	55,55,55,55	0
7	EDO	D	504	4/4	0.81	0.15	87,89,90,90	0
7	EDO	A	503	4/4	0.82	0.20	67,72,80,80	0
7	EDO	B	505	4/4	0.82	0.19	65,68,71,71	0
8	PEG	A	504	7/7	0.82	0.15	72,79,87,92	0
7	EDO	C	506	4/4	0.83	0.18	68,69,71,76	0
13	ACP	F	401	31/31	0.86	0.11	88,95,112,123	0
11	WIW	B	504	36/36	0.87	0.19	48,59,69,84	36
6	MG	B	502	1/1	0.87	0.29	58,58,58,58	0
12	CA	C	503	1/1	0.88	0.08	76,76,76,76	1
7	EDO	D	503	4/4	0.88	0.13	71,74,74,86	0
7	EDO	C	505	4/4	0.89	0.11	61,67,67,70	0
6	MG	A	502	1/1	0.89	0.28	52,52,52,52	0
5	GTP	D	501	32/32	0.89	0.11	62,75,94,120	0
7	EDO	C	504	4/4	0.94	0.11	57,61,63,66	0
10	MES	B	503	12/12	0.95	0.09	57,69,75,78	0
5	GTP	C	501	32/32	0.96	0.10	43,55,67,364	0
9	GDP	B	501	28/28	0.96	0.08	41,53,59,86	0
5	GTP	A	501	32/32	0.96	0.07	43,52,57,61	0

The following is a graphical depiction of the model fit to experimental electron density of all instances of the Ligand of Interest. In addition, ligands with molecular weight > 250 and outliers as shown on the geometry validation Tables will also be included. Each fit is shown from different orientation to approximate a three-dimensional view.

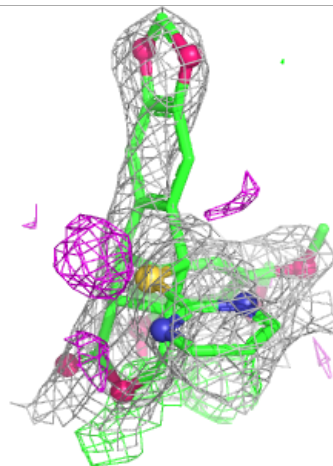
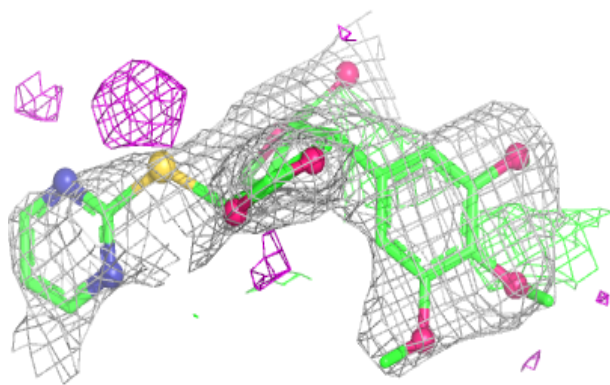
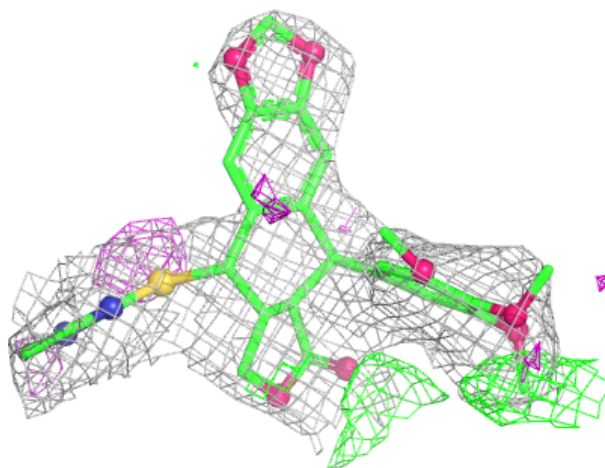
Electron density around ACP F 401:

$2mF_o-DF_c$ (at 0.7 rmsd) in gray
 mF_o-DF_c (at 3 rmsd) in purple (negative)
and green (positive)



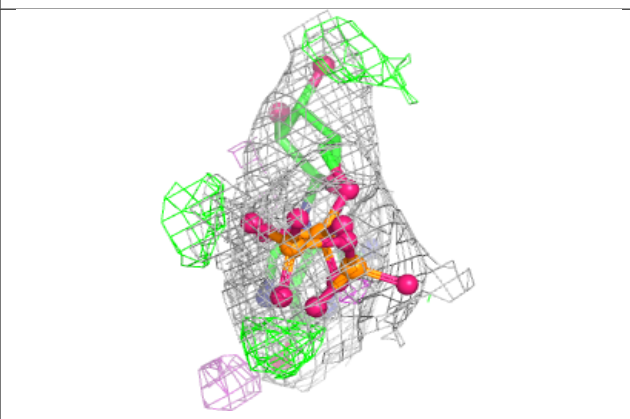
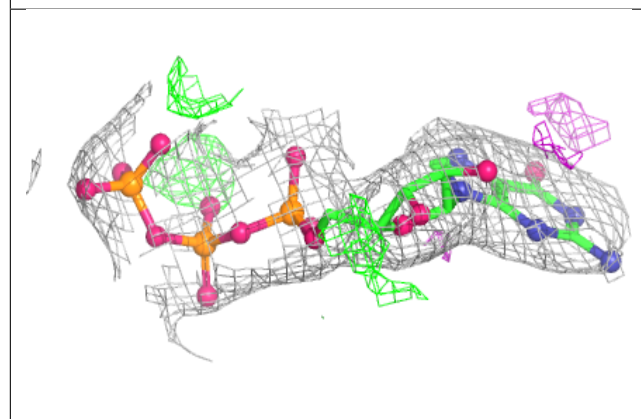
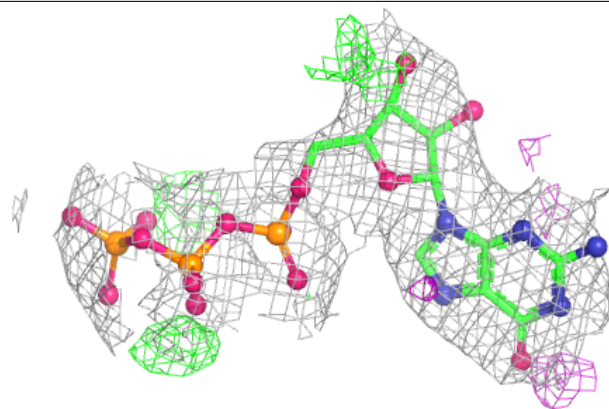
Electron density around WIW B 504:

$2mF_o-DF_c$ (at 0.7 rmsd) in gray
 mF_o-DF_c (at 3 rmsd) in purple (negative)
and green (positive)

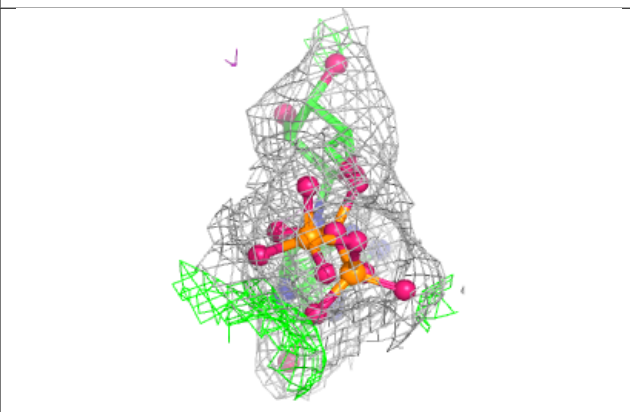
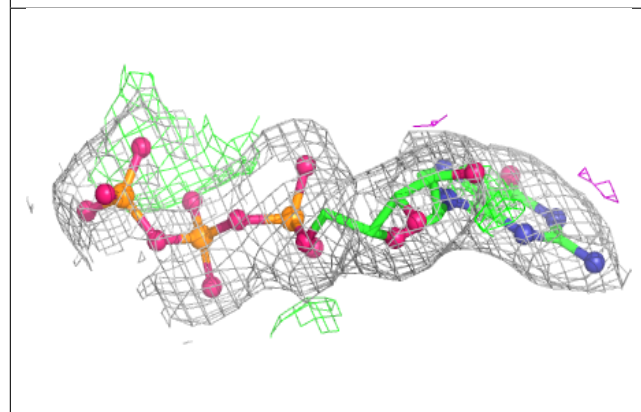
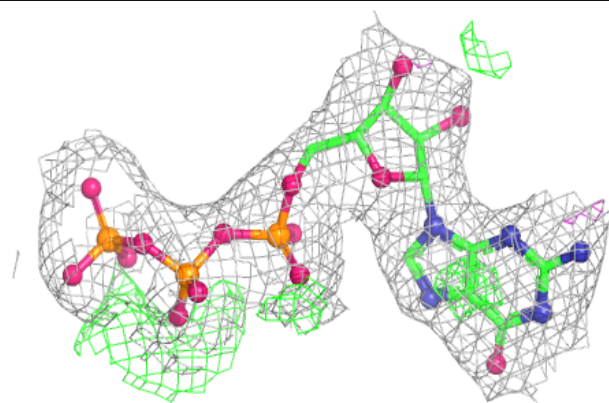


Electron density around GTP D 501:

$2mF_o-DF_c$ (at 0.7 rmsd) in gray
 mF_o-DF_c (at 3 rmsd) in purple (negative)
and green (positive)

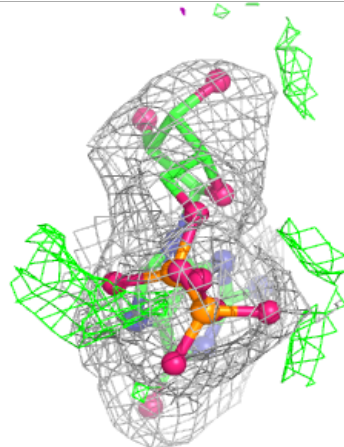
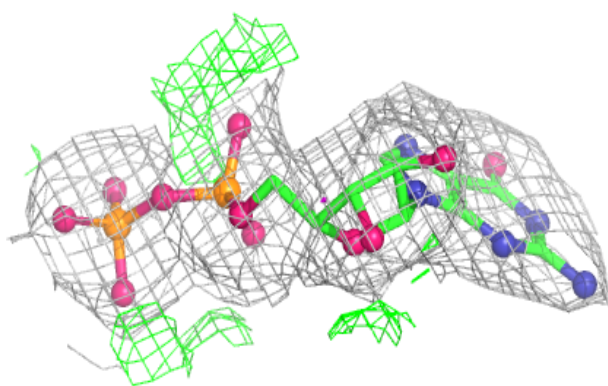
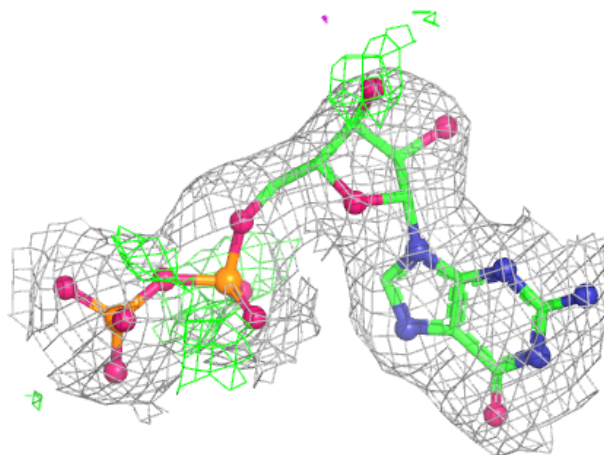
**Electron density around GTP C 501:**

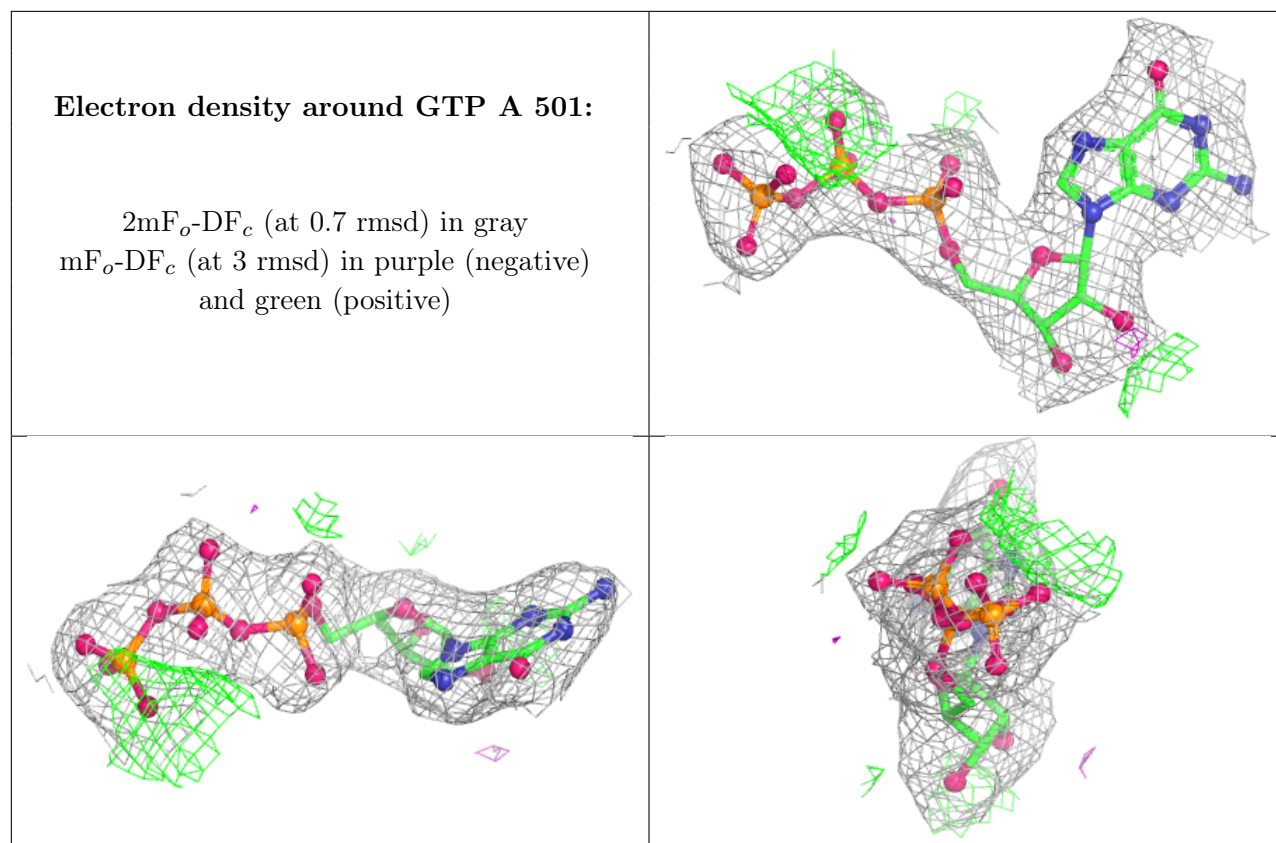
$2mF_o-DF_c$ (at 0.7 rmsd) in gray
 mF_o-DF_c (at 3 rmsd) in purple (negative)
and green (positive)



Electron density around GDP B 501:

$2mF_o-DF_c$ (at 0.7 rmsd) in gray
 mF_o-DF_c (at 3 rmsd) in purple (negative)
and green (positive)





6.5 Other polymers [i](#)

There are no such residues in this entry.