



wwPDB X-ray Structure Validation Summary Report ⓘ

Mar 9, 2026 – 08:57 AM UTC

PDB ID : 4WBH / pdb_00004wbh
Title : STRUCTURE OF THE WNT DEACYLASE NOTUM - CRYSTAL FORM I
APO - 2.2A
Authors : Zebisch, M.; Jones, E.Y.
Deposited on : 2014-09-03
Resolution : 2.20 Å(reported)

This is a wwPDB X-ray Structure Validation Summary Report for a publicly released PDB entry.

We welcome your comments at validation@mail.wwpdb.org

A user guide is available at

<https://www.wwpdb.org/validation/2017/XrayValidationReportHelp>

with specific help available everywhere you see the ⓘ symbol.

The types of validation reports are described at

<http://www.wwpdb.org/validation/2017/FAQs#types>.

The following versions of software and data (see [references ⓘ](#)) were used in the production of this report:

MolProbity : 4-5-2 with Phenix2.0
Mogul : 2022.3.0, CSD as543be (2022)
Xtriage (Phenix) : 2.0
EDS : 3.0
Percentile statistics : 20250101.v01 (using entries in the PDB archive January 1st 2025)
CCP4 : 9.0.010 (Gargrove)
Density-Fitness : 1.0.12
Ideal geometry (proteins) : Engh & Huber (2001)
Ideal geometry (DNA, RNA) : Parkinson et al. (1996)
Validation Pipeline (wwPDB-VP) : 2.49

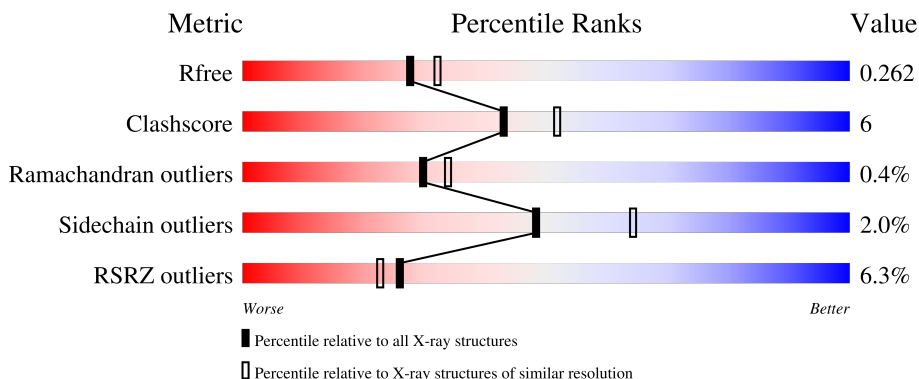
1 Overall quality at a glance

The following experimental techniques were used to determine the structure:

X-RAY DIFFRACTION

The reported resolution of this entry is 2.20 Å.

Percentile scores (ranging between 0-100) for global validation metrics of the entry are shown in the following graphic. The table shows the number of entries on which the scores are based.



Metric	Whole archive (#Entries)	Similar resolution (#Entries, resolution range(Å))
R_{free}	180053	6164 (2.20-2.20)
Clashscore	190562	6851 (2.20-2.20)
Ramachandran outliers	187476	6768 (2.20-2.20)
Sidechain outliers	187428	6769 (2.20-2.20)
RSRZ outliers	180081	6166 (2.20-2.20)

The table below summarises the geometric issues observed across the polymeric chains and their fit to the electron density. The red, orange, yellow and green segments of the lower bar indicate the fraction of residues that contain outliers for ≥ 3 , 2, 1 and 0 types of geometric quality criteria respectively. A grey segment represents the fraction of residues that are not modelled. The numeric value for each fraction is indicated below the corresponding segment, with a dot representing fractions $\leq 5\%$. The upper red bar (where present) indicates the fraction of residues that have poor fit to the electron density. The numeric value is given above the bar.

Mol	Chain	Length	Quality of chain
1	A	471	 7% 66% 7% 26%
1	B	471	 2% 64% 10% 25%

2 Entry composition [i](#)

There are 5 unique types of molecules in this entry. The entry contains 5673 atoms, of which 0 are hydrogens and 0 are deuteriums.

In the tables below, the ZeroOcc column contains the number of atoms modelled with zero occupancy, the AltConf column contains the number of residues with at least one atom in alternate conformation and the Trace column contains the number of residues modelled with at most 2 atoms.

- Molecule 1 is a protein called Protein notum homolog.

Mol	Chain	Residues	Atoms					ZeroOcc	AltConf	Trace
			Total	C	N	O	S			
1	A	347	2783	1761	502	501	19	0	1	0
1	B	351	2808	1774	505	508	21	0	2	0

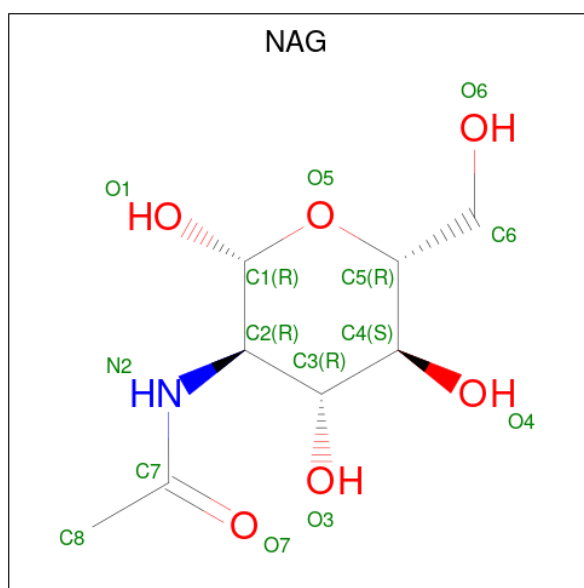
There are 24 discrepancies between the modelled and reference sequences:

Chain	Residue	Modelled	Actual	Comment	Reference
A	35	GLU	-	expression tag	UNP Q6P988
A	36	THR	-	expression tag	UNP Q6P988
A	37	GLY	-	expression tag	UNP Q6P988
A	497	GLY	-	expression tag	UNP Q6P988
A	498	THR	-	expression tag	UNP Q6P988
A	499	LYS	-	expression tag	UNP Q6P988
A	500	HIS	-	expression tag	UNP Q6P988
A	501	HIS	-	expression tag	UNP Q6P988
A	502	HIS	-	expression tag	UNP Q6P988
A	503	HIS	-	expression tag	UNP Q6P988
A	504	HIS	-	expression tag	UNP Q6P988
A	505	HIS	-	expression tag	UNP Q6P988
B	35	GLU	-	expression tag	UNP Q6P988
B	36	THR	-	expression tag	UNP Q6P988
B	37	GLY	-	expression tag	UNP Q6P988
B	497	GLY	-	expression tag	UNP Q6P988
B	498	THR	-	expression tag	UNP Q6P988
B	499	LYS	-	expression tag	UNP Q6P988
B	500	HIS	-	expression tag	UNP Q6P988
B	501	HIS	-	expression tag	UNP Q6P988
B	502	HIS	-	expression tag	UNP Q6P988
B	503	HIS	-	expression tag	UNP Q6P988
B	504	HIS	-	expression tag	UNP Q6P988
B	505	HIS	-	expression tag	UNP Q6P988

- Molecule 2 is CHLORIDE ION (CCD ID: CL) (formula: Cl).

Mol	Chain	Residues	Atoms		ZeroOcc	AltConf
2	A	3	Total	Cl	0	0
			3	3		
2	B	1	Total	Cl	0	0
			1	1		

- Molecule 3 is 2-acetamido-2-deoxy-beta-D-glucopyranose (CCD ID: NAG) (formula: C₈H₁₅NO₆).



Mol	Chain	Residues	Atoms				ZeroOcc	AltConf
3	B	1	Total	C	N	O	0	0
			14	8	1	5		

- Molecule 4 is SULFATE ION (CCD ID: SO4) (formula: O₄S).



Mol	Chain	Residues	Atoms		ZeroOcc	AltConf
4	B	1	Total	O S	0	0
			5	4 1		

- Molecule 5 is water.

Mol	Chain	Residues	Atoms		ZeroOcc	AltConf
5	A	22	Total	O	0	0
			22	22		
5	B	37	Total	O	0	0
			37	37		

4 Data and refinement statistics

Property	Value	Source
Space group	P 21 21 2	Depositor
Cell constants a, b, c, α , β , γ	72.70Å 175.43Å 60.76Å 90.00° 90.00° 90.00°	Depositor
Resolution (Å)	87.72 – 2.20 87.72 – 2.20	Depositor EDS
% Data completeness (in resolution range)	99.6 (87.72-2.20) 99.6 (87.72-2.20)	Depositor EDS
R_{merge}	0.08	Depositor
R_{sym}	(Not available)	Depositor
$\langle I/\sigma(I) \rangle$ ¹	1.93 (at 2.20Å)	Xtrriage
Refinement program	REFMAC 5.8.0073	Depositor
R, R_{free}	0.215 , 0.262 0.214 , 0.262	Depositor DCC
R_{free} test set	2013 reflections (4.99%)	wwPDB-VP
Wilson B-factor (Å ²)	36.3	Xtrriage
Anisotropy	0.375	Xtrriage
Bulk solvent k_{sol} (e/Å ³), B_{sol} (Å ²)	0.33 , 31.2	EDS
L-test for twinning ²	$\langle L \rangle = 0.46$, $\langle L^2 \rangle = 0.29$	Xtrriage
Estimated twinning fraction	No twinning to report.	Xtrriage
F_o, F_c correlation	0.94	EDS
Total number of atoms	5673	wwPDB-VP
Average B, all atoms (Å ²)	43.0	wwPDB-VP

Xtrriage's analysis on translational NCS is as follows: *The largest off-origin peak in the Patterson function is 4.00% of the height of the origin peak. No significant pseudotranslation is detected.*

¹Intensities estimated from amplitudes.

²Theoretical values of $\langle |L| \rangle$, $\langle L^2 \rangle$ for acentric reflections are 0.5, 0.333 respectively for untwinned datasets, and 0.375, 0.2 for perfectly twinned datasets.

5 Model quality [i](#)

5.1 Standard geometry [i](#)

Bond lengths and bond angles in the following residue types are not validated in this section: CL, NAG, SO4

The Z score for a bond length (or angle) is the number of standard deviations the observed value is removed from the expected value. A bond length (or angle) with $|Z| > 5$ is considered an outlier worth inspection. RMSZ is the root-mean-square of all Z scores of the bond lengths (or angles).

Mol	Chain	Bond lengths		Bond angles	
		RMSZ	# Z >5	RMSZ	# Z >5
1	A	0.53	0/2860	0.81	0/3887
1	B	0.53	0/2886	0.81	1/3927 (0.0%)
All	All	0.53	0/5746	0.81	1/7814 (0.0%)

There are no bond length outliers.

All (1) bond angle outliers are listed below:

Mol	Chain	Res	Type	Atoms	Z	Observed(°)	Ideal(°)
1	B	232	SER	CB-CA-C	-5.80	109.34	117.23

There are no chirality outliers.

There are no planarity outliers.

5.2 Too-close contacts [i](#)

In the following table, the Non-H and H(model) columns list the number of non-hydrogen atoms and hydrogen atoms in the chain respectively. The H(added) column lists the number of hydrogen atoms added and optimized by MolProbity. The Clashes column lists the number of clashes within the asymmetric unit, whereas Symm-Clashes lists symmetry-related clashes.

Mol	Chain	Non-H	H(model)	H(added)	Clashes	Symm-Clashes
1	A	2783	0	2686	15	0
1	B	2808	0	2698	53	1
2	A	3	0	0	0	0
2	B	1	0	0	0	0
3	B	14	0	13	0	0
4	B	5	0	0	0	0
5	A	22	0	0	0	0
5	B	37	0	0	0	0

Continued on next page...

Continued from previous page...

Mol	Chain	Non-H	H(model)	H(added)	Clashes	Symm-Clashes
All	All	5673	0	5397	68	1

The all-atom clashscore is defined as the number of clashes found per 1000 atoms (including hydrogen atoms). The all-atom clashscore for this structure is 6.

The worst 5 of 68 close contacts within the same asymmetric unit are listed below, sorted by their clash magnitude.

Atom-1	Atom-2	Interatomic distance (Å)	Clash overlap (Å)
1:B:139:ARG:CG	1:B:147:MET:HE2	2.05	0.86
1:A:193:SER:HA	1:A:203:MET:HE3	1.61	0.82
1:B:139:ARG:HD3	1:B:147:MET:HE2	1.62	0.81
1:B:139:ARG:CD	1:B:147:MET:HE2	2.12	0.78
1:B:175:ALA:HB3	1:B:177:MET:HE3	1.65	0.78

All (1) symmetry-related close contacts are listed below. The label for Atom-2 includes the symmetry operator and encoded unit-cell translations to be applied.

Atom-1	Atom-2	Interatomic distance (Å)	Clash overlap (Å)
1:B:292:ARG:NH2	1:B:292:ARG:NH2[2_555]	1.50	0.70

5.3 Torsion angles [i](#)

5.3.1 Protein backbone [i](#)

In the following table, the Percentiles column shows the percent Ramachandran outliers of the chain as a percentile score with respect to all X-ray entries followed by that with respect to entries of similar resolution.

The Analysed column shows the number of residues for which the backbone conformation was analysed, and the total number of residues.

Mol	Chain	Analysed	Favoured	Allowed	Outliers	Percentiles	
1	A	340/471 (72%)	322 (95%)	17 (5%)	1 (0%)	36	42
1	B	347/471 (74%)	333 (96%)	12 (4%)	2 (1%)	21	23
All	All	687/942 (73%)	655 (95%)	29 (4%)	3 (0%)	30	34

All (3) Ramachandran outliers are listed below:

Mol	Chain	Res	Type
1	B	354	GLN
1	B	391	ILE
1	A	391	ILE

5.3.2 Protein sidechains [i](#)

In the following table, the Percentiles column shows the percent sidechain outliers of the chain as a percentile score with respect to all X-ray entries followed by that with respect to entries of similar resolution.

The Analysed column shows the number of residues for which the sidechain conformation was analysed, and the total number of residues.

Mol	Chain	Analysed	Rotameric	Outliers	Percentiles
1	A	302/405 (75%)	297 (98%)	5 (2%)	53 69
1	B	305/405 (75%)	297 (97%)	8 (3%)	40 55
All	All	607/810 (75%)	594 (98%)	13 (2%)	48 63

5 of 13 residues with a non-rotameric sidechain are listed below:

Mol	Chain	Res	Type
1	B	295	ILE
1	B	309	GLN
1	B	445[B]	CYS
1	B	432	CYS
1	B	445[A]	CYS

Sometimes sidechains can be flipped to improve hydrogen bonding and reduce clashes. 5 of 9 such sidechains are listed below:

Mol	Chain	Res	Type
1	B	396	HIS
1	B	412	HIS
1	B	92	HIS
1	B	102	ASN
1	B	241	ASN

5.3.3 RNA [i](#)

There are no RNA molecules in this entry.

5.4 Non-standard residues in protein, DNA, RNA chains [i](#)

There are no non-standard protein/DNA/RNA residues in this entry.

5.5 Carbohydrates [i](#)

There are no oligosaccharides in this entry.

5.6 Ligand geometry [i](#)

Of 6 ligands modelled in this entry, 4 are monoatomic - leaving 2 for Mogul analysis.

In the following table, the Counts columns list the number of bonds (or angles) for which Mogul statistics could be retrieved, the number of bonds (or angles) that are observed in the model and the number of bonds (or angles) that are defined in the Chemical Component Dictionary. The Link column lists molecule types, if any, to which the group is linked. The Z score for a bond length (or angle) is the number of standard deviations the observed value is removed from the expected value. A bond length (or angle) with $|Z| > 2$ is considered an outlier worth inspection. RMSZ is the root-mean-square of all Z scores of the bond lengths (or angles).

Mol	Type	Chain	Res	Link	Bond lengths			Bond angles		
					Counts	RMSZ	# Z > 2	Counts	RMSZ	# Z > 2
3	NAG	B	601	1	14,14,15	0.48	0	17,19,21	1.68	2 (11%)
4	SO4	B	603	-	4,4,4	0.43	0	6,6,6	0.17	0

In the following table, the Chirals column lists the number of chiral outliers, the number of chiral centers analysed, the number of these observed in the model and the number defined in the Chemical Component Dictionary. Similar counts are reported in the Torsion and Rings columns. '-' means no outliers of that kind were identified.

Mol	Type	Chain	Res	Link	Chirals	Torsions	Rings
3	NAG	B	601	1	-	2/6/23/26	0/1/1/1

There are no bond length outliers.

All (2) bond angle outliers are listed below:

Mol	Chain	Res	Type	Atoms	Z	Observed(°)	Ideal(°)
3	B	601	NAG	C1-O5-C5	4.65	118.42	112.19
3	B	601	NAG	C3-C4-C5	-2.74	105.26	110.23

There are no chirality outliers.

All (2) torsion outliers are listed below:

Mol	Chain	Res	Type	Atoms
3	B	601	NAG	C4-C5-C6-O6
3	B	601	NAG	O5-C5-C6-O6

There are no ring outliers.

No monomer is involved in short contacts.

5.7 Other polymers [i](#)

There are no such residues in this entry.

5.8 Polymer linkage issues [i](#)

There are no chain breaks in this entry.

6 Fit of model and data [i](#)

6.1 Protein, DNA and RNA chains [i](#)

In the following table, the column labelled ‘#RSRZ > 2’ contains the number (and percentage) of RSRZ outliers, followed by percent RSRZ outliers for the chain as percentile scores relative to all X-ray entries and entries of similar resolution. The OWAB column contains the minimum, median, 95th percentile and maximum values of the occupancy-weighted average B-factor per residue. The column labelled ‘Q < 0.9’ lists the number of (and percentage) of residues with an average occupancy less than 0.9.

Mol	Chain	Analysed	<RSRZ>	#RSRZ>2	OWAB(Å ²)	Q<0.9
1	A	347/471 (73%)	0.49	33 (9%) 14 11	18, 42, 83, 116	1 (0%)
1	B	351/471 (74%)	0.16	11 (3%) 51 48	22, 37, 63, 106	2 (0%)
All	All	698/942 (74%)	0.33	44 (6%) 26 23	18, 40, 77, 116	3 (0%)

The worst 5 of 44 RSRZ outliers are listed below:

Mol	Chain	Res	Type	RSRZ
1	A	434	VAL	5.1
1	A	356	VAL	4.9
1	A	355	PRO	4.8
1	A	442	TRP	4.5
1	A	283	ILE	4.3

6.2 Non-standard residues in protein, DNA, RNA chains [i](#)

There are no non-standard protein/DNA/RNA residues in this entry.

6.3 Carbohydrates [i](#)

There are no oligosaccharides in this entry.

6.4 Ligands [i](#)

In the following table, the Atoms column lists the number of modelled atoms in the group and the number defined in the chemical component dictionary. The B-factors column lists the minimum, median, 95th percentile and maximum values of B factors of atoms in the group. The column labelled ‘Q < 0.9’ lists the number of atoms with occupancy less than 0.9.

Mol	Type	Chain	Res	Atoms	RSCC	RSR	B-factors(\AA^2)	Q<0.9
4	SO4	B	603	5/5	0.66	0.15	84,89,93,94	0
3	NAG	B	601	14/15	0.84	0.12	56,58,60,60	0
2	CL	A	602	1/1	0.88	0.15	73,73,73,73	0
2	CL	B	602	1/1	0.89	0.26	67,67,67,67	0
2	CL	A	603	1/1	0.92	0.23	68,68,68,68	0
2	CL	A	601	1/1	0.96	0.12	70,70,70,70	0

6.5 Other polymers [i](#)

There are no such residues in this entry.