



# wwPDB EM Validation Summary Report ⓘ

Mar 24, 2026 – 04:46 PM JST

PDB ID : 9W2Z / pdb\_00009w2z  
EMDB ID : EMD-65585  
Title : Cryo-EM structure of complex IV on the bovine heart submitochondrial particles, IV-A  
Authors : Nakano, A.; Masuya, T.; Akisada, S.; Ishikawa-Fukuda, M.; Mitsuoka, K.; Miyoshi, H.; Murai, M.; Yokoyama, K.  
Deposited on : 2025-07-28  
Resolution : 2.61 Å (reported)  
Based on initial model : 7QSK

This is a wwPDB EM Validation Summary Report for a publicly released PDB entry.

We welcome your comments at [validation@mail.wwpdb.org](mailto:validation@mail.wwpdb.org)

A user guide is available at

<https://www.wwpdb.org/validation/2017/EMValidationReportHelp>

with specific help available everywhere you see the ⓘ symbol.

The types of validation reports are described at

<http://www.wwpdb.org/validation/2017/FAQs#types>.

---

The following versions of software and data (see [references ⓘ](#)) were used in the production of this report:

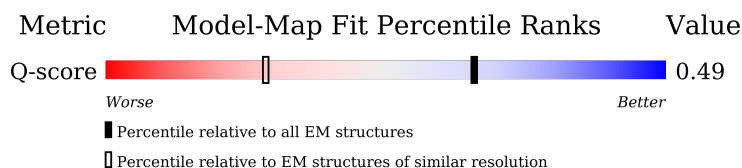
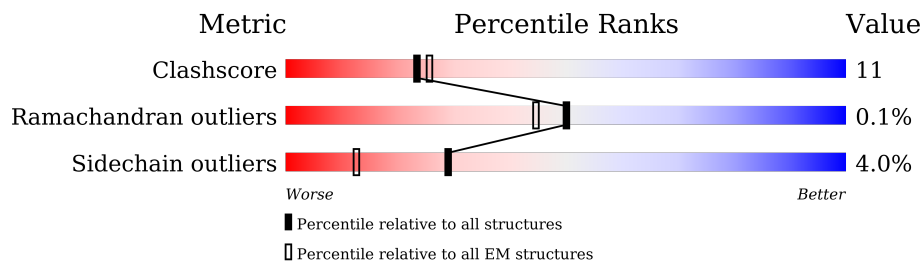
EMDB validation analysis : 0.0.1.dev132  
Mogul : 1.8.5 (274361), CSD as541be (2020)  
MolProbity : 4-5-2 with Phenix2.0  
buster-report : 1.1.7 (2018)  
Percentile statistics : 20231227.v01 (using entries in the PDB archive December 27th 2023)  
EM percentile statistics : 202505.v01 (Using data in the EMDB archive up until May 2025)  
MapQ : 1.9.13  
Ideal geometry (proteins) : Engh & Huber (2001)  
Ideal geometry (DNA, RNA) : Parkinson et al. (1996)  
Validation Pipeline (wwPDB-VP) : 2.48.1

# 1 Overall quality at a glance i

The following experimental techniques were used to determine the structure:  
*ELECTRON MICROSCOPY*

The reported resolution of this entry is 2.61 Å.

Percentile scores (ranging between 0-100) for global validation metrics of the entry are shown in the following graphic. The table shows the number of entries on which the scores are based.



Metric	Whole archive (#Entries)	EM structures (#Entries)	Similar EM resolution (#Entries, resolution range(Å))
Clashscore	210492	15764	-
Ramachandran outliers	207382	16835	-
Sidechain outliers	206894	16415	-
Q-score	-	25397	8735 ( 2.11 - 3.11 )

The table below summarises the geometric issues observed across the polymeric chains and their fit to the map. The red, orange, yellow and green segments of the bar indicate the fraction of residues that contain outliers for  $\geq 3$ , 2, 1 and 0 types of geometric quality criteria respectively. A grey segment represents the fraction of residues that are not modelled. The numeric value for each fraction is indicated below the corresponding segment, with a dot representing fractions  $\leq 5\%$ . The upper red bar (where present) indicates the fraction of residues that have poor fit to the EM map (all-atom inclusion  $< 40\%$ ). The numeric value is given above the bar.

Mol	Chain	Length	Quality of chain
1	A	514	
2	B	226	
3	C	256	
4	D	136	

*Continued on next page...*

*Continued from previous page...*

Mol	Chain	Length	Quality of chain
5	E	102	
6	F	91	
7	G	72	
8	H	81	
9	I	70	
10	J	55	
11	K	49	
12	L	44	
13	M	40	
14	N	81	

## 2 Entry composition [i](#)

There are 23 unique types of molecules in this entry. The entry contains 14825 atoms, of which 0 are hydrogens and 0 are deuteriums.

In the tables below, the AltConf column contains the number of residues with at least one atom in alternate conformation and the Trace column contains the number of residues modelled with at most 2 atoms.

- Molecule 1 is a protein called Cytochrome c oxidase subunit 1.

Mol	Chain	Residues	Atoms					AltConf	Trace
			Total	C	N	O	S		
1	A	514	4027	2691	623	678	35	0	0

- Molecule 2 is a protein called Cytochrome c oxidase subunit 2.

Mol	Chain	Residues	Atoms					AltConf	Trace
			Total	C	N	O	S		
2	B	226	1814	1179	280	338	17	0	0

- Molecule 3 is a protein called Cytochrome c oxidase subunit 3.

Mol	Chain	Residues	Atoms					AltConf	Trace
			Total	C	N	O	S		
3	C	256	2089	1401	331	345	12	0	0

- Molecule 4 is a protein called Cytochrome c oxidase subunit 4 isoform 1, mitochondrial.

Mol	Chain	Residues	Atoms					AltConf	Trace
			Total	C	N	O	S		
4	D	136	1133	740	186	203	4	0	0

- Molecule 5 is a protein called Cytochrome c oxidase subunit 5A, mitochondrial.

Mol	Chain	Residues	Atoms					AltConf	Trace
			Total	C	N	O	S		
5	E	102	825	528	139	156	2	0	0

- Molecule 6 is a protein called Cytochrome c oxidase subunit 5B, mitochondrial.

Mol	Chain	Residues	Atoms					AltConf	Trace
			Total	C	N	O	S		
6	F	91	694	432	122	135	5	0	0

- Molecule 7 is a protein called Cytochrome c oxidase subunit 6A2, mitochondrial.

Mol	Chain	Residues	Atoms					AltConf	Trace
			Total	C	N	O	S		
7	G	72	595	387	113	94	1	0	0

- Molecule 8 is a protein called Cytochrome c oxidase subunit 6B1.

Mol	Chain	Residues	Atoms					AltConf	Trace
			Total	C	N	O	S		
8	H	81	676	425	124	122	5	0	0

- Molecule 9 is a protein called Cytochrome c oxidase subunit 6C.

Mol	Chain	Residues	Atoms					AltConf	Trace
			Total	C	N	O	S		
9	I	70	575	375	103	93	4	0	0

- Molecule 10 is a protein called Cytochrome c oxidase subunit 7A1, mitochondrial.

Mol	Chain	Residues	Atoms					AltConf	Trace
			Total	C	N	O	S		
10	J	55	434	280	72	79	3	0	0

- Molecule 11 is a protein called Cytochrome c oxidase subunit 7B, mitochondrial.

Mol	Chain	Residues	Atoms					AltConf	Trace
			Total	C	N	O	S		
11	K	49	384	250	65	67	2	0	0

- Molecule 12 is a protein called Cytochrome c oxidase subunit 7C, mitochondrial.

Mol	Chain	Residues	Atoms					AltConf	Trace
			Total	C	N	O	S		
12	L	44	360	242	59	57	2	0	0

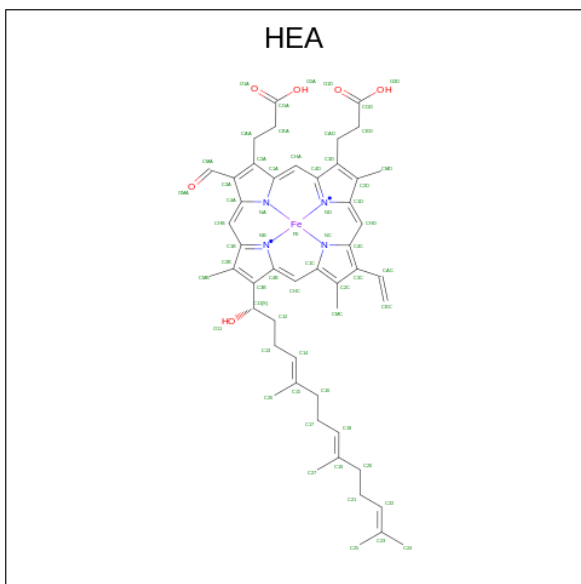
- Molecule 13 is a protein called Cytochrome c oxidase subunit 8B, mitochondrial.

Mol	Chain	Residues	Atoms				AltConf	Trace
			Total	C	N	O		
13	M	40	311	208	48	55	0	0

- Molecule 14 is a protein called Cytochrome c oxidase subunit NDUFA4.

Mol	Chain	Residues	Atoms				AltConf	Trace
			Total	C	N	O		
14	N	81	645	420	112	113	0	0

- Molecule 15 is HEME-A (CCD ID: HEA) (formula:  $C_{49}H_{56}FeN_4O_6$ ) (labeled as "Ligand of Interest" by depositor).



Mol	Chain	Residues	Atoms					AltConf
			Total	C	Fe	N	O	
15	A	1	60	49	1	4	6	0
15	A	1	60	49	1	4	6	0

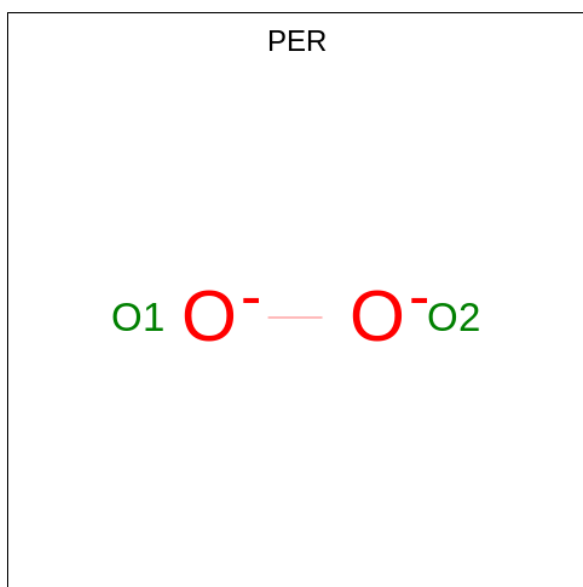
- Molecule 16 is COPPER (II) ION (CCD ID: CU) (formula: Cu).

Mol	Chain	Residues	Atoms		AltConf
			Total	Cu	
16	A	1	1	1	0

- Molecule 17 is MAGNESIUM ION (CCD ID: MG) (formula: Mg).

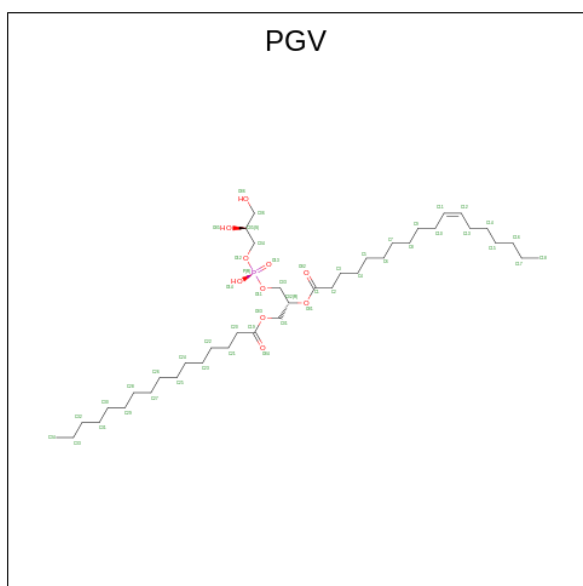
Mol	Chain	Residues	Atoms		AltConf
			Total	Mg	
17	A	1	1	1	0

- Molecule 18 is PEROXIDE ION (CCD ID: PER) (formula:  $O_2$ ).



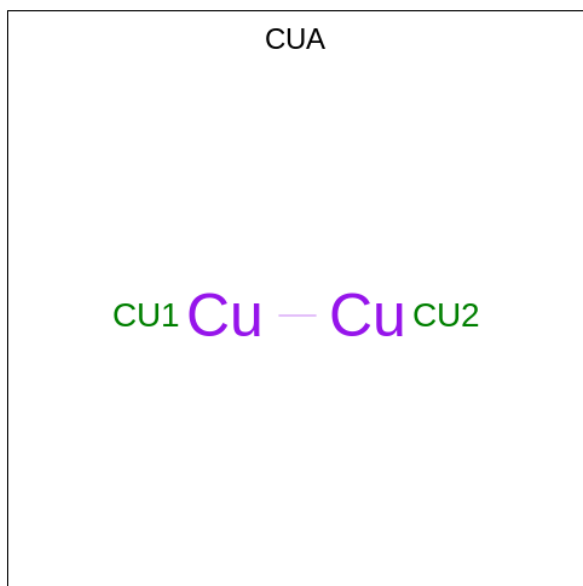
Mol	Chain	Residues	Atoms	AltConf
18	A	1	Total O 2 2	0

- Molecule 19 is (1R)-2-{{{[(2S)-2,3-DIHYDROXYPROPYL]OXY}(HYDROXY)PHOSPHORYL]OXY}-1-[(PALMITOYLOXY)METHYL]ETHYL (11E)-OCTADEC-11-ENOATE (CCD ID: PGV) (formula: C<sub>40</sub>H<sub>77</sub>O<sub>10</sub>P) (labeled as "Ligand of Interest" by depositor).



Mol	Chain	Residues	Atoms	AltConf
19	A	1	Total C O P 51 40 10 1	0
19	C	1	Total C O P 41 30 10 1	0

- Molecule 20 is DINUCLEAR COPPER ION (CCD ID: CUA) (formula: Cu<sub>2</sub>).



Mol	Chain	Residues	Atoms	AltConf
20	B	1	Total Cu 2 2	0

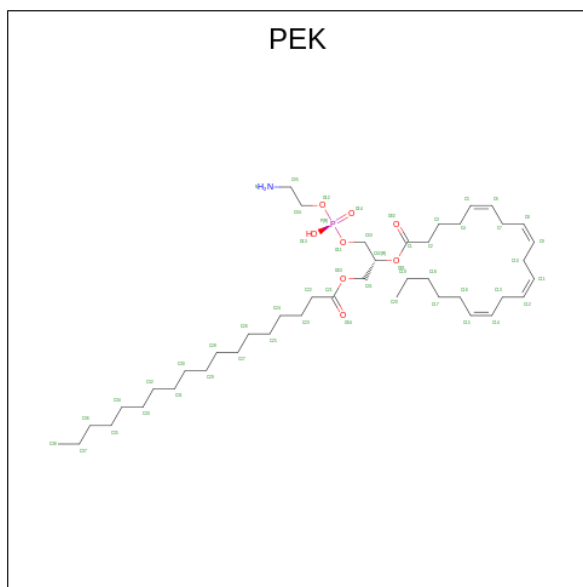
- Molecule 21 is SODIUM ION (CCD ID: NA) (formula: Na).

Mol	Chain	Residues	Atoms	AltConf
21	C	1	Total Na 1 1	0

- Molecule 22 is ZINC ION (CCD ID: ZN) (formula: Zn).

Mol	Chain	Residues	Atoms	AltConf
22	F	1	Total Zn 1 1	0

- Molecule 23 is (1S)-2-[[[2-AMINOETHOXY](HYDROXY)PHOSPHORYL]OXY}-1-[(STEAROYLOXY)METHYL]ETHYL (5E,8E,11E,14E)-ICOSA-5,8,11,14-TETRAENOATE (CCD ID: PEK) (formula: C<sub>43</sub>H<sub>78</sub>NO<sub>8</sub>P) (labeled as "Ligand of Interest" by depositor).

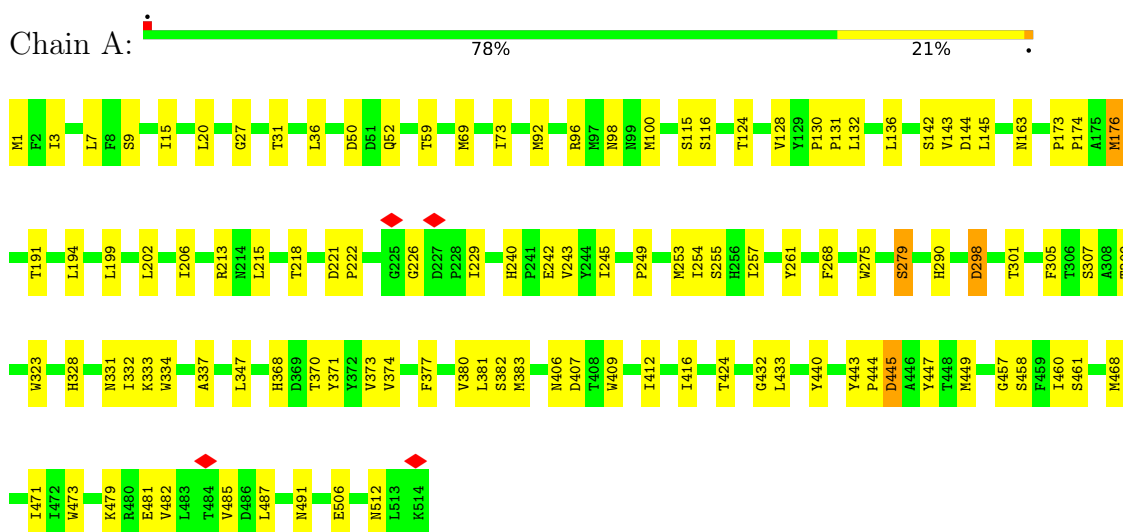


Mol	Chain	Residues	Atoms					AltConf
			Total	C	N	O	P	
23	G	1	43	33	1	8	1	0

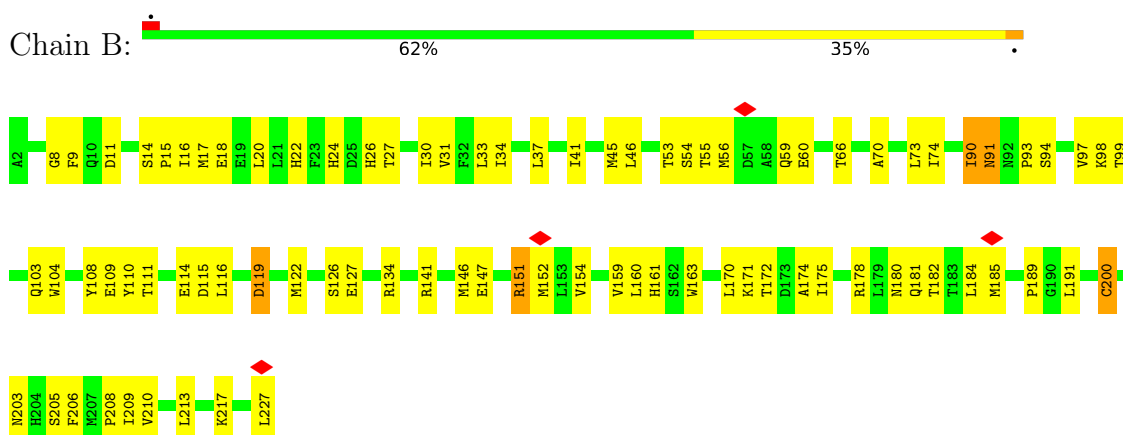
### 3 Residue-property plots [i](#)

These plots are drawn for all protein, RNA, DNA and oligosaccharide chains in the entry. The first graphic for a chain summarises the proportions of the various outlier classes displayed in the second graphic. The second graphic shows the sequence view annotated by issues in geometry and atom inclusion in map density. Residues are color-coded according to the number of geometric quality criteria for which they contain at least one outlier: green = 0, yellow = 1, orange = 2 and red = 3 or more. A red diamond above a residue indicates a poor fit to the EM map for this residue (all-atom inclusion < 40%). Stretches of 2 or more consecutive residues without any outlier are shown as a green connector. Residues present in the sample, but not in the model, are shown in grey.

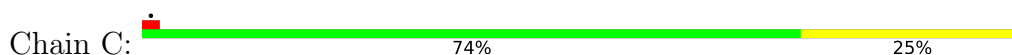
- Molecule 1: Cytochrome c oxidase subunit 1

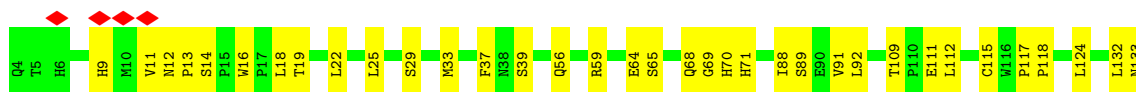


- Molecule 2: Cytochrome c oxidase subunit 2

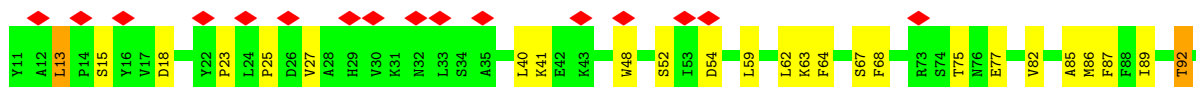
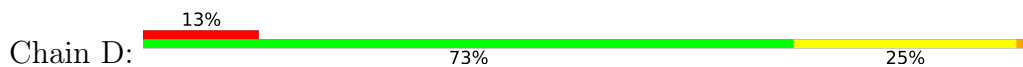


- Molecule 3: Cytochrome c oxidase subunit 3





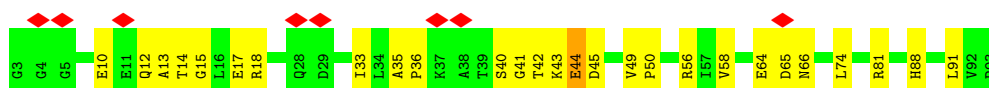
- Molecule 4: Cytochrome c oxidase subunit 4 isoform 1, mitochondrial



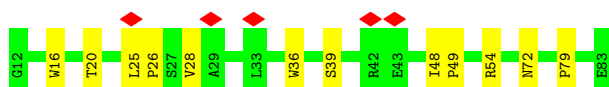
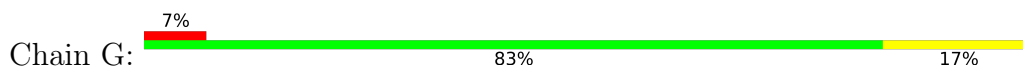
- Molecule 5: Cytochrome c oxidase subunit 5A, mitochondrial



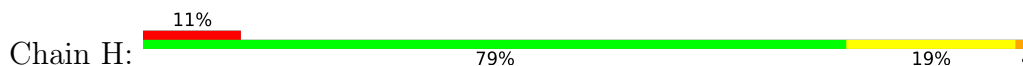
- Molecule 6: Cytochrome c oxidase subunit 5B, mitochondrial



- Molecule 7: Cytochrome c oxidase subunit 6A2, mitochondrial



- Molecule 8: Cytochrome c oxidase subunit 6B1

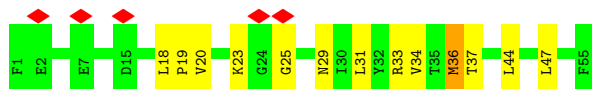
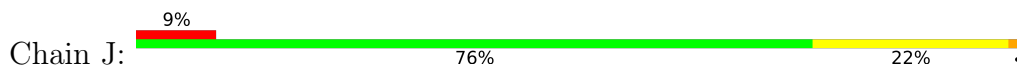




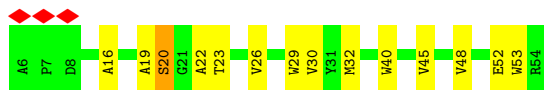
- Molecule 9: Cytochrome c oxidase subunit 6C



- Molecule 10: Cytochrome c oxidase subunit 7A1, mitochondrial



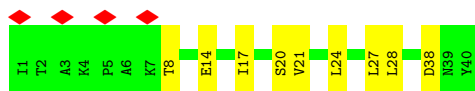
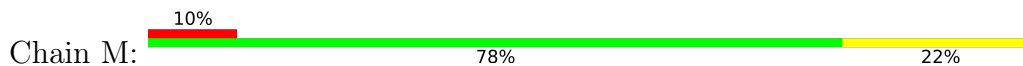
- Molecule 11: Cytochrome c oxidase subunit 7B, mitochondrial



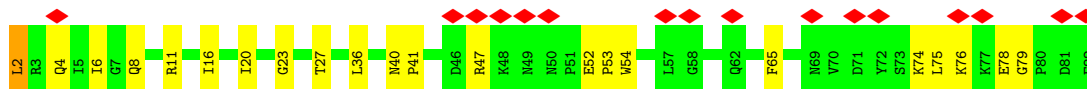
- Molecule 12: Cytochrome c oxidase subunit 7C, mitochondrial



- Molecule 13: Cytochrome c oxidase subunit 8B, mitochondrial



- Molecule 14: Cytochrome c oxidase subunit NDUFA4



## 4 Experimental information

Property	Value	Source
EM reconstruction method	SINGLE PARTICLE	Depositor
Imposed symmetry	POINT, Not provided	
Number of particles used	227858	Depositor
Resolution determination method	FSC 0.143 CUT-OFF	Depositor
CTF correction method	PHASE FLIPPING AND AMPLITUDE CORRECTION	Depositor
Microscope	TFS KRIOS	Depositor
Voltage (kV)	300	Depositor
Electron dose ( $e^-/\text{\AA}^2$ )	50	Depositor
Minimum defocus (nm)	800	Depositor
Maximum defocus (nm)	1800	Depositor
Magnification	Not provided	
Image detector	GATAN K3 (6k x 4k)	Depositor
Maximum map value	1.076	Depositor
Minimum map value	-0.570	Depositor
Average map value	-0.000	Depositor
Map value standard deviation	0.019	Depositor
Recommended contour level	0.2	Depositor
Map size ( $\text{\AA}$ )	654.0, 654.0, 654.0	wwPDB
Map dimensions	600, 600, 600	wwPDB
Map angles ( $^\circ$ )	90.0, 90.0, 90.0	wwPDB
Pixel spacing ( $\text{\AA}$ )	1.09, 1.09, 1.09	Depositor

## 5 Model quality i

### 5.1 Standard geometry i

Bond lengths and bond angles in the following residue types are not validated in this section: CU, PGV, HEA, PEK, MG, PER, ZN, NA, CUA, FME

The Z score for a bond length (or angle) is the number of standard deviations the observed value is removed from the expected value. A bond length (or angle) with  $|Z| > 5$  is considered an outlier worth inspection. RMSZ is the root-mean-square of all Z scores of the bond lengths (or angles).

Mol	Chain	Bond lengths		Bond angles	
		RMSZ	# Z  >5	RMSZ	# Z  >5
1	A	0.23	0/4156	0.51	0/5678
2	B	0.32	0/1860	0.70	0/2534
3	C	0.25	0/2175	0.54	0/2977
4	D	0.26	0/1167	0.61	1/1577 (0.1%)
5	E	0.29	0/843	0.67	0/1145
6	F	0.29	0/709	0.68	0/963
7	G	0.26	0/621	0.65	0/848
8	H	0.30	0/696	0.65	1/940 (0.1%)
9	I	0.31	0/588	0.73	1/781 (0.1%)
10	J	0.24	0/443	0.59	0/598
11	K	0.29	0/398	0.65	0/546
12	L	0.82	3/372 (0.8%)	1.95	6/500 (1.2%)
13	M	0.22	0/321	0.53	0/440
14	N	0.26	0/665	0.69	0/902
All	All	0.29	3/15014 (0.0%)	0.67	9/20429 (0.0%)

All (3) bond length outliers are listed below:

Mol	Chain	Res	Type	Atoms	Z	Observed(Å)	Ideal(Å)
12	L	12	PRO	CB-CG	-10.16	0.98	1.49
12	L	12	PRO	N-CA	8.38	1.58	1.47
12	L	12	PRO	CG-CD	-5.88	1.30	1.50

The worst 5 of 9 bond angle outliers are listed below:

Mol	Chain	Res	Type	Atoms	Z	Observed(°)	Ideal(°)
12	L	12	PRO	CB-CG-CD	23.09	179.97	106.10
12	L	12	PRO	N-CD-CG	-21.39	71.11	103.20
12	L	12	PRO	CA-CB-CG	-20.34	65.85	104.50
12	L	12	PRO	CA-N-CD	-13.98	92.43	112.00
12	L	12	PRO	N-CA-CB	-8.69	94.13	103.25

There are no chirality outliers.

There are no planarity outliers.

## 5.2 Too-close contacts

In the following table, the Non-H and H(model) columns list the number of non-hydrogen atoms and hydrogen atoms in the chain respectively. The H(added) column lists the number of hydrogen atoms added and optimized by MolProbity. The Clashes column lists the number of clashes within the asymmetric unit, whereas Symm-Clashes lists symmetry-related clashes.

Mol	Chain	Non-H	H(model)	H(added)	Clashes	Symm-Clashes
1	A	4027	0	4002	79	0
2	B	1814	0	1823	71	0
3	C	2089	0	2012	40	0
4	D	1133	0	1119	29	0
5	E	825	0	823	36	0
6	F	694	0	677	19	0
7	G	595	0	569	9	0
8	H	676	0	636	13	0
9	I	575	0	584	18	0
10	J	434	0	432	10	0
11	K	384	0	366	11	0
12	L	360	0	360	10	0
13	M	311	0	321	5	0
14	N	645	0	630	21	0
15	A	120	0	108	3	0
16	A	1	0	0	0	0
17	A	1	0	0	0	0
18	A	2	0	0	1	0
19	A	51	0	76	1	0
19	C	41	0	55	1	0
20	B	2	0	0	1	0
21	C	1	0	0	0	0
22	F	1	0	0	0	0
23	G	43	0	58	1	0
All	All	14825	0	14651	319	0

The all-atom clashscore is defined as the number of clashes found per 1000 atoms (including hydrogen atoms). The all-atom clashscore for this structure is 11.

The worst 5 of 319 close contacts within the same asymmetric unit are listed below, sorted by their clash magnitude.

Atom-1	Atom-2	Interatomic distance (Å)	Clash overlap (Å)
2:B:200:CYS:SG	20:B:301:CUA:CU1	1.36	1.13
1:A:416:ILE:HD11	1:A:460:ILE:HG22	1.55	0.87
1:A:243:VAL:HB	15:A:602:HEA:HAC	1.59	0.84
14:N:8:GLN:HA	14:N:11:ARG:HH21	1.41	0.83
2:B:33:LEU:HD21	9:I:32:ALA:HB2	1.63	0.81

There are no symmetry-related clashes.

## 5.3 Torsion angles [i](#)

### 5.3.1 Protein backbone [i](#)

In the following table, the Percentiles column shows the percent Ramachandran outliers of the chain as a percentile score with respect to all PDB entries followed by that with respect to all EM entries.

The Analysed column shows the number of residues for which the backbone conformation was analysed, and the total number of residues.

Mol	Chain	Analysed	Favoured	Allowed	Outliers	Percentiles	
1	A	512/514 (100%)	485 (95%)	26 (5%)	1 (0%)	44	65
2	B	224/226 (99%)	211 (94%)	13 (6%)	0	100	100
3	C	254/256 (99%)	244 (96%)	10 (4%)	0	100	100
4	D	134/136 (98%)	124 (92%)	10 (8%)	0	100	100
5	E	100/102 (98%)	96 (96%)	4 (4%)	0	100	100
6	F	89/91 (98%)	82 (92%)	6 (7%)	1 (1%)	12	24
7	G	70/72 (97%)	67 (96%)	3 (4%)	0	100	100
8	H	79/81 (98%)	72 (91%)	7 (9%)	0	100	100
9	I	68/70 (97%)	66 (97%)	2 (3%)	0	100	100
10	J	53/55 (96%)	51 (96%)	2 (4%)	0	100	100
11	K	47/49 (96%)	45 (96%)	2 (4%)	0	100	100
12	L	42/44 (96%)	38 (90%)	4 (10%)	0	100	100
13	M	38/40 (95%)	37 (97%)	1 (3%)	0	100	100
14	N	79/81 (98%)	73 (92%)	6 (8%)	0	100	100
All	All	1789/1817 (98%)	1691 (94%)	96 (5%)	2 (0%)	50	70

All (2) Ramachandran outliers are listed below:

Mol	Chain	Res	Type
6	F	44	GLU
1	A	332	ILE

### 5.3.2 Protein sidechains [i](#)

In the following table, the Percentiles column shows the percent sidechain outliers of the chain as a percentile score with respect to all PDB entries followed by that with respect to all EM entries.

The Analysed column shows the number of residues for which the sidechain conformation was analysed, and the total number of residues.

Mol	Chain	Analysed	Rotameric	Outliers	Percentiles	
1	A	426/426 (100%)	412 (97%)	14 (3%)	33	57
2	B	210/210 (100%)	202 (96%)	8 (4%)	28	52
3	C	222/222 (100%)	212 (96%)	10 (4%)	23	45
4	D	120/120 (100%)	116 (97%)	4 (3%)	33	57
5	E	89/89 (100%)	83 (93%)	6 (7%)	13	27
6	F	76/76 (100%)	73 (96%)	3 (4%)	27	51
7	G	62/62 (100%)	62 (100%)	0	100	100
8	H	72/72 (100%)	69 (96%)	3 (4%)	25	48
9	I	55/55 (100%)	51 (93%)	4 (7%)	11	24
10	J	46/46 (100%)	43 (94%)	3 (6%)	14	29
11	K	39/39 (100%)	37 (95%)	2 (5%)	20	40
12	L	37/37 (100%)	35 (95%)	2 (5%)	18	37
13	M	34/34 (100%)	32 (94%)	2 (6%)	16	33
14	N	66/69 (96%)	65 (98%)	1 (2%)	60	80
All	All	1554/1557 (100%)	1492 (96%)	62 (4%)	29	50

5 of 62 residues with a non-rotameric sidechain are listed below:

Mol	Chain	Res	Type
3	C	140	SER
11	K	20	SER
4	D	107	ILE
10	J	47	LEU
13	M	8	THR

Sometimes sidechains can be flipped to improve hydrogen bonding and reduce clashes. 5 of 13 such sidechains are listed below:

Mol	Chain	Res	Type
3	C	71	HIS
3	C	177	GLN
8	H	25	GLN
4	D	132	GLN
4	D	143	ASN

### 5.3.3 RNA [i](#)

There are no RNA molecules in this entry.

## 5.4 Non-standard residues in protein, DNA, RNA chains [i](#)

1 non-standard protein/DNA/RNA residue is modelled in this entry.

In the following table, the Counts columns list the number of bonds (or angles) for which Mogul statistics could be retrieved, the number of bonds (or angles) that are observed in the model and the number of bonds (or angles) that are defined in the Chemical Component Dictionary. The Link column lists molecule types, if any, to which the group is linked. The Z score for a bond length (or angle) is the number of standard deviations the observed value is removed from the expected value. A bond length (or angle) with  $|Z| > 2$  is considered an outlier worth inspection. RMSZ is the root-mean-square of all Z scores of the bond lengths (or angles).

Mol	Type	Chain	Res	Link	Bond lengths			Bond angles		
					Counts	RMSZ	$\# Z  > 2$	Counts	RMSZ	$\# Z  > 2$
1	FME	A	1	1	8,9,10	0.93	0	7,9,11	1.09	1 (14%)

In the following table, the Chirals column lists the number of chiral outliers, the number of chiral centers analysed, the number of these observed in the model and the number defined in the Chemical Component Dictionary. Similar counts are reported in the Torsion and Rings columns. '-' means no outliers of that kind were identified.

Mol	Type	Chain	Res	Link	Chirals	Torsions	Rings
1	FME	A	1	1	-	4/7/9/11	-

There are no bond length outliers.

All (1) bond angle outliers are listed below:

Mol	Chain	Res	Type	Atoms	Z	Observed( $^{\circ}$ )	Ideal( $^{\circ}$ )
1	A	1	FME	C-CA-N	2.03	113.40	109.73

There are no chirality outliers.

All (4) torsion outliers are listed below:

Mol	Chain	Res	Type	Atoms
1	A	1	FME	CB-CA-N-CN
1	A	1	FME	N-CA-CB-CG
1	A	1	FME	C-CA-CB-CG
1	A	1	FME	CB-CG-SD-CE

There are no ring outliers.

No monomer is involved in short contacts.

## 5.5 Carbohydrates [i](#)

There are no oligosaccharides in this entry.

## 5.6 Ligand geometry [i](#)

Of 11 ligands modelled in this entry, 4 are monoatomic - leaving 7 for Mogul analysis.

In the following table, the Counts columns list the number of bonds (or angles) for which Mogul statistics could be retrieved, the number of bonds (or angles) that are observed in the model and the number of bonds (or angles) that are defined in the Chemical Component Dictionary. The Link column lists molecule types, if any, to which the group is linked. The Z score for a bond length (or angle) is the number of standard deviations the observed value is removed from the expected value. A bond length (or angle) with  $|Z| > 2$  is considered an outlier worth inspection. RMSZ is the root-mean-square of all Z scores of the bond lengths (or angles).

Mol	Type	Chain	Res	Link	Bond lengths			Bond angles		
					Counts	RMSZ	$\# Z  > 2$	Counts	RMSZ	$\# Z  > 2$
18	PER	A	605	16	0,1,1	-	-	-	-	-
23	PEK	G	101	-	42,42,52	0.52	0	45,47,57	0.52	0
15	HEA	A	601	1	57,67,67	2.12	18 (31%)	61,103,103	2.40	24 (39%)
20	CUA	B	301	2	0,1,1	-	-	-	-	-
19	PGV	A	606	-	50,50,50	0.50	0	53,56,56	0.46	0
19	PGV	C	302	-	40,40,50	0.54	0	43,46,56	0.51	0
15	HEA	A	602	1	57,67,67	2.16	18 (31%)	61,103,103	2.33	21 (34%)

In the following table, the Chirals column lists the number of chiral outliers, the number of chiral centers analysed, the number of these observed in the model and the number defined in the Chemical Component Dictionary. Similar counts are reported in the Torsion and Rings columns. '-' means no outliers of that kind were identified.

Mol	Type	Chain	Res	Link	Chirals	Torsions	Rings
23	PEK	G	101	-	-	14/46/46/56	-
15	HEA	A	601	1	-	4/32/76/76	-
19	PGV	A	606	-	-	21/55/55/55	-
19	PGV	C	302	-	-	19/45/45/55	-
15	HEA	A	602	1	-	7/32/76/76	-

The worst 5 of 36 bond length outliers are listed below:

Mol	Chain	Res	Type	Atoms	Z	Observed(Å)	Ideal(Å)
15	A	602	HEA	C3B-C2B	6.16	1.48	1.34
15	A	601	HEA	C3A-C2A	5.56	1.48	1.40
15	A	601	HEA	C3B-C2B	5.56	1.47	1.34
15	A	602	HEA	C3A-C2A	5.34	1.47	1.40
15	A	602	HEA	CHD-C1D	5.03	1.47	1.35

The worst 5 of 45 bond angle outliers are listed below:

Mol	Chain	Res	Type	Atoms	Z	Observed(°)	Ideal(°)
15	A	601	HEA	C3D-C4D-ND	6.26	116.42	110.36
15	A	602	HEA	C3D-C4D-ND	5.75	115.92	110.36
15	A	602	HEA	C2B-C1B-NB	5.36	116.30	109.88
15	A	602	HEA	C3B-C4B-NB	5.14	115.92	109.84
15	A	601	HEA	C2B-C1B-NB	5.07	115.96	109.88

There are no chirality outliers.

5 of 65 torsion outliers are listed below:

Mol	Chain	Res	Type	Atoms
15	A	602	HEA	O11-C11-C3B-C2B
19	A	606	PGV	O03-C01-C02-O01
19	C	302	PGV	C03-O11-P-O13
19	C	302	PGV	O12-C04-C05-C06
23	G	101	PEK	O04-C21-O03-C01

There are no ring outliers.

7 monomers are involved in 8 short contacts:

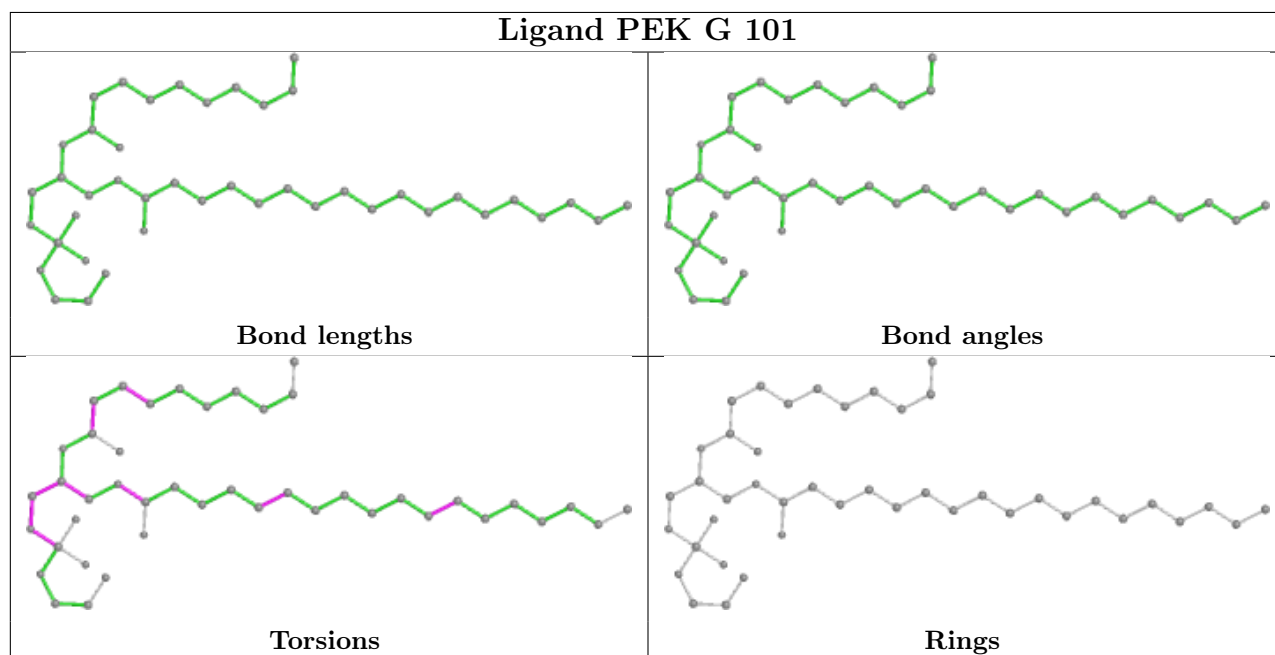
Mol	Chain	Res	Type	Clashes	Symm-Clashes
18	A	605	PER	1	0
23	G	101	PEK	1	0
15	A	601	HEA	1	0

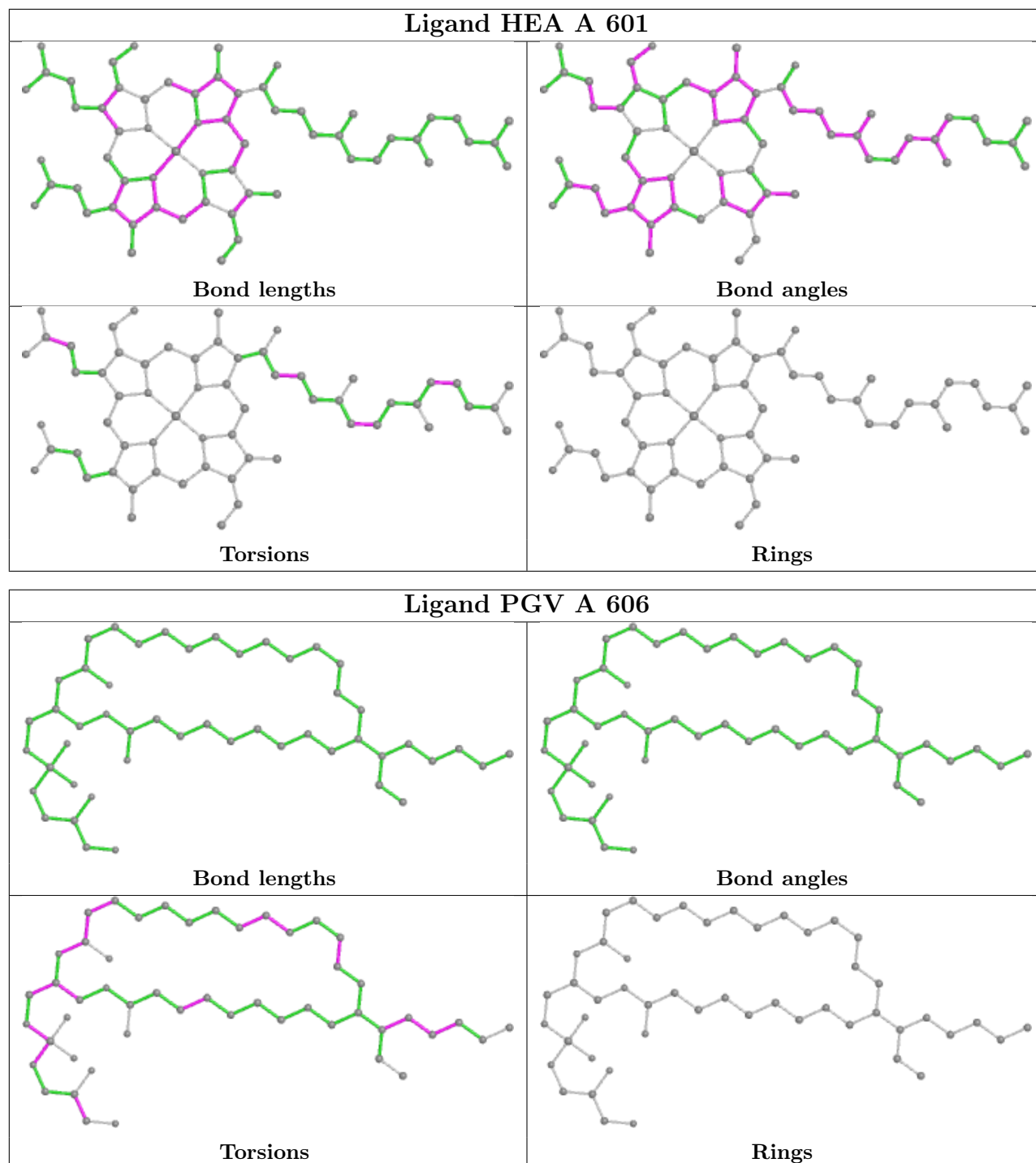
*Continued on next page...*

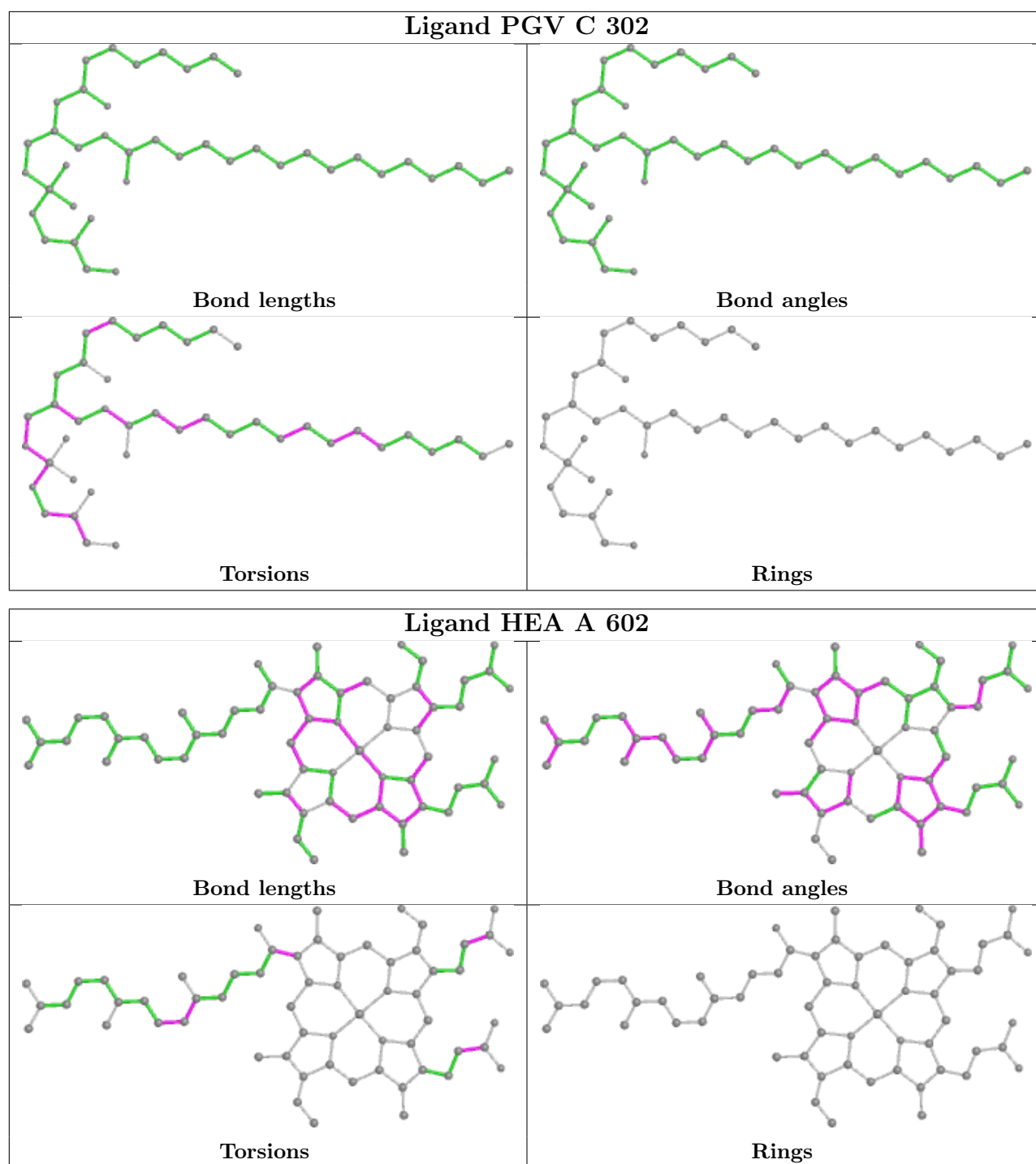
Continued from previous page...

Mol	Chain	Res	Type	Clashes	Symm-Clashes
20	B	301	CUA	1	0
19	A	606	PGV	1	0
19	C	302	PGV	1	0
15	A	602	HEA	2	0

The following is a two-dimensional graphical depiction of Mogul quality analysis of bond lengths, bond angles, torsion angles, and ring geometry for all instances of the Ligand of Interest. In addition, ligands with molecular weight > 250 and outliers as shown on the validation Tables will also be included. For torsion angles, if less than 5% of the Mogul distribution of torsion angles is within 10 degrees of the torsion angle in question, then that torsion angle is considered an outlier. Any bond that is central to one or more torsion angles identified as an outlier by Mogul will be highlighted in the graph. For rings, the root-mean-square deviation (RMSD) between the ring in question and similar rings identified by Mogul is calculated over all ring torsion angles. If the average RMSD is greater than 60 degrees and the minimal RMSD between the ring in question and any Mogul-identified rings is also greater than 60 degrees, then that ring is considered an outlier. The outliers are highlighted in purple. The color gray indicates Mogul did not find sufficient equivalents in the CSD to analyse the geometry.







## 5.7 Other polymers [i](#)

There are no such residues in this entry.

## 5.8 Polymer linkage issues [i](#)

There are no chain breaks in this entry.

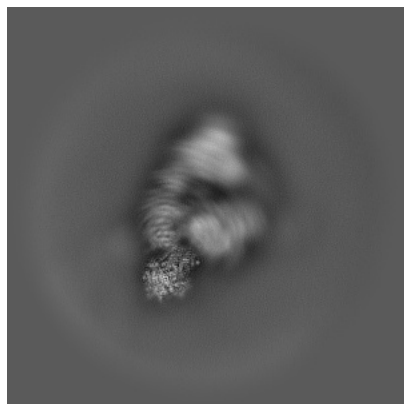
## 6 Map visualisation [i](#)

This section contains visualisations of the EMDB entry EMD-65585. These allow visual inspection of the internal detail of the map and identification of artifacts.

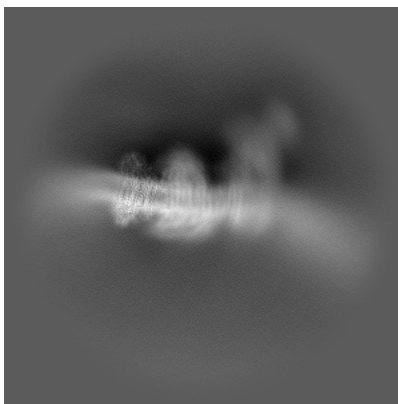
Images derived from a raw map, generated by summing the deposited half-maps, are presented below the corresponding image components of the primary map to allow further visual inspection and comparison with those of the primary map.

### 6.1 Orthogonal projections [i](#)

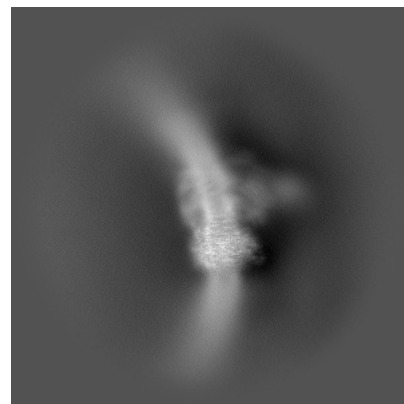
#### 6.1.1 Primary map



X

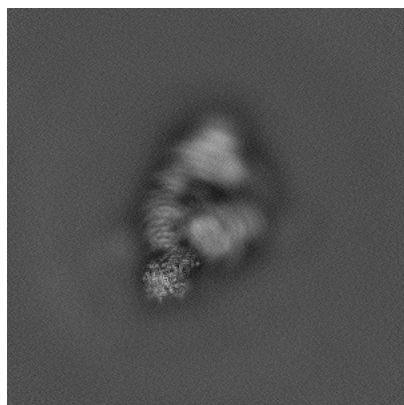


Y

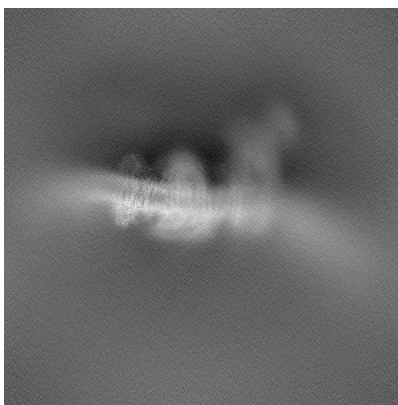


Z

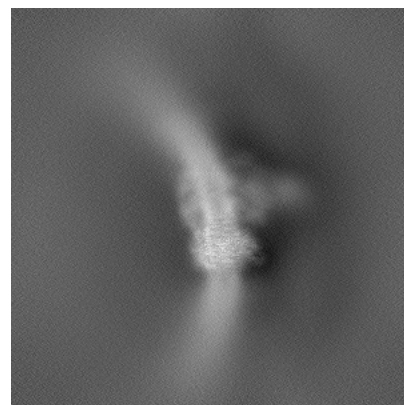
#### 6.1.2 Raw map



X



Y

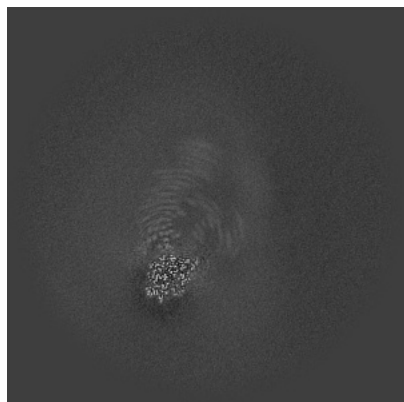


Z

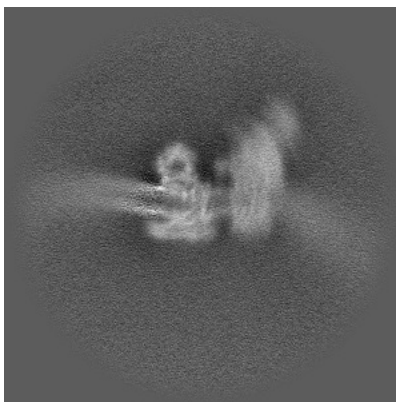
The images above show the map projected in three orthogonal directions.

## 6.2 Central slices [i](#)

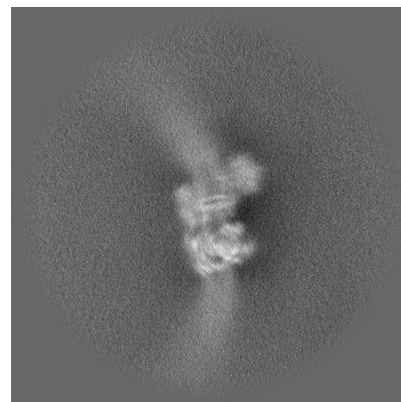
### 6.2.1 Primary map



X Index: 300



Y Index: 300



Z Index: 300

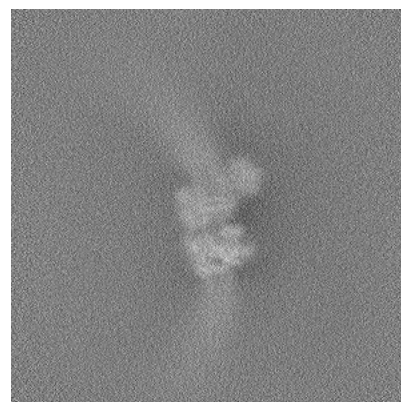
### 6.2.2 Raw map



X Index: 300



Y Index: 300

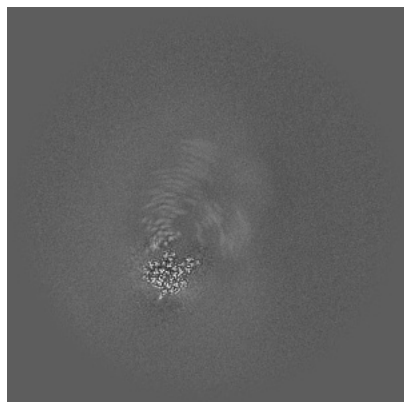


Z Index: 300

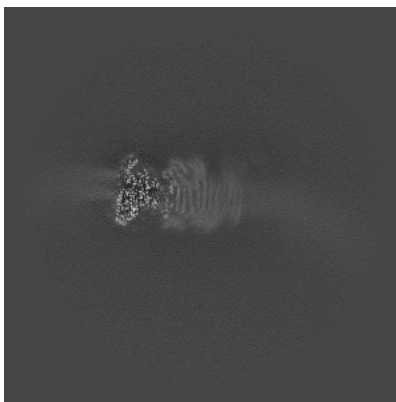
The images above show central slices of the map in three orthogonal directions.

## 6.3 Largest variance slices [i](#)

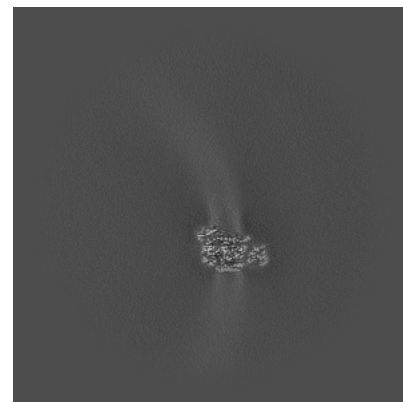
### 6.3.1 Primary map



X Index: 308

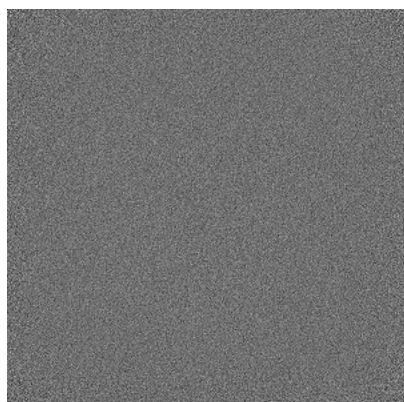


Y Index: 236

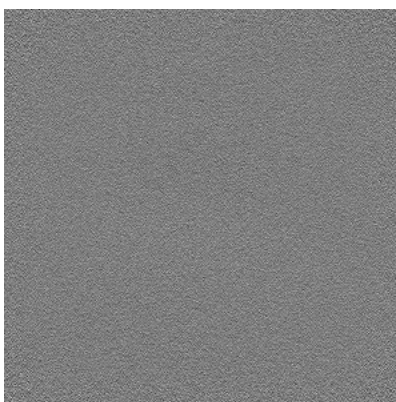


Z Index: 194

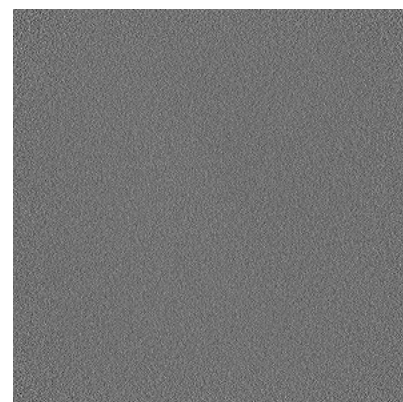
### 6.3.2 Raw map



X Index: 0



Y Index: 0

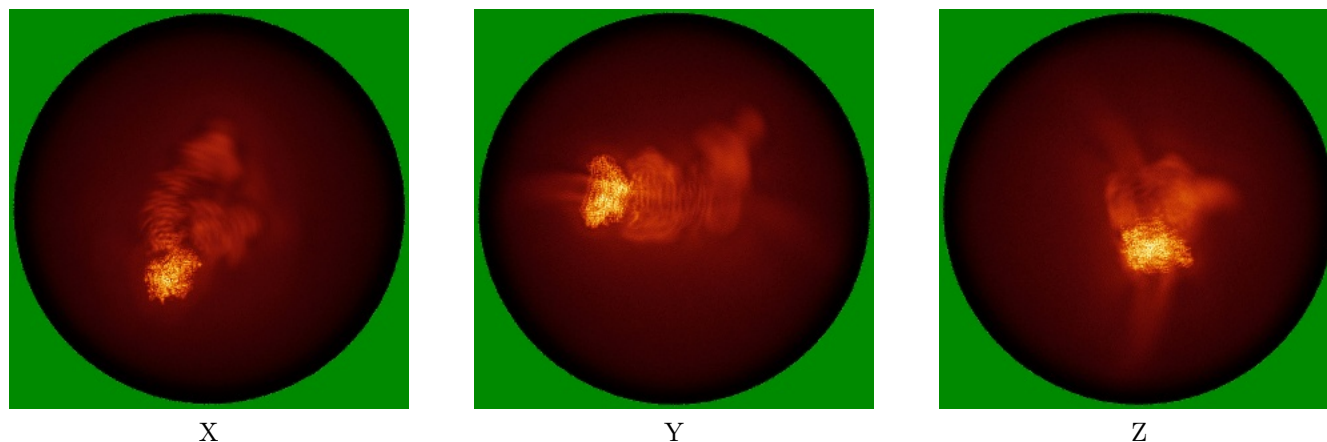


Z Index: 0

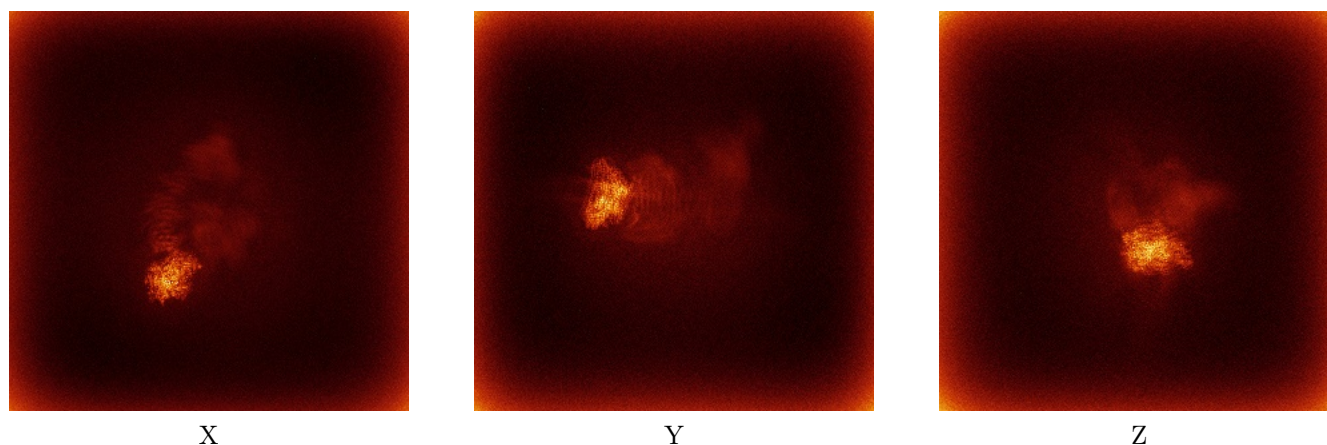
The images above show the largest variance slices of the map in three orthogonal directions.

## 6.4 Orthogonal standard-deviation projections (False-color) [i](#)

### 6.4.1 Primary map



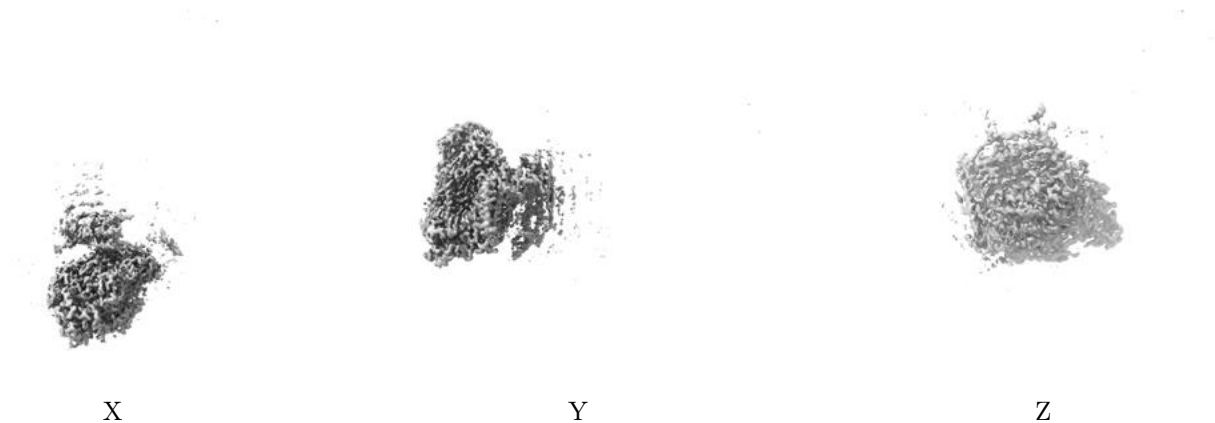
### 6.4.2 Raw map



The images above show the map standard deviation projections with false color in three orthogonal directions. Minimum values are shown in green, max in blue, and dark to light orange shades represent small to large values respectively.

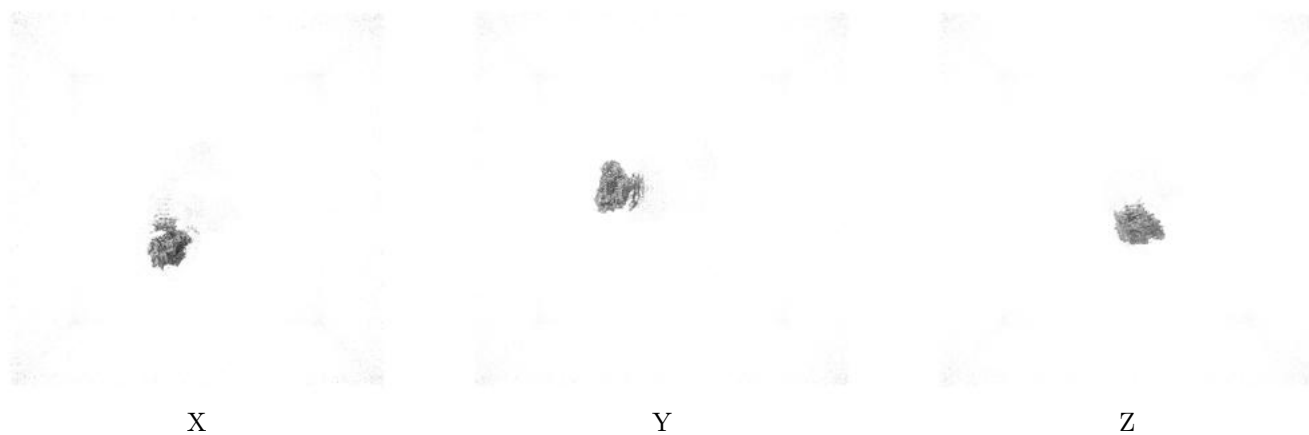
## 6.5 Orthogonal surface views [i](#)

### 6.5.1 Primary map



The images above show the 3D surface view of the map at the recommended contour level 0.2. These images, in conjunction with the slice images, may facilitate assessment of whether an appropriate contour level has been provided.

### 6.5.2 Raw map



These images show the 3D surface of the raw map. The raw map's contour level was selected so that its surface encloses the same volume as the primary map does at its recommended contour level.

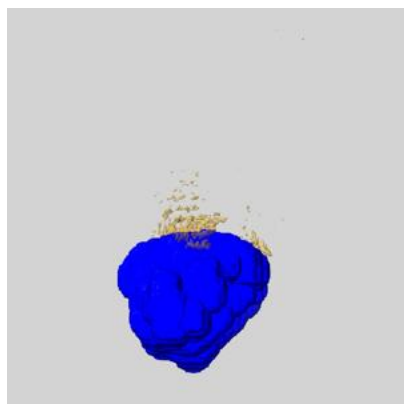
## 6.6 Mask visualisation [i](#)

This section shows the 3D surface view of the primary map at 50% transparency overlaid with the specified mask at 0% transparency

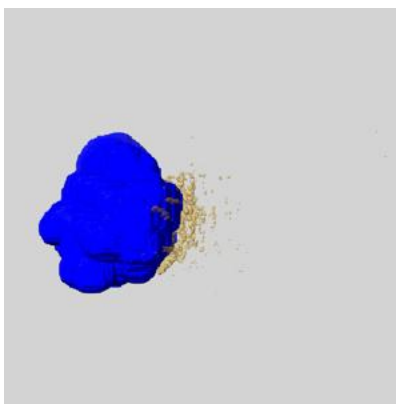
A mask typically either:

- Encompasses the whole structure
- Separates out a domain, a functional unit, a monomer or an area of interest from a larger structure

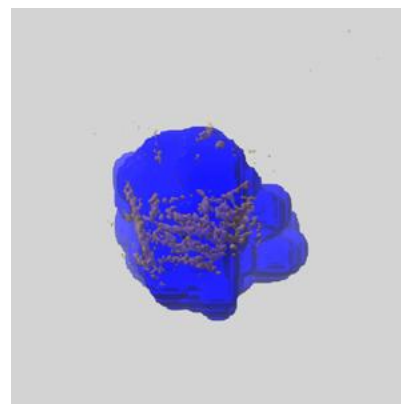
### 6.6.1 emd\_65585\_msk\_1.map [i](#)



X



Y

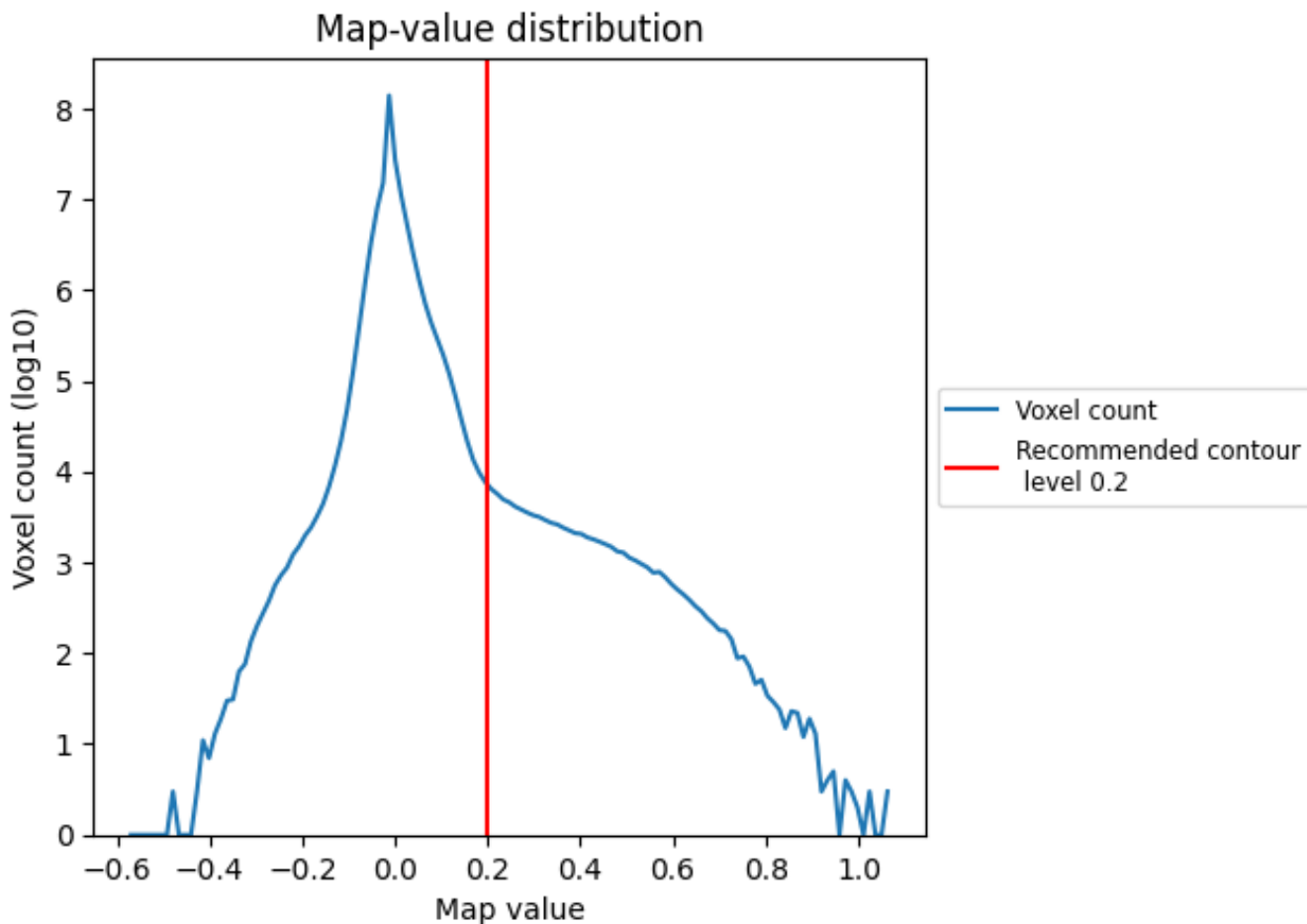


Z

## 7 Map analysis [i](#)

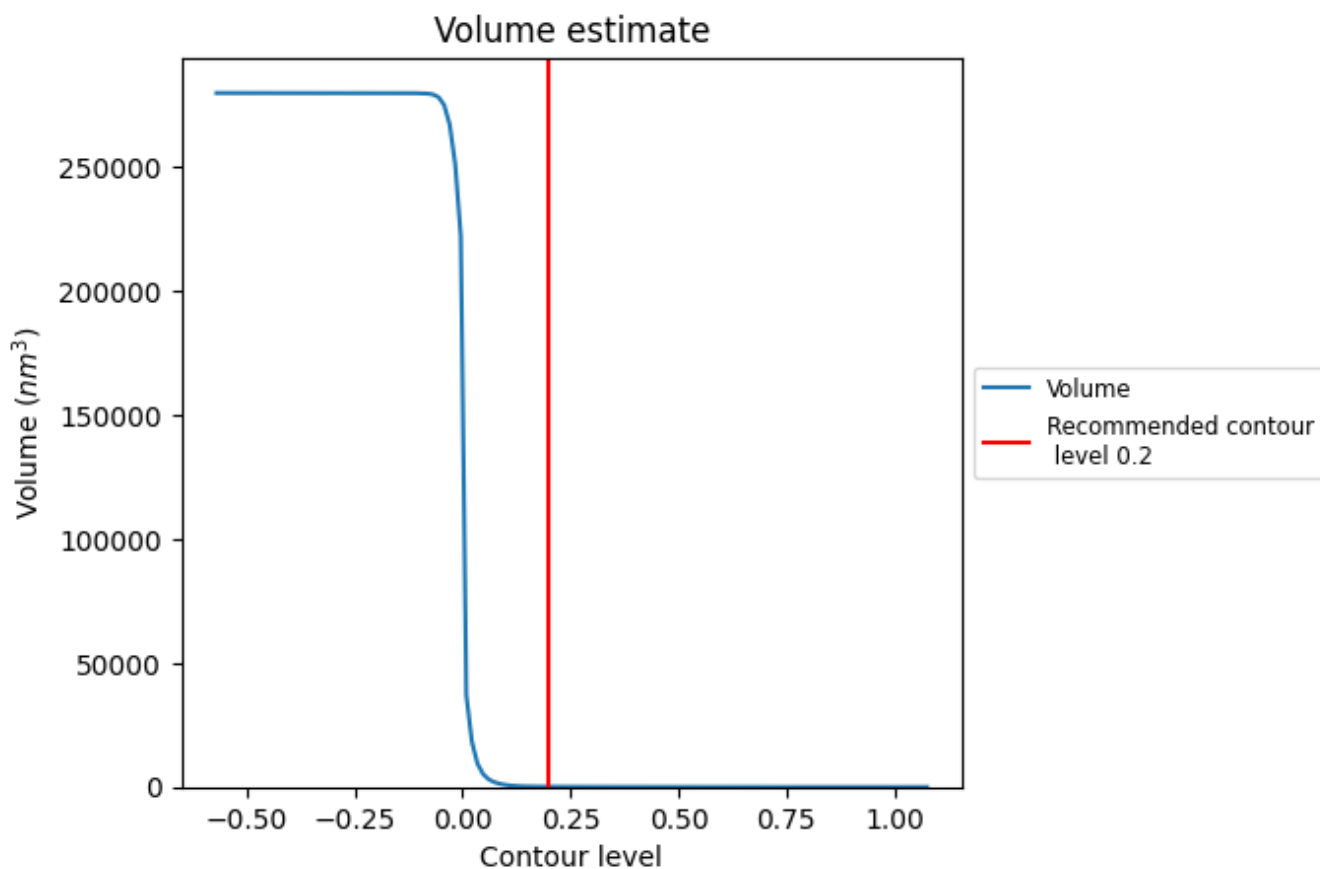
This section contains the results of statistical analysis of the map.

### 7.1 Map-value distribution [i](#)



The map-value distribution is plotted in 128 intervals along the x-axis. The y-axis is logarithmic. A spike in this graph at zero usually indicates that the volume has been masked.

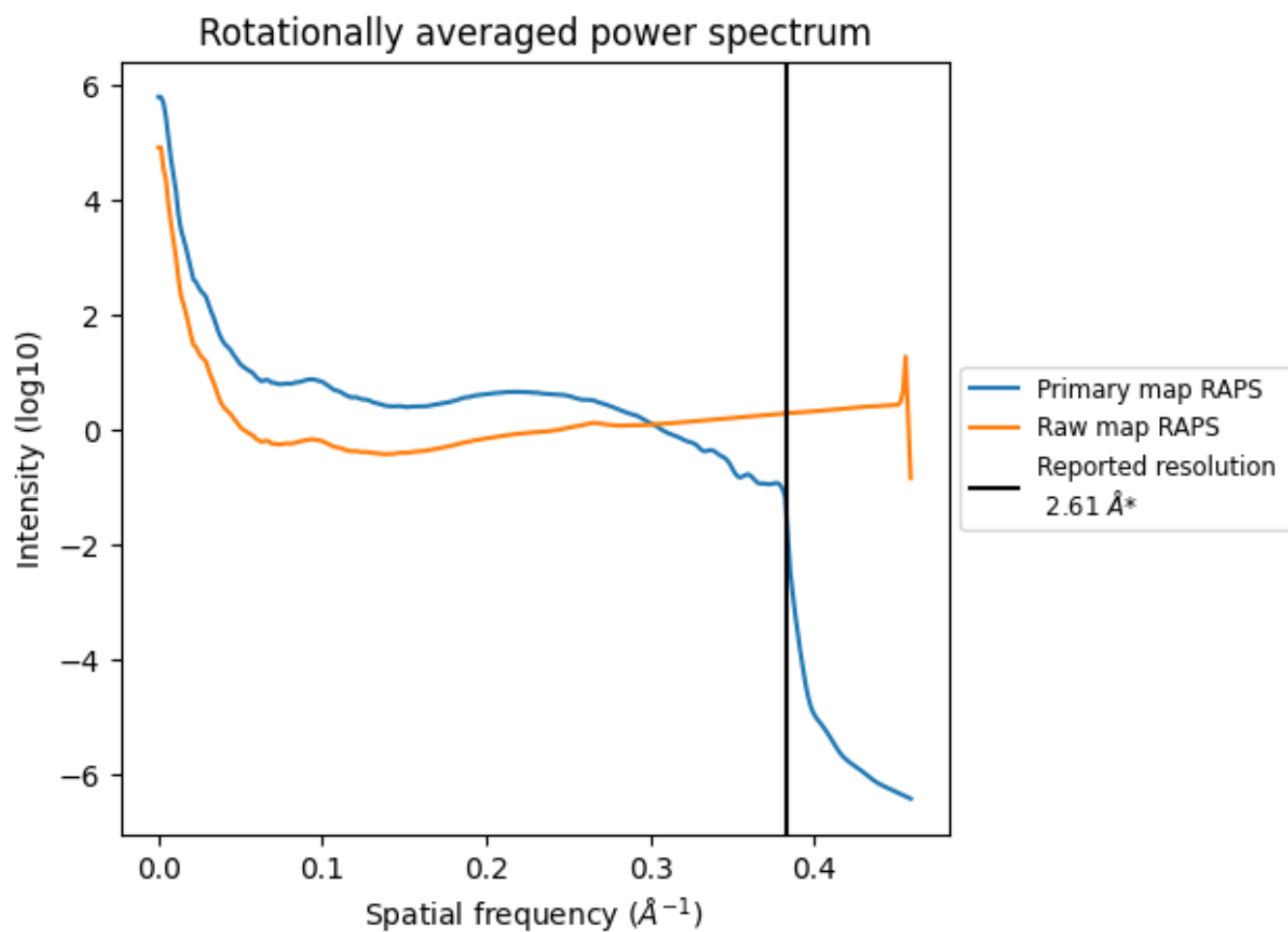
## 7.2 Volume estimate [\(i\)](#)



The volume at the recommended contour level is 107  $\text{nm}^3$ ; this corresponds to an approximate mass of 97 kDa.

The volume estimate graph shows how the enclosed volume varies with the contour level. The recommended contour level is shown as a vertical line and the intersection between the line and the curve gives the volume of the enclosed surface at the given level.

### 7.3 Rotationally averaged power spectrum i

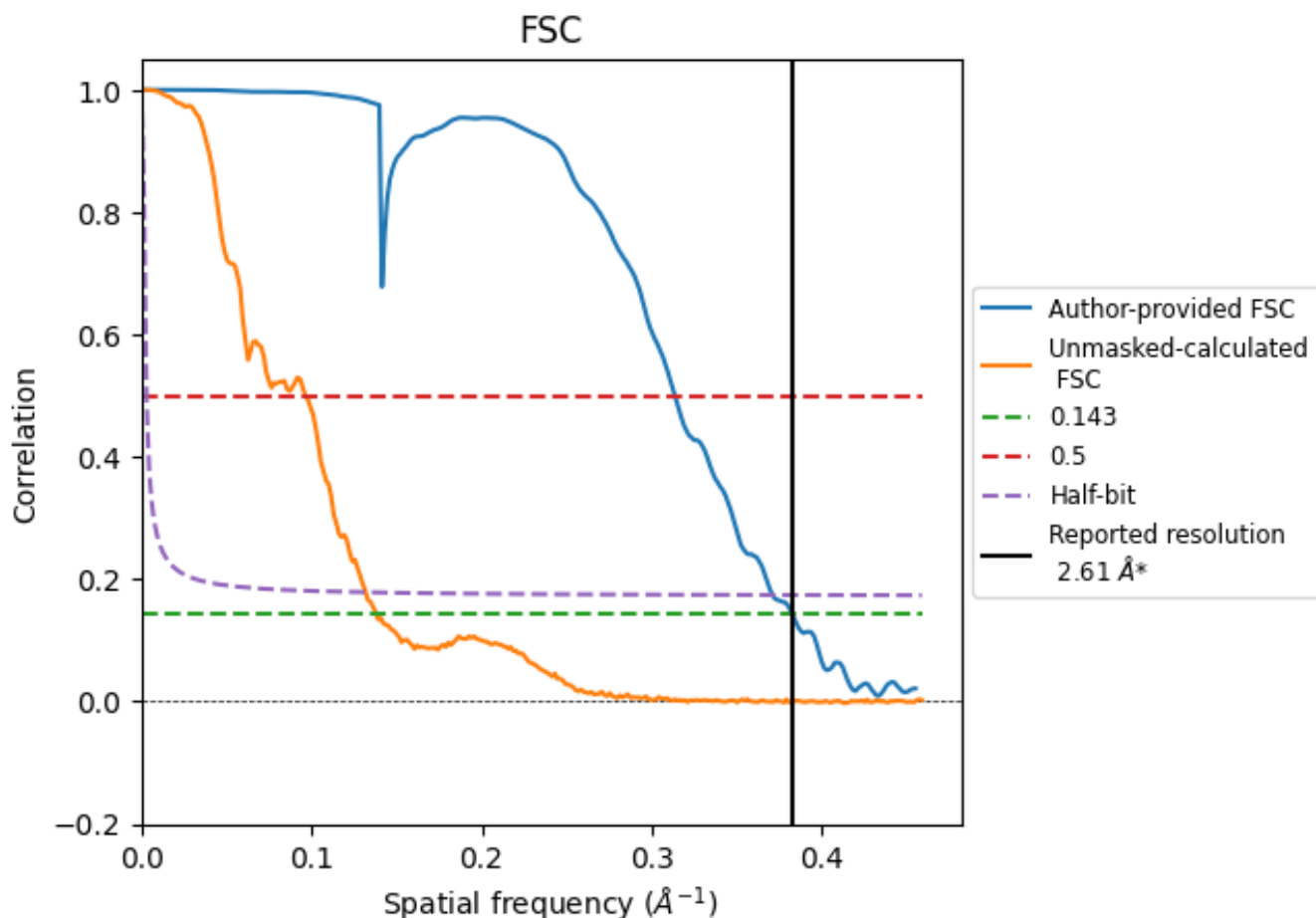


\*Reported resolution corresponds to spatial frequency of  $0.383 \text{ \AA}^{-1}$

## 8 Fourier-Shell correlation [i](#)

Fourier-Shell Correlation (FSC) is the most commonly used method to estimate the resolution of single-particle and subtomogram-averaged maps. The shape of the curve depends on the imposed symmetry, mask and whether or not the two 3D reconstructions used were processed from a common reference. The reported resolution is shown as a black line. A curve is displayed for the half-bit criterion in addition to lines showing the 0.143 gold standard cut-off and 0.5 cut-off.

### 8.1 FSC [i](#)



\*Reported resolution corresponds to spatial frequency of 0.383 Å<sup>-1</sup>

## 8.2 Resolution estimates [i](#)

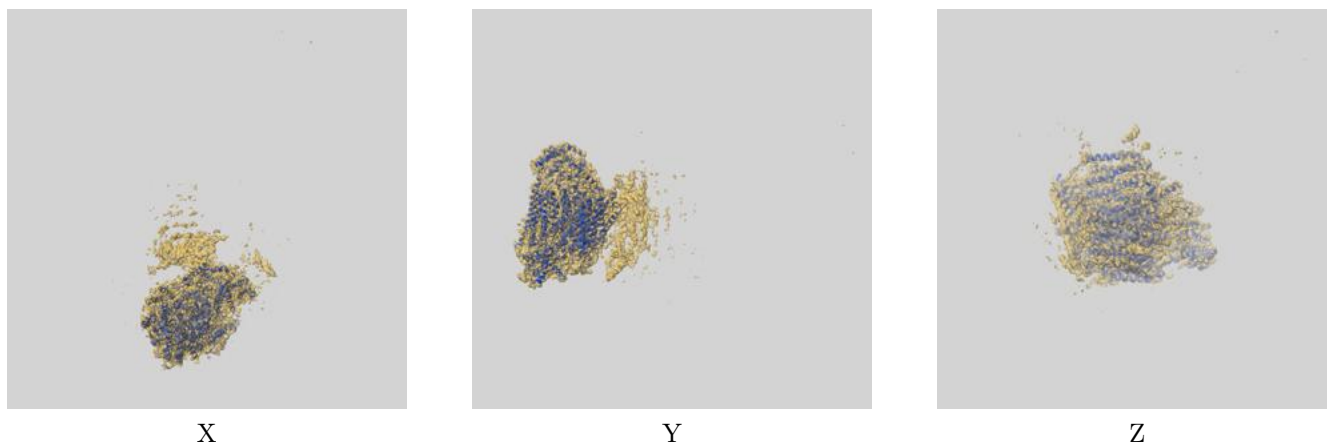
Resolution estimate (Å)	Estimation criterion (FSC cut-off)		
	0.143	0.5	Half-bit
Reported by author	2.61	-	-
Author-provided FSC curve	2.61	3.19	2.70
Unmasked-calculated*	7.25	10.37	7.58

\*Resolution estimate based on FSC curve calculated by comparison of deposited half-maps. The value from deposited half-maps intersecting FSC 0.143 CUT-OFF 7.25 differs from the reported value 2.61 by more than 10 %

## 9 Map-model fit [i](#)

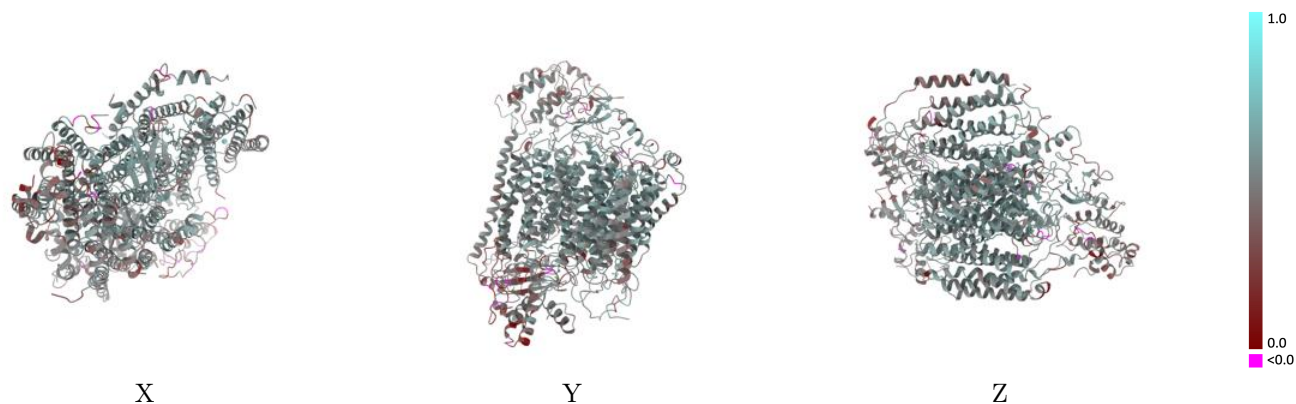
This section contains information regarding the fit between EMDB map EMD-65585 and PDB model 9W2Z. Per-residue inclusion information can be found in section 3 on page 10.

### 9.1 Map-model overlay [i](#)



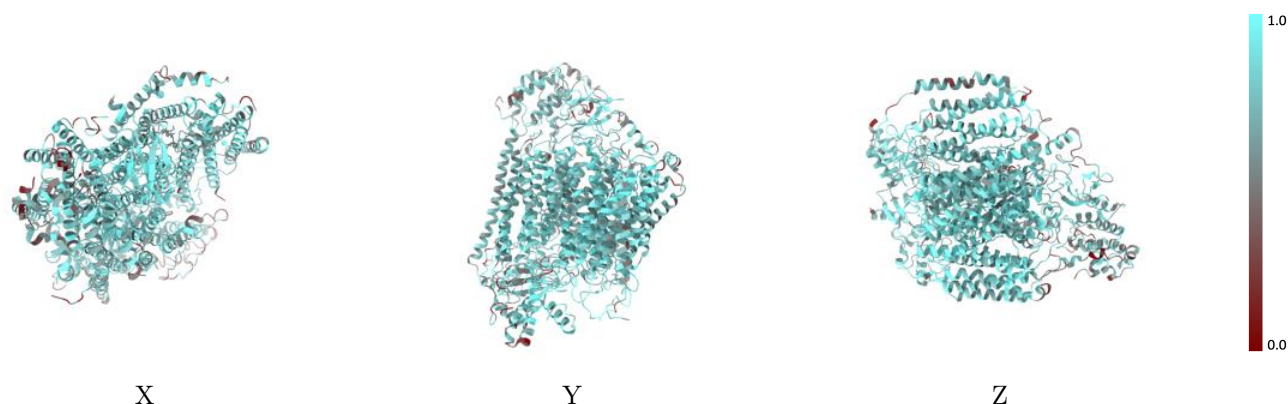
The images above show the 3D surface view of the map at the recommended contour level 0.2 at 50% transparency in yellow overlaid with a ribbon representation of the model coloured in blue. These images allow for the visual assessment of the quality of fit between the atomic model and the map.

## 9.2 Q-score mapped to coordinate model [i](#)



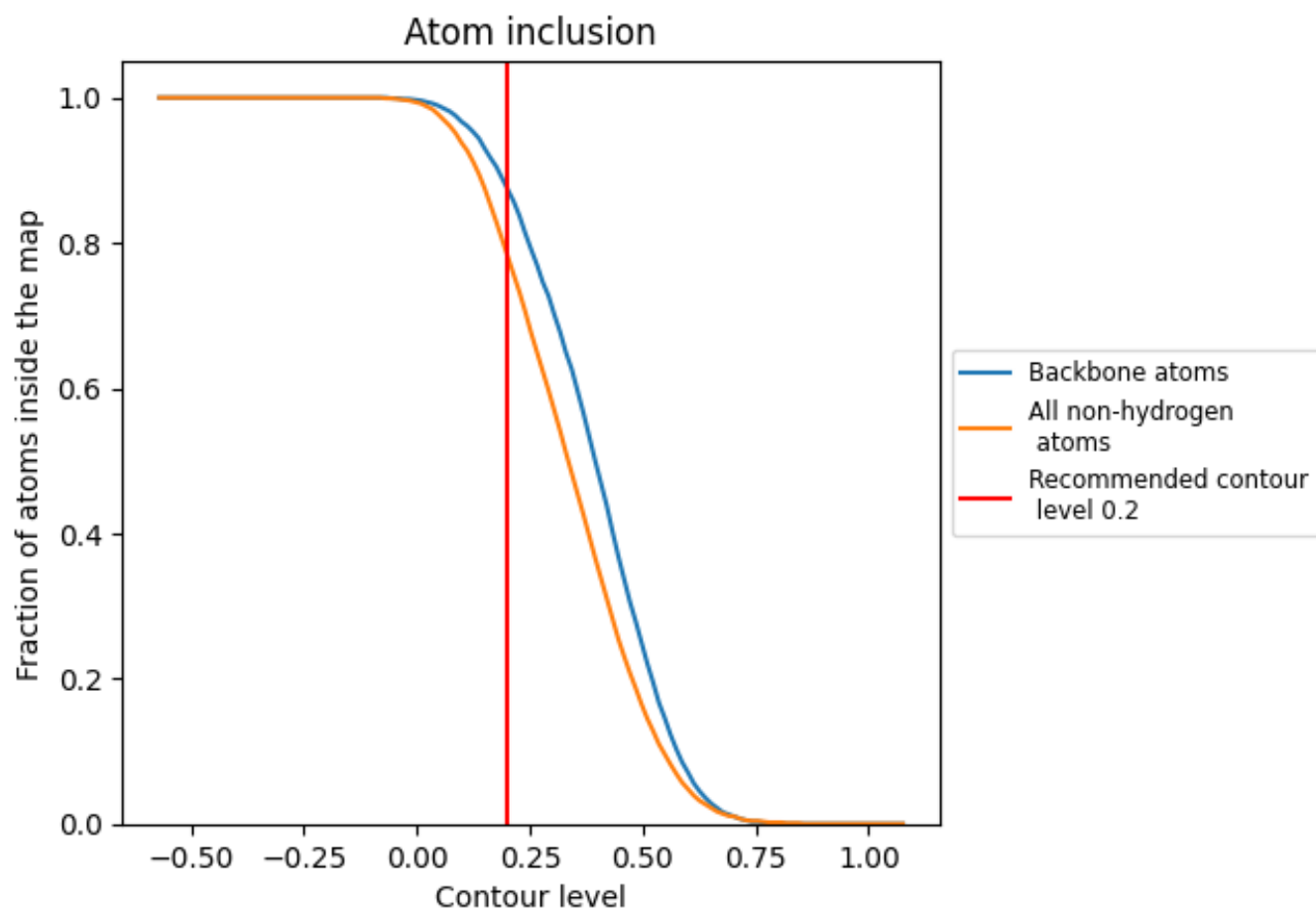
The images above show the model with each residue coloured according to its Q-score. This shows their resolvability in the map with higher Q-score values reflecting better resolvability. Please note: Q-score is calculating the resolvability of atoms, and thus high values are only expected at resolutions at which atoms can be resolved. Low Q-score values may therefore be expected for many entries.

## 9.3 Atom inclusion mapped to coordinate model [i](#)



The images above show the model with each residue coloured according to its atom inclusion. This shows to what extent they are inside the map at the recommended contour level (0.2).





























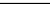
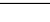
## 9.4 Atom inclusion [i](#)



At the recommended contour level, 88% of all backbone atoms, 78% of all non-hydrogen atoms, are inside the map.

## 9.5 Map-model fit summary

The table lists the average atom inclusion at the recommended contour level (0.2) and Q-score for the entire model and for each chain.

Chain	Atom inclusion	Q-score
All	 0.7840	 0.4900
A	 0.8680	 0.5560
B	 0.7950	 0.4670
C	 0.8230	 0.5190
D	 0.6840	 0.4250
E	 0.7030	 0.4520
F	 0.7230	 0.4970
G	 0.7640	 0.4820
H	 0.7400	 0.3970
I	 0.6910	 0.4210
J	 0.7230	 0.4800
K	 0.7410	 0.4570
L	 0.7970	 0.4870
M	 0.7370	 0.4770
N	 0.6320	 0.3850

