



## Full wwPDB EM Validation Report ⓘ

Apr 30, 2025 – 02:23 PM EDT

PDB ID : 8VQJ / pdb\_00008vqj  
EMDB ID : EMD-43446  
Title : CryoEM structure of DPOR under turnover  
Authors : Kashyap, R.; Antony, E.  
Deposited on : 2024-01-18  
Resolution : 3.82 Å(reported)

This is a Full wwPDB EM Validation Report for a publicly released PDB entry.

We welcome your comments at [validation@mail.wwpdb.org](mailto:validation@mail.wwpdb.org)

A user guide is available at

<https://www.wwpdb.org/validation/2017/EMValidationReportHelp>

with specific help available everywhere you see the ⓘ symbol.

The types of validation reports are described at

<http://www.wwpdb.org/validation/2017/FAQs#types>.

---

The following versions of software and data (see [references ⓘ](#)) were used in the production of this report:

EMDB validation analysis : 0.0.1.dev118  
Mogul : 2022.3.0, CSD as543be (2022)  
MolProbity : 4-5-2 with Phenix2.0rc1  
buster-report : 1.1.7 (2018)  
Percentile statistics : 20231227.v01 (using entries in the PDB archive December 27th 2023)  
MapQ : 1.9.13  
Ideal geometry (proteins) : Engh & Huber (2001)  
Ideal geometry (DNA, RNA) : Parkinson et al. (1996)  
Validation Pipeline (wwPDB-VP) : 2.43.1

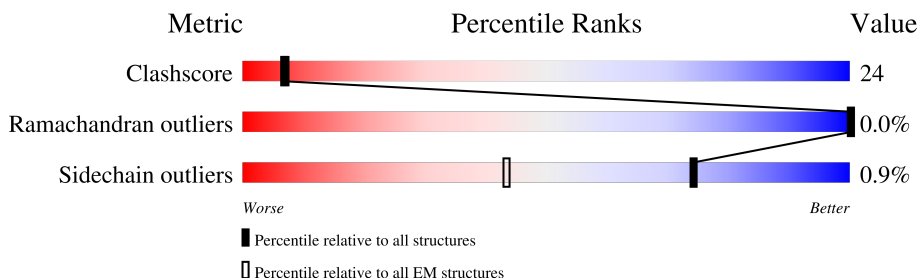
# 1 Overall quality at a glance

The following experimental techniques were used to determine the structure:

*ELECTRON MICROSCOPY*

The reported resolution of this entry is 3.82 Å.

Percentile scores (ranging between 0-100) for global validation metrics of the entry are shown in the following graphic. The table shows the number of entries on which the scores are based.



Metric	Whole archive (#Entries)	EM structures (#Entries)
Clashscore	210492	15764
Ramachandran outliers	207382	16835
Sidechain outliers	206894	16415

The table below summarises the geometric issues observed across the polymeric chains and their fit to the map. The red, orange, yellow and green segments of the bar indicate the fraction of residues that contain outliers for  $\geq 3$ , 2, 1 and 0 types of geometric quality criteria respectively. A grey segment represents the fraction of residues that are not modelled. The numeric value for each fraction is indicated below the corresponding segment, with a dot representing fractions  $\leq 5\%$ . The upper red bar (where present) indicates the fraction of residues that have poor fit to the EM map (all-atom inclusion  $< 40\%$ ). The numeric value is given above the bar.

Mol	Chain	Length	Quality of chain
1	A	428	
1	C	428	
2	B	536	
2	D	536	
3	E	318	
3	F	318	

The following table lists non-polymeric compounds, carbohydrate monomers and non-standard residues in protein, DNA, RNA chains that are outliers for geometric or electron-density-fit criteria:

Mol	Type	Chain	Res	Chirality	Geometry	Clashes	Electron density
4	SF4	A	501	-	-	X	-
4	SF4	C	501	-	-	X	-
4	SF4	F	301	-	-	X	-
5	PMR	A	502	X	-	-	-
5	PMR	B	601	X	-	-	-

## 2 Entry composition

There are 7 unique types of molecules in this entry. The entry contains 17048 atoms, of which 0 are hydrogens and 0 are deuteriums.

In the tables below, the AltConf column contains the number of residues with at least one atom in alternate conformation and the Trace column contains the number of residues modelled with at most 2 atoms.

- Molecule 1 is a protein called Light-independent protochlorophyllide reductase subunit N.

Mol	Chain	Residues	Atoms					AltConf	Trace
1	A	401	Total	C	N	O	S	0	0
			3046	1929	549	558	10		
1	C	403	Total	C	N	O	S	0	0
			3063	1939	556	558	10		

- Molecule 2 is a protein called Light-independent protochlorophyllide reductase subunit B.

Mol	Chain	Residues	Atoms					AltConf	Trace
2	B	420	Total	C	N	O	S	0	0
			3239	2053	565	599	22		
2	D	429	Total	C	N	O	S	0	0
			3313	2100	576	616	21		

- Molecule 3 is a protein called Light-independent protochlorophyllide reductase iron-sulfur ATP-binding protein.

Mol	Chain	Residues	Atoms					AltConf	Trace
3	E	290	Total	C	N	O	S	0	0
			2128	1351	356	411	10		
3	F	287	Total	C	N	O	S	0	0
			2141	1349	364	418	10		

There are 44 discrepancies between the modelled and reference sequences:

Chain	Residue	Modelled	Actual	Comment	Reference
E	-20	MET	-	initiating methionine	UNP Q9RFD6
E	-19	GLY	-	expression tag	UNP Q9RFD6
E	-18	SER	-	expression tag	UNP Q9RFD6
E	-17	SER	-	expression tag	UNP Q9RFD6
E	-16	HIS	-	expression tag	UNP Q9RFD6
E	-15	HIS	-	expression tag	UNP Q9RFD6
E	-14	HIS	-	expression tag	UNP Q9RFD6
E	-13	HIS	-	expression tag	UNP Q9RFD6

*Continued on next page...*

*Continued from previous page...*

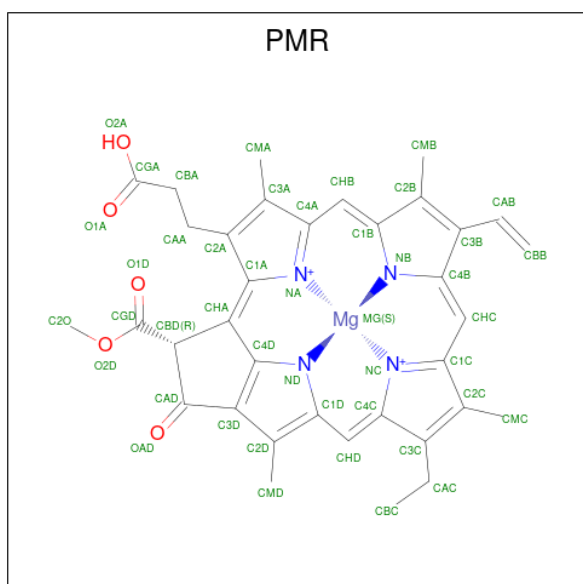
Chain	Residue	Modelled	Actual	Comment	Reference
E	-12	HIS	-	expression tag	UNP Q9RFD6
E	-11	HIS	-	expression tag	UNP Q9RFD6
E	-10	SER	-	expression tag	UNP Q9RFD6
E	-9	GLN	-	expression tag	UNP Q9RFD6
E	-8	ASP	-	expression tag	UNP Q9RFD6
E	-7	PRO	-	expression tag	UNP Q9RFD6
E	-6	GLU	-	expression tag	UNP Q9RFD6
E	-5	ASN	-	expression tag	UNP Q9RFD6
E	-4	LEU	-	expression tag	UNP Q9RFD6
E	-3	TYR	-	expression tag	UNP Q9RFD6
E	-2	PHE	-	expression tag	UNP Q9RFD6
E	-1	GLN	-	expression tag	UNP Q9RFD6
E	0	SER	-	expression tag	UNP Q9RFD6
E	289	GLU	ASP	variant	UNP Q9RFD6
F	-20	MET	-	initiating methionine	UNP Q9RFD6
F	-19	GLY	-	expression tag	UNP Q9RFD6
F	-18	SER	-	expression tag	UNP Q9RFD6
F	-17	SER	-	expression tag	UNP Q9RFD6
F	-16	HIS	-	expression tag	UNP Q9RFD6
F	-15	HIS	-	expression tag	UNP Q9RFD6
F	-14	HIS	-	expression tag	UNP Q9RFD6
F	-13	HIS	-	expression tag	UNP Q9RFD6
F	-12	HIS	-	expression tag	UNP Q9RFD6
F	-11	HIS	-	expression tag	UNP Q9RFD6
F	-10	SER	-	expression tag	UNP Q9RFD6
F	-9	GLN	-	expression tag	UNP Q9RFD6
F	-8	ASP	-	expression tag	UNP Q9RFD6
F	-7	PRO	-	expression tag	UNP Q9RFD6
F	-6	GLU	-	expression tag	UNP Q9RFD6
F	-5	ASN	-	expression tag	UNP Q9RFD6
F	-4	LEU	-	expression tag	UNP Q9RFD6
F	-3	TYR	-	expression tag	UNP Q9RFD6
F	-2	PHE	-	expression tag	UNP Q9RFD6
F	-1	GLN	-	expression tag	UNP Q9RFD6
F	0	SER	-	expression tag	UNP Q9RFD6
F	289	GLU	ASP	variant	UNP Q9RFD6

- Molecule 4 is IRON/SULFUR CLUSTER (CCD ID: SF4) (formula: Fe<sub>4</sub>S<sub>4</sub>) (labeled as "Ligand of Interest" by depositor).



Mol	Chain	Residues	Atoms			AltConf
4	A	1	Total	Fe	S	0
			8	4	4	
4	C	1	Total	Fe	S	0
			8	4	4	
4	F	1	Total	Fe	S	0
			8	4	4	

- Molecule 5 is Protochlorophyllide (CCD ID: PMR) (formula:  $C_{35}H_{32}MgN_4O_5$ ) (labeled as "Ligand of Interest" by depositor).



Mol	Chain	Residues	Atoms					AltConf
5	A	1	Total	C	Mg	N	O	0
			45	35	1	4	5	
5	B	1	Total	C	Mg	N	O	0
			45	35	1	4	5	

- Molecule 6 is COPPER (II) ION (CCD ID: CU) (formula: Cu) (labeled as "Ligand of Interest" by depositor).

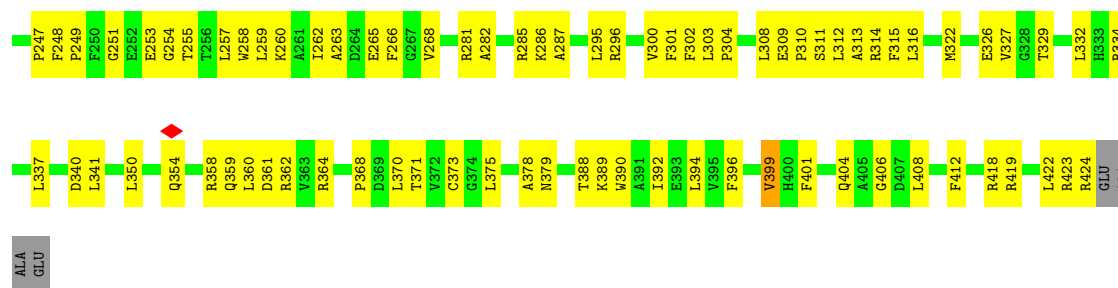
Mol	Chain	Residues	Atoms		AltConf
6	B	2	Total	Cu	0
			2	2	

- Molecule 7 is MAGNESIUM ION (CCD ID: MG) (formula: Mg) (labeled as "Ligand of Interest" by depositor).

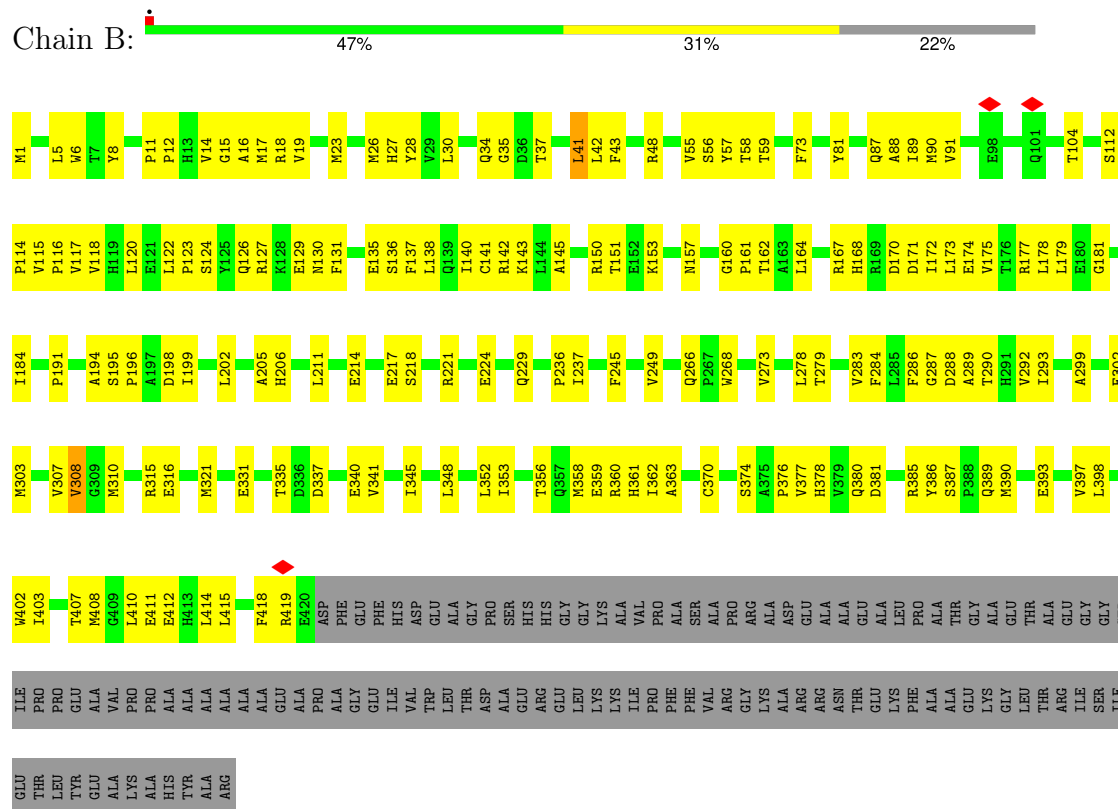
Mol	Chain	Residues	Atoms		AltConf
7	E	1	Total	Mg	0
			1	1	
7	F	1	Total	Mg	0
			1	1	



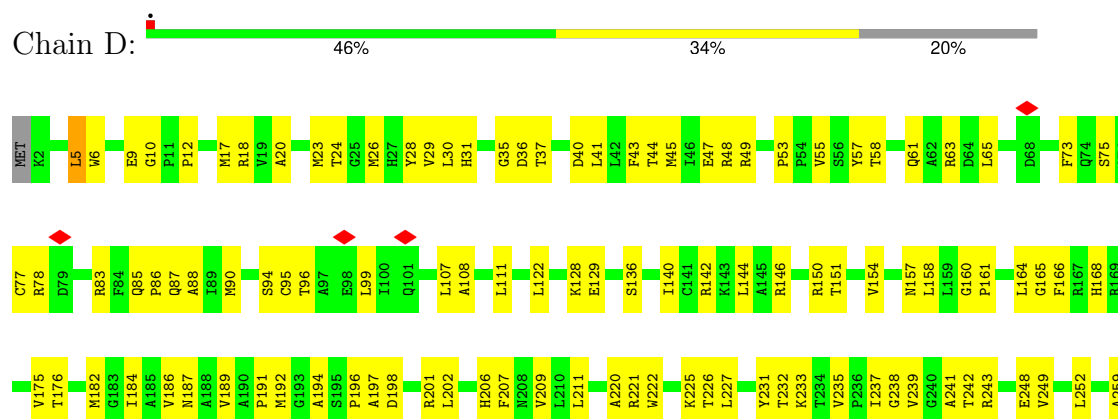


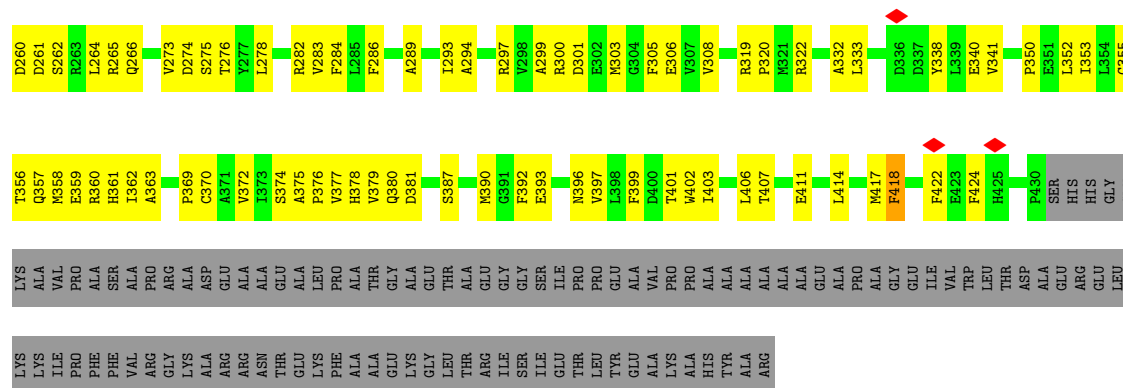


• Molecule 2: Light-independent protochlorophyllide reductase subunit B

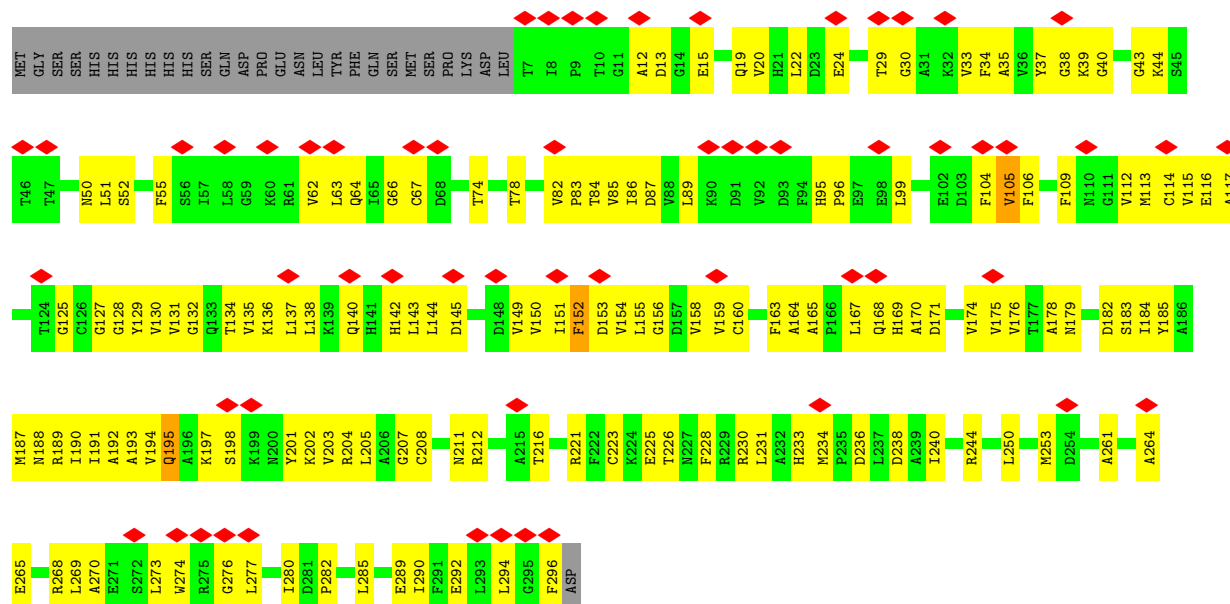
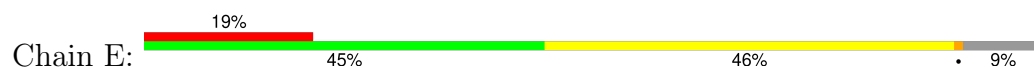


• Molecule 2: Light-independent protochlorophyllide reductase subunit B

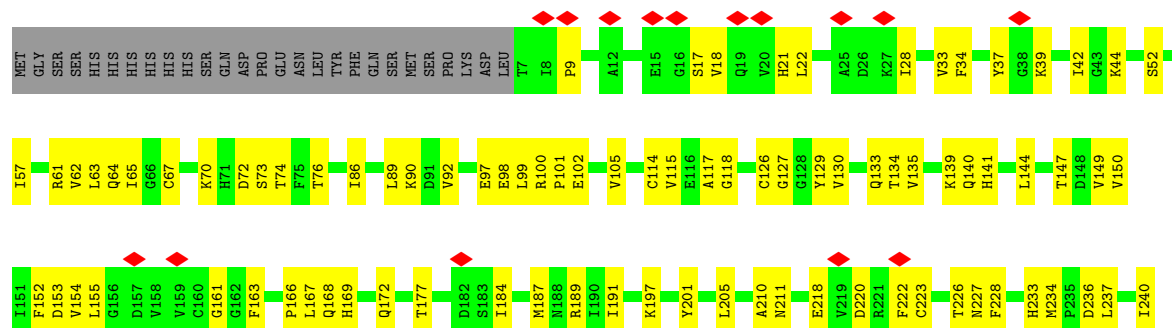




- Molecule 3: Light-independent protochlorophyllide reductase iron-sulfur ATP-binding protein



- Molecule 3: Light-independent protochlorophyllide reductase iron-sulfur ATP-binding protein



R241	R242	S243	R244	L245	K246	K247	K248	T249	L250	M253	D254	E255	D256	V259	L260	A261	A264	E265	R268	E271	S272	L273	W274	R275	G276	L277	I280	D281	P282	L283	LEU	GLY	PHE	ASP
------	------	------	------	------	------	------	------	------	------	------	------	------	------	------	------	------	------	------	------	------	------	------	------	------	------	------	------	------	------	------	-----	-----	-----	-----

## 4 Experimental information

Property	Value	Source
EM reconstruction method	SINGLE PARTICLE	Depositor
Imposed symmetry	POINT, Not provided	
Number of particles used	18965	Depositor
Resolution determination method	FSC 0.143 CUT-OFF	Depositor
CTF correction method	NONE	Depositor
Microscope	TFS KRIOS	Depositor
Voltage (kV)	300	Depositor
Electron dose ( $e^-/\text{\AA}^2$ )	50	Depositor
Minimum defocus (nm)	1000	Depositor
Maximum defocus (nm)	2200	Depositor
Magnification	105000	Depositor
Image detector	GATAN K3 BIOQUANTUM (6k x 4k)	Depositor
Maximum map value	0.712	Depositor
Minimum map value	-0.201	Depositor
Average map value	0.000	Depositor
Map value standard deviation	0.015	Depositor
Recommended contour level	0.0809	Depositor
Map size ( $\text{\AA}$ )	393.6, 393.6, 393.6	wwPDB
Map dimensions	480, 480, 480	wwPDB
Map angles ( $^\circ$ )	90.0, 90.0, 90.0	wwPDB
Pixel spacing ( $\text{\AA}$ )	0.82, 0.82, 0.82	Depositor

## 5 Model quality [i](#)

### 5.1 Standard geometry [i](#)

Bond lengths and bond angles in the following residue types are not validated in this section: MG, CU, PMR, SF4

The Z score for a bond length (or angle) is the number of standard deviations the observed value is removed from the expected value. A bond length (or angle) with  $|Z| > 5$  is considered an outlier worth inspection. RMSZ is the root-mean-square of all Z scores of the bond lengths (or angles).

Mol	Chain	Bond lengths		Bond angles	
		RMSZ	$\# Z  > 5$	RMSZ	$\# Z  > 5$
1	A	0.18	0/3110	0.47	1/4225 (0.0%)
1	C	0.20	0/3127	0.47	1/4248 (0.0%)
2	B	0.18	0/3314	0.45	0/4503
2	D	0.16	0/3392	0.40	0/4610
3	E	0.20	0/2168	0.55	1/2951 (0.0%)
3	F	0.16	0/2181	0.47	1/2966 (0.0%)
All	All	0.18	0/17292	0.46	4/23503 (0.0%)

There are no bond length outliers.

All (4) bond angle outliers are listed below:

Mol	Chain	Res	Type	Atoms	Z	Observed(°)	Ideal(°)
1	A	70	PRO	CA-N-CD	-5.92	103.72	112.00
3	F	253	MET	CB-CG-SD	5.64	129.62	112.70
3	E	24	GLU	CB-CA-C	-5.43	110.30	116.54
1	C	399	VAL	N-CA-C	-5.26	108.15	113.20

There are no chirality outliers.

There are no planarity outliers.

### 5.2 Too-close contacts [i](#)

In the following table, the Non-H and H(model) columns list the number of non-hydrogen atoms and hydrogen atoms in the chain respectively. The H(added) column lists the number of hydrogen atoms added and optimized by MolProbity. The Clashes column lists the number of clashes within the asymmetric unit, whereas Symm-Clashes lists symmetry-related clashes.

Mol	Chain	Non-H	H(model)	H(added)	Clashes	Symm-Clashes
1	A	3046	0	3055	174	0

*Continued on next page...*

*Continued from previous page...*

Mol	Chain	Non-H	H(model)	H(added)	Clashes	Symm-Clashes
1	C	3063	0	3078	159	0
2	B	3239	0	3206	153	0
2	D	3313	0	3254	138	0
3	E	2128	0	2041	135	0
3	F	2141	0	2060	98	0
4	A	8	0	0	13	0
4	C	8	0	0	11	0
4	F	8	0	0	3	0
5	A	45	0	31	2	0
5	B	45	0	31	16	0
6	B	2	0	0	0	0
7	E	1	0	0	0	0
7	F	1	0	0	0	0
All	All	17048	0	16756	810	0

The all-atom clashscore is defined as the number of clashes found per 1000 atoms (including hydrogen atoms). The all-atom clashscore for this structure is 24.

All (810) close contacts within the same asymmetric unit are listed below, sorted by their clash magnitude.

Atom-1	Atom-2	Interatomic distance (Å)	Clash overlap (Å)
1:C:54:CYS:SG	4:C:501:SF4:FE3	1.19	1.33
1:A:29:CYS:SG	4:A:501:SF4:FE1	1.22	1.31
1:A:54:CYS:SG	4:A:501:SF4:FE3	1.31	1.23
1:A:115:CYS:SG	4:A:501:SF4:FE4	1.32	1.20
1:C:115:CYS:SG	4:C:501:SF4:FE4	1.44	1.10
1:A:29:CYS:HG	4:A:501:SF4:FE1	0.75	0.95
1:C:54:CYS:HG	4:C:501:SF4:FE3	0.81	0.89
2:B:23:MET:HE3	2:B:26:MET:HE3	1.54	0.88
1:A:115:CYS:HG	4:A:501:SF4:FE4	0.58	0.86
1:A:45:PHE:HB2	1:A:106:ILE:HG12	1.58	0.85
2:B:385:ARG:HG3	2:D:397:VAL:HG22	1.58	0.83
2:D:299:ALA:HA	2:D:303:MET:HB2	1.60	0.83
1:C:303:LEU:HD22	1:C:373:CYS:HB2	1.60	0.82
3:F:241:ARG:HB2	3:F:245:LEU:HG	1.61	0.80
5:B:601:PMR:HHC	1:C:61:ALA:HA	1.62	0.80
3:E:112:VAL:HG12	3:E:113:MET:HG2	1.61	0.80
1:A:182:LEU:HD12	1:A:183:PRO:HD2	1.63	0.79
2:B:12:PRO:HB2	2:B:122:LEU:HD12	1.64	0.79
3:E:86:ILE:HG22	3:E:96:PRO:HB2	1.64	0.78
2:B:12:PRO:HA	2:B:129:GLU:HA	1.64	0.78

*Continued on next page...*

*Continued from previous page...*

Atom-1	Atom-2	Interatomic distance (Å)	Clash overlap (Å)
5:B:601:PMR:HHD	1:C:392:ILE:HD12	1.67	0.76
2:D:265:ARG:H	2:D:396:ASN:HD21	1.33	0.76
3:E:20:VAL:HG13	3:E:22:LEU:H	1.49	0.76
3:F:250:LEU:HG	3:F:259:VAL:HG13	1.68	0.76
1:A:42:GLN:HG2	1:A:209:HIS:HB3	1.65	0.76
1:A:309:GLU:HG2	1:A:310:PRO:HD3	1.68	0.75
2:D:175:VAL:HG21	2:D:211:LEU:HD11	1.67	0.75
2:B:15:GLY:HA2	2:B:18:ARG:HD3	1.69	0.75
3:E:159:VAL:HG13	3:E:193:ALA:HB2	1.67	0.75
3:F:97:GLU:HA	3:F:140:GLN:HE22	1.52	0.75
2:B:356:THR:OG1	2:B:376:PRO:O	2.05	0.74
2:D:356:THR:OG1	2:D:376:PRO:O	2.06	0.74
3:E:95:HIS:CE1	3:E:104:PHE:HB2	2.22	0.74
1:A:354:GLN:HB3	1:A:362:ARG:HH22	1.53	0.74
2:B:353:ILE:HD11	2:B:363:ALA:HB2	1.69	0.74
1:C:378:ALA:HA	1:C:388:THR:HG21	1.70	0.74
2:D:24:THR:OG1	2:D:194:ALA:O	2.06	0.74
1:A:66:ILE:H	1:A:66:ILE:HD12	1.52	0.73
5:B:601:PMR:HHC	1:C:62:ALA:H	1.53	0.73
1:C:24:GLN:HE21	2:D:57:TYR:HB2	1.52	0.73
1:A:244:ILE:HG21	1:A:265:GLU:HG2	1.71	0.72
1:A:54:CYS:SG	4:A:501:SF4:S2	2.87	0.72
3:E:95:HIS:HE1	3:E:104:PHE:HB2	1.54	0.72
3:E:184:ILE:HA	3:E:187:MET:HE2	1.70	0.72
1:C:248:PHE:O	1:C:314:ARG:NH2	2.21	0.72
2:D:158:LEU:HB2	2:D:189:VAL:HG22	1.70	0.72
1:A:29:CYS:SG	4:A:501:SF4:S3	2.88	0.71
1:C:54:CYS:SG	4:C:501:SF4:S2	2.89	0.71
3:F:39:LYS:H	3:F:42:ILE:HD11	1.56	0.70
2:B:217:GLU:OE1	3:F:100:ARG:NH2	2.25	0.70
1:A:278:ALA:HA	1:A:281:ARG:HE	1.57	0.70
2:D:12:PRO:HA	2:D:129:GLU:HA	1.73	0.70
1:C:176:LEU:H	1:C:201:PRO:HB2	1.58	0.69
2:B:151:THR:OG1	2:B:153:LYS:O	2.10	0.69
1:C:375:LEU:HD11	1:C:392:ILE:HG12	1.74	0.69
1:C:379:ASN:ND2	2:D:44:THR:O	2.25	0.69
2:B:87:GLN:HB2	2:B:196:PRO:HG2	1.75	0.69
2:B:28:TYR:HB3	2:B:55:VAL:HG12	1.72	0.69
2:B:359:GLU:N	2:B:359:GLU:OE2	2.25	0.69
1:A:54:CYS:SG	4:A:501:SF4:S1	2.91	0.68
1:A:142:TYR:HD2	1:A:164:ILE:HG22	1.58	0.68

*Continued on next page...*

*Continued from previous page...*

Atom-1	Atom-2	Interatomic distance (Å)	Clash overlap (Å)
2:B:237:ILE:HG12	2:B:390:MET:HG2	1.74	0.68
3:E:179:ASN:ND2	3:E:211:ASN:O	2.27	0.68
1:C:312:LEU:HD11	1:C:412:PHE:HZ	1.57	0.68
3:E:67:CYS:HA	3:E:117:ALA:HB3	1.75	0.68
3:E:296:PHE:HA	3:F:243:SER:HA	1.76	0.68
3:F:187:MET:O	3:F:191:ILE:HG12	1.94	0.67
2:B:23:MET:HB3	2:B:194:ALA:HB3	1.77	0.67
2:B:284:PHE:HB3	2:B:353:ILE:HG22	1.77	0.67
1:C:29:CYS:SG	4:C:501:SF4:S4	2.93	0.67
1:A:375:LEU:HB3	2:B:41:LEU:HD11	1.77	0.67
1:A:298:LYS:HB2	1:A:322:MET:HE1	1.75	0.67
1:C:137:PRO:O	1:C:140:ARG:NH2	2.28	0.66
2:D:231:TYR:O	2:D:233:LYS:NZ	2.29	0.66
3:F:64:GLN:HE21	3:F:74:THR:HG22	1.60	0.66
2:B:380:GLN:N	2:B:380:GLN:OE1	2.29	0.66
3:E:82:VAL:HG12	3:E:87:ASP:HB3	1.77	0.66
2:B:118:VAL:HB	2:B:143:LYS:HD3	1.78	0.66
3:F:237:LEU:HD22	3:F:242:ARG:HH22	1.59	0.66
1:A:199:ILE:HD13	1:A:268:VAL:HG22	1.78	0.66
1:C:66:ILE:HG23	2:D:5:LEU:HD22	1.78	0.66
1:C:115:CYS:SG	4:C:501:SF4:S2	2.92	0.66
2:B:214:GLU:CD	2:B:214:GLU:H	2.04	0.65
2:D:378:HIS:ND1	2:D:381:ASP:OD2	2.28	0.65
1:C:172:GLU:O	1:C:219:ASN:ND2	2.29	0.65
2:D:284:PHE:HB3	2:D:353:ILE:HG23	1.78	0.65
1:A:302:PHE:HB2	1:A:327:VAL:HA	1.77	0.65
1:A:399:VAL:HB	1:A:408:LEU:HG	1.79	0.64
1:C:54:CYS:SG	4:C:501:SF4:S1	2.95	0.64
1:C:255:THR:HG21	1:C:401:PHE:HA	1.79	0.64
3:F:236:ASP:HB3	3:F:240:ILE:HG13	1.80	0.64
1:A:96:VAL:HG21	1:A:131:LEU:HD11	1.79	0.64
2:D:356:THR:HB	2:D:374:SER:HB3	1.80	0.64
1:C:92:LEU:O	1:C:96:VAL:HG23	1.97	0.64
3:E:12:ALA:HB1	3:F:17:SER:HB3	1.79	0.64
3:F:241:ARG:HE	3:F:245:LEU:HA	1.63	0.64
1:A:274:GLU:O	1:A:281:ARG:NH2	2.31	0.64
4:C:501:SF4:FE2	2:D:36:ASP:OD1	1.46	0.64
2:B:27:HIS:CD2	2:B:56:SER:HG	2.14	0.64
1:C:224:LEU:HD11	1:C:229:LEU:HB2	1.79	0.64
1:C:244:ILE:HG12	1:C:265:GLU:HG3	1.80	0.64
3:E:158:VAL:HG23	3:E:163:PHE:CD2	2.33	0.64

*Continued on next page...*



*Continued from previous page...*

Atom-1	Atom-2	Interatomic distance (Å)	Clash overlap (Å)
1:C:304:PRO:HG2	1:C:354:GLN:HB2	1.80	0.63
3:E:30:GLY:HA2	3:E:144:LEU:HD22	1.80	0.63
3:F:154:VAL:HG21	3:F:166:PRO:HG2	1.80	0.63
1:C:286:LYS:HE2	1:C:286:LYS:HA	1.79	0.63
2:B:90:MET:HE3	2:B:120:LEU:HD22	1.80	0.63
1:A:150:GLU:OE2	1:A:150:GLU:N	2.31	0.63
3:E:37:TYR:CE2	3:E:175:VAL:HG22	2.34	0.63
1:A:416:VAL:HG13	1:A:418:ARG:HE	1.63	0.62
2:B:27:HIS:NE2	2:B:56:SER:OG	2.22	0.62
3:F:245:LEU:HD22	3:F:250:LEU:HD13	1.80	0.62
2:B:161:PRO:HD3	2:B:211:LEU:HD23	1.80	0.62
3:F:130:VAL:O	3:F:134:THR:HG23	1.99	0.62
1:A:150:GLU:HG2	1:A:151:THR:HG23	1.81	0.62
2:D:273:VAL:HA	2:D:276:THR:HG23	1.82	0.62
2:D:23:MET:HE3	2:D:24:THR:H	1.65	0.62
2:D:40:ASP:O	2:D:44:THR:HG23	2.00	0.62
1:C:37:LEU:HD11	1:C:157:GLU:OE2	2.00	0.62
3:E:37:TYR:HE2	3:E:175:VAL:HG22	1.64	0.62
3:E:19:GLN:HG2	3:F:126:CYS:HB2	1.82	0.62
1:C:91:GLU:O	1:C:95:GLU:HG2	1.99	0.62
2:D:18:ARG:HG2	2:D:43:PHE:HZ	1.65	0.61
1:A:233:HIS:CE1	1:A:336:ILE:HD11	2.35	0.61
2:B:89:ILE:HG21	2:B:113:LEU:HD11	1.82	0.61
2:B:299:ALA:HA	2:B:303:MET:HB2	1.82	0.61
1:C:65:MET:HG3	1:C:70:PRO:HB3	1.82	0.61
1:C:232:THR:O	1:C:236:LEU:HG	2.01	0.60
3:E:212:ARG:NH1	3:E:233:HIS:O	2.34	0.60
1:A:115:CYS:SG	4:A:501:SF4:S2	2.99	0.60
1:A:39:ARG:NH1	2:D:418:PHE:O	2.34	0.60
1:A:300:VAL:HG12	1:A:324:ALA:HA	1.83	0.60
2:B:34:GLN:HB2	2:B:59:THR:HB	1.83	0.60
2:B:179:LEU:HD22	2:B:184:ILE:HD11	1.82	0.60
2:D:10:GLY:N	2:D:129:GLU:OE2	2.27	0.60
1:A:43:ASP:HB2	1:A:209:HIS:HB2	1.82	0.60
1:C:399:VAL:HB	1:C:408:LEU:HD12	1.83	0.60
1:A:107:ARG:HA	1:A:139:VAL:HG12	1.83	0.60
1:A:29:CYS:SG	4:A:501:SF4:S4	3.00	0.60
1:A:71:ARG:HD2	1:A:103:ARG:HH21	1.67	0.59
2:B:393:GLU:O	2:B:397:VAL:HG23	2.02	0.59
3:E:185:TYR:O	3:E:188:ASN:ND2	2.35	0.59
3:E:194:VAL:HB	3:E:203:VAL:HG13	1.84	0.59

*Continued on next page...*

*Continued from previous page...*

Atom-1	Atom-2	Interatomic distance (Å)	Clash overlap (Å)
2:B:89:ILE:HG23	2:B:117:VAL:HG23	1.83	0.59
1:A:26:GLU:OE1	2:B:37:THR:OG1	2.17	0.59
3:E:39:LYS:HE3	3:E:178:ALA:HB2	1.83	0.59
3:E:66:GLY:HA2	3:E:153:ASP:HB3	1.82	0.59
3:E:184:ILE:O	3:E:188:ASN:ND2	2.36	0.59
3:F:99:LEU:O	3:F:141:HIS:NE2	2.34	0.59
2:D:166:PHE:HB2	2:D:375:ALA:HA	1.84	0.59
3:F:271:GLU:O	3:F:275:ARG:HG2	2.02	0.59
3:F:33:VAL:HG13	3:F:150:VAL:HG12	1.85	0.59
2:D:184:ILE:HD12	2:D:184:ILE:H	1.66	0.59
2:B:245:PHE:O	2:B:249:VAL:HG12	2.02	0.59
1:A:62:ALA:HB1	1:A:65:MET:HB2	1.84	0.58
1:A:135:HIS:HB3	1:A:139:VAL:HG23	1.85	0.58
1:C:311:SER:OG	1:C:340:ASP:OD2	2.20	0.58
1:A:96:VAL:HA	1:A:99:LEU:HG	1.85	0.58
1:A:242:ARG:NH2	1:A:265:GLU:OE1	2.35	0.58
2:D:359:GLU:OE1	2:D:359:GLU:N	2.32	0.58
3:E:265:GLU:HG2	3:E:268:ARG:HH12	1.66	0.58
2:D:237:ILE:HB	2:D:294:ALA:HB1	1.83	0.58
3:E:40:GLY:H	3:E:155:LEU:HD12	1.69	0.58
1:C:254:GLY:HA3	1:C:314:ARG:HH22	1.68	0.58
1:A:91:GLU:HG2	2:B:1:MET:HB2	1.84	0.58
2:B:116:PRO:HB2	2:B:143:LYS:HE3	1.85	0.58
2:D:209:VAL:HA	2:D:232:THR:HG22	1.85	0.58
5:B:601:PMR:CHD	1:C:392:ILE:HD12	2.32	0.58
1:C:301:PHE:HB2	1:C:368:PRO:HG3	1.84	0.58
3:E:270:ALA:HA	3:E:273:LEU:HB3	1.86	0.58
2:B:170:ASP:OD1	2:B:386:TYR:HB2	2.04	0.58
1:A:66:ILE:HG23	2:B:5:LEU:HD23	1.85	0.57
2:B:89:ILE:HG22	2:B:115:VAL:HG12	1.86	0.57
1:C:375:LEU:HB2	2:D:41:LEU:HD12	1.84	0.57
5:B:601:PMR:HMA	2:D:379:VAL:HG21	1.85	0.57
1:C:419:ARG:HE	1:C:423:ARG:HH11	1.50	0.57
2:D:40:ASP:HA	2:D:53:PRO:HG2	1.86	0.57
3:E:159:VAL:HG11	3:E:189:ARG:HG3	1.87	0.57
1:C:52:ARG:HD2	1:C:76:VAL:HG11	1.87	0.57
1:C:249:PRO:HD3	1:C:258:TRP:CZ3	2.39	0.57
3:F:97:GLU:HA	3:F:140:GLN:NE2	2.20	0.57
2:D:264:LEU:HD12	2:D:266:GLN:H	1.68	0.57
3:E:62:VAL:O	3:E:114:CYS:HB2	2.05	0.57
1:C:311:SER:O	1:C:314:ARG:HG3	2.05	0.56

*Continued on next page...*

*Continued from previous page...*

Atom-1	Atom-2	Interatomic distance (Å)	Clash overlap (Å)
2:D:26:MET:HE1	2:D:88:ALA:HB3	1.85	0.56
1:A:33:GLY:HA2	1:A:36:TRP:CZ3	2.40	0.56
1:C:360:LEU:O	1:C:364:ARG:HG3	2.05	0.56
3:F:52:SER:OG	3:F:64:GLN:OE1	2.23	0.56
2:B:335:THR:HG21	2:B:340:GLU:HB2	1.87	0.56
1:C:253:GLU:O	1:C:257:LEU:HG	2.05	0.56
1:C:316:LEU:HG	1:C:322:MET:HG2	1.86	0.56
2:D:265:ARG:H	2:D:396:ASN:ND2	2.03	0.56
2:D:393:GLU:O	2:D:397:VAL:HG23	2.05	0.56
3:E:50:ASN:HD21	3:E:250:LEU:HD23	1.70	0.56
3:F:76:THR:HB	3:F:249:THR:HG23	1.87	0.56
2:D:238:GLY:O	2:D:242:THR:OG1	2.20	0.56
3:F:67:CYS:HA	3:F:117:ALA:HB3	1.87	0.56
2:B:138:LEU:O	2:B:142:ARG:HG2	2.04	0.56
1:C:368:PRO:HG2	1:C:371:THR:HG22	1.87	0.56
3:F:256:ASP:HB3	3:F:259:VAL:HG23	1.87	0.56
2:B:27:HIS:HE2	2:B:56:SER:HG	1.35	0.56
3:E:104:PHE:HE2	3:E:143:LEU:HG	1.70	0.56
3:F:92:VAL:HB	3:F:98:GLU:OE2	2.05	0.56
3:E:168:GLN:HE21	3:E:197:LYS:NZ	2.04	0.56
1:A:66:ILE:HG21	2:B:6:TRP:HB2	1.88	0.56
1:A:168:LEU:O	1:A:239:ARG:NH1	2.38	0.56
2:B:162:THR:H	2:B:168:HIS:HD2	1.54	0.56
3:E:82:VAL:HB	3:E:85:VAL:HA	1.87	0.56
1:C:125:HIS:O	1:C:129:GLU:HG2	2.06	0.56
3:F:220:ASP:OD1	3:F:220:ASP:N	2.39	0.56
2:B:341:VAL:O	2:B:345:ILE:HG23	2.06	0.55
2:D:18:ARG:HG2	2:D:43:PHE:CZ	2.41	0.55
3:E:37:TYR:HD1	3:E:154:VAL:CG2	2.18	0.55
3:E:51:LEU:HD11	3:E:273:LEU:HD22	1.88	0.55
1:A:274:GLU:HG2	1:A:281:ARG:HH22	1.71	0.55
3:E:154:VAL:HB	3:E:158:VAL:CG1	2.37	0.55
2:B:120:LEU:HD21	2:B:136:SER:HB3	1.87	0.55
2:B:151:THR:OG1	2:B:206:HIS:HE1	1.90	0.55
1:C:152:THR:H	1:C:155:GLN:HB3	1.72	0.55
3:E:127:GLY:N	4:F:301:SF4:S2	2.75	0.55
3:E:185:TYR:CZ	3:F:70:LYS:HA	2.42	0.55
1:A:332:LEU:HD21	1:A:350:LEU:HD12	1.87	0.55
1:A:45:PHE:HE2	1:A:99:LEU:HB2	1.72	0.55
1:A:114:SER:O	1:A:118:GLU:HG2	2.05	0.55
3:F:177:THR:OG1	3:F:187:MET:SD	2.60	0.55

*Continued on next page...*

*Continued from previous page...*

Atom-1	Atom-2	Interatomic distance (Å)	Clash overlap (Å)
1:C:302:PHE:CE2	1:C:313:ALA:HB2	2.42	0.55
3:E:280:ILE:HG23	3:E:282:PRO:HD3	1.88	0.55
1:A:161:LEU:O	1:A:165:VAL:HG23	2.07	0.55
3:E:136:LYS:O	3:E:140:GLN:N	2.38	0.55
3:E:184:ILE:HD11	3:E:292:GLU:HB2	1.88	0.55
1:A:20:LYS:HG3	1:A:352:GLU:O	2.06	0.55
3:E:64:GLN:NE2	3:E:74:THR:OG1	2.40	0.55
3:F:127:GLY:N	4:F:301:SF4:S4	2.73	0.55
1:C:115:CYS:SG	4:C:501:SF4:S3	3.05	0.55
1:C:168:LEU:HD11	1:C:205:LEU:HD13	1.89	0.55
3:E:261:ALA:HB1	3:E:264:ALA:HB3	1.89	0.55
1:A:174:ARG:NE	1:A:219:ASN:O	2.31	0.54
1:C:216:VAL:HG13	1:C:220:THR:HG21	1.89	0.54
2:D:136:SER:O	2:D:140:ILE:HG12	2.07	0.54
2:B:303:MET:HA	2:B:303:MET:HE2	1.88	0.54
2:D:176:THR:HG22	2:D:186:VAL:HG11	1.88	0.54
3:E:221:ARG:O	3:E:225:GLU:HG3	2.07	0.54
2:D:308:VAL:HG11	2:D:350:PRO:HB3	1.88	0.54
2:B:289:ALA:O	2:B:293:ILE:HG12	2.06	0.54
1:C:394:LEU:HB3	1:C:399:VAL:HG21	1.87	0.54
1:A:28:PHE:HZ	2:B:41:LEU:HD23	1.71	0.54
1:A:161:LEU:HD21	1:A:229:LEU:HD22	1.89	0.54
1:A:308:LEU:HD23	1:A:394:LEU:HD13	1.90	0.54
1:A:390:TRP:NE1	1:A:393:GLU:OE1	2.34	0.54
3:F:34:PHE:HD1	3:F:172:GLN:HB2	1.71	0.54
1:A:66:ILE:CG2	2:B:6:TRP:HB2	2.37	0.54
2:D:157:ASN:ND2	2:D:202:LEU:O	2.41	0.54
3:F:63:LEU:HD21	3:F:144:LEU:HD23	1.90	0.54
2:B:412:GLU:HA	2:B:415:LEU:HD12	1.89	0.54
2:D:357:GLN:HE21	2:D:361:HIS:HE1	1.55	0.54
1:C:47:LEU:HD13	1:C:111:LEU:HD23	1.89	0.53
2:D:353:ILE:HD12	2:D:363:ALA:HB2	1.89	0.53
1:C:302:PHE:HD2	1:C:309:GLU:HB3	1.73	0.53
2:B:195:SER:H	2:B:198:ASP:HB2	1.74	0.53
2:B:221:ARG:NH1	3:F:101:PRO:HD2	2.23	0.53
2:B:284:PHE:HE1	2:B:286:PHE:HB2	1.73	0.53
1:C:46:PHE:HD1	1:C:110:PHE:HB2	1.74	0.53
2:D:241:ALA:N	2:D:297:ARG:HH12	2.06	0.53
2:D:275:SER:HA	2:D:278:LEU:HB2	1.90	0.53
1:C:312:LEU:HD11	1:C:412:PHE:CZ	2.42	0.53
2:D:61:GLN:HB3	2:D:63:ARG:HH21	1.72	0.53

*Continued on next page...*

*Continued from previous page...*

Atom-1	Atom-2	Interatomic distance (Å)	Clash overlap (Å)
1:A:114:SER:O	1:A:117:SER:OG	2.23	0.53
2:B:308:VAL:HG22	2:B:348:LEU:HD12	1.91	0.53
5:B:601:PMR:HHC	1:C:62:ALA:N	2.23	0.53
5:B:601:PMR:CAB	2:D:41:LEU:HD21	2.38	0.53
1:C:54:CYS:SG	4:C:501:SF4:S4	3.07	0.53
3:E:83:PRO:HB2	3:E:106:PHE:CZ	2.44	0.53
3:E:84:THR:HB	3:E:86:ILE:HG12	1.89	0.53
2:B:221:ARG:HH12	3:F:100:ARG:HB3	1.73	0.53
2:D:28:TYR:HB3	2:D:55:VAL:HG13	1.90	0.53
3:E:195:GLN:HA	3:E:198:SER:HB3	1.91	0.53
1:A:285:ARG:HA	1:A:288:VAL:HG12	1.91	0.53
1:A:48:VAL:HB	1:A:74:THR:HA	1.91	0.53
1:C:194:LEU:HD11	1:C:262:ILE:HG21	1.90	0.53
1:A:98:ARG:O	1:A:102:ARG:HG3	2.09	0.52
1:A:279:ALA:O	1:A:283:ARG:HG2	2.09	0.52
2:B:17:MET:HG2	2:B:43:PHE:HE2	1.73	0.52
2:B:112:SER:O	2:B:112:SER:OG	2.24	0.52
1:C:189:GLN:HE22	1:C:404:GLN:HE22	1.55	0.52
2:D:264:LEU:HD12	2:D:265:ARG:N	2.23	0.52
3:E:223:CYS:O	3:E:226:THR:OG1	2.26	0.52
2:B:157:ASN:ND2	2:B:202:LEU:O	2.42	0.52
1:C:179:VAL:HG12	1:C:205:LEU:HB3	1.92	0.52
1:C:234:GLY:O	1:C:238:ARG:HG2	2.09	0.52
2:B:26:MET:HE1	2:B:196:PRO:HD3	1.91	0.52
2:D:144:LEU:O	2:D:146:ARG:NH1	2.43	0.52
2:B:28:TYR:CE1	2:B:30:LEU:HD12	2.44	0.52
3:E:129:TYR:CD2	3:F:18:VAL:HG11	2.45	0.52
1:A:29:CYS:SG	4:A:501:SF4:S2	3.08	0.52
1:A:303:LEU:HD13	1:A:373:CYS:HB3	1.90	0.52
3:E:62:VAL:HG22	3:E:149:VAL:HG23	1.91	0.52
3:F:280:ILE:HG23	3:F:282:PRO:HD3	1.92	0.52
2:B:42:LEU:HD13	2:B:164:LEU:HD22	1.90	0.52
1:C:281:ARG:HG2	1:C:285:ARG:HH12	1.74	0.52
1:A:312:LEU:HD11	1:A:394:LEU:HD22	1.91	0.52
3:F:74:THR:HB	3:F:114:CYS:HB2	1.92	0.52
3:E:89:LEU:HD11	3:E:137:LEU:HD13	1.91	0.52
1:C:314:ARG:HD2	1:C:315:PHE:N	2.25	0.52
3:E:135:VAL:HG22	3:E:152:PHE:CZ	2.45	0.52
3:E:244:ARG:HH21	3:E:253:MET:HB2	1.74	0.52
2:B:361:HIS:NE2	2:D:411:GLU:OE1	2.42	0.52
3:E:226:THR:HG22	3:E:285:LEU:HD12	1.90	0.51

*Continued on next page...*

*Continued from previous page...*

Atom-1	Atom-2	Interatomic distance (Å)	Clash overlap (Å)
1:A:208:HIS:NE2	1:A:212:GLU:OE2	2.43	0.51
1:C:419:ARG:HE	1:C:423:ARG:NH1	2.08	0.51
2:D:26:MET:HE3	2:D:26:MET:HA	1.92	0.51
2:D:352:LEU:HD13	2:D:369:PRO:HB2	1.91	0.51
1:A:158:ASP:HA	1:A:161:LEU:HG	1.92	0.51
2:B:389:GLN:HG3	2:B:398:LEU:HD21	1.92	0.51
3:F:101:PRO:HD3	3:F:141:HIS:CD2	2.46	0.51
1:A:377:LEU:O	1:A:381:LEU:HG	2.09	0.51
2:D:414:LEU:O	2:D:418:PHE:HB2	2.11	0.51
3:F:139:LYS:HD3	3:F:144:LEU:HD12	1.92	0.51
1:A:92:LEU:O	1:A:96:VAL:HG13	2.10	0.51
1:A:358:ARG:O	1:A:362:ARG:HG3	2.11	0.51
1:A:390:TRP:NE1	1:A:393:GLU:HB2	2.26	0.51
2:D:360:ARG:HD2	2:D:370:CYS:HB2	1.93	0.51
3:E:34:PHE:N	3:E:150:VAL:O	2.39	0.51
1:A:233:HIS:O	1:A:237:THR:HG23	2.10	0.51
2:D:12:PRO:HB2	2:D:122:LEU:HD13	1.92	0.51
3:E:294:LEU:HG	3:F:247:LYS:HD3	1.91	0.51
1:A:115:CYS:SG	4:A:501:SF4:S3	3.09	0.51
2:B:178:LEU:O	2:B:181:GLY:N	2.44	0.51
5:B:601:PMR:HBCB	5:B:601:PMR:HMCB	1.93	0.51
1:C:158:ASP:OD1	1:C:232:THR:HG23	2.11	0.51
1:A:404:GLN:HA	1:A:407:ASP:OD1	2.10	0.51
1:A:80:LYS:NZ	3:E:15:GLU:HA	2.26	0.51
1:C:225:VAL:HA	1:C:258:TRP:CH2	2.45	0.50
3:E:105:VAL:HG21	3:E:115:VAL:HG11	1.93	0.50
3:F:37:TYR:CZ	3:F:167:LEU:HD21	2.46	0.50
2:B:127:ARG:HB3	2:B:131:PHE:CD2	2.47	0.50
2:D:151:THR:O	2:D:206:HIS:NE2	2.40	0.50
3:E:135:VAL:HG22	3:E:152:PHE:HZ	1.76	0.50
1:C:312:LEU:HD12	1:C:394:LEU:HD22	1.93	0.50
3:F:205:LEU:HD13	3:F:282:PRO:HD2	1.92	0.50
3:F:250:LEU:HD12	3:F:254:ASP:HB3	1.93	0.50
1:A:186:VAL:HG22	1:A:404:GLN:NE2	2.26	0.50
2:D:87:GLN:HG3	2:D:196:PRO:HG2	1.93	0.50
3:E:182:ASP:OD1	3:E:183:SER:N	2.44	0.50
3:E:198:SER:HA	3:E:202:LYS:HA	1.93	0.50
3:F:102:GLU:H	3:F:105:VAL:HG12	1.77	0.50
1:A:22:ARG:H	1:A:22:ARG:HD3	1.76	0.50
2:D:30:LEU:HD11	2:D:94:SER:HB2	1.93	0.50
3:F:100:ARG:HG3	3:F:100:ARG:HH11	1.77	0.50

*Continued on next page...*

*Continued from previous page...*

Atom-1	Atom-2	Interatomic distance (Å)	Clash overlap (Å)
3:F:240:ILE:HG12	3:F:250:LEU:HD22	1.92	0.50
1:A:115:CYS:SG	4:A:501:SF4:S1	3.10	0.50
1:C:255:THR:CG2	1:C:401:PHE:HA	2.42	0.50
3:E:154:VAL:HB	3:E:158:VAL:HG11	1.93	0.50
3:F:72:ASP:OD1	3:F:72:ASP:N	2.44	0.50
1:C:115:CYS:HG	4:C:501:SF4:FE4	1.22	0.50
1:C:310:PRO:HG2	1:C:337:LEU:HD21	1.94	0.50
2:D:397:VAL:O	2:D:401:THR:HG22	2.11	0.50
3:E:50:ASN:HD21	3:E:250:LEU:HB3	1.76	0.50
2:B:167:ARG:O	2:B:170:ASP:N	2.29	0.49
2:D:306:GLU:N	2:D:306:GLU:OE1	2.45	0.49
3:E:212:ARG:NH2	3:E:236:ASP:OD1	2.37	0.49
1:A:81:ASP:OD1	1:A:81:ASP:N	2.45	0.49
1:C:114:SER:O	1:C:117:SER:OG	2.27	0.49
2:D:189:VAL:O	2:D:194:ALA:HB2	2.11	0.49
1:A:234:GLY:O	1:A:238:ARG:HG2	2.12	0.49
2:B:18:ARG:HA	2:B:43:PHE:CZ	2.47	0.49
1:C:89:ASN:HB3	1:C:130:ARG:NH2	2.28	0.49
1:C:329:THR:HG21	1:C:332:LEU:HG	1.93	0.49
2:B:337:ASP:HB2	2:B:340:GLU:HG3	1.94	0.49
1:A:65:MET:HB3	1:A:70:PRO:HG3	1.95	0.49
1:A:252:GLU:O	1:A:256:THR:OG1	2.24	0.49
1:A:375:LEU:HB2	2:B:41:LEU:HD21	1.93	0.49
3:F:227:ASN:HB3	3:F:282:PRO:HA	1.94	0.49
1:C:192:SER:O	1:C:196:GLN:HG2	2.13	0.49
3:F:28:ILE:HB	3:F:139:LYS:HE2	1.94	0.49
1:A:131:LEU:HD23	1:A:141:VAL:HG11	1.94	0.49
3:E:164:ALA:HB1	3:E:167:LEU:HD12	1.94	0.49
3:E:192:ALA:HA	3:E:195:GLN:OE1	2.13	0.49
3:E:19:GLN:HG3	3:E:19:GLN:O	2.11	0.49
1:C:326:GLU:OE2	1:C:359:GLN:NE2	2.46	0.49
2:D:17:MET:HB2	2:D:55:VAL:HG21	1.95	0.49
3:F:22:LEU:HD23	3:F:22:LEU:H	1.78	0.49
1:A:154:THR:HB	1:A:228:PHE:CD1	2.48	0.49
1:A:232:THR:O	1:A:236:LEU:HG	2.13	0.48
1:C:42:GLN:HA	1:C:71:ARG:NH1	2.28	0.48
1:C:296:ARG:HA	1:C:322:MET:HE1	1.95	0.48
2:D:87:GLN:CG	2:D:196:PRO:HG2	2.44	0.48
1:A:112:VAL:HG12	1:A:144:PHE:CE1	2.48	0.48
1:A:243:HIS:CD2	1:A:336:ILE:HD12	2.47	0.48
2:B:8:TYR:HE2	2:B:286:PHE:CE1	2.31	0.48

*Continued on next page...*



*Continued from previous page...*

Atom-1	Atom-2	Interatomic distance (Å)	Clash overlap (Å)
2:B:28:TYR:HA	2:B:90:MET:SD	2.53	0.48
2:B:30:LEU:HD22	2:B:57:TYR:CD1	2.49	0.48
3:E:168:GLN:HE21	3:E:197:LYS:HZ2	1.62	0.48
1:A:42:GLN:N	1:A:42:GLN:OE1	2.44	0.48
2:B:287:GLY:HA3	2:B:374:SER:OG	2.14	0.48
3:E:64:GLN:HA	3:E:151:ILE:HB	1.95	0.48
3:F:61:ARG:HB2	3:F:147:THR:HA	1.95	0.48
1:A:53:THR:HG23	2:B:11:PRO:HG3	1.95	0.48
2:B:26:MET:SD	2:B:26:MET:N	2.85	0.48
2:B:175:VAL:O	2:B:179:LEU:HG	2.13	0.48
1:C:281:ARG:HG2	1:C:285:ARG:NH1	2.29	0.48
3:E:183:SER:O	3:E:187:MET:HG3	2.13	0.48
1:A:369:ASP:O	1:A:387:THR:OG1	2.23	0.48
2:B:138:LEU:HD23	2:B:218:SER:HB3	1.96	0.48
2:D:422:PHE:HB3	2:D:424:PHE:HE2	1.77	0.48
3:E:130:VAL:O	3:E:134:THR:OG1	2.31	0.48
3:E:136:LYS:HZ1	3:F:9:PRO:HA	1.78	0.48
3:E:207:GLY:HA2	3:E:228:PHE:CE1	2.49	0.48
3:F:73:SER:OG	3:F:153:ASP:OD2	2.20	0.48
2:B:283:VAL:HA	2:B:352:LEU:O	2.13	0.48
1:C:249:PRO:HD3	1:C:258:TRP:HZ3	1.75	0.48
3:F:234:MET:HE1	3:F:261:ALA:HB1	1.94	0.48
2:B:12:PRO:HG2	2:B:124:SER:HA	1.94	0.48
2:D:189:VAL:HG12	2:D:192:MET:O	2.14	0.48
3:E:167:LEU:HB2	3:E:197:LYS:HG3	1.94	0.48
3:F:256:ASP:N	3:F:259:VAL:HB	2.29	0.48
1:A:116:PRO:O	1:A:120:ILE:HG12	2.13	0.48
3:E:125:GLY:H	3:F:161:GLY:HA3	1.79	0.48
1:C:153:PHE:HD1	1:C:154:THR:HG23	1.78	0.48
3:E:64:GLN:HB3	3:E:114:CYS:SG	2.54	0.48
3:E:269:LEU:HD22	3:E:277:LEU:HD11	1.95	0.48
3:F:222:PHE:O	3:F:226:THR:OG1	2.30	0.48
1:A:263:ALA:HB1	1:A:268:VAL:HB	1.95	0.48
5:B:601:PMR:HBCA	1:C:396:PHE:HE2	1.78	0.48
1:C:332:LEU:O	1:C:334:ARG:NH1	2.47	0.48
3:F:177:THR:O	3:F:211:ASN:N	2.47	0.48
1:A:24:GLN:N	1:A:355:ASP:OD1	2.47	0.47
1:A:189:GLN:HG3	1:A:403:GLU:CD	2.39	0.47
2:B:135:GLU:O	2:B:138:LEU:HD12	2.13	0.47
3:E:212:ARG:O	3:E:236:ASP:HA	2.13	0.47
1:A:158:ASP:HB3	1:A:229:LEU:HD23	1.96	0.47

*Continued on next page...*



*Continued from previous page...*

Atom-1	Atom-2	Interatomic distance (Å)	Clash overlap (Å)
2:B:161:PRO:HA	2:B:168:HIS:CD2	2.50	0.47
2:B:266:GLN:HE22	2:B:302:GLU:HB3	1.80	0.47
3:E:38:GLY:O	3:E:156:GLY:N	2.47	0.47
3:E:160:CYS:O	3:E:164:ALA:N	2.46	0.47
2:B:129:GLU:HG3	2:B:130:ASN:N	2.29	0.47
2:B:170:ASP:OD2	2:B:387:SER:N	2.37	0.47
2:D:235:VAL:HG12	2:D:237:ILE:HG13	1.96	0.47
1:A:78:GLU:OE2	2:B:1:MET:N	2.47	0.47
2:B:18:ARG:HA	2:B:43:PHE:HZ	1.79	0.47
2:D:239:VAL:O	2:D:243:ARG:HG2	2.15	0.47
2:D:403:ILE:O	2:D:407:THR:HG22	2.14	0.47
3:E:191:ILE:HG12	3:E:205:LEU:HD23	1.96	0.47
3:F:256:ASP:O	3:F:260:LEU:N	2.36	0.47
1:A:49:VAL:O	1:A:49:VAL:HG23	2.14	0.47
1:A:372:VAL:HA	1:A:389:LYS:O	2.14	0.47
2:D:197:ALA:O	2:D:201:ARG:HG3	2.14	0.47
1:A:61:ALA:HA	5:A:502:PMR:C4B	2.45	0.47
1:A:126:ARG:HH11	1:A:127:ALA:HB2	1.80	0.47
1:A:161:LEU:O	1:A:164:ILE:HG13	2.14	0.47
2:B:410:LEU:HD21	5:B:601:PMR:O1D	2.14	0.47
3:E:13:ASP:HB2	3:F:21:HIS:HD2	1.80	0.47
3:F:240:ILE:HG12	3:F:250:LEU:CD2	2.43	0.47
2:B:126:GLN:HG2	2:B:127:ARG:HG2	1.97	0.47
2:B:316:GLU:HA	3:F:97:GLU:HG2	1.97	0.47
1:C:255:THR:O	1:C:259:LEU:HD23	2.13	0.47
3:E:135:VAL:HG11	3:E:169:HIS:CD2	2.50	0.47
1:A:24:GLN:NE2	2:B:57:TYR:H	2.13	0.47
1:C:38:HIS:HD2	1:C:65:MET:HE3	1.80	0.47
3:F:264:ALA:O	3:F:268:ARG:HG2	2.14	0.47
1:A:39:ARG:HD2	1:A:39:ARG:HA	1.69	0.47
1:A:115:CYS:O	1:A:119:VAL:HG12	2.15	0.47
1:A:209:HIS:NE2	1:A:211:ALA:HB2	2.29	0.47
2:B:127:ARG:NH2	3:F:97:GLU:HG3	2.30	0.47
1:C:147:SER:O	1:C:151:THR:HG22	2.15	0.47
2:D:264:LEU:HD22	2:D:392:PHE:CD1	2.50	0.47
2:D:363:ALA:HB3	2:D:370:CYS:HB3	1.97	0.47
3:E:52:SER:HB3	3:E:64:GLN:HB2	1.96	0.47
2:D:182:MET:HE1	2:D:249:VAL:HG23	1.96	0.47
2:D:358:MET:O	2:D:362:ILE:HG22	2.15	0.47
3:F:52:SER:HB3	3:F:62:VAL:HG11	1.97	0.47
3:F:201:TYR:CD1	3:F:201:TYR:N	2.83	0.47

*Continued on next page...*

*Continued from previous page...*

Atom-1	Atom-2	Interatomic distance (Å)	Clash overlap (Å)
3:F:277:LEU:HD12	3:F:277:LEU:H	1.80	0.47
3:E:44:LYS:HB3	3:E:176:VAL:HG11	1.96	0.46
3:E:144:LEU:HD12	3:E:145:ASP:N	2.30	0.46
3:E:175:VAL:HB	3:E:208:CYS:HA	1.96	0.46
1:A:161:LEU:HD11	1:A:232:THR:OG1	2.15	0.46
1:C:34:ILE:HG23	1:C:46:PHE:CD2	2.50	0.46
2:D:9:GLU:HB3	2:D:128:LYS:HB3	1.96	0.46
3:F:223:CYS:O	3:F:228:PHE:N	2.49	0.46
1:A:26:GLU:CD	2:B:37:THR:HG1	2.22	0.46
1:A:311:SER:OG	1:A:340:ASP:OD2	2.17	0.46
1:A:363:VAL:O	1:A:368:PRO:HD3	2.15	0.46
3:E:137:LEU:HD12	3:E:137:LEU:H	1.80	0.46
3:F:44:LYS:HE3	3:F:155:LEU:HD12	1.96	0.46
1:A:314:ARG:HD3	1:A:340:ASP:OD1	2.15	0.46
1:A:325:VAL:HG12	1:A:326:GLU:HG2	1.96	0.46
1:C:109:LEU:HD23	1:C:109:LEU:HA	1.74	0.46
2:D:232:THR:OG1	2:D:248:GLU:OE1	2.33	0.46
2:D:303:MET:HG3	2:D:402:TRP:HE3	1.80	0.46
2:D:333:LEU:HD23	2:D:340:GLU:OE2	2.16	0.46
3:E:51:LEU:HG	3:E:55:PHE:CE2	2.51	0.46
3:E:184:ILE:HA	3:E:187:MET:CE	2.44	0.46
1:A:224:LEU:HD11	1:A:229:LEU:HB2	1.96	0.46
2:B:81:TYR:HE2	2:B:114:PRO:HD2	1.80	0.46
1:C:116:PRO:O	1:C:120:ILE:HG13	2.16	0.46
2:D:225:LYS:HG3	2:D:226:THR:HG23	1.96	0.46
2:D:260:ASP:OD1	2:D:262:SER:OG	2.34	0.46
1:A:40:LYS:HD2	1:A:40:LYS:HA	1.66	0.46
1:A:115:CYS:HB3	1:A:149:ILE:HD11	1.98	0.46
1:C:251:GLY:HA3	1:C:315:PHE:CD1	2.50	0.46
3:E:52:SER:HA	3:E:62:VAL:HG21	1.98	0.46
3:E:240:ILE:HD13	3:E:250:LEU:HD13	1.97	0.46
1:A:389:LYS:NZ	1:A:393:GLU:HB3	2.31	0.46
2:B:55:VAL:HB	2:B:57:TYR:HE1	1.81	0.46
2:B:153:LYS:HZ2	2:B:184:ILE:HA	1.81	0.46
2:B:217:GLU:HG3	2:B:218:SER:N	2.31	0.46
5:B:601:PMR:HAB	1:C:60:SER:O	2.15	0.46
2:D:108:ALA:HA	2:D:111:LEU:HD12	1.98	0.46
3:F:163:PHE:N	4:F:301:SF4:S1	2.89	0.46
2:B:145:ALA:HB2	2:B:199:ILE:HG22	1.97	0.46
2:D:37:THR:HG22	2:D:57:TYR:CD2	2.51	0.46
2:B:172:ILE:HG13	2:B:173:LEU:N	2.31	0.46

*Continued on next page...*

*Continued from previous page...*

Atom-1	Atom-2	Interatomic distance (Å)	Clash overlap (Å)
2:B:321:MET:HE2	2:B:321:MET:HA	1.97	0.46
1:C:29:CYS:HB3	2:D:35:GLY:HA3	1.97	0.46
1:C:33:GLY:HA2	1:C:36:TRP:CZ2	2.51	0.46
1:C:182:LEU:HD22	1:C:183:PRO:HD2	1.98	0.46
2:D:406:LEU:HD23	2:D:406:LEU:HA	1.81	0.46
3:E:33:VAL:CG1	3:E:152:PHE:HB2	2.46	0.46
3:E:165:ALA:O	3:E:168:GLN:HB2	2.15	0.46
1:A:191:VAL:HG22	1:A:202:VAL:HG11	1.98	0.45
2:B:278:LEU:HB2	1:C:418:ARG:NH2	2.31	0.45
5:B:601:PMR:HHC	1:C:61:ALA:CA	2.40	0.45
2:D:150:ARG:NH2	2:D:227:LEU:O	2.47	0.45
2:D:286:PHE:HB3	2:D:359:GLU:OE2	2.16	0.45
3:E:269:LEU:O	3:E:273:LEU:HB2	2.15	0.45
1:A:58:LEU:HD21	1:A:72:PHE:CD2	2.52	0.45
2:D:261:ASP:C	2:D:261:ASP:OD1	2.59	0.45
3:E:174:VAL:HG11	3:E:273:LEU:HD11	1.97	0.45
3:F:86:ILE:HG22	3:F:118:GLY:HA3	1.98	0.45
2:B:283:VAL:HG23	2:B:307:VAL:HA	1.99	0.45
3:E:78:THR:HA	3:E:109:PHE:HD1	1.82	0.45
3:E:190:ILE:O	3:E:194:VAL:HG13	2.15	0.45
3:F:245:LEU:HB2	3:F:248:LYS:O	2.17	0.45
2:B:11:PRO:HG2	2:B:14:VAL:HG23	1.98	0.45
2:B:315:ARG:HB3	3:F:97:GLU:OE2	2.17	0.45
1:C:183:PRO:HG2	1:C:186:VAL:HB	1.98	0.45
1:C:300:VAL:HG22	1:C:370:LEU:HB3	1.98	0.45
2:D:355:GLY:O	2:D:372:VAL:HA	2.16	0.45
2:B:273:VAL:HG12	1:C:379:ASN:OD1	2.16	0.45
1:A:315:PHE:CE2	1:A:408:LEU:HD22	2.52	0.45
2:B:268:TRP:NE1	2:D:48:ARG:O	2.46	0.45
3:F:218:GLU:N	3:F:218:GLU:OE1	2.49	0.45
2:B:26:MET:HE1	2:B:196:PRO:CD	2.47	0.45
2:D:264:LEU:HB2	2:D:392:PHE:HB3	1.99	0.45
3:E:74:THR:HB	3:E:116:GLU:HB3	1.98	0.45
1:A:67:PHE:HE2	2:B:378:HIS:CE1	2.34	0.45
1:C:247:PRO:HG2	1:C:257:LEU:HD12	1.98	0.45
1:C:322:MET:SD	1:C:322:MET:N	2.90	0.45
3:E:285:LEU:HD13	3:E:289:GLU:CD	2.42	0.45
3:E:289:GLU:OE1	3:E:290:ILE:HG13	2.17	0.45
5:B:601:PMR:CHC	1:C:62:ALA:H	2.24	0.45
2:B:415:LEU:O	2:B:419:ARG:HG2	2.18	0.45
2:D:422:PHE:HB3	2:D:424:PHE:CE2	2.52	0.45

*Continued on next page...*

*Continued from previous page...*

Atom-1	Atom-2	Interatomic distance (Å)	Clash overlap (Å)
2:B:358:MET:HE3	2:B:358:MET:O	2.17	0.44
1:C:38:HIS:O	1:C:71:ARG:NH1	2.49	0.44
1:C:394:LEU:HD12	1:C:394:LEU:H	1.81	0.44
3:E:131:VAL:O	3:E:135:VAL:HG23	2.17	0.44
3:F:129:TYR:O	3:F:133:GLN:HG2	2.16	0.44
2:B:89:ILE:HD12	2:B:90:MET:H	1.82	0.44
1:C:419:ARG:NE	1:C:423:ARG:HD3	2.33	0.44
2:D:338:TYR:HA	2:D:341:VAL:HG12	1.99	0.44
2:B:221:ARG:O	2:B:224:GLU:HB2	2.18	0.44
5:B:601:PMR:HMCA	5:B:601:PMR:HBB	1.99	0.44
2:D:237:ILE:HG12	2:D:390:MET:HG3	1.99	0.44
2:D:303:MET:HE3	2:D:303:MET:HA	1.99	0.44
2:D:377:VAL:HB	2:D:381:ASP:OD2	2.17	0.44
2:D:378:HIS:CE1	2:D:380:GLN:HB3	2.52	0.44
1:A:257:LEU:HD12	1:A:343:LEU:HD11	1.99	0.44
1:C:304:PRO:HB3	1:C:329:THR:C	2.42	0.44
3:E:95:HIS:ND1	3:E:99:LEU:HA	2.31	0.44
2:B:266:GLN:HE21	2:B:303:MET:HE3	1.83	0.44
2:D:157:ASN:OD1	2:D:187:ASN:HB3	2.17	0.44
2:D:220:ALA:HB1	2:D:231:TYR:CG	2.52	0.44
3:F:168:GLN:HE22	3:F:169:HIS:CE1	2.36	0.44
1:A:354:GLN:HG2	1:A:362:ARG:HH12	1.82	0.44
2:B:331:GLU:OE1	2:B:331:GLU:N	2.51	0.44
2:D:31:HIS:ND1	2:D:58:THR:HG21	2.33	0.44
2:D:47:GLU:HB3	2:D:49:ARG:HG3	1.99	0.44
2:D:289:ALA:O	2:D:293:ILE:HG12	2.17	0.44
3:E:188:ASN:HA	3:E:191:ILE:HD12	2.00	0.44
1:A:45:PHE:HD2	1:A:99:LEU:HD13	1.83	0.44
1:A:238:ARG:HA	1:A:238:ARG:HD3	1.84	0.44
3:F:184:ILE:O	3:F:187:MET:HG2	2.18	0.44
3:F:197:LYS:HD2	3:F:197:LYS:HA	1.74	0.44
1:A:155:GLN:OE1	1:A:307:GLN:NE2	2.51	0.44
1:C:45:PHE:HB3	1:C:109:LEU:HD21	1.99	0.44
1:C:226:GLN:OE1	1:C:227:PRO:HD2	2.18	0.44
1:C:295:LEU:HD12	1:C:295:LEU:O	2.18	0.44
1:C:327:VAL:HG13	1:C:350:LEU:HA	1.99	0.44
1:C:225:VAL:HA	1:C:258:TRP:HH2	1.83	0.44
2:D:95:CYS:SG	2:D:96:THR:N	2.90	0.44
2:D:322:ARG:HG2	2:D:332:ALA:HB3	2.00	0.44
3:E:138:LEU:H	3:E:138:LEU:HD12	1.83	0.44
3:F:33:VAL:HA	3:F:150:VAL:O	2.18	0.44

*Continued on next page...*

*Continued from previous page...*

Atom-1	Atom-2	Interatomic distance (Å)	Clash overlap (Å)
1:A:45:PHE:CD2	1:A:99:LEU:HD13	2.53	0.43
1:A:153:PHE:HB3	1:A:154:THR:H	1.65	0.43
1:C:115:CYS:O	1:C:119:VAL:HG23	2.18	0.43
1:C:302:PHE:HB2	1:C:327:VAL:HA	1.98	0.43
1:C:389:LYS:HG2	1:C:412:PHE:CE1	2.53	0.43
2:D:378:HIS:HD1	2:D:378:HIS:H	1.64	0.43
3:E:273:LEU:HA	3:E:276:GLY:C	2.43	0.43
3:E:285:LEU:HD23	3:E:285:LEU:HA	1.89	0.43
1:A:96:VAL:HG21	1:A:131:LEU:HD21	2.00	0.43
2:B:359:GLU:HA	2:B:362:ILE:HG22	2.00	0.43
1:C:174:ARG:NH2	1:C:265:GLU:O	2.51	0.43
2:D:165:GLY:HA3	2:D:168:HIS:CE1	2.52	0.43
1:A:327:VAL:HG23	1:A:348:PRO:HB2	2.00	0.43
1:C:154:THR:HB	1:C:228:PHE:CD1	2.52	0.43
2:D:6:TRP:CD1	2:D:6:TRP:C	2.97	0.43
3:E:39:LYS:HB2	3:E:39:LYS:HE2	1.54	0.43
3:E:207:GLY:HA3	3:E:231:LEU:HD11	2.01	0.43
1:A:152:THR:HB	2:B:34:GLN:HE22	1.84	0.43
1:A:255:THR:O	1:A:259:LEU:HG	2.18	0.43
2:D:221:ARG:O	2:D:225:LYS:HG2	2.19	0.43
3:E:62:VAL:HA	3:E:149:VAL:O	2.17	0.43
3:F:256:ASP:HB3	3:F:259:VAL:CG2	2.48	0.43
1:A:302:PHE:HD2	1:A:309:GLU:HB2	1.84	0.43
1:C:282:ALA:HA	1:C:285:ARG:HG2	2.00	0.43
1:C:375:LEU:HD21	1:C:392:ILE:HD11	2.01	0.43
3:F:99:LEU:HD12	3:F:99:LEU:H	1.83	0.43
1:A:80:LYS:HZ1	3:E:15:GLU:HA	1.83	0.43
2:D:170:ASP:OD2	2:D:387:SER:N	2.35	0.43
2:D:300:ARG:HG2	2:D:301:ASP:OD1	2.19	0.43
1:A:270:ALA:HA	1:A:273:PHE:CD2	2.53	0.43
2:B:16:ALA:HB1	2:B:28:TYR:HE2	1.82	0.43
2:B:160:GLY:N	2:B:161:PRO:HD2	2.34	0.43
1:C:43:ASP:OD1	1:C:107:ARG:N	2.44	0.43
2:D:282:ARG:HB3	2:D:308:VAL:HB	2.00	0.43
3:F:233:HIS:HA	3:F:265:GLU:HG3	2.01	0.43
3:F:250:LEU:HD21	3:F:259:VAL:HG22	1.99	0.43
3:F:280:ILE:HD12	3:F:280:ILE:HA	1.87	0.43
1:A:47:LEU:HD12	1:A:47:LEU:HA	1.87	0.43
2:B:58:THR:HG21	2:B:73:PHE:CD2	2.53	0.43
2:B:123:PRO:HD2	2:B:131:PHE:CE2	2.53	0.43
1:C:282:ALA:HA	1:C:285:ARG:HH11	1.84	0.43

*Continued on next page...*

*Continued from previous page...*

Atom-1	Atom-2	Interatomic distance (Å)	Clash overlap (Å)
1:C:418:ARG:HH11	1:C:422:LEU:HD11	1.83	0.43
2:D:160:GLY:N	2:D:161:PRO:HD2	2.34	0.43
3:F:242:ARG:HD3	3:F:242:ARG:HA	1.92	0.43
1:A:310:PRO:HB2	1:A:337:LEU:HD11	2.01	0.43
2:B:288:ASP:OD1	2:B:289:ALA:N	2.51	0.43
3:E:35:ALA:HA	3:E:152:PHE:H	1.84	0.43
1:A:178:LEU:HD12	1:A:178:LEU:HA	1.95	0.43
2:D:73:PHE:HB3	2:D:107:LEU:HD13	2.01	0.43
1:A:375:LEU:H	1:A:392:ILE:HD11	1.83	0.42
2:B:19:VAL:HG11	2:B:136:SER:OG	2.18	0.42
2:B:48:ARG:NH1	2:D:274:ASP:OD2	2.52	0.42
1:C:316:LEU:HG	1:C:322:MET:CG	2.47	0.42
2:D:75:SER:HA	2:D:78:ARG:HD3	2.01	0.42
1:A:106:ILE:HD12	1:A:106:ILE:HA	1.75	0.42
2:B:279:THR:OG1	1:C:418:ARG:NE	2.53	0.42
2:D:319:ARG:HB3	2:D:320:PRO:HD3	2.01	0.42
3:E:55:PHE:CE1	3:E:274:TRP:HA	2.55	0.42
3:F:65:ILE:HD13	3:F:152:PHE:CZ	2.54	0.42
1:A:255:THR:HG21	1:A:401:PHE:HA	2.01	0.42
1:A:392:ILE:H	1:A:392:ILE:HG12	1.41	0.42
2:D:161:PRO:O	2:D:191:PRO:HD2	2.19	0.42
3:E:86:ILE:HA	3:E:96:PRO:HG2	2.01	0.42
3:E:159:VAL:HG21	3:E:189:ARG:HG3	2.02	0.42
3:E:171:ASP:O	3:E:204:ARG:N	2.53	0.42
3:F:89:LEU:HA	3:F:92:VAL:HG22	2.00	0.42
3:F:105:VAL:HG23	3:F:115:VAL:HG23	2.01	0.42
3:F:256:ASP:H	3:F:259:VAL:HB	1.84	0.42
1:A:307:GLN:HG2	1:A:330:PRO:HG2	2.01	0.42
1:C:171:THR:O	1:C:217:GLY:HA3	2.18	0.42
1:C:227:PRO:HG3	1:C:308:LEU:HA	2.01	0.42
3:E:89:LEU:HG	3:E:137:LEU:HD22	2.01	0.42
1:A:282:ALA:O	1:A:285:ARG:HG2	2.19	0.42
2:B:205:ALA:O	2:B:229:GLN:NE2	2.52	0.42
1:C:40:LYS:HA	1:C:40:LYS:HD2	1.85	0.42
2:D:207:PHE:HB2	2:D:252:LEU:HD23	2.00	0.42
3:E:33:VAL:HB	3:E:170:ALA:HA	2.00	0.42
3:E:74:THR:CB	3:E:116:GLU:HB3	2.49	0.42
3:F:97:GLU:OE1	3:F:97:GLU:N	2.45	0.42
2:B:236:PRO:O	2:B:390:MET:HB3	2.18	0.42
1:C:135:HIS:HB3	1:C:139:VAL:HB	2.01	0.42
2:D:259:ALA:HB1	2:D:392:PHE:CE2	2.55	0.42

*Continued on next page...*

*Continued from previous page...*

Atom-1	Atom-2	Interatomic distance (Å)	Clash overlap (Å)
3:E:212:ARG:NH1	3:E:230:ARG:HH22	2.18	0.42
3:F:34:PHE:CD1	3:F:273:LEU:HD12	2.53	0.42
1:A:38:HIS:CE1	1:A:65:MET:HE2	2.55	0.42
1:A:328:GLY:HA2	1:A:351:SER:OG	2.18	0.42
2:B:30:LEU:HD22	2:B:57:TYR:CE1	2.54	0.42
2:B:37:THR:HA	2:B:57:TYR:CE2	2.55	0.42
2:B:91:VAL:HG22	2:B:104:THR:HB	2.02	0.42
2:B:137:PHE:HD1	2:B:140:ILE:HD11	1.84	0.42
1:C:39:ARG:HG2	1:C:65:MET:HE1	2.02	0.42
1:C:112:VAL:HG12	1:C:144:PHE:CE1	2.55	0.42
1:C:119:VAL:HG11	2:D:99:LEU:HB2	2.01	0.42
1:C:184:ASP:OD1	1:C:185:VAL:N	2.52	0.42
2:D:283:VAL:HG12	2:D:352:LEU:HB3	2.01	0.42
3:E:212:ARG:NH2	3:E:234:MET:O	2.52	0.42
1:A:358:ARG:HA	1:A:358:ARG:HD2	1.81	0.42
3:E:228:PHE:HB2	3:E:282:PRO:HB3	2.02	0.42
3:F:135:VAL:O	3:F:139:LYS:HG2	2.20	0.42
1:A:389:LYS:C	1:A:389:LYS:HD2	2.44	0.42
2:B:360:ARG:HD2	2:B:370:CYS:SG	2.60	0.42
2:B:403:ILE:O	2:B:407:THR:HG22	2.20	0.42
1:C:91:GLU:O	1:C:94:ARG:HG2	2.19	0.42
1:C:361:ASP:CG	2:D:83:ARG:HH12	2.28	0.42
1:A:253:GLU:HG2	1:A:318:ARG:HD2	2.02	0.42
1:C:260:LYS:HB3	1:C:260:LYS:HE2	1.85	0.42
2:D:300:ARG:HA	2:D:305:PHE:O	2.20	0.42
3:E:39:LYS:HB2	3:E:43:GLY:HA3	2.00	0.42
3:F:42:ILE:HD12	3:F:177:THR:HA	2.02	0.42
3:F:57:ILE:HD13	3:F:57:ILE:HA	1.89	0.42
2:B:174:GLU:O	2:B:177:ARG:HG2	2.20	0.41
1:C:207:ALA:HB1	1:C:212:GLU:HB3	2.01	0.41
2:B:284:PHE:CE1	2:B:286:PHE:HB2	2.53	0.41
1:C:157:GLU:OE1	1:C:161:LEU:HG	2.20	0.41
3:E:136:LYS:NZ	3:F:9:PRO:HA	2.35	0.41
1:A:176:LEU:HD21	1:A:194:LEU:HD13	2.03	0.41
1:A:227:PRO:HG3	1:A:248:PHE:CD2	2.55	0.41
1:A:308:LEU:HD12	1:A:308:LEU:HA	1.88	0.41
2:B:164:LEU:HD12	2:B:164:LEU:HA	1.78	0.41
1:C:389:LYS:HG2	1:C:412:PHE:CD1	2.55	0.41
1:C:423:ARG:HA	1:C:424:ARG:HA	1.59	0.41
2:D:26:MET:HE2	2:D:90:MET:SD	2.59	0.41
3:F:62:VAL:HG22	3:F:149:VAL:HB	2.02	0.41

*Continued on next page...*



*Continued from previous page...*

Atom-1	Atom-2	Interatomic distance (Å)	Clash overlap (Å)
3:F:189:ARG:HD2	3:F:189:ARG:HA	1.84	0.41
1:A:394:LEU:HD12	1:A:395:VAL:N	2.35	0.41
5:B:601:PMR:CAB	1:C:60:SER:O	2.69	0.41
1:C:161:LEU:HD22	1:C:164:ILE:HD11	2.02	0.41
2:D:43:PHE:CE1	2:D:164:LEU:HB2	2.54	0.41
2:D:399:PHE:O	2:D:403:ILE:HG23	2.20	0.41
3:E:128:GLY:O	3:E:132:GLY:HA3	2.20	0.41
3:E:265:GLU:HA	3:E:268:ARG:NH1	2.36	0.41
3:F:90:LYS:HE2	3:F:90:LYS:HB2	1.83	0.41
1:A:197:LEU:HD11	1:A:273:PHE:HB2	2.03	0.41
2:B:43:PHE:HD1	2:B:43:PHE:HA	1.78	0.41
2:B:273:VAL:CG2	1:C:390:TRP:HD1	2.34	0.41
2:B:377:VAL:HB	2:B:381:ASP:CG	2.45	0.41
2:B:414:LEU:O	2:B:418:PHE:HB2	2.21	0.41
1:C:33:GLY:HA2	1:C:36:TRP:CE2	2.56	0.41
1:C:332:LEU:HB2	1:C:334:ARG:CZ	2.50	0.41
2:D:17:MET:HE2	2:D:55:VAL:HG21	2.01	0.41
2:D:303:MET:HG3	2:D:402:TRP:CE3	2.55	0.41
3:E:66:GLY:H	3:E:116:GLU:HA	1.86	0.41
1:A:142:TYR:CD2	1:A:164:ILE:HG22	2.48	0.41
1:A:378:ALA:O	1:A:388:THR:HG21	2.20	0.41
1:A:416:VAL:HG12	1:A:418:ARG:H	1.86	0.41
2:B:26:MET:SD	2:B:88:ALA:HB3	2.61	0.41
2:B:161:PRO:HA	2:B:168:HIS:HD2	1.86	0.41
3:E:201:TYR:HD1	3:E:201:TYR:O	2.04	0.41
3:E:273:LEU:HD23	3:E:273:LEU:O	2.21	0.41
1:A:59:GLN:O	1:A:66:ILE:HD11	2.21	0.41
1:C:201:PRO:HD2	1:C:266:PHE:HE2	1.86	0.41
1:A:20:LYS:HA	1:A:353:GLY:O	2.20	0.41
1:A:225:VAL:HG23	1:A:249:PRO:HG2	2.03	0.41
2:B:120:LEU:HB3	2:B:122:LEU:HD23	2.03	0.41
2:B:150:ARG:HA	2:B:150:ARG:HD3	1.86	0.41
2:B:214:GLU:OE1	2:B:290:THR:HG22	2.21	0.41
1:C:55:ALA:HB2	1:C:74:THR:HG21	2.03	0.41
1:C:67:PHE:CZ	2:D:357:GLN:HG2	2.56	0.41
1:C:263:ALA:HB1	1:C:268:VAL:HB	2.03	0.41
1:C:337:LEU:O	1:C:341:LEU:HD12	2.21	0.41
3:E:155:LEU:O	3:E:158:VAL:HG12	2.21	0.41
1:A:41:MET:HA	1:A:209:HIS:H	1.86	0.41
1:A:179:VAL:HB	1:A:205:LEU:HD22	2.03	0.41
1:A:229:LEU:HB3	1:A:232:THR:OG1	2.21	0.41

*Continued on next page...*



*Continued from previous page...*

Atom-1	Atom-2	Interatomic distance (Å)	Clash overlap (Å)
1:A:316:LEU:HB3	1:A:322:MET:CB	2.51	0.41
1:A:389:LYS:HD2	1:A:390:TRP:N	2.36	0.41
2:B:19:VAL:HG23	2:B:191:PRO:CB	2.50	0.41
2:B:35:GLY:H	2:B:37:THR:HG23	1.86	0.41
2:B:42:LEU:HD12	2:B:43:PHE:N	2.35	0.41
1:C:221:VAL:HG22	1:C:244:ILE:HD11	2.02	0.41
2:D:29:VAL:HG11	2:D:77:CYS:SG	2.61	0.41
2:D:85:GLN:N	2:D:86:PRO:HD3	2.36	0.41
3:E:89:LEU:HD22	3:E:134:THR:HG23	2.02	0.41
1:A:34:ILE:H	1:A:34:ILE:HG12	1.62	0.41
1:A:96:VAL:HG11	1:A:131:LEU:HD21	2.03	0.41
2:B:292:VAL:HG12	2:B:310:MET:HE3	2.03	0.41
5:B:601:PMR:HHB	2:D:45:MET:HG2	2.03	0.41
1:C:304:PRO:HD2	1:C:354:GLN:NE2	2.35	0.41
2:D:198:ASP:CG	2:D:201:ARG:HH21	2.29	0.41
1:A:401:PHE:N	1:A:404:GLN:OE1	2.54	0.40
2:D:17:MET:HA	2:D:20:ALA:HB3	2.03	0.40
2:D:65:LEU:HA	2:D:65:LEU:HD23	1.86	0.40
2:D:122:LEU:HD12	2:D:122:LEU:O	2.20	0.40
2:D:142:ARG:HG2	2:D:222:TRP:NE1	2.36	0.40
1:A:110:PHE:HA	1:A:142:TYR:O	2.20	0.40
5:A:502:PMR:HBAA	2:D:274:ASP:OD1	2.21	0.40
2:B:23:MET:HE1	2:B:140:ILE:HD12	2.03	0.40
2:B:138:LEU:HD23	2:B:218:SER:CB	2.51	0.40
2:B:171:ASP:HB3	2:B:390:MET:SD	2.62	0.40
1:C:176:LEU:HA	1:C:221:VAL:O	2.22	0.40
1:C:185:VAL:HG22	1:C:189:GLN:NE2	2.36	0.40
2:D:154:VAL:HA	2:D:206:HIS:ND1	2.35	0.40
2:D:359:GLU:HA	2:D:362:ILE:HG22	2.03	0.40
3:E:63:LEU:HD21	3:E:138:LEU:HB3	2.03	0.40
1:A:281:ARG:HB2	1:A:285:ARG:HH21	1.86	0.40
2:B:402:TRP:N	2:B:402:TRP:CD1	2.89	0.40
2:B:408:MET:HA	2:B:411:GLU:OE2	2.21	0.40
3:E:208:CYS:O	3:E:231:LEU:HD13	2.21	0.40
3:E:212:ARG:HG3	3:E:216:THR:H	1.86	0.40
3:E:236:ASP:C	3:E:238:ASP:H	2.30	0.40
3:F:210:ALA:HB3	3:F:233:HIS:HD2	1.87	0.40
1:A:92:LEU:HA	1:A:92:LEU:HD12	1.77	0.40
1:A:197:LEU:HD12	1:A:268:VAL:HG11	2.03	0.40
1:A:370:LEU:HD11	1:A:389:LYS:HB3	2.03	0.40
1:C:131:LEU:HA	1:C:134:HIS:CE1	2.56	0.40

*Continued on next page...*

Continued from previous page...

Atom-1	Atom-2	Interatomic distance (Å)	Clash overlap (Å)
1:C:161:LEU:O	1:C:165:VAL:HG23	2.21	0.40
1:C:258:TRP:CD1	1:C:262:ILE:HG13	2.56	0.40
1:C:287:ALA:HB1	1:C:406:GLY:HA3	2.02	0.40
1:A:45:PHE:HB2	1:A:106:ILE:CG1	2.41	0.40
1:A:113:GLY:H	1:A:145:SER:HA	1.86	0.40
2:B:6:TRP:HE1	2:B:358:MET:HB2	1.87	0.40
2:B:140:ILE:HG13	2:B:141:CYS:N	2.36	0.40
1:C:254:GLY:HA3	1:C:314:ARG:NH2	2.33	0.40
1:C:358:ARG:HB2	1:C:362:ARG:HH21	1.87	0.40
1:C:370:LEU:HD11	1:C:389:LYS:HB2	2.03	0.40
3:E:29:THR:OG1	3:E:33:VAL:HG23	2.21	0.40

There are no symmetry-related clashes.

## 5.3 Torsion angles [i](#)

### 5.3.1 Protein backbone [i](#)

In the following table, the Percentiles column shows the percent Ramachandran outliers of the chain as a percentile score with respect to all PDB entries followed by that with respect to all EM entries.

The Analysed column shows the number of residues for which the backbone conformation was analysed, and the total number of residues.

Mol	Chain	Analysed	Favoured	Allowed	Outliers	Percentiles	
1	A	399/428 (93%)	376 (94%)	23 (6%)	0	100	100
1	C	401/428 (94%)	386 (96%)	15 (4%)	0	100	100
2	B	418/536 (78%)	402 (96%)	16 (4%)	0	100	100
2	D	427/536 (80%)	411 (96%)	16 (4%)	0	100	100
3	E	288/318 (91%)	246 (85%)	41 (14%)	1 (0%)	37	70
3	F	285/318 (90%)	268 (94%)	17 (6%)	0	100	100
All	All	2218/2564 (86%)	2089 (94%)	128 (6%)	1 (0%)	100	100

All (1) Ramachandran outliers are listed below:

Mol	Chain	Res	Type
3	E	105	VAL

### 5.3.2 Protein sidechains ⓘ

In the following table, the Percentiles column shows the percent sidechain outliers of the chain as a percentile score with respect to all PDB entries followed by that with respect to all EM entries.

The Analysed column shows the number of residues for which the sidechain conformation was analysed, and the total number of residues.

Mol	Chain	Analysed	Rotameric	Outliers	Percentiles	
1	A	313/335 (93%)	307 (98%)	6 (2%)	52	70
1	C	314/335 (94%)	312 (99%)	2 (1%)	84	88
2	B	335/415 (81%)	333 (99%)	2 (1%)	84	88
2	D	342/415 (82%)	339 (99%)	3 (1%)	75	83
3	E	217/265 (82%)	214 (99%)	3 (1%)	62	76
3	F	224/265 (84%)	224 (100%)	0	100	100
All	All	1745/2030 (86%)	1729 (99%)	16 (1%)	74	83

All (16) residues with a non-rotameric sidechain are listed below:

Mol	Chain	Res	Type
1	A	92	LEU
1	A	100	LEU
1	A	143	ASN
1	A	354	GLN
1	A	392	ILE
1	A	401	PHE
2	B	41	LEU
2	B	308	VAL
1	C	47	LEU
1	C	157	GLU
2	D	5	LEU
2	D	417	MET
2	D	418	PHE
3	E	142	HIS
3	E	152	PHE
3	E	195	GLN

Sometimes sidechains can be flipped to improve hydrogen bonding and reduce clashes. All (26) such sidechains are listed below:

Mol	Chain	Res	Type
1	A	135	HIS

*Continued on next page...*

*Continued from previous page...*

Mol	Chain	Res	Type
1	A	233	HIS
1	A	243	HIS
1	A	333	HIS
1	A	354	GLN
2	B	85	GLN
2	B	157	ASN
2	B	168	HIS
2	B	187	ASN
2	B	206	HIS
2	B	266	GLN
2	B	357	GLN
1	C	24	GLN
1	C	189	GLN
1	C	233	HIS
2	D	74	GLN
2	D	119	HIS
2	D	361	HIS
3	E	50	ASN
3	E	64	GLN
3	E	168	GLN
3	E	188	ASN
3	F	140	GLN
3	F	179	ASN
3	F	227	ASN
3	F	233	HIS

### 5.3.3 RNA [i](#)

There are no RNA molecules in this entry.

### 5.4 Non-standard residues in protein, DNA, RNA chains [i](#)

There are no non-standard protein/DNA/RNA residues in this entry.

### 5.5 Carbohydrates [i](#)

There are no oligosaccharides in this entry.

## 5.6 Ligand geometry

Of 9 ligands modelled in this entry, 4 are monoatomic - leaving 5 for Mogul analysis.

In the following table, the Counts columns list the number of bonds (or angles) for which Mogul statistics could be retrieved, the number of bonds (or angles) that are observed in the model and the number of bonds (or angles) that are defined in the Chemical Component Dictionary. The Link column lists molecule types, if any, to which the group is linked. The Z score for a bond length (or angle) is the number of standard deviations the observed value is removed from the expected value. A bond length (or angle) with  $|Z| > 2$  is considered an outlier worth inspection. RMSZ is the root-mean-square of all Z scores of the bond lengths (or angles).

Mol	Type	Chain	Res	Link	Bond lengths			Bond angles		
					Counts	RMSZ	# Z  > 2	Counts	RMSZ	# Z  > 2
5	PMR	A	502	-	48,53,53	2.91	20 (41%)	54,89,89	3.94	25 (46%)
4	SF4	C	501	-	0,12,12	-	-	-	-	-
4	SF4	F	301	3	0,12,12	-	-	-	-	-
5	PMR	B	601	-	48,53,53	2.94	19 (39%)	54,89,89	4.79	25 (46%)
4	SF4	A	501	-	0,12,12	-	-	-	-	-

In the following table, the Chirals column lists the number of chiral outliers, the number of chiral centers analysed, the number of these observed in the model and the number defined in the Chemical Component Dictionary. Similar counts are reported in the Torsion and Rings columns. '-' means no outliers of that kind were identified.

Mol	Type	Chain	Res	Link	Chirals	Torsions	Rings
5	PMR	A	502	-	3/3/16/20	7/15/111/111	-
4	SF4	C	501	-	-	-	0/6/5/5
4	SF4	F	301	3	-	-	0/6/5/5
5	PMR	B	601	-	3/3/16/20	9/15/111/111	-
4	SF4	A	501	-	-	-	0/6/5/5

All (39) bond length outliers are listed below:

Mol	Chain	Res	Type	Atoms	Z	Observed(Å)	Ideal(Å)
5	B	601	PMR	C1B-NB	8.84	1.49	1.37
5	A	502	PMR	C1B-NB	6.22	1.46	1.37
5	A	502	PMR	C4B-NB	6.19	1.46	1.37
5	B	601	PMR	C4C-NC	5.84	1.47	1.37
5	A	502	PMR	C3C-C2C	5.49	1.48	1.36
5	A	502	PMR	C2A-C3A	5.49	1.48	1.36
5	B	601	PMR	C3C-C2C	5.35	1.48	1.36
5	A	502	PMR	C3B-C2B	5.16	1.47	1.37
5	B	601	PMR	C2A-C3A	5.12	1.47	1.36

*Continued on next page...*

*Continued from previous page...*

Mol	Chain	Res	Type	Atoms	Z	Observed(Å)	Ideal(Å)
5	A	502	PMR	O2D-CGD	5.07	1.45	1.33
5	A	502	PMR	C4C-NC	5.01	1.45	1.37
5	B	601	PMR	O2D-CGD	5.01	1.45	1.33
5	B	601	PMR	C3B-C2B	4.97	1.47	1.37
5	A	502	PMR	C3D-C4D	-4.97	1.33	1.40
5	B	601	PMR	OAD-CAD	4.83	1.28	1.22
5	B	601	PMR	C1A-NA	4.78	1.47	1.38
5	A	502	PMR	OAD-CAD	4.49	1.28	1.22
5	B	601	PMR	C4B-NB	4.45	1.43	1.37
5	A	502	PMR	CHD-C4C	4.45	1.45	1.34
5	B	601	PMR	CHD-C4C	4.40	1.45	1.34
5	B	601	PMR	C3D-C4D	-4.22	1.34	1.40
5	A	502	PMR	CHC-C4B	4.14	1.46	1.38
5	A	502	PMR	C3D-C2D	4.14	1.46	1.39
5	B	601	PMR	C3D-C2D	4.11	1.46	1.39
5	A	502	PMR	C1A-NA	3.97	1.46	1.38
5	A	502	PMR	CHC-C1C	3.35	1.46	1.39
5	B	601	PMR	CHC-C4B	3.19	1.44	1.38
5	A	502	PMR	CHB-C1B	3.10	1.44	1.38
5	A	502	PMR	C4D-ND	2.98	1.40	1.35
5	B	601	PMR	C1A-CHA	2.76	1.47	1.40
5	B	601	PMR	CHB-C4A	2.73	1.45	1.39
5	B	601	PMR	C4C-C3C	2.54	1.49	1.45
5	A	502	PMR	C1A-CHA	2.53	1.46	1.40
5	B	601	PMR	C1C-C2C	2.32	1.49	1.44
5	A	502	PMR	C1C-C2C	2.29	1.49	1.44
5	A	502	PMR	CHB-C4A	2.23	1.44	1.39
5	A	502	PMR	C4C-C3C	2.18	1.48	1.45
5	B	601	PMR	C1A-C2A	2.18	1.49	1.45
5	B	601	PMR	CHB-C1B	2.11	1.42	1.38

All (50) bond angle outliers are listed below:

Mol	Chain	Res	Type	Atoms	Z	Observed(°)	Ideal(°)
5	B	601	PMR	C1A-NA-C4A	-22.50	96.41	106.68
5	A	502	PMR	C1A-NA-C4A	-19.24	97.90	106.68
5	B	601	PMR	C2B-C1B-NB	8.04	118.08	110.13
5	B	601	PMR	C3C-C4C-NC	8.01	118.47	109.90
5	A	502	PMR	C1B-CHB-C4A	-8.00	109.01	126.02
5	B	601	PMR	C3B-C2B-C1B	-7.50	99.95	107.05
5	B	601	PMR	CMD-C2D-C1D	7.40	139.29	128.46
5	A	502	PMR	C2B-C1B-NB	7.30	117.35	110.13

*Continued on next page...*

*Continued from previous page...*

Mol	Chain	Res	Type	Atoms	Z	Observed(°)	Ideal(°)
5	B	601	PMR	CHB-C1B-NB	-7.12	114.79	124.80
5	B	601	PMR	C1B-CHB-C4A	-6.96	111.23	126.02
5	B	601	PMR	C2C-C1C-NC	6.86	118.94	110.45
5	B	601	PMR	CHB-C4A-C3A	-6.33	115.04	125.03
5	A	502	PMR	CMD-C2D-C1D	6.29	137.67	128.46
5	B	601	PMR	CHC-C1C-NC	-6.17	114.67	124.23
5	B	601	PMR	C3A-C4A-NA	6.16	118.07	110.45
5	A	502	PMR	C4B-CHC-C1C	-6.02	113.22	126.02
5	A	502	PMR	C3B-C2B-C1B	-5.53	101.82	107.05
5	B	601	PMR	C4B-CHC-C1C	-5.49	114.35	126.02
5	A	502	PMR	C3A-C4A-NA	5.34	117.06	110.45
5	B	601	PMR	CHD-C4C-NC	-5.27	116.37	124.31
5	A	502	PMR	O2D-CGD-CBD	5.23	120.37	111.23
5	A	502	PMR	CHB-C1B-NB	-5.14	117.58	124.80
5	B	601	PMR	O2D-CGD-CBD	4.88	119.77	111.23
5	B	601	PMR	CMA-C3A-C4A	-4.50	118.01	125.03
5	A	502	PMR	CHC-C4B-NB	-4.42	118.59	124.80
5	A	502	PMR	C3C-C4C-NC	4.34	114.55	109.90
5	A	502	PMR	CHC-C1C-NC	-3.77	118.38	124.23
5	B	601	PMR	CHC-C4B-NB	-3.71	119.59	124.80
5	B	601	PMR	CMA-C3A-C2A	3.63	135.96	126.15
5	A	502	PMR	CHB-C4A-NA	-3.63	118.61	124.23
5	B	601	PMR	CHA-C1A-C2A	-3.37	122.99	131.19
5	B	601	PMR	C1A-C2A-C3A	-3.32	102.25	106.63
5	B	601	PMR	C1C-C2C-C3C	-3.14	103.68	106.98
5	A	502	PMR	C2C-C1C-NC	3.13	114.33	110.45
5	B	601	PMR	C4B-C3B-C2B	3.05	109.46	106.81
5	A	502	PMR	C1A-C2A-C3A	-2.91	102.80	106.63
5	A	502	PMR	CHD-C4C-NC	-2.76	120.16	124.31
5	B	601	PMR	C4C-C3C-C2C	-2.75	102.88	106.89
5	B	601	PMR	O2D-CGD-O1D	-2.71	118.58	123.85
5	A	502	PMR	CBA-CAA-C2A	-2.68	105.11	112.53
5	B	601	PMR	CMB-C2B-C1B	2.37	128.91	124.73
5	A	502	PMR	O1D-CGD-CBD	-2.36	119.86	124.52
5	A	502	PMR	CMB-C2B-C1B	2.27	128.72	124.73
5	B	601	PMR	CGD-CBD-CAD	-2.21	103.70	110.85
5	A	502	PMR	CHA-C1A-C2A	-2.20	125.85	131.19
5	A	502	PMR	O2D-CGD-O1D	-2.09	119.77	123.85
5	A	502	PMR	CMC-C2C-C1C	2.08	128.29	125.03
5	A	502	PMR	C4A-C3A-C2A	-2.03	104.84	106.98
5	A	502	PMR	CAC-C3C-C4C	2.02	127.42	124.79
5	A	502	PMR	CAA-CBA-CGA	-2.01	108.33	113.67

All (6) chirality outliers are listed below:

Mol	Chain	Res	Type	Atom
5	A	502	PMR	NB
5	A	502	PMR	NC
5	A	502	PMR	NA
5	B	601	PMR	NB
5	B	601	PMR	NC
5	B	601	PMR	NA

All (16) torsion outliers are listed below:

Mol	Chain	Res	Type	Atoms
5	A	502	PMR	C2B-C3B-CAB-CBB
5	A	502	PMR	C4B-C3B-CAB-CBB
5	A	502	PMR	CBD-CGD-O2D-C2O
5	A	502	PMR	O1D-CGD-O2D-C2O
5	B	601	PMR	C2A-CAA-CBA-CGA
5	B	601	PMR	C4C-C3C-CAC-CBC
5	B	601	PMR	C2C-C3C-CAC-CBC
5	B	601	PMR	CAD-CBD-CGD-O2D
5	A	502	PMR	C3A-C2A-CAA-CBA
5	B	601	PMR	CAD-CBD-CGD-O1D
5	B	601	PMR	C2B-C3B-CAB-CBB
5	A	502	PMR	CAA-CBA-CGA-O2A
5	A	502	PMR	CAA-CBA-CGA-O1A
5	B	601	PMR	CAA-CBA-CGA-O2A
5	B	601	PMR	CAA-CBA-CGA-O1A
5	B	601	PMR	C4B-C3B-CAB-CBB

There are no ring outliers.

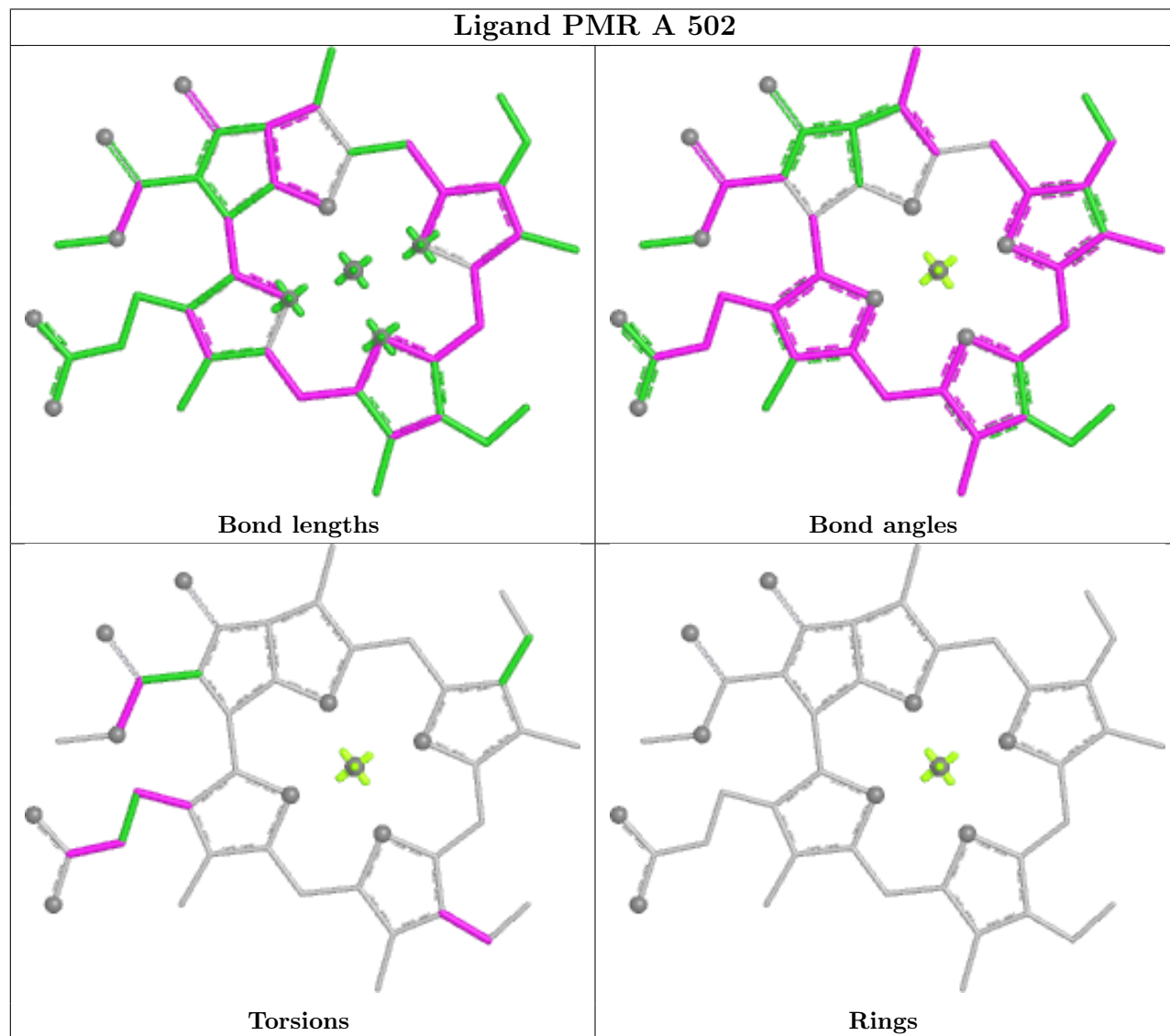
5 monomers are involved in 45 short contacts:

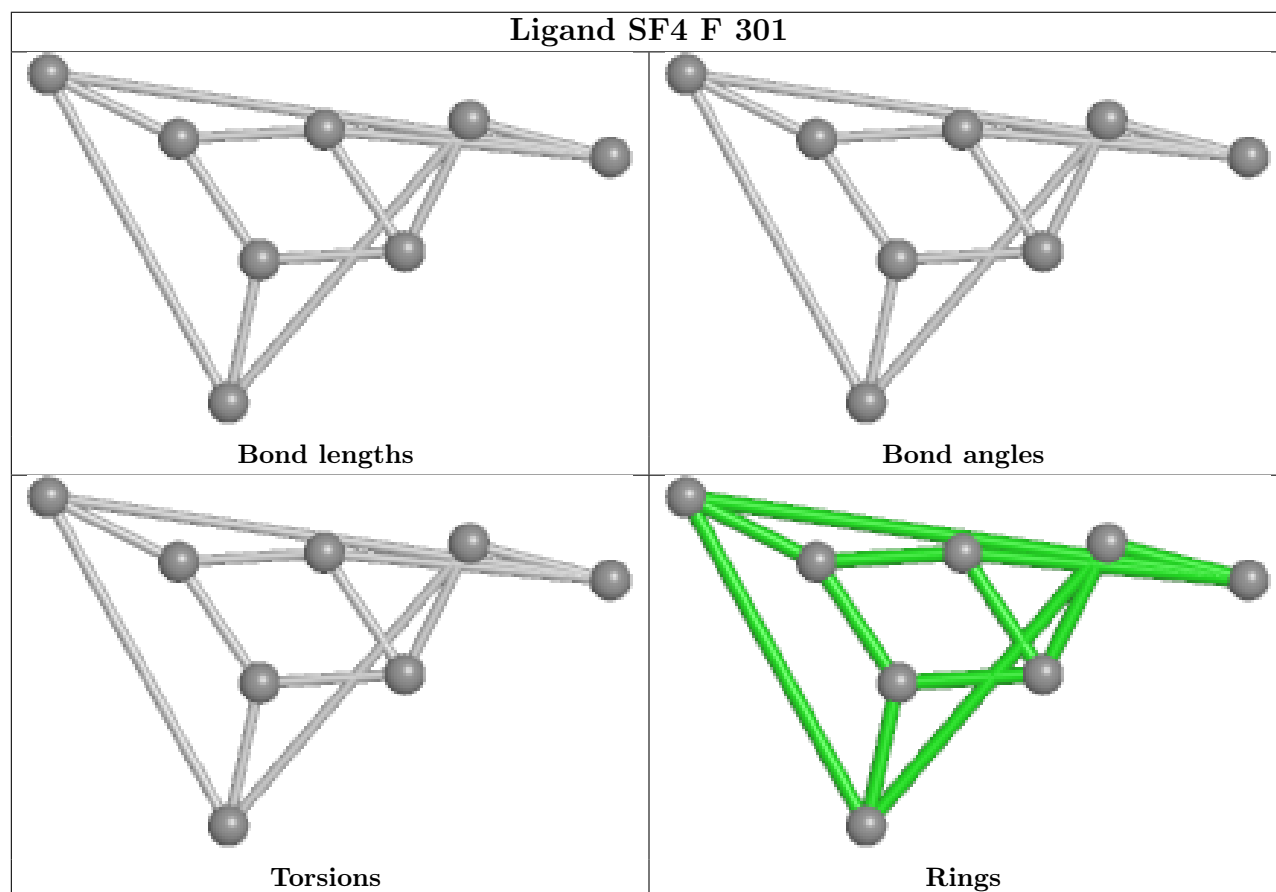
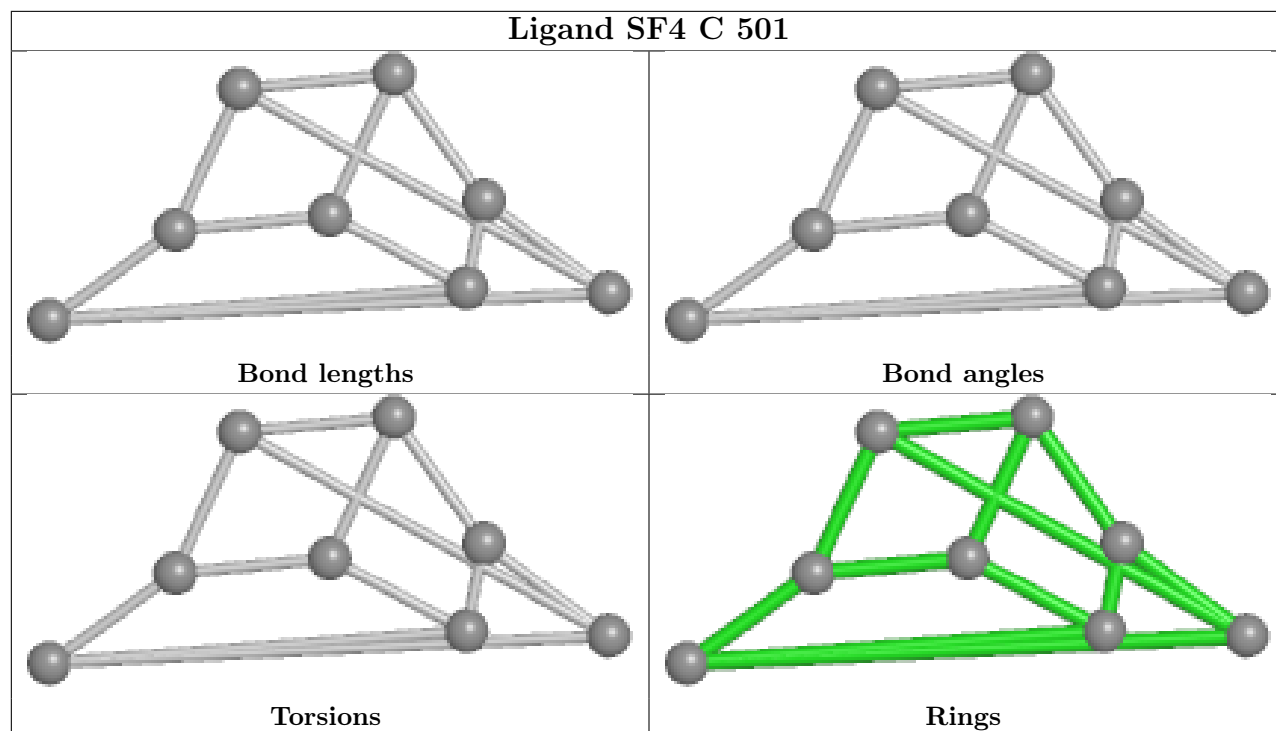
Mol	Chain	Res	Type	Clashes	Symm-Clashes
5	A	502	PMR	2	0
4	C	501	SF4	11	0
4	F	301	SF4	3	0
5	B	601	PMR	16	0
4	A	501	SF4	13	0

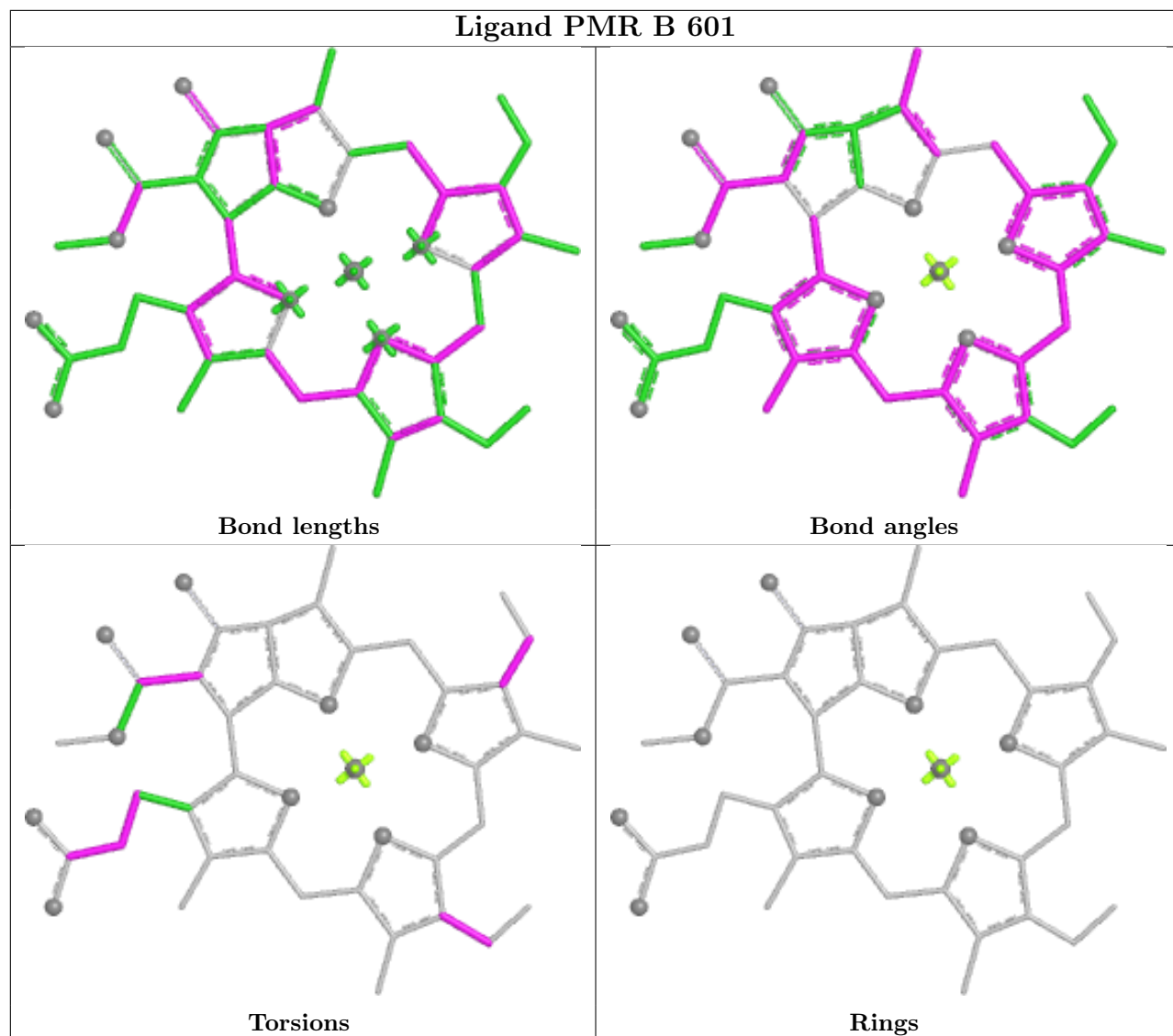
The following is a two-dimensional graphical depiction of Mogul quality analysis of bond lengths, bond angles, torsion angles, and ring geometry for all instances of the Ligand of Interest. In addition, ligands with molecular weight > 250 and outliers as shown on the validation Tables will also be included. For torsion angles, if less than 5% of the Mogul distribution of torsion angles is

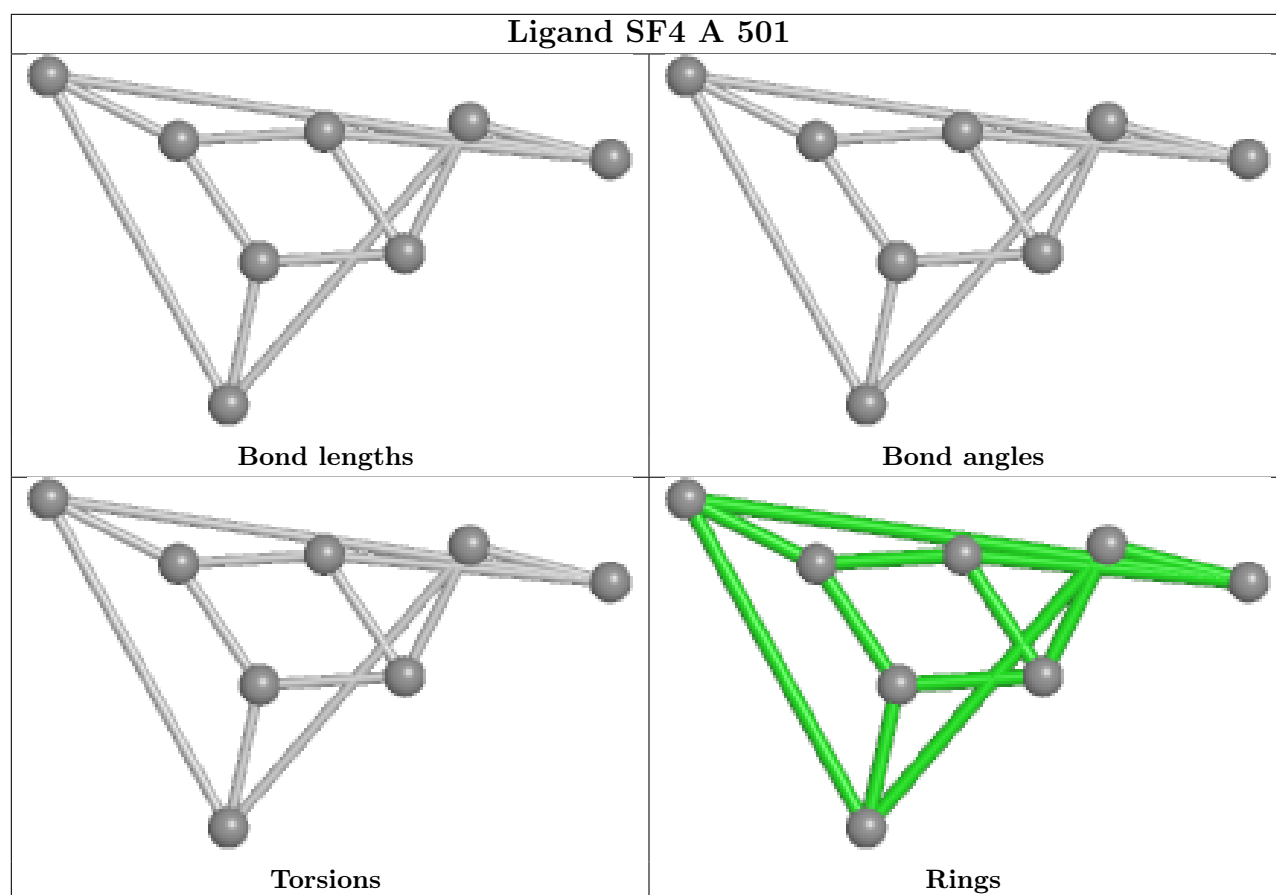


within 10 degrees of the torsion angle in question, then that torsion angle is considered an outlier. Any bond that is central to one or more torsion angles identified as an outlier by Mogul will be highlighted in the graph. For rings, the root-mean-square deviation (RMSD) between the ring in question and similar rings identified by Mogul is calculated over all ring torsion angles. If the average RMSD is greater than 60 degrees and the minimal RMSD between the ring in question and any Mogul-identified rings is also greater than 60 degrees, then that ring is considered an outlier. The outliers are highlighted in purple. The color gray indicates Mogul did not find sufficient equivalents in the CSD to analyse the geometry.









## 5.7 Other polymers [i](#)

There are no such residues in this entry.

## 5.8 Polymer linkage issues [i](#)

There are no chain breaks in this entry.

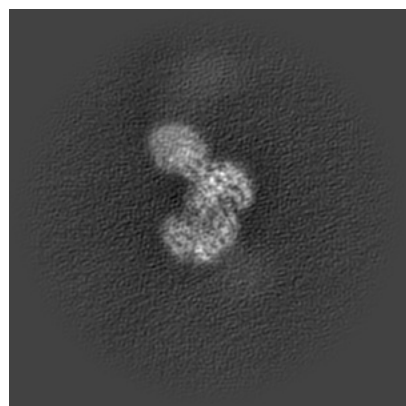
## 6 Map visualisation [i](#)

This section contains visualisations of the EMDB entry EMD-43446. These allow visual inspection of the internal detail of the map and identification of artifacts.

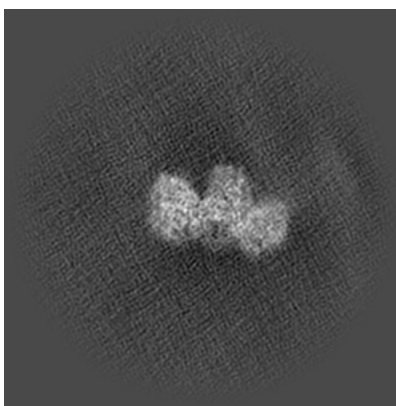
Images derived from a raw map, generated by summing the deposited half-maps, are presented below the corresponding image components of the primary map to allow further visual inspection and comparison with those of the primary map.

### 6.1 Orthogonal projections [i](#)

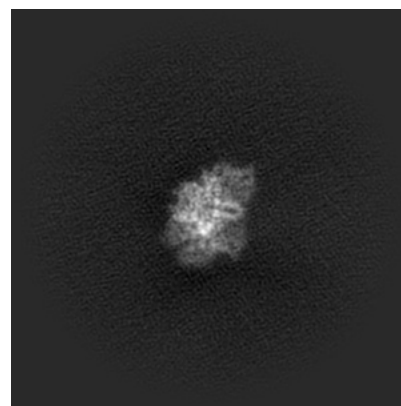
#### 6.1.1 Primary map



X

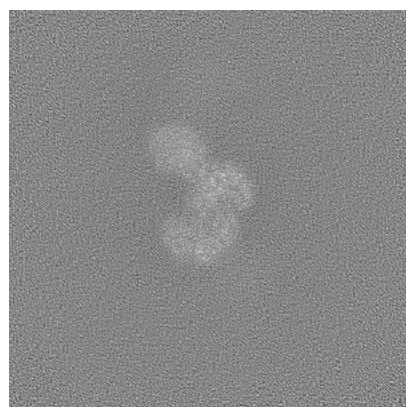


Y

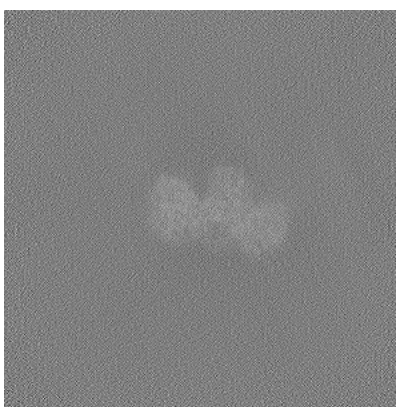


Z

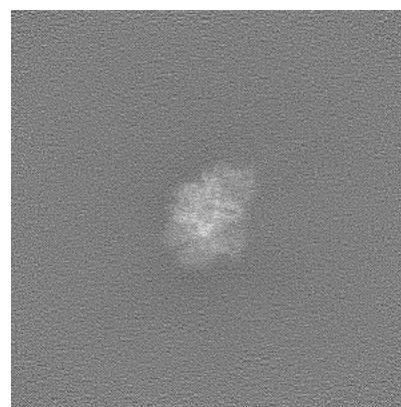
#### 6.1.2 Raw map



X



Y

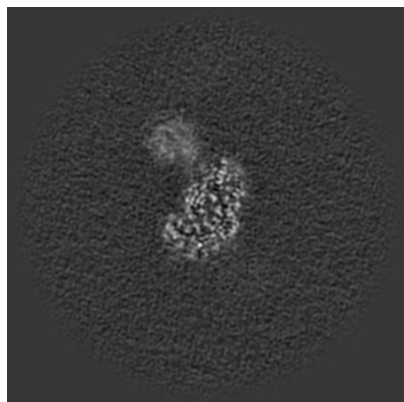


Z

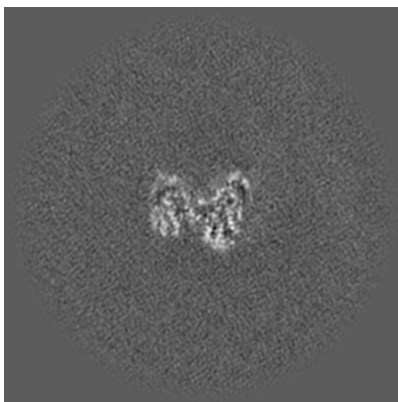
The images above show the map projected in three orthogonal directions.

## 6.2 Central slices [i](#)

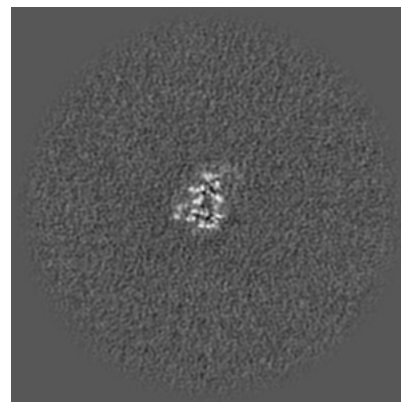
### 6.2.1 Primary map



X Index: 240

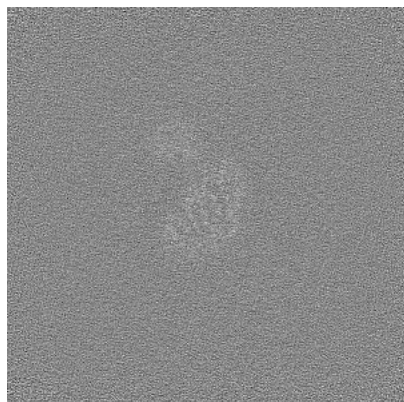


Y Index: 240

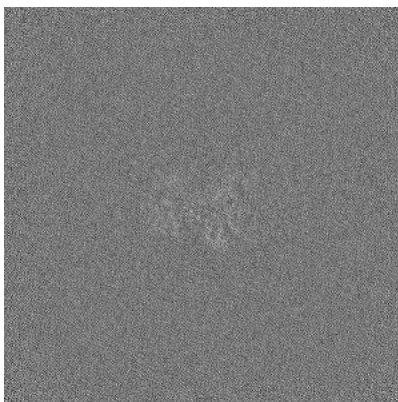


Z Index: 240

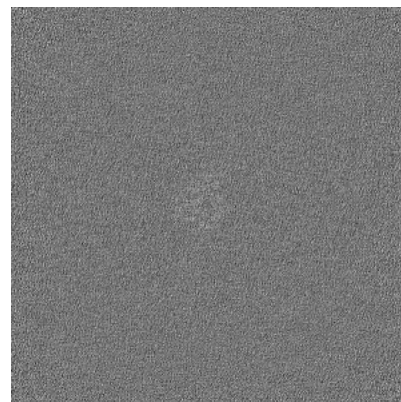
### 6.2.2 Raw map



X Index: 240



Y Index: 240



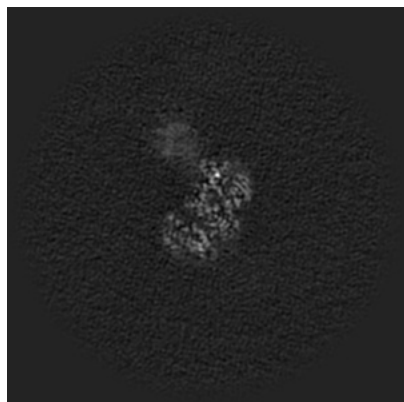
Z Index: 240

The images above show central slices of the map in three orthogonal directions.

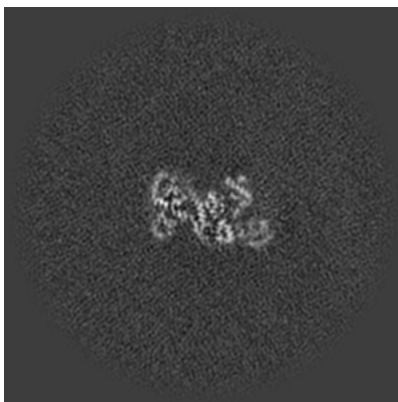


## 6.3 Largest variance slices [i](#)

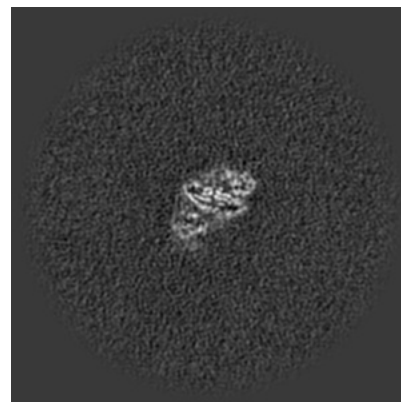
### 6.3.1 Primary map



X Index: 245

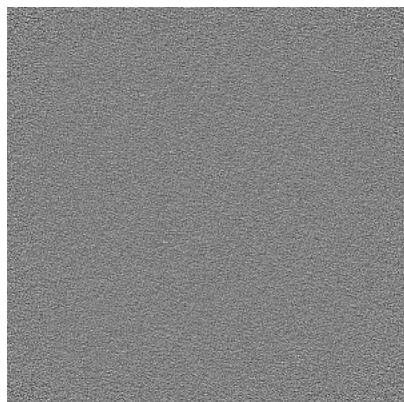


Y Index: 233

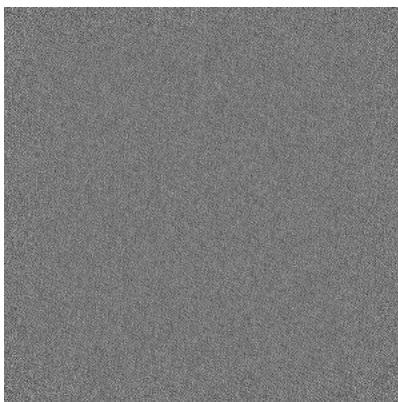


Z Index: 282

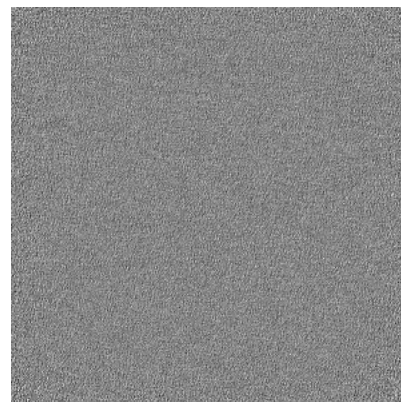
### 6.3.2 Raw map



X Index: 0



Y Index: 0

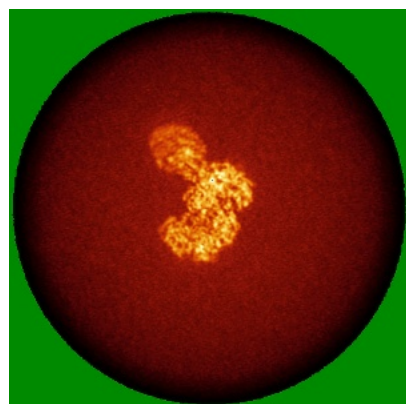


Z Index: 0

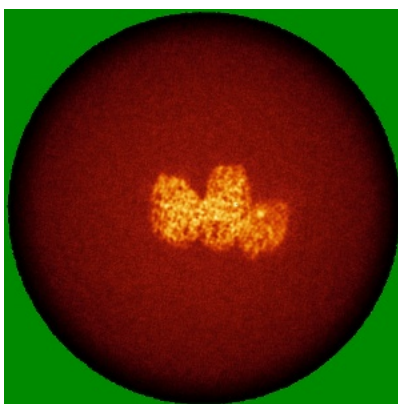
The images above show the largest variance slices of the map in three orthogonal directions.

## 6.4 Orthogonal standard-deviation projections (False-color) [i](#)

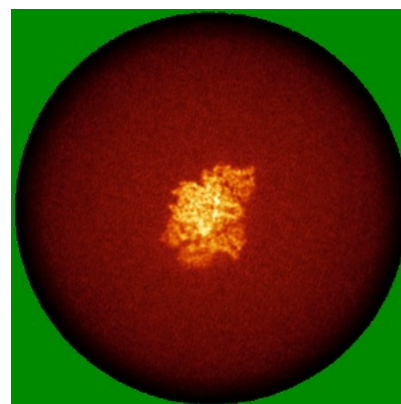
### 6.4.1 Primary map



X

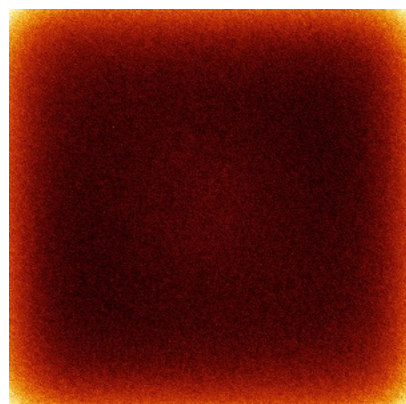


Y

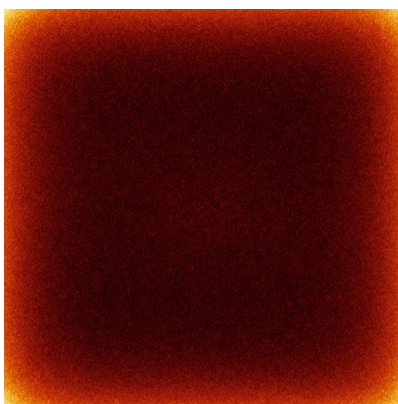


Z

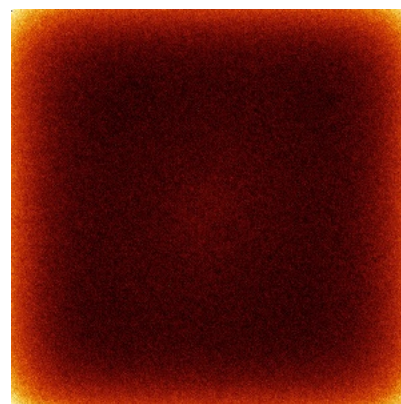
### 6.4.2 Raw map



X



Y



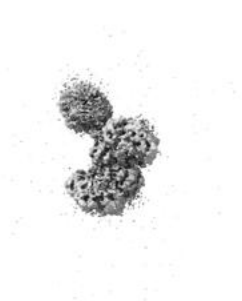
Z

The images above show the map standard deviation projections with false color in three orthogonal directions. Minimum values are shown in green, max in blue, and dark to light orange shades represent small to large values respectively.



## 6.5 Orthogonal surface views [i](#)

### 6.5.1 Primary map



X



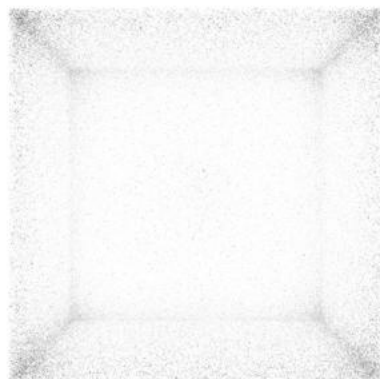
Y



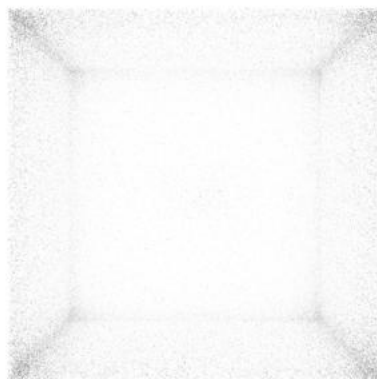
Z

The images above show the 3D surface view of the map at the recommended contour level 0.0809. These images, in conjunction with the slice images, may facilitate assessment of whether an appropriate contour level has been provided.

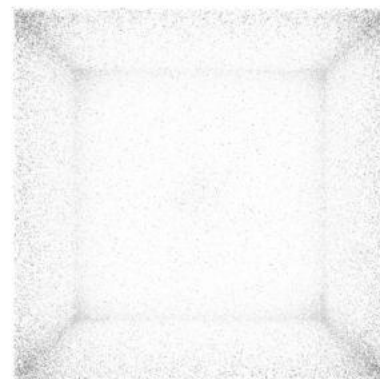
### 6.5.2 Raw map



X



Y



Z

These images show the 3D surface of the raw map. The raw map's contour level was selected so that its surface encloses the same volume as the primary map does at its recommended contour level.

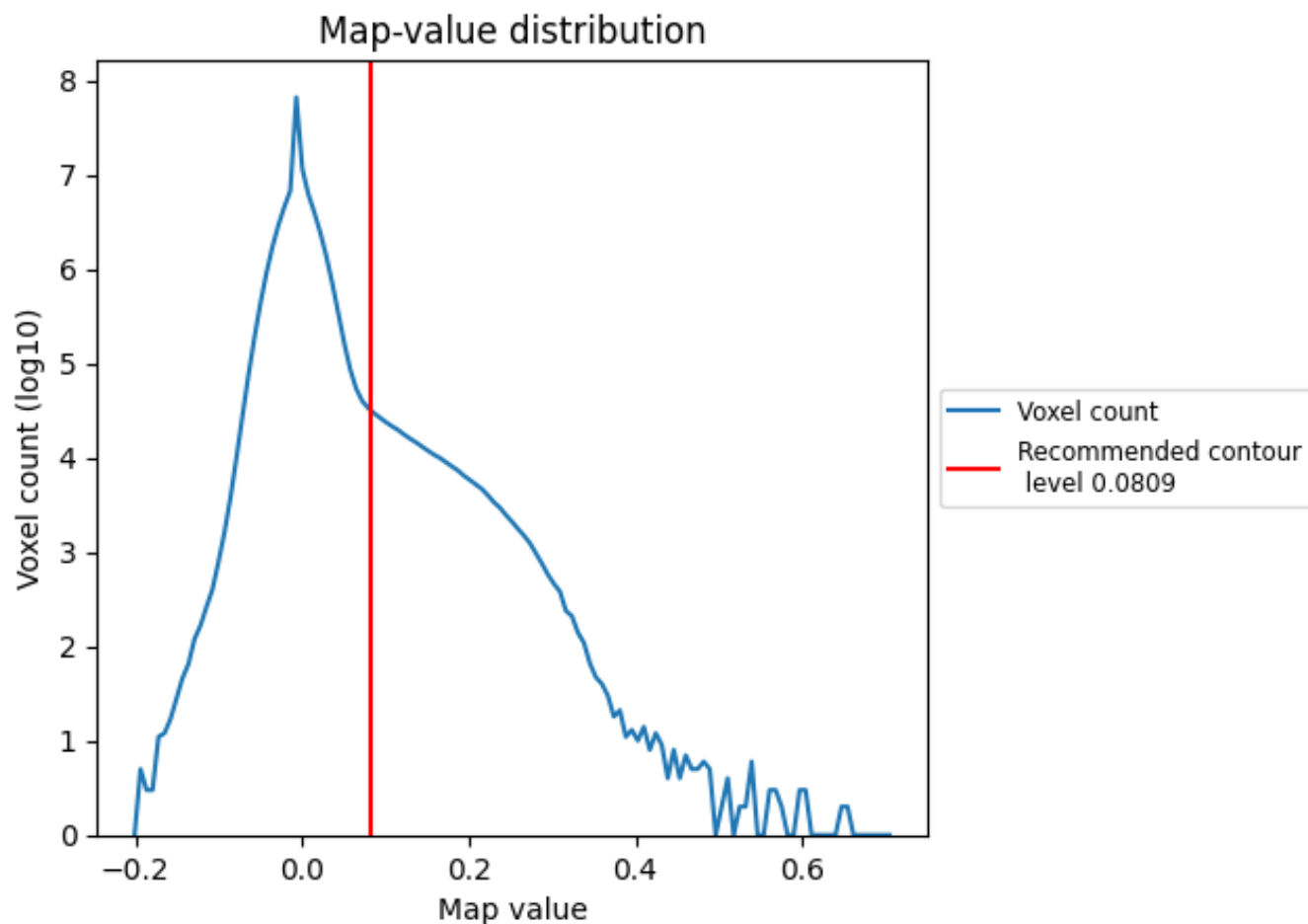
## 6.6 Mask visualisation [i](#)

This section was not generated. No masks/segmentation were deposited.

## 7 Map analysis [i](#)

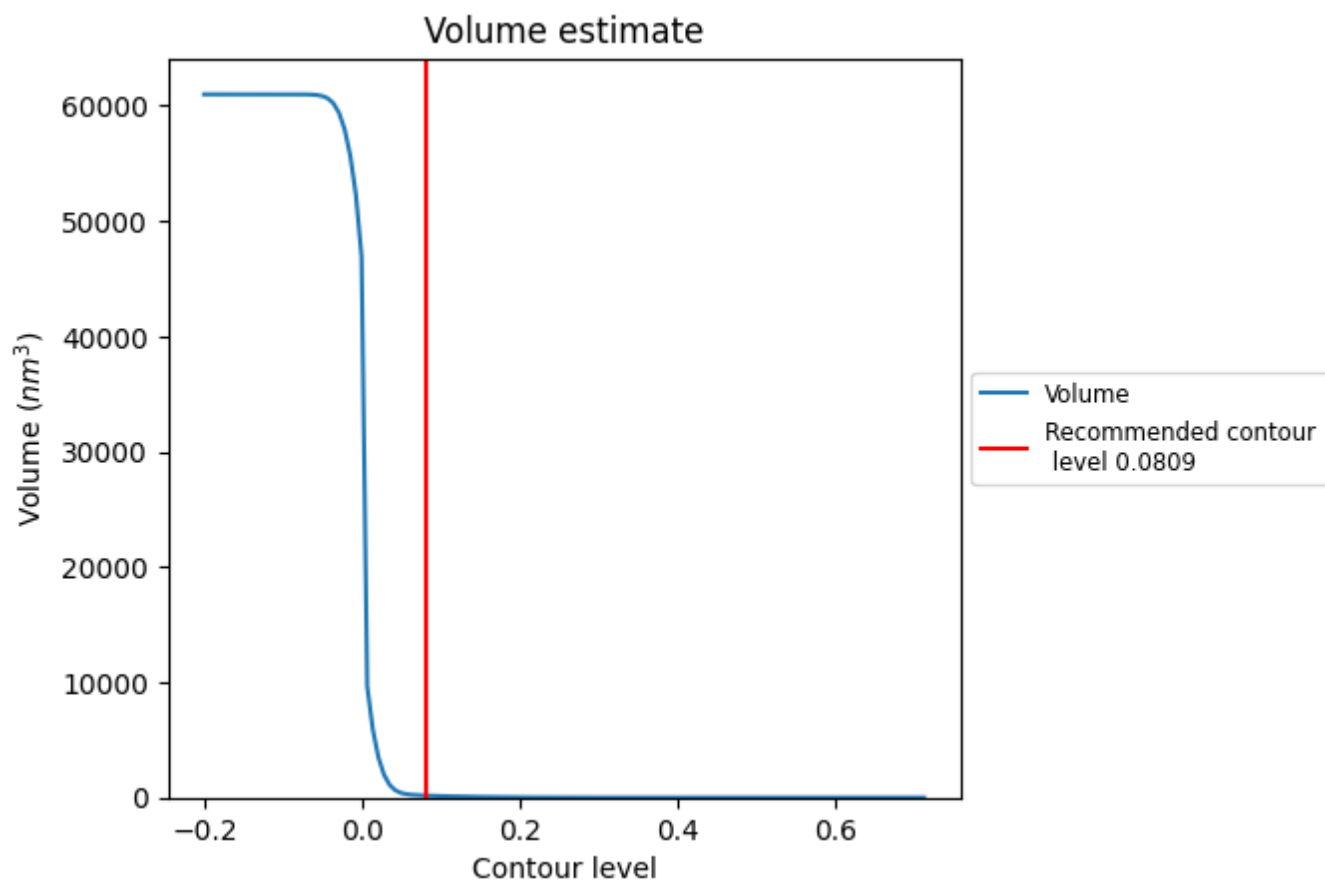
This section contains the results of statistical analysis of the map.

### 7.1 Map-value distribution [i](#)



The map-value distribution is plotted in 128 intervals along the x-axis. The y-axis is logarithmic. A spike in this graph at zero usually indicates that the volume has been masked.

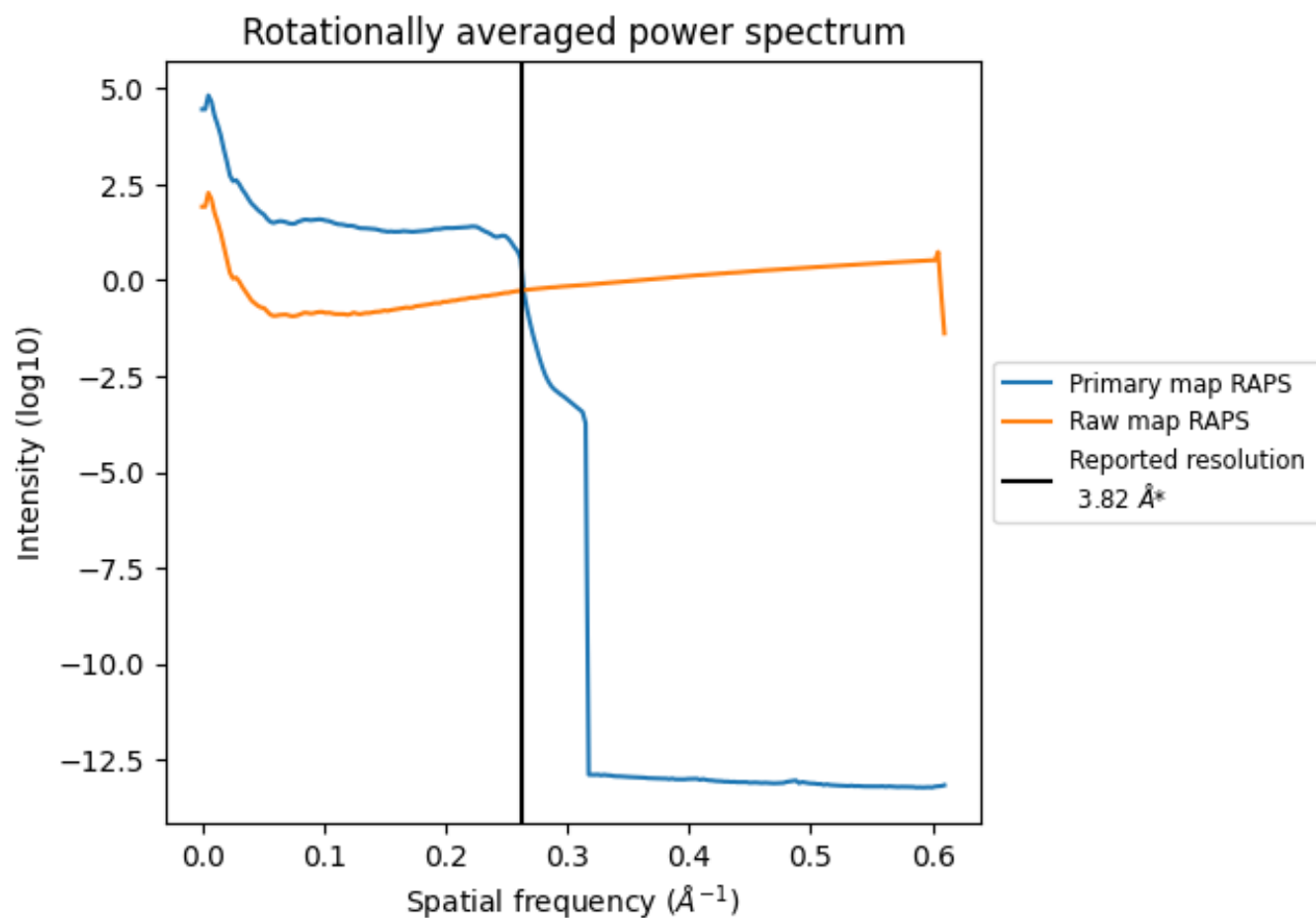
## 7.2 Volume estimate [i](#)



The volume at the recommended contour level is 171  $\text{nm}^3$ ; this corresponds to an approximate mass of 154 kDa.

The volume estimate graph shows how the enclosed volume varies with the contour level. The recommended contour level is shown as a vertical line and the intersection between the line and the curve gives the volume of the enclosed surface at the given level.

### 7.3 Rotationally averaged power spectrum ⓘ

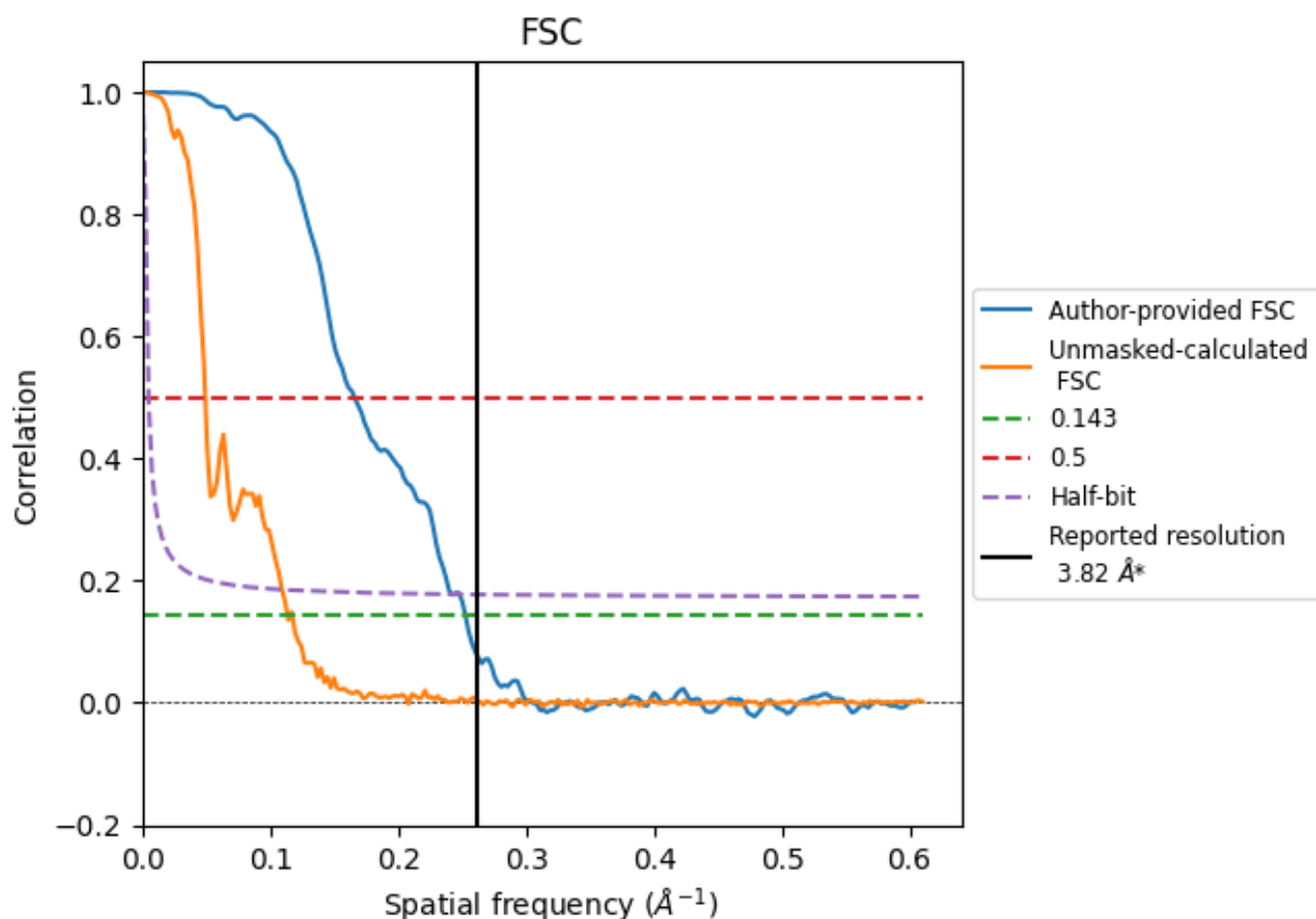


\*Reported resolution corresponds to spatial frequency of 0.262 Å<sup>-1</sup>

## 8 Fourier-Shell correlation [i](#)

Fourier-Shell Correlation (FSC) is the most commonly used method to estimate the resolution of single-particle and subtomogram-averaged maps. The shape of the curve depends on the imposed symmetry, mask and whether or not the two 3D reconstructions used were processed from a common reference. The reported resolution is shown as a black line. A curve is displayed for the half-bit criterion in addition to lines showing the 0.143 gold standard cut-off and 0.5 cut-off.

### 8.1 FSC [i](#)



\*Reported resolution corresponds to spatial frequency of 0.262 Å<sup>-1</sup>

## 8.2 Resolution estimates [i](#)

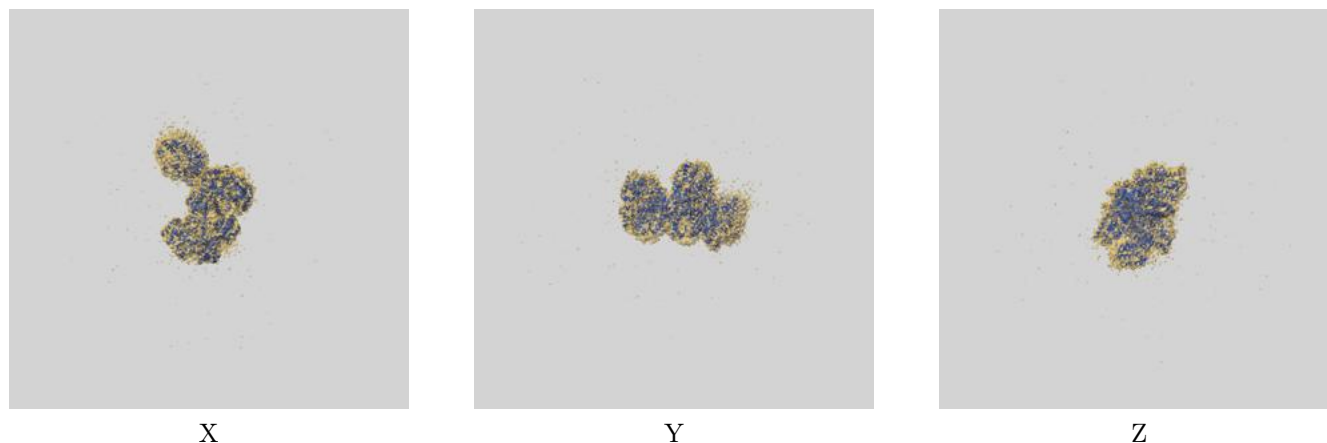
Resolution estimate (Å)	Estimation criterion (FSC cut-off)		
	0.143	0.5	Half-bit
Reported by author	3.82	-	-
Author-provided FSC curve	3.96	6.02	4.13
Unmasked-calculated*	8.80	20.28	9.15

\*Resolution estimate based on FSC curve calculated by comparison of deposited half-maps. The value from deposited half-maps intersecting FSC 0.143 CUT-OFF 8.80 differs from the reported value 3.82 by more than 10 %

## 9 Map-model fit [i](#)

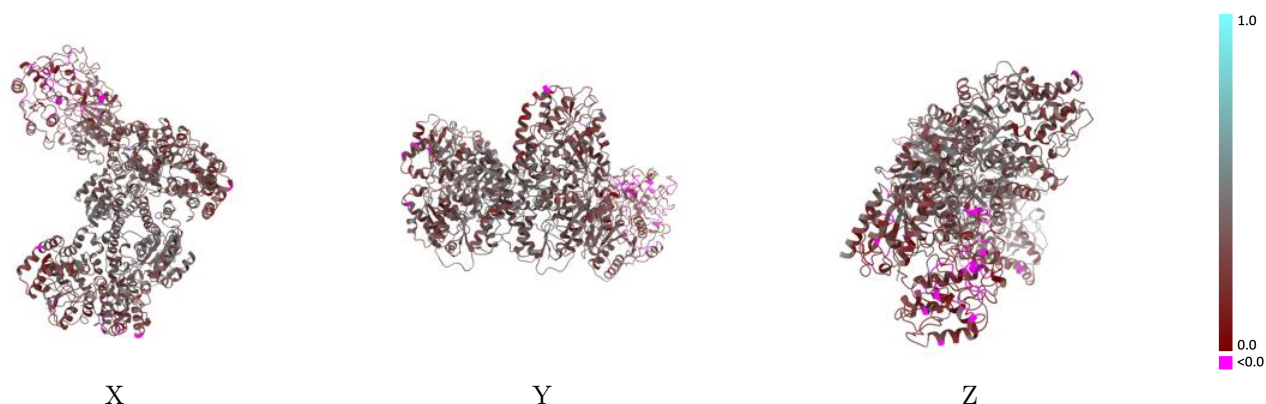
This section contains information regarding the fit between EMDB map EMD-43446 and PDB model 8VQJ. Per-residue inclusion information can be found in section [3](#) on page [8](#).

### 9.1 Map-model overlay [i](#)



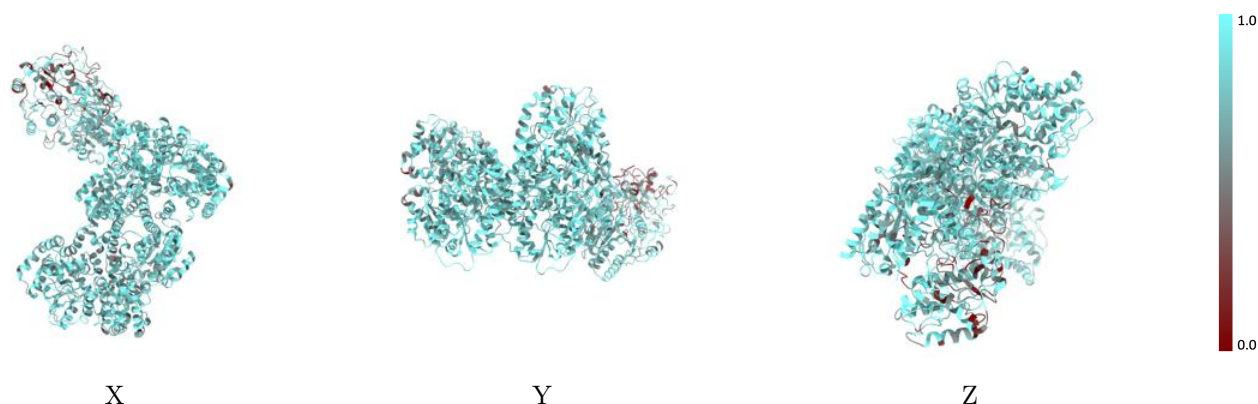
The images above show the 3D surface view of the map at the recommended contour level 0.0809 at 50% transparency in yellow overlaid with a ribbon representation of the model coloured in blue. These images allow for the visual assessment of the quality of fit between the atomic model and the map.

## 9.2 Q-score mapped to coordinate model [i](#)



The images above show the model with each residue coloured according to its Q-score. This shows their resolvability in the map with higher Q-score values reflecting better resolvability. Please note: Q-score is calculating the resolvability of atoms, and thus high values are only expected at resolutions at which atoms can be resolved. Low Q-score values may therefore be expected for many entries.

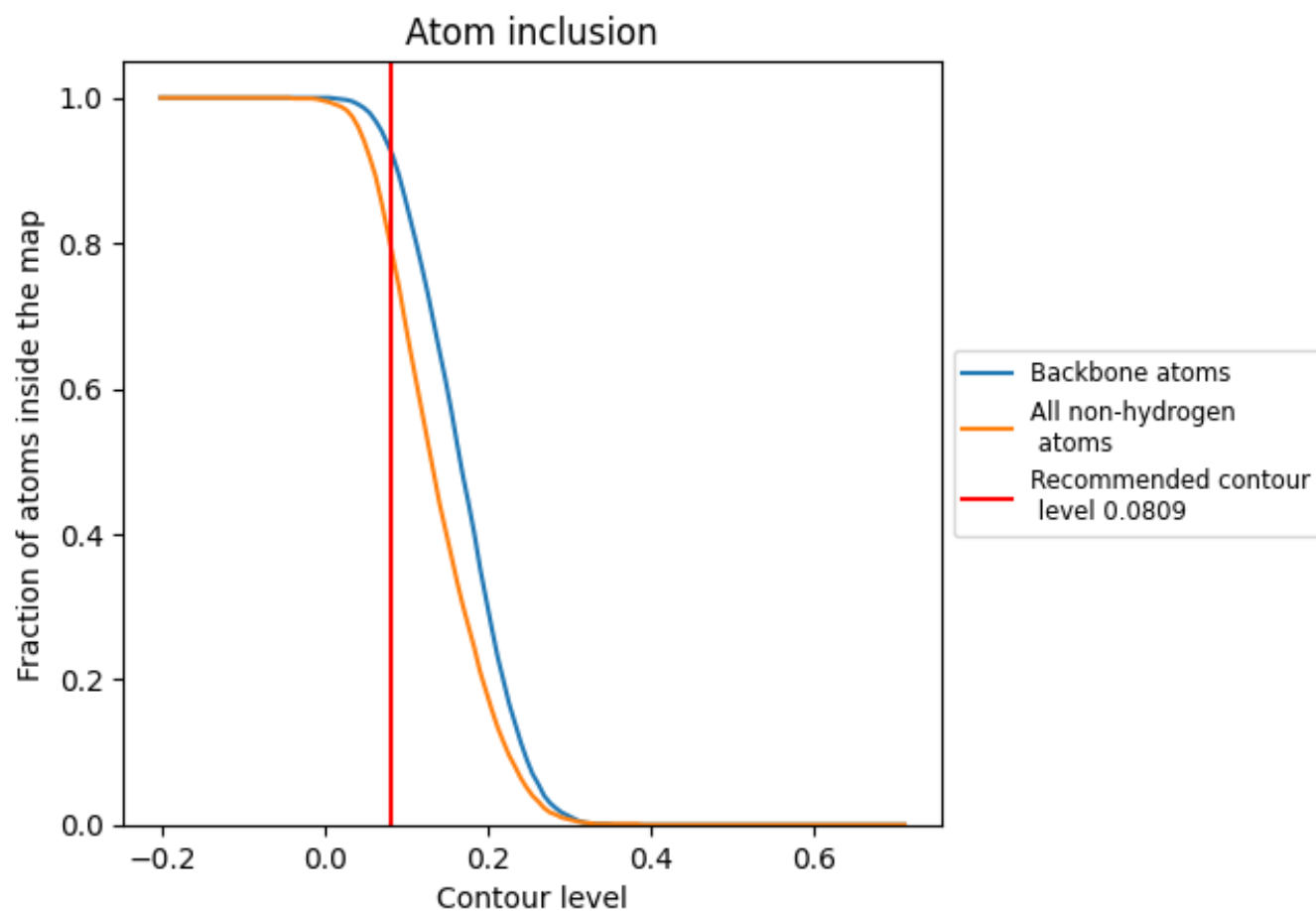
## 9.3 Atom inclusion mapped to coordinate model [i](#)



The images above show the model with each residue coloured according to its atom inclusion. This shows to what extent they are inside the map at the recommended contour level (0.0809).



## 9.4 Atom inclusion [i](#)



At the recommended contour level, 93% of all backbone atoms, 80% of all non-hydrogen atoms, are inside the map.

9.5 Map-model fit summary ⓘ

The table lists the average atom inclusion at the recommended contour level (0.0809) and Q-score for the entire model and for each chain.

Chain	Atom inclusion	Q-score
All	<div><div></div></div> 0.7980	<div><div></div></div> 0.3230
A	<div><div></div></div> 0.8310	<div><div></div></div> 0.3410
B	<div><div></div></div> 0.8500	<div><div></div></div> 0.3800
C	<div><div></div></div> 0.7950	<div><div></div></div> 0.3180
D	<div><div></div></div> 0.8440	<div><div></div></div> 0.3680
E	<div><div></div></div> 0.6480	<div><div></div></div> 0.1890
F	<div><div></div></div> 0.7590	<div><div></div></div> 0.2800

1.0

0.0

<0.0