



Full wwPDB X-ray Structure Validation Report ⓘ

Mar 11, 2025 – 06:07 PM EDT

PDB ID : 8V9C
Title : HIV-1 Integrase F185H Complexed with Allosteric Inhibitor GSK1264
Authors : Montermoso, S.; Gupta, K.; Eilers, G.; Bushman, F.D.; Van Duyne, G.D.
Deposited on : 2023-12-07
Resolution : 4.40 Å(reported)

This is a Full wwPDB X-ray Structure Validation Report for a publicly released PDB entry.

We welcome your comments at validation@mail.wwpdb.org

A user guide is available at

<https://www.wwpdb.org/validation/2017/XrayValidationReportHelp>

with specific help available everywhere you see the ⓘ symbol.

The types of validation reports are described at

<http://www.wwpdb.org/validation/2017/FAQs#types>.

The following versions of software and data (see [references ⓘ](#)) were used in the production of this report:

MolProbity	:	4.02b-467
Mogul	:	2022.3.0, CSD as543be (2022)
Xtriage (Phenix)	:	1.21
EDS	:	3.0
buster-report	:	1.1.7 (2018)
Percentile statistics	:	20231227.v01 (using entries in the PDB archive December 27th 2023)
CCP4	:	9.0.004 (Gargrove)
Density-Fitness	:	1.0.11
Ideal geometry (proteins)	:	Engh & Huber (2001)
Ideal geometry (DNA, RNA)	:	Parkinson et al. (1996)
Validation Pipeline (wwPDB-VP)	:	2.41.4

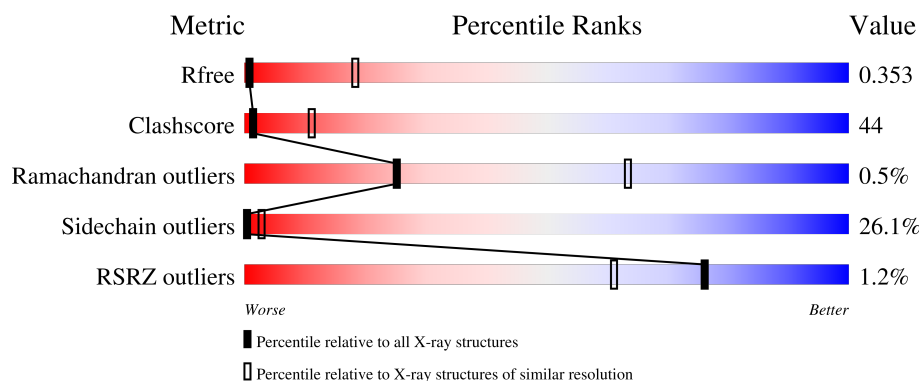
1 Overall quality at a glance

The following experimental techniques were used to determine the structure:

X-RAY DIFFRACTION

The reported resolution of this entry is 4.40 Å.

Percentile scores (ranging between 0-100) for global validation metrics of the entry are shown in the following graphic. The table shows the number of entries on which the scores are based.



Metric	Whole archive (#Entries)	Similar resolution (#Entries, resolution range(Å))
R_{free}	164625	1013 (4.90-3.90)
Clashscore	180529	1066 (4.90-3.90)
Ramachandran outliers	177936	1019 (4.92-3.86)
Sidechain outliers	177891	1003 (4.92-3.86)
RSRZ outliers	164620	1010 (4.90-3.90)

The table below summarises the geometric issues observed across the polymeric chains and their fit to the electron density. The red, orange, yellow and green segments of the lower bar indicate the fraction of residues that contain outliers for ≥ 3 , 2, 1 and 0 types of geometric quality criteria respectively. A grey segment represents the fraction of residues that are not modelled. The numeric value for each fraction is indicated below the corresponding segment, with a dot representing fractions $\leq 5\%$. The upper red bar (where present) indicates the fraction of residues that have poor fit to the electron density. The numeric value is given above the bar.

Mol	Chain	Length	Quality of chain
1	A	293	<div> <div></div> <div> <div></div> <div>26%</div> <div>33%</div> <div>13%</div> <div>29%</div> </div> </div>
1	B	293	<div> <div></div> <div> <div></div> <div>25%</div> <div>40%</div> <div>8%</div> <div>27%</div> </div> </div>

2 Entry composition

There are 2 unique types of molecules in this entry. The entry contains 4222 atoms, of which 804 are hydrogens and 0 are deuteriums.

In the tables below, the ZeroOcc column contains the number of atoms modelled with zero occupancy, the AltConf column contains the number of residues with at least one atom in alternate conformation and the Trace column contains the number of residues modelled with at most 2 atoms.

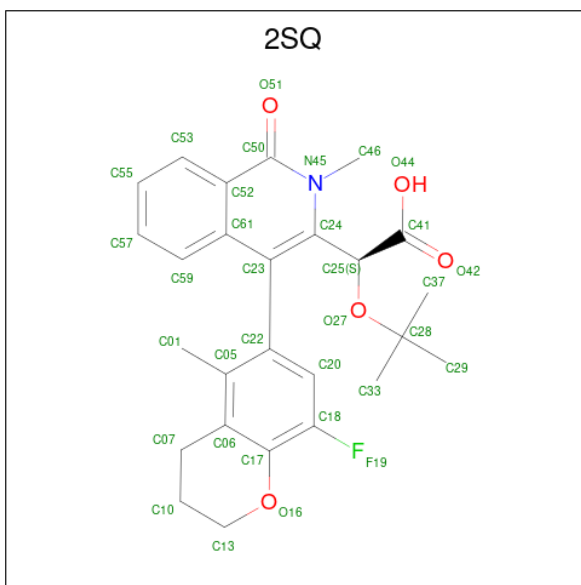
- Molecule 1 is a protein called Integrase.

Mol	Chain	Residues	Atoms						ZeroOcc	AltConf	Trace
1	A	209	Total	C	H	N	O	S	1	0	0
			2069	1064	401	298	300	6			
1	B	213	Total	C	H	N	O	S	0	0	0
			2087	1071	403	302	305	6			

There are 16 discrepancies between the modelled and reference sequences:

Chain	Residue	Modelled	Actual	Comment	Reference
A	1	HIS	-	expression tag	UNP P12497
A	15	ALA	TYR	engineered mutation	UNP P12497
A	185	HIS	PHE	engineered mutation	UNP P12497
A	289	CYS	-	expression tag	UNP P12497
A	290	THR	-	expression tag	UNP P12497
A	291	LEU	-	expression tag	UNP P12497
A	292	GLU	-	expression tag	UNP P12497
A	293	TYR	-	expression tag	UNP P12497
B	1	HIS	-	expression tag	UNP P12497
B	15	ALA	TYR	engineered mutation	UNP P12497
B	185	HIS	PHE	engineered mutation	UNP P12497
B	289	CYS	-	expression tag	UNP P12497
B	290	THR	-	expression tag	UNP P12497
B	291	LEU	-	expression tag	UNP P12497
B	292	GLU	-	expression tag	UNP P12497
B	293	TYR	-	expression tag	UNP P12497

- Molecule 2 is (2S)-tert-butoxy[4-(8-fluoro-5-methyl-3,4-dihydro-2H-chromen-6-yl)-2-methyl-1-oxo-1,2-dihydroisoquinolin-3-yl]ethanoic acid (three-letter code: 2SQ) (formula: C₂₆H₂₈FNO₅) (labeled as "Ligand of Interest" by depositor).

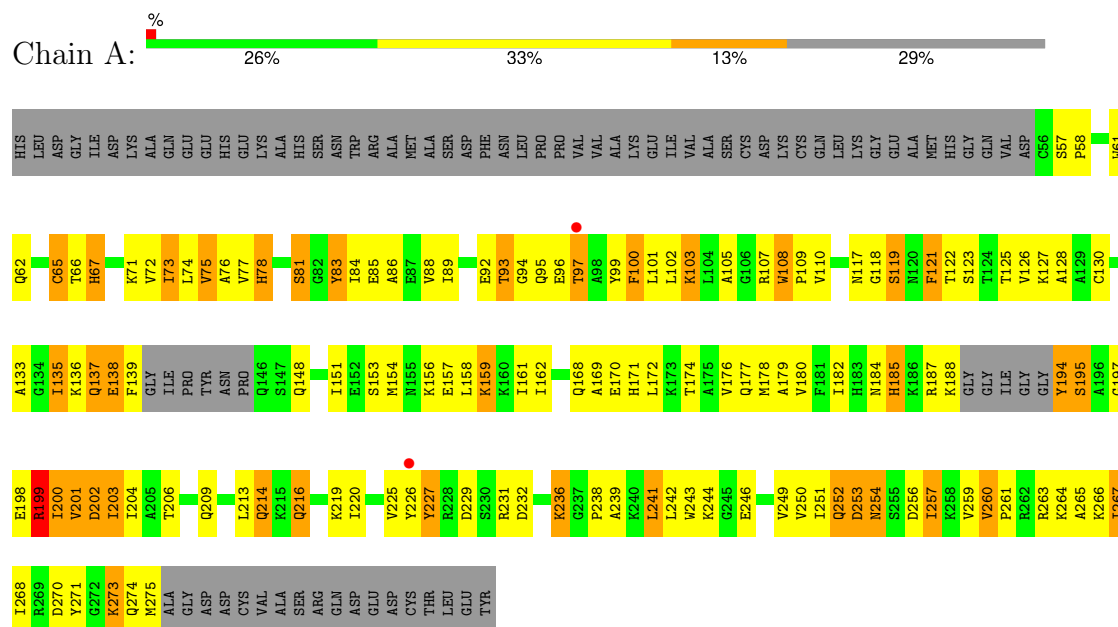


Mol	Chain	Residues	Atoms					ZeroOcc	AltConf
2	A	1	Total 33	C 26	F 1	N 1	O 5	0	0
2	B	1	Total 33	C 26	F 1	N 1	O 5	0	0

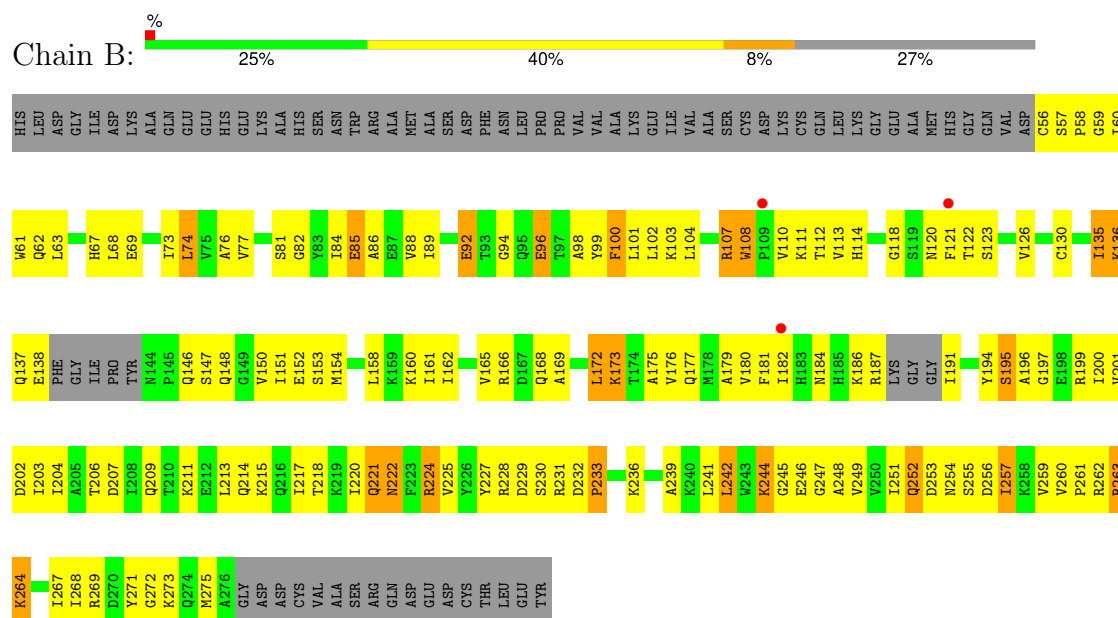
3 Residue-property plots

These plots are drawn for all protein, RNA, DNA and oligosaccharide chains in the entry. The first graphic for a chain summarises the proportions of the various outlier classes displayed in the second graphic. The second graphic shows the sequence view annotated by issues in geometry and electron density. Residues are color-coded according to the number of geometric quality criteria for which they contain at least one outlier: green = 0, yellow = 1, orange = 2 and red = 3 or more. A red dot above a residue indicates a poor fit to the electron density ($RSRZ > 2$). Stretches of 2 or more consecutive residues without any outlier are shown as a green connector. Residues present in the sample, but not in the model, are shown in grey.

• Molecule 1: Integrase



• Molecule 1: Integrase



4 Data and refinement statistics

Property	Value	Source
Space group	P 61 2 2	Depositor
Cell constants a, b, c, α , β , γ	107.06Å 107.06Å 243.49Å 90.00° 90.00° 120.00°	Depositor
Resolution (Å)	20.00 – 4.40 20.00 – 4.40	Depositor EDS
% Data completeness (in resolution range)	95.7 (20.00-4.40) 94.2 (20.00-4.40)	Depositor EDS
R_{merge}	0.06	Depositor
R_{sym}	(Not available)	Depositor
$\langle I/\sigma(I) \rangle$ ¹	5.36 (at 4.29Å)	Xtriage
Refinement program	CNS	Depositor
R, R_{free}	0.318 , 0.341 0.325 , 0.353	Depositor DCC
R_{free} test set	4858 reflections (9.99%)	wwPDB-VP
Wilson B-factor (Å ²)	197.8	Xtriage
Anisotropy	0.420	Xtriage
Bulk solvent k_{sol} (e/Å ³), B_{sol} (Å ²)	0.19 , 123.2	EDS
L-test for twinning ²	$\langle L \rangle = 0.48$, $\langle L^2 \rangle = 0.31$	Xtriage
Estimated twinning fraction	No twinning to report.	Xtriage
F_o, F_c correlation	0.90	EDS
Total number of atoms	4222	wwPDB-VP
Average B, all atoms (Å ²)	215.0	wwPDB-VP

Xtriage's analysis on translational NCS is as follows: *The largest off-origin peak in the Patterson function is 10.63% of the height of the origin peak. No significant pseudotranslation is detected.*

¹Intensities estimated from amplitudes.

²Theoretical values of $\langle |L| \rangle$, $\langle L^2 \rangle$ for acentric reflections are 0.5, 0.333 respectively for untwinned datasets, and 0.375, 0.2 for perfectly twinned datasets.

5 Model quality [i](#)

5.1 Standard geometry [i](#)

Bond lengths and bond angles in the following residue types are not validated in this section: 2SQ

The Z score for a bond length (or angle) is the number of standard deviations the observed value is removed from the expected value. A bond length (or angle) with $|Z| > 5$ is considered an outlier worth inspection. RMSZ is the root-mean-square of all Z scores of the bond lengths (or angles).

Mol	Chain	Bond lengths		Bond angles	
		RMSZ	$\# Z > 5$	RMSZ	$\# Z > 5$
1	A	0.94	5/1700 (0.3%)	0.96	5/2293 (0.2%)
1	B	0.84	3/1716 (0.2%)	0.92	2/2317 (0.1%)
All	All	0.89	8/3416 (0.2%)	0.94	7/4610 (0.2%)

All (8) bond length outliers are listed below:

Mol	Chain	Res	Type	Atoms	Z	Observed(Å)	Ideal(Å)
1	B	152	GLU	CD-OE2	-15.43	1.08	1.25
1	A	121	PHE	CG-CD2	-9.54	1.24	1.38
1	A	199	ARG	CZ-NH1	7.22	1.42	1.33
1	B	100	PHE	CG-CD1	6.65	1.48	1.38
1	A	83	TYR	CG-CD1	-6.04	1.31	1.39
1	B	114	HIS	CG-CD2	-5.59	1.26	1.35
1	A	65	CYS	CB-SG	-5.29	1.73	1.81
1	A	121	PHE	CD1-CE1	-5.27	1.28	1.39

All (7) bond angle outliers are listed below:

Mol	Chain	Res	Type	Atoms	Z	Observed(°)	Ideal(°)
1	A	199	ARG	NE-CZ-NH1	10.80	125.70	120.30
1	B	100	PHE	CB-CG-CD2	7.10	125.77	120.80
1	B	233	PRO	N-CA-C	6.97	130.21	112.10
1	A	194	TYR	CZ-CE2-CD2	6.35	125.51	119.80
1	A	109	PRO	N-CA-C	-6.28	95.78	112.10
1	A	78	HIS	N-CA-C	-5.69	95.64	111.00
1	A	199	ARG	NH1-CZ-NH2	-5.29	113.58	119.40

There are no chirality outliers.

There are no planarity outliers.

5.2 Too-close contacts ⓘ

In the following table, the Non-H and H(model) columns list the number of non-hydrogen atoms and hydrogen atoms in the chain respectively. The H(added) column lists the number of hydrogen atoms added and optimized by MolProbity. The Clashes column lists the number of clashes within the asymmetric unit, whereas Symm-Clashes lists symmetry-related clashes.

Mol	Chain	Non-H	H(model)	H(added)	Clashes	Symm-Clashes
1	A	1668	401	1702	152	1
1	B	1684	403	1715	145	1
2	A	33	0	27	6	0
2	B	33	0	27	7	0
All	All	3418	804	3471	300	1

The all-atom clashscore is defined as the number of clashes found per 1000 atoms (including hydrogen atoms). The all-atom clashscore for this structure is 44.

All (300) close contacts within the same asymmetric unit are listed below, sorted by their clash magnitude.

Atom-1	Atom-2	Interatomic distance (Å)	Clash overlap (Å)
1:A:252:GLN:HB3	1:A:257:ILE:HG23	1.48	0.92
1:A:72:VAL:HG21	1:A:92:GLU:HB2	1.54	0.89
1:B:239:ALA:HB3	1:B:251:ILE:HD13	1.55	0.88
1:B:81:SER:O	1:B:196:ALA:HB1	1.80	0.82
1:A:180:VAL:HG12	1:A:184:ASN:HD21	1.45	0.80
1:A:244:LYS:HA	1:A:249:VAL:HG22	1.63	0.80
1:A:225:VAL:HG22	1:A:267:ILE:HG23	1.61	0.80
1:B:228:ARG:HB3	1:B:264:LYS:HD2	1.62	0.80
1:B:261:PRO:HG2	1:B:264:LYS:HB2	1.64	0.79
1:A:61:TRP:CD1	1:A:110:VAL:HG22	2.18	0.77
1:A:239:ALA:HB3	1:A:251:ILE:HD12	1.66	0.77
1:A:250:VAL:HG13	1:A:259:VAL:HG22	1.67	0.74
1:B:225:VAL:HG21	1:B:251:ILE:HG21	1.70	0.73
1:A:242:LEU:HD11	1:A:257:ILE:HG21	1.69	0.72
1:B:228:ARG:HB3	1:B:264:LYS:CD	2.20	0.72
1:B:165:VAL:O	1:B:168:GLN:HB2	1.89	0.71
1:A:78:HIS:CD2	1:A:200:ILE:HD13	2.26	0.71
1:A:121:PHE:CZ	1:A:137:GLN:CB	2.72	0.71
1:A:159:LYS:HA	1:A:162:ILE:HD12	1.71	0.71
1:A:118:GLY:O	1:A:122:THR:HG23	1.90	0.71
1:A:125:THR:O	1:A:128:ALA:HB3	1.91	0.71
1:A:242:LEU:HD12	1:A:250:VAL:HG12	1.73	0.70
1:A:260:VAL:HG12	1:A:261:PRO:HD2	1.74	0.70

Continued on next page...

Continued from previous page...

Atom-1	Atom-2	Interatomic distance (Å)	Clash overlap (Å)
1:A:72:VAL:HG23	1:A:89:ILE:HG13	1.73	0.70
1:A:73:ILE:HG22	1:A:88:VAL:HG13	1.72	0.70
1:A:202:ASP:O	1:A:206:THR:HG23	1.91	0.69
1:A:180:VAL:HG12	1:A:184:ASN:ND2	2.08	0.68
1:B:197:GLY:O	1:B:200:ILE:HG22	1.92	0.68
1:A:177:GLN:HB2	1:B:102:LEU:HD23	1.76	0.68
1:B:213:LEU:O	1:B:217:ILE:HD12	1.92	0.68
1:B:110:VAL:O	1:B:135:ILE:HD12	1.93	0.68
1:A:121:PHE:CE2	1:A:137:GLN:NE2	2.62	0.68
1:B:239:ALA:HB1	1:B:252:GLN:O	1.93	0.67
1:B:225:VAL:HG21	1:B:251:ILE:CG2	2.25	0.67
1:A:252:GLN:HB3	1:A:257:ILE:HD12	1.76	0.67
1:A:62:GLN:HG2	1:A:151:ILE:HD13	1.76	0.66
1:A:201:VAL:HA	1:A:204:ILE:HD12	1.77	0.66
1:A:243:TRP:O	1:A:249:VAL:HG13	1.96	0.66
1:B:261:PRO:HD2	1:B:264:LYS:HE2	1.76	0.66
1:A:252:GLN:CB	1:A:257:ILE:HG23	2.24	0.65
1:B:150:VAL:HG12	1:B:154:MET:HG2	1.77	0.65
1:B:76:ALA:HB3	1:B:85:GLU:O	1.96	0.65
1:B:74:LEU:HD13	1:B:100:PHE:CD2	2.32	0.65
1:A:178:MET:HG3	1:B:102:LEU:HD21	1.78	0.65
1:B:68:LEU:HD23	1:B:172:LEU:HD13	1.79	0.64
1:B:228:ARG:HB3	1:B:264:LYS:HG3	1.78	0.64
1:A:77:VAL:HG21	1:A:151:ILE:HG23	1.78	0.64
1:A:252:GLN:CB	1:A:257:ILE:HD12	2.27	0.64
1:A:81:SER:CB	1:A:200:ILE:HG12	2.27	0.64
1:B:63:LEU:HD22	1:B:113:VAL:HG11	1.80	0.63
1:A:121:PHE:CZ	1:A:137:GLN:HB2	2.34	0.63
1:B:121:PHE:HA	1:B:126:VAL:HG11	1.81	0.63
1:B:231:ARG:CZ	1:B:263:ARG:NH2	2.61	0.63
1:B:57:SER:N	1:B:58:PRO:HD2	2.13	0.62
1:B:98:ALA:HA	1:B:101:LEU:HD12	1.80	0.62
1:A:241:LEU:HA	1:A:251:ILE:HG22	1.82	0.62
1:B:74:LEU:HD13	1:B:100:PHE:CG	2.35	0.62
1:A:242:LEU:HD11	1:A:257:ILE:CG2	2.30	0.61
1:B:222:ASN:O	1:B:224:ARG:HD3	1.99	0.61
1:B:63:LEU:HD12	1:B:76:ALA:HA	1.81	0.61
1:B:82:GLY:O	1:B:84:ILE:HG13	2.01	0.60
1:A:81:SER:HB3	1:A:200:ILE:HG12	1.82	0.60
1:A:73:ILE:HD12	1:A:176:VAL:HG11	1.85	0.59
1:B:169:ALA:HB3	1:B:175:ALA:HB2	1.84	0.59

Continued on next page...

Continued from previous page...

Atom-1	Atom-2	Interatomic distance (Å)	Clash overlap (Å)
1:A:250:VAL:HG13	1:A:259:VAL:CG2	2.33	0.58
1:B:261:PRO:HG2	1:B:264:LYS:CB	2.31	0.58
1:B:62:GLN:HG2	1:B:151:ILE:HG12	1.83	0.58
1:A:241:LEU:HB2	1:A:251:ILE:HG22	1.84	0.58
1:A:121:PHE:HA	1:A:126:VAL:HG11	1.86	0.58
2:A:301:2SQ:C24	2:A:301:2SQ:H16	2.34	0.58
1:B:100:PHE:HA	1:B:103:LYS:HE2	1.86	0.57
1:A:198:GLU:O	1:A:199:ARG:HB2	2.04	0.57
1:B:61:TRP:CD1	1:B:110:VAL:HG22	2.39	0.57
1:A:89:ILE:HD12	1:A:92:GLU:HA	1.84	0.57
1:B:251:ILE:HD12	1:B:252:GLN:N	2.18	0.57
1:B:158:LEU:HA	1:B:161:ILE:HD12	1.86	0.57
1:A:268:ILE:HD12	1:A:268:ILE:N	2.19	0.57
1:B:228:ARG:HB3	1:B:264:LYS:CG	2.35	0.57
1:A:137:GLN:HE22	1:A:139:PHE:HA	1.70	0.57
1:A:130:CYS:O	1:A:135:ILE:N	2.38	0.56
1:A:121:PHE:CZ	1:A:137:GLN:HG3	2.39	0.56
1:B:89:ILE:HG21	1:B:96:GLU:HB3	1.87	0.56
1:A:118:GLY:O	1:A:122:THR:N	2.34	0.56
1:A:227:TYR:CB	1:A:265:ALA:HB2	2.35	0.56
1:B:267:ILE:HD12	1:B:267:ILE:N	2.20	0.56
1:B:68:LEU:CD2	1:B:172:LEU:HD13	2.35	0.55
1:B:245:GLY:CA	1:B:248:ALA:HB3	2.37	0.55
1:A:57:SER:N	1:A:58:PRO:HD2	2.21	0.55
1:A:76:ALA:HB3	1:A:85:GLU:H	1.72	0.55
1:B:89:ILE:HD13	1:B:92:GLU:HA	1.88	0.55
1:B:59:GLY:O	1:B:110:VAL:HG13	2.07	0.55
2:B:301:2SQ:C41	2:B:301:2SQ:H23	2.37	0.55
1:A:225:VAL:O	1:A:238:PRO:HA	2.07	0.54
1:B:247:GLY:O	1:B:261:PRO:HA	2.06	0.54
1:A:76:ALA:O	1:A:84:ILE:HD12	2.07	0.54
1:B:220:ILE:HG23	1:B:241:LEU:O	2.07	0.54
1:B:260:VAL:HG13	1:B:264:LYS:HB3	1.90	0.54
1:A:76:ALA:O	1:A:84:ILE:HG23	2.08	0.54
1:A:242:LEU:N	1:A:250:VAL:O	2.40	0.54
1:A:273:LYS:HE2	1:A:273:LYS:HA	1.90	0.54
1:B:135:ILE:N	1:B:135:ILE:HD13	2.22	0.54
1:A:73:ILE:CG2	1:A:88:VAL:HG13	2.37	0.54
1:A:105:ALA:O	1:A:108:TRP:O	2.26	0.54
1:A:121:PHE:CE1	1:A:137:GLN:HG3	2.43	0.54
1:A:249:VAL:O	1:A:259:VAL:HG13	2.08	0.54

Continued on next page...

Continued from previous page...

Atom-1	Atom-2	Interatomic distance (Å)	Clash overlap (Å)
1:A:178:MET:O	1:A:182:ILE:HD12	2.08	0.53
1:A:61:TRP:CZ2	1:A:108:TRP:CG	2.97	0.53
1:A:125:THR:HG22	2:B:301:2SQ:C59	2.38	0.53
1:A:137:GLN:HE22	1:A:139:PHE:CA	2.21	0.53
1:A:266:LYS:HE3	1:A:268:ILE:HA	1.91	0.53
1:B:228:ARG:CB	1:B:264:LYS:HG3	2.38	0.53
1:B:187:ARG:NH1	1:B:194:TYR:HA	2.23	0.53
1:B:209:GLN:O	1:B:213:LEU:HD13	2.10	0.53
1:A:169:ALA:HB1	2:A:301:2SQ:O42	2.08	0.52
1:B:231:ARG:CZ	1:B:263:ARG:HH22	2.21	0.52
1:B:252:GLN:HG3	1:B:257:ILE:HG23	1.90	0.52
1:A:172:LEU:O	1:A:176:VAL:HG23	2.09	0.52
1:B:74:LEU:HD22	1:B:100:PHE:CD2	2.44	0.52
1:B:176:VAL:O	1:B:179:ALA:HB3	2.09	0.52
1:A:242:LEU:HD12	1:A:250:VAL:CG1	2.39	0.52
1:B:239:ALA:HB2	1:B:253:ASP:HA	1.90	0.52
1:A:216:GLN:CA	1:A:216:GLN:HE21	2.22	0.52
1:B:57:SER:N	1:B:58:PRO:CD	2.73	0.52
1:B:112:THR:HA	1:B:136:LYS:O	2.10	0.52
1:B:172:LEU:O	1:B:176:VAL:HG23	2.10	0.52
1:A:93:THR:HG23	1:A:96:GLU:HB2	1.91	0.52
1:A:225:VAL:HG13	1:A:267:ILE:HG13	1.90	0.52
1:A:118:GLY:C	1:A:122:THR:HG23	2.30	0.51
1:A:81:SER:OG	1:A:200:ILE:HG12	2.11	0.51
1:B:110:VAL:HG11	1:B:113:VAL:HG23	1.91	0.51
1:A:121:PHE:CZ	1:A:137:GLN:CG	2.93	0.51
1:A:226:TYR:CZ	1:A:238:PRO:HB3	2.46	0.51
1:B:100:PHE:HA	1:B:103:LYS:CE	2.40	0.51
1:B:165:VAL:HA	1:B:168:GLN:CD	2.31	0.51
1:B:230:SER:HB3	1:B:233:PRO:CD	2.40	0.51
1:B:228:ARG:HG3	1:B:230:SER:O	2.11	0.51
1:B:232:ASP:N	1:B:233:PRO:HD2	2.27	0.50
1:B:158:LEU:HG	1:B:162:ILE:HD11	1.94	0.50
1:B:261:PRO:O	1:B:264:LYS:HB3	2.11	0.50
1:A:216:GLN:HE21	1:A:216:GLN:N	2.10	0.50
1:A:214:GLN:HE21	1:A:214:GLN:HA	1.77	0.50
1:B:187:ARG:CZ	1:B:194:TYR:HA	2.42	0.50
1:A:73:ILE:HG22	1:A:88:VAL:HA	1.92	0.50
1:B:227:TYR:OH	1:B:236:LYS:HB3	2.12	0.50
1:A:176:VAL:O	1:A:179:ALA:HB3	2.12	0.50
1:B:61:TRP:CZ2	1:B:108:TRP:NE1	2.80	0.50

Continued on next page...

Continued from previous page...

Atom-1	Atom-2	Interatomic distance (Å)	Clash overlap (Å)
1:B:213:LEU:C	1:B:217:ILE:HD12	2.31	0.50
1:A:61:TRP:CE2	1:A:78:HIS:HB2	2.47	0.49
1:A:73:ILE:HG21	1:A:88:VAL:HG22	1.93	0.49
1:A:227:TYR:HA	1:A:265:ALA:CB	2.43	0.49
1:B:172:LEU:HG	1:B:173:LYS:N	2.27	0.49
1:A:99:TYR:O	1:A:103:LYS:HG3	2.12	0.49
1:A:256:ASP:C	1:A:257:ILE:HD13	2.32	0.49
1:B:68:LEU:HB3	1:B:73:ILE:HD11	1.95	0.49
1:A:94:GLY:O	1:A:97:THR:HB	2.13	0.49
1:B:241:LEU:HD12	1:B:249:VAL:HG13	1.95	0.49
1:B:231:ARG:NH1	1:B:263:ARG:HH21	2.11	0.49
1:B:260:VAL:CG1	1:B:264:LYS:HG2	2.42	0.49
1:A:61:TRP:HA	1:A:77:VAL:O	2.13	0.49
1:B:252:GLN:NE2	1:B:254:ASN:O	2.46	0.49
1:B:269:ARG:NH1	1:B:272:GLY:CA	2.76	0.49
1:A:83:TYR:O	1:A:84:ILE:HD13	2.13	0.49
1:A:253:ASP:CG	1:A:254:ASN:N	2.65	0.49
1:B:239:ALA:HB3	1:B:251:ILE:CD1	2.35	0.49
1:A:121:PHE:CE2	1:A:137:GLN:HG3	2.48	0.48
1:A:172:LEU:O	1:A:172:LEU:HD12	2.13	0.48
1:A:263:ARG:NH1	1:A:264:LYS:NZ	2.61	0.48
1:A:268:ILE:H	1:A:268:ILE:CD1	2.27	0.48
1:A:93:THR:HG23	1:A:96:GLU:H	1.77	0.48
1:A:200:ILE:O	1:A:203:ILE:N	2.46	0.48
1:B:110:VAL:HG11	1:B:113:VAL:CG2	2.44	0.48
1:A:226:TYR:CD1	1:A:226:TYR:N	2.81	0.48
1:B:89:ILE:HD12	1:B:89:ILE:O	2.14	0.48
1:B:110:VAL:O	1:B:135:ILE:HG23	2.13	0.48
1:A:95:GLN:HG2	2:B:301:2SQ:H15	1.95	0.48
1:B:252:GLN:HG2	1:B:256:ASP:O	2.13	0.48
1:A:250:VAL:HA	1:A:259:VAL:HG13	1.96	0.47
1:B:137:GLN:O	1:B:138:GLU:C	2.52	0.47
1:A:107:ARG:HD2	1:A:108:TRP:NE1	2.28	0.47
1:A:121:PHE:CE2	1:A:137:GLN:CG	2.97	0.47
1:B:245:GLY:HA3	1:B:248:ALA:HB3	1.97	0.47
2:B:301:2SQ:H16	2:B:301:2SQ:C24	2.45	0.47
1:A:184:ASN:O	1:A:185:HIS:C	2.51	0.47
2:A:301:2SQ:C20	2:A:301:2SQ:H14	2.45	0.47
1:A:225:VAL:HG21	1:A:241:LEU:HB3	1.96	0.47
1:A:266:LYS:HD3	1:A:266:LYS:C	2.35	0.46
1:B:158:LEU:HD11	1:B:179:ALA:HB1	1.96	0.46

Continued on next page...

Continued from previous page...

Atom-1	Atom-2	Interatomic distance (Å)	Clash overlap (Å)
1:A:61:TRP:CZ2	1:A:78:HIS:HB2	2.50	0.46
1:B:172:LEU:O	1:B:175:ALA:HB3	2.15	0.46
1:A:252:GLN:HB2	1:A:257:ILE:HD12	1.97	0.46
1:A:174:THR:OG1	2:A:301:2SQ:H13	2.16	0.46
1:A:201:VAL:HG11	1:B:204:ILE:HG21	1.97	0.46
1:A:241:LEU:CB	1:A:251:ILE:HG22	2.46	0.46
1:B:74:LEU:O	1:B:86:ALA:HB1	2.16	0.46
1:B:107:ARG:HB2	1:B:108:TRP:CE2	2.51	0.46
1:B:108:TRP:CD1	1:B:108:TRP:N	2.82	0.46
1:B:172:LEU:HD12	1:B:172:LEU:C	2.36	0.46
1:A:78:HIS:CG	1:A:200:ILE:HD13	2.49	0.46
1:A:242:LEU:N	1:A:242:LEU:HD23	2.31	0.46
1:B:76:ALA:N	1:B:85:GLU:O	2.48	0.46
1:B:181:PHE:CD1	1:B:181:PHE:C	2.88	0.46
1:A:267:ILE:HD12	1:A:267:ILE:H	1.81	0.46
1:A:121:PHE:HE2	1:A:137:GLN:HE21	1.60	0.46
1:B:166:ARG:NH1	1:B:169:ALA:O	2.49	0.46
2:B:301:2SQ:C41	2:B:301:2SQ:C46	2.94	0.46
1:B:158:LEU:HD11	1:B:179:ALA:CB	2.47	0.45
1:B:230:SER:HB3	1:B:233:PRO:HG3	1.98	0.45
1:B:224:ARG:O	1:B:268:ILE:HG13	2.15	0.45
1:A:61:TRP:CH2	1:A:78:HIS:HB2	2.51	0.45
1:A:225:VAL:HG13	1:A:267:ILE:HG23	1.99	0.45
1:B:56:CYS:C	1:B:58:PRO:HD2	2.37	0.45
1:B:214:GLN:HA	1:B:217:ILE:HD12	1.98	0.45
1:A:252:GLN:CA	1:A:257:ILE:HG23	2.45	0.45
1:B:199:ARG:O	1:B:203:ILE:HG13	2.17	0.45
1:A:103:LYS:HG2	1:B:177:GLN:CD	2.38	0.45
1:B:231:ARG:NE	1:B:263:ARG:HH22	2.15	0.45
1:B:179:ALA:HA	1:B:182:ILE:HD12	1.99	0.45
1:A:170:GLU:HB3	1:A:171:HIS:CD2	2.53	0.44
1:A:268:ILE:N	1:A:268:ILE:CD1	2.80	0.44
1:B:68:LEU:CB	1:B:73:ILE:HD11	2.47	0.44
1:A:85:GLU:CD	1:A:107:ARG:NE	2.70	0.44
1:B:74:LEU:O	1:B:86:ALA:HA	2.17	0.44
1:B:89:ILE:HD13	1:B:92:GLU:CA	2.48	0.44
1:B:251:ILE:HD12	1:B:252:GLN:C	2.38	0.44
1:B:62:GLN:O	1:B:77:VAL:N	2.50	0.44
1:B:252:GLN:OE1	1:B:255:SER:HA	2.17	0.44
1:A:125:THR:HG22	2:B:301:2SQ:C57	2.47	0.44
1:B:180:VAL:HG12	1:B:184:ASN:HD21	1.82	0.44

Continued on next page...

Continued from previous page...

Atom-1	Atom-2	Interatomic distance (Å)	Clash overlap (Å)
1:B:60:ILE:HG12	1:B:112:THR:OG1	2.17	0.44
1:B:194:TYR:O	1:B:195:SER:CB	2.66	0.44
1:A:61:TRP:CD2	1:A:78:HIS:HB2	2.53	0.44
1:A:72:VAL:O	1:A:89:ILE:HG12	2.18	0.44
1:A:176:VAL:O	1:A:180:VAL:HG23	2.18	0.44
1:A:188:LYS:N	1:A:195:SER:HB3	2.31	0.44
1:A:95:GLN:CG	2:B:301:2SQ:H15	2.47	0.44
1:B:81:SER:HB2	1:B:200:ILE:CA	2.48	0.43
1:B:244:LYS:HD3	1:B:245:GLY:O	2.18	0.43
1:A:100:PHE:HA	1:A:103:LYS:HG3	1.99	0.43
1:A:138:GLU:O	1:A:139:PHE:C	2.56	0.43
1:A:72:VAL:O	1:A:89:ILE:CG1	2.66	0.43
1:B:104:LEU:HA	1:B:107:ARG:CZ	2.48	0.43
1:B:214:GLN:O	1:B:217:ILE:HB	2.17	0.43
1:A:158:LEU:O	1:A:162:ILE:HG13	2.19	0.43
1:B:269:ARG:NH1	1:B:272:GLY:HA2	2.34	0.43
1:A:75:VAL:HB	1:A:86:ALA:HB2	2.01	0.43
1:B:252:GLN:HE21	1:B:252:GLN:HB3	1.49	0.43
1:B:242:LEU:HD23	1:B:242:LEU:N	2.33	0.43
1:B:68:LEU:HD12	1:B:69:GLU:N	2.33	0.43
1:B:158:LEU:CD1	1:B:179:ALA:HB1	2.47	0.43
1:A:83:TYR:C	1:A:84:ILE:HD13	2.39	0.43
1:A:94:GLY:O	1:A:97:THR:CB	2.66	0.43
1:B:150:VAL:O	1:B:154:MET:HG2	2.19	0.43
1:B:146:GLN:HG3	1:B:147:SER:N	2.34	0.43
1:B:260:VAL:HG11	1:B:264:LYS:HG2	1.99	0.43
1:A:133:ALA:HB3	1:A:135:ILE:HB	2.00	0.42
1:B:60:ILE:HA	1:B:112:THR:O	2.19	0.42
1:A:130:CYS:HB3	1:A:135:ILE:HG22	2.00	0.42
1:B:96:GLU:OE1	1:B:96:GLU:HA	2.18	0.42
1:B:241:LEU:O	1:B:241:LEU:HD23	2.19	0.42
1:A:148:GLN:HA	1:A:151:ILE:HD12	2.01	0.42
1:B:191:ILE:HD12	1:B:191:ILE:N	2.35	0.42
1:A:67:HIS:ND1	1:A:67:HIS:N	2.65	0.42
1:A:268:ILE:HD12	1:A:268:ILE:H	1.80	0.42
1:B:214:GLN:HA	1:B:217:ILE:CD1	2.49	0.42
1:A:241:LEU:O	1:A:241:LEU:HG	2.19	0.42
1:B:94:GLY:HA2	1:B:120:ASN:HB3	2.01	0.42
1:A:101:LEU:HD23	1:A:101:LEU:O	2.19	0.42
1:B:99:TYR:CD2	1:B:103:LYS:NZ	2.88	0.42
1:B:221:GLN:HG3	1:B:222:ASN:N	2.34	0.42

Continued on next page...

Continued from previous page...

Atom-1	Atom-2	Interatomic distance (Å)	Clash overlap (Å)
1:A:225:VAL:HG13	1:A:267:ILE:CG1	2.49	0.42
1:B:169:ALA:CB	1:B:175:ALA:HB2	2.49	0.42
1:B:225:VAL:CG2	1:B:251:ILE:HG21	2.45	0.42
1:A:187:ARG:CZ	1:A:198:GLU:OE2	2.68	0.42
1:A:257:ILE:HD13	1:A:257:ILE:N	2.35	0.42
1:B:88:VAL:HG21	1:B:173:LYS:HA	2.02	0.42
1:B:245:GLY:C	1:B:248:ALA:HB3	2.40	0.42
1:A:127:LYS:HA	1:A:130:CYS:SG	2.60	0.41
1:B:76:ALA:CB	1:B:85:GLU:O	2.67	0.41
1:B:118:GLY:HA3	1:B:122:THR:HG23	2.01	0.41
1:B:227:TYR:O	1:B:227:TYR:CG	2.73	0.41
1:B:227:TYR:CE2	1:B:229:ASP:HB2	2.55	0.41
1:A:229:ASP:HB2	1:A:236:LYS:HD2	2.03	0.41
1:A:158:LEU:HA	1:A:161:ILE:HD12	2.02	0.41
1:A:197:GLY:O	1:A:199:ARG:CD	2.68	0.41
2:A:301:2SQ:H23	2:A:301:2SQ:C41	2.51	0.41
1:B:239:ALA:CB	1:B:252:GLN:O	2.64	0.41
2:A:301:2SQ:C24	2:A:301:2SQ:C33	2.98	0.41
1:A:151:ILE:O	1:A:154:MET:HB2	2.20	0.41
1:A:227:TYR:CD1	1:A:236:LYS:HB2	2.56	0.41
1:A:81:SER:HB3	1:A:200:ILE:HG23	2.02	0.41
1:A:117:ASN:HD21	1:A:119:SER:CB	2.34	0.41
1:A:225:VAL:CG2	1:A:267:ILE:HG23	2.41	0.41
1:B:196:ALA:O	1:B:199:ARG:HB2	2.21	0.41
1:B:257:ILE:HD13	1:B:257:ILE:N	2.36	0.41
1:B:61:TRP:CZ2	1:B:108:TRP:CD1	3.09	0.41
1:A:231:ARG:N	1:A:231:ARG:NE	2.70	0.40
1:A:57:SER:N	1:A:58:PRO:CD	2.84	0.40
1:A:76:ALA:O	1:A:84:ILE:HA	2.21	0.40
1:B:225:VAL:HG23	1:B:239:ALA:O	2.21	0.40
1:A:225:VAL:HG22	1:A:267:ILE:CG2	2.41	0.40

All (1) symmetry-related close contacts are listed below. The label for Atom-2 includes the symmetry operator and encoded unit-cell translations to be applied.

Atom-1	Atom-2	Interatomic distance (Å)	Clash overlap (Å)
1:A:168:GLN:HE21	1:B:269:ARG:H[10_443]	1.20	0.40

5.3 Torsion angles

5.3.1 Protein backbone

In the following table, the Percentiles column shows the percent Ramachandran outliers of the chain as a percentile score with respect to all X-ray entries followed by that with respect to entries of similar resolution.

The Analysed column shows the number of residues for which the backbone conformation was analysed, and the total number of residues.

Mol	Chain	Analysed	Favoured	Allowed	Outliers	Percentiles	
1	A	203/293 (69%)	197 (97%)	5 (2%)	1 (0%)	25	63
1	B	207/293 (71%)	201 (97%)	5 (2%)	1 (0%)	25	63
All	All	410/586 (70%)	398 (97%)	10 (2%)	2 (0%)	25	63

All (2) Ramachandran outliers are listed below:

Mol	Chain	Res	Type
1	B	195	SER
1	A	254	ASN

5.3.2 Protein sidechains

In the following table, the Percentiles column shows the percent sidechain outliers of the chain as a percentile score with respect to all X-ray entries followed by that with respect to entries of similar resolution.

The Analysed column shows the number of residues for which the sidechain conformation was analysed, and the total number of residues.

Mol	Chain	Analysed	Rotameric	Outliers	Percentiles	
1	A	178/244 (73%)	125 (70%)	53 (30%)	0	2
1	B	179/244 (73%)	139 (78%)	40 (22%)	1	5
All	All	357/488 (73%)	264 (74%)	93 (26%)	0	3

All (93) residues with a non-rotameric sidechain are listed below:

Mol	Chain	Res	Type
1	A	65	CYS
1	A	66	THR
1	A	67	HIS
1	A	71	LYS

Continued on next page...

Continued from previous page...

Mol	Chain	Res	Type
1	A	73	ILE
1	A	74	LEU
1	A	75	VAL
1	A	81	SER
1	A	93	THR
1	A	97	THR
1	A	100	PHE
1	A	102	LEU
1	A	103	LYS
1	A	108	TRP
1	A	119	SER
1	A	123	SER
1	A	135	ILE
1	A	136	LYS
1	A	137	GLN
1	A	138	GLU
1	A	153	SER
1	A	156	LYS
1	A	157	GLU
1	A	159	LYS
1	A	185	HIS
1	A	194	TYR
1	A	195	SER
1	A	199	ARG
1	A	200	ILE
1	A	201	VAL
1	A	202	ASP
1	A	203	ILE
1	A	209	GLN
1	A	213	LEU
1	A	214	GLN
1	A	216	GLN
1	A	219	LYS
1	A	220	ILE
1	A	227	TYR
1	A	232	ASP
1	A	236	LYS
1	A	241	LEU
1	A	246	GLU
1	A	252	GLN
1	A	253	ASP
1	A	257	ILE

Continued on next page...

Continued from previous page...

Mol	Chain	Res	Type
1	A	260	VAL
1	A	267	ILE
1	A	270	ASP
1	A	271	TYR
1	A	273	LYS
1	A	274	GLN
1	A	275	MET
1	B	67	HIS
1	B	74	LEU
1	B	85	GLU
1	B	92	GLU
1	B	96	GLU
1	B	107	ARG
1	B	108	TRP
1	B	111	LYS
1	B	123	SER
1	B	130	CYS
1	B	135	ILE
1	B	136	LYS
1	B	148	GLN
1	B	153	SER
1	B	160	LYS
1	B	172	LEU
1	B	173	LYS
1	B	186	LYS
1	B	201	VAL
1	B	202	ASP
1	B	206	THR
1	B	207	ASP
1	B	211	LYS
1	B	215	LYS
1	B	218	THR
1	B	221	GLN
1	B	222	ASN
1	B	224	ARG
1	B	242	LEU
1	B	244	LYS
1	B	246	GLU
1	B	252	GLN
1	B	257	ILE
1	B	259	VAL
1	B	262	ARG

Continued on next page...

Continued from previous page...

Mol	Chain	Res	Type
1	B	263	ARG
1	B	264	LYS
1	B	271	TYR
1	B	273	LYS
1	B	275	MET

Sometimes sidechains can be flipped to improve hydrogen bonding and reduce clashes. All (11) such sidechains are listed below:

Mol	Chain	Res	Type
1	A	120	ASN
1	A	137	GLN
1	A	146	GLN
1	A	184	ASN
1	A	214	GLN
1	A	216	GLN
1	B	120	ASN
1	B	146	GLN
1	B	155	ASN
1	B	164	GLN
1	B	252	GLN

5.3.3 RNA [i](#)

There are no RNA molecules in this entry.

5.4 Non-standard residues in protein, DNA, RNA chains [i](#)

There are no non-standard protein/DNA/RNA residues in this entry.

5.5 Carbohydrates [i](#)

There are no oligosaccharides in this entry.

5.6 Ligand geometry [i](#)

2 ligands are modelled in this entry.

In the following table, the Counts columns list the number of bonds (or angles) for which Mogul statistics could be retrieved, the number of bonds (or angles) that are observed in the model and

the number of bonds (or angles) that are defined in the Chemical Component Dictionary. The Link column lists molecule types, if any, to which the group is linked. The Z score for a bond length (or angle) is the number of standard deviations the observed value is removed from the expected value. A bond length (or angle) with $|Z| > 2$ is considered an outlier worth inspection. RMSZ is the root-mean-square of all Z scores of the bond lengths (or angles).

Mol	Type	Chain	Res	Link	Bond lengths			Bond angles		
					Counts	RMSZ	# Z > 2	Counts	RMSZ	# Z > 2
2	2SQ	B	301	-	34,36,36	1.83	8 (23%)	44,55,55	1.68	12 (27%)
2	2SQ	A	301	-	34,36,36	1.80	8 (23%)	44,55,55	1.77	14 (31%)

In the following table, the Chirals column lists the number of chiral outliers, the number of chiral centers analysed, the number of these observed in the model and the number defined in the Chemical Component Dictionary. Similar counts are reported in the Torsion and Rings columns. '-' means no outliers of that kind were identified.

Mol	Type	Chain	Res	Link	Chirals	Torsions	Rings
2	2SQ	B	301	-	-	7/17/24/24	0/4/4/4
2	2SQ	A	301	-	-	6/17/24/24	0/4/4/4

All (16) bond length outliers are listed below:

Mol	Chain	Res	Type	Atoms	Z	Observed(Å)	Ideal(Å)
2	B	301	2SQ	C22-C23	-4.76	1.43	1.49
2	A	301	2SQ	C22-C23	-4.55	1.43	1.49
2	A	301	2SQ	C01-C05	-3.82	1.44	1.51
2	B	301	2SQ	C01-C05	-3.72	1.44	1.51
2	A	301	2SQ	C07-C06	-3.56	1.46	1.51
2	B	301	2SQ	C07-C06	-3.44	1.46	1.51
2	A	301	2SQ	C61-C23	-3.20	1.38	1.47
2	B	301	2SQ	C52-C50	-3.20	1.41	1.47
2	B	301	2SQ	C61-C23	-3.19	1.38	1.47
2	A	301	2SQ	C06-C05	-3.11	1.35	1.40
2	A	301	2SQ	C52-C50	-3.04	1.41	1.47
2	B	301	2SQ	C06-C05	-2.96	1.35	1.40
2	B	301	2SQ	C50-N45	-2.72	1.34	1.39
2	A	301	2SQ	C50-N45	-2.65	1.34	1.39
2	B	301	2SQ	F19-C18	2.59	1.42	1.35
2	A	301	2SQ	F19-C18	2.21	1.41	1.35

All (26) bond angle outliers are listed below:

Mol	Chain	Res	Type	Atoms	Z	Observed(°)	Ideal(°)
2	A	301	2SQ	O16-C17-C06	3.70	126.40	121.08
2	B	301	2SQ	O16-C17-C06	3.55	126.19	121.08
2	A	301	2SQ	C59-C61-C52	-3.34	115.51	119.26
2	B	301	2SQ	C59-C61-C52	-3.33	115.52	119.26
2	A	301	2SQ	C01-C05-C22	-3.20	117.52	122.29
2	A	301	2SQ	C61-C52-C50	-2.99	117.44	120.95
2	A	301	2SQ	C07-C06-C17	-2.94	117.27	120.36
2	A	301	2SQ	C05-C22-C23	2.82	126.45	121.06
2	B	301	2SQ	C61-C52-C50	-2.80	117.66	120.95
2	B	301	2SQ	C46-N45-C50	-2.64	113.97	117.54
2	B	301	2SQ	C07-C06-C17	-2.63	117.60	120.36
2	B	301	2SQ	C01-C05-C22	-2.61	118.39	122.29
2	B	301	2SQ	O27-C25-C41	-2.56	102.22	109.46
2	B	301	2SQ	C05-C22-C23	2.54	125.90	121.06
2	B	301	2SQ	C52-C61-C23	2.49	122.21	117.98
2	A	301	2SQ	C52-C50-N45	2.41	119.18	116.26
2	A	301	2SQ	C53-C52-C61	2.41	121.97	119.26
2	A	301	2SQ	C52-C61-C23	2.41	122.06	117.98
2	A	301	2SQ	F19-C18-C17	2.33	120.71	117.62
2	B	301	2SQ	C57-C59-C61	2.29	123.94	119.80
2	A	301	2SQ	C57-C59-C61	2.29	123.93	119.80
2	B	301	2SQ	C53-C52-C61	2.28	121.81	119.26
2	A	301	2SQ	C20-C22-C05	-2.24	117.86	120.43
2	B	301	2SQ	C52-C50-N45	2.22	118.94	116.26
2	A	301	2SQ	C20-C22-C23	-2.05	115.45	118.97
2	A	301	2SQ	C61-C23-C24	-2.01	116.83	119.60

There are no chirality outliers.

All (13) torsion outliers are listed below:

Mol	Chain	Res	Type	Atoms
2	A	301	2SQ	C22-C23-C61-C52
2	A	301	2SQ	C22-C23-C61-C59
2	A	301	2SQ	C24-C23-C61-C52
2	A	301	2SQ	C24-C23-C61-C59
2	A	301	2SQ	C24-C25-C41-O44
2	B	301	2SQ	C22-C23-C61-C52
2	B	301	2SQ	C22-C23-C61-C59
2	B	301	2SQ	C24-C23-C61-C52
2	B	301	2SQ	C24-C23-C61-C59
2	B	301	2SQ	C24-C25-C41-O44
2	B	301	2SQ	C24-C25-C41-O42
2	A	301	2SQ	C24-C25-C41-O42

Continued on next page...

Continued from previous page...

Mol	Chain	Res	Type	Atoms
2	B	301	2SQ	C41-C25-O27-C28

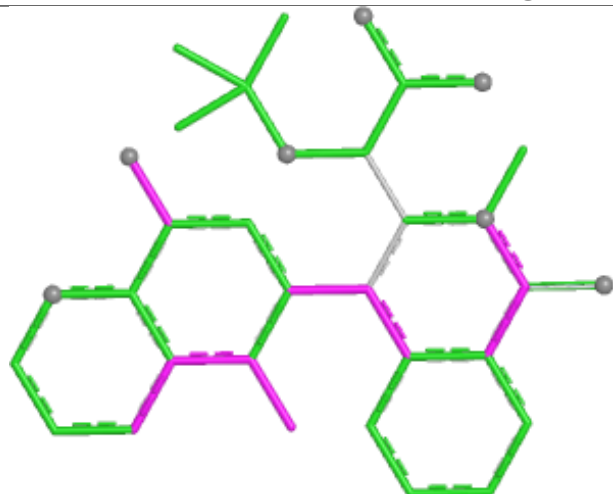
There are no ring outliers.

2 monomers are involved in 13 short contacts:

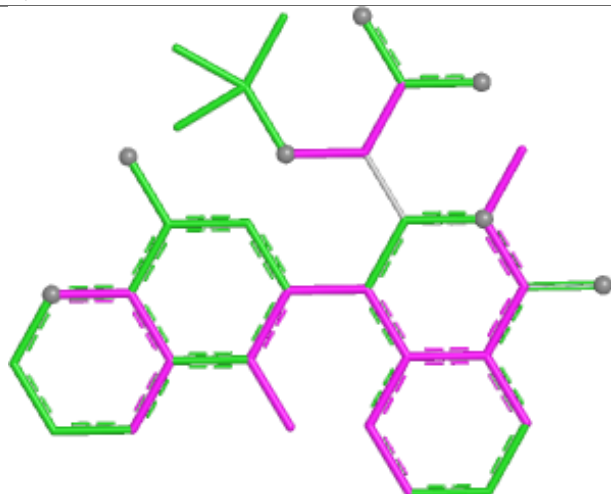
Mol	Chain	Res	Type	Clashes	Symm-Clashes
2	B	301	2SQ	7	0
2	A	301	2SQ	6	0

The following is a two-dimensional graphical depiction of Mogul quality analysis of bond lengths, bond angles, torsion angles, and ring geometry for all instances of the Ligand of Interest. In addition, ligands with molecular weight > 250 and outliers as shown on the validation Tables will also be included. For torsion angles, if less than 5% of the Mogul distribution of torsion angles is within 10 degrees of the torsion angle in question, then that torsion angle is considered an outlier. Any bond that is central to one or more torsion angles identified as an outlier by Mogul will be highlighted in the graph. For rings, the root-mean-square deviation (RMSD) between the ring in question and similar rings identified by Mogul is calculated over all ring torsion angles. If the average RMSD is greater than 60 degrees and the minimal RMSD between the ring in question and any Mogul-identified rings is also greater than 60 degrees, then that ring is considered an outlier. The outliers are highlighted in purple. The color gray indicates Mogul did not find sufficient equivalents in the CSD to analyse the geometry.

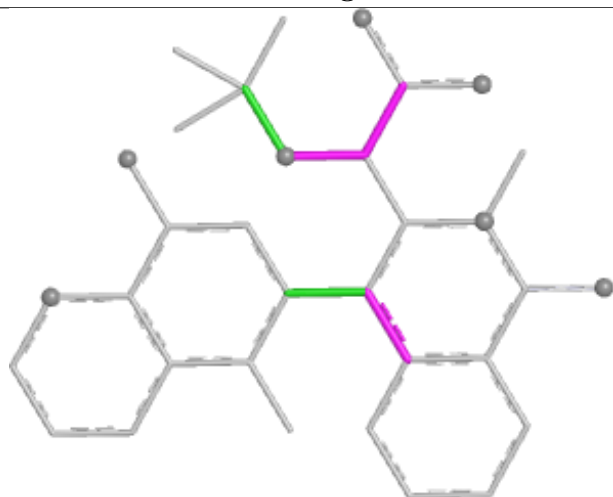
Ligand 2SQ B 301



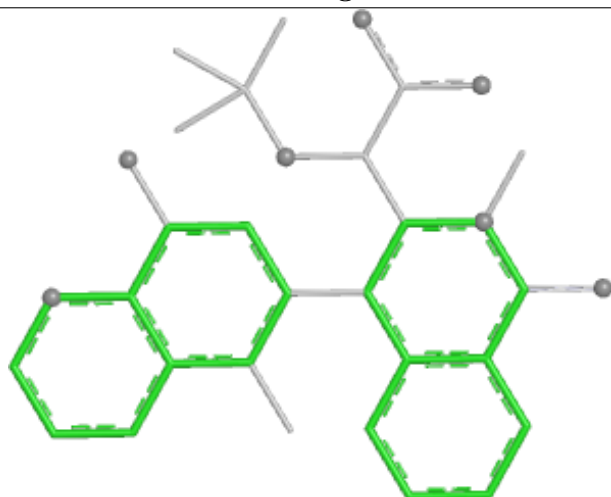
Bond lengths



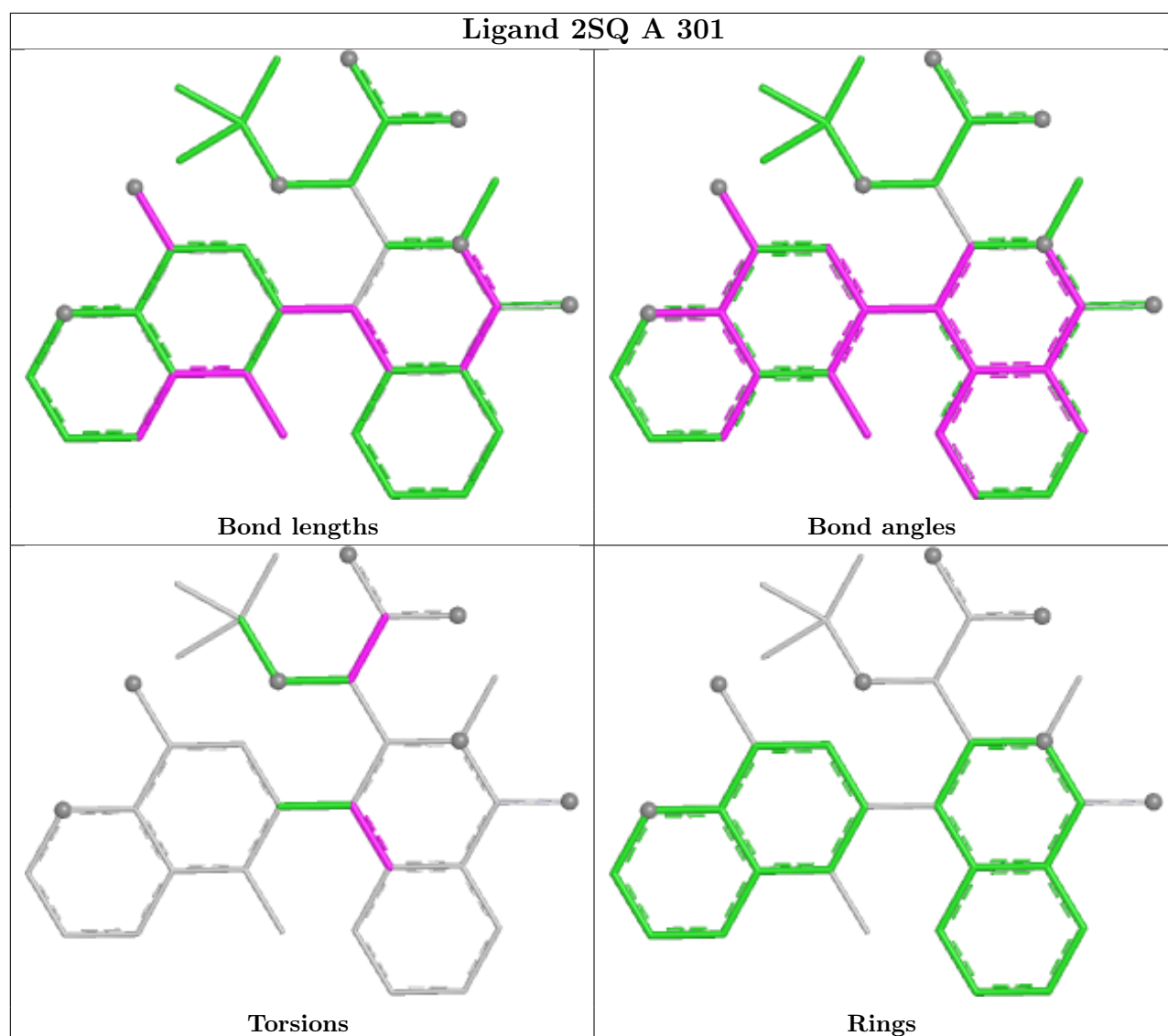
Bond angles



Torsions



Rings



5.7 Other polymers [i](#)

There are no such residues in this entry.

5.8 Polymer linkage issues [i](#)

There are no chain breaks in this entry.

6 Fit of model and data [i](#)

6.1 Protein, DNA and RNA chains [i](#)

In the following table, the column labelled ‘#RSRZ> 2’ contains the number (and percentage) of RSRZ outliers, followed by percent RSRZ outliers for the chain as percentile scores relative to all X-ray entries and entries of similar resolution. The OWAB column contains the minimum, median, 95th percentile and maximum values of the occupancy-weighted average B-factor per residue. The column labelled ‘Q< 0.9’ lists the number of (and percentage) of residues with an average occupancy less than 0.9.

Mol	Chain	Analysed	<RSRZ>	#RSRZ>2		OWAB(Å ²)	Q<0.9
1	A	209/293 (71%)	0.08	2 (0%)	79 64	67, 221, 291, 300	3 (1%)
1	B	213/293 (72%)	0.09	3 (1%)	73 58	49, 205, 279, 300	3 (1%)
All	All	422/586 (72%)	0.09	5 (1%)	76 61	49, 213, 288, 300	6 (1%)

All (5) RSRZ outliers are listed below:

Mol	Chain	Res	Type	RSRZ
1	B	121	PHE	3.2
1	B	182	ILE	2.7
1	A	97	THR	2.2
1	A	226	TYR	2.1
1	B	109	PRO	2.0

6.2 Non-standard residues in protein, DNA, RNA chains [i](#)

There are no non-standard protein/DNA/RNA residues in this entry.

6.3 Carbohydrates [i](#)

There are no monosaccharides in this entry.

6.4 Ligands [i](#)

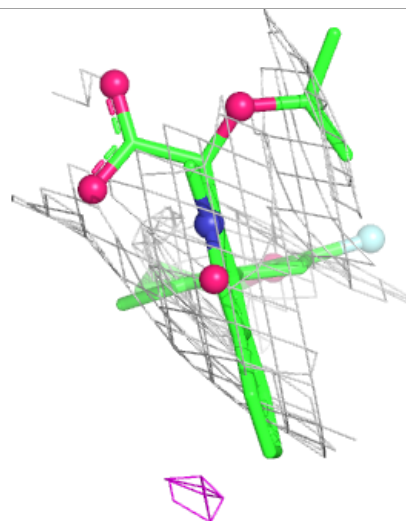
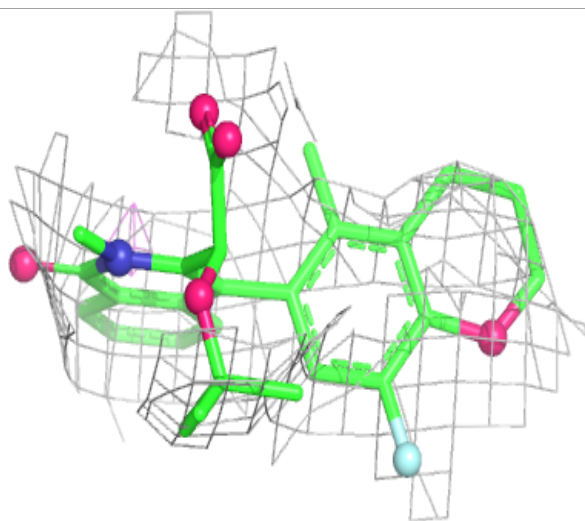
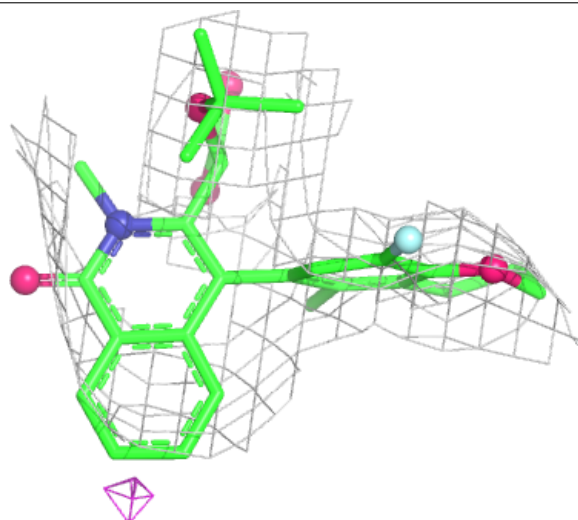
In the following table, the Atoms column lists the number of modelled atoms in the group and the number defined in the chemical component dictionary. The B-factors column lists the minimum, median, 95th percentile and maximum values of B factors of atoms in the group. The column labelled ‘Q< 0.9’ lists the number of atoms with occupancy less than 0.9.

Mol	Type	Chain	Res	Atoms	RSCC	RSR	B-factors(\AA^2)	Q<0.9
2	2SQ	A	301	33/33	0.94	0.17	192,192,192,192	0
2	2SQ	B	301	33/33	0.95	0.15	199,199,199,199	0

The following is a graphical depiction of the model fit to experimental electron density of all instances of the Ligand of Interest. In addition, ligands with molecular weight > 250 and outliers as shown on the geometry validation Tables will also be included. Each fit is shown from different orientation to approximate a three-dimensional view.

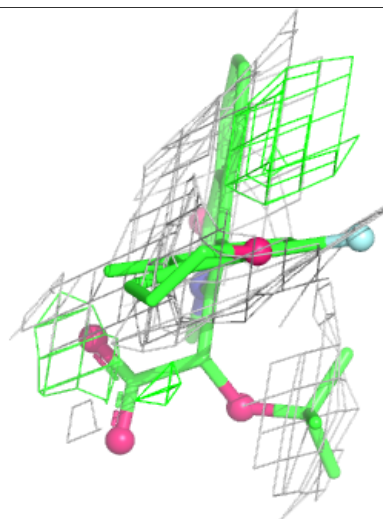
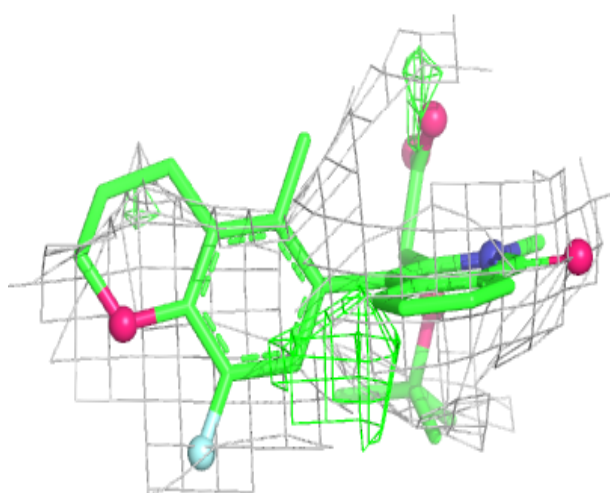
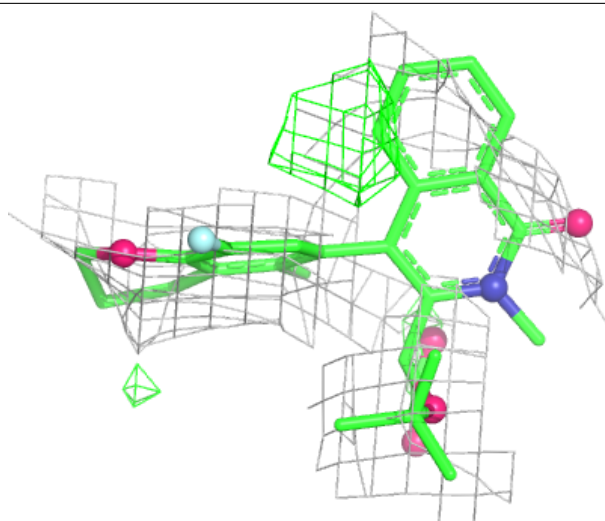
Electron density around 2SQ A 301:

$2mF_o-DF_c$ (at 0.7 rmsd) in gray
 mF_o-DF_c (at 3 rmsd) in purple (negative)
 and green (positive)



Electron density around 2SQ B 301:

$2mF_o-DF_c$ (at 0.7 rmsd) in gray
 mF_o-DF_c (at 3 rmsd) in purple (negative)
and green (positive)



6.5 Other polymers [i](#)

There are no such residues in this entry.