



Full wwPDB EM Validation Report ⓘ

Nov 16, 2024 – 08:02 AM EST

PDB ID : 8V0G
EMDB ID : EMD-42854
Title : plasmodium falciparum Niemann-Pick type C1-related protein form I
Authors : Zhang, Z.; Lyu, M.
Deposited on : 2023-11-17
Resolution : 3.11 Å (reported)

This is a Full wwPDB EM Validation Report for a publicly released PDB entry.

We welcome your comments at validation@mail.wwpdb.org

A user guide is available at

<https://www.wwpdb.org/validation/2017/EMValidationReportHelp>

with specific help available everywhere you see the ⓘ symbol.

The types of validation reports are described at

<http://www.wwpdb.org/validation/2017/FAQs#types>.

The following versions of software and data (see [references ⓘ](#)) were used in the production of this report:

EMDB validation analysis : 0.0.1.dev113
Mogul : 2022.3.0, CSD as543be (2022)
MolProbity : 4.02b-467
buster-report : 1.1.7 (2018)
Percentile statistics : 20231227.v01 (using entries in the PDB archive December 27th 2023)
MapQ : 1.9.13
Ideal geometry (proteins) : Engh & Huber (2001)
Ideal geometry (DNA, RNA) : Parkinson et al. (1996)
Validation Pipeline (wwPDB-VP) : 2.39

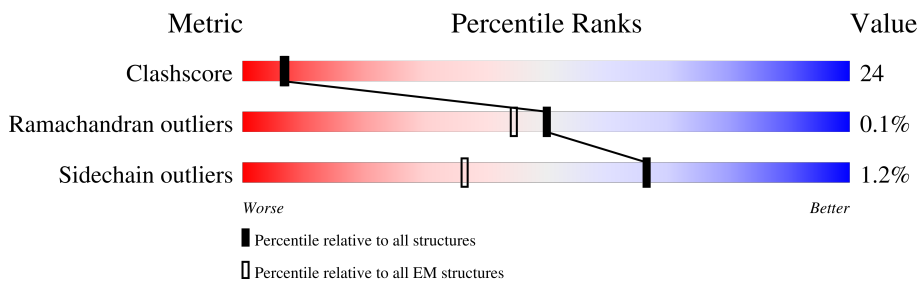
1 Overall quality at a glance i

The following experimental techniques were used to determine the structure:

ELECTRON MICROSCOPY

The reported resolution of this entry is 3.11 Å.

Percentile scores (ranging between 0-100) for global validation metrics of the entry are shown in the following graphic. The table shows the number of entries on which the scores are based.



Metric	Whole archive (#Entries)	EM structures (#Entries)
Clashscore	210492	15764
Ramachandran outliers	207382	16835
Sidechain outliers	206894	16415

The table below summarises the geometric issues observed across the polymeric chains and their fit to the map. The red, orange, yellow and green segments of the bar indicate the fraction of residues that contain outliers for ≥ 3 , 2, 1 and 0 types of geometric quality criteria respectively. A grey segment represents the fraction of residues that are not modelled. The numeric value for each fraction is indicated below the corresponding segment, with a dot representing fractions $\leq 5\%$. The upper red bar (where present) indicates the fraction of residues that have poor fit to the EM map (all-atom inclusion $< 40\%$). The numeric value is given above the bar.

Mol	Chain	Length	Quality of chain
1	A	1470	

2 Entry composition [i](#)

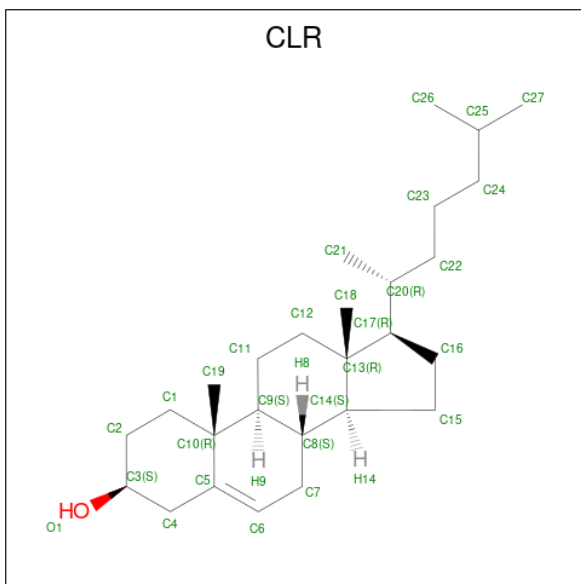
There are 3 unique types of molecules in this entry. The entry contains 8106 atoms, of which 0 are hydrogens and 0 are deuteriums.

In the tables below, the AltConf column contains the number of residues with at least one atom in alternate conformation and the Trace column contains the number of residues modelled with at most 2 atoms.

- Molecule 1 is a protein called Niemann-Pick type C1-related protein.

Mol	Chain	Residues	Atoms					AltConf	Trace
			Total	C	N	O	S		
1	A	985	8050	5285	1266	1454	45	0	0

- Molecule 2 is CHOLESTEROL (three-letter code: CLR) (formula: $C_{27}H_{46}O$) (labeled as "Ligand of Interest" by depositor).



Mol	Chain	Residues	Atoms			AltConf
			Total	C	O	
2	A	1	28	27	1	0

- Molecule 3 is 2-acetamido-2-deoxy-beta-D-glucopyranose (three-letter code: NAG) (formula: $C_8H_{15}NO_6$).

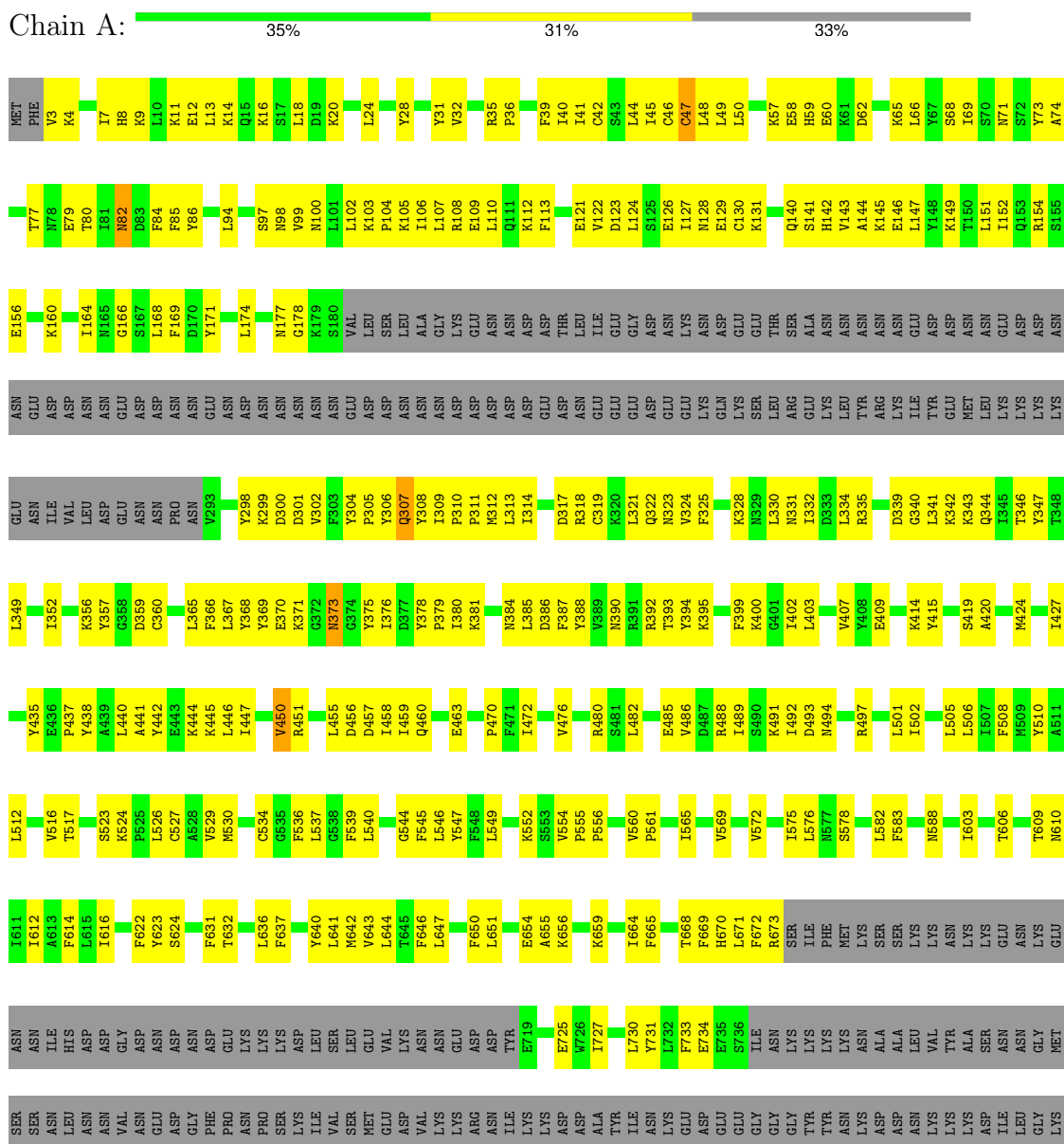


Mol	Chain	Residues	Atoms				AltConf
			Total	C	N	O	
3	A	1	Total	C	N	O	0
			14	8	1	5	
3	A	1	Total	C	N	O	0
			14	8	1	5	

3 Residue-property plots i

These plots are drawn for all protein, RNA, DNA and oligosaccharide chains in the entry. The first graphic for a chain summarises the proportions of the various outlier classes displayed in the second graphic. The second graphic shows the sequence view annotated by issues in geometry and atom inclusion in map density. Residues are color-coded according to the number of geometric quality criteria for which they contain at least one outlier: green = 0, yellow = 1, orange = 2 and red = 3 or more. A red diamond above a residue indicates a poor fit to the EM map for this residue (all-atom inclusion < 40%). Stretches of 2 or more consecutive residues without any outlier are shown as a green connector. Residues present in the sample, but not in the model, are shown in grey.

- Molecule 1: Niemann-Pick type C1-related protein



H1394	H1312	N1218	Y1146	N1055	PRO	ARG	LYS
S1395	H1313	L1222	R1147	I1056	ASN	PRO	GLN
M1396	L1317	L1222	G1148	G1057	PRO	PRO	LYS
R1398	I1318	N1227	E1149	K1058	SER	SER	LYS
T1399	I1318	N1227	L1150	K1058	ASN	SER	ASN
R1400	I1322	P1226	E1150	F1060	ASP	ASP	ASN
R1400	I1322	Q1228	K1151	F1060	GLU	GLU	ASN
D1401	I1323	Q1228	K1151	R1061	ASN	GLU	ASN
E1402	I1324	E1229	ASN	S1062	VAL	TYR	ASN
K1403	I1324	F1230	THR	L1063	VAL	LYS	VAL
M1404	I1327	F1230	LYS	V1064	THR	GLU	THR
M1404	I1327	E1232	GLU	V1064	GLU	GLU	LEU
K1405	I1327	E1232	ALA	Y1067	VAL	LYS	VAL
L1410	T1331	I1233	ALA	Y1068	THR	LYS	VAL
M1411	A1352	F1234	ALA	Y1068	THR	ASP	SER
I1412	Y1333	F1242	SER	Y1069	THR	LYS	SER
I1412	Y1333	F1242	SER	V1069	MET	LYS	LYS
H1417	I1334	F1242	PHE	P1070	VAL	ASN	LYS
S1418	I1335	L1246	LEU	F1071	TYR	LYS	GLY
G1419	I1336	L1246	LEU	L1072	TYR	LYS	GLY
W1423	K1336	F1247	TYR	L1072	ASN	ILE	GLU
W1423	K1336	K1248	SER	F1076	ASN	ASN	ASP
I1426	Y1339	N1249	ASP	G1077	THR	ILE	ASN
S1427	S1340	N1254	LEU	K1078	ASP	LEU	GLU
F1430	S1340	L1254	LEU	K1078	THR	LEU	LEU
D1435	W1341	L1254	THR	I1079	ASN	ASN	LEU
V1438	W1341	N1255	THR	I1079	ASP	ASP	ASP
F1441	I1342	G1256	ASP	I1080	VAL	VAL	VAL
Q1442	I1343	G1256	ARG	I1080	PHE	PHE	VAL
S1451	I1344	W1261	I1169	I1083	ASN	ASN	TYR
I1452	I1347	Y1265	I1170	M1084	LYS	ASN	TYR
T1453	I1347	Y1265	I1170	M1084	LYS	ASP	GLU
S1456	L1350	Y1266	S1173	F1085	GLU	ILE	ASN
M1457	L1350	F1266	P1174	T1086	GLU	ILE	ASN
F1458	I1351	Q1267	K1175	I1087	LYS	ILE	LYS
L1459	D1352	V1270	I1176	I1087	GLN	ILE	ASP
P1460	D1352	D1271	M1177	I1089	GLN	LYS	GLU
F1466	I1355	D1271	K1178	Y1094	LYS	PRO	LYS
G1467	F1356	D1272	M1184	Y1094	ASN	ASN	THR
P1468	M1359	I1275	T1185	L1098	ASN	ASN	ASN
L1469	M1359	S1276	M1186	L1098	VAL	VAL	ASN
H1470	M1366	S1277	L1187	K1104	LYS	LYS	LYS
	M1367	K1278	Q1188	K1107	ASP	LEU	LYS
	I1368	W1279	E1189	K1107	MET	ASP	LYS
	I1369	L1280	I1192	D1112	ARG	ASP	ASN
	M1371	K1281	I1193	S1113	GLY	ARG	ASN
	V1372	K1284	M1194	D1113	LEU	ASP	ASN
	I1373	Q1285	HL195	S1113	VAL	VAL	ASN
	L1376	I1286	S1200	F1116	ASP	ASP	LYS
	G1379	L1289	Q1201	T1120	MET	ASP	LYS
	G1379	H1292	E1202	F1126	ILE	ASP	LYS
	I1382	M1293	F1203	F1127	GLY	ASP	LYS
	D1383	V1294	V1204	D1128	TYR	ASP	LYS
	H1384	Q1295	S1206	F1129	THR	ASP	LYS
	T1385	I1304	V1207	F1132	TYR	ASP	LYS
	V1389	F1305	V1207	F1132	ILE	SER	LYS
	Q1390	F1305	F1211	F1138	ILE	SER	LYS
	A1391	T1212	T1212	D1139	ASN	ASN	GLY
	F1392	F1213	F1213	K1140	ASN	ASN	GLY
	S1393	T1309	F1214	H1141	LYS	ASN	ALA
		D1309	F1214	H1141	LYS	ASN	ALA
				F1142	ILE	ASN	ILE
				I1143	ILE	ASN	ILE
					LEU	ASN	LEU

4 Experimental information

Property	Value	Source
EM reconstruction method	SINGLE PARTICLE	Depositor
Imposed symmetry	POINT, Not provided	
Number of particles used	63097	Depositor
Resolution determination method	FSC 0.143 CUT-OFF	Depositor
CTF correction method	PHASE FLIPPING AND AMPLITUDE CORRECTION	Depositor
Microscope	FEI TITAN KRIOS	Depositor
Voltage (kV)	300	Depositor
Electron dose ($e^-/\text{\AA}^2$)	35.86	Depositor
Minimum defocus (nm)	800	Depositor
Maximum defocus (nm)	1500	Depositor
Magnification	81000	Depositor
Image detector	GATAN K3 BIOQUANTUM (6k x 4k)	Depositor
Maximum map value	0.867	Depositor
Minimum map value	-0.535	Depositor
Average map value	-0.001	Depositor
Map value standard deviation	0.023	Depositor
Recommended contour level	0.1	Depositor
Map size (Å)	321.00003, 321.00003, 321.00003	wwPDB
Map dimensions	300, 300, 300	wwPDB
Map angles (°)	90.0, 90.0, 90.0	wwPDB
Pixel spacing (Å)	1.07, 1.07, 1.07	Depositor

5 Model quality i

5.1 Standard geometry i

Bond lengths and bond angles in the following residue types are not validated in this section: CLR, NAG

The Z score for a bond length (or angle) is the number of standard deviations the observed value is removed from the expected value. A bond length (or angle) with $|Z| > 5$ is considered an outlier worth inspection. RMSZ is the root-mean-square of all Z scores of the bond lengths (or angles).

Mol	Chain	Bond lengths		Bond angles	
		RMSZ	# Z >5	RMSZ	# Z >5
1	A	0.33	0/8239	0.41	0/11120

There are no bond length outliers.

There are no bond angle outliers.

There are no chirality outliers.

There are no planarity outliers.

5.2 Too-close contacts i

In the following table, the Non-H and H(model) columns list the number of non-hydrogen atoms and hydrogen atoms in the chain respectively. The H(added) column lists the number of hydrogen atoms added and optimized by MolProbity. The Clashes column lists the number of clashes within the asymmetric unit, whereas Symm-Clashes lists symmetry-related clashes.

Mol	Chain	Non-H	H(model)	H(added)	Clashes	Symm-Clashes
1	A	8050	0	8078	391	0
2	A	28	0	46	7	0
3	A	28	0	26	1	0
All	All	8106	0	8150	392	0

The all-atom clashscore is defined as the number of clashes found per 1000 atoms (including hydrogen atoms). The all-atom clashscore for this structure is 24.

All (392) close contacts within the same asymmetric unit are listed below, sorted by their clash magnitude.

Atom-1	Atom-2	Interatomic distance (Å)	Clash overlap (Å)
1:A:530:MET:HB3	1:A:646:PHE:HE1	1.22	1.05

Continued on next page...

Continued from previous page...

Atom-1	Atom-2	Interatomic distance (Å)	Clash overlap (Å)
1:A:1400:ARG:HD3	1:A:1467:GLY:H	1.34	0.92
1:A:1177:ASN:HD21	1:A:1295:GLN:H	1.15	0.91
1:A:80:THR:HA	1:A:1147:ARG:HH21	1.36	0.91
1:A:517:THR:HG22	1:A:523:SER:HB3	1.57	0.85
1:A:530:MET:HB3	1:A:646:PHE:CE1	2.10	0.82
1:A:322:GLN:HB2	1:A:331:ASN:HA	1.60	0.82
1:A:312:MET:HG3	1:A:313:LEU:HD12	1.64	0.80
1:A:1128:ASP:HB3	1:A:1205:THR:HG21	1.62	0.80
1:A:609:THR:HG21	1:A:1382:ILE:HG21	1.63	0.79
1:A:69:ILE:HG13	1:A:1308:THR:HG22	1.64	0.78
1:A:313:LEU:HD11	1:A:1149:LEU:HD21	1.66	0.78
1:A:140:GLN:HB3	1:A:145:LYS:HD3	1.66	0.75
1:A:1055:ASN:HB2	1:A:1058:LYS:HB2	1.72	0.72
1:A:536:PHE:CE2	1:A:540:LEU:HD11	2.24	0.72
1:A:640:TYR:CE2	1:A:644:LEU:HD11	2.25	0.71
1:A:637:PHE:CE2	1:A:641:LEU:HD11	2.25	0.71
1:A:730:LEU:HD13	1:A:1049:TYR:HB3	1.73	0.71
1:A:328:LYS:HB3	1:A:330:LEU:HG	1.74	0.70
1:A:637:PHE:CZ	1:A:641:LEU:HD11	2.26	0.70
1:A:108:ARG:HG2	1:A:376:ILE:HG21	1.72	0.70
1:A:1052:PRO:HD2	1:A:1055:ASN:HD21	1.56	0.70
1:A:1173:SER:HB3	1:A:1176:ILE:HG12	1.73	0.69
1:A:556:PRO:HG2	1:A:624:SER:HB2	1.73	0.69
1:A:168:LEU:HD21	3:A:1502:NAG:H62	1.73	0.69
1:A:1402:GLU:O	1:A:1405:LYS:HG2	1.92	0.69
1:A:727:ILE:HG21	1:A:1410:LEU:HD11	1.76	0.68
1:A:640:TYR:CZ	1:A:644:LEU:HD11	2.28	0.68
1:A:446:LEU:O	1:A:450:VAL:HG12	1.93	0.68
1:A:31:TYR:HB3	1:A:35:ARG:NH2	2.09	0.68
1:A:1214:PHE:CE2	1:A:1222:LEU:HD21	2.30	0.67
1:A:1046:LYS:HG3	1:A:1048:ILE:HG22	1.76	0.67
1:A:609:THR:HG23	1:A:1327:ILE:HD12	1.77	0.67
1:A:575:ILE:HD11	1:A:603:ILE:HD13	1.76	0.67
1:A:1289:LEU:HB2	1:A:1294:VAL:HB	1.76	0.66
1:A:1170:ILE:HG23	1:A:1176:ILE:HG21	1.77	0.66
1:A:310:PRO:HB2	1:A:313:LEU:HD13	1.78	0.66
1:A:1399:THR:HB	1:A:1402:GLU:HG3	1.78	0.66
1:A:1419:GLY:HA3	1:A:1452:ILE:HD11	1.77	0.65
1:A:668:THR:O	1:A:671:LEU:HG	1.95	0.65
1:A:122:VAL:HG22	1:A:445:LYS:HG3	1.78	0.65
1:A:330:LEU:HB3	1:A:332:ILE:HG12	1.78	0.65

Continued on next page...

Continued from previous page...

Atom-1	Atom-2	Interatomic distance (Å)	Clash overlap (Å)
1:A:42:CYS:O	1:A:45:ILE:HG12	1.98	0.64
1:A:109:GLU:O	1:A:112:LYS:HG2	1.98	0.64
1:A:486:VAL:O	1:A:489:ILE:HG12	1.99	0.63
1:A:725:GLU:HA	1:A:1396:MET:SD	2.38	0.63
1:A:71:ASN:HD21	1:A:74:ALA:H	1.47	0.63
1:A:1056:ILE:HD12	1:A:1056:ILE:H	1.61	0.62
1:A:1369:ILE:H	1:A:1369:ILE:HD12	1.63	0.62
1:A:147:LEU:HD22	1:A:298:TYR:HB3	1.80	0.62
1:A:321:LEU:HD13	1:A:330:LEU:HD12	1.82	0.62
1:A:609:THR:HG21	1:A:1382:ILE:CG2	2.30	0.62
1:A:104:PRO:O	1:A:108:ARG:HG3	1.99	0.62
1:A:1272:ASP:HB3	1:A:1275:ILE:HG22	1.81	0.61
1:A:44:LEU:O	1:A:48:LEU:HD23	2.00	0.61
1:A:367:LEU:HA	1:A:370:GLU:HG2	1.82	0.61
1:A:1194:MET:HG3	1:A:1286:ILE:HG22	1.82	0.61
1:A:301:ASP:HB3	1:A:1254:LEU:HD21	1.83	0.60
1:A:107:LEU:HD23	1:A:376:ILE:HG23	1.83	0.60
1:A:1435:ASP:O	1:A:1438:VAL:HG12	2.02	0.60
1:A:47:CYS:SG	1:A:537:LEU:HD12	2.41	0.60
1:A:357:TYR:CD2	1:A:395:LYS:HG2	2.36	0.60
1:A:517:THR:HG21	1:A:1054:GLY:O	2.01	0.60
1:A:1076:PHE:CE2	1:A:1080:ILE:HD11	2.37	0.59
1:A:375:TYR:HB2	1:A:378:TYR:CD2	2.37	0.59
1:A:1177:ASN:ND2	1:A:1295:GLN:H	1.95	0.59
1:A:1347:ILE:HG13	1:A:1459:LEU:HD13	1.84	0.59
1:A:31:TYR:HB3	1:A:35:ARG:HH22	1.66	0.59
1:A:1094:TYR:CE2	1:A:1098:LEU:HD11	2.38	0.59
1:A:643:VAL:HG13	1:A:647:LEU:HD23	1.85	0.59
1:A:324:VAL:HG21	1:A:438:TYR:CE1	2.37	0.59
1:A:1146:TYR:O	1:A:1149:LEU:HG	2.03	0.59
1:A:28:TYR:HA	1:A:31:TYR:HD2	1.67	0.59
1:A:1356:PHE:O	1:A:1359:MET:HG2	2.02	0.59
1:A:127:ILE:HD11	1:A:347:TYR:HE2	1.67	0.58
1:A:304:TYR:HA	1:A:305:PRO:C	2.22	0.58
1:A:1064:VAL:HG12	1:A:1069:VAL:HG23	1.85	0.58
1:A:1339:TYR:O	1:A:1342:VAL:HG22	2.03	0.58
1:A:1060:PHE:HE2	1:A:1412:ILE:HG23	1.69	0.58
1:A:142:HIS:O	1:A:146:GLU:HG3	2.02	0.58
1:A:1344:ILE:HG12	1:A:1389:VAL:HG21	1.85	0.58
1:A:407:VAL:HB	1:A:419:SER:HB3	1.86	0.58
1:A:166:GLY:HA2	1:A:169:PHE:CD2	2.39	0.57

Continued on next page...

Continued from previous page...

Atom-1	Atom-2	Interatomic distance (Å)	Clash overlap (Å)
1:A:488:ARG:O	1:A:491:LYS:HG2	2.04	0.57
1:A:1247:PHE:CZ	2:A:1501:CLR:H14	2.39	0.57
1:A:103:LYS:HD3	1:A:105:LYS:NZ	2.19	0.57
1:A:28:TYR:HA	1:A:31:TYR:CD2	2.39	0.57
1:A:301:ASP:HA	1:A:1255:ASN:HD21	1.69	0.57
1:A:84:PHE:HA	1:A:311:PRO:HD2	1.88	0.56
1:A:123:ASP:OD1	1:A:126:GLU:HG3	2.04	0.56
1:A:50:LEU:HD12	1:A:545:PHE:HB2	1.88	0.56
1:A:508:PHE:CZ	1:A:529:VAL:HG22	2.41	0.56
1:A:82:ASN:HD22	1:A:82:ASN:N	2.03	0.56
1:A:510:TYR:OH	1:A:1417:HIS:HA	2.05	0.56
1:A:366:PHE:HA	1:A:369:TYR:HD2	1.71	0.56
1:A:1150:GLU:O	1:A:1151:LYS:C	2.43	0.55
1:A:669:PHE:O	1:A:673:ARG:HG3	2.07	0.55
1:A:1207:VAL:HG12	1:A:1265:TYR:HB2	1.89	0.55
1:A:1336:LYS:HD2	1:A:1394:HIS:CE1	2.42	0.55
1:A:152:ILE:HA	1:A:309:ILE:HD11	1.89	0.55
1:A:32:VAL:HA	1:A:39:PHE:CE1	2.42	0.55
1:A:545:PHE:CE2	1:A:549:LEU:HD11	2.42	0.55
1:A:502:ILE:O	1:A:506:LEU:HG	2.07	0.54
1:A:1392:PHE:HZ	1:A:1400:ARG:HG3	1.73	0.54
1:A:8:HIS:CE1	1:A:11:LYS:HZ1	2.25	0.54
1:A:1063:LEU:HD12	1:A:1067:TYR:CD1	2.43	0.54
1:A:1379:GLY:O	1:A:1382:ILE:HG22	2.07	0.54
1:A:14:LYS:HE3	1:A:1333:TYR:O	2.07	0.54
1:A:151:LEU:HD23	1:A:154:ARG:HH11	1.71	0.54
1:A:1226:ASN:HB3	1:A:1229:GLU:HB3	1.90	0.54
1:A:387:PHE:CD2	2:A:1501:CLR:H231	2.42	0.54
1:A:1218:ASN:O	1:A:1222:LEU:HD13	2.08	0.54
1:A:31:TYR:HB3	1:A:35:ARG:CZ	2.37	0.54
1:A:384:ASN:HD21	1:A:386:ASP:HB2	1.72	0.54
1:A:730:LEU:CD1	1:A:1049:TYR:HB3	2.38	0.54
1:A:1400:ARG:HD3	1:A:1467:GLY:N	2.13	0.54
1:A:129:GLU:HG3	1:A:437:PRO:HB3	1.89	0.54
1:A:1141:HIS:NE2	1:A:1178:LYS:HG3	2.23	0.53
1:A:1214:PHE:CE1	1:A:1234:PHE:HA	2.43	0.53
1:A:1456:SER:O	1:A:1460:PRO:HG2	2.07	0.53
1:A:459:ILE:HD13	1:A:472:ILE:HG22	1.90	0.53
1:A:1149:LEU:CD1	1:A:1150:GLU:HG2	2.38	0.53
1:A:13:LEU:HA	1:A:16:LYS:HE2	1.90	0.53
1:A:731:TYR:CE1	1:A:1405:LYS:HE2	2.44	0.53

Continued on next page...

Continued from previous page...

Atom-1	Atom-2	Interatomic distance (Å)	Clash overlap (Å)
1:A:309:ILE:O	1:A:310:PRO:C	2.48	0.52
1:A:455:LEU:O	1:A:458:ILE:HG22	2.09	0.52
1:A:447:ILE:O	1:A:451:ARG:HG3	2.10	0.52
1:A:365:LEU:HD13	1:A:403:LEU:HD11	1.91	0.52
1:A:1423:TRP:HA	1:A:1426:ILE:HG12	1.90	0.52
1:A:3:VAL:O	1:A:7:ILE:HG13	2.10	0.52
1:A:485:GLU:O	1:A:489:ILE:HG23	2.08	0.52
1:A:1390:GLN:HG3	1:A:1394:HIS:HD2	1.75	0.52
1:A:545:PHE:O	1:A:549:LEU:HG	2.10	0.52
1:A:140:GLN:HB3	1:A:145:LYS:CD	2.39	0.51
1:A:371:LYS:CB	1:A:392:ARG:HB2	2.40	0.51
1:A:1331:THR:O	1:A:1334:ILE:HG13	2.10	0.51
1:A:1052:PRO:HD2	1:A:1055:ASN:ND2	2.25	0.51
1:A:94:LEU:HD13	1:A:424:MET:HB2	1.92	0.51
1:A:123:ASP:HA	1:A:346:THR:HG22	1.92	0.51
1:A:1184:ASN:HB3	1:A:1186:ASN:OD1	2.11	0.51
1:A:31:TYR:HB3	1:A:35:ARG:NH1	2.25	0.51
1:A:516:VAL:HA	1:A:523:SER:HB2	1.92	0.51
1:A:390:ASN:HB3	1:A:393:THR:OG1	2.11	0.51
1:A:357:TYR:HD2	1:A:395:LYS:HG2	1.72	0.51
1:A:1289:LEU:H	1:A:1289:LEU:HD22	1.76	0.51
1:A:147:LEU:HD23	1:A:313:LEU:HD21	1.91	0.51
1:A:373:ASN:HA	1:A:392:ARG:CZ	2.41	0.51
1:A:103:LYS:HD3	1:A:105:LYS:HZ3	1.74	0.50
1:A:384:ASN:HA	1:A:415:TYR:HE2	1.75	0.50
1:A:140:GLN:HG2	1:A:144:ALA:HB3	1.93	0.50
1:A:1076:PHE:O	1:A:1080:ILE:HG13	2.11	0.50
1:A:71:ASN:ND2	1:A:74:ALA:H	2.10	0.50
1:A:80:THR:CA	1:A:1147:ARG:HH21	2.16	0.50
1:A:583:PHE:CE2	1:A:1051:GLU:HG2	2.47	0.50
1:A:385:LEU:HG	1:A:415:TYR:CD2	2.47	0.50
1:A:1390:GLN:HG3	1:A:1394:HIS:CD2	2.46	0.50
1:A:325:PHE:CE1	1:A:352:ILE:HG23	2.47	0.49
1:A:546:LEU:CD1	1:A:631:PHE:HA	2.42	0.49
1:A:588:ASN:OD1	1:A:659:LYS:HB2	2.12	0.49
1:A:1277:SER:O	1:A:1281:LYS:HG3	2.12	0.49
1:A:1339:TYR:CE2	1:A:1343:ILE:HD11	2.47	0.49
1:A:1084:MET:O	1:A:1087:ILE:HG22	2.12	0.49
1:A:1132:PHE:CZ	2:A:1501:CLR:H21	2.47	0.49
1:A:1267:GLN:NE2	1:A:1279:TRP:HE3	2.09	0.49
1:A:1366:MET:HB2	1:A:1371:MET:SD	2.52	0.49

Continued on next page...

Continued from previous page...

Atom-1	Atom-2	Interatomic distance (Å)	Clash overlap (Å)
1:A:1339:TYR:O	1:A:1343:ILE:HG13	2.13	0.49
1:A:373:ASN:OD1	1:A:390:ASN:HA	2.13	0.49
1:A:527:CYS:SG	1:A:651:LEU:HA	2.53	0.49
1:A:622:PHE:HZ	1:A:1308:THR:HB	1.76	0.49
1:A:1084:MET:O	1:A:1088:ILE:HG13	2.13	0.49
1:A:50:LEU:O	1:A:544:GLY:HA3	2.12	0.49
1:A:123:ASP:CG	1:A:126:GLU:HG3	2.33	0.49
1:A:124:LEU:HA	1:A:127:ILE:HD13	1.94	0.49
1:A:390:ASN:HB3	1:A:393:THR:HG1	1.77	0.49
1:A:35:ARG:HG3	1:A:39:PHE:CE1	2.48	0.49
1:A:41:ILE:HG13	1:A:42:CYS:N	2.27	0.49
1:A:1189:GLU:O	1:A:1192:ILE:HG22	2.12	0.49
1:A:1242:PHE:O	1:A:1246:LEU:HG	2.12	0.49
1:A:106:ILE:HG22	1:A:110:LEU:HD23	1.95	0.48
1:A:1126:PHE:HB3	1:A:1129:PHE:HD2	1.78	0.48
1:A:1339:TYR:CD2	1:A:1468:PRO:HG3	2.48	0.48
1:A:1459:LEU:HB3	1:A:1460:PRO:HD3	1.94	0.48
1:A:1085:PHE:CZ	1:A:1453:THR:HG22	2.47	0.48
1:A:131:LYS:O	1:A:335:ARG:HA	2.13	0.48
1:A:1270:VAL:HG21	1:A:1275:ILE:HG21	1.95	0.48
1:A:339:ASP:HB3	1:A:343:LYS:NZ	2.29	0.48
1:A:390:ASN:O	1:A:394:TYR:N	2.45	0.48
1:A:1057:GLY:O	1:A:1061:ARG:HG3	2.13	0.48
1:A:41:ILE:O	1:A:45:ILE:HG23	2.13	0.48
1:A:572:VAL:HG22	1:A:647:LEU:HD22	1.95	0.48
1:A:1229:GLU:O	1:A:1233:ILE:HG12	2.13	0.48
1:A:1385:THR:HG23	1:A:1459:LEU:HD22	1.96	0.48
1:A:1142:PHE:CD1	1:A:1254:LEU:HD12	2.48	0.48
1:A:1352:ASP:HA	1:A:1355:ILE:HG12	1.95	0.48
1:A:58:GLU:OE1	1:A:552:LYS:HE2	2.14	0.48
1:A:105:LYS:HE2	1:A:458:ILE:HG13	1.96	0.48
1:A:98:ASN:HD21	1:A:470:PRO:HA	1.77	0.48
1:A:612:ILE:O	1:A:616:ILE:HG12	2.14	0.47
1:A:441:ALA:O	1:A:445:LYS:HG2	2.14	0.47
1:A:1318:ILE:O	1:A:1322:ILE:HG13	2.13	0.47
1:A:1132:PHE:HZ	2:A:1501:CLR:H21	1.80	0.47
1:A:71:ASN:ND2	1:A:73:TYR:HB3	2.29	0.47
1:A:508:PHE:CZ	1:A:529:VAL:HG13	2.49	0.47
1:A:727:ILE:HD12	1:A:730:LEU:HD23	1.97	0.47
1:A:97:SER:OG	1:A:99:VAL:HG22	2.14	0.47
1:A:302:VAL:H	1:A:1255:ASN:ND2	2.12	0.47

Continued on next page...

Continued from previous page...

Atom-1	Atom-2	Interatomic distance (Å)	Clash overlap (Å)
1:A:306:TYR:C	1:A:308:TYR:H	2.17	0.47
1:A:508:PHE:HZ	1:A:529:VAL:HG13	1.80	0.47
1:A:174:LEU:HB3	1:A:178:GLY:HA2	1.95	0.47
1:A:1176:ILE:HG23	1:A:1295:GLN:HB3	1.97	0.47
1:A:141:SER:O	1:A:144:ALA:HB3	2.15	0.47
1:A:1104:LYS:HD3	1:A:1107:LYS:HZ3	1.80	0.47
1:A:575:ILE:HD11	1:A:603:ILE:HG21	1.97	0.47
1:A:1174:PRO:O	1:A:1178:LYS:HD3	2.15	0.47
1:A:9:LYS:O	1:A:12:GLU:HB3	2.15	0.46
1:A:45:ILE:HG13	1:A:46:CYS:N	2.30	0.46
1:A:110:LEU:O	1:A:113:PHE:HB3	2.16	0.46
1:A:156:GLU:O	1:A:160:LYS:HG3	2.15	0.46
1:A:546:LEU:HD12	1:A:631:PHE:HA	1.96	0.46
1:A:1076:PHE:CZ	1:A:1080:ILE:HD11	2.50	0.46
1:A:8:HIS:HA	1:A:11:LYS:HD3	1.97	0.46
1:A:444:LYS:O	1:A:447:ILE:HG12	2.16	0.46
1:A:402:ILE:HB	1:A:403:LEU:HD12	1.97	0.46
1:A:539:PHE:HD2	1:A:540:LEU:HD23	1.81	0.46
1:A:578:SER:O	1:A:582:LEU:HD23	2.14	0.46
1:A:456:ASP:O	1:A:459:ILE:HG12	2.15	0.46
1:A:1313:ILE:O	1:A:1317:LEU:HG	2.15	0.46
1:A:319:CYS:SG	1:A:335:ARG:HD3	2.56	0.46
1:A:130:CYS:SG	1:A:319:CYS:HA	2.56	0.46
1:A:530:MET:HG3	1:A:650:PHE:CD2	2.51	0.46
1:A:637:PHE:CE1	1:A:641:LEU:HD21	2.50	0.46
1:A:457:ASP:HA	1:A:460:GLN:NE2	2.31	0.46
1:A:517:THR:OG1	1:A:1054:GLY:HA2	2.16	0.46
1:A:1139:ASP:O	1:A:1143:ILE:HG12	2.16	0.46
1:A:65:LYS:HE2	1:A:623:TYR:CG	2.51	0.46
1:A:122:VAL:HG13	1:A:126:GLU:OE1	2.15	0.46
1:A:339:ASP:O	1:A:343:LYS:HG3	2.15	0.46
1:A:546:LEU:HD12	1:A:631:PHE:CD1	2.50	0.46
1:A:606:THR:HG23	1:A:1383:ASP:CG	2.36	0.46
1:A:57:LYS:HE2	1:A:59:HIS:CE1	2.51	0.46
1:A:20:LYS:O	1:A:24:LEU:HG	2.15	0.46
1:A:371:LYS:CG	1:A:393:THR:HG22	2.46	0.46
1:A:1398:ARG:HG3	1:A:1402:GLU:OE1	2.16	0.45
1:A:40:ILE:HD13	1:A:650:PHE:CE1	2.50	0.45
1:A:121:GLU:HG2	1:A:346:THR:HB	1.98	0.45
1:A:440:LEU:HB3	1:A:480:ARG:NH1	2.32	0.45
1:A:1068:TYR:OH	1:A:1457:MET:HG2	2.16	0.45

Continued on next page...

Continued from previous page...

Atom-1	Atom-2	Interatomic distance (Å)	Clash overlap (Å)
1:A:646:PHE:CZ	1:A:650:PHE:CE1	3.04	0.45
1:A:1201:GLN:HB3	1:A:1203:PHE:CE1	2.51	0.45
1:A:378:TYR:HB3	1:A:379:PRO:HD2	1.99	0.45
1:A:554:VAL:HB	1:A:556:PRO:HD2	1.99	0.45
1:A:1138:PHE:HB3	1:A:1143:ILE:HG13	1.99	0.45
1:A:632:THR:O	1:A:636:LEU:HG	2.17	0.45
1:A:1116:ARG:O	1:A:1120:THR:HG23	2.16	0.45
1:A:1457:MET:C	1:A:1460:PRO:HD2	2.37	0.45
1:A:60:GLU:HG3	1:A:62:ASP:OD1	2.16	0.45
1:A:60:GLU:HB3	1:A:66:LEU:HD21	1.98	0.45
1:A:385:LEU:HD21	1:A:415:TYR:HB2	1.98	0.45
1:A:4:LYS:HD3	1:A:4:LYS:C	2.37	0.45
1:A:349:LEU:HD13	1:A:442:TYR:CE2	2.52	0.45
1:A:1367:ASN:O	1:A:1371:MET:HG2	2.16	0.45
1:A:1309:ASP:O	1:A:1312:ILE:HG22	2.17	0.44
1:A:321:LEU:CD2	1:A:328:LYS:HG3	2.47	0.44
1:A:365:LEU:HD11	1:A:380:ILE:HD13	1.99	0.44
1:A:1231:TYR:CD1	1:A:1256:GLY:HA2	2.53	0.44
1:A:501:LEU:O	1:A:505:LEU:HD13	2.18	0.44
1:A:1089:ILE:HD11	1:A:1350:LEU:HD21	2.00	0.44
1:A:1149:LEU:HD11	1:A:1150:GLU:HG2	1.99	0.44
1:A:1312:ILE:HD13	1:A:1366:MET:O	2.18	0.44
1:A:100:ASN:C	1:A:102:LEU:N	2.71	0.44
1:A:539:PHE:CD2	1:A:540:LEU:HD23	2.52	0.44
1:A:340:GLY:O	1:A:344:GLN:HG2	2.18	0.44
1:A:368:TYR:O	1:A:373:ASN:HB3	2.18	0.44
1:A:409:GLU:O	1:A:415:TYR:HA	2.18	0.44
1:A:492:ILE:N	1:A:492:ILE:HD12	2.31	0.44
1:A:305:PRO:HB2	1:A:307:GLN:CD	2.37	0.44
1:A:671:LEU:HD12	1:A:672:PHE:N	2.32	0.44
1:A:1140:LYS:NZ	1:A:1176:ILE:HB	2.32	0.44
1:A:1438:VAL:O	1:A:1442:GLN:HG3	2.18	0.44
1:A:1068:TYR:CZ	1:A:1072:LEU:HD11	2.53	0.44
1:A:1369:ILE:O	1:A:1373:ILE:HG12	2.18	0.44
1:A:321:LEU:HD22	1:A:328:LYS:HG3	2.00	0.43
1:A:1399:THR:H	1:A:1402:GLU:CD	2.20	0.43
1:A:325:PHE:HE1	1:A:352:ILE:HG23	1.83	0.43
1:A:370:GLU:HB2	1:A:393:THR:HG21	1.99	0.43
1:A:371:LYS:HB3	1:A:392:ARG:HB2	2.00	0.43
1:A:456:ASP:O	1:A:460:GLN:HG3	2.18	0.43
1:A:572:VAL:O	1:A:576:LEU:HG	2.18	0.43

Continued on next page...

Continued from previous page...

Atom-1	Atom-2	Interatomic distance (Å)	Clash overlap (Å)
1:A:1083:ILE:O	1:A:1086:THR:HB	2.18	0.43
1:A:1242:PHE:CE2	1:A:1246:LEU:HD11	2.54	0.43
1:A:1369:ILE:HD12	1:A:1369:ILE:N	2.32	0.43
1:A:45:ILE:O	1:A:49:LEU:HG	2.17	0.43
1:A:68:SER:HB2	1:A:1304:ILE:HG13	2.00	0.43
1:A:1112:ASP:O	1:A:1113:SER:C	2.56	0.43
1:A:1389:VAL:HG23	1:A:1459:LEU:HD21	2.00	0.43
1:A:664:ILE:HG23	1:A:665:PHE:N	2.33	0.43
1:A:1078:LYS:O	1:A:1079:THR:C	2.57	0.43
1:A:387:PHE:CG	2:A:1501:CLR:H231	2.54	0.43
1:A:730:LEU:O	1:A:734:GLU:HG3	2.19	0.43
1:A:1430:PHE:HB2	1:A:1441:PHE:CE2	2.53	0.43
1:A:85:PHE:HZ	1:A:1261:TRP:HA	1.83	0.43
1:A:352:ILE:HG22	1:A:435:TYR:HD1	1.84	0.43
1:A:555:PRO:HB2	1:A:556:PRO:HD3	2.00	0.43
1:A:1340:SER:O	1:A:1344:ILE:HG13	2.18	0.43
1:A:84:PHE:HZ	1:A:1147:ARG:HG2	1.84	0.43
1:A:86:TYR:OH	1:A:314:ILE:HG13	2.18	0.43
1:A:341:LEU:HA	1:A:344:GLN:HG2	2.01	0.43
1:A:1351:ILE:HD13	1:A:1451:SER:HA	2.01	0.43
1:A:80:THR:HA	1:A:1147:ARG:NH2	2.17	0.42
1:A:317:ASP:N	1:A:317:ASP:OD1	2.52	0.42
1:A:1323:THR:O	1:A:1324:ILE:C	2.57	0.42
1:A:1069:VAL:HB	1:A:1070:PRO:HD3	1.99	0.42
1:A:35:ARG:HG3	1:A:39:PHE:HE1	1.85	0.42
1:A:62:ASP:CG	1:A:65:LYS:HB3	2.40	0.42
1:A:328:LYS:C	1:A:330:LEU:N	2.72	0.42
1:A:368:TYR:HB2	1:A:399:PHE:HZ	1.84	0.42
1:A:727:ILE:O	1:A:730:LEU:HB3	2.19	0.42
1:A:1046:LYS:CG	1:A:1048:ILE:HG22	2.46	0.42
1:A:1369:ILE:O	1:A:1372:VAL:HG12	2.18	0.42
1:A:1284:LYS:HB2	1:A:1284:LYS:HE3	1.80	0.42
1:A:493:ASP:O	1:A:497:ARG:HG3	2.19	0.42
1:A:1149:LEU:C	1:A:1149:LEU:HD12	2.40	0.42
1:A:1289:LEU:N	1:A:1294:VAL:O	2.53	0.42
1:A:102:LEU:HG	1:A:420:ALA:HB3	2.01	0.42
1:A:317:ASP:OD1	1:A:323:ASN:ND2	2.53	0.42
1:A:565:ILE:O	1:A:569:VAL:HG23	2.19	0.42
1:A:13:LEU:O	1:A:14:LYS:C	2.58	0.42
1:A:99:VAL:HG12	1:A:463:GLU:O	2.20	0.42
1:A:1403:LYS:HE2	1:A:1469:LEU:HD12	2.00	0.42

Continued on next page...

Continued from previous page...

Atom-1	Atom-2	Interatomic distance (Å)	Clash overlap (Å)
1:A:146:GLU:HA	1:A:149:LYS:HE3	2.00	0.42
1:A:1170:ILE:O	1:A:1176:ILE:HG13	2.20	0.42
1:A:1331:THR:HG21	1:A:1382:ILE:HG12	2.02	0.42
1:A:57:LYS:HE2	1:A:59:HIS:NE2	2.34	0.42
1:A:57:LYS:HG3	1:A:547:TYR:CE1	2.55	0.42
1:A:388:TYR:HB3	1:A:399:PHE:CE1	2.54	0.42
1:A:400:LYS:HE3	1:A:400:LYS:HB2	1.79	0.42
1:A:450:VAL:HG11	1:A:476:VAL:HB	2.02	0.42
1:A:130:CYS:HB3	1:A:334:LEU:HB2	2.02	0.42
1:A:367:LEU:HA	1:A:370:GLU:CG	2.50	0.42
1:A:560:VAL:HB	1:A:561:PRO:HD3	2.02	0.42
1:A:1248:LYS:HG3	1:A:1249:ASN:OD1	2.20	0.42
1:A:11:LYS:HG2	1:A:12:GLU:N	2.34	0.41
1:A:610:ASN:O	1:A:614:PHE:HD2	2.03	0.41
1:A:614:PHE:CE1	1:A:1376:LEU:HD13	2.55	0.41
1:A:143:VAL:HA	1:A:146:GLU:CD	2.41	0.41
1:A:151:LEU:HA	1:A:154:ARG:HG2	2.02	0.41
1:A:318:ARG:HD2	1:A:437:PRO:HG2	2.01	0.41
1:A:128:ASN:OD1	1:A:131:LYS:HD3	2.20	0.41
1:A:349:LEU:HD22	1:A:442:TYR:OH	2.20	0.41
1:A:371:LYS:HB2	1:A:392:ARG:HB2	2.01	0.41
1:A:381:LYS:HZ1	1:A:414:LYS:HB2	1.85	0.41
1:A:349:LEU:HD21	1:A:427:ILE:HG21	2.03	0.41
1:A:359:ASP:O	1:A:360:CYS:C	2.58	0.41
1:A:387:PHE:CE2	2:A:1501:CLR:H272	2.55	0.41
1:A:539:PHE:CZ	1:A:561:PRO:HG3	2.55	0.41
1:A:1059:TYR:O	1:A:1060:PHE:C	2.59	0.41
1:A:1226:ASN:HB3	1:A:1229:GLU:CB	2.50	0.41
1:A:339:ASP:HA	1:A:342:LYS:HE2	2.01	0.41
1:A:1149:LEU:HD12	1:A:1150:GLU:N	2.35	0.41
1:A:1200:SER:O	1:A:1201:GLN:C	2.59	0.41
1:A:299:LYS:HG2	1:A:300:ASP:OD1	2.20	0.41
1:A:14:LYS:O	1:A:18:LEU:HG	2.21	0.41
1:A:140:GLN:O	1:A:141:SER:C	2.58	0.41
1:A:356:LYS:HG2	1:A:357:TYR:CD2	2.55	0.41
1:A:526:LEU:HB3	1:A:654:GLU:OE1	2.20	0.41
1:A:534:CYS:SG	1:A:642:MET:CB	3.09	0.41
1:A:1176:ILE:HD13	1:A:1176:ILE:HA	1.93	0.41
1:A:124:LEU:HB2	1:A:342:LYS:O	2.20	0.41
1:A:164:ILE:N	1:A:164:ILE:HD12	2.36	0.41
1:A:171:TYR:CE2	1:A:1228:GLN:HB2	2.56	0.41

Continued on next page...

Continued from previous page...

Atom-1	Atom-2	Interatomic distance (Å)	Clash overlap (Å)
1:A:328:LYS:HB3	1:A:330:LEU:CG	2.48	0.41
1:A:664:ILE:HG23	1:A:665:PHE:H	1.85	0.41
1:A:1339:TYR:HD2	1:A:1468:PRO:HG3	1.86	0.41
1:A:154:ARG:NH2	1:A:300:ASP:HA	2.36	0.41
1:A:347:TYR:OH	1:A:441:ALA:HB3	2.21	0.41
1:A:482:LEU:O	1:A:486:VAL:HG23	2.20	0.41
1:A:512:LEU:O	1:A:516:VAL:HG22	2.21	0.41
1:A:670:HIS:HA	1:A:673:ARG:HH11	1.85	0.41
1:A:1187:LEU:HB2	1:A:1292:HIS:CD2	2.56	0.41
1:A:1173:SER:HB3	1:A:1176:ILE:CG1	2.47	0.41
1:A:1195:HIS:CD2	1:A:1212:THR:HG21	2.55	0.41
1:A:74:ALA:O	1:A:77:THR:HB	2.21	0.40
1:A:1304:ILE:HG23	1:A:1305:PHE:N	2.35	0.40
1:A:349:LEU:HB2	1:A:442:TYR:CZ	2.56	0.40
1:A:388:TYR:HB3	1:A:399:PHE:HE1	1.86	0.40
1:A:494:ASN:HA	1:A:497:ARG:HD2	2.04	0.40
1:A:1427:SER:HA	1:A:1441:PHE:CE1	2.55	0.40
1:A:36:PRO:HG3	1:A:656:LYS:NZ	2.36	0.40
1:A:524:LYS:HZ1	1:A:655:ALA:HA	1.86	0.40
1:A:84:PHE:CE2	1:A:1143:ILE:HG23	2.56	0.40
1:A:1069:VAL:O	1:A:1070:PRO:C	2.59	0.40
2:A:1501:CLR:H162	2:A:1501:CLR:H222	1.89	0.40

There are no symmetry-related clashes.

5.3 Torsion angles [i](#)

5.3.1 Protein backbone [i](#)

In the following table, the Percentiles column shows the percent Ramachandran outliers of the chain as a percentile score with respect to all PDB entries followed by that with respect to all EM entries.

The Analysed column shows the number of residues for which the backbone conformation was analysed, and the total number of residues.

Mol	Chain	Analysed	Favoured	Allowed	Outliers	Percentiles
1	A	975/1470 (66%)	931 (96%)	43 (4%)	1 (0%)	48 78

All (1) Ramachandran outliers are listed below:

Mol	Chain	Res	Type
1	A	307	GLN

5.3.2 Protein sidechains [i](#)

In the following table, the Percentiles column shows the percent sidechain outliers of the chain as a percentile score with respect to all PDB entries followed by that with respect to all EM entries.

The Analysed column shows the number of residues for which the sidechain conformation was analysed, and the total number of residues.

Mol	Chain	Analysed	Rotameric	Outliers	Percentiles
1	A	905/1371 (66%)	894 (99%)	11 (1%)	67 82

All (11) residues with a non-rotameric sidechain are listed below:

Mol	Chain	Res	Type
1	A	47	CYS
1	A	79	GLU
1	A	82	ASN
1	A	177	ASN
1	A	373	ASN
1	A	450	VAL
1	A	733	PHE
1	A	1211	PHE
1	A	1234	PHE
1	A	1342	VAL
1	A	1466	PHE

Sometimes sidechains can be flipped to improve hydrogen bonding and reduce clashes. All (15) such sidechains are listed below:

Mol	Chain	Res	Type
1	A	8	HIS
1	A	15	GLN
1	A	23	ASN
1	A	82	ASN
1	A	140	GLN
1	A	431	ASN
1	A	514	ASN
1	A	577	ASN
1	A	1177	ASN
1	A	1184	ASN

Continued on next page...

Continued from previous page...

Mol	Chain	Res	Type
1	A	1228	GLN
1	A	1255	ASN
1	A	1269	ASN
1	A	1291	ASN
1	A	1293	ASN

5.3.3 RNA [i](#)

There are no RNA molecules in this entry.

5.4 Non-standard residues in protein, DNA, RNA chains [i](#)

There are no non-standard protein/DNA/RNA residues in this entry.

5.5 Carbohydrates [i](#)

There are no oligosaccharides in this entry.

5.6 Ligand geometry [i](#)

3 ligands are modelled in this entry.

In the following table, the Counts columns list the number of bonds (or angles) for which Mogul statistics could be retrieved, the number of bonds (or angles) that are observed in the model and the number of bonds (or angles) that are defined in the Chemical Component Dictionary. The Link column lists molecule types, if any, to which the group is linked. The Z score for a bond length (or angle) is the number of standard deviations the observed value is removed from the expected value. A bond length (or angle) with $|Z| > 2$ is considered an outlier worth inspection. RMSZ is the root-mean-square of all Z scores of the bond lengths (or angles).

Mol	Type	Chain	Res	Link	Bond lengths			Bond angles		
					Counts	RMSZ	$\# Z > 2$	Counts	RMSZ	$\# Z > 2$
2	CLR	A	1501	-	31,31,31	0.88	2 (6%)	48,48,48	1.36	8 (16%)
3	NAG	A	1502	1	14,14,15	0.30	0	17,19,21	0.63	0
3	NAG	A	1503	1	14,14,15	0.33	0	17,19,21	1.47	2 (11%)

In the following table, the Chirals column lists the number of chiral outliers, the number of chiral centers analysed, the number of these observed in the model and the number defined in the Chemical Component Dictionary. Similar counts are reported in the Torsion and Rings columns. '-' means no outliers of that kind were identified.

Mol	Type	Chain	Res	Link	Chirals	Torsions	Rings
2	CLR	A	1501	-	-	0/10/68/68	0/4/4/4
3	NAG	A	1502	1	-	2/6/23/26	0/1/1/1
3	NAG	A	1503	1	-	2/6/23/26	0/1/1/1

All (2) bond length outliers are listed below:

Mol	Chain	Res	Type	Atoms	Z	Observed(Å)	Ideal(Å)
2	A	1501	CLR	C13-C14	-2.17	1.51	1.55
2	A	1501	CLR	C10-C9	-2.14	1.52	1.56

All (10) bond angle outliers are listed below:

Mol	Chain	Res	Type	Atoms	Z	Observed(°)	Ideal(°)
3	A	1503	NAG	C1-O5-C5	4.95	118.82	112.19
2	A	1501	CLR	C13-C14-C8	-3.16	109.92	114.41
2	A	1501	CLR	C11-C12-C13	-2.89	107.87	112.74
2	A	1501	CLR	C8-C7-C6	-2.86	108.79	112.76
2	A	1501	CLR	C17-C13-C14	2.85	103.37	100.10
2	A	1501	CLR	C13-C17-C20	-2.76	115.23	119.50
2	A	1501	CLR	C11-C9-C10	-2.47	110.04	113.08
2	A	1501	CLR	C3-C4-C5	-2.15	108.62	112.05
2	A	1501	CLR	C19-C10-C9	-2.15	109.25	111.66
3	A	1503	NAG	C4-C3-C2	-2.01	108.07	111.02

There are no chirality outliers.

All (4) torsion outliers are listed below:

Mol	Chain	Res	Type	Atoms
3	A	1502	NAG	C8-C7-N2-C2
3	A	1502	NAG	O7-C7-N2-C2
3	A	1503	NAG	C8-C7-N2-C2
3	A	1503	NAG	O7-C7-N2-C2

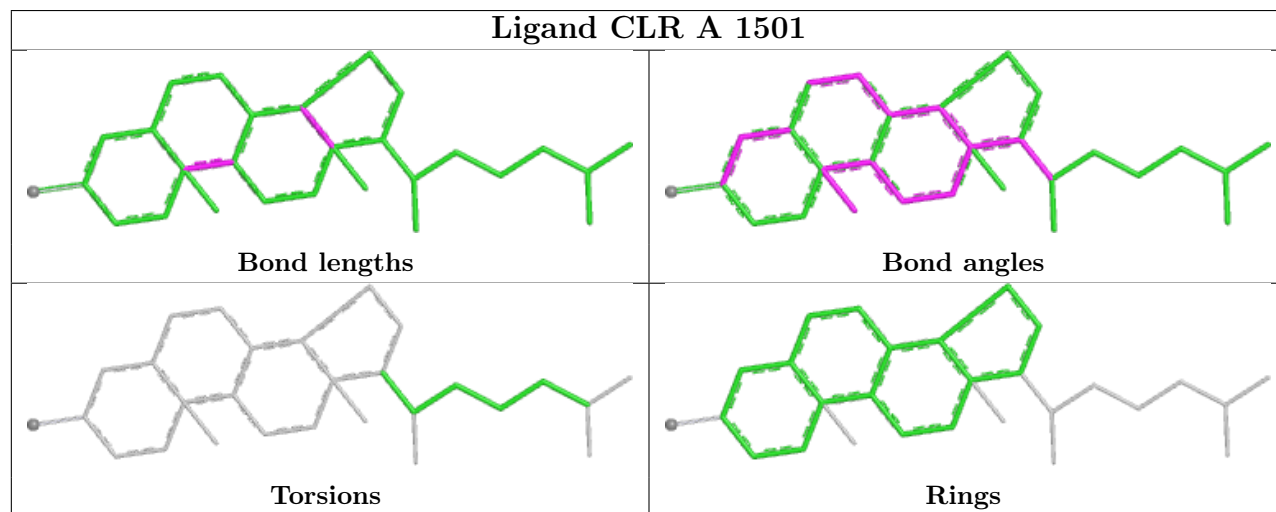
There are no ring outliers.

2 monomers are involved in 8 short contacts:

Mol	Chain	Res	Type	Clashes	Symm-Clashes
2	A	1501	CLR	7	0
3	A	1502	NAG	1	0

The following is a two-dimensional graphical depiction of Mogul quality analysis of bond lengths,

bond angles, torsion angles, and ring geometry for all instances of the Ligand of Interest. In addition, ligands with molecular weight > 250 and outliers as shown on the validation Tables will also be included. For torsion angles, if less than 5% of the Mogul distribution of torsion angles is within 10 degrees of the torsion angle in question, then that torsion angle is considered an outlier. Any bond that is central to one or more torsion angles identified as an outlier by Mogul will be highlighted in the graph. For rings, the root-mean-square deviation (RMSD) between the ring in question and similar rings identified by Mogul is calculated over all ring torsion angles. If the average RMSD is greater than 60 degrees and the minimal RMSD between the ring in question and any Mogul-identified rings is also greater than 60 degrees, then that ring is considered an outlier. The outliers are highlighted in purple. The color gray indicates Mogul did not find sufficient equivalents in the CSD to analyse the geometry.



5.7 Other polymers [\(i\)](#)

There are no such residues in this entry.

5.8 Polymer linkage issues [\(i\)](#)

There are no chain breaks in this entry.

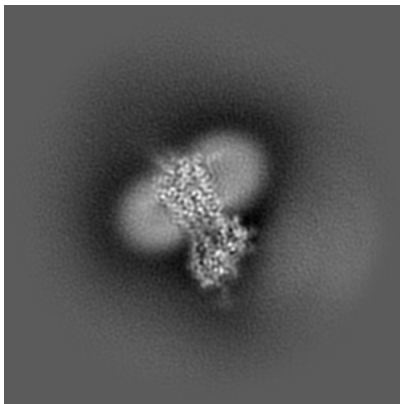
6 Map visualisation [i](#)

This section contains visualisations of the EMDB entry EMD-42854. These allow visual inspection of the internal detail of the map and identification of artifacts.

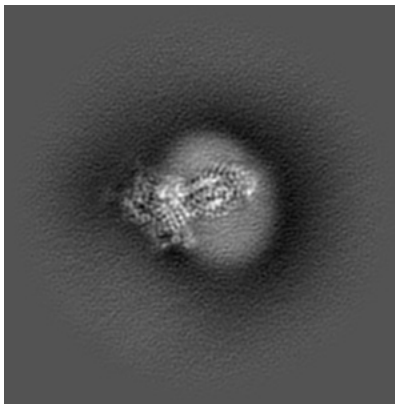
Images derived from a raw map, generated by summing the deposited half-maps, are presented below the corresponding image components of the primary map to allow further visual inspection and comparison with those of the primary map.

6.1 Orthogonal projections [i](#)

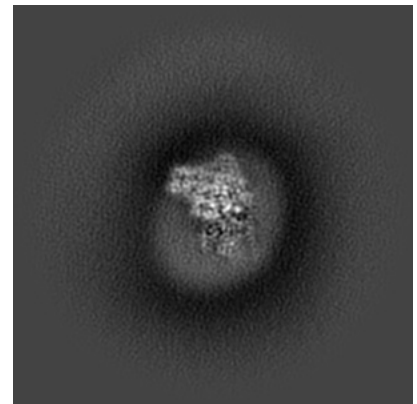
6.1.1 Primary map



X

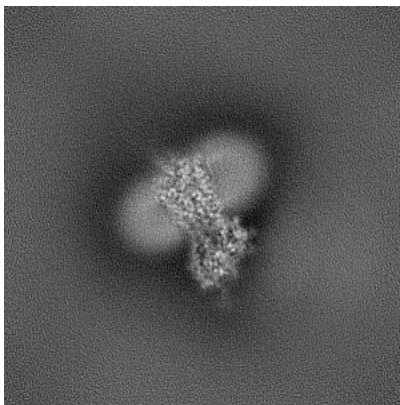


Y

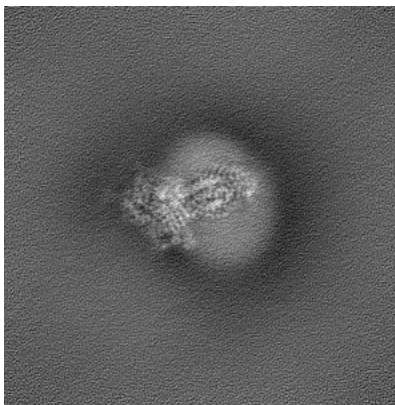


Z

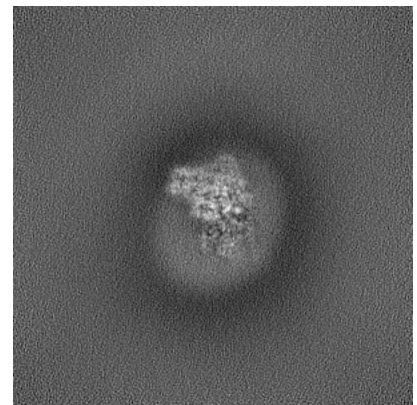
6.1.2 Raw map



X



Y

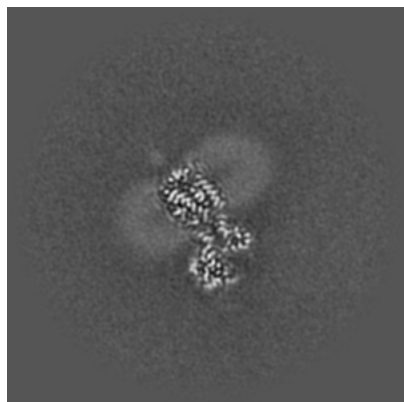


Z

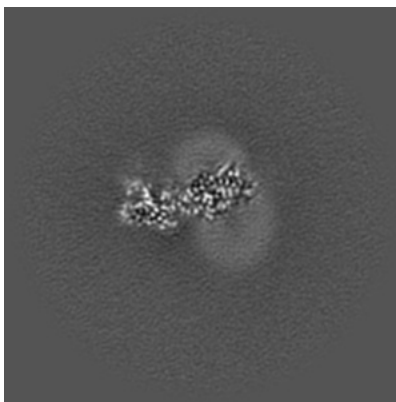
The images above show the map projected in three orthogonal directions.

6.2 Central slices [i](#)

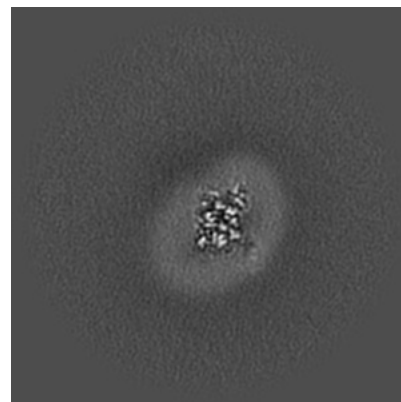
6.2.1 Primary map



X Index: 150

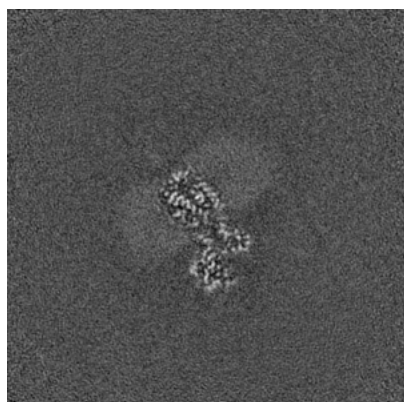


Y Index: 150

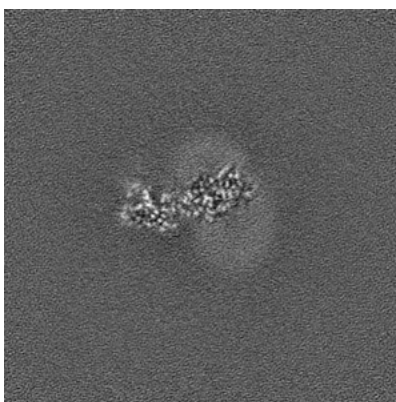


Z Index: 150

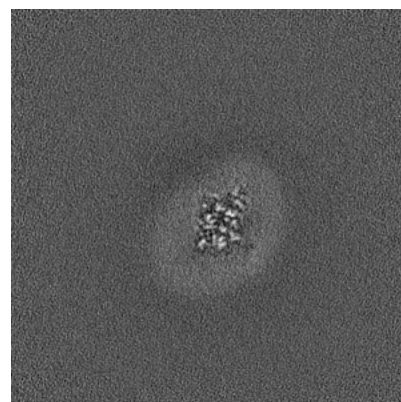
6.2.2 Raw map



X Index: 150



Y Index: 150

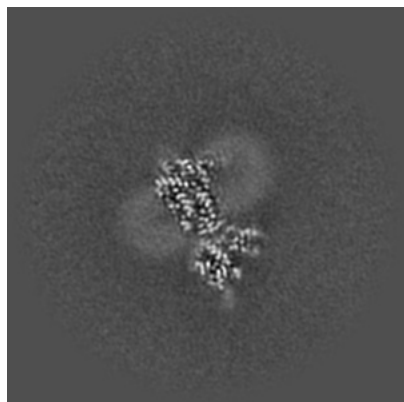


Z Index: 150

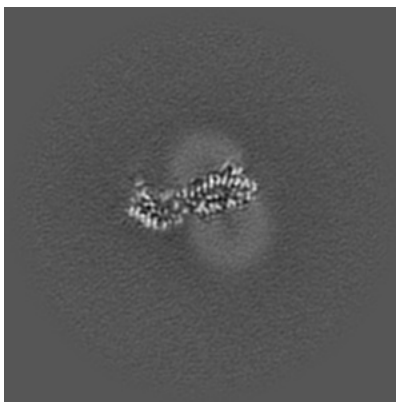
The images above show central slices of the map in three orthogonal directions.

6.3 Largest variance slices [i](#)

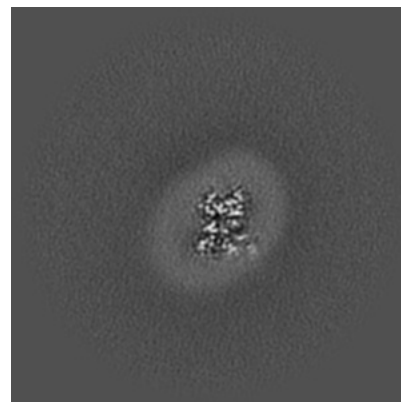
6.3.1 Primary map



X Index: 158

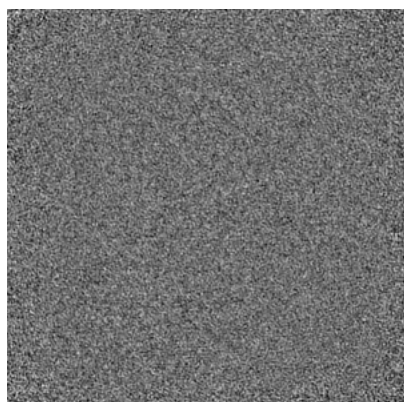


Y Index: 145

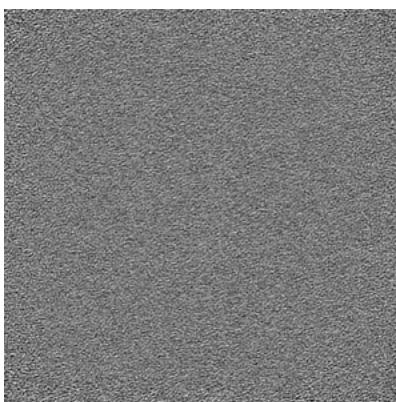


Z Index: 155

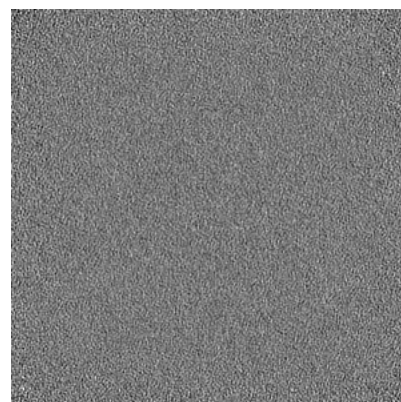
6.3.2 Raw map



X Index: 0



Y Index: 0

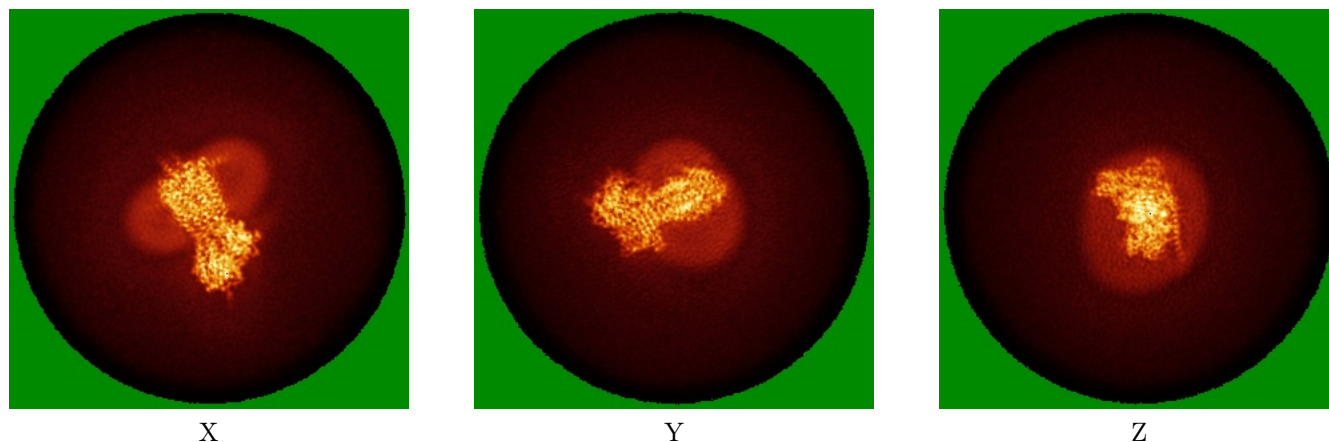


Z Index: 0

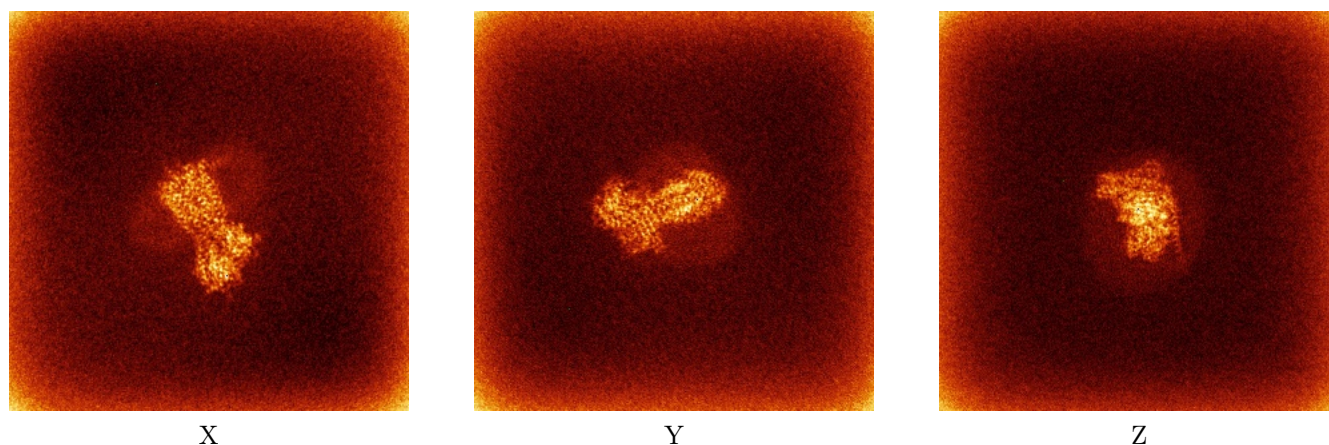
The images above show the largest variance slices of the map in three orthogonal directions.

6.4 Orthogonal standard-deviation projections (False-color) [i](#)

6.4.1 Primary map



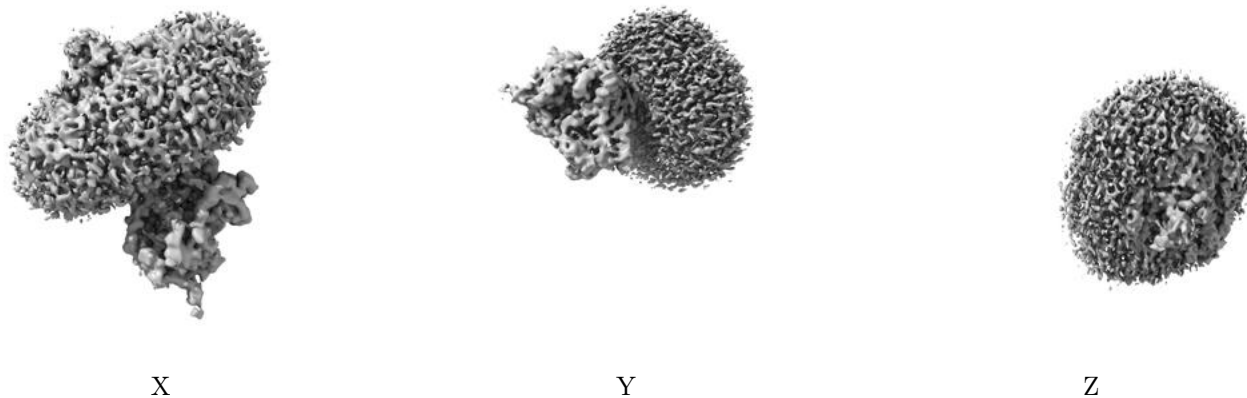
6.4.2 Raw map



The images above show the map standard deviation projections with false color in three orthogonal directions. Minimum values are shown in green, max in blue, and dark to light orange shades represent small to large values respectively.

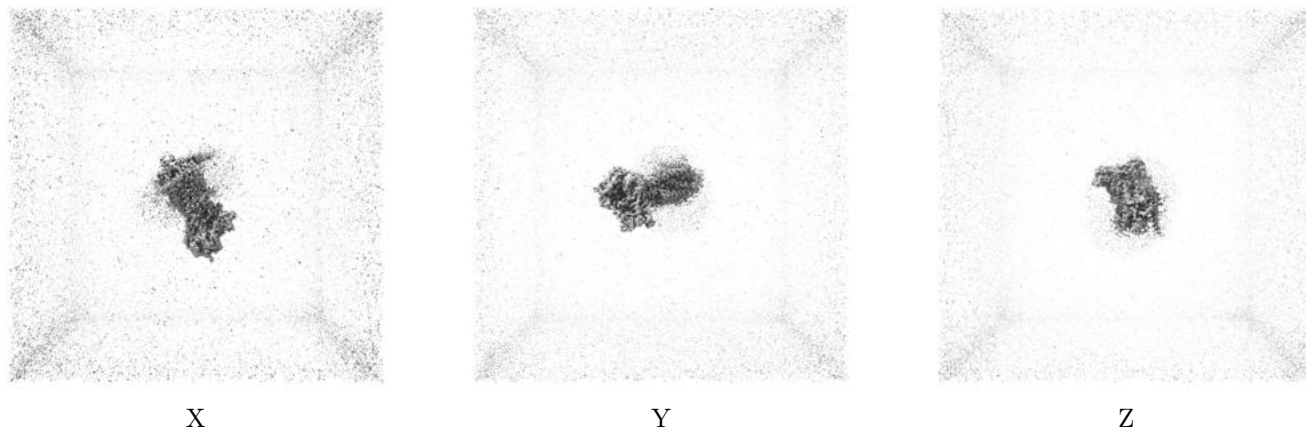
6.5 Orthogonal surface views [i](#)

6.5.1 Primary map



The images above show the 3D surface view of the map at the recommended contour level 0.1. These images, in conjunction with the slice images, may facilitate assessment of whether an appropriate contour level has been provided.

6.5.2 Raw map



These images show the 3D surface of the raw map. The raw map's contour level was selected so that its surface encloses the same volume as the primary map does at its recommended contour level.

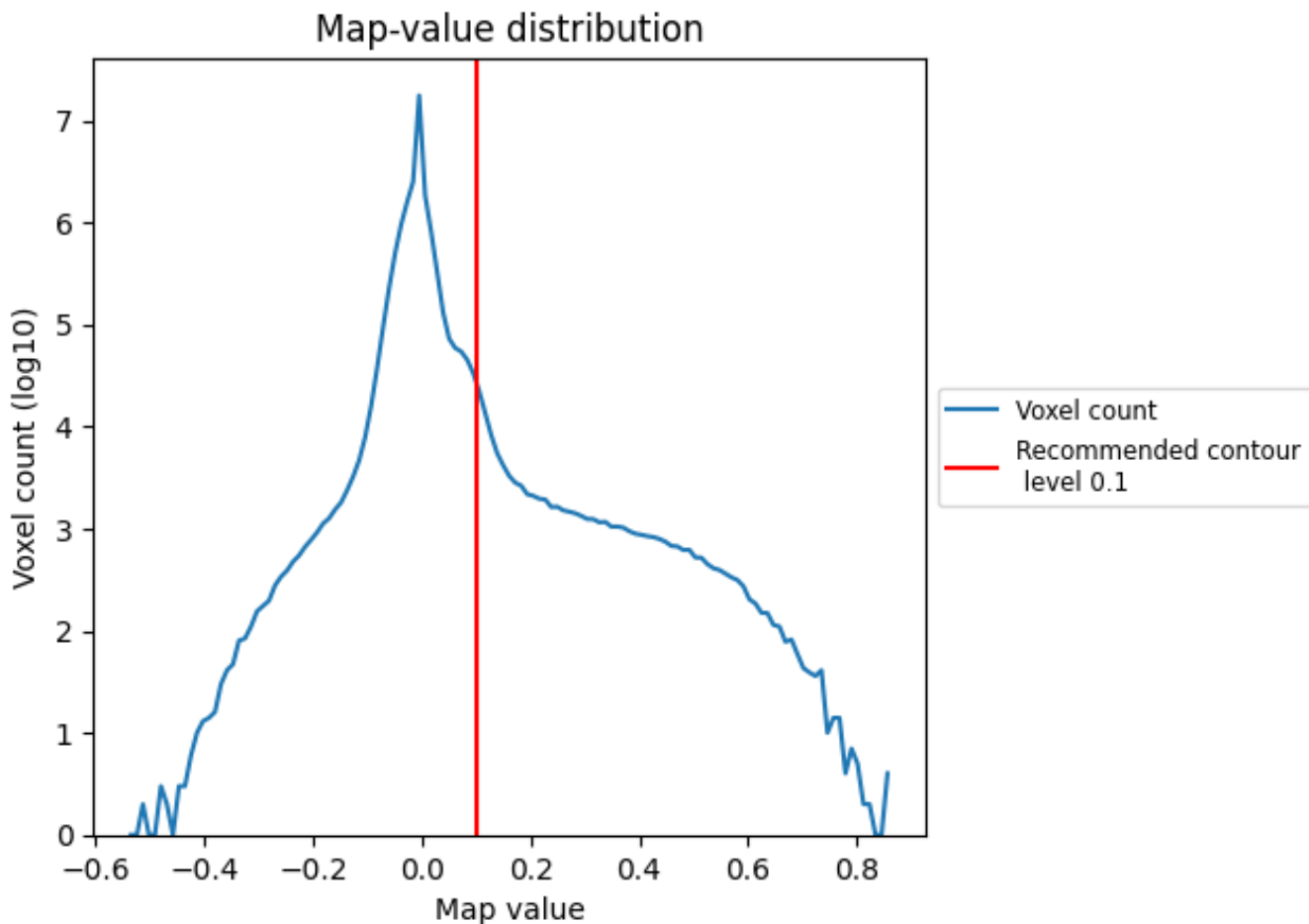
6.6 Mask visualisation [i](#)

This section was not generated. No masks/segmentation were deposited.

7 Map analysis [i](#)

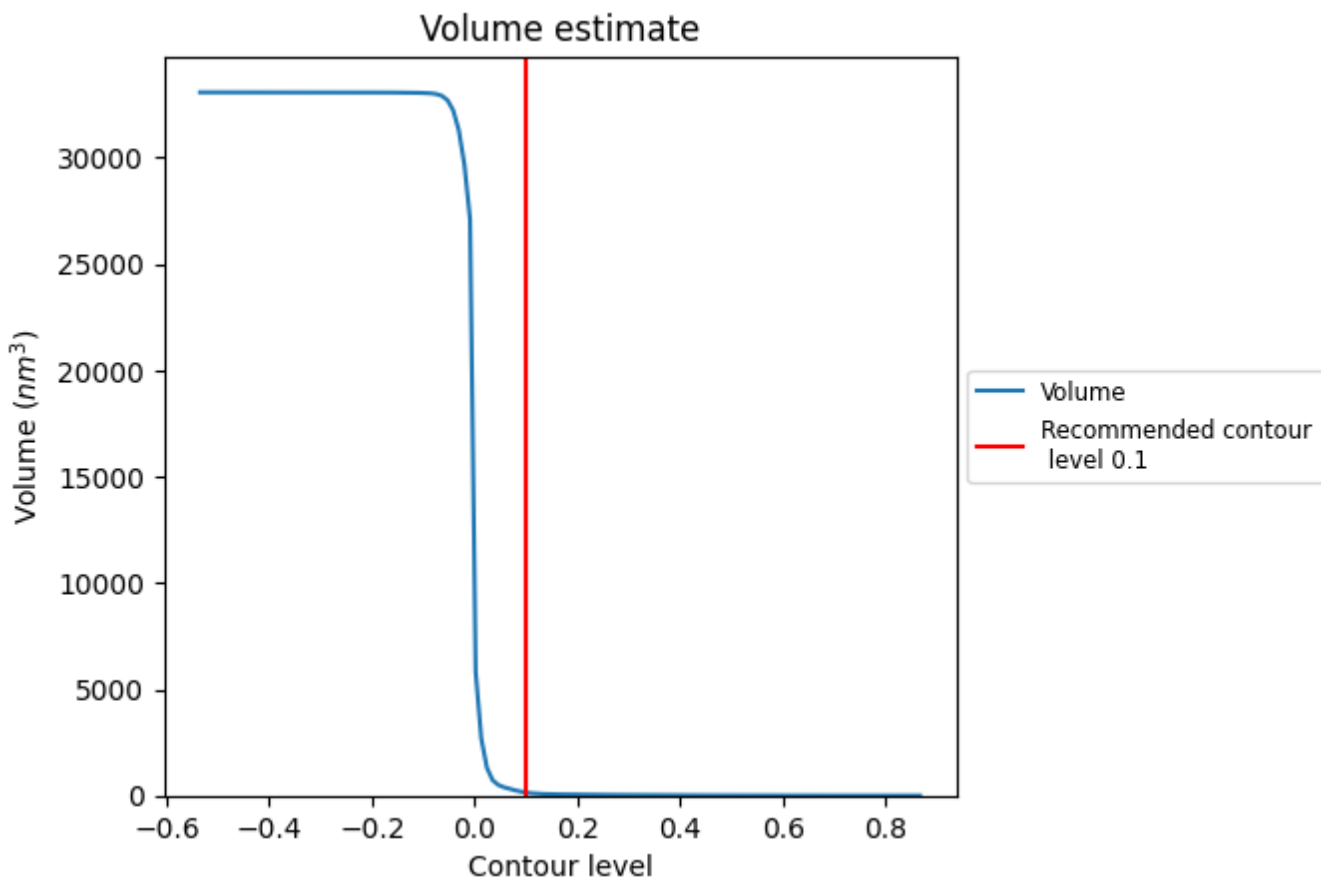
This section contains the results of statistical analysis of the map.

7.1 Map-value distribution [i](#)



The map-value distribution is plotted in 128 intervals along the x-axis. The y-axis is logarithmic. A spike in this graph at zero usually indicates that the volume has been masked.

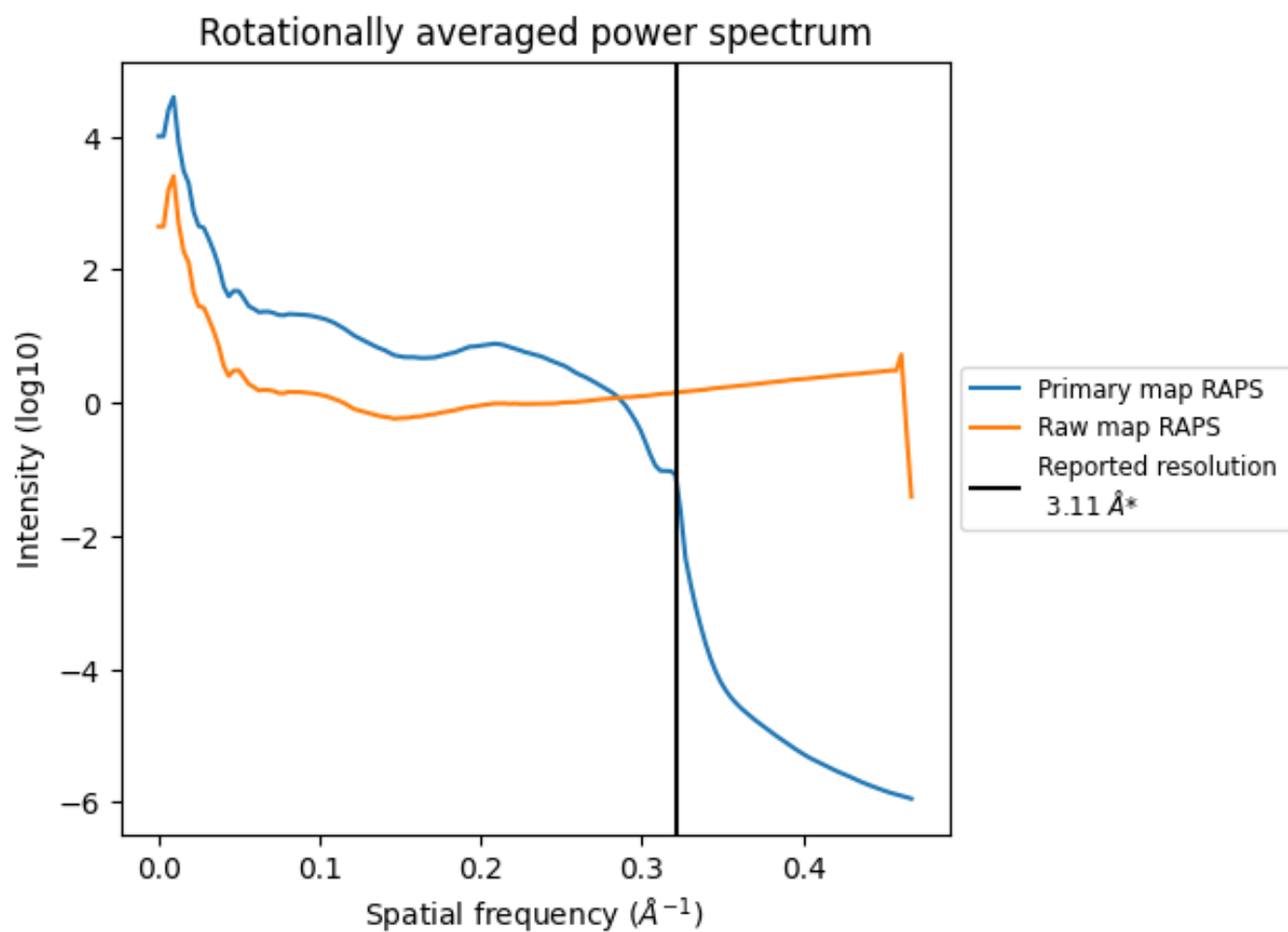
7.2 Volume estimate [i](#)



The volume at the recommended contour level is 144 nm^3 ; this corresponds to an approximate mass of 130 kDa.

The volume estimate graph shows how the enclosed volume varies with the contour level. The recommended contour level is shown as a vertical line and the intersection between the line and the curve gives the volume of the enclosed surface at the given level.

7.3 Rotationally averaged power spectrum i

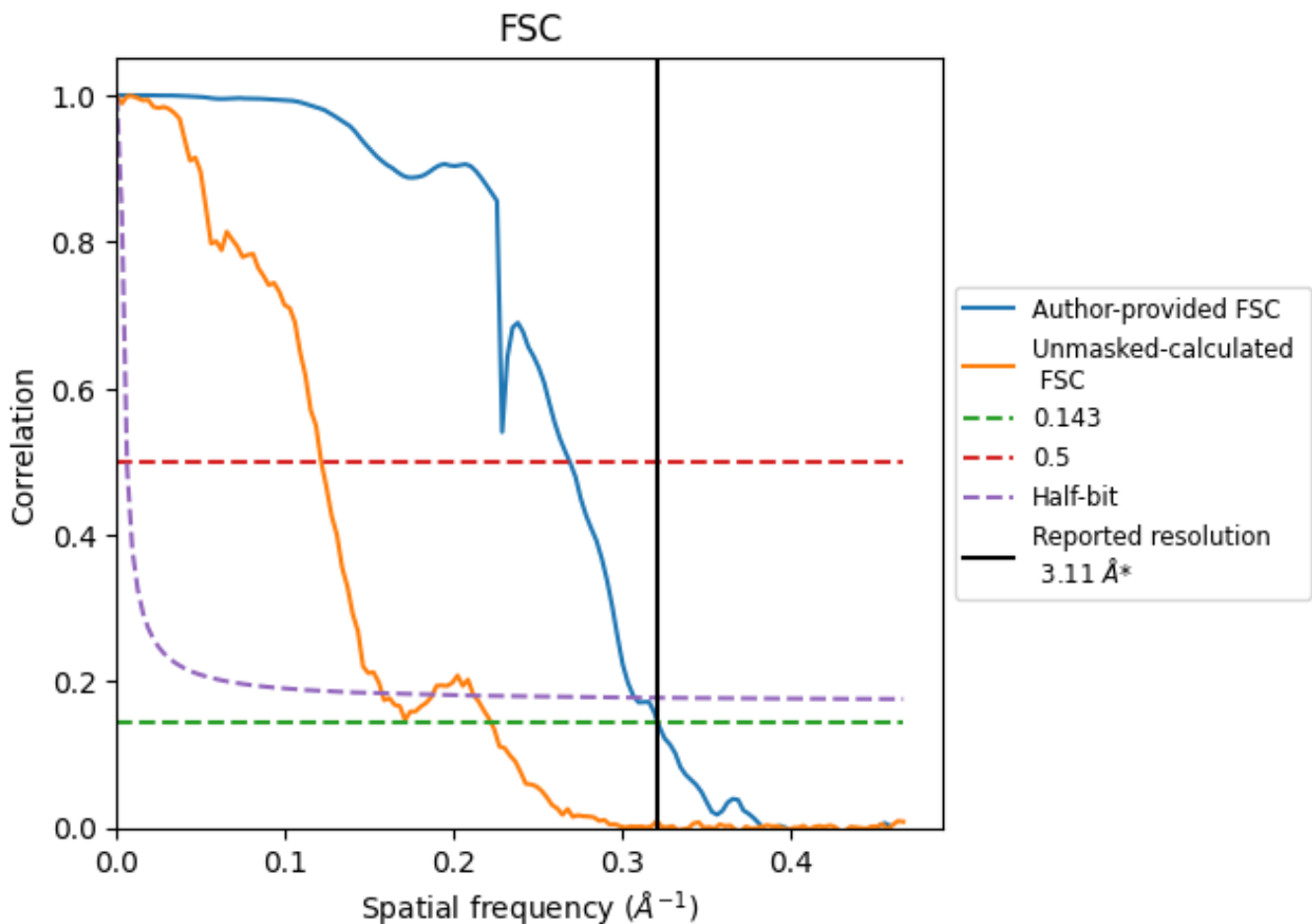


*Reported resolution corresponds to spatial frequency of 0.322 Å⁻¹

8 Fourier-Shell correlation [i](#)

Fourier-Shell Correlation (FSC) is the most commonly used method to estimate the resolution of single-particle and subtomogram-averaged maps. The shape of the curve depends on the imposed symmetry, mask and whether or not the two 3D reconstructions used were processed from a common reference. The reported resolution is shown as a black line. A curve is displayed for the half-bit criterion in addition to lines showing the 0.143 gold standard cut-off and 0.5 cut-off.

8.1 FSC [i](#)



*Reported resolution corresponds to spatial frequency of 0.322 Å⁻¹

8.2 Resolution estimates [i](#)

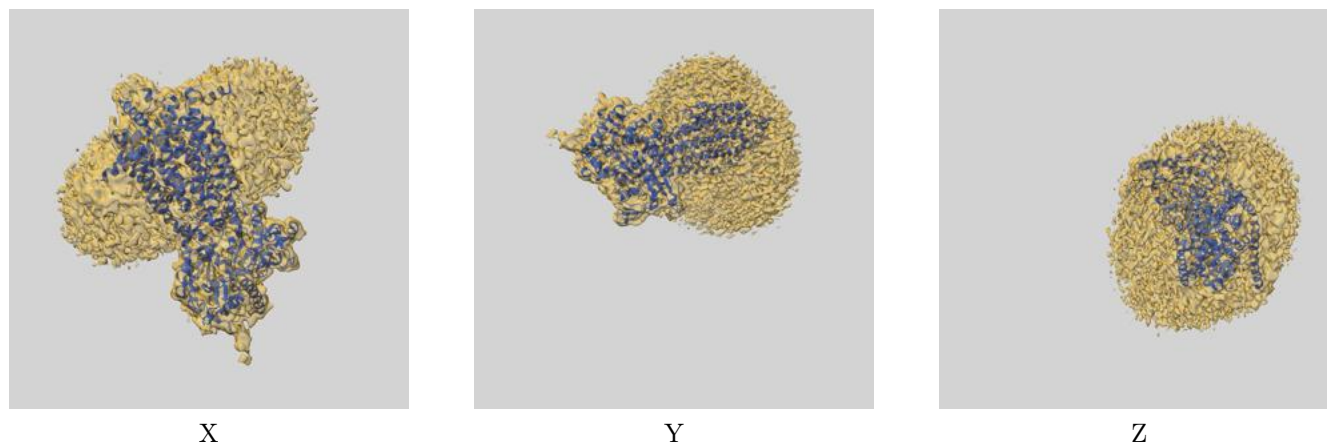
Resolution estimate (Å)	Estimation criterion (FSC cut-off)		
	0.143	0.5	Half-bit
Reported by author	3.11	-	-
Author-provided FSC curve	3.11	3.72	3.25
Unmasked-calculated*	4.50	8.24	6.34

*Resolution estimate based on FSC curve calculated by comparison of deposited half-maps. The value from deposited half-maps intersecting FSC 0.143 CUT-OFF 4.50 differs from the reported value 3.11 by more than 10 %

9 Map-model fit [i](#)

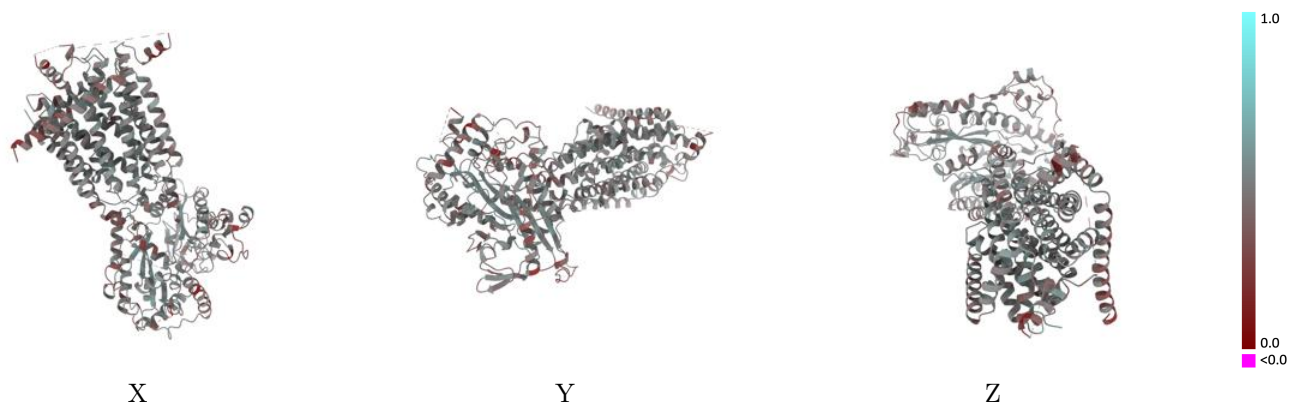
This section contains information regarding the fit between EMDB map EMD-42854 and PDB model 8V0G. Per-residue inclusion information can be found in section 3 on page 5.

9.1 Map-model overlay [i](#)



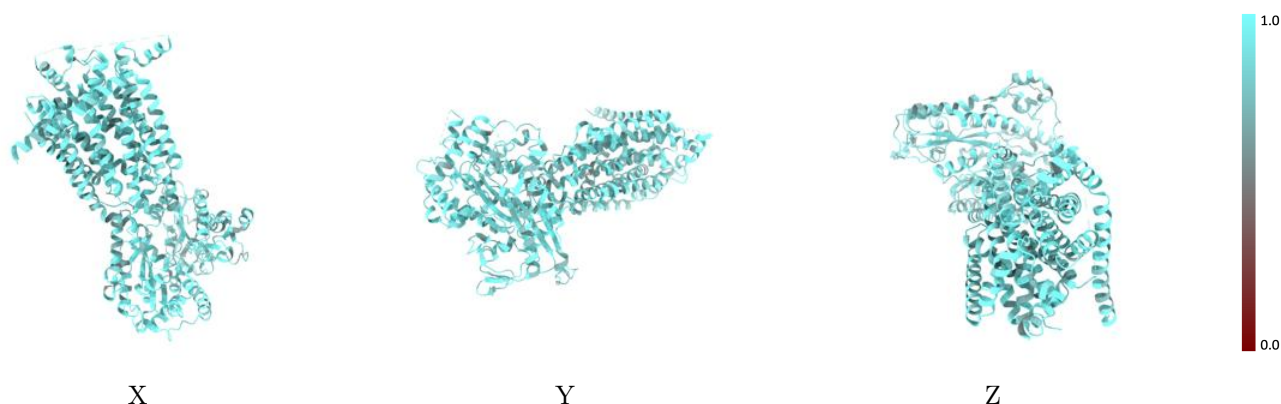
The images above show the 3D surface view of the map at the recommended contour level 0.1 at 50% transparency in yellow overlaid with a ribbon representation of the model coloured in blue. These images allow for the visual assessment of the quality of fit between the atomic model and the map.

9.2 Q-score mapped to coordinate model [i](#)



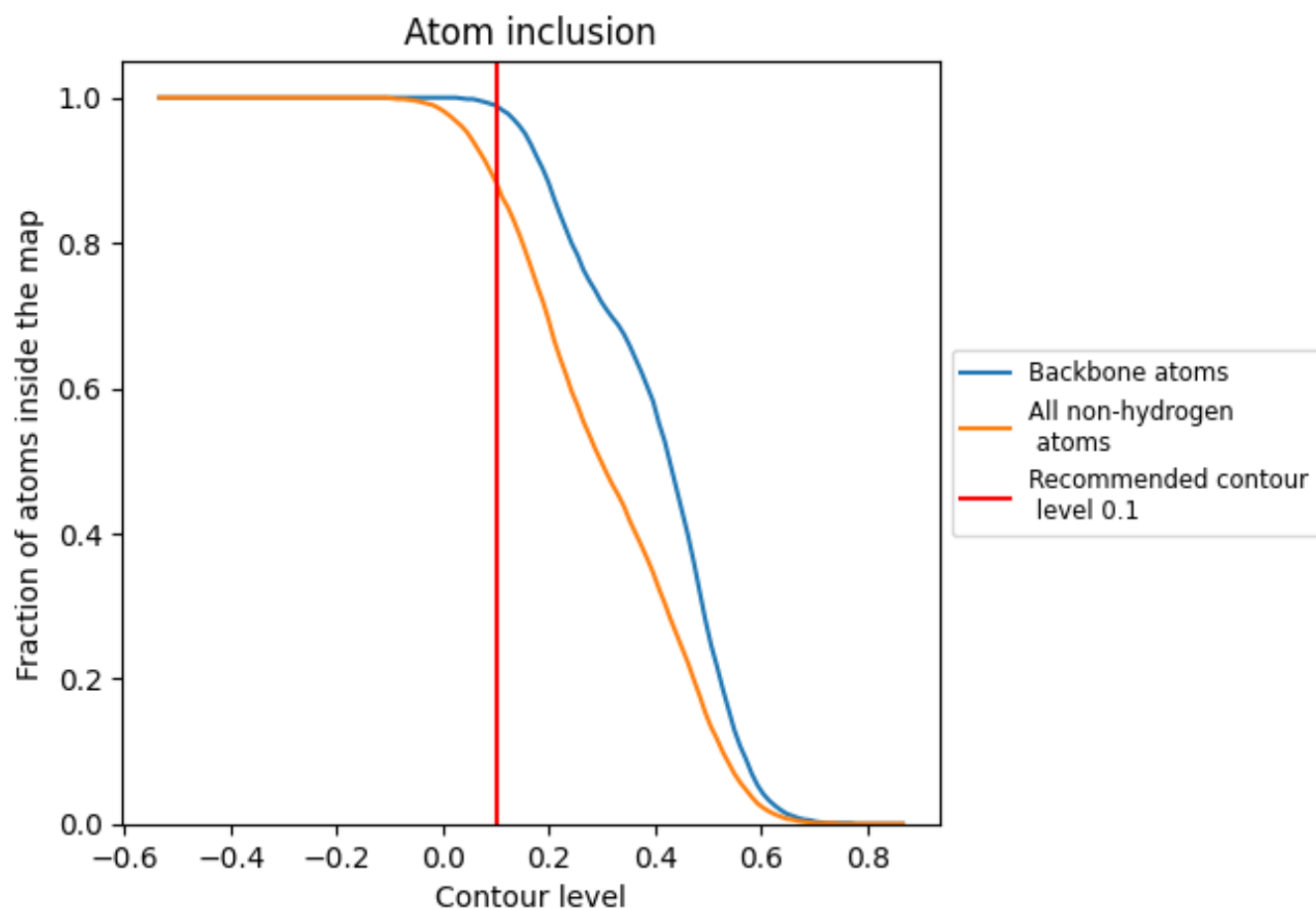
The images above show the model with each residue coloured according to its Q-score. This shows their resolvability in the map with higher Q-score values reflecting better resolvability. Please note: Q-score is calculating the resolvability of atoms, and thus high values are only expected at resolutions at which atoms can be resolved. Low Q-score values may therefore be expected for many entries.

9.3 Atom inclusion mapped to coordinate model [i](#)



The images above show the model with each residue coloured according to its atom inclusion. This shows to what extent they are inside the map at the recommended contour level (0.1).


9.4 Atom inclusion [i](#)



At the recommended contour level, 99% of all backbone atoms, 88% of all non-hydrogen atoms, are inside the map.

9.5 Map-model fit summary [i](#)

The table lists the average atom inclusion at the recommended contour level (0.1) and Q-score for the entire model and for each chain.

Chain	Atom inclusion	Q-score
All	 0.8840	 0.4580
A	 0.8840	 0.4580

