



# wwPDB X-ray Structure Validation Summary Report ⓘ

Feb 9, 2026 – 04:13 PM JST

PDB ID : 9UC1 / pdb\_00009uc1  
Title : Crystal structure of voltage-gated sodium channel NavAb N49K/S178T mutant  
Authors : Irie, K.; Maeda, Y.; Kojima, K.  
Deposited on : 2025-04-03  
Resolution : 2.50 Å(reported)

This is a wwPDB X-ray Structure Validation Summary Report for a publicly released PDB entry.

We welcome your comments at [validation@mail.wwpdb.org](mailto:validation@mail.wwpdb.org)

A user guide is available at

<https://www.wwpdb.org/validation/2017/XrayValidationReportHelp>

with specific help available everywhere you see the ⓘ symbol.

The types of validation reports are described at

<http://www.wwpdb.org/validation/2017/FAQs#types>.

---

The following versions of software and data (see [references ⓘ](#)) were used in the production of this report:

MolProbity : 4-5-2 with Phenix2.0  
Mogul : 1.8.5 (274361), CSD as541be (2020)  
Xtrriage (Phenix) : 2.0  
EDS : 3.0  
buster-report : 1.1.7 (2018)  
Percentile statistics : 20231227.v01 (using entries in the PDB archive December 27th 2023)  
CCP4 : 9.0.010 (Gargrove)  
Density-Fitness : 1.0.12  
Ideal geometry (proteins) : Engh & Huber (2001)  
Ideal geometry (DNA, RNA) : Parkinson et al. (1996)  
Validation Pipeline (wwPDB-VP) : 2.48

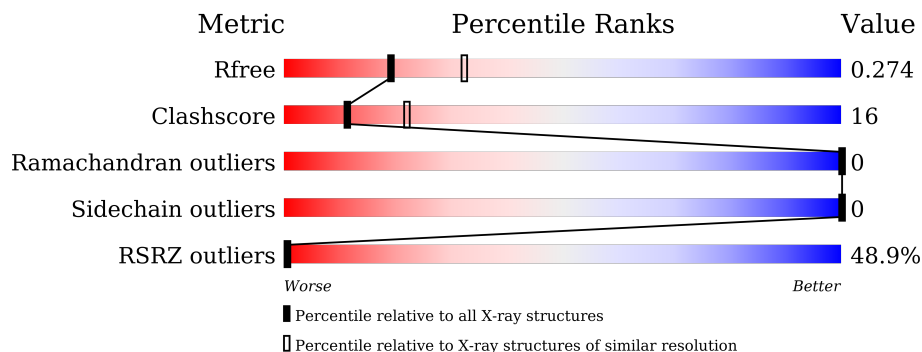
# 1 Overall quality at a glance

The following experimental techniques were used to determine the structure:

*X-RAY DIFFRACTION*

The reported resolution of this entry is 2.50 Å.

Percentile scores (ranging between 0-100) for global validation metrics of the entry are shown in the following graphic. The table shows the number of entries on which the scores are based.



Metric	Whole archive (#Entries)	Similar resolution (#Entries, resolution range(Å))
$R_{free}$	164625	5504 (2.50-2.50)
Clashscore	180529	6282 (2.50-2.50)
Ramachandran outliers	177936	6191 (2.50-2.50)
Sidechain outliers	177891	6193 (2.50-2.50)
RSRZ outliers	164620	5504 (2.50-2.50)

The table below summarises the geometric issues observed across the polymeric chains and their fit to the electron density. The red, orange, yellow and green segments of the lower bar indicate the fraction of residues that contain outliers for  $\geq 3$ , 2, 1 and 0 types of geometric quality criteria respectively. A grey segment represents the fraction of residues that are not modelled. The numeric value for each fraction is indicated below the corresponding segment, with a dot representing fractions  $\leq 5\%$ . The upper red bar (where present) indicates the fraction of residues that have poor fit to the electron density. The numeric value is given above the bar.

Mol	Chain	Length	Quality of chain
1	A	271	

## 2 Entry composition

There are 6 unique types of molecules in this entry. The entry contains 2345 atoms, of which 0 are hydrogens and 0 are deuteriums.

In the tables below, the ZeroOcc column contains the number of atoms modelled with zero occupancy, the AltConf column contains the number of residues with at least one atom in alternate conformation and the Trace column contains the number of residues modelled with at most 2 atoms.

- Molecule 1 is a protein called Ion transport protein.

Mol	Chain	Residues	Atoms					ZeroOcc	AltConf	Trace
			Total	C	N	O	S			
1	A	229	1871	1274	281	304	12	0	0	0

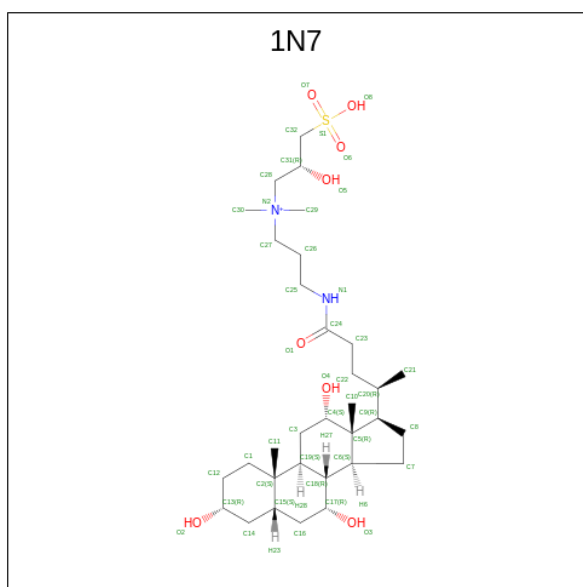
There are 6 discrepancies between the modelled and reference sequences:

Chain	Residue	Modelled	Actual	Comment	Reference
A	997	GLY	-	expression tag	UNP A8EVM5
A	998	SER	-	expression tag	UNP A8EVM5
A	999	GLY	-	expression tag	UNP A8EVM5
A	1000	SER	-	expression tag	UNP A8EVM5
A	1049	LYS	ASN	engineered mutation	UNP A8EVM5
A	1178	THR	SER	engineered mutation	UNP A8EVM5

- Molecule 2 is CALCIUM ION (CCD ID: CA) (formula: Ca) (labeled as "Ligand of Interest" by depositor).

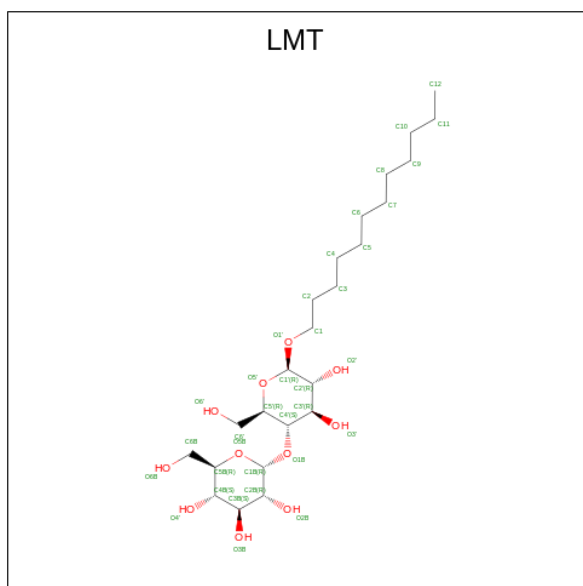
Mol	Chain	Residues	Atoms		ZeroOcc	AltConf
2	A	3	Total	Ca	0	0
			3	3		

- Molecule 3 is CHAPSO (CCD ID: 1N7) (formula: C<sub>32</sub>H<sub>59</sub>N<sub>2</sub>O<sub>8</sub>S).



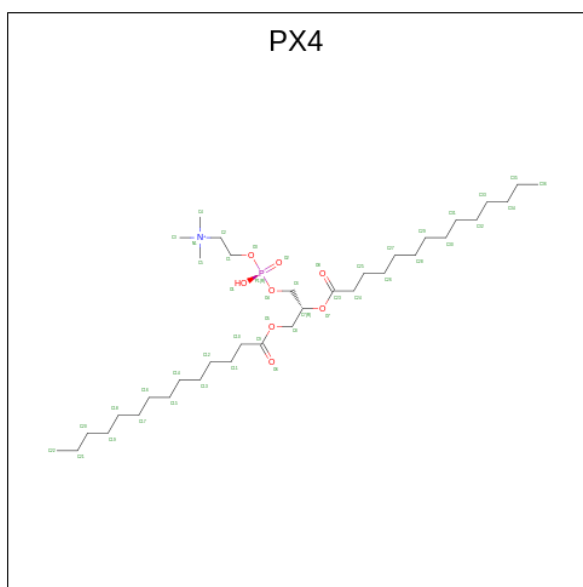
Mol	Chain	Residues	Atoms					ZeroOcc	AltConf
			Total	C	N	O	S		
3	A	1	43	32	2	8	1	0	0

- Molecule 4 is DODECYL-BETA-D-MALTOSE (CCD ID: LMT) (formula:  $C_{24}H_{46}O_{11}$ ).



Mol	Chain	Residues	Atoms		ZeroOcc	AltConf
			Total	O		
4	A	1	35	11	0	0

- Molecule 5 is 1,2-DIMYRISTOYL-SN-GLYCERO-3-PHOSPHOCHOLINE (CCD ID: PX4) (formula:  $C_{36}H_{73}NO_8P$ ).



Mol	Chain	Residues	Atoms					ZeroOcc	AltConf
5	A	1	Total	C	N	O	P	0	0
			46	36	1	8	1		
5	A	1	Total	C	N	O	P	0	0
			46	36	1	8	1		
5	A	1	Total	C	N	O	P	0	0
			46	36	1	8	1		
5	A	1	Total	C	N	O	P	0	0
			46	36	1	8	1		
5	A	1	Total	C	N	O	P	0	0
			46	36	1	8	1		
5	A	1	Total	C	N	O	P	0	0
			46	36	1	8	1		
5	A	1	Total	C	N	O	P	0	0
			46	36	1	8	1		

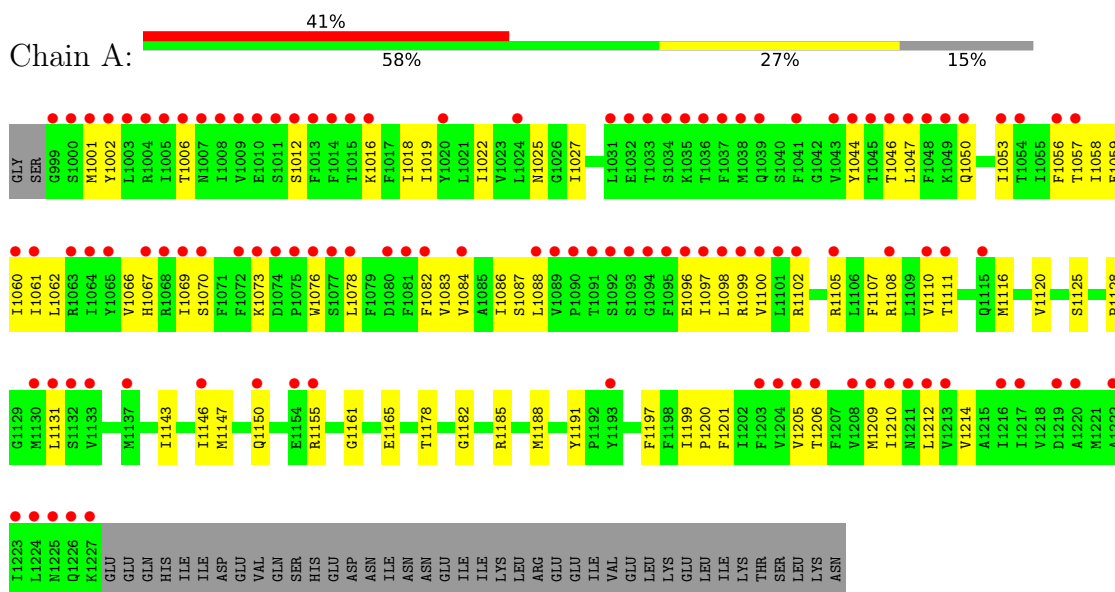
- Molecule 6 is water.

Mol	Chain	Residues	Atoms		ZeroOcc	AltConf
6	A	25	Total	O	0	0
			25	25		

### 3 Residue-property plots [i](#)

These plots are drawn for all protein, RNA, DNA and oligosaccharide chains in the entry. The first graphic for a chain summarises the proportions of the various outlier classes displayed in the second graphic. The second graphic shows the sequence view annotated by issues in geometry and electron density. Residues are color-coded according to the number of geometric quality criteria for which they contain at least one outlier: green = 0, yellow = 1, orange = 2 and red = 3 or more. A red dot above a residue indicates a poor fit to the electron density ( $RSRZ > 2$ ). Stretches of 2 or more consecutive residues without any outlier are shown as a green connector. Residues present in the sample, but not in the model, are shown in grey.

- Molecule 1: Ion transport protein



## 4 Data and refinement statistics

Property	Value	Source
Space group	I 4 2 2	Depositor
Cell constants a, b, c, $\alpha$ , $\beta$ , $\gamma$	127.95Å 127.95Å 200.35Å 90.00° 90.00° 90.00°	Depositor
Resolution (Å)	45.24 – 2.50 45.24 – 2.50	Depositor EDS
% Data completeness (in resolution range)	80.0 (45.24-2.50) 80.0 (45.24-2.50)	Depositor EDS
$R_{merge}$	(Not available)	Depositor
$R_{sym}$	(Not available)	Depositor
$\langle I/\sigma(I) \rangle$ <sup>1</sup>	0.82 (at 2.27Å)	Xtrriage
Refinement program	PHENIX 1.18.2_3874	Depositor
R, $R_{free}$	0.254 , 0.274 0.258 , 0.274	Depositor DCC
$R_{free}$ test set	1135 reflections (2.95%)	wwPDB-VP
Wilson B-factor (Å <sup>2</sup> )	59.4	Xtrriage
Anisotropy	0.049	Xtrriage
Bulk solvent $k_{sol}$ (e/Å <sup>3</sup> ), $B_{sol}$ (Å <sup>2</sup> )	0.24 , 54.0	EDS
L-test for twinning <sup>2</sup>	$\langle  L  \rangle = 0.50$ , $\langle L^2 \rangle = 0.34$	Xtrriage
Estimated twinning fraction	No twinning to report.	Xtrriage
$F_o, F_c$ correlation	0.85	EDS
Total number of atoms	2345	wwPDB-VP
Average B, all atoms (Å <sup>2</sup> )	94.0	wwPDB-VP

Xtrriage's analysis on translational NCS is as follows: *The largest off-origin peak in the Patterson function is 4.82% of the height of the origin peak. No significant pseudotranslation is detected.*

<sup>1</sup>Intensities estimated from amplitudes.

<sup>2</sup>Theoretical values of  $\langle |L| \rangle$ ,  $\langle L^2 \rangle$  for acentric reflections are 0.5, 0.333 respectively for untwinned datasets, and 0.375, 0.2 for perfectly twinned datasets.

## 5 Model quality [i](#)

### 5.1 Standard geometry [i](#)

Bond lengths and bond angles in the following residue types are not validated in this section: PX4, 1N7, LMT, CA

The Z score for a bond length (or angle) is the number of standard deviations the observed value is removed from the expected value. A bond length (or angle) with  $|Z| > 5$  is considered an outlier worth inspection. RMSZ is the root-mean-square of all Z scores of the bond lengths (or angles).

Mol	Chain	Bond lengths		Bond angles	
		RMSZ	# Z  >5	RMSZ	# Z  >5
1	A	0.21	0/1922	0.46	0/2612

Chiral center outliers are detected by calculating the chiral volume of a chiral center and verifying if the center is modelled as a planar moiety or with the opposite hand. A planarity outlier is detected by checking planarity of atoms in a peptide group, atoms in a mainchain group or atoms of a sidechain that are expected to be planar.

Mol	Chain	#Chirality outliers	#Planarity outliers
1	A	0	1

There are no bond length outliers.

There are no bond angle outliers.

There are no chirality outliers.

All (1) planarity outliers are listed below:

Mol	Chain	Res	Type	Group
1	A	1001	MET	Peptide

### 5.2 Too-close contacts [i](#)

In the following table, the Non-H and H(model) columns list the number of non-hydrogen atoms and hydrogen atoms in the chain respectively. The H(added) column lists the number of hydrogen atoms added and optimized by MolProbity. The Clashes column lists the number of clashes within the asymmetric unit, whereas Symm-Clashes lists symmetry-related clashes.

Mol	Chain	Non-H	H(model)	H(added)	Clashes	Symm-Clashes
1	A	1871	0	1960	60	4
2	A	3	0	0	0	0

*Continued on next page...*

Continued from previous page...

Mol	Chain	Non-H	H(model)	H(added)	Clashes	Symm-Clashes
3	A	43	0	59	1	1
4	A	35	0	45	2	0
5	A	368	0	576	28	5
6	A	25	0	0	0	1
All	All	2345	0	2640	79	7

The all-atom clashscore is defined as the number of clashes found per 1000 atoms (including hydrogen atoms). The all-atom clashscore for this structure is 16.

The worst 5 of 79 close contacts within the same asymmetric unit are listed below, sorted by their clash magnitude.

Atom-1	Atom-2	Interatomic distance (Å)	Clash overlap (Å)
1:A:1110:VAL:HG23	1:A:1116:MET:HB3	1.47	0.93
1:A:1076:TRP:HE1	5:A:1306:PX4:H12	1.50	0.77
1:A:1025:ASN:HD21	1:A:1105:ARG:HH11	1.30	0.77
5:A:1312:PX4:H33	5:A:1312:PX4:H61	1.68	0.75
1:A:1059:GLU:OE2	1:A:1108:ARG:NH1	2.24	0.71

The worst 5 of 7 symmetry-related close contacts are listed below. The label for Atom-2 includes the symmetry operator and encoded unit-cell translations to be applied.

Atom-1	Atom-2	Interatomic distance (Å)	Clash overlap (Å)
1:A:1161:GLY:O	5:A:1312:PX4:C5[4_555]	1.37	0.83
1:A:1165:GLU:OE2	5:A:1311:PX4:C5[3_555]	1.37	0.83
1:A:1131:LEU:CB	3:A:1304:1N7:O4[4_555]	1.38	0.82
5:A:1309:PX4:C2	5:A:1311:PX4:C4[2_555]	1.49	0.71
5:A:1310:PX4:C22	5:A:1312:PX4:C22[4_555]	1.49	0.71

## 5.3 Torsion angles [i](#)

### 5.3.1 Protein backbone [i](#)

In the following table, the Percentiles column shows the percent Ramachandran outliers of the chain as a percentile score with respect to all X-ray entries followed by that with respect to entries of similar resolution.

The Analysed column shows the number of residues for which the backbone conformation was analysed, and the total number of residues.

Mol	Chain	Analysed	Favoured	Allowed	Outliers	Percentiles	
1	A	227/271 (84%)	223 (98%)	4 (2%)	0	100	100

There are no Ramachandran outliers to report.

### 5.3.2 Protein sidechains [i](#)

In the following table, the Percentiles column shows the percent sidechain outliers of the chain as a percentile score with respect to all X-ray entries followed by that with respect to entries of similar resolution.

The Analysed column shows the number of residues for which the sidechain conformation was analysed, and the total number of residues.

Mol	Chain	Analysed	Rotameric	Outliers	Percentiles	
1	A	209/250 (84%)	209 (100%)	0	100	100

There are no protein residues with a non-rotameric sidechain to report.

Sometimes sidechains can be flipped to improve hydrogen bonding and reduce clashes. All (2) such sidechains are listed below:

Mol	Chain	Res	Type
1	A	1025	ASN
1	A	1067	HIS

### 5.3.3 RNA [i](#)

There are no RNA molecules in this entry.

## 5.4 Non-standard residues in protein, DNA, RNA chains [i](#)

There are no non-standard protein/DNA/RNA residues in this entry.

## 5.5 Carbohydrates [i](#)

There are no oligosaccharides in this entry.

## 5.6 Ligand geometry [i](#)

Of 13 ligands modelled in this entry, 3 are monoatomic - leaving 10 for Mogul analysis.

In the following table, the Counts columns list the number of bonds (or angles) for which Mogul statistics could be retrieved, the number of bonds (or angles) that are observed in the model and the number of bonds (or angles) that are defined in the Chemical Component Dictionary. The Link column lists molecule types, if any, to which the group is linked. The Z score for a bond length (or angle) is the number of standard deviations the observed value is removed from the expected value. A bond length (or angle) with  $|Z| > 2$  is considered an outlier worth inspection. RMSZ is the root-mean-square of all Z scores of the bond lengths (or angles).

Mol	Type	Chain	Res	Link	Bond lengths			Bond angles		
					Counts	RMSZ	# Z  > 2	Counts	RMSZ	# Z  > 2
3	1N7	A	1304	-	45,46,46	0.61	1 (2%)	69,72,72	1.29	8 (11%)
4	LMT	A	1305	-	36,36,36	1.12	5 (13%)	47,47,47	1.22	5 (10%)
5	PX4	A	1306	-	45,45,45	1.02	2 (4%)	51,53,53	1.03	3 (5%)
5	PX4	A	1307	-	45,45,45	1.00	2 (4%)	51,53,53	0.93	2 (3%)
5	PX4	A	1311	-	45,45,45	1.01	2 (4%)	51,53,53	1.15	4 (7%)
5	PX4	A	1312	-	45,45,45	1.01	2 (4%)	51,53,53	1.02	3 (5%)
5	PX4	A	1308	-	45,45,45	1.01	2 (4%)	51,53,53	1.04	3 (5%)
5	PX4	A	1313	-	45,45,45	1.01	2 (4%)	51,53,53	1.05	2 (3%)
5	PX4	A	1310	-	45,45,45	1.03	2 (4%)	51,53,53	1.08	2 (3%)
5	PX4	A	1309	-	45,45,45	1.01	2 (4%)	51,53,53	1.03	3 (5%)

In the following table, the Chirals column lists the number of chiral outliers, the number of chiral centers analysed, the number of these observed in the model and the number defined in the Chemical Component Dictionary. Similar counts are reported in the Torsion and Rings columns. '-' means no outliers of that kind were identified.

Mol	Type	Chain	Res	Link	Chirals	Torsions	Rings
3	1N7	A	1304	-	-	12/27/92/92	1/4/4/4
4	LMT	A	1305	-	-	9/21/61/61	0/2/2/2
5	PX4	A	1306	-	-	21/49/49/49	-
5	PX4	A	1307	-	-	23/49/49/49	-
5	PX4	A	1311	-	-	16/49/49/49	-
5	PX4	A	1312	-	-	18/49/49/49	-
5	PX4	A	1308	-	-	20/49/49/49	-
5	PX4	A	1313	-	-	30/49/49/49	-
5	PX4	A	1310	-	-	18/49/49/49	-
5	PX4	A	1309	-	-	13/49/49/49	-

The worst 5 of 22 bond length outliers are listed below:

Mol	Chain	Res	Type	Atoms	Z	Observed(Å)	Ideal(Å)
5	A	1310	PX4	O5-C9	4.31	1.45	1.33
5	A	1306	PX4	O5-C9	4.31	1.45	1.33
5	A	1313	PX4	O5-C9	4.30	1.45	1.33
5	A	1310	PX4	O7-C23	4.28	1.46	1.34
5	A	1312	PX4	O5-C9	4.24	1.45	1.33

The worst 5 of 35 bond angle outliers are listed below:

Mol	Chain	Res	Type	Atoms	Z	Observed(°)	Ideal(°)
5	A	1308	PX4	O7-C23-C24	4.33	120.84	111.50
5	A	1310	PX4	O7-C23-C24	4.30	120.77	111.50
5	A	1309	PX4	O7-C23-C24	4.13	120.41	111.50
5	A	1311	PX4	O7-C23-C24	4.11	120.37	111.50
5	A	1313	PX4	O7-C23-C24	4.11	120.36	111.50

There are no chirality outliers.

5 of 180 torsion outliers are listed below:

Mol	Chain	Res	Type	Atoms
3	A	1304	1N7	N2-C28-C31-C32
3	A	1304	1N7	N2-C28-C31-O5
4	A	1305	LMT	C2'-C1'-O1'-C1
4	A	1305	LMT	C2-C1-O1'-C1'
5	A	1306	PX4	C1-O3-P1-O2

All (1) ring outliers are listed below:

Mol	Chain	Res	Type	Atoms
3	A	1304	1N7	C1-C12-C13-C14-C15-C2

10 monomers are involved in 37 short contacts:

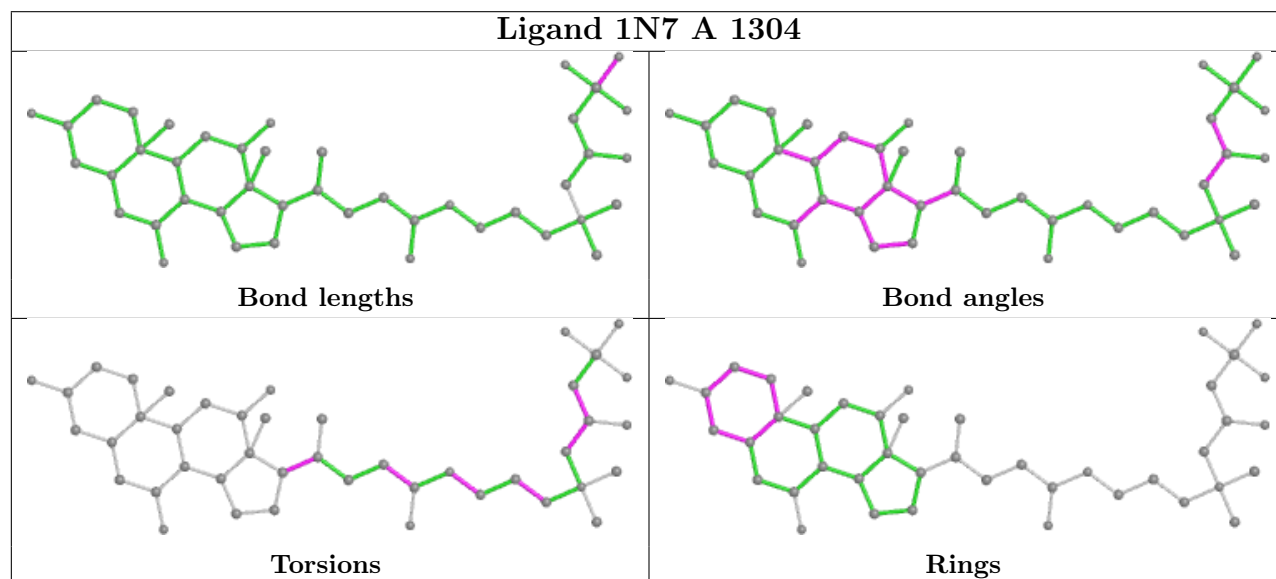
Mol	Chain	Res	Type	Clashes	Symm-Clashes
3	A	1304	1N7	1	1
4	A	1305	LMT	2	0
5	A	1306	PX4	6	0
5	A	1307	PX4	7	0
5	A	1311	PX4	2	3
5	A	1312	PX4	3	2
5	A	1308	PX4	6	0
5	A	1313	PX4	1	0
5	A	1310	PX4	3	1

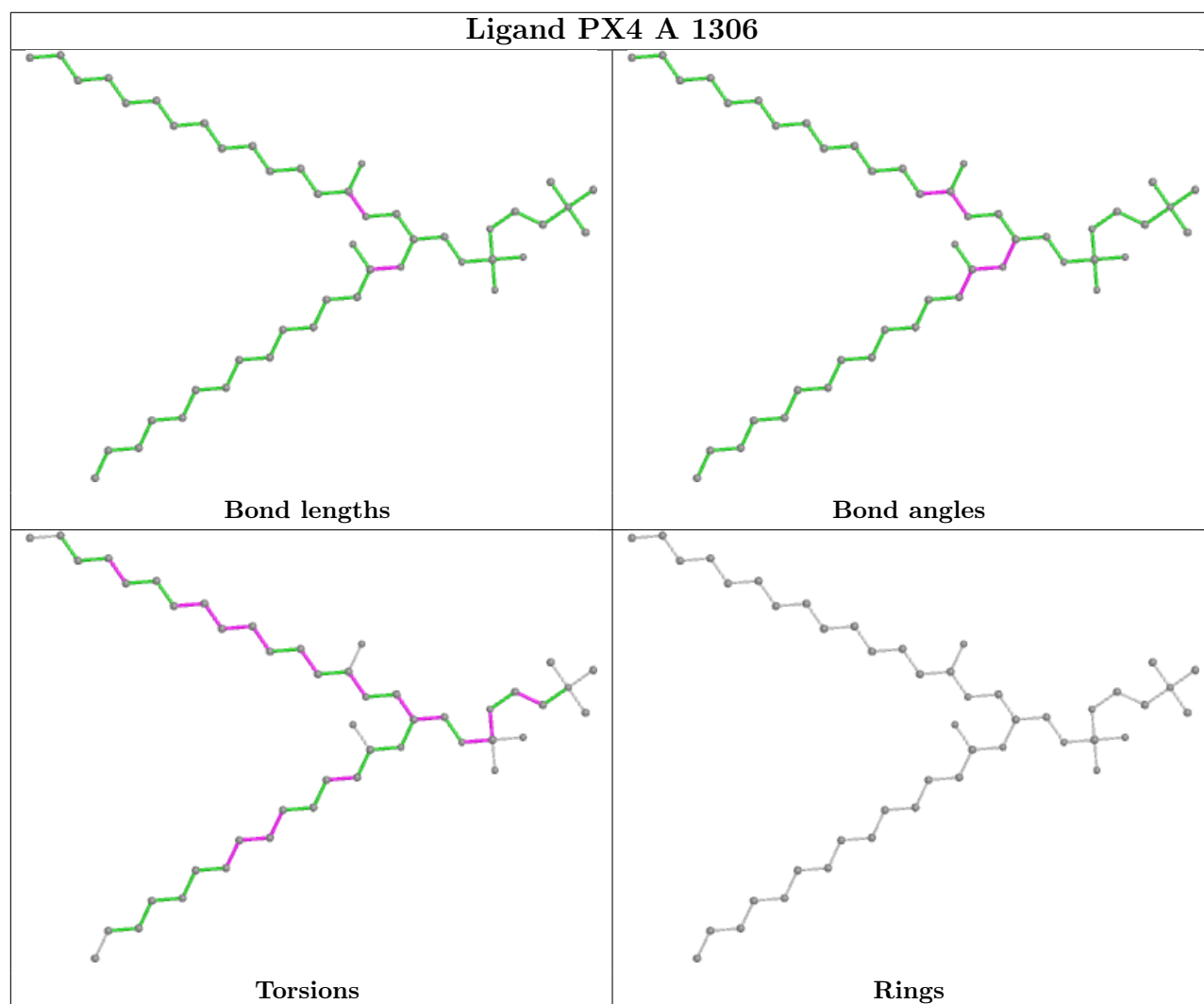
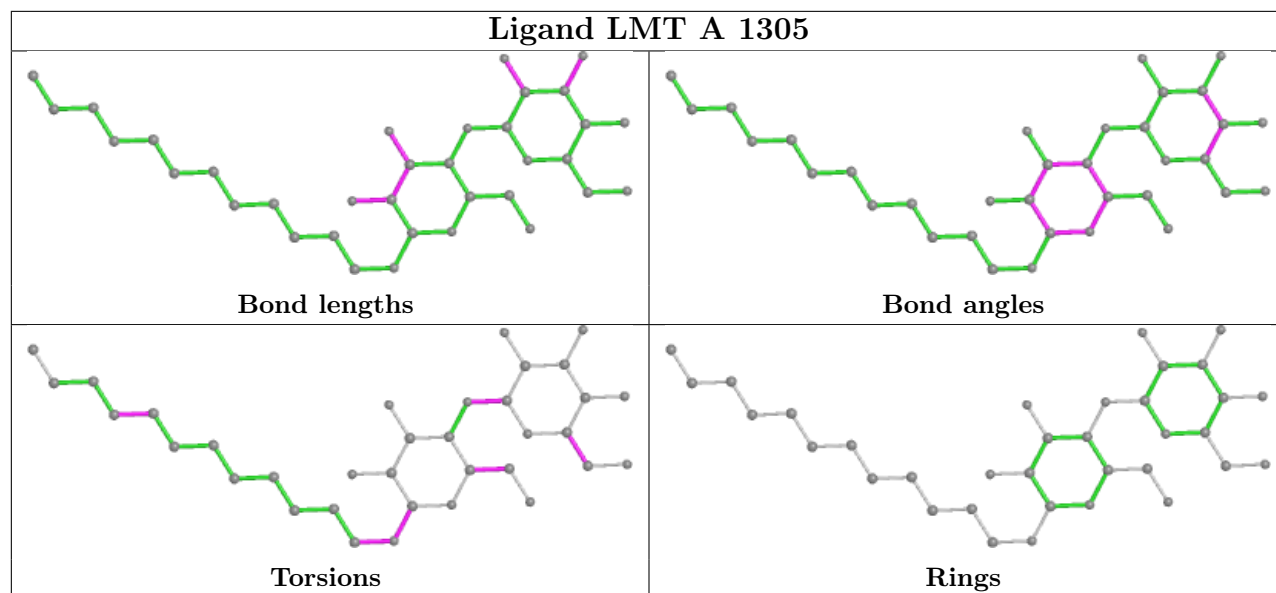
*Continued on next page...*

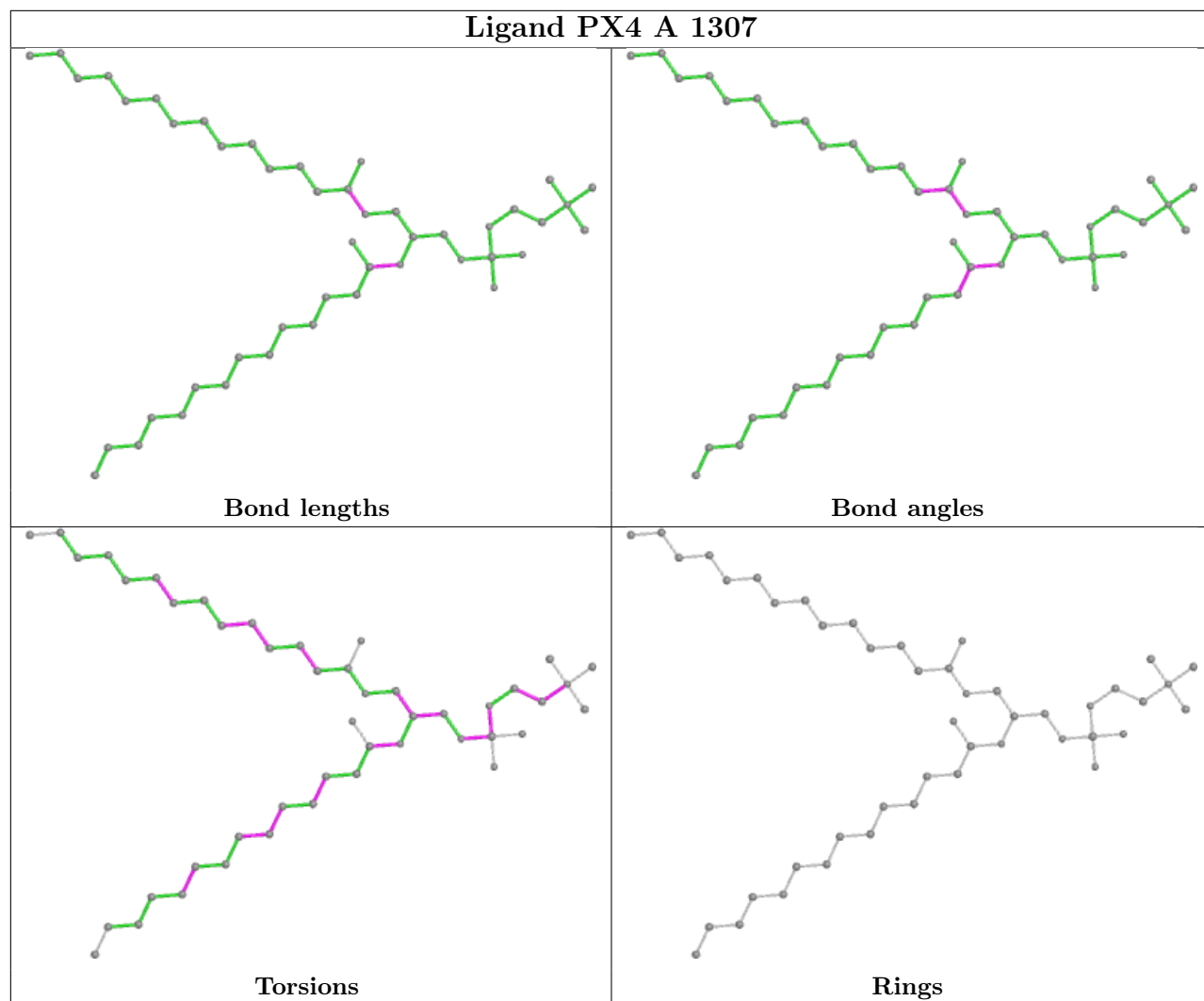
*Continued from previous page...*

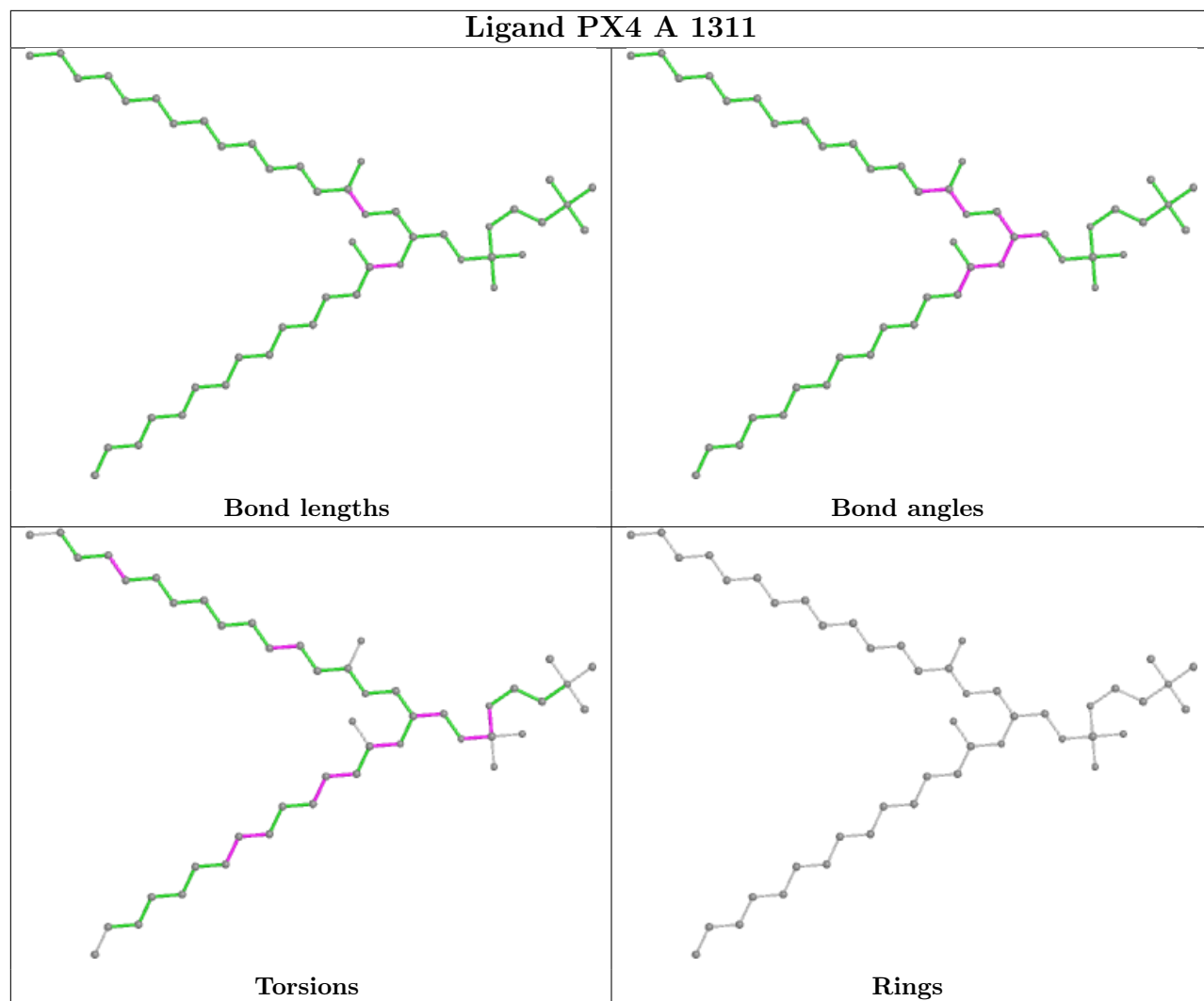
Mol	Chain	Res	Type	Clashes	Symm-Clashes
5	A	1309	PX4	4	1

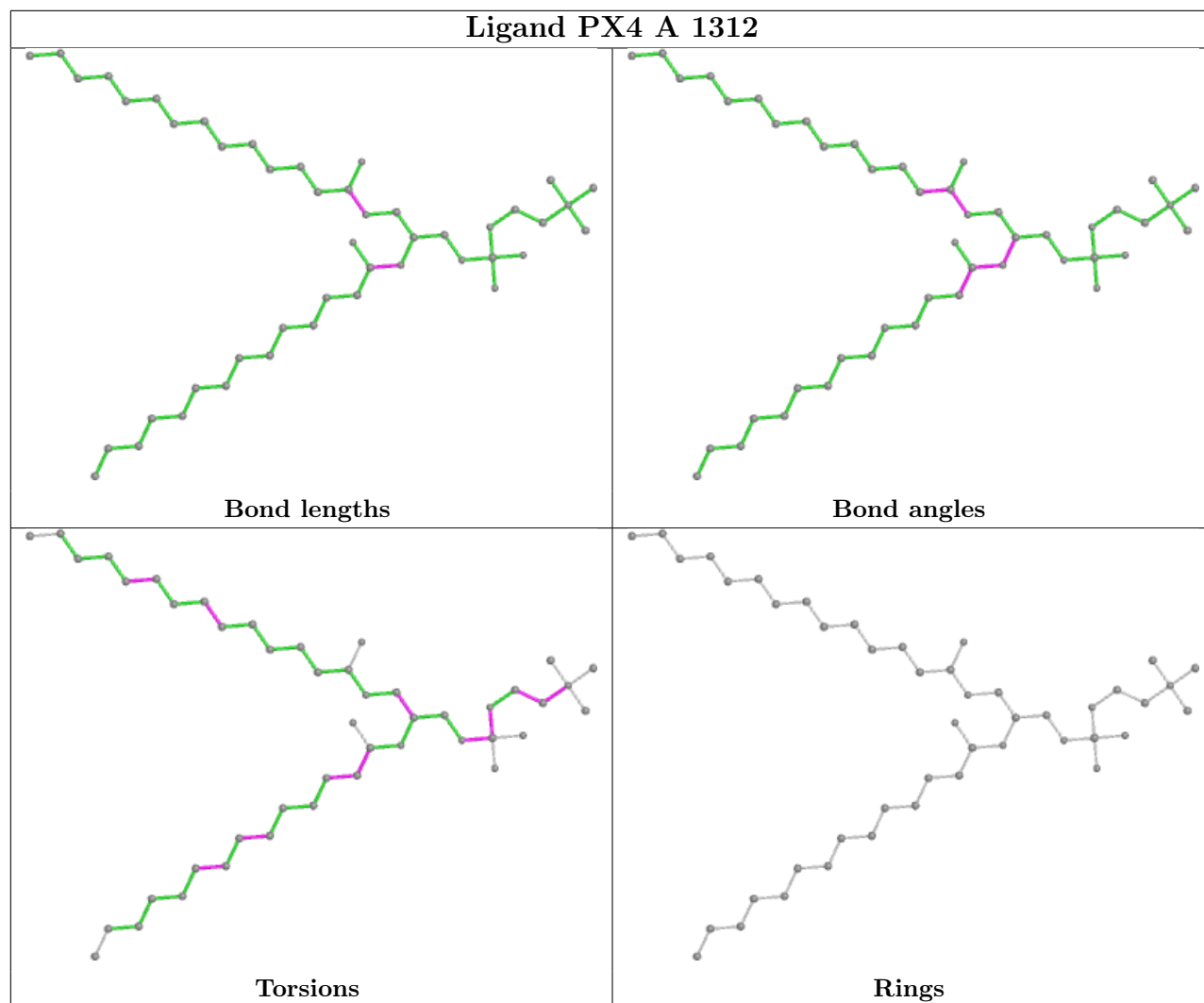
The following is a two-dimensional graphical depiction of Mogul quality analysis of bond lengths, bond angles, torsion angles, and ring geometry for all instances of the Ligand of Interest. In addition, ligands with molecular weight > 250 and outliers as shown on the validation Tables will also be included. For torsion angles, if less than 5% of the Mogul distribution of torsion angles is within 10 degrees of the torsion angle in question, then that torsion angle is considered an outlier. Any bond that is central to one or more torsion angles identified as an outlier by Mogul will be highlighted in the graph. For rings, the root-mean-square deviation (RMSD) between the ring in question and similar rings identified by Mogul is calculated over all ring torsion angles. If the average RMSD is greater than 60 degrees and the minimal RMSD between the ring in question and any Mogul-identified rings is also greater than 60 degrees, then that ring is considered an outlier. The outliers are highlighted in purple. The color gray indicates Mogul did not find sufficient equivalents in the CSD to analyse the geometry.

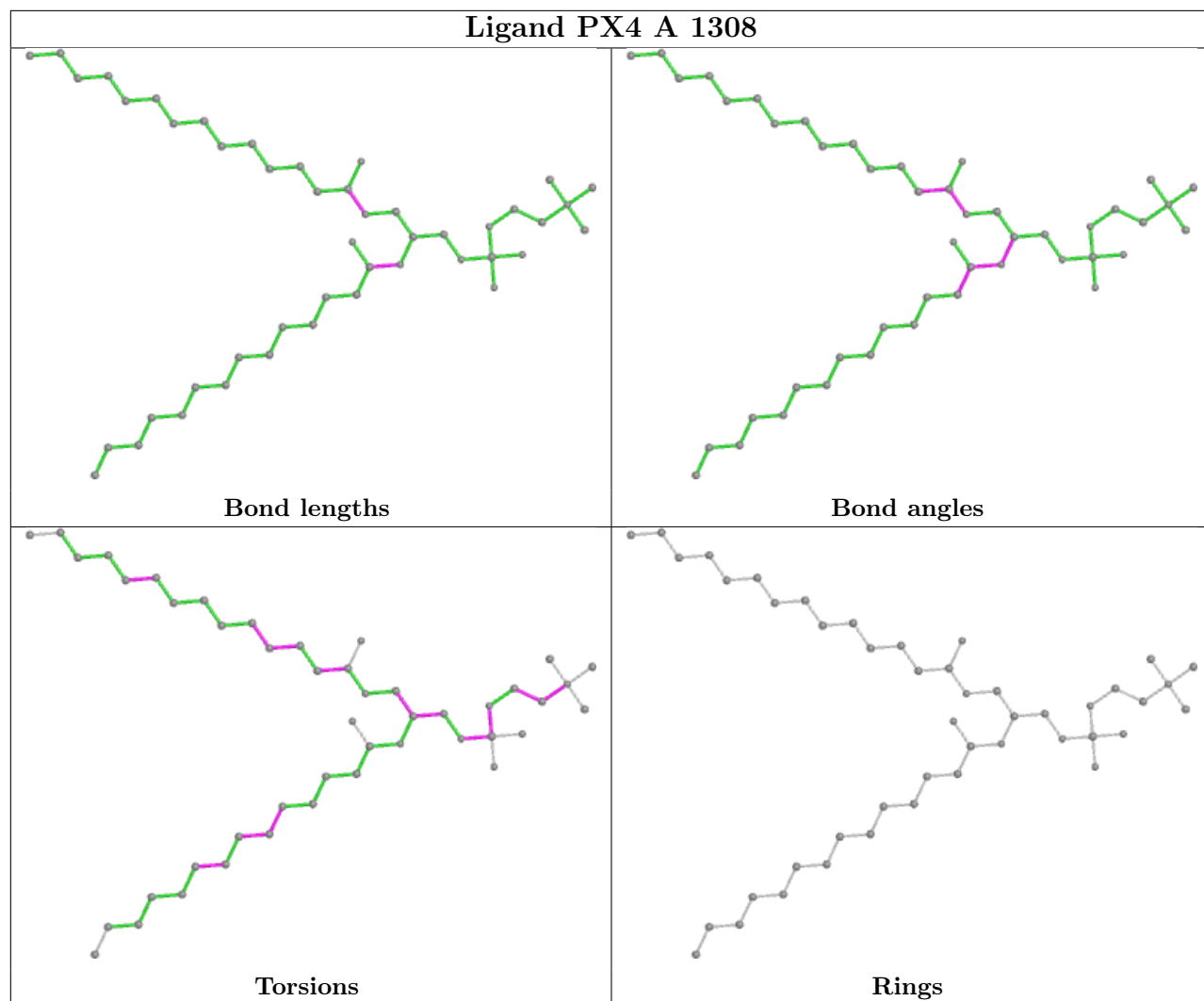


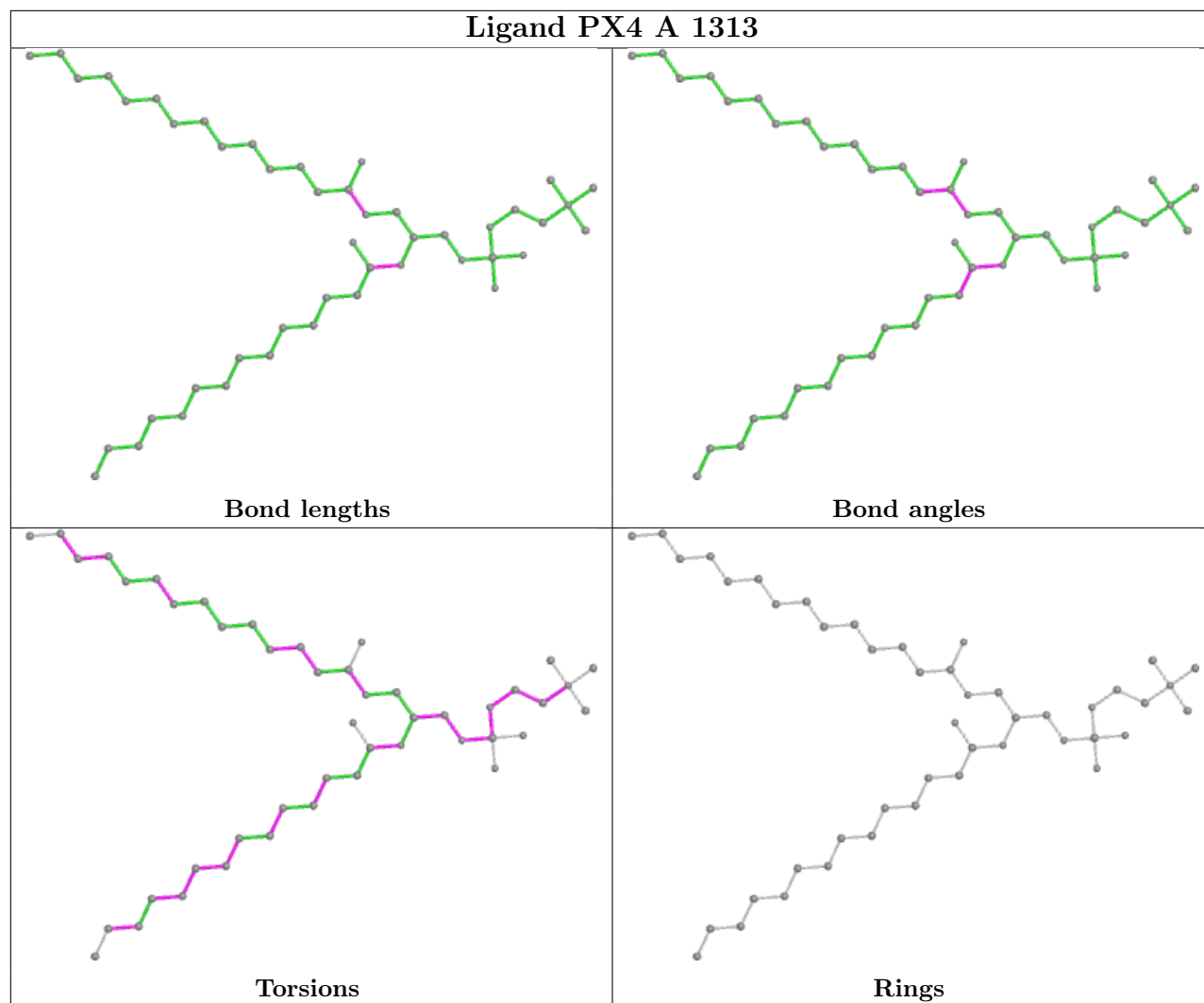


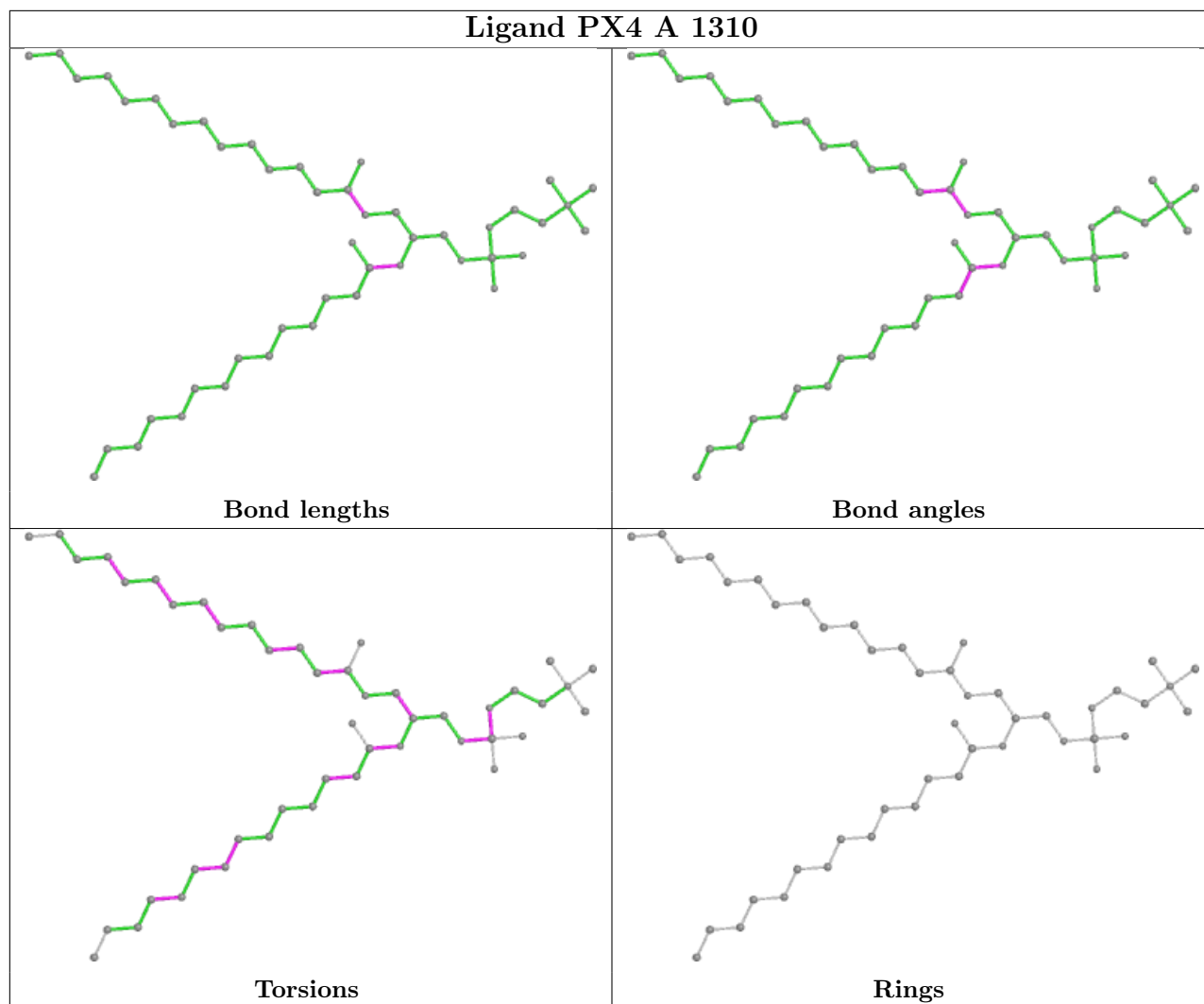


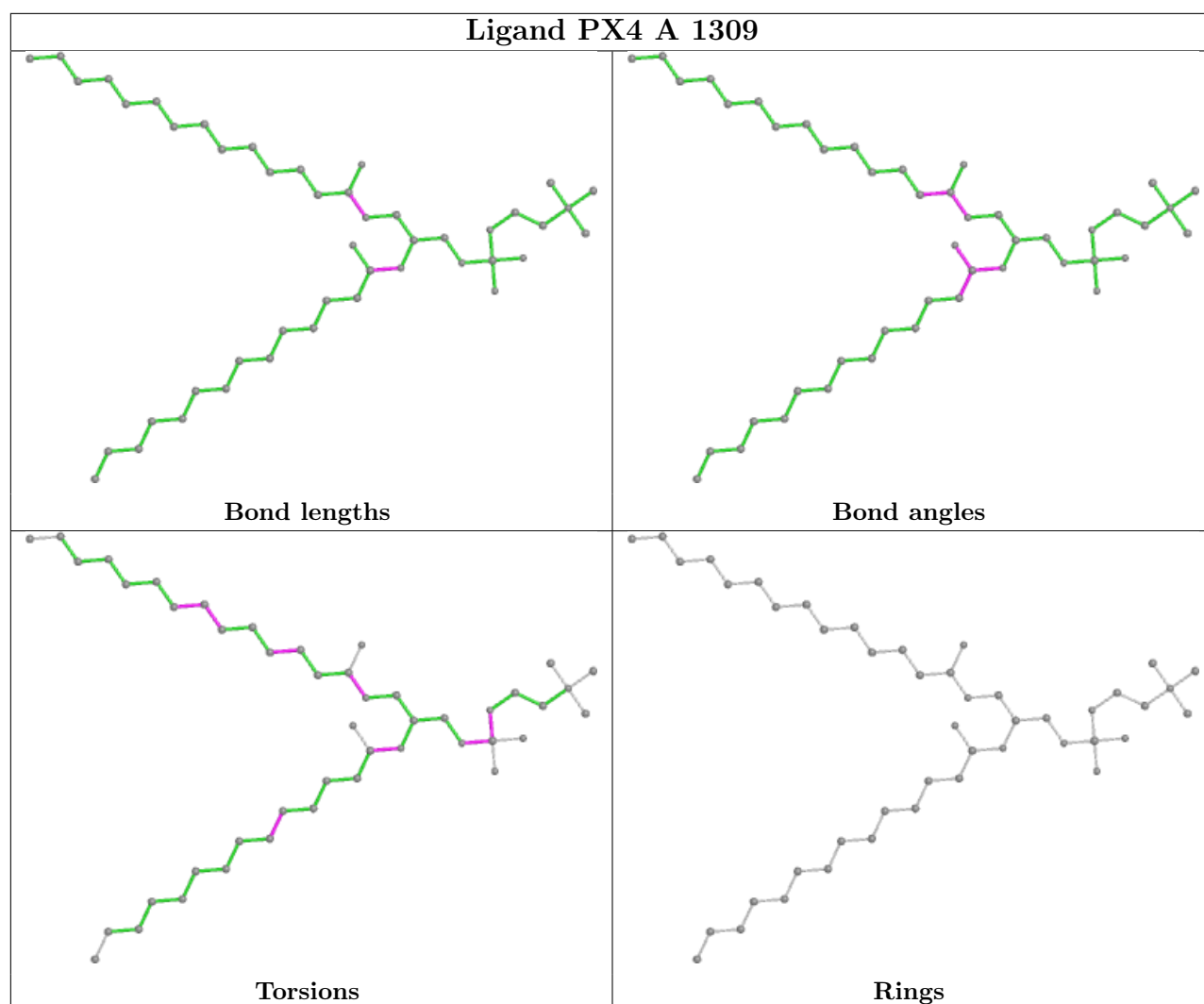












## 5.7 Other polymers [i](#)

There are no such residues in this entry.

## 5.8 Polymer linkage issues [i](#)

There are no chain breaks in this entry.

## 6 Fit of model and data [i](#)

### 6.1 Protein, DNA and RNA chains [i](#)

In the following table, the column labelled '#RSRZ > 2' contains the number (and percentage) of RSRZ outliers, followed by percent RSRZ outliers for the chain as percentile scores relative to all X-ray entries and entries of similar resolution. The OWAB column contains the minimum, median, 95<sup>th</sup> percentile and maximum values of the occupancy-weighted average B-factor per residue. The column labelled 'Q < 0.9' lists the number of (and percentage) of residues with an average occupancy less than 0.9.

Mol	Chain	Analysed	<RSRZ>	#RSRZ>2	OWAB(Å <sup>2</sup> )	Q<0.9
1	A	229/271 (84%)	2.83	112 (48%) <b>0</b> <b>0</b>	35, 88, 142, 165	0

The worst 5 of 112 RSRZ outliers are listed below:

Mol	Chain	Res	Type	RSRZ
1	A	1094	GLY	35.2
1	A	1000	SER	24.8
1	A	1002	TYR	20.6
1	A	999	GLY	18.7
1	A	1095	PHE	16.4

### 6.2 Non-standard residues in protein, DNA, RNA chains [i](#)

There are no non-standard protein/DNA/RNA residues in this entry.

### 6.3 Carbohydrates [i](#)

There are no oligosaccharides in this entry.

### 6.4 Ligands [i](#)

In the following table, the Atoms column lists the number of modelled atoms in the group and the number defined in the chemical component dictionary. The B-factors column lists the minimum, median, 95<sup>th</sup> percentile and maximum values of B factors of atoms in the group. The column labelled 'Q < 0.9' lists the number of atoms with occupancy less than 0.9.

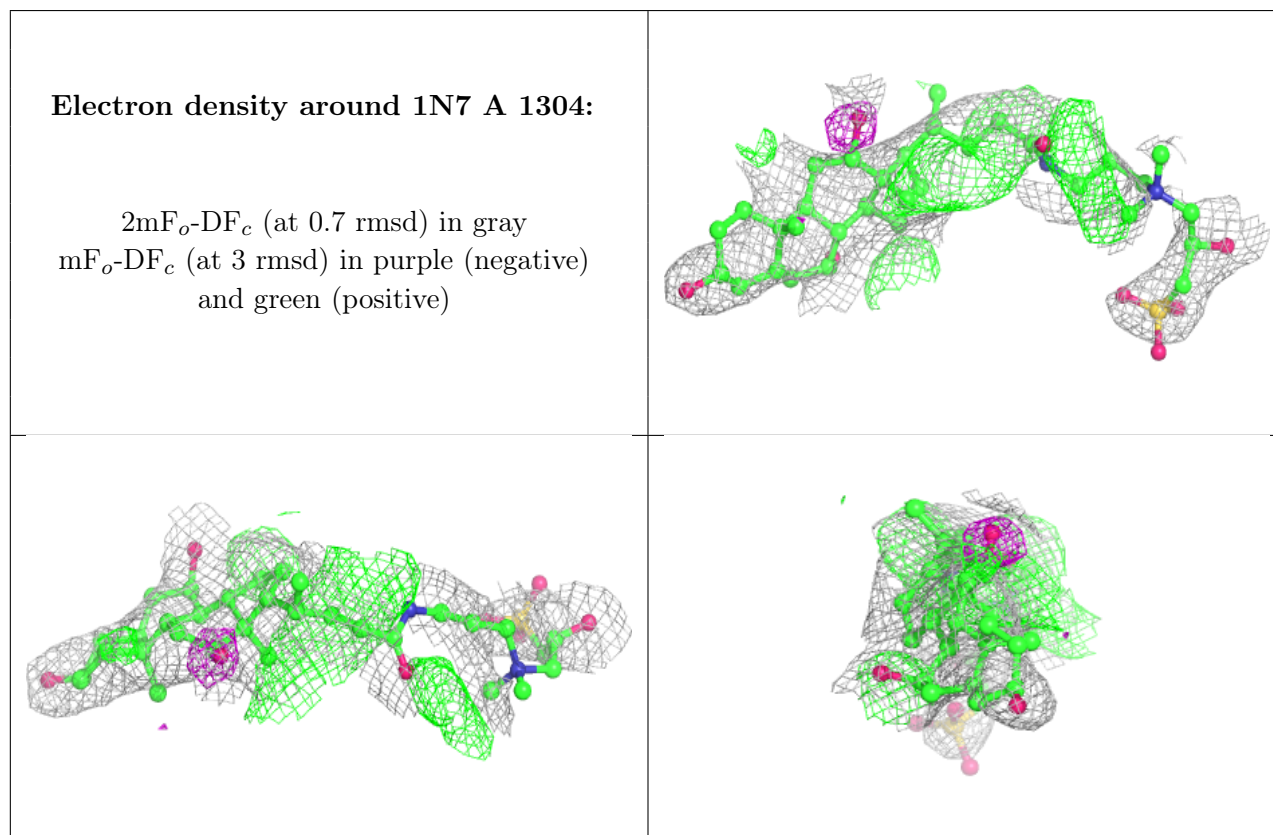
Mol	Type	Chain	Res	Atoms	RSCC	RSR	B-factors(Å <sup>2</sup> )	Q<0.9
3	1N7	A	1304	43/43	0.55	0.37	93,109,156,175	0
5	PX4	A	1308	46/46	0.61	0.34	96,119,152,176	0

*Continued on next page...*

Continued from previous page...

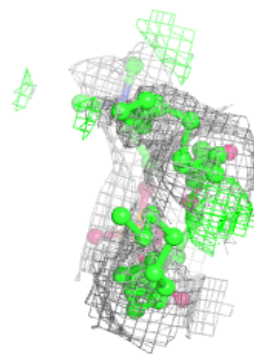
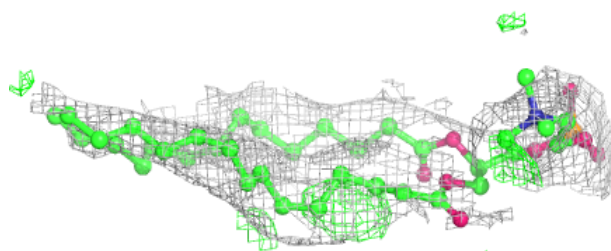
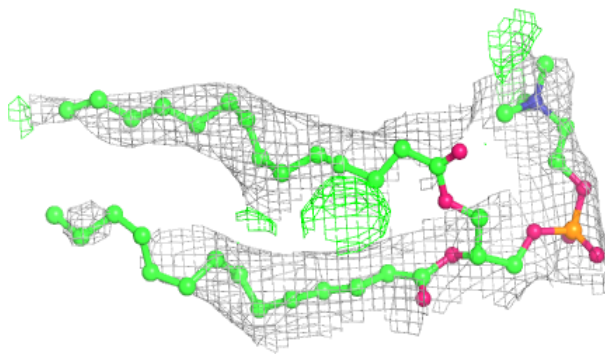
Mol	Type	Chain	Res	Atoms	RSCC	RSR	B-factors( $\text{\AA}^2$ )	Q<0.9
4	LMT	A	1305	35/35	0.63	0.36	72,98,116,118	0
5	PX4	A	1309	46/46	0.63	0.35	96,118,131,138	0
5	PX4	A	1310	46/46	0.65	0.34	95,123,155,170	0
5	PX4	A	1307	46/46	0.66	0.33	92,115,149,175	0
5	PX4	A	1306	46/46	0.75	0.30	79,107,138,157	0
5	PX4	A	1313	46/46	0.75	0.27	58,92,121,140	0
5	PX4	A	1312	46/46	0.80	0.23	71,91,116,125	0
5	PX4	A	1311	46/46	0.86	0.23	49,85,101,106	0
2	CA	A	1302	1/1	0.89	0.21	114,114,114,114	1
2	CA	A	1301	1/1	0.91	0.18	80,80,80,80	1
2	CA	A	1303	1/1	0.93	0.15	70,70,70,70	0

The following is a graphical depiction of the model fit to experimental electron density of all instances of the Ligand of Interest. In addition, ligands with molecular weight > 250 and outliers as shown on the geometry validation Tables will also be included. Each fit is shown from different orientation to approximate a three-dimensional view.

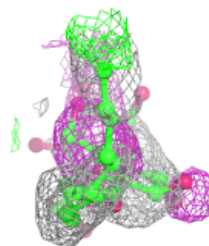
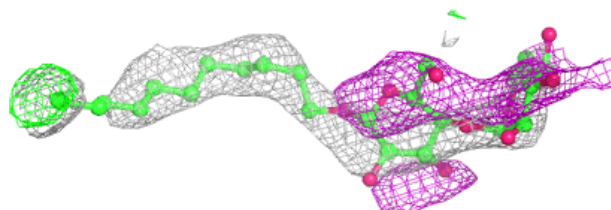
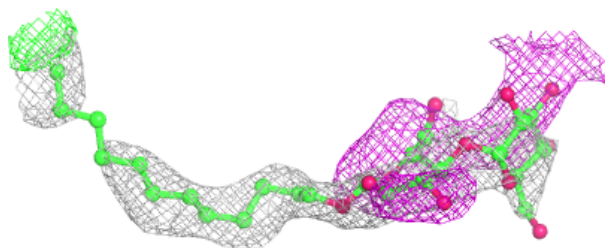


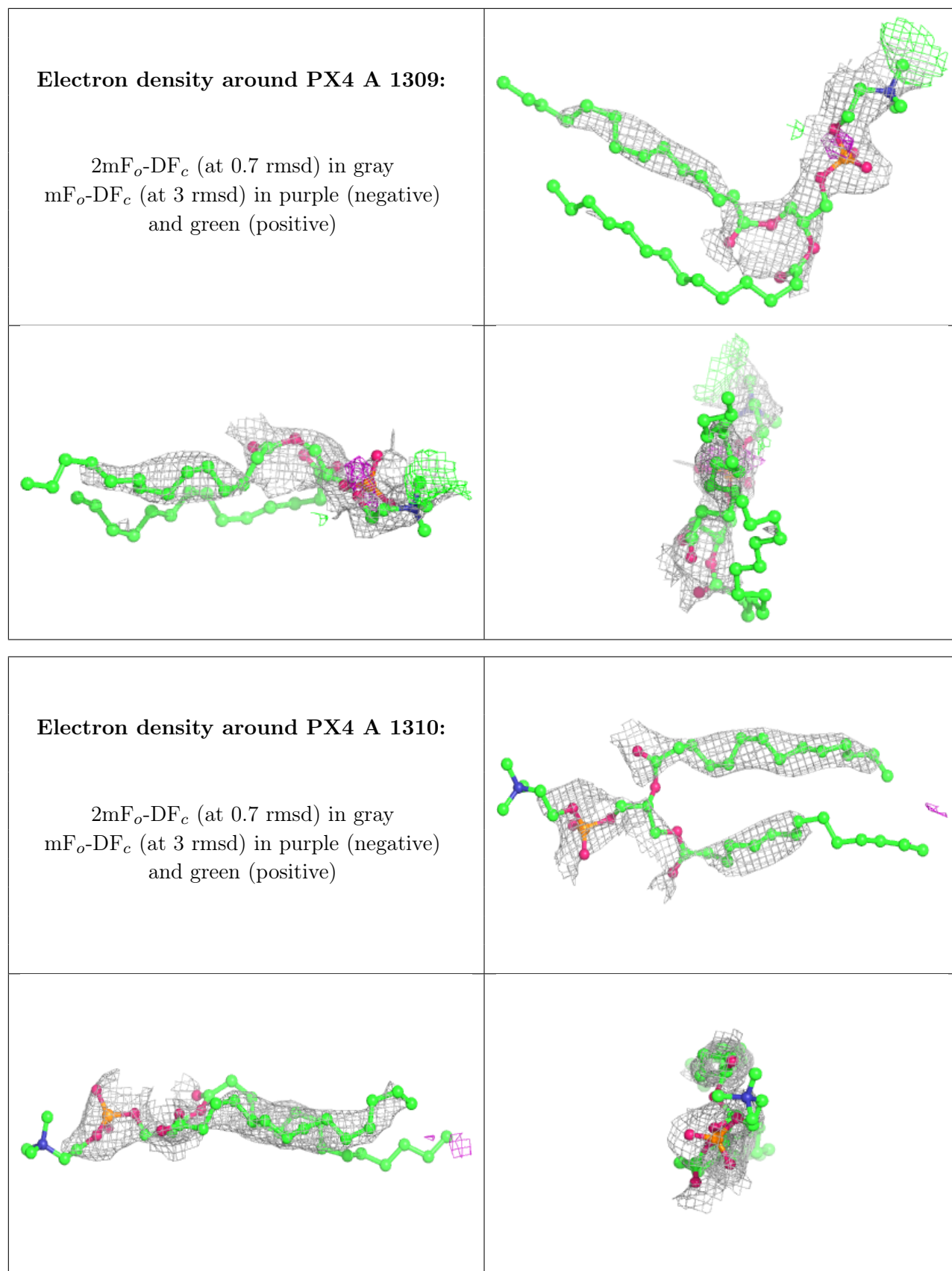
**Electron density around PX4 A 1308:**

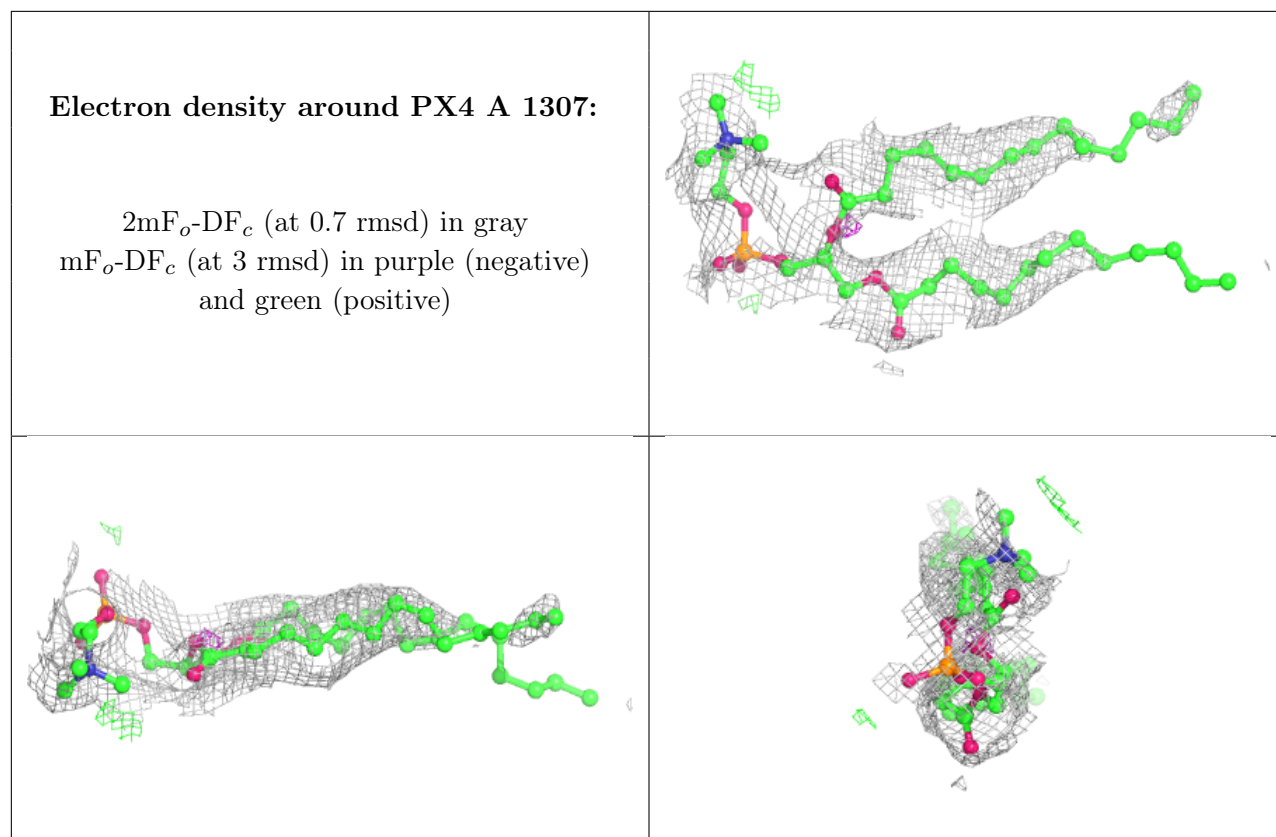
$2mF_o-DF_c$  (at 0.7 rmsd) in gray  
 $mF_o-DF_c$  (at 3 rmsd) in purple (negative)  
and green (positive)

**Electron density around LMT A 1305:**

$2mF_o-DF_c$  (at 0.7 rmsd) in gray  
 $mF_o-DF_c$  (at 3 rmsd) in purple (negative)  
and green (positive)

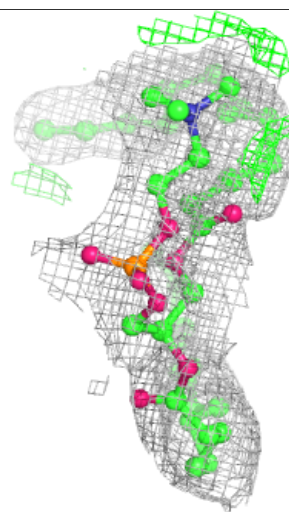
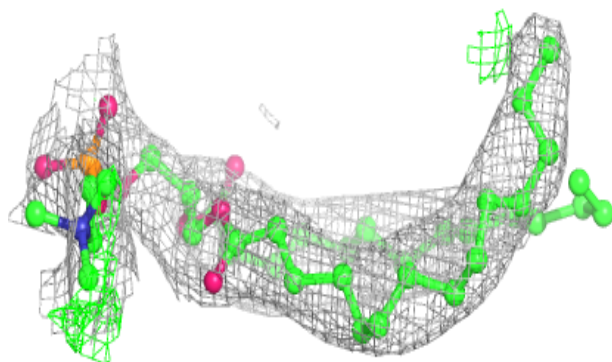
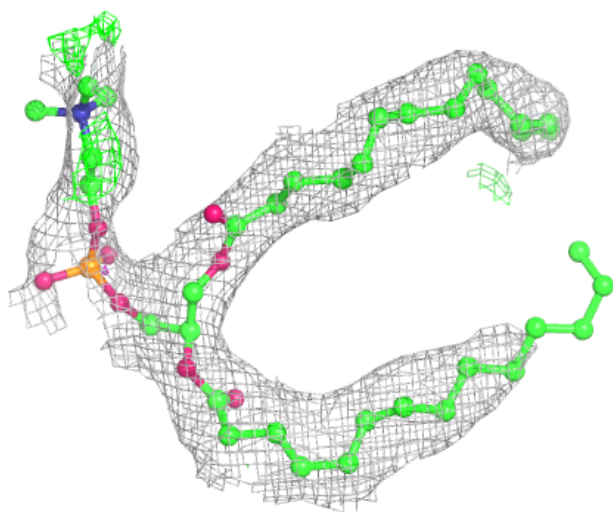






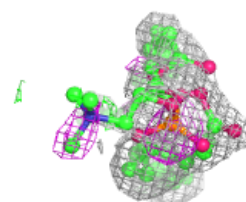
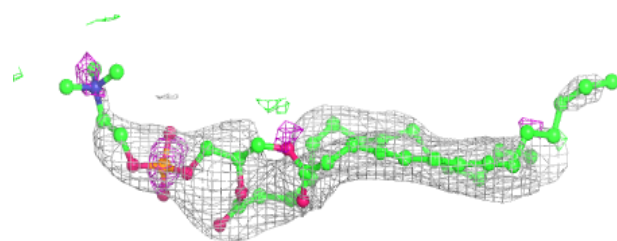
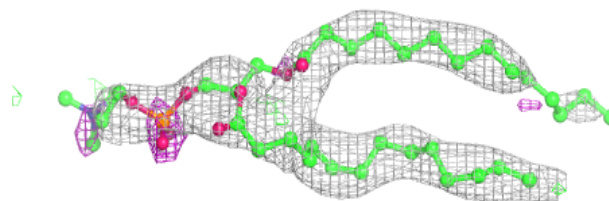
**Electron density around PX4 A 1306:**

$2mF_o-DF_c$  (at 0.7 rmsd) in gray  
 $mF_o-DF_c$  (at 3 rmsd) in purple (negative)  
and green (positive)

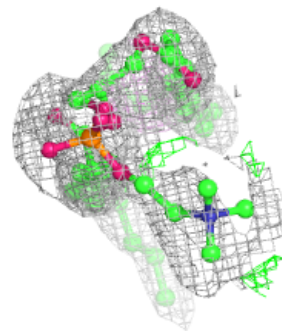
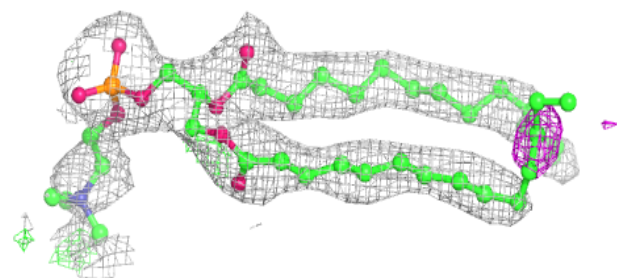
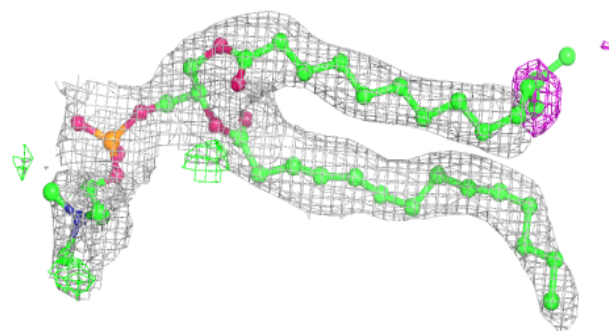


**Electron density around PX4 A 1313:**

$2mF_o-DF_c$  (at 0.7 rmsd) in gray  
 $mF_o-DF_c$  (at 3 rmsd) in purple (negative)  
and green (positive)

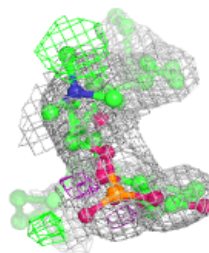
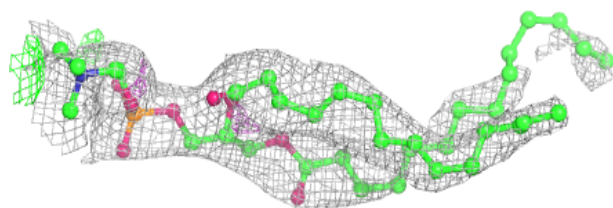
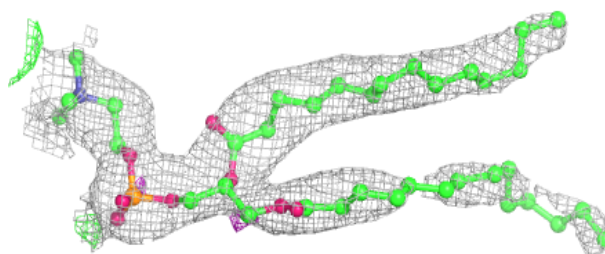
**Electron density around PX4 A 1312:**

$2mF_o-DF_c$  (at 0.7 rmsd) in gray  
 $mF_o-DF_c$  (at 3 rmsd) in purple (negative)  
and green (positive)



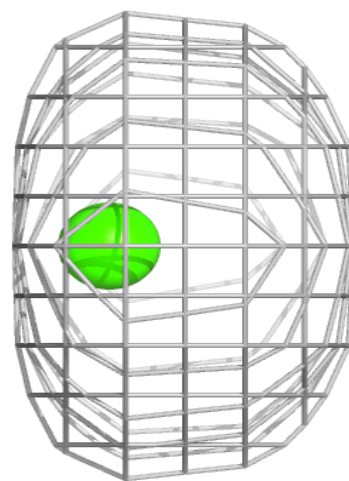
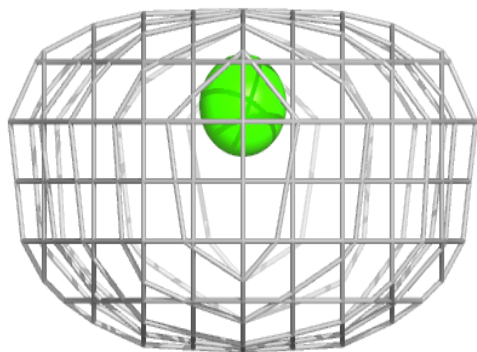
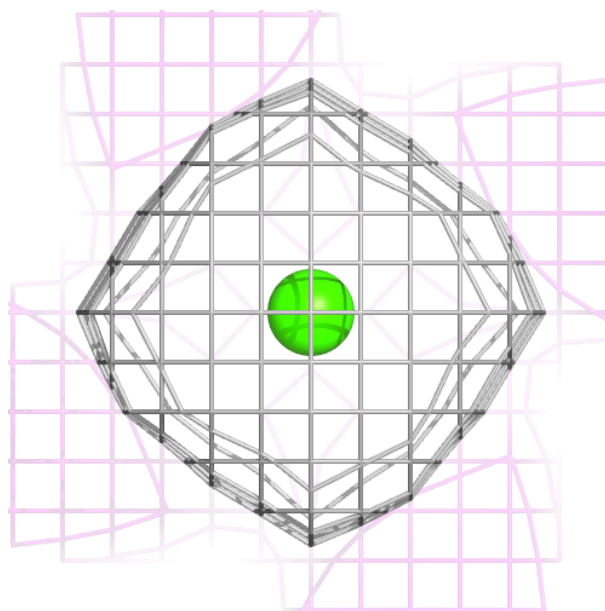
**Electron density around PX4 A 1311:**

$2mF_o-DF_c$  (at 0.7 rmsd) in gray  
 $mF_o-DF_c$  (at 3 rmsd) in purple (negative)  
and green (positive)



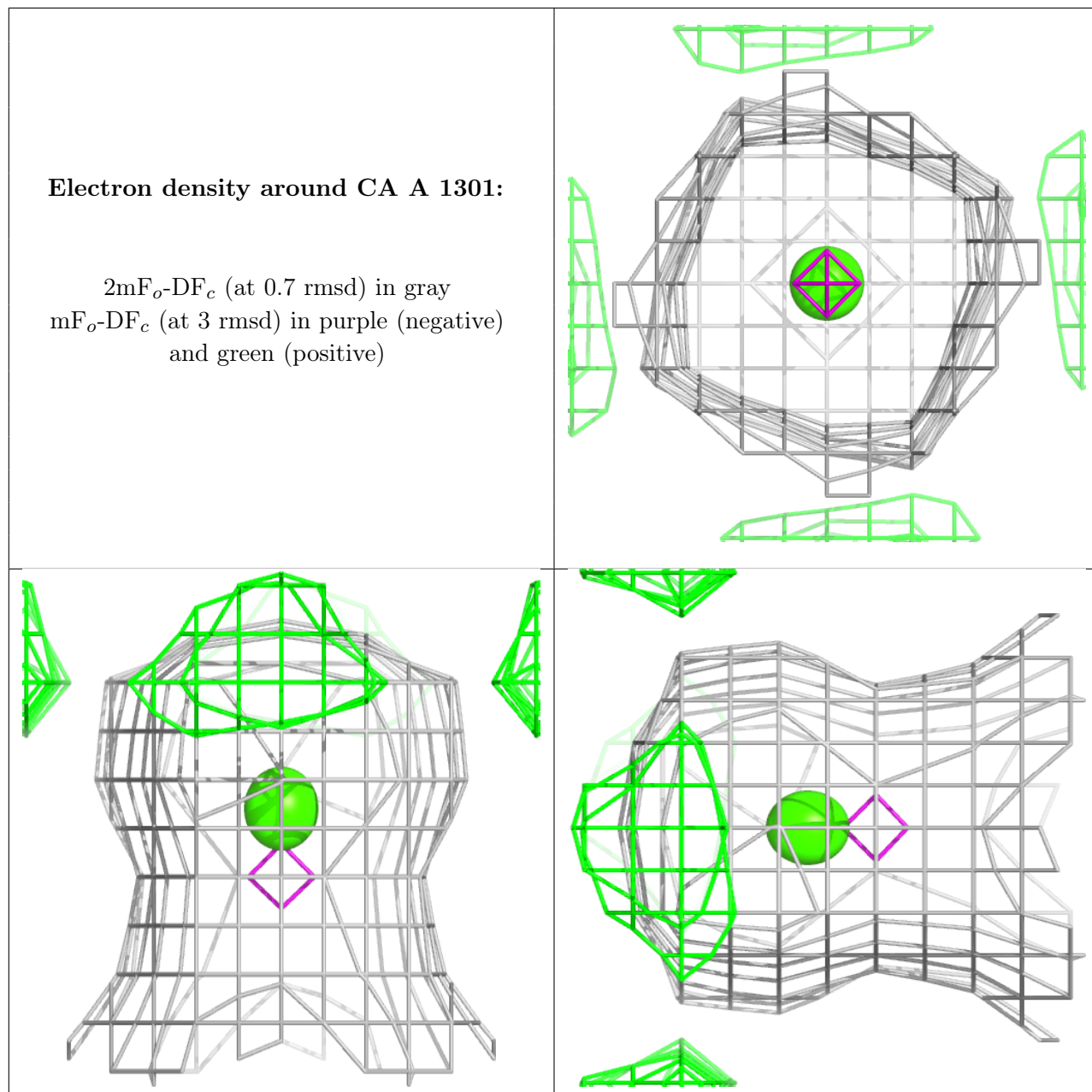
**Electron density around CA A 1302:**

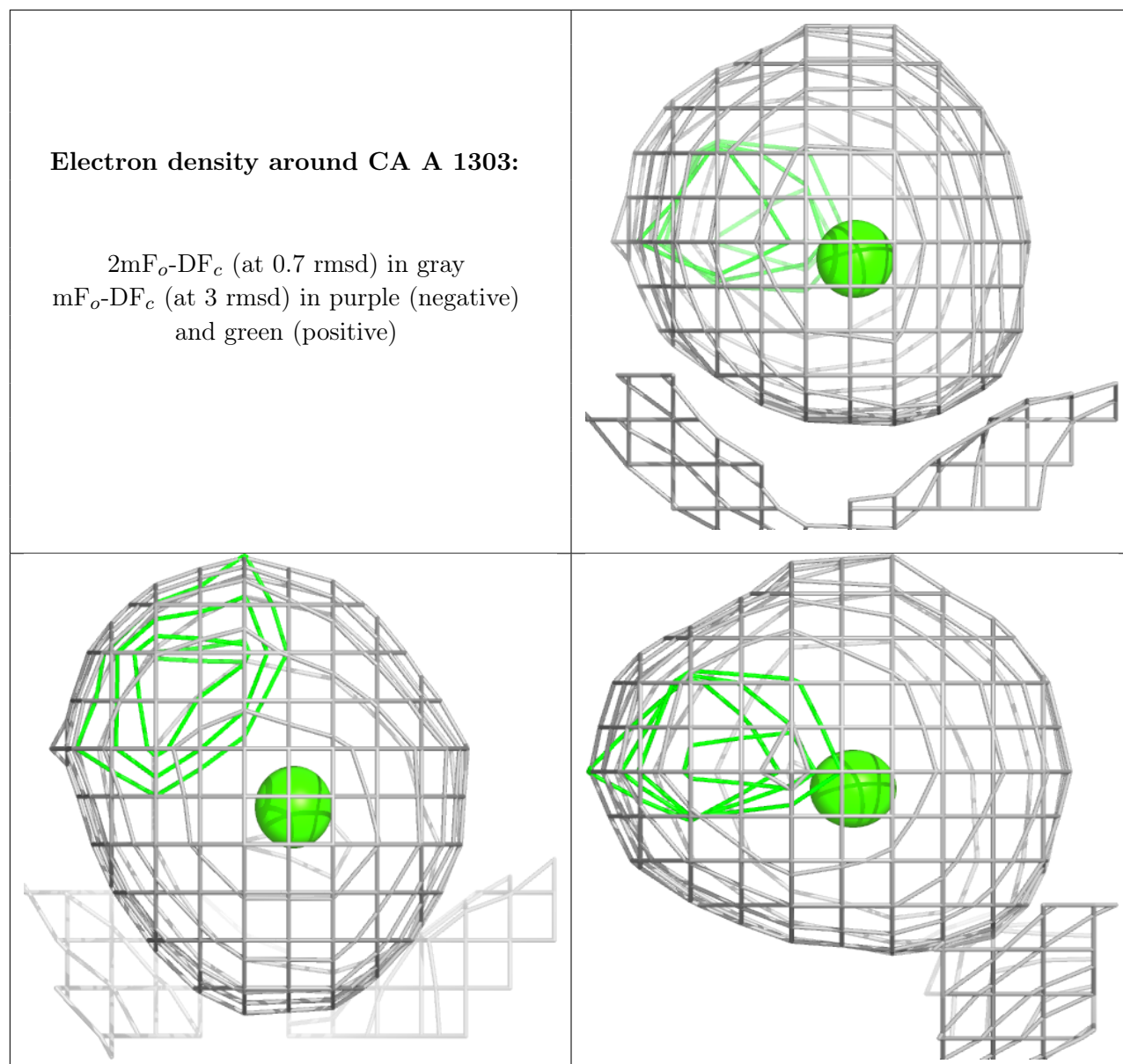
$2mF_o-DF_c$  (at 0.7 rmsd) in gray  
 $mF_o-DF_c$  (at 3 rmsd) in purple (negative)  
and green (positive)



**Electron density around CA A 1301:**

$2mF_o-DF_c$  (at 0.7 rmsd) in gray  
 $mF_o-DF_c$  (at 3 rmsd) in purple (negative)  
and green (positive)





## 6.5 Other polymers [i](#)

There are no such residues in this entry.