



Full wwPDB EM Validation Report ⓘ

Mar 8, 2026 – 09:10 AM UTC

PDB ID : 9U4T / pdb_00009u4t
EMDB ID : EMD-63854
Title : Cryo-EM map of MSMEG_3496 in complex with AcpM, size exclusion chromatography peak1
Authors : Gao, F.; Zhang, X.; Li, D.; Ma, X.
Deposited on : 2025-03-20
Resolution : 3.11 Å(reported)

This is a Full wwPDB EM Validation Report for a publicly released PDB entry.

We welcome your comments at validation@mail.wwpdb.org

A user guide is available at

<https://www.wwpdb.org/validation/2017/EMValidationReportHelp>

with specific help available everywhere you see the ⓘ symbol.

The types of validation reports are described at

<http://www.wwpdb.org/validation/2017/FAQs#types>.

The following versions of software and data (see [references ⓘ](#)) were used in the production of this report:

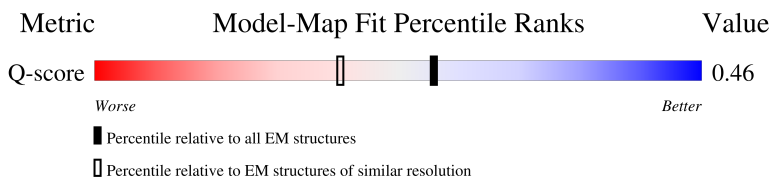
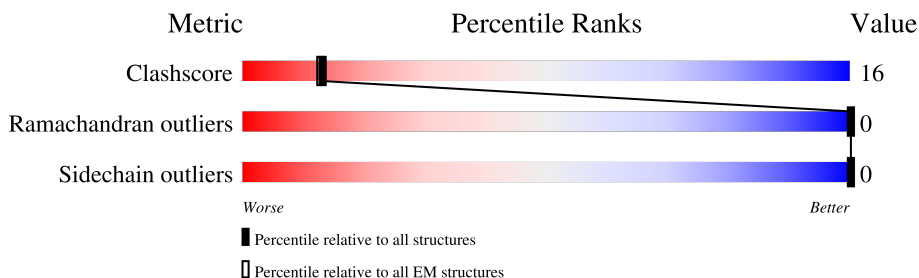
EMDB validation analysis : 0.0.1.dev132
Mogul : 2022.3.0, CSD as543be (2022)
MolProbity : 4-5-2 with Phenix2.0
Percentile statistics : 20250101.v01 (using entries in the PDB archive January 1st 2025)
EM percentile statistics : 202505.v01 (Using data in the EMDB archive up until May 2025)
MapQ : 1.9.13
Ideal geometry (proteins) : Engh & Huber (2001)
Ideal geometry (DNA, RNA) : Parkinson et al. (1996)
Validation Pipeline (wwPDB-VP) : 2.49

1 Overall quality at a glance

The following experimental techniques were used to determine the structure:
ELECTRON MICROSCOPY

The reported resolution of this entry is 3.11 Å.

Percentile scores (ranging between 0-100) for global validation metrics of the entry are shown in the following graphic. The table shows the number of entries on which the scores are based.



Metric	Whole archive (#Entries)	EM structures (#Entries)	Similar EM resolution (#Entries, resolution range(Å))
Clashscore	229148	23984	-
Ramachandran outliers	224038	23583	-
Sidechain outliers	223484	23102	-
Q-score	-	25397	14465 (2.61 - 3.61)

The table below summarises the geometric issues observed across the polymeric chains and their fit to the map. The red, orange, yellow and green segments of the bar indicate the fraction of residues that contain outliers for ≥ 3 , 2, 1 and 0 types of geometric quality criteria respectively. A grey segment represents the fraction of residues that are not modelled. The numeric value for each fraction is indicated below the corresponding segment, with a dot representing fractions $\leq 5\%$. The upper red bar (where present) indicates the fraction of residues that have poor fit to the EM map (all-atom inclusion $< 40\%$). The numeric value is given above the bar.

Mol	Chain	Length	Quality of chain
1	A	1008	<p>7% (red), 49% (green), 25% (yellow), 26% (grey)</p>
2	B	99	<p>27% (red), 39% (green), 43% (yellow), 16% (grey)</p>

2 Entry composition i

There are 2 unique types of molecules in this entry. The entry contains 6301 atoms, of which 0 are hydrogens and 0 are deuteriums.

In the tables below, the AltConf column contains the number of residues with at least one atom in alternate conformation and the Trace column contains the number of residues modelled with at most 2 atoms.

- Molecule 1 is a protein called MmpL4 protein.

Mol	Chain	Residues	Atoms					AltConf	Trace
			Total	C	N	O	S		
1	A	742	5647	3648	954	1016	29	0	0

There are 39 discrepancies between the modelled and reference sequences:

Chain	Residue	Modelled	Actual	Comment	Reference
A	970	ALA	-	expression tag	UNP A0QY12
A	971	ALA	-	expression tag	UNP A0QY12
A	972	ALA	-	expression tag	UNP A0QY12
A	973	GLU	-	expression tag	UNP A0QY12
A	974	ASN	-	expression tag	UNP A0QY12
A	975	LEU	-	expression tag	UNP A0QY12
A	976	TYR	-	expression tag	UNP A0QY12
A	977	PHE	-	expression tag	UNP A0QY12
A	978	GLN	-	expression tag	UNP A0QY12
A	979	GLY	-	expression tag	UNP A0QY12
A	980	LEU	-	expression tag	UNP A0QY12
A	981	TRP	-	expression tag	UNP A0QY12
A	982	SER	-	expression tag	UNP A0QY12
A	983	HIS	-	expression tag	UNP A0QY12
A	984	PRO	-	expression tag	UNP A0QY12
A	985	GLN	-	expression tag	UNP A0QY12
A	986	PHE	-	expression tag	UNP A0QY12
A	987	GLU	-	expression tag	UNP A0QY12
A	988	LYS	-	expression tag	UNP A0QY12
A	989	GLY	-	expression tag	UNP A0QY12
A	990	GLY	-	expression tag	UNP A0QY12
A	991	GLY	-	expression tag	UNP A0QY12
A	992	SER	-	expression tag	UNP A0QY12
A	993	GLY	-	expression tag	UNP A0QY12
A	994	GLY	-	expression tag	UNP A0QY12
A	995	GLY	-	expression tag	UNP A0QY12
A	996	SER	-	expression tag	UNP A0QY12
A	997	GLY	-	expression tag	UNP A0QY12

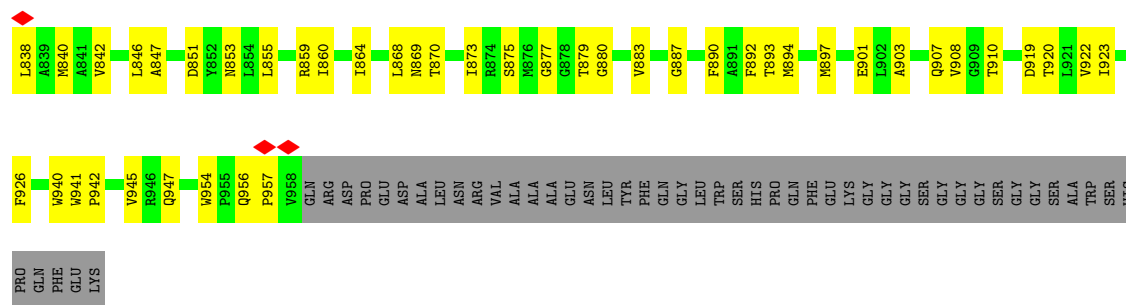
Continued on next page...

Continued from previous page...

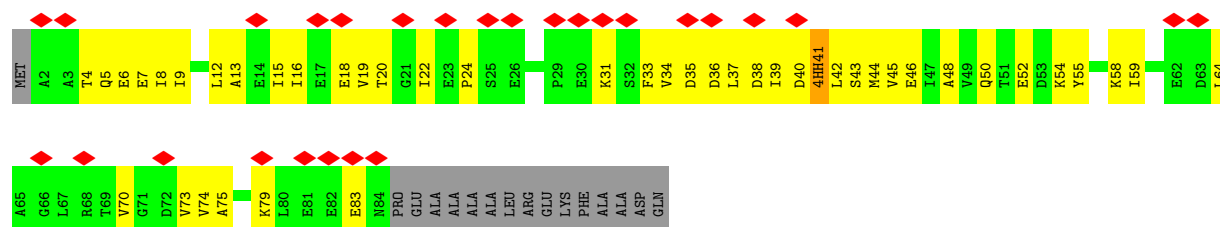
Chain	Residue	Modelled	Actual	Comment	Reference
A	998	GLY	-	expression tag	UNP A0QY12
A	999	SER	-	expression tag	UNP A0QY12
A	1000	ALA	-	expression tag	UNP A0QY12
A	1001	TRP	-	expression tag	UNP A0QY12
A	1002	SER	-	expression tag	UNP A0QY12
A	1003	HIS	-	expression tag	UNP A0QY12
A	1004	PRO	-	expression tag	UNP A0QY12
A	1005	GLN	-	expression tag	UNP A0QY12
A	1006	PHE	-	expression tag	UNP A0QY12
A	1007	GLU	-	expression tag	UNP A0QY12
A	1008	LYS	-	expression tag	UNP A0QY12

- Molecule 2 is a protein called Meromycolate extension acyl carrier protein.

Mol	Chain	Residues	Atoms						AltConf	Trace
			Total	C	N	O	P	S		
2	B	83	654	407	96	148	1	2	0	0



• Molecule 2: Meromycolate extension acyl carrier protein



4 Experimental information

Property	Value	Source
EM reconstruction method	SINGLE PARTICLE	Depositor
Imposed symmetry	POINT, Not provided	
Number of particles used	4926409	Depositor
Resolution determination method	FSC 0.143 CUT-OFF	Depositor
CTF correction method	PHASE FLIPPING AND AMPLITUDE CORRECTION	Depositor
Microscope	TFS KRIOS	Depositor
Voltage (kV)	300	Depositor
Electron dose ($e^-/\text{\AA}^2$)	60	Depositor
Minimum defocus (nm)	900	Depositor
Maximum defocus (nm)	2000	Depositor
Magnification	Not provided	
Image detector	GATAN K3 BIOQUANTUM (6k x 4k)	Depositor
Maximum map value	0.886	Depositor
Minimum map value	-0.371	Depositor
Average map value	-0.001	Depositor
Map value standard deviation	0.018	Depositor
Recommended contour level	0.2	Depositor
Map size (Å)	264.0, 264.0, 264.0	wwPDB
Map dimensions	240, 240, 240	wwPDB
Map angles (°)	90.0, 90.0, 90.0	wwPDB
Pixel spacing (Å)	1.1, 1.1, 1.1	Depositor

5 Model quality [i](#)

5.1 Standard geometry [i](#)

Bond lengths and bond angles in the following residue types are not validated in this section: 4HH

The Z score for a bond length (or angle) is the number of standard deviations the observed value is removed from the expected value. A bond length (or angle) with $|Z| > 5$ is considered an outlier worth inspection. RMSZ is the root-mean-square of all Z scores of the bond lengths (or angles).

Mol	Chain	Bond lengths		Bond angles	
		RMSZ	# Z >5	RMSZ	# Z >5
1	A	0.17	0/5770	0.32	0/7862
2	B	0.22	0/631	0.56	0/856
All	All	0.17	0/6401	0.35	0/8718

There are no bond length outliers.

There are no bond angle outliers.

There are no chirality outliers.

There are no planarity outliers.

5.2 Too-close contacts [i](#)

In the following table, the Non-H and H(model) columns list the number of non-hydrogen atoms and hydrogen atoms in the chain respectively. The H(added) column lists the number of hydrogen atoms added and optimized by MolProbity. The Clashes column lists the number of clashes within the asymmetric unit, whereas Symm-Clashes lists symmetry-related clashes.

Mol	Chain	Non-H	H(model)	H(added)	Clashes	Symm-Clashes
1	A	5647	0	5792	179	0
2	B	654	0	637	38	0
All	All	6301	0	6429	207	0

The all-atom clashscore is defined as the number of clashes found per 1000 atoms (including hydrogen atoms). The all-atom clashscore for this structure is 16.

All (207) close contacts within the same asymmetric unit are listed below, sorted by their clash magnitude.

Atom-1	Atom-2	Interatomic distance (Å)	Clash overlap (Å)
2:B:54:LYS:HZ2	2:B:55:TYR:HE2	1.12	0.91
1:A:887:GLY:HA3	1:A:920:THR:HG21	1.53	0.90
2:B:31:LYS:HZ2	2:B:37:LEU:HD23	1.40	0.85
1:A:319:ILE:HG12	1:A:847:ALA:HB1	1.64	0.80
1:A:824:ILE:HG13	1:A:828:ILE:HD11	1.69	0.74
1:A:814:LEU:HD11	1:A:842:VAL:HG22	1.71	0.71
1:A:122:PRO:O	1:A:156:ARG:NH2	2.25	0.70
1:A:61:MET:HE2	1:A:62:ARG:HH21	1.57	0.70
1:A:446:ASN:HB3	1:A:763:THR:HG21	1.72	0.70
1:A:864:ILE:HD12	1:A:868:LEU:HD23	1.75	0.68
2:B:33:PHE:O	2:B:36:ASP:N	2.20	0.68
1:A:218:ILE:HD11	1:A:235:LEU:HD22	1.74	0.68
1:A:258:ILE:HD12	1:A:340:PRO:HG3	1.75	0.68
1:A:836:MET:HB2	1:A:840:MET:HE3	1.76	0.66
1:A:31:ARG:HH12	1:A:298:GLU:HA	1.60	0.65
2:B:19:VAL:HG12	2:B:20:THR:HG23	1.79	0.65
1:A:289:GLU:OE2	1:A:859:ARG:NH2	2.29	0.64
1:A:806:ILE:HG12	1:A:853:ASN:HB3	1.80	0.64
1:A:316:GLY:HA3	1:A:349:VAL:HG21	1.81	0.63
1:A:228:ILE:O	1:A:232:ILE:HG12	1.99	0.63
2:B:15:ILE:HD11	2:B:50:GLN:HB3	1.81	0.63
1:A:458:LEU:HD12	1:A:463:ASP:HB3	1.82	0.62
1:A:919:ASP:HA	1:A:923:ILE:HB	1.82	0.62
1:A:390:ARG:NH2	2:B:59:ILE:O	2.31	0.62
1:A:257:ILE:HG22	1:A:258:ILE:HG23	1.82	0.61
2:B:40:ASP:OD1	2:B:41:4HH:N	2.34	0.60
1:A:487:THR:HG23	1:A:488:ARG:HG3	1.82	0.60
1:A:76:ALA:O	1:A:80:VAL:HG23	2.03	0.59
1:A:201:ALA:HB2	1:A:427:LEU:HD11	1.83	0.59
1:A:316:GLY:CA	1:A:349:VAL:HG21	2.31	0.59
1:A:873:ILE:HD11	2:B:46:GLU:HG3	1.84	0.59
1:A:291:ARG:NE	1:A:371:GLU:OE1	2.29	0.58
1:A:471:ALA:HB2	1:A:720:PHE:HE2	1.69	0.57
1:A:737:ILE:HD11	1:A:764:ALA:HB3	1.86	0.57
1:A:836:MET:O	1:A:840:MET:HG3	2.04	0.57
1:A:333:TYR:HD2	1:A:836:MET:HE1	1.69	0.57
1:A:870:THR:HA	1:A:873:ILE:HG22	1.87	0.56
1:A:216:VAL:HG11	1:A:892:PHE:HB3	1.86	0.56
1:A:418:ASN:HA	1:A:729:MET:HE3	1.87	0.56
1:A:315:SER:HA	1:A:851:ASP:OD1	2.06	0.56
1:A:312:VAL:HB	1:A:353:LEU:HD21	1.87	0.56
1:A:41:TRP:O	1:A:45:ILE:HG12	2.06	0.56

Continued on next page...

Continued from previous page...

Atom-1	Atom-2	Interatomic distance (Å)	Clash overlap (Å)
1:A:731:PRO:HA	1:A:734:ILE:HD13	1.87	0.56
1:A:80:VAL:HG22	1:A:451:MET:CE	2.36	0.55
1:A:197:ASP:HB3	1:A:427:LEU:HD13	1.88	0.55
1:A:94:MET:HG3	1:A:445:MET:HG3	1.88	0.55
1:A:319:ILE:HG21	1:A:345:MET:HE2	1.88	0.55
1:A:384:LEU:HD11	1:A:926:PHE:CE2	2.41	0.55
2:B:75:ALA:HB1	2:B:79:LYS:NZ	2.22	0.55
1:A:117:LYS:NZ	1:A:177:SER:OG	2.40	0.55
1:A:834:HIS:HB3	1:A:837:VAL:HG23	1.87	0.55
1:A:469:ARG:HH21	1:A:473:ARG:HH22	1.54	0.55
1:A:718:VAL:HG13	1:A:720:PHE:HE1	1.71	0.54
2:B:40:ASP:N	2:B:43:SER:OG	2.39	0.54
1:A:279:TYR:CE2	1:A:349:VAL:HG22	2.42	0.54
1:A:55:LEU:HD21	1:A:268:LEU:HD23	1.89	0.54
2:B:34:VAL:HA	2:B:38:ASP:H	1.72	0.54
1:A:482:ARG:HB2	1:A:723:SER:HB2	1.88	0.54
1:A:319:ILE:O	1:A:323:THR:HG23	2.08	0.54
1:A:68:PRO:HG2	1:A:71:ALA:HB2	1.90	0.53
1:A:860:ILE:O	1:A:864:ILE:HG12	2.07	0.53
1:A:382:ARG:HB3	2:B:46:GLU:OE2	2.08	0.53
2:B:12:LEU:O	2:B:15:ILE:HG22	2.09	0.53
1:A:124:HIS:HB3	1:A:167:SER:HA	1.91	0.53
1:A:810:VAL:HG11	1:A:846:LEU:HA	1.91	0.53
1:A:729:MET:HB2	1:A:767:PHE:CD2	2.44	0.52
1:A:422:TYR:OH	1:A:832:GLU:O	2.27	0.52
2:B:70:VAL:HA	2:B:73:VAL:HG12	1.91	0.52
1:A:204:ARG:NH2	1:A:901:GLU:OE2	2.36	0.52
1:A:237:MET:HE3	1:A:356:GLY:HA3	1.91	0.52
1:A:118:LEU:HD22	1:A:125:VAL:HG21	1.92	0.52
1:A:837:VAL:HG22	1:A:908:VAL:HG23	1.92	0.52
2:B:75:ALA:HB1	2:B:79:LYS:HZ1	1.74	0.51
1:A:128:VAL:HG22	1:A:153:VAL:HG22	1.91	0.51
1:A:835:TRP:H	1:A:835:TRP:CD1	2.28	0.51
1:A:421:ARG:HH21	1:A:831:LEU:HA	1.74	0.51
2:B:4:THR:N	2:B:7:GLU:OE2	2.30	0.51
1:A:249:ILE:HG13	1:A:268:LEU:HD21	1.93	0.51
2:B:12:LEU:O	2:B:16:ILE:HG12	2.11	0.51
1:A:818:PHE:CD1	1:A:838:LEU:HD11	2.46	0.51
1:A:737:ILE:HG23	1:A:760:LEU:HD23	1.92	0.50
1:A:733:GLY:O	1:A:737:ILE:HG12	2.12	0.50
1:A:957:PRO:HG3	2:B:6:GLU:HB3	1.92	0.50

Continued on next page...

Continued from previous page...

Atom-1	Atom-2	Interatomic distance (Å)	Clash overlap (Å)
1:A:58:VAL:HA	1:A:61:MET:HG2	1.94	0.50
1:A:734:ILE:HG21	1:A:771:GLN:NE2	2.27	0.49
1:A:291:ARG:NH1	1:A:295:GLU:O	2.38	0.49
1:A:738:ASP:N	1:A:738:ASP:OD1	2.44	0.49
1:A:195:SER:O	1:A:198:GLN:HG2	2.12	0.49
1:A:345:MET:O	1:A:349:VAL:HG23	2.13	0.49
1:A:766:THR:O	1:A:770:LEU:HD23	2.12	0.49
1:A:195:SER:O	1:A:199:HIS:ND1	2.43	0.49
2:B:22:ILE:HD12	2:B:39:ILE:HD11	1.94	0.49
1:A:311:VAL:HG11	1:A:855:LEU:HD13	1.94	0.48
1:A:825:TRP:NE1	1:A:910:THR:OG1	2.37	0.48
1:A:956:GLN:HG2	1:A:957:PRO:HD2	1.94	0.48
1:A:460:ASN:OD1	1:A:461:SER:N	2.46	0.48
2:B:34:VAL:HG23	2:B:38:ASP:HA	1.96	0.48
1:A:168:VAL:HG11	1:A:193:ALA:HA	1.96	0.48
2:B:33:PHE:O	2:B:35:ASP:N	2.46	0.48
1:A:954:TRP:CZ3	2:B:8:ILE:HG23	2.49	0.48
1:A:165:ASN:O	1:A:169:GLU:HG2	2.13	0.48
1:A:694:PRO:HG2	1:A:697:THR:HG23	1.96	0.48
1:A:326:LEU:HD13	1:A:337:LEU:HD23	1.96	0.48
1:A:297:ARG:HG2	1:A:364:SER:HB3	1.95	0.48
1:A:712:SER:HG	1:A:716:HIS:H	1.61	0.48
1:A:80:VAL:HA	1:A:451:MET:HE1	1.94	0.47
1:A:699:GLU:HA	1:A:704:LYS:HE2	1.97	0.47
1:A:922:VAL:HA	1:A:926:PHE:HD1	1.79	0.47
1:A:813:SER:HB3	1:A:923:ILE:HG13	1.95	0.47
1:A:479:GLY:O	1:A:725:GLU:N	2.45	0.47
1:A:724:HIS:ND1	1:A:728:PRO:HB3	2.30	0.47
1:A:314:GLY:O	1:A:318:THR:HG23	2.14	0.47
1:A:479:GLY:HA3	1:A:736:HIS:NE2	2.29	0.47
1:A:855:LEU:HD23	1:A:883:VAL:HG22	1.96	0.46
1:A:189:THR:HB	1:A:432:GLY:HA3	1.97	0.46
1:A:389:VAL:HG11	1:A:869:ASN:HB3	1.97	0.46
2:B:83:GLU:N	2:B:83:GLU:OE1	2.48	0.46
1:A:315:SER:O	1:A:319:ILE:HG13	2.16	0.46
1:A:837:VAL:HA	1:A:908:VAL:HG22	1.98	0.46
1:A:422:TYR:HA	1:A:903:ALA:HB3	1.96	0.46
1:A:728:PRO:O	1:A:733:GLY:HA3	2.14	0.46
1:A:823:LEU:O	1:A:827:HIS:HB2	2.16	0.46
1:A:270:THR:CB	1:A:897:MET:HE3	2.47	0.45
1:A:34:ALA:O	1:A:38:ILE:HG12	2.16	0.45

Continued on next page...

Continued from previous page...

Atom-1	Atom-2	Interatomic distance (Å)	Clash overlap (Å)
1:A:748:ILE:HD11	1:A:753:LEU:HD22	1.98	0.45
1:A:341:LEU:O	1:A:345:MET:HG2	2.17	0.45
1:A:777:ASP:HA	1:A:780:ILE:HG22	1.98	0.45
1:A:868:LEU:HD12	1:A:947:GLN:HA	1.99	0.45
1:A:954:TRP:CE3	2:B:8:ILE:HA	2.52	0.45
1:A:61:MET:HE2	1:A:62:ARG:NH2	2.30	0.45
1:A:263:PHE:CD2	1:A:840:MET:HE1	2.52	0.45
1:A:836:MET:HE2	1:A:836:MET:HB3	1.93	0.45
1:A:742:GLN:O	1:A:746:GLU:OE1	2.35	0.44
1:A:468:ASP:HA	1:A:487:THR:HG21	1.98	0.44
1:A:890:PHE:O	1:A:894:MET:HG2	2.18	0.44
1:A:403:SER:HA	1:A:816:ALA:HB2	1.99	0.44
1:A:825:TRP:CD2	1:A:907:GLN:HG2	2.53	0.44
1:A:267:LEU:HD23	1:A:337:LEU:HD11	2.00	0.44
1:A:64:VAL:N	1:A:260:LEU:O	2.51	0.43
1:A:458:LEU:N	1:A:715:GLY:O	2.36	0.43
1:A:771:GLN:HG3	1:A:772:GLU:N	2.32	0.43
1:A:387:ALA:HB2	2:B:42:LEU:HD11	2.01	0.43
1:A:753:LEU:HD23	1:A:753:LEU:O	2.17	0.43
1:A:206:VAL:HA	1:A:209:ILE:HG22	2.00	0.43
1:A:234:THR:HG23	1:A:280:ALA:HB1	1.99	0.43
1:A:382:ARG:NH2	2:B:18:GLU:O	2.52	0.43
1:A:391:TRP:CH2	2:B:45:VAL:HG21	2.53	0.43
1:A:450:LEU:HD12	1:A:760:LEU:HD13	1.99	0.43
1:A:110:TYR:O	1:A:114:ILE:HG12	2.17	0.43
1:A:734:ILE:HG23	1:A:768:LYS:HB2	2.00	0.43
1:A:41:TRP:NE1	1:A:354:THR:OG1	2.50	0.43
1:A:181:PRO:HG2	1:A:184:VAL:HB	1.99	0.43
1:A:297:ARG:NH2	1:A:367:GLY:O	2.36	0.43
1:A:318:THR:OG1	1:A:851:ASP:OD1	2.28	0.43
1:A:382:ARG:HG2	1:A:877:GLY:HA3	1.99	0.43
1:A:445:MET:HE2	1:A:445:MET:HB2	1.92	0.43
1:A:213:THR:HG23	1:A:893:THR:HG22	2.01	0.43
1:A:252:LEU:HB3	1:A:258:ILE:HG12	2.01	0.43
1:A:480:ILE:HD11	1:A:740:ILE:HD11	2.01	0.43
1:A:729:MET:HB2	1:A:767:PHE:CE2	2.53	0.43
1:A:331:MET:HE1	1:A:774:ALA:N	2.33	0.42
1:A:712:SER:N	1:A:717:ALA:O	2.49	0.42
1:A:818:PHE:CE1	1:A:838:LEU:HD11	2.54	0.42
1:A:270:THR:HB	1:A:897:MET:HE3	2.01	0.42
1:A:467:VAL:HG13	1:A:720:PHE:HZ	1.85	0.42

Continued on next page...

Continued from previous page...

Atom-1	Atom-2	Interatomic distance (Å)	Clash overlap (Å)
1:A:790:PHE:HB2	1:A:807:VAL:HG21	2.01	0.42
1:A:813:SER:HB2	1:A:919:ASP:OD1	2.19	0.42
1:A:941:TRP:CD2	1:A:942:PRO:HA	2.54	0.42
2:B:34:VAL:HA	2:B:38:ASP:N	2.34	0.42
1:A:366:PHE:O	1:A:369:THR:HG23	2.19	0.42
1:A:376:MET:HE3	1:A:376:MET:HB2	1.86	0.42
1:A:873:ILE:CD1	2:B:46:GLU:HG3	2.47	0.42
1:A:62:ARG:NH1	1:A:253:GLY:O	2.52	0.42
1:A:316:GLY:HA2	1:A:349:VAL:HG21	2.02	0.42
1:A:329:THR:HG22	1:A:777:ASP:HB3	2.01	0.42
1:A:453:GLU:HG3	1:A:717:ALA:HB2	2.01	0.42
1:A:732:GLU:HA	1:A:735:LYS:HG2	2.02	0.42
1:A:58:VAL:HG11	1:A:250:ALA:HA	2.01	0.42
1:A:93:VAL:HG11	1:A:168:VAL:HG22	2.01	0.42
1:A:875:SER:O	1:A:879:THR:OG1	2.37	0.42
1:A:52:VAL:HG21	1:A:251:PHE:HA	2.00	0.42
1:A:467:VAL:HG22	1:A:718:VAL:HG11	2.01	0.42
1:A:940:TRP:CD1	1:A:945:VAL:HG11	2.55	0.42
1:A:86:GLU:HB3	1:A:127:HIS:CG	2.54	0.42
2:B:33:PHE:CG	2:B:34:VAL:N	2.86	0.41
2:B:64:LEU:HD12	2:B:64:LEU:HA	1.83	0.41
2:B:52:GLU:HG2	2:B:58:LYS:HA	2.01	0.41
1:A:31:ARG:NH1	1:A:298:GLU:HA	2.31	0.41
1:A:482:ARG:HH21	1:A:491:GLY:N	2.18	0.41
2:B:13:ALA:HB1	2:B:24:PRO:HA	2.03	0.41
1:A:780:ILE:HD12	1:A:780:ILE:HA	1.89	0.41
2:B:5:GLN:O	2:B:9:ILE:HG12	2.21	0.41
1:A:27:ALA:HB2	1:A:305:PHE:CD2	2.56	0.41
1:A:51:VAL:HG23	1:A:52:VAL:HG23	2.03	0.41
1:A:176:GLU:OE1	1:A:176:GLU:HA	2.20	0.41
2:B:40:ASP:O	2:B:44:MET:N	2.52	0.41
2:B:8:ILE:CG2	2:B:74:VAL:HG23	2.51	0.41
2:B:48:ALA:O	2:B:52:GLU:HG3	2.21	0.41
1:A:56:ASP:OD1	1:A:57:VAL:N	2.54	0.40
1:A:280:ALA:O	1:A:284:ILE:HG12	2.21	0.40
1:A:381:TRP:CD2	1:A:880:GLY:HA3	2.56	0.40
1:A:455:ASP:OD1	1:A:455:ASP:N	2.54	0.40
1:A:95:ILE:HG12	1:A:188:VAL:HG22	2.04	0.40
1:A:464:PHE:CE2	1:A:707:MET:HE2	2.57	0.40
1:A:727:ASP:HB3	1:A:730:SER:HB3	2.02	0.40
2:B:33:PHE:CE2	2:B:44:MET:HE2	2.57	0.40

Continued on next page...

Continued from previous page...

Atom-1	Atom-2	Interatomic distance (Å)	Clash overlap (Å)
1:A:286:ARG:HD2	1:A:286:ARG:HA	1.93	0.40

There are no symmetry-related clashes.

5.3 Torsion angles [i](#)

5.3.1 Protein backbone [i](#)

In the following table, the Percentiles column shows the percent Ramachandran outliers of the chain as a percentile score with respect to all PDB entries followed by that with respect to all EM entries.

The Analysed column shows the number of residues for which the backbone conformation was analysed, and the total number of residues.

Mol	Chain	Analysed	Favoured	Allowed	Outliers	Percentiles	
1	A	738/1008 (73%)	716 (97%)	22 (3%)	0	100	100
2	B	80/99 (81%)	74 (92%)	6 (8%)	0	100	100
All	All	818/1107 (74%)	790 (97%)	28 (3%)	0	100	100

There are no Ramachandran outliers to report.

5.3.2 Protein sidechains [i](#)

In the following table, the Percentiles column shows the percent sidechain outliers of the chain as a percentile score with respect to all PDB entries followed by that with respect to all EM entries.

The Analysed column shows the number of residues for which the sidechain conformation was analysed, and the total number of residues.

Mol	Chain	Analysed	Rotameric	Outliers	Percentiles	
1	A	601/833 (72%)	601 (100%)	0	100	100
2	B	70/80 (88%)	70 (100%)	0	100	100
All	All	671/913 (74%)	671 (100%)	0	100	100

There are no protein residues with a non-rotameric sidechain to report.

Sometimes sidechains can be flipped to improve hydrogen bonding and reduce clashes. All (3) such sidechains are listed below:

Mol	Chain	Res	Type
1	A	266	ASN
1	A	299	GLN
1	A	425	GLN

5.3.3 RNA [i](#)

There are no RNA molecules in this entry.

5.4 Non-standard residues in protein, DNA, RNA chains [i](#)

1 non-standard protein/DNA/RNA residue is modelled in this entry.

In the following table, the Counts columns list the number of bonds (or angles) for which Mogul statistics could be retrieved, the number of bonds (or angles) that are observed in the model and the number of bonds (or angles) that are defined in the Chemical Component Dictionary. The Link column lists molecule types, if any, to which the group is linked. The Z score for a bond length (or angle) is the number of standard deviations the observed value is removed from the expected value. A bond length (or angle) with $|Z| > 2$ is considered an outlier worth inspection. RMSZ is the root-mean-square of all Z scores of the bond lengths (or angles).

Mol	Type	Chain	Res	Link	Bond lengths			Bond angles		
					Counts	RMSZ	# Z > 2	Counts	RMSZ	# Z > 2
2	4HH	B	41	2	22,26,27	1.87	4 (18%)	27,35,37	1.65	4 (14%)

In the following table, the Chirals column lists the number of chiral outliers, the number of chiral centers analysed, the number of these observed in the model and the number defined in the Chemical Component Dictionary. Similar counts are reported in the Torsion and Rings columns. '-' means no outliers of that kind were identified.

Mol	Type	Chain	Res	Link	Chirals	Torsions	Rings
2	4HH	B	41	2	-	2/33/35/37	-

All (4) bond length outliers are listed below:

Mol	Chain	Res	Type	Atoms	Z	Observed(Å)	Ideal(Å)
2	B	41	4HH	CL3-NN	5.18	1.45	1.33
2	B	41	4HH	CQ-NR	5.06	1.45	1.33
2	B	41	4HH	ON-CL3	-2.34	1.18	1.23
2	B	41	4HH	OR-CQ	-2.22	1.18	1.23

All (4) bond angle outliers are listed below:

Mol	Chain	Res	Type	Atoms	Z	Observed(°)	Ideal(°)
2	B	41	4HH	OG-P-O2P	-5.29	87.98	108.94
2	B	41	4HH	OG-CB-CA	2.80	110.87	108.14
2	B	41	4HH	CP-CQ-NR	2.23	120.41	116.34
2	B	41	4HH	CM-CL3-NN	2.08	120.44	116.48

There are no chirality outliers.

All (2) torsion outliers are listed below:

Mol	Chain	Res	Type	Atoms
2	B	41	4HH	CJ-O3P-P-OG
2	B	41	4HH	CJ-O3P-P-O1P

There are no ring outliers.

1 monomer is involved in 1 short contact:

Mol	Chain	Res	Type	Clashes	Symm-Clashes
2	B	41	4HH	1	0

5.5 Carbohydrates [i](#)

There are no oligosaccharides in this entry.

5.6 Ligand geometry [i](#)

There are no ligands in this entry.

5.7 Other polymers [i](#)

There are no such residues in this entry.

5.8 Polymer linkage issues [i](#)

There are no chain breaks in this entry.

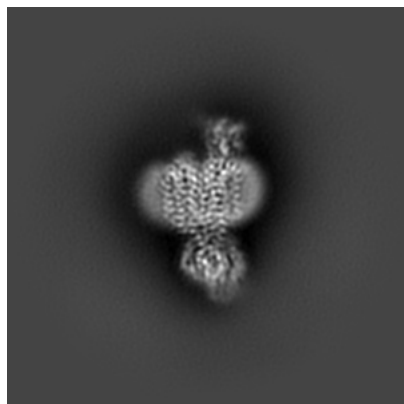
6 Map visualisation [i](#)

This section contains visualisations of the EMDB entry EMD-63854. These allow visual inspection of the internal detail of the map and identification of artifacts.

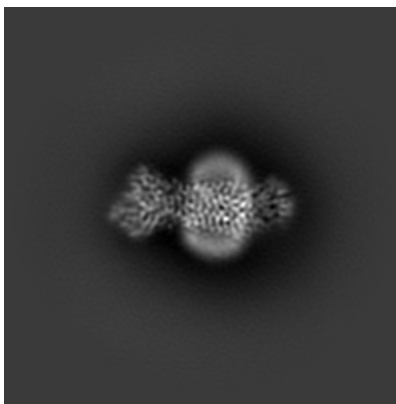
Images derived from a raw map, generated by summing the deposited half-maps, are presented below the corresponding image components of the primary map to allow further visual inspection and comparison with those of the primary map.

6.1 Orthogonal projections [i](#)

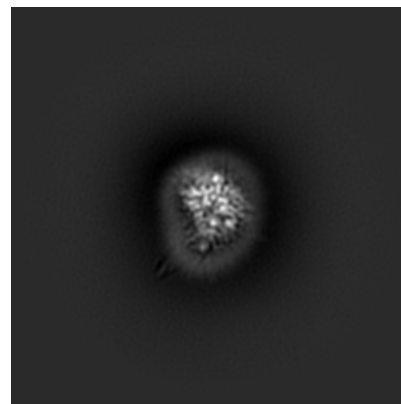
6.1.1 Primary map



X

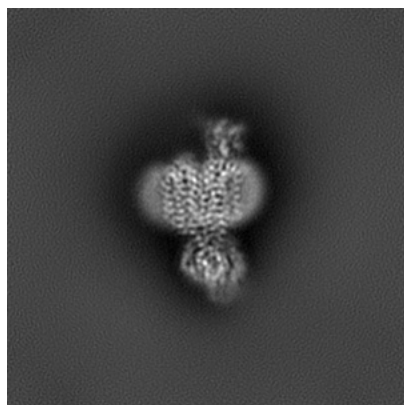


Y

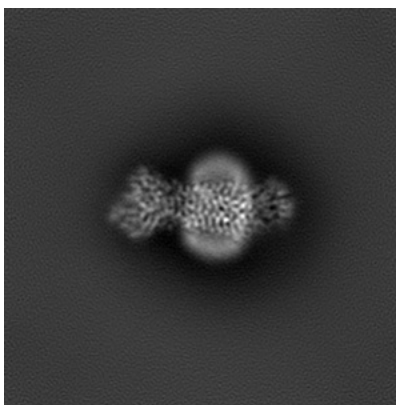


Z

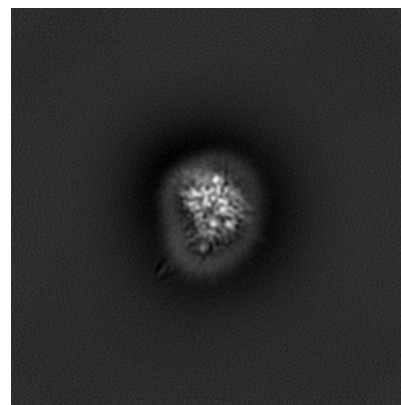
6.1.2 Raw map



X



Y

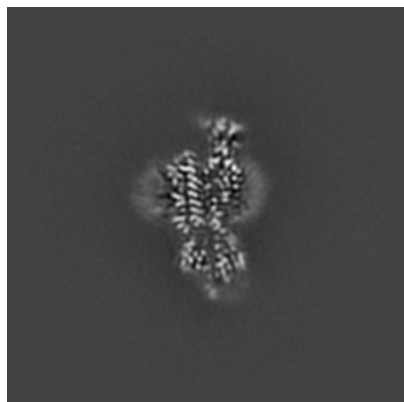


Z

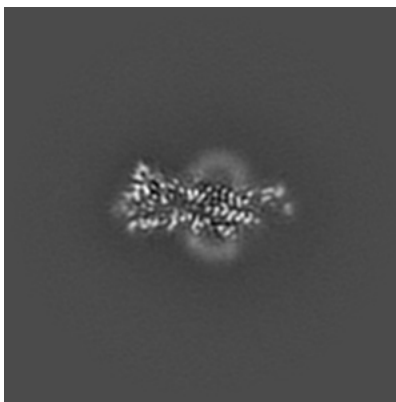
The images above show the map projected in three orthogonal directions.

6.2 Central slices [i](#)

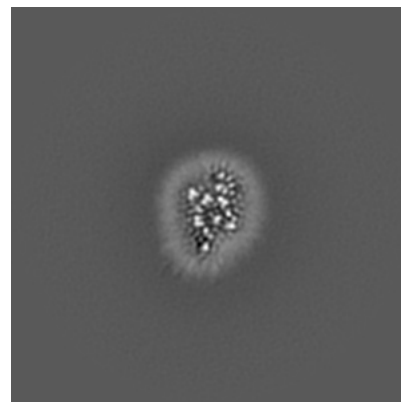
6.2.1 Primary map



X Index: 120

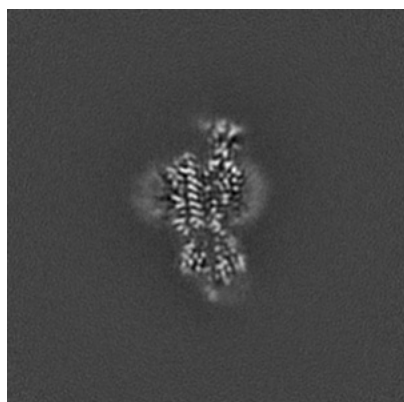


Y Index: 120

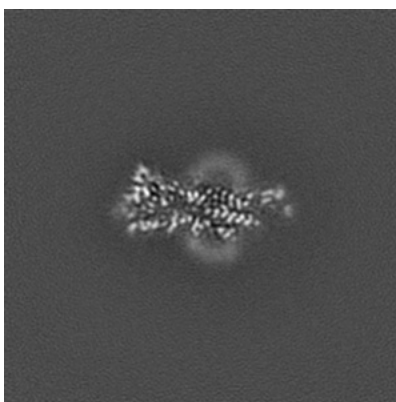


Z Index: 120

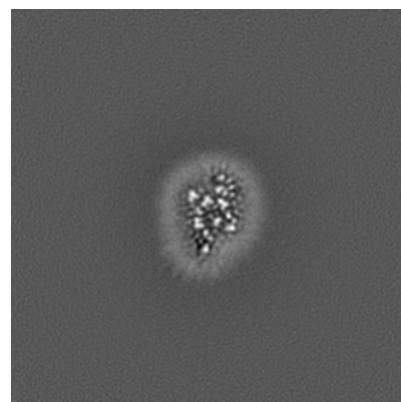
6.2.2 Raw map



X Index: 120



Y Index: 120

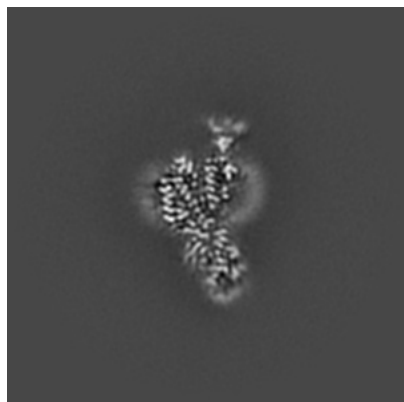


Z Index: 120

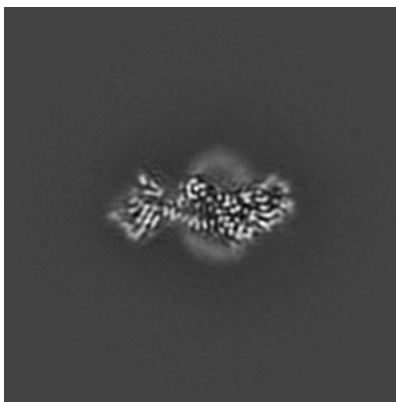
The images above show central slices of the map in three orthogonal directions.

6.3 Largest variance slices [i](#)

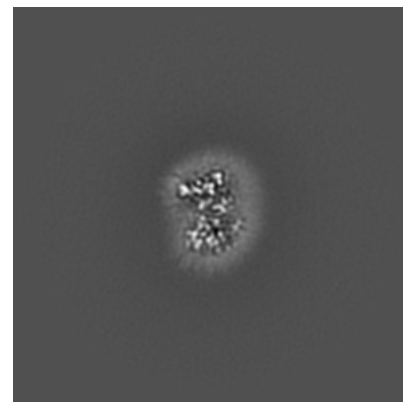
6.3.1 Primary map



X Index: 115

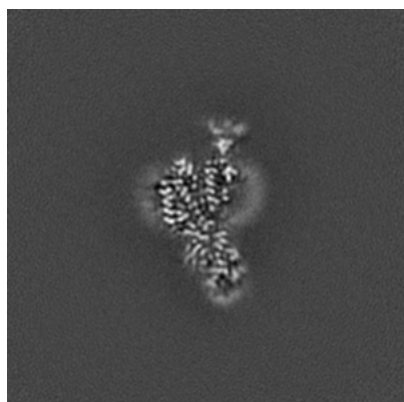


Y Index: 128

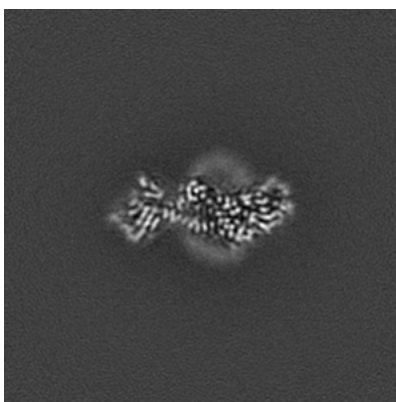


Z Index: 140

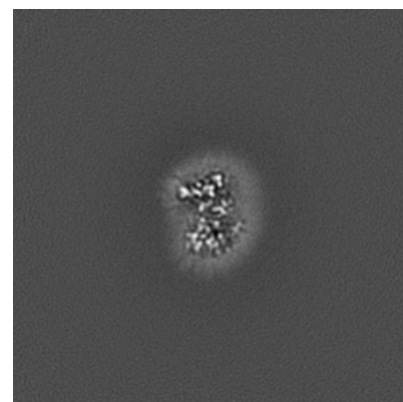
6.3.2 Raw map



X Index: 115



Y Index: 128

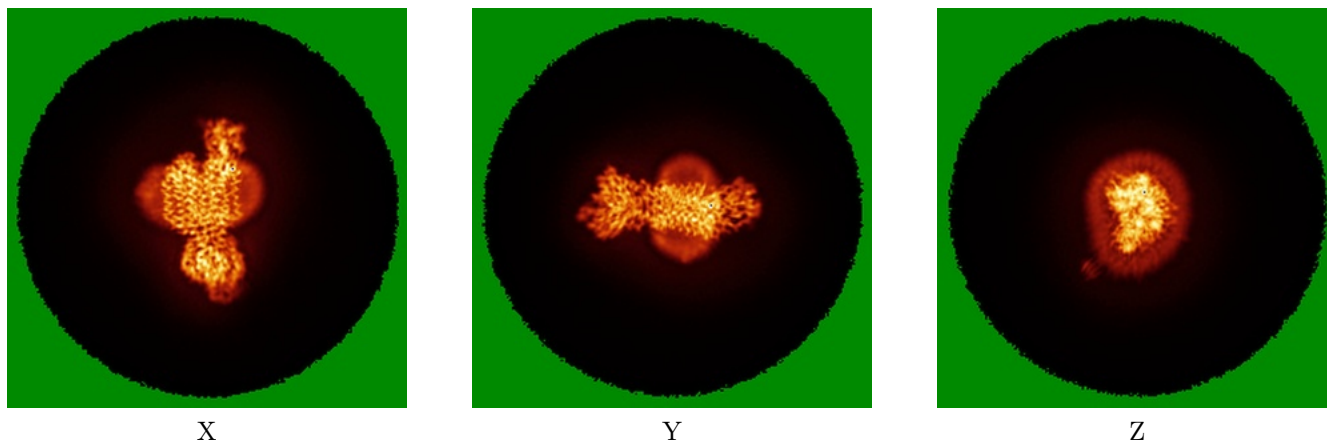


Z Index: 140

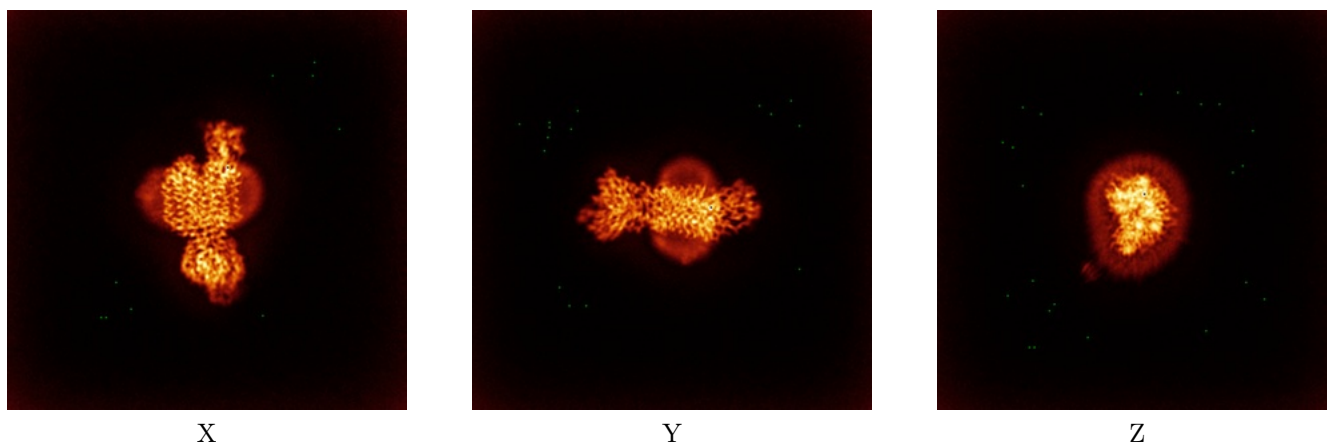
The images above show the largest variance slices of the map in three orthogonal directions.

6.4 Orthogonal standard-deviation projections (False-color) [i](#)

6.4.1 Primary map



6.4.2 Raw map



The images above show the map standard deviation projections with false color in three orthogonal directions. Minimum values are shown in green, max in blue, and dark to light orange shades represent small to large values respectively.

6.5 Orthogonal surface views [i](#)

This section was not generated.

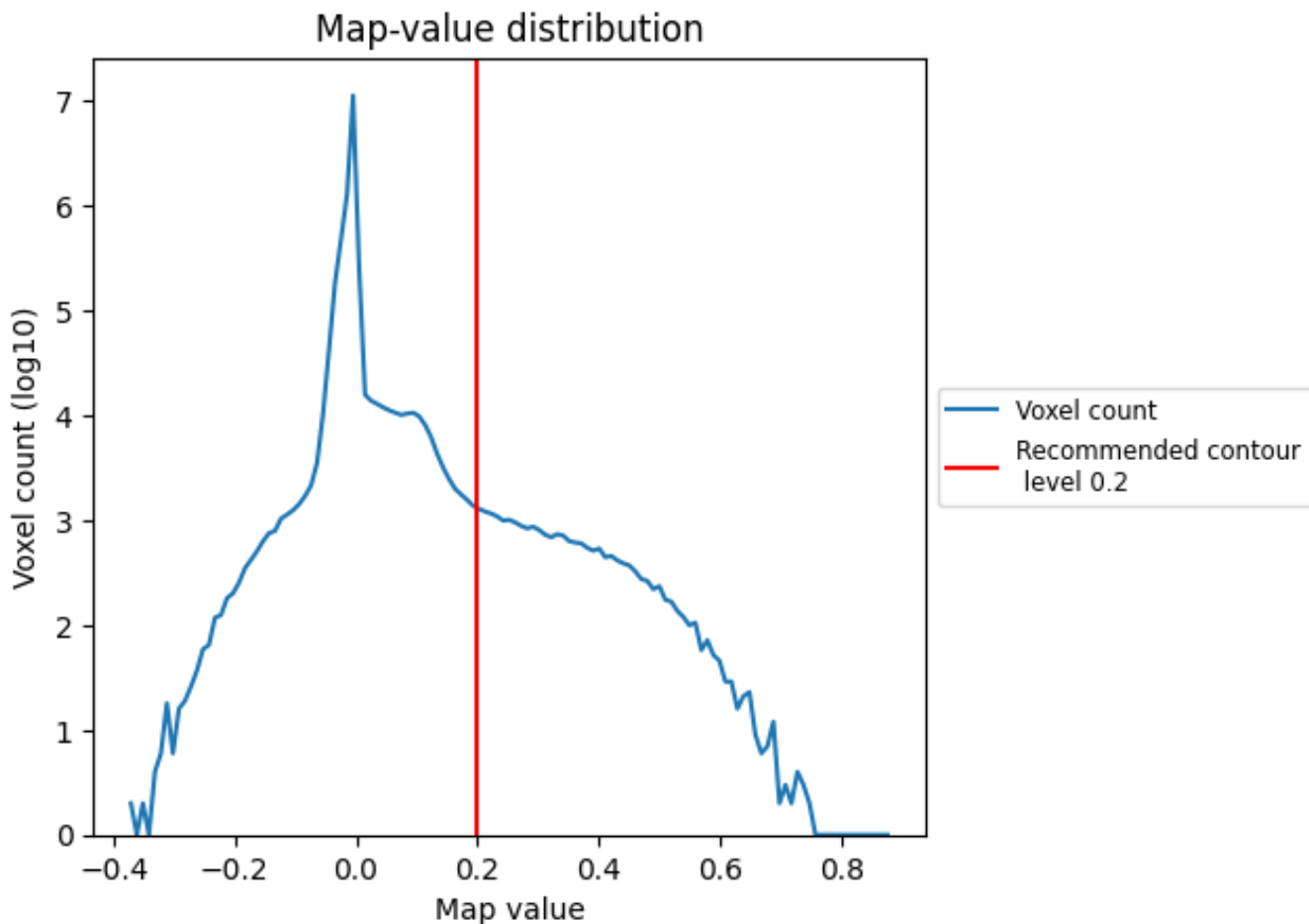
6.6 Mask visualisation [i](#)

This section was not generated. No masks/segmentation were deposited.

7 Map analysis [i](#)

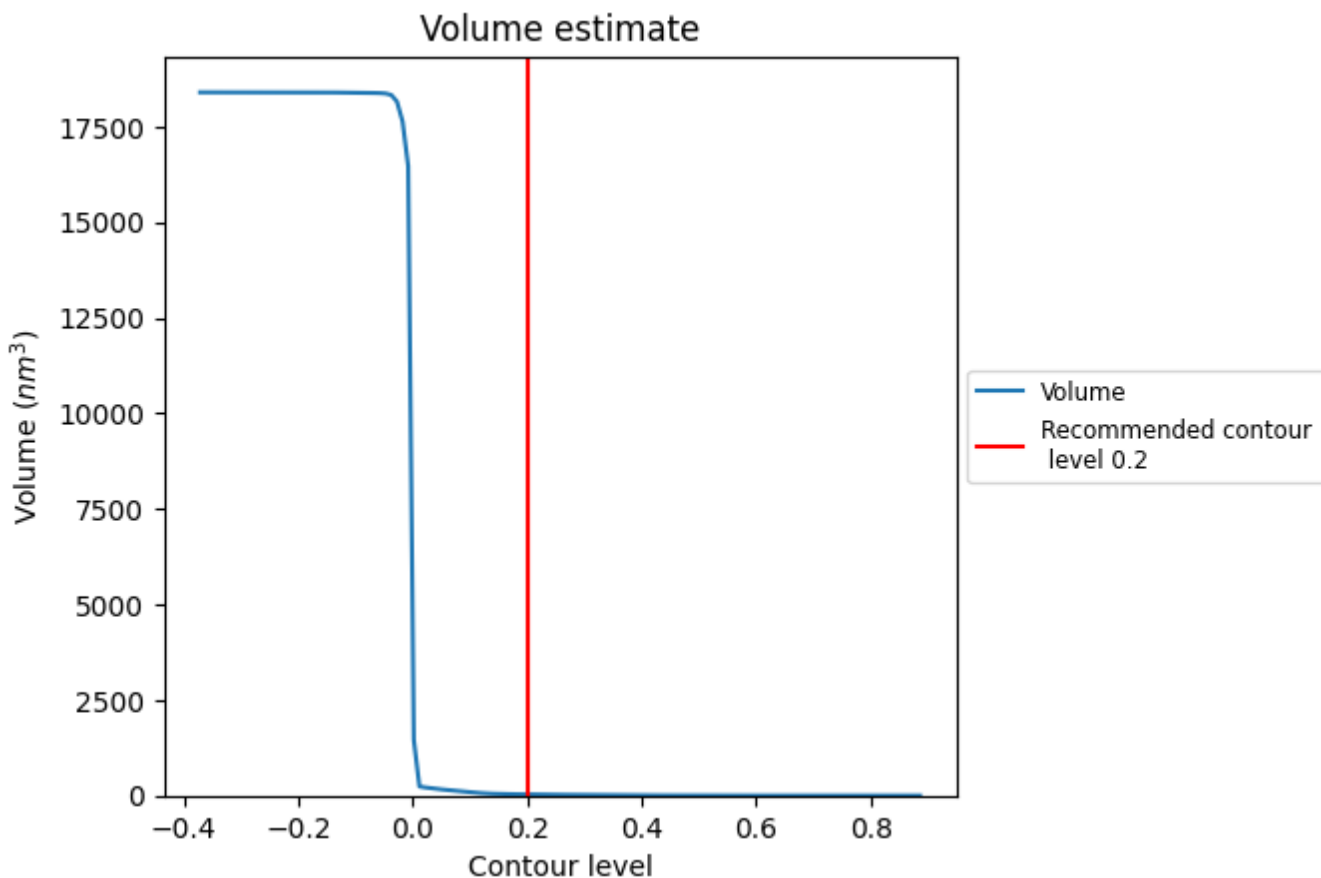
This section contains the results of statistical analysis of the map.

7.1 Map-value distribution [i](#)



The map-value distribution is plotted in 128 intervals along the x-axis. The y-axis is logarithmic. A spike in this graph at zero usually indicates that the volume has been masked.

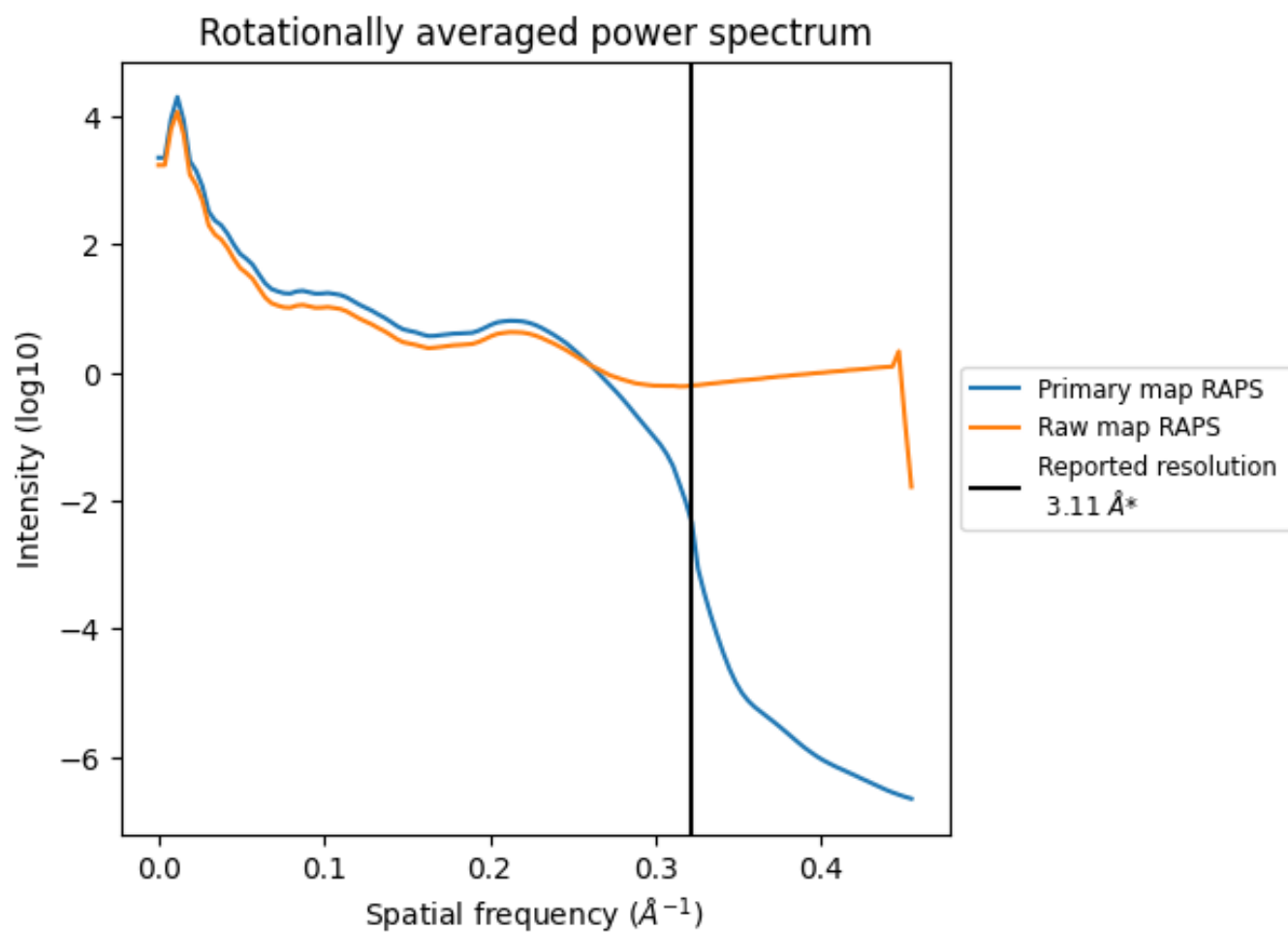
7.2 Volume estimate [i](#)



The volume at the recommended contour level is 30 nm³; this corresponds to an approximate mass of 27 kDa.

The volume estimate graph shows how the enclosed volume varies with the contour level. The recommended contour level is shown as a vertical line and the intersection between the line and the curve gives the volume of the enclosed surface at the given level.

7.3 Rotationally averaged power spectrum i

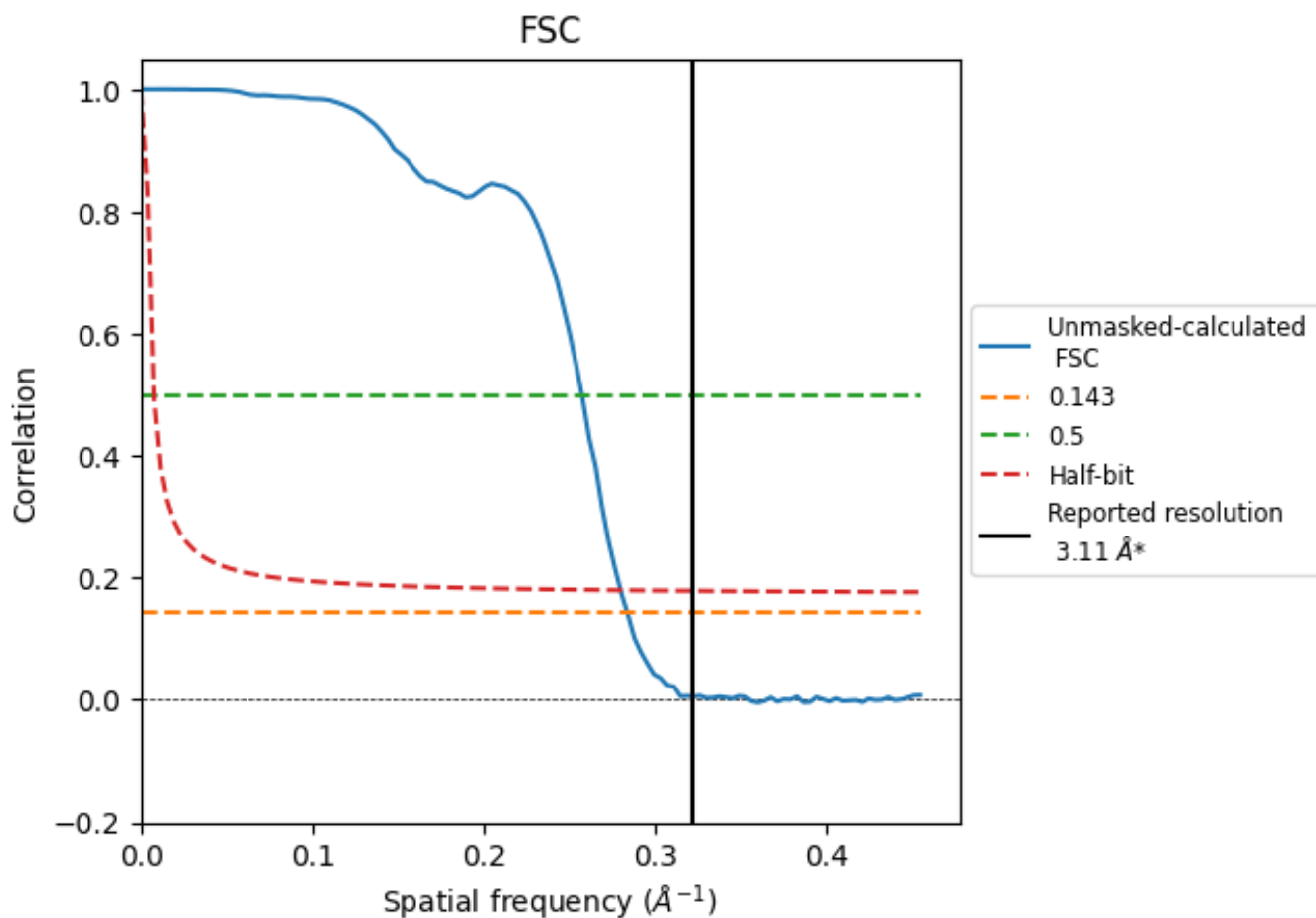


*Reported resolution corresponds to spatial frequency of 0.322 \AA^{-1}

8 Fourier-Shell correlation [i](#)

Fourier-Shell Correlation (FSC) is the most commonly used method to estimate the resolution of single-particle and subtomogram-averaged maps. The shape of the curve depends on the imposed symmetry, mask and whether or not the two 3D reconstructions used were processed from a common reference. The reported resolution is shown as a black line. A curve is displayed for the half-bit criterion in addition to lines showing the 0.143 gold standard cut-off and 0.5 cut-off.

8.1 FSC [i](#)



*Reported resolution corresponds to spatial frequency of 0.322 Å⁻¹

8.2 Resolution estimates [i](#)

Resolution estimate (Å)	Estimation criterion (FSC cut-off)		
	0.143	0.5	Half-bit
Reported by author	3.11	-	-
Author-provided FSC curve	-	-	-
Unmasked-calculated*	3.52	3.89	3.58

*Resolution estimate based on FSC curve calculated by comparison of deposited half-maps. The value from deposited half-maps intersecting FSC 0.143 CUT-OFF 3.52 differs from the reported value 3.11 by more than 10 %

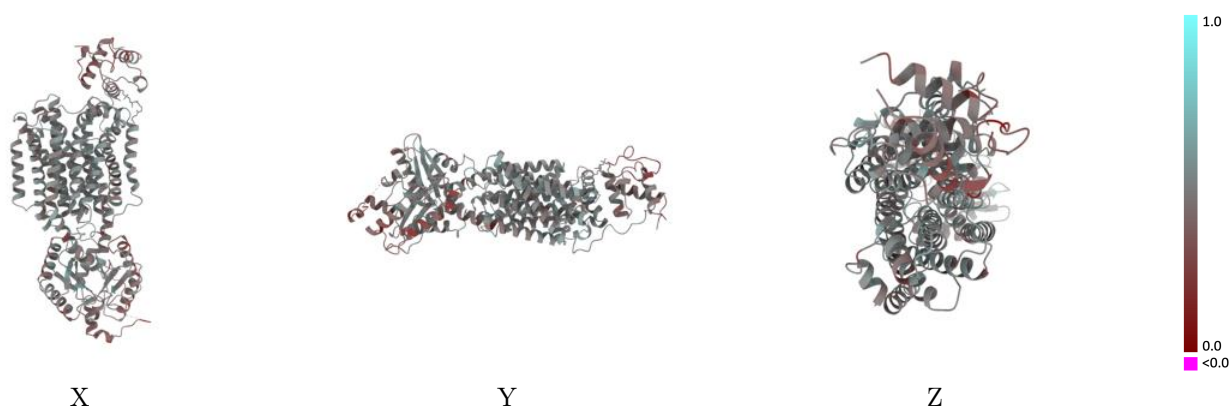
9 Map-model fit [i](#)

This section contains information regarding the fit between EMDB map EMD-63854 and PDB model 9U4T. Per-residue inclusion information can be found in section 3 on page 5.

9.1 Map-model overlay [i](#)

This section was not generated.

9.2 Q-score mapped to coordinate model [i](#)

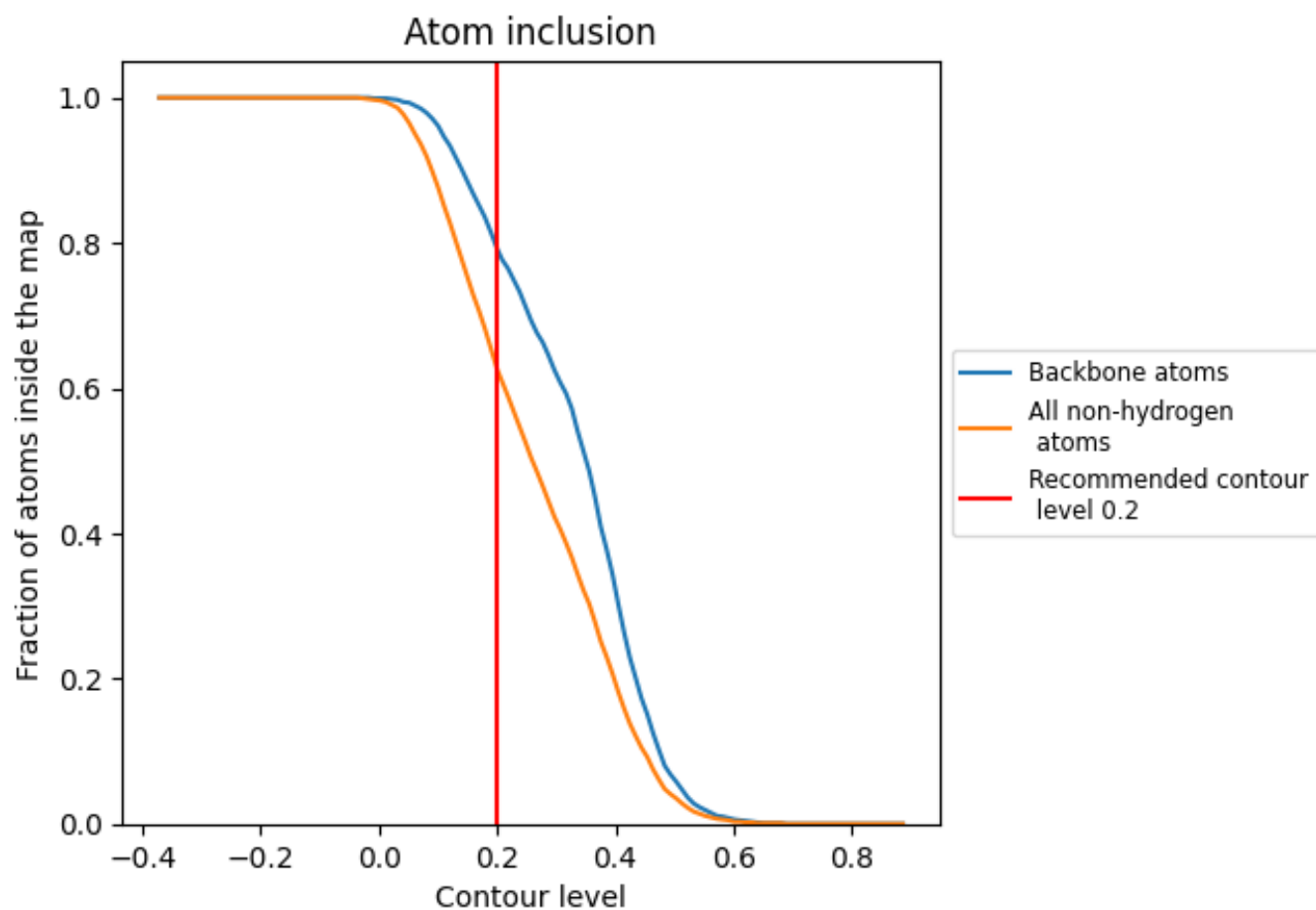


The images above show the model with each residue coloured according to its Q-score. This shows their resolvability in the map with higher Q-score values reflecting better resolvability. Please note: Q-score is calculating the resolvability of atoms, and thus high values are only expected at resolutions at which atoms can be resolved. Low Q-score values may therefore be expected for many entries.

9.3 Atom inclusion mapped to coordinate model [i](#)

This section was not generated.







9.4 Atom inclusion [i](#)



At the recommended contour level, 79% of all backbone atoms, 63% of all non-hydrogen atoms, are inside the map.

9.5 Map-model fit summary [i](#)

The table lists the average atom inclusion at the recommended contour level (0.2) and Q-score for the entire model and for each chain.

Chain	Atom inclusion	Q-score
All	 0.6260	 0.4600
A	 0.6380	 0.4690
B	 0.5210	 0.3840

