



## wwPDB EM Validation Summary Report ⓘ

Apr 2, 2026 – 07:49 pm BST

PDB ID : 9TG4 / pdb\_00009tg4  
EMDB ID : EMD-55890  
Title : Structure of the YbjP lipoprotein bound to the AcrABZ-TolC efflux pump  
Authors : Kaplan, E.; Harris, A.; Horne, J.; Petsolari, E.; Luisi, B.  
Deposited on : 2025-11-28  
Resolution : 3.17 Å (reported)

This is a wwPDB EM Validation Summary Report for a publicly released PDB entry.

We welcome your comments at [validation@mail.wwpdb.org](mailto:validation@mail.wwpdb.org)

A user guide is available at

<https://www.wwpdb.org/validation/2017/EMValidationReportHelp>

with specific help available everywhere you see the ⓘ symbol.

The types of validation reports are described at

<http://www.wwpdb.org/validation/2017/FAQs#types>.

---

The following versions of software and data (see [references ⓘ](#)) were used in the production of this report:

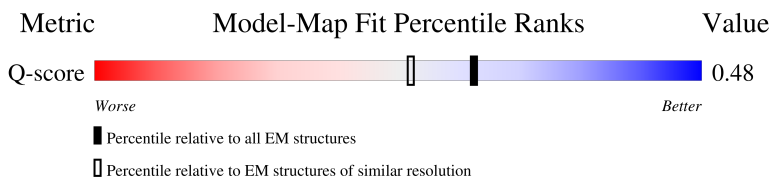
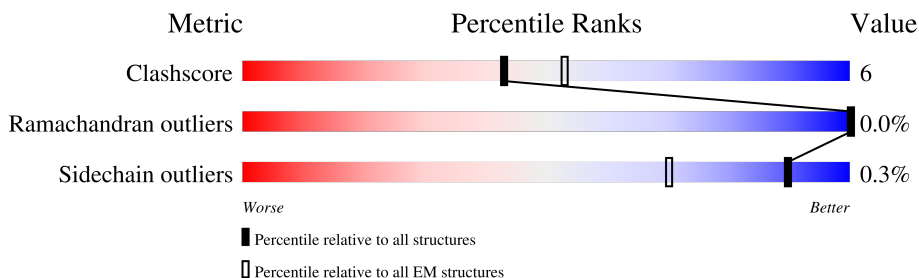
EMDB validation analysis : 0.0.1.dev132  
MolProbity : 4-5-2 with Phenix2.0  
Percentile statistics : 20231227.v01 (using entries in the PDB archive December 27th 2023)  
EM percentile statistics : 202505.v01 (Using data in the EMDB archive up until May 2025)  
MapQ : 1.9.13  
Ideal geometry (proteins) : Engh & Huber (2001)  
Ideal geometry (DNA, RNA) : Parkinson et al. (1996)  
Validation Pipeline (wwPDB-VP) : 2.48.1

# 1 Overall quality at a glance i

The following experimental techniques were used to determine the structure:  
*ELECTRON MICROSCOPY*

The reported resolution of this entry is 3.17 Å.

Percentile scores (ranging between 0-100) for global validation metrics of the entry are shown in the following graphic. The table shows the number of entries on which the scores are based.



Metric	Whole archive (#Entries)	EM structures (#Entries)	Similar EM resolution (#Entries, resolution range(Å))
Clashscore	210492	15764	-
Ramachandran outliers	207382	16835	-
Sidechain outliers	206894	16415	-
Q-score	-	25397	14465 ( 2.67 - 3.67 )

The table below summarises the geometric issues observed across the polymeric chains and their fit to the map. The red, orange, yellow and green segments of the bar indicate the fraction of residues that contain outliers for  $\geq 3$ , 2, 1 and 0 types of geometric quality criteria respectively. A grey segment represents the fraction of residues that are not modelled. The numeric value for each fraction is indicated below the corresponding segment, with a dot representing fractions  $\leq 5\%$ . The upper red bar (where present) indicates the fraction of residues that have poor fit to the EM map (all-atom inclusion  $< 40\%$ ). The numeric value is given above the bar.

Mol	Chain	Length	Quality of chain
1	A	480	5% (red), 78% (green), 12% (yellow), 10% (grey)
1	B	480	5% (red), 78% (green), 12% (yellow), 10% (grey)
1	C	480	5% (red), 75% (green), 15% (yellow), 10% (grey)
2	D	397	6% (red), 80% (green), 7% (yellow), 13% (grey)

Continued on next page...

Continued from previous page...

Mol	Chain	Length	Quality of chain
2	E	397	80% 6% 13% 5%
2	F	397	78% 8% 14% 5%
2	G	397	79% 9% 13% 6%
2	H	397	82% 5% 13% 6%
2	I	397	80% 7% 13% 6%
3	J	1049	81% 18% 8%
3	K	1049	84% 15% 8%
3	L	1049	83% 16% 8%
4	M	49	59% 20% 20% 16%
4	N	49	61% 18% 20% 16%
4	O	49	57% 22% 20% 18%
5	P	160	80% 15% 94%
5	Q	160	78% 17% 94%
5	R	160	81% 12% 93%

## 2 Entry composition [i](#)

There are 6 unique types of molecules in this entry. The entry contains 53653 atoms, of which 0 are hydrogens and 0 are deuteriums.

In the tables below, the AltConf column contains the number of residues with at least one atom in alternate conformation and the Trace column contains the number of residues modelled with at most 2 atoms.

- Molecule 1 is a protein called Outer membrane protein TolC.

Mol	Chain	Residues	Atoms					AltConf	Trace
			Total	C	N	O	S		
1	A	433	3340	2059	593	683	5	0	0
1	B	433	3340	2059	593	683	5	0	0
1	C	433	3340	2059	593	683	5	0	0

There are 27 discrepancies between the modelled and reference sequences:

Chain	Residue	Modelled	Actual	Comment	Reference
A	0	MET	-	initiating methionine	UNP P02930
A	472	ASP	-	expression tag	UNP P02930
A	473	TYR	-	expression tag	UNP P02930
A	474	LYS	-	expression tag	UNP P02930
A	475	ASP	-	expression tag	UNP P02930
A	476	ASP	-	expression tag	UNP P02930
A	477	ASP	-	expression tag	UNP P02930
A	478	ASP	-	expression tag	UNP P02930
A	479	LYS	-	expression tag	UNP P02930
B	0	MET	-	initiating methionine	UNP P02930
B	472	ASP	-	expression tag	UNP P02930
B	473	TYR	-	expression tag	UNP P02930
B	474	LYS	-	expression tag	UNP P02930
B	475	ASP	-	expression tag	UNP P02930
B	476	ASP	-	expression tag	UNP P02930
B	477	ASP	-	expression tag	UNP P02930
B	478	ASP	-	expression tag	UNP P02930
B	479	LYS	-	expression tag	UNP P02930
C	0	MET	-	initiating methionine	UNP P02930
C	472	ASP	-	expression tag	UNP P02930
C	473	TYR	-	expression tag	UNP P02930
C	474	LYS	-	expression tag	UNP P02930
C	475	ASP	-	expression tag	UNP P02930
C	476	ASP	-	expression tag	UNP P02930

*Continued on next page...*

Continued from previous page...

Chain	Residue	Modelled	Actual	Comment	Reference
C	477	ASP	-	expression tag	UNP P02930
C	478	ASP	-	expression tag	UNP P02930
C	479	LYS	-	expression tag	UNP P02930

- Molecule 2 is a protein called Multidrug efflux pump subunit AcrA.

Mol	Chain	Residues	Atoms					AltConf	Trace
2	D	345	Total	C	N	O	S	0	0
			2591	1619	456	514	2		
2	E	346	Total	C	N	O	S	0	0
			2600	1624	458	516	2		
2	F	341	Total	C	N	O	S	0	0
			2564	1603	452	507	2		
2	G	346	Total	C	N	O	S	0	0
			2601	1625	459	515	2		
2	H	344	Total	C	N	O	S	0	0
			2583	1615	455	511	2		
2	I	346	Total	C	N	O	S	0	0
			2601	1625	459	515	2		

- Molecule 3 is a protein called Multidrug efflux pump subunit AcrB.

Mol	Chain	Residues	Atoms					AltConf	Trace
3	J	1037	Total	C	N	O	S	0	0
			7883	5071	1304	1464	44		
3	K	1034	Total	C	N	O	S	0	0
			7855	5055	1296	1460	44		
3	L	1034	Total	C	N	O	S	0	0
			7855	5055	1296	1460	44		

- Molecule 4 is a protein called Multidrug efflux pump accessory protein AcrZ.

Mol	Chain	Residues	Atoms					AltConf	Trace
4	M	39	Total	C	N	O	S	0	0
			294	203	41	47	3		
4	N	39	Total	C	N	O	S	0	0
			294	203	41	47	3		
4	O	39	Total	C	N	O	S	0	0
			294	203	41	47	3		

- Molecule 5 is a protein called Uncharacterized lipoprotein YbjP.

Mol	Chain	Residues	Atoms					AltConf	Trace
5	P	153	Total	C	N	O	S	0	0
			1205	737	223	241	4		
5	Q	153	Total	C	N	O	S	0	0
			1205	737	223	241	4		
5	R	153	Total	C	N	O	S	0	0
			1205	737	223	241	4		

There are 48 discrepancies between the modelled and reference sequences:

Chain	Residue	Modelled	Actual	Comment	Reference
P	27	MET	-	initiating methionine	UNP P75818
P	172	GLU	-	expression tag	UNP P75818
P	173	ASN	-	expression tag	UNP P75818
P	174	LEU	-	expression tag	UNP P75818
P	175	TYR	-	expression tag	UNP P75818
P	176	PHE	-	expression tag	UNP P75818
P	177	GLN	-	expression tag	UNP P75818
P	178	SER	-	expression tag	UNP P75818
P	179	LEU	-	expression tag	UNP P75818
P	180	GLU	-	expression tag	UNP P75818
P	181	HIS	-	expression tag	UNP P75818
P	182	HIS	-	expression tag	UNP P75818
P	183	HIS	-	expression tag	UNP P75818
P	184	HIS	-	expression tag	UNP P75818
P	185	HIS	-	expression tag	UNP P75818
P	186	HIS	-	expression tag	UNP P75818
Q	27	MET	-	initiating methionine	UNP P75818
Q	172	GLU	-	expression tag	UNP P75818
Q	173	ASN	-	expression tag	UNP P75818
Q	174	LEU	-	expression tag	UNP P75818
Q	175	TYR	-	expression tag	UNP P75818
Q	176	PHE	-	expression tag	UNP P75818
Q	177	GLN	-	expression tag	UNP P75818
Q	178	SER	-	expression tag	UNP P75818
Q	179	LEU	-	expression tag	UNP P75818
Q	180	GLU	-	expression tag	UNP P75818
Q	181	HIS	-	expression tag	UNP P75818
Q	182	HIS	-	expression tag	UNP P75818
Q	183	HIS	-	expression tag	UNP P75818
Q	184	HIS	-	expression tag	UNP P75818
Q	185	HIS	-	expression tag	UNP P75818
Q	186	HIS	-	expression tag	UNP P75818
R	27	MET	-	initiating methionine	UNP P75818

*Continued on next page...*

*Continued from previous page...*

Chain	Residue	Modelled	Actual	Comment	Reference
R	172	GLU	-	expression tag	UNP P75818
R	173	ASN	-	expression tag	UNP P75818
R	174	LEU	-	expression tag	UNP P75818
R	175	TYR	-	expression tag	UNP P75818
R	176	PHE	-	expression tag	UNP P75818
R	177	GLN	-	expression tag	UNP P75818
R	178	SER	-	expression tag	UNP P75818
R	179	LEU	-	expression tag	UNP P75818
R	180	GLU	-	expression tag	UNP P75818
R	181	HIS	-	expression tag	UNP P75818
R	182	HIS	-	expression tag	UNP P75818
R	183	HIS	-	expression tag	UNP P75818
R	184	HIS	-	expression tag	UNP P75818
R	185	HIS	-	expression tag	UNP P75818
R	186	HIS	-	expression tag	UNP P75818

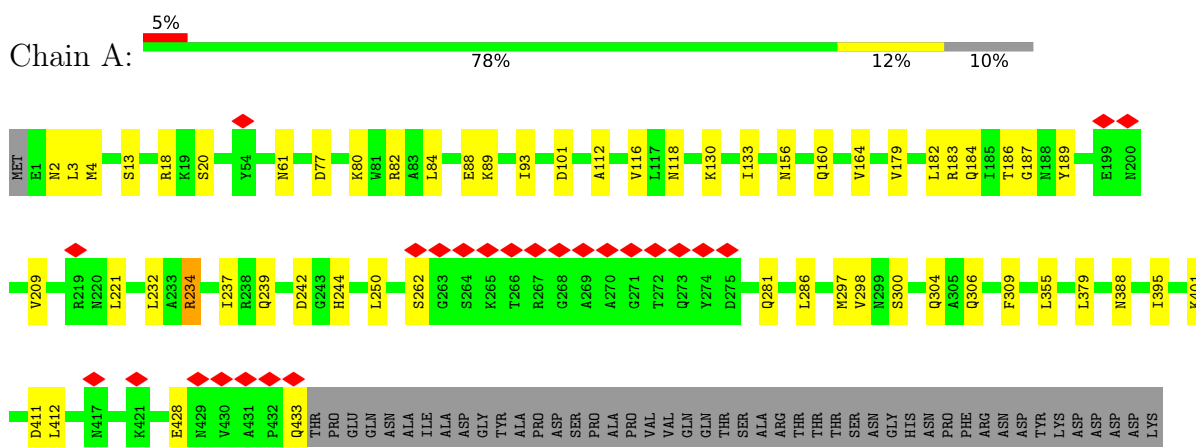
- Molecule 6 is CHLORIDE ION (CCD ID: CL) (formula: Cl).

Mol	Chain	Residues	Atoms	AltConf
6	A	1	Total Cl 1 1	0
6	B	1	Total Cl 1 1	0
6	C	1	Total Cl 1 1	0

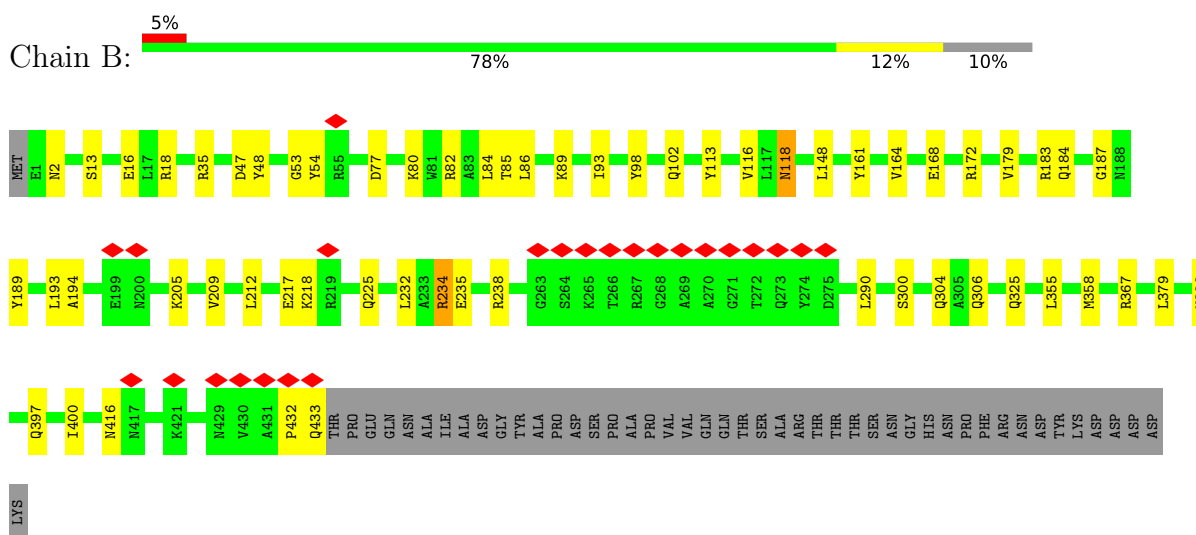
### 3 Residue-property plots [i](#)

These plots are drawn for all protein, RNA, DNA and oligosaccharide chains in the entry. The first graphic for a chain summarises the proportions of the various outlier classes displayed in the second graphic. The second graphic shows the sequence view annotated by issues in geometry and atom inclusion in map density. Residues are color-coded according to the number of geometric quality criteria for which they contain at least one outlier: green = 0, yellow = 1, orange = 2 and red = 3 or more. A red diamond above a residue indicates a poor fit to the EM map for this residue (all-atom inclusion < 40%). Stretches of 2 or more consecutive residues without any outlier are shown as a green connector. Residues present in the sample, but not in the model, are shown in grey.

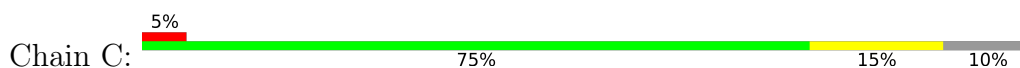
- Molecule 1: Outer membrane protein TolC



- Molecule 1: Outer membrane protein TolC



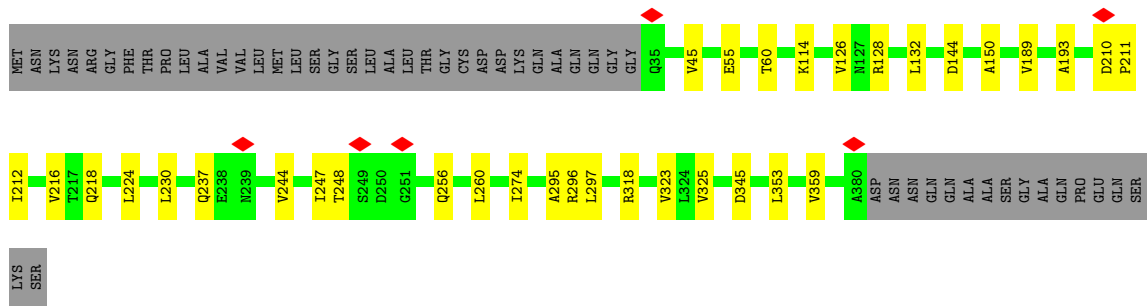
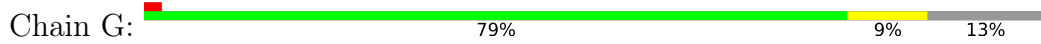
- Molecule 1: Outer membrane protein TolC



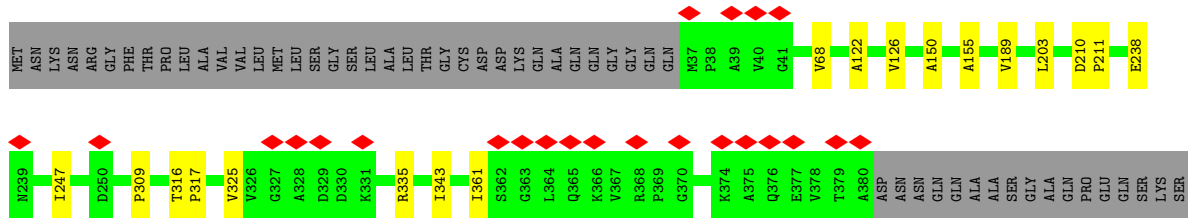
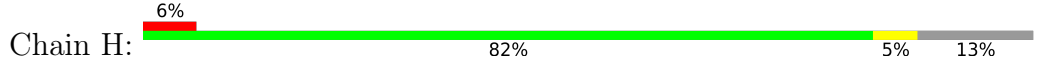


ASP  
ASN  
ASN  
GLN  
GLN  
ALA  
ALA  
SER  
SER  
GLY  
ALA  
ALA  
PRO  
GLU  
GLN  
GLN  
LYS  
LYS  
SER

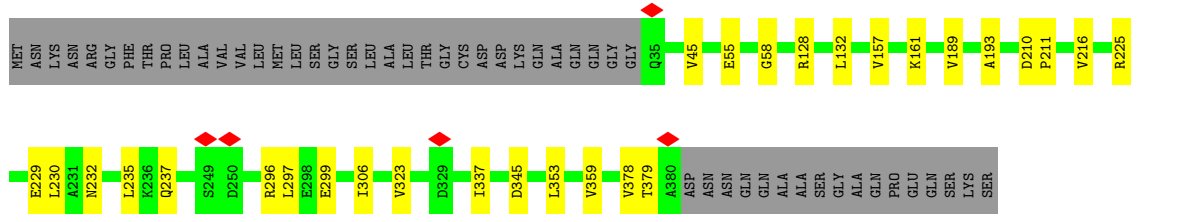
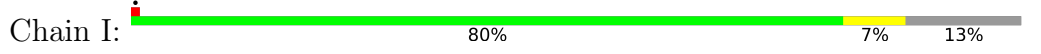
• Molecule 2: Multidrug efflux pump subunit AcrA



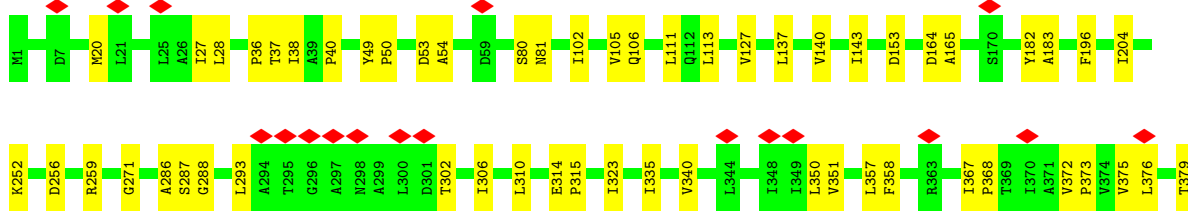
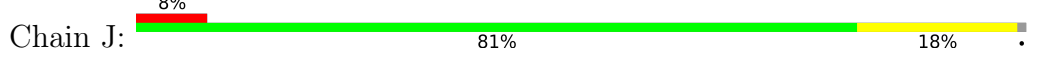
• Molecule 2: Multidrug efflux pump subunit AcrA

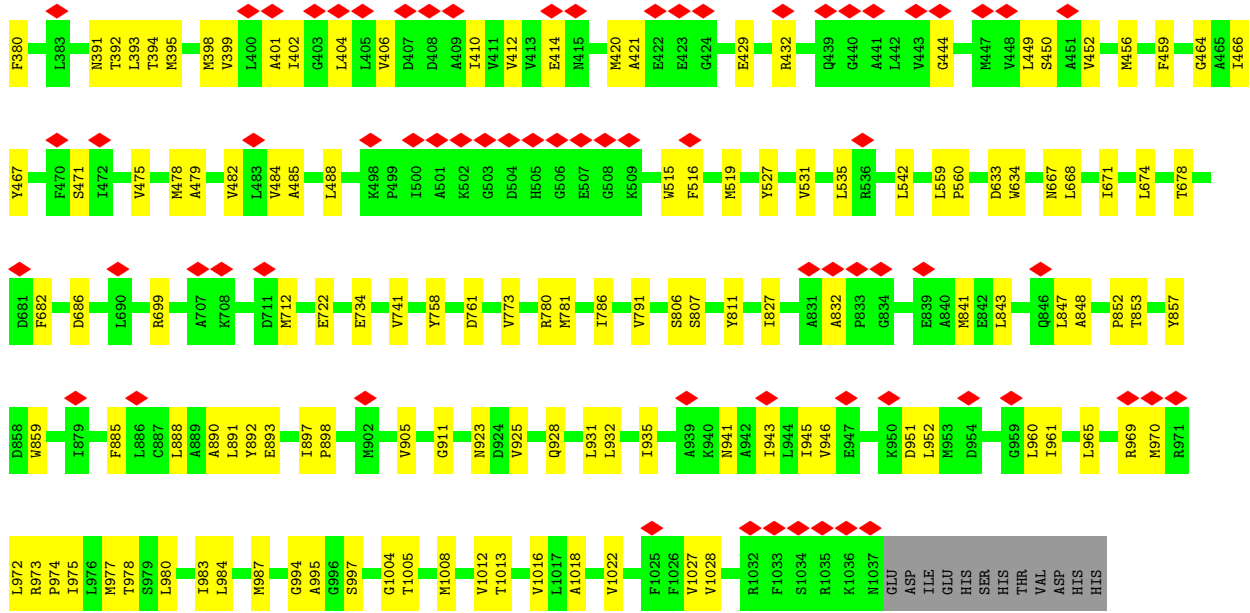


• Molecule 2: Multidrug efflux pump subunit AcrA

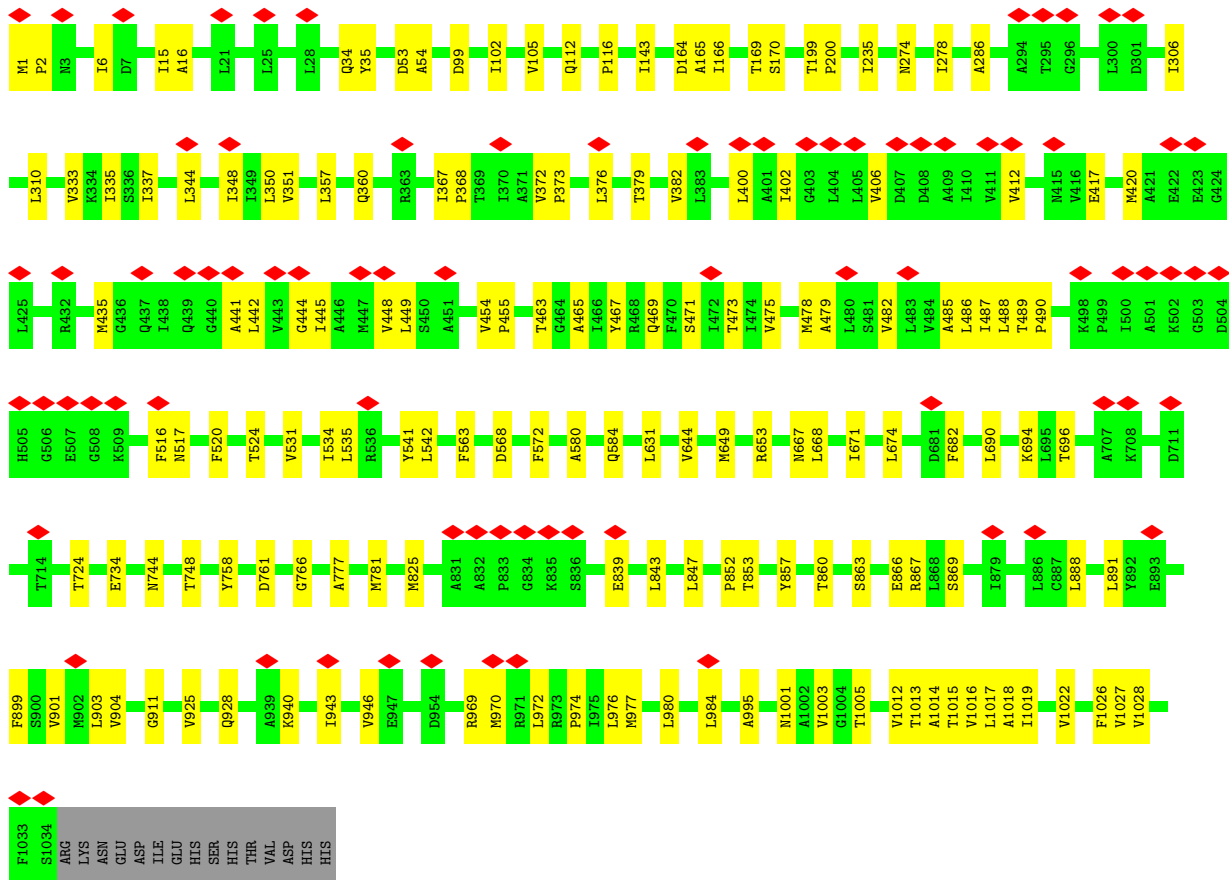
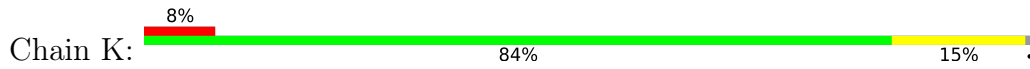


• Molecule 3: Multidrug efflux pump subunit AcrB





• Molecule 3: Multidrug efflux pump subunit AcrB



• Molecule 3: Multidrug efflux pump subunit AcrB





## 4 Experimental information

Property	Value	Source
EM reconstruction method	SINGLE PARTICLE	Depositor
Imposed symmetry	POINT, Not provided	
Number of particles used	97441	Depositor
Resolution determination method	FSC 0.143 CUT-OFF	Depositor
CTF correction method	PHASE FLIPPING AND AMPLITUDE CORRECTION	Depositor
Microscope	TFS KRIOS	Depositor
Voltage (kV)	300	Depositor
Electron dose ( $e^-/\text{\AA}^2$ )	56	Depositor
Minimum defocus (nm)	1000	Depositor
Maximum defocus (nm)	2500	Depositor
Magnification	Not provided	
Image detector	GATAN K3 (6k x 4k)	Depositor
Maximum map value	0.551	Depositor
Minimum map value	-0.179	Depositor
Average map value	0.000	Depositor
Map value standard deviation	0.010	Depositor
Recommended contour level	0.13	Depositor
Map size ( $\text{\AA}$ )	686.784, 686.784, 686.784	wwPDB
Map dimensions	588, 588, 588	wwPDB
Map angles ( $^\circ$ )	90.0, 90.0, 90.0	wwPDB
Pixel spacing ( $\text{\AA}$ )	1.168, 1.168, 1.168	Depositor

## 5 Model quality [i](#)

### 5.1 Standard geometry [i](#)

Bond lengths and bond angles in the following residue types are not validated in this section:  
CL

The Z score for a bond length (or angle) is the number of standard deviations the observed value is removed from the expected value. A bond length (or angle) with  $|Z| > 5$  is considered an outlier worth inspection. RMSZ is the root-mean-square of all Z scores of the bond lengths (or angles).

Mol	Chain	Bond lengths		Bond angles	
		RMSZ	# Z  >5	RMSZ	# Z  >5
1	A	0.23	0/3382	0.31	0/4596
1	B	0.20	0/3382	0.31	0/4596
1	C	0.30	2/3382 (0.1%)	0.52	4/4596 (0.1%)
2	D	0.14	0/2624	0.31	0/3570
2	E	0.16	0/2633	0.30	0/3582
2	F	0.14	0/2597	0.31	0/3532
2	G	0.16	0/2634	0.30	0/3583
2	H	0.15	0/2616	0.30	0/3559
2	I	0.15	0/2634	0.30	0/3583
3	J	0.15	0/8033	0.35	0/10907
3	K	0.15	0/8005	0.36	2/10871 (0.0%)
3	L	0.15	0/8005	0.35	0/10871
4	M	0.15	0/298	0.31	0/403
4	N	0.16	0/298	0.28	0/403
4	O	0.16	0/298	0.33	0/403
5	P	0.33	1/1227 (0.1%)	0.44	1/1667 (0.1%)
5	Q	0.24	0/1227	0.40	1/1667 (0.1%)
5	R	0.32	0/1227	0.41	0/1667
All	All	0.18	3/54502 (0.0%)	0.35	8/74056 (0.0%)

All (3) bond length outliers are listed below:

Mol	Chain	Res	Type	Atoms	Z	Observed(Å)	Ideal(Å)
1	C	191	PRO	CG-CD	-9.71	1.17	1.50
1	C	191	PRO	CB-CG	-8.72	1.06	1.49
5	P	108	ALA	CA-C	-5.52	1.46	1.52

The worst 5 of 8 bond angle outliers are listed below:

Mol	Chain	Res	Type	Atoms	Z	Observed(°)	Ideal(°)
1	C	191	PRO	N-CD-CG	-19.03	74.66	103.20

*Continued on next page...*

Continued from previous page...

Mol	Chain	Res	Type	Atoms	Z	Observed(°)	Ideal(°)
1	C	191	PRO	CA-CB-CG	-15.60	74.87	104.50
1	C	191	PRO	CB-CG-CD	10.39	139.35	106.10
3	K	116	PRO	N-CD-CG	-9.32	89.22	103.20
5	P	108	ALA	N-CA-C	-8.04	96.12	109.07

There are no chirality outliers.

There are no planarity outliers.

## 5.2 Too-close contacts

In the following table, the Non-H and H(model) columns list the number of non-hydrogen atoms and hydrogen atoms in the chain respectively. The H(added) column lists the number of hydrogen atoms added and optimized by MolProbity. The Clashes column lists the number of clashes within the asymmetric unit, whereas Symm-Clashes lists symmetry-related clashes.

Mol	Chain	Non-H	H(model)	H(added)	Clashes	Symm-Clashes
1	A	3340	0	3289	42	0
1	B	3340	0	3289	54	0
1	C	3340	0	3289	60	0
2	D	2591	0	2649	15	0
2	E	2600	0	2657	22	0
2	F	2564	0	2624	21	0
2	G	2601	0	2661	21	0
2	H	2583	0	2645	15	0
2	I	2601	0	2661	20	0
3	J	7883	0	8038	146	0
3	K	7855	0	8006	107	0
3	L	7855	0	8006	129	0
4	M	294	0	330	7	0
4	N	294	0	330	5	0
4	O	294	0	330	7	0
5	P	1205	0	1150	27	0
5	Q	1205	0	1150	36	0
5	R	1205	0	1150	22	0
6	A	1	0	0	0	0
6	B	1	0	0	0	0
6	C	1	0	0	0	0
All	All	53653	0	54254	693	0

The all-atom clashscore is defined as the number of clashes found per 1000 atoms (including hydrogen atoms). The all-atom clashscore for this structure is 6.

The worst 5 of 693 close contacts within the same asymmetric unit are listed below, sorted by their clash magnitude.

Atom-1	Atom-2	Interatomic distance (Å)	Clash overlap (Å)
1:B:234:ARG:NH1	5:Q:109:SER:CB	2.07	1.17
1:B:234:ARG:NH1	5:Q:109:SER:HB2	1.60	1.15
1:B:234:ARG:HH11	5:Q:109:SER:CB	1.66	1.09
3:L:348:ILE:HD11	3:L:372:VAL:HG11	1.36	1.08
5:R:105:VAL:HG13	5:R:123:VAL:HG22	1.39	1.01

There are no symmetry-related clashes.

## 5.3 Torsion angles [i](#)

### 5.3.1 Protein backbone [i](#)

In the following table, the Percentiles column shows the percent Ramachandran outliers of the chain as a percentile score with respect to all PDB entries followed by that with respect to all EM entries.

The Analysed column shows the number of residues for which the backbone conformation was analysed, and the total number of residues.

Mol	Chain	Analysed	Favoured	Allowed	Outliers	Percentiles	
1	A	431/480 (90%)	429 (100%)	2 (0%)	0	100	100
1	B	431/480 (90%)	428 (99%)	3 (1%)	0	100	100
1	C	431/480 (90%)	421 (98%)	10 (2%)	0	100	100
2	D	343/397 (86%)	334 (97%)	9 (3%)	0	100	100
2	E	344/397 (87%)	332 (96%)	12 (4%)	0	100	100
2	F	339/397 (85%)	327 (96%)	12 (4%)	0	100	100
2	G	344/397 (87%)	335 (97%)	9 (3%)	0	100	100
2	H	342/397 (86%)	335 (98%)	7 (2%)	0	100	100
2	I	344/397 (87%)	335 (97%)	9 (3%)	0	100	100
3	J	1035/1049 (99%)	1011 (98%)	24 (2%)	0	100	100
3	K	1032/1049 (98%)	1006 (98%)	26 (2%)	0	100	100
3	L	1032/1049 (98%)	1005 (97%)	27 (3%)	0	100	100
4	M	37/49 (76%)	37 (100%)	0	0	100	100
4	N	37/49 (76%)	37 (100%)	0	0	100	100

*Continued on next page...*

Continued from previous page...

Mol	Chain	Analysed	Favoured	Allowed	Outliers	Percentiles	
4	O	37/49 (76%)	37 (100%)	0	0	100	100
5	P	151/160 (94%)	141 (93%)	10 (7%)	0	100	100
5	Q	151/160 (94%)	143 (95%)	8 (5%)	0	100	100
5	R	151/160 (94%)	140 (93%)	10 (7%)	1 (1%)	19	52
All	All	7012/7596 (92%)	6833 (97%)	178 (2%)	1 (0%)	100	100

All (1) Ramachandran outliers are listed below:

Mol	Chain	Res	Type
5	R	178	SER

### 5.3.2 Protein sidechains [i](#)

In the following table, the Percentiles column shows the percent sidechain outliers of the chain as a percentile score with respect to all PDB entries followed by that with respect to all EM entries.

The Analysed column shows the number of residues for which the sidechain conformation was analysed, and the total number of residues.

Mol	Chain	Analysed	Rotameric	Outliers	Percentiles	
1	A	362/402 (90%)	361 (100%)	1 (0%)	91	95
1	B	362/402 (90%)	360 (99%)	2 (1%)	84	92
1	C	362/402 (90%)	360 (99%)	2 (1%)	84	92
2	D	278/318 (87%)	278 (100%)	0	100	100
2	E	279/318 (88%)	277 (99%)	2 (1%)	81	91
2	F	275/318 (86%)	275 (100%)	0	100	100
2	G	279/318 (88%)	278 (100%)	1 (0%)	89	94
2	H	277/318 (87%)	277 (100%)	0	100	100
2	I	279/318 (88%)	278 (100%)	1 (0%)	89	94
3	J	843/855 (99%)	841 (100%)	2 (0%)	92	97
3	K	840/855 (98%)	840 (100%)	0	100	100
3	L	840/855 (98%)	840 (100%)	0	100	100
4	M	33/41 (80%)	33 (100%)	0	100	100
4	N	33/41 (80%)	33 (100%)	0	100	100

Continued on next page...

Continued from previous page...

Mol	Chain	Analysed	Rotameric	Outliers	Percentiles	
4	O	33/41 (80%)	32 (97%)	1 (3%)	36	64
5	P	133/140 (95%)	133 (100%)	0	100	100
5	Q	133/140 (95%)	133 (100%)	0	100	100
5	R	133/140 (95%)	130 (98%)	3 (2%)	45	70
All	All	5774/6222 (93%)	5759 (100%)	15 (0%)	90	95

5 of 15 residues with a non-rotameric sidechain are listed below:

Mol	Chain	Res	Type
2	G	256	GLN
5	R	107	SER
2	I	297	LEU
5	R	179	LEU
4	O	14	MET

Sometimes sidechains can be flipped to improve hydrogen bonding and reduce clashes. 5 of 64 such sidechains are listed below:

Mol	Chain	Res	Type
3	L	797	GLN
5	P	113	ASN
2	E	120	ASN
2	E	36	GLN
5	Q	177	GLN

### 5.3.3 RNA [i](#)

There are no RNA molecules in this entry.

## 5.4 Non-standard residues in protein, DNA, RNA chains [i](#)

There are no non-standard protein/DNA/RNA residues in this entry.

## 5.5 Carbohydrates [i](#)

There are no oligosaccharides in this entry.

## 5.6 Ligand geometry [i](#)

Of 3 ligands modelled in this entry, 3 are monoatomic - leaving 0 for Mogul analysis.

There are no bond length outliers.

There are no bond angle outliers.

There are no chirality outliers.

There are no torsion outliers.

There are no ring outliers.

No monomer is involved in short contacts.

## 5.7 Other polymers [i](#)

There are no such residues in this entry.

## 5.8 Polymer linkage issues [i](#)

There are no chain breaks in this entry.

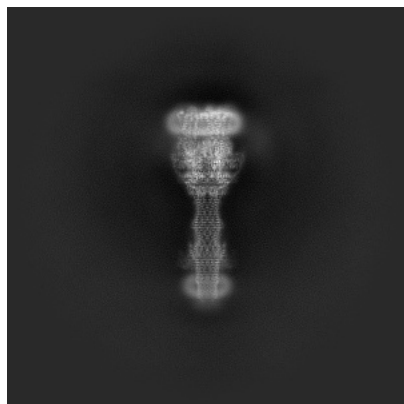
## 6 Map visualisation [i](#)

This section contains visualisations of the EMDB entry EMD-55890. These allow visual inspection of the internal detail of the map and identification of artifacts.

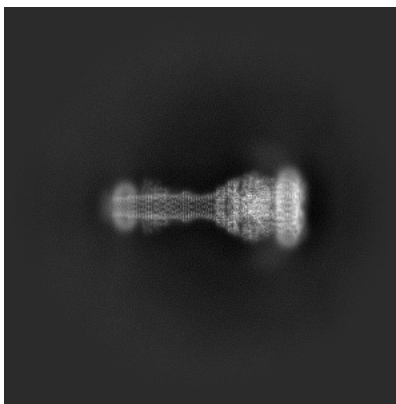
Images derived from a raw map, generated by summing the deposited half-maps, are presented below the corresponding image components of the primary map to allow further visual inspection and comparison with those of the primary map.

### 6.1 Orthogonal projections [i](#)

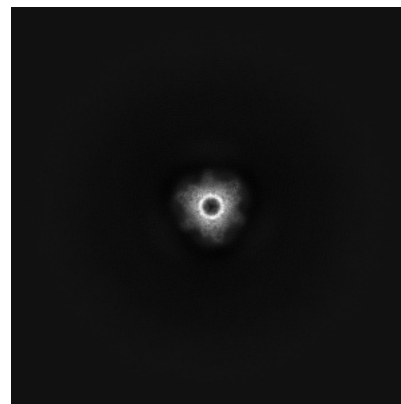
#### 6.1.1 Primary map



X

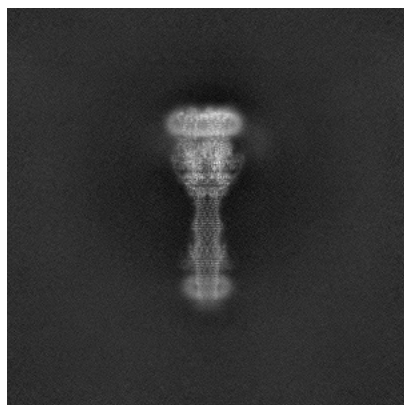


Y

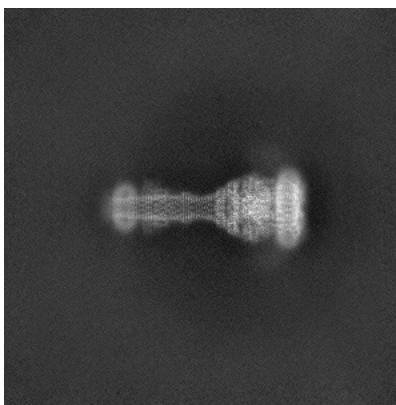


Z

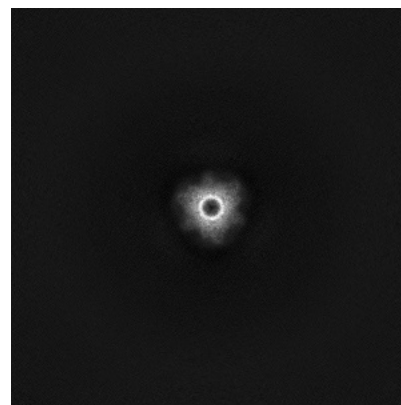
#### 6.1.2 Raw map



X



Y

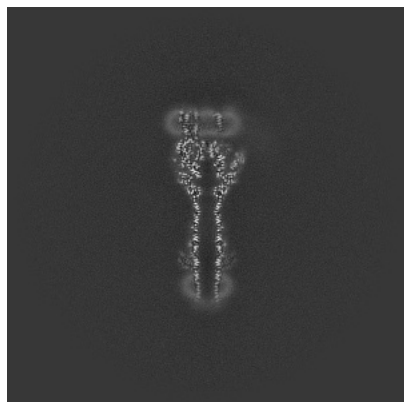


Z

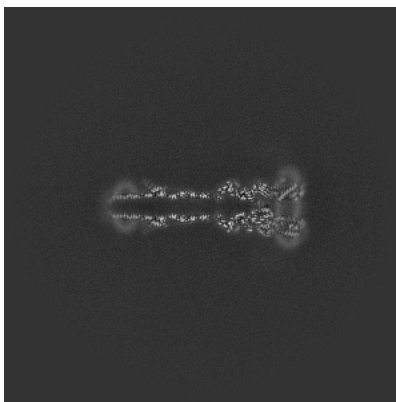
The images above show the map projected in three orthogonal directions.

## 6.2 Central slices [i](#)

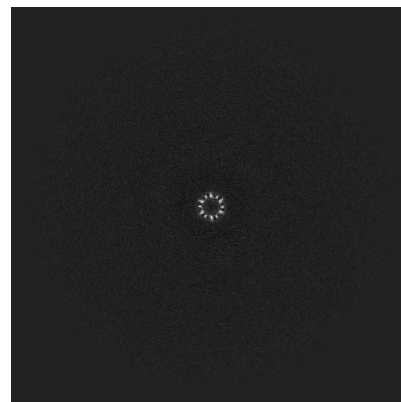
### 6.2.1 Primary map



X Index: 294

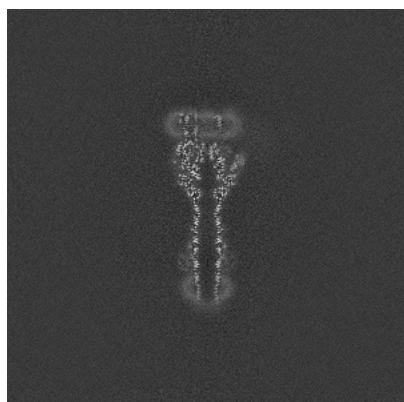


Y Index: 294

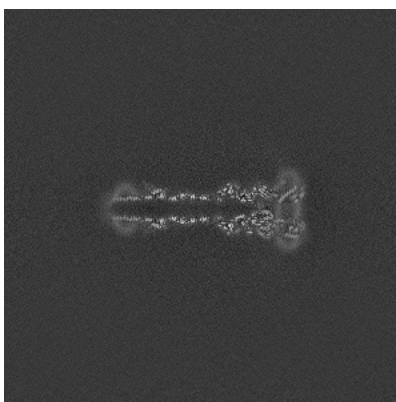


Z Index: 294

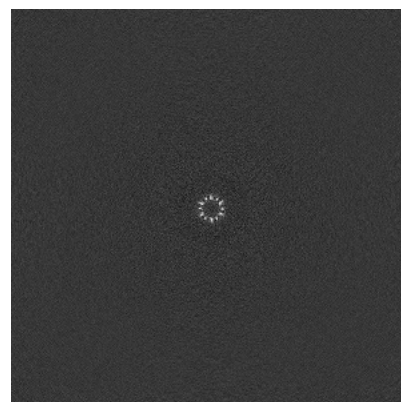
### 6.2.2 Raw map



X Index: 294



Y Index: 294

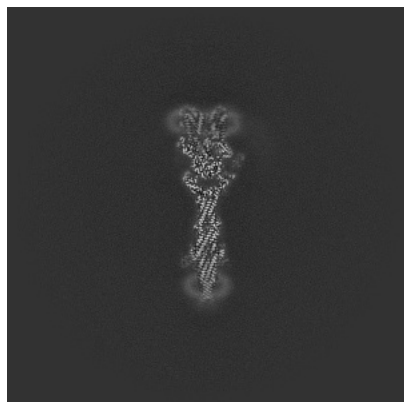


Z Index: 294

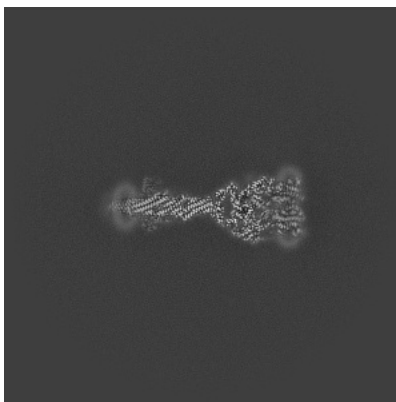
The images above show central slices of the map in three orthogonal directions.

## 6.3 Largest variance slices [i](#)

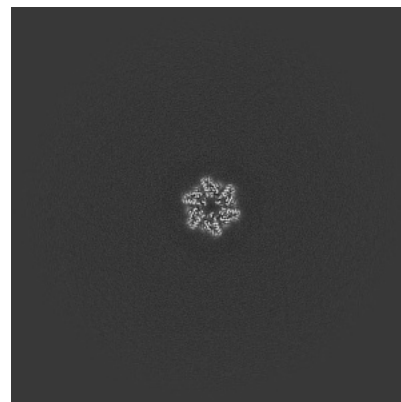
### 6.3.1 Primary map



X Index: 280

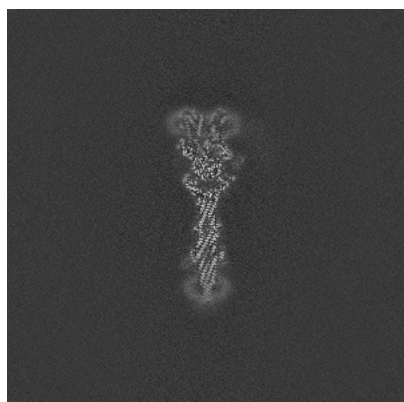


Y Index: 309

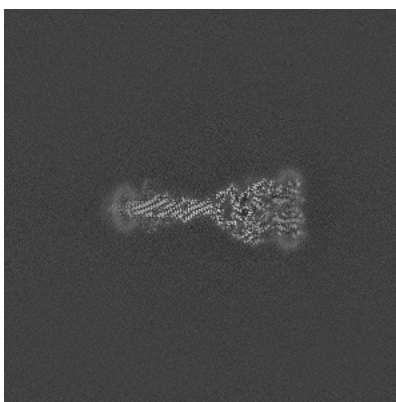


Z Index: 339

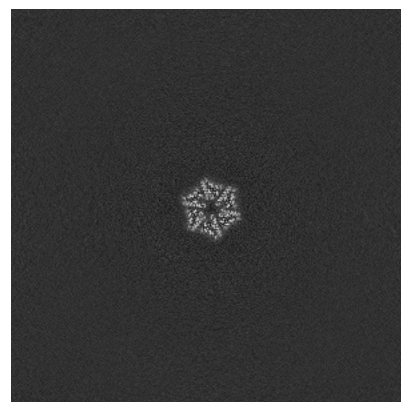
### 6.3.2 Raw map



X Index: 280



Y Index: 309

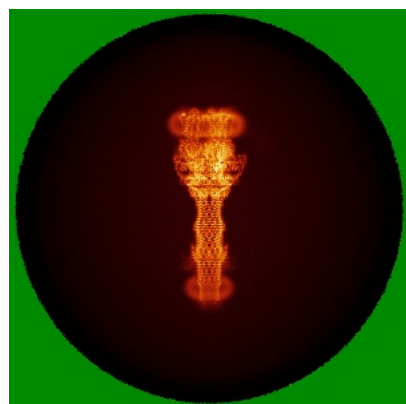


Z Index: 338

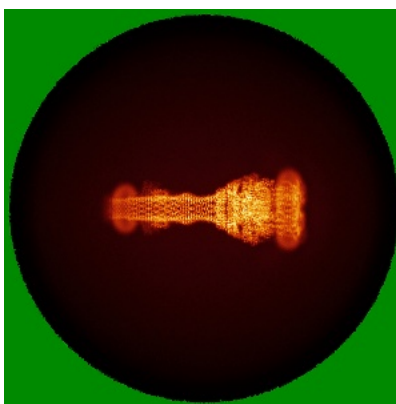
The images above show the largest variance slices of the map in three orthogonal directions.

## 6.4 Orthogonal standard-deviation projections (False-color) [i](#)

### 6.4.1 Primary map



X

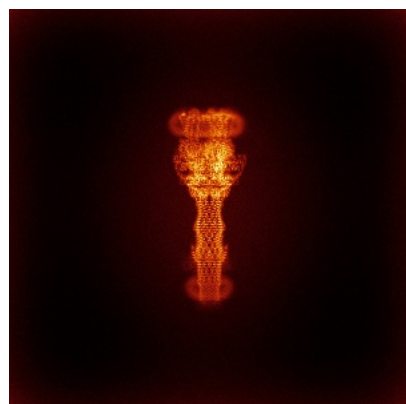


Y

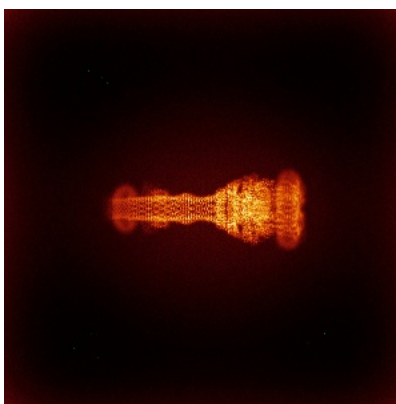


Z

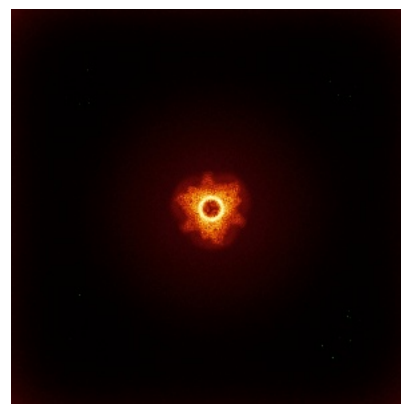
### 6.4.2 Raw map



X



Y

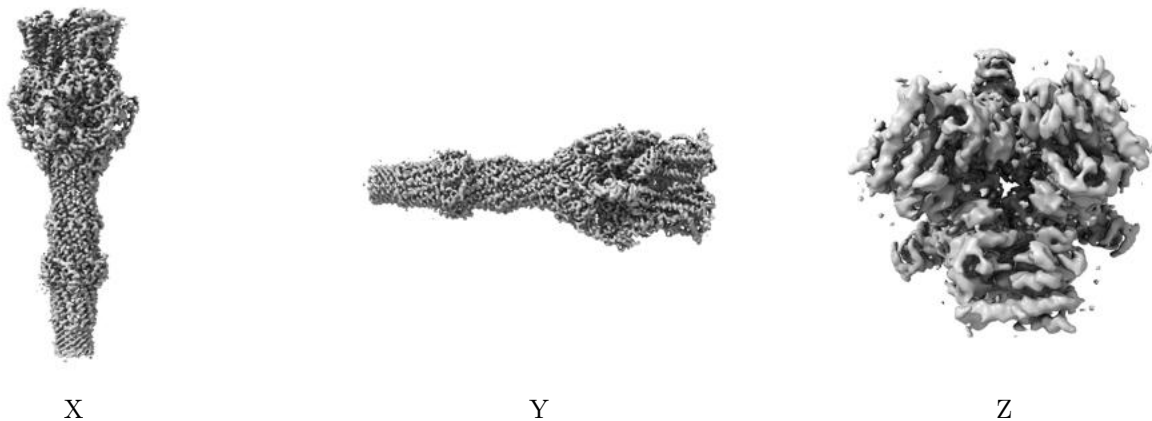


Z

The images above show the map standard deviation projections with false color in three orthogonal directions. Minimum values are shown in green, max in blue, and dark to light orange shades represent small to large values respectively.

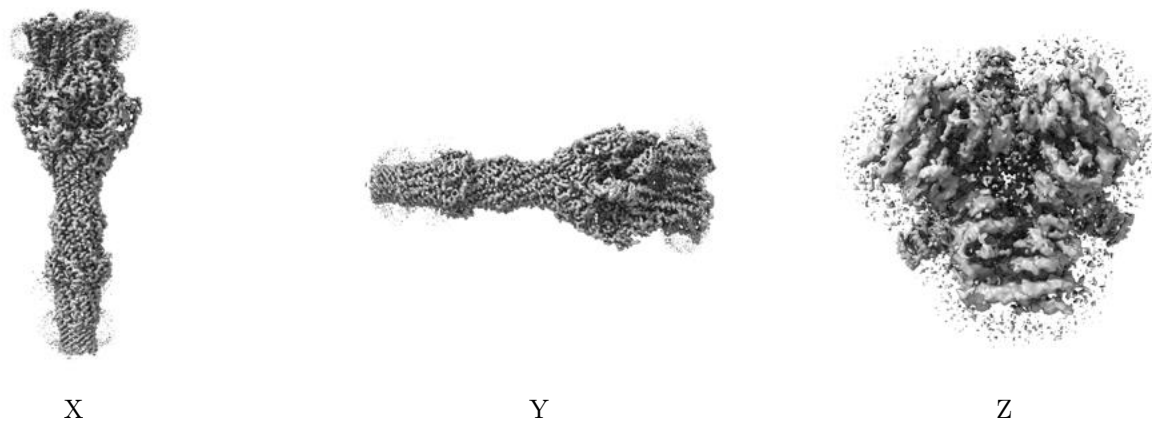
## 6.5 Orthogonal surface views [i](#)

### 6.5.1 Primary map



The images above show the 3D surface view of the map at the recommended contour level 0.13. These images, in conjunction with the slice images, may facilitate assessment of whether an appropriate contour level has been provided.

### 6.5.2 Raw map



These images show the 3D surface of the raw map. The raw map's contour level was selected so that its surface encloses the same volume as the primary map does at its recommended contour level.

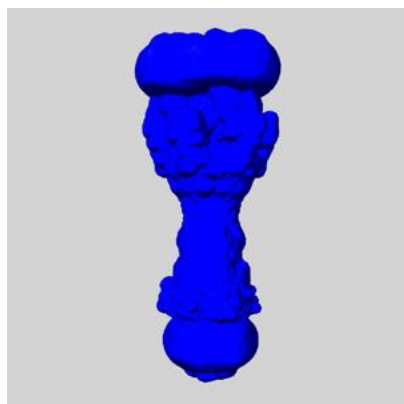
## 6.6 Mask visualisation [i](#)

This section shows the 3D surface view of the primary map at 50% transparency overlaid with the specified mask at 0% transparency

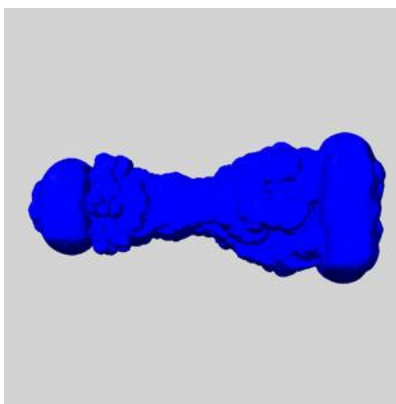
A mask typically either:

- Encompasses the whole structure
- Separates out a domain, a functional unit, a monomer or an area of interest from a larger structure

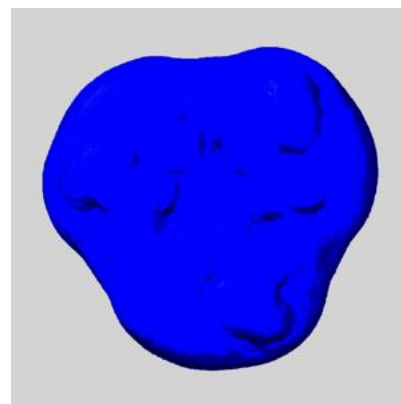
### 6.6.1 emd\_55890\_msk\_1.map [i](#)



X



Y

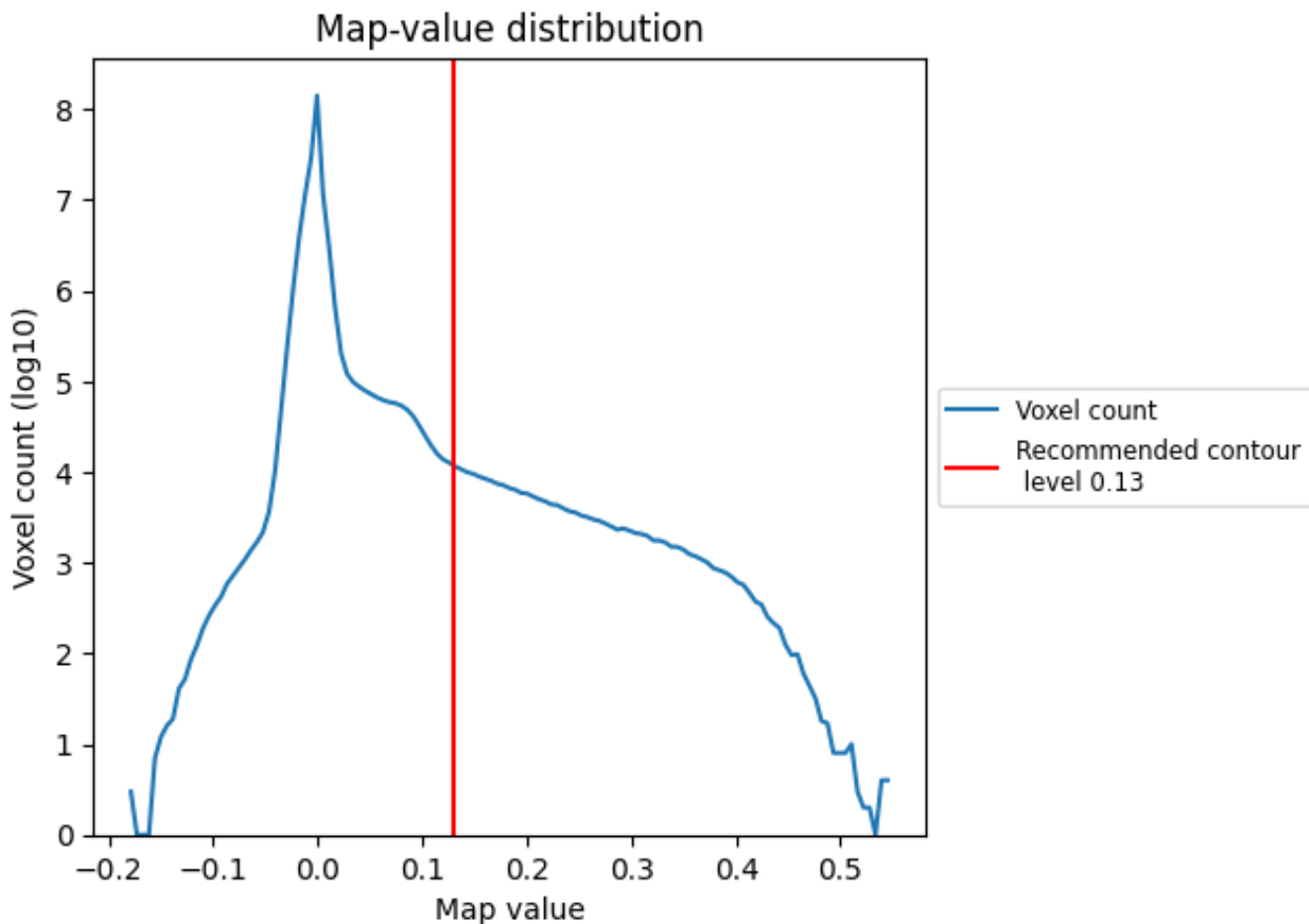


Z

## 7 Map analysis [i](#)

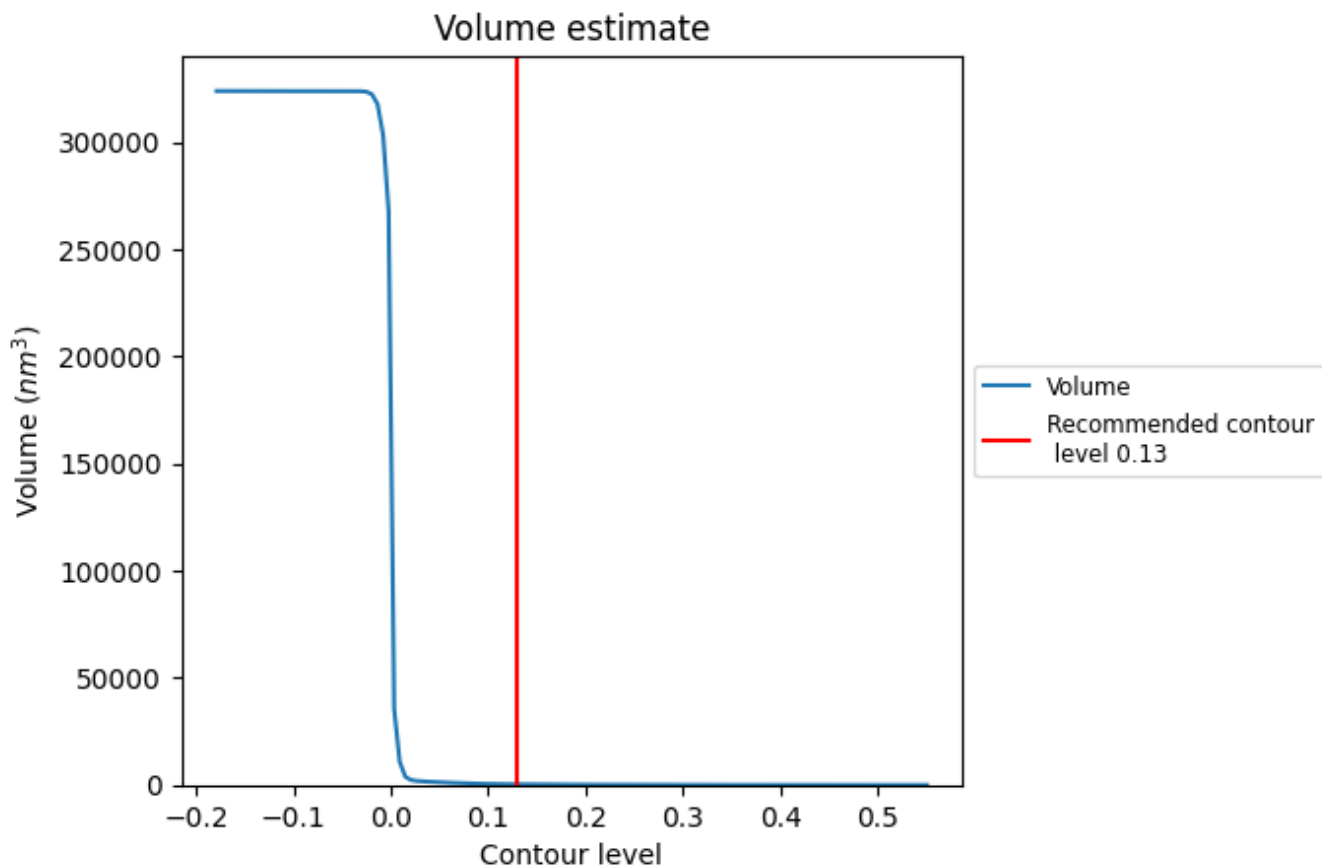
This section contains the results of statistical analysis of the map.

### 7.1 Map-value distribution [i](#)



The map-value distribution is plotted in 128 intervals along the x-axis. The y-axis is logarithmic. A spike in this graph at zero usually indicates that the volume has been masked.

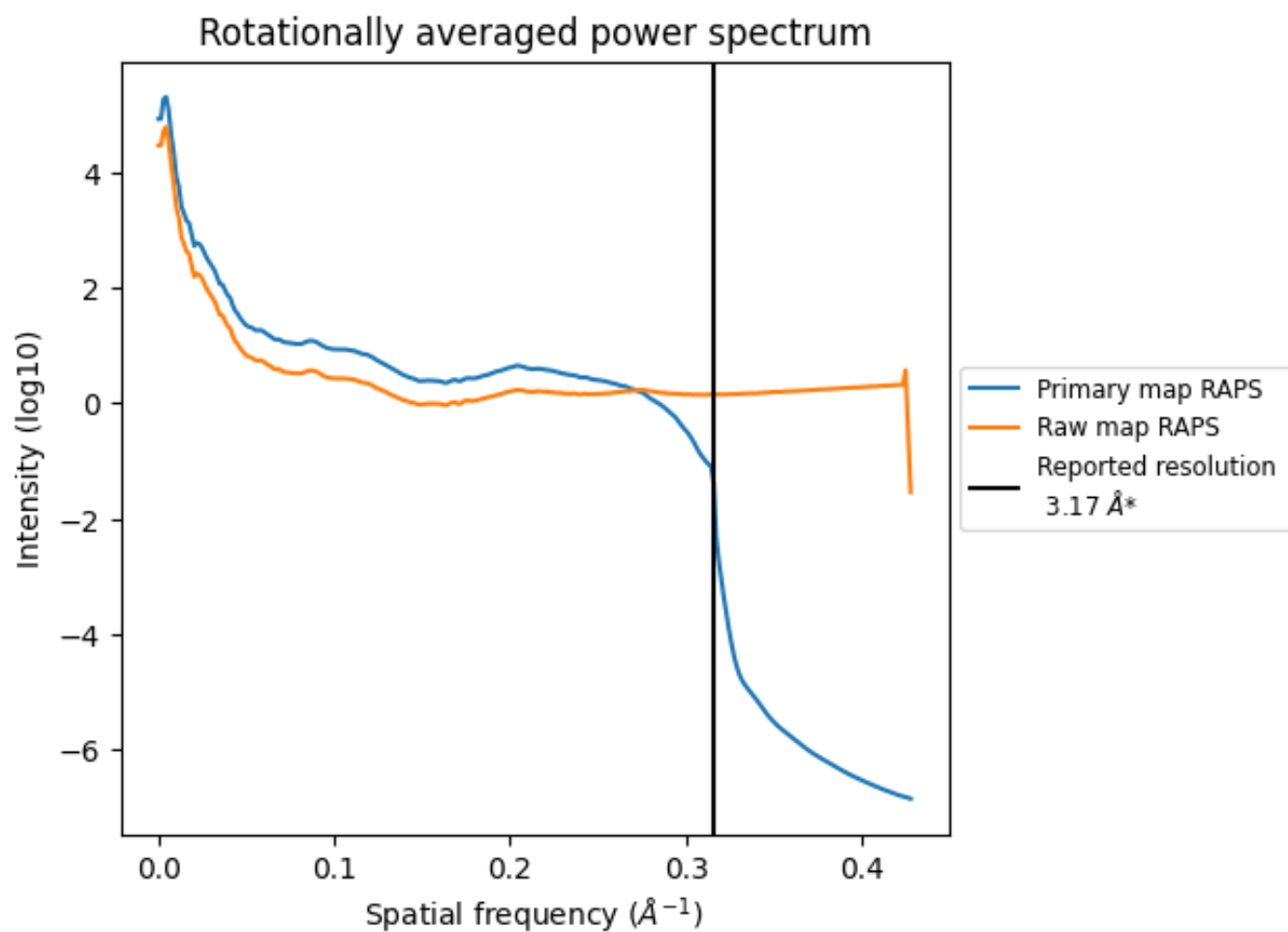
## 7.2 Volume estimate [i](#)



The volume at the recommended contour level is 312  $\text{nm}^3$ ; this corresponds to an approximate mass of 282 kDa.

The volume estimate graph shows how the enclosed volume varies with the contour level. The recommended contour level is shown as a vertical line and the intersection between the line and the curve gives the volume of the enclosed surface at the given level.

### 7.3 Rotationally averaged power spectrum i

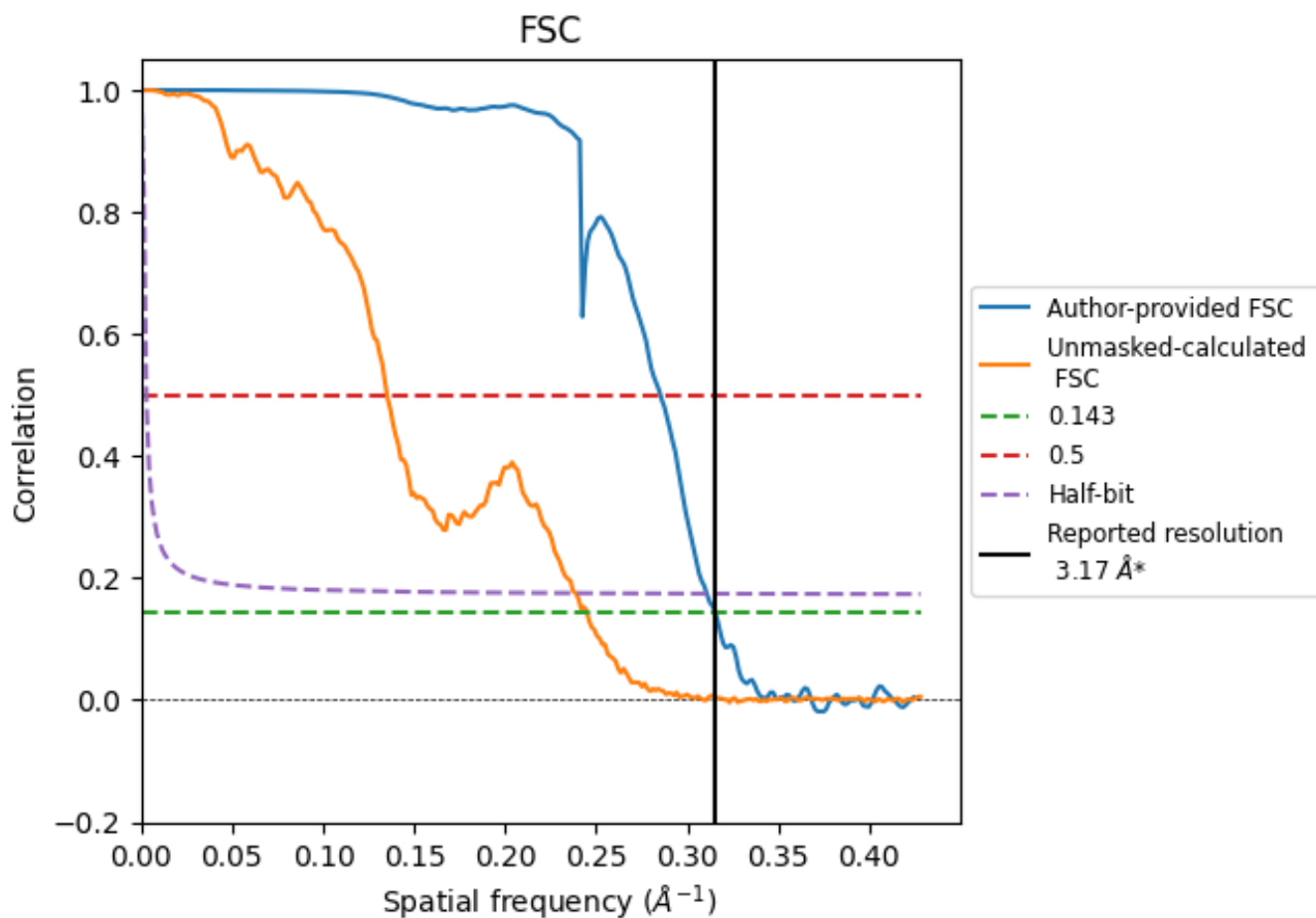


\*Reported resolution corresponds to spatial frequency of  $0.315 \text{ \AA}^{-1}$

## 8 Fourier-Shell correlation [i](#)

Fourier-Shell Correlation (FSC) is the most commonly used method to estimate the resolution of single-particle and subtomogram-averaged maps. The shape of the curve depends on the imposed symmetry, mask and whether or not the two 3D reconstructions used were processed from a common reference. The reported resolution is shown as a black line. A curve is displayed for the half-bit criterion in addition to lines showing the 0.143 gold standard cut-off and 0.5 cut-off.

### 8.1 FSC [i](#)



\*Reported resolution corresponds to spatial frequency of 0.315  $\text{\AA}^{-1}$

## 8.2 Resolution estimates

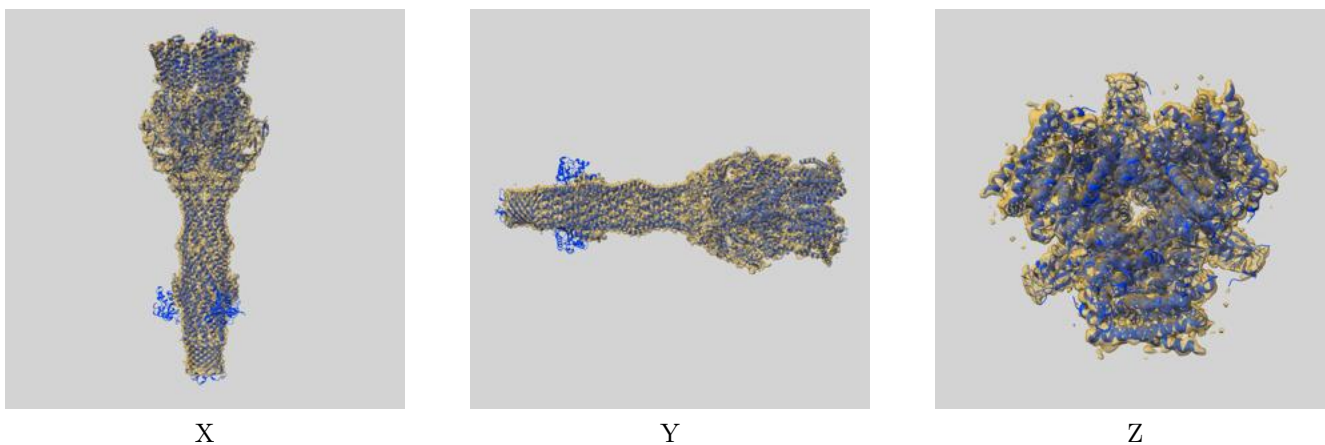
Resolution estimate (Å)	Estimation criterion (FSC cut-off)		
	0.143	0.5	Half-bit
Reported by author	3.17	-	-
Author-provided FSC curve	3.17	3.51	3.22
Unmasked-calculated*	4.08	7.40	4.19

\*Resolution estimate based on FSC curve calculated by comparison of deposited half-maps. The value from deposited half-maps intersecting FSC 0.143 CUT-OFF 4.08 differs from the reported value 3.17 by more than 10 %

## 9 Map-model fit [i](#)

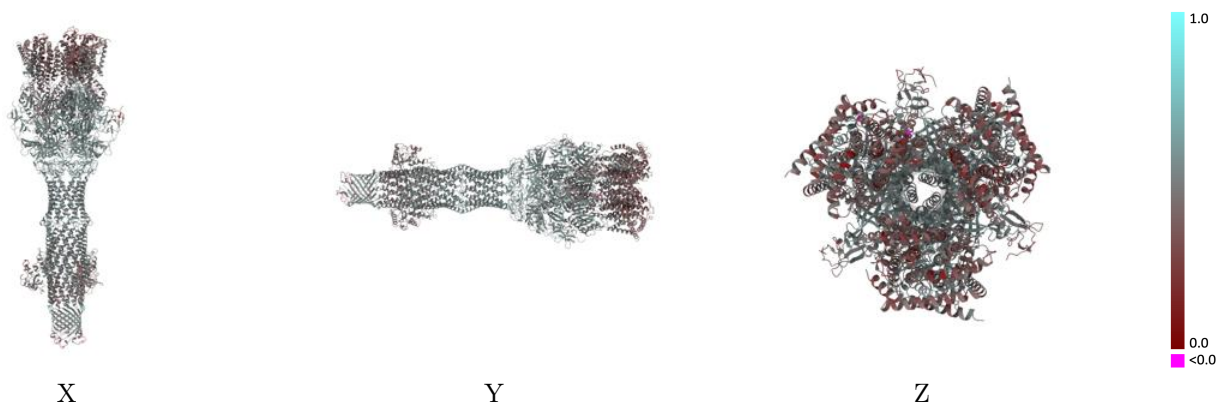
This section contains information regarding the fit between EMDB map EMD-55890 and PDB model 9TG4. Per-residue inclusion information can be found in section 3 on page 8.

### 9.1 Map-model overlay [i](#)



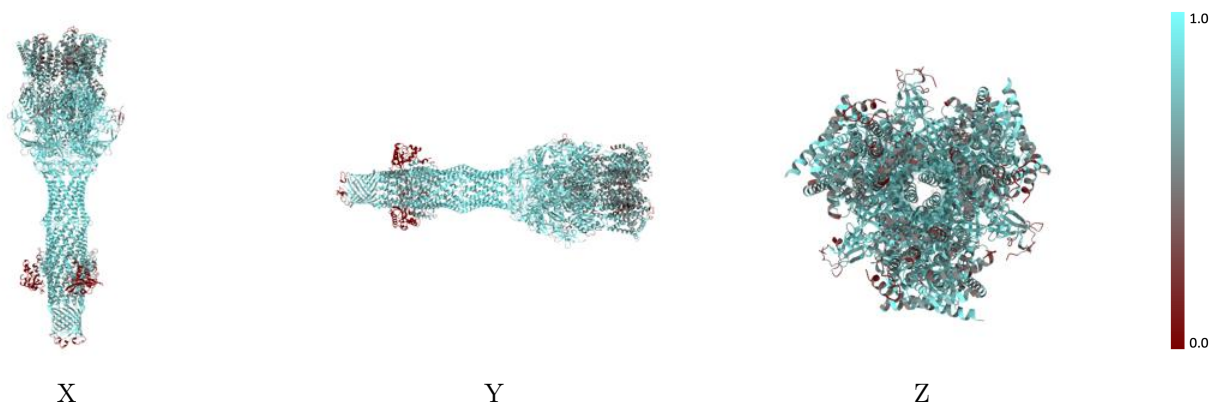
The images above show the 3D surface view of the map at the recommended contour level 0.13 at 50% transparency in yellow overlaid with a ribbon representation of the model coloured in blue. These images allow for the visual assessment of the quality of fit between the atomic model and the map.

## 9.2 Q-score mapped to coordinate model [i](#)



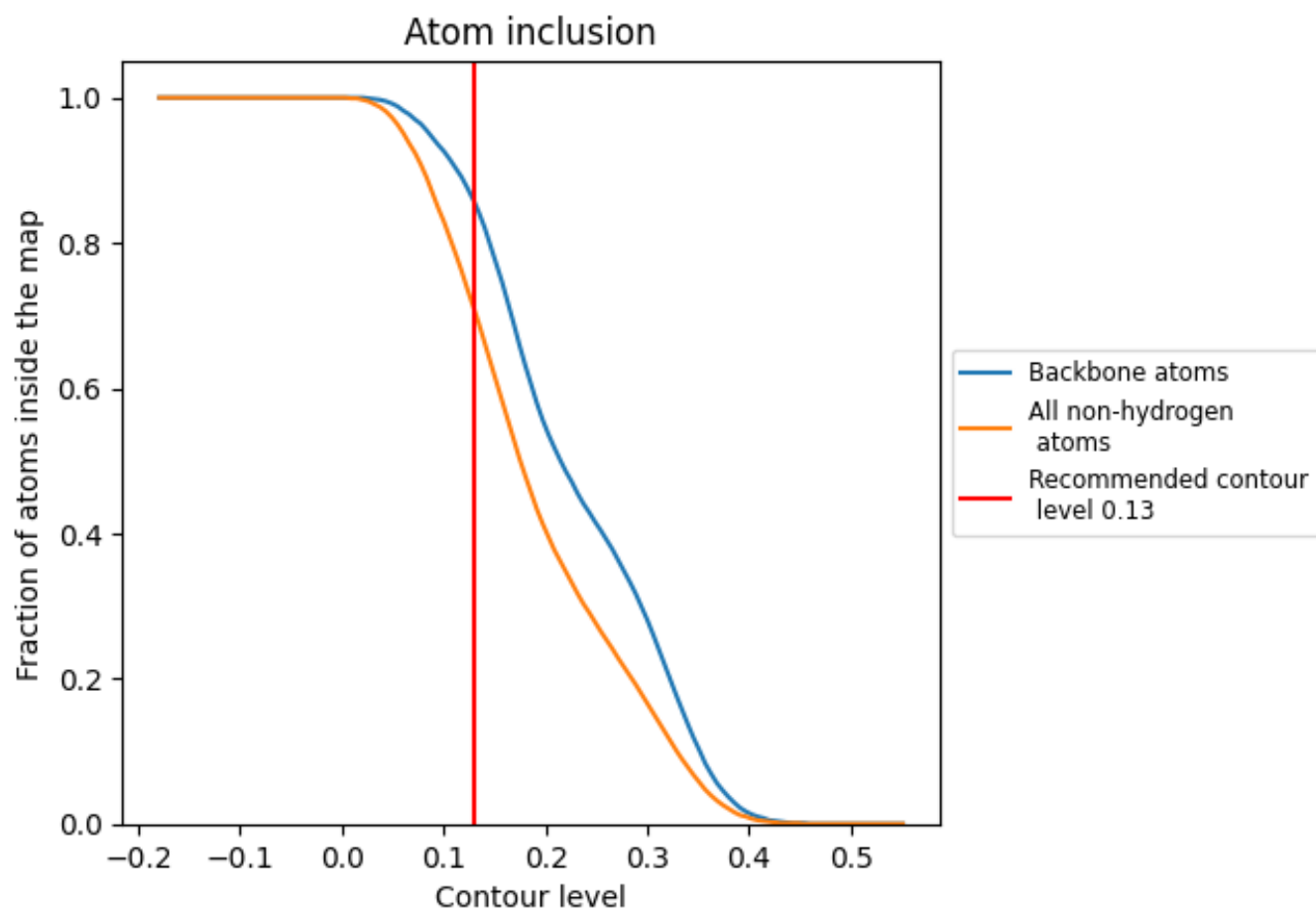
The images above show the model with each residue coloured according to its Q-score. This shows their resolvability in the map with higher Q-score values reflecting better resolvability. Please note: Q-score is calculating the resolvability of atoms, and thus high values are only expected at resolutions at which atoms can be resolved. Low Q-score values may therefore be expected for many entries.

## 9.3 Atom inclusion mapped to coordinate model [i](#)



The images above show the model with each residue coloured according to its atom inclusion. This shows to what extent they are inside the map at the recommended contour level (0.13).







































## 9.4 Atom inclusion [i](#)



At the recommended contour level, 86% of all backbone atoms, 71% of all non-hydrogen atoms, are inside the map.

## 9.5 Map-model fit summary

The table lists the average atom inclusion at the recommended contour level (0.13) and Q-score for the entire model and for each chain.

Chain	Atom inclusion	Q-score
All	 0.7090	 0.4800
A	 0.7570	 0.4860
B	 0.7520	 0.4860
C	 0.7520	 0.4820
D	 0.8120	 0.5160
E	 0.8500	 0.5340
F	 0.8230	 0.5180
G	 0.8550	 0.5330
H	 0.8140	 0.5140
I	 0.8550	 0.5330
J	 0.7150	 0.4610
K	 0.7180	 0.4590
L	 0.7180	 0.4580
M	 0.5360	 0.3940
N	 0.5390	 0.3820
O	 0.5290	 0.3860
P	 0.0300	 0.4240
Q	 0.0310	 0.4330
R	 0.0320	 0.4370

