



# Full wwPDB X-ray Structure Validation Report ⓘ

Feb 11, 2026 – 09:11 am GMT

PDB ID : 9SPC / pdb\_00009spc  
Title : Recombinant human butyrylcholinesterase in complex with ethyl 1-[3-(2-oxo pyrrolidin-1-yl)propyl]-2-phenyl-1H-1,3-benzodiazole-5-carboxylate  
Authors : Brazzolotto, X.; Ha, Z.Y.; Law, C.S.W.; Yeong, K.Y.  
Deposited on : 2025-09-16  
Resolution : 2.66 Å(reported)

This is a Full wwPDB X-ray Structure Validation Report for a publicly released PDB entry.

We welcome your comments at [validation@mail.wwpdb.org](mailto:validation@mail.wwpdb.org)

A user guide is available at

<https://www.wwpdb.org/validation/2017/XrayValidationReportHelp>

with specific help available everywhere you see the ⓘ symbol.

The types of validation reports are described at

<http://www.wwpdb.org/validation/2017/FAQs#types>.

---

The following versions of software and data (see [references ⓘ](#)) were used in the production of this report:

MolProbity : 4-5-2 with Phenix2.0  
Mogul : 1.8.4, CSD as541be (2020)  
Xtriage (Phenix) : 2.0  
EDS : 3.0  
buster-report : 1.1.7 (2018)  
Percentile statistics : 20231227.v01 (using entries in the PDB archive December 27th 2023)  
CCP4 : 9.0.010 (Gargrove)  
Density-Fitness : 1.0.12  
Ideal geometry (proteins) : Engh & Huber (2001)  
Ideal geometry (DNA, RNA) : Parkinson et al. (1996)  
Validation Pipeline (wwPDB-VP) : 2.48

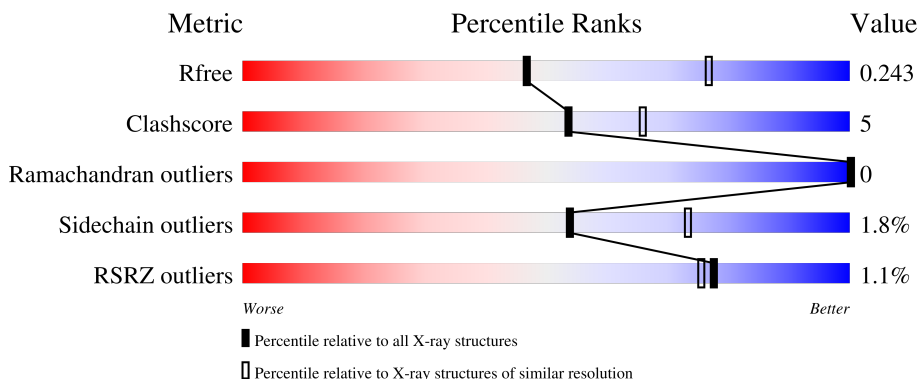
# 1 Overall quality at a glance

The following experimental techniques were used to determine the structure:

*X-RAY DIFFRACTION*

The reported resolution of this entry is 2.66 Å.

Percentile scores (ranging between 0-100) for global validation metrics of the entry are shown in the following graphic. The table shows the number of entries on which the scores are based.




Metric	Whole archive (#Entries)	Similar resolution (#Entries, resolution range(Å))
$R_{free}$	164625	1003 (2.66-2.66)
Clashscore	180529	1063 (2.66-2.66)
Ramachandran outliers	177936	1052 (2.66-2.66)
Sidechain outliers	177891	1052 (2.66-2.66)
RSRZ outliers	164620	1003 (2.66-2.66)

The table below summarises the geometric issues observed across the polymeric chains and their fit to the electron density. The red, orange, yellow and green segments of the lower bar indicate the fraction of residues that contain outliers for  $\geq 3$ , 2, 1 and 0 types of geometric quality criteria respectively. A grey segment represents the fraction of residues that are not modelled. The numeric value for each fraction is indicated below the corresponding segment, with a dot representing fractions  $\leq 5\%$ . The upper red bar (where present) indicates the fraction of residues that have poor fit to the electron density. The numeric value is given above the bar.

Mol	Chain	Length	Quality of chain
1	A	529	 88% 11% ..
2	B	2	 100%
2	E	2	 100%
3	C	3	 33% 67%
3	D	3	 33% 67%

*Continued on next page...*

*Continued from previous page...*

Mol	Chain	Length	Quality of chain
4	F	2	 100%

## 2 Entry composition [i](#)

There are 9 unique types of molecules in this entry. The entry contains 4612 atoms, of which 0 are hydrogens and 0 are deuteriums.

In the tables below, the ZeroOcc column contains the number of atoms modelled with zero occupancy, the AltConf column contains the number of residues with at least one atom in alternate conformation and the Trace column contains the number of residues modelled with at most 2 atoms.

- Molecule 1 is a protein called Cholinesterase.

Mol	Chain	Residues	Atoms					ZeroOcc	AltConf	Trace
			Total	C	N	O	S			
1	A	526	4237	2736	712	773	16	0	6	0

There are 4 discrepancies between the modelled and reference sequences:

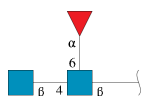
Chain	Residue	Modelled	Actual	Comment	Reference
A	17	GLN	ASN	engineered mutation	UNP P06276
A	455	GLN	ASN	engineered mutation	UNP P06276
A	481	GLN	ASN	engineered mutation	UNP P06276
A	486	GLN	ASN	engineered mutation	UNP P06276

- Molecule 2 is an oligosaccharide called 2-acetamido-2-deoxy-beta-D-glucopyranose-(1-4)-2-acetamido-2-deoxy-beta-D-glucopyranose.



Mol	Chain	Residues	Atoms				ZeroOcc	AltConf	Trace
			Total	C	N	O			
2	B	2	28	16	2	10	0	0	0
2	E	2	28	16	2	10	0	0	0

- Molecule 3 is an oligosaccharide called 2-acetamido-2-deoxy-beta-D-glucopyranose-(1-4)-[alpha-L-fucopyranose-(1-6)]2-acetamido-2-deoxy-beta-D-glucopyranose.



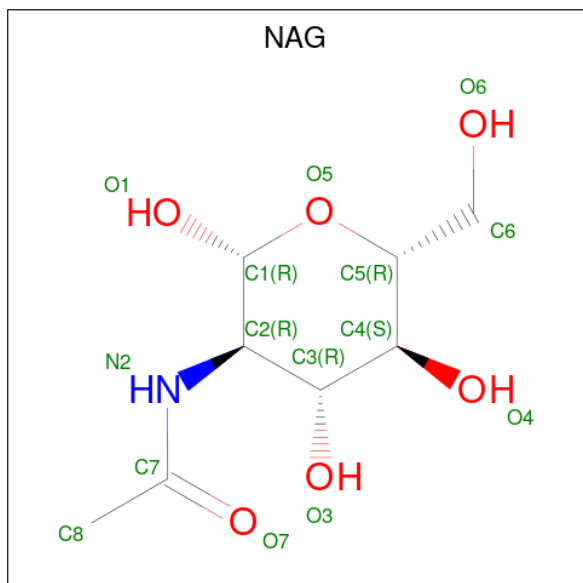
Mol	Chain	Residues	Atoms				ZeroOcc	AltConf	Trace
3	C	3	Total	C	N	O	0	0	0
			38	22	2	14			
3	D	3	Total	C	N	O	0	0	0
			38	22	2	14			

- Molecule 4 is an oligosaccharide called alpha-L-fucopyranose-(1-6)-2-acetamido-2-deoxy-beta-D-glucopyranose.



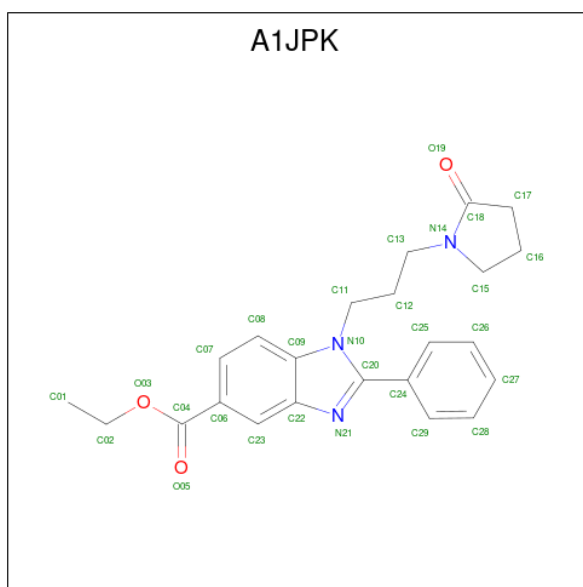
Mol	Chain	Residues	Atoms				ZeroOcc	AltConf	Trace
4	F	2	Total	C	N	O	0	0	0
			24	14	1	9			

- Molecule 5 is 2-acetamido-2-deoxy-beta-D-glucopyranose (CCD ID: NAG) (formula:  $C_8H_{15}NO_6$ ).



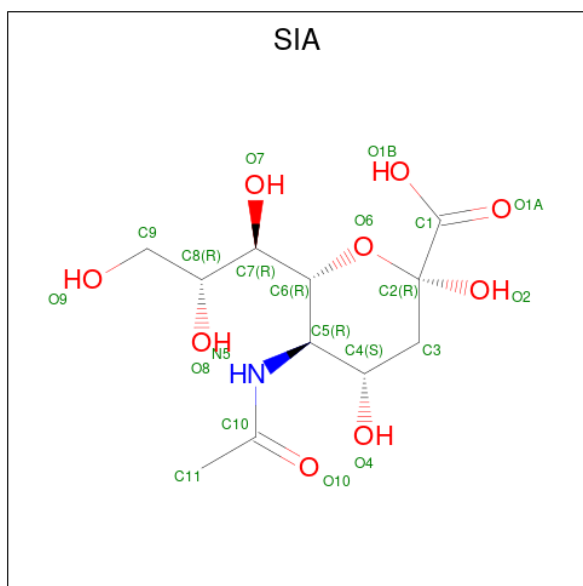
Mol	Chain	Residues	Atoms				ZeroOcc	AltConf
5	A	1	Total	C	N	O	0	0
			14	8	1	5		

- Molecule 6 is ethyl 1-[3-(2-oxidanylidenepyrrolidin-1-yl)propyl]-2-phenyl-benzimidazole-5-carboxylate (CCD ID: A1JPK) (formula:  $C_{23}H_{25}N_3O_3$ ) (labeled as "Ligand of Interest" by depositor).



Mol	Chain	Residues	Atoms				ZeroOcc	AltConf
			Total	C	N	O		
6	A	1	29	23	3	3	0	0

- Molecule 7 is N-acetyl-alpha-neuraminic acid (CCD ID: SIA) (formula:  $C_{11}H_{19}NO_9$ ).



Mol	Chain	Residues	Atoms				ZeroOcc	AltConf
			Total	C	N	O		
7	A	1	21	11	1	9	0	0

- Molecule 8 is SULFATE ION (CCD ID: SO4) (formula:  $O_4S$ ).



Mol	Chain	Residues	Atoms			ZeroOcc	AltConf
8	A	1	Total	O	S	0	0
			5	4	1		
8	A	1	Total	O	S	0	0
			5	4	1		
8	A	1	Total	O	S	0	0
			5	4	1		
8	A	1	Total	O	S	0	0
			5	4	1		

- Molecule 9 is water.

Mol	Chain	Residues	Atoms		ZeroOcc	AltConf
9	A	130	Total	O	0	0
			130	130		



- Molecule 3: 2-acetamido-2-deoxy-beta-D-glucopyranose-(1-4)-[alpha-L-fucopyranose-(1-6)]2-acetamido-2-deoxy-beta-D-glucopyranose

Chain D:  33% 67%

MAG1  
MAG2  
FUC3

- Molecule 4: alpha-L-fucopyranose-(1-6)-2-acetamido-2-deoxy-beta-D-glucopyranose

Chain F:  100%

MAG1  
FUC2

## 4 Data and refinement statistics

Property	Value	Source
Space group	I 4 2 2	Depositor
Cell constants a, b, c, $\alpha$ , $\beta$ , $\gamma$	154.13Å 154.13Å 128.39Å 90.00° 90.00° 90.00°	Depositor
Resolution (Å)	48.74 – 2.66 48.74 – 2.66	Depositor EDS
% Data completeness (in resolution range)	99.7 (48.74-2.66) 99.6 (48.74-2.66)	Depositor EDS
$R_{merge}$	0.17	Depositor
$R_{sym}$	(Not available)	Depositor
$\langle I/\sigma(I) \rangle$ <sup>1</sup>	1.32 (at 2.65Å)	Xtrriage
Refinement program	PHENIX 1.21.2_5419	Depositor
R, $R_{free}$	0.180 , 0.240 0.185 , 0.243	Depositor DCC
$R_{free}$ test set	1140 reflections (5.06%)	wwPDB-VP
Wilson B-factor (Å <sup>2</sup> )	51.9	Xtrriage
Anisotropy	0.340	Xtrriage
Bulk solvent $k_{sol}$ (e/Å <sup>3</sup> ), $B_{sol}$ (Å <sup>2</sup> )	0.33 , 53.6	EDS
L-test for twinning <sup>2</sup>	$\langle  L  \rangle = 0.50$ , $\langle L^2 \rangle = 0.33$	Xtrriage
Estimated twinning fraction	No twinning to report.	Xtrriage
$F_o, F_c$ correlation	0.95	EDS
Total number of atoms	4612	wwPDB-VP
Average B, all atoms (Å <sup>2</sup> )	57.0	wwPDB-VP

Xtrriage's analysis on translational NCS is as follows: *The largest off-origin peak in the Patterson function is 3.54% of the height of the origin peak. No significant pseudotranslation is detected.*

<sup>1</sup>Intensities estimated from amplitudes.

<sup>2</sup>Theoretical values of  $\langle |L| \rangle$ ,  $\langle L^2 \rangle$  for acentric reflections are 0.5, 0.333 respectively for untwinned datasets, and 0.375, 0.2 for perfectly twinned datasets.

## 5 Model quality [i](#)

### 5.1 Standard geometry [i](#)

Bond lengths and bond angles in the following residue types are not validated in this section: A1JPK, NAG, SIA, FUC, SO4

The Z score for a bond length (or angle) is the number of standard deviations the observed value is removed from the expected value. A bond length (or angle) with  $|Z| > 5$  is considered an outlier worth inspection. RMSZ is the root-mean-square of all Z scores of the bond lengths (or angles).

Mol	Chain	Bond lengths		Bond angles	
		RMSZ	# Z  >5	RMSZ	# Z  >5
1	A	0.33	0/4367	0.52	0/5927

There are no bond length outliers.

There are no bond angle outliers.

There are no chirality outliers.

There are no planarity outliers.

### 5.2 Too-close contacts [i](#)

In the following table, the Non-H and H(model) columns list the number of non-hydrogen atoms and hydrogen atoms in the chain respectively. The H(added) column lists the number of hydrogen atoms added and optimized by MolProbity. The Clashes column lists the number of clashes within the asymmetric unit, whereas Symm-Clashes lists symmetry-related clashes.

Mol	Chain	Non-H	H(model)	H(added)	Clashes	Symm-Clashes
1	A	4237	0	4139	42	0
2	B	28	0	25	0	0
2	E	28	0	25	0	0
3	C	38	0	34	0	0
3	D	38	0	34	0	0
4	F	24	0	22	3	0
5	A	14	0	13	0	0
6	A	29	0	0	0	0
7	A	21	0	18	0	0
8	A	25	0	0	0	0
9	A	130	0	0	1	0
All	All	4612	0	4310	42	0

The all-atom clashscore is defined as the number of clashes found per 1000 atoms (including

hydrogen atoms). The all-atom clashscore for this structure is 5.

All (42) close contacts within the same asymmetric unit are listed below, sorted by their clash magnitude.

Atom-1	Atom-2	Interatomic distance (Å)	Clash overlap (Å)
1:A:430:TRP:HB3	1:A:434:MET:HE2	1.72	0.72
1:A:227:PHE:HZ	1:A:307:LEU:HB2	1.62	0.63
1:A:501:LEU:HD11	1:A:508:THR:HG23	1.81	0.61
1:A:161:GLU:HG3	1:A:258:THR:HG23	1.84	0.60
1:A:69:ILE:HD13	1:A:84:PRO:HD2	1.85	0.58
1:A:378:ASP:HB3	1:A:381:ARG:HG3	1.88	0.56
1:A:209:LEU:HD12	1:A:312:PHE:HB3	1.88	0.55
1:A:319:VAL:O	1:A:418:PHE:HA	2.07	0.54
1:A:522:TRP:O	1:A:527:PRO:HD3	2.07	0.54
1:A:500:TYR:CZ	1:A:511[B]:MET:HB2	2.43	0.53
1:A:459:ALA:HB1	1:A:505:THR:HB	1.91	0.52
1:A:506:GLU:HG3	1:A:507:SER:H	1.77	0.50
1:A:431:PRO:HG2	1:A:434:MET:HG3	1.93	0.50
1:A:245:ASN:ND2	4:F:2:FUC:H5	2.26	0.49
1:A:233:VAL:HG21	1:A:303:PRO:HG3	1.95	0.49
1:A:347:ARG:NH2	1:A:370:LEU:HD21	2.28	0.49
1:A:227:PHE:CD1	1:A:303:PRO:HB2	2.48	0.48
1:A:276:GLU:O	1:A:279:VAL:HG22	2.14	0.48
1:A:237:TYR:HE1	4:F:1:NAG:H82	1.78	0.48
1:A:500:TYR:CZ	1:A:511[A]:MET:HB2	2.49	0.47
1:A:347:ARG:HB2	1:A:385:TYR:CZ	2.51	0.46
1:A:18:LEU:O	1:A:24:THR:HA	2.15	0.45
1:A:383:GLU:CD	1:A:383:GLU:H	2.23	0.45
1:A:270:GLN:OE1	1:A:274:LEU:HD23	2.17	0.45
1:A:237:TYR:CE1	4:F:1:NAG:H82	2.52	0.44
1:A:508:THR:O	1:A:509:ARG:HD2	2.18	0.44
1:A:195:PHE:HB3	1:A:221:ILE:HB	2.00	0.43
1:A:34:ALA:C	1:A:49:LEU:HD13	2.44	0.43
1:A:99:ILE:HG21	1:A:185:PHE:HB3	2.01	0.43
1:A:506:GLU:CG	1:A:507:SER:H	2.32	0.43
1:A:197:GLU:HA	1:A:223:GLN:O	2.18	0.43
1:A:227:PHE:CE1	1:A:303:PRO:HB2	2.54	0.43
1:A:34:ALA:HB2	1:A:173:LEU:HD23	2.00	0.42
1:A:227:PHE:CD1	1:A:227:PHE:C	2.96	0.42
1:A:299:LEU:HA	1:A:299:LEU:HD12	1.76	0.42
1:A:303:PRO:HD2	9:A:737:HOH:O	2.20	0.41
1:A:42:ARG:HG2	1:A:43:PHE:CD2	2.56	0.41
1:A:182:ILE:HD12	1:A:182:ILE:HA	1.78	0.41

*Continued on next page...*

*Continued from previous page...*

Atom-1	Atom-2	Interatomic distance (Å)	Clash overlap (Å)
1:A:322:ASN:O	1:A:325:GLU:HG2	2.21	0.41
1:A:370:LEU:HD12	1:A:374:THR:HG21	2.02	0.41
1:A:504:ASN:OD1	1:A:506:GLU:HG3	2.21	0.41
1:A:273:LEU:HA	1:A:273:LEU:HD23	1.84	0.40

There are no symmetry-related clashes.

## 5.3 Torsion angles [i](#)

### 5.3.1 Protein backbone [i](#)

In the following table, the Percentiles column shows the percent Ramachandran outliers of the chain as a percentile score with respect to all X-ray entries followed by that with respect to entries of similar resolution.

The Analysed column shows the number of residues for which the backbone conformation was analysed, and the total number of residues.

Mol	Chain	Analysed	Favoured	Allowed	Outliers	Percentiles
1	A	530/529 (100%)	504 (95%)	26 (5%)	0	100 100

There are no Ramachandran outliers to report.

### 5.3.2 Protein sidechains [i](#)

In the following table, the Percentiles column shows the percent sidechain outliers of the chain as a percentile score with respect to all X-ray entries followed by that with respect to entries of similar resolution.

The Analysed column shows the number of residues for which the sidechain conformation was analysed, and the total number of residues.

Mol	Chain	Analysed	Rotameric	Outliers	Percentiles
1	A	457/454 (101%)	449 (98%)	8 (2%)	54 73

All (8) residues with a non-rotameric sidechain are listed below:

Mol	Chain	Res	Type
1	A	8	THR
1	A	69	ILE

*Continued on next page...*

*Continued from previous page...*

Mol	Chain	Res	Type
1	A	182	ILE
1	A	195	PHE
1	A	280	VAL
1	A	287	SER
1	A	428	LEU
1	A	508	THR

Sometimes sidechains can be flipped to improve hydrogen bonding and reduce clashes. There are no such sidechains identified.

### 5.3.3 RNA [i](#)

There are no RNA molecules in this entry.

## 5.4 Non-standard residues in protein, DNA, RNA chains [i](#)

There are no non-standard protein/DNA/RNA residues in this entry.

## 5.5 Carbohydrates [i](#)

12 monosaccharides are modelled in this entry.

In the following table, the Counts columns list the number of bonds (or angles) for which Mogul statistics could be retrieved, the number of bonds (or angles) that are observed in the model and the number of bonds (or angles) that are defined in the Chemical Component Dictionary. The Link column lists molecule types, if any, to which the group is linked. The Z score for a bond length (or angle) is the number of standard deviations the observed value is removed from the expected value. A bond length (or angle) with  $|Z| > 2$  is considered an outlier worth inspection. RMSZ is the root-mean-square of all Z scores of the bond lengths (or angles).

Mol	Type	Chain	Res	Link	Bond lengths			Bond angles		
					Counts	RMSZ	# Z  > 2	Counts	RMSZ	# Z  > 2
2	NAG	B	1	1,2	14,14,15	0.62	0	17,19,21	1.58	3 (17%)
2	NAG	B	2	2	14,14,15	0.75	0	17,19,21	1.61	4 (23%)
3	NAG	C	1	1,3	14,14,15	0.78	0	17,19,21	0.92	0
3	NAG	C	2	3	14,14,15	0.73	1 (7%)	17,19,21	1.42	4 (23%)
3	FUC	C	3	3	10,10,11	0.95	0	14,14,16	2.02	5 (35%)
3	NAG	D	1	1,3	14,14,15	0.89	1 (7%)	17,19,21	1.51	3 (17%)
3	NAG	D	2	3	14,14,15	0.79	0	17,19,21	2.27	3 (17%)
3	FUC	D	3	3	10,10,11	0.81	0	14,14,16	1.24	0

Mol	Type	Chain	Res	Link	Bond lengths			Bond angles		
					Counts	RMSZ	# Z  > 2	Counts	RMSZ	# Z  > 2
2	NAG	E	1	1,2	14,14,15	0.73	0	17,19,21	1.55	2 (11%)
2	NAG	E	2	2	14,14,15	0.72	0	17,19,21	1.05	1 (5%)
4	NAG	F	1	4,1	14,14,15	0.75	0	17,19,21	2.54	5 (29%)
4	FUC	F	2	4	10,10,11	0.80	0	14,14,16	1.26	2 (14%)

In the following table, the Chirals column lists the number of chiral outliers, the number of chiral centers analysed, the number of these observed in the model and the number defined in the Chemical Component Dictionary. Similar counts are reported in the Torsion and Rings columns. '-' means no outliers of that kind were identified.

Mol	Type	Chain	Res	Link	Chirals	Torsions	Rings
2	NAG	B	1	1,2	-	2/6/23/26	0/1/1/1
2	NAG	B	2	2	-	1/6/23/26	0/1/1/1
3	NAG	C	1	1,3	-	0/6/23/26	0/1/1/1
3	NAG	C	2	3	-	1/6/23/26	0/1/1/1
3	FUC	C	3	3	-	-	0/1/1/1
3	NAG	D	1	1,3	-	2/6/23/26	0/1/1/1
3	NAG	D	2	3	-	3/6/23/26	0/1/1/1
3	FUC	D	3	3	-	-	0/1/1/1
2	NAG	E	1	1,2	-	0/6/23/26	0/1/1/1
2	NAG	E	2	2	-	3/6/23/26	0/1/1/1
4	NAG	F	1	4,1	-	2/6/23/26	0/1/1/1
4	FUC	F	2	4	-	-	0/1/1/1

All (2) bond length outliers are listed below:

Mol	Chain	Res	Type	Atoms	Z	Observed(Å)	Ideal(Å)
3	C	2	NAG	C1-C2	2.02	1.55	1.52
3	D	1	NAG	O5-C1	-2.01	1.40	1.43

All (32) bond angle outliers are listed below:

Mol	Chain	Res	Type	Atoms	Z	Observed(°)	Ideal(°)
3	D	2	NAG	C2-N2-C7	7.77	133.97	122.90
4	F	1	NAG	C2-N2-C7	7.59	133.70	122.90
3	C	3	FUC	C1-C2-C3	4.63	115.36	109.67
2	B	1	NAG	C1-O5-C5	4.22	117.91	112.19
4	F	1	NAG	C1-C2-N2	-4.20	103.32	110.49
2	B	2	NAG	C2-N2-C7	3.89	128.44	122.90
2	E	1	NAG	C1-O5-C5	3.54	116.99	112.19

*Continued on next page...*

*Continued from previous page...*

Mol	Chain	Res	Type	Atoms	Z	Observed(°)	Ideal(°)
2	B	2	NAG	O5-C1-C2	-3.38	105.95	111.29
3	D	1	NAG	C1-C2-N2	-3.36	104.75	110.49
3	D	2	NAG	C8-C7-N2	3.31	121.71	116.10
3	C	2	NAG	C1-O5-C5	3.02	116.28	112.19
3	C	3	FUC	C2-C3-C4	2.91	115.93	110.89
2	E	1	NAG	C2-N2-C7	2.80	126.89	122.90
4	F	1	NAG	C3-C4-C5	-2.79	105.25	110.24
4	F	2	FUC	O4-C4-C5	2.78	115.83	109.67
3	D	1	NAG	O4-C4-C5	2.59	115.73	109.30
3	C	3	FUC	O3-C3-C2	-2.47	105.27	109.99
2	B	1	NAG	C2-N2-C7	2.45	126.39	122.90
3	C	3	FUC	O4-C4-C5	2.42	115.04	109.67
2	B	1	NAG	O3-C3-C2	-2.39	104.52	109.47
2	E	2	NAG	C2-N2-C7	2.38	126.29	122.90
3	C	2	NAG	C2-N2-C7	2.38	126.29	122.90
4	F	1	NAG	O5-C5-C6	2.32	110.84	107.20
3	C	3	FUC	O3-C3-C4	2.14	115.30	110.35
3	C	2	NAG	O5-C5-C6	2.07	110.45	107.20
4	F	1	NAG	O4-C4-C5	2.06	114.40	109.30
2	B	2	NAG	C1-O5-C5	2.05	114.97	112.19
2	B	2	NAG	O4-C4-C5	2.03	114.35	109.30
3	D	1	NAG	O4-C4-C3	-2.03	105.66	110.35
4	F	2	FUC	O2-C2-C3	2.01	114.17	110.14
3	C	2	NAG	C3-C4-C5	-2.01	106.65	110.24
3	D	2	NAG	O7-C7-N2	-2.00	118.27	121.95

There are no chirality outliers.

All (14) torsion outliers are listed below:

Mol	Chain	Res	Type	Atoms
4	F	1	NAG	C3-C2-N2-C7
2	B	1	NAG	O5-C5-C6-O6
2	B	1	NAG	C4-C5-C6-O6
2	E	2	NAG	C8-C7-N2-C2
2	E	2	NAG	O7-C7-N2-C2
3	D	1	NAG	C8-C7-N2-C2
3	D	1	NAG	O7-C7-N2-C2
3	D	2	NAG	C8-C7-N2-C2
3	D	2	NAG	O7-C7-N2-C2
3	C	2	NAG	O5-C5-C6-O6
2	E	2	NAG	O5-C5-C6-O6
4	F	1	NAG	C1-C2-N2-C7

*Continued on next page...*

Continued from previous page...

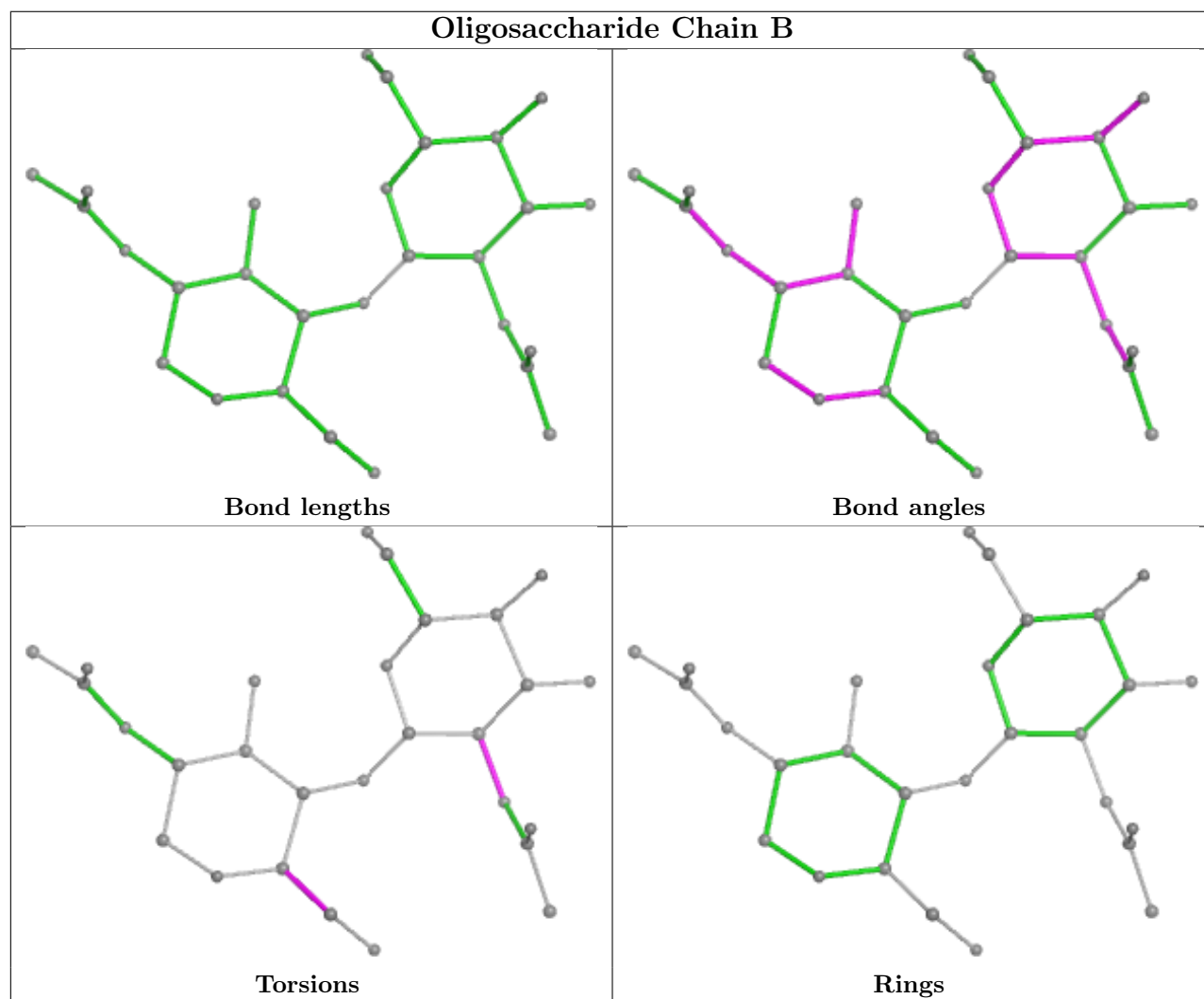
Mol	Chain	Res	Type	Atoms
2	B	2	NAG	C3-C2-N2-C7
3	D	2	NAG	C3-C2-N2-C7

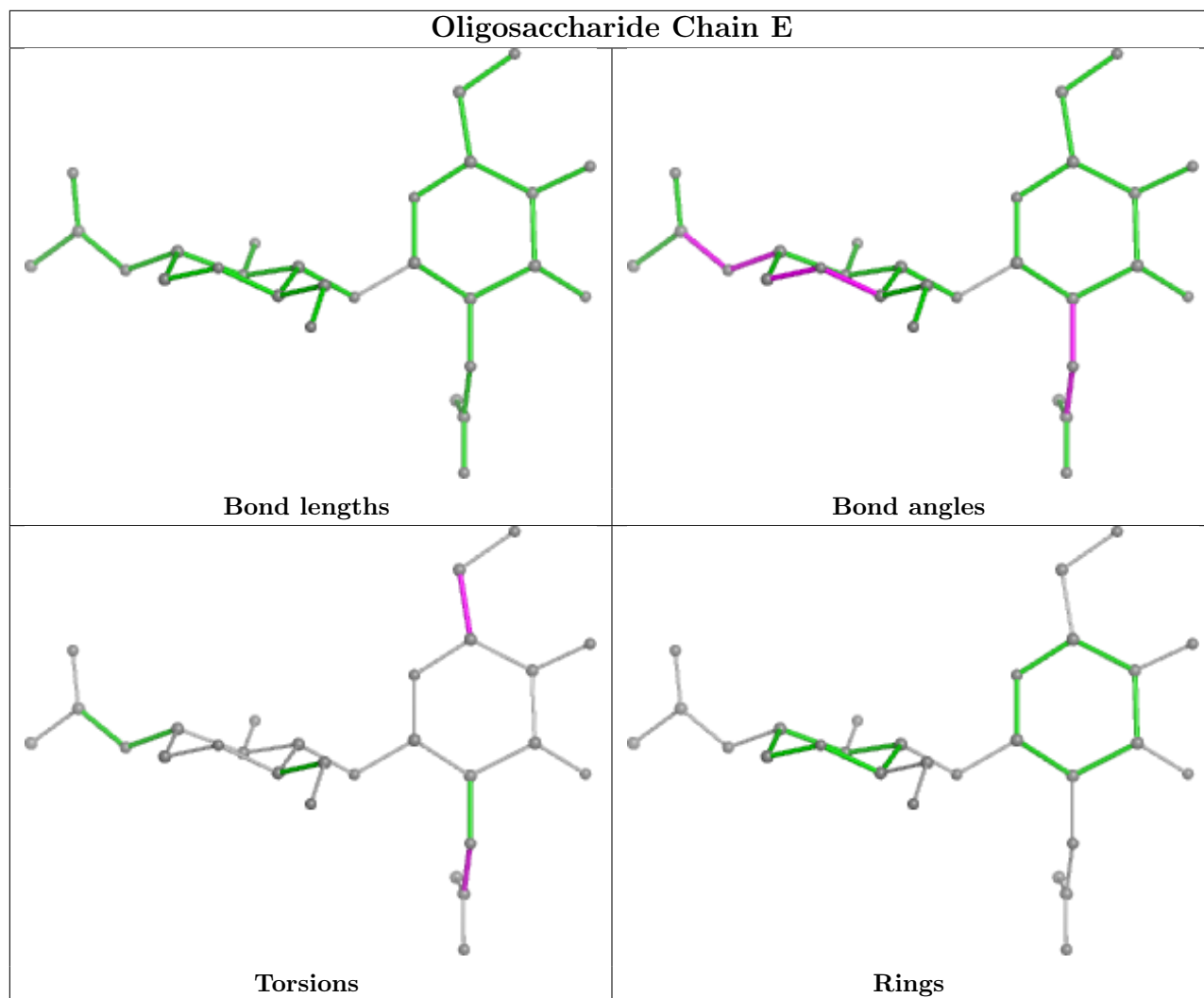
There are no ring outliers.

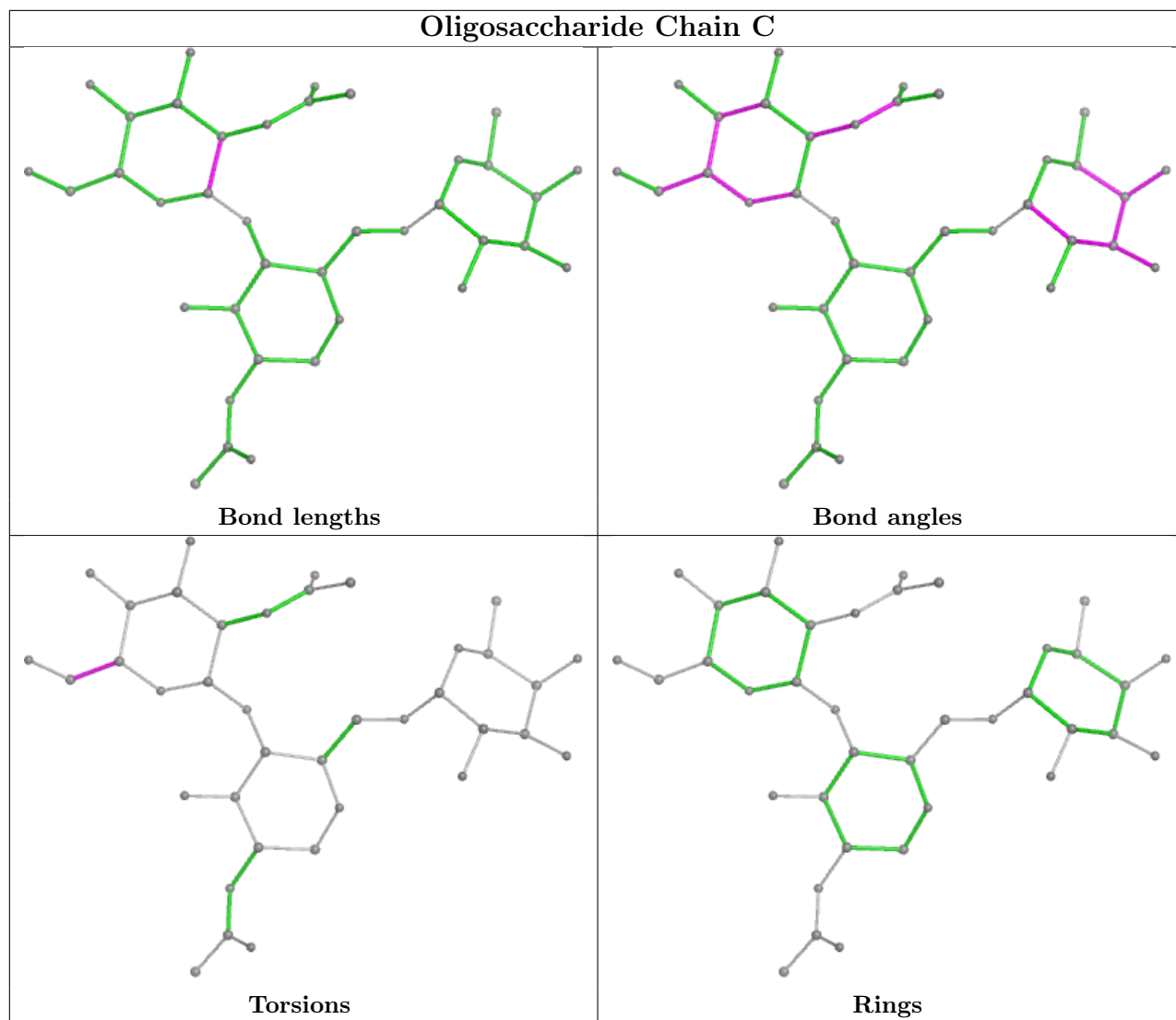
2 monomers are involved in 3 short contacts:

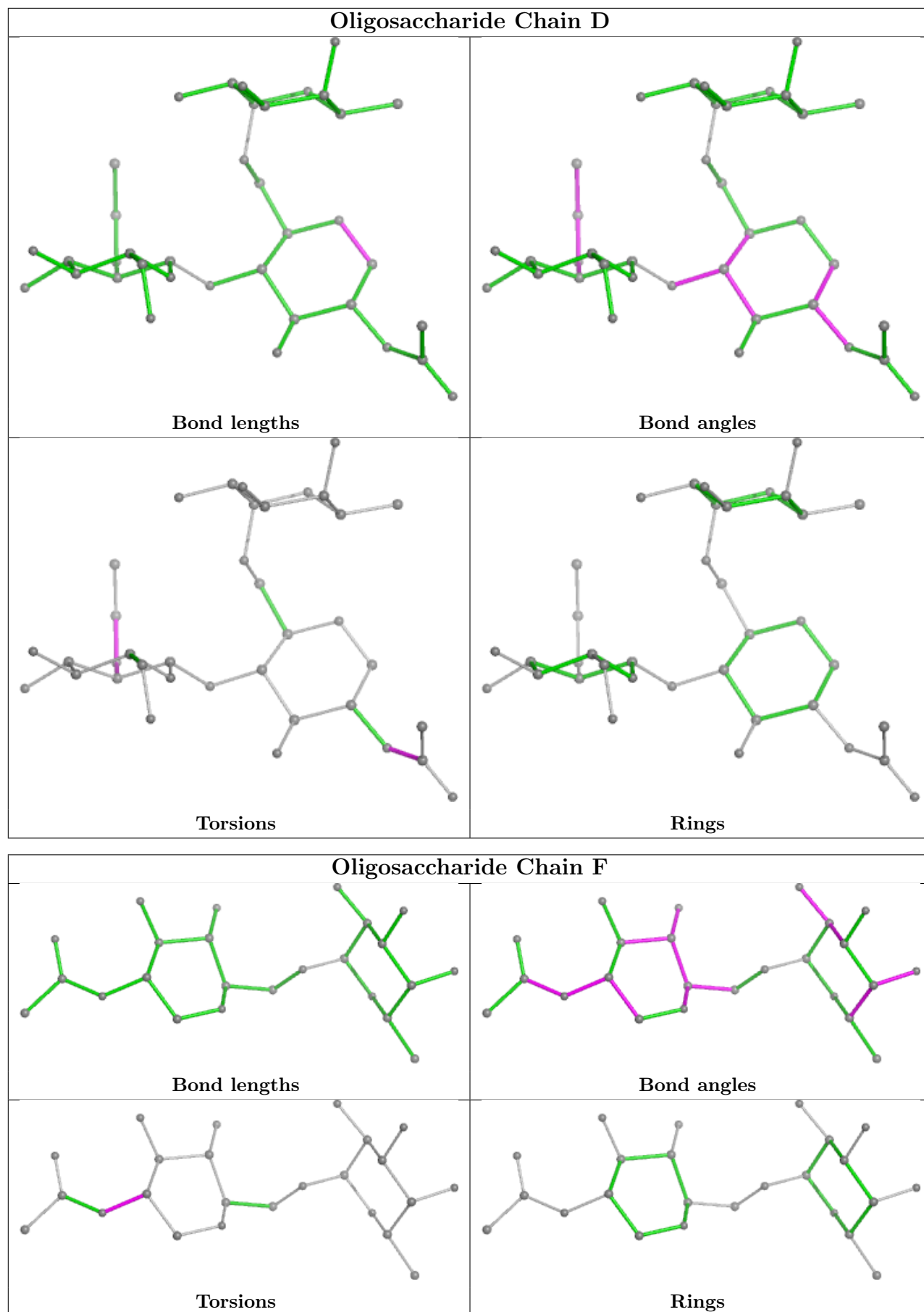
Mol	Chain	Res	Type	Clashes	Symm-Clashes
4	F	1	NAG	2	0
4	F	2	FUC	1	0

The following is a two-dimensional graphical depiction of Mogul quality analysis of bond lengths, bond angles, torsion angles, and ring geometry for oligosaccharide.









## 5.6 Ligand geometry

8 ligands are modelled in this entry.

In the following table, the Counts columns list the number of bonds (or angles) for which Mogul statistics could be retrieved, the number of bonds (or angles) that are observed in the model and the number of bonds (or angles) that are defined in the Chemical Component Dictionary. The Link column lists molecule types, if any, to which the group is linked. The Z score for a bond length (or angle) is the number of standard deviations the observed value is removed from the expected value. A bond length (or angle) with  $|Z| > 2$  is considered an outlier worth inspection. RMSZ is the root-mean-square of all Z scores of the bond lengths (or angles).

Mol	Type	Chain	Res	Link	Bond lengths			Bond angles		
					Counts	RMSZ	# Z  > 2	Counts	RMSZ	# Z  > 2
8	SO4	A	608	-	4,4,4	0.59	0	6,6,6	0.21	0
8	SO4	A	605	-	4,4,4	0.67	0	6,6,6	0.22	0
8	SO4	A	607	-	4,4,4	0.69	0	6,6,6	0.16	0
6	A1JPK	A	602	-	29,32,32	2.85	16 (55%)	36,44,44	2.51	7 (19%)
5	NAG	A	601	1	14,14,15	0.65	0	17,19,21	1.22	2 (11%)
8	SO4	A	604	-	4,4,4	0.65	0	6,6,6	0.15	0
7	SIA	A	603	-	21,21,21	1.75	4 (19%)	25,31,31	1.62	5 (20%)
8	SO4	A	606	-	4,4,4	0.65	0	6,6,6	0.25	0

In the following table, the Chirals column lists the number of chiral outliers, the number of chiral centers analysed, the number of these observed in the model and the number defined in the Chemical Component Dictionary. Similar counts are reported in the Torsion and Rings columns. '-' means no outliers of that kind were identified.

Mol	Type	Chain	Res	Link	Chirals	Torsions	Rings
5	NAG	A	601	1	-	2/6/23/26	0/1/1/1
7	SIA	A	603	-	-	6/20/38/38	0/1/1/1
6	A1JPK	A	602	-	-	6/17/27/27	0/4/4/4

All (20) bond length outliers are listed below:

Mol	Chain	Res	Type	Atoms	Z	Observed(Å)	Ideal(Å)
6	A	602	A1JPK	C24-C20	6.54	1.63	1.47
6	A	602	A1JPK	C18-N14	5.11	1.47	1.34
6	A	602	A1JPK	C07-C06	4.24	1.46	1.39
6	A	602	A1JPK	C23-C22	4.22	1.48	1.41
7	A	603	SIA	O6-C2	4.21	1.47	1.43
6	A	602	A1JPK	C06-C04	3.94	1.59	1.50
6	A	602	A1JPK	C08-C07	3.77	1.44	1.36
7	A	603	SIA	C2-C1	3.47	1.59	1.53

*Continued on next page...*

Continued from previous page...

Mol	Chain	Res	Type	Atoms	Z	Observed(Å)	Ideal(Å)
6	A	602	A1JPK	C15-N14	3.41	1.54	1.47
6	A	602	A1JPK	C29-C24	3.37	1.46	1.39
6	A	602	A1JPK	C26-C25	3.02	1.45	1.38
6	A	602	A1JPK	C28-C29	2.95	1.45	1.38
7	A	603	SIA	C3-C2	2.88	1.55	1.51
6	A	602	A1JPK	C08-C09	2.73	1.46	1.41
6	A	602	A1JPK	O05-C04	2.69	1.30	1.22
6	A	602	A1JPK	C22-N21	2.53	1.47	1.38
7	A	603	SIA	C7-C6	2.46	1.56	1.53
6	A	602	A1JPK	C23-C06	2.41	1.41	1.37
6	A	602	A1JPK	C27-C26	2.30	1.44	1.38
6	A	602	A1JPK	C25-C24	2.22	1.44	1.39

All (14) bond angle outliers are listed below:

Mol	Chain	Res	Type	Atoms	Z	Observed(°)	Ideal(°)
6	A	602	A1JPK	O03-C04-C06	10.79	130.93	112.14
6	A	602	A1JPK	O03-C04-O05	-5.36	112.80	123.67
7	A	603	SIA	O1A-C1-C2	-4.55	116.70	123.59
6	A	602	A1JPK	C15-N14-C18	-4.27	108.14	113.76
6	A	602	A1JPK	C02-O03-C04	4.04	125.86	116.46
6	A	602	A1JPK	N21-C20-N10	-3.24	106.99	115.11
7	A	603	SIA	C3-C4-C5	3.11	114.75	109.98
6	A	602	A1JPK	C20-N21-C22	2.81	109.35	103.78
7	A	603	SIA	O6-C6-C7	-2.54	103.37	107.29
6	A	602	A1JPK	C13-N14-C15	2.53	126.60	121.80
5	A	601	NAG	C1-O5-C5	2.25	115.23	112.19
7	A	603	SIA	O6-C6-C5	-2.16	107.67	109.78
5	A	601	NAG	O5-C5-C6	2.13	110.54	107.20
7	A	603	SIA	O1B-C1-O1A	2.08	130.44	123.82

There are no chirality outliers.

All (14) torsion outliers are listed below:

Mol	Chain	Res	Type	Atoms
7	A	603	SIA	O1A-C1-C2-C3
7	A	603	SIA	O1A-C1-C2-O2
7	A	603	SIA	O1B-C1-C2-O2
5	A	601	NAG	C8-C7-N2-C2
5	A	601	NAG	O7-C7-N2-C2
6	A	602	A1JPK	C11-C12-C13-N14
6	A	602	A1JPK	O03-C04-C06-C23

Continued on next page...

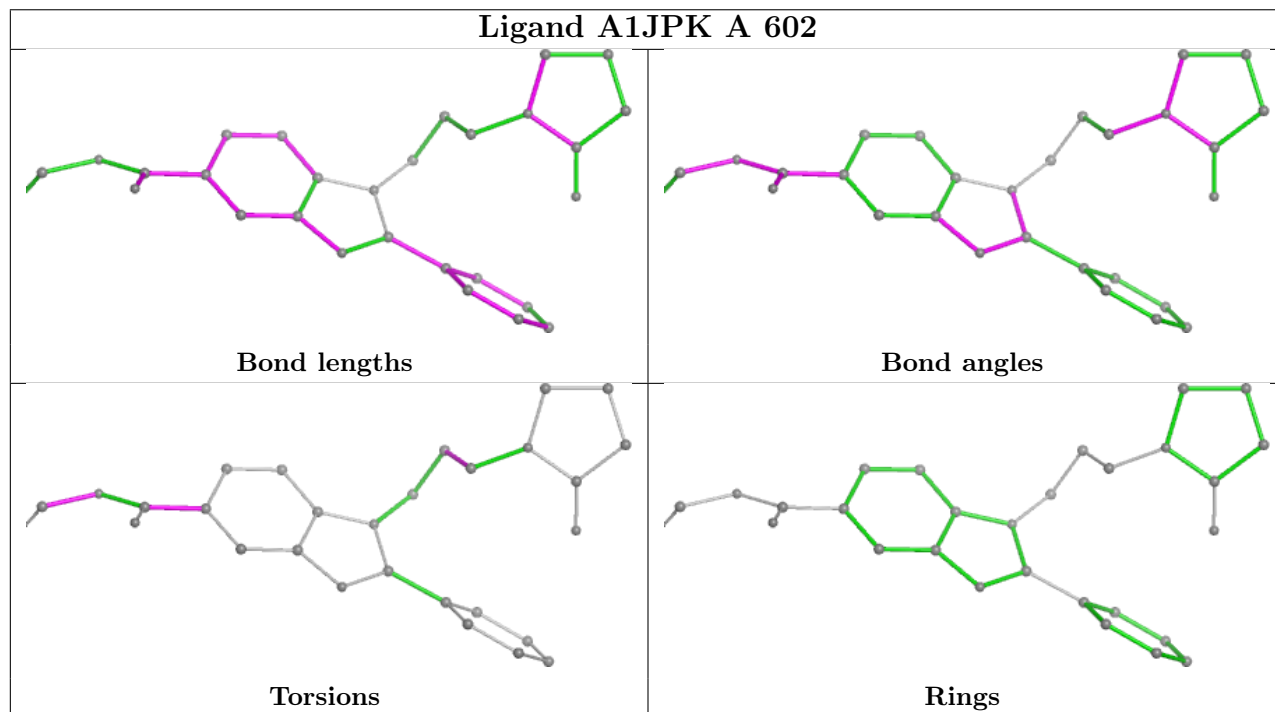
*Continued from previous page...*

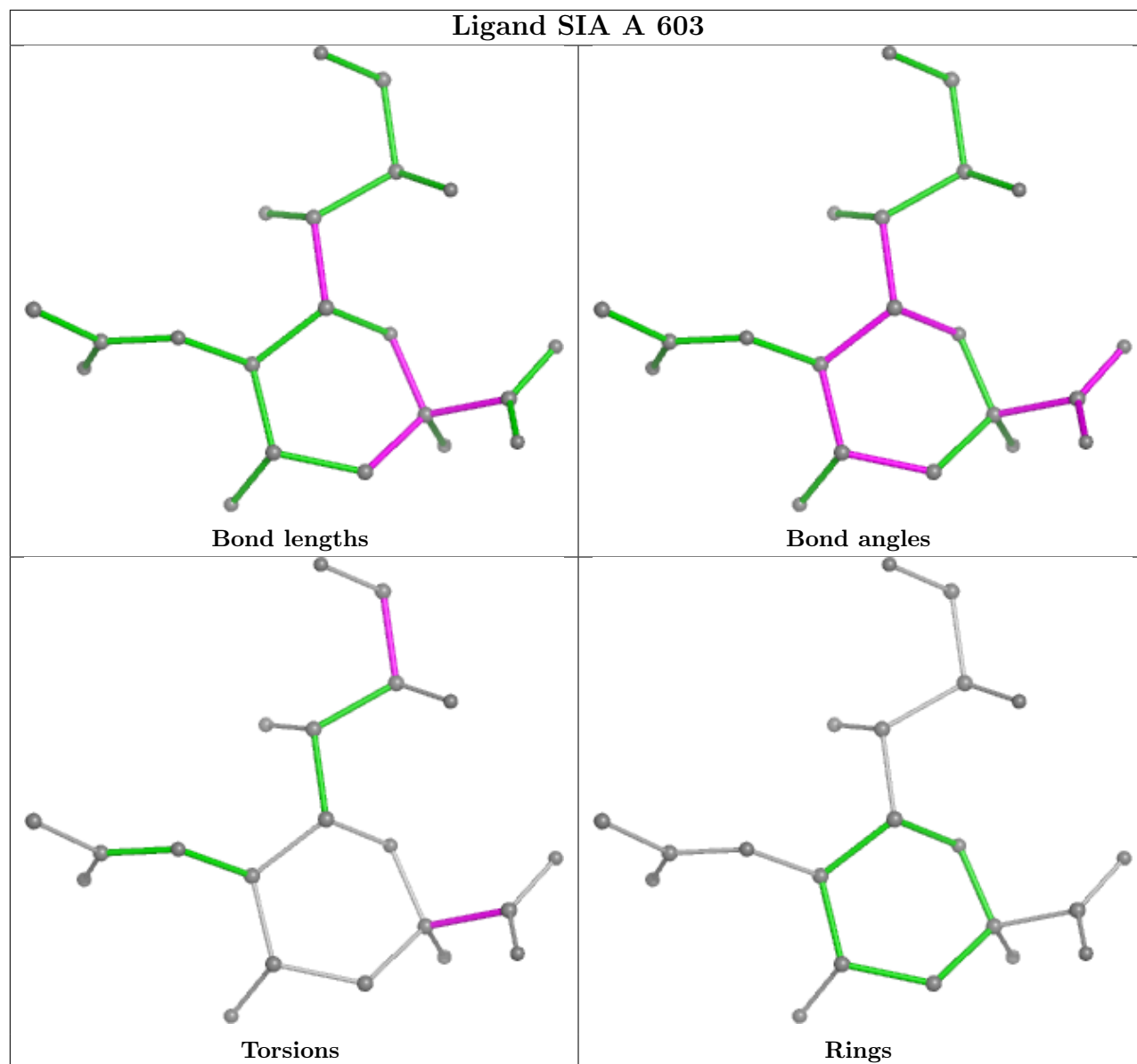
Mol	Chain	Res	Type	Atoms
6	A	602	A1JPK	O03-C04-C06-C07
6	A	602	A1JPK	O05-C04-C06-C23
6	A	602	A1JPK	O05-C04-C06-C07
7	A	603	SIA	O8-C8-C9-O9
7	A	603	SIA	O1B-C1-C2-C3
6	A	602	A1JPK	C01-C02-O03-C04
7	A	603	SIA	C7-C8-C9-O9

There are no ring outliers.

No monomer is involved in short contacts.

The following is a two-dimensional graphical depiction of Mogul quality analysis of bond lengths, bond angles, torsion angles, and ring geometry for all instances of the Ligand of Interest. In addition, ligands with molecular weight > 250 and outliers as shown on the validation Tables will also be included. For torsion angles, if less than 5% of the Mogul distribution of torsion angles is within 10 degrees of the torsion angle in question, then that torsion angle is considered an outlier. Any bond that is central to one or more torsion angles identified as an outlier by Mogul will be highlighted in the graph. For rings, the root-mean-square deviation (RMSD) between the ring in question and similar rings identified by Mogul is calculated over all ring torsion angles. If the average RMSD is greater than 60 degrees and the minimal RMSD between the ring in question and any Mogul-identified rings is also greater than 60 degrees, then that ring is considered an outlier. The outliers are highlighted in purple. The color gray indicates Mogul did not find sufficient equivalents in the CSD to analyse the geometry.





## 5.7 Other polymers [i](#)

There are no such residues in this entry.

## 5.8 Polymer linkage issues [i](#)

There are no chain breaks in this entry.

## 6 Fit of model and data [i](#)

### 6.1 Protein, DNA and RNA chains [i](#)

In the following table, the column labelled ‘#RSRZ> 2’ contains the number (and percentage) of RSRZ outliers, followed by percent RSRZ outliers for the chain as percentile scores relative to all X-ray entries and entries of similar resolution. The OWAB column contains the minimum, median, 95<sup>th</sup> percentile and maximum values of the occupancy-weighted average B-factor per residue. The column labelled ‘Q< 0.9’ lists the number of (and percentage) of residues with an average occupancy less than 0.9.

Mol	Chain	Analysed	<RSRZ>	#RSRZ>2	OWAB(Å <sup>2</sup> )	Q<0.9
1	A	526/529 (99%)	-0.35	6 (1%) 77 75	21, 51, 83, 118	6 (1%)

All (6) RSRZ outliers are listed below:

Mol	Chain	Res	Type	RSRZ
1	A	377	VAL	3.2
1	A	214[A]	HIS	3.1
1	A	282	TYR	2.3
1	A	281	PRO	2.3
1	A	4	ILE	2.2
1	A	237	TYR	2.0

### 6.2 Non-standard residues in protein, DNA, RNA chains [i](#)

There are no non-standard protein/DNA/RNA residues in this entry.

### 6.3 Carbohydrates [i](#)

In the following table, the Atoms column lists the number of modelled atoms in the group and the number defined in the chemical component dictionary. The B-factors column lists the minimum, median, 95<sup>th</sup> percentile and maximum values of B factors of atoms in the group. The column labelled ‘Q< 0.9’ lists the number of atoms with occupancy less than 0.9.

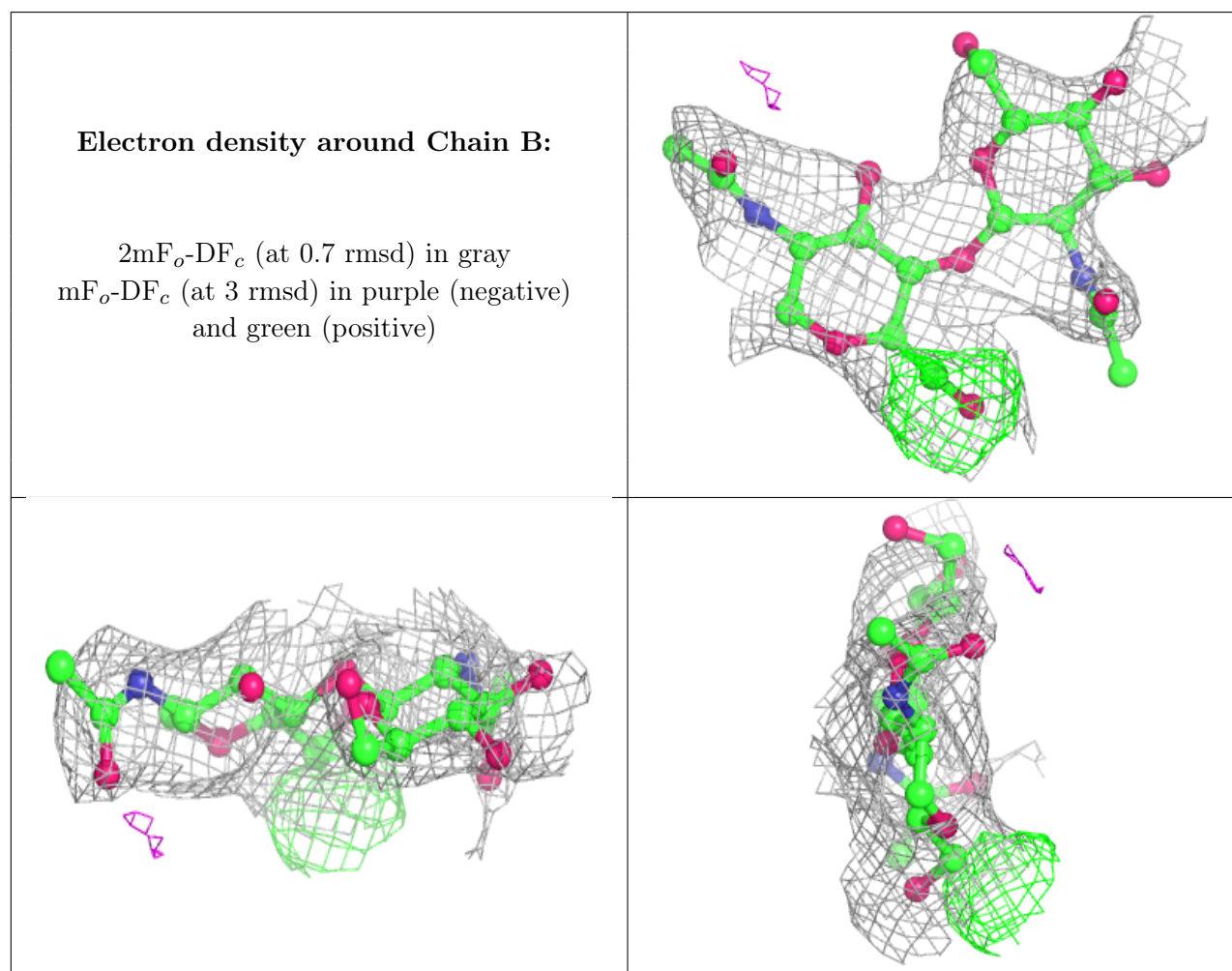
Mol	Type	Chain	Res	Atoms	RSCC	RSR	B-factors(Å <sup>2</sup> )	Q<0.9
4	NAG	F	1	14/15	0.18	0.17	100,111,117,119	0
2	NAG	E	2	14/15	0.47	0.16	109,119,125,126	0
2	NAG	B	1	14/15	0.55	0.14	93,102,117,120	0
3	NAG	C	2	14/15	0.61	0.14	93,109,120,122	0
2	NAG	B	2	14/15	0.63	0.13	105,119,123,126	0
3	NAG	D	2	14/15	0.67	0.14	77,90,98,100	0

*Continued on next page...*

Continued from previous page...

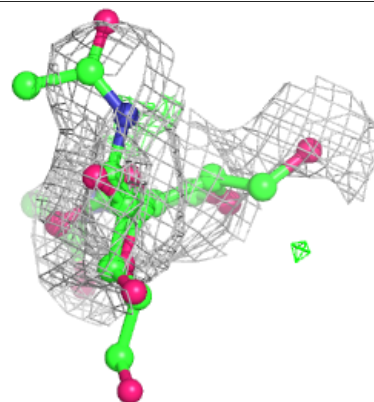
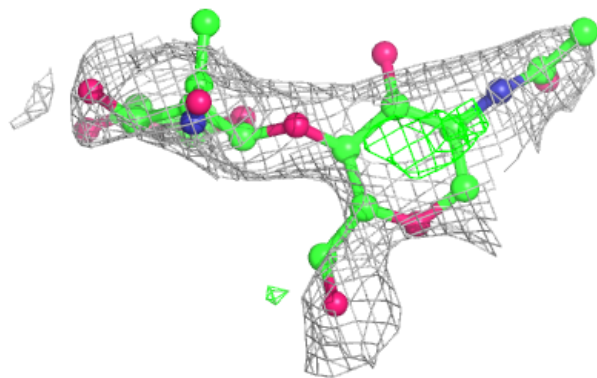
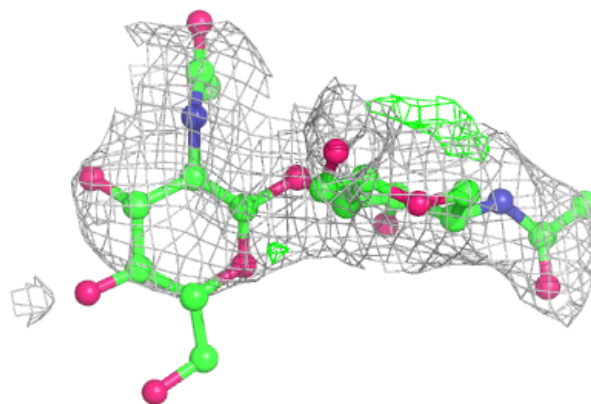
Mol	Type	Chain	Res	Atoms	RSCC	RSR	B-factors( $\text{\AA}^2$ )	Q<0.9
2	NAG	E	1	14/15	0.71	0.15	75,98,115,115	0
4	FUC	F	2	10/11	0.76	0.13	88,112,122,123	0
3	FUC	D	3	10/11	0.82	0.12	65,77,86,87	0
3	FUC	C	3	10/11	0.82	0.15	75,91,98,98	0
3	NAG	C	1	14/15	0.82	0.10	70,91,99,101	0
3	NAG	D	1	14/15	0.92	0.09	56,68,72,78	0

The following is a graphical depiction of the model fit to experimental electron density for oligosaccharide. Each fit is shown from different orientation to approximate a three-dimensional view.



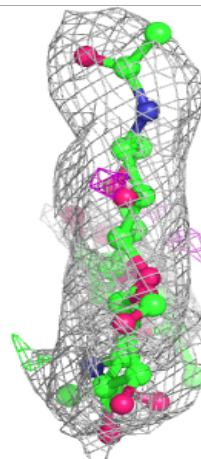
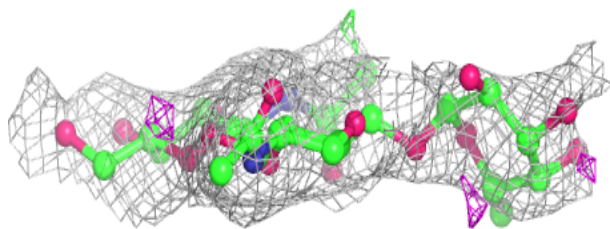
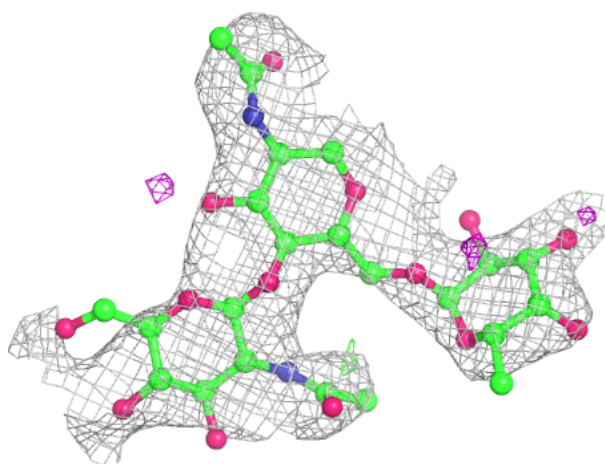
**Electron density around Chain E:**

$2mF_o-DF_c$  (at 0.7 rmsd) in gray  
 $mF_o-DF_c$  (at 3 rmsd) in purple (negative)  
and green (positive)



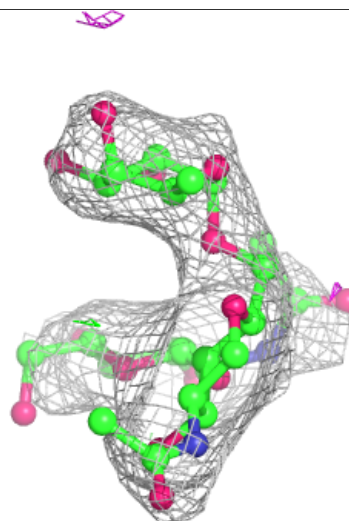
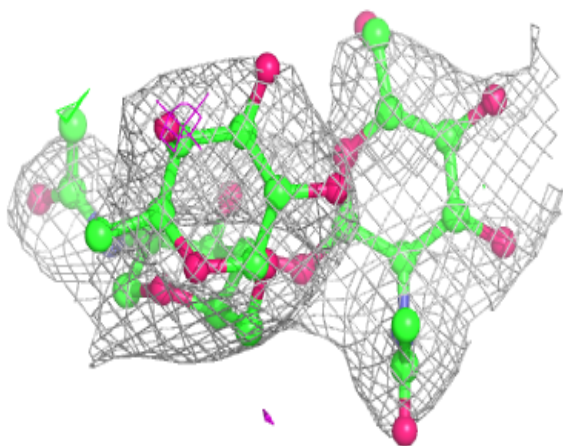
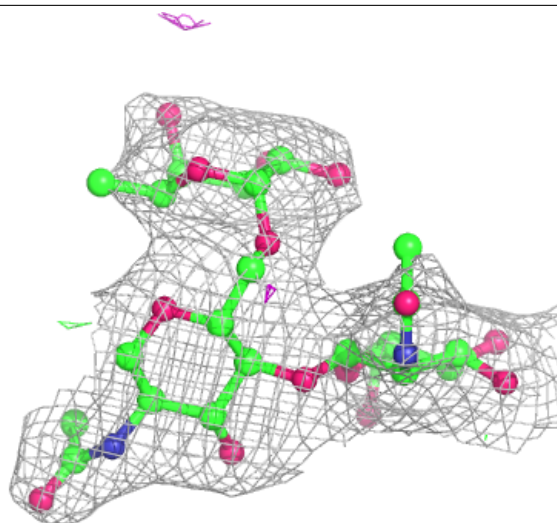
**Electron density around Chain C:**

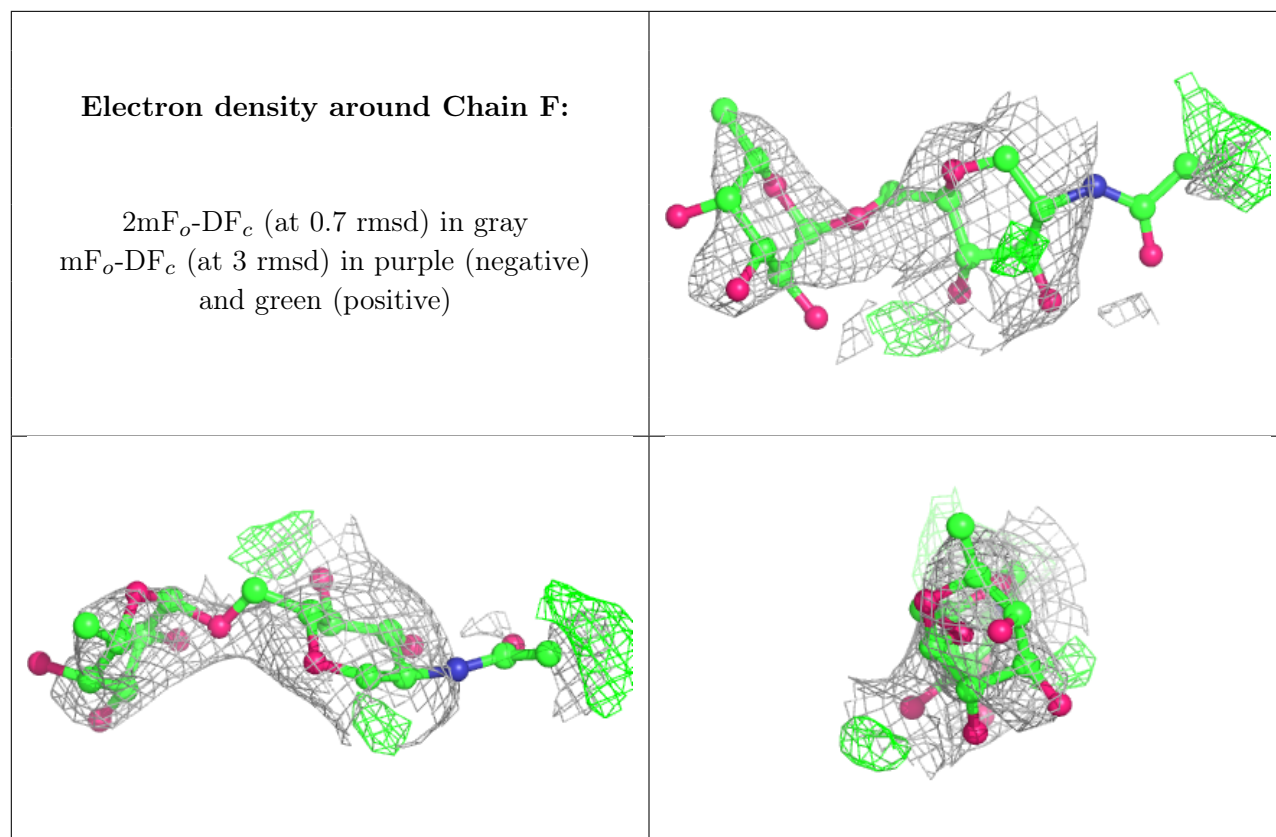
$2mF_o-DF_c$  (at 0.7 rmsd) in gray  
 $mF_o-DF_c$  (at 3 rmsd) in purple (negative)  
and green (positive)



**Electron density around Chain D:**

$2mF_o-DF_c$  (at 0.7 rmsd) in gray  
 $mF_o-DF_c$  (at 3 rmsd) in purple (negative)  
and green (positive)





## 6.4 Ligands [i](#)

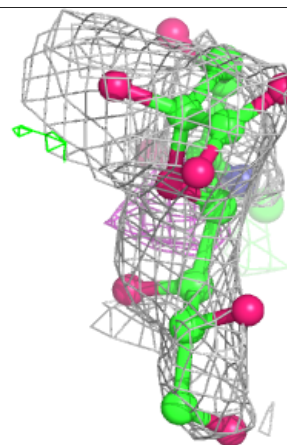
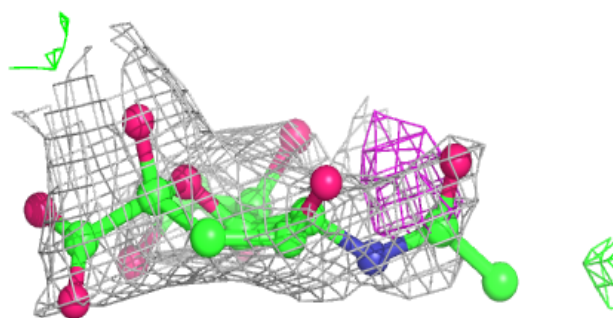
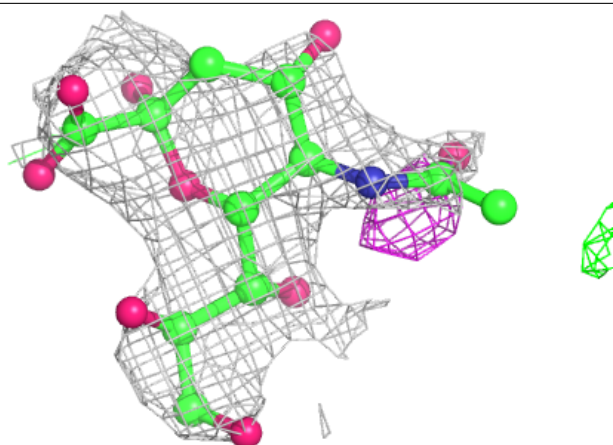
In the following table, the Atoms column lists the number of modelled atoms in the group and the number defined in the chemical component dictionary. The B-factors column lists the minimum, median, 95<sup>th</sup> percentile and maximum values of B factors of atoms in the group. The column labelled 'Q < 0.9' lists the number of atoms with occupancy less than 0.9.

Mol	Type	Chain	Res	Atoms	RSCC	RSR	B-factors(Å <sup>2</sup> )	Q < 0.9
5	NAG	A	601	14/15	0.69	0.12	97,108,116,124	0
7	SIA	A	603	21/21	0.74	0.13	69,91,101,104	0
6	A1JPK	A	602	29/29	0.82	0.18	54,71,83,91	0
8	SO4	A	605	5/5	0.82	0.10	82,90,106,111	0
8	SO4	A	606	5/5	0.83	0.23	74,91,104,117	0
8	SO4	A	608	5/5	0.85	0.29	59,79,97,109	0
8	SO4	A	607	5/5	0.86	0.16	78,83,97,112	0
8	SO4	A	604	5/5	0.88	0.13	74,77,99,102	0

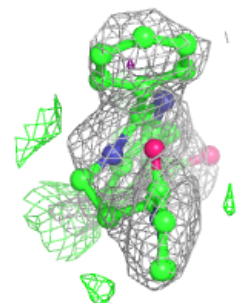
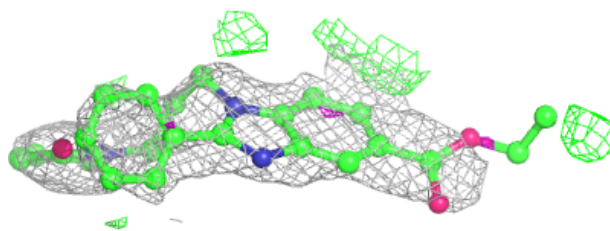
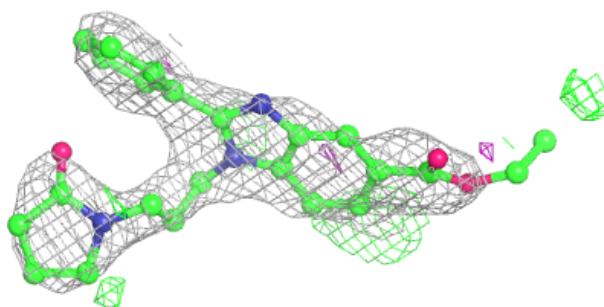
The following is a graphical depiction of the model fit to experimental electron density of all instances of the Ligand of Interest. In addition, ligands with molecular weight > 250 and outliers as shown on the geometry validation Tables will also be included. Each fit is shown from different orientation to approximate a three-dimensional view.

**Electron density around SIA A 603:**

$2mF_o-DF_c$  (at 0.7 rmsd) in gray  
 $mF_o-DF_c$  (at 3 rmsd) in purple (negative)  
and green (positive)

**Electron density around A1JPK A 602:**

$2mF_o-DF_c$  (at 0.7 rmsd) in gray  
 $mF_o-DF_c$  (at 3 rmsd) in purple (negative)  
and green (positive)



## 6.5 Other polymers

There are no such residues in this entry.