



wwPDB X-ray Structure Validation Summary Report ⓘ

Oct 5, 2024 – 10:11 PM EDT

PDB ID : 1SH7
Title : Crystal structure of a cold adapted subtilisin-like serine proteinase
Authors : Arnorsdottir, J.; Kristjansson, M.M.; Ficner, R.
Deposited on : 2004-02-25
Resolution : 1.84 Å(reported)

This is a wwPDB X-ray Structure Validation Summary Report for a publicly released PDB entry.

We welcome your comments at validation@mail.wwpdb.org

A user guide is available at

<https://www.wwpdb.org/validation/2017/XrayValidationReportHelp>

with specific help available everywhere you see the ⓘ symbol.

The types of validation reports are described at

<http://www.wwpdb.org/validation/2017/FAQs#types>.

The following versions of software and data (see [references ⓘ](#)) were used in the production of this report:

MolProbity : 4.02b-467
Mogul : 2022.3.0, CSD as543be (2022)
Xtriage (Phenix) : 1.20.1
EDS : 3.0
Percentile statistics : 20231227.v01 (using entries in the PDB archive December 27th 2023)
CCP4 : 9.0.003 (Gargrove)
Density-Fitness : 1.0.11
Ideal geometry (proteins) : Engh & Huber (2001)
Ideal geometry (DNA, RNA) : Parkinson et al. (1996)
Validation Pipeline (wwPDB-VP) : 2.39

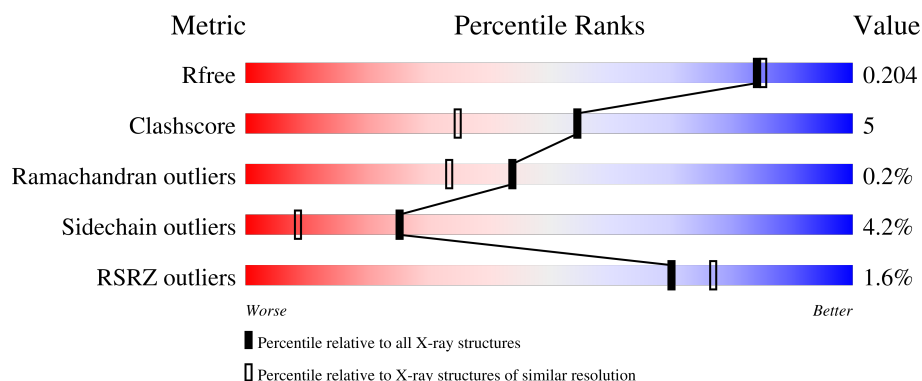
1 Overall quality at a glance

The following experimental techniques were used to determine the structure:

X-RAY DIFFRACTION

The reported resolution of this entry is 1.84 Å.

Percentile scores (ranging between 0-100) for global validation metrics of the entry are shown in the following graphic. The table shows the number of entries on which the scores are based.



Metric	Whole archive (#Entries)	Similar resolution (#Entries, resolution range(Å))
R_{free}	164625	1150 (1.84-1.84)
Clashscore	180529	1248 (1.84-1.84)
Ramachandran outliers	177936	1240 (1.84-1.84)
Sidechain outliers	177891	1240 (1.84-1.84)
RSRZ outliers	164620	1149 (1.84-1.84)

The table below summarises the geometric issues observed across the polymeric chains and their fit to the electron density. The red, orange, yellow and green segments of the lower bar indicate the fraction of residues that contain outliers for ≥ 3 , 2, 1 and 0 types of geometric quality criteria respectively. A grey segment represents the fraction of residues that are not modelled. The numeric value for each fraction is indicated below the corresponding segment, with a dot representing fractions $\leq 5\%$. The upper red bar (where present) indicates the fraction of residues that have poor fit to the electron density. The numeric value is given above the bar.

Mol	Chain	Length	Quality of chain
1	A	284	<div> <div>2%</div> <div> <div></div> <div>86%</div> <div>12%</div> <div>..</div> </div> </div>
1	B	284	<div> <div>%</div> <div> <div></div> <div>85%</div> <div>10%</div> <div>..</div> </div> </div>

2 Entry composition [i](#)

There are 4 unique types of molecules in this entry. The entry contains 4633 atoms, of which 0 are hydrogens and 0 are deuteriums.

In the tables below, the ZeroOcc column contains the number of atoms modelled with zero occupancy, the AltConf column contains the number of residues with at least one atom in alternate conformation and the Trace column contains the number of residues modelled with at most 2 atoms.

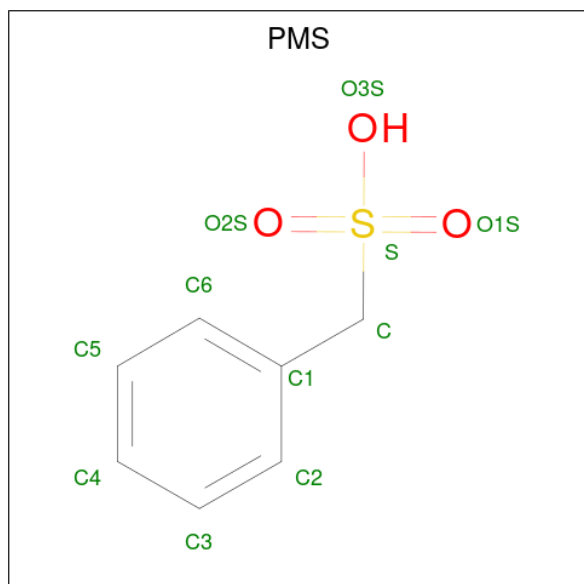
- Molecule 1 is a protein called extracellular subtilisin-like serine proteinase.

Mol	Chain	Residues	Atoms					ZeroOcc	AltConf	Trace
1	A	281	Total	C	N	O	S	0	4	0
			2030	1232	359	430	9			
1	B	274	Total	C	N	O	S	0	4	0
			1984	1209	351	417	7			

- Molecule 2 is CALCIUM ION (three-letter code: CA) (formula: Ca).

Mol	Chain	Residues	Atoms		ZeroOcc	AltConf
2	A	3	Total	Ca	0	0
			3	3		
2	B	3	Total	Ca	0	0
			3	3		

- Molecule 3 is phenylmethanesulfonic acid (three-letter code: PMS) (formula: C₇H₈O₃S).



Mol	Chain	Residues	Atoms				ZeroOcc	AltConf
3	A	1	Total	C	O	S	0	0
			10	7	2	1		
3	B	1	Total	C	O	S	0	0
			10	7	2	1		

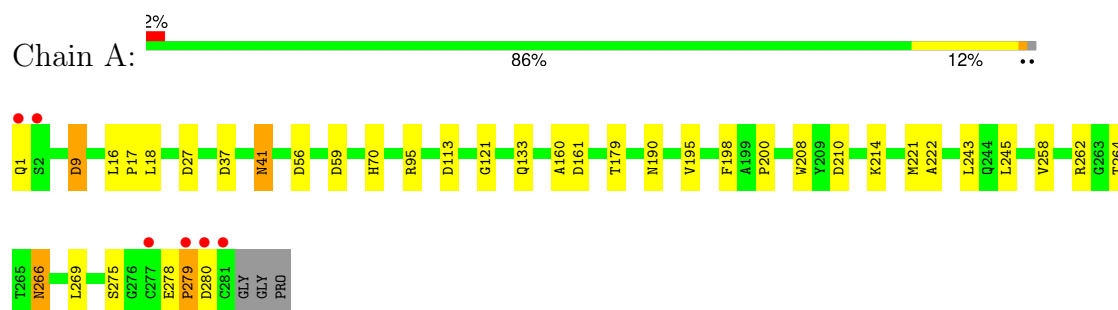
- Molecule 4 is water.

Mol	Chain	Residues	Atoms		ZeroOcc	AltConf
4	A	288	Total	O	0	0
			288	288		
4	B	305	Total	O	0	0
			305	305		

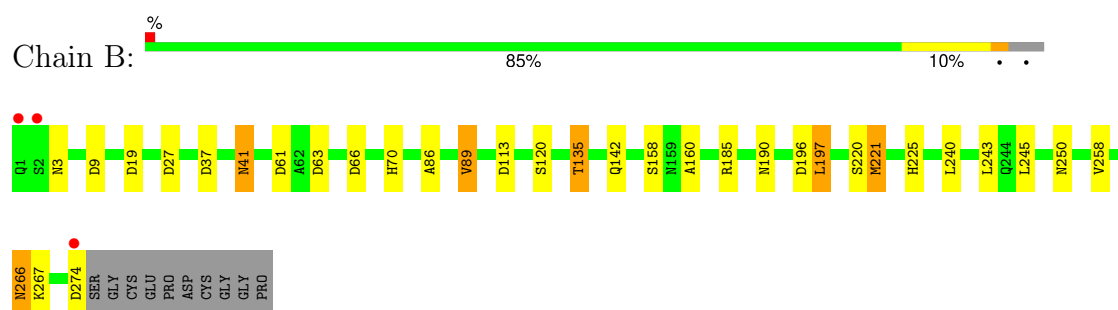
3 Residue-property plots

These plots are drawn for all protein, RNA, DNA and oligosaccharide chains in the entry. The first graphic for a chain summarises the proportions of the various outlier classes displayed in the second graphic. The second graphic shows the sequence view annotated by issues in geometry and electron density. Residues are color-coded according to the number of geometric quality criteria for which they contain at least one outlier: green = 0, yellow = 1, orange = 2 and red = 3 or more. A red dot above a residue indicates a poor fit to the electron density ($RSRZ > 2$). Stretches of 2 or more consecutive residues without any outlier are shown as a green connector. Residues present in the sample, but not in the model, are shown in grey.

- Molecule 1: extracellular subtilisin-like serine proteinase



- Molecule 1: extracellular subtilisin-like serine proteinase



4 Data and refinement statistics

Property	Value	Source
Space group	P 1 21 1	Depositor
Cell constants a, b, c, α , β , γ	43.21Å 36.88Å 140.49Å 90.00° 97.80° 90.00°	Depositor
Resolution (Å)	30.00 – 1.84 30.00 – 1.84	Depositor EDS
% Data completeness (in resolution range)	97.2 (30.00-1.84) 97.7 (30.00-1.84)	Depositor EDS
R_{merge}	(Not available)	Depositor
R_{sym}	0.07	Depositor
$\langle I/\sigma(I) \rangle$ ¹	2.72 (at 1.83Å)	Xtriage
Refinement program	REFMAC 5.1.24	Depositor
R, R_{free}	0.141 , 0.197 0.154 , 0.204	Depositor DCC
R_{free} test set	3754 reflections (9.94%)	wwPDB-VP
Wilson B-factor (Å ²)	11.9	Xtriage
Anisotropy	0.325	Xtriage
Bulk solvent k_{sol} (e/Å ³), B_{sol} (Å ²)	0.35 , 47.7	EDS
L-test for twinning ²	$\langle L \rangle = 0.50$, $\langle L^2 \rangle = 0.33$	Xtriage
Estimated twinning fraction	0.024 for h,-k,-h-l	Xtriage
F_o, F_c correlation	0.96	EDS
Total number of atoms	4633	wwPDB-VP
Average B, all atoms (Å ²)	14.0	wwPDB-VP

Xtriage's analysis on translational NCS is as follows: *The largest off-origin peak in the Patterson function is 8.23% of the height of the origin peak. No significant pseudotranslation is detected.*

¹Intensities estimated from amplitudes.

²Theoretical values of $\langle |L| \rangle$, $\langle L^2 \rangle$ for acentric reflections are 0.5, 0.333 respectively for untwinned datasets, and 0.375, 0.2 for perfectly twinned datasets.

5 Model quality

5.1 Standard geometry

Bond lengths and bond angles in the following residue types are not validated in this section: PMS, CA

The Z score for a bond length (or angle) is the number of standard deviations the observed value is removed from the expected value. A bond length (or angle) with $|Z| > 5$ is considered an outlier worth inspection. RMSZ is the root-mean-square of all Z scores of the bond lengths (or angles).

Mol	Chain	Bond lengths		Bond angles	
		RMSZ	$\# Z > 5$	RMSZ	$\# Z > 5$
1	A	0.67	0/2081	0.87	8/2832 (0.3%)
1	B	0.68	0/2027	0.90	12/2759 (0.4%)
All	All	0.68	0/4108	0.89	20/5591 (0.4%)

Chiral center outliers are detected by calculating the chiral volume of a chiral center and verifying if the center is modelled as a planar moiety or with the opposite hand. A planarity outlier is detected by checking planarity of atoms in a peptide group, atoms in a mainchain group or atoms of a sidechain that are expected to be planar.

Mol	Chain	#Chirality outliers	#Planarity outliers
1	A	0	1

There are no bond length outliers.

The worst 5 of 20 bond angle outliers are listed below:

Mol	Chain	Res	Type	Atoms	Z	Observed(°)	Ideal(°)
1	B	113	ASP	CB-CG-OD2	8.85	126.26	118.30
1	B	9	ASP	CB-CG-OD2	8.06	125.55	118.30
1	A	113	ASP	CB-CG-OD2	6.83	124.45	118.30
1	B	61	ASP	CB-CG-OD2	6.46	124.11	118.30
1	B	27	ASP	CB-CG-OD2	6.37	124.03	118.30

There are no chirality outliers.

All (1) planarity outliers are listed below:

Mol	Chain	Res	Type	Group
1	A	278	GLU	Peptide

5.2 Too-close contacts [i](#)

In the following table, the Non-H and H(model) columns list the number of non-hydrogen atoms and hydrogen atoms in the chain respectively. The H(added) column lists the number of hydrogen atoms added and optimized by MolProbity. The Clashes column lists the number of clashes within the asymmetric unit, whereas Symm-Clashes lists symmetry-related clashes.

Mol	Chain	Non-H	H(model)	H(added)	Clashes	Symm-Clashes
1	A	2030	0	1902	16	0
1	B	1984	0	1873	19	0
2	A	3	0	0	0	0
2	B	3	0	0	0	0
3	A	10	0	7	2	0
3	B	10	0	7	2	0
4	A	288	0	0	2	0
4	B	305	0	0	7	0
All	All	4633	0	3789	37	0

The all-atom clashscore is defined as the number of clashes found per 1000 atoms (including hydrogen atoms). The all-atom clashscore for this structure is 5.

The worst 5 of 37 close contacts within the same asymmetric unit are listed below, sorted by their clash magnitude.

Atom-1	Atom-2	Interatomic distance (Å)	Clash overlap (Å)
3:B:2284:PMS:S	4:B:2526:HOH:O	2.44	0.74
1:A:258:VAL:H	1:A:266:ASN:HD21	1.41	0.69
1:B:258:VAL:H	1:B:266:ASN:HD21	1.40	0.69
1:B:37:ASP:OD1	1:B:70:HIS:HD2	1.76	0.67
1:A:121:GLY:N	4:A:1567:HOH:O	2.32	0.61

There are no symmetry-related clashes.

5.3 Torsion angles [i](#)

5.3.1 Protein backbone [i](#)

In the following table, the Percentiles column shows the percent Ramachandran outliers of the chain as a percentile score with respect to all X-ray entries followed by that with respect to entries of similar resolution.

The Analysed column shows the number of residues for which the backbone conformation was analysed, and the total number of residues.

Mol	Chain	Analysed	Favoured	Allowed	Outliers	Percentiles	
1	A	283/284 (100%)	273 (96%)	9 (3%)	1 (0%)	30	18
1	B	275/284 (97%)	270 (98%)	5 (2%)	0	100	100
All	All	558/568 (98%)	543 (97%)	14 (2%)	1 (0%)	44	33

All (1) Ramachandran outliers are listed below:

Mol	Chain	Res	Type
1	A	279	PRO

5.3.2 Protein sidechains ⓘ

In the following table, the Percentiles column shows the percent sidechain outliers of the chain as a percentile score with respect to all X-ray entries followed by that with respect to entries of similar resolution.

The Analysed column shows the number of residues for which the sidechain conformation was analysed, and the total number of residues.

Mol	Chain	Analysed	Rotameric	Outliers	Percentiles	
1	A	223/220 (101%)	213 (96%)	10 (4%)	23	7
1	B	216/220 (98%)	206 (95%)	10 (5%)	23	7
All	All	439/440 (100%)	419 (95%)	20 (5%)	25	7

5 of 20 residues with a non-rotameric sidechain are listed below:

Mol	Chain	Res	Type
1	B	197[A]	LEU
1	B	243	LEU
1	B	274	ASP
1	B	266	ASN
1	A	262	ARG

Sometimes sidechains can be flipped to improve hydrogen bonding and reduce clashes. 5 of 19 such sidechains are listed below:

Mol	Chain	Res	Type
1	B	146	GLN
1	B	256	ASN
1	B	266	ASN
1	B	225	HIS
1	B	43	ASN

5.3.3 RNA [i](#)

There are no RNA molecules in this entry.

5.4 Non-standard residues in protein, DNA, RNA chains [i](#)

There are no non-standard protein/DNA/RNA residues in this entry.

5.5 Carbohydrates [i](#)

There are no oligosaccharides in this entry.

5.6 Ligand geometry [i](#)

Of 8 ligands modelled in this entry, 6 are monoatomic - leaving 2 for Mogul analysis.

In the following table, the Counts columns list the number of bonds (or angles) for which Mogul statistics could be retrieved, the number of bonds (or angles) that are observed in the model and the number of bonds (or angles) that are defined in the Chemical Component Dictionary. The Link column lists molecule types, if any, to which the group is linked. The Z score for a bond length (or angle) is the number of standard deviations the observed value is removed from the expected value. A bond length (or angle) with $|Z| > 2$ is considered an outlier worth inspection. RMSZ is the root-mean-square of all Z scores of the bond lengths (or angles).

Mol	Type	Chain	Res	Link	Bond lengths			Bond angles		
					Counts	RMSZ	$\# Z > 2$	Counts	RMSZ	$\# Z > 2$
3	PMS	A	1284	1	7,10,11	0.72	0	11,12,15	0.42	0
3	PMS	B	2284	1	7,10,11	0.88	0	11,12,15	2.83	2 (18%)

In the following table, the Chirals column lists the number of chiral outliers, the number of chiral centers analysed, the number of these observed in the model and the number defined in the Chemical Component Dictionary. Similar counts are reported in the Torsion and Rings columns. '-' means no outliers of that kind were identified.

Mol	Type	Chain	Res	Link	Chirals	Torsions	Rings
3	PMS	A	1284	1	-	0/4/4/5	0/1/1/1
3	PMS	B	2284	1	-	1/4/4/5	0/1/1/1

There are no bond length outliers.

All (2) bond angle outliers are listed below:

Mol	Chain	Res	Type	Atoms	Z	Observed(°)	Ideal(°)
3	B	2284	PMS	O1S-S-C	7.09	117.80	105.55
3	B	2284	PMS	O2S-S-C	-6.03	95.14	105.55

There are no chirality outliers.

All (1) torsion outliers are listed below:

Mol	Chain	Res	Type	Atoms
3	B	2284	PMS	C1-C-S-O1S

There are no ring outliers.

2 monomers are involved in 4 short contacts:

Mol	Chain	Res	Type	Clashes	Symm-Clashes
3	A	1284	PMS	2	0
3	B	2284	PMS	2	0

5.7 Other polymers [i](#)

There are no such residues in this entry.

5.8 Polymer linkage issues [i](#)

There are no chain breaks in this entry.

6 Fit of model and data [i](#)

6.1 Protein, DNA and RNA chains [i](#)

In the following table, the column labelled ‘#RSRZ> 2’ contains the number (and percentage) of RSRZ outliers, followed by percent RSRZ outliers for the chain as percentile scores relative to all X-ray entries and entries of similar resolution. The OWAB column contains the minimum, median, 95th percentile and maximum values of the occupancy-weighted average B-factor per residue. The column labelled ‘Q< 0.9’ lists the number of (and percentage) of residues with an average occupancy less than 0.9.

Mol	Chain	Analysed	<RSRZ>	#RSRZ>2	OWAB(Å ²)	Q<0.9
1	A	281/284 (98%)	-0.47	6 (2%) 63 69	7, 12, 21, 33	11 (3%)
1	B	274/284 (96%)	-0.57	3 (1%) 77 84	6, 12, 19, 40	6 (2%)
All	All	555/568 (97%)	-0.52	9 (1%) 70 77	6, 12, 20, 40	17 (3%)

The worst 5 of 9 RSRZ outliers are listed below:

Mol	Chain	Res	Type	RSRZ
1	A	279	PRO	7.1
1	A	2	SER	4.7
1	A	281	CYS	4.6
1	B	274	ASP	3.7
1	A	280	ASP	3.2

6.2 Non-standard residues in protein, DNA, RNA chains [i](#)

There are no non-standard protein/DNA/RNA residues in this entry.

6.3 Carbohydrates [i](#)

There are no monosaccharides in this entry.

6.4 Ligands [i](#)

In the following table, the Atoms column lists the number of modelled atoms in the group and the number defined in the chemical component dictionary. The B-factors column lists the minimum, median, 95th percentile and maximum values of B factors of atoms in the group. The column labelled ‘Q< 0.9’ lists the number of atoms with occupancy less than 0.9.

Mol	Type	Chain	Res	Atoms	RSCC	RSR	B-factors(\AA^2)	Q<0.9
3	PMS	B	2284	10/11	0.80	0.22	29,34,34,36	6
3	PMS	A	1284	10/11	0.85	0.20	32,34,34,34	6
2	CA	A	1291	1/1	0.99	0.03	13,13,13,13	0
2	CA	B	2290	1/1	1.00	0.04	12,12,12,12	0
2	CA	B	2291	1/1	1.00	0.02	13,13,13,13	0
2	CA	B	2292	1/1	1.00	0.05	10,10,10,10	0
2	CA	A	1290	1/1	1.00	0.04	10,10,10,10	0
2	CA	A	1292	1/1	1.00	0.02	11,11,11,11	0

6.5 Other polymers [i](#)

There are no such residues in this entry.