



# Full wwPDB X-ray Structure Validation Report ⓘ

Jan 27, 2026 – 06:12 pm GMT

PDB ID : 9S64 / pdb\_00009s64  
Title : Human TEAD1 in complex with 2-(4-chloro-3-{3-methyl-5-[4-(trifluoromethyl)phenoxy]phenyl}-1H-pyrrolo[3,2-c]pyridin-1-yl)ethan-1-ol  
Authors : Musil, D.; Freire, F.  
Deposited on : 2025-07-30  
Resolution : 1.85 Å(reported)

This is a Full wwPDB X-ray Structure Validation Report for a publicly released PDB entry.

We welcome your comments at [validation@mail.wwpdb.org](mailto:validation@mail.wwpdb.org)

A user guide is available at

<https://www.wwpdb.org/validation/2017/XrayValidationReportHelp>

with specific help available everywhere you see the ⓘ symbol.

The types of validation reports are described at

<http://www.wwpdb.org/validation/2017/FAQs#types>.

---

The following versions of software and data (see [references ⓘ](#)) were used in the production of this report:

MolProbity : 4-5-2 with Phenix2.0  
Mogul : 1.8.4, CSD as541be (2020)  
Xtriage (Phenix) : 2.0  
EDS : 3.0  
buster-report : 1.1.7 (2018)  
Percentile statistics : 20231227.v01 (using entries in the PDB archive December 27th 2023)  
CCP4 : 9.0.010 (Gargrove)  
Density-Fitness : 1.0.12  
Ideal geometry (proteins) : Engh & Huber (2001)  
Ideal geometry (DNA, RNA) : Parkinson et al. (1996)  
Validation Pipeline (wwPDB-VP) : 2.47

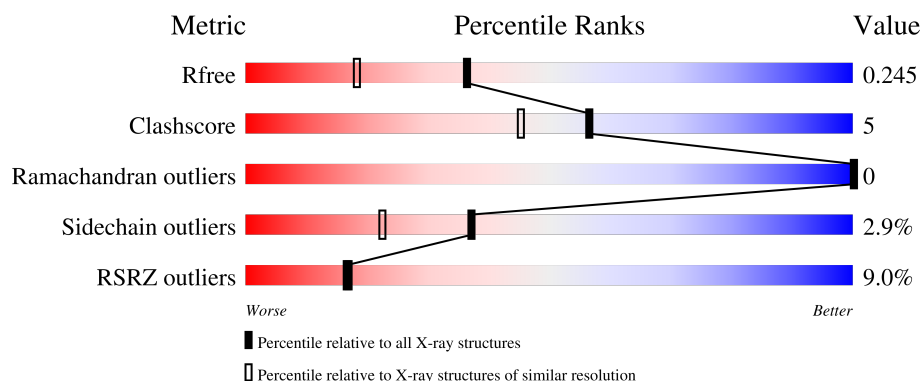
# 1 Overall quality at a glance

The following experimental techniques were used to determine the structure:

*X-RAY DIFFRACTION*

The reported resolution of this entry is 1.85 Å.

Percentile scores (ranging between 0-100) for global validation metrics of the entry are shown in the following graphic. The table shows the number of entries on which the scores are based.



Metric	Whole archive (#Entries)	Similar resolution (#Entries, resolution range(Å))
$R_{free}$	164625	3097 (1.86-1.86)
Clashscore	180529	3359 (1.86-1.86)
Ramachandran outliers	177936	3335 (1.86-1.86)
Sidechain outliers	177891	3335 (1.86-1.86)
RSRZ outliers	164620	3097 (1.86-1.86)

The table below summarises the geometric issues observed across the polymeric chains and their fit to the electron density. The red, orange, yellow and green segments of the lower bar indicate the fraction of residues that contain outliers for  $\geq 3$ , 2, 1 and 0 types of geometric quality criteria respectively. A grey segment represents the fraction of residues that are not modelled. The numeric value for each fraction is indicated below the corresponding segment, with a dot representing fractions  $\leq 5\%$ . The upper red bar (where present) indicates the fraction of residues that have poor fit to the electron density. The numeric value is given above the bar.

Mol	Chain	Length	Quality of chain
1	A	220	<div> <div>6%</div> <div> <div></div> <div>81%</div> <div>12%</div> <div>7%</div> </div> </div>
1	B	220	<div> <div>7%</div> <div> <div></div> <div>78%</div> <div>12%</div> <div>8%</div> </div> </div>
1	C	220	<div> <div>5%</div> <div> <div></div> <div>82%</div> <div>10%</div> <div>8%</div> </div> </div>
1	D	220	<div> <div>15%</div> <div> <div></div> <div>71%</div> <div>11%</div> <div>17%</div> </div> </div>

## 2 Entry composition

There are 6 unique types of molecules in this entry. The entry contains 6932 atoms, of which 0 are hydrogens and 0 are deuteriums.

In the tables below, the ZeroOcc column contains the number of atoms modelled with zero occupancy, the AltConf column contains the number of residues with at least one atom in alternate conformation and the Trace column contains the number of residues modelled with at most 2 atoms.

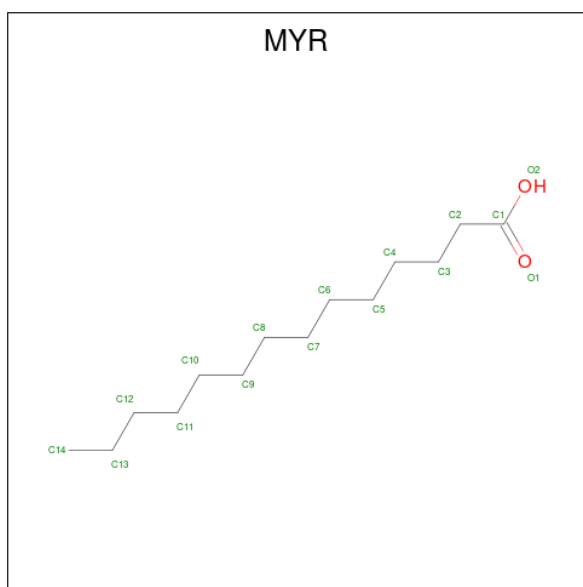
- Molecule 1 is a protein called Transcriptional enhancer factor TEF-1.

Mol	Chain	Residues	Atoms					ZeroOcc	AltConf	Trace
1	A	205	Total	C	N	O	S	13	8	0
			1727	1109	291	315	12			
1	B	202	Total	C	N	O	S	4	3	0
			1661	1068	282	299	12			
1	C	203	Total	C	N	O	S	7	7	0
			1707	1093	289	313	12			
1	D	182	Total	C	N	O	S	14	3	0
			1498	968	251	266	13			

There are 8 discrepancies between the modelled and reference sequences:

Chain	Residue	Modelled	Actual	Comment	Reference
A	207	GLY	-	expression tag	UNP P28347
A	208	PRO	-	expression tag	UNP P28347
B	207	GLY	-	expression tag	UNP P28347
B	208	PRO	-	expression tag	UNP P28347
C	207	GLY	-	expression tag	UNP P28347
C	208	PRO	-	expression tag	UNP P28347
D	207	GLY	-	expression tag	UNP P28347
D	208	PRO	-	expression tag	UNP P28347

- Molecule 2 is MYRISTIC ACID (CCD ID: MYR) (formula: C<sub>14</sub>H<sub>28</sub>O<sub>2</sub>).



Mol	Chain	Residues	Atoms			ZeroOcc	AltConf
2	A	1	Total	C	O	0	0
			15	14	1		
2	B	1	Total	C	O	0	0
			15	14	1		

- Molecule 3 is GLYCEROL (CCD ID: GOL) (formula:  $C_3H_8O_3$ ).

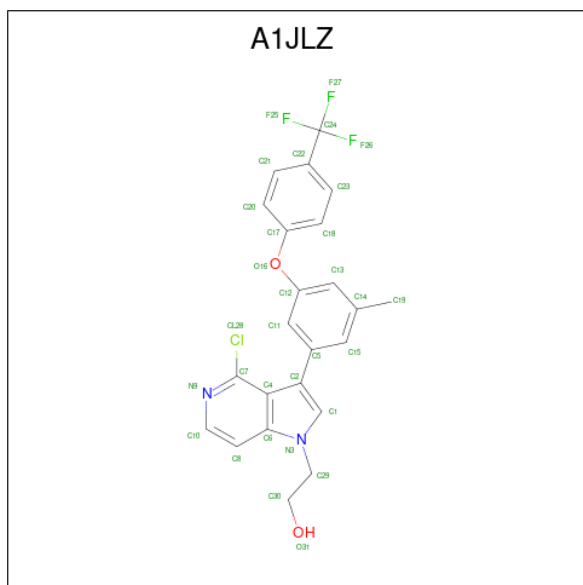


Mol	Chain	Residues	Atoms			ZeroOcc	AltConf
3	B	1	Total	C	O	0	0
			6	3	3		

- Molecule 4 is CHLORIDE ION (CCD ID: CL) (formula:  $Cl$ ).

Mol	Chain	Residues	Atoms	ZeroOcc	AltConf
4	C	1	Total Cl 1 1	0	0

- Molecule 5 is 2-[4-chloranyl-3-[3-methyl-5-[4-(trifluoromethyl)phenoxy]phenyl]pyrrolo[3,2-c]pyridin-1-yl]ethanol (CCD ID: A1JLZ) (formula: C<sub>23</sub>H<sub>18</sub>ClF<sub>3</sub>N<sub>2</sub>O<sub>2</sub>) (labeled as "Ligand of Interest" by depositor).



Mol	Chain	Residues	Atoms						ZeroOcc	AltConf
5	C	1	Total	C	Cl	F	N	O	0	0
			31	23	1	3	2	2		
5	D	1	Total	C	Cl	F	N	O	0	0
			31	23	1	3	2	2		

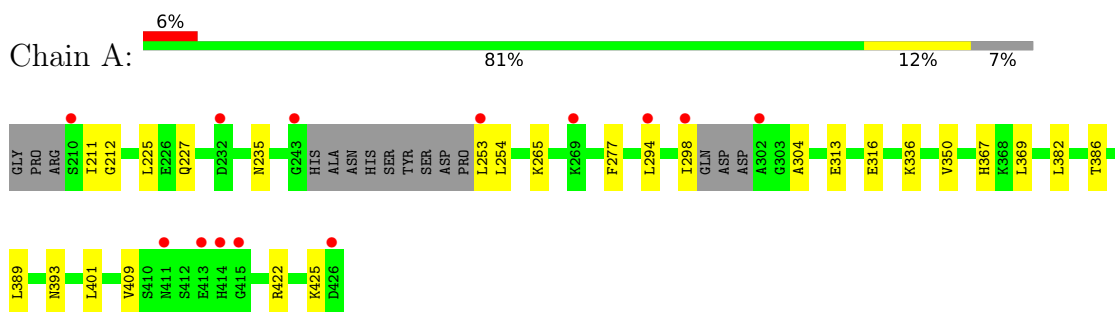
- Molecule 6 is water.

Mol	Chain	Residues	Atoms	ZeroOcc	AltConf
6	A	79	Total O 79 79	0	0
6	B	67	Total O 67 67	0	0
6	C	56	Total O 56 56	0	0
6	D	38	Total O 38 38	0	0

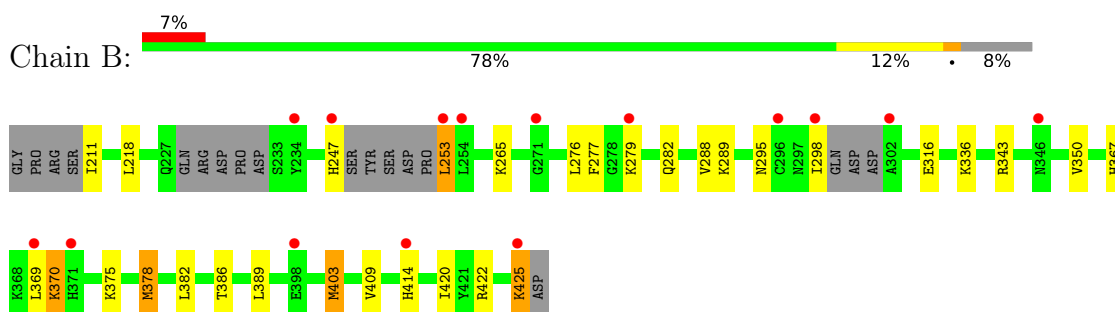
### 3 Residue-property plots [i](#)

These plots are drawn for all protein, RNA, DNA and oligosaccharide chains in the entry. The first graphic for a chain summarises the proportions of the various outlier classes displayed in the second graphic. The second graphic shows the sequence view annotated by issues in geometry and electron density. Residues are color-coded according to the number of geometric quality criteria for which they contain at least one outlier: green = 0, yellow = 1, orange = 2 and red = 3 or more. A red dot above a residue indicates a poor fit to the electron density ( $RSRZ > 2$ ). Stretches of 2 or more consecutive residues without any outlier are shown as a green connector. Residues present in the sample, but not in the model, are shown in grey.

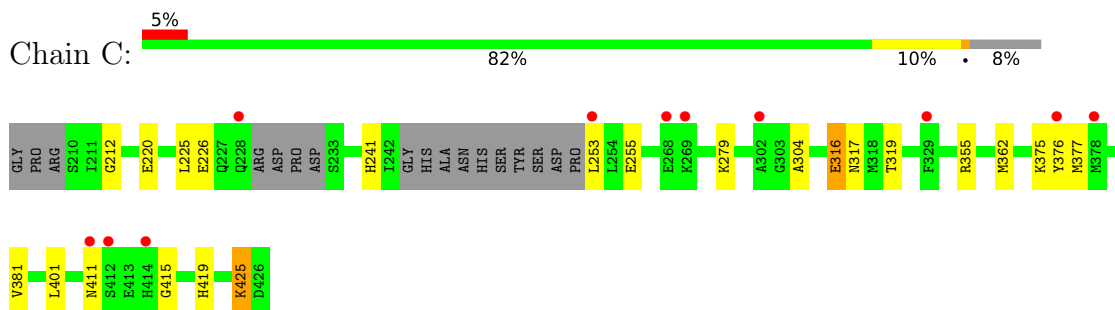
- Molecule 1: Transcriptional enhancer factor TEF-1



- Molecule 1: Transcriptional enhancer factor TEF-1

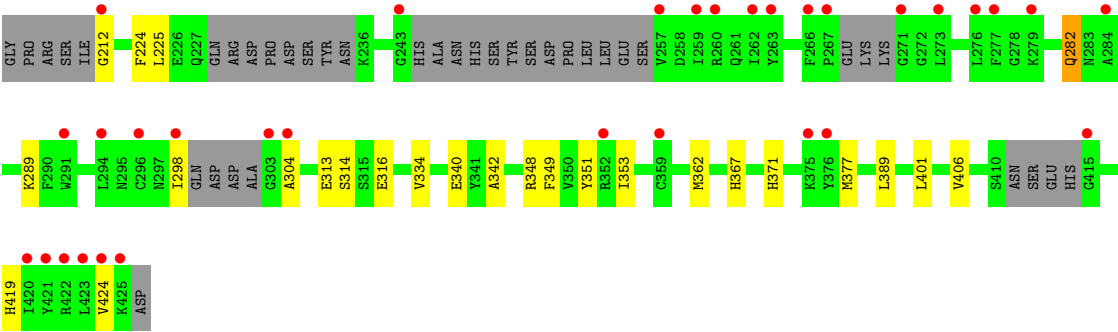


- Molecule 1: Transcriptional enhancer factor TEF-1



- Molecule 1: Transcriptional enhancer factor TEF-1





## 4 Data and refinement statistics

Property	Value	Source
Space group	P 1 21 1	Depositor
Cell constants a, b, c, $\alpha$ , $\beta$ , $\gamma$	73.71Å 81.88Å 76.60Å 90.00° 97.31° 90.00°	Depositor
Resolution (Å)	36.55 – 1.85 36.55 – 1.85	Depositor EDS
% Data completeness (in resolution range)	60.2 (36.55-1.85) 60.1 (36.55-1.85)	Depositor EDS
$R_{merge}$	(Not available)	Depositor
$R_{sym}$	(Not available)	Depositor
$\langle I/\sigma(I) \rangle$ <sup>1</sup>	1.19 (at 1.85Å)	Xtriage
Refinement program	BUSTER 2.11.8	Depositor
R, $R_{free}$	0.215 , 0.255 0.207 , 0.245	Depositor DCC
$R_{free}$ test set	2172 reflections (4.68%)	wwPDB-VP
Wilson B-factor (Å <sup>2</sup> )	28.9	Xtriage
Anisotropy	0.019	Xtriage
Bulk solvent $k_{sol}$ (e/Å <sup>3</sup> ), $B_{sol}$ (Å <sup>2</sup> )	0.36 , 40.0	EDS
L-test for twinning <sup>2</sup>	$\langle  L  \rangle = 0.50$ , $\langle L^2 \rangle = 0.33$	Xtriage
Estimated twinning fraction	0.019 for l,-k,h	Xtriage
$F_o, F_c$ correlation	0.94	EDS
Total number of atoms	6932	wwPDB-VP
Average B, all atoms (Å <sup>2</sup> )	39.0	wwPDB-VP

Xtriage's analysis on translational NCS is as follows: *The largest off-origin peak in the Patterson function is 5.43% of the height of the origin peak. No significant pseudotranslation is detected.*

<sup>1</sup>Intensities estimated from amplitudes.

<sup>2</sup>Theoretical values of  $\langle |L| \rangle$ ,  $\langle L^2 \rangle$  for acentric reflections are 0.5, 0.333 respectively for untwinned datasets, and 0.375, 0.2 for perfectly twinned datasets.



## 5 Model quality

### 5.1 Standard geometry

Bond lengths and bond angles in the following residue types are not validated in this section: MYR, CL, GOL, A1JLZ

The Z score for a bond length (or angle) is the number of standard deviations the observed value is removed from the expected value. A bond length (or angle) with  $|Z| > 5$  is considered an outlier worth inspection. RMSZ is the root-mean-square of all Z scores of the bond lengths (or angles).

Mol	Chain	Bond lengths		Bond angles	
		RMSZ	$\# Z  > 5$	RMSZ	$\# Z  > 5$
1	A	0.76	0/1778	0.96	1/2390 (0.0%)
1	B	0.78	2/1702 (0.1%)	1.00	0/2288
1	C	0.71	0/1755	1.03	6/2359 (0.3%)
1	D	0.65	0/1530	0.96	1/2053 (0.0%)
All	All	0.73	2/6765 (0.0%)	0.99	8/9090 (0.1%)

All (2) bond length outliers are listed below:

Mol	Chain	Res	Type	Atoms	Z	Observed(Å)	Ideal(Å)
1	B	403	MET	SD-CE	8.41	2.00	1.79
1	B	378	MET	SD-CE	-5.43	1.66	1.79

All (8) bond angle outliers are listed below:

Mol	Chain	Res	Type	Atoms	Z	Observed(°)	Ideal(°)
1	C	425	LYS	CA-C-N	6.35	133.13	121.70
1	C	425	LYS	C-N-CA	6.35	133.13	121.70
1	C	411	ASN	CA-C-N	5.39	128.37	120.71
1	C	411	ASN	C-N-CA	5.39	128.37	120.71
1	C	415	GLY	N-CA-C	5.25	122.44	112.62
1	A	393	ASN	N-CA-C	-5.19	100.63	108.67
1	C	319	THR	N-CA-C	-5.11	100.19	108.52
1	D	224	PHE	N-CA-C	5.10	116.75	109.14

There are no chirality outliers.

There are no planarity outliers.

## 5.2 Too-close contacts ⓘ

In the following table, the Non-H and H(model) columns list the number of non-hydrogen atoms and hydrogen atoms in the chain respectively. The H(added) column lists the number of hydrogen atoms added and optimized by MolProbity. The Clashes column lists the number of clashes within the asymmetric unit, whereas Symm-Clashes lists symmetry-related clashes.

Mol	Chain	Non-H	H(model)	H(added)	Clashes	Symm-Clashes
1	A	1727	0	1715	12	0
1	B	1661	0	1642	19	0
1	C	1707	0	1682	12	0
1	D	1498	0	1489	15	0
2	A	15	0	27	1	0
2	B	15	0	27	0	0
3	B	6	0	8	1	0
4	C	1	0	0	0	0
5	C	31	0	0	4	0
5	D	31	0	0	2	0
6	A	79	0	0	0	0
6	B	67	0	0	1	0
6	C	56	0	0	0	0
6	D	38	0	0	0	0
All	All	6932	0	6590	60	0

The all-atom clashscore is defined as the number of clashes found per 1000 atoms (including hydrogen atoms). The all-atom clashscore for this structure is 5.

All (60) close contacts within the same asymmetric unit are listed below, sorted by their clash magnitude.

Atom-1	Atom-2	Interatomic distance (Å)	Clash overlap (Å)
1:D:362:MET:HE3	5:D:501:A1JLZ:CL28	2.03	0.95
1:C:362:MET:HE3	5:C:502:A1JLZ:CL28	2.06	0.92
1:B:247:HIS:CE1	1:B:420:ILE:HD12	2.05	0.91
1:A:254:LEU:HB2	1:A:422:ARG:HD2	1.67	0.77
1:D:289:LYS:HD3	1:D:406:VAL:HG23	1.69	0.73
1:D:298:ILE:HD12	1:D:367:HIS:CD2	2.26	0.71
1:C:225:LEU:HD11	1:C:304:ALA:HB1	1.74	0.69
1:C:381:VAL:HG22	1:D:377:MET:HE1	1.78	0.66
1:A:313[A]:GLU:HG2	1:A:350:VAL:HG22	1.81	0.63
1:A:212:GLY:HA2	1:A:401[B]:LEU:HD21	1.83	0.60
5:C:502:A1JLZ:CL28	5:C:502:A1JLZ:C11	2.87	0.59
1:D:282:GLN:H	1:D:282:GLN:HE21	1.53	0.55
1:D:212:GLY:HA2	1:D:401:LEU:HD21	1.90	0.54

*Continued on next page...*

*Continued from previous page...*

Atom-1	Atom-2	Interatomic distance (Å)	Clash overlap (Å)
1:C:226:GLU:OE2	1:C:355:ARG:NH1	2.41	0.54
1:B:265:LYS:HB3	1:B:386:THR:HG21	1.91	0.53
1:B:288:VAL:HG21	1:B:403:MET:HE3	1.90	0.53
1:A:277:PHE:HE2	1:A:425:LYS:HB2	1.74	0.52
1:C:376:TYR:CD1	1:D:371:HIS:ND1	2.78	0.52
1:B:375:LYS:HA	1:B:378:MET:HE2	1.92	0.51
1:A:211:ILE:HG22	1:A:401[A]:LEU:HD11	1.94	0.50
1:C:255:GLU:OE2	1:C:419[B]:HIS:HE1	1.95	0.50
1:B:277:PHE:CZ	1:B:282:GLN:HG2	2.47	0.50
1:B:276:LEU:HD23	1:B:279:LYS:HE2	1.94	0.49
1:D:282:GLN:H	1:D:282:GLN:NE2	2.11	0.48
1:B:295:ASN:HD22	1:B:414:HIS:CE1	2.31	0.48
1:D:340:GLU:HG3	1:D:353:ILE:HG12	1.96	0.47
1:D:342:ALA:HB1	1:D:349:PHE:HB3	1.96	0.47
1:B:298:ILE:HD13	1:B:367:HIS:CD2	2.50	0.47
1:B:343:ARG:HD2	1:B:350:VAL:O	2.15	0.46
1:D:298:ILE:HD12	1:D:367:HIS:HD2	1.79	0.46
1:C:212:GLY:HA2	1:C:401:LEU:HD21	1.97	0.46
1:A:227:GLN:O	1:A:235:ASN:HB2	2.15	0.46
5:D:501:A1JLZ:CL28	5:D:501:A1JLZ:C11	3.01	0.46
1:D:313:GLU:OE1	1:D:348:ARG:HD2	2.16	0.45
1:C:377:MET:O	1:C:381:VAL:HG23	2.17	0.45
1:B:378:MET:HE3	1:B:409:VAL:HG21	1.98	0.44
1:C:316:GLU:HG3	1:C:317:ASN:N	2.31	0.44
1:B:425:LYS:HD3	1:B:425:LYS:H	1.81	0.44
1:A:294:LEU:HD13	1:A:409:VAL:HG22	1.99	0.44
1:B:218:LEU:HD22	1:B:403:MET:SD	2.58	0.44
3:B:502:GOL:H12	6:B:613:HOH:O	2.17	0.44
1:C:362:MET:HG2	5:C:502:A1JLZ:CL28	2.55	0.43
1:D:314:SER:OG	1:D:316:GLU:O	2.37	0.43
1:A:225:LEU:HD11	1:A:304:ALA:HB1	2.00	0.43
1:D:225:LEU:HD11	1:D:304:ALA:HB1	2.02	0.42
2:A:501:MYR:H131	2:A:501:MYR:H101	1.92	0.42
1:B:369:LEU:HD11	1:B:382:LEU:HD21	2.01	0.42
1:D:342:ALA:HB2	1:D:351:TYR:CE2	2.55	0.41
1:A:369:LEU:HD11	1:A:382:LEU:HD21	2.03	0.41
1:B:253:LEU:HD22	1:B:422:ARG:HH21	1.86	0.41
1:B:295:ASN:ND2	1:B:414:HIS:CE1	2.88	0.41
1:A:211:ILE:CG2	1:A:401[A]:LEU:HD11	2.51	0.41
1:B:370:LYS:HE3	1:B:370:LYS:HB3	1.91	0.41
1:C:220[B]:GLU:OE2	1:C:241[B]:HIS:HE1	2.04	0.41

*Continued on next page...*

*Continued from previous page...*

Atom-1	Atom-2	Interatomic distance (Å)	Clash overlap (Å)
1:B:425:LYS:H	1:B:425:LYS:CD	2.34	0.41
1:C:362:MET:CE	5:C:502:A1JLZ:CL28	2.93	0.41
1:B:211:ILE:HD12	1:B:218:LEU:HD23	2.03	0.40
1:A:265:LYS:HB3	1:A:386:THR:HG21	2.03	0.40
1:A:298:ILE:HD11	1:A:367:HIS:HA	2.03	0.40
1:B:279:LYS:HE3	1:B:279:LYS:HB3	1.97	0.40

There are no symmetry-related clashes.

## 5.3 Torsion angles [i](#)

### 5.3.1 Protein backbone [i](#)

In the following table, the Percentiles column shows the percent Ramachandran outliers of the chain as a percentile score with respect to all X-ray entries followed by that with respect to entries of similar resolution.

The Analysed column shows the number of residues for which the backbone conformation was analysed, and the total number of residues.

Mol	Chain	Analysed	Favoured	Allowed	Outliers	Percentiles	
1	A	207/220 (94%)	204 (99%)	3 (1%)	0	100	100
1	B	196/220 (89%)	195 (100%)	1 (0%)	0	100	100
1	C	204/220 (93%)	200 (98%)	4 (2%)	0	100	100
1	D	173/220 (79%)	173 (100%)	0	0	100	100
All	All	780/880 (89%)	772 (99%)	8 (1%)	0	100	100

There are no Ramachandran outliers to report.

### 5.3.2 Protein sidechains [i](#)

In the following table, the Percentiles column shows the percent sidechain outliers of the chain as a percentile score with respect to all X-ray entries followed by that with respect to entries of similar resolution.

The Analysed column shows the number of residues for which the sidechain conformation was analysed, and the total number of residues.

Mol	Chain	Analysed	Rotameric	Outliers	Percentiles	
1	A	194/199 (98%)	189 (97%)	5 (3%)	41	26
1	B	185/199 (93%)	177 (96%)	8 (4%)	25	10
1	C	192/199 (96%)	187 (97%)	5 (3%)	41	26
1	D	167/199 (84%)	162 (97%)	5 (3%)	36	21
All	All	738/796 (93%)	715 (97%)	23 (3%)	37	20

All (23) residues with a non-rotameric sidechain are listed below:

Mol	Chain	Res	Type
1	A	253	LEU
1	A	316	GLU
1	A	336	LYS
1	A	389[A]	LEU
1	A	389[B]	LEU
1	B	253	LEU
1	B	289	LYS
1	B	316	GLU
1	B	336	LYS
1	B	370	LYS
1	B	389[A]	LEU
1	B	389[B]	LEU
1	B	425	LYS
1	C	253	LEU
1	C	279	LYS
1	C	316	GLU
1	C	375	LYS
1	C	425	LYS
1	D	282	GLN
1	D	334	VAL
1	D	389	LEU
1	D	419	HIS
1	D	424	VAL

Sometimes sidechains can be flipped to improve hydrogen bonding and reduce clashes. All (15) such sidechains are listed below:

Mol	Chain	Res	Type
1	A	317	ASN
1	B	295	ASN
1	B	297	ASN
1	B	317	ASN

*Continued on next page...*

*Continued from previous page...*

Mol	Chain	Res	Type
1	B	354	ASN
1	B	364	ASN
1	B	414	HIS
1	B	417	GLN
1	C	235	ASN
1	C	354	ASN
1	C	397	GLN
1	C	414	HIS
1	D	282	GLN
1	D	332	GLN
1	D	397	GLN

### 5.3.3 RNA [i](#)

There are no RNA molecules in this entry.

## 5.4 Non-standard residues in protein, DNA, RNA chains [i](#)

There are no non-standard protein/DNA/RNA residues in this entry.

## 5.5 Carbohydrates [i](#)

There are no oligosaccharides in this entry.

## 5.6 Ligand geometry [i](#)

Of 6 ligands modelled in this entry, 1 is monoatomic - leaving 5 for Mogul analysis.

In the following table, the Counts columns list the number of bonds (or angles) for which Mogul statistics could be retrieved, the number of bonds (or angles) that are observed in the model and the number of bonds (or angles) that are defined in the Chemical Component Dictionary. The Link column lists molecule types, if any, to which the group is linked. The Z score for a bond length (or angle) is the number of standard deviations the observed value is removed from the expected value. A bond length (or angle) with  $|Z| > 2$  is considered an outlier worth inspection. RMSZ is the root-mean-square of all Z scores of the bond lengths (or angles).

Mol	Type	Chain	Res	Link	Bond lengths			Bond angles		
					Counts	RMSZ	$\# Z  > 2$	Counts	RMSZ	$\# Z  > 2$
2	MYR	B	501	1	14,14,15	0.29	0	13,13,15	0.41	0
3	GOL	B	502	-	5,5,5	0.12	0	5,5,5	0.26	0
2	MYR	A	501	1	14,14,15	0.27	0	13,13,15	0.36	0

Mol	Type	Chain	Res	Link	Bond lengths			Bond angles		
					Counts	RMSZ	# Z  > 2	Counts	RMSZ	# Z  > 2
5	A1JLZ	C	502	-	32,34,34	0.67	0	39,50,50	0.71	1 (2%)
5	A1JLZ	D	501	-	32,34,34	0.71	1 (3%)	39,50,50	0.84	2 (5%)

In the following table, the Chirals column lists the number of chiral outliers, the number of chiral centers analysed, the number of these observed in the model and the number defined in the Chemical Component Dictionary. Similar counts are reported in the Torsion and Rings columns. '-' means no outliers of that kind were identified.

Mol	Type	Chain	Res	Link	Chirals	Torsions	Rings
2	MYR	B	501	1	-	7/11/12/13	-
3	GOL	B	502	-	-	0/4/4/4	-
2	MYR	A	501	1	-	7/11/12/13	-
5	A1JLZ	C	502	-	-	2/17/17/17	0/4/4/4
5	A1JLZ	D	501	-	-	2/17/17/17	0/4/4/4

All (1) bond length outliers are listed below:

Mol	Chain	Res	Type	Atoms	Z	Observed(Å)	Ideal(Å)
5	D	501	A1JLZ	C2-C4	2.33	1.45	1.41

All (3) bond angle outliers are listed below:

Mol	Chain	Res	Type	Atoms	Z	Observed(°)	Ideal(°)
5	D	501	A1JLZ	C10-C8-C6	-2.94	116.80	119.31
5	C	502	A1JLZ	C10-C8-C6	-2.81	116.91	119.31
5	D	501	A1JLZ	C17-O16-C12	2.08	123.66	118.80

There are no chirality outliers.

All (18) torsion outliers are listed below:

Mol	Chain	Res	Type	Atoms
5	C	502	A1JLZ	C4-C2-C5-C15
2	B	501	MYR	C4-C5-C6-C7
2	A	501	MYR	C4-C5-C6-C7
2	B	501	MYR	C6-C7-C8-C9
2	A	501	MYR	C6-C7-C8-C9
2	B	501	MYR	C2-C3-C4-C5
2	A	501	MYR	C2-C3-C4-C5
2	A	501	MYR	C10-C11-C12-C13
2	B	501	MYR	C7-C8-C9-C10

*Continued on next page...*

*Continued from previous page...*

Mol	Chain	Res	Type	Atoms
5	C	502	A1JLZ	C4-C2-C5-C11
5	D	501	A1JLZ	C4-C2-C5-C15
2	A	501	MYR	C3-C4-C5-C6
2	A	501	MYR	C7-C8-C9-C10
2	B	501	MYR	C9-C10-C11-C12
2	A	501	MYR	C9-C10-C11-C12
2	B	501	MYR	C10-C11-C12-C13
2	B	501	MYR	C3-C4-C5-C6
5	D	501	A1JLZ	N3-C29-C30-O31

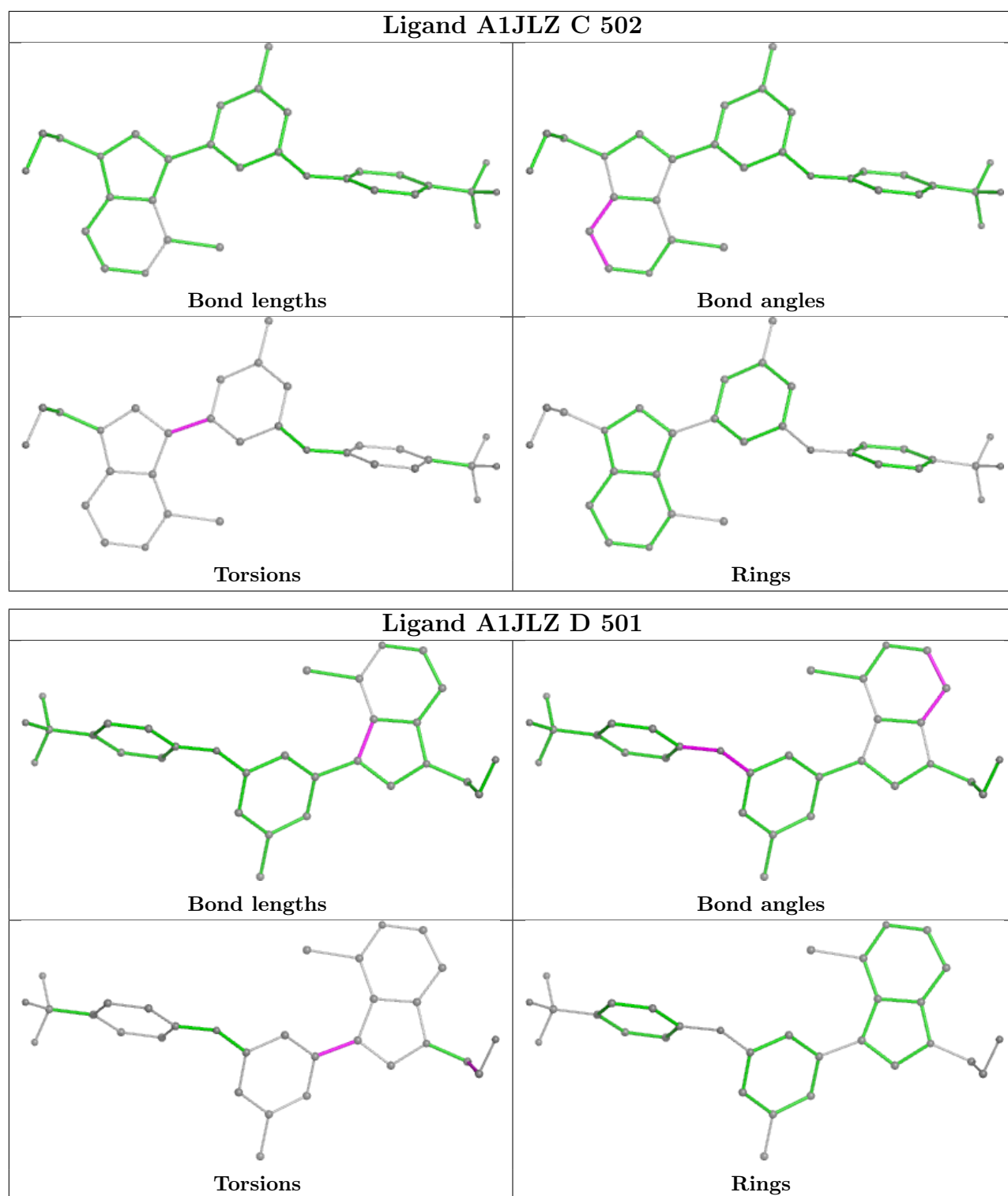
There are no ring outliers.

4 monomers are involved in 8 short contacts:

Mol	Chain	Res	Type	Clashes	Symm-Clashes
3	B	502	GOL	1	0
2	A	501	MYR	1	0
5	C	502	A1JLZ	4	0
5	D	501	A1JLZ	2	0

The following is a two-dimensional graphical depiction of Mogul quality analysis of bond lengths, bond angles, torsion angles, and ring geometry for all instances of the Ligand of Interest. In addition, ligands with molecular weight > 250 and outliers as shown on the validation Tables will also be included. For torsion angles, if less than 5% of the Mogul distribution of torsion angles is within 10 degrees of the torsion angle in question, then that torsion angle is considered an outlier. Any bond that is central to one or more torsion angles identified as an outlier by Mogul will be highlighted in the graph. For rings, the root-mean-square deviation (RMSD) between the ring in question and similar rings identified by Mogul is calculated over all ring torsion angles. If the average RMSD is greater than 60 degrees and the minimal RMSD between the ring in question and any Mogul-identified rings is also greater than 60 degrees, then that ring is considered an outlier. The outliers are highlighted in purple. The color gray indicates Mogul did not find sufficient equivalents in the CSD to analyse the geometry.





## 5.7 Other polymers [i](#)

There are no such residues in this entry.

## 5.8 Polymer linkage issues ⓘ

There are no chain breaks in this entry.

## 6 Fit of model and data

### 6.1 Protein, DNA and RNA chains

In the following table, the column labelled ‘#RSRZ > 2’ contains the number (and percentage) of RSRZ outliers, followed by percent RSRZ outliers for the chain as percentile scores relative to all X-ray entries and entries of similar resolution. The OWAB column contains the minimum, median, 95<sup>th</sup> percentile and maximum values of the occupancy-weighted average B-factor per residue. The column labelled ‘Q < 0.9’ lists the number of (and percentage) of residues with an average occupancy less than 0.9.

Mol	Chain	Analysed	<RSRZ>	#RSRZ>2	OWAB(Å <sup>2</sup> )	Q<0.9
1	A	205/220 (93%)	0.34	13 (6%) 27 29	10, 29, 49, 65	11 (5%)
1	B	202/220 (91%)	0.49	15 (7%) 22 23	17, 33, 54, 65	4 (1%)
1	C	203/220 (92%)	0.54	11 (5%) 32 34	11, 37, 58, 70	9 (4%)
1	D	182/220 (82%)	1.14	32 (17%) 4 4	14, 50, 82, 96	6 (3%)
All	All	792/880 (90%)	0.61	71 (8%) 17 17	10, 36, 68, 96	30 (3%)

All (71) RSRZ outliers are listed below:

Mol	Chain	Res	Type	RSRZ
1	B	253	LEU	5.2
1	D	423	LEU	4.8
1	A	414	HIS	4.3
1	D	424	VAL	4.2
1	A	253	LEU	4.1
1	D	298	ILE	4.0
1	D	271	GLY	3.9
1	D	257	VAL	3.8
1	D	259	ILE	3.8
1	D	273	LEU	3.7
1	C	228	GLN	3.7
1	A	298	ILE	3.7
1	C	302	ALA	3.5
1	D	291	TRP	3.5
1	B	247	HIS	3.4
1	D	421	TYR	3.4
1	B	298	ILE	3.4
1	D	277	PHE	3.3
1	A	413	GLU	3.3
1	D	212	GLY	3.3
1	C	253	LEU	3.3

*Continued on next page...*

*Continued from previous page...*

Mol	Chain	Res	Type	RSRZ
1	A	232	ASP	3.2
1	D	262	ILE	3.2
1	D	376	TYR	3.1
1	C	329	PHE	3.1
1	D	279	LYS	3.1
1	A	426	ASP	3.1
1	B	254	LEU	3.0
1	D	263	TYR	3.0
1	D	276	LEU	2.9
1	D	352	ARG	2.9
1	D	359[A]	CYS	2.9
1	C	411	ASN	2.8
1	B	302	ALA	2.8
1	D	303	GLY	2.7
1	D	415	GLY	2.7
1	D	267	PRO	2.7
1	D	425	LYS	2.7
1	D	375	LYS	2.6
1	D	422	ARG	2.5
1	D	420	ILE	2.5
1	B	296	CYS	2.4
1	B	234	TYR	2.4
1	A	302	ALA	2.4
1	C	414	HIS	2.4
1	C	376	TYR	2.4
1	B	425	LYS	2.3
1	D	304	ALA	2.3
1	C	378	MET	2.3
1	C	268	GLU	2.3
1	B	279	LYS	2.2
1	D	266	PHE	2.2
1	D	260	ARG	2.2
1	B	398	GLU	2.2
1	A	210	SER	2.2
1	D	284	ALA	2.2
1	D	294	LEU	2.2
1	C	269	LYS	2.1
1	B	271	GLY	2.1
1	A	294	LEU	2.1
1	B	371	HIS	2.1
1	B	414	HIS	2.1
1	B	369	LEU	2.1

*Continued on next page...*

*Continued from previous page...*

Mol	Chain	Res	Type	RSRZ
1	A	243	GLY	2.1
1	D	243	GLY	2.1
1	C	412	SER	2.1
1	B	346[A]	ASN	2.1
1	A	415	GLY	2.1
1	D	296	CYS	2.0
1	A	269	LYS	2.0
1	A	411	ASN	2.0

## 6.2 Non-standard residues in protein, DNA, RNA chains [i](#)

There are no non-standard protein/DNA/RNA residues in this entry.

## 6.3 Carbohydrates [i](#)

There are no oligosaccharides in this entry.

## 6.4 Ligands [i](#)

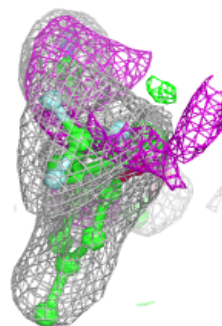
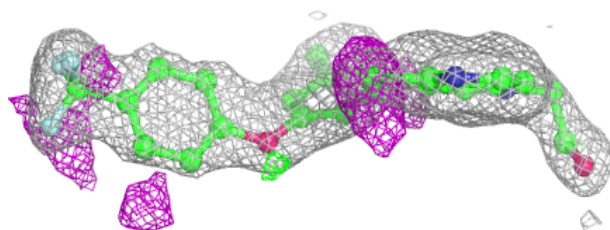
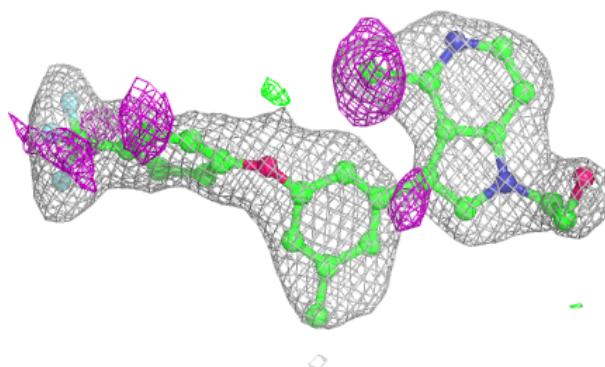
In the following table, the Atoms column lists the number of modelled atoms in the group and the number defined in the chemical component dictionary. The B-factors column lists the minimum, median, 95<sup>th</sup> percentile and maximum values of B factors of atoms in the group. The column labelled 'Q< 0.9' lists the number of atoms with occupancy less than 0.9.

Mol	Type	Chain	Res	Atoms	RSCC	RSR	B-factors( $\text{\AA}^2$ )	Q<0.9
5	A1JLZ	D	501	31/31	0.83	0.12	34,36,44,49	0
2	MYR	B	501	15/16	0.85	0.18	42,43,47,47	0
5	A1JLZ	C	502	31/31	0.86	0.10	29,32,46,52	0
2	MYR	A	501	15/16	0.86	0.15	37,40,44,44	0
4	CL	C	501	1/1	0.90	0.10	59,59,59,59	0
3	GOL	B	502	6/6	0.92	0.09	39,40,41,43	0

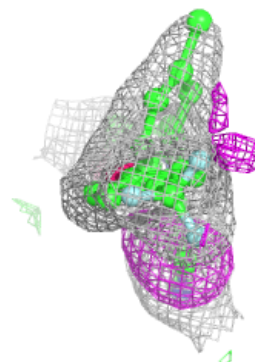
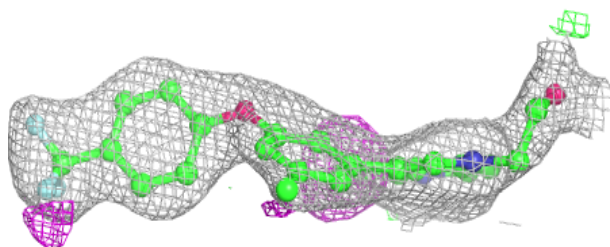
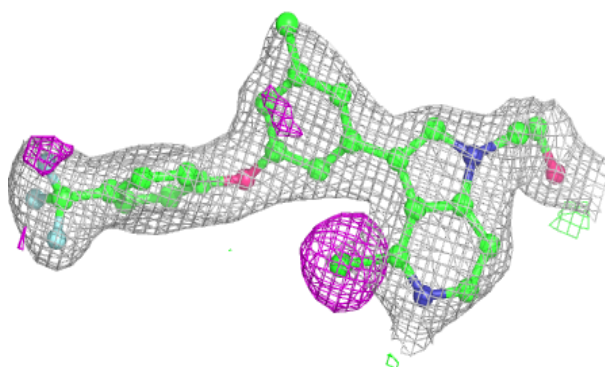
The following is a graphical depiction of the model fit to experimental electron density of all instances of the Ligand of Interest. In addition, ligands with molecular weight > 250 and outliers as shown on the geometry validation Tables will also be included. Each fit is shown from different orientation to approximate a three-dimensional view.

**Electron density around A1JLZ D 501:**

$2mF_o-DF_c$  (at 0.7 rmsd) in gray  
 $mF_o-DF_c$  (at 3 rmsd) in purple (negative)  
and green (positive)

**Electron density around A1JLZ C 502:**

$2mF_o-DF_c$  (at 0.7 rmsd) in gray  
 $mF_o-DF_c$  (at 3 rmsd) in purple (negative)  
and green (positive)



## 6.5 Other polymers [i](#)

There are no such residues in this entry.