



# Full wwPDB X-ray Structure Validation Report ⓘ

Jan 20, 2026 – 03:28 pm GMT

PDB ID : 9S0D / pdb\_00009s0d  
Title : 3 us Intermediate-state of CBD of TtCarH at 12 mJ/cm<sup>2</sup> laser fluence (TR-SFX, SACLA), refined against extrapolated structure factors  
Authors : Rios-Santacruz, R.; Coquelle, N.; Colletier, J.P.; De Zitter, E.; Schiro, G.; Weik, M.  
Deposited on : 2025-07-16  
Resolution : 2.30 Å(reported)

This is a Full wwPDB X-ray Structure Validation Report for a publicly released PDB entry.

We welcome your comments at [validation@mail.wwpdb.org](mailto:validation@mail.wwpdb.org)

A user guide is available at

<https://www.wwpdb.org/validation/2017/XrayValidationReportHelp>

with specific help available everywhere you see the ⓘ symbol.

The types of validation reports are described at

<http://www.wwpdb.org/validation/2017/FAQs#types>.

---

The following versions of software and data (see [references ⓘ](#)) were used in the production of this report:

MolProbity : 4-5-2 with Phenix2.0  
Mogul : 1.8.4, CSD as541be (2020)  
Xtrriage (Phenix) : 2.0  
EDS : 3.0  
buster-report : 1.1.7 (2018)  
Percentile statistics : 20231227.v01 (using entries in the PDB archive December 27th 2023)  
CCP4 : 9.0.010 (Gargrove)  
Density-Fitness : 1.0.12  
Ideal geometry (proteins) : Engh & Huber (2001)  
Ideal geometry (DNA, RNA) : Parkinson et al. (1996)  
Validation Pipeline (wwPDB-VP) : 2.47

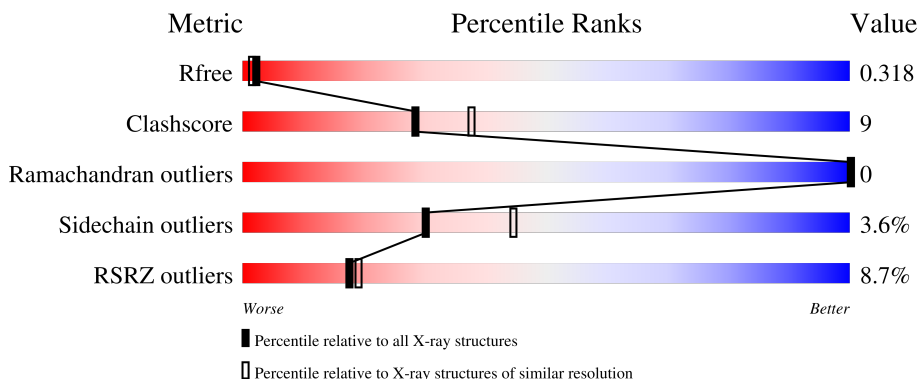
# 1 Overall quality at a glance i

The following experimental techniques were used to determine the structure:

*X-RAY DIFFRACTION*

The reported resolution of this entry is 2.30 Å.

Percentile scores (ranging between 0-100) for global validation metrics of the entry are shown in the following graphic. The table shows the number of entries on which the scores are based.



Metric	Whole archive (#Entries)	Similar resolution (#Entries, resolution range(Å))
$R_{free}$	164625	5963 (2.30-2.30)
Clashscore	180529	6698 (2.30-2.30)
Ramachandran outliers	177936	6640 (2.30-2.30)
Sidechain outliers	177891	6640 (2.30-2.30)
RSRZ outliers	164620	5963 (2.30-2.30)

The table below summarises the geometric issues observed across the polymeric chains and their fit to the electron density. The red, orange, yellow and green segments of the lower bar indicate the fraction of residues that contain outliers for  $\geq 3$ , 2, 1 and 0 types of geometric quality criteria respectively. A grey segment represents the fraction of residues that are not modelled. The numeric value for each fraction is indicated below the corresponding segment, with a dot representing fractions  $\leq 5\%$ . The upper red bar (where present) indicates the fraction of residues that have poor fit to the electron density. The numeric value is given above the bar.

Mol	Chain	Length	Quality of chain
1	A	215	<div style="display: flex; align-items: center;"> <div style="width: 5%; height: 10px; background-color: red; margin-right: 5px;"></div> <div style="width: 79%; height: 10px; background-color: green; margin-right: 5px;"></div> <div style="width: 12%; height: 10px; background-color: yellow; margin-right: 5px;"></div> <div style="width: 8%; height: 10px; background-color: grey;"></div> </div>
1	B	215	<div style="display: flex; align-items: center;"> <div style="width: 6%; height: 10px; background-color: red; margin-right: 5px;"></div> <div style="width: 74%; height: 10px; background-color: green; margin-right: 5px;"></div> <div style="width: 15%; height: 10px; background-color: yellow; margin-right: 5px;"></div> <div style="width: 8%; height: 10px; background-color: grey;"></div> </div>
1	C	215	<div style="display: flex; align-items: center;"> <div style="width: 13%; height: 10px; background-color: red; margin-right: 5px;"></div> <div style="width: 75%; height: 10px; background-color: green; margin-right: 5px;"></div> <div style="width: 15%; height: 10px; background-color: yellow; margin-right: 5px;"></div> <div style="width: 9%; height: 10px; background-color: grey;"></div> </div>
1	D	215	<div style="display: flex; align-items: center;"> <div style="width: 8%; height: 10px; background-color: red; margin-right: 5px;"></div> <div style="width: 78%; height: 10px; background-color: green; margin-right: 5px;"></div> <div style="width: 13%; height: 10px; background-color: yellow; margin-right: 5px;"></div> <div style="width: 9%; height: 10px; background-color: grey;"></div> </div>

## 2 Entry composition i

There are 4 unique types of molecules in this entry. The entry contains 6794 atoms, of which 0 are hydrogens and 0 are deuteriums.

In the tables below, the ZeroOcc column contains the number of atoms modelled with zero occupancy, the AltConf column contains the number of residues with at least one atom in alternate conformation and the Trace column contains the number of residues modelled with at most 2 atoms.

- Molecule 1 is a protein called Probable transcriptional regulator.

Mol	Chain	Residues	Atoms					ZeroOcc	AltConf	Trace
			Total	C	N	O	S			
1	A	197	1516	969	280	265	2	0	3	0
1	B	197	1526	976	282	266	2	0	5	0
1	C	196	1522	973	282	265	2	0	5	0
1	D	196	1520	971	281	266	2	0	5	0

There are 28 discrepancies between the modelled and reference sequences:

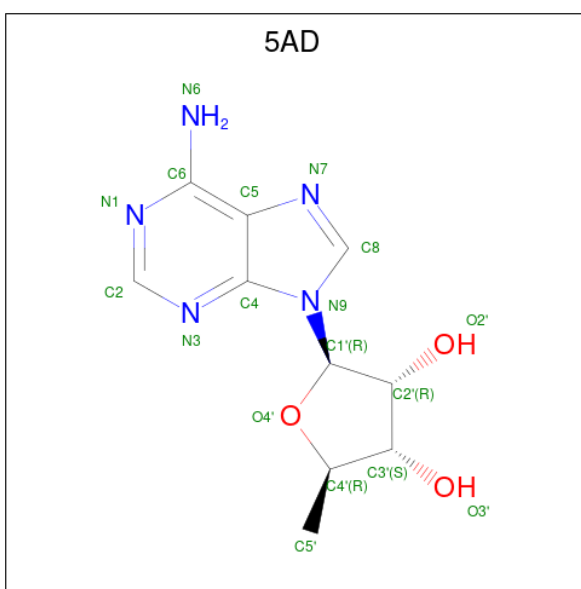
Chain	Residue	Modelled	Actual	Comment	Reference
A	286	GLY	-	expression tag	UNP Q746J7
A	287	HIS	-	expression tag	UNP Q746J7
A	288	HIS	-	expression tag	UNP Q746J7
A	289	HIS	-	expression tag	UNP Q746J7
A	290	HIS	-	expression tag	UNP Q746J7
A	291	HIS	-	expression tag	UNP Q746J7
A	292	HIS	-	expression tag	UNP Q746J7
B	286	GLY	-	expression tag	UNP Q746J7
B	287	HIS	-	expression tag	UNP Q746J7
B	288	HIS	-	expression tag	UNP Q746J7
B	289	HIS	-	expression tag	UNP Q746J7
B	290	HIS	-	expression tag	UNP Q746J7
B	291	HIS	-	expression tag	UNP Q746J7
B	292	HIS	-	expression tag	UNP Q746J7
C	286	GLY	-	expression tag	UNP Q746J7
C	287	HIS	-	expression tag	UNP Q746J7
C	288	HIS	-	expression tag	UNP Q746J7
C	289	HIS	-	expression tag	UNP Q746J7
C	290	HIS	-	expression tag	UNP Q746J7
C	291	HIS	-	expression tag	UNP Q746J7
C	292	HIS	-	expression tag	UNP Q746J7

*Continued on next page...*

Continued from previous page...

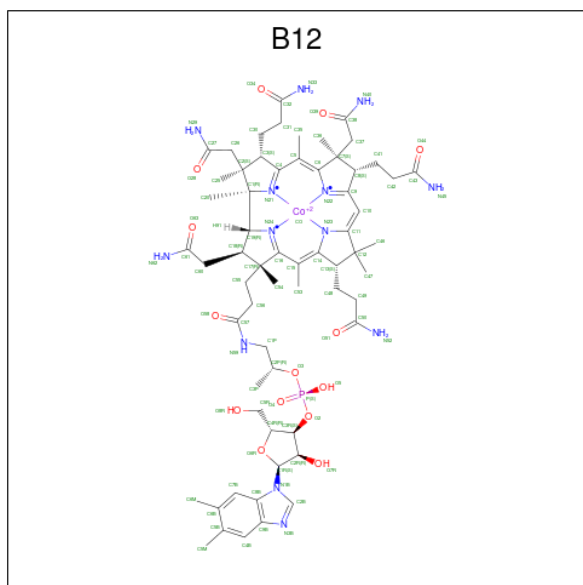
Chain	Residue	Modelled	Actual	Comment	Reference
D	286	GLY	-	expression tag	UNP Q746J7
D	287	HIS	-	expression tag	UNP Q746J7
D	288	HIS	-	expression tag	UNP Q746J7
D	289	HIS	-	expression tag	UNP Q746J7
D	290	HIS	-	expression tag	UNP Q746J7
D	291	HIS	-	expression tag	UNP Q746J7
D	292	HIS	-	expression tag	UNP Q746J7

- Molecule 2 is 5'-DEOXYADENOSINE (CCD ID: 5AD) (formula: C<sub>10</sub>H<sub>13</sub>N<sub>5</sub>O<sub>3</sub>) (labeled as "Ligand of Interest" by depositor).



Mol	Chain	Residues	Atoms				ZeroOcc	AltConf
			Total	C	N	O		
2	A	1	Total	C	N	O	0	0
			18	10	5	3		
2	B	1	Total	C	N	O	0	0
			18	10	5	3		
2	C	1	Total	C	N	O	0	0
			18	10	5	3		
2	D	1	Total	C	N	O	0	0
			18	10	5	3		

- Molecule 3 is COBALAMIN (CCD ID: B12) (formula: C<sub>62</sub>H<sub>89</sub>CoN<sub>13</sub>O<sub>14</sub>P) (labeled as "Ligand of Interest" by depositor).

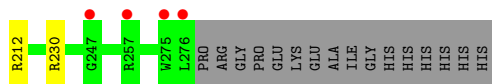


Mol	Chain	Residues	Atoms					ZeroOcc	AltConf	
			Total	C	Co	N	O			P
3	A	1	Total 91	C 62	Co 1	N 13	O 14	P 1	0	0
3	B	1	Total 91	C 62	Co 1	N 13	O 14	P 1	0	0
3	C	1	Total 91	C 62	Co 1	N 13	O 14	P 1	0	0
3	D	1	Total 91	C 62	Co 1	N 13	O 14	P 1	0	0

- Molecule 4 is water.

Mol	Chain	Residues	Atoms		ZeroOcc	AltConf
4	A	83	Total 83	O 83	0	0
4	B	70	Total 70	O 70	0	0
4	C	56	Total 56	O 56	0	0
4	D	65	Total 65	O 65	0	0





## 4 Data and refinement statistics

Property	Value	Source
Space group	P 21 21 21	Depositor
Cell constants a, b, c, $\alpha$ , $\beta$ , $\gamma$	64.80Å 71.08Å 207.27Å 90.00° 90.00° 90.00°	Depositor
Resolution (Å)	29.31 – 2.30 29.31 – 2.30	Depositor EDS
% Data completeness (in resolution range)	99.9 (29.31-2.30) 99.8 (29.31-2.30)	Depositor EDS
$R_{merge}$	(Not available)	Depositor
$R_{sym}$	(Not available)	Depositor
$\langle I/\sigma(I) \rangle$ <sup>1</sup>	1.25 (at 2.29Å)	Xtrriage
Refinement program	PHENIX 1.19.2_4158	Depositor
R, $R_{free}$	0.270 , 0.319 0.270 , 0.318	Depositor DCC
$R_{free}$ test set	2000 reflections (4.61%)	wwPDB-VP
Wilson B-factor (Å <sup>2</sup> )	50.3	Xtrriage
Anisotropy	0.267	Xtrriage
Bulk solvent $k_{sol}$ (e/Å <sup>3</sup> ), $B_{sol}$ (Å <sup>2</sup> )	0.32 , 45.8	EDS
L-test for twinning <sup>2</sup>	$\langle  L  \rangle = 0.53$ , $\langle L^2 \rangle = 0.38$	Xtrriage
Estimated twinning fraction	No twinning to report.	Xtrriage
$F_o, F_c$ correlation	0.93	EDS
Total number of atoms	6794	wwPDB-VP
Average B, all atoms (Å <sup>2</sup> )	54.0	wwPDB-VP

Xtrriage's analysis on translational NCS is as follows: *The largest off-origin peak in the Patterson function is 4.34% of the height of the origin peak. No significant pseudotranslation is detected.*

<sup>1</sup>Intensities estimated from amplitudes.

<sup>2</sup>Theoretical values of  $\langle |L| \rangle$ ,  $\langle L^2 \rangle$  for acentric reflections are 0.5, 0.333 respectively for untwinned datasets, and 0.375, 0.2 for perfectly twinned datasets.



## 5 Model quality [i](#)

### 5.1 Standard geometry [i](#)

Bond lengths and bond angles in the following residue types are not validated in this section: B12, 5AD

The Z score for a bond length (or angle) is the number of standard deviations the observed value is removed from the expected value. A bond length (or angle) with  $|Z| > 5$  is considered an outlier worth inspection. RMSZ is the root-mean-square of all Z scores of the bond lengths (or angles).

Mol	Chain	Bond lengths		Bond angles	
		RMSZ	# Z  >5	RMSZ	# Z  >5
1	A	0.26	0/1554	0.40	0/2112
1	B	0.26	0/1561	0.41	0/2120
1	C	0.25	0/1557	0.41	0/2113
1	D	0.23	0/1554	0.39	0/2110
All	All	0.25	0/6226	0.40	0/8455

There are no bond length outliers.

There are no bond angle outliers.

There are no chirality outliers.

There are no planarity outliers.

### 5.2 Too-close contacts [i](#)

In the following table, the Non-H and H(model) columns list the number of non-hydrogen atoms and hydrogen atoms in the chain respectively. The H(added) column lists the number of hydrogen atoms added and optimized by MolProbity. The Clashes column lists the number of clashes within the asymmetric unit, whereas Symm-Clashes lists symmetry-related clashes.

Mol	Chain	Non-H	H(model)	H(added)	Clashes	Symm-Clashes
1	A	1516	0	1551	17	0
1	B	1526	0	1557	28	0
1	C	1522	0	1557	22	0
1	D	1520	0	1552	18	0
2	A	18	0	13	6	0
2	B	18	0	12	5	0
2	C	18	0	12	4	0
2	D	18	0	12	3	0
3	A	91	0	88	12	0

*Continued on next page...*

*Continued from previous page...*

Mol	Chain	Non-H	H(model)	H(added)	Clashes	Symm-Clashes
3	B	91	0	88	9	0
3	C	91	0	88	9	0
3	D	91	0	88	13	0
4	A	83	0	0	1	0
4	B	70	0	0	2	0
4	C	56	0	0	2	0
4	D	65	0	0	2	0
All	All	6794	0	6618	114	0

The all-atom clashscore is defined as the number of clashes found per 1000 atoms (including hydrogen atoms). The all-atom clashscore for this structure is 9.

All (114) close contacts within the same asymmetric unit are listed below, sorted by their clash magnitude.

Atom-1	Atom-2	Interatomic distance (Å)	Clash overlap (Å)
1:C:212[B]:ARG:HH2	1:C:242:PRO:HD3	1.38	0.88
1:B:107:LEU:HA	1:B:115:VAL:HG11	1.69	0.73
2:A:401:5AD:H4'	3:A:402:B12:N21	2.05	0.71
1:D:83:LEU:HD11	1:D:102:LEU:HD22	1.73	0.71
3:C:402:B12:N29	4:C:502:HOH:O	2.30	0.65
2:A:401:5AD:H5'3	3:A:402:B12:H261	1.81	0.62
3:C:402:B12:H362	3:C:402:B12:H351	1.81	0.62
1:D:179:ILE:HG22	3:D:402:B12:H3P3	1.82	0.62
1:B:213:ARG:NH1	4:B:501:HOH:O	2.18	0.62
1:A:178:GLU:HB2	1:A:197:TYR:OH	2.00	0.61
1:C:232:LEU:O	1:C:258:ARG:NH2	2.33	0.61
1:C:269:GLY:HA2	1:C:272:GLU:HG3	1.82	0.60
1:C:141:GLU:OE2	3:C:402:B12:H532	2.02	0.60
3:A:402:B12:H401	3:A:402:B12:H8	1.67	0.59
1:A:81:GLU:N	4:A:502:HOH:O	2.35	0.58
3:D:402:B12:H531	3:D:402:B12:H552	1.86	0.57
3:B:402:B12:H362	3:B:402:B12:H351	1.86	0.57
1:A:208:ARG:HB2	1:A:240:LEU:HD23	1.87	0.56
1:B:227:GLU:HG3	1:B:230[B]:ARG:NH1	2.21	0.56
1:C:178:GLU:HG2	3:C:402:B12:H522	1.68	0.56
1:C:198:LEU:HD23	1:D:143:LEU:HD13	1.88	0.56
1:A:121:LEU:HD21	1:A:183:LEU:HD11	1.89	0.55
1:B:124:LEU:HD11	1:B:179:ILE:HD13	1.88	0.55
1:A:210:LEU:HD13	1:B:140:GLU:HG3	1.88	0.54
2:A:401:5AD:H4'	3:A:402:B12:N24	2.22	0.54
3:A:402:B12:H351	3:A:402:B12:H362	1.90	0.54

*Continued on next page...*

*Continued from previous page...*

Atom-1	Atom-2	Interatomic distance (Å)	Clash overlap (Å)
1:D:110:TRP:HB3	1:D:114:GLY:HA3	1.90	0.53
1:B:167:VAL:HG22	1:B:218:ALA:HB3	1.91	0.53
3:D:402:B12:H362	3:D:402:B12:H351	1.91	0.53
1:B:141:GLU:OE1	2:B:401:5AD:O2'	2.27	0.52
1:C:168:LEU:HB2	1:C:219:VAL:HG22	1.92	0.52
1:A:188:LEU:HB3	1:A:193:VAL:HB	1.92	0.51
1:A:178:GLU:HG2	3:A:402:B12:H522	1.75	0.51
1:D:108:ARG:HD2	4:D:555:HOH:O	2.10	0.51
1:D:141:GLU:OE1	1:D:142:HIS:ND1	2.43	0.51
1:B:125[B]:ARG:O	1:B:129:GLU:HG2	2.12	0.50
1:C:255:GLU:OE1	1:C:258:ARG:NH1	2.44	0.50
2:D:401:5AD:H5'3	3:D:402:B12:H261	1.94	0.50
1:B:254:GLU:H	1:B:254:GLU:CD	2.21	0.49
1:B:129:GLU:HB3	1:B:133:ARG:NH1	2.28	0.49
2:B:401:5AD:H5'3	3:B:402:B12:H261	1.95	0.49
1:B:160:GLY:O	1:B:189:ARG:HD3	2.14	0.48
1:A:127:VAL:HG13	1:A:136:ILE:HD11	1.95	0.48
1:B:178:GLU:HG2	3:B:402:B12:H522	1.78	0.48
1:D:141:GLU:OE2	3:D:402:B12:H532	2.14	0.48
1:C:162:PRO:O	1:C:194:PRO:HB3	2.13	0.48
1:C:131:TRP:CZ2	2:C:401:5AD:H8	2.50	0.47
3:A:402:B12:H541	3:A:402:B12:H602	1.74	0.47
1:A:131:TRP:CZ2	2:A:401:5AD:H8	2.50	0.47
1:B:104:ARG:NH1	1:C:109:PHE:O	2.47	0.47
2:C:401:5AD:H5'3	3:C:402:B12:H261	1.97	0.47
1:D:121:LEU:HB2	1:D:122:PRO:HD3	1.98	0.46
1:B:113:GLU:OE2	1:B:190:ARG:HD3	2.16	0.46
2:D:401:5AD:H5'1	3:D:402:B12:C4	2.46	0.46
2:D:401:5AD:O4'	3:D:402:B12:N22	2.48	0.46
3:D:402:B12:H253	3:D:402:B12:H301	1.83	0.46
3:C:402:B12:H363	3:C:402:B12:H411	1.64	0.46
3:C:402:B12:H91	3:C:402:B12:H262	1.66	0.46
3:D:402:B12:H1R	4:D:537:HOH:O	2.16	0.46
3:B:402:B12:H8	3:B:402:B12:H401	1.80	0.45
1:D:208[B]:ARG:NH2	1:D:212[B]:ARG:HB2	2.31	0.45
3:A:402:B12:H363	3:A:402:B12:H411	1.68	0.45
1:A:264:MET:HE3	1:A:264:MET:HB2	1.90	0.45
1:B:179:ILE:HG22	3:B:402:B12:H3P3	1.97	0.45
3:D:402:B12:H201	3:D:402:B12:H18	1.86	0.45
1:A:79[B]:ARG:HB3	1:A:80:PRO:HD3	1.99	0.44
3:A:402:B12:H8	3:A:402:B12:N40	2.29	0.44

*Continued on next page...*

*Continued from previous page...*

Atom-1	Atom-2	Interatomic distance (Å)	Clash overlap (Å)
1:D:177:HIS:CD2	3:D:402:B12:H202	2.53	0.44
1:D:178:GLU:HB2	1:D:197:TYR:OH	2.17	0.44
1:C:178:GLU:HB2	1:C:197:TYR:OH	2.17	0.44
1:C:268[B]:LYS:HB3	1:C:268[B]:LYS:NZ	2.32	0.44
1:C:238:LYS:HG3	1:C:239:ASP:N	2.33	0.44
2:A:401:5AD:O4'	3:A:402:B12:N22	2.51	0.44
1:D:166:PRO:HA	1:D:194:PRO:HB2	1.99	0.43
1:B:100:GLU:O	1:B:104:ARG:HG2	2.19	0.43
1:D:206:ASP:OD1	1:D:206:ASP:N	2.51	0.43
1:B:133:ARG:HH21	1:B:135:GLU:CD	2.26	0.43
1:C:87:LEU:HD23	1:C:123:VAL:HG21	2.01	0.43
2:C:401:5AD:H5'1	3:C:402:B12:C5	2.48	0.43
1:C:140:GLU:HG3	1:D:210:LEU:HD13	2.01	0.42
1:A:176[A]:ARG:HB2	3:A:402:B12:C43	2.49	0.42
1:A:173:PRO:O	1:A:228:PRO:HB3	2.18	0.42
1:C:204:LEU:HD12	1:C:204:LEU:H	1.85	0.42
1:D:121:LEU:HD21	1:D:183:LEU:HD11	2.02	0.42
1:A:162:PRO:O	1:A:194:PRO:HB3	2.19	0.42
1:C:133:ARG:HE	1:C:135:GLU:CD	2.26	0.42
1:B:114:GLY:N	4:B:506:HOH:O	2.38	0.42
1:D:113:GLU:OE1	1:D:113:GLU:N	2.53	0.42
3:D:402:B12:H473	3:D:402:B12:H481	1.87	0.42
1:B:82:ASP:O	1:B:85:THR:HG22	2.20	0.41
1:C:126:GLU:HB2	4:C:506:HOH:O	2.20	0.41
2:B:401:5AD:O2'	3:B:402:B12:H462	2.20	0.41
1:D:123:VAL:O	1:D:127:VAL:HG23	2.20	0.41
1:B:121:LEU:HD21	1:B:183:LEU:HD11	2.00	0.41
3:B:402:B12:H253	3:B:402:B12:H301	1.92	0.41
1:C:243:ARG:HG2	1:C:243:ARG:HH11	1.85	0.41
1:B:141:GLU:CD	1:B:141:GLU:C	2.89	0.41
1:B:96:LEU:HD23	1:B:96:LEU:HA	1.87	0.41
1:B:131:TRP:CZ2	2:B:401:5AD:H5'2	2.55	0.41
1:A:83:LEU:HD23	1:A:83:LEU:HA	1.87	0.41
2:B:401:5AD:C5'	3:B:402:B12:H261	2.51	0.41
3:B:402:B12:H201	3:B:402:B12:H18	1.72	0.41
1:A:163:PRO:HG2	1:C:275:TRP:HZ2	1.86	0.41
1:D:83:LEU:CD1	1:D:102:LEU:HD22	2.48	0.41
3:D:402:B12:H261	3:D:402:B12:H91	1.83	0.41
1:B:184:ALA:HA	1:B:267:LEU:HD22	2.02	0.40
1:B:124:LEU:HD23	1:B:124:LEU:HA	1.80	0.40
2:C:401:5AD:H5'1	3:C:402:B12:C4	2.52	0.40

*Continued on next page...*

Continued from previous page...

Atom-1	Atom-2	Interatomic distance (Å)	Clash overlap (Å)
2:A:401:5AD:H8	2:A:401:5AD:H5'2	2.02	0.40
1:B:121:LEU:HB2	1:B:122:PRO:HD3	2.03	0.40
1:C:204:LEU:HB2	1:C:205:PRO:HD3	2.02	0.40
1:A:141:GLU:OE2	3:A:402:B12:H532	2.21	0.40
1:B:111:GLY:O	1:B:115:VAL:HG13	2.21	0.40
1:B:129:GLU:HB3	1:B:133:ARG:HH12	1.87	0.40

There are no symmetry-related clashes.

## 5.3 Torsion angles [i](#)

### 5.3.1 Protein backbone [i](#)

In the following table, the Percentiles column shows the percent Ramachandran outliers of the chain as a percentile score with respect to all X-ray entries followed by that with respect to entries of similar resolution.

The Analysed column shows the number of residues for which the backbone conformation was analysed, and the total number of residues.

Mol	Chain	Analysed	Favoured	Allowed	Outliers	Percentiles	
1	A	197/215 (92%)	193 (98%)	4 (2%)	0	100	100
1	B	199/215 (93%)	195 (98%)	4 (2%)	0	100	100
1	C	198/215 (92%)	191 (96%)	7 (4%)	0	100	100
1	D	198/215 (92%)	194 (98%)	4 (2%)	0	100	100
All	All	792/860 (92%)	773 (98%)	19 (2%)	0	100	100

There are no Ramachandran outliers to report.

### 5.3.2 Protein sidechains [i](#)

In the following table, the Percentiles column shows the percent sidechain outliers of the chain as a percentile score with respect to all X-ray entries followed by that with respect to entries of similar resolution.

The Analysed column shows the number of residues for which the sidechain conformation was analysed, and the total number of residues.

Mol	Chain	Analysed	Rotameric	Outliers	Percentiles	
1	A	148/161 (92%)	143 (97%)	5 (3%)	32	47
1	B	148/161 (92%)	140 (95%)	8 (5%)	18	27
1	C	148/161 (92%)	142 (96%)	6 (4%)	26	39
1	D	148/161 (92%)	143 (97%)	5 (3%)	32	47
All	All	592/644 (92%)	568 (96%)	24 (4%)	30	39

All (24) residues with a non-rotameric sidechain are listed below:

Mol	Chain	Res	Type
1	A	79[A]	ARG
1	A	79[B]	ARG
1	A	179	ILE
1	A	257	ARG
1	A	268	LYS
1	B	82	ASP
1	B	100	GLU
1	B	127	VAL
1	B	142	HIS
1	B	226	SER
1	B	230[A]	ARG
1	B	230[B]	ARG
1	B	254	GLU
1	C	93	ARG
1	C	179	ILE
1	C	208[A]	ARG
1	C	208[B]	ARG
1	C	239	ASP
1	C	274	LEU
1	D	107	LEU
1	D	120	LEU
1	D	149	ARG
1	D	179	ILE
1	D	230	ARG

Sometimes sidechains can be flipped to improve hydrogen bonding and reduce clashes. All (2) such sidechains are listed below:

Mol	Chain	Res	Type
1	B	187	HIS
1	C	118	HIS

### 5.3.3 RNA [i](#)

There are no RNA molecules in this entry.

## 5.4 Non-standard residues in protein, DNA, RNA chains [i](#)

There are no non-standard protein/DNA/RNA residues in this entry.

## 5.5 Carbohydrates [i](#)

There are no oligosaccharides in this entry.

## 5.6 Ligand geometry [i](#)

8 ligands are modelled in this entry.

In the following table, the Counts columns list the number of bonds (or angles) for which Mogul statistics could be retrieved, the number of bonds (or angles) that are observed in the model and the number of bonds (or angles) that are defined in the Chemical Component Dictionary. The Link column lists molecule types, if any, to which the group is linked. The Z score for a bond length (or angle) is the number of standard deviations the observed value is removed from the expected value. A bond length (or angle) with  $|Z| > 2$  is considered an outlier worth inspection. RMSZ is the root-mean-square of all Z scores of the bond lengths (or angles).

Mol	Type	Chain	Res	Link	Bond lengths			Bond angles		
					Counts	RMSZ	# Z  > 2	Counts	RMSZ	# Z  > 2
3	B12	A	402	1	90,101,101	1.03	4 (4%)	137,166,166	1.71	28 (20%)
2	5AD	C	401	3	17,20,20	1.05	1 (5%)	15,30,30	2.58	3 (20%)
2	5AD	D	401	-	17,20,20	1.21	2 (11%)	15,30,30	2.49	5 (33%)
2	5AD	B	401	3	17,20,20	1.47	3 (17%)	15,30,30	2.35	7 (46%)
3	B12	B	402	1,2	90,101,101	1.07	6 (6%)	137,166,166	1.68	27 (19%)
3	B12	D	402	1	90,101,101	1.05	4 (4%)	137,166,166	1.70	23 (16%)
3	B12	C	402	1,2	90,101,101	1.03	4 (4%)	137,166,166	1.79	27 (19%)
2	5AD	A	401	-	17,20,20	1.57	4 (23%)	15,30,30	2.59	10 (66%)

In the following table, the Chirals column lists the number of chiral outliers, the number of chiral centers analysed, the number of these observed in the model and the number defined in the Chemical Component Dictionary. Similar counts are reported in the Torsion and Rings columns. '-' means no outliers of that kind were identified.

Mol	Type	Chain	Res	Link	Chirals	Torsions	Rings
3	B12	A	402	1	-	18/52/223/223	0/3/11/11
2	5AD	C	401	3	-	0/0/20/20	0/3/3/3
2	5AD	D	401	-	-	0/0/20/20	0/3/3/3
2	5AD	B	401	3	-	0/0/20/20	0/3/3/3
3	B12	B	402	1,2	-	14/52/223/223	0/3/11/11
3	B12	D	402	1	-	13/52/223/223	0/3/11/11
3	B12	C	402	1,2	-	17/52/223/223	0/3/11/11
2	5AD	A	401	-	-	0/0/20/20	0/3/3/3

All (28) bond length outliers are listed below:

Mol	Chain	Res	Type	Atoms	Z	Observed(Å)	Ideal(Å)
3	A	402	B12	C14-N23	3.79	1.39	1.35
3	B	402	B12	C14-N23	3.77	1.39	1.35
3	D	402	B12	C14-N23	3.56	1.39	1.35
2	B	401	5AD	C5-C4	3.48	1.50	1.40
2	A	401	5AD	C5-C4	3.41	1.50	1.40
3	C	402	B12	C14-N23	3.05	1.39	1.35
2	D	401	5AD	C5-C4	2.98	1.48	1.40
3	B	402	B12	C54-C17	2.83	1.59	1.54
2	B	401	5AD	C2-N3	2.83	1.36	1.32
3	A	402	B12	C35-C5	2.82	1.56	1.50
3	A	402	B12	C54-C17	2.76	1.59	1.54
3	D	402	B12	C35-C5	2.74	1.56	1.50
3	C	402	B12	C54-C17	2.63	1.59	1.54
3	B	402	B12	C35-C5	2.61	1.56	1.50
3	D	402	B12	C54-C17	2.59	1.59	1.54
2	A	401	5AD	O4'-C1'	2.57	1.44	1.41
3	C	402	B12	C35-C5	2.55	1.56	1.50
2	A	401	5AD	C2-N3	2.52	1.36	1.32
2	C	401	5AD	C5-C4	2.41	1.47	1.40
3	D	402	B12	C55-C17	-2.31	1.49	1.54
2	A	401	5AD	C6-C5	2.31	1.51	1.43
2	D	401	5AD	C2-N3	2.27	1.35	1.32
3	B	402	B12	C55-C17	-2.10	1.49	1.54
3	A	402	B12	C55-C17	-2.09	1.49	1.54
3	B	402	B12	C6B-C5B	2.07	1.46	1.40
3	C	402	B12	C48-C13	2.06	1.59	1.54
2	B	401	5AD	O4'-C1'	2.01	1.43	1.41
3	B	402	B12	C53-C15	2.00	1.55	1.50

All (130) bond angle outliers are listed below:



Mol	Chain	Res	Type	Atoms	Z	Observed(°)	Ideal(°)
2	D	401	5AD	C5'-C4'-C3'	-7.56	107.75	115.70
2	C	401	5AD	C5'-C4'-C3'	-7.26	108.08	115.70
3	A	402	B12	C7B-C8B-C9B	5.89	126.37	120.54
3	C	402	B12	C7B-C8B-C9B	5.76	126.24	120.54
3	C	402	B12	C2P-C1P-N59	-5.67	104.57	112.93
3	C	402	B12	C1-C19-C18	-5.34	113.11	121.88
3	B	402	B12	C1-C19-C18	-5.26	113.24	121.88
3	D	402	B12	C2P-C1P-N59	-5.15	105.34	112.93
3	A	402	B12	C18-C17-C16	5.02	106.76	100.67
3	D	402	B12	C1P-N59-C57	-5.01	111.77	122.69
3	C	402	B12	C18-C17-C16	4.89	106.61	100.67
3	A	402	B12	C54-C17-C18	-4.88	105.78	112.98
2	A	401	5AD	C5'-C4'-C3'	-4.86	110.59	115.70
2	B	401	5AD	C5'-C4'-C3'	-4.84	110.62	115.70
3	D	402	B12	C18-C17-C16	4.74	106.42	100.67
3	B	402	B12	C7B-C8B-C9B	4.61	125.10	120.54
3	D	402	B12	C7B-C8B-C9B	4.57	125.06	120.54
3	D	402	B12	C55-C17-C16	4.42	125.38	116.65
3	D	402	B12	C1-C19-C18	-4.37	114.70	121.88
3	C	402	B12	C54-C17-C18	-4.22	106.75	112.98
2	C	401	5AD	N3-C2-N1	-4.12	122.24	128.68
3	B	402	B12	C18-C17-C16	4.10	105.65	100.67
3	B	402	B12	C55-C17-C16	4.08	124.70	116.65
3	B	402	B12	C16-C15-C14	-4.05	115.10	121.25
3	B	402	B12	C15-C16-N24	4.04	128.24	122.42
3	D	402	B12	C56-C55-C17	-3.87	108.05	115.52
3	C	402	B12	C26-C2-C1	-3.81	104.08	110.01
3	A	402	B12	C16-C15-C14	-3.77	115.53	121.25
3	C	402	B12	C54-C17-C16	-3.76	92.86	112.40
3	C	402	B12	C55-C17-C16	3.76	124.08	116.65
3	B	402	B12	C20-C1-C19	-3.75	105.75	109.36
2	A	401	5AD	C4-C5-N7	-3.69	105.56	109.40
3	A	402	B12	C55-C17-C16	3.66	123.87	116.65
3	A	402	B12	C1P-N59-C57	-3.63	114.79	122.69
3	C	402	B12	C1P-N59-C57	-3.61	114.82	122.69
3	C	402	B12	C5M-C5B-C6B	-3.60	113.36	120.74
3	B	402	B12	C54-C17-C16	-3.57	93.85	112.40
3	D	402	B12	C16-C15-C14	-3.56	115.85	121.25
3	B	402	B12	C20-C1-N21	3.54	116.07	110.27
3	D	402	B12	C54-C17-C16	-3.53	94.09	112.40
3	C	402	B12	C16-C15-C14	-3.51	115.92	121.25
3	C	402	B12	C18-C19-N24	3.50	107.64	102.31
2	A	401	5AD	O3'-C3'-C4'	3.46	118.94	110.47

*Continued on next page...*

*Continued from previous page...*

Mol	Chain	Res	Type	Atoms	Z	Observed(°)	Ideal(°)
2	B	401	5AD	C3'-C2'-C1'	3.44	106.16	100.98
3	B	402	B12	C1P-N59-C57	-3.44	115.20	122.69
3	A	402	B12	C5M-C5B-C6B	-3.39	113.80	120.74
3	D	402	B12	C2-C3-C4	3.36	105.45	101.63
3	D	402	B12	C15-C16-N24	3.35	127.25	122.42
3	B	402	B12	C54-C17-C18	-3.34	108.06	112.98
3	C	402	B12	C15-C16-N24	3.31	127.19	122.42
3	D	402	B12	C13-C14-C15	-3.31	119.27	124.32
3	C	402	B12	C20-C1-N21	3.29	115.67	110.27
3	A	402	B12	C1-C19-C18	-3.25	116.55	121.88
3	A	402	B12	C54-C17-C16	-3.23	95.64	112.40
3	B	402	B12	C17-C16-N24	-3.19	106.24	111.15
3	A	402	B12	C2P-C1P-N59	-3.19	108.24	112.93
3	B	402	B12	C13-C14-C15	-3.14	119.53	124.32
3	A	402	B12	C41-C8-C9	-3.12	105.70	111.19
3	A	402	B12	C17-C16-N24	-3.11	106.35	111.15
3	C	402	B12	C5B-C4B-C9B	-3.09	116.85	121.22
2	C	401	5AD	O4'-C1'-C2'	-3.06	102.45	106.93
3	A	402	B12	C5B-C4B-C9B	-3.02	116.95	121.22
2	B	401	5AD	O3'-C3'-C4'	2.99	117.79	110.47
3	D	402	B12	C17-C16-N24	-2.98	106.56	111.15
3	A	402	B12	C15-C16-N24	2.91	126.61	122.42
2	A	401	5AD	O2'-C2'-C3'	-2.90	102.43	111.82
3	D	402	B12	C5B-C4B-C9B	-2.90	117.11	121.22
3	D	402	B12	C54-C17-C18	-2.89	108.72	112.98
3	C	402	B12	C41-C8-C9	-2.84	106.19	111.19
3	C	402	B12	C2-C26-C27	-2.81	107.33	115.22
3	A	402	B12	C13-C14-C15	-2.80	120.03	124.32
2	A	401	5AD	O3'-C3'-C2'	-2.79	102.79	111.82
2	A	401	5AD	N3-C2-N1	-2.76	124.37	128.68
2	D	401	5AD	C4-C5-N7	-2.75	106.53	109.40
3	C	402	B12	C25-C2-C26	2.75	115.26	109.71
3	B	402	B12	C56-C55-C17	-2.73	110.25	115.52
3	D	402	B12	C18-C19-N24	2.72	106.45	102.31
2	B	401	5AD	O2'-C2'-C3'	-2.72	103.02	111.82
3	D	402	B12	C49-C48-C13	-2.70	106.93	114.73
3	C	402	B12	C13-C14-C15	-2.70	120.19	124.32
3	D	402	B12	C5M-C5B-C6B	-2.68	115.24	120.74
3	A	402	B12	C53-C15-C16	2.67	124.97	120.38
3	A	402	B12	C56-C55-C17	-2.66	110.39	115.52
3	B	402	B12	C5B-C4B-C9B	-2.65	117.47	121.22
2	D	401	5AD	N3-C2-N1	-2.63	124.56	128.68

*Continued on next page...*

*Continued from previous page...*

Mol	Chain	Res	Type	Atoms	Z	Observed(°)	Ideal(°)
3	C	402	B12	C17-C16-N24	-2.58	107.18	111.15
2	B	401	5AD	C4-C5-N7	-2.57	106.72	109.40
3	D	402	B12	C20-C1-N21	2.56	114.47	110.27
3	C	402	B12	C55-C56-C57	-2.54	105.69	111.23
2	A	401	5AD	C5-C6-N6	2.53	124.20	120.35
3	A	402	B12	C49-C48-C13	-2.51	107.48	114.73
3	C	402	B12	C4B-C9B-C8B	-2.48	118.56	121.10
3	B	402	B12	C53-C15-C16	2.48	124.64	120.38
3	A	402	B12	C4B-C5B-C6B	2.43	124.01	119.91
2	A	401	5AD	C1'-N9-C4	-2.40	122.43	126.64
3	A	402	B12	C4B-C9B-C8B	-2.39	118.65	121.10
3	A	402	B12	O28-C27-N29	-2.38	116.01	122.50
3	D	402	B12	C41-C8-C7	-2.37	107.62	114.14
3	B	402	B12	C47-C12-C46	-2.36	105.36	109.35
3	A	402	B12	C2-C3-C4	2.36	104.31	101.63
3	A	402	B12	C18-C19-N24	2.36	105.90	102.31
3	B	402	B12	C41-C8-C9	-2.35	107.06	111.19
3	B	402	B12	C5M-C5B-C6B	-2.34	115.93	120.74
3	B	402	B12	C18-C19-N24	2.32	105.85	102.31
3	A	402	B12	C55-C56-C57	-2.32	106.17	111.23
3	A	402	B12	C36-C7-C37	2.31	114.61	110.80
3	C	402	B12	C49-C48-C13	-2.30	108.10	114.73
3	B	402	B12	C55-C56-C57	-2.29	106.24	111.23
3	C	402	B12	C4B-C5B-C6B	2.28	123.75	119.91
3	B	402	B12	C42-C43-N45	2.27	123.58	116.51
2	B	401	5AD	N3-C2-N1	-2.27	125.13	128.68
3	B	402	B12	O28-C27-N29	-2.27	116.31	122.50
2	B	401	5AD	O3'-C3'-C2'	-2.26	104.51	111.82
3	A	402	B12	C12-C11-C10	-2.24	120.45	123.37
2	A	401	5AD	C3'-C2'-C1'	2.18	104.26	100.98
3	B	402	B12	C31-C32-N33	2.17	123.27	116.51
3	D	402	B12	C53-C15-C16	2.16	124.10	120.38
3	C	402	B12	C42-C43-N45	2.15	123.22	116.51
3	C	402	B12	C3R-C2R-C1R	2.13	104.61	99.89
3	B	402	B12	C35-C5-C4	-2.13	112.45	116.79
3	A	402	B12	C42-C43-N45	2.13	123.13	116.51
3	B	402	B12	C13-C14-N23	2.10	111.96	109.10
2	D	401	5AD	O3'-C3'-C4'	2.10	115.61	110.47
2	D	401	5AD	C3'-C2'-C1'	2.09	104.13	100.98
3	B	402	B12	O2-C3R-C4R	-2.05	102.67	110.08
3	A	402	B12	C31-C30-C3	-2.04	108.83	114.73
3	D	402	B12	C3R-C2R-C1R	2.04	104.41	99.89

*Continued on next page...*

*Continued from previous page...*

Mol	Chain	Res	Type	Atoms	Z	Observed(°)	Ideal(°)
2	A	401	5AD	C2-N1-C6	2.02	122.22	118.75
3	C	402	B12	C13-C14-N23	2.00	111.83	109.10
3	D	402	B12	C4B-C5B-C6B	2.00	123.29	119.91

There are no chirality outliers.

All (62) torsion outliers are listed below:

Mol	Chain	Res	Type	Atoms
3	A	402	B12	N59-C1P-C2P-C3P
3	A	402	B12	N59-C1P-C2P-O3
3	A	402	B12	C1P-C2P-O3-P
3	A	402	B12	C3P-C2P-O3-P
3	A	402	B12	C3R-O2-P-O4
3	A	402	B12	C3R-O2-P-O5
3	B	402	B12	N59-C1P-C2P-C3P
3	B	402	B12	N59-C1P-C2P-O3
3	C	402	B12	N59-C1P-C2P-C3P
3	C	402	B12	N59-C1P-C2P-O3
3	C	402	B12	C1P-C2P-O3-P
3	C	402	B12	C3P-C2P-O3-P
3	C	402	B12	C3R-O2-P-O5
3	C	402	B12	C3R-C4R-C5R-O8R
3	C	402	B12	O6R-C4R-C5R-O8R
3	D	402	B12	C1P-C2P-O3-P
3	D	402	B12	C3R-O2-P-O5
3	D	402	B12	C4-C3-C30-C31
3	A	402	B12	C42-C41-C8-C9
3	A	402	B12	C18-C17-C55-C56
3	D	402	B12	C16-C17-C55-C56
3	C	402	B12	C3R-O2-P-O3
3	D	402	B12	C3R-O2-P-O3
3	D	402	B12	C1-C2-C26-C27
3	D	402	B12	C25-C2-C26-C27
3	D	402	B12	C3P-C2P-O3-P
3	D	402	B12	C2-C3-C30-C31
3	A	402	B12	C55-C56-C57-O58
3	A	402	B12	C3R-O2-P-O3
3	A	402	B12	C4-C3-C30-C31
3	C	402	B12	C42-C41-C8-C9
3	A	402	B12	C55-C56-C57-N59
3	C	402	B12	C2-C3-C30-C31
3	B	402	B12	C4-C3-C30-C31

*Continued on next page...*

*Continued from previous page...*

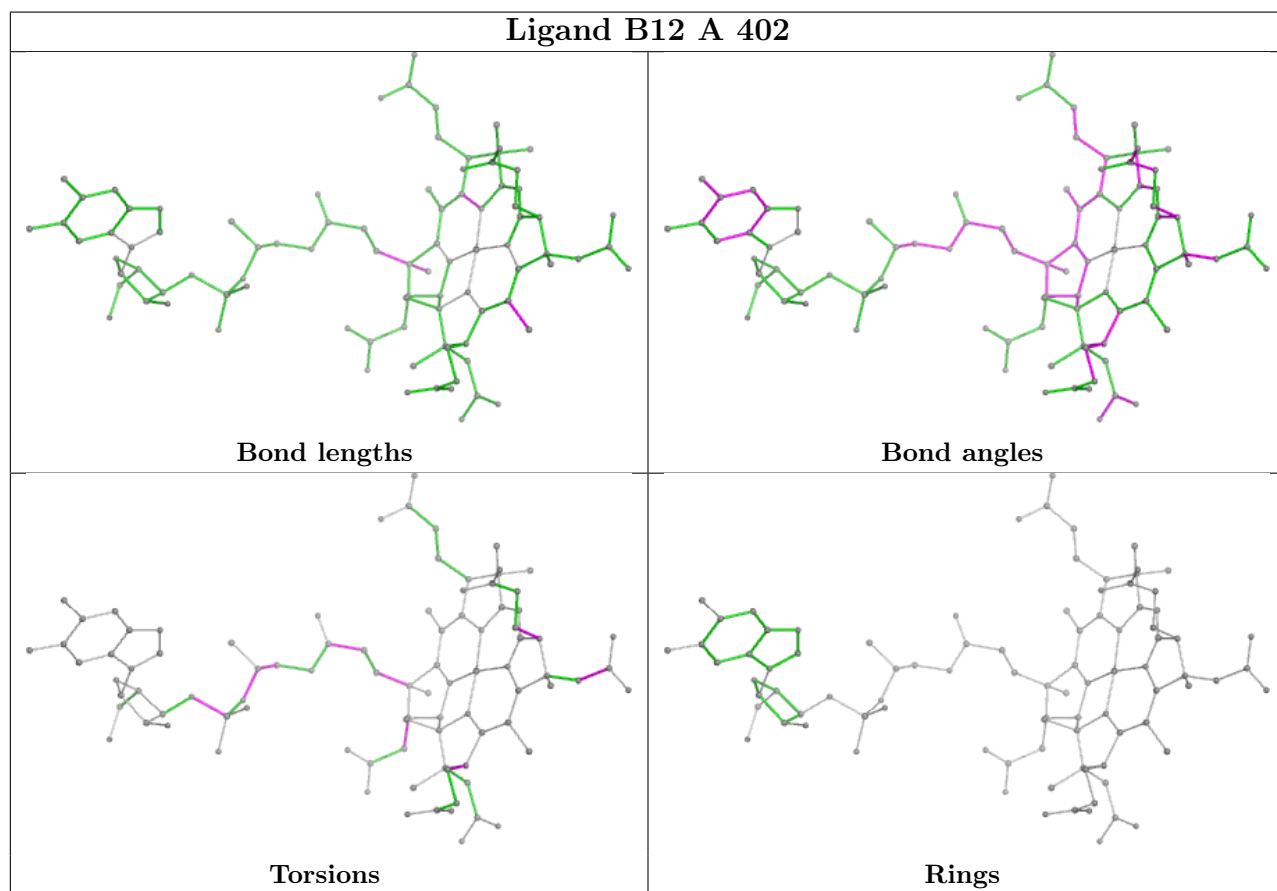
Mol	Chain	Res	Type	Atoms
3	B	402	B12	C42-C41-C8-C9
3	B	402	B12	C2P-O3-P-O2
3	C	402	B12	C3R-O2-P-O4
3	D	402	B12	C3R-O2-P-O4
3	C	402	B12	C4-C3-C30-C31
3	B	402	B12	C55-C56-C57-O58
3	C	402	B12	C55-C56-C57-O58
3	D	402	B12	C3-C2-C26-C27
3	A	402	B12	C7-C37-C38-N40
3	A	402	B12	C2-C3-C30-C31
3	C	402	B12	C55-C56-C57-N59
3	B	402	B12	C55-C56-C57-N59
3	B	402	B12	C7-C37-C38-N40
3	A	402	B12	C7-C37-C38-O39
3	B	402	B12	C7-C37-C38-O39
3	B	402	B12	C3R-O2-P-O5
3	A	402	B12	C54-C17-C55-C56
3	A	402	B12	C17-C18-C60-C61
3	B	402	B12	C2-C3-C30-C31
3	C	402	B12	C18-C60-C61-O63
3	B	402	B12	C17-C18-C60-C61
3	C	402	B12	C17-C18-C60-C61
3	D	402	B12	C12-C13-C48-C49
3	B	402	B12	O6R-C4R-C5R-O8R
3	A	402	B12	C19-C18-C60-C61
3	B	402	B12	C19-C18-C60-C61
3	C	402	B12	C19-C18-C60-C61
3	D	402	B12	C55-C56-C57-O58

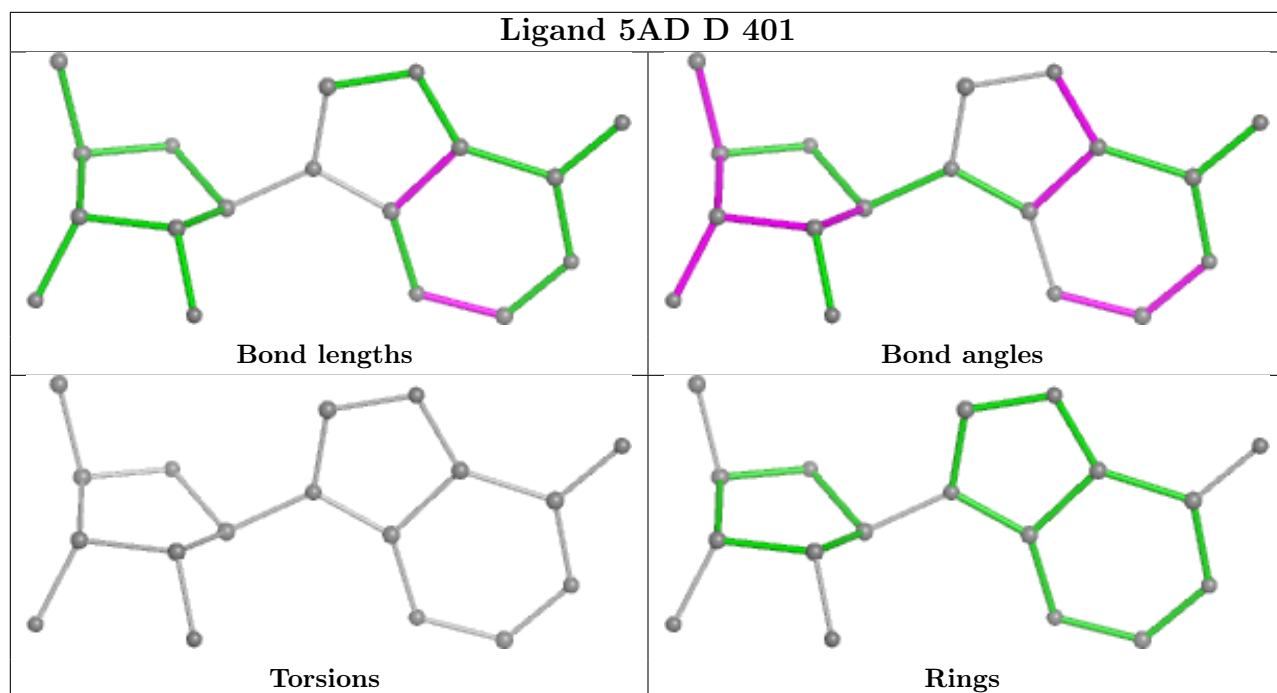
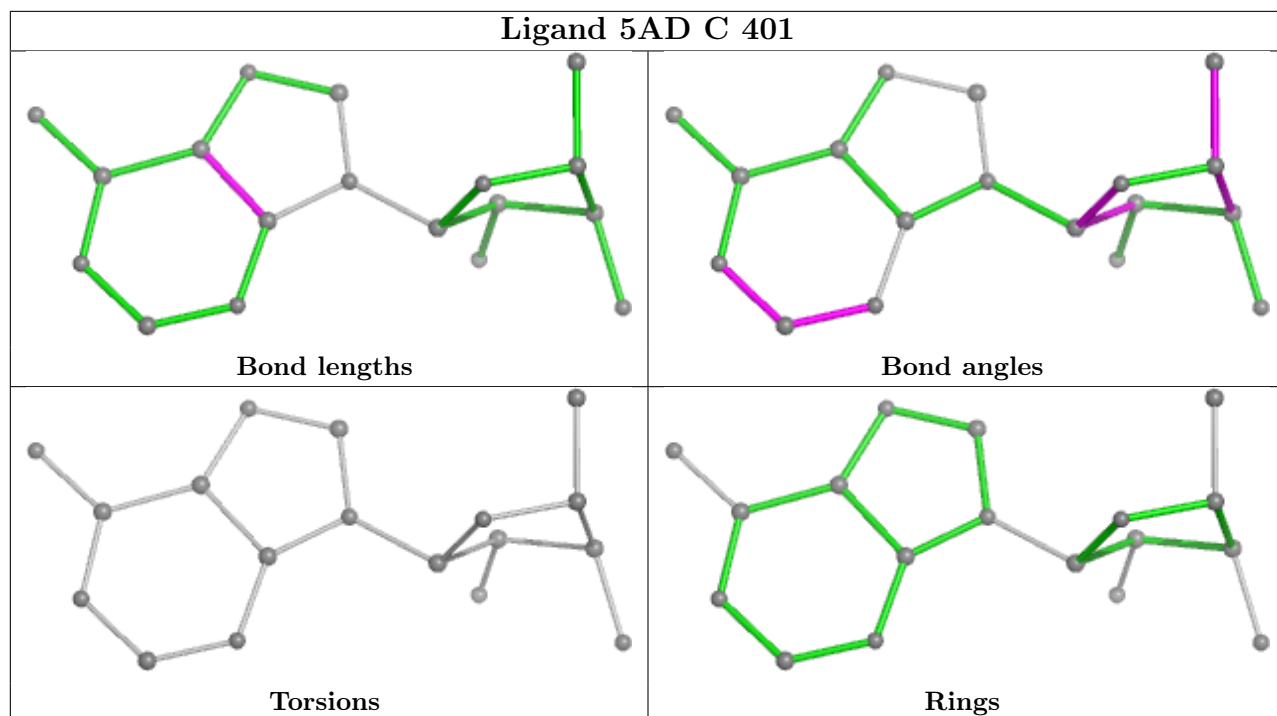
There are no ring outliers.

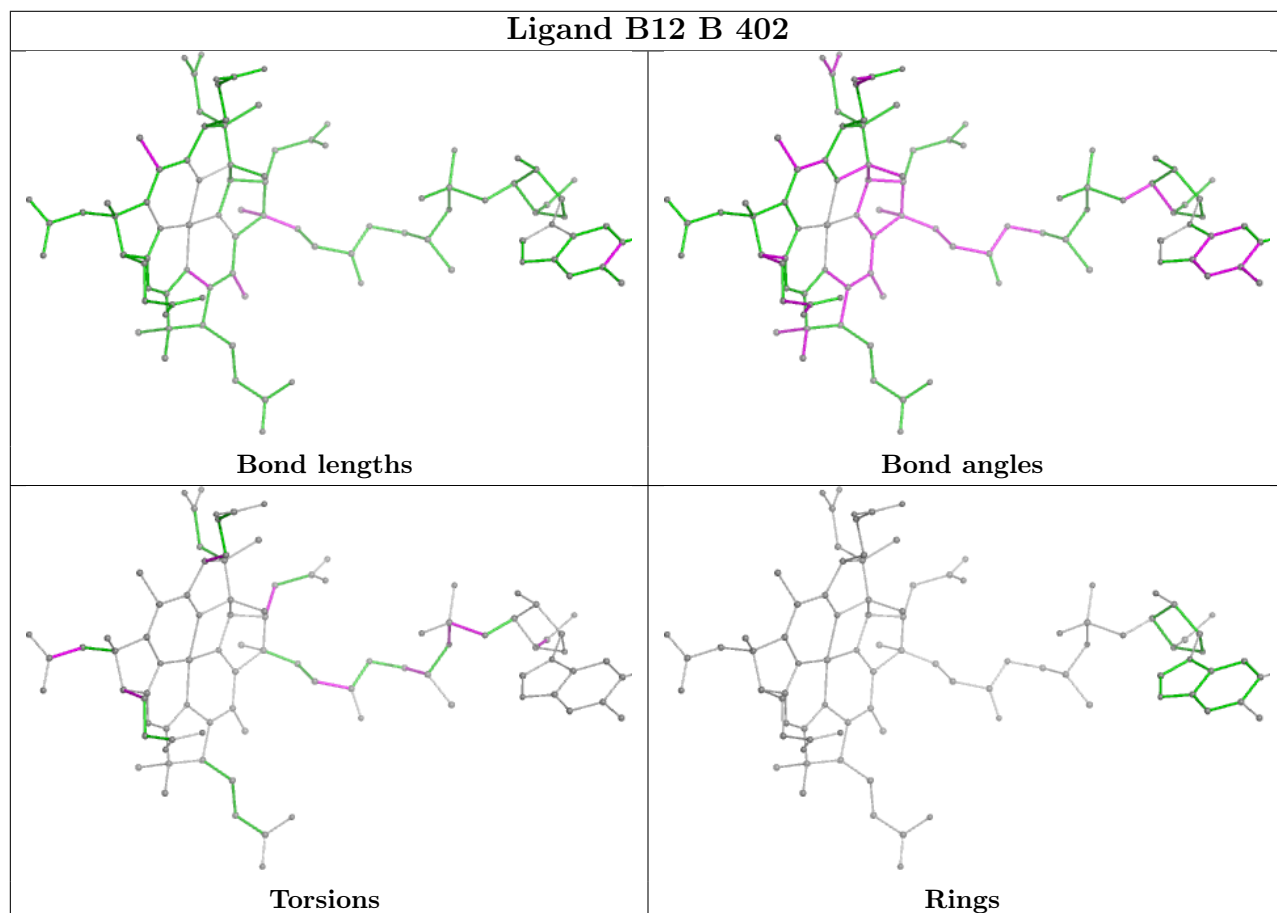
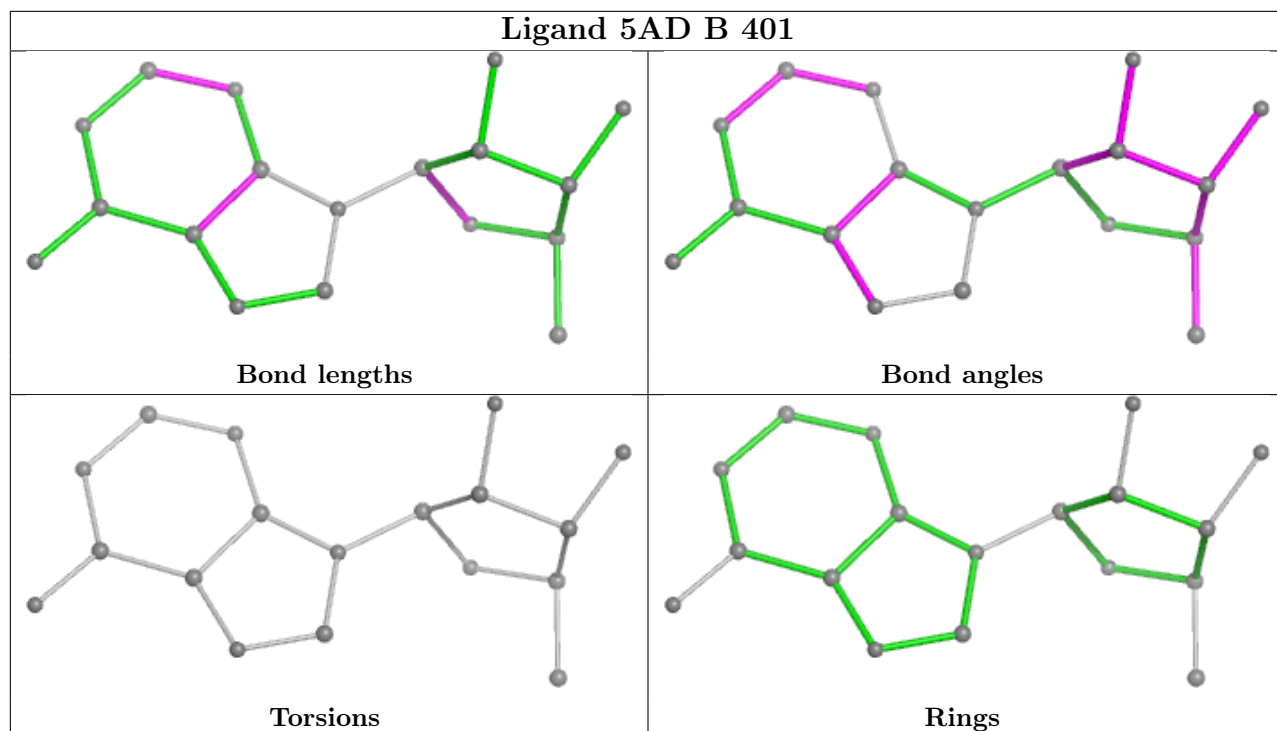
8 monomers are involved in 48 short contacts:

Mol	Chain	Res	Type	Clashes	Symm-Clashes
3	A	402	B12	12	0
2	C	401	5AD	4	0
2	D	401	5AD	3	0
2	B	401	5AD	5	0
3	B	402	B12	9	0
3	D	402	B12	13	0
3	C	402	B12	9	0
2	A	401	5AD	6	0

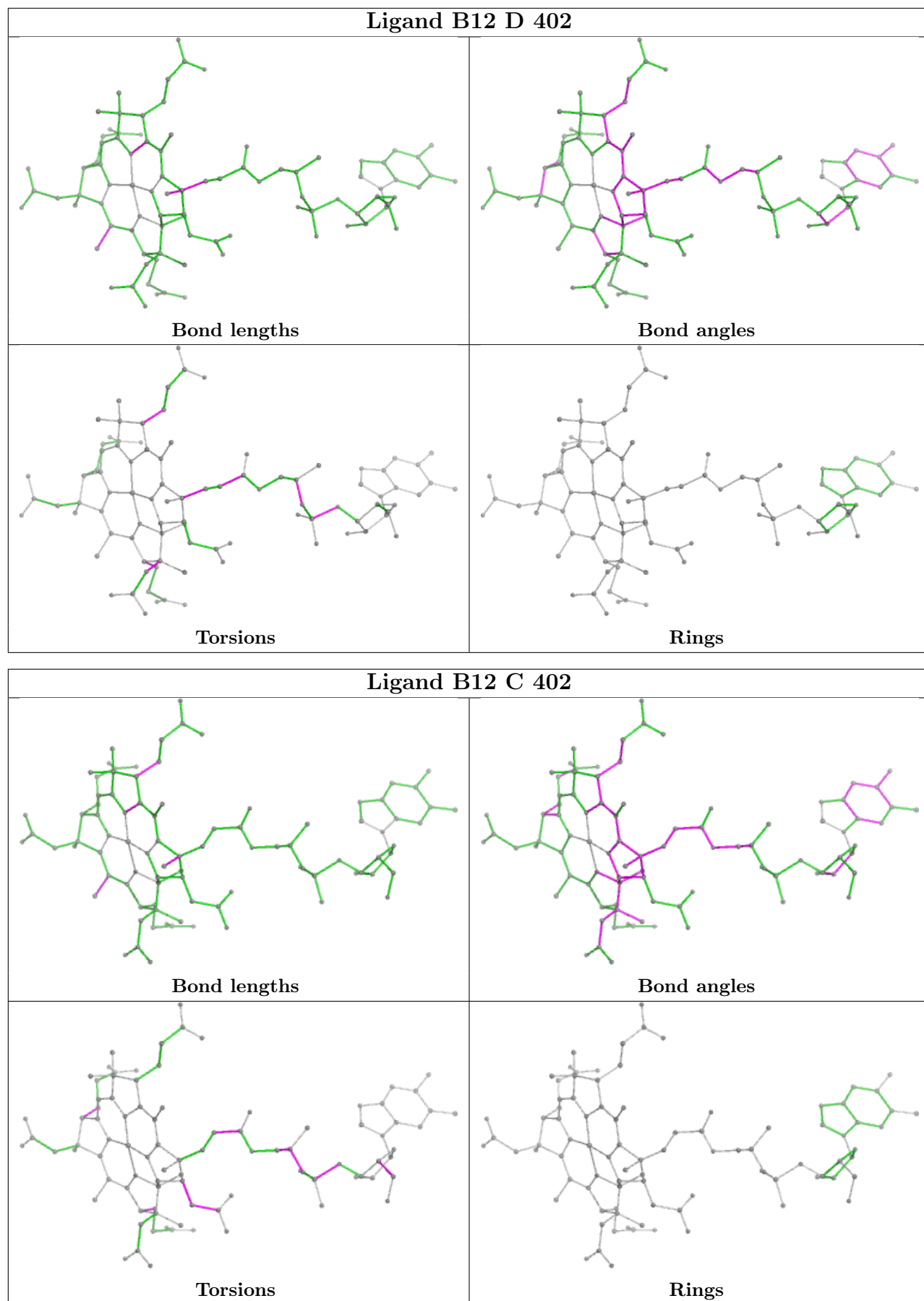
The following is a two-dimensional graphical depiction of Mogul quality analysis of bond lengths, bond angles, torsion angles, and ring geometry for all instances of the Ligand of Interest. In addition, ligands with molecular weight > 250 and outliers as shown on the validation Tables will also be included. For torsion angles, if less than 5% of the Mogul distribution of torsion angles is within 10 degrees of the torsion angle in question, then that torsion angle is considered an outlier. Any bond that is central to one or more torsion angles identified as an outlier by Mogul will be highlighted in the graph. For rings, the root-mean-square deviation (RMSD) between the ring in question and similar rings identified by Mogul is calculated over all ring torsion angles. If the average RMSD is greater than 60 degrees and the minimal RMSD between the ring in question and any Mogul-identified rings is also greater than 60 degrees, then that ring is considered an outlier. The outliers are highlighted in purple. The color gray indicates Mogul did not find sufficient equivalents in the CSD to analyse the geometry.

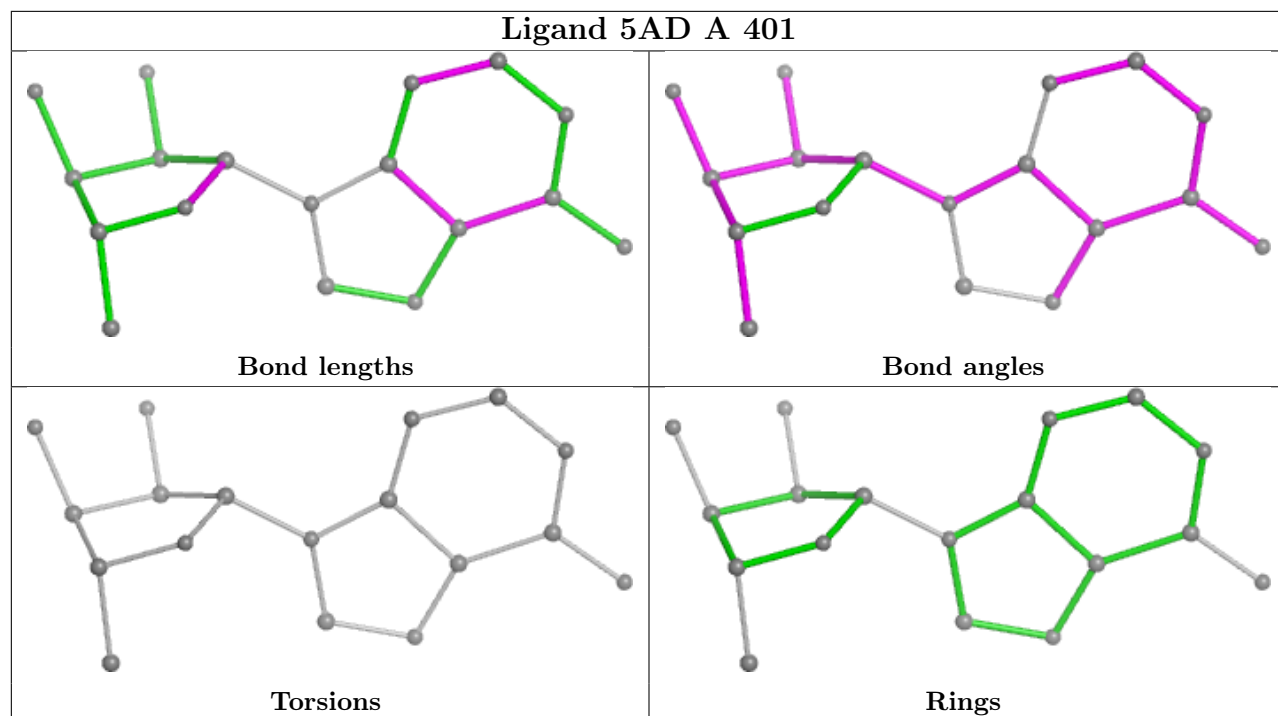












## 5.7 Other polymers [i](#)

There are no such residues in this entry.

## 5.8 Polymer linkage issues [i](#)

There are no chain breaks in this entry.

## 6 Fit of model and data [i](#)

### 6.1 Protein, DNA and RNA chains [i](#)

In the following table, the column labelled ‘#RSRZ > 2’ contains the number (and percentage) of RSRZ outliers, followed by percent RSRZ outliers for the chain as percentile scores relative to all X-ray entries and entries of similar resolution. The OWAB column contains the minimum, median, 95<sup>th</sup> percentile and maximum values of the occupancy-weighted average B-factor per residue. The column labelled ‘Q < 0.9’ lists the number of (and percentage) of residues with an average occupancy less than 0.9.

Mol	Chain	Analysed	<RSRZ>	#RSRZ>2	OWAB(Å <sup>2</sup> )	Q<0.9
1	A	197/215 (91%)	0.51	10 (5%) 34 35	24, 48, 70, 119	3 (1%)
1	B	197/215 (91%)	0.64	13 (6%) 26 27	23, 48, 76, 89	4 (2%)
1	C	196/215 (91%)	0.91	28 (14%) 7 8	25, 52, 79, 94	4 (2%)
1	D	196/215 (91%)	0.82	17 (8%) 17 19	22, 53, 82, 89	4 (2%)
All	All	786/860 (91%)	0.72	68 (8%) 17 19	22, 50, 78, 119	15 (1%)

All (68) RSRZ outliers are listed below:

Mol	Chain	Res	Type	RSRZ
1	B	269	GLY	6.2
1	B	275	TRP	5.4
1	A	275	TRP	4.8
1	C	273	ALA	4.5
1	C	275	TRP	4.4
1	A	79[A]	ARG	4.4
1	D	275	TRP	4.3
1	B	276	LEU	4.0
1	C	81	GLU	4.0
1	D	276	LEU	3.9
1	B	109	PHE	3.3
1	C	80	PRO	3.3
1	A	273	ALA	3.3
1	D	129	GLU	3.1
1	C	253	PRO	3.0
1	C	208[A]	ARG	2.9
1	B	80	PRO	2.9
1	C	274	LEU	2.8
1	C	246	LEU	2.8
1	C	234	ASP	2.7
1	B	271	ALA	2.7

*Continued on next page...*

*Continued from previous page...*

<b>Mol</b>	<b>Chain</b>	<b>Res</b>	<b>Type</b>	<b>RSRZ</b>
1	B	272	GLU	2.7
1	C	244	VAL	2.7
1	C	240	LEU	2.7
1	B	85	THR	2.7
1	C	233	PRO	2.7
1	B	273	ALA	2.7
1	D	208[A]	ARG	2.6
1	C	268[A]	LYS	2.6
1	D	138	VAL	2.5
1	B	270[A]	LEU	2.5
1	D	89	GLU	2.5
1	C	211	ALA	2.5
1	C	257	ARG	2.5
1	D	134	GLY	2.4
1	C	252	GLY	2.4
1	C	238	LYS	2.4
1	C	259	LEU	2.3
1	D	128	GLY	2.3
1	A	131	TRP	2.3
1	C	232	LEU	2.3
1	C	82	ASP	2.3
1	D	81	GLU	2.2
1	B	230[A]	ARG	2.2
1	D	82	ASP	2.2
1	C	264	MET	2.2
1	A	272	GLU	2.2
1	A	274	LEU	2.2
1	D	124	LEU	2.2
1	C	212[A]	ARG	2.2
1	D	143	LEU	2.2
1	A	239	ASP	2.2
1	A	208	ARG	2.1
1	D	136	ILE	2.1
1	D	257[A]	ARG	2.1
1	C	161	PHE	2.1
1	C	245	PHE	2.1
1	D	247	GLY	2.1
1	C	166	PRO	2.1
1	C	256	ALA	2.1
1	C	204	LEU	2.0
1	D	122	PRO	2.0
1	B	125[A]	ARG	2.0

*Continued on next page...*

*Continued from previous page...*

Mol	Chain	Res	Type	RSRZ
1	A	269	GLY	2.0
1	C	235	GLY	2.0
1	D	103	PHE	2.0
1	B	136	ILE	2.0
1	A	249	GLN	2.0

## 6.2 Non-standard residues in protein, DNA, RNA chains [i](#)

There are no non-standard protein/DNA/RNA residues in this entry.

## 6.3 Carbohydrates [i](#)

There are no oligosaccharides in this entry.

## 6.4 Ligands [i](#)

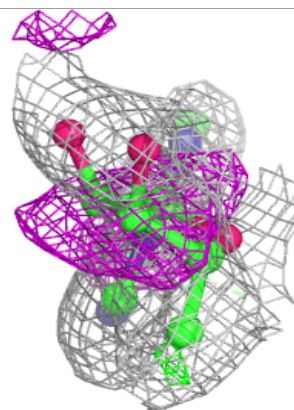
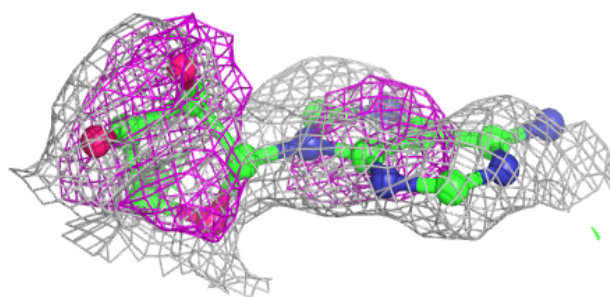
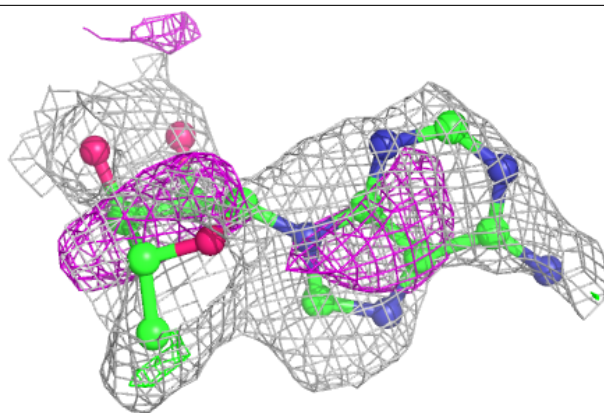
In the following table, the Atoms column lists the number of modelled atoms in the group and the number defined in the chemical component dictionary. The B-factors column lists the minimum, median, 95<sup>th</sup> percentile and maximum values of B factors of atoms in the group. The column labelled 'Q< 0.9' lists the number of atoms with occupancy less than 0.9.

Mol	Type	Chain	Res	Atoms	RSCC	RSR	B-factors( $\text{\AA}^2$ )	Q<0.9
2	5AD	A	401	18/18	0.50	0.20	44,57,60,61	0
2	5AD	D	401	18/18	0.70	0.17	52,62,65,68	0
2	5AD	B	401	18/18	0.72	0.15	51,56,58,59	0
2	5AD	C	401	18/18	0.81	0.12	41,46,49,50	0
3	B12	D	402	91/91	0.89	0.12	45,58,66,76	0
3	B12	C	402	91/91	0.91	0.12	40,49,62,66	0
3	B12	B	402	91/91	0.91	0.11	41,53,59,63	0
3	B12	A	402	91/91	0.92	0.10	40,50,57,61	0

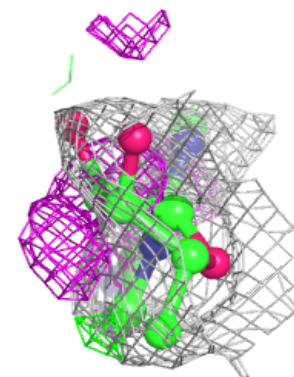
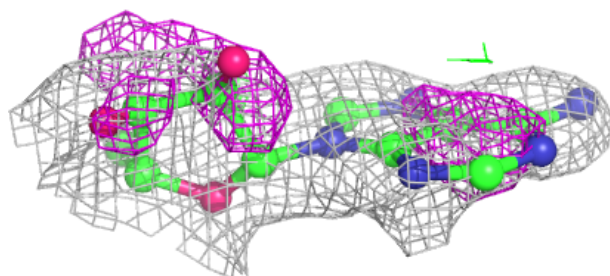
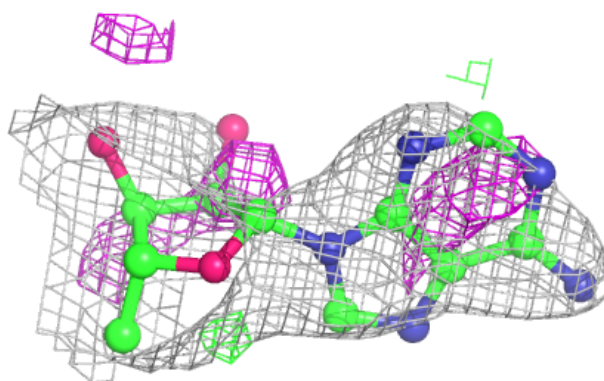
The following is a graphical depiction of the model fit to experimental electron density of all instances of the Ligand of Interest. In addition, ligands with molecular weight > 250 and outliers as shown on the geometry validation Tables will also be included. Each fit is shown from different orientation to approximate a three-dimensional view.

**Electron density around 5AD A 401:**

$2mF_o-DF_c$  (at 0.7 rmsd) in gray  
 $mF_o-DF_c$  (at 3 rmsd) in purple (negative)  
and green (positive)

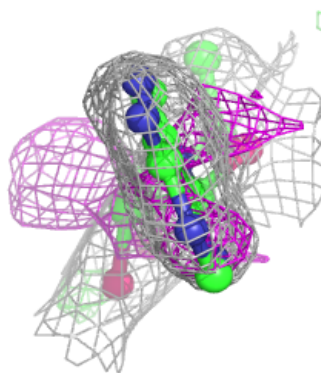
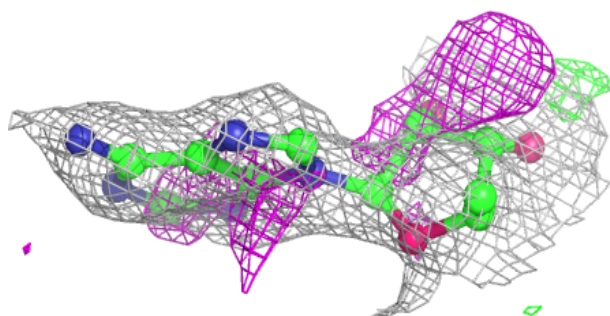
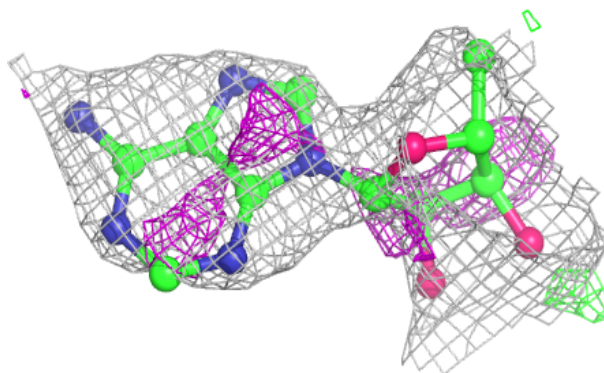
**Electron density around 5AD D 401:**

$2mF_o-DF_c$  (at 0.7 rmsd) in gray  
 $mF_o-DF_c$  (at 3 rmsd) in purple (negative)  
and green (positive)

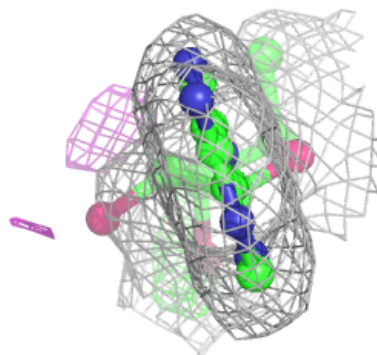
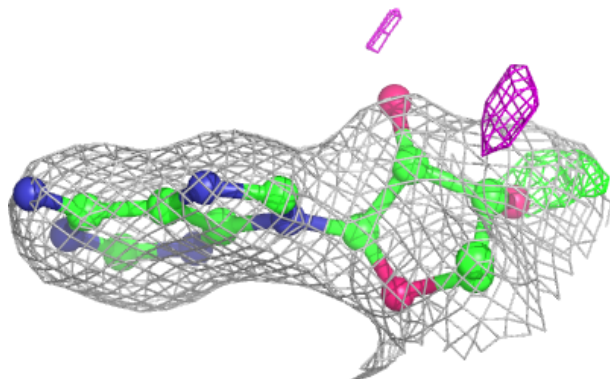
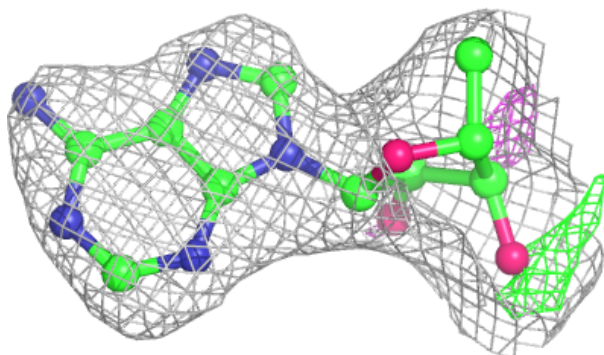


**Electron density around 5AD B 401:**

$2mF_o-DF_c$  (at 0.7 rmsd) in gray  
 $mF_o-DF_c$  (at 3 rmsd) in purple (negative)  
and green (positive)

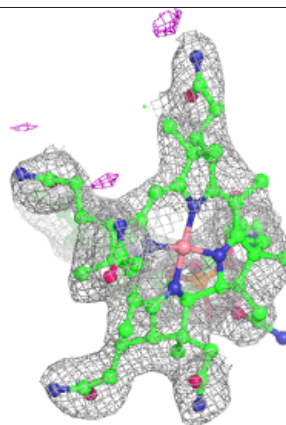
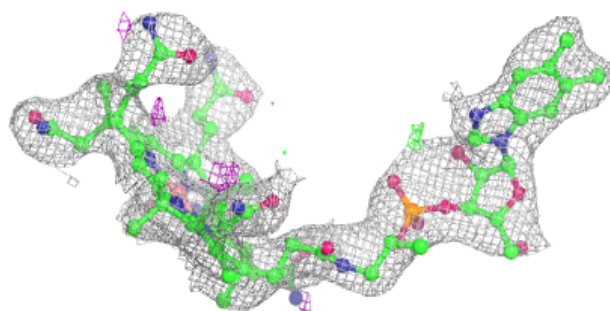
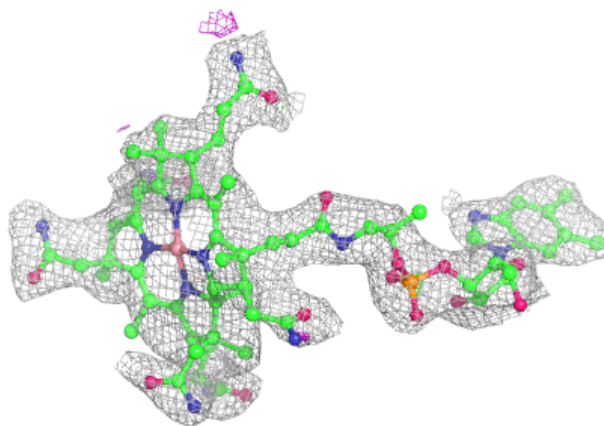
**Electron density around 5AD C 401:**

$2mF_o-DF_c$  (at 0.7 rmsd) in gray  
 $mF_o-DF_c$  (at 3 rmsd) in purple (negative)  
and green (positive)

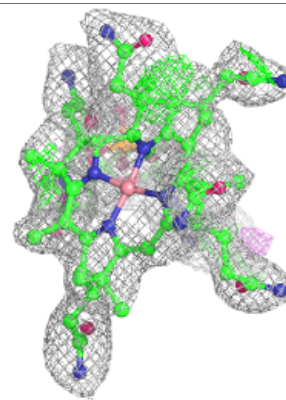
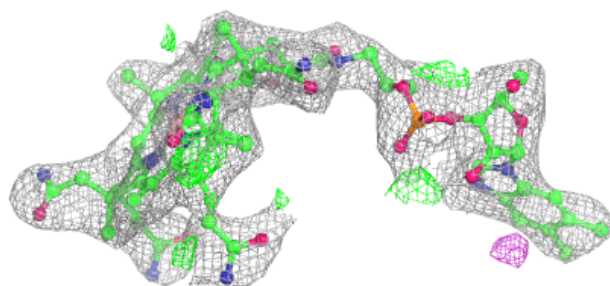
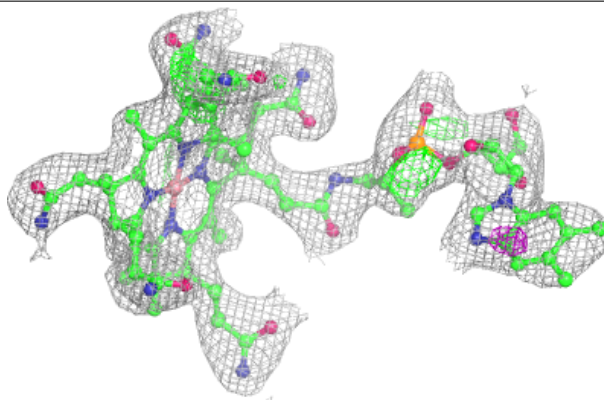


**Electron density around B12 D 402:**

$2mF_o-DF_c$  (at 0.7 rmsd) in gray  
 $mF_o-DF_c$  (at 3 rmsd) in purple (negative)  
and green (positive)

**Electron density around B12 C 402:**

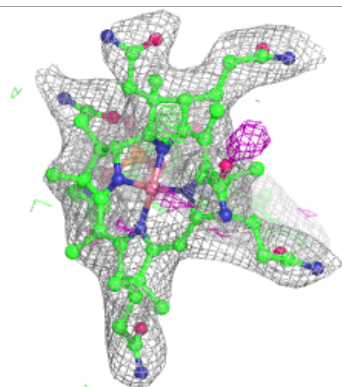
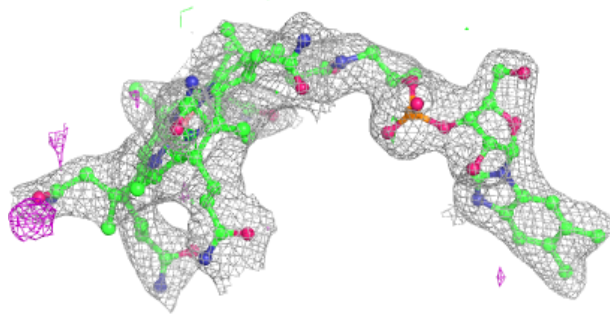
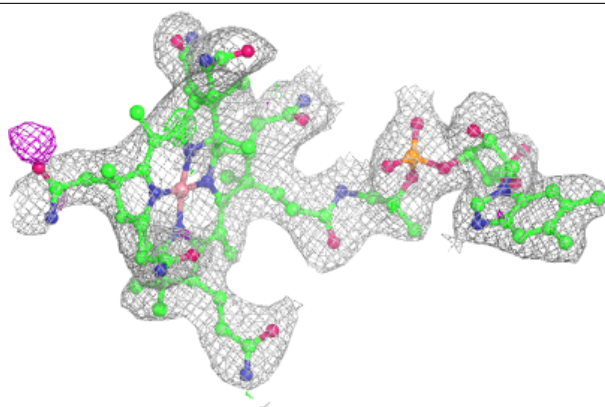
$2mF_o-DF_c$  (at 0.7 rmsd) in gray  
 $mF_o-DF_c$  (at 3 rmsd) in purple (negative)  
and green (positive)



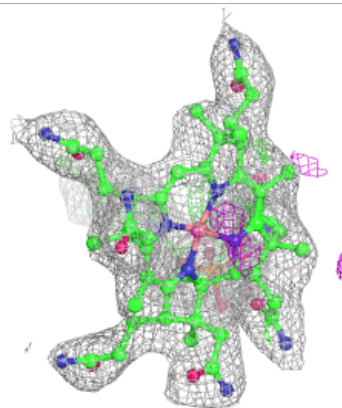
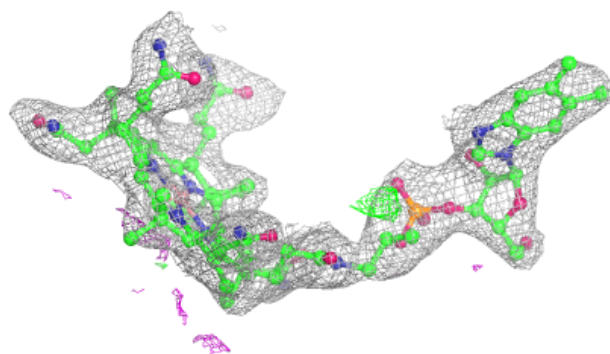
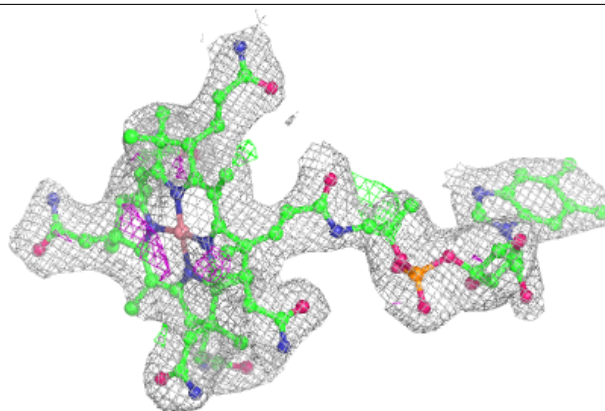


**Electron density around B12 B 402:**

$2mF_o-DF_c$  (at 0.7 rmsd) in gray  
 $mF_o-DF_c$  (at 3 rmsd) in purple (negative)  
and green (positive)

**Electron density around B12 A 402:**

$2mF_o-DF_c$  (at 0.7 rmsd) in gray  
 $mF_o-DF_c$  (at 3 rmsd) in purple (negative)  
and green (positive)



## 6.5 Other polymers [i](#)

There are no such residues in this entry.