



Full wwPDB X-ray Structure Validation Report ⓘ

Jan 20, 2026 – 03:29 pm GMT

PDB ID : 9S06 / pdb_00009s06
Title : Dark-state of CBD of TtCarH (TR-SFX, SACLA)
Authors : Rios-Santacruz, R.; Coquelle, N.; Colletier, J.P.; De Zitter, E.; Schiro, G.; Weik, M.
Deposited on : 2025-07-16
Resolution : 2.05 Å(reported)

This is a Full wwPDB X-ray Structure Validation Report for a publicly released PDB entry.

We welcome your comments at validation@mail.wwpdb.org

A user guide is available at

<https://www.wwpdb.org/validation/2017/XrayValidationReportHelp>

with specific help available everywhere you see the ⓘ symbol.

The types of validation reports are described at

<http://www.wwpdb.org/validation/2017/FAQs#types>.

The following versions of software and data (see [references ⓘ](#)) were used in the production of this report:

MolProbity : 4-5-2 with Phenix2.0
Mogul : 1.8.4, CSD as541be (2020)
Xtriage (Phenix) : 2.0
EDS : 3.0
buster-report : 1.1.7 (2018)
Percentile statistics : 20231227.v01 (using entries in the PDB archive December 27th 2023)
CCP4 : 9.0.010 (Gargrove)
Density-Fitness : 1.0.12
Ideal geometry (proteins) : Engh & Huber (2001)
Ideal geometry (DNA, RNA) : Parkinson et al. (1996)
Validation Pipeline (wwPDB-VP) : 2.47

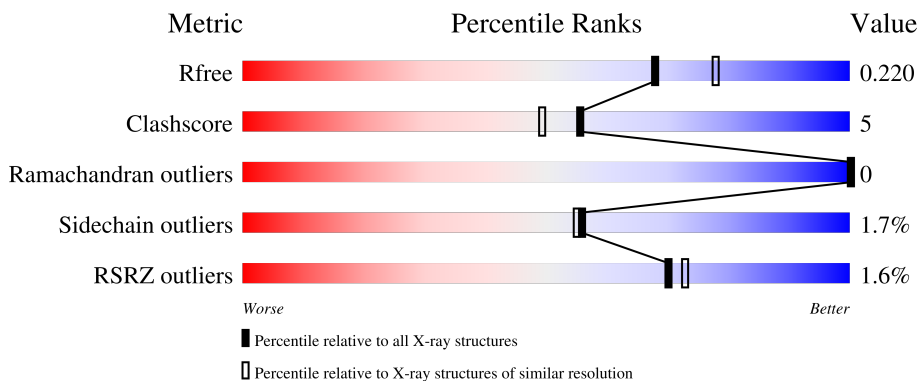
1 Overall quality at a glance

The following experimental techniques were used to determine the structure:

X-RAY DIFFRACTION

The reported resolution of this entry is 2.05 Å.

Percentile scores (ranging between 0-100) for global validation metrics of the entry are shown in the following graphic. The table shows the number of entries on which the scores are based.



Metric	Whole archive (#Entries)	Similar resolution (#Entries, resolution range(Å))
R_{free}	164625	2096 (2.04-2.04)
Clashscore	180529	2229 (2.04-2.04)
Ramachandran outliers	177936	2217 (2.04-2.04)
Sidechain outliers	177891	2217 (2.04-2.04)
RSRZ outliers	164620	2096 (2.04-2.04)

The table below summarises the geometric issues observed across the polymeric chains and their fit to the electron density. The red, orange, yellow and green segments of the lower bar indicate the fraction of residues that contain outliers for ≥ 3 , 2, 1 and 0 types of geometric quality criteria respectively. A grey segment represents the fraction of residues that are not modelled. The numeric value for each fraction is indicated below the corresponding segment, with a dot representing fractions $\leq 5\%$. The upper red bar (where present) indicates the fraction of residues that have poor fit to the electron density. The numeric value is given above the bar.

Mol	Chain	Length	Quality of chain
1	A	215	 85% 7% 8%
1	B	215	 83% 8% 8%
1	C	215	 85% 6% 8%
1	D	215	 80% 11% 8%

2 Entry composition i

There are 4 unique types of molecules in this entry. The entry contains 6915 atoms, of which 0 are hydrogens and 0 are deuteriums.

In the tables below, the ZeroOcc column contains the number of atoms modelled with zero occupancy, the AltConf column contains the number of residues with at least one atom in alternate conformation and the Trace column contains the number of residues modelled with at most 2 atoms.

- Molecule 1 is a protein called Probable transcriptional regulator.

Mol	Chain	Residues	Atoms					ZeroOcc	AltConf	Trace
			Total	C	N	O	S			
1	A	197	1545	986	286	271	2	0	7	0
1	B	197	1524	977	277	268	2	0	6	0
1	C	197	1528	977	281	268	2	0	5	0
1	D	197	1522	978	273	269	2	0	6	0

There are 28 discrepancies between the modelled and reference sequences:

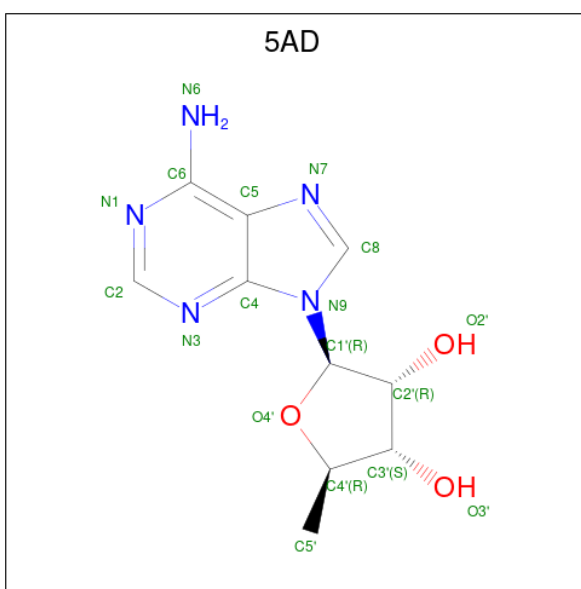
Chain	Residue	Modelled	Actual	Comment	Reference
A	286	GLY	-	expression tag	UNP Q746J7
A	287	HIS	-	expression tag	UNP Q746J7
A	288	HIS	-	expression tag	UNP Q746J7
A	289	HIS	-	expression tag	UNP Q746J7
A	290	HIS	-	expression tag	UNP Q746J7
A	291	HIS	-	expression tag	UNP Q746J7
A	292	HIS	-	expression tag	UNP Q746J7
B	286	GLY	-	expression tag	UNP Q746J7
B	287	HIS	-	expression tag	UNP Q746J7
B	288	HIS	-	expression tag	UNP Q746J7
B	289	HIS	-	expression tag	UNP Q746J7
B	290	HIS	-	expression tag	UNP Q746J7
B	291	HIS	-	expression tag	UNP Q746J7
B	292	HIS	-	expression tag	UNP Q746J7
C	286	GLY	-	expression tag	UNP Q746J7
C	287	HIS	-	expression tag	UNP Q746J7
C	288	HIS	-	expression tag	UNP Q746J7
C	289	HIS	-	expression tag	UNP Q746J7
C	290	HIS	-	expression tag	UNP Q746J7
C	291	HIS	-	expression tag	UNP Q746J7
C	292	HIS	-	expression tag	UNP Q746J7

Continued on next page...

Continued from previous page...

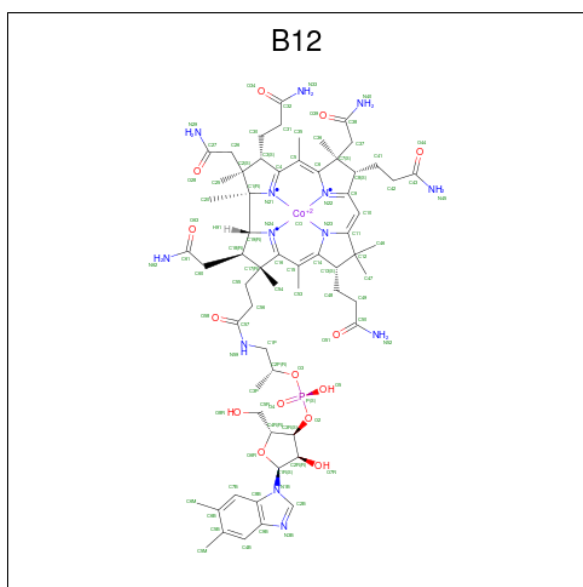
Chain	Residue	Modelled	Actual	Comment	Reference
D	286	GLY	-	expression tag	UNP Q746J7
D	287	HIS	-	expression tag	UNP Q746J7
D	288	HIS	-	expression tag	UNP Q746J7
D	289	HIS	-	expression tag	UNP Q746J7
D	290	HIS	-	expression tag	UNP Q746J7
D	291	HIS	-	expression tag	UNP Q746J7
D	292	HIS	-	expression tag	UNP Q746J7

- Molecule 2 is 5'-DEOXYADENOSINE (CCD ID: 5AD) (formula: C₁₀H₁₃N₅O₃) (labeled as "Ligand of Interest" by depositor).



Mol	Chain	Residues	Atoms				ZeroOcc	AltConf
			Total	C	N	O		
2	A	1	Total	C	N	O	0	0
			18	10	5	3		
2	B	1	Total	C	N	O	0	0
			18	10	5	3		
2	C	1	Total	C	N	O	0	0
			18	10	5	3		
2	D	1	Total	C	N	O	0	0
			18	10	5	3		

- Molecule 3 is COBALAMIN (CCD ID: B12) (formula: C₆₂H₈₉CoN₁₃O₁₄P) (labeled as "Ligand of Interest" by depositor).



Mol	Chain	Residues	Atoms					ZeroOcc	AltConf	
			Total	C	Co	N	O			P
3	A	1	91	62	1	13	14	1	0	0
3	B	1	91	62	1	13	14	1	0	0
3	C	1	91	62	1	13	14	1	0	0
3	D	1	91	62	1	13	14	1	0	0


- Molecule 4 is water.

Mol	Chain	Residues	Atoms		ZeroOcc	AltConf
4	A	98	Total	O	0	1
			99	99		
4	B	114	Total	O	0	2
			116	116		
4	C	79	Total	O	0	0
			79	79		
4	D	66	Total	O	0	0
			66	66		

3 Residue-property plots [i](#)


These plots are drawn for all protein, RNA, DNA and oligosaccharide chains in the entry. The first graphic for a chain summarises the proportions of the various outlier classes displayed in the second graphic. The second graphic shows the sequence view annotated by issues in geometry and electron density. Residues are color-coded according to the number of geometric quality criteria for which they contain at least one outlier: green = 0, yellow = 1, orange = 2 and red = 3 or more. A red dot above a residue indicates a poor fit to the electron density ($RSRZ > 2$). Stretches of 2 or more consecutive residues without any outlier are shown as a green connector. Residues present in the sample, but not in the model, are shown in grey.

- Molecule 1: Probable transcriptional regulator

Chain A: 




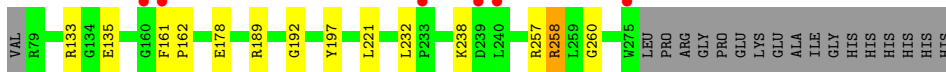
- Molecule 1: Probable transcriptional regulator

Chain B: 




- Molecule 1: Probable transcriptional regulator

Chain C: 



- Molecule 1: Probable transcriptional regulator

Chain D: 



HIS
HIS
HIS
HIS
HIS
HIS
HIS

4 Data and refinement statistics

Property	Value	Source
Space group	P 21 21 21	Depositor
Cell constants a, b, c, α , β , γ	64.80Å 71.09Å 207.26Å 90.00° 90.00° 90.00°	Depositor
Resolution (Å)	50.00 – 2.05 50.00 – 2.05	Depositor EDS
% Data completeness (in resolution range)	99.9 (50.00-2.05) 99.9 (50.00-2.05)	Depositor EDS
R_{merge}	(Not available)	Depositor
R_{sym}	(Not available)	Depositor
$\langle I/\sigma(I) \rangle$ ¹	2.03 (at 2.05Å)	Xtrriage
Refinement program	PHENIX 1.19.2_4158	Depositor
R, R_{free}	0.174 , 0.219 0.174 , 0.220	Depositor DCC
R_{free} test set	3017 reflections (4.94%)	wwPDB-VP
Wilson B-factor (Å ²)	46.0	Xtrriage
Anisotropy	0.405	Xtrriage
Bulk solvent k_{sol} (e/Å ³), B_{sol} (Å ²)	0.33 , 59.0	EDS
L-test for twinning ²	$\langle L \rangle = 0.48$, $\langle L^2 \rangle = 0.32$	Xtrriage
Estimated twinning fraction	No twinning to report.	Xtrriage
F_o, F_c correlation	0.97	EDS
Total number of atoms	6915	wwPDB-VP
Average B, all atoms (Å ²)	56.0	wwPDB-VP

Xtrriage's analysis on translational NCS is as follows: *The largest off-origin peak in the Patterson function is 5.13% of the height of the origin peak. No significant pseudotranslation is detected.*

¹Intensities estimated from amplitudes.

²Theoretical values of $\langle |L| \rangle$, $\langle L^2 \rangle$ for acentric reflections are 0.5, 0.333 respectively for untwinned datasets, and 0.375, 0.2 for perfectly twinned datasets.

5 Model quality [i](#)

5.1 Standard geometry [i](#)

Bond lengths and bond angles in the following residue types are not validated in this section: B12, 5AD

The Z score for a bond length (or angle) is the number of standard deviations the observed value is removed from the expected value. A bond length (or angle) with $|Z| > 5$ is considered an outlier worth inspection. RMSZ is the root-mean-square of all Z scores of the bond lengths (or angles).

Mol	Chain	Bond lengths		Bond angles	
		RMSZ	# Z >5	RMSZ	# Z >5
1	A	0.30	0/1583	0.42	0/2149
1	B	0.29	0/1568	0.47	0/2131
1	C	0.27	0/1566	0.43	0/2127
1	D	0.28	0/1557	0.44	0/2117
All	All	0.29	0/6274	0.44	0/8524

There are no bond length outliers.

There are no bond angle outliers.

There are no chirality outliers.

There are no planarity outliers.

5.2 Too-close contacts [i](#)

In the following table, the Non-H and H(model) columns list the number of non-hydrogen atoms and hydrogen atoms in the chain respectively. The H(added) column lists the number of hydrogen atoms added and optimized by MolProbity. The Clashes column lists the number of clashes within the asymmetric unit, whereas Symm-Clashes lists symmetry-related clashes.

Mol	Chain	Non-H	H(model)	H(added)	Clashes	Symm-Clashes
1	A	1545	0	1580	9	0
1	B	1524	0	1566	11	0
1	C	1528	0	1564	6	0
1	D	1522	0	1557	13	0
2	A	18	0	12	1	0
2	B	18	0	12	0	0
2	C	18	0	12	1	0
2	D	18	0	12	3	0
3	A	91	0	88	7	0

Continued on next page...

Continued from previous page...

Mol	Chain	Non-H	H(model)	H(added)	Clashes	Symm-Clashes
3	B	91	0	88	5	0
3	C	91	0	88	6	0
3	D	91	0	88	6	0
4	A	99	0	0	2	0
4	B	116	0	0	3	0
4	C	79	0	0	0	0
4	D	66	0	0	1	0
All	All	6915	0	6667	61	0

The all-atom clashscore is defined as the number of clashes found per 1000 atoms (including hydrogen atoms). The all-atom clashscore for this structure is 5.

All (61) close contacts within the same asymmetric unit are listed below, sorted by their clash magnitude.

Atom-1	Atom-2	Interatomic distance (Å)	Clash overlap (Å)
1:C:238:LYS:HG3	1:C:260:GLY:HA3	1.73	0.70
1:D:121:LEU:HD21	1:D:183:LEU:HD11	1.78	0.65
1:B:113:GLU:OE2	1:B:190:ARG:HD3	2.00	0.61
1:A:154:GLU:OE2	4:B:520[B]:HOH:O	2.16	0.60
3:A:402:B12:H351	3:A:402:B12:H362	1.84	0.59
3:C:402:B12:H362	3:C:402:B12:H351	1.85	0.59
1:D:141:GLU:OE2	3:D:402:B12:H532	2.04	0.58
1:B:212:ARG:NH1	4:B:502:HOH:O	2.33	0.57
3:B:402:B12:H362	3:B:402:B12:H351	1.86	0.57
1:A:121:LEU:HD21	1:A:183:LEU:HD11	1.87	0.56
1:B:121:LEU:HD21	1:B:183:LEU:HD11	1.87	0.56
1:B:161:PHE:CZ	1:B:196:LEU:HD13	2.41	0.56
3:B:402:B12:H8	3:B:402:B12:H401	1.71	0.56
1:B:83:LEU:HD21	1:B:105:ARG:HD2	1.87	0.56
3:A:402:B12:H552	3:A:402:B12:H531	1.90	0.53
3:D:402:B12:H362	3:D:402:B12:H351	1.90	0.53
2:D:401:5AD:H5'3	3:D:402:B12:C19	2.39	0.53
1:A:157:ASP:OD1	4:A:501:HOH:O	2.19	0.52
1:C:232:LEU:O	1:C:258:ARG:NH2	2.37	0.52
1:B:176:ARG:NH1	4:B:506:HOH:O	2.43	0.51
1:A:163:PRO:O	4:A:502:HOH:O	2.20	0.50
1:A:162:PRO:HG2	1:A:192:GLY:O	2.12	0.50
1:D:123:VAL:O	1:D:127:VAL:HG23	2.13	0.49
1:D:178:GLU:HB2	1:D:197:TYR:OH	2.12	0.48
2:D:401:5AD:H5'3	3:D:402:B12:N24	2.25	0.47
2:A:401:5AD:H5'3	3:A:402:B12:C19	2.44	0.47

Continued on next page...

Continued from previous page...

Atom-1	Atom-2	Interatomic distance (Å)	Clash overlap (Å)
1:C:178:GLU:HB2	1:C:197:TYR:OH	2.15	0.46
3:B:402:B12:H8	3:B:402:B12:N40	2.29	0.46
1:D:83:LEU:HD23	1:D:110:TRP:CZ3	2.51	0.46
1:C:162:PRO:HG2	1:C:192:GLY:O	2.17	0.45
1:B:85:THR:O	1:B:89:GLU:HG3	2.17	0.45
2:C:401:5AD:H5'3	3:C:402:B12:C19	2.46	0.45
3:C:402:B12:H8	3:C:402:B12:N40	2.31	0.45
1:C:133:ARG:HE	1:C:135:GLU:CD	2.25	0.45
1:B:186:TYR:CZ	1:B:190:ARG:HD2	2.51	0.45
1:D:160:GLY:O	1:D:189:ARG:HD3	2.17	0.45
1:B:178:GLU:HB2	1:B:197:TYR:OH	2.17	0.44
3:A:402:B12:H262	3:A:402:B12:H91	1.79	0.44
1:A:245:PHE:HE1	1:A:274:LEU:HD21	1.82	0.44
1:A:160:GLY:C	1:A:189[A]:ARG:HH21	2.25	0.43
3:D:402:B12:H601	3:D:402:B12:H252	2.01	0.43
1:D:108:ARG:NH2	4:D:506:HOH:O	2.51	0.42
1:A:121:LEU:HD13	3:A:402:B12:H5R1	2.02	0.42
3:D:402:B12:H301	3:D:402:B12:H253	1.83	0.42
1:B:160:GLY:O	1:B:189:ARG:HD3	2.20	0.42
3:B:402:B12:H253	3:B:402:B12:H301	1.86	0.42
1:D:141:GLU:OE1	1:D:142:HIS:ND1	2.41	0.42
1:B:82:ASP:OD1	1:B:82:ASP:N	2.53	0.41
3:B:402:B12:HM53	3:B:402:B12:HM61	1.82	0.41
3:C:402:B12:H473	3:C:402:B12:H481	1.91	0.41
3:A:402:B12:H401	3:A:402:B12:H8	1.85	0.41
1:D:184:ALA:HA	1:D:267:LEU:HD22	2.02	0.41
1:A:178:GLU:HB2	1:A:197:TYR:OH	2.20	0.41
1:D:141:GLU:HG3	2:D:401:5AD:O3'	2.20	0.41
1:D:254:GLU:OE2	1:D:257:ARG:NH1	2.54	0.41
1:D:121:LEU:HB2	1:D:122:PRO:HD3	2.03	0.41
3:A:402:B12:H473	3:A:402:B12:H481	1.85	0.41
1:C:161:PHE:HD1	1:C:189[B]:ARG:HD3	1.85	0.41
3:C:402:B12:O28	3:C:402:B12:H3	2.21	0.41
3:C:402:B12:H552	3:C:402:B12:H531	2.03	0.40
1:D:110:TRP:HB3	1:D:114:GLY:HA3	2.03	0.40

There are no symmetry-related clashes.

5.3 Torsion angles [i](#)

5.3.1 Protein backbone [i](#)

In the following table, the Percentiles column shows the percent Ramachandran outliers of the chain as a percentile score with respect to all X-ray entries followed by that with respect to entries of similar resolution.

The Analysed column shows the number of residues for which the backbone conformation was analysed, and the total number of residues.

Mol	Chain	Analysed	Favoured	Allowed	Outliers	Percentiles	
1	A	201/215 (94%)	198 (98%)	3 (2%)	0	100	100
1	B	200/215 (93%)	197 (98%)	3 (2%)	0	100	100
1	C	199/215 (93%)	193 (97%)	6 (3%)	0	100	100
1	D	199/215 (93%)	195 (98%)	4 (2%)	0	100	100
All	All	799/860 (93%)	783 (98%)	16 (2%)	0	100	100

There are no Ramachandran outliers to report.

5.3.2 Protein sidechains [i](#)

In the following table, the Percentiles column shows the percent sidechain outliers of the chain as a percentile score with respect to all X-ray entries followed by that with respect to entries of similar resolution.

The Analysed column shows the number of residues for which the sidechain conformation was analysed, and the total number of residues.

Mol	Chain	Analysed	Rotameric	Outliers	Percentiles	
1	A	152/161 (94%)	151 (99%)	1 (1%)	81	83
1	B	151/161 (94%)	150 (99%)	1 (1%)	81	83
1	C	150/161 (93%)	147 (98%)	3 (2%)	50	47
1	D	150/161 (93%)	145 (97%)	5 (3%)	33	27
All	All	603/644 (94%)	593 (98%)	10 (2%)	56	55

All (10) residues with a non-rotameric sidechain are listed below:

Mol	Chain	Res	Type
1	A	243	ARG
1	B	82	ASP

Continued on next page...

Continued from previous page...

Mol	Chain	Res	Type
1	C	221	LEU
1	C	257	ARG
1	C	258	ARG
1	D	85	THR
1	D	92	LEU
1	D	96	LEU
1	D	100	GLU
1	D	265	GLU

Sometimes sidechains can be flipped to improve hydrogen bonding and reduce clashes. All (5) such sidechains are listed below:

Mol	Chain	Res	Type
1	A	153	GLN
1	B	153	GLN
1	B	187	HIS
1	C	153	GLN
1	C	249	GLN

5.3.3 RNA [i](#)

There are no RNA molecules in this entry.

5.4 Non-standard residues in protein, DNA, RNA chains [i](#)

There are no non-standard protein/DNA/RNA residues in this entry.

5.5 Carbohydrates [i](#)

There are no oligosaccharides in this entry.

5.6 Ligand geometry [i](#)

8 ligands are modelled in this entry.

In the following table, the Counts columns list the number of bonds (or angles) for which Mogul statistics could be retrieved, the number of bonds (or angles) that are observed in the model and the number of bonds (or angles) that are defined in the Chemical Component Dictionary. The Link column lists molecule types, if any, to which the group is linked. The Z score for a bond length (or angle) is the number of standard deviations the observed value is removed from the

expected value. A bond length (or angle) with $|Z| > 2$ is considered an outlier worth inspection. RMSZ is the root-mean-square of all Z scores of the bond lengths (or angles).

Mol	Type	Chain	Res	Link	Bond lengths			Bond angles		
					Counts	RMSZ	# Z > 2	Counts	RMSZ	# Z > 2
2	5AD	D	401	-	17,20,20	1.10	2 (11%)	15,30,30	1.58	3 (20%)
2	5AD	B	401	-	17,20,20	1.06	2 (11%)	15,30,30	1.81	5 (33%)
3	B12	D	402	1	90,101,101	1.04	6 (6%)	137,166,166	1.78	25 (18%)
3	B12	A	402	1	90,101,101	1.11	5 (5%)	137,166,166	1.69	31 (22%)
2	5AD	C	401	-	17,20,20	1.30	3 (17%)	15,30,30	1.97	5 (33%)
3	B12	B	402	1	90,101,101	1.08	5 (5%)	137,166,166	1.62	26 (18%)
2	5AD	A	401	-	17,20,20	1.30	3 (17%)	15,30,30	1.67	4 (26%)
3	B12	C	402	1	90,101,101	1.09	4 (4%)	137,166,166	1.77	27 (19%)

In the following table, the Chirals column lists the number of chiral outliers, the number of chiral centers analysed, the number of these observed in the model and the number defined in the Chemical Component Dictionary. Similar counts are reported in the Torsion and Rings columns. '-' means no outliers of that kind were identified.

Mol	Type	Chain	Res	Link	Chirals	Torsions	Rings
2	5AD	D	401	-	-	0/0/20/20	0/3/3/3
2	5AD	B	401	-	-	0/0/20/20	0/3/3/3
3	B12	D	402	1	-	20/52/223/223	0/3/11/11
3	B12	A	402	1	-	12/52/223/223	0/3/11/11
2	5AD	C	401	-	-	0/0/20/20	0/3/3/3
3	B12	B	402	1	-	15/52/223/223	0/3/11/11
2	5AD	A	401	-	-	0/0/20/20	0/3/3/3
3	B12	C	402	1	-	14/52/223/223	0/3/11/11

All (30) bond length outliers are listed below:

Mol	Chain	Res	Type	Atoms	Z	Observed(Å)	Ideal(Å)
3	A	402	B12	C14-N23	4.21	1.40	1.35
3	B	402	B12	C14-N23	3.28	1.39	1.35
3	B	402	B12	C35-C5	3.21	1.57	1.50
3	C	402	B12	C14-N23	3.19	1.39	1.35
2	C	401	5AD	C5-C4	3.17	1.49	1.40
2	A	401	5AD	C5-C4	3.06	1.49	1.40
3	A	402	B12	C54-C17	3.05	1.59	1.54
3	C	402	B12	C54-C17	2.97	1.59	1.54
3	A	402	B12	C35-C5	2.93	1.57	1.50
3	D	402	B12	C35-C5	2.87	1.56	1.50

Continued on next page...

Continued from previous page...

Mol	Chain	Res	Type	Atoms	Z	Observed(Å)	Ideal(Å)
3	D	402	B12	C54-C17	2.87	1.59	1.54
3	B	402	B12	C54-C17	2.85	1.59	1.54
3	D	402	B12	C14-N23	2.71	1.38	1.35
2	B	401	5AD	C5-C4	2.70	1.48	1.40
2	D	401	5AD	C5-C4	2.63	1.47	1.40
3	C	402	B12	C35-C5	2.60	1.56	1.50
3	C	402	B12	C55-C17	-2.44	1.49	1.54
3	B	402	B12	C48-C13	2.38	1.60	1.54
2	A	401	5AD	C2-N3	2.37	1.35	1.32
3	D	402	B12	C6B-C5B	2.37	1.46	1.40
3	A	402	B12	C30-C3	2.31	1.59	1.54
3	B	402	B12	C55-C17	-2.25	1.49	1.54
3	D	402	B12	C55-C17	-2.17	1.49	1.54
3	A	402	B12	C55-C17	-2.11	1.49	1.54
2	C	401	5AD	C2-N3	2.09	1.35	1.32
2	A	401	5AD	O4'-C1'	2.09	1.44	1.41
2	B	401	5AD	C2-N3	2.08	1.35	1.32
2	C	401	5AD	O4'-C1'	2.08	1.44	1.41
2	D	401	5AD	C2-N3	2.06	1.35	1.32
3	D	402	B12	C53-C15	2.01	1.55	1.50

All (126) bond angle outliers are listed below:

Mol	Chain	Res	Type	Atoms	Z	Observed(°)	Ideal(°)
3	C	402	B12	C2P-C1P-N59	-9.46	98.99	112.93
3	D	402	B12	C2P-C1P-N59	-9.29	99.23	112.93
3	A	402	B12	C7B-C8B-C9B	5.58	126.06	120.54
3	D	402	B12	C7B-C8B-C9B	5.58	126.06	120.54
3	A	402	B12	C2P-C1P-N59	-5.39	104.99	112.93
3	C	402	B12	C7B-C8B-C9B	5.14	125.63	120.54
3	B	402	B12	C7B-C8B-C9B	4.80	125.29	120.54
3	A	402	B12	C55-C17-C16	4.38	125.31	116.65
2	C	401	5AD	C5'-C4'-C3'	-4.36	111.12	115.70
3	A	402	B12	C56-C55-C17	-4.19	107.44	115.52
3	D	402	B12	C1P-N59-C57	-4.07	113.82	122.69
3	B	402	B12	C55-C56-C57	-4.05	102.38	111.23
3	B	402	B12	C18-C17-C16	3.85	105.35	100.67
3	B	402	B12	C15-C16-N24	3.82	127.92	122.42
3	C	402	B12	C56-C55-C17	-3.81	108.18	115.52
3	B	402	B12	C54-C17-C18	-3.78	107.39	112.98
3	C	402	B12	C18-C17-C16	3.77	105.25	100.67
3	B	402	B12	C56-C55-C17	-3.72	108.34	115.52

Continued on next page...

Continued from previous page...

Mol	Chain	Res	Type	Atoms	Z	Observed(°)	Ideal(°)
3	B	402	B12	C55-C17-C16	3.70	123.97	116.65
3	D	402	B12	C55-C17-C16	3.70	123.96	116.65
3	D	402	B12	C16-C15-C14	-3.68	115.67	121.25
3	D	402	B12	C18-C17-C16	3.67	105.13	100.67
3	A	402	B12	C15-C16-N24	3.65	127.68	122.42
3	D	402	B12	C17-C16-N24	-3.60	105.60	111.15
2	B	401	5AD	N3-C2-N1	-3.57	123.09	128.68
3	D	402	B12	C56-C55-C17	-3.55	108.67	115.52
3	B	402	B12	C1P-N59-C57	-3.46	115.14	122.69
3	D	402	B12	C54-C17-C16	-3.43	94.57	112.40
3	A	402	B12	C16-C15-C14	-3.40	116.09	121.25
3	C	402	B12	C55-C17-C16	3.40	123.36	116.65
2	B	401	5AD	C5'-C4'-C3'	-3.37	112.16	115.70
2	B	401	5AD	C3'-C2'-C1'	3.36	106.03	100.98
3	A	402	B12	C13-C14-C15	-3.34	119.22	124.32
3	D	402	B12	C15-C16-N24	3.32	127.21	122.42
2	C	401	5AD	C4-C5-N7	-3.31	105.94	109.40
3	B	402	B12	C2P-C1P-N59	-3.29	108.09	112.93
3	C	402	B12	C15-C16-N24	3.27	127.14	122.42
2	D	401	5AD	C3'-C2'-C1'	3.26	105.89	100.98
3	D	402	B12	C13-C14-C15	-3.26	119.33	124.32
3	B	402	B12	C54-C17-C16	-3.18	95.87	112.40
3	D	402	B12	C53-C15-C16	3.15	125.81	120.38
3	A	402	B12	C54-C17-C16	-3.12	96.18	112.40
3	A	402	B12	C36-C7-C37	3.12	115.95	110.80
3	B	402	B12	C17-C16-N24	-3.12	106.34	111.15
3	C	402	B12	C1-C19-C18	-3.12	116.76	121.88
2	C	401	5AD	N3-C2-N1	-3.11	123.81	128.68
3	C	402	B12	C55-C56-C57	-3.10	104.45	111.23
3	B	402	B12	C1-C19-C18	-3.10	116.80	121.88
2	A	401	5AD	C3'-C2'-C1'	3.07	105.60	100.98
3	D	402	B12	C55-C56-C57	-3.06	104.55	111.23
3	A	402	B12	C5B-C4B-C9B	-3.03	116.93	121.22
3	C	402	B12	C5B-C4B-C9B	-3.03	116.93	121.22
3	C	402	B12	C5M-C5B-C6B	-3.02	114.54	120.74
3	B	402	B12	C5B-C4B-C9B	-3.02	116.94	121.22
3	B	402	B12	C16-C15-C14	-3.02	116.67	121.25
3	A	402	B12	C2-C1-C19	-3.02	113.84	118.60
3	C	402	B12	C1P-N59-C57	-2.99	116.18	122.69
3	A	402	B12	C20-C1-C19	2.99	112.23	109.36
2	A	401	5AD	N3-C2-N1	-2.98	124.03	128.68
3	C	402	B12	C54-C17-C18	-2.97	108.60	112.98

Continued on next page...

Continued from previous page...

Mol	Chain	Res	Type	Atoms	Z	Observed(°)	Ideal(°)
3	C	402	B12	C2-C1-C19	-2.95	113.94	118.60
3	C	402	B12	C54-C17-C16	-2.95	97.11	112.40
3	B	402	B12	C2-C1-C19	-2.91	114.01	118.60
3	C	402	B12	C13-C14-C15	-2.90	119.89	124.32
2	D	401	5AD	N3-C2-N1	-2.90	124.15	128.68
3	A	402	B12	C5M-C5B-C6B	-2.88	114.83	120.74
3	D	402	B12	C1-C19-C18	-2.88	117.16	121.88
2	A	401	5AD	C4-C5-N7	-2.86	106.41	109.40
3	A	402	B12	C1-C19-C18	-2.85	117.20	121.88
3	B	402	B12	C13-C14-C15	-2.83	120.00	124.32
3	A	402	B12	C55-C56-C57	-2.74	105.25	111.23
2	C	401	5AD	C3'-C2'-C1'	2.74	105.10	100.98
3	C	402	B12	C17-C16-N24	-2.72	106.95	111.15
3	D	402	B12	C5B-C4B-C9B	-2.72	117.37	121.22
3	D	402	B12	O6R-C4R-C5R	2.71	115.08	109.21
3	A	402	B12	C54-C17-C18	-2.70	108.99	112.98
3	B	402	B12	O2-C3R-C4R	-2.64	100.55	110.08
3	D	402	B12	C54-C17-C18	-2.64	109.09	112.98
3	C	402	B12	O28-C27-N29	-2.63	115.31	122.50
2	A	401	5AD	C5'-C4'-C3'	-2.63	112.94	115.70
3	C	402	B12	C16-C15-C14	-2.61	117.29	121.25
3	A	402	B12	C13-C14-N23	2.60	112.64	109.10
3	B	402	B12	C13-C14-N23	2.59	112.62	109.10
3	B	402	B12	C53-C15-C16	2.57	124.80	120.38
3	A	402	B12	C49-C48-C13	-2.56	107.35	114.73
3	A	402	B12	C18-C17-C16	2.53	103.75	100.67
2	D	401	5AD	C4-C5-N7	-2.53	106.76	109.40
3	C	402	B12	O2-C3R-C4R	-2.49	101.08	110.08
3	A	402	B12	C3R-C2R-C1R	2.46	105.33	99.89
3	B	402	B12	C5M-C5B-C6B	-2.40	115.82	120.74
3	A	402	B12	C18-C60-C61	-2.38	108.04	113.97
3	D	402	B12	C49-C48-C13	-2.38	107.87	114.73
3	A	402	B12	O58-C57-N59	2.37	127.49	123.01
3	C	402	B12	C20-C1-C19	2.37	111.64	109.36
3	A	402	B12	C41-C8-C9	-2.34	107.06	111.19
3	C	402	B12	C13-C14-N23	2.32	112.25	109.10
3	D	402	B12	C41-C8-C9	-2.31	107.12	111.19
3	A	402	B12	C17-C16-N24	-2.30	107.61	111.15
3	D	402	B12	O28-C27-N29	-2.29	116.25	122.50
3	B	402	B12	C3R-C2R-C1R	2.28	104.95	99.89
3	C	402	B12	C3R-C2R-C1R	2.27	104.92	99.89
3	D	402	B12	C5M-C5B-C6B	-2.26	116.11	120.74

Continued on next page...

Continued from previous page...

Mol	Chain	Res	Type	Atoms	Z	Observed(°)	Ideal(°)
3	D	402	B12	C4B-C9B-C8B	-2.25	118.80	121.10
3	A	402	B12	C4B-C9B-C8B	-2.23	118.82	121.10
3	C	402	B12	C36-C7-C37	2.23	114.48	110.80
3	A	402	B12	C2-C26-C27	-2.20	109.04	115.22
3	C	402	B12	C18-C19-N24	2.19	105.65	102.31
3	C	402	B12	C41-C8-C9	-2.15	107.41	111.19
3	D	402	B12	C13-C14-N23	2.14	112.01	109.10
3	B	402	B12	O5-P-O4	2.13	122.78	112.24
3	D	402	B12	C35-C5-C4	-2.12	112.47	116.79
2	B	401	5AD	C4-C5-N7	-2.10	107.21	109.40
3	C	402	B12	C49-C48-C13	-2.09	108.70	114.73
2	C	401	5AD	C2-N1-C6	2.09	122.32	118.75
3	A	402	B12	O44-C43-N45	-2.08	116.82	122.50
3	C	402	B12	C2-C26-C27	-2.08	109.37	115.22
3	A	402	B12	C4B-C5B-C6B	2.08	123.42	119.91
3	B	402	B12	C42-C43-N45	2.07	122.96	116.51
3	A	402	B12	C37-C7-C8	-2.05	102.91	108.39
3	A	402	B12	C42-C43-N45	2.04	122.87	116.51
3	A	402	B12	C1P-N59-C57	-2.04	118.24	122.69
2	B	401	5AD	C2-N1-C6	2.04	122.24	118.75
3	B	402	B12	O28-C27-N29	-2.03	116.97	122.50
3	D	402	B12	C2-C1-C19	-2.03	115.40	118.60
3	B	402	B12	C36-C7-C37	2.02	114.14	110.80
3	B	402	B12	C20-C1-C19	2.02	111.30	109.36

There are no chirality outliers.

All (61) torsion outliers are listed below:

Mol	Chain	Res	Type	Atoms
3	A	402	B12	N59-C1P-C2P-C3P
3	A	402	B12	N59-C1P-C2P-O3
3	A	402	B12	C1P-C2P-O3-P
3	A	402	B12	C3P-C2P-O3-P
3	A	402	B12	C3R-O2-P-O4
3	A	402	B12	C3R-O2-P-O5
3	B	402	B12	N59-C1P-C2P-C3P
3	B	402	B12	N59-C1P-C2P-O3
3	B	402	B12	C3R-O2-P-O5
3	C	402	B12	N59-C1P-C2P-C3P
3	C	402	B12	N59-C1P-C2P-O3
3	C	402	B12	C1P-C2P-O3-P
3	C	402	B12	C3P-C2P-O3-P

Continued on next page...

Continued from previous page...

Mol	Chain	Res	Type	Atoms
3	C	402	B12	C3R-O2-P-O5
3	C	402	B12	C3R-C4R-C5R-O8R
3	C	402	B12	O6R-C4R-C5R-O8R
3	D	402	B12	N59-C1P-C2P-C3P
3	D	402	B12	N59-C1P-C2P-O3
3	D	402	B12	C3R-O2-P-O4
3	D	402	B12	C3R-O2-P-O5
3	D	402	B12	O6R-C4R-C5R-O8R
3	D	402	B12	C3R-C4R-C5R-O8R
3	C	402	B12	C3R-O2-P-O3
3	B	402	B12	O6R-C4R-C5R-O8R
3	D	402	B12	C3P-C2P-O3-P
3	A	402	B12	C3R-O2-P-O3
3	B	402	B12	C3R-O2-P-O3
3	C	402	B12	C2P-O3-P-O2
3	D	402	B12	C2P-O3-P-O2
3	D	402	B12	C3R-O2-P-O3
3	B	402	B12	C3R-O2-P-O4
3	C	402	B12	C3R-O2-P-O4
3	D	402	B12	C55-C56-C57-O58
3	D	402	B12	C1P-C2P-O3-P
3	B	402	B12	C4-C3-C30-C31
3	D	402	B12	C55-C56-C57-N59
3	D	402	B12	C4-C3-C30-C31
3	D	402	B12	C18-C60-C61-O63
3	D	402	B12	C42-C41-C8-C9
3	A	402	B12	C17-C18-C60-C61
3	A	402	B12	C19-C18-C60-C61
3	B	402	B12	C17-C18-C60-C61
3	C	402	B12	C17-C18-C60-C61
3	B	402	B12	C55-C56-C57-O58
3	B	402	B12	C55-C56-C57-N59
3	A	402	B12	C55-C56-C57-O58
3	B	402	B12	C19-C18-C60-C61
3	C	402	B12	C19-C18-C60-C61
3	A	402	B12	C42-C41-C8-C9
3	D	402	B12	C2-C3-C30-C31
3	C	402	B12	C55-C56-C57-O58
3	B	402	B12	C2-C3-C30-C31
3	A	402	B12	C55-C56-C57-N59
3	C	402	B12	C55-C56-C57-N59
3	B	402	B12	C7-C37-C38-O39

Continued on next page...

Continued from previous page...

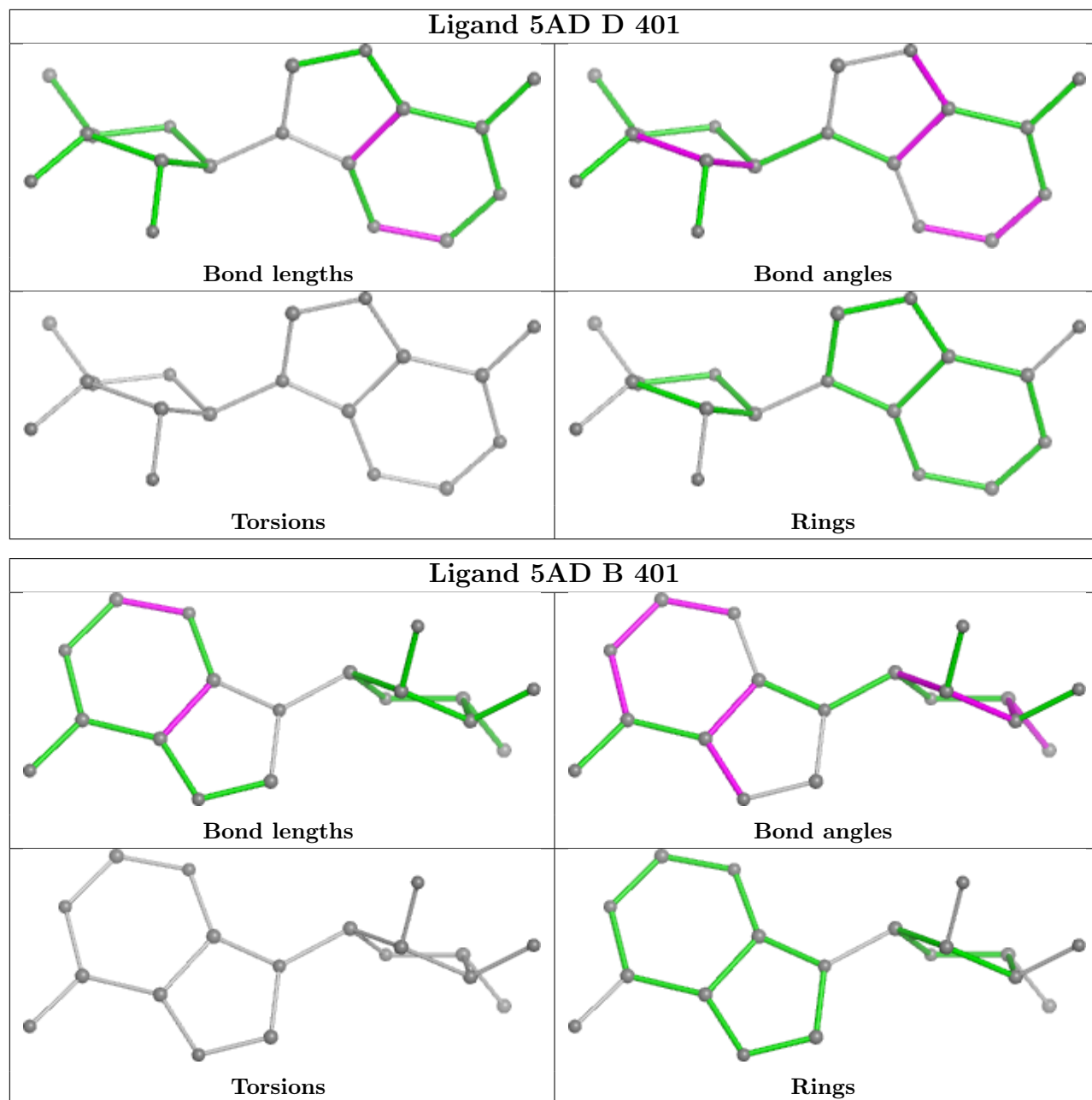
Mol	Chain	Res	Type	Atoms
3	D	402	B12	C17-C18-C60-C61
3	D	402	B12	C19-C18-C60-C61
3	D	402	B12	C18-C17-C55-C56
3	D	402	B12	C18-C60-C61-N62
3	B	402	B12	C3R-C4R-C5R-O8R
3	B	402	B12	C18-C17-C55-C56

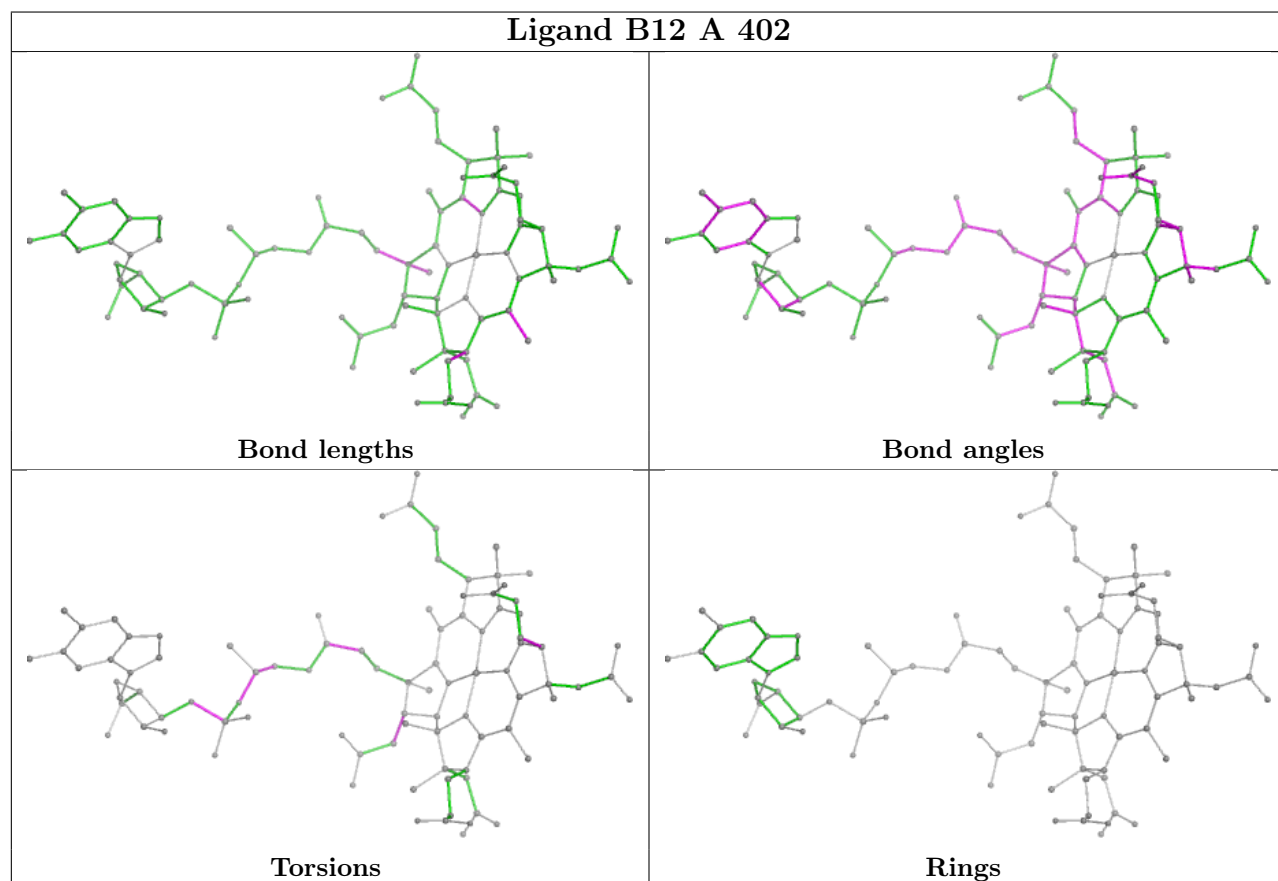
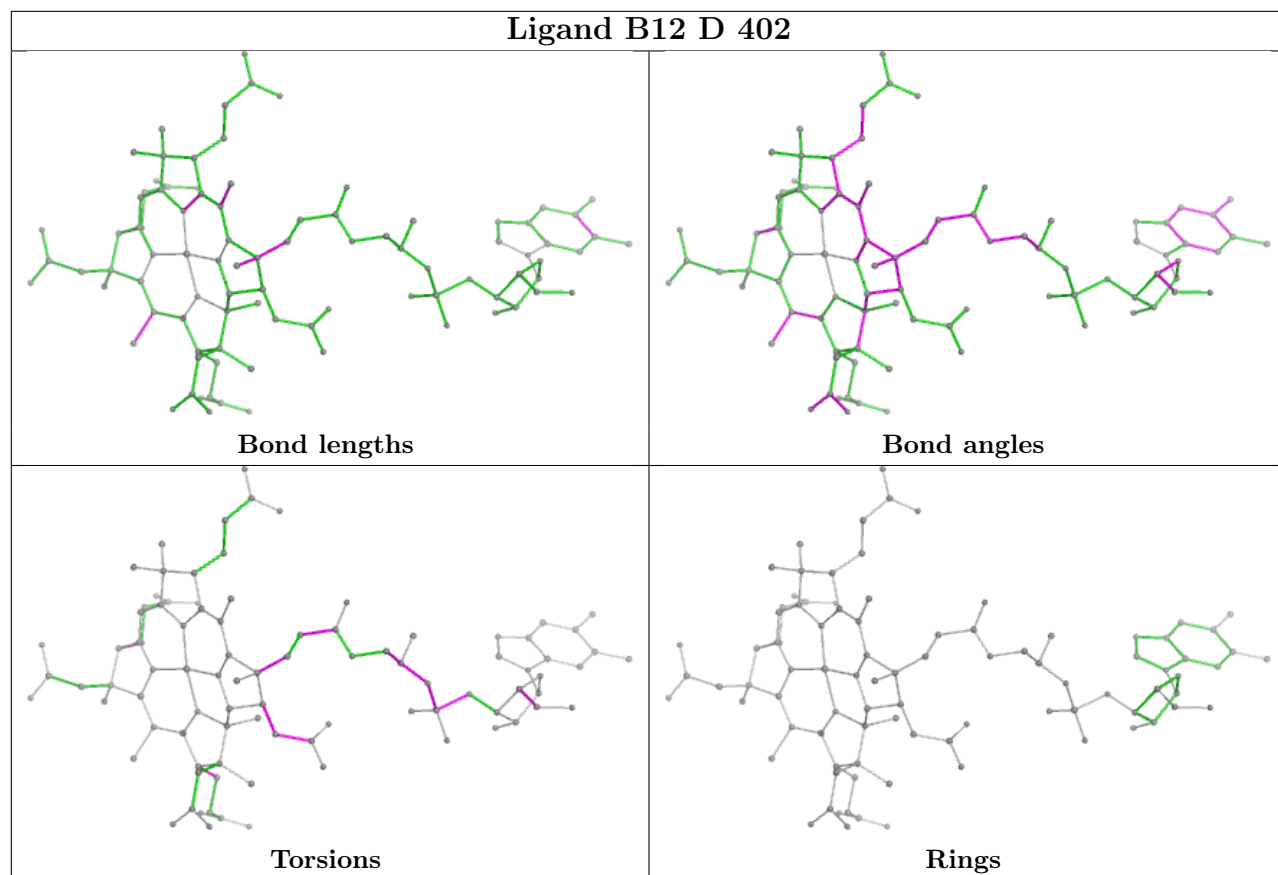
There are no ring outliers.

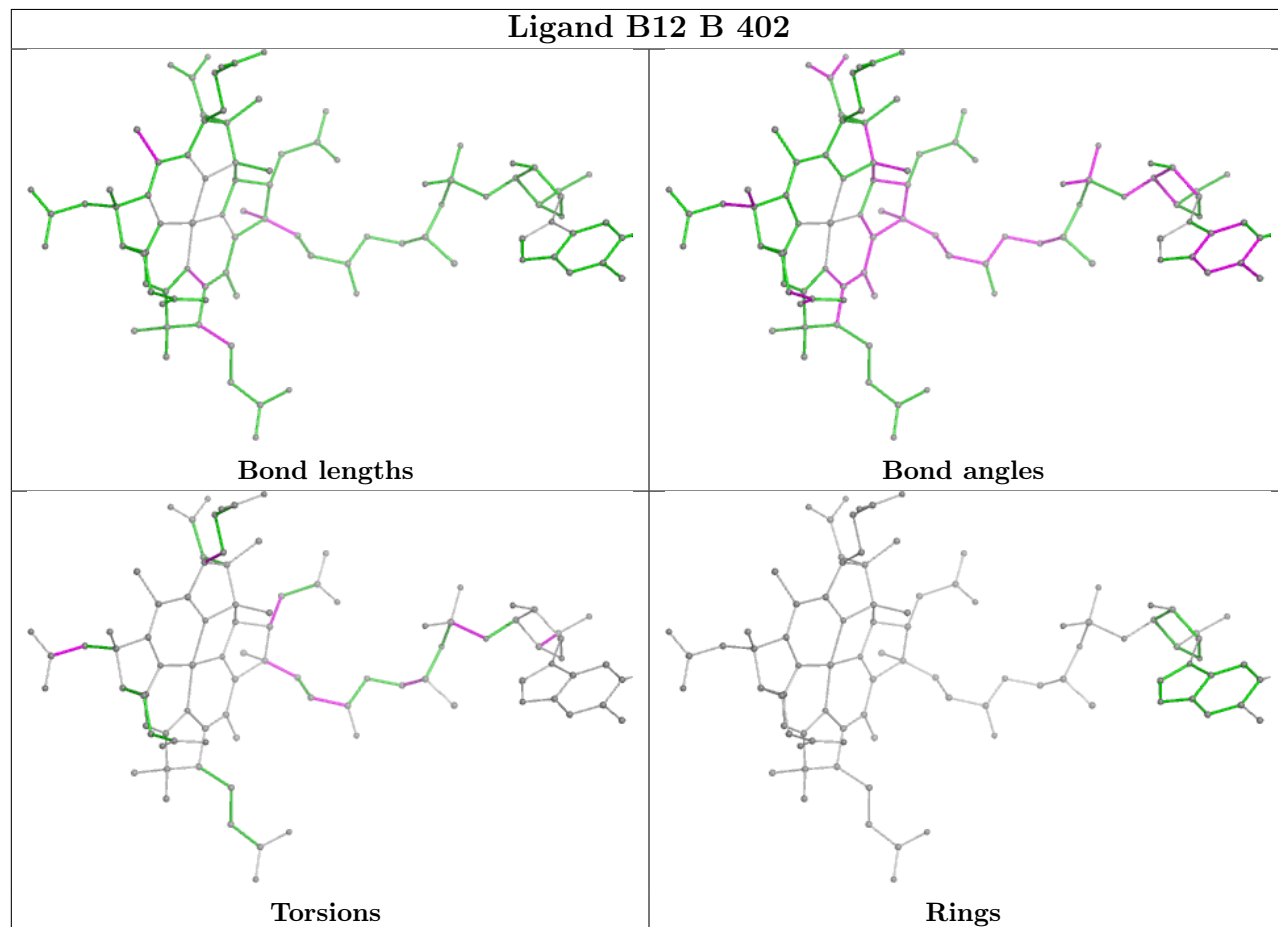
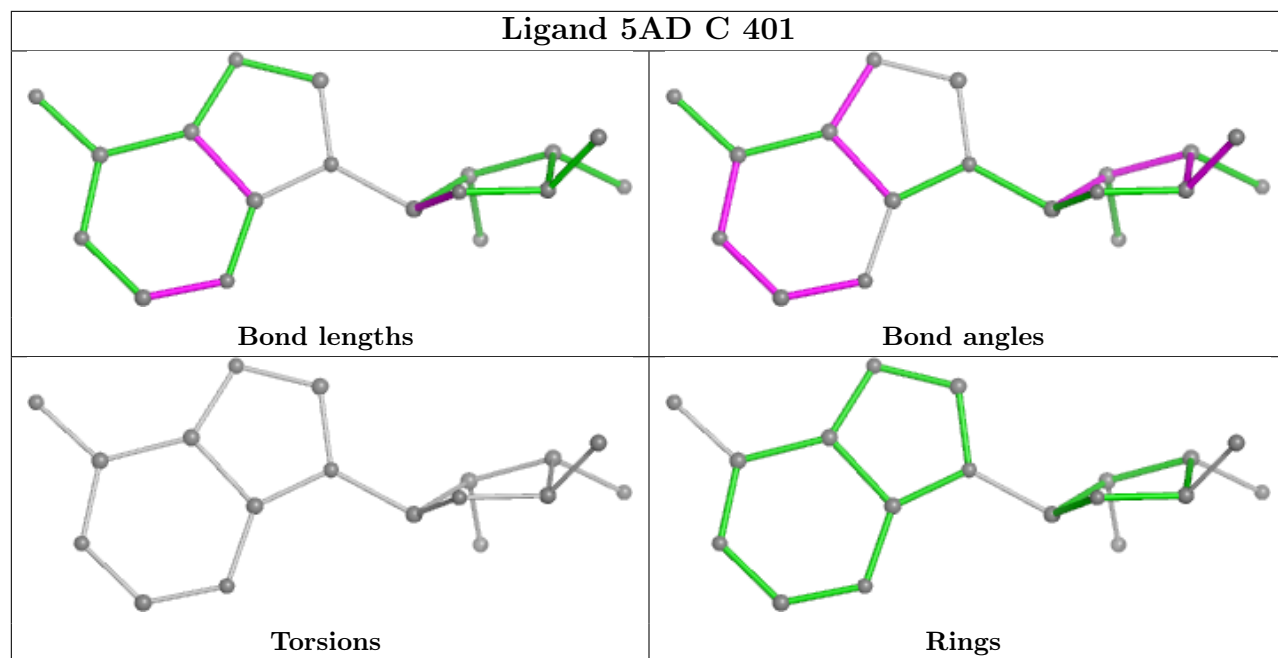
7 monomers are involved in 25 short contacts:

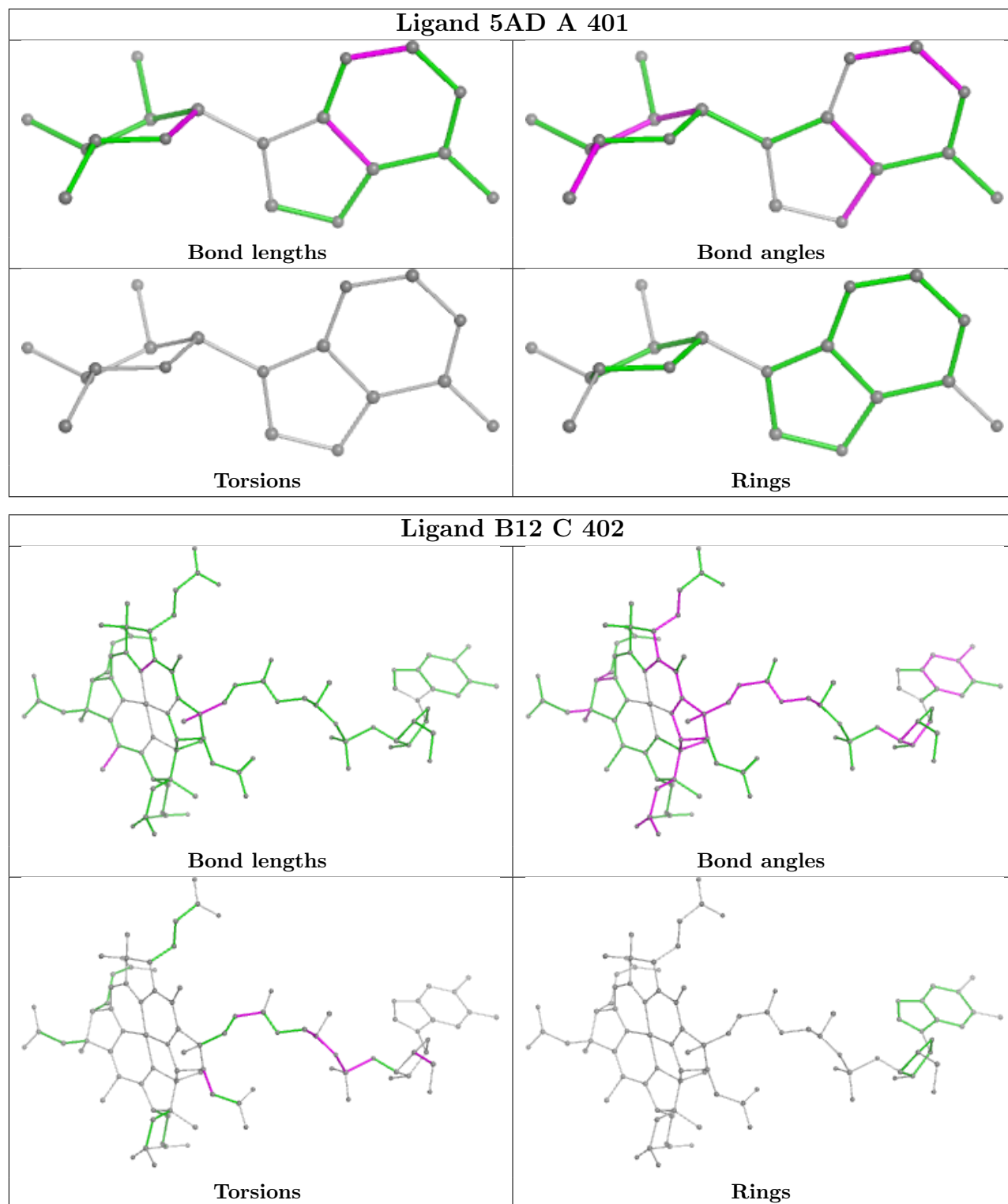
Mol	Chain	Res	Type	Clashes	Symm-Clashes
2	D	401	5AD	3	0
3	D	402	B12	6	0
3	A	402	B12	7	0
2	C	401	5AD	1	0
3	B	402	B12	5	0
2	A	401	5AD	1	0
3	C	402	B12	6	0

The following is a two-dimensional graphical depiction of Mogul quality analysis of bond lengths, bond angles, torsion angles, and ring geometry for all instances of the Ligand of Interest. In addition, ligands with molecular weight > 250 and outliers as shown on the validation Tables will also be included. For torsion angles, if less than 5% of the Mogul distribution of torsion angles is within 10 degrees of the torsion angle in question, then that torsion angle is considered an outlier. Any bond that is central to one or more torsion angles identified as an outlier by Mogul will be highlighted in the graph. For rings, the root-mean-square deviation (RMSD) between the ring in question and similar rings identified by Mogul is calculated over all ring torsion angles. If the average RMSD is greater than 60 degrees and the minimal RMSD between the ring in question and any Mogul-identified rings is also greater than 60 degrees, then that ring is considered an outlier. The outliers are highlighted in purple. The color gray indicates Mogul did not find sufficient equivalents in the CSD to analyse the geometry.









5.7 Other polymers [\(i\)](#)

There are no such residues in this entry.

5.8 Polymer linkage issues

There are no chain breaks in this entry.

6 Fit of model and data [i](#)

6.1 Protein, DNA and RNA chains [i](#)

In the following table, the column labelled ‘#RSRZ > 2’ contains the number (and percentage) of RSRZ outliers, followed by percent RSRZ outliers for the chain as percentile scores relative to all X-ray entries and entries of similar resolution. The OWAB column contains the minimum, median, 95th percentile and maximum values of the occupancy-weighted average B-factor per residue. The column labelled ‘Q < 0.9’ lists the number of (and percentage) of residues with an average occupancy less than 0.9.

Mol	Chain	Analysed	<RSRZ>	#RSRZ>2	OWAB(Å ²)	Q<0.9
1	A	197/215 (91%)	-0.18	1 (0%) 87 89	18, 49, 80, 109	6 (3%)
1	B	197/215 (91%)	-0.21	3 (1%) 71 74	20, 49, 77, 120	5 (2%)
1	C	197/215 (91%)	0.24	6 (3%) 52 54	20, 53, 91, 105	4 (2%)
1	D	197/215 (91%)	0.17	3 (1%) 71 74	21, 55, 89, 110	4 (2%)
All	All	788/860 (91%)	0.00	13 (1%) 70 73	18, 52, 87, 120	19 (2%)

All (13) RSRZ outliers are listed below:

Mol	Chain	Res	Type	RSRZ
1	B	275	TRP	3.2
1	A	275	TRP	3.1
1	D	275	TRP	3.1
1	C	275	TRP	2.9
1	D	276	LEU	2.8
1	B	80	PRO	2.8
1	D	80	PRO	2.6
1	C	240	LEU	2.3
1	C	239	ASP	2.3
1	C	160	GLY	2.2
1	C	233	PRO	2.2
1	C	161	PHE	2.1
1	B	271	ALA	2.1

6.2 Non-standard residues in protein, DNA, RNA chains [i](#)

There are no non-standard protein/DNA/RNA residues in this entry.

6.3 Carbohydrates

There are no oligosaccharides in this entry.

6.4 Ligands

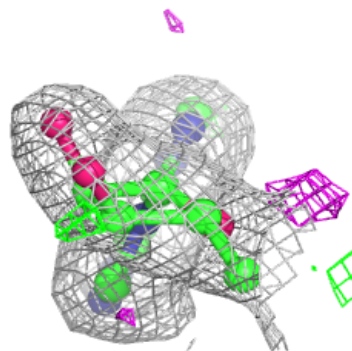
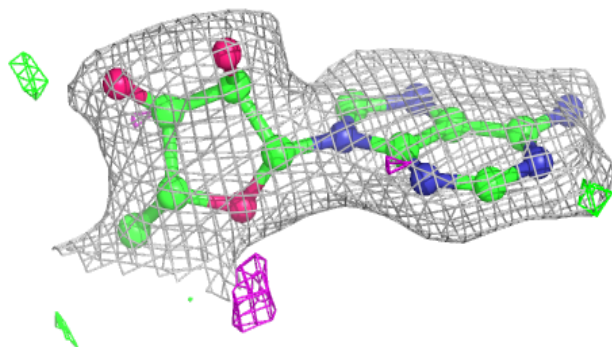
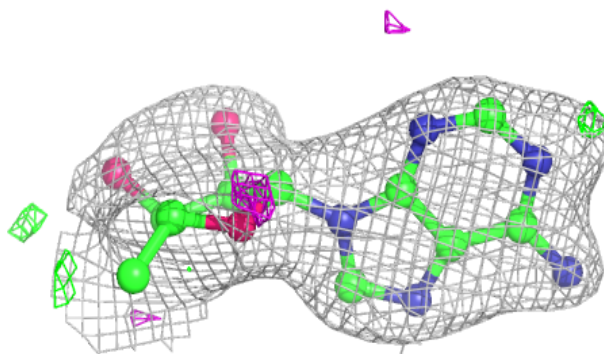
In the following table, the Atoms column lists the number of modelled atoms in the group and the number defined in the chemical component dictionary. The B-factors column lists the minimum, median, 95th percentile and maximum values of B factors of atoms in the group. The column labelled 'Q< 0.9' lists the number of atoms with occupancy less than 0.9.

Mol	Type	Chain	Res	Atoms	RSCC	RSR	B-factors(Å ²)	Q<0.9
2	5AD	D	401	18/18	0.93	0.08	51,56,61,63	0
3	B12	D	402	91/91	0.95	0.09	43,57,75,85	0
3	B12	B	402	91/91	0.96	0.07	36,48,67,76	0
3	B12	C	402	91/91	0.96	0.08	35,47,70,78	0
3	B12	A	402	91/91	0.96	0.07	34,47,68,83	0
2	5AD	C	401	18/18	0.97	0.06	37,42,46,48	0
2	5AD	A	401	18/18	0.97	0.06	37,42,47,48	0
2	5AD	B	401	18/18	0.97	0.06	40,49,51,52	0

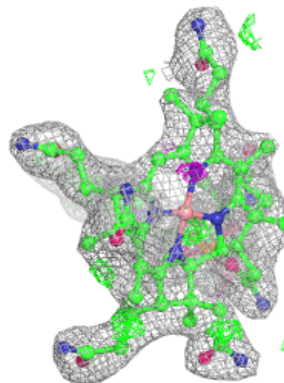
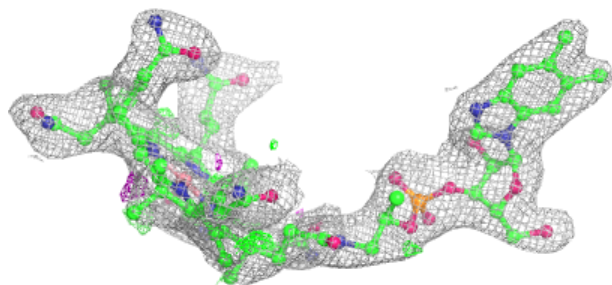
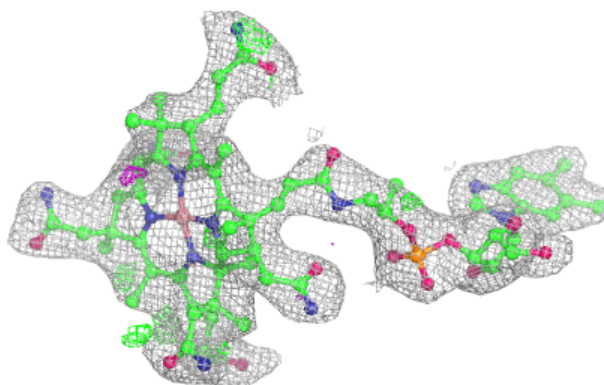
The following is a graphical depiction of the model fit to experimental electron density of all instances of the Ligand of Interest. In addition, ligands with molecular weight > 250 and outliers as shown on the geometry validation Tables will also be included. Each fit is shown from different orientation to approximate a three-dimensional view.

Electron density around 5AD D 401:

$2mF_o-DF_c$ (at 0.7 rmsd) in gray
 mF_o-DF_c (at 3 rmsd) in purple (negative)
and green (positive)

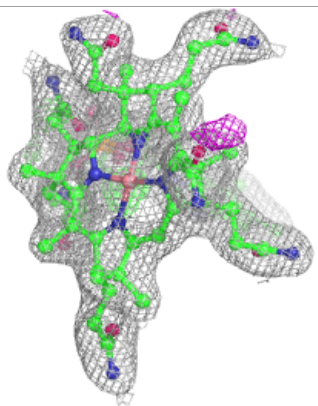
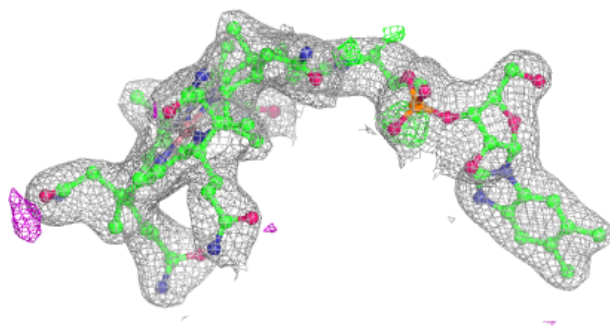
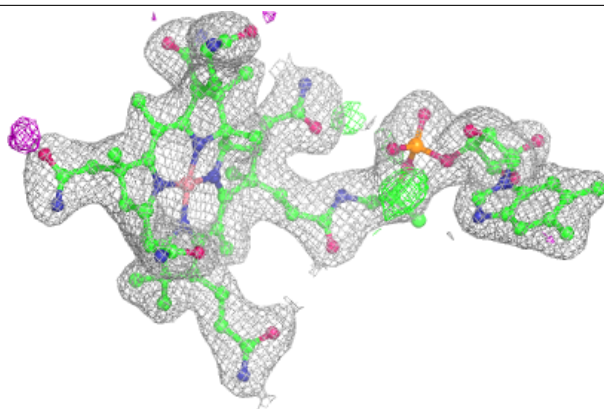
**Electron density around B12 D 402:**

$2mF_o-DF_c$ (at 0.7 rmsd) in gray
 mF_o-DF_c (at 3 rmsd) in purple (negative)
and green (positive)

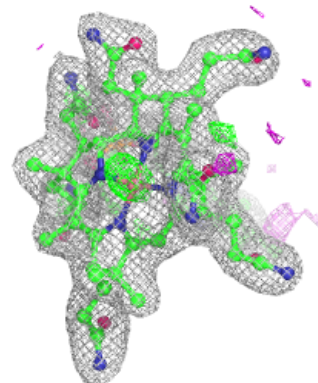
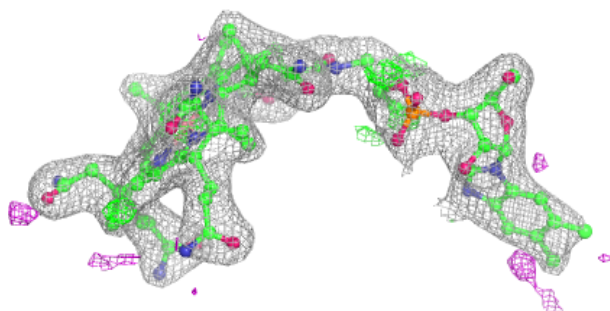
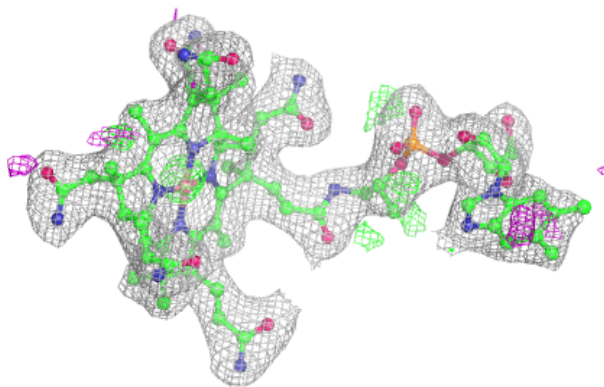


Electron density around B12 B 402:

$2mF_o-DF_c$ (at 0.7 rmsd) in gray
 mF_o-DF_c (at 3 rmsd) in purple (negative)
and green (positive)

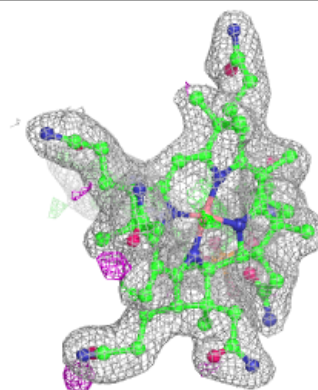
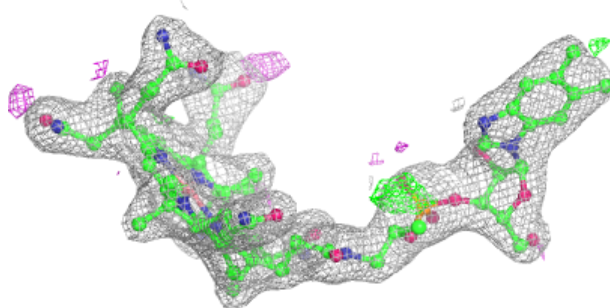
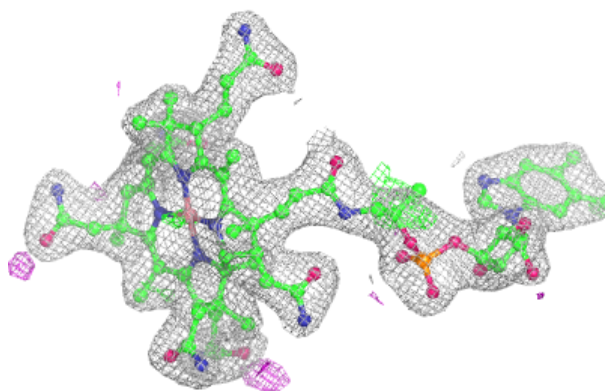
**Electron density around B12 C 402:**

$2mF_o-DF_c$ (at 0.7 rmsd) in gray
 mF_o-DF_c (at 3 rmsd) in purple (negative)
and green (positive)

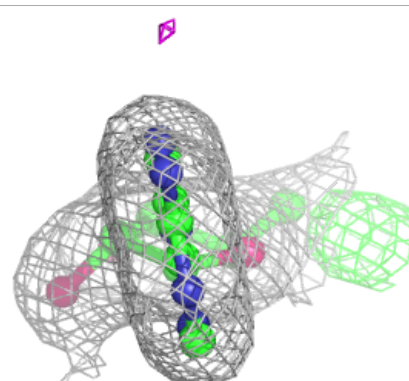
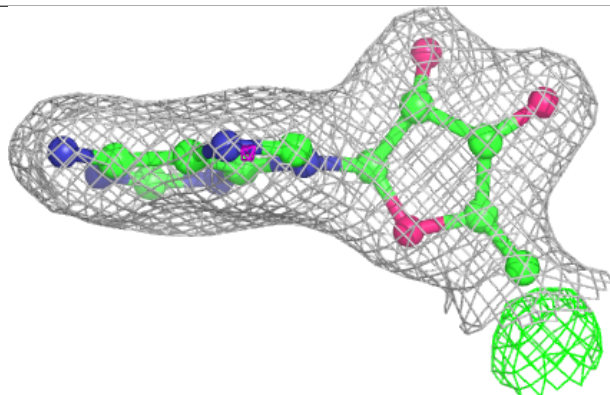
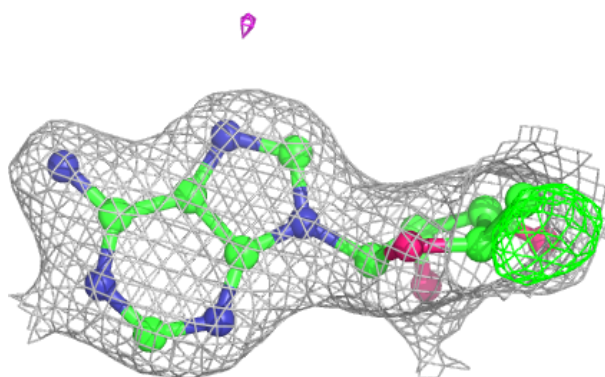


Electron density around B12 A 402:

$2mF_o-DF_c$ (at 0.7 rmsd) in gray
 mF_o-DF_c (at 3 rmsd) in purple (negative)
and green (positive)

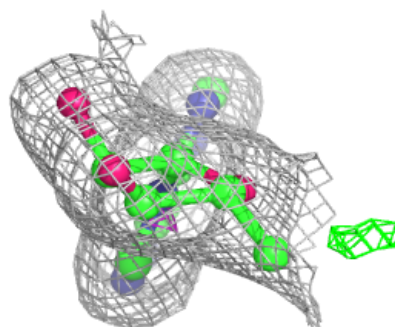
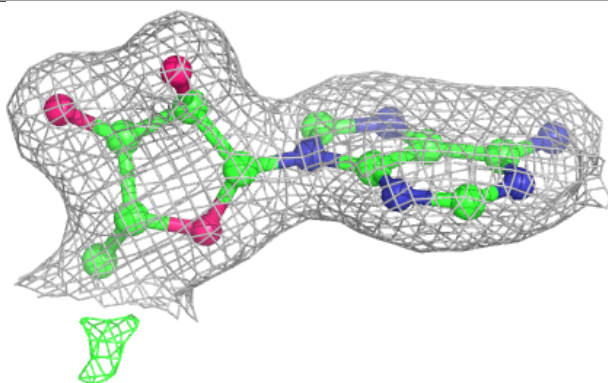
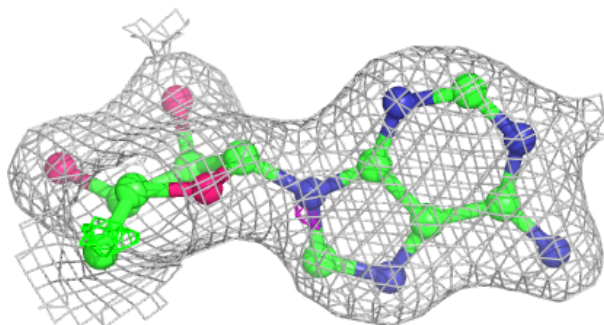
**Electron density around 5AD C 401:**

$2mF_o-DF_c$ (at 0.7 rmsd) in gray
 mF_o-DF_c (at 3 rmsd) in purple (negative)
and green (positive)

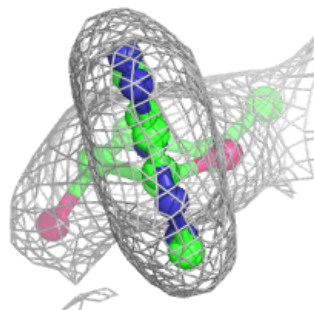
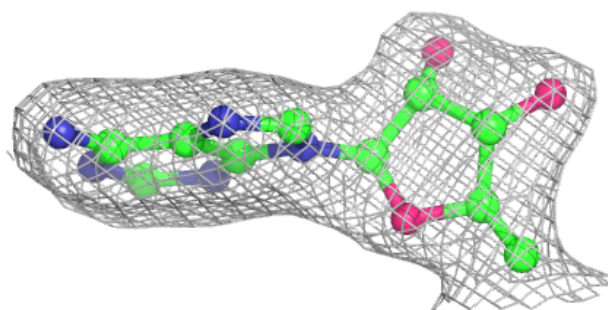
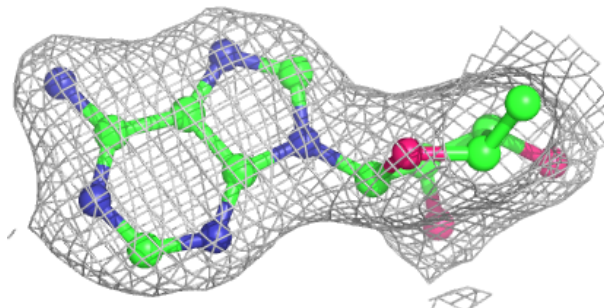


Electron density around 5AD A 401:

$2mF_o-DF_c$ (at 0.7 rmsd) in gray
 mF_o-DF_c (at 3 rmsd) in purple (negative)
and green (positive)

**Electron density around 5AD B 401:**

$2mF_o-DF_c$ (at 0.7 rmsd) in gray
 mF_o-DF_c (at 3 rmsd) in purple (negative)
and green (positive)



6.5 Other polymers [i](#)

There are no such residues in this entry.