



wwPDB X-ray Structure Validation Summary Report ⓘ

Mar 6, 2026 – 04:57 PM UTC

PDB ID : 1RZH / pdb_00001rzh
Title : PHOTOSYNTHETIC REACTION CENTER DOUBLE MUTANT FROM RHODOBACTER SPHAEROIDES WITH ASP L213 REPLACED WITH ASN AND ARG M233 REPLACED WITH CYS IN THE CHARGE-NEUTRAL DQAQB STATE (TRIGONAL FORM)
Authors : Xu, Q.; Axelrod, H.L.; Abresch, E.C.; Paddock, M.L.; Okamura, M.Y.; Feher, G.
Deposited on : 2003-12-24
Resolution : 1.80 Å(reported)

This is a wwPDB X-ray Structure Validation Summary Report for a publicly released PDB entry.

We welcome your comments at validation@mail.wwpdb.org

A user guide is available at

<https://www.wwpdb.org/validation/2017/XrayValidationReportHelp>

with specific help available everywhere you see the ⓘ symbol.

The types of validation reports are described at

<http://www.wwpdb.org/validation/2017/FAQs#types>.

The following versions of software and data (see [references ⓘ](#)) were used in the production of this report:

MolProbity : 4-5-2 with Phenix2.0
Mogul : 2022.3.0, CSD as543be (2022)
Xtriage (Phenix) : 2.0
EDS : 3.0
Buster-report : wwPDB partial adaption of 1.1.7 (2018)
Percentile statistics : 20250101.v01 (using entries in the PDB archive January 1st 2025)
CCP4 : 9.0.010 (Gargrove)
Density-Fitness : 1.0.12
Ideal geometry (proteins) : Engh & Huber (2001)

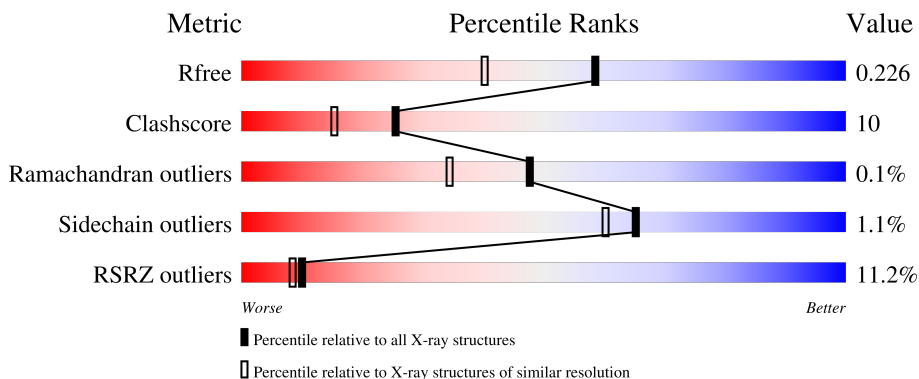
1 Overall quality at a glance

The following experimental techniques were used to determine the structure:

X-RAY DIFFRACTION

The reported resolution of this entry is 1.80 Å.

Percentile scores (ranging between 0-100) for global validation metrics of the entry are shown in the following graphic. The table shows the number of entries on which the scores are based.



Metric	Whole archive (#Entries)	Similar resolution (#Entries, resolution range(Å))
R_{free}	180053	7662 (1.80-1.80)
Clashscore	190562	8479 (1.80-1.80)
Ramachandran outliers	187476	8391 (1.80-1.80)
Sidechain outliers	187428	8390 (1.80-1.80)
RSRZ outliers	180081	7663 (1.80-1.80)

The table below summarises the geometric issues observed across the polymeric chains and their fit to the electron density. The red, orange, yellow and green segments of the lower bar indicate the fraction of residues that contain outliers for ≥ 3 , 2, 1 and 0 types of geometric quality criteria respectively. A grey segment represents the fraction of residues that are not modelled. The numeric value for each fraction is indicated below the corresponding segment, with a dot representing fractions $\leq 5\%$. The upper red bar (where present) indicates the fraction of residues that have poor fit to the electron density. The numeric value is given above the bar.

Mol	Chain	Length	Quality of chain
1	L	281	 14% 85% 15%
2	M	307	 12% 79% 19% .
3	H	260	 7% 75% 15% . 8%

Ideal geometry (DNA, RNA) : Parkinson et al. (1996)
 Validation Pipeline (wwPDB-VP) : 2.49

The following table lists non-polymeric compounds, carbohydrate monomers and non-standard residues in protein, DNA, RNA chains that are outliers for geometric or electron-density-fit criteria:

Mol	Type	Chain	Res	Chirality	Geometry	Clashes	Electron density
13	GOL	M	867	-	X	-	-
4	BCL	M	851	X	-	-	-
5	BPH	L	856	X	-	-	-
5	BPH	M	855	X	-	-	-
6	U10	L	859[A]	-	-	-	X

2 Entry composition [i](#)

There are 14 unique types of molecules in this entry. The entry contains 7586 atoms, of which 0 are hydrogens and 0 are deuteriums.

In the tables below, the ZeroOcc column contains the number of atoms modelled with zero occupancy, the AltConf column contains the number of residues with at least one atom in alternate conformation and the Trace column contains the number of residues modelled with at most 2 atoms.

- Molecule 1 is a protein called Reaction center protein L chain.

Mol	Chain	Residues	Atoms					ZeroOcc	AltConf	Trace
			Total	C	N	O	S			
1	L	281	2238	1510	357	363	8	0	1	0

There is a discrepancy between the modelled and reference sequences:

Chain	Residue	Modelled	Actual	Comment	Reference
L	213	ASN	ASP	engineered mutation	UNP P02954

- Molecule 2 is a protein called Reaction center protein M chain.

Mol	Chain	Residues	Atoms					ZeroOcc	AltConf	Trace
			Total	C	N	O	S			
2	M	301	2399	1602	390	396	11	0	0	0

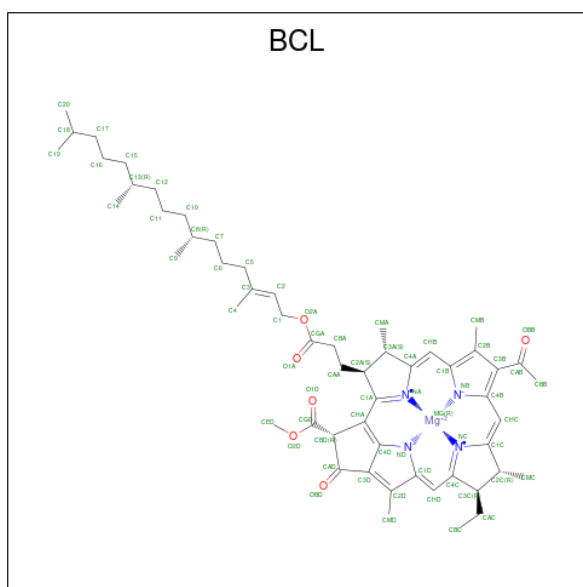
There is a discrepancy between the modelled and reference sequences:

Chain	Residue	Modelled	Actual	Comment	Reference
M	233	CYS	ARG	engineered mutation	UNP P02953

- Molecule 3 is a protein called Reaction center protein H chain.

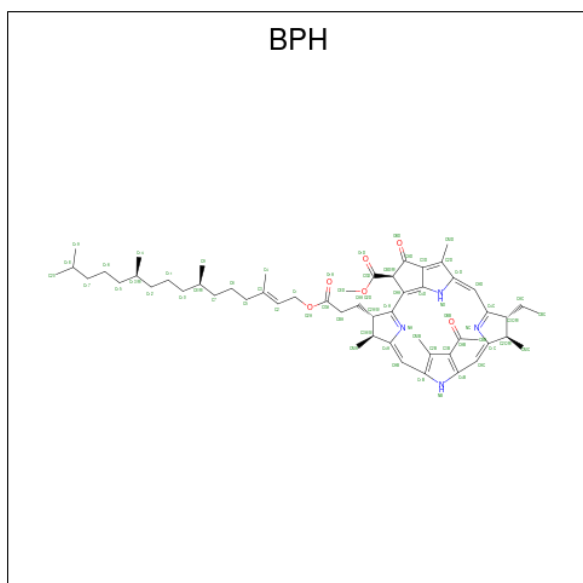
Mol	Chain	Residues	Atoms					ZeroOcc	AltConf	Trace
			Total	C	N	O	S			
3	H	238	1822	1165	312	335	10	0	1	0

- Molecule 4 is BACTERIOCHLOROPHYLL A (CCD ID: BCL) (formula: C₅₅H₇₄MgN₄O₆).



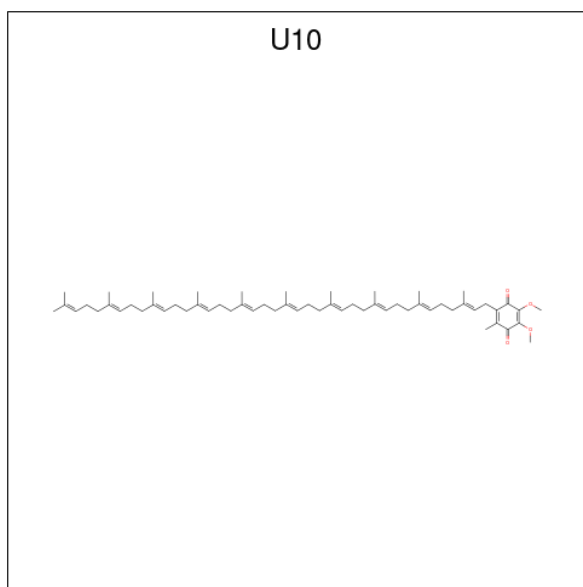
Mol	Chain	Residues	Atoms				ZeroOcc	AltConf	
			Total	C	Mg	N			O
4	L	1	Total	C	Mg	N	O	0	0
			66	55	1	4	6		
4	L	1	Total	C	Mg	N	O	0	0
			66	55	1	4	6		
4	M	1	Total	C	Mg	N	O	0	0
			66	55	1	4	6		
4	M	1	Total	C	Mg	N	O	0	0
			66	55	1	4	6		

- Molecule 5 is BACTERIOPHEOPHYTIN A (CCD ID: BPH) (formula: $C_{55}H_{76}N_4O_6$).



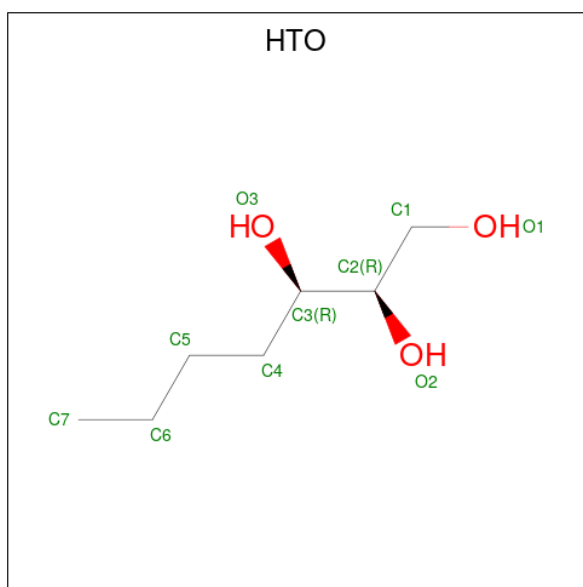
Mol	Chain	Residues	Atoms				ZeroOcc	AltConf
5	L	1	Total	C	N	O	0	0
			65	55	4	6		
5	M	1	Total	C	N	O	0	0
			55	45	4	6		

- Molecule 6 is UBIQUINONE-10 (CCD ID: U10) (formula: $C_{59}H_{90}O_4$).



Mol	Chain	Residues	Atoms			ZeroOcc	AltConf
6	L	1	Total	C	O	0	1
			33	29	4		
6	M	1	Total	C	O	0	0
			48	44	4		

- Molecule 7 is HEPTANE-1,2,3-TRIOL (CCD ID: HTO) (formula: $C_7H_{16}O_3$).

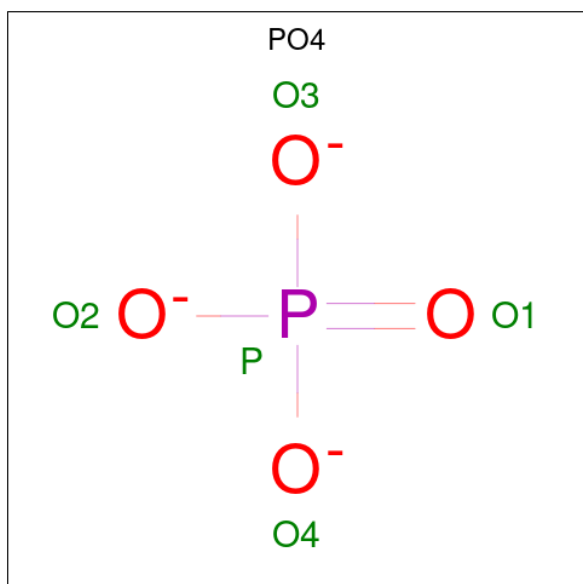


Mol	Chain	Residues	Atoms	ZeroOcc	AltConf
7	L	1	Total C O 10 7 3	0	0
7	L	1	Total C O 10 7 3	0	0

- Molecule 8 is FE (II) ION (CCD ID: FE2) (formula: Fe).

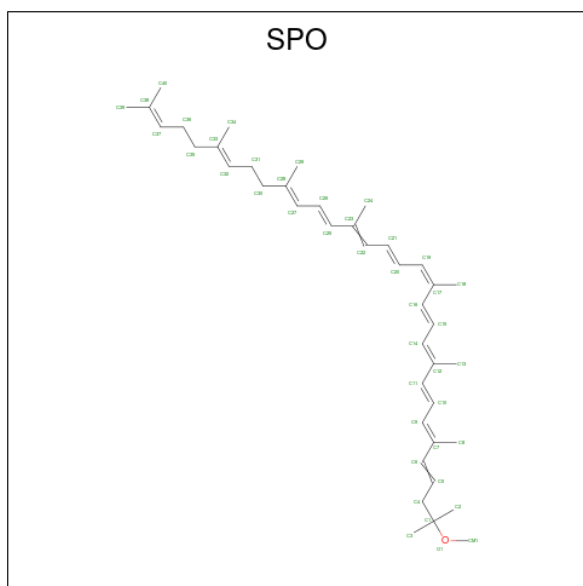
Mol	Chain	Residues	Atoms	ZeroOcc	AltConf
8	M	1	Total Fe 1 1	0	0

- Molecule 9 is PHOSPHATE ION (CCD ID: PO4) (formula: O₄P).



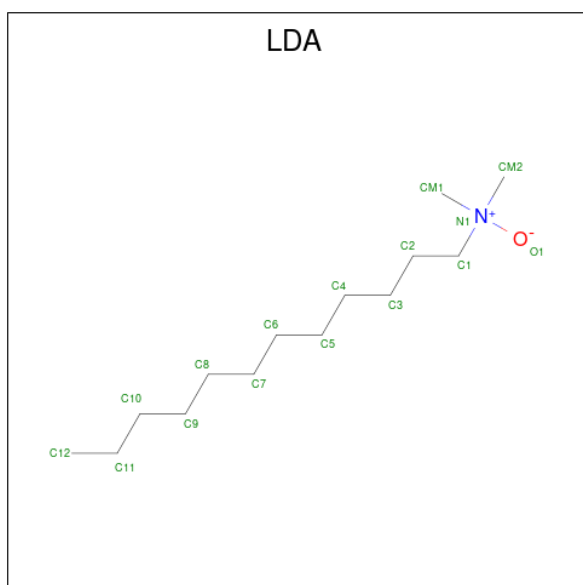
Mol	Chain	Residues	Atoms			ZeroOcc	AltConf
9	M	1	Total	O	P	0	0
			5	4	1		

- Molecule 10 is SPHEROIDENE (CCD ID: SPO) (formula: $C_{41}H_{60}O$).



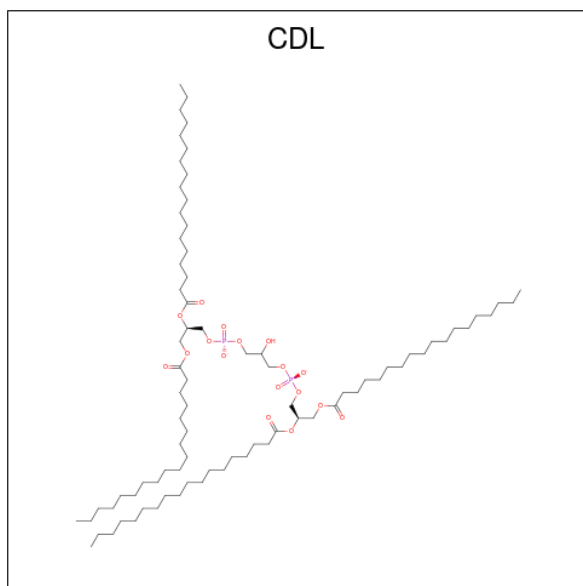
Mol	Chain	Residues	Atoms			ZeroOcc	AltConf
10	M	1	Total	C	O	0	0
			42	41	1		

- Molecule 11 is LAURYL DIMETHYLAMINE-N-OXIDE (CCD ID: LDA) (formula: $C_{14}H_{31}NO$).



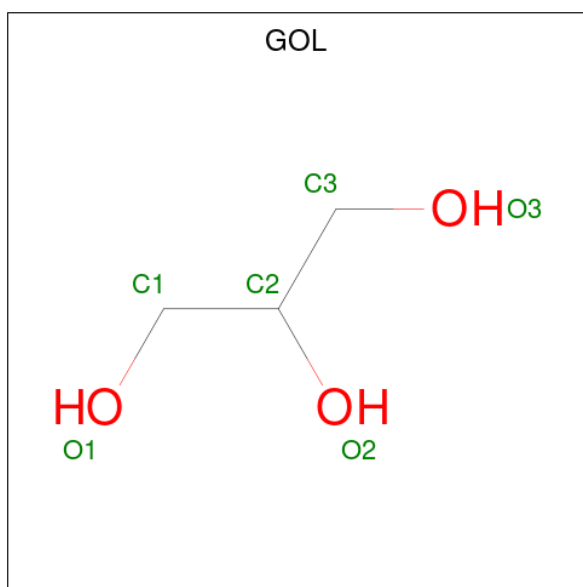
Mol	Chain	Residues	Atoms				ZeroOcc	AltConf
			Total	C	N	O		
11	M	1	16	14	1	1	0	0
11	M	1	16	14	1	1	0	0
11	H	1	16	14	1	1	0	0

- Molecule 12 is CARDIOLIPIN (CCD ID: CDL) (formula: $C_{81}H_{156}O_{17}P_2$).



Mol	Chain	Residues	Atoms				ZeroOcc	AltConf
			Total	C	O	P		
12	M	1	69	50	17	2	0	0

- Molecule 13 is GLYCEROL (CCD ID: GOL) (formula: $C_3H_8O_3$).



Mol	Chain	Residues	Atoms	ZeroOcc	AltConf
13	M	1	Total C O 6 3 3	0	0

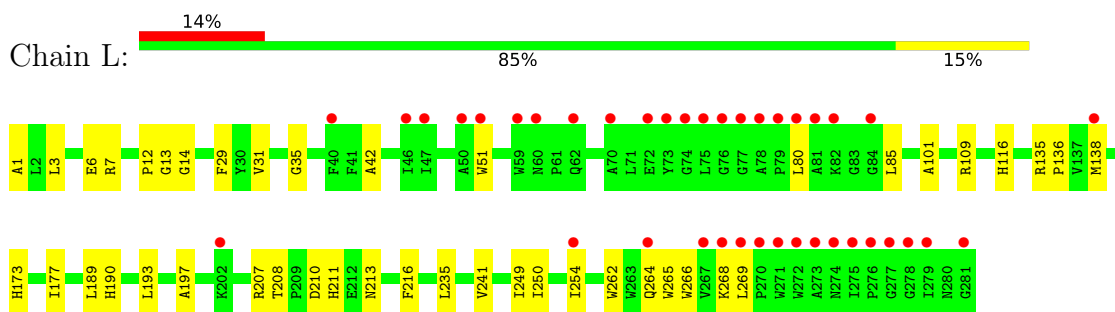
- Molecule 14 is water.

Mol	Chain	Residues	Atoms	ZeroOcc	AltConf
14	L	124	Total O 124 124	0	2
14	M	138	Total O 138 138	0	0
14	H	209	Total O 209 209	0	0

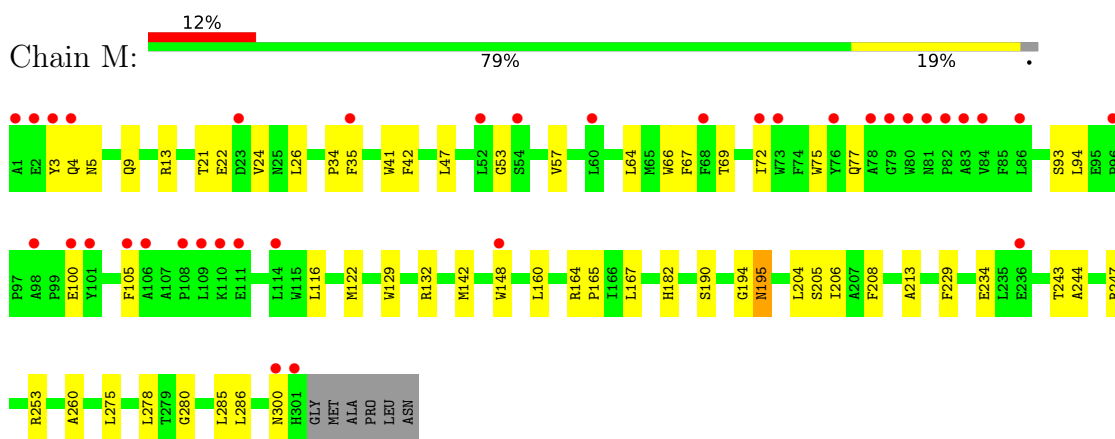
3 Residue-property plots [i](#)

These plots are drawn for all protein, RNA, DNA and oligosaccharide chains in the entry. The first graphic for a chain summarises the proportions of the various outlier classes displayed in the second graphic. The second graphic shows the sequence view annotated by issues in geometry and electron density. Residues are color-coded according to the number of geometric quality criteria for which they contain at least one outlier: green = 0, yellow = 1, orange = 2 and red = 3 or more. A red dot above a residue indicates a poor fit to the electron density ($RSRZ > 2$). Stretches of 2 or more consecutive residues without any outlier are shown as a green connector. Residues present in the sample, but not in the model, are shown in grey.

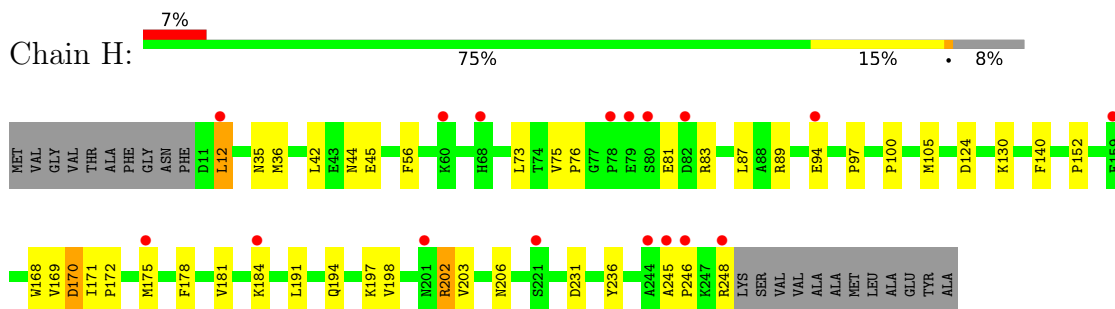
- Molecule 1: Reaction center protein L chain



- Molecule 2: Reaction center protein M chain



- Molecule 3: Reaction center protein H chain



4 Data and refinement statistics

Property	Value	Source
Space group	P 31 2 1	Depositor
Cell constants a, b, c, α , β , γ	139.35Å 139.35Å 184.96Å 90.00° 90.00° 120.00°	Depositor
Resolution (Å)	39.31 – 1.80 39.31 – 1.80	Depositor EDS
% Data completeness (in resolution range)	98.2 (39.31-1.80) 98.3 (39.31-1.80)	Depositor EDS
R_{merge}	(Not available)	Depositor
R_{sym}	0.10	Depositor
$\langle I/\sigma(I) \rangle$ ¹	2.03 (at 1.79Å)	Xtrriage
Refinement program	CNS	Depositor
R, R_{free}	0.221 , 0.233 0.214 , 0.226	Depositor DCC
R_{free} test set	9418 reflections (5.00%)	wwPDB-VP
Wilson B-factor (Å ²)	23.2	Xtrriage
Anisotropy	0.020	Xtrriage
Bulk solvent k_{sol} (e/Å ³), B_{sol} (Å ²)	0.36 , 41.6	EDS
L-test for twinning ²	$\langle L \rangle = 0.47$, $\langle L^2 \rangle = 0.29$	Xtrriage
Estimated twinning fraction	0.027 for -h,-k,l	Xtrriage
F_o, F_c correlation	0.94	EDS
Total number of atoms	7586	wwPDB-VP
Average B, all atoms (Å ²)	28.0	wwPDB-VP

Xtrriage's analysis on translational NCS is as follows: *The largest off-origin peak in the Patterson function is 2.86% of the height of the origin peak. No significant pseudotranslation is detected.*

¹Intensities estimated from amplitudes.

²Theoretical values of $\langle |L| \rangle$, $\langle L^2 \rangle$ for acentric reflections are 0.5, 0.333 respectively for untwinned datasets, and 0.375, 0.2 for perfectly twinned datasets.

5 Model quality [i](#)

5.1 Standard geometry [i](#)

Bond lengths and bond angles in the following residue types are not validated in this section: SPO, PO4, U10, CDL, GOL, BPH, BCL, LDA, HTO, FE2

The Z score for a bond length (or angle) is the number of standard deviations the observed value is removed from the expected value. A bond length (or angle) with $|Z| > 5$ is considered an outlier worth inspection. RMSZ is the root-mean-square of all Z scores of the bond lengths (or angles).

Mol	Chain	Bond lengths		Bond angles	
		RMSZ	# Z >5	RMSZ	# Z >5
1	L	0.40	0/2326	0.89	7/3183 (0.2%)
2	M	0.40	0/2491	0.87	2/3402 (0.1%)
3	H	0.36	0/1870	0.85	3/2544 (0.1%)
All	All	0.39	0/6687	0.87	12/9129 (0.1%)

There are no bond length outliers.

The worst 5 of 12 bond angle outliers are listed below:

Mol	Chain	Res	Type	Atoms	Z	Observed(°)	Ideal(°)
1	L	6	GLU	N-CA-C	8.55	122.20	111.69
1	L	13	GLY	N-CA-C	7.34	118.92	111.95
1	L	35	GLY	N-CA-C	-6.38	104.61	112.77
3	H	44	ASN	N-CA-C	-6.12	102.64	110.53
2	M	234	GLU	N-CA-C	5.95	117.44	111.07

There are no chirality outliers.

There are no planarity outliers.

5.2 Too-close contacts [i](#)

In the following table, the Non-H and H(model) columns list the number of non-hydrogen atoms and hydrogen atoms in the chain respectively. The H(added) column lists the number of hydrogen atoms added and optimized by MolProbity. The Clashes column lists the number of clashes within the asymmetric unit, whereas Symm-Clashes lists symmetry-related clashes.

Mol	Chain	Non-H	H(model)	H(added)	Clashes	Symm-Clashes
1	L	2238	0	2193	37	0
2	M	2399	0	2310	56	0
3	H	1822	0	1826	31	0

Continued on next page...

Continued from previous page...

Mol	Chain	Non-H	H(model)	H(added)	Clashes	Symm-Clashes
4	L	132	0	148	4	0
4	M	132	0	148	22	0
5	L	65	0	74	6	0
5	M	55	0	53	2	0
6	L	33	0	39	8	0
6	M	48	0	61	3	0
7	L	20	0	32	2	0
8	M	1	0	0	0	0
9	M	5	0	0	0	0
10	M	42	0	60	7	0
11	H	16	0	31	2	0
11	M	32	0	62	5	0
12	M	69	0	82	2	0
13	M	6	0	4	0	0
14	H	209	0	0	1	0
14	L	124	0	0	0	0
14	M	138	0	0	0	0
All	All	7586	0	7123	137	0

The all-atom clashscore is defined as the number of clashes found per 1000 atoms (including hydrogen atoms). The all-atom clashscore for this structure is 10.

The worst 5 of 137 close contacts within the same asymmetric unit are listed below, sorted by their clash magnitude.

Atom-1	Atom-2	Interatomic distance (Å)	Clash overlap (Å)
4:M:851:BCL:C9	4:M:851:BCL:H121	1.41	1.43
4:M:851:BCL:C12	4:M:851:BCL:H91	1.36	1.39
1:L:241:VAL:HG21	5:L:856:BPH:HAC1	1.46	0.97
4:M:851:BCL:H91	4:M:851:BCL:H122	1.54	0.90
2:M:21:THR:HG23	2:M:26:LEU:HD11	1.53	0.90

There are no symmetry-related clashes.

5.3 Torsion angles [i](#)

5.3.1 Protein backbone [i](#)

In the following table, the Percentiles column shows the percent Ramachandran outliers of the chain as a percentile score with respect to all X-ray entries followed by that with respect to entries of similar resolution.

The Analysed column shows the number of residues for which the backbone conformation was analysed, and the total number of residues.

Mol	Chain	Analysed	Favoured	Allowed	Outliers	Percentiles	
1	L	280/281 (100%)	273 (98%)	7 (2%)	0	100	100
2	M	299/307 (97%)	292 (98%)	6 (2%)	1 (0%)	36	25
3	H	237/260 (91%)	236 (100%)	1 (0%)	0	100	100
All	All	816/848 (96%)	801 (98%)	14 (2%)	1 (0%)	48	34

All (1) Ramachandran outliers are listed below:

Mol	Chain	Res	Type
2	M	195	ASN

5.3.2 Protein sidechains [i](#)

In the following table, the Percentiles column shows the percent sidechain outliers of the chain as a percentile score with respect to all X-ray entries followed by that with respect to entries of similar resolution.

The Analysed column shows the number of residues for which the sidechain conformation was analysed, and the total number of residues.

Mol	Chain	Analysed	Rotameric	Outliers	Percentiles	
1	L	221/220 (100%)	221 (100%)	0	100	100
2	M	236/240 (98%)	234 (99%)	2 (1%)	73	70
3	H	194/208 (93%)	189 (97%)	5 (3%)	40	28
All	All	651/668 (98%)	644 (99%)	7 (1%)	65	60

5 of 7 residues with a non-rotameric sidechain are listed below:

Mol	Chain	Res	Type
3	H	73	LEU
3	H	175	MET
3	H	231	ASP
3	H	202	ARG
3	H	12	LEU

Sometimes sidechains can be flipped to improve hydrogen bonding and reduce clashes. 5 of 9 such sidechains are listed below:

Mol	Chain	Res	Type
2	M	300	ASN
3	H	206	ASN
2	M	9	GLN
2	M	77	GLN
2	M	138	GLN

5.3.3 RNA [i](#)

There are no RNA molecules in this entry.

5.4 Non-standard residues in protein, DNA, RNA chains [i](#)

There are no non-standard protein/DNA/RNA residues in this entry.

5.5 Carbohydrates [i](#)

There are no oligosaccharides in this entry.

5.6 Ligand geometry [i](#)

Of 18 ligands modelled in this entry, 1 is monoatomic - leaving 17 for Mogul analysis.

In the following table, the Counts columns list the number of bonds (or angles) for which Mogul statistics could be retrieved, the number of bonds (or angles) that are observed in the model and the number of bonds (or angles) that are defined in the Chemical Component Dictionary. The Link column lists molecule types, if any, to which the group is linked. The Z score for a bond length (or angle) is the number of standard deviations the observed value is removed from the expected value. A bond length (or angle) with $|Z| > 2$ is considered an outlier worth inspection. RMSZ is the root-mean-square of all Z scores of the bond lengths (or angles).

Mol	Type	Chain	Res	Link	Bond lengths			Bond angles		
					Counts	RMSZ	# $ Z > 2$	Counts	RMSZ	# $ Z > 2$
11	LDA	M	861	-	13,15,15	2.01	1 (7%)	14,17,17	1.60	4 (28%)
4	BCL	L	852	-	69,74,74	1.74	10 (14%)	79,115,115	1.72	17 (21%)
11	LDA	H	862	-	13,15,15	2.06	2 (15%)	14,17,17	1.76	4 (28%)
6	U10	M	858	-	48,48,63	2.19	18 (37%)	60,61,79	3.27	19 (31%)
4	BCL	L	854	-	69,74,74	1.48	15 (21%)	79,115,115	1.88	20 (25%)
5	BPH	L	856	-	59,70,70	2.11	15 (25%)	59,101,101	2.76	21 (35%)
5	BPH	M	855	-	49,60,70	2.25	14 (28%)	47,89,101	3.06	21 (44%)
7	HTO	L	865	-	9,9,9	1.37	1 (11%)	10,10,10	0.39	0

Mol	Type	Chain	Res	Link	Bond lengths			Bond angles		
					Counts	RMSZ	# Z > 2	Counts	RMSZ	# Z > 2
7	HTO	L	866	-	9,9,9	1.37	1 (11%)	10,10,10	0.38	0
13	GOL	M	867	-	5,5,5	4.75	5 (100%)	5,5,5	6.14	3 (60%)
4	BCL	M	851	-	69,74,74	1.39	12 (17%)	79,115,115	2.26	22 (27%)
11	LDA	M	863	-	13,15,15	1.88	1 (7%)	14,17,17	1.68	4 (28%)
9	PO4	M	864	-	4,4,4	1.78	1 (25%)	6,6,6	0.46	0
6	U10	L	859[A]	-	33,33,63	2.08	12 (36%)	42,43,79	1.92	11 (26%)
12	CDL	M	900	-	68,68,99	0.75	2 (2%)	74,80,111	0.97	5 (6%)
10	SPO	M	860	-	41,41,41	3.14	22 (53%)	47,50,50	2.45	16 (34%)
4	BCL	M	853	-	69,74,74	1.53	11 (15%)	79,115,115	2.45	18 (22%)

In the following table, the Chirals column lists the number of chiral outliers, the number of chiral centers analysed, the number of these observed in the model and the number defined in the Chemical Component Dictionary. Similar counts are reported in the Torsion and Rings columns. '-' means no outliers of that kind were identified.

Mol	Type	Chain	Res	Link	Chirals	Torsions	Rings
11	LDA	M	861	-	-	6/13/13/13	-
4	BCL	L	852	-	-	4/41/137/137	-
11	LDA	H	862	-	-	6/13/13/13	-
6	U10	M	858	-	-	10/45/69/87	0/1/1/1
4	BCL	L	854	-	-	8/41/137/137	-
5	BPH	M	855	-	1/1/16/22	9/25/93/105	0/5/6/6
5	BPH	L	856	-	2/2/18/22	8/37/105/105	0/5/6/6
7	HTO	L	865	-	-	7/10/10/10	-
7	HTO	L	866	-	-	8/10/10/10	-
13	GOL	M	867	-	-	2/4/4/4	-
4	BCL	M	851	-	2/2/21/25	17/41/137/137	-
11	LDA	M	863	-	-	3/13/13/13	-
6	U10	L	859[A]	-	-	4/27/51/87	0/1/1/1
12	CDL	M	900	-	-	21/79/79/110	-
10	SPO	M	860	-	-	14/47/47/47	-
4	BCL	M	853	-	-	3/41/137/137	-

The worst 5 of 143 bond length outliers are listed below:

Mol	Chain	Res	Type	Atoms	Z	Observed(Å)	Ideal(Å)
10	M	860	SPO	C6-C5	8.24	1.54	1.32

Continued on next page...

Continued from previous page...

Mol	Chain	Res	Type	Atoms	Z	Observed(Å)	Ideal(Å)
13	M	867	GOL	C3-C2	-7.94	1.21	1.51
10	M	860	SPO	C10-C11	7.73	1.54	1.34
10	M	860	SPO	C15-C16	7.50	1.54	1.34
5	M	855	BPH	C2C-C3C	-7.20	1.48	1.54

The worst 5 of 185 bond angle outliers are listed below:

Mol	Chain	Res	Type	Atoms	Z	Observed(°)	Ideal(°)
6	M	858	U10	C32-C33-C34	19.35	171.91	127.62
5	M	855	BPH	O2D-CGD-CBD	13.29	125.55	110.95
5	L	856	BPH	O2D-CGD-CBD	12.68	124.89	110.95
4	M	853	BCL	C1C-NC-C4C	11.89	112.11	106.68
13	M	867	GOL	O3-C3-C2	11.12	160.46	110.38

All (5) chirality outliers are listed below:

Mol	Chain	Res	Type	Atom
4	M	851	BCL	C13
4	M	851	BCL	C8
5	L	856	BPH	C13
5	L	856	BPH	C8
5	M	855	BPH	C8

5 of 130 torsion outliers are listed below:

Mol	Chain	Res	Type	Atoms
5	L	856	BPH	C4C-C3C-CAC-CBC
5	L	856	BPH	C2C-C3C-CAC-CBC
5	M	855	BPH	C1-C2-C3-C5
6	L	859[A]	U10	C14-C16-C17-C18
6	M	858	U10	C32-C33-C34-C35

There are no ring outliers.

15 monomers are involved in 58 short contacts:

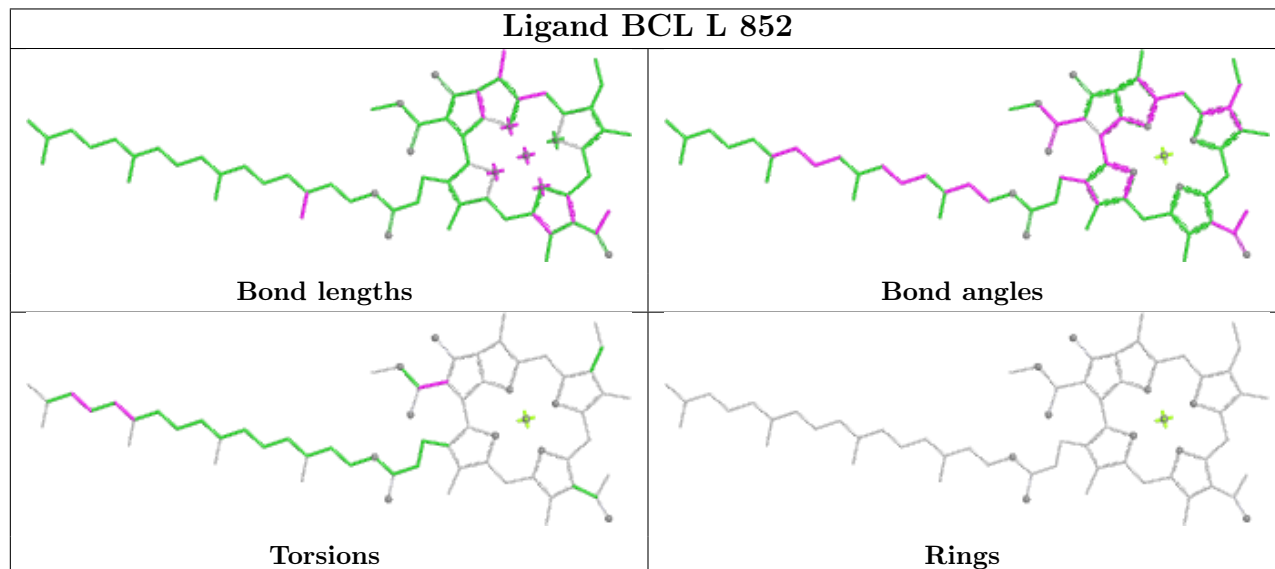
Mol	Chain	Res	Type	Clashes	Symm-Clashes
11	M	861	LDA	2	0
4	L	852	BCL	1	0
11	H	862	LDA	2	0
6	M	858	U10	3	0
4	L	854	BCL	3	0

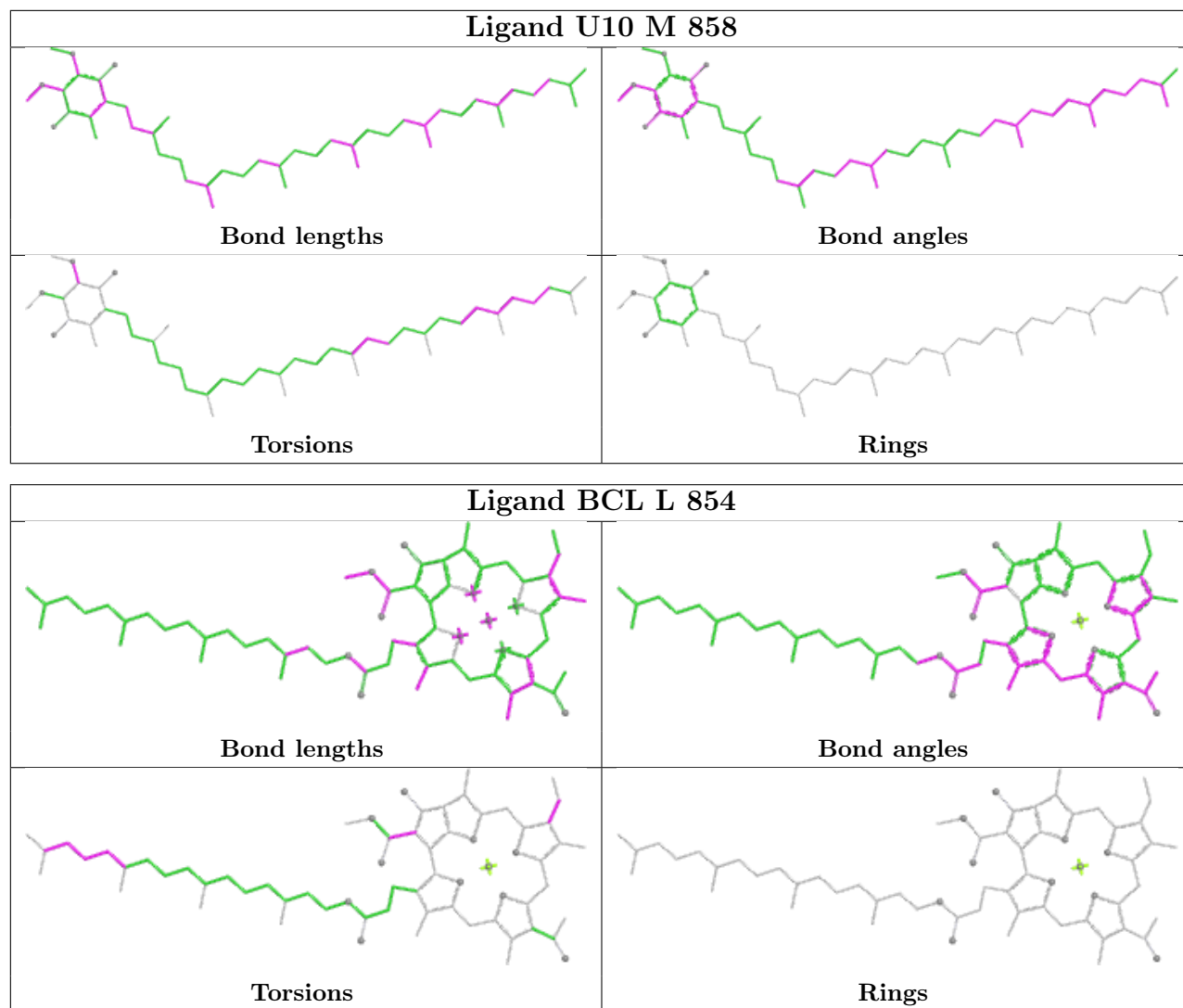
Continued on next page...

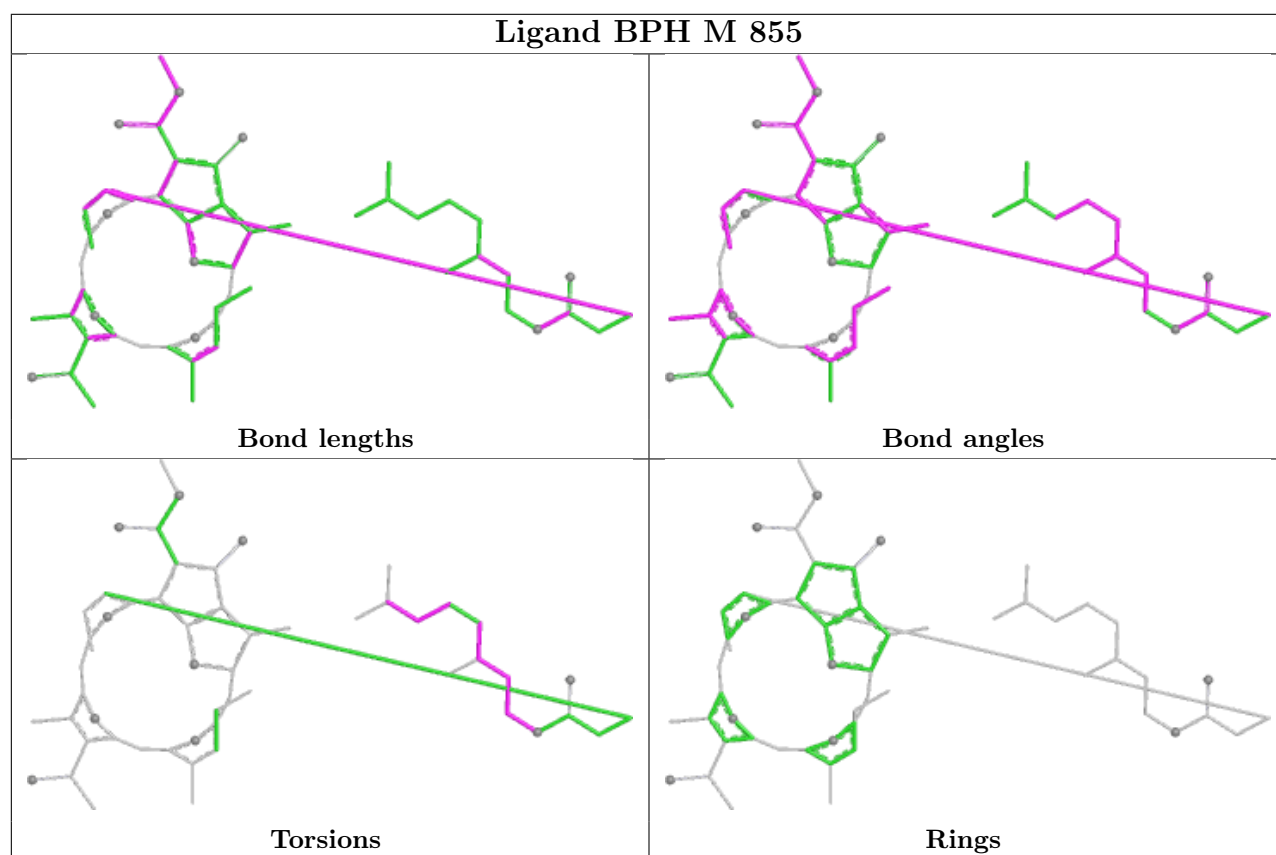
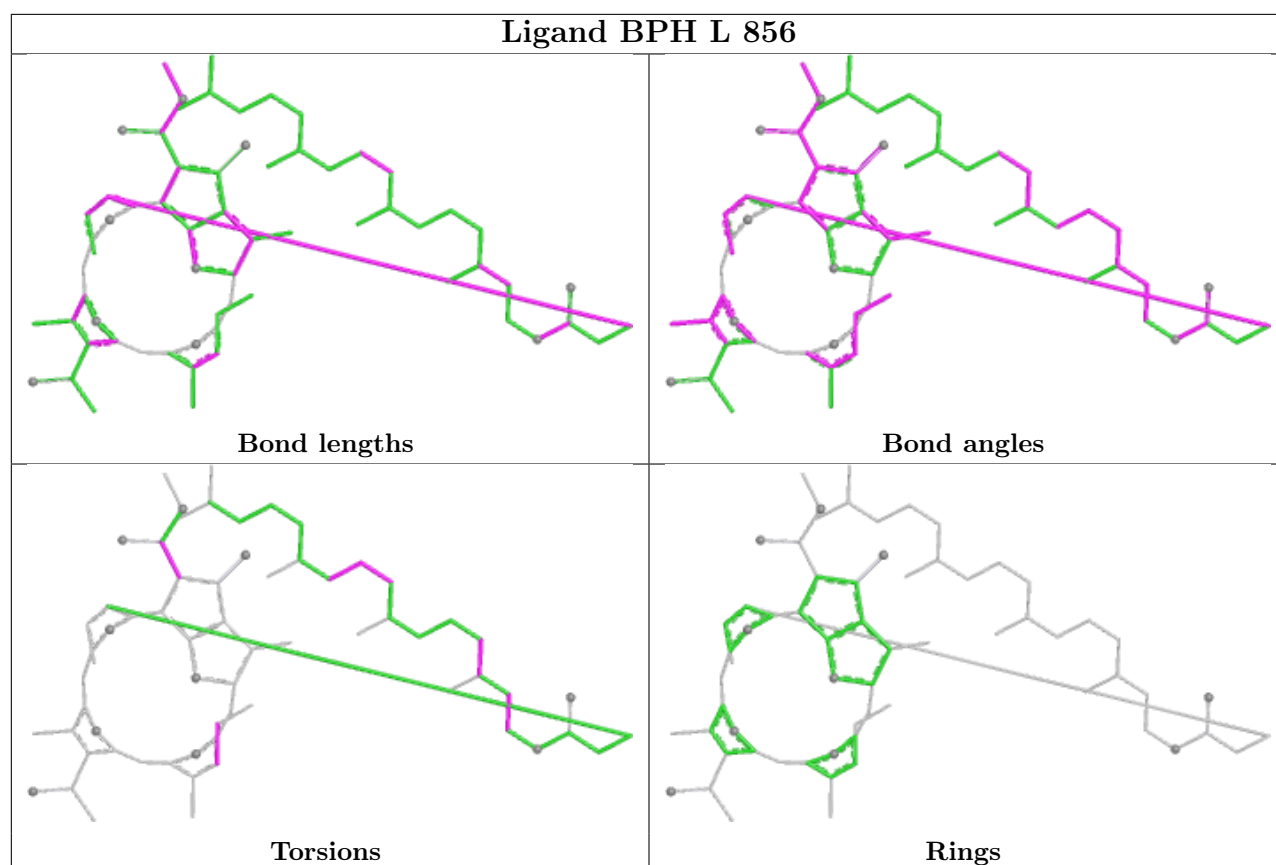
Continued from previous page...

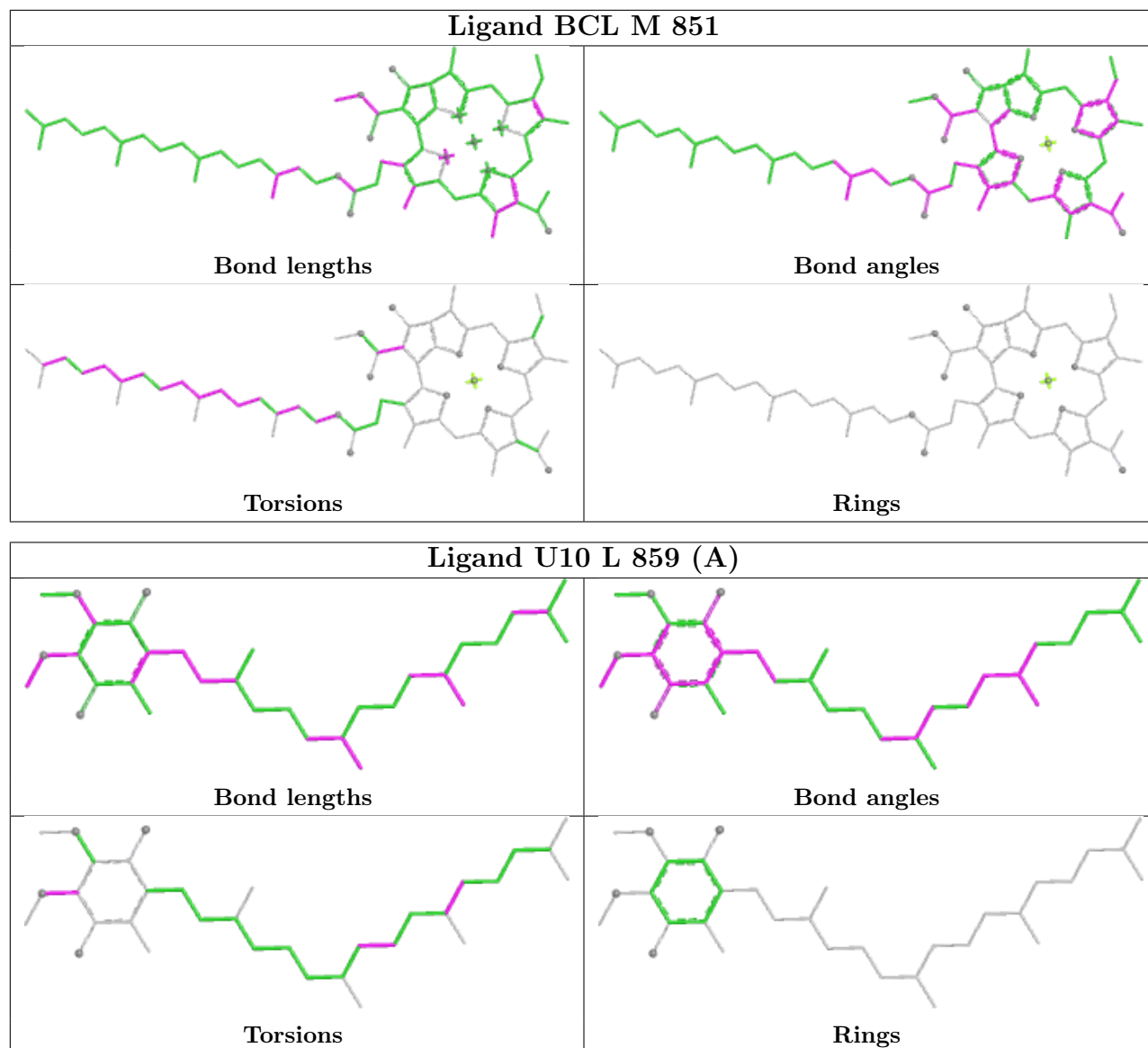
Mol	Chain	Res	Type	Clashes	Symm-Clashes
5	L	856	BPH	6	0
5	M	855	BPH	2	0
7	L	865	HTO	1	0
7	L	866	HTO	1	0
4	M	851	BCL	15	0
11	M	863	LDA	3	0
6	L	859[A]	U10	8	0
12	M	900	CDL	2	0
10	M	860	SPO	7	0
4	M	853	BCL	8	0

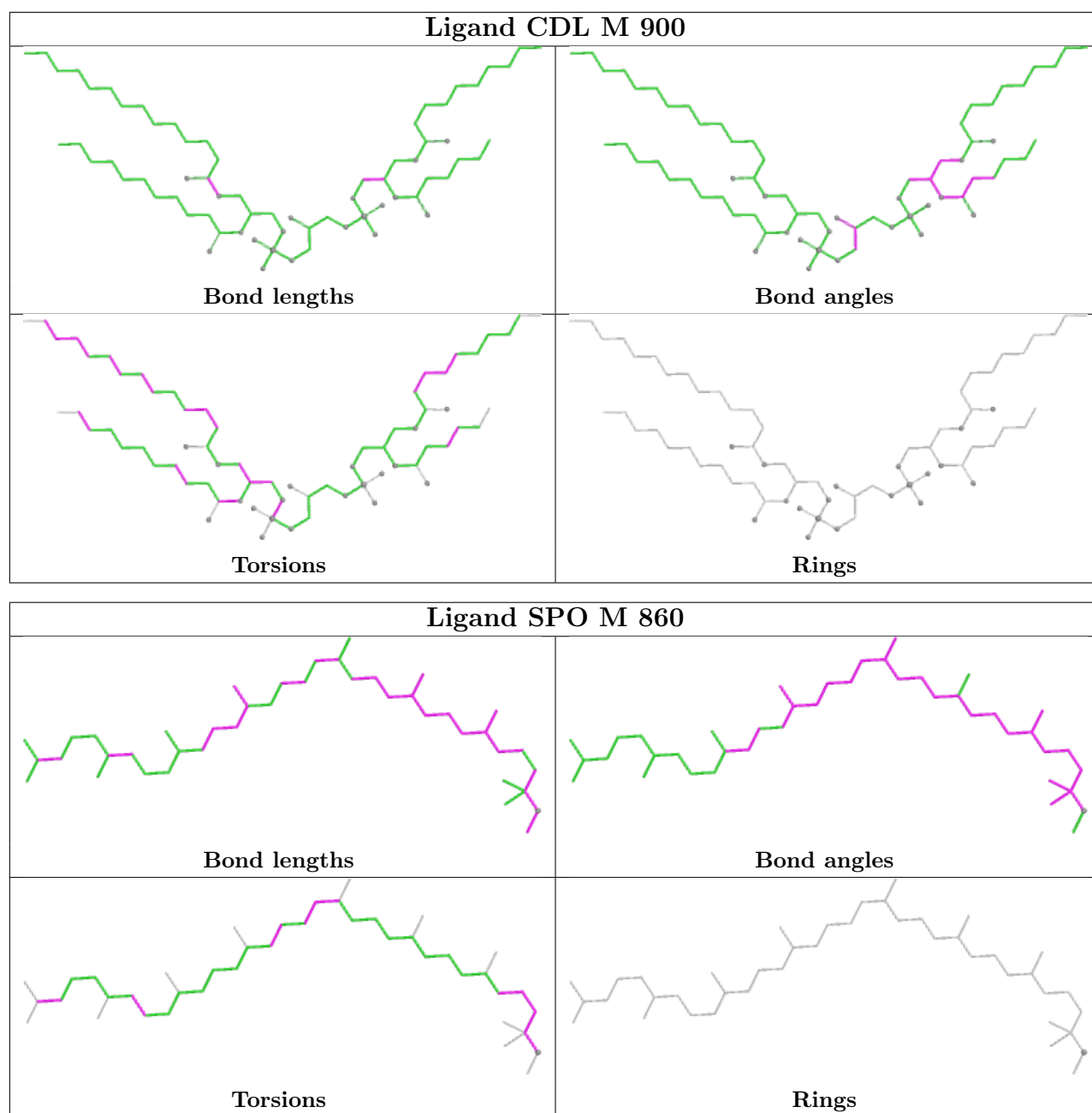
The following is a two-dimensional graphical depiction of Mogul quality analysis of bond lengths, bond angles, torsion angles, and ring geometry for all instances of the Ligand of Interest. In addition, ligands with molecular weight > 250 and outliers as shown on the validation Tables will also be included. For torsion angles, if less than 5% of the Mogul distribution of torsion angles is within 10 degrees of the torsion angle in question, then that torsion angle is considered an outlier. Any bond that is central to one or more torsion angles identified as an outlier by Mogul will be highlighted in the graph. For rings, the root-mean-square deviation (RMSD) between the ring in question and similar rings identified by Mogul is calculated over all ring torsion angles. If the average RMSD is greater than 60 degrees and the minimal RMSD between the ring in question and any Mogul-identified rings is also greater than 60 degrees, then that ring is considered an outlier. The outliers are highlighted in purple. The color gray indicates Mogul did not find sufficient equivalents in the CSD to analyse the geometry.

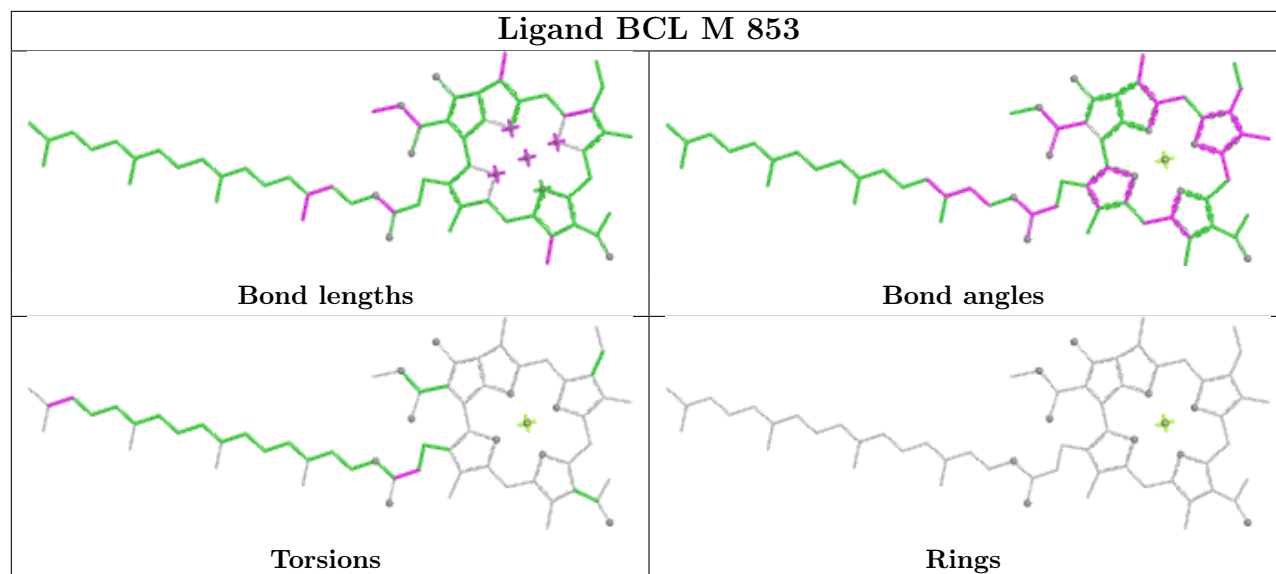












5.7 Other polymers [\(i\)](#)

There are no such residues in this entry.

5.8 Polymer linkage issues [\(i\)](#)

There are no chain breaks in this entry.

6 Fit of model and data [i](#)

6.1 Protein, DNA and RNA chains [i](#)

In the following table, the column labelled ‘#RSRZ> 2’ contains the number (and percentage) of RSRZ outliers, followed by percent RSRZ outliers for the chain as percentile scores relative to all X-ray entries and entries of similar resolution. The OWAB column contains the minimum, median, 95th percentile and maximum values of the occupancy-weighted average B-factor per residue. The column labelled ‘Q< 0.9’ lists the number of (and percentage) of residues with an average occupancy less than 0.9.

Mol	Chain	Analysed	<RSRZ>	#RSRZ>2	OWAB(Å ²)	Q<0.9
1	L	281/281 (100%)	0.57	39 (13%) 6 5	8, 22, 46, 59	1 (0%)
2	M	301/307 (98%)	0.60	36 (11%) 9 7	13, 25, 47, 63	0
3	H	238/260 (91%)	0.49	17 (7%) 22 20	11, 25, 38, 51	1 (0%)
All	All	820/848 (96%)	0.56	92 (11%) 10 8	8, 24, 45, 63	2 (0%)

The worst 5 of 92 RSRZ outliers are listed below:

Mol	Chain	Res	Type	RSRZ
2	M	1	ALA	7.2
2	M	3	TYR	6.3
1	L	281	GLY	5.8
2	M	2	GLU	5.6
1	L	273	ALA	5.4

6.2 Non-standard residues in protein, DNA, RNA chains [i](#)

There are no non-standard protein/DNA/RNA residues in this entry.

6.3 Carbohydrates [i](#)

There are no oligosaccharides in this entry.

6.4 Ligands [i](#)

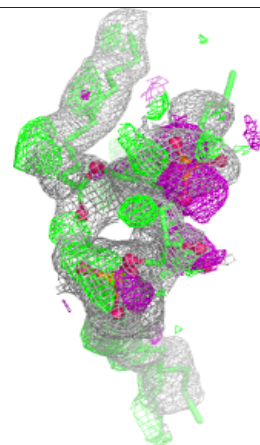
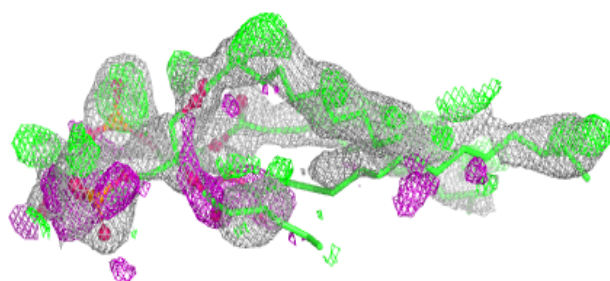
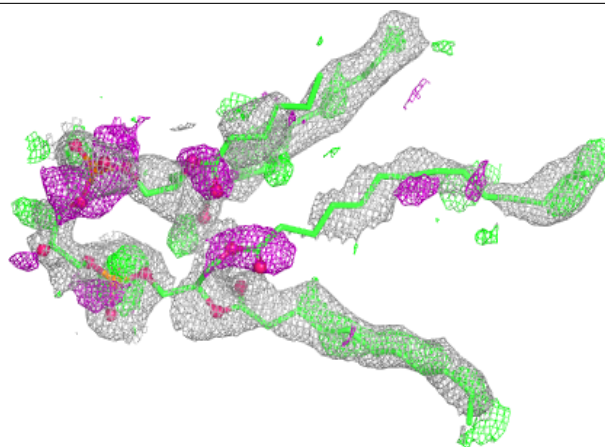
In the following table, the Atoms column lists the number of modelled atoms in the group and the number defined in the chemical component dictionary. The B-factors column lists the minimum, median, 95th percentile and maximum values of B factors of atoms in the group. The column labelled ‘Q< 0.9’ lists the number of atoms with occupancy less than 0.9.

Mol	Type	Chain	Res	Atoms	RSCC	RSR	B-factors(\AA^2)	Q<0.9
7	HTO	L	866	10/10	0.64	0.37	66,68,69,69	0
7	HTO	L	865	10/10	0.70	0.39	61,63,64,64	0
12	CDL	M	900	69/100	0.71	0.35	49,71,77,78	0
11	LDA	M	861	16/16	0.73	0.35	57,63,67,68	0
6	U10	L	859[A]	33/63	0.76	0.45	45,50,52,53	33
11	LDA	M	863	16/16	0.80	0.32	70,70,74,74	0
13	GOL	M	867	6/6	0.82	0.18	51,55,56,58	0
9	PO4	M	864	5/5	0.84	0.17	72,73,73,73	0
11	LDA	H	862	16/16	0.84	0.29	61,62,66,67	0
10	SPO	M	860	42/42	0.85	0.20	25,32,50,52	0
6	U10	M	858	48/63	0.92	0.18	16,29,61,63	0
4	BCL	M	851	66/66	0.93	0.15	17,22,66,68	0
4	BCL	M	853	66/66	0.93	0.11	13,18,38,44	0
5	BPH	L	856	65/65	0.93	0.11	13,17,33,36	0
5	BPH	M	855	55/65	0.93	0.12	19,22,63,66	0
4	BCL	L	854	66/66	0.93	0.11	12,17,40,44	0
4	BCL	L	852	66/66	0.94	0.09	15,17,29,32	0
8	FE2	M	857	1/1	0.98	0.03	14,14,14,14	0

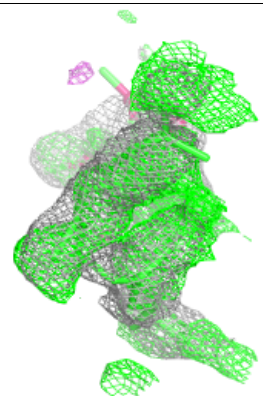
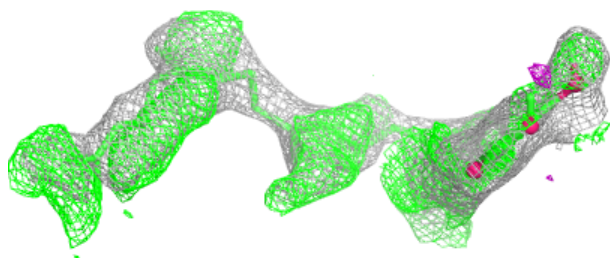
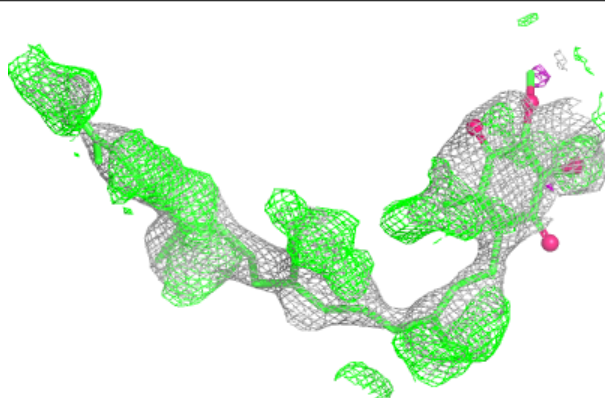
The following is a graphical depiction of the model fit to experimental electron density of all instances of the Ligand of Interest. In addition, ligands with molecular weight > 250 and outliers as shown on the geometry validation Tables will also be included. Each fit is shown from different orientation to approximate a three-dimensional view.

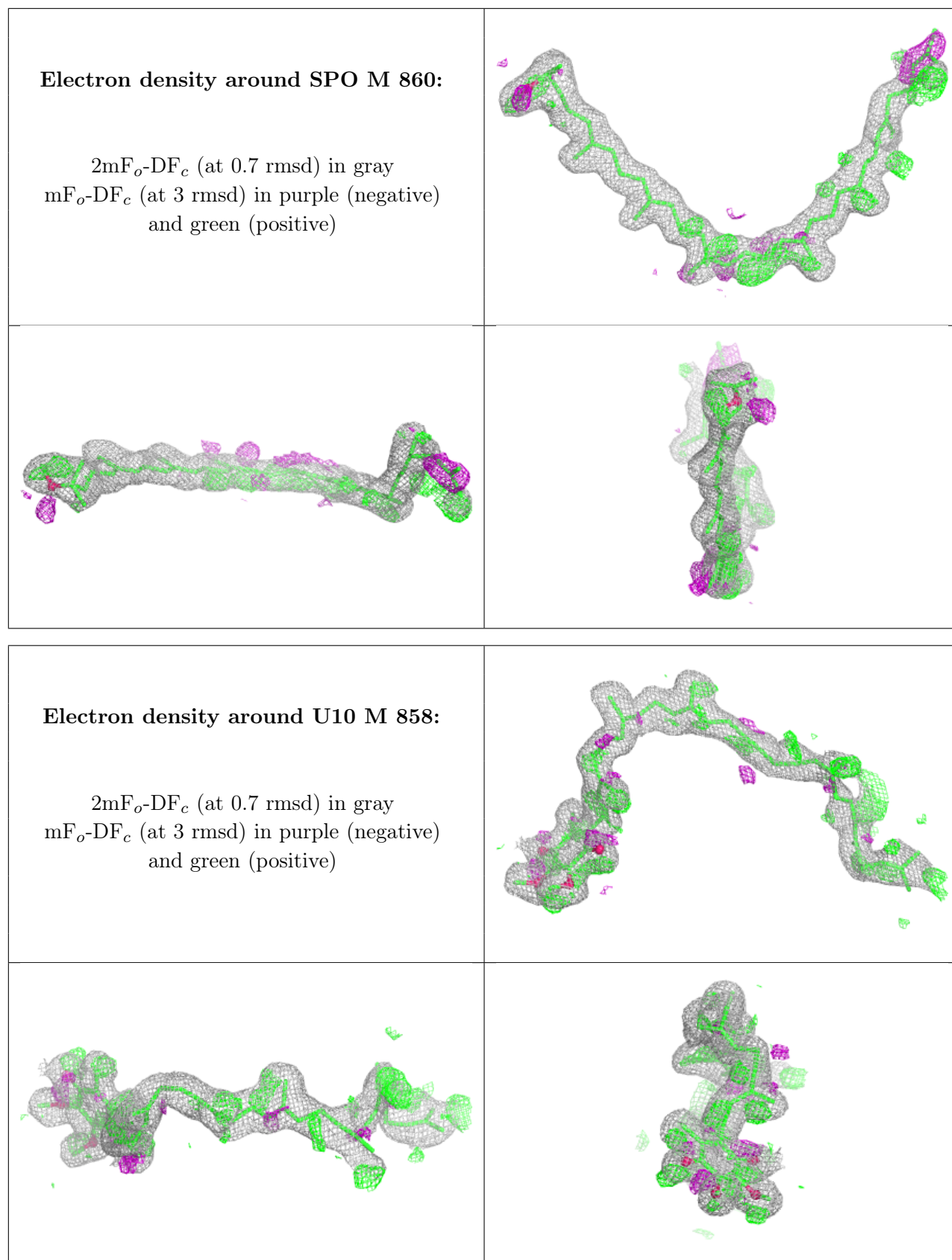
Electron density around CDL M 900:

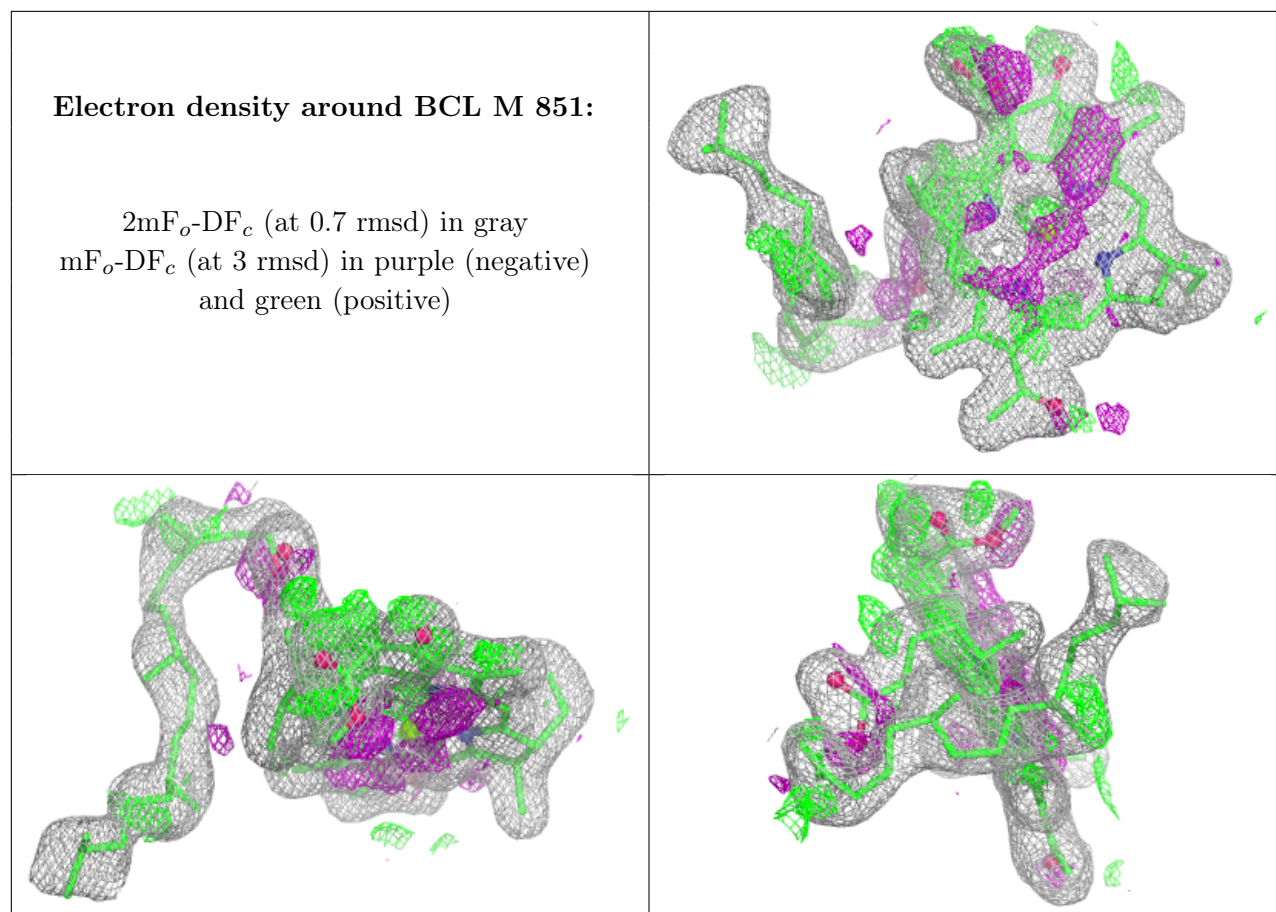
$2mF_o-DF_c$ (at 0.7 rmsd) in gray
 mF_o-DF_c (at 3 rmsd) in purple (negative)
and green (positive)

**Electron density around U10 L 859 (A):**

$2mF_o-DF_c$ (at 0.7 rmsd) in gray
 mF_o-DF_c (at 3 rmsd) in purple (negative)
and green (positive)

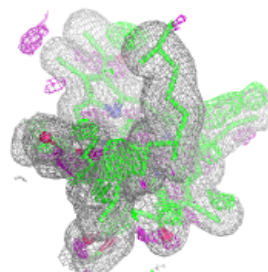
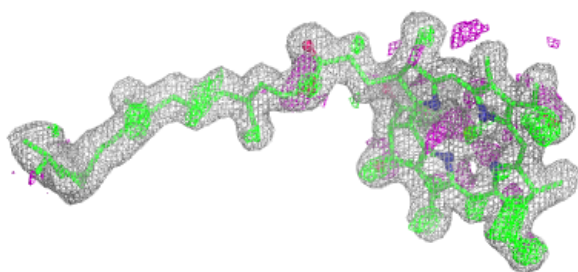
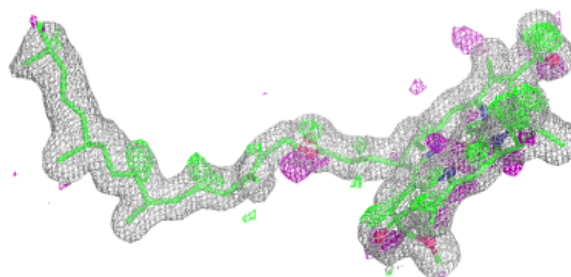






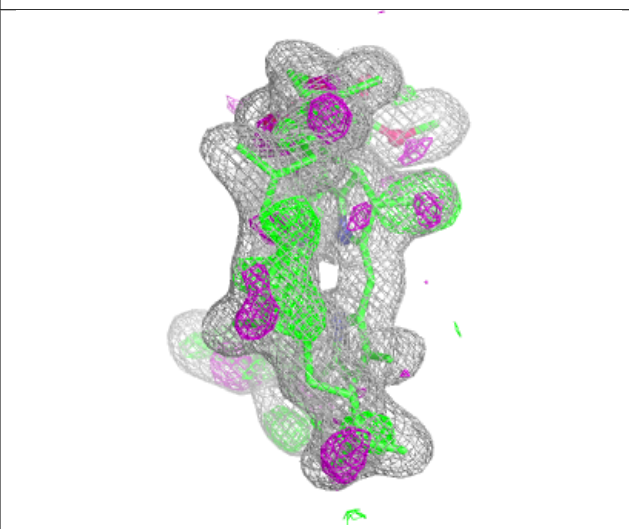
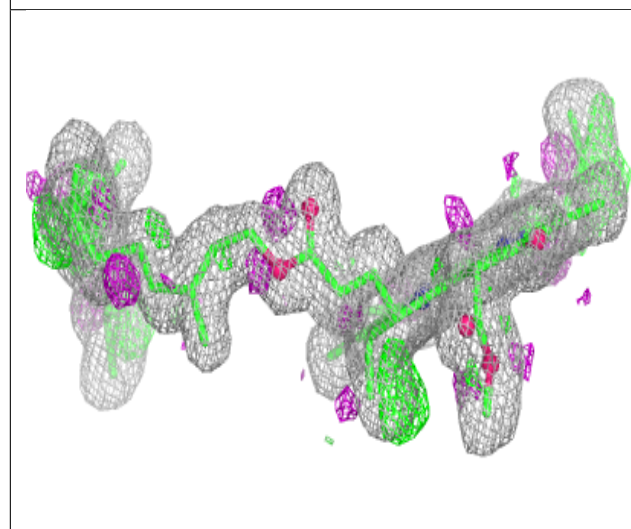
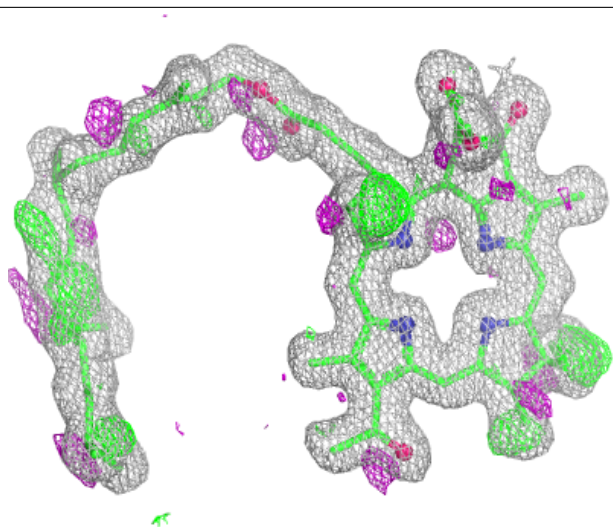
Electron density around BCL M 853:

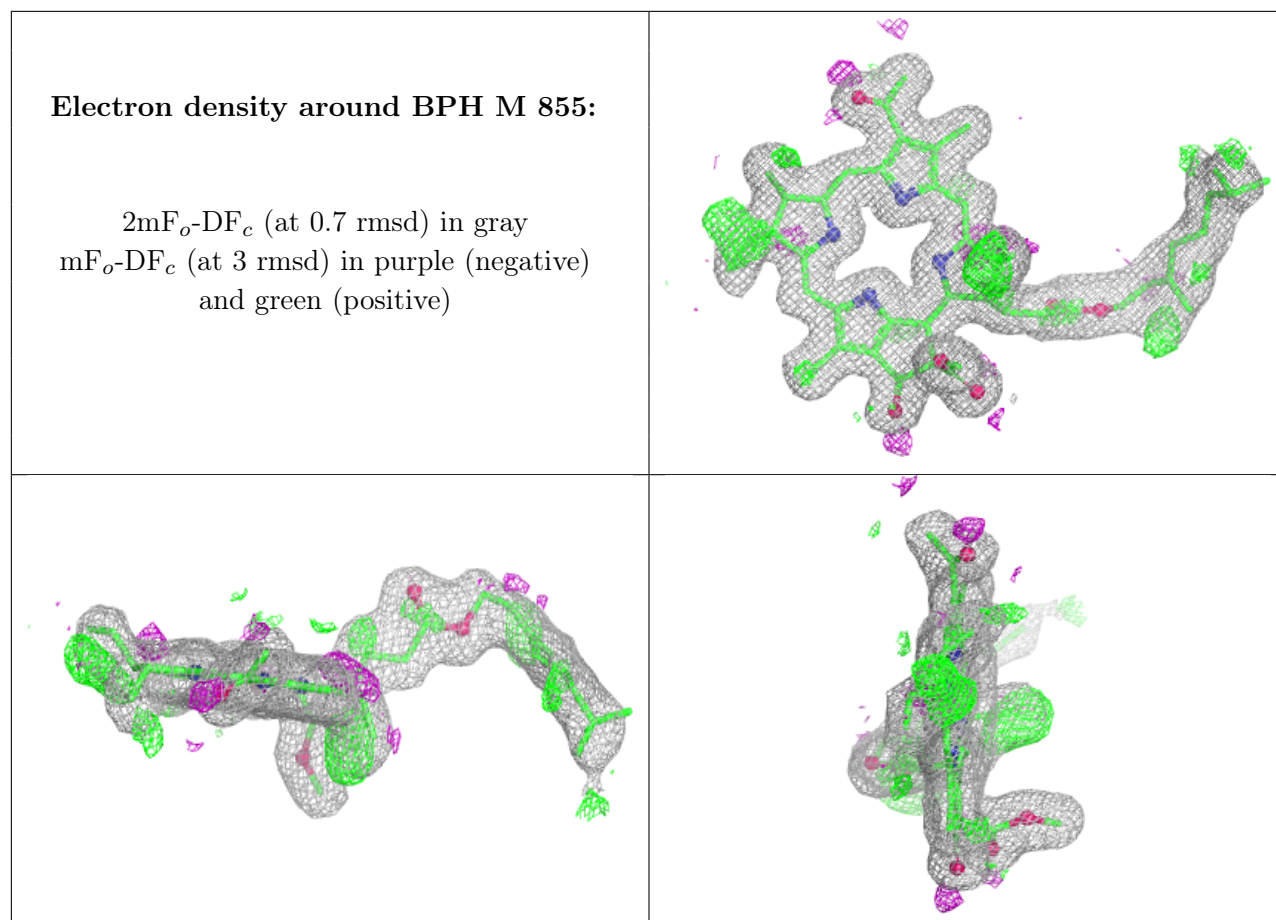
$2mF_o-DF_c$ (at 0.7 rmsd) in gray
 mF_o-DF_c (at 3 rmsd) in purple (negative)
and green (positive)



Electron density around BPH L 856:

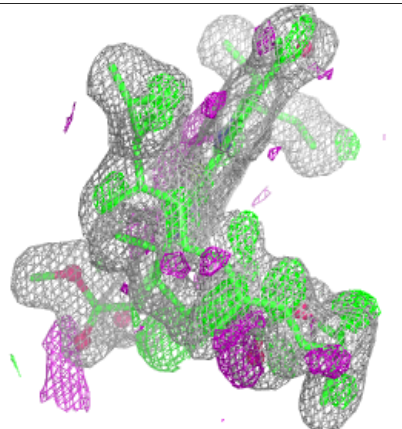
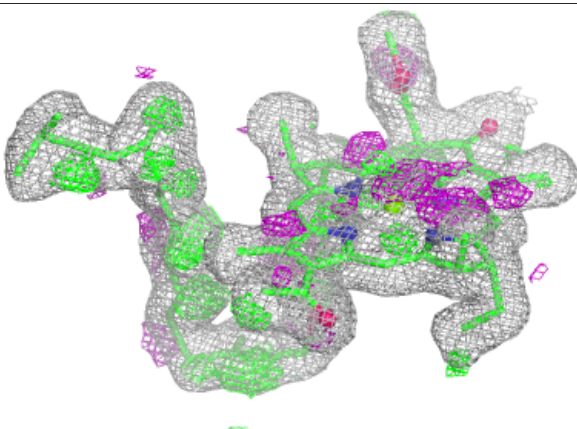
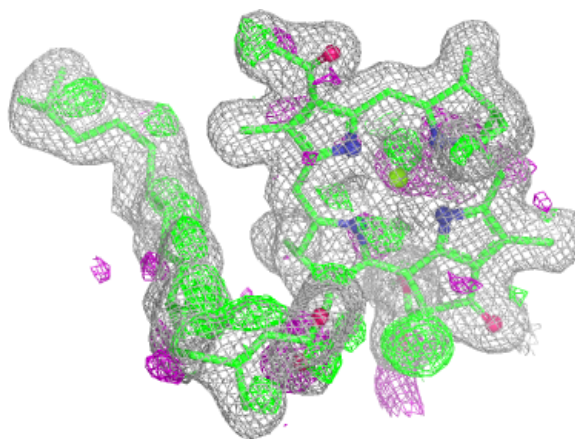
$2mF_o-DF_c$ (at 0.7 rmsd) in gray
 mF_o-DF_c (at 3 rmsd) in purple (negative)
and green (positive)

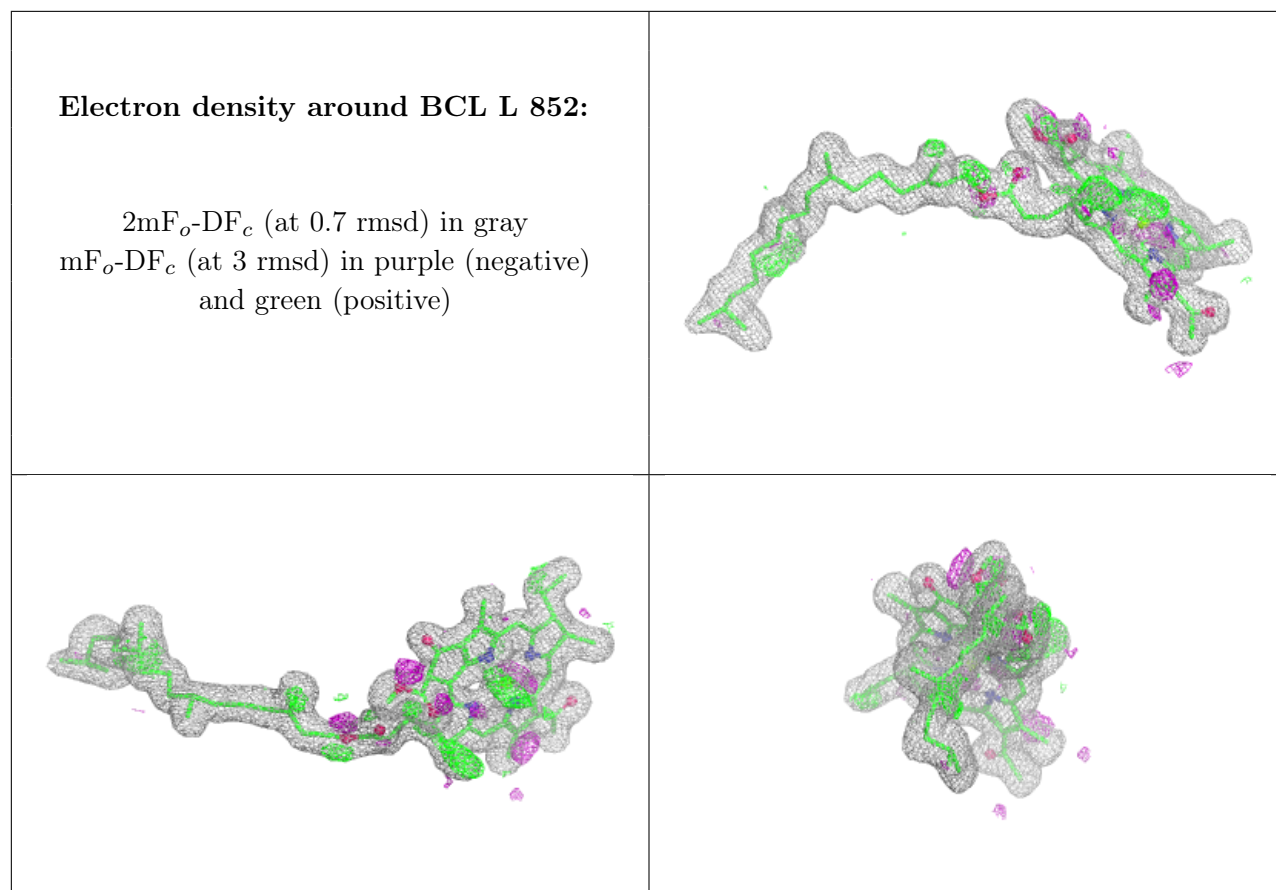




Electron density around BCL L 854:

$2mF_o-DF_c$ (at 0.7 rmsd) in gray
 mF_o-DF_c (at 3 rmsd) in purple (negative)
and green (positive)





6.5 Other polymers [\(i\)](#)

There are no such residues in this entry.