



wwPDB X-ray Structure Validation Summary Report ⓘ

Mar 31, 2026 – 01:24 pm BST

PDB ID : 9RFQ / pdb_00009rfq
Title : Structure of liver pyruvate kinase in complex with Liver pyruvate kinase in complex with fluorescent probe I
Authors : Bogucka, A.; Koteles, I.; Grotli, M.; Hyvonen, M.
Deposited on : 2025-06-04
Resolution : 2.38 Å (reported)

This is a wwPDB X-ray Structure Validation Summary Report for a publicly released PDB entry.

We welcome your comments at validation@mail.wwpdb.org

A user guide is available at

<https://www.wwpdb.org/validation/2017/XrayValidationReportHelp>

with specific help available everywhere you see the ⓘ symbol.

The types of validation reports are described at

<http://www.wwpdb.org/validation/2017/FAQs#types>.

The following versions of software and data (see [references ⓘ](#)) were used in the production of this report:

MolProbity : 4-5-2 with Phenix2.0
Mogul : 1.8.4, CSD as541be (2020)
Xtrriage (Phenix) : 2.0
EDS : 3.0
buster-report : 1.1.7 (2018)
Percentile statistics : 20231227.v01 (using entries in the PDB archive December 27th 2023)
CCP4 : 9.0.010 (Gargrove)
Density-Fitness : 1.0.12
Ideal geometry (proteins) : Engh & Huber (2001)
Ideal geometry (DNA, RNA) : Parkinson et al. (1996)
Validation Pipeline (wwPDB-VP) : 2.48.1

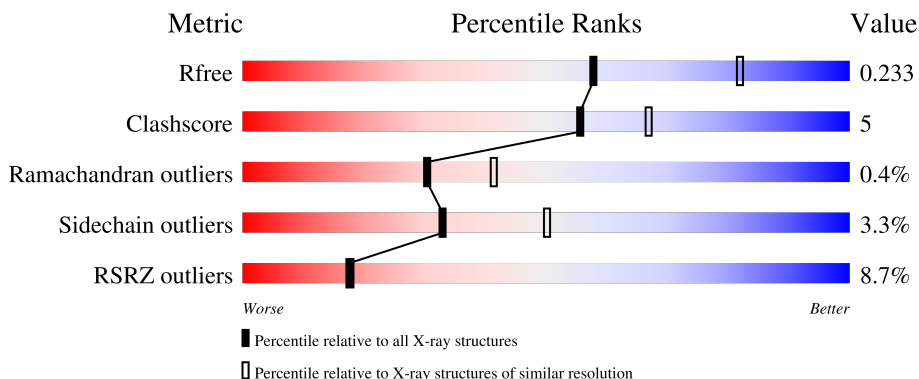
1 Overall quality at a glance i

The following experimental techniques were used to determine the structure:

X-RAY DIFFRACTION

The reported resolution of this entry is 2.38 Å.

Percentile scores (ranging between 0-100) for global validation metrics of the entry are shown in the following graphic. The table shows the number of entries on which the scores are based.



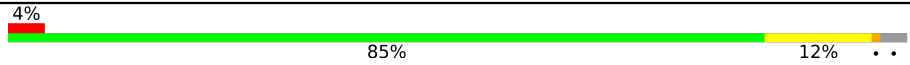


Metric	Whole archive (#Entries)	Similar resolution (#Entries, resolution range(Å))
R_{free}	164625	6699 (2.40-2.36)
Clashscore	180529	7414 (2.40-2.36)
Ramachandran outliers	177936	7337 (2.40-2.36)
Sidechain outliers	177891	7338 (2.40-2.36)
RSRZ outliers	164620	6699 (2.40-2.36)

The table below summarises the geometric issues observed across the polymeric chains and their fit to the electron density. The red, orange, yellow and green segments of the lower bar indicate the fraction of residues that contain outliers for ≥ 3 , 2, 1 and 0 types of geometric quality criteria respectively. A grey segment represents the fraction of residues that are not modelled. The numeric value for each fraction is indicated below the corresponding segment, with a dot representing fractions $\leq 5\%$. The upper red bar (where present) indicates the fraction of residues that have poor fit to the electron density. The numeric value is given above the bar.

Mol	Chain	Length	Quality of chain
1	A	447	19% (Poor fit) 81% (0-3 outliers) 13% (1 outlier) 5% (2 outliers)
1	B	447	14% (Poor fit) 85% (0-3 outliers) 11% (1 outlier) 2% (2 outliers)
1	C	447	7% (Poor fit) 82% (0-3 outliers) 12% (1 outlier) 2% (2 outliers)
1	D	447	2% (Poor fit) 82% (0-3 outliers) 12% (1 outlier) 5% (2 outliers)
1	E	447	15% (Poor fit) 82% (0-3 outliers) 11% (1 outlier) 5% (2 outliers)

Continued on next page...

Continued from previous page...

Mol	Chain	Length	Quality of chain
1	F	447	 4% 85% 12% ..
1	G	447	 2% 80% 13% • 6%
1	H	447	 2% 81% 14% ..

2 Entry composition [i](#)

There are 7 unique types of molecules in this entry. The entry contains 27172 atoms, of which 64 are hydrogens and 0 are deuteriums.

In the tables below, the ZeroOcc column contains the number of atoms modelled with zero occupancy, the AltConf column contains the number of residues with at least one atom in alternate conformation and the Trace column contains the number of residues modelled with at most 2 atoms.

- Molecule 1 is a protein called Isoform L-type of Pyruvate kinase PKLR.

Mol	Chain	Residues	Atoms					ZeroOcc	AltConf	Trace
			Total	C	N	O	S			
1	A	423	3243	2039	586	598	20	0	6	0
1	B	436	3329	2090	604	615	20	0	4	0
1	C	427	3257	2045	587	606	19	0	4	0
1	D	424	3248	2040	589	600	19	0	6	0
1	E	423	3231	2030	583	598	20	0	5	0
1	F	435	3335	2097	600	618	20	0	7	0
1	G	422	3237	2034	582	602	19	0	6	0
1	H	427	3268	2051	596	602	19	0	4	0

There are 832 discrepancies between the modelled and reference sequences:

Chain	Residue	Modelled	Actual	Comment	Reference
A	-1	GLY	-	expression tag	UNP P30613
A	0	SER	-	expression tag	UNP P30613
A	12	ASP	SER	conflict	UNP P30613
A	?	-	GLU	deletion	UNP P30613
A	?	-	ILE	deletion	UNP P30613
A	?	-	ARG	deletion	UNP P30613
A	?	-	THR	deletion	UNP P30613
A	?	-	GLY	deletion	UNP P30613
A	?	-	ILE	deletion	UNP P30613
A	?	-	LEU	deletion	UNP P30613
A	?	-	GLN	deletion	UNP P30613
A	?	-	GLY	deletion	UNP P30613
A	?	-	GLY	deletion	UNP P30613

Continued on next page...

Continued from previous page...

Chain	Residue	Modelled	Actual	Comment	Reference
A	?	-	PRO	deletion	UNP P30613
A	?	-	GLU	deletion	UNP P30613
A	?	-	SER	deletion	UNP P30613
A	?	-	GLU	deletion	UNP P30613
A	?	-	VAL	deletion	UNP P30613
A	?	-	GLU	deletion	UNP P30613
A	?	-	LEU	deletion	UNP P30613
A	?	-	VAL	deletion	UNP P30613
A	?	-	LYS	deletion	UNP P30613
A	?	-	GLY	deletion	UNP P30613
A	?	-	SER	deletion	UNP P30613
A	?	-	GLN	deletion	UNP P30613
A	?	-	VAL	deletion	UNP P30613
A	?	-	LEU	deletion	UNP P30613
A	?	-	VAL	deletion	UNP P30613
A	?	-	THR	deletion	UNP P30613
A	?	-	VAL	deletion	UNP P30613
A	?	-	ASP	deletion	UNP P30613
A	?	-	PRO	deletion	UNP P30613
A	?	-	ALA	deletion	UNP P30613
A	?	-	PHE	deletion	UNP P30613
A	?	-	ARG	deletion	UNP P30613
A	?	-	THR	deletion	UNP P30613
A	?	-	ARG	deletion	UNP P30613
A	?	-	GLY	deletion	UNP P30613
A	?	-	ASN	deletion	UNP P30613
A	?	-	ALA	deletion	UNP P30613
A	?	-	ASN	deletion	UNP P30613
A	?	-	THR	deletion	UNP P30613
A	?	-	VAL	deletion	UNP P30613
A	?	-	TRP	deletion	UNP P30613
A	?	-	VAL	deletion	UNP P30613
A	?	-	ASP	deletion	UNP P30613
A	?	-	TYR	deletion	UNP P30613
A	?	-	PRO	deletion	UNP P30613
A	?	-	ASN	deletion	UNP P30613
A	?	-	ILE	deletion	UNP P30613
A	?	-	VAL	deletion	UNP P30613
A	?	-	ARG	deletion	UNP P30613
A	?	-	VAL	deletion	UNP P30613
A	?	-	VAL	deletion	UNP P30613
A	?	-	PRO	deletion	UNP P30613

Continued on next page...

Continued from previous page...

Chain	Residue	Modelled	Actual	Comment	Reference
A	?	-	VAL	deletion	UNP P30613
A	?	-	GLY	deletion	UNP P30613
A	?	-	GLY	deletion	UNP P30613
A	?	-	ARG	deletion	UNP P30613
A	?	-	ILE	deletion	UNP P30613
A	?	-	TYR	deletion	UNP P30613
A	?	-	ILE	deletion	UNP P30613
A	?	-	ASP	deletion	UNP P30613
A	?	-	ASP	deletion	UNP P30613
A	?	-	GLY	deletion	UNP P30613
A	?	-	LEU	deletion	UNP P30613
A	?	-	ILE	deletion	UNP P30613
A	?	-	SER	deletion	UNP P30613
A	?	-	LEU	deletion	UNP P30613
A	?	-	VAL	deletion	UNP P30613
A	?	-	VAL	deletion	UNP P30613
A	?	-	GLN	deletion	UNP P30613
A	?	-	LYS	deletion	UNP P30613
A	?	-	ILE	deletion	UNP P30613
A	?	-	GLY	deletion	UNP P30613
A	?	-	PRO	deletion	UNP P30613
A	?	-	GLU	deletion	UNP P30613
A	?	-	GLY	deletion	UNP P30613
A	?	-	LEU	deletion	UNP P30613
A	?	-	VAL	deletion	UNP P30613
A	?	-	THR	deletion	UNP P30613
A	?	-	GLN	deletion	UNP P30613
A	?	-	VAL	deletion	UNP P30613
A	?	-	GLU	deletion	UNP P30613
A	?	-	ASN	deletion	UNP P30613
A	?	-	GLY	deletion	UNP P30613
A	?	-	GLY	deletion	UNP P30613
A	?	-	VAL	deletion	UNP P30613
A	?	-	LEU	deletion	UNP P30613
A	?	-	GLY	deletion	UNP P30613
A	?	-	SER	deletion	UNP P30613
A	?	-	ARG	deletion	UNP P30613
A	?	-	LYS	deletion	UNP P30613
A	?	-	GLY	deletion	UNP P30613
A	?	-	VAL	deletion	UNP P30613
A	?	-	ASN	deletion	UNP P30613
A	?	-	LEU	deletion	UNP P30613

Continued on next page...

Continued from previous page...

Chain	Residue	Modelled	Actual	Comment	Reference
A	?	-	PRO	deletion	UNP P30613
A	?	-	GLY	deletion	UNP P30613
A	?	-	ALA	deletion	UNP P30613
A	?	-	GLN	deletion	UNP P30613
A	130	GLY	VAL	linker	UNP P30613
A	131	SER	ASP	linker	UNP P30613
A	132	GLY	LEU	linker	UNP P30613
B	-1	GLY	-	expression tag	UNP P30613
B	0	SER	-	expression tag	UNP P30613
B	12	ASP	SER	conflict	UNP P30613
B	?	-	GLU	deletion	UNP P30613
B	?	-	ILE	deletion	UNP P30613
B	?	-	ARG	deletion	UNP P30613
B	?	-	THR	deletion	UNP P30613
B	?	-	GLY	deletion	UNP P30613
B	?	-	ILE	deletion	UNP P30613
B	?	-	LEU	deletion	UNP P30613
B	?	-	GLN	deletion	UNP P30613
B	?	-	GLY	deletion	UNP P30613
B	?	-	GLY	deletion	UNP P30613
B	?	-	PRO	deletion	UNP P30613
B	?	-	GLU	deletion	UNP P30613
B	?	-	SER	deletion	UNP P30613
B	?	-	GLU	deletion	UNP P30613
B	?	-	VAL	deletion	UNP P30613
B	?	-	GLU	deletion	UNP P30613
B	?	-	LEU	deletion	UNP P30613
B	?	-	VAL	deletion	UNP P30613
B	?	-	LYS	deletion	UNP P30613
B	?	-	GLY	deletion	UNP P30613
B	?	-	SER	deletion	UNP P30613
B	?	-	GLN	deletion	UNP P30613
B	?	-	VAL	deletion	UNP P30613
B	?	-	LEU	deletion	UNP P30613
B	?	-	VAL	deletion	UNP P30613
B	?	-	THR	deletion	UNP P30613
B	?	-	VAL	deletion	UNP P30613
B	?	-	ASP	deletion	UNP P30613
B	?	-	PRO	deletion	UNP P30613
B	?	-	ALA	deletion	UNP P30613
B	?	-	PHE	deletion	UNP P30613
B	?	-	ARG	deletion	UNP P30613

Continued on next page...

Continued from previous page...

Chain	Residue	Modelled	Actual	Comment	Reference
B	?	-	THR	deletion	UNP P30613
B	?	-	ARG	deletion	UNP P30613
B	?	-	GLY	deletion	UNP P30613
B	?	-	ASN	deletion	UNP P30613
B	?	-	ALA	deletion	UNP P30613
B	?	-	ASN	deletion	UNP P30613
B	?	-	THR	deletion	UNP P30613
B	?	-	VAL	deletion	UNP P30613
B	?	-	TRP	deletion	UNP P30613
B	?	-	VAL	deletion	UNP P30613
B	?	-	ASP	deletion	UNP P30613
B	?	-	TYR	deletion	UNP P30613
B	?	-	PRO	deletion	UNP P30613
B	?	-	ASN	deletion	UNP P30613
B	?	-	ILE	deletion	UNP P30613
B	?	-	VAL	deletion	UNP P30613
B	?	-	ARG	deletion	UNP P30613
B	?	-	VAL	deletion	UNP P30613
B	?	-	VAL	deletion	UNP P30613
B	?	-	PRO	deletion	UNP P30613
B	?	-	VAL	deletion	UNP P30613
B	?	-	GLY	deletion	UNP P30613
B	?	-	GLY	deletion	UNP P30613
B	?	-	ARG	deletion	UNP P30613
B	?	-	ILE	deletion	UNP P30613
B	?	-	TYR	deletion	UNP P30613
B	?	-	ILE	deletion	UNP P30613
B	?	-	ASP	deletion	UNP P30613
B	?	-	ASP	deletion	UNP P30613
B	?	-	GLY	deletion	UNP P30613
B	?	-	LEU	deletion	UNP P30613
B	?	-	ILE	deletion	UNP P30613
B	?	-	SER	deletion	UNP P30613
B	?	-	LEU	deletion	UNP P30613
B	?	-	VAL	deletion	UNP P30613
B	?	-	VAL	deletion	UNP P30613
B	?	-	GLN	deletion	UNP P30613
B	?	-	LYS	deletion	UNP P30613
B	?	-	ILE	deletion	UNP P30613
B	?	-	GLY	deletion	UNP P30613
B	?	-	PRO	deletion	UNP P30613
B	?	-	GLU	deletion	UNP P30613

Continued on next page...

Continued from previous page...

Chain	Residue	Modelled	Actual	Comment	Reference
B	?	-	GLY	deletion	UNP P30613
B	?	-	LEU	deletion	UNP P30613
B	?	-	VAL	deletion	UNP P30613
B	?	-	THR	deletion	UNP P30613
B	?	-	GLN	deletion	UNP P30613
B	?	-	VAL	deletion	UNP P30613
B	?	-	GLU	deletion	UNP P30613
B	?	-	ASN	deletion	UNP P30613
B	?	-	GLY	deletion	UNP P30613
B	?	-	GLY	deletion	UNP P30613
B	?	-	VAL	deletion	UNP P30613
B	?	-	LEU	deletion	UNP P30613
B	?	-	GLY	deletion	UNP P30613
B	?	-	SER	deletion	UNP P30613
B	?	-	ARG	deletion	UNP P30613
B	?	-	LYS	deletion	UNP P30613
B	?	-	GLY	deletion	UNP P30613
B	?	-	VAL	deletion	UNP P30613
B	?	-	ASN	deletion	UNP P30613
B	?	-	LEU	deletion	UNP P30613
B	?	-	PRO	deletion	UNP P30613
B	?	-	GLY	deletion	UNP P30613
B	?	-	ALA	deletion	UNP P30613
B	?	-	GLN	deletion	UNP P30613
B	130	GLY	VAL	linker	UNP P30613
B	131	SER	ASP	linker	UNP P30613
B	132	GLY	LEU	linker	UNP P30613
C	-1	GLY	-	expression tag	UNP P30613
C	0	SER	-	expression tag	UNP P30613
C	12	ASP	SER	conflict	UNP P30613
C	?	-	GLU	deletion	UNP P30613
C	?	-	ILE	deletion	UNP P30613
C	?	-	ARG	deletion	UNP P30613
C	?	-	THR	deletion	UNP P30613
C	?	-	GLY	deletion	UNP P30613
C	?	-	ILE	deletion	UNP P30613
C	?	-	LEU	deletion	UNP P30613
C	?	-	GLN	deletion	UNP P30613
C	?	-	GLY	deletion	UNP P30613
C	?	-	GLY	deletion	UNP P30613
C	?	-	PRO	deletion	UNP P30613
C	?	-	GLU	deletion	UNP P30613

Continued on next page...

Continued from previous page...

Chain	Residue	Modelled	Actual	Comment	Reference
C	?	-	SER	deletion	UNP P30613
C	?	-	GLU	deletion	UNP P30613
C	?	-	VAL	deletion	UNP P30613
C	?	-	GLU	deletion	UNP P30613
C	?	-	LEU	deletion	UNP P30613
C	?	-	VAL	deletion	UNP P30613
C	?	-	LYS	deletion	UNP P30613
C	?	-	GLY	deletion	UNP P30613
C	?	-	SER	deletion	UNP P30613
C	?	-	GLN	deletion	UNP P30613
C	?	-	VAL	deletion	UNP P30613
C	?	-	LEU	deletion	UNP P30613
C	?	-	VAL	deletion	UNP P30613
C	?	-	THR	deletion	UNP P30613
C	?	-	VAL	deletion	UNP P30613
C	?	-	ASP	deletion	UNP P30613
C	?	-	PRO	deletion	UNP P30613
C	?	-	ALA	deletion	UNP P30613
C	?	-	PHE	deletion	UNP P30613
C	?	-	ARG	deletion	UNP P30613
C	?	-	THR	deletion	UNP P30613
C	?	-	ARG	deletion	UNP P30613
C	?	-	GLY	deletion	UNP P30613
C	?	-	ASN	deletion	UNP P30613
C	?	-	ALA	deletion	UNP P30613
C	?	-	ASN	deletion	UNP P30613
C	?	-	THR	deletion	UNP P30613
C	?	-	VAL	deletion	UNP P30613
C	?	-	TRP	deletion	UNP P30613
C	?	-	VAL	deletion	UNP P30613
C	?	-	ASP	deletion	UNP P30613
C	?	-	TYR	deletion	UNP P30613
C	?	-	PRO	deletion	UNP P30613
C	?	-	ASN	deletion	UNP P30613
C	?	-	ILE	deletion	UNP P30613
C	?	-	VAL	deletion	UNP P30613
C	?	-	ARG	deletion	UNP P30613
C	?	-	VAL	deletion	UNP P30613
C	?	-	VAL	deletion	UNP P30613
C	?	-	PRO	deletion	UNP P30613
C	?	-	VAL	deletion	UNP P30613
C	?	-	GLY	deletion	UNP P30613

Continued on next page...

Continued from previous page...

Chain	Residue	Modelled	Actual	Comment	Reference
C	?	-	GLY	deletion	UNP P30613
C	?	-	ARG	deletion	UNP P30613
C	?	-	ILE	deletion	UNP P30613
C	?	-	TYR	deletion	UNP P30613
C	?	-	ILE	deletion	UNP P30613
C	?	-	ASP	deletion	UNP P30613
C	?	-	ASP	deletion	UNP P30613
C	?	-	GLY	deletion	UNP P30613
C	?	-	LEU	deletion	UNP P30613
C	?	-	ILE	deletion	UNP P30613
C	?	-	SER	deletion	UNP P30613
C	?	-	LEU	deletion	UNP P30613
C	?	-	VAL	deletion	UNP P30613
C	?	-	VAL	deletion	UNP P30613
C	?	-	GLN	deletion	UNP P30613
C	?	-	LYS	deletion	UNP P30613
C	?	-	ILE	deletion	UNP P30613
C	?	-	GLY	deletion	UNP P30613
C	?	-	PRO	deletion	UNP P30613
C	?	-	GLU	deletion	UNP P30613
C	?	-	GLY	deletion	UNP P30613
C	?	-	LEU	deletion	UNP P30613
C	?	-	VAL	deletion	UNP P30613
C	?	-	THR	deletion	UNP P30613
C	?	-	GLN	deletion	UNP P30613
C	?	-	VAL	deletion	UNP P30613
C	?	-	GLU	deletion	UNP P30613
C	?	-	ASN	deletion	UNP P30613
C	?	-	GLY	deletion	UNP P30613
C	?	-	GLY	deletion	UNP P30613
C	?	-	VAL	deletion	UNP P30613
C	?	-	LEU	deletion	UNP P30613
C	?	-	GLY	deletion	UNP P30613
C	?	-	SER	deletion	UNP P30613
C	?	-	ARG	deletion	UNP P30613
C	?	-	LYS	deletion	UNP P30613
C	?	-	GLY	deletion	UNP P30613
C	?	-	VAL	deletion	UNP P30613
C	?	-	ASN	deletion	UNP P30613
C	?	-	LEU	deletion	UNP P30613
C	?	-	PRO	deletion	UNP P30613
C	?	-	GLY	deletion	UNP P30613

Continued on next page...

Continued from previous page...

Chain	Residue	Modelled	Actual	Comment	Reference
C	?	-	ALA	deletion	UNP P30613
C	?	-	GLN	deletion	UNP P30613
C	130	GLY	VAL	linker	UNP P30613
C	131	SER	ASP	linker	UNP P30613
C	132	GLY	LEU	linker	UNP P30613
D	-1	GLY	-	expression tag	UNP P30613
D	0	SER	-	expression tag	UNP P30613
D	12	ASP	SER	conflict	UNP P30613
D	?	-	GLU	deletion	UNP P30613
D	?	-	ILE	deletion	UNP P30613
D	?	-	ARG	deletion	UNP P30613
D	?	-	THR	deletion	UNP P30613
D	?	-	GLY	deletion	UNP P30613
D	?	-	ILE	deletion	UNP P30613
D	?	-	LEU	deletion	UNP P30613
D	?	-	GLN	deletion	UNP P30613
D	?	-	GLY	deletion	UNP P30613
D	?	-	GLY	deletion	UNP P30613
D	?	-	PRO	deletion	UNP P30613
D	?	-	GLU	deletion	UNP P30613
D	?	-	SER	deletion	UNP P30613
D	?	-	GLU	deletion	UNP P30613
D	?	-	VAL	deletion	UNP P30613
D	?	-	GLU	deletion	UNP P30613
D	?	-	LEU	deletion	UNP P30613
D	?	-	VAL	deletion	UNP P30613
D	?	-	LYS	deletion	UNP P30613
D	?	-	GLY	deletion	UNP P30613
D	?	-	SER	deletion	UNP P30613
D	?	-	GLN	deletion	UNP P30613
D	?	-	VAL	deletion	UNP P30613
D	?	-	LEU	deletion	UNP P30613
D	?	-	VAL	deletion	UNP P30613
D	?	-	THR	deletion	UNP P30613
D	?	-	VAL	deletion	UNP P30613
D	?	-	ASP	deletion	UNP P30613
D	?	-	PRO	deletion	UNP P30613
D	?	-	ALA	deletion	UNP P30613
D	?	-	PHE	deletion	UNP P30613
D	?	-	ARG	deletion	UNP P30613
D	?	-	THR	deletion	UNP P30613
D	?	-	ARG	deletion	UNP P30613

Continued on next page...

Continued from previous page...

Chain	Residue	Modelled	Actual	Comment	Reference
D	?	-	GLY	deletion	UNP P30613
D	?	-	ASN	deletion	UNP P30613
D	?	-	ALA	deletion	UNP P30613
D	?	-	ASN	deletion	UNP P30613
D	?	-	THR	deletion	UNP P30613
D	?	-	VAL	deletion	UNP P30613
D	?	-	TRP	deletion	UNP P30613
D	?	-	VAL	deletion	UNP P30613
D	?	-	ASP	deletion	UNP P30613
D	?	-	TYR	deletion	UNP P30613
D	?	-	PRO	deletion	UNP P30613
D	?	-	ASN	deletion	UNP P30613
D	?	-	ILE	deletion	UNP P30613
D	?	-	VAL	deletion	UNP P30613
D	?	-	ARG	deletion	UNP P30613
D	?	-	VAL	deletion	UNP P30613
D	?	-	VAL	deletion	UNP P30613
D	?	-	PRO	deletion	UNP P30613
D	?	-	VAL	deletion	UNP P30613
D	?	-	GLY	deletion	UNP P30613
D	?	-	GLY	deletion	UNP P30613
D	?	-	ARG	deletion	UNP P30613
D	?	-	ILE	deletion	UNP P30613
D	?	-	TYR	deletion	UNP P30613
D	?	-	ILE	deletion	UNP P30613
D	?	-	ASP	deletion	UNP P30613
D	?	-	ASP	deletion	UNP P30613
D	?	-	GLY	deletion	UNP P30613
D	?	-	LEU	deletion	UNP P30613
D	?	-	ILE	deletion	UNP P30613
D	?	-	SER	deletion	UNP P30613
D	?	-	LEU	deletion	UNP P30613
D	?	-	VAL	deletion	UNP P30613
D	?	-	VAL	deletion	UNP P30613
D	?	-	GLN	deletion	UNP P30613
D	?	-	LYS	deletion	UNP P30613
D	?	-	ILE	deletion	UNP P30613
D	?	-	GLY	deletion	UNP P30613
D	?	-	PRO	deletion	UNP P30613
D	?	-	GLU	deletion	UNP P30613
D	?	-	GLY	deletion	UNP P30613
D	?	-	LEU	deletion	UNP P30613

Continued on next page...

Continued from previous page...

Chain	Residue	Modelled	Actual	Comment	Reference
D	?	-	VAL	deletion	UNP P30613
D	?	-	THR	deletion	UNP P30613
D	?	-	GLN	deletion	UNP P30613
D	?	-	VAL	deletion	UNP P30613
D	?	-	GLU	deletion	UNP P30613
D	?	-	ASN	deletion	UNP P30613
D	?	-	GLY	deletion	UNP P30613
D	?	-	GLY	deletion	UNP P30613
D	?	-	VAL	deletion	UNP P30613
D	?	-	LEU	deletion	UNP P30613
D	?	-	GLY	deletion	UNP P30613
D	?	-	SER	deletion	UNP P30613
D	?	-	ARG	deletion	UNP P30613
D	?	-	LYS	deletion	UNP P30613
D	?	-	GLY	deletion	UNP P30613
D	?	-	VAL	deletion	UNP P30613
D	?	-	ASN	deletion	UNP P30613
D	?	-	LEU	deletion	UNP P30613
D	?	-	PRO	deletion	UNP P30613
D	?	-	GLY	deletion	UNP P30613
D	?	-	ALA	deletion	UNP P30613
D	?	-	GLN	deletion	UNP P30613
D	130	GLY	VAL	linker	UNP P30613
D	131	SER	ASP	linker	UNP P30613
D	132	GLY	LEU	linker	UNP P30613
E	-1	GLY	-	expression tag	UNP P30613
E	0	SER	-	expression tag	UNP P30613
E	12	ASP	SER	conflict	UNP P30613
E	?	-	GLU	deletion	UNP P30613
E	?	-	ILE	deletion	UNP P30613
E	?	-	ARG	deletion	UNP P30613
E	?	-	THR	deletion	UNP P30613
E	?	-	GLY	deletion	UNP P30613
E	?	-	ILE	deletion	UNP P30613
E	?	-	LEU	deletion	UNP P30613
E	?	-	GLN	deletion	UNP P30613
E	?	-	GLY	deletion	UNP P30613
E	?	-	GLY	deletion	UNP P30613
E	?	-	PRO	deletion	UNP P30613
E	?	-	GLU	deletion	UNP P30613
E	?	-	SER	deletion	UNP P30613
E	?	-	GLU	deletion	UNP P30613

Continued on next page...

Continued from previous page...

Chain	Residue	Modelled	Actual	Comment	Reference
E	?	-	VAL	deletion	UNP P30613
E	?	-	GLU	deletion	UNP P30613
E	?	-	LEU	deletion	UNP P30613
E	?	-	VAL	deletion	UNP P30613
E	?	-	LYS	deletion	UNP P30613
E	?	-	GLY	deletion	UNP P30613
E	?	-	SER	deletion	UNP P30613
E	?	-	GLN	deletion	UNP P30613
E	?	-	VAL	deletion	UNP P30613
E	?	-	LEU	deletion	UNP P30613
E	?	-	VAL	deletion	UNP P30613
E	?	-	THR	deletion	UNP P30613
E	?	-	VAL	deletion	UNP P30613
E	?	-	ASP	deletion	UNP P30613
E	?	-	PRO	deletion	UNP P30613
E	?	-	ALA	deletion	UNP P30613
E	?	-	PHE	deletion	UNP P30613
E	?	-	ARG	deletion	UNP P30613
E	?	-	THR	deletion	UNP P30613
E	?	-	ARG	deletion	UNP P30613
E	?	-	GLY	deletion	UNP P30613
E	?	-	ASN	deletion	UNP P30613
E	?	-	ALA	deletion	UNP P30613
E	?	-	ASN	deletion	UNP P30613
E	?	-	THR	deletion	UNP P30613
E	?	-	VAL	deletion	UNP P30613
E	?	-	TRP	deletion	UNP P30613
E	?	-	VAL	deletion	UNP P30613
E	?	-	ASP	deletion	UNP P30613
E	?	-	TYR	deletion	UNP P30613
E	?	-	PRO	deletion	UNP P30613
E	?	-	ASN	deletion	UNP P30613
E	?	-	ILE	deletion	UNP P30613
E	?	-	VAL	deletion	UNP P30613
E	?	-	ARG	deletion	UNP P30613
E	?	-	VAL	deletion	UNP P30613
E	?	-	VAL	deletion	UNP P30613
E	?	-	PRO	deletion	UNP P30613
E	?	-	VAL	deletion	UNP P30613
E	?	-	GLY	deletion	UNP P30613
E	?	-	GLY	deletion	UNP P30613
E	?	-	ARG	deletion	UNP P30613

Continued on next page...

Continued from previous page...

Chain	Residue	Modelled	Actual	Comment	Reference
E	?	-	ILE	deletion	UNP P30613
E	?	-	TYR	deletion	UNP P30613
E	?	-	ILE	deletion	UNP P30613
E	?	-	ASP	deletion	UNP P30613
E	?	-	ASP	deletion	UNP P30613
E	?	-	GLY	deletion	UNP P30613
E	?	-	LEU	deletion	UNP P30613
E	?	-	ILE	deletion	UNP P30613
E	?	-	SER	deletion	UNP P30613
E	?	-	LEU	deletion	UNP P30613
E	?	-	VAL	deletion	UNP P30613
E	?	-	VAL	deletion	UNP P30613
E	?	-	GLN	deletion	UNP P30613
E	?	-	LYS	deletion	UNP P30613
E	?	-	ILE	deletion	UNP P30613
E	?	-	GLY	deletion	UNP P30613
E	?	-	PRO	deletion	UNP P30613
E	?	-	GLU	deletion	UNP P30613
E	?	-	GLY	deletion	UNP P30613
E	?	-	LEU	deletion	UNP P30613
E	?	-	VAL	deletion	UNP P30613
E	?	-	THR	deletion	UNP P30613
E	?	-	GLN	deletion	UNP P30613
E	?	-	VAL	deletion	UNP P30613
E	?	-	GLU	deletion	UNP P30613
E	?	-	ASN	deletion	UNP P30613
E	?	-	GLY	deletion	UNP P30613
E	?	-	GLY	deletion	UNP P30613
E	?	-	VAL	deletion	UNP P30613
E	?	-	LEU	deletion	UNP P30613
E	?	-	GLY	deletion	UNP P30613
E	?	-	SER	deletion	UNP P30613
E	?	-	ARG	deletion	UNP P30613
E	?	-	LYS	deletion	UNP P30613
E	?	-	GLY	deletion	UNP P30613
E	?	-	VAL	deletion	UNP P30613
E	?	-	ASN	deletion	UNP P30613
E	?	-	LEU	deletion	UNP P30613
E	?	-	PRO	deletion	UNP P30613
E	?	-	GLY	deletion	UNP P30613
E	?	-	ALA	deletion	UNP P30613
E	?	-	GLN	deletion	UNP P30613

Continued on next page...

Continued from previous page...

Chain	Residue	Modelled	Actual	Comment	Reference
E	130	GLY	VAL	linker	UNP P30613
E	131	SER	ASP	linker	UNP P30613
E	132	GLY	LEU	linker	UNP P30613
F	-1	GLY	-	expression tag	UNP P30613
F	0	SER	-	expression tag	UNP P30613
F	12	ASP	SER	conflict	UNP P30613
F	?	-	GLU	deletion	UNP P30613
F	?	-	ILE	deletion	UNP P30613
F	?	-	ARG	deletion	UNP P30613
F	?	-	THR	deletion	UNP P30613
F	?	-	GLY	deletion	UNP P30613
F	?	-	ILE	deletion	UNP P30613
F	?	-	LEU	deletion	UNP P30613
F	?	-	GLN	deletion	UNP P30613
F	?	-	GLY	deletion	UNP P30613
F	?	-	GLY	deletion	UNP P30613
F	?	-	PRO	deletion	UNP P30613
F	?	-	GLU	deletion	UNP P30613
F	?	-	SER	deletion	UNP P30613
F	?	-	GLU	deletion	UNP P30613
F	?	-	VAL	deletion	UNP P30613
F	?	-	GLU	deletion	UNP P30613
F	?	-	LEU	deletion	UNP P30613
F	?	-	VAL	deletion	UNP P30613
F	?	-	LYS	deletion	UNP P30613
F	?	-	GLY	deletion	UNP P30613
F	?	-	SER	deletion	UNP P30613
F	?	-	GLN	deletion	UNP P30613
F	?	-	VAL	deletion	UNP P30613
F	?	-	LEU	deletion	UNP P30613
F	?	-	VAL	deletion	UNP P30613
F	?	-	THR	deletion	UNP P30613
F	?	-	VAL	deletion	UNP P30613
F	?	-	ASP	deletion	UNP P30613
F	?	-	PRO	deletion	UNP P30613
F	?	-	ALA	deletion	UNP P30613
F	?	-	PHE	deletion	UNP P30613
F	?	-	ARG	deletion	UNP P30613
F	?	-	THR	deletion	UNP P30613
F	?	-	ARG	deletion	UNP P30613
F	?	-	GLY	deletion	UNP P30613
F	?	-	ASN	deletion	UNP P30613

Continued on next page...

Continued from previous page...

Chain	Residue	Modelled	Actual	Comment	Reference
F	?	-	ALA	deletion	UNP P30613
F	?	-	ASN	deletion	UNP P30613
F	?	-	THR	deletion	UNP P30613
F	?	-	VAL	deletion	UNP P30613
F	?	-	TRP	deletion	UNP P30613
F	?	-	VAL	deletion	UNP P30613
F	?	-	ASP	deletion	UNP P30613
F	?	-	TYR	deletion	UNP P30613
F	?	-	PRO	deletion	UNP P30613
F	?	-	ASN	deletion	UNP P30613
F	?	-	ILE	deletion	UNP P30613
F	?	-	VAL	deletion	UNP P30613
F	?	-	ARG	deletion	UNP P30613
F	?	-	VAL	deletion	UNP P30613
F	?	-	VAL	deletion	UNP P30613
F	?	-	PRO	deletion	UNP P30613
F	?	-	VAL	deletion	UNP P30613
F	?	-	GLY	deletion	UNP P30613
F	?	-	GLY	deletion	UNP P30613
F	?	-	ARG	deletion	UNP P30613
F	?	-	ILE	deletion	UNP P30613
F	?	-	TYR	deletion	UNP P30613
F	?	-	ILE	deletion	UNP P30613
F	?	-	ASP	deletion	UNP P30613
F	?	-	ASP	deletion	UNP P30613
F	?	-	GLY	deletion	UNP P30613
F	?	-	LEU	deletion	UNP P30613
F	?	-	ILE	deletion	UNP P30613
F	?	-	SER	deletion	UNP P30613
F	?	-	LEU	deletion	UNP P30613
F	?	-	VAL	deletion	UNP P30613
F	?	-	VAL	deletion	UNP P30613
F	?	-	GLN	deletion	UNP P30613
F	?	-	LYS	deletion	UNP P30613
F	?	-	ILE	deletion	UNP P30613
F	?	-	GLY	deletion	UNP P30613
F	?	-	PRO	deletion	UNP P30613
F	?	-	GLU	deletion	UNP P30613
F	?	-	GLY	deletion	UNP P30613
F	?	-	LEU	deletion	UNP P30613
F	?	-	VAL	deletion	UNP P30613
F	?	-	THR	deletion	UNP P30613

Continued on next page...

Continued from previous page...

Chain	Residue	Modelled	Actual	Comment	Reference
F	?	-	GLN	deletion	UNP P30613
F	?	-	VAL	deletion	UNP P30613
F	?	-	GLU	deletion	UNP P30613
F	?	-	ASN	deletion	UNP P30613
F	?	-	GLY	deletion	UNP P30613
F	?	-	GLY	deletion	UNP P30613
F	?	-	VAL	deletion	UNP P30613
F	?	-	LEU	deletion	UNP P30613
F	?	-	GLY	deletion	UNP P30613
F	?	-	SER	deletion	UNP P30613
F	?	-	ARG	deletion	UNP P30613
F	?	-	LYS	deletion	UNP P30613
F	?	-	GLY	deletion	UNP P30613
F	?	-	VAL	deletion	UNP P30613
F	?	-	ASN	deletion	UNP P30613
F	?	-	LEU	deletion	UNP P30613
F	?	-	PRO	deletion	UNP P30613
F	?	-	GLY	deletion	UNP P30613
F	?	-	ALA	deletion	UNP P30613
F	?	-	GLN	deletion	UNP P30613
F	130	GLY	VAL	linker	UNP P30613
F	131	SER	ASP	linker	UNP P30613
F	132	GLY	LEU	linker	UNP P30613
G	-1	GLY	-	expression tag	UNP P30613
G	0	SER	-	expression tag	UNP P30613
G	12	ASP	SER	conflict	UNP P30613
G	?	-	GLU	deletion	UNP P30613
G	?	-	ILE	deletion	UNP P30613
G	?	-	ARG	deletion	UNP P30613
G	?	-	THR	deletion	UNP P30613
G	?	-	GLY	deletion	UNP P30613
G	?	-	ILE	deletion	UNP P30613
G	?	-	LEU	deletion	UNP P30613
G	?	-	GLN	deletion	UNP P30613
G	?	-	GLY	deletion	UNP P30613
G	?	-	GLY	deletion	UNP P30613
G	?	-	PRO	deletion	UNP P30613
G	?	-	GLU	deletion	UNP P30613
G	?	-	SER	deletion	UNP P30613
G	?	-	GLU	deletion	UNP P30613
G	?	-	VAL	deletion	UNP P30613
G	?	-	GLU	deletion	UNP P30613

Continued on next page...

Continued from previous page...

Chain	Residue	Modelled	Actual	Comment	Reference
G	?	-	LEU	deletion	UNP P30613
G	?	-	VAL	deletion	UNP P30613
G	?	-	LYS	deletion	UNP P30613
G	?	-	GLY	deletion	UNP P30613
G	?	-	SER	deletion	UNP P30613
G	?	-	GLN	deletion	UNP P30613
G	?	-	VAL	deletion	UNP P30613
G	?	-	LEU	deletion	UNP P30613
G	?	-	VAL	deletion	UNP P30613
G	?	-	THR	deletion	UNP P30613
G	?	-	VAL	deletion	UNP P30613
G	?	-	ASP	deletion	UNP P30613
G	?	-	PRO	deletion	UNP P30613
G	?	-	ALA	deletion	UNP P30613
G	?	-	PHE	deletion	UNP P30613
G	?	-	ARG	deletion	UNP P30613
G	?	-	THR	deletion	UNP P30613
G	?	-	ARG	deletion	UNP P30613
G	?	-	GLY	deletion	UNP P30613
G	?	-	ASN	deletion	UNP P30613
G	?	-	ALA	deletion	UNP P30613
G	?	-	ASN	deletion	UNP P30613
G	?	-	THR	deletion	UNP P30613
G	?	-	VAL	deletion	UNP P30613
G	?	-	TRP	deletion	UNP P30613
G	?	-	VAL	deletion	UNP P30613
G	?	-	ASP	deletion	UNP P30613
G	?	-	TYR	deletion	UNP P30613
G	?	-	PRO	deletion	UNP P30613
G	?	-	ASN	deletion	UNP P30613
G	?	-	ILE	deletion	UNP P30613
G	?	-	VAL	deletion	UNP P30613
G	?	-	ARG	deletion	UNP P30613
G	?	-	VAL	deletion	UNP P30613
G	?	-	VAL	deletion	UNP P30613
G	?	-	PRO	deletion	UNP P30613
G	?	-	VAL	deletion	UNP P30613
G	?	-	GLY	deletion	UNP P30613
G	?	-	GLY	deletion	UNP P30613
G	?	-	ARG	deletion	UNP P30613
G	?	-	ILE	deletion	UNP P30613
G	?	-	TYR	deletion	UNP P30613

Continued on next page...

Continued from previous page...

Chain	Residue	Modelled	Actual	Comment	Reference
G	?	-	ILE	deletion	UNP P30613
G	?	-	ASP	deletion	UNP P30613
G	?	-	ASP	deletion	UNP P30613
G	?	-	GLY	deletion	UNP P30613
G	?	-	LEU	deletion	UNP P30613
G	?	-	ILE	deletion	UNP P30613
G	?	-	SER	deletion	UNP P30613
G	?	-	LEU	deletion	UNP P30613
G	?	-	VAL	deletion	UNP P30613
G	?	-	VAL	deletion	UNP P30613
G	?	-	GLN	deletion	UNP P30613
G	?	-	LYS	deletion	UNP P30613
G	?	-	ILE	deletion	UNP P30613
G	?	-	GLY	deletion	UNP P30613
G	?	-	PRO	deletion	UNP P30613
G	?	-	GLU	deletion	UNP P30613
G	?	-	GLY	deletion	UNP P30613
G	?	-	LEU	deletion	UNP P30613
G	?	-	VAL	deletion	UNP P30613
G	?	-	THR	deletion	UNP P30613
G	?	-	GLN	deletion	UNP P30613
G	?	-	VAL	deletion	UNP P30613
G	?	-	GLU	deletion	UNP P30613
G	?	-	ASN	deletion	UNP P30613
G	?	-	GLY	deletion	UNP P30613
G	?	-	GLY	deletion	UNP P30613
G	?	-	VAL	deletion	UNP P30613
G	?	-	LEU	deletion	UNP P30613
G	?	-	GLY	deletion	UNP P30613
G	?	-	SER	deletion	UNP P30613
G	?	-	ARG	deletion	UNP P30613
G	?	-	LYS	deletion	UNP P30613
G	?	-	GLY	deletion	UNP P30613
G	?	-	VAL	deletion	UNP P30613
G	?	-	ASN	deletion	UNP P30613
G	?	-	LEU	deletion	UNP P30613
G	?	-	PRO	deletion	UNP P30613
G	?	-	GLY	deletion	UNP P30613
G	?	-	ALA	deletion	UNP P30613
G	?	-	GLN	deletion	UNP P30613
G	130	GLY	VAL	linker	UNP P30613
G	131	SER	ASP	linker	UNP P30613

Continued on next page...

Continued from previous page...

Chain	Residue	Modelled	Actual	Comment	Reference
G	132	GLY	LEU	linker	UNP P30613
H	-1	GLY	-	expression tag	UNP P30613
H	0	SER	-	expression tag	UNP P30613
H	12	ASP	SER	conflict	UNP P30613
H	?	-	GLU	deletion	UNP P30613
H	?	-	ILE	deletion	UNP P30613
H	?	-	ARG	deletion	UNP P30613
H	?	-	THR	deletion	UNP P30613
H	?	-	GLY	deletion	UNP P30613
H	?	-	ILE	deletion	UNP P30613
H	?	-	LEU	deletion	UNP P30613
H	?	-	GLN	deletion	UNP P30613
H	?	-	GLY	deletion	UNP P30613
H	?	-	GLY	deletion	UNP P30613
H	?	-	PRO	deletion	UNP P30613
H	?	-	GLU	deletion	UNP P30613
H	?	-	SER	deletion	UNP P30613
H	?	-	GLU	deletion	UNP P30613
H	?	-	VAL	deletion	UNP P30613
H	?	-	GLU	deletion	UNP P30613
H	?	-	LEU	deletion	UNP P30613
H	?	-	VAL	deletion	UNP P30613
H	?	-	LYS	deletion	UNP P30613
H	?	-	GLY	deletion	UNP P30613
H	?	-	SER	deletion	UNP P30613
H	?	-	GLN	deletion	UNP P30613
H	?	-	VAL	deletion	UNP P30613
H	?	-	LEU	deletion	UNP P30613
H	?	-	VAL	deletion	UNP P30613
H	?	-	THR	deletion	UNP P30613
H	?	-	VAL	deletion	UNP P30613
H	?	-	ASP	deletion	UNP P30613
H	?	-	PRO	deletion	UNP P30613
H	?	-	ALA	deletion	UNP P30613
H	?	-	PHE	deletion	UNP P30613
H	?	-	ARG	deletion	UNP P30613
H	?	-	THR	deletion	UNP P30613
H	?	-	ARG	deletion	UNP P30613
H	?	-	GLY	deletion	UNP P30613
H	?	-	ASN	deletion	UNP P30613
H	?	-	ALA	deletion	UNP P30613
H	?	-	ASN	deletion	UNP P30613

Continued on next page...

Continued from previous page...

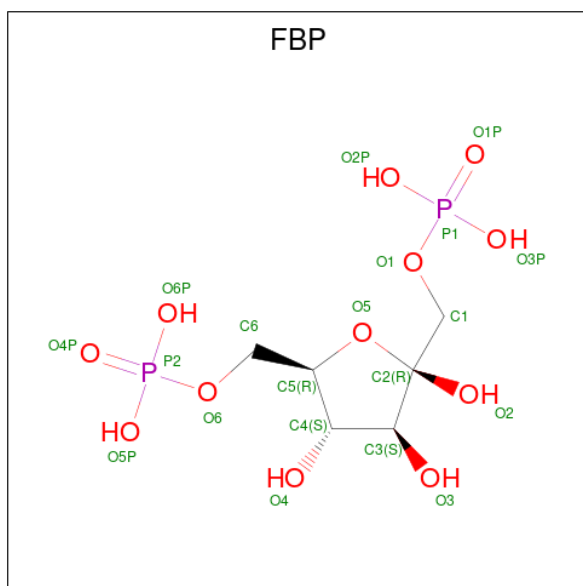
Chain	Residue	Modelled	Actual	Comment	Reference
H	?	-	THR	deletion	UNP P30613
H	?	-	VAL	deletion	UNP P30613
H	?	-	TRP	deletion	UNP P30613
H	?	-	VAL	deletion	UNP P30613
H	?	-	ASP	deletion	UNP P30613
H	?	-	TYR	deletion	UNP P30613
H	?	-	PRO	deletion	UNP P30613
H	?	-	ASN	deletion	UNP P30613
H	?	-	ILE	deletion	UNP P30613
H	?	-	VAL	deletion	UNP P30613
H	?	-	ARG	deletion	UNP P30613
H	?	-	VAL	deletion	UNP P30613
H	?	-	VAL	deletion	UNP P30613
H	?	-	PRO	deletion	UNP P30613
H	?	-	VAL	deletion	UNP P30613
H	?	-	GLY	deletion	UNP P30613
H	?	-	GLY	deletion	UNP P30613
H	?	-	ARG	deletion	UNP P30613
H	?	-	ILE	deletion	UNP P30613
H	?	-	TYR	deletion	UNP P30613
H	?	-	ILE	deletion	UNP P30613
H	?	-	ASP	deletion	UNP P30613
H	?	-	ASP	deletion	UNP P30613
H	?	-	GLY	deletion	UNP P30613
H	?	-	LEU	deletion	UNP P30613
H	?	-	ILE	deletion	UNP P30613
H	?	-	SER	deletion	UNP P30613
H	?	-	LEU	deletion	UNP P30613
H	?	-	VAL	deletion	UNP P30613
H	?	-	VAL	deletion	UNP P30613
H	?	-	GLN	deletion	UNP P30613
H	?	-	LYS	deletion	UNP P30613
H	?	-	ILE	deletion	UNP P30613
H	?	-	GLY	deletion	UNP P30613
H	?	-	PRO	deletion	UNP P30613
H	?	-	GLU	deletion	UNP P30613
H	?	-	GLY	deletion	UNP P30613
H	?	-	LEU	deletion	UNP P30613
H	?	-	VAL	deletion	UNP P30613
H	?	-	THR	deletion	UNP P30613
H	?	-	GLN	deletion	UNP P30613
H	?	-	VAL	deletion	UNP P30613

Continued on next page...

Continued from previous page...

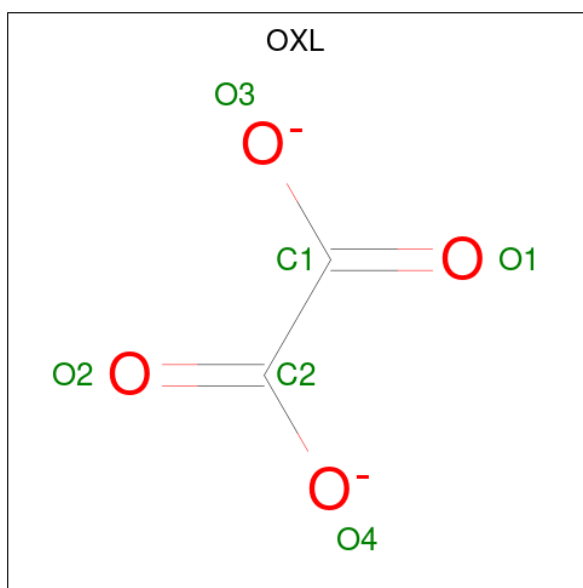
Chain	Residue	Modelled	Actual	Comment	Reference
H	?	-	GLU	deletion	UNP P30613
H	?	-	ASN	deletion	UNP P30613
H	?	-	GLY	deletion	UNP P30613
H	?	-	GLY	deletion	UNP P30613
H	?	-	VAL	deletion	UNP P30613
H	?	-	LEU	deletion	UNP P30613
H	?	-	GLY	deletion	UNP P30613
H	?	-	SER	deletion	UNP P30613
H	?	-	ARG	deletion	UNP P30613
H	?	-	LYS	deletion	UNP P30613
H	?	-	GLY	deletion	UNP P30613
H	?	-	VAL	deletion	UNP P30613
H	?	-	ASN	deletion	UNP P30613
H	?	-	LEU	deletion	UNP P30613
H	?	-	PRO	deletion	UNP P30613
H	?	-	GLY	deletion	UNP P30613
H	?	-	ALA	deletion	UNP P30613
H	?	-	GLN	deletion	UNP P30613
H	130	GLY	VAL	linker	UNP P30613
H	131	SER	ASP	linker	UNP P30613
H	132	GLY	LEU	linker	UNP P30613

- Molecule 2 is 1,6-di-O-phosphono-beta-D-fructofuranose (CCD ID: FBP) (formula: $C_6H_{14}O_{12}P_2$).



Mol	Chain	Residues	Atoms				ZeroOcc	AltConf
2	A	1	Total	C	O	P	0	0
			20	6	12	2		
2	B	1	Total	C	O	P	0	0
			20	6	12	2		
2	C	1	Total	C	O	P	0	0
			20	6	12	2		
2	D	1	Total	C	O	P	0	0
			20	6	12	2		
2	E	1	Total	C	O	P	0	0
			20	6	12	2		
2	F	1	Total	C	O	P	0	0
			20	6	12	2		
2	G	1	Total	C	O	P	0	0
			20	6	12	2		
2	H	1	Total	C	O	P	0	0
			20	6	12	2		

- Molecule 3 is OXALATE ION (CCD ID: OXL) (formula: C_2O_4).



Mol	Chain	Residues	Atoms			ZeroOcc	AltConf
3	A	1	Total	C	O	0	0
			6	2	4		
3	B	1	Total	C	O	0	0
			6	2	4		
3	C	1	Total	C	O	0	0
			6	2	4		
3	D	1	Total	C	O	0	0
			6	2	4		

Continued on next page...

Continued from previous page...

Mol	Chain	Residues	Atoms	ZeroOcc	AltConf
3	E	1	Total C O 6 2 4	0	0
3	F	1	Total C O 6 2 4	0	0
3	G	1	Total C O 6 2 4	0	0
3	H	1	Total C O 6 2 4	0	0

- Molecule 4 is MAGNESIUM ION (CCD ID: MG) (formula: Mg).

Mol	Chain	Residues	Atoms	ZeroOcc	AltConf
4	A	1	Total Mg 1 1	0	0
4	B	1	Total Mg 1 1	0	0
4	C	1	Total Mg 1 1	0	0
4	D	1	Total Mg 1 1	0	0
4	E	1	Total Mg 1 1	0	0
4	F	1	Total Mg 1 1	0	0
4	G	1	Total Mg 1 1	0	0
4	H	1	Total Mg 1 1	0	0

- Molecule 5 is POTASSIUM ION (CCD ID: K) (formula: K).

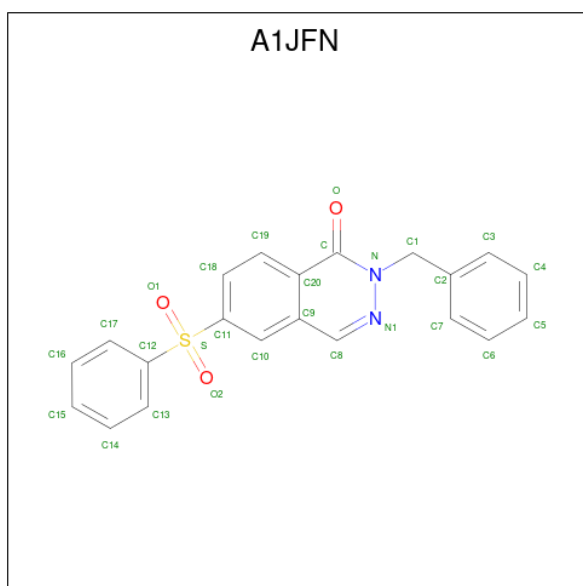
Mol	Chain	Residues	Atoms	ZeroOcc	AltConf
5	A	1	Total K 1 1	0	0
5	B	1	Total K 1 1	0	0
5	C	1	Total K 1 1	0	0
5	D	1	Total K 1 1	0	0
5	E	1	Total K 1 1	0	0

Continued on next page...

Continued from previous page...

Mol	Chain	Residues	Atoms	ZeroOcc	AltConf
5	F	1	Total K 1 1	0	0
5	G	1	Total K 1 1	0	0
5	H	1	Total K 1 1	0	0

- Molecule 6 is 2-(phenylmethyl)-6-(phenylsulfonyl)phthalazin-1-one (CCD ID: A1JFN) (formula: C₂₁H₁₆N₂O₃S) (labeled as "Ligand of Interest" by depositor).



Mol	Chain	Residues	Atoms	ZeroOcc	AltConf
6	B	1	Total C H N O S 43 21 16 2 3 1	16	0
6	C	1	Total C H N O S 43 21 16 2 3 1	16	0
6	E	1	Total C H N O S 43 21 16 2 3 1	16	0
6	H	1	Total C H N O S 43 21 16 2 3 1	16	0

- Molecule 7 is water.

Mol	Chain	Residues	Atoms	ZeroOcc	AltConf
7	A	45	Total O 45 45	0	0
7	B	49	Total O 49 49	0	0

Continued on next page...

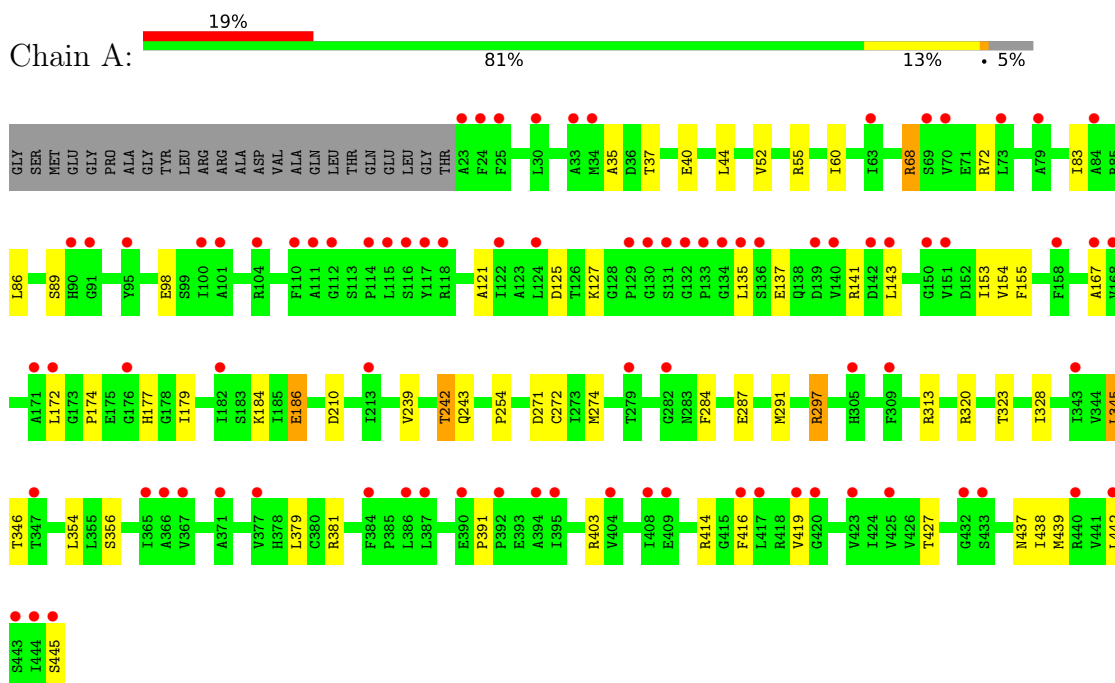
Continued from previous page...

Mol	Chain	Residues	Atoms		ZeroOcc	AltConf
7	C	81	Total 81	O 81	0	0
7	D	99	Total 99	O 99	0	0
7	E	62	Total 62	O 62	0	0
7	F	79	Total 79	O 79	0	0
7	G	91	Total 91	O 91	0	0
7	H	122	Total 122	O 122	0	0

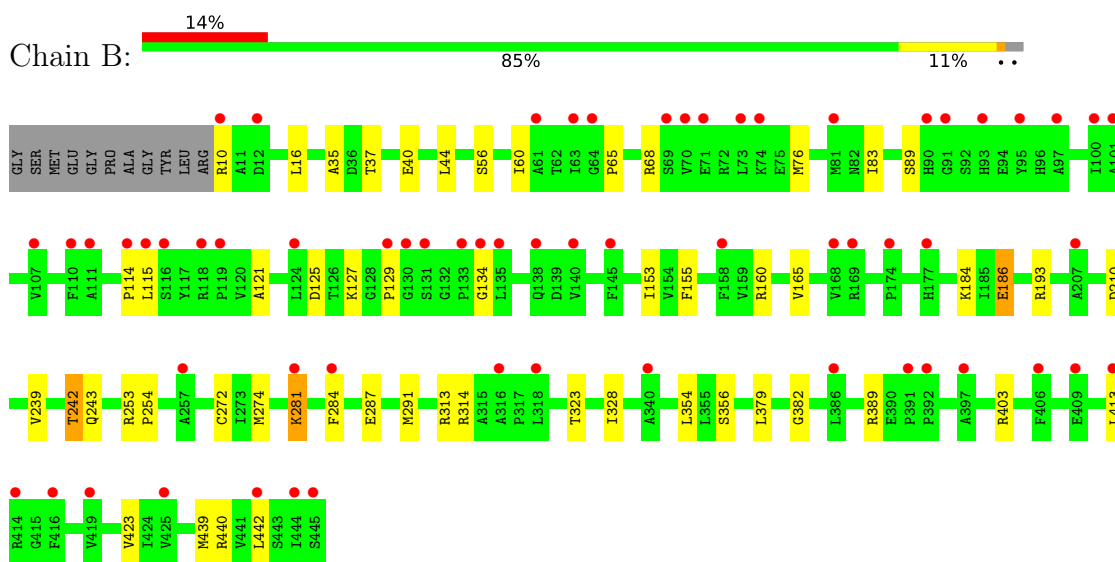
3 Residue-property plots [i](#)

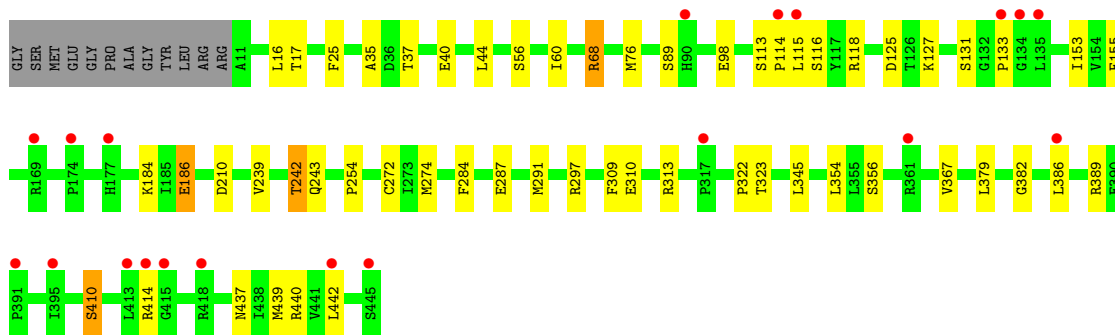
These plots are drawn for all protein, RNA, DNA and oligosaccharide chains in the entry. The first graphic for a chain summarises the proportions of the various outlier classes displayed in the second graphic. The second graphic shows the sequence view annotated by issues in geometry and electron density. Residues are color-coded according to the number of geometric quality criteria for which they contain at least one outlier: green = 0, yellow = 1, orange = 2 and red = 3 or more. A red dot above a residue indicates a poor fit to the electron density ($RSRZ > 2$). Stretches of 2 or more consecutive residues without any outlier are shown as a green connector. Residues present in the sample, but not in the model, are shown in grey.

- Molecule 1: Isoform L-type of Pyruvate kinase PKLR

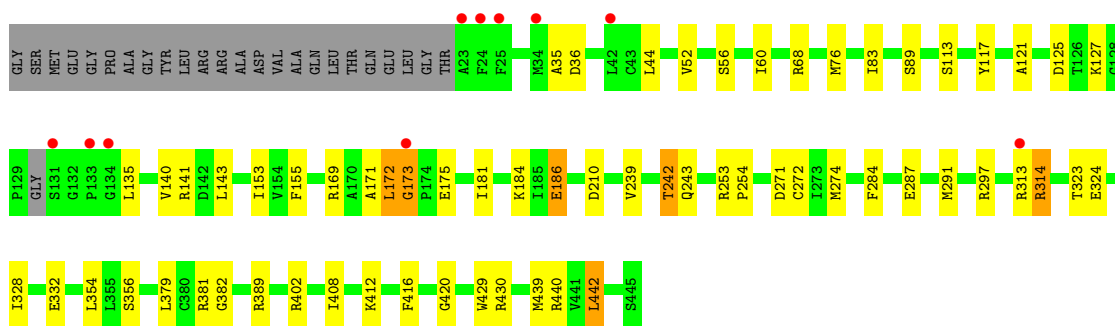
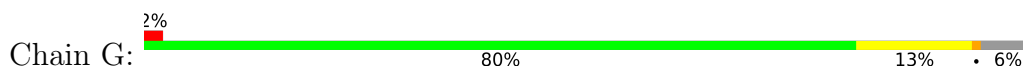


- Molecule 1: Isoform L-type of Pyruvate kinase PKLR

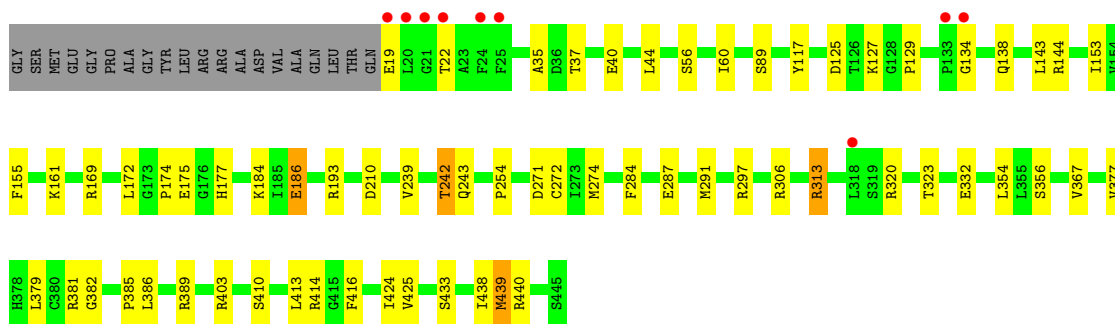
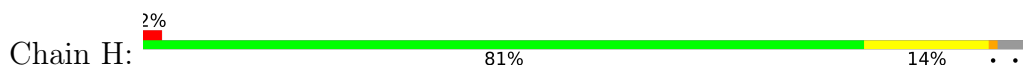




• Molecule 1: Isoform L-type of Pyruvate kinase PKLR



• Molecule 1: Isoform L-type of Pyruvate kinase PKLR



4 Data and refinement statistics i

Property	Value	Source
Space group	C 1 2 1	Depositor
Cell constants a, b, c, α , β , γ	207.36Å 112.74Å 187.80Å 90.00° 91.83° 90.00°	Depositor
Resolution (Å)	187.71 – 2.38 187.71 – 2.38	Depositor EDS
% Data completeness (in resolution range)	48.3 (187.71-2.38) 48.3 (187.71-2.38)	Depositor EDS
R_{merge}	0.24	Depositor
R_{sym}	(Not available)	Depositor
$\langle I/\sigma(I) \rangle$ ¹	2.90 (at 2.40Å)	Xtrriage
Refinement program	BUSTER 2.10.4	Depositor
R, R_{free}	0.209 , 0.242 0.204 , 0.233	Depositor DCC
R_{free} test set	4101 reflections (2.38%)	wwPDB-VP
Wilson B-factor (Å ²)	43.8	Xtrriage
Anisotropy	0.026	Xtrriage
Bulk solvent k_{sol} (e/Å ³), B_{sol} (Å ²)	0.34 , 52.7	EDS
L-test for twinning ²	$\langle L \rangle = 0.46$, $\langle L^2 \rangle = 0.28$	Xtrriage
Estimated twinning fraction	0.013 for -h,-k,l	Xtrriage
F_o, F_c correlation	0.93	EDS
Total number of atoms	27172	wwPDB-VP
Average B, all atoms (Å ²)	50.0	wwPDB-VP

Xtrriage's analysis on translational NCS is as follows: *The analyses of the Patterson function reveals a significant off-origin peak that is 63.26 % of the origin peak, indicating pseudo-translational symmetry. The chance of finding a peak of this or larger height randomly in a structure without pseudo-translational symmetry is equal to 9.9381e-06. The detected translational NCS is most likely also responsible for the elevated intensity ratio.*

¹Intensities estimated from amplitudes.

²Theoretical values of $\langle |L| \rangle$, $\langle L^2 \rangle$ for acentric reflections are 0.5, 0.333 respectively for untwinned datasets, and 0.375, 0.2 for perfectly twinned datasets.

5 Model quality

5.1 Standard geometry

Bond lengths and bond angles in the following residue types are not validated in this section: A1JFN, FBP, K, MG, OXL

The Z score for a bond length (or angle) is the number of standard deviations the observed value is removed from the expected value. A bond length (or angle) with $|Z| > 5$ is considered an outlier worth inspection. RMSZ is the root-mean-square of all Z scores of the bond lengths (or angles).

Mol	Chain	Bond lengths		Bond angles	
		RMSZ	# Z >5	RMSZ	# Z >5
1	A	0.68	0/3316	1.09	2/4484 (0.0%)
1	B	0.67	0/3396	1.06	0/4592
1	C	0.69	0/3324	1.09	6/4495 (0.1%)
1	D	0.69	0/3322	1.06	3/4492 (0.1%)
1	E	0.66	0/3301	1.09	6/4463 (0.1%)
1	F	0.69	0/3411	1.07	2/4613 (0.0%)
1	G	0.70	0/3309	1.05	3/4473 (0.1%)
1	H	0.72	0/3333	1.08	1/4506 (0.0%)
All	All	0.69	0/26712	1.08	23/36118 (0.1%)

There are no bond length outliers.

The worst 5 of 23 bond angle outliers are listed below:

Mol	Chain	Res	Type	Atoms	Z	Observed(°)	Ideal(°)
1	A	391	PRO	N-CA-C	7.71	120.10	110.70
1	C	416	PHE	CA-CB-CG	6.87	120.67	113.80
1	G	416	PHE	CA-CB-CG	6.27	120.07	113.80
1	E	23	ALA	CA-C-N	6.22	128.90	120.38
1	E	23	ALA	C-N-CA	6.22	128.90	120.38

There are no chirality outliers.

There are no planarity outliers.

5.2 Too-close contacts

In the following table, the Non-H and H(model) columns list the number of non-hydrogen atoms and hydrogen atoms in the chain respectively. The H(added) column lists the number of hydrogen atoms added and optimized by MolProbity. The Clashes column lists the number of clashes within the asymmetric unit, whereas Symm-Clashes lists symmetry-related clashes.

Mol	Chain	Non-H	H(model)	H(added)	Clashes	Symm-Clashes
1	A	3243	0	3307	32	0
1	B	3329	0	3395	28	0
1	C	3257	0	3309	36	0
1	D	3248	0	3307	31	0
1	E	3231	0	3289	27	0
1	F	3335	0	3404	26	0
1	G	3237	0	3290	41	0
1	H	3268	0	3323	43	0
2	A	20	0	10	2	0
2	B	20	0	10	1	0
2	C	20	0	10	1	0
2	D	20	0	10	2	0
2	E	20	0	10	2	0
2	F	20	0	10	0	0
2	G	20	0	10	1	0
2	H	20	0	10	1	0
3	A	6	0	0	0	0
3	B	6	0	0	0	0
3	C	6	0	0	1	0
3	D	6	0	0	0	0
3	E	6	0	0	0	0
3	F	6	0	0	0	0
3	G	6	0	0	0	0
3	H	6	0	0	0	0
4	A	1	0	0	0	0
4	B	1	0	0	0	0
4	C	1	0	0	0	0
4	D	1	0	0	0	0
4	E	1	0	0	0	0
4	F	1	0	0	0	0
4	G	1	0	0	0	0
4	H	1	0	0	0	0
5	A	1	0	0	0	0
5	B	1	0	0	0	0
5	C	1	0	0	0	0
5	D	1	0	0	0	0
5	E	1	0	0	0	0
5	F	1	0	0	0	0
5	G	1	0	0	0	0
5	H	1	0	0	0	0
6	B	27	16	0	0	0
6	C	27	16	0	0	0
6	E	27	16	0	0	0

Continued on next page...

Continued from previous page...

Mol	Chain	Non-H	H(model)	H(added)	Clashes	Symm-Clashes
6	H	27	16	0	0	0
7	A	45	0	0	1	0
7	B	49	0	0	0	0
7	C	81	0	0	1	0
7	D	99	0	0	1	0
7	E	62	0	0	1	0
7	F	79	0	0	0	0
7	G	91	0	0	2	0
7	H	122	0	0	3	0
All	All	27108	64	26704	244	0

The all-atom clashscore is defined as the number of clashes found per 1000 atoms (including hydrogen atoms). The all-atom clashscore for this structure is 5.

The worst 5 of 244 close contacts within the same asymmetric unit are listed below, sorted by their clash magnitude.

Atom-1	Atom-2	Interatomic distance (Å)	Clash overlap (Å)
1:C:313:ARG:HG3	1:C:328:ILE:HD11	1.51	0.90
7:G:615:HOH:O	1:H:313:ARG:HD3	1.72	0.87
1:A:174:PRO:HA	1:A:177:HIS:NE2	1.92	0.84
1:G:439:MET:HE3	1:H:439:MET:HG2	1.61	0.83
1:B:114:PRO:HB3	1:B:389:ARG:HE	1.43	0.81

There are no symmetry-related clashes.

5.3 Torsion angles [i](#)

5.3.1 Protein backbone [i](#)

In the following table, the Percentiles column shows the percent Ramachandran outliers of the chain as a percentile score with respect to all X-ray entries followed by that with respect to entries of similar resolution.

The Analysed column shows the number of residues for which the backbone conformation was analysed, and the total number of residues.

Mol	Chain	Analysed	Favoured	Allowed	Outliers	Percentiles
1	A	427/447 (96%)	416 (97%)	9 (2%)	2 (0%)	25 35
1	B	438/447 (98%)	428 (98%)	9 (2%)	1 (0%)	44 57

Continued on next page...

Continued from previous page...

Mol	Chain	Analysed	Favoured	Allowed	Outliers	Percentiles	
1	C	429/447 (96%)	418 (97%)	6 (1%)	5 (1%)	11	14
1	D	428/447 (96%)	424 (99%)	3 (1%)	1 (0%)	44	57
1	E	426/447 (95%)	421 (99%)	4 (1%)	1 (0%)	44	57
1	F	440/447 (98%)	431 (98%)	7 (2%)	2 (0%)	25	35
1	G	424/447 (95%)	416 (98%)	6 (1%)	2 (0%)	25	35
1	H	429/447 (96%)	423 (99%)	5 (1%)	1 (0%)	44	57
All	All	3441/3576 (96%)	3377 (98%)	49 (1%)	15 (0%)	30	41

5 of 15 Ramachandran outliers are listed below:

Mol	Chain	Res	Type
1	C	173	GLY
1	G	173	GLY
1	C	176	GLY
1	C	129	PRO
1	A	437	ASN

5.3.2 Protein sidechains [i](#)

In the following table, the Percentiles column shows the percent sidechain outliers of the chain as a percentile score with respect to all X-ray entries followed by that with respect to entries of similar resolution.

The Analysed column shows the number of residues for which the sidechain conformation was analysed, and the total number of residues.

Mol	Chain	Analysed	Rotameric	Outliers	Percentiles	
1	A	341/352 (97%)	330 (97%)	11 (3%)	34	51
1	B	349/352 (99%)	334 (96%)	15 (4%)	25	39
1	C	342/352 (97%)	333 (97%)	9 (3%)	41	59
1	D	342/352 (97%)	330 (96%)	12 (4%)	31	48
1	E	340/352 (97%)	323 (95%)	17 (5%)	20	33
1	F	351/352 (100%)	337 (96%)	14 (4%)	27	42
1	G	341/352 (97%)	329 (96%)	12 (4%)	31	48
1	H	342/352 (97%)	332 (97%)	10 (3%)	37	55
All	All	2748/2816 (98%)	2648 (96%)	100 (4%)	33	46

5 of 100 residues with a non-rotameric sidechain are listed below:

Mol	Chain	Res	Type
1	E	356[B]	SER
1	F	297	ARG
1	H	439	MET
1	E	433	SER
1	F	68	ARG

Sometimes sidechains can be flipped to improve hydrogen bonding and reduce clashes. 5 of 8 such sidechains are listed below:

Mol	Chain	Res	Type
1	H	292	GLN
1	G	292	GLN
1	F	15	GLN
1	D	27	GLN
1	F	27	GLN

5.3.3 RNA [i](#)

There are no RNA molecules in this entry.

5.4 Non-standard residues in protein, DNA, RNA chains [i](#)

There are no non-standard protein/DNA/RNA residues in this entry.

5.5 Carbohydrates [i](#)

There are no oligosaccharides in this entry.

5.6 Ligand geometry [i](#)

Of 36 ligands modelled in this entry, 16 are monoatomic - leaving 20 for Mogul analysis.

In the following table, the Counts columns list the number of bonds (or angles) for which Mogul statistics could be retrieved, the number of bonds (or angles) that are observed in the model and the number of bonds (or angles) that are defined in the Chemical Component Dictionary. The Link column lists molecule types, if any, to which the group is linked. The Z score for a bond length (or angle) is the number of standard deviations the observed value is removed from the expected value. A bond length (or angle) with $|Z| > 2$ is considered an outlier worth inspection. RMSZ is the root-mean-square of all Z scores of the bond lengths (or angles).

Mol	Type	Chain	Res	Link	Bond lengths			Bond angles		
					Counts	RMSZ	# Z > 2	Counts	RMSZ	# Z > 2
3	OXL	A	502	4	5,5,5	1.89	2 (40%)	6,6,6	1.10	1 (16%)
2	FBP	D	501	-	18,20,20	0.57	0	23,32,32	0.90	0
3	OXL	G	502	4	5,5,5	2.26	2 (40%)	6,6,6	1.00	0
3	OXL	D	502	4	5,5,5	1.88	2 (40%)	6,6,6	1.43	1 (16%)
2	FBP	E	501	-	18,20,20	0.51	0	23,32,32	0.86	1 (4%)
6	A1JFN	E	505	-	30,30,30	0.34	0	42,43,43	0.44	0
2	FBP	A	501	-	18,20,20	0.34	0	23,32,32	0.84	1 (4%)
3	OXL	B	502	4	5,5,5	1.97	2 (40%)	6,6,6	1.13	1 (16%)
2	FBP	H	502	-	18,20,20	0.78	1 (5%)	23,32,32	1.13	2 (8%)
2	FBP	B	501	-	18,20,20	0.51	0	23,32,32	1.01	2 (8%)
2	FBP	F	501	-	18,20,20	0.33	0	23,32,32	0.74	0
2	FBP	C	501	-	18,20,20	0.52	0	23,32,32	1.01	2 (8%)
3	OXL	F	502	4	5,5,5	1.97	2 (40%)	6,6,6	1.21	1 (16%)
3	OXL	H	503	4	5,5,5	1.78	2 (40%)	6,6,6	1.06	1 (16%)
2	FBP	G	501	-	18,20,20	0.50	0	23,32,32	0.68	0
6	A1JFN	C	505	-	30,30,30	0.37	0	42,43,43	0.40	0
6	A1JFN	B	505	-	30,30,30	0.34	0	42,43,43	0.45	0
3	OXL	E	502	4	5,5,5	2.00	2 (40%)	6,6,6	1.27	1 (16%)
3	OXL	C	502	4	5,5,5	1.97	2 (40%)	6,6,6	0.92	0
6	A1JFN	H	501	-	30,30,30	0.39	0	42,43,43	0.38	0

In the following table, the Chirals column lists the number of chiral outliers, the number of chiral centers analysed, the number of these observed in the model and the number defined in the Chemical Component Dictionary. Similar counts are reported in the Torsion and Rings columns. '-' means no outliers of that kind were identified.

Mol	Type	Chain	Res	Link	Chirals	Torsions	Rings
3	OXL	A	502	4	-	0/4/4/4	-
2	FBP	D	501	-	-	3/13/32/32	0/1/1/1
3	OXL	G	502	4	-	0/4/4/4	-
3	OXL	D	502	4	-	0/4/4/4	-
2	FBP	E	501	-	-	7/13/32/32	0/1/1/1
6	A1JFN	E	505	-	-	0/16/16/16	0/4/4/4
2	FBP	A	501	-	-	5/13/32/32	0/1/1/1
3	OXL	B	502	4	-	0/4/4/4	-
2	FBP	H	502	-	-	2/13/32/32	0/1/1/1
2	FBP	B	501	-	-	5/13/32/32	0/1/1/1
2	FBP	F	501	-	-	4/13/32/32	0/1/1/1

Continued on next page...

Continued from previous page...

Mol	Type	Chain	Res	Link	Chirals	Torsions	Rings
2	FBP	C	501	-	-	2/13/32/32	0/1/1/1
3	OXL	F	502	4	-	0/4/4/4	-
3	OXL	H	503	4	-	1/4/4/4	-
2	FBP	G	501	-	-	7/13/32/32	0/1/1/1
6	A1JFN	C	505	-	-	0/16/16/16	0/4/4/4
6	A1JFN	B	505	-	-	0/16/16/16	0/4/4/4
3	OXL	E	502	4	-	1/4/4/4	-
3	OXL	C	502	4	-	0/4/4/4	-
6	A1JFN	H	501	-	-	0/16/16/16	0/4/4/4

The worst 5 of 17 bond length outliers are listed below:

Mol	Chain	Res	Type	Atoms	Z	Observed(Å)	Ideal(Å)
3	G	502	OXL	O2-C2	4.01	1.33	1.22
3	F	502	OXL	O2-C2	3.72	1.32	1.22
3	B	502	OXL	O2-C2	3.58	1.32	1.22
3	C	502	OXL	O2-C2	3.36	1.31	1.22
3	E	502	OXL	O2-C2	3.34	1.31	1.22

The worst 5 of 14 bond angle outliers are listed below:

Mol	Chain	Res	Type	Atoms	Z	Observed(°)	Ideal(°)
2	H	502	FBP	O6-P2-O4P	3.19	115.42	106.47
2	B	501	FBP	P1-O1-C1	2.76	125.90	118.30
2	A	501	FBP	P1-O1-C1	2.68	125.68	118.30
3	D	502	OXL	O4-C2-C1	2.43	120.39	113.16
2	H	502	FBP	P2-O6-C6	2.42	124.95	118.30

There are no chirality outliers.

5 of 37 torsion outliers are listed below:

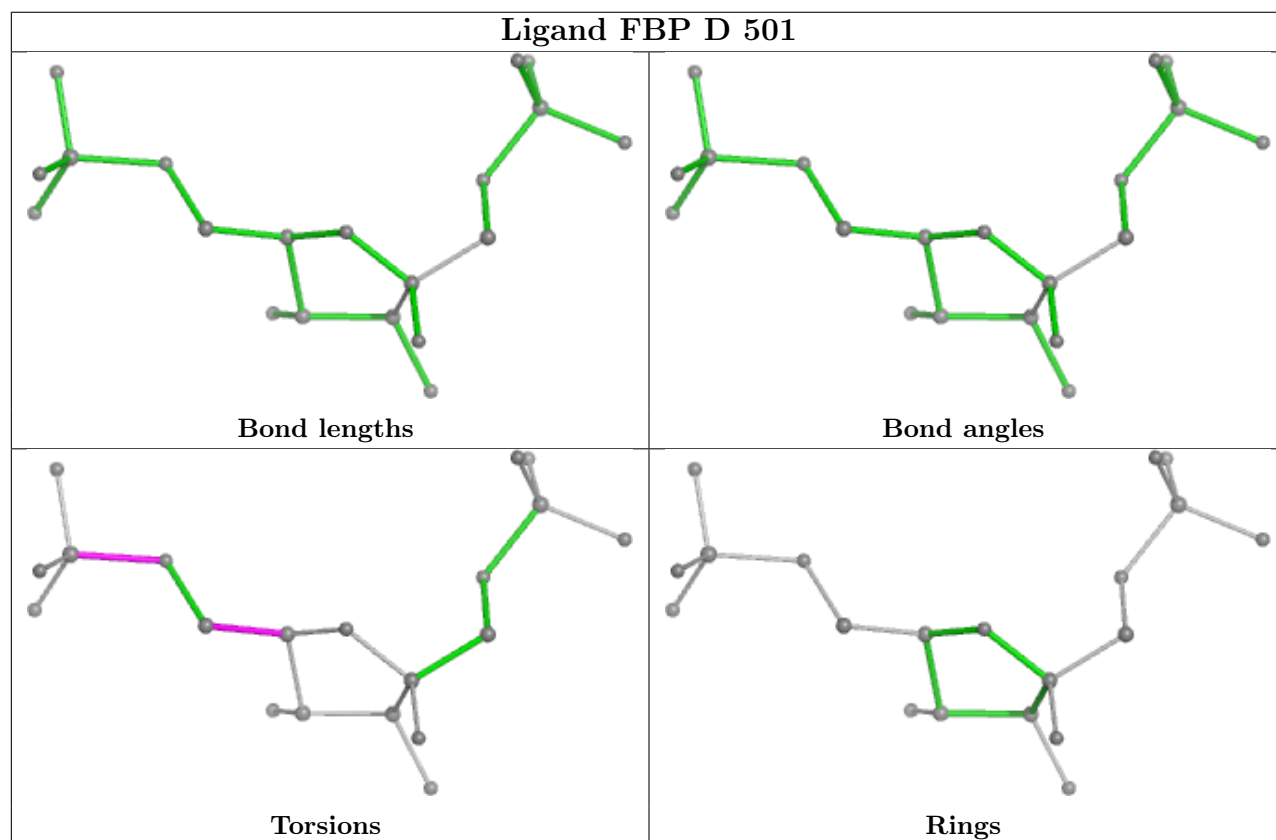
Mol	Chain	Res	Type	Atoms
2	A	501	FBP	C6-O6-P2-O4P
2	A	501	FBP	C6-O6-P2-O5P
2	A	501	FBP	C6-O6-P2-O6P
2	B	501	FBP	C1-O1-P1-O2P
2	B	501	FBP	C1-O1-P1-O3P

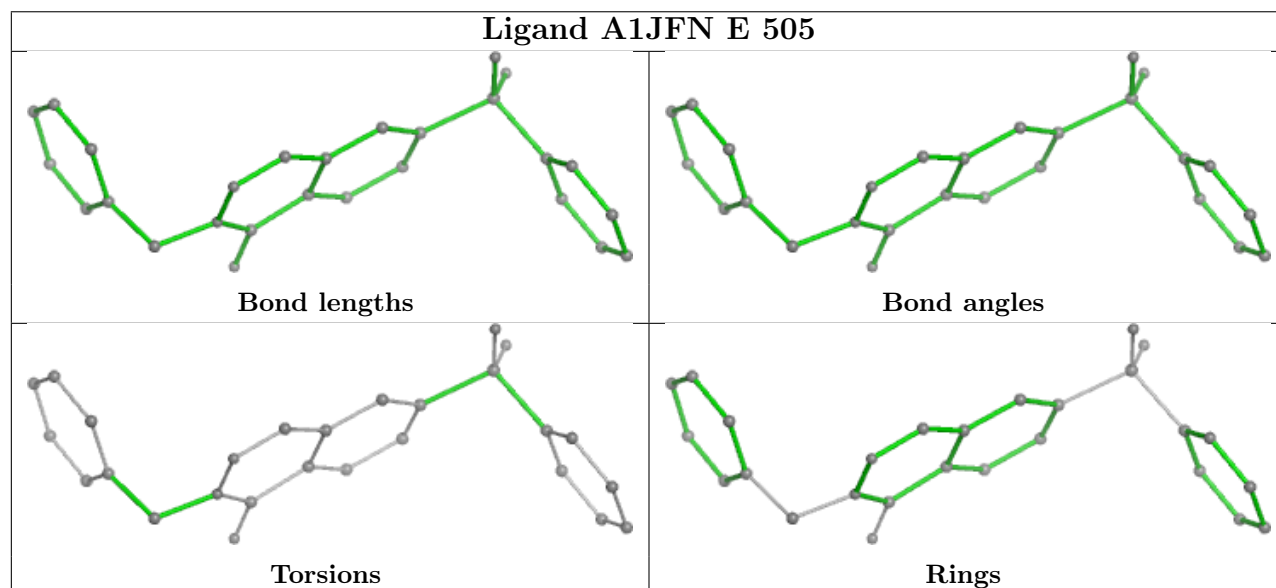
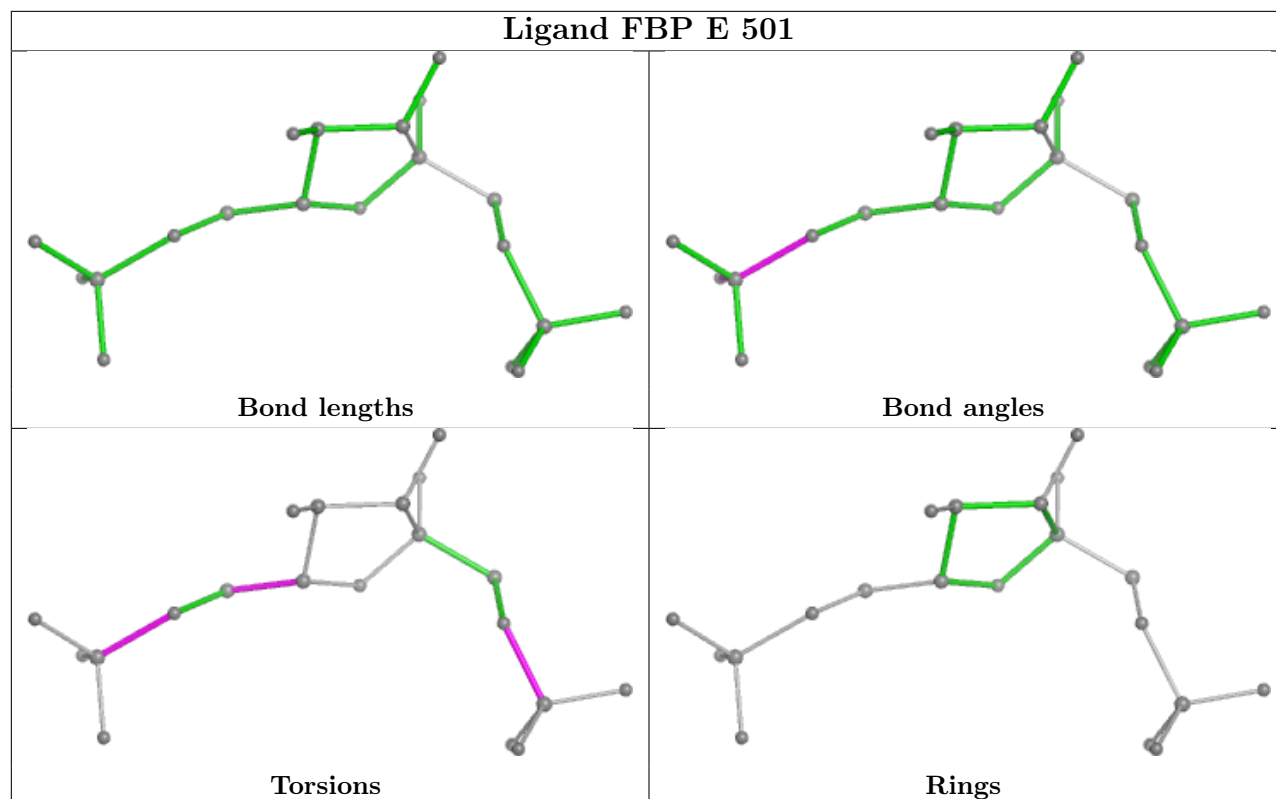
There are no ring outliers.

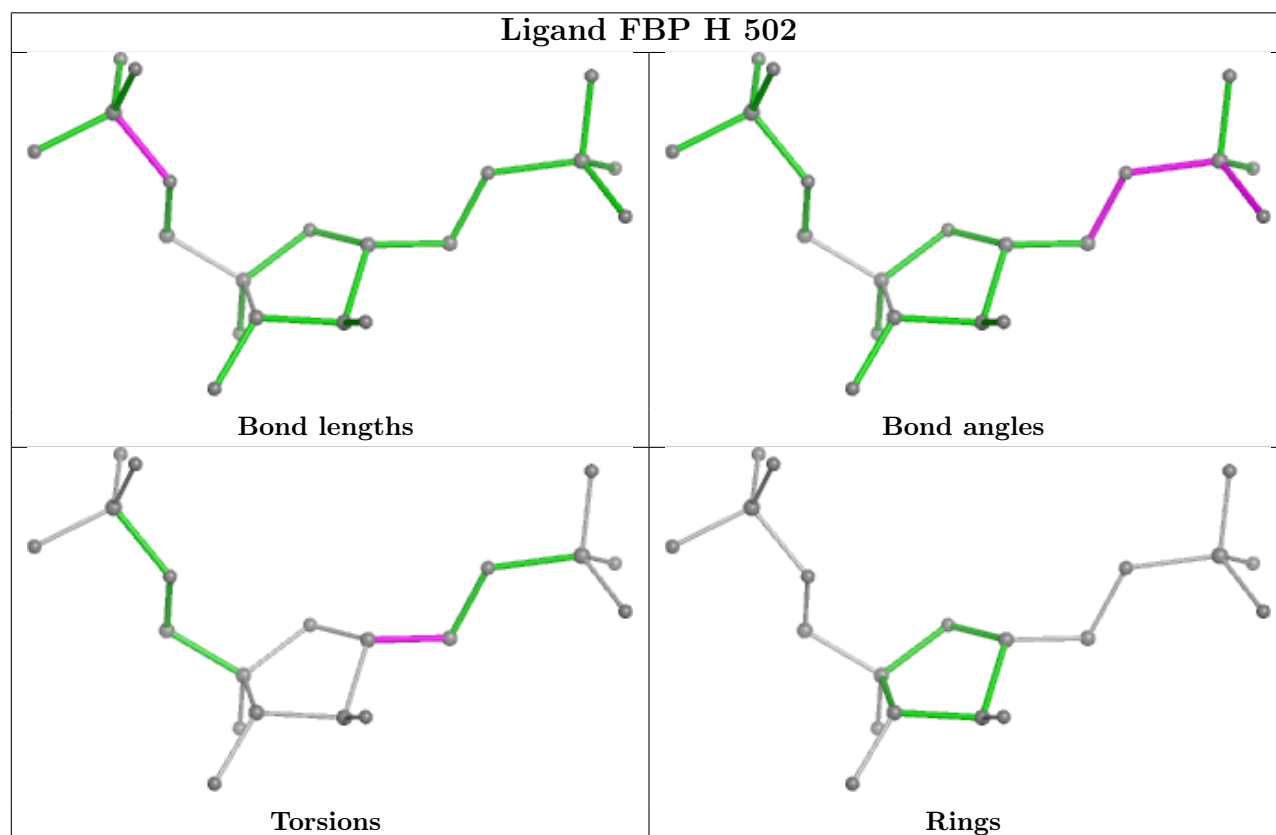
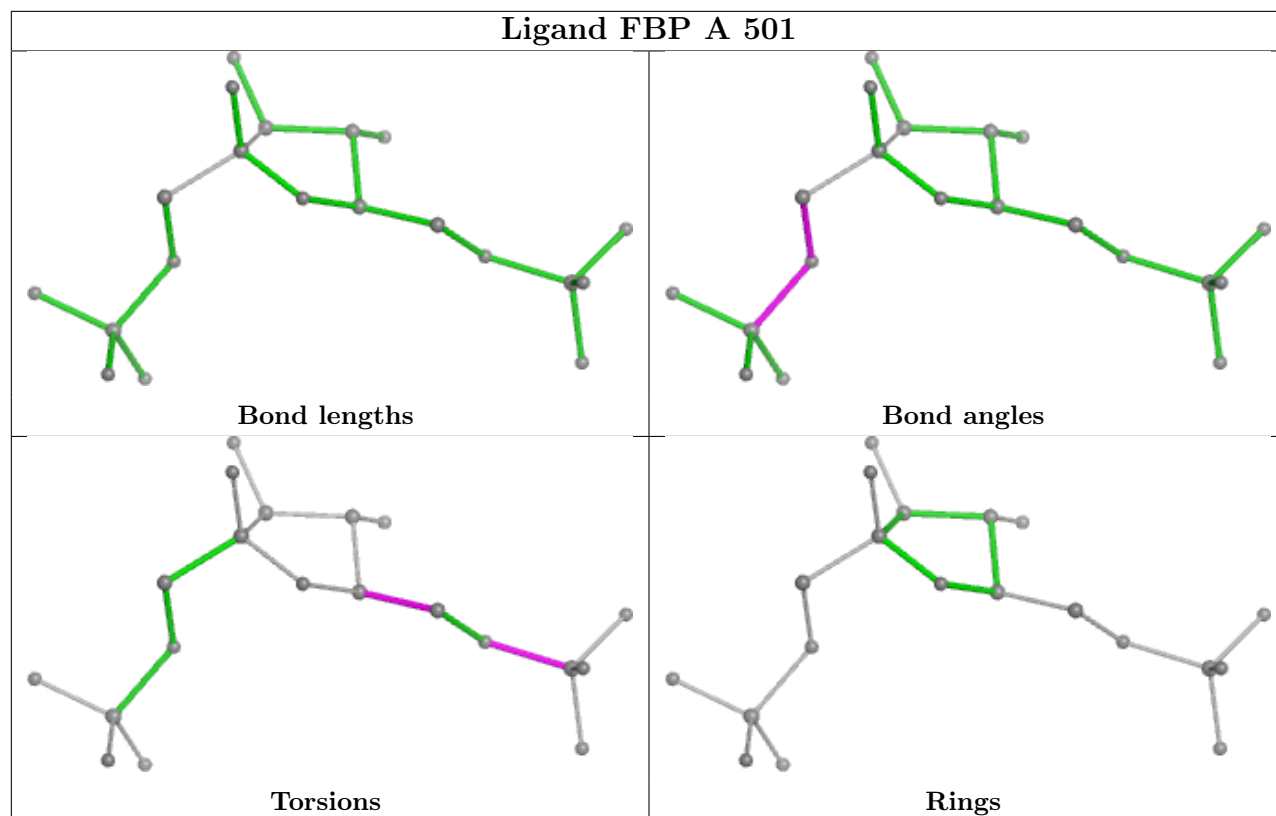
8 monomers are involved in 11 short contacts:

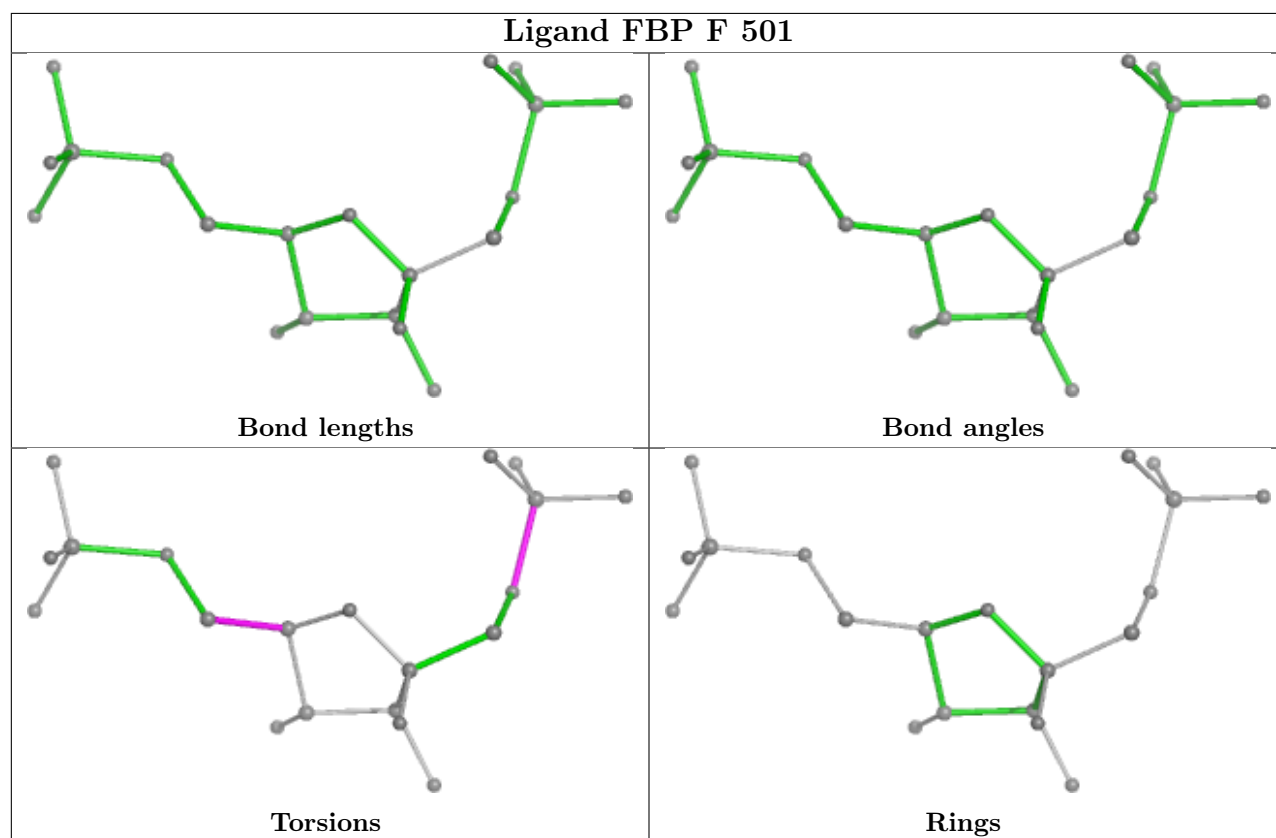
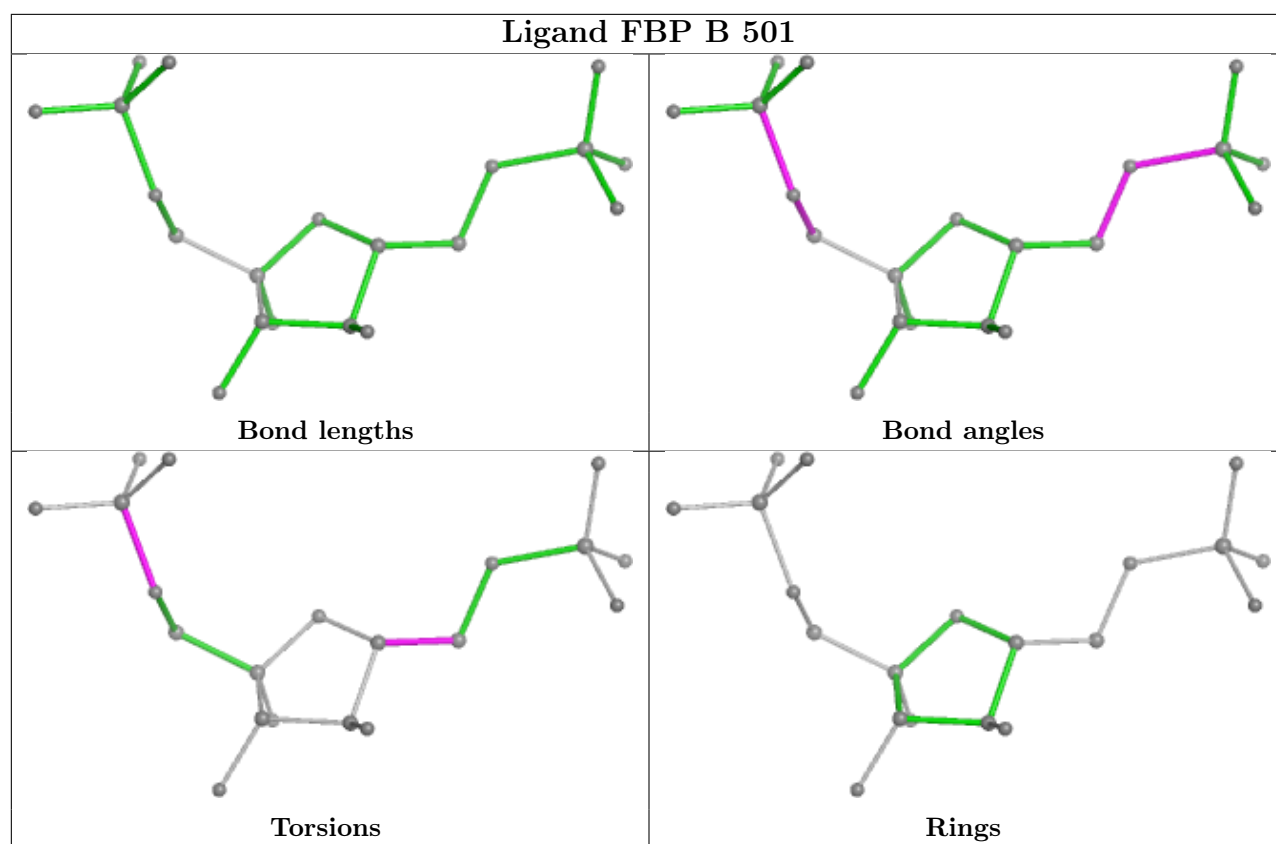
Mol	Chain	Res	Type	Clashes	Symm-Clashes
2	D	501	FBP	2	0
2	E	501	FBP	2	0
2	A	501	FBP	2	0
2	H	502	FBP	1	0
2	B	501	FBP	1	0
2	C	501	FBP	1	0
2	G	501	FBP	1	0
3	C	502	OXL	1	0

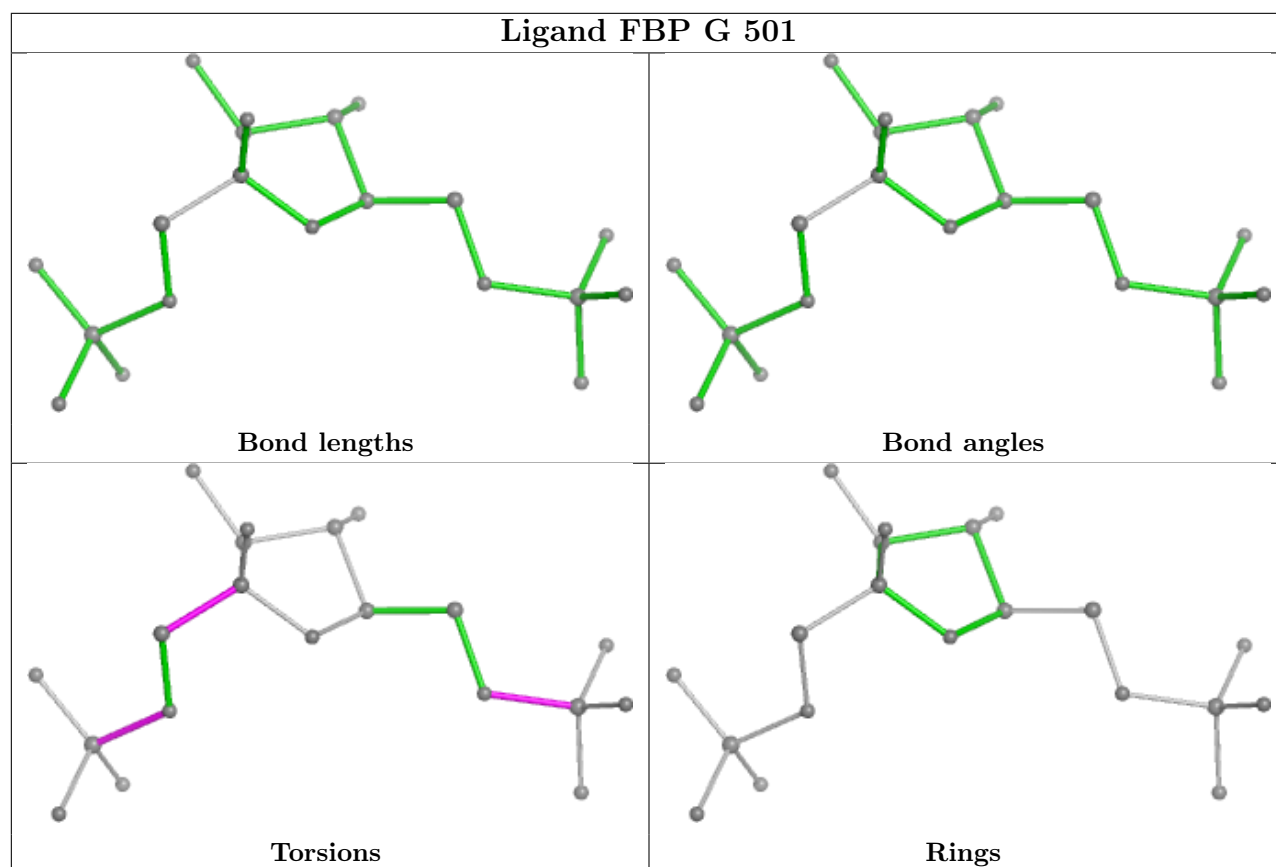
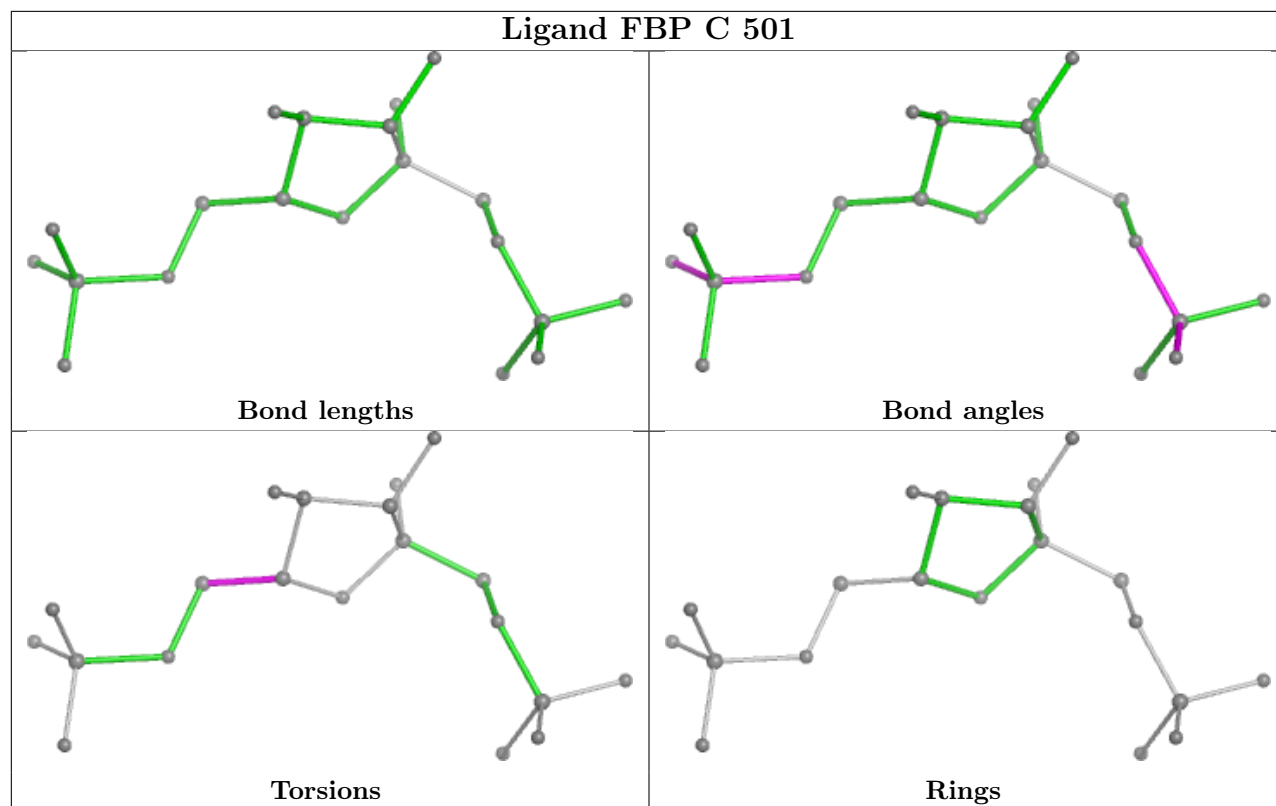
The following is a two-dimensional graphical depiction of Mogul quality analysis of bond lengths, bond angles, torsion angles, and ring geometry for all instances of the Ligand of Interest. In addition, ligands with molecular weight > 250 and outliers as shown on the validation Tables will also be included. For torsion angles, if less than 5% of the Mogul distribution of torsion angles is within 10 degrees of the torsion angle in question, then that torsion angle is considered an outlier. Any bond that is central to one or more torsion angles identified as an outlier by Mogul will be highlighted in the graph. For rings, the root-mean-square deviation (RMSD) between the ring in question and similar rings identified by Mogul is calculated over all ring torsion angles. If the average RMSD is greater than 60 degrees and the minimal RMSD between the ring in question and any Mogul-identified rings is also greater than 60 degrees, then that ring is considered an outlier. The outliers are highlighted in purple. The color gray indicates Mogul did not find sufficient equivalents in the CSD to analyse the geometry.

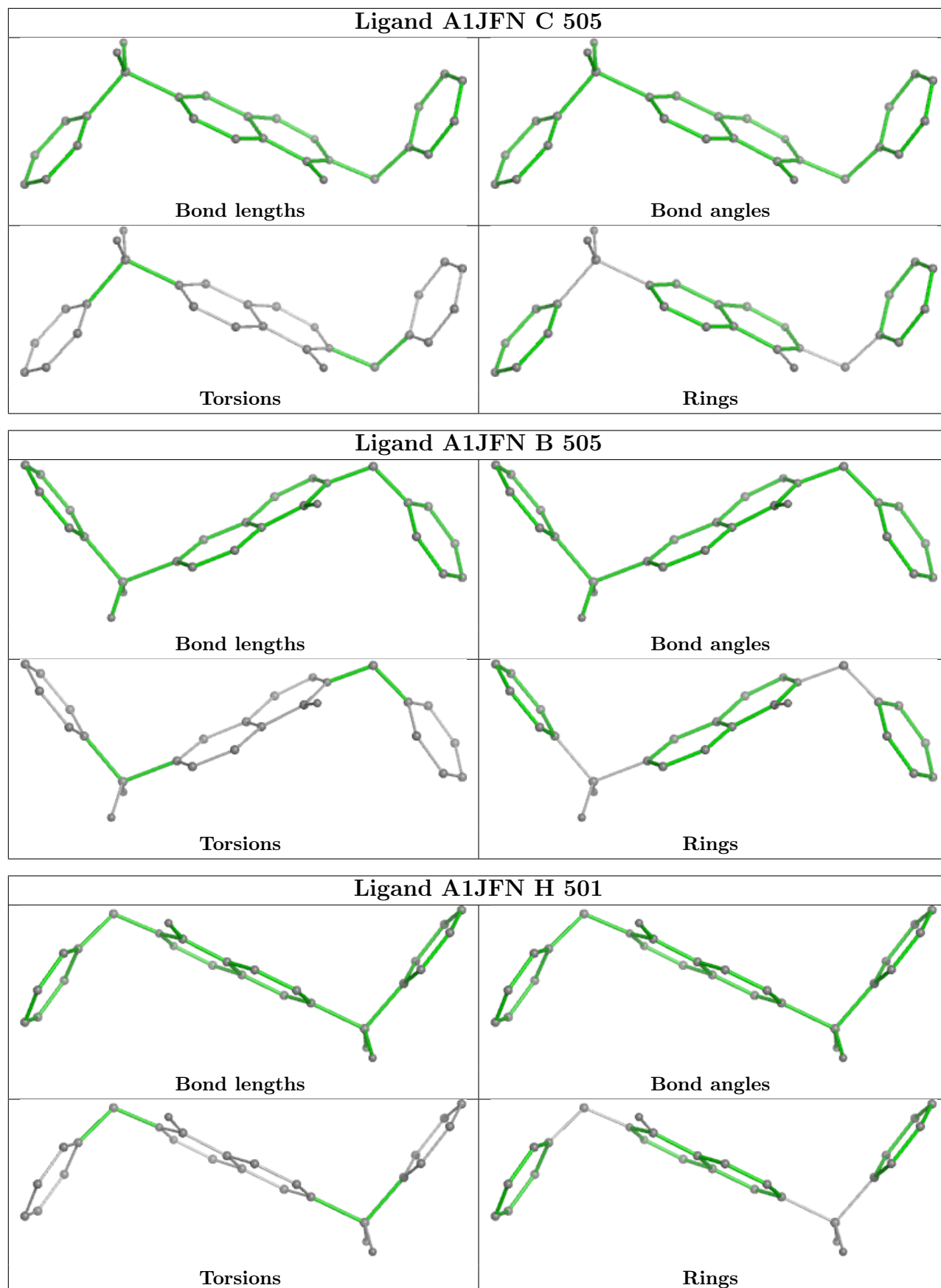












5.7 Other polymers [i](#)

There are no such residues in this entry.

5.8 Polymer linkage issues [i](#)

There are no chain breaks in this entry.

6 Fit of model and data [i](#)

6.1 Protein, DNA and RNA chains [i](#)

In the following table, the column labelled ‘#RSRZ > 2’ contains the number (and percentage) of RSRZ outliers, followed by percent RSRZ outliers for the chain as percentile scores relative to all X-ray entries and entries of similar resolution. The OWAB column contains the minimum, median, 95th percentile and maximum values of the occupancy-weighted average B-factor per residue. The column labelled ‘Q < 0.9’ lists the number of (and percentage) of residues with an average occupancy less than 0.9.

Mol	Chain	Analysed	<RSRZ>	#RSRZ>2	OWAB(Å ²)	Q<0.9
1	A	423/447 (94%)	1.28	84 (19%) 3 3	32, 65, 98, 120	6 (1%)
1	B	436/447 (97%)	0.88	62 (14%) 7 7	30, 55, 87, 99	4 (0%)
1	C	427/447 (95%)	0.48	33 (7%) 21 21	23, 51, 78, 105	4 (0%)
1	D	424/447 (94%)	0.03	10 (2%) 59 59	16, 36, 61, 100	6 (1%)
1	E	423/447 (94%)	0.92	69 (16%) 5 6	27, 55, 89, 108	5 (1%)
1	F	435/447 (97%)	0.45	20 (4%) 38 38	27, 46, 76, 95	7 (1%)
1	G	422/447 (94%)	0.13	10 (2%) 59 59	20, 42, 60, 85	7 (1%)
1	H	427/447 (95%)	-0.15	9 (2%) 63 63	14, 33, 58, 91	4 (0%)
All	All	3417/3576 (95%)	0.50	297 (8%) 17 18	14, 48, 85, 120	43 (1%)

The worst 5 of 297 RSRZ outliers are listed below:

Mol	Chain	Res	Type	RSRZ
1	A	445	SER	9.9
1	A	384	PHE	6.8
1	A	365	ILE	6.3
1	E	23	ALA	5.9
1	D	25	PHE	5.7

6.2 Non-standard residues in protein, DNA, RNA chains [i](#)

There are no non-standard protein/DNA/RNA residues in this entry.

6.3 Carbohydrates [i](#)

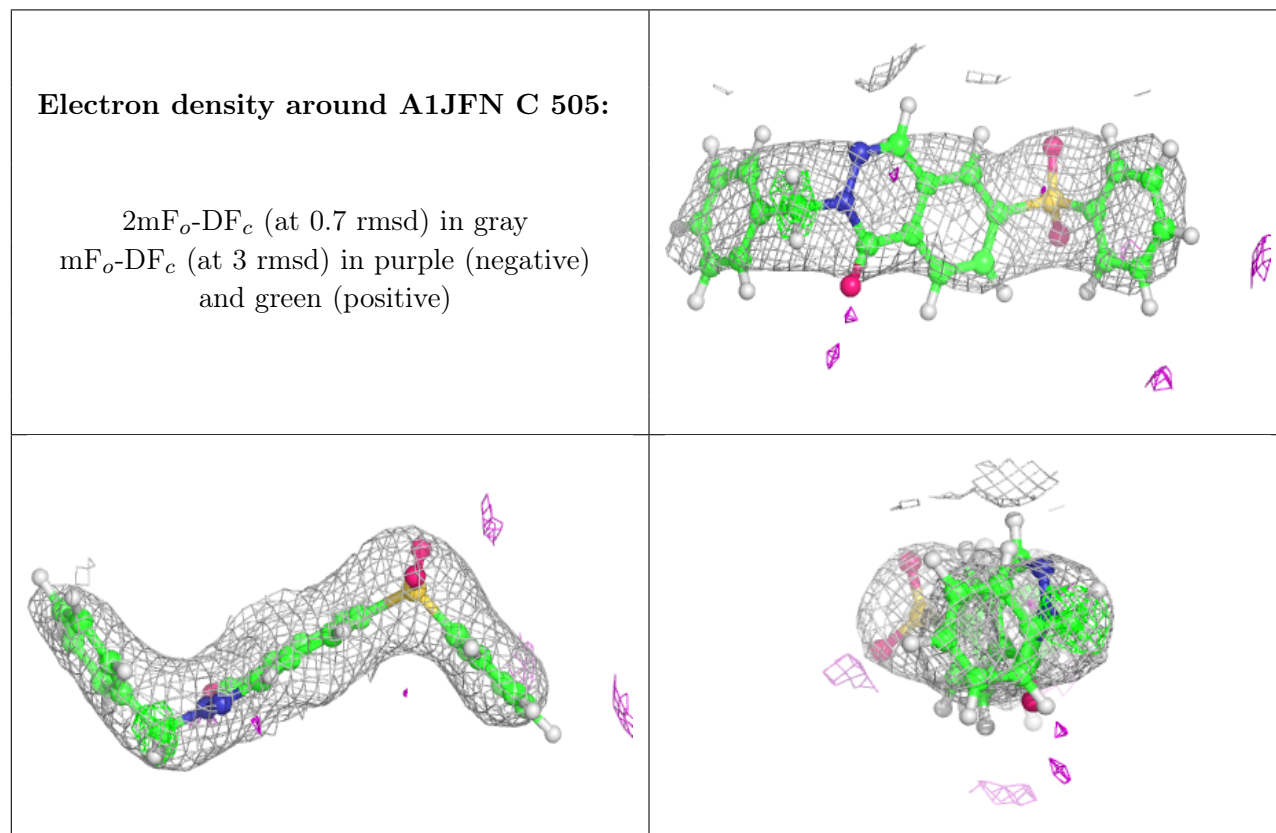
There are no oligosaccharides in this entry.

6.4 Ligands [i](#)

In the following table, the Atoms column lists the number of modelled atoms in the group and the number defined in the chemical component dictionary. The B-factors column lists the minimum, median, 95th percentile and maximum values of B factors of atoms in the group. The column labelled 'Q< 0.9' lists the number of atoms with occupancy less than 0.9.

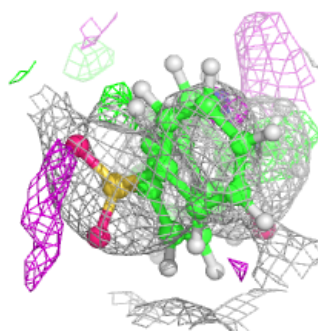
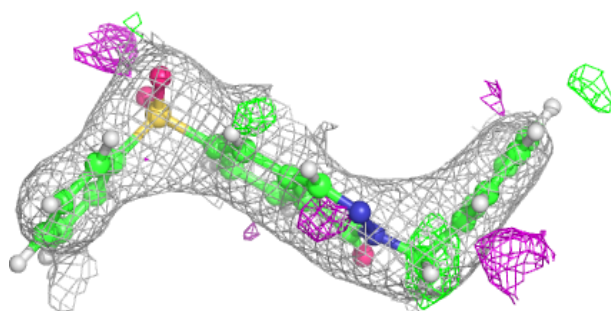
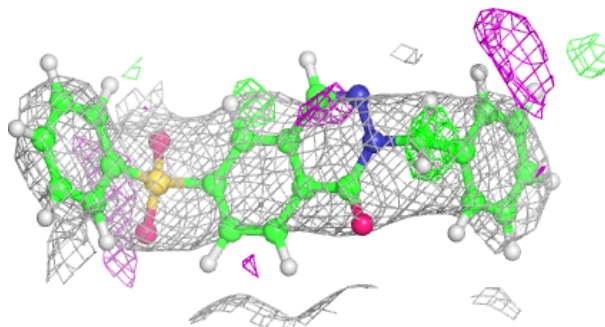
Mol	Type	Chain	Res	Atoms	RSCC	RSR	B-factors(Å ²)	Q<0.9
5	K	E	504	1/1	0.78	0.13	95,95,95,95	0
5	K	C	504	1/1	0.83	0.11	97,97,97,97	0
5	K	A	504	1/1	0.85	0.10	105,105,105,105	0
3	OXL	A	502	6/6	0.89	0.15	100,100,100,100	0
3	OXL	G	502	6/6	0.90	0.11	61,61,62,62	0
3	OXL	C	502	6/6	0.90	0.13	69,69,69,69	0
6	A1JFN	C	505	27/27	0.90	0.13	58,59,61,61	16
6	A1JFN	B	505	27/27	0.91	0.12	51,53,54,55	16
6	A1JFN	H	501	27/27	0.91	0.11	41,45,46,47	16
6	A1JFN	E	505	27/27	0.92	0.10	43,49,50,52	16
3	OXL	B	502	6/6	0.92	0.11	71,71,72,72	0
3	OXL	H	503	6/6	0.93	0.10	39,40,41,41	0
2	FBP	B	501	20/20	0.93	0.09	56,57,60,60	0
2	FBP	E	501	20/20	0.93	0.09	52,54,56,56	0
2	FBP	A	501	20/20	0.93	0.09	62,65,66,66	0
3	OXL	F	502	6/6	0.94	0.10	67,68,68,69	0
2	FBP	F	501	20/20	0.94	0.07	45,48,54,54	0
3	OXL	E	502	6/6	0.94	0.09	69,70,70,70	0
5	K	G	504	1/1	0.94	0.06	65,65,65,65	0
4	MG	C	503	1/1	0.95	0.15	37,37,37,37	0
5	K	D	504	1/1	0.95	0.06	49,49,49,49	0
5	K	F	504	1/1	0.96	0.05	80,80,80,80	0
3	OXL	D	502	6/6	0.96	0.09	58,58,58,59	0
4	MG	F	503	1/1	0.96	0.10	22,22,22,22	0
5	K	H	505	1/1	0.97	0.04	57,57,57,57	0
4	MG	B	503	1/1	0.97	0.09	39,39,39,39	0
4	MG	A	503	1/1	0.97	0.09	44,44,44,44	0
5	K	B	504	1/1	0.97	0.06	70,70,70,70	0
4	MG	D	503	1/1	0.97	0.13	32,32,32,32	0
2	FBP	C	501	20/20	0.98	0.05	28,29,32,33	0
4	MG	G	503	1/1	0.98	0.10	17,17,17,17	0
4	MG	H	504	1/1	0.98	0.12	21,21,21,21	0
2	FBP	D	501	20/20	0.98	0.05	28,29,31,31	0
2	FBP	G	501	20/20	0.98	0.05	34,37,38,38	0
4	MG	E	503	1/1	0.99	0.08	43,43,43,43	0
2	FBP	H	502	20/20	0.99	0.04	22,23,25,25	0

The following is a graphical depiction of the model fit to experimental electron density of all instances of the Ligand of Interest. In addition, ligands with molecular weight > 250 and outliers as shown on the geometry validation Tables will also be included. Each fit is shown from different orientation to approximate a three-dimensional view.

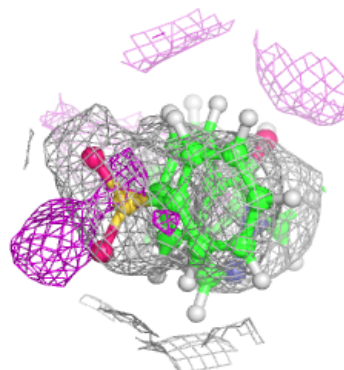
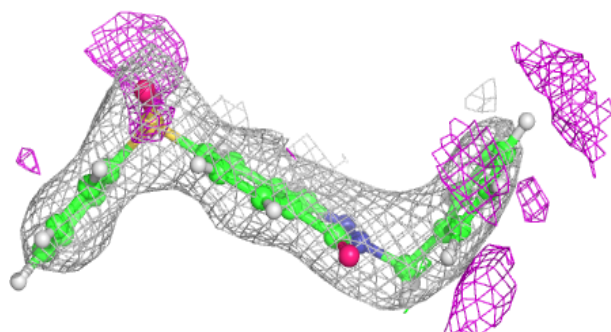
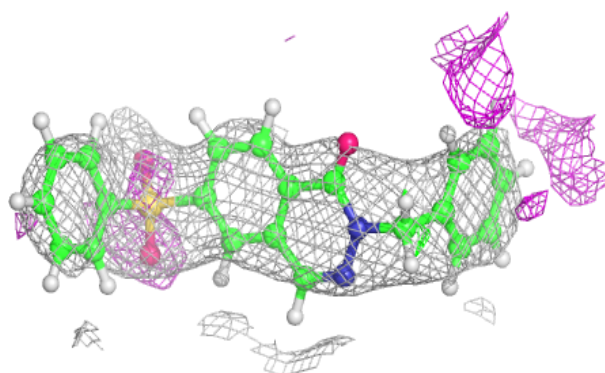


Electron density around A1JFN B 505:

$2mF_o-DF_c$ (at 0.7 rmsd) in gray
 mF_o-DF_c (at 3 rmsd) in purple (negative)
and green (positive)

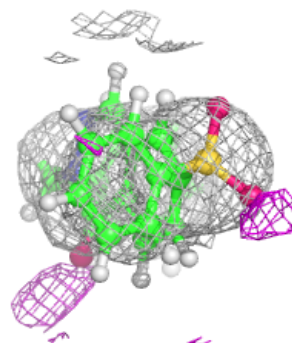
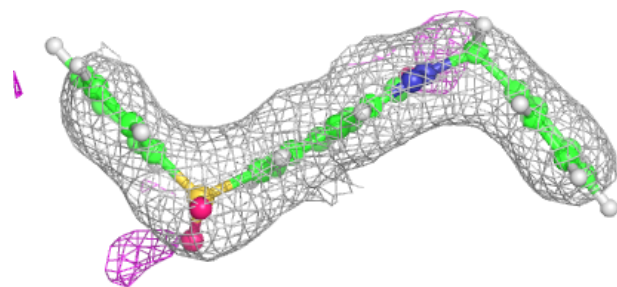
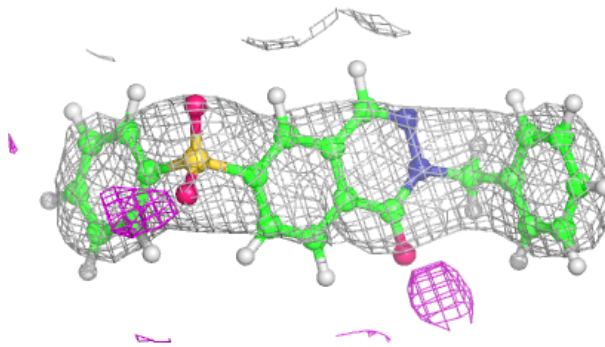
**Electron density around A1JFN H 501:**

$2mF_o-DF_c$ (at 0.7 rmsd) in gray
 mF_o-DF_c (at 3 rmsd) in purple (negative)
and green (positive)

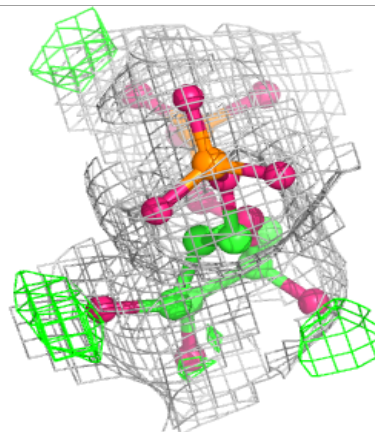
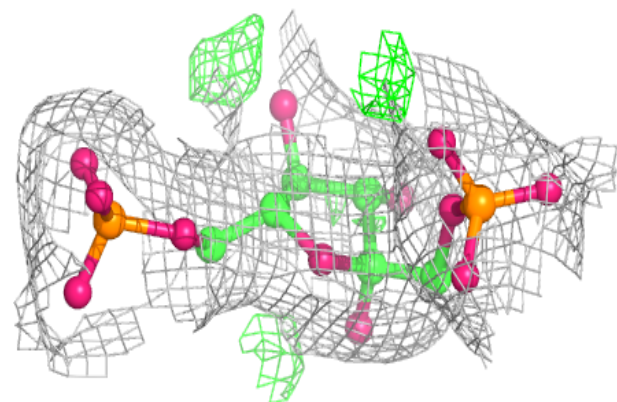
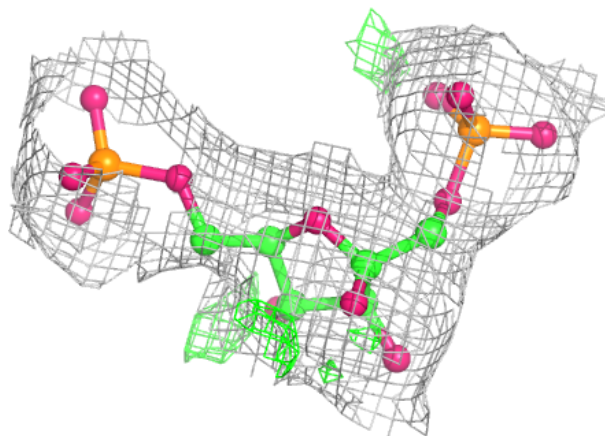


Electron density around A1JFN E 505:

$2mF_o-DF_c$ (at 0.7 rmsd) in gray
 mF_o-DF_c (at 3 rmsd) in purple (negative)
and green (positive)

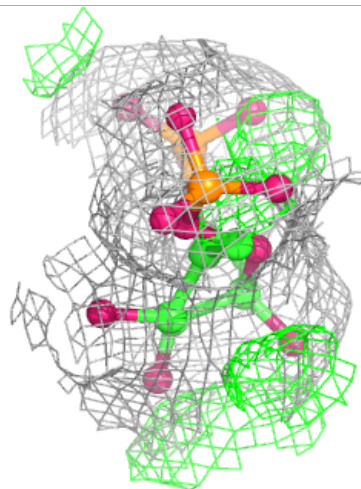
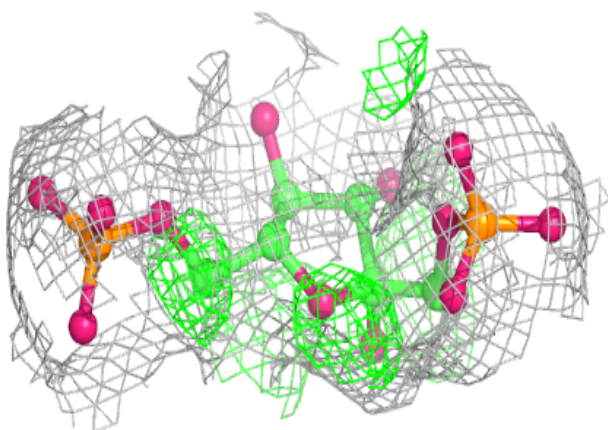
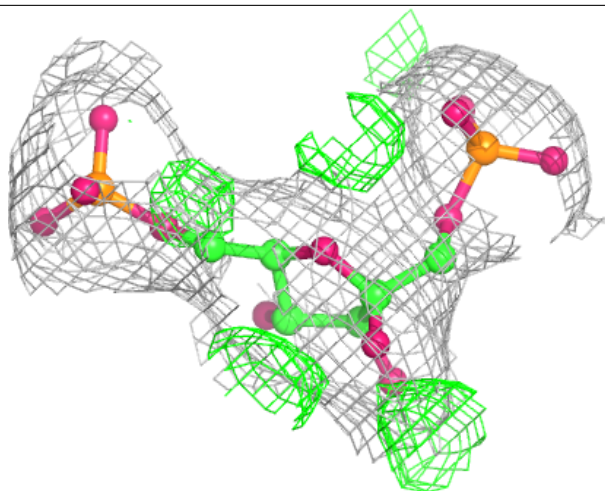
**Electron density around FBP B 501:**

$2mF_o-DF_c$ (at 0.7 rmsd) in gray
 mF_o-DF_c (at 3 rmsd) in purple (negative)
and green (positive)



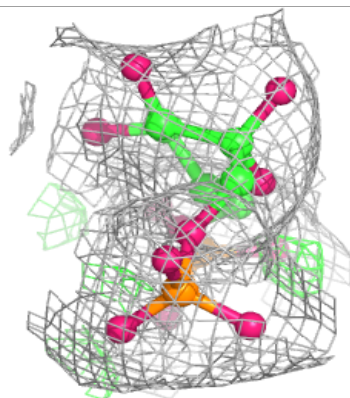
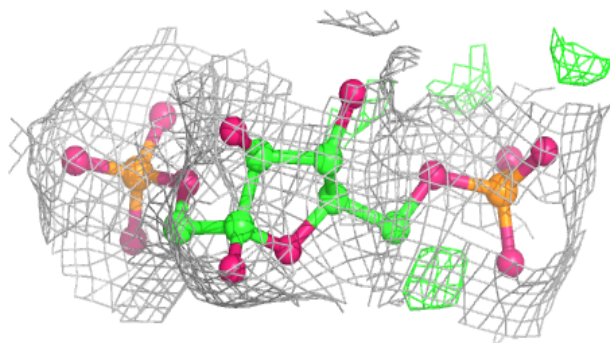
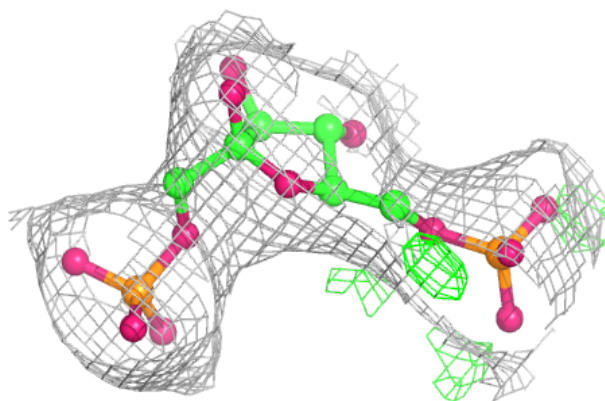
Electron density around FBP E 501:

$2mF_o-DF_c$ (at 0.7 rmsd) in gray
 mF_o-DF_c (at 3 rmsd) in purple (negative)
and green (positive)

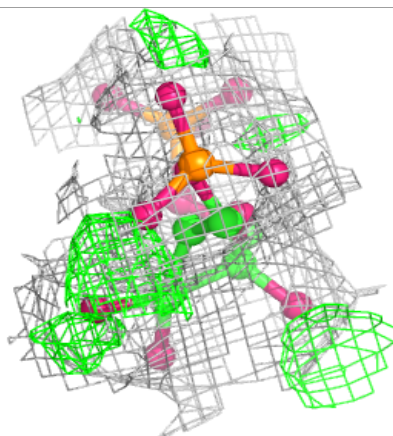
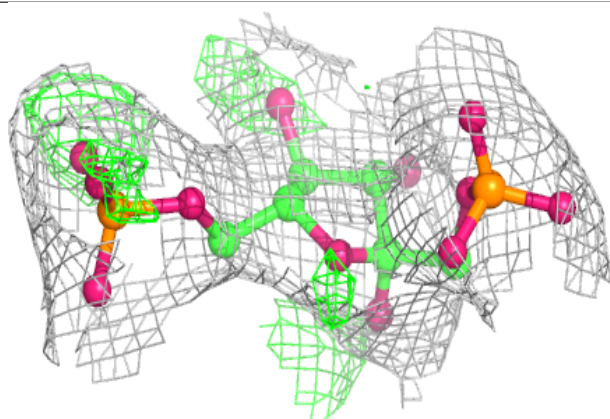
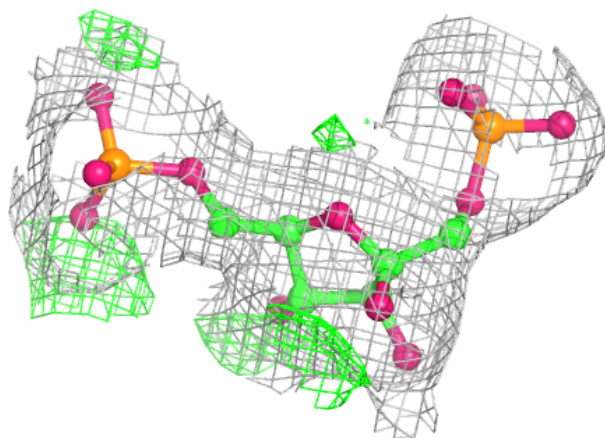


Electron density around FBP A 501:

$2mF_o-DF_c$ (at 0.7 rmsd) in gray
 mF_o-DF_c (at 3 rmsd) in purple (negative)
and green (positive)

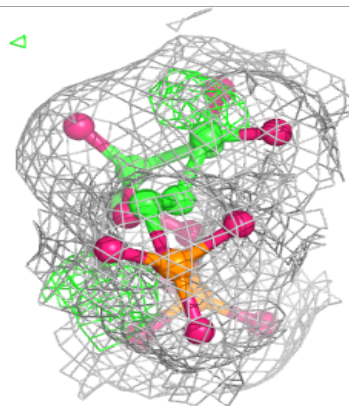
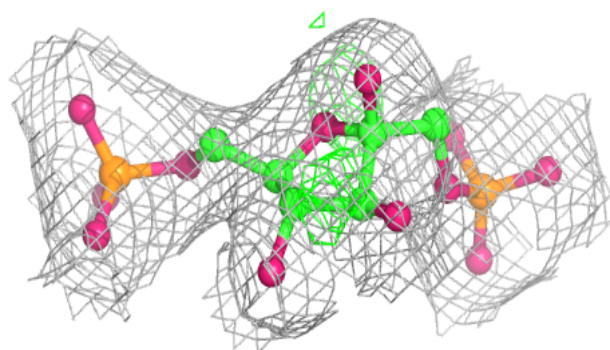
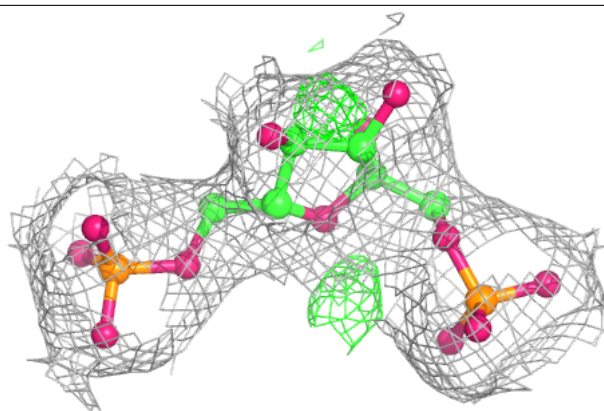
**Electron density around FBP F 501:**

$2mF_o-DF_c$ (at 0.7 rmsd) in gray
 mF_o-DF_c (at 3 rmsd) in purple (negative)
and green (positive)

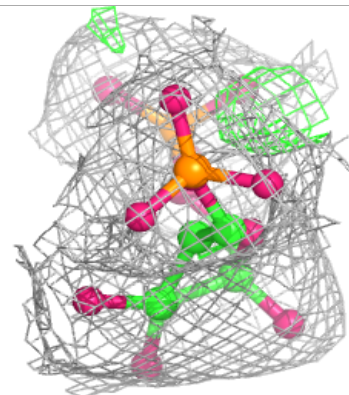
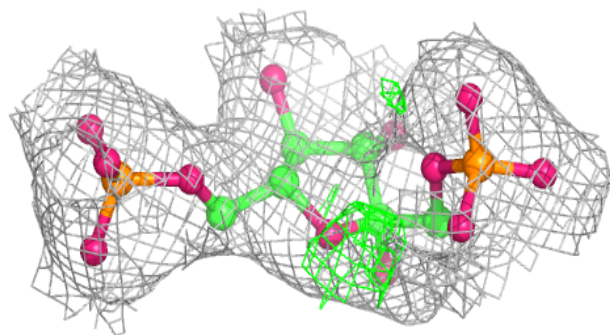
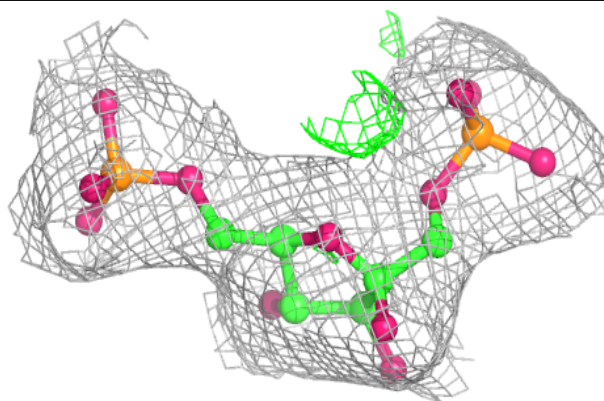


Electron density around FBP C 501:

$2mF_o-DF_c$ (at 0.7 rmsd) in gray
 mF_o-DF_c (at 3 rmsd) in purple (negative)
and green (positive)

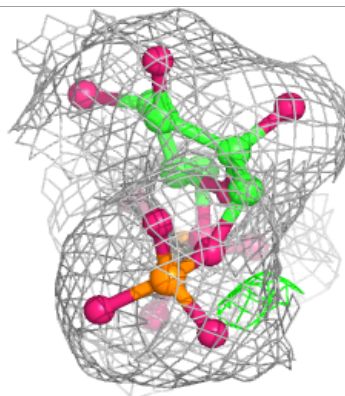
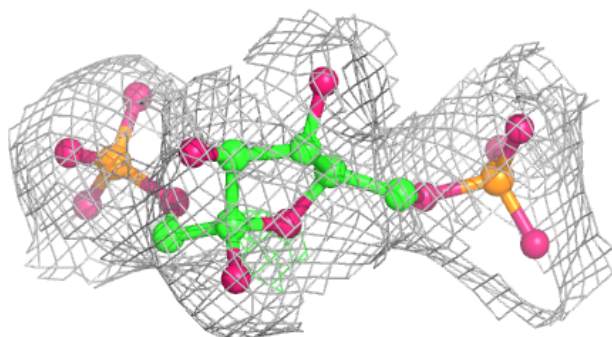
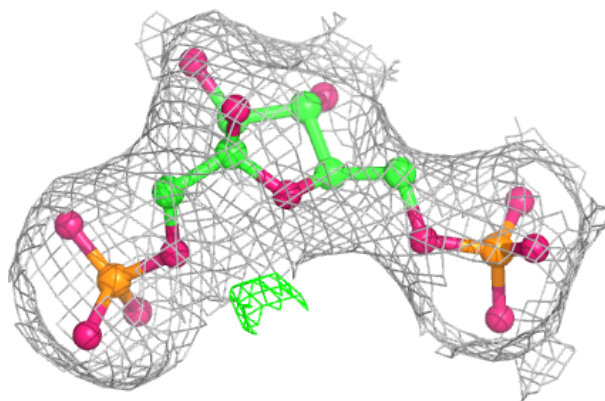
**Electron density around FBP D 501:**

$2mF_o-DF_c$ (at 0.7 rmsd) in gray
 mF_o-DF_c (at 3 rmsd) in purple (negative)
and green (positive)

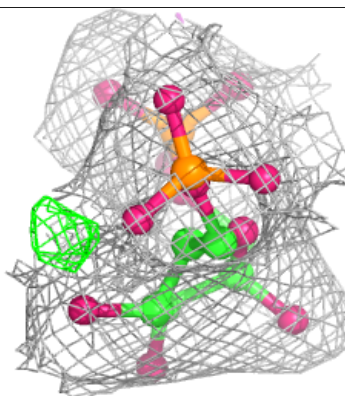
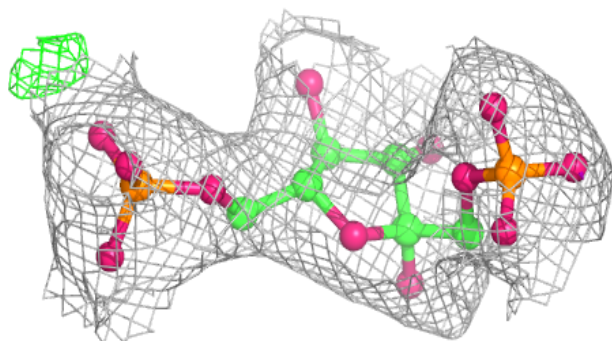
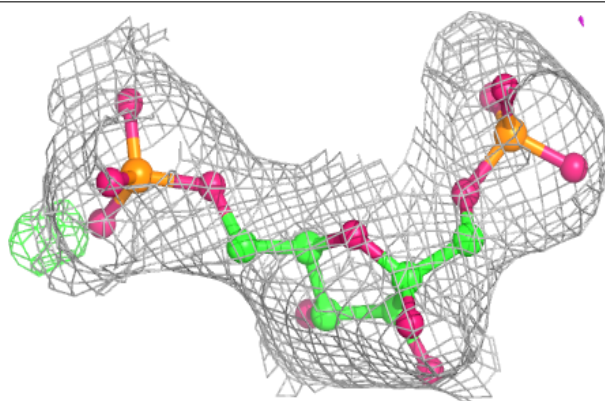


Electron density around FBP G 501:

$2mF_o-DF_c$ (at 0.7 rmsd) in gray
 mF_o-DF_c (at 3 rmsd) in purple (negative)
and green (positive)

**Electron density around FBP H 502:**

$2mF_o-DF_c$ (at 0.7 rmsd) in gray
 mF_o-DF_c (at 3 rmsd) in purple (negative)
and green (positive)



6.5 Other polymers [i](#)

There are no such residues in this entry.