



# Full wwPDB X-ray Structure Validation Report ⓘ

May 25, 2025 – 07:08 am BST

PDB ID : 8RAQ / pdb\_00008raq  
Title : Crystal structure of Mycobacterium tuberculosis MmaA1 with S-adenosyl methionine (SAM)  
Authors : Chaudhary, B.; Kobakhidze, G.; Wachelder, L.; Mazumdar, P.A.; Madhuran-takam, C.; Dong, G.  
Deposited on : 2023-12-01  
Resolution : 1.40 Å(reported)

This is a Full wwPDB X-ray Structure Validation Report for a publicly released PDB entry.

We welcome your comments at [validation@mail.wwpdb.org](mailto:validation@mail.wwpdb.org)

A user guide is available at

<https://www.wwpdb.org/validation/2017/XrayValidationReportHelp>

with specific help available everywhere you see the ⓘ symbol.

The types of validation reports are described at

<http://www.wwpdb.org/validation/2017/FAQs#types>.

---

The following versions of software and data (see [references ⓘ](#)) were used in the production of this report:

MolProbity : 4-5-2 with Phenix2.0rc1  
Mogul : 1.8.4, CSD as541be (2020)  
Xtriage (Phenix) : 2.0rc1  
EDS : 3.0  
buster-report : 1.1.7 (2018)  
Percentile statistics : 20231227.v01 (using entries in the PDB archive December 27th 2023)  
CCP4 : 9.0.003 (Gargrove)  
Density-Fitness : 1.0.11  
Ideal geometry (proteins) : Engh & Huber (2001)  
Ideal geometry (DNA, RNA) : Parkinson et al. (1996)  
Validation Pipeline (wwPDB-VP) : 2.43.1

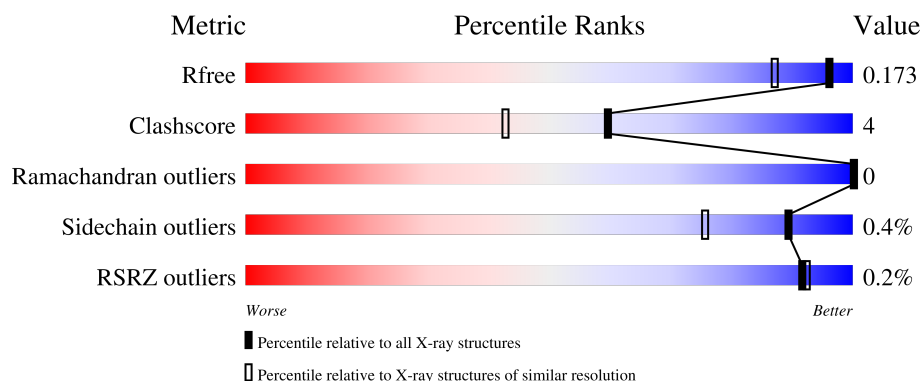
# 1 Overall quality at a glance

The following experimental techniques were used to determine the structure:

*X-RAY DIFFRACTION*



The reported resolution of this entry is 1.40 Å.

Percentile scores (ranging between 0-100) for global validation metrics of the entry are shown in the following graphic. The table shows the number of entries on which the scores are based.



Metric	Whole archive (#Entries)	Similar resolution (#Entries, resolution range(Å))
$R_{free}$	164625	2247 (1.40-1.40)
Clashscore	180529	2446 (1.40-1.40)
Ramachandran outliers	177936	2398 (1.40-1.40)
Sidechain outliers	177891	2397 (1.40-1.40)
RSRZ outliers	164620	2246 (1.40-1.40)

The table below summarises the geometric issues observed across the polymeric chains and their fit to the electron density. The red, orange, yellow and green segments of the lower bar indicate the fraction of residues that contain outliers for  $\geq 3$ , 2, 1 and 0 types of geometric quality criteria respectively. A grey segment represents the fraction of residues that are not modelled. The numeric value for each fraction is indicated below the corresponding segment, with a dot representing fractions  $\leq 5\%$ . The upper red bar (where present) indicates the fraction of residues that have poor fit to the electron density. The numeric value is given above the bar.

Mol	Chain	Length	Quality of chain
1	A	287	 87% 7% 6%
1	A0A0	287	 93% 6%

## 2 Entry composition [i](#)

There are 6 unique types of molecules in this entry. The entry contains 9705 atoms, of which 4366 are hydrogens and 0 are deuteriums.

In the tables below, the ZeroOcc column contains the number of atoms modelled with zero occupancy, the AltConf column contains the number of residues with at least one atom in alternate conformation and the Trace column contains the number of residues modelled with at most 2 atoms.

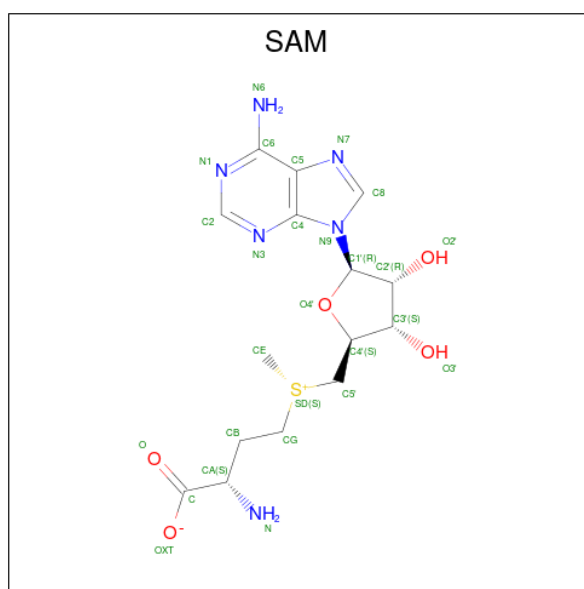
- Molecule 1 is a protein called Mycolic acid methyltransferase MmaA1.

Mol	Chain	Residues	Atoms						ZeroOcc	AltConf	Trace
1	A	271	Total	C	H	N	O	S	0	1	0
			4355	1409	2140	382	414	10			
1	A0A0	271	Total	C	H	N	O	S	0	1	0
			4355	1409	2140	382	414	10			

There are 2 discrepancies between the modelled and reference sequences:

Chain	Residue	Modelled	Actual	Comment	Reference
A	0	HIS	-	expression tag	UNP P9WPB1
A0A0	0	HIS	-	expression tag	UNP P9WPB1

- Molecule 2 is S-ADENOSYLMETHIONINE (CCD ID: SAM) (formula: C<sub>15</sub>H<sub>22</sub>N<sub>6</sub>O<sub>5</sub>S) (labeled as "Ligand of Interest" by depositor).



Mol	Chain	Residues	Atoms						ZeroOcc	AltConf
2	A	1	Total	C	H	N	O	S	0	0
			50	15	23	6	5	1		

*Continued on next page...*

Continued from previous page...

Mol	Chain	Residues	Atoms						ZeroOcc	AltConf
2	A0A0	1	Total	C	H	N	O	S	0	0
			50	15	23	6	5	1		

- Molecule 3 is GLYCEROL (CCD ID: GOL) (formula:  $C_3H_8O_3$ ).



Mol	Chain	Residues	Atoms				ZeroOcc	AltConf
3	A	1	Total	C	H	O	0	0
			14	3	8	3		
3	A0A0	1	Total	C	H	O	0	0
			14	3	8	3		

- Molecule 4 is 1,2-ETHANEDIOL (CCD ID: EDO) (formula:  $C_2H_6O_2$ ).



Mol	Chain	Residues	Atoms				ZeroOcc	AltConf
4	A	1	Total	C	H	O	0	0
			10	2	6	2		
4	A	1	Total	C	H	O	0	0
			10	2	6	2		
4	A0A0	1	Total	C	H	O	0	0
			10	2	6	2		
4	A0A0	1	Total	C	H	O	0	0
			10	2	6	2		

- Molecule 5 is SODIUM ION (CCD ID: NA) (formula: Na).

Mol	Chain	Residues	Atoms		ZeroOcc	AltConf
5	A	1	Total	Na	0	0
			1	1		

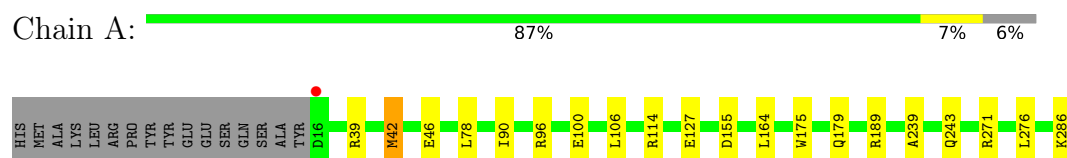
- Molecule 6 is water.

Mol	Chain	Residues	Atoms		ZeroOcc	AltConf
6	A	438	Total	O	0	0
			438	438		
6	A0A0	388	Total	O	0	0
			388	388		

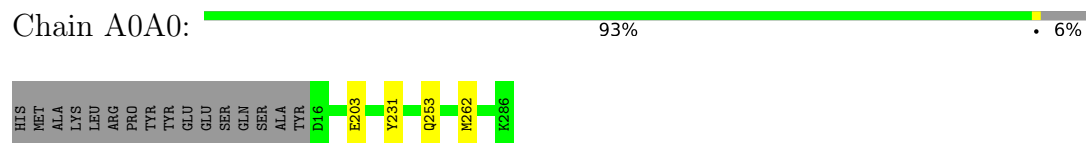
### 3 Residue-property plots

These plots are drawn for all protein, RNA, DNA and oligosaccharide chains in the entry. The first graphic for a chain summarises the proportions of the various outlier classes displayed in the second graphic. The second graphic shows the sequence view annotated by issues in geometry and electron density. Residues are color-coded according to the number of geometric quality criteria for which they contain at least one outlier: green = 0, yellow = 1, orange = 2 and red = 3 or more. A red dot above a residue indicates a poor fit to the electron density ( $RSRZ > 2$ ). Stretches of 2 or more consecutive residues without any outlier are shown as a green connector. Residues present in the sample, but not in the model, are shown in grey.

- Molecule 1: Mycolic acid methyltransferase MmaA1



- Molecule 1: Mycolic acid methyltransferase MmaA1



## 4 Data and refinement statistics

Property	Value	Source
Space group	P 1 21 1	Depositor
Cell constants a, b, c, $\alpha$ , $\beta$ , $\gamma$	41.38Å 74.73Å 96.77Å 90.00° 90.74° 90.00°	Depositor
Resolution (Å)	19.94 – 1.40 19.94 – 1.40	Depositor EDS
% Data completeness (in resolution range)	99.5 (19.94-1.40) 99.6 (19.94-1.40)	Depositor EDS
$R_{merge}$	0.08	Depositor
$R_{sym}$	(Not available)	Depositor
$\langle I/\sigma(I) \rangle$ <sup>1</sup>	1.47 (at 1.40Å)	Xtriage
Refinement program	PHENIX 1.20.1-4487-000	Depositor
R, $R_{free}$	0.150 , 0.171 0.152 , 0.173	Depositor DCC
$R_{free}$ test set	113827 reflections (1.73%)	wwPDB-VP
Wilson B-factor (Å <sup>2</sup> )	17.3	Xtriage
Anisotropy	0.198	Xtriage
Bulk solvent $k_{sol}$ (e/Å <sup>3</sup> ), $B_{sol}$ (Å <sup>2</sup> )	0.41 , 43.9	EDS
L-test for twinning <sup>2</sup>	$\langle  L  \rangle = 0.50$ , $\langle L^2 \rangle = 0.33$	Xtriage
Estimated twinning fraction	0.026 for h,-k,-l	Xtriage
$F_o, F_c$ correlation	0.98	EDS
Total number of atoms	9705	wwPDB-VP
Average B, all atoms (Å <sup>2</sup> )	25.0	wwPDB-VP

Xtriage's analysis on translational NCS is as follows: *The largest off-origin peak in the Patterson function is 8.09% of the height of the origin peak. No significant pseudotranslation is detected.*

<sup>1</sup>Intensities estimated from amplitudes.

<sup>2</sup>Theoretical values of  $\langle |L| \rangle$ ,  $\langle L^2 \rangle$  for acentric reflections are 0.5, 0.333 respectively for untwinned datasets, and 0.375, 0.2 for perfectly twinned datasets.

## 5 Model quality [i](#)

### 5.1 Standard geometry [i](#)

Bond lengths and bond angles in the following residue types are not validated in this section: SAM, GOL, EDO, NA

The Z score for a bond length (or angle) is the number of standard deviations the observed value is removed from the expected value. A bond length (or angle) with  $|Z| > 5$  is considered an outlier worth inspection. RMSZ is the root-mean-square of all Z scores of the bond lengths (or angles).

Mol	Chain	Bond lengths		Bond angles	
		RMSZ	$\# Z  > 5$	RMSZ	$\# Z  > 5$
1	A	0.49	0/2267	0.65	1/3065 (0.0%)
1	A0A0	0.53	2/2267 (0.1%)	0.60	0/3065
All	All	0.51	2/4534 (0.0%)	0.62	1/6130 (0.0%)

All (2) bond length outliers are listed below:

Mol	Chain	Res	Type	Atoms	Z	Observed(Å)	Ideal(Å)
1	A0A0	262	MET	SD-CE	-9.79	1.55	1.79
1	A0A0	253	GLN	CA-C	-6.09	1.49	1.52

All (1) bond angle outliers are listed below:

Mol	Chain	Res	Type	Atoms	Z	Observed(°)	Ideal(°)
1	A	42	MET	N-CA-CB	5.12	117.54	110.17

There are no chirality outliers.

There are no planarity outliers.

### 5.2 Too-close contacts [i](#)

In the following table, the Non-H and H(model) columns list the number of non-hydrogen atoms and hydrogen atoms in the chain respectively. The H(added) column lists the number of hydrogen atoms added and optimized by MolProbity. The Clashes column lists the number of clashes within the asymmetric unit, whereas Symm-Clashes lists symmetry-related clashes.

Mol	Chain	Non-H	H(model)	H(added)	Clashes	Symm-Clashes
1	A	2215	2140	2140	21	0
1	A0A0	2215	2140	0	0	0
2	A	27	23	21	0	0

*Continued on next page...*



*Continued from previous page...*

Mol	Chain	Non-H	H(model)	H(added)	Clashes	Symm-Clashes
2	A0A0	27	23	0	0	0
3	A	6	8	8	0	0
3	A0A0	6	8	0	0	0
4	A	8	12	12	0	0
4	A0A0	8	12	0	0	0
5	A	1	0	0	0	0
6	A	438	0	0	14	2
6	A0A0	388	0	0	0	2
All	All	5339	4366	2181	21	2

The all-atom clashscore is defined as the number of clashes found per 1000 atoms (including hydrogen atoms). The all-atom clashscore for this structure is 4.

All (21) close contacts within the same asymmetric unit are listed below, sorted by their clash magnitude.

Atom-1	Atom-2	Interatomic distance (Å)	Clash overlap (Å)
1:A:286:LYS:OXT	6:A:401:HOH:O	1.82	0.95
1:A:100:GLU:CD	6:A:404:HOH:O	2.16	0.89
1:A:127:GLU:OE1	6:A:403:HOH:O	1.92	0.86
1:A:271:ARG:HG2	1:A:276:LEU:HD12	1.61	0.83
1:A:100:GLU:OE2	6:A:404:HOH:O	2.05	0.74
1:A:100:GLU:HG3	6:A:404:HOH:O	1.89	0.72
1:A:100:GLU:CG	6:A:404:HOH:O	2.36	0.70
1:A:189:ARG:NH2	6:A:402:HOH:O	1.84	0.64
1:A:100:GLU:OE2	6:A:406:HOH:O	2.16	0.60
1:A:155:ASP:HB2	6:A:407:HOH:O	2.01	0.60
1:A:96:ARG:NH1	6:A:406:HOH:O	2.21	0.59
1:A:39:ARG:NH2	6:A:405:HOH:O	2.34	0.57
1:A:155:ASP:CB	6:A:407:HOH:O	2.53	0.57
1:A:39:ARG:NE	6:A:405:HOH:O	2.13	0.56
1:A:189:ARG:NE	6:A:402:HOH:O	2.41	0.54
1:A:175:TRP:CH2	1:A:179:GLN:HG3	2.46	0.51
1:A:239:ALA:O	1:A:243:GLN:HG3	2.13	0.49
1:A:42:MET:HB3	1:A:46:GLU:HB2	1.98	0.45
1:A:78:LEU:HD13	1:A:106:LEU:HD11	1.99	0.45
1:A:164:LEU:HD13	1:A:164:LEU:C	2.45	0.41
1:A:90:ILE:HD11	1:A:114:ARG:NH1	2.35	0.41

All (2) symmetry-related close contacts are listed below. The label for Atom-2 includes the symmetry operator and encoded unit-cell translations to be applied.

Atom-1	Atom-2	Interatomic distance (Å)	Clash overlap (Å)
6:A:669:HOH:O	6:A0A0:640:HOH:O[1_655]	1.93	0.27
6:A:771:HOH:O	6:A0A0:698:HOH:O[2_644]	2.18	0.02

## 5.3 Torsion angles [i](#)

### 5.3.1 Protein backbone [i](#)

In the following table, the Percentiles column shows the percent Ramachandran outliers of the chain as a percentile score with respect to all X-ray entries followed by that with respect to entries of similar resolution.

The Analysed column shows the number of residues for which the backbone conformation was analysed, and the total number of residues.

Mol	Chain	Analysed	Favoured	Allowed	Outliers	Percentiles	
1	A	270/287 (94%)	267 (99%)	3 (1%)	0	100	100
1	A0A0	270/287 (94%)	267 (99%)	3 (1%)	0	100	100
All	All	540/574 (94%)	534 (99%)	6 (1%)	0	100	100

There are no Ramachandran outliers to report.

### 5.3.2 Protein sidechains [i](#)

In the following table, the Percentiles column shows the percent sidechain outliers of the chain as a percentile score with respect to all X-ray entries followed by that with respect to entries of similar resolution.

The Analysed column shows the number of residues for which the sidechain conformation was analysed, and the total number of residues.

Mol	Chain	Analysed	Rotameric	Outliers	Percentiles	
1	A	230/243 (95%)	230 (100%)	0	100	100
1	A0A0	230/243 (95%)	228 (99%)	2 (1%)	75	53
All	All	460/486 (95%)	458 (100%)	2 (0%)	89	76

All (2) residues with a non-rotameric sidechain are listed below:

Mol	Chain	Res	Type
1	A0A0	203	GLU
1	A0A0	231	TYR

Sometimes sidechains can be flipped to improve hydrogen bonding and reduce clashes. All (2) such sidechains are listed below:

Mol	Chain	Res	Type
1	A	177	HIS
1	A	213	ASN

### 5.3.3 RNA ⓘ

There are no RNA molecules in this entry.

## 5.4 Non-standard residues in protein, DNA, RNA chains ⓘ

There are no non-standard protein/DNA/RNA residues in this entry.

## 5.5 Carbohydrates ⓘ

There are no oligosaccharides in this entry.

## 5.6 Ligand geometry ⓘ

Of 9 ligands modelled in this entry, 1 is monoatomic - leaving 8 for Mogul analysis.

In the following table, the Counts columns list the number of bonds (or angles) for which Mogul statistics could be retrieved, the number of bonds (or angles) that are observed in the model and the number of bonds (or angles) that are defined in the Chemical Component Dictionary. The Link column lists molecule types, if any, to which the group is linked. The Z score for a bond length (or angle) is the number of standard deviations the observed value is removed from the expected value. A bond length (or angle) with  $|Z| > 2$  is considered an outlier worth inspection. RMSZ is the root-mean-square of all Z scores of the bond lengths (or angles).

Mol	Type	Chain	Res	Link	Bond lengths			Bond angles		
					Counts	RMSZ	$\# Z  > 2$	Counts	RMSZ	$\# Z  > 2$
4	EDO	A	304	-	3,3,3	0.50	0	2,2,2	0.26	0
3	GOL	A0A0	303	-	5,5,5	0.93	0	5,5,5	1.03	0
4	EDO	A	303	-	3,3,3	0.45	0	2,2,2	0.33	0
4	EDO	A0A0	301	-	3,3,3	0.47	0	2,2,2	0.46	0
2	SAM	A0A0	302	-	24,29,29	3.15	8 (33%)	23,42,42	1.86	5 (21%)
2	SAM	A	301	-	24,29,29	2.75	8 (33%)	23,42,42	1.80	6 (26%)
4	EDO	A0A0	304	-	3,3,3	0.44	0	2,2,2	0.12	0
3	GOL	A	302	-	5,5,5	0.82	0	5,5,5	0.98	0

In the following table, the Chirals column lists the number of chiral outliers, the number of chiral

centers analysed, the number of these observed in the model and the number defined in the Chemical Component Dictionary. Similar counts are reported in the Torsion and Rings columns. '-' means no outliers of that kind were identified.

Mol	Type	Chain	Res	Link	Chirals	Torsions	Rings
4	EDO	A	304	-	-	0/1/1/1	-
3	GOL	A0A0	303	-	-	1/4/4/4	-
4	EDO	A	303	-	-	1/1/1/1	-
4	EDO	A0A0	301	-	-	1/1/1/1	-
2	SAM	A0A0	302	-	-	2/12/33/33	0/3/3/3
2	SAM	A	301	-	-	3/12/33/33	0/3/3/3
4	EDO	A0A0	304	-	-	0/1/1/1	-
3	GOL	A	302	-	-	2/4/4/4	-

All (16) bond length outliers are listed below:

Mol	Chain	Res	Type	Atoms	Z	Observed(Å)	Ideal(Å)
2	A0A0	302	SAM	O4'-C4'	9.01	1.65	1.45
2	A	301	SAM	O4'-C4'	8.06	1.63	1.45
2	A0A0	302	SAM	C3'-C4'	-8.02	1.32	1.53
2	A	301	SAM	C3'-C4'	-7.63	1.33	1.53
2	A0A0	302	SAM	O4'-C1'	-5.91	1.32	1.41
2	A0A0	302	SAM	O2'-C2'	-3.68	1.34	1.43
2	A	301	SAM	O4'-C1'	-3.61	1.36	1.41
2	A	301	SAM	C6-N6	3.42	1.46	1.34
2	A	301	SAM	C2'-C1'	3.18	1.58	1.53
2	A0A0	302	SAM	O3'-C3'	3.16	1.50	1.43
2	A0A0	302	SAM	C6-N6	3.15	1.45	1.34
2	A0A0	302	SAM	C2'-C1'	2.76	1.57	1.53
2	A0A0	302	SAM	O-C	2.39	1.29	1.22
2	A	301	SAM	O-C	2.29	1.29	1.22
2	A	301	SAM	O3'-C3'	2.27	1.48	1.43
2	A	301	SAM	O2'-C2'	-2.12	1.38	1.43

All (11) bond angle outliers are listed below:

Mol	Chain	Res	Type	Atoms	Z	Observed(°)	Ideal(°)
2	A0A0	302	SAM	N3-C2-N1	-4.81	121.16	128.68
2	A	301	SAM	N3-C2-N1	-3.96	122.49	128.68
2	A	301	SAM	O4'-C4'-C5'	-3.94	98.91	108.88
2	A0A0	302	SAM	O4'-C4'-C5'	-3.77	99.34	108.88
2	A0A0	302	SAM	C1'-N9-C4	-3.21	121.00	126.64
2	A0A0	302	SAM	C2'-C3'-C4'	2.66	107.80	102.64
2	A	301	SAM	C2'-C3'-C4'	2.51	107.52	102.64

*Continued on next page...*

*Continued from previous page...*

Mol	Chain	Res	Type	Atoms	Z	Observed(°)	Ideal(°)
2	A	301	SAM	C1'-N9-C4	-2.39	122.44	126.64
2	A0A0	302	SAM	C3'-C2'-C1'	-2.31	97.51	100.98
2	A	301	SAM	C2-N1-C6	2.13	122.40	118.75
2	A	301	SAM	O2'-C2'-C3'	2.10	118.60	111.82

There are no chirality outliers.

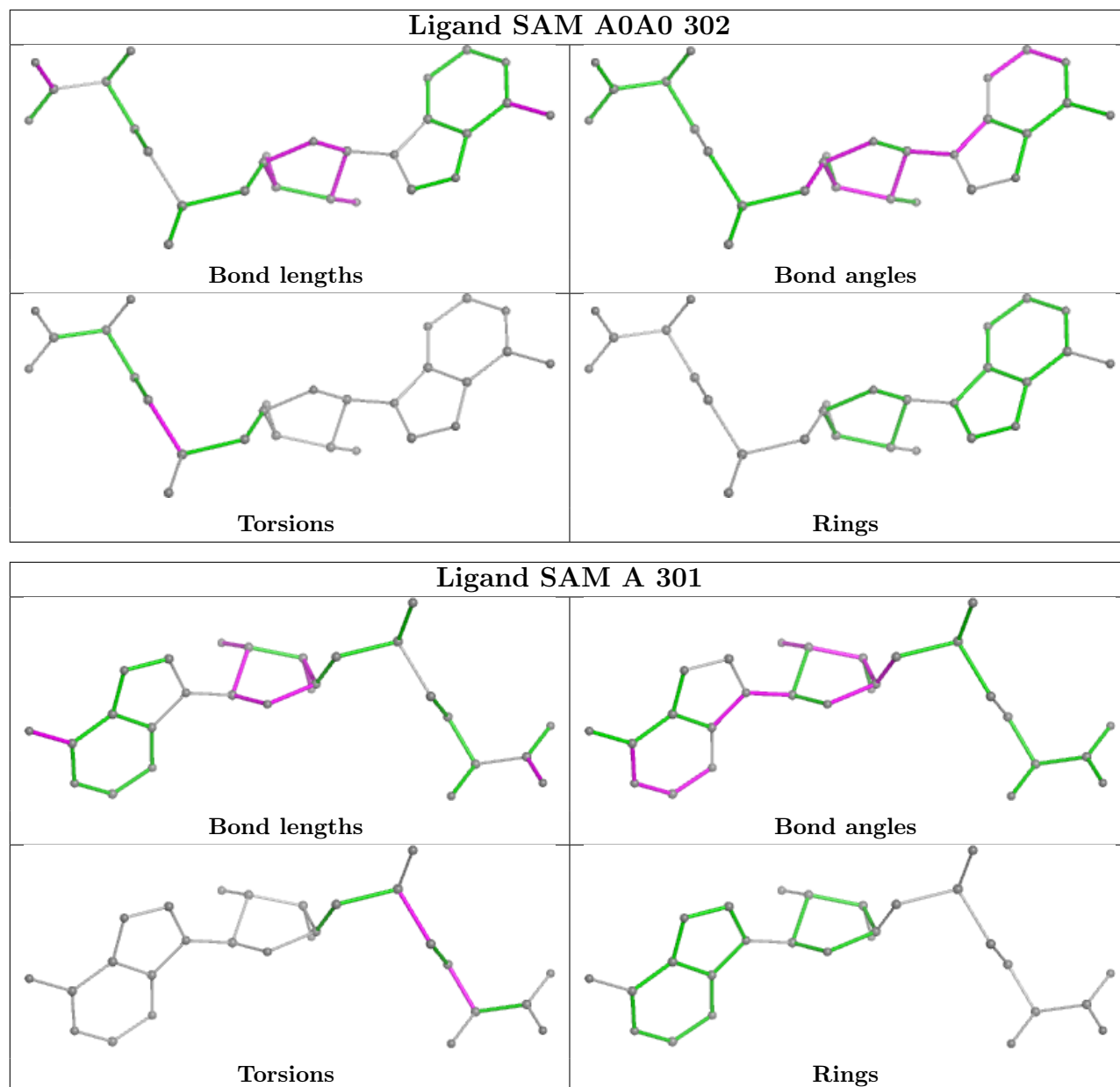
All (10) torsion outliers are listed below:

Mol	Chain	Res	Type	Atoms
3	A	302	GOL	O1-C1-C2-C3
4	A	303	EDO	O1-C1-C2-O2
3	A	302	GOL	O1-C1-C2-O2
2	A	301	SAM	CB-CG-SD-CE
2	A	301	SAM	CB-CG-SD-C5'
2	A0A0	302	SAM	CB-CG-SD-C5'
4	A0A0	301	EDO	O1-C1-C2-O2
2	A0A0	302	SAM	CB-CG-SD-CE
3	A0A0	303	GOL	C1-C2-C3-O3
2	A	301	SAM	C-CA-CB-CG

There are no ring outliers.

No monomer is involved in short contacts.

The following is a two-dimensional graphical depiction of Mogul quality analysis of bond lengths, bond angles, torsion angles, and ring geometry for all instances of the Ligand of Interest. In addition, ligands with molecular weight > 250 and outliers as shown on the validation Tables will also be included. For torsion angles, if less than 5% of the Mogul distribution of torsion angles is within 10 degrees of the torsion angle in question, then that torsion angle is considered an outlier. Any bond that is central to one or more torsion angles identified as an outlier by Mogul will be highlighted in the graph. For rings, the root-mean-square deviation (RMSD) between the ring in question and similar rings identified by Mogul is calculated over all ring torsion angles. If the average RMSD is greater than 60 degrees and the minimal RMSD between the ring in question and any Mogul-identified rings is also greater than 60 degrees, then that ring is considered an outlier. The outliers are highlighted in purple. The color gray indicates Mogul did not find sufficient equivalents in the CSD to analyse the geometry.



## 5.7 Other polymers [i](#)

There are no such residues in this entry.

## 5.8 Polymer linkage issues [i](#)

There are no chain breaks in this entry.

## 6 Fit of model and data [i](#)

### 6.1 Protein, DNA and RNA chains [i](#)

In the following table, the column labelled ‘#RSRZ> 2’ contains the number (and percentage) of RSRZ outliers, followed by percent RSRZ outliers for the chain as percentile scores relative to all X-ray entries and entries of similar resolution. The OWAB column contains the minimum, median, 95<sup>th</sup> percentile and maximum values of the occupancy-weighted average B-factor per residue. The column labelled ‘Q< 0.9’ lists the number of (and percentage) of residues with an average occupancy less than 0.9.

Mol	Chain	Analysed	<RSRZ>	#RSRZ>2	OWAB(Å <sup>2</sup> )	Q<0.9
1	A	271/287 (94%)	-0.64	1 (0%) 89 90	9, 20, 37, 59	1 (0%)
1	A0A0	271/287 (94%)	-0.56	0 100 100	10, 24, 44, 68	1 (0%)
All	All	542/574 (94%)	-0.60	1 (0%) 92 92	9, 22, 39, 68	2 (0%)

All (1) RSRZ outliers are listed below:

Mol	Chain	Res	Type	RSRZ
1	A	16	ASP	2.1

### 6.2 Non-standard residues in protein, DNA, RNA chains [i](#)

There are no non-standard protein/DNA/RNA residues in this entry.

### 6.3 Carbohydrates [i](#)

There are no monosaccharides in this entry.

### 6.4 Ligands [i](#)

In the following table, the Atoms column lists the number of modelled atoms in the group and the number defined in the chemical component dictionary. The B-factors column lists the minimum, median, 95<sup>th</sup> percentile and maximum values of B factors of atoms in the group. The column labelled ‘Q< 0.9’ lists the number of atoms with occupancy less than 0.9.

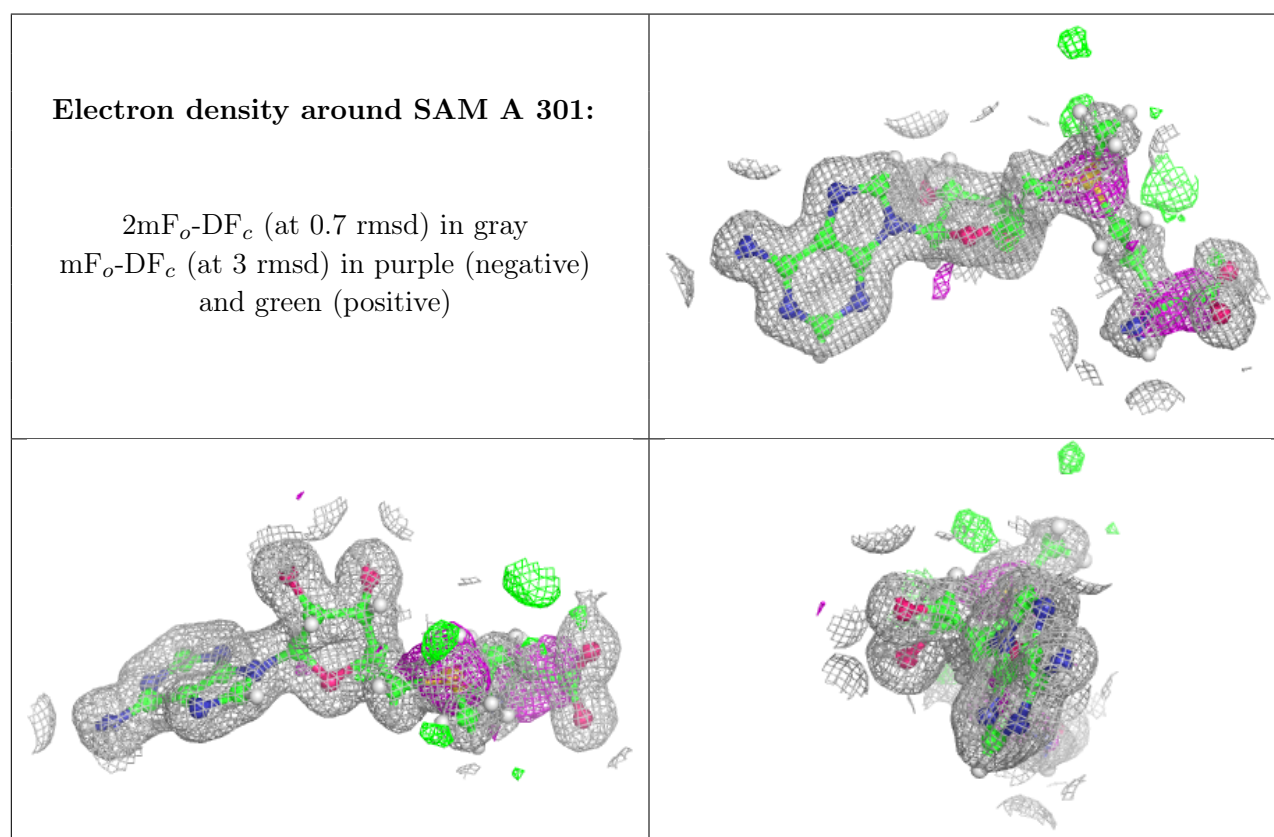
Mol	Type	Chain	Res	Atoms	RSCC	RSR	B-factors(Å <sup>2</sup> )	Q<0.9
3	GOL	A0A0	303	6/6	0.79	0.13	43,55,73,73	0
4	EDO	A	304	4/4	0.80	0.13	44,58,72,75	0
4	EDO	A0A0	304	4/4	0.80	0.12	39,48,71,85	0
4	EDO	A	303	4/4	0.82	0.11	52,62,74,74	0

*Continued on next page...*

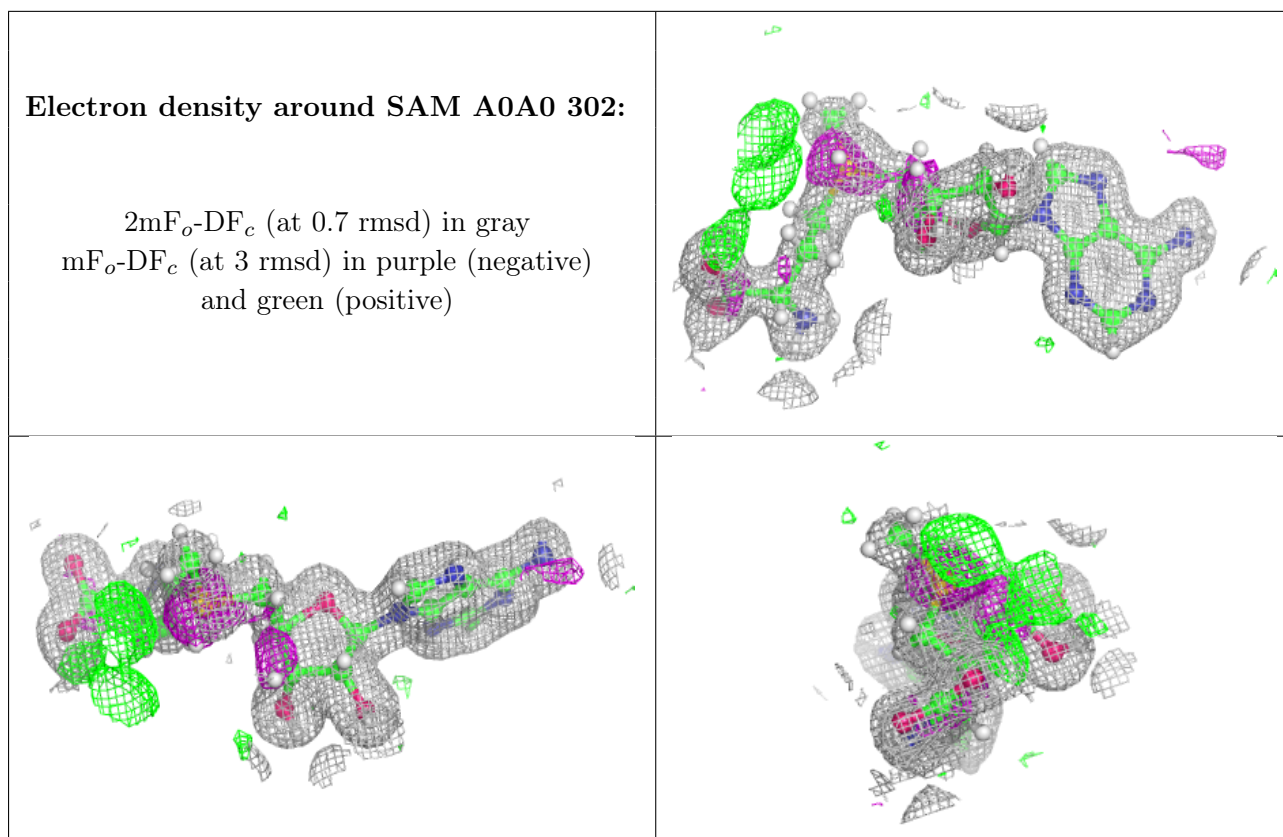
*Continued from previous page...*

Mol	Type	Chain	Res	Atoms	RSCC	RSR	B-factors( $\text{\AA}^2$ )	Q<0.9
4	EDO	A0A0	301	4/4	0.86	0.12	28,45,54,57	0
3	GOL	A	302	6/6	0.91	0.11	28,53,70,70	0
2	SAM	A	301	27/27	0.95	0.07	15,20,29,34	0
2	SAM	A0A0	302	27/27	0.95	0.07	18,24,33,35	0
5	NA	A	305	1/1	0.96	0.07	29,29,29,29	0

The following is a graphical depiction of the model fit to experimental electron density of all instances of the Ligand of Interest. In addition, ligands with molecular weight > 250 and outliers as shown on the geometry validation Tables will also be included. Each fit is shown from different orientation to approximate a three-dimensional view.







## 6.5 Other polymers [i](#)

There are no such residues in this entry.