



wwPDB EM Validation Summary Report ⓘ

Mar 8, 2026 – 12:51 PM UTC

PDB ID : 6R94 / pdb_00006r94
EMDB ID : EMD-4768
Title : Cryo-EM structure of NCP_THF2(-3)
Authors : Matsumoto, S.; Cavadini, S.; Bunker, R.D.; Thoma, N.H.
Deposited on : 2019-04-02
Resolution : 3.50 Å(reported)
Based on initial models : 4ZUX, 4E54, 5Y0C, 3EI4

This is a wwPDB EM Validation Summary Report for a publicly released PDB entry.

We welcome your comments at validation@mail.wwpdb.org

A user guide is available at

<https://www.wwpdb.org/validation/2017/EMValidationReportHelp>

with specific help available everywhere you see the ⓘ symbol.

The types of validation reports are described at

<http://www.wwpdb.org/validation/2017/FAQs#types>.

The following versions of software and data (see [references ⓘ](#)) were used in the production of this report:

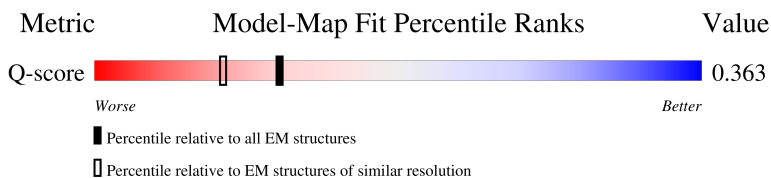
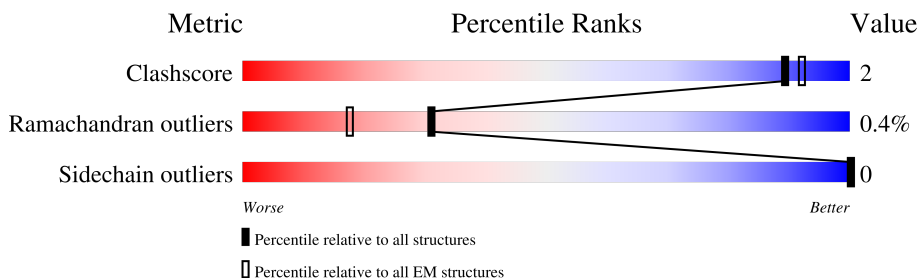
EMDB validation analysis : 0.0.1.dev132
Mogul : 2022.3.0, CSD as543be (2022)
MolProbity : 4-5-2 with Phenix2.0
Percentile statistics : 20250101.v01 (using entries in the PDB archive January 1st 2025)
EM percentile statistics : 202505.v01 (Using data in the EMDB archive up until May 2025)
MapQ : 1.9.13
Ideal geometry (proteins) : Engh & Huber (2001)
Ideal geometry (DNA, RNA) : Parkinson et al. (1996)
Validation Pipeline (wwPDB-VP) : 2.49

1 Overall quality at a glance i

The following experimental techniques were used to determine the structure:
ELECTRON MICROSCOPY

The reported resolution of this entry is 3.50 Å.

Percentile scores (ranging between 0-100) for global validation metrics of the entry are shown in the following graphic. The table shows the number of entries on which the scores are based.



Metric	Whole archive (#Entries)	EM structures (#Entries)	Similar EM resolution (#Entries, resolution range(Å))
Clashscore	229148	23984	-
Ramachandran outliers	224038	23583	-
Sidechain outliers	223484	23102	-
Q-score	-	25397	13950 (3.00 - 4.00)

The table below summarises the geometric issues observed across the polymeric chains and their fit to the map. The red, orange, yellow and green segments of the bar indicate the fraction of residues that contain outliers for ≥ 3 , 2, 1 and 0 types of geometric quality criteria respectively. A grey segment represents the fraction of residues that are not modelled. The numeric value for each fraction is indicated below the corresponding segment, with a dot representing fractions $\leq 5\%$. The upper red bar (where present) indicates the fraction of residues that have poor fit to the EM map (all-atom inclusion $< 40\%$). The numeric value is given above the bar.

Mol	Chain	Length	Quality of chain
1	I	147	97%
2	J	147	97%
3	A	139	68% 27%
3	E	139	64% 9% 27%

Continued on next page...

Continued from previous page...

Mol	Chain	Length	Quality of chain
4	B	106	<p>5% 72% 8% 15%</p>
4	F	106	<p>8% 75% 7% 10%</p>
5	C	133	<p>2% 80% 6% 12%</p>
5	G	133	<p>2% 81% 8% 9%</p>
6	D	129	<p>2% 70% 5% 23%</p>
6	H	129	<p>2% 68% 9% 21%</p>

2 Entry composition [i](#)

There are 6 unique types of molecules in this entry. The entry contains 22443 atoms, of which 10071 are hydrogens and 0 are deuteriums.

In the tables below, the AltConf column contains the number of residues with at least one atom in alternate conformation and the Trace column contains the number of residues modelled with at most 2 atoms.

- Molecule 1 is a DNA chain called Human alpha-satellite DNA (145-MER).

Mol	Chain	Residues	Atoms					AltConf	Trace	
			Total	C	H	N	O			P
1	I	145	4649	1431	1657	535	880	146	2	0

- Molecule 2 is a DNA chain called Human alpha-satellite DNA (145-MER) with abasic sites at positions 97-98.

Mol	Chain	Residues	Atoms					AltConf	Trace	
			Total	C	H	N	O			P
2	J	145	4646	1430	1655	539	876	146	2	0

- Molecule 3 is a protein called Histone H3.1.

Mol	Chain	Residues	Atoms					AltConf	Trace	
			Total	C	H	N	O			S
3	A	101	1705	525	874	161	141	4	0	0
3	E	101	1707	525	876	161	141	4	0	0

There are 6 discrepancies between the modelled and reference sequences:

Chain	Residue	Modelled	Actual	Comment	Reference
A	-2	GLY	-	expression tag	UNP P68431
A	-1	SER	-	expression tag	UNP P68431
A	0	HIS	-	expression tag	UNP P68431
E	-2	GLY	-	expression tag	UNP P68431
E	-1	SER	-	expression tag	UNP P68431
E	0	HIS	-	expression tag	UNP P68431

- Molecule 4 is a protein called Histone H4.

Mol	Chain	Residues	Atoms					AltConf	Trace	
			Total	C	H	N	O			S
4	B	84	1394	424	721	133	115	1	0	0

Continued on next page...

Continued from previous page...

Mol	Chain	Residues	Atoms					AltConf	Trace	
			Total	C	H	N	O			S
4	F	87	1456	442	753	142	118	1	0	0

There are 6 discrepancies between the modelled and reference sequences:

Chain	Residue	Modelled	Actual	Comment	Reference
B	-2	GLY	-	expression tag	UNP P62805
B	-1	SER	-	expression tag	UNP P62805
B	0	HIS	-	expression tag	UNP P62805
F	-2	GLY	-	expression tag	UNP P62805
F	-1	SER	-	expression tag	UNP P62805
F	0	HIS	-	expression tag	UNP P62805

- Molecule 5 is a protein called Histone H2A type 1-B/E.

Mol	Chain	Residues	Atoms					AltConf	Trace
			Total	C	H	N	O		
5	C	115	1831	555	947	174	155	0	0
5	G	118	1885	573	972	182	158	0	0

There are 6 discrepancies between the modelled and reference sequences:

Chain	Residue	Modelled	Actual	Comment	Reference
C	-2	GLY	-	expression tag	UNP P04908
C	-1	SER	-	expression tag	UNP P04908
C	0	HIS	-	expression tag	UNP P04908
G	-2	GLY	-	expression tag	UNP P04908
G	-1	SER	-	expression tag	UNP P04908
G	0	HIS	-	expression tag	UNP P04908

- Molecule 6 is a protein called Histone H2B type 1-J.

Mol	Chain	Residues	Atoms					AltConf	Trace	
			Total	C	H	N	O			S
6	D	97	1559	480	793	142	142	2	0	0
6	H	100	1611	494	823	147	145	2	0	0

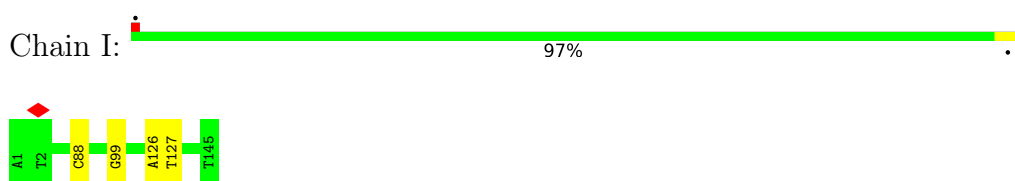
There are 6 discrepancies between the modelled and reference sequences:

Chain	Residue	Modelled	Actual	Comment	Reference
D	-5	GLY	-	expression tag	UNP P06899
D	-4	SER	-	expression tag	UNP P06899
D	-3	HIS	-	expression tag	UNP P06899
H	-2	GLY	-	expression tag	UNP P06899
H	-1	SER	-	expression tag	UNP P06899
H	0	HIS	-	expression tag	UNP P06899

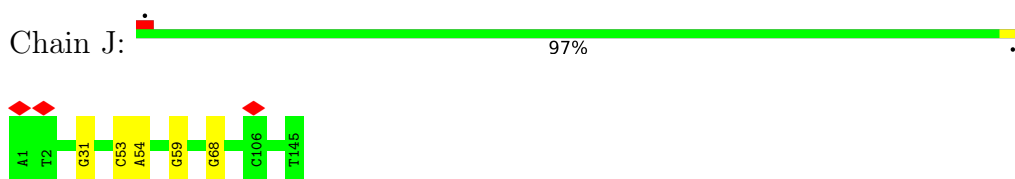
3 Residue-property plots [i](#)

These plots are drawn for all protein, RNA, DNA and oligosaccharide chains in the entry. The first graphic for a chain summarises the proportions of the various outlier classes displayed in the second graphic. The second graphic shows the sequence view annotated by issues in geometry and atom inclusion in map density. Residues are color-coded according to the number of geometric quality criteria for which they contain at least one outlier: green = 0, yellow = 1, orange = 2 and red = 3 or more. A red diamond above a residue indicates a poor fit to the EM map for this residue (all-atom inclusion < 40%). Stretches of 2 or more consecutive residues without any outlier are shown as a green connector. Residues present in the sample, but not in the model, are shown in grey.

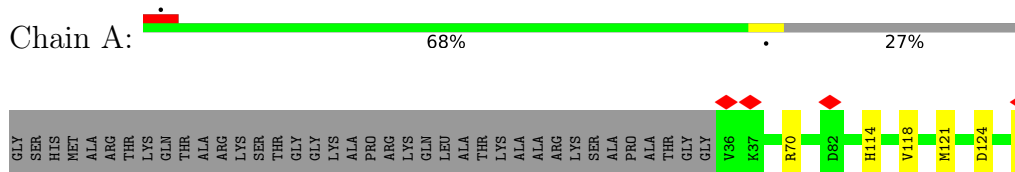
- Molecule 1: Human alpha-satellite DNA (145-MER)



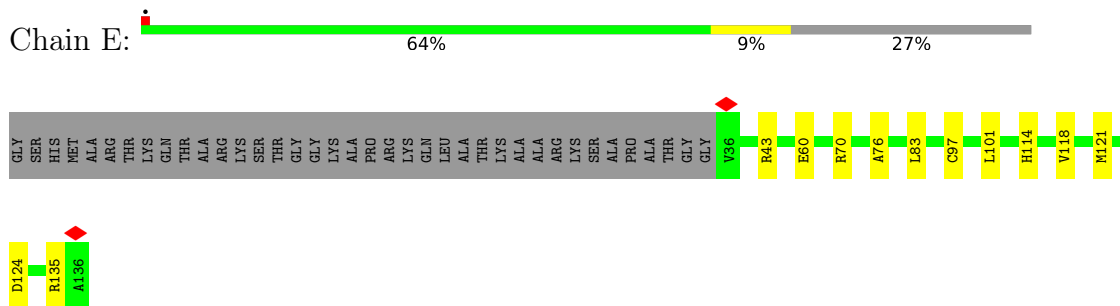
- Molecule 2: Human alpha-satellite DNA (145-MER) with abasic sites at positions 97-98



- Molecule 3: Histone H3.1

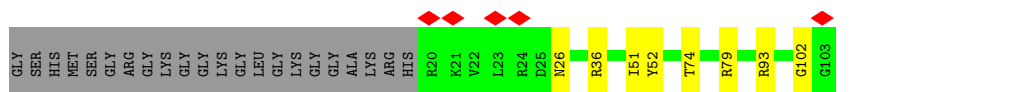


- Molecule 3: Histone H3.1

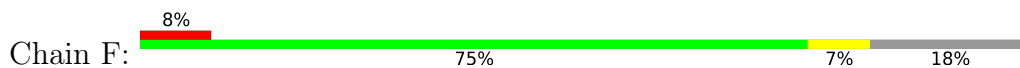


- Molecule 4: Histone H4

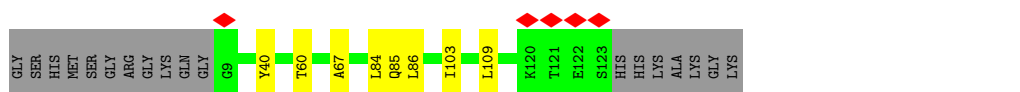
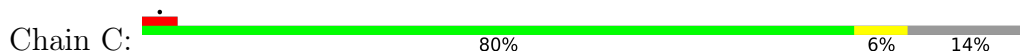




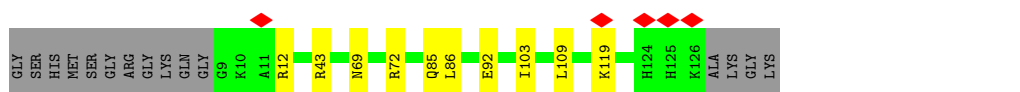
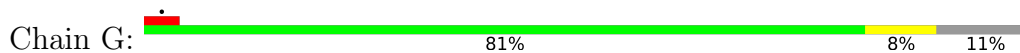
• Molecule 4: Histone H4



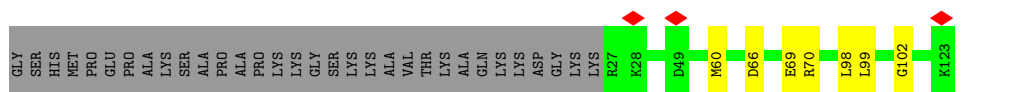
• Molecule 5: Histone H2A type 1-B/E



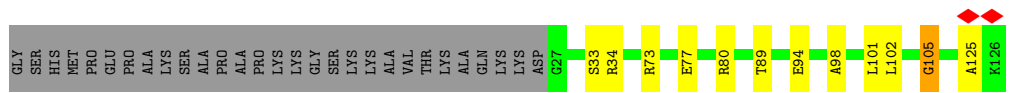
• Molecule 5: Histone H2A type 1-B/E



• Molecule 6: Histone H2B type 1-J



• Molecule 6: Histone H2B type 1-J



4 Experimental information

Property	Value	Source
EM reconstruction method	SINGLE PARTICLE	Depositor
Imposed symmetry	POINT, Not provided	
Number of particles used	78672	Depositor
Resolution determination method	FSC 0.143 CUT-OFF	Depositor
CTF correction method	PHASE FLIPPING AND AMPLITUDE CORRECTION	Depositor
Microscope	FEI TITAN KRIOS	Depositor
Voltage (kV)	300	Depositor
Electron dose ($e^-/\text{\AA}^2$)	40.0	Depositor
Minimum defocus (nm)	Not provided	
Maximum defocus (nm)	Not provided	
Magnification	130000	Depositor
Image detector	GATAN K2 SUMMIT (4k x 4k)	Depositor
Maximum map value	0.177	Depositor
Minimum map value	-0.003	Depositor
Average map value	0.000	Depositor
Map value standard deviation	0.003	Depositor
Recommended contour level	0.0091	Depositor
Map size (Å)	258.0, 258.0, 258.0	wwPDB
Map dimensions	300, 300, 300	wwPDB
Map angles (°)	90.0, 90.0, 90.0	wwPDB
Pixel spacing (Å)	0.86, 0.86, 0.86	Depositor

5 Model quality [i](#)

5.1 Standard geometry [i](#)

Bond lengths and bond angles in the following residue types are not validated in this section: 3DR

The Z score for a bond length (or angle) is the number of standard deviations the observed value is removed from the expected value. A bond length (or angle) with $|Z| > 5$ is considered an outlier worth inspection. RMSZ is the root-mean-square of all Z scores of the bond lengths (or angles).

Mol	Chain	Bond lengths		Bond angles	
		RMSZ	# Z >5	RMSZ	# Z >5
1	I	0.30	0/3329	0.55	0/5132
2	J	0.30	0/3329	0.54	0/5131
3	A	0.48	0/843	0.68	0/1130
3	E	0.48	0/843	0.73	0/1130
4	B	0.52	0/680	0.65	0/908
4	F	0.53	0/711	0.67	0/948
5	C	0.44	0/894	0.68	0/1203
5	G	0.47	0/925	0.76	0/1244
6	D	0.47	0/777	0.65	0/1040
6	H	0.47	0/799	0.66	1/1067 (0.1%)
All	All	0.40	0/13130	0.61	1/18933 (0.0%)

Chiral center outliers are detected by calculating the chiral volume of a chiral center and verifying if the center is modelled as a planar moiety or with the opposite hand. A planarity outlier is detected by checking planarity of atoms in a peptide group, atoms in a mainchain group or atoms of a sidechain that are expected to be planar.

Mol	Chain	#Chirality outliers	#Planarity outliers
3	A	0	1
3	E	0	1
4	B	0	1
4	F	0	1
6	H	0	1
All	All	0	5

There are no bond length outliers.

All (1) bond angle outliers are listed below:

Mol	Chain	Res	Type	Atoms	Z	Observed(°)	Ideal(°)
6	H	105	GLY	N-CA-C	5.26	125.65	113.18

There are no chirality outliers.

All (5) planarity outliers are listed below:

Mol	Chain	Res	Type	Group
3	A	135	ARG	Mainchain
4	B	102	GLY	Mainchain
3	E	135	ARG	Mainchain
4	F	102	GLY	Mainchain
6	H	125	ALA	Mainchain

5.2 Too-close contacts

In the following table, the Non-H and H(model) columns list the number of non-hydrogen atoms and hydrogen atoms in the chain respectively. The H(added) column lists the number of hydrogen atoms added and optimized by MolProbity. The Clashes column lists the number of clashes within the asymmetric unit, whereas Symm-Clashes lists symmetry-related clashes.

Mol	Chain	Non-H	H(model)	H(added)	Clashes	Symm-Clashes
1	I	2992	1657	1657	3	0
2	J	2991	1655	1655	4	0
3	A	831	874	878	5	0
3	E	831	876	878	10	0
4	B	673	721	722	5	0
4	F	703	753	755	6	0
5	C	884	947	949	5	0
5	G	913	972	976	6	0
6	D	766	793	797	5	0
6	H	788	823	826	7	0
All	All	12372	10071	10093	40	0

The all-atom clashscore is defined as the number of clashes found per 1000 atoms (including hydrogen atoms). The all-atom clashscore for this structure is 2.

The worst 5 of 40 close contacts within the same asymmetric unit are listed below, sorted by their clash magnitude.

Atom-1	Atom-2	Interatomic distance (Å)	Clash overlap (Å)
3:E:70:ARG:NH1	4:F:26:ASN:OD1	2.11	0.83
3:A:70:ARG:NH1	4:B:26:ASN:OD1	2.18	0.75
5:G:69:ASN:OD1	5:G:72:ARG:NH2	2.21	0.74
6:D:70:ARG:HB3	6:D:99:LEU:HD11	1.71	0.73
6:H:94:GLU:OE1	6:H:94:GLU:N	2.32	0.63

There are no symmetry-related clashes.

5.3 Torsion angles [i](#)

5.3.1 Protein backbone [i](#)

In the following table, the Percentiles column shows the percent Ramachandran outliers of the chain as a percentile score with respect to all PDB entries followed by that with respect to all EM entries.

The Analysed column shows the number of residues for which the backbone conformation was analysed, and the total number of residues.

Mol	Chain	Analysed	Favoured	Allowed	Outliers	Percentiles	
3	A	99/139 (71%)	98 (99%)	1 (1%)	0	100	100
3	E	99/139 (71%)	97 (98%)	2 (2%)	0	100	100
4	B	82/106 (77%)	80 (98%)	2 (2%)	0	100	100
4	F	85/106 (80%)	82 (96%)	3 (4%)	0	100	100
5	C	113/133 (85%)	109 (96%)	4 (4%)	0	100	100
5	G	116/133 (87%)	108 (93%)	7 (6%)	1 (1%)	14	47
6	D	95/129 (74%)	91 (96%)	3 (3%)	1 (1%)	11	43
6	H	98/129 (76%)	95 (97%)	2 (2%)	1 (1%)	12	44
All	All	787/1014 (78%)	760 (97%)	24 (3%)	3 (0%)	31	62

All (3) Ramachandran outliers are listed below:

Mol	Chain	Res	Type
6	D	102	GLY
6	H	105	GLY
5	G	119	LYS

5.3.2 Protein sidechains [i](#)

In the following table, the Percentiles column shows the percent sidechain outliers of the chain as a percentile score with respect to all PDB entries followed by that with respect to all EM entries.

The Analysed column shows the number of residues for which the sidechain conformation was analysed, and the total number of residues.

Mol	Chain	Analysed	Rotameric	Outliers	Percentiles	
3	A	88/113 (78%)	88 (100%)	0	100	100
3	E	88/113 (78%)	88 (100%)	0	100	100
4	B	69/81 (85%)	69 (100%)	0	100	100
4	F	72/81 (89%)	72 (100%)	0	100	100
5	C	90/102 (88%)	90 (100%)	0	100	100
5	G	93/102 (91%)	93 (100%)	0	100	100
6	D	83/107 (78%)	83 (100%)	0	100	100
6	H	85/107 (79%)	85 (100%)	0	100	100
All	All	668/806 (83%)	668 (100%)	0	100	100

There are no protein residues with a non-rotameric sidechain to report.

Sometimes sidechains can be flipped to improve hydrogen bonding and reduce clashes. All (5) such sidechains are listed below:

Mol	Chain	Res	Type
5	C	105	GLN
5	C	111	ASN
6	D	65	ASN
5	G	32	HIS
6	H	50	HIS

5.3.3 RNA [i](#)

There are no RNA molecules in this entry.

5.4 Non-standard residues in protein, DNA, RNA chains [i](#)

4 non-standard protein/DNA/RNA residues are modelled in this entry.

In the following table, the Counts columns list the number of bonds (or angles) for which Mogul statistics could be retrieved, the number of bonds (or angles) that are observed in the model and the number of bonds (or angles) that are defined in the Chemical Component Dictionary. The Link column lists molecule types, if any, to which the group is linked. The Z score for a bond length (or angle) is the number of standard deviations the observed value is removed from the expected value. A bond length (or angle) with $|Z| > 2$ is considered an outlier worth inspection. RMSZ is the root-mean-square of all Z scores of the bond lengths (or angles).

Mol	Type	Chain	Res	Link	Bond lengths			Bond angles		
					Counts	RMSZ	$\# Z > 2$	Counts	RMSZ	$\# Z > 2$
2	3DR	J	97[A]	2	8,11,12	0.24	0	7,14,17	0.36	0

Mol	Type	Chain	Res	Link	Bond lengths			Bond angles		
					Counts	RMSZ	# Z > 2	Counts	RMSZ	# Z > 2
2	3DR	J	98[A]	2	8,11,12	0.18	0	7,14,17	0.57	0
1	3DR	I	97[B]	1	8,11,12	0.28	0	7,14,17	0.79	0
1	3DR	I	98[B]	1	8,11,12	0.23	0	7,14,17	0.70	0

In the following table, the Chirals column lists the number of chiral outliers, the number of chiral centers analysed, the number of these observed in the model and the number defined in the Chemical Component Dictionary. Similar counts are reported in the Torsion and Rings columns. '-' means no outliers of that kind were identified.

Mol	Type	Chain	Res	Link	Chirals	Torsions	Rings
2	3DR	J	97[A]	2	-	0/3/15/16	0/1/1/1
2	3DR	J	98[A]	2	-	0/3/15/16	0/1/1/1
1	3DR	I	97[B]	1	-	0/3/15/16	0/1/1/1
1	3DR	I	98[B]	1	-	0/3/15/16	0/1/1/1

There are no bond length outliers.

There are no bond angle outliers.

There are no chirality outliers.

There are no torsion outliers.

There are no ring outliers.

No monomer is involved in short contacts.

5.5 Carbohydrates [i](#)

There are no oligosaccharides in this entry.

5.6 Ligand geometry [i](#)

There are no ligands in this entry.

5.7 Other polymers [i](#)

There are no such residues in this entry.

5.8 Polymer linkage issues [i](#)

There are no chain breaks in this entry.

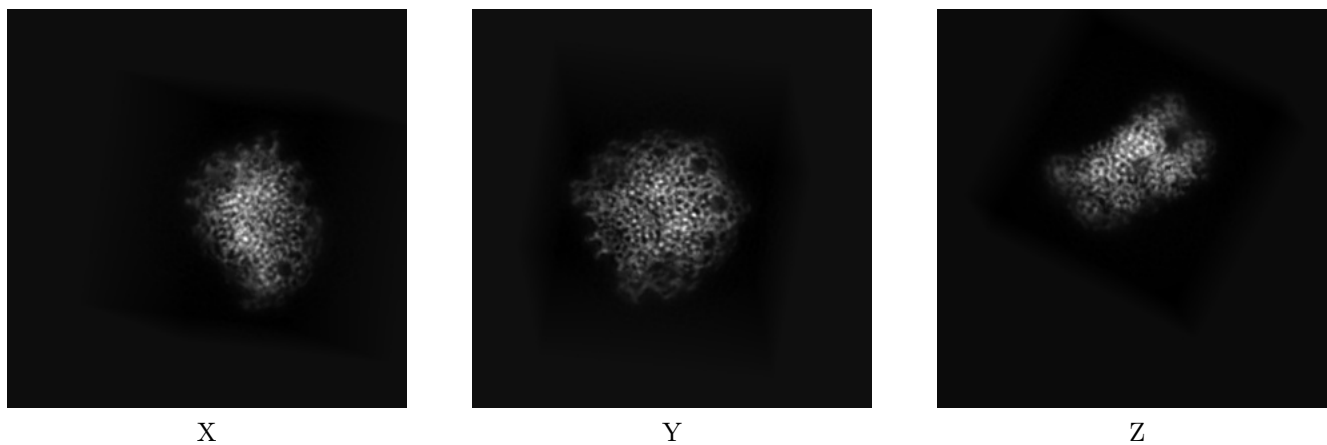
6 Map visualisation [i](#)

This section contains visualisations of the EMDB entry EMD-4768. These allow visual inspection of the internal detail of the map and identification of artifacts.

No raw map or half-maps were deposited for this entry and therefore no images, graphs, etc. pertaining to the raw map can be shown.

6.1 Orthogonal projections [i](#)

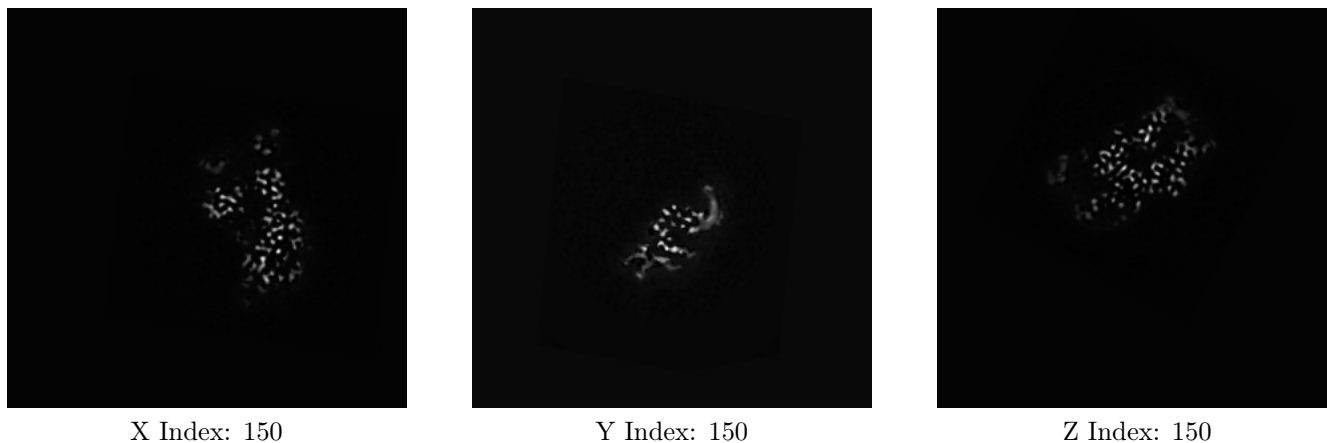
6.1.1 Primary map



The images above show the map projected in three orthogonal directions.

6.2 Central slices [i](#)

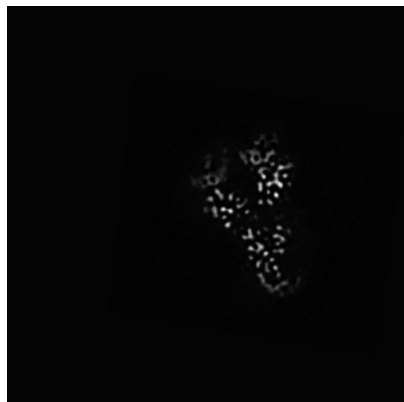
6.2.1 Primary map



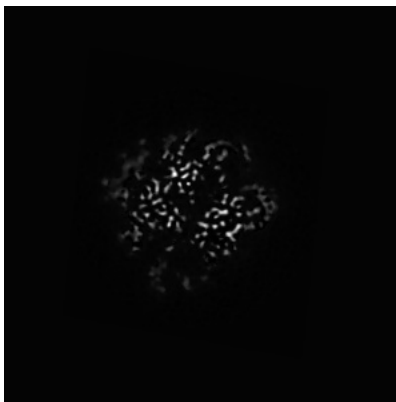
The images above show central slices of the map in three orthogonal directions.

6.3 Largest variance slices [i](#)

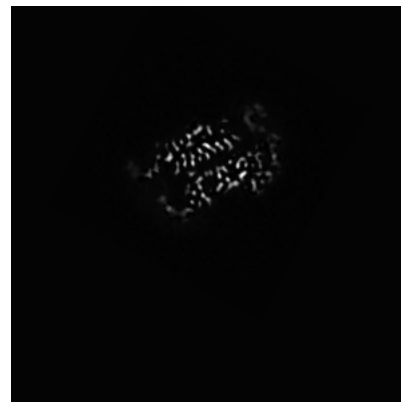
6.3.1 Primary map



X Index: 144



Y Index: 189

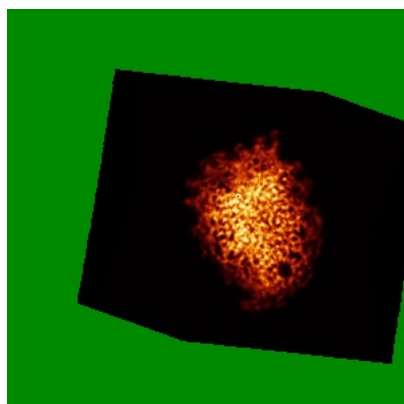


Z Index: 160

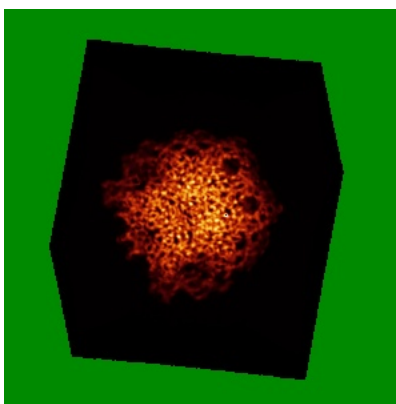
The images above show the largest variance slices of the map in three orthogonal directions.

6.4 Orthogonal standard-deviation projections (False-color) [i](#)

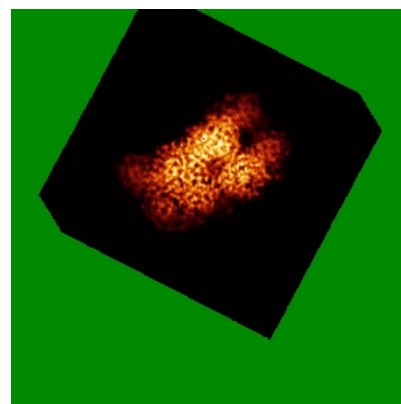
6.4.1 Primary map



X



Y



Z

The images above show the map standard deviation projections with false color in three orthogonal directions. Minimum values are shown in green, max in blue, and dark to light orange shades represent small to large values respectively.

6.5 Orthogonal surface views

This section was not generated.

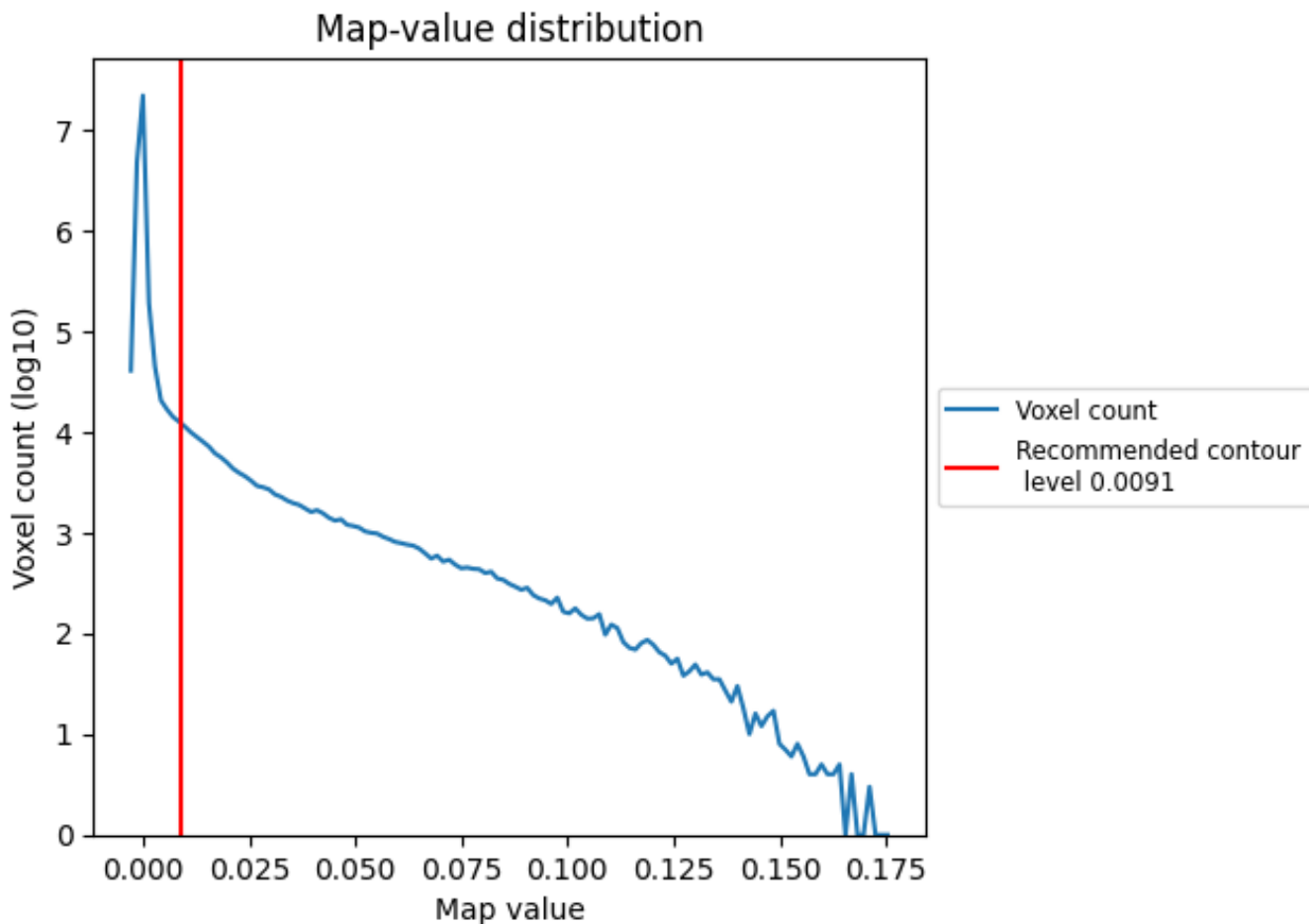
6.6 Mask visualisation

This section was not generated. No masks/segmentation were deposited.

7 Map analysis [i](#)

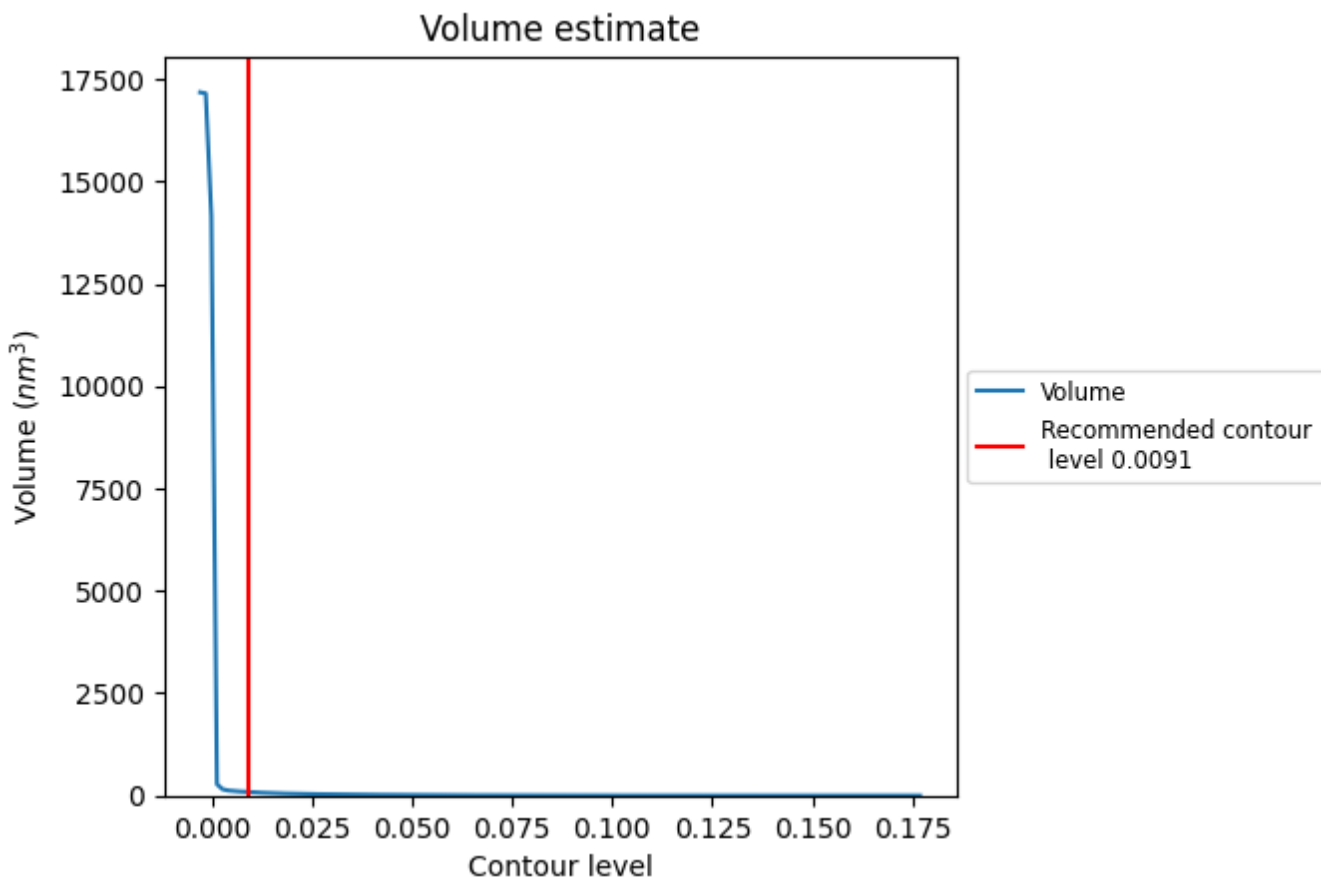
This section contains the results of statistical analysis of the map.

7.1 Map-value distribution [i](#)



The map-value distribution is plotted in 128 intervals along the x-axis. The y-axis is logarithmic. A spike in this graph at zero usually indicates that the volume has been masked.

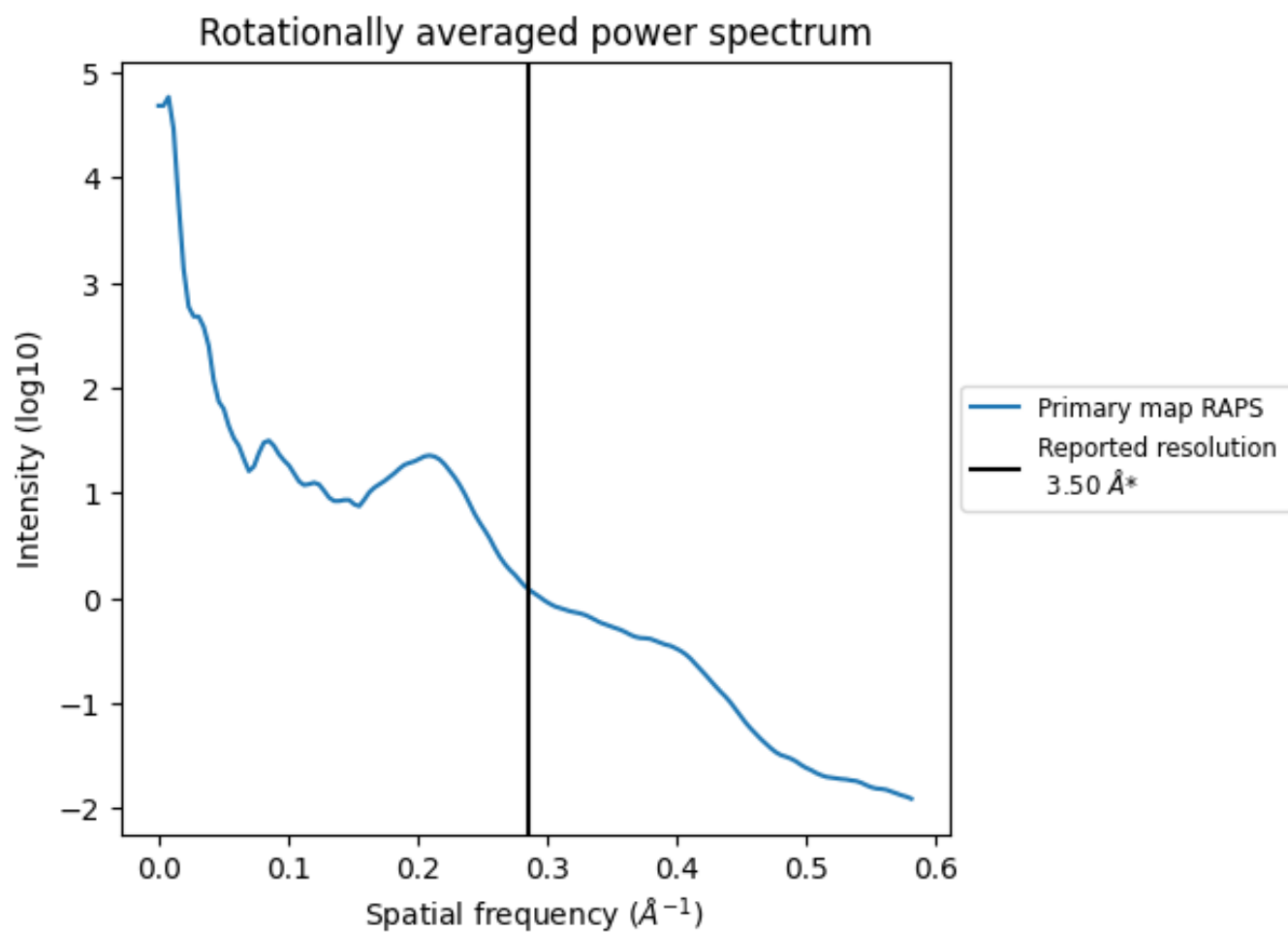
7.2 Volume estimate [\(i\)](#)



The volume at the recommended contour level is 87 nm^3 ; this corresponds to an approximate mass of 79 kDa.

The volume estimate graph shows how the enclosed volume varies with the contour level. The recommended contour level is shown as a vertical line and the intersection between the line and the curve gives the volume of the enclosed surface at the given level.

7.3 Rotationally averaged power spectrum [i](#)



*Reported resolution corresponds to spatial frequency of 0.286 Å⁻¹

8 Fourier-Shell correlation

This section was not generated. No FSC curve or half-maps provided.

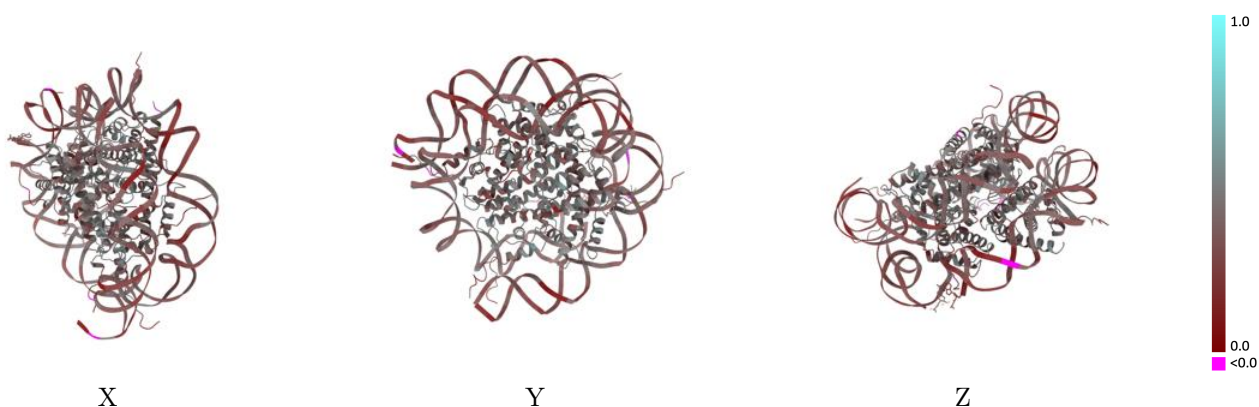
9 Map-model fit [i](#)

This section contains information regarding the fit between EMDB map EMD-4768 and PDB model 6R94. Per-residue inclusion information can be found in section 3 on page 7.

9.1 Map-model overlay [i](#)

This section was not generated.

9.2 Q-score mapped to coordinate model [i](#)

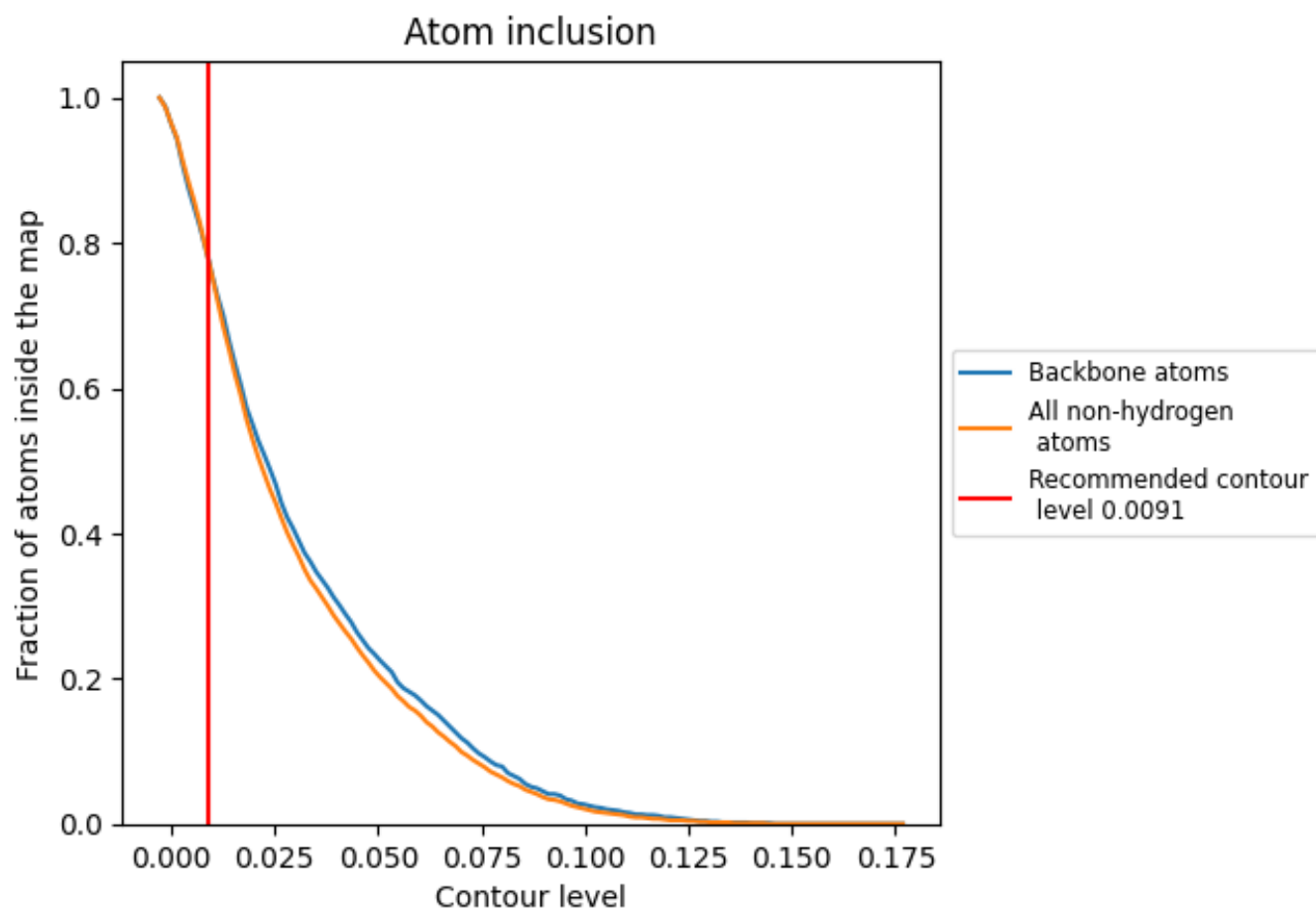


The images above show the model with each residue coloured according to its Q-score. This shows their resolvability in the map with higher Q-score values reflecting better resolvability. Please note: Q-score is calculating the resolvability of atoms, and thus high values are only expected at resolutions at which atoms can be resolved. Low Q-score values may therefore be expected for many entries.

9.3 Atom inclusion mapped to coordinate model [i](#)

This section was not generated.























9.4 Atom inclusion [i](#)



At the recommended contour level, 78% of all backbone atoms, 77% of all non-hydrogen atoms, are inside the map.

9.5 Map-model fit summary

The table lists the average atom inclusion at the recommended contour level (0.0091) and Q-score for the entire model and for each chain.

Chain	Atom inclusion	Q-score
All	 0.7740	 0.3630
A	 0.7940	 0.4130
B	 0.7780	 0.4170
C	 0.7830	 0.4030
D	 0.7740	 0.4140
E	 0.7950	 0.4030
F	 0.7830	 0.4150
G	 0.7910	 0.4160
H	 0.7980	 0.4180
I	 0.7800	 0.3120
J	 0.7750	 0.3080

