



# wwPDB X-ray Structure Validation Summary Report ⓘ

Mar 9, 2026 – 12:06 PM UTC

PDB ID : 8QZR / pdb\_00008qzr  
Title : SARS-CoV-2 delta RBD complexed with BA.4/5-9 Fab  
Authors : Zhou, D.; Ren, J.; Stuart, D.I.  
Deposited on : 2023-10-29  
Resolution : 3.77 Å(reported)

This is a wwPDB X-ray Structure Validation Summary Report for a publicly released PDB entry.

We welcome your comments at [validation@mail.wwpdb.org](mailto:validation@mail.wwpdb.org)

A user guide is available at

<https://www.wwpdb.org/validation/2017/XrayValidationReportHelp>

with specific help available everywhere you see the ⓘ symbol.

The types of validation reports are described at

<http://www.wwpdb.org/validation/2017/FAQs#types>.

---

The following versions of software and data (see [references ⓘ](#)) were used in the production of this report:

MolProbity : 4-5-2 with Phenix2.0  
Mogul : 2022.3.0, CSD as543be (2022)  
Xtrriage (Phenix) : 2.0  
EDS : 3.0  
Percentile statistics : 20250101.v01 (using entries in the PDB archive January 1st 2025)  
CCP4 : 9.0.010 (Gargrove)  
Density-Fitness : 1.0.12  
Ideal geometry (proteins) : Engh & Huber (2001)  
Ideal geometry (DNA, RNA) : Parkinson et al. (1996)  
Validation Pipeline (wwPDB-VP) : 2.49

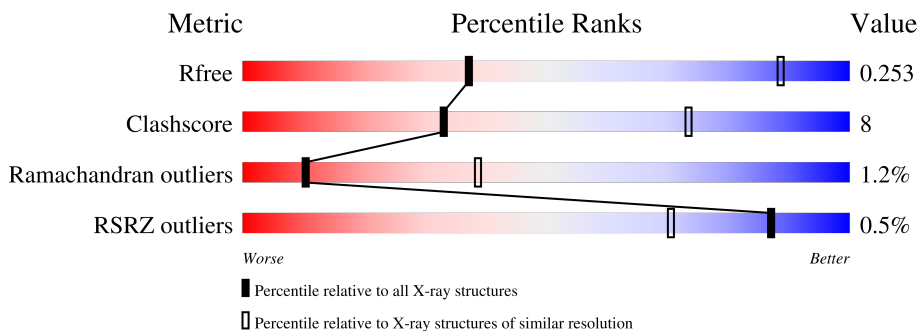
# 1 Overall quality at a glance

The following experimental techniques were used to determine the structure:

*X-RAY DIFFRACTION*

The reported resolution of this entry is 3.77 Å.

Percentile scores (ranging between 0-100) for global validation metrics of the entry are shown in the following graphic. The table shows the number of entries on which the scores are based.



Metric	Whole archive (#Entries)	Similar resolution (#Entries, resolution range(Å))
$R_{free}$	180053	1085 (3.94-3.62)
Clashscore	190562	1029 (3.92-3.64)
Ramachandran outliers	187476	1064 (3.94-3.62)
RSRZ outliers	180081	1084 (3.94-3.62)

The table below summarises the geometric issues observed across the polymeric chains and their fit to the electron density. The red, orange, yellow and green segments of the lower bar indicate the fraction of residues that contain outliers for  $\geq 3$ , 2, 1 and 0 types of geometric quality criteria respectively. A grey segment represents the fraction of residues that are not modelled. The numeric value for each fraction is indicated below the corresponding segment, with a dot representing fractions  $\leq 5\%$ . The upper red bar (where present) indicates the fraction of residues that have poor fit to the electron density. The numeric value is given above the bar.

Mol	Chain	Length	Quality of chain
1	B	215	
1	L	215	
2	A	225	
2	H	225	
3	C	202	
3	E	202	

## 2 Entry composition [i](#)

There are 5 unique types of molecules in this entry. The entry contains 8709 atoms, of which 0 are hydrogens and 0 are deuteriums.

In the tables below, the ZeroOcc column contains the number of atoms modelled with zero occupancy, the AltConf column contains the number of residues with at least one atom in alternate conformation and the Trace column contains the number of residues modelled with at most 2 atoms.

- Molecule 1 is a protein called BA.4/5-9 light chain.

Mol	Chain	Residues	Atoms					ZeroOcc	AltConf	Trace
			Total	C	N	O	S			
1	L	215	Total 1661	C 1038	N 284	O 333	S 6	0	0	0
1	B	132	Total 1031	C 643	N 178	O 207	S 3	0	0	0

- Molecule 2 is a protein called BA.4/5-9 heavy chain.

Mol	Chain	Residues	Atoms					ZeroOcc	AltConf	Trace
			Total	C	N	O	S			
2	H	219	Total 1630	C 1025	N 275	O 322	S 8	0	0	0
2	A	165	Total 1261	C 794	N 215	O 247	S 5	0	0	0

- Molecule 3 is a protein called Spike protein S1.

Mol	Chain	Residues	Atoms					ZeroOcc	AltConf	Trace
			Total	C	N	O	S			
3	C	194	Total 1544	C 988	N 260	O 288	S 8	0	1	0
3	E	194	Total 1544	C 988	N 260	O 288	S 8	0	1	0

There are 20 discrepancies between the modelled and reference sequences:

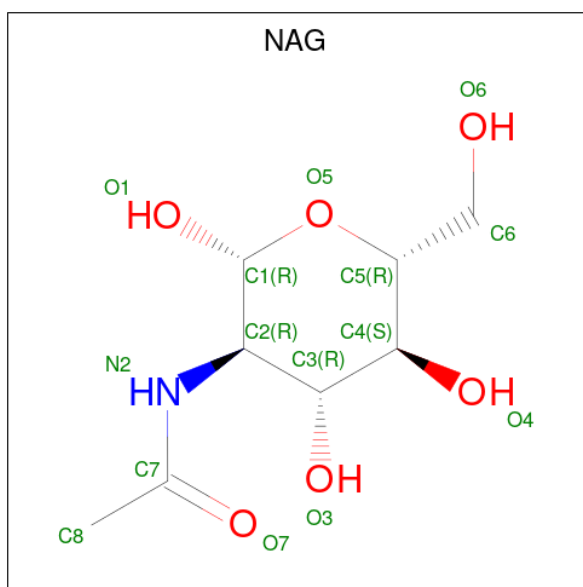
Chain	Residue	Modelled	Actual	Comment	Reference
C	327	HIS	-	expression tag	UNP P0DTC2
C	328	HIS	-	expression tag	UNP P0DTC2
C	329	HIS	-	expression tag	UNP P0DTC2
C	330	HIS	-	expression tag	UNP P0DTC2
C	331	HIS	-	expression tag	UNP P0DTC2
C	332	HIS	-	expression tag	UNP P0DTC2
C	452	ARG	LEU	variant	UNP P0DTC2
C	478	LYS	THR	variant	UNP P0DTC2

*Continued on next page...*

Continued from previous page...

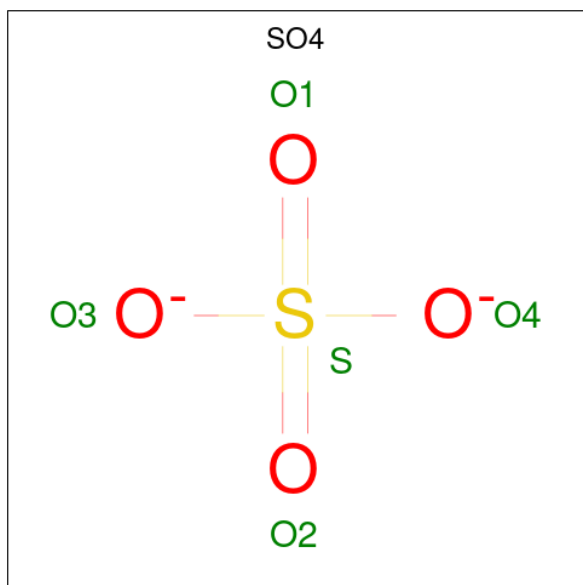
Chain	Residue	Modelled	Actual	Comment	Reference
C	527	LYS	-	expression tag	UNP P0DTC2
C	528	LYS	-	expression tag	UNP P0DTC2
E	327	HIS	-	expression tag	UNP P0DTC2
E	328	HIS	-	expression tag	UNP P0DTC2
E	329	HIS	-	expression tag	UNP P0DTC2
E	330	HIS	-	expression tag	UNP P0DTC2
E	331	HIS	-	expression tag	UNP P0DTC2
E	332	HIS	-	expression tag	UNP P0DTC2
E	452	ARG	LEU	variant	UNP P0DTC2
E	478	LYS	THR	variant	UNP P0DTC2
E	527	LYS	-	expression tag	UNP P0DTC2
E	528	LYS	-	expression tag	UNP P0DTC2

- Molecule 4 is 2-acetamido-2-deoxy-beta-D-glucopyranose (CCD ID: NAG) (formula:  $C_8H_{15}NO_6$ ).



Mol	Chain	Residues	Atoms				ZeroOcc	AltConf
			Total	C	N	O		
4	C	1	14	8	1	5	0	0
4	E	1	14	8	1	5	0	0

- Molecule 5 is SULFATE ION (CCD ID: SO4) (formula:  $O_4S$ ).




Mol	Chain	Residues	Atoms			ZeroOcc	AltConf
5	C	1	Total	O	S	0	0
			5	4	1		
5	E	1	Total	O	S	0	0
			5	4	1		

### 3 Residue-property plots [i](#)

These plots are drawn for all protein, RNA, DNA and oligosaccharide chains in the entry. The first graphic for a chain summarises the proportions of the various outlier classes displayed in the second graphic. The second graphic shows the sequence view annotated by issues in geometry and electron density. Residues are color-coded according to the number of geometric quality criteria for which they contain at least one outlier: green = 0, yellow = 1, orange = 2 and red = 3 or more. A red dot above a residue indicates a poor fit to the electron density ( $RSRZ > 2$ ). Stretches of 2 or more consecutive residues without any outlier are shown as a green connector. Residues present in the sample, but not in the model, are shown in grey.

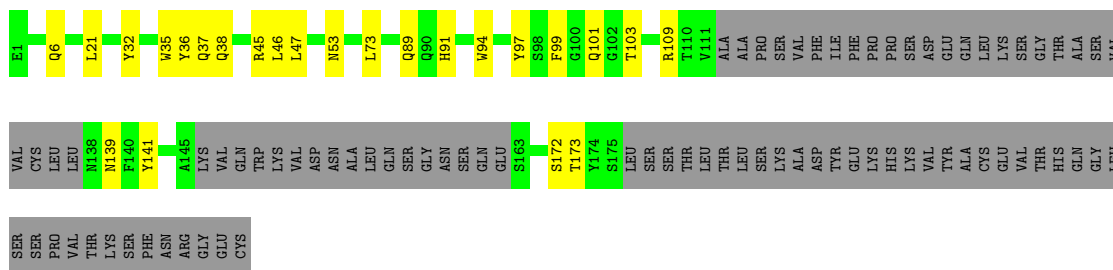
- Molecule 1: BA.4/5-9 light chain

Chain L: 




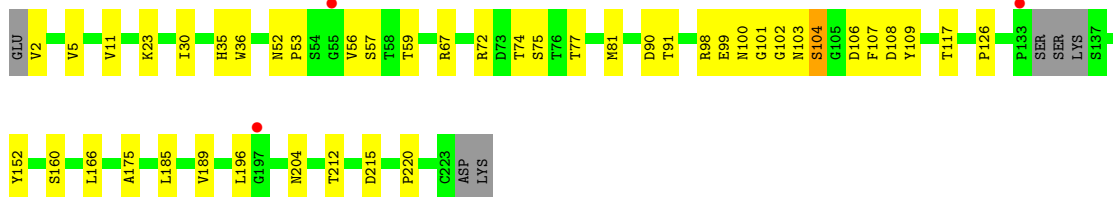
- Molecule 1: BA.4/5-9 light chain

Chain B: 



- Molecule 2: BA.4/5-9 heavy chain

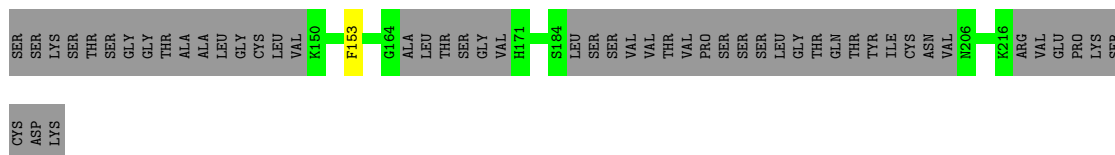
Chain H: 



- Molecule 2: BA.4/5-9 heavy chain

Chain A: 





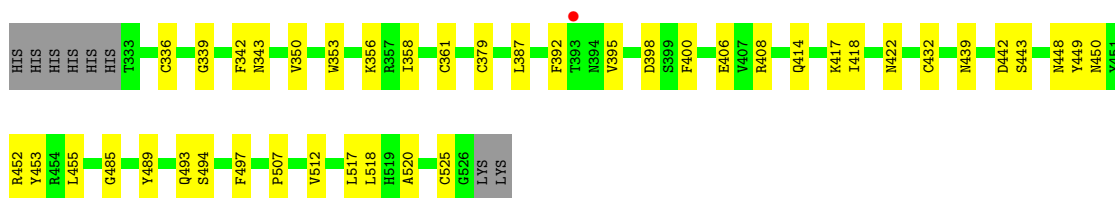
- Molecule 3: Spike protein S1

Chain C: 78% 18%



- Molecule 3: Spike protein S1

Chain E: 75% 21%



## 4 Data and refinement statistics i

Property	Value	Source
Space group	I 2 3	Depositor
Cell constants a, b, c, $\alpha$ , $\beta$ , $\gamma$	251.58Å 251.58Å 251.58Å 90.00° 90.00° 90.00°	Depositor
Resolution (Å)	59.30 – 3.77 59.30 – 3.77	Depositor EDS
% Data completeness (in resolution range)	99.9 (59.30-3.77) 98.9 (59.30-3.77)	Depositor EDS
$R_{merge}$	0.41	Depositor
$R_{sym}$	(Not available)	Depositor
$\langle I/\sigma(I) \rangle$ <sup>1</sup>	1.01 (at 3.77Å)	Xtrriage
Refinement program	PHENIX 1.20.1_4487	Depositor
R, $R_{free}$	0.251 , 0.300 (Not available) , 0.253	Depositor DCC
$R_{free}$ test set	1322 reflections (4.95%)	wwPDB-VP
Wilson B-factor (Å <sup>2</sup> )	165.5	Xtrriage
Anisotropy	0.000	Xtrriage
Bulk solvent $k_{sol}$ (e/Å <sup>3</sup> ), $B_{sol}$ (Å <sup>2</sup> )	0.36 , 209.9	EDS
L-test for twinning <sup>2</sup>	$\langle  L  \rangle = 0.38$ , $\langle L^2 \rangle = 0.21$	Xtrriage
Estimated twinning fraction	0.138 for -l,-k,-h	Xtrriage
$F_o, F_c$ correlation	0.92	EDS
Total number of atoms	8709	wwPDB-VP
Average B, all atoms (Å <sup>2</sup> )	196.0	wwPDB-VP

Xtrriage's analysis on translational NCS is as follows: *The largest off-origin peak in the Patterson function is 1.96% of the height of the origin peak. No significant pseudotranslation is detected.*

<sup>1</sup>Intensities estimated from amplitudes.

<sup>2</sup>Theoretical values of  $\langle |L| \rangle$ ,  $\langle L^2 \rangle$  for acentric reflections are 0.5, 0.333 respectively for untwinned datasets, and 0.375, 0.2 for perfectly twinned datasets.

## 5 Model quality [i](#)

### 5.1 Standard geometry [i](#)

Bond lengths and bond angles in the following residue types are not validated in this section: NAG, SO4

The Z score for a bond length (or angle) is the number of standard deviations the observed value is removed from the expected value. A bond length (or angle) with  $|Z| > 5$  is considered an outlier worth inspection. RMSZ is the root-mean-square of all Z scores of the bond lengths (or angles).

Mol	Chain	Bond lengths		Bond angles	
		RMSZ	# Z  >5	RMSZ	# Z  >5
1	B	0.10	0/1055	0.28	0/1430
1	L	0.09	0/1700	0.29	0/2309
2	A	0.11	0/1292	0.31	0/1751
2	H	0.11	0/1669	0.31	0/2273
3	C	0.09	0/1590	0.28	0/2161
3	E	0.11	0/1590	0.30	0/2161
All	All	0.10	0/8896	0.30	0/12085

There are no bond length outliers.

There are no bond angle outliers.

There are no chirality outliers.

There are no planarity outliers.

### 5.2 Too-close contacts [i](#)

In the following table, the Non-H and H(model) columns list the number of non-hydrogen atoms and hydrogen atoms in the chain respectively. The H(added) column lists the number of hydrogen atoms added and optimized by MolProbity. The Clashes column lists the number of clashes within the asymmetric unit, whereas Symm-Clashes lists symmetry-related clashes.

Mol	Chain	Non-H	H(model)	H(added)	Clashes	Symm-Clashes
1	B	1031	0	975	20	0
1	L	1661	0	1598	21	0
2	A	1261	0	1202	27	0
2	H	1630	0	1584	40	0
3	C	1544	0	1465	25	0
3	E	1544	0	1465	31	0
4	C	14	0	13	1	0

*Continued on next page...*

Continued from previous page...

Mol	Chain	Non-H	H(model)	H(added)	Clashes	Symm-Clashes
4	E	14	0	13	1	0
5	C	5	0	0	0	0
5	E	5	0	0	0	0
All	All	8709	0	8315	133	0

The all-atom clashscore is defined as the number of clashes found per 1000 atoms (including hydrogen atoms). The all-atom clashscore for this structure is 8.

The worst 5 of 133 close contacts within the same asymmetric unit are listed below, sorted by their clash magnitude.

Atom-1	Atom-2	Interatomic distance (Å)	Clash overlap (Å)
2:H:204:ASN:ND2	2:H:215:ASP:OD2	2.25	0.70
2:A:57:SER:HB3	3:E:489:TYR:HD1	1.56	0.70
3:C:392:PHE:HB3	3:C:517:LEU:HD23	1.75	0.68
2:H:72:ARG:HH21	2:H:77:THR:HG22	1.60	0.66
2:A:31:ASN:OD1	3:E:453:TYR:OH	2.07	0.65

There are no symmetry-related clashes.

## 5.3 Torsion angles [i](#)

### 5.3.1 Protein backbone [i](#)

In the following table, the Percentiles column shows the percent Ramachandran outliers of the chain as a percentile score with respect to all X-ray entries followed by that with respect to entries of similar resolution.

The Analysed column shows the number of residues for which the backbone conformation was analysed, and the total number of residues.

Mol	Chain	Analysed	Favoured	Allowed	Outliers	Percentiles	
1	B	126/215 (59%)	119 (94%)	7 (6%)	0	100	100
1	L	213/215 (99%)	202 (95%)	10 (5%)	1 (0%)	24	56
2	A	157/225 (70%)	138 (88%)	16 (10%)	3 (2%)	6	32
2	H	215/225 (96%)	200 (93%)	11 (5%)	4 (2%)	6	32
3	C	193/202 (96%)	174 (90%)	16 (8%)	3 (2%)	7	34
3	E	193/202 (96%)	174 (90%)	17 (9%)	2 (1%)	12	42
All	All	1097/1284 (85%)	1007 (92%)	77 (7%)	13 (1%)	10	39

5 of 13 Ramachandran outliers are listed below:

Mol	Chain	Res	Type
2	H	74	THR
3	C	450	ASN
3	E	450	ASN
2	H	56	VAL
2	H	104	SER

### 5.3.2 Protein sidechains [i](#)

There are no protein residues with a non-rotameric sidechain to report in this entry.

### 5.3.3 RNA [i](#)

There are no RNA molecules in this entry.

### 5.4 Non-standard residues in protein, DNA, RNA chains [i](#)

There are no non-standard protein/DNA/RNA residues in this entry.

### 5.5 Carbohydrates [i](#)

There are no oligosaccharides in this entry.

### 5.6 Ligand geometry [i](#)

4 ligands are modelled in this entry.

In the following table, the Counts columns list the number of bonds (or angles) for which Mogul statistics could be retrieved, the number of bonds (or angles) that are observed in the model and the number of bonds (or angles) that are defined in the Chemical Component Dictionary. The Link column lists molecule types, if any, to which the group is linked. The Z score for a bond length (or angle) is the number of standard deviations the observed value is removed from the expected value. A bond length (or angle) with  $|Z| > 2$  is considered an outlier worth inspection. RMSZ is the root-mean-square of all Z scores of the bond lengths (or angles).

Mol	Type	Chain	Res	Link	Bond lengths			Bond angles		
					Counts	RMSZ	$\# Z  > 2$	Counts	RMSZ	$\# Z  > 2$
4	NAG	E	601	3	14,14,15	0.22	0	17,19,21	0.52	0
5	SO4	C	602	-	4,4,4	0.23	0	6,6,6	0.06	0
4	NAG	C	601	3	14,14,15	0.24	0	17,19,21	0.54	0
5	SO4	E	602	-	4,4,4	0.22	0	6,6,6	0.09	0

In the following table, the Chirals column lists the number of chiral outliers, the number of chiral centers analysed, the number of these observed in the model and the number defined in the Chemical Component Dictionary. Similar counts are reported in the Torsion and Rings columns. '-' means no outliers of that kind were identified.

Mol	Type	Chain	Res	Link	Chirals	Torsions	Rings
4	NAG	E	601	3	-	2/6/23/26	0/1/1/1
4	NAG	C	601	3	-	2/6/23/26	0/1/1/1

There are no bond length outliers.

There are no bond angle outliers.

There are no chirality outliers.

All (4) torsion outliers are listed below:

Mol	Chain	Res	Type	Atoms
4	E	601	NAG	O5-C5-C6-O6
4	C	601	NAG	O5-C5-C6-O6
4	E	601	NAG	C4-C5-C6-O6
4	C	601	NAG	C4-C5-C6-O6

There are no ring outliers.

2 monomers are involved in 2 short contacts:

Mol	Chain	Res	Type	Clashes	Symm-Clashes
4	E	601	NAG	1	0
4	C	601	NAG	1	0

## 5.7 Other polymers [i](#)

There are no such residues in this entry.

## 5.8 Polymer linkage issues [i](#)

There are no chain breaks in this entry.

## 6 Fit of model and data [i](#)

### 6.1 Protein, DNA and RNA chains [i](#)

In the following table, the column labelled ‘#RSRZ > 2’ contains the number (and percentage) of RSRZ outliers, followed by percent RSRZ outliers for the chain as percentile scores relative to all X-ray entries and entries of similar resolution. The OWAB column contains the minimum, median, 95<sup>th</sup> percentile and maximum values of the occupancy-weighted average B-factor per residue. The column labelled ‘Q < 0.9’ lists the number of (and percentage) of residues with an average occupancy less than 0.9.

Mol	Chain	Analysed	<RSRZ>	#RSRZ > 2	OWAB(Å <sup>2</sup> )	Q < 0.9
1	B	132/215 (61%)	-0.18	0 <a href="#">100</a> <a href="#">100</a>	152, 204, 329, 457	0
1	L	215/215 (100%)	-0.32	0 <a href="#">100</a> <a href="#">100</a>	148, 204, 264, 328	0
2	A	165/225 (73%)	-0.26	1 (0%) <a href="#">85</a> <a href="#">67</a>	137, 197, 353, 538	0
2	H	219/225 (97%)	-0.20	3 (1%) <a href="#">73</a> <a href="#">50</a>	136, 181, 229, 298	0
3	C	194/202 (96%)	-0.28	1 (0%) <a href="#">87</a> <a href="#">70</a>	127, 179, 234, 276	1 (0%)
3	E	194/202 (96%)	-0.10	1 (0%) <a href="#">87</a> <a href="#">70</a>	114, 168, 226, 277	1 (0%)
All	All	1119/1284 (87%)	-0.23	6 (0%) <a href="#">87</a> <a href="#">70</a>	114, 186, 294, 538	2 (0%)

The worst 5 of 6 RSRZ outliers are listed below:

Mol	Chain	Res	Type	RSRZ
2	H	55	GLY	2.9
3	C	496	GLY	2.8
2	H	133	PRO	2.6
2	A	55	GLY	2.5
3	E	393	THR	2.1

### 6.2 Non-standard residues in protein, DNA, RNA chains [i](#)

There are no non-standard protein/DNA/RNA residues in this entry.

### 6.3 Carbohydrates [i](#)

There are no oligosaccharides in this entry.

## 6.4 Ligands [i](#)

In the following table, the Atoms column lists the number of modelled atoms in the group and the number defined in the chemical component dictionary. The B-factors column lists the minimum, median, 95<sup>th</sup> percentile and maximum values of B factors of atoms in the group. The column labelled 'Q< 0.9' lists the number of atoms with occupancy less than 0.9.

Mol	Type	Chain	Res	Atoms	RSCC	RSR	B-factors(Å <sup>2</sup> )	Q<0.9
4	NAG	C	601	14/15	0.69	0.09	182,221,247,250	0
4	NAG	E	601	14/15	0.74	0.09	194,242,269,270	0
5	SO4	C	602	5/5	0.75	0.14	146,173,231,287	0
5	SO4	E	602	5/5	0.86	0.06	191,215,240,420	0

## 6.5 Other polymers [i](#)

There are no such residues in this entry.