



Full wwPDB X-ray Structure Validation Report ⓘ

Mar 5, 2026 – 04:13 AM UTC

PDB ID : 9QUG / pdb_00009qug
Title : Structure of a UBC-Ubiquitin conjugate
Authors : Kordic, D.; Williams, T.L.; Luiza Deszcz, L.; Ehrmann, J.; Arnese, R.; Meinhart, A.; Clausen, T.
Deposited on : 2025-04-10
Resolution : 1.80 Å(reported)

This is a Full wwPDB X-ray Structure Validation Report for a publicly released PDB entry.

We welcome your comments at validation@mail.wwpdb.org

A user guide is available at

<https://www.wwpdb.org/validation/2017/XrayValidationReportHelp>

with specific help available everywhere you see the ⓘ symbol.

The types of validation reports are described at

<http://www.wwpdb.org/validation/2017/FAQs#types>.

The following versions of software and data (see [references ⓘ](#)) were used in the production of this report:

MolProbity : 4-5-2 with Phenix2.0
Mogul : 2022.3.0, CSD as543be (2022)
Xtrriage (Phenix) : 2.0
EDS : 3.0
Buster-report : wwPDB partial adaption of 1.1.7 (2018)
Percentile statistics : 20250101.v01 (using entries in the PDB archive January 1st 2025)
CCP4 : 9.0.010 (Gargrove)
Density-Fitness : 1.0.12
Ideal geometry (proteins) : Engh & Huber (2001)
Ideal geometry (DNA, RNA) : Parkinson et al. (1996)
Validation Pipeline (wwPDB-VP) : 2.49

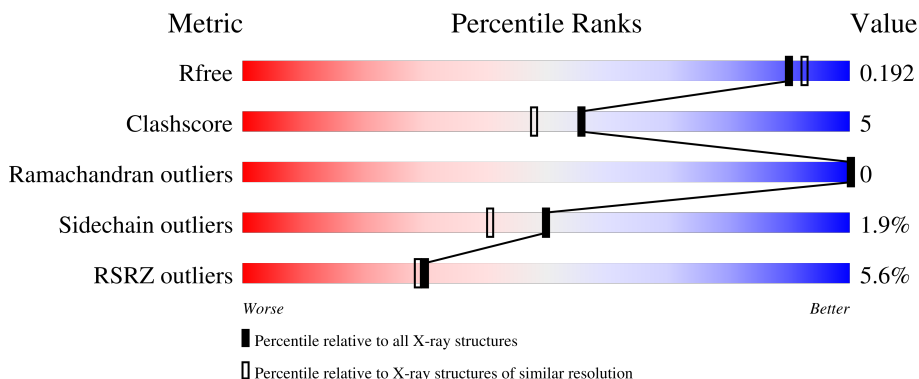
1 Overall quality at a glance

The following experimental techniques were used to determine the structure:

X-RAY DIFFRACTION

The reported resolution of this entry is 1.80 Å.

Percentile scores (ranging between 0-100) for global validation metrics of the entry are shown in the following graphic. The table shows the number of entries on which the scores are based.



Metric	Whole archive (#Entries)	Similar resolution (#Entries, resolution range(Å))
R_{free}	180053	7662 (1.80-1.80)
Clashscore	190562	8479 (1.80-1.80)
Ramachandran outliers	187476	8391 (1.80-1.80)
Sidechain outliers	187428	8390 (1.80-1.80)
RSRZ outliers	180081	7663 (1.80-1.80)

The table below summarises the geometric issues observed across the polymeric chains and their fit to the electron density. The red, orange, yellow and green segments of the lower bar indicate the fraction of residues that contain outliers for ≥ 3 , 2, 1 and 0 types of geometric quality criteria respectively. A grey segment represents the fraction of residues that are not modelled. The numeric value for each fraction is indicated below the corresponding segment, with a dot representing fractions $\leq 5\%$. The upper red bar (where present) indicates the fraction of residues that have poor fit to the electron density. The numeric value is given above the bar.

Mol	Chain	Length	Quality of chain
1	C	76	
2	A	382	

The following table lists non-polymeric compounds, carbohydrate monomers and non-standard residues in protein, DNA, RNA chains that are outliers for geometric or electron-density-fit criteria:

Mol	Type	Chain	Res	Chirality	Geometry	Clashes	Electron density
3	GOL	A	1402	-	-	X	-

2 Entry composition [i](#)

There are 5 unique types of molecules in this entry. The entry contains 3162 atoms, of which 0 are hydrogens and 0 are deuteriums.

In the tables below, the ZeroOcc column contains the number of atoms modelled with zero occupancy, the AltConf column contains the number of residues with at least one atom in alternate conformation and the Trace column contains the number of residues modelled with at most 2 atoms.

- Molecule 1 is a protein called Polyubiquitin-B.

Mol	Chain	Residues	Atoms					ZeroOcc	AltConf	Trace
			Total	C	N	O	S			
1	C	76	617	388	111	117	1	0	2	0

- Molecule 2 is a protein called (E3-independent) E2 ubiquitin-conjugating enzyme.

Mol	Chain	Residues	Atoms					ZeroOcc	AltConf	Trace
			Total	C	N	O	S			
2	A	283	2276	1471	382	414	9	0	0	0

There are 10 discrepancies between the modelled and reference sequences:

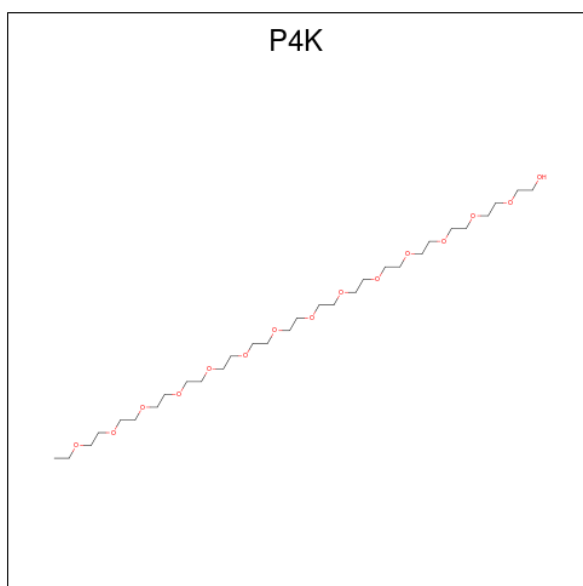
Chain	Residue	Modelled	Actual	Comment	Reference
A	919	MET	-	initiating methionine	UNP Q9C0C9
A	1040	LYS	CYS	conflict	UNP Q9C0C9
A	1293	GLY	-	expression tag	UNP Q9C0C9
A	1294	SER	-	expression tag	UNP Q9C0C9
A	1295	HIS	-	expression tag	UNP Q9C0C9
A	1296	HIS	-	expression tag	UNP Q9C0C9
A	1297	HIS	-	expression tag	UNP Q9C0C9
A	1298	HIS	-	expression tag	UNP Q9C0C9
A	1299	HIS	-	expression tag	UNP Q9C0C9
A	1300	HIS	-	expression tag	UNP Q9C0C9

- Molecule 3 is GLYCEROL (CCD ID: GOL) (formula: C₃H₈O₃) (labeled as "Ligand of Interest" by depositor).



Mol	Chain	Residues	Atoms			ZeroOcc	AltConf
3	C	1	Total	C	O	0	0
			6	3	3		
3	A	1	Total	C	O	0	0
			6	3	3		
3	A	1	Total	C	O	0	0
			6	3	3		
3	A	1	Total	C	O	0	0
			6	3	3		

- Molecule 4 is polyethylene glycol (CCD ID: P4K) (formula: $C_{30}H_{62}O_{15}$) (labeled as "Ligand of Interest" by depositor).



Mol	Chain	Residues	Atoms			ZeroOcc	AltConf
4	A	1	Total	C	O	0	0
			36	24	12		
4	A	1	Total	C	O	0	0
			17	11	6		

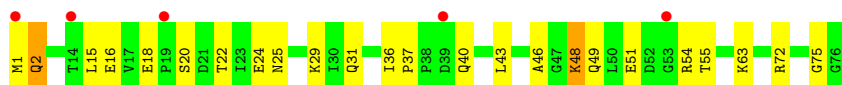
- Molecule 5 is water.

Mol	Chain	Residues	Atoms		ZeroOcc	AltConf
5	C	21	Total	O	0	0
			21	21		
5	A	171	Total	O	0	0
			171	171		

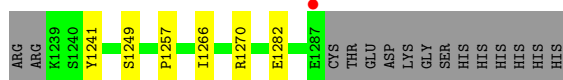
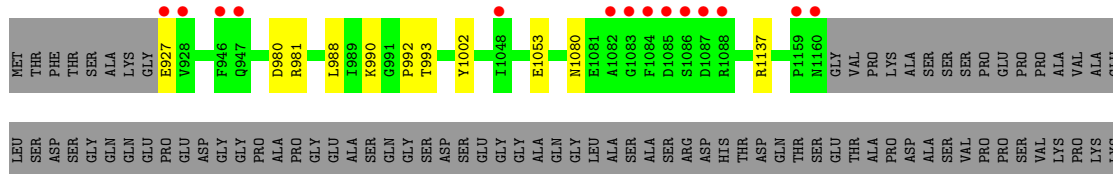
3 Residue-property plots [i](#)

These plots are drawn for all protein, RNA, DNA and oligosaccharide chains in the entry. The first graphic for a chain summarises the proportions of the various outlier classes displayed in the second graphic. The second graphic shows the sequence view annotated by issues in geometry and electron density. Residues are color-coded according to the number of geometric quality criteria for which they contain at least one outlier: green = 0, yellow = 1, orange = 2 and red = 3 or more. A red dot above a residue indicates a poor fit to the electron density ($RSRZ > 2$). Stretches of 2 or more consecutive residues without any outlier are shown as a green connector. Residues present in the sample, but not in the model, are shown in grey.

- Molecule 1: Polyubiquitin-B



- Molecule 2: (E3-independent) E2 ubiquitin-conjugating enzyme



4 Data and refinement statistics

Property	Value	Source
Space group	P 21 21 21	Depositor
Cell constants a, b, c, α , β , γ	61.58Å 82.84Å 98.66Å 90.00° 90.00° 90.00°	Depositor
Resolution (Å)	49.33 – 1.80 49.33 – 1.80	Depositor EDS
% Data completeness (in resolution range)	95.3 (49.33-1.80) 95.3 (49.33-1.80)	Depositor EDS
R_{merge}	(Not available)	Depositor
R_{sym}	(Not available)	Depositor
$\langle I/\sigma(I) \rangle$ ¹	1.72 (at 1.59Å)	Xtrriage
Refinement program	PHENIX 1.21.2_5419	Depositor
R, R_{free}	0.167 , 0.192 0.167 , 0.192	Depositor DCC
R_{free} test set	2507 reflections (3.67%)	wwPDB-VP
Wilson B-factor (Å ²)	32.4	Xtrriage
Anisotropy	0.023	Xtrriage
Bulk solvent k_{sol} (e/Å ³), B_{sol} (Å ²)	0.35 , 38.5	EDS
L-test for twinning ²	$\langle L \rangle = 0.50$, $\langle L^2 \rangle = 0.33$	Xtrriage
Estimated twinning fraction	No twinning to report.	Xtrriage
F_o, F_c correlation	0.97	EDS
Total number of atoms	3162	wwPDB-VP
Average B, all atoms (Å ²)	45.0	wwPDB-VP

Xtrriage's analysis on translational NCS is as follows: *The largest off-origin peak in the Patterson function is 4.85% of the height of the origin peak. No significant pseudotranslation is detected.*

¹Intensities estimated from amplitudes.

²Theoretical values of $\langle |L| \rangle$, $\langle L^2 \rangle$ for acentric reflections are 0.5, 0.333 respectively for untwinned datasets, and 0.375, 0.2 for perfectly twinned datasets.

5 Model quality [i](#)

5.1 Standard geometry [i](#)

Bond lengths and bond angles in the following residue types are not validated in this section: P4K, GOL

The Z score for a bond length (or angle) is the number of standard deviations the observed value is removed from the expected value. A bond length (or angle) with $|Z| > 5$ is considered an outlier worth inspection. RMSZ is the root-mean-square of all Z scores of the bond lengths (or angles).

Mol	Chain	Bond lengths		Bond angles	
		RMSZ	# Z >5	RMSZ	# Z >5
1	C	0.49	0/629	0.70	1/844 (0.1%)
2	A	0.83	0/2335	0.84	1/3160 (0.0%)
All	All	0.77	0/2964	0.82	2/4004 (0.0%)

There are no bond length outliers.

All (2) bond angle outliers are listed below:

Mol	Chain	Res	Type	Atoms	Z	Observed(°)	Ideal(°)
1	C	48	LYS	CG-CD-CE	-6.14	97.18	111.30
2	A	1002	TYR	CB-CA-C	5.29	118.61	110.62

There are no chirality outliers.

There are no planarity outliers.

5.2 Too-close contacts [i](#)

In the following table, the Non-H and H(model) columns list the number of non-hydrogen atoms and hydrogen atoms in the chain respectively. The H(added) column lists the number of hydrogen atoms added and optimized by MolProbity. The Clashes column lists the number of clashes within the asymmetric unit, whereas Symm-Clashes lists symmetry-related clashes.

Mol	Chain	Non-H	H(model)	H(added)	Clashes	Symm-Clashes
1	C	617	0	655	15	0
2	A	2276	0	2271	14	0
3	A	18	0	24	6	0
3	C	6	0	8	3	0
4	A	53	0	0	1	0
5	A	171	0	0	2	0
5	C	21	0	0	1	0

Continued on next page...

Continued from previous page...

Mol	Chain	Non-H	H(model)	H(added)	Clashes	Symm-Clashes
All	All	3162	0	2958	28	0

The all-atom clashscore is defined as the number of clashes found per 1000 atoms (including hydrogen atoms). The all-atom clashscore for this structure is 5.

All (28) close contacts within the same asymmetric unit are listed below, sorted by their clash magnitude.

Atom-1	Atom-2	Interatomic distance (Å)	Clash overlap (Å)
1:C:75:GLY:HA3	3:C:101:GOL:H12	1.56	0.87
2:A:992:PRO:HA	3:A:1402:GOL:H11	1.57	0.86
1:C:16:GLU:O	1:C:29:LYS:NZ	2.31	0.59
2:A:980:ASP:O	3:A:1404:GOL:H11	2.03	0.59
2:A:981:ARG:HA	3:A:1403:GOL:H12	1.86	0.56
2:A:927:GLU:N	2:A:927:GLU:OE1	2.39	0.56
1:C:31:GLN:HG3	1:C:36:ILE:O	2.07	0.54
2:A:990:LYS:HE3	5:A:1589:HOH:O	2.07	0.54
3:C:101:GOL:H11	2:A:1080:ASN:HA	1.90	0.52
2:A:1282:GLU:HG3	5:A:1549:HOH:O	2.11	0.50
1:C:2:GLN:HA	1:C:15:LEU:O	2.12	0.49
2:A:1241:TYR:HB2	2:A:1257:PRO:HG3	1.95	0.49
1:C:49:GLN:HG2	5:C:203:HOH:O	2.14	0.48
2:A:992:PRO:HA	3:A:1402:GOL:C1	2.39	0.46
2:A:988:LEU:C	2:A:988:LEU:HD23	2.41	0.45
2:A:1266:ILE:O	2:A:1270:ARG:HG3	2.17	0.45
1:C:1:MET:HG2	1:C:63:LYS:HB2	1.99	0.44
1:C:72[A]:ARG:NH2	2:A:1053:GLU:OE2	2.51	0.44
1:C:48:LYS:HB3	1:C:48:LYS:HE2	1.73	0.44
1:C:46:ALA:C	3:A:1402:GOL:H31	2.42	0.44
1:C:51:GLU:HB2	1:C:54:ARG:HG3	1.99	0.43
1:C:75:GLY:CA	3:C:101:GOL:H12	2.39	0.43
2:A:1137:ARG:HD2	4:A:1405:P4K:C9	2.47	0.43
2:A:993:THR:HG23	3:A:1402:GOL:H12	2.01	0.43
1:C:1:MET:SD	1:C:63:LYS:HG3	2.59	0.42
1:C:43:LEU:HA	1:C:43:LEU:HD23	1.90	0.41
1:C:37:PRO:HG2	1:C:40:GLN:NE2	2.36	0.41
1:C:22:THR:HA	1:C:55:THR:HA	2.03	0.40

There are no symmetry-related clashes.

5.3 Torsion angles [i](#)

5.3.1 Protein backbone [i](#)

In the following table, the Percentiles column shows the percent Ramachandran outliers of the chain as a percentile score with respect to all X-ray entries followed by that with respect to entries of similar resolution.

The Analysed column shows the number of residues for which the backbone conformation was analysed, and the total number of residues.

Mol	Chain	Analysed	Favoured	Allowed	Outliers	Percentiles	
1	C	76/76 (100%)	73 (96%)	3 (4%)	0	100	100
2	A	279/382 (73%)	273 (98%)	6 (2%)	0	100	100
All	All	355/458 (78%)	346 (98%)	9 (2%)	0	100	100

There are no Ramachandran outliers to report.

5.3.2 Protein sidechains [i](#)

In the following table, the Percentiles column shows the percent sidechain outliers of the chain as a percentile score with respect to all X-ray entries followed by that with respect to entries of similar resolution.

The Analysed column shows the number of residues for which the sidechain conformation was analysed, and the total number of residues.

Mol	Chain	Analysed	Rotameric	Outliers	Percentiles	
1	C	70/68 (103%)	65 (93%)	5 (7%)	13	4
2	A	250/327 (76%)	249 (100%)	1 (0%)	84	83
All	All	320/395 (81%)	314 (98%)	6 (2%)	50	41

All (6) residues with a non-rotameric sidechain are listed below:

Mol	Chain	Res	Type
1	C	2	GLN
1	C	18	GLU
1	C	20	SER
1	C	24	GLU
1	C	25	ASN
2	A	1249	SER

Sometimes sidechains can be flipped to improve hydrogen bonding and reduce clashes. All (1) such

sidechains are listed below:

Mol	Chain	Res	Type
2	A	1007	GLN

5.3.3 RNA [i](#)

There are no RNA molecules in this entry.

5.4 Non-standard residues in protein, DNA, RNA chains [i](#)

There are no non-standard protein/DNA/RNA residues in this entry.

5.5 Carbohydrates [i](#)

There are no oligosaccharides in this entry.

5.6 Ligand geometry [i](#)

6 ligands are modelled in this entry.

In the following table, the Counts columns list the number of bonds (or angles) for which Mogul statistics could be retrieved, the number of bonds (or angles) that are observed in the model and the number of bonds (or angles) that are defined in the Chemical Component Dictionary. The Link column lists molecule types, if any, to which the group is linked. The Z score for a bond length (or angle) is the number of standard deviations the observed value is removed from the expected value. A bond length (or angle) with $|Z| > 2$ is considered an outlier worth inspection. RMSZ is the root-mean-square of all Z scores of the bond lengths (or angles).

Mol	Type	Chain	Res	Link	Bond lengths			Bond angles		
					Counts	RMSZ	$\# Z > 2$	Counts	RMSZ	$\# Z > 2$
3	GOL	A	1404	-	5,5,5	0.44	0	5,5,5	0.91	0
3	GOL	A	1402	-	5,5,5	0.36	0	5,5,5	1.53	1 (20%)
3	GOL	A	1403	-	5,5,5	0.35	0	5,5,5	1.18	1 (20%)
4	P4K	A	1401	-	35,35,44	0.43	0	34,34,43	0.59	0
4	P4K	A	1405	-	16,16,44	0.57	0	15,15,43	1.07	2 (13%)
3	GOL	C	101	-	5,5,5	0.35	0	5,5,5	0.69	0

In the following table, the Chirals column lists the number of chiral outliers, the number of chiral centers analysed, the number of these observed in the model and the number defined in the Chemical Component Dictionary. Similar counts are reported in the Torsion and Rings columns. '2' means no outliers of that kind were identified.

Mol	Type	Chain	Res	Link	Chirals	Torsions	Rings
3	GOL	A	1404	-	-	2/4/4/4	-
3	GOL	A	1402	-	-	2/4/4/4	-
3	GOL	A	1403	-	-	2/4/4/4	-
4	P4K	A	1401	-	-	18/33/33/42	-
4	P4K	A	1405	-	-	7/14/14/42	-
3	GOL	C	101	-	-	4/4/4/4	-

There are no bond length outliers.

All (4) bond angle outliers are listed below:

Mol	Chain	Res	Type	Atoms	Z	Observed(°)	Ideal(°)
4	A	1405	P4K	C3-O2-C2	2.36	123.60	113.26
3	A	1403	GOL	O3-C3-C2	-2.08	101.01	110.38
3	A	1402	GOL	O3-C3-C2	-2.03	101.25	110.38
4	A	1405	P4K	O3-C4-C3	2.01	119.50	110.35

There are no chirality outliers.

All (35) torsion outliers are listed below:

Mol	Chain	Res	Type	Atoms
3	C	101	GOL	C1-C2-C3-O3
3	C	101	GOL	O2-C2-C3-O3
3	A	1402	GOL	O1-C1-C2-C3
3	A	1404	GOL	C1-C2-C3-O3
4	A	1401	P4K	O11-C21-C22-O12
4	A	1401	P4K	O6-C10-C9-O5
4	A	1401	P4K	O9-C17-C18-O10
4	A	1405	P4K	O6-C10-C9-O5
4	A	1405	P4K	O1-C1-C2-O2
3	C	101	GOL	O1-C1-C2-C3
3	A	1403	GOL	O1-C1-C2-C3
3	C	101	GOL	O1-C1-C2-O2
3	A	1404	GOL	O2-C2-C3-O3
4	A	1405	P4K	O4-C7-C8-O5
4	A	1401	P4K	O7-C13-C14-O8
3	A	1403	GOL	O1-C1-C2-O2
4	A	1401	P4K	C10-C9-O5-C8
4	A	1405	P4K	C7-C8-O5-C9
4	A	1401	P4K	C13-C14-O8-C15
4	A	1401	P4K	C16-C15-O8-C14
4	A	1405	P4K	C3-C4-O3-C5

Continued on next page...

Continued from previous page...

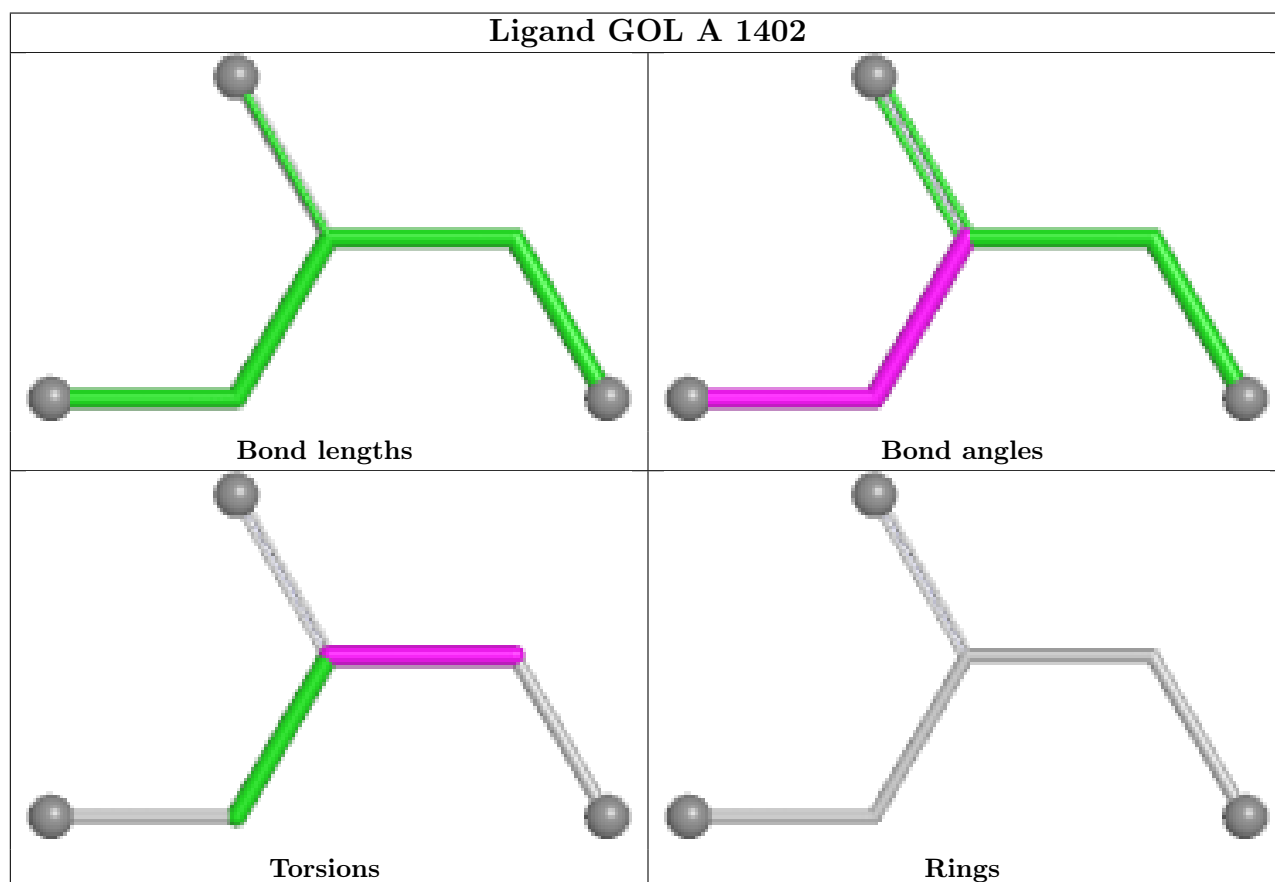
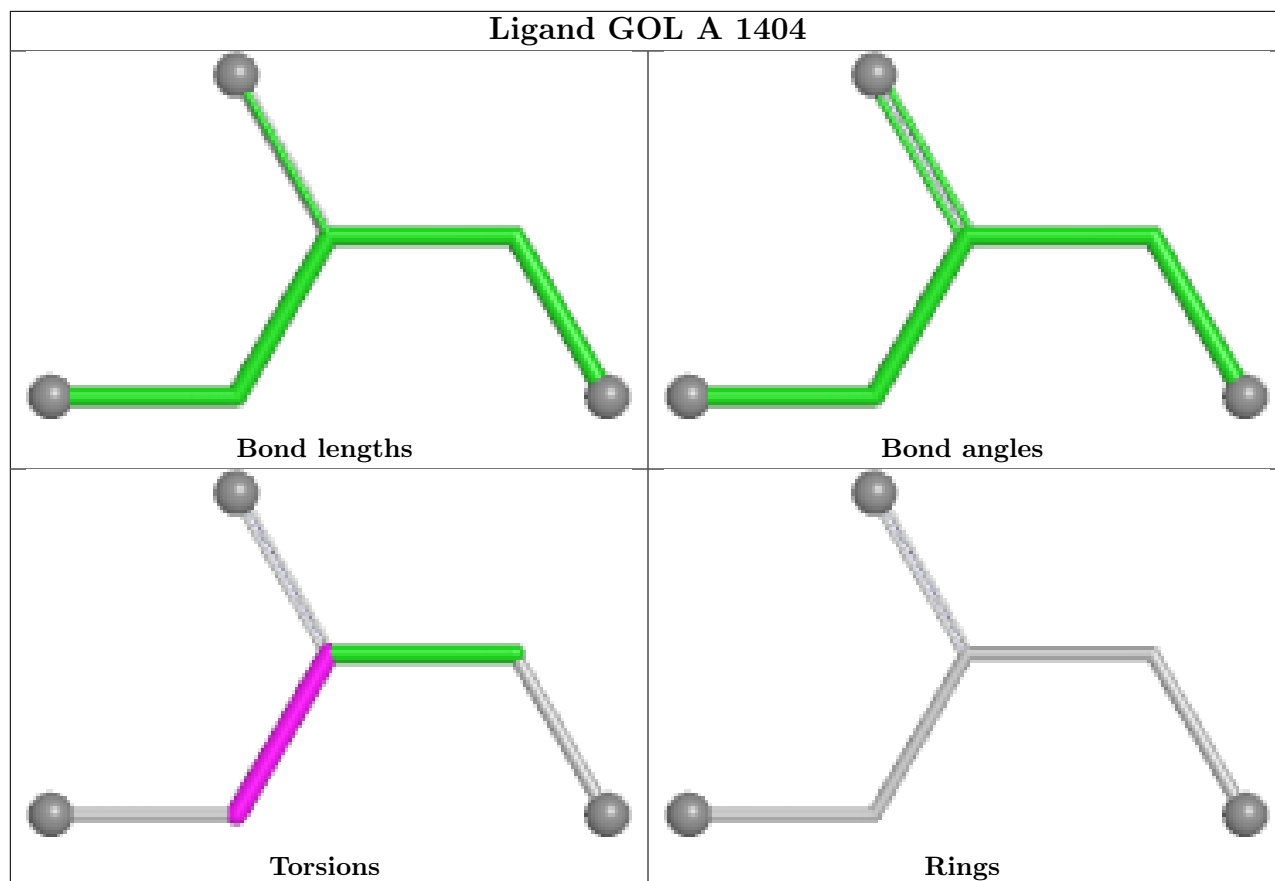
Mol	Chain	Res	Type	Atoms
3	A	1402	GOL	O1-C1-C2-O2
4	A	1401	P4K	C18-C17-O9-C16
4	A	1401	P4K	O8-C15-C16-O9
4	A	1401	P4K	C25-C26-O14-C27
4	A	1401	P4K	C24-C23-O12-C22
4	A	1401	P4K	O12-C23-C24-O13
4	A	1405	P4K	C10-C9-O5-C8
4	A	1401	P4K	C19-C20-O11-C21
4	A	1401	P4K	O4-C7-C8-O5
4	A	1401	P4K	C7-C8-O5-C9
4	A	1401	P4K	C15-C16-O9-C17
4	A	1401	P4K	O14-C27-C28-O15
4	A	1401	P4K	O6-C11-C12-O7
4	A	1405	P4K	C6-C5-O3-C4

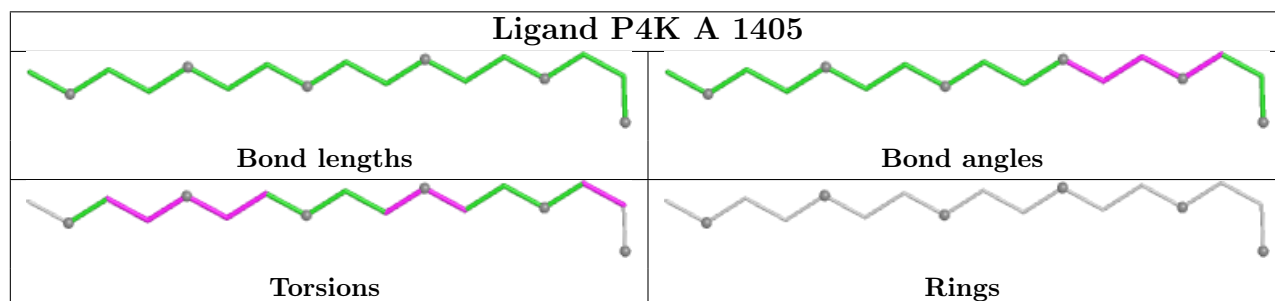
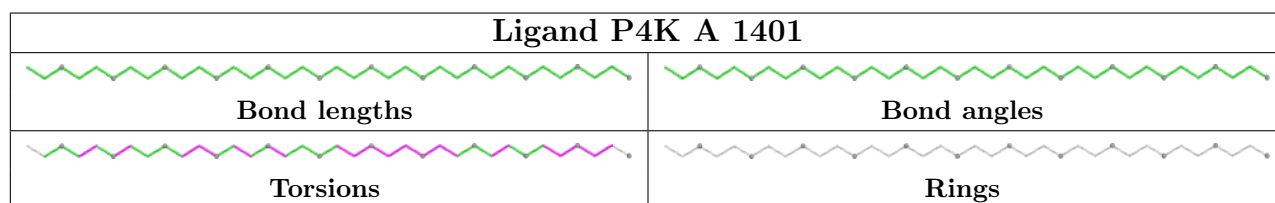
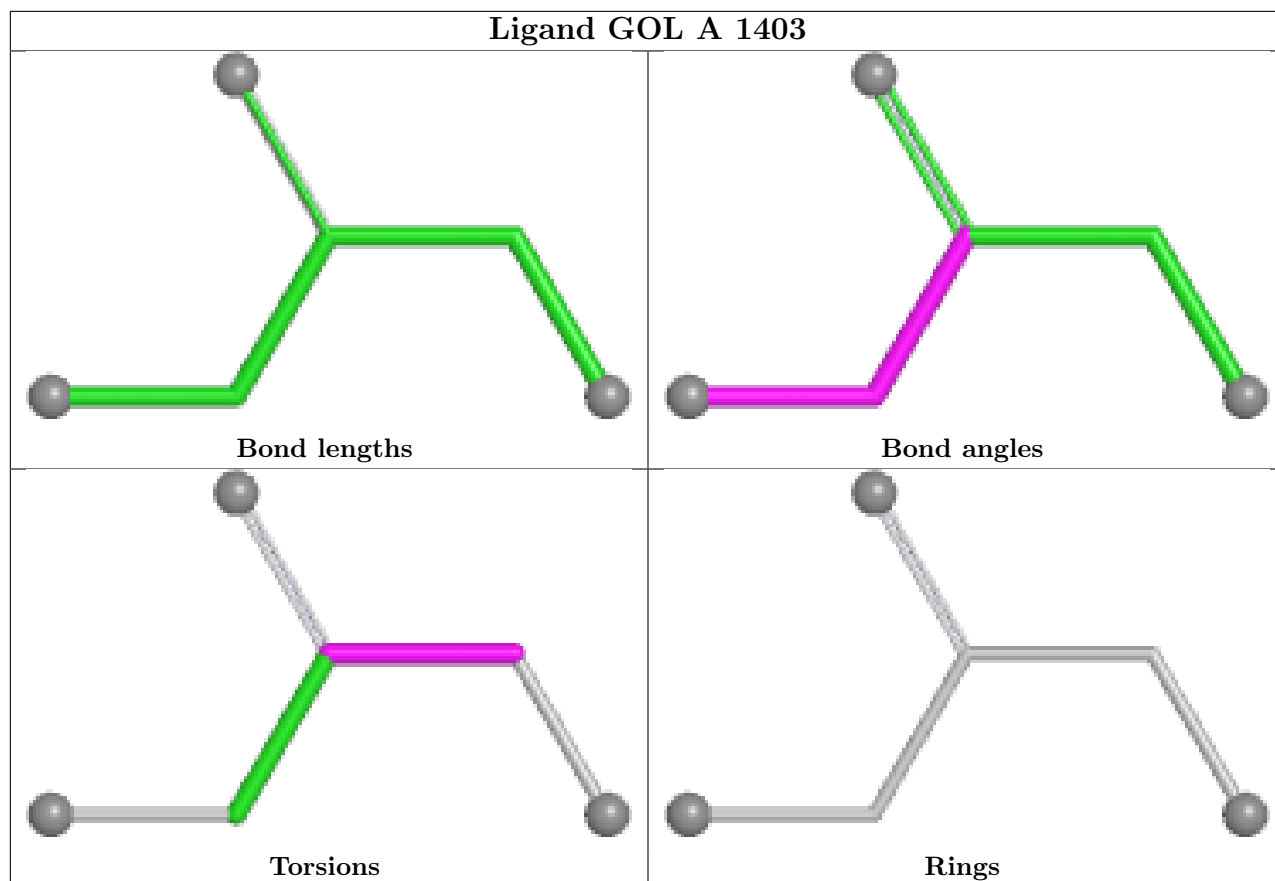
There are no ring outliers.

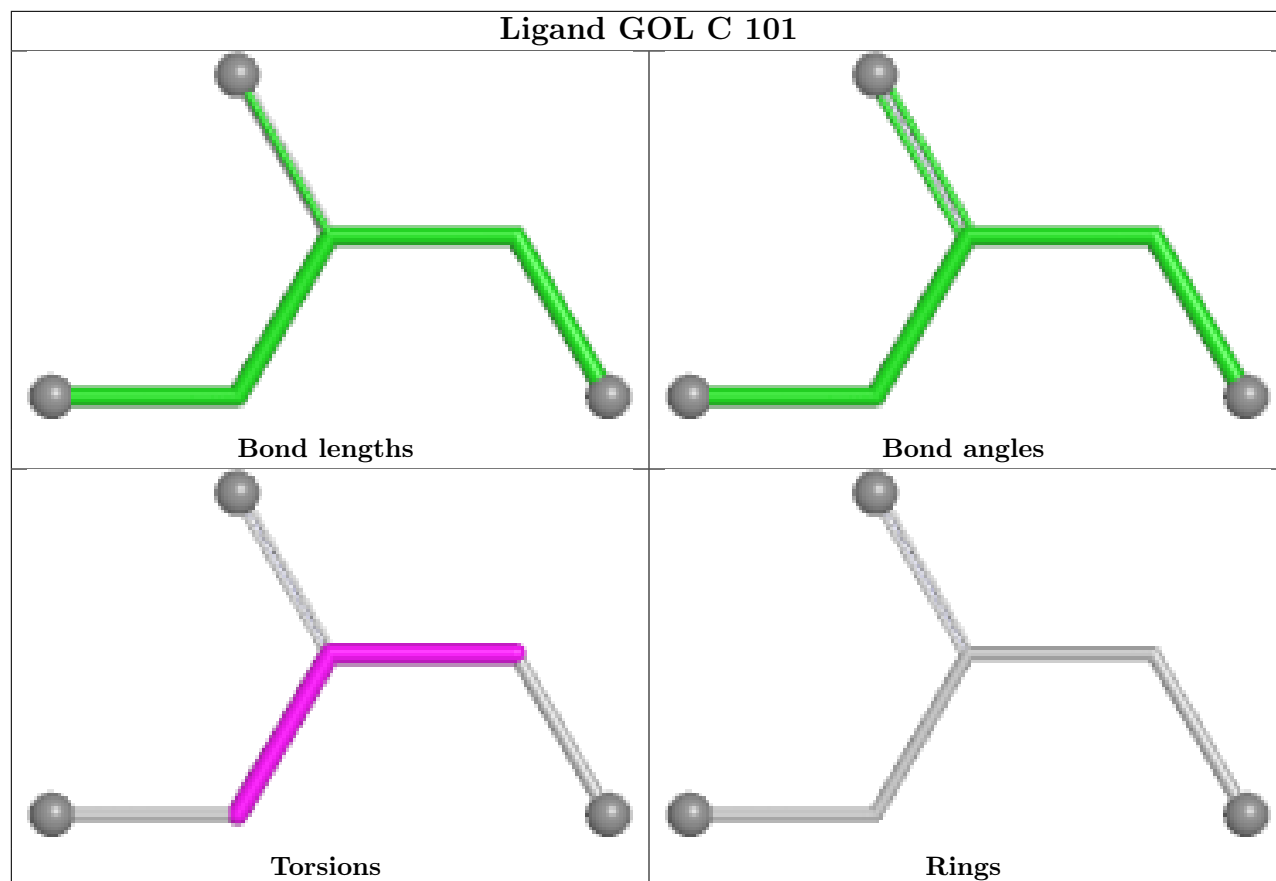
5 monomers are involved in 10 short contacts:

Mol	Chain	Res	Type	Clashes	Symm-Clashes
3	A	1404	GOL	1	0
3	A	1402	GOL	4	0
3	A	1403	GOL	1	0
4	A	1405	P4K	1	0
3	C	101	GOL	3	0

The following is a two-dimensional graphical depiction of Mogul quality analysis of bond lengths, bond angles, torsion angles, and ring geometry for all instances of the Ligand of Interest. In addition, ligands with molecular weight > 250 and outliers as shown on the validation Tables will also be included. For torsion angles, if less than 5% of the Mogul distribution of torsion angles is within 10 degrees of the torsion angle in question, then that torsion angle is considered an outlier. Any bond that is central to one or more torsion angles identified as an outlier by Mogul will be highlighted in the graph. For rings, the root-mean-square deviation (RMSD) between the ring in question and similar rings identified by Mogul is calculated over all ring torsion angles. If the average RMSD is greater than 60 degrees and the minimal RMSD between the ring in question and any Mogul-identified rings is also greater than 60 degrees, then that ring is considered an outlier. The outliers are highlighted in purple. The color gray indicates Mogul did not find sufficient equivalents in the CSD to analyse the geometry.







5.7 Other polymers [i](#)

There are no such residues in this entry.

5.8 Polymer linkage issues [i](#)

There are no chain breaks in this entry.

6 Fit of model and data [i](#)

6.1 Protein, DNA and RNA chains [i](#)

In the following table, the column labelled ‘#RSRZ > 2’ contains the number (and percentage) of RSRZ outliers, followed by percent RSRZ outliers for the chain as percentile scores relative to all X-ray entries and entries of similar resolution. The OWAB column contains the minimum, median, 95th percentile and maximum values of the occupancy-weighted average B-factor per residue. The column labelled ‘Q < 0.9’ lists the number of (and percentage) of residues with an average occupancy less than 0.9.

Mol	Chain	Analysed	<RSRZ>	#RSRZ>2	OWAB(Å ²)	Q<0.9
1	C	76/76 (100%)	0.71	5 (6%) 24 23	29, 67, 91, 102	2 (2%)
2	A	283/382 (74%)	-0.01	15 (5%) 32 31	23, 34, 64, 110	0
All	All	359/458 (78%)	0.14	20 (5%) 30 29	23, 37, 87, 110	2 (0%)

All (20) RSRZ outliers are listed below:

Mol	Chain	Res	Type	RSRZ
2	A	1085	ASP	4.1
1	C	53	GLY	4.0
2	A	1084	PHE	4.0
2	A	1083	GLY	3.5
2	A	1082	ALA	3.1
2	A	1086	SER	3.1
2	A	1160	ASN	2.9
2	A	1087	ASP	2.8
2	A	1088	ARG	2.7
1	C	39	ASP	2.7
2	A	1287	GLU	2.5
1	C	1	MET	2.5
2	A	927	GLU	2.4
2	A	947	GLN	2.3
1	C	14	THR	2.3
2	A	946	PHE	2.2
1	C	19	PRO	2.1
2	A	928	VAL	2.1
2	A	1159	PRO	2.0
2	A	1048	ILE	2.0

6.2 Non-standard residues in protein, DNA, RNA chains [i](#)

There are no non-standard protein/DNA/RNA residues in this entry.

6.3 Carbohydrates [i](#)

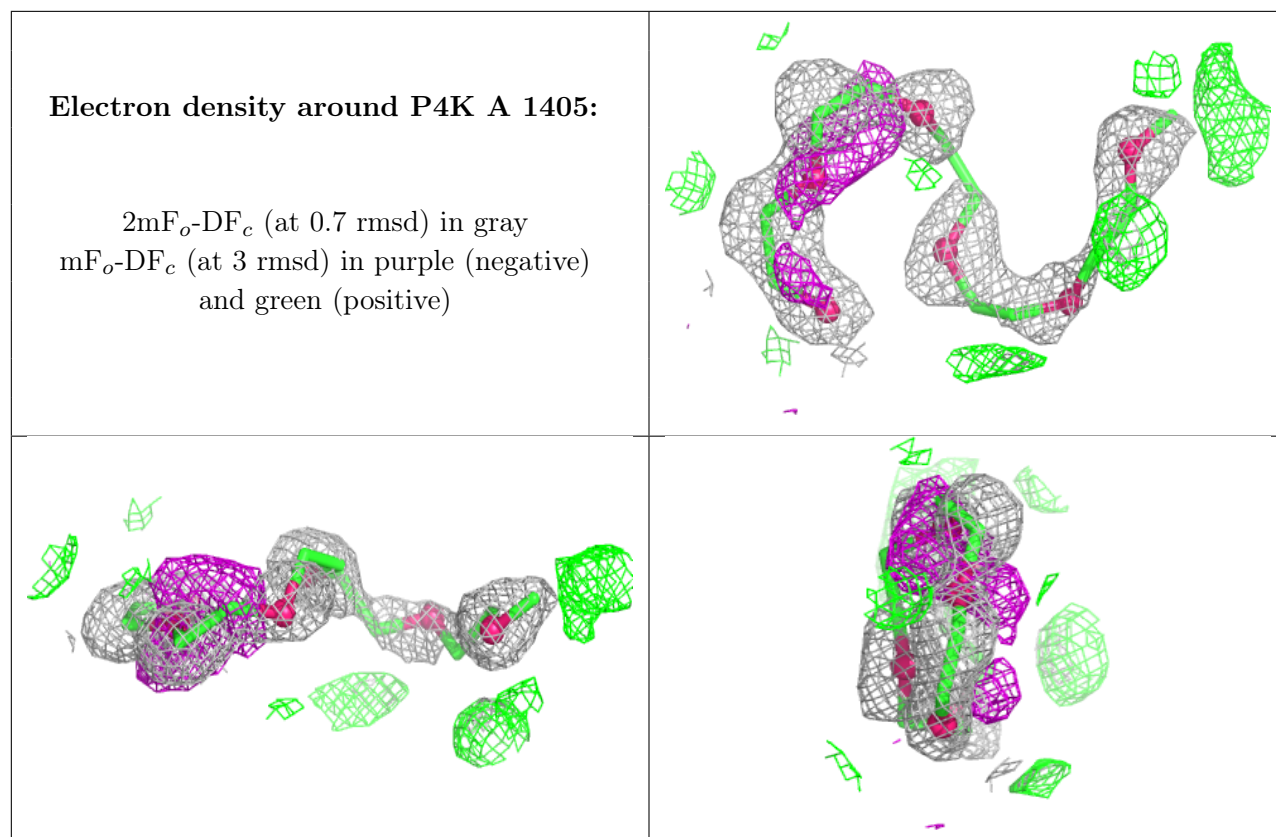
There are no oligosaccharides in this entry.

6.4 Ligands [i](#)

In the following table, the Atoms column lists the number of modelled atoms in the group and the number defined in the chemical component dictionary. The B-factors column lists the minimum, median, 95th percentile and maximum values of B factors of atoms in the group. The column labelled 'Q< 0.9' lists the number of atoms with occupancy less than 0.9.

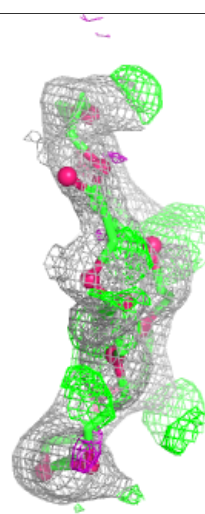
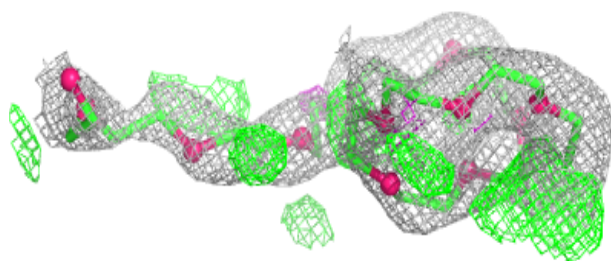
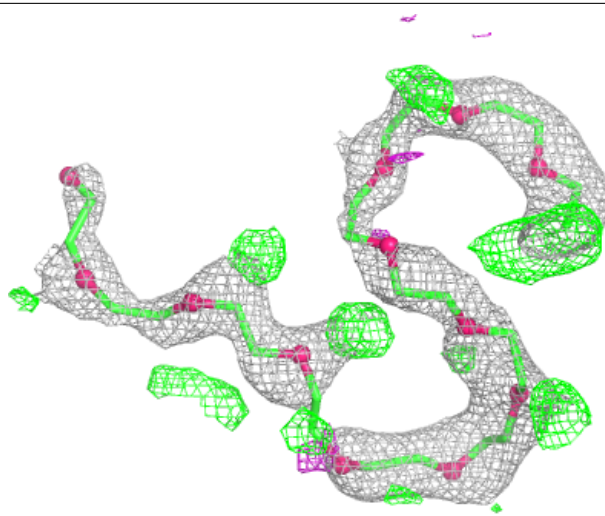
Mol	Type	Chain	Res	Atoms	RSCC	RSR	B-factors(\AA^2)	Q<0.9
4	P4K	A	1405	17/45	0.63	0.23	42,72,81,84	0
4	P4K	A	1401	36/45	0.74	0.20	46,68,78,85	0
3	GOL	A	1404	6/6	0.82	0.16	50,63,64,67	0
3	GOL	C	101	6/6	0.84	0.15	48,57,64,68	0
3	GOL	A	1402	6/6	0.85	0.14	39,52,59,66	0
3	GOL	A	1403	6/6	0.91	0.12	38,51,58,59	0

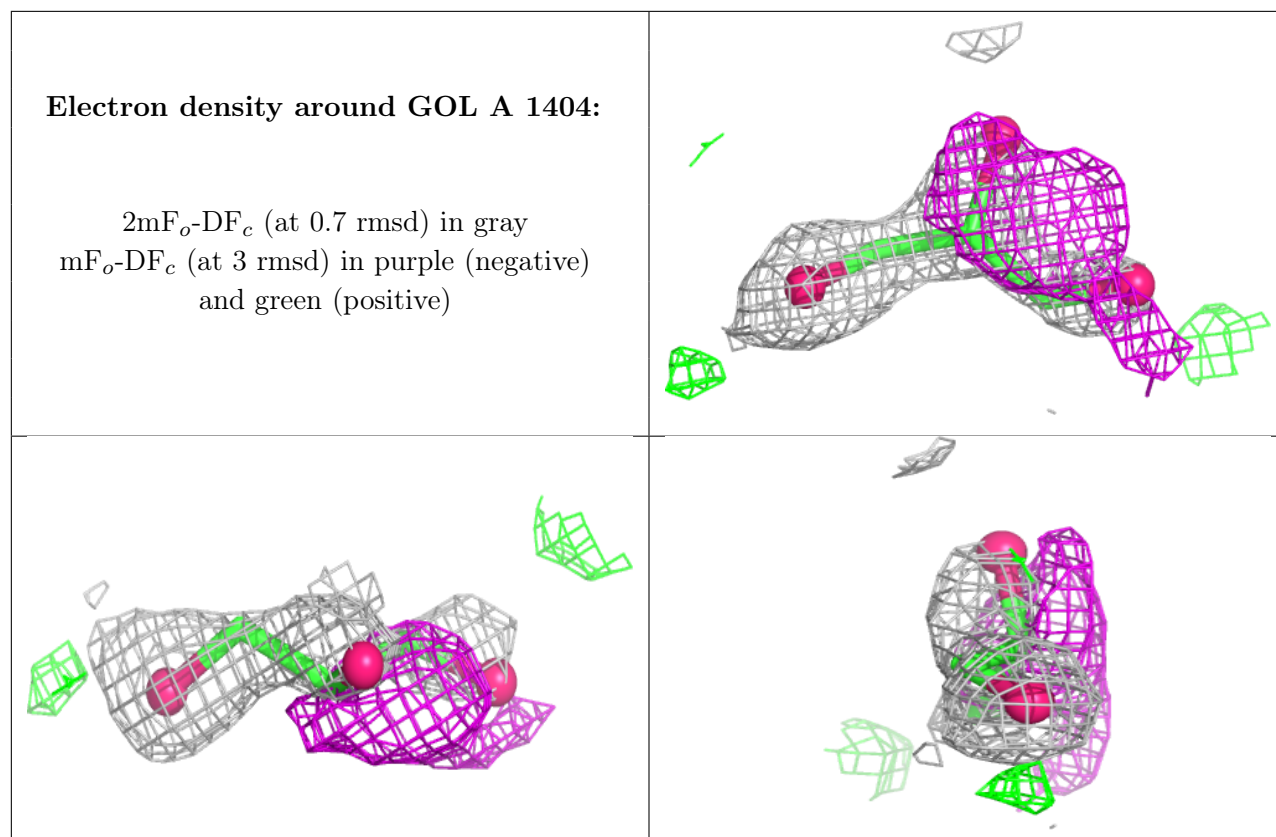
The following is a graphical depiction of the model fit to experimental electron density of all instances of the Ligand of Interest. In addition, ligands with molecular weight > 250 and outliers as shown on the geometry validation Tables will also be included. Each fit is shown from different orientation to approximate a three-dimensional view.

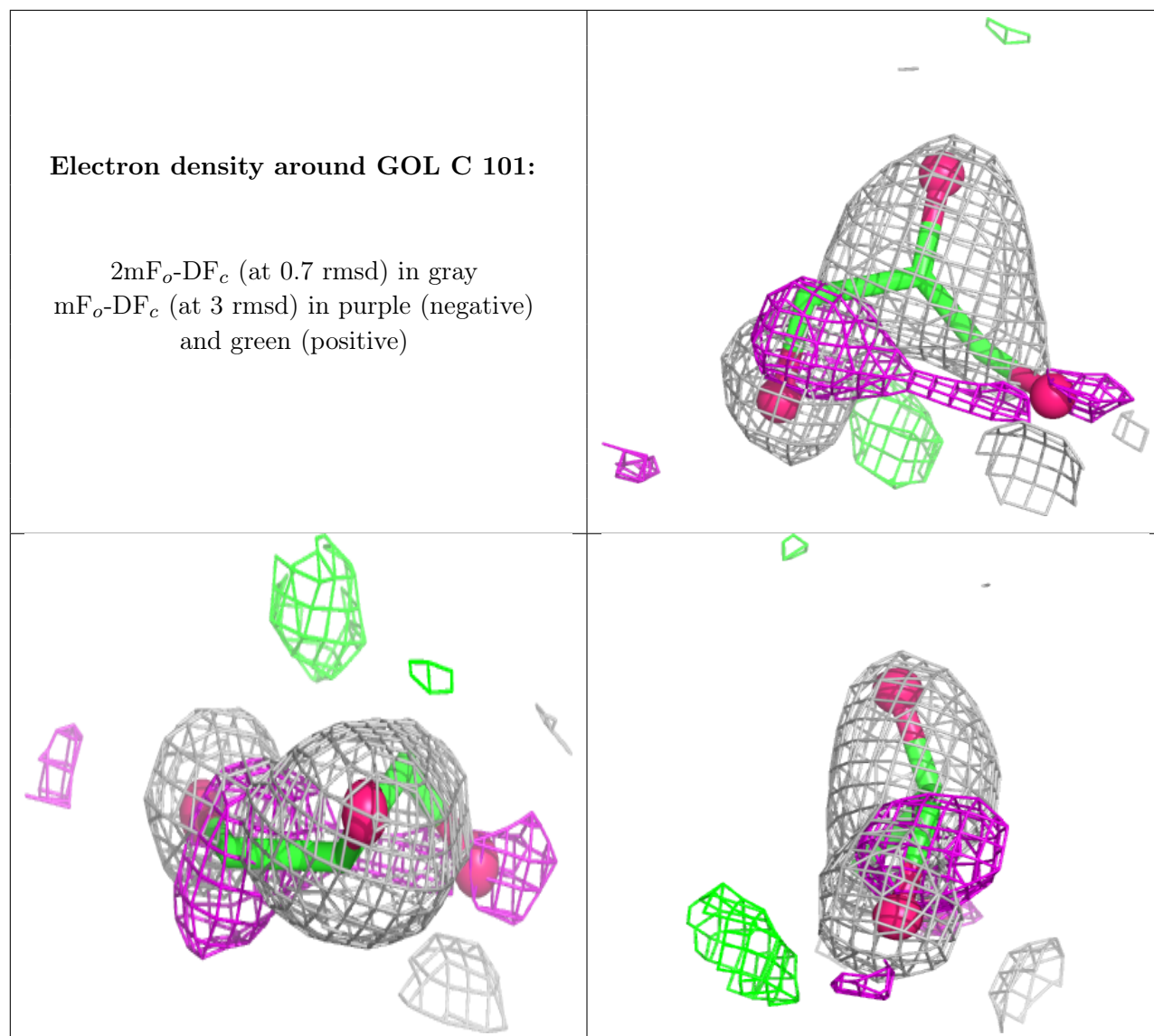


Electron density around P4K A 1401:

$2mF_o-DF_c$ (at 0.7 rmsd) in gray
 mF_o-DF_c (at 3 rmsd) in purple (negative)
and green (positive)

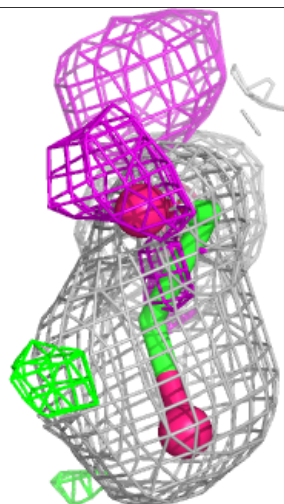
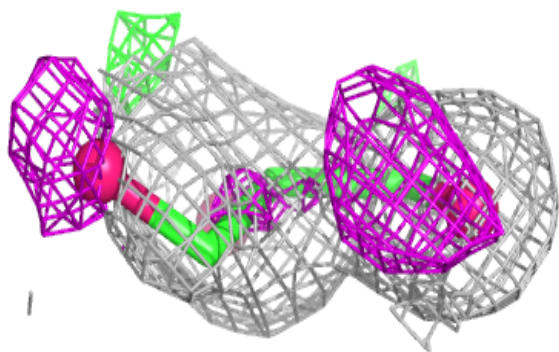
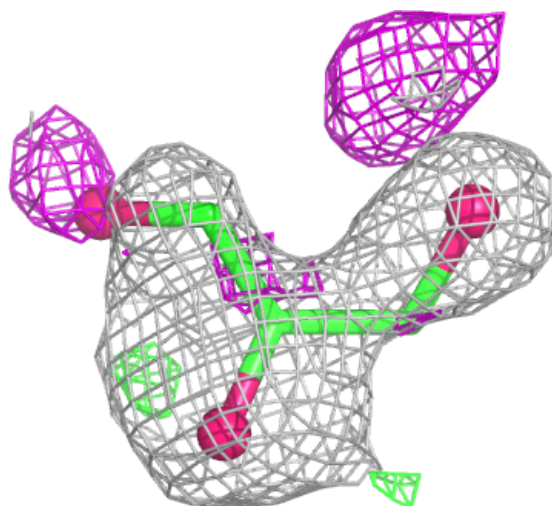


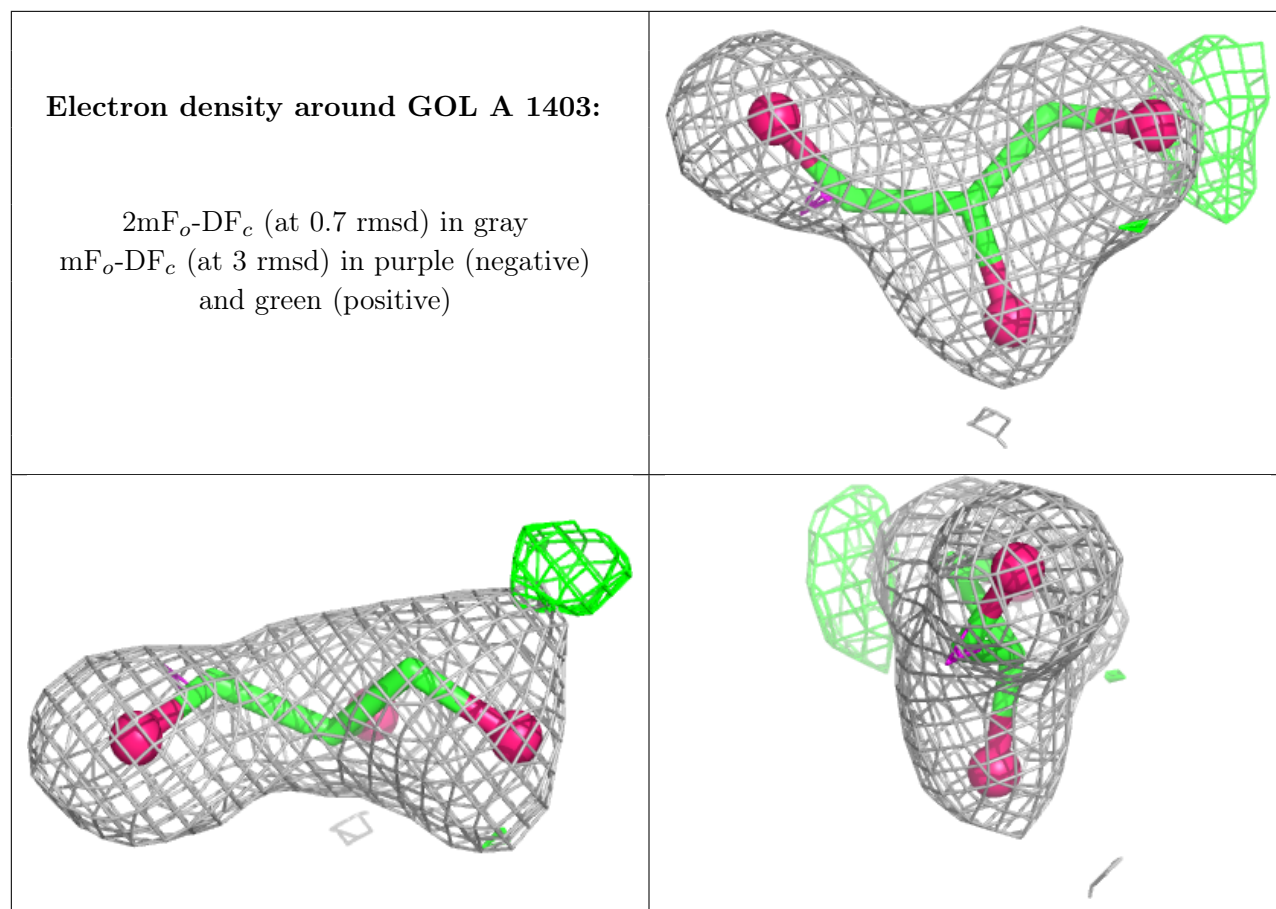




Electron density around GOL A 1402:

$2mF_o-DF_c$ (at 0.7 rmsd) in gray
 mF_o-DF_c (at 3 rmsd) in purple (negative)
and green (positive)





6.5 Other polymers [i](#)

There are no such residues in this entry.