



## Full wwPDB EM Validation Report ⓘ

Mar 27, 2026 – 06:43 PM UTC

PDB ID : 9QON / pdb\_00009qon  
EMDB ID : EMD-53264  
Title : Ternary complex of the human 20S proteasome in complex with Importin-9 and two homodimers of Akirin-2 - focussed refinement on the alpha subunits, Ipo-9 and Ak2  
Authors : Brunner, H.L.; Grundmann, L.; David, H.  
Deposited on : 2025-03-26  
Resolution : 3.20 Å(reported)

This is a Full wwPDB EM Validation Report for a publicly released PDB entry.

We welcome your comments at [validation@mail.wwpdb.org](mailto:validation@mail.wwpdb.org)

A user guide is available at

<https://www.wwpdb.org/validation/2017/EMValidationReportHelp>

with specific help available everywhere you see the ⓘ symbol.

The types of validation reports are described at

<http://www.wwpdb.org/validation/2017/FAQs#types>.

---

The following versions of software and data (see [references ⓘ](#)) were used in the production of this report:

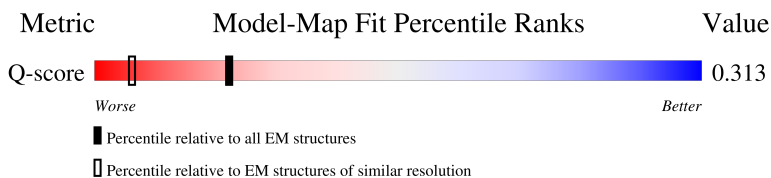
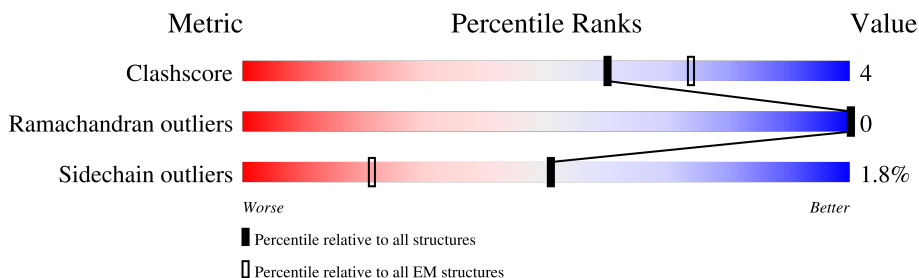
EMDB validation analysis : 0.0.1.dev132  
MolProbity : 4-5-2 with Phenix2.0  
Percentile statistics : 20250101.v01 (using entries in the PDB archive January 1st 2025)  
EM percentile statistics : 202505.v01 (Using data in the EMDB archive up until May 2025)  
MapQ : 1.9.13  
Ideal geometry (proteins) : Engh & Huber (2001)  
Ideal geometry (DNA, RNA) : Parkinson et al. (1996)  
Validation Pipeline (wwPDB-VP) : 2.49

# 1 Overall quality at a glance

The following experimental techniques were used to determine the structure:  
*ELECTRON MICROSCOPY*

The reported resolution of this entry is 3.20 Å.

Percentile scores (ranging between 0-100) for global validation metrics of the entry are shown in the following graphic. The table shows the number of entries on which the scores are based.







Metric	Whole archive (#Entries)	EM structures (#Entries)	Similar EM resolution (#Entries, resolution range(Å))
Clashscore	229148	23984	-
Ramachandran outliers	224038	23583	-
Sidechain outliers	223484	23102	-
Q-score	-	25397	15020 ( 2.70 - 3.70 )

The table below summarises the geometric issues observed across the polymeric chains and their fit to the map. The red, orange, yellow and green segments of the bar indicate the fraction of residues that contain outliers for  $\geq 3$ , 2, 1 and 0 types of geometric quality criteria respectively. A grey segment represents the fraction of residues that are not modelled. The numeric value for each fraction is indicated below the corresponding segment, with a dot representing fractions  $\leq 5\%$ . The upper red bar (where present) indicates the fraction of residues that have poor fit to the EM map (all-atom inclusion  $< 40\%$ ). The numeric value is given above the bar.

Mol	Chain	Length	Quality of chain
1	A	1041	
2	B	203	
2	C	203	
2	D	203	

Continued on next page...

*Continued from previous page...*

Mol	Chain	Length	Quality of chain
3	F	255	 85% 10% 5%
4	G	246	 91% 8% .
5	O	234	 89% 9% .
6	P	261	 85% 9% 5%
7	Q	248	 81% 14% .
8	R	241	 90% 10%
9	S	263	 79% 11% 10%

## 2 Entry composition [i](#)

There are 9 unique types of molecules in this entry. The entry contains 32930 atoms, of which 16396 are hydrogens and 0 are deuteriums.

In the tables below, the AltConf column contains the number of residues with at least one atom in alternate conformation and the Trace column contains the number of residues modelled with at most 2 atoms.

- Molecule 1 is a protein called Importin-9.

Mol	Chain	Residues	Atoms					AltConf	Trace	
			Total	C	H	N	O			S
1	A	264	3742	1212	1818	339	362	11	0	0

- Molecule 2 is a protein called Akirin-2.

Mol	Chain	Residues	Atoms					AltConf	Trace	
			Total	C	H	N	O			S
2	B	61	1033	328	512	90	100	3	0	0
2	C	90	1476	470	725	137	140	4	0	0
2	D	28	426	136	206	44	39	1	0	0

- Molecule 3 is a protein called Proteasome subunit alpha type-3.

Mol	Chain	Residues	Atoms					AltConf	Trace	
			Total	C	H	N	O			S
3	F	242	3776	1201	1883	323	358	11	0	0

- Molecule 4 is a protein called Proteasome subunit alpha type-6.

Mol	Chain	Residues	Atoms					AltConf	Trace	
			Total	C	H	N	O			S
4	G	242	3781	1197	1895	315	361	13	0	0

- Molecule 5 is a protein called Proteasome subunit alpha type-2.

Mol	Chain	Residues	Atoms					AltConf	Trace	
			Total	C	H	N	O			S
5	O	231	3609	1155	1802	306	340	6	0	0

- Molecule 6 is a protein called Proteasome subunit alpha type-4.

Mol	Chain	Residues	Atoms					AltConf	Trace	
			Total	C	H	N	O			S
6	P	248	3928	1234	1975	336	373	10	0	0

- Molecule 7 is a protein called Proteasome subunit alpha type-7.

Mol	Chain	Residues	Atoms					AltConf	Trace	
			Total	C	H	N	O			S
7	Q	237	3765	1174	1895	331	360	5	0	0

- Molecule 8 is a protein called Proteasome subunit alpha type-5.


Mol	Chain	Residues	Atoms					AltConf	Trace	
			Total	C	H	N	O			S
8	R	241	3686	1163	1836	305	370	12	0	0

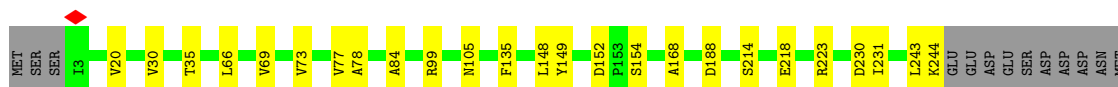
- Molecule 9 is a protein called Proteasome subunit alpha type-1.

Mol	Chain	Residues	Atoms					AltConf	Trace	
			Total	C	H	N	O			S
9	S	236	3708	1166	1849	334	348	11	0	0





Chain F:  85% 10% 5%




- Molecule 4: Proteasome subunit alpha type-6

Chain G:  91% 8%




- Molecule 5: Proteasome subunit alpha type-2

Chain O:  89% 9%




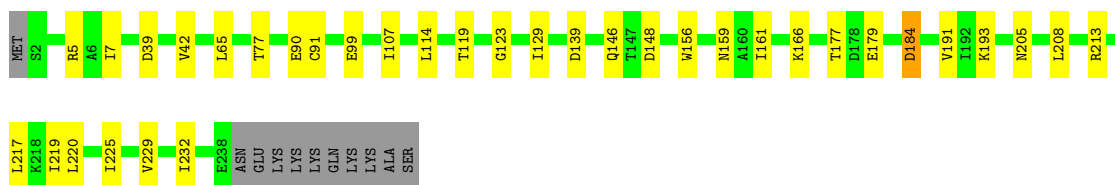
- Molecule 6: Proteasome subunit alpha type-4

Chain P:  85% 9% 5%



- Molecule 7: Proteasome subunit alpha type-7

Chain Q:  81% 14%

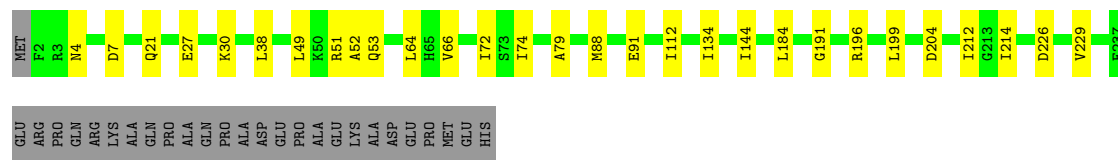
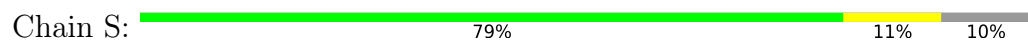


- Molecule 8: Proteasome subunit alpha type-5

Chain R:  90% 10%



- Molecule 9: Proteasome subunit alpha type-1



## 4 Experimental information

Property	Value	Source
EM reconstruction method	SINGLE PARTICLE	Depositor
Imposed symmetry	POINT, Not provided	
Number of particles used	61740	Depositor
Resolution determination method	FSC 0.143 CUT-OFF	Depositor
CTF correction method	PHASE FLIPPING AND AMPLITUDE CORRECTION	Depositor
Microscope	TFS KRIOS	Depositor
Voltage (kV)	300	Depositor
Electron dose ( $e^-/\text{\AA}^2$ )	44.4	Depositor
Minimum defocus (nm)	1000	Depositor
Maximum defocus (nm)	1900	Depositor
Magnification	Not provided	
Image detector	GATAN K3 BIOQUANTUM (6k x 4k)	Depositor
Maximum map value	1.880	Depositor
Minimum map value	-0.014	Depositor
Average map value	0.001	Depositor
Map value standard deviation	0.022	Depositor
Recommended contour level	0.0313	Depositor
Map size ( $\text{\AA}$ )	428.99997, 428.99997, 428.99997	wwPDB
Map dimensions	300, 300, 300	wwPDB
Map angles ( $^\circ$ )	90.0, 90.0, 90.0	wwPDB
Pixel spacing ( $\text{\AA}$ )	1.43, 1.43, 1.43	Depositor

## 5 Model quality [i](#)

### 5.1 Standard geometry [i](#)

The Z score for a bond length (or angle) is the number of standard deviations the observed value is removed from the expected value. A bond length (or angle) with  $|Z| > 5$  is considered an outlier worth inspection. RMSZ is the root-mean-square of all Z scores of the bond lengths (or angles).

Mol	Chain	Bond lengths		Bond angles	
		RMSZ	# Z  >5	RMSZ	# Z  >5
1	A	0.12	0/1953	0.32	0/2654
2	B	0.16	0/529	0.32	0/706
2	C	0.12	0/761	0.31	0/1014
2	D	0.08	0/221	0.23	0/293
3	F	0.16	0/1928	0.34	0/2596
4	G	0.16	0/1920	0.32	0/2595
5	O	0.16	0/1846	0.34	0/2500
6	P	0.15	0/1983	0.33	0/2671
7	Q	0.16	0/1896	0.32	0/2558
8	R	0.14	0/1879	0.32	0/2536
9	S	0.15	0/1894	0.32	0/2559
All	All	0.15	0/16810	0.32	0/22682

There are no bond length outliers.

There are no bond angle outliers.

There are no chirality outliers.

There are no planarity outliers.

### 5.2 Too-close contacts [i](#)

In the following table, the Non-H and H(model) columns list the number of non-hydrogen atoms and hydrogen atoms in the chain respectively. The H(added) column lists the number of hydrogen atoms added and optimized by MolProbity. The Clashes column lists the number of clashes within the asymmetric unit, whereas Symm-Clashes lists symmetry-related clashes.

Mol	Chain	Non-H	H(model)	H(added)	Clashes	Symm-Clashes
1	A	1924	1818	1816	28	0
2	B	521	512	511	6	0
2	C	751	725	723	9	0
2	D	220	206	205	0	0
3	F	1893	1883	1882	14	0

*Continued on next page...*

*Continued from previous page...*

Mol	Chain	Non-H	H(model)	H(added)	Clashes	Symm-Clashes
4	G	1886	1895	1893	14	0
5	O	1807	1802	1801	13	0
6	P	1953	1975	1973	21	0
7	Q	1870	1895	1893	19	0
8	R	1850	1836	1836	13	0
9	S	1859	1849	1848	20	0
All	All	16534	16396	16381	148	0

The all-atom clashscore is defined as the number of clashes found per 1000 atoms (including hydrogen atoms). The all-atom clashscore for this structure is 4.

All (148) close contacts within the same asymmetric unit are listed below, sorted by their clash magnitude.

Atom-1	Atom-2	Interatomic distance (Å)	Clash overlap (Å)
7:Q:99:GLU:N	7:Q:99:GLU:OE2	2.11	0.82
3:F:230:ASP:OD2	3:F:231:ILE:N	2.13	0.81
7:Q:179:GLU:N	7:Q:179:GLU:OE1	2.18	0.76
1:A:733:ASP:OD1	1:A:734:GLU:N	2.19	0.75
5:O:14:PRO:O	5:O:15:SER:OG	2.07	0.72
2:C:80:GLN:O	2:C:84:ASN:ND2	2.21	0.72
6:P:76:VAL:HG11	6:P:83:ALA:CB	2.24	0.68
1:A:725:LEU:HD11	1:A:740:LEU:HD21	1.76	0.67
6:P:76:VAL:HG11	6:P:83:ALA:HB2	1.77	0.66
4:G:10:ASP:OD1	4:G:11:ARG:N	2.30	0.65
3:F:152:ASP:OD1	3:F:154:SER:N	2.33	0.61
8:R:9:ASP:OD1	8:R:10:ARG:N	2.32	0.61
9:S:66:VAL:HG21	9:S:88:MET:HE2	1.83	0.61
9:S:72:ILE:CG2	9:S:88:MET:HE1	2.30	0.61
9:S:88:MET:SD	9:S:112:ILE:HD11	2.41	0.60
5:O:74:VAL:HG22	5:O:75:TYR:H	1.67	0.60
1:A:802:MET:HE2	1:A:846:ARG:HH12	1.67	0.59
6:P:155:ASN:OD1	7:Q:77:THR:OG1	2.17	0.59
9:S:72:ILE:HG21	9:S:88:MET:HE1	1.86	0.57
9:S:49:LEU:HD13	9:S:199:LEU:HD21	1.85	0.57
1:A:719:ALA:O	1:A:723:VAL:HG22	2.04	0.57
2:B:155:LEU:HD11	2:C:158:ARG:HD2	1.87	0.57
1:A:705:ASP:OD1	1:A:705:ASP:O	2.23	0.56
5:O:51:GLN:OE1	5:O:51:GLN:HA	2.06	0.56
3:F:152:ASP:OD1	3:F:152:ASP:C	2.49	0.55
4:G:10:ASP:OD1	4:G:10:ASP:C	2.49	0.55
9:S:27:GLU:OE1	9:S:30:LYS:NZ	2.40	0.55

*Continued on next page...*

*Continued from previous page...*

Atom-1	Atom-2	Interatomic distance (Å)	Clash overlap (Å)
8:R:31:ILE:HD13	8:R:140:ALA:HB2	1.89	0.55
1:A:725:LEU:HD12	1:A:725:LEU:O	2.07	0.54
6:P:224:VAL:HG23	6:P:224:VAL:O	2.07	0.54
2:B:142:PHE:O	2:C:142:PHE:N	2.41	0.54
6:P:11:ILE:HG22	7:Q:7:ILE:HG23	1.90	0.53
6:P:44:LEU:C	6:P:44:LEU:HD12	2.33	0.53
3:F:99:ARG:NH1	3:F:105:ASN:OD1	2.39	0.53
5:O:184:GLU:OE2	5:O:184:GLU:HA	2.08	0.52
9:S:91:GLU:HA	9:S:91:GLU:OE1	2.09	0.52
6:P:194:ILE:HD12	6:P:237:ILE:CD1	2.40	0.52
8:R:107:MET:HG2	8:R:112:VAL:HG23	1.91	0.52
1:A:911:ILE:HD12	1:A:915:VAL:HG12	1.91	0.52
3:F:30:VAL:HG23	3:F:78:ALA:O	2.10	0.51
9:S:212:ILE:CG2	9:S:214:ILE:HD11	2.40	0.51
9:S:4:ASN:ND2	9:S:7:ASP:OD1	2.42	0.51
2:B:173:LYS:N	2:B:173:LYS:HD2	2.26	0.51
2:C:82:LEU:O	2:C:86:LYS:HG3	2.10	0.51
6:P:140:ASP:OD1	6:P:141:LYS:N	2.44	0.50
5:O:63:LYS:N	5:O:208:GLU:OE2	2.43	0.50
1:A:820:LEU:HD12	1:A:820:LEU:O	2.12	0.50
9:S:72:ILE:HG22	9:S:134:ILE:HG12	1.93	0.49
1:A:840:MET:HG2	1:A:913:LEU:HD21	1.95	0.49
6:P:76:VAL:HG11	6:P:83:ALA:HB1	1.94	0.49
9:S:7:ASP:O	9:S:21:GLN:NE2	2.43	0.49
6:P:92:LEU:HD12	6:P:96:ARG:HH21	1.78	0.49
4:G:19:GLU:HA	4:G:19:GLU:OE1	2.13	0.49
2:B:158:ARG:O	2:B:162:VAL:HG22	2.13	0.48
6:P:197:LEU:HA	6:P:200:THR:HG22	1.95	0.48
1:A:789:ILE:O	1:A:793:MET:HG3	2.14	0.48
2:C:192:ARG:HD3	2:C:195:GLU:OE1	2.12	0.48
9:S:212:ILE:HD12	9:S:229:VAL:HG23	1.96	0.48
7:Q:91:CYS:SG	7:Q:107:ILE:HD12	2.53	0.48
9:S:49:LEU:CD1	9:S:199:LEU:HD21	2.43	0.48
7:Q:184:ASP:N	7:Q:184:ASP:OD1	2.47	0.48
6:P:246:LYS:N	6:P:246:LYS:HD3	2.29	0.48
2:B:200:TYR:OH	6:P:18:LEU:N	2.40	0.47
6:P:82:ASP:OD2	6:P:82:ASP:N	2.47	0.47
8:R:238:ILE:HD13	8:R:241:ILE:HD12	1.96	0.47
1:A:923:ASN:O	1:A:927:ASN:OD1	2.33	0.47
2:C:188:GLN:O	5:O:15:SER:OG	2.29	0.46
3:F:35:THR:OG1	3:F:168:ALA:HB3	2.15	0.46

*Continued on next page...*

*Continued from previous page...*

Atom-1	Atom-2	Interatomic distance (Å)	Clash overlap (Å)
6:P:194:ILE:HD12	6:P:237:ILE:HD13	1.98	0.46
7:Q:39:ASP:OD1	7:Q:213:ARG:NH2	2.41	0.46
3:F:20:VAL:O	3:F:20:VAL:HG13	2.16	0.46
5:O:99:VAL:HG12	5:O:100:TYR:CD2	2.51	0.46
1:A:824:LEU:HD11	1:A:839:VAL:HG21	1.97	0.46
3:F:230:ASP:OD2	3:F:230:ASP:C	2.58	0.46
3:F:218:GLU:HA	3:F:218:GLU:OE1	2.16	0.46
7:Q:225:ILE:O	7:Q:229:VAL:HG23	2.16	0.45
1:A:776:ARG:HD2	1:A:776:ARG:C	2.42	0.45
1:A:910:ASN:O	1:A:910:ASN:CG	2.60	0.45
7:Q:146:GLN:NE2	7:Q:148:ASP:OD2	2.50	0.45
7:Q:156:TRP:CG	7:Q:159:ASN:HD22	2.35	0.45
3:F:77:VAL:HG12	3:F:135:PHE:HB3	1.97	0.45
8:R:99:HIS:CG	8:R:107:MET:HE3	2.52	0.45
1:A:733:ASP:OD1	1:A:733:ASP:C	2.59	0.45
4:G:93:ARG:NH1	4:G:97:GLU:OE2	2.46	0.45
5:O:106:THR:O	5:O:110:VAL:HG23	2.17	0.45
3:F:77:VAL:HG11	3:F:84:ALA:HB1	1.97	0.45
5:O:206:ASN:O	5:O:207:ILE:HG23	2.16	0.45
8:R:99:HIS:CB	8:R:107:MET:HE3	2.46	0.44
9:S:51:ARG:NH2	9:S:52:ALA:O	2.50	0.44
5:O:114:ALA:HB1	5:O:152:GLY:O	2.17	0.44
6:P:59:VAL:HG22	6:P:60:PHE:N	2.33	0.44
8:R:25:GLU:HA	8:R:25:GLU:OE2	2.16	0.44
8:R:121:LEU:HD12	9:S:79:ALA:HB3	2.00	0.44
9:S:196:ARG:NH1	9:S:204:ASP:OD1	2.51	0.44
1:A:784:GLN:OE1	1:A:787:ARG:NH2	2.47	0.44
4:G:46:ASP:OD1	4:G:46:ASP:C	2.61	0.44
7:Q:208:LEU:HD22	7:Q:220:LEU:HD12	1.99	0.44
1:A:812:LEU:HB3	1:A:820:LEU:HD22	2.00	0.43
2:B:178:TYR:O	2:B:182:VAL:HG23	2.18	0.43
1:A:820:LEU:HD12	1:A:824:LEU:HD23	1.99	0.43
2:C:142:PHE:N	2:C:142:PHE:CD1	2.85	0.43
1:A:776:ARG:HD2	1:A:776:ARG:O	2.19	0.43
5:O:38:LYS:NZ	6:P:57:ASP:OD2	2.47	0.43
5:O:168:ASN:HA	5:O:171:THR:HG22	2.00	0.43
7:Q:217:LEU:C	7:Q:217:LEU:HD23	2.44	0.43
9:S:38:LEU:HD11	9:S:191:GLY:CA	2.48	0.43
3:F:223:ARG:HH11	3:F:223:ARG:HG3	1.84	0.42
4:G:165:ALA:O	5:O:55:LEU:HD13	2.19	0.42
2:C:88:GLU:OE2	2:C:91:ARG:NH2	2.50	0.42

*Continued on next page...*

Continued from previous page...

Atom-1	Atom-2	Interatomic distance (Å)	Clash overlap (Å)
7:Q:65:LEU:HD13	7:Q:107:ILE:HD11	2.00	0.42
8:R:215:ILE:HG13	8:R:234:LEU:HD21	2.02	0.42
1:A:840:MET:CG	1:A:913:LEU:HD11	2.50	0.42
7:Q:42:VAL:HB	7:Q:191:VAL:HG21	2.01	0.42
1:A:803:GLN:O	1:A:807:MET:HG2	2.19	0.42
4:G:244:GLU:O	4:G:244:GLU:HG3	2.20	0.42
6:P:59:VAL:HG22	6:P:60:PHE:H	1.84	0.42
4:G:56:VAL:O	4:G:56:VAL:CG1	2.68	0.42
7:Q:193:LYS:HG3	7:Q:232:ILE:HD13	2.01	0.42
8:R:190:THR:OG1	8:R:191:LEU:N	2.52	0.42
1:A:911:ILE:HD12	1:A:915:VAL:CG1	2.50	0.41
4:G:38:THR:HG23	4:G:202:LEU:HD11	2.01	0.41
4:G:176:THR:O	4:G:180:GLU:HG3	2.20	0.41
9:S:64:LEU:HD12	9:S:74:ILE:HD11	2.02	0.41
6:P:52:ILE:O	6:P:52:ILE:HG23	2.20	0.41
3:F:69:VAL:HG23	3:F:73:VAL:HB	2.03	0.41
4:G:131:MET:SD	4:G:131:MET:N	2.93	0.41
7:Q:5:ARG:O	7:Q:123:GLY:N	2.54	0.41
1:A:869:HIS:ND1	1:A:869:HIS:C	2.78	0.41
6:P:49:ARG:HH21	6:P:52:ILE:HD12	1.86	0.41
7:Q:139:ASP:OD1	7:Q:139:ASP:C	2.64	0.41
1:A:723:VAL:HG23	1:A:724:THR:N	2.35	0.41
1:A:848:HIS:ND1	1:A:849:LEU:HD23	2.36	0.41
4:G:211:LYS:NZ	4:G:211:LYS:HB3	2.35	0.41
7:Q:90:GLU:O	7:Q:90:GLU:OE2	2.39	0.41
1:A:744:MET:HE1	1:A:785:ILE:HD11	2.02	0.41
3:F:148:LEU:HD23	3:F:149:TYR:N	2.36	0.41
9:S:226:ASP:O	9:S:229:VAL:HG12	2.21	0.41
1:A:782:LEU:C	1:A:782:LEU:HD23	2.46	0.40
2:C:79:GLU:O	2:C:83:TYR:HD1	2.04	0.40
8:R:84:ASP:OD2	8:R:135:ARG:NH1	2.47	0.40
4:G:209:ASP:OD1	4:G:209:ASP:N	2.39	0.40
9:S:184:LEU:O	9:S:184:LEU:HD23	2.21	0.40
4:G:53:GLN:OE1	4:G:206:LEU:HD11	2.21	0.40
6:P:76:VAL:HG22	6:P:134:LEU:HD23	2.02	0.40
8:R:157:ASP:OD1	8:R:157:ASP:C	2.65	0.40
8:R:196:LYS:NZ	8:R:196:LYS:HB2	2.36	0.40
1:A:698:ALA:HA	1:A:701:THR:HG22	2.02	0.40
7:Q:119:THR:O	7:Q:119:THR:HG22	2.21	0.40

There are no symmetry-related clashes.

## 5.3 Torsion angles [i](#)

### 5.3.1 Protein backbone [i](#)

In the following table, the Percentiles column shows the percent Ramachandran outliers of the chain as a percentile score with respect to all PDB entries followed by that with respect to all EM entries.

The Analysed column shows the number of residues for which the backbone conformation was analysed, and the total number of residues.

Mol	Chain	Analysed	Favoured	Allowed	Outliers	Percentiles	
1	A	258/1041 (25%)	251 (97%)	7 (3%)	0	100	100
2	B	59/203 (29%)	58 (98%)	1 (2%)	0	100	100
2	C	86/203 (42%)	81 (94%)	5 (6%)	0	100	100
2	D	26/203 (13%)	26 (100%)	0	0	100	100
3	F	240/255 (94%)	235 (98%)	5 (2%)	0	100	100
4	G	240/246 (98%)	234 (98%)	6 (2%)	0	100	100
5	O	229/234 (98%)	223 (97%)	6 (3%)	0	100	100
6	P	246/261 (94%)	239 (97%)	7 (3%)	0	100	100
7	Q	235/248 (95%)	231 (98%)	4 (2%)	0	100	100
8	R	239/241 (99%)	238 (100%)	1 (0%)	0	100	100
9	S	234/263 (89%)	228 (97%)	6 (3%)	0	100	100
All	All	2092/3398 (62%)	2044 (98%)	48 (2%)	0	100	100

There are no Ramachandran outliers to report.

### 5.3.2 Protein sidechains [i](#)

In the following table, the Percentiles column shows the percent sidechain outliers of the chain as a percentile score with respect to all PDB entries followed by that with respect to all EM entries.

The Analysed column shows the number of residues for which the sidechain conformation was analysed, and the total number of residues.

Mol	Chain	Analysed	Rotameric	Outliers	Percentiles	
1	A	187/894 (21%)	184 (98%)	3 (2%)	55	75
2	B	56/171 (33%)	55 (98%)	1 (2%)	51	74
2	C	76/171 (44%)	76 (100%)	0	100	100

*Continued on next page...*

*Continued from previous page...*

Mol	Chain	Analysed	Rotameric	Outliers	Percentiles	
2	D	19/171 (11%)	18 (95%)	1 (5%)	20	53
3	F	199/212 (94%)	194 (98%)	5 (2%)	42	69
4	G	206/210 (98%)	205 (100%)	1 (0%)	81	85
5	O	190/191 (100%)	188 (99%)	2 (1%)	65	79
6	P	208/221 (94%)	205 (99%)	3 (1%)	59	77
7	Q	201/211 (95%)	193 (96%)	8 (4%)	28	61
8	R	203/203 (100%)	198 (98%)	5 (2%)	42	69
9	S	202/224 (90%)	200 (99%)	2 (1%)	68	80
All	All	1747/2879 (61%)	1716 (98%)	31 (2%)	51	74

All (31) residues with a non-rotameric sidechain are listed below:

Mol	Chain	Res	Type
1	A	700	CYS
1	A	920	LEU
1	A	927	ASN
2	B	185	THR
2	D	79	GLU
3	F	66	LEU
3	F	188	ASP
3	F	214	SER
3	F	243	LEU
3	F	244	LYS
4	G	155	ASP
5	O	47	THR
5	O	160	THR
6	P	81	SER
6	P	92	LEU
6	P	239	LYS
7	Q	114	LEU
7	Q	129	ILE
7	Q	161	ILE
7	Q	166	LYS
7	Q	177	THR
7	Q	184	ASP
7	Q	205	ASN
7	Q	219	ILE
8	R	41	GLN
8	R	122	GLN

*Continued on next page...*

*Continued from previous page...*

Mol	Chain	Res	Type
8	R	139	VAL
8	R	224	GLN
8	R	230	THR
9	S	53	GLN
9	S	144	ILE

Sometimes sidechains can be flipped to improve hydrogen bonding and reduce clashes. All (13) such sidechains are listed below:

Mol	Chain	Res	Type
1	A	781	ASN
1	A	910	ASN
2	B	171	ASN
2	B	188	GLN
4	G	150	GLN
5	O	87	HIS
5	O	122	GLN
5	O	147	GLN
6	P	142	HIS
8	R	178	GLN
8	R	227	HIS
9	S	8	ASN
9	S	65	HIS

### 5.3.3 RNA [i](#)

There are no RNA molecules in this entry.

### 5.4 Non-standard residues in protein, DNA, RNA chains [i](#)

There are no non-standard protein/DNA/RNA residues in this entry.

### 5.5 Carbohydrates [i](#)

There are no oligosaccharides in this entry.

### 5.6 Ligand geometry [i](#)

There are no ligands in this entry.

## 5.7 Other polymers [i](#)

There are no such residues in this entry.

## 5.8 Polymer linkage issues [i](#)

There are no chain breaks in this entry.

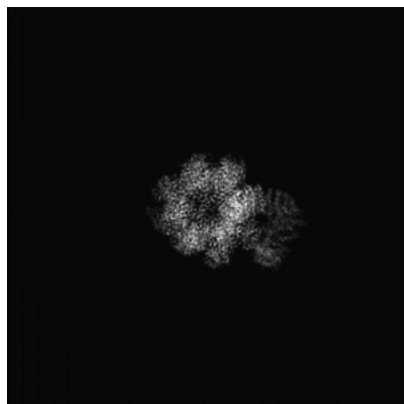
## 6 Map visualisation [i](#)

This section contains visualisations of the EMDB entry EMD-53264. These allow visual inspection of the internal detail of the map and identification of artifacts.

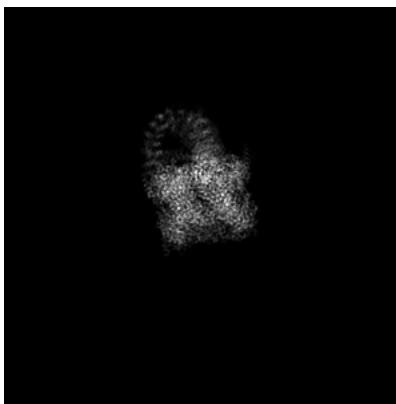
Images derived from a raw map, generated by summing the deposited half-maps, are presented below the corresponding image components of the primary map to allow further visual inspection and comparison with those of the primary map.

### 6.1 Orthogonal projections [i](#)

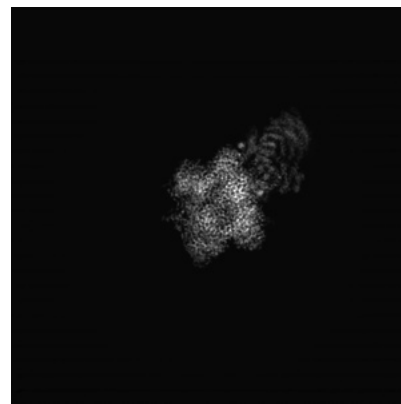
#### 6.1.1 Primary map



X

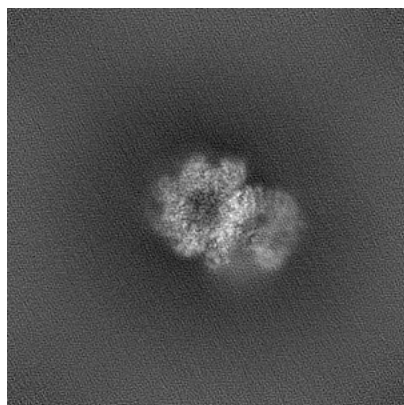


Y

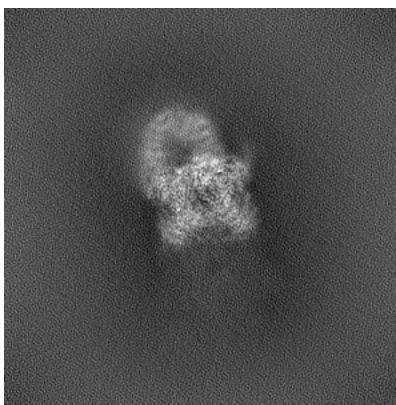


Z

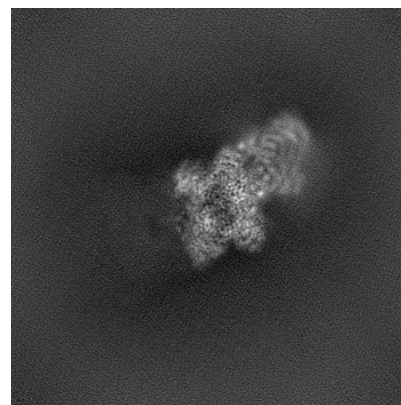
#### 6.1.2 Raw map



X



Y



Z

The images above show the map projected in three orthogonal directions.

## 6.2 Central slices [i](#)

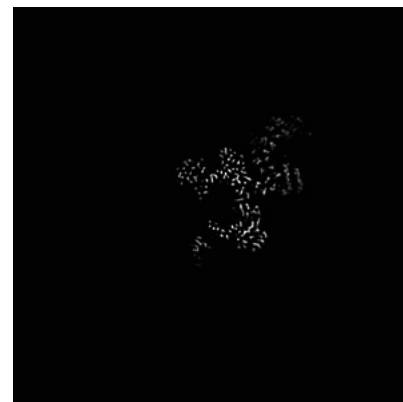
### 6.2.1 Primary map



X Index: 150

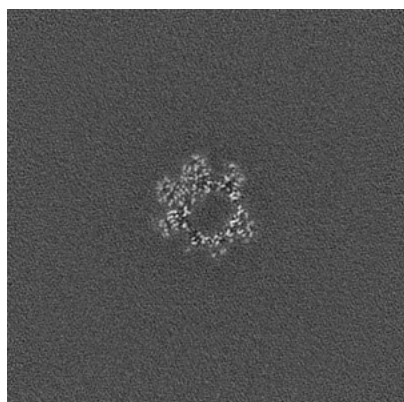


Y Index: 150

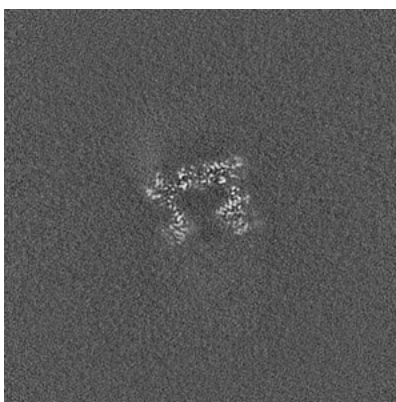


Z Index: 150

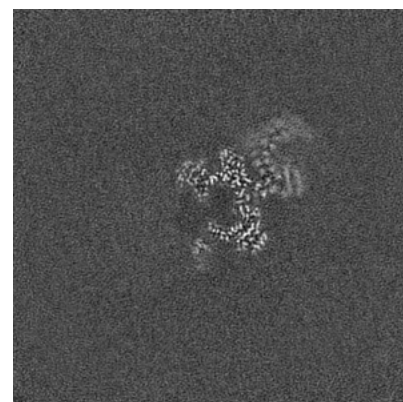
### 6.2.2 Raw map



X Index: 150



Y Index: 150



Z Index: 150

The images above show central slices of the map in three orthogonal directions.

## 6.3 Largest variance slices [i](#)

### 6.3.1 Primary map



X Index: 172

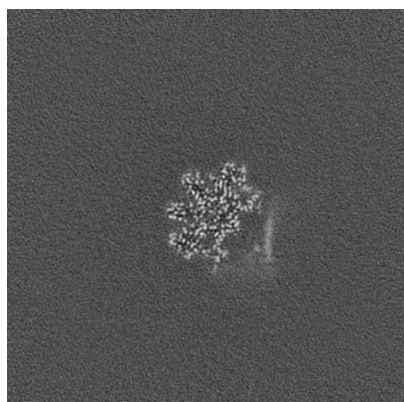


Y Index: 164

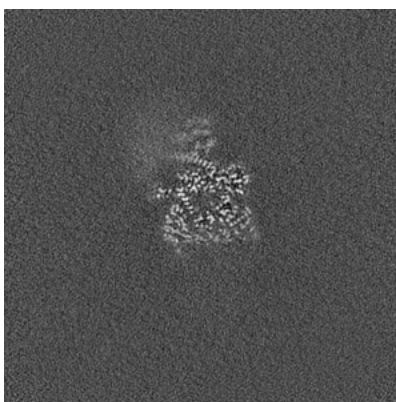


Z Index: 131

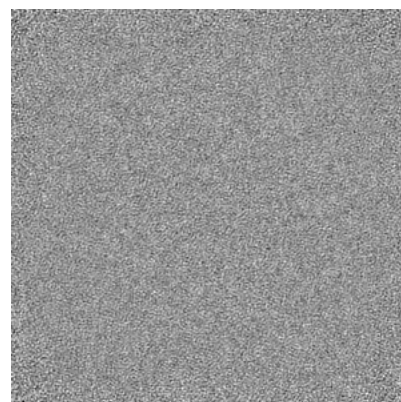
### 6.3.2 Raw map



X Index: 172



Y Index: 167

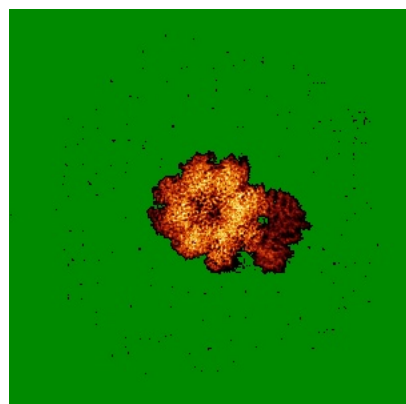


Z Index: 299

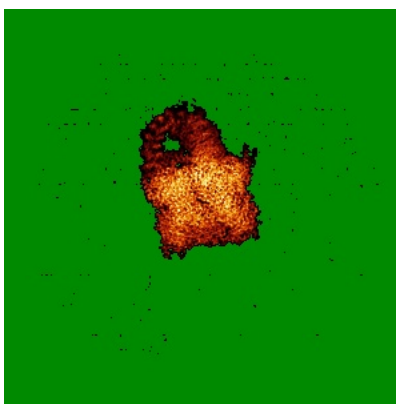
The images above show the largest variance slices of the map in three orthogonal directions.

## 6.4 Orthogonal standard-deviation projections (False-color) [i](#)

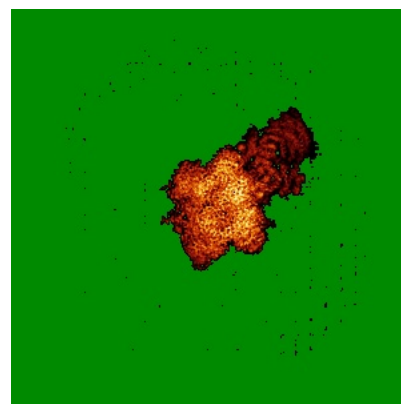
### 6.4.1 Primary map



X

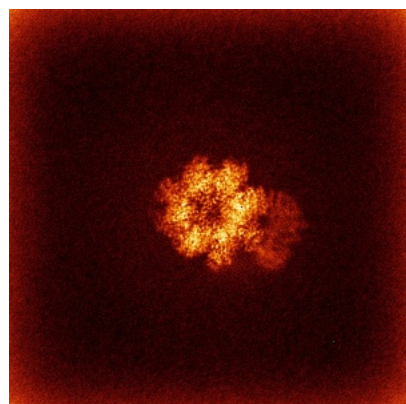


Y

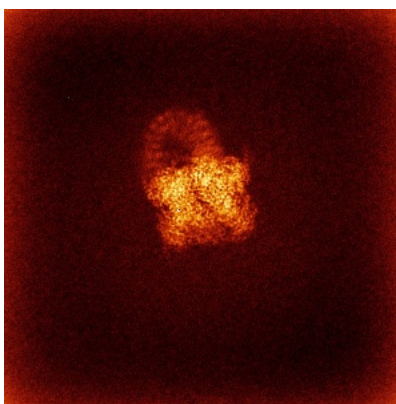


Z

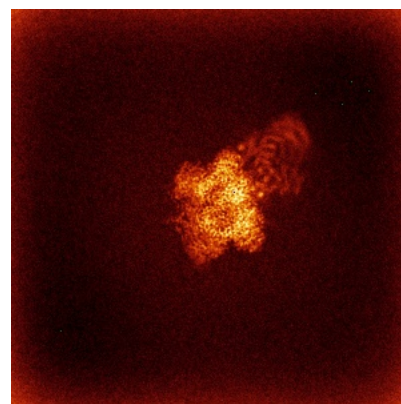
### 6.4.2 Raw map



X



Y

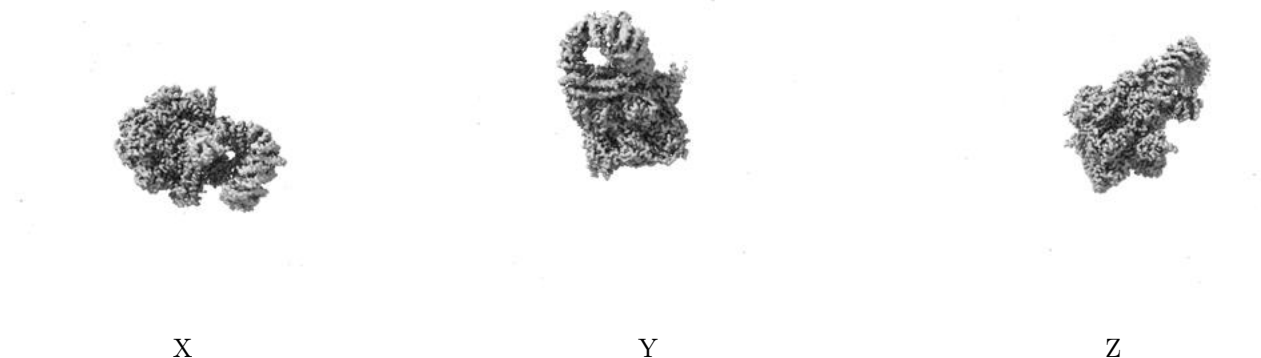


Z

The images above show the map standard deviation projections with false color in three orthogonal directions. Minimum values are shown in green, max in blue, and dark to light orange shades represent small to large values respectively.

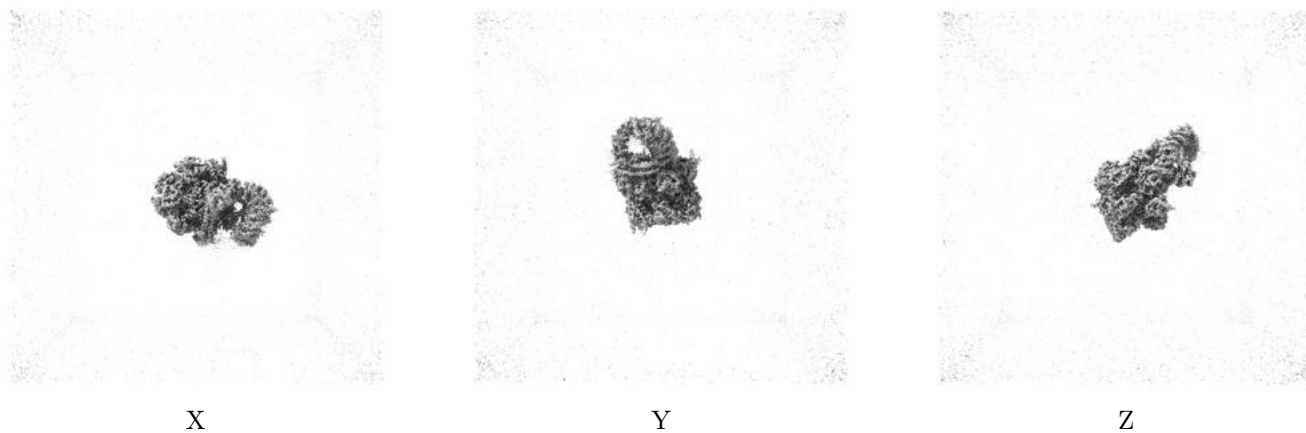
## 6.5 Orthogonal surface views [i](#)

### 6.5.1 Primary map



The images above show the 3D surface view of the map at the recommended contour level 0.0313. These images, in conjunction with the slice images, may facilitate assessment of whether an appropriate contour level has been provided.

### 6.5.2 Raw map



These images show the 3D surface of the raw map. The raw map's contour level was selected so that its surface encloses the same volume as the primary map does at its recommended contour level.

## 6.6 Mask visualisation [i](#)

This section shows the 3D surface view of the primary map at 50% transparency overlaid with the specified mask at 0% transparency

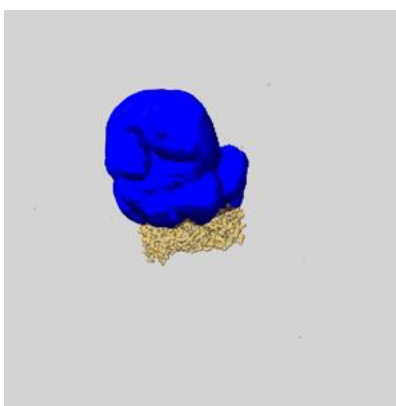
A mask typically either:

- Encompasses the whole structure
- Separates out a domain, a functional unit, a monomer or an area of interest from a larger structure

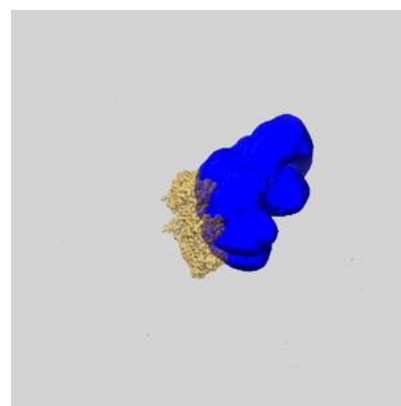
### 6.6.1 emd\_53264\_msk\_1.map [i](#)



X



Y

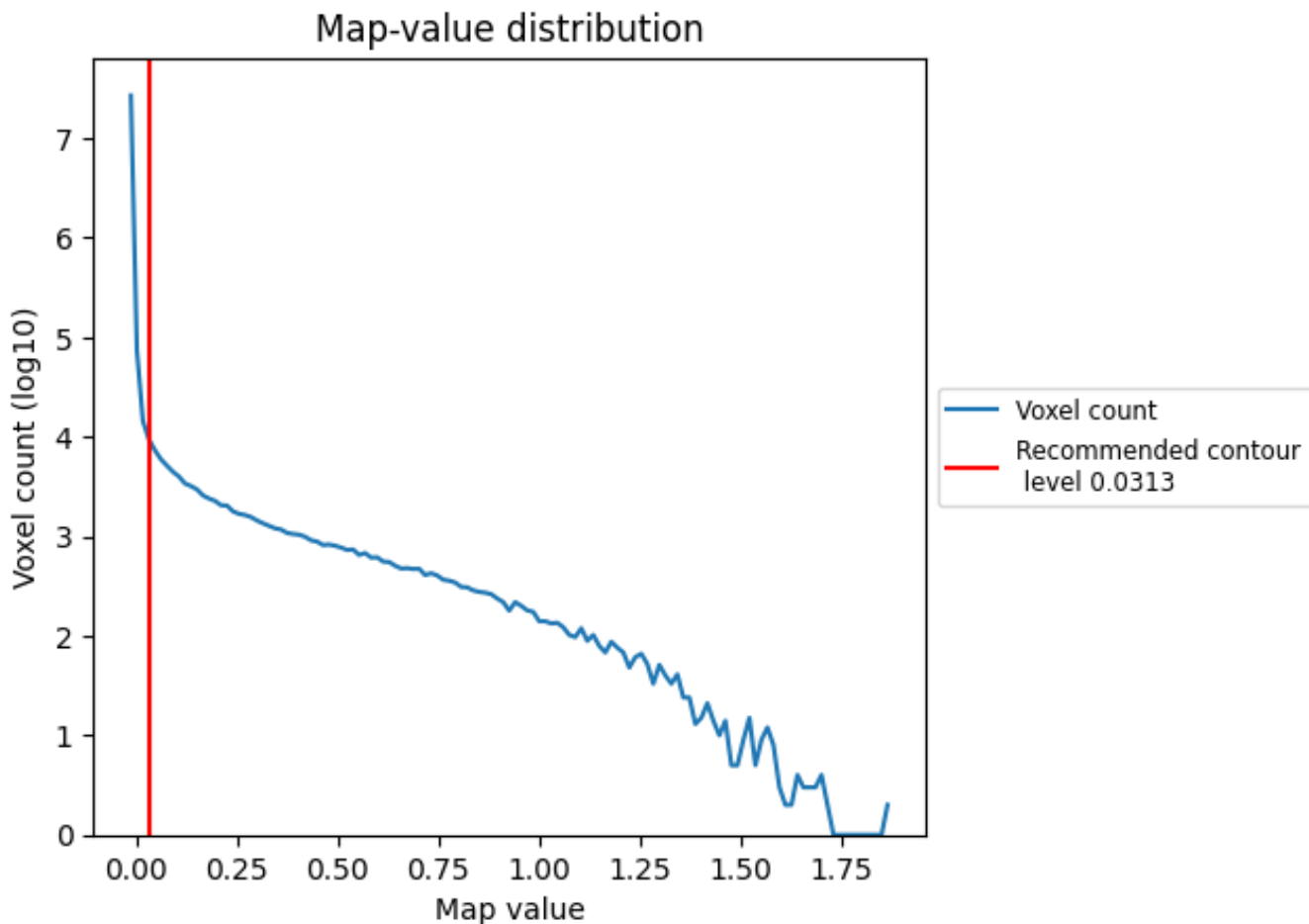


Z

## 7 Map analysis [i](#)

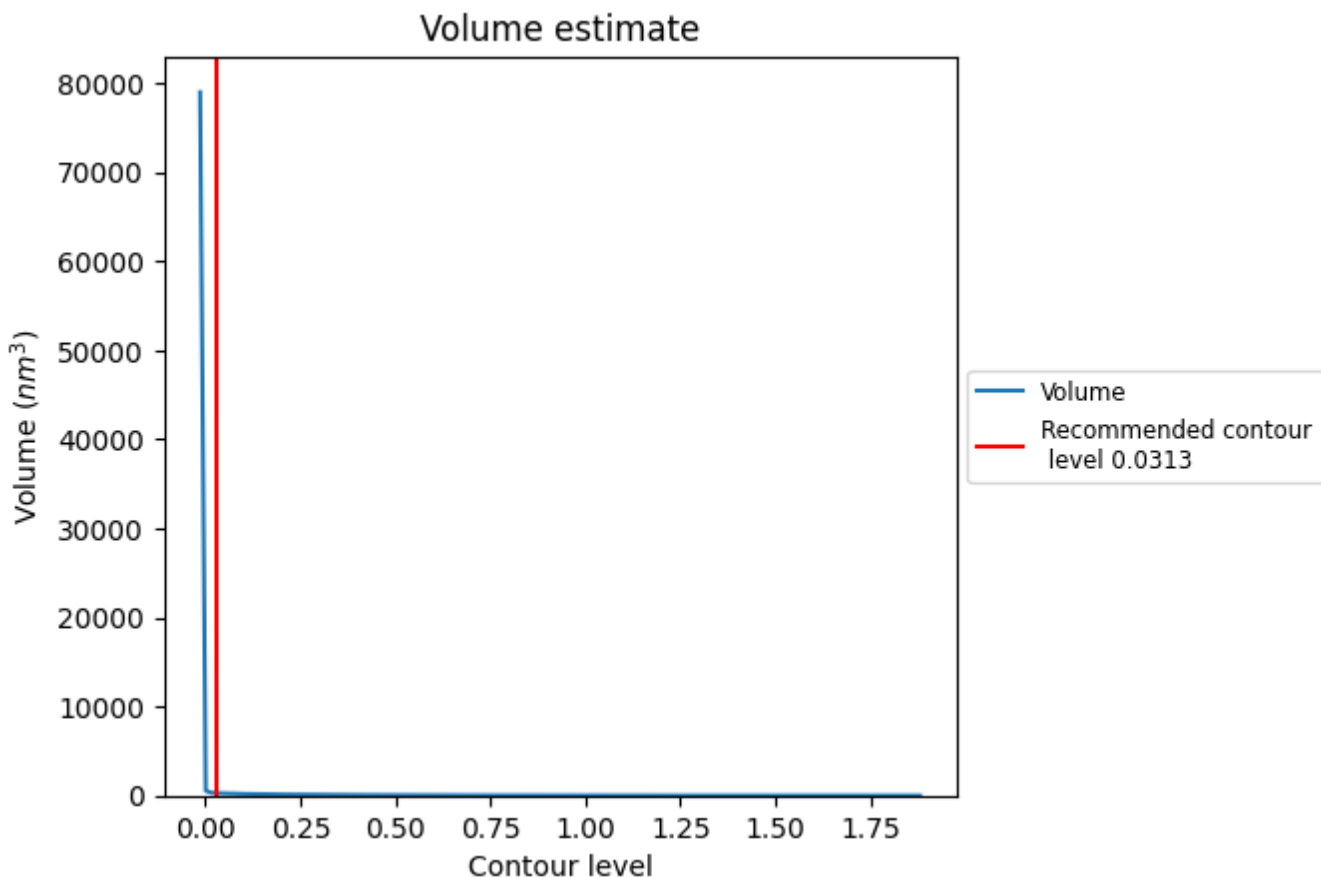
This section contains the results of statistical analysis of the map.

### 7.1 Map-value distribution [i](#)



The map-value distribution is plotted in 128 intervals along the x-axis. The y-axis is logarithmic. A spike in this graph at zero usually indicates that the volume has been masked.

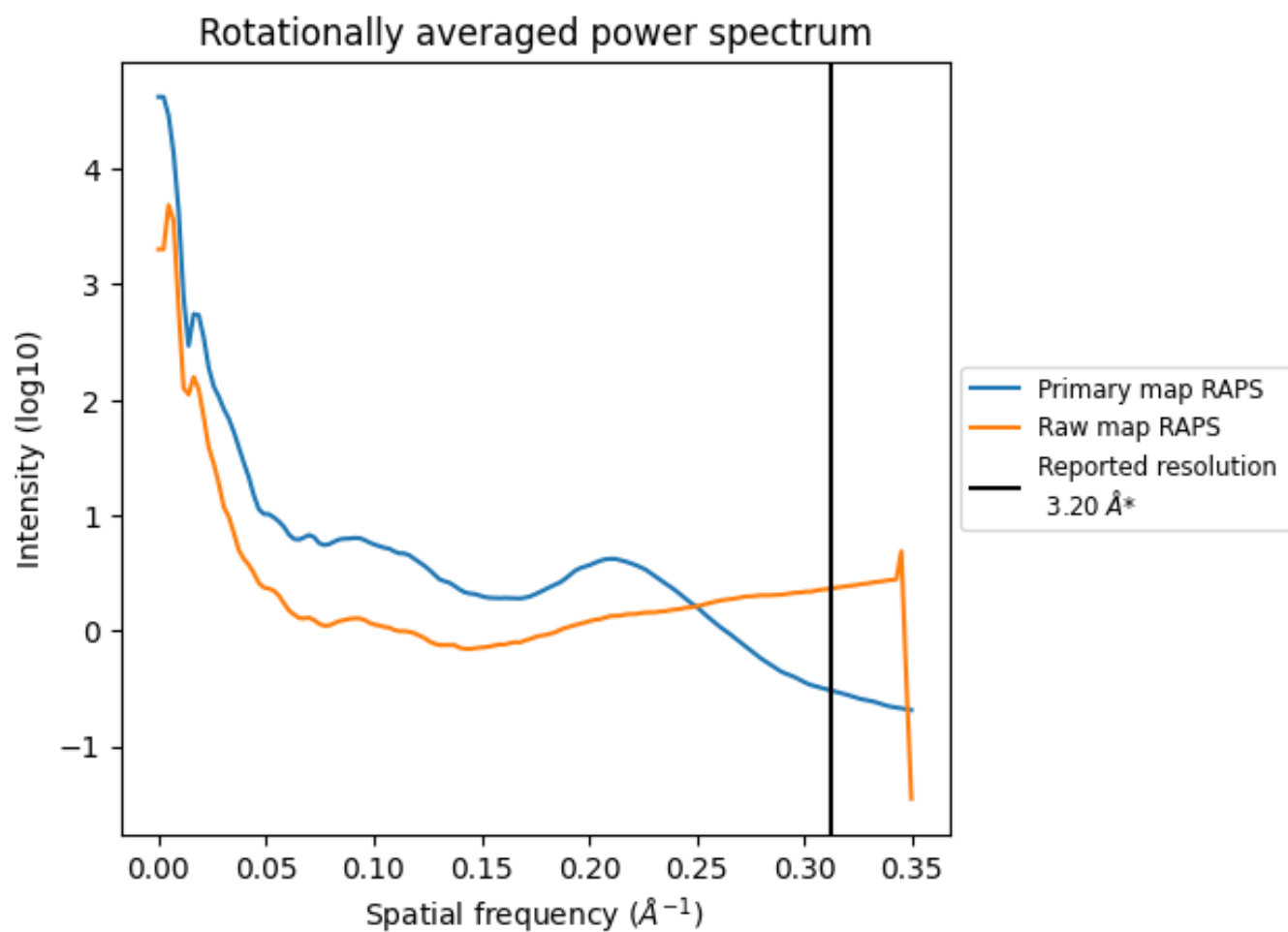
## 7.2 Volume estimate [i](#)



The volume at the recommended contour level is 276 nm<sup>3</sup>; this corresponds to an approximate mass of 249 kDa.

The volume estimate graph shows how the enclosed volume varies with the contour level. The recommended contour level is shown as a vertical line and the intersection between the line and the curve gives the volume of the enclosed surface at the given level.

### 7.3 Rotationally averaged power spectrum i

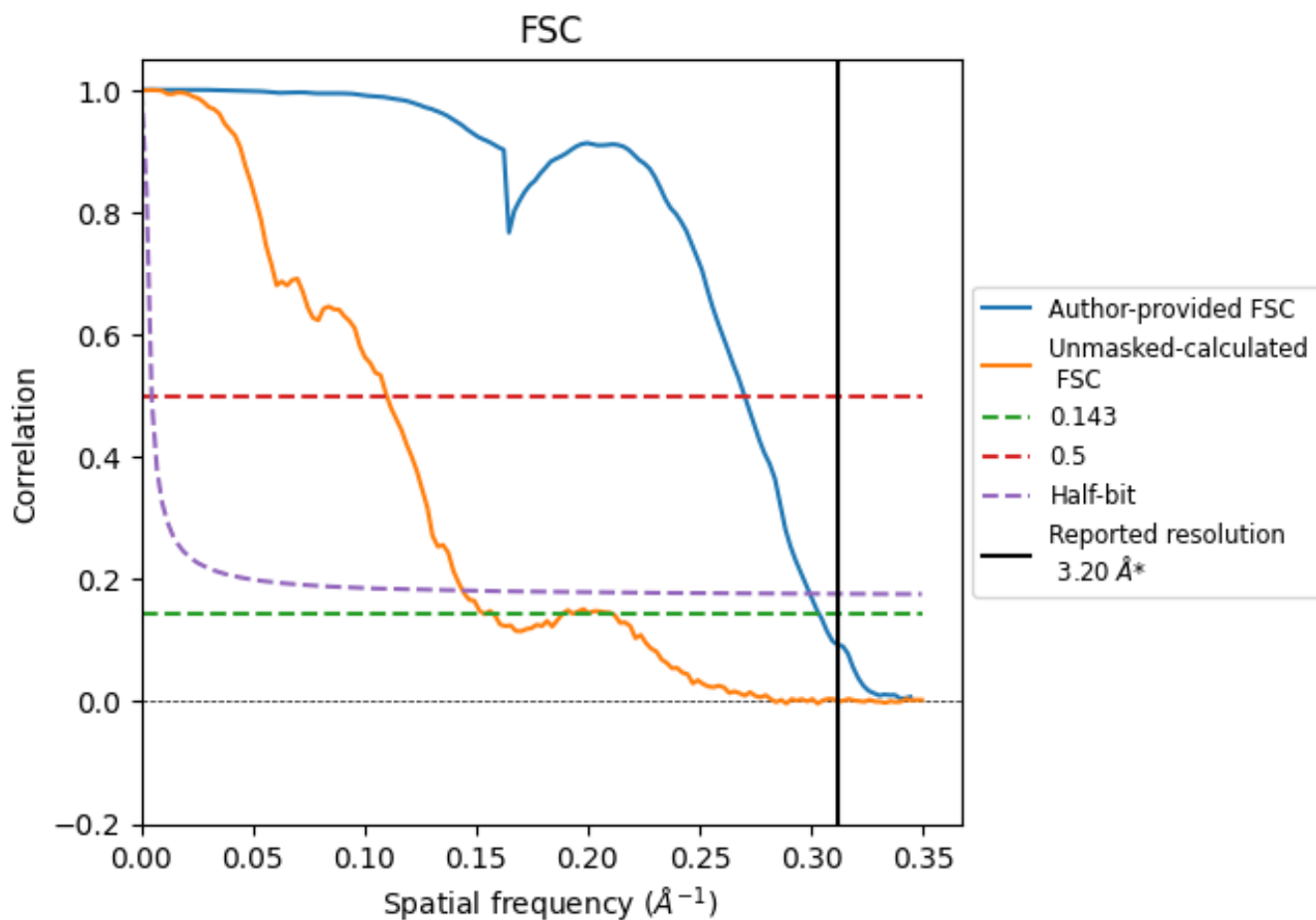


\*Reported resolution corresponds to spatial frequency of  $0.312 \text{ \AA}^{-1}$

## 8 Fourier-Shell correlation [i](#)

Fourier-Shell Correlation (FSC) is the most commonly used method to estimate the resolution of single-particle and subtomogram-averaged maps. The shape of the curve depends on the imposed symmetry, mask and whether or not the two 3D reconstructions used were processed from a common reference. The reported resolution is shown as a black line. A curve is displayed for the half-bit criterion in addition to lines showing the 0.143 gold standard cut-off and 0.5 cut-off.

### 8.1 FSC [i](#)



\*Reported resolution corresponds to spatial frequency of 0.312 Å<sup>-1</sup>

## 8.2 Resolution estimates [i](#)

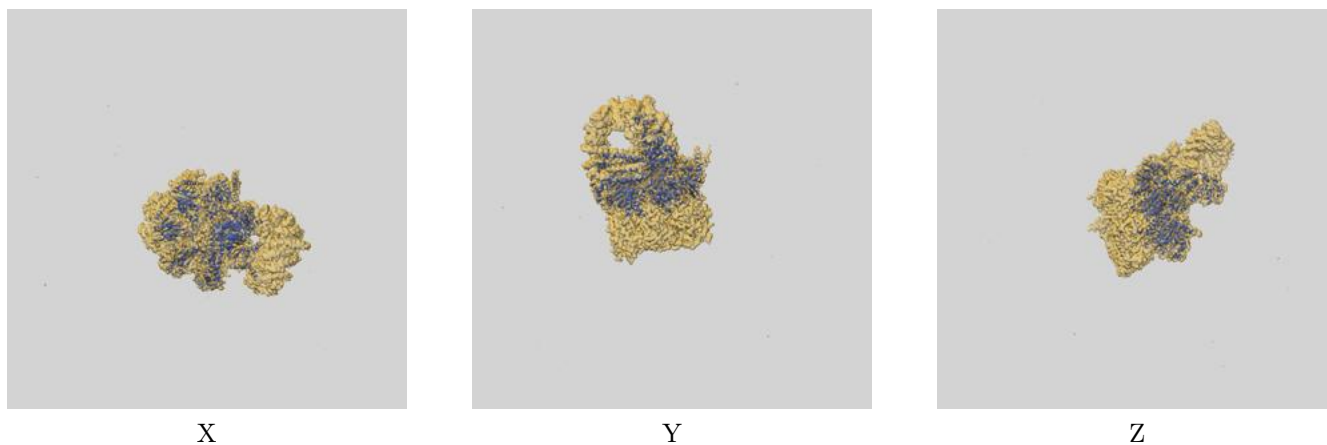
Resolution estimate (Å)	Estimation criterion (FSC cut-off)		
	0.143	0.5	Half-bit
Reported by author	3.20	-	-
Author-provided FSC curve	3.29	3.70	3.34
Unmasked-calculated*	6.51	9.10	6.94

\*Resolution estimate based on FSC curve calculated by comparison of deposited half-maps. The value from deposited half-maps intersecting FSC 0.143 CUT-OFF 6.51 differs from the reported value 3.2 by more than 10 %

## 9 Map-model fit [i](#)

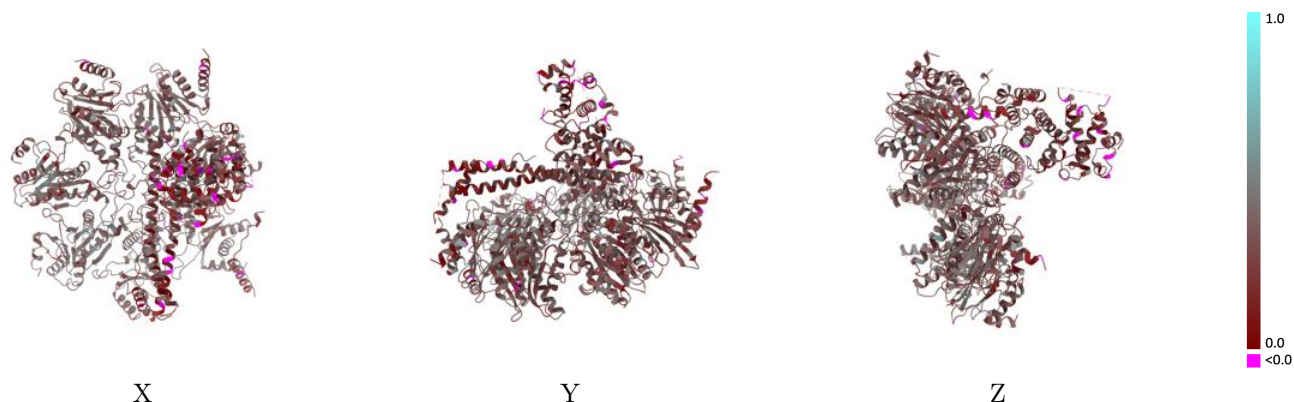
This section contains information regarding the fit between EMDB map EMD-53264 and PDB model 9QON. Per-residue inclusion information can be found in section [3](#) on page [6](#).

### 9.1 Map-model overlay [i](#)



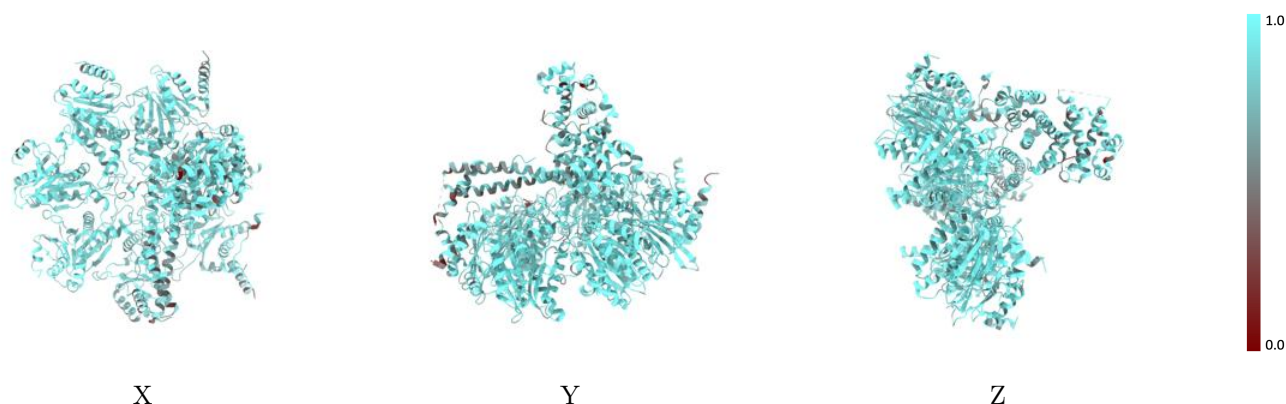
The images above show the 3D surface view of the map at the recommended contour level 0.0313 at 50% transparency in yellow overlaid with a ribbon representation of the model coloured in blue. These images allow for the visual assessment of the quality of fit between the atomic model and the map.

## 9.2 Q-score mapped to coordinate model [i](#)



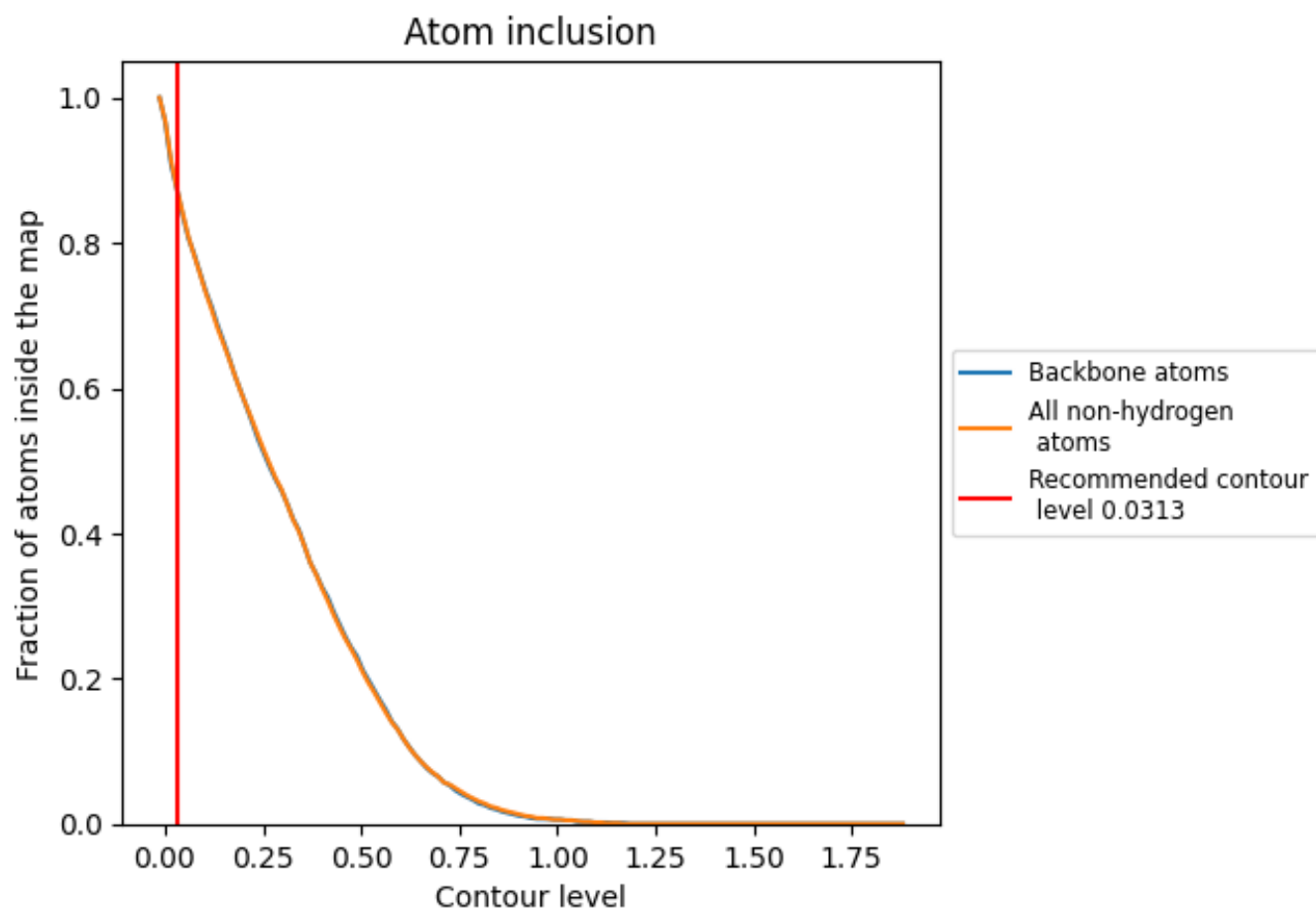
The images above show the model with each residue coloured according to its Q-score. This shows their resolvability in the map with higher Q-score values reflecting better resolvability. Please note: Q-score is calculating the resolvability of atoms, and thus high values are only expected at resolutions at which atoms can be resolved. Low Q-score values may therefore be expected for many entries.

## 9.3 Atom inclusion mapped to coordinate model [i](#)



The images above show the model with each residue coloured according to its atom inclusion. This shows to what extent they are inside the map at the recommended contour level (0.0313).

























## 9.4 Atom inclusion [i](#)



At the recommended contour level, 87% of all backbone atoms, 87% of all non-hydrogen atoms, are inside the map.

## 9.5 Map-model fit summary [i](#)

The table lists the average atom inclusion at the recommended contour level (0.0313) and Q-score for the entire model and for each chain.

Chain	Atom inclusion	Q-score
All	 0.8730	 0.3130
A	 0.8090	 0.2380
B	 0.7470	 0.2220
C	 0.7560	 0.2360
D	 0.7080	 0.2330
F	 0.8960	 0.3540
G	 0.8960	 0.3250
O	 0.9030	 0.3130
P	 0.8870	 0.3070
Q	 0.8850	 0.3190
R	 0.8850	 0.3430
S	 0.9240	 0.3700

