



wwPDB X-ray Structure Validation Summary Report ⓘ

Jan 13, 2026 – 01:37 pm GMT

PDB ID : 9QB9 / pdb_00009qb9
Title : CK2, catalytic subunit alpha' (CSNK2A2 gene product) in complex with a heparin-derived trisaccharide and the ATP-competitive inhibitor 4w
Authors : Werner, C.; Harasimowicz, H.; Weiss, M.S.; Niefind, K.
Deposited on : 2025-03-01
Resolution : 1.19 Å (reported)

This is a wwPDB X-ray Structure Validation Summary Report for a publicly released PDB entry.

We welcome your comments at validation@mail.wwpdb.org

A user guide is available at

<https://www.wwpdb.org/validation/2017/XrayValidationReportHelp>

with specific help available everywhere you see the ⓘ symbol.

The types of validation reports are described at

<http://www.wwpdb.org/validation/2017/FAQs#types>.

The following versions of software and data (see [references ⓘ](#)) were used in the production of this report:

MolProbity : 4-5-2 with Phenix2.0
Mogul : 1.8.4, CSD as541be (2020)
Xtrriage (Phenix) : 2.0
EDS : 3.0
buster-report : 1.1.7 (2018)
Percentile statistics : 20231227.v01 (using entries in the PDB archive December 27th 2023)
CCP4 : 9.0.010 (Gargrove)
Density-Fitness : 1.0.12
Ideal geometry (proteins) : Engh & Huber (2001)
Ideal geometry (DNA, RNA) : Parkinson et al. (1996)
Validation Pipeline (wwPDB-VP) : 2.47

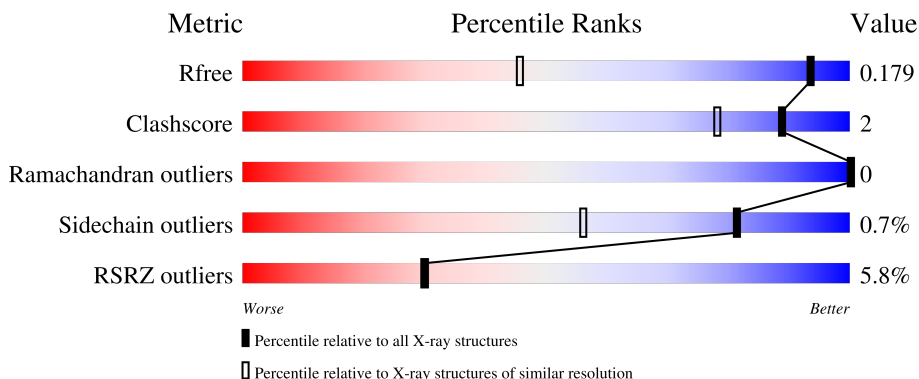
1 Overall quality at a glance

The following experimental techniques were used to determine the structure:

X-RAY DIFFRACTION


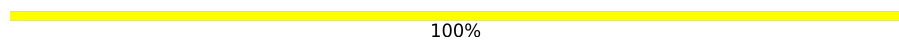
The reported resolution of this entry is 1.19 Å.

Percentile scores (ranging between 0-100) for global validation metrics of the entry are shown in the following graphic. The table shows the number of entries on which the scores are based.



Metric	Whole archive (#Entries)	Similar resolution (#Entries, resolution range(Å))
R_{free}	164625	1079 (1.20-1.20)
Clashscore	180529	1183 (1.20-1.20)
Ramachandran outliers	177936	1146 (1.20-1.20)
Sidechain outliers	177891	1146 (1.20-1.20)
RSRZ outliers	164620	1078 (1.20-1.20)

The table below summarises the geometric issues observed across the polymeric chains and their fit to the electron density. The red, orange, yellow and green segments of the lower bar indicate the fraction of residues that contain outliers for ≥ 3 , 2, 1 and 0 types of geometric quality criteria respectively. A grey segment represents the fraction of residues that are not modelled. The numeric value for each fraction is indicated below the corresponding segment, with a dot representing fractions $\leq 5\%$. The upper red bar (where present) indicates the fraction of residues that have poor fit to the electron density. The numeric value is given above the bar.

Mol	Chain	Length	Quality of chain
1	A	370	 5% 84% 12%
2	B	3	 100%

2 Entry composition [i](#)

There are 5 unique types of molecules in this entry. The entry contains 5876 atoms, of which 2789 are hydrogens and 0 are deuteriums.

In the tables below, the ZeroOcc column contains the number of atoms modelled with zero occupancy, the AltConf column contains the number of residues with at least one atom in alternate conformation and the Trace column contains the number of residues modelled with at most 2 atoms.

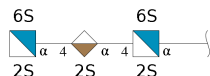
- Molecule 1 is a protein called 'Casein kinase II subunit alpha'.

Mol	Chain	Residues	Atoms					ZeroOcc	AltConf	Trace	
			Total	C	H	N	O				S
1	A	327	5525	1785	2749	484	496	11	0	2	0

There are 21 discrepancies between the modelled and reference sequences:

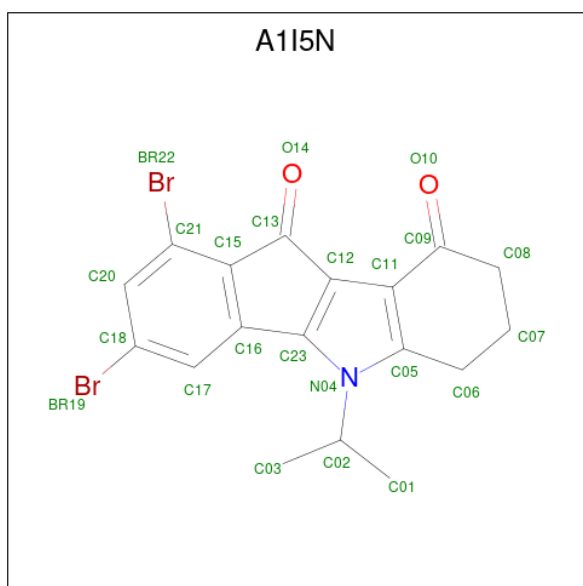
Chain	Residue	Modelled	Actual	Comment	Reference
A	-19	MET	-	initiating methionine	UNP P19784
A	-18	GLY	-	expression tag	UNP P19784
A	-17	SER	-	expression tag	UNP P19784
A	-16	SER	-	expression tag	UNP P19784
A	-15	HIS	-	expression tag	UNP P19784
A	-14	HIS	-	expression tag	UNP P19784
A	-13	HIS	-	expression tag	UNP P19784
A	-12	HIS	-	expression tag	UNP P19784
A	-11	HIS	-	expression tag	UNP P19784
A	-10	HIS	-	expression tag	UNP P19784
A	-9	SER	-	expression tag	UNP P19784
A	-8	SER	-	expression tag	UNP P19784
A	-7	GLY	-	expression tag	UNP P19784
A	-6	LEU	-	expression tag	UNP P19784
A	-5	VAL	-	expression tag	UNP P19784
A	-4	PRO	-	expression tag	UNP P19784
A	-3	ARG	-	expression tag	UNP P19784
A	-2	GLY	-	expression tag	UNP P19784
A	-1	SER	-	expression tag	UNP P19784
A	0	HIS	-	expression tag	UNP P19784
A	336	SER	CYS	engineered mutation	UNP P19784

- Molecule 2 is an oligosaccharide called 2-deoxy-6-O-sulfo-2-(sulfoamino)-alpha-D-glucopyranose-(1-4)-2-O-sulfo-alpha-L-idopyranuronic acid-(1-4)-2-deoxy-6-O-sulfo-2-(sulfoamino)-alpha-D-glucopyranose.



Mol	Chain	Residues	Atoms					ZeroOcc	AltConf	Trace	
			Total	C	H	N	O				S
2	B	3	80	18	25	2	30	5	0	0	0

- Molecule 3 is 1,3-bis(bromanyl)-5-propan-2-yl-7,8-dihydro-6 {H}-indeno[1,2-b]indole-9,10-dione (CCD ID: A1I5N) (formula: C₁₈H₁₅Br₂NO₂).



Mol	Chain	Residues	Atoms					ZeroOcc	AltConf	
			Total	Br	C	H	N			O
3	A	1	38	2	18	15	1	2	0	0

- Molecule 4 is CHLORIDE ION (CCD ID: CL) (formula: Cl).

Mol	Chain	Residues	Atoms		ZeroOcc	AltConf
			Total	Cl		
4	A	1	1	1	0	0

- Molecule 5 is water.

Mol	Chain	Residues	Atoms		ZeroOcc	AltConf
			Total	O		
5	A	232	232	232	0	0

4 Data and refinement statistics i

Property	Value	Source
Space group	P 1	Depositor
Cell constants a, b, c, α , β , γ	46.54Å 47.65Å 50.44Å 66.53° 89.38° 87.97°	Depositor
Resolution (Å)	43.68 – 1.19 43.68 – 1.19	Depositor EDS
% Data completeness (in resolution range)	50.0 (43.68-1.19) 46.6 (43.68-1.19)	Depositor EDS
R_{merge}	0.05	Depositor
R_{sym}	(Not available)	Depositor
$\langle I/\sigma(I) \rangle$ ¹	1.56 (at 1.19Å)	Xtrriage
Refinement program	PHENIX 1.21.2_5419	Depositor
R, R_{free}	0.143 , 0.175 0.150 , 0.179	Depositor DCC
R_{free} test set	1230 reflections (1.95%)	wwPDB-VP
Wilson B-factor (Å ²)	10.5	Xtrriage
Anisotropy	0.033	Xtrriage
Bulk solvent k_{sol} (e/Å ³), B_{sol} (Å ²)	0.44 , 43.0	EDS
L-test for twinning ²	$\langle L \rangle = 0.48$, $\langle L^2 \rangle = 0.31$	Xtrriage
Estimated twinning fraction	0.029 for h,-k,-l	Xtrriage
F_o, F_c correlation	0.96	EDS
Total number of atoms	5876	wwPDB-VP
Average B, all atoms (Å ²)	21.0	wwPDB-VP

Xtrriage's analysis on translational NCS is as follows: *The largest off-origin peak in the Patterson function is 8.25% of the height of the origin peak. No significant pseudotranslation is detected.*

¹Intensities estimated from amplitudes.

²Theoretical values of $\langle |L| \rangle$, $\langle L^2 \rangle$ for acentric reflections are 0.5, 0.333 respectively for untwinned datasets, and 0.375, 0.2 for perfectly twinned datasets.

5 Model quality [i](#)

5.1 Standard geometry [i](#)

Bond lengths and bond angles in the following residue types are not validated in this section: CL, A1I5N, IDS, SGN

The Z score for a bond length (or angle) is the number of standard deviations the observed value is removed from the expected value. A bond length (or angle) with $|Z| > 5$ is considered an outlier worth inspection. RMSZ is the root-mean-square of all Z scores of the bond lengths (or angles).

Mol	Chain	Bond lengths		Bond angles	
		RMSZ	# Z >5	RMSZ	# Z >5
1	A	0.22	0/2847	0.46	0/3842

There are no bond length outliers.

There are no bond angle outliers.

There are no chirality outliers.

There are no planarity outliers.

5.2 Too-close contacts [i](#)

In the following table, the Non-H and H(model) columns list the number of non-hydrogen atoms and hydrogen atoms in the chain respectively. The H(added) column lists the number of hydrogen atoms added and optimized by MolProbity. The Clashes column lists the number of clashes within the asymmetric unit, whereas Symm-Clashes lists symmetry-related clashes.

Mol	Chain	Non-H	H(model)	H(added)	Clashes	Symm-Clashes
1	A	2776	2749	2746	10	0
2	B	55	25	20	0	0
3	A	23	15	0	0	0
4	A	1	0	0	0	0
5	A	232	0	0	2	0
All	All	3087	2789	2766	10	0

The all-atom clashscore is defined as the number of clashes found per 1000 atoms (including hydrogen atoms). The all-atom clashscore for this structure is 2.

The worst 5 of 10 close contacts within the same asymmetric unit are listed below, sorted by their clash magnitude.

Atom-1	Atom-2	Interatomic distance (Å)	Clash overlap (Å)
1:A:12:VAL:HG11	1:A:315:THR:HG21	1.71	0.71
1:A:56:GLU:OE2	1:A:65:ARG:NH1	2.23	0.70
1:A:186:ALA:HA	1:A:209[B]:MET:HE3	1.90	0.53
1:A:37:GLN:NE2	5:A:505:HOH:O	2.41	0.51
1:A:164:MET:HA	1:A:164:MET:HE2	1.94	0.49

There are no symmetry-related clashes.

5.3 Torsion angles [i](#)

5.3.1 Protein backbone [i](#)

In the following table, the Percentiles column shows the percent Ramachandran outliers of the chain as a percentile score with respect to all X-ray entries followed by that with respect to entries of similar resolution.

The Analysed column shows the number of residues for which the backbone conformation was analysed, and the total number of residues.

Mol	Chain	Analysed	Favoured	Allowed	Outliers	Percentiles
1	A	327/370 (88%)	318 (97%)	9 (3%)	0	100 100

There are no Ramachandran outliers to report.

5.3.2 Protein sidechains [i](#)

In the following table, the Percentiles column shows the percent sidechain outliers of the chain as a percentile score with respect to all X-ray entries followed by that with respect to entries of similar resolution.

The Analysed column shows the number of residues for which the sidechain conformation was analysed, and the total number of residues.

Mol	Chain	Analysed	Rotameric	Outliers	Percentiles
1	A	301/331 (91%)	299 (99%)	2 (1%)	81 56

All (2) residues with a non-rotameric sidechain are listed below:

Mol	Chain	Res	Type
1	A	11	ARG
1	A	77	LYS

Sometimes sidechains can be flipped to improve hydrogen bonding and reduce clashes. All (4) such sidechains are listed below:

Mol	Chain	Res	Type
1	A	37	GLN
1	A	168	GLN
1	A	237	GLN
1	A	269	HIS

5.3.3 RNA [i](#)

There are no RNA molecules in this entry.

5.4 Non-standard residues in protein, DNA, RNA chains [i](#)

There are no non-standard protein/DNA/RNA residues in this entry.

5.5 Carbohydrates [i](#)

3 monosaccharides are modelled in this entry.

In the following table, the Counts columns list the number of bonds (or angles) for which Mogul statistics could be retrieved, the number of bonds (or angles) that are observed in the model and the number of bonds (or angles) that are defined in the Chemical Component Dictionary. The Link column lists molecule types, if any, to which the group is linked. The Z score for a bond length (or angle) is the number of standard deviations the observed value is removed from the expected value. A bond length (or angle) with $|Z| > 2$ is considered an outlier worth inspection. RMSZ is the root-mean-square of all Z scores of the bond lengths (or angles).

Mol	Type	Chain	Res	Link	Bond lengths			Bond angles		
					Counts	RMSZ	# $ Z > 2$	Counts	RMSZ	# $ Z > 2$
2	SGN	B	1	2	19,20,20	0.52	0	24,31,31	1.56	3 (12%)
2	IDS	B	2	2	16,16,17	1.00	1 (6%)	17,24,26	1.15	0
2	SGN	B	3	2	18,19,20	0.71	0	22,29,31	1.95	5 (22%)

In the following table, the Chirals column lists the number of chiral outliers, the number of chiral centers analysed, the number of these observed in the model and the number defined in the Chemical Component Dictionary. Similar counts are reported in the Torsion and Rings columns. '-' means no outliers of that kind were identified.

Mol	Type	Chain	Res	Link	Chirals	Torsions	Rings
2	SGN	B	1	2	-	1/11/31/31	0/1/1/1
2	IDS	B	2	2	-	0/9/26/29	0/1/1/1

Continued on next page...

Continued from previous page...

Mol	Type	Chain	Res	Link	Chirals	Torsions	Rings
2	SGN	B	3	2	-	1/11/28/31	0/1/1/1

All (1) bond length outliers are listed below:

Mol	Chain	Res	Type	Atoms	Z	Observed(Å)	Ideal(Å)
2	B	2	IDS	O6B-C6	-2.79	1.21	1.30

The worst 5 of 8 bond angle outliers are listed below:

Mol	Chain	Res	Type	Atoms	Z	Observed(°)	Ideal(°)
2	B	3	SGN	C1-C2-N2	6.08	120.73	110.27
2	B	1	SGN	C1-C2-N2	5.17	116.84	110.67
2	B	3	SGN	C3-C2-N2	-4.05	105.00	110.32
2	B	1	SGN	O1S-S1-N2	-3.07	103.26	108.87
2	B	1	SGN	O5-C1-C2	3.04	112.57	109.52

There are no chirality outliers.

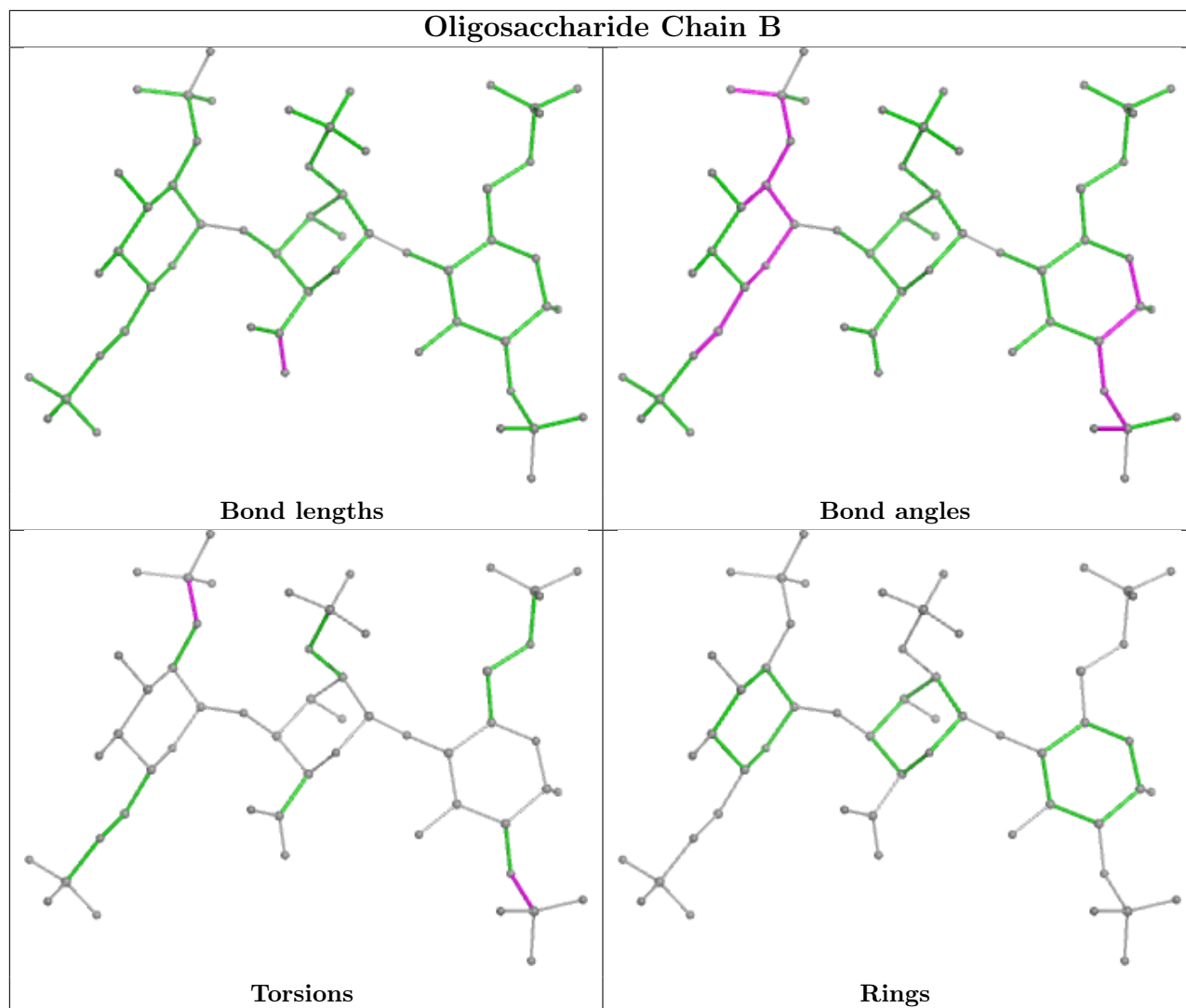
All (2) torsion outliers are listed below:

Mol	Chain	Res	Type	Atoms
2	B	1	SGN	C2-N2-S1-O2S
2	B	3	SGN	C2-N2-S1-O1S

There are no ring outliers.

No monomer is involved in short contacts.

The following is a two-dimensional graphical depiction of Mogul quality analysis of bond lengths, bond angles, torsion angles, and ring geometry for oligosaccharide.



5.6 Ligand geometry [i](#)

Of 2 ligands modelled in this entry, 1 is monoatomic - leaving 1 for Mogul analysis.

In the following table, the Counts columns list the number of bonds (or angles) for which Mogul statistics could be retrieved, the number of bonds (or angles) that are observed in the model and the number of bonds (or angles) that are defined in the Chemical Component Dictionary. The Link column lists molecule types, if any, to which the group is linked. The Z score for a bond length (or angle) is the number of standard deviations the observed value is removed from the expected value. A bond length (or angle) with $|Z| > 2$ is considered an outlier worth inspection. RMSZ is the root-mean-square of all Z scores of the bond lengths (or angles).

Mol	Type	Chain	Res	Link	Bond lengths			Bond angles		
					Counts	RMSZ	$\# Z > 2$	Counts	RMSZ	$\# Z > 2$
3	A1I5N	A	401	-	24,26,26	1.48	5 (20%)	29,41,41	1.20	5 (17%)

In the following table, the Chirals column lists the number of chiral outliers, the number of chiral

centers analysed, the number of these observed in the model and the number defined in the Chemical Component Dictionary. Similar counts are reported in the Torsion and Rings columns. '-' means no outliers of that kind were identified.

Mol	Type	Chain	Res	Link	Chirals	Torsions	Rings
3	A1I5N	A	401	-	-	2/4/26/26	0/4/4/4

All (5) bond length outliers are listed below:

Mol	Chain	Res	Type	Atoms	Z	Observed(Å)	Ideal(Å)
3	A	401	A1I5N	C06-C05	3.85	1.58	1.50
3	A	401	A1I5N	C02-N04	-2.20	1.45	1.49
3	A	401	A1I5N	O14-C13	-2.17	1.18	1.22
3	A	401	A1I5N	O10-C09	-2.06	1.19	1.22
3	A	401	A1I5N	C16-C15	-2.01	1.39	1.41

All (5) bond angle outliers are listed below:

Mol	Chain	Res	Type	Atoms	Z	Observed(°)	Ideal(°)
3	A	401	A1I5N	O10-C09-C11	-2.38	118.62	122.38
3	A	401	A1I5N	BR19-C18-C17	2.28	122.43	119.27
3	A	401	A1I5N	BR22-C21-C15	-2.28	117.35	121.14
3	A	401	A1I5N	C03-C02-N04	-2.22	108.92	111.52
3	A	401	A1I5N	BR19-C18-C20	-2.18	116.23	119.27

There are no chirality outliers.

All (2) torsion outliers are listed below:

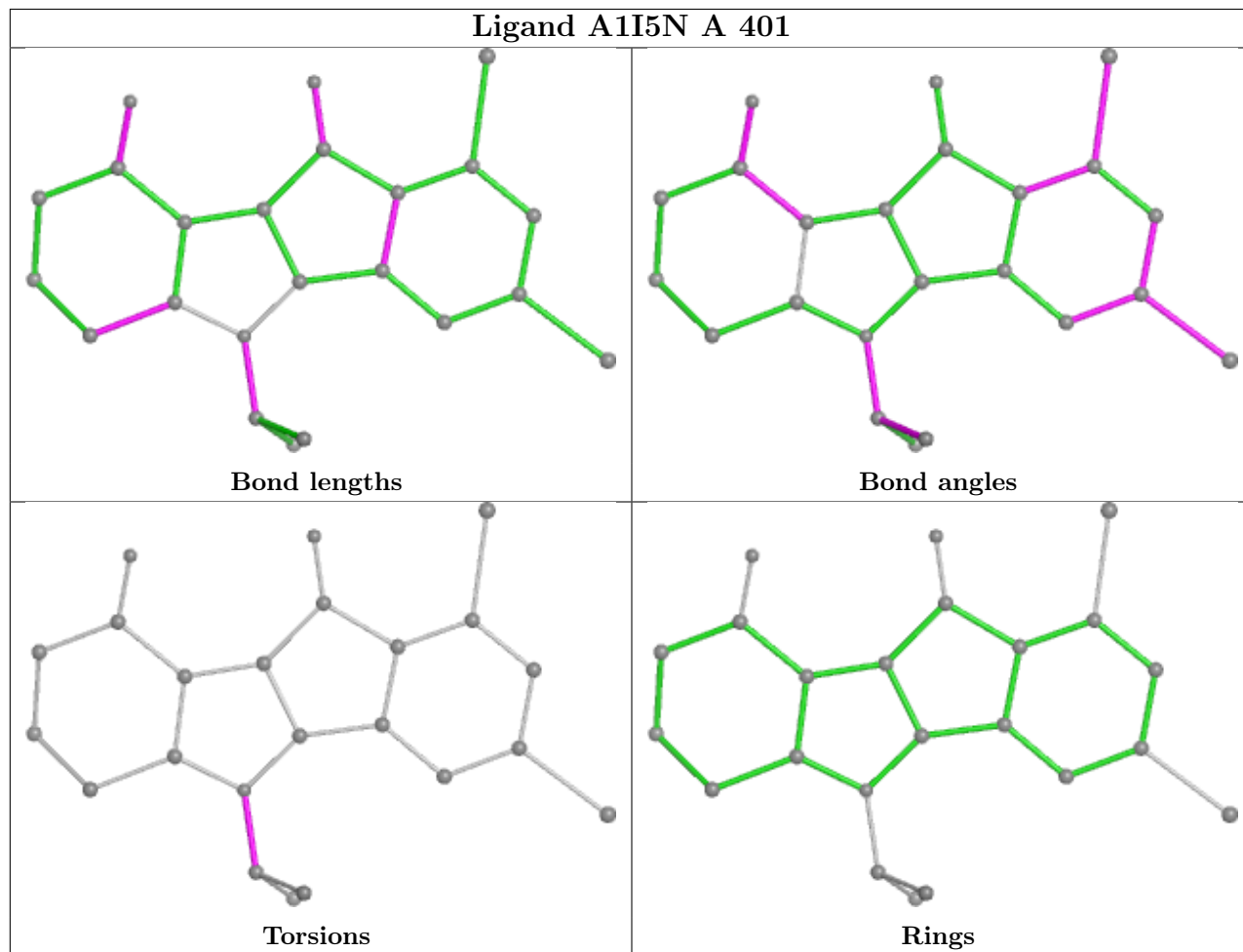
Mol	Chain	Res	Type	Atoms
3	A	401	A1I5N	C03-C02-N04-C05
3	A	401	A1I5N	C01-C02-N04-C05

There are no ring outliers.

No monomer is involved in short contacts.

The following is a two-dimensional graphical depiction of Mogul quality analysis of bond lengths, bond angles, torsion angles, and ring geometry for all instances of the Ligand of Interest. In addition, ligands with molecular weight > 250 and outliers as shown on the validation Tables will also be included. For torsion angles, if less than 5% of the Mogul distribution of torsion angles is within 10 degrees of the torsion angle in question, then that torsion angle is considered an outlier. Any bond that is central to one or more torsion angles identified as an outlier by Mogul will be highlighted in the graph. For rings, the root-mean-square deviation (RMSD) between the ring in question and similar rings identified by Mogul is calculated over all ring torsion angles. If the average RMSD is greater than 60 degrees and the minimal RMSD between the ring in question and

any Mogul-identified rings is also greater than 60 degrees, then that ring is considered an outlier. The outliers are highlighted in purple. The color gray indicates Mogul did not find sufficient equivalents in the CSD to analyse the geometry.



5.7 Other polymers [\(i\)](#)

There are no such residues in this entry.

5.8 Polymer linkage issues [\(i\)](#)

There are no chain breaks in this entry.

6 Fit of model and data [i](#)

6.1 Protein, DNA and RNA chains [i](#)

In the following table, the column labelled '#RSRZ > 2' contains the number (and percentage) of RSRZ outliers, followed by percent RSRZ outliers for the chain as percentile scores relative to all X-ray entries and entries of similar resolution. The OWAB column contains the minimum, median, 95th percentile and maximum values of the occupancy-weighted average B-factor per residue. The column labelled 'Q < 0.9' lists the number of (and percentage) of residues with an average occupancy less than 0.9.

Mol	Chain	Analysed	<RSRZ>	#RSRZ>2	OWAB(Å ²)	Q<0.9
1	A	327/370 (88%)	0.07	19 (5%) 30 30	7, 17, 42, 60	2 (0%)

The worst 5 of 19 RSRZ outliers are listed below:

Mol	Chain	Res	Type	RSRZ
1	A	12	VAL	7.7
1	A	106	VAL	5.6
1	A	7	GLY	4.4
1	A	11	ARG	3.7
1	A	10	ALA	3.2

6.2 Non-standard residues in protein, DNA, RNA chains [i](#)

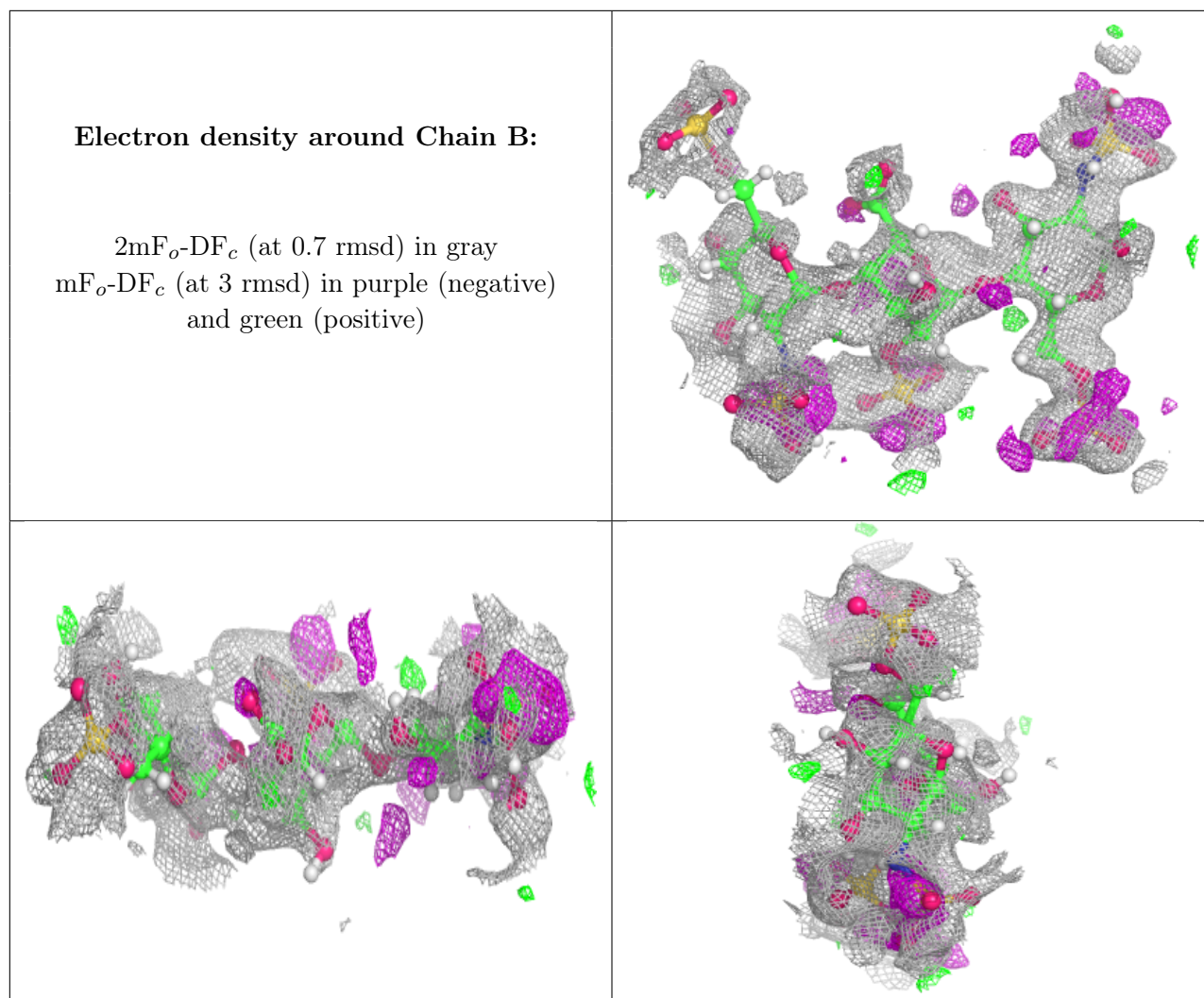
There are no non-standard protein/DNA/RNA residues in this entry.

6.3 Carbohydrates [i](#)

In the following table, the Atoms column lists the number of modelled atoms in the group and the number defined in the chemical component dictionary. The B-factors column lists the minimum, median, 95th percentile and maximum values of B factors of atoms in the group. The column labelled 'Q < 0.9' lists the number of atoms with occupancy less than 0.9.

Mol	Type	Chain	Res	Atoms	RSCC	RSR	B-factors(Å ²)	Q<0.9
2	SGN	B	3	19/20	0.69	0.15	66,81,89,101	0
2	IDS	B	2	16/17	0.86	0.13	55,57,68,70	0
2	SGN	B	1	20/20	0.86	0.13	44,54,70,84	0

The following is a graphical depiction of the model fit to experimental electron density for oligosaccharide. Each fit is shown from different orientation to approximate a three-dimensional view.

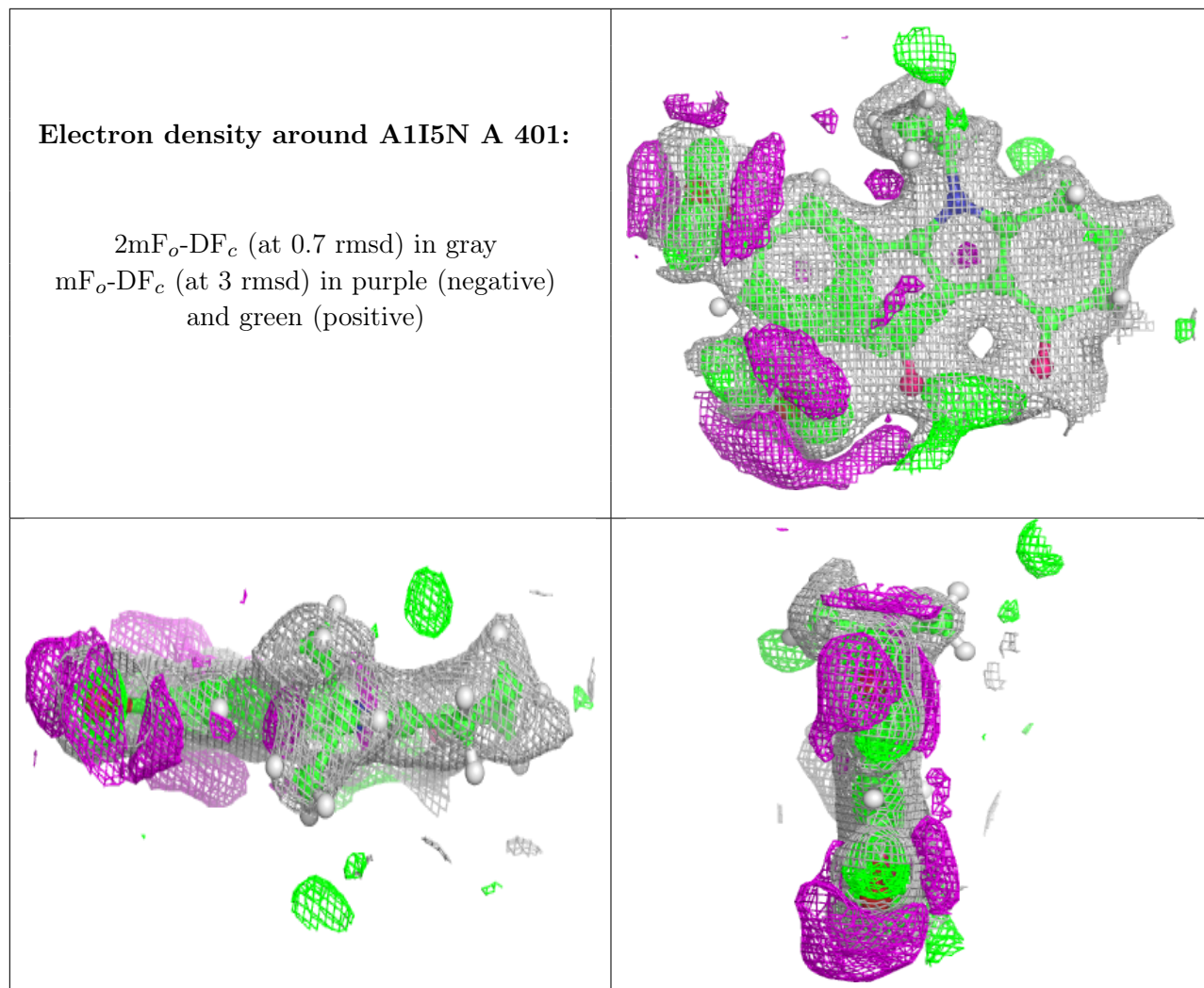


6.4 Ligands [i](#)

In the following table, the Atoms column lists the number of modelled atoms in the group and the number defined in the chemical component dictionary. The B-factors column lists the minimum, median, 95th percentile and maximum values of B factors of atoms in the group. The column labelled 'Q< 0.9' lists the number of atoms with occupancy less than 0.9.

Mol	Type	Chain	Res	Atoms	RSCC	RSR	B-factors(\AA^2)	Q<0.9
3	A1I5N	A	401	23/23	0.89	0.16	31,44,94,115	0
4	CL	A	402	1/1	0.89	0.18	29,29,29,29	0

The following is a graphical depiction of the model fit to experimental electron density of all instances of the Ligand of Interest. In addition, ligands with molecular weight > 250 and outliers as shown on the geometry validation Tables will also be included. Each fit is shown from different orientation to approximate a three-dimensional view.



6.5 Other polymers [\(i\)](#)

There are no such residues in this entry.