



wwPDB X-ray Structure Validation Summary Report ⓘ

Jan 26, 2026 – 12:52 PM EST

PDB ID : 9Q46 / pdb_00009q46
Title : Ternary complex of PYCR1 with the allosteric inhibitor 2-[(2,6-dichlorophenyl)amino]pyridine-3-sulfonic acid in two remote sites and the active site, and (S)-(-)-2-Hydroxy-3,3-dimethylbutyric acid in the active site
Authors : Tanner, J.J.; Meeks, K.R.
Deposited on : 2025-08-19
Resolution : 1.75 Å(reported)

This is a wwPDB X-ray Structure Validation Summary Report for a publicly released PDB entry.

We welcome your comments at validation@mail.wwpdb.org

A user guide is available at

<https://www.wwpdb.org/validation/2017/XrayValidationReportHelp>

with specific help available everywhere you see the ⓘ symbol.

The types of validation reports are described at

<http://www.wwpdb.org/validation/2017/FAQs#types>.

The following versions of software and data (see [references ⓘ](#)) were used in the production of this report:

MolProbity	:	4-5-2 with Phenix2.0
Mogul	:	2022.3.0, CSD as543be (2022)
Xtriage (Phenix)	:	2.0
EDS	:	3.0
buster-report	:	1.1.7 (2018)
Percentile statistics	:	20231227.v01 (using entries in the PDB archive December 27th 2023)
CCP4	:	9.0.010 (Gargrove)
Density-Fitness	:	1.0.12
Ideal geometry (proteins)	:	Engh & Huber (2001)
Ideal geometry (DNA, RNA)	:	Parkinson et al. (1996)
Validation Pipeline (wwPDB-VP)	:	2.47

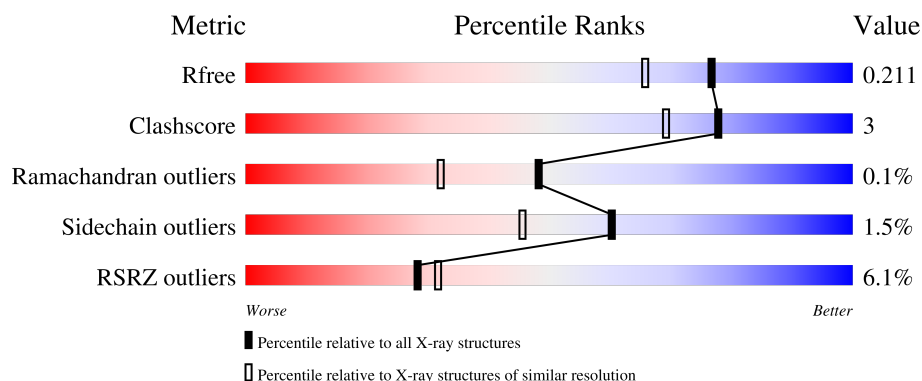
1 Overall quality at a glance

The following experimental techniques were used to determine the structure:

X-RAY DIFFRACTION

The reported resolution of this entry is 1.75 Å.

Percentile scores (ranging between 0-100) for global validation metrics of the entry are shown in the following graphic. The table shows the number of entries on which the scores are based.



Metric	Whole archive (#Entries)	Similar resolution (#Entries, resolution range(Å))
R_{free}	164625	2888 (1.76-1.76)
Clashscore	180529	3097 (1.76-1.76)
Ramachandran outliers	177936	3072 (1.76-1.76)
Sidechain outliers	177891	3072 (1.76-1.76)
RSRZ outliers	164620	2887 (1.76-1.76)

The table below summarises the geometric issues observed across the polymeric chains and their fit to the electron density. The red, orange, yellow and green segments of the lower bar indicate the fraction of residues that contain outliers for ≥ 3 , 2, 1 and 0 types of geometric quality criteria respectively. A grey segment represents the fraction of residues that are not modelled. The numeric value for each fraction is indicated below the corresponding segment, with a dot representing fractions $\leq 5\%$. The upper red bar (where present) indicates the fraction of residues that have poor fit to the electron density. The numeric value is given above the bar.

Mol	Chain	Length	Quality of chain
1	A	316	 4% 81% 6% 13%
1	B	316	 3% 82% 7% 11%
1	C	316	 5% 80% 7% 13%
1	D	316	 9% 82% 6% 12%

Continued on next page...

Continued from previous page...

Mol	Chain	Length	Quality of chain
1	E	316	<div><div></div><div>6%</div><div>83%</div><div>•</div><div>13%</div></div>

2 Entry composition

There are 5 unique types of molecules in this entry. The entry contains 10871 atoms, of which 0 are hydrogens and 0 are deuteriums.

In the tables below, the ZeroOcc column contains the number of atoms modelled with zero occupancy, the AltConf column contains the number of residues with at least one atom in alternate conformation and the Trace column contains the number of residues modelled with at most 2 atoms.

- Molecule 1 is a protein called Pyrroline-5-carboxylate reductase 1, mitochondrial.

Mol	Chain	Residues	Atoms					ZeroOcc	AltConf	Trace
1	A	276	Total	C	N	O	S	0	2	0
			1985	1247	351	373	14			
1	B	280	Total	C	N	O	S	0	3	0
			2010	1266	352	379	13			
1	C	275	Total	C	N	O	S	0	3	0
			1925	1208	336	367	14			
1	D	279	Total	C	N	O	S	0	4	0
			1931	1215	342	361	13			
1	E	275	Total	C	N	O	S	0	5	0
			1934	1220	338	363	13			

There are 110 discrepancies between the modelled and reference sequences:

Chain	Residue	Modelled	Actual	Comment	Reference
A	-21	MET	-	initiating methionine	UNP P32322
A	-20	HIS	-	expression tag	UNP P32322
A	-19	HIS	-	expression tag	UNP P32322
A	-18	HIS	-	expression tag	UNP P32322
A	-17	HIS	-	expression tag	UNP P32322
A	-16	HIS	-	expression tag	UNP P32322
A	-15	HIS	-	expression tag	UNP P32322
A	-14	SER	-	expression tag	UNP P32322
A	-13	SER	-	expression tag	UNP P32322
A	-12	GLY	-	expression tag	UNP P32322
A	-11	VAL	-	expression tag	UNP P32322
A	-10	ASP	-	expression tag	UNP P32322
A	-9	LEU	-	expression tag	UNP P32322
A	-8	GLY	-	expression tag	UNP P32322
A	-7	THR	-	expression tag	UNP P32322
A	-6	GLU	-	expression tag	UNP P32322
A	-5	ASN	-	expression tag	UNP P32322
A	-4	LEU	-	expression tag	UNP P32322
A	-3	TYR	-	expression tag	UNP P32322

Continued on next page...

Continued from previous page...

Chain	Residue	Modelled	Actual	Comment	Reference
A	-2	PHE	-	expression tag	UNP P32322
A	-1	GLN	-	expression tag	UNP P32322
A	0	SER	-	expression tag	UNP P32322
B	-21	MET	-	initiating methionine	UNP P32322
B	-20	HIS	-	expression tag	UNP P32322
B	-19	HIS	-	expression tag	UNP P32322
B	-18	HIS	-	expression tag	UNP P32322
B	-17	HIS	-	expression tag	UNP P32322
B	-16	HIS	-	expression tag	UNP P32322
B	-15	HIS	-	expression tag	UNP P32322
B	-14	SER	-	expression tag	UNP P32322
B	-13	SER	-	expression tag	UNP P32322
B	-12	GLY	-	expression tag	UNP P32322
B	-11	VAL	-	expression tag	UNP P32322
B	-10	ASP	-	expression tag	UNP P32322
B	-9	LEU	-	expression tag	UNP P32322
B	-8	GLY	-	expression tag	UNP P32322
B	-7	THR	-	expression tag	UNP P32322
B	-6	GLU	-	expression tag	UNP P32322
B	-5	ASN	-	expression tag	UNP P32322
B	-4	LEU	-	expression tag	UNP P32322
B	-3	TYR	-	expression tag	UNP P32322
B	-2	PHE	-	expression tag	UNP P32322
B	-1	GLN	-	expression tag	UNP P32322
B	0	SER	-	expression tag	UNP P32322
C	-21	MET	-	initiating methionine	UNP P32322
C	-20	HIS	-	expression tag	UNP P32322
C	-19	HIS	-	expression tag	UNP P32322
C	-18	HIS	-	expression tag	UNP P32322
C	-17	HIS	-	expression tag	UNP P32322
C	-16	HIS	-	expression tag	UNP P32322
C	-15	HIS	-	expression tag	UNP P32322
C	-14	SER	-	expression tag	UNP P32322
C	-13	SER	-	expression tag	UNP P32322
C	-12	GLY	-	expression tag	UNP P32322
C	-11	VAL	-	expression tag	UNP P32322
C	-10	ASP	-	expression tag	UNP P32322
C	-9	LEU	-	expression tag	UNP P32322
C	-8	GLY	-	expression tag	UNP P32322
C	-7	THR	-	expression tag	UNP P32322
C	-6	GLU	-	expression tag	UNP P32322
C	-5	ASN	-	expression tag	UNP P32322

Continued on next page...

Continued from previous page...

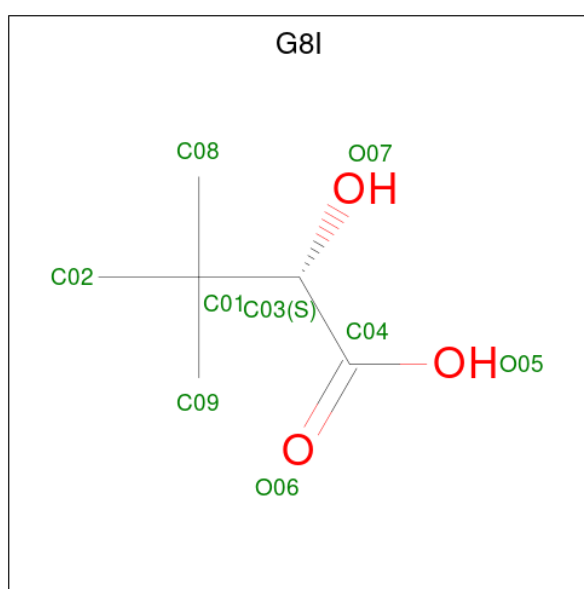
Chain	Residue	Modelled	Actual	Comment	Reference
C	-4	LEU	-	expression tag	UNP P32322
C	-3	TYR	-	expression tag	UNP P32322
C	-2	PHE	-	expression tag	UNP P32322
C	-1	GLN	-	expression tag	UNP P32322
C	0	SER	-	expression tag	UNP P32322
D	-21	MET	-	initiating methionine	UNP P32322
D	-20	HIS	-	expression tag	UNP P32322
D	-19	HIS	-	expression tag	UNP P32322
D	-18	HIS	-	expression tag	UNP P32322
D	-17	HIS	-	expression tag	UNP P32322
D	-16	HIS	-	expression tag	UNP P32322
D	-15	HIS	-	expression tag	UNP P32322
D	-14	SER	-	expression tag	UNP P32322
D	-13	SER	-	expression tag	UNP P32322
D	-12	GLY	-	expression tag	UNP P32322
D	-11	VAL	-	expression tag	UNP P32322
D	-10	ASP	-	expression tag	UNP P32322
D	-9	LEU	-	expression tag	UNP P32322
D	-8	GLY	-	expression tag	UNP P32322
D	-7	THR	-	expression tag	UNP P32322
D	-6	GLU	-	expression tag	UNP P32322
D	-5	ASN	-	expression tag	UNP P32322
D	-4	LEU	-	expression tag	UNP P32322
D	-3	TYR	-	expression tag	UNP P32322
D	-2	PHE	-	expression tag	UNP P32322
D	-1	GLN	-	expression tag	UNP P32322
D	0	SER	-	expression tag	UNP P32322
E	-21	MET	-	initiating methionine	UNP P32322
E	-20	HIS	-	expression tag	UNP P32322
E	-19	HIS	-	expression tag	UNP P32322
E	-18	HIS	-	expression tag	UNP P32322
E	-17	HIS	-	expression tag	UNP P32322
E	-16	HIS	-	expression tag	UNP P32322
E	-15	HIS	-	expression tag	UNP P32322
E	-14	SER	-	expression tag	UNP P32322
E	-13	SER	-	expression tag	UNP P32322
E	-12	GLY	-	expression tag	UNP P32322
E	-11	VAL	-	expression tag	UNP P32322
E	-10	ASP	-	expression tag	UNP P32322
E	-9	LEU	-	expression tag	UNP P32322
E	-8	GLY	-	expression tag	UNP P32322
E	-7	THR	-	expression tag	UNP P32322

Continued on next page...

Continued from previous page...

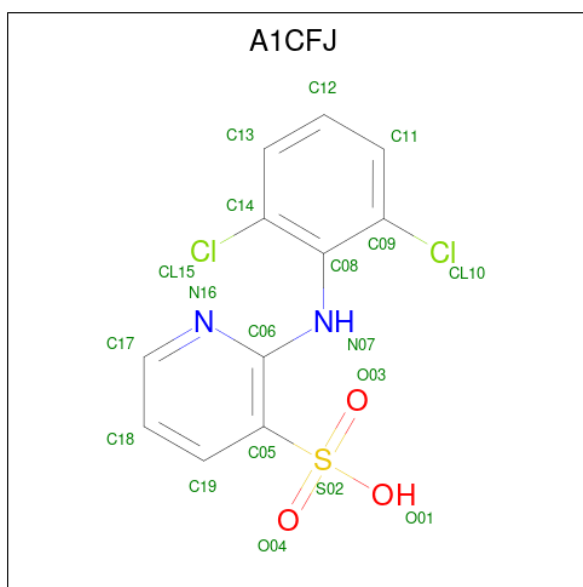
Chain	Residue	Modelled	Actual	Comment	Reference
E	-6	GLU	-	expression tag	UNP P32322
E	-5	ASN	-	expression tag	UNP P32322
E	-4	LEU	-	expression tag	UNP P32322
E	-3	TYR	-	expression tag	UNP P32322
E	-2	PHE	-	expression tag	UNP P32322
E	-1	GLN	-	expression tag	UNP P32322
E	0	SER	-	expression tag	UNP P32322

- Molecule 2 is (2S)-2-hydroxy-3,3-dimethylbutanoic acid (CCD ID: G8I) (formula: $C_6H_{12}O_3$) (labeled as "Ligand of Interest" by depositor).



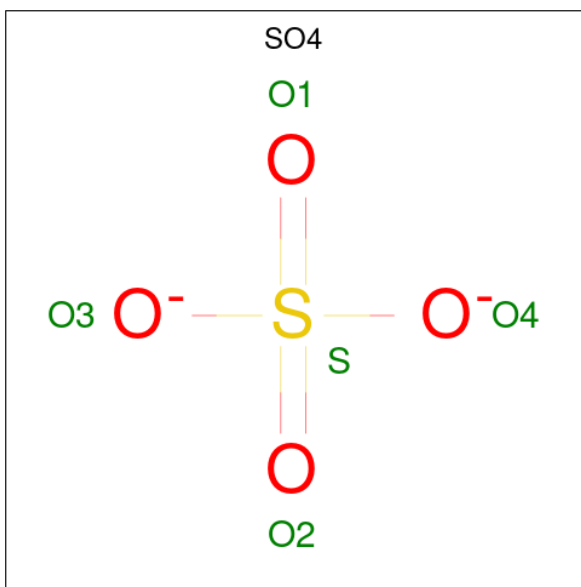
Mol	Chain	Residues	Atoms			ZeroOcc	AltConf
2	A	1	Total	C	O	0	1
			9	6	3		
2	B	1	Total	C	O	0	0
			9	6	3		
2	C	1	Total	C	O	0	0
			9	6	3		
2	D	1	Total	C	O	0	0
			9	6	3		
2	E	1	Total	C	O	0	0
			9	6	3		

- Molecule 3 is 2-(2,6-dichloroanilino)pyridine-3-sulfonic acid (CCD ID: A1CFJ) (formula: $C_{11}H_8Cl_2N_2O_3S$) (labeled as "Ligand of Interest" by depositor).



Mol	Chain	Residues	Atoms						ZeroOcc	AltConf
3	A	1	Total 19	C 11	Cl 2	N 2	O 3	S 1	0	0
3	B	1	Total 19	C 11	Cl 2	N 2	O 3	S 1	0	0
3	B	1	Total 19	C 11	Cl 2	N 2	O 3	S 1	0	0
3	B	1	Total 19	C 11	Cl 2	N 2	O 3	S 1	0	0
3	C	1	Total 19	C 11	Cl 2	N 2	O 3	S 1	0	0
3	C	1	Total 19	C 11	Cl 2	N 2	O 3	S 1	0	0
3	C	1	Total 19	C 11	Cl 2	N 2	O 3	S 1	0	0
3	D	1	Total 19	C 11	Cl 2	N 2	O 3	S 1	0	0
3	E	1	Total 19	C 11	Cl 2	N 2	O 3	S 1	0	0

- Molecule 4 is SULFATE ION (CCD ID: SO4) (formula: O₄S).



Mol	Chain	Residues	Atoms			ZeroOcc	AltConf
4	A	1	Total	O	S	0	1
			5	4	1		

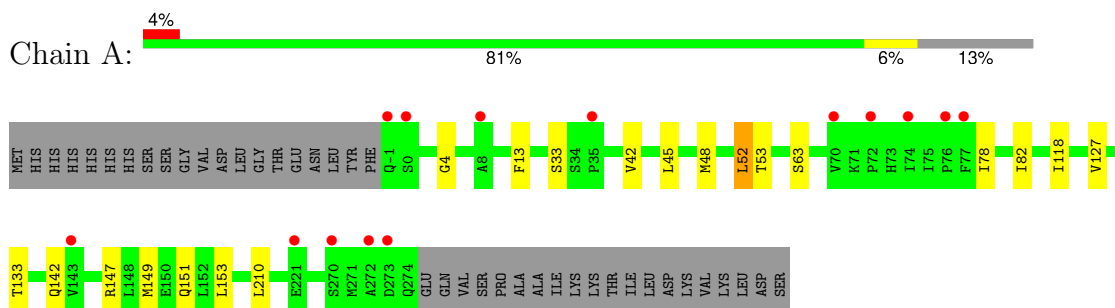
- Molecule 5 is water.

Mol	Chain	Residues	Atoms		ZeroOcc	AltConf
5	A	186	Total	O	0	0
			186	186		
5	B	204	Total	O	0	0
			204	204		
5	C	165	Total	O	0	0
			165	165		
5	D	149	Total	O	0	0
			149	149		
5	E	161	Total	O	0	0
			161	161		

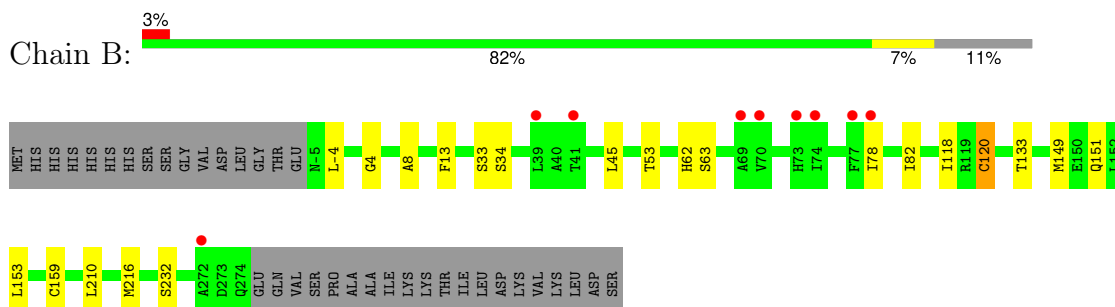
3 Residue-property plots [i](#)

These plots are drawn for all protein, RNA, DNA and oligosaccharide chains in the entry. The first graphic for a chain summarises the proportions of the various outlier classes displayed in the second graphic. The second graphic shows the sequence view annotated by issues in geometry and electron density. Residues are color-coded according to the number of geometric quality criteria for which they contain at least one outlier: green = 0, yellow = 1, orange = 2 and red = 3 or more. A red dot above a residue indicates a poor fit to the electron density ($RSRZ > 2$). Stretches of 2 or more consecutive residues without any outlier are shown as a green connector. Residues present in the sample, but not in the model, are shown in grey.

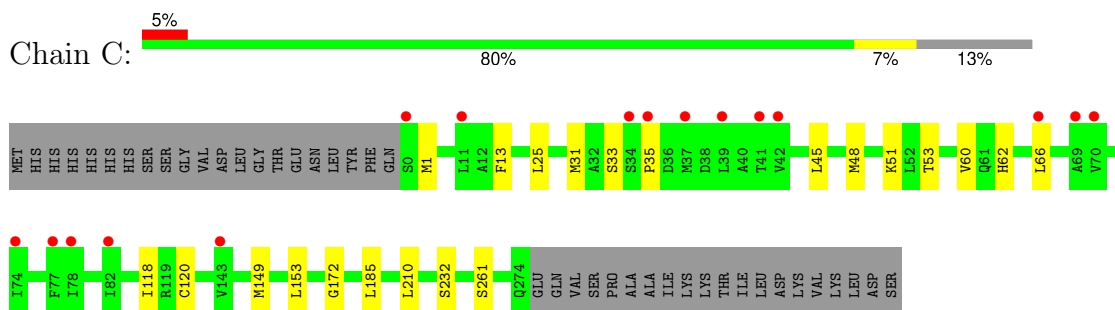
- Molecule 1: Pyrroline-5-carboxylate reductase 1, mitochondrial



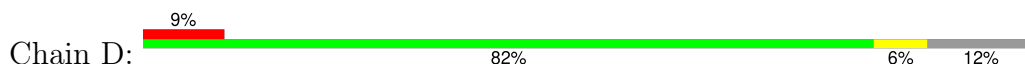
- Molecule 1: Pyrroline-5-carboxylate reductase 1, mitochondrial

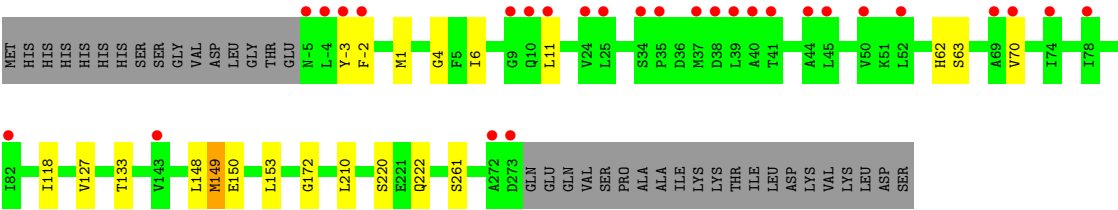


- Molecule 1: Pyrroline-5-carboxylate reductase 1, mitochondrial

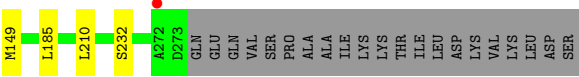
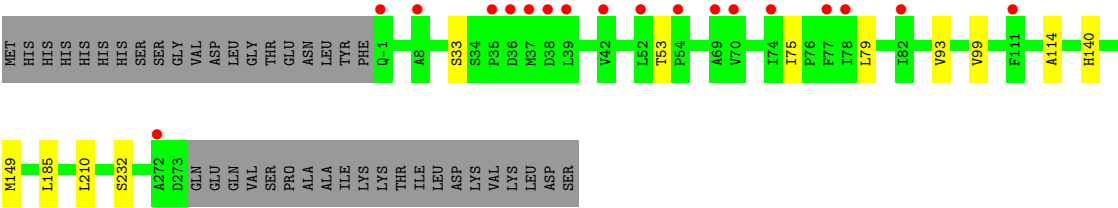
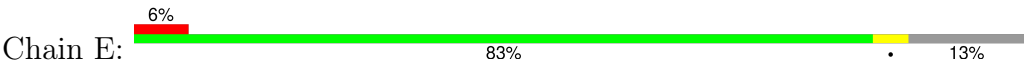


- Molecule 1: Pyrroline-5-carboxylate reductase 1, mitochondrial





● Molecule 1: Pyrroline-5-carboxylate reductase 1, mitochondrial



4 Data and refinement statistics

Property	Value	Source
Space group	C 1 2 1	Depositor
Cell constants a, b, c, α , β , γ	110.77Å 180.31Å 88.14Å 90.00° 106.52° 90.00°	Depositor
Resolution (Å)	45.75 – 1.75 45.75 – 1.75	Depositor EDS
% Data completeness (in resolution range)	98.7 (45.75-1.75) 99.2 (45.75-1.75)	Depositor EDS
R_{merge}	0.16	Depositor
R_{sym}	(Not available)	Depositor
$\langle I/\sigma(I) \rangle$ ¹	1.36 (at 1.75Å)	Xtriage
Refinement program	PHENIX (1.21.2_5419: ???)	Depositor
R, R_{free}	0.199 , 0.217 0.192 , 0.211	Depositor DCC
R_{free} test set	3273 reflections (1.97%)	wwPDB-VP
Wilson B-factor (Å ²)	22.3	Xtriage
Anisotropy	0.233	Xtriage
Bulk solvent k_{sol} (e/Å ³), B_{sol} (Å ²)	0.32 , 50.5	EDS
L-test for twinning ²	$\langle L \rangle = 0.47$, $\langle L^2 \rangle = 0.30$	Xtriage
Estimated twinning fraction	No twinning to report.	Xtriage
F_o, F_c correlation	0.96	EDS
Total number of atoms	10871	wwPDB-VP
Average B, all atoms (Å ²)	33.0	wwPDB-VP

Xtriage's analysis on translational NCS is as follows: *The largest off-origin peak in the Patterson function is 4.41% of the height of the origin peak. No significant pseudotranslation is detected.*

¹Intensities estimated from amplitudes.

²Theoretical values of $\langle |L| \rangle$, $\langle L^2 \rangle$ for acentric reflections are 0.5, 0.333 respectively for untwinned datasets, and 0.375, 0.2 for perfectly twinned datasets.

5 Model quality [i](#)

5.1 Standard geometry [i](#)

Bond lengths and bond angles in the following residue types are not validated in this section: A1CFJ, SO4, G8I

The Z score for a bond length (or angle) is the number of standard deviations the observed value is removed from the expected value. A bond length (or angle) with $|Z| > 5$ is considered an outlier worth inspection. RMSZ is the root-mean-square of all Z scores of the bond lengths (or angles).

Mol	Chain	Bond lengths		Bond angles	
		RMSZ	# Z >5	RMSZ	# Z >5
1	A	0.32	0/2022	0.47	0/2745
1	B	0.32	0/2052	0.48	0/2792
1	C	0.29	0/1965	0.46	0/2679
1	D	0.28	0/1974	0.44	0/2693
1	E	0.30	0/1973	0.47	0/2693
All	All	0.30	0/9986	0.46	0/13602

There are no bond length outliers.

There are no bond angle outliers.

There are no chirality outliers.

There are no planarity outliers.

5.2 Too-close contacts [i](#)

In the following table, the Non-H and H(model) columns list the number of non-hydrogen atoms and hydrogen atoms in the chain respectively. The H(added) column lists the number of hydrogen atoms added and optimized by MolProbity. The Clashes column lists the number of clashes within the asymmetric unit, whereas Symm-Clashes lists symmetry-related clashes.

Mol	Chain	Non-H	H(model)	H(added)	Clashes	Symm-Clashes
1	A	1985	0	1978	11	0
1	B	2010	0	1971	14	0
1	C	1925	0	1840	10	0
1	D	1931	0	1825	12	0
1	E	1934	0	1863	7	0
2	A	9	0	0	0	0
2	B	9	0	0	0	0
2	C	9	0	0	0	0

Continued on next page...

Continued from previous page...

Mol	Chain	Non-H	H(model)	H(added)	Clashes	Symm-Clashes
2	D	9	0	0	0	0
2	E	9	0	0	0	0
3	A	19	0	0	0	0
3	B	57	0	0	2	0
3	C	57	0	0	2	0
3	D	19	0	0	1	0
3	E	19	0	0	0	0
4	A	5	0	0	0	0
5	A	186	0	0	0	0
5	B	204	0	0	0	0
5	C	165	0	0	0	0
5	D	149	0	0	0	0
5	E	161	0	0	0	0
All	All	10871	0	9477	52	0

The all-atom clashscore is defined as the number of clashes found per 1000 atoms (including hydrogen atoms). The all-atom clashscore for this structure is 3.

The worst 5 of 52 close contacts within the same asymmetric unit are listed below, sorted by their clash magnitude.

Atom-1	Atom-2	Interatomic distance (Å)	Clash overlap (Å)
1:D:118:ILE:HD13	1:D:149[B]:MET:HG3	1.77	0.67
1:C:210:LEU:HD13	1:D:210[A]:LEU:HD11	1.77	0.64
1:D:1:MET:HE2	1:D:148:LEU:HD21	1.81	0.63
1:D:-2:PHE:HA	1:D:1:MET:HE3	1.82	0.62
1:D:133:THR:HG21	1:D:153:LEU:HD13	1.82	0.60

There are no symmetry-related clashes.

5.3 Torsion angles ⓘ

5.3.1 Protein backbone ⓘ

In the following table, the Percentiles column shows the percent Ramachandran outliers of the chain as a percentile score with respect to all X-ray entries followed by that with respect to entries of similar resolution.

The Analysed column shows the number of residues for which the backbone conformation was analysed, and the total number of residues.

Mol	Chain	Analysed	Favoured	Allowed	Outliers	Percentiles	
1	A	276/316 (87%)	271 (98%)	5 (2%)	0	100	100
1	B	281/316 (89%)	273 (97%)	8 (3%)	0	100	100
1	C	276/316 (87%)	267 (97%)	8 (3%)	1 (0%)	30	16
1	D	281/316 (89%)	276 (98%)	5 (2%)	0	100	100
1	E	278/316 (88%)	270 (97%)	8 (3%)	0	100	100
All	All	1392/1580 (88%)	1357 (98%)	34 (2%)	1 (0%)	48	32

All (1) Ramachandran outliers are listed below:

Mol	Chain	Res	Type
1	C	35	PRO

5.3.2 Protein sidechains ⓘ

In the following table, the Percentiles column shows the percent sidechain outliers of the chain as a percentile score with respect to all X-ray entries followed by that with respect to entries of similar resolution.

The Analysed column shows the number of residues for which the sidechain conformation was analysed, and the total number of residues.

Mol	Chain	Analysed	Rotameric	Outliers	Percentiles	
1	A	201/251 (80%)	199 (99%)	2 (1%)	73	61
1	B	200/251 (80%)	197 (98%)	3 (2%)	60	45
1	C	184/251 (73%)	180 (98%)	4 (2%)	47	27
1	D	176/251 (70%)	171 (97%)	5 (3%)	38	18
1	E	184/251 (73%)	183 (100%)	1 (0%)	86	82
All	All	945/1255 (75%)	930 (98%)	15 (2%)	60	42

5 of 15 residues with a non-rotameric sidechain are listed below:

Mol	Chain	Res	Type
1	C	153	LEU
1	D	222	GLN
1	C	232	SER
1	E	232	SER
1	D	149[B]	MET

Sometimes sidechains can be flipped to improve hydrogen bonding and reduce clashes. 5 of 16

such sidechains are listed below:

Mol	Chain	Res	Type
1	D	226	GLN
1	D	219	HIS
1	B	226	GLN
1	C	230	ASN
1	B	219	HIS

5.3.3 RNA [i](#)

There are no RNA molecules in this entry.

5.4 Non-standard residues in protein, DNA, RNA chains [i](#)

There are no non-standard protein/DNA/RNA residues in this entry.

5.5 Carbohydrates [i](#)

There are no oligosaccharides in this entry.

5.6 Ligand geometry [i](#)

15 ligands are modelled in this entry.

In the following table, the Counts columns list the number of bonds (or angles) for which Mogul statistics could be retrieved, the number of bonds (or angles) that are observed in the model and the number of bonds (or angles) that are defined in the Chemical Component Dictionary. The Link column lists molecule types, if any, to which the group is linked. The Z score for a bond length (or angle) is the number of standard deviations the observed value is removed from the expected value. A bond length (or angle) with $|Z| > 2$ is considered an outlier worth inspection. RMSZ is the root-mean-square of all Z scores of the bond lengths (or angles).

Mol	Type	Chain	Res	Link	Bond lengths			Bond angles		
					Counts	RMSZ	# $ Z > 2$	Counts	RMSZ	# $ Z > 2$
3	A1CFJ	B	303	-	20,20,20	1.73	3 (15%)	26,29,29	1.40	4 (15%)
3	A1CFJ	B	304	-	20,20,20	1.68	2 (10%)	26,29,29	1.36	5 (19%)
3	A1CFJ	E	302	-	20,20,20	1.75	3 (15%)	26,29,29	1.25	4 (15%)
3	A1CFJ	C	303	-	20,20,20	1.72	2 (10%)	26,29,29	1.44	5 (19%)
2	G8I	C	301	-	8,8,8	1.47	1 (12%)	11,12,12	1.25	2 (18%)
2	G8I	D	301	-	8,8,8	0.86	0	11,12,12	1.16	2 (18%)
2	G8I	B	302	-	8,8,8	0.94	0	11,12,12	1.17	1 (9%)

Mol	Type	Chain	Res	Link	Bond lengths			Bond angles		
					Counts	RMSZ	# Z > 2	Counts	RMSZ	# Z > 2
3	A1CFJ	D	302	-	20,20,20	1.67	2 (10%)	26,29,29	1.35	5 (19%)
2	G8I	E	301	-	8,8,8	0.94	0	11,12,12	1.28	1 (9%)
3	A1CFJ	A	302	-	20,20,20	1.72	1 (5%)	26,29,29	1.13	2 (7%)
3	A1CFJ	C	304	-	20,20,20	1.77	1 (5%)	26,29,29	1.28	5 (19%)
2	G8I	A	301[A]	-	8,8,8	0.93	0	11,12,12	1.14	1 (9%)
4	SO4	A	303[B]	-	4,4,4	0.70	0	6,6,6	0.14	0
3	A1CFJ	B	301	-	20,20,20	1.77	1 (5%)	26,29,29	1.22	3 (11%)
3	A1CFJ	C	302	-	20,20,20	1.73	3 (15%)	26,29,29	1.25	4 (15%)

In the following table, the Chirals column lists the number of chiral outliers, the number of chiral centers analysed, the number of these observed in the model and the number defined in the Chemical Component Dictionary. Similar counts are reported in the Torsion and Rings columns. '-' means no outliers of that kind were identified.

Mol	Type	Chain	Res	Link	Chirals	Torsions	Rings
3	A1CFJ	B	303	-	-	3/10/10/10	0/2/2/2
3	A1CFJ	B	304	-	-	3/10/10/10	0/2/2/2
3	A1CFJ	E	302	-	-	0/10/10/10	0/2/2/2
3	A1CFJ	C	303	-	-	1/10/10/10	0/2/2/2
2	G8I	C	301	-	-	1/10/10/10	-
2	G8I	D	301	-	-	1/10/10/10	-
2	G8I	B	302	-	-	0/10/10/10	-
3	A1CFJ	D	302	-	-	2/10/10/10	0/2/2/2
2	G8I	E	301	-	-	0/10/10/10	-
3	A1CFJ	A	302	-	-	4/10/10/10	0/2/2/2
3	A1CFJ	C	304	-	-	0/10/10/10	0/2/2/2
2	G8I	A	301[A]	-	-	0/10/10/10	-
3	A1CFJ	B	301	-	-	0/10/10/10	0/2/2/2
3	A1CFJ	C	302	-	-	0/10/10/10	0/2/2/2

The worst 5 of 19 bond length outliers are listed below:

Mol	Chain	Res	Type	Atoms	Z	Observed(Å)	Ideal(Å)
3	B	301	A1CFJ	C06-N07	5.90	1.47	1.36
3	C	304	A1CFJ	C06-N07	5.87	1.47	1.36
3	A	302	A1CFJ	C06-N07	5.58	1.46	1.36
3	E	302	A1CFJ	C06-N07	5.58	1.46	1.36
3	C	302	A1CFJ	C06-N07	5.49	1.46	1.36

The worst 5 of 44 bond angle outliers are listed below:

Mol	Chain	Res	Type	Atoms	Z	Observed(°)	Ideal(°)
3	B	303	A1CFJ	C09-C08-N07	-3.47	117.40	121.97
3	D	302	A1CFJ	O01-S02-C05	3.04	112.03	106.12
2	E	301	G8I	O05-C04-O06	-3.01	117.25	124.08
3	C	304	A1CFJ	O04-S02-C05	2.88	113.17	106.52
3	C	303	A1CFJ	C09-C08-C14	2.88	120.17	116.10

There are no chirality outliers.

5 of 15 torsion outliers are listed below:

Mol	Chain	Res	Type	Atoms
3	A	302	A1CFJ	C19-C05-S02-O01
3	B	303	A1CFJ	C05-C06-N07-C08
3	A	302	A1CFJ	C19-C05-S02-O03
3	A	302	A1CFJ	C19-C05-S02-O04
3	B	304	A1CFJ	C19-C05-S02-O04

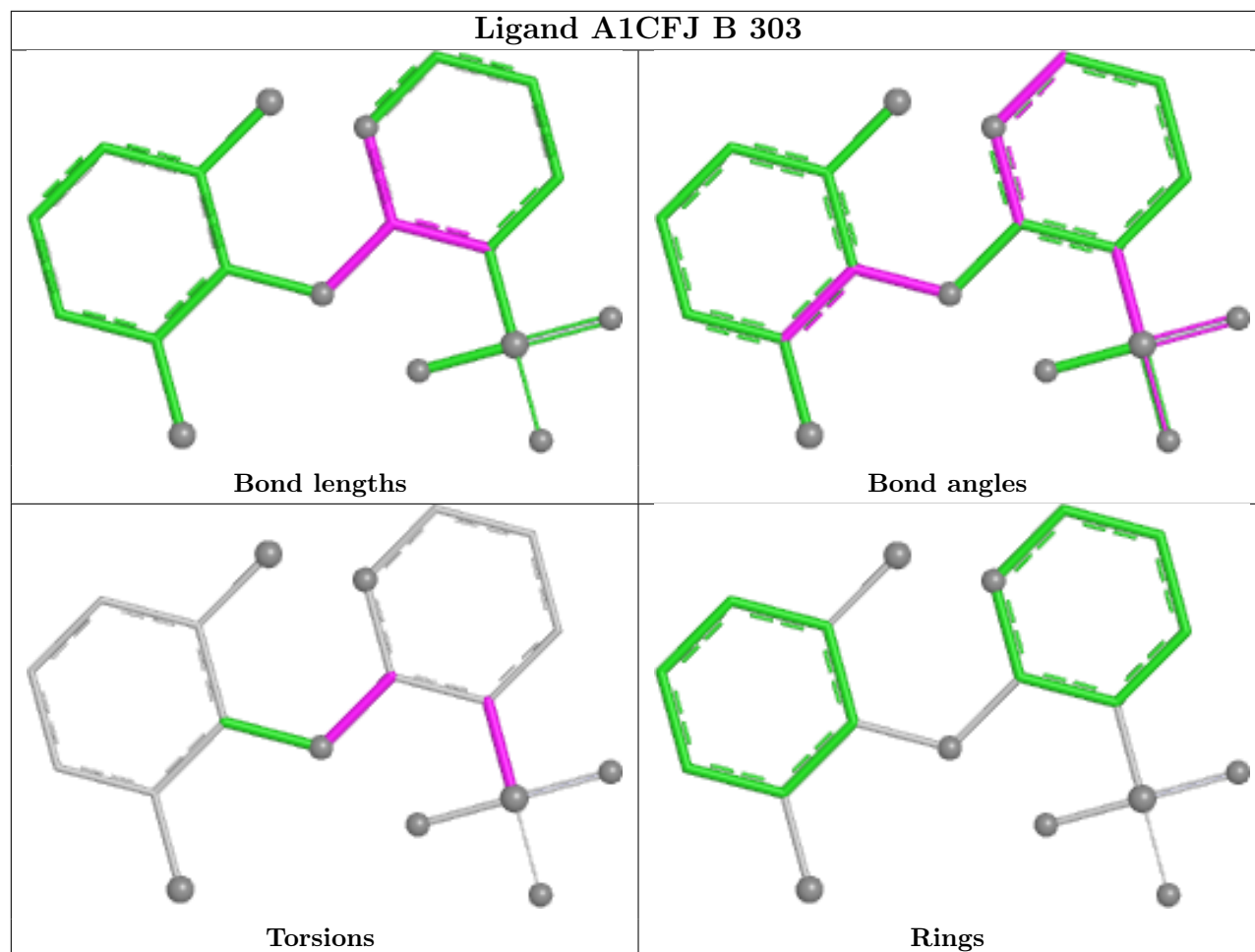
There are no ring outliers.

4 monomers are involved in 5 short contacts:

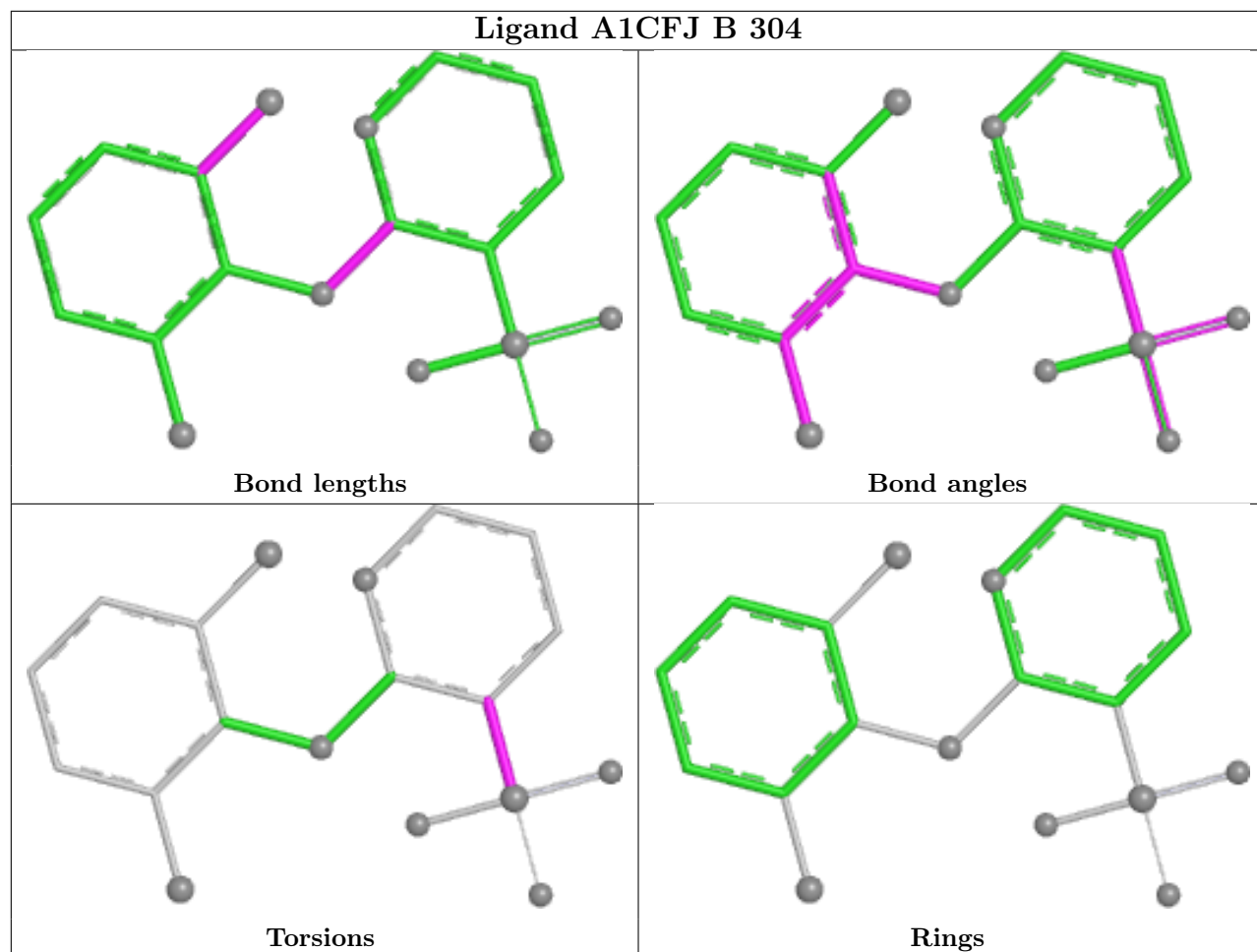
Mol	Chain	Res	Type	Clashes	Symm-Clashes
3	B	303	A1CFJ	2	0
3	D	302	A1CFJ	1	0
3	C	304	A1CFJ	1	0
3	C	302	A1CFJ	1	0

The following is a two-dimensional graphical depiction of Mogul quality analysis of bond lengths, bond angles, torsion angles, and ring geometry for all instances of the Ligand of Interest. In addition, ligands with molecular weight > 250 and outliers as shown on the validation Tables will also be included. For torsion angles, if less than 5% of the Mogul distribution of torsion angles is within 10 degrees of the torsion angle in question, then that torsion angle is considered an outlier. Any bond that is central to one or more torsion angles identified as an outlier by Mogul will be highlighted in the graph. For rings, the root-mean-square deviation (RMSD) between the ring in question and similar rings identified by Mogul is calculated over all ring torsion angles. If the average RMSD is greater than 60 degrees and the minimal RMSD between the ring in question and any Mogul-identified rings is also greater than 60 degrees, then that ring is considered an outlier. The outliers are highlighted in purple. The color gray indicates Mogul did not find sufficient equivalents in the CSD to analyse the geometry.

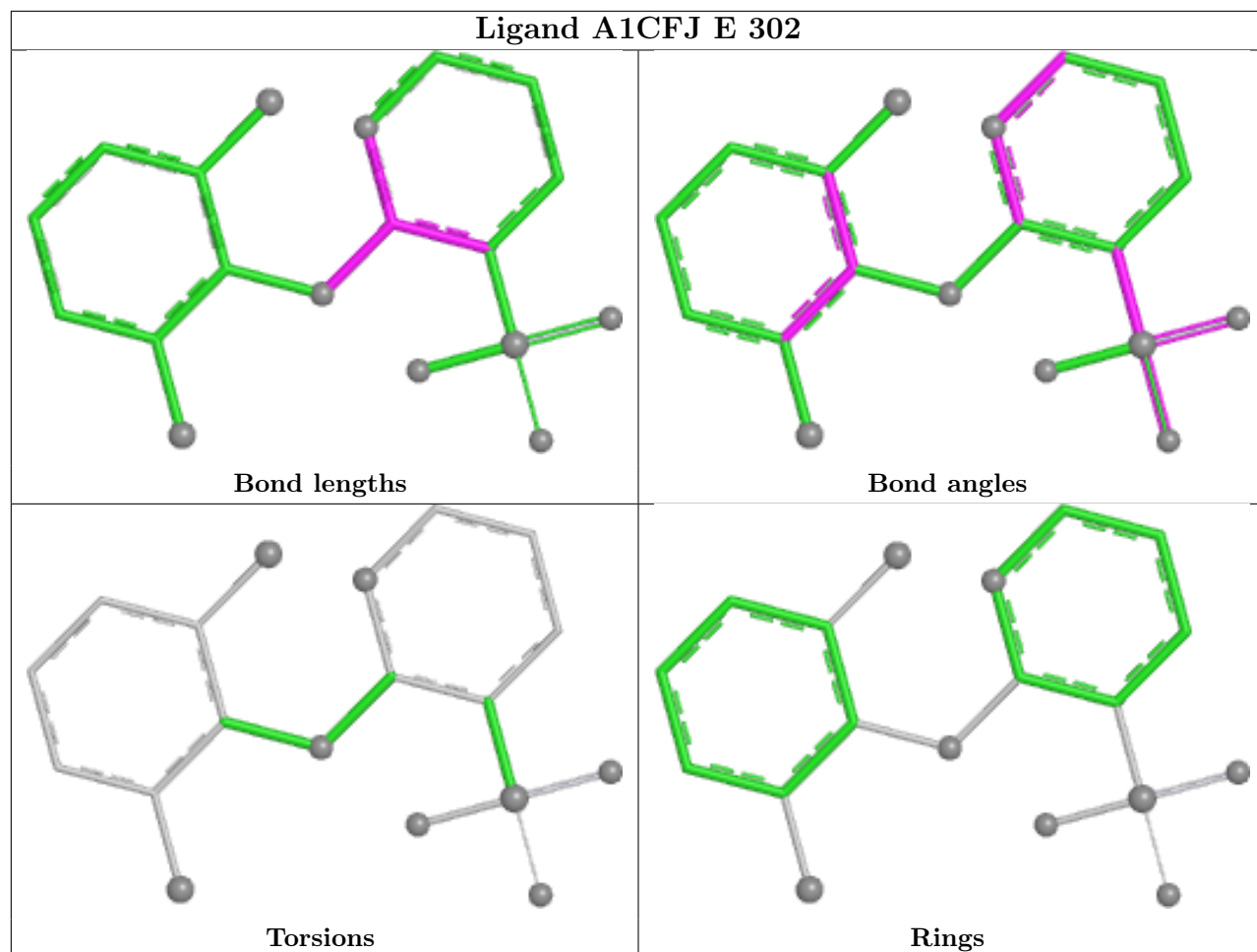
Ligand A1CFJ B 303



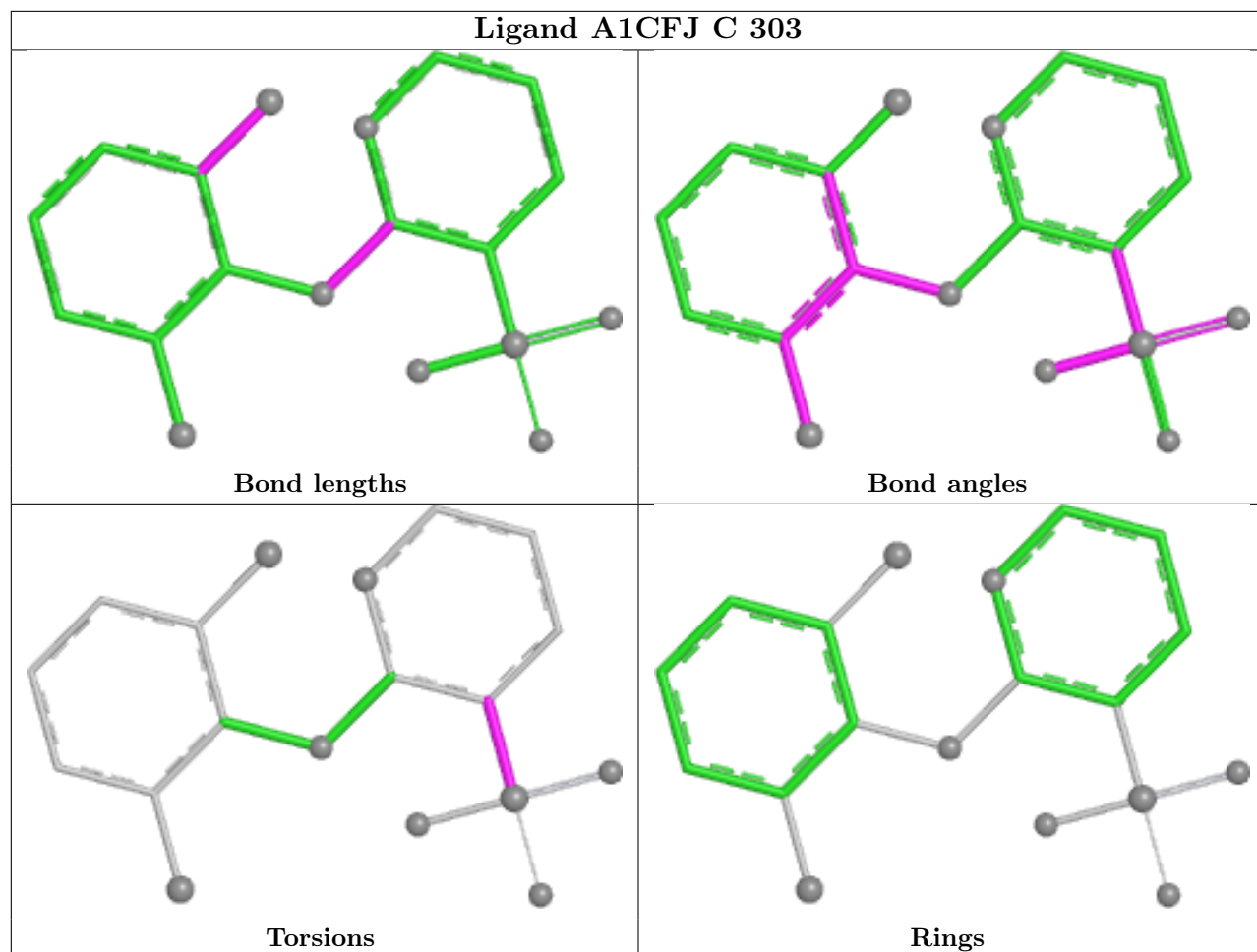
Ligand A1CFJ B 304



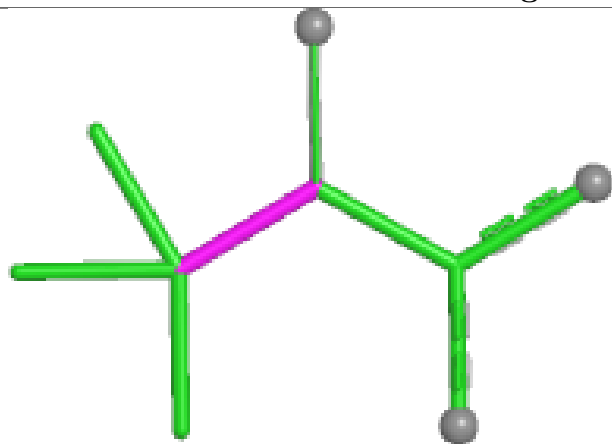
Ligand A1CFJ E 302



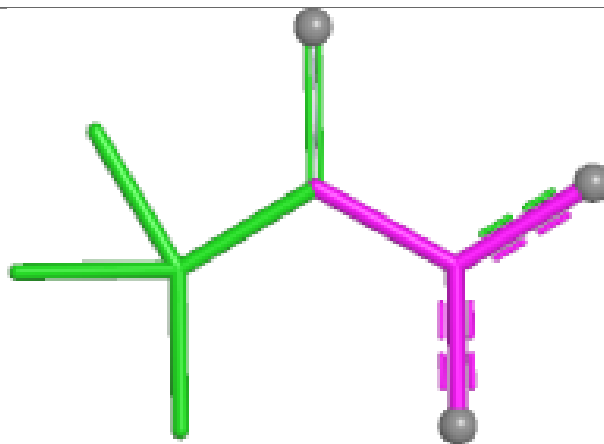
Ligand A1CFJ C 303



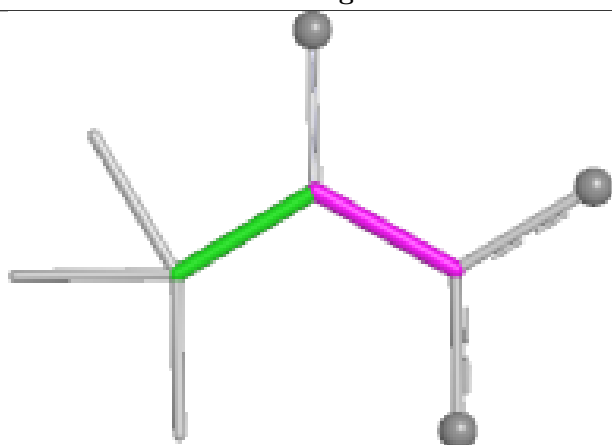
Ligand G8I C 301



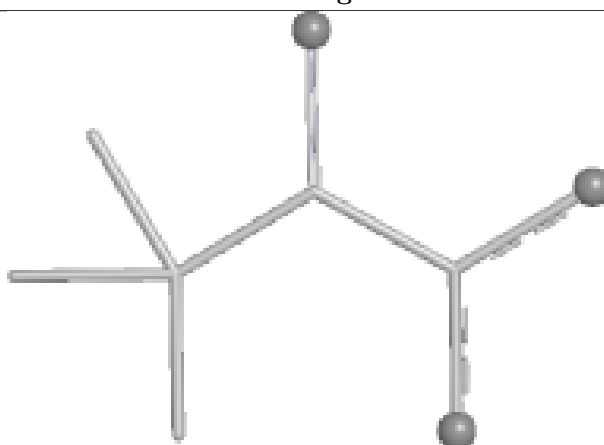
Bond lengths



Bond angles

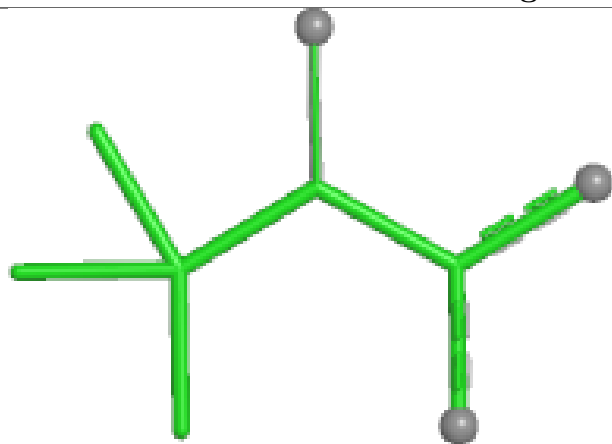


Torsions

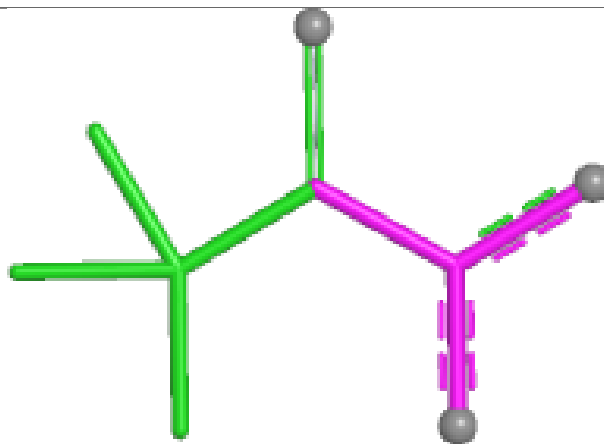


Rings

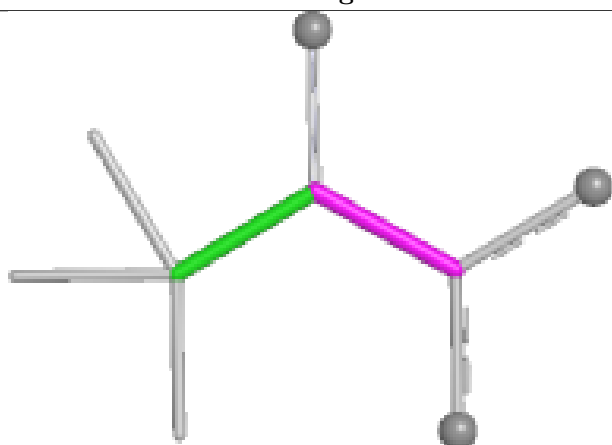
Ligand G8I D 301



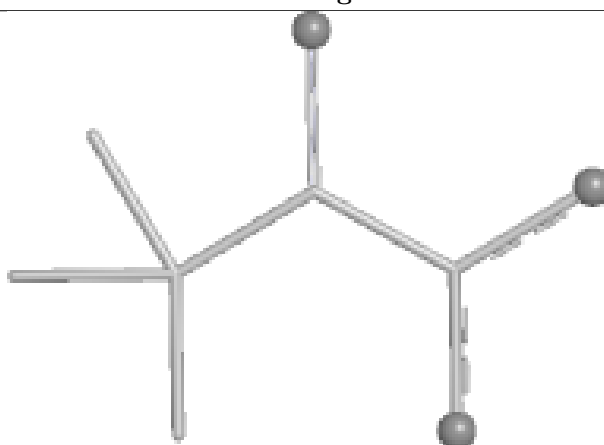
Bond lengths



Bond angles

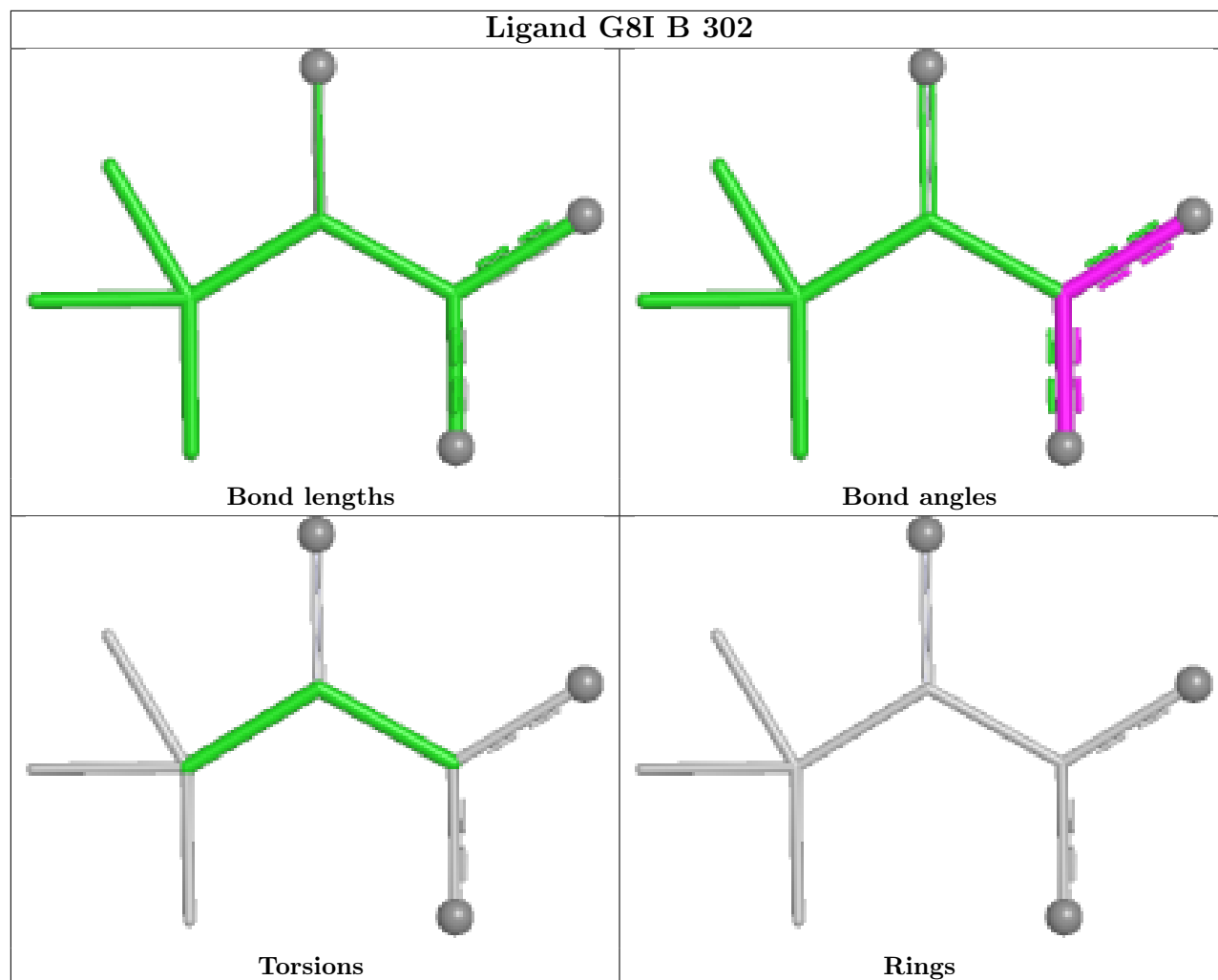


Torsions

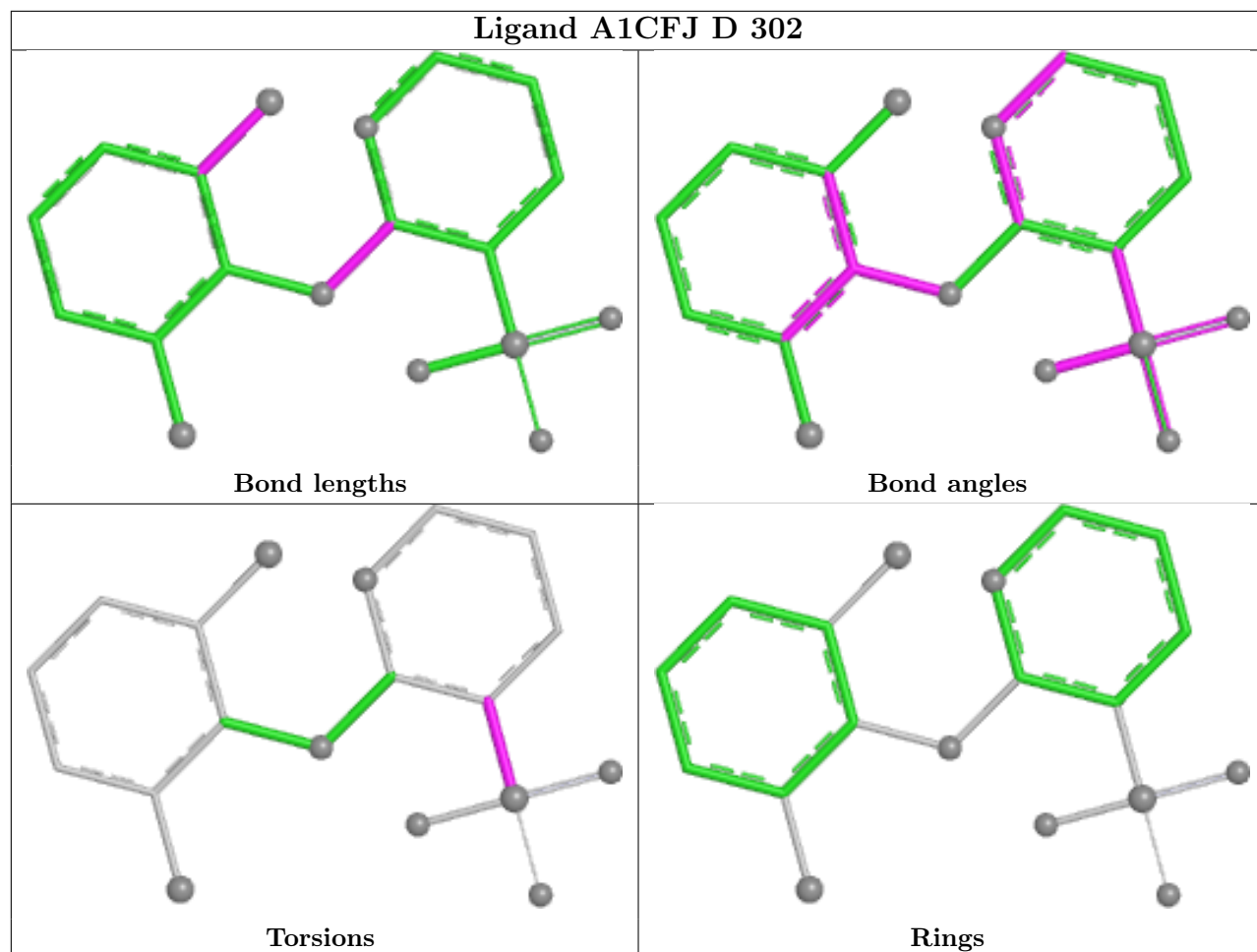


Rings

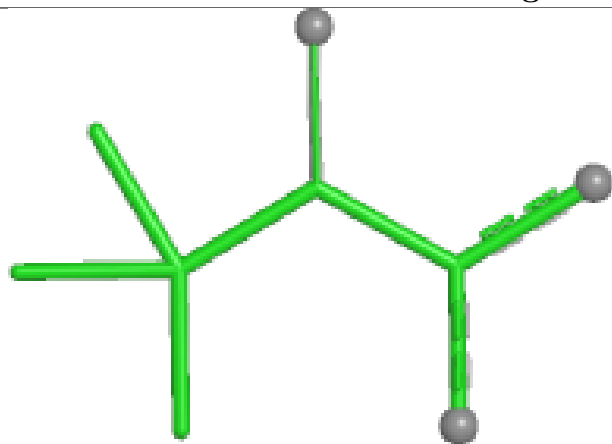
Ligand G8I B 302



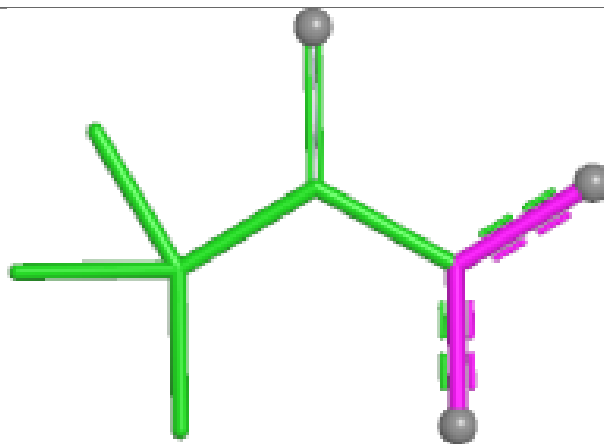
Ligand A1CFJ D 302



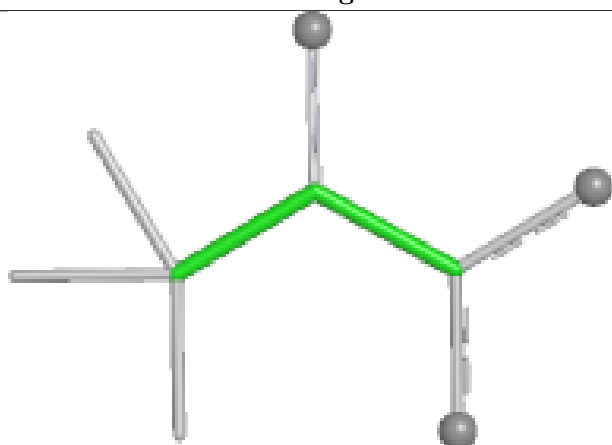
Ligand G8I E 301



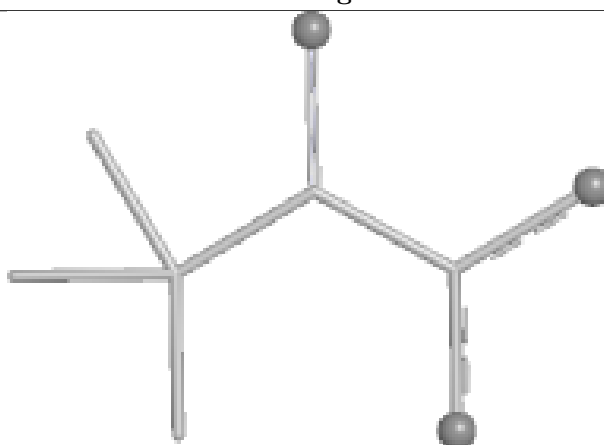
Bond lengths



Bond angles

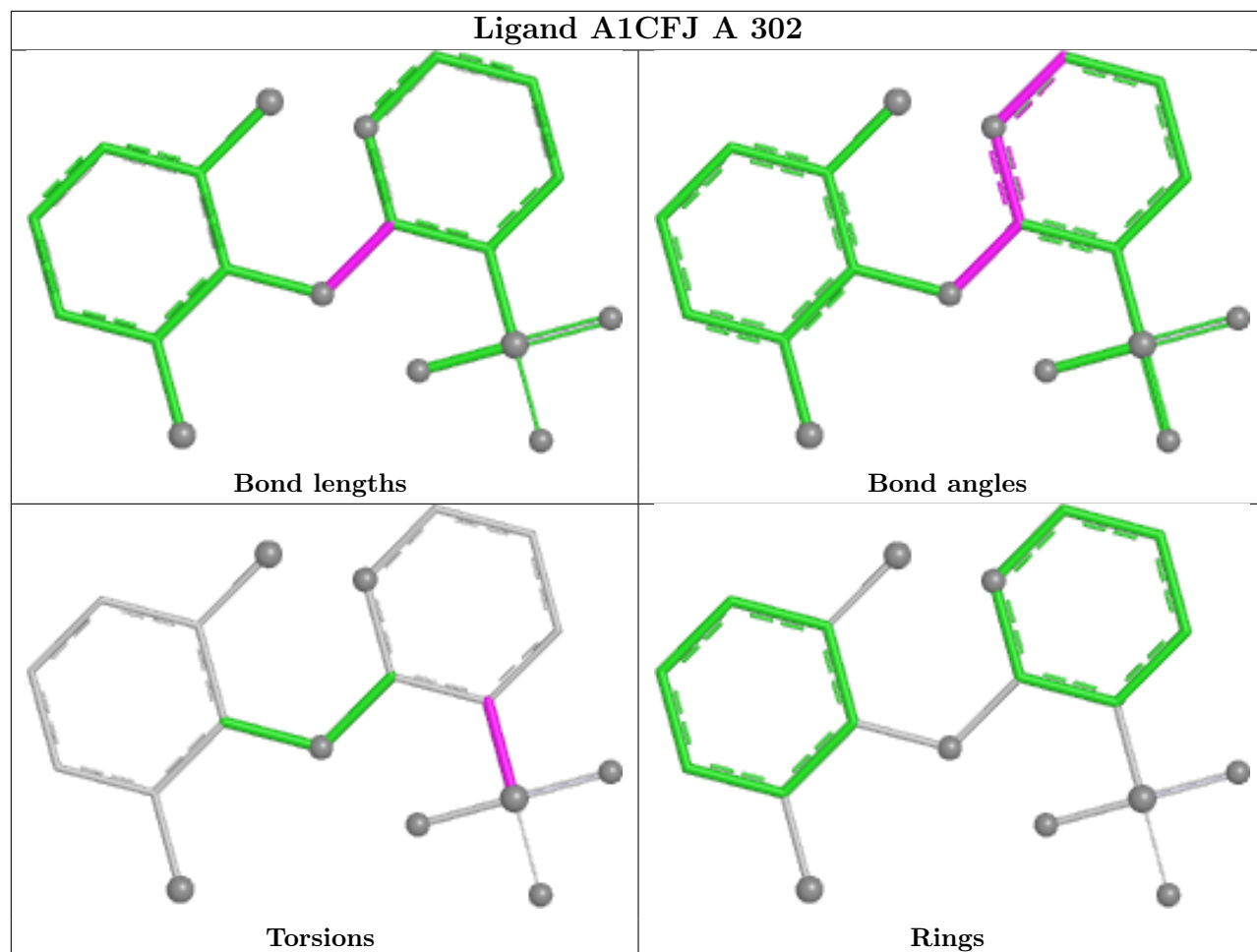


Torsions

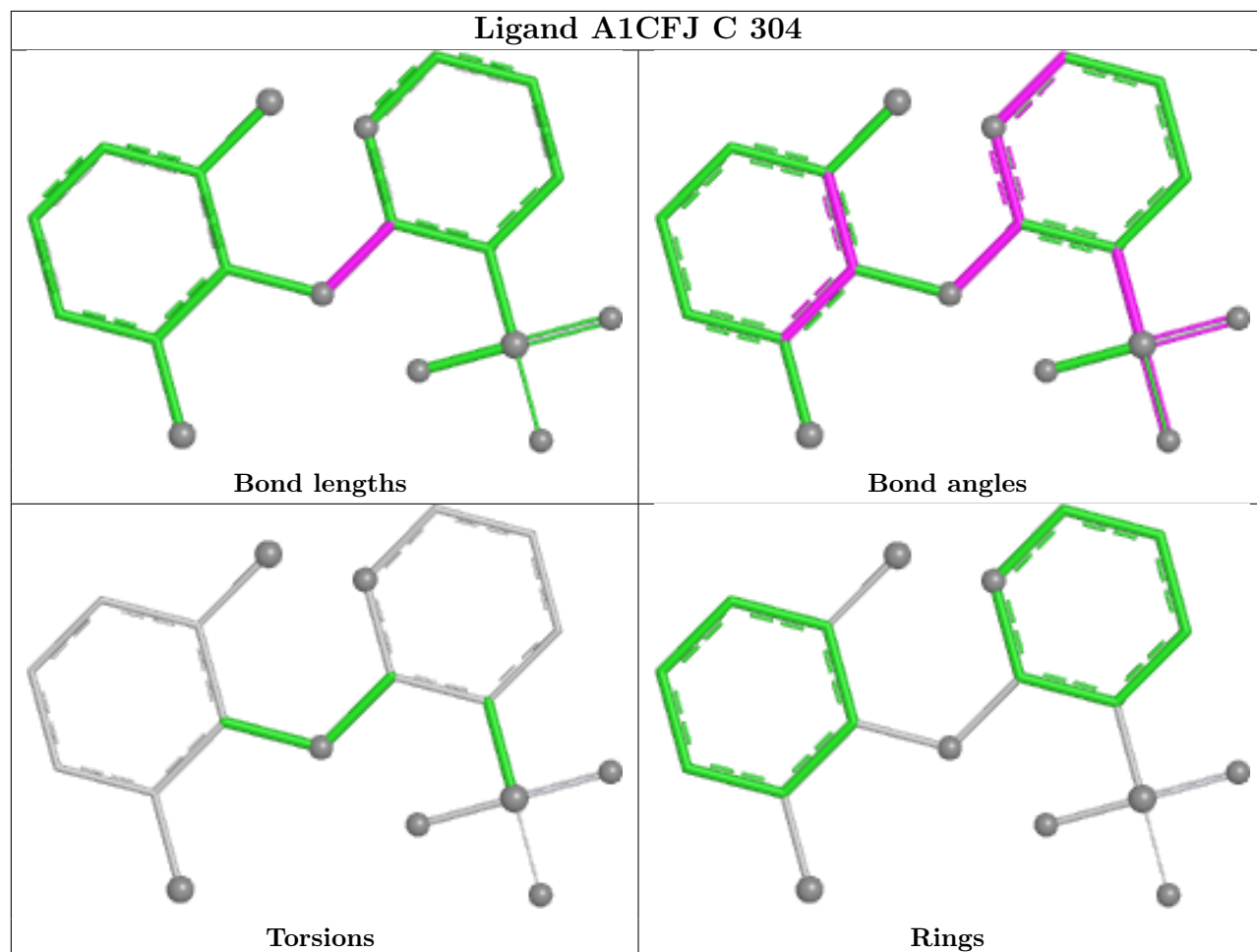


Rings

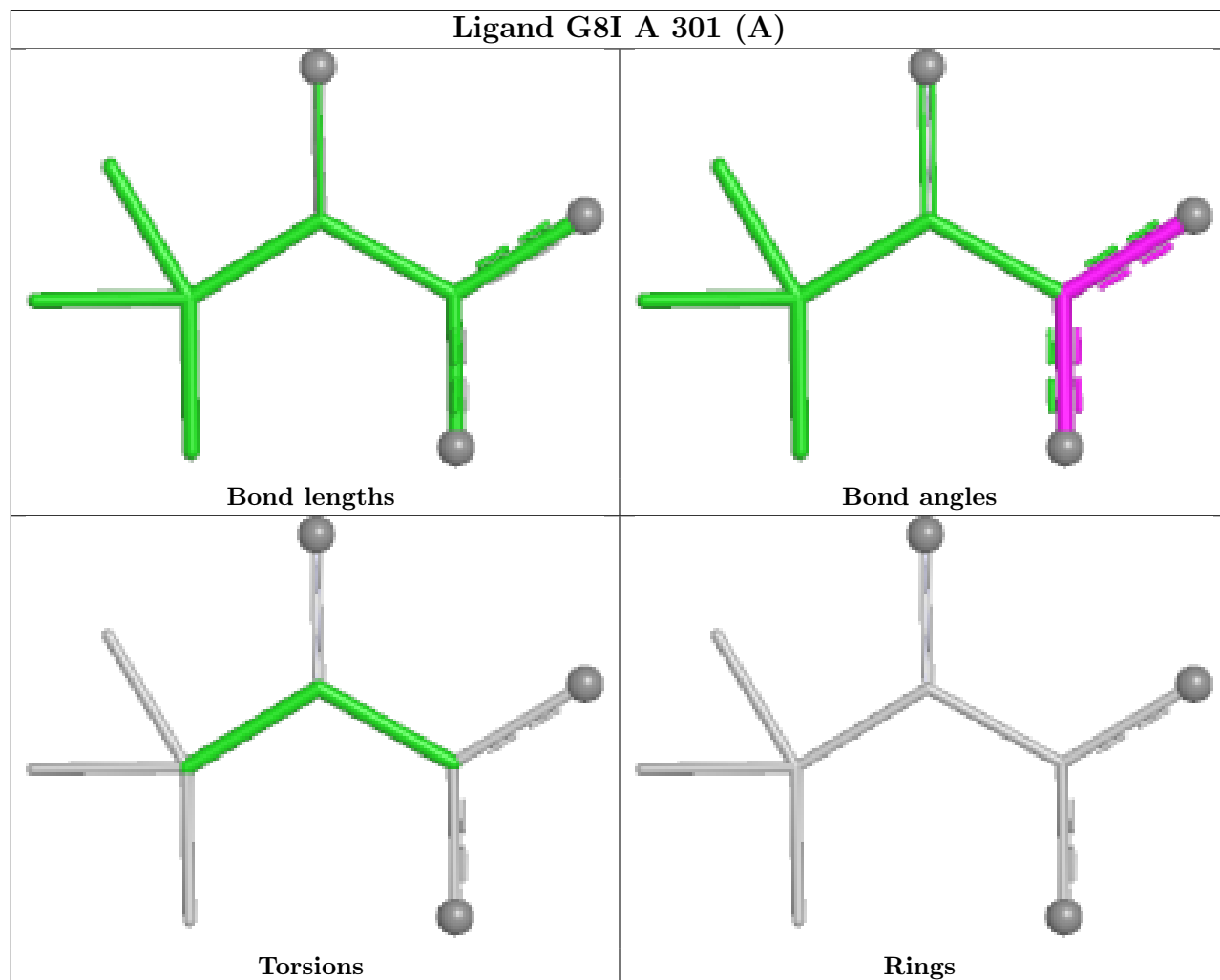
Ligand A1CFJ A 302



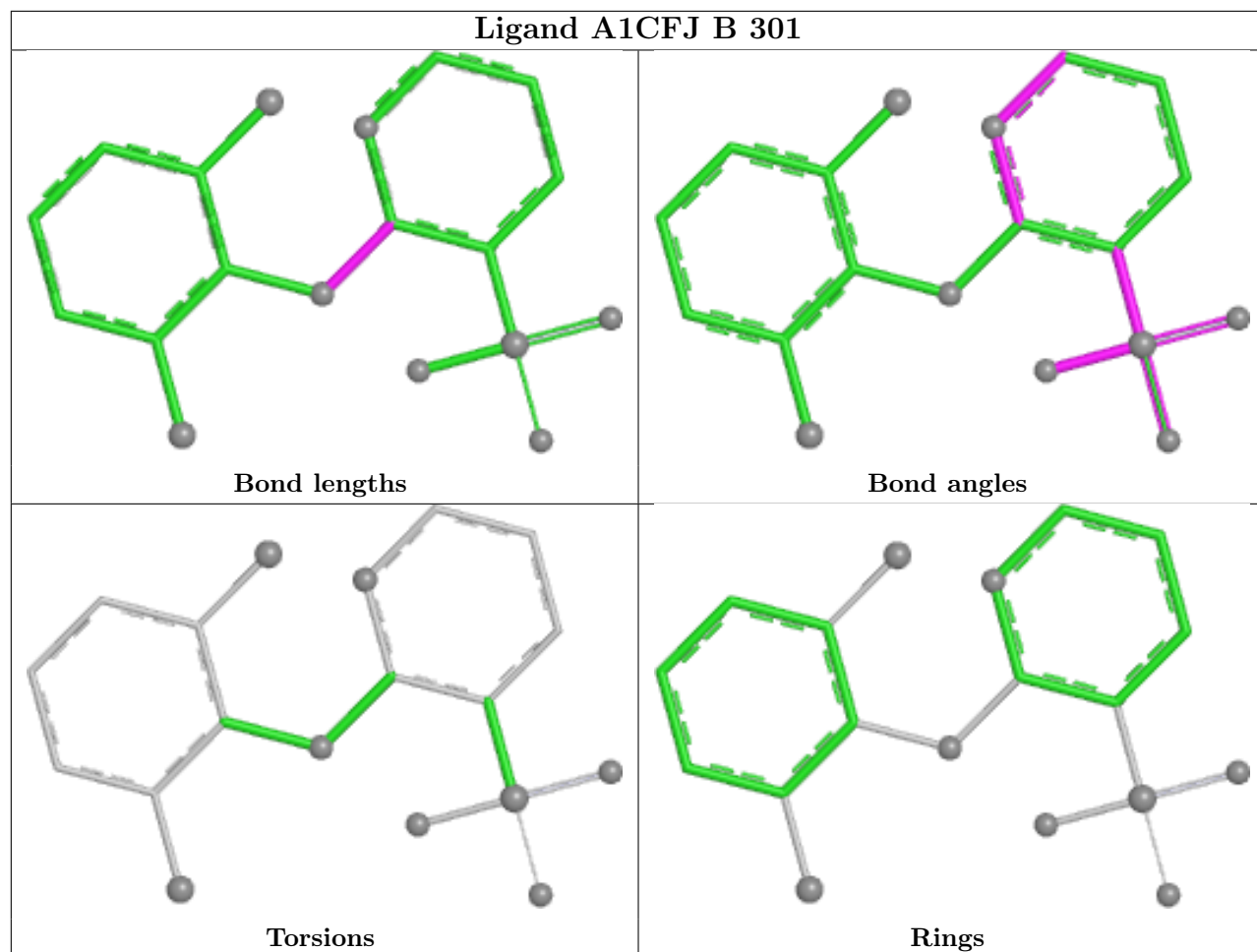
Ligand A1CFJ C 304

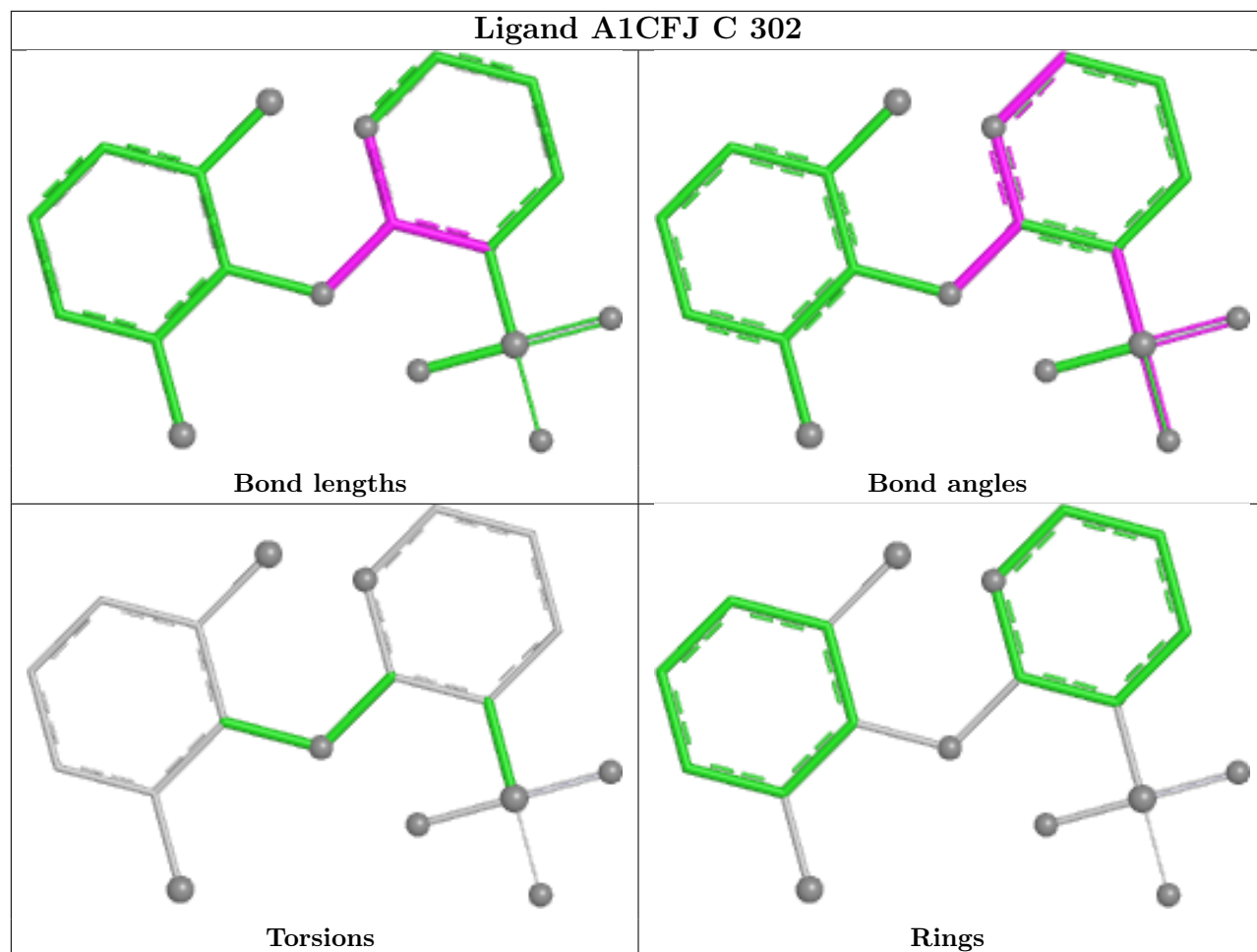


Ligand G8I A 301 (A)



Ligand A1CFJ B 301





5.7 Other polymers [i](#)

There are no such residues in this entry.

5.8 Polymer linkage issues [i](#)

There are no chain breaks in this entry.

6 Fit of model and data [i](#)

6.1 Protein, DNA and RNA chains [i](#)

In the following table, the column labelled ‘#RSRZ > 2’ contains the number (and percentage) of RSRZ outliers, followed by percent RSRZ outliers for the chain as percentile scores relative to all X-ray entries and entries of similar resolution. The OWAB column contains the minimum, median, 95th percentile and maximum values of the occupancy-weighted average B-factor per residue. The column labelled ‘Q < 0.9’ lists the number of (and percentage) of residues with an average occupancy less than 0.9.

Mol	Chain	Analysed	<RSRZ>	#RSRZ>2	OWAB(Å ²)	Q<0.9
1	A	276/316 (87%)	0.05	14 (5%) 34 38	14, 27, 52, 75	2 (0%)
1	B	280/316 (88%)	0.04	9 (3%) 50 57	14, 29, 50, 64	3 (1%)
1	C	275/316 (87%)	0.24	16 (5%) 30 33	15, 32, 59, 82	3 (1%)
1	D	279/316 (88%)	0.41	28 (10%) 14 16	13, 34, 68, 90	4 (1%)
1	E	275/316 (87%)	0.20	18 (6%) 26 29	14, 30, 59, 81	5 (1%)
All	All	1385/1580 (87%)	0.19	85 (6%) 28 32	13, 30, 59, 90	17 (1%)

The worst 5 of 85 RSRZ outliers are listed below:

Mol	Chain	Res	Type	RSRZ
1	A	70	VAL	4.2
1	C	82	ILE	4.0
1	D	39	LEU	3.8
1	C	41	THR	3.7
1	C	42	VAL	3.7

6.2 Non-standard residues in protein, DNA, RNA chains [i](#)

There are no non-standard protein/DNA/RNA residues in this entry.

6.3 Carbohydrates [i](#)

There are no oligosaccharides in this entry.

6.4 Ligands [i](#)

In the following table, the Atoms column lists the number of modelled atoms in the group and the number defined in the chemical component dictionary. The B-factors column lists the minimum,

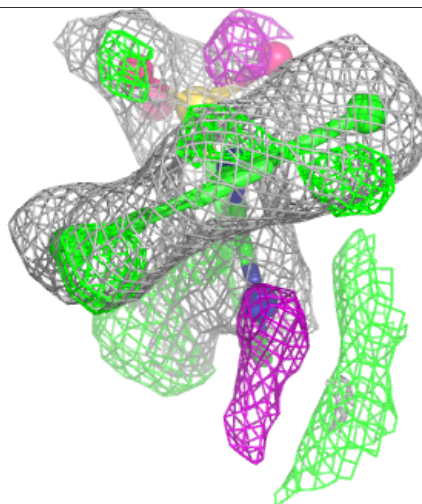
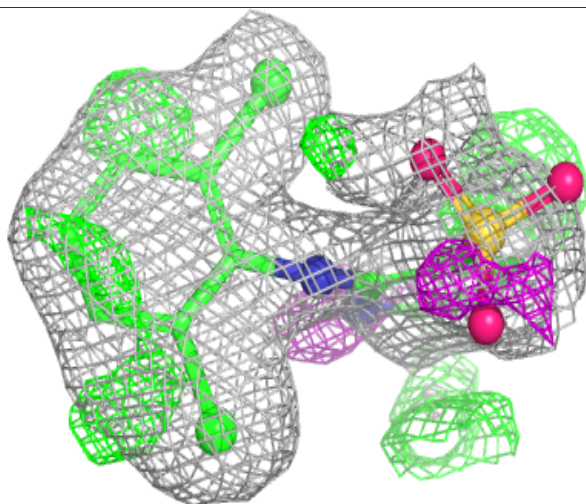
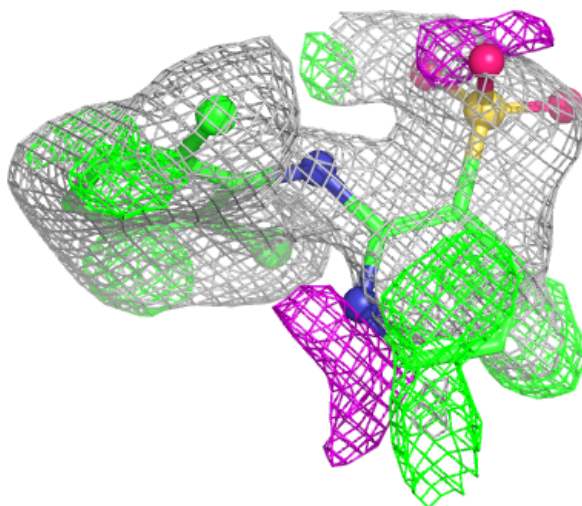
median, 95th percentile and maximum values of B factors of atoms in the group. The column labelled 'Q< 0.9' lists the number of atoms with occupancy less than 0.9.

Mol	Type	Chain	Res	Atoms	RSCC	RSR	B-factors(Å ²)	Q<0.9
3	A1CFJ	B	303	19/19	0.75	0.24	32,41,51,52	19
3	A1CFJ	C	302	19/19	0.80	0.21	36,40,46,46	19
3	A1CFJ	E	302	19/19	0.83	0.18	25,33,45,45	19
3	A1CFJ	D	302	19/19	0.84	0.16	30,35,47,48	19
3	A1CFJ	C	304	19/19	0.84	0.16	33,40,51,51	19
3	A1CFJ	B	304	19/19	0.88	0.13	29,36,44,49	19
3	A1CFJ	B	301	19/19	0.88	0.15	28,32,40,45	19
3	A1CFJ	C	303	19/19	0.88	0.15	29,35,39,47	19
2	G8I	B	302	9/9	0.90	0.12	20,25,29,32	0
2	G8I	E	301	9/9	0.90	0.13	20,25,28,29	0
2	G8I	C	301	9/9	0.91	0.11	23,27,30,31	0
2	G8I	A	301[A]	9/9	0.92	0.10	20,22,24,24	9
2	G8I	D	301	9/9	0.93	0.10	23,25,30,31	0
3	A1CFJ	A	302	19/19	0.93	0.10	23,29,34,39	19
4	SO4	A	303[B]	5/5	0.98	0.05	19,20,22,22	5

The following is a graphical depiction of the model fit to experimental electron density of all instances of the Ligand of Interest. In addition, ligands with molecular weight > 250 and outliers as shown on the geometry validation Tables will also be included. Each fit is shown from different orientation to approximate a three-dimensional view.

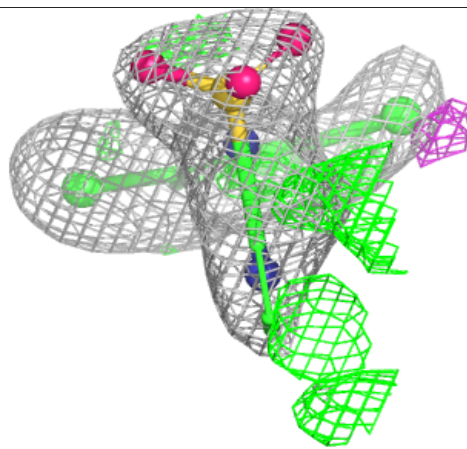
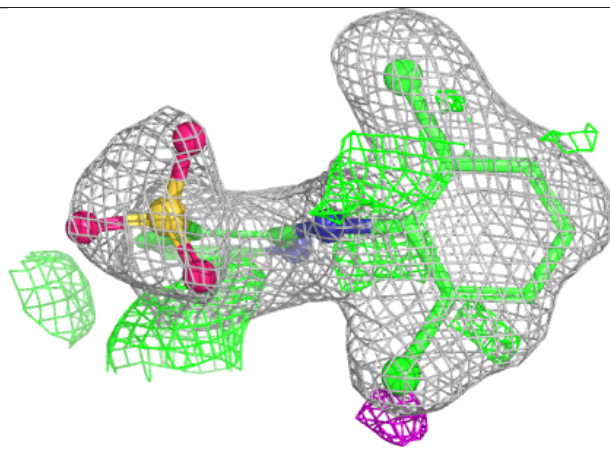
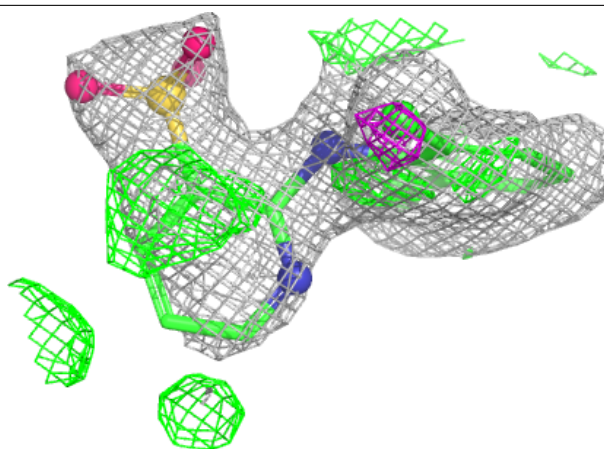
Electron density around A1CFJ B 303:

$2mF_o-DF_c$ (at 0.7 rmsd) in gray
 mF_o-DF_c (at 3 rmsd) in purple (negative)
and green (positive)



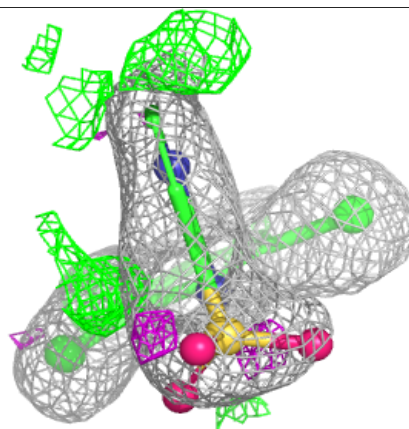
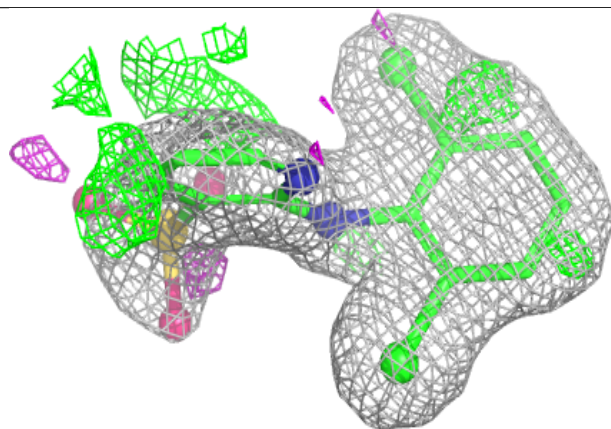
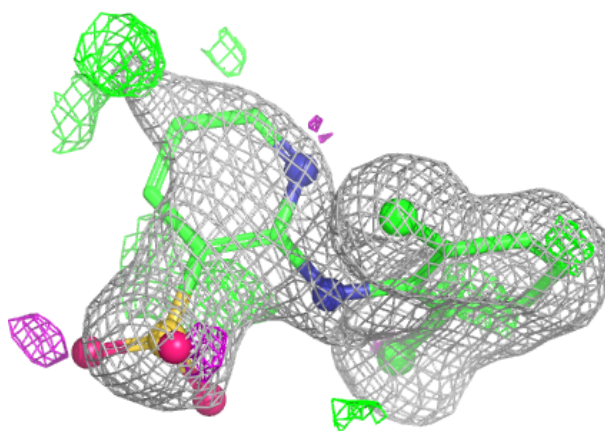
Electron density around A1CFJ C 302:

$2mF_o - DF_c$ (at 0.7 rmsd) in gray
 $mF_o - DF_c$ (at 3 rmsd) in purple (negative)
and green (positive)



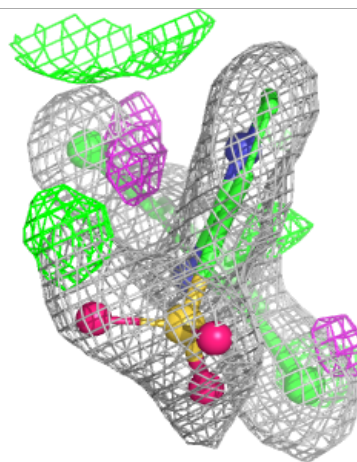
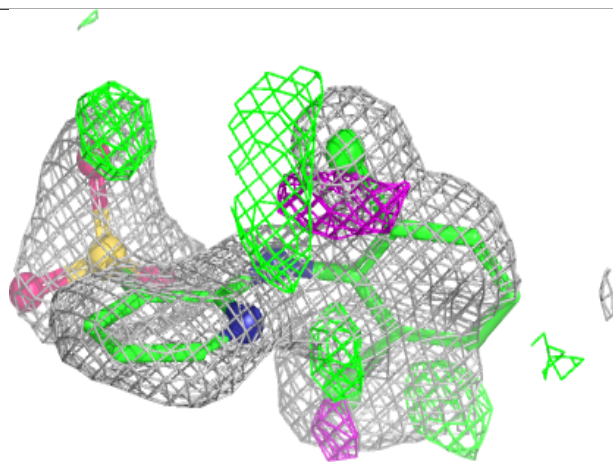
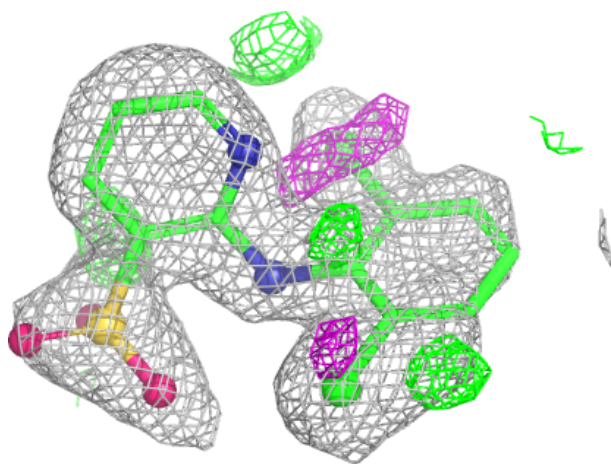
Electron density around A1CFJ E 302:

$2mF_o - DF_c$ (at 0.7 rmsd) in gray
 $mF_o - DF_c$ (at 3 rmsd) in purple (negative)
and green (positive)



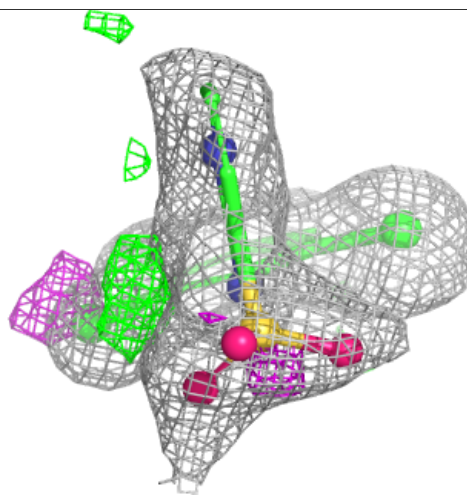
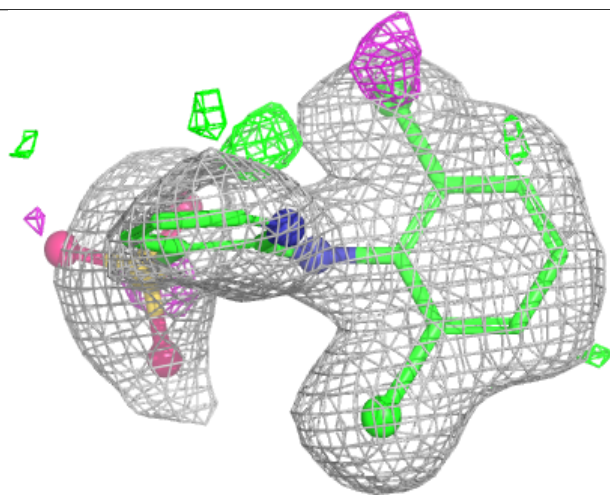
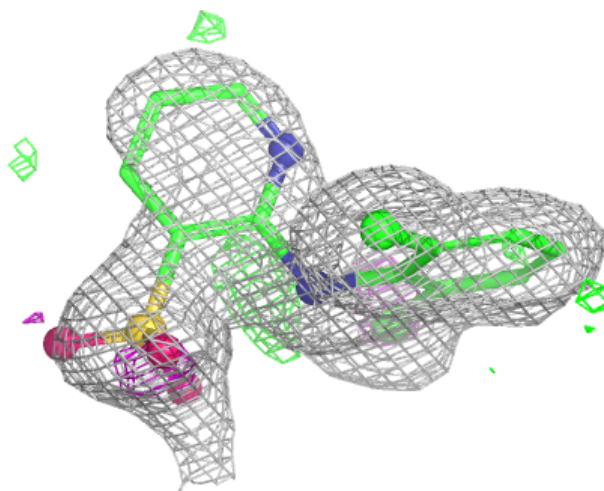
Electron density around A1CFJ D 302:

$2mF_o-DF_c$ (at 0.7 rmsd) in gray
 mF_o-DF_c (at 3 rmsd) in purple (negative)
and green (positive)



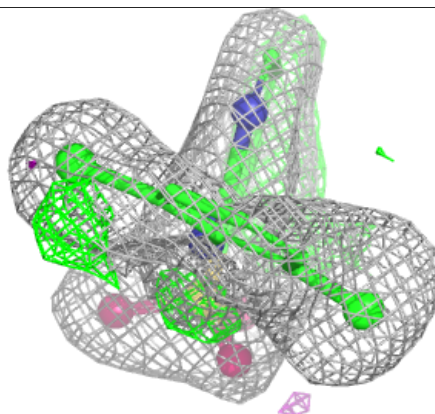
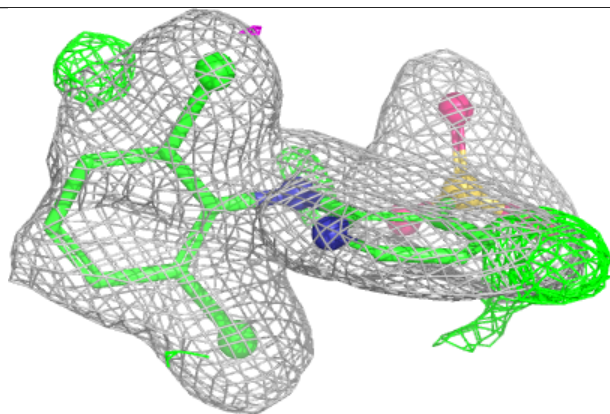
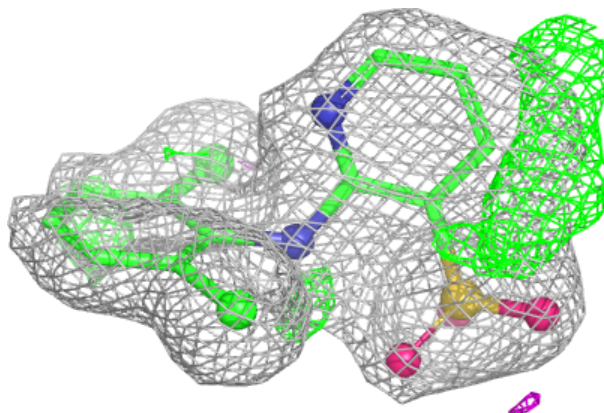
Electron density around A1CFJ C 304:

$2mF_o-DF_c$ (at 0.7 rmsd) in gray
 mF_o-DF_c (at 3 rmsd) in purple (negative)
and green (positive)



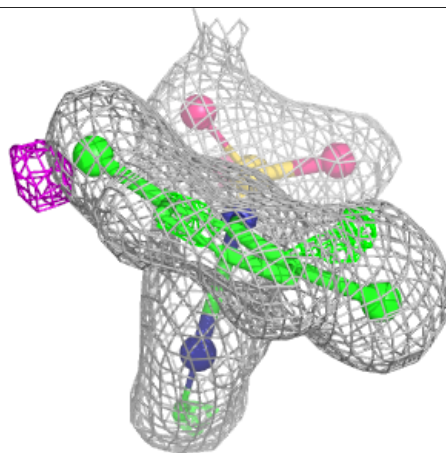
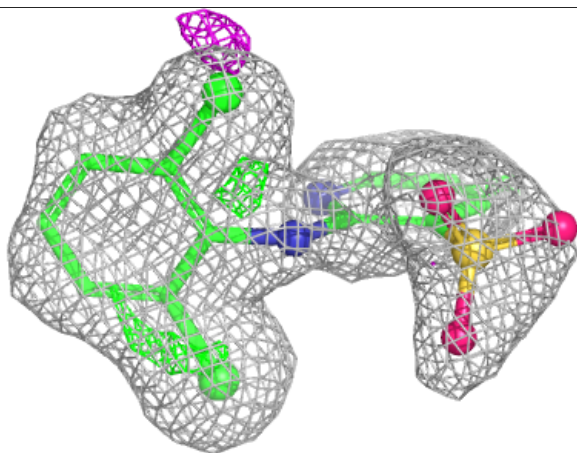
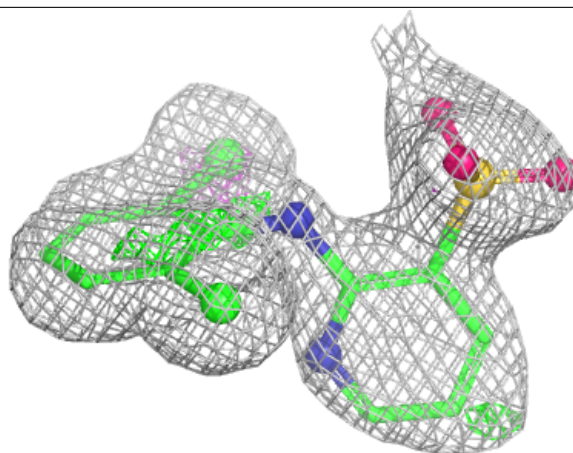
Electron density around A1CFJ B 304:

$2mF_o - DF_c$ (at 0.7 rmsd) in gray
 $mF_o - DF_c$ (at 3 rmsd) in purple (negative)
and green (positive)



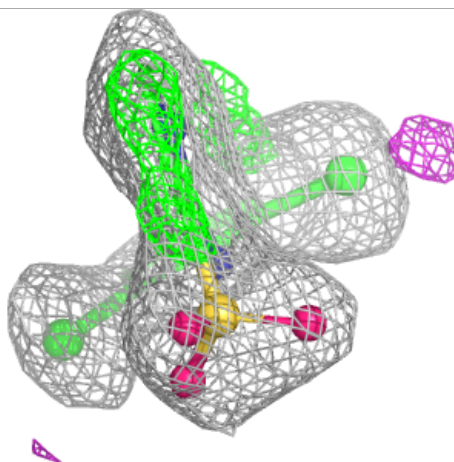
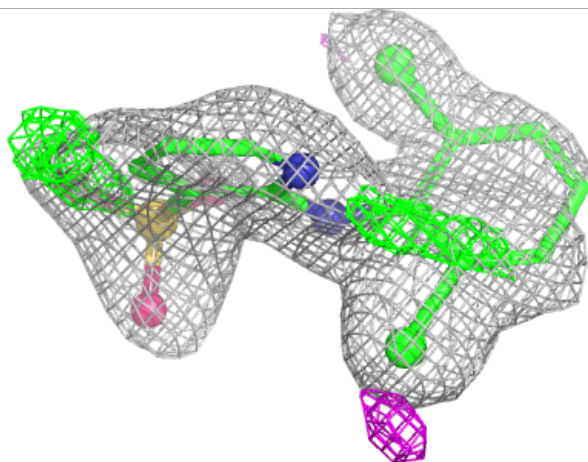
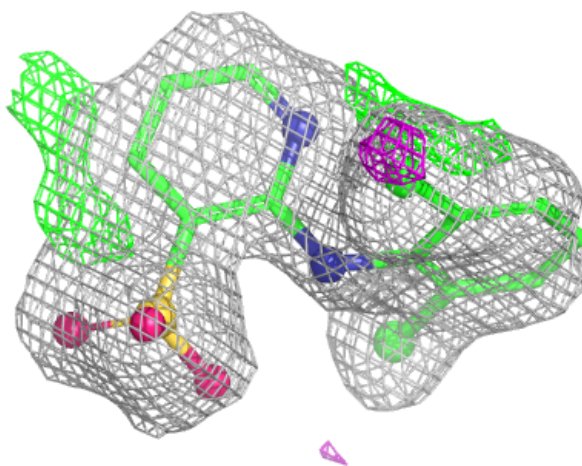
Electron density around A1CFJ B 301:

$2mF_o-DF_c$ (at 0.7 rmsd) in gray
 mF_o-DF_c (at 3 rmsd) in purple (negative)
and green (positive)



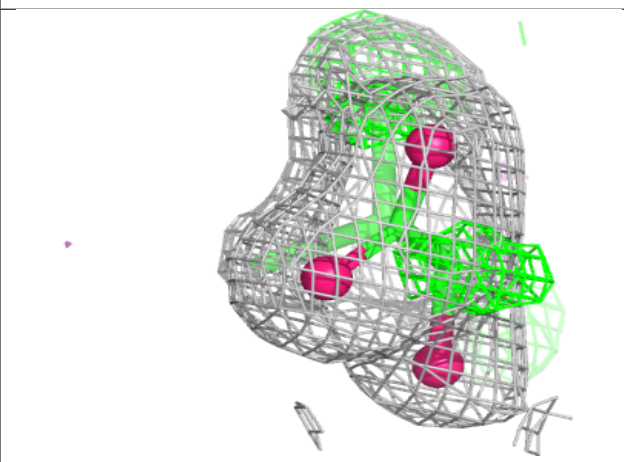
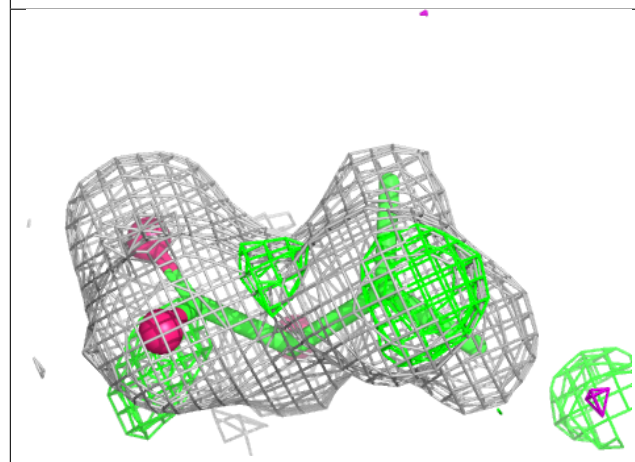
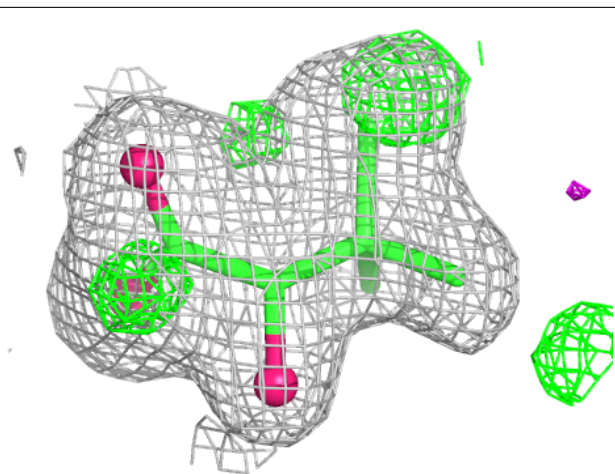
Electron density around A1CFJ C 303:

$2mF_o-DF_c$ (at 0.7 rmsd) in gray
 mF_o-DF_c (at 3 rmsd) in purple (negative)
and green (positive)



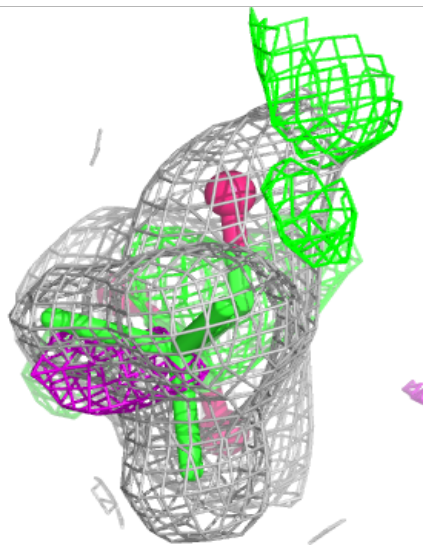
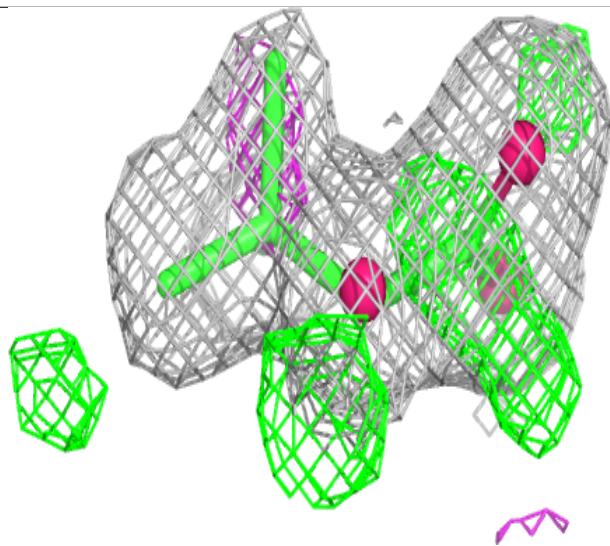
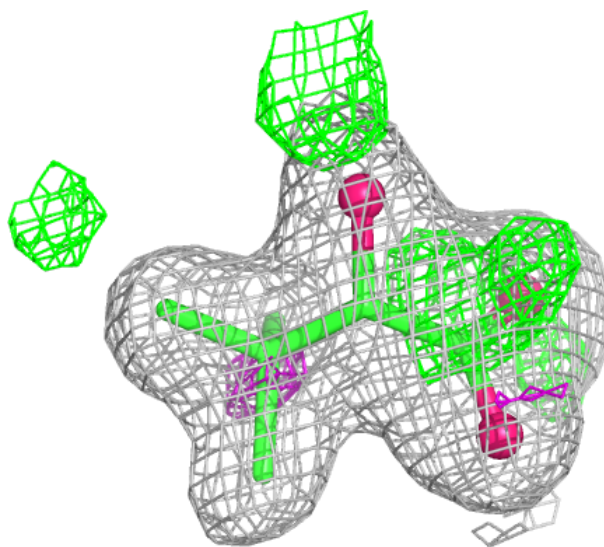
Electron density around G8I B 302:

$2mF_o-DF_c$ (at 0.7 rmsd) in gray
 mF_o-DF_c (at 3 rmsd) in purple (negative)
and green (positive)



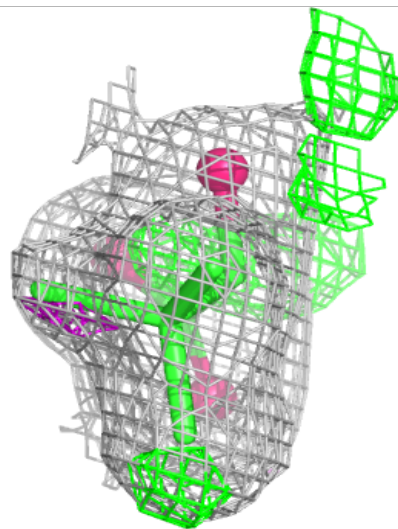
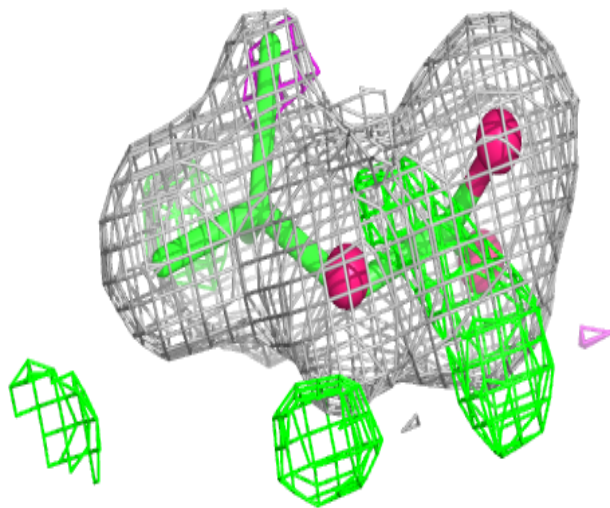
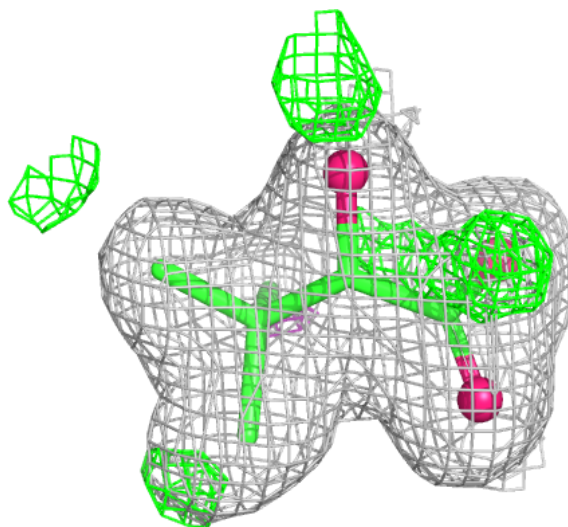
Electron density around G8I E 301:

$2mF_o-DF_c$ (at 0.7 rmsd) in gray
 mF_o-DF_c (at 3 rmsd) in purple (negative)
and green (positive)



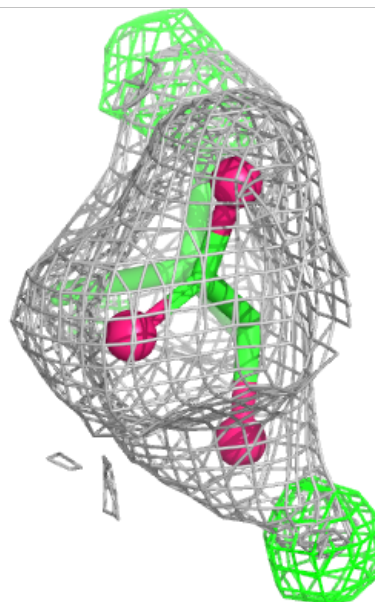
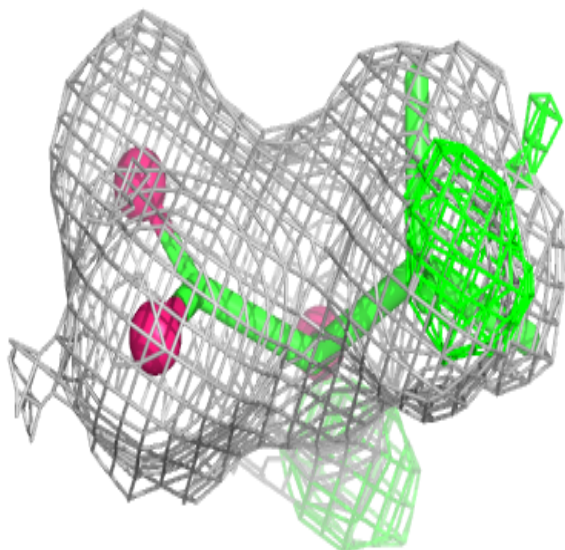
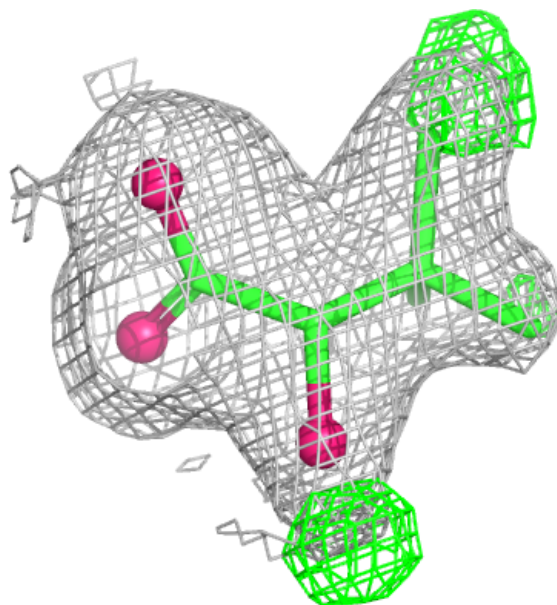
Electron density around G8I C 301:

$2mF_o-DF_c$ (at 0.7 rmsd) in gray
 mF_o-DF_c (at 3 rmsd) in purple (negative)
and green (positive)



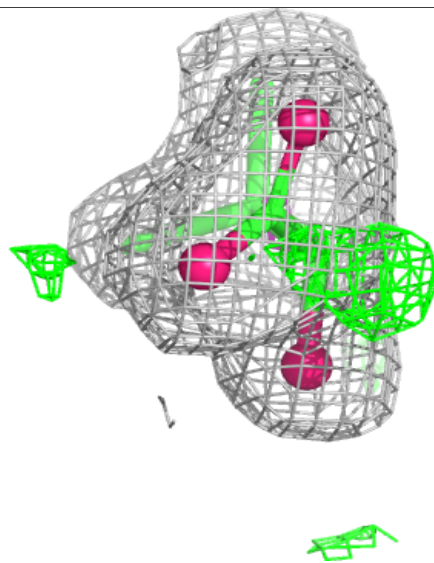
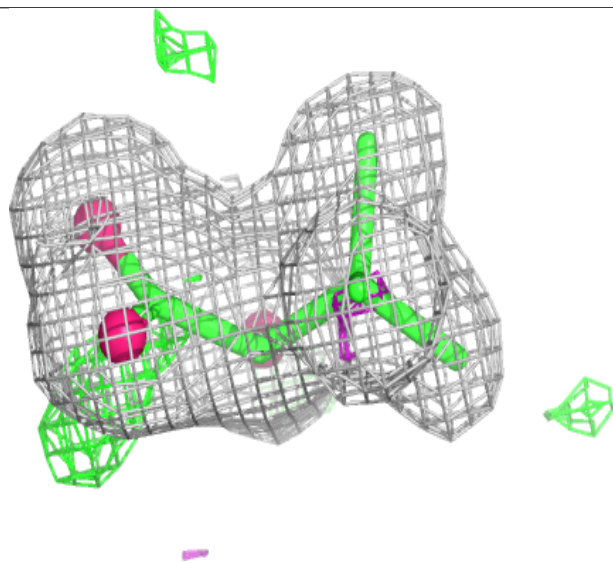
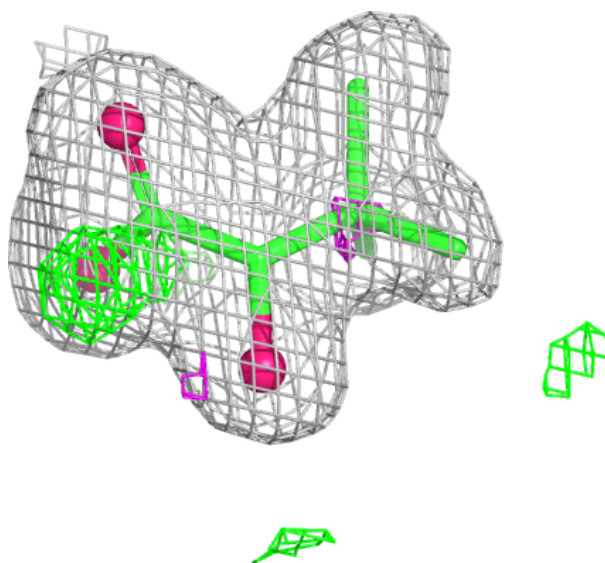
Electron density around G8I A 301 (A):

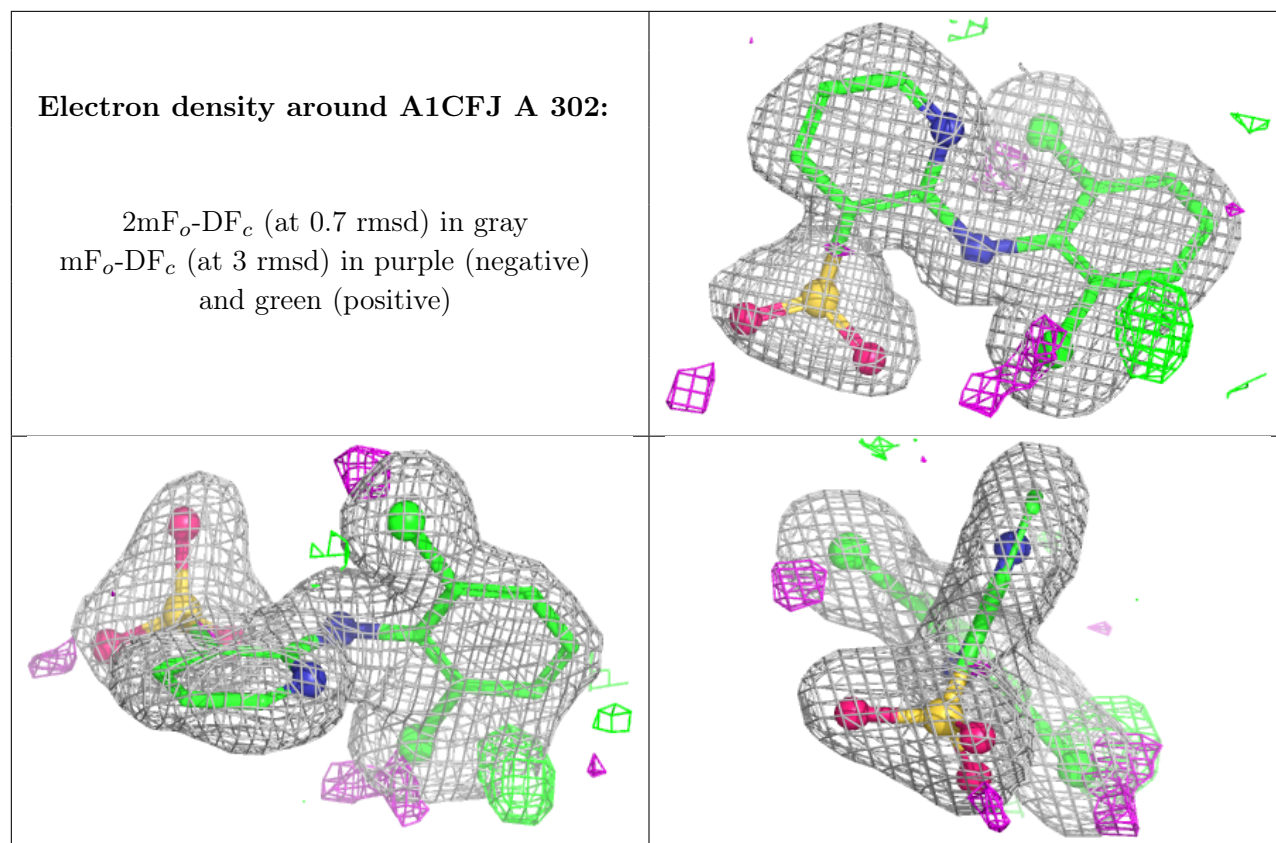
$2mF_o-DF_c$ (at 0.7 rmsd) in gray
 mF_o-DF_c (at 3 rmsd) in purple (negative)
and green (positive)



Electron density around G8I D 301:

$2mF_o-DF_c$ (at 0.7 rmsd) in gray
 mF_o-DF_c (at 3 rmsd) in purple (negative)
and green (positive)





6.5 Other polymers [i](#)

There are no such residues in this entry.