



wwPDB X-ray Structure Validation Summary Report ⓘ

Oct 22, 2024 – 02:06 AM EDT

PDB ID : 3P9Q
Title : Structure of I274C variant of E. coli KatE
Authors : Loewen, P.C.; Jha, V.; Louis, S.; Chelikani, P.; Carpena, X.; Fita, I.
Deposited on : 2010-10-18
Resolution : 1.48 Å(reported)

This is a wwPDB X-ray Structure Validation Summary Report for a publicly released PDB entry.

We welcome your comments at validation@mail.wwpdb.org

A user guide is available at

<https://www.wwpdb.org/validation/2017/XrayValidationReportHelp>

with specific help available everywhere you see the ⓘ symbol.

The types of validation reports are described at

<http://www.wwpdb.org/validation/2017/FAQs#types>.

The following versions of software and data (see [references ⓘ](#)) were used in the production of this report:

MolProbity	:	4.02b-467
Mogul	:	2022.3.0, CSD as543be (2022)
Xtriage (Phenix)	:	1.20.1
EDS	:	3.0
buster-report	:	1.1.7 (2018)
Percentile statistics	:	20231227.v01 (using entries in the PDB archive December 27th 2023)
CCP4	:	9.0.003 (Gargrove)
Density-Fitness	:	1.0.11
Ideal geometry (proteins)	:	Engh & Huber (2001)
Ideal geometry (DNA, RNA)	:	Parkinson et al. (1996)
Validation Pipeline (wwPDB-VP)	:	2.39

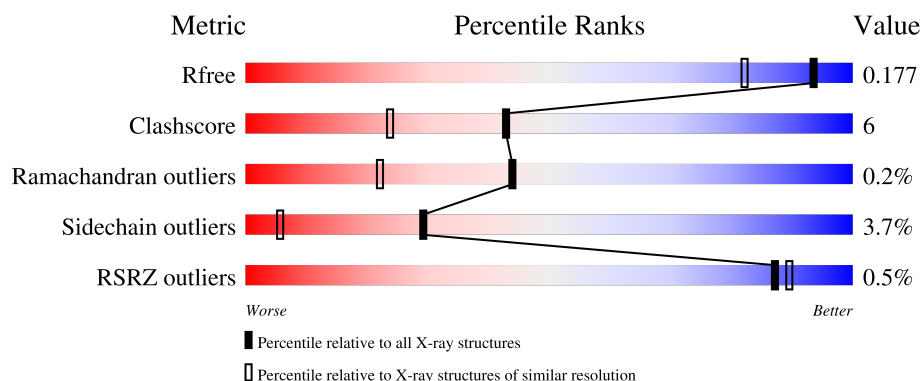
1 Overall quality at a glance

The following experimental techniques were used to determine the structure:

X-RAY DIFFRACTION

The reported resolution of this entry is 1.48 Å.

Percentile scores (ranging between 0-100) for global validation metrics of the entry are shown in the following graphic. The table shows the number of entries on which the scores are based.



Metric	Whole archive (#Entries)	Similar resolution (#Entries, resolution range(Å))
R_{free}	164625	6131 (1.50-1.46)
Clashscore	180529	6623 (1.50-1.46)
Ramachandran outliers	177936	6521 (1.50-1.46)
Sidechain outliers	177891	6518 (1.50-1.46)
RSRZ outliers	164620	6132 (1.50-1.46)

The table below summarises the geometric issues observed across the polymeric chains and their fit to the electron density. The red, orange, yellow and green segments of the lower bar indicate the fraction of residues that contain outliers for ≥ 3 , 2, 1 and 0 types of geometric quality criteria respectively. A grey segment represents the fraction of residues that are not modelled. The numeric value for each fraction is indicated below the corresponding segment, with a dot representing fractions $\leq 5\%$. The upper red bar (where present) indicates the fraction of residues that have poor fit to the electron density. The numeric value is given above the bar.

Mol	Chain	Length	Quality of chain
1	A	753	<div> <div style="width: 100%; height: 10px; background: linear-gradient(to right, red 1%, orange 1%, yellow 12%, green 84%, grey 13%);"></div> <div style="display: flex; justify-content: space-between; width: 100%;"> % 84% 12% ... </div> </div>
1	B	753	<div> <div style="width: 100%; height: 10px; background: linear-gradient(to right, red 1%, orange 1%, yellow 13%, green 81%, grey 14%);"></div> <div style="display: flex; justify-content: space-between; width: 100%;"> % 81% 13% ... </div> </div>
1	C	753	<div> <div style="width: 100%; height: 10px; background: linear-gradient(to right, yellow 11%, green 84%, orange 5%, grey 10%);"></div> <div style="display: flex; justify-content: space-between; width: 100%;"> 84% 11% ... </div> </div>
1	D	753	<div> <div style="width: 100%; height: 10px; background: linear-gradient(to right, yellow 11%, green 84%, orange 5%, grey 10%);"></div> <div style="display: flex; justify-content: space-between; width: 100%;"> 84% 11% ... </div> </div>

The following table lists non-polymeric compounds, carbohydrate monomers and non-standard

residues in protein, DNA, RNA chains that are outliers for geometric or electron-density-fit criteria:

Mol	Type	Chain	Res	Chirality	Geometry	Clashes	Electron density
3	HDE	A	761[B]	X	-	-	-
4	H2S	A	754[A]	-	-	X	-
4	H2S	B	754[A]	-	-	X	-
4	H2S	C	754[A]	-	-	X	-
4	H2S	D	754[A]	-	-	X	-

2 Entry composition

There are 5 unique types of molecules in this entry. The entry contains 26893 atoms, of which 0 are hydrogens and 0 are deuteriums.

In the tables below, the ZeroOcc column contains the number of atoms modelled with zero occupancy, the AltConf column contains the number of residues with at least one atom in alternate conformation and the Trace column contains the number of residues modelled with at most 2 atoms.

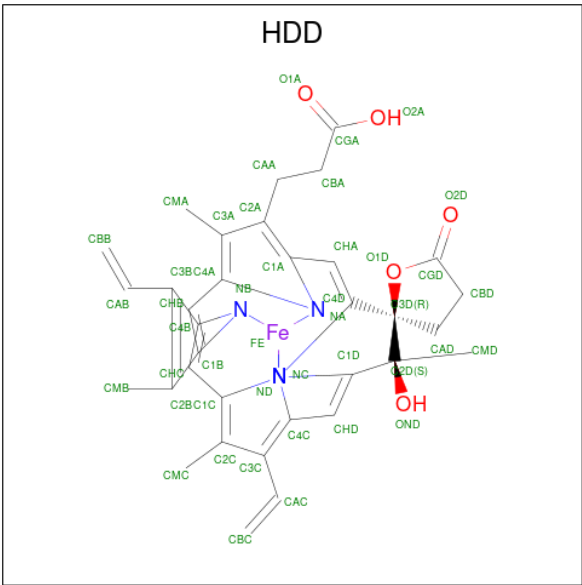
- Molecule 1 is a protein called Catalase HP11.

Mol	Chain	Residues	Atoms					ZeroOcc	AltConf	Trace
1	A	726	Total	C	N	O	S	0	5	0
			5755	3652	1009	1083	11			
1	B	726	Total	C	N	O	S	0	5	0
			5757	3654	1009	1083	11			
1	C	726	Total	C	N	O	S	0	4	0
			5760	3658	1010	1081	11			
1	D	726	Total	C	N	O	S	0	8	0
			5769	3661	1012	1085	11			

There are 12 discrepancies between the modelled and reference sequences:

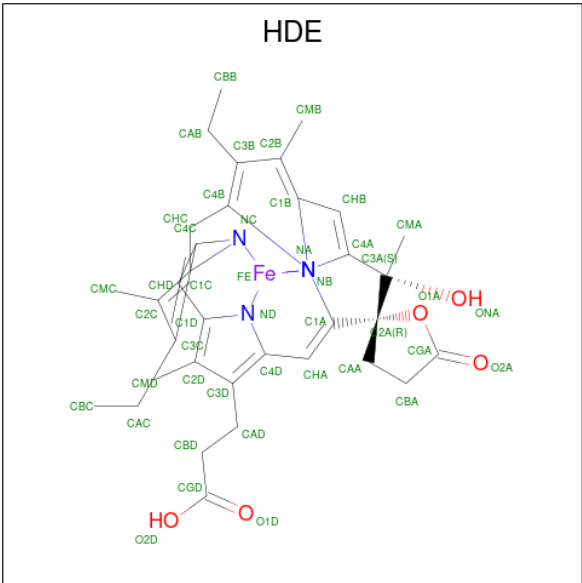
Chain	Residue	Modelled	Actual	Comment	Reference
A	274	CYS	ILE	engineered mutation	UNP P21179
A	438	ALA	CYS	engineered mutation	UNP P21179
A	669	ALA	CYS	engineered mutation	UNP P21179
B	274	CYS	ILE	engineered mutation	UNP P21179
B	438	ALA	CYS	engineered mutation	UNP P21179
B	669	ALA	CYS	engineered mutation	UNP P21179
C	274	CYS	ILE	engineered mutation	UNP P21179
C	438	ALA	CYS	engineered mutation	UNP P21179
C	669	ALA	CYS	engineered mutation	UNP P21179
D	274	CYS	ILE	engineered mutation	UNP P21179
D	438	ALA	CYS	engineered mutation	UNP P21179
D	669	ALA	CYS	engineered mutation	UNP P21179

- Molecule 2 is CIS-HEME D HYDROXYCHLORIN GAMMA-SPIROLACTONE (three-letter code: HDD) (formula: $C_{34}H_{32}FeN_4O_5$).



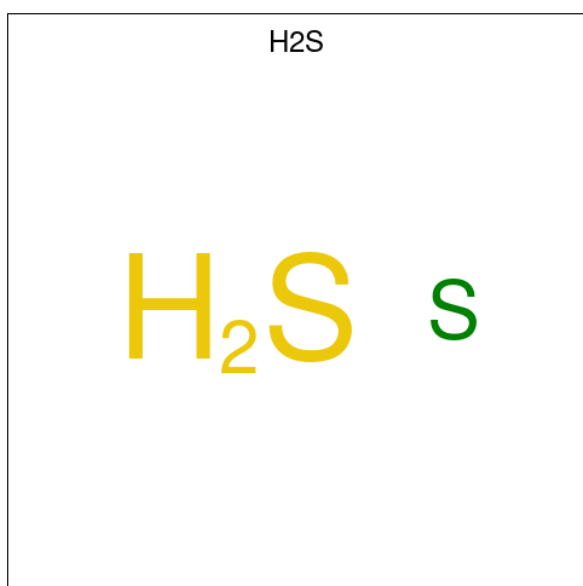
Mol	Chain	Residues	Atoms					ZeroOcc	AltConf
2	A	1	Total	C	Fe	N	O	0	1
			44	34	1	4	5		
2	B	1	Total	C	Fe	N	O	0	1
			44	34	1	4	5		
2	C	1	Total	C	Fe	N	O	0	1
			44	34	1	4	5		
2	D	1	Total	C	Fe	N	O	0	1
			44	34	1	4	5		

- Molecule 3 is CIS-HEME D HYDROXYCHLORIN GAMMA-SPIROLACTONE 17R, 18S (three-letter code: HDE) (formula: $C_{34}H_{38}FeN_4O_5$).



Mol	Chain	Residues	Atoms					ZeroOcc	AltConf
3	A	1	Total 44	C 34	Fe 1	N 4	O 5	0	1
3	B	1	Total 44	C 34	Fe 1	N 4	O 5	0	1
3	C	1	Total 44	C 34	Fe 1	N 4	O 5	0	1
3	D	1	Total 44	C 34	Fe 1	N 4	O 5	0	1

- Molecule 4 is HYDROSULFURIC ACID (three-letter code: H2S) (formula: H₂S).



Mol	Chain	Residues	Atoms		ZeroOcc	AltConf
4	A	1	Total 1	S 1	0	1
4	B	1	Total 1	S 1	0	1
4	C	1	Total 1	S 1	0	1
4	D	1	Total 1	S 1	0	1

- Molecule 5 is water.

Mol	Chain	Residues	Atoms		ZeroOcc	AltConf
5	A	895	Total 895	O 895	0	0
5	B	803	Total 803	O 803	0	0

Continued on next page...

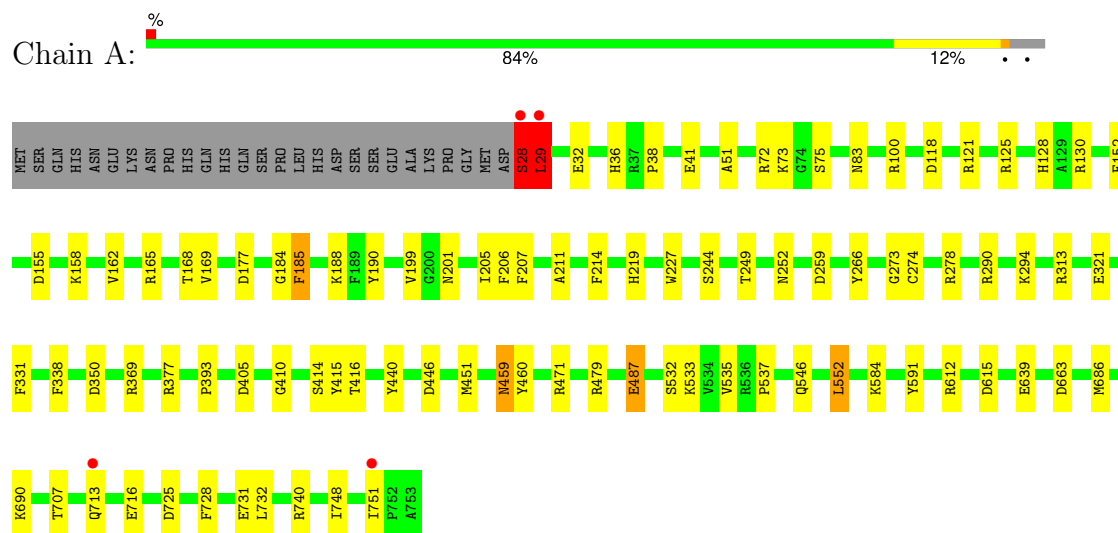
Continued from previous page...

Mol	Chain	Residues	Atoms		ZeroOcc	AltConf
5	C	865	Total 865	O 865	0	0
5	D	933	Total 933	O 933	0	0

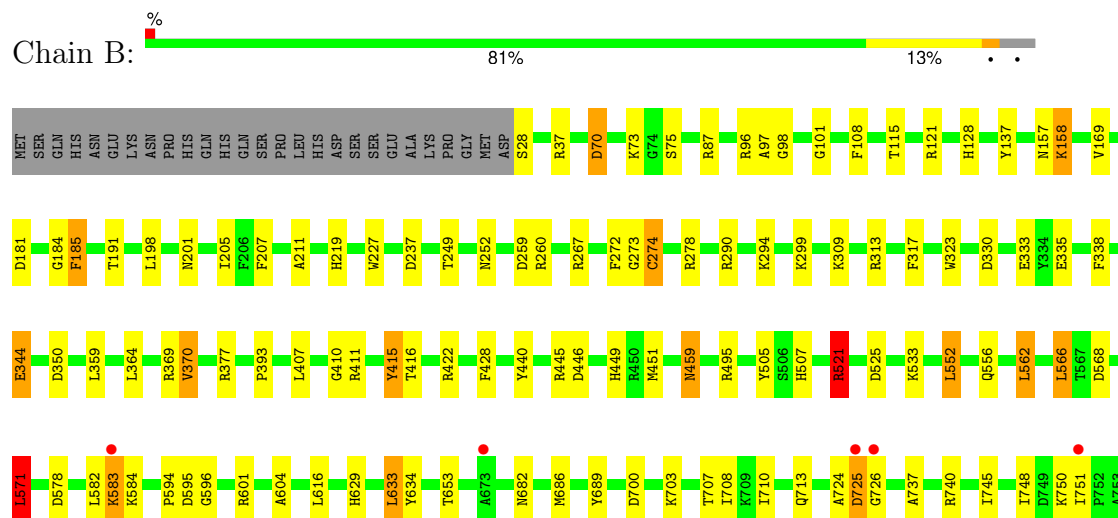
3 Residue-property plots [i](#)

These plots are drawn for all protein, RNA, DNA and oligosaccharide chains in the entry. The first graphic for a chain summarises the proportions of the various outlier classes displayed in the second graphic. The second graphic shows the sequence view annotated by issues in geometry and electron density. Residues are color-coded according to the number of geometric quality criteria for which they contain at least one outlier: green = 0, yellow = 1, orange = 2 and red = 3 or more. A red dot above a residue indicates a poor fit to the electron density ($RSRZ > 2$). Stretches of 2 or more consecutive residues without any outlier are shown as a green connector. Residues present in the sample, but not in the model, are shown in grey.

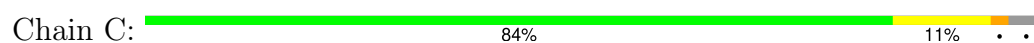
• Molecule 1: Catalase HPII

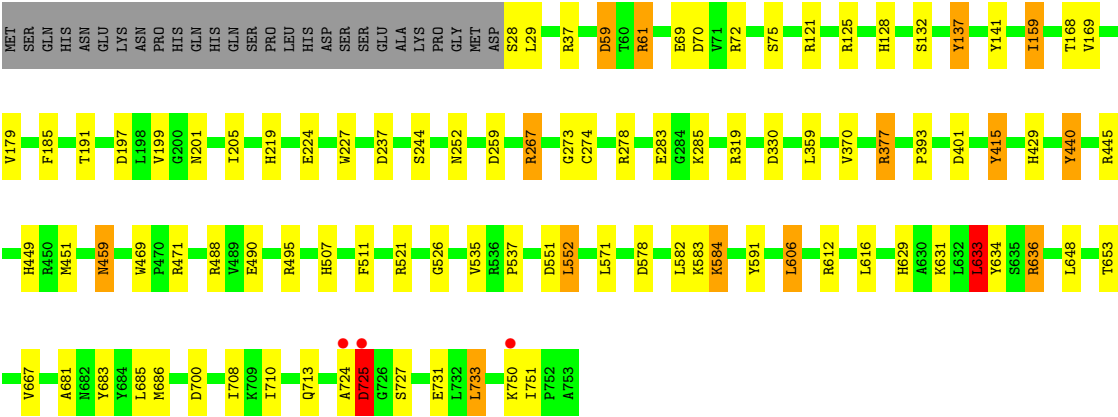


• Molecule 1: Catalase HPII

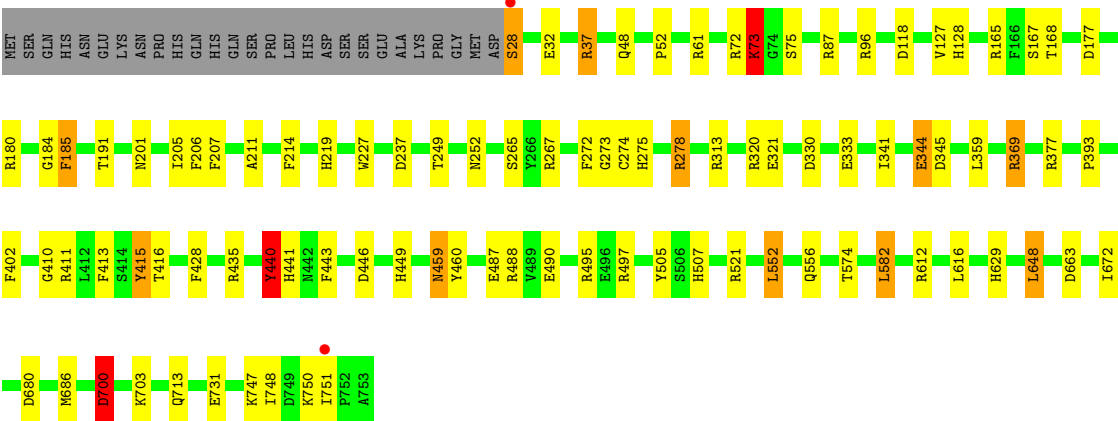
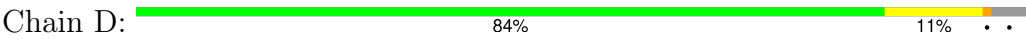


• Molecule 1: Catalase HPII





● Molecule 1: Catalase HP1I



4 Data and refinement statistics

Property	Value	Source
Space group	P 1 21 1	Depositor
Cell constants a, b, c, α , β , γ	93.66Å 133.02Å 122.59Å 90.00° 109.59° 90.00°	Depositor
Resolution (Å)	28.55 – 1.48 28.55 – 1.48	Depositor EDS
% Data completeness (in resolution range)	91.7 (28.55-1.48) 91.7 (28.55-1.48)	Depositor EDS
R_{merge}	(Not available)	Depositor
R_{sym}	0.08	Depositor
$\langle I/\sigma(I) \rangle$ ¹	1.97 (at 1.48Å)	Xtriage
Refinement program	REFMAC	Depositor
R, R_{free}	0.143 , 0.177 0.143 , 0.177	Depositor DCC
R_{free} test set	21507 reflections (5.00%)	wwPDB-VP
Wilson B-factor (Å ²)	10.7	Xtriage
Anisotropy	0.045	Xtriage
Bulk solvent k_{sol} (e/Å ³), B_{sol} (Å ²)	0.32 , 35.8	EDS
L-test for twinning ²	$\langle L \rangle = 0.50$, $\langle L^2 \rangle = 0.33$	Xtriage
Estimated twinning fraction	0.016 for h,-k,-h-l	Xtriage
F_o, F_c correlation	0.97	EDS
Total number of atoms	26893	wwPDB-VP
Average B, all atoms (Å ²)	14.0	wwPDB-VP

Xtriage's analysis on translational NCS is as follows: *The largest off-origin peak in the Patterson function is 3.42% of the height of the origin peak. No significant pseudotranslation is detected.*

¹Intensities estimated from amplitudes.

²Theoretical values of $\langle |L| \rangle$, $\langle L^2 \rangle$ for acentric reflections are 0.5, 0.333 respectively for untwinned datasets, and 0.375, 0.2 for perfectly twinned datasets.

5 Model quality ⓘ

5.1 Standard geometry ⓘ

Bond lengths and bond angles in the following residue types are not validated in this section: HDE, HDD, H2S

The Z score for a bond length (or angle) is the number of standard deviations the observed value is removed from the expected value. A bond length (or angle) with $|Z| > 5$ is considered an outlier worth inspection. RMSZ is the root-mean-square of all Z scores of the bond lengths (or angles).

Mol	Chain	Bond lengths		Bond angles	
		RMSZ	$\# Z > 5$	RMSZ	$\# Z > 5$
1	A	1.37	11/5932 (0.2%)	1.22	34/8064 (0.4%)
1	B	1.32	15/5931 (0.3%)	1.20	43/8062 (0.5%)
1	C	1.30	18/5932 (0.3%)	1.20	33/8065 (0.4%)
1	D	1.40	24/5957 (0.4%)	1.23	33/8098 (0.4%)
All	All	1.35	68/23752 (0.3%)	1.21	143/32289 (0.4%)

Chiral center outliers are detected by calculating the chiral volume of a chiral center and verifying if the center is modelled as a planar moiety or with the opposite hand. A planarity outlier is detected by checking planarity of atoms in a peptide group, atoms in a mainchain group or atoms of a sidechain that are expected to be planar.

Mol	Chain	#Chirality outliers	#Planarity outliers
1	A	0	1
1	B	0	1
1	C	1	3
All	All	1	5

The worst 5 of 68 bond length outliers are listed below:

Mol	Chain	Res	Type	Atoms	Z	Observed(Å)	Ideal(Å)
1	A	321	GLU	CD-OE1	9.75	1.36	1.25
1	D	28	SER	CB-OG	9.68	1.54	1.42
1	D	321	GLU	CD-OE1	8.88	1.35	1.25
1	C	59	ASP	CB-CG	8.65	1.70	1.51
1	D	440	TYR	CE1-CZ	7.54	1.48	1.38

The worst 5 of 143 bond angle outliers are listed below:

Mol	Chain	Res	Type	Atoms	Z	Observed(°)	Ideal(°)
1	C	636	ARG	NE-CZ-NH1	15.89	128.25	120.30

Continued on next page...

Continued from previous page...

Mol	Chain	Res	Type	Atoms	Z	Observed(°)	Ideal(°)
1	C	37	ARG	NE-CZ-NH2	-15.18	112.71	120.30
1	C	636	ARG	NE-CZ-NH2	-14.19	113.21	120.30
1	B	521	ARG	NE-CZ-NH1	10.80	125.70	120.30
1	C	59	ASP	CB-CG-OD1	10.46	127.72	118.30

All (1) chirality outliers are listed below:

Mol	Chain	Res	Type	Atom
1	C	159	ILE	CB

All (5) planarity outliers are listed below:

Mol	Chain	Res	Type	Group
1	A	121	ARG	Sidechain
1	B	121	ARG	Sidechain
1	C	121	ARG	Sidechain
1	C	724	ALA	Peptide
1	C	725	ASP	Peptide

5.2 Too-close contacts

In the following table, the Non-H and H(model) columns list the number of non-hydrogen atoms and hydrogen atoms in the chain respectively. The H(added) column lists the number of hydrogen atoms added and optimized by MolProbity. The Clashes column lists the number of clashes within the asymmetric unit, whereas Symm-Clashes lists symmetry-related clashes.

Mol	Chain	Non-H	H(model)	H(added)	Clashes	Symm-Clashes
1	A	5755	0	5582	61	0
1	B	5757	0	5587	63	0
1	C	5760	0	5591	59	0
1	D	5769	0	5597	53	0
2	A	44	0	31	12	0
2	B	44	0	31	19	0
2	C	44	0	31	19	0
2	D	44	0	31	11	0
3	A	44	0	36	10	0
3	B	44	0	36	10	0
3	C	44	0	36	8	0
3	D	44	0	36	9	0
4	A	1	0	0	5	0
4	B	1	0	0	4	0

Continued on next page...

Continued from previous page...

Mol	Chain	Non-H	H(model)	H(added)	Clashes	Symm-Clashes
4	C	1	0	0	5	0
4	D	1	0	0	4	0
5	A	895	0	0	9	1
5	B	803	0	0	19	0
5	C	865	0	0	20	0
5	D	933	0	0	25	1
All	All	26893	0	22625	282	1

The all-atom clashscore is defined as the number of clashes found per 1000 atoms (including hydrogen atoms). The all-atom clashscore for this structure is 6.

The worst 5 of 282 close contacts within the same asymmetric unit are listed below, sorted by their clash magnitude.

Atom-1	Atom-2	Interatomic distance (Å)	Clash overlap (Å)
2:C:760[A]:HDD:HBB2	4:C:754[A]:H2S:S	1.30	1.70
2:B:760[A]:HDD:HBB2	4:B:754[A]:H2S:S	1.22	1.68
1:A:274:CYS:HB3	4:A:754[A]:H2S:S	1.34	1.63
1:B:274:CYS:HB3	4:B:754[A]:H2S:S	1.35	1.63
1:C:274:CYS:HB3	4:C:754[A]:H2S:S	1.32	1.62

All (1) symmetry-related close contacts are listed below. The label for Atom-2 includes the symmetry operator and encoded unit-cell translations to be applied.

Atom-1	Atom-2	Interatomic distance (Å)	Clash overlap (Å)
5:A:3241:HOH:O	5:D:2457:HOH:O[2_646]	1.92	0.28

5.3 Torsion angles

5.3.1 Protein backbone

In the following table, the Percentiles column shows the percent Ramachandran outliers of the chain as a percentile score with respect to all X-ray entries followed by that with respect to entries of similar resolution.

The Analysed column shows the number of residues for which the backbone conformation was analysed, and the total number of residues.

Mol	Chain	Analysed	Favoured	Allowed	Outliers	Percentiles
1	A	729/753 (97%)	711 (98%)	17 (2%)	1 (0%)	48 24

Continued on next page...

Continued from previous page...

Mol	Chain	Analysed	Favoured	Allowed	Outliers	Percentiles	
1	B	729/753 (97%)	713 (98%)	14 (2%)	2 (0%)	37	17
1	C	728/753 (97%)	707 (97%)	20 (3%)	1 (0%)	48	24
1	D	732/753 (97%)	714 (98%)	17 (2%)	1 (0%)	48	24
All	All	2918/3012 (97%)	2845 (98%)	68 (2%)	5 (0%)	44	22

All (5) Ramachandran outliers are listed below:

Mol	Chain	Res	Type
1	B	725	ASP
1	C	75	SER
1	A	75	SER
1	D	75	SER
1	B	75	SER

5.3.2 Protein sidechains ⓘ

In the following table, the Percentiles column shows the percent sidechain outliers of the chain as a percentile score with respect to all X-ray entries followed by that with respect to entries of similar resolution.

The Analysed column shows the number of residues for which the sidechain conformation was analysed, and the total number of residues.

Mol	Chain	Analysed	Rotameric	Outliers	Percentiles	
1	A	614/634 (97%)	599 (98%)	15 (2%)	44	15
1	B	614/634 (97%)	589 (96%)	25 (4%)	26	4
1	C	613/634 (97%)	583 (95%)	30 (5%)	21	2
1	D	617/634 (97%)	596 (97%)	21 (3%)	32	7
All	All	2458/2536 (97%)	2367 (96%)	91 (4%)	29	6

5 of 91 residues with a non-rotameric sidechain are listed below:

Mol	Chain	Res	Type
1	C	521	ARG
1	D	48	GLN
1	C	571	LEU
1	C	648	LEU
1	D	205	ILE

Sometimes sidechains can be flipped to improve hydrogen bonding and reduce clashes. 5 of 24 such sidechains are listed below:

Mol	Chain	Res	Type
1	C	572	ASN
1	D	48	GLN
1	C	671	ASN
1	D	252	ASN
1	B	368	GLN

5.3.3 RNA ⓘ

There are no RNA molecules in this entry.

5.4 Non-standard residues in protein, DNA, RNA chains ⓘ

There are no non-standard protein/DNA/RNA residues in this entry.

5.5 Carbohydrates ⓘ

There are no oligosaccharides in this entry.

5.6 Ligand geometry ⓘ

Of 12 ligands modelled in this entry, 4 are modelled with single atom - leaving 8 for Mogul analysis.

In the following table, the Counts columns list the number of bonds (or angles) for which Mogul statistics could be retrieved, the number of bonds (or angles) that are observed in the model and the number of bonds (or angles) that are defined in the Chemical Component Dictionary. The Link column lists molecule types, if any, to which the group is linked. The Z score for a bond length (or angle) is the number of standard deviations the observed value is removed from the expected value. A bond length (or angle) with $|Z| > 2$ is considered an outlier worth inspection. RMSZ is the root-mean-square of all Z scores of the bond lengths (or angles).

Mol	Type	Chain	Res	Link	Bond lengths			Bond angles		
					Counts	RMSZ	# $ Z > 2$	Counts	RMSZ	# $ Z > 2$
2	HDD	C	760[A]	1,5	41,52,52	2.22	12 (29%)	34,89,89	2.60	10 (29%)
3	HDE	A	761[B]	1,5	44,52,52	2.64	15 (34%)	42,89,89	3.94	23 (54%)
2	HDD	D	760[A]	1,5	41,52,52	2.45	13 (31%)	34,89,89	3.13	15 (44%)
2	HDD	A	760[A]	1,5	41,52,52	2.24	13 (31%)	34,89,89	2.14	8 (23%)
3	HDE	B	761[B]	1,5	44,52,52	2.48	14 (31%)	42,89,89	3.59	23 (54%)

Mol	Type	Chain	Res	Link	Bond lengths			Bond angles		
					Counts	RMSZ	# Z > 2	Counts	RMSZ	# Z > 2
3	HDE	C	761[B]	1,5	44,52,52	2.58	14 (31%)	42,89,89	3.50	23 (54%)
3	HDE	D	761[B]	1,5	44,52,52	2.55	14 (31%)	42,89,89	3.38	22 (52%)
2	HDD	B	760[A]	1,5	41,52,52	2.07	14 (34%)	34,89,89	3.29	11 (32%)

In the following table, the Chirals column lists the number of chiral outliers, the number of chiral centers analysed, the number of these observed in the model and the number defined in the Chemical Component Dictionary. Similar counts are reported in the Torsion and Rings columns. '-' means no outliers of that kind were identified.

Mol	Type	Chain	Res	Link	Chirals	Torsions	Rings
2	HDD	C	760[A]	1,5	-	2/5/89/89	0/1/9/9
3	HDE	A	761[B]	1,5	1/1/8/10	6/9/89/89	0/1/9/9
2	HDD	D	760[A]	1,5	-	2/5/89/89	0/1/9/9
2	HDD	A	760[A]	1,5	-	2/5/89/89	0/1/9/9
3	HDE	B	761[B]	1,5	-	6/9/89/89	0/1/9/9
3	HDE	C	761[B]	1,5	-	6/9/89/89	0/1/9/9
3	HDE	D	761[B]	1,5	-	6/9/89/89	0/1/9/9
2	HDD	B	760[A]	1,5	-	2/5/89/89	0/1/9/9

The worst 5 of 109 bond length outliers are listed below:

Mol	Chain	Res	Type	Atoms	Z	Observed(Å)	Ideal(Å)
2	D	760[A]	HDD	FE-ND	7.39	2.23	1.95
3	B	761[B]	HDE	CHC-C4B	-7.29	1.43	1.51
3	C	761[B]	HDE	CHC-C4B	-7.27	1.43	1.51
3	A	761[B]	HDE	O1A-CGA	7.16	1.46	1.35
3	D	761[B]	HDE	CHC-C4B	-6.89	1.44	1.51

The worst 5 of 135 bond angle outliers are listed below:

Mol	Chain	Res	Type	Atoms	Z	Observed(°)	Ideal(°)
3	D	761[B]	HDE	C2D-C1D-ND	10.69	117.32	109.44
3	B	761[B]	HDE	C2D-C1D-ND	10.26	117.00	109.44
3	A	761[B]	HDE	C2C-C1C-NC	10.15	116.92	109.44
3	C	761[B]	HDE	C2C-C1C-NC	10.14	116.92	109.44
2	B	760[A]	HDD	O1D-CGD-O2D	10.03	129.26	120.81

All (1) chirality outliers are listed below:

Mol	Chain	Res	Type	Atom
3	A	761[B]	HDE	NA

5 of 32 torsion outliers are listed below:

Mol	Chain	Res	Type	Atoms
3	A	761[B]	HDE	C2B-C3B-CAB-CBB
3	A	761[B]	HDE	C4B-C3B-CAB-CBB
3	A	761[B]	HDE	C2C-C3C-CAC-CBC
3	A	761[B]	HDE	C4C-C3C-CAC-CBC
3	B	761[B]	HDE	C2B-C3B-CAB-CBB

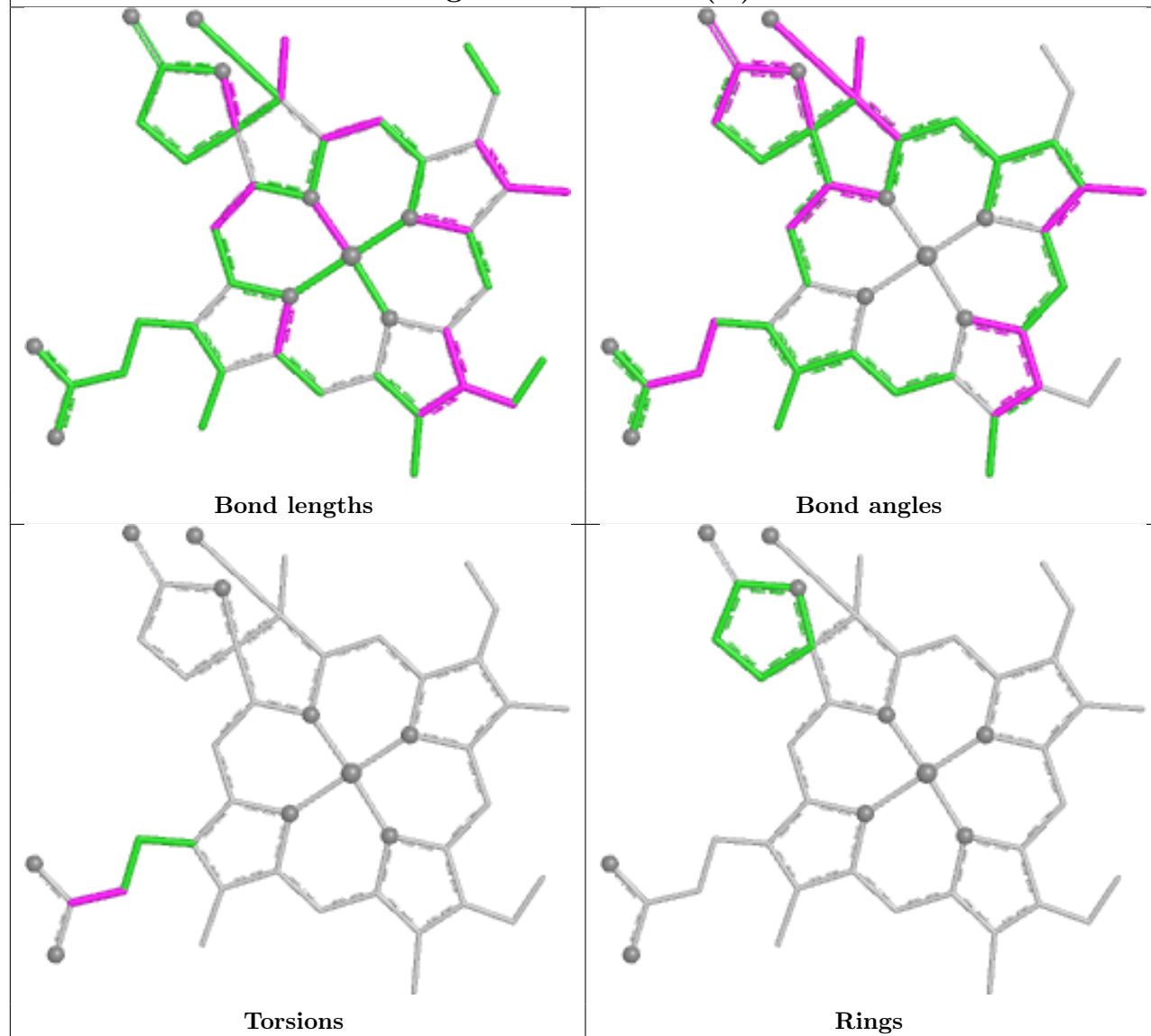
There are no ring outliers.

8 monomers are involved in 98 short contacts:

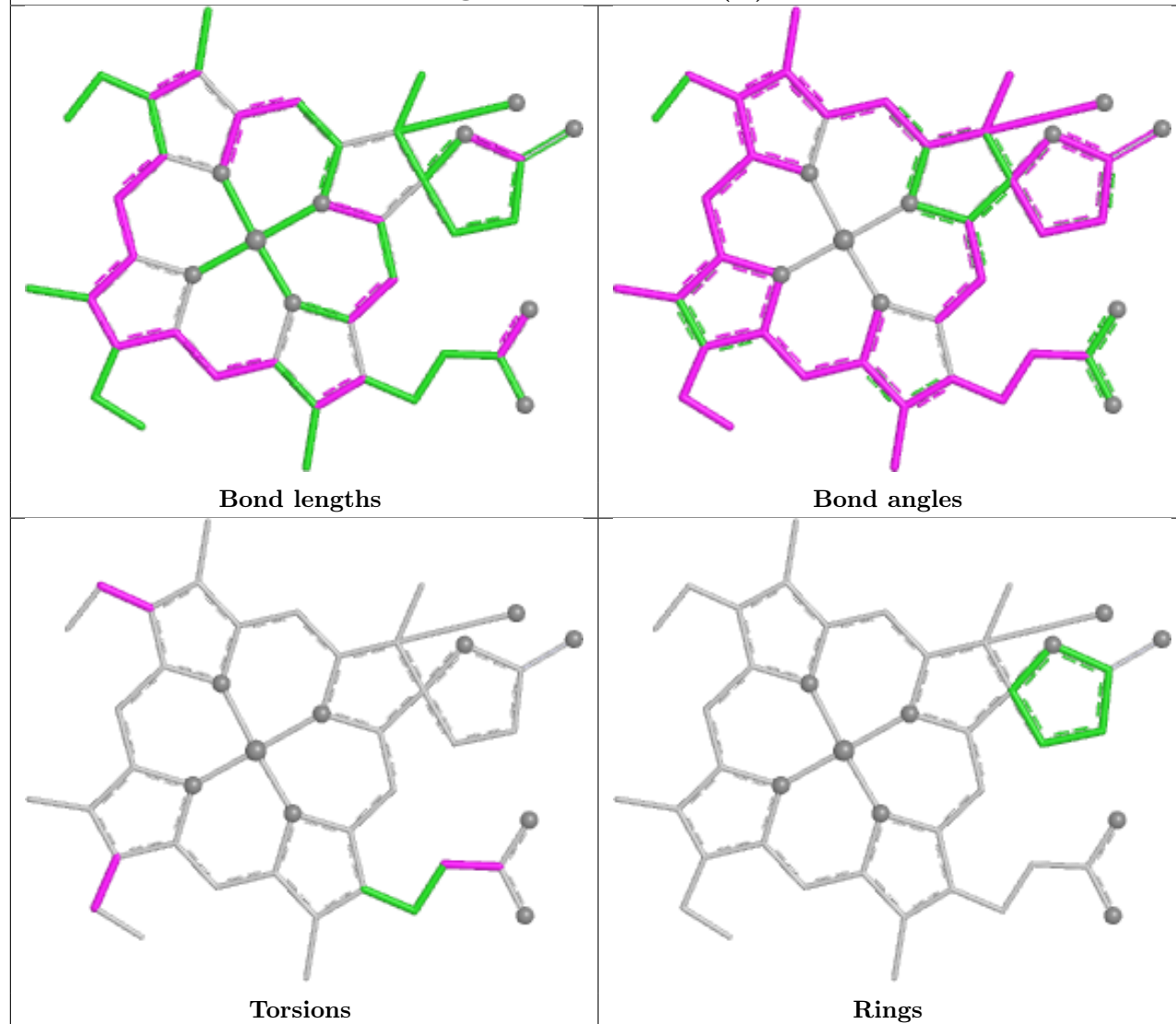
Mol	Chain	Res	Type	Clashes	Symm-Clashes
2	C	760[A]	HDD	19	0
3	A	761[B]	HDE	10	0
2	D	760[A]	HDD	11	0
2	A	760[A]	HDD	12	0
3	B	761[B]	HDE	10	0
3	C	761[B]	HDE	8	0
3	D	761[B]	HDE	9	0
2	B	760[A]	HDD	19	0

The following is a two-dimensional graphical depiction of Mogul quality analysis of bond lengths, bond angles, torsion angles, and ring geometry for all instances of the Ligand of Interest. In addition, ligands with molecular weight > 250 and outliers as shown on the validation Tables will also be included. For torsion angles, if less than 5% of the Mogul distribution of torsion angles is within 10 degrees of the torsion angle in question, then that torsion angle is considered an outlier. Any bond that is central to one or more torsion angles identified as an outlier by Mogul will be highlighted in the graph. For rings, the root-mean-square deviation (RMSD) between the ring in question and similar rings identified by Mogul is calculated over all ring torsion angles. If the average RMSD is greater than 60 degrees and the minimal RMSD between the ring in question and any Mogul-identified rings is also greater than 60 degrees, then that ring is considered an outlier. The outliers are highlighted in purple. The color gray indicates Mogul did not find sufficient equivalents in the CSD to analyse the geometry.

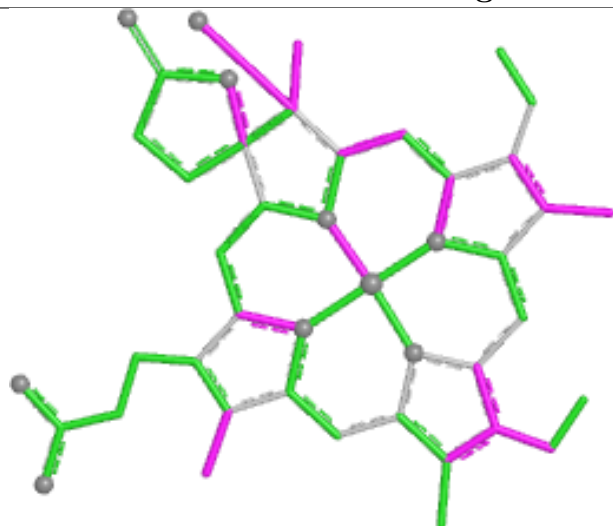
Ligand HDD C 760 (A)



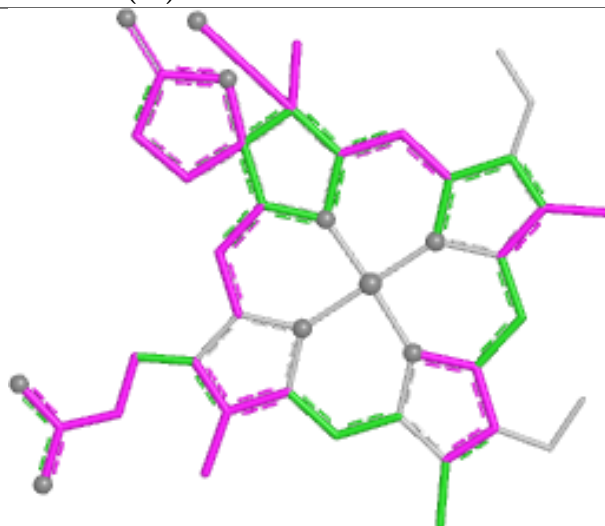
Ligand HDE A 761 (B)



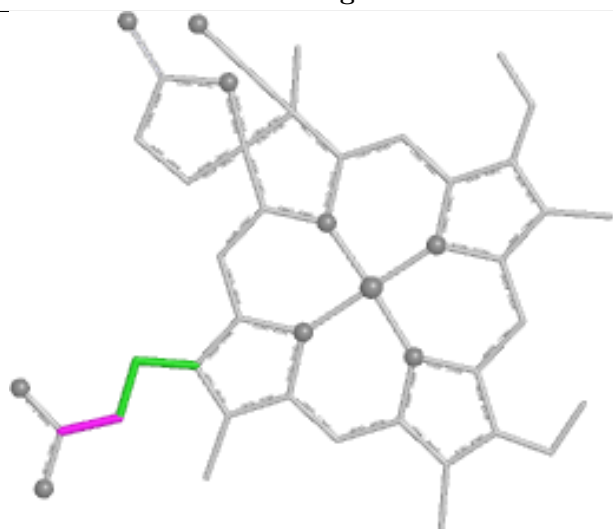
Ligand HDD D 760 (A)



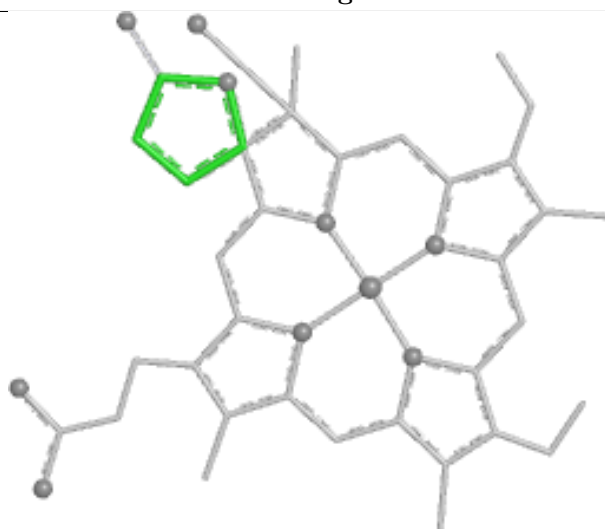
Bond lengths



Bond angles

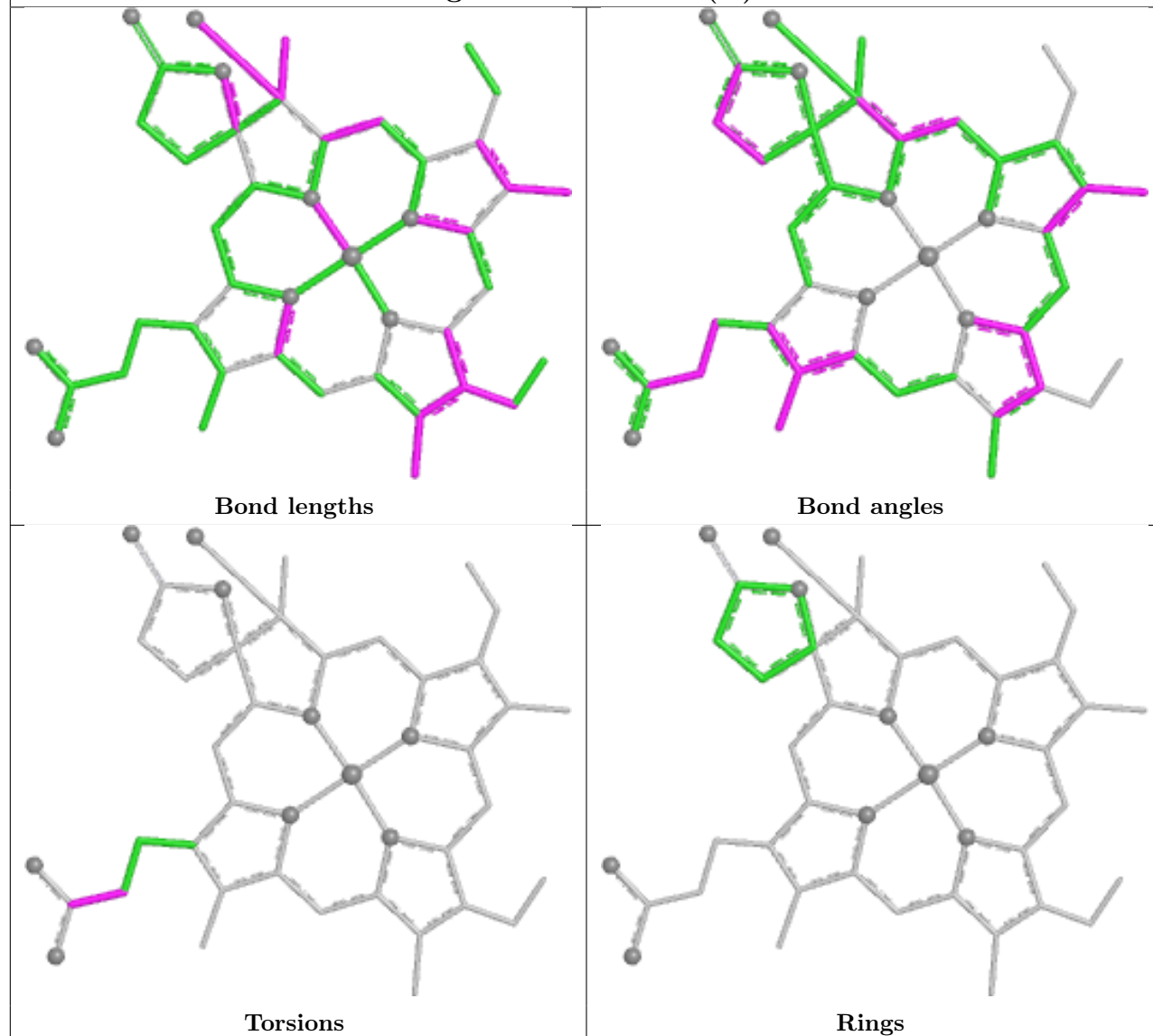


Torsions

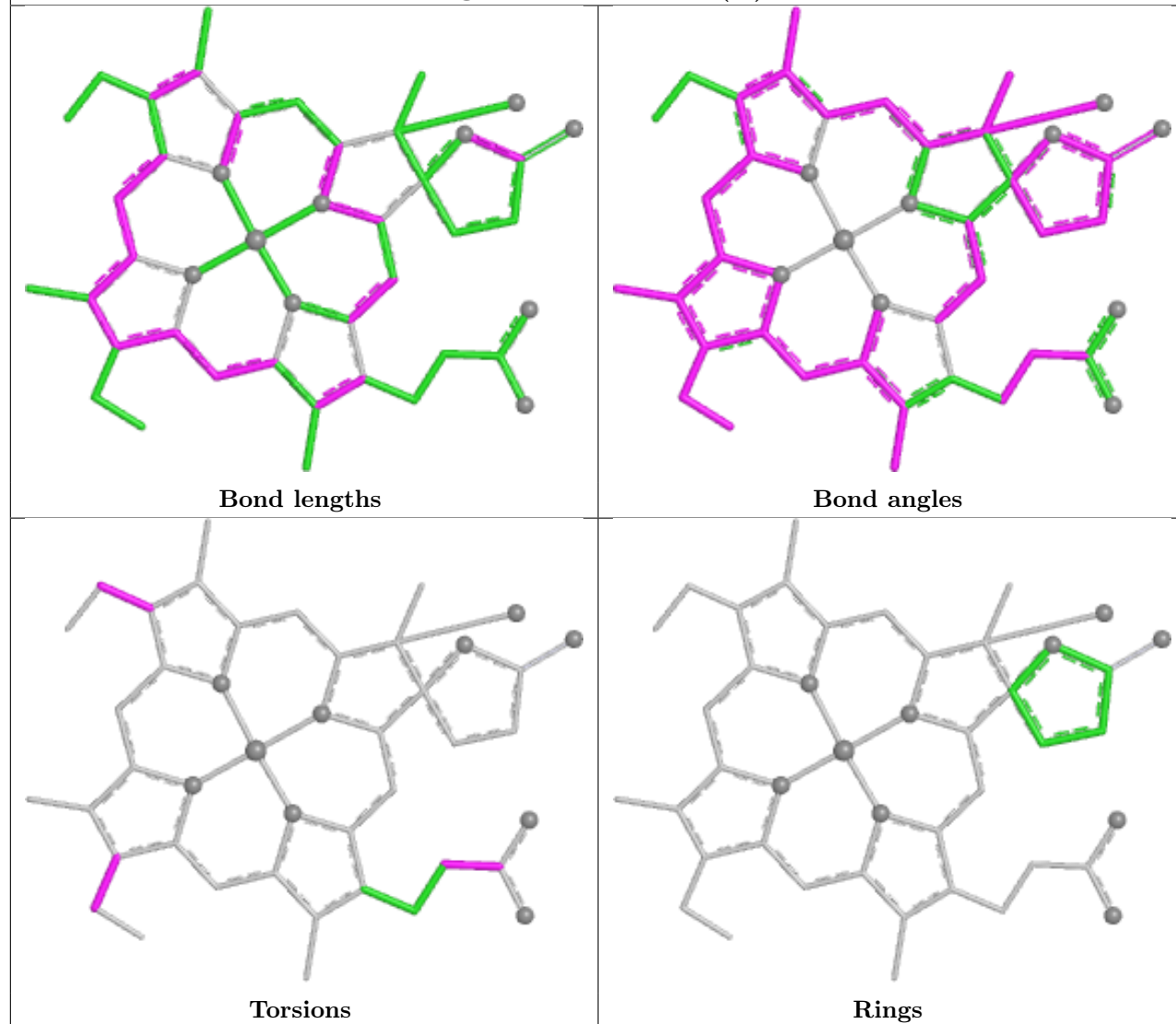


Rings

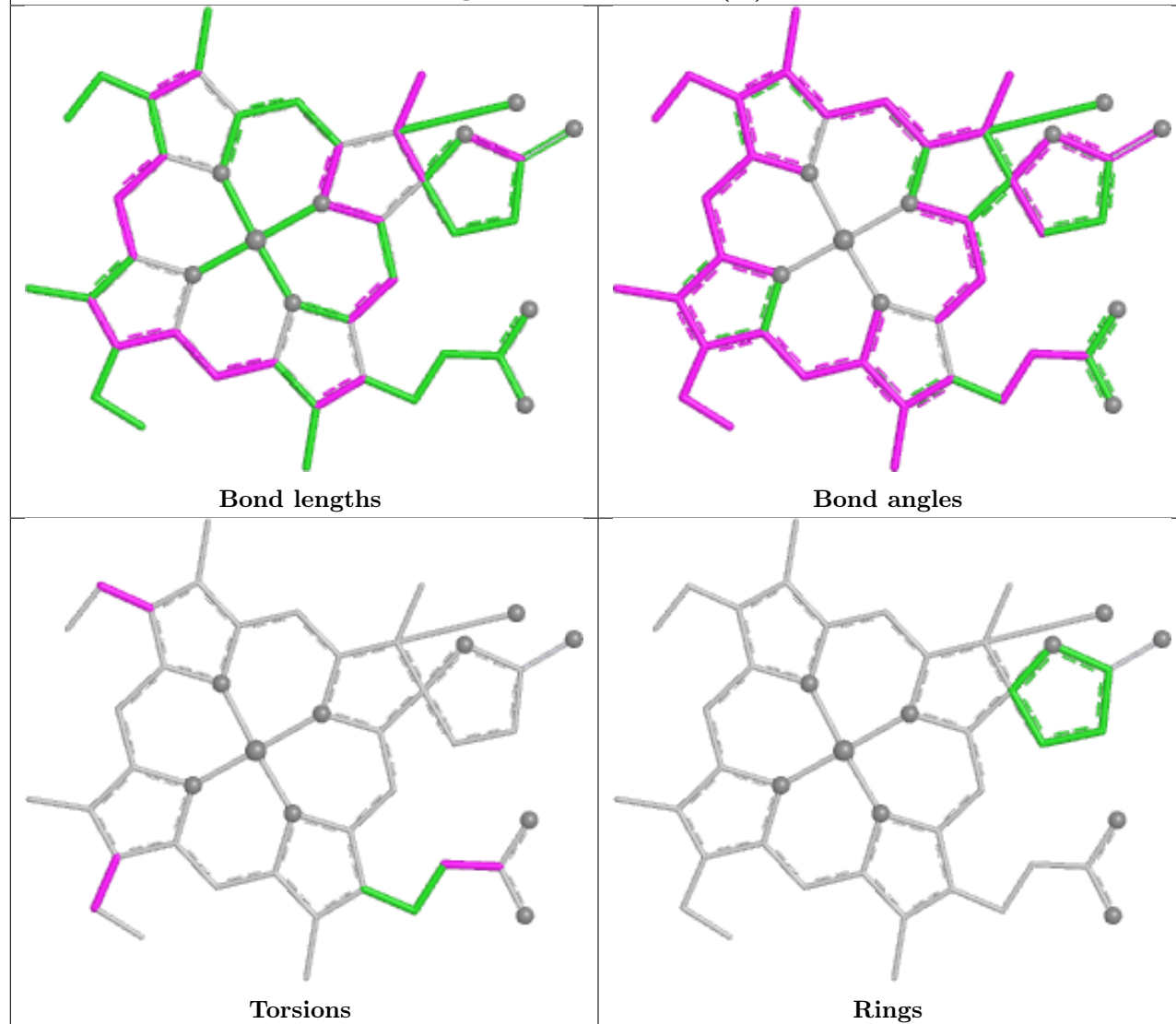
Ligand HDD A 760 (A)



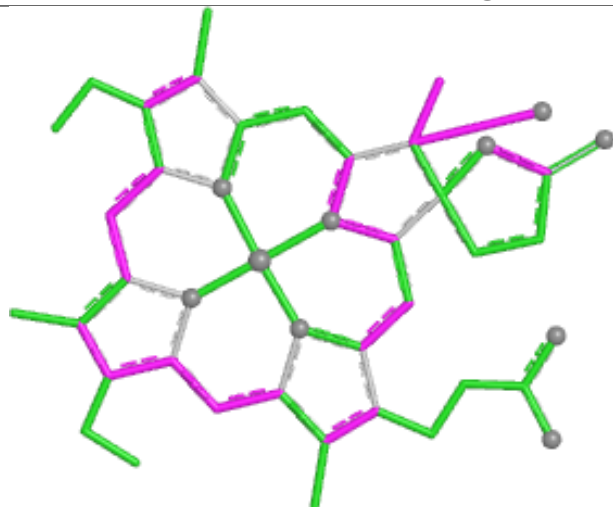
Ligand HDE B 761 (B)



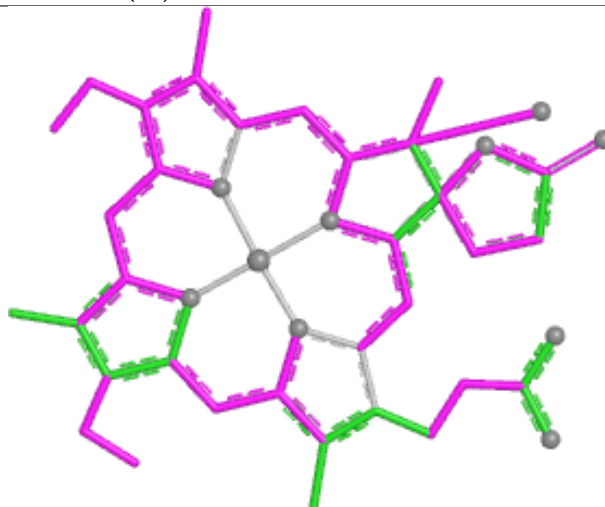
Ligand HDE C 761 (B)



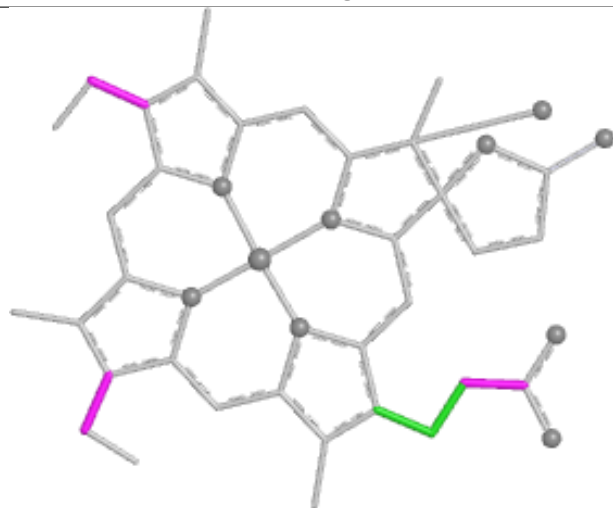
Ligand HDE D 761 (B)



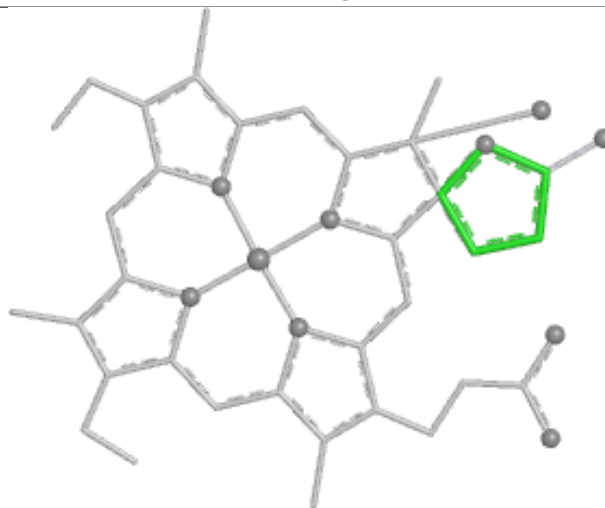
Bond lengths



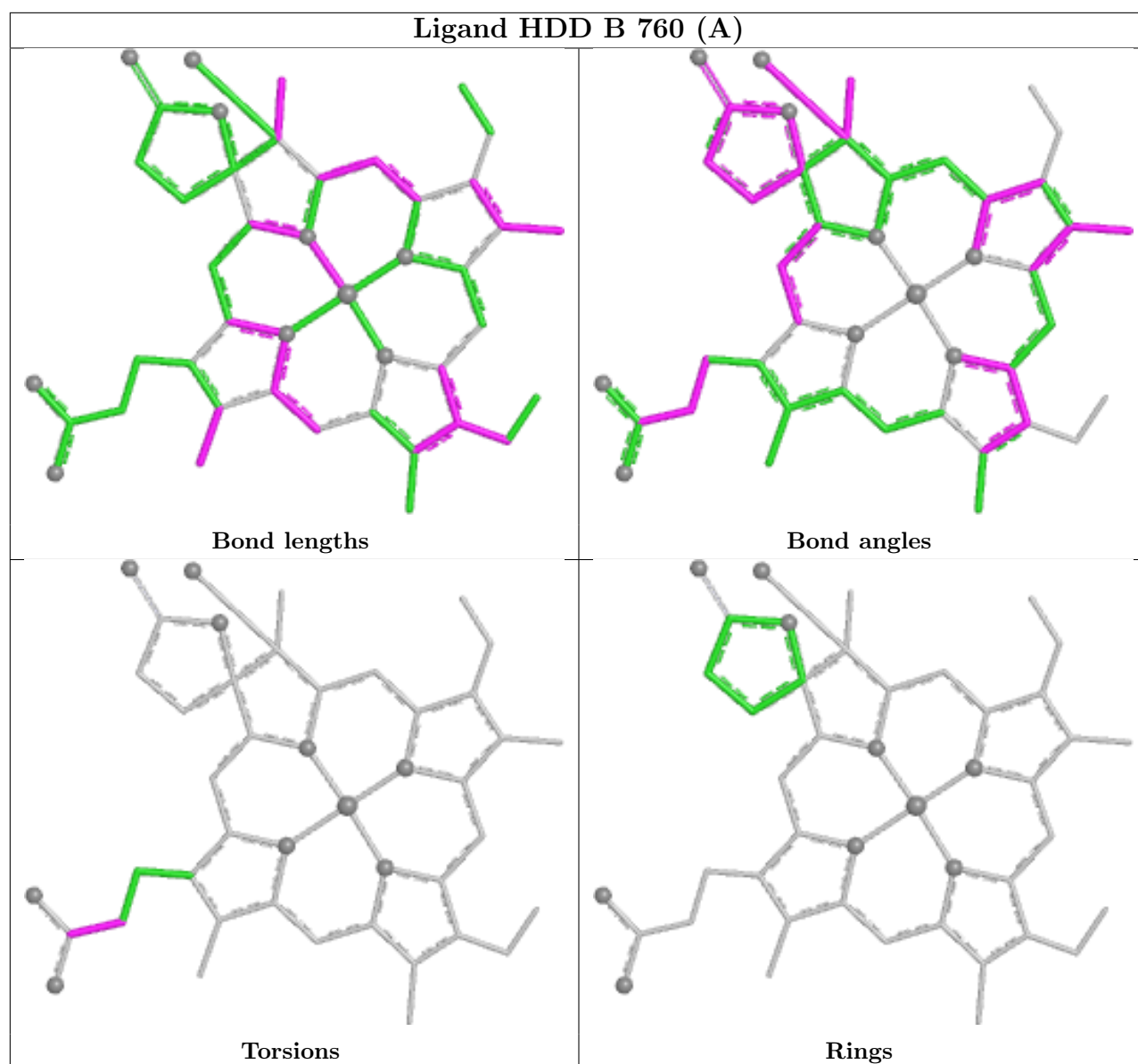
Bond angles



Torsions



Rings



5.7 Other polymers [i](#)

There are no such residues in this entry.

5.8 Polymer linkage issues [i](#)

There are no chain breaks in this entry.

6 Fit of model and data [i](#)

6.1 Protein, DNA and RNA chains [i](#)

In the following table, the column labelled ‘#RSRZ> 2’ contains the number (and percentage) of RSRZ outliers, followed by percent RSRZ outliers for the chain as percentile scores relative to all X-ray entries and entries of similar resolution. The OWAB column contains the minimum, median, 95th percentile and maximum values of the occupancy-weighted average B-factor per residue. The column labelled ‘Q< 0.9’ lists the number of (and percentage) of residues with an average occupancy less than 0.9.

Mol	Chain	Analysed	<RSRZ>	#RSRZ>2	OWAB(Å ²)	Q<0.9
1	A	726/753 (96%)	-0.76	4 (0%) 85 88	3, 10, 25, 45	7 (0%)
1	B	726/753 (96%)	-0.60	5 (0%) 84 87	3, 12, 32, 47	7 (0%)
1	C	726/753 (96%)	-0.64	3 (0%) 89 91	3, 12, 31, 46	6 (0%)
1	D	726/753 (96%)	-0.75	2 (0%) 90 92	3, 10, 26, 45	9 (1%)
All	All	2904/3012 (96%)	-0.69	14 (0%) 87 89	3, 11, 29, 47	29 (0%)

The worst 5 of 14 RSRZ outliers are listed below:

Mol	Chain	Res	Type	RSRZ
1	A	28	SER	4.7
1	D	28	SER	3.5
1	B	726	GLY	2.9
1	A	713	GLN	2.5
1	B	725	ASP	2.5

6.2 Non-standard residues in protein, DNA, RNA chains [i](#)

There are no non-standard protein/DNA/RNA residues in this entry.

6.3 Carbohydrates [i](#)

There are no monosaccharides in this entry.

6.4 Ligands [i](#)

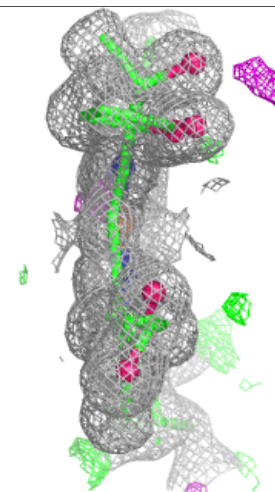
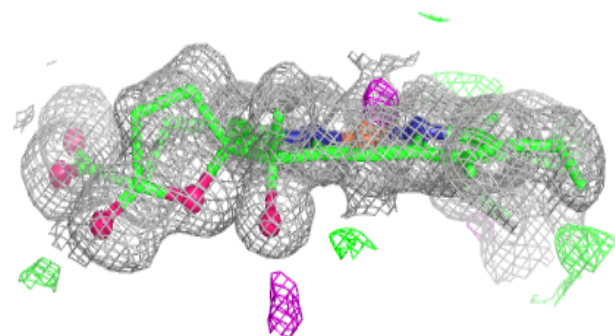
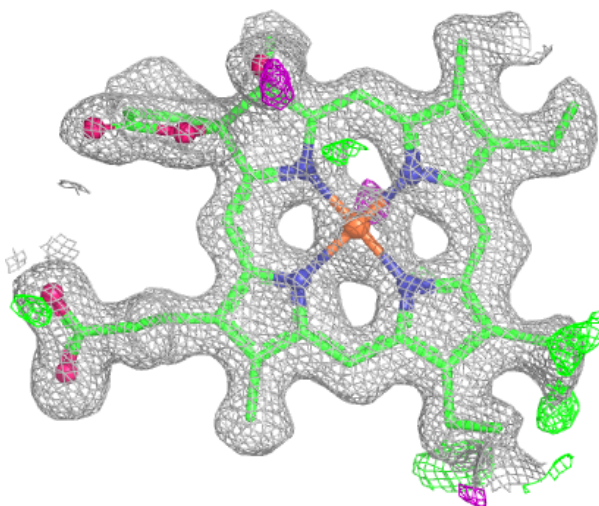
In the following table, the Atoms column lists the number of modelled atoms in the group and the number defined in the chemical component dictionary. The B-factors column lists the minimum, median, 95th percentile and maximum values of B factors of atoms in the group. The column labelled ‘Q< 0.9’ lists the number of atoms with occupancy less than 0.9.

Mol	Type	Chain	Res	Atoms	RSCC	RSR	B-factors(\AA^2)	Q<0.9
4	H2S	C	754[A]	1/1	0.90	0.11	21,21,21,21	1
4	H2S	D	754[A]	1/1	0.92	0.13	23,23,23,23	1
4	H2S	B	754[A]	1/1	0.93	0.07	22,22,22,22	1
4	H2S	A	754[A]	1/1	0.95	0.08	21,21,21,21	1
3	HDE	A	761[B]	44/44	0.98	0.05	4,10,13,14	44
3	HDE	B	761[B]	44/44	0.98	0.06	2,11,15,18	44
3	HDE	C	761[B]	44/44	0.98	0.05	4,11,14,15	44
3	HDE	D	761[B]	44/44	0.98	0.05	4,11,15,19	44
2	HDD	A	760[A]	44/44	0.99	0.04	2,3,10,14	44
2	HDD	B	760[A]	44/44	0.99	0.04	2,4,8,12	44
2	HDD	C	760[A]	44/44	0.99	0.04	2,5,12,17	44
2	HDD	D	760[A]	44/44	0.99	0.04	2,4,10,15	44

The following is a graphical depiction of the model fit to experimental electron density of all instances of the Ligand of Interest. In addition, ligands with molecular weight > 250 and outliers as shown on the geometry validation Tables will also be included. Each fit is shown from different orientation to approximate a three-dimensional view.

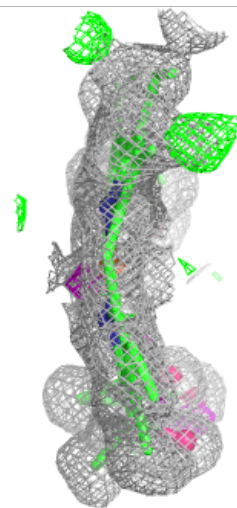
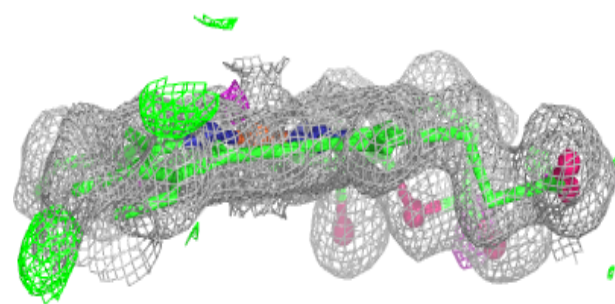
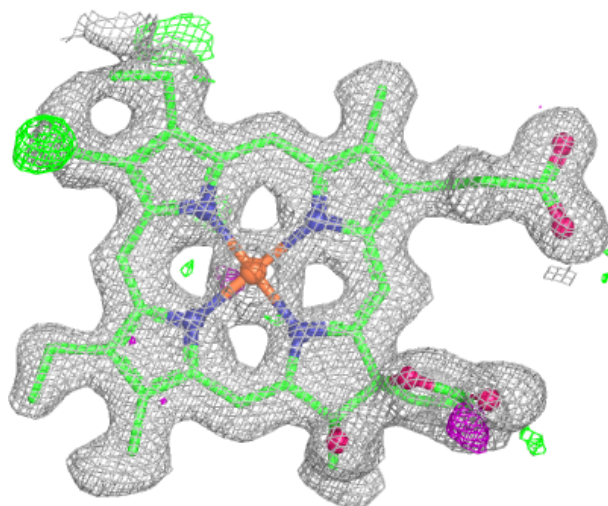
Electron density around HDE A 761 (B):

2mF_o-DF_c (at 0.7 rmsd) in gray
 mF_o-DF_c (at 3 rmsd) in purple (negative)
 and green (positive)



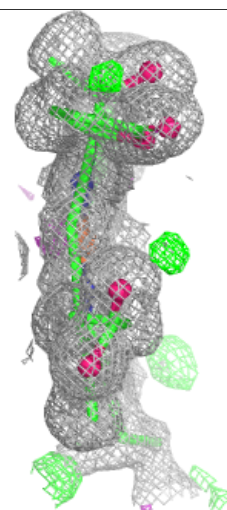
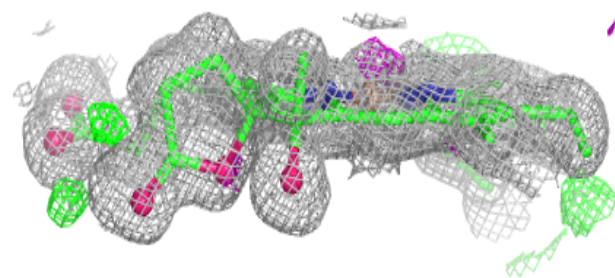
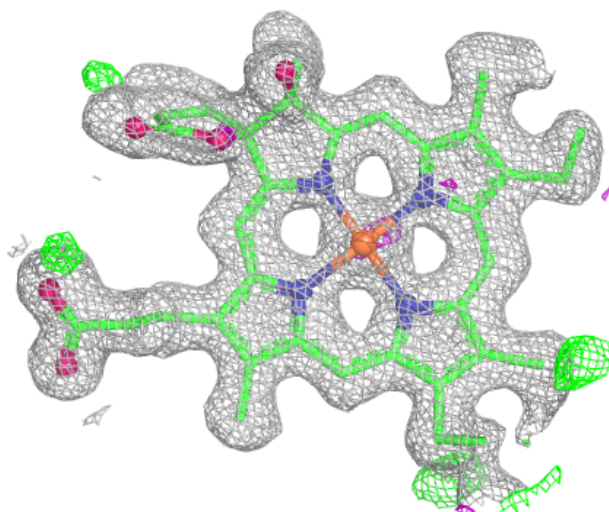
Electron density around HDE B 761 (B):

$2mF_o-DF_c$ (at 0.7 rmsd) in gray
 mF_o-DF_c (at 3 rmsd) in purple (negative)
and green (positive)



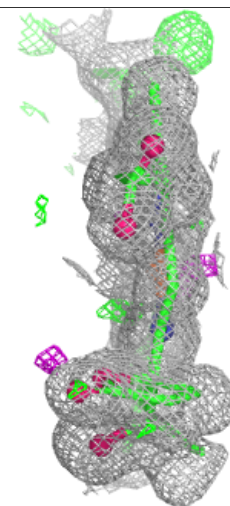
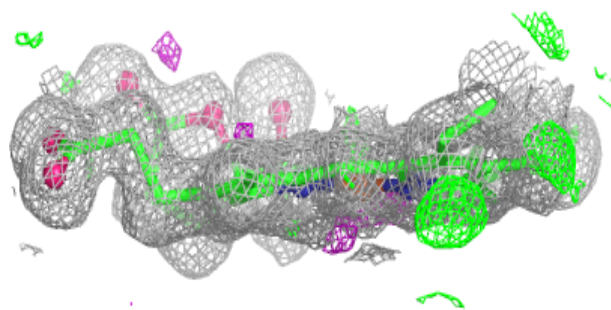
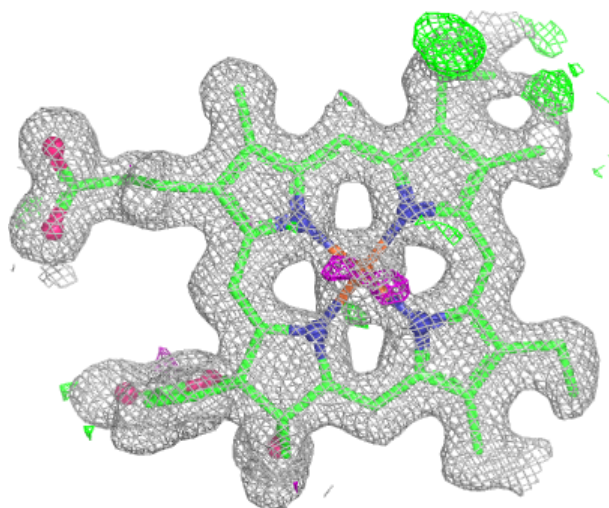
Electron density around HDE C 761 (B):

$2mF_o-DF_c$ (at 0.7 rmsd) in gray
 mF_o-DF_c (at 3 rmsd) in purple (negative)
and green (positive)



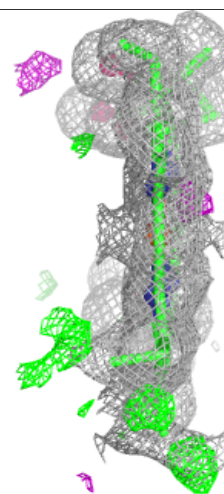
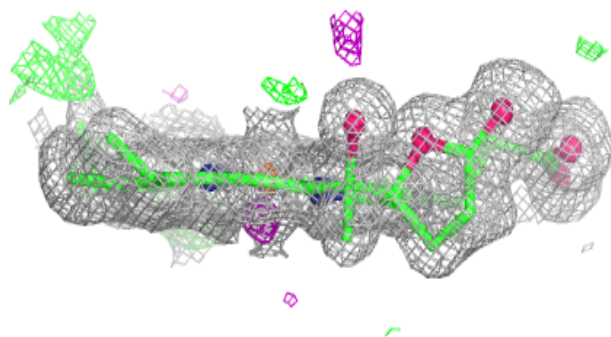
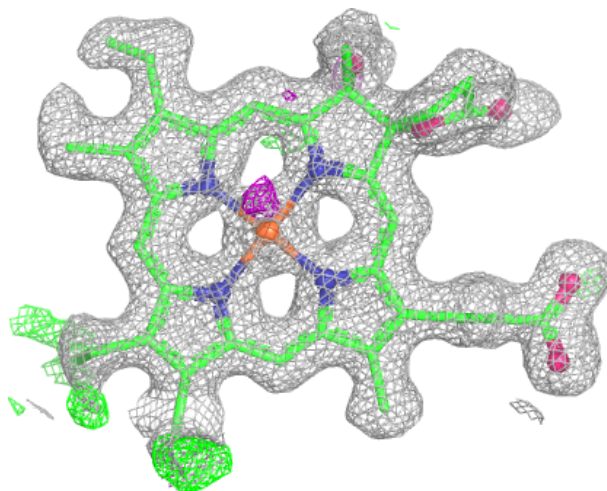
Electron density around HDE D 761 (B):

$2mF_o-DF_c$ (at 0.7 rmsd) in gray
 mF_o-DF_c (at 3 rmsd) in purple (negative)
and green (positive)



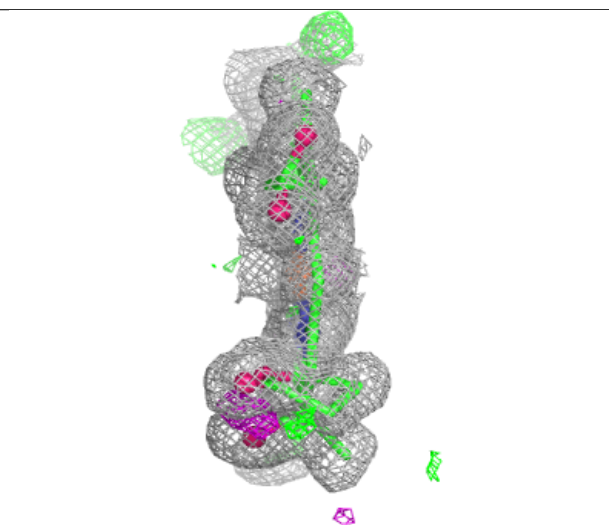
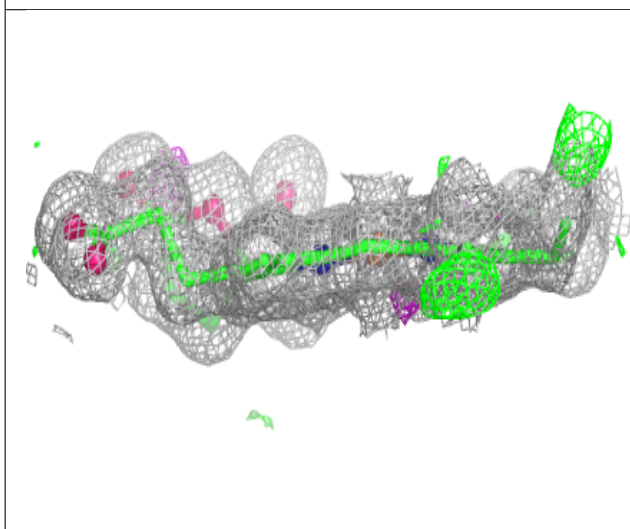
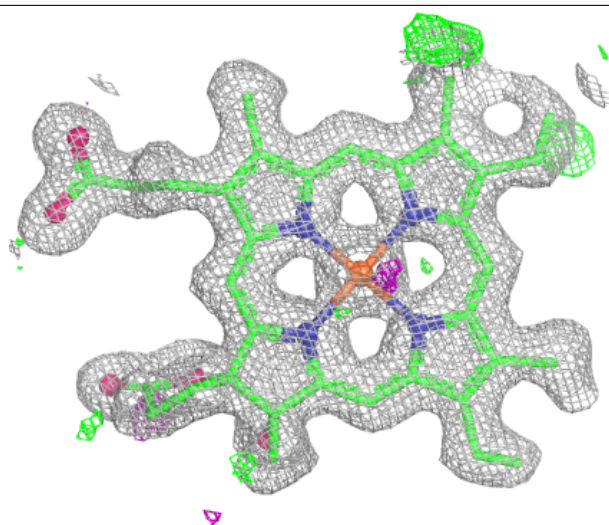
Electron density around HDD A 760 (A):

$2mF_o-DF_c$ (at 0.7 rmsd) in gray
 mF_o-DF_c (at 3 rmsd) in purple (negative)
and green (positive)



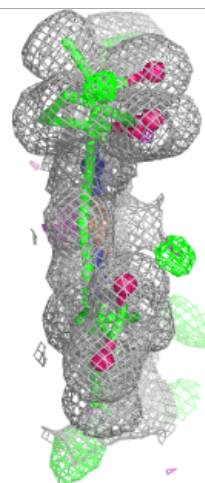
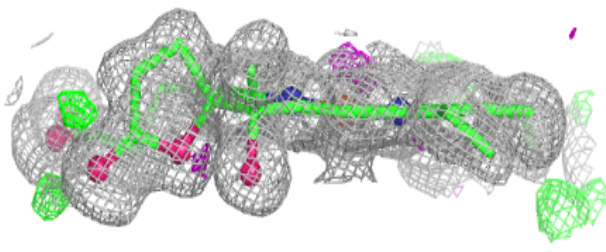
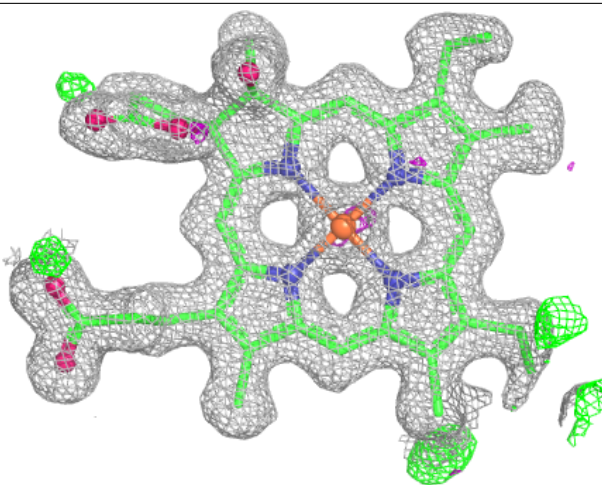
Electron density around HDD B 760 (A):

$2mF_o-DF_c$ (at 0.7 rmsd) in gray
 mF_o-DF_c (at 3 rmsd) in purple (negative)
and green (positive)



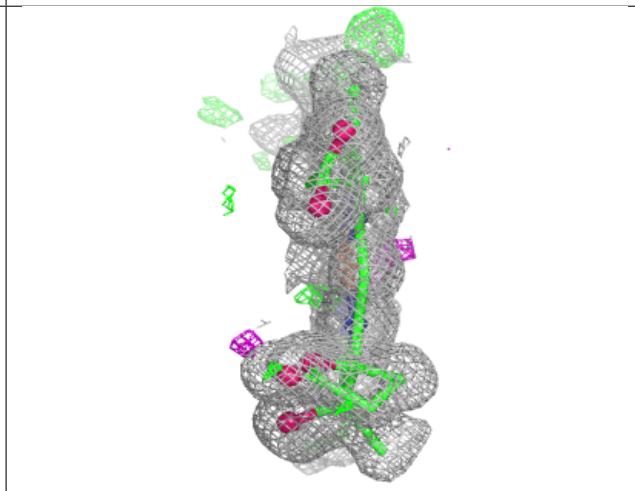
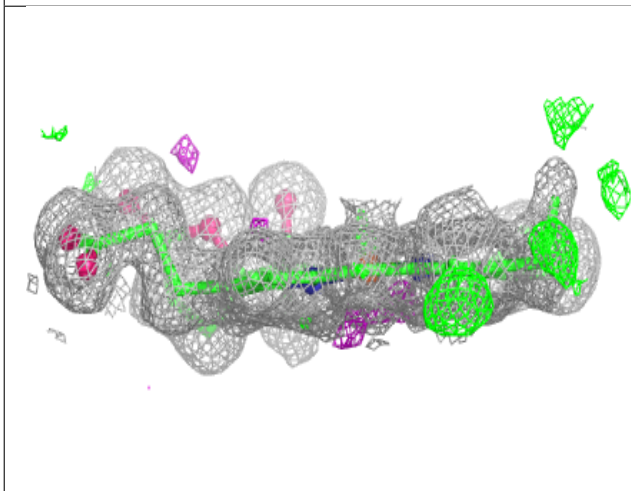
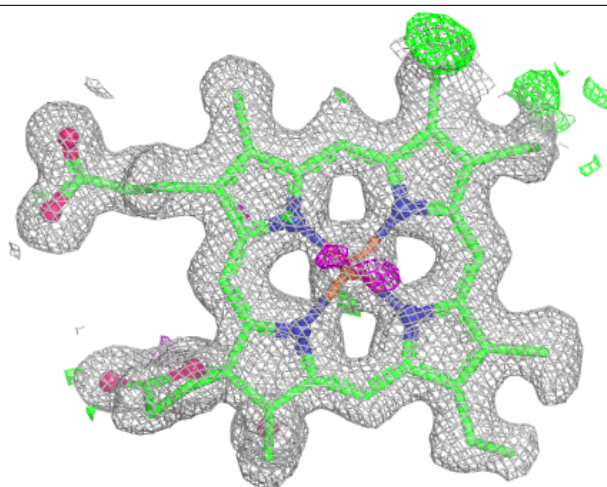
Electron density around HDD C 760 (A):

$2mF_o-DF_c$ (at 0.7 rmsd) in gray
 mF_o-DF_c (at 3 rmsd) in purple (negative)
and green (positive)



Electron density around HDD D 760 (A):

$2mF_o-DF_c$ (at 0.7 rmsd) in gray
 mF_o-DF_c (at 3 rmsd) in purple (negative)
and green (positive)



6.5 Other polymers [i](#)

There are no such residues in this entry.