



Full wwPDB X-ray Structure Validation Report ⓘ

Jun 10, 2025 – 04:04 PM EDT

PDB ID : 9P1C / pdb_00009p1c
Title : Crystal structure of human TMPRSS11A S368A interacting with its own zymogen activation motif
Authors : Fraser, B.J.; Dong, A.; Hastings, K.; Wilson, R.P.; Seitova, A.; Li, Y.; Arrow-smith, C.H.
Deposited on : 2025-06-09
Resolution : 2.54 Å(reported)

This is a Full wwPDB X-ray Structure Validation Report for a publicly released PDB entry.

We welcome your comments at validation@mail.wwpdb.org

A user guide is available at

<https://www.wwpdb.org/validation/2017/XrayValidationReportHelp>

with specific help available everywhere you see the ⓘ symbol.

The types of validation reports are described at

<http://www.wwpdb.org/validation/2017/FAQs#types>.

The following versions of software and data (see [references ⓘ](#)) were used in the production of this report:

MolProbity : 4-5-2 with Phenix2.0rc1
Mogul : 2022.3.0, CSD as543be (2022)
Xtriage (Phenix) : 2.0rc1
EDS : 3.0
Percentile statistics : 20231227.v01 (using entries in the PDB archive December 27th 2023)
CCP4 : 9.0.006 (Gargrove)
Density-Fitness : 1.0.12
Ideal geometry (proteins) : Engh & Huber (2001)
Ideal geometry (DNA, RNA) : Parkinson et al. (1996)
Validation Pipeline (wwPDB-VP) : 2.43.1

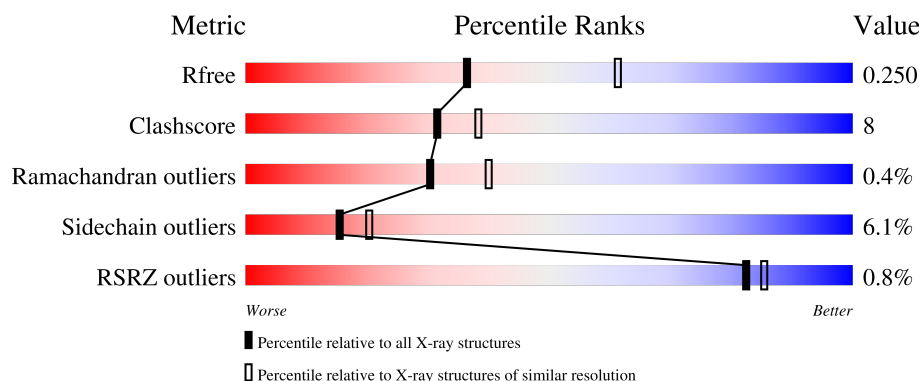
1 Overall quality at a glance

The following experimental techniques were used to determine the structure:

X-RAY DIFFRACTION

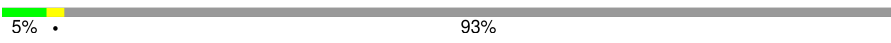

The reported resolution of this entry is 2.54 Å.

Percentile scores (ranging between 0-100) for global validation metrics of the entry are shown in the following graphic. The table shows the number of entries on which the scores are based.



Metric	Whole archive (#Entries)	Similar resolution (#Entries, resolution range(Å))
R_{free}	164625	1004 (2.54-2.54)
Clashscore	180529	1055 (2.54-2.54)
Ramachandran outliers	177936	1048 (2.54-2.54)
Sidechain outliers	177891	1048 (2.54-2.54)
RSRZ outliers	164620	1004 (2.54-2.54)

The table below summarises the geometric issues observed across the polymeric chains and their fit to the electron density. The red, orange, yellow and green segments of the lower bar indicate the fraction of residues that contain outliers for ≥ 3 , 2, 1 and 0 types of geometric quality criteria respectively. A grey segment represents the fraction of residues that are not modelled. The numeric value for each fraction is indicated below the corresponding segment, with a dot representing fractions $\leq 5\%$. The upper red bar (where present) indicates the fraction of residues that have poor fit to the electron density. The numeric value is given above the bar.

Mol	Chain	Length	Quality of chain
1	A	186	 5% 93%
2	B	232	 81% 16%

2 Entry composition

There are 5 unique types of molecules in this entry. The entry contains 1950 atoms, of which 0 are hydrogens and 0 are deuteriums.

In the tables below, the ZeroOcc column contains the number of atoms modelled with zero occupancy, the AltConf column contains the number of residues with at least one atom in alternate conformation and the Trace column contains the number of residues modelled with at most 2 atoms.

- Molecule 1 is a protein called Transmembrane protease serine 11A.

Mol	Chain	Residues	Atoms					ZeroOcc	AltConf	Trace
1	A	13	Total	C	N	O	S	0	0	0
			100	60	22	17	1			

There are 44 discrepancies between the modelled and reference sequences:

Chain	Residue	Modelled	Actual	Comment	Reference
A	1	ALA	-	expression tag	UNP Q6ZMR5
A	2	ALA	-	expression tag	UNP Q6ZMR5
A	3	PRO	-	expression tag	UNP Q6ZMR5
A	4	GLU	-	expression tag	UNP Q6ZMR5
A	5	MET	-	expression tag	UNP Q6ZMR5
A	6	HIS	-	expression tag	UNP Q6ZMR5
A	7	HIS	-	expression tag	UNP Q6ZMR5
A	8	HIS	-	expression tag	UNP Q6ZMR5
A	9	HIS	-	expression tag	UNP Q6ZMR5
A	10	HIS	-	expression tag	UNP Q6ZMR5
A	11	HIS	-	expression tag	UNP Q6ZMR5
A	12	GLU	-	expression tag	UNP Q6ZMR5
A	13	PHE	-	expression tag	UNP Q6ZMR5
A	14	MET	-	expression tag	UNP Q6ZMR5
A	15	SER	-	expression tag	UNP Q6ZMR5
A	16	GLY	-	expression tag	UNP Q6ZMR5
A	17	LEU	-	expression tag	UNP Q6ZMR5
A	18	ASN	-	expression tag	UNP Q6ZMR5
A	19	ASP	-	expression tag	UNP Q6ZMR5
A	20	ILE	-	expression tag	UNP Q6ZMR5
A	21	PHE	-	expression tag	UNP Q6ZMR5
A	22	GLU	-	expression tag	UNP Q6ZMR5
A	23	ALA	-	expression tag	UNP Q6ZMR5
A	24	GLN	-	expression tag	UNP Q6ZMR5
A	25	LYS	-	expression tag	UNP Q6ZMR5
A	26	ILE	-	expression tag	UNP Q6ZMR5
A	27	GLU	-	expression tag	UNP Q6ZMR5

Continued on next page...

Continued from previous page...

Chain	Residue	Modelled	Actual	Comment	Reference
A	28	TRP	-	expression tag	UNP Q6ZMR5
A	29	HIS	-	expression tag	UNP Q6ZMR5
A	30	GLU	-	expression tag	UNP Q6ZMR5
A	31	GLY	-	expression tag	UNP Q6ZMR5
A	32	SER	-	expression tag	UNP Q6ZMR5
A	33	ALA	-	expression tag	UNP Q6ZMR5
A	34	GLY	-	expression tag	UNP Q6ZMR5
A	35	GLY	-	expression tag	UNP Q6ZMR5
A	36	SER	-	expression tag	UNP Q6ZMR5
A	37	GLY	-	expression tag	UNP Q6ZMR5
A	38	GLU	-	expression tag	UNP Q6ZMR5
A	39	ASN	-	expression tag	UNP Q6ZMR5
A	40	LEU	-	expression tag	UNP Q6ZMR5
A	41	TYR	-	expression tag	UNP Q6ZMR5
A	42	PHE	-	expression tag	UNP Q6ZMR5
A	43	GLN	-	expression tag	UNP Q6ZMR5
A	44	GLY	-	expression tag	UNP Q6ZMR5

- Molecule 2 is a protein called Transmembrane protease serine 11A.

Mol	Chain	Residues	Atoms					ZeroOcc	AltConf	Trace
2	B	232	Total	C	N	O	S	0	0	0
			1799	1147	316	326	10			

There is a discrepancy between the modelled and reference sequences:

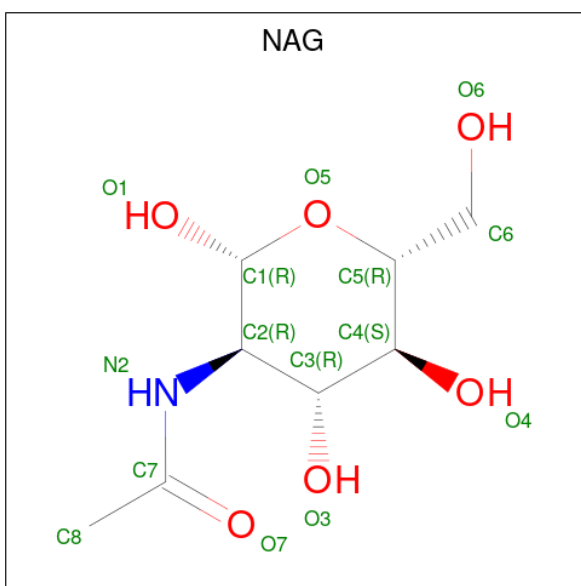
Chain	Residue	Modelled	Actual	Comment	Reference
B	368	ALA	SER	engineered mutation	UNP Q6ZMR5

- Molecule 3 is PHOSPHATE ION (CCD ID: PO4) (formula: O₄P).



Mol	Chain	Residues	Atoms			ZeroOcc	AltConf
3	B	1	Total	O	P	0	0
			5	4	1		
3	B	1	Total	O	P	0	0
			5	4	1		
3	B	1	Total	O	P	0	0
			5	4	1		
3	B	1	Total	O	P	0	0
			5	4	1		

- Molecule 4 is 2-acetamido-2-deoxy-beta-D-glucopyranose (CCD ID: NAG) (formula: $C_8H_{15}NO_6$).

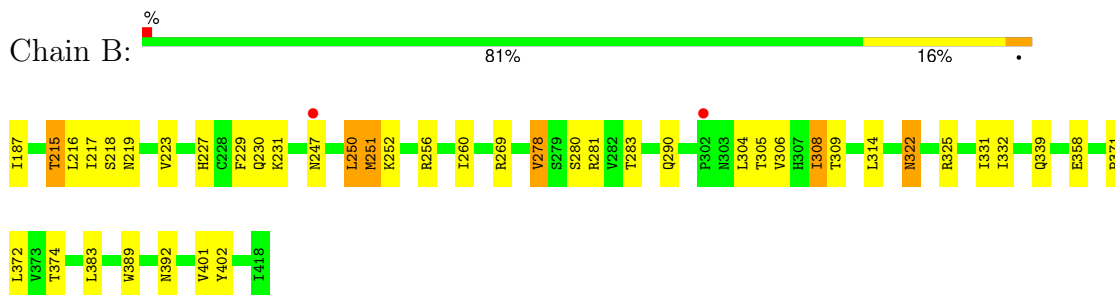


Mol	Chain	Residues	Atoms				ZeroOcc	AltConf
4	B	1	Total	C	N	O	0	0
			14	8	1	5		

- Molecule 5 is water.

Mol	Chain	Residues	Atoms		ZeroOcc	AltConf
5	A	1	Total	O	0	0
			1	1		
5	B	16	Total	O	0	0
			16	16		

- Molecule 1: Transmembrane protease serine 11A



4 Data and refinement statistics

Property	Value	Source
Space group	P 41	Depositor
Cell constants a, b, c, α , β , γ	81.78Å 81.78Å 44.88Å 90.00° 90.00° 90.00°	Depositor
Resolution (Å)	39.38 – 2.54 39.38 – 2.54	Depositor EDS
% Data completeness (in resolution range)	98.4 (39.38-2.54) 98.4 (39.38-2.54)	Depositor EDS
R_{merge}	0.33	Depositor
R_{sym}	(Not available)	Depositor
$\langle I/\sigma(I) \rangle$ ¹	2.10 (at 2.54Å)	Xtriage
Refinement program	REFMAC 5.8.0425	Depositor
R, R_{free}	0.192 , 0.246 0.198 , 0.250	Depositor DCC
R_{free} test set	489 reflections (4.92%)	wwPDB-VP
Wilson B-factor (Å ²)	53.9	Xtriage
Anisotropy	0.394	Xtriage
Bulk solvent k_{sol} (e/Å ³), B_{sol} (Å ²)	0.35 , 32.2	EDS
L-test for twinning ²	$\langle L \rangle = 0.48$, $\langle L^2 \rangle = 0.31$	Xtriage
Estimated twinning fraction	0.051 for h,-k,-l	Xtriage
F_o, F_c correlation	0.95	EDS
Total number of atoms	1950	wwPDB-VP
Average B, all atoms (Å ²)	54.0	wwPDB-VP

Xtriage's analysis on translational NCS is as follows: *The largest off-origin peak in the Patterson function is 5.20% of the height of the origin peak. No significant pseudotranslation is detected.*

¹Intensities estimated from amplitudes.

²Theoretical values of $\langle |L| \rangle$, $\langle L^2 \rangle$ for acentric reflections are 0.5, 0.333 respectively for untwinned datasets, and 0.375, 0.2 for perfectly twinned datasets.

5 Model quality

5.1 Standard geometry

Bond lengths and bond angles in the following residue types are not validated in this section: NAG, PO4

The Z score for a bond length (or angle) is the number of standard deviations the observed value is removed from the expected value. A bond length (or angle) with $|Z| > 5$ is considered an outlier worth inspection. RMSZ is the root-mean-square of all Z scores of the bond lengths (or angles).

Mol	Chain	Bond lengths		Bond angles	
		RMSZ	$\# Z > 5$	RMSZ	$\# Z > 5$
1	A	0.62	0/100	1.21	0/132
2	B	0.60	0/1848	1.14	2/2517 (0.1%)
All	All	0.60	0/1948	1.14	2/2649 (0.1%)

Chiral center outliers are detected by calculating the chiral volume of a chiral center and verifying if the center is modelled as a planar moiety or with the opposite hand. A planarity outlier is detected by checking planarity of atoms in a peptide group, atoms in a mainchain group or atoms of a sidechain that are expected to be planar.

Mol	Chain	#Chirality outliers	#Planarity outliers
2	B	0	1

There are no bond length outliers.

All (2) bond angle outliers are listed below:

Mol	Chain	Res	Type	Atoms	Z	Observed($^{\circ}$)	Ideal($^{\circ}$)
2	B	231	LYS	CB-CA-C	-6.96	98.08	109.56
2	B	283	THR	CA-CB-OG1	-5.78	100.93	109.60

There are no chirality outliers.

All (1) planarity outliers are listed below:

Mol	Chain	Res	Type	Group
2	B	256	ARG	Sidechain

5.2 Too-close contacts

In the following table, the Non-H and H(model) columns list the number of non-hydrogen atoms and hydrogen atoms in the chain respectively. The H(added) column lists the number of hydrogen

atoms added and optimized by MolProbity. The Clashes column lists the number of clashes within the asymmetric unit, whereas Symm-Clashes lists symmetry-related clashes.

Mol	Chain	Non-H	H(model)	H(added)	Clashes	Symm-Clashes
1	A	100	0	107	2	0
2	B	1799	0	1719	28	0
3	B	20	0	0	0	0
4	B	14	0	13	0	0
5	A	1	0	0	1	0
5	B	16	0	0	1	0
All	All	1950	0	1839	29	0

The all-atom clashscore is defined as the number of clashes found per 1000 atoms (including hydrogen atoms). The all-atom clashscore for this structure is 8.

All (29) close contacts within the same asymmetric unit are listed below, sorted by their clash magnitude.

Atom-1	Atom-2	Interatomic distance (Å)	Clash overlap (Å)
2:B:308:ILE:HD11	2:B:402:TYR:CE2	2.16	0.80
2:B:216:LEU:HD22	2:B:218:SER:O	1.90	0.71
2:B:306:VAL:HG12	2:B:374:THR:CG2	2.23	0.69
2:B:306:VAL:CG2	2:B:372:LEU:HD11	2.26	0.66
1:A:175:CYS:HB3	2:B:290:GLN:HE21	1.61	0.65
2:B:229:PHE:HB2	2:B:260:ILE:HD11	1.80	0.63
2:B:304:LEU:HD21	2:B:374:THR:HG21	1.79	0.63
2:B:308:ILE:HD11	2:B:402:TYR:CZ	2.37	0.59
2:B:269:ARG:NH1	5:B:601:HOH:O	2.36	0.59
2:B:250:LEU:O	2:B:251:MET:C	2.51	0.54
2:B:219:ASN:HD21	2:B:281:ARG:HH21	1.58	0.51
2:B:306:VAL:HG21	2:B:372:LEU:HD11	1.93	0.50
2:B:389:TRP:CH2	2:B:401:VAL:HG21	2.47	0.50
2:B:187:ILE:HD12	2:B:308:ILE:HG23	1.94	0.50
2:B:217:ILE:HD13	2:B:223:VAL:HG23	1.93	0.49
2:B:227:HIS:O	2:B:230:GLN:HB2	2.14	0.48
1:A:183:ASN:ND2	5:A:201:HOH:O	2.47	0.48
2:B:306:VAL:HG12	2:B:374:THR:HG22	1.94	0.47
2:B:215:THR:HG21	2:B:371:PRO:HB3	1.96	0.47
2:B:247:ASN:CB	2:B:322:ASN:OD1	2.64	0.46
2:B:402:TYR:N	2:B:402:TYR:CD1	2.83	0.46
2:B:306:VAL:HG12	2:B:374:THR:HG23	1.97	0.45
2:B:314:LEU:HD21	2:B:325:ARG:HD3	1.99	0.43
2:B:309:THR:HA	2:B:325:ARG:O	2.18	0.43
2:B:217:ILE:HD13	2:B:223:VAL:CG2	2.49	0.42

Continued on next page...

Continued from previous page...

Atom-1	Atom-2	Interatomic distance (Å)	Clash overlap (Å)
2:B:278:VAL:CG1	2:B:280:SER:O	2.69	0.41
2:B:308:ILE:HD12	2:B:372:LEU:HD13	2.03	0.41
2:B:331:ILE:HG22	2:B:332:ILE:N	2.36	0.40
2:B:389:TRP:CZ2	2:B:401:VAL:HG21	2.56	0.40

There are no symmetry-related clashes.

5.3 Torsion angles [i](#)

5.3.1 Protein backbone [i](#)

In the following table, the Percentiles column shows the percent Ramachandran outliers of the chain as a percentile score with respect to all X-ray entries followed by that with respect to entries of similar resolution.

The Analysed column shows the number of residues for which the backbone conformation was analysed, and the total number of residues.

Mol	Chain	Analysed	Favoured	Allowed	Outliers	Percentiles	
1	A	11/186 (6%)	11 (100%)	0	0	100	100
2	B	230/232 (99%)	212 (92%)	17 (7%)	1 (0%)	30	40
All	All	241/418 (58%)	223 (92%)	17 (7%)	1 (0%)	30	40

All (1) Ramachandran outliers are listed below:

Mol	Chain	Res	Type
2	B	251	MET

5.3.2 Protein sidechains [i](#)

In the following table, the Percentiles column shows the percent sidechain outliers of the chain as a percentile score with respect to all X-ray entries followed by that with respect to entries of similar resolution.

The Analysed column shows the number of residues for which the sidechain conformation was analysed, and the total number of residues.

Mol	Chain	Analysed	Rotameric	Outliers	Percentiles	
1	A	12/165 (7%)	11 (92%)	1 (8%)	9	12

Continued on next page...

Continued from previous page...

Mol	Chain	Analysed	Rotameric	Outliers	Percentiles	
2	B	184/194 (95%)	173 (94%)	11 (6%)	16	21
All	All	196/359 (55%)	184 (94%)	12 (6%)	15	20

All (12) residues with a non-rotameric sidechain are listed below:

Mol	Chain	Res	Type
1	A	180	VAL
2	B	215	THR
2	B	250	LEU
2	B	252	LYS
2	B	278	VAL
2	B	305	THR
2	B	308	ILE
2	B	322	ASN
2	B	339	GLN
2	B	358	GLU
2	B	383	LEU
2	B	392	ASN

Sometimes sidechains can be flipped to improve hydrogen bonding and reduce clashes. All (5) such sidechains are listed below:

Mol	Chain	Res	Type
2	B	219	ASN
2	B	290	GLN
2	B	392	ASN
2	B	395	GLN
2	B	404	GLN

5.3.3 RNA ⓘ

There are no RNA molecules in this entry.

5.4 Non-standard residues in protein, DNA, RNA chains ⓘ

There are no non-standard protein/DNA/RNA residues in this entry.

5.5 Carbohydrates ⓘ

There are no oligosaccharides in this entry.

5.6 Ligand geometry

5 ligands are modelled in this entry.

In the following table, the Counts columns list the number of bonds (or angles) for which Mogul statistics could be retrieved, the number of bonds (or angles) that are observed in the model and the number of bonds (or angles) that are defined in the Chemical Component Dictionary. The Link column lists molecule types, if any, to which the group is linked. The Z score for a bond length (or angle) is the number of standard deviations the observed value is removed from the expected value. A bond length (or angle) with $|Z| > 2$ is considered an outlier worth inspection. RMSZ is the root-mean-square of all Z scores of the bond lengths (or angles).

Mol	Type	Chain	Res	Link	Bond lengths			Bond angles		
					Counts	RMSZ	# Z > 2	Counts	RMSZ	# Z > 2
4	NAG	B	505	2	14,14,15	0.40	0	17,19,21	1.04	2 (11%)
3	PO4	B	502	-	4,4,4	0.46	0	6,6,6	0.57	0
3	PO4	B	501	-	4,4,4	1.30	1 (25%)	6,6,6	0.43	0
3	PO4	B	503	-	4,4,4	0.98	0	6,6,6	0.70	0
3	PO4	B	504	-	4,4,4	0.92	0	6,6,6	0.56	0

In the following table, the Chirals column lists the number of chiral outliers, the number of chiral centers analysed, the number of these observed in the model and the number defined in the Chemical Component Dictionary. Similar counts are reported in the Torsion and Rings columns. '-' means no outliers of that kind were identified.

Mol	Type	Chain	Res	Link	Chirals	Torsions	Rings
4	NAG	B	505	2	-	5/6/23/26	0/1/1/1

All (1) bond length outliers are listed below:

Mol	Chain	Res	Type	Atoms	Z	Observed(Å)	Ideal(Å)
3	B	501	PO4	P-O1	2.50	1.56	1.50

All (2) bond angle outliers are listed below:

Mol	Chain	Res	Type	Atoms	Z	Observed(°)	Ideal(°)
4	B	505	NAG	O5-C1-C2	3.46	116.64	111.29
4	B	505	NAG	C2-N2-C7	2.17	125.81	122.90

There are no chirality outliers.

All (5) torsion outliers are listed below:

Mol	Chain	Res	Type	Atoms
4	B	505	NAG	C3-C2-N2-C7
4	B	505	NAG	C8-C7-N2-C2
4	B	505	NAG	O7-C7-N2-C2
4	B	505	NAG	O5-C5-C6-O6
4	B	505	NAG	C4-C5-C6-O6

There are no ring outliers.

No monomer is involved in short contacts.

5.7 Other polymers [i](#)

There are no such residues in this entry.

5.8 Polymer linkage issues [i](#)

There are no chain breaks in this entry.

6 Fit of model and data [i](#)

6.1 Protein, DNA and RNA chains [i](#)

In the following table, the column labelled '#RSRZ> 2' contains the number (and percentage) of RSRZ outliers, followed by percent RSRZ outliers for the chain as percentile scores relative to all X-ray entries and entries of similar resolution. The OWAB column contains the minimum, median, 95th percentile and maximum values of the occupancy-weighted average B-factor per residue. The column labelled 'Q< 0.9' lists the number of (and percentage) of residues with an average occupancy less than 0.9.

Mol	Chain	Analysed	<RSRZ>	#RSRZ>2	OWAB(Å ²)	Q<0.9
1	A	13/186 (6%)	0.17	0 100 100	48, 60, 89, 90	0
2	B	232/232 (100%)	-0.26	2 (0%) 81 83	31, 52, 75, 112	0
All	All	245/418 (58%)	-0.24	2 (0%) 82 85	31, 52, 76, 112	0

All (2) RSRZ outliers are listed below:

Mol	Chain	Res	Type	RSRZ
2	B	302	PRO	2.9
2	B	247	ASN	2.6

6.2 Non-standard residues in protein, DNA, RNA chains [i](#)

There are no non-standard protein/DNA/RNA residues in this entry.

6.3 Carbohydrates [i](#)

There are no monosaccharides in this entry.

6.4 Ligands [i](#)

In the following table, the Atoms column lists the number of modelled atoms in the group and the number defined in the chemical component dictionary. The B-factors column lists the minimum, median, 95th percentile and maximum values of B factors of atoms in the group. The column labelled 'Q< 0.9' lists the number of atoms with occupancy less than 0.9.

Mol	Type	Chain	Res	Atoms	RSCC	RSR	B-factors(Å ²)	Q<0.9
3	PO4	B	504	5/5	0.38	0.13	89,91,105,125	0
4	NAG	B	505	14/15	0.56	0.16	94,113,118,127	0
3	PO4	B	502	5/5	0.57	0.09	91,101,125,128	0

Continued on next page...

Continued from previous page...

Mol	Type	Chain	Res	Atoms	RSCC	RSR	B-factors(\AA^2)	Q<0.9
3	PO4	B	503	5/5	0.81	0.34	59,77,97,103	0
3	PO4	B	501	5/5	0.89	0.12	68,69,83,98	0

6.5 Other polymers [i](#)

There are no such residues in this entry.