



# Full wwPDB X-ray Structure Validation Report ⓘ

Apr 23, 2025 – 12:08 PM EDT

PDB ID : 9OB2 / pdb\_00009ob2  
Title : CDK2/CyclinE bound to compound 11 with P-loop in the EE and CC conformations  
Authors : Baird, J.; Holliday, M.H.  
Deposited on : 2025-04-22  
Resolution : 2.12 Å (reported)

This is a Full wwPDB X-ray Structure Validation Report for a publicly released PDB entry.

We welcome your comments at [validation@mail.wwpdb.org](mailto:validation@mail.wwpdb.org)

A user guide is available at

<https://www.wwpdb.org/validation/2017/XrayValidationReportHelp>

with specific help available everywhere you see the ⓘ symbol.

The types of validation reports are described at

<http://www.wwpdb.org/validation/2017/FAQs#types>.

---

The following versions of software and data (see [references ⓘ](#)) were used in the production of this report:

MolProbity : 4.02b-467  
Mogul : 2022.3.0, CSD as543be (2022)  
Xtrriage (Phenix) : 2.0rc1  
EDS : 3.0  
buster-report : 1.1.7 (2018)  
Percentile statistics : 20231227.v01 (using entries in the PDB archive December 27th 2023)  
CCP4 : 9.0.006 (Gargrove)  
Density-Fitness : 1.0.12  
Ideal geometry (proteins) : Engh & Huber (2001)  
Ideal geometry (DNA, RNA) : Parkinson et al. (1996)  
Validation Pipeline (wwPDB-VP) : 2.42

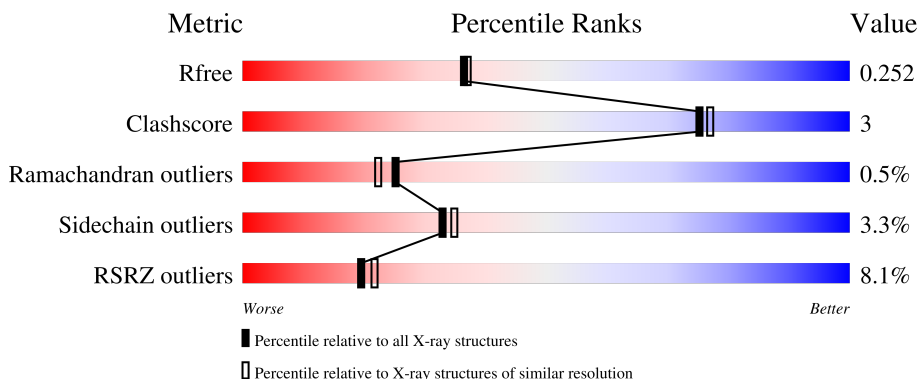
# 1 Overall quality at a glance

The following experimental techniques were used to determine the structure:

*X-RAY DIFFRACTION*

The reported resolution of this entry is 2.12 Å.

Percentile scores (ranging between 0-100) for global validation metrics of the entry are shown in the following graphic. The table shows the number of entries on which the scores are based.



Metric	Whole archive (#Entries)	Similar resolution (#Entries, resolution range(Å))
$R_{free}$	164625	7689 (2.14-2.10)
Clashscore	180529	8431 (2.14-2.10)
Ramachandran outliers	177936	8366 (2.14-2.10)
Sidechain outliers	177891	8367 (2.14-2.10)
RSRZ outliers	164620	7689 (2.14-2.10)

The table below summarises the geometric issues observed across the polymeric chains and their fit to the electron density. The red, orange, yellow and green segments of the lower bar indicate the fraction of residues that contain outliers for  $\geq 3$ , 2, 1 and 0 types of geometric quality criteria respectively. A grey segment represents the fraction of residues that are not modelled. The numeric value for each fraction is indicated below the corresponding segment, with a dot representing fractions  $\leq 5\%$ . The upper red bar (where present) indicates the fraction of residues that have poor fit to the electron density. The numeric value is given above the bar.

Mol	Chain	Length	Quality of chain
1	A	301	 6% 88% 10% ..
2	B	285	 10% 85% 11% .

## 2 Entry composition

There are 4 unique types of molecules in this entry. The entry contains 4774 atoms, of which 0 are hydrogens and 0 are deuteriums.

In the tables below, the ZeroOcc column contains the number of atoms modelled with zero occupancy, the AltConf column contains the number of residues with at least one atom in alternate conformation and the Trace column contains the number of residues modelled with at most 2 atoms.

- Molecule 1 is a protein called Cyclin-dependent kinase 2.

Mol	Chain	Residues	Atoms					ZeroOcc	AltConf	Trace	
			Total	C	N	O	P				S
1	A	298	2448	1588	415	436	1	8	0	7	0

There are 3 discrepancies between the modelled and reference sequences:

Chain	Residue	Modelled	Actual	Comment	Reference
A	-2	SER	-	expression tag	UNP P24941
A	-1	HIS	-	expression tag	UNP P24941
A	0	MET	-	expression tag	UNP P24941

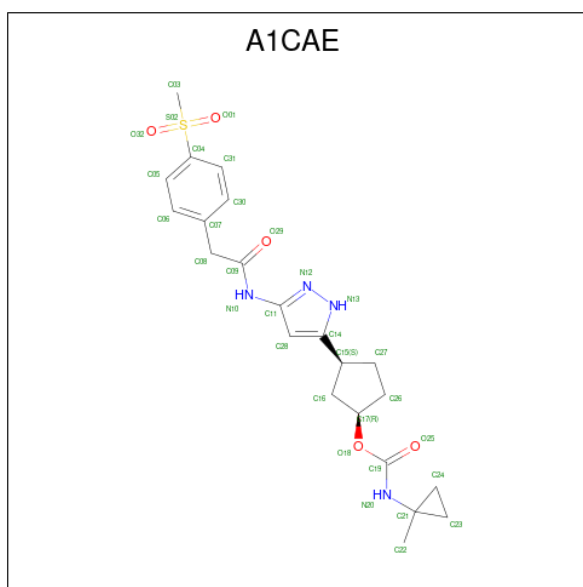
- Molecule 2 is a protein called G1/S-specific cyclin-E1.

Mol	Chain	Residues	Atoms					ZeroOcc	AltConf	Trace
			Total	C	N	O	S			
2	B	274	2243	1458	366	402	17	0	0	0

There are 2 discrepancies between the modelled and reference sequences:

Chain	Residue	Modelled	Actual	Comment	Reference
B	94	GLY	-	expression tag	UNP P24864
B	95	SER	-	expression tag	UNP P24864

- Molecule 3 is (1R,3R)-3-(3-{2-[4-(methanesulfonyl)phenyl]acetamido}-1H-pyrazol-5-yl)cyclopentyl (1-methylcyclopropyl)carbamate (CCD ID: A1CAE) (formula: C<sub>22</sub>H<sub>28</sub>N<sub>4</sub>O<sub>5</sub>S) (labeled as "Ligand of Interest" by depositor).



Mol	Chain	Residues	Atoms					ZeroOcc	AltConf
			Total	C	N	O	S		
3	A	1	32	22	4	5	1	0	0

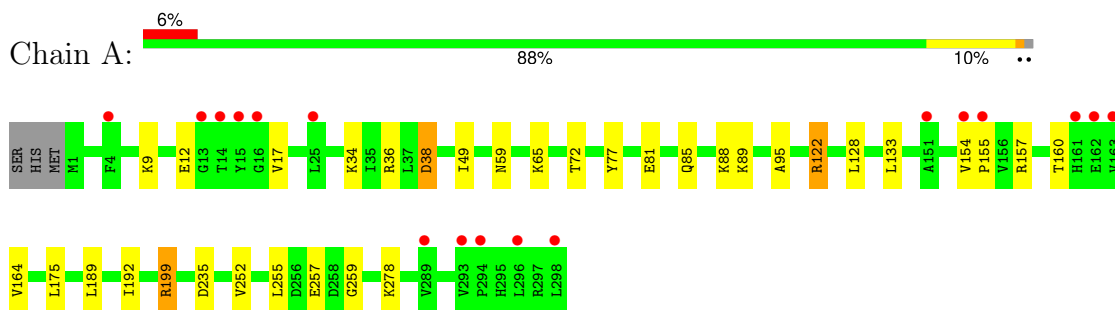
- Molecule 4 is water.

Mol	Chain	Residues	Atoms		ZeroOcc	AltConf
4	A	43	Total	O	0	0
			43	43		
4	B	8	Total	O	0	0
			8	8		

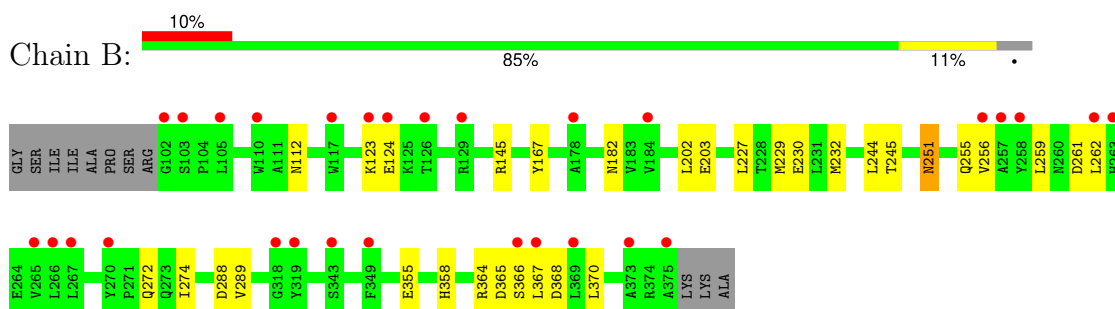
### 3 Residue-property plots

These plots are drawn for all protein, RNA, DNA and oligosaccharide chains in the entry. The first graphic for a chain summarises the proportions of the various outlier classes displayed in the second graphic. The second graphic shows the sequence view annotated by issues in geometry and electron density. Residues are color-coded according to the number of geometric quality criteria for which they contain at least one outlier: green = 0, yellow = 1, orange = 2 and red = 3 or more. A red dot above a residue indicates a poor fit to the electron density ( $RSRZ > 2$ ). Stretches of 2 or more consecutive residues without any outlier are shown as a green connector. Residues present in the sample, but not in the model, are shown in grey.

- Molecule 1: Cyclin-dependent kinase 2



- Molecule 2: G1/S-specific cyclin-E1



## 4 Data and refinement statistics

Property	Value	Source
Space group	P 41 21 2	Depositor
Cell constants a, b, c, $\alpha$ , $\beta$ , $\gamma$	101.14Å 101.14Å 150.91Å 90.00° 90.00° 90.00°	Depositor
Resolution (Å)	84.02 – 2.12 84.02 – 2.12	Depositor EDS
% Data completeness (in resolution range)	100.0 (84.02-2.12) 100.0 (84.02-2.12)	Depositor EDS
$R_{merge}$	0.10	Depositor
$R_{sym}$	(Not available)	Depositor
$\langle I/\sigma(I) \rangle$ <sup>1</sup>	1.30 (at 2.12Å)	Xtrriage
Refinement program	PHENIX 1.21.2_5419	Depositor
R, $R_{free}$	0.220 , 0.254 0.223 , 0.252	Depositor DCC
$R_{free}$ test set	43115 reflections (4.43%)	wwPDB-VP
Wilson B-factor (Å <sup>2</sup> )	56.3	Xtrriage
Anisotropy	0.228	Xtrriage
Bulk solvent $k_{sol}$ (e/Å <sup>3</sup> ), $B_{sol}$ (Å <sup>2</sup> )	0.30 , 43.4	EDS
L-test for twinning <sup>2</sup>	$\langle  L  \rangle = 0.47$ , $\langle L^2 \rangle = 0.30$	Xtrriage
Estimated twinning fraction	No twinning to report.	Xtrriage
$F_o, F_c$ correlation	0.96	EDS
Total number of atoms	4774	wwPDB-VP
Average B, all atoms (Å <sup>2</sup> )	78.0	wwPDB-VP

Xtrriage's analysis on translational NCS is as follows: *The largest off-origin peak in the Patterson function is 3.32% of the height of the origin peak. No significant pseudotranslation is detected.*

<sup>1</sup>Intensities estimated from amplitudes.

<sup>2</sup>Theoretical values of  $\langle |L| \rangle$ ,  $\langle L^2 \rangle$  for acentric reflections are 0.5, 0.333 respectively for untwinned datasets, and 0.375, 0.2 for perfectly twinned datasets.

## 5 Model quality

### 5.1 Standard geometry

Bond lengths and bond angles in the following residue types are not validated in this section: A1CAE, TPO

The Z score for a bond length (or angle) is the number of standard deviations the observed value is removed from the expected value. A bond length (or angle) with  $|Z| > 5$  is considered an outlier worth inspection. RMSZ is the root-mean-square of all Z scores of the bond lengths (or angles).

Mol	Chain	Bond lengths		Bond angles	
		RMSZ	# Z  >5	RMSZ	# Z  >5
1	A	0.24	0/2499	0.46	0/3390
2	B	0.23	0/2299	0.41	0/3120
All	All	0.24	0/4798	0.44	0/6510

There are no bond length outliers.

There are no bond angle outliers.

There are no chirality outliers.

There are no planarity outliers.

### 5.2 Too-close contacts

In the following table, the Non-H and H(model) columns list the number of non-hydrogen atoms and hydrogen atoms in the chain respectively. The H(added) column lists the number of hydrogen atoms added and optimized by MolProbity. The Clashes column lists the number of clashes within the asymmetric unit, whereas Symm-Clashes lists symmetry-related clashes.

Mol	Chain	Non-H	H(model)	H(added)	Clashes	Symm-Clashes
1	A	2448	0	2488	17	0
2	B	2243	0	2245	15	0
3	A	32	0	0	0	0
4	A	43	0	0	0	0
4	B	8	0	0	0	0
All	All	4774	0	4733	27	0

The all-atom clashscore is defined as the number of clashes found per 1000 atoms (including hydrogen atoms). The all-atom clashscore for this structure is 3.

All (27) close contacts within the same asymmetric unit are listed below, sorted by their clash magnitude.

Atom-1	Atom-2	Interatomic distance (Å)	Clash overlap (Å)
1:A:85:GLN:HG3	1:A:89:LYS:HE2	1.68	0.74
1:A:155:PRO:HD2	2:B:251:ASN:HD22	1.62	0.64
2:B:145:ARG:HD3	2:B:289:VAL:HG22	1.83	0.61
2:B:366:SER:O	2:B:368:ASP:N	2.33	0.60
2:B:272:GLN:HB3	2:B:358:HIS:HB3	1.87	0.57
2:B:123:LYS:HD2	2:B:244:LEU:HG	1.87	0.56
1:A:12[A]:GLU:HG3	1:A:17[A]:VAL:HG22	1.90	0.54
1:A:128:LEU:HD13	1:A:189:LEU:HD13	1.88	0.54
1:A:175:LEU:HA	1:A:235:ASP:HB2	1.91	0.51
1:A:122:ARG:HH11	1:A:154:VAL:HG23	1.76	0.50
2:B:261:ASP:N	2:B:261:ASP:OD1	2.45	0.49
1:A:278:LYS:NZ	2:B:112:ASN:HB2	2.28	0.48
1:A:133:LEU:HD11	1:A:192:ILE:HD13	1.95	0.47
2:B:256:VAL:HA	2:B:259:LEU:HG	1.97	0.47
2:B:288:ASP:HB2	2:B:370:LEU:HD11	1.97	0.47
1:A:255:LEU:HG	1:A:259:GLY:HA3	1.97	0.47
2:B:167:TYR:HB3	2:B:245:THR:HB	1.97	0.47
1:A:155:PRO:HD3	2:B:255:GLN:HB2	1.96	0.47
2:B:227:LEU:HA	2:B:230:GLU:HG2	1.96	0.46
1:A:95:ALA:HA	1:A:199:ARG:HG2	1.97	0.46
1:A:9:LYS:HE3	1:A:17[A]:VAL:HG13	1.97	0.46
1:A:157:ARG:NH1	2:B:203:GLU:OE2	2.41	0.44
1:A:49:ILE:HG22	2:B:202:LEU:HD21	2.00	0.44
1:A:38:ASP:OD1	1:A:38:ASP:N	2.39	0.44
2:B:229:MET:HA	2:B:232:MET:HE2	1.99	0.43
1:A:34:LYS:NZ	1:A:77:TYR:OH	2.52	0.42
1:A:65:LYS:HB3	1:A:65:LYS:HE2	1.82	0.41

There are no symmetry-related clashes.

## 5.3 Torsion angles [\(i\)](#)

### 5.3.1 Protein backbone [\(i\)](#)

In the following table, the Percentiles column shows the percent Ramachandran outliers of the chain as a percentile score with respect to all X-ray entries followed by that with respect to entries of similar resolution.

The Analysed column shows the number of residues for which the backbone conformation was analysed, and the total number of residues.



Mol	Chain	Analysed	Favoured	Allowed	Outliers	Percentiles	
1	A	302/301 (100%)	293 (97%)	8 (3%)	1 (0%)	37	36
2	B	272/285 (95%)	266 (98%)	4 (2%)	2 (1%)	19	15
All	All	574/586 (98%)	559 (97%)	12 (2%)	3 (0%)	25	22

All (3) Ramachandran outliers are listed below:

Mol	Chain	Res	Type
1	A	164	VAL
2	B	367	LEU
2	B	182	ASN

### 5.3.2 Protein sidechains [i](#)

In the following table, the Percentiles column shows the percent sidechain outliers of the chain as a percentile score with respect to all X-ray entries followed by that with respect to entries of similar resolution.

The Analysed column shows the number of residues for which the sidechain conformation was analysed, and the total number of residues.

Mol	Chain	Analysed	Rotameric	Outliers	Percentiles	
1	A	266/265 (100%)	256 (96%)	10 (4%)	28	29
2	B	247/255 (97%)	240 (97%)	7 (3%)	38	41
All	All	513/520 (99%)	496 (97%)	17 (3%)	33	35

All (17) residues with a non-rotameric sidechain are listed below:

Mol	Chain	Res	Type
1	A	36	ARG
1	A	38	ASP
1	A	59	ASN
1	A	72	THR
1	A	81	GLU
1	A	88	LYS
1	A	122	ARG
1	A	199	ARG
1	A	252	VAL
1	A	257	GLU
2	B	124	GLU
2	B	251	ASN
2	B	262	LEU

*Continued on next page...*

Continued from previous page...

Mol	Chain	Res	Type
2	B	274	ILE
2	B	355	GLU
2	B	364	ARG
2	B	365	ASP

Sometimes sidechains can be flipped to improve hydrogen bonding and reduce clashes. All (5) such sidechains are listed below:

Mol	Chain	Res	Type
1	A	5	GLN
1	A	265	GLN
2	B	136	GLN
2	B	251	ASN
2	B	320	GLN

### 5.3.3 RNA [i](#)

There are no RNA molecules in this entry.

## 5.4 Non-standard residues in protein, DNA, RNA chains [i](#)

1 non-standard protein/DNA/RNA residue is modelled in this entry.

In the following table, the Counts columns list the number of bonds (or angles) for which Mogul statistics could be retrieved, the number of bonds (or angles) that are observed in the model and the number of bonds (or angles) that are defined in the Chemical Component Dictionary. The Link column lists molecule types, if any, to which the group is linked. The Z score for a bond length (or angle) is the number of standard deviations the observed value is removed from the expected value. A bond length (or angle) with  $|Z| > 2$  is considered an outlier worth inspection. RMSZ is the root-mean-square of all Z scores of the bond lengths (or angles).

Mol	Type	Chain	Res	Link	Bond lengths			Bond angles		
					Counts	RMSZ	$\# Z  > 2$	Counts	RMSZ	$\# Z  > 2$
1	TPO	A	160	1	8,10,11	2.60	1 (12%)	10,14,16	1.28	1 (10%)

In the following table, the Chirals column lists the number of chiral outliers, the number of chiral centers analysed, the number of these observed in the model and the number defined in the Chemical Component Dictionary. Similar counts are reported in the Torsion and Rings columns. '-' means no outliers of that kind were identified.

Mol	Type	Chain	Res	Link	Chirals	Torsions	Rings
1	TPO	A	160	1	-	0/9/11/13	-

All (1) bond length outliers are listed below:

Mol	Chain	Res	Type	Atoms	Z	Observed(Å)	Ideal(Å)
1	A	160	TPO	P-OG1	7.17	1.72	1.59

All (1) bond angle outliers are listed below:

Mol	Chain	Res	Type	Atoms	Z	Observed(°)	Ideal(°)
1	A	160	TPO	OG1-P-O1P	-2.46	100.56	109.33

There are no chirality outliers.

There are no torsion outliers.

There are no ring outliers.

No monomer is involved in short contacts.

## 5.5 Carbohydrates [i](#)

There are no oligosaccharides in this entry.

## 5.6 Ligand geometry [i](#)

1 ligand is modelled in this entry.

In the following table, the Counts columns list the number of bonds (or angles) for which Mogul statistics could be retrieved, the number of bonds (or angles) that are observed in the model and the number of bonds (or angles) that are defined in the Chemical Component Dictionary. The Link column lists molecule types, if any, to which the group is linked. The Z score for a bond length (or angle) is the number of standard deviations the observed value is removed from the expected value. A bond length (or angle) with  $|Z| > 2$  is considered an outlier worth inspection. RMSZ is the root-mean-square of all Z scores of the bond lengths (or angles).

Mol	Type	Chain	Res	Link	Bond lengths			Bond angles		
					Counts	RMSZ	# Z  > 2	Counts	RMSZ	# Z  > 2
3	A1CAE	A	301	-	33,35,35	2.22	12 (36%)	43,52,52	3.61	28 (65%)

In the following table, the Chirals column lists the number of chiral outliers, the number of chiral centers analysed, the number of these observed in the model and the number defined in the Chemical Component Dictionary. Similar counts are reported in the Torsion and Rings columns. '-' means no outliers of that kind were identified.

Mol	Type	Chain	Res	Link	Chirals	Torsions	Rings
3	A1CAE	A	301	-	-	1/26/40/40	0/4/4/4

All (12) bond length outliers are listed below:

Mol	Chain	Res	Type	Atoms	Z	Observed(Å)	Ideal(Å)
3	A	301	A1CAE	C04-S02	4.91	1.82	1.77
3	A	301	A1CAE	C19-N20	4.05	1.42	1.35
3	A	301	A1CAE	C14-N13	3.97	1.39	1.34
3	A	301	A1CAE	C09-N10	3.88	1.43	1.35
3	A	301	A1CAE	C08-C07	3.87	1.57	1.51
3	A	301	A1CAE	C24-C21	3.86	1.56	1.49
3	A	301	A1CAE	O18-C19	3.31	1.41	1.35
3	A	301	A1CAE	C08-C09	3.22	1.58	1.52
3	A	301	A1CAE	C11-N10	2.91	1.47	1.40
3	A	301	A1CAE	C23-C21	2.65	1.54	1.49
3	A	301	A1CAE	C31-C30	2.11	1.42	1.38
3	A	301	A1CAE	C06-C05	2.06	1.42	1.38

All (28) bond angle outliers are listed below:

Mol	Chain	Res	Type	Atoms	Z	Observed(°)	Ideal(°)
3	A	301	A1CAE	O18-C19-N20	10.70	122.12	109.50
3	A	301	A1CAE	C31-C04-C05	-7.00	111.33	120.47
3	A	301	A1CAE	C08-C09-N10	6.75	127.36	114.73
3	A	301	A1CAE	C31-C04-S02	5.61	124.56	119.58
3	A	301	A1CAE	C06-C05-C04	5.47	124.76	119.44
3	A	301	A1CAE	C30-C31-C04	5.46	124.75	119.44
3	A	301	A1CAE	O18-C19-O25	-5.40	116.60	124.55
3	A	301	A1CAE	C05-C04-S02	5.11	124.11	119.58
3	A	301	A1CAE	C28-C14-N13	-4.77	103.90	110.28
3	A	301	A1CAE	C03-S02-C04	4.10	109.07	104.55
3	A	301	A1CAE	O32-S02-O01	-3.71	111.69	117.99
3	A	301	A1CAE	C15-C16-C17	3.53	111.24	103.01
3	A	301	A1CAE	C06-C07-C30	-3.51	113.02	118.23
3	A	301	A1CAE	O29-C09-C08	-3.39	114.65	121.99
3	A	301	A1CAE	C14-C28-C11	3.17	108.76	105.91
3	A	301	A1CAE	O29-C09-N10	-3.16	117.97	123.64
3	A	301	A1CAE	O01-S02-C04	2.77	110.38	108.23
3	A	301	A1CAE	C27-C26-C17	2.76	107.87	102.75
3	A	301	A1CAE	C28-C11-N10	-2.71	127.38	131.11
3	A	301	A1CAE	C28-C11-N12	-2.58	106.77	110.47
3	A	301	A1CAE	O32-S02-C04	2.53	110.19	108.23
3	A	301	A1CAE	C17-O18-C19	2.42	119.98	116.52
3	A	301	A1CAE	C24-C21-C23	-2.36	57.74	59.88
3	A	301	A1CAE	O25-C19-N20	-2.34	121.28	124.91
3	A	301	A1CAE	C28-C14-C15	2.29	132.77	129.25
3	A	301	A1CAE	C16-C15-C27	2.23	104.32	100.78

*Continued on next page...*

*Continued from previous page...*

Mol	Chain	Res	Type	Atoms	Z	Observed(°)	Ideal(°)
3	A	301	A1CAE	C08-C07-C30	2.12	124.01	120.89
3	A	301	A1CAE	C15-C14-N13	2.10	123.33	120.23

There are no chirality outliers.

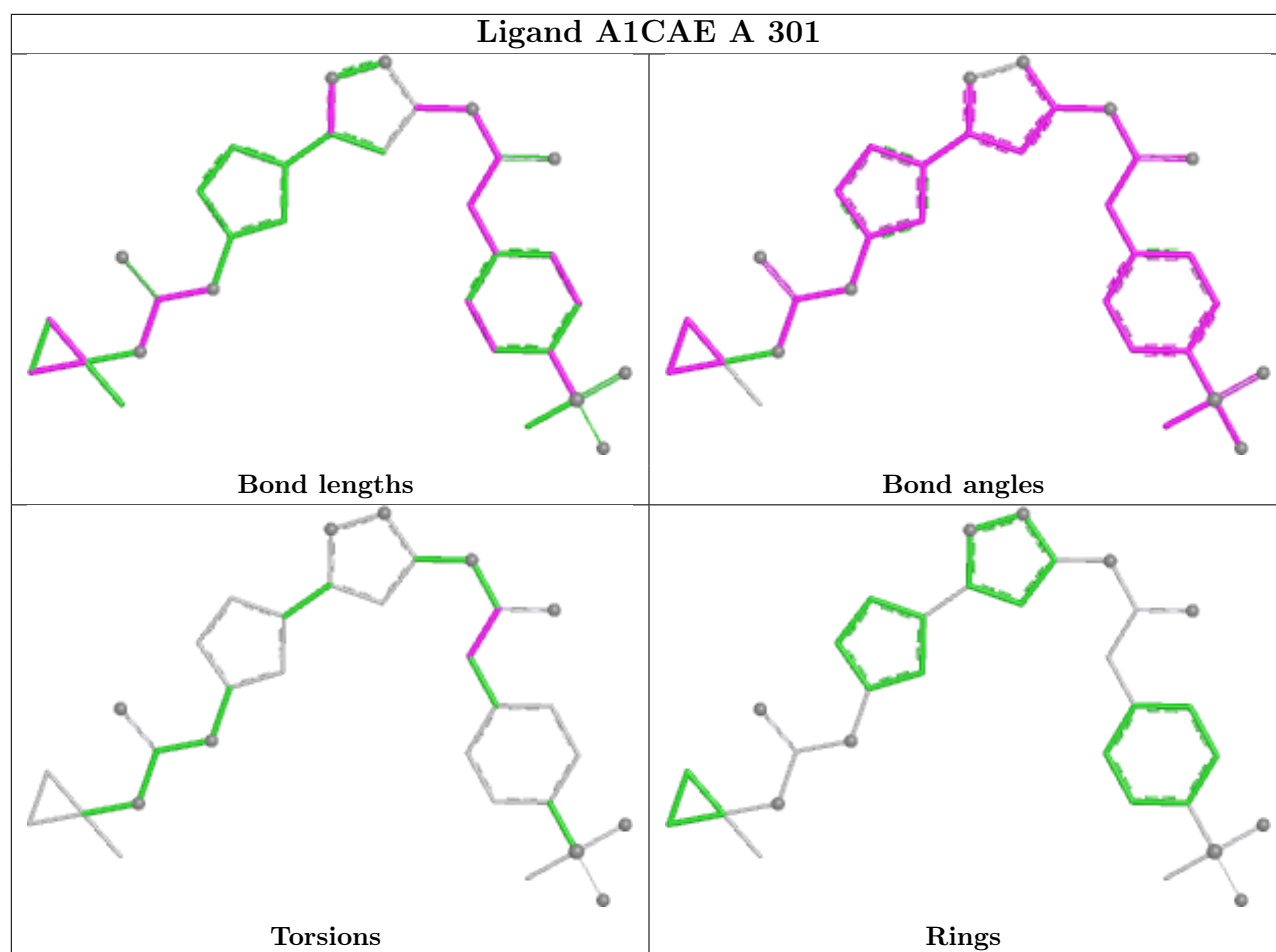
All (1) torsion outliers are listed below:

Mol	Chain	Res	Type	Atoms
3	A	301	A1CAE	C07-C08-C09-O29

There are no ring outliers.

No monomer is involved in short contacts.

The following is a two-dimensional graphical depiction of Mogul quality analysis of bond lengths, bond angles, torsion angles, and ring geometry for all instances of the Ligand of Interest. In addition, ligands with molecular weight > 250 and outliers as shown on the validation Tables will also be included. For torsion angles, if less than 5% of the Mogul distribution of torsion angles is within 10 degrees of the torsion angle in question, then that torsion angle is considered an outlier. Any bond that is central to one or more torsion angles identified as an outlier by Mogul will be highlighted in the graph. For rings, the root-mean-square deviation (RMSD) between the ring in question and similar rings identified by Mogul is calculated over all ring torsion angles. If the average RMSD is greater than 60 degrees and the minimal RMSD between the ring in question and any Mogul-identified rings is also greater than 60 degrees, then that ring is considered an outlier. The outliers are highlighted in purple. The color gray indicates Mogul did not find sufficient equivalents in the CSD to analyse the geometry.



## 5.7 Other polymers [i](#)

There are no such residues in this entry.

## 5.8 Polymer linkage issues [i](#)

There are no chain breaks in this entry.

## 6 Fit of model and data

### 6.1 Protein, DNA and RNA chains

In the following table, the column labelled ‘#RSRZ > 2’ contains the number (and percentage) of RSRZ outliers, followed by percent RSRZ outliers for the chain as percentile scores relative to all X-ray entries and entries of similar resolution. The OWAB column contains the minimum, median, 95<sup>th</sup> percentile and maximum values of the occupancy-weighted average B-factor per residue. The column labelled ‘Q < 0.9’ lists the number of (and percentage) of residues with an average occupancy less than 0.9.

Mol	Chain	Analysed	<RSRZ>	#RSRZ>2	OWAB(Å <sup>2</sup> )	Q<0.9
1	A	297/301 (98%)	0.39	17 (5%) 30 33	33, 62, 115, 164	7 (2%)
2	B	274/285 (96%)	0.94	29 (10%) 13 14	57, 88, 130, 230	0
All	All	571/586 (97%)	0.66	46 (8%) 19 22	33, 73, 124, 230	7 (1%)

All (46) RSRZ outliers are listed below:

Mol	Chain	Res	Type	RSRZ
1	A	14[A]	THR	14.9
1	A	15[A]	TYR	14.5
1	A	16[A]	GLY	5.2
1	A	154	VAL	5.0
2	B	343	SER	4.6
2	B	373	ALA	3.7
2	B	102	GLY	3.7
2	B	117	TRP	3.4
2	B	126	THR	3.4
2	B	262	LEU	3.2
1	A	13[A]	GLY	3.1
1	A	293	VAL	3.0
2	B	267	LEU	2.9
1	A	155	PRO	2.9
1	A	296	LEU	2.8
2	B	265	VAL	2.8
2	B	319	TYR	2.8
1	A	163	VAL	2.7
2	B	257	ALA	2.7
1	A	162	GLU	2.6
2	B	124	GLU	2.6
1	A	289	VAL	2.6
2	B	123	LYS	2.6
2	B	349	PHE	2.6

*Continued on next page...*

*Continued from previous page...*

Mol	Chain	Res	Type	RSRZ
2	B	263	HIS	2.6
2	B	256	VAL	2.5
1	A	294	PRO	2.5
1	A	298	LEU	2.5
2	B	105	LEU	2.5
2	B	270	TYR	2.4
2	B	103	SER	2.4
2	B	266	LEU	2.4
2	B	367	LEU	2.4
1	A	161	HIS	2.4
1	A	25	LEU	2.3
2	B	369	LEU	2.3
2	B	110	TRP	2.2
2	B	366	SER	2.2
2	B	258	TYR	2.2
1	A	151	ALA	2.2
2	B	375	ALA	2.2
1	A	4	PHE	2.2
2	B	129	ARG	2.1
2	B	178	ALA	2.1
2	B	318	GLY	2.1
2	B	184	VAL	2.1

## 6.2 Non-standard residues in protein, DNA, RNA chains [i](#)

In the following table, the Atoms column lists the number of modelled atoms in the group and the number defined in the chemical component dictionary. The B-factors column lists the minimum, median, 95<sup>th</sup> percentile and maximum values of B factors of atoms in the group. The column labelled 'Q< 0.9' lists the number of atoms with occupancy less than 0.9.

Mol	Type	Chain	Res	Atoms	RSCC	RSR	B-factors(Å <sup>2</sup> )	Q<0.9
1	TPO	A	160	11/12	0.96	0.11	62,70,76,78	0

## 6.3 Carbohydrates [i](#)

There are no monosaccharides in this entry.

## 6.4 Ligands [i](#)

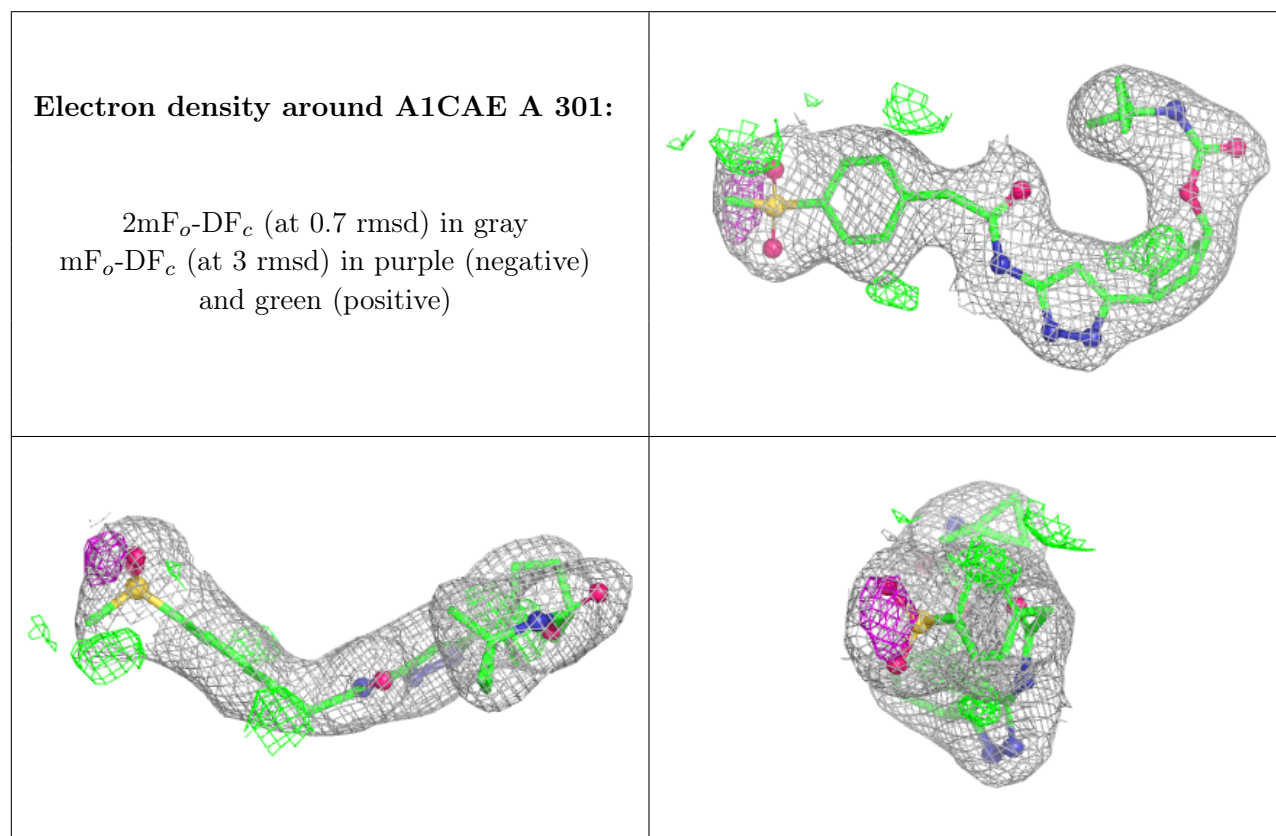
In the following table, the Atoms column lists the number of modelled atoms in the group and the number defined in the chemical component dictionary. The B-factors column lists the minimum,



median, 95<sup>th</sup> percentile and maximum values of B factors of atoms in the group. The column labelled 'Q < 0.9' lists the number of atoms with occupancy less than 0.9.

Mol	Type	Chain	Res	Atoms	RSCC	RSR	B-factors(Å <sup>2</sup> )	Q<0.9
3	A1CAE	A	301	32/32	0.92	0.11	43,54,79,85	0

The following is a graphical depiction of the model fit to experimental electron density of all instances of the Ligand of Interest. In addition, ligands with molecular weight > 250 and outliers as shown on the geometry validation Tables will also be included. Each fit is shown from different orientation to approximate a three-dimensional view.



## 6.5 Other polymers [i](#)

There are no such residues in this entry.