



wwPDB X-ray Structure Validation Summary Report ⓘ

May 5, 2025 – 07:50 PM EDT

PDB ID : 9O2P / pdb_00009o2p
Title : cis-CaaD E114Q mutant with covalent intermediates of the hydration and decarboxylation of cis-3-chloroacrylic acid
Authors : Silva, K.; Geiger, J.H.; Draths, K.
Deposited on : 2025-04-04
Resolution : 2.20 Å(reported)

This is a wwPDB X-ray Structure Validation Summary Report for a publicly released PDB entry.

We welcome your comments at validation@mail.wwpdb.org

A user guide is available at

<https://www.wwpdb.org/validation/2017/XrayValidationReportHelp>

with specific help available everywhere you see the ⓘ symbol.

The types of validation reports are described at

<http://www.wwpdb.org/validation/2017/FAQs#types>.

The following versions of software and data (see [references ⓘ](#)) were used in the production of this report:

MolProbity : 4-5-2 with Phenix2.0rc1
Mogul : 2022.3.0, CSD as543be (2022)
Xtriage (Phenix) : 2.0rc1
EDS : 3.0
buster-report : 1.1.7 (2018)
Percentile statistics : 20231227.v01 (using entries in the PDB archive December 27th 2023)
CCP4 : 9.0.006 (Gargrove)
Density-Fitness : 1.0.12
Ideal geometry (proteins) : Engh & Huber (2001)
Ideal geometry (DNA, RNA) : Parkinson et al. (1996)
Validation Pipeline (wwPDB-VP) : 2.43.1

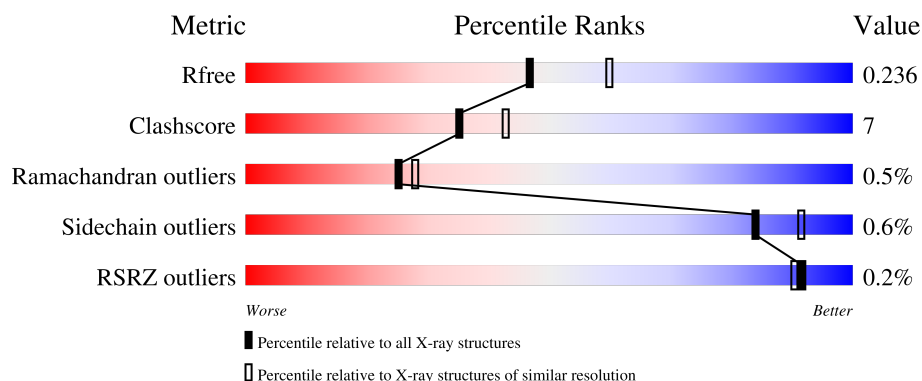
1 Overall quality at a glance

The following experimental techniques were used to determine the structure:

X-RAY DIFFRACTION

The reported resolution of this entry is 2.20 Å.

Percentile scores (ranging between 0-100) for global validation metrics of the entry are shown in the following graphic. The table shows the number of entries on which the scores are based.



Metric	Whole archive (#Entries)	Similar resolution (#Entries, resolution range(Å))
R_{free}	164625	5791 (2.20-2.20)
Clashscore	180529	6634 (2.20-2.20)
Ramachandran outliers	177936	6560 (2.20-2.20)
Sidechain outliers	177891	6561 (2.20-2.20)
RSRZ outliers	164620	5791 (2.20-2.20)

The table below summarises the geometric issues observed across the polymeric chains and their fit to the electron density. The red, orange, yellow and green segments of the lower bar indicate the fraction of residues that contain outliers for ≥ 3 , 2, 1 and 0 types of geometric quality criteria respectively. A grey segment represents the fraction of residues that are not modelled. The numeric value for each fraction is indicated below the corresponding segment, with a dot representing fractions $\leq 5\%$. The upper red bar (where present) indicates the fraction of residues that have poor fit to the electron density. The numeric value is given above the bar.

Mol	Chain	Length	Quality of chain
1	A	164	
1	B	164	
2	C	164	

The following table lists non-polymeric compounds, carbohydrate monomers and non-standard residues in protein, DNA, RNA chains that are outliers for geometric or electron-density-fit criteria:

Mol	Type	Chain	Res	Chirality	Geometry	Clashes	Electron density
3	AKR	A	201	-	X	X	-
5	SO4	C	201	-	-	X	-

2 Entry composition

There are 6 unique types of molecules in this entry. The entry contains 3587 atoms, of which 0 are hydrogens and 0 are deuteriums.

In the tables below, the ZeroOcc column contains the number of atoms modelled with zero occupancy, the AltConf column contains the number of residues with at least one atom in alternate conformation and the Trace column contains the number of residues modelled with at most 2 atoms.

- Molecule 1 is a protein called Cis-3-chloroacrylic acid dehalogenase.

Mol	Chain	Residues	Atoms					ZeroOcc	AltConf	Trace
1	A	145	Total	C	N	O	S	0	0	0
			1142	718	206	214	4			
1	B	145	Total	C	N	O	S	0	0	0
			1142	718	206	214	4			

There are 32 discrepancies between the modelled and reference sequences:

Chain	Residue	Modelled	Actual	Comment	Reference
A	114	GLN	GLU	engineered mutation	UNP Q6VPE5
A	150	GLU	-	expression tag	UNP Q6VPE5
A	151	ASN	-	expression tag	UNP Q6VPE5
A	152	LEU	-	expression tag	UNP Q6VPE5
A	153	TYR	-	expression tag	UNP Q6VPE5
A	154	PHE	-	expression tag	UNP Q6VPE5
A	155	GLN	-	expression tag	UNP Q6VPE5
A	156	GLY	-	expression tag	UNP Q6VPE5
A	157	LEU	-	expression tag	UNP Q6VPE5
A	158	GLU	-	expression tag	UNP Q6VPE5
A	159	HIS	-	expression tag	UNP Q6VPE5
A	160	HIS	-	expression tag	UNP Q6VPE5
A	161	HIS	-	expression tag	UNP Q6VPE5
A	162	HIS	-	expression tag	UNP Q6VPE5
A	163	HIS	-	expression tag	UNP Q6VPE5
A	164	HIS	-	expression tag	UNP Q6VPE5
B	114	GLN	GLU	engineered mutation	UNP Q6VPE5
B	150	GLU	-	expression tag	UNP Q6VPE5
B	151	ASN	-	expression tag	UNP Q6VPE5
B	152	LEU	-	expression tag	UNP Q6VPE5
B	153	TYR	-	expression tag	UNP Q6VPE5
B	154	PHE	-	expression tag	UNP Q6VPE5
B	155	GLN	-	expression tag	UNP Q6VPE5
B	156	GLY	-	expression tag	UNP Q6VPE5
B	157	LEU	-	expression tag	UNP Q6VPE5

Continued on next page...

Continued from previous page...

Chain	Residue	Modelled	Actual	Comment	Reference
B	158	GLU	-	expression tag	UNP Q6VPE5
B	159	HIS	-	expression tag	UNP Q6VPE5
B	160	HIS	-	expression tag	UNP Q6VPE5
B	161	HIS	-	expression tag	UNP Q6VPE5
B	162	HIS	-	expression tag	UNP Q6VPE5
B	163	HIS	-	expression tag	UNP Q6VPE5
B	164	HIS	-	expression tag	UNP Q6VPE5

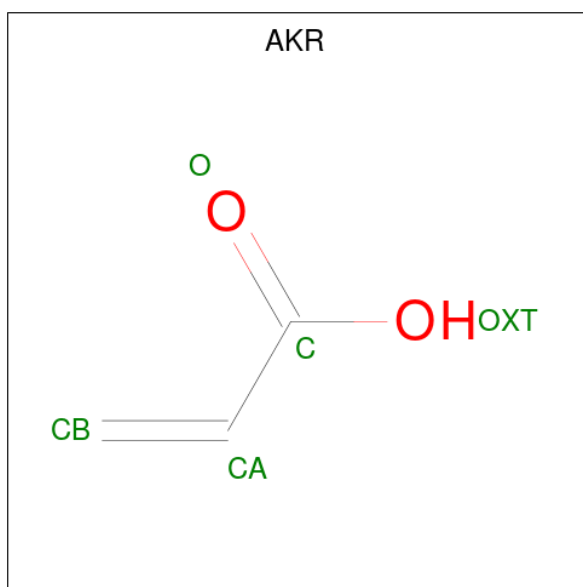
- Molecule 2 is a protein called Cis-3-chloroacrylic acid dehalogenase.

Mol	Chain	Residues	Atoms					ZeroOcc	AltConf	Trace
2	C	145	Total	C	N	O	S	0	0	0
			1144	720	206	214	4			

There are 16 discrepancies between the modelled and reference sequences:

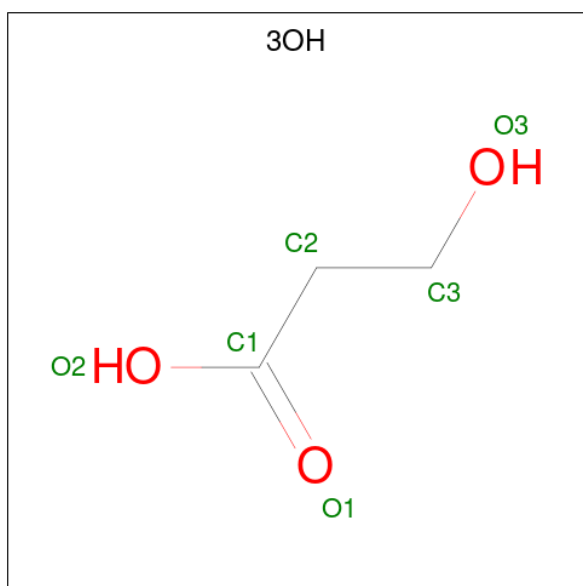
Chain	Residue	Modelled	Actual	Comment	Reference
C	114	GLN	GLU	engineered mutation	UNP Q6VPE5
C	150	GLU	-	expression tag	UNP Q6VPE5
C	151	ASN	-	expression tag	UNP Q6VPE5
C	152	LEU	-	expression tag	UNP Q6VPE5
C	153	TYR	-	expression tag	UNP Q6VPE5
C	154	PHE	-	expression tag	UNP Q6VPE5
C	155	GLN	-	expression tag	UNP Q6VPE5
C	156	GLY	-	expression tag	UNP Q6VPE5
C	157	LEU	-	expression tag	UNP Q6VPE5
C	158	GLU	-	expression tag	UNP Q6VPE5
C	159	HIS	-	expression tag	UNP Q6VPE5
C	160	HIS	-	expression tag	UNP Q6VPE5
C	161	HIS	-	expression tag	UNP Q6VPE5
C	162	HIS	-	expression tag	UNP Q6VPE5
C	163	HIS	-	expression tag	UNP Q6VPE5
C	164	HIS	-	expression tag	UNP Q6VPE5

- Molecule 3 is ACRYLIC ACID (CCD ID: AKR) (formula: C₃H₄O₂) (labeled as "Ligand of Interest" by depositor).



Mol	Chain	Residues	Atoms			ZeroOcc	AltConf
3	A	1	Total	C	O	0	0
			5	3	2		

- Molecule 4 is 3-HYDROXY-PROPANOIC ACID (CCD ID: 3OH) (formula: $C_3H_6O_3$) (labeled as "Ligand of Interest" by depositor).



Mol	Chain	Residues	Atoms			ZeroOcc	AltConf
4	B	1	Total	C	O	0	0
			6	3	3		

- Molecule 5 is SULFATE ION (CCD ID: SO4) (formula: O_4S).



Mol	Chain	Residues	Atoms			ZeroOcc	AltConf
5	C	1	Total	O	S	0	0
			5	4	1		

- Molecule 6 is water.

Mol	Chain	Residues	Atoms		ZeroOcc	AltConf
6	A	37	Total	O	0	0
			37	37		
6	B	60	Total	O	0	0
			60	60		
6	C	46	Total	O	0	0
			46	46		

i

- Molecule 1: Cis-3-chloroacrylic acid dehalogenase



4 Data and refinement statistics

Property	Value	Source
Space group	C 2 2 21	Depositor
Cell constants a, b, c, α , β , γ	60.61Å 101.23Å 148.09Å 90.00° 90.00° 90.00°	Depositor
Resolution (Å)	35.80 – 2.20 35.80 – 2.20	Depositor EDS
% Data completeness (in resolution range)	75.2 (35.80-2.20) 89.8 (35.80-2.20)	Depositor EDS
R_{merge}	(Not available)	Depositor
R_{sym}	(Not available)	Depositor
$\langle I/\sigma(I) \rangle$ ¹	3.14 (at 2.20Å)	Xtriage
Refinement program	PHENIX 1.21.2_5419	Depositor
R, R_{free}	0.173 , 0.236 0.173 , 0.236	Depositor DCC
R_{free} test set	21574 reflections (9.30%)	wwPDB-VP
Wilson B-factor (Å ²)	30.7	Xtriage
Anisotropy	0.047	Xtriage
Bulk solvent k_{sol} (e/Å ³), B_{sol} (Å ²)	0.31 , 22.7	EDS
L-test for twinning ²	$\langle L \rangle = 0.48$, $\langle L^2 \rangle = 0.31$	Xtriage
Estimated twinning fraction	0.022 for 1/2*h-1/2*k,-3/2*h-1/2*k,-l 0.045 for 1/2*h+1/2*k,3/2*h-1/2*k,-l	Xtriage
F_o, F_c correlation	0.95	EDS
Total number of atoms	3587	wwPDB-VP
Average B, all atoms (Å ²)	32.0	wwPDB-VP

Xtriage's analysis on translational NCS is as follows: *The largest off-origin peak in the Patterson function is 4.94% of the height of the origin peak. No significant pseudotranslation is detected.*

¹Intensities estimated from amplitudes.

²Theoretical values of $\langle |L| \rangle$, $\langle L^2 \rangle$ for acentric reflections are 0.5, 0.333 respectively for untwinned datasets, and 0.375, 0.2 for perfectly twinned datasets.

5 Model quality

5.1 Standard geometry

Bond lengths and bond angles in the following residue types are not validated in this section: AKR, N80, 3OH, SO4

The Z score for a bond length (or angle) is the number of standard deviations the observed value is removed from the expected value. A bond length (or angle) with $|Z| > 5$ is considered an outlier worth inspection. RMSZ is the root-mean-square of all Z scores of the bond lengths (or angles).

Mol	Chain	Bond lengths		Bond angles	
		RMSZ	# Z >5	RMSZ	# Z >5
1	A	0.37	0/1170	0.49	0/1584
1	B	0.37	0/1170	0.56	0/1584
2	C	0.37	0/1162	0.56	0/1573
All	All	0.37	0/3502	0.54	0/4741

There are no bond length outliers.

There are no bond angle outliers.

There are no chirality outliers.

There are no planarity outliers.

5.2 Too-close contacts

In the following table, the Non-H and H(model) columns list the number of non-hydrogen atoms and hydrogen atoms in the chain respectively. The H(added) column lists the number of hydrogen atoms added and optimized by MolProbity. The Clashes column lists the number of clashes within the asymmetric unit, whereas Symm-Clashes lists symmetry-related clashes.

Mol	Chain	Non-H	H(model)	H(added)	Clashes	Symm-Clashes
1	A	1142	0	1087	22	0
1	B	1142	0	1086	18	0
2	C	1144	0	1088	11	0
3	A	5	0	2	6	0
4	B	6	0	3	2	0
5	C	5	0	0	2	0
6	A	37	0	0	1	0
6	B	60	0	0	2	0
6	C	46	0	0	0	0
All	All	3587	0	3266	49	0

The all-atom clashscore is defined as the number of clashes found per 1000 atoms (including hydrogen atoms). The all-atom clashscore for this structure is 7.

The worst 5 of 49 close contacts within the same asymmetric unit are listed below, sorted by their clash magnitude.

Atom-1	Atom-2	Interatomic distance (Å)	Clash overlap (Å)
2:C:73:ARG:NH1	5:C:201:SO4:O1	1.80	1.11
1:A:70:ARG:HG2	3:A:201:AKR:O	1.63	0.96
1:B:70:ARG:HE	4:B:201:3OH:H22	1.35	0.88
1:B:11:ARG:HG3	1:B:60:GLY:O	1.90	0.72
1:A:70:ARG:CG	3:A:201:AKR:O	2.37	0.68

There are no symmetry-related clashes.

5.3 Torsion angles [i](#)

5.3.1 Protein backbone [i](#)

In the following table, the Percentiles column shows the percent Ramachandran outliers of the chain as a percentile score with respect to all X-ray entries followed by that with respect to entries of similar resolution.

The Analysed column shows the number of residues for which the backbone conformation was analysed, and the total number of residues.

Mol	Chain	Analysed	Favoured	Allowed	Outliers	Percentiles	
1	A	143/164 (87%)	138 (96%)	5 (4%)	0	100	100
1	B	143/164 (87%)	140 (98%)	3 (2%)	0	100	100
2	C	143/164 (87%)	140 (98%)	1 (1%)	2 (1%)	9	7
All	All	429/492 (87%)	418 (97%)	9 (2%)	2 (0%)	25	28

All (2) Ramachandran outliers are listed below:

Mol	Chain	Res	Type
2	C	124	HIS
2	C	128	TRP

5.3.2 Protein sidechains [i](#)

In the following table, the Percentiles column shows the percent sidechain outliers of the chain as a percentile score with respect to all X-ray entries followed by that with respect to entries of similar

resolution.

The Analysed column shows the number of residues for which the sidechain conformation was analysed, and the total number of residues.

Mol	Chain	Analysed	Rotameric	Outliers	Percentiles	
1	A	118/136 (87%)	117 (99%)	1 (1%)	79	88
1	B	118/136 (87%)	117 (99%)	1 (1%)	79	88
2	C	117/135 (87%)	117 (100%)	0	100	100
All	All	353/407 (87%)	351 (99%)	2 (1%)	84	91

All (2) residues with a non-rotameric sidechain are listed below:

Mol	Chain	Res	Type
1	A	61	ASP
1	B	61	ASP

Sometimes sidechains can be flipped to improve hydrogen bonding and reduce clashes. 5 of 10 such sidechains are listed below:

Mol	Chain	Res	Type
2	C	36	HIS
2	C	44	GLN
2	C	99	HIS
1	A	110	GLN
1	B	57	GLN

5.3.3 RNA ⓘ

There are no RNA molecules in this entry.

5.4 Non-standard residues in protein, DNA, RNA chains ⓘ

1 non-standard protein/DNA/RNA residue is modelled in this entry.

In the following table, the Counts columns list the number of bonds (or angles) for which Mogul statistics could be retrieved, the number of bonds (or angles) that are observed in the model and the number of bonds (or angles) that are defined in the Chemical Component Dictionary. The Link column lists molecule types, if any, to which the group is linked. The Z score for a bond length (or angle) is the number of standard deviations the observed value is removed from the expected value. A bond length (or angle) with $|Z| > 2$ is considered an outlier worth inspection. RMSZ is the root-mean-square of all Z scores of the bond lengths (or angles).

Mol	Type	Chain	Res	Link	Bond lengths			Bond angles		
					Counts	RMSZ	# Z > 2	Counts	RMSZ	# Z > 2
2	N80	C	1	2	8,9,10	2.57	1 (12%)	5,11,13	1.12	0

In the following table, the Chirals column lists the number of chiral outliers, the number of chiral centers analysed, the number of these observed in the model and the number defined in the Chemical Component Dictionary. Similar counts are reported in the Torsion and Rings columns. '-' means no outliers of that kind were identified.

Mol	Type	Chain	Res	Link	Chirals	Torsions	Rings
2	N80	C	1	2	-	0/0/14/16	0/1/1/1

All (1) bond length outliers are listed below:

Mol	Chain	Res	Type	Atoms	Z	Observed(Å)	Ideal(Å)
2	C	1	N80	CAD-N	-7.02	0.99	1.35

There are no bond angle outliers.

There are no chirality outliers.

There are no torsion outliers.

There are no ring outliers.

1 monomer is involved in 3 short contacts:

Mol	Chain	Res	Type	Clashes	Symm-Clashes
2	C	1	N80	3	0

5.5 Carbohydrates [i](#)

There are no oligosaccharides in this entry.

5.6 Ligand geometry [i](#)

3 ligands are modelled in this entry.

In the following table, the Counts columns list the number of bonds (or angles) for which Mogul statistics could be retrieved, the number of bonds (or angles) that are observed in the model and the number of bonds (or angles) that are defined in the Chemical Component Dictionary. The Link column lists molecule types, if any, to which the group is linked. The Z score for a bond length (or angle) is the number of standard deviations the observed value is removed from the expected value. A bond length (or angle) with $|Z| > 2$ is considered an outlier worth inspection. RMSZ is the root-mean-square of all Z scores of the bond lengths (or angles).

Mol	Type	Chain	Res	Link	Bond lengths			Bond angles		
					Counts	RMSZ	# Z > 2	Counts	RMSZ	# Z > 2
4	3OH	B	201	1	5,5,5	1.20	0	5,5,5	1.89	3 (60%)
3	AKR	A	201	1	4,4,4	3.60	2 (50%)	4,4,4	3.03	2 (50%)
5	SO4	C	201	-	4,4,4	0.60	0	6,6,6	1.25	1 (16%)

In the following table, the Chirals column lists the number of chiral outliers, the number of chiral centers analysed, the number of these observed in the model and the number defined in the Chemical Component Dictionary. Similar counts are reported in the Torsion and Rings columns. '-' means no outliers of that kind were identified.

Mol	Type	Chain	Res	Link	Chirals	Torsions	Rings
4	3OH	B	201	1	-	1/3/3/3	-
3	AKR	A	201	1	-	2/2/2/2	-

All (2) bond length outliers are listed below:

Mol	Chain	Res	Type	Atoms	Z	Observed(Å)	Ideal(Å)
3	A	201	AKR	CA-C	5.57	1.61	1.46
3	A	201	AKR	O-C	4.01	1.32	1.23

The worst 5 of 6 bond angle outliers are listed below:

Mol	Chain	Res	Type	Atoms	Z	Observed(°)	Ideal(°)
3	A	201	AKR	CB-CA-C	-5.46	112.20	121.50
4	B	201	3OH	O2-C1-O1	-2.67	116.47	123.33
4	B	201	3OH	O2-C1-C2	2.54	122.03	114.00
3	A	201	AKR	OXT-C-CA	2.13	120.00	114.19
5	C	201	SO4	O3-S-O1	2.05	120.28	109.56

There are no chirality outliers.

All (3) torsion outliers are listed below:

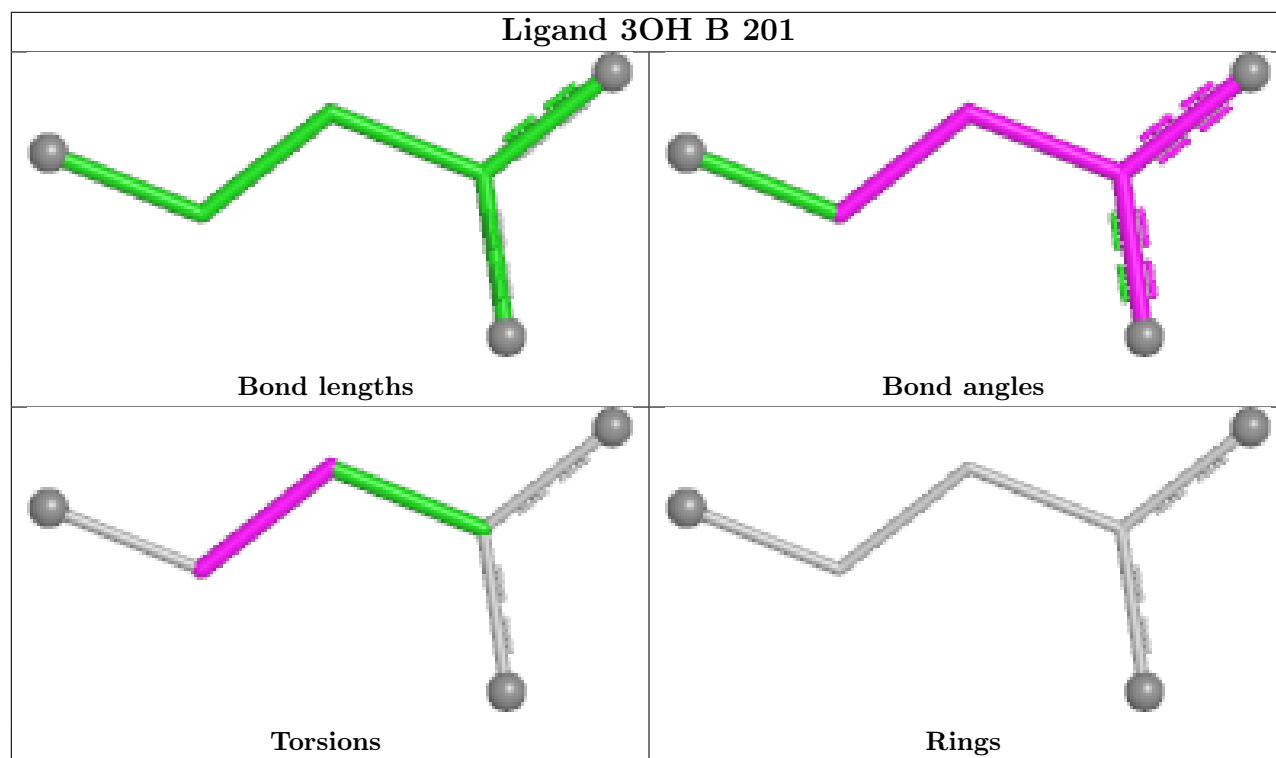
Mol	Chain	Res	Type	Atoms
3	A	201	AKR	O-C-CA-CB
3	A	201	AKR	OXT-C-CA-CB
4	B	201	3OH	C1-C2-C3-O3

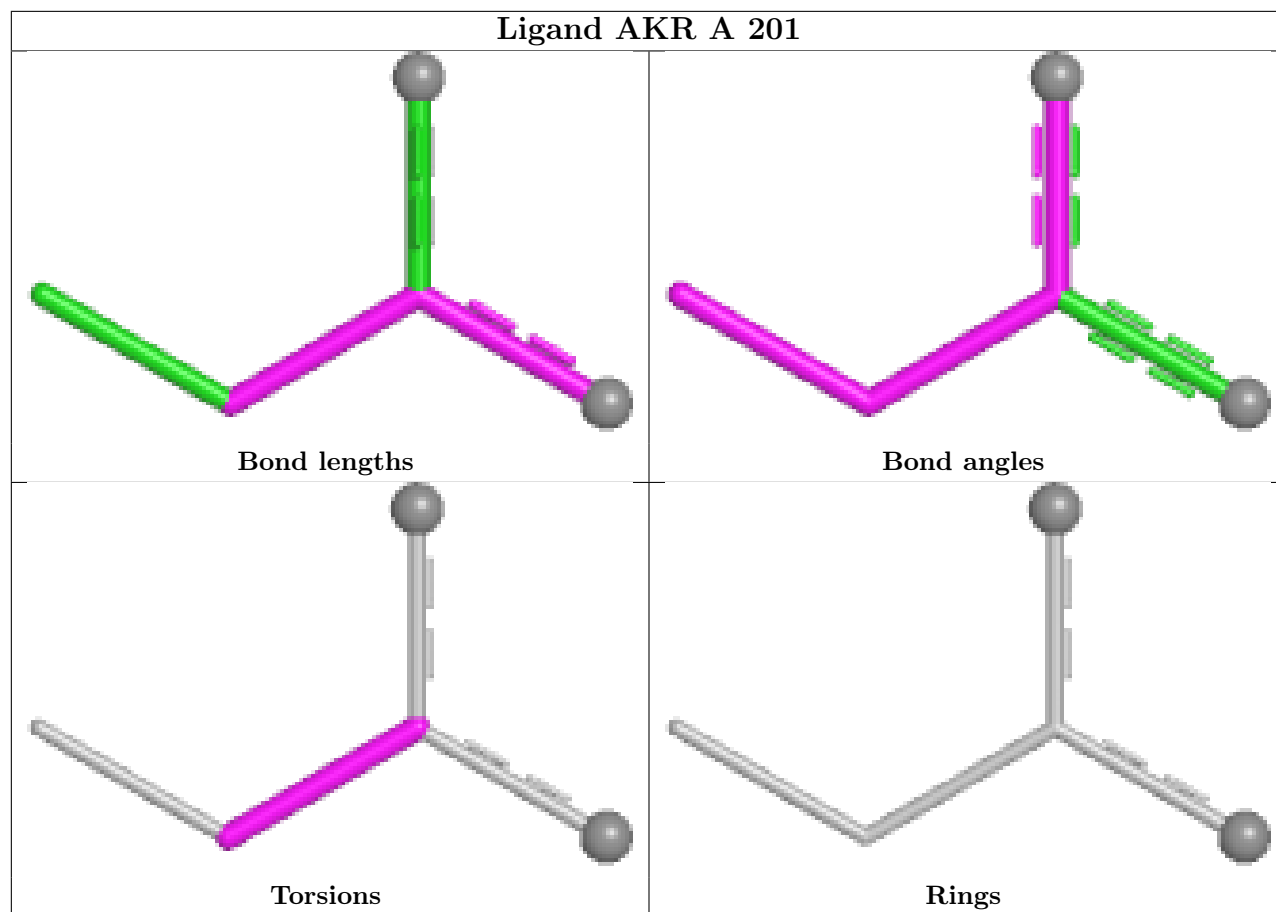
There are no ring outliers.

3 monomers are involved in 10 short contacts:

Mol	Chain	Res	Type	Clashes	Symm-Clashes
4	B	201	3OH	2	0
3	A	201	AKR	6	0
5	C	201	SO4	2	0

The following is a two-dimensional graphical depiction of Mogul quality analysis of bond lengths, bond angles, torsion angles, and ring geometry for all instances of the Ligand of Interest. In addition, ligands with molecular weight > 250 and outliers as shown on the validation Tables will also be included. For torsion angles, if less than 5% of the Mogul distribution of torsion angles is within 10 degrees of the torsion angle in question, then that torsion angle is considered an outlier. Any bond that is central to one or more torsion angles identified as an outlier by Mogul will be highlighted in the graph. For rings, the root-mean-square deviation (RMSD) between the ring in question and similar rings identified by Mogul is calculated over all ring torsion angles. If the average RMSD is greater than 60 degrees and the minimal RMSD between the ring in question and any Mogul-identified rings is also greater than 60 degrees, then that ring is considered an outlier. The outliers are highlighted in purple. The color gray indicates Mogul did not find sufficient equivalents in the CSD to analyse the geometry.





5.7 Other polymers [i](#)

There are no such residues in this entry.

5.8 Polymer linkage issues [i](#)

There are no chain breaks in this entry.

6 Fit of model and data [i](#)

6.1 Protein, DNA and RNA chains [i](#)

In the following table, the column labelled ‘#RSRZ> 2’ contains the number (and percentage) of RSRZ outliers, followed by percent RSRZ outliers for the chain as percentile scores relative to all X-ray entries and entries of similar resolution. The OWAB column contains the minimum, median, 95th percentile and maximum values of the occupancy-weighted average B-factor per residue. The column labelled ‘Q< 0.9’ lists the number of (and percentage) of residues with an average occupancy less than 0.9.

Mol	Chain	Analysed	<RSRZ>	#RSRZ>2	OWAB(Å ²)	Q<0.9
1	A	145/164 (88%)	-0.22	1 (0%) 84 82	21, 32, 54, 65	0
1	B	145/164 (88%)	-0.47	0 100 100	20, 29, 41, 51	0
2	C	144/164 (87%)	-0.37	0 100 100	21, 30, 43, 59	0
All	All	434/492 (88%)	-0.35	1 (0%) 92 90	20, 30, 48, 65	0

All (1) RSRZ outliers are listed below:

Mol	Chain	Res	Type	RSRZ
1	A	126	GLY	3.7

6.2 Non-standard residues in protein, DNA, RNA chains [i](#)

In the following table, the Atoms column lists the number of modelled atoms in the group and the number defined in the chemical component dictionary. The B-factors column lists the minimum, median, 95th percentile and maximum values of B factors of atoms in the group. The column labelled ‘Q< 0.9’ lists the number of atoms with occupancy less than 0.9.

Mol	Type	Chain	Res	Atoms	RSCC	RSR	B-factors(Å ²)	Q<0.9
2	N80	C	1	9/10	0.92	0.09	23,26,35,36	0

6.3 Carbohydrates [i](#)

There are no monosaccharides in this entry.

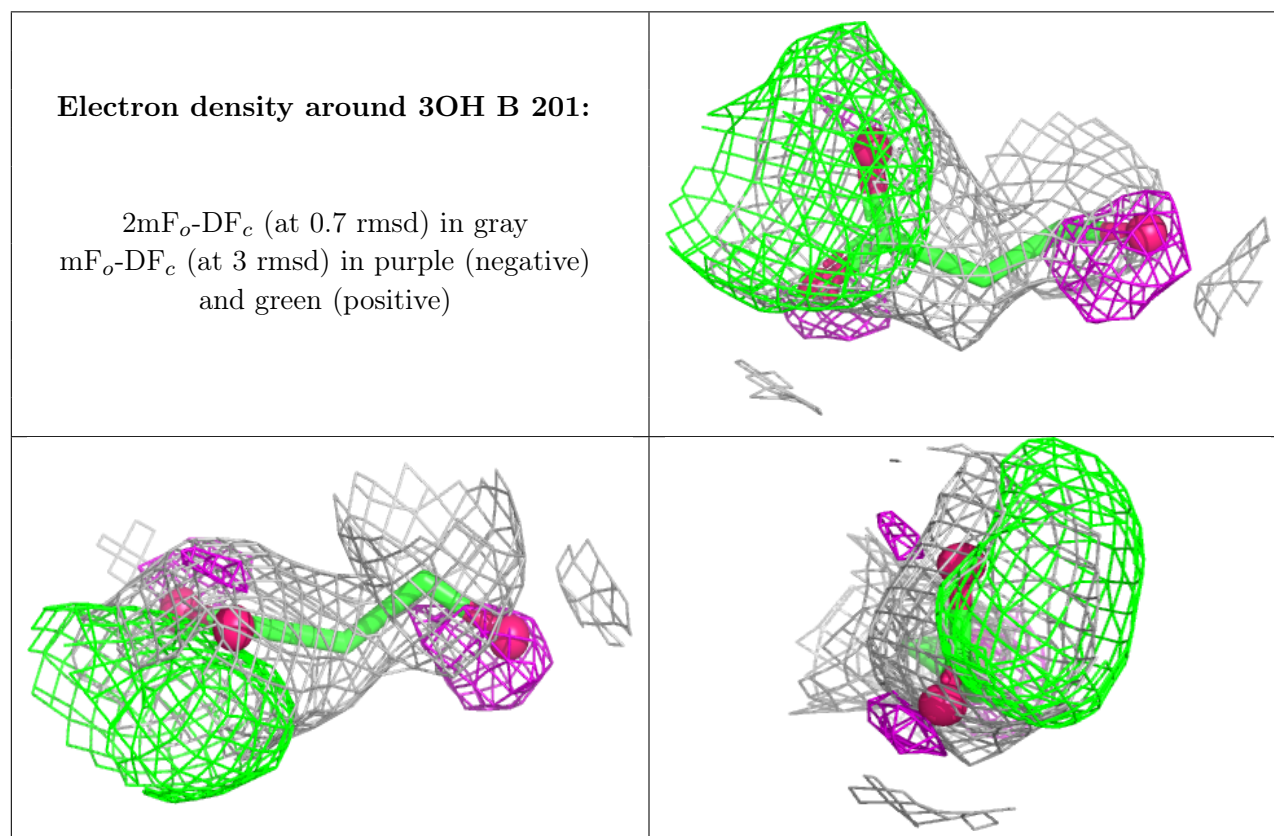
6.4 Ligands [i](#)

In the following table, the Atoms column lists the number of modelled atoms in the group and the number defined in the chemical component dictionary. The B-factors column lists the minimum,

median, 95th percentile and maximum values of B factors of atoms in the group. The column labelled 'Q< 0.9' lists the number of atoms with occupancy less than 0.9.

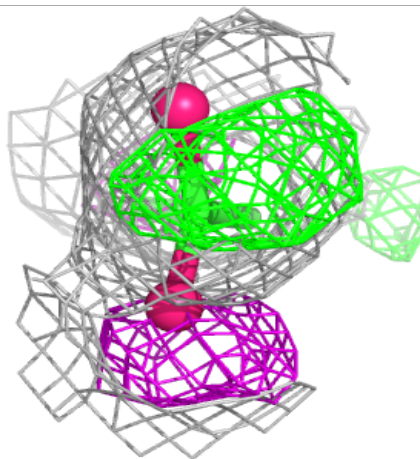
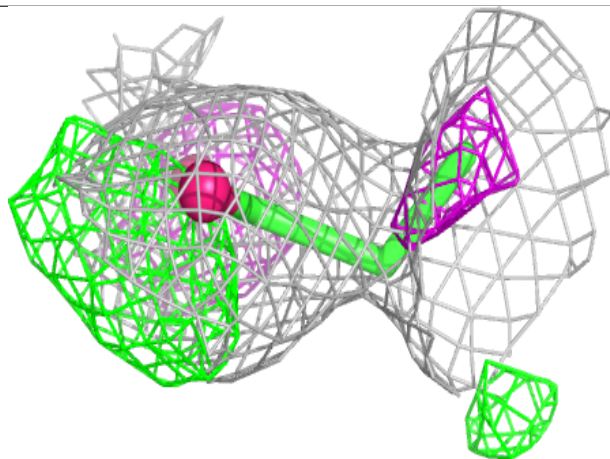
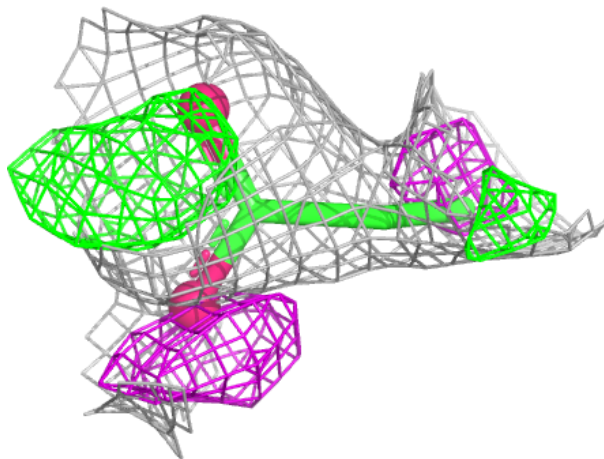
Mol	Type	Chain	Res	Atoms	RSCC	RSR	B-factors(Å ²)	Q<0.9
4	3OH	B	201	6/6	0.48	0.28	35,36,44,46	0
3	AKR	A	201	5/5	0.74	0.20	31,36,41,48	0
5	SO4	C	201	5/5	0.92	0.15	33,40,44,49	0

The following is a graphical depiction of the model fit to experimental electron density of all instances of the Ligand of Interest. In addition, ligands with molecular weight > 250 and outliers as shown on the geometry validation Tables will also be included. Each fit is shown from different orientation to approximate a three-dimensional view.



Electron density around AKR A 201:

$2mF_o-DF_c$ (at 0.7 rmsd) in gray
 mF_o-DF_c (at 3 rmsd) in purple (negative)
and green (positive)



6.5 Other polymers [i](#)

There are no such residues in this entry.