



Full wwPDB EM Validation Report ⓘ

Mar 27, 2026 – 02:27 AM UTC

PDB ID : 9NX2 / pdb_00009nx2
EMDB ID : EMD-49899
Title : Muscle-type nicotinic acetylcholine receptor bound to conotoxin ImII
Authors : Stowell, M.H.B.; Hibbs, R.E.; Noviello, C.M.; Bhattacharjee, B.
Deposited on : 2025-03-25
Resolution : 2.96 Å (reported)
Based on initial model : 7KOO

This is a Full wwPDB EM Validation Report for a publicly released PDB entry.

We welcome your comments at validation@mail.wwpdb.org

A user guide is available at

<https://www.wwpdb.org/validation/2017/EMValidationReportHelp>

with specific help available everywhere you see the ⓘ symbol.

The types of validation reports are described at

<http://www.wwpdb.org/validation/2017/FAQs#types>.

The following versions of software and data (see [references ⓘ](#)) were used in the production of this report:

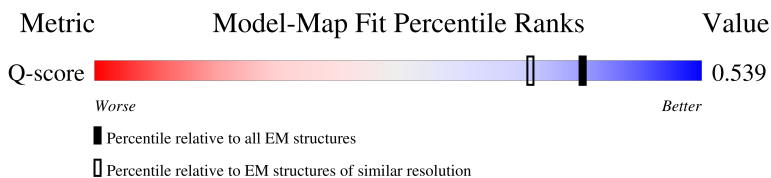
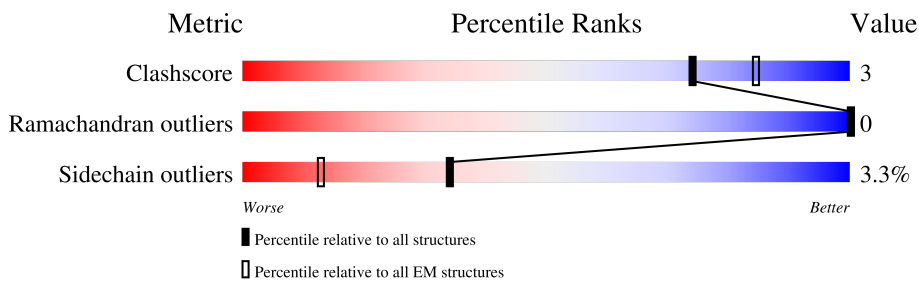
EMDB validation analysis : 0.0.1.dev132
Mogul : 2022.3.0, CSD as543be (2022)
MolProbity : 4-5-2 with Phenix2.0
Percentile statistics : 20250101.v01 (using entries in the PDB archive January 1st 2025)
EM percentile statistics : 202505.v01 (Using data in the EMDB archive up until May 2025)
MapQ : 1.9.13
Ideal geometry (proteins) : Engh & Huber (2001)
Ideal geometry (DNA, RNA) : Parkinson et al. (1996)
Validation Pipeline (wwPDB-VP) : 2.49

1 Overall quality at a glance i

The following experimental techniques were used to determine the structure:
ELECTRON MICROSCOPY

The reported resolution of this entry is 2.96 Å.

Percentile scores (ranging between 0-100) for global validation metrics of the entry are shown in the following graphic. The table shows the number of entries on which the scores are based.







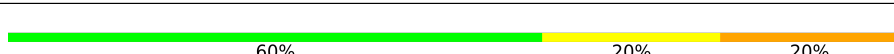
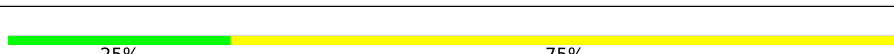

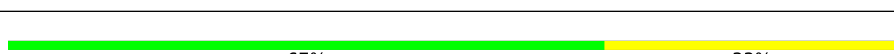
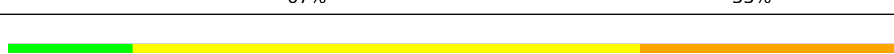
Metric	Whole archive (#Entries)	EM structures (#Entries)	Similar EM resolution (#Entries, resolution range(Å))
Clashscore	229148	23984	-
Ramachandran outliers	224038	23583	-
Sidechain outliers	223484	23102	-
Q-score	-	25397	13155 (2.46 - 3.46)

The table below summarises the geometric issues observed across the polymeric chains and their fit to the map. The red, orange, yellow and green segments of the bar indicate the fraction of residues that contain outliers for ≥ 3 , 2, 1 and 0 types of geometric quality criteria respectively. A grey segment represents the fraction of residues that are not modelled. The numeric value for each fraction is indicated below the corresponding segment, with a dot representing fractions $\leq 5\%$. The upper red bar (where present) indicates the fraction of residues that have poor fit to the EM map (all-atom inclusion $< 40\%$). The numeric value is given above the bar.

Mol	Chain	Length	Quality of chain
1	A	434	80% 8% 11%
1	D	434	81% 10% 8%
2	B	499	77% 8% 15%
3	C	469	76% 10% 13%

Continued on next page...

Continued from previous page...

Mol	Chain	Length	Quality of chain
4	E	489	
5	F	13	
5	G	13	
6	H	5	
6	M	5	
7	I	4	
8	J	2	
9	K	3	
10	L	7	

2 Entry composition [i](#)

There are 13 unique types of molecules in this entry. The entry contains 17103 atoms, of which 0 are hydrogens and 0 are deuteriums.

In the tables below, the AltConf column contains the number of residues with at least one atom in alternate conformation and the Trace column contains the number of residues modelled with at most 2 atoms.

- Molecule 1 is a protein called Acetylcholine receptor subunit alpha.

Mol	Chain	Residues	Atoms					AltConf	Trace
			Total	C	N	O	S		
1	A	386	Total	C	N	O	S	1	0
			3138	2054	503	559	22		
1	D	399	Total	C	N	O	S	1	0
			3248	2127	521	578	22		

There are 2 discrepancies between the modelled and reference sequences:

Chain	Residue	Modelled	Actual	Comment	Reference
A	430	LYS	LEU	conflict	UNP P02710
D	430	LYS	LEU	conflict	UNP P02710

- Molecule 2 is a protein called Acetylcholine receptor subunit delta.

Mol	Chain	Residues	Atoms					AltConf	Trace
			Total	C	N	O	S		
2	B	426	Total	C	N	O	S	2	0
			3477	2267	567	627	16		

- Molecule 3 is a protein called Acetylcholine receptor subunit beta.

Mol	Chain	Residues	Atoms					AltConf	Trace
			Total	C	N	O	S		
3	C	409	Total	C	N	O	S	0	0
			3317	2172	527	604	14		

- Molecule 4 is a protein called Acetylcholine receptor subunit gamma.

Mol	Chain	Residues	Atoms					AltConf	Trace
			Total	C	N	O	S		
4	E	409	Total	C	N	O	S	3	0
			3344	2189	533	609	13		

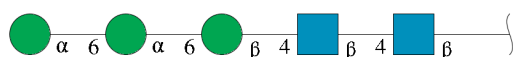
- Molecule 5 is a protein called Alpha-conotoxin ImII.

Mol	Chain	Residues	Atoms				AltConf	Trace	
5	F	13	Total	C	N	O	S	0	1
			102	57	26	15	4		
5	G	13	Total	C	N	O	S	0	1
			102	57	26	15	4		

There are 2 discrepancies between the modelled and reference sequences:

Chain	Residue	Modelled	Actual	Comment	Reference
F	13	NH2	-	amidation	UNP Q8I6R5
G	13	NH2	-	amidation	UNP Q8I6R5

- Molecule 6 is an oligosaccharide called alpha-D-mannopyranose-(1-6)-alpha-D-mannopyranose-(1-6)-beta-D-mannopyranose-(1-4)-2-acetamido-2-deoxy-beta-D-glucopyranose-(1-4)-2-acetamido-2-deoxy-beta-D-glucopyranose.



Mol	Chain	Residues	Atoms				AltConf	Trace
6	H	5	Total	C	N	O	0	0
			61	34	2	25		
6	M	5	Total	C	N	O	0	0
			61	34	2	25		

- Molecule 7 is an oligosaccharide called alpha-D-mannopyranose-(1-6)-beta-D-mannopyranose-(1-4)-2-acetamido-2-deoxy-beta-D-glucopyranose-(1-4)-2-acetamido-2-deoxy-beta-D-glucopyranose.



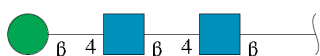
Mol	Chain	Residues	Atoms				AltConf	Trace
7	I	4	Total	C	N	O	0	0
			50	28	2	20		

- Molecule 8 is an oligosaccharide called 2-acetamido-2-deoxy-beta-D-glucopyranose-(1-4)-2-acetamido-2-deoxy-beta-D-glucopyranose.



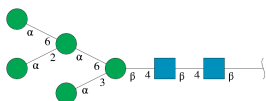
Mol	Chain	Residues	Atoms			AltConf	Trace	
			Total	C	N			O
8	J	2	28	16	2	10	0	0

- Molecule 9 is an oligosaccharide called beta-D-mannopyranose-(1-4)-2-acetamido-2-deoxy-beta-D-glucopyranose-(1-4)-2-acetamido-2-deoxy-beta-D-glucopyranose.



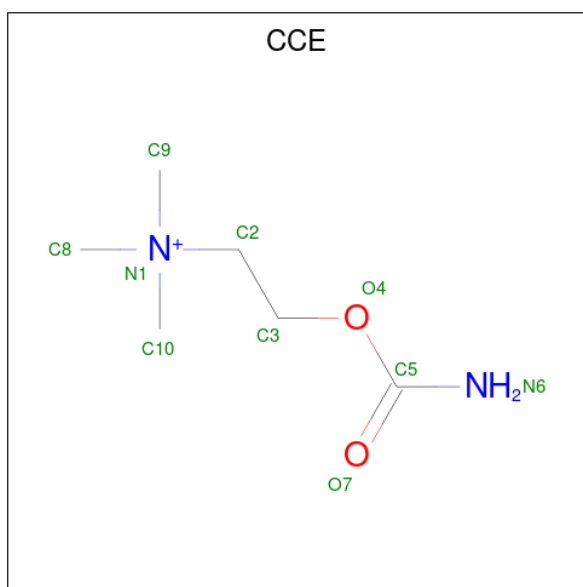
Mol	Chain	Residues	Atoms			AltConf	Trace	
			Total	C	N			O
9	K	3	39	22	2	15	0	0

- Molecule 10 is an oligosaccharide called alpha-D-mannopyranose-(1-2)-[alpha-D-mannopyranose-(1-6)]alpha-D-mannopyranose-(1-6)-[alpha-D-mannopyranose-(1-3)]beta-D-mannopyranose-(1-4)-2-acetamido-2-deoxy-beta-D-glucopyranose-(1-4)-2-acetamido-2-deoxy-beta-D-glucopyranose.



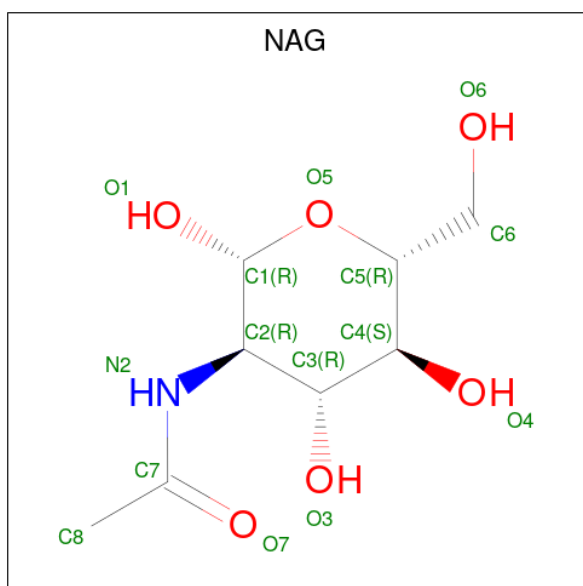
Mol	Chain	Residues	Atoms			AltConf	Trace	
			Total	C	N			O
10	L	7	83	46	2	35	0	0

- Molecule 11 is 2-[(AMINOCARBONYL)OXY]-N,N,N-TRIMETHYLETHANAMINIUM (CCD ID: CCE) (formula: C₆H₁₅N₂O₂).



Mol	Chain	Residues	Atoms				AltConf
			Total	C	N	O	
11	A	1	10	6	2	2	0
11	D	1	10	6	2	2	0

- Molecule 12 is 2-acetamido-2-deoxy-beta-D-glucopyranose (CCD ID: NAG) (formula: $C_8H_{15}NO_6$).



Mol	Chain	Residues	Atoms				AltConf
			Total	C	N	O	
12	B	1	14	8	1	5	0

Continued on next page...

Continued from previous page...

Mol	Chain	Residues	Atoms				AltConf
			Total	C	N	O	
12	E	1	14	8	1	5	0

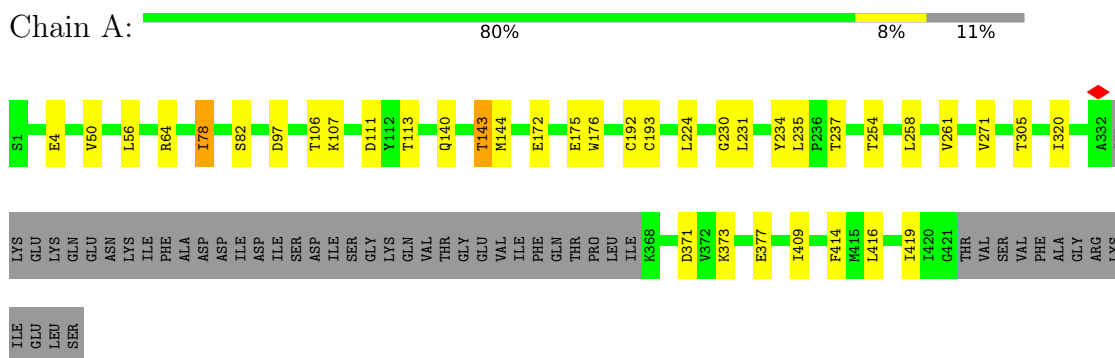
- Molecule 13 is water.

Mol	Chain	Residues	Atoms		AltConf
13	A	2	Total 2	O 2	0
13	B	2	Total 2	O 2	0
13	D	1	Total 1	O 1	0

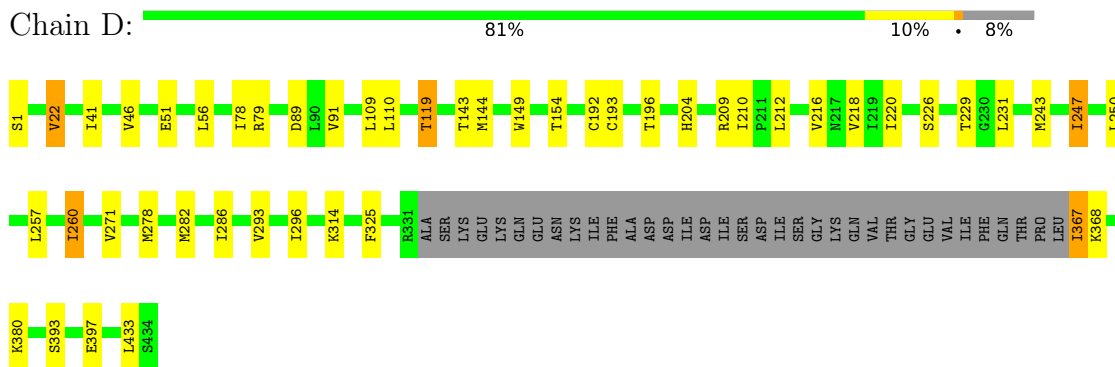
3 Residue-property plots [i](#)

These plots are drawn for all protein, RNA, DNA and oligosaccharide chains in the entry. The first graphic for a chain summarises the proportions of the various outlier classes displayed in the second graphic. The second graphic shows the sequence view annotated by issues in geometry and atom inclusion in map density. Residues are color-coded according to the number of geometric quality criteria for which they contain at least one outlier: green = 0, yellow = 1, orange = 2 and red = 3 or more. A red diamond above a residue indicates a poor fit to the EM map for this residue (all-atom inclusion < 40%). Stretches of 2 or more consecutive residues without any outlier are shown as a green connector. Residues present in the sample, but not in the model, are shown in grey.

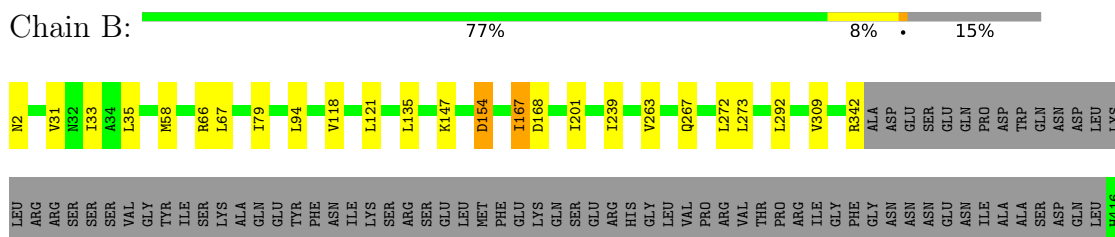
- Molecule 1: Acetylcholine receptor subunit alpha



- Molecule 1: Acetylcholine receptor subunit alpha



- Molecule 2: Acetylcholine receptor subunit delta





- Molecule 6: alpha-D-mannopyranose-(1-6)-alpha-D-mannopyranose-(1-6)-beta-D-mannopyranose-(1-4)-2-acetamido-2-deoxy-beta-D-glucopyranose-(1-4)-2-acetamido-2-deoxy-beta-D-glucopyranose



- Molecule 7: alpha-D-mannopyranose-(1-6)-beta-D-mannopyranose-(1-4)-2-acetamido-2-deoxy-beta-D-glucopyranose-(1-4)-2-acetamido-2-deoxy-beta-D-glucopyranose



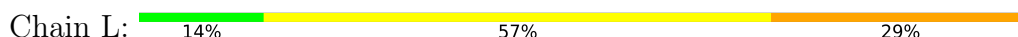
- Molecule 8: 2-acetamido-2-deoxy-beta-D-glucopyranose-(1-4)-2-acetamido-2-deoxy-beta-D-glucopyranose



- Molecule 9: beta-D-mannopyranose-(1-4)-2-acetamido-2-deoxy-beta-D-glucopyranose-(1-4)-2-acetamido-2-deoxy-beta-D-glucopyranose



- Molecule 10: alpha-D-mannopyranose-(1-2)-[alpha-D-mannopyranose-(1-6)]alpha-D-mannopyranose-(1-6)-[alpha-D-mannopyranose-(1-3)]beta-D-mannopyranose-(1-4)-2-acetamido-2-deoxy-beta-D-glucopyranose-(1-4)-2-acetamido-2-deoxy-beta-D-glucopyranose



4 Experimental information

Property	Value	Source
EM reconstruction method	SINGLE PARTICLE	Depositor
Imposed symmetry	POINT, Not provided	
Number of particles used	128448	Depositor
Resolution determination method	FSC 0.143 CUT-OFF	Depositor
CTF correction method	PHASE FLIPPING AND AMPLITUDE CORRECTION	Depositor
Microscope	TFS KRIOS	Depositor
Voltage (kV)	300	Depositor
Electron dose ($e^-/\text{\AA}^2$)	50	Depositor
Minimum defocus (nm)	5000	Depositor
Maximum defocus (nm)	30000	Depositor
Magnification	Not provided	
Image detector	GATAN K2 SUMMIT (4k x 4k)	Depositor
Maximum map value	0.127	Depositor
Minimum map value	-0.048	Depositor
Average map value	0.001	Depositor
Map value standard deviation	0.005	Depositor
Recommended contour level	0.02	Depositor
Map size (Å)	261.6, 261.6, 261.6	wwPDB
Map dimensions	300, 300, 300	wwPDB
Map angles (°)	90.0, 90.0, 90.0	wwPDB
Pixel spacing (Å)	0.87200004, 0.87200004, 0.87200004	Depositor

5 Model quality [i](#)

5.1 Standard geometry [i](#)

Bond lengths and bond angles in the following residue types are not validated in this section: NH2, NAG, MAN, BMA, CCE

The Z score for a bond length (or angle) is the number of standard deviations the observed value is removed from the expected value. A bond length (or angle) with $|Z| > 5$ is considered an outlier worth inspection. RMSZ is the root-mean-square of all Z scores of the bond lengths (or angles).

Mol	Chain	Bond lengths		Bond angles	
		RMSZ	# Z >5	RMSZ	# Z >5
1	A	0.13	0/3226	0.25	0/4399
1	D	0.14	0/3335	0.27	0/4543
2	B	0.14	0/3581	0.26	0/4887
3	C	0.14	0/3405	0.26	0/4651
4	E	0.12	0/3434	0.25	0/4683
5	F	0.17	0/102	0.42	0/134
5	G	0.18	0/102	0.48	0/134
All	All	0.13	0/17185	0.26	0/23431

There are no bond length outliers.

There are no bond angle outliers.

There are no chirality outliers.

There are no planarity outliers.

5.2 Too-close contacts [i](#)

In the following table, the Non-H and H(model) columns list the number of non-hydrogen atoms and hydrogen atoms in the chain respectively. The H(added) column lists the number of hydrogen atoms added and optimized by MolProbity. The Clashes column lists the number of clashes within the asymmetric unit, whereas Symm-Clashes lists symmetry-related clashes.

Mol	Chain	Non-H	H(model)	H(added)	Clashes	Symm-Clashes
1	A	3138	0	3166	20	0
1	D	3248	0	3281	28	0
2	B	3477	0	3453	24	0
3	C	3317	0	3333	23	0
4	E	3344	0	3339	24	0
5	F	102	0	94	1	0

Continued on next page...

Continued from previous page...

Mol	Chain	Non-H	H(model)	H(added)	Clashes	Symm-Clashes
5	G	102	0	94	1	0
6	H	61	0	52	0	0
6	M	61	0	52	1	0
7	I	50	0	43	1	0
8	J	28	0	25	1	0
9	K	39	0	34	1	0
10	L	83	0	70	2	0
11	A	10	0	15	1	0
11	D	10	0	15	2	0
12	B	14	0	13	0	0
12	E	14	0	13	0	0
13	A	2	0	0	0	0
13	B	2	0	0	1	0
13	D	1	0	0	0	0
All	All	17103	0	17092	110	0

The all-atom clashscore is defined as the number of clashes found per 1000 atoms (including hydrogen atoms). The all-atom clashscore for this structure is 3.

All (110) close contacts within the same asymmetric unit are listed below, sorted by their clash magnitude.

Atom-1	Atom-2	Interatomic distance (Å)	Clash overlap (Å)
5:F:8:CYS:SG	5:F:9:ARG:N	2.57	0.75
3:C:252:SER:HB3	3:C:295:VAL:HG22	1.68	0.75
11:A:601:CCE:H3C2	2:B:121:LEU:HD23	1.69	0.72
1:D:149:TRP:CE2	11:D:601:CCE:H2C1	2.30	0.67
1:A:305:THR:HA	2:B:342:ARG:HD2	1.80	0.64
3:C:194:ARG:NH2	9:K:2:NAG:O3	2.32	0.63
4:E:280:VAL:O	4:E:285:LYS:NZ	2.31	0.63
1:A:192:CYS:SG	1:A:193:CYS:N	2.75	0.59
1:D:149:TRP:CZ2	11:D:601:CCE:H2C1	2.37	0.59
1:A:320:ILE:HG21	1:A:409:ILE:HD11	1.83	0.59
3:C:155:GLU:OE2	1:D:79:ARG:NH1	2.35	0.58
4:E:435:SER:O	4:E:439:ASN:ND2	2.35	0.58
4:E:147:ARG:NH1	4:E:208:GLU:OE1	2.37	0.58
1:D:286:ILE:HG23	4:E:236:LEU:HD21	1.86	0.58
1:D:192:CYS:SG	1:D:193:CYS:N	2.78	0.57
2:B:496:ASP:O	2:B:497:HIS:ND1	2.38	0.56
2:B:154:ASP:N	2:B:154:ASP:OD1	2.37	0.56
8:J:2:NAG:H3	8:J:2:NAG:H83	1.87	0.56
1:D:91:VAL:HG21	1:D:149:TRP:HE3	1.71	0.56

Continued on next page...

Continued from previous page...

Atom-1	Atom-2	Interatomic distance (Å)	Clash overlap (Å)
1:A:254:THR:HG21	2:B:239:ILE:HD11	1.89	0.54
3:C:95:ASN:ND2	3:C:99:SER:O	2.41	0.54
1:D:89:ASP:OD1	1:D:89:ASP:N	2.41	0.54
4:E:15:TYR:HE2	4:E:85:LEU:HA	1.73	0.53
1:A:371:ASP:HB3	2:B:423:ILE:HG21	1.89	0.53
1:A:143:THR:OG1	1:A:144:MET:N	2.42	0.53
1:A:106:THR:OG1	1:A:107:LYS:N	2.42	0.53
1:A:111:ASP:OD1	1:A:113:THR:OG1	2.23	0.52
1:A:234:TYR:O	4:E:306:ASN:ND2	2.42	0.52
1:A:4:GLU:HG3	1:A:78:ILE:HD11	1.92	0.52
2:B:35:LEU:HD12	2:B:58:MET:HE3	1.92	0.52
4:E:65:LEU:HD22	4:E:116:MET:HE1	1.91	0.52
2:B:66:ARG:HB2	2:B:67:LEU:HD22	1.91	0.51
3:C:24:THR:OG1	3:C:27:ASP:OD1	2.25	0.51
4:E:151:TYR:HB3	4:E:155:GLU:HG3	1.92	0.51
2:B:499:ARG:O	2:B:499:ARG:HG2	2.11	0.50
1:D:46:VAL:HG22	5:G:7:ARG:HH21	1.77	0.50
3:C:403:GLU:HB2	1:D:380:LYS:HZ1	1.77	0.50
2:B:154:ASP:OD1	3:C:79:ARG:NH2	2.45	0.49
3:C:22:ALA:O	1:D:1:SER:OG	2.27	0.49
1:D:257:LEU:HD13	1:D:278:MET:HG2	1.95	0.49
4:E:255:SER:HB3	4:E:298:VAL:HG22	1.94	0.49
2:B:2:ASN:N	13:B:701:HOH:O	2.45	0.49
3:C:315:PRO:HD2	3:C:318:ILE:HD12	1.94	0.48
2:B:419:ILE:O	2:B:423:ILE:HG12	2.13	0.48
4:E:439:ASN:O	4:E:443:ILE:HG12	2.13	0.48
1:A:175:GLU:HG3	1:A:176:TRP:CD1	2.49	0.47
1:A:224:LEU:HD11	4:E:292[A]:PHE:HE1	1.79	0.47
4:E:293:VAL:O	4:E:297:ILE:HG12	2.14	0.47
1:A:230:GLY:HA3	1:A:414:PHE:CZ	2.50	0.47
4:E:410:ALA:HB3	4:E:413:ILE:HG22	1.96	0.47
10:L:5:MAN:O6	10:L:5:MAN:O4	2.31	0.47
3:C:296:ILE:HG12	1:D:231:LEU:HD11	1.96	0.47
3:C:402:LYS:O	3:C:405:VAL:HG22	2.14	0.47
2:B:440:ASP:O	2:B:443:VAL:HG22	2.15	0.46
3:C:281:ILE:O	3:C:285:MET:HG2	2.16	0.46
1:D:218:VAL:HG13	1:D:260:ILE:HD11	1.97	0.46
1:D:78:ILE:HG23	1:D:110:LEU:HB3	1.98	0.46
4:E:93:GLU:HG2	4:E:147:ARG:HH21	1.80	0.46
3:C:309:PRO:HG3	3:C:424:LEU:HB3	1.97	0.45
2:B:470:ILE:O	2:B:474:VAL:HG23	2.17	0.45

Continued on next page...

Continued from previous page...

Atom-1	Atom-2	Interatomic distance (Å)	Clash overlap (Å)
1:D:41:ILE:HB	1:D:51:GLU:HB2	1.99	0.45
6:M:4:MAN:H61	6:M:5:MAN:H2	1.35	0.45
3:C:272:GLU:N	3:C:272:GLU:OE1	2.49	0.45
1:A:373:LYS:O	1:A:377:GLU:HG2	2.16	0.45
2:B:167:ILE:HG23	2:B:168:ASP:H	1.82	0.45
3:C:402:LYS:O	3:C:406:GLU:HG2	2.17	0.45
3:C:409:LYS:O	3:C:413:GLU:HG2	2.17	0.45
3:C:82:SER:OG	3:C:106:VAL:O	2.35	0.44
3:C:192:PRO:HD2	3:C:210:TYR:HB2	1.99	0.44
1:D:22:VAL:HG23	4:E:2:ASN:HD21	1.82	0.44
4:E:464:LEU:O	4:E:468:LEU:HB2	2.18	0.44
3:C:36:THR:HB	3:C:55:PHE:HB2	1.99	0.44
1:A:416:LEU:O	1:A:419:ILE:HG22	2.18	0.44
1:D:143:THR:HG22	1:D:204:HIS:HB3	2.00	0.44
4:E:93:GLU:HG2	4:E:147:ARG:NH2	2.33	0.44
3:C:291:VAL:O	3:C:295:VAL:HG23	2.18	0.43
1:A:258:LEU:O	1:A:261:VAL:HG12	2.18	0.43
1:D:247:ILE:HD13	1:D:247:ILE:HA	1.80	0.43
10:L:6:MAN:O6	10:L:6:MAN:O4	2.31	0.43
1:A:56:LEU:HD23	1:A:56:LEU:H	1.83	0.43
1:D:243:MET:HE2	1:D:296:ILE:HD12	2.00	0.43
2:B:309:VAL:HG22	2:B:453:ILE:HG22	2.01	0.43
3:C:93:MET:HG3	3:C:147:LYS:HG2	2.00	0.43
4:E:294:SER:O	4:E:298:VAL:HG23	2.19	0.43
1:D:209:ARG:HG3	1:D:210:ILE:N	2.34	0.43
1:D:216:VAL:HA	1:D:220:ILE:HD13	2.01	0.43
4:E:237:VAL:HG22	4:E:297:ILE:HG21	2.01	0.43
1:D:393:SER:O	1:D:397:GLU:HG2	2.20	0.42
2:B:499:ARG:O	2:B:500:CYS:C	2.62	0.42
1:D:367:ILE:HG23	1:D:368:LYS:H	1.84	0.42
2:B:474:VAL:HG12	2:B:475:MET:H	1.84	0.42
1:A:82:SER:OG	1:A:106:THR:O	2.27	0.42
1:A:235:LEU:HD23	1:A:235:LEU:H	1.84	0.42
2:B:474:VAL:HG12	2:B:475:MET:N	2.35	0.42
1:D:56:LEU:O	1:D:119:THR:HA	2.19	0.42
1:D:226:SER:O	1:D:229:THR:HG22	2.20	0.42
1:D:247:ILE:HD11	4:E:254:LEU:HD12	2.01	0.42
4:E:76:ASP:OD1	4:E:77:LEU:HG	2.20	0.42
2:B:273:LEU:HD23	2:B:273:LEU:HA	1.86	0.41
4:E:97:ASP:OD1	4:E:97:ASP:N	2.51	0.41
2:B:263:VAL:O	2:B:267:GLN:HG2	2.20	0.41

Continued on next page...

Continued from previous page...

Atom-1	Atom-2	Interatomic distance (Å)	Clash overlap (Å)
4:E:428:LYS:HE3	4:E:428:LYS:HB3	1.84	0.41
1:D:243:MET:HE1	1:D:293:VAL:HG22	2.03	0.41
2:B:427:ASN:O	2:B:430:VAL:HG22	2.21	0.41
3:C:325:THR:O	3:C:328:PRO:HD2	2.21	0.41
3:C:45:GLU:OE2	3:C:215:ARG:NH2	2.49	0.40
1:D:282:MET:HE3	1:D:282:MET:HB2	1.98	0.40
1:A:231:LEU:HD11	4:E:299[B]:MET:HG2	2.03	0.40
2:B:482:PRO:HG2	7:I:1:NAG:H81	2.04	0.40
2:B:94:LEU:HD12	2:B:147:LYS:O	2.22	0.40

There are no symmetry-related clashes.

5.3 Torsion angles [i](#)

5.3.1 Protein backbone [i](#)

In the following table, the Percentiles column shows the percent Ramachandran outliers of the chain as a percentile score with respect to all PDB entries followed by that with respect to all EM entries.

The Analysed column shows the number of residues for which the backbone conformation was analysed, and the total number of residues.

Mol	Chain	Analysed	Favoured	Allowed	Outliers	Percentiles	
1	A	383/434 (88%)	367 (96%)	16 (4%)	0	100	100
1	D	396/434 (91%)	387 (98%)	9 (2%)	0	100	100
2	B	424/499 (85%)	409 (96%)	15 (4%)	0	100	100
3	C	405/469 (86%)	392 (97%)	13 (3%)	0	100	100
4	E	408/489 (83%)	396 (97%)	12 (3%)	0	100	100
5	F	11/13 (85%)	8 (73%)	3 (27%)	0	100	100
5	G	11/13 (85%)	4 (36%)	7 (64%)	0	100	100
All	All	2038/2351 (87%)	1963 (96%)	75 (4%)	0	100	100

There are no Ramachandran outliers to report.

5.3.2 Protein sidechains [i](#)

In the following table, the Percentiles column shows the percent sidechain outliers of the chain as a percentile score with respect to all PDB entries followed by that with respect to all EM entries.

The Analysed column shows the number of residues for which the sidechain conformation was analysed, and the total number of residues.

Mol	Chain	Analysed	Rotameric	Outliers	Percentiles
1	A	361/403 (90%)	352 (98%)	9 (2%)	42 66
1	D	373/403 (93%)	358 (96%)	15 (4%)	28 53
2	B	394/457 (86%)	380 (96%)	14 (4%)	31 56
3	C	377/431 (88%)	357 (95%)	20 (5%)	20 45
4	E	375/446 (84%)	372 (99%)	3 (1%)	73 85
5	F	11/11 (100%)	10 (91%)	1 (9%)	9 23
5	G	11/11 (100%)	10 (91%)	1 (9%)	9 23
All	All	1902/2162 (88%)	1839 (97%)	63 (3%)	34 58

All (63) residues with a non-rotameric sidechain are listed below:

Mol	Chain	Res	Type
1	A	50	VAL
1	A	64	ARG
1	A	78	ILE
1	A	97	ASP
1	A	140	GLN
1	A	143	THR
1	A	172	GLU
1	A	237	THR
1	A	271	VAL
2	B	31	VAL
2	B	33	ILE
2	B	79	ILE
2	B	118	VAL
2	B	135	LEU
2	B	154	ASP
2	B	167	ILE
2	B	201	ILE
2	B	272	LEU
2	B	292	LEU
2	B	436	LYS

Continued on next page...

Continued from previous page...

Mol	Chain	Res	Type
2	B	443	VAL
2	B	459	PHE
2	B	489	ASP
3	C	14	THR
3	C	93	MET
3	C	106	VAL
3	C	110	VAL
3	C	147	LYS
3	C	158	LEU
3	C	181	THR
3	C	189	GLU
3	C	194	ARG
3	C	207	VAL
3	C	221	ILE
3	C	230	LEU
3	C	256	LEU
3	C	297	LEU
3	C	304	LEU
3	C	307	ARG
3	C	323	ILE
3	C	397	LEU
3	C	401	LEU
3	C	468	PHE
1	D	22	VAL
1	D	109	LEU
1	D	119	THR
1	D	144	MET
1	D	154	THR
1	D	196	THR
1	D	212	LEU
1	D	247	ILE
1	D	250	LEU
1	D	260	ILE
1	D	271	VAL
1	D	314	LYS
1	D	325	PHE
1	D	367	ILE
1	D	433	LEU
4	E	52	THR
4	E	432	ASP
4	E	468	LEU
5	F	2	CYS

Continued on next page...

Continued from previous page...

Mol	Chain	Res	Type
5	G	8	CYS

Sometimes sidechains can be flipped to improve hydrogen bonding and reduce clashes. All (13) such sidechains are listed below:

Mol	Chain	Res	Type
1	A	58	GLN
1	A	94	ASN
1	A	104	HIS
1	A	134	HIS
1	A	140	GLN
2	B	9	ASN
2	B	267	GLN
2	B	437	ASN
1	D	186	HIS
1	D	300	HIS
4	E	53	ASN
4	E	188	HIS
4	E	300	ASN

5.3.3 RNA [i](#)

There are no RNA molecules in this entry.

5.4 Non-standard residues in protein, DNA, RNA chains [i](#)

There are no non-standard protein/DNA/RNA residues in this entry.

5.5 Carbohydrates [i](#)

26 monosaccharides are modelled in this entry.

In the following table, the Counts columns list the number of bonds (or angles) for which Mogul statistics could be retrieved, the number of bonds (or angles) that are observed in the model and the number of bonds (or angles) that are defined in the Chemical Component Dictionary. The Link column lists molecule types, if any, to which the group is linked. The Z score for a bond length (or angle) is the number of standard deviations the observed value is removed from the expected value. A bond length (or angle) with $|Z| > 2$ is considered an outlier worth inspection. RMSZ is the root-mean-square of all Z scores of the bond lengths (or angles).

Mol	Type	Chain	Res	Link	Bond lengths			Bond angles		
					Counts	RMSZ	# Z > 2	Counts	RMSZ	# Z > 2
6	NAG	H	1	1,6	14,14,15	0.45	0	17,19,21	0.45	0
6	NAG	H	2	6	14,14,15	0.33	0	17,19,21	0.65	0
6	BMA	H	3	6	11,11,12	0.61	0	15,15,17	0.84	0
6	MAN	H	4	6	11,11,12	0.61	0	15,15,17	1.10	2 (13%)
6	MAN	H	5	6	11,11,12	0.98	1 (9%)	15,15,17	1.41	2 (13%)
7	NAG	I	1	2,7	14,14,15	0.24	0	17,19,21	0.53	0
7	NAG	I	2	7	14,14,15	0.36	0	17,19,21	0.43	0
7	BMA	I	3	7	11,11,12	0.52	0	15,15,17	0.92	1 (6%)
7	MAN	I	4	7	11,11,12	0.88	0	15,15,17	1.23	2 (13%)
8	NAG	J	1	2,8	14,14,15	0.24	0	17,19,21	0.45	0
8	NAG	J	2	8	14,14,15	0.52	0	17,19,21	1.34	2 (11%)
9	NAG	K	1	3,9	14,14,15	0.31	0	17,19,21	0.45	0
9	NAG	K	2	9	14,14,15	0.64	0	17,19,21	0.46	0
9	BMA	K	3	9	11,11,12	0.86	0	15,15,17	0.88	0
10	NAG	L	1	10,1	14,14,15	0.29	0	17,19,21	0.46	0
10	NAG	L	2	10	14,14,15	0.22	0	17,19,21	0.61	1 (5%)
10	BMA	L	3	10	11,11,12	0.57	0	15,15,17	0.90	1 (6%)
10	MAN	L	4	10	11,11,12	0.84	0	15,15,17	1.28	2 (13%)
10	MAN	L	5	10	11,11,12	0.92	0	15,15,17	1.53	2 (13%)
10	MAN	L	6	10	11,11,12	0.81	1 (9%)	15,15,17	1.21	2 (13%)
10	MAN	L	7	10	11,11,12	0.66	0	15,15,17	0.95	2 (13%)
6	NAG	M	1	6,4	14,14,15	0.23	0	17,19,21	0.45	0
6	NAG	M	2	6	14,14,15	0.27	0	17,19,21	0.58	0
6	BMA	M	3	6	11,11,12	0.56	0	15,15,17	0.76	0
6	MAN	M	4	6	11,11,12	0.83	0	15,15,17	1.10	1 (6%)
6	MAN	M	5	6	11,11,12	0.74	0	15,15,17	0.92	0

In the following table, the Chirals column lists the number of chiral outliers, the number of chiral centers analysed, the number of these observed in the model and the number defined in the Chemical Component Dictionary. Similar counts are reported in the Torsion and Rings columns. '-' means no outliers of that kind were identified.

Mol	Type	Chain	Res	Link	Chirals	Torsions	Rings
6	NAG	H	1	1,6	-	2/6/23/26	0/1/1/1
6	NAG	H	2	6	-	2/6/23/26	0/1/1/1
6	BMA	H	3	6	-	2/2/19/22	0/1/1/1
6	MAN	H	4	6	-	2/2/19/22	0/1/1/1
6	MAN	H	5	6	-	0/2/19/22	1/1/1/1
7	NAG	I	1	2,7	-	0/6/23/26	0/1/1/1

Continued on next page...

Continued from previous page...

Mol	Type	Chain	Res	Link	Chirals	Torsions	Rings
7	NAG	I	2	7	-	0/6/23/26	0/1/1/1
7	BMA	I	3	7	-	2/2/19/22	0/1/1/1
7	MAN	I	4	7	-	0/2/19/22	1/1/1/1
8	NAG	J	1	2,8	-	0/6/23/26	0/1/1/1
8	NAG	J	2	8	-	6/6/23/26	0/1/1/1
9	NAG	K	1	3,9	-	0/6/23/26	0/1/1/1
9	NAG	K	2	9	-	2/6/23/26	0/1/1/1
9	BMA	K	3	9	-	2/2/19/22	0/1/1/1
10	NAG	L	1	10,1	-	4/6/23/26	0/1/1/1
10	NAG	L	2	10	-	1/6/23/26	0/1/1/1
10	BMA	L	3	10	-	2/2/19/22	0/1/1/1
10	MAN	L	4	10	-	1/2/19/22	0/1/1/1
10	MAN	L	5	10	-	1/2/19/22	0/1/1/1
10	MAN	L	6	10	-	1/2/19/22	0/1/1/1
10	MAN	L	7	10	-	2/2/19/22	0/1/1/1
6	NAG	M	1	6,4	-	2/6/23/26	0/1/1/1
6	NAG	M	2	6	-	2/6/23/26	0/1/1/1
6	BMA	M	3	6	-	2/2/19/22	0/1/1/1
6	MAN	M	4	6	-	1/2/19/22	1/1/1/1
6	MAN	M	5	6	-	1/2/19/22	0/1/1/1

All (2) bond length outliers are listed below:

Mol	Chain	Res	Type	Atoms	Z	Observed(Å)	Ideal(Å)
6	H	5	MAN	C1-C2	2.33	1.57	1.52
10	L	6	MAN	C1-C2	2.19	1.57	1.52

All (20) bond angle outliers are listed below:

Mol	Chain	Res	Type	Atoms	Z	Observed(°)	Ideal(°)
8	J	2	NAG	C2-N2-C7	4.57	129.02	122.90
6	H	5	MAN	C1-O5-C5	4.35	118.02	112.19
10	L	5	MAN	C1-O5-C5	3.98	117.52	112.19
7	I	4	MAN	C1-O5-C5	3.77	117.24	112.19
10	L	4	MAN	O2-C2-C3	-3.52	102.85	110.15
10	L	6	MAN	C1-O5-C5	3.22	116.50	112.19
10	L	4	MAN	C1-O5-C5	3.12	116.36	112.19
6	H	4	MAN	C1-O5-C5	2.88	116.04	112.19
10	L	5	MAN	O2-C2-C3	-2.77	104.41	110.15
6	M	4	MAN	O2-C2-C3	-2.61	104.75	110.15

Continued on next page...

Continued from previous page...

Mol	Chain	Res	Type	Atoms	Z	Observed(°)	Ideal(°)
7	I	3	BMA	C1-O5-C5	2.47	115.49	112.19
6	H	4	MAN	O2-C2-C3	-2.33	105.32	110.15
6	H	5	MAN	O2-C2-C3	-2.30	105.38	110.15
10	L	6	MAN	O2-C2-C3	-2.24	105.51	110.15
10	L	7	MAN	O2-C2-C3	-2.22	105.56	110.15
8	J	2	NAG	C1-C2-N2	2.10	113.74	110.43
10	L	2	NAG	C1-O5-C5	2.06	114.94	112.19
10	L	3	BMA	C1-O5-C5	2.03	114.91	112.19
7	I	4	MAN	O2-C2-C3	-2.03	105.95	110.15
10	L	7	MAN	C1-O5-C5	2.00	114.87	112.19

There are no chirality outliers.

All (40) torsion outliers are listed below:

Mol	Chain	Res	Type	Atoms
6	M	3	BMA	C4-C5-C6-O6
10	L	1	NAG	O5-C5-C6-O6
7	I	3	BMA	C4-C5-C6-O6
6	M	3	BMA	O5-C5-C6-O6
6	H	3	BMA	C4-C5-C6-O6
6	H	1	NAG	O5-C5-C6-O6
6	M	1	NAG	O5-C5-C6-O6
8	J	2	NAG	C4-C5-C6-O6
10	L	1	NAG	C4-C5-C6-O6
10	L	3	BMA	C4-C5-C6-O6
7	I	3	BMA	O5-C5-C6-O6
10	L	3	BMA	O5-C5-C6-O6
6	H	3	BMA	O5-C5-C6-O6
6	M	1	NAG	C4-C5-C6-O6
6	H	1	NAG	C4-C5-C6-O6
8	J	2	NAG	O5-C5-C6-O6
8	J	2	NAG	C8-C7-N2-C2
8	J	2	NAG	O7-C7-N2-C2
10	L	1	NAG	C8-C7-N2-C2
10	L	1	NAG	O7-C7-N2-C2
9	K	3	BMA	O5-C5-C6-O6
10	L	4	MAN	O5-C5-C6-O6
10	L	7	MAN	O5-C5-C6-O6
9	K	2	NAG	C4-C5-C6-O6
9	K	3	BMA	C4-C5-C6-O6
10	L	7	MAN	C4-C5-C6-O6
6	H	4	MAN	C4-C5-C6-O6

Continued on next page...

Continued from previous page...

Mol	Chain	Res	Type	Atoms
6	H	4	MAN	O5-C5-C6-O6
6	M	4	MAN	O5-C5-C6-O6
10	L	6	MAN	O5-C5-C6-O6
10	L	5	MAN	O5-C5-C6-O6
6	M	5	MAN	O5-C5-C6-O6
9	K	2	NAG	O5-C5-C6-O6
6	H	2	NAG	C1-C2-N2-C7
6	H	2	NAG	C3-C2-N2-C7
6	M	2	NAG	C3-C2-N2-C7
6	M	2	NAG	C1-C2-N2-C7
8	J	2	NAG	C1-C2-N2-C7
8	J	2	NAG	C3-C2-N2-C7
10	L	2	NAG	O5-C5-C6-O6

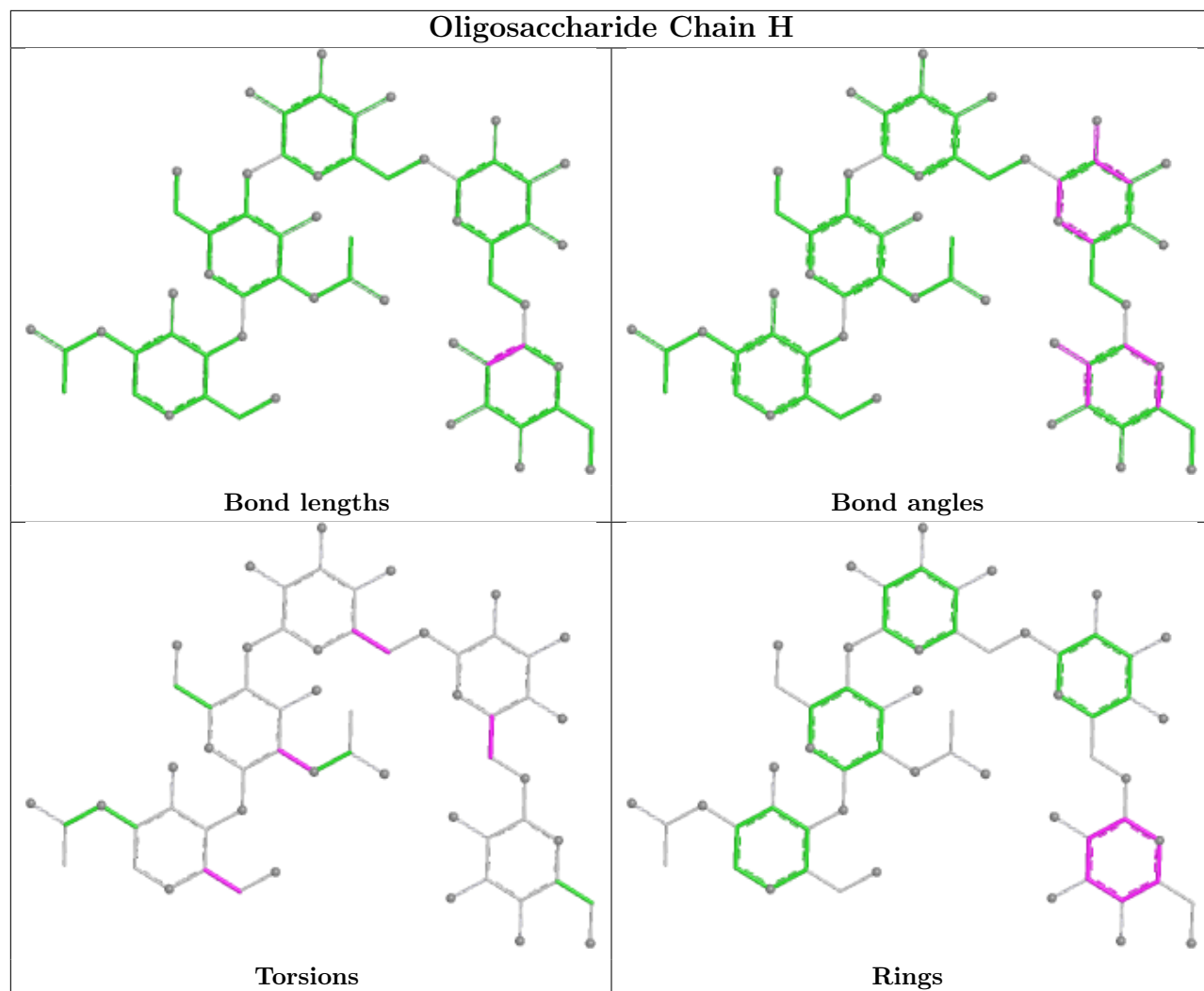
All (3) ring outliers are listed below:

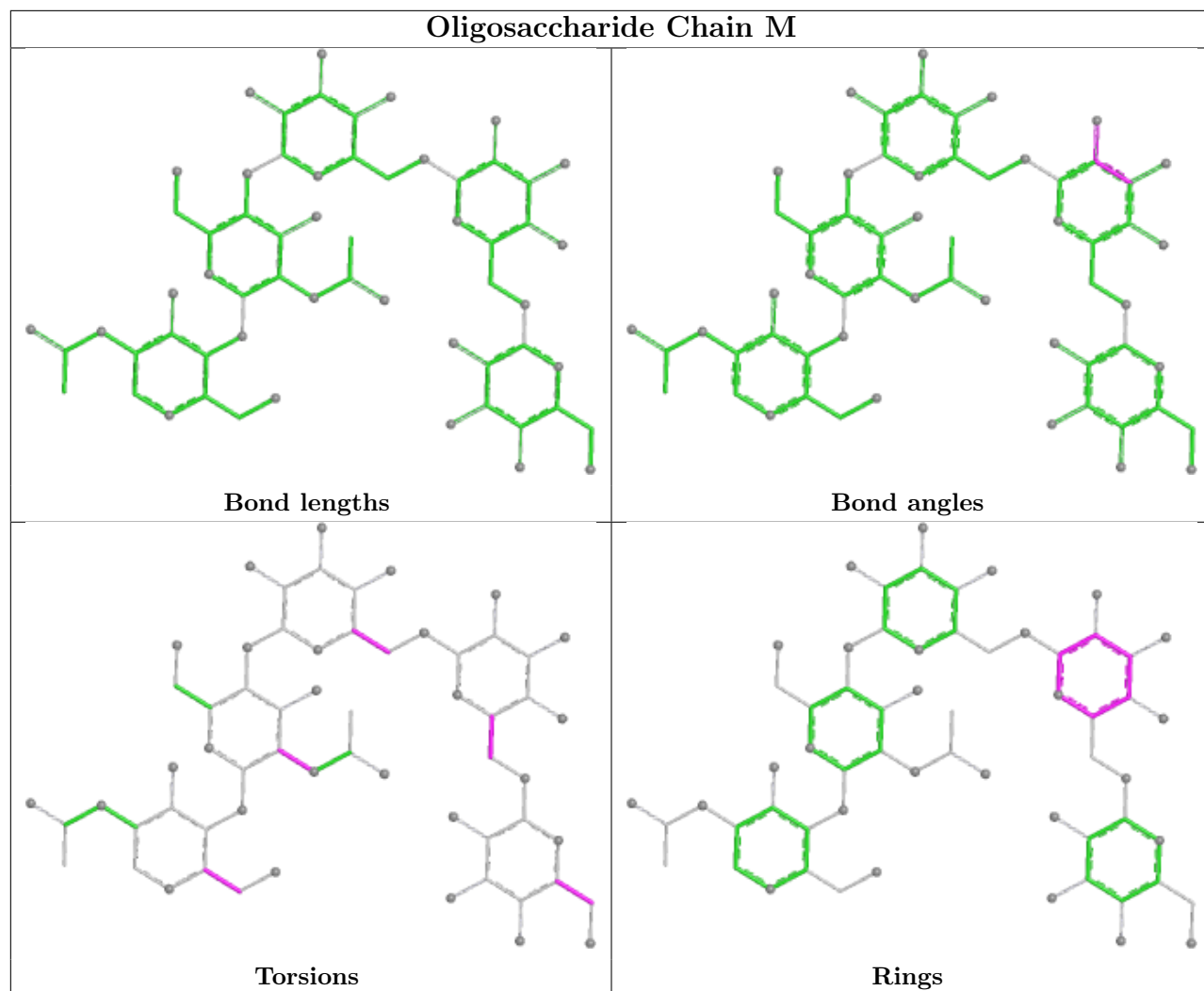
Mol	Chain	Res	Type	Atoms
6	H	5	MAN	C1-C2-C3-C4-C5-O5
6	M	4	MAN	C1-C2-C3-C4-C5-O5
7	I	4	MAN	C1-C2-C3-C4-C5-O5

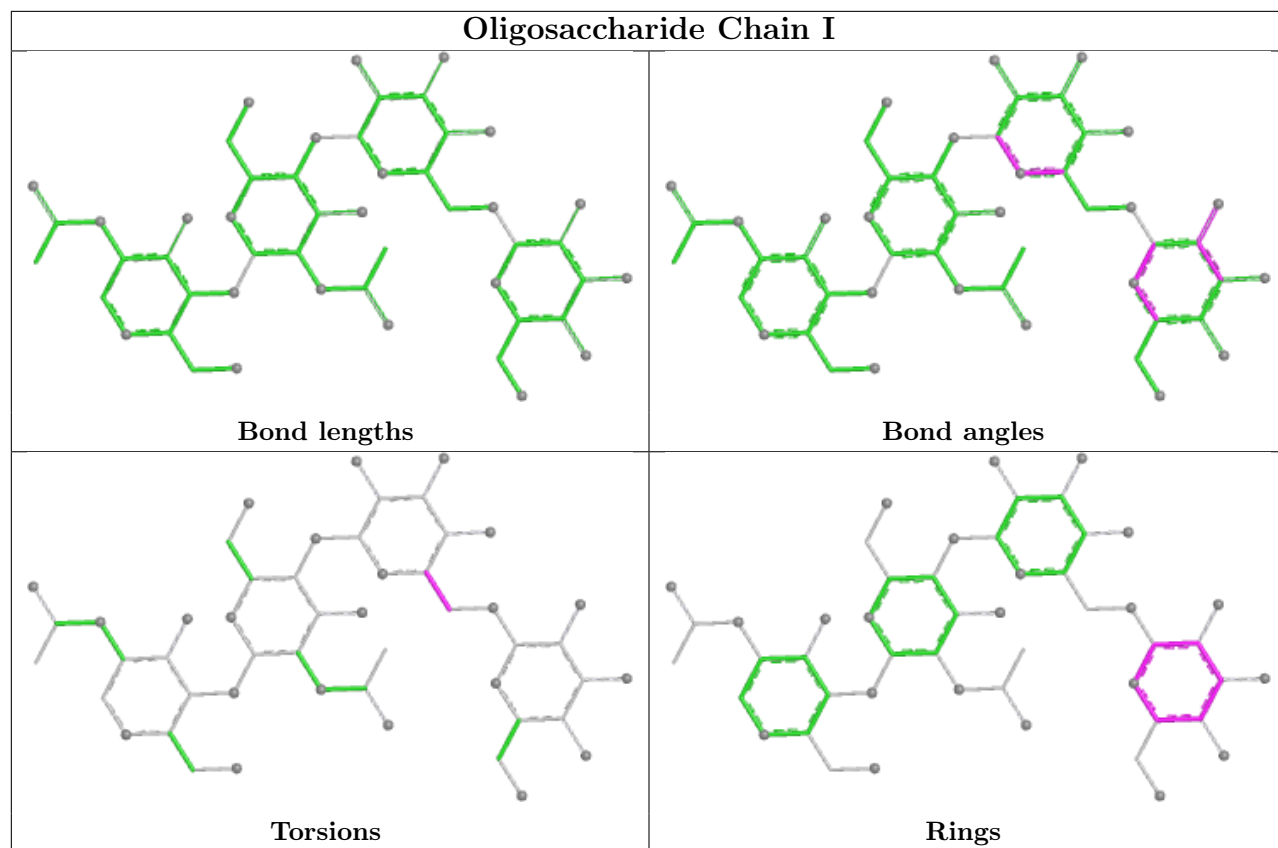
7 monomers are involved in 6 short contacts:

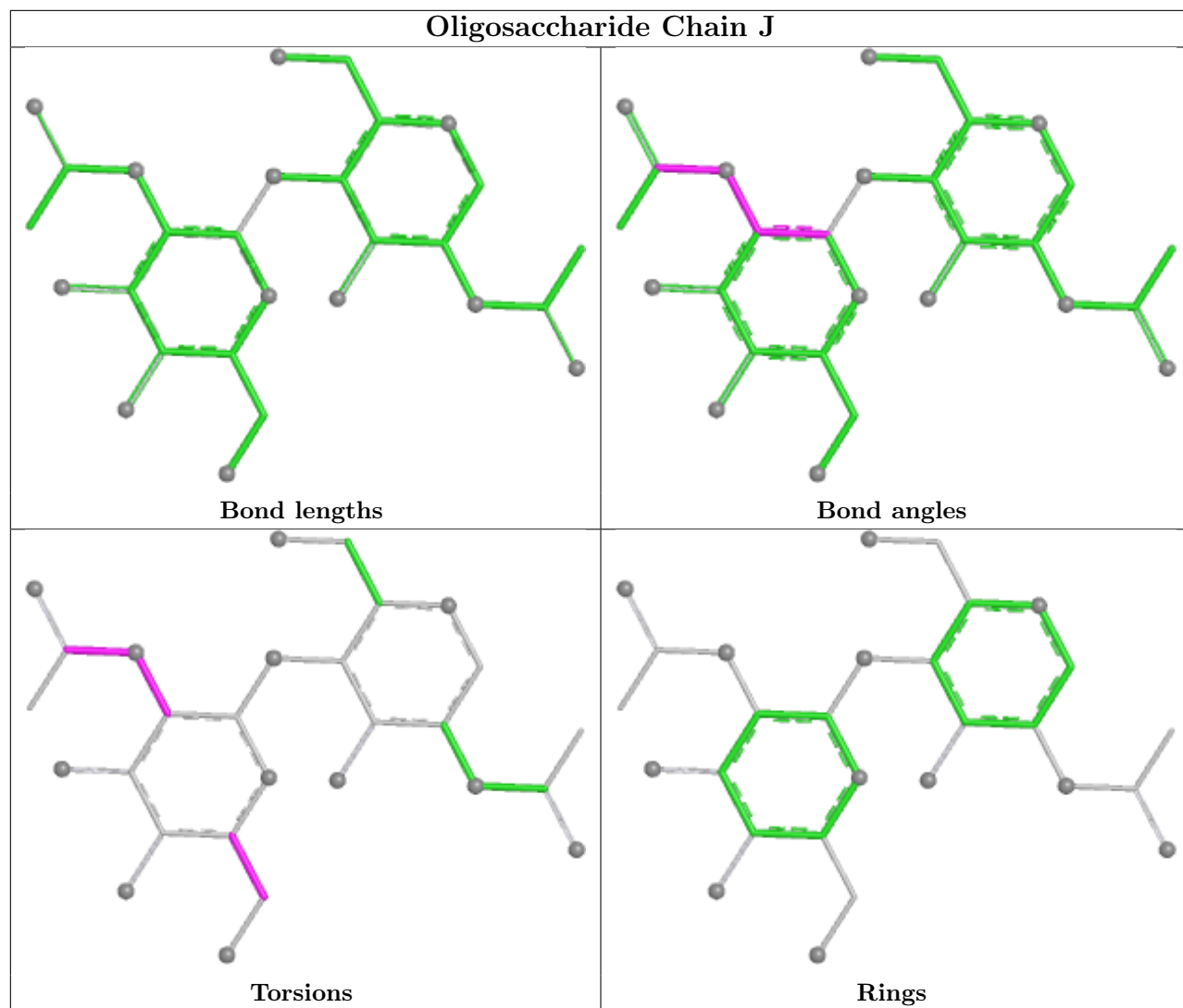
Mol	Chain	Res	Type	Clashes	Symm-Clashes
6	M	4	MAN	1	0
10	L	5	MAN	1	0
9	K	2	NAG	1	0
6	M	5	MAN	1	0
7	I	1	NAG	1	0
10	L	6	MAN	1	0
8	J	2	NAG	1	0

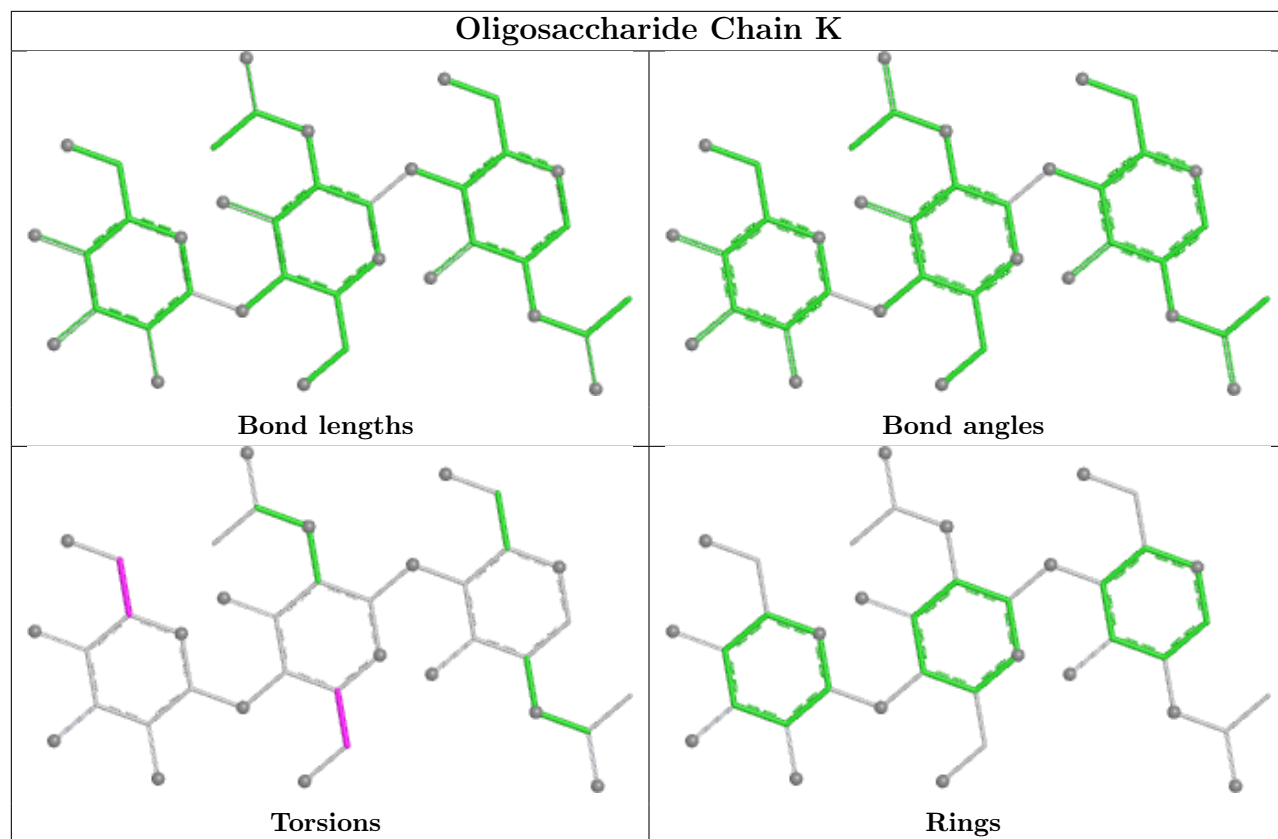
The following is a two-dimensional graphical depiction of Mogul quality analysis of bond lengths, bond angles, torsion angles, and ring geometry for oligosaccharide.

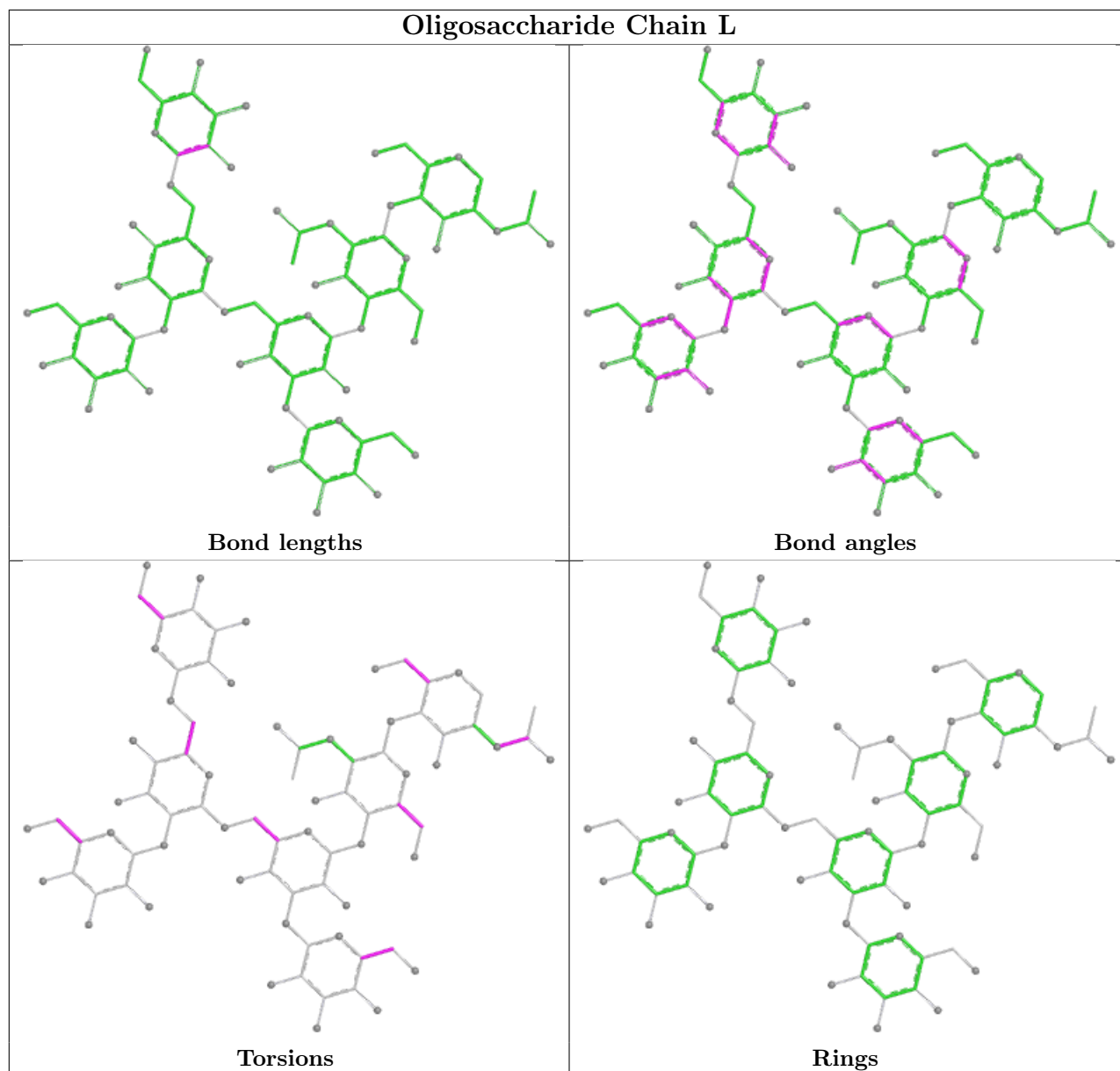












5.6 Ligand geometry [i](#)

4 ligands are modelled in this entry.

In the following table, the Counts columns list the number of bonds (or angles) for which Mogul statistics could be retrieved, the number of bonds (or angles) that are observed in the model and the number of bonds (or angles) that are defined in the Chemical Component Dictionary. The Link column lists molecule types, if any, to which the group is linked. The Z score for a bond length (or angle) is the number of standard deviations the observed value is removed from the expected value. A bond length (or angle) with $|Z| > 2$ is considered an outlier worth inspection. RMSZ is the root-mean-square of all Z scores of the bond lengths (or angles).

Mol	Type	Chain	Res	Link	Bond lengths			Bond angles		
					Counts	RMSZ	# Z > 2	Counts	RMSZ	# Z > 2
11	CCE	A	601	-	9,9,9	0.46	0	11,12,12	0.32	0
12	NAG	E	501	4	14,14,15	0.23	0	17,19,21	0.53	0
11	CCE	D	601	-	9,9,9	2.49	1 (11%)	11,12,12	2.68	4 (36%)
12	NAG	B	601	2	14,14,15	0.24	0	17,19,21	0.46	0

In the following table, the Chirals column lists the number of chiral outliers, the number of chiral centers analysed, the number of these observed in the model and the number defined in the Chemical Component Dictionary. Similar counts are reported in the Torsion and Rings columns. '-' means no outliers of that kind were identified.

Mol	Type	Chain	Res	Link	Chirals	Torsions	Rings
11	CCE	A	601	-	-	3/7/7/7	-
12	NAG	E	501	4	-	4/6/23/26	0/1/1/1
11	CCE	D	601	-	-	3/7/7/7	-
12	NAG	B	601	2	-	2/6/23/26	0/1/1/1

All (1) bond length outliers are listed below:

Mol	Chain	Res	Type	Atoms	Z	Observed(Å)	Ideal(Å)
11	D	601	CCE	O4-C5	7.05	1.45	1.35

All (4) bond angle outliers are listed below:

Mol	Chain	Res	Type	Atoms	Z	Observed(°)	Ideal(°)
11	D	601	CCE	O4-C5-N6	6.62	119.34	111.11
11	D	601	CCE	O4-C5-O7	-5.12	118.36	123.08
11	D	601	CCE	C3-C2-N1	-2.12	109.01	115.82
11	D	601	CCE	O7-C5-N6	-2.08	122.30	125.58

There are no chirality outliers.

All (12) torsion outliers are listed below:

Mol	Chain	Res	Type	Atoms
11	A	601	CCE	O7-C5-O4-C3
11	A	601	CCE	N6-C5-O4-C3
11	D	601	CCE	O7-C5-O4-C3
11	D	601	CCE	N6-C5-O4-C3
12	E	501	NAG	O5-C5-C6-O6
12	E	501	NAG	C4-C5-C6-O6
12	B	601	NAG	O5-C5-C6-O6

Continued on next page...

Continued from previous page...

Mol	Chain	Res	Type	Atoms
11	A	601	CCE	N1-C2-C3-O4
12	B	601	NAG	C4-C5-C6-O6
11	D	601	CCE	N1-C2-C3-O4
12	E	501	NAG	C1-C2-N2-C7
12	E	501	NAG	C3-C2-N2-C7

There are no ring outliers.

2 monomers are involved in 3 short contacts:

Mol	Chain	Res	Type	Clashes	Symm-Clashes
11	A	601	CCE	1	0
11	D	601	CCE	2	0

5.7 Other polymers [i](#)

There are no such residues in this entry.

5.8 Polymer linkage issues [i](#)

There are no chain breaks in this entry.

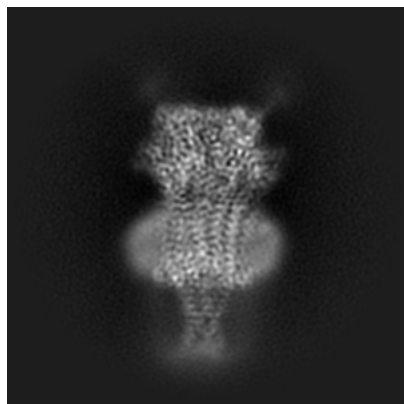
6 Map visualisation [i](#)

This section contains visualisations of the EMDB entry EMD-49899. These allow visual inspection of the internal detail of the map and identification of artifacts.

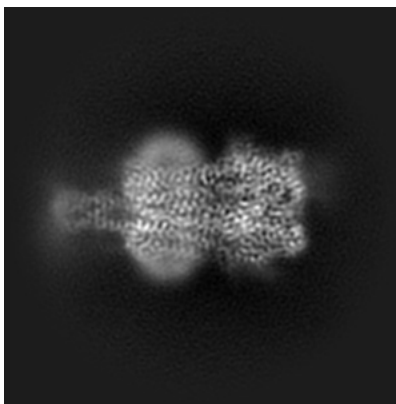
Images derived from a raw map, generated by summing the deposited half-maps, are presented below the corresponding image components of the primary map to allow further visual inspection and comparison with those of the primary map.

6.1 Orthogonal projections [i](#)

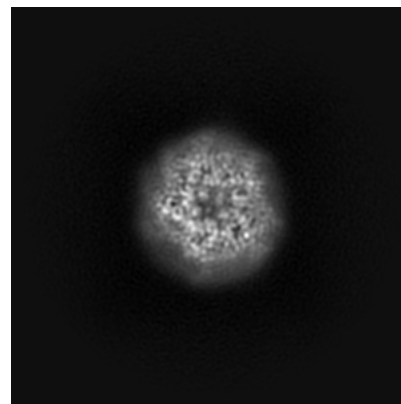
6.1.1 Primary map



X

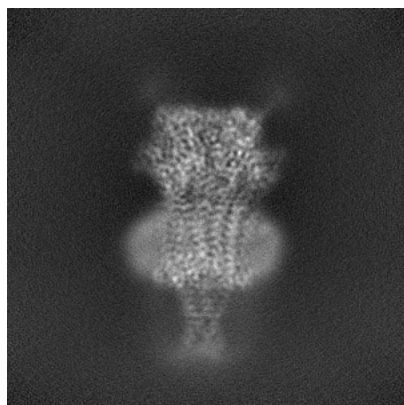


Y

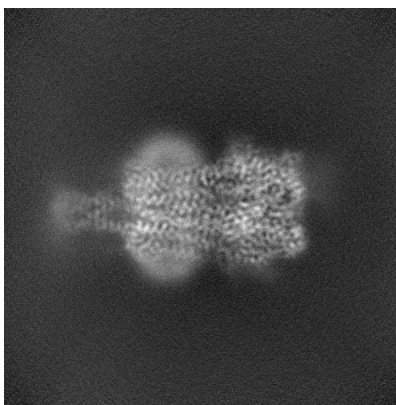


Z

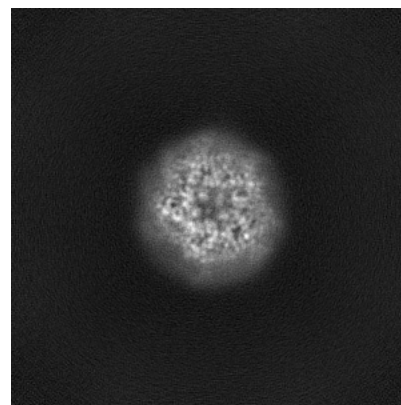
6.1.2 Raw map



X



Y

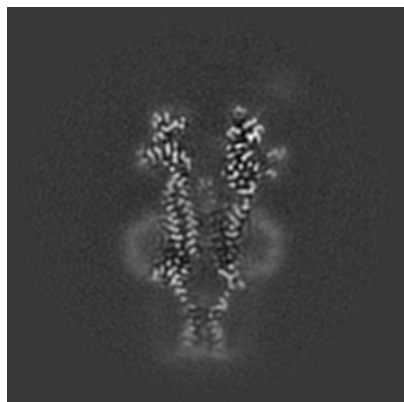


Z

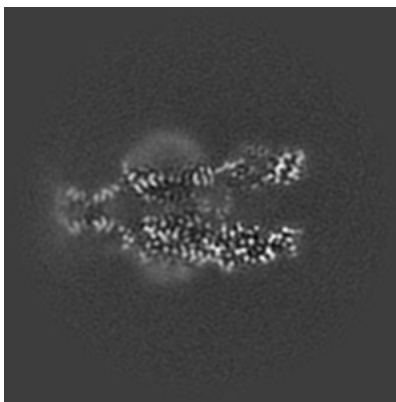
The images above show the map projected in three orthogonal directions.

6.2 Central slices [i](#)

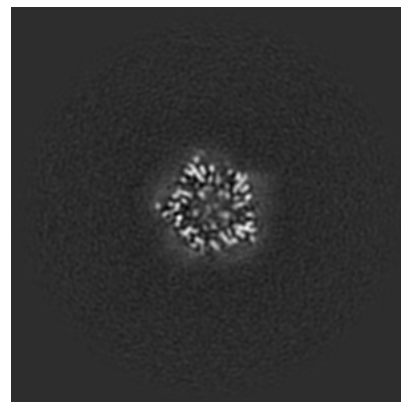
6.2.1 Primary map



X Index: 150

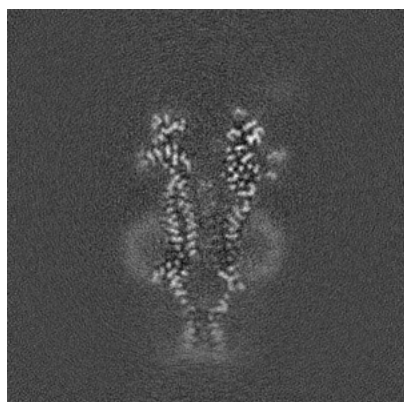


Y Index: 150

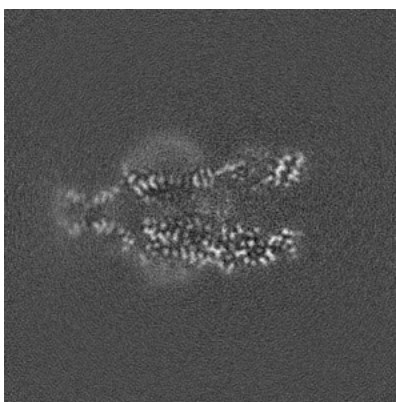


Z Index: 150

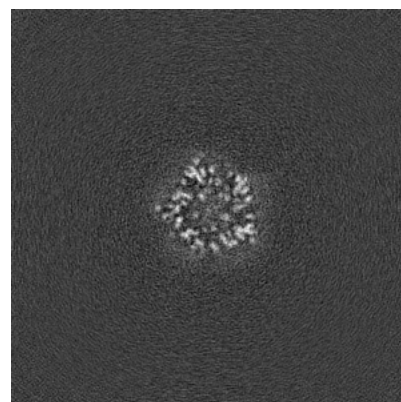
6.2.2 Raw map



X Index: 150



Y Index: 150

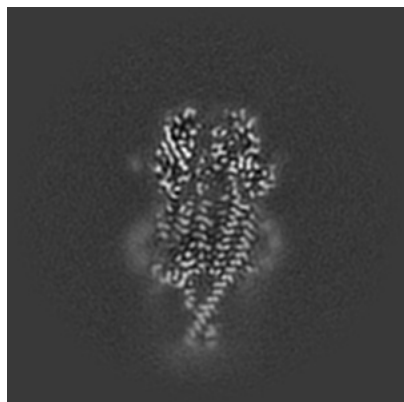


Z Index: 150

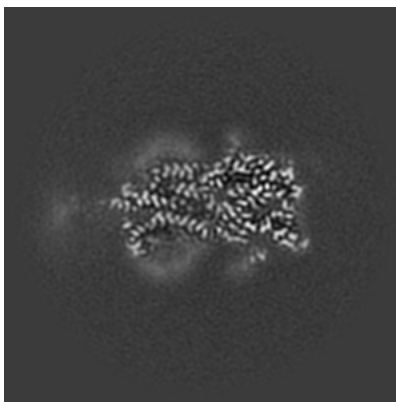
The images above show central slices of the map in three orthogonal directions.

6.3 Largest variance slices [i](#)

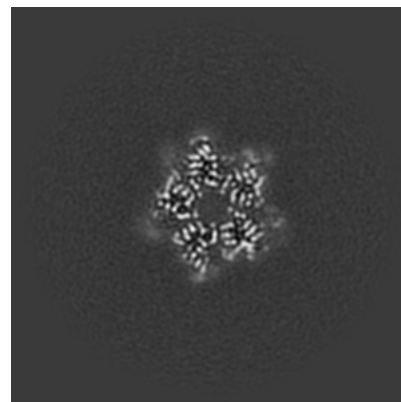
6.3.1 Primary map



X Index: 136

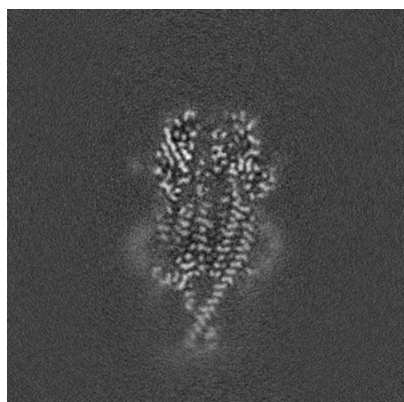


Y Index: 130

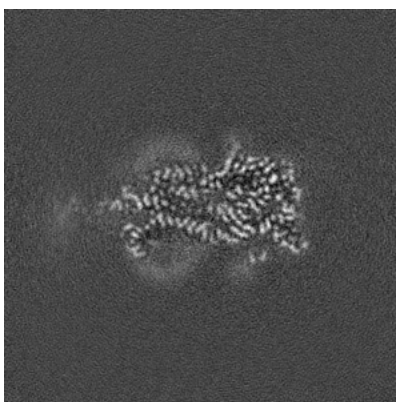


Z Index: 179

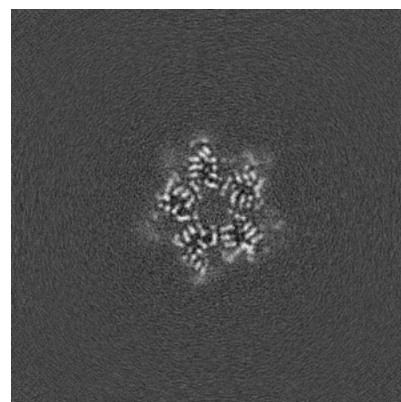
6.3.2 Raw map



X Index: 136



Y Index: 131

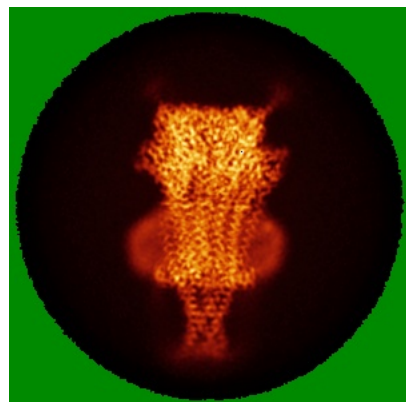


Z Index: 179

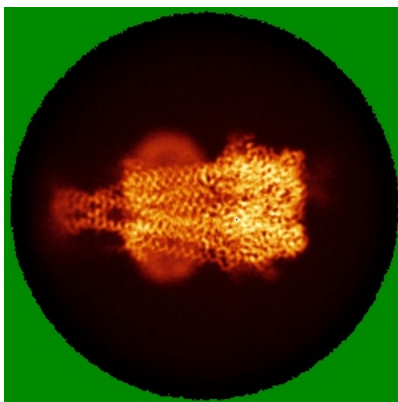
The images above show the largest variance slices of the map in three orthogonal directions.

6.4 Orthogonal standard-deviation projections (False-color) [i](#)

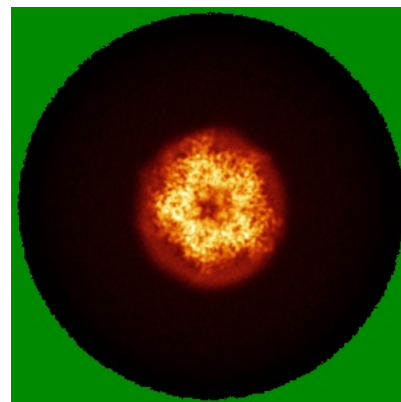
6.4.1 Primary map



X

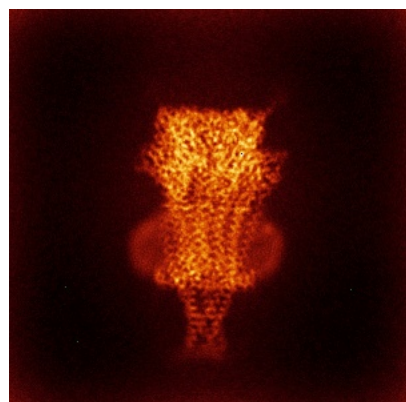


Y

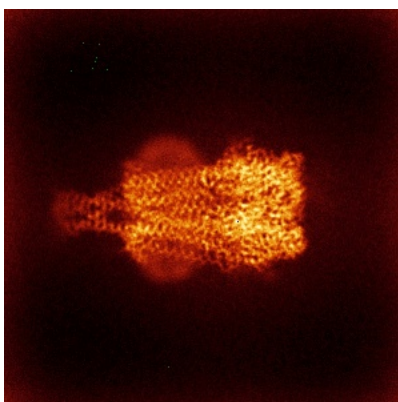


Z

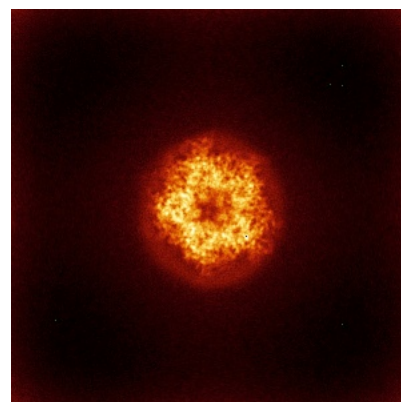
6.4.2 Raw map



X



Y

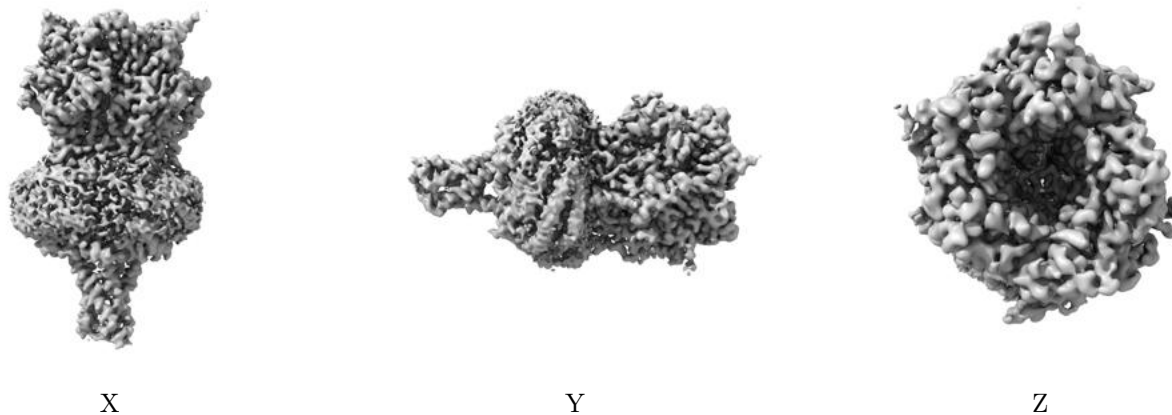


Z

The images above show the map standard deviation projections with false color in three orthogonal directions. Minimum values are shown in green, max in blue, and dark to light orange shades represent small to large values respectively.

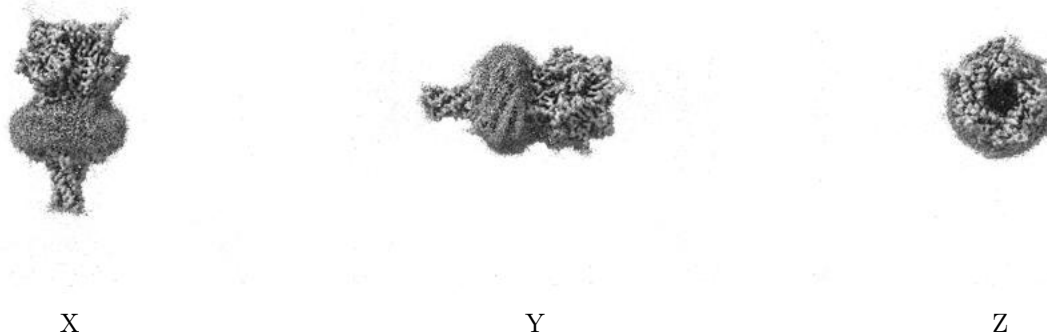
6.5 Orthogonal surface views [i](#)

6.5.1 Primary map



The images above show the 3D surface view of the map at the recommended contour level 0.02. These images, in conjunction with the slice images, may facilitate assessment of whether an appropriate contour level has been provided.

6.5.2 Raw map



These images show the 3D surface of the raw map. The raw map's contour level was selected so that its surface encloses the same volume as the primary map does at its recommended contour level.

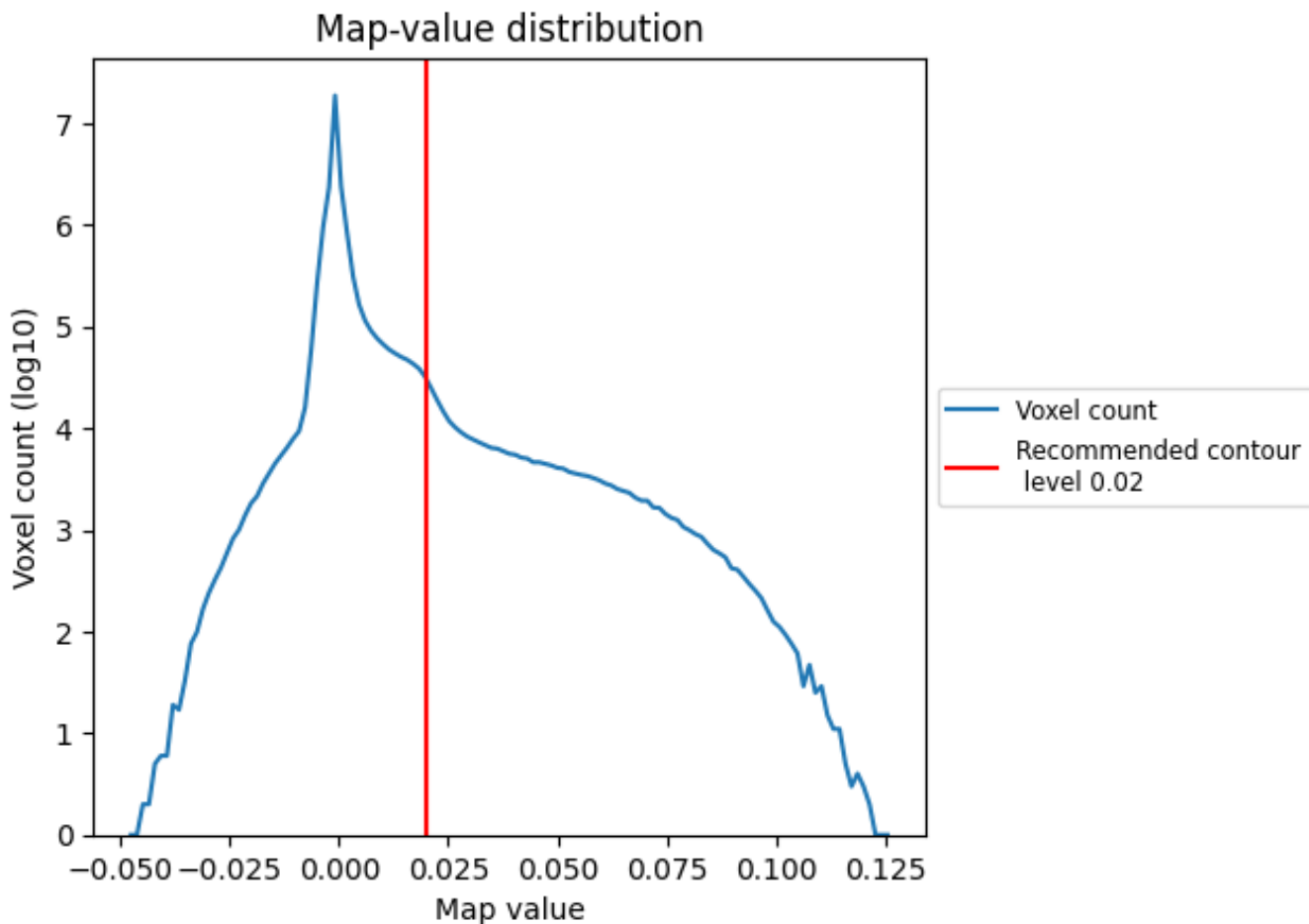
6.6 Mask visualisation [i](#)

This section was not generated. No masks/segmentation were deposited.

7 Map analysis [i](#)

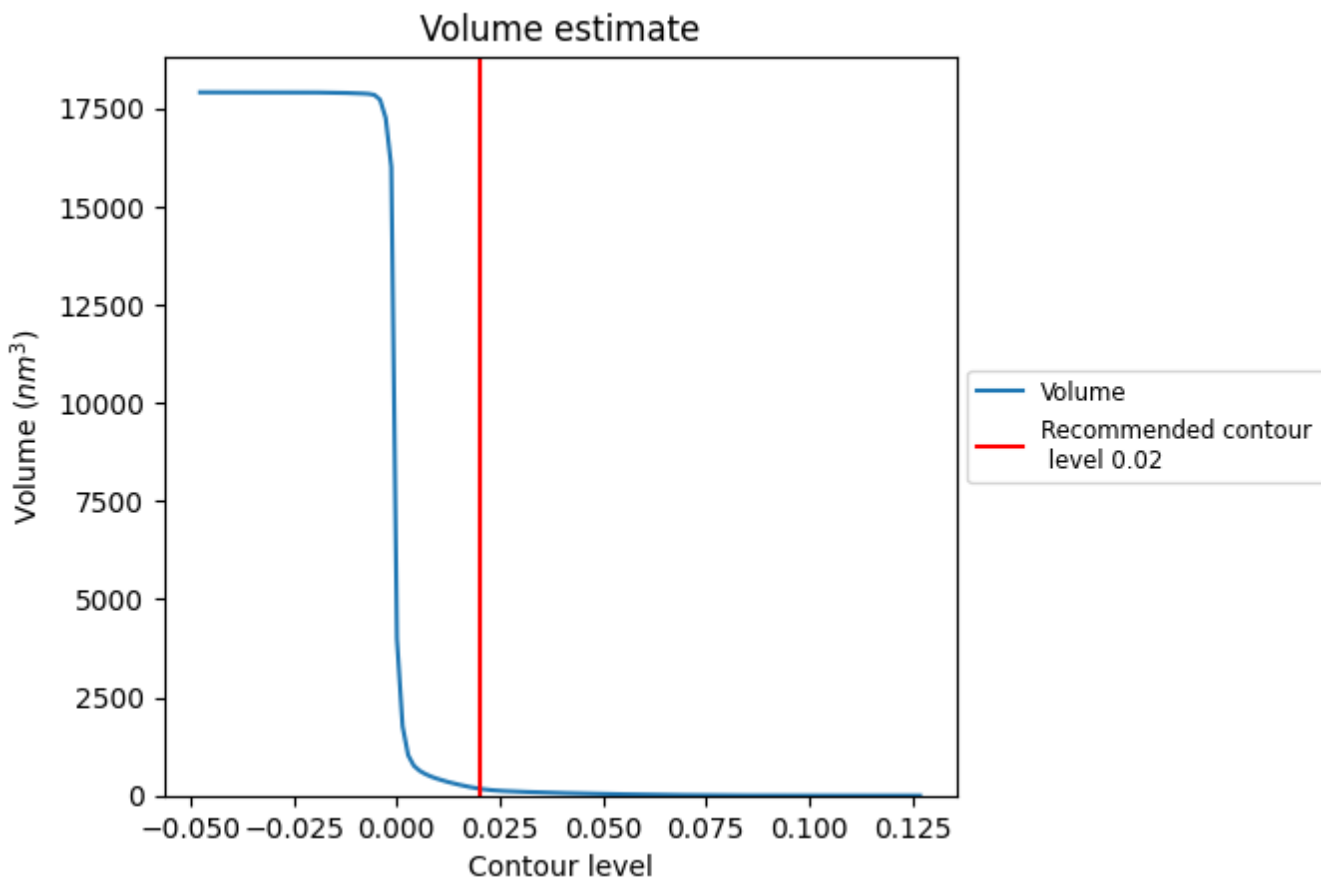
This section contains the results of statistical analysis of the map.

7.1 Map-value distribution [i](#)



The map-value distribution is plotted in 128 intervals along the x-axis. The y-axis is logarithmic. A spike in this graph at zero usually indicates that the volume has been masked.

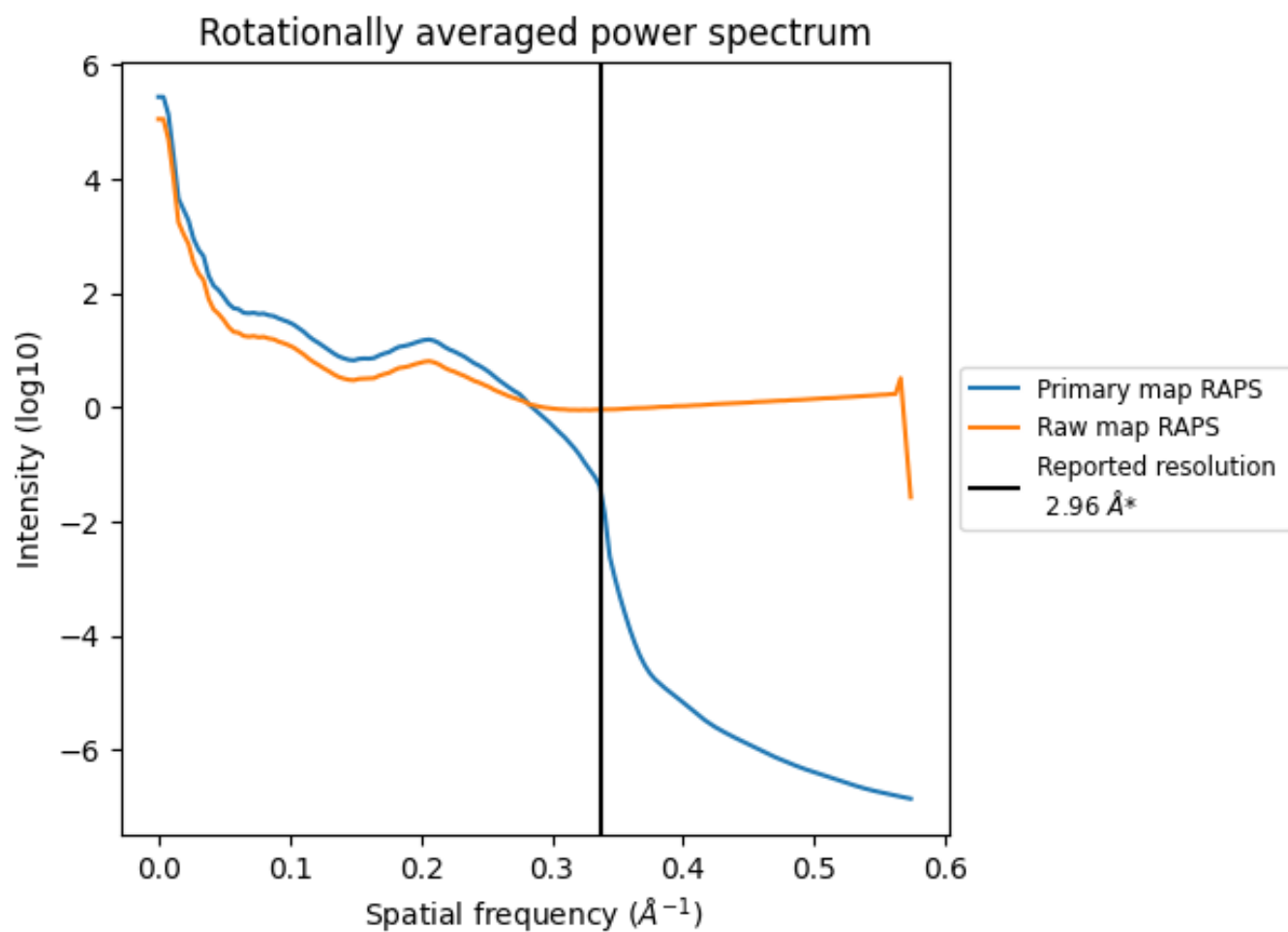
7.2 Volume estimate [i](#)



The volume at the recommended contour level is 177 nm³; this corresponds to an approximate mass of 160 kDa.

The volume estimate graph shows how the enclosed volume varies with the contour level. The recommended contour level is shown as a vertical line and the intersection between the line and the curve gives the volume of the enclosed surface at the given level.

7.3 Rotationally averaged power spectrum i

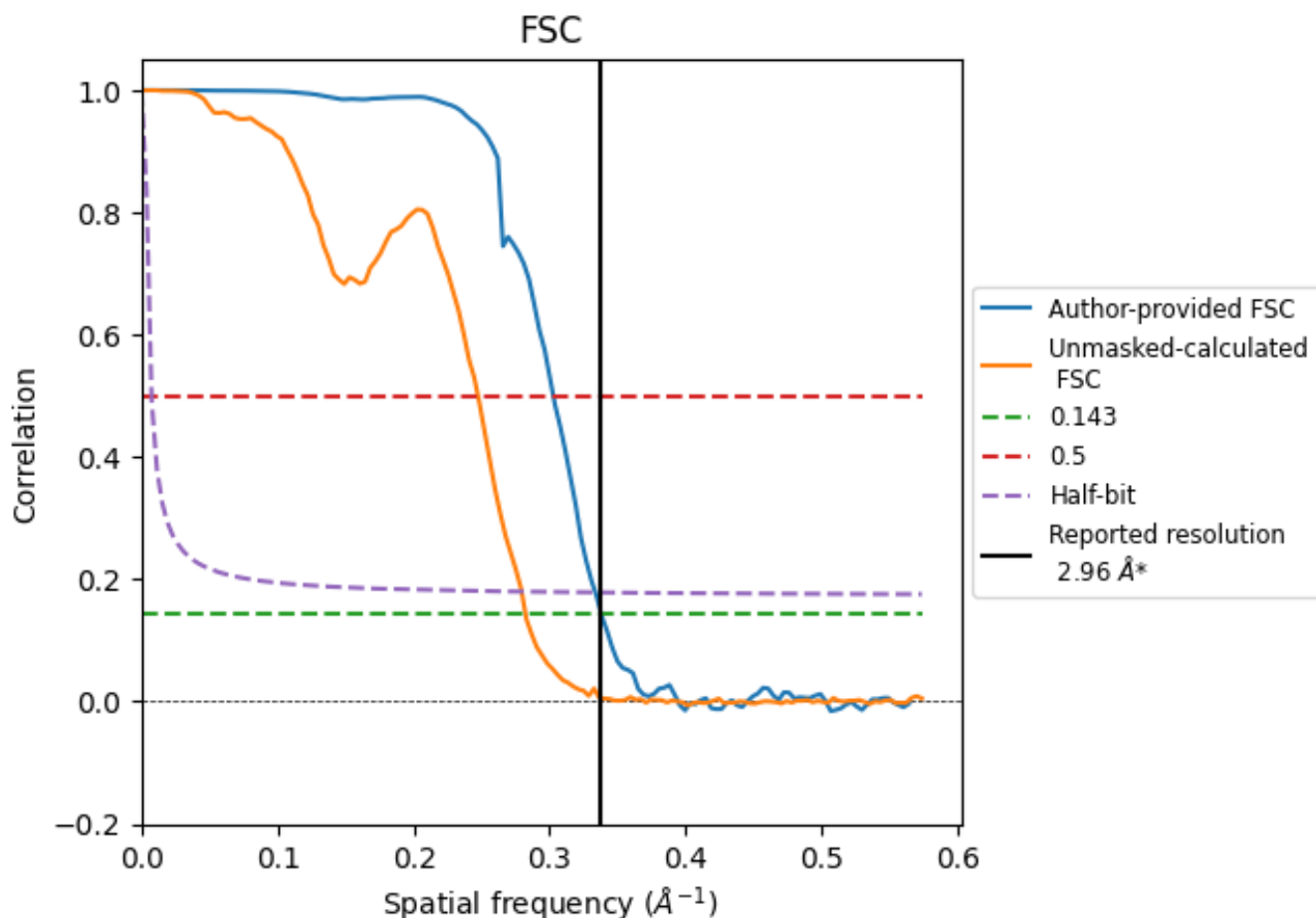


*Reported resolution corresponds to spatial frequency of 0.338 Å⁻¹

8 Fourier-Shell correlation [i](#)

Fourier-Shell Correlation (FSC) is the most commonly used method to estimate the resolution of single-particle and subtomogram-averaged maps. The shape of the curve depends on the imposed symmetry, mask and whether or not the two 3D reconstructions used were processed from a common reference. The reported resolution is shown as a black line. A curve is displayed for the half-bit criterion in addition to lines showing the 0.143 gold standard cut-off and 0.5 cut-off.

8.1 FSC [i](#)



*Reported resolution corresponds to spatial frequency of 0.338\AA^{-1}

8.2 Resolution estimates [i](#)

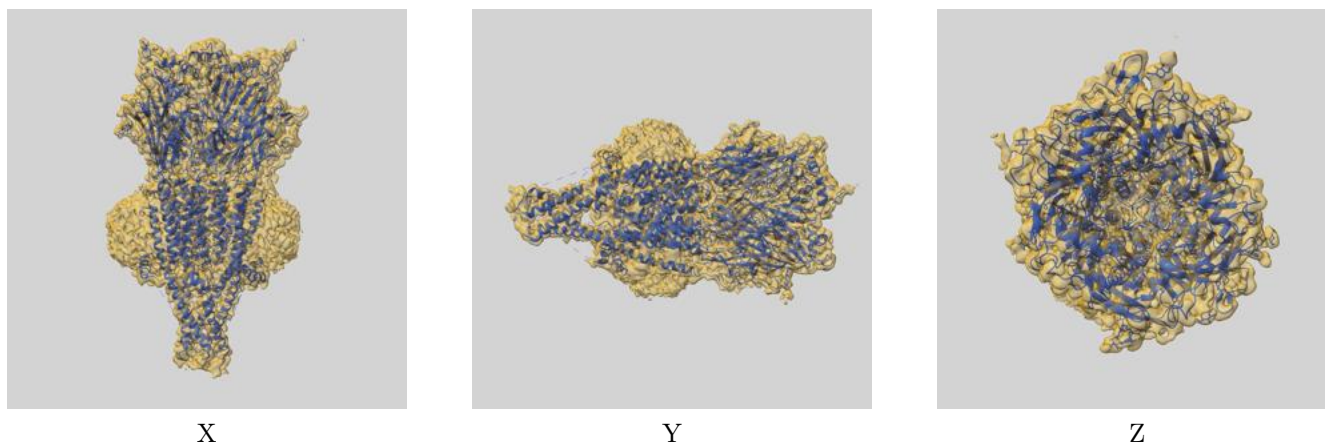
Resolution estimate (Å)	Estimation criterion (FSC cut-off)		
	0.143	0.5	Half-bit
Reported by author	2.96	-	-
Author-provided FSC curve	2.96	3.30	3.00
Unmasked-calculated*	3.54	4.04	3.58

*Resolution estimate based on FSC curve calculated by comparison of deposited half-maps. The value from deposited half-maps intersecting FSC 0.143 CUT-OFF 3.54 differs from the reported value 2.96 by more than 10 %

9 Map-model fit [i](#)

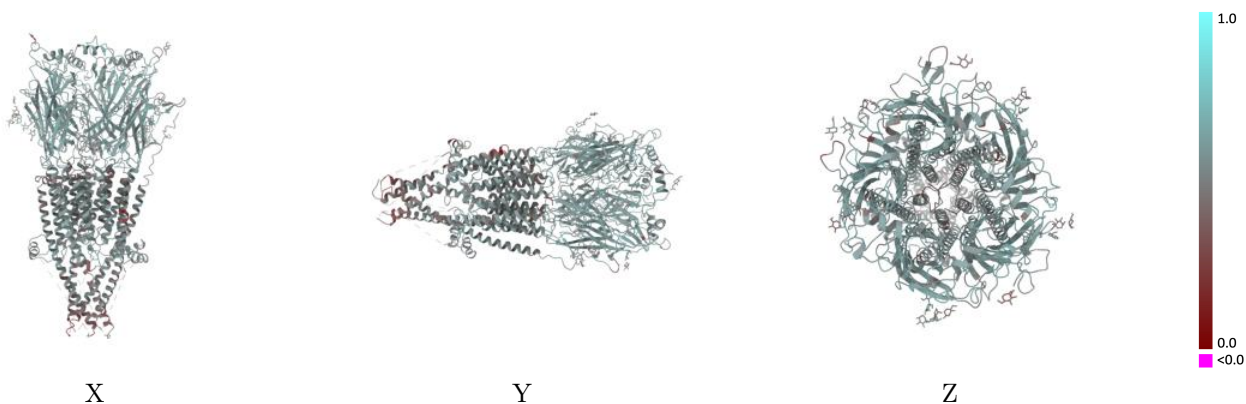
This section contains information regarding the fit between EMDB map EMD-49899 and PDB model 9NX2. Per-residue inclusion information can be found in section 3 on page 9.

9.1 Map-model overlay [i](#)



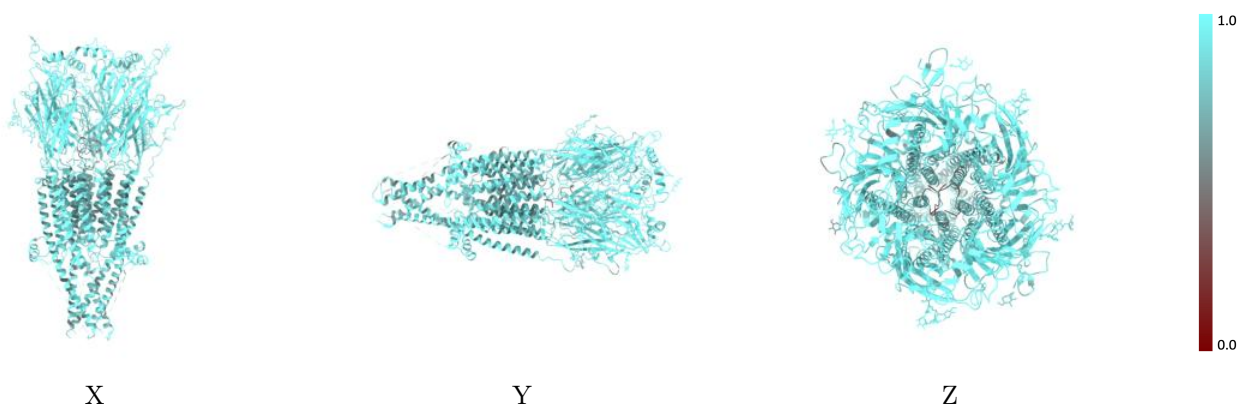
The images above show the 3D surface view of the map at the recommended contour level 0.02 at 50% transparency in yellow overlaid with a ribbon representation of the model coloured in blue. These images allow for the visual assessment of the quality of fit between the atomic model and the map.

9.2 Q-score mapped to coordinate model [\(i\)](#)



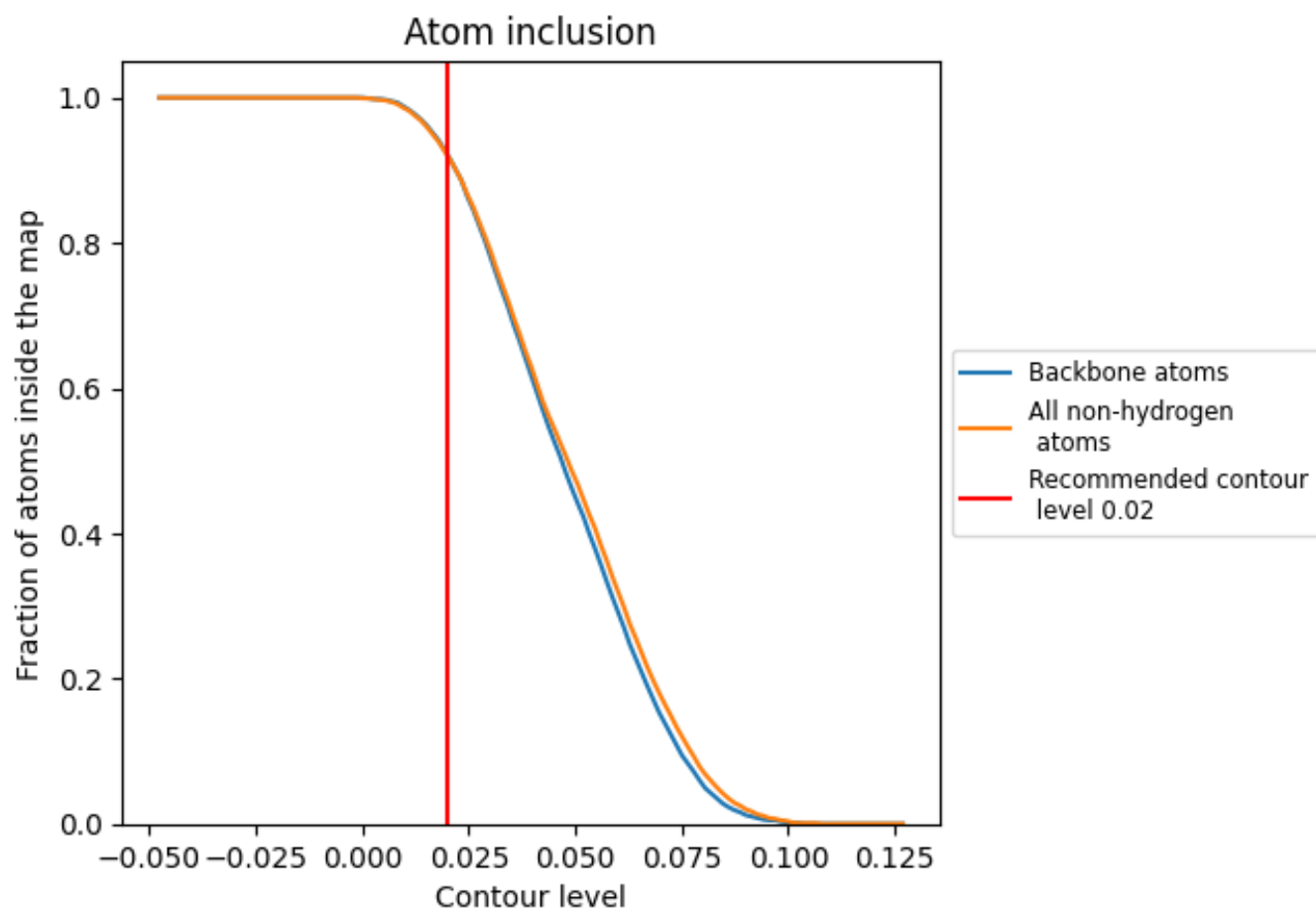
The images above show the model with each residue coloured according to its Q-score. This shows their resolvability in the map with higher Q-score values reflecting better resolvability. Please note: Q-score is calculating the resolvability of atoms, and thus high values are only expected at resolutions at which atoms can be resolved. Low Q-score values may therefore be expected for many entries.

9.3 Atom inclusion mapped to coordinate model [\(i\)](#)



The images above show the model with each residue coloured according to its atom inclusion. This shows to what extent they are inside the map at the recommended contour level (0.02).



























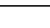
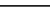
9.4 Atom inclusion [i](#)



At the recommended contour level, 92% of all backbone atoms, 92% of all non-hydrogen atoms, are inside the map.

9.5 Map-model fit summary

The table lists the average atom inclusion at the recommended contour level (0.02) and Q-score for the entire model and for each chain.

Chain	Atom inclusion	Q-score
All	 0.9200	 0.5390
A	 0.9180	 0.5330
B	 0.9290	 0.5410
C	 0.9330	 0.5450
D	 0.9240	 0.5400
E	 0.9220	 0.5440
F	 0.5910	 0.4930
G	 0.5480	 0.3840
H	 1.0000	 0.5070
I	 0.9000	 0.5040
J	 1.0000	 0.4910
K	 0.8460	 0.4250
L	 0.9760	 0.5170
M	 0.9670	 0.4870

