



## wwPDB EM Validation Summary Report ⓘ

Aug 11, 2025 – 03:39 PM EDT

PDB ID : 9NBB / pdb\_00009nbb  
EMDB ID : EMD-49225  
Title : Augmin/V junction(closed)  
Authors : Ashaduzzaman, M.; Al-Bassam, J.; Taheri, A.  
Deposited on : 2025-02-13  
Resolution : 5.90 Å(reported)

This is a wwPDB EM Validation Summary Report for a publicly released PDB entry.

We welcome your comments at [validation@mail.wwpdb.org](mailto:validation@mail.wwpdb.org)

A user guide is available at

<https://www.wwpdb.org/validation/2017/EMValidationReportHelp>

with specific help available everywhere you see the ⓘ symbol.

The types of validation reports are described at

<http://www.wwpdb.org/validation/2017/FAQs#types>.

---

The following versions of software and data (see [references ⓘ](#)) were used in the production of this report:

EMDB validation analysis : 0.0.1.dev126  
MolProbity : 4-5-2 with Phenix2.0rc1  
Percentile statistics : 20231227.v01 (using entries in the PDB archive December 27th 2023)  
MapQ : 1.9.13  
Ideal geometry (proteins) : Engh & Huber (2001)  
Ideal geometry (DNA, RNA) : Parkinson et al. (1996)  
Validation Pipeline (wwPDB-VP) : 2.45.1

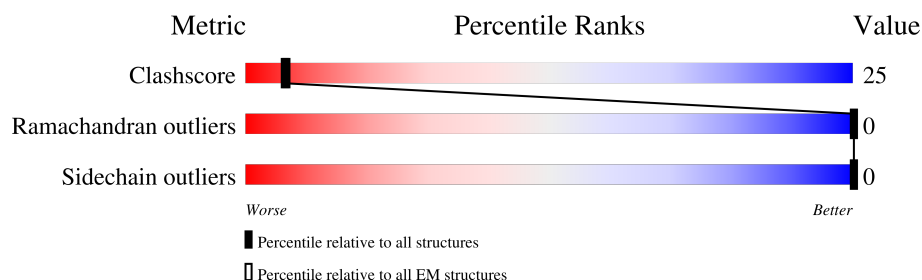
# 1 Overall quality at a glance

The following experimental techniques were used to determine the structure:

*ELECTRON MICROSCOPY*

The reported resolution of this entry is 5.90 Å.

Percentile scores (ranging between 0-100) for global validation metrics of the entry are shown in the following graphic. The table shows the number of entries on which the scores are based.



Metric	Whole archive (#Entries)	EM structures (#Entries)
Clashscore	210492	15764
Ramachandran outliers	207382	16835
Sidechain outliers	206894	16415

The table below summarises the geometric issues observed across the polymeric chains and their fit to the map. The red, orange, yellow and green segments of the bar indicate the fraction of residues that contain outliers for  $\geq 3$ , 2, 1 and 0 types of geometric quality criteria respectively. A grey segment represents the fraction of residues that are not modelled. The numeric value for each fraction is indicated below the corresponding segment, with a dot representing fractions  $\leq 5\%$ . The upper red bar (where present) indicates the fraction of residues that have poor fit to the EM map (all-atom inclusion  $< 40\%$ ). The numeric value is given above the bar.

Mol	Chain	Length	Quality of chain
1	B	296	<div> <div>13%</div> <div>24%</div> <div>21%</div> <div>54%</div> </div>
2	C	617	<div> <div>13%</div> <div>26%</div> <div>16%</div> <div>58%</div> </div>
3	E	747	<div> <div>19%</div> <div>29%</div> <div>21%</div> <div>50%</div> </div>
4	F	387	<div> <div>26%</div> <div>39%</div> <div>46%</div> <div>15%</div> </div>
5	G	329	<div> <div>30%</div> <div>43%</div> <div>38%</div> <div>19%</div> </div>
6	H	281	<div> <div>12%</div> <div>27%</div> <div>23%</div> <div>50%</div> </div>

## 2 Entry composition

There are 6 unique types of molecules in this entry. The entry contains 11937 atoms, of which 0 are hydrogens and 0 are deuteriums.

In the tables below, the AltConf column contains the number of residues with at least one atom in alternate conformation and the Trace column contains the number of residues modelled with at most 2 atoms.

- Molecule 1 is a protein called AUGMIN subunit 2.

Mol	Chain	Residues	Atoms					AltConf	Trace
1	B	135	Total	C	N	O	S	0	0
			1058	660	187	208	3		

- Molecule 2 is a protein called AUGMIN subunit 3.

Mol	Chain	Residues	Atoms					AltConf	Trace
2	C	259	Total	C	N	O	S	0	0
			2100	1326	366	400	8		

- Molecule 3 is a protein called AUGMIN subunit 5.

Mol	Chain	Residues	Atoms					AltConf	Trace
3	E	371	Total	C	N	O	S	0	0
			2934	1814	524	585	11		

There are 49 discrepancies between the modelled and reference sequences:

Chain	Residue	Modelled	Actual	Comment	Reference
E	?	-	LEU	deletion	UNP Q9FMB4
E	?	-	SER	deletion	UNP Q9FMB4
E	?	-	TYR	deletion	UNP Q9FMB4
E	?	-	GLN	deletion	UNP Q9FMB4
E	?	-	PHE	deletion	UNP Q9FMB4
E	?	-	ASN	deletion	UNP Q9FMB4
E	?	-	GLY	deletion	UNP Q9FMB4
E	?	-	ASN	deletion	UNP Q9FMB4
E	?	-	GLY	deletion	UNP Q9FMB4
E	?	-	LYS	deletion	UNP Q9FMB4
E	?	-	ILE	deletion	UNP Q9FMB4
E	?	-	GLY	deletion	UNP Q9FMB4
E	?	-	THR	deletion	UNP Q9FMB4
E	?	-	ASP	deletion	UNP Q9FMB4
E	?	-	THR	deletion	UNP Q9FMB4

*Continued on next page...*

*Continued from previous page...*

Chain	Residue	Modelled	Actual	Comment	Reference
E	?	-	HIS	deletion	UNP Q9FMB4
E	?	-	PHE	deletion	UNP Q9FMB4
E	?	-	GLN	deletion	UNP Q9FMB4
E	?	-	GLY	deletion	UNP Q9FMB4
E	?	-	LEU	deletion	UNP Q9FMB4
E	?	-	GLU	deletion	UNP Q9FMB4
E	?	-	SER	deletion	UNP Q9FMB4
E	?	-	MET	deletion	UNP Q9FMB4
E	?	-	GLY	deletion	UNP Q9FMB4
E	?	-	ALA	deletion	UNP Q9FMB4
E	?	-	ASN	deletion	UNP Q9FMB4
E	?	-	GLY	deletion	UNP Q9FMB4
E	?	-	SER	deletion	UNP Q9FMB4
E	?	-	THR	deletion	UNP Q9FMB4
E	?	-	GLY	deletion	UNP Q9FMB4
E	?	-	PRO	deletion	UNP Q9FMB4
E	?	-	GLU	deletion	UNP Q9FMB4
E	?	-	ALA	deletion	UNP Q9FMB4
E	?	-	VAL	deletion	UNP Q9FMB4
E	?	-	ALA	deletion	UNP Q9FMB4
E	?	-	TYR	deletion	UNP Q9FMB4
E	?	-	ALA	deletion	UNP Q9FMB4
E	?	-	GLU	deletion	UNP Q9FMB4
E	?	-	LYS	deletion	UNP Q9FMB4
E	?	-	ASN	deletion	UNP Q9FMB4
E	?	-	ALA	deletion	UNP Q9FMB4
E	?	-	ALA	deletion	UNP Q9FMB4
E	?	-	LEU	deletion	UNP Q9FMB4
E	?	-	LEU	deletion	UNP Q9FMB4
E	?	-	THR	deletion	UNP Q9FMB4
E	?	-	ALA	deletion	UNP Q9FMB4
E	?	-	ARG	deletion	UNP Q9FMB4
E	?	-	ALA	deletion	UNP Q9FMB4
E	?	-	GLY	deletion	UNP Q9FMB4

- Molecule 4 is a protein called AUGMIN subunit 6.

Mol	Chain	Residues	Atoms					AltConf	Trace
4	F	328	Total	C	N	O	S	0	0
			2575	1601	470	493	11		

- Molecule 5 is a protein called AUGMIN subunit 7.

Mol	Chain	Residues	Atoms					AltConf	Trace
5	G	267	Total	C	N	O	S	0	0
			2156	1373	359	415	9		

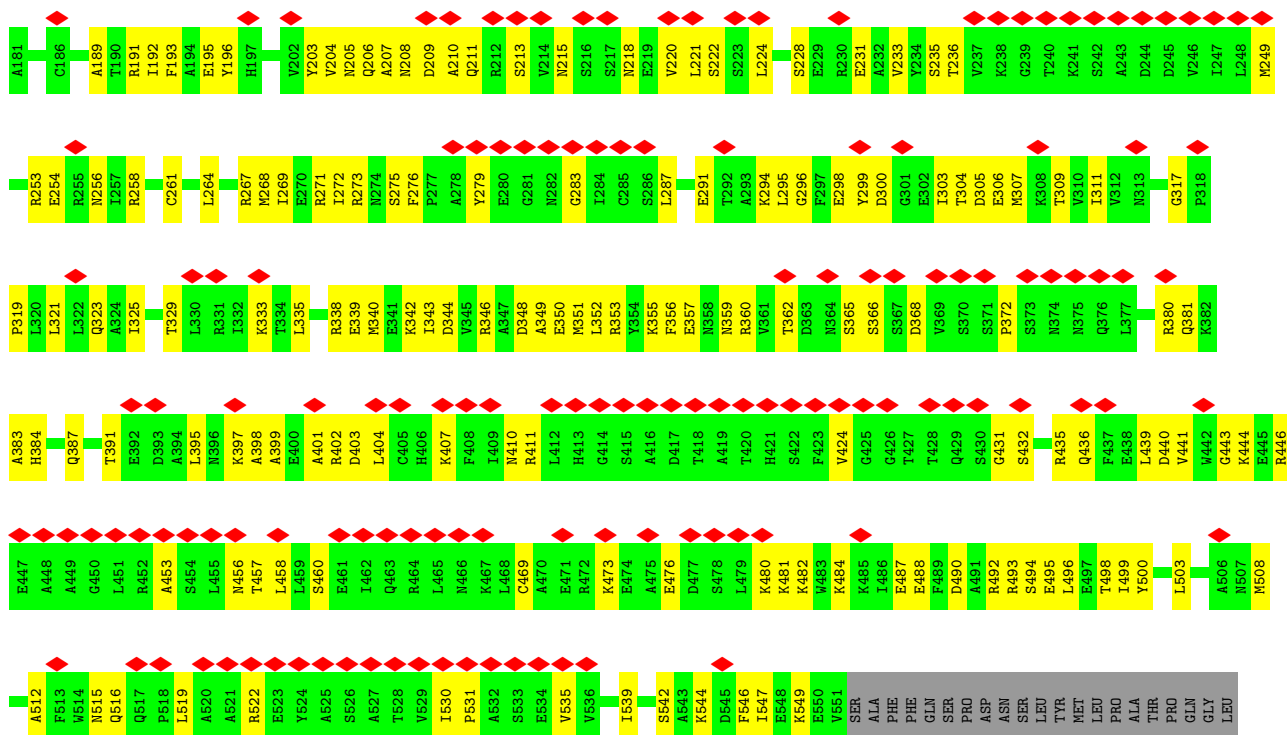
- Molecule 6 is a protein called AUGMIN subunit 8.

Mol	Chain	Residues	Atoms					AltConf	Trace
6	H	140	Total	C	N	O	S	0	0
			1114	696	199	214	5		

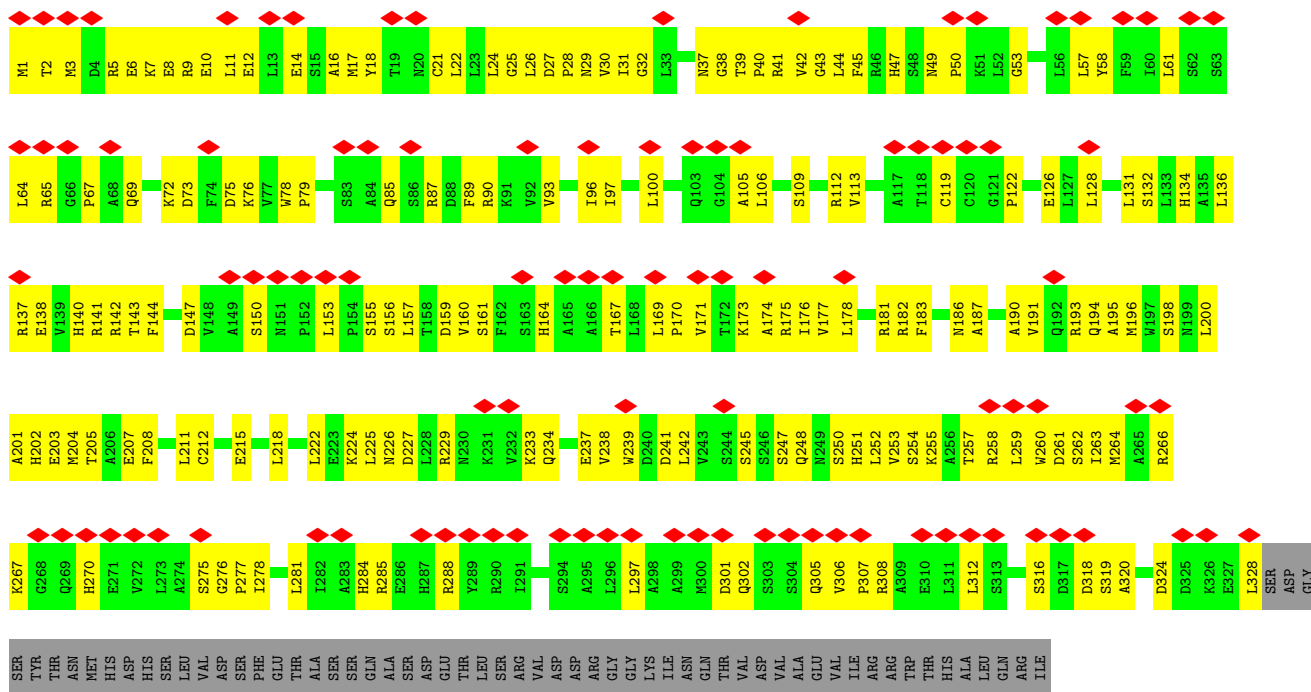
There are 19 discrepancies between the modelled and reference sequences:

Chain	Residue	Modelled	Actual	Comment	Reference
H	364	MET	-	initiating methionine	UNP Q9SUH5
H	365	LYS	-	expression tag	UNP Q9SUH5
H	366	SER	-	expression tag	UNP Q9SUH5
H	367	SER	-	expression tag	UNP Q9SUH5
H	368	GLU	-	expression tag	UNP Q9SUH5
H	369	ASP	-	expression tag	UNP Q9SUH5
H	370	GLN	-	expression tag	UNP Q9SUH5
H	371	VAL	-	expression tag	UNP Q9SUH5
H	372	ASP	-	expression tag	UNP Q9SUH5
H	373	PRO	-	expression tag	UNP Q9SUH5
H	374	ARG	-	expression tag	UNP Q9SUH5
H	375	LEU	-	expression tag	UNP Q9SUH5
H	376	ILE	-	expression tag	UNP Q9SUH5
H	377	ASP	-	expression tag	UNP Q9SUH5
H	378	GLY	-	expression tag	UNP Q9SUH5
H	379	LYS	-	expression tag	UNP Q9SUH5
H	380	GLY	-	expression tag	UNP Q9SUH5
H	381	SER	-	expression tag	UNP Q9SUH5
H	382	GLY	-	expression tag	UNP Q9SUH5

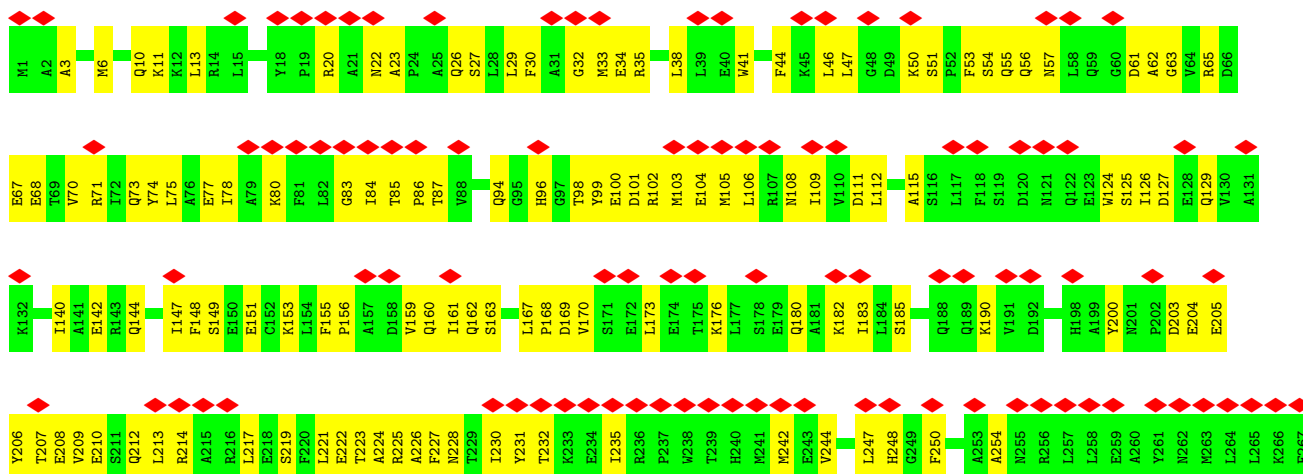
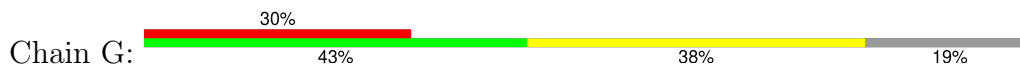




- Molecule 4: AUGMIN subunit 6



- Molecule 5: AUGMIN subunit 7

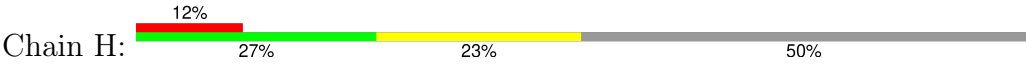




LEU  
GLY  
ASN  
LEU  
LYS  
ASN  
LEU  
ARG  
ASP  
SER  
HIS  
ALA  
ALA  
LEU  
SER  
ILE  
GLY  
SER  
SER  
GLY  
THR  
VAL  
ALA  
GLY  
GLU  
PRO  
SER  
SER  
VAL  
THR  
ARG  
ILE  
VAL  
SER  
ASP  
CYS  
GLU  
ALA  
ALA  
LEU  
THR  
THR  
VAL  
LEU  
ASN  
ARG  
ASP  
LEU  
GLY  
ILE  
LEU  
SER  
ALA  
SER  
ILE  
ALA  
ARG  
GLU  
GLN  
GLY  
GLU

ARG  
LEU

● Molecule 6: AUGMIN subunit 8



MET  
LYS  
SER  
SER  
TYR  
GLU  
ASP  
GLN  
VAL  
ASP  
PRO  
ARG  
LEU  
ILE  
ASP  
GLY  
LYS  
GLY  
SER  
SER  
GLY  
ARG  
PRO  
THR  
SER  
PRO  
PRO  
SER  
ARG  
GLY  
ILE  
SER  
PRO  
SER  
ARG  
ILE  
ARG  
THR  
THR  
THR  
THR  
THR  
GLN  
SER  
SER  
THR  
THR  
THR  
SER  
VAL  
LEU  
SER  
PHE  
ILE  
THR  
ASP  
VAL  
LYS  
LYS  
GLY  
LYS

LYS  
ALA  
SER  
TYR  
ILE  
E429  
D430  
V431  
H432  
D433  
I434  
M504  
V505  
S506  
I437  
H438  
H439  
R440  
Y441  
I442  
Q443  
W444  
R445  
F446  
A447  
I448  
A449  
R450  
A451  
E452  
S453  
Y456  
I457  
Q458  
R459  
L460  
T461  
S462  
L466  
V469  
I473  
S474  
E475  
L476  
Q477  
D478  
H479  
V480  
T481  
R482  
Q483  
G486  
L490  
R491  
I492

E493  
I494  
K495  
L496  
N497  
S498  
L499  
L500  
M501  
D502  
Q503  
M504  
V505  
S506  
L507  
E508  
D509  
W510  
A511  
T512  
L513  
E514  
R515  
D516  
H517  
V518  
S519  
S520  
L521  
W522  
G523  
A524  
I525  
L528  
E529  
A530  
N531  
T532  
T538  
G539  
K542  
A543  
D544  
T545  
E546  
S547  
A550  
A551  
W552  
L556  
R559  
Q560  
A561  
W562

G563  
S564  
S565  
I566  
W567  
S568  
LEU  
LEU  
SER  
LYS  
VAL  
GLU  
GLU  
MET  
ASN  
ILE  
MET  
VAL  
THR  
GLU  
LEU  
ALA  
VAL  
VAL  
VAL  
THR  
LYS  
GLU  
SER  
SER  
MET  
GLN  
GLY  
LYS  
CYS  
GLU  
ASP  
LEU  
LEU  
ALA  
SER  
THR  
ALA  
ILE  
MET  
GLN  
ILE  
GLU  
GLU  
GLU  
CYS  
SER  
LEU  
ARG  
THR  
HIS  
LEU  
ILE  
GLN  
THR  
ARG

ARG  
GLU  
GLY  
GLY  
ASP  
ALA  
GLU  
THR  
PRO  
PRO  
PRO  
LEU  
LEU  
PRO  
LEU  
SER  
LYS  
PHE  
PRO  
TRP  
PRO

## 4 Experimental information

Property	Value	Source
EM reconstruction method	SINGLE PARTICLE	Depositor
Imposed symmetry	POINT, Not provided	
Number of particles used	18243	Depositor
Resolution determination method	FSC 0.143 CUT-OFF	Depositor
CTF correction method	PHASE FLIPPING AND AMPLITUDE CORRECTION	Depositor
Microscope	TFS GLACIOS	Depositor
Voltage (kV)	200	Depositor
Electron dose ( $e^-/\text{\AA}^2$ )	60	Depositor
Minimum defocus (nm)	600	Depositor
Maximum defocus (nm)	1800	Depositor
Magnification	Not provided	
Image detector	GATAN K3 (6k x 4k)	Depositor
Maximum map value	1.730	Depositor
Minimum map value	-0.002	Depositor
Average map value	0.001	Depositor
Map value standard deviation	0.018	Depositor
Recommended contour level	0.12	Depositor
Map size (Å)	440.0, 440.0, 440.0	wwPDB
Map dimensions	250, 250, 250	wwPDB
Map angles (°)	90.0, 90.0, 90.0	wwPDB
Pixel spacing (Å)	1.76, 1.76, 1.76	Depositor

## 5 Model quality

### 5.1 Standard geometry

The Z score for a bond length (or angle) is the number of standard deviations the observed value is removed from the expected value. A bond length (or angle) with  $|Z| > 5$  is considered an outlier worth inspection. RMSZ is the root-mean-square of all Z scores of the bond lengths (or angles).

Mol	Chain	Bond lengths		Bond angles	
		RMSZ	$\# Z  > 5$	RMSZ	$\# Z  > 5$
1	B	0.13	0/1070	0.34	0/1442
2	C	0.13	0/2136	0.32	0/2879
3	E	0.13	0/2972	0.31	0/4010
4	F	0.15	0/2621	0.37	0/3543
5	G	0.12	0/2197	0.33	0/2971
6	H	0.12	0/1131	0.31	0/1531
All	All	0.13	0/12127	0.33	0/16376

There are no bond length outliers.

There are no bond angle outliers.

There are no chirality outliers.

There are no planarity outliers.

### 5.2 Too-close contacts

In the following table, the Non-H and H(model) columns list the number of non-hydrogen atoms and hydrogen atoms in the chain respectively. The H(added) column lists the number of hydrogen atoms added and optimized by MolProbity. The Clashes column lists the number of clashes within the asymmetric unit, whereas Symm-Clashes lists symmetry-related clashes.

Mol	Chain	Non-H	H(model)	H(added)	Clashes	Symm-Clashes
1	B	1058	0	1077	70	0
2	C	2100	0	2091	104	0
3	E	2934	0	2911	166	0
4	F	2575	0	2566	174	0
5	G	2156	0	2139	113	0
6	H	1114	0	1111	87	0
All	All	11937	0	11895	591	0

The all-atom clashscore is defined as the number of clashes found per 1000 atoms (including hydrogen atoms). The all-atom clashscore for this structure is 25.

The worst 5 of 591 close contacts within the same asymmetric unit are listed below, sorted by their clash magnitude.

Atom-1	Atom-2	Interatomic distance (Å)	Clash overlap (Å)
6:H:434:LEU:HA	6:H:437:LEU:HD23	1.46	0.96
4:F:3:MET:O	4:F:7:LYS:N	2.10	0.83
4:F:233:LYS:HB3	4:F:237:GLU:HB2	1.63	0.81
1:B:87:ASN:HA	1:B:91:LEU:HB2	1.64	0.80
6:H:456:TYR:HA	6:H:459:ARG:HG2	1.62	0.80

There are no symmetry-related clashes.

## 5.3 Torsion angles [i](#)

### 5.3.1 Protein backbone [i](#)

In the following table, the Percentiles column shows the percent Ramachandran outliers of the chain as a percentile score with respect to all PDB entries followed by that with respect to all EM entries.

The Analysed column shows the number of residues for which the backbone conformation was analysed, and the total number of residues.

Mol	Chain	Analysed	Favoured	Allowed	Outliers	Percentiles	
1	B	133/296 (45%)	125 (94%)	8 (6%)	0	100	100
2	C	257/617 (42%)	239 (93%)	18 (7%)	0	100	100
3	E	369/747 (49%)	354 (96%)	15 (4%)	0	100	100
4	F	326/387 (84%)	307 (94%)	19 (6%)	0	100	100
5	G	265/329 (80%)	246 (93%)	19 (7%)	0	100	100
6	H	138/281 (49%)	134 (97%)	4 (3%)	0	100	100
All	All	1488/2657 (56%)	1405 (94%)	83 (6%)	0	100	100

There are no Ramachandran outliers to report.

### 5.3.2 Protein sidechains [i](#)

In the following table, the Percentiles column shows the percent sidechain outliers of the chain as a percentile score with respect to all PDB entries followed by that with respect to all EM entries.

The Analysed column shows the number of residues for which the sidechain conformation was

analysed, and the total number of residues.

Mol	Chain	Analysed	Rotameric	Outliers	Percentiles	
1	B	117/258 (45%)	117 (100%)	0	100	100
2	C	229/538 (43%)	229 (100%)	0	100	100
3	E	320/644 (50%)	320 (100%)	0	100	100
4	F	283/335 (84%)	283 (100%)	0	100	100
5	G	232/281 (83%)	232 (100%)	0	100	100
6	H	122/251 (49%)	122 (100%)	0	100	100
All	All	1303/2307 (56%)	1303 (100%)	0	100	100

There are no protein residues with a non-rotameric sidechain to report.

Sometimes sidechains can be flipped to improve hydrogen bonding and reduce clashes. 5 of 15 such sidechains are listed below:

Mol	Chain	Res	Type
3	E	406	HIS
6	H	468	ASN
3	E	429	GLN
6	H	477	GLN
5	G	26	GLN

### 5.3.3 RNA [i](#)

There are no RNA molecules in this entry.

## 5.4 Non-standard residues in protein, DNA, RNA chains [i](#)

There are no non-standard protein/DNA/RNA residues in this entry.

## 5.5 Carbohydrates [i](#)

There are no oligosaccharides in this entry.

## 5.6 Ligand geometry [i](#)

There are no ligands in this entry.

## 5.7 Other polymers

There are no such residues in this entry.

## 5.8 Polymer linkage issues

There are no chain breaks in this entry.

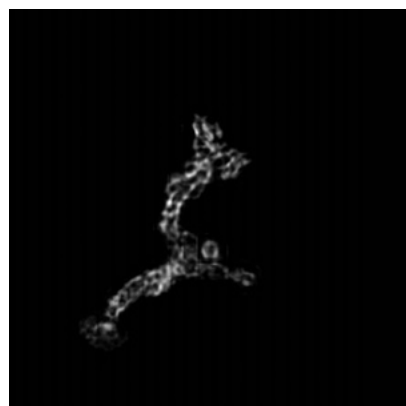
## 6 Map visualisation [i](#)

This section contains visualisations of the EMDB entry EMD-49225. These allow visual inspection of the internal detail of the map and identification of artifacts.

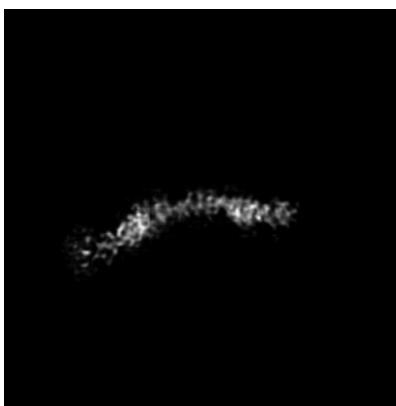
Images derived from a raw map, generated by summing the deposited half-maps, are presented below the corresponding image components of the primary map to allow further visual inspection and comparison with those of the primary map.

### 6.1 Orthogonal projections [i](#)

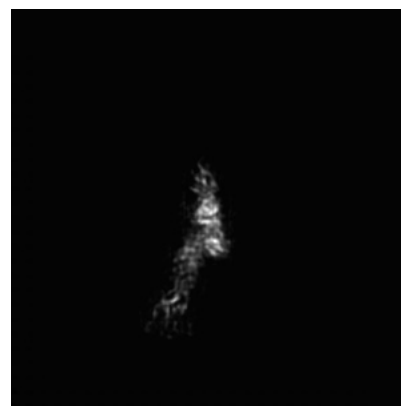
#### 6.1.1 Primary map



X

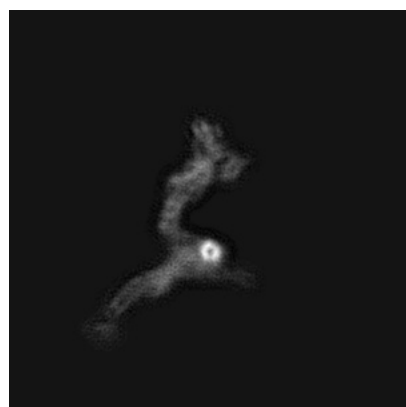


Y

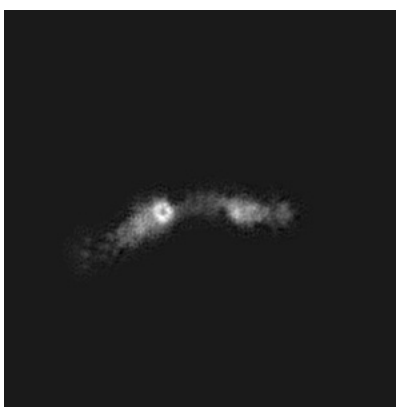


Z

#### 6.1.2 Raw map



X



Y

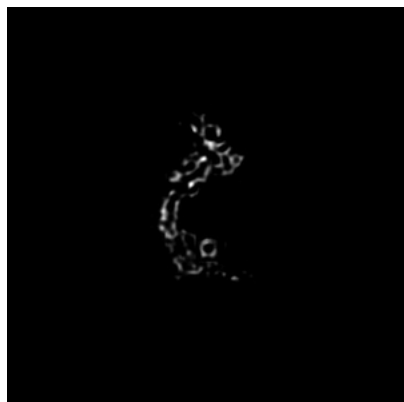


Z

The images above show the map projected in three orthogonal directions.

## 6.2 Central slices [i](#)

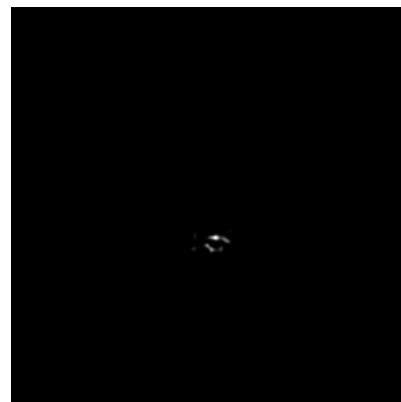
### 6.2.1 Primary map



X Index: 125

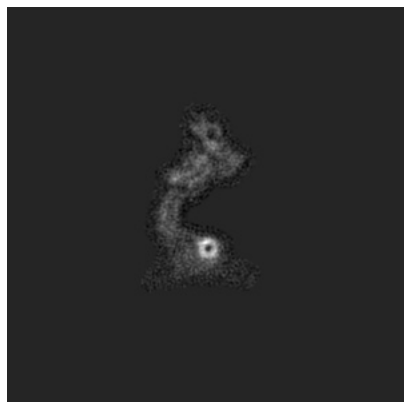


Y Index: 125

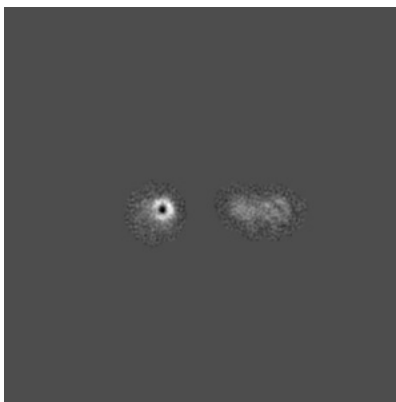


Z Index: 125

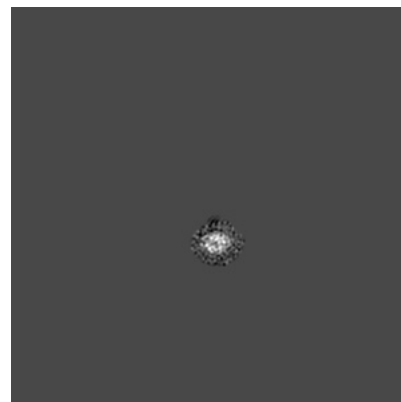
### 6.2.2 Raw map



X Index: 125



Y Index: 125



Z Index: 125

The images above show central slices of the map in three orthogonal directions.

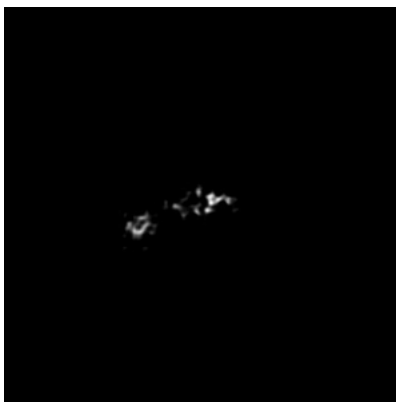


## 6.3 Largest variance slices [i](#)

### 6.3.1 Primary map



X Index: 127

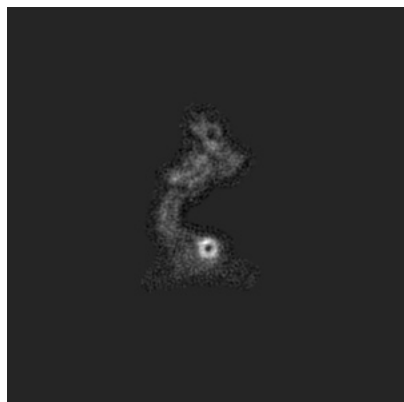


Y Index: 100

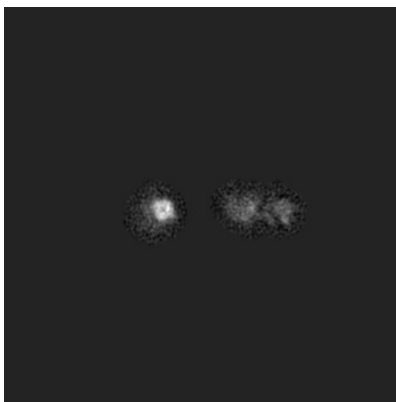


Z Index: 84

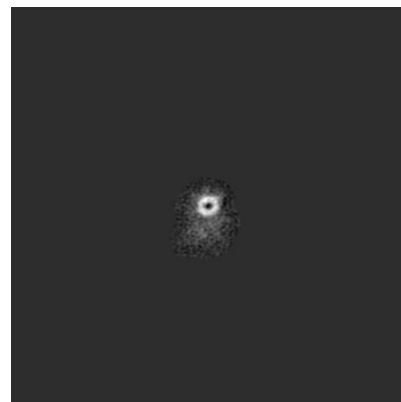
### 6.3.2 Raw map



X Index: 125



Y Index: 122

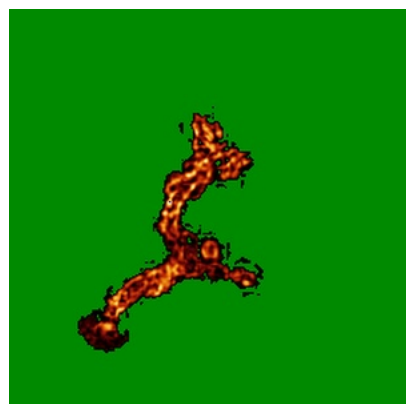


Z Index: 97

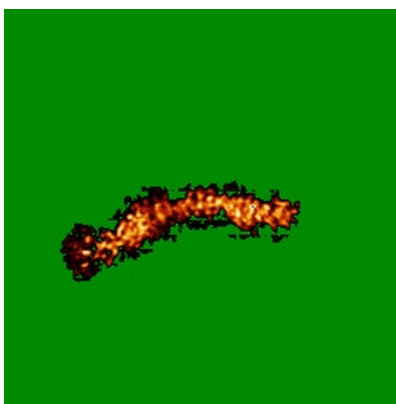
The images above show the largest variance slices of the map in three orthogonal directions.

## 6.4 Orthogonal standard-deviation projections (False-color) [i](#)

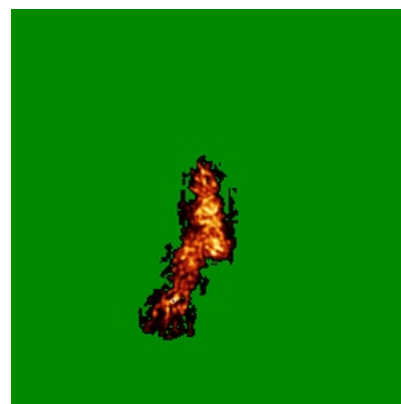
### 6.4.1 Primary map



X

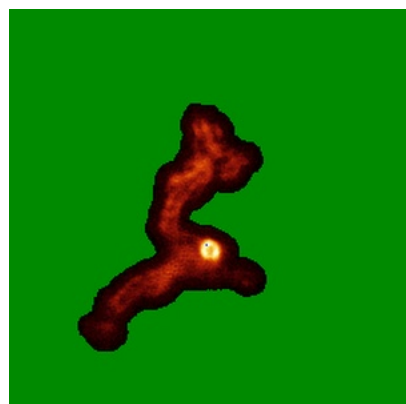


Y

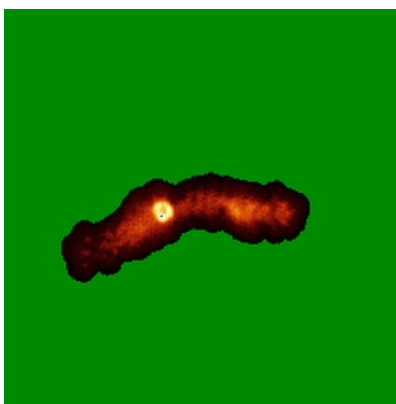


Z

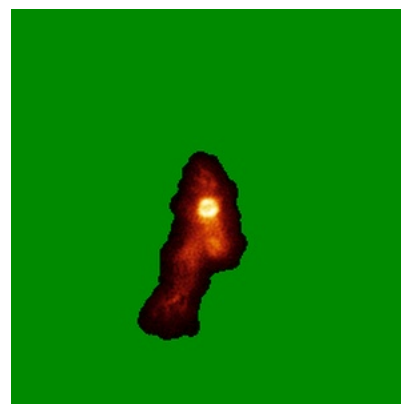
### 6.4.2 Raw map



X



Y

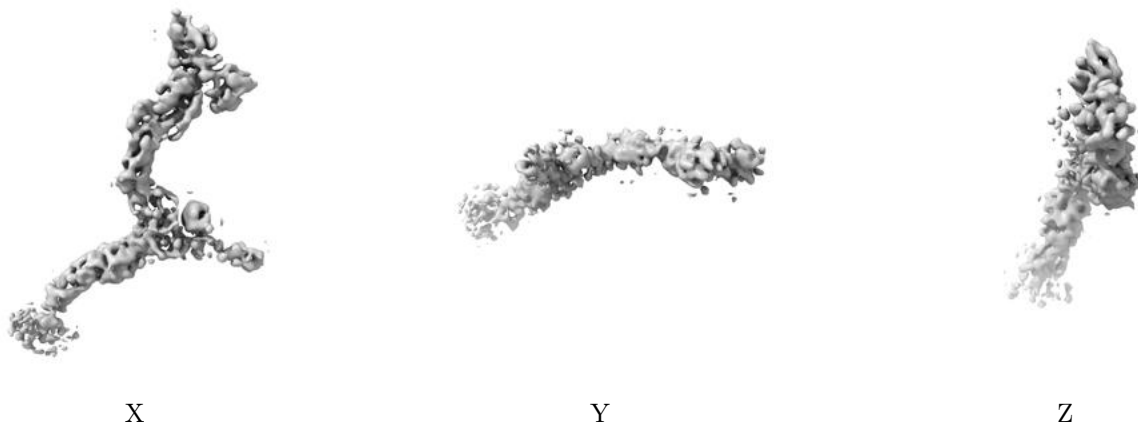


Z

The images above show the map standard deviation projections with false color in three orthogonal directions. Minimum values are shown in green, max in blue, and dark to light orange shades represent small to large values respectively.

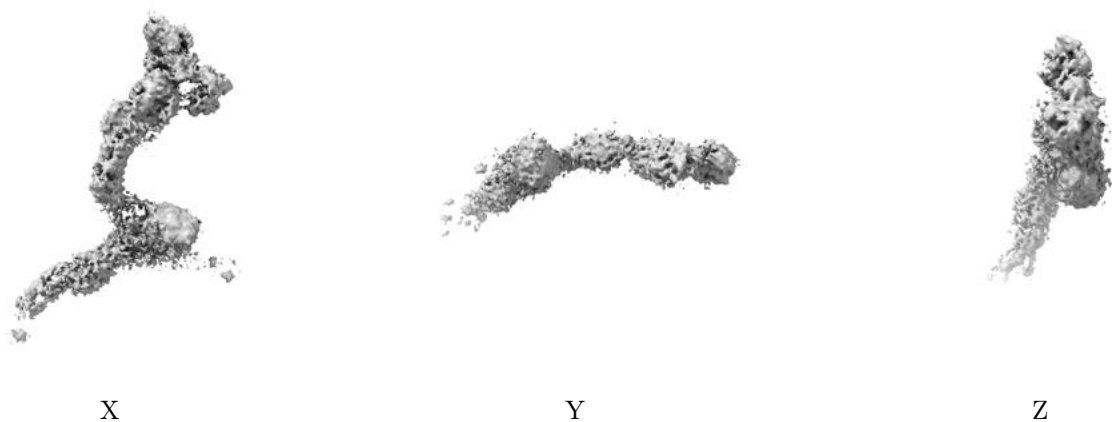
## 6.5 Orthogonal surface views [i](#)

### 6.5.1 Primary map



The images above show the 3D surface view of the map at the recommended contour level 0.12. These images, in conjunction with the slice images, may facilitate assessment of whether an appropriate contour level has been provided.

### 6.5.2 Raw map



These images show the 3D surface of the raw map. The raw map's contour level was selected so that its surface encloses the same volume as the primary map does at its recommended contour level.

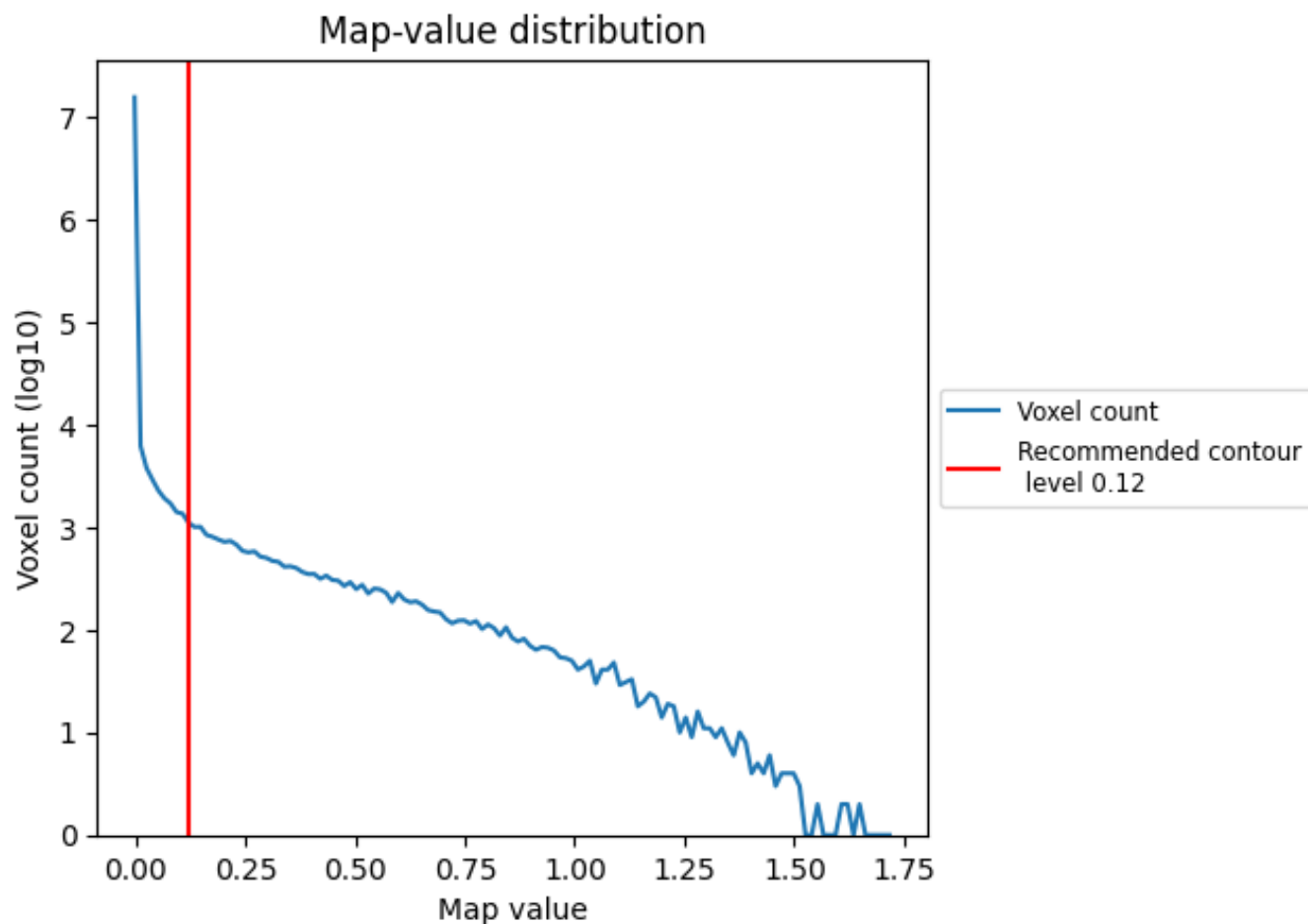
## 6.6 Mask visualisation [i](#)

This section was not generated. No masks/segmentation were deposited.

## 7 Map analysis [i](#)

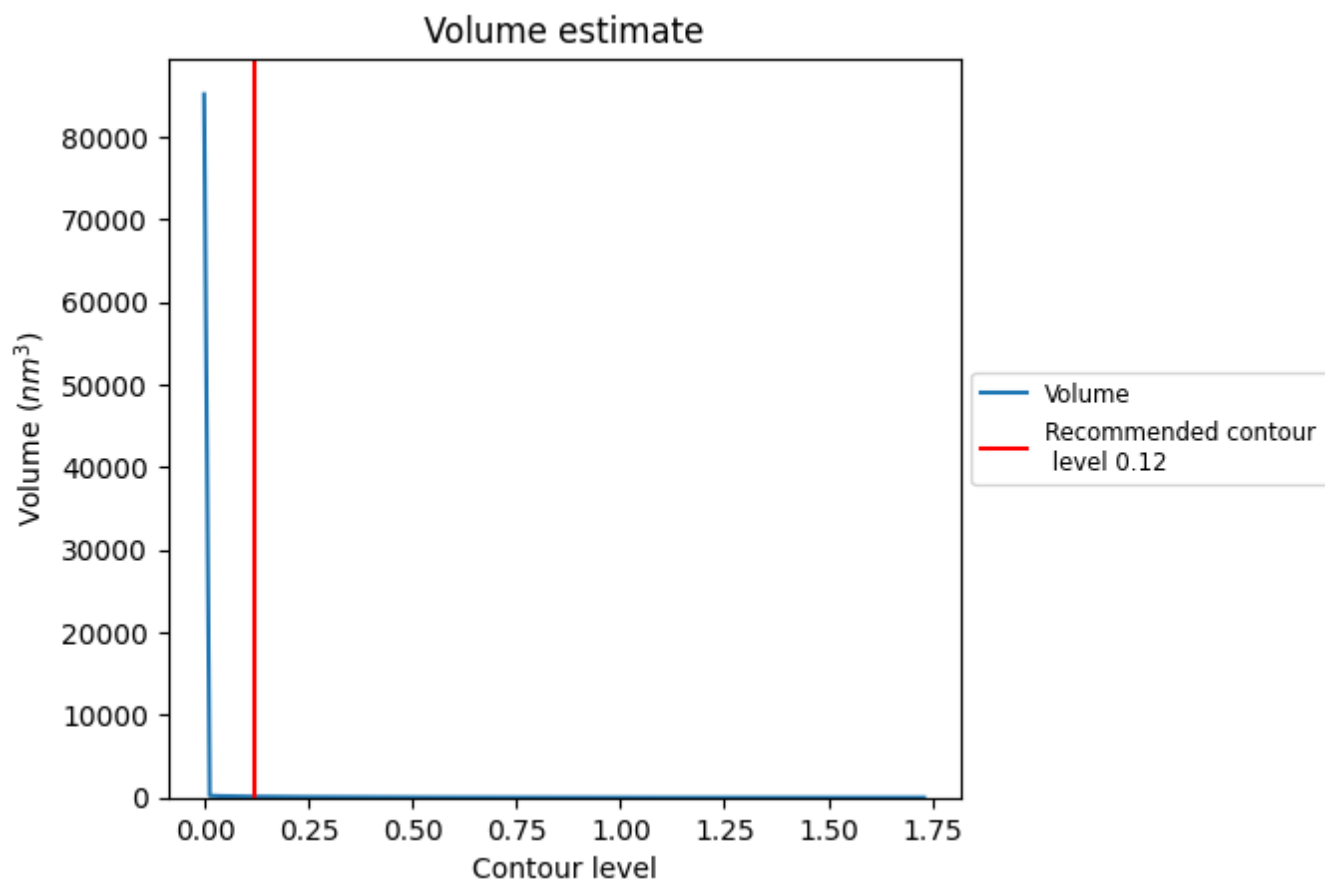
This section contains the results of statistical analysis of the map.

### 7.1 Map-value distribution [i](#)



The map-value distribution is plotted in 128 intervals along the x-axis. The y-axis is logarithmic. A spike in this graph at zero usually indicates that the volume has been masked.

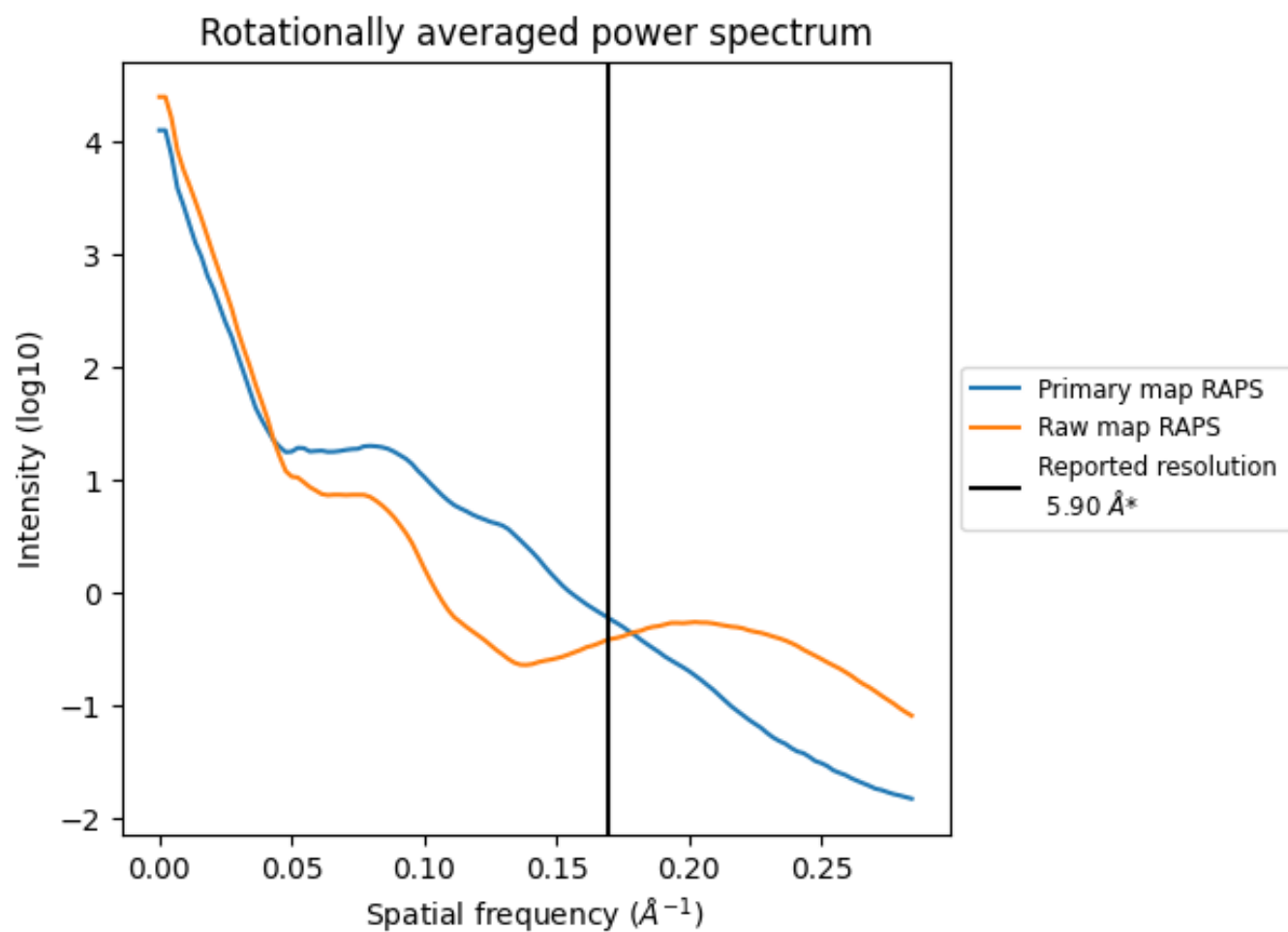
## 7.2 Volume estimate [i](#)



The volume at the recommended contour level is 116 nm<sup>3</sup>; this corresponds to an approximate mass of 105 kDa.

The volume estimate graph shows how the enclosed volume varies with the contour level. The recommended contour level is shown as a vertical line and the intersection between the line and the curve gives the volume of the enclosed surface at the given level.

### 7.3 Rotationally averaged power spectrum ⓘ

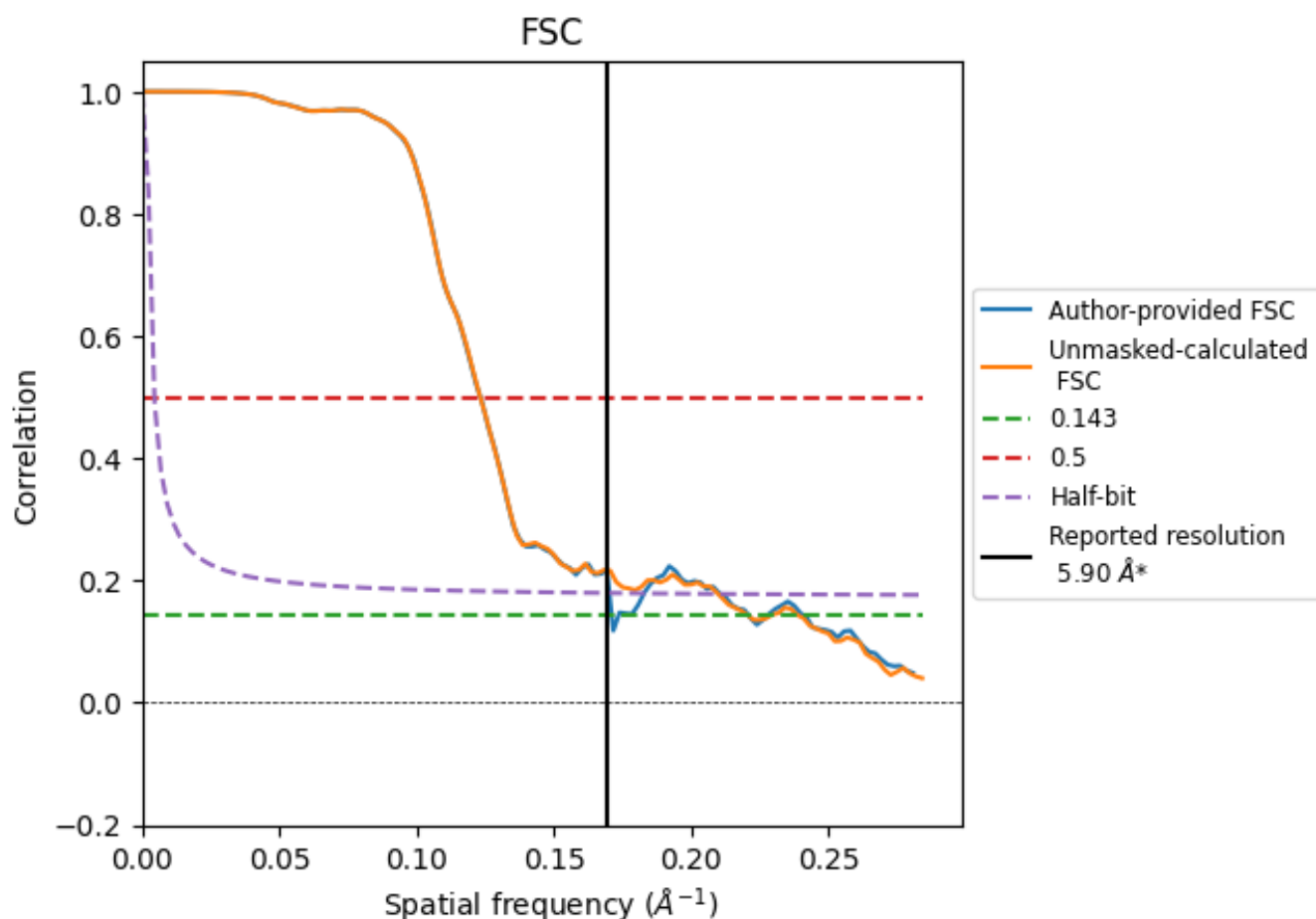


\*Reported resolution corresponds to spatial frequency of 0.169 Å<sup>-1</sup>

## 8 Fourier-Shell correlation [i](#)

Fourier-Shell Correlation (FSC) is the most commonly used method to estimate the resolution of single-particle and subtomogram-averaged maps. The shape of the curve depends on the imposed symmetry, mask and whether or not the two 3D reconstructions used were processed from a common reference. The reported resolution is shown as a black line. A curve is displayed for the half-bit criterion in addition to lines showing the 0.143 gold standard cut-off and 0.5 cut-off.

### 8.1 FSC [i](#)



\*Reported resolution corresponds to spatial frequency of 0.169  $\text{\AA}^{-1}$

## 8.2 Resolution estimates [i](#)

Resolution estimate (Å)	Estimation criterion (FSC cut-off)		
	0.143	0.5	Half-bit
Reported by author	5.90	-	-
Author-provided FSC curve	5.85	8.12	5.88
Unmasked-calculated*	4.53	8.12	4.77

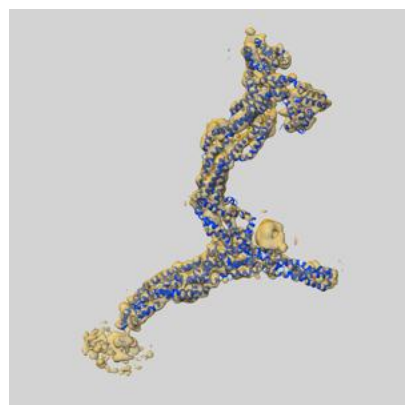
\*Resolution estimate based on FSC curve calculated by comparison of deposited half-maps. The value from deposited half-maps intersecting FSC 0.143 CUT-OFF 4.53 differs from the reported value 5.9 by more than 10 %



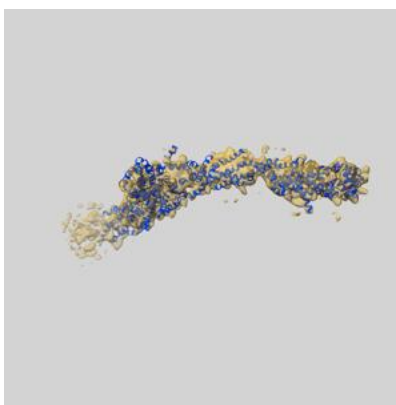
## 9 Map-model fit [i](#)

This section contains information regarding the fit between EMDB map EMD-49225 and PDB model 9NBB. Per-residue inclusion information can be found in section [3](#) on page [6](#).

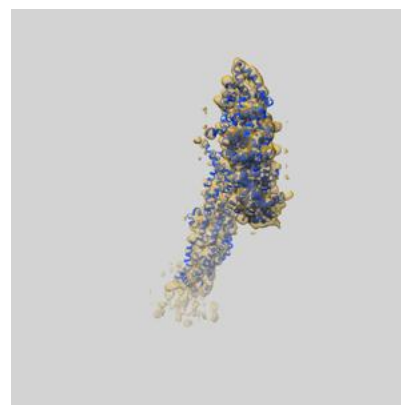
### 9.1 Map-model overlay [i](#)



X



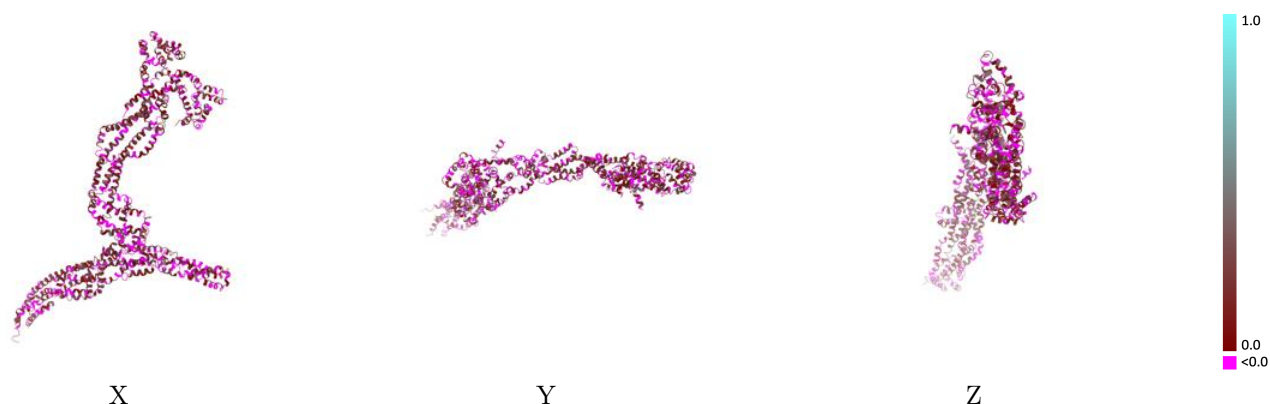
Y



Z

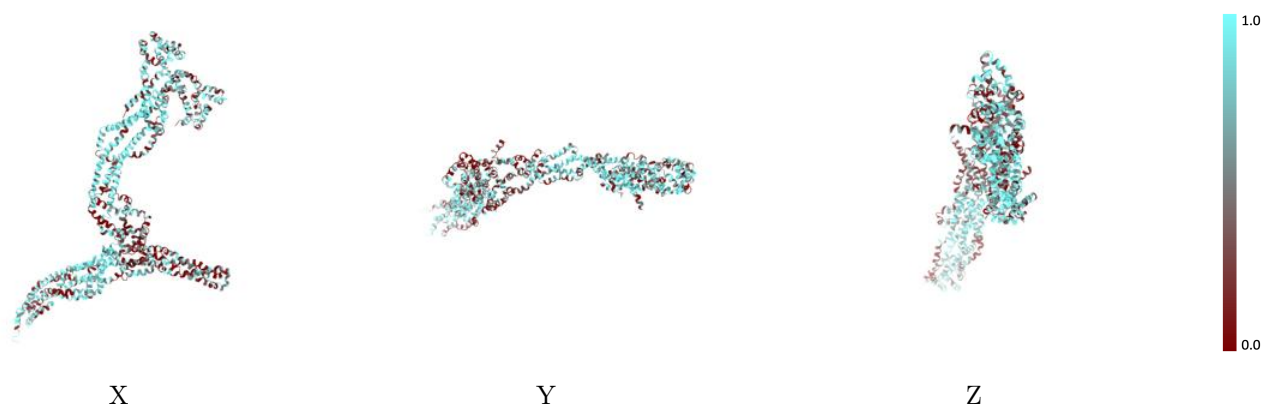
The images above show the 3D surface view of the map at the recommended contour level 0.12 at 50% transparency in yellow overlaid with a ribbon representation of the model coloured in blue. These images allow for the visual assessment of the quality of fit between the atomic model and the map.

## 9.2 Q-score mapped to coordinate model [i](#)



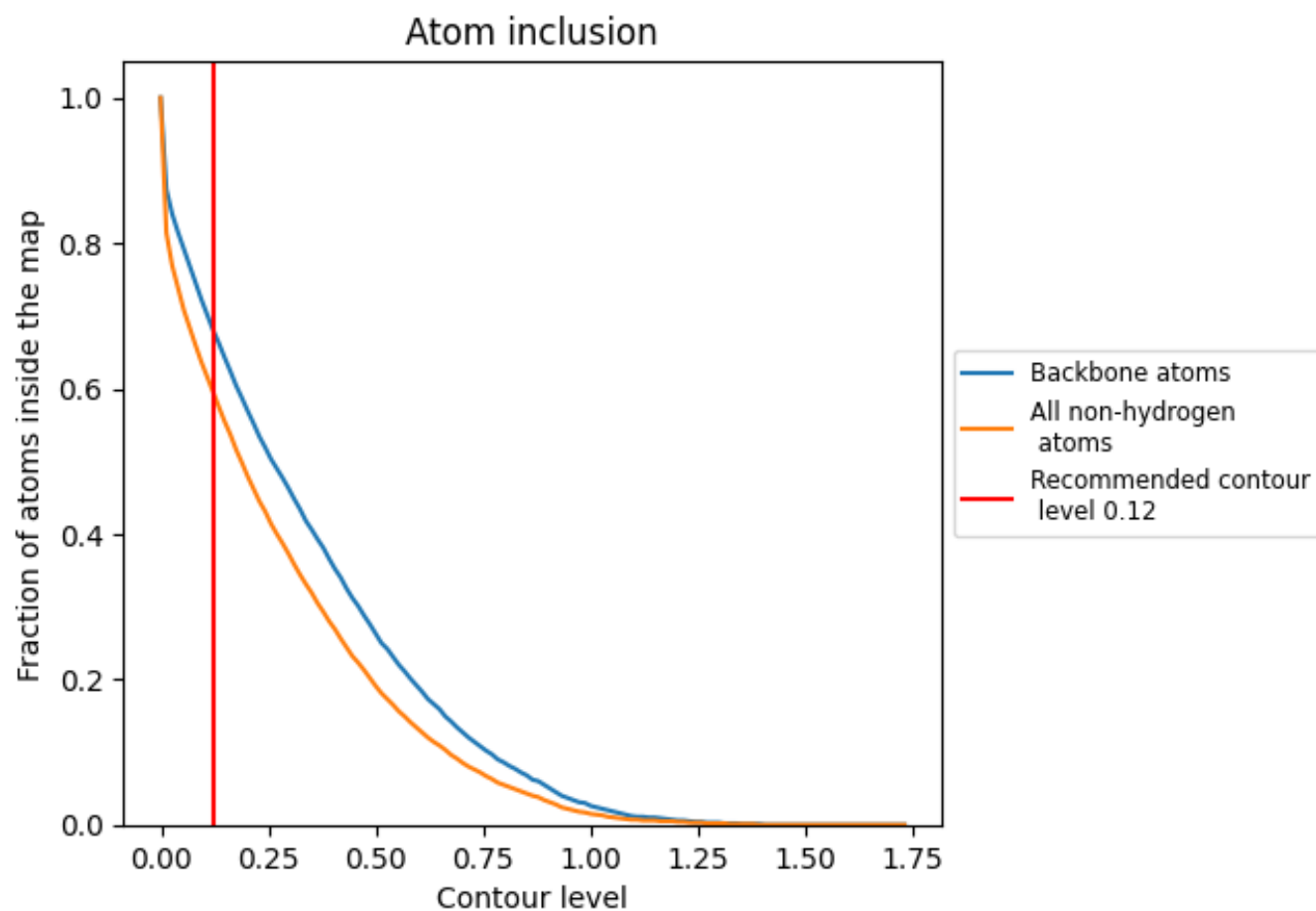
The images above show the model with each residue coloured according to its Q-score. This shows their resolvability in the map with higher Q-score values reflecting better resolvability. Please note: Q-score is calculating the resolvability of atoms, and thus high values are only expected at resolutions at which atoms can be resolved. Low Q-score values may therefore be expected for many entries.

## 9.3 Atom inclusion mapped to coordinate model [i](#)



The images above show the model with each residue coloured according to its atom inclusion. This shows to what extent they are inside the map at the recommended contour level (0.12).

## 9.4 Atom inclusion [i](#)



At the recommended contour level, 68% of all backbone atoms, 60% of all non-hydrogen atoms, are inside the map.

9.5 Map-model fit summary ⓘ

The table lists the average atom inclusion at the recommended contour level (0.12) and Q-score for the entire model and for each chain.

Chain	Atom inclusion	Q-score
All	<div><div></div></div> 0.5960	<div><div></div></div> 0.0880
B	<div><div></div></div> 0.6440	<div><div></div></div> 0.1130
C	<div><div></div></div> 0.5860	<div><div></div></div> 0.0990
E	<div><div></div></div> 0.5760	<div><div></div></div> 0.0790
F	<div><div></div></div> 0.6210	<div><div></div></div> 0.0830
G	<div><div></div></div> 0.5420	<div><div></div></div> 0.0760
H	<div><div></div></div> 0.6650	<div><div></div></div> 0.1050

1.0

0.0

<0.0