



# wwPDB X-ray Structure Validation Summary Report ⓘ

Jun 16, 2025 – 12:51 PM EDT

PDB ID : 9N4U / pdb\_00009n4u  
Title : Crystal structure of PAK1 bound to compound R1  
Authors : Wang, W.; Oh, A.; Kiefer, J.R.; Hsu, P.L.  
Deposited on : 2025-02-03  
Resolution : 1.77 Å(reported)

This is a wwPDB X-ray Structure Validation Summary Report for a publicly released PDB entry.

We welcome your comments at [validation@mail.wwpdb.org](mailto:validation@mail.wwpdb.org)

A user guide is available at

<https://www.wwpdb.org/validation/2017/XrayValidationReportHelp>

with specific help available everywhere you see the ⓘ symbol.

The types of validation reports are described at

<http://www.wwpdb.org/validation/2017/FAQs#types>.

---

The following versions of software and data (see [references ⓘ](#)) were used in the production of this report:

MolProbity : 4-5-2 with Phenix2.0rc1  
Mogul : 2022.3.0, CSD as543be (2022)  
Xtriage (Phenix) : 2.0rc1  
EDS : 3.0  
buster-report : 1.1.7 (2018)  
Percentile statistics : 20231227.v01 (using entries in the PDB archive December 27th 2023)  
CCP4 : 9.0.006 (Gargrove)  
Density-Fitness : 1.0.12  
Ideal geometry (proteins) : Engh & Huber (2001)  
Ideal geometry (DNA, RNA) : Parkinson et al. (1996)  
Validation Pipeline (wwPDB-VP) : 2.44

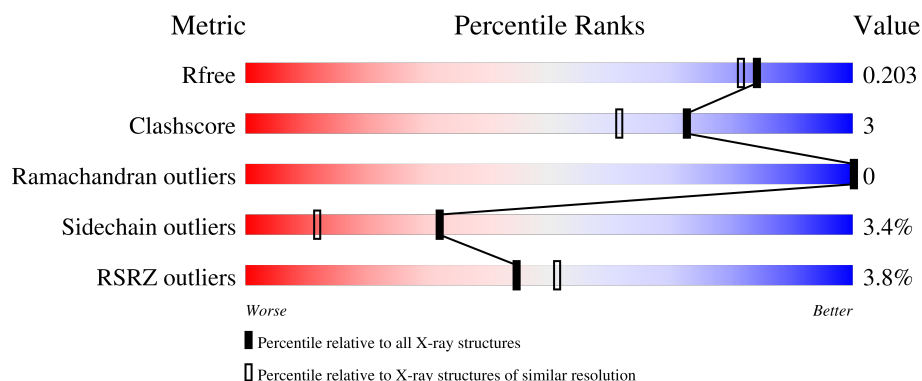
# 1 Overall quality at a glance

The following experimental techniques were used to determine the structure:

*X-RAY DIFFRACTION*

The reported resolution of this entry is 1.77 Å.

Percentile scores (ranging between 0-100) for global validation metrics of the entry are shown in the following graphic. The table shows the number of entries on which the scores are based.



Metric	Whole archive (#Entries)	Similar resolution (#Entries, resolution range(Å))
$R_{free}$	164625	1191 (1.78-1.78)
Clashscore	180529	1282 (1.78-1.78)
Ramachandran outliers	177936	1270 (1.78-1.78)
Sidechain outliers	177891	1270 (1.78-1.78)
RSRZ outliers	164620	1191 (1.78-1.78)

The table below summarises the geometric issues observed across the polymeric chains and their fit to the electron density. The red, orange, yellow and green segments of the lower bar indicate the fraction of residues that contain outliers for  $\geq 3$ , 2, 1 and 0 types of geometric quality criteria respectively. A grey segment represents the fraction of residues that are not modelled. The numeric value for each fraction is indicated below the corresponding segment, with a dot representing fractions  $\leq 5\%$ . The upper red bar (where present) indicates the fraction of residues that have poor fit to the electron density. The numeric value is given above the bar.

Mol	Chain	Length	Quality of chain
1	A	537	<div> <div style="width: 100%; height: 10px; background: linear-gradient(to right, red 1%, orange 1%, yellow 1%, green 98%);"></div> <div style="display: flex; justify-content: space-between; margin-top: 5px;"> <span>51%</span> <span>45%</span> </div> </div>
1	B	537	<div> <div style="width: 100%; height: 10px; background: linear-gradient(to right, red 3%, orange 1%, yellow 1%, green 95%);"></div> <div style="display: flex; justify-content: space-between; margin-top: 5px;"> <span>47%</span> <span>5%</span> <span>48%</span> </div> </div>

## 2 Entry composition

There are 3 unique types of molecules in this entry. The entry contains 5092 atoms, of which 0 are hydrogens and 0 are deuteriums.

In the tables below, the ZeroOcc column contains the number of atoms modelled with zero occupancy, the AltConf column contains the number of residues with at least one atom in alternate conformation and the Trace column contains the number of residues modelled with at most 2 atoms.

- Molecule 1 is a protein called Glutathione S-transferase class-mu 26 kDa isozyme, Serine/threonine-protein kinase PAK 1.

Mol	Chain	Residues	Atoms					ZeroOcc	AltConf	Trace
1	A	298	Total	C	N	O	S	0	0	0
			2324	1472	392	444	16			
1	B	281	Total	C	N	O	S	0	0	0
			2184	1386	366	417	15			

There are 52 discrepancies between the modelled and reference sequences:

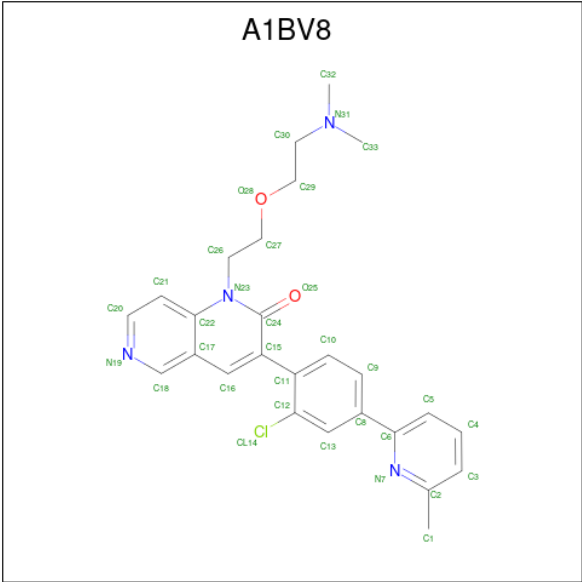
Chain	Residue	Modelled	Actual	Comment	Reference
A	12	MET	-	expression tag	UNP P08515
A	13	HIS	-	expression tag	UNP P08515
A	14	HIS	-	expression tag	UNP P08515
A	15	HIS	-	expression tag	UNP P08515
A	16	HIS	-	expression tag	UNP P08515
A	17	HIS	-	expression tag	UNP P08515
A	18	HIS	-	expression tag	UNP P08515
A	19	HIS	-	expression tag	UNP P08515
A	20	HIS	-	expression tag	UNP P08515
A	21	GLY	-	expression tag	UNP P08515
A	154	LYS	GLU	conflict	UNP P08515
A	239	SER	-	linker	UNP P08515
A	240	ASP	-	linker	UNP P08515
A	241	GLY	-	linker	UNP P08515
A	242	GLU	-	linker	UNP P08515
A	243	ASN	-	linker	UNP P08515
A	244	LEU	-	linker	UNP P08515
A	245	TYR	-	linker	UNP P08515
A	246	PHE	-	linker	UNP P08515
A	247	GLN	-	linker	UNP P08515
A	248	GLY	-	linker	UNP P08515
A	389	ASN	ASP	conflict	UNP Q13153
A	423	GLU	THR	conflict	UNP Q13153
A	546	GLY	-	expression tag	UNP Q13153

*Continued on next page...*

*Continued from previous page...*

Chain	Residue	Modelled	Actual	Comment	Reference
A	547	ASN	-	expression tag	UNP Q13153
A	548	SER	-	expression tag	UNP Q13153
B	12	MET	-	expression tag	UNP P08515
B	13	HIS	-	expression tag	UNP P08515
B	14	HIS	-	expression tag	UNP P08515
B	15	HIS	-	expression tag	UNP P08515
B	16	HIS	-	expression tag	UNP P08515
B	17	HIS	-	expression tag	UNP P08515
B	18	HIS	-	expression tag	UNP P08515
B	19	HIS	-	expression tag	UNP P08515
B	20	HIS	-	expression tag	UNP P08515
B	21	GLY	-	expression tag	UNP P08515
B	154	LYS	GLU	conflict	UNP P08515
B	239	SER	-	linker	UNP P08515
B	240	ASP	-	linker	UNP P08515
B	241	GLY	-	linker	UNP P08515
B	242	GLU	-	linker	UNP P08515
B	243	ASN	-	linker	UNP P08515
B	244	LEU	-	linker	UNP P08515
B	245	TYR	-	linker	UNP P08515
B	246	PHE	-	linker	UNP P08515
B	247	GLN	-	linker	UNP P08515
B	248	GLY	-	linker	UNP P08515
B	389	ASN	ASP	conflict	UNP Q13153
B	423	GLU	THR	conflict	UNP Q13153
B	546	GLY	-	expression tag	UNP Q13153
B	547	ASN	-	expression tag	UNP Q13153
B	548	SER	-	expression tag	UNP Q13153

- Molecule 2 is (3M)-3-[(4P)-2-chloro-4-(6-methylpyridin-2-yl)phenyl]-1-{2-[2-(dimethylamino)ethoxy]ethyl}-1,6-naphthyridin-2(1H)-one (CCD ID: A1BV8) (formula: C<sub>26</sub>H<sub>27</sub>ClN<sub>4</sub>O<sub>2</sub>) (labeled as "Ligand of Interest" by depositor).



Mol	Chain	Residues	Atoms					ZeroOcc	AltConf
2	A	1	Total	C	Cl	N	O	0	0
			33	26	1	4	2		
2	B	1	Total	C	Cl	N	O	0	0
			33	26	1	4	2		

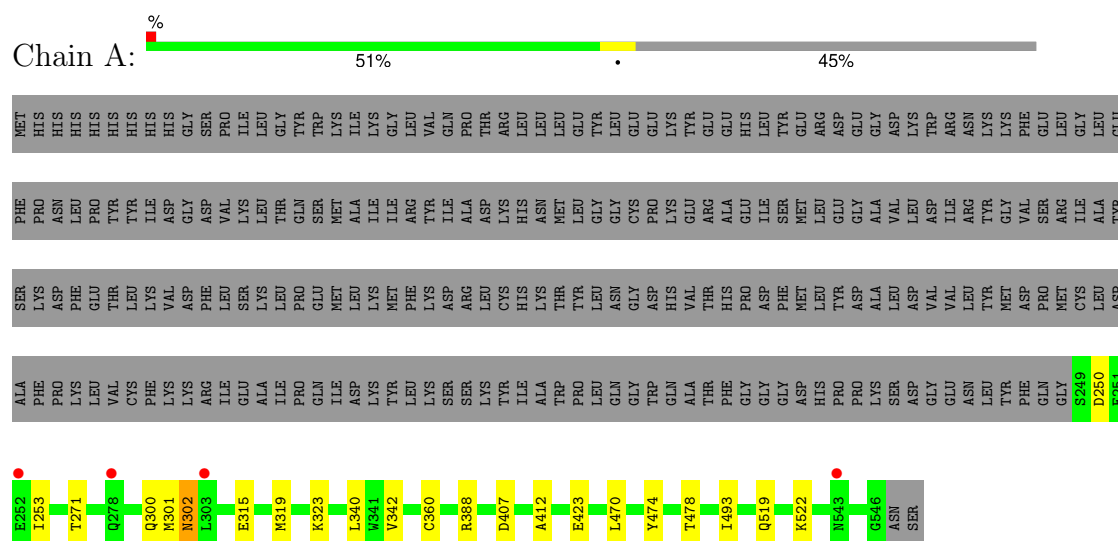
- Molecule 3 is water.

Mol	Chain	Residues	Atoms		ZeroOcc	AltConf
3	A	266	Total	O	0	0
			266	266		
3	B	252	Total	O	0	0
			252	252		

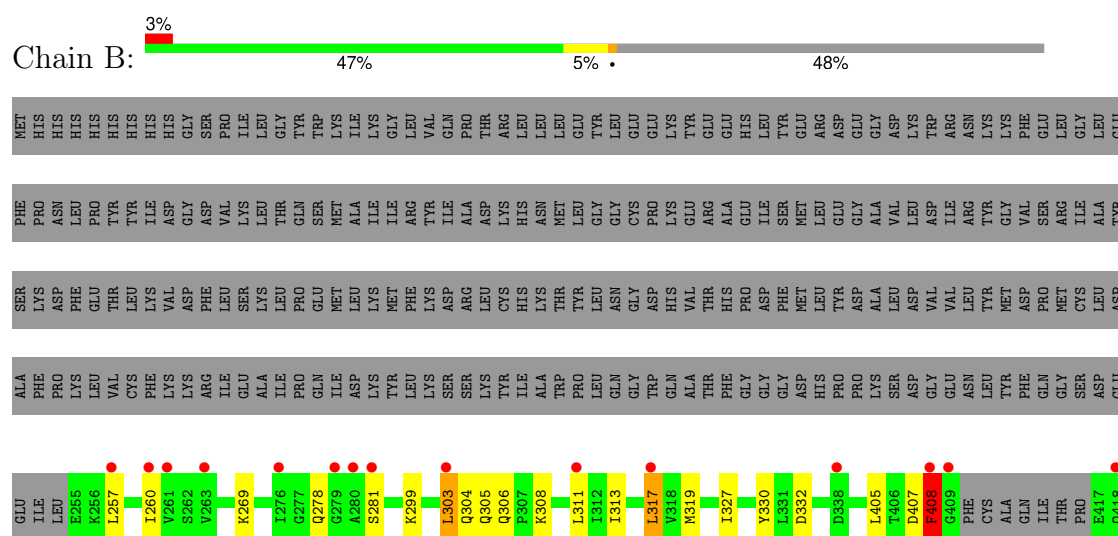
### 3 Residue-property plots

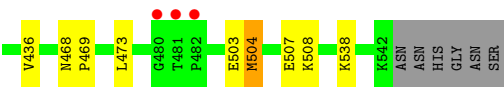
These plots are drawn for all protein, RNA, DNA and oligosaccharide chains in the entry. The first graphic for a chain summarises the proportions of the various outlier classes displayed in the second graphic. The second graphic shows the sequence view annotated by issues in geometry and electron density. Residues are color-coded according to the number of geometric quality criteria for which they contain at least one outlier: green = 0, yellow = 1, orange = 2 and red = 3 or more. A red dot above a residue indicates a poor fit to the electron density ( $RSRZ > 2$ ). Stretches of 2 or more consecutive residues without any outlier are shown as a green connector. Residues present in the sample, but not in the model, are shown in grey.

- Molecule 1: Glutathione S-transferase class-mu 26 kDa isozyme,Serine/threonine-protein kinase PAK 1



- Molecule 1: Glutathione S-transferase class-mu 26 kDa isozyme,Serine/threonine-protein kinase PAK 1





## 4 Data and refinement statistics

Property	Value	Source
Space group	P 1 21 1	Depositor
Cell constants a, b, c, $\alpha$ , $\beta$ , $\gamma$	62.39Å 80.73Å 65.89Å 90.00° 106.92° 90.00°	Depositor
Resolution (Å)	30.64 – 1.77 30.64 – 1.77	Depositor EDS
% Data completeness (in resolution range)	98.7 (30.64-1.77) 98.7 (30.64-1.77)	Depositor EDS
$R_{merge}$	0.05	Depositor
$R_{sym}$	(Not available)	Depositor
$\langle I/\sigma(I) \rangle$ <sup>1</sup>	1.64 (at 1.77Å)	Xtriage
Refinement program	PHENIX (1.21.2_5419: ???)	Depositor
R, $R_{free}$	0.173 , 0.203 0.174 , 0.203	Depositor DCC
$R_{free}$ test set	3066 reflections (5.05%)	wwPDB-VP
Wilson B-factor (Å <sup>2</sup> )	28.1	Xtriage
Anisotropy	0.270	Xtriage
Bulk solvent $k_{sol}$ (e/Å <sup>3</sup> ), $B_{sol}$ (Å <sup>2</sup> )	0.33 , 50.8	EDS
L-test for twinning <sup>2</sup>	$\langle  L  \rangle = 0.50$ , $\langle L^2 \rangle = 0.34$	Xtriage
Estimated twinning fraction	No twinning to report.	Xtriage
$F_o, F_c$ correlation	0.97	EDS
Total number of atoms	5092	wwPDB-VP
Average B, all atoms (Å <sup>2</sup> )	44.0	wwPDB-VP

Xtriage's analysis on translational NCS is as follows: *The largest off-origin peak in the Patterson function is 5.92% of the height of the origin peak. No significant pseudotranslation is detected.*

<sup>1</sup>Intensities estimated from amplitudes.

<sup>2</sup>Theoretical values of  $\langle |L| \rangle$ ,  $\langle L^2 \rangle$  for acentric reflections are 0.5, 0.333 respectively for untwinned datasets, and 0.375, 0.2 for perfectly twinned datasets.



## 5 Model quality [i](#)

### 5.1 Standard geometry [i](#)

Bond lengths and bond angles in the following residue types are not validated in this section: A1BV8

The Z score for a bond length (or angle) is the number of standard deviations the observed value is removed from the expected value. A bond length (or angle) with  $|Z| > 5$  is considered an outlier worth inspection. RMSZ is the root-mean-square of all Z scores of the bond lengths (or angles).

Mol	Chain	Bond lengths		Bond angles	
		RMSZ	$\# Z  > 5$	RMSZ	$\# Z  > 5$
1	A	0.46	0/2363	0.63	1/3196 (0.0%)
1	B	0.38	0/2219	0.59	2/3000 (0.1%)
All	All	0.42	0/4582	0.61	3/6196 (0.0%)

There are no bond length outliers.

All (3) bond angle outliers are listed below:

Mol	Chain	Res	Type	Atoms	Z	Observed(°)	Ideal(°)
1	A	407	ASP	N-CA-C	7.70	121.86	111.24
1	B	408	PHE	N-CA-CB	5.45	118.86	110.79
1	B	408	PHE	CA-CB-CG	5.07	118.87	113.80

There are no chirality outliers.

There are no planarity outliers.

### 5.2 Too-close contacts [i](#)

In the following table, the Non-H and H(model) columns list the number of non-hydrogen atoms and hydrogen atoms in the chain respectively. The H(added) column lists the number of hydrogen atoms added and optimized by MolProbity. The Clashes column lists the number of clashes within the asymmetric unit, whereas Symm-Clashes lists symmetry-related clashes.

Mol	Chain	Non-H	H(model)	H(added)	Clashes	Symm-Clashes
1	A	2324	0	2349	11	0
1	B	2184	0	2212	18	0
2	A	33	0	0	0	0
2	B	33	0	0	0	0
3	A	266	0	0	1	0
3	B	252	0	0	2	0

*Continued on next page...*

*Continued from previous page...*

Mol	Chain	Non-H	H(model)	H(added)	Clashes	Symm-Clashes
All	All	5092	0	4561	28	0

The all-atom clashscore is defined as the number of clashes found per 1000 atoms (including hydrogen atoms). The all-atom clashscore for this structure is 3.

The worst 5 of 28 close contacts within the same asymmetric unit are listed below, sorted by their clash magnitude.

Atom-1	Atom-2	Interatomic distance (Å)	Clash overlap (Å)
1:A:519:GLN:HG2	1:A:522:LYS:HE2	1.71	0.72
1:A:493:ILE:HD11	1:A:519:GLN:HB2	1.79	0.65
1:B:303:LEU:C	1:B:305:GLN:HA	2.27	0.59
1:A:315:GLU:O	1:A:319:MET:HG2	2.05	0.56
1:B:260:ILE:HD11	1:B:317:LEU:HG	1.89	0.55

There are no symmetry-related clashes.

## 5.3 Torsion angles [i](#)

### 5.3.1 Protein backbone [i](#)

In the following table, the Percentiles column shows the percent Ramachandran outliers of the chain as a percentile score with respect to all X-ray entries followed by that with respect to entries of similar resolution.

The Analysed column shows the number of residues for which the backbone conformation was analysed, and the total number of residues.

Mol	Chain	Analysed	Favoured	Allowed	Outliers	Percentiles	
1	A	296/537 (55%)	291 (98%)	5 (2%)	0	100	100
1	B	277/537 (52%)	264 (95%)	13 (5%)	0	100	100
All	All	573/1074 (53%)	555 (97%)	18 (3%)	0	100	100

There are no Ramachandran outliers to report.

### 5.3.2 Protein sidechains [i](#)

In the following table, the Percentiles column shows the percent sidechain outliers of the chain as a percentile score with respect to all X-ray entries followed by that with respect to entries of similar resolution.

The Analysed column shows the number of residues for which the sidechain conformation was analysed, and the total number of residues.

Mol	Chain	Analysed	Rotameric	Outliers	Percentiles	
1	A	255/470 (54%)	250 (98%)	5 (2%)	50	32
1	B	239/470 (51%)	227 (95%)	12 (5%)	20	4
All	All	494/940 (53%)	477 (97%)	17 (3%)	32	12

5 of 17 residues with a non-rotameric sidechain are listed below:

Mol	Chain	Res	Type
1	B	436	VAL
1	B	507	GLU
1	B	303	LEU
1	B	306	GLN
1	B	313	ILE

Sometimes sidechains can be flipped to improve hydrogen bonding and reduce clashes. 5 of 6 such sidechains are listed below:

Mol	Chain	Res	Type
1	B	322	ASN
1	B	326	ASN
1	B	375	GLN
1	A	326	ASN
1	A	322	ASN

### 5.3.3 RNA ⓘ

There are no RNA molecules in this entry.

## 5.4 Non-standard residues in protein, DNA, RNA chains ⓘ

There are no non-standard protein/DNA/RNA residues in this entry.

## 5.5 Carbohydrates ⓘ

There are no oligosaccharides in this entry.

## 5.6 Ligand geometry

2 ligands are modelled in this entry.

In the following table, the Counts columns list the number of bonds (or angles) for which Mogul statistics could be retrieved, the number of bonds (or angles) that are observed in the model and the number of bonds (or angles) that are defined in the Chemical Component Dictionary. The Link column lists molecule types, if any, to which the group is linked. The Z score for a bond length (or angle) is the number of standard deviations the observed value is removed from the expected value. A bond length (or angle) with  $|Z| > 2$  is considered an outlier worth inspection. RMSZ is the root-mean-square of all Z scores of the bond lengths (or angles).

Mol	Type	Chain	Res	Link	Bond lengths			Bond angles		
					Counts	RMSZ	# $ Z  > 2$	Counts	RMSZ	# $ Z  > 2$
2	A1BV8	A	601	-	36,36,36	0.77	2 (5%)	46,50,50	1.58	12 (26%)
2	A1BV8	B	601	-	36,36,36	0.68	0	46,50,50	1.56	8 (17%)

In the following table, the Chirals column lists the number of chiral outliers, the number of chiral centers analysed, the number of these observed in the model and the number defined in the Chemical Component Dictionary. Similar counts are reported in the Torsion and Rings columns. '-' means no outliers of that kind were identified.

Mol	Type	Chain	Res	Link	Chirals	Torsions	Rings
2	A1BV8	A	601	-	-	7/16/16/16	0/4/4/4
2	A1BV8	B	601	-	-	3/16/16/16	0/4/4/4

All (2) bond length outliers are listed below:

Mol	Chain	Res	Type	Atoms	Z	Observed(Å)	Ideal(Å)
2	A	601	A1BV8	C6-N7	-2.30	1.31	1.34
2	A	601	A1BV8	C2-N7	-2.16	1.31	1.34

The worst 5 of 20 bond angle outliers are listed below:

Mol	Chain	Res	Type	Atoms	Z	Observed(°)	Ideal(°)
2	B	601	A1BV8	O25-C24-C15	-5.24	118.51	125.37
2	A	601	A1BV8	O25-C24-C15	-4.88	118.98	125.37
2	A	601	A1BV8	C17-C16-C15	-3.63	118.47	122.47
2	B	601	A1BV8	C20-N19-C18	3.51	123.00	116.85
2	B	601	A1BV8	C6-N7-C2	3.31	121.71	118.46

There are no chirality outliers.

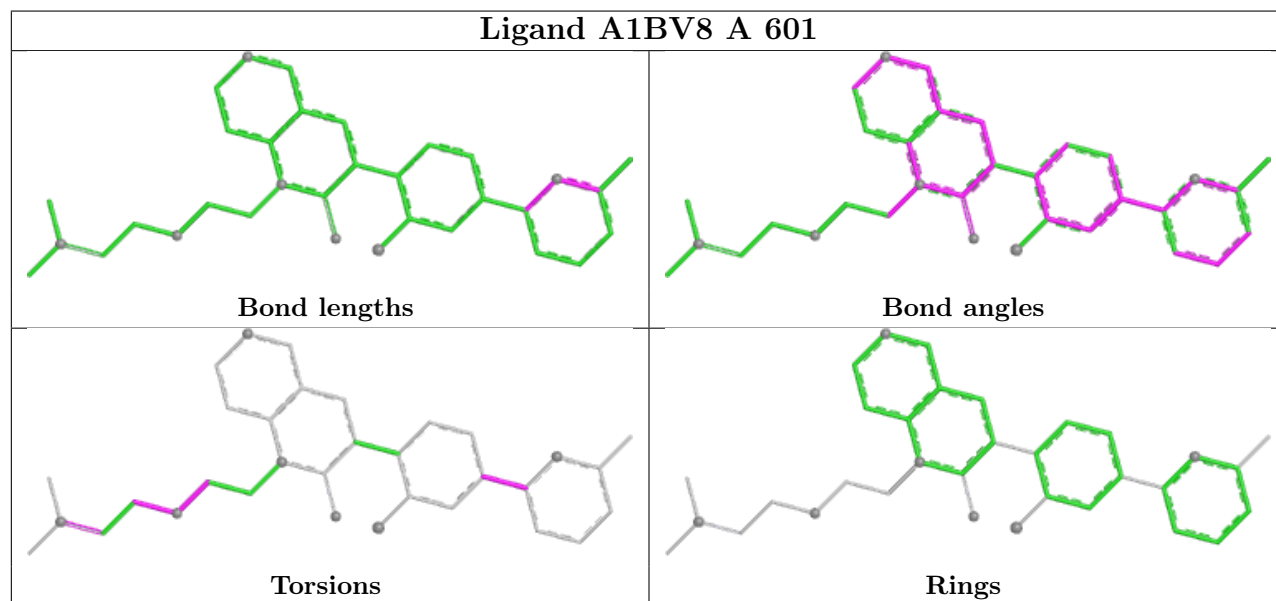
5 of 10 torsion outliers are listed below:

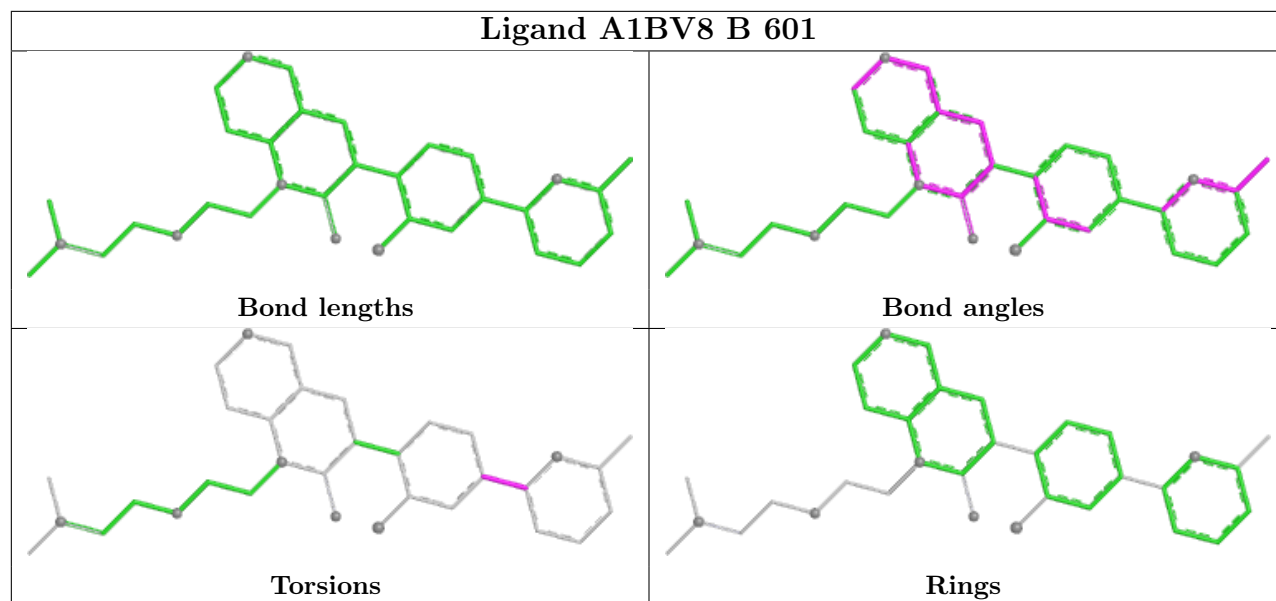
Mol	Chain	Res	Type	Atoms
2	A	601	A1BV8	C29-C30-N31-C32
2	A	601	A1BV8	C5-C6-C8-C13
2	A	601	A1BV8	C5-C6-C8-C9
2	A	601	A1BV8	N7-C6-C8-C13
2	A	601	A1BV8	N7-C6-C8-C9

There are no ring outliers.

No monomer is involved in short contacts.

The following is a two-dimensional graphical depiction of Mogul quality analysis of bond lengths, bond angles, torsion angles, and ring geometry for all instances of the Ligand of Interest. In addition, ligands with molecular weight > 250 and outliers as shown on the validation Tables will also be included. For torsion angles, if less than 5% of the Mogul distribution of torsion angles is within 10 degrees of the torsion angle in question, then that torsion angle is considered an outlier. Any bond that is central to one or more torsion angles identified as an outlier by Mogul will be highlighted in the graph. For rings, the root-mean-square deviation (RMSD) between the ring in question and similar rings identified by Mogul is calculated over all ring torsion angles. If the average RMSD is greater than 60 degrees and the minimal RMSD between the ring in question and any Mogul-identified rings is also greater than 60 degrees, then that ring is considered an outlier. The outliers are highlighted in purple. The color gray indicates Mogul did not find sufficient equivalents in the CSD to analyse the geometry.





## 5.7 Other polymers [i](#)

There are no such residues in this entry.

## 5.8 Polymer linkage issues [i](#)

There are no chain breaks in this entry.

## 6 Fit of model and data [i](#)

### 6.1 Protein, DNA and RNA chains [i](#)

In the following table, the column labelled ‘#RSRZ> 2’ contains the number (and percentage) of RSRZ outliers, followed by percent RSRZ outliers for the chain as percentile scores relative to all X-ray entries and entries of similar resolution. The OWAB column contains the minimum, median, 95<sup>th</sup> percentile and maximum values of the occupancy-weighted average B-factor per residue. The column labelled ‘Q< 0.9’ lists the number of (and percentage) of residues with an average occupancy less than 0.9.

Mol	Chain	Analysed	<RSRZ>	#RSRZ>2	OWAB(Å <sup>2</sup> )	Q<0.9
1	A	298/537 (55%)	-0.01	4 (1%) 74 80	19, 36, 78, 123	0
1	B	281/537 (52%)	0.20	18 (6%) 27 32	21, 37, 103, 154	0
All	All	579/1074 (53%)	0.09	22 (3%) 44 51	19, 36, 94, 154	0

The worst 5 of 22 RSRZ outliers are listed below:

Mol	Chain	Res	Type	RSRZ
1	B	276	ILE	4.2
1	B	409	GLY	4.1
1	B	281	SER	3.8
1	B	260	ILE	3.4
1	B	257	LEU	3.3

### 6.2 Non-standard residues in protein, DNA, RNA chains [i](#)

There are no non-standard protein/DNA/RNA residues in this entry.

### 6.3 Carbohydrates [i](#)

There are no oligosaccharides in this entry.

### 6.4 Ligands [i](#)

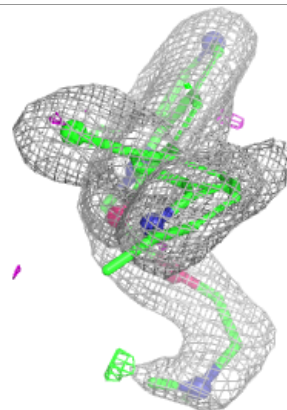
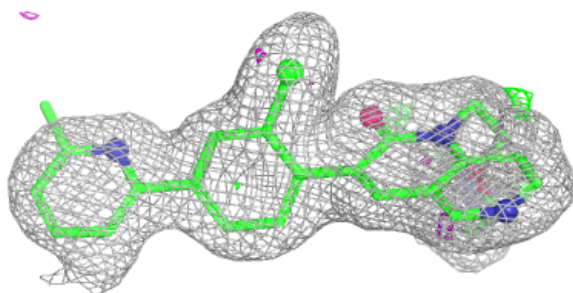
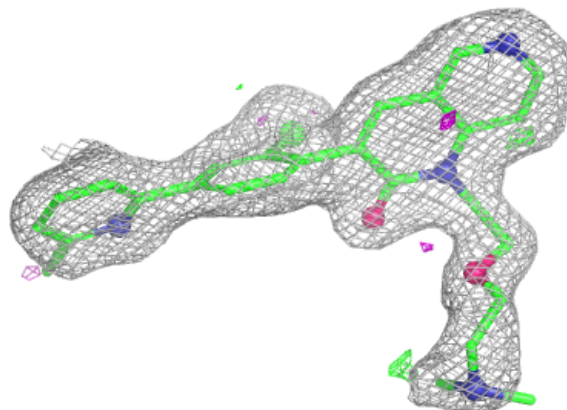
In the following table, the Atoms column lists the number of modelled atoms in the group and the number defined in the chemical component dictionary. The B-factors column lists the minimum, median, 95<sup>th</sup> percentile and maximum values of B factors of atoms in the group. The column labelled ‘Q< 0.9’ lists the number of atoms with occupancy less than 0.9.

Mol	Type	Chain	Res	Atoms	RSCC	RSR	B-factors( $\text{\AA}^2$ )	Q<0.9
2	A1BV8	B	601	33/33	0.92	0.09	32,41,64,70	0
2	A1BV8	A	601	33/33	0.93	0.09	26,36,48,56	0

The following is a graphical depiction of the model fit to experimental electron density of all instances of the Ligand of Interest. In addition, ligands with molecular weight > 250 and outliers as shown on the geometry validation Tables will also be included. Each fit is shown from different orientation to approximate a three-dimensional view.

**Electron density around A1BV8 B 601:**

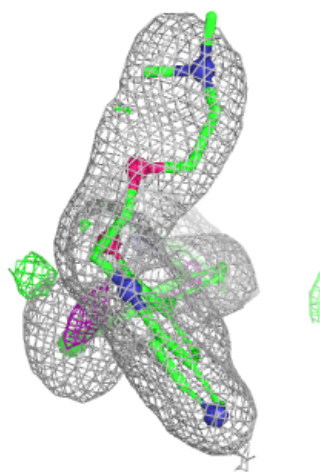
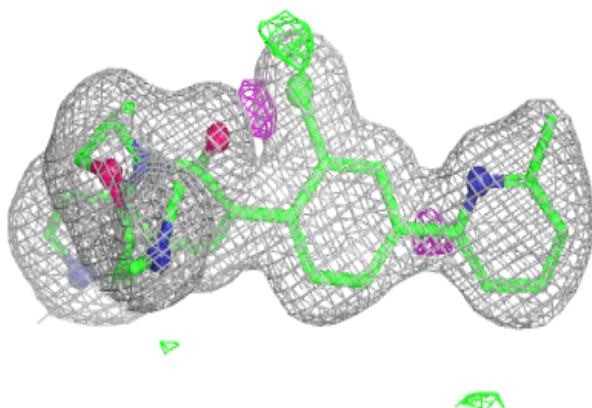
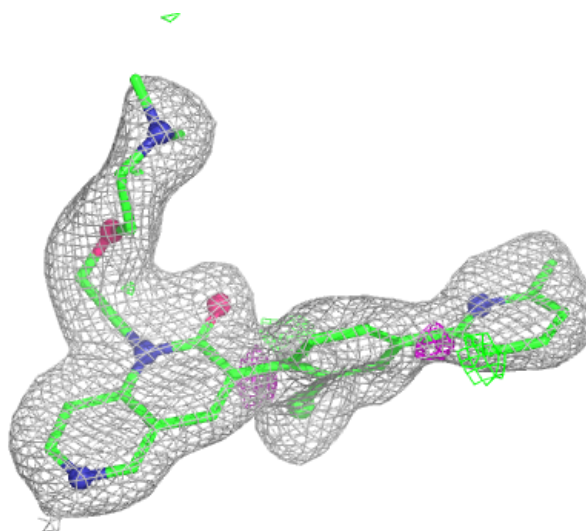
2mF<sub>o</sub>-DF<sub>c</sub> (at 0.7 rmsd) in gray  
mF<sub>o</sub>-DF<sub>c</sub> (at 3 rmsd) in purple (negative)  
and green (positive)





**Electron density around A1BV8 A 601:**

$2mF_o-DF_c$  (at 0.7 rmsd) in gray  
 $mF_o-DF_c$  (at 3 rmsd) in purple (negative)  
and green (positive)



## 6.5 Other polymers [i](#)

There are no such residues in this entry.