



# wwPDB X-ray Structure Validation Summary Report ⓘ

Jan 20, 2026 – 06:22 PM EST

PDB ID : 9N03 / pdb\_00009n03  
Title : Crystal structure of Melanotaenia fluviatilis estrogen receptor alpha ligand binding domain complexed with Bisphenol AF  
Authors : Pederick, J.L.; Bruning, J.B.  
Deposited on : 2025-01-23  
Resolution : 1.80 Å(reported)

This is a wwPDB X-ray Structure Validation Summary Report for a publicly released PDB entry.

We welcome your comments at [validation@mail.wwpdb.org](mailto:validation@mail.wwpdb.org)

A user guide is available at

<https://www.wwpdb.org/validation/2017/XrayValidationReportHelp>

with specific help available everywhere you see the ⓘ symbol.

The types of validation reports are described at

<http://www.wwpdb.org/validation/2017/FAQs#types>.

---

The following versions of software and data (see [references ⓘ](#)) were used in the production of this report:

MolProbity	:	4-5-2 with Phenix2.0
Mogul	:	2022.3.0, CSD as543be (2022)
Xtriage (Phenix)	:	2.0
EDS	:	3.0
buster-report	:	1.1.7 (2018)
Percentile statistics	:	20231227.v01 (using entries in the PDB archive December 27th 2023)
CCP4	:	9.0.010 (Gargrove)
Density-Fitness	:	1.0.12
Ideal geometry (proteins)	:	Engh & Huber (2001)
Ideal geometry (DNA, RNA)	:	Parkinson et al. (1996)
Validation Pipeline (wwPDB-VP)	:	2.47

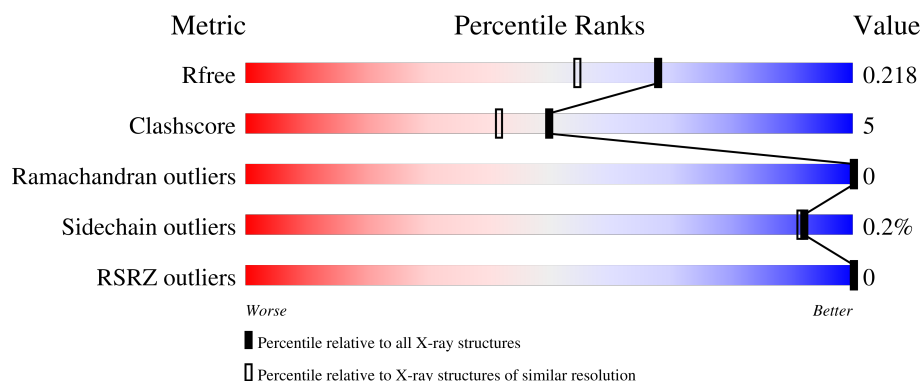
# 1 Overall quality at a glance

The following experimental techniques were used to determine the structure:

## *X-RAY DIFFRACTION*



The reported resolution of this entry is 1.80 Å.

Percentile scores (ranging between 0-100) for global validation metrics of the entry are shown in the following graphic. The table shows the number of entries on which the scores are based.



Metric	Whole archive (#Entries)	Similar resolution (#Entries, resolution range(Å))
$R_{free}$	164625	7108 (1.80-1.80)
Clashscore	180529	8162 (1.80-1.80)
Ramachandran outliers	177936	8077 (1.80-1.80)
Sidechain outliers	177891	8076 (1.80-1.80)
RSRZ outliers	164620	7108 (1.80-1.80)

The table below summarises the geometric issues observed across the polymeric chains and their fit to the electron density. The red, orange, yellow and green segments of the lower bar indicate the fraction of residues that contain outliers for  $\geq 3$ , 2, 1 and 0 types of geometric quality criteria respectively. A grey segment represents the fraction of residues that are not modelled. The numeric value for each fraction is indicated below the corresponding segment, with a dot representing fractions  $\leq 5\%$ . The upper red bar (where present) indicates the fraction of residues that have poor fit to the electron density. The numeric value is given above the bar.

Mol	Chain	Length	Quality of chain
1	A	251	 86% 9% 5%
1	B	251	 84% 12% •

## 2 Entry composition

There are 4 unique types of molecules in this entry. The entry contains 4228 atoms, of which 0 are hydrogens and 0 are deuteriums.

In the tables below, the ZeroOcc column contains the number of atoms modelled with zero occupancy, the AltConf column contains the number of residues with at least one atom in alternate conformation and the Trace column contains the number of residues modelled with at most 2 atoms.

- Molecule 1 is a protein called Estrogen receptor.

Mol	Chain	Residues	Atoms					ZeroOcc	AltConf	Trace
1	A	239	Total	C	N	O	S	0	2	0
			1886	1207	319	340	20			
1	B	241	Total	C	N	O	S	0	3	0
			1885	1206	318	341	20			

There are 14 discrepancies between the modelled and reference sequences:

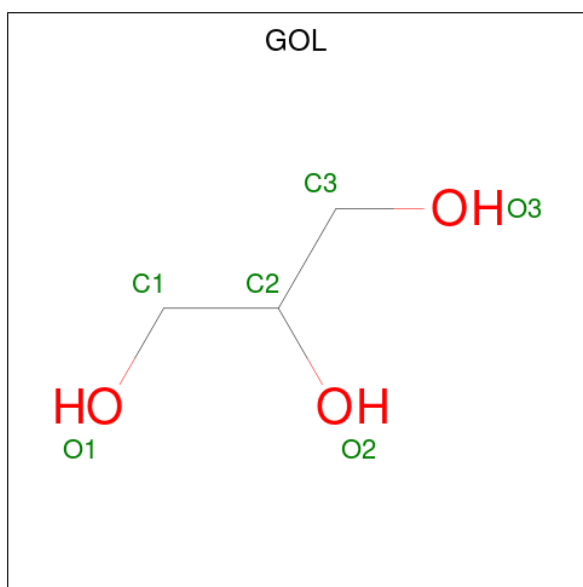
Chain	Residue	Modelled	Actual	Comment	Reference
A	303	MET	-	expression tag	UNP D6N7U3
A	304	HIS	-	expression tag	UNP D6N7U3
A	305	HIS	-	expression tag	UNP D6N7U3
A	306	HIS	-	expression tag	UNP D6N7U3
A	307	HIS	-	expression tag	UNP D6N7U3
A	308	HIS	-	expression tag	UNP D6N7U3
A	309	HIS	-	expression tag	UNP D6N7U3
B	303	MET	-	expression tag	UNP D6N7U3
B	304	HIS	-	expression tag	UNP D6N7U3
B	305	HIS	-	expression tag	UNP D6N7U3
B	306	HIS	-	expression tag	UNP D6N7U3
B	307	HIS	-	expression tag	UNP D6N7U3
B	308	HIS	-	expression tag	UNP D6N7U3
B	309	HIS	-	expression tag	UNP D6N7U3

- Molecule 2 is 4,4'-(1,1,1,3,3,3-hexafluoropropane-2,2-diyl)diphenol (CCD ID: 0CZ) (formula: C<sub>15</sub>H<sub>10</sub>F<sub>6</sub>O<sub>2</sub>) (labeled as "Ligand of Interest" by depositor).



Mol	Chain	Residues	Atoms				ZeroOcc	AltConf
2	A	1	Total 23	C 15	F 6	O 2	0	0
2	B	1	Total 23	C 15	F 6	O 2	0	1
2	B	1	Total 23	C 15	F 6	O 2	0	1

- Molecule 3 is GLYCEROL (CCD ID: GOL) (formula:  $\text{C}_3\text{H}_8\text{O}_3$ ).



Mol	Chain	Residues	Atoms			ZeroOcc	AltConf
3	A	1	Total	C	O	0	0
			6	3	3		

*Continued on next page...*

*Continued from previous page...*

Mol	Chain	Residues	Atoms			ZeroOcc	AltConf
3	A	1	Total	C	O	0	0
			6	3	3		
3	A	1	Total	C	O	0	0
			6	3	3		
3	B	1	Total	C	O	0	0
			6	3	3		
3	B	1	Total	C	O	0	0
			6	3	3		


- Molecule 4 is water.

Mol	Chain	Residues	Atoms		ZeroOcc	AltConf
4	A	160	Total	O	0	0
			160	160		
4	B	198	Total	O	0	0
			198	198		

### 3 Residue-property plots


These plots are drawn for all protein, RNA, DNA and oligosaccharide chains in the entry. The first graphic for a chain summarises the proportions of the various outlier classes displayed in the second graphic. The second graphic shows the sequence view annotated by issues in geometry and electron density. Residues are color-coded according to the number of geometric quality criteria for which they contain at least one outlier: green = 0, yellow = 1, orange = 2 and red = 3 or more. A red dot above a residue indicates a poor fit to the electron density ( $RSRZ > 2$ ). Stretches of 2 or more consecutive residues without any outlier are shown as a green connector. Residues present in the sample, but not in the model, are shown in grey.

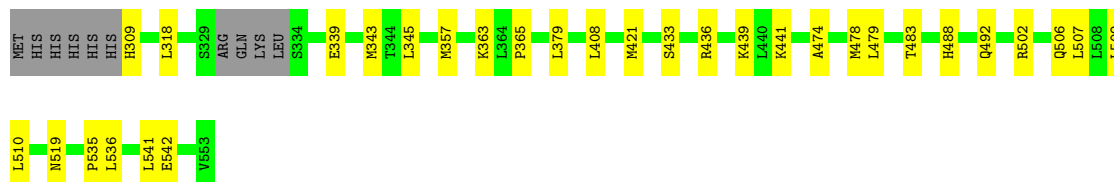
- Molecule 1: Estrogen receptor

Chain A: 



- Molecule 1: Estrogen receptor

Chain B: 



## 4 Data and refinement statistics

Property	Value	Source
Space group	P 3 2 1	Depositor
Cell constants a, b, c, $\alpha$ , $\beta$ , $\gamma$	111.16Å 111.16Å 99.50Å 90.00° 90.00° 120.00°	Depositor
Resolution (Å)	37.07 – 1.80 37.07 – 1.80	Depositor EDS
% Data completeness (in resolution range)	100.0 (37.07-1.80) 96.2 (37.07-1.80)	Depositor EDS
$R_{merge}$	0.29	Depositor
$R_{sym}$	(Not available)	Depositor
$\langle I/\sigma(I) \rangle$ <sup>1</sup>	1.99 (at 1.81Å)	Xtriage
Refinement program	PHENIX (1.20.1_4487: ???)	Depositor
R, $R_{free}$	0.185 , 0.218 0.185 , 0.218	Depositor DCC
$R_{free}$ test set	3329 reflections (5.04%)	wwPDB-VP
Wilson B-factor (Å <sup>2</sup> )	23.7	Xtriage
Anisotropy	0.271	Xtriage
Bulk solvent $k_{sol}$ (e/Å <sup>3</sup> ), $B_{sol}$ (Å <sup>2</sup> )	0.36 , 35.4	EDS
L-test for twinning <sup>2</sup>	$\langle  L  \rangle = 0.46$ , $\langle L^2 \rangle = 0.29$	Xtriage
Estimated twinning fraction	0.067 for -h,-k,l	Xtriage
$F_o, F_c$ correlation	0.96	EDS
Total number of atoms	4228	wwPDB-VP
Average B, all atoms (Å <sup>2</sup> )	30.0	wwPDB-VP

Xtriage's analysis on translational NCS is as follows: *The largest off-origin peak in the Patterson function is 5.54% of the height of the origin peak. No significant pseudotranslation is detected.*

<sup>1</sup>Intensities estimated from amplitudes.

<sup>2</sup>Theoretical values of  $\langle |L| \rangle$ ,  $\langle L^2 \rangle$  for acentric reflections are 0.5, 0.333 respectively for untwinned datasets, and 0.375, 0.2 for perfectly twinned datasets.

## 5 Model quality [i](#)

### 5.1 Standard geometry [i](#)

Bond lengths and bond angles in the following residue types are not validated in this section: GOL, OCZ

The Z score for a bond length (or angle) is the number of standard deviations the observed value is removed from the expected value. A bond length (or angle) with  $|Z| > 5$  is considered an outlier worth inspection. RMSZ is the root-mean-square of all Z scores of the bond lengths (or angles).

Mol	Chain	Bond lengths		Bond angles	
		RMSZ	$\# Z  > 5$	RMSZ	$\# Z  > 5$
1	A	0.71	0/1925	0.83	3/2607 (0.1%)
1	B	0.75	1/1924 (0.1%)	0.83	0/2608
All	All	0.73	1/3849 (0.0%)	0.83	3/5215 (0.1%)

All (1) bond length outliers are listed below:

Mol	Chain	Res	Type	Atoms	Z	Observed(Å)	Ideal(Å)
1	B	542	GLU	CB-CG	-5.41	1.36	1.52

All (3) bond angle outliers are listed below:

Mol	Chain	Res	Type	Atoms	Z	Observed(°)	Ideal(°)
1	A	500	GLN	N-CA-CB	5.86	118.51	110.01
1	A	500	GLN	CA-CB-CG	5.30	124.70	114.10
1	A	500	GLN	CB-CA-C	-5.13	102.83	110.88

There are no chirality outliers.

There are no planarity outliers.

### 5.2 Too-close contacts [i](#)

In the following table, the Non-H and H(model) columns list the number of non-hydrogen atoms and hydrogen atoms in the chain respectively. The H(added) column lists the number of hydrogen atoms added and optimized by MolProbity. The Clashes column lists the number of clashes within the asymmetric unit, whereas Symm-Clashes lists symmetry-related clashes.

Mol	Chain	Non-H	H(model)	H(added)	Clashes	Symm-Clashes
1	A	1886	0	1900	16	0
1	B	1885	0	1882	24	0

*Continued on next page...*



*Continued from previous page...*

Mol	Chain	Non-H	H(model)	H(added)	Clashes	Symm-Clashes
2	A	23	0	10	0	0
2	B	46	0	20	4	0
3	A	18	0	23	1	0
3	B	12	0	15	0	0
4	A	160	0	0	3	1
4	B	198	0	0	7	0
All	All	4228	0	3850	40	1

The all-atom clashscore is defined as the number of clashes found per 1000 atoms (including hydrogen atoms). The all-atom clashscore for this structure is 5.

The worst 5 of 40 close contacts within the same asymmetric unit are listed below, sorted by their clash magnitude.

Atom-1	Atom-2	Interatomic distance (Å)	Clash overlap (Å)
1:B:441:LYS:NZ	4:B:701:HOH:O	2.11	0.84
1:B:343:MET:HE2	1:B:343:MET:HA	1.79	0.65
1:A:516:HIS:HE1	4:B:767:HOH:O	1.80	0.64
1:A:380:GLU:HG2	1:A:550:HIS:H	1.65	0.61
1:A:502:ARG:O	1:A:506:GLN:HG3	2.00	0.61

All (1) symmetry-related close contacts are listed below. The label for Atom-2 includes the symmetry operator and encoded unit-cell translations to be applied.

Atom-1	Atom-2	Interatomic distance (Å)	Clash overlap (Å)
4:A:847:HOH:O	4:A:848:HOH:O[5_555]	2.10	0.10

## 5.3 Torsion angles ⓘ

### 5.3.1 Protein backbone ⓘ

In the following table, the Percentiles column shows the percent Ramachandran outliers of the chain as a percentile score with respect to all X-ray entries followed by that with respect to entries of similar resolution.

The Analysed column shows the number of residues for which the backbone conformation was analysed, and the total number of residues.

Mol	Chain	Analysed	Favoured	Allowed	Outliers	Percentiles
1	A	237/251 (94%)	233 (98%)	4 (2%)	0	100 100

*Continued on next page...*

*Continued from previous page...*

Mol	Chain	Analysed	Favoured	Allowed	Outliers	Percentiles	
1	B	239/251 (95%)	237 (99%)	2 (1%)	0	100	100
All	All	476/502 (95%)	470 (99%)	6 (1%)	0	100	100

There are no Ramachandran outliers to report.

### 5.3.2 Protein sidechains ⓘ

In the following table, the Percentiles column shows the percent sidechain outliers of the chain as a percentile score with respect to all X-ray entries followed by that with respect to entries of similar resolution.

The Analysed column shows the number of residues for which the sidechain conformation was analysed, and the total number of residues.

Mol	Chain	Analysed	Rotameric	Outliers	Percentiles	
1	A	210/226 (93%)	209 (100%)	1 (0%)	86	86
1	B	208/226 (92%)	208 (100%)	0	100	100
All	All	418/452 (92%)	417 (100%)	1 (0%)	92	91

All (1) residues with a non-rotameric sidechain are listed below:

Mol	Chain	Res	Type
1	A	326	ILE

Sometimes sidechains can be flipped to improve hydrogen bonding and reduce clashes. 5 of 10 such sidechains are listed below:

Mol	Chain	Res	Type
1	A	504	GLN
1	A	519	ASN
1	B	519	ASN
1	A	470	HIS
1	A	488	HIS

### 5.3.3 RNA ⓘ

There are no RNA molecules in this entry.

## 5.4 Non-standard residues in protein, DNA, RNA chains [i](#)

There are no non-standard protein/DNA/RNA residues in this entry.

## 5.5 Carbohydrates [i](#)

There are no oligosaccharides in this entry.

## 5.6 Ligand geometry [i](#)

8 ligands are modelled in this entry.

In the following table, the Counts columns list the number of bonds (or angles) for which Mogul statistics could be retrieved, the number of bonds (or angles) that are observed in the model and the number of bonds (or angles) that are defined in the Chemical Component Dictionary. The Link column lists molecule types, if any, to which the group is linked. The Z score for a bond length (or angle) is the number of standard deviations the observed value is removed from the expected value. A bond length (or angle) with  $|Z| > 2$  is considered an outlier worth inspection. RMSZ is the root-mean-square of all Z scores of the bond lengths (or angles).

Mol	Type	Chain	Res	Link	Bond lengths			Bond angles		
					Counts	RMSZ	# $ Z  > 2$	Counts	RMSZ	# $ Z  > 2$
2	0CZ	B	604[B]	-	24,24,24	1.67	7 (29%)	38,38,38	1.62	3 (7%)
2	0CZ	A	601	-	24,24,24	1.63	5 (20%)	38,38,38	1.30	6 (15%)
2	0CZ	B	601[A]	-	24,24,24	1.53	5 (20%)	38,38,38	1.34	5 (13%)
3	GOL	A	602	-	5,5,5	1.33	1 (20%)	5,5,5	1.13	0
3	GOL	A	604	-	5,5,5	1.10	0	5,5,5	1.10	0
3	GOL	A	603	-	5,5,5	1.28	1 (20%)	5,5,5	0.90	0
3	GOL	B	602	-	5,5,5	0.55	0	5,5,5	1.28	1 (20%)
3	GOL	B	603	-	5,5,5	1.59	1 (20%)	5,5,5	0.97	0

In the following table, the Chirals column lists the number of chiral outliers, the number of chiral centers analysed, the number of these observed in the model and the number defined in the Chemical Component Dictionary. Similar counts are reported in the Torsion and Rings columns. '-' means no outliers of that kind were identified.

Mol	Type	Chain	Res	Link	Chirals	Torsions	Rings
2	0CZ	B	604[B]	-	-	15/30/30/30	0/2/2/2
2	0CZ	A	601	-	-	0/30/30/30	0/2/2/2
2	0CZ	B	601[A]	-	-	0/30/30/30	0/2/2/2
3	GOL	A	602	-	-	4/4/4/4	-
3	GOL	A	604	-	-	2/4/4/4	-

*Continued on next page...*

*Continued from previous page...*

Mol	Type	Chain	Res	Link	Chirals	Torsions	Rings
3	GOL	A	603	-	-	4/4/4/4	-
3	GOL	B	602	-	-	0/4/4/4	-
3	GOL	B	603	-	-	2/4/4/4	-

The worst 5 of 20 bond length outliers are listed below:

Mol	Chain	Res	Type	Atoms	Z	Observed(Å)	Ideal(Å)
2	A	601	0CZ	OAB-CAR	4.43	1.46	1.37
2	B	604[B]	0CZ	CAW-CAS	3.62	1.60	1.54
3	B	603	GOL	O2-C2	-3.46	1.33	1.43
2	B	601[A]	0CZ	FAH-CAV	3.29	1.44	1.33
2	A	601	0CZ	CAW-CAT	-3.18	1.49	1.54

The worst 5 of 15 bond angle outliers are listed below:

Mol	Chain	Res	Type	Atoms	Z	Observed(°)	Ideal(°)
2	B	604[B]	0CZ	CAT-CAW-CAS	-8.30	99.84	111.08
2	B	601[A]	0CZ	FAF-CAV-CAW	-3.95	104.69	112.04
2	A	601	0CZ	CAP-CAT-CAO	3.70	123.55	118.03
2	B	601[A]	0CZ	CAN-CAS-CAM	2.94	122.42	118.03
2	B	601[A]	0CZ	FAD-CAU-CAW	-2.75	106.92	112.04

There are no chirality outliers.

5 of 27 torsion outliers are listed below:

Mol	Chain	Res	Type	Atoms
2	B	604[B]	0CZ	FAD-CAU-CAW-CAS
2	B	604[B]	0CZ	FAE-CAU-CAW-CAS
2	B	604[B]	0CZ	FAC-CAU-CAW-CAS
2	B	604[B]	0CZ	FAD-CAU-CAW-CAV
2	B	604[B]	0CZ	FAE-CAU-CAW-CAV

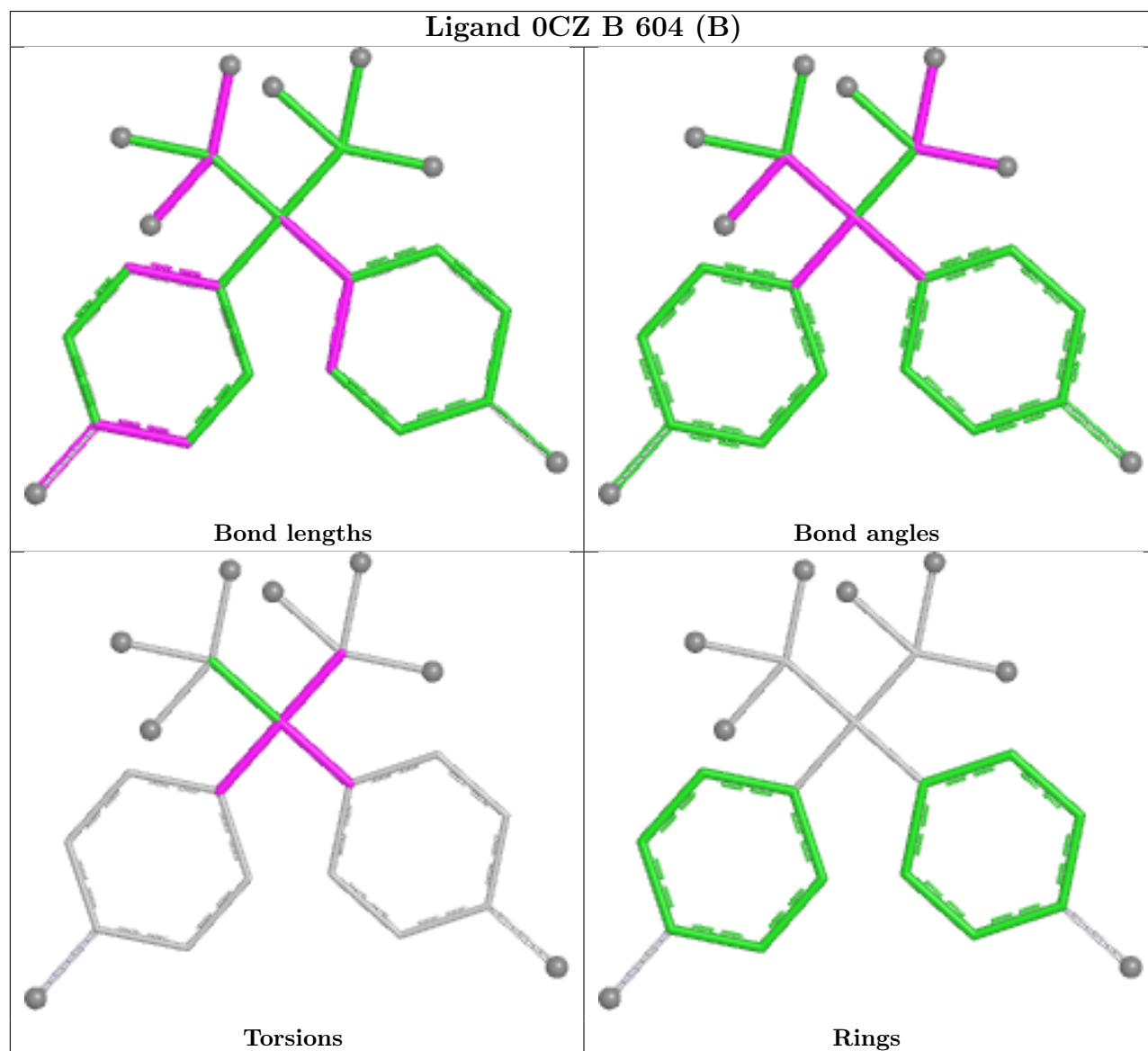
There are no ring outliers.

3 monomers are involved in 5 short contacts:

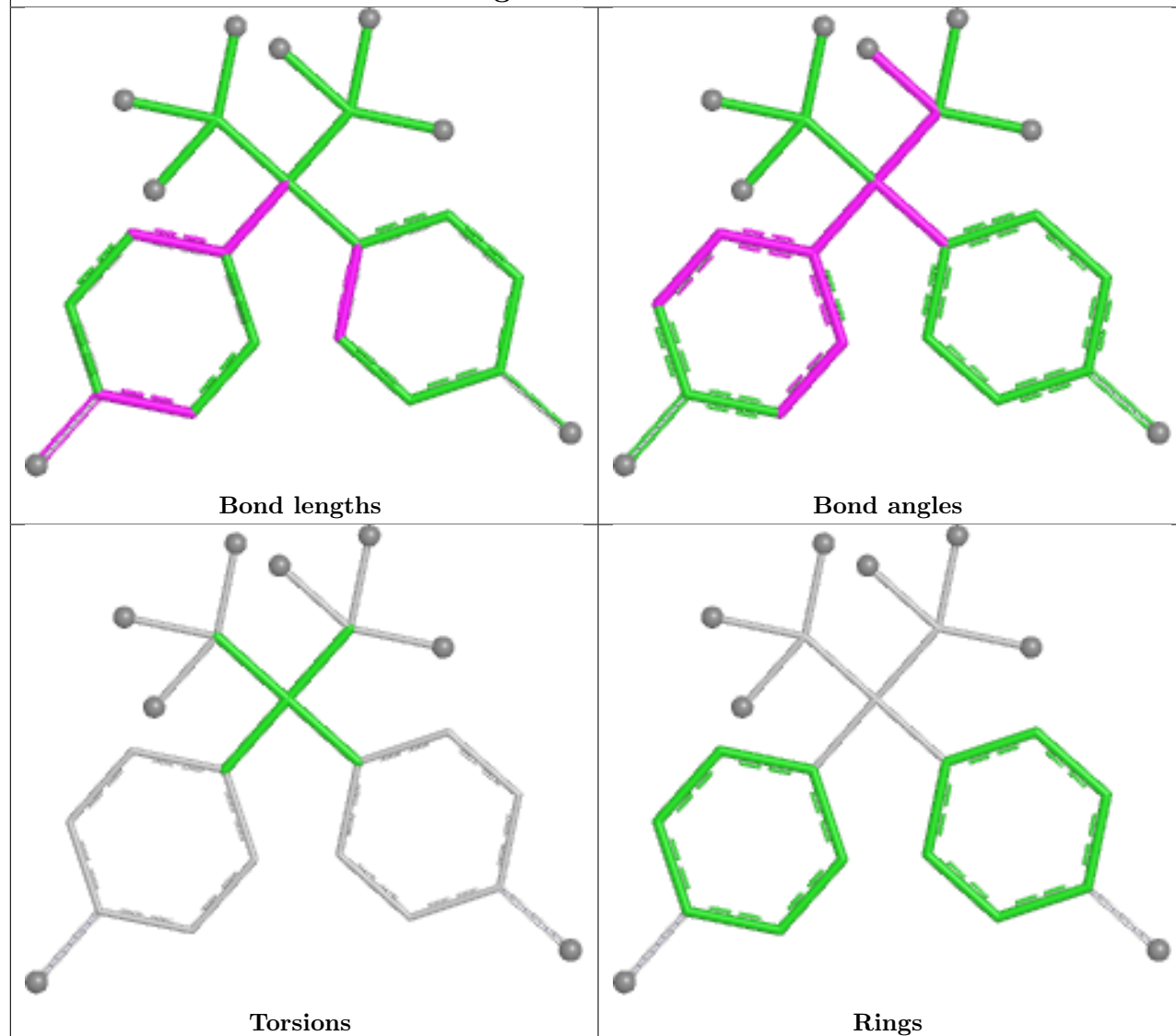
Mol	Chain	Res	Type	Clashes	Symm-Clashes
2	B	604[B]	0CZ	3	0
2	B	601[A]	0CZ	1	0
3	A	603	GOL	1	0

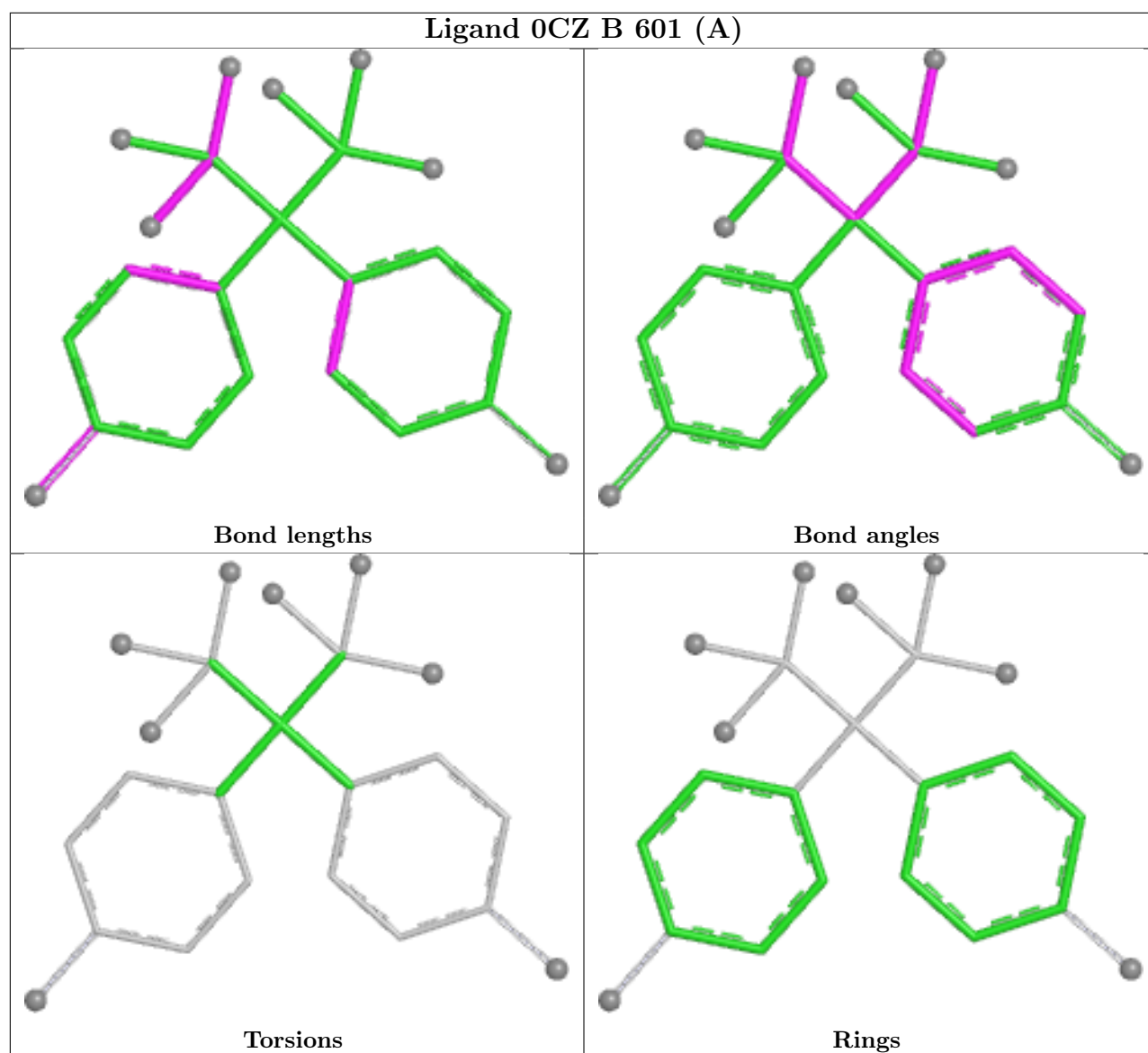
The following is a two-dimensional graphical depiction of Mogul quality analysis of bond lengths,

bond angles, torsion angles, and ring geometry for all instances of the Ligand of Interest. In addition, ligands with molecular weight > 250 and outliers as shown on the validation Tables will also be included. For torsion angles, if less than 5% of the Mogul distribution of torsion angles is within 10 degrees of the torsion angle in question, then that torsion angle is considered an outlier. Any bond that is central to one or more torsion angles identified as an outlier by Mogul will be highlighted in the graph. For rings, the root-mean-square deviation (RMSD) between the ring in question and similar rings identified by Mogul is calculated over all ring torsion angles. If the average RMSD is greater than 60 degrees and the minimal RMSD between the ring in question and any Mogul-identified rings is also greater than 60 degrees, then that ring is considered an outlier. The outliers are highlighted in purple. The color gray indicates Mogul did not find sufficient equivalents in the CSD to analyse the geometry.



## Ligand 0CZ A 601





## 5.7 Other polymers [i](#)

There are no such residues in this entry.

## 5.8 Polymer linkage issues [i](#)

There are no chain breaks in this entry.

## 6 Fit of model and data [i](#)

### 6.1 Protein, DNA and RNA chains [i](#)

In the following table, the column labelled ‘#RSRZ> 2’ contains the number (and percentage) of RSRZ outliers, followed by percent RSRZ outliers for the chain as percentile scores relative to all X-ray entries and entries of similar resolution. The OWAB column contains the minimum, median, 95<sup>th</sup> percentile and maximum values of the occupancy-weighted average B-factor per residue. The column labelled ‘Q< 0.9’ lists the number of (and percentage) of residues with an average occupancy less than 0.9.

Mol	Chain	Analysed	<RSRZ>	#RSRZ>2	OWAB(Å <sup>2</sup> )	Q<0.9
1	A	239/251 (95%)	-1.35	0 100 100	9, 27, 53, 75	2 (0%)
1	B	241/251 (96%)	-1.33	0 100 100	12, 27, 52, 84	2 (0%)
All	All	480/502 (95%)	-1.34	0 100 100	9, 27, 53, 84	4 (0%)

There are no RSRZ outliers to report.

### 6.2 Non-standard residues in protein, DNA, RNA chains [i](#)

There are no non-standard protein/DNA/RNA residues in this entry.

### 6.3 Carbohydrates [i](#)

There are no oligosaccharides in this entry.

### 6.4 Ligands [i](#)

In the following table, the Atoms column lists the number of modelled atoms in the group and the number defined in the chemical component dictionary. The B-factors column lists the minimum, median, 95<sup>th</sup> percentile and maximum values of B factors of atoms in the group. The column labelled ‘Q< 0.9’ lists the number of atoms with occupancy less than 0.9.

Mol	Type	Chain	Res	Atoms	RSCC	RSR	B-factors(Å <sup>2</sup> )	Q<0.9
3	GOL	A	603	6/6	0.97	0.06	35,43,44,45	0
3	GOL	A	604	6/6	0.97	0.06	39,52,55,57	0
2	OCZ	B	604[B]	23/23	0.99	0.04	21,27,34,40	23
3	GOL	A	602	6/6	0.99	0.04	30,36,39,41	6
2	OCZ	A	601	23/23	0.99	0.03	16,22,28,31	0
2	OCZ	B	601[A]	23/23	0.99	0.03	21,26,31,35	23
3	GOL	B	602	6/6	0.99	0.04	20,24,27,30	6

*Continued on next page...*



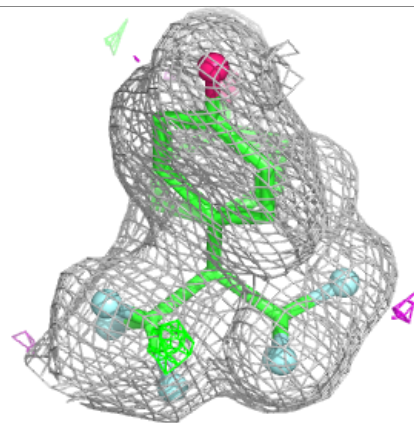
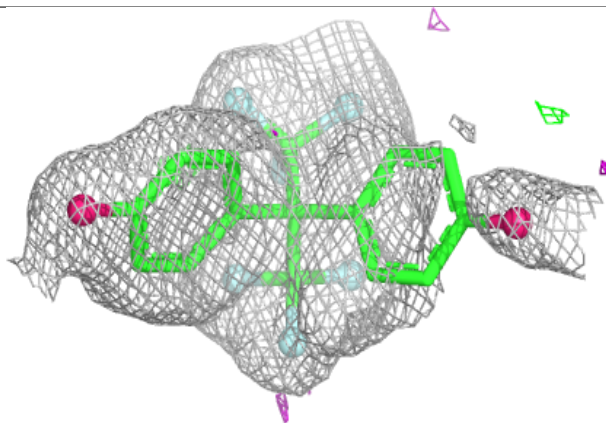
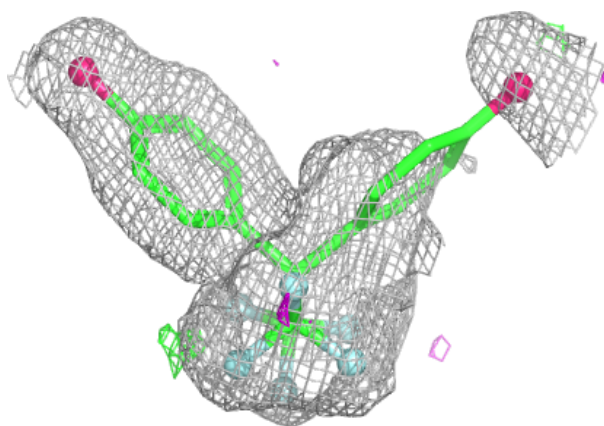
*Continued from previous page...*

Mol	Type	Chain	Res	Atoms	RSCC	RSR	B-factors( $\text{\AA}^2$ )	Q<0.9
3	GOL	B	603	6/6	0.99	0.04	25,27,37,40	0

The following is a graphical depiction of the model fit to experimental electron density of all instances of the Ligand of Interest. In addition, ligands with molecular weight > 250 and outliers as shown on the geometry validation Tables will also be included. Each fit is shown from different orientation to approximate a three-dimensional view.

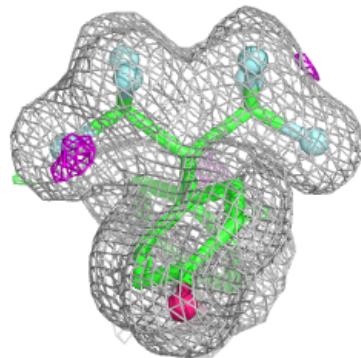
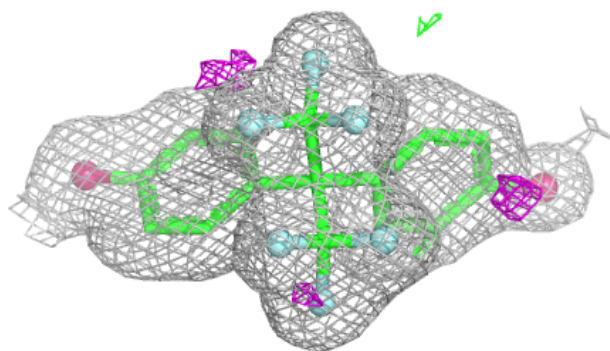
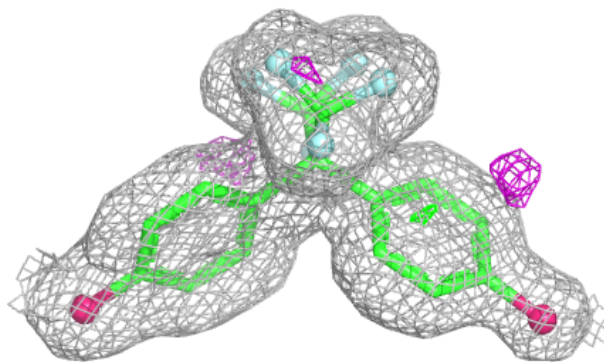
**Electron density around 0CZ B 604 (B):**

2mF<sub>o</sub>-DF<sub>c</sub> (at 0.7 rmsd) in gray  
mF<sub>o</sub>-DF<sub>c</sub> (at 3 rmsd) in purple (negative)  
and green (positive)

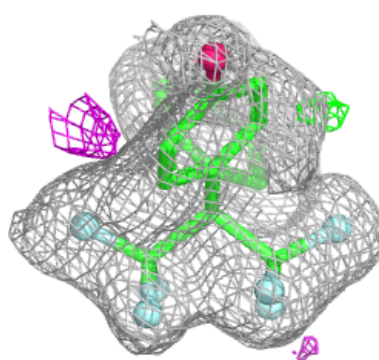
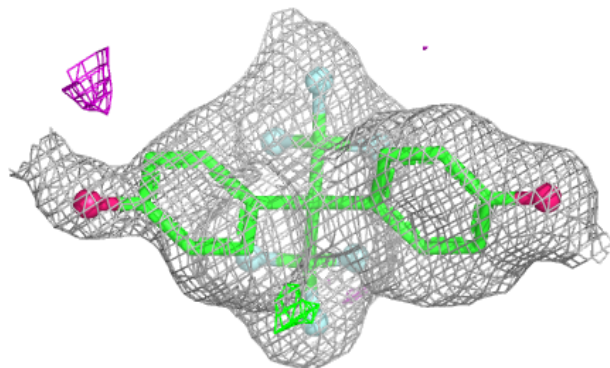
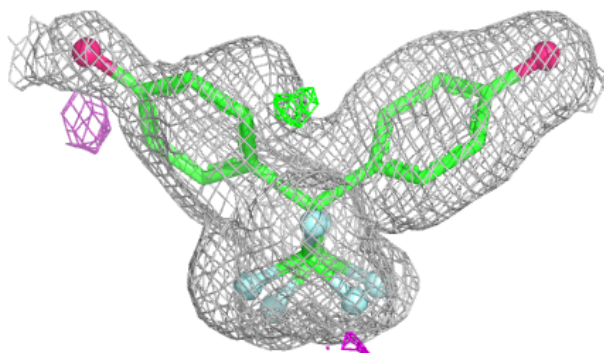


**Electron density around 0CZ A 601:**

$2mF_o-DF_c$  (at 0.7 rmsd) in gray  
 $mF_o-DF_c$  (at 3 rmsd) in purple (negative)  
and green (positive)

**Electron density around 0CZ B 601 (A):**

$2mF_o-DF_c$  (at 0.7 rmsd) in gray  
 $mF_o-DF_c$  (at 3 rmsd) in purple (negative)  
and green (positive)



## 6.5 Other polymers [i](#)

There are no such residues in this entry.