



wwPDB X-ray Structure Validation Summary Report ⓘ

Feb 28, 2026 – 11:05 PM UTC

PDB ID : 1MYR / pdb_00001myr
Title : MYROSINASE FROM SINAPIS ALBA
Authors : Burmeister, W.P.; Iori, R.; Palmieri, S.; Henrissat, B.
Deposited on : 1997-03-23
Resolution : 1.64 Å(reported)

This is a wwPDB X-ray Structure Validation Summary Report for a publicly released PDB entry.

We welcome your comments at validation@mail.wwpdb.org

A user guide is available at

<https://www.wwpdb.org/validation/2017/XrayValidationReportHelp>

with specific help available everywhere you see the ⓘ symbol.

The types of validation reports are described at

<http://www.wwpdb.org/validation/2017/FAQs#types>.

The following versions of software and data (see [references ⓘ](#)) were used in the production of this report:

MolProbity : 4-5-2 with Phenix2.0
Mogul : 2022.3.0, CSD as543be (2022)
Xtrriage (Phenix) : 2.0
EDS : 3.0
Percentile statistics : 20250101.v01 (using entries in the PDB archive January 1st 2025)
CCP4 : 9.0.010 (Gargrove)
Density-Fitness : 1.0.12
Ideal geometry (proteins) : Engh & Huber (2001)
Ideal geometry (DNA, RNA) : Parkinson et al. (1996)
Validation Pipeline (wwPDB-VP) : 2.49

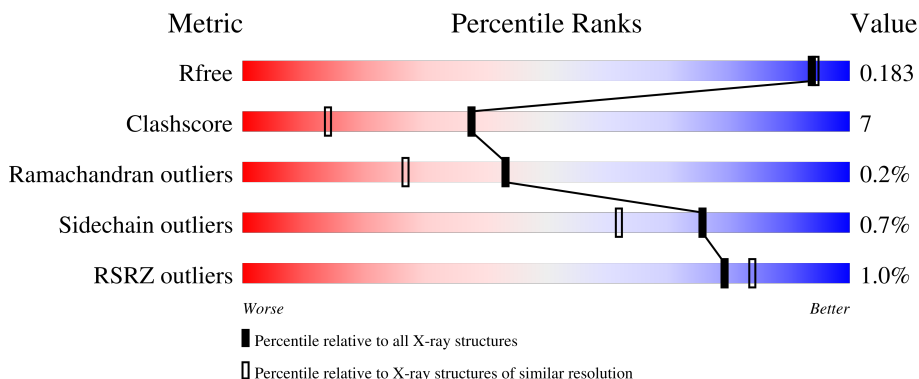
1 Overall quality at a glance

The following experimental techniques were used to determine the structure:

X-RAY DIFFRACTION

The reported resolution of this entry is 1.64 Å.

Percentile scores (ranging between 0-100) for global validation metrics of the entry are shown in the following graphic. The table shows the number of entries on which the scores are based.



Metric	Whole archive (#Entries)	Similar resolution (#Entries, resolution range(Å))
R_{free}	180053	1141 (1.64-1.64)
Clashscore	190562	1171 (1.64-1.64)
Ramachandran outliers	187476	1151 (1.64-1.64)
Sidechain outliers	187428	1150 (1.64-1.64)
RSRZ outliers	180081	1141 (1.64-1.64)

The table below summarises the geometric issues observed across the polymeric chains and their fit to the electron density. The red, orange, yellow and green segments of the lower bar indicate the fraction of residues that contain outliers for ≥ 3 , 2, 1 and 0 types of geometric quality criteria respectively. A grey segment represents the fraction of residues that are not modelled. The numeric value for each fraction is indicated below the corresponding segment, with a dot representing fractions $\leq 5\%$. The upper red bar (where present) indicates the fraction of residues that have poor fit to the electron density. The numeric value is given above the bar.

Mol	Chain	Length	Quality of chain
1	A	501	 85% 14%
2	B	2	 50% 50%
2	E	2	 50% 50%
3	C	5	 20% 80%
4	D	7	 14% 86%

The following table lists non-polymeric compounds, carbohydrate monomers and non-standard residues in protein, DNA, RNA chains that are outliers for geometric or electron-density-fit criteria:

Mol	Type	Chain	Res	Chirality	Geometry	Clashes	Electron density
5	NAG	A	931	-	-	X	-
5	NAG	A	971	X	-	-	-
7	SO4	A	1000	-	-	X	-
7	SO4	A	995	-	-	X	-

2 Entry composition i

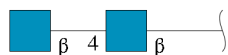
There are 9 unique types of molecules in this entry. The entry contains 5014 atoms, of which 0 are hydrogens and 0 are deuteriums.

In the tables below, the ZeroOcc column contains the number of atoms modelled with zero occupancy, the AltConf column contains the number of residues with at least one atom in alternate conformation and the Trace column contains the number of residues modelled with at most 2 atoms.

- Molecule 1 is a protein called MYROSINASE.

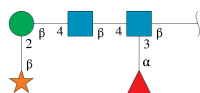
Mol	Chain	Residues	Atoms					ZeroOcc	AltConf	Trace
			Total	C	N	O	S			
1	A	499	4003	2562	660	765	16	0	0	0

- Molecule 2 is an oligosaccharide called 2-acetamido-2-deoxy-beta-D-glucopyranose-(1-4)-2-acetamido-2-deoxy-beta-D-glucopyranose.



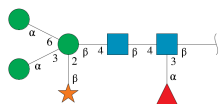
Mol	Chain	Residues	Atoms				ZeroOcc	AltConf	Trace
			Total	C	N	O			
2	B	2	28	16	2	10	0	0	0
2	E	2	28	16	2	10	0	0	0

- Molecule 3 is an oligosaccharide called beta-D-xylopyranose-(1-2)-beta-D-mannopyranose-(1-4)-2-acetamido-2-deoxy-beta-D-glucopyranose-(1-4)-[alpha-L-fucopyranose-(1-3)]2-acetamido-2-deoxy-beta-D-glucopyranose.



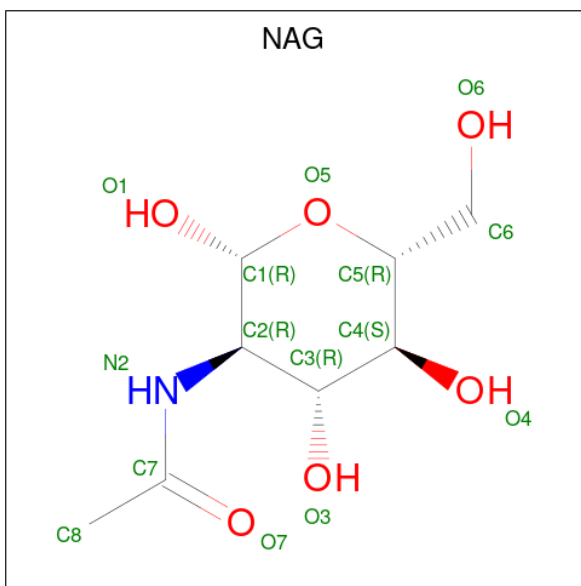
Mol	Chain	Residues	Atoms				ZeroOcc	AltConf	Trace
			Total	C	N	O			
3	C	5	58	33	2	23	0	0	0

- Molecule 4 is an oligosaccharide called beta-D-xylopyranose-(1-2)-[alpha-D-mannopyranose-(1-3)][alpha-D-mannopyranose-(1-6)]beta-D-mannopyranose-(1-4)-2-acetamido-2-deoxy-beta-D-glucopyranose-(1-4)-[alpha-L-fucopyranose-(1-3)]2-acetamido-2-deoxy-beta-D-glucopyranose.



Mol	Chain	Residues	Atoms				ZeroOcc	AltConf	Trace
			Total	C	N	O			
4	D	7	80	45	2	33	0	0	0

- Molecule 5 is 2-acetamido-2-deoxy-beta-D-glucopyranose (CCD ID: NAG) (formula: $C_8H_{15}NO_6$).



Mol	Chain	Residues	Atoms				ZeroOcc	AltConf
			Total	C	N	O		
5	A	1	14	8	1	5	0	0
5	A	1	14	8	1	5	0	0
5	A	1	14	8	1	5	0	0
5	A	1	14	8	1	5	0	0
5	A	1	14	8	1	5	0	0

- Molecule 6 is ZINC ION (CCD ID: ZN) (formula: Zn).

Mol	Chain	Residues	Atoms		ZeroOcc	AltConf
			Total	Zn		
6	A	1	1	1	0	0

- Molecule 7 is SULFATE ION (CCD ID: SO4) (formula: O₄S).



Mol	Chain	Residues	Atoms	ZeroOcc	AltConf
7	A	1	Total O S 5 4 1	0	0
7	A	1	Total O S 5 4 1	0	0
7	A	1	Total O S 5 4 1	0	0
7	A	1	Total O S 5 4 1	0	0
7	A	1	Total O S 5 4 1	0	0
7	A	1	Total O S 5 4 1	0	0
7	A	1	Total O S 5 4 1	0	0
7	A	1	Total O S 5 4 1	0	0
7	A	1	Total O S 5 4 1	0	0
7	A	1	Total O S 5 4 1	0	0

- Molecule 8 is GLYCEROL (CCD ID: GOL) (formula: C₃H₈O₃).



Mol	Chain	Residues	Atoms	ZeroOcc	AltConf
8	A	1	Total C O 6 3 3	0	0
8	A	1	Total C O 6 3 3	0	0
8	A	1	Total C O 6 3 3	0	0
8	A	1	Total C O 6 3 3	0	0

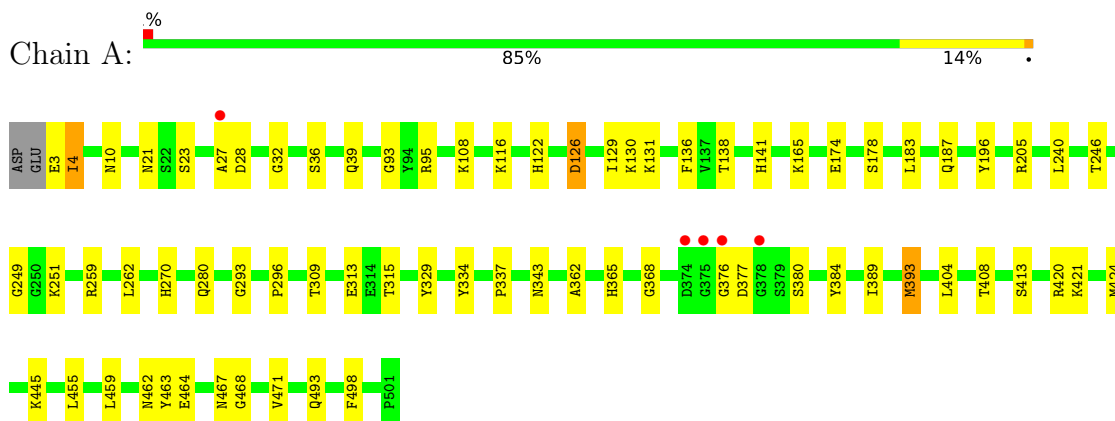
- Molecule 9 is water.

Mol	Chain	Residues	Atoms	ZeroOcc	AltConf
9	A	672	Total O 672 672	0	0

3 Residue-property plots [i](#)

These plots are drawn for all protein, RNA, DNA and oligosaccharide chains in the entry. The first graphic for a chain summarises the proportions of the various outlier classes displayed in the second graphic. The second graphic shows the sequence view annotated by issues in geometry and electron density. Residues are color-coded according to the number of geometric quality criteria for which they contain at least one outlier: green = 0, yellow = 1, orange = 2 and red = 3 or more. A red dot above a residue indicates a poor fit to the electron density ($RSRZ > 2$). Stretches of 2 or more consecutive residues without any outlier are shown as a green connector. Residues present in the sample, but not in the model, are shown in grey.

- Molecule 1: MYROSINASE



- Molecule 2: 2-acetamido-2-deoxy-beta-D-glucopyranose-(1-4)-2-acetamido-2-deoxy-beta-D-glucopyranose



- Molecule 2: 2-acetamido-2-deoxy-beta-D-glucopyranose-(1-4)-2-acetamido-2-deoxy-beta-D-glucopyranose



- Molecule 3: beta-D-xylopyranose-(1-2)-beta-D-mannopyranose-(1-4)-2-acetamido-2-deoxy-beta-D-glucopyranose-(1-4)-[alpha-L-fucopyranose-(1-3)]2-acetamido-2-deoxy-beta-D-glucopyranose



- Molecule 4: beta-D-xylopyranose-(1-2)-[alpha-D-mannopyranose-(1-3)][alpha-D-mannopyranose-(1-6)]beta-D-mannopyranose-(1-4)-2-acetamido-2-deoxy-beta-D-glucopyranose-(1-4)-[alpha-L-fucopyranose-(1-3)]2-acetamido-2-deoxy-beta-D-glucopyranose

Chain D:  14% 86%

MAG1	MAG2	EMAG3	XYL4	MANN5	MANN6	FUC7
------	------	-------	------	-------	-------	------

4 Data and refinement statistics i

Property	Value	Source
Space group	C 2 2 21	Depositor
Cell constants a, b, c, α , β , γ	134.30Å 136.40Å 80.30Å 90.00° 90.00° 90.00°	Depositor
Resolution (Å)	17.40 – 1.64 17.40 – 1.64	Depositor EDS
% Data completeness (in resolution range)	98.3 (17.40-1.64) 98.2 (17.40-1.64)	Depositor EDS
R_{merge}	0.07	Depositor
R_{sym}	0.07	Depositor
$\langle I/\sigma(I) \rangle$	-	Xtrriage
Refinement program	X-PLOR	Depositor
R, R_{free}	0.152 , 0.187 0.149 , 0.183	Depositor DCC
R_{free} test set	4533 reflections (5.12%)	wwPDB-VP
Wilson B-factor (Å ²)	12.7	Xtrriage
Anisotropy	0.026	Xtrriage
Bulk solvent k_{sol} (e/Å ³), B_{sol} (Å ²)	0.39 , 51.8	EDS
L-test for twinning ¹	$\langle L \rangle = 0.50$, $\langle L^2 \rangle = 0.33$	Xtrriage
Estimated twinning fraction	0.012 for -k,-h,-l	Xtrriage
F_o, F_c correlation	0.97	EDS
Total number of atoms	5014	wwPDB-VP
Average B, all atoms (Å ²)	16.0	wwPDB-VP

Xtrriage's analysis on translational NCS is as follows: *The largest off-origin peak in the Patterson function is 4.92% of the height of the origin peak. No significant pseudotranslation is detected.*

¹Theoretical values of $\langle |L| \rangle$, $\langle L^2 \rangle$ for acentric reflections are 0.5, 0.333 respectively for untwinned datasets, and 0.375, 0.2 for perfectly twinned datasets.

5 Model quality [i](#)

5.1 Standard geometry [i](#)

Bond lengths and bond angles in the following residue types are not validated in this section: MAN, SO4, NAG, GOL, ZN, BMA, XYP, FUC

The Z score for a bond length (or angle) is the number of standard deviations the observed value is removed from the expected value. A bond length (or angle) with $|Z| > 5$ is considered an outlier worth inspection. RMSZ is the root-mean-square of all Z scores of the bond lengths (or angles).

Mol	Chain	Bond lengths		Bond angles	
		RMSZ	# Z >5	RMSZ	# Z >5
1	A	1.13	2/4124 (0.0%)	1.06	3/5607 (0.1%)

Chiral center outliers are detected by calculating the chiral volume of a chiral center and verifying if the center is modelled as a planar moiety or with the opposite hand. A planarity outlier is detected by checking planarity of atoms in a peptide group, atoms in a mainchain group or atoms of a sidechain that are expected to be planar.

Mol	Chain	#Chirality outliers	#Planarity outliers
1	A	0	3

All (2) bond length outliers are listed below:

Mol	Chain	Res	Type	Atoms	Z	Observed(Å)	Ideal(Å)
1	A	27	ALA	CA-CB	6.12	1.62	1.53
1	A	393	MET	SD-CE	5.98	1.94	1.79

All (3) bond angle outliers are listed below:

Mol	Chain	Res	Type	Atoms	Z	Observed(°)	Ideal(°)
1	A	380	SER	N-CA-C	-5.30	106.05	112.88
1	A	404	LEU	N-CA-C	-5.04	101.10	109.46
1	A	259	ARG	N-CA-C	-5.01	101.67	109.24

There are no chirality outliers.

All (3) planarity outliers are listed below:

Mol	Chain	Res	Type	Group
1	A	10	ASN	Sidechain
1	A	126	ASP	Mainchain

Continued on next page...

Continued from previous page...

Mol	Chain	Res	Type	Group
1	A	329	TYR	Sidechain

5.2 Too-close contacts [i](#)

In the following table, the Non-H and H(model) columns list the number of non-hydrogen atoms and hydrogen atoms in the chain respectively. The H(added) column lists the number of hydrogen atoms added and optimized by MolProbity. The Clashes column lists the number of clashes within the asymmetric unit, whereas Symm-Clashes lists symmetry-related clashes.

Mol	Chain	Non-H	H(model)	H(added)	Clashes	Symm-Clashes
1	A	4003	0	3757	55	0
2	B	28	0	25	0	0
2	E	28	0	25	1	0
3	C	58	0	42	0	0
4	D	80	0	60	1	0
5	A	70	0	65	7	0
6	A	1	0	0	0	0
7	A	50	0	0	2	0
8	A	24	0	32	1	0
9	A	672	0	0	17	0
All	All	5014	0	4006	58	0

The all-atom clashscore is defined as the number of clashes found per 1000 atoms (including hydrogen atoms). The all-atom clashscore for this structure is 7.

The worst 5 of 58 close contacts within the same asymmetric unit are listed below, sorted by their clash magnitude.

Atom-1	Atom-2	Interatomic distance (Å)	Clash overlap (Å)
1:A:246:THR:HG22	9:A:1342:HOH:O	1.64	0.97
1:A:108:LYS:HD2	9:A:1126:HOH:O	1.83	0.79
1:A:293:GLY:HA3	1:A:315:THR:HG23	1.67	0.76
1:A:464:GLU:HG2	1:A:467:ASN:HD22	1.51	0.74
7:A:995:SO4:S	7:A:1000:SO4:O3	2.52	0.68

There are no symmetry-related clashes.

5.3 Torsion angles [i](#)

5.3.1 Protein backbone [i](#)

In the following table, the Percentiles column shows the percent Ramachandran outliers of the chain as a percentile score with respect to all X-ray entries followed by that with respect to entries of similar resolution.

The Analysed column shows the number of residues for which the backbone conformation was analysed, and the total number of residues.

Mol	Chain	Analysed	Favoured	Allowed	Outliers	Percentiles
1	A	497/501 (99%)	481 (97%)	15 (3%)	1 (0%)	43 27

All (1) Ramachandran outliers are listed below:

Mol	Chain	Res	Type
1	A	187	GLN

5.3.2 Protein sidechains [i](#)

In the following table, the Percentiles column shows the percent sidechain outliers of the chain as a percentile score with respect to all X-ray entries followed by that with respect to entries of similar resolution.

The Analysed column shows the number of residues for which the sidechain conformation was analysed, and the total number of residues.

Mol	Chain	Analysed	Rotameric	Outliers	Percentiles
1	A	430/432 (100%)	427 (99%)	3 (1%)	76 62

All (3) residues with a non-rotameric sidechain are listed below:

Mol	Chain	Res	Type
1	A	3	GLU
1	A	4	ILE
1	A	408	THR

Sometimes sidechains can be flipped to improve hydrogen bonding and reduce clashes. 5 of 6 such sidechains are listed below:

Mol	Chain	Res	Type
1	A	410	ASN
1	A	462	ASN

Continued on next page...

Continued from previous page...

Mol	Chain	Res	Type
1	A	467	ASN
1	A	365	HIS
1	A	316	ASN

5.3.3 RNA [i](#)

There are no RNA molecules in this entry.

5.4 Non-standard residues in protein, DNA, RNA chains [i](#)

There are no non-standard protein/DNA/RNA residues in this entry.

5.5 Carbohydrates [i](#)

16 monosaccharides are modelled in this entry.

In the following table, the Counts columns list the number of bonds (or angles) for which Mogul statistics could be retrieved, the number of bonds (or angles) that are observed in the model and the number of bonds (or angles) that are defined in the Chemical Component Dictionary. The Link column lists molecule types, if any, to which the group is linked. The Z score for a bond length (or angle) is the number of standard deviations the observed value is removed from the expected value. A bond length (or angle) with $|Z| > 2$ is considered an outlier worth inspection. RMSZ is the root-mean-square of all Z scores of the bond lengths (or angles).

Mol	Type	Chain	Res	Link	Bond lengths			Bond angles		
					Counts	RMSZ	# Z > 2	Counts	RMSZ	# Z > 2
2	NAG	B	1	2,1	14,14,15	0.87	0	17,19,21	0.92	0
2	NAG	B	2	2	14,14,15	1.16	2 (14%)	17,19,21	0.90	1 (5%)
3	NAG	C	1	3,1	14,14,15	0.72	1 (7%)	17,19,21	0.92	0
3	NAG	C	2	3	14,14,15	0.98	1 (7%)	17,19,21	0.79	0
3	BMA	C	3	3	11,11,12	1.54	3 (27%)	15,15,17	0.89	0
3	XYP	C	4	3	9,9,10	1.38	2 (22%)	10,12,14	0.95	1 (10%)
3	FUC	C	5	3	10,10,11	0.69	0	14,14,16	0.89	0
4	NAG	D	1	4,1	14,14,15	0.79	0	17,19,21	0.93	1 (5%)
4	NAG	D	2	4	14,14,15	0.98	1 (7%)	17,19,21	0.98	1 (5%)
4	BMA	D	3	4	11,11,12	1.55	2 (18%)	15,15,17	0.95	0
4	XYP	D	4	4	9,9,10	0.61	0	10,12,14	0.64	0
4	MAN	D	5	4	11,11,12	1.00	0	15,15,17	0.90	0
4	MAN	D	6	4	11,11,12	1.65	3 (27%)	15,15,17	1.68	3 (20%)

Mol	Type	Chain	Res	Link	Bond lengths			Bond angles		
					Counts	RMSZ	# Z > 2	Counts	RMSZ	# Z > 2
4	FUC	D	7	4	10,10,11	1.18	1 (10%)	14,14,16	0.84	0
2	NAG	E	1	2,1	14,14,15	0.91	1 (7%)	17,19,21	0.51	0
2	NAG	E	2	2	14,14,15	1.69	4 (28%)	17,19,21	0.93	1 (5%)

In the following table, the Chirals column lists the number of chiral outliers, the number of chiral centers analysed, the number of these observed in the model and the number defined in the Chemical Component Dictionary. Similar counts are reported in the Torsion and Rings columns. '-' means no outliers of that kind were identified.

Mol	Type	Chain	Res	Link	Chirals	Torsions	Rings
2	NAG	B	1	2,1	-	2/6/23/26	0/1/1/1
2	NAG	B	2	2	-	1/6/23/26	0/1/1/1
3	NAG	C	1	3,1	-	0/6/23/26	0/1/1/1
3	NAG	C	2	3	-	0/6/23/26	0/1/1/1
3	BMA	C	3	3	-	0/2/19/22	0/1/1/1
3	XYP	C	4	3	-	-	0/1/1/1
3	FUC	C	5	3	-	-	0/1/1/1
4	NAG	D	1	4,1	-	0/6/23/26	0/1/1/1
4	NAG	D	2	4	-	0/6/23/26	0/1/1/1
4	BMA	D	3	4	-	0/2/19/22	0/1/1/1
4	XYP	D	4	4	-	-	0/1/1/1
4	MAN	D	5	4	-	2/2/19/22	0/1/1/1
4	MAN	D	6	4	-	2/2/19/22	0/1/1/1
4	FUC	D	7	4	-	-	0/1/1/1
2	NAG	E	1	2,1	-	0/6/23/26	0/1/1/1
2	NAG	E	2	2	-	2/6/23/26	0/1/1/1

The worst 5 of 21 bond length outliers are listed below:

Mol	Chain	Res	Type	Atoms	Z	Observed(Å)	Ideal(Å)
4	D	3	BMA	C2-C3	-3.75	1.46	1.52
4	D	6	MAN	C2-C3	3.63	1.58	1.52
2	E	2	NAG	C1-C2	3.23	1.56	1.52
3	C	3	BMA	C4-C5	3.22	1.59	1.53
2	E	1	NAG	C1-C2	3.14	1.56	1.52

The worst 5 of 8 bond angle outliers are listed below:

Mol	Chain	Res	Type	Atoms	Z	Observed(°)	Ideal(°)
4	D	6	MAN	C1-O5-C5	4.31	117.96	112.19

Continued on next page...

Continued from previous page...

Mol	Chain	Res	Type	Atoms	Z	Observed(°)	Ideal(°)
4	D	6	MAN	C1-C2-C3	3.08	114.13	109.64
2	B	2	NAG	C8-C7-N2	-2.54	111.90	116.12
4	D	6	MAN	C3-C4-C5	2.51	114.79	110.23
3	C	4	XYP	C4-C3-C2	-2.42	108.05	110.92

There are no chirality outliers.

5 of 9 torsion outliers are listed below:

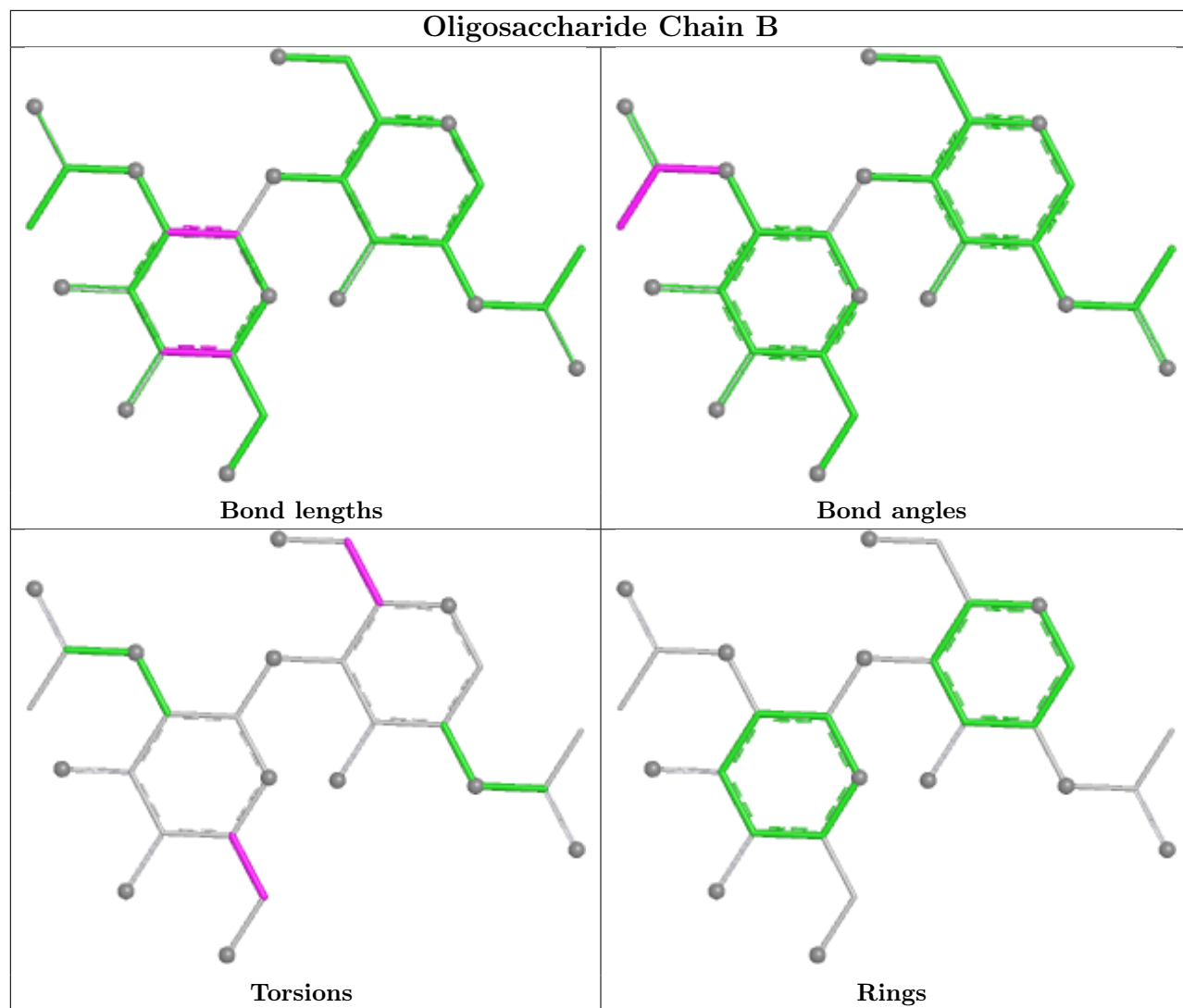
Mol	Chain	Res	Type	Atoms
4	D	6	MAN	O5-C5-C6-O6
4	D	6	MAN	C4-C5-C6-O6
2	E	2	NAG	O5-C5-C6-O6
2	B	1	NAG	O5-C5-C6-O6
2	B	1	NAG	C4-C5-C6-O6

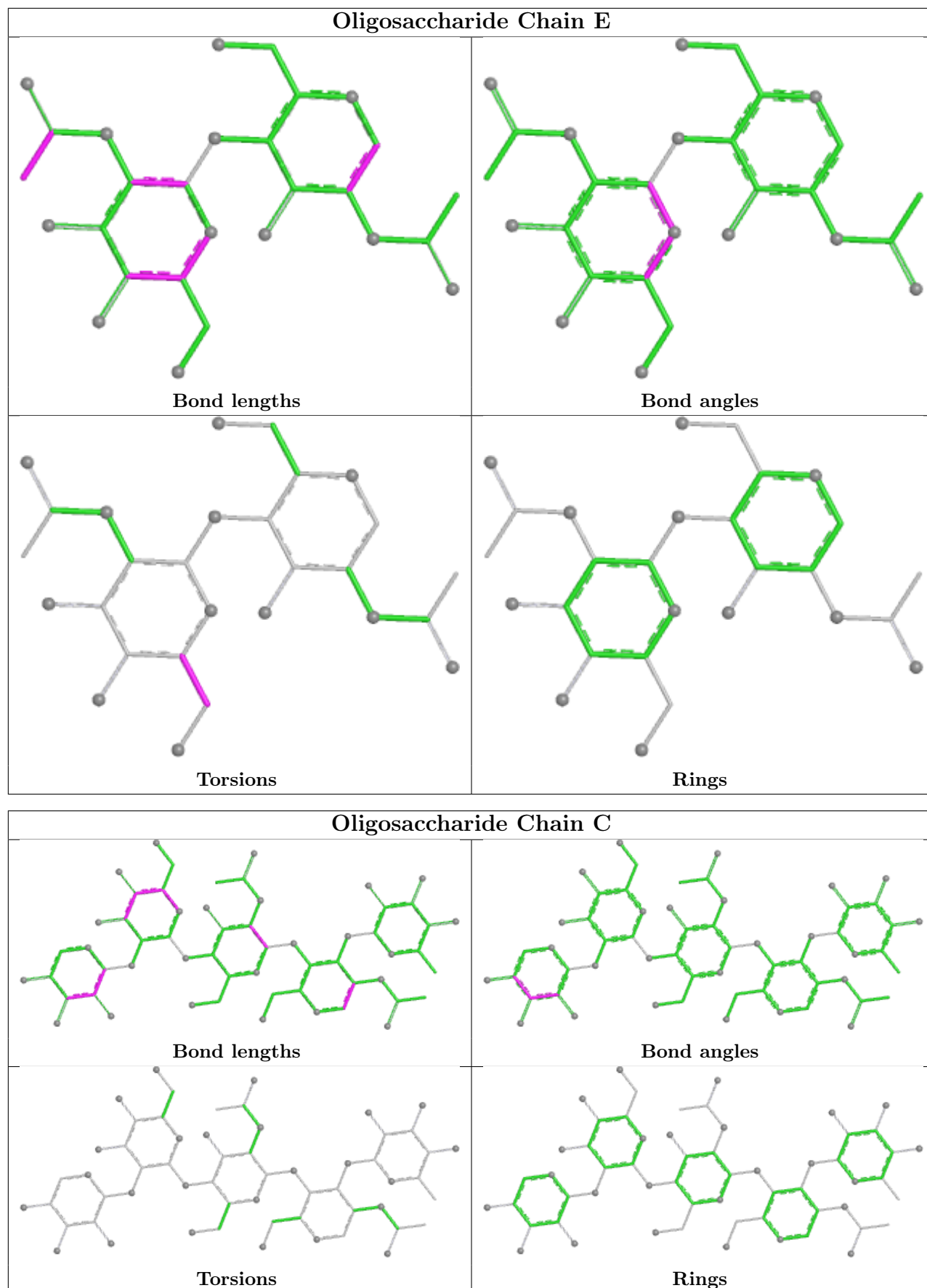
There are no ring outliers.

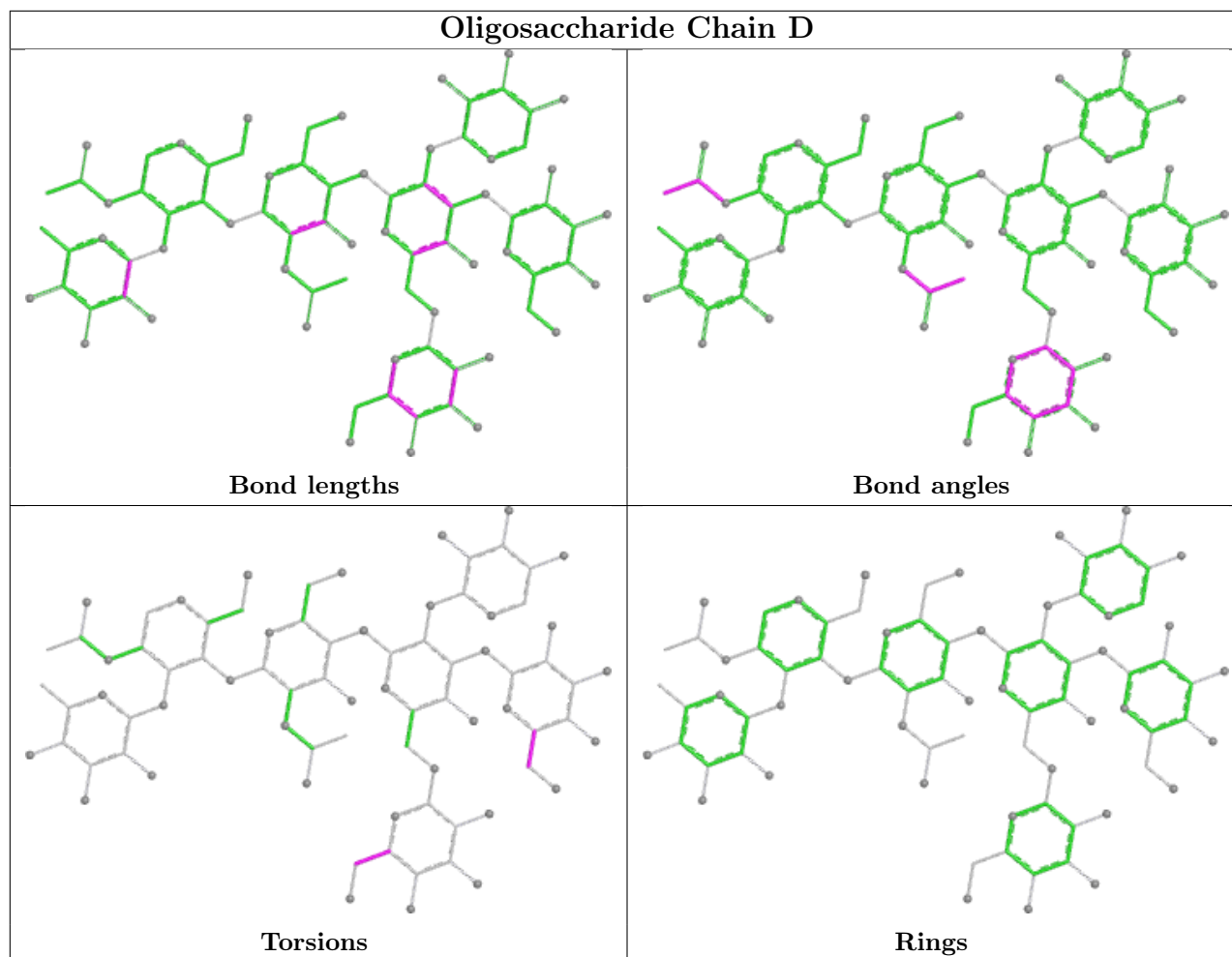
2 monomers are involved in 2 short contacts:

Mol	Chain	Res	Type	Clashes	Symm-Clashes
2	E	1	NAG	1	0
4	D	5	MAN	1	0

The following is a two-dimensional graphical depiction of Mogul quality analysis of bond lengths, bond angles, torsion angles, and ring geometry for oligosaccharide.







5.6 Ligand geometry [i](#)

Of 20 ligands modelled in this entry, 1 is monoatomic - leaving 19 for Mogul analysis.

In the following table, the Counts columns list the number of bonds (or angles) for which Mogul statistics could be retrieved, the number of bonds (or angles) that are observed in the model and the number of bonds (or angles) that are defined in the Chemical Component Dictionary. The Link column lists molecule types, if any, to which the group is linked. The Z score for a bond length (or angle) is the number of standard deviations the observed value is removed from the expected value. A bond length (or angle) with $|Z| > 2$ is considered an outlier worth inspection. RMSZ is the root-mean-square of all Z scores of the bond lengths (or angles).

Mol	Type	Chain	Res	Link	Bond lengths			Bond angles		
					Counts	RMSZ	$\# Z > 2$	Counts	RMSZ	$\# Z > 2$
7	SO4	A	998	-	4,4,4	0.40	0	6,6,6	0.37	0
7	SO4	A	994	-	4,4,4	0.49	0	6,6,6	0.49	0
7	SO4	A	993	-	4,4,4	1.13	0	6,6,6	0.36	0
8	GOL	A	1004	-	5,5,5	0.36	0	5,5,5	0.40	0
5	NAG	A	991	1	14,14,15	1.99	4 (28%)	17,19,21	1.71	3 (17%)

Mol	Type	Chain	Res	Link	Bond lengths			Bond angles		
					Counts	RMSZ	# Z > 2	Counts	RMSZ	# Z > 2
8	GOL	A	1005	-	5,5,5	0.23	0	5,5,5	0.39	0
7	SO4	A	997	-	4,4,4	0.90	0	6,6,6	0.22	0
7	SO4	A	999	-	4,4,4	1.27	0	6,6,6	0.27	0
8	GOL	A	1006	-	5,5,5	0.62	0	5,5,5	0.76	0
7	SO4	A	996	-	4,4,4	0.90	0	6,6,6	0.32	0
7	SO4	A	1001	-	4,4,4	0.91	0	6,6,6	0.38	0
7	SO4	A	995	-	4,4,4	1.21	0	6,6,6	0.59	0
5	NAG	A	971	1	14,14,15	2.13	4 (28%)	17,19,21	1.44	3 (17%)
8	GOL	A	1003	-	5,5,5	0.68	0	5,5,5	0.47	0
7	SO4	A	1000	-	4,4,4	1.89	1 (25%)	6,6,6	0.35	0
5	NAG	A	901	1	14,14,15	0.93	1 (7%)	17,19,21	0.89	0
7	SO4	A	1002	-	4,4,4	0.96	0	6,6,6	0.22	0
5	NAG	A	911	1	14,14,15	0.85	0	17,19,21	1.00	1 (5%)
5	NAG	A	931	1	14,14,15	1.04	1 (7%)	17,19,21	1.59	2 (11%)

In the following table, the Chirals column lists the number of chiral outliers, the number of chiral centers analysed, the number of these observed in the model and the number defined in the Chemical Component Dictionary. Similar counts are reported in the Torsion and Rings columns. '-' means no outliers of that kind were identified.

Mol	Type	Chain	Res	Link	Chirals	Torsions	Rings
8	GOL	A	1006	-	-	1/4/4/4	-
8	GOL	A	1005	-	-	0/4/4/4	-
5	NAG	A	901	1	-	0/6/23/26	0/1/1/1
5	NAG	A	971	1	1/1/5/7	2/6/23/26	0/1/1/1
8	GOL	A	1004	-	-	0/4/4/4	-
5	NAG	A	991	1	-	1/6/23/26	0/1/1/1
8	GOL	A	1003	-	-	0/4/4/4	-
5	NAG	A	911	1	-	0/6/23/26	0/1/1/1
5	NAG	A	931	1	-	2/6/23/26	0/1/1/1

The worst 5 of 11 bond length outliers are listed below:

Mol	Chain	Res	Type	Atoms	Z	Observed(Å)	Ideal(Å)
5	A	971	NAG	C1-C2	5.67	1.60	1.52
5	A	991	NAG	C1-C2	4.56	1.58	1.52
5	A	971	NAG	C4-C5	3.62	1.60	1.53
7	A	1000	SO4	O3-S	-3.49	1.19	1.48
5	A	971	NAG	C3-C2	2.67	1.58	1.52

The worst 5 of 9 bond angle outliers are listed below:

Mol	Chain	Res	Type	Atoms	Z	Observed(°)	Ideal(°)
5	A	991	NAG	C4-C3-C2	-4.43	104.52	111.02
5	A	931	NAG	C4-C3-C2	-4.05	105.08	111.02
5	A	971	NAG	C1-O5-C5	3.66	117.09	112.19
5	A	931	NAG	C3-C4-C5	-3.31	104.23	110.23
5	A	971	NAG	O5-C5-C6	-3.00	101.83	107.66

All (1) chirality outliers are listed below:

Mol	Chain	Res	Type	Atom
5	A	971	NAG	C1

5 of 6 torsion outliers are listed below:

Mol	Chain	Res	Type	Atoms
5	A	931	NAG	C8-C7-N2-C2
5	A	931	NAG	O7-C7-N2-C2
5	A	971	NAG	O5-C5-C6-O6
5	A	971	NAG	C4-C5-C6-O6
8	A	1006	GOL	O1-C1-C2-O2

There are no ring outliers.

4 monomers are involved in 10 short contacts:

Mol	Chain	Res	Type	Clashes	Symm-Clashes
8	A	1004	GOL	1	0
7	A	995	SO4	2	0
7	A	1000	SO4	2	0
5	A	931	NAG	7	0

5.7 Other polymers [i](#)

There are no such residues in this entry.

5.8 Polymer linkage issues [i](#)

There are no chain breaks in this entry.

6 Fit of model and data [i](#)

6.1 Protein, DNA and RNA chains [i](#)

In the following table, the column labelled '#RSRZ > 2' contains the number (and percentage) of RSRZ outliers, followed by percent RSRZ outliers for the chain as percentile scores relative to all X-ray entries and entries of similar resolution. The OWAB column contains the minimum, median, 95th percentile and maximum values of the occupancy-weighted average B-factor per residue. The column labelled 'Q < 0.9' lists the number of (and percentage) of residues with an average occupancy less than 0.9.

Mol	Chain	Analysed	<RSRZ>	#RSRZ>2	OWAB(Å ²)	Q<0.9
1	A	499/501 (99%)	-0.83	5 (1%) 79 84	7, 11, 29, 50	0

All (5) RSRZ outliers are listed below:

Mol	Chain	Res	Type	RSRZ
1	A	376	GLY	4.1
1	A	375	GLY	3.4
1	A	378	GLY	2.2
1	A	374	ASP	2.1
1	A	27	ALA	2.0

6.2 Non-standard residues in protein, DNA, RNA chains [i](#)

There are no non-standard protein/DNA/RNA residues in this entry.

6.3 Carbohydrates [i](#)

In the following table, the Atoms column lists the number of modelled atoms in the group and the number defined in the chemical component dictionary. The B-factors column lists the minimum, median, 95th percentile and maximum values of B factors of atoms in the group. The column labelled 'Q < 0.9' lists the number of atoms with occupancy less than 0.9.

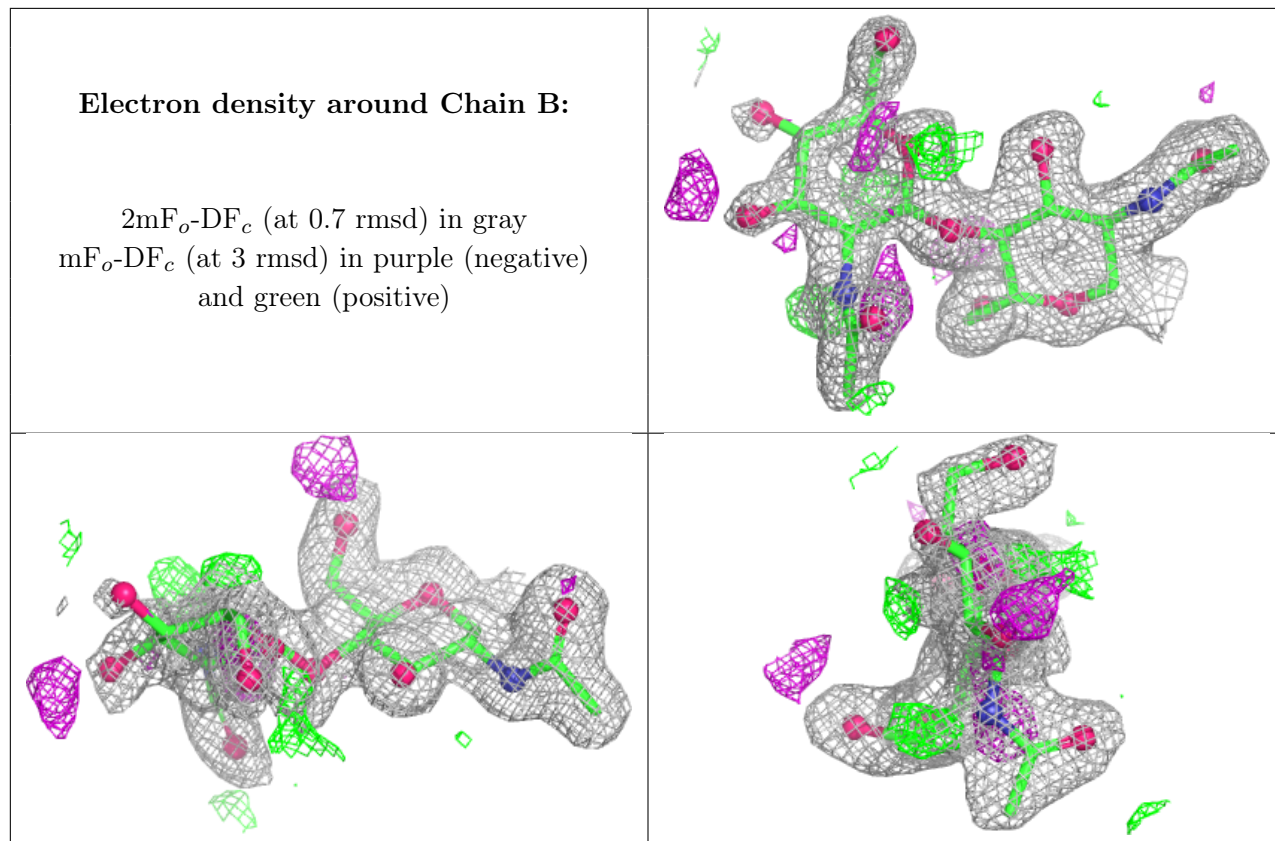
Mol	Type	Chain	Res	Atoms	RSCC	RSR	B-factors(Å ²)	Q<0.9
2	NAG	B	2	14/15	0.68	0.15	31,47,50,52	0
3	XYP	C	4	9/10	0.68	0.16	45,47,50,50	0
3	BMA	C	3	11/12	0.69	0.14	40,45,48,51	0
4	MAN	D	6	11/12	0.69	0.19	39,47,49,54	0
4	MAN	D	5	11/12	0.81	0.15	19,46,47,48	0
4	XYP	D	4	9/10	0.83	0.13	24,35,48,51	0
3	FUC	C	5	10/11	0.88	0.09	20,30,44,46	0

Continued on next page...

Continued from previous page...

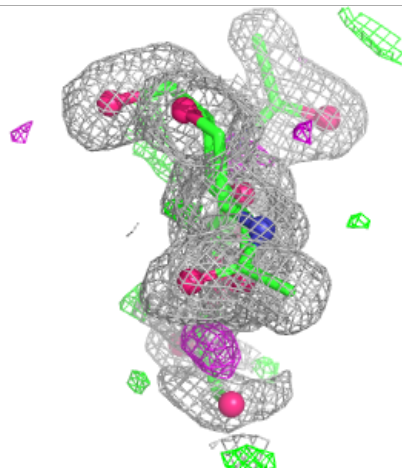
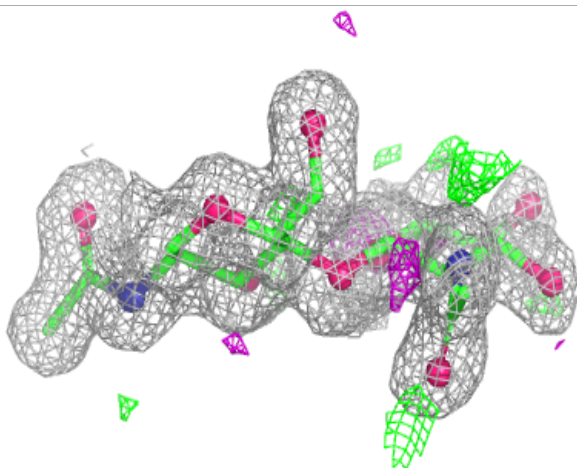
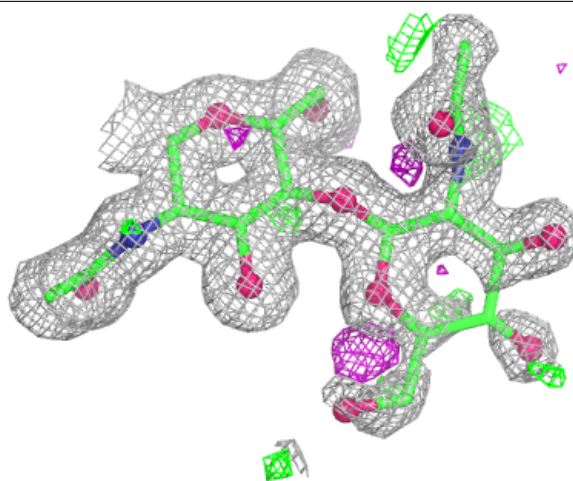
Mol	Type	Chain	Res	Atoms	RSCC	RSR	B-factors(\AA^2)	Q<0.9
2	NAG	E	2	14/15	0.88	0.11	19,31,47,49	0
4	BMA	D	3	11/12	0.89	0.10	22,27,36,39	0
3	NAG	C	2	14/15	0.93	0.08	21,28,38,45	0
3	NAG	C	1	14/15	0.93	0.07	14,19,22,23	0
4	FUC	D	7	10/11	0.94	0.07	19,22,24,27	0
4	NAG	D	2	14/15	0.95	0.07	15,20,27,28	0
2	NAG	B	1	14/15	0.95	0.07	16,19,30,36	0
2	NAG	E	1	14/15	0.97	0.05	9,13,15,19	0
4	NAG	D	1	14/15	0.97	0.05	13,16,21,22	0

The following is a graphical depiction of the model fit to experimental electron density for oligosaccharide. Each fit is shown from different orientation to approximate a three-dimensional view.



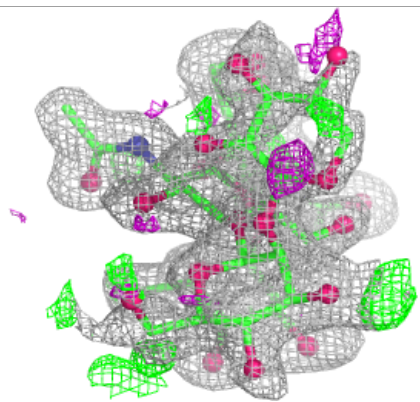
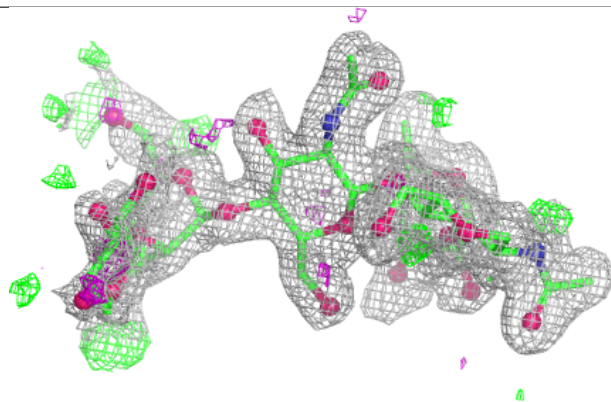
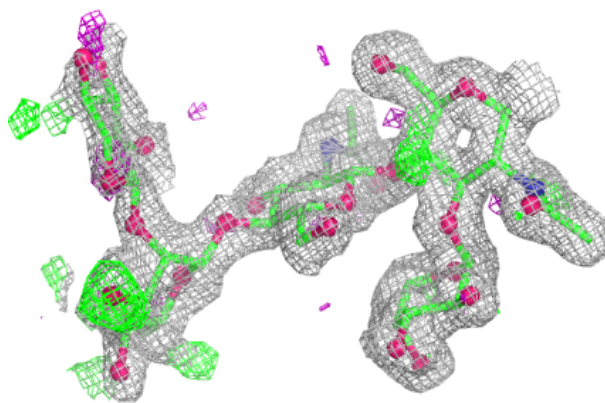
Electron density around Chain E:

$2mF_o-DF_c$ (at 0.7 rmsd) in gray
 mF_o-DF_c (at 3 rmsd) in purple (negative)
and green (positive)

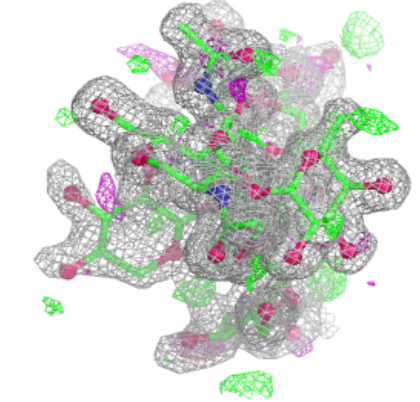
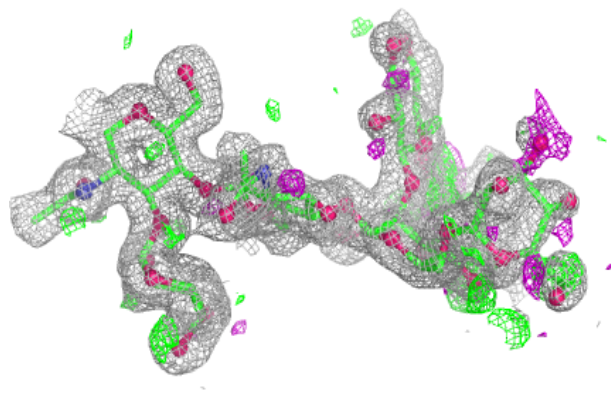
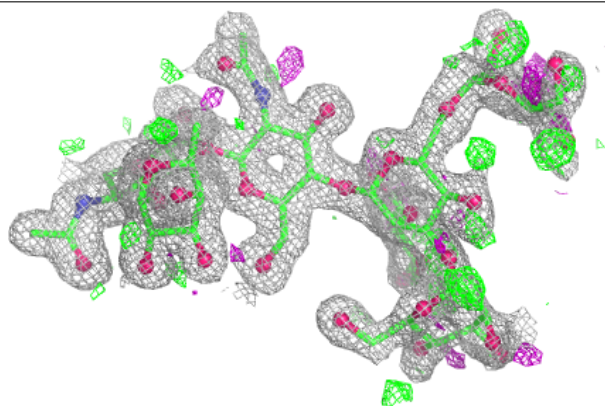


Electron density around Chain C:

$2mF_o-DF_c$ (at 0.7 rmsd) in gray
 mF_o-DF_c (at 3 rmsd) in purple (negative)
and green (positive)

**Electron density around Chain D:**

$2mF_o-DF_c$ (at 0.7 rmsd) in gray
 mF_o-DF_c (at 3 rmsd) in purple (negative)
and green (positive)



6.4 Ligands [i](#)

In the following table, the Atoms column lists the number of modelled atoms in the group and the number defined in the chemical component dictionary. The B-factors column lists the minimum, median, 95th percentile and maximum values of B factors of atoms in the group. The column labelled 'Q< 0.9' lists the number of atoms with occupancy less than 0.9.

Mol	Type	Chain	Res	Atoms	RSCC	RSR	B-factors(Å ²)	Q<0.9
5	NAG	A	971	14/15	0.45	0.18	45,50,54,57	0
7	SO4	A	1001	5/5	0.62	0.25	37,43,47,50	5
5	NAG	A	991	14/15	0.65	0.16	42,48,51,58	0
7	SO4	A	999	5/5	0.75	0.13	35,38,47,53	5
8	GOL	A	1006	6/6	0.76	0.18	35,38,44,44	0
5	NAG	A	931	14/15	0.80	0.13	33,40,50,50	0
7	SO4	A	1002	5/5	0.81	0.13	43,44,47,54	5
7	SO4	A	995	5/5	0.83	0.15	18,34,40,45	5
7	SO4	A	1000	5/5	0.84	0.18	25,40,45,45	5
7	SO4	A	998	5/5	0.85	0.15	16,40,47,48	5
7	SO4	A	997	5/5	0.88	0.12	28,29,38,44	5
5	NAG	A	911	14/15	0.90	0.10	19,29,38,40	0
5	NAG	A	901	14/15	0.93	0.09	24,36,42,42	0
7	SO4	A	994	5/5	0.93	0.08	18,29,39,42	5
8	GOL	A	1005	6/6	0.96	0.07	10,13,22,23	0
8	GOL	A	1004	6/6	0.97	0.07	11,23,25,30	0
8	GOL	A	1003	6/6	0.98	0.05	11,13,15,16	0
7	SO4	A	993	5/5	0.98	0.06	21,22,26,31	5
7	SO4	A	996	5/5	0.99	0.04	14,19,21,22	0
6	ZN	A	992	1/1	1.00	0.01	9,9,9,9	1

6.5 Other polymers [i](#)

There are no such residues in this entry.