



Full wwPDB X-ray Structure Validation Report ⓘ

Feb 27, 2025 – 04:54 PM EST

PDB ID : 9MHV
Title : Monkey TLR7 ectodomain with small molecule agonist 9
Authors : Critton, D.A.
Deposited on : 2024-12-12
Resolution : 2.45 Å(reported)

This is a Full wwPDB X-ray Structure Validation Report for a publicly released PDB entry.

We welcome your comments at validation@mail.wwpdb.org

A user guide is available at

<https://www.wwpdb.org/validation/2017/XrayValidationReportHelp>

with specific help available everywhere you see the ⓘ symbol.

The types of validation reports are described at

<http://www.wwpdb.org/validation/2017/FAQs#types>.

The following versions of software and data (see [references ⓘ](#)) were used in the production of this report:

MolProbity	:	4.02b-467
Mogul	:	2022.3.0, CSD as543be (2022)
Xtriage (Phenix)	:	1.21
EDS	:	3.0
buster-report	:	1.1.7 (2018)
Percentile statistics	:	20231227.v01 (using entries in the PDB archive December 27th 2023)
CCP4	:	9.0.004 (Gargrove)
Density-Fitness	:	1.0.11
Ideal geometry (proteins)	:	Engh & Huber (2001)
Ideal geometry (DNA, RNA)	:	Parkinson et al. (1996)
Validation Pipeline (wwPDB-VP)	:	2.41.4

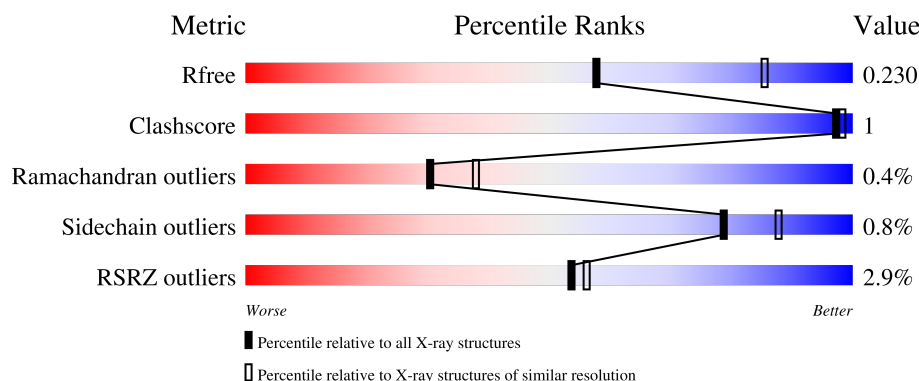
1 Overall quality at a glance

The following experimental techniques were used to determine the structure:

X-RAY DIFFRACTION

The reported resolution of this entry is 2.45 Å.

Percentile scores (ranging between 0-100) for global validation metrics of the entry are shown in the following graphic. The table shows the number of entries on which the scores are based.




Metric	Whole archive (#Entries)	Similar resolution (#Entries, resolution range(Å))
R_{free}	164625	1096 (2.46-2.46)
Clashscore	180529	1178 (2.46-2.46)
Ramachandran outliers	177936	1170 (2.46-2.46)
Sidechain outliers	177891	1170 (2.46-2.46)
RSRZ outliers	164620	1096 (2.46-2.46)

The table below summarises the geometric issues observed across the polymeric chains and their fit to the electron density. The red, orange, yellow and green segments of the lower bar indicate the fraction of residues that contain outliers for ≥ 3 , 2, 1 and 0 types of geometric quality criteria respectively. A grey segment represents the fraction of residues that are not modelled. The numeric value for each fraction is indicated below the corresponding segment, with a dot representing fractions $\leq 5\%$. The upper red bar (where present) indicates the fraction of residues that have poor fit to the electron density. The numeric value is given above the bar.

Mol	Chain	Length	Quality of chain
1	A	817	
1	B	817	
2	C	3	
3	D	2	
3	E	2	

Continued on next page...

Continued from previous page...

Mol	Chain	Length	Quality of chain
3	F	2	

2 Entry composition [i](#)

There are 8 unique types of molecules in this entry. The entry contains 25595 atoms, of which 12461 are hydrogens and 0 are deuteriums.

In the tables below, the ZeroOcc column contains the number of atoms modelled with zero occupancy, the AltConf column contains the number of residues with at least one atom in alternate conformation and the Trace column contains the number of residues modelled with at most 2 atoms.

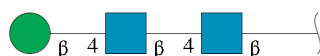
- Molecule 1 is a protein called Toll-like receptor 7.

Mol	Chain	Residues	Atoms						ZeroOcc	AltConf	Trace
1	A	768	Total	C	H	N	O	S	6068	1	0
			12216	3945	6068	1031	1142	30			
1	B	768	Total	C	H	N	O	S	6016	0	0
			12140	3934	6016	1019	1141	30			

There are 16 discrepancies between the modelled and reference sequences:

Chain	Residue	Modelled	Actual	Comment	Reference
A	23	ARG	-	expression tag	UNP B3Y653
A	24	SER	-	expression tag	UNP B3Y653
A	25	PRO	-	expression tag	UNP B3Y653
A	26	TRP	-	expression tag	UNP B3Y653
A	167	GLN	ASN	engineered mutation	UNP B3Y653
A	389	GLN	ASN	engineered mutation	UNP B3Y653
A	488	GLN	ASN	engineered mutation	UNP B3Y653
A	799	GLN	ASN	engineered mutation	UNP B3Y653
B	23	ARG	-	expression tag	UNP B3Y653
B	24	SER	-	expression tag	UNP B3Y653
B	25	PRO	-	expression tag	UNP B3Y653
B	26	TRP	-	expression tag	UNP B3Y653
B	167	GLN	ASN	engineered mutation	UNP B3Y653
B	389	GLN	ASN	engineered mutation	UNP B3Y653
B	488	GLN	ASN	engineered mutation	UNP B3Y653
B	799	GLN	ASN	engineered mutation	UNP B3Y653

- Molecule 2 is an oligosaccharide called beta-D-mannopyranose-(1-4)-2-acetamido-2-deoxy-beta-D-glucopyranose-(1-4)-2-acetamido-2-deoxy-beta-D-glucopyranose.



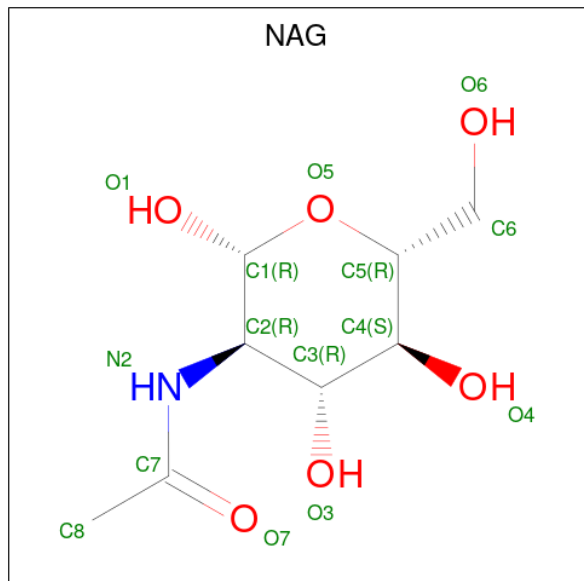
Mol	Chain	Residues	Atoms					ZeroOcc	AltConf	Trace
2	C	3	Total	C	H	N	O	34	0	0
			73	22	34	2	15			

- Molecule 3 is an oligosaccharide called 2-acetamido-2-deoxy-beta-D-glucopyranose-(1-4)-2-acetamido-2-deoxy-beta-D-glucopyranose.



Mol	Chain	Residues	Atoms					ZeroOcc	AltConf	Trace
3	D	2	Total	C	H	N	O	25	0	0
			53	16	25	2	10			
3	E	2	Total	C	H	N	O	25	0	0
			53	16	25	2	10			
3	F	2	Total	C	H	N	O	25	0	0
			53	16	25	2	10			

- Molecule 4 is 2-acetamido-2-deoxy-beta-D-glucopyranose (three-letter code: NAG) (formula: $C_8H_{15}NO_6$).



Mol	Chain	Residues	Atoms					ZeroOcc	AltConf
4	A	1	Total	C	H	N	O	13	0
			27	8	13	1	5		
4	A	1	Total	C	H	N	O	13	0
			27	8	13	1	5		

Continued on next page...

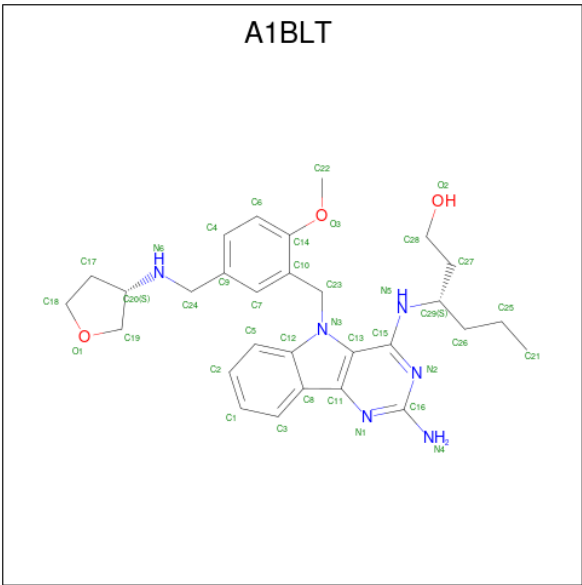
Continued from previous page...

Mol	Chain	Residues	Atoms					ZeroOcc	AltConf
4	A	1	Total	C	H	N	O	13	0
			27	8	13	1	5		
4	A	1	Total	C	H	N	O	13	0
			27	8	13	1	5		
4	A	1	Total	C	H	N	O	13	0
			27	8	13	1	5		
4	A	1	Total	C	H	N	O	13	0
			27	8	13	1	5		
4	A	1	Total	C	H	N	O	13	0
			27	8	13	1	5		
4	B	1	Total	C	H	N	O	13	0
			27	8	13	1	5		
4	B	1	Total	C	H	N	O	13	0
			27	8	13	1	5		
4	B	1	Total	C	H	N	O	13	0
			27	8	13	1	5		
4	B	1	Total	C	H	N	O	13	0
			27	8	13	1	5		
4	B	1	Total	C	H	N	O	13	0
			27	8	13	1	5		
4	B	1	Total	C	H	N	O	13	0
			27	8	13	1	5		

- Molecule 5 is CHLORIDE ION (three-letter code: CL) (formula: Cl).

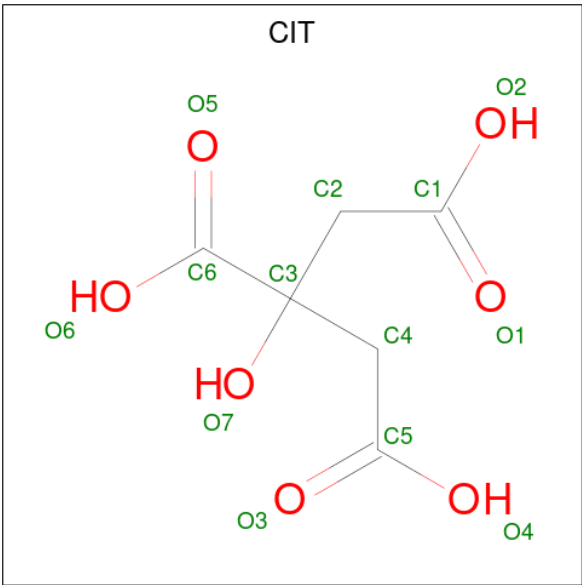
Mol	Chain	Residues	Atoms		ZeroOcc	AltConf
5	A	1	Total	Cl	0	0
			1	1		
5	B	1	Total	Cl	0	0
			1	1		

- Molecule 6 is (3S)-3-[(2-amino-5-{[2-methoxy-5-({[(3S)-oxolan-3-yl]amino}methyl)phenyl]methyl}-5H-pyrimido[5,4-b]indol-4-yl)amino]hexan-1-ol (three-letter code: A1BLT) (formula: C₂₉H₃₈N₆O₃) (labeled as "Ligand of Interest" by depositor).



Mol	Chain	Residues	Atoms					ZeroOcc	AltConf
6	A	1	Total	C	H	N	O	38	0
			76	29	38	6	3		
6	B	1	Total	C	H	N	O	38	0
			76	29	38	6	3		

- Molecule 7 is CITRIC ACID (three-letter code: CIT) (formula: $C_6H_8O_7$).



Mol	Chain	Residues	Atoms				ZeroOcc	AltConf
7	A	1	Total	C	H	O	5	0
			18	6	5	7		
7	B	1	Total	C	H	O	5	0
			18	6	5	7		

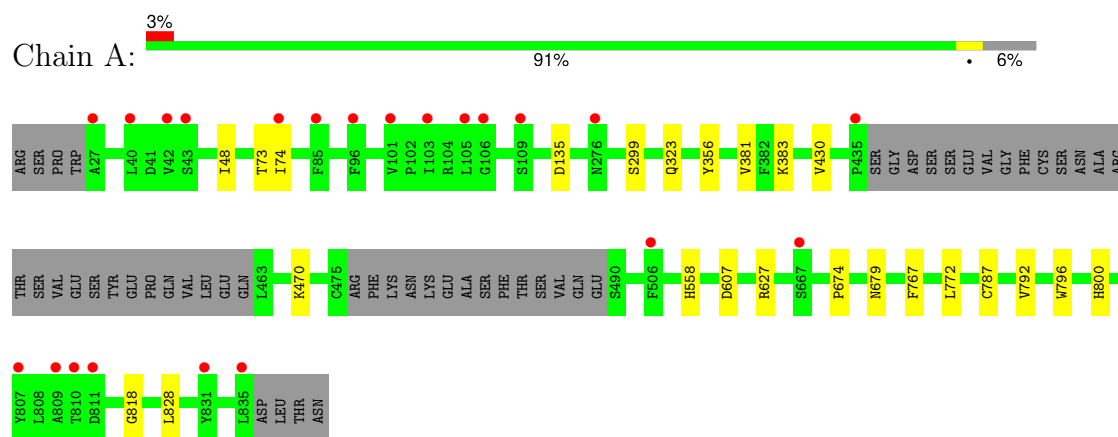
- Molecule 8 is water.

Mol	Chain	Residues	Atoms		ZeroOcc	AltConf
8	A	257	Total 257	O 257	0	0
8	B	182	Total 182	O 182	0	0

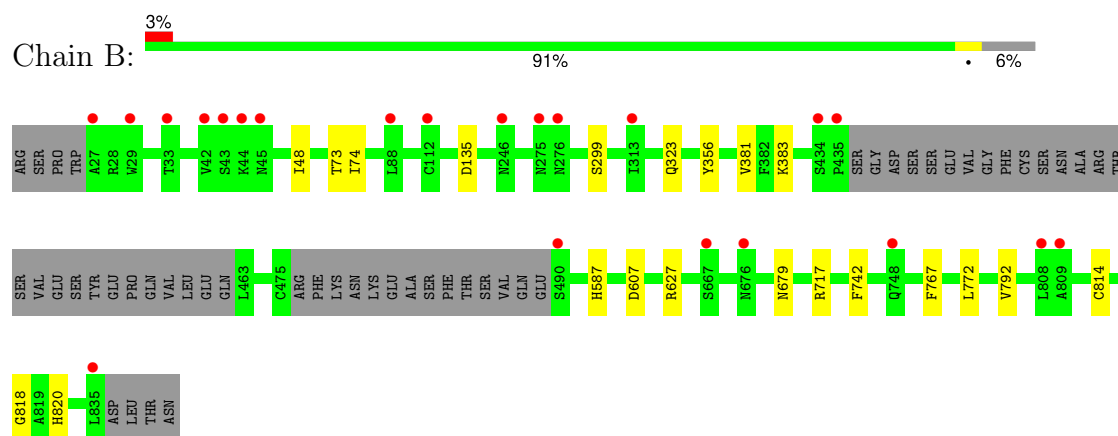
3 Residue-property plots [i](#)

These plots are drawn for all protein, RNA, DNA and oligosaccharide chains in the entry. The first graphic for a chain summarises the proportions of the various outlier classes displayed in the second graphic. The second graphic shows the sequence view annotated by issues in geometry and electron density. Residues are color-coded according to the number of geometric quality criteria for which they contain at least one outlier: green = 0, yellow = 1, orange = 2 and red = 3 or more. A red dot above a residue indicates a poor fit to the electron density ($RSRZ > 2$). Stretches of 2 or more consecutive residues without any outlier are shown as a green connector. Residues present in the sample, but not in the model, are shown in grey.

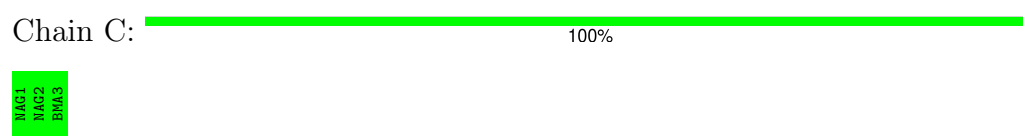
- Molecule 1: Toll-like receptor 7



- Molecule 1: Toll-like receptor 7



- Molecule 2: beta-D-mannopyranose-(1-4)-2-acetamido-2-deoxy-beta-D-glucopyranose-(1-4)-2-acetamido-2-deoxy-beta-D-glucopyranose



- Molecule 3: 2-acetamido-2-deoxy-beta-D-glucopyranose-(1-4)-2-acetamido-2-deoxy-beta-D-glucopyranose

Chain D:  50% 50%


MAG1
MAG2

- Molecule 3: 2-acetamido-2-deoxy-beta-D-glucopyranose-(1-4)-2-acetamido-2-deoxy-beta-D-glucopyranose

Chain E:  100%


MAG1
MAG2

- Molecule 3: 2-acetamido-2-deoxy-beta-D-glucopyranose-(1-4)-2-acetamido-2-deoxy-beta-D-glucopyranose

Chain F:  50% 50%


MAG1
MAG2

4 Data and refinement statistics

Property	Value	Source
Space group	P 21 21 21	Depositor
Cell constants a, b, c, α , β , γ	98.27Å 139.44Å 149.41Å 90.00° 90.00° 90.00°	Depositor
Resolution (Å)	46.90 – 2.45 46.90 – 2.45	Depositor EDS
% Data completeness (in resolution range)	71.3 (46.90-2.45) 71.3 (46.90-2.45)	Depositor EDS
R_{merge}	(Not available)	Depositor
R_{sym}	(Not available)	Depositor
$\langle I/\sigma(I) \rangle$ ¹	1.93 (at 2.45Å)	Xtriage
Refinement program	BUSTER 2.11.8 (3-FEB-2022)	Depositor
R, R_{free}	0.221 , 0.244 0.208 , 0.230	Depositor DCC
R_{free} test set	24418 reflections (5.06%)	wwPDB-VP
Wilson B-factor (Å ²)	53.1	Xtriage
Anisotropy	0.015	Xtriage
Bulk solvent k_{sol} (e/Å ³), B_{sol} (Å ²)	0.35 , 38.2	EDS
L-test for twinning ²	$\langle L \rangle = 0.50$, $\langle L^2 \rangle = 0.34$	Xtriage
Estimated twinning fraction	No twinning to report.	Xtriage
F_o, F_c correlation	0.94	EDS
Total number of atoms	25595	wwPDB-VP
Average B, all atoms (Å ²)	56.0	wwPDB-VP

Xtriage's analysis on translational NCS is as follows: *The largest off-origin peak in the Patterson function is 5.73% of the height of the origin peak. No significant pseudotranslation is detected.*

¹Intensities estimated from amplitudes.

²Theoretical values of $\langle |L| \rangle$, $\langle L^2 \rangle$ for acentric reflections are 0.5, 0.333 respectively for untwinned datasets, and 0.375, 0.2 for perfectly twinned datasets.

5 Model quality [i](#)

5.1 Standard geometry [i](#)

Bond lengths and bond angles in the following residue types are not validated in this section: CL, A1BLT, CIT, NAG, BMA

The Z score for a bond length (or angle) is the number of standard deviations the observed value is removed from the expected value. A bond length (or angle) with $|Z| > 5$ is considered an outlier worth inspection. RMSZ is the root-mean-square of all Z scores of the bond lengths (or angles).

Mol	Chain	Bond lengths		Bond angles	
		RMSZ	$\# Z > 5$	RMSZ	$\# Z > 5$
1	A	0.37	0/6279	0.58	0/8532
1	B	0.37	0/6255	0.58	0/8504
All	All	0.37	0/12534	0.58	0/17036

There are no bond length outliers.

There are no bond angle outliers.

There are no chirality outliers.

There are no planarity outliers.

5.2 Too-close contacts [i](#)

In the following table, the Non-H and H(model) columns list the number of non-hydrogen atoms and hydrogen atoms in the chain respectively. The H(added) column lists the number of hydrogen atoms added and optimized by MolProbity. The Clashes column lists the number of clashes within the asymmetric unit, whereas Symm-Clashes lists symmetry-related clashes.

Mol	Chain	Non-H	H(model)	H(added)	Clashes	Symm-Clashes
1	A	6148	6068	6059	12	0
1	B	6124	6016	6007	8	0
2	C	39	34	34	0	0
3	D	28	25	25	1	0
3	E	28	25	25	0	0
3	F	28	25	25	1	0
4	A	98	91	91	2	0
4	B	98	91	91	0	0
5	A	1	0	0	0	0
5	B	1	0	0	0	0
6	A	38	38	0	0	0

Continued on next page...

Continued from previous page...

Mol	Chain	Non-H	H(model)	H(added)	Clashes	Symm-Clashes
6	B	38	38	0	0	0
7	A	13	5	5	1	0
7	B	13	5	5	0	0
8	A	257	0	0	1	0
8	B	182	0	0	1	0
All	All	13134	12461	12367	20	0

The all-atom clashscore is defined as the number of clashes found per 1000 atoms (including hydrogen atoms). The all-atom clashscore for this structure is 1.

All (20) close contacts within the same asymmetric unit are listed below, sorted by their clash magnitude.

Atom-1	Atom-2	Interatomic distance (Å)	Clash overlap (Å)
1:A:558:HIS:NE2	7:A:910:CIT:O3	2.34	0.60
1:B:767:PHE:HB3	1:B:772:LEU:HD11	1.84	0.60
1:A:767:PHE:HB3	1:A:772:LEU:HD11	1.85	0.57
1:A:679:ASN:HB3	4:A:907:NAG:O5	2.05	0.57
1:B:587:HIS:HD2	8:B:1034:HOH:O	1.89	0.56
1:A:299:SER:HA	1:A:323:GLN:O	2.10	0.51
1:A:73:THR:HG22	1:A:74:ILE:HG13	1.93	0.51
1:B:299:SER:HA	1:B:323:GLN:O	2.10	0.51
1:B:73:THR:HG22	1:B:74:ILE:HG13	1.94	0.49
1:B:814:CYS:HB2	1:B:820:HIS:O	2.13	0.49
1:A:48:ILE:HG12	3:D:1:NAG:H82	1.97	0.46
1:B:48:ILE:HG12	3:F:1:NAG:H82	1.98	0.46
1:A:679:ASN:CB	4:A:907:NAG:O5	2.65	0.45
1:B:356:TYR:CE2	1:B:383:LYS:HG2	2.53	0.43
1:A:787:CYS:HB3	1:A:828:LEU:HD21	2.00	0.43
1:A:356:TYR:CE2	1:A:383:LYS:HG2	2.53	0.43
1:A:796:TRP:CE2	1:A:800:HIS:CD2	3.08	0.42
1:A:356:TYR:CZ	1:A:383:LYS:HG2	2.56	0.41
1:B:356:TYR:CZ	1:B:383:LYS:HG2	2.55	0.41
1:A:674:PRO:HB2	8:A:1038:HOH:O	2.20	0.40

There are no symmetry-related clashes.

5.3 Torsion angles

5.3.1 Protein backbone

In the following table, the Percentiles column shows the percent Ramachandran outliers of the chain as a percentile score with respect to all X-ray entries followed by that with respect to entries of similar resolution.

The Analysed column shows the number of residues for which the backbone conformation was analysed, and the total number of residues.

Mol	Chain	Analysed	Favoured	Allowed	Outliers	Percentiles	
1	A	763/817 (93%)	712 (93%)	48 (6%)	3 (0%)	30	38
1	B	762/817 (93%)	707 (93%)	52 (7%)	3 (0%)	30	38
All	All	1525/1634 (93%)	1419 (93%)	100 (7%)	6 (0%)	30	38

All (6) Ramachandran outliers are listed below:

Mol	Chain	Res	Type
1	A	818	GLY
1	B	818	GLY
1	B	742	PHE
1	A	381	VAL
1	B	381	VAL
1	A	430	VAL

5.3.2 Protein sidechains

In the following table, the Percentiles column shows the percent sidechain outliers of the chain as a percentile score with respect to all X-ray entries followed by that with respect to entries of similar resolution.

The Analysed column shows the number of residues for which the sidechain conformation was analysed, and the total number of residues.

Mol	Chain	Analysed	Rotameric	Outliers	Percentiles	
1	A	697/768 (91%)	692 (99%)	5 (1%)	81	89
1	B	690/768 (90%)	684 (99%)	6 (1%)	75	86
All	All	1387/1536 (90%)	1376 (99%)	11 (1%)	79	88

All (11) residues with a non-rotameric sidechain are listed below:

Mol	Chain	Res	Type
1	A	135	ASP
1	A	470	LYS
1	A	607	ASP
1	A	627	ARG
1	A	792	VAL
1	B	135	ASP
1	B	607	ASP
1	B	627	ARG
1	B	679	ASN
1	B	717	ARG
1	B	792	VAL

Sometimes sidechains can be flipped to improve hydrogen bonding and reduce clashes. All (12) such sidechains are listed below:

Mol	Chain	Res	Type
1	A	173	ASN
1	A	389	GLN
1	A	503	ASN
1	A	644	GLN
1	A	648	ASN
1	A	734	GLN
1	A	748	GLN
1	A	800	HIS
1	B	173	ASN
1	B	503	ASN
1	B	587	HIS
1	B	820	HIS

5.3.3 RNA ⓘ

There are no RNA molecules in this entry.

5.4 Non-standard residues in protein, DNA, RNA chains ⓘ

There are no non-standard protein/DNA/RNA residues in this entry.

5.5 Carbohydrates ⓘ

9 monosaccharides are modelled in this entry.

In the following table, the Counts columns list the number of bonds (or angles) for which Mogul statistics could be retrieved, the number of bonds (or angles) that are observed in the model and the number of bonds (or angles) that are defined in the Chemical Component Dictionary. The Link column lists molecule types, if any, to which the group is linked. The Z score for a bond length (or angle) is the number of standard deviations the observed value is removed from the expected value. A bond length (or angle) with $|Z| > 2$ is considered an outlier worth inspection. RMSZ is the root-mean-square of all Z scores of the bond lengths (or angles).

Mol	Type	Chain	Res	Link	Bond lengths			Bond angles		
					Counts	RMSZ	$\# Z > 2$	Counts	RMSZ	$\# Z > 2$
2	NAG	C	1	1,2	14,14,15	0.24	0	17,19,21	0.53	0
2	NAG	C	2	2	14,14,15	0.23	0	17,19,21	0.54	0
2	BMA	C	3	2	11,11,12	0.22	0	15,15,17	0.38	0
3	NAG	D	1	1,3	14,14,15	0.24	0	17,19,21	0.71	0
3	NAG	D	2	3	14,14,15	0.27	0	17,19,21	0.62	0
3	NAG	E	1	1,3	14,14,15	0.27	0	17,19,21	0.55	0
3	NAG	E	2	3	14,14,15	0.23	0	17,19,21	0.55	0
3	NAG	F	1	1,3	14,14,15	0.24	0	17,19,21	0.74	0
3	NAG	F	2	3	14,14,15	0.30	0	17,19,21	0.65	0

In the following table, the Chirals column lists the number of chiral outliers, the number of chiral centers analysed, the number of these observed in the model and the number defined in the Chemical Component Dictionary. Similar counts are reported in the Torsion and Rings columns. '-' means no outliers of that kind were identified.

Mol	Type	Chain	Res	Link	Chirals	Torsions	Rings
2	NAG	C	1	1,2	-	0/6/23/26	0/1/1/1
2	NAG	C	2	2	-	0/6/23/26	0/1/1/1
2	BMA	C	3	2	-	0/2/19/22	0/1/1/1
3	NAG	D	1	1,3	-	0/6/23/26	0/1/1/1
3	NAG	D	2	3	-	0/6/23/26	0/1/1/1
3	NAG	E	1	1,3	-	0/6/23/26	0/1/1/1
3	NAG	E	2	3	-	0/6/23/26	0/1/1/1
3	NAG	F	1	1,3	-	0/6/23/26	0/1/1/1
3	NAG	F	2	3	-	0/6/23/26	0/1/1/1

There are no bond length outliers.

There are no bond angle outliers.

There are no chirality outliers.

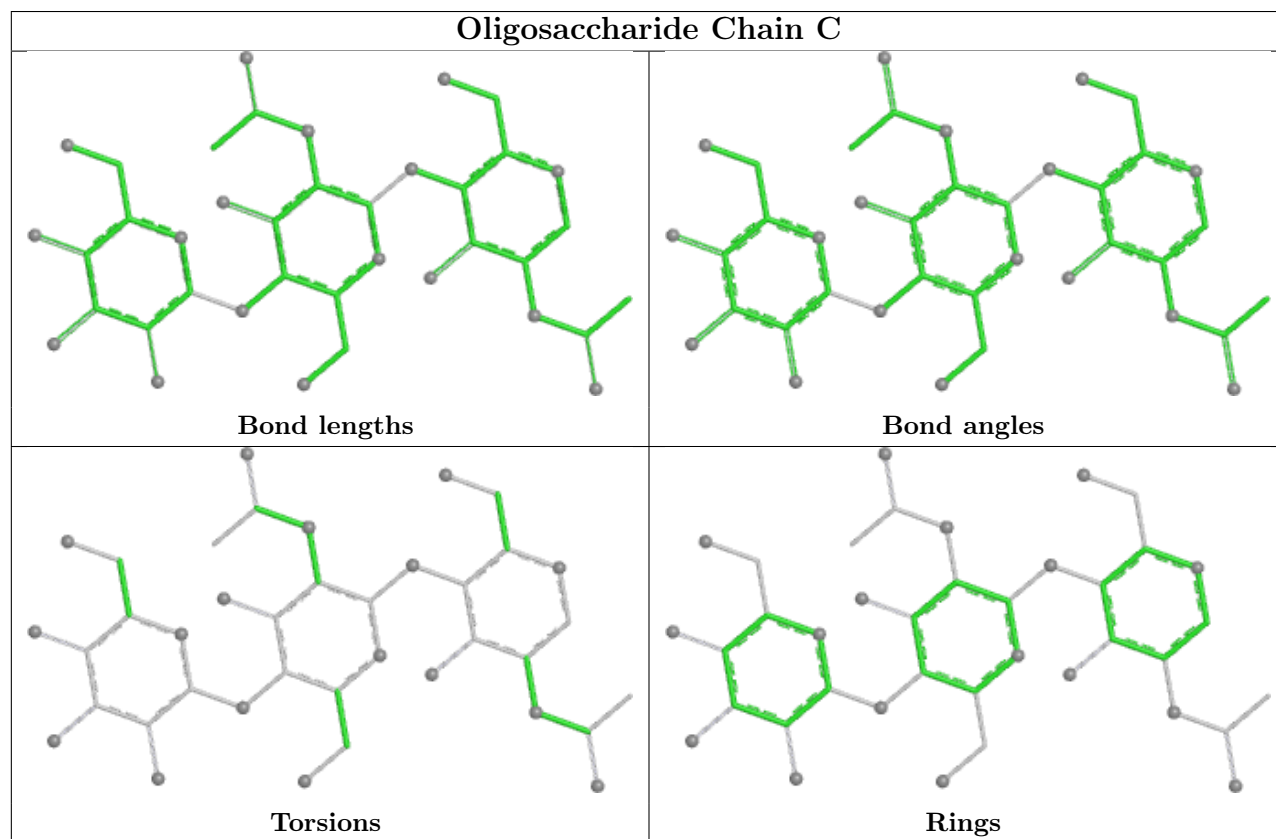
There are no torsion outliers.

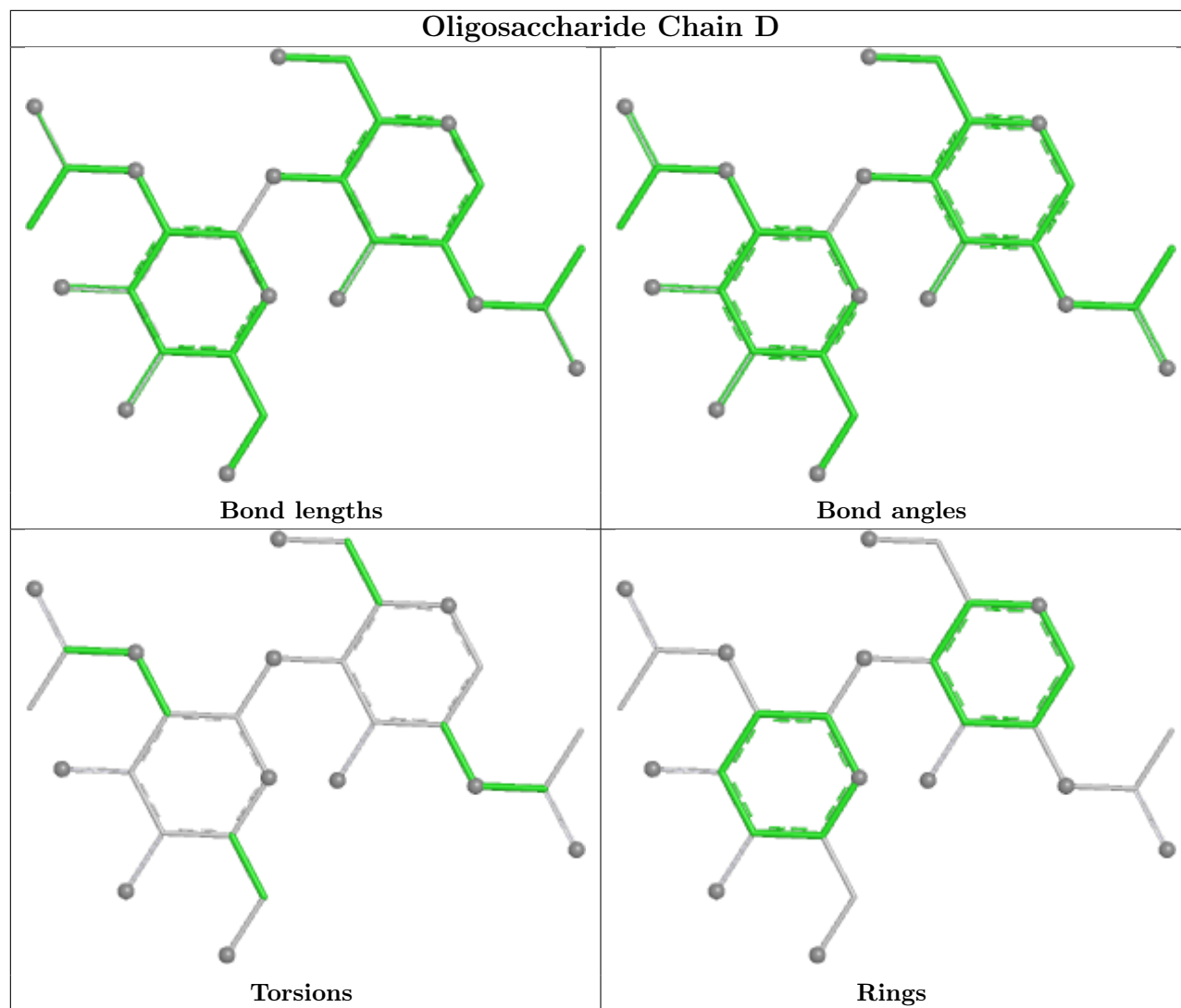
There are no ring outliers.

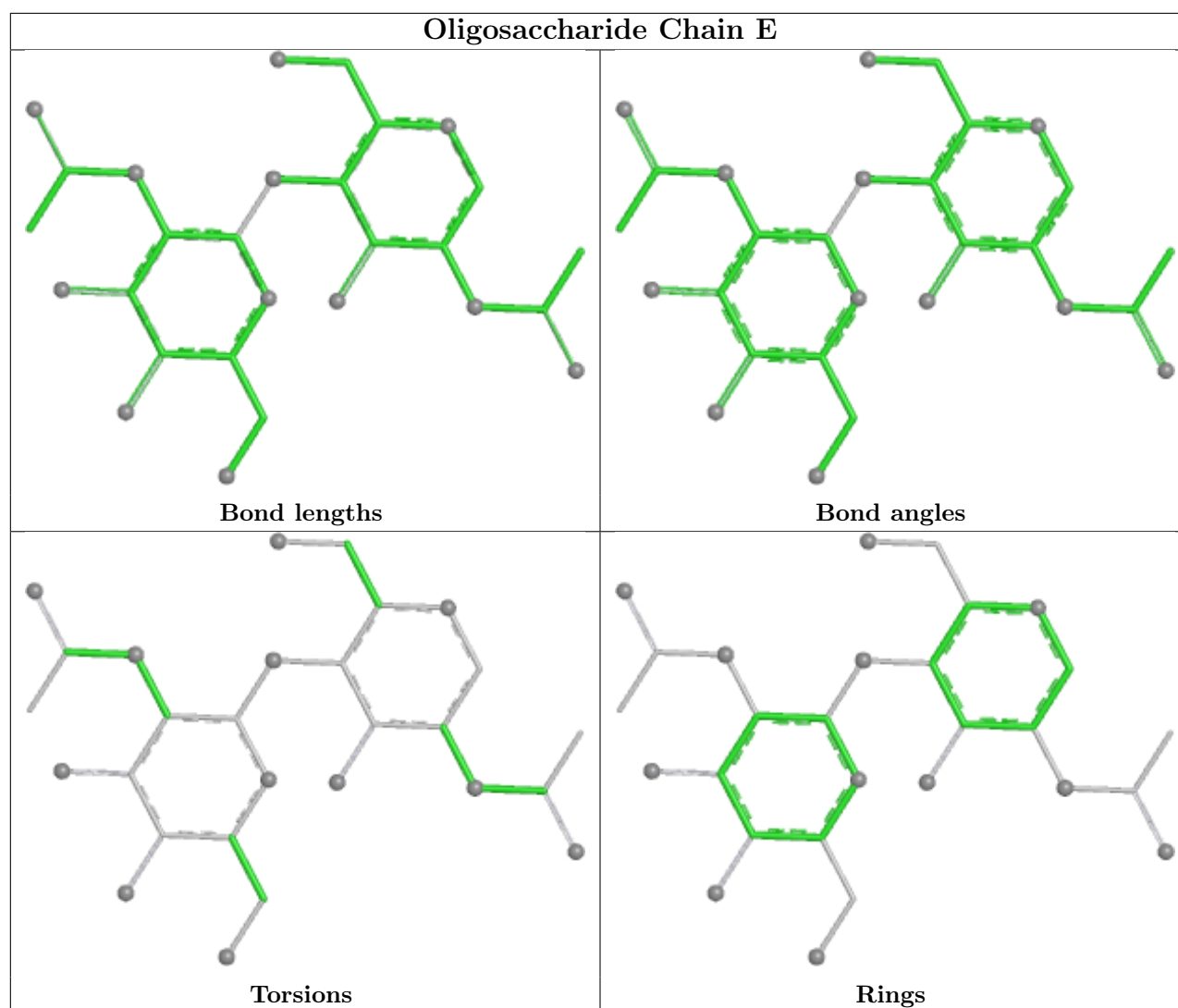
2 monomers are involved in 2 short contacts:

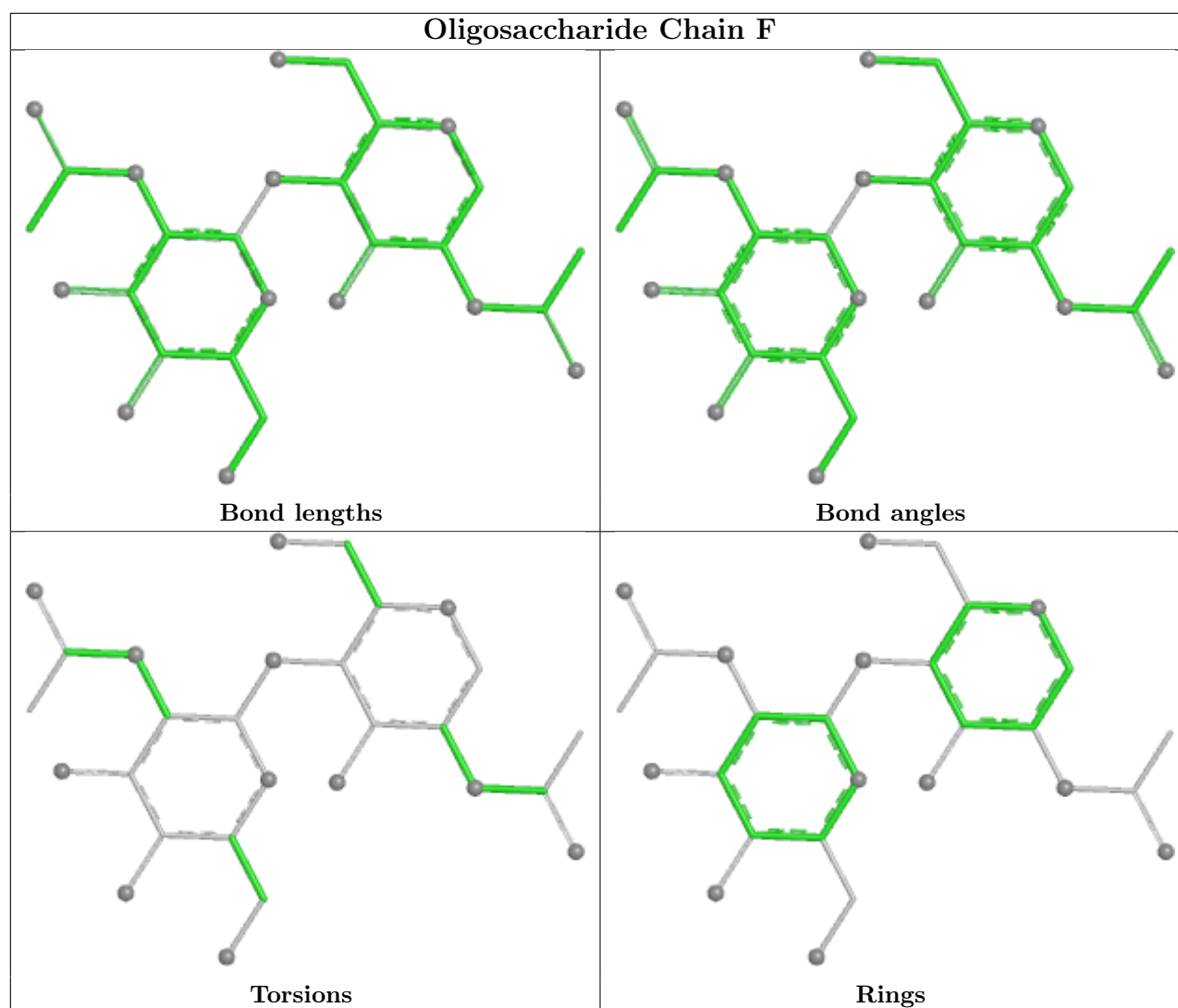
Mol	Chain	Res	Type	Clashes	Symm-Clashes
3	F	1	NAG	1	0
3	D	1	NAG	1	0

The following is a two-dimensional graphical depiction of Mogul quality analysis of bond lengths, bond angles, torsion angles, and ring geometry for oligosaccharide.









5.6 Ligand geometry [i](#)

Of 20 ligands modelled in this entry, 2 are monoatomic - leaving 18 for Mogul analysis.

In the following table, the Counts columns list the number of bonds (or angles) for which Mogul statistics could be retrieved, the number of bonds (or angles) that are observed in the model and the number of bonds (or angles) that are defined in the Chemical Component Dictionary. The Link column lists molecule types, if any, to which the group is linked. The Z score for a bond length (or angle) is the number of standard deviations the observed value is removed from the expected value. A bond length (or angle) with $|Z| > 2$ is considered an outlier worth inspection. RMSZ is the root-mean-square of all Z scores of the bond lengths (or angles).

Mol	Type	Chain	Res	Link	Bond lengths			Bond angles		
					Counts	RMSZ	# Z > 2	Counts	RMSZ	# Z > 2
7	CIT	B	910	-	12,12,12	1.01	0	17,17,17	1.40	3 (17%)
4	NAG	A	905	1	14,14,15	0.26	0	17,19,21	0.41	0
4	NAG	A	902	1	14,14,15	0.25	0	17,19,21	0.58	0

Mol	Type	Chain	Res	Link	Bond lengths			Bond angles		
					Counts	RMSZ	# Z > 2	Counts	RMSZ	# Z > 2
4	NAG	A	903	1	14,14,15	0.27	0	17,19,21	0.64	0
4	NAG	A	907	1	14,14,15	0.46	0	17,19,21	0.66	0
4	NAG	B	901	1	14,14,15	0.22	0	17,19,21	0.61	0
4	NAG	A	906	1	14,14,15	0.34	0	17,19,21	0.72	1 (5%)
4	NAG	B	906	1	14,14,15	0.25	0	17,19,21	0.44	0
4	NAG	B	907	1	14,14,15	0.31	0	17,19,21	0.58	0
4	NAG	B	902	1	14,14,15	0.20	0	17,19,21	0.51	0
6	A1BLT	B	909	-	37,42,42	0.56	0	42,58,58	0.76	1 (2%)
4	NAG	A	904	1	14,14,15	0.29	0	17,19,21	0.38	0
6	A1BLT	A	909	-	37,42,42	0.53	0	42,58,58	0.91	1 (2%)
7	CIT	A	910	-	12,12,12	1.00	0	17,17,17	1.10	1 (5%)
4	NAG	B	903	1	14,14,15	0.28	0	17,19,21	0.47	0
4	NAG	B	904	1	14,14,15	0.26	0	17,19,21	0.61	0
4	NAG	B	905	1	14,14,15	0.33	0	17,19,21	0.69	1 (5%)
4	NAG	A	901	1	14,14,15	0.21	0	17,19,21	0.63	0

In the following table, the Chirals column lists the number of chiral outliers, the number of chiral centers analysed, the number of these observed in the model and the number defined in the Chemical Component Dictionary. Similar counts are reported in the Torsion and Rings columns. '-' means no outliers of that kind were identified.

Mol	Type	Chain	Res	Link	Chirals	Torsions	Rings
7	CIT	B	910	-	-	6/16/16/16	-
4	NAG	A	905	1	-	0/6/23/26	0/1/1/1
4	NAG	A	902	1	-	0/6/23/26	0/1/1/1
4	NAG	A	903	1	-	0/6/23/26	0/1/1/1
4	NAG	A	907	1	-	0/6/23/26	0/1/1/1
4	NAG	B	901	1	-	0/6/23/26	0/1/1/1
4	NAG	A	906	1	-	0/6/23/26	0/1/1/1
4	NAG	B	906	1	-	0/6/23/26	0/1/1/1
4	NAG	B	907	1	-	1/6/23/26	0/1/1/1
4	NAG	B	902	1	-	0/6/23/26	0/1/1/1
6	A1BLT	B	909	-	-	2/21/28/28	0/5/5/5
4	NAG	A	904	1	-	0/6/23/26	0/1/1/1
6	A1BLT	A	909	-	-	4/21/28/28	0/5/5/5
7	CIT	A	910	-	-	2/16/16/16	-
4	NAG	B	903	1	-	0/6/23/26	0/1/1/1
4	NAG	B	904	1	-	1/6/23/26	0/1/1/1
4	NAG	B	905	1	-	0/6/23/26	0/1/1/1
4	NAG	A	901	1	-	0/6/23/26	0/1/1/1

There are no bond length outliers.

All (8) bond angle outliers are listed below:

Mol	Chain	Res	Type	Atoms	Z	Observed(°)	Ideal(°)
6	A	909	A1BLT	C25-C26-C29	3.57	118.16	114.95
7	B	910	CIT	C3-C2-C1	3.10	122.38	113.92
6	B	909	A1BLT	C19-C20-N6	-2.48	108.72	111.91
7	A	910	CIT	O5-C6-C3	-2.45	117.36	122.09
4	A	906	NAG	C1-O5-C5	2.27	115.23	112.19
7	B	910	CIT	O1-C1-C2	-2.24	116.61	122.95
7	B	910	CIT	O5-C6-C3	-2.23	117.78	122.09
4	B	905	NAG	C1-O5-C5	2.17	115.09	112.19

There are no chirality outliers.

All (16) torsion outliers are listed below:

Mol	Chain	Res	Type	Atoms
6	A	909	A1BLT	C29-C27-C28-O2
6	B	909	A1BLT	C29-C27-C28-O2
7	B	910	CIT	C2-C3-C6-O5
7	B	910	CIT	C2-C3-C6-O6
7	B	910	CIT	O7-C3-C6-O5
7	B	910	CIT	O7-C3-C6-O6
6	A	909	A1BLT	C14-C10-C23-N3
6	B	909	A1BLT	C14-C10-C23-N3
4	B	904	NAG	C1-C2-N2-C7
6	A	909	A1BLT	C25-C26-C29-N5
7	A	910	CIT	C3-C4-C5-O4
7	A	910	CIT	C3-C4-C5-O3
4	B	907	NAG	C4-C5-C6-O6
6	A	909	A1BLT	C6-C14-O3-C22
7	B	910	CIT	O1-C1-C2-C3
7	B	910	CIT	O7-C3-C4-C5

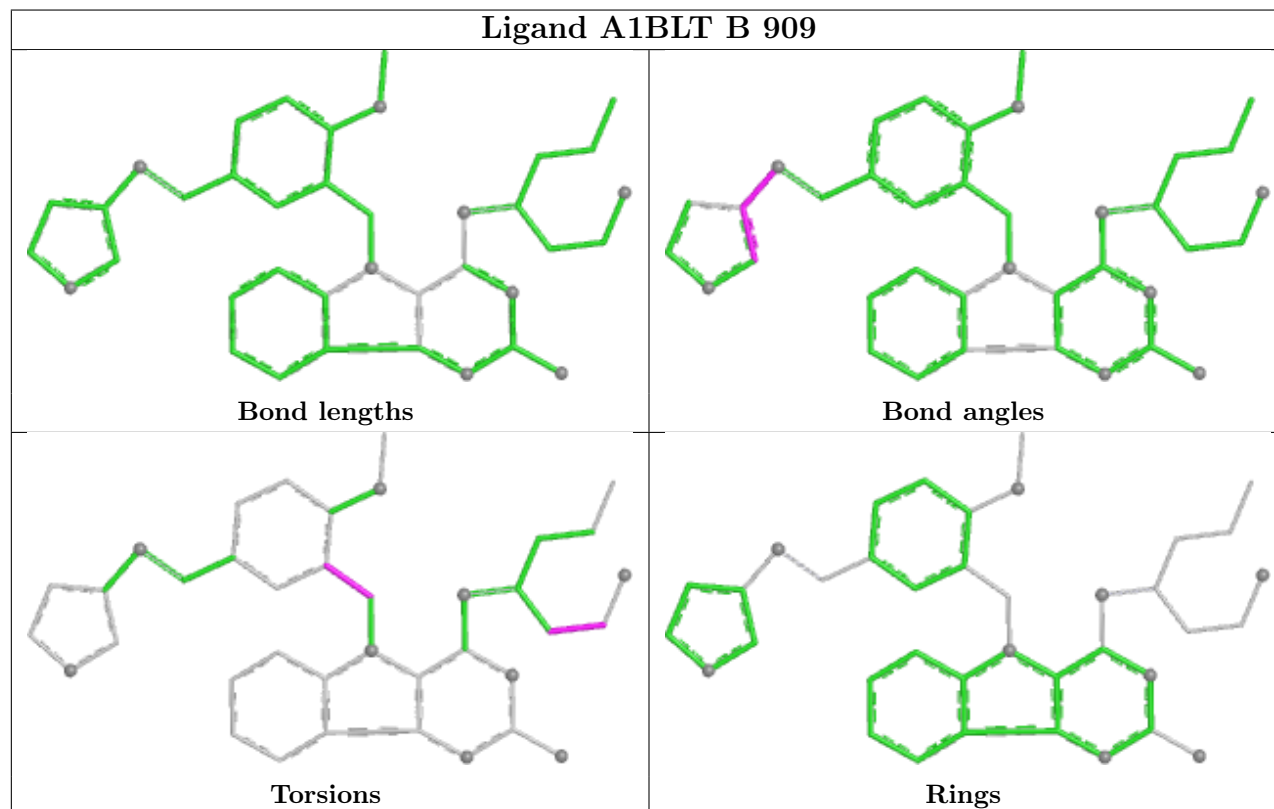
There are no ring outliers.

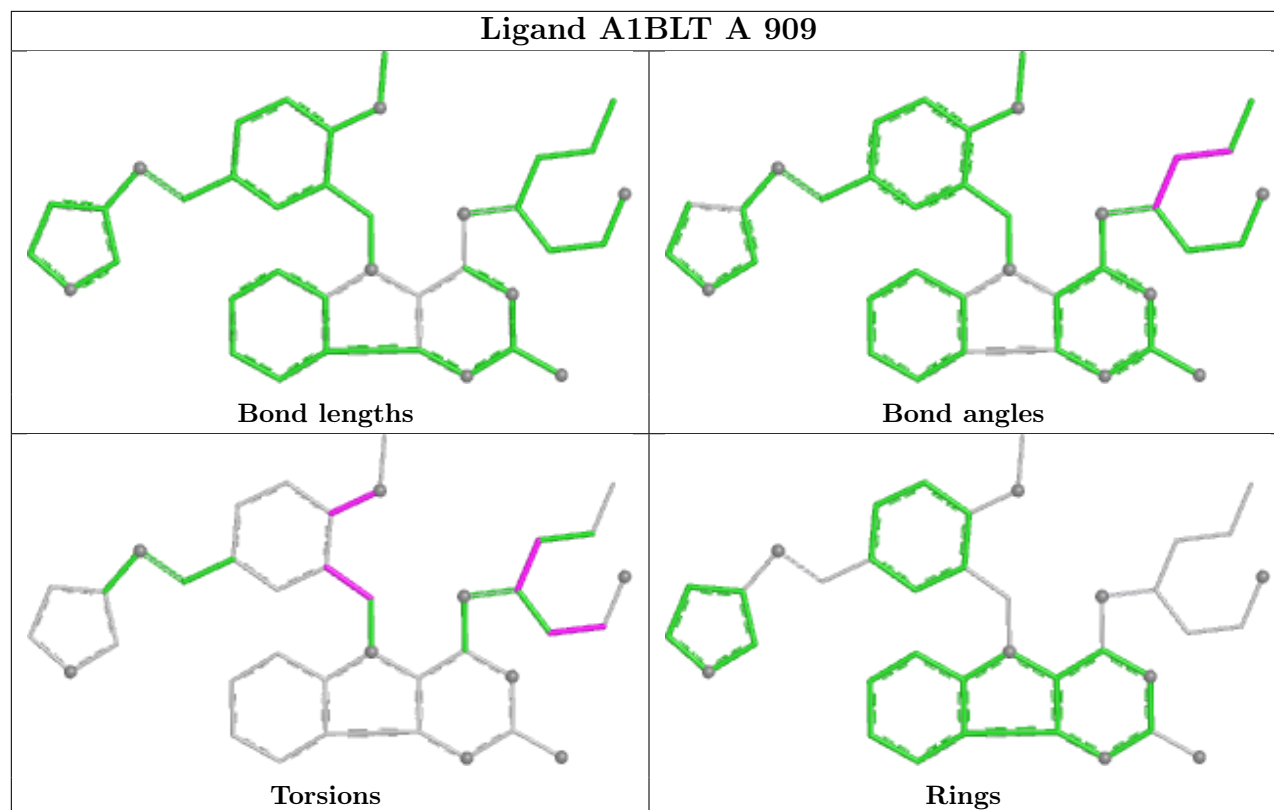
2 monomers are involved in 3 short contacts:

Mol	Chain	Res	Type	Clashes	Symm-Clashes
4	A	907	NAG	2	0
7	A	910	CIT	1	0

The following is a two-dimensional graphical depiction of Mogul quality analysis of bond lengths, bond angles, torsion angles, and ring geometry for all instances of the Ligand of Interest. In

addition, ligands with molecular weight > 250 and outliers as shown on the validation Tables will also be included. For torsion angles, if less than 5% of the Mogul distribution of torsion angles is within 10 degrees of the torsion angle in question, then that torsion angle is considered an outlier. Any bond that is central to one or more torsion angles identified as an outlier by Mogul will be highlighted in the graph. For rings, the root-mean-square deviation (RMSD) between the ring in question and similar rings identified by Mogul is calculated over all ring torsion angles. If the average RMSD is greater than 60 degrees and the minimal RMSD between the ring in question and any Mogul-identified rings is also greater than 60 degrees, then that ring is considered an outlier. The outliers are highlighted in purple. The color gray indicates Mogul did not find sufficient equivalents in the CSD to analyse the geometry.





5.7 Other polymers [i](#)

There are no such residues in this entry.

5.8 Polymer linkage issues [i](#)

There are no chain breaks in this entry.

6 Fit of model and data

6.1 Protein, DNA and RNA chains

In the following table, the column labelled ‘#RSRZ> 2’ contains the number (and percentage) of RSRZ outliers, followed by percent RSRZ outliers for the chain as percentile scores relative to all X-ray entries and entries of similar resolution. The OWAB column contains the minimum, median, 95th percentile and maximum values of the occupancy-weighted average B-factor per residue. The column labelled ‘Q< 0.9’ lists the number of (and percentage) of residues with an average occupancy less than 0.9.

Mol	Chain	Analysed	<RSRZ>	#RSRZ>2	OWAB(Å ²)	Q<0.9
1	A	768/817 (94%)	0.04	22 (2%) 54 56	14, 25, 40, 59	1 (0%)
1	B	768/817 (94%)	0.31	22 (2%) 54 56	17, 30, 43, 63	0
All	All	1536/1634 (94%)	0.18	44 (2%) 54 56	14, 28, 42, 63	1 (0%)

All (44) RSRZ outliers are listed below:

Mol	Chain	Res	Type	RSRZ
1	A	27	ALA	4.7
1	A	109	SER	3.9
1	B	809	ALA	3.8
1	A	810	THR	3.7
1	B	808	LEU	3.6
1	B	29	TRP	3.4
1	A	809	ALA	3.3
1	A	506	PHE	3.0
1	B	112	CYS	2.9
1	B	275	ASN	2.9
1	A	831	TYR	2.9
1	A	105	LEU	2.8
1	B	435	PRO	2.8
1	A	40	LEU	2.7
1	A	276	ASN	2.7
1	B	276	ASN	2.7
1	A	106	GLY	2.7
1	B	27	ALA	2.7
1	B	33	THR	2.7
1	B	835	LEU	2.6
1	B	44	LYS	2.6
1	A	103	ILE	2.6
1	A	667	SER	2.5
1	B	490	SER	2.5

Continued on next page...

Continued from previous page...

Mol	Chain	Res	Type	RSRZ
1	A	807	TYR	2.5
1	B	45	ASN	2.5
1	A	835	LEU	2.5
1	B	667	SER	2.4
1	A	435	PRO	2.4
1	B	88	LEU	2.3
1	B	313	ILE	2.3
1	A	42	VAL	2.2
1	A	43	SER	2.2
1	B	748	GLN	2.2
1	A	811	ASP	2.1
1	A	96	PHE	2.1
1	B	676	ASN	2.1
1	B	246	ASN	2.1
1	B	42	VAL	2.1
1	A	85	PHE	2.1
1	B	43	SER	2.1
1	A	74	ILE	2.1
1	A	101	VAL	2.0
1	B	434	SER	2.0

6.2 Non-standard residues in protein, DNA, RNA chains [i](#)

There are no non-standard protein/DNA/RNA residues in this entry.

6.3 Carbohydrates [i](#)

In the following table, the Atoms column lists the number of modelled atoms in the group and the number defined in the chemical component dictionary. The B-factors column lists the minimum, median, 95th percentile and maximum values of B factors of atoms in the group. The column labelled 'Q< 0.9' lists the number of atoms with occupancy less than 0.9.

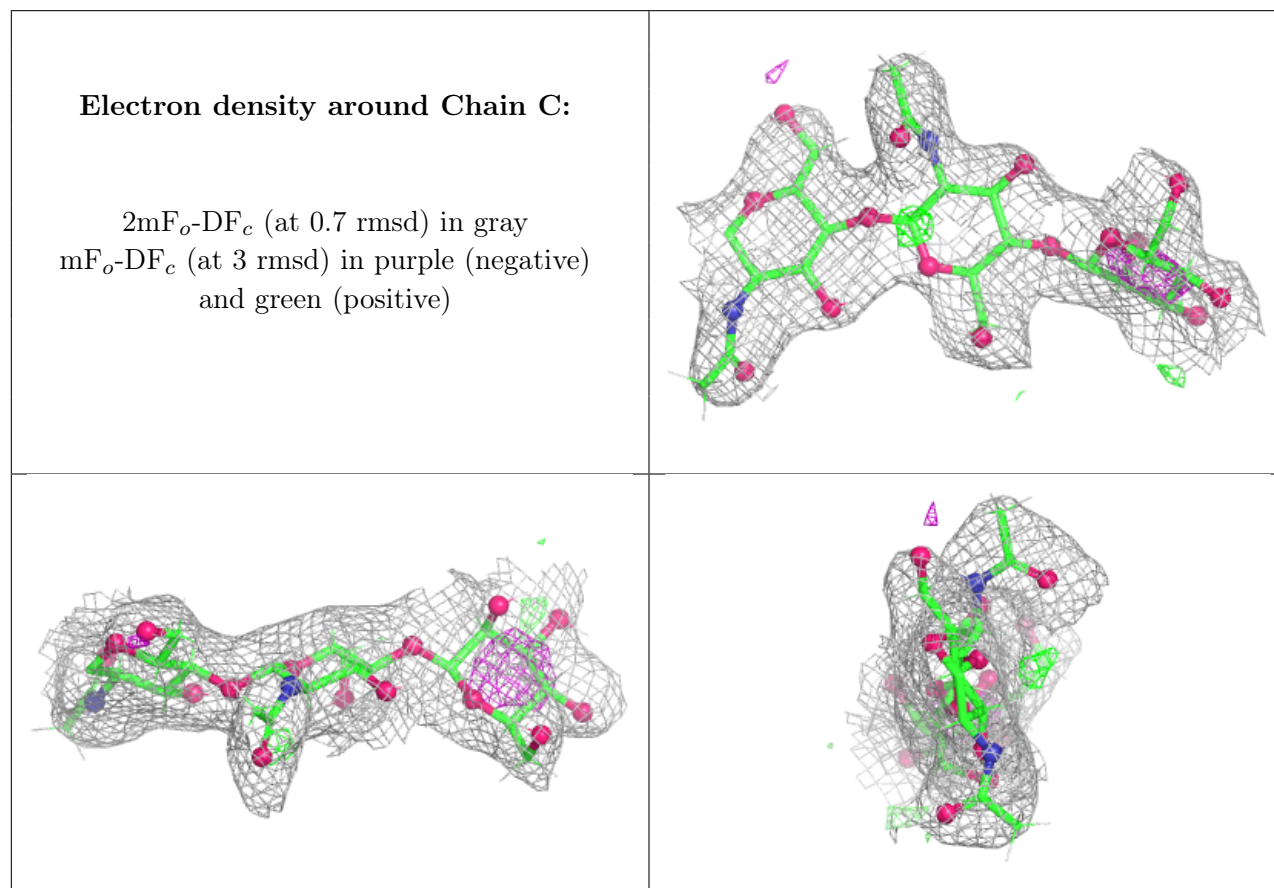
Mol	Type	Chain	Res	Atoms	RSCC	RSR	B-factors(Å ²)	Q<0.9
2	BMA	C	3	11/12	0.63	0.15	78,80,90,91	10
3	NAG	F	2	14/15	0.67	0.15	80,81,82,83	13
3	NAG	D	2	14/15	0.70	0.14	87,88,89,90	13
3	NAG	E	2	14/15	0.84	0.11	62,65,66,66	13
2	NAG	C	2	14/15	0.85	0.11	70,74,80,80	12
3	NAG	D	1	14/15	0.87	0.13	81,82,84,85	12
3	NAG	F	1	14/15	0.92	0.10	76,77,79,79	12
2	NAG	C	1	14/15	0.92	0.11	61,64,68,69	12

Continued on next page...

Continued from previous page...

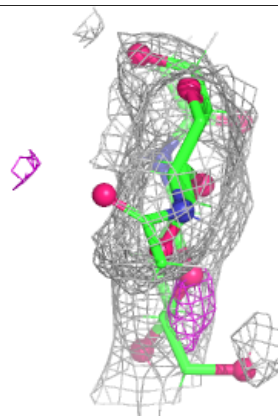
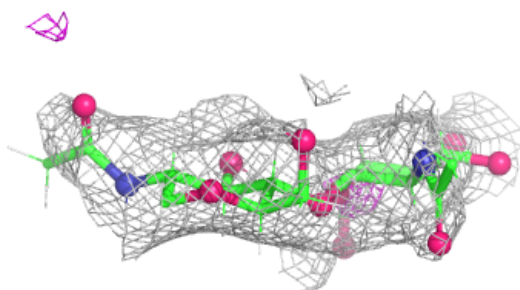
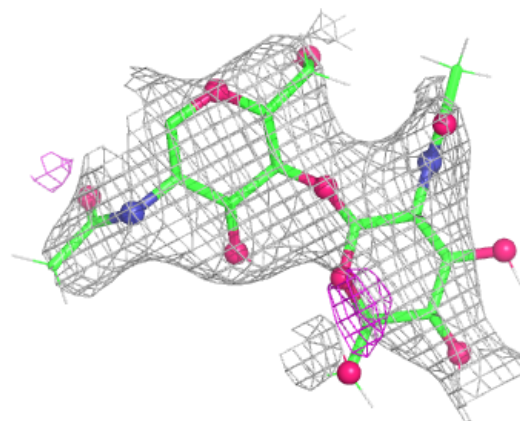
Mol	Type	Chain	Res	Atoms	RSCC	RSR	B-factors(\AA^2)	Q<0.9
3	NAG	E	1	14/15	0.95	0.09	48,57,60,62	12

The following is a graphical depiction of the model fit to experimental electron density for oligosaccharide. Each fit is shown from different orientation to approximate a three-dimensional view.



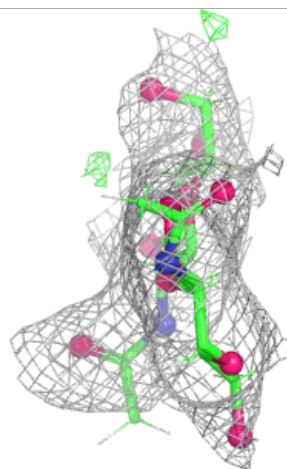
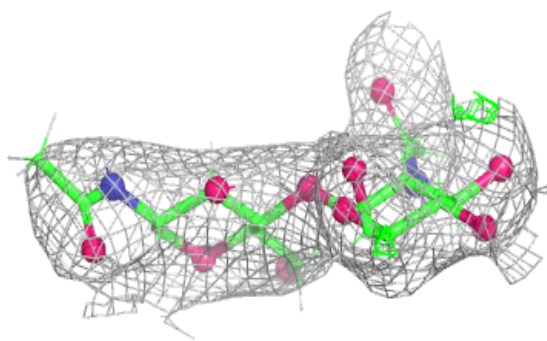
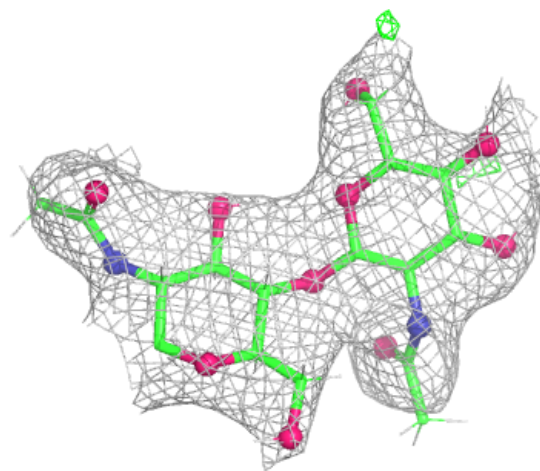
Electron density around Chain D:

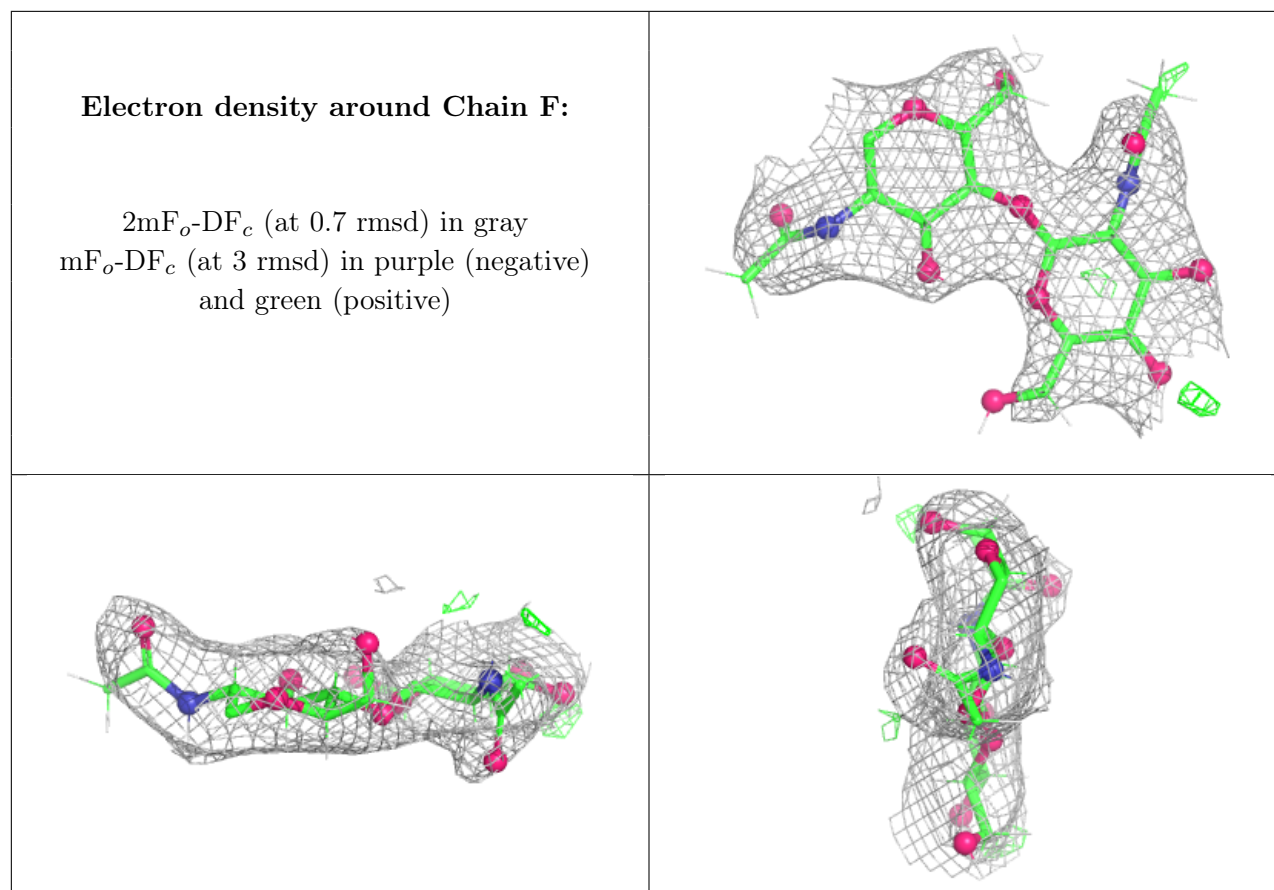
$2mF_o-DF_c$ (at 0.7 rmsd) in gray
 mF_o-DF_c (at 3 rmsd) in purple (negative)
and green (positive)



Electron density around Chain E:

$2mF_o-DF_c$ (at 0.7 rmsd) in gray
 mF_o-DF_c (at 3 rmsd) in purple (negative)
and green (positive)





6.4 Ligands ⓘ

In the following table, the Atoms column lists the number of modelled atoms in the group and the number defined in the chemical component dictionary. The B-factors column lists the minimum, median, 95th percentile and maximum values of B factors of atoms in the group. The column labelled 'Q < 0.9' lists the number of atoms with occupancy less than 0.9.

Mol	Type	Chain	Res	Atoms	RSCC	RSR	B-factors(Å ²)	Q<0.9
4	NAG	B	907	14/15	0.34	0.20	97,99,114,116	13
4	NAG	A	907	14/15	0.57	0.22	65,67,71,72	13
4	NAG	B	906	14/15	0.66	0.16	80,84,85,85	13
4	NAG	A	906	14/15	0.73	0.15	67,69,73,74	13
7	CIT	B	910	13/13	0.74	0.17	97,97,98,98	5
4	NAG	B	905	14/15	0.76	0.14	86,88,96,97	13
4	NAG	A	905	14/15	0.77	0.13	72,74,83,84	13
4	NAG	B	903	14/15	0.79	0.11	77,79,92,92	13
4	NAG	B	904	14/15	0.81	0.11	73,75,87,89	13
4	NAG	A	904	14/15	0.83	0.12	63,65,72,72	13
4	NAG	B	902	14/15	0.83	0.14	72,74,84,86	13
7	CIT	A	910	13/13	0.86	0.16	113,113,114,114	5
4	NAG	A	903	14/15	0.87	0.10	62,64,66,67	13

Continued on next page...

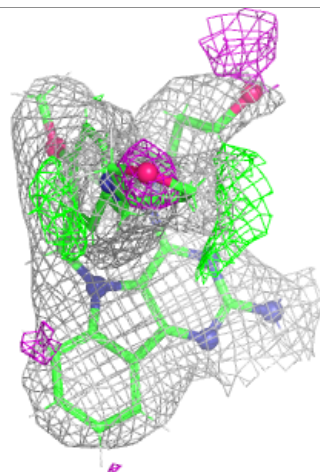
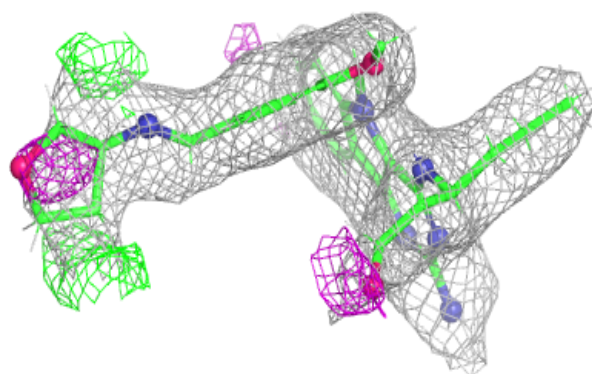
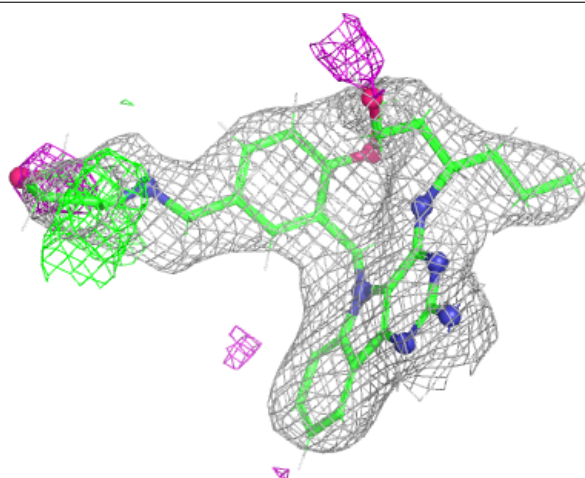
Continued from previous page...

Mol	Type	Chain	Res	Atoms	RSCC	RSR	B-factors(\AA^2)	Q<0.9
4	NAG	A	902	14/15	0.88	0.10	58,60,65,66	13
6	A1BLT	B	909	38/38	0.88	0.12	47,51,62,63	38
4	NAG	A	901	14/15	0.93	0.08	41,44,48,48	13
5	CL	B	908	1/1	0.93	0.23	101,101,101,101	0
6	A1BLT	A	909	38/38	0.93	0.10	47,48,60,60	38
5	CL	A	908	1/1	0.94	0.18	89,89,89,89	0
4	NAG	B	901	14/15	0.94	0.08	42,46,52,52	13

The following is a graphical depiction of the model fit to experimental electron density of all instances of the Ligand of Interest. In addition, ligands with molecular weight > 250 and outliers as shown on the geometry validation Tables will also be included. Each fit is shown from different orientation to approximate a three-dimensional view.

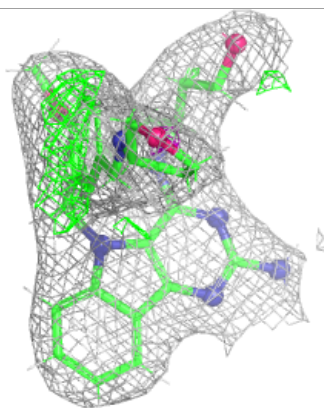
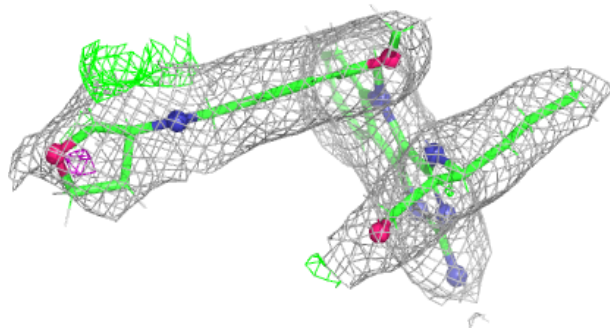
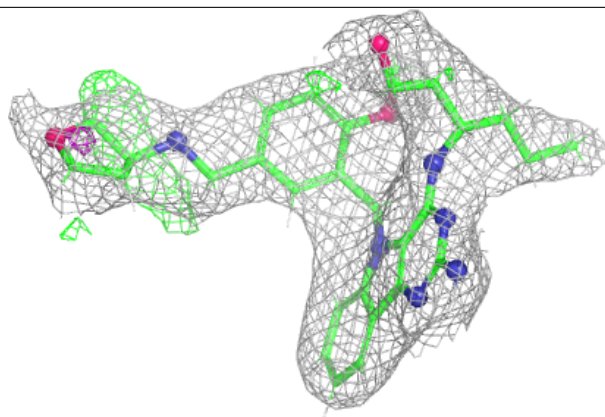
Electron density around A1BLT B 909:

2mF_o-DF_c (at 0.7 rmsd) in gray
mF_o-DF_c (at 3 rmsd) in purple (negative)
and green (positive)



Electron density around A1BLT A 909:

$2mF_o-DF_c$ (at 0.7 rmsd) in gray
 mF_o-DF_c (at 3 rmsd) in purple (negative)
and green (positive)



6.5 Other polymers [i](#)

There are no such residues in this entry.