



wwPDB EM Validation Summary Report ⓘ

Dec 13, 2025 – 04:10 PM EST

PDB ID : 9MGG / pdb_00009mgg
EMDB ID : EMD-48255
Title : beta-barrel assembly machine from Escherichia coli in a late state of substrate assembly
Authors : Thomson, B.D.; Kahne, D.
Deposited on : 2024-12-10
Resolution : 3.90 Å (reported)
Based on initial models : 5D0Q, 5D0O

This is a wwPDB EM Validation Summary Report for a publicly released PDB entry.

We welcome your comments at validation@mail.wwpdb.org

A user guide is available at

<https://www.wwpdb.org/validation/2017/EMValidationReportHelp>
with specific help available everywhere you see the ⓘ symbol.

The types of validation reports are described at

<http://www.wwpdb.org/validation/2017/FAQs#types>.

The following versions of software and data (see [references ⓘ](#)) were used in the production of this report:

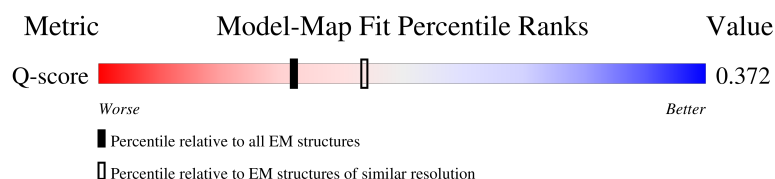
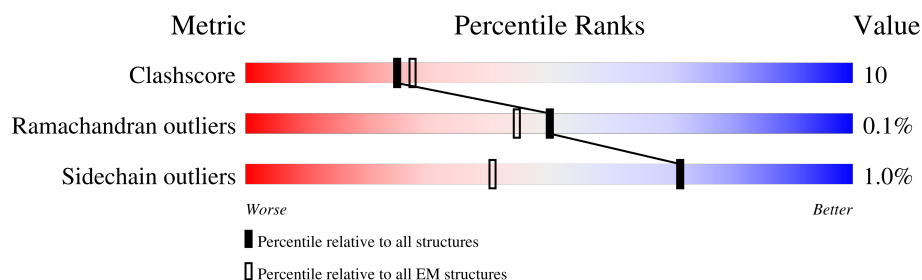
EMDB validation analysis : 0.0.1.dev129
MolProbity : 4-5-2 with Phenix2.0
Percentile statistics : 20231227.v01 (using entries in the PDB archive December 27th 2023)
EM percentile statistics : 202505.v01 (Using data in the EMDB archive up until May 2025)
MapQ : 1.9.13
Ideal geometry (proteins) : Engh & Huber (2001)
Ideal geometry (DNA, RNA) : Parkinson et al. (1996)
Validation Pipeline (wwPDB-VP) : 2.47

1 Overall quality at a glance

The following experimental techniques were used to determine the structure:
ELECTRON MICROSCOPY




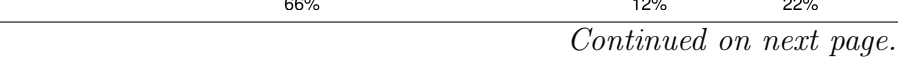
The reported resolution of this entry is 3.90 Å.

Percentile scores (ranging between 0-100) for global validation metrics of the entry are shown in the following graphic. The table shows the number of entries on which the scores are based.



Metric	Whole archive (#Entries)	EM structures (#Entries)	Similar EM resolution (#Entries, resolution range(Å))
Clashscore	210492	15764	-
Ramachandran outliers	207382	16835	-
Sidechain outliers	206894	16415	-
Q-score	-	25397	8855 (3.40 - 4.40)

The table below summarises the geometric issues observed across the polymeric chains and their fit to the map. The red, orange, yellow and green segments of the bar indicate the fraction of residues that contain outliers for ≥ 3 , 2, 1 and 0 types of geometric quality criteria respectively. A grey segment represents the fraction of residues that are not modelled. The numeric value for each fraction is indicated below the corresponding segment, with a dot representing fractions $\leq 5\%$. The upper red bar (where present) indicates the fraction of residues that have poor fit to the EM map (all-atom inclusion $< 40\%$). The numeric value is given above the bar.

Mol	Chain	Length	Quality of chain
1	A	798	
2	C	344	
3	D	245	
4	E	113	

Continued on next page...

Continued from previous page...

Mol	Chain	Length	Quality of chain
5	B	392	<div><div></div><div>8%</div><div>69%</div><div>21%</div><div>10%</div></div>
6	F	568	<div><div></div><div>10%</div><div>46%</div><div>10%</div><div>43%</div></div>

2 Entry composition

There are 6 unique types of molecules in this entry. The entry contains 25706 atoms, of which 12414 are hydrogens and 0 are deuteriums.

In the tables below, the AltConf column contains the number of residues with at least one atom in alternate conformation and the Trace column contains the number of residues modelled with at most 2 atoms.

- Molecule 1 is a protein called Outer membrane protein assembly factor BamA.

Mol	Chain	Residues	Atoms						AltConf	Trace
1	A	742	Total	C	H	N	O	S	0	0
			10087	3275	4780	945	1073	14		

There are 12 discrepancies between the modelled and reference sequences:

Chain	Residue	Modelled	Actual	Comment	Reference
A	13	ALA	-	expression tag	UNP P0A940
A	14	GLU	-	expression tag	UNP P0A940
A	15	GLY	-	expression tag	UNP P0A940
A	16	HIS	-	expression tag	UNP P0A940
A	17	HIS	-	expression tag	UNP P0A940
A	18	HIS	-	expression tag	UNP P0A940
A	19	HIS	-	expression tag	UNP P0A940
A	20	HIS	-	expression tag	UNP P0A940
A	21	HIS	-	expression tag	UNP P0A940
A	22	HIS	-	expression tag	UNP P0A940
A	23	HIS	-	expression tag	UNP P0A940
A	512	CYS	ASP	engineered mutation	UNP P0A940

- Molecule 2 is a protein called Outer membrane protein assembly factor BamC.

Mol	Chain	Residues	Atoms						AltConf	Trace
2	C	51	Total	C	H	N	O	S	0	0
			717	229	357	59	71	1		

- Molecule 3 is a protein called Outer membrane protein assembly factor BamD.

Mol	Chain	Residues	Atoms						AltConf	Trace
3	D	218	Total	C	H	N	O	S	0	0
			3426	1101	1676	308	334	7		

- Molecule 4 is a protein called Outer membrane protein assembly factor BamE.

Mol	Chain	Residues	Atoms						AltConf	Trace
4	E	88	Total	C	H	N	O	S	0	0
			1355	432	669	120	132	2		

- Molecule 5 is a protein called Outer membrane protein assembly factor BamB.

Mol	Chain	Residues	Atoms						AltConf	Trace
5	B	354	Total	C	H	N	O	S	0	0
			5223	1654	2586	452	525	6		

- Molecule 6 is a protein called Outer membrane protein assembly factor BamA.

Mol	Chain	Residues	Atoms						AltConf	Trace
6	F	321	Total	C	H	N	O	S	0	0
			4898	1629	2346	411	503	9		

There are 30 discrepancies between the modelled and reference sequences:

Chain	Residue	Modelled	Actual	Comment	Reference
F	243	ALA	-	expression tag	UNP P0A940
F	244	TRP	-	expression tag	UNP P0A940
F	245	SER	-	expression tag	UNP P0A940
F	246	HIS	-	expression tag	UNP P0A940
F	247	PRO	-	expression tag	UNP P0A940
F	248	GLN	-	expression tag	UNP P0A940
F	249	PHE	-	expression tag	UNP P0A940
F	250	GLU	-	expression tag	UNP P0A940
F	251	LYS	-	expression tag	UNP P0A940
F	252	GLY	-	expression tag	UNP P0A940
F	253	GLY	-	expression tag	UNP P0A940
F	254	GLY	-	expression tag	UNP P0A940
F	255	SER	-	expression tag	UNP P0A940
F	256	GLY	-	expression tag	UNP P0A940
F	257	GLY	-	expression tag	UNP P0A940
F	258	GLY	-	expression tag	UNP P0A940
F	259	SER	-	expression tag	UNP P0A940
F	260	GLY	-	expression tag	UNP P0A940
F	261	GLY	-	expression tag	UNP P0A940
F	262	SER	-	expression tag	UNP P0A940
F	263	ALA	-	expression tag	UNP P0A940
F	264	TRP	-	expression tag	UNP P0A940
F	265	SER	-	expression tag	UNP P0A940
F	266	HIS	-	expression tag	UNP P0A940
F	267	PRO	-	expression tag	UNP P0A940

Continued on next page...

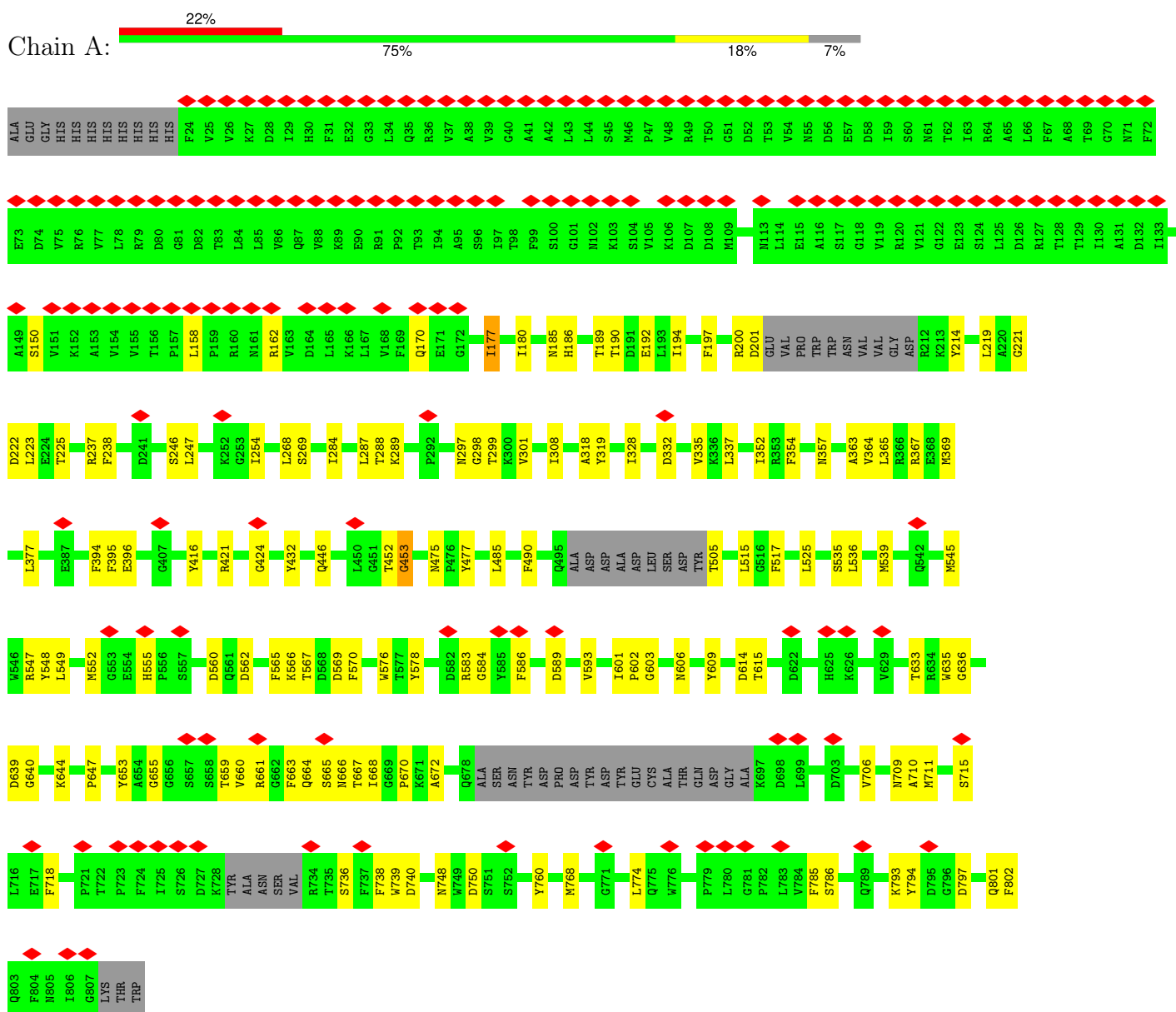
Continued from previous page...

Chain	Residue	Modelled	Actual	Comment	Reference
F	268	GLN	-	expression tag	UNP P0A940
F	269	PHE	-	expression tag	UNP P0A940
F	270	GLU	-	expression tag	UNP P0A940
F	271	LYS	-	expression tag	UNP P0A940
F	458	CYS	ILE	engineered mutation	UNP P0A940

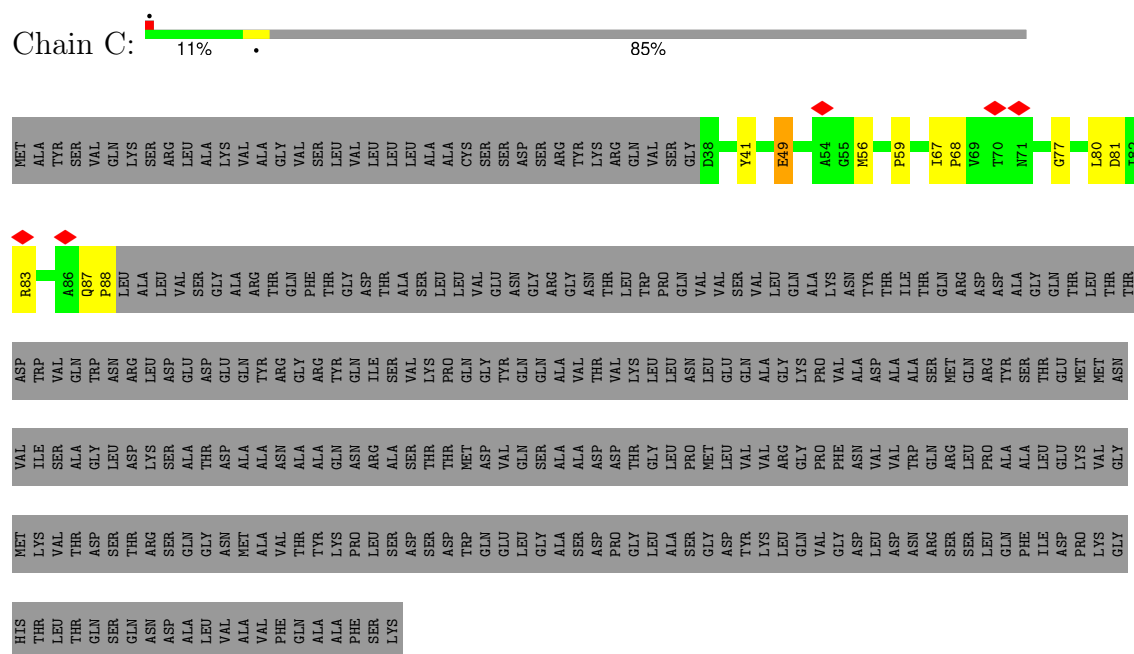
3 Residue-property plots

These plots are drawn for all protein, RNA, DNA and oligosaccharide chains in the entry. The first graphic for a chain summarises the proportions of the various outlier classes displayed in the second graphic. The second graphic shows the sequence view annotated by issues in geometry and atom inclusion in map density. Residues are color-coded according to the number of geometric quality criteria for which they contain at least one outlier: green = 0, yellow = 1, orange = 2 and red = 3 or more. A red diamond above a residue indicates a poor fit to the EM map for this residue (all-atom inclusion < 40%). Stretches of 2 or more consecutive residues without any outlier are shown as a green connector. Residues present in the sample, but not in the model, are shown in grey.

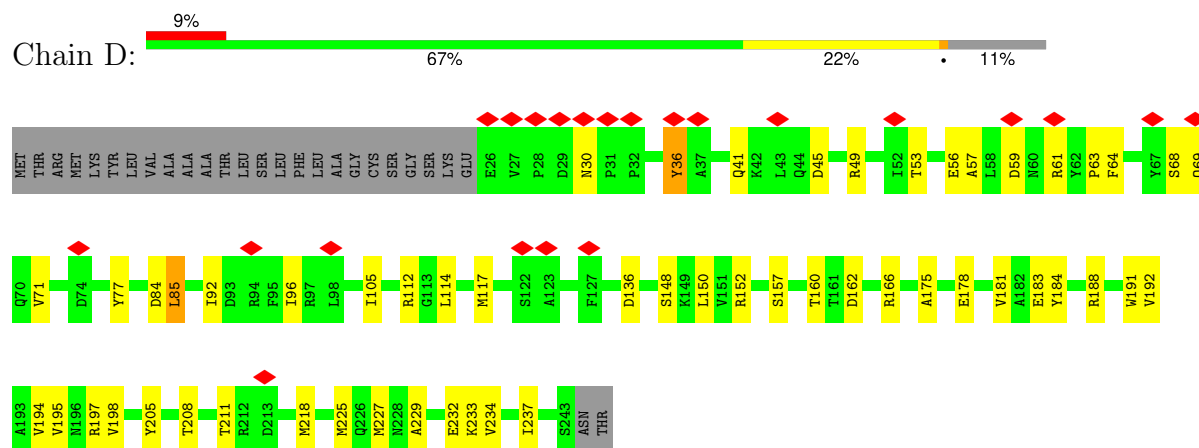
- Molecule 1: Outer membrane protein assembly factor BamA



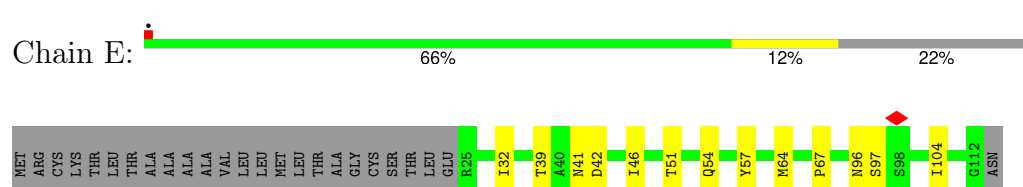
- Molecule 2: Outer membrane protein assembly factor BamC



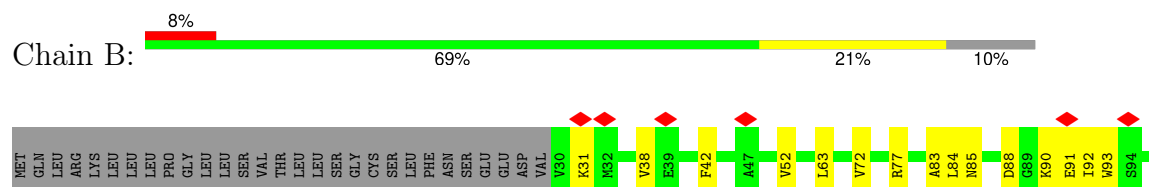
- Molecule 3: Outer membrane protein assembly factor BamD



- Molecule 4: Outer membrane protein assembly factor BamE



- Molecule 5: Outer membrane protein assembly factor BamB



4 Experimental information

Property	Value	Source
EM reconstruction method	SINGLE PARTICLE	Depositor
Imposed symmetry	POINT, Not provided	
Number of particles used	39744	Depositor
Resolution determination method	FSC 0.143 CUT-OFF	Depositor
CTF correction method	PHASE FLIPPING AND AMPLITUDE CORRECTION	Depositor
Microscope	TFS KRIOS	Depositor
Voltage (kV)	300	Depositor
Electron dose ($e^-/\text{\AA}^2$)	49.6	Depositor
Minimum defocus (nm)	1000	Depositor
Maximum defocus (nm)	2400	Depositor
Magnification	105000	Depositor
Image detector	GATAN K3 BIOQUANTUM (6k x 4k)	Depositor
Maximum map value	34.843	Depositor
Minimum map value	-23.845	Depositor
Average map value	0.006	Depositor
Map value standard deviation	1.015	Depositor
Recommended contour level	5.4	Depositor
Map size (\AA)	265.6, 265.6, 265.6	wwPDB
Map dimensions	320, 320, 320	wwPDB
Map angles ($^\circ$)	90.0, 90.0, 90.0	wwPDB
Pixel spacing (\AA)	0.83000004, 0.83000004, 0.83000004	Depositor

5 Model quality [i](#)

5.1 Standard geometry [i](#)

The Z score for a bond length (or angle) is the number of standard deviations the observed value is removed from the expected value. A bond length (or angle) with $|Z| > 5$ is considered an outlier worth inspection. RMSZ is the root-mean-square of all Z scores of the bond lengths (or angles).

Mol	Chain	Bond lengths		Bond angles	
		RMSZ	$\# Z > 5$	RMSZ	$\# Z > 5$
1	A	0.23	0/5420	0.52	0/7276
2	C	0.13	0/369	0.45	0/508
3	D	0.29	0/1790	0.58	0/2434
4	E	0.20	0/701	0.42	0/956
5	B	0.21	0/2683	0.50	0/3661
6	F	0.19	0/2632	0.49	0/3583
All	All	0.22	0/13595	0.51	0/18418

There are no bond length outliers.

There are no bond angle outliers.

There are no chirality outliers.

There are no planarity outliers.

5.2 Too-close contacts [i](#)

In the following table, the Non-H and H(model) columns list the number of non-hydrogen atoms and hydrogen atoms in the chain respectively. The H(added) column lists the number of hydrogen atoms added and optimized by MolProbity. The Clashes column lists the number of clashes within the asymmetric unit, whereas Symm-Clashes lists symmetry-related clashes.

Mol	Chain	Non-H	H(model)	H(added)	Clashes	Symm-Clashes
1	A	5307	4780	4634	98	0
2	C	360	357	356	10	0
3	D	1750	1676	1675	50	0
4	E	686	669	668	11	0
5	B	2637	2586	2585	60	0
6	F	2552	2346	2344	40	0
All	All	13292	12414	12262	262	0

The all-atom clashscore is defined as the number of clashes found per 1000 atoms (including hydrogen atoms). The all-atom clashscore for this structure is 10.

The worst 5 of 262 close contacts within the same asymmetric unit are listed below, sorted by their clash magnitude.

Atom-1	Atom-2	Interatomic distance (Å)	Clash overlap (Å)
1:A:288:THR:HG22	1:A:308:ILE:HD11	1.68	0.75
3:D:198:VAL:HG13	3:D:218:MET:HE3	1.78	0.65
1:A:365:LEU:HD11	1:A:395:PHE:HZ	1.63	0.63
5:B:31:LYS:HZ2	5:B:323:LEU:HB2	1.65	0.61
3:D:188:ARG:HG2	3:D:188:ARG:HH11	1.68	0.59

There are no symmetry-related clashes.

5.3 Torsion angles [i](#)

5.3.1 Protein backbone [i](#)

In the following table, the Percentiles column shows the percent Ramachandran outliers of the chain as a percentile score with respect to all PDB entries followed by that with respect to all EM entries.

The Analysed column shows the number of residues for which the backbone conformation was analysed, and the total number of residues.

Mol	Chain	Analysed	Favoured	Allowed	Outliers	Percentiles	
1	A	732/798 (92%)	680 (93%)	51 (7%)	1 (0%)	48	80
2	C	49/344 (14%)	49 (100%)	0	0	100	100
3	D	216/245 (88%)	204 (94%)	12 (6%)	0	100	100
4	E	86/113 (76%)	82 (95%)	4 (5%)	0	100	100
5	B	350/392 (89%)	309 (88%)	41 (12%)	0	100	100
6	F	317/568 (56%)	288 (91%)	29 (9%)	0	100	100
All	All	1750/2460 (71%)	1612 (92%)	137 (8%)	1 (0%)	50	80

All (1) Ramachandran outliers are listed below:

Mol	Chain	Res	Type
1	A	453	GLY

5.3.2 Protein sidechains [i](#)

In the following table, the Percentiles column shows the percent sidechain outliers of the chain as a percentile score with respect to all PDB entries followed by that with respect to all EM entries.

The Analysed column shows the number of residues for which the sidechain conformation was analysed, and the total number of residues.

Mol	Chain	Analysed	Rotameric	Outliers	Percentiles	
1	A	505/680 (74%)	501 (99%)	4 (1%)	79	84
2	C	36/276 (13%)	35 (97%)	1 (3%)	38	59
3	D	180/204 (88%)	177 (98%)	3 (2%)	56	72
4	E	76/95 (80%)	76 (100%)	0	100	100
5	B	283/321 (88%)	281 (99%)	2 (1%)	81	86
6	F	273/473 (58%)	269 (98%)	4 (2%)	60	74
All	All	1353/2049 (66%)	1339 (99%)	14 (1%)	71	81

5 of 14 residues with a non-rotameric sidechain are listed below:

Mol	Chain	Res	Type
3	D	85	LEU
5	B	248	ASP
6	F	610	LYS
6	F	525	LEU
6	F	585	TYR

Sometimes sidechains can be flipped to improve hydrogen bonding and reduce clashes. 5 of 7 such sidechains are listed below:

Mol	Chain	Res	Type
3	D	82	ASN
5	B	175	ASN
6	F	573	ASN
5	B	266	ASN
1	A	805	ASN

5.3.3 RNA [i](#)

There are no RNA molecules in this entry.

5.4 Non-standard residues in protein, DNA, RNA chains [i](#)

There are no non-standard protein/DNA/RNA residues in this entry.

5.5 Carbohydrates [i](#)

There are no oligosaccharides in this entry.

5.6 Ligand geometry [i](#)

There are no ligands in this entry.

5.7 Other polymers [i](#)

There are no such residues in this entry.

5.8 Polymer linkage issues [i](#)

There are no chain breaks in this entry.

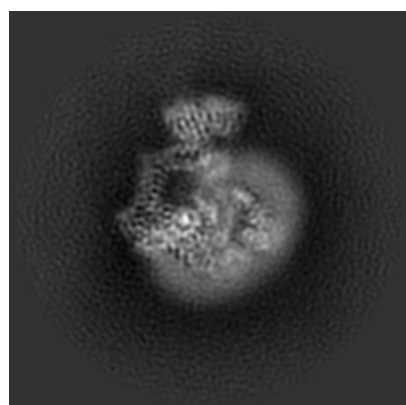
6 Map visualisation [i](#)

This section contains visualisations of the EMDB entry EMD-48255. These allow visual inspection of the internal detail of the map and identification of artifacts.

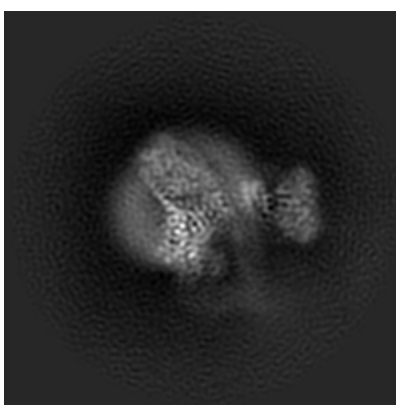
No raw map or half-maps were deposited for this entry and therefore no images, graphs, etc. pertaining to the raw map can be shown.

6.1 Orthogonal projections [i](#)

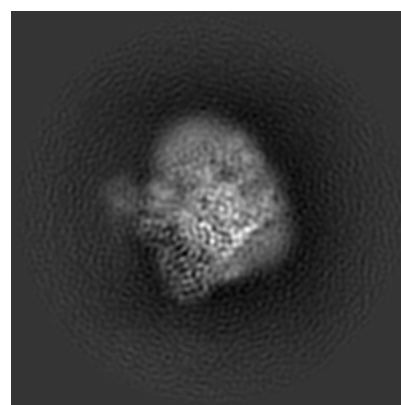
6.1.1 Primary map



X



Y

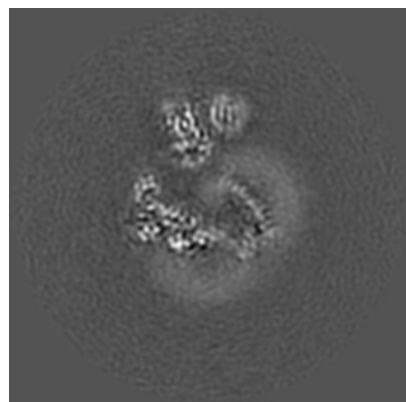


Z

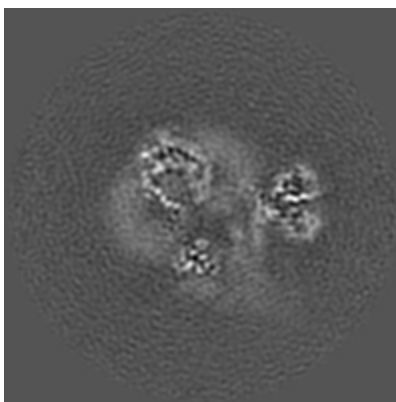
The images above show the map projected in three orthogonal directions.

6.2 Central slices [i](#)

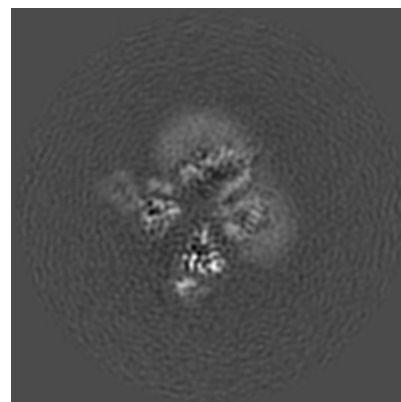
6.2.1 Primary map



X Index: 160



Y Index: 160

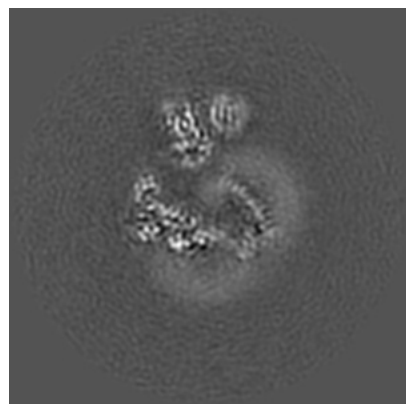


Z Index: 160

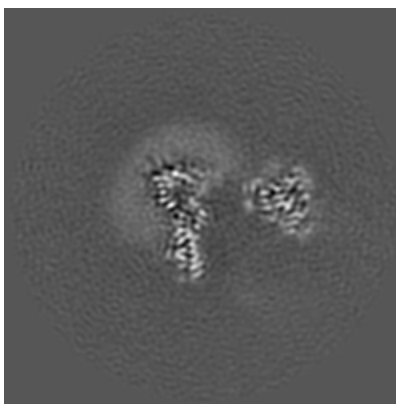
The images above show central slices of the map in three orthogonal directions.

6.3 Largest variance slices [i](#)

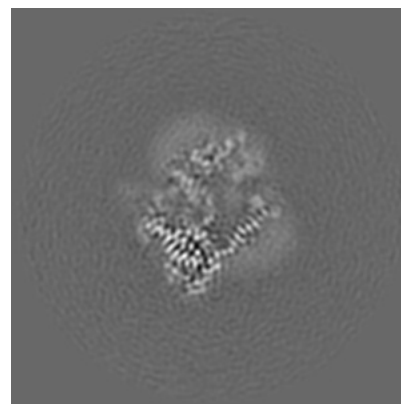
6.3.1 Primary map



X Index: 160



Y Index: 140

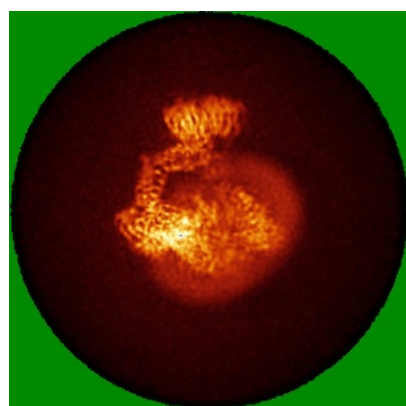


Z Index: 141

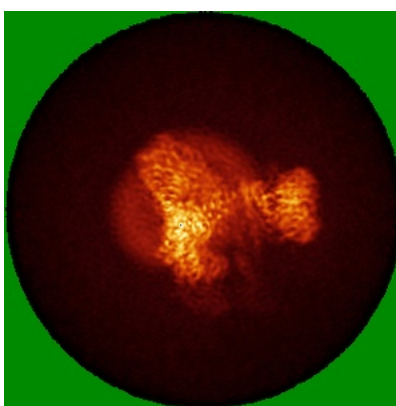
The images above show the largest variance slices of the map in three orthogonal directions.

6.4 Orthogonal standard-deviation projections (False-color) [i](#)

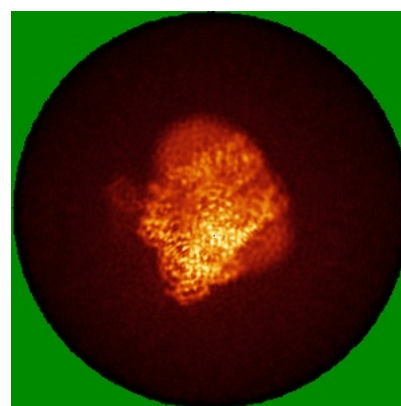
6.4.1 Primary map



X



Y

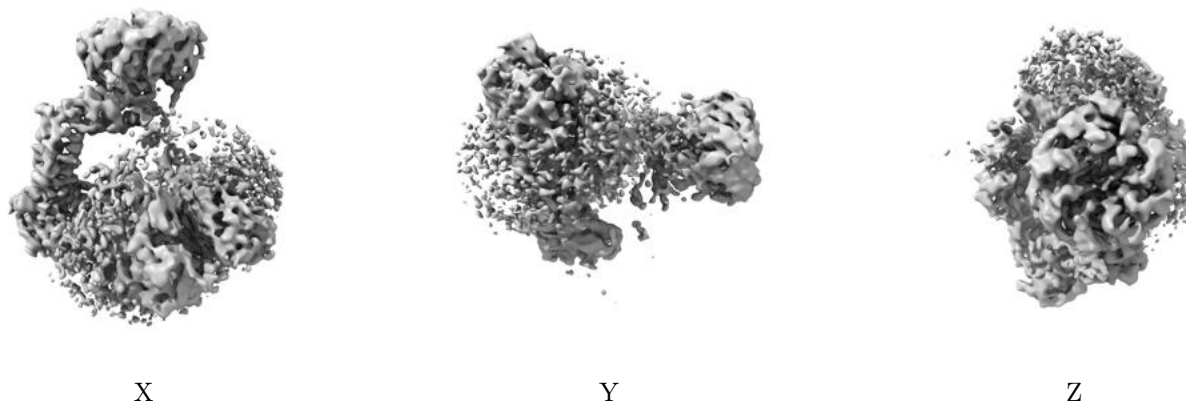


Z

The images above show the map standard deviation projections with false color in three orthogonal directions. Minimum values are shown in green, max in blue, and dark to light orange shades represent small to large values respectively.

6.5 Orthogonal surface views [i](#)

6.5.1 Primary map



The images above show the 3D surface view of the map at the recommended contour level 5.4. These images, in conjunction with the slice images, may facilitate assessment of whether an appropriate contour level has been provided.

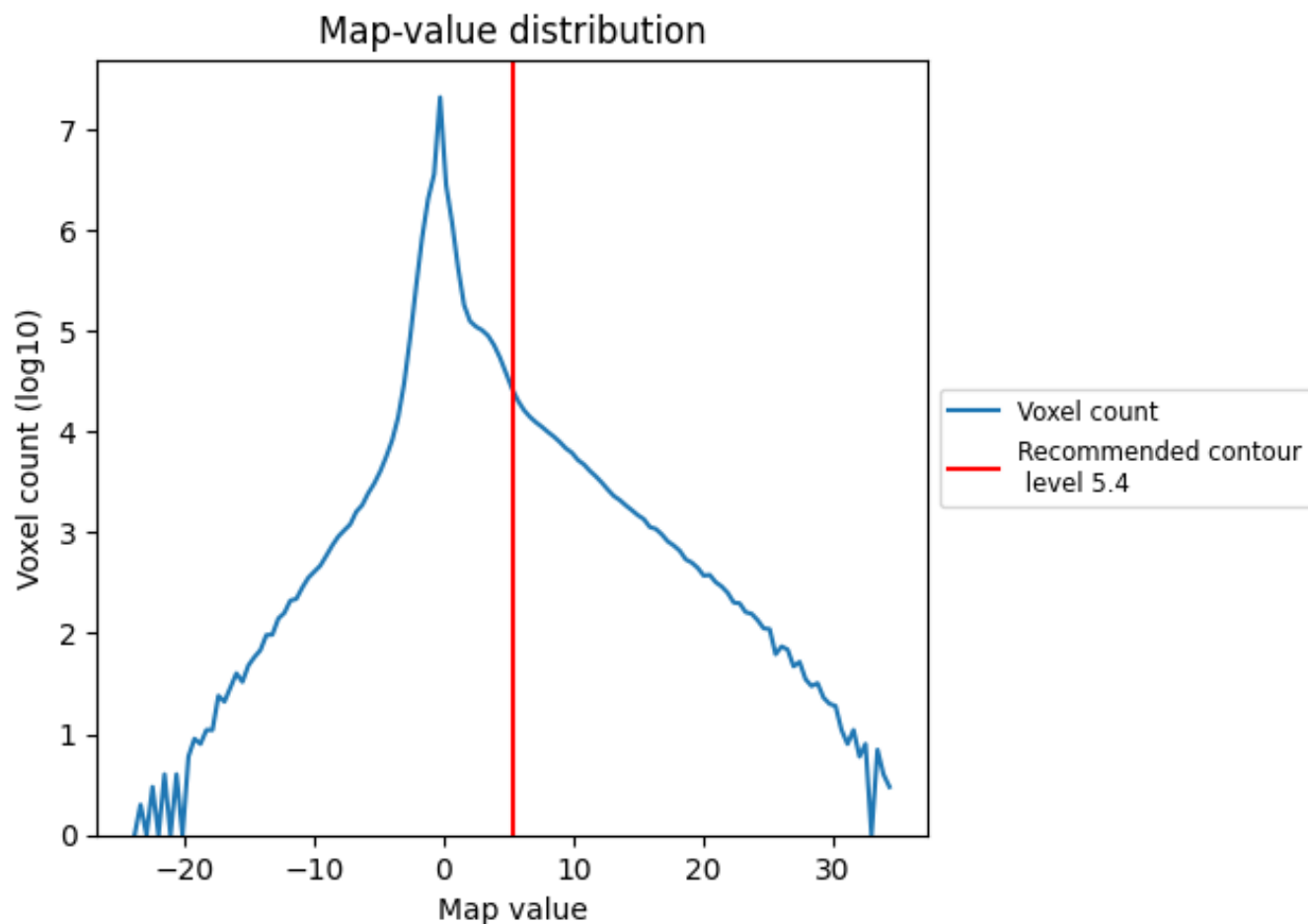
6.6 Mask visualisation [i](#)

This section was not generated. No masks/segmentation were deposited.

7 Map analysis [i](#)

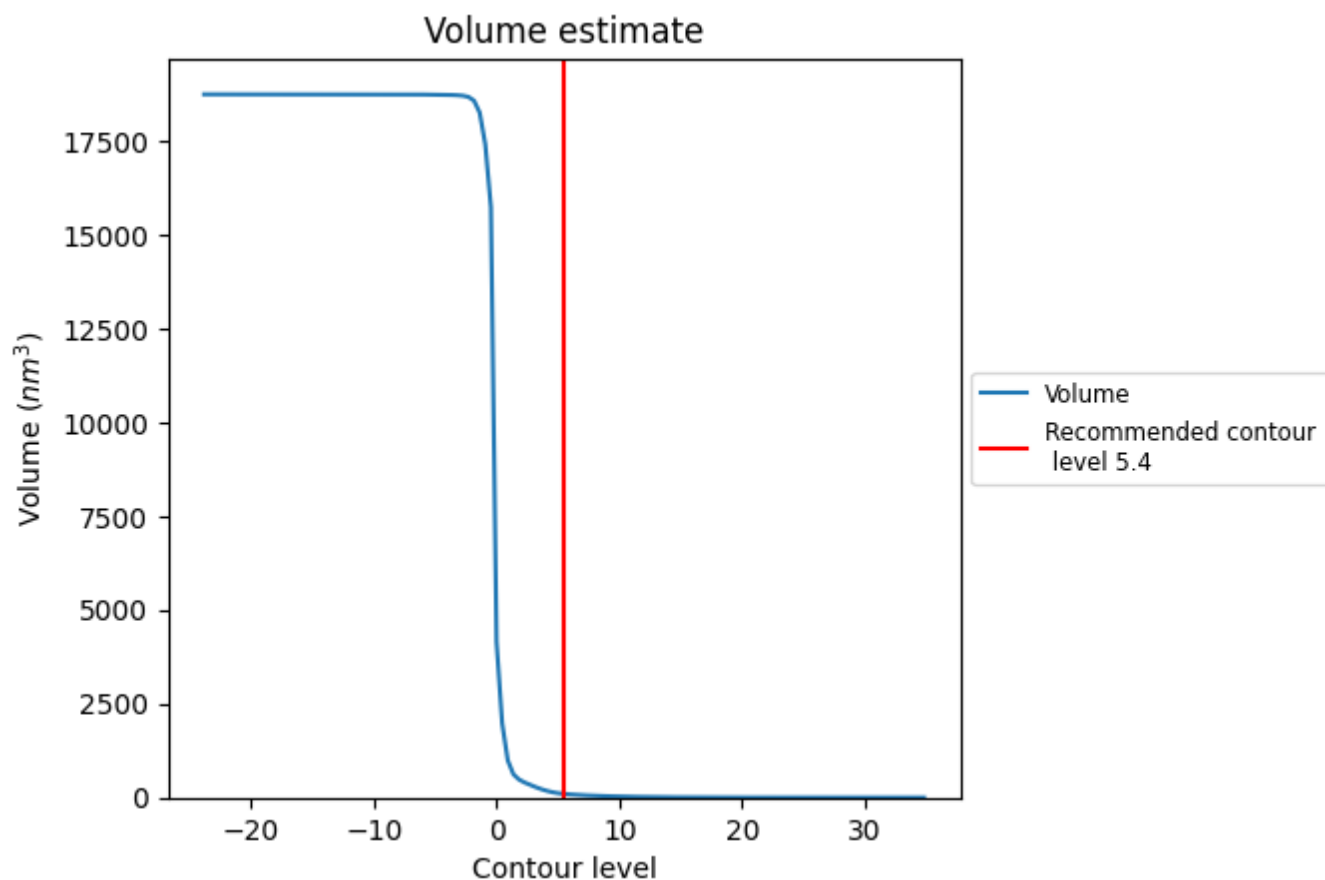
This section contains the results of statistical analysis of the map.

7.1 Map-value distribution [i](#)



The map-value distribution is plotted in 128 intervals along the x-axis. The y-axis is logarithmic. A spike in this graph at zero usually indicates that the volume has been masked.

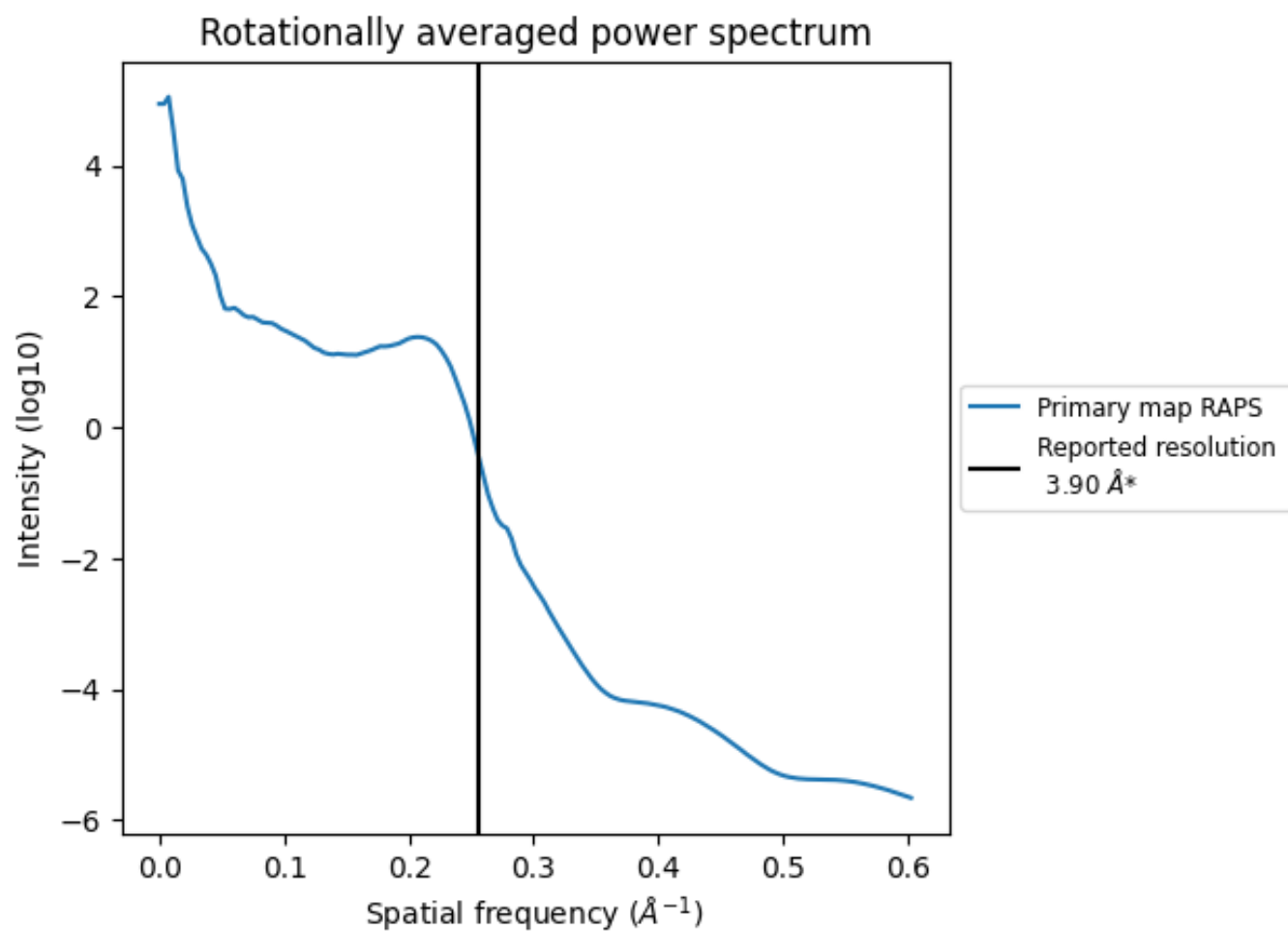
7.2 Volume estimate [i](#)



The volume at the recommended contour level is 101 nm³; this corresponds to an approximate mass of 91 kDa.

The volume estimate graph shows how the enclosed volume varies with the contour level. The recommended contour level is shown as a vertical line and the intersection between the line and the curve gives the volume of the enclosed surface at the given level.

7.3 Rotationally averaged power spectrum ⓘ

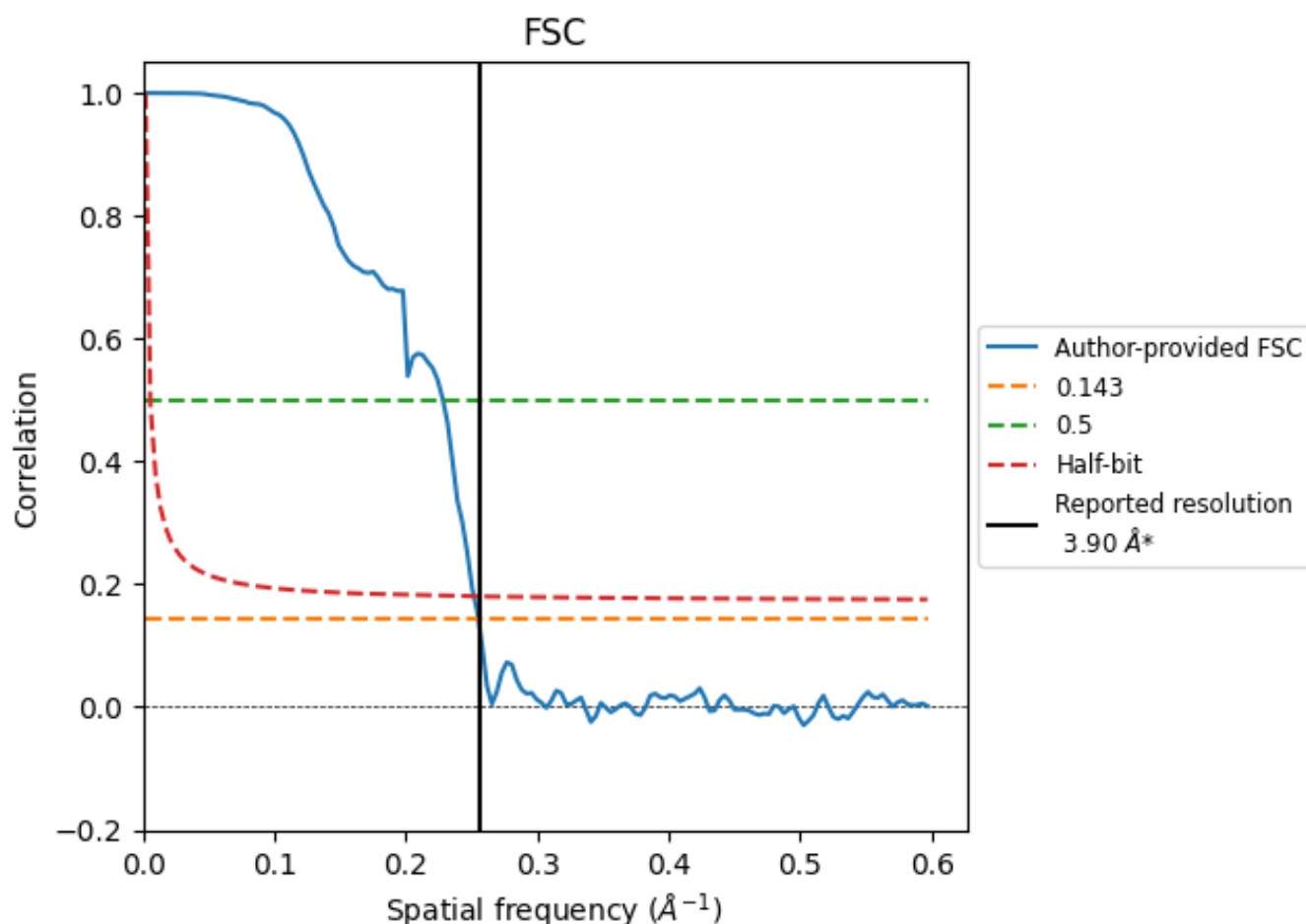


*Reported resolution corresponds to spatial frequency of 0.256 \AA^{-1}

8 Fourier-Shell correlation [i](#)

Fourier-Shell Correlation (FSC) is the most commonly used method to estimate the resolution of single-particle and subtomogram-averaged maps. The shape of the curve depends on the imposed symmetry, mask and whether or not the two 3D reconstructions used were processed from a common reference. The reported resolution is shown as a black line. A curve is displayed for the half-bit criterion in addition to lines showing the 0.143 gold standard cut-off and 0.5 cut-off.

8.1 FSC [i](#)



*Reported resolution corresponds to spatial frequency of 0.256 Å⁻¹

8.2 Resolution estimates [i](#)

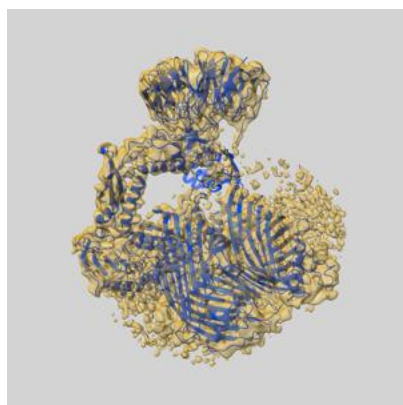
Resolution estimate (Å)	Estimation criterion (FSC cut-off)		
	0.143	0.5	Half-bit
Reported by author	3.90	-	-
Author-provided FSC curve	3.92	4.38	3.97
Unmasked-calculated*	-	-	-

*Resolution estimate based on FSC curve calculated by comparison of deposited half-maps.

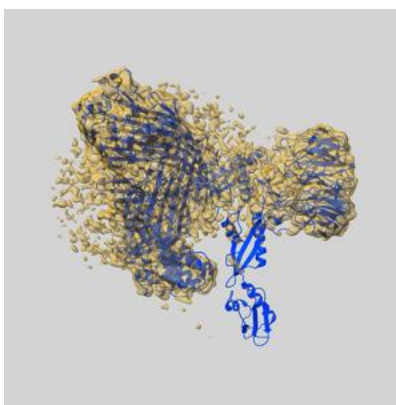
9 Map-model fit [i](#)

This section contains information regarding the fit between EMDB map EMD-48255 and PDB model 9MGG. Per-residue inclusion information can be found in section [3](#) on page [7](#).

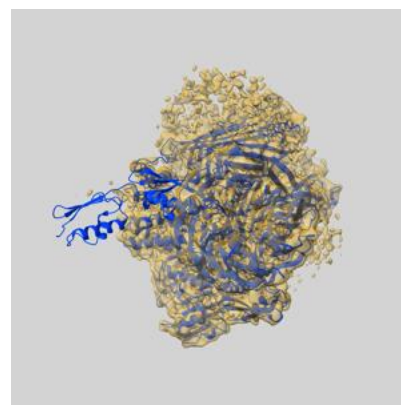
9.1 Map-model overlay [i](#)



X



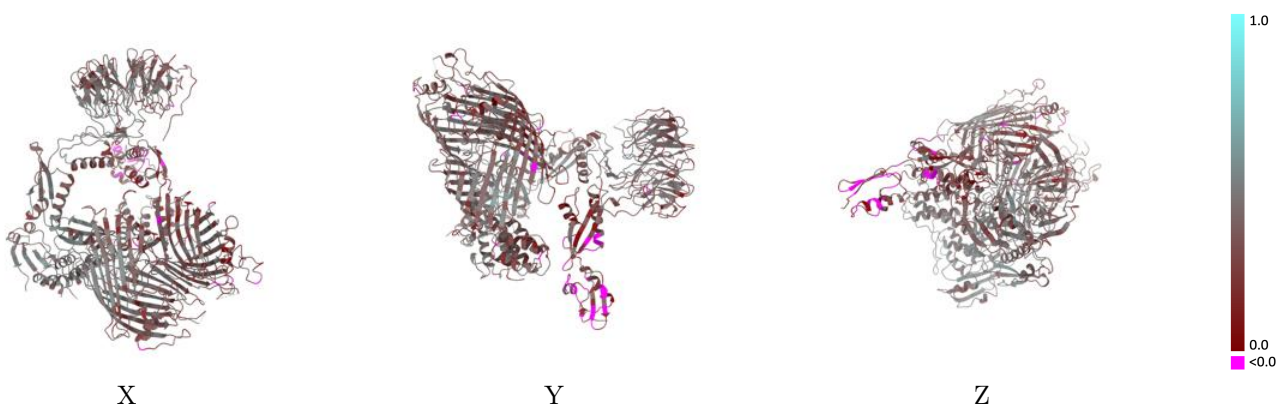
Y



Z

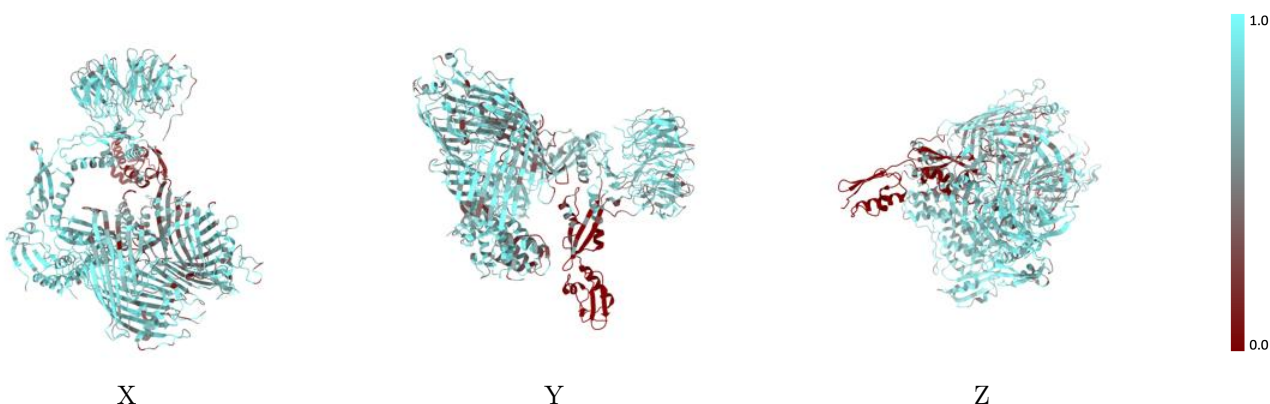
The images above show the 3D surface view of the map at the recommended contour level 5.4 at 50% transparency in yellow overlaid with a ribbon representation of the model coloured in blue. These images allow for the visual assessment of the quality of fit between the atomic model and the map.

9.2 Q-score mapped to coordinate model [i](#)



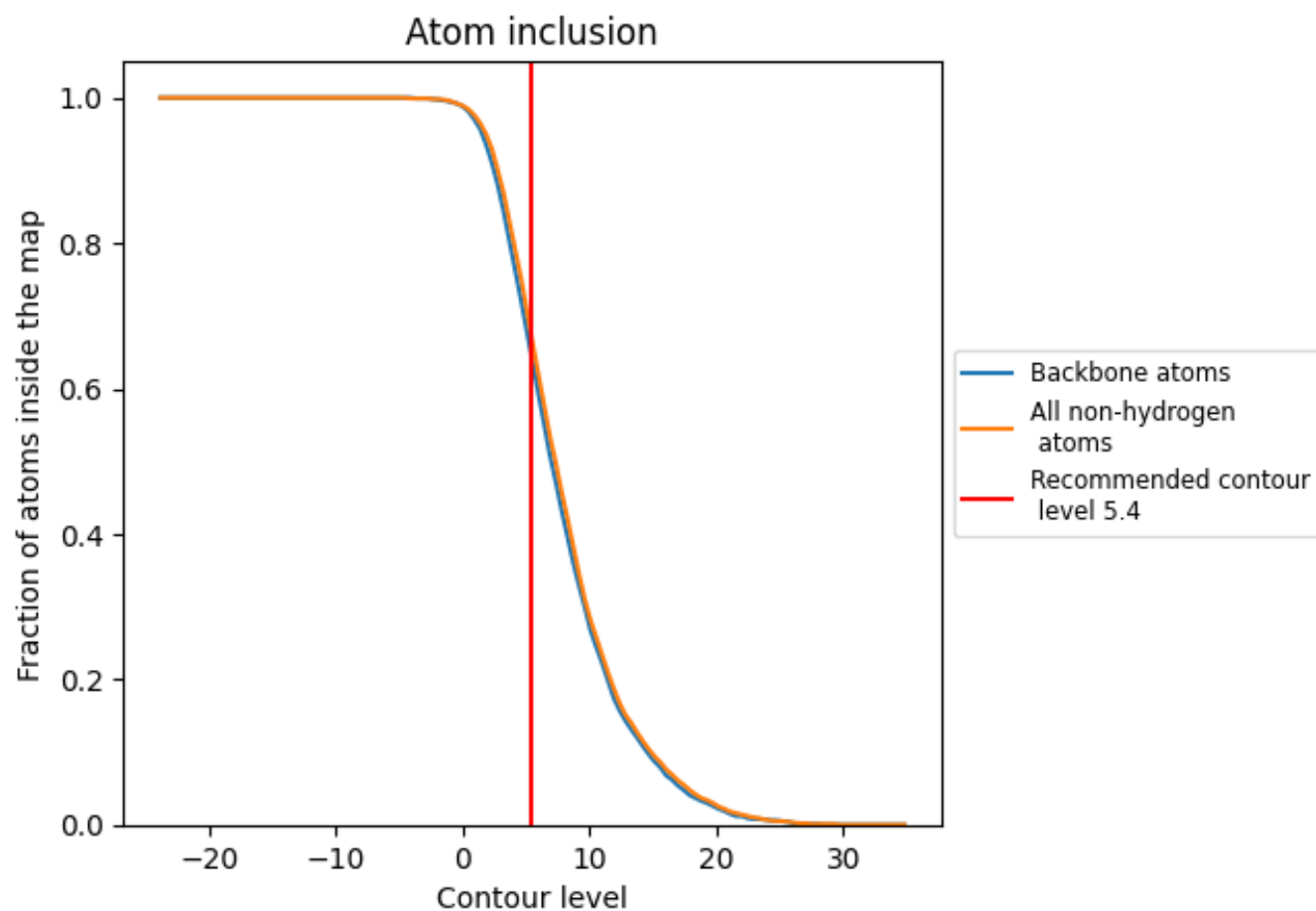
The images above show the model with each residue coloured according to its Q-score. This shows their resolvability in the map with higher Q-score values reflecting better resolvability. Please note: Q-score is calculating the resolvability of atoms, and thus high values are only expected at resolutions at which atoms can be resolved. Low Q-score values may therefore be expected for many entries.

9.3 Atom inclusion mapped to coordinate model [i](#)



The images above show the model with each residue coloured according to its atom inclusion. This shows to what extent they are inside the map at the recommended contour level (5.4).

9.4 Atom inclusion [i](#)



At the recommended contour level, 65% of all backbone atoms, 67% of all non-hydrogen atoms, are inside the map.

9.5 Map-model fit summary ⓘ

The table lists the average atom inclusion at the recommended contour level (5.4) and Q-score for the entire model and for each chain.

Chain	Atom inclusion	Q-score
All	<div><div></div>0.6720</div>	<div><div></div>0.3720</div>
A	<div><div></div>0.6560</div>	<div><div></div>0.3690</div>
B	<div><div></div>0.7270</div>	<div><div></div>0.3750</div>
C	<div><div></div>0.7190</div>	<div><div></div>0.4300</div>
D	<div><div></div>0.7350</div>	<div><div></div>0.3950</div>
E	<div><div></div>0.8370</div>	<div><div></div>0.4440</div>
F	<div><div></div>0.6590</div>	<div><div></div>0.3300</div>

1.0

0.0

<0.0