



wwPDB X-ray Structure Validation Summary Report ⓘ

Apr 29, 2025 – 04:07 PM EDT

PDB ID : 9MFR / pdb_00009mfr
Title : Cat DHX9 in Complex with Compound 23 and ADP
Authors : Lockbaum, G.J.; Lee, Y.-T.; Sickmier, E.A.; Boriack-Sjodin, P.A.; Grigoriu, S.
Deposited on : 2024-12-10
Resolution : 2.35 Å(reported)

This is a wwPDB X-ray Structure Validation Summary Report for a publicly released PDB entry.

We welcome your comments at validation@mail.wwpdb.org

A user guide is available at

<https://www.wwpdb.org/validation/2017/XrayValidationReportHelp>

with specific help available everywhere you see the ⓘ symbol.

The types of validation reports are described at

<http://www.wwpdb.org/validation/2017/FAQs#types>.

The following versions of software and data (see [references ⓘ](#)) were used in the production of this report:

MolProbity : 4-5-2 with Phenix2.0rc1
Mogul : 2022.3.0, CSD as543be (2022)
Xtriage (Phenix) : 2.0rc1
EDS : 3.0
buster-report : 1.1.7 (2018)
Percentile statistics : 20231227.v01 (using entries in the PDB archive December 27th 2023)
CCP4 : 9.0.006 (Gargrove)
Density-Fitness : 1.0.12
Ideal geometry (proteins) : Engh & Huber (2001)
Ideal geometry (DNA, RNA) : Parkinson et al. (1996)
Validation Pipeline (wwPDB-VP) : 2.43.1

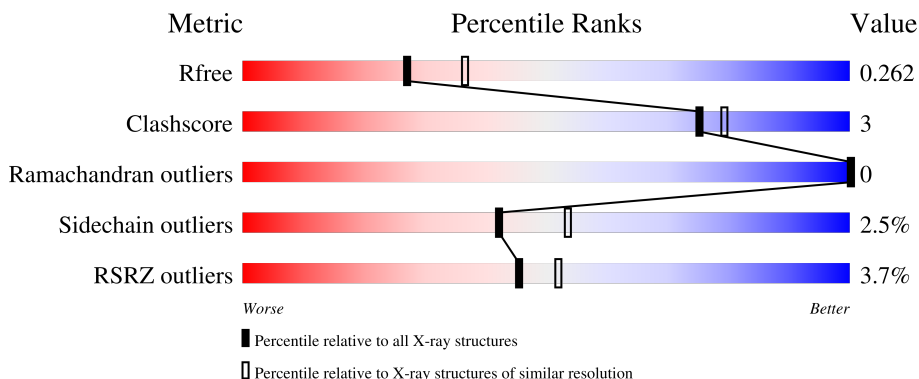
1 Overall quality at a glance

The following experimental techniques were used to determine the structure:

X-RAY DIFFRACTION

The reported resolution of this entry is 2.35 Å.

Percentile scores (ranging between 0-100) for global validation metrics of the entry are shown in the following graphic. The table shows the number of entries on which the scores are based.



Metric	Whole archive (#Entries)	Similar resolution (#Entries, resolution range(Å))
R_{free}	164625	1460 (2.36-2.36)
Clashscore	180529	1571 (2.36-2.36)
Ramachandran outliers	177936	1559 (2.36-2.36)
Sidechain outliers	177891	1559 (2.36-2.36)
RSRZ outliers	164620	1460 (2.36-2.36)

The table below summarises the geometric issues observed across the polymeric chains and their fit to the electron density. The red, orange, yellow and green segments of the lower bar indicate the fraction of residues that contain outliers for ≥ 3 , 2, 1 and 0 types of geometric quality criteria respectively. A grey segment represents the fraction of residues that are not modelled. The numeric value for each fraction is indicated below the corresponding segment, with a dot representing fractions $\leq 5\%$. The upper red bar (where present) indicates the fraction of residues that have poor fit to the electron density. The numeric value is given above the bar.

Mol	Chain	Length	Quality of chain
1	A	1010	

2 Entry composition

There are 8 unique types of molecules in this entry. The entry contains 7251 atoms, of which 0 are hydrogens and 0 are deuteriums.

In the tables below, the ZeroOcc column contains the number of atoms modelled with zero occupancy, the AltConf column contains the number of residues with at least one atom in alternate conformation and the Trace column contains the number of residues modelled with at most 2 atoms.

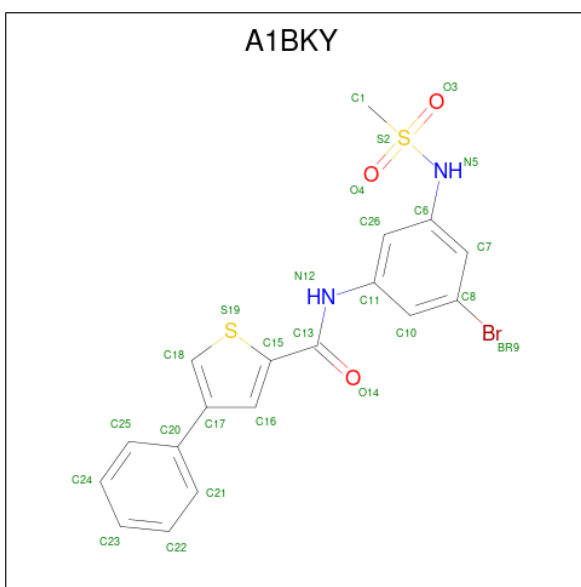
- Molecule 1 is a protein called RNA helicase.

Mol	Chain	Residues	Atoms					ZeroOcc	AltConf	Trace
1	A	860	Total	C	N	O	S	0	0	0
			6822	4351	1169	1257	45			

There are 9 discrepancies between the modelled and reference sequences:

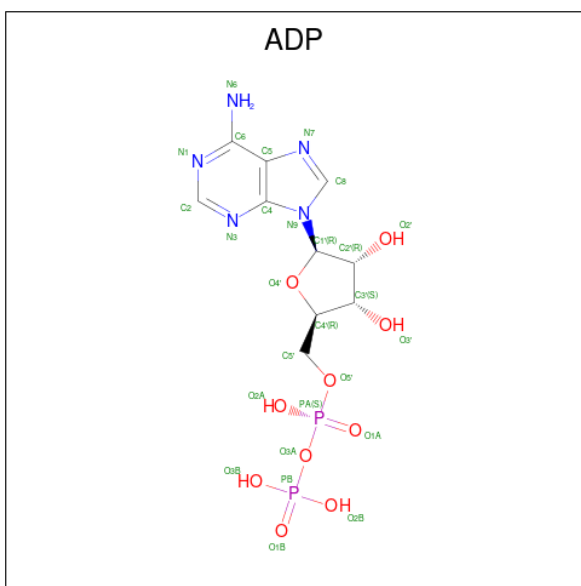
Chain	Residue	Modelled	Actual	Comment	Reference
A	150	MET	-	initiating methionine	UNP M3WPI7
A	1152	ASP	-	expression tag	UNP M3WPI7
A	1153	TYR	-	expression tag	UNP M3WPI7
A	1154	LYS	-	expression tag	UNP M3WPI7
A	1155	ASP	-	expression tag	UNP M3WPI7
A	1156	ASP	-	expression tag	UNP M3WPI7
A	1157	ASP	-	expression tag	UNP M3WPI7
A	1158	ASP	-	expression tag	UNP M3WPI7
A	1159	LYS	-	expression tag	UNP M3WPI7

- Molecule 2 is N-[3-bromo-5-(methanesulfonamido)phenyl]-4-phenylthiophene-2-carboxamide (CCD ID: A1BKY) (formula: C₁₈H₁₅BrN₂O₃S₂) (labeled as "Ligand of Interest" by depositor).



Mol	Chain	Residues	Atoms					ZeroOcc	AltConf
2	A	1	Total	Br	C	N	O	S	
			26	1	18	2	3	2	

- Molecule 3 is ADENOSINE-5'-DIPHOSPHATE (CCD ID: ADP) (formula: $C_{10}H_{15}N_5O_{10}P_2$).

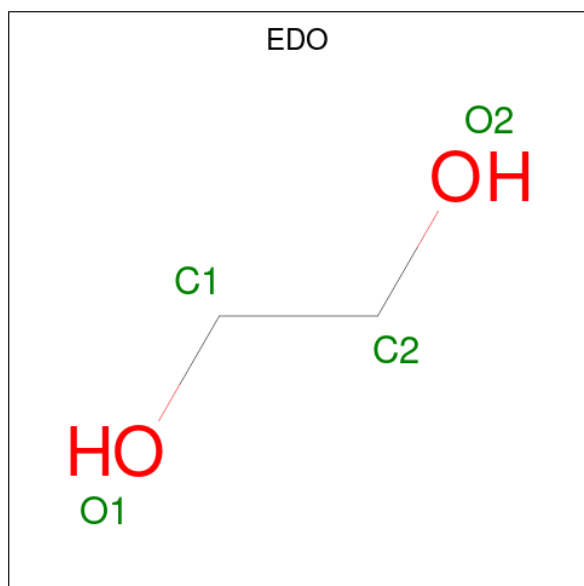


Mol	Chain	Residues	Atoms					ZeroOcc	AltConf
3	A	1	Total	C	N	O	P		
			27	10	5	10	2		

- Molecule 4 is MAGNESIUM ION (CCD ID: MG) (formula: Mg).

Mol	Chain	Residues	Atoms		ZeroOcc	AltConf
4	A	1	Total	Mg	0	0
			1	1		

- Molecule 5 is 1,2-ETHANEDIOL (CCD ID: EDO) (formula: $C_2H_6O_2$).



Mol	Chain	Residues	Atoms			ZeroOcc	AltConf
5	A	1	Total	C	O	0	0
			4	2	2		
5	A	1	Total	C	O	0	0
			4	2	2		
5	A	1	Total	C	O	0	0
			4	2	2		
5	A	1	Total	C	O	0	0
			4	2	2		
5	A	1	Total	C	O	0	0
			4	2	2		
5	A	1	Total	C	O	0	0
			4	2	2		
5	A	1	Total	C	O	0	0
			4	2	2		

- Molecule 6 is SULFATE ION (CCD ID: SO4) (formula: O_4S).



Mol	Chain	Residues	Atoms			ZeroOcc	AltConf
6	A	1	Total	O	S	0	0
			5	4	1		
6	A	1	Total	O	S	0	0
			5	4	1		
6	A	1	Total	O	S	0	0
			5	4	1		
6	A	1	Total	O	S	0	0
			5	4	1		
6	A	1	Total	O	S	0	0
			5	4	1		
6	A	1	Total	O	S	0	0
			5	4	1		
6	A	1	Total	O	S	0	0
			5	4	1		
6	A	1	Total	O	S	0	0
			5	4	1		

- Molecule 7 is CHLORIDE ION (CCD ID: CL) (formula: Cl).

Mol	Chain	Residues	Atoms		ZeroOcc	AltConf
7	A	2	Total	Cl	0	0
			2	2		

- Molecule 8 is water.

Mol	Chain	Residues	Atoms		ZeroOcc	AltConf
8	A	291	Total 291	O 291	0	0

4 Data and refinement statistics

Property	Value	Source
Space group	P 43 21 2	Depositor
Cell constants a, b, c, α , β , γ	85.88Å 85.88Å 346.51Å 90.00° 90.00° 90.00°	Depositor
Resolution (Å)	49.78 – 2.35 49.78 – 2.35	Depositor EDS
% Data completeness (in resolution range)	100.0 (49.78-2.35) 100.0 (49.78-2.35)	Depositor EDS
R_{merge}	0.08	Depositor
R_{sym}	(Not available)	Depositor
$\langle I/\sigma(I) \rangle$ ¹	3.00 (at 2.34Å)	Xtriage
Refinement program	REFMAC 5.8.0267	Depositor
R, R_{free}	0.205 , 0.262 0.207 , 0.262	Depositor DCC
R_{free} test set	2792 reflections (5.04%)	wwPDB-VP
Wilson B-factor (Å ²)	60.9	Xtriage
Anisotropy	0.289	Xtriage
Bulk solvent k_{sol} (e/Å ³), B_{sol} (Å ²)	0.32 , 40.7	EDS
L-test for twinning ²	$\langle L \rangle = 0.49$, $\langle L^2 \rangle = 0.32$	Xtriage
Estimated twinning fraction	No twinning to report.	Xtriage
F_o, F_c correlation	0.96	EDS
Total number of atoms	7251	wwPDB-VP
Average B, all atoms (Å ²)	74.0	wwPDB-VP

Xtriage's analysis on translational NCS is as follows: *The largest off-origin peak in the Patterson function is 2.95% of the height of the origin peak. No significant pseudotranslation is detected.*

¹Intensities estimated from amplitudes.

²Theoretical values of $\langle |L| \rangle$, $\langle L^2 \rangle$ for acentric reflections are 0.5, 0.333 respectively for untwinned datasets, and 0.375, 0.2 for perfectly twinned datasets.

5 Model quality [i](#)

5.1 Standard geometry [i](#)

Bond lengths and bond angles in the following residue types are not validated in this section: SO4, A1BKY, ADP, CL, MG, EDO

The Z score for a bond length (or angle) is the number of standard deviations the observed value is removed from the expected value. A bond length (or angle) with $|Z| > 5$ is considered an outlier worth inspection. RMSZ is the root-mean-square of all Z scores of the bond lengths (or angles).

Mol	Chain	Bond lengths		Bond angles	
		RMSZ	$\# Z > 5$	RMSZ	$\# Z > 5$
1	A	1.03	2/6972 (0.0%)	1.40	5/9467 (0.1%)

All (2) bond length outliers are listed below:

Mol	Chain	Res	Type	Atoms	Z	Observed(Å)	Ideal(Å)
1	A	446	PRO	C-O	-5.22	1.17	1.24
1	A	1052	THR	N-CA	5.03	1.49	1.46

All (5) bond angle outliers are listed below:

Mol	Chain	Res	Type	Atoms	Z	Observed(°)	Ideal(°)
1	A	990	ASP	CA-CB-CG	6.35	118.95	112.60
1	A	942	GLU	CB-CA-C	5.27	120.27	109.67
1	A	824	PRO	N-CA-C	5.02	115.29	110.47
1	A	678	GLY	CA-C-N	5.00	127.69	120.38
1	A	678	GLY	C-N-CA	5.00	127.69	120.38

There are no chirality outliers.

There are no planarity outliers.

5.2 Too-close contacts [i](#)

In the following table, the Non-H and H(model) columns list the number of non-hydrogen atoms and hydrogen atoms in the chain respectively. The H(added) column lists the number of hydrogen atoms added and optimized by MolProbity. The Clashes column lists the number of clashes within the asymmetric unit, whereas Symm-Clashes lists symmetry-related clashes.

Mol	Chain	Non-H	H(model)	H(added)	Clashes	Symm-Clashes
1	A	6822	0	6846	40	0

Continued on next page...

Continued from previous page...

Mol	Chain	Non-H	H(model)	H(added)	Clashes	Symm-Clashes
2	A	26	0	0	1	0
3	A	27	0	12	1	0
4	A	1	0	0	0	0
5	A	32	0	48	2	0
6	A	50	0	0	0	0
7	A	2	0	0	0	0
8	A	291	0	0	0	0
All	All	7251	0	6906	40	0

The all-atom clashscore is defined as the number of clashes found per 1000 atoms (including hydrogen atoms). The all-atom clashscore for this structure is 3.

The worst 5 of 40 close contacts within the same asymmetric unit are listed below, sorted by their clash magnitude.

Atom-1	Atom-2	Interatomic distance (Å)	Clash overlap (Å)
1:A:312:ASN:ND2	1:A:1074:LYS:O	2.13	0.81
1:A:901:LEU:O	1:A:906:ARG:NH1	2.14	0.80
1:A:1001:TYR:CD1	1:A:1002:PRO:HA	2.28	0.68
1:A:577:GLU:HG2	1:A:613:CYS:SG	2.40	0.60
1:A:319:PHE:CD1	1:A:851:PRO:HD2	2.37	0.59

There are no symmetry-related clashes.

5.3 Torsion angles [i](#)

5.3.1 Protein backbone [i](#)

In the following table, the Percentiles column shows the percent Ramachandran outliers of the chain as a percentile score with respect to all X-ray entries followed by that with respect to entries of similar resolution.

The Analysed column shows the number of residues for which the backbone conformation was analysed, and the total number of residues.

Mol	Chain	Analysed	Favoured	Allowed	Outliers	Percentiles	
1	A	854/1010 (85%)	822 (96%)	32 (4%)	0	100	100

There are no Ramachandran outliers to report.

5.3.2 Protein sidechains ⓘ

In the following table, the Percentiles column shows the percent sidechain outliers of the chain as a percentile score with respect to all X-ray entries followed by that with respect to entries of similar resolution.

The Analysed column shows the number of residues for which the sidechain conformation was analysed, and the total number of residues.

Mol	Chain	Analysed	Rotameric	Outliers	Percentiles
1	A	761/891 (85%)	742 (98%)	19 (2%)	42 53

5 of 19 residues with a non-rotameric sidechain are listed below:

Mol	Chain	Res	Type
1	A	1076	VAL
1	A	1130	GLU
1	A	1151	ILE
1	A	1094	SER
1	A	861	ILE

Sometimes sidechains can be flipped to improve hydrogen bonding and reduce clashes. 5 of 8 such sidechains are listed below:

Mol	Chain	Res	Type
1	A	1124	GLN
1	A	978	GLN
1	A	748	ASN
1	A	558	ASN
1	A	776	HIS

5.3.3 RNA ⓘ

There are no RNA molecules in this entry.

5.4 Non-standard residues in protein, DNA, RNA chains ⓘ

There are no non-standard protein/DNA/RNA residues in this entry.

5.5 Carbohydrates ⓘ

There are no oligosaccharides in this entry.

5.6 Ligand geometry

Of 23 ligands modelled in this entry, 3 are monoatomic - leaving 20 for Mogul analysis.

In the following table, the Counts columns list the number of bonds (or angles) for which Mogul statistics could be retrieved, the number of bonds (or angles) that are observed in the model and the number of bonds (or angles) that are defined in the Chemical Component Dictionary. The Link column lists molecule types, if any, to which the group is linked. The Z score for a bond length (or angle) is the number of standard deviations the observed value is removed from the expected value. A bond length (or angle) with $|Z| > 2$ is considered an outlier worth inspection. RMSZ is the root-mean-square of all Z scores of the bond lengths (or angles).

Mol	Type	Chain	Res	Link	Bond lengths			Bond angles		
					Counts	RMSZ	# $ Z > 2$	Counts	RMSZ	# $ Z > 2$
5	EDO	A	1206	-	3,3,3	0.09	0	2,2,2	0.11	0
6	SO4	A	1216	-	4,4,4	0.34	0	6,6,6	0.08	0
5	EDO	A	1208	-	3,3,3	0.06	0	2,2,2	0.08	0
5	EDO	A	1210	-	3,3,3	0.04	0	2,2,2	0.02	0
6	SO4	A	1213	-	4,4,4	0.34	0	6,6,6	0.07	0
6	SO4	A	1221	-	4,4,4	0.33	0	6,6,6	0.08	0
5	EDO	A	1204	-	3,3,3	0.07	0	2,2,2	0.41	0
5	EDO	A	1205	-	3,3,3	0.06	0	2,2,2	0.08	0
2	A1BKY	A	1201	-	26,28,28	0.92	2 (7%)	34,40,40	1.64	7 (20%)
5	EDO	A	1209	-	3,3,3	0.11	0	2,2,2	0.22	0
6	SO4	A	1212	-	4,4,4	0.30	0	6,6,6	0.20	0
6	SO4	A	1215	-	4,4,4	0.33	0	6,6,6	0.08	0
6	SO4	A	1219	-	4,4,4	0.33	0	6,6,6	0.09	0
6	SO4	A	1214	-	4,4,4	0.34	0	6,6,6	0.07	0
6	SO4	A	1218	-	4,4,4	0.34	0	6,6,6	0.07	0
6	SO4	A	1220	-	4,4,4	0.34	0	6,6,6	0.07	0
5	EDO	A	1207	-	3,3,3	0.05	0	2,2,2	0.15	0
5	EDO	A	1211	-	3,3,3	0.10	0	2,2,2	0.18	0
6	SO4	A	1217	-	4,4,4	0.33	0	6,6,6	0.09	0
3	ADP	A	1202	4	24,29,29	0.78	0	29,45,45	0.84	1 (3%)

In the following table, the Chirals column lists the number of chiral outliers, the number of chiral centers analysed, the number of these observed in the model and the number defined in the Chemical Component Dictionary. Similar counts are reported in the Torsion and Rings columns. '-' means no outliers of that kind were identified.

Mol	Type	Chain	Res	Link	Chirals	Torsions	Rings
5	EDO	A	1206	-	-	1/1/1/1	-
5	EDO	A	1210	-	-	1/1/1/1	-
5	EDO	A	1204	-	-	1/1/1/1	-
5	EDO	A	1205	-	-	0/1/1/1	-

Continued on next page...

Continued from previous page...

Mol	Type	Chain	Res	Link	Chirals	Torsions	Rings
5	EDO	A	1207	-	-	1/1/1/1	-
5	EDO	A	1209	-	-	1/1/1/1	-
2	A1BKY	A	1201	-	-	0/15/17/17	0/3/3/3
5	EDO	A	1208	-	-	1/1/1/1	-
5	EDO	A	1211	-	-	0/1/1/1	-
3	ADP	A	1202	4	-	2/12/32/32	0/3/3/3

All (2) bond length outliers are listed below:

Mol	Chain	Res	Type	Atoms	Z	Observed(Å)	Ideal(Å)
2	A	1201	A1BKY	C6-N5	-2.25	1.39	1.43
2	A	1201	A1BKY	C1-S2	2.02	1.80	1.75

The worst 5 of 8 bond angle outliers are listed below:

Mol	Chain	Res	Type	Atoms	Z	Observed(°)	Ideal(°)
2	A	1201	A1BKY	C15-C13-N12	3.79	119.84	114.03
2	A	1201	A1BKY	O4-S2-C1	3.75	114.19	108.26
2	A	1201	A1BKY	C16-C17-C20	-3.71	122.90	126.32
2	A	1201	A1BKY	C17-C18-S19	-2.78	110.50	112.29
2	A	1201	A1BKY	C18-C17-C20	-2.71	123.93	127.98

There are no chirality outliers.

5 of 8 torsion outliers are listed below:

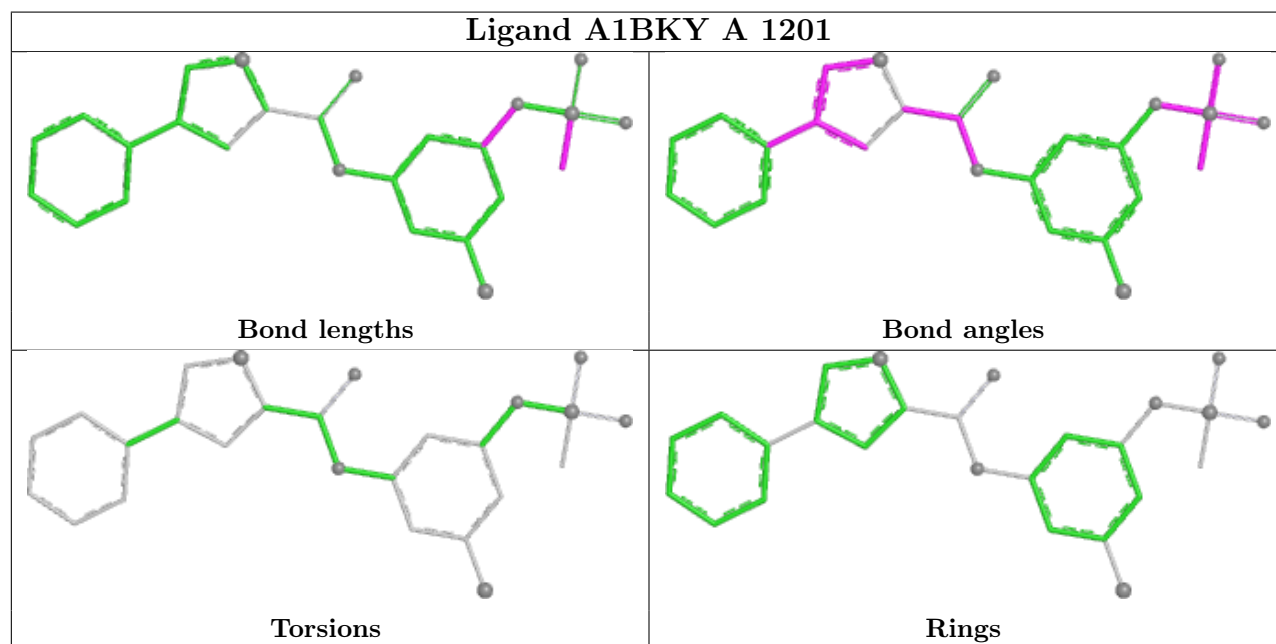
Mol	Chain	Res	Type	Atoms
3	A	1202	ADP	PA-O3A-PB-O3B
5	A	1207	EDO	O1-C1-C2-O2
5	A	1208	EDO	O1-C1-C2-O2
5	A	1204	EDO	O1-C1-C2-O2
5	A	1206	EDO	O1-C1-C2-O2

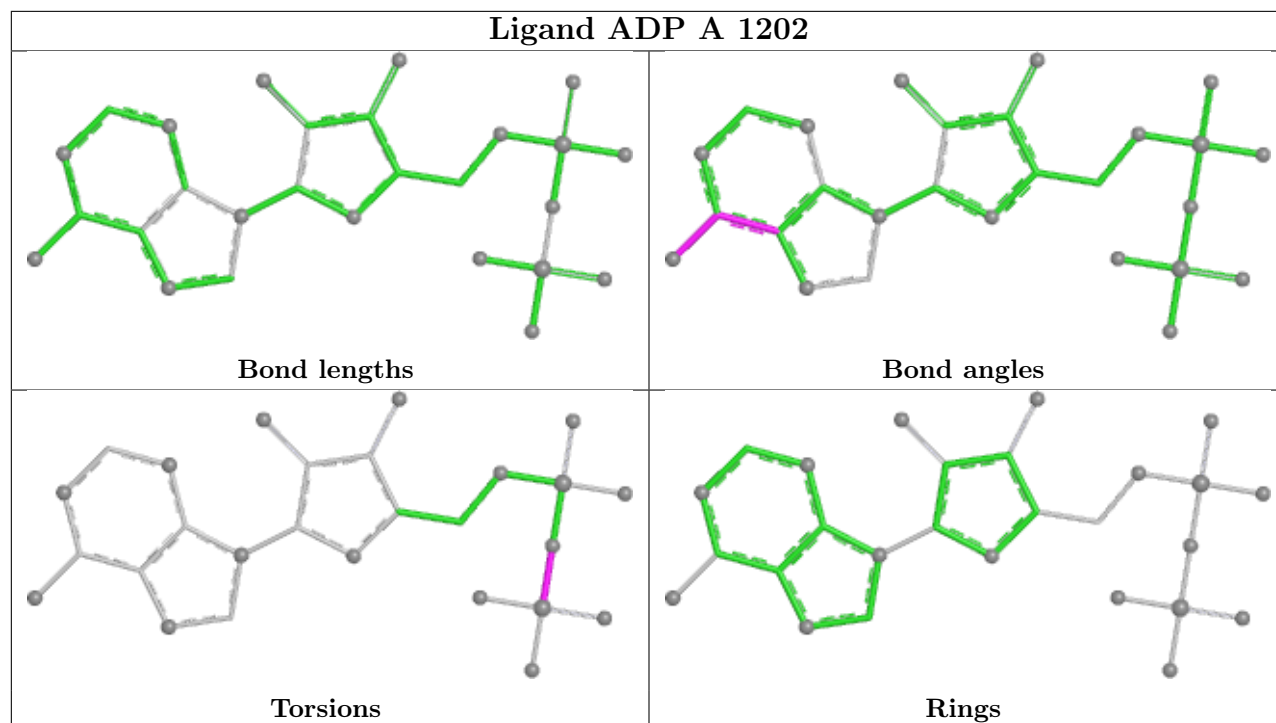
There are no ring outliers.

4 monomers are involved in 4 short contacts:

Mol	Chain	Res	Type	Clashes	Symm-Clashes
5	A	1206	EDO	1	0
2	A	1201	A1BKY	1	0
5	A	1207	EDO	1	0
3	A	1202	ADP	1	0

The following is a two-dimensional graphical depiction of Mogul quality analysis of bond lengths, bond angles, torsion angles, and ring geometry for all instances of the Ligand of Interest. In addition, ligands with molecular weight > 250 and outliers as shown on the validation Tables will also be included. For torsion angles, if less than 5% of the Mogul distribution of torsion angles is within 10 degrees of the torsion angle in question, then that torsion angle is considered an outlier. Any bond that is central to one or more torsion angles identified as an outlier by Mogul will be highlighted in the graph. For rings, the root-mean-square deviation (RMSD) between the ring in question and similar rings identified by Mogul is calculated over all ring torsion angles. If the average RMSD is greater than 60 degrees and the minimal RMSD between the ring in question and any Mogul-identified rings is also greater than 60 degrees, then that ring is considered an outlier. The outliers are highlighted in purple. The color gray indicates Mogul did not find sufficient equivalents in the CSD to analyse the geometry.





5.7 Other polymers [i](#)

There are no such residues in this entry.

5.8 Polymer linkage issues [i](#)

There are no chain breaks in this entry.

6 Fit of model and data [i](#)

6.1 Protein, DNA and RNA chains [i](#)

In the following table, the column labelled ‘#RSRZ > 2’ contains the number (and percentage) of RSRZ outliers, followed by percent RSRZ outliers for the chain as percentile scores relative to all X-ray entries and entries of similar resolution. The OWAB column contains the minimum, median, 95th percentile and maximum values of the occupancy-weighted average B-factor per residue. The column labelled ‘Q < 0.9’ lists the number of (and percentage) of residues with an average occupancy less than 0.9.

Mol	Chain	Analysed	<RSRZ>	#RSRZ>2	OWAB(Å ²)	Q<0.9
1	A	860/1010 (85%)	0.29	32 (3%) 45 52	47, 70, 110, 146	0

The worst 5 of 32 RSRZ outliers are listed below:

Mol	Chain	Res	Type	RSRZ
1	A	298	ILE	6.3
1	A	328	ILE	3.7
1	A	324	ARG	3.5
1	A	1151	ILE	3.3
1	A	585	PHE	3.1

6.2 Non-standard residues in protein, DNA, RNA chains [i](#)

There are no non-standard protein/DNA/RNA residues in this entry.

6.3 Carbohydrates [i](#)

There are no monosaccharides in this entry.

6.4 Ligands [i](#)

In the following table, the Atoms column lists the number of modelled atoms in the group and the number defined in the chemical component dictionary. The B-factors column lists the minimum, median, 95th percentile and maximum values of B factors of atoms in the group. The column labelled ‘Q < 0.9’ lists the number of atoms with occupancy less than 0.9.

Mol	Type	Chain	Res	Atoms	RSCC	RSR	B-factors(Å ²)	Q<0.9
6	SO4	A	1214	5/5	0.69	0.14	114,123,126,126	0
6	SO4	A	1219	5/5	0.72	0.17	144,144,149,149	0

Continued on next page...

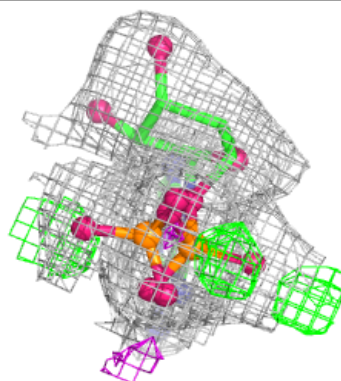
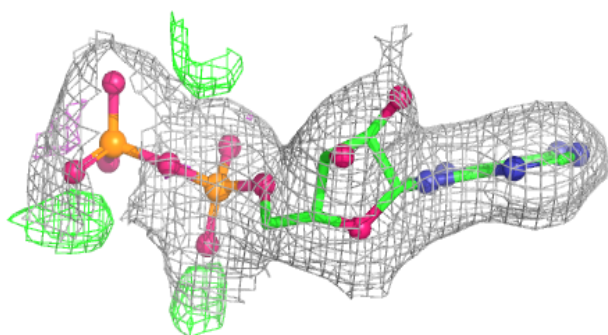
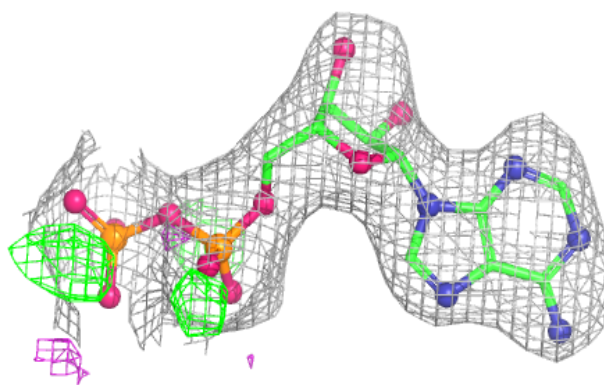
Continued from previous page...

Mol	Type	Chain	Res	Atoms	RSCC	RSR	B-factors(\AA^2)	Q<0.9
5	EDO	A	1210	4/4	0.73	0.18	84,85,87,90	0
5	EDO	A	1209	4/4	0.74	0.23	87,88,88,91	0
5	EDO	A	1208	4/4	0.76	0.17	102,104,109,112	0
6	SO4	A	1220	5/5	0.77	0.11	143,146,147,150	0
6	SO4	A	1221	5/5	0.80	0.12	126,131,135,136	0
6	SO4	A	1216	5/5	0.82	0.11	150,160,162,165	0
6	SO4	A	1217	5/5	0.84	0.12	86,92,99,107	5
6	SO4	A	1215	5/5	0.84	0.14	140,145,147,147	0
7	CL	A	1222	1/1	0.85	0.18	99,99,99,99	0
5	EDO	A	1207	4/4	0.89	0.16	76,78,79,85	0
6	SO4	A	1212	5/5	0.89	0.11	71,72,84,90	0
7	CL	A	1223	1/1	0.89	0.15	100,100,100,100	0
5	EDO	A	1205	4/4	0.90	0.22	79,80,81,83	0
6	SO4	A	1218	5/5	0.91	0.17	139,139,141,145	5
5	EDO	A	1211	4/4	0.91	0.15	73,75,79,87	0
5	EDO	A	1206	4/4	0.92	0.15	68,69,71,72	0
5	EDO	A	1204	4/4	0.95	0.12	56,60,60,63	0
6	SO4	A	1213	5/5	0.96	0.06	67,71,76,83	0
3	ADP	A	1202	27/27	0.97	0.07	48,65,70,76	0
4	MG	A	1203	1/1	0.98	0.07	48,48,48,48	0
2	A1BKY	A	1201	26/26	0.99	0.06	46,53,63,65	0

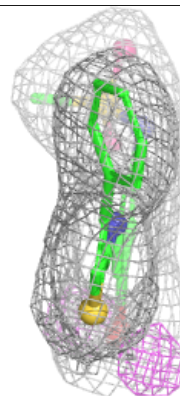
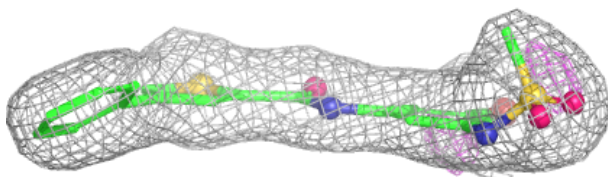
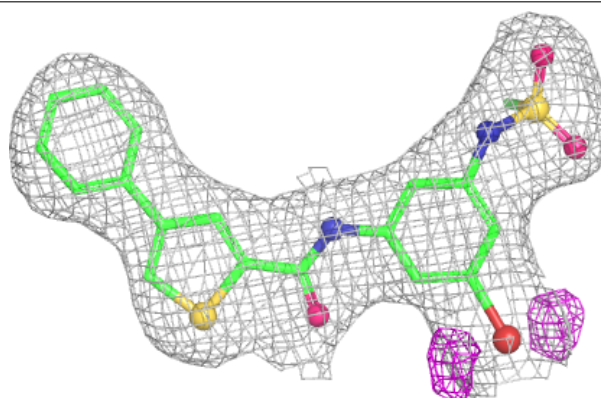
The following is a graphical depiction of the model fit to experimental electron density of all instances of the Ligand of Interest. In addition, ligands with molecular weight > 250 and outliers as shown on the geometry validation Tables will also be included. Each fit is shown from different orientation to approximate a three-dimensional view.

Electron density around ADP A 1202:

$2mF_o-DF_c$ (at 0.7 rmsd) in gray
 mF_o-DF_c (at 3 rmsd) in purple (negative)
and green (positive)

**Electron density around A1BKY A 1201:**

$2mF_o-DF_c$ (at 0.7 rmsd) in gray
 mF_o-DF_c (at 3 rmsd) in purple (negative)
and green (positive)



6.5 Other polymers [i](#)

There are no such residues in this entry.