



wwPDB X-ray Structure Validation Summary Report ⓘ

Mar 9, 2026 – 11:17 PM JST

PDB ID : 9M9Z / pdb_00009m9z
Title : Crystal structure of MctB from Mycobacterium tuberculosis at 2.3 Angstroms resolution
Authors : Sun, D.M.; Chen, L.; Wu, M.H.; Zang, J.Y.; Tian, C.L.
Deposited on : 2025-03-13
Resolution : 2.31 Å(reported)

This is a wwPDB X-ray Structure Validation Summary Report for a publicly released PDB entry.

We welcome your comments at validation@mail.wwpdb.org

A user guide is available at

<https://www.wwpdb.org/validation/2017/XrayValidationReportHelp>

with specific help available everywhere you see the ⓘ symbol.

The types of validation reports are described at

<http://www.wwpdb.org/validation/2017/FAQs#types>.

The following versions of software and data (see [references ⓘ](#)) were used in the production of this report:

MolProbity : 4-5-2 with Phenix2.0
Mogul : 1.8.5 (274361), CSD as541be (2020)
Xtriage (Phenix) : 2.0
EDS : 3.0
Percentile statistics : 20231227.v01 (using entries in the PDB archive December 27th 2023)
CCP4 : 9.0.010 (Gargrove)
Density-Fitness : 1.0.12
Ideal geometry (proteins) : Engh & Huber (2001)
Ideal geometry (DNA, RNA) : Parkinson et al. (1996)
Validation Pipeline (wwPDB-VP) : 2.48.1

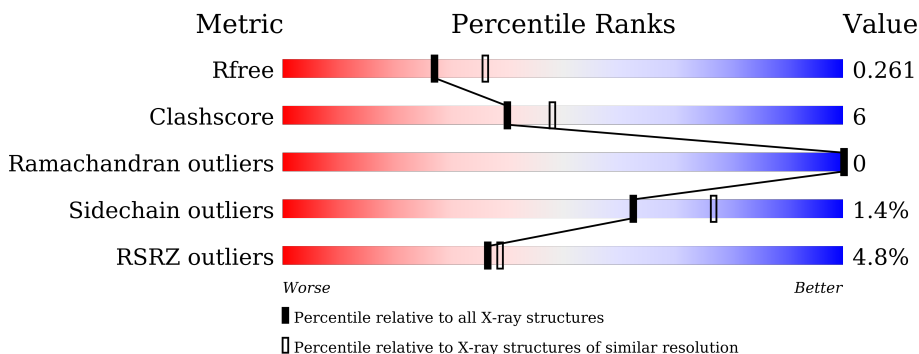
1 Overall quality at a glance

The following experimental techniques were used to determine the structure:

X-RAY DIFFRACTION

The reported resolution of this entry is 2.31 Å.

Percentile scores (ranging between 0-100) for global validation metrics of the entry are shown in the following graphic. The table shows the number of entries on which the scores are based.



Metric	Whole archive (#Entries)	Similar resolution (#Entries, resolution range(Å))
R_{free}	164625	7250 (2.34-2.30)
Clashscore	180529	8063 (2.34-2.30)
Ramachandran outliers	177936	7993 (2.34-2.30)
Sidechain outliers	177891	7993 (2.34-2.30)
RSRZ outliers	164620	7250 (2.34-2.30)

The table below summarises the geometric issues observed across the polymeric chains and their fit to the electron density. The red, orange, yellow and green segments of the lower bar indicate the fraction of residues that contain outliers for ≥ 3 , 2, 1 and 0 types of geometric quality criteria respectively. A grey segment represents the fraction of residues that are not modelled. The numeric value for each fraction is indicated below the corresponding segment, with a dot representing fractions $\leq 5\%$. The upper red bar (where present) indicates the fraction of residues that have poor fit to the electron density. The numeric value is given above the bar.

Mol	Chain	Length	Quality of chain
1	A	297	 6% 83% 11% 6%
1	C	297	 3% 82% 14% ..

2 Entry composition [i](#)

There are 4 unique types of molecules in this entry. The entry contains 4274 atoms, of which 0 are hydrogens and 0 are deuteriums.

In the tables below, the ZeroOcc column contains the number of atoms modelled with zero occupancy, the AltConf column contains the number of residues with at least one atom in alternate conformation and the Trace column contains the number of residues modelled with at most 2 atoms.

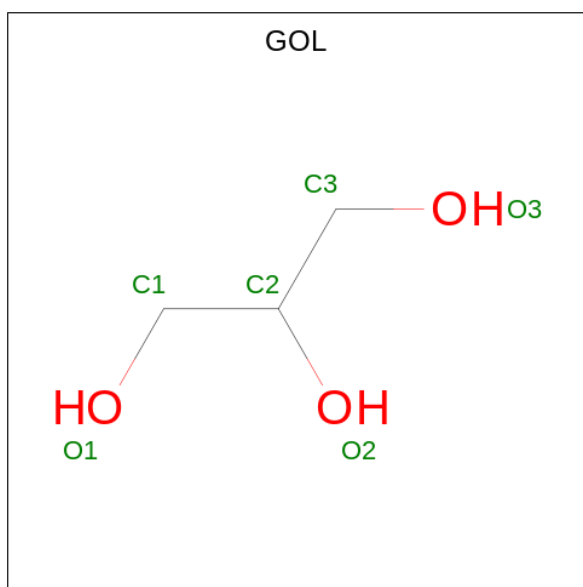
- Molecule 1 is a protein called Copper transporter MctB.

Mol	Chain	Residues	Atoms					ZeroOcc	AltConf	Trace
			Total	C	N	O	S			
1	A	280	2023	1237	372	412	2	7	0	0
1	C	288	2092	1283	381	426	2	10	0	0

There are 18 discrepancies between the modelled and reference sequences:

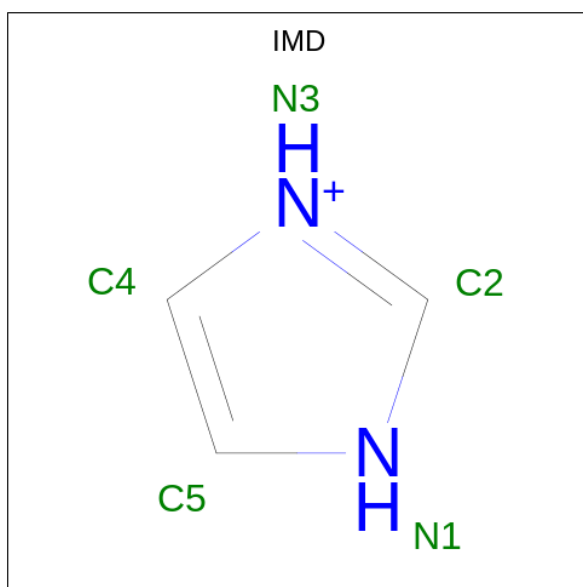
Chain	Residue	Modelled	Actual	Comment	Reference
A	1	MET	-	initiating methionine	UNP P9WJ82
A	2	GLY	-	expression tag	UNP P9WJ82
A	3	HIS	-	expression tag	UNP P9WJ82
A	4	HIS	-	expression tag	UNP P9WJ82
A	5	HIS	-	expression tag	UNP P9WJ82
A	6	HIS	-	expression tag	UNP P9WJ82
A	7	HIS	-	expression tag	UNP P9WJ82
A	8	HIS	-	expression tag	UNP P9WJ82
A	9	MET	-	expression tag	UNP P9WJ82
C	1	MET	-	initiating methionine	UNP P9WJ82
C	2	GLY	-	expression tag	UNP P9WJ82
C	3	HIS	-	expression tag	UNP P9WJ82
C	4	HIS	-	expression tag	UNP P9WJ82
C	5	HIS	-	expression tag	UNP P9WJ82
C	6	HIS	-	expression tag	UNP P9WJ82
C	7	HIS	-	expression tag	UNP P9WJ82
C	8	HIS	-	expression tag	UNP P9WJ82
C	9	MET	-	expression tag	UNP P9WJ82

- Molecule 2 is GLYCEROL (CCD ID: GOL) (formula: C₃H₈O₃).



Mol	Chain	Residues	Atoms	ZeroOcc	AltConf
2	A	1	Total C O 6 3 3	0	0
2	A	1	Total C O 6 3 3	0	0
2	A	1	Total C O 6 3 3	0	0
2	C	1	Total C O 6 3 3	0	0
2	C	1	Total C O 6 3 3	0	0
2	C	1	Total C O 6 3 3	0	0
2	C	1	Total C O 6 3 3	0	0
2	C	1	Total C O 6 3 3	0	0

- Molecule 3 is IMIDAZOLE (CCD ID: IMD) (formula: C₃H₅N₂).



Mol	Chain	Residues	Atoms	ZeroOcc	AltConf
3	A	1	Total C N 5 3 2	0	0
3	A	1	Total C N 5 3 2	0	0
3	A	1	Total C N 5 3 2	0	0

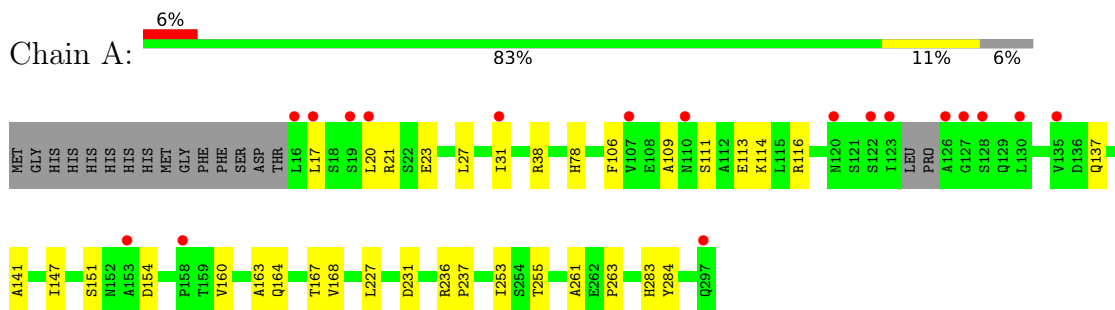
- Molecule 4 is water.

Mol	Chain	Residues	Atoms	ZeroOcc	AltConf
4	A	44	Total O 44 44	0	0
4	C	52	Total O 52 52	0	0

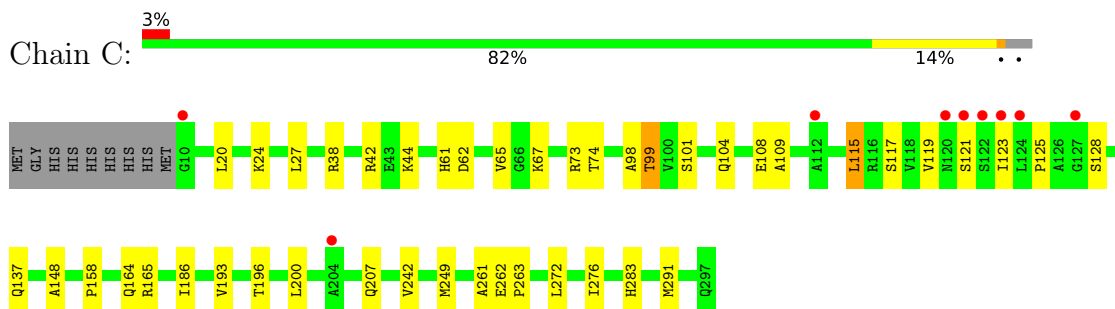
3 Residue-property plots [i](#)

These plots are drawn for all protein, RNA, DNA and oligosaccharide chains in the entry. The first graphic for a chain summarises the proportions of the various outlier classes displayed in the second graphic. The second graphic shows the sequence view annotated by issues in geometry and electron density. Residues are color-coded according to the number of geometric quality criteria for which they contain at least one outlier: green = 0, yellow = 1, orange = 2 and red = 3 or more. A red dot above a residue indicates a poor fit to the electron density ($RSRZ > 2$). Stretches of 2 or more consecutive residues without any outlier are shown as a green connector. Residues present in the sample, but not in the model, are shown in grey.

- Molecule 1: Copper transporter MctB



- Molecule 1: Copper transporter MctB



4 Data and refinement statistics

Property	Value	Source
Space group	P 4 2 2	Depositor
Cell constants a, b, c, α , β , γ	122.00Å 122.00Å 88.88Å 90.00° 90.00° 90.00°	Depositor
Resolution (Å)	46.50 – 2.31 46.50 – 2.31	Depositor EDS
% Data completeness (in resolution range)	94.7 (46.50-2.31) 94.7 (46.50-2.31)	Depositor EDS
R_{merge}	0.08	Depositor
R_{sym}	(Not available)	Depositor
$\langle I/\sigma(I) \rangle$ ¹	5.19 (at 2.32Å)	Xtrriage
Refinement program	PHENIX (1.20.1_4487: ???)	Depositor
R, R_{free}	0.218 , 0.261 0.220 , 0.261	Depositor DCC
R_{free} test set	2000 reflections (6.65%)	wwPDB-VP
Wilson B-factor (Å ²)	46.6	Xtrriage
Anisotropy	0.699	Xtrriage
Bulk solvent k_{sol} (e/Å ³), B_{sol} (Å ²)	0.36 , 47.5	EDS
L-test for twinning ²	$\langle L \rangle = 0.49$, $\langle L^2 \rangle = 0.32$	Xtrriage
Estimated twinning fraction	No twinning to report.	Xtrriage
F_o, F_c correlation	0.95	EDS
Total number of atoms	4274	wwPDB-VP
Average B, all atoms (Å ²)	57.0	wwPDB-VP

Xtrriage's analysis on translational NCS is as follows: *The largest off-origin peak in the Patterson function is 3.32% of the height of the origin peak. No significant pseudotranslation is detected.*

¹Intensities estimated from amplitudes.

²Theoretical values of $\langle |L| \rangle$, $\langle L^2 \rangle$ for acentric reflections are 0.5, 0.333 respectively for untwinned datasets, and 0.375, 0.2 for perfectly twinned datasets.

5 Model quality [i](#)

5.1 Standard geometry [i](#)

Bond lengths and bond angles in the following residue types are not validated in this section: IMD, GOL

The Z score for a bond length (or angle) is the number of standard deviations the observed value is removed from the expected value. A bond length (or angle) with $|Z| > 5$ is considered an outlier worth inspection. RMSZ is the root-mean-square of all Z scores of the bond lengths (or angles).

Mol	Chain	Bond lengths		Bond angles	
		RMSZ	# Z >5	RMSZ	# Z >5
1	A	0.34	0/2042	0.57	1/2775 (0.0%)
1	C	0.32	0/2115	0.52	0/2876
All	All	0.33	0/4157	0.54	1/5651 (0.0%)

There are no bond length outliers.

All (1) bond angle outliers are listed below:

Mol	Chain	Res	Type	Atoms	Z	Observed(°)	Ideal(°)
1	A	284	TYR	N-CA-CB	-5.47	102.03	111.55

There are no chirality outliers.

There are no planarity outliers.

5.2 Too-close contacts [i](#)

In the following table, the Non-H and H(model) columns list the number of non-hydrogen atoms and hydrogen atoms in the chain respectively. The H(added) column lists the number of hydrogen atoms added and optimized by MolProbity. The Clashes column lists the number of clashes within the asymmetric unit, whereas Symm-Clashes lists symmetry-related clashes.

Mol	Chain	Non-H	H(model)	H(added)	Clashes	Symm-Clashes
1	A	2023	0	2010	24	0
1	C	2092	0	2082	34	0
2	A	18	0	23	2	0
2	C	30	0	40	1	0
3	A	15	0	15	2	0
4	A	44	0	0	1	0
4	C	52	0	0	2	0
All	All	4274	0	4170	54	0

The all-atom clashscore is defined as the number of clashes found per 1000 atoms (including hydrogen atoms). The all-atom clashscore for this structure is 6.

The worst 5 of 54 close contacts within the same asymmetric unit are listed below, sorted by their clash magnitude.

Atom-1	Atom-2	Interatomic distance (Å)	Clash overlap (Å)
1:A:38:ARG:HH12	2:A:303:GOL:H31	1.40	0.87
1:A:283:HIS:CD2	3:A:306:IMD:H4	2.16	0.81
1:C:125:PRO:HD3	1:C:164:GLN:HG2	1.67	0.76
1:A:27:LEU:O	1:A:31:ILE:HD12	1.94	0.67
1:C:98:ALA:HB2	1:C:186:ILE:HD12	1.76	0.66

There are no symmetry-related clashes.

5.3 Torsion angles [i](#)

5.3.1 Protein backbone [i](#)

In the following table, the Percentiles column shows the percent Ramachandran outliers of the chain as a percentile score with respect to all X-ray entries followed by that with respect to entries of similar resolution.

The Analysed column shows the number of residues for which the backbone conformation was analysed, and the total number of residues.

Mol	Chain	Analysed	Favoured	Allowed	Outliers	Percentiles	
1	A	276/297 (93%)	269 (98%)	7 (2%)	0	100	100
1	C	286/297 (96%)	274 (96%)	12 (4%)	0	100	100
All	All	562/594 (95%)	543 (97%)	19 (3%)	0	100	100

There are no Ramachandran outliers to report.

5.3.2 Protein sidechains [i](#)

In the following table, the Percentiles column shows the percent sidechain outliers of the chain as a percentile score with respect to all X-ray entries followed by that with respect to entries of similar resolution.

The Analysed column shows the number of residues for which the sidechain conformation was analysed, and the total number of residues.

Mol	Chain	Analysed	Rotameric	Outliers	Percentiles	
1	A	209/227 (92%)	205 (98%)	4 (2%)	52	68
1	C	219/227 (96%)	217 (99%)	2 (1%)	75	86
All	All	428/454 (94%)	422 (99%)	6 (1%)	62	77

5 of 6 residues with a non-rotameric sidechain are listed below:

Mol	Chain	Res	Type
1	A	253	ILE
1	C	99	THR
1	C	115	LEU
1	A	154	ASP
1	A	151	SER

Sometimes sidechains can be flipped to improve hydrogen bonding and reduce clashes. 5 of 7 such sidechains are listed below:

Mol	Chain	Res	Type
1	A	129	GLN
1	A	206	ASN
1	C	61	HIS
1	A	280	HIS
1	A	78	HIS

5.3.3 RNA [i](#)

There are no RNA molecules in this entry.

5.4 Non-standard residues in protein, DNA, RNA chains [i](#)

There are no non-standard protein/DNA/RNA residues in this entry.

5.5 Carbohydrates [i](#)

There are no oligosaccharides in this entry.

5.6 Ligand geometry [i](#)

11 ligands are modelled in this entry.

In the following table, the Counts columns list the number of bonds (or angles) for which Mogul statistics could be retrieved, the number of bonds (or angles) that are observed in the model and the number of bonds (or angles) that are defined in the Chemical Component Dictionary. The Link column lists molecule types, if any, to which the group is linked. The Z score for a bond length (or angle) is the number of standard deviations the observed value is removed from the expected value. A bond length (or angle) with $|Z| > 2$ is considered an outlier worth inspection. RMSZ is the root-mean-square of all Z scores of the bond lengths (or angles).

Mol	Type	Chain	Res	Link	Bond lengths			Bond angles		
					Counts	RMSZ	# Z > 2	Counts	RMSZ	# Z > 2
2	GOL	A	302	-	5,5,5	0.86	0	5,5,5	0.96	0
2	GOL	C	303	-	5,5,5	1.02	0	5,5,5	0.80	0
2	GOL	A	303	-	5,5,5	0.89	0	5,5,5	1.10	0
2	GOL	A	301	-	5,5,5	1.22	1 (20%)	5,5,5	0.79	0
2	GOL	C	304	-	5,5,5	0.90	0	5,5,5	1.05	0
3	IMD	A	304	-	3,5,5	0.45	0	4,5,5	0.62	0
2	GOL	C	302	-	5,5,5	0.85	0	5,5,5	1.03	0
3	IMD	A	305	-	3,5,5	0.44	0	4,5,5	0.57	0
3	IMD	A	306	-	3,5,5	0.42	0	4,5,5	0.45	0
2	GOL	C	301	-	5,5,5	0.98	0	5,5,5	0.96	0
2	GOL	C	305	-	5,5,5	0.85	0	5,5,5	0.95	0

In the following table, the Chirals column lists the number of chiral outliers, the number of chiral centers analysed, the number of these observed in the model and the number defined in the Chemical Component Dictionary. Similar counts are reported in the Torsion and Rings columns. '-' means no outliers of that kind were identified.

Mol	Type	Chain	Res	Link	Chirals	Torsions	Rings
2	GOL	A	302	-	-	2/4/4/4	-
2	GOL	C	303	-	-	4/4/4/4	-
2	GOL	A	303	-	-	2/4/4/4	-
2	GOL	A	301	-	-	3/4/4/4	-
2	GOL	C	304	-	-	2/4/4/4	-
3	IMD	A	304	-	-	-	0/1/1/1
2	GOL	C	302	-	-	0/4/4/4	-
3	IMD	A	305	-	-	-	0/1/1/1
3	IMD	A	306	-	-	-	0/1/1/1
2	GOL	C	301	-	-	0/4/4/4	-
2	GOL	C	305	-	-	4/4/4/4	-

All (1) bond length outliers are listed below:

Mol	Chain	Res	Type	Atoms	Z	Observed(Å)	Ideal(Å)
2	A	301	GOL	O2-C2	-2.25	1.36	1.43

There are no bond angle outliers.

There are no chirality outliers.

5 of 17 torsion outliers are listed below:

Mol	Chain	Res	Type	Atoms
2	A	301	GOL	C1-C2-C3-O3
2	C	304	GOL	O1-C1-C2-C3
2	A	302	GOL	O1-C1-C2-C3
2	A	303	GOL	C1-C2-C3-O3
2	C	303	GOL	C1-C2-C3-O3

There are no ring outliers.

5 monomers are involved in 5 short contacts:

Mol	Chain	Res	Type	Clashes	Symm-Clashes
2	A	303	GOL	1	0
2	A	301	GOL	1	0
3	A	304	IMD	1	0
2	C	302	GOL	1	0
3	A	306	IMD	1	0

5.7 Other polymers [i](#)

There are no such residues in this entry.

5.8 Polymer linkage issues [i](#)

There are no chain breaks in this entry.

6 Fit of model and data [i](#)

6.1 Protein, DNA and RNA chains [i](#)

In the following table, the column labelled ‘#RSRZ> 2’ contains the number (and percentage) of RSRZ outliers, followed by percent RSRZ outliers for the chain as percentile scores relative to all X-ray entries and entries of similar resolution. The OWAB column contains the minimum, median, 95th percentile and maximum values of the occupancy-weighted average B-factor per residue. The column labelled ‘Q< 0.9’ lists the number of (and percentage) of residues with an average occupancy less than 0.9.

Mol	Chain	Analysed	<RSRZ>	#RSRZ>2	OWAB(Å ²)	Q<0.9
1	A	280/297 (94%)	0.37	18 (6%) 27 29	31, 51, 91, 121	12 (4%)
1	C	288/297 (96%)	0.31	9 (3%) 51 54	35, 52, 80, 92	13 (4%)
All	All	568/594 (95%)	0.34	27 (4%) 36 39	31, 52, 85, 121	25 (4%)

The worst 5 of 27 RSRZ outliers are listed below:

Mol	Chain	Res	Type	RSRZ
1	A	123	ILE	6.6
1	A	122	SER	4.8
1	A	16	LEU	4.6
1	A	17	LEU	4.3
1	C	127	GLY	3.9

6.2 Non-standard residues in protein, DNA, RNA chains [i](#)

There are no non-standard protein/DNA/RNA residues in this entry.

6.3 Carbohydrates [i](#)

There are no oligosaccharides in this entry.

6.4 Ligands [i](#)

In the following table, the Atoms column lists the number of modelled atoms in the group and the number defined in the chemical component dictionary. The B-factors column lists the minimum, median, 95th percentile and maximum values of B factors of atoms in the group. The column labelled ‘Q< 0.9’ lists the number of atoms with occupancy less than 0.9.

Mol	Type	Chain	Res	Atoms	RSCC	RSR	B-factors(\AA^2)	Q<0.9
2	GOL	C	305	6/6	0.53	0.10	80,83,87,88	0
2	GOL	C	301	6/6	0.62	0.12	71,79,90,99	0
2	GOL	C	303	6/6	0.71	0.12	80,81,81,83	0
2	GOL	A	302	6/6	0.74	0.14	70,73,76,80	0
2	GOL	A	303	6/6	0.75	0.13	73,74,77,83	0
2	GOL	C	304	6/6	0.79	0.11	67,70,75,78	0
3	IMD	A	305	5/5	0.82	0.12	62,63,65,65	0
2	GOL	C	302	6/6	0.83	0.08	76,78,81,82	0
3	IMD	A	304	5/5	0.85	0.23	59,60,66,69	0
2	GOL	A	301	6/6	0.86	0.11	50,53,54,56	0
3	IMD	A	306	5/5	0.88	0.15	47,48,62,64	0

6.5 Other polymers [i](#)

There are no such residues in this entry.