



# wwPDB X-ray Structure Validation Summary Report ⓘ

Feb 9, 2026 – 04:26 PM JST

PDB ID : 9LV1 / pdb\_00009lv1  
Title : Crystal structure of H1 Haemagglutinin HN/18 from Influenza A virus  
Authors : Deng, G.; Wei, X.; Sun, H.  
Deposited on : 2025-02-11  
Resolution : 2.40 Å(reported)

This is a wwPDB X-ray Structure Validation Summary Report for a publicly released PDB entry.

We welcome your comments at [validation@mail.wwpdb.org](mailto:validation@mail.wwpdb.org)

A user guide is available at

<https://www.wwpdb.org/validation/2017/XrayValidationReportHelp>

with specific help available everywhere you see the ⓘ symbol.

The types of validation reports are described at

<http://www.wwpdb.org/validation/2017/FAQs#types>.

---

The following versions of software and data (see [references ⓘ](#)) were used in the production of this report:

MolProbity : 4-5-2 with Phenix2.0  
Mogul : 1.8.5 (274361), CSD as541be (2020)  
Xtrriage (Phenix) : 2.0  
EDS : 3.0  
Percentile statistics : 20231227.v01 (using entries in the PDB archive December 27th 2023)  
CCP4 : 9.0.010 (Gargrove)  
Density-Fitness : 1.0.12  
Ideal geometry (proteins) : Engh & Huber (2001)  
Ideal geometry (DNA, RNA) : Parkinson et al. (1996)  
Validation Pipeline (wwPDB-VP) : 2.48

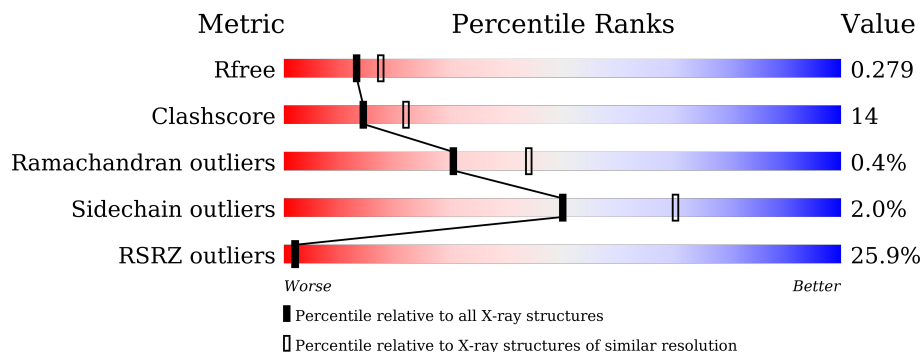
# 1 Overall quality at a glance

The following experimental techniques were used to determine the structure:

*X-RAY DIFFRACTION*

The reported resolution of this entry is 2.40 Å.

Percentile scores (ranging between 0-100) for global validation metrics of the entry are shown in the following graphic. The table shows the number of entries on which the scores are based.



Metric	Whole archive (#Entries)	Similar resolution (#Entries, resolution range(Å))
$R_{free}$	164625	4642 (2.40-2.40)
Clashscore	180529	5218 (2.40-2.40)
Ramachandran outliers	177936	5158 (2.40-2.40)
Sidechain outliers	177891	5159 (2.40-2.40)
RSRZ outliers	164620	4642 (2.40-2.40)

The table below summarises the geometric issues observed across the polymeric chains and their fit to the electron density. The red, orange, yellow and green segments of the lower bar indicate the fraction of residues that contain outliers for  $\geq 3$ , 2, 1 and 0 types of geometric quality criteria respectively. A grey segment represents the fraction of residues that are not modelled. The numeric value for each fraction is indicated below the corresponding segment, with a dot representing fractions  $\leq 5\%$ . The upper red bar (where present) indicates the fraction of residues that have poor fit to the electron density. The numeric value is given above the bar.

Mol	Chain	Length	Quality of chain
1	A	321	 8% 81% 18%
1	C	321	 13% 76% 20%
1	E	321	 12% 86% 14%
2	B	154	 64% 75% 22%
2	D	154	 71% 56% 38% 6%
2	F	154	 33% 71% 28%

## 2 Entry composition

There are 4 unique types of molecules in this entry. The entry contains 11635 atoms, of which 0 are hydrogens and 0 are deuteriums.

In the tables below, the ZeroOcc column contains the number of atoms modelled with zero occupancy, the AltConf column contains the number of residues with at least one atom in alternate conformation and the Trace column contains the number of residues modelled with at most 2 atoms.

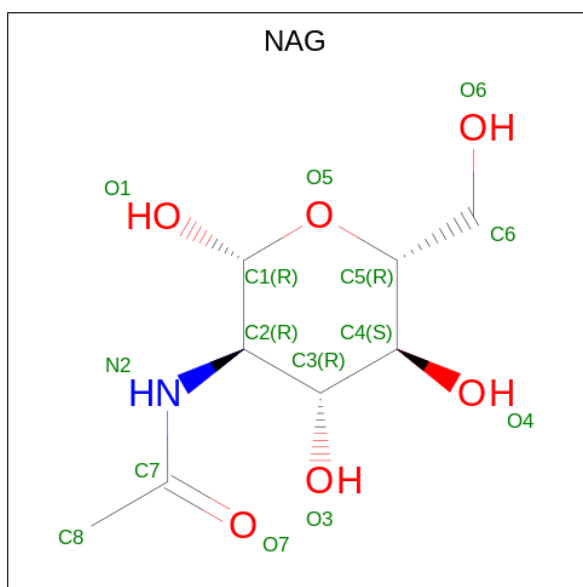
- Molecule 1 is a protein called Hemagglutinin.

Mol	Chain	Residues	Atoms					ZeroOcc	AltConf	Trace
			Total	C	N	O	S			
1	E	321	2515	1583	441	480	11	0	0	0
1	A	321	2515	1583	441	480	11	0	0	0
1	C	321	2515	1583	441	480	11	0	0	0

- Molecule 2 is a protein called Hemagglutinin.

Mol	Chain	Residues	Atoms					ZeroOcc	AltConf	Trace
			Total	C	N	O	S			
2	F	154	1229	771	211	240	7	0	0	0
2	B	154	1229	771	211	240	7	0	0	0
2	D	154	1229	771	211	240	7	0	0	0

- Molecule 3 is 2-acetamido-2-deoxy-beta-D-glucopyranose (CCD ID: NAG) (formula: C<sub>8</sub>H<sub>15</sub>NO<sub>6</sub>).



Mol	Chain	Residues	Atoms				ZeroOcc	AltConf
			Total	C	N	O		
3	E	1	Total 14	8	1	5	0	0
3	E	1	Total 14	8	1	5	0	0
3	E	1	Total 14	8	1	5	0	0
3	E	1	Total 14	8	1	5	0	0
3	A	1	Total 14	8	1	5	0	0
3	A	1	Total 14	8	1	5	0	0
3	A	1	Total 14	8	1	5	0	0
3	A	1	Total 14	8	1	5	0	0
3	C	1	Total 14	8	1	5	0	0
3	C	1	Total 14	8	1	5	0	0
3	C	1	Total 14	8	1	5	0	0
3	C	1	Total 14	8	1	5	0	0

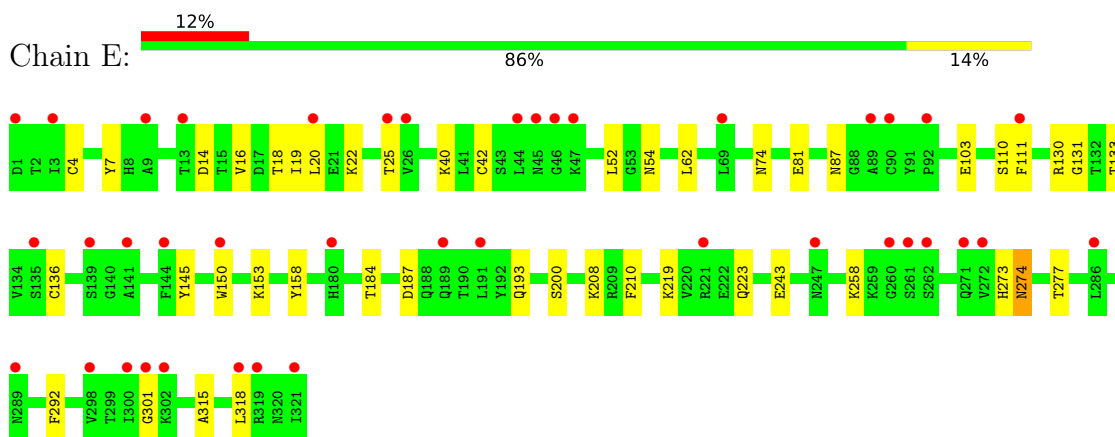
- Molecule 4 is water.

Mol	Chain	Residues	Atoms	ZeroOcc	AltConf
4	E	62	Total O 62 62	0	0
4	A	65	Total O 65 65	0	0
4	C	69	Total O 69 69	0	0
4	F	16	Total O 16 16	0	0
4	B	15	Total O 15 15	0	0
4	D	8	Total O 8 8	0	0

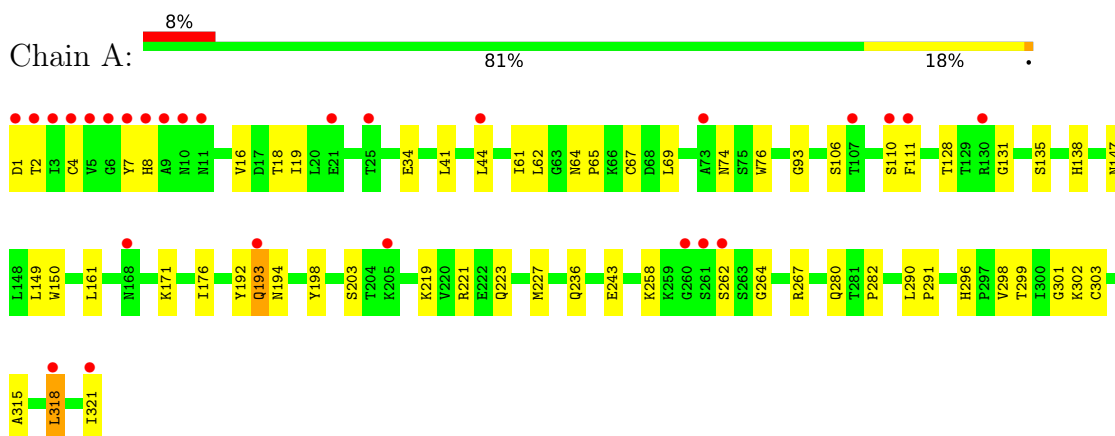
### 3 Residue-property plots [i](#)

These plots are drawn for all protein, RNA, DNA and oligosaccharide chains in the entry. The first graphic for a chain summarises the proportions of the various outlier classes displayed in the second graphic. The second graphic shows the sequence view annotated by issues in geometry and electron density. Residues are color-coded according to the number of geometric quality criteria for which they contain at least one outlier: green = 0, yellow = 1, orange = 2 and red = 3 or more. A red dot above a residue indicates a poor fit to the electron density ( $RSRZ > 2$ ). Stretches of 2 or more consecutive residues without any outlier are shown as a green connector. Residues present in the sample, but not in the model, are shown in grey.

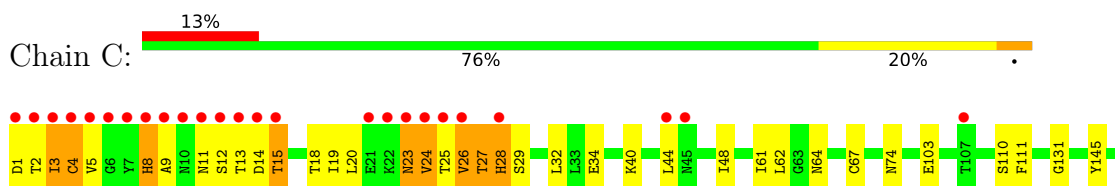
- Molecule 1: Hemagglutinin

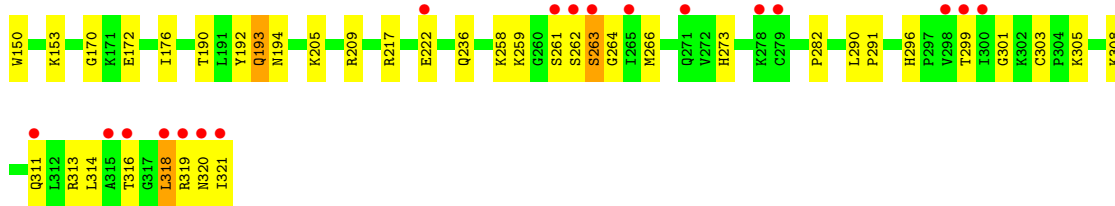


- Molecule 1: Hemagglutinin

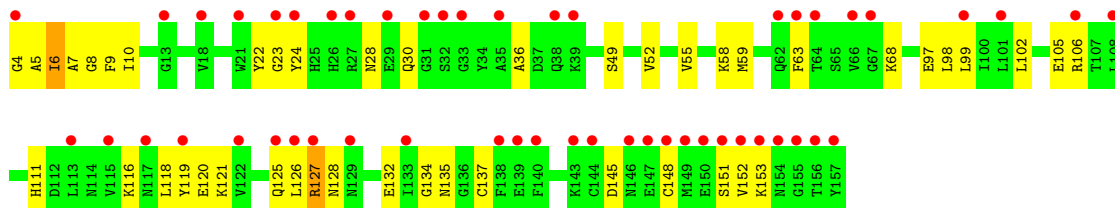


- Molecule 1: Hemagglutinin

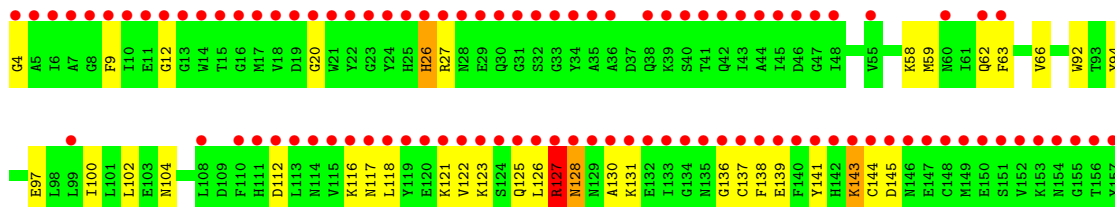
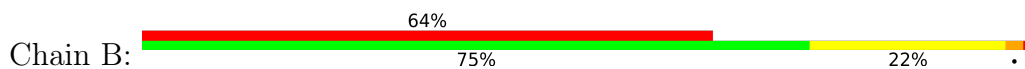




• Molecule 2: Hemagglutinin



• Molecule 2: Hemagglutinin



• Molecule 2: Hemagglutinin



## 4 Data and refinement statistics

Property	Value	Source
Space group	P 1 21 1	Depositor
Cell constants a, b, c, $\alpha$ , $\beta$ , $\gamma$	102.34Å 79.60Å 121.81Å 90.00° 95.34° 90.00°	Depositor
Resolution (Å)	50.01 – 2.40 50.01 – 2.40	Depositor EDS
% Data completeness (in resolution range)	75.8 (50.01-2.40) 75.8 (50.01-2.40)	Depositor EDS
$R_{merge}$	0.19	Depositor
$R_{sym}$	(Not available)	Depositor
$\langle I/\sigma(I) \rangle$ <sup>1</sup>	1.15 (at 2.39Å)	Xtrriage
Refinement program	REFMAC 5.8.0218	Depositor
R, $R_{free}$	0.263 , 0.280 0.264 , 0.279	Depositor DCC
$R_{free}$ test set	2984 reflections (3.90%)	wwPDB-VP
Wilson B-factor (Å <sup>2</sup> )	36.6	Xtrriage
Anisotropy	0.060	Xtrriage
Bulk solvent $k_{sol}$ (e/Å <sup>3</sup> ), $B_{sol}$ (Å <sup>2</sup> )	0.33 , 47.4	EDS
L-test for twinning <sup>2</sup>	$\langle  L  \rangle = 0.50$ , $\langle L^2 \rangle = 0.34$	Xtrriage
Estimated twinning fraction	No twinning to report.	Xtrriage
$F_o, F_c$ correlation	0.87	EDS
Total number of atoms	11635	wwPDB-VP
Average B, all atoms (Å <sup>2</sup> )	51.0	wwPDB-VP

Xtrriage's analysis on translational NCS is as follows: *The largest off-origin peak in the Patterson function is 3.73% of the height of the origin peak. No significant pseudotranslation is detected.*

<sup>1</sup>Intensities estimated from amplitudes.

<sup>2</sup>Theoretical values of  $\langle |L| \rangle$ ,  $\langle L^2 \rangle$  for acentric reflections are 0.5, 0.333 respectively for untwinned datasets, and 0.375, 0.2 for perfectly twinned datasets.

## 5 Model quality [i](#)

### 5.1 Standard geometry [i](#)

Bond lengths and bond angles in the following residue types are not validated in this section: NAG

The Z score for a bond length (or angle) is the number of standard deviations the observed value is removed from the expected value. A bond length (or angle) with  $|Z| > 5$  is considered an outlier worth inspection. RMSZ is the root-mean-square of all Z scores of the bond lengths (or angles).

Mol	Chain	Bond lengths		Bond angles	
		RMSZ	# Z  >5	RMSZ	# Z  >5
1	A	0.33	0/2577	0.50	0/3506
1	C	0.41	0/2577	0.66	7/3506 (0.2%)
1	E	0.17	0/2577	0.41	0/3506
2	B	0.32	0/1252	0.73	5/1683 (0.3%)
2	D	0.32	0/1252	0.70	4/1683 (0.2%)
2	F	0.43	0/1252	0.59	0/1683
All	All	0.33	0/11487	0.58	16/15567 (0.1%)

There are no bond length outliers.

The worst 5 of 16 bond angle outliers are listed below:

Mol	Chain	Res	Type	Atoms	Z	Observed(°)	Ideal(°)
1	C	11	ASN	N-CA-C	10.23	124.21	108.96
2	B	143	LYS	N-CA-C	8.29	122.93	108.75
1	C	316	THR	N-CA-C	-7.06	104.54	113.43
1	C	15	THR	N-CA-C	7.03	120.10	109.41
2	B	127	ARG	CB-CA-C	-6.89	108.61	116.54

There are no chirality outliers.

There are no planarity outliers.

### 5.2 Too-close contacts [i](#)

In the following table, the Non-H and H(model) columns list the number of non-hydrogen atoms and hydrogen atoms in the chain respectively. The H(added) column lists the number of hydrogen atoms added and optimized by MolProbity. The Clashes column lists the number of clashes within the asymmetric unit, whereas Symm-Clashes lists symmetry-related clashes.

Mol	Chain	Non-H	H(model)	H(added)	Clashes	Symm-Clashes
1	A	2515	0	2453	50	0
1	C	2515	0	2452	96	0
1	E	2515	0	2452	35	0
2	B	1229	0	1168	51	0
2	D	1229	0	1167	116	0
2	F	1229	0	1167	45	0
3	A	56	0	52	5	0
3	C	56	0	52	1	0
3	E	56	0	52	0	0
4	A	65	0	0	2	0
4	B	15	0	0	0	0
4	C	69	0	0	2	0
4	D	8	0	0	1	0
4	E	62	0	0	1	0
4	F	16	0	0	2	0
All	All	11635	0	11015	314	0

The all-atom clashscore is defined as the number of clashes found per 1000 atoms (including hydrogen atoms). The all-atom clashscore for this structure is 14.

The worst 5 of 314 close contacts within the same asymmetric unit are listed below, sorted by their clash magnitude.

Atom-1	Atom-2	Interatomic distance (Å)	Clash overlap (Å)
2:D:113:LEU:HD13	2:D:114:ASN:N	1.30	1.46
1:A:4:CYS:SG	2:B:137:CYS:SG	1.34	1.34
1:C:13:THR:CG2	1:C:14:ASP:H	1.50	1.24
2:D:113:LEU:HD11	2:D:114:ASN:OD1	1.42	1.18
1:C:13:THR:HG22	1:C:14:ASP:N	1.48	1.17

There are no symmetry-related clashes.

## 5.3 Torsion angles [i](#)

### 5.3.1 Protein backbone [i](#)

In the following table, the Percentiles column shows the percent Ramachandran outliers of the chain as a percentile score with respect to all X-ray entries followed by that with respect to entries of similar resolution.

The Analysed column shows the number of residues for which the backbone conformation was analysed, and the total number of residues.

Mol	Chain	Analysed	Favoured	Allowed	Outliers	Percentiles	
1	A	319/321 (99%)	301 (94%)	17 (5%)	1 (0%)	37	51
1	C	319/321 (99%)	295 (92%)	20 (6%)	4 (1%)	10	15
1	E	319/321 (99%)	304 (95%)	15 (5%)	0	100	100
2	B	152/154 (99%)	144 (95%)	8 (5%)	0	100	100
2	D	152/154 (99%)	137 (90%)	14 (9%)	1 (1%)	19	29
2	F	152/154 (99%)	146 (96%)	6 (4%)	0	100	100
All	All	1413/1425 (99%)	1327 (94%)	80 (6%)	6 (0%)	30	44

5 of 6 Ramachandran outliers are listed below:

Mol	Chain	Res	Type
1	C	27	THR
1	C	193	GLN
1	A	193	GLN
2	D	127	ARG
1	C	261	SER

### 5.3.2 Protein sidechains [i](#)

In the following table, the Percentiles column shows the percent sidechain outliers of the chain as a percentile score with respect to all X-ray entries followed by that with respect to entries of similar resolution.

The Analysed column shows the number of residues for which the sidechain conformation was analysed, and the total number of residues.

Mol	Chain	Analysed	Rotameric	Outliers	Percentiles	
1	A	282/282 (100%)	280 (99%)	2 (1%)	81	91
1	C	282/282 (100%)	275 (98%)	7 (2%)	42	63
1	E	282/282 (100%)	281 (100%)	1 (0%)	89	95
2	B	131/132 (99%)	126 (96%)	5 (4%)	28	47
2	D	131/132 (99%)	124 (95%)	7 (5%)	19	33
2	F	131/132 (99%)	128 (98%)	3 (2%)	45	66
All	All	1239/1242 (100%)	1214 (98%)	25 (2%)	50	70

5 of 25 residues with a non-rotameric sidechain are listed below:

Mol	Chain	Res	Type
2	B	127	ARG

*Continued on next page...*

*Continued from previous page...*

Mol	Chain	Res	Type
2	B	143	LYS
2	D	138	PHE
2	B	141	TYR
2	D	37	ASP

Sometimes sidechains can be flipped to improve hydrogen bonding and reduce clashes. 5 of 27 such sidechains are listed below:

Mol	Chain	Res	Type
1	C	273	HIS
2	F	114	ASN
2	D	125	GLN
2	F	30	GLN
2	B	26	HIS

### 5.3.3 RNA [i](#)

There are no RNA molecules in this entry.

## 5.4 Non-standard residues in protein, DNA, RNA chains [i](#)

There are no non-standard protein/DNA/RNA residues in this entry.

## 5.5 Carbohydrates [i](#)

There are no oligosaccharides in this entry.

## 5.6 Ligand geometry [i](#)

12 ligands are modelled in this entry.

In the following table, the Counts columns list the number of bonds (or angles) for which Mogul statistics could be retrieved, the number of bonds (or angles) that are observed in the model and the number of bonds (or angles) that are defined in the Chemical Component Dictionary. The Link column lists molecule types, if any, to which the group is linked. The Z score for a bond length (or angle) is the number of standard deviations the observed value is removed from the expected value. A bond length (or angle) with  $|Z| > 2$  is considered an outlier worth inspection. RMSZ is the root-mean-square of all Z scores of the bond lengths (or angles).

Mol	Type	Chain	Res	Link	Bond lengths			Bond angles		
					Counts	RMSZ	# Z  > 2	Counts	RMSZ	# Z  > 2
3	NAG	E	402	1	14,14,15	0.31	0	17,19,21	0.73	1 (5%)
3	NAG	C	404	1	14,14,15	0.26	0	17,19,21	0.97	2 (11%)
3	NAG	C	403	1	14,14,15	0.27	0	17,19,21	0.66	1 (5%)
3	NAG	C	402	1	14,14,15	0.31	0	17,19,21	0.68	0
3	NAG	A	401	1	14,14,15	0.28	0	17,19,21	0.65	0
3	NAG	A	404	1	14,14,15	0.30	0	17,19,21	1.03	1 (5%)
3	NAG	E	404	1	14,14,15	0.27	0	17,19,21	0.86	0
3	NAG	E	403	1	14,14,15	0.26	0	17,19,21	0.74	0
3	NAG	A	402	1	14,14,15	0.31	0	17,19,21	0.89	0
3	NAG	A	403	1	14,14,15	0.26	0	17,19,21	0.98	1 (5%)
3	NAG	C	401	1	14,14,15	0.31	0	17,19,21	0.86	0
3	NAG	E	401	1	14,14,15	0.29	0	17,19,21	0.75	0

In the following table, the Chirals column lists the number of chiral outliers, the number of chiral centers analysed, the number of these observed in the model and the number defined in the Chemical Component Dictionary. Similar counts are reported in the Torsion and Rings columns. '-' means no outliers of that kind were identified.

Mol	Type	Chain	Res	Link	Chirals	Torsions	Rings
3	NAG	E	402	1	-	4/6/23/26	0/1/1/1
3	NAG	C	404	1	-	0/6/23/26	0/1/1/1
3	NAG	C	403	1	-	4/6/23/26	0/1/1/1
3	NAG	C	402	1	-	2/6/23/26	0/1/1/1
3	NAG	A	401	1	-	4/6/23/26	0/1/1/1
3	NAG	A	404	1	-	0/6/23/26	0/1/1/1
3	NAG	E	404	1	-	4/6/23/26	0/1/1/1
3	NAG	E	403	1	-	2/6/23/26	0/1/1/1
3	NAG	A	402	1	-	2/6/23/26	0/1/1/1
3	NAG	A	403	1	-	2/6/23/26	0/1/1/1
3	NAG	C	401	1	-	2/6/23/26	0/1/1/1
3	NAG	E	401	1	-	2/6/23/26	0/1/1/1

There are no bond length outliers.

The worst 5 of 6 bond angle outliers are listed below:

Mol	Chain	Res	Type	Atoms	Z	Observed(°)	Ideal(°)
3	A	403	NAG	C2-N2-C7	-2.32	119.60	122.90
3	E	402	NAG	O5-C5-C6	2.29	110.80	107.20

*Continued on next page...*

*Continued from previous page...*

Mol	Chain	Res	Type	Atoms	Z	Observed(°)	Ideal(°)
3	C	404	NAG	C4-C3-C2	-2.13	107.89	111.02
3	C	404	NAG	C2-N2-C7	-2.13	119.87	122.90
3	A	404	NAG	O5-C1-C2	-2.11	107.96	111.29

There are no chirality outliers.

5 of 28 torsion outliers are listed below:

Mol	Chain	Res	Type	Atoms
3	E	401	NAG	C8-C7-N2-C2
3	E	401	NAG	O7-C7-N2-C2
3	E	404	NAG	C8-C7-N2-C2
3	E	404	NAG	O7-C7-N2-C2
3	A	403	NAG	C8-C7-N2-C2

There are no ring outliers.

2 monomers are involved in 6 short contacts:

Mol	Chain	Res	Type	Clashes	Symm-Clashes
3	C	404	NAG	1	0
3	A	401	NAG	5	0

## 5.7 Other polymers [i](#)

There are no such residues in this entry.

## 5.8 Polymer linkage issues [i](#)

There are no chain breaks in this entry.

## 6 Fit of model and data [i](#)

### 6.1 Protein, DNA and RNA chains [i](#)

In the following table, the column labelled ‘#RSRZ > 2’ contains the number (and percentage) of RSRZ outliers, followed by percent RSRZ outliers for the chain as percentile scores relative to all X-ray entries and entries of similar resolution. The OWAB column contains the minimum, median, 95<sup>th</sup> percentile and maximum values of the occupancy-weighted average B-factor per residue. The column labelled ‘Q < 0.9’ lists the number of (and percentage) of residues with an average occupancy less than 0.9.

Mol	Chain	Analysed	<RSRZ>	#RSRZ>2	OWAB(Å <sup>2</sup> )	Q<0.9
1	A	321/321 (100%)	0.64	27 (8%) 18 17	15, 31, 63, 149	0
1	C	321/321 (100%)	0.87	43 (13%) 8 7	15, 31, 76, 166	0
1	E	321/321 (100%)	0.82	40 (12%) 9 8	18, 40, 58, 71	0
2	B	154/154 (100%)	3.33	98 (63%) 0 0	17, 103, 135, 143	0
2	D	154/154 (100%)	4.15	110 (71%) 0 0	18, 124, 148, 156	0
2	F	154/154 (100%)	1.63	51 (33%) 1 1	17, 55, 79, 90	0
All	All	1425/1425 (100%)	1.51	369 (25%) 2 2	15, 41, 134, 166	0

The worst 5 of 369 RSRZ outliers are listed below:

Mol	Chain	Res	Type	RSRZ
1	C	4	CYS	20.4
1	C	7	TYR	16.9
1	C	6	GLY	16.7
1	A	3	ILE	16.3
2	D	25	HIS	15.0

### 6.2 Non-standard residues in protein, DNA, RNA chains [i](#)

There are no non-standard protein/DNA/RNA residues in this entry.

### 6.3 Carbohydrates [i](#)

There are no oligosaccharides in this entry.

## 6.4 Ligands [i](#)

In the following table, the Atoms column lists the number of modelled atoms in the group and the number defined in the chemical component dictionary. The B-factors column lists the minimum, median, 95<sup>th</sup> percentile and maximum values of B factors of atoms in the group. The column labelled 'Q< 0.9' lists the number of atoms with occupancy less than 0.9.

Mol	Type	Chain	Res	Atoms	RSCC	RSR	B-factors(Å <sup>2</sup> )	Q<0.9
3	NAG	E	404	14/15	-0.06	0.32	87,104,110,111	0
3	NAG	C	403	14/15	0.09	0.23	30,30,30,30	0
3	NAG	E	402	14/15	0.17	0.26	72,89,93,97	0
3	NAG	A	403	14/15	0.35	0.21	76,93,100,100	0
3	NAG	E	403	14/15	0.35	0.21	78,93,100,101	0
3	NAG	C	404	14/15	0.44	0.18	30,30,30,30	0
3	NAG	C	402	14/15	0.48	0.20	74,85,94,102	0
3	NAG	A	401	14/15	0.50	0.19	85,96,98,100	0
3	NAG	C	401	14/15	0.54	0.20	75,82,86,88	0
3	NAG	E	401	14/15	0.54	0.16	76,83,88,90	0
3	NAG	A	402	14/15	0.57	0.22	62,89,98,100	0
3	NAG	A	404	14/15	0.80	0.14	39,43,54,59	0

## 6.5 Other polymers [i](#)

There are no such residues in this entry.