



Full wwPDB EM Validation Report ⓘ

Mar 9, 2026 – 08:21 PM UTC

PDB ID : 9LM6 / pdb_00009lm6
EMDB ID : EMD-63217
Title : Cryo-EM structure of prefusion-stabilized RSV F (DS-Cav1 strain: A2) in complex with nanobody 1D8
Authors : Wang, Q.Q.; Ke, X.L.; Li, E.T.; Hong, D.X.; Li, H.X.; Cheng, Z.K.; Zhang, J.C.; Jin, T.C.; Shu, B.; Chiu, S.
Deposited on : 2025-01-18
Resolution : 3.26 Å(reported)

This is a Full wwPDB EM Validation Report for a publicly released PDB entry.

We welcome your comments at validation@mail.wwpdb.org

A user guide is available at

<https://www.wwpdb.org/validation/2017/EMValidationReportHelp>

with specific help available everywhere you see the ⓘ symbol.

The types of validation reports are described at

<http://www.wwpdb.org/validation/2017/FAQs#types>.

The following versions of software and data (see [references ⓘ](#)) were used in the production of this report:

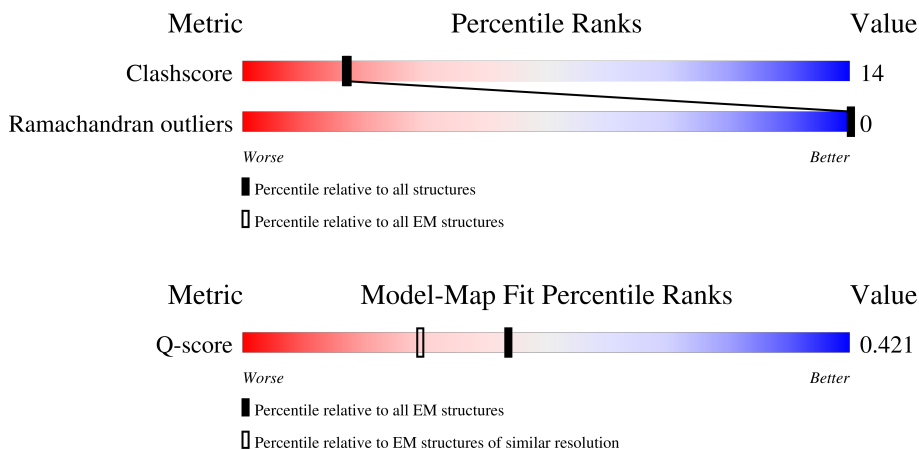
EMDB validation analysis : 0.0.1.dev132
MolProbity : 4-5-2 with Phenix2.0
Percentile statistics : 20250101.v01 (using entries in the PDB archive January 1st 2025)
EM percentile statistics : 202505.v01 (Using data in the EMDB archive up until May 2025)
MapQ : 1.9.13
Ideal geometry (proteins) : Engh & Huber (2001)
Ideal geometry (DNA, RNA) : Parkinson et al. (1996)
Validation Pipeline (wwPDB-VP) : 2.49

1 Overall quality at a glance i

The following experimental techniques were used to determine the structure:
ELECTRON MICROSCOPY

The reported resolution of this entry is 3.26 Å.

Percentile scores (ranging between 0-100) for global validation metrics of the entry are shown in the following graphic. The table shows the number of entries on which the scores are based.




Metric	Whole archive (#Entries)	EM structures (#Entries)	Similar EM resolution (#Entries, resolution range(Å))
Clashscore	229148	23984	-
Ramachandran outliers	224038	23583	-
Q-score	-	25397	14557 (2.76 - 3.76)

The table below summarises the geometric issues observed across the polymeric chains and their fit to the map. The red, orange, yellow and green segments of the bar indicate the fraction of residues that contain outliers for ≥ 3 , 2, 1 and 0 types of geometric quality criteria respectively. A grey segment represents the fraction of residues that are not modelled. The numeric value for each fraction is indicated below the corresponding segment, with a dot representing fractions $\leq 5\%$. The upper red bar (where present) indicates the fraction of residues that have poor fit to the EM map (all-atom inclusion $< 40\%$). The numeric value is given above the bar.

Mol	Chain	Length	Quality of chain
1	A	569	 57% 23% 20%
1	B	569	 57% 23% 20%
1	C	569	 56% 23% 20%
2	D	139	 60% 29% 11%
2	E	139	 58% 31% 11%

Continued on next page...

Continued from previous page...

Mol	Chain	Length	Quality of chain
2	F	139	 58% 32% 11%

2 Entry composition i

There are 2 unique types of molecules in this entry. The entry contains 13278 atoms, of which 0 are hydrogens and 0 are deuteriums.

In the tables below, the AltConf column contains the number of residues with at least one atom in alternate conformation and the Trace column contains the number of residues modelled with at most 2 atoms.

- Molecule 1 is a protein called Fusion glycoprotein F0.

Mol	Chain	Residues	Atoms					AltConf	Trace
			Total	C	N	O	S		
1	A	453	3496	2211	574	689	22	0	0
1	B	453	3496	2211	574	689	22	0	0
1	C	453	3496	2211	574	689	22	0	0

There are 189 discrepancies between the modelled and reference sequences:

Chain	Residue	Modelled	Actual	Comment	Reference
A	102	ALA	PRO	variant	UNP P03420
A	155	CYS	SER	conflict	UNP P03420
A	190	PHE	SER	conflict	UNP P03420
A	207	LEU	VAL	conflict	UNP P03420
A	290	CYS	SER	conflict	UNP P03420
A	379	VAL	ILE	variant	UNP P03420
A	447	VAL	MET	variant	UNP P03420
A	514	SER	-	expression tag	UNP P03420
A	515	ALA	-	expression tag	UNP P03420
A	516	ILE	-	expression tag	UNP P03420
A	517	GLY	-	expression tag	UNP P03420
A	518	GLY	-	expression tag	UNP P03420
A	519	TYR	-	expression tag	UNP P03420
A	520	ILE	-	expression tag	UNP P03420
A	521	PRO	-	expression tag	UNP P03420
A	522	GLU	-	expression tag	UNP P03420
A	523	ALA	-	expression tag	UNP P03420
A	524	PRO	-	expression tag	UNP P03420
A	525	ARG	-	expression tag	UNP P03420
A	526	ASP	-	expression tag	UNP P03420
A	527	GLY	-	expression tag	UNP P03420
A	528	GLN	-	expression tag	UNP P03420
A	529	ALA	-	expression tag	UNP P03420
A	530	TYR	-	expression tag	UNP P03420

Continued on next page...

Continued from previous page...

Chain	Residue	Modelled	Actual	Comment	Reference
A	531	VAL	-	expression tag	UNP P03420
A	532	ARG	-	expression tag	UNP P03420
A	533	LYS	-	expression tag	UNP P03420
A	534	ASP	-	expression tag	UNP P03420
A	535	GLY	-	expression tag	UNP P03420
A	536	GLU	-	expression tag	UNP P03420
A	537	TRP	-	expression tag	UNP P03420
A	538	VAL	-	expression tag	UNP P03420
A	539	LEU	-	expression tag	UNP P03420
A	540	LEU	-	expression tag	UNP P03420
A	541	SER	-	expression tag	UNP P03420
A	542	THR	-	expression tag	UNP P03420
A	543	PHE	-	expression tag	UNP P03420
A	544	LEU	-	expression tag	UNP P03420
A	545	GLU	-	expression tag	UNP P03420
A	546	ALA	-	expression tag	UNP P03420
A	547	ALA	-	expression tag	UNP P03420
A	548	ALA	-	expression tag	UNP P03420
A	549	LYS	-	expression tag	UNP P03420
A	550	GLU	-	expression tag	UNP P03420
A	551	ALA	-	expression tag	UNP P03420
A	552	ALA	-	expression tag	UNP P03420
A	553	ALA	-	expression tag	UNP P03420
A	554	LYS	-	expression tag	UNP P03420
A	555	GLU	-	expression tag	UNP P03420
A	556	ALA	-	expression tag	UNP P03420
A	557	ALA	-	expression tag	UNP P03420
A	558	ALA	-	expression tag	UNP P03420
A	559	LYS	-	expression tag	UNP P03420
A	560	HIS	-	expression tag	UNP P03420
A	561	HIS	-	expression tag	UNP P03420
A	562	HIS	-	expression tag	UNP P03420
A	563	HIS	-	expression tag	UNP P03420
A	564	HIS	-	expression tag	UNP P03420
A	565	HIS	-	expression tag	UNP P03420
A	566	HIS	-	expression tag	UNP P03420
A	567	HIS	-	expression tag	UNP P03420
A	568	HIS	-	expression tag	UNP P03420
A	569	HIS	-	expression tag	UNP P03420
B	102	ALA	PRO	variant	UNP P03420
B	155	CYS	SER	conflict	UNP P03420
B	190	PHE	SER	conflict	UNP P03420

Continued on next page...

Continued from previous page...

Chain	Residue	Modelled	Actual	Comment	Reference
B	207	LEU	VAL	conflict	UNP P03420
B	290	CYS	SER	conflict	UNP P03420
B	379	VAL	ILE	variant	UNP P03420
B	447	VAL	MET	variant	UNP P03420
B	514	SER	-	expression tag	UNP P03420
B	515	ALA	-	expression tag	UNP P03420
B	516	ILE	-	expression tag	UNP P03420
B	517	GLY	-	expression tag	UNP P03420
B	518	GLY	-	expression tag	UNP P03420
B	519	TYR	-	expression tag	UNP P03420
B	520	ILE	-	expression tag	UNP P03420
B	521	PRO	-	expression tag	UNP P03420
B	522	GLU	-	expression tag	UNP P03420
B	523	ALA	-	expression tag	UNP P03420
B	524	PRO	-	expression tag	UNP P03420
B	525	ARG	-	expression tag	UNP P03420
B	526	ASP	-	expression tag	UNP P03420
B	527	GLY	-	expression tag	UNP P03420
B	528	GLN	-	expression tag	UNP P03420
B	529	ALA	-	expression tag	UNP P03420
B	530	TYR	-	expression tag	UNP P03420
B	531	VAL	-	expression tag	UNP P03420
B	532	ARG	-	expression tag	UNP P03420
B	533	LYS	-	expression tag	UNP P03420
B	534	ASP	-	expression tag	UNP P03420
B	535	GLY	-	expression tag	UNP P03420
B	536	GLU	-	expression tag	UNP P03420
B	537	TRP	-	expression tag	UNP P03420
B	538	VAL	-	expression tag	UNP P03420
B	539	LEU	-	expression tag	UNP P03420
B	540	LEU	-	expression tag	UNP P03420
B	541	SER	-	expression tag	UNP P03420
B	542	THR	-	expression tag	UNP P03420
B	543	PHE	-	expression tag	UNP P03420
B	544	LEU	-	expression tag	UNP P03420
B	545	GLU	-	expression tag	UNP P03420
B	546	ALA	-	expression tag	UNP P03420
B	547	ALA	-	expression tag	UNP P03420
B	548	ALA	-	expression tag	UNP P03420
B	549	LYS	-	expression tag	UNP P03420
B	550	GLU	-	expression tag	UNP P03420
B	551	ALA	-	expression tag	UNP P03420

Continued on next page...

Continued from previous page...

Chain	Residue	Modelled	Actual	Comment	Reference
B	552	ALA	-	expression tag	UNP P03420
B	553	ALA	-	expression tag	UNP P03420
B	554	LYS	-	expression tag	UNP P03420
B	555	GLU	-	expression tag	UNP P03420
B	556	ALA	-	expression tag	UNP P03420
B	557	ALA	-	expression tag	UNP P03420
B	558	ALA	-	expression tag	UNP P03420
B	559	LYS	-	expression tag	UNP P03420
B	560	HIS	-	expression tag	UNP P03420
B	561	HIS	-	expression tag	UNP P03420
B	562	HIS	-	expression tag	UNP P03420
B	563	HIS	-	expression tag	UNP P03420
B	564	HIS	-	expression tag	UNP P03420
B	565	HIS	-	expression tag	UNP P03420
B	566	HIS	-	expression tag	UNP P03420
B	567	HIS	-	expression tag	UNP P03420
B	568	HIS	-	expression tag	UNP P03420
B	569	HIS	-	expression tag	UNP P03420
C	102	ALA	PRO	variant	UNP P03420
C	155	CYS	SER	conflict	UNP P03420
C	190	PHE	SER	conflict	UNP P03420
C	207	LEU	VAL	conflict	UNP P03420
C	290	CYS	SER	conflict	UNP P03420
C	379	VAL	ILE	variant	UNP P03420
C	447	VAL	MET	variant	UNP P03420
C	514	SER	-	expression tag	UNP P03420
C	515	ALA	-	expression tag	UNP P03420
C	516	ILE	-	expression tag	UNP P03420
C	517	GLY	-	expression tag	UNP P03420
C	518	GLY	-	expression tag	UNP P03420
C	519	TYR	-	expression tag	UNP P03420
C	520	ILE	-	expression tag	UNP P03420
C	521	PRO	-	expression tag	UNP P03420
C	522	GLU	-	expression tag	UNP P03420
C	523	ALA	-	expression tag	UNP P03420
C	524	PRO	-	expression tag	UNP P03420
C	525	ARG	-	expression tag	UNP P03420
C	526	ASP	-	expression tag	UNP P03420
C	527	GLY	-	expression tag	UNP P03420
C	528	GLN	-	expression tag	UNP P03420
C	529	ALA	-	expression tag	UNP P03420
C	530	TYR	-	expression tag	UNP P03420

Continued on next page...

Continued from previous page...

Chain	Residue	Modelled	Actual	Comment	Reference
C	531	VAL	-	expression tag	UNP P03420
C	532	ARG	-	expression tag	UNP P03420
C	533	LYS	-	expression tag	UNP P03420
C	534	ASP	-	expression tag	UNP P03420
C	535	GLY	-	expression tag	UNP P03420
C	536	GLU	-	expression tag	UNP P03420
C	537	TRP	-	expression tag	UNP P03420
C	538	VAL	-	expression tag	UNP P03420
C	539	LEU	-	expression tag	UNP P03420
C	540	LEU	-	expression tag	UNP P03420
C	541	SER	-	expression tag	UNP P03420
C	542	THR	-	expression tag	UNP P03420
C	543	PHE	-	expression tag	UNP P03420
C	544	LEU	-	expression tag	UNP P03420
C	545	GLU	-	expression tag	UNP P03420
C	546	ALA	-	expression tag	UNP P03420
C	547	ALA	-	expression tag	UNP P03420
C	548	ALA	-	expression tag	UNP P03420
C	549	LYS	-	expression tag	UNP P03420
C	550	GLU	-	expression tag	UNP P03420
C	551	ALA	-	expression tag	UNP P03420
C	552	ALA	-	expression tag	UNP P03420
C	553	ALA	-	expression tag	UNP P03420
C	554	LYS	-	expression tag	UNP P03420
C	555	GLU	-	expression tag	UNP P03420
C	556	ALA	-	expression tag	UNP P03420
C	557	ALA	-	expression tag	UNP P03420
C	558	ALA	-	expression tag	UNP P03420
C	559	LYS	-	expression tag	UNP P03420
C	560	HIS	-	expression tag	UNP P03420
C	561	HIS	-	expression tag	UNP P03420
C	562	HIS	-	expression tag	UNP P03420
C	563	HIS	-	expression tag	UNP P03420
C	564	HIS	-	expression tag	UNP P03420
C	565	HIS	-	expression tag	UNP P03420
C	566	HIS	-	expression tag	UNP P03420
C	567	HIS	-	expression tag	UNP P03420
C	568	HIS	-	expression tag	UNP P03420
C	569	HIS	-	expression tag	UNP P03420

- Molecule 2 is a protein called nanobody 1D8.

Mol	Chain	Residues	Atoms					AltConf	Trace
			Total	C	N	O	S		
2	D	124	Total 930	572	157	191	10	0	0
2	E	124	Total 930	572	157	191	10	0	0
2	F	124	Total 930	572	157	191	10	0	0

4 Experimental information

Property	Value	Source
EM reconstruction method	SINGLE PARTICLE	Depositor
Imposed symmetry	POINT, Not provided	
Number of particles used	280787	Depositor
Resolution determination method	FSC 0.143 CUT-OFF	Depositor
CTF correction method	PHASE FLIPPING AND AMPLITUDE CORRECTION	Depositor
Microscope	JEOL CRYO ARM 300	Depositor
Voltage (kV)	300	Depositor
Electron dose ($e^-/\text{\AA}^2$)	40	Depositor
Minimum defocus (nm)	500	Depositor
Maximum defocus (nm)	2500	Depositor
Magnification	Not provided	
Image detector	GATAN K3 (6k x 4k)	Depositor
Maximum map value	0.424	Depositor
Minimum map value	-0.150	Depositor
Average map value	0.001	Depositor
Map value standard deviation	0.017	Depositor
Recommended contour level	0.04	Depositor
Map size (Å)	228.0, 228.0, 228.0	wwPDB
Map dimensions	240, 240, 240	wwPDB
Map angles (°)	90.0, 90.0, 90.0	wwPDB
Pixel spacing (Å)	0.95, 0.95, 0.95	Depositor

5 Model quality [i](#)

5.1 Standard geometry [i](#)

The Z score for a bond length (or angle) is the number of standard deviations the observed value is removed from the expected value. A bond length (or angle) with $|Z| > 5$ is considered an outlier worth inspection. RMSZ is the root-mean-square of all Z scores of the bond lengths (or angles).

Mol	Chain	Bond lengths		Bond angles	
		RMSZ	# Z >5	RMSZ	# Z >5
1	A	0.26	0/3547	0.34	0/4808
1	B	0.26	0/3547	0.34	0/4808
1	C	0.26	0/3547	0.34	0/4808
2	D	0.22	0/948	0.50	0/1281
2	E	0.22	0/948	0.50	0/1281
2	F	0.22	0/948	0.50	0/1281
All	All	0.26	0/13485	0.38	0/18267

There are no bond length outliers.

There are no bond angle outliers.

There are no chirality outliers.

There are no planarity outliers.

5.2 Too-close contacts [i](#)

In the following table, the Non-H and H(model) columns list the number of non-hydrogen atoms and hydrogen atoms in the chain respectively. The H(added) column lists the number of hydrogen atoms added and optimized by MolProbity. The Clashes column lists the number of clashes within the asymmetric unit, whereas Symm-Clashes lists symmetry-related clashes.

Mol	Chain	Non-H	H(model)	H(added)	Clashes	Symm-Clashes
1	A	3496	0	3523	99	0
1	B	3496	0	3523	96	0
1	C	3496	0	3523	97	0
2	D	930	0	841	29	0
2	E	930	0	841	31	0
2	F	930	0	841	32	0
All	All	13278	0	13092	363	0

The all-atom clashscore is defined as the number of clashes found per 1000 atoms (including hydrogen atoms). The all-atom clashscore for this structure is 14.

All (363) close contacts within the same asymmetric unit are listed below, sorted by their clash magnitude.

Atom-1	Atom-2	Interatomic distance (Å)	Clash overlap (Å)
2:E:40:GLN:HB3	2:E:93:MET:HB3	1.63	0.80
2:F:40:GLN:HB3	2:F:93:MET:HB3	1.63	0.80
2:D:40:GLN:HB3	2:D:93:MET:HB3	1.63	0.80
1:B:432:ILE:HD11	1:B:447:VAL:HG22	1.76	0.68
1:C:432:ILE:HD11	1:C:447:VAL:HG22	1.76	0.67
1:A:432:ILE:HD11	1:A:447:VAL:HG22	1.76	0.67
1:C:138:LEU:HD11	1:C:394:LYS:HD3	1.78	0.66
1:A:138:LEU:HD11	1:A:394:LYS:HD3	1.78	0.66
2:D:52:ILE:HD11	2:D:70:ILE:HG23	1.79	0.65
1:B:138:LEU:HD11	1:B:394:LYS:HD3	1.78	0.65
2:E:52:ILE:HD11	2:E:70:ILE:HG23	1.79	0.65
2:F:52:ILE:HD11	2:F:70:ILE:HG23	1.79	0.64
1:C:311:THR:HG22	1:C:344:ASP:HB2	1.80	0.64
1:A:311:THR:HG22	1:A:344:ASP:HB2	1.80	0.63
1:A:49:ARG:HG3	1:A:304:PRO:HB3	1.81	0.62
1:B:311:THR:HG22	1:B:344:ASP:HB2	1.80	0.62
1:A:444:ASN:ND2	1:A:462:GLN:O	2.33	0.62
1:B:444:ASN:ND2	1:B:462:GLN:O	2.33	0.62
1:B:204:LEU:HD12	1:B:207:LEU:HB3	1.82	0.61
1:A:311:THR:CG2	1:A:344:ASP:CB	2.79	0.61
1:C:204:LEU:HD12	1:C:207:LEU:HB3	1.82	0.61
1:C:49:ARG:HG3	1:C:304:PRO:HB3	1.81	0.61
1:C:311:THR:HG23	1:C:312:PRO:HD2	1.83	0.61
1:A:204:LEU:HD12	1:A:207:LEU:HB3	1.82	0.61
1:B:311:THR:CG2	1:B:344:ASP:CB	2.79	0.61
1:B:49:ARG:HG3	1:B:304:PRO:HB3	1.81	0.61
1:C:311:THR:CG2	1:C:344:ASP:CB	2.79	0.61
1:A:49:ARG:NH1	1:A:51:GLY:O	2.34	0.60
1:C:444:ASN:ND2	1:C:462:GLN:O	2.33	0.60
1:B:311:THR:HG23	1:B:312:PRO:HD2	1.83	0.60
1:C:49:ARG:NH1	1:C:51:GLY:O	2.34	0.60
1:B:49:ARG:NH1	1:B:51:GLY:O	2.34	0.60
1:A:311:THR:HG23	1:A:312:PRO:HD2	1.83	0.60
1:C:317:HIS:CG	1:C:408:THR:HG22	2.37	0.59
2:D:5:LEU:HD21	2:D:98:THR:HG23	1.85	0.59
1:B:317:HIS:CG	1:B:408:THR:HG22	2.37	0.59
2:E:5:LEU:HD21	2:E:98:THR:HG23	1.85	0.59
1:A:317:HIS:CG	1:A:408:THR:HG22	2.38	0.58
2:F:5:LEU:HD21	2:F:98:THR:HG23	1.85	0.58
1:A:406:VAL:HG13	1:B:144:VAL:HB	1.86	0.58

Continued on next page...

Continued from previous page...

Atom-1	Atom-2	Interatomic distance (Å)	Clash overlap (Å)
1:B:321:LEU:HD11	1:B:473:PRO:HB3	1.86	0.58
1:A:144:VAL:HB	1:C:406:VAL:HG13	1.85	0.58
1:A:321:LEU:HD11	1:A:473:PRO:HB3	1.86	0.57
1:A:192:VAL:HG12	1:A:256:GLU:HG2	1.87	0.57
1:A:235:ARG:NH1	1:C:250:TYR:OH	2.38	0.57
2:F:121:GLN:OE1	2:F:121:GLN:HA	2.05	0.57
1:B:250:TYR:OH	1:C:235:ARG:NH1	2.38	0.57
1:B:192:VAL:HG12	1:B:256:GLU:HG2	1.87	0.57
1:A:481:LEU:HG	1:A:482:VAL:HG13	1.87	0.57
1:C:321:LEU:HD11	1:C:473:PRO:HB3	1.86	0.57
1:A:261:ILE:HA	1:A:264:MET:HE2	1.87	0.56
1:C:192:VAL:HG12	1:C:256:GLU:HG2	1.87	0.56
1:C:481:LEU:HG	1:C:482:VAL:HG13	1.87	0.56
1:B:406:VAL:HG13	1:C:144:VAL:HB	1.88	0.56
1:B:481:LEU:HG	1:B:482:VAL:HG13	1.87	0.56
2:E:121:GLN:OE1	2:E:121:GLN:HA	2.05	0.56
1:C:261:ILE:HA	1:C:264:MET:HE2	1.87	0.56
1:B:279:GLN:NE2	1:B:361:GLN:OE1	2.39	0.56
2:D:121:GLN:HA	2:D:121:GLN:OE1	2.05	0.56
1:A:279:GLN:NE2	1:A:361:GLN:OE1	2.39	0.55
1:B:261:ILE:HA	1:B:264:MET:HE2	1.87	0.55
1:C:311:THR:CG2	1:C:344:ASP:HB2	2.36	0.55
2:E:28:HIS:O	2:E:28:HIS:ND1	2.39	0.55
1:C:291:ILE:HD11	1:C:293:LYS:HE3	1.88	0.55
2:D:28:HIS:O	2:D:28:HIS:ND1	2.39	0.55
1:C:279:GLN:NE2	1:C:361:GLN:OE1	2.39	0.55
1:A:250:TYR:OH	1:B:235:ARG:NH1	2.39	0.55
1:B:291:ILE:HD11	1:B:293:LYS:HE3	1.88	0.55
2:F:37:TRP:N	2:F:50:SER:O	2.38	0.55
2:F:39:ARG:HA	2:F:94:TYR:HA	1.89	0.55
1:B:311:THR:CG2	1:B:344:ASP:HB2	2.36	0.55
1:A:445:LYS:HD2	2:D:99:ARG:HH22	1.72	0.54
2:E:39:ARG:HA	2:E:94:TYR:HA	1.89	0.54
1:C:320:PRO:HA	1:C:335:THR:HG22	1.89	0.54
2:F:28:HIS:ND1	2:F:28:HIS:O	2.39	0.54
1:A:291:ILE:HD11	1:A:293:LYS:HE3	1.88	0.54
2:D:39:ARG:HA	2:D:94:TYR:HA	1.89	0.54
1:B:320:PRO:HA	1:B:335:THR:HG22	1.89	0.54
1:C:94:GLN:HG2	1:C:292:ILE:HG21	1.89	0.54
1:C:445:LYS:HD2	2:F:99:ARG:HH22	1.72	0.54
1:A:486:ASP:OD2	1:B:487:GLU:HG2	2.08	0.54

Continued on next page...

Continued from previous page...

Atom-1	Atom-2	Interatomic distance (Å)	Clash overlap (Å)
1:B:30:GLU:OE2	1:B:441:TYR:OH	2.21	0.54
1:A:311:THR:CG2	1:A:344:ASP:HB2	2.36	0.54
1:B:445:LYS:HD2	2:E:99:ARG:HH22	1.72	0.54
1:A:334:LEU:HB2	1:A:475:ILE:HD13	1.90	0.54
1:B:405:SER:HB2	1:B:452:VAL:HG21	1.90	0.54
1:A:30:GLU:OE2	1:A:441:TYR:OH	2.21	0.54
1:B:94:GLN:HG2	1:B:292:ILE:HG21	1.89	0.54
1:B:334:LEU:HB2	1:B:475:ILE:HD13	1.90	0.54
1:A:405:SER:HB2	1:A:452:VAL:HG21	1.90	0.54
2:E:94:TYR:N	2:E:123:THR:O	2.38	0.54
2:F:41:ALA:HB3	2:F:44:LYS:HB2	1.89	0.54
1:A:94:GLN:HG2	1:A:292:ILE:HG21	1.89	0.53
1:A:311:THR:HG21	1:A:344:ASP:HB3	1.90	0.53
2:E:7:GLU:N	2:E:7:GLU:OE1	2.41	0.53
1:C:334:LEU:HB2	1:C:475:ILE:HD13	1.90	0.53
2:F:45:GLU:OE1	2:F:46:ARG:N	2.41	0.53
2:E:41:ALA:HB3	2:E:44:LYS:HB2	1.89	0.53
2:E:45:GLU:OE1	2:E:46:ARG:N	2.41	0.53
2:E:69:THR:O	2:E:82:GLN:N	2.40	0.53
2:F:7:GLU:OE1	2:F:7:GLU:N	2.42	0.53
1:A:320:PRO:HA	1:A:335:THR:HG22	1.89	0.53
1:C:311:THR:HG21	1:C:344:ASP:HB3	1.90	0.53
2:D:41:ALA:HB3	2:D:44:LYS:HB2	1.90	0.53
2:D:7:GLU:N	2:D:7:GLU:OE1	2.41	0.53
1:B:311:THR:CG2	1:B:312:PRO:HD2	2.39	0.53
1:A:311:THR:CG2	1:A:312:PRO:HD2	2.39	0.53
1:C:405:SER:HB2	1:C:452:VAL:HG21	1.90	0.52
2:D:45:GLU:OE1	2:D:46:ARG:N	2.41	0.52
1:C:311:THR:CG2	1:C:312:PRO:HD2	2.39	0.52
1:A:93:LEU:HD23	1:A:96:LEU:HD12	1.92	0.52
2:D:37:TRP:N	2:D:50:SER:O	2.38	0.52
1:C:505:PHE:O	1:C:508:LYS:HG3	2.09	0.52
1:A:505:PHE:O	1:A:508:LYS:HG3	2.10	0.52
1:B:486:ASP:OD2	1:C:487:GLU:HG2	2.10	0.52
1:A:487:GLU:HG2	1:C:486:ASP:OD2	2.09	0.52
1:B:311:THR:HG21	1:B:344:ASP:HB3	1.90	0.52
1:B:93:LEU:HD23	1:B:96:LEU:HD12	1.92	0.52
1:B:505:PHE:O	1:B:508:LYS:HG3	2.10	0.52
2:E:37:TRP:N	2:E:50:SER:O	2.38	0.51
1:B:491:SER:H	1:B:494:GLN:HB2	1.76	0.51
1:C:93:LEU:HD23	1:C:96:LEU:HD12	1.92	0.51

Continued on next page...

Continued from previous page...

Atom-1	Atom-2	Interatomic distance (Å)	Clash overlap (Å)
2:F:94:TYR:N	2:F:123:THR:O	2.38	0.51
1:B:311:THR:CG2	1:B:344:ASP:HB3	2.41	0.50
1:A:311:THR:CG2	1:A:344:ASP:HB3	2.41	0.50
1:B:60:GLU:OE2	1:B:191:LYS:NZ	2.39	0.50
1:A:79:ILE:HG13	1:A:220:VAL:HG22	1.94	0.50
2:D:70:ILE:HB	2:D:81:LEU:HD13	1.93	0.50
1:B:79:ILE:HG13	1:B:220:VAL:HG22	1.94	0.50
1:C:79:ILE:HG13	1:C:220:VAL:HG22	1.94	0.50
2:E:70:ILE:HB	2:E:81:LEU:HD13	1.93	0.50
1:B:64:ILE:HD13	1:B:83:LEU:HD22	1.94	0.50
2:D:16:GLY:HA2	2:D:85:SER:HA	1.94	0.50
1:C:491:SER:H	1:C:494:GLN:HB2	1.76	0.50
2:F:16:GLY:HA2	2:F:85:SER:HA	1.94	0.50
1:A:512:LEU:O	1:A:516:ILE:HG12	2.12	0.50
1:B:56:VAL:HB	1:B:189:THR:HG22	1.94	0.50
2:E:16:GLY:HA2	2:E:85:SER:HA	1.94	0.50
1:C:508:LYS:HA	1:C:511:GLU:HG3	1.94	0.50
1:C:512:LEU:O	1:C:516:ILE:HG12	2.12	0.50
1:A:64:ILE:HD13	1:A:83:LEU:HD22	1.94	0.49
1:A:311:THR:HG21	1:A:344:ASP:CB	2.42	0.49
1:C:311:THR:CG2	1:C:344:ASP:HB3	2.41	0.49
2:F:70:ILE:HB	2:F:81:LEU:HD13	1.93	0.49
1:B:508:LYS:HA	1:B:511:GLU:HG3	1.94	0.49
1:B:512:LEU:O	1:B:516:ILE:HG12	2.12	0.49
1:A:491:SER:H	1:A:494:GLN:HB2	1.76	0.49
2:D:69:THR:O	2:D:82:GLN:N	2.40	0.49
2:D:94:TYR:N	2:D:123:THR:O	2.38	0.49
1:C:64:ILE:HD13	1:C:83:LEU:HD22	1.94	0.49
1:C:401:ASP:OD1	1:C:401:ASP:N	2.40	0.49
2:F:69:THR:O	2:F:82:GLN:N	2.40	0.49
2:F:72:GLN:OE1	2:F:74:ASN:ND2	2.46	0.49
1:B:311:THR:HG21	1:B:344:ASP:CB	2.43	0.48
1:C:56:VAL:HB	1:C:189:THR:HG22	1.94	0.48
1:A:508:LYS:HA	1:A:511:GLU:HG3	1.93	0.48
1:A:56:VAL:HB	1:A:189:THR:HG22	1.94	0.48
1:A:60:GLU:OE2	1:A:191:LYS:NZ	2.39	0.48
2:D:72:GLN:OE1	2:D:74:ASN:ND2	2.46	0.48
1:A:317:HIS:CD2	1:A:408:THR:HG22	2.49	0.48
1:B:211:SER:O	1:B:211:SER:OG	2.31	0.48
1:C:322:CYS:N	1:C:417:TYR:OH	2.39	0.48
1:C:30:GLU:OE2	1:C:441:TYR:OH	2.21	0.48

Continued on next page...

Continued from previous page...

Atom-1	Atom-2	Interatomic distance (Å)	Clash overlap (Å)
2:E:72:GLN:OE1	2:E:74:ASN:ND2	2.46	0.47
1:C:311:THR:HG21	1:C:344:ASP:CB	2.43	0.47
1:B:317:HIS:CD2	1:B:408:THR:HG22	2.49	0.47
1:B:442:VAL:CG2	1:B:447:VAL:HG21	2.45	0.47
1:C:317:HIS:CD2	1:C:408:THR:HG22	2.49	0.47
1:A:311:THR:HG21	1:A:344:ASP:O	2.15	0.47
1:A:325:ASN:HB2	1:A:331:ASN:OD1	2.15	0.47
1:A:348:SER:HB2	1:C:454:ASN:HD21	1.80	0.47
1:B:311:THR:HG21	1:B:344:ASP:O	2.15	0.47
1:B:322:CYS:N	1:B:417:TYR:OH	2.39	0.47
1:B:454:ASN:HD21	1:C:348:SER:HB2	1.78	0.47
1:C:442:VAL:CG2	1:C:447:VAL:HG21	2.45	0.47
1:A:442:VAL:HG22	1:A:447:VAL:HG21	1.97	0.47
1:A:442:VAL:CG2	1:A:447:VAL:HG21	2.45	0.47
1:C:498:LYS:HA	1:C:501:GLN:HG3	1.97	0.47
1:C:245:THR:HB	1:C:246:PRO:HD3	1.97	0.47
2:D:61:ALA:H	2:D:64:VAL:HG22	1.79	0.46
1:B:245:THR:HB	1:B:246:PRO:HD3	1.97	0.46
1:C:79:ILE:HD11	1:C:214:ILE:HG12	1.97	0.46
2:F:61:ALA:H	2:F:64:VAL:HG22	1.79	0.46
1:A:79:ILE:HD11	1:A:214:ILE:HG12	1.97	0.46
1:A:454:ASN:HD21	1:B:348:SER:HB2	1.79	0.46
1:A:498:LYS:HA	1:A:501:GLN:HG3	1.97	0.46
1:C:280:ILE:HG21	1:C:366:PHE:CG	2.50	0.46
1:C:285:SER:OG	1:C:286:TYR:N	2.49	0.46
1:B:442:VAL:HG22	1:B:447:VAL:HG21	1.97	0.46
2:E:107:TYR:O	2:E:113:CYS:HA	2.16	0.46
1:A:349:VAL:HG23	1:A:377:SER:HA	1.97	0.46
1:C:338:ASP:HB3	1:C:342:TYR:OH	2.16	0.46
1:A:414:VAL:HG21	1:A:435:PHE:HE2	1.80	0.46
1:B:280:ILE:HG21	1:B:366:PHE:CG	2.50	0.46
1:B:325:ASN:HB2	1:B:331:ASN:OD1	2.15	0.46
1:B:349:VAL:HG23	1:B:377:SER:HA	1.97	0.46
2:E:71:SER:N	2:E:80:TYR:O	2.36	0.46
1:A:280:ILE:HG21	1:A:366:PHE:CG	2.50	0.46
1:A:338:ASP:HB3	1:A:342:TYR:OH	2.16	0.46
1:B:338:ASP:HB3	1:B:342:TYR:OH	2.16	0.46
1:A:292:ILE:HD13	1:A:297:LEU:HD13	1.98	0.46
2:D:107:TYR:O	2:D:113:CYS:HA	2.16	0.46
1:C:311:THR:HG21	1:C:344:ASP:O	2.15	0.46
1:A:399:LYS:HB2	1:B:494:GLN:NE2	2.30	0.46

Continued on next page...

Continued from previous page...

Atom-1	Atom-2	Interatomic distance (Å)	Clash overlap (Å)
1:C:325:ASN:HB2	1:C:331:ASN:OD1	2.15	0.46
1:B:79:ILE:HD11	1:B:214:ILE:HG12	1.97	0.45
1:C:414:VAL:HG21	1:C:435:PHE:HE2	1.80	0.45
1:B:498:LYS:HA	1:B:501:GLN:HG3	1.97	0.45
1:C:349:VAL:HG23	1:C:377:SER:HA	1.97	0.45
1:A:335:THR:OG1	1:A:396:MET:HG2	2.17	0.45
2:E:61:ALA:H	2:E:64:VAL:HG22	1.80	0.45
1:C:442:VAL:HG22	1:C:447:VAL:HG21	1.97	0.45
1:A:245:THR:HB	1:A:246:PRO:HD3	1.97	0.45
1:A:494:GLN:NE2	1:C:399:LYS:HB2	2.31	0.45
1:B:323:THR:OG1	1:B:324:THR:N	2.50	0.45
1:C:335:THR:OG1	1:C:396:MET:HG2	2.17	0.45
1:B:285:SER:OG	1:B:286:TYR:N	2.49	0.45
1:B:414:VAL:HG21	1:B:435:PHE:HE2	1.80	0.45
2:F:107:TYR:O	2:F:113:CYS:HA	2.16	0.45
2:F:71:SER:N	2:F:80:TYR:O	2.36	0.45
1:B:138:LEU:HD23	1:B:138:LEU:HA	1.82	0.45
1:C:49:ARG:HE	1:C:368:ASP:CG	2.25	0.45
1:B:292:ILE:HD13	1:B:297:LEU:HD13	1.98	0.44
1:B:504:ALA:HA	1:B:507:ARG:NH1	2.32	0.44
1:C:323:THR:OG1	1:C:324:THR:N	2.50	0.44
1:C:292:ILE:HD13	1:C:297:LEU:HD13	1.98	0.44
1:A:46:SER:HB3	1:A:313:CYS:SG	2.58	0.44
1:A:49:ARG:HE	1:A:368:ASP:CG	2.25	0.44
1:A:285:SER:OG	1:A:286:TYR:N	2.49	0.44
1:B:335:THR:OG1	1:B:396:MET:HG2	2.17	0.44
1:C:252:LEU:HD23	1:C:252:LEU:HA	1.89	0.44
2:F:7:GLU:HA	2:F:23:CYS:HA	1.99	0.44
1:A:504:ALA:HA	1:A:507:ARG:NH1	2.32	0.44
2:E:91:THR:HG22	2:E:124:GLN:NE2	2.32	0.44
2:D:91:THR:HG22	2:D:124:GLN:NE2	2.32	0.44
1:B:503:LEU:O	1:B:506:ILE:HG22	2.18	0.44
1:C:46:SER:HB3	1:C:313:CYS:SG	2.58	0.44
1:A:39:ALA:HB3	1:A:413:ILE:HD11	1.99	0.44
1:C:67:ASN:HD21	1:C:80:LYS:HG3	1.82	0.44
1:A:323:THR:OG1	1:A:324:THR:N	2.50	0.44
1:B:46:SER:HB3	1:B:313:CYS:SG	2.58	0.44
1:B:183:ASN:OD1	1:B:184:GLY:N	2.51	0.44
1:C:39:ALA:HB3	1:C:413:ILE:HD11	1.99	0.44
2:F:91:THR:HG22	2:F:124:GLN:NE2	2.32	0.44
1:C:504:ALA:HA	1:C:507:ARG:NH1	2.32	0.44

Continued on next page...

Continued from previous page...

Atom-1	Atom-2	Interatomic distance (Å)	Clash overlap (Å)
1:A:94:GLN:HA	1:A:292:ILE:HG21	2.00	0.44
2:E:7:GLU:HA	2:E:23:CYS:HA	1.99	0.44
1:C:183:ASN:OD1	1:C:184:GLY:N	2.51	0.44
1:A:261:ILE:HG12	1:A:274:MET:HE2	2.00	0.43
1:B:94:GLN:HA	1:B:292:ILE:HG21	2.00	0.43
1:A:151:GLY:HA3	1:A:288:ILE:HD12	2.00	0.43
1:B:151:GLY:HA3	1:B:288:ILE:HD12	2.00	0.43
1:C:89:ALA:HB2	1:C:231:LEU:HD23	2.01	0.43
1:A:503:LEU:O	1:A:506:ILE:HG22	2.18	0.43
1:B:39:ALA:HB3	1:B:413:ILE:HD11	1.99	0.43
1:B:62:SER:OG	1:B:196:LYS:HA	2.19	0.43
1:B:399:LYS:HB2	1:C:494:GLN:NE2	2.33	0.43
1:A:209:LYS:HE3	1:A:209:LYS:HB2	1.84	0.43
2:D:7:GLU:HA	2:D:23:CYS:HA	1.99	0.43
1:B:89:ALA:HB2	1:B:231:LEU:HD23	2.01	0.43
1:A:62:SER:H	1:A:86:TYR:HH	1.65	0.43
1:A:138:LEU:HD23	1:A:138:LEU:HA	1.82	0.43
1:B:49:ARG:HE	1:B:368:ASP:CG	2.25	0.43
1:B:482:VAL:HG21	1:B:503:LEU:HD21	2.01	0.43
1:A:83:LEU:HA	1:A:83:LEU:HD23	1.81	0.43
2:D:71:SER:N	2:D:80:TYR:O	2.36	0.43
2:D:108:CYS:HA	2:D:113:CYS:HB3	2.01	0.43
1:A:67:ASN:HD21	1:A:80:LYS:HG3	1.82	0.43
1:A:183:ASN:OD1	1:A:184:GLY:N	2.51	0.43
1:B:83:LEU:HD23	1:B:83:LEU:HA	1.81	0.43
2:E:100:LEU:HD12	2:E:100:LEU:HA	1.89	0.43
1:C:94:GLN:HA	1:C:292:ILE:HG21	2.00	0.43
1:A:62:SER:OG	1:A:196:LYS:HA	2.19	0.43
1:A:258:LEU:HD23	1:A:258:LEU:HA	1.88	0.43
1:B:67:ASN:HD21	1:B:80:LYS:HG3	1.82	0.43
1:B:261:ILE:HG12	1:B:274:MET:HE2	2.00	0.43
1:B:401:ASP:OD1	1:B:401:ASP:N	2.40	0.43
1:B:285:SER:HB2	1:B:304:PRO:HD3	2.00	0.43
1:C:285:SER:HB2	1:C:304:PRO:HD3	2.00	0.43
1:C:482:VAL:HG21	1:C:503:LEU:HD21	2.01	0.43
2:D:100:LEU:HB2	2:D:118:TYR:HE2	1.84	0.42
1:C:503:LEU:O	1:C:506:ILE:HG22	2.18	0.42
1:C:441:TYR:HB3	1:C:468:TYR:HE2	1.85	0.42
2:F:108:CYS:CA	2:F:113:CYS:HB3	2.50	0.42
1:A:441:TYR:HB3	1:A:468:TYR:HE2	1.85	0.42
1:B:264:MET:HE3	1:B:266:ILE:HD13	2.01	0.42

Continued on next page...

Continued from previous page...

Atom-1	Atom-2	Interatomic distance (Å)	Clash overlap (Å)
1:B:467:LEU:HD12	2:E:106:THR:O	2.20	0.42
2:E:108:CYS:CA	2:E:113:CYS:HB3	2.50	0.42
1:A:89:ALA:HB2	1:A:231:LEU:HD23	2.01	0.42
1:A:264:MET:HE3	1:A:266:ILE:HD13	2.01	0.42
1:A:482:VAL:HG21	1:A:503:LEU:HD21	2.01	0.42
1:B:293:LYS:HG3	1:B:294:GLU:HG3	2.01	0.42
1:C:62:SER:OG	1:C:196:LYS:HA	2.19	0.42
1:C:261:ILE:HG12	1:C:274:MET:HE2	2.00	0.42
2:F:100:LEU:HD12	2:F:100:LEU:HA	1.88	0.42
2:D:108:CYS:CA	2:D:113:CYS:HB3	2.50	0.42
1:B:243:VAL:HA	1:B:287:SER:O	2.20	0.42
1:B:441:TYR:HB3	1:B:468:TYR:HE2	1.85	0.42
2:E:100:LEU:HB2	2:E:118:TYR:HE2	1.84	0.42
1:C:151:GLY:HA3	1:C:288:ILE:HD12	2.00	0.42
1:C:467:LEU:HD12	2:F:106:THR:O	2.20	0.42
1:B:164:VAL:HG11	1:B:291:ILE:HG21	2.02	0.42
1:B:190:PHE:HD2	1:B:260:LEU:HD13	1.85	0.42
1:C:231:LEU:HD23	1:C:231:LEU:HA	1.90	0.42
1:C:243:VAL:HA	1:C:287:SER:O	2.20	0.42
1:A:285:SER:HB2	1:A:304:PRO:HD3	2.00	0.42
2:D:100:LEU:HG	2:D:101:CYS:H	1.85	0.42
2:E:100:LEU:HG	2:E:101:CYS:H	1.85	0.42
2:E:108:CYS:HA	2:E:113:CYS:HB3	2.01	0.42
2:F:100:LEU:HG	2:F:101:CYS:H	1.85	0.42
1:B:33:TYR:CE2	1:B:383:ASN:HB3	2.55	0.42
1:C:60:GLU:OE2	1:C:191:LYS:NZ	2.39	0.42
1:C:164:VAL:HG11	1:C:291:ILE:HG21	2.02	0.42
2:F:100:LEU:HB2	2:F:118:TYR:HE2	1.84	0.42
1:A:33:TYR:CE2	1:A:383:ASN:HB3	2.55	0.42
2:D:70:ILE:HG13	2:D:71:SER:N	2.35	0.41
1:B:365:VAL:HG13	1:B:365:VAL:O	2.20	0.41
1:C:264:MET:HE3	1:C:266:ILE:HD13	2.01	0.41
1:A:206:ILE:HG13	1:A:209:LYS:HE2	2.02	0.41
1:A:293:LYS:HG3	1:A:294:GLU:HG3	2.01	0.41
1:C:33:TYR:CE2	1:C:383:ASN:HB3	2.55	0.41
2:F:108:CYS:HA	2:F:113:CYS:HB3	2.01	0.41
1:A:322:CYS:N	1:A:417:TYR:OH	2.39	0.41
1:A:365:VAL:O	1:A:365:VAL:HG13	2.20	0.41
2:F:54:ILE:HD12	2:F:54:ILE:HA	1.91	0.41
1:A:243:VAL:HA	1:A:287:SER:O	2.20	0.41
1:B:56:VAL:O	1:B:189:THR:HA	2.21	0.41

Continued on next page...

Continued from previous page...

Atom-1	Atom-2	Interatomic distance (Å)	Clash overlap (Å)
1:C:293:LYS:HG3	1:C:294:GLU:HG3	2.01	0.41
1:C:341:TRP:CD2	1:C:365:VAL:HG21	2.56	0.41
1:C:449:THR:HB	1:C:456:LEU:HD11	2.03	0.41
2:F:70:ILE:HG13	2:F:71:SER:N	2.35	0.41
1:A:190:PHE:HD2	1:A:260:LEU:HD13	1.85	0.41
1:A:211:SER:O	1:A:211:SER:OG	2.31	0.41
1:B:206:ILE:HG13	1:B:209:LYS:HE2	2.02	0.41
2:E:61:ALA:H	2:E:64:VAL:CG2	2.34	0.41
1:C:206:ILE:HG13	1:C:209:LYS:HE2	2.02	0.41
1:C:506:ILE:HD12	1:C:506:ILE:HA	1.89	0.41
1:A:449:THR:HB	1:A:456:LEU:HD11	2.03	0.41
1:B:341:TRP:CD2	1:B:365:VAL:HG21	2.56	0.41
1:B:34:GLN:HE21	1:B:471:GLY:H	1.69	0.41
1:B:252:LEU:HD23	1:B:252:LEU:HA	1.89	0.41
2:E:40:GLN:C	2:E:92:ALA:HB1	2.46	0.41
2:F:40:GLN:C	2:F:92:ALA:HB1	2.46	0.41
1:A:164:VAL:HG11	1:A:291:ILE:HG21	2.02	0.41
1:A:341:TRP:CD2	1:A:365:VAL:HG21	2.56	0.41
1:A:467:LEU:HD12	2:D:106:THR:O	2.20	0.41
1:A:231:LEU:HD23	1:A:231:LEU:HA	1.90	0.40
2:D:40:GLN:C	2:D:92:ALA:HB1	2.46	0.40
1:C:190:PHE:HD2	1:C:260:LEU:HD13	1.85	0.40
1:A:56:VAL:O	1:A:189:THR:HA	2.21	0.40
1:A:261:ILE:HD13	1:A:274:MET:HB3	2.04	0.40
1:C:31:GLU:OE1	1:C:33:TYR:OH	2.28	0.40
1:C:365:VAL:O	1:C:365:VAL:HG13	2.20	0.40
2:E:91:THR:C	2:E:124:GLN:HE22	2.30	0.40
1:C:56:VAL:O	1:C:189:THR:HA	2.21	0.40
1:C:492:ILE:HD13	1:C:492:ILE:HA	1.98	0.40
2:D:61:ALA:H	2:D:64:VAL:CG2	2.34	0.40
2:E:97:LYS:HD2	2:E:119:TRP:CZ2	2.57	0.40
1:C:34:GLN:HE21	1:C:471:GLY:H	1.69	0.40
2:F:38:TYR:N	2:F:95:TYR:O	2.50	0.40
2:F:61:ALA:H	2:F:64:VAL:CG2	2.34	0.40
1:A:252:LEU:HD23	1:A:252:LEU:HA	1.89	0.40
1:B:449:THR:HB	1:B:456:LEU:HD11	2.03	0.40

There are no symmetry-related clashes.

5.3 Torsion angles [i](#)

5.3.1 Protein backbone [i](#)

In the following table, the Percentiles column shows the percent Ramachandran outliers of the chain as a percentile score with respect to all PDB entries followed by that with respect to all EM entries.

The Analysed column shows the number of residues for which the backbone conformation was analysed, and the total number of residues.

Mol	Chain	Analysed	Favoured	Allowed	Outliers	Percentiles	
1	A	449/569 (79%)	418 (93%)	31 (7%)	0	100	100
1	B	449/569 (79%)	418 (93%)	31 (7%)	0	100	100
1	C	449/569 (79%)	418 (93%)	31 (7%)	0	100	100
2	D	122/139 (88%)	108 (88%)	14 (12%)	0	100	100
2	E	122/139 (88%)	108 (88%)	14 (12%)	0	100	100
2	F	122/139 (88%)	108 (88%)	14 (12%)	0	100	100
All	All	1713/2124 (81%)	1578 (92%)	135 (8%)	0	100	100

There are no Ramachandran outliers to report.

5.3.2 Protein sidechains [i](#)

There are no protein residues with a non-rotameric sidechain to report in this entry.

5.3.3 RNA [i](#)

There are no RNA molecules in this entry.

5.4 Non-standard residues in protein, DNA, RNA chains [i](#)

There are no non-standard protein/DNA/RNA residues in this entry.

5.5 Carbohydrates [i](#)

There are no oligosaccharides in this entry.

5.6 Ligand geometry [i](#)

There are no ligands in this entry.

5.7 Other polymers [i](#)

There are no such residues in this entry.

5.8 Polymer linkage issues [i](#)

There are no chain breaks in this entry.

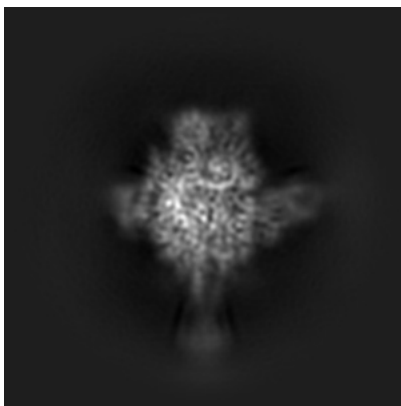
6 Map visualisation [i](#)

This section contains visualisations of the EMDB entry EMD-63217. These allow visual inspection of the internal detail of the map and identification of artifacts.

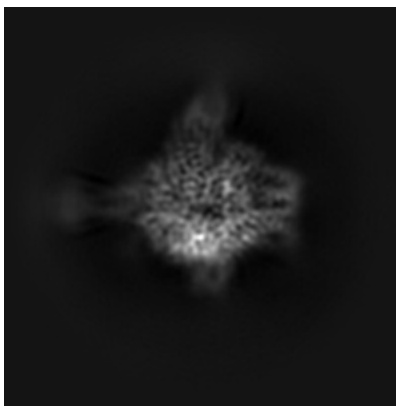
Images derived from a raw map, generated by summing the deposited half-maps, are presented below the corresponding image components of the primary map to allow further visual inspection and comparison with those of the primary map.

6.1 Orthogonal projections [i](#)

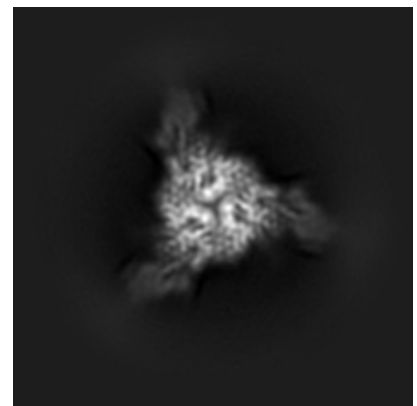
6.1.1 Primary map



X

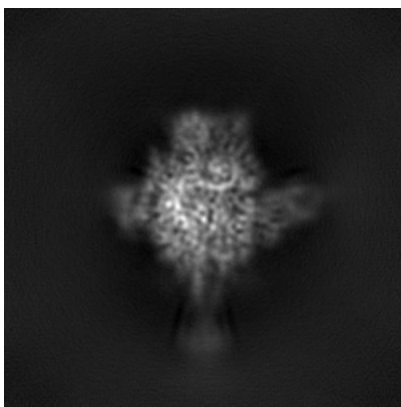


Y

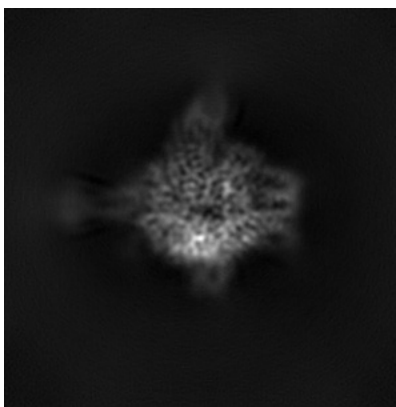


Z

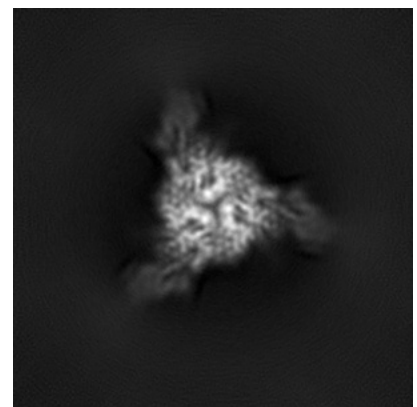
6.1.2 Raw map



X



Y

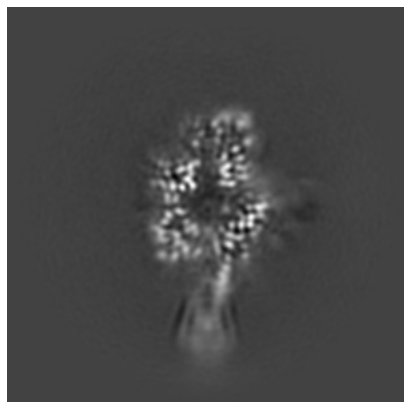


Z

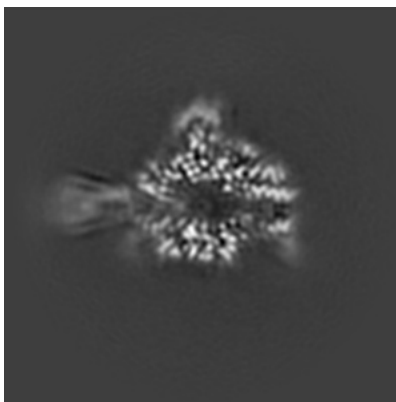
The images above show the map projected in three orthogonal directions.

6.2 Central slices [i](#)

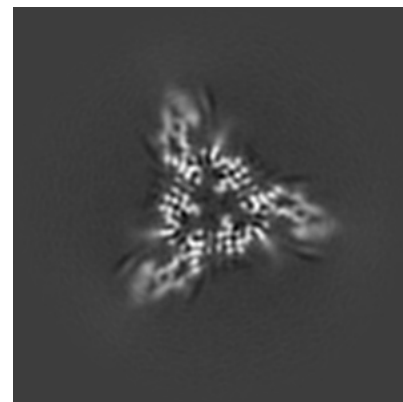
6.2.1 Primary map



X Index: 120

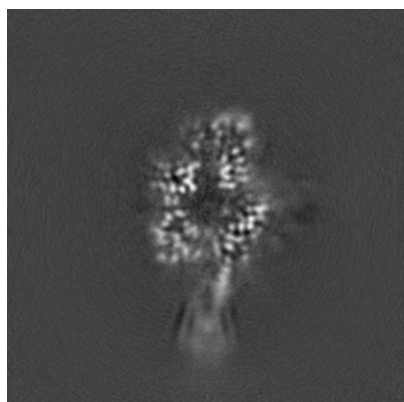


Y Index: 120

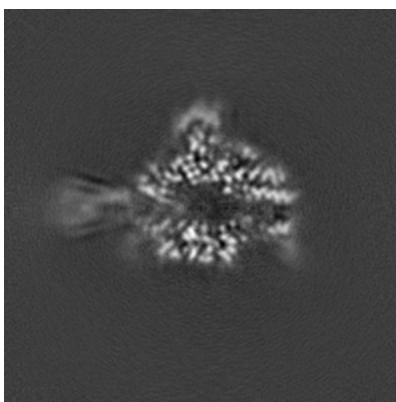


Z Index: 120

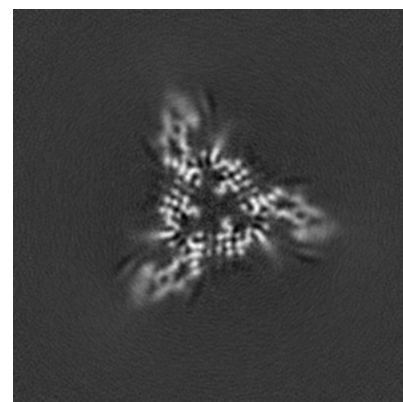
6.2.2 Raw map



X Index: 120



Y Index: 120

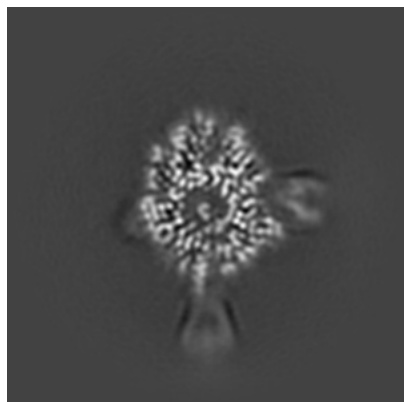


Z Index: 120

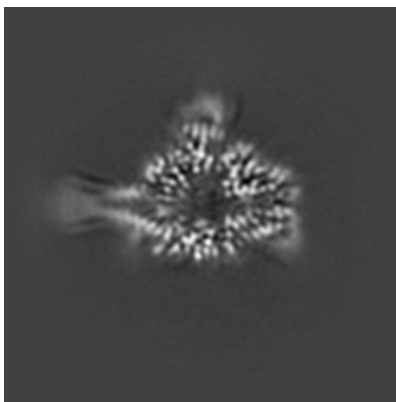
The images above show central slices of the map in three orthogonal directions.

6.3 Largest variance slices [i](#)

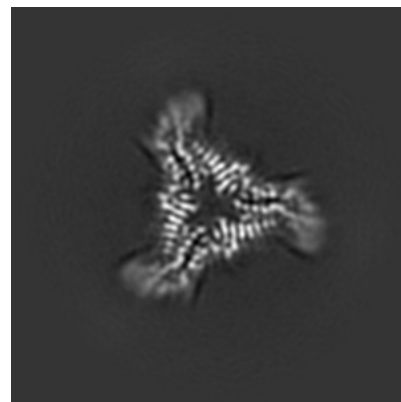
6.3.1 Primary map



X Index: 110

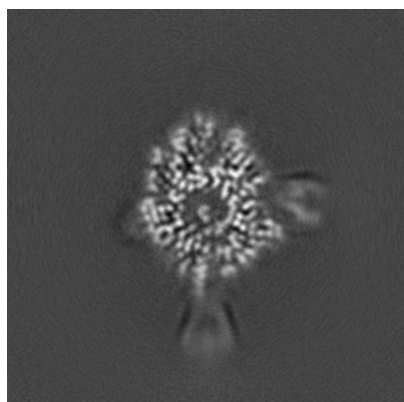


Y Index: 116

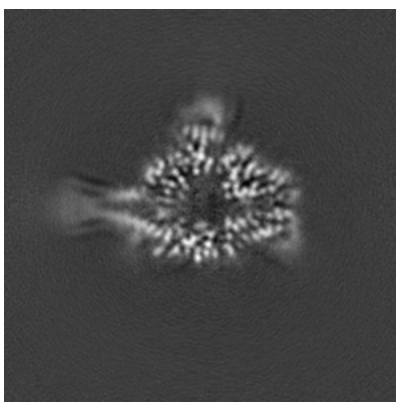


Z Index: 113

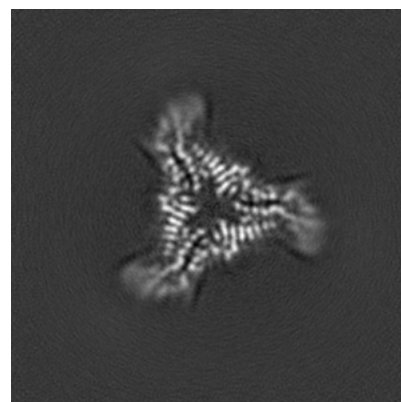
6.3.2 Raw map



X Index: 110



Y Index: 116

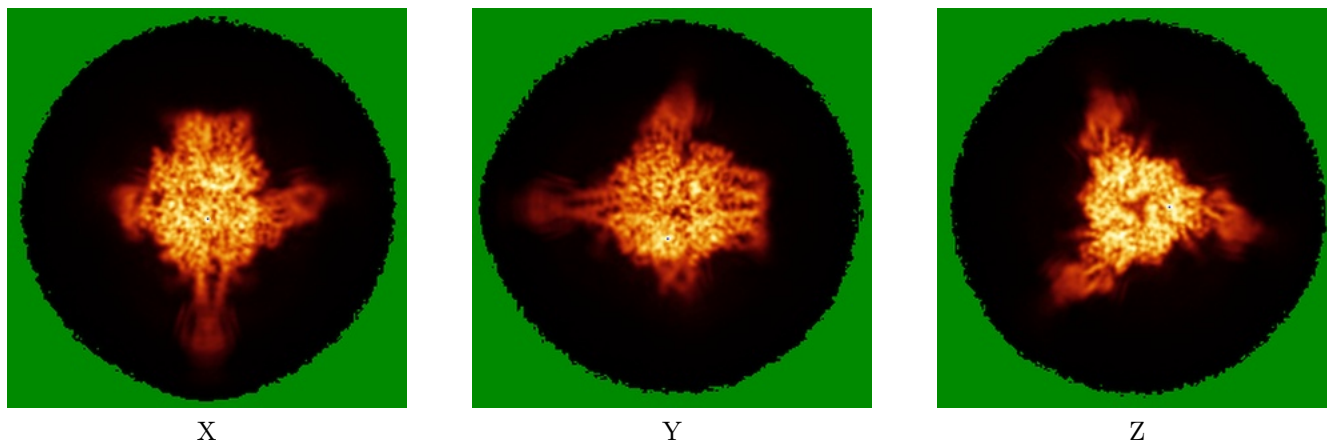


Z Index: 113

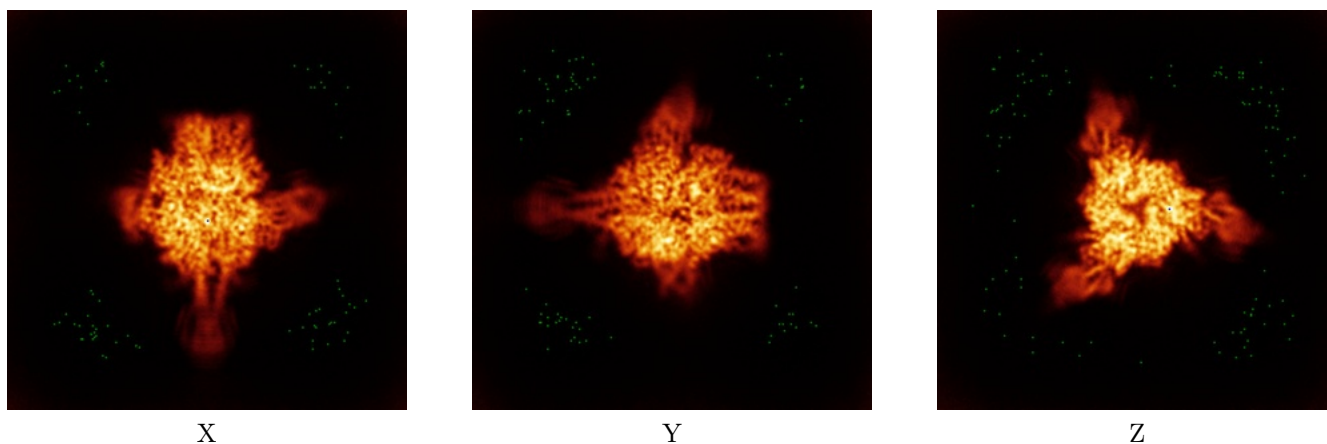
The images above show the largest variance slices of the map in three orthogonal directions.

6.4 Orthogonal standard-deviation projections (False-color) [i](#)

6.4.1 Primary map



6.4.2 Raw map



The images above show the map standard deviation projections with false color in three orthogonal directions. Minimum values are shown in green, max in blue, and dark to light orange shades represent small to large values respectively.

6.5 Orthogonal surface views [i](#)

This section was not generated.

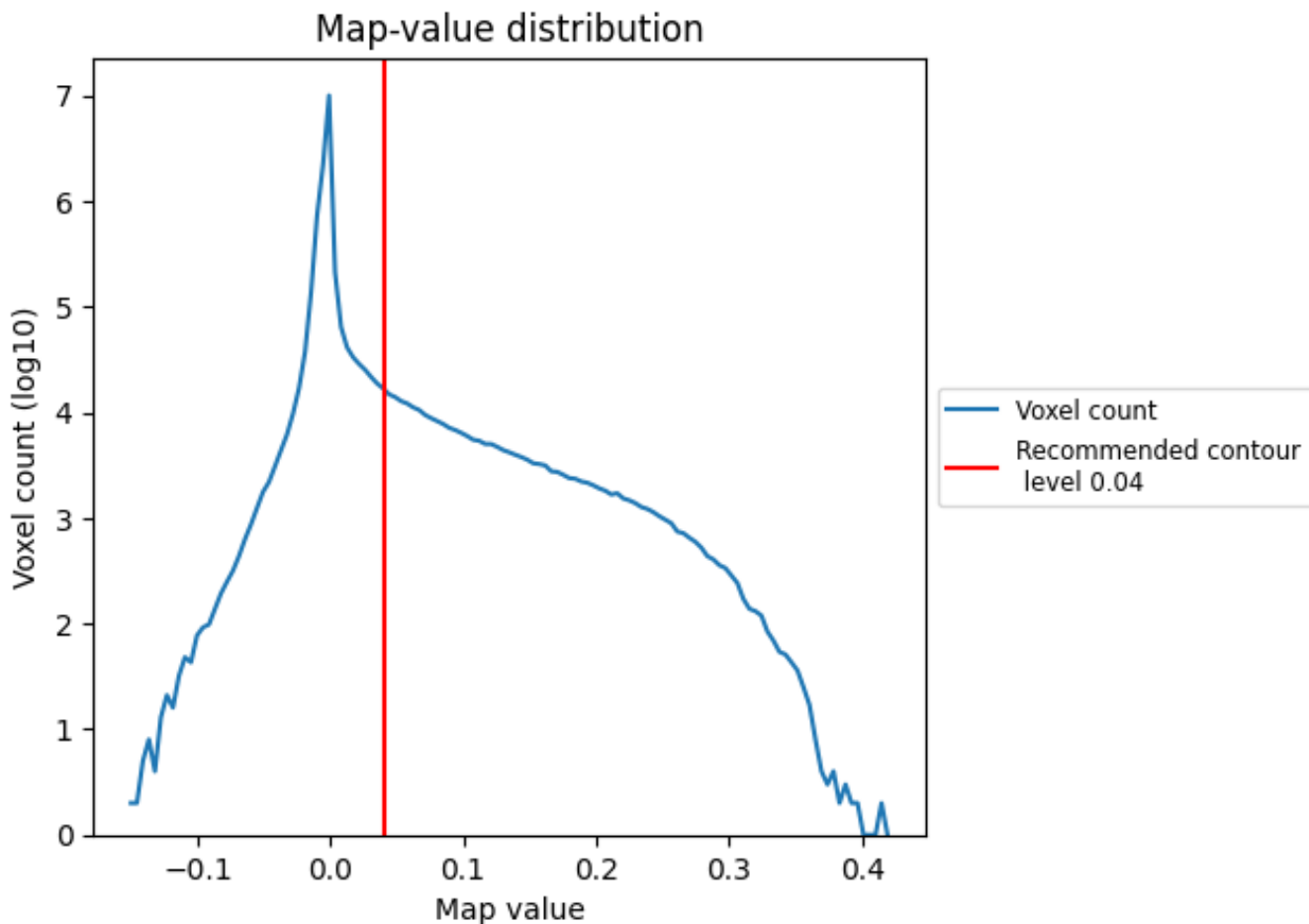
6.6 Mask visualisation [i](#)

This section was not generated. No masks/segmentation were deposited.

7 Map analysis [i](#)

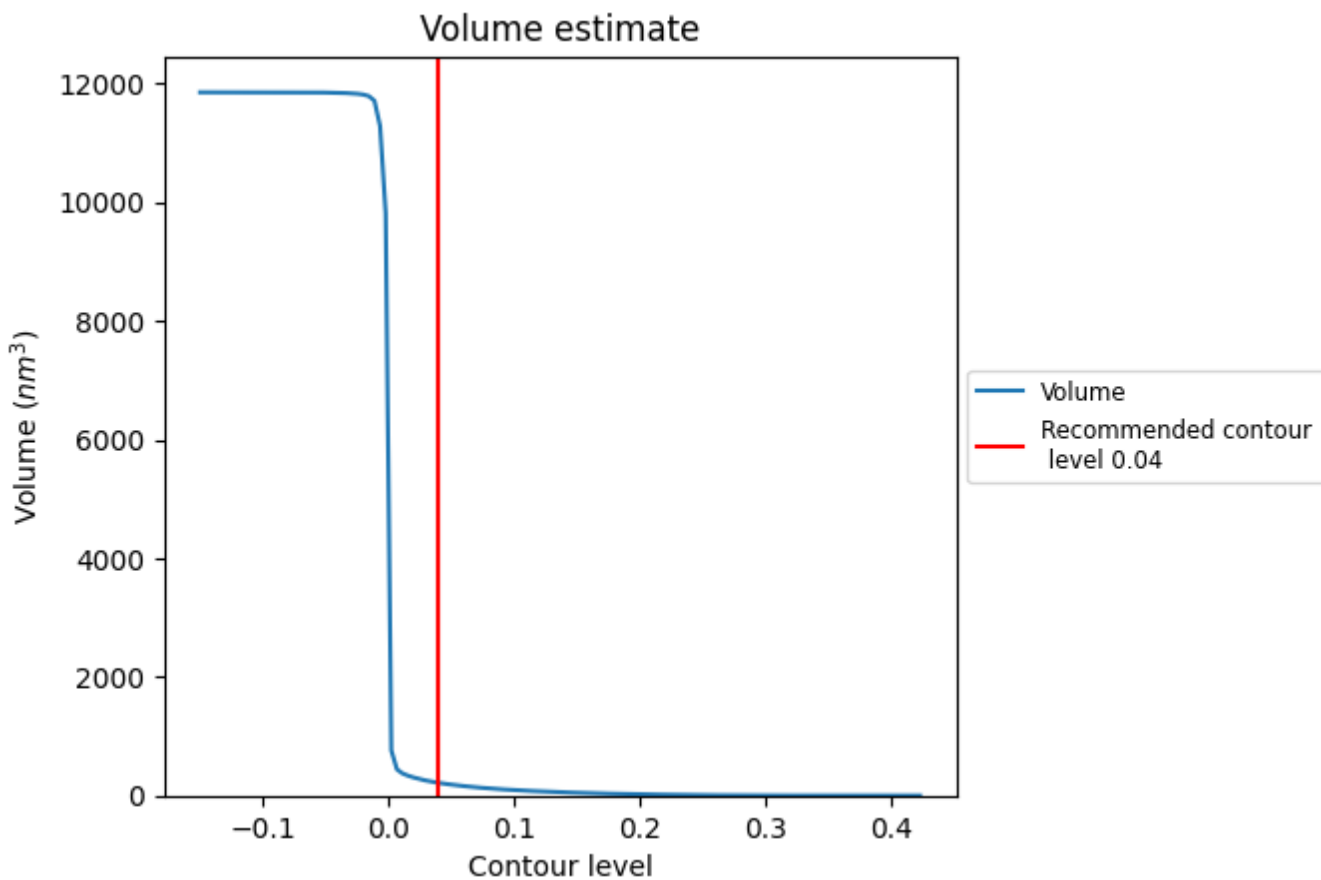
This section contains the results of statistical analysis of the map.

7.1 Map-value distribution [i](#)



The map-value distribution is plotted in 128 intervals along the x-axis. The y-axis is logarithmic. A spike in this graph at zero usually indicates that the volume has been masked.

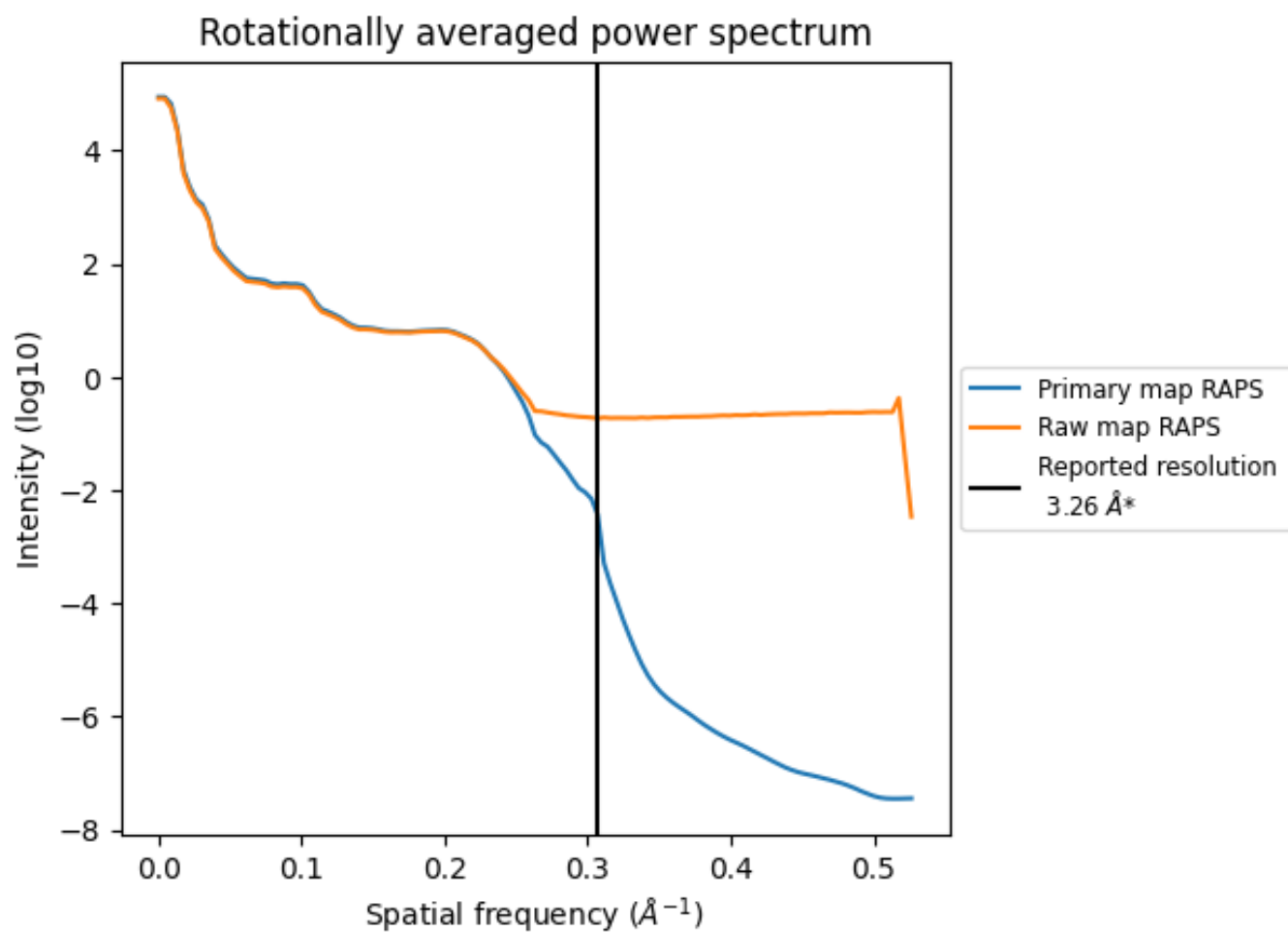
7.2 Volume estimate [i](#)



The volume at the recommended contour level is 215 nm³; this corresponds to an approximate mass of 194 kDa.

The volume estimate graph shows how the enclosed volume varies with the contour level. The recommended contour level is shown as a vertical line and the intersection between the line and the curve gives the volume of the enclosed surface at the given level.

7.3 Rotationally averaged power spectrum [i](#)

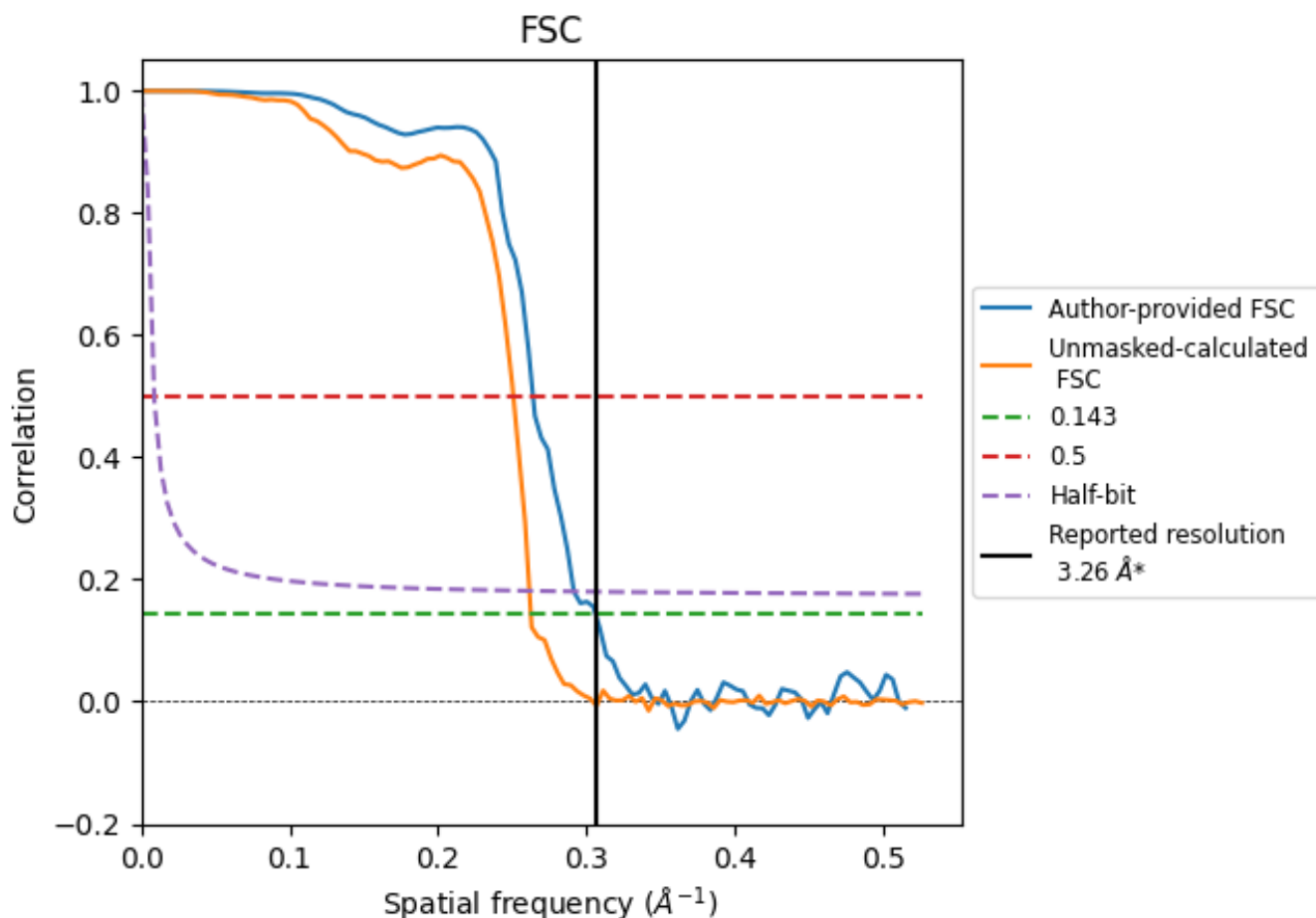


*Reported resolution corresponds to spatial frequency of 0.307 Å⁻¹

8 Fourier-Shell correlation [i](#)

Fourier-Shell Correlation (FSC) is the most commonly used method to estimate the resolution of single-particle and subtomogram-averaged maps. The shape of the curve depends on the imposed symmetry, mask and whether or not the two 3D reconstructions used were processed from a common reference. The reported resolution is shown as a black line. A curve is displayed for the half-bit criterion in addition to lines showing the 0.143 gold standard cut-off and 0.5 cut-off.

8.1 FSC [i](#)



*Reported resolution corresponds to spatial frequency of 0.307 Å⁻¹

8.2 Resolution estimates [i](#)

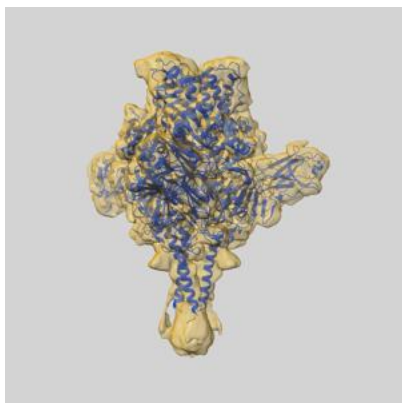
Resolution estimate (Å)	Estimation criterion (FSC cut-off)		
	0.143	0.5	Half-bit
Reported by author	3.26	-	-
Author-provided FSC curve	3.26	3.79	3.43
Unmasked-calculated*	3.81	3.99	3.82

*Resolution estimate based on FSC curve calculated by comparison of deposited half-maps. The value from deposited half-maps intersecting FSC 0.143 CUT-OFF 3.81 differs from the reported value 3.26 by more than 10 %

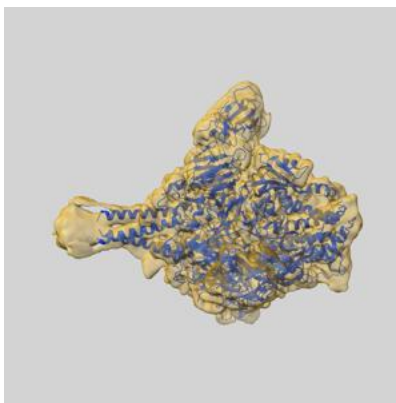
9 Map-model fit [i](#)

This section contains information regarding the fit between EMDB map EMD-63217 and PDB model 9LM6. Per-residue inclusion information can be found in section 3 on page 10.

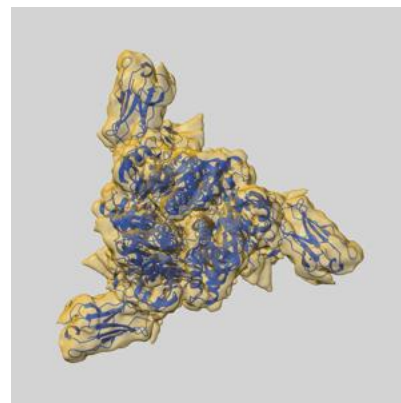
9.1 Map-model overlay [i](#)



X



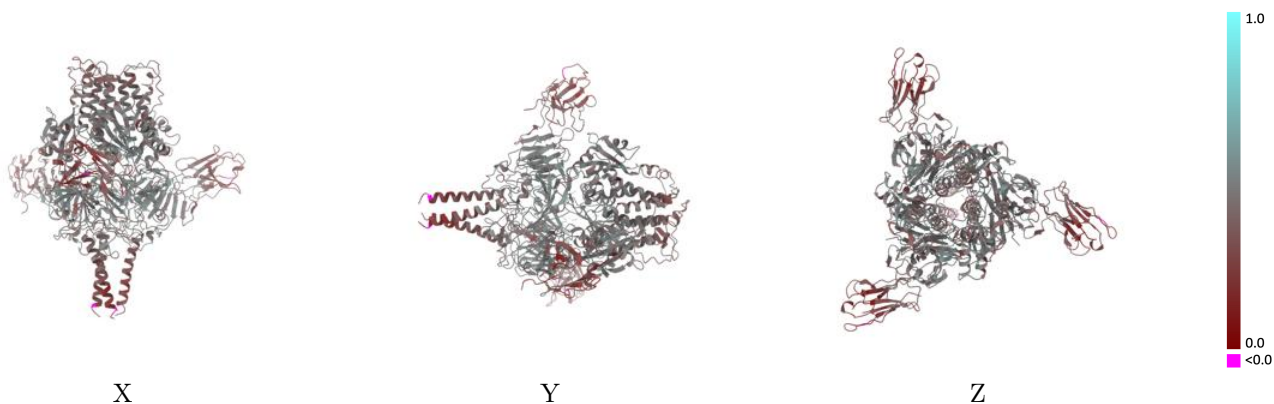
Y



Z

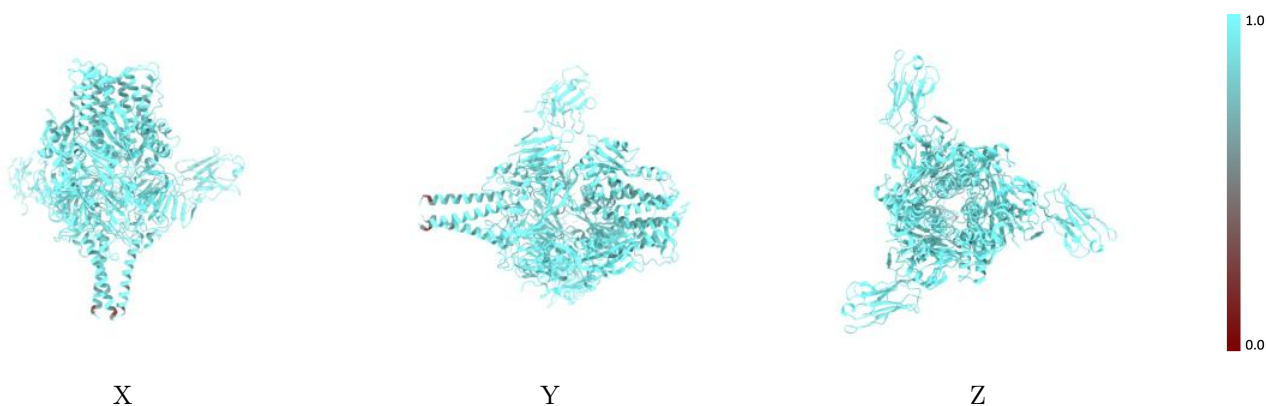
The images above show the 3D surface view of the map at the recommended contour level 0.04 at 50% transparency in yellow overlaid with a ribbon representation of the model coloured in blue. These images allow for the visual assessment of the quality of fit between the atomic model and the map.

9.2 Q-score mapped to coordinate model [\(i\)](#)



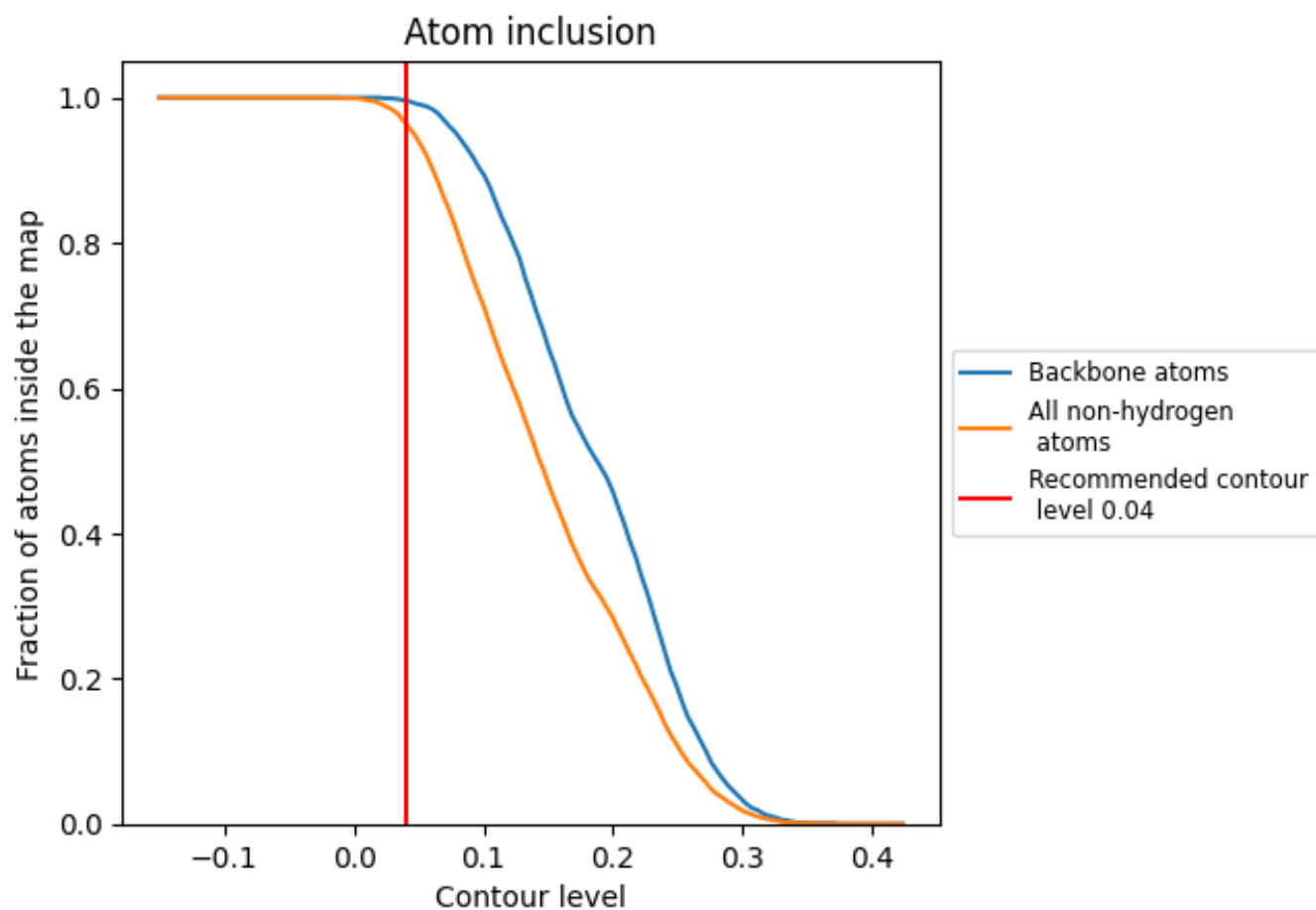
The images above show the model with each residue coloured according to its Q-score. This shows their resolvability in the map with higher Q-score values reflecting better resolvability. Please note: Q-score is calculating the resolvability of atoms, and thus high values are only expected at resolutions at which atoms can be resolved. Low Q-score values may therefore be expected for many entries.

9.3 Atom inclusion mapped to coordinate model [\(i\)](#)



The images above show the model with each residue coloured according to its atom inclusion. This shows to what extent they are inside the map at the recommended contour level (0.04).















9.4 Atom inclusion [i](#)



At the recommended contour level, 100% of all backbone atoms, 96% of all non-hydrogen atoms, are inside the map.

9.5 Map-model fit summary [i](#)

The table lists the average atom inclusion at the recommended contour level (0.04) and Q-score for the entire model and for each chain.

Chain	Atom inclusion	Q-score
All	 0.9650	 0.4210
A	 0.9700	 0.4490
B	 0.9700	 0.4490
C	 0.9700	 0.4480
D	 0.9430	 0.3190
E	 0.9470	 0.3170
F	 0.9480	 0.3180

