



Full wwPDB EM Validation Report ⓘ

Mar 8, 2026 – 12:16 AM UTC

PDB ID : 9LHO / pdb_00009lho
EMDB ID : EMD-63103
Title : CryoEM structure of H7 hemagglutinin in complex with a human neutralizing antibody 6Y13
Authors : Wang, M.; Yuan, B.; Peng, Q.; Gao, G.F.; Shi, Y.
Deposited on : 2025-01-13
Resolution : 3.10 Å(reported)

This is a Full wwPDB EM Validation Report for a publicly released PDB entry.

We welcome your comments at validation@mail.wwpdb.org

A user guide is available at

<https://www.wwpdb.org/validation/2017/EMValidationReportHelp>

with specific help available everywhere you see the ⓘ symbol.

The types of validation reports are described at

<http://www.wwpdb.org/validation/2017/FAQs#types>.

The following versions of software and data (see [references ⓘ](#)) were used in the production of this report:

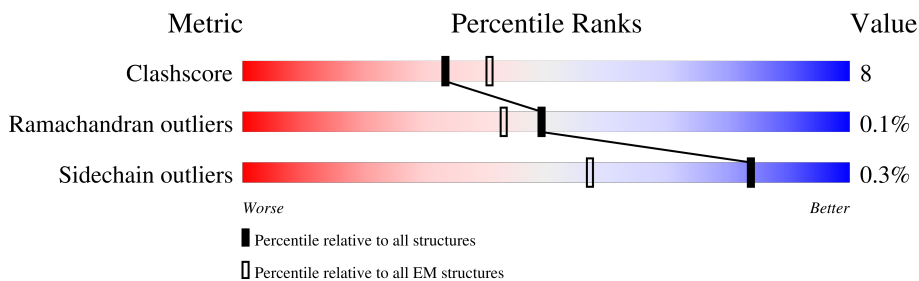
EMDB validation analysis : 0.0.1.dev132
Mogul : 2022.3.0, CSD as543be (2022)
MolProbity : 4-5-2 with Phenix2.0
Percentile statistics : 20250101.v01 (using entries in the PDB archive January 1st 2025)
EM percentile statistics : 202505.v01 (Using data in the EMDB archive up until May 2025)
MapQ : 1.9.13
Ideal geometry (proteins) : Engh & Huber (2001)
Ideal geometry (DNA, RNA) : Parkinson et al. (1996)
Validation Pipeline (wwPDB-VP) : 2.49

1 Overall quality at a glance i

The following experimental techniques were used to determine the structure:
ELECTRON MICROSCOPY

The reported resolution of this entry is 3.10 Å.

Percentile scores (ranging between 0-100) for global validation metrics of the entry are shown in the following graphic. The table shows the number of entries on which the scores are based.



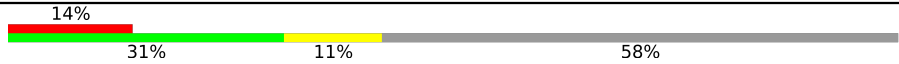
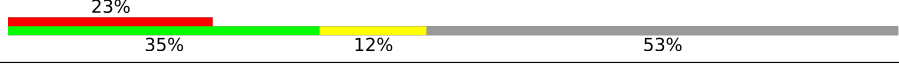
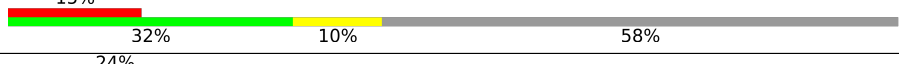

Metric	Whole archive (#Entries)	EM structures (#Entries)
Clashscore	229148	23984
Ramachandran outliers	224038	23583
Sidechain outliers	223484	23102

The table below summarises the geometric issues observed across the polymeric chains and their fit to the map. The red, orange, yellow and green segments of the bar indicate the fraction of residues that contain outliers for ≥ 3 , 2, 1 and 0 types of geometric quality criteria respectively. A grey segment represents the fraction of residues that are not modelled. The numeric value for each fraction is indicated below the corresponding segment, with a dot representing fractions $\leq 5\%$. The upper red bar (where present) indicates the fraction of residues that have poor fit to the EM map (all-atom inclusion $< 40\%$). The numeric value is given above the bar.

Mol	Chain	Length	Quality of chain
1	A	505	<div style="display: flex; justify-content: space-between; align-items: center;"> <div style="text-align: right;">19%</div> <div style="width: 100%; height: 15px; background: linear-gradient(to right, red 19%, orange 19%, yellow 12%, green 50%, grey 38%);"></div> <div style="text-align: left;">50%</div> </div>
1	B	505	<div style="display: flex; justify-content: space-between; align-items: center;"> <div style="text-align: right;">7%</div> <div style="width: 100%; height: 15px; background: linear-gradient(to right, red 7%, orange 7%, yellow 5%, green 27%, grey 68%);"></div> <div style="text-align: left;">27%</div> </div>
1	C	505	<div style="display: flex; justify-content: space-between; align-items: center;"> <div style="text-align: right;">19%</div> <div style="width: 100%; height: 15px; background: linear-gradient(to right, red 19%, orange 19%, yellow 12%, green 50%, grey 38%);"></div> <div style="text-align: left;">50%</div> </div>
1	D	505	<div style="display: flex; justify-content: space-between; align-items: center;"> <div style="text-align: right;">7%</div> <div style="width: 100%; height: 15px; background: linear-gradient(to right, red 7%, orange 7%, yellow 6%, green 27%, grey 68%);"></div> <div style="text-align: left;">27%</div> </div>
1	E	505	<div style="display: flex; justify-content: space-between; align-items: center;"> <div style="text-align: right;">19%</div> <div style="width: 100%; height: 15px; background: linear-gradient(to right, red 19%, orange 19%, yellow 14%, green 48%, grey 38%);"></div> <div style="text-align: left;">48%</div> </div>
1	F	505	<div style="display: flex; justify-content: space-between; align-items: center;"> <div style="text-align: right;">8%</div> <div style="width: 100%; height: 15px; background: linear-gradient(to right, red 8%, orange 8%, yellow 6%, green 26%, grey 68%);"></div> <div style="text-align: left;">26%</div> </div>
2	H	264	<div style="display: flex; justify-content: space-between; align-items: center;"> <div style="text-align: right;">15%</div> <div style="width: 100%; height: 15px; background: linear-gradient(to right, red 15%, orange 15%, yellow 12%, green 30%, grey 58%);"></div> <div style="text-align: left;">30%</div> </div>
2	I	264	<div style="display: flex; justify-content: space-between; align-items: center;"> <div style="text-align: right;">25%</div> <div style="width: 100%; height: 15px; background: linear-gradient(to right, red 25%, orange 25%, yellow 10%, green 36%, grey 53%);"></div> <div style="text-align: left;">36%</div> </div>

Continued on next page...

Continued from previous page...

Mol	Chain	Length	Quality of chain
2	N	264	
2	O	264	
2	S	264	
2	T	264	

2 Entry composition [i](#)

There are 3 unique types of molecules in this entry. The entry contains 16638 atoms, of which 0 are hydrogens and 0 are deuteriums.

In the tables below, the AltConf column contains the number of residues with at least one atom in alternate conformation and the Trace column contains the number of residues modelled with at most 2 atoms.

- Molecule 1 is a protein called Hemagglutinin.

Mol	Chain	Residues	Atoms					AltConf	Trace
			Total	C	N	O	S		
1	A	314	2386	1480	432	459	15	0	0
1	B	163	1326	815	233	270	8	0	0
1	C	314	2386	1480	433	458	15	0	0
1	D	163	1326	815	233	270	8	0	0
1	E	314	2386	1480	433	458	15	0	0
1	F	163	1326	815	233	270	8	0	0

There are 42 discrepancies between the modelled and reference sequences:

Chain	Residue	Modelled	Actual	Comment	Reference
A	499	GLU	-	expression tag	UNP N0DP11
A	500	PHE	-	expression tag	UNP N0DP11
A	501	ARG	-	expression tag	UNP N0DP11
A	502	LEU	-	expression tag	UNP N0DP11
A	503	VAL	-	expression tag	UNP N0DP11
A	504	PRO	-	expression tag	UNP N0DP11
A	505	ARG	-	expression tag	UNP N0DP11
B	499	GLU	-	expression tag	UNP N0DP11
B	500	PHE	-	expression tag	UNP N0DP11
B	501	ARG	-	expression tag	UNP N0DP11
B	502	LEU	-	expression tag	UNP N0DP11
B	503	VAL	-	expression tag	UNP N0DP11
B	504	PRO	-	expression tag	UNP N0DP11
B	505	ARG	-	expression tag	UNP N0DP11
C	499	GLU	-	expression tag	UNP N0DP11
C	500	PHE	-	expression tag	UNP N0DP11
C	501	ARG	-	expression tag	UNP N0DP11
C	502	LEU	-	expression tag	UNP N0DP11

Continued on next page...

Continued from previous page...

Chain	Residue	Modelled	Actual	Comment	Reference
C	503	VAL	-	expression tag	UNP N0DP11
C	504	PRO	-	expression tag	UNP N0DP11
C	505	ARG	-	expression tag	UNP N0DP11
D	499	GLU	-	expression tag	UNP N0DP11
D	500	PHE	-	expression tag	UNP N0DP11
D	501	ARG	-	expression tag	UNP N0DP11
D	502	LEU	-	expression tag	UNP N0DP11
D	503	VAL	-	expression tag	UNP N0DP11
D	504	PRO	-	expression tag	UNP N0DP11
D	505	ARG	-	expression tag	UNP N0DP11
E	499	GLU	-	expression tag	UNP N0DP11
E	500	PHE	-	expression tag	UNP N0DP11
E	501	ARG	-	expression tag	UNP N0DP11
E	502	LEU	-	expression tag	UNP N0DP11
E	503	VAL	-	expression tag	UNP N0DP11
E	504	PRO	-	expression tag	UNP N0DP11
E	505	ARG	-	expression tag	UNP N0DP11
F	499	GLU	-	expression tag	UNP N0DP11
F	500	PHE	-	expression tag	UNP N0DP11
F	501	ARG	-	expression tag	UNP N0DP11
F	502	LEU	-	expression tag	UNP N0DP11
F	503	VAL	-	expression tag	UNP N0DP11
F	504	PRO	-	expression tag	UNP N0DP11
F	505	ARG	-	expression tag	UNP N0DP11

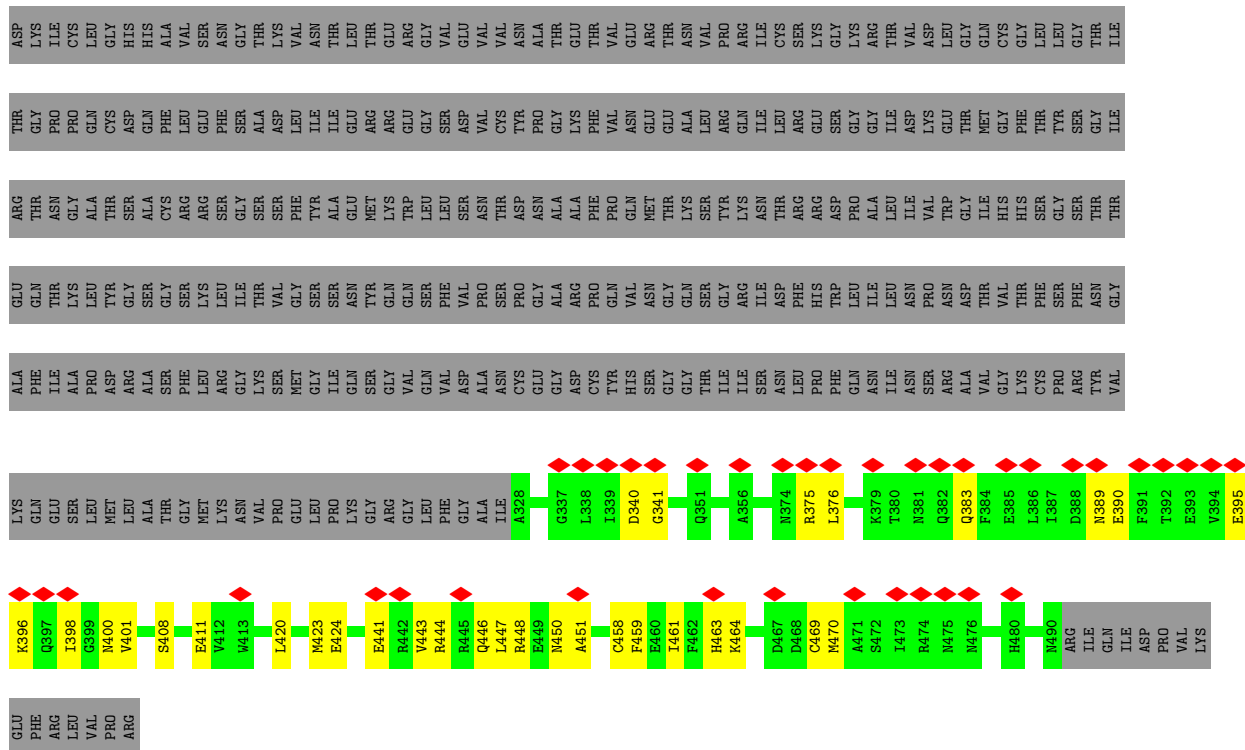
- Molecule 2 is a protein called scFv of 6Y13 chimera.

Mol	Chain	Residues	Atoms				AltConf	Trace	
			Total	C	N	O			S
2	H	111	846	535	137	170	4	0	0
2	N	111	846	535	137	170	4	0	0
2	S	111	846	535	137	170	4	0	0
2	I	125	946	591	170	180	5	0	0
2	O	125	946	591	170	180	5	0	0
2	T	125	946	591	170	180	5	0	0

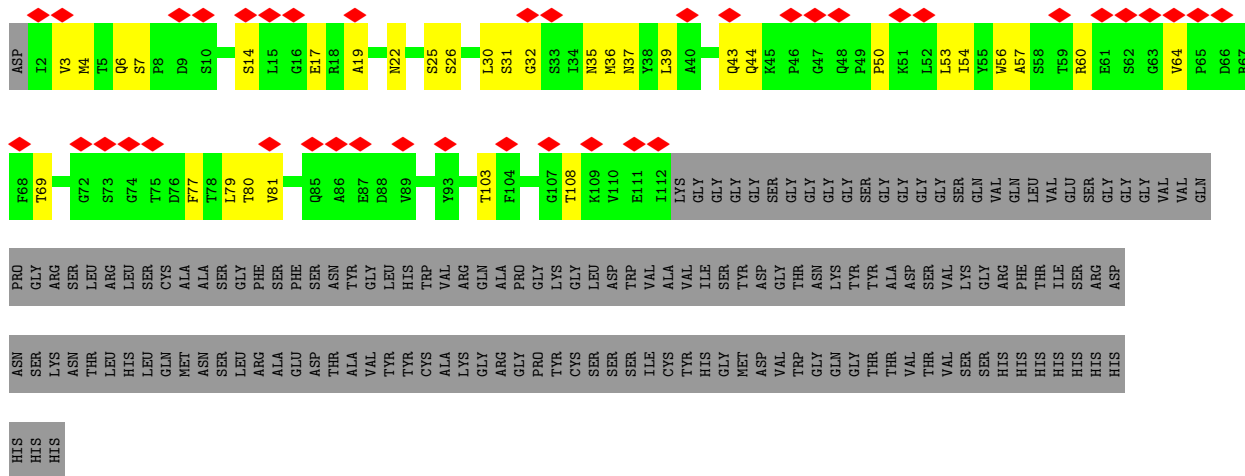
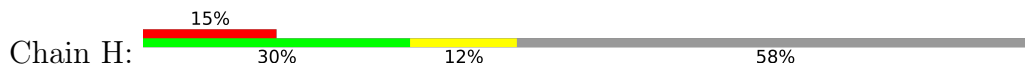
- Molecule 3 is 2-acetamido-2-deoxy-beta-D-glucopyranose (CCD ID: NAG) (formula: C₈H₁₅NO₆).



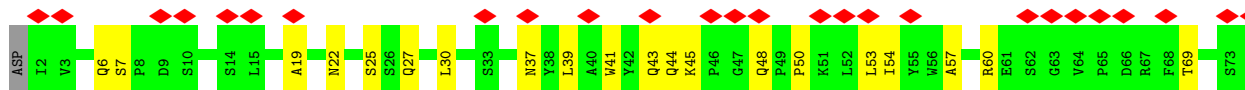
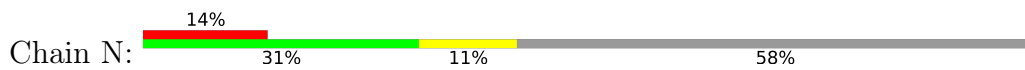
Mol	Chain	Residues	Atoms				AltConf
			Total	C	N	O	
3	A	1	Total 14	8	1	5	0
3	A	1	Total 14	8	1	5	0
3	B	1	Total 14	8	1	5	0
3	C	1	Total 14	8	1	5	0
3	C	1	Total 14	8	1	5	0
3	D	1	Total 14	8	1	5	0
3	E	1	Total 14	8	1	5	0
3	E	1	Total 14	8	1	5	0
3	F	1	Total 14	8	1	5	0

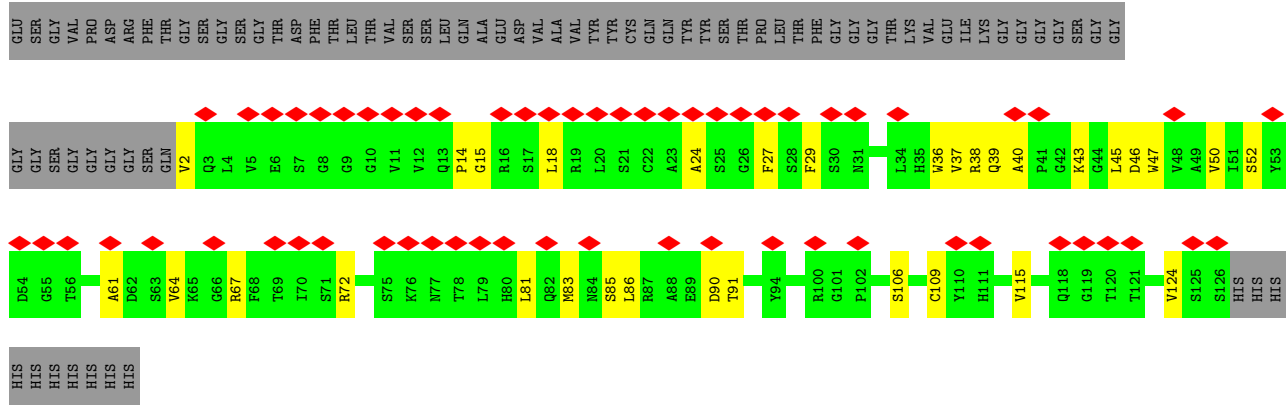


• Molecule 2: scFv of 6Y13 chimera

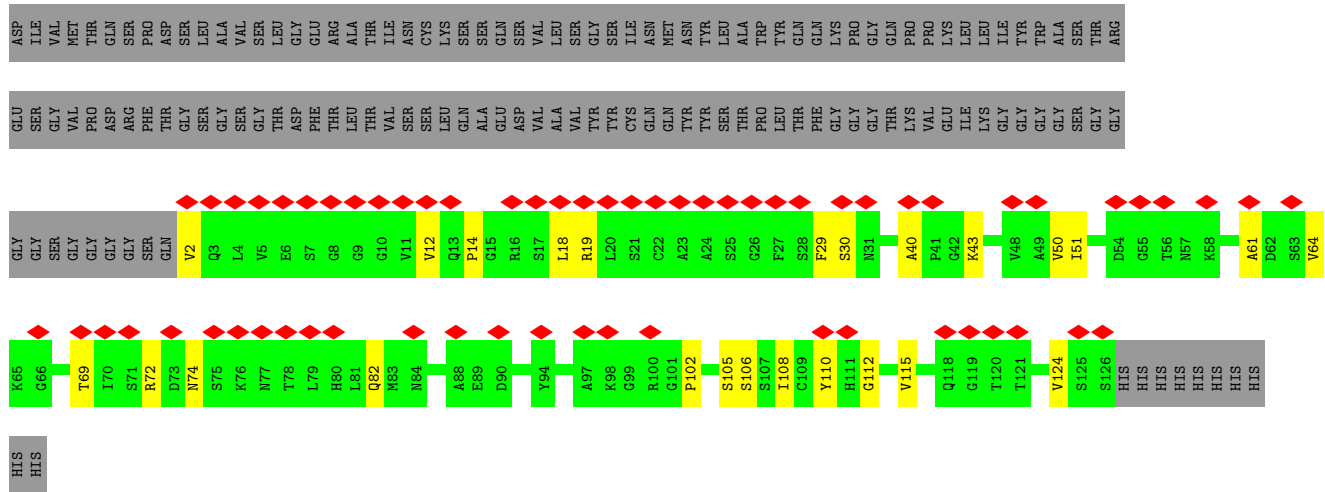
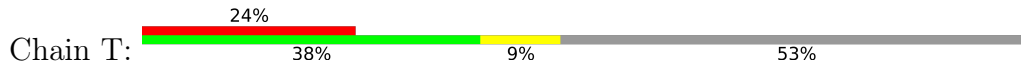


• Molecule 2: scFv of 6Y13 chimera





• Molecule 2: scFv of 6Y13 chimera



4 Experimental information

Property	Value	Source
EM reconstruction method	SINGLE PARTICLE	Depositor
Imposed symmetry	POINT, Not provided	
Number of particles used	83312	Depositor
Resolution determination method	FSC 0.143 CUT-OFF	Depositor
CTF correction method	PHASE FLIPPING AND AMPLITUDE CORRECTION	Depositor
Microscope	FEI TALOS ARCTICA	Depositor
Voltage (kV)	300	Depositor
Electron dose ($e^-/\text{\AA}^2$)	60	Depositor
Minimum defocus (nm)	1500	Depositor
Maximum defocus (nm)	3000	Depositor
Magnification	Not provided	
Image detector	GATAN K2 BASE (4k x 4k)	Depositor
Maximum map value	1.797	Depositor
Minimum map value	-0.002	Depositor
Average map value	0.002	Depositor
Map value standard deviation	0.036	Depositor
Recommended contour level	0.0103	Depositor
Map size (Å)	266.24, 266.24, 266.24	wwPDB
Map dimensions	256, 256, 256	wwPDB
Map angles (°)	90.0, 90.0, 90.0	wwPDB
Pixel spacing (Å)	1.04, 1.04, 1.04	Depositor

5 Model quality [i](#)

5.1 Standard geometry [i](#)

Bond lengths and bond angles in the following residue types are not validated in this section: NAG

The Z score for a bond length (or angle) is the number of standard deviations the observed value is removed from the expected value. A bond length (or angle) with $|Z| > 5$ is considered an outlier worth inspection. RMSZ is the root-mean-square of all Z scores of the bond lengths (or angles).

Mol	Chain	Bond lengths		Bond angles	
		RMSZ	# Z >5	RMSZ	# Z >5
1	A	0.14	0/2432	0.37	0/3289
1	B	0.15	0/1349	0.39	0/1818
1	C	0.17	0/2432	0.40	0/3289
1	D	0.14	0/1349	0.38	0/1818
1	E	0.15	0/2432	0.39	0/3289
1	F	0.14	0/1349	0.38	0/1818
2	H	0.21	0/865	0.58	0/1178
2	I	0.28	0/968	0.46	1/1312 (0.1%)
2	N	0.16	0/865	0.44	0/1178
2	O	0.15	0/968	0.43	1/1312 (0.1%)
2	S	0.28	0/865	0.52	0/1178
2	T	0.13	0/968	0.35	0/1312
All	All	0.17	0/16842	0.41	2/22791 (0.0%)

There are no bond length outliers.

All (2) bond angle outliers are listed below:

Mol	Chain	Res	Type	Atoms	Z	Observed(°)	Ideal(°)
2	I	109	CYS	N-CA-C	-6.31	105.74	113.50
2	O	109	CYS	N-CA-C	-6.27	106.59	114.56

There are no chirality outliers.

There are no planarity outliers.

5.2 Too-close contacts [i](#)

In the following table, the Non-H and H(model) columns list the number of non-hydrogen atoms and hydrogen atoms in the chain respectively. The H(added) column lists the number of hydrogen

atoms added and optimized by MolProbity. The Clashes column lists the number of clashes within the asymmetric unit, whereas Symm-Clashes lists symmetry-related clashes.

Mol	Chain	Non-H	H(model)	H(added)	Clashes	Symm-Clashes
1	A	2386	0	2328	49	0
1	B	1326	0	1221	21	0
1	C	2386	0	2330	50	0
1	D	1326	0	1221	29	0
1	E	2386	0	2330	51	0
1	F	1326	0	1221	25	0
2	H	846	0	821	20	0
2	I	946	0	900	15	0
2	N	846	0	821	16	0
2	O	946	0	900	19	0
2	S	846	0	821	15	0
2	T	946	0	900	15	0
3	A	28	0	26	0	0
3	B	14	0	13	0	0
3	C	28	0	26	0	0
3	D	14	0	13	0	0
3	E	28	0	26	0	0
3	F	14	0	13	0	0
All	All	16638	0	15931	270	0

The all-atom clashscore is defined as the number of clashes found per 1000 atoms (including hydrogen atoms). The all-atom clashscore for this structure is 8.

All (270) close contacts within the same asymmetric unit are listed below, sorted by their clash magnitude.

Atom-1	Atom-2	Interatomic distance (Å)	Clash overlap (Å)
1:A:92:PHE:O	1:A:95:GLU:HG3	1.70	0.90
2:I:94:TYR:O	2:I:119:GLY:HA2	1.77	0.84
1:A:92:PHE:O	1:A:95:GLU:CG	2.27	0.82
1:A:91:LYS:CG	1:A:95:GLU:OE2	2.37	0.72
1:A:91:LYS:HG3	1:A:95:GLU:OE2	1.88	0.72
2:N:6:GLN:NE2	2:N:94:CYS:SG	2.64	0.70
2:N:19:ALA:HB3	2:N:81:VAL:HB	1.75	0.69
2:S:6:GLN:NE2	2:S:94:CYS:SG	2.66	0.69
2:T:69:THR:HB	2:T:82:GLN:HB2	1.76	0.68
1:E:260:SER:HA	1:E:275:SER:HA	1.75	0.67
1:C:3:ILE:HG22	1:D:470:MET:HE3	1.76	0.67
1:F:376:LEU:HD11	1:F:420:LEU:HD21	1.77	0.64
1:C:260:SER:HA	1:C:275:SER:HA	1.78	0.64

Continued on next page...

Continued from previous page...

Atom-1	Atom-2	Interatomic distance (Å)	Clash overlap (Å)
2:S:38:TYR:HA	2:S:56:TRP:HD1	1.61	0.64
2:N:39:LEU:HB3	2:N:57:ALA:HB2	1.79	0.64
1:E:173:ILE:O	1:E:221:ILE:HA	1.98	0.64
2:O:83:MET:HB3	2:O:86:LEU:HD11	1.80	0.63
1:A:260:SER:HA	1:A:275:SER:HA	1.79	0.63
1:F:441:GLU:OE1	1:F:444:ARG:NH1	2.31	0.63
1:A:73:SER:HA	1:A:107:GLY:HA3	1.81	0.62
2:O:67:ARG:NH2	2:O:90:ASP:OD2	2.34	0.61
1:C:73:SER:HA	1:C:107:GLY:HA3	1.82	0.61
2:N:30:LEU:HD12	2:N:37:ASN:HB2	1.82	0.61
1:D:409:MET:HE2	1:F:408:SER:HB2	1.82	0.60
1:E:120:ILE:HD11	1:E:153:PRO:HD2	1.82	0.60
1:E:142:TRP:NE1	1:E:186:TYR:OH	2.34	0.60
2:H:69:THR:OG1	2:H:80:THR:OG1	2.20	0.60
1:C:97:ALA:HB1	1:F:396:LYS:HB3	1.84	0.60
2:H:30:LEU:HA	2:H:37:ASN:HA	1.84	0.59
2:N:44:GLN:HB2	2:N:50:PRO:HB3	1.84	0.59
2:I:93:VAL:HG12	2:I:121:THR:HG22	1.84	0.59
1:E:71:GLU:HB3	1:E:110:LYS:HG2	1.84	0.59
1:E:212:PRO:O	1:E:220:ARG:NH2	2.35	0.59
2:S:45:LYS:NZ	2:S:87:GLU:O	2.37	0.58
2:N:69:THR:OG1	2:N:80:THR:OG1	2.21	0.58
1:A:97:ALA:HB1	1:D:396:LYS:HB3	1.86	0.57
1:A:258:ILE:HG21	1:A:273:TYR:HB2	1.87	0.57
2:S:31:SER:OG	2:S:32:GLY:N	2.38	0.57
1:B:375:ARG:NH2	1:B:424:GLU:OE2	2.38	0.57
2:I:29:PHE:O	2:I:72:ARG:NH2	2.37	0.57
1:C:287:ASN:ND2	1:C:302:GLN:O	2.38	0.57
1:A:173:ILE:O	1:A:221:ILE:HA	2.04	0.56
1:C:4:CYS:SG	1:D:348:GLN:NE2	2.77	0.56
2:T:50:VAL:HG11	2:T:110:TYR:HB3	1.87	0.56
2:S:7:SER:HB3	2:S:22:ASN:H	1.69	0.56
1:E:259:GLN:OE1	1:F:389:ASN:ND2	2.39	0.56
2:O:38:ARG:NH1	2:O:46:ASP:OD2	2.39	0.56
2:H:36:MET:HG3	2:H:56:TRP:CD1	2.41	0.55
1:A:142:TRP:NE1	1:A:186:TYR:OH	2.34	0.55
1:B:454:ASP:OD1	1:F:448:ARG:NH2	2.39	0.55
1:E:259:GLN:NE2	1:F:390:GLU:OE1	2.40	0.55
2:I:14:PRO:HG3	2:I:124:VAL:HB	1.89	0.55
2:I:52:SER:O	2:I:72:ARG:NH1	2.39	0.55
2:O:37:VAL:HG12	2:O:47:TRP:HA	1.88	0.55

Continued on next page...

Continued from previous page...

Atom-1	Atom-2	Interatomic distance (Å)	Clash overlap (Å)
2:T:51:ILE:HD13	2:T:72:ARG:HG3	1.88	0.55
1:A:3:ILE:N	1:B:459:PHE:O	2.39	0.55
1:E:228:LEU:HD22	1:E:232:ASP:HB3	1.89	0.55
1:A:175:HIS:NE2	1:A:222:ASP:OD2	2.40	0.54
1:D:398:ILE:HD11	1:F:401:VAL:HG21	1.88	0.54
1:B:396:LYS:NZ	1:B:400:ASN:OD1	2.37	0.54
2:N:19:ALA:HB2	2:N:84:LEU:HD11	1.89	0.54
1:C:116:THR:O	1:C:157:LYS:NZ	2.40	0.54
2:H:19:ALA:HB3	2:H:81:VAL:HB	1.90	0.54
2:T:14:PRO:HG3	2:T:124:VAL:HB	1.89	0.54
1:A:79:GLU:HB2	1:A:259:GLN:HG2	1.89	0.54
2:H:31:SER:OG	2:H:32:GLY:N	2.40	0.53
1:C:100:GLN:OE1	1:F:400:ASN:ND2	2.42	0.53
1:C:259:GLN:NE2	1:D:390:GLU:OE1	2.41	0.53
1:E:197:SER:HB2	1:E:234:VAL:HG22	1.90	0.53
2:T:12:VAL:HG11	2:T:18:LEU:HD22	1.91	0.53
2:H:39:LEU:HB3	2:H:57:ALA:HB2	1.91	0.53
1:C:5:LEU:HD22	1:D:440:TYR:HD1	1.74	0.53
1:C:173:ILE:O	1:C:221:ILE:HA	2.08	0.53
1:A:259:GLN:OE1	1:B:389:ASN:ND2	2.42	0.53
1:E:287:ASN:ND2	1:E:302:GLN:O	2.41	0.52
1:E:258:ILE:HG21	1:E:273:TYR:HB2	1.92	0.52
1:C:4:CYS:HB2	1:D:346:ARG:HB2	1.91	0.52
2:S:54:ILE:HG22	2:S:60:ARG:HA	1.91	0.52
1:C:295:LYS:HE3	1:D:383:GLN:HB2	1.92	0.52
1:D:347:HIS:HA	1:D:470:MET:HE1	1.91	0.52
2:S:53:LEU:HA	2:S:64:VAL:HG11	1.92	0.52
2:S:55:TYR:OH	2:T:112:GLY:N	2.36	0.52
2:N:45:LYS:HB2	2:N:48:GLN:HB2	1.92	0.52
1:E:137:TYR:HB2	1:E:140:MET:HB2	1.91	0.52
1:A:233:THR:HG23	1:C:212:PRO:HB3	1.92	0.52
2:O:40:ALA:HB3	2:O:43:LYS:HB2	1.92	0.52
2:O:18:LEU:HB3	2:O:83:MET:HG3	1.92	0.51
2:T:40:ALA:HB3	2:T:43:LYS:HB2	1.93	0.51
1:C:27:VAL:HB	1:C:313:ASN:HB3	1.93	0.51
1:C:163:ARG:NH2	2:N:60:ARG:O	2.39	0.51
2:T:29:PHE:O	2:T:72:ARG:NH2	2.44	0.51
2:T:19:ARG:NE	2:T:82:GLN:OE1	2.35	0.51
1:A:27:VAL:HB	1:A:313:ASN:HB3	1.92	0.51
2:N:96:GLN:NE2	2:N:101:PRO:O	2.43	0.51
1:C:85:ASP:OD2	1:C:99:ARG:NH2	2.44	0.51

Continued on next page...

Continued from previous page...

Atom-1	Atom-2	Interatomic distance (Å)	Clash overlap (Å)
2:N:43:GLN:HB3	2:N:53:LEU:HD11	1.92	0.51
2:H:14:SER:N	2:H:17:GLU:OE2	2.41	0.51
2:S:69:THR:OG1	2:S:80:THR:OG1	2.27	0.51
2:H:54:ILE:HG22	2:H:60:ARG:HA	1.91	0.50
1:F:461:ILE:HG22	1:F:463:HIS:H	1.77	0.50
1:A:91:LYS:HG2	1:A:95:GLU:OE2	2.10	0.50
1:C:3:ILE:HG23	1:D:461:ILE:HD11	1.93	0.50
1:D:441:GLU:OE1	1:D:444:ARG:NH1	2.29	0.50
2:I:37:VAL:HG12	2:I:47:TRP:HA	1.94	0.50
1:A:124:GLY:HA3	1:A:142:TRP:HB3	1.94	0.50
1:C:160:LYS:NZ	1:C:231:ASN:OD1	2.36	0.50
1:C:201:GLN:HG2	1:E:220:ARG:HG3	1.92	0.50
1:E:3:ILE:N	1:F:459:PHE:O	2.44	0.50
2:S:6:GLN:OE1	2:S:108:THR:OG1	2.29	0.50
1:C:259:GLN:HE22	1:D:389:ASN:HA	1.76	0.50
1:C:68:GLN:HA	2:O:106:SER:HA	1.94	0.49
2:N:7:SER:HB3	2:N:22:ASN:H	1.76	0.49
2:H:44:GLN:HB2	2:H:50:PRO:HB3	1.94	0.49
1:B:328:ALA:HA	1:B:331:ILE:HD12	1.95	0.49
1:E:187:GLY:O	1:E:191:LYS:NZ	2.45	0.49
2:T:2:VAL:HG12	2:T:115:VAL:HG21	1.95	0.49
1:A:187:GLY:O	1:A:191:LYS:NZ	2.42	0.49
2:I:48:VAL:HG13	2:I:64:VAL:HG21	1.95	0.49
2:O:24:ALA:HB1	2:O:27:PHE:HE1	1.78	0.49
1:D:347:HIS:HB2	1:D:354:GLY:H	1.78	0.49
1:A:16:VAL:HG12	1:A:306:MET:HB3	1.94	0.48
2:S:30:LEU:HA	2:S:37:ASN:HA	1.95	0.48
1:C:3:ILE:HG12	1:D:459:PHE:HB2	1.95	0.48
1:C:5:LEU:HD11	1:D:439:LEU:HG	1.94	0.48
1:C:302:GLN:NE2	1:D:414:SER:OG	2.41	0.48
1:A:222:ASP:OD1	1:E:201:GLN:NE2	2.42	0.48
1:C:37:ASN:HB2	1:C:288:ILE:HG12	1.94	0.48
1:B:396:LYS:HB3	1:E:97:ALA:HB1	1.95	0.48
2:I:91:THR:HA	2:I:122:VAL:O	2.14	0.48
1:E:124:GLY:HA3	1:E:142:TRP:HB3	1.94	0.48
2:I:91:THR:HG22	2:I:124:VAL:H	1.78	0.48
1:C:197:SER:O	1:E:220:ARG:NH1	2.39	0.48
1:E:88:TYR:HD2	1:E:221:ILE:HG12	1.79	0.47
1:C:218:SER:O	1:C:220:ARG:NH1	2.47	0.47
2:N:41:TRP:HB2	2:N:54:ILE:HG12	1.96	0.47
2:S:34:ILE:HG12	2:S:36:MET:HB2	1.95	0.47

Continued on next page...

Continued from previous page...

Atom-1	Atom-2	Interatomic distance (Å)	Clash overlap (Å)
1:E:124:GLY:HA2	1:E:144:LEU:HD11	1.96	0.47
1:A:47:ARG:HD3	2:H:35:ASN:HB3	1.96	0.47
1:C:259:GLN:OE1	1:D:389:ASN:ND2	2.48	0.47
1:F:443:VAL:HA	1:F:446:GLN:HE21	1.79	0.47
1:B:415:TYR:OH	1:F:420:LEU:HD22	2.15	0.47
1:A:92:PHE:O	1:A:95:GLU:HG2	2.13	0.47
1:A:197:SER:HB3	1:A:200:TYR:HB3	1.97	0.47
1:A:212:PRO:O	1:A:220:ARG:NH2	2.44	0.47
2:N:45:LYS:NZ	2:N:87:GLU:O	2.42	0.47
2:T:105:SER:OG	2:T:106:SER:N	2.46	0.47
2:I:40:ALA:HB3	2:I:43:LYS:HB2	1.96	0.47
1:C:196:GLY:HA3	1:E:211:ARG:HG3	1.97	0.47
2:I:35:HIS:NE2	2:I:111:HIS:O	2.48	0.47
1:A:259:GLN:NE2	1:B:390:GLU:OE1	2.44	0.46
1:A:271:ASP:OD1	1:A:272:CYS:N	2.48	0.46
2:O:52:SER:O	2:O:72:ARG:NH1	2.48	0.46
1:B:401:VAL:HG21	1:F:398:ILE:HD11	1.96	0.46
2:I:105:SER:O	2:I:106:SER:C	2.57	0.46
1:B:419:LEU:HD21	1:F:423:MET:HE1	1.97	0.46
1:C:302:GLN:NE2	1:D:418:GLU:OE2	2.48	0.46
1:E:197:SER:HB3	1:E:200:TYR:HB3	1.97	0.46
1:C:143:LEU:HB3	1:C:152:PHE:HZ	1.81	0.46
2:O:61:ALA:HB3	2:O:64:VAL:HG22	1.98	0.46
1:A:220:ARG:NH1	1:E:197:SER:O	2.37	0.46
1:E:294:GLY:HA2	1:F:383:GLN:HG2	1.98	0.46
2:H:53:LEU:HA	2:H:64:VAL:HG11	1.98	0.46
1:C:4:CYS:HA	1:D:458:CYS:HA	1.98	0.46
2:O:29:PHE:O	2:O:72:ARG:NH2	2.49	0.45
1:C:29:ALA:HA	1:C:309:THR:H	1.81	0.45
1:E:27:VAL:HB	1:E:313:ASN:HB3	1.97	0.45
1:E:4:CYS:HA	1:F:458:CYS:HA	1.98	0.45
1:C:258:ILE:HG21	1:C:273:TYR:HB2	1.99	0.45
1:D:409:MET:HA	1:D:412:VAL:HG12	1.99	0.45
1:A:10:VAL:HG22	1:A:27:VAL:HG23	1.99	0.45
1:A:124:GLY:HA2	1:A:144:LEU:HD11	1.97	0.45
1:E:56:LEU:HD13	1:E:77:ILE:HG21	1.99	0.45
1:C:131:ARG:HH12	1:C:135:SER:HB2	1.81	0.44
1:C:314:VAL:HG23	1:D:334:GLY:H	1.82	0.44
1:E:73:SER:HA	1:E:107:GLY:HA3	1.99	0.44
1:A:314:VAL:HG23	1:B:334:GLY:H	1.82	0.44
1:A:106:GLY:HA2	1:A:255:SER:HB3	2.00	0.44

Continued on next page...

Continued from previous page...

Atom-1	Atom-2	Interatomic distance (Å)	Clash overlap (Å)
1:B:461:ILE:HG22	1:B:463:HIS:H	1.81	0.44
1:D:441:GLU:HB3	1:D:445:ARG:NH1	2.33	0.44
1:A:142:TRP:HZ2	1:A:185:LEU:HD13	1.83	0.44
2:N:25:SER:OG	2:N:27:GLN:O	2.30	0.44
1:F:450:ASN:HB3	1:F:463:HIS:HD2	1.83	0.44
2:N:45:LYS:NZ	2:N:89:VAL:O	2.50	0.44
2:I:61:ALA:HB3	2:I:64:VAL:HG22	2.00	0.44
1:E:228:LEU:HD21	1:E:234:VAL:HG23	2.00	0.44
1:F:447:LEU:HB3	1:F:451:ALA:HB3	2.00	0.44
2:O:15:GLY:HA2	2:O:85:SER:HA	1.98	0.43
1:A:196:GLY:HA3	1:C:211:ARG:HG3	1.99	0.43
1:A:197:SER:OG	1:A:198:SER:N	2.51	0.43
2:I:69:THR:HG22	2:I:82:GLN:HB2	2.00	0.43
1:A:41:ILE:HG12	1:A:262:VAL:HG23	2.00	0.43
1:B:395:GLU:HB3	1:B:398:ILE:HG22	2.01	0.43
1:B:441:GLU:OE1	1:B:444:ARG:NE	2.41	0.43
2:O:47:TRP:HE1	2:O:50:VAL:HG23	1.83	0.43
1:C:57:LEU:HD23	1:C:102:LEU:HD12	2.00	0.43
1:C:254:LYS:HE3	1:C:254:LYS:HB3	1.79	0.43
1:A:211:ARG:HG3	1:E:196:GLY:HA3	2.01	0.43
1:E:49:VAL:HG13	1:E:74:ALA:HB2	2.00	0.43
1:F:340:ASP:OD1	1:F:341:GLY:N	2.52	0.43
2:H:6:GLN:OE1	2:H:108:THR:OG1	2.32	0.42
1:E:170:VAL:HG22	1:E:225:TRP:HB3	2.01	0.42
1:A:109:ASP:OD1	1:A:252:ARG:NH1	2.51	0.42
1:A:212:PRO:HB3	1:E:233:THR:HG23	2.01	0.42
1:D:395:GLU:HB3	1:D:398:ILE:HG22	2.01	0.42
1:F:395:GLU:HB3	1:F:398:ILE:HG22	2.00	0.42
1:E:193:ILE:HG23	1:E:238:PHE:HB3	2.00	0.42
1:B:396:LYS:HE3	1:E:101:ILE:HG12	2.00	0.42
1:F:375:ARG:NH2	1:F:424:GLU:OE2	2.53	0.42
1:A:98:LEU:HD11	1:A:168:LEU:HD21	2.01	0.42
1:B:434:SER:O	1:B:438:LYS:HB2	2.19	0.42
2:H:30:LEU:HD23	2:H:31:SER:HB2	2.02	0.42
1:C:49:VAL:HG13	1:C:74:ALA:HB2	2.02	0.42
1:C:10:VAL:HG22	1:C:27:VAL:HG23	2.01	0.42
1:C:197:SER:OG	1:C:198:SER:N	2.53	0.42
1:E:60:ILE:HD11	1:E:102:LEU:HD21	2.02	0.42
1:E:197:SER:OG	1:E:198:SER:N	2.52	0.42
2:H:4:MET:HB2	2:H:103:THR:OG1	2.20	0.42
2:H:4:MET:HE1	2:H:25:SER:HB2	2.00	0.42

Continued on next page...

Continued from previous page...

Atom-1	Atom-2	Interatomic distance (Å)	Clash overlap (Å)
1:E:109:ASP:OD1	1:E:252:ARG:NH1	2.52	0.42
1:B:441:GLU:HB3	1:B:445:ARG:NH1	2.35	0.41
1:C:170:VAL:HG22	1:C:225:TRP:HB3	2.02	0.41
2:O:39:GLN:HB2	2:O:45:LEU:HD23	2.02	0.41
2:H:3:VAL:HG12	2:H:26:SER:HB3	2.02	0.41
2:H:39:LEU:HD22	2:H:77:PHE:CG	2.55	0.41
1:C:142:TRP:NE1	1:C:186:TYR:OH	2.48	0.41
2:T:102:PRO:HD2	2:T:105:SER:HB3	2.02	0.41
1:E:37:ASN:HB2	1:E:288:ILE:HG12	2.02	0.41
1:E:57:LEU:HD23	1:E:102:LEU:HD12	2.02	0.41
2:I:50:VAL:HG21	2:I:110:TYR:HA	2.01	0.41
1:A:60:ILE:HD11	1:A:102:LEU:HD21	2.02	0.41
1:E:198:SER:OG	1:E:232:ASP:OD2	2.32	0.41
2:T:30:SER:HB3	2:T:74:ASN:HB3	2.02	0.41
1:C:302:GLN:HE22	1:D:414:SER:HG	1.65	0.41
2:T:61:ALA:HB3	2:T:64:VAL:HG22	2.02	0.41
2:T:106:SER:HB2	2:T:108:ILE:HG12	2.01	0.41
1:A:137:TYR:HB2	1:A:140:MET:HB2	2.03	0.41
1:A:259:GLN:HE22	1:B:390:GLU:H	1.68	0.41
1:D:413:TRP:HZ2	1:F:411:GLU:HG2	1.85	0.41
1:E:171:TRP:O	1:E:223:PHE:HA	2.20	0.41
1:F:464:LYS:HD2	1:F:464:LYS:HA	1.93	0.41
1:E:80:ARG:NH1	1:E:262:VAL:O	2.45	0.41
2:S:4:MET:HE1	2:S:25:SER:HB2	2.01	0.41
2:O:2:VAL:HG13	2:O:115:VAL:HG21	2.01	0.41
2:O:14:PRO:HG3	2:O:124:VAL:HB	2.02	0.41
2:O:47:TRP:NE1	2:O:50:VAL:HG23	2.35	0.41
1:A:131:ARG:NH1	1:A:136:PHE:O	2.47	0.41
1:A:201:GLN:NE2	1:C:222:ASP:OD1	2.54	0.41
2:H:7:SER:HB3	2:H:22:ASN:H	1.86	0.41
1:C:8:HIS:HB3	1:D:338:LEU:HD22	2.02	0.41
1:C:171:TRP:HE1	1:C:204:PHE:HZ	1.68	0.41
1:D:442:ARG:NH1	1:D:476:ASN:OD1	2.54	0.41
1:E:7:HIS:ND1	1:E:311:MET:SD	2.94	0.41
1:E:212:PRO:HG2	1:E:220:ARG:HH22	1.86	0.41
1:A:307:LEU:HD22	1:B:376:LEU:HD23	2.03	0.41
1:D:461:ILE:HG22	1:D:463:HIS:H	1.86	0.41
1:E:291:ARG:HE	1:E:291:ARG:HB3	1.63	0.41
2:H:43:GLN:HB3	2:H:53:LEU:HD11	2.02	0.40
1:E:10:VAL:HG22	1:E:27:VAL:HG23	2.02	0.40
1:E:226:LEU:HD11	1:E:234:VAL:HG21	2.02	0.40

Continued on next page...

Continued from previous page...

Atom-1	Atom-2	Interatomic distance (Å)	Clash overlap (Å)
2:S:39:LEU:HD21	2:S:94:CYS:HB2	2.03	0.40
1:A:287:ASN:HD22	1:A:303:GLU:HA	1.86	0.40
1:C:256:MET:HE3	1:C:256:MET:HB3	1.92	0.40
1:E:54:CYS:SG	1:E:55:GLY:N	2.95	0.40
2:S:24:LYS:HE2	2:S:24:LYS:HB2	1.85	0.40
2:H:79:LEU:HD23	2:H:79:LEU:HA	1.88	0.40
2:O:36:TRP:CG	2:O:81:LEU:HD22	2.57	0.40
1:A:173:ILE:HG12	1:A:204:PHE:CE1	2.57	0.40
1:A:301:LYS:H	1:B:414:SER:HB2	1.87	0.40
1:F:469:CYS:SG	1:F:470:MET:N	2.95	0.40
2:O:91:THR:HG22	2:O:124:VAL:H	1.86	0.40

There are no symmetry-related clashes.

5.3 Torsion angles [i](#)

5.3.1 Protein backbone [i](#)

In the following table, the Percentiles column shows the percent Ramachandran outliers of the chain as a percentile score with respect to all PDB entries followed by that with respect to all EM entries.

The Analysed column shows the number of residues for which the backbone conformation was analysed, and the total number of residues.

Mol	Chain	Analysed	Favoured	Allowed	Outliers	Percentiles	
1	A	312/505 (62%)	294 (94%)	18 (6%)	0	100	100
1	B	161/505 (32%)	156 (97%)	5 (3%)	0	100	100
1	C	312/505 (62%)	297 (95%)	15 (5%)	0	100	100
1	D	161/505 (32%)	154 (96%)	7 (4%)	0	100	100
1	E	312/505 (62%)	300 (96%)	12 (4%)	0	100	100
1	F	161/505 (32%)	154 (96%)	7 (4%)	0	100	100
2	H	109/264 (41%)	94 (86%)	15 (14%)	0	100	100
2	I	123/264 (47%)	112 (91%)	8 (6%)	3 (2%)	4	22
2	N	109/264 (41%)	101 (93%)	8 (7%)	0	100	100
2	O	123/264 (47%)	110 (89%)	13 (11%)	0	100	100
2	S	109/264 (41%)	97 (89%)	12 (11%)	0	100	100

Continued on next page...

Continued from previous page...

Mol	Chain	Analysed	Favoured	Allowed	Outliers	Percentiles	
2	T	123/264 (47%)	113 (92%)	10 (8%)	0	100	100
All	All	2115/4614 (46%)	1982 (94%)	130 (6%)	3 (0%)	49	78

All (3) Ramachandran outliers are listed below:

Mol	Chain	Res	Type
2	I	106	SER
2	I	107	SER
2	I	105	SER

5.3.2 Protein sidechains [i](#)

In the following table, the Percentiles column shows the percent sidechain outliers of the chain as a percentile score with respect to all PDB entries followed by that with respect to all EM entries.

The Analysed column shows the number of residues for which the sidechain conformation was analysed, and the total number of residues.

Mol	Chain	Analysed	Rotameric	Outliers	Percentiles	
1	A	261/429 (61%)	261 (100%)	0	100	100
1	B	140/429 (33%)	140 (100%)	0	100	100
1	C	261/429 (61%)	261 (100%)	0	100	100
1	D	140/429 (33%)	140 (100%)	0	100	100
1	E	261/429 (61%)	260 (100%)	1 (0%)	84	86
1	F	140/429 (33%)	140 (100%)	0	100	100
2	H	95/213 (45%)	95 (100%)	0	100	100
2	I	100/213 (47%)	97 (97%)	3 (3%)	36	65
2	N	95/213 (45%)	95 (100%)	0	100	100
2	O	100/213 (47%)	100 (100%)	0	100	100
2	S	95/213 (45%)	94 (99%)	1 (1%)	65	78
2	T	100/213 (47%)	100 (100%)	0	100	100
All	All	1788/3852 (46%)	1783 (100%)	5 (0%)	84	87

All (5) residues with a non-rotameric sidechain are listed below:

Mol	Chain	Res	Type
1	E	123	ASN
2	S	100	THR
2	I	106	SER
2	I	107	SER
2	I	108	ILE

Sometimes sidechains can be flipped to improve hydrogen bonding and reduce clashes. All (45) such sidechains are listed below:

Mol	Chain	Res	Type
1	A	259	GLN
1	A	287	ASN
1	A	302	GLN
1	B	363	GLN
1	B	368	GLN
1	B	389	ASN
1	B	416	ASN
1	B	450	ASN
1	B	490	ASN
2	H	22	ASN
2	H	44	GLN
1	C	149	ASN
1	C	215	ASN
1	C	259	GLN
1	C	287	ASN
1	D	363	GLN
1	D	389	ASN
1	D	416	ASN
1	D	426	GLN
1	D	490	ASN
2	N	44	GLN
2	N	85	GLN
1	E	146	ASN
1	E	149	ASN
1	E	259	GLN
1	E	287	ASN
1	F	363	GLN
1	F	368	GLN
1	F	389	ASN
1	F	416	ASN
1	F	426	GLN
1	F	446	GLN
1	F	490	ASN
2	S	22	ASN

Continued on next page...

Continued from previous page...

Mol	Chain	Res	Type
2	S	35	ASN
2	S	85	GLN
2	I	39	GLN
2	I	74	ASN
2	I	118	GLN
2	O	39	GLN
2	O	80	HIS
2	O	118	GLN
2	T	13	GLN
2	T	74	ASN
2	T	80	HIS

5.3.3 RNA [i](#)

There are no RNA molecules in this entry.

5.4 Non-standard residues in protein, DNA, RNA chains [i](#)

There are no non-standard protein/DNA/RNA residues in this entry.

5.5 Carbohydrates [i](#)

There are no oligosaccharides in this entry.

5.6 Ligand geometry [i](#)

9 ligands are modelled in this entry.

In the following table, the Counts columns list the number of bonds (or angles) for which Mogul statistics could be retrieved, the number of bonds (or angles) that are observed in the model and the number of bonds (or angles) that are defined in the Chemical Component Dictionary. The Link column lists molecule types, if any, to which the group is linked. The Z score for a bond length (or angle) is the number of standard deviations the observed value is removed from the expected value. A bond length (or angle) with $|Z| > 2$ is considered an outlier worth inspection. RMSZ is the root-mean-square of all Z scores of the bond lengths (or angles).

Mol	Type	Chain	Res	Link	Bond lengths			Bond angles		
					Counts	RMSZ	$\# Z > 2$	Counts	RMSZ	$\# Z > 2$
3	NAG	A	602	1	14,14,15	0.29	0	17,19,21	0.51	0
3	NAG	D	601	1	14,14,15	0.47	0	17,19,21	0.54	0
3	NAG	E	601	1	14,14,15	0.27	0	17,19,21	0.42	0

Mol	Type	Chain	Res	Link	Bond lengths			Bond angles		
					Counts	RMSZ	# Z > 2	Counts	RMSZ	# Z > 2
3	NAG	F	601	1	14,14,15	0.44	0	17,19,21	0.56	0
3	NAG	A	601	1	14,14,15	0.27	0	17,19,21	0.42	0
3	NAG	C	602	1	14,14,15	0.55	0	17,19,21	0.52	0
3	NAG	B	601	1	14,14,15	0.48	0	17,19,21	0.56	0
3	NAG	C	601	1	14,14,15	0.26	0	17,19,21	0.42	0
3	NAG	E	602	1	14,14,15	0.24	0	17,19,21	0.46	0

In the following table, the Chirals column lists the number of chiral outliers, the number of chiral centers analysed, the number of these observed in the model and the number defined in the Chemical Component Dictionary. Similar counts are reported in the Torsion and Rings columns. '2' means no outliers of that kind were identified.

Mol	Type	Chain	Res	Link	Chirals	Torsions	Rings
3	NAG	A	602	1	-	2/6/23/26	0/1/1/1
3	NAG	D	601	1	-	2/6/23/26	0/1/1/1
3	NAG	E	601	1	-	2/6/23/26	0/1/1/1
3	NAG	F	601	1	-	0/6/23/26	0/1/1/1
3	NAG	A	601	1	-	2/6/23/26	0/1/1/1
3	NAG	C	602	1	-	2/6/23/26	0/1/1/1
3	NAG	B	601	1	-	0/6/23/26	0/1/1/1
3	NAG	C	601	1	-	2/6/23/26	0/1/1/1
3	NAG	E	602	1	-	2/6/23/26	0/1/1/1

There are no bond length outliers.

There are no bond angle outliers.

There are no chirality outliers.

All (14) torsion outliers are listed below:

Mol	Chain	Res	Type	Atoms
3	C	602	NAG	O5-C5-C6-O6
3	A	602	NAG	O5-C5-C6-O6
3	A	601	NAG	O5-C5-C6-O6
3	C	601	NAG	C4-C5-C6-O6
3	A	601	NAG	C4-C5-C6-O6
3	C	601	NAG	O5-C5-C6-O6
3	C	602	NAG	C4-C5-C6-O6
3	E	601	NAG	O5-C5-C6-O6
3	E	601	NAG	C4-C5-C6-O6
3	A	602	NAG	C4-C5-C6-O6

Continued on next page...

Continued from previous page...

Mol	Chain	Res	Type	Atoms
3	D	601	NAG	O5-C5-C6-O6
3	E	602	NAG	O5-C5-C6-O6
3	E	602	NAG	C4-C5-C6-O6
3	D	601	NAG	C4-C5-C6-O6

There are no ring outliers.

No monomer is involved in short contacts.

5.7 Other polymers [i](#)

There are no such residues in this entry.

5.8 Polymer linkage issues [i](#)

There are no chain breaks in this entry.

6 Map visualisation [i](#)

This section contains visualisations of the EMDB entry EMD-63103. These allow visual inspection of the internal detail of the map and identification of artifacts.

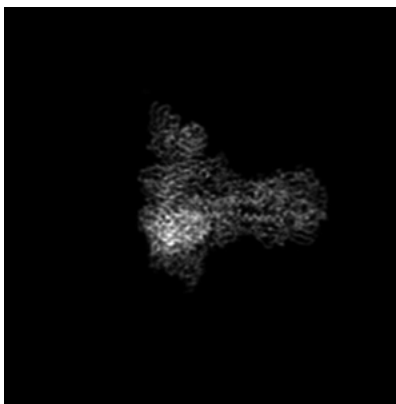
Images derived from a raw map, generated by summing the deposited half-maps, are presented below the corresponding image components of the primary map to allow further visual inspection and comparison with those of the primary map.

6.1 Orthogonal projections [i](#)

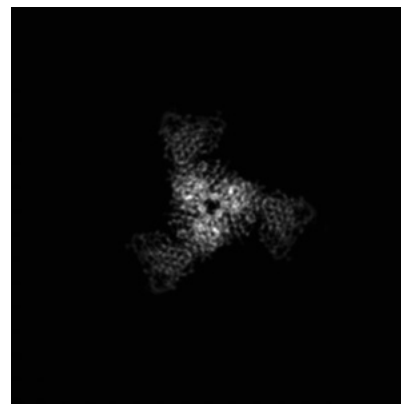
6.1.1 Primary map



X

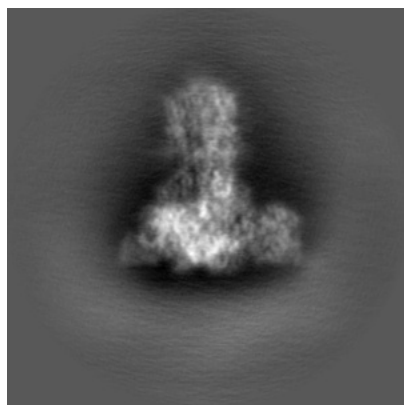


Y

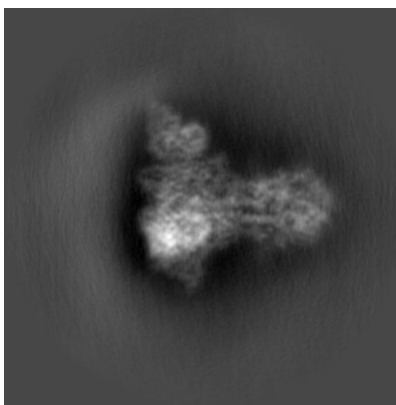


Z

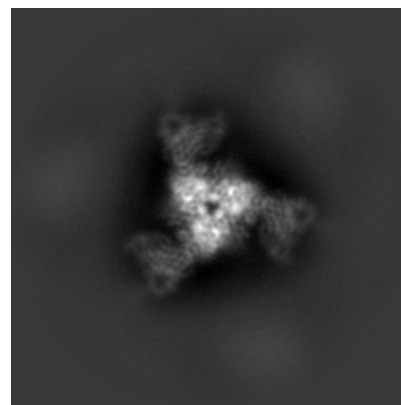
6.1.2 Raw map



X



Y



Z

The images above show the map projected in three orthogonal directions.

6.2 Central slices [i](#)

6.2.1 Primary map



X Index: 128

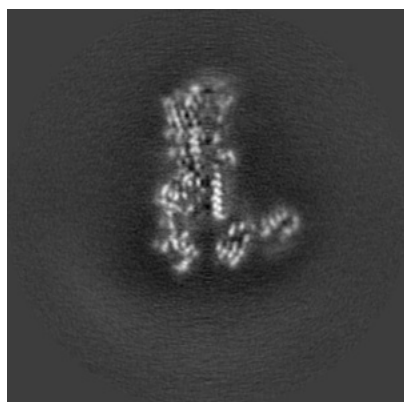


Y Index: 128

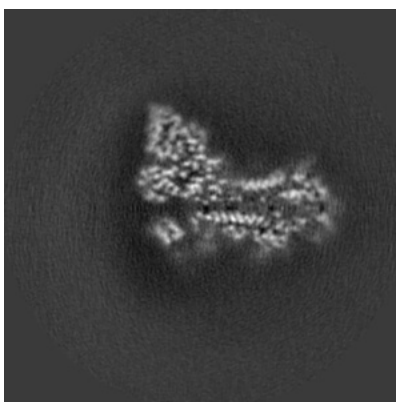


Z Index: 128

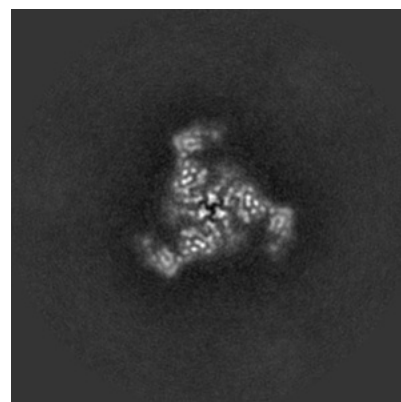
6.2.2 Raw map



X Index: 128



Y Index: 128



Z Index: 128

The images above show central slices of the map in three orthogonal directions.

6.3 Largest variance slices [i](#)

6.3.1 Primary map



X Index: 121

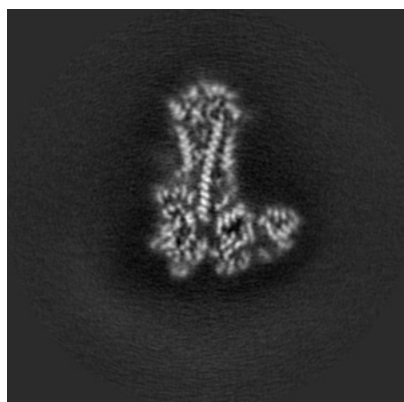


Y Index: 134

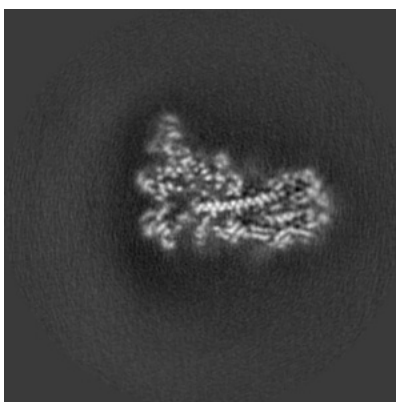


Z Index: 106

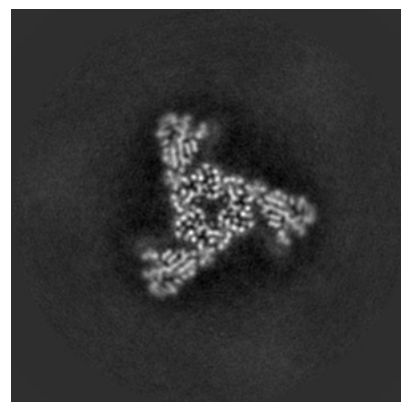
6.3.2 Raw map



X Index: 121



Y Index: 134

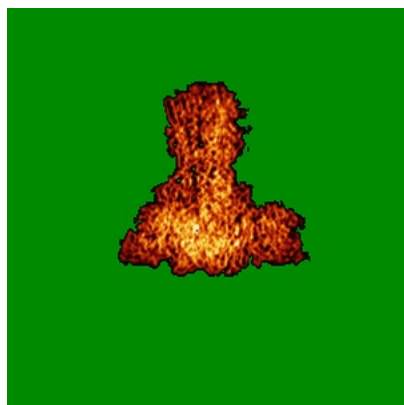


Z Index: 105

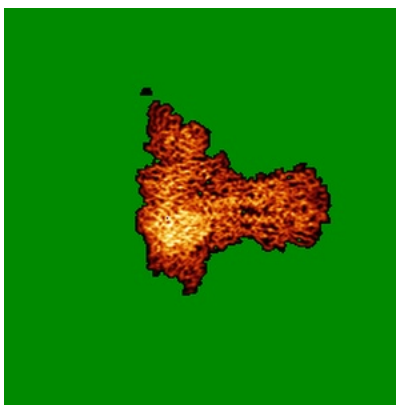
The images above show the largest variance slices of the map in three orthogonal directions.

6.4 Orthogonal standard-deviation projections (False-color) [i](#)

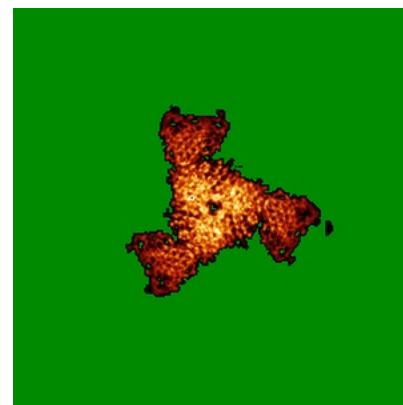
6.4.1 Primary map



X

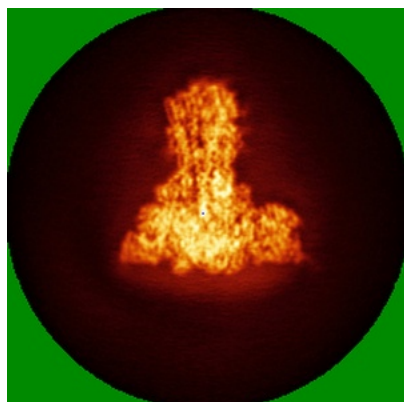


Y

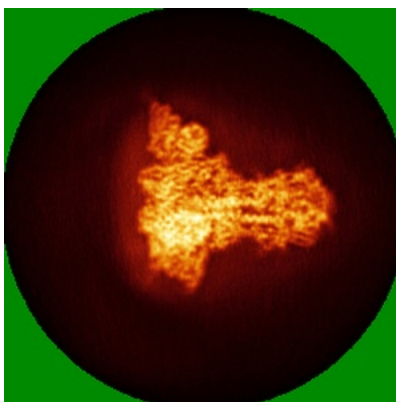


Z

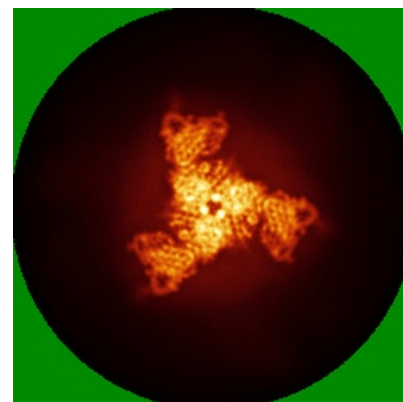
6.4.2 Raw map



X



Y



Z

The images above show the map standard deviation projections with false color in three orthogonal directions. Minimum values are shown in green, max in blue, and dark to light orange shades represent small to large values respectively.

6.5 Orthogonal surface views [i](#)

This section was not generated.

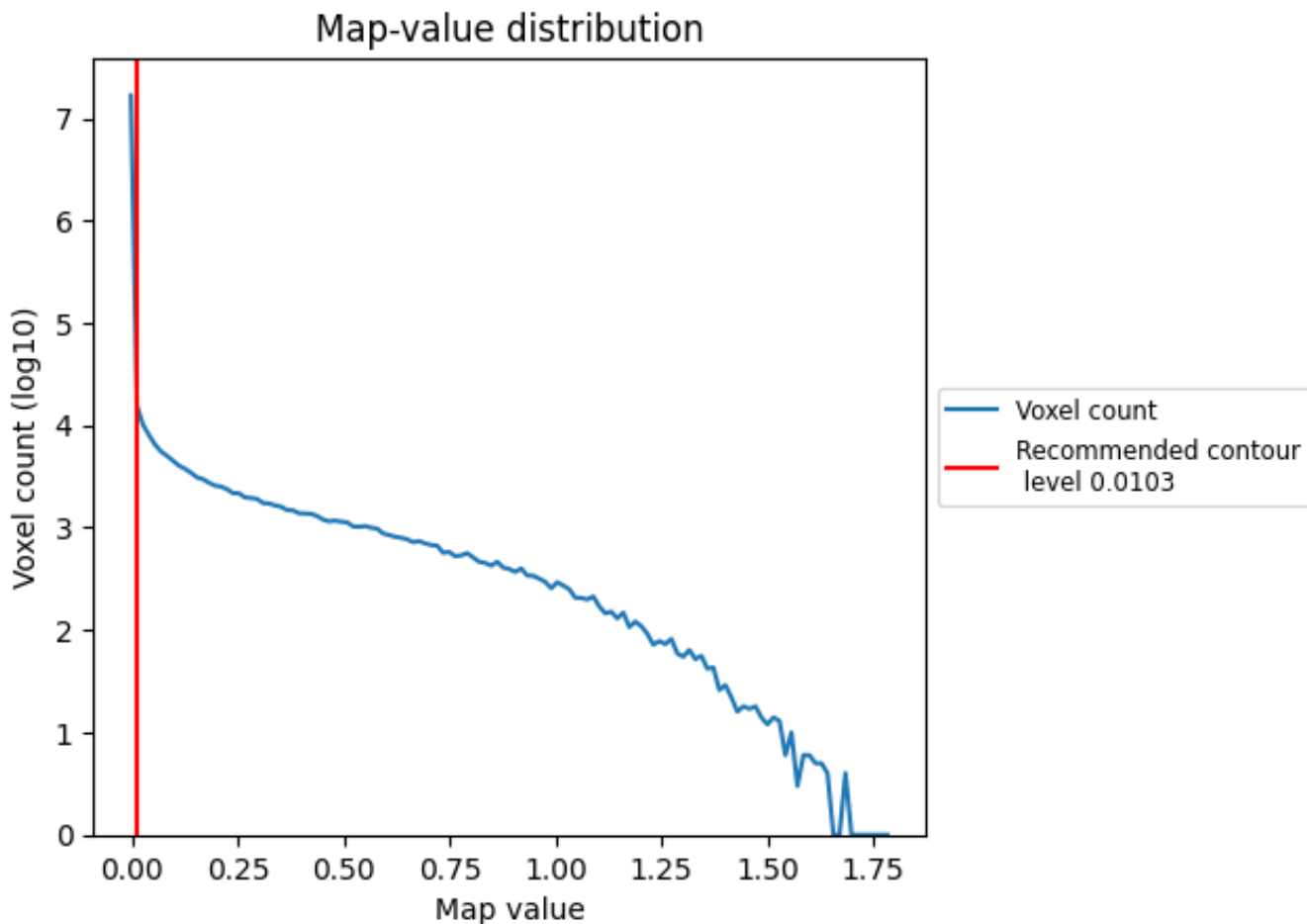
6.6 Mask visualisation [i](#)

This section was not generated. No masks/segmentation were deposited.

7 Map analysis [i](#)

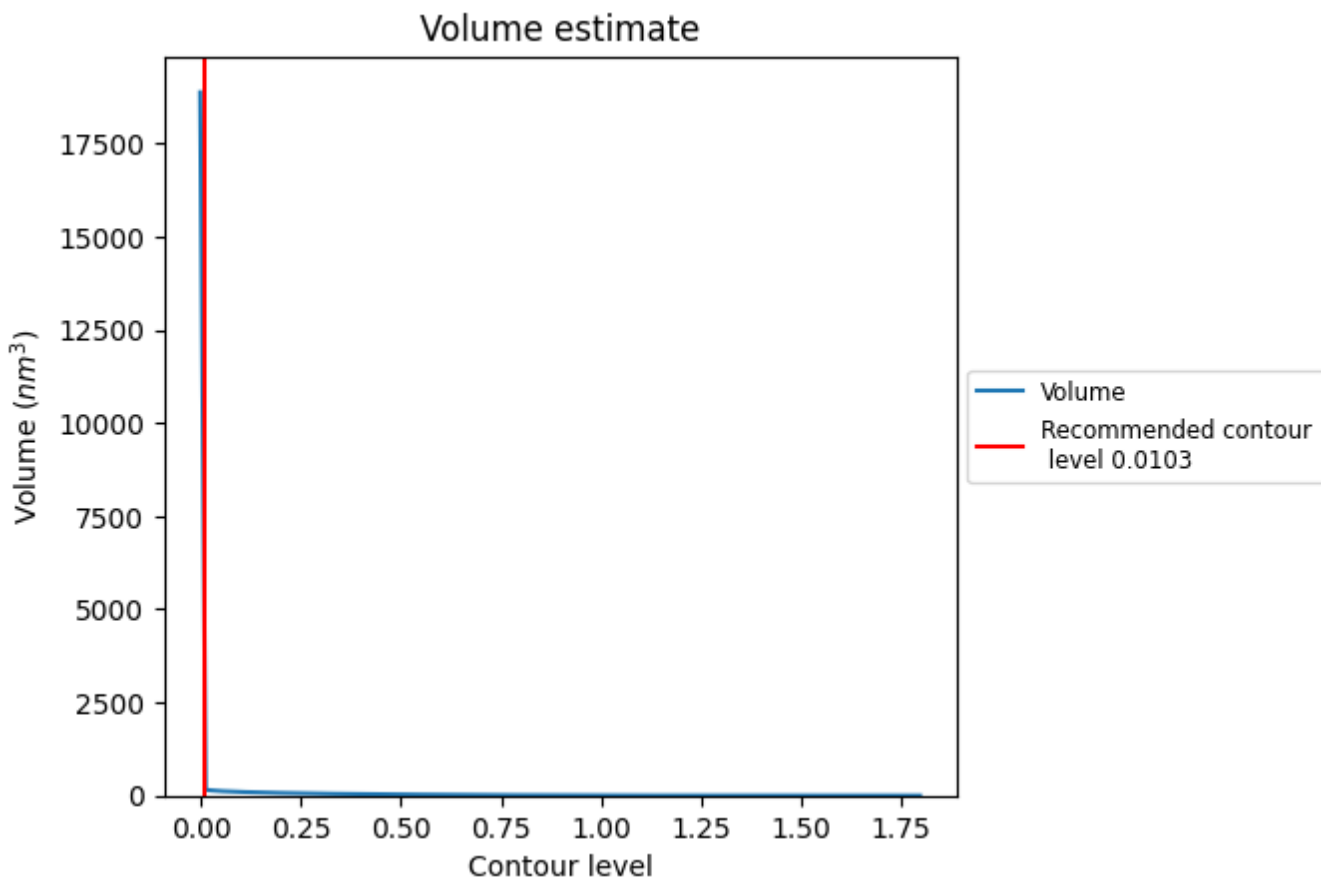
This section contains the results of statistical analysis of the map.

7.1 Map-value distribution [i](#)



The map-value distribution is plotted in 128 intervals along the x-axis. The y-axis is logarithmic. A spike in this graph at zero usually indicates that the volume has been masked.

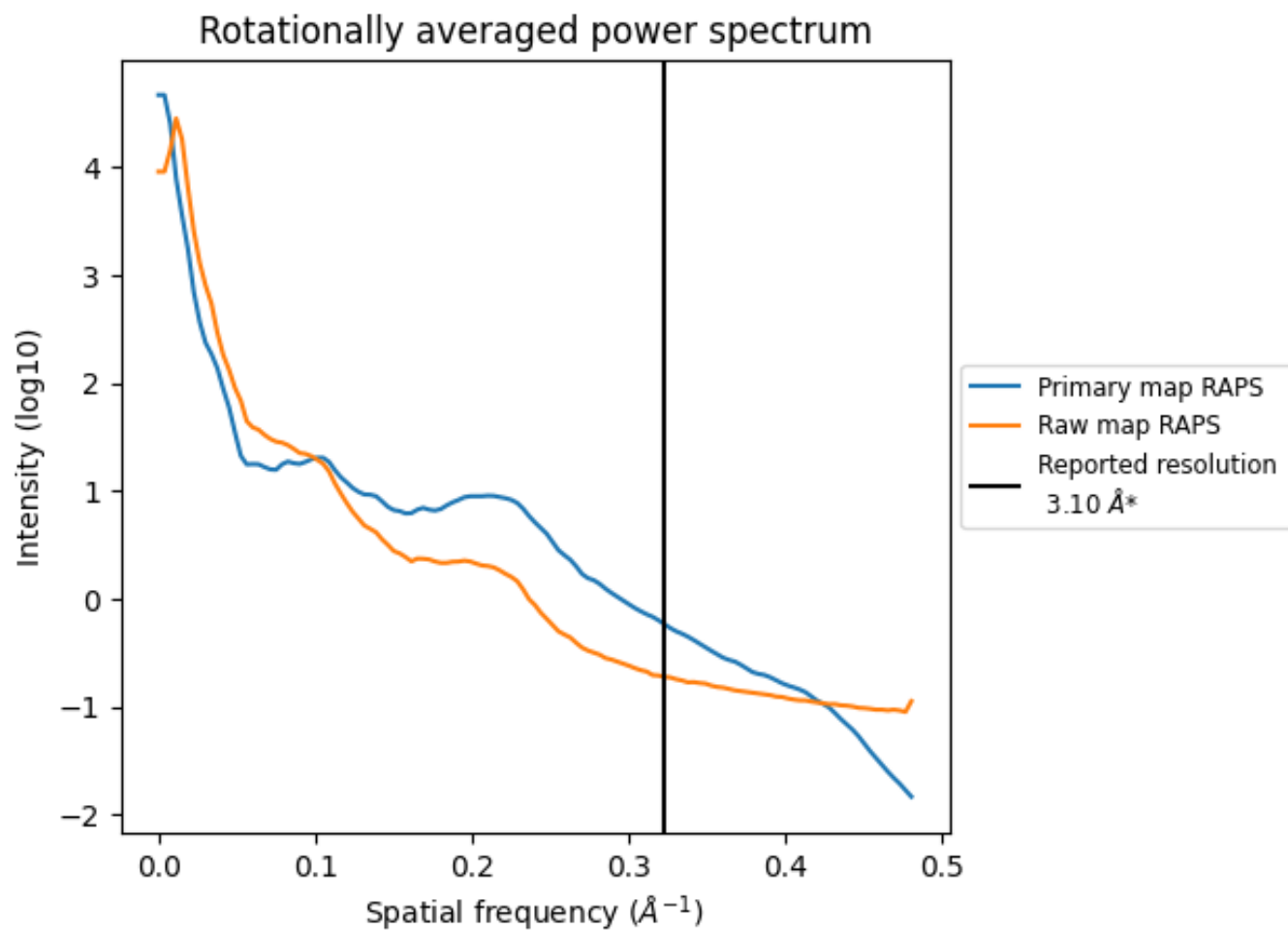
7.2 Volume estimate [i](#)



The volume at the recommended contour level is 2808 nm^3 ; this corresponds to an approximate mass of 2537 kDa.

The volume estimate graph shows how the enclosed volume varies with the contour level. The recommended contour level is shown as a vertical line and the intersection between the line and the curve gives the volume of the enclosed surface at the given level.

7.3 Rotationally averaged power spectrum i

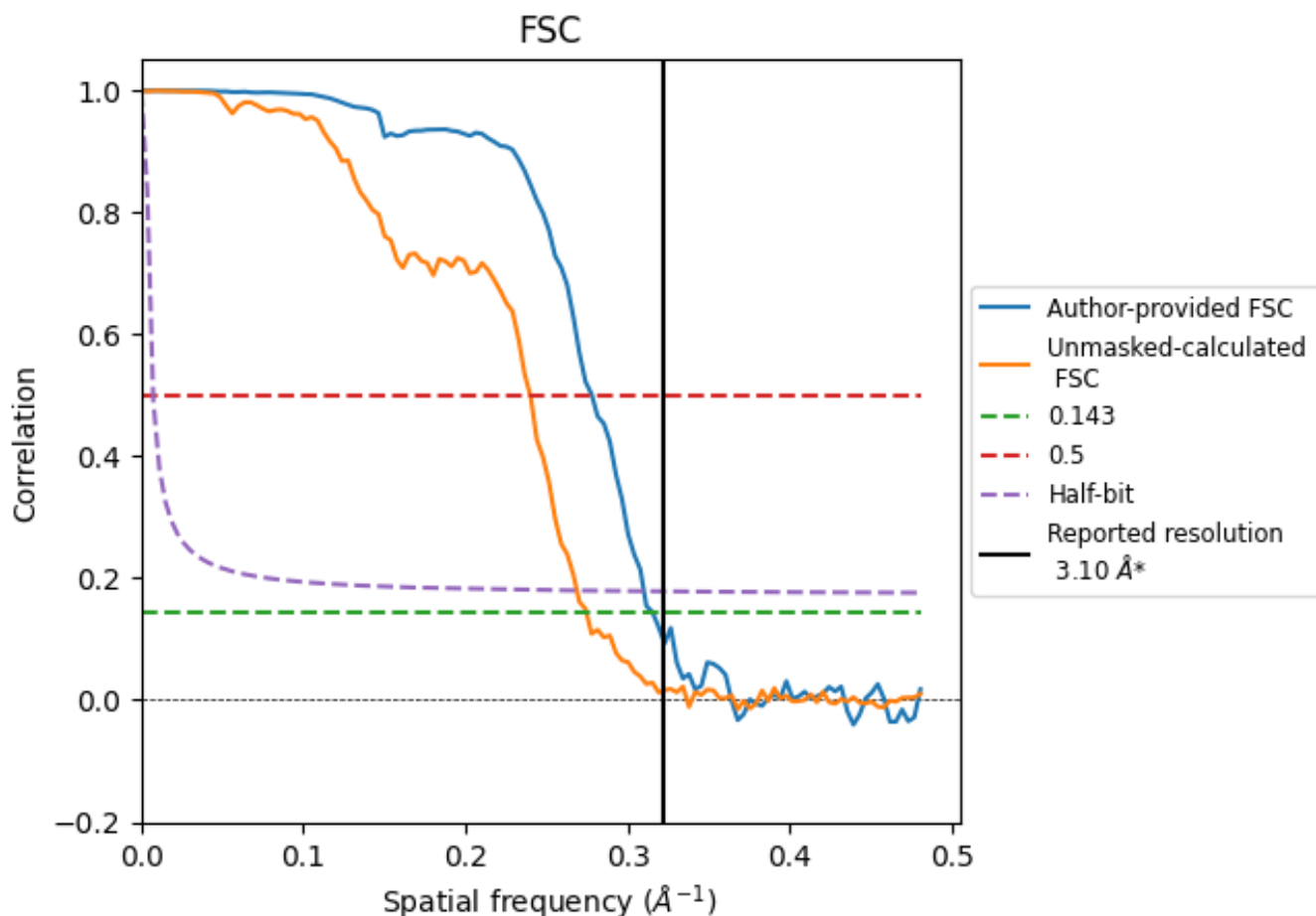


*Reported resolution corresponds to spatial frequency of 0.323 Å⁻¹

8 Fourier-Shell correlation [i](#)

Fourier-Shell Correlation (FSC) is the most commonly used method to estimate the resolution of single-particle and subtomogram-averaged maps. The shape of the curve depends on the imposed symmetry, mask and whether or not the two 3D reconstructions used were processed from a common reference. The reported resolution is shown as a black line. A curve is displayed for the half-bit criterion in addition to lines showing the 0.143 gold standard cut-off and 0.5 cut-off.

8.1 FSC [i](#)



*Reported resolution corresponds to spatial frequency of 0.323 Å⁻¹

8.2 Resolution estimates [i](#)

Resolution estimate (Å)	Estimation criterion (FSC cut-off)		
	0.143	0.5	Half-bit
Reported by author	3.10	-	-
Author-provided FSC curve	3.17	3.59	3.22
Unmasked-calculated*	3.64	4.16	3.72

*Resolution estimate based on FSC curve calculated by comparison of deposited half-maps. The value from deposited half-maps intersecting FSC 0.143 CUT-OFF 3.64 differs from the reported value 3.1 by more than 10 %

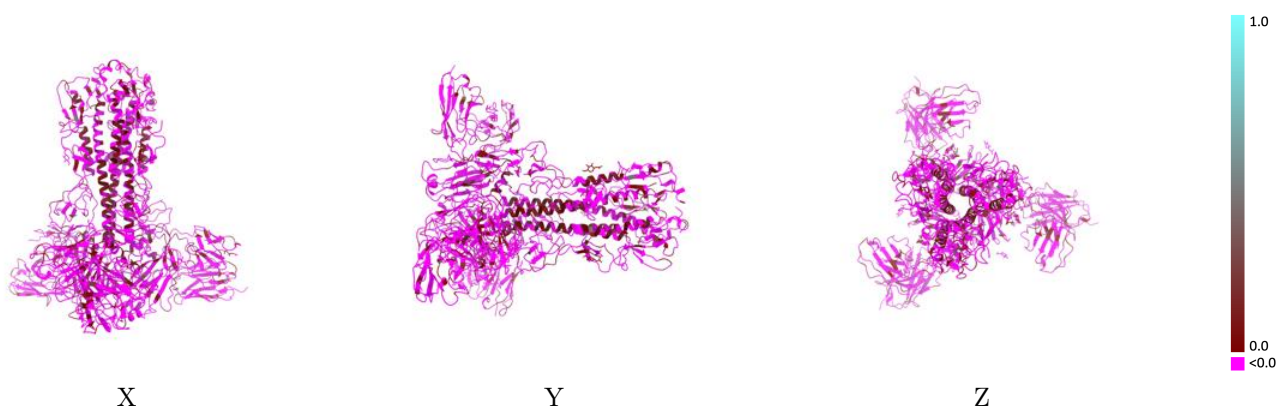
9 Map-model fit [i](#)

This section contains information regarding the fit between EMDB map EMD-63103 and PDB model 9LHO. Per-residue inclusion information can be found in section 3 on page 7.

9.1 Map-model overlay [i](#)

This section was not generated.

9.2 Q-score mapped to coordinate model [i](#)

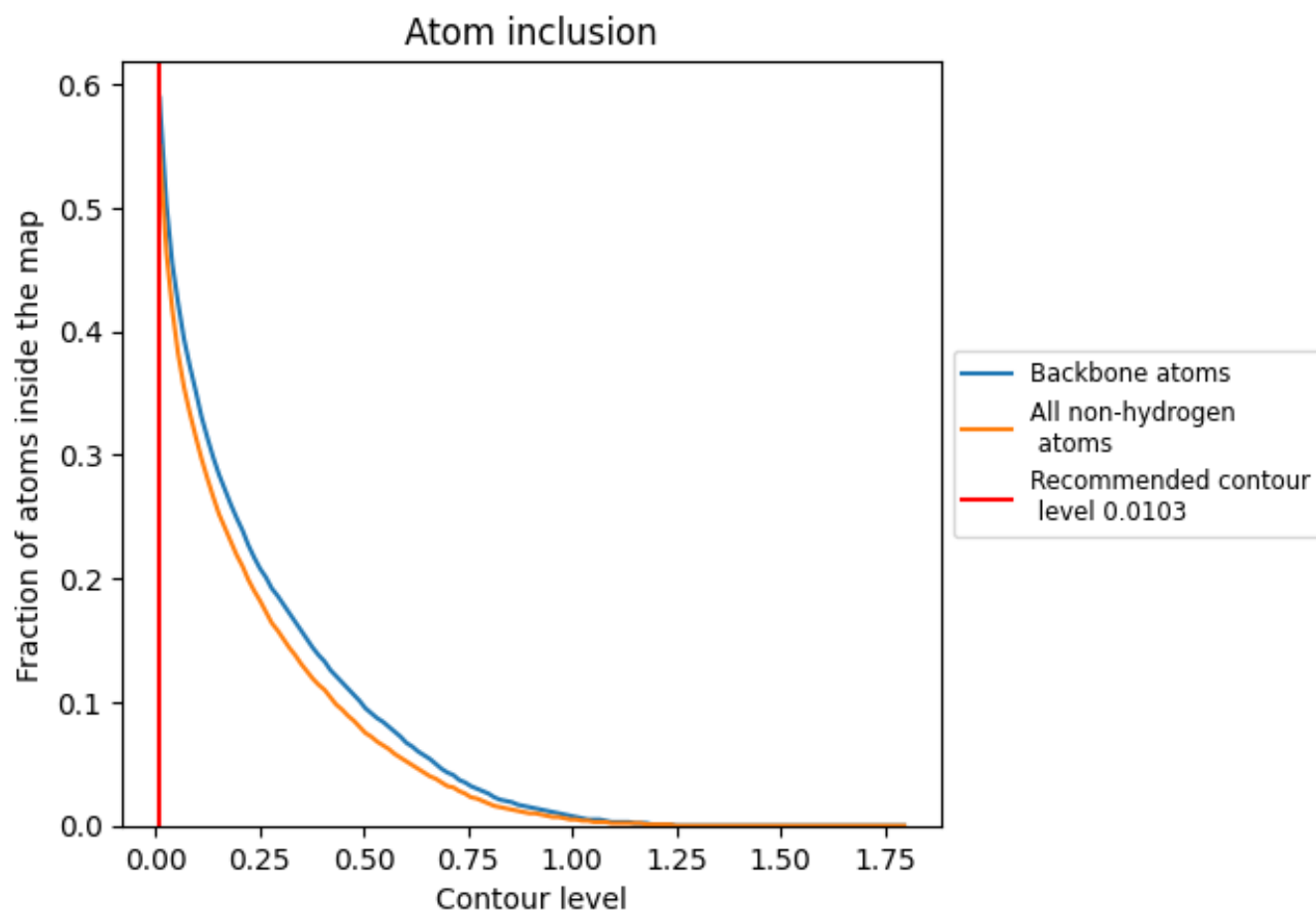


The images above show the model with each residue coloured according its Q-score. This shows their resolvability in the map with higher Q-score values reflecting better resolvability. Please note: Q-score is calculating the resolvability of atoms, and thus high values are only expected at resolutions at which atoms can be resolved. Low Q-score values may therefore be expected for many entries.

9.3 Atom inclusion mapped to coordinate model [i](#)

This section was not generated.

9.4 Atom inclusion [i](#)



At the recommended contour level, 59% of all backbone atoms, 55% of all non-hydrogen atoms, are inside the map.

9.5 Map-model fit summary [i](#)

The table lists the average atom inclusion at the recommended contour level (0.0103) and Q-score for the entire model and for each chain.

Chain	Atom inclusion	Q-score
All	0.5500	-0.0890
A	0.5560	-0.0990
B	0.6020	-0.0560
C	0.5650	-0.0970
D	0.6030	-0.0630
E	0.5600	-0.0980
F	0.6100	-0.0570
H	0.5340	-0.1000
I	0.4570	-0.0990
N	0.5520	-0.1070
O	0.4570	-0.0910
S	0.5330	-0.0950
T	0.4500	-0.1020

