



Full wwPDB EM Validation Report ⓘ

May 14, 2025 – 12:16 AM JST

PDB ID : 9L43 / pdb_00009l43
EMDB ID : EMD-62804
Title : ATR Spiral -ATRIP bound with VE-822
Authors : Wang, G.
Deposited on : 2024-12-19
Resolution : 3.83 Å(reported)

This is a Full wwPDB EM Validation Report for a publicly released PDB entry.

We welcome your comments at validation@mail.wwpdb.org

A user guide is available at

<https://www.wwpdb.org/validation/2017/EMValidationReportHelp>

with specific help available everywhere you see the ⓘ symbol.

The types of validation reports are described at

<http://www.wwpdb.org/validation/2017/FAQs#types>.

The following versions of software and data (see [references ⓘ](#)) were used in the production of this report:

EMDB validation analysis : 0.0.1.dev118
MolProbity : 4-5-2 with Phenix2.0rc1
Percentile statistics : 20231227.v01 (using entries in the PDB archive December 27th 2023)
MapQ : 1.9.13
Ideal geometry (proteins) : Engh & Huber (2001)
Ideal geometry (DNA, RNA) : Parkinson et al. (1996)
Validation Pipeline (wwPDB-VP) : 2.43.1

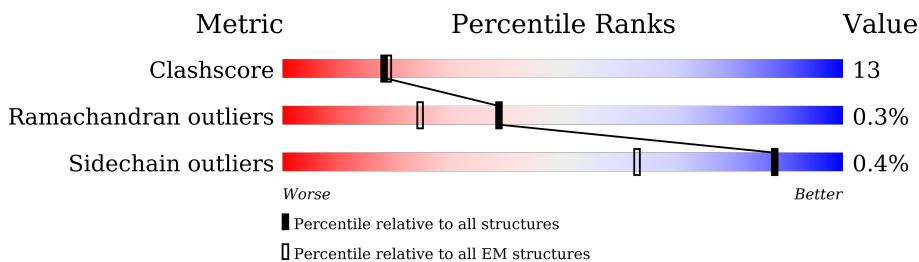
1 Overall quality at a glance

The following experimental techniques were used to determine the structure:

ELECTRON MICROSCOPY

The reported resolution of this entry is 3.83 Å.

Percentile scores (ranging between 0-100) for global validation metrics of the entry are shown in the following graphic. The table shows the number of entries on which the scores are based.



Metric	Whole archive (#Entries)	EM structures (#Entries)
Clashscore	210492	15764
Ramachandran outliers	207382	16835
Sidechain outliers	206894	16415

The table below summarises the geometric issues observed across the polymeric chains and their fit to the map. The red, orange, yellow and green segments of the bar indicate the fraction of residues that contain outliers for ≥ 3 , 2, 1 and 0 types of geometric quality criteria respectively. A grey segment represents the fraction of residues that are not modelled. The numeric value for each fraction is indicated below the corresponding segment, with a dot representing fractions $\leq 5\%$. The upper red bar (where present) indicates the fraction of residues that have poor fit to the EM map (all-atom inclusion $< 40\%$). The numeric value is given above the bar.

Mol	Chain	Length	Quality of chain
1	A	2644	
1	B	2644	
2	C	791	
2	D	791	

The following table lists non-polymeric compounds, carbohydrate monomers and non-standard residues in protein, DNA, RNA chains that are outliers for geometric or electron-density-fit criteria:

Mol	Type	Chain	Res	Chirality	Geometry	Clashes	Electron density
3	ZN	C	801	-	-	X	-

2 Entry composition

There are 3 unique types of molecules in this entry. The entry contains 33261 atoms, of which 15995 are hydrogens and 0 are deuteriums.

In the tables below, the AltConf column contains the number of residues with at least one atom in alternate conformation and the Trace column contains the number of residues modelled with at most 2 atoms.

- Molecule 1 is a protein called Serine/threonine-protein kinase ATR.

Mol	Chain	Residues	Atoms						AltConf	Trace
1	A	827	Total	C	H	N	O	S	0	0
			11843	3902	5783	1011	1107	40		
1	B	853	Total	C	H	N	O	S	0	0
			11860	3970	5696	1023	1129	42		

- Molecule 2 is a protein called ATR-interacting protein.

Mol	Chain	Residues	Atoms						AltConf	Trace
2	D	366	Total	C	H	N	O	S	0	0
			4754	1582	2252	439	464	17		
2	C	369	Total	C	H	N	O	S	0	0
			4802	1604	2264	442	470	22		

- Molecule 3 is ZINC ION (CCD ID: ZN) (formula: Zn) (labeled as "Ligand of Interest" by depositor).

Mol	Chain	Residues	Atoms		AltConf
3	D	1	Total	Zn	0
			1	1	
3	C	1	Total	Zn	0
			1	1	







4 Experimental information

Property	Value	Source
EM reconstruction method	SINGLE PARTICLE	Depositor
Imposed symmetry	POINT, Not provided	
Number of particles used	66141	Depositor
Resolution determination method	FSC 0.143 CUT-OFF	Depositor
CTF correction method	PHASE FLIPPING AND AMPLITUDE CORRECTION	Depositor
Microscope	TFS KRIOS	Depositor
Voltage (kV)	300	Depositor
Electron dose ($e^-/\text{\AA}^2$)	50	Depositor
Minimum defocus (nm)	1500	Depositor
Maximum defocus (nm)	2500	Depositor
Magnification	Not provided	
Image detector	GATAN K3 BIOQUANTUM (6k x 4k)	Depositor
Maximum map value	1.891	Depositor
Minimum map value	-1.003	Depositor
Average map value	0.008	Depositor
Map value standard deviation	0.069	Depositor
Recommended contour level	0.446	Depositor
Map size (Å)	308.16, 308.16, 308.16	wwPDB
Map dimensions	288, 288, 288	wwPDB
Map angles (°)	90.0, 90.0, 90.0	wwPDB
Pixel spacing (Å)	1.07, 1.07, 1.07	Depositor

5 Model quality [i](#)

5.1 Standard geometry [i](#)

Bond lengths and bond angles in the following residue types are not validated in this section: ZN

The Z score for a bond length (or angle) is the number of standard deviations the observed value is removed from the expected value. A bond length (or angle) with $|Z| > 5$ is considered an outlier worth inspection. RMSZ is the root-mean-square of all Z scores of the bond lengths (or angles).

Mol	Chain	Bond lengths		Bond angles	
		RMSZ	$\# Z > 5$	RMSZ	$\# Z > 5$
1	A	0.32	5/6156 (0.1%)	0.58	14/8371 (0.2%)
1	B	0.24	2/6271 (0.0%)	0.40	2/8533 (0.0%)
2	C	0.51	7/2574 (0.3%)	0.90	19/3510 (0.5%)
2	D	0.29	1/2539 (0.0%)	0.54	4/3473 (0.1%)
All	All	0.32	15/17540 (0.1%)	0.58	39/23887 (0.2%)

Chiral center outliers are detected by calculating the chiral volume of a chiral center and verifying if the center is modelled as a planar moiety or with the opposite hand. A planarity outlier is detected by checking planarity of atoms in a peptide group, atoms in a mainchain group or atoms of a sidechain that are expected to be planar.

Mol	Chain	#Chirality outliers	#Planarity outliers
2	C	0	3

All (15) bond length outliers are listed below:

Mol	Chain	Res	Type	Atoms	Z	Observed(Å)	Ideal(Å)
2	C	623	LEU	CA-C	12.36	1.69	1.52
2	C	624	CYS	C-N	-5.84	1.25	1.33
2	C	624	CYS	CA-C	-5.66	1.45	1.52
2	C	631	LEU	N-CA	5.25	1.52	1.46
2	C	488	HIS	ND1-CE1	5.24	1.37	1.32
1	A	856	HIS	ND1-CE1	5.24	1.37	1.32
1	A	830	HIS	ND1-CE1	5.24	1.37	1.32
2	C	623	LEU	N-CA	5.22	1.52	1.46
1	A	167	HIS	ND1-CE1	5.21	1.37	1.32
1	B	856	HIS	ND1-CE1	5.19	1.37	1.32
2	D	379	GLN	CD-OE1	5.09	1.33	1.23
2	C	379	GLN	CD-OE1	5.09	1.33	1.23
1	A	657	ASN	CG-OD1	5.08	1.33	1.23
1	B	633	GLN	CD-OE1	5.08	1.33	1.23

Continued on next page...

Continued from previous page...

Mol	Chain	Res	Type	Atoms	Z	Observed(Å)	Ideal(Å)
1	A	681	GLN	CD-OE1	5.01	1.33	1.23

All (39) bond angle outliers are listed below:

Mol	Chain	Res	Type	Atoms	Z	Observed(°)	Ideal(°)
2	C	622	GLN	O-C-N	-24.42	90.11	122.59
1	A	822	VAL	N-CA-CB	-22.01	83.74	112.36
2	C	624	CYS	CB-CA-C	-14.47	86.61	110.77
2	C	624	CYS	N-CA-CB	13.88	132.15	109.94
2	C	681	GLN	N-CA-C	-11.41	98.58	111.71
2	C	624	CYS	CA-CB-SG	-10.36	90.57	114.40
1	A	821	ARG	CB-CA-C	-9.13	95.63	110.79
2	C	626	HIS	CB-CA-C	8.41	126.09	110.10
2	D	681	GLN	N-CA-C	-8.24	102.30	111.28
2	C	630	CYS	CB-CA-C	8.14	125.57	110.10
1	A	822	VAL	CB-CA-C	7.96	119.68	110.93
1	A	824	PHE	N-CA-C	-7.56	103.04	111.28
1	A	824	PHE	CA-C-O	-7.39	112.71	120.55
1	A	823	ALA	N-CA-C	-7.33	103.90	112.92
2	C	623	LEU	CA-C-O	-6.92	110.61	120.51
1	A	167	HIS	CB-CG-CD2	-6.64	122.56	131.20
1	A	856	HIS	CB-CG-CD2	-6.64	122.56	131.20
1	B	856	HIS	CB-CG-CD2	-6.59	122.63	131.20
2	C	488	HIS	CB-CG-CD2	-6.57	122.66	131.20
1	A	830	HIS	CB-CG-CD2	-6.45	122.81	131.20
2	D	630	CYS	N-CA-CB	-6.40	101.54	113.89
2	C	623	LEU	CA-C-N	-6.27	112.64	121.99
2	C	623	LEU	C-N-CA	-6.27	112.64	121.99
2	C	682	CYS	CA-C-O	-6.25	113.92	120.55
1	A	34	ARG	CB-CA-C	6.19	121.06	110.79
2	D	630	CYS	CB-CA-C	6.07	124.00	110.76
2	C	622	GLN	CA-C-N	5.89	132.79	121.54
2	C	622	GLN	C-N-CA	5.89	132.79	121.54
1	A	856	HIS	CB-CG-ND1	5.75	131.32	122.70
1	A	167	HIS	CB-CG-ND1	5.75	131.32	122.70
2	C	625	SER	N-CA-C	-5.71	104.51	112.45
1	B	856	HIS	CB-CG-ND1	5.70	131.25	122.70
2	C	488	HIS	CB-CG-ND1	5.63	131.15	122.70
1	A	830	HIS	CB-CG-ND1	5.57	131.05	122.70
2	C	680	CYS	CB-CA-C	5.45	119.20	110.16
2	D	629	GLY	N-CA-C	-5.21	100.83	113.18
2	C	631	LEU	CA-C-N	5.20	131.48	121.54

Continued on next page...

Continued from previous page...

Mol	Chain	Res	Type	Atoms	Z	Observed(°)	Ideal(°)
2	C	631	LEU	C-N-CA	5.20	131.48	121.54
1	A	34	ARG	N-CA-CB	-5.03	102.72	110.12

There are no chirality outliers.

All (3) planarity outliers are listed below:

Mol	Chain	Res	Type	Group
2	C	622	GLN	Peptide,Mainchain
2	C	624	CYS	Mainchain

5.2 Too-close contacts [i](#)

In the following table, the Non-H and H(model) columns list the number of non-hydrogen atoms and hydrogen atoms in the chain respectively. The H(added) column lists the number of hydrogen atoms added and optimized by MolProbity. The Clashes column lists the number of clashes within the asymmetric unit, whereas Symm-Clashes lists symmetry-related clashes.

Mol	Chain	Non-H	H(model)	H(added)	Clashes	Symm-Clashes
1	A	6060	5783	5794	153	0
1	B	6164	5696	5700	150	0
2	C	2538	2264	2271	74	0
2	D	2502	2252	2257	55	0
3	C	1	0	0	3	0
3	D	1	0	0	0	0
All	All	17266	15995	16022	430	0

The all-atom clashscore is defined as the number of clashes found per 1000 atoms (including hydrogen atoms). The all-atom clashscore for this structure is 13.

All (430) close contacts within the same asymmetric unit are listed below, sorted by their clash magnitude.

Atom-1	Atom-2	Interatomic distance (Å)	Clash overlap (Å)
2:C:630:CYS:CB	2:C:680:CYS:SG	2.38	1.12
2:C:680:CYS:SG	3:C:801:ZN:ZN	1.39	1.08
1:A:822:VAL:HB	1:A:868:THR:HB	1.33	1.05
2:C:430:HIS:HA	2:C:433:ALA:HB3	1.36	1.04
2:C:308:GLN:N	2:C:394:CYS:SG	2.40	0.94
1:A:818:LYS:O	1:A:822:VAL:HG23	1.73	0.89
2:C:624:CYS:HG	3:C:801:ZN:ZN	0.82	0.88

Continued on next page...

Continued from previous page...

Atom-1	Atom-2	Interatomic distance (Å)	Clash overlap (Å)
1:A:585:HIS:O	1:A:587:LEU:N	2.07	0.87
1:A:124:CYS:SG	1:A:212:VAL:HG22	2.19	0.83
1:A:379:LEU:O	1:A:382:VAL:HG12	1.80	0.81
1:B:857:ALA:O	1:B:861:ARG:N	2.13	0.80
2:C:630:CYS:HB2	2:C:680:CYS:SG	2.21	0.80
1:B:926:PHE:O	1:B:930:LYS:N	2.15	0.80
2:C:621:PRO:O	2:C:623:LEU:N	2.14	0.80
2:C:630:CYS:HB3	2:C:680:CYS:SG	2.22	0.77
1:A:806:LEU:O	1:A:810:LEU:HD23	1.85	0.76
1:A:857:ALA:O	1:A:861:ARG:N	2.19	0.75
1:A:551:LEU:HD11	1:A:620:LEU:HD21	1.67	0.74
1:B:715:VAL:HG11	1:B:789:LEU:HD13	1.69	0.74
1:B:633:GLN:O	1:B:637:VAL:HG23	1.87	0.74
2:D:428:GLY:O	2:D:432:GLN:N	2.18	0.74
1:B:38:CYS:O	1:B:42:ASP:N	2.20	0.74
1:B:721:MET:O	1:B:750:GLN:N	2.20	0.74
1:A:819:ASP:O	1:A:823:ALA:HB3	1.89	0.73
2:D:621:PRO:O	2:D:625:SER:N	2.22	0.73
1:B:40:PHE:O	1:B:44:ILE:HD12	1.88	0.72
2:C:624:CYS:HA	2:C:630:CYS:HA	1.72	0.72
1:B:371:TYR:O	1:B:375:ILE:HD12	1.90	0.71
1:A:49:ASN:O	1:A:53:VAL:HG23	1.91	0.71
2:C:430:HIS:N	2:C:471:LEU:HD21	2.06	0.70
1:A:371:TYR:O	1:A:375:ILE:HD12	1.92	0.70
1:A:174:VAL:HG23	1:A:194:LEU:O	1.92	0.69
1:B:55:LEU:C	1:B:118:LEU:HD12	2.16	0.69
1:A:822:VAL:HB	1:A:868:THR:CB	2.16	0.69
2:C:656:GLU:HB3	2:C:693:MET:HE3	1.74	0.69
1:B:635:ARG:CB	1:B:740:LEU:HD11	2.23	0.69
1:A:213:LEU:HD21	1:A:229:LEU:HD22	1.73	0.69
1:B:692:LEU:O	1:B:696:VAL:HG12	1.92	0.69
1:A:550:LEU:O	1:A:554:VAL:HG23	1.94	0.68
1:B:723:TYR:N	1:B:748:THR:O	2.20	0.68
1:A:228:LEU:O	1:A:232:ILE:HD12	1.93	0.68
1:B:596:LEU:HD11	1:B:620:LEU:CD2	2.24	0.67
1:A:120:HIS:HA	1:A:123:ILE:HD12	1.75	0.67
1:A:822:VAL:CB	1:A:868:THR:HB	2.19	0.67
1:B:476:SER:OG	1:B:489:MET:HE1	1.95	0.66
1:B:596:LEU:HD11	1:B:620:LEU:HD22	1.77	0.65
2:C:308:GLN:N	2:C:394:CYS:O	2.30	0.65
1:B:664:HIS:ND1	1:B:667:ILE:HD12	2.11	0.65

Continued on next page...

Continued from previous page...

Atom-1	Atom-2	Interatomic distance (Å)	Clash overlap (Å)
1:A:780:LEU:HB2	1:A:820:VAL:HG22	1.78	0.65
2:C:430:HIS:HA	2:C:433:ALA:CB	2.22	0.64
2:D:632:LEU:C	2:D:634:LEU:H	2.06	0.64
2:D:719:CYS:O	2:D:723:THR:HG23	1.98	0.63
1:B:715:VAL:HG11	1:B:789:LEU:CD1	2.28	0.63
2:C:624:CYS:SG	2:C:630:CYS:CB	2.87	0.63
1:B:722:PHE:HA	1:B:748:THR:O	1.98	0.63
1:B:326:CYS:HB2	1:B:375:ILE:HD11	1.80	0.62
1:B:21:ALA:HB1	1:B:26:TYR:HA	1.82	0.62
1:A:546:SER:O	1:A:550:LEU:HD23	2.00	0.62
1:A:574:ILE:HG13	1:A:639:LEU:HD12	1.80	0.62
1:A:139:PRO:O	1:A:142:PHE:N	2.33	0.62
1:A:540:TYR:OH	1:A:576:MET:HE1	2.00	0.62
1:B:492:GLY:O	1:B:496:VAL:HG23	1.99	0.61
2:C:719:CYS:O	2:C:723:THR:HG23	2.00	0.61
1:B:700:SER:O	1:B:703:VAL:HG12	2.00	0.61
1:A:376:CYS:HA	1:A:379:LEU:HD12	1.83	0.61
1:A:155:ASP:O	1:A:159:LEU:HD23	1.99	0.61
1:B:635:ARG:O	1:B:639:LEU:HD23	2.01	0.61
1:A:14:ALA:O	1:A:18:LEU:HD23	2.00	0.61
1:B:209:LEU:O	1:B:213:LEU:HD23	2.00	0.61
1:B:99:PHE:CE2	1:B:103:ILE:HD11	2.36	0.60
1:A:786:LEU:O	1:A:790:CYS:N	2.35	0.60
1:A:156:LEU:HD21	1:A:175:MET:HE3	1.83	0.60
1:A:8:LEU:HD13	1:A:40:PHE:CD2	2.37	0.60
2:D:430:HIS:O	2:D:434:LEU:HD23	2.01	0.60
1:A:530:VAL:O	1:A:531:VAL:HG13	2.03	0.59
1:B:561:ALA:HB1	1:B:565:LYS:NZ	2.17	0.59
1:A:530:VAL:O	1:A:530:VAL:HG23	2.01	0.59
1:B:12:ILE:HA	1:B:15:LEU:HD12	1.84	0.59
1:B:230:TRP:CZ3	1:B:252:LEU:HD22	2.38	0.59
2:C:430:HIS:CA	2:C:433:ALA:HB3	2.22	0.59
1:B:71:PHE:O	1:B:75:ILE:HG22	2.02	0.59
1:B:142:PHE:O	1:B:146:THR:HG23	2.03	0.59
2:D:580:LEU:O	2:D:583:PHE:N	2.36	0.59
1:A:801:ASP:O	1:A:805:VAL:HG23	2.03	0.59
1:B:907:ALA:O	1:B:910:GLU:N	2.35	0.59
2:D:611:SER:OG	2:D:662:LEU:HD13	2.03	0.58
1:B:565:LYS:O	1:B:569:ILE:HD12	2.03	0.58
2:D:636:TYR:CZ	2:D:686:VAL:HG23	2.38	0.58
1:A:124:CYS:O	1:A:128:CYS:HB2	2.04	0.58

Continued on next page...

Continued from previous page...

Atom-1	Atom-2	Interatomic distance (Å)	Clash overlap (Å)
2:C:624:CYS:SG	2:C:630:CYS:HB2	2.44	0.58
2:D:545:LEU:C	2:D:545:LEU:HD23	2.29	0.58
1:A:72:ILE:HA	1:A:75:ILE:HG22	1.86	0.58
1:B:10:SER:N	1:B:15:LEU:HD11	2.19	0.57
1:A:725:THR:HG21	1:A:728:LEU:HB2	1.85	0.57
1:B:640:LEU:HD21	1:B:652:ARG:HA	1.86	0.57
1:B:84:VAL:HG22	1:B:85:ASN:N	2.19	0.57
2:C:632:LEU:HD12	2:C:632:LEU:H	1.69	0.57
1:A:243:LYS:O	1:A:247:LEU:HD23	2.05	0.57
1:A:815:ASP:HB3	1:A:821:ARG:CB	2.35	0.57
1:A:104:ILE:O	1:A:108:LEU:HD23	2.05	0.57
1:A:560:GLU:OE1	1:A:560:GLU:N	2.35	0.57
1:B:84:VAL:HG22	1:B:85:ASN:H	1.69	0.57
2:C:621:PRO:C	2:C:623:LEU:N	2.63	0.57
2:C:646:VAL:O	2:C:646:VAL:HG13	2.05	0.57
1:B:802:VAL:O	1:B:806:LEU:HD23	2.05	0.56
1:A:473:LEU:HB2	1:A:493:ILE:HD11	1.87	0.56
2:D:730:LEU:O	2:D:733:LYS:N	2.39	0.56
1:A:8:LEU:HD13	1:A:40:PHE:HD2	1.71	0.56
1:B:762:VAL:HG22	1:B:766:PHE:CE2	2.40	0.56
2:D:694:LEU:CD2	2:D:751:VAL:HG21	2.35	0.56
1:A:728:LEU:O	1:A:729:THR:HG23	2.04	0.56
2:D:428:GLY:O	2:D:431:CYS:N	2.39	0.56
2:D:736:LEU:O	2:D:739:MET:N	2.39	0.56
1:A:821:ARG:CB	1:A:822:VAL:HG22	2.36	0.56
2:D:659:VAL:O	2:D:663:LEU:HD23	2.06	0.56
1:B:251:PHE:CE2	1:B:255:LEU:HD11	2.41	0.55
1:B:635:ARG:HA	1:B:740:LEU:HD11	1.89	0.55
2:D:578:ASP:OD1	2:D:578:ASP:N	2.39	0.55
1:A:196:LEU:HD23	1:A:201:ASN:CG	2.31	0.55
1:B:763:CYS:SG	1:B:767:LEU:HD23	2.47	0.55
1:B:635:ARG:CA	1:B:740:LEU:HD11	2.37	0.55
1:B:475:ILE:O	1:B:478:GLU:N	2.40	0.54
2:C:624:CYS:HG	2:C:630:CYS:CB	2.19	0.54
1:A:380:LEU:O	1:A:380:LEU:HD23	2.06	0.54
1:B:757:GLN:HA	1:B:794:ASP:CB	2.37	0.54
2:D:628:GLU:O	2:D:630:CYS:N	2.39	0.54
2:D:725:LEU:HD22	2:D:768:CYS:HB3	1.87	0.54
2:C:632:LEU:HD23	2:C:636:TYR:OH	2.05	0.54
1:B:22:THR:O	1:B:26:TYR:N	2.33	0.54
2:C:656:GLU:CB	2:C:693:MET:HE3	2.37	0.54

Continued on next page...

Continued from previous page...

Atom-1	Atom-2	Interatomic distance (Å)	Clash overlap (Å)
2:C:636:TYR:O	2:C:640:THR:HG22	2.07	0.54
1:A:469:LYS:O	1:A:472:SER:OG	2.22	0.54
1:A:638:PHE:O	1:A:641:THR:OG1	2.23	0.54
2:D:720:LEU:O	2:D:724:VAL:HG23	2.06	0.54
2:C:739:MET:O	2:C:742:VAL:HG22	2.08	0.54
1:A:104:ILE:HG21	1:A:178:PHE:HE2	1.73	0.53
2:C:545:LEU:HD23	2:C:545:LEU:C	2.33	0.53
1:A:210:LEU:HD23	1:A:247:LEU:HB3	1.91	0.53
1:B:380:LEU:HD23	1:B:380:LEU:C	2.33	0.53
1:A:477:LEU:O	1:A:481:GLY:N	2.42	0.53
2:D:648:LEU:O	2:D:651:GLN:N	2.42	0.53
2:C:656:GLU:HG2	2:C:693:MET:HE3	1.90	0.53
2:D:317:LEU:HD13	2:C:386:LEU:CD2	2.39	0.53
1:B:153:PHE:CD2	1:B:232:ILE:HD12	2.44	0.53
1:A:585:HIS:O	1:A:588:GLU:N	2.36	0.52
2:D:313:ILE:HG23	2:D:314:ASN:N	2.23	0.52
1:A:208:THR:O	1:A:212:VAL:HG23	2.09	0.52
2:D:482:LEU:O	2:D:486:VAL:HG23	2.10	0.52
2:C:701:VAL:HG13	2:C:702:ARG:N	2.25	0.52
1:A:108:LEU:HD12	1:A:205:ILE:HD11	1.92	0.52
1:A:131:LEU:HD12	1:A:142:PHE:CE1	2.44	0.52
1:B:48:VAL:HG23	1:B:49:ASN:N	2.25	0.52
1:B:357:VAL:O	1:B:357:VAL:HG13	2.09	0.52
2:C:321:LEU:O	2:C:322:ILE:HD13	2.10	0.52
2:C:430:HIS:O	2:C:434:LEU:HD23	2.09	0.52
2:D:723:THR:O	2:D:727:LEU:HD13	2.10	0.52
2:C:472:GLU:CB	2:C:556:LEU:HD23	2.40	0.52
1:B:198:SER:O	1:B:201:ASN:N	2.43	0.51
2:C:680:CYS:CB	2:C:682:CYS:SG	2.99	0.51
1:A:551:LEU:CD1	1:A:620:LEU:HD21	2.39	0.51
2:C:655:LEU:C	2:C:655:LEU:HD23	2.36	0.51
1:B:108:LEU:CD1	1:B:205:ILE:HD11	2.41	0.51
1:B:252:LEU:HD23	1:B:255:LEU:HD12	1.93	0.51
1:B:379:LEU:O	1:B:382:VAL:HG12	2.11	0.51
1:A:49:ASN:O	1:A:53:VAL:N	2.43	0.51
1:B:494:ALA:HB2	1:B:569:ILE:HD11	1.92	0.51
1:A:937:LEU:HD23	1:A:937:LEU:O	2.10	0.51
1:B:210:LEU:HD23	1:B:247:LEU:HB3	1.92	0.51
2:D:683:ASN:O	2:D:686:VAL:HG12	2.11	0.51
1:B:341:LEU:O	1:B:344:ALA:N	2.43	0.51
2:C:624:CYS:SG	3:C:801:ZN:ZN	1.81	0.50

Continued on next page...

Continued from previous page...

Atom-1	Atom-2	Interatomic distance (Å)	Clash overlap (Å)
1:A:566:VAL:HA	1:A:569:ILE:HG22	1.93	0.50
1:B:629:SER:O	1:B:633:GLN:N	2.34	0.50
2:D:386:LEU:HD13	2:C:317:LEU:HD13	1.93	0.50
2:D:751:VAL:HG13	2:D:752:MET:N	2.26	0.50
2:C:640:THR:HG23	2:C:641:SER:N	2.26	0.50
1:A:883:ASP:OD2	1:A:883:ASP:N	2.45	0.50
2:D:420:LEU:O	2:D:423:VAL:N	2.45	0.50
2:D:684:VAL:HG23	2:D:740:HIS:ND1	2.27	0.49
1:B:639:LEU:CD2	1:B:740:LEU:HD13	2.42	0.49
1:A:124:CYS:O	1:A:125:GLU:C	2.52	0.49
2:C:663:LEU:CB	2:C:726:LEU:HD21	2.43	0.49
1:B:407:ILE:O	1:B:411:ILE:HG22	2.13	0.49
1:A:551:LEU:HD12	1:A:552:GLU:N	2.28	0.49
1:B:341:LEU:O	1:B:344:ALA:HB3	2.13	0.49
1:A:173:VAL:HG22	1:A:174:VAL:N	2.28	0.49
2:D:601:PRO:O	2:D:605:LEU:HD23	2.13	0.49
1:B:111:ALA:HB3	1:B:205:ILE:HD12	1.95	0.48
1:B:725:THR:HG22	1:B:726:SER:N	2.28	0.48
1:A:379:LEU:HD22	1:A:392:LEU:HD12	1.95	0.48
1:B:505:VAL:HG22	1:B:579:ASN:ND2	2.27	0.48
2:D:655:LEU:HD23	2:D:655:LEU:C	2.38	0.48
1:A:926:PHE:O	1:A:930:LYS:N	2.45	0.48
1:B:724:LEU:O	1:B:725:THR:OG1	2.30	0.48
2:D:632:LEU:C	2:D:634:LEU:N	2.70	0.48
2:C:759:ILE:O	2:C:765:VAL:HG12	2.12	0.48
1:A:104:ILE:HG21	1:A:178:PHE:CE2	2.48	0.48
1:B:728:LEU:HD12	1:B:729:THR:N	2.28	0.48
1:A:486:VAL:O	1:A:490:LEU:HD13	2.14	0.48
1:A:653:THR:O	1:A:657:ASN:OD1	2.31	0.48
1:B:494:ALA:HB2	1:B:569:ILE:CD1	2.44	0.48
2:C:633:LEU:HD12	2:C:682:CYS:HB3	1.96	0.47
1:B:640:LEU:HD11	1:B:652:ARG:CB	2.43	0.47
1:B:706:GLU:O	1:B:710:ILE:HG23	2.14	0.47
2:C:683:ASN:O	2:C:686:VAL:HG12	2.14	0.47
2:C:712:GLN:O	2:C:716:THR:HG23	2.14	0.47
1:A:198:SER:O	1:A:201:ASN:N	2.46	0.47
1:A:585:HIS:C	1:A:587:LEU:N	2.73	0.47
1:B:153:PHE:CE2	1:B:232:ILE:HD12	2.49	0.47
1:B:593:MET:SD	1:B:593:MET:N	2.86	0.47
2:C:430:HIS:CA	2:C:471:LEU:HD21	2.44	0.47
1:B:333:VAL:O	1:B:336:ARG:N	2.47	0.47

Continued on next page...

Continued from previous page...

Atom-1	Atom-2	Interatomic distance (Å)	Clash overlap (Å)
1:A:869:LEU:O	1:A:873:THR:HG23	2.13	0.47
1:A:778:VAL:HG13	1:A:779:LYS:N	2.30	0.47
1:B:584:ASP:O	1:B:587:LEU:N	2.47	0.47
1:A:104:ILE:HG22	1:A:108:LEU:HD23	1.96	0.47
1:B:108:LEU:HD12	1:B:205:ILE:HD11	1.97	0.47
1:B:109:ARG:HG2	1:B:194:LEU:HD12	1.96	0.47
1:B:333:VAL:HG13	1:B:334:LEU:N	2.29	0.47
1:B:500:THR:O	1:B:504:THR:HG22	2.15	0.47
2:D:495:LEU:C	2:D:495:LEU:HD23	2.39	0.47
2:C:640:THR:HG23	2:C:641:SER:H	1.80	0.47
2:C:736:LEU:O	2:C:739:MET:N	2.48	0.47
2:D:758:LEU:O	2:D:761:GLY:N	2.48	0.47
1:A:113:THR:HG23	1:A:116:CYS:H	1.80	0.47
1:A:698:ASP:CB	1:A:703:VAL:HG22	2.44	0.47
1:A:855:THR:O	1:A:859:ILE:HD12	2.14	0.47
1:B:22:THR:OG1	1:B:25:GLU:N	2.43	0.47
2:C:666:LEU:HD23	2:C:666:LEU:C	2.39	0.46
1:B:152:LEU:CD2	1:B:156:LEU:HD11	2.46	0.46
1:B:710:ILE:O	1:B:746:LYS:NZ	2.46	0.46
1:B:357:VAL:O	1:B:357:VAL:CG1	2.64	0.46
2:C:311:ILE:HG22	2:C:311:ILE:O	2.14	0.46
1:A:86:VAL:HG23	1:A:86:VAL:O	2.16	0.46
1:A:779:LYS:HB2	1:A:820:VAL:HG21	1.97	0.46
1:A:817:ASP:O	1:A:822:VAL:HG22	2.16	0.46
1:A:818:LYS:HA	1:A:822:VAL:CG2	2.46	0.46
1:A:937:LEU:HD23	1:A:937:LEU:C	2.40	0.46
1:B:335:MET:HE2	1:B:382:VAL:HA	1.98	0.46
1:B:715:VAL:HG23	1:B:716:CYS:H	1.81	0.46
2:C:551:ALA:O	2:C:552:ALA:C	2.59	0.46
2:C:601:PRO:O	2:C:605:LEU:HD23	2.15	0.46
1:B:138:SER:OG	1:B:141:ILE:HD12	2.15	0.46
2:C:472:GLU:HB3	2:C:556:LEU:HD23	1.97	0.46
1:B:724:LEU:HD23	1:B:747:ALA:HB2	1.97	0.46
2:D:545:LEU:O	2:D:549:SER:N	2.47	0.46
2:C:591:PRO:O	2:C:595:SER:N	2.49	0.46
1:A:10:SER:HB2	1:A:36:ILE:HD12	1.98	0.45
1:A:651:TRP:O	1:A:655:VAL:HG23	2.16	0.45
1:A:81:LEU:HA	1:A:84:VAL:O	2.16	0.45
2:C:313:ILE:HG23	2:C:314:ASN:N	2.32	0.45
1:B:385:ILE:HG22	1:B:385:ILE:O	2.15	0.45
2:C:624:CYS:CB	2:C:630:CYS:HB2	2.45	0.45

Continued on next page...

Continued from previous page...

Atom-1	Atom-2	Interatomic distance (Å)	Clash overlap (Å)
2:C:386:LEU:HD13	2:C:419:PHE:HZ	1.82	0.45
2:D:420:LEU:O	2:D:421:PRO:C	2.59	0.45
1:B:315:PRO:O	1:B:318:LEU:N	2.50	0.45
1:B:535:MET:HE2	1:B:539:PHE:CD2	2.51	0.45
1:A:818:LYS:HA	1:A:822:VAL:HG21	1.98	0.45
1:B:715:VAL:HG23	1:B:716:CYS:N	2.32	0.45
2:C:621:PRO:C	2:C:623:LEU:H	2.24	0.45
1:A:686:ASN:C	1:A:718:LEU:HD12	2.42	0.45
1:A:678:LEU:C	1:A:678:LEU:HD23	2.41	0.45
1:A:778:VAL:O	1:A:781:ALA:HB3	2.17	0.45
1:B:801:ASP:O	1:B:805:VAL:HG23	2.17	0.45
1:A:649:LEU:HD11	1:A:682:GLN:OE1	2.16	0.44
2:D:311:ILE:O	2:D:311:ILE:HG22	2.16	0.44
2:D:482:LEU:HD12	2:D:486:VAL:HG23	1.99	0.44
1:B:104:ILE:HG22	1:B:108:LEU:HD23	1.97	0.44
1:B:197:MET:N	1:B:201:ASN:OD1	2.51	0.44
1:B:204:PHE:O	1:B:207:VAL:HG12	2.18	0.44
2:C:680:CYS:HB3	2:C:683:ASN:H	1.82	0.44
1:A:40:PHE:HA	1:A:43:ARG:HG2	1.99	0.44
2:C:384:THR:O	2:C:388:LEU:HD23	2.17	0.44
1:B:383:LEU:HD12	1:B:384:GLY:N	2.32	0.44
1:A:597:PRO:HA	1:A:628:TYR:CE2	2.52	0.44
1:B:100:SER:HA	1:B:103:ILE:HD12	1.99	0.44
1:B:261:LEU:HD23	1:B:261:LEU:H	1.83	0.44
1:B:352:TYR:HD1	1:B:356:PHE:HB2	1.82	0.44
2:D:694:LEU:HD22	2:D:751:VAL:HG21	2.00	0.44
2:C:739:MET:HE3	2:C:740:HIS:CE1	2.52	0.44
1:A:333:VAL:HG13	1:A:334:LEU:N	2.33	0.44
1:A:367:VAL:HG22	1:A:371:TYR:CE1	2.52	0.44
1:A:503:CYS:O	1:A:507:CYS:HB2	2.17	0.44
2:D:384:THR:O	2:D:388:LEU:HD23	2.18	0.44
2:D:406:ARG:O	2:D:407:ALA:C	2.61	0.44
1:A:934:CYS:O	1:A:938:VAL:HG13	2.17	0.44
1:B:266:ALA:O	1:B:267:SER:C	2.60	0.44
1:B:504:THR:O	1:B:508:SER:OG	2.24	0.44
1:B:770:LEU:HD13	1:B:812:LEU:HD11	2.00	0.44
1:A:112:ALA:HB1	1:A:201:ASN:CG	2.43	0.43
1:A:699:ASP:N	1:A:699:ASP:OD1	2.50	0.43
1:A:931:LYS:CB	1:A:932:PRO:HD3	2.48	0.43
1:B:321:LEU:HD11	1:B:349:LEU:HD21	2.00	0.43
1:B:679:LEU:O	1:B:682:GLN:N	2.51	0.43

Continued on next page...

Continued from previous page...

Atom-1	Atom-2	Interatomic distance (Å)	Clash overlap (Å)
1:A:124:CYS:O	1:A:128:CYS:CB	2.66	0.43
1:B:97:ILE:O	1:B:101:ASN:ND2	2.44	0.43
2:C:481:ILE:O	2:C:485:LEU:HG	2.17	0.43
1:B:152:LEU:HD12	1:B:177:ARG:HB2	2.01	0.43
1:B:176:SER:HB3	1:B:179:LEU:HD21	2.00	0.43
1:B:556:LYS:C	1:B:559:LEU:HD22	2.43	0.43
1:A:783:ILE:O	1:A:786:LEU:HD23	2.17	0.43
1:B:619:THR:HG23	1:B:620:LEU:N	2.31	0.43
1:B:767:LEU:HD12	1:B:767:LEU:C	2.42	0.43
1:A:266:ALA:O	1:A:267:SER:C	2.62	0.43
1:A:898:SER:CB	1:A:903:VAL:HG21	2.48	0.43
1:B:604:ASP:N	1:B:608:LEU:HD21	2.33	0.43
2:C:656:GLU:CG	2:C:693:MET:HE3	2.47	0.43
1:A:296:SER:HA	1:A:299:ILE:HG22	2.00	0.43
2:C:472:GLU:HB2	2:C:556:LEU:HD23	2.00	0.43
1:A:264:GLN:HB2	1:A:265:PRO:HD3	2.01	0.43
1:B:574:ILE:HD12	1:B:639:LEU:HD12	2.00	0.43
2:C:697:GLN:CB	2:C:720:LEU:HD21	2.49	0.43
1:A:456:MET:O	1:A:457:ASN:C	2.61	0.43
1:A:142:PHE:O	1:A:146:THR:HG23	2.19	0.43
1:A:584:ASP:O	1:A:588:GLU:CB	2.67	0.43
1:B:104:ILE:HG22	1:B:108:LEU:CD2	2.48	0.43
1:B:199:MET:HE2	1:B:199:MET:HA	2.00	0.43
1:B:350:LEU:O	1:B:354:LEU:HD13	2.19	0.43
1:A:280:LEU:O	1:A:283:MET:N	2.49	0.42
1:A:382:VAL:O	1:A:382:VAL:HG22	2.18	0.42
1:A:672:VAL:HG23	1:A:673:SER:N	2.34	0.42
1:A:779:LYS:HB3	1:A:820:VAL:HG11	2.01	0.42
1:A:310:TYR:HB3	1:A:352:TYR:OH	2.19	0.42
1:A:931:LYS:O	1:A:935:GLN:HG3	2.19	0.42
1:B:640:LEU:HD12	1:B:640:LEU:O	2.19	0.42
2:C:666:LEU:HD23	2:C:666:LEU:O	2.19	0.42
1:A:379:LEU:HB3	1:A:392:LEU:HD11	1.99	0.42
1:A:389:ALA:O	1:A:392:LEU:HB3	2.19	0.42
1:A:569:ILE:O	1:A:573:LEU:HD13	2.19	0.42
1:A:730:GLU:OE1	1:A:730:GLU:HA	2.19	0.42
1:B:884:LEU:O	1:B:887:PHE:N	2.52	0.42
2:C:686:VAL:HG13	2:C:687:VAL:N	2.33	0.42
1:A:286:ASP:OD1	1:A:287:GLN:N	2.50	0.42
1:A:288:LEU:O	1:A:289:LYS:C	2.62	0.42
1:A:618:LEU:HD23	1:A:622:CYS:SG	2.59	0.42

Continued on next page...

Continued from previous page...

Atom-1	Atom-2	Interatomic distance (Å)	Clash overlap (Å)
1:A:821:ARG:CB	1:A:822:VAL:HG13	2.49	0.42
1:A:850:MET:HE3	1:A:869:LEU:HD22	2.01	0.42
1:B:32:LYS:HB2	1:B:33:PRO:HD3	2.01	0.42
1:B:626:ASP:OD1	1:B:626:ASP:N	2.49	0.42
1:B:758:LEU:CB	1:B:793:LEU:HA	2.50	0.42
1:A:43:ARG:NH2	1:A:44:ILE:HD11	2.35	0.42
1:A:598:TRP:CH2	1:A:637:VAL:HG13	2.54	0.42
1:B:129:SER:HA	1:B:132:PHE:HB2	2.00	0.42
1:B:454:VAL:HG12	1:B:455:ASP:N	2.34	0.42
1:A:194:LEU:O	1:A:194:LEU:HG	2.19	0.42
1:B:666:VAL:HG23	1:B:667:ILE:N	2.34	0.42
1:B:673:SER:O	1:B:676:PHE:CE1	2.72	0.42
2:D:580:LEU:HD23	2:D:583:PHE:CD2	2.55	0.42
1:A:688:VAL:O	1:A:690:LYS:NZ	2.34	0.42
1:A:799:GLU:O	1:A:802:VAL:HG12	2.19	0.42
2:C:741:CYS:O	2:C:742:VAL:C	2.62	0.42
1:A:380:LEU:HD23	1:A:380:LEU:C	2.45	0.42
1:B:321:LEU:HD12	1:B:321:LEU:O	2.20	0.42
1:B:349:LEU:HD11	1:B:353:PHE:HE2	1.85	0.42
2:D:713:GLN:O	2:D:717:VAL:HG23	2.19	0.42
1:B:104:ILE:O	1:B:108:LEU:HD23	2.20	0.42
1:B:540:TYR:O	1:B:543:VAL:HG22	2.20	0.42
2:C:569:VAL:O	2:C:573:GLU:HG3	2.20	0.42
2:C:701:VAL:O	2:C:702:ARG:C	2.62	0.42
1:A:256:PHE:CD1	1:A:260:GLY:HA2	2.55	0.42
1:B:482:LEU:HD12	1:B:483:LYS:N	2.34	0.42
2:D:646:VAL:O	2:D:647:ALA:C	2.63	0.42
1:B:537:LEU:HD12	1:B:537:LEU:N	2.35	0.41
1:B:551:LEU:HD21	1:B:562:THR:CB	2.50	0.41
2:D:684:VAL:HG13	2:D:685:GLU:N	2.35	0.41
2:C:321:LEU:C	2:C:322:ILE:HD13	2.45	0.41
1:B:737:HIS:O	1:B:737:HIS:ND1	2.53	0.41
2:D:686:VAL:HG13	2:D:687:VAL:N	2.35	0.41
1:A:173:VAL:HG22	1:A:174:VAL:H	1.86	0.41
1:A:471:GLU:O	1:A:475:ILE:HG12	2.20	0.41
1:B:152:LEU:O	1:B:156:LEU:HG	2.20	0.41
1:B:554:VAL:HG22	1:B:554:VAL:O	2.20	0.41
2:D:583:PHE:O	2:D:584:GLN:C	2.62	0.41
1:A:675:PHE:HA	1:A:678:LEU:HB3	2.01	0.41
1:B:241:SER:HB2	1:B:242:PRO:HD2	2.01	0.41
1:B:876:ILE:O	1:B:880:ALA:HB2	2.21	0.41

Continued on next page...

Continued from previous page...

Atom-1	Atom-2	Interatomic distance (Å)	Clash overlap (Å)
2:D:316:LEU:HD21	2:D:485:LEU:HD21	2.01	0.41
2:D:569:VAL:HG13	2:D:570:LYS:N	2.34	0.41
2:D:735:LYS:HD2	2:D:735:LYS:N	2.36	0.41
1:A:217:ILE:CG2	1:A:218:ALA:N	2.82	0.41
2:C:561:LEU:C	2:C:561:LEU:HD23	2.45	0.41
1:A:639:LEU:HD13	1:A:639:LEU:HA	1.93	0.41
1:A:901:ALA:O	1:A:902:SER:C	2.64	0.41
1:A:152:LEU:O	1:A:156:LEU:HG	2.21	0.41
1:B:142:PHE:CE2	1:B:219:ILE:HG22	2.56	0.41
1:B:202:LEU:O	1:B:205:ILE:HG22	2.21	0.41
1:A:585:HIS:O	1:A:586:ILE:C	2.62	0.41
1:B:305:PHE:CE1	1:B:348:HIS:CE1	3.09	0.41
2:D:421:PRO:HA	2:D:424:GLN:HG2	2.01	0.41
1:A:492:GLY:O	1:A:495:VAL:HG12	2.20	0.41
1:A:563:ILE:O	1:A:566:VAL:HG12	2.21	0.41
1:A:865:LEU:O	1:A:868:THR:OG1	2.33	0.41
1:B:171:TRP:CZ3	1:B:199:MET:HE3	2.55	0.41
1:B:198:SER:N	1:B:201:ASN:OD1	2.44	0.41
1:B:303:PHE:HB3	1:B:352:TYR:CD2	2.55	0.41
1:B:889:LEU:HD22	1:B:925:PHE:CZ	2.56	0.41
1:B:906:ALA:O	1:B:909:THR:OG1	2.37	0.41
2:C:406:ARG:O	2:C:407:ALA:HB3	2.20	0.41
2:C:756:SER:O	2:C:760:ARG:HD3	2.21	0.41
1:A:266:ALA:O	1:A:269:PHE:N	2.53	0.41
1:A:817:ASP:O	1:A:822:VAL:CG2	2.69	0.41
1:A:827:ASN:HA	1:A:830:HIS:HD2	1.86	0.41
1:A:874:GLY:HA3	1:A:910:GLU:CG	2.51	0.41
1:B:79:SER:O	1:B:79:SER:OG	2.34	0.41
1:A:812:LEU:O	1:A:821:ARG:CB	2.69	0.40
1:A:841:PHE:HA	1:A:844:GLU:CG	2.51	0.40
1:B:195:GLN:N	1:B:195:GLN:OE1	2.55	0.40
1:B:899:LYS:O	1:B:900:SER:C	2.65	0.40
2:D:730:LEU:O	2:D:733:LYS:O	2.39	0.40
2:C:742:VAL:HG23	2:C:743:GLU:N	2.36	0.40
1:A:261:LEU:HD21	1:A:313:ILE:CD1	2.51	0.40
1:A:779:LYS:H	1:A:779:LYS:HD2	1.87	0.40
2:C:430:HIS:H	2:C:471:LEU:HD21	1.83	0.40
2:C:687:VAL:HG13	2:C:688:ARG:N	2.36	0.40
1:B:487:ILE:HG13	1:B:488:GLU:N	2.35	0.40
2:D:681:GLN:O	2:D:684:VAL:HG12	2.20	0.40
1:A:48:VAL:HG23	1:A:49:ASN:N	2.36	0.40

Continued on next page...

Continued from previous page...

Atom-1	Atom-2	Interatomic distance (Å)	Clash overlap (Å)
1:A:494:ALA:HA	1:A:569:ILE:HD13	2.03	0.40
1:B:315:PRO:O	1:B:316:VAL:C	2.63	0.40
2:D:332:LEU:HD21	2:D:426:PHE:CE1	2.56	0.40
1:A:40:PHE:O	1:A:44:ILE:HG12	2.21	0.40
1:A:335:MET:HB3	1:A:382:VAL:HG23	2.04	0.40
1:A:365:LEU:O	1:A:368:ARG:HB3	2.21	0.40
1:A:537:LEU:HA	1:A:540:TYR:CD2	2.57	0.40
1:B:128:CYS:C	1:B:130:LEU:H	2.29	0.40
1:B:548:ARG:O	1:B:552:GLU:N	2.47	0.40
1:B:673:SER:O	1:B:676:PHE:CD1	2.75	0.40
1:B:809:LEU:O	1:B:812:LEU:HD13	2.21	0.40
2:D:653:LEU:HD21	2:D:715:ARG:CB	2.51	0.40
2:D:751:VAL:O	2:D:752:MET:C	2.65	0.40

There are no symmetry-related clashes.

5.3 Torsion angles [i](#)

5.3.1 Protein backbone [i](#)

In the following table, the Percentiles column shows the percent Ramachandran outliers of the chain as a percentile score with respect to all PDB entries followed by that with respect to all EM entries.

The Analysed column shows the number of residues for which the backbone conformation was analysed, and the total number of residues.

Mol	Chain	Analysed	Favoured	Allowed	Outliers	Percentiles	
1	A	813/2644 (31%)	756 (93%)	54 (7%)	3 (0%)	30	65
1	B	839/2644 (32%)	769 (92%)	70 (8%)	0	100	100
2	C	355/791 (45%)	324 (91%)	28 (8%)	3 (1%)	16	51
2	D	356/791 (45%)	312 (88%)	43 (12%)	1 (0%)	37	70
All	All	2363/6870 (34%)	2161 (92%)	195 (8%)	7 (0%)	38	70

All (7) Ramachandran outliers are listed below:

Mol	Chain	Res	Type
1	A	586	ILE
2	C	622	GLN

Continued on next page...

Continued from previous page...

Mol	Chain	Res	Type
2	C	623	LEU
1	A	825	SER
2	C	632	LEU
1	A	585	HIS
2	D	629	GLY

5.3.2 Protein sidechains ⓘ

In the following table, the Percentiles column shows the percent sidechain outliers of the chain as a percentile score with respect to all PDB entries followed by that with respect to all EM entries.

The Analysed column shows the number of residues for which the sidechain conformation was analysed, and the total number of residues.

Mol	Chain	Analysed	Rotameric	Outliers	Percentiles	
1	A	599/2363 (25%)	596 (100%)	3 (0%)	86	90
1	B	585/2363 (25%)	585 (100%)	0	100	100
2	C	231/678 (34%)	229 (99%)	2 (1%)	75	83
2	D	228/678 (34%)	227 (100%)	1 (0%)	89	91
All	All	1643/6082 (27%)	1637 (100%)	6 (0%)	88	91

All (6) residues with a non-rotameric sidechain are listed below:

Mol	Chain	Res	Type
1	A	531	VAL
1	A	642	LEU
1	A	822	VAL
2	D	630	CYS
2	C	631	LEU
2	C	680	CYS

Sometimes sidechains can be flipped to improve hydrogen bonding and reduce clashes. All (7) such sidechains are listed below:

Mol	Chain	Res	Type
1	A	73	GLN
1	A	74	HIS
1	A	85	ASN
1	A	633	GLN
1	A	683	ASN

Continued on next page...

Continued from previous page...

Mol	Chain	Res	Type
1	A	830	HIS
2	C	683	ASN

5.3.3 RNA [i](#)

There are no RNA molecules in this entry.

5.4 Non-standard residues in protein, DNA, RNA chains [i](#)

There are no non-standard protein/DNA/RNA residues in this entry.

5.5 Carbohydrates [i](#)

There are no oligosaccharides in this entry.

5.6 Ligand geometry [i](#)

Of 2 ligands modelled in this entry, 2 are monoatomic - leaving 0 for Mogul analysis.

There are no bond length outliers.

There are no bond angle outliers.

There are no chirality outliers.

There are no torsion outliers.

There are no ring outliers.

No monomer is involved in short contacts.

5.7 Other polymers [i](#)

There are no such residues in this entry.

5.8 Polymer linkage issues [i](#)

There are no chain breaks in this entry.

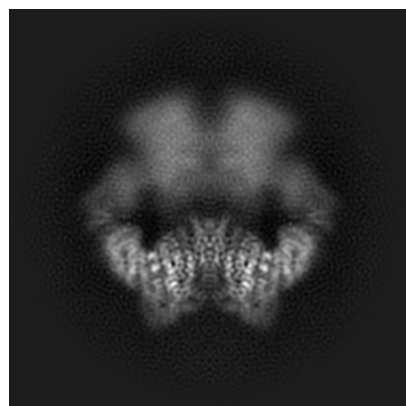
6 Map visualisation [i](#)

This section contains visualisations of the EMDB entry EMD-62804. These allow visual inspection of the internal detail of the map and identification of artifacts.

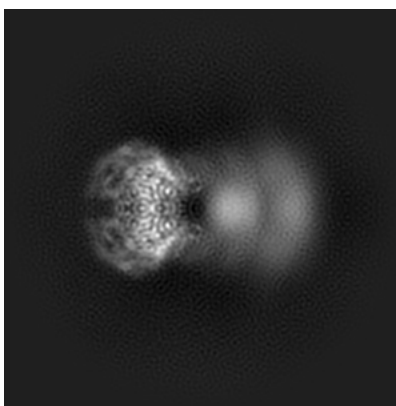
Images derived from a raw map, generated by summing the deposited half-maps, are presented below the corresponding image components of the primary map to allow further visual inspection and comparison with those of the primary map.

6.1 Orthogonal projections [i](#)

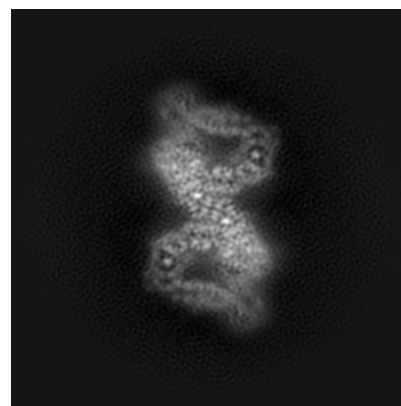
6.1.1 Primary map



X

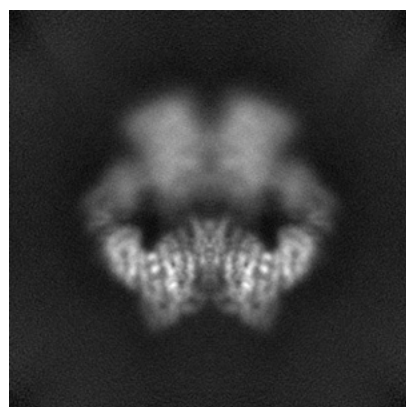


Y

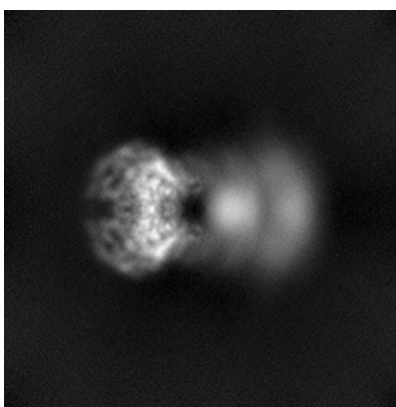


Z

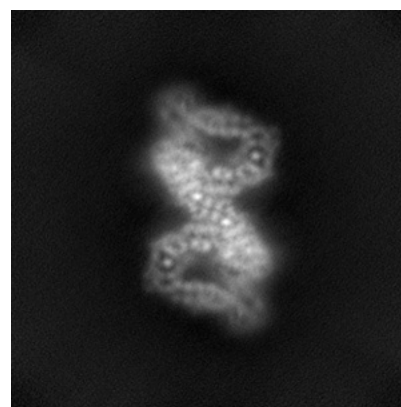
6.1.2 Raw map



X



Y

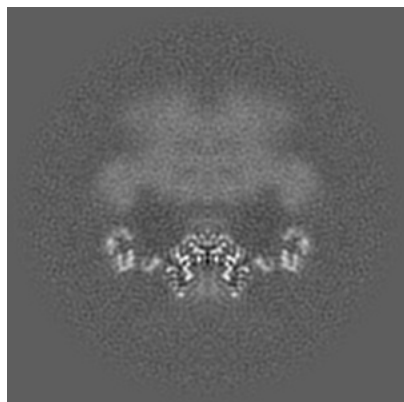


Z

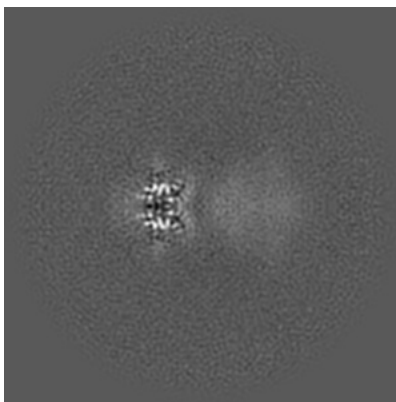
The images above show the map projected in three orthogonal directions.

6.2 Central slices [i](#)

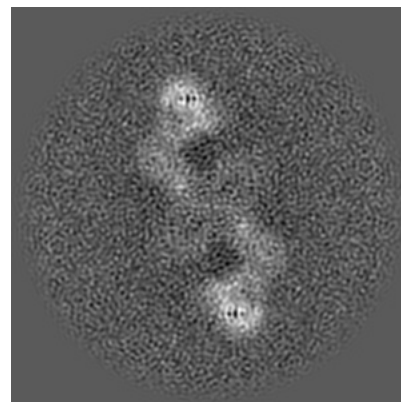
6.2.1 Primary map



X Index: 144

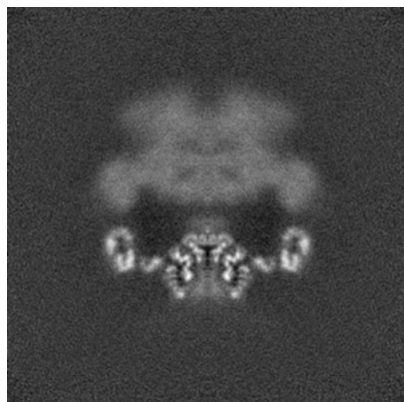


Y Index: 144

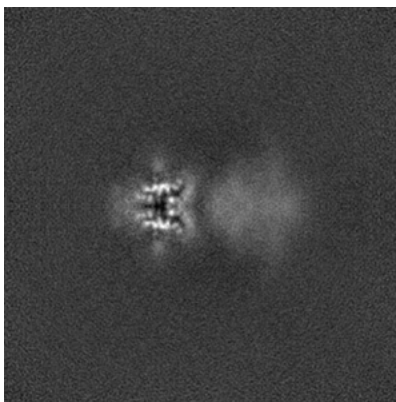


Z Index: 144

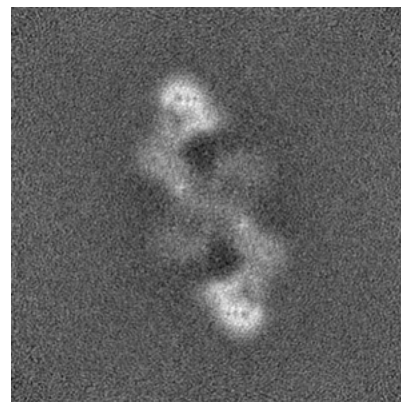
6.2.2 Raw map



X Index: 144



Y Index: 144

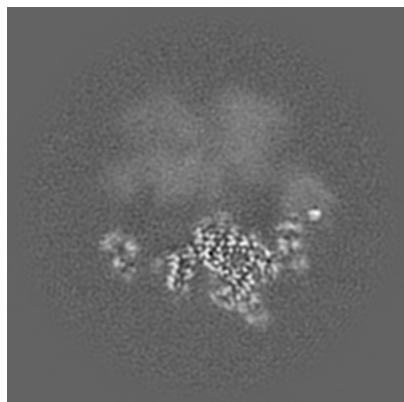


Z Index: 144

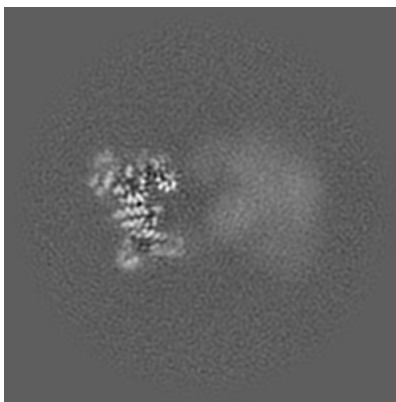
The images above show central slices of the map in three orthogonal directions.

6.3 Largest variance slices [i](#)

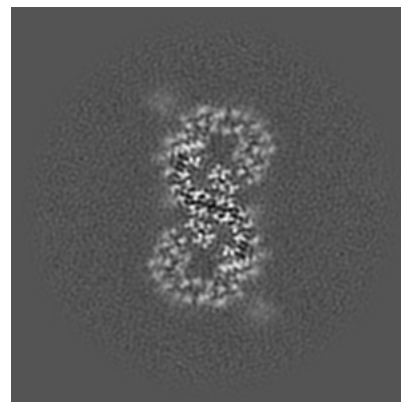
6.3.1 Primary map



X Index: 131

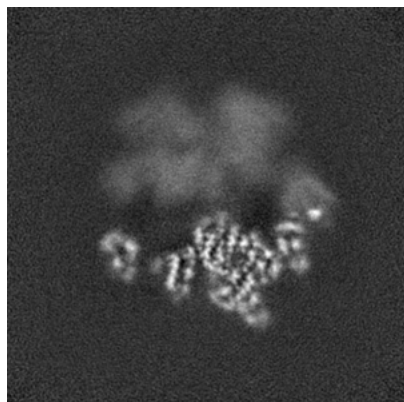


Y Index: 118

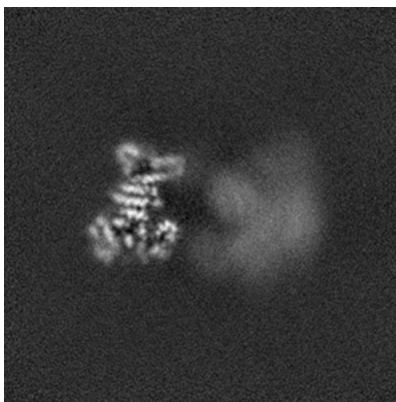


Z Index: 109

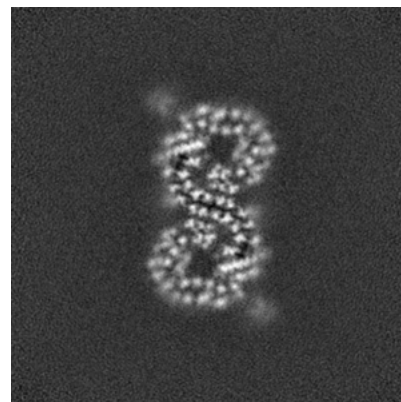
6.3.2 Raw map



X Index: 131



Y Index: 170

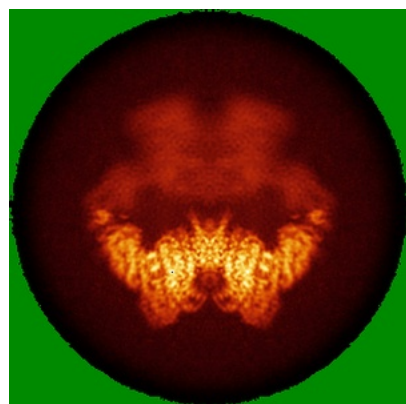


Z Index: 109

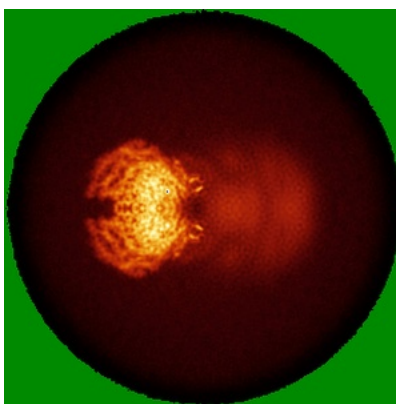
The images above show the largest variance slices of the map in three orthogonal directions.

6.4 Orthogonal standard-deviation projections (False-color) [i](#)

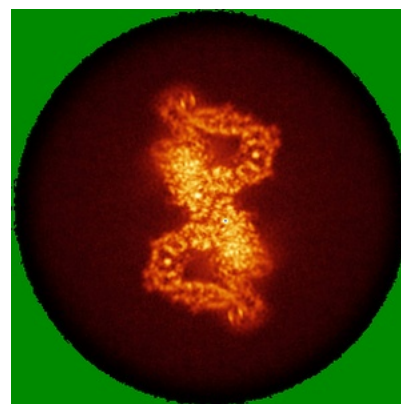
6.4.1 Primary map



X

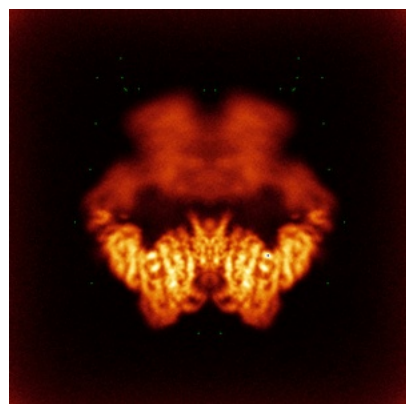


Y

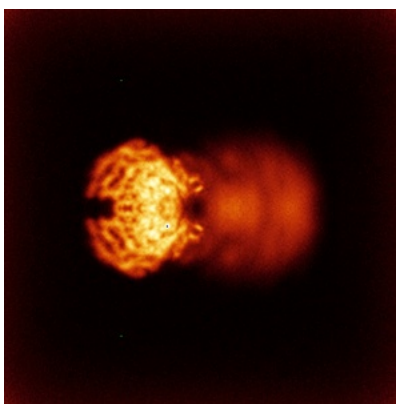


Z

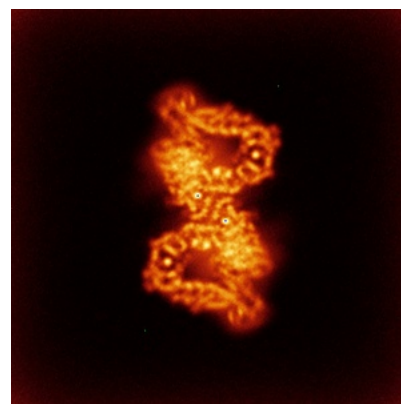
6.4.2 Raw map



X



Y



Z

The images above show the map standard deviation projections with false color in three orthogonal directions. Minimum values are shown in green, max in blue, and dark to light orange shades represent small to large values respectively.

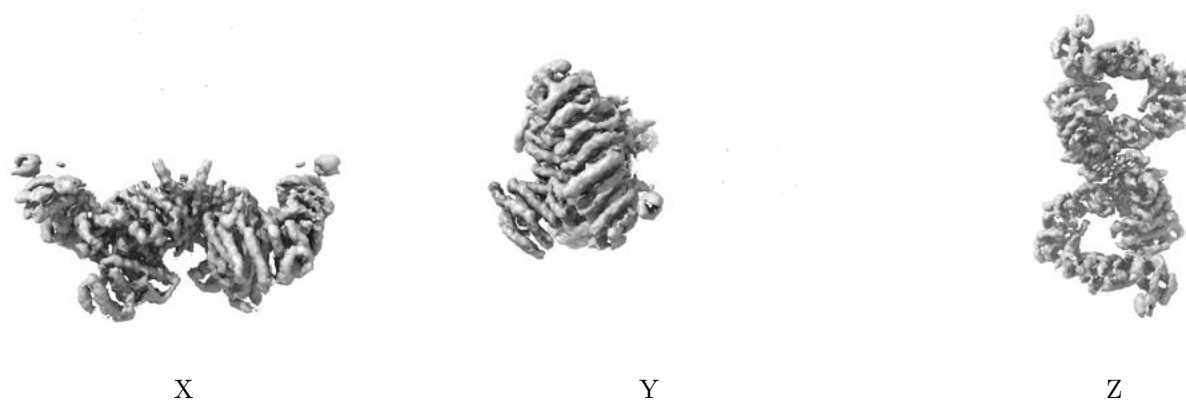
6.5 Orthogonal surface views [i](#)

6.5.1 Primary map



The images above show the 3D surface view of the map at the recommended contour level 0.446. These images, in conjunction with the slice images, may facilitate assessment of whether an appropriate contour level has been provided.

6.5.2 Raw map



These images show the 3D surface of the raw map. The raw map's contour level was selected so that its surface encloses the same volume as the primary map does at its recommended contour level.

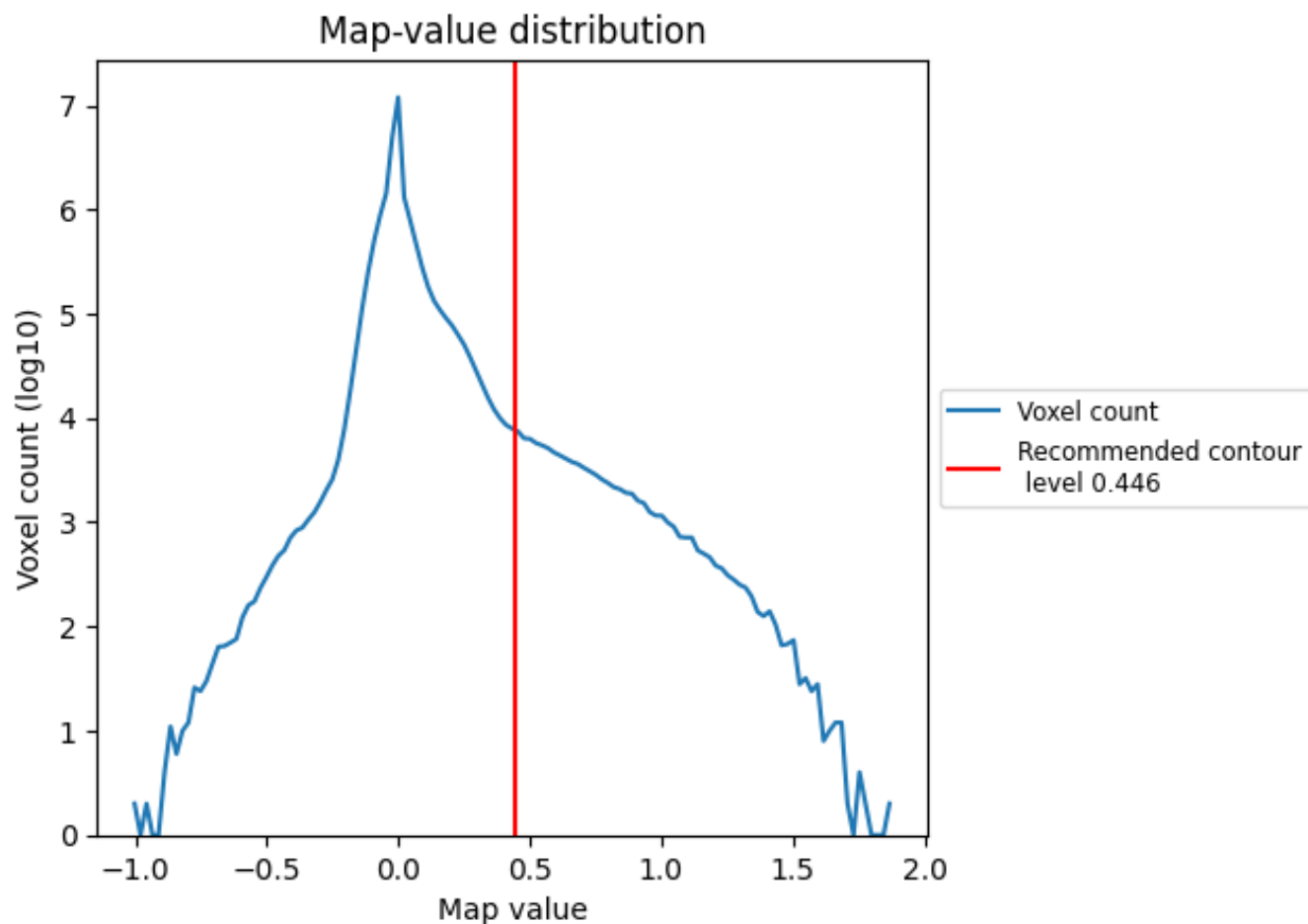
6.6 Mask visualisation [i](#)

This section was not generated. No masks/segmentation were deposited.

7 Map analysis [i](#)

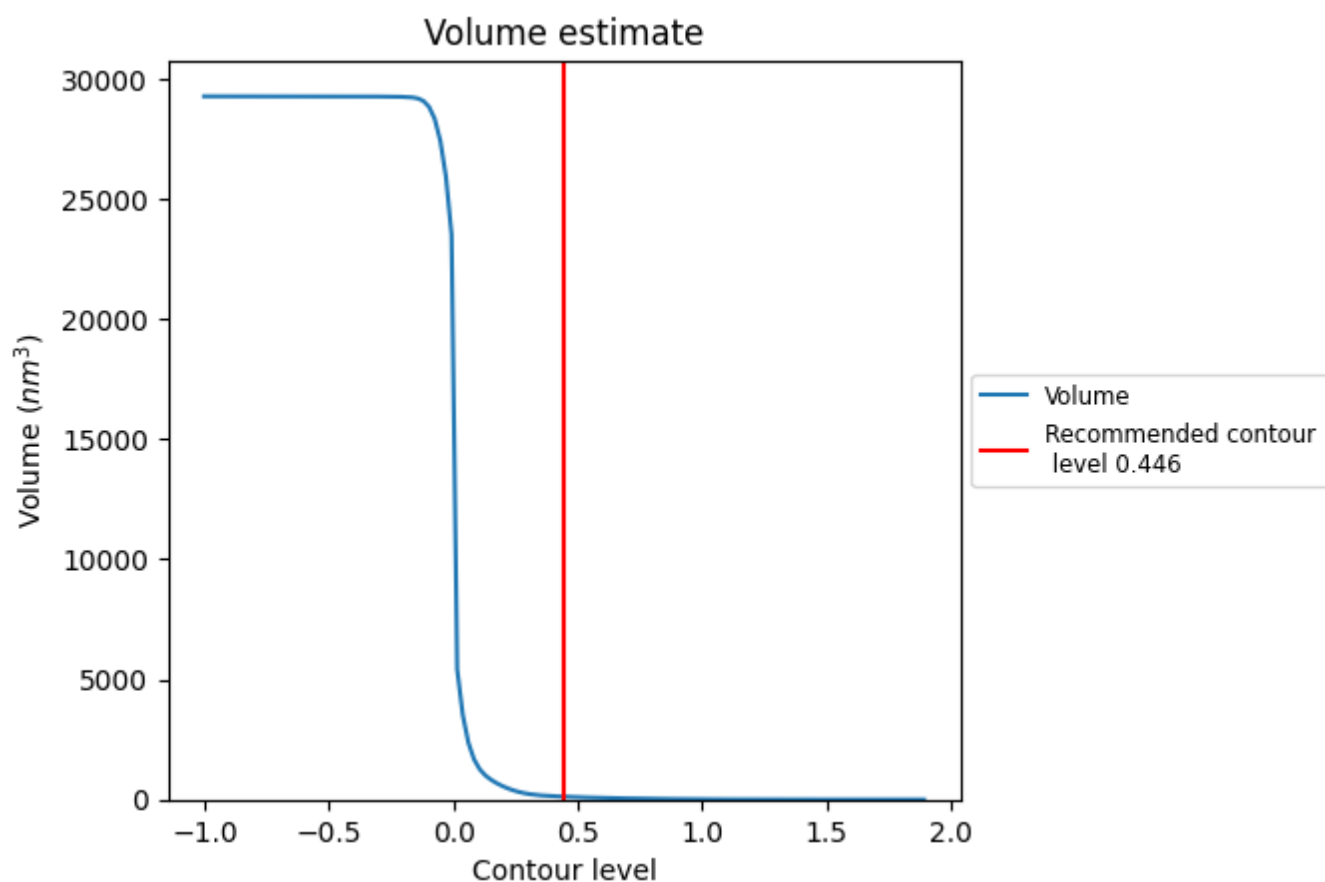
This section contains the results of statistical analysis of the map.

7.1 Map-value distribution [i](#)



The map-value distribution is plotted in 128 intervals along the x-axis. The y-axis is logarithmic. A spike in this graph at zero usually indicates that the volume has been masked.

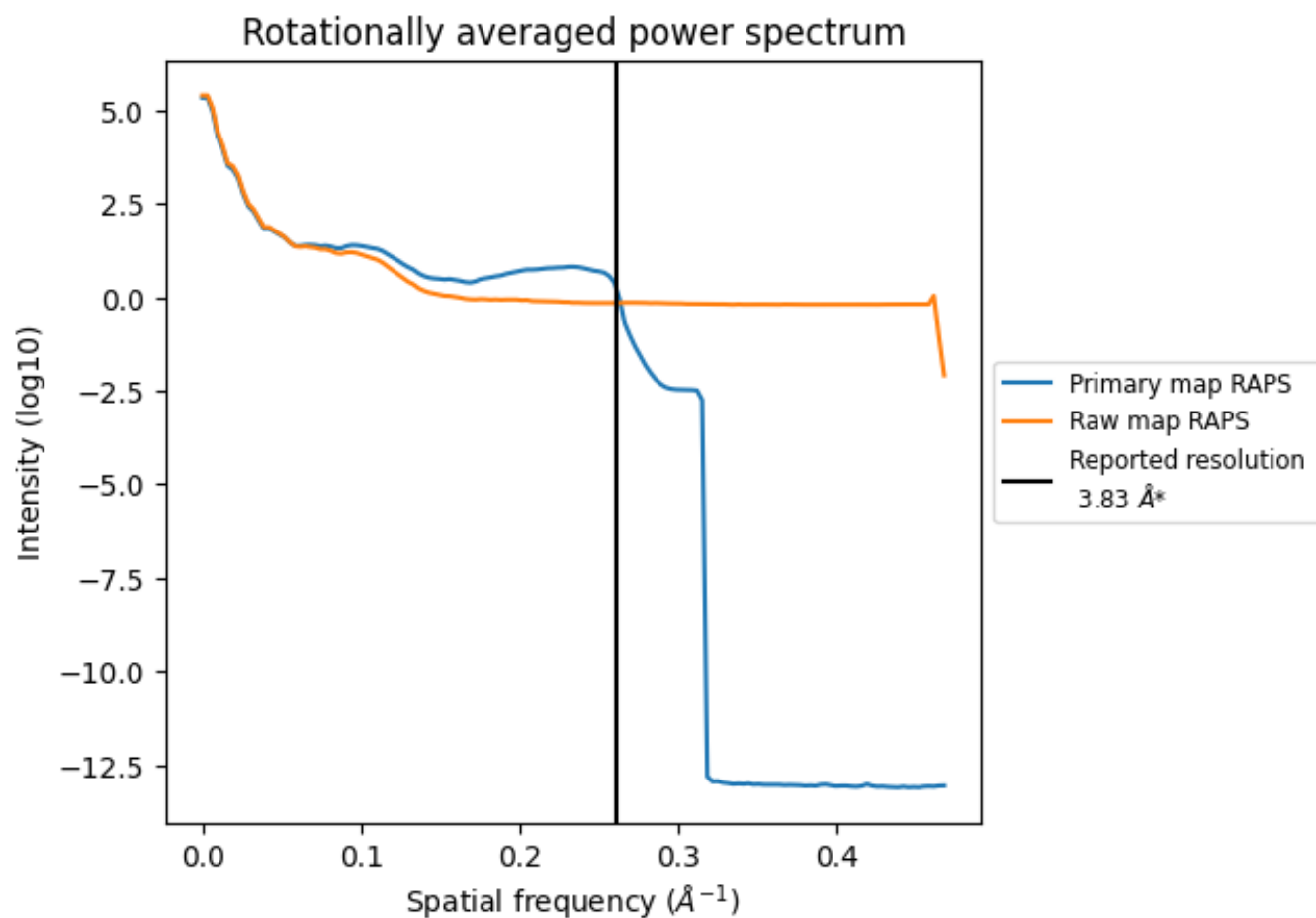
7.2 Volume estimate [i](#)



The volume at the recommended contour level is 120 nm³; this corresponds to an approximate mass of 108 kDa.

The volume estimate graph shows how the enclosed volume varies with the contour level. The recommended contour level is shown as a vertical line and the intersection between the line and the curve gives the volume of the enclosed surface at the given level.

7.3 Rotationally averaged power spectrum ⓘ

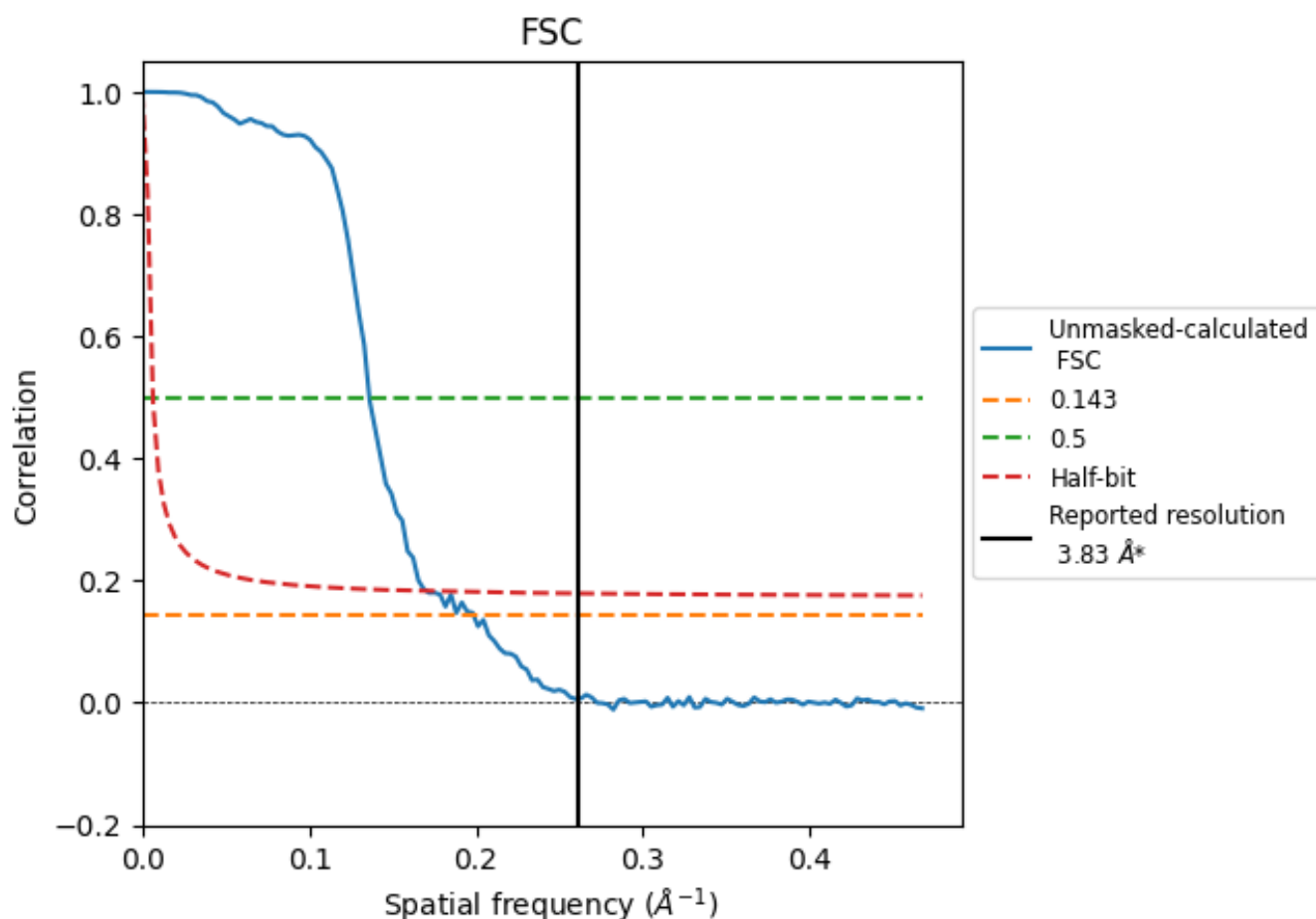


*Reported resolution corresponds to spatial frequency of 0.261 Å⁻¹

8 Fourier-Shell correlation [i](#)

Fourier-Shell Correlation (FSC) is the most commonly used method to estimate the resolution of single-particle and subtomogram-averaged maps. The shape of the curve depends on the imposed symmetry, mask and whether or not the two 3D reconstructions used were processed from a common reference. The reported resolution is shown as a black line. A curve is displayed for the half-bit criterion in addition to lines showing the 0.143 gold standard cut-off and 0.5 cut-off.

8.1 FSC [i](#)



*Reported resolution corresponds to spatial frequency of 0.261 \AA^{-1}

8.2 Resolution estimates [i](#)

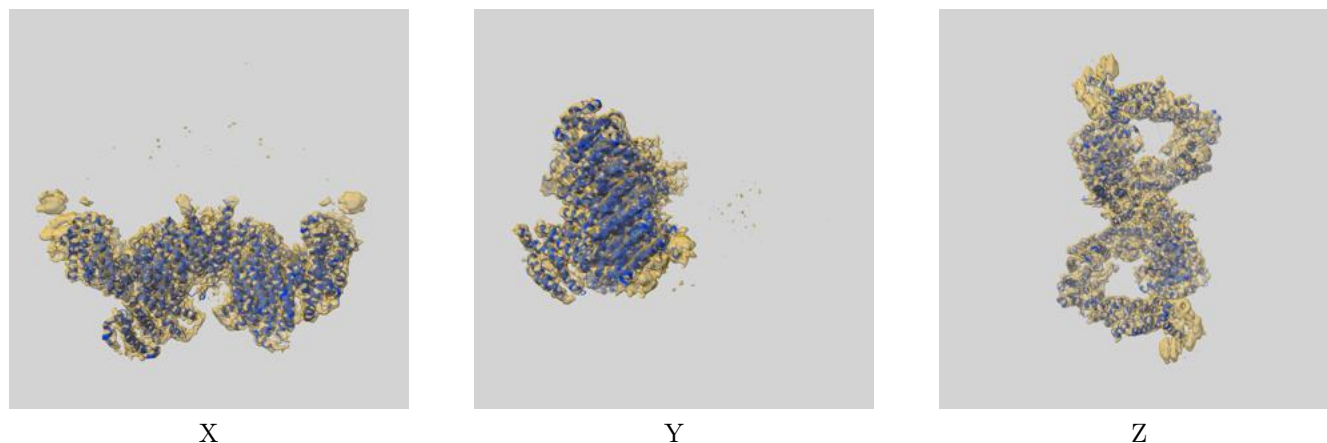
Resolution estimate (Å)	Estimation criterion (FSC cut-off)		
	0.143	0.5	Half-bit
Reported by author	3.83	-	-
Author-provided FSC curve	-	-	-
Unmasked-calculated*	5.04	7.35	5.87

*Resolution estimate based on FSC curve calculated by comparison of deposited half-maps. The value from deposited half-maps intersecting FSC 0.143 CUT-OFF 5.04 differs from the reported value 3.83 by more than 10 %

9 Map-model fit [i](#)

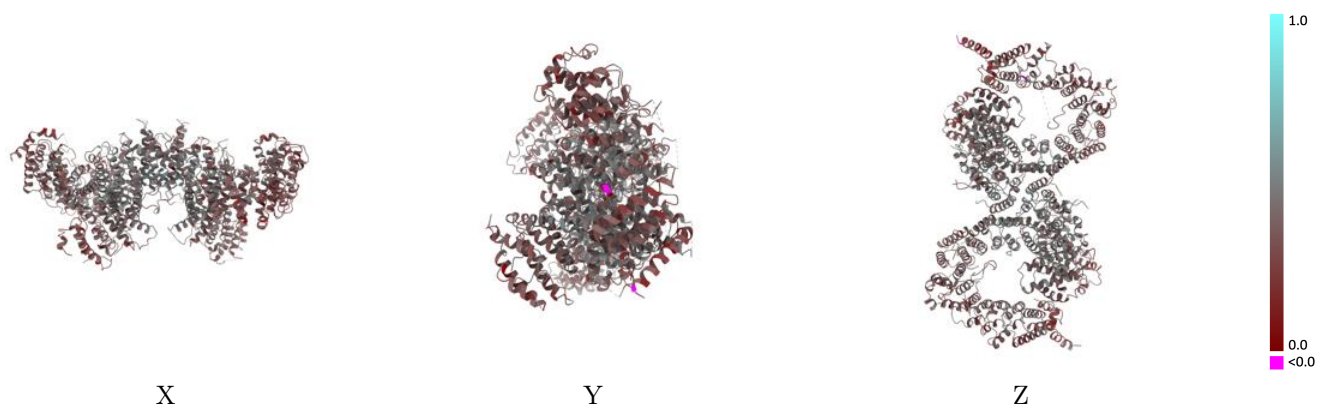
This section contains information regarding the fit between EMDB map EMD-62804 and PDB model 9L43. Per-residue inclusion information can be found in [section 3](#) on [page 4](#).

9.1 Map-model overlay [i](#)



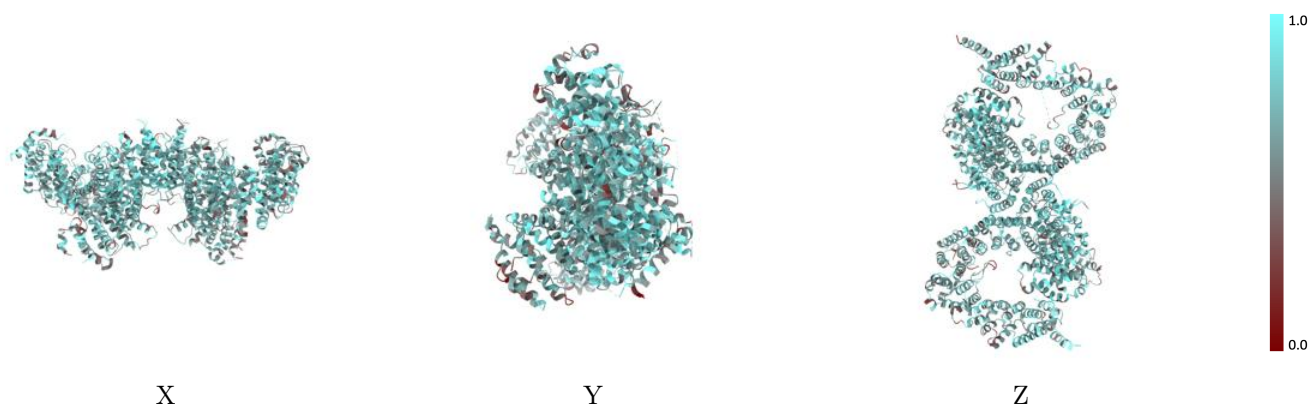
The images above show the 3D surface view of the map at the recommended contour level 0.446 at 50% transparency in yellow overlaid with a ribbon representation of the model coloured in blue. These images allow for the visual assessment of the quality of fit between the atomic model and the map.

9.2 Q-score mapped to coordinate model [i](#)



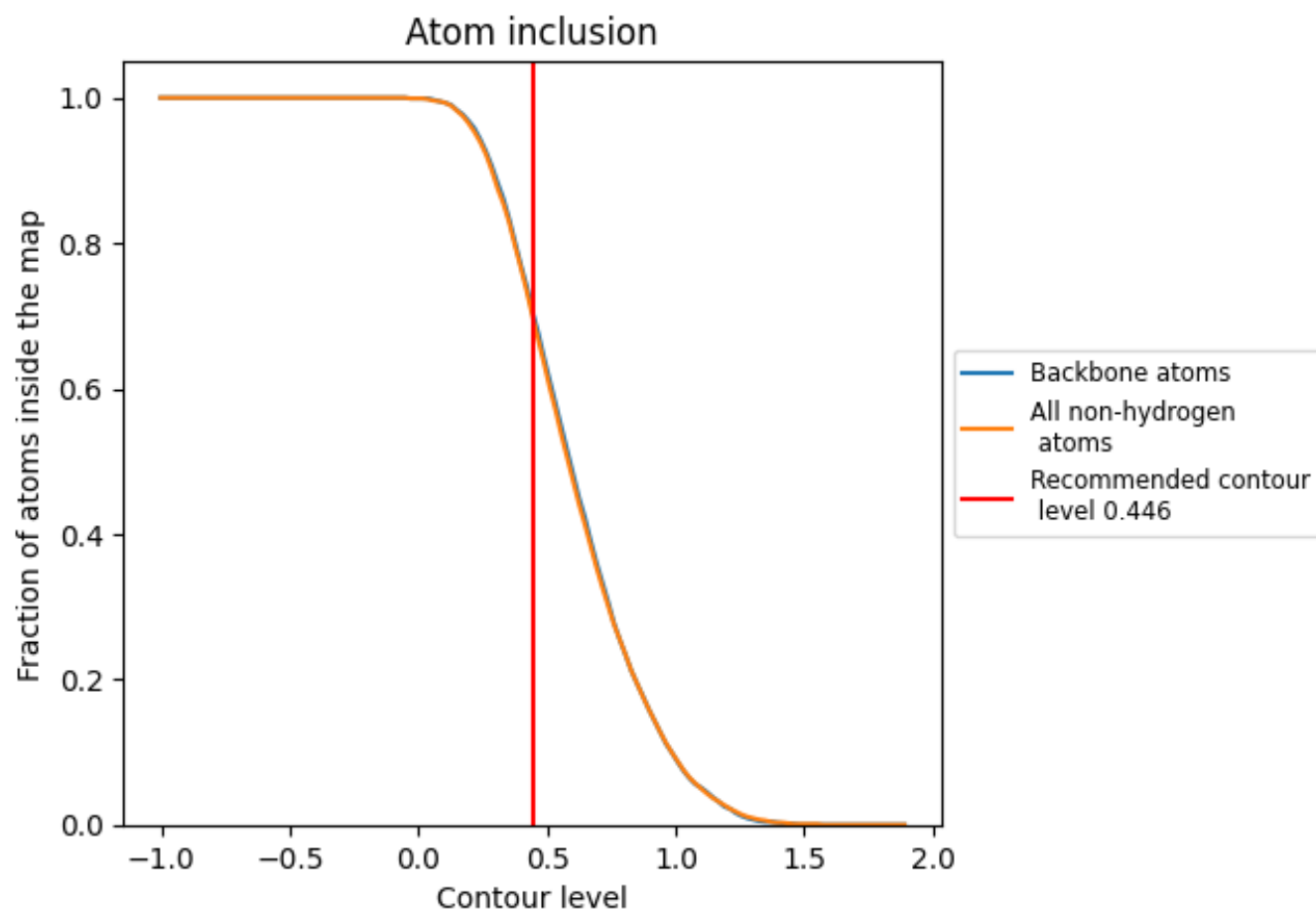
The images above show the model with each residue coloured according to its Q-score. This shows their resolvability in the map with higher Q-score values reflecting better resolvability. Please note: Q-score is calculating the resolvability of atoms, and thus high values are only expected at resolutions at which atoms can be resolved. Low Q-score values may therefore be expected for many entries.

9.3 Atom inclusion mapped to coordinate model [i](#)



The images above show the model with each residue coloured according to its atom inclusion. This shows to what extent they are inside the map at the recommended contour level (0.446).

9.4 Atom inclusion [i](#)



At the recommended contour level, 70% of all backbone atoms, 70% of all non-hydrogen atoms, are inside the map.

9.5 Map-model fit summary ⓘ

The table lists the average atom inclusion at the recommended contour level (0.446) and Q-score for the entire model and for each chain.

Chain	Atom inclusion	Q-score
All	<div></div> 0.6960	<div></div> 0.3890
A	<div></div> 0.6660	<div></div> 0.3710
B	<div></div> 0.6740	<div></div> 0.3750
C	<div></div> 0.7600	<div></div> 0.4280
D	<div></div> 0.7530	<div></div> 0.4280

